

Distribution and phenology of monarch butterfly larvae and their milkweed hosts in the South Central US

James L Tracy (✉ James.Tracy@ag.tamu.edu)

Texas A&M University <https://orcid.org/0000-0002-9281-2692>

Tuula Kantola

None

Kristen A. Baum

Oklahoma State University - Tulsa

Robert N. Coulson

Texas A&M University College Station: Texas A&M University

Research Article

Keywords: Niche models, Community science, Resource selectivity, Migration pathways, Monarch conservation

Posted Date: January 6th, 2022

DOI: <https://doi.org/10.21203/rs.3.rs-755161/v2>

License: © ⓘ This work is licensed under a Creative Commons Attribution 4.0 International License. [Read Full License](#)

Abstract

South Central US milkweeds (*Asclepias*) are critical adult nectar and larval food resources for producing the first spring and last summer/fall generations of declining eastern migratory monarch butterflies (*Danaus plexippus*). This study addresses multiple gaps in assessment of monarch conservation priorities for the South Central US through analyses of monarch larval host selectivity, phenology, and spatial density, as well as the phenology, niche modeled distribution, and land cover selectivity of important milkweed hosts. Results are synthesized to estimate seasonal milkweed resource areas. About 70% of monarch larval activity occurred from mid-March to mid-July (early season) and 30% from mid-August to late November (late season). Twenty-six wild milkweed (Apocynaceae) hosts were mapped, including four new records for North America. Important hosts included *Asclepias a. ssp. capricornu*, *A. viridis*, and *A. oenotheroides*, that were utilized more frequently during early season, and *Asclepias latifolia*, utilized more frequently during late season. Landscape host selectivity was positive for *A. viridis* and *A. a. ssp. capricornu* in late and early seasons, respectively, and negative for *A. oenotheroides* in late season. Milkweed land cover selectivity was positive for Developed-Open Space and Grassland Herbaceous, and negative for Cultivated Crops and Shrub/Scrub. Seasonal milkweed resource areas and larval spatial densities resolved interior and coastal corridors providing functional connectivity for monarch spring and fall migrations. A potential gap in milkweed land cover benefit was identified in South Texas. The novel merging of milkweed niche models with larval phenology, host selectivity, milkweed phenology, and land cover selectivity informs conservation assessment.

Introduction

The monarch butterfly (*Danaus plexippus*) recently became a candidate for US listing as federally endangered or threatened (USDI FWS 2020). Eastern migratory monarchs are unique among insects in flying up to 3,000 km in their fall migration from breeding sites as far north as southern Canada to overwintering sites in Central Mexico (Urquhart and Urquhart 1978), with the same butterflies returning to the U.S. in the spring. Spring remigrants lay eggs in the South Central US from Texas to Oklahoma on milkweeds (*Asclepias* spp.), their primary larval host plants (Malcolm et al. 1993). Batalden et al. (2007) and Castañeda et al. (2019) identified the South Central US as the primary region of activity for first generation monarchs from March to April. Therefore, milkweed habitat in the South Central US (Texas, Oklahoma, Louisiana, and Arkansas) is critical for development of the first generation in the spring, which forms the basis for subsequent generations that migrate and reproduce further north (Flockhart et al. 2013; Oberhauser et al. 2017). Milkweeds are also preferred nectar plants of adult monarchs (USDA NRCS 2015a,b; 2018) and can be important for fueling the spring and fall migrations (Brower et al. 2006; Hobson et al. 2020). Because of the importance of South Central US milkweed habitat for maintaining monarch functional connectivity along the migratory corridors, spatially explicit niche models (Schwartz 2012) and habitat selectivity assessments (Johnson et al. 1980) in this region are needed to inform monarch conservation planning efforts (e.g., Moreno-Sanchez et al. 2019). The significant long-term decline in the eastern monarch population that overwinters in Central Mexico (Semmens et al. 2016) has been primarily attributed to the loss of milkweed habitat in the Midwest US for second and third generation larvae (Oberhauser et al. 2017; Pleasants 2017; Thogmartin et al. 2017; Stenoien et al. 2018; Taylor et al. 2020), adult mortality within the Central Mexico overwintering grounds (Brower et al. 2004, 2012, 2017; Ries et al. 2015), breeding season climate change (Zylstra et al. 2021), or more of a combination of these factors (Wilcox 2019). Demographic models of Oberhauser et al. (2017) indicate that increasing milkweed and nectar availability for monarchs in both the northern and southern parts of the breeding range may be the most efficient strategy for promoting monarch population growth. Few studies have focused on monarch conservation with respect to the South Central US (but see Tracy et al. 2019; Kantola et al. 2019a). We investigate South Central US monarch larval and milkweed distribution and phenology, advancing several new applications of monarch community science data (formerly "citizen science data") to those reviewed by Ries and Oberhauser (2015).

Analysis of monarch host selectivity at a landscape level can be valuable in understanding the relative importance of host milkweeds in the South Central US. Few studies have analyzed insect population host selectivity at a landscape level. Lechowicz and Jobin (1983) and Mauffette et al. (1983) investigated landscape host selectivity of gypsy moth larvae for tree species in Quebec forests using the relativized electivity index (E^* ; Vanderploeg and Scavia 1979). Martinson et al. (2016) also utilized E^* in evaluating landscape host selectivity of brown marmorated stink bugs for woody plant species in nurseries. We expand the use of E^* and estimate monarch larval landscape host selectivity for milkweeds in the South Central US, uniquely employing community science data to reveal important host associations. We also novelly employ community science larval occurrence data to assess monarch larval phenology and spatial density distribution across the South Central US, incorporating these data into seasonal landscape host selectivity indices. Understanding the important milkweed host species and peak seasonal periods of monarch larval activity is fundamental for guiding an evaluation of the spatial distribution and phenology of important milkweed resources for monarch butterflies in the South Central US.

An understanding of the influence of land use/land cover (LULC) classes on milkweed habitat is critical for estimating the distribution of milkweed resources for monarchs in the South Central US. *Asclepias syriaca* favors agricultural landscapes in Canada (Pitman et al. 2018) and roadsides in Iowa (Kaul and Wilsey 2019), but it has significantly declined in the Midwest over the last century in conjunction with agricultural intensification (Hartzler 2010; Boyle et al. 2019) related to increased use of glyphosate herbicides (Pleasants 2017; Stenoien et al. 2018). Waterbury et al. (2019) found that *A. speciosa*, *A. incarnata*, and other northwestern US milkweeds rarely utilized land covers of cultivated crops, developed, pasture/hay, and mixed and evergreen forest. We uniquely employ E^* to assess milkweed land cover selectivity in the South Central US with community science data. To our knowledge, Ogawa and Mototani (1991) performed the only other study that applied utilization/availability analysis to assess plant land cover selectivity (see Supplement Introduction on utilization/availability analysis).

Niche models for North America milkweed species have been essential to investigate the actual and potential geographic distributions of adult and larval monarch food resources under current climate in the western US (Dilts et al. 2019), and both current and future climate scenarios for the northeastern US (Lemoine 2015) and northwestern US (Svancara et al. 2019). Kass et al. (2020) incorporated milkweed niche models into modeling the monarch fall migration from South Texas to Mexico. Except for range-wide MaxEnt models developed for *A. viridis* (Lemoine 2015), range-wide models for South Central US milkweed species are lacking, and we develop them for this study. We take a hierarchical approach (see Wilting et al. 2010 and Supplement Introduction) to combine

milkweed niche model output with results from phenological and landscape resource selectivity analyses to estimate seasonal milkweed resource areas across the South Central US.

The objectives of this study were to (1) analyze monarch larval landscape host selectivity and larval phenology to identify important focal milkweed hosts and the major seasonal periods of monarch larval activity in the South Central US; (2) delineate seasonal monarch larval spatial density distributions; (3) develop MaxEnt niche models for defining core habitats of focal milkweed species; (4) compare seasonal phenology of focal milkweeds; (5) assess milkweed land cover selectivity; and (6) estimate seasonal milkweed resource areas for monarch butterflies through combining the results from all analyses. Seasonal milkweed resource areas are compared with monarch larval spatial densities, and results are discussed in the context of monarch conservation.

Methods

Study area

The target study area comprised the South Central US region, including Arkansas and the majority of Oklahoma, Texas, and Louisiana, which represents the principal area for the development of first and last generation monarch larvae (Fig. 1; see also Fig. S1). The western edge of the study area consisted of the western distribution limit for *A. a. ssp. capricornu* in West Texas and Oklahoma (Woodson 1954) (see Occurrence data, below). The eastern boundary consisted of the eastern borders of Arkansas and northern Louisiana, and the Mississippi River in southern Louisiana (Fig. 1). The background evaluation extents for niche modeling each of the focal milkweed species were represented by 500-km buffers around convex hull polygons from the milkweed occurrence points, which together extended over much of central eastern, southeastern, and southwestern North America.

Occurrence data

A variety of data sources were used in six primary analyses for developing seasonal milkweed resource area maps for the South Central US (Fig. 2, items 1-6). Monarch larval instar associations with wild (unplanted) native hosts by locality and date for the South Central US study were compiled for 2011-2020 from iNaturalist (2021a) and for 2011-May 2017 from Journey North (2017) and Monarch Larva Monitoring Project (2017). Larval data from extensive seasonal focused surveys (e.g., Berman and Baum, unpublished data) were not included to reduce seasonal survey bias. To reduce spatiotemporal bias, the larval data were spatially filtered by host species to 10 km (Boria et al. 2014) leaving 341 occurrences for the landscape host selectivity analysis (Fig. 2, item 1). Spatiotemporal filtering by week/year within 30 km per host left 547 occurrences for the larval phenology analysis by hosts (Fig. 2, item 2). Both sets of larval data were then weighted to reduce sample bias in higher human population density areas (see Phenology of monarch larvae, below). Results from the first two analyses were used in selecting the focal milkweed hosts and defining periods of monarch larval seasonal activity for the four remaining analyses (Fig. 2, items 3-6). The 10 km thinned larval distribution data (Fig. 2, item 1) were also used to model seasonal larval spatial density distributions for early (weeks 11-28, 232 occurrences) and late (weeks 32-47; 195 occurrences) seasons (Fig. 2, item 3). For assessment of novel monarch larval native host distribution records in North America, we surveyed the literature to update host distribution records following Malcolm and Brower (1986), Robinson et al. (2002), and Beccaloni et al. (2008). For developing niche models and defining core habitat for selected focal milkweed hosts (Fig. 2, item 4), historical (1834-2018) occurrence data throughout the entire North American ranges for the focal milkweed species were obtained from a variety of sources. Milkweed occurrence sources included iNaturalist (2021a), SEINet (2017), Global Biodiversity Information Facility (GBIF 2017), vPlants (2017), 2017 correspondence with various herbaria (Kansas State University [KSC], Missouri State University [SMS], University of Nebraska [NEB]), the Oklahoma Vascular Plant Database (OVPD; various herbaria, see Hoagland et al. 2017), and Texas survey data from our laboratory and various collaborators (Janice Bush, University of Texas at San Antonio [UTSA], 2017; David Berman and Kristen Baum, Oklahoma State University [OSU], 2017). An effort was made to obtain occurrence data representative of the known county distributions of milkweed species (Kartesz 2015), such as through georeferencing SEINet, vPlants, and OVPD records in various counties from which we lacked specific locations. From 388 to 979 occurrence points per species were available for modeling after spatial thinning to 10 km to reduce spatial autocorrelation (Boria et al. 2014). We partitioned data for *A. a. ssp. capricornu* to the East from *A. a. ssp. asperula* to the West to improve niche model quality (e.g., Gonzalez et al. 2011; for details on the subspecies boundaries, see Supplement Methods). To reduce spatiotemporal bias for focal milkweed species phenology analyses (Fig. 2, item 5), 2011-2020 iNaturalist milkweed records over their identified core habitats in the South Central US were spatiotemporally filtered by week/year within 30 km per host to leave 272 to 520 occurrences. In the milkweed land cover selectivity analyses (Fig. 2, item 6), land covers were manually determined for 2014-2018 iNaturalist focal milkweed occurrence points (within two years of 2016 land cover data) with at least ca. 30-m resolution within MaxEnt modeled core habitat for the South Central US study. Milkweed land cover class data were spatially thinned to 1km to leave from 67 to 586 occurrence points, which were sample bias adjusted for human population density and road distance (see below Phenology of monarch larvae). Milkweed land cover classes were assigned based on the 2016 National Land Cover Database (NLCD) legend (Jin et al. 2019; MLRC 2021a; 2021b) within a 15 m radius of the location and within the context of the adjacent surroundings according to historical imagery for 2014-2018 from Google Earth Pro (2021) and Google Maps (2021) Street View. In addition, the general habitat of the milkweed location was manually classified using the imagery into road rights-of-way (ROW) versus non-road habitats (for further details on manual land cover classifications using imagery and further general habitat subdivisions, see Supplement Methods; for all occurrence data Excel files, see Table S1).

Phenology of monarch larvae and milkweeds

The phenology of both monarch larvae and milkweed host plants was assessed for the 2011-2020 period in the South Central US (Fig. 2, items 2 and 5). Spatiotemporally thinned occurrence data were used to develop weekly stacked phenophase histograms and phenoperiod Gantt charts. Monarch larval phenophase histograms were visually inspected to demarcate between early and late season activity periods. The early and late season larval and milkweed frequency data were fitted to curves with highest R^2 using CurveExpert software (Hyams 2010) (for further details on determination of monarch larval hosts and phenophases of monarch larvae and milkweeds from community science data images and statistical analysis, see Supplement Methods; for excel histogram charts and R script for analyses, see Tables S1 and S3, respectively).

The estimated relative proportions of community science observations of monarch larvae on various milkweeds predominating near and away from human population centers are sensitive to errors from sample bias (e.g., Geldmann et al. 2016, Zhang and Zhu 2018). Larval-host association occurrences were weighted to reduce sample bias using a novel target group-based Histogram Bin Ratio Weighting (HBRWt) method (sample bias method hereafter). This method assumes that (1) the spatial distribution of a large target group of taxa related to the taxa of interest represents a good estimate of community science sample bias from various sources (e.g., Ranc et al. 2017), and (2) the percent frequency distribution of the target group occurrences with respect to the spatial sources of bias (e.g., human population density) should ideally approximate the percent frequency distribution of randomly generated points with respect to the sources of bias. These approximating assumptions provide an objective basis for correcting sample bias that leads to more conservative estimates of milkweed host associations within human population dense areas. The HBRWt sample bias method involved first constructing histograms of human population density for two sets of data in the study area: (1) 10,000 unthinned random points; and (2) up to 10,000 unthinned target group points, where the target group was 2011-2020 iNaturalist records for major families of monarch preferred nectar plants (e.g., Asteraceae and Apocynaceae). In a particular human population bin range, if the random point percent frequency was 10% and the target group percent frequency was lower at 5%, the HBRWt adjustment factor for population density, $PopDenHBRWt$, was $10\%/5\% = 200\%$ upwards for any milkweed point occurring within the population density bin (a raw count of one became two). Values of $PopDenHBRWt$ were normalized to yield $PopDenHBRWtN$ which summed to the raw count per species (for further details, see Supplement Methods).

Landscape resource selectivity analyses

To assess monarch landscape host selectivity and milkweed land cover selectivity (Fig. 2, items 1 and 6), we employed a utilization/availability analysis that incorporated Vanderploeg and Scavia's (1979) relativized electivity index, E^* . The R electivity package (Quintans 2019) was used to calculate E^* for each larval host or land cover class: $E_i^* = [W_i - (1/n)]/[W_i + (1/n)]$, where $I =$ the i^{th} host or land cover class, $W_i = (r_i/p_i)/(\sum r_i/p_i) - 1$, r_i is the proportion of the i^{th} host or land cover class utilized, p_i is the proportion of the i^{th} host or land cover class available, and n is number of hosts or land cover classes. Lechowicz (1982) recommended use of E^* over several other electivity indices due to better approximation of a range from -1 to 1, where -1 indicates negative selectivity, zero indicates random selectivity, and +1 indicates positive selectivity. The $PopDenHBRWtN$ weighted larval occurrence points were used to estimate the actual percentage of larval occurrences per milkweed host, r_i . In addition to using $PopDenHBRWt$, we also employed a road distance HBRWt correction factor, $RoadDistHBRWt$, for adjusting milkweed land cover occurrences (only available for the higher resolution land cover data) that was calculated similarly to $PopDenHBRWt$ within nested larger human population bins. A combined human population and road distance correction factor, $PopRoadHBRWt$, for a given milkweed land cover observation was calculated as $PopDenHBRWt \times RoadDistHBRWt$, and values were normalized to sum to the raw count per species (for further details, see Supplement Methods, Landscape resource selectivity analyses). The manually determined land cover data for each $PopRoadHBRWtN$ weighted milkweed land cover occurrence point were used to estimate the actual percentage of milkweed species occurrences per land cover, r_i . Host plant occurrence records (iNaturalist 2021a) for 2011-2020 were combined with larval host record data, thinned by 10 km per species, and weighted by $PopDenHBRWt$ to estimate the percent available hosts, p_i . For the expected or available percent of land cover, p_i , we tabulated the 2016 NLCD land cover class raster cells falling within the MaxEnt core habitat (see Results for p_i sample sizes). The manually determined occurrence point land cover classifications for milkweed occurrences used for r_i were also compared with classifications derived from the NLCD 2016 spatial database. For the monarch landscape host selectivity analysis, data for r_i and p_i were partitioned into three periods prior to thinning for seasonal analyses: year-round, early season, and late season (see Phenology above). An omnibus chi-square goodness-of-fit test was used to determine whether r_i significantly differed from p_i ($P < 0.05$), combining classes containing less than five expected counts of host or milkweed land cover occurrences. If the omnibus test was significant, we calculated 95% Bonferroni confidence intervals (BCIs) of r_i for each host or land cover class, and we reported host and land cover classes where p_i fell outside of the 95% BCI of r_i (e.g., Neu et al. 1974; Byers et al. 1984; Manly et al. 2002; Kelly and Elle 2020). Habitat utilization (e.g., roadside versus non-road habitats) was also analyzed for milkweed land cover observations using Chi-squared tests for independence.

Monarch larval spatial density distribution

Kernel density estimation of species occurrences can be useful in representing species spatial distributions (Pennay et al. 2011), especially for migratory species such as the monarch butterfly (Tracy et al. 2019). The early and late season spatial densities of monarch larval observations were modeled through developing 1km resolution kernel density estimation (KDE) surfaces (geodesic method, expected counts) in ArcGIS using the 10 km thinned and sample bias adjusted larval occurrence data (see above) (Fig. 2, item 3). The monarch larval KDE 85% isopleth was used to visualize most of the monarch larval density distribution.

Milkweed niche modeling

An initial set of 95 environmental variables at 1km resolution was used in developing MaxEnt niche models (Fig. 2, item 4), including 57 climatic indices (Hijmans et al. 2005; Zomer et al. 2007, 2008; Trabucco and Zomer 2010; WorldClim 2017), 14 topographic indices (Lehner et al. 2008; Evans et al. 2014), and 24 edaphic indices (Hengl et al. 2017) (Table S2). Anthropogenic and land cover variables were intentionally excluded from the niche models to facilitate a more independent assessment of species affiliation with land cover through the milkweed land cover selectivity analysis (see above) (for justification of initial variable selection, see Supplement Methods). MaxEnt (Phillips et al. 2006) version 3.3.3 models were developed from milkweed locations using the R-software (R Core Team 2017) dismo package (Hijmans et al. 2011). We generally followed methods described in Tracy et al. (2018) for generation of 10,000 background and 10,000 pseudoabsence points and calculation of the performance metrics of Area under the Curve (AUC), True Skill Statistic (TSS), and overfitting (for details, see Supplement Methods).

We utilized the random subset feature selection algorithm (RSFSA) to evaluate performance of thousands of MaxEnt milkweed species models developed from random combinations of subsets of 3 to 25 of the 95 variables, limiting correlation of variables to less than |0.7| (Tracy et al. 2018, 2019; Kantola et al.

2019b) (for further details, see Supplement, Methods and Tracy et al. 2018, 2019). A total of 48 feature selected binary calibrated MaxEnt models were projected for mapping, 12 for each of the four species. These 12 selected models per species were assembled into feature subset ensembles, with the area of 100% model frequency consensus used to represent milkweed core habitats (e.g., Porfirio et al. 2014) (for further details on niche model calibration, consensus, and variable ranking, see Supplement Methods and Tables S12-S15).

Seasonal milkweed resource areas

Results from the above analyses (Fig. 2, items 1-6) were synthesized in the form of various seasonal indices representing milkweed species habitat quality that were applied to milkweed core habitat areas for raster visualization of seasonal milkweed resource areas (Fig. 2, items 7-10). Output from the monarch larval host selectivity and phenology analyses and the milkweed core habitat phenology analysis (Fig. 2, items 1-2, 4-5) were first summarized in the form of a seasonal landscape host selectivity index (*SLHSel*) for each milkweed host (Fig. 2, item 7), calculated as $SLHSel = E_i^*_{SNH,T} \times \%STF \times \%SHF$, where $E_i^*_{SNH,T}$ (Fig. 2, item 1) is the seasonal E_i^* value representing selectivity for a host by the target organism that has been integer normalized from zero to 10,000 to facilitate multiplication and raster assignments, $\%STF$ (Fig. 2, item 2) is percent seasonal target organism (monarch larva) frequency, and $\%SHF$ (Fig. 2, items 5) is the seasonal host (milkweed) frequency in the core habitat (Fig. 2, item 4). The *SLHSel* values were then combined with the milkweed land cover selectivity results, to produce the land cover/seasonal landscape host selectivity index (*LCSLHSel*) for each focal milkweed species (Fig. 2, item 8), calculated as $LCSLHSel = SLHSel \times E_i^*_{LC,H}$, where *SLHSel* is defined above and $E_i^*_{LC,H}$ is the E_i^* value representing land cover selection by the host that has been integer normalized from zero to 10,000 to facilitate multiplication and raster value assignments (index calculation tables are referenced in the Results). Values of *LCSLHSel* were assigned to each land cover class pixel within core habitats for each focal milkweed species using the reclassify tool in ArcGIS to create three separate rasters per milkweed species per season (three early season and three late season rasters), one raster for each land cover class selectivity category of positive, random, or negative (Fig. 2, item 8). The resulting three categorized milkweed *LCSLHSel* rasters per season were added by category across all species using Arc GIS cell statistics summation (with "no data" ignored) to create combined seasonal *LCSLHSel* rasters (Fig. 2, item 9). Kernel density estimate surfaces were also developed in ArcGIS from early and late season combined positive selectivity category *LCSLHSel* (milkweed resource indices), including 85% KDE isopleths to represent seasonal milkweed resource areas (Fig. 2, item 10). Results were displayed with 85% KDE isopleths of seasonal larval spatial density (Fig. 2, item 3) (see Supplement Methods; for details on kernel density estimate analysis and additional summary procedures, and scripts for R and ArcPython, see Table S3).

Results

Monarch landscape host selectivity

Twenty-six wild native monarch larval hosts were identified across the South Central US (non-native ornamental *A. curassavica* was not included in this study). These included four new host records, *A. linearis*, *A. arenaria*, *A. brachystephana*, and *Cynanchum unifarium* (Fig. 1), according to our updated North American monarch larval host distribution records (Table S4). In addition, 18 new state host distribution records were found among 13 previously known host species, including *A. asperula* ssp. *capricornu*, *A. oenotheroides*, *A. tuberosa*, *A. syriaca*, *A. variegata*, *A. purpurascens*, *A. subverticillata*, *A. incarnata*, *A. speciosa*, *A. sullivantii*, *A. engelmanniana*, *A. quadrifolia*, and *C. laeve* (Fig. 1, Table S4). The top six hosts utilized annually (in order of utilization) were *A. viridis*, *A. asperula* ssp. *capricornu*, *A. oenotheroides*, *C. laeve*, *A. latifolia*, and *A. tuberosa*. The four top *Asclepias* spp. all had higher availability than *C. laeve*, and they were chosen as focal species in this study (Figs. 1, 3A-B). The top five available hosts across the region annually were *A. viridis*, *A. asperula* ssp. *capricornu*, *A. oenotheroides*, *A. tuberosa*, and *A. viridiflora* (Fig. 3B). We observed seven other milkweed larval host records in South Central US states from species from which monarch larvae have previously been reported, including *A. perennis*, *A. texana*, *A. amplexicaulis*, *A. hirtella*, *A. longifolia*, *A. viridiflora*, and *Matelea reticulata* (Fig. 1, Table S4). Only three previously recorded monarch larval hosts for the South Central US were not seen in data from this study, *Funastrum cynanchoides*, *F. crispum*, and *A. obovata* (Table S4). Annual positive monarch landscape host selectivity was identified for *A. viridis* and *A. asperula* ssp. *capricornu*, while negative selectivity was identified for *A. tuberosa*, *A. viridiflora*, *A. amplexicaulis*, *A. engelmanniana*, and *Matelea reticulata* (Fig. 3C). Several differences were noted in seasonal landscape host selectivity, such as negative selectivity for *A. oenotheroides* in the late season, and negative selectivity for *A. quadrifolia* and *A. variegata* in the early season (Fig. 3C) (see below for seasons).

Phenology of monarch larvae and milkweeds

Early and late season peaks of monarch larval activity in the South Central US were centered around late April and early October, respectively. Early and late season periods of monarch larval activity extended from mid-March to mid-July (weeks 11-28) and mid-August to late November (weeks 32-47), respectively, with a general between season cutoff around early August (weeks 31-32) (Fig. 4). Larval frequency was significantly higher in the early season for all the top four utilized *Asclepias* hosts except *A. latifolia*, for which larval activity was significantly highest in the late season (Fig. 4B).

All four focal South Central US milkweeds exhibited bimodal early and late season peaks in vegetative frequency. *Asclepias viridis* and *A. a.* ssp. *capricornu* had larger early season peaks that corresponded well with early season monarch activity from mid-March to mid-July (Figs. 4, 5A-B). The relative frequency of *A. oenotheroides* and *A. latifolia* did not significantly differ between early and late seasons (Fig. 5C-D). The two seasonal peaks in focal milkweeds were associated with the first and second early vegetative phenophases. Peak flowering generally corresponded well with peaks in vegetative frequency (Fig. 5A-C), except for late season flowering in *A. latifolia*, which peaked earlier than the overall vegetative peak (Fig. 5D).

Monarch larval spatial density distribution

Both early and late season community science monarch larval host records from 2011-2020 were heavily biased towards population centers, such as San Antonio/Austin, Dallas/Fort Worth, Houston, and Oklahoma City (Fig. 6). The highest larval densities occurred along the eastern edge of the Central Funnel and central portion of the Coastal Funnel. Primary ecoregions with higher larval densities were the eastern edge of the South Central Semiarid Prairies, the

central portions of the East Central Texas Plains and Texas Louisiana Coastal Plain, and a western portion of the Ozark Ouachita Appalachian Forests-West (Figs. 6, S1). Late season monarch larval densities were much lower than those in the early season, and the densities (85% KDE isopleths) were more widely distributed to the West, North, and East (Fig. 6).

Milkweed niche modeling

Milkweed niche model performance was high for all four focal milkweeds in terms of test pseudoabsence AUC (AUC_{psa} ; AUC used in feature selection) (0.86-0.97), and moderate to high in terms of background AUC (AUC_{bgp} ; default MaxEnt AUC) (0.81-0.9) (Table S11). Model AUC_{psa} overfitting (AUC_{psa_diff}) was similar across the four species, ranging from 0.002 to 0.011, giving an average value of 0.008, which is a little lower than the average value for AUC_{bgp} overfitting (AUC_{bgp_diff}) of 0.013 (Table S11). The random subset feature selection algorithm analysis revealed that subsets of six to eight of the 95 variables were the optimal smallest sizes for producing higher performing MaxEnt models of the four milkweed species (Figs. S11-S14, A-C) (see Supplement Results for details on variable importance and feature selection).

Asclepias viridis MaxEnt core habitat occurred along the eastern edge of the South Central Semiarid Prairies from Kansas to Texas and included the southern Central Irregular Plains, the eastern portion of the Ozark Ouachita Appalachian Forests (excluding the mountainous ecoregions), the western portion of the Southeastern USA Plains, and the eastern Texas portion of the Texas Louisiana Coastal Plain (Fig. 7A). Core habitat for *A. a. ssp. capricornu* primarily occupied the southeastern portion of the South Central Semiarid Prairies from western Oklahoma to Central Texas (Fig. 7B). *Asclepias oenotheroides* core habitat was concentrated along the southeastern edge of the South Central Semiarid Prairies and northern portions of the Tamaulipas Texas Semiarid Plain, extending southwards into Mexico along the East coast (Fig. 7C, S23). The core eastern habitat of *A. latifolia* included the West Central portion of the South Central Semiarid Prairies from southwestern Kansas and southeastern Colorado to eastern New Mexico and northwest Texas, and portions of the northern Chihuahuan Desert (Fig. 7D).

Milkweed land cover selectivity

The 2016 NLCD land cover classification had an overall accuracy of 43% at milkweed locations in the study area, and we used our manual occurrence point land cover classifications for calculating milkweed land cover utilization (r_i) (Table S24). The sample bias adjustment effectively reduced the community science percentage proportions of milkweeds in roadside habitats downward from 24-59% in the raw counts to 6-31% for the adjusted *PopRoadHBRWtN* counts (Figs. S24-29). Roadside habitat utilization was significantly higher for *A. latifolia*, and *A. asperula ssp. capricornu* utilized roadsides to a significantly greater extent than *A. viridis* (Fig. S24; Chi-squared tests for independence; $P < 0.05$).

The land cover classes with highest utilization by at least three of the four focal milkweed species were Grassland Herbaceous, followed by Developed Low, Open Space (Fig. 8A). Field/Meadow and Rural Road ROW land covers generally dominated the most common habitats utilized by the four milkweeds (Figs. S30D, S32D, S32D, S33D). Developed Medium and High Intensity land covers also dominated within Rural Road ROW habitats (Fig. S34). The land cover classes with the generally highest availability (p_i) in the milkweed core habitats included Grassland Herbaceous, Shrub/Scrub, and Cultivated Crops (Fig. 8B). The two land cover classes of positive selectivity for most focal milkweeds were Developed-Open Space and Developed-Low Intensity. Cultivated Crops and Shrub/Scrub were prominent negative selectivity land cover for all four focal milkweeds (Fig. 8C).

Seasonal milkweed resource areas

Both the early and late season milkweed resource areas occurred over similar regions along the eastern half of the Central Funnel and a central portion of the Coastal Funnel (see Tables S6-10 for values used in calculation of milkweed resource indices). The milkweed resource area densities were much higher in the spring (Fig. 9). For example, the late season milkweed resource area 5% KDE isopleth, which matches the density value of the early season milkweed resource area 85% KDE isopleth, only occupied two small areas in the east central portion of the Texas Central Funnel (Fig. 9B). The late season milkweed resource areas extended a little further west and east compared to the spring (Fig. 9). The early season larval 85% KDE isopleth regions (larval density areas, hereafter) mostly fell within the milkweed resource areas in the eastern Central Funnel and a portion of the central Coastal Funnel. The late season larval density areas overlapped similar late season milkweed resource areas, but portions extended further westwards and eastwards outside of the main milkweed resource area regions. In both early and late season milkweed resource areas, there was a potentially critical gap in South Texas, where there were much negative selectivity milkweed resource index areas in *A. oenotheroides* core habitat (Figs. 7C; southernmost red areas in Fig. 9).

Discussion

Monarch landscape host selectivity

Community science data on monarch larval wild host associations proved valuable in revealing regionally important and novel host associations. The four new native host records bring the total to 56 host species for North America, of which about half (29) are native in the South Central States (52% of total), including the 26 species found in this study (Table S4). We selected *A. viridis*, *A. a. ssp. capricornu*, *A. oenotheroides*, and *A. latifolia* as the most important focal milkweeds for this study as they had high landscape host utilization and availability. These four species were the primary late season monarch larval hosts reported in Central Texas by Calvert (1999). Lynch and Martin (1993) identified *A. viridis* and *A. a. ssp. capricornu* as important spring hosts in Texas, with *A. viridis* also important for Louisiana. *Asclepias a. ssp. capricornu*, *A. viridis*, and *A. oenotheroides* are regarded as regionally important milkweed species for monarchs in Texas, Oklahoma, and Kansas by the USDA Natural Resource Conservation Service (2015c), and in Texas by USFWS (Tuggle 2014). Further support for the importance of *A. latifolia* as a late season monarch host in West Texas comes from Brym et al. (2020; also unpublished data, D. Berman and K. Baum).

Only two milkweeds had significant positive landscape host selectivity, *A. viridis* in the late season and *A. a. ssp. capricornu* in the early season. Significant negative host selectivity for *A. oenotheroides* in the late season indicates it might be a less preferred or suitable host than *A. viridis* during that time. A variety of other ecological interactions could also account for lower selectivity for *A. oenotheroides*, including higher predation or parasitism (e.g., Kursar et al. 2006) that could be associated with habitats favored by *A. oenotheroides*, including habitats where resprouting following disturbance tends to occur. Predation of monarch larvae can be higher in grassland (Myers et al. 2019) and urban habitats (Baker and Potter 2020), and *A. oenotheroides* exhibited significant positive selectivity for the Developed, Low Intensity land cover class that was not seen in *A. viridis* (Fig. 8C). *Asclepias tuberosa* had negative selectivity for year-round and seasonal periods, which may be partly related to lower monarch field ovipositional preference for *A. tuberosa* compared to several other *Asclepias* spp. (Pocius et al. 2018). Although *A. viridiflora* was among the top five available hosts for the region, it had negative year-round and late season host selectivity, and further studies are needed on monarch ovipositional preference and larval suitability for this species. *Cynanchum laeve* was among the top five utilized hosts in the South Central US, but it had lower availability compared to the four focal *Asclepias* spp. Monarch larval survival on *C. laeve* is similar to that on other highly suitable *Asclepias* hosts (Yeargen and Allard 2005; Pocius et al. 2017). *Cynanchum laeve* appears to not only be a more important monarch host plant than generally realized for the East Central US (Yeargen and Allard 2005), but also for the South Central US.

There is probably still significant bias towards monarch larval hosts encountered in proximity to urban areas in our sample bias adjusted community science data. Regional community science groups such as the “Texas Milkweeds and Monarchs” iNaturalist project (iNaturalist 2021b) collected valuable data for our study but can also be a potential source of spatial bias. Consequently, results from our landscape host selectivity analysis should be interpreted with caution and compared with data from field studies with random sampling protocols. Monarch landscape host selectivity analyses can reveal important host associations in other areas with monarch community science data, including Mexico.

Phenology of monarch larvae and milkweeds

The community science phenology data are apparently biased towards more visible larger fifth instar monarch larvae (Fig. 4), and possibly towards larger, and more showy flowering milkweed host stages or species (Fig. 5). These observer biases may have skewed seasonal peak frequencies in favor of weeks with higher counts of more apparent stages. Consequently, caution is warranted in interpreting the phenology results, but they can indicate primary seasonal activity periods. Lynch and Martin (1993) found that April-May first generation monarch larval activity in Texas and Louisiana was best synchronized with the presence of *A. viridis* and *A. asperula ssp. capricornu*. They suggested that a second, and possibly third, generation of monarch larvae may be produced past May in the northern South Central US. Second generation larvae may dominate our June to mid-July early season monarch larval records. Early season monarch spring migratory activity was also well synchronized with local *Asclepias* spp. phenology in North Central Florida (Brower et al. 2018) and Idaho and Washington (Waterbury et al. 2019). Similarly, we found that both early and late season peaks in monarch larval activity of late May and early October generally agreed well with early and late season peaks in milkweed vegetative phenology of the four focal milkweeds in the South Central US. *Asclepias latifolia* represented an exception, with an early season vegetative peak occurring in early July, much later than peak late April monarch spring activity. However, the late September peak for *A. latifolia* frequency approximately corresponded to late season early October peak in monarch larval activity. Late season monarch larval activity in the South Central US can represent around 30% of the total seasonal monarch larval frequency (Fig. 4). Further investigation is needed to determine the degree to which late season larvae represent fourth or later generations from midsummer migrants originating north of the South Central US or from resident populations in South Central US urban areas (Taylor 2020), which potentially breed on ornamental *A. curassavica*. The phenology of monarch larvae on ornamental *A. curassavica* warrants investigation. Finer spatio-temporal partitioning of the monarch larval and milkweed phenology data can be used to investigate regional variation in phenology and changes in phenology over time.

The bimodal early and late season peaks in weekly vegetative frequency and the gaps between early and late season early vegetative phenophases for all four milkweeds (Fig. 5) may reflect late emergence of some individuals or resprouting following favorable late summer/early fall rainfall in certain years, which can be promoted by mid-summer disturbance. Calvert (1999) reported above average rainfall in the fall of 1996 produced abundant resprouting and peak October flowering in all four studied species across Central Texas. We have also observed late September/early October flowering of *A. a. ssp. capricornu* and *A. oenotheroides* in Central Texas following above average September 2018 rainfall without disturbance (Figs. S36-S37). Late season resprouting of *A. viridis* has also been reported following summer rain (Dee and Palmer 2019) and summer disturbance, such as burning (Baum and Sharber 2012) or mowing (Baum and Mueller 2015; Dee and Baum 2019). *Asclepias oenotheroides* has the highest number of buds per root biomass of all four species, and *A. latifolia* is the only clonal species we studied (Pellissier et al. 2016). These more developed vegetative reproduction traits probably favor the observed relatively greater late season frequencies of *A. oenotheroides* and *A. latifolia*.

Monarch larval spatial density distribution

Patterns of monarch larval density were generally similar between the early and late season and mainly centered around host records on *A. viridis* and *A. asperula ssp. capricornu* (Figs. 1, 6). Late season densities were several times lower and more broadly dispersed, with higher larval density areas in West Texas generally dominated by *A. latifolia* host records (Figs. 1, 6B). Early season monarch larval densities were lowest in parts of South and West Texas, while late season larval densities were lowest in parts of South Texas and Louisiana. The sample bias towards urban centers in the larval data supports our approach of focusing on the distribution of milkweed resources in the South Central US within the core habitats of the important focal milkweed species, for which occurrence data appeared to be less concentrated around urban centers (Fig. 7).

Milkweed niche modeling

The 100% MaxEnt consensus model core habitat of *A. a. ssp. capricornu* generally resided well within the subspecies boundary, but it approached the boundary near the confluence of the Pecos River and Rio Grande in Texas (Fig. 7B). Our data support the suggestion by Singhurst et al. (2015) that species status may be warranted for *A. a. ssp. capricornu* and *A. a. ssp. asperula* based upon clear differences in their morphology and distribution (see Woodson 1954).

Our models confirmed the importance of the South Central US as core habitat for *A. viridis*, which included eastern Texas and Oklahoma and parts of western Arkansas and Louisiana but excluded most of Illinois and all of Indiana (Fig. 7A). These results contrast with the 0.5 probability contour for the MaxEnt distribution of *A. viridis* from Lemoine (2015) that extended past Illinois east to Indiana, but excluded most of Oklahoma, Texas, and Louisiana. The differences probably arise from our efforts to include more of a representative number of *A. viridis* occurrence data to the West and South (for discussion on niche model performance and feature selection, see Supplement, Discussion, Milkweed niche models).

Milkweed land cover selectivity

Negative land cover selectivity was found with Cultivated Crops for all four milkweed species. Waterbury et al. (2019) similarly found cultivated croplands had low utilization for northwestern milkweeds. We found a few *A. oenotheroides* in Cultivated Crops. *Asclepias latifolia* occurred in cotton fields of the Texas panhandle in the 1960's to 1970's before the increased use of glyphosate resistant cotton (S. Feagley, Soil and Crop Sciences Department, TAMU, retired, personal communication). The greater vegetative root budding of *A. oenotheroides* and the clonal nature of *A. latifolia* (Pellissier et al. 2016) probably make these species relatively more tolerant of cultivation. Widespread herbicide use could be lowering occurrence of *A. oenotheroides* and *A. latifolia* in Cultivated Crops in the South Central US, similar to the previously discussed reduction of rhizomatous *A. syriaca* in Midwest croplands (Zaya et al. 2017).

All four focal milkweeds had negative selectivity for Shrub/Scrub land cover, which could be related to lower soil moisture and anthropogenically lowered disturbance regimes fostering woody encroachment of open meadow milkweed habitats. Waterbury et al. (2019) found relatively low utilization of northwestern milkweeds for shrub/scrub, which they attributed to higher aridity. Grassland Herbaceous land cover was of positive selectivity for *A. viridis* and *A. oenotheroides*, random selectivity for *A. a. ssp. capricornu*, and negative selectivity for *A. latifolia* (Fig. 8C). Waterbury et al. (2019) found highest utilization of northwestern milkweeds for grassland/herbaceous cover. Lower disturbance leading to less open areas in contemporary anthropogenically managed Grassland Herbaceous land covers may disfavor *A. latifolia*. Management practices with the potential to increase milkweed and nectar plant populations in grasslands include brush management, prescribed burning, prescribed grazing, and mowing (USDA NRCS 2015a, 2016a,b).

The Developed-Low Intensity and Developed-Open Space land covers, which commonly included roadsides and urban areas, were of positive selectivity for two to three of the four milkweed species, respectively, except for *A. latifolia*. We found from 6% to 31% of our milkweed occurrences were associated with roadsides, depending on the species. Webb (2017) found that both *A. viridis* and *A. a. ssp. capricornu* occurred at higher frequency on roadsides compared to adjacent lands in Oklahoma. *Asclepias viridis*, along with *A. syriaca* and a variety of other milkweeds, are also common along roadsides in other states (e.g., Kaul et al. 1991; Kasten et al. 2016; Cariveau et al. 2020). Management of roadside habitats is receiving increased focus for benefitting pollinator species in general (Hopwood et al. 2015; Phillips et al. 2020), and milkweeds and monarchs (Fischer et al. 2015; Kasten et al. 2016; Kaul and Wilsey 2019; Knight et al. 2019; Cariveau et al. 2019, 2020; Monarch CCAA/CCA Development Team 2020). Roadside habitats can be a threat to monarchs from roadkill (Kantola et al. 2019a; Mora Alvarez et al. 2019). Phillips et al. (2019) found roadside pollinator populations were higher a few meters away from the roadway, and Keilsohn et al. (2018) suggested that placing nectar plants a few meters from the roadway edge may reduce roadkill. Enhancement of milkweeds in urban gardens to benefit monarchs is also receiving attention (Fitzgerald 2015; Baker and Potter 2019). However, predation in urban gardens can sometimes be higher than in rural habitats, potentially making them an ecological trap (Baker and Potter 2020; see also McGruddy et al. 2021).

The use of our novel histogram bin weighting sample bias reduction method lowered the frequency percentage of the four milkweed species in roadside ROW habitats by 24-55%, helping compensate for the inherent bias of iNaturalist observations along roadsides (Figs. S26-S29). However, there is still the potential for substantial error in the milkweed land cover selectivity analysis. For example, our sample bias reduction method could be over-compensating for bias of community science records near roads if a milkweed species had greater selectivity for roadside disturbed habitats than the larger target group of nectar plants (see also Ranc et al. 2017).

Seasonal milkweed resource areas

Previously discussed community science data biases probably reduce the accuracy of our milkweed resource area projections, and more studies with random sampling protocols are needed to refine predictions. However, our innovative combination of milkweed niche model core habitats with indices of seasonal landscape host selectivity and milkweed land cover selectivity provides valuable estimates of seasonal milkweed resource areas. The milkweed resource areas resolve major corridors providing monarch adult nectar and larval host plants for both the spring migration as well as the last summer generation and fall migration. The identified early and late season corridors of milkweed resources are similar and mostly encompassed within the previously identified Central and Coastal monarch fall migratory funnels of Tracy et al. (2019), except for Northeast Texas. The spring monarch migration is dispersed, and spring migratory routes are more difficult to identify than fall migration routes (Solensky 2004), which have been clearly defined (Calvert and Wagner 1999; Howard and Davis 2009; Tracy et al. 2019). Taylor (2019) described two major monarch spring migratory pathways through Mexico into Texas based upon spring first sightings of Journey North, a primary interior pathway and minor coastal pathway. These spring migratory pathways correspond well with our fall migratory Central and Coastal funnels (Tracy et al. 2019), respectively, and most of the seasonal milkweed resource areas (Fig. 9). We identify a potential critical connectivity gap in milkweed land cover benefit in *A. oenotheroides* core habitat in South Texas (Fig. 9). Providing additional *A. oenotheroides* milkweed habitat in South Texas may improve spring and fall connectivity for monarch migration.

Disturbance in anthropogenic areas from mowing and burning favors growth of Midwest milkweeds, such as *A. syriaca* (Kaul and Wilsey 2019), as well as *A. viridis* (Baum and Sharber 2012; Baum and Mueller 2015) and probably other South Central US milkweeds. For example, regular late season mowing of grasslands in Oklahoma can increase the cover of *A. viridis* (Dee et al. 2016; Dee and Baum 2019). Leone et al. (2019) reported that monarchs were more abundant at sites managed by prescribed fire compared to grazing. Periodic mowing or burning is probably a critical disturbance factor needed to maintain open habitat for continued milkweed colonization and persistence in roadside and grassland habitats (Kaul and Wilsey 2019). Mowing of milkweed habitats at the wrong time during the spring and late summer/fall breeding seasons can reduce habitat availability for pollinators (Hopwood et al. 2015; Phillips et al. 2019; Waterbury et al. 2019), including immature and adult monarchs (Cariveau et al. 2020; Monarch Joint Venture 2020), and potentially reduce milkweed

seeding and spread. Timing of mowing or burning in fields, roadsides, and urban open spaces can be especially important to maximize seasonal milkweed availability to monarchs for adult nectar resources and larval food plants (Baum and Sharber 2012; Baum and Mueller 2015; Fischer et al. 2015; Knight et al. 2019; Haan and Landis 2019a, 2019b, 2020).

Conclusion

Combined analyses of monarch community science data on landscape resource selectivity, distribution, and phenology can contribute to regional conservation assessments. Seasonal milkweed resource area estimates revealed variations in larval habitat quality within otherwise edapho-topo-climatically suitable milkweed habitats. Milkweed conservation in South Central US Grassland Herbaceous and Developed land covers, including roadsides and urban areas, has potential to benefit migrating monarchs by conserving or increasing critical milkweed nectar and host plant resources. Seasonal milkweed resource areas resolved important corridors in the Central and Coastal monarch migratory funnels where milkweeds provide adult nectar and larval food resources critical to functional connectivity for the spring and fall migrations through the South Central US. A potential critical gap in monarch migration functional connectivity was identified in South Texas. Seasonal milkweed resource area corridors and gaps can guide mitigation measures to conserve or restore monarch migratory habitats.

Declarations

Acknowledgements

We are grateful to Karen Oberhauser (Monarch Larva Monitoring Project) and Elizabeth Howard (Journey North) for contributing monarch larval occurrence and host data, and to Mark Fishbein (OSU) for assistance with Apocynaceae image species identifications. We thank Mike Quinn (TPWD retired), Michelle Bowe (SMS), Thomas Labedz (NEB), Todd Fagin (Oklahoma Natural Heritage Inventory), Janice Bush (UTSA), and David Berman (OSU) for providing milkweed occurrence data. We appreciate Cole Mandrona (TAMU) and Thomas Robbins (USDA-ARS, retired) for assessing online imagery associated with iNaturalist milkweed data. We thank Jason Singhurst (Texas Parks and Wildlife Department) and Kristina Chyn (Texas AgriLife Research) for reviewing earlier versions of this manuscript, and anonymous reviewers for suggestions that improved the manuscript. This research was funded by the Texas Comptroller of Public Accounts, Economic Growth and Endangered Species Management Division, Interagency Contract No. 16-5979.

Funding

This research was funded by the Texas Comptroller of Public Accounts, Economic Growth and Endangered Species Management Division, Interagency Contract No. 16-5979.

Conflicts of interest/Competing interests

The authors declare that they have no conflict of interest in this publication.

Availability of data and material

The Supplement and Online Data include raw data and data summaries.

Code availability

The Supplement and Online Data include R and python codes used in analyses.

Author contributions

Planning for the study involved all authors, including JLT, TK, KAB, and RNC. JLT developed the analysis framework and methodology, assembled some of the species occurrence data, and performed some of the niche model analysis, all the weekly phenology, landscape host selectivity, and seasonal larval spatial density analysis, and most of the land cover selectivity analysis. TK also assembled species occurrence data and carried out some of the niche model and land cover selectivity analyses. JLT led the writing with TK, KAB, and RNC assisting. All authors gave approval for the final revision and are accountable for all aspects of the work.

Ethics approval

Not applicable.

Consent to participate

Not applicable.

Consent for publication

Not applicable.

References

- Baker AM, Potter DA (2019) Configuration and location of small urban gardens affect colonization by monarch butterflies. *Front Ecol Evol* 7:474. <https://doi.org/10.3389/fevo.2019.00474>
- Baker AM, Potter DA (2020) Invasive paper wasp turns urban pollinator gardens into ecological traps for monarch butterfly larvae. *Sci Rep* 10:1-7. <https://doi.org/10.1038/s41598-020-66621-6>
- Batalden RV, Oberhauser K, Peterson AT (2007) Ecological niches in sequential generations of eastern North American monarch butterflies (Lepidoptera: Danaidae): the ecology of migration and likely climate change implications. *Env Entomol* 36:1365-1373. [https://doi.org/10.1603/0046-225X\(2007\)36\[1365:ENISGO\]2.0.CO;2](https://doi.org/10.1603/0046-225X(2007)36[1365:ENISGO]2.0.CO;2)
- Baum KA, Mueller EK (2015) Grassland and roadside management practices affect milkweed abundance and opportunities for monarch recruitment. In: Oberhauser, KS, Nail, KR, and Altizer, S (eds), *Monarchs in a changing world: Biology and conservation of an iconic butterfly*. Cornell University Press, Ithaca, New York, pp 197-202
- Baum KA, Sharber WV (2012) Fire creates host plant patches for monarch butterflies. *Biol Lett* 8:968-971. <https://doi.org/10.1098/rsbl.2012.0550>
- Beccaloni GW, Vilorio AL, Hall SK, Robinson GS (2008) Catalogue of the hostplants of the Neotropical butterflies. *Monografias Tercer Milenio*, Vol. 8, Sociedad Entomológica Aragonesa, Zaragoza, Spain
- Boria RA, Olson LE, Goodman SM, Anderson RP (2014) Spatial filtering to reduce sampling bias can improve the performance of ecological niche models. *Ecol Model* 275:73-77. <https://doi.org/10.1016/j.ecolmodel.2013.12.012>
- Boyle JH, Dalgleish HJ, Puzey JR (2019) Monarch butterfly and milkweed declines substantially predate the use of genetically modified crops. *Proc Natl Acad Sci* 116:3006-3011. <https://doi.org/10.1073/pnas.1811437116>
- Brower LP, Kust DR, Rendón Salinas E, García-Serrano E, Kust KR, Miller J, Fernandez del Rey C, Pape K (2004) Catastrophic winter storm mortality of monarch butterflies in Mexico during January 2002. In: Oberhauser KS, Solensky MJ (eds) *The monarch butterfly: Biology and conservation*. Cornell University Press, Ithaca, New York, pp 151-166
- Brower LP, Fink LS, Walford P (2006) Fueling the fall migration of the monarch butterfly. *Integr Comp Biol* 46:1123-1142. <https://doi.org/10.1093/icb/icl029>
- Brower LP, Taylor OR, Williams EH, Slayback DA, Zubieta RR, Ramirez MI (2012) Decline of monarch butterflies overwintering in Mexico: is the migratory phenomenon at risk? *Insect Conserv Divers* 5:95-100. <https://doi.org/10.1111/j.1752-4598.2011.00142.x>
- Brower LP, Williams EH, Jaramillo-López P, Kust DR, Slayback DA, Ramírez MI (2017) Butterfly mortality and salvage logging from the March 2016 storm in the Monarch Butterfly Biosphere Reserve in Mexico. *Am Entomol* 63:151-164. <https://doi.org/10.1093/ae/tmx052>
- Brower LP, Williams EH, Dunford KS, Dunford JC, Knight AL, Daniels J, Cohen JA, Van Hook T, Saarinen E, Standridge MJ, Epstein SW (2018) A long-term survey of spring monarch butterflies in north-central Florida. *J Nat Hist* 52:2025-2046. <https://doi.org/10.1080/00222933.2018.1510057>
- Brym MZ, Henry C, Lukashow-Moore SP, Henry BJ, van Gestel N, Kendall RJ (2020) Prevalence of monarch (*Danaus plexippus*) and queen (*Danaus gilippus*) butterflies in West Texas during the fall of 2018. *BMC Ecol* 20:33. <https://doi.org/10.1186/s12898-020-00301-x>
- Byers CR, Steinhorst RK, Krausman PR (1984) Clarification of a technique for analysis of utilization-availability data. *J Wildl Manag* 48:1050-1053. <https://doi.org/10.2307/3801467>
- Calvert WH (1999) Patterns in the spatial and temporal use of Texas milkweeds (Asclepiadaceae) by the monarch butterfly (*Danaus plexippus* L.) during fall, 1996. *J Lepidopterists' Soc* 53:37-44. <http://images.peabody.yale.edu/lepsoc/jls/1990s/1999/1999-53%281%2937-Calvert.pdf>. Accessed 11 July 2021
- Calvert WH, Wagner M (1999) Patterns in the monarch butterfly migration through Texas—1993 to 1995. In: Hoth J, Merino L, Oberhauser K, Pisanty I, Price S, Wilkinson T (eds) *1997 North American conference on the monarch butterfly*. Commission for Environmental Cooperation, Montreal, pp 119–125. http://www.fs.fed.us/wildflowers/pollinators/Monarch_Butterfly/documents/1997_conference.pdf#132. Accessed 11 July 2021
- Cariveau AB, Anderson E, Baum K, Hopwood J, Lonsdorf EV, Nootenboom C, Tuerk K, Oberhauser K, Snell-Rood E (2019) Rapid assessment of roadsides as potential habitat for monarchs and other pollinators. *Front Ecol Evol* 7:386. <https://doi.org/10.3389/fevo.2019.00386>
- Cariveau AB, Caldwell W, Lonsdorf E, Nootenboom C, Tuerk K, Snell-Rood E, Anderson E, Baum KA, Hopwood J, Oberhauser K (2020) Evaluating the suitability of roadway corridors for use by monarch butterflies. National Cooperative Highway Research Program (NCHRP) Research Report 942. The National Academies Press, Washington, DC. https://downloadnapedu/cart/downloadcgi?record_id=25693. Accessed 30 June 2020
- Castañeda S, Botello F, Sánchez-Cordero V, Sarkar S (2019) Spatio-temporal distribution of monarch butterflies along their migratory route. *Front Ecol Evol* 7:400. <https://doi.org/10.3389/fevo.2019.00400>
- Commission for Environmental Cooperation (CEC) (2010) Level III Ecoregions of North America Shapefile. US Environmental Protection Agency, Corvallis, Oregon. http://ecologicalregions.info/data/cec_na/NA_CEC_Eco_Level3.zip (see maps at http://ecologicalregions.info/htm/na_eco.htm). Accessed 16 October 2021

- Dee JR, Baum KA (2019) Mowing frequency influences number of flowering stems but not population age structure of *Asclepias viridis*, an important monarch host plant. *Am Midl Nat* 182:27-35. <https://doi.org/10.1674/0003-0031-182.1.27>. Accessed 11 July 2021
- Dee JR, Palmer MW (2019) Utility of herbaceous annual rings as markers of plant response to disturbance: A case study using roots of a common milkweed species of the US tallgrass prairie. *Tree-Ring Res* 75:14-24. <https://doi.org/10.3959/1536-1098-75.1.14>
- Dee JR, Thomas SM, Thompson SD, Palmer MW (2016) Long-term late season mowing maintains diversity in southern US tallgrass prairie invaded by *Bothriochloa ischaemum*. *Appl Veg Sci* 19:442-453. <https://doi.org/10.1111/avsc.12227>
- Dilts T, Steele, M, Engler, JD, Pelton, EM, Jepsen, SJ, McKnight, S, Taylor, AR, Fallon, CE, Black, SH, Cruz, EE and Craver, DR (2019) Host plants and climate structure habitat associations of the western monarch butterfly. *Front Ecol Evol* 7:188. <https://doi.org/10.3389/fevo.2019.00188>
- Evans JS, Oakleaf J, Cushman SA, Theobald D (2014) An ArcGIS toolbox for surface gradient and geomorphometric modeling, version 20-0. <https://wwwarcgiscom/home/itemhtml?id=63ffcecf3b2a45bf99a84cdaedefaccf>. Accessed 13 December 2016
- Fischer SJ, Williams EH, Brower LP, Palmiotto PA (2015) Enhancing monarch butterfly reproduction by mowing fields of common milkweed. *Am Midl Nat* 173:229-240. <https://doi.org/10.1674/amid-173-02-229-240.1>
- Fitzgerald P (2015) Monarch conservation in America's cities: A solutions guide for municipal leaders. National Wildlife Federation, Reston, Virginia. https://wwwfwsgov/southwest/es/Documents/R2ES/Monarch_Conservation_in_Americas_Cities_Guide_121715pdf. Accessed 30 June 2020
- Flockhart DT, Wassenaar LI, Martin TG, Hobson KA, Wunder MB, Norris DR (2013) Tracking multi-generational colonization of the breeding grounds by monarch butterflies in eastern North America. *Proc R Soc Lond B: Biol Sci* 280:20131087. <https://doi.org/10.1098/rspb.2013.1087>
- Geldmann J, Heilmann-Clausen J, Holm TE, Levinsky I, Markussen B, Olsen K, Rahbek C, Tøttrup AP (2016) What determines spatial bias in citizen science? Exploring four recording schemes with different proficiency requirements. *Divers Distrib* 22:1139-1149. <https://doi.org/10.1111/ddi.12477>
- Global Biodiversity Information Facility (GBIF) (2017) Explore species. <http://wwwgbiforg/species>. Accessed 13 June 2017
- Gonzalez S C, Soto-Centeno, J A, & Reed, D L (2011) Population distribution models: species distributions are better modeled using biologically relevant data partitions. *BMC Ecol* 11:20. <https://doi.org/10.1186/1472-6785-11-20>
- Google Earth Pro 7.3.3.7786 (2021) Historical aerial imagery: United States. <https://www.google.com/earth/download/gep/agree.html?hl=en-GB>. Accessed 23 June 2021
- Google Maps (2021) Historical street view imagery: United States. <https://google.com/maps>. Accessed 23 June 2021
- Haan NL, Landis DA (2019a) Grassland disturbance increases monarch butterfly oviposition and decreases arthropod predator abundance. *Biol Conserv* 233:185-192. <https://doi.org/10.1016/j.biocon.2019.03.007>
- Haan NL, Landis DA (2019b) The importance of shifting disturbance regimes in monarch butterfly decline and recovery. *Front Ecol Evol* 7:191. <https://doi.org/10.3389/fevo.2019.00191>
- Haan NL, Landis DA (2020) Grassland disturbance effects on first-instar monarch butterfly survival, floral resources, and flower-visiting insects. *Biol Conserv* 243:108492. <https://doi.org/10.1016/j.biocon.2020.108492>
- Hartzler RG (2010) Reduction in common milkweed (*Asclepias syriaca*) occurrence in Iowa cropland from 1999 to 2009. *Crop Prot* 29:1542-1544. <https://doi.org/10.1016/j.cropro.2010.07.018>
- Hengl T, Mendes de Jesus J, Heuvelink GB, Ruiperez Gonzalez M, Kilibarda M, Blagotić A, Shangguan W, Wright MN, Geng X, Bauer-Marschallinger B, Guevara MA (2017) SoilGrids250m: Global gridded soil information based on machine learning. *PLoS One* 12:e0169748. <https://doi.org/10.1371/journal.pone.0169748>
- Hijmans RJ, Cameron SE, Parra JL, Jones PG, Jarvis A (2005) Very high resolution interpolated climate surfaces for global land areas. *International Journal of Climatology: J R Meteorol Soc* 25:1965-1978. <https://doi.org/10.1002/joc.1276>
- Hijmans RJ, Phillips S, Leathwick J, Elith J (2011) Package 'dismo'. <http://cranr-projectorg/web/packages/dismo/indexhtml>. Accessed 7 January 2016
- Hoagland, BW, Buthod AK, Fagin TD (2017) Oklahoma Vascular Plants Database. Oklahoma Biological Survey, University of Oklahoma, Norman, OK, USA. <http://www.oklahomaplantdatabase.org/>. Accessed 21 January 2021
- Hobson KA, García-Rubio OR, Carrera-Treviño R, Anparasan L, Kardynal KJ, McNeil JN, García-Serrano E, Mora Alvarez BX (2020) Isotopic ($\delta^2\text{H}$) Analysis of stored lipids in migratory and overwintering monarch butterflies (*Danaus plexippus*): Evidence for southern critical late-stage nectaring sites?. *Front Ecol Evol* 8:331. <https://doi.org/10.3389/fevo.2020.572140>
- Hopwood J, Black SH, Lee-Mäder E, Charlap A, Preston R, Mozumder K, Fleury S (2015) Literature review: pollinator habitat enhancement and best management practices in highway rights-of-way. Federal Highway Administration Report, The Xerces Society for Invertebrate Conservation and ICF International, Washington, DC. http://xerces.org/sites/default/files/2018-05/15-055_01_pollinators_BMPs_in_highway_ROW.pdf. Accessed 9 August 2020

- Howard E, Davis AK (2009) The fall migration flyways of monarch butterflies in eastern North America revealed by citizen scientists. *J Insect Conserv* 13:279–286. <https://doi.org/10.1007/s10841-008-9169-y>
- Hyams, DG (2010) CurveExpert software. <http://www.curveexpert.net>. Accessed 12 January 2021
- iNaturalist.org (2021a) iNaturalist: Explore observations. <https://www.inaturalist.org/observations> Accessed 7 December 2021
- iNaturalist.org (2021b) Texas milkweeds and monarchs. <https://www.inaturalist.org/projects/texas-milkweeds-and-monarchs> Accessed 18 December 2021
- Jin S, Homer C, Yang L, Danielson P, Dewitz J, Li C, Zhu Z, Xian G, Howard D (2019) Overall methodology design for the United States national land cover database 2016 products. *Remote Sens* 11:2971. <https://doi.org/10.3390/rs11242971>
- Johnson DH (1980) The comparison of usage and availability measurements for evaluating resource preference. *Ecol* 61:65-71. <https://doi.org/10.2307/1937156>
- Journey North (2017) Tracking Migrations and Seasons: View Maps. Available at: <https://journeynorth.org/> Accessed 22 January 2021
- Kantola T, Tracy JL, Baum KA, Quinn MA, Coulson RN (2019a) Spatial risk assessment of eastern monarch butterfly road mortality during autumn migration within the southern corridor. *Biol Conserv* 231:150-160. <https://doi.org/10.1016/j.biocon.2019.01.008>
- Kantola T, Tracy, J, Lyytikäinen-Saarenmaa, P, Saarenmaa, HT, Coulson, R, Trabucco, A, and Holopainen, M (2019b) Hemlock woolly adelgid niche models from the invasive eastern North American range with projections to native ranges and future climates. *iForest* 12:149-145. <https://doi.org/10.3832/ifer2883-012>
- Kartesz JT, The Biota of North America Program (BONAP) (2015) *North American Plant Atlas* Chapel Hill, NC [maps generated from Kartesz JT, 2015, Floristic synthesis of North America, Version 10 Biota of North America Program (BONAP) (in press)]. <http://bonapnet/NAPA/TaxonMaps/Genus/County/Asclepias>. Accessed 1 January 2019
- Kass JM, Anderson RP, Espinosa-Lucas A, Juárez-Jaimes V, Martínez-Salas E, Botello F, Tavera G, Flores-Martínez JJ, Sánchez-Cordero V (2020) Biotic predictors with phenological information improve range estimates for migrating monarch butterflies in Mexico. *Ecography* 43:341-352. <https://doi.org/10.1111/ecog.04886>
- Kasten K, Stenoien C, Caldwell W, Oberhauser KS (2016) Can roadside habitat lead monarchs on a route to recovery? *J Insect Conserv* 20:1047-1057. <https://doi.org/10.1007/s10841-016-9938-y>
- Kaul AD, Wilsey BJ (2019) Monarch butterfly host plant (milkweed *Asclepias* spp.) abundance varies by habitat type across 98 prairies. *Restor Ecol* 27:1274-1281. <https://doi.org/10.1111/rec.12993>
- Kaul RB, Rolsmeier SB, Esch JJ (1991) The distribution and reproductive phenology of the milkweeds (Asclepiadaceae: *Asclepias* and *Cynanchum*) in Nebraska. *Trans Neb Acad Sci Affil Soc* 18:127-140. <https://digitalcommons.unl.edu/tnas/152/>. Accessed 11 July 2021
- Keilsohn W, Narango DL, Tallamy DW (2018) Roadside habitat impacts insect traffic mortality. *J Insect Conserv* 22:183-188. <https://doi.org/10.1007/s10841-018-0051-2>
- Kelly TT, Elle E (2020) Investigating bee dietary preferences along a gradient of floral resources: how does resource use align with resource availability? *Insect Sci* 28:555-565. <https://doi.org/10.1111/1744-7917.12785>
- Knight SM, Norris DR, Derbyshire R, Flockhart DT (2019) Strategic mowing of roadside milkweeds increases monarch butterfly oviposition. *Glob Ecol Conserv* 19:e00678. <https://doi.org/10.1016/j.gecco.2019.e00678>
- Kursar TA, Wolfe BT, Epps MJ, Coley PD (2006) Food quality, competition, and parasitism influence feeding preference in a neotropical lepidopteran. *Ecol* 87:3058-3069. [https://doi.org/10.1890/0012-9658\(2006\)87\[3058:FQCAPI\]2.0.CO;2](https://doi.org/10.1890/0012-9658(2006)87[3058:FQCAPI]2.0.CO;2)
- Lechowicz MJ (1982) The sampling characteristics of electivity indices. *Oecologia* 52:22-30. <https://doi.org/10.1007/BF00349007>
- Lechowicz MJ, Jobin L (1983) Estimating the susceptibility of tree species to attack by the gypsy moth, *Lymantria dispar*. *Ecol Entomol* 8:171-83. <https://doi.org.srv-proxy2.library.tamu.edu/10.1111/j.1365-2311.1983.tb00496.x>
- Lehner B, Verdin K, Jarvis A (2008) New global hydrography derived from spaceborne elevation data. *Eos* 89:93-94. <https://doi.org/10.1029/2008EO100001>
- Lemoine NP (2015) Climate change may alter breeding ground distributions of eastern migratory monarchs (*Danaus plexippus*) via range expansion of *Asclepias* host plants. *PLoS One* 10:e0118614. <https://doi.org/10.1371/journal.pone.0118614>
- Leone JB, Larson DL, Larson JL, Pennarola P, Oberhauser K (2019) Adult monarch (*Danaus plexippus*) abundance is higher in burned sites than in grazed sites. *Front Ecol Evol* 7:435. <https://doi.org/10.3389/fevo.2019.00435>
- Lynch SP, Martin RA (1993) Milkweed host plant utilization and cardenolide sequestration by monarch butterflies in Louisiana and Texas. In: Malcolm, SB, Zalucki MP (eds), *Biology and conservation of the monarch butterfly*. No 38 Science Series, Natural History Museum of Los Angeles County, Los Angeles, California, pp 107-123

- Malcolm SB, Brower LP (1986) Selective oviposition by monarch butterflies (*Danaus plexippus* L) in a mixed stand of *Asclepias curassavica* L and *A. incarnata* L in south Florida. *J Lepidopterists' Soc* 40:255-263. [https://images.peabody.yale.edu/lepsoc/jls/1980s/1986/1986-40\(4\)255-Malcolm.pdf](https://images.peabody.yale.edu/lepsoc/jls/1980s/1986/1986-40(4)255-Malcolm.pdf) Accessed 16 December 2021
- Malcolm SB, Cockrell BJ, Brower LP (1993) Spring recolonization of eastern North America by the monarch butterfly: Successive brood or single sweep migration. In: Malcolm, SB, Zalucki MP (eds), *Biology and conservation of the monarch butterfly*. No 38 Science Series, Natural History Museum of Los Angeles County, Los Angeles, California, pp 253-267. https://www.researchgate.net/publication/292664949_Spring_recolonization_of_eastern_North_America_by_the_monarch_butterfly_successive_brood_or_sing Accessed 11 July 2021
- Manly BFJ, McDonald LL, Thomas DL, McDonald TL, Erickson WP (2002) *Resource selection by animals: Statistical design and analysis for field studies*. Second Edition, Kluwer, Academic Publishers, Dordrecht, the Netherlands
- Martinson HM, Bergmann EJ, Venugopal PD, Riley CB, Shrewsbury PM, Raupp MJ (2016) Invasive stink bug favors naïve plants: testing the role of plant geographic origin in diverse, managed environments. *Sci Rep* 6:1-7. <https://doi.org/10.1038/srep32646>
- Mauffette Y, Lechowicz MJ, Jobin L (1983) Host preferences of the gypsy moth, *Lymantria dispar* (L.), in southern Quebec. *Can J For Res* 13:53-60. <https://doi.org/10.1139/x83-008>
- McGruddy RA, Howse MW, Haywood J, Ward CJ, Stauffer TB, Hayek-Williams M, Toft RJ, Lester PJ (2021) Invasive paper wasps have strong cascading effects on the host plant of monarch butterflies. *Ecol Entomol* 46:459-69. <https://doi.org/10.1111/een.12992>
- Monarch Candidate Conservation Agreement with Assurances and Candidate Conservation Agreement [CCAA/CCA] Development Team (2020) *Nationwide Candidate Conservation Agreement for monarch butterfly on energy and transportation lands: An integrated Candidate Conservation Agreement with Assurances (CCAA) and Candidate Conservation Agreement (CCA)*. Energy Resources Center at The University of Illinois at Chicago, Chicago, Illinois https://www.fws.gov/savethemonarch/pdfs/Final_CCAA_040720_Fully%20Executed.pdf. Accessed 30 June 2020
- Monarch Joint Venture (2020) *Mowing: Best practices for monarchs*. University of Minnesota, Department of Fisheries, Wildlife, and Conservation Biology, St Paul, Minnesota <https://monarchjointventure.org/images/uploads/documents/MowingForMonarch.pdf>. Accessed 9 August 2020
- Monarch Larva Monitoring Project (MLMP) (2017) Data accessed from the MLMP, a joint program of the Monarch Joint Venture and University of Wisconsin–Madison Arboretum. <http://www.mlmp.org>. Accessed 22 January 2021
- Mora Alvarez BX, Carrera-Treviño R, Hobson KA (2019) Mortality of monarch butterflies (*Danaus plexippus*) at two highway crossing “Hotspots” during autumn migration in Northeast Mexico. *Front Ecol Evol* 7:273. <https://doi.org/10.3389/fevo.2019.00273>
- Moreno-Sanchez R, Raines J, Diffendorfer J, Drummond MA, Manko J (2019) Challenges for monitoring the extent and land use/cover changes in monarch butterflies' migratory habitat across the United States and Mexico. *Land* 8:156. <https://doi.org/10.3390/land8100156>
- Multi-Resolution Land Characteristics Consortium (MLRC) (2021a) Data: Land cover. <https://www.mrlc.gov/data?f%5B0%5D=category%3Aland%20cover>. Accessed 24 December 2021
- MLRC (2021b) *National Land Cover Database 2016 (NLCD 2016) Legend*. <https://www.mrlc.gov/data/legends/national-land-cover-database-2016-nlcd2016-legend>. Accessed 23 June 2021
- Myers A, Bahlai CA, Landis DA (2019) Habitat type influences *Danaus plexippus* (Lepidoptera: Nymphalidae) oviposition and egg survival on *Asclepias syriaca* (Gentianales: Apocynaceae). *Env Entomol* 48:675-684. <https://doi.org/10.1093/ee/nvz046>
- Neu CW, Byers CR, Peek JM (1974) A technique for analysis of utilization-availability data. *J Wildl Manag* 1:541-545. <https://doi.org/10.2307/3800887>
- Oberhauser K, Wiederholt R, Diffendorfer JE, Semmens D, Ries L, Thogmartin WE, Lopez-Hoffman L, Semmens B (2017) A trans-national monarch butterfly population model and implications for regional conservation priorities. *Ecol Entomol* 42:51-60. <https://doi.org/10.1111/een.12351>
- Ogawa K, Mototani I (1991) Land-use selection by dandelions in the Tokyo metropolitan area. *Japan. Ecol Res* 6:233-246. <https://doi.org/10.1007/BF02347125>
- Pellissier L, Litsios G, Fishbein M, Salamin N, Agrawal AA, Rasmann S (2016) Different rates of defense evolution and niche preferences in clonal and nonclonal milkweeds (*Asclepias* spp.). *New Phytol* 209:1230-1239. <https://doi.org/10.1111/nph.13649>
- Pennay M, Law B, Lunney D (2011) Review of the distribution and status of the bat fauna of New South Wales and the Australian Capital Territory. In: Law B, Eby P, Lunney D, Lumsden L (eds), *The biology and conservation of Australasian Bats*. Royal Zoological Society of New South Wales, Mosman, pp 226–256. <https://doi.org/10.7882/FS.2011.025>
- Phillips BB, Gaston KJ, Bullock JM, Osborne JL (2019) Road verges support pollinators in agricultural landscapes, but are diminished by heavy traffic and summer cutting. *J Appl Ecol* 56:2316-2327. <https://doi.org/10.1111/1365-2664.13470>

- Phillips BJ, Wallace C, Roberts BR, Whitehouse AT, Gaston KJ, Bullock JM, Dicks LV, Osborne JL (2020) Enhancing road verges to aid pollinator conservation: A review. *Biol Conserv* 250:108687. <https://doi.org/10.1016/j.biocon.2020.108687>
- Phillips SJ, Anderson RP, Schapire RE (2006) Maximum entropy modeling of species geographic distributions. *Ecol Model* 190:231-259. <https://doi.org/10.1016/j.ecolmodel.2005.03.026>
- Pitman GM, Flockhart DT, Norris DR (2018) Patterns and causes of oviposition in monarch butterflies: implications for milkweed restoration. *Biol Cons* 217:54-65. <https://doi.org/10.1016/j.biocon.2017.10.019>
- Pleasants J (2017) Milkweed restoration in the Midwest for monarch butterfly recovery: estimates of milkweeds lost, milkweeds remaining and milkweeds that must be added to increase the monarch population. *Insect Conserv Divers* 10:42-53. <https://doi.org/10.1111/icad.12198>
- Pocius VM, Debinski DM, Pleasants JM, Bidne KG, Hellmich RL, Brower LP (2017) Milkweed matters: monarch butterfly (Lepidoptera: Nymphalidae) survival and development on nine Midwestern milkweed species. *Env Entomol* 46:1098-1105. <https://doi.org/10.1093/ee/nvx137>
- Pocius VM, Pleasants JM, Debinski DM, Bidne KG, Hellmich RL, Bradbury SP, Blodgett SL (2018) Monarch butterflies show differential utilization of nine Midwestern milkweed species. *Front Ecol Evol* 6:169. <https://doi.org/10.3389/fevo.2018.00169>
- Porfirio LL, Harris RM, Lefroy EC, Hugh S, Gould SF, Lee G, Bindoff NL, Mackey B (2014) Improving the use of species distribution models in conservation planning and management under climate change. *PLoS One* 9:e113749. <https://doi.org/10.1371/journal.pone.0113749>
- Quintans D (2019) electivity: Algorithms for Electivity Indices. R package version 1.0.2. <https://CRAN.R-project.org/package=electivity> Accessed 17 December 2020
- R Core Team (2017) R: A language and environment for statistical computing. R Foundation for Statistical Computing, Vienna, Austria. <https://www.R-project.org/>. Accessed 18 April 2018
- Ranc N, Santini L, Rondinini C, Boitani L, Poitevin F, Angerbjörn A, Maiorano L (2017) Performance tradeoffs in target-group bias correction for species distribution models. *Ecography* 40:1076-1087. <https://doi.org/10.1111/ecog.02414>
- Ries L, Oberhauser K (2015) A citizen army for science: quantifying the contributions of citizen scientists to our understanding of monarch butterfly biology. *BioSci* 65:419-430. <https://doi.org/10.1093/biosci/biv011>
- Ries L, Taron DJ, Rendón-Salinas E (2015) The disconnect between summer and winter monarch trends for the eastern migratory population: Possible links to differing drivers. *Ann Entomol Soc Am* 108:691-699. <https://doi.org/10.1093/aesa/sav055>
- Robinson GS, Ackery PR, Kitching IJ, Beccaloni GW, Hernández LM (2002) Hostplants of the moth and butterfly caterpillars of America north of Mexico. American Entomological Institute, Gainesville, Florida.
- Schwartz MW (2012) Using niche models with climate projections to inform conservation management decisions. *Biol Cons* 155:149-56. <https://doi.org/10.1016/j.biocon.2012.06.011>
- Semmens BX, Semmens DJ, Thogmartin WE, Wiederholt R, López-Hoffman L, Diffendorfer JE, Pleasants JM, Oberhauser KS, Taylor OR (2016) Quasi-extinction risk and population targets for the Eastern, migratory population of monarch butterflies (*Danaus plexippus*). *Sci Rep* 6:1-7. <https://doi.org/10.1038/srep23265>
- SEINet (2017) SEINet Arizona-New Mexico chapter: Specimen search. <http://swbiodiversityorg/seinet/collections/index.php>. Accessed 8 June 2017
- Singhurst J, Hutchins B, Holmes WC (2015) Identification of milkweeds (*Asclepias*, Family Apocynaceae) in Texas. Texas Parks and Wildlife and Lady Bird Johnson Wildflower Center, University of Texas, Austin, Texas <https://www.wildflower.org/plants/TPWD-Identification-Milkweeds-Texas.pdf> Accessed 24 July 2020
- Solensky MJ (2004) Overview of monarch migration. In: Oberhauser KS, Solensky MJ (eds) *The monarch butterfly: Biology and conservation*. Cornell University Press, Ithaca, New York, pp 79-83.
- Stenoien C, Nail KR, Zalucki JM, Parry H, Oberhauser KS, Zalucki MP (2018) Monarchs in decline: a collateral landscape-level effect of modern agriculture. *Insect Sci* 25:528-541. <https://doi.org/10.1111/1744-7917.12404>
- Svancara LK, Abatzoglou JT, Waterbury B (2019) Modeling current and future potential distributions of milkweeds and the Monarch butterfly in Idaho. *Front Ecol Evol* 7:168. <https://doi.org/10.3389/fevo.2019.00168>
- Taylor OR (2019) Monarch population status; 15 March 2019. *Monarch Watch Blog* 38. <https://monarchwatch.org/blog/2019/03/15/monarch-population-status-38/>. Accessed 13 December 2020
- Taylor OR (2020) Monarch annual cycle: Migrations and the number of generations; 3 June 2020. *Monarch Watch Blog*. <https://monarchwatch.org/blog/2020/06/03/monarch-annual-cycle-migrations-and-the-number-of-generations/>. Accessed 25 December 2021

Taylor OR, Pleasants JM, Grundel R, Pecoraro SD, Lovett JP, Ryan A (2020) Evaluating the migration mortality hypothesis using monarch tagging data. *Front Ecol Evol* 8:264. <https://doi.org/10.3389/fevo.2020.00264>

Thogmartin WE, Wiederholt R, Oberhauser K, Drum RG, Diffendorfer JE, Altizer S, Taylor OR, Pleasants J, Semmens D, Semmens B, Erickson R, Libby K, Lopez-Hoffman L (2017) Monarch butterfly population decline in North America: identifying the threatening processes. *R Soc Open Sci* 4:170760. <https://doi.org/10.1098/rsos.170760>

Trabucco A, Zomer RJ (2010) Global soil water balance geospatial database Consultive Group on International Agricultural Research (CGIAR)- Consortium for Spatial Information, Washington, DC. <http://www.cgiar-csi.org/data/global-high-resolution-soil-water-balance>. Accessed 11 January 2017

Tracy JL, Trabucco A, Lawing AM, Giermakowski T, Tchakerian M, Drus GM, Coulson RN (2018) Random subset feature selection of ecological niche models for wildfire activity in western North America. *Ecol Model* 383:52-68. <https://doi.org/10.1016/j.ecolmodel.2018.05.019>

Tracy JL, Kantola T, Baum KA, Coulson, RN (2019) Modelling fall migration pathways and spatially identifying potential migratory hazards for the eastern monarch butterfly. *Landsc Ecol* 34:443-448. <https://doi.org/10.1007/s10980-019-00776-0>

Tuggle BN (2014) Region 2 monarch butterfly conservation strategy and action plan template memo to Donita Cotter, Monarch Conservation Strategy Coordinator, 12 November, 2014. https://www.fws.gov/southwest/es/Documents/R2ES/Pollinators/11-Southwest_Region_Monarch_Conservation_Strategy_Nov2014.pdf. Accessed 3 June 2017

US Department of Agriculture Natural Resources Conservation Service [USDA NRCS] (2015a) Monarch butterfly habitat development project. USDA-NRCS, Washington, DC. https://www.nrcsusdagov/wps/PA_NRCSConsumption/download?cid=nrcseprd414244&ext=pdf. Accessed 24 July 2020

US Department of Agriculture NRCS (2015b) Monarch butterflies plant lists: Southern plains; Kansas, Oklahoma, and Texas. 4 pp. https://www.nrcs.usda.gov/Internet/FSE_PLANTMATERIALS/publications/cepmstn12676.pdf. Accessed 18 December 2020

USDA NRCS (2016a) Monarch butterfly conference report. USDA NRCS and USDI Fish and Wildlife Service, 107 pp. https://www.nrcsusdagov/wps/PA_NRCSConsumption/download?cid=nrcseprd1310223&ext=pdf. Accessed 3 June 2017

USDA NRCS (2016b) Fact sheet: Monarch butterfly habitat development project (MBHP). USDA NRCS, Temple, Texas. <https://www.nrcsusdagov/wps/portal/nrcs/detail/tx/plantsanimals/?cid=nrcseprd945806>. Accessed 8 January 2019

USDA NRCS (2018) Important plants of the monarch butterfly, southern Great Plains: Staff guide, 100 pp https://www.nrcs.usda.gov/wps/PA_NRCSConsumption/download?cid=nrcseprd772806&ext=pdf . Accessed 20 December 2020

US Department of Interior Fish and Wildlife Service [USDI FWS] (2020) U.S. Fish and Wildlife Service finds Endangered Species Act listing for monarch butterfly warranted but precluded. 15 December, 2020, press release. https://www.fws.gov/news/ShowNews.cfm?ref=u.s.-fish-and-wildlife-service-finds-endangered-species-act-listing-for-&_ID=36817. Accessed 15 December 2020

Urquhart FA, Urquhart NR (1978) Autumnal migration routes of the eastern population of the monarch butterfly (*Danaus p. plexippus* L.; Danaidae; Lepidoptera) in North America to the overwintering site in the Neovolcanic Plateau of Mexico. *Can J Zool* 56:1759-1764. <https://doi.org/10.1139/z78-240>

Vanderploeg HA, Scavia D (1979) Two electivity indices for feeding with special reference to zooplankton grazing. *J Fish Board Can* 36:362-365. <https://doi.org/10.1139/f79-055>

vPlants (2017) vPlants: A virtual herbarium of the Chicago region. <http://vplantsorg/portal/index.php>. Accessed 1 January 2019

Waterbury B, Potter A, Svancara LK (2019) Monarch butterfly distribution and breeding ecology in Idaho and Washington. *Front Ecol Evol* 7:172. <https://doi.org/10.3389/fevo.2019.00172>

Webb MA (2017) Roadside environments and the effects of roadside management practices on milkweeds and monarchs. Master's Thesis, Oklahoma State University, Stillwater, Oklahoma. https://shareok.org/bitstream/handle/11244/300099/Webb_okstate_0664M_15564.pdf?sequence=1&isAllowed=y. Accessed 17 December 2020

Wilcox AA, Flockhart DT, Newman AE, Norris DR (2019) An evaluation of studies on the potential threats contributing to the decline of eastern migratory North American monarch butterflies (*Danaus plexippus*). *Front Ecol Evol* 7:99. <https://doi.org/10.3389/fevo.2019.00099>

Wilting A, Cord A, Hearn AJ, Hesse D, Mohamed A, Traeholdt C, Cheyne SM, Sunarto S, Jayasilan MA, Ross J, Shapiro AC (2010) Modelling the species distribution of flat-headed cats (*Prionailurus planiceps*), an endangered South-East Asian small felid. *PloS One* 5:e9612. <https://doi.org/10.1371/journal.pone.0009612>

Woodson RE (1954) The North American species of *Asclepias* L. *Ann Mo Bot Gard* 41:1-211. <https://www.jstor.org/stable/2394652>. Accessed 12 July 2021

WorldClim (2017) Global climate data. <http://www.worldclim.org/version1>. Accessed 12 March 2017

Yeargan KV, Allard CM (2005) Comparison of common milkweed and honeyvine milkweed (Asclepiadaceae) as host plants for monarch larvae (Lepidoptera: Nymphalidae). *J Kans Entomol Soc* 78:247-251. <https://doi.org/10.2317/0407.40.1>

Zaya DN, Pearse IS, Spyreas G (2017) Long-term trends in Midwestern milkweed abundances and their relevance to monarch butterfly declines. *BioSci* 67:343-356. <https://doi.org/10.1093/biosci/biw186>

Zhang G, Zhu AX (2018) The representativeness and spatial bias of volunteered geographic information: a review. *Ann GIS* 24:151-162. <https://doi.org/10.1080/19475683.2018.1501607>

Zomer RJ, Bossio DA, Trabucco A, Yuanjie L, Gupta DC, Singh VP (2007) Trees and water: smallholder agroforestry on irrigated lands in northern India, IWMI Research Report 122, Colombo, International Water Management Institute, Sri Lanka, pp 45. <http://www.cgiar-csi.org/data/global-aridity-and-pet-database>. Accessed 11 January 2017

Zomer RJ, Trabucco A, Bossio DA, van Straaten O, Verchot LV (2008) Climate change mitigation: A spatial analysis of global land suitability for clean development. *Mech Afforestation Refor Agric Ecosyst Env* 126:67-80. <https://doi.org/10.1016/j.agee.2008.01.014>. <http://www.cgiar-csi.org/data/global-aridity-and-pet-database>. Accessed 11 January 2017

Zylstra ER, Ries L, Neupane N, Saunders SP, Ramírez MI, Rendón-Salinas E, Oberhauser KS, Farr MT, Zipkin EF (2021) Changes in climate drive recent monarch butterfly dynamics. *Nat Ecol Evol* 19:1-2. <https://doi.org/10.1038/s41559-021-01504-1>

Figures

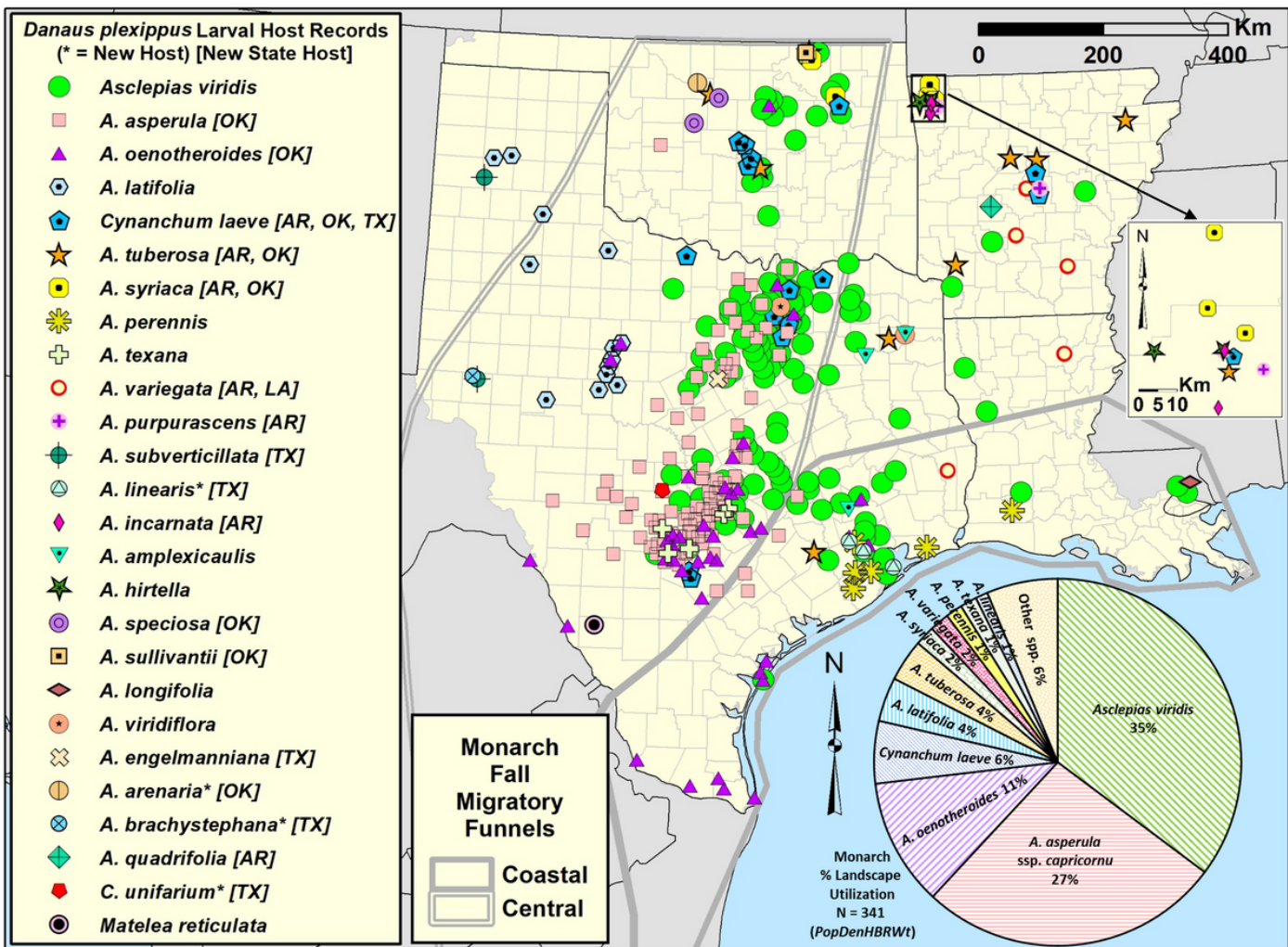


Figure 1

South Central US study area with *Danaus plexippus* larvae and pupae (2011-2020) occurrences on wild native Apocynaceae (n = 341 spatio-temporally thinned locations used in analyses), with selected additional occurrences (n = 19, data outside of analyzed spatio-temporal boundaries, see Table S1), and percent landscape utilization of host species (inset chart), with fall monarch migratory funnels from Tracy et al. (2019) (see Table S4 for host and distribution records).

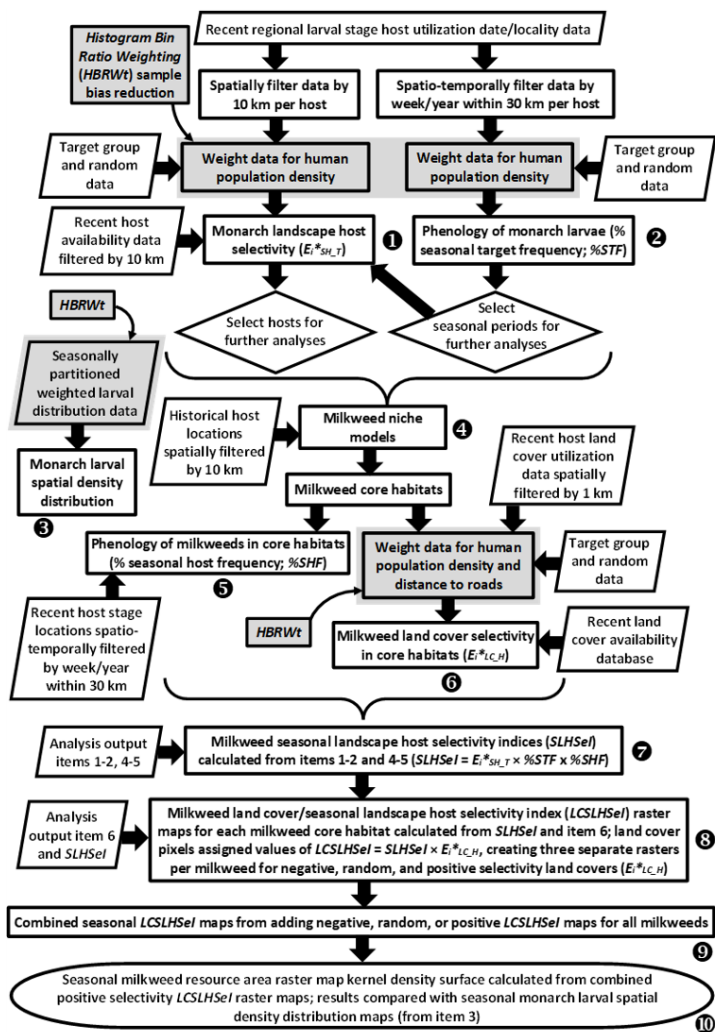


Figure 2

Flowchart of various analysis output items (circled digits, e.g., ⑩) for estimating the distribution of seasonal milkweed resource areas.

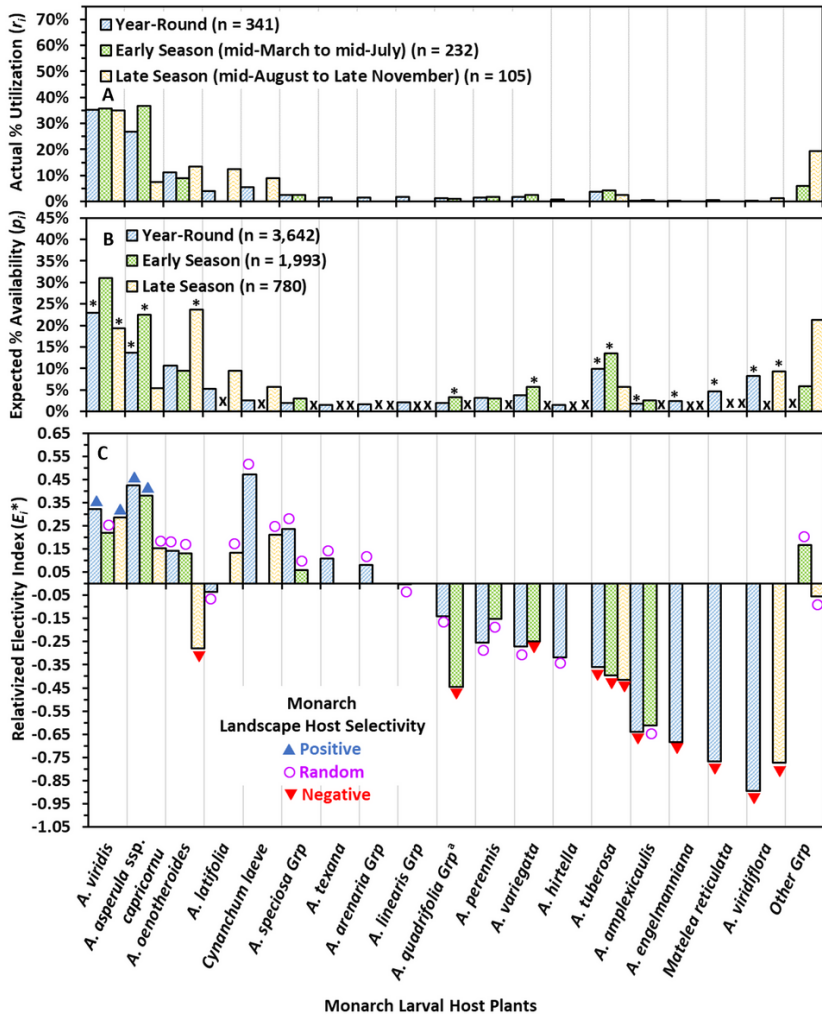


Figure 3
 Annual early season (mid-March - mid-July) and late season (mid-Aug - late Nov) landscape milkweed host utilization/availability analysis (2011-2020) for *Danaus plexippus* in South Central US for (A) actual percent utilization of milkweed (r_i) by monarch larvae (n = locations weighted by human population, *PopDemHBRWtN*); (B) expected percent availability (p_i) for milkweed hosts, where values of p_i with asterisks fall outside of the two-tailed 95% Bonferroni confidence intervals for r_i (r_i significantly differed from p_i for all seasons; Chi-squared Goodness of Fit Test, $P < 0.05$); and (C) larval milkweed host relativized electivity index (E_i^*), where milkweed hosts with significant differences noted in (B) are marked with colored arrows. Values of p_i (B) with "x" had less than five expected milkweed occurrences and were combined into the "Other" category, or various host "Grp" categories (^a*A. quadrifolia* species present and not in group for early season; see Table S5 for groupings per period).

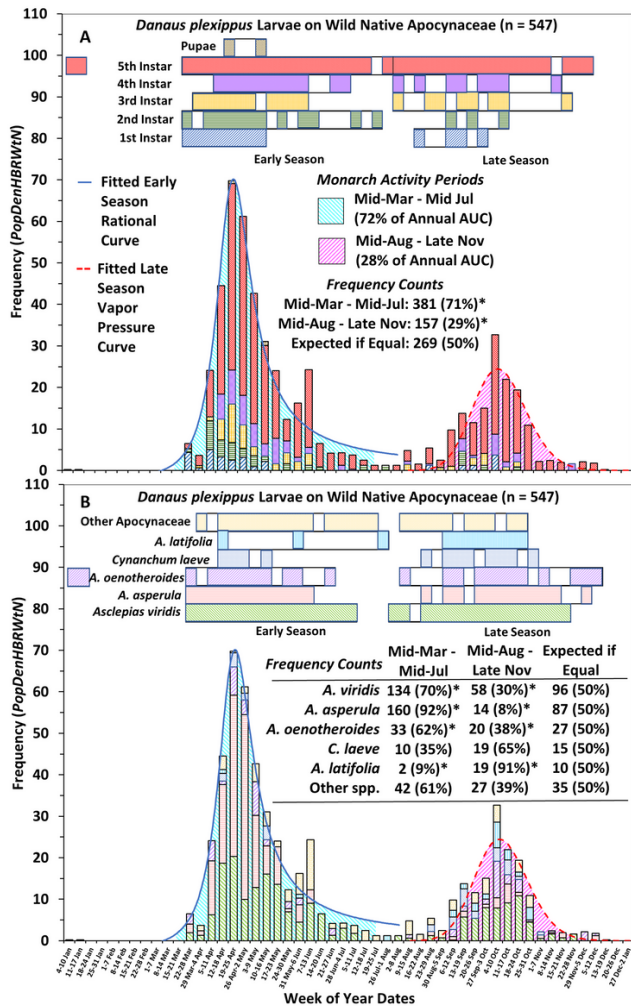


Figure 4

Danaus plexippus larvae and pupae annual (2011-2020) weekly stacked phenophase histograms and phenoperiod Gantt charts (= legend) for South Central US study area (n = spatio-temporally thinned locations), with percent of total area under fitted nonlinear curves for the monarch immature activity periods of mid-March to mid-July and mid-August to late November for: (A) *D. plexippus* larval and pupal stages, and (B) native Apocynaceae host plants (for larger images, fitted curve formulae, and R^2 values, see Figs. S5-6). The two-tailed 95% Bonferroni confidence intervals for early and late season frequency percentages with asterisks fall outside of the expected random frequency of 50%, assuming they were equal (omnibus Chi-squared Goodness of Fit Tests, $P < 0.05$).

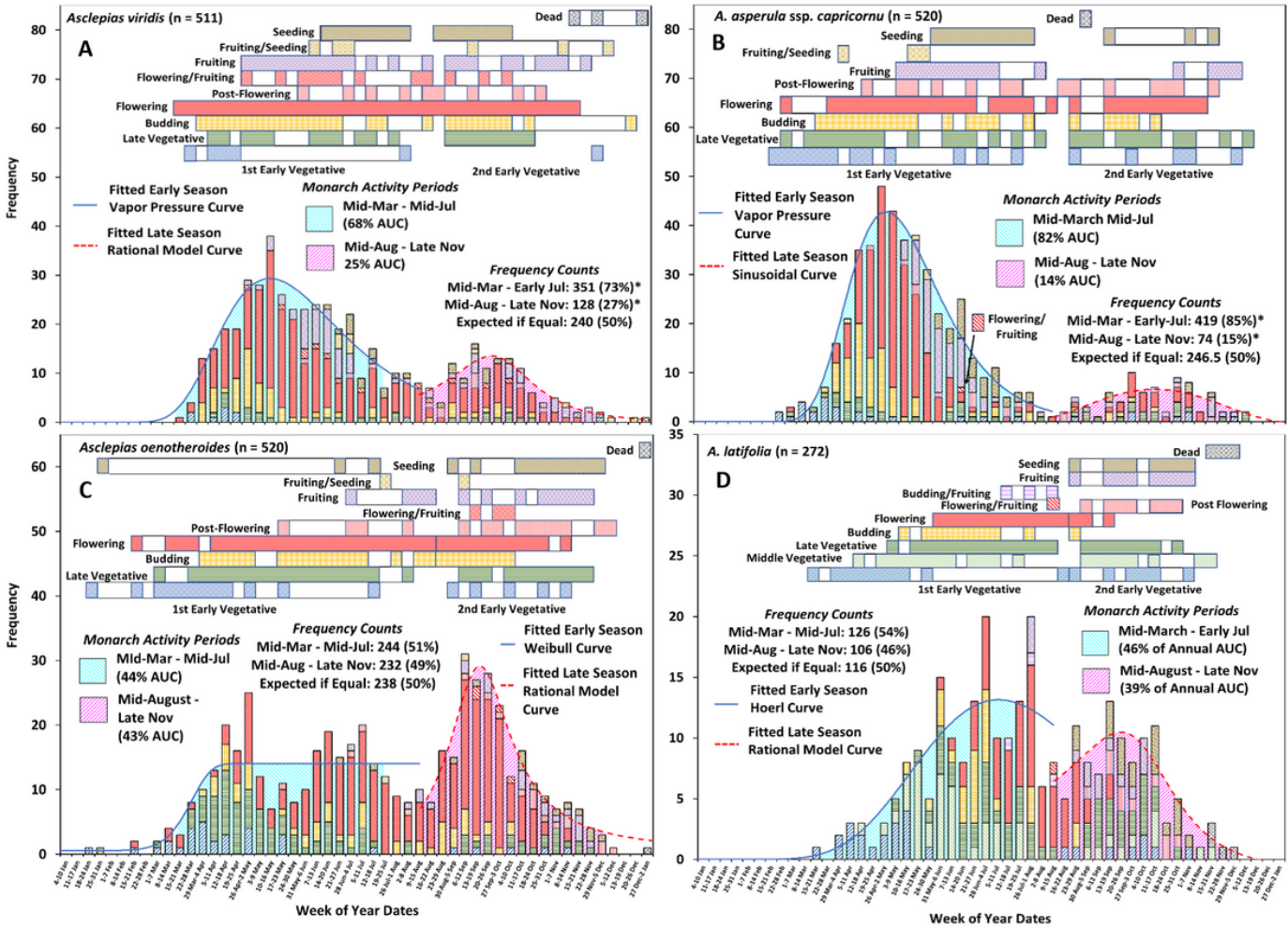


Figure 5

Asclepias spp. annual (2011-2020) weekly stacked phenophase histograms and phenoperiod Gantt charts (= legend) for MaxEnt core habitats within South Central US study area (n = spatio-temporally thinned locations), with percent of total area under fitted nonlinear curves for the monarch activity periods of mid-March to mid-July and mid-August to late November for: (A) *A. viridis*, (B) *A. asperula* ssp. *capricornu*, (C) *A. oenotheroides*, and (D) *A. latifolia* (for larger images, fitted curve formulae, and R^2 values, see Figs. S7-10). The two-tailed 95% Bonferroni confidence intervals for early and late season frequency percentages with asterisks fall outside of the expected random frequency of 50%, assuming they were equal (omnibus Chi-squared Goodness of Fit Tests, $P < 0.05$).

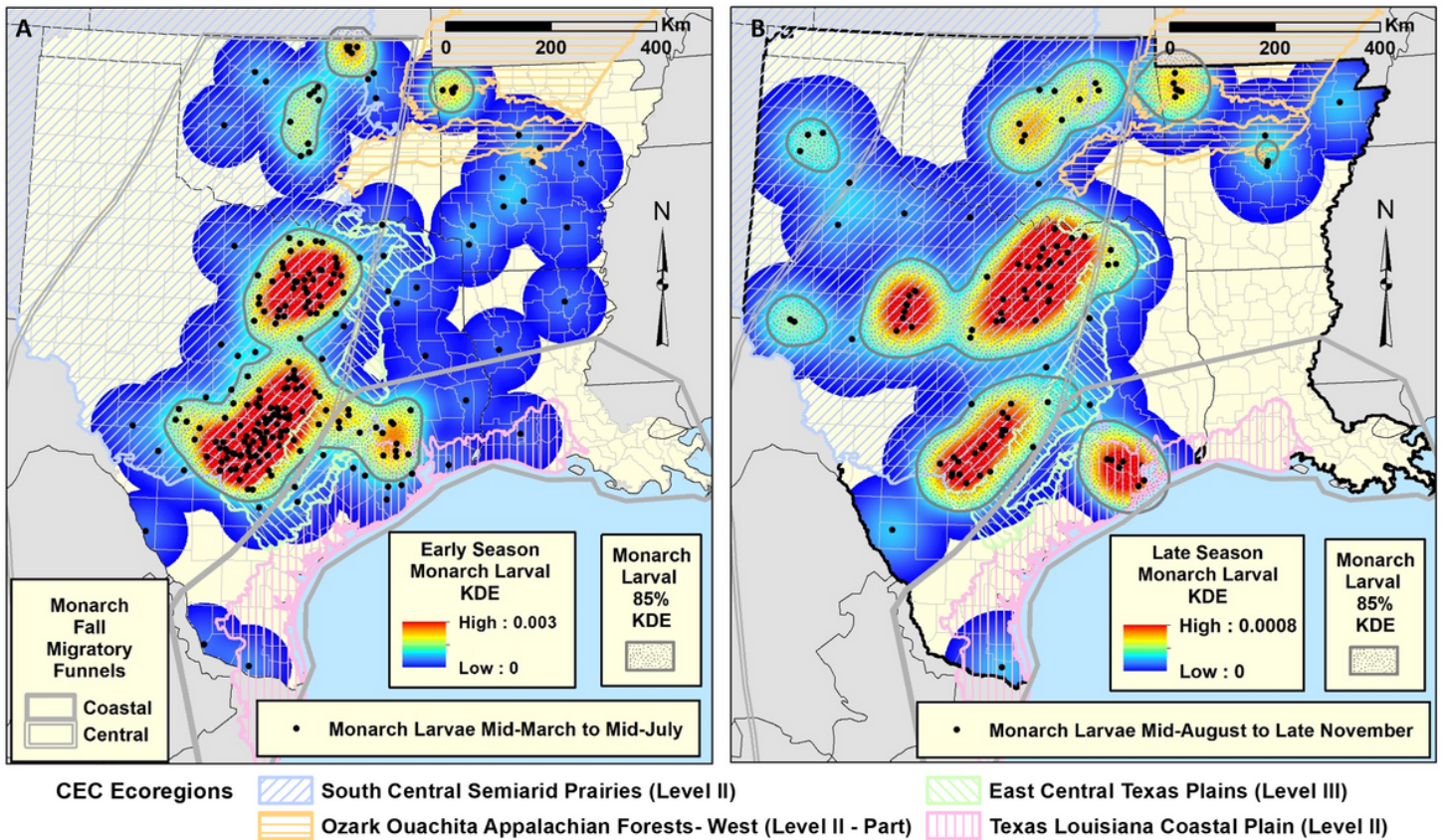


Figure 6

Kernel density estimation (KDE) surfaces monarch larval spatial density (2011-2020) in the South Central US for the early and late season monarch activity periods of (A) mid-March through mid-July and (B) mid-August through late November, with selected modified Commission for Environmental Cooperation (CEC) (2010) Level III ecoregions over the South Central US study area and fall monarch migratory funnels from Tracy et al. (2019).

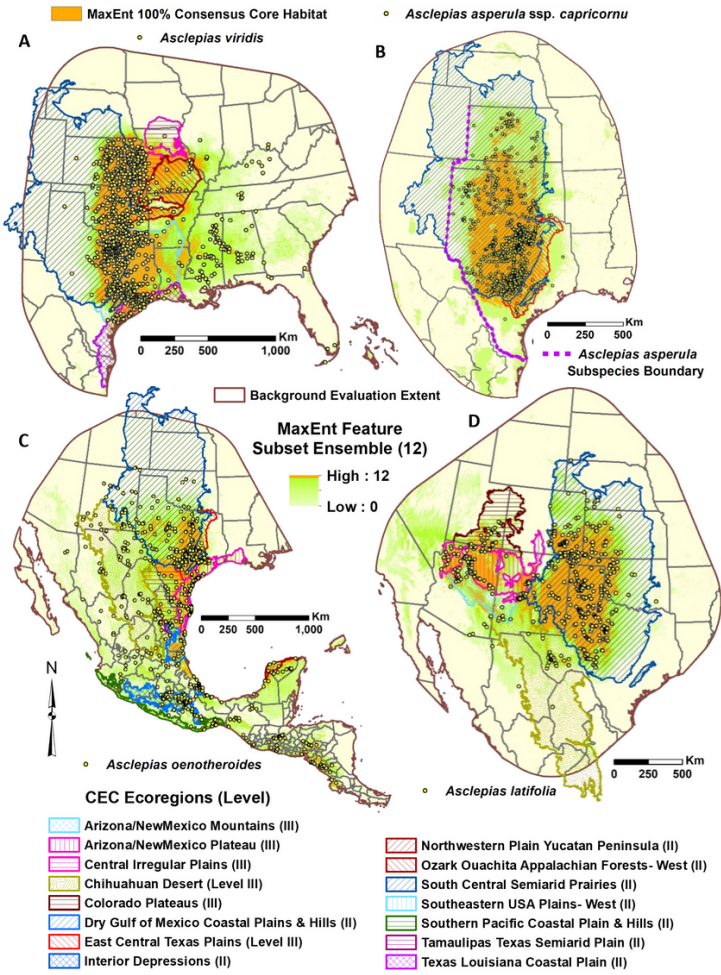


Figure 7

Asclepias spp. MaxEnt frequency consensus for selected feature subset ensembles of 12 distribution models (1834-2018), including MaxEnt 100% consensus core habitats and selected modified CEC (2010) ecoregions, for (A) *A. viridis*, (B) *A. asperula* ssp. *capricornu*, with subspecies western distribution boundary (see Figs. S1-S3), (C) *A. oenotheroides*, and (D) *A. latifolia* (for larger images, see Figs. S19-S23).

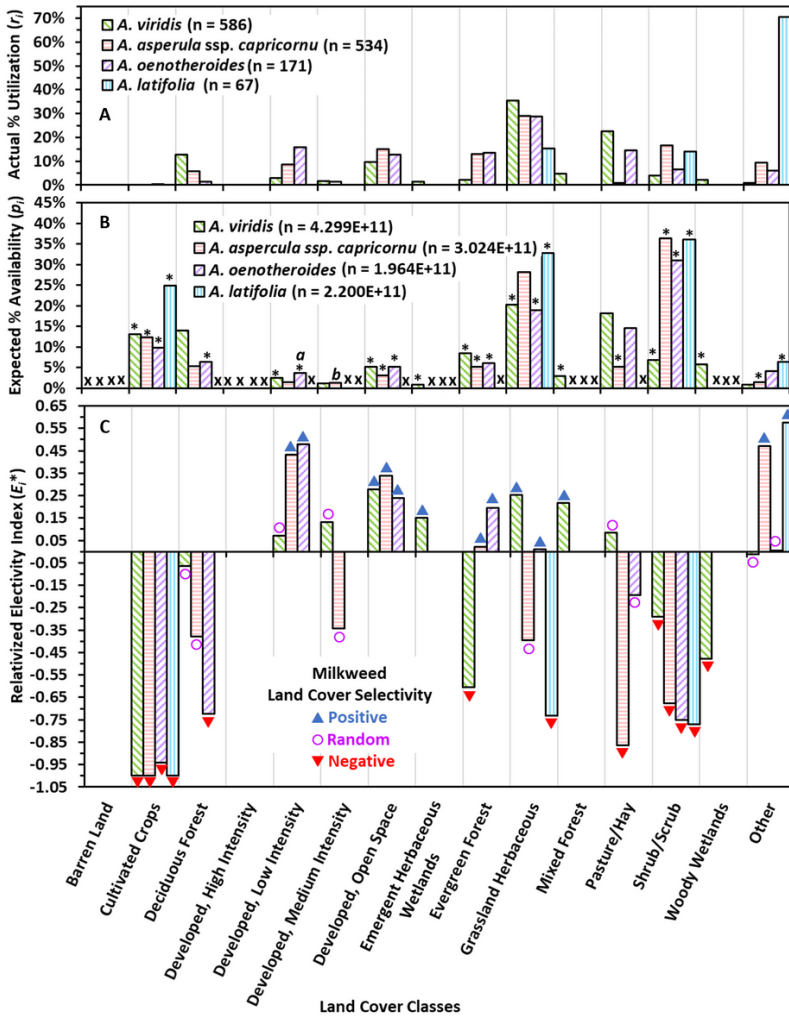
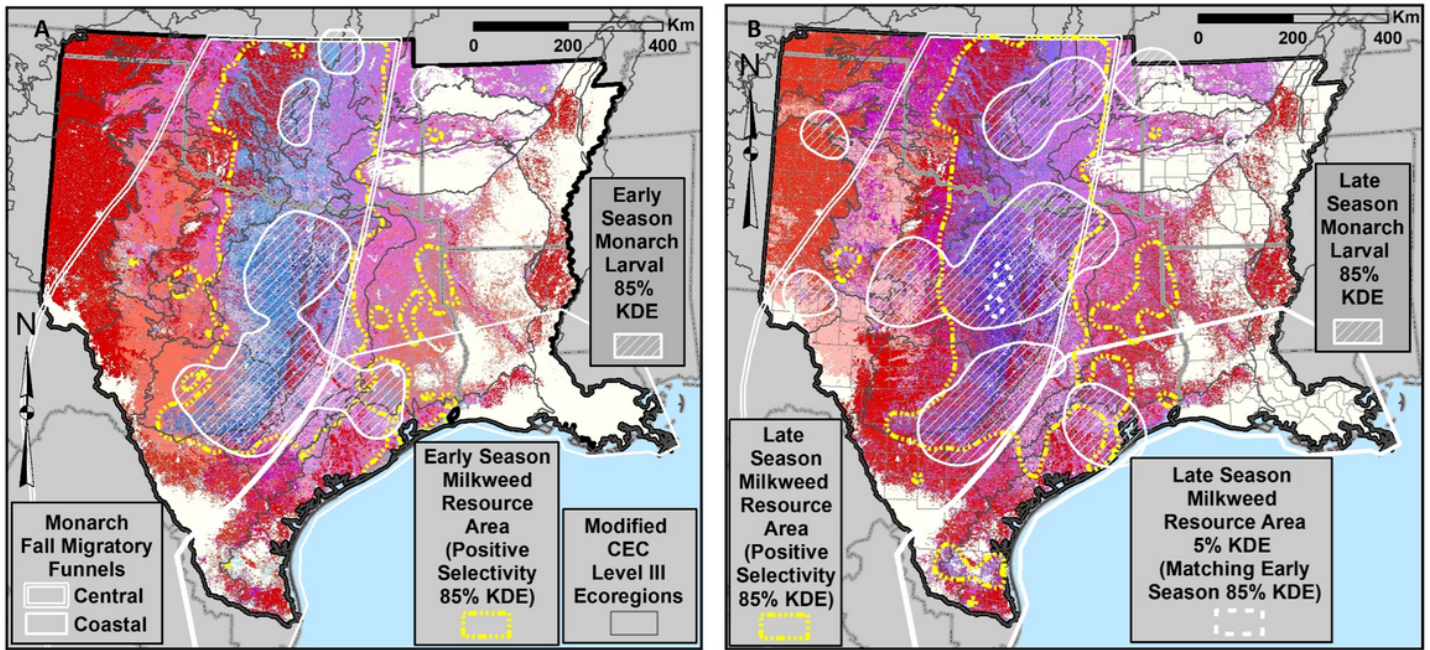


Figure 8
 Land cover class utilization/availability analysis (2014-2018) for *Asclepias* spp. in South Central US within MaxEnt core habitats for (A) actual percent utilization of land cover classes (r_i) by *Asclepias* spp. (n = locations weighted by human population and road distance, $PopRoadHBRWtN$); (B) expected percent availability (p_i) for land cover classes, where values of p_i with asterisks fall outside of the two-tailed 95% Bonferroni confidence intervals for r_i (r_i significantly differed from p_i for all *Asclepias* spp.; Chi-squared Goodness of Fit Test, $P < 0.05$); and (C) land cover relativized electivity index (E_i^*) for *Asclepias* spp., where land covers with significant differences noted in (B) are marked with colored arrows. Values of p_i (B) with "x" had less than five expected milkweed occurrences and were combined into the "Other" category, or Developed, High and Medium Intensities were combined with Developed, Low Intensity when marked with "a", or Developed, High Intensity was combined with Developed, Medium Intensity when marked with "b".



Seasonal Milkweed (*Asclepias* spp.) Resource Indices

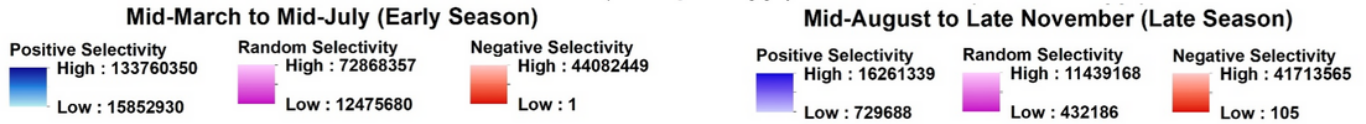


Figure 9

Combined seasonal milkweed (*Asclepias* spp.) resource indices (2014-2018) over MaxEnt core habitats in the South Central US with positive land cover selectivity 85% kernel density estimate (KDE) isopleths (seasonal milkweed resource areas) for the early and late season monarch activity periods of (A) mid-March to mid-July and (B) mid-August to late November, with selected modified CEC (2010) Level III ecoregions over the South Central US study area, fall monarch migratory funnels from Tracy et al. (2019), and seasonal monarch larval 85% KDE (from Fig. 6).

Supplementary Files

This is a list of supplementary files associated with this preprint. Click to download.

- [TracyetalMilkweedsMSSupplement27DecClean.docx](#)
- [TracyetalMilkweedMSOnLineData.7z](#)