



Distributional dynamics of a vulnerable species in response to past and future climate change: a window for conservation prospects

Yunjun Bai¹, Xueping Wei² and Xiaoqiang Li¹

¹Key Laboratory of Vertebrate Evolution and Human Origin of Chinese Academy of Sciences, Institute of Vertebrate Paleontology and Paleoanthropology, Chinese Academy of Sciences, Beijing

²Key Laboratory of Bioactive Substances and Resources Utilization of Chinese Herbal Medicine, Engineering Research Center of Tradition Chinese Medicine Resource, Ministry of Education, Institute of Medicinal Plant Development, Chinese Academy of Medical Sciences, Peking Union Medical College, Beijing

ABSTRACT

Background. The ongoing change in climate is predicted to exert unprecedented effects on Earth's biodiversity at all levels of organization. Biological conservation is important to prevent biodiversity loss, especially for species facing a high risk of extinction. Understanding the past responses of species to climate change is helpful for revealing response mechanisms, which will contribute to the development of effective conservation strategies in the future.

Methods. In this study, we modelled the distributional dynamics of a 'Vulnerable' species, *Pseudolarix amabilis*, in response to late Quaternary glacial-interglacial cycles and future 2080 climate change using an ecological niche model (MaxEnt). We also performed migration vector analysis to reveal the potential migration of the population over time.

Results. Historical modelling indicates that the range dynamics of *P. amabilis* is highly sensitive to climate change and that its long-distance dispersal ability and potential for evolutionary adaptation are limited. Compared to the current climatically suitable areas for this species, future modelling showed significant migration northward towards future potential climatically suitable areas.

Discussion. In combination with the predicted future distribution, the mechanism revealed by the historical response suggests that this species will not be able to fully occupy the future expanded areas of suitable climate or adapt to the unsuitable climate across the future contraction regions. As a result, we suggest assisted migration as an effective supplementary means of conserving this vulnerable species in the face of the unprecedentedly rapid climate change of the 21st century. As a study case, this work highlights the significance of introducing historical perspectives while researching species conservation, especially for currently vulnerable or endangered taxa that once had a wider distribution in geological time.

Submitted 11 October 2017

Accepted 2 January 2018

Published 16 January 2018

Corresponding author

Xiaoqiang Li, lixiaoqiang@ivpp.ac.cn

Academic editor

Ladislav Mucina

Additional Information and
Declarations can be found on
page 16

DOI 10.7717/peerj.4287

© Copyright
2018 Bai et al.

Distributed under
Creative Commons CC-BY 4.0

OPEN ACCESS

Subjects Biodiversity, Conservation Biology, Ecology, Climate Change Biology

Keywords Climate change, *Pseudolarix amabilis*, MaxEnt, Range dynamics, Species conservation

INTRODUCTION

Of the four billion species that have evolved on Earth over the past 3.5 billion years, 99% are considered to have disappeared (Novacek, 2001), most notably in the ‘Big Five’ mass extinctions (Raup & Sepkoski, 1982; Jablonski & Chaloner, 1994; Bambach, 2006). Considerable species losses over the past few centuries and millennia as a result of anthropogenic climate change have sounded the alarm about a possible sixth mass extinction (Barnosky et al., 2011). Effective conservation planning is necessary to avoid potential biodiversity loss, and an understanding of the distribution dynamics of organisms in response to climate change underlies the development of effective conservation strategies (Razgour et al., 2013).

Climate change is recognized as a key driver of species’ range dynamics, both locally and globally, over time (Huntley et al., 1995; Pearson & Dawson, 2003; Yates et al., 2010; Hamer et al., 2015). Quaternary climatic oscillations, particularly the most recent late Quaternary, characterized by markedly recurring glacial-interglacial cycles have played a crucial role in shaping the contemporary geographical distribution of plant species (Comes & Kadereit, 1998; Dynesius & Jansson, 2000; Hewitt, 2000; Sandel et al., 2011). The Last Interglacial (LIG, ~120–140 ka) and Last Glacial Maximum (LGM, ~21 ka) periods mark contrary extremes during the late Quaternary (Dawson, 1992), with the latter especially representing one of Earth’s most extreme periods of environmental variability (Clark et al., 2009). Indeed, the climate has warmed from the LGM to the present, and the temperature variations during this interval cover almost the entire temperature range of the Quaternary (Imbrie, McIntyre & Mix, 1989; Ruddiman, 2008). The dramatic climatic cooling during the LGM drove many species to glacial refugia (Nogués-Bravo et al., 2010), though populations began to recolonize during postglacial climate warming (Davis & Shaw, 2001; Normand et al., 2011).

As human activity intensifies, global temperatures are expected to rise by 1.1–6.4 °C during the 21st century (Intergovernmental Panel on Climate Change, 2007). Due to this unprecedentedly rapid rate of warming, climate change is predicted to be the greatest force in reshaping the geographical distribution of species in the 21st century (Leadley et al., 2010). Moreover, given the rapidity of climate change over the coming decades, whether populations can shift rapidly enough successfully tracking climate change is the central concern of many ecology studies (Davis & Shaw, 2001). Therefore, although many organisms have survived multiple climate cycles during their evolutionary histories (Meyers & Bull, 2002), some species are unable to disperse or adapt fast enough to track the rapidly changing climate, leading to increased extinction risk (Warren et al., 2001; Menéndez et al., 2006). In addition, landscape modifications resulting from the intensification of human activity may aggravate the negative effects of climate change by impeding species migration. Consequently, there is great concern about the challenges posed to extant species by the ongoing unprecedented change (Thuiller, 2007).

The response of species to climate change can be synthesized as evolutionary adaptation, dispersal or extinction (Parmesan, 2006; Aitken et al., 2008; Dawson et al., 2011), processes that are related to the velocity of the climate change and the species’ capacity to adapt

and migrate (Jump & Penuelas, 2005; Sandel et al., 2011). Populations that are unable to keep up with climate change or to adapt to new climate conditions, especially those with narrow climatic tolerances (Thuiller, Lavorel & Araújo, 2005), face a very high risk of extinction (Hofreiter & Stewart, 2009; Dawson et al., 2011; Molinos et al., 2016). Endemic species are unique to a defined geographic range. These restricted-range species may be highly vulnerable to rapid climate change because of their narrow climatic tolerances (Malcolm et al., 2006; Ohlemüller et al., 2008), indicating that endemism and extinction risk are closely related (Petit, Hu & Dick, 2008). Therefore, surveying the response of endemic species to climate change is particularly important.

Pseudolarix amabilis is a representative of monotypic genus of the family Pinaceae; it is endemic to China, inhabiting a highly restricted area of the lower Yangtze River at an elevation range of 180–1,000 m (Yang & Christian, 2013). This deciduous tree's branchlets are dimorphic: long branchlets (leading shoots) with helically borne leaves and short branchlets (brachioblasts) with fascicularly arranged leaves. The bract-scale complexes of the seed cones shed at maturity; two winged seeds, located at the base of the seed scales, mature in the 1st year (Fu, Li & Robert, 1999). *P. amabilis* is a wind-pollinated (Zanni & Ravazzi, 2007) and wind-dispersed species (Fordham & Spraker, 1997). The species grows on a variety of soils derived from acidic rock and is distributed in mixed-mesophytic and evergreen sclerophyllous broad-leaved forests (Wang, 1961; Farjon, 1990).

Currently, this species is ranked as at least 'Vulnerable B2ab (iii, v) ver. 3.1' and possibly the more threatened category 'Endangered' in the International Union for Conservation of Nature (IUCN) Red List of Threatened Species (Yang & Christian, 2013). Its population is severely fragmented, and the quality of the habitat and the population size continue to decline (Yang & Christian, 2013). To prevent deterioration, establishment of protected areas has been advocated by the IUCN (Yang & Christian, 2013). Compared to its current distribution, the extensive distribution of this species across the Northern Hemisphere was much wider during geological time (from the Cretaceous to the Pliocene-Pleistocene) (LePage & Basinger, 1995; Fig. S1). The sharp contraction suggests that the relict species *P. amabilis* has kept up with and survived past changes in climate. However, whether the 'living fossil' *P. amabilis* can cope with the challenge presented by the unprecedentedly rapid climate warming of the 21st century is a matter of concern. In addition, mast seeding—the synchronous intermittent production of large seed crops by populations (Kelly, 1994)—may aggravate the vulnerability of *P. amabilis* to climate change.

Reconstructing the range dynamics of species under past climate fluctuations is helpful for revealing their response mechanism to climate change. Clarification of a species' response mechanism in combination with future distribution prediction can assist in developing effective conservation strategies (Petit, Hu & Dick, 2008; Désamoré et al., 2012). Ecological niche models (ENMs) link species occurrence records with environmental variables on multiple spatial and temporal scales to model past, present, and future distribution (Peterson et al., 2011). Such climate envelope models are important for revealing the past response of organisms to climate change, particularly for periods for which there is no fossil record. Overall, this tool has been regarded as an effective approach

for reliably assessing the potential effects of future climate change on the fate of organisms (e.g., [Huntley et al., 2004](#); [Rodríguez-Sánchez & Arroyo, 2008](#); [Elith & Leathwick, 2009](#)).

Niche conservatism is a key assumption underlying the application of ENMs. In the case of *P. amabilis*, the evolutionary history indicates evolutionary stasis for this species since at least the Eocene ([LePage & Basinger, 1995](#)). As *P. amabilis* is an extraordinary example of evolutionary stasis, its niche is considered to be evolutionarily conservative because evolutionary stasis is perceived as related to niche conservatism ([Eldredge et al., 2005](#); [Stigall, 2012](#)). The inference of niche conservatism for *P. amabilis* is supported by the general consistency of its temperature requirement throughout geological time ([Bai & Li, 2017](#)). In addition, this concern can be somewhat alleviated by the fact that a very general pattern of niche conservatism among species has been rather broadly confirmed in a recent review ([Peterson, 2011](#)).

In this study, we use an ENM to model the range dynamics of *P. amabilis* across four temporal frameworks representing four extreme moments of climatic variability during the Quaternary: the LIG, the LGM, the present and the future (2080). Our overall aim is to hind-cast the response of *P. amabilis* to chronological climate change and ultimately to provide some meaningful information about future conservation strategies for this vulnerable species based on the hind-casted response mechanism to climate change and the future distribution prediction.

MATERIALS & METHODS

Natural occurrence data for *P. amabilis* were compiled from the Chinese Virtual Herbarium (<http://www.cvh.ac.cn/>), the Global Biodiversity Information Facility (<http://www.gbif.org/>), and references ([Ge et al., 1998](#); [Hao et al., 2000](#); [Duan et al., 2012](#); [Huang et al., 2016](#)).

Bioclimatic layers at a resolution of 2.5 arc minutes for the present (representative of 1960–1990), the LIG (~120–140 ka) and the LGM (~21 ka) climate were downloaded from the WorldClim dataset (available at <http://www.worldclim.org/>). Present climate data were generated through interpolation of average monthly climate data from global weather stations ([Hijmans et al., 2005](#)). LGM climate data were based on general circulation model (GCM) simulations from the Community Climate System Model (CCSM; [Kiehl & Gent, 2004](#)), and LIG climate data were based on models from [Otto-Bliesner et al. \(2006\)](#).

Future climate data were provided by the CGIAR Research Program on Climate Change, Agriculture and Food Security (CCAFS) (available at <http://www.ccafs-climate.org>). These climate data were generated by GCMs under a set of emissions scenarios. By the end of 2012, the closest emissions scenarios resulting from the Intergovernmental Panel on Climate Change (IPCC) process to the observed emission trends were the Special Report on Emissions Scenarios (SRES) A1B used in the IPCC Fourth Assessment Report and the Representative Concentration Pathways (RCPs) 8.5 used in the IPCC Fifth Assessment Report ([Peters et al., 2012](#)). The SRES A1B scenario describes a future of very rapid economic growth, a balance between the use of fossil fuels and non-fossil fuels and moderate human population growth ([Intergovernmental Panel on Climate Change, 2007](#)); the RCP 8.5

scenario depicts a world characterized by an atmospheric CO₂ concentration that continues to increase at current rates (*Intergovernmental Panel on Climate Change, 2013*). For this study, we chose four types of future (2080) climate layers generated from simulations using a set of GCMs under the above two emission scenarios: UK Meteorological Office (UKMO) Hadley Centre Coupled Model, version 3 (HadCM3) (*Gordon et al., 2000; Pope et al., 2000*), under SRES A1B; Met Office Hadley Centre (MOHC) Hadley Centre Global Environmental Model, version 2 (HadGEM2-ES (Earth System)) (*Jones et al., 2011*), under RCP 8.5; Canadian Centre for Climate Modelling and Analysis (CCCma) third-generation Coupled Global Climate Model with T63 spectral resolution (CGCM3.1-T63) (*Flato, 2005*), under SRES A1B; and Meteorological Research Institute (MRI) Coupled Global Climate Model, version 3 (CGCM3) (*Yukimoto et al., 2012*), under RCP 8.5.

The maximum entropy (MaxEnt) model, based upon the maximum entropy principle and using 'presence-only' species data (*Phillips, Anderson & Schapire, 2006*), has excellent predictive performance for threatened or range-restricted species (*Elith et al., 2006; Hernandez et al., 2006; Hijmans & Graham, 2006; Pearson et al., 2007*). We employed MaxEnt 3.4.1 for modelling. The responses of multivariate nonlinear models based on highly correlated climate variables can result in model overfitting (*Morlini, 2006*), which will also occur when such models are applied to data outside the training conditions (*Graham, 2003; Morlini, 2006*). To prevent multicollinearity and increase transferability effectiveness, we removed all environmental predictors with high pairwise correlation (Pearson's correlation > 0.85, [Table S1](#)). Among highly correlated variables, we selected those with more direct physiological roles in limiting the survival and reproduction of *P. amabilis*. We also deleted climate variables with a relatively low percentage contribution to the model performance. The contribution of each climate variable was assessed by the Jackknife procedure in MaxEnt ([Fig. S2](#)). These operations created a model of better performance with a balance between an underfitted model with few parameters and an overfitted model with too many correlated explanatory variables (*Burnham & Anderson, 2002*). The final set of selected bioclimatic variables included mean annual temperature (MAT, Bio1), temperature seasonality (TS; standard deviation of monthly mean temperature value, Bio4), min temperature of coldest month (MTCM, Bio6), mean temperature of driest quarter (MTDQ, Bio9), annual precipitation (AP, Bio12), precipitation of driest month (PDM, Bio14), precipitation of wettest quarter (PWeQ, Bio16) and precipitation of warmest quarter (PWaQ, Bio18).

ENMs assume that species are in equilibrium with their environments (*Guisan & Zimmermann, 2000*), i.e., species occur in all climatically suitable regions while being absent from all unsuitable ones (*Hutchinson, 1957*). In the process of investigating species occurrence data, however, some areas in a landscape were sampled more intensively than others; this sampling bias will lead to a lack of equilibrium of species distributions with climate. To reduce the effect of sampling bias, the approach of spatial filtering of a species occurrence dataset was applied in this study (*Boria et al., 2014*). We spatially filtered the distribution data of *P. amabilis* to obtain the maximum number of localities 10 km apart. As a result, 49 occurrence localities ([Table S2](#)) were rarefied to 47 points ([Table S3](#)). To minimize the effect of sampling bias, we also used a bias file representing a Gaussian kernel

density of the species occurrence localities sampled within a 60-km search radius. The bias file upweights presence-only data points with fewer neighbours in a geographic space (Elith *et al.*, 2011). The species occurrence data and climate layers were both projected to the Asia north equidistant conic projection in ArcMap.

We chose area under the receiver operating characteristic curves (AUCs) to assess the predictive performance of the ENMs (Fielding & Bell, 1997). The AUC statistic is bounded from 0.5 to 1.0, in which 0.5 indicates a random prediction (useless model) and 1.0 a perfect model prediction of presence versus absence; the closer AUC is to 1, the better the predictive accuracy of the model. Each model was run 10 times, with 75% of the species occurrence data selected for model training and 25% for model testing. To obtain binary predictions of the climate suitability of ENMs, MaxEnt's logistic probability of occurrence output was converted to a binary mode (presence-absence output) using the maximum training sensitivity plus specificity logistic (MTSS) threshold and the 10 percentile training presence logistic (10% TP) threshold. By maximizing the proportions of actual positives and negatives that are correctly identified, prediction based on the MTSS threshold represents the most accurate forecast of presence/absence (Liu *et al.*, 2005; Jiménez-Valverde & Lobo, 2007). The prediction based on the 10% TP threshold represents the core of species ranges by excluding the 10% of training localities with lowest prediction in the modelling (Morueta-Holme, Fløjgaard & Svenning, 2010; Anderson & Gonzalez, 2011).

To explore the distributional change between the two ENMs during each climate transition (e.g., from the LIG to the LGM, from the LGM to the current period, and from the present to 2080), we reduced the distribution to a single central point (known as a centroid) and created a vector depicting the magnitude and direction of the predicted change. Furthermore, to reveal potential migration in detail, we applied migration vector analysis. First, we calculated the geographic centroids of the ranges for every $60 \times 60 \text{ km}^2$ for each period and then determined the centroid in the second time interval nearest to the centroid in the first time interval (i.e., LGM to LIG, present to LGM, and future to present); finally, we evaluated the potential migration from one period to the next.

To determine the variable with greatest influence for the model prediction in each grid cell, we performed limiting factor analysis. For any given point, the limiting factor is the variable with a value change at that point that results in the greatest change in the predicted probability of species occurrence (Elith, Kearney & Phillips, 2010; Elith *et al.*, 2011). We focused on the limiting climatic factors affecting the contraction and expansion of climate suitability. The algorithm for the limiting factor analysis was programmed into MaxEnt, and the 'density.tools.LimitingFactor' command was used.

RESULTS

The observed AUC values of 0.9802 (training data) and 0.9744 (testing data) indicate a good discrimination of the models between absence and presence cells, and the relatively high AUC values suggest that the species distributions were well predicted by climate. The MTSS and 10% TP thresholds were calculated to be 0.3048 and 0.3842, respectively.

It is noteworthy that the predicted area based on the MTSS threshold is very similar to that based on the 10% TP threshold (Figs. 1A–1D). The high similarity implies a consistence

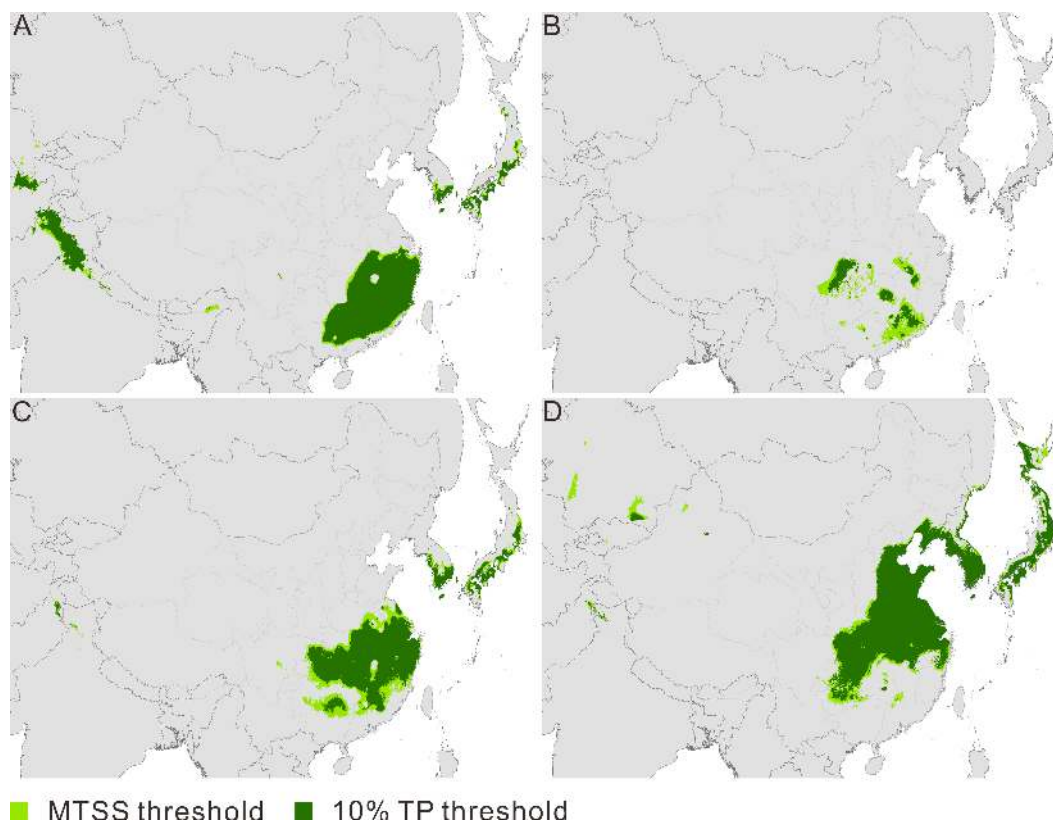


Figure 1 Maps of predicted climate suitability for *Pseudolarix amabilis* across time stages. The Last Interglacial (A), the Last Glacial Maximum (B), the present (C), and 2080 (D). The spatial data was freely downloaded from <http://www.diva-gis.org/Data>, the base map was generated by ArcGIS v.9.3 (<http://www.esri.com/software/arcgis/arcgis-for-desktop>).

Full-size DOI: 10.7717/peerj.4287/fig-1

in the trend of distributional change over time between the predictions based on the two types of thresholds. Therefore, investigation of the predicted areas was based on binary ENMs generated by MTSS and 10% TP thresholds; however, assessment of the dynamic change of distribution over time was based only on the chosen MTSS threshold. Besides, compared to the present distribution of *P. amabilis*, its future distributions predicted using four types of climate layers all indicate an expansion northward and southern contraction, though the areas of the expansion and contraction differ (Fig. S3). Given the consistent trend of change and the focus of this study to explore the distributional change and potential migration routes of species, for conciseness, we choose one of the four future prediction for elaboration below: the prediction based on the HadCM3 simulation under SRES A1B.

The current potential distribution of *P. amabilis* involves three main disjunct districts (Fig. 1C): southeast China, where the actual population exists; and the southern frontier regions of Japan and the Korean peninsula, where extant populations are absent. The ENM projections for the other three periods (LIG, LGM and 2080) depict potential distributions with altered locations. The modelled potential climate suitability during the LIG shows

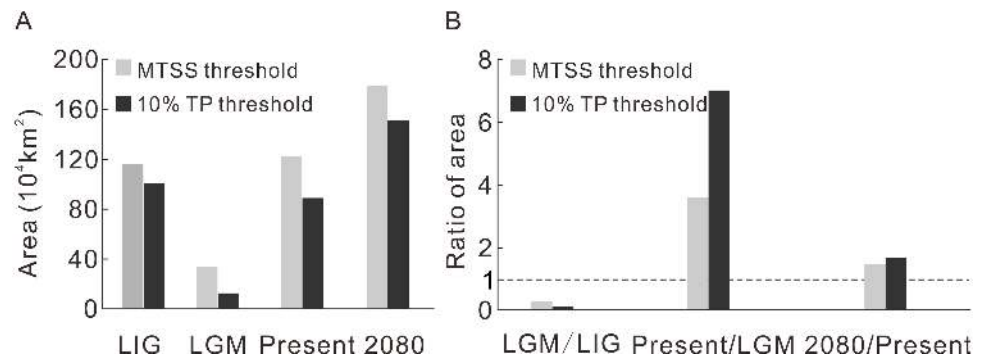


Figure 2 The predicted area during four time intervals (A) and the area ratios between adjacent time periods (B).

Full-size [DOI: 10.7717/peerj.4287/fig-2](https://doi.org/10.7717/peerj.4287/fig-2)

Table 1 The predicted area during the four time periods and their ratios through time.

	Threshold	LIG	LGM	Present	2080
Area (10 ⁴ km ²)	MTSS	116.5	33.8	122.2	179.6
	10% TP	100.8	12.6	88.9	151.5
Ratio of area (%)		LGM/LIG	Present/LGM	2080/Present	
	MTSS	29.0	362.0	146.9	
	10% TP	12.5	703.7	170.3	

four main disjunct regions, including southeast China, the southern frontier regions of the Himalayas and the southern frontier regions of Japan and the Korean Peninsula (Fig. 1A). During the LGM, fragmented distribution in southeast China is revealed (Fig. 1B), whereas the central-eastern regions of China, most parts of the Korean Peninsula and southern Japan are included in the future (Fig. 1D).

Contraction and expansion occur during each transition, and the resulting range varies significantly through time (Fig. 2A, Table 1). The ratio of the area between adjacent moments indicates a dramatic shrinkage from the LIG to the LGM, followed by significant expansion from the LGM to the current time and moderate expansion from the current period to the future (Fig. 2B, Table 1). The pattern of climate suitability change is dominated by contraction from the LIG to the LGM (Fig. 3A, Table 2), and by expansion since the LGM (Figs. 3C and 3E, Table 2).

With regard to distributional change, overall migration route analysis shows migration southeast from the LIG to the LGM (Fig. 3A), followed by migration northeast from the LGM to the present (Fig. 3C) and migration northward from the present to 2080 (Fig. 3E). From the LIG to the LGM, the expansion occurred mainly in the Sichuan Basin, with a source population from the most southeastern regions of China migrating northwest (Fig. 3B). From the LGM to the present, the expansion occurred in southeast China, with a relatively short migration distance (Fig. 3D). Northward expansion is the dominant tendency from the present to 2080 (Fig. 3F).

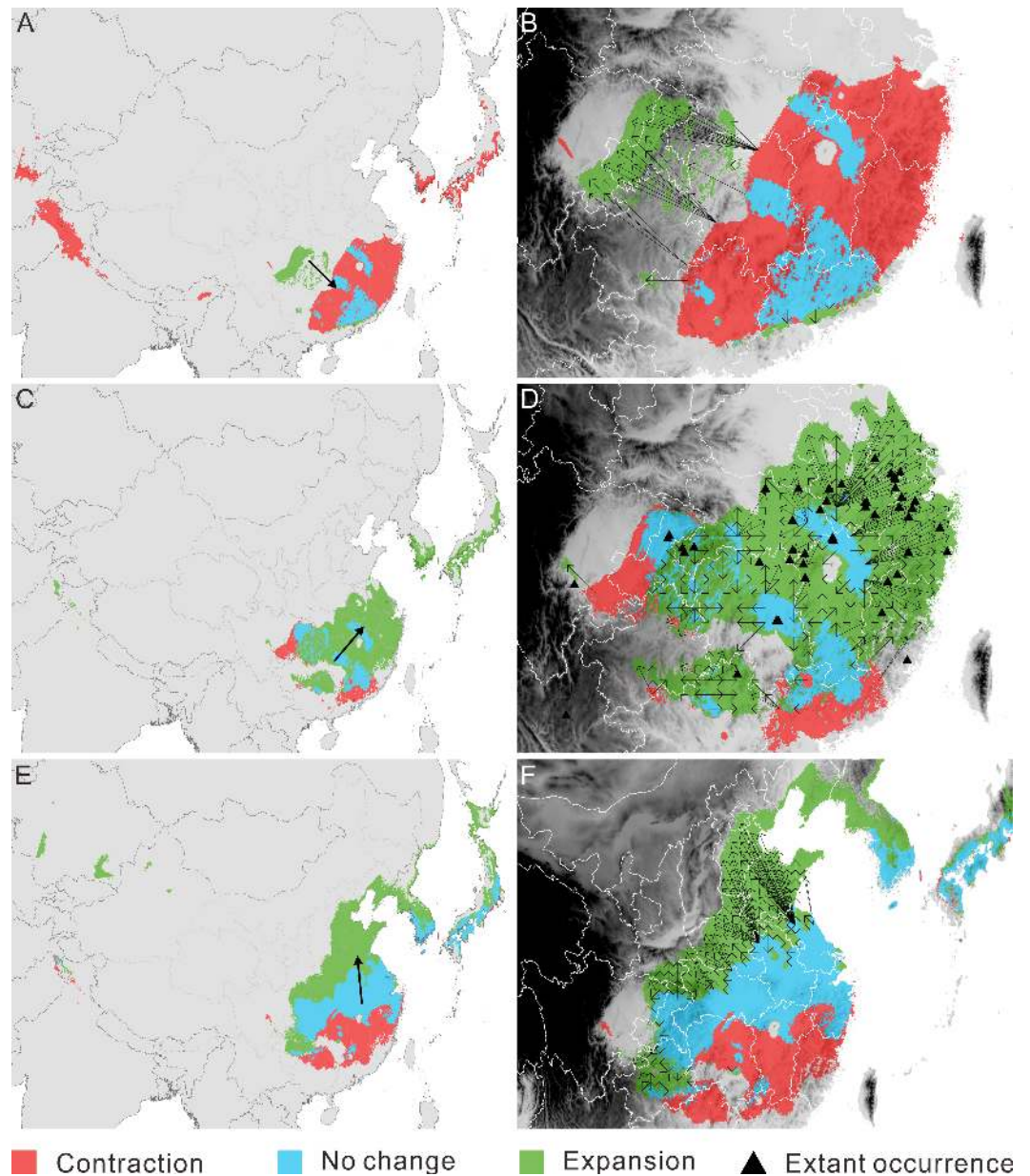


Figure 3 Migration of *Pseudolarix amabilis* over climate transitions. Distributional change (A, C, E) and migration distance and direction (B, D, F) of *Pseudolarix amabilis* over climate transitions: from the LIG to the LGM (A, B), from the LGM to the present (C, D), and from the present to 2080 (E, F). The large arrows in a, c and e indicate the overall migration routes; the small arrows in b, d and f indicate the potential migration in detail. The spatial data was freely downloaded from <http://www.diva-gis.org/Data>, the base map was generated by ArcGIS v.9.3 (<http://www.esri.com/software/arcgis/arcgis-for-desktop>).

Full-size  DOI: 10.7717/peerj.4287/fig-3

Limiting factors analysis indicates that the main climate variables influencing the model prediction for the change in climate suitability are temperature seasonality (TS), minimum temperature of coldest month (MTCM), mean temperature of driest quarter (MTDQ), annual precipitation (AP) and precipitation of driest month (PDM) (Figs. 4A–4C, Table 3,

Table 2 The change in predicted area based on the MTSS threshold through time.

	From LIG to LGM	From LGM to Present	From Present to 2080
Constriction (10 ⁴ km ²)	97.0	13.1	43.6
[ratio (%) ^a]	[83.2]	[38.7]	35.6
No change (10 ⁴ km ²)	19.5	20.6	75.9
[ratio (%) ^a]	16.7	61.0	62.1
Expansion (10 ⁴ km ²)	14.2	101.6	103.7
[ratio (%) ^b]	[42.0]	[83.2]	[57.8]

Notes.

^aindicates the percentage of changed area relative to the previous period (LIG, LGM and Present).

^bindicates the percentage of changed area relative to the latter period (LGM, Present and 2080).

Fig. S4). The changes in the five variables set them within or outside the range of the physiological tolerances of *P. amabilis* (Fig. S5) and result in distribution expansion or contraction.

DISCUSSION

Formation of glacial refugia

Decreasing temperatures, especially winter temperatures, dominated the trend of climate change from the LIG to the LGM. As expected, the marked decrease in winter temperature caused min temperature of coldest month (MTCM) to be the main limiting factor accounting for the northern contraction of *P. amabilis* (Fig. 4A), which is a thermophilic tree according to its physiological tolerance of MTCM (Fig. S5). Low temperatures affect the survival of plants by impacting their transition from vegetative to reproductive development (Gallagher, 1986) as well as their assimilation of soil water and nutrients for cell division, differentiation and tissue growth (Thuiller et al., 2005). Extremely cold winters can even result in frost kill (Pearson et al., 2002). Therefore, the significance of minimum temperatures in determining the world distributions of species, especially the northern boundary of their ranges, has been long recognized (Raison et al., 1979; Woodward, 1987; Ashcroft, Chisholm & French, 2008). Moreover, a recent evaluation via ENMs of environmental factors affecting species distributions indicated that winter minimum temperature contributes the most to model predictions (Ashcroft, French & Chisholm, 2011). In contrast, temperature seasonality (TS) and annual precipitation (AP) were important factors for the observed southern contraction of *P. amabilis* (Fig. 4A). Notably, the change in TS was a main factor leading to the expansion in the Sichuan Basin (Fig. 4A). The contrasting role played by the same climate variable against the same climate background may result from heterogeneity among regional climate conditions and differences in the variation of climate variables.

Rapid climate change, especially the rapid cooling and warming that occur at the beginning and end of glaciation cycles, is always accompanied by the extinction of populations that fail to track climate shift or adapt to new conditions (e.g., Hofreiter & Stewart, 2009; Loarie et al., 2009; Corlett & Westcott, 2013). Therefore, aggravated by the risk of failure of tracking and adaptation, the drastic range shrinkage of *P. amabilis* may have once placed this species near extinction.

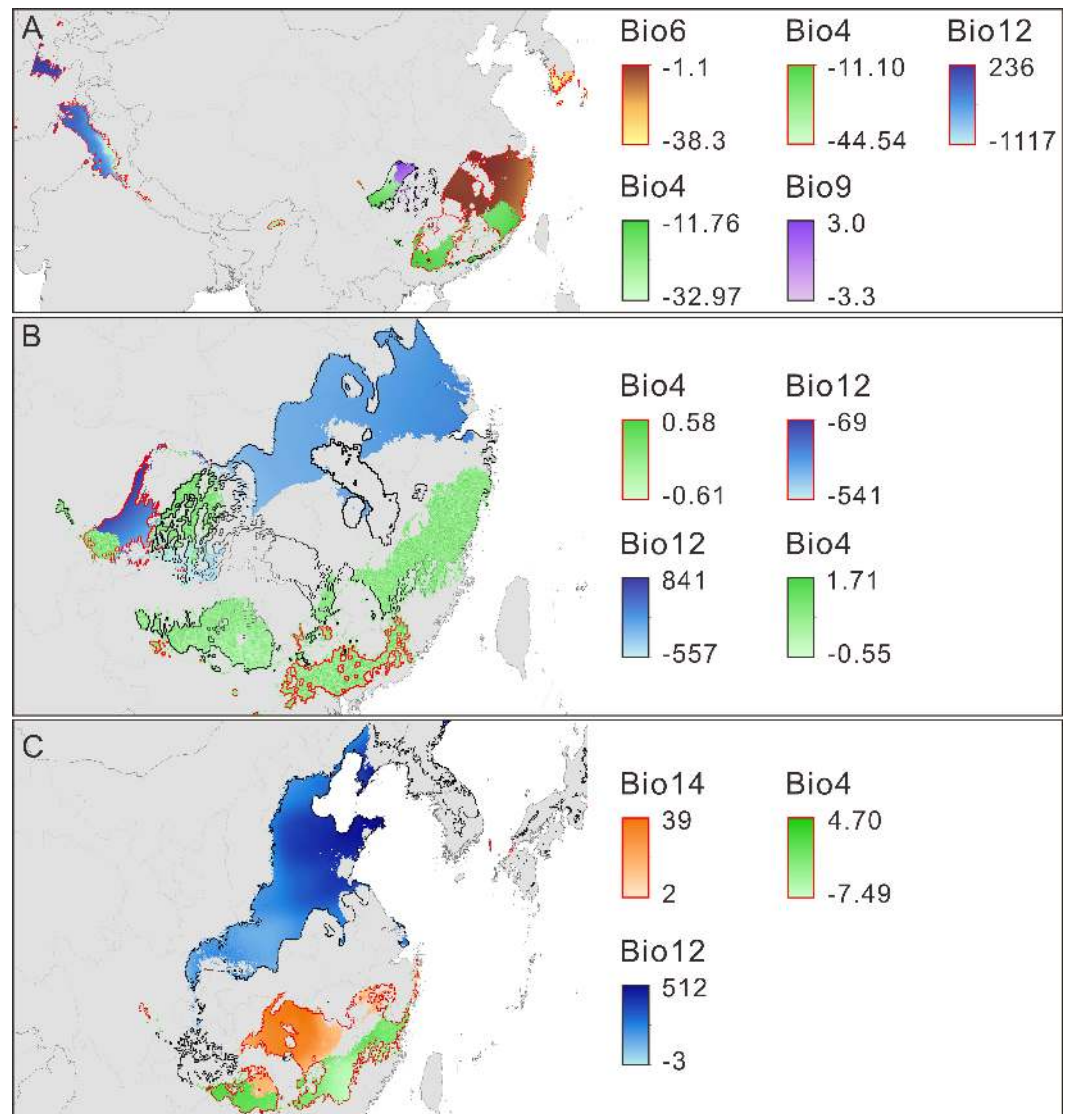


Figure 4 Main limiting climatic factors for the distributional changes of *Pseudolarix amabilis*. The main limiting climatic factors for the distributional changes (contraction and expansion) of *Pseudolarix amabilis* and the amplitude of change of each main limiting factor over climate transitions: from the LIG to the LGM (A), from the LGM to the present (B), and from the present to 2080 (C). The change amplitude of the limiting factor was obtained by subtracting the previous values from the latter values, i.e., LGM minus LIG (A), present minus LGM (B), and 2080 minus present (C). Contraction is outlined in red; expansion is outlined in black. Bio4: temperature seasonality, Bio6: min temperature of coldest month ($^{\circ}\text{C}$), Bio9: mean temperature of driest quarter ($^{\circ}\text{C}$), Bio12: annual precipitation (mm), Bio14: precipitation of driest month (mm). The spatial data was freely downloaded from <http://www.diva-gis.org/Data>, the base map was generated by ArcGIS v.9.3 (<http://www.esri.com/software/arcgis/arcgis-for-desktop>).

Full-size DOI: 10.7717/peerj.4287/fig-4

Table 3 The percentage of main limiting factors accounting for the variation of climate suitability through time.

	From LIG to LGM		From LGM to Present		From Present to 2080	
Contraction	Bio6	45.1%	Bio4	66.9%	Bio14	43.2%
	Bio4	22.7%	Bio12	33.1%	Bio4	40.8%
	Bio12	22.1%				
Expansion	Bio4	46.7%	Bio12	30.1%	Bio12	60.7%
	Bio9	40.6%	Bio4	28.3%		

Notes.

Bio4, temperature seasonality (standard deviation); Bio6, min temperature of coldest month (°C); Bio9, mean temperature of driest quarter (°C); Bio12, annual precipitation (mm); Bio14, precipitation of driest month (mm).

The threat of extinction makes the presence of refugia meaningful. As the sole area of distribution expansion from the LIG to the LGM, the Sichuan Basin acted as an important refuge for *P. amabilis*, in addition to scattered refugia in southeast China (Fig. 3A). Fossil records of glacial periods have been used to confirm glacial refugia of organisms, though regrettably, no fossils of *P. amabilis* have been found in the above refugia.

Post-LGM colonization

Affected by the main limiting factors of AP and TS (Fig. 4B), expansion dominated the change in distribution from the LGM to the present, but contraction also occurred on a small scale (Fig. 3B). The present-day ranges of living *P. amabilis* generally agree with its predicted climate suitability (Fig. 3D), suggesting that climate is the main determinant in constraining plant species ranges, which is consistent with many other studies (e.g., *Prentice, Bartlein & Webb, 1991*; *Pearson & Dawson, 2003*; *Heikkilä, Fontana & Seppä, 2009*). However, the absence of an extant population of *P. amabilis* from current climatically suitable areas is also noticeable (Figs. 3C and 3D), indicating that other than climatic factors may constrain the ability of this species to colonize its potential range. Constraints by nonclimatic factors have also been demonstrated by the postglacial expansion of European tree species (*Svenning & Skov, 2004*; *Normand et al., 2011*).

The absence of extant species from climatically suitable areas may result from time-lagged migration or the exclusion of species from established colonization (*Normand et al., 2011*). The migration performance of a species is related to its intrinsic dispersal ability and extrinsic influencing factors, such as the locations of ice age refugia, geographical barriers, habitat fragmentation and competition with established vegetation (*Davis, 1986*; *Prentice, Bartlein & Webb, 1991*; *Svenning & Skov, 2004*). The factors that drive a species out of an established colonization area include the local edaphic conditions, biotic interactions and human deforestation. The factors contributing to the absence of *P. amabilis* from climatically suitable areas depend on the specific geographic position.

In southeast China, multiple factors may be responsible for the absence of *P. amabilis* in climatically suitable areas. For example, the relatively high mountains southeast of the Sichuan Basin and north of Guangxi Province (Fig. 3D) may have blocked the tree from moving into the surrounding areas. This block led to its incomplete expansion and its absence from the southwestern part of the potential climatically suitable area. In contrast,

in areas that are not blocked by high mountains, exclusion of populations from established colonization may be the main reason for the absence of *P. amabilis*, such as in Jiangxi Province, the eastern part of Hubei Province and the southern part of Anhui Province (Fig. 3D). Another notable absence occurred in the northeastern regions of the predicted climatically suitable areas, such as Jiangsu Province (Fig. 3D). The migration distance required to fully cover climatically suitable areas is as great as ~300–480 km, and the absence of *P. amabilis* may indicate that the actual distance migrated was shorter than the theoretically required value, revealing a limited dispersal ability. Although certain factors played a leading role in the absence of *P. amabilis* from specific regions, the contributions of other abovementioned factors should not be overlooked.

By contrast, the reasons for the absence of this species in Korea and Japan are different from those in southeast China. The location of LGM refugia can impact the post-LGM colonization of species (Firbas, 1949), principally by affecting the expansion of species to current climatically suitable areas (Normand et al., 2011). The absence of glacial refugia in Korea and Japan led to the lack of a resource population for expansion. At the same time, the limited long-distance dispersal ability of *P. amabilis* and separation by climatically unsuitable areas and the ocean resulted in the impossibility of colonization from the refugia in southeast China. Consequently, the failure of post-LGM colonization led to the absence of living *P. amabilis* in Korea and Japan, despite a suitable climate in those regions.

Overall, the postglacial range dynamics of *P. amabilis* suggest that the present climate strongly shaped the current distribution of this species; however, other forces, such as its limited long-distance dispersal ability, geographical barriers or human influence, constrained its ability to completely fill potential climatically suitable areas. Our results support the view that although climate exerts a dominant control over the natural distribution of species on a regional to global scale, non-climatic factors play important supplementary roles at the local level (Svenning & Skov, 2004; Normand et al., 2011).

Perspectives for the future

In response to future climate change, the potential climate suitability of *P. amabilis* will move northward, resulting from contraction south and expansion north (Fig. 3E). The contraction is controlled by changes in the main climate variables precipitation of driest month (PDM) and TS, whereas the expansion is controlled mainly by changes in AP (Fig. 4C). This type of latitudinal shift, via range shifts from lower to higher latitudes, has been regarded as the widespread response of species to future climate change (Parmesan & Yohe, 2003; Hof et al., 2011).

The area of expansion is greater than that of contraction, resulting in a larger area of climate suitability in the future than in the present (Fig. 3E). However, the increase in this area does not substantially relieve concerns about the future destiny of *P. amabilis*. This is because the expanded climatically suitable areas may not be completely filled by dispersal and because the areas of southern contraction will become climatically unsuitable.

The incomplete range filling of *P. amabilis* may be related to its limited accessibility to climate suitability, as shown in its response to post-LGM climate change. As portrayed in its post-LGM colonization, geographic barriers, landscape modifications and low

migration ability may continually affect the expansion of *P. amabilis*. For example, the Daba Mountains may prevent the northward expansion of the population from the Sichuan Basin (Fig. 3F). Although no high mountains are present, landscape modifications, such as land-use changes and concomitant habitat destruction, degradation and fragmentation in Henan and Shandong (Fig. 3F), may disrupt dispersal processes (Haila, 2002; Fazey, Fischer & Lindenmayer, 2005; Fischer & Lindenmayer, 2007). In contrast, the limitation of the low migration rate of *P. amabilis* appears particularly prominent against the background of the unprecedented rate of ongoing climate change. This unprecedented climate change necessitates species dispersal that is rapid enough to match the climate shifts (Huntley, 1997; Hoegh-Guldberg et al., 2008). Theoretically, to keep up with climate change in the coming decades, *P. amabilis* must move from its dispersal source in China up to an elevation of 750 km by the end of 2080, with most distances being greater than 100 km. (Because there is no living *P. amabilis* in Korea and Japan, expansion there in the future is not realistic.) The migration rate necessary to achieve such great distances in the coming decades is greater than the inferred rate of range shifts of 300 to 500 km per century that is required for plants to track climate change in the 21st century (Davis & Shaw, 2001). However, the actual migration rate of *P. amabilis*, as deduced from the process of its post-LGM colonization, may be much lower. Without knowledge of the actual migration rate of *P. amabilis*, the commonly observed past migration rates of trees of 20 to 40 km per century (Davis, 1986; Davis & Shaw, 2001) can provide a reference. Therefore, the lower migration rate of *P. amabilis* relative to the climate-change velocity will also likely lead to its failure to fully colonize the future climatically suitable areas.

By comparison, the population confined to the southern contraction regions will face a different challenge: struggling with the burden of the upcoming unsuitable climate. To avoid extinction, adaptation to new climate conditions is an alternative in addition to migration, and the adaptation rate must be in equilibrium with the rate of climate change (Dawson et al., 2011). Regardless, climate change commonly overwhelms the adaptation of species (Davis, Shaw & Etterson, 2005; Petit, Hu & Dick, 2008) and almost certainly will in the future because of the unprecedentedly rapid rate (Davis & Shaw, 2001; Jump & Penuelas, 2005). Because of its evolutionary stasis for at least 56 million years ago, there is a slight possibility of niche evolution for *P. amabilis* for adaptation in the coming decades (LePage & Basinger, 1995). Moreover, although some behavioural and/or evolutionary adaptations may occur, the adaptation rate will likely be too slow to match the unprecedented rapidity of climate change, largely due to the slow reproductive rate resulting from the mast seeding and long lifespan of the species. Consequently, the high rate of niche evolution required for a high adaptation rate stands in stark contrast to the supposed evolutionary stasis in *P. amabilis*' niches. This suggests that the population of *P. amabilis* confined to the southern contraction areas may not adapt to the coming new climate.

Given the limited accessibility of certain species to climatically suitable areas and their inability to adapt to new climate conditions *in situ*, assisted migration has been suggested as a supplementary means of conservation (Hunter, 2007; Hoegh-Guldberg et al., 2008). The feasibility of applying this method to *P. amabilis* has been confirmed by the success of current cultivated introductions in a variety of sites, even in climatically unsuitable areas,

such as the National Forest Park of Yaoxiang in Shandong Province and Xiaolongshan Botanical Garden in Ganshu Province. However, one major concern associated with assisted migration is the potential for disrupting the native ecological balance at the target sites (McLachlan, Hellmann & Schwartz, 2007; Hoegh-Guldberg et al., 2008). Given that most major ecological invasions have occurred via continent-to-continent and continent-to-island translocations (e.g., Weber, Sun & Li, 2008; Alexander et al., 2009), translocations of *P. amabilis* within east China are unlikely to create devastating negative effects. In addition, the mast seeding of *P. amabilis* with an approximate 5-yr cycle and its limited migration ability suggest a very low possibility that it will exhibit invasive tendencies in introduction areas. Thus, assisted migration is likely to be an effective conservation strategy.

In addition to the latitudinal shift in distribution, a shift towards higher elevations is suggested as an additional response of *P. amabilis*. This elevational shift is predicted to mainly occur in unchanged climatically suitable areas. Compared to latitudinal migration, unassisted elevational shift may be feasible for *P. amabilis*, as the migration distances to climatically suitable areas are relatively short. Nonetheless, to increase the probability of success in elevational shift, assisted migration in elevational direction should also be considered.

CONCLUSIONS

In summary, in common with the general responses of species to climate change but with individual pattern, *P. amabilis* responds to glacial-interglacial cycles with high sensitivity, supporting the view that restricted-range species are sensitive to climate change (Sandel et al., 2011). The combination of investigating the response mechanism of *P. amabilis* to past climate change and predicting future climate suitability is beneficial for devising an effective conservation strategy. Our findings highlight the importance of combining a historical perspective with future predictions to develop a global conservation planning strategy for organisms in a changing world.

Uncertainties related to our model should be kept in mind when interpreting the results of this study. One important uncertainty derives from the fact that non-climatic factors, such as soil conditions, could not be integrated into our modelling because of the lack of sufficient data so far. In addition, many other ecological and evolutionary processes, such as biological interactions and interactions between the functional traits of an organism and its habitat, will also affect the distribution of species (Kearney & Porter, 2009; Fordham et al., 2012). These constraints are being addressed by some mechanistic modelling approaches. Compared to the MaxEnt-style correlative/statistical model, which statistically links spatial data to species distribution records, mechanistic models incorporate mechanistic links between the functional traits of organisms and their environments (e.g., Renton, Shackelford & Standish, 2012; Tomlinson et al., 2017). These two types of models have both strengths and weaknesses (Kearney & Porter, 2009; Kearney, Wintle & Porter, 2010). For poorly studied taxa with a paucity of knowledge about the physiological constraints on their survival and reproduction, such as *P. amabilis*, MaxEnt-style correlative/statistical models are a better choice. We will never be able to reconstruct the past and predict the

future with accuracy, but we need a strategy for utilizing existing knowledge to reveal the likely effects of climate on species survival. Optimistically, we hold the opinion that as more data become available, ENMs will generate more realistic simulations and provide a solid basis on which to draw a more practical conservation strategy.

ACKNOWLEDGEMENTS

We are grateful to the Chinese Virtual Herbarium and the Global Biodiversity Information Facility for providing the distributional data of *Pseudolarix amabilis*. We are also thankful to the editor and three referees for their constructive comments and Dr. Huijie Qiao, Institute of Zoology, Chinese Academy of Sciences, Beijing, China, for his suggestions on the revision of this study.

ADDITIONAL INFORMATION AND DECLARATIONS

Funding

This work was supported by the National Natural Science Foundation of China (Nos. 41372175, 41602188) and National Basic Research Program of China (No. 2015CB953803). The funders had no role in study design, data collection and analysis, decision to publish, or preparation of the manuscript.

Grant Disclosures

The following grant information was disclosed by the authors:
National Natural Science Foundation of China: 41372175, 41602188.
National Basic Research Program of China: 2015CB953803.

Competing Interests

The authors declare there are no competing interests.

Author Contributions

- Yunjun Bai performed the experiments, analyzed the data, contributed reagents/materials/analysis tools, wrote the paper, prepared figures and/or tables.
- Xueping Wei performed the experiments, analyzed the data, wrote the paper, prepared figures and/or tables.
- Xiaoqiang Li conceived and designed the experiments, analyzed the data, wrote the paper, reviewed drafts of the paper.

Data Availability

The following information was supplied regarding data availability:
The raw data is provided in [Figs. S1–S5](#) and [Tables S1–S3](#).

Supplemental Information

Supplemental information for this article can be found online at <http://dx.doi.org/10.7717/peerj.4287#supplemental-information>.

REFERENCES

- Aitken SN, Yeaman S, Holliday JA, Wang T, Curtis-McLane S. 2008. Adaptation, migration or extirpation: climate change outcomes for tree populations. *Evolutionary Applications* 1:95–111 DOI [10.1111/j.1752-4571.2007.00013.x](https://doi.org/10.1111/j.1752-4571.2007.00013.x).
- Alexander JM, Naylor B, Poll M, Edwards PJ, Dietz H. 2009. Plant invasions along mountain roads: the altitudinal amplitude of alien Asteraceae forbs in their native and introduced ranges. *Ecography* 32:334–344 DOI [10.1111/j.1600-0587.2008.05605.x](https://doi.org/10.1111/j.1600-0587.2008.05605.x).
- Anderson RP, Gonzalez I. 2011. Species-specific tuning increases robustness to sampling bias in models of species distributions: an implementation with MaxEnt. *Ecological Modelling* 222:2796–2811 DOI [10.1016/j.ecolmodel.2011.04.011](https://doi.org/10.1016/j.ecolmodel.2011.04.011).
- Ashcroft MB, Chisholm LA, French KO. 2008. The effect of exposure on landscape scale soil surface temperatures and species distribution models. *Landscape Ecology* 23:211–225 DOI [10.1007/s10980-007-9181-8](https://doi.org/10.1007/s10980-007-9181-8).
- Ashcroft MB, French KO, Chisholm LA. 2011. An evaluation of environmental factors affecting species distributions. *Ecological Modelling* 222:524–531 DOI [10.1016/j.ecolmodel.2010.10.003](https://doi.org/10.1016/j.ecolmodel.2010.10.003).
- Bai YJ, Li XQ. 2017. Late Miocene *Pseudolarix amabilis* bract-scale complex from Zhejiang, East China. *PLOS ONE* 12(17):e0180979 DOI [10.1371/journal.pone.0180979](https://doi.org/10.1371/journal.pone.0180979).
- Bambach RK. 2006. Phanerozoic biodiversity mass extinctions. *Annual Reviews in Earth and Planetary Sciences* 34:127–155 DOI [10.1146/annurev.earth.33.092203.122654](https://doi.org/10.1146/annurev.earth.33.092203.122654).
- Barnosky AD, Matzke N, Tomiya S, Wogan GO, Swartz B, Quental TB, Marshall C, McGuire JL, Lindsey EL, Maguire KC, Mersey B, Ferrer EA. 2011. Has the Earth's sixth mass extinction already arrived? *Nature* 471:51–57 DOI [10.1038/nature09678](https://doi.org/10.1038/nature09678).
- Boria RA, Olson LE, Goodman SM, Anderson RP. 2014. Spatial filtering to reduce sampling bias can improve the performance of ecological niche models. *Ecological Modelling* 275:73–77 DOI [10.1016/j.ecolmodel.2013.12.012](https://doi.org/10.1016/j.ecolmodel.2013.12.012).
- Burnham KP, Anderson DR. 2002. *Model selection and multimodel inference: a practical information-theoretic approach*. Heidelberg: Springer-Verlag.
- Clark PU, Dyke AS, Shakun JD, Carlson AE, Clark J, Wohlfarth B, Mitrovica JX, Hostetler SW, McCabe AM. 2009. The last glacial maximum. *Science* 325:710–714 DOI [10.1126/science.1172873](https://doi.org/10.1126/science.1172873).
- Comes HP, Kadereit JW. 1998. The effect of quaternary climatic changes on plant distribution and evolution. *Trends in Plant Science* 3:432–438 DOI [10.1016/S1360-1385\(98\)01327-2](https://doi.org/10.1016/S1360-1385(98)01327-2).
- Corlett RT, Westcott DA. 2013. Will plant movements keep up with climate change? *Trends in Ecology & Evolution* 28:482–488 DOI [10.1016/j.tree.2013.04.003](https://doi.org/10.1016/j.tree.2013.04.003).
- Davis MB. 1986. Climatic instability, time, lags, and community disequilibrium. In: Diamond J, Case TJ, eds. *Community ecology*. New York: Harper & Row, 269–284.
- Davis MB, Shaw RG. 2001. Range shifts and adaptive responses to Quaternary climate change. *Science* 292:673–679 DOI [10.1126/science.292.5517.673](https://doi.org/10.1126/science.292.5517.673).
- Davis MB, Shaw RG, Etterson JR. 2005. Evolutionary responses to changing climate. *Ecology* 86:1704–1714 DOI [10.1890/03-0788](https://doi.org/10.1890/03-0788).

- Dawson AG. 1992.** *Ice Age Earth: Late Quaternary geology and climate*. New York: Routledge.
- Dawson TP, Jackson ST, House JI, Prentice IC, Mace GM. 2011.** Beyond predictions: biodiversity conservation in a changing climate. *Science* **332**:53–58 DOI [10.1126/science.1200303](https://doi.org/10.1126/science.1200303).
- Désamoré A, Laenen B, Stech M, Papp B, Hedenäs L, Mateo RG, Vanderpoorten A. 2012.** How do temperate bryophytes face the challenge of a changing environment? Lessons from the past and predictions for the future. *Global Change Biology* **18**:2915–2924 DOI [10.1111/j.1365-2486.2012.02752.x](https://doi.org/10.1111/j.1365-2486.2012.02752.x).
- Duan RY, Huang MY, Lin F, Zhang Y. 2012.** Study on *Pseudolarix amabilis* population spatial distribution pattern. *Advanced Materials Research* **485**:221–224 DOI [10.4028/www.scientific.net/AMR.485.221](https://doi.org/10.4028/www.scientific.net/AMR.485.221).
- Dynesius M, Jansson R. 2000.** Evolutionary consequences of changes in species' geographical distributions driven by Milankovitch climate oscillations. *Proceedings of the National Academy of Sciences of the United States of America* **97**:9115–9120 DOI [10.1073/pnas.97.16.9115](https://doi.org/10.1073/pnas.97.16.9115).
- Eldredge N, Thompson JN, Brakefield PM, Gavrillets S, Jablonski D, Jackson JB, Lenski RE, Lieberman BS, McPeck MA, Miller W. 2005.** The dynamics of evolutionary stasis. *Paleobiology* **31**:133–145 DOI [10.1666/0094-8373\(2005\)031\[0133:TDOES\]2.0.CO;2](https://doi.org/10.1666/0094-8373(2005)031[0133:TDOES]2.0.CO;2).
- Elith J, Graham CH, Anderson RP, Dudík M, Ferrier S, Guisan A, Hijmans RJ, Huettmann F, Leathwick JR, Lehmann A, Li J, Lohmann LG, Loiselle BA, Manion G, Moritz C, Nakamura M, Nakazawa Y, Overton JMM, Peterson AT, Phillips SJ, Richardson K, Scachetti-Pereira R, Schapire RE, Soberón J, Williams S, Wisz MS, Zimmermann NE. 2006.** Novel methods improve prediction of species' distributions from occurrence data. *Ecography* **29**:129–151 DOI [10.1111/j.2006.0906-7590.04596.x](https://doi.org/10.1111/j.2006.0906-7590.04596.x).
- Elith J, Kearney M, Phillips S. 2010.** The art of modelling range-shifting species. *Methods in Ecology & Evolution* **1**:330–342 DOI [10.1111/j.2041-210X.2010.00036.x](https://doi.org/10.1111/j.2041-210X.2010.00036.x).
- Elith J, Leathwick JR. 2009.** Species distribution models: ecological explanation and prediction across space and time. *Annual Review of Ecology, Evolution & Systematics* **40**:677–697 DOI [10.1146/annurev.ecolsys.110308.120159](https://doi.org/10.1146/annurev.ecolsys.110308.120159).
- Elith J, Phillips SJ, Hastie T, Dudík M, Chee YE, Yates CJ. 2011.** A statistical explanation of MaxEnt for ecologists. *Diversity & Distributions* **17**:43–57 DOI [10.1111/j.1472-4642.2010.00725.x](https://doi.org/10.1111/j.1472-4642.2010.00725.x).
- Farjon A. 1990.** *Pinaceae*. Koenigstein: Koenigstein Scientific Books.
- Fazey I, Fischer J, Lindenmayer DB. 2005.** What do conservation biologists publish? *Biological Conservation* **124**:63–73 DOI [10.1016/j.biocon.2005.01.013](https://doi.org/10.1016/j.biocon.2005.01.013).
- Fielding AH, Bell JF. 1997.** A review of methods for the assessment of prediction errors in conservation presence/absence models. *Environmental Conservation* **24**:38–49 DOI [10.1017/S0376892997000088](https://doi.org/10.1017/S0376892997000088).

- Firbas F. 1949.** *Spät- und nacheiszeitliche Waldgeschichte Mitteleuropas nördlich der Alpen*. Jena: Gustav Fischer Verlag.
- Fischer J, Lindenmayer DB. 2007.** Landscape modification and habitat fragmentation: a synthesis. *Global Ecology & Biogeography* **16**:265–280
DOI [10.1111/j.1466-8238.2007.00287.x](https://doi.org/10.1111/j.1466-8238.2007.00287.x).
- Flato GM. 2005.** The third generation coupled global climate model (CGCM3). Available at <https://www.canada.ca/en/environment-climate-change/services/climate-change/centre-modelling-analysis/models/third-generation-coupled-global.html>.
- Fordham AJ, Spraker LJ. 1997.** Propagation manual of selected gymnosperms. *Arnoldia* **37**:1–88.
- Fordham DA, Resit Akçakaya H, Araújo MB, Elith J, Keith DA, Pearson R, Auld TD, Mellin C, Morgan JW, Regan TJ, Tozer M, Watts MJ, White M, Wintle BA, Yates C, Brook BW. 2012.** Plant extinction risk under climate change: are forecast range shifts alone a good indicator of species vulnerability to global warming? *Global Change Biology* **18**:1357–1371 DOI [10.1111/j.1365-2486.2011.02614.x](https://doi.org/10.1111/j.1365-2486.2011.02614.x).
- Fu LG, Li N, Robert RM. 1999.** Pinaceae. In: Wu ZY, Raven PH, Hong DY, eds. *Folra of China*. Vol. 4. Beijing, St. Louis: Science Press, Missouri Botanical Garden Press, 41–42.
- Gallagher N. 1986.** *Weather and crop growth*. New Zealand: Lincoln College.
- Ge JW, Wu JQ, Zhu ZQ, Yang JY, Lei Y. 1998.** The present status and *in-situ* conservation of the rare and endangered plants in Hubei Province. *Chinese Biodiversity* **6**:220–228.
- Gordon C, Cooper C, Senior CA, Banks H, Gregory JM, Johns TC, Mitchell JFB, Wood RA. 2000.** The simulation of SST, sea ice extents and ocean heat transports in a version of the Hadley Centre coupled model without flux adjustments. *Climate Dynamics* **16**:147–168 DOI [10.1007/s003820050010](https://doi.org/10.1007/s003820050010).
- Graham JW. 2003.** Adding missing-data-relevant variables to FIML-based structural equation models. *Structural Equation Modeling* **10**:80–100
DOI [10.1207/S15328007SEM1001_4](https://doi.org/10.1207/S15328007SEM1001_4).
- Guisan A, Zimmermann NE. 2000.** Predictive habitat distribution models in ecology. *Ecological Modelling* **135**:147–186 DOI [10.1016/S0304-3800\(00\)00354-9](https://doi.org/10.1016/S0304-3800(00)00354-9).
- Haila Y. 2002.** A conceptual genealogy of fragmentation research: from island biogeography to landscape ecology. *Ecological Applications* **12**:321–334
DOI [10.1890/1051-0761\(2002\)012\[0321:ACGOFR\]2.0.CO;2](https://doi.org/10.1890/1051-0761(2002)012[0321:ACGOFR]2.0.CO;2).
- Hamer JJ, Veneklaas EJ, Poot P, Mokany K, Renton M. 2015.** Shallow environmental gradients put inland species at risk: insights and implications from predicting future distributions of *Eucalyptus* species in South Western Australia. *Austral Ecology* **40**:923–932 DOI [10.1111/aec.12274](https://doi.org/10.1111/aec.12274).
- Hao RM, Huang ZY, Liu XJ, Wang ZL, Xu HQ, Yao ZG. 2000.** The natural distribution and characteristics of the rare and endangered plants in Jiangsu, China. *Chinese Biodiversity* **8**:153–162.

- Heikkilä M, Fontana SL, Seppä H. 2009.** Rapid Lateglacial tree population dynamics and ecosystem changes in the eastern Baltic region. *Journal of Quaternary Science* 24:802–815 DOI [10.1002/jqs.1254](https://doi.org/10.1002/jqs.1254).
- Hernandez PA, Graham CH, Master LL, Albert DL. 2006.** The effect of sample size and species characteristics on performance of different species distribution modeling methods. *Ecography* 29:773–785 DOI [10.1111/j.0906-7590.2006.04700.x](https://doi.org/10.1111/j.0906-7590.2006.04700.x).
- Hewitt G. 2000.** The genetic legacy of the Quaternary ice ages. *Nature* 405:907–913 DOI [10.1038/35016000](https://doi.org/10.1038/35016000).
- Hijmans RJ, Cameron SE, Parra JL, Jones PG, Jarvis A. 2005.** Very high resolution interpolated climate surfaces for global land areas. *International Journal of Climatology* 25:1965–1978 DOI [10.1002/joc.1276](https://doi.org/10.1002/joc.1276).
- Hijmans RJ, Graham CH. 2006.** The ability of climate envelope models to predict the effect of climate change on species distributions. *Global Change Biology* 12:2272–2281 DOI [10.1111/j.1365-2486.2006.01256.x](https://doi.org/10.1111/j.1365-2486.2006.01256.x).
- Hoegh-Guldberg O, Hughes L, McIntyre S, Lindenmayer DB, Parmesan C, Possingham HP, Thomas CD. 2008.** Assisted colonization and rapid climate change. *Science* 321:345–346 DOI [10.1126/science.1157897](https://doi.org/10.1126/science.1157897).
- Hof C, Levinsky I, AraÚjo MB, Rahbek C. 2011.** Rethinking species' ability to cope with rapid climate change. *Global Change Biology* 17:2987–2990 DOI [10.1111/j.1365-2486.2011.02418.x](https://doi.org/10.1111/j.1365-2486.2011.02418.x).
- Hofreiter M, Stewart J. 2009.** Ecological change, range fluctuations and population dynamics during the Pleistocene. *Current Biology* 19:R584–R594 DOI [10.1016/j.cub.2009.06.030](https://doi.org/10.1016/j.cub.2009.06.030).
- Huang S, Lü SA, Hong JF, Chen SL, Ding HB. 2016.** Study on the floristics of seed plants in Xingdoushan Nature Reserve, Hubei. *Plant Science Journal* 34:684–694 DOI [10.11913/PSJ.2095-0837.2016.50684](https://doi.org/10.11913/PSJ.2095-0837.2016.50684).
- Hunter ML. 2007.** Climate change and moving species: furthering the debate on assisted colonization. *Conservation Biology* 21:1356–1358 DOI [10.1111/j.1523-1739.2007.00780.x](https://doi.org/10.1111/j.1523-1739.2007.00780.x).
- Huntley B. 1997.** Past and future rapid environmental changes: the spatial and evolutionary responses of terrestrial biota. In: Huntley B, Cramer W, Morgan AV, Prentice IC, Allen JRM, eds. *Predicting the response of terrestrial biota to future environmental changes*. Berlin: Springer-Verlag, 487–426.
- Huntley B, Berry PM, Cramer W, McDonald AP. 1995.** Special paper: modelling present and potential future ranges of some European higher plants using climate response surfaces. *Journal of Biogeography* 22:967–1001 DOI [10.2307/2845830](https://doi.org/10.2307/2845830).
- Huntley B, Green RE, Collingham YC, Hill JK, Willis SG, Bartlein PJ, Cramer W, Hagemeyer WJM, Thomas CJ. 2004.** The performance of models relating species geographical distributions to climate is independent of trophic level. *Ecology Letters* 7:417–426 DOI [10.1111/j.1461-0248.2004.00598.x](https://doi.org/10.1111/j.1461-0248.2004.00598.x).
- Hutchinson GE. 1957.** Concluding remarks. *Cold Spring Harbor Symposia on Quantitative Biology* 22:145–159 DOI [10.1101/SQB.1957.022.01.039](https://doi.org/10.1101/SQB.1957.022.01.039).

- Imbrie J, McIntyre A, Mix AC. 1989.** Oceanic response to orbital forcing in the late Quaternary: observational and experimental strategies. In: Berger A, Schneider SH, Duplessy JC, eds. *Climate and geosciences, a challenge for science and society in the 21st century*. Dordrecht: Kluwer Academic Publishers, 121–164.
- Intergovernmental Panel on Climate Change. 2007.** In: Solomon S, Qin D, Manning M, Chen Z, Marquis M, Averyt KB, Tignor M, Miller HL, eds. *Climate change 2007: the physical science basis. Contribution of working group I to the fourth assessment report of the intergovernmental panel on climate change*. Cambridge, Cambridge University Press.
- Intergovernmental Panel on Climate Change. 2013.** In: Stocker TF, Qin D, Plattner GK, Tignor M, Allen SK, Boschung J, Nauels A, Xia Y, Bex V, Midgley PM, eds. *Summary for policymakers. Climate change 2013: the physical science basis. Contribution of working group 1 to the fifth assessment report of the intergovernmental panel on climate change*. Cambridge, Cambridge University Press.
- Jablonski D, Chaloner WG. 1994.** Extinctions in the fossil record. *Philosophical Transactions of the Royal Society of London B: Biological Sciences* **344**:11–17
[DOI 10.1098/rstb.1994.0045](https://doi.org/10.1098/rstb.1994.0045).
- Jiménez-Valverde A, Lobo JM. 2007.** Threshold criteria for conversion of probability of species presence to either–or or presence–absence. *Acta Oecologica* **31**:361–369
[DOI 10.1016/j.actao.2007.02.001](https://doi.org/10.1016/j.actao.2007.02.001).
- Jones CD, Hughes JK, Bellouin N, Hardiman SC, Jones GS, Knight J, Liddicoat S, O'Connor FM, Andres RJ, Bell C, Boo K-O, Bozzo A, Butchart N, Cadule P, Corbin KD, Doutriaux-Boucher M, Friedlingstein P, Gornall J, Gray L, Halloran PR, Hurtt G, Ingram WJ, Lamarque JF, Law RM, Meinshausen M, Osprey S, Palin EJ, Parsons Chini L, Raddatz T, Sanderson MG, Sellar AA, Schurer A, Valdes P, Wood N, Woodward S, Yoshioka M, Zerroukat M. 2011.** The HadGEM2-ES implementation of CMIP5 centennial simulations. *Geoscientific Model Development Discussion* **4**:543–570 [DOI 10.5194/gmd-4-543-2011](https://doi.org/10.5194/gmd-4-543-2011).
- Jump AS, Penuelas J. 2005.** Running to stand still: adaptation and the response of plants to rapid climate change. *Ecology Letters* **8**:1010–1020
[DOI 10.1111/j.1461-0248.2005.00796.x](https://doi.org/10.1111/j.1461-0248.2005.00796.x).
- Kearney MR, Wintle BA, Porter WP. 2010.** Correlative and mechanistic models of species distribution provide congruent forecasts under climate change. *Conservation Letters* **3**:203–213 [DOI 10.1111/j.1755-263X.2010.00097.x](https://doi.org/10.1111/j.1755-263X.2010.00097.x).
- Kearney W, Porter W. 2009.** Mechanistic niche modelling: combining physiological and spatial data to predict species' ranges. *Ecology Letters* **12**:334–350
[DOI 10.1111/j.1461-0248.2008.01277.x](https://doi.org/10.1111/j.1461-0248.2008.01277.x).
- Kelly D. 1994.** The evolutionary ecology of mast seeding. *Trends in Ecology & Evolution* **9**:465–470 [DOI 10.1016/0169-5347\(94\)90310-7](https://doi.org/10.1016/0169-5347(94)90310-7).
- Kiehl JT, Gent PR. 2004.** The community climate system model, version 2. *Journal of Climate* **17**:3666–3682 [DOI 10.1175/1520-0442\(2004\)017<3666:TCCSMV>2.0.CO;2](https://doi.org/10.1175/1520-0442(2004)017<3666:TCCSMV>2.0.CO;2).

- Leadley P, Pereira HM, Alkemade R, Fernandez-Manjarres JF, Proenca V, Scharlemann JPW, Walpole MJ. 2010.** *Biodiversity scenarios: projections of 21st century change in biodiversity and associated ecosystem services. Technical Series no. 50.* Montreal: Secretariat of the Convention on Biological Diversity.
- LePage BA, Basinger JF. 1995.** Evolutionary history of the genus *Pseudolarix* Gordon (Pinaceae). *International Journal of Plant Sciences* **156**:910–950 DOI [10.1086/297313](https://doi.org/10.1086/297313).
- Liu C, Berry PM, Dawson TP, Pearson RG. 2005.** Selecting thresholds of occurrence in the prediction of species distributions. *Ecography* **28**:385–393 DOI [10.1111/j.0906-7590.2005.03957.x](https://doi.org/10.1111/j.0906-7590.2005.03957.x).
- Loarie SR, Duffy PB, Hamilton H, Asner GP, Field CB, Ackerly DD. 2009.** The velocity of climate change. *Nature* **462**:1052–1055 DOI [10.1038/nature08649](https://doi.org/10.1038/nature08649).
- Malcolm JR, Liu C, Neilson RP, Hansen L, Hannah L. 2006.** Global warming and extinctions of endemic species from biodiversity hotspots. *Conservation Biology* **20**:538–548 DOI [10.1111/j.1523-1739.2006.00364.x](https://doi.org/10.1111/j.1523-1739.2006.00364.x).
- McLachlan JS, Hellmann JJ, Schwartz MW. 2007.** A framework for debate of assisted migration in an era of climate change. *Conservation Biology* **21**:297–302 DOI [10.1111/j.1523-1739.2007.00676.x](https://doi.org/10.1111/j.1523-1739.2007.00676.x).
- Menéndez R, Megías AG, Hill JK, Braschler B, Willis SG, Collingham Y, Fox R, Roy DB, Thomas CD. 2006.** Species richness changes lag behind climate change. *Proceedings of the Royal Society of London B: Biological Sciences* **273**:1465–1470 DOI [10.1098/rspb.2006.3484](https://doi.org/10.1098/rspb.2006.3484).
- Meyers LA, Bull JJ. 2002.** Fighting change with change: adaptive variation in an uncertain world. *Trends in Ecology & Evolution* **17**:551–557 DOI [10.1016/S0169-5347\(02\)02633-2](https://doi.org/10.1016/S0169-5347(02)02633-2).
- Molinos JG, Halpern BS, Schoeman DS, Brown CJ, Kiessling W, Moore PJ, Pandolfi JM, Poloczanska ES, Richardson AJ, Burrows MT. 2016.** Climate velocity and the future global redistribution of marine biodiversity. *Nature Climate Change* **6**:83–88 DOI [10.1038/nclimate2769](https://doi.org/10.1038/nclimate2769).
- Morlini I. 2006.** On multicollinearity and concurvity in some nonlinear multivariate models. *Statistical Methods & Applications* **15**:3–26 DOI [10.1007/s10260-006-0005-9](https://doi.org/10.1007/s10260-006-0005-9).
- Morueta-Holme N, Fløjgaard C, Svenning J-C. 2010.** Climate change risks and conservation implications for a threatened small-range mammal species. *PLOS ONE* **5**:e10360 DOI [10.1371/journal.pone.0010360](https://doi.org/10.1371/journal.pone.0010360).
- Nogués-Bravo D, Ohlemüller R, Batra P, Araújo MB. 2010.** Climate predictors of late Quaternary extinctions. *Evolution* **64**:2442–2449 DOI [10.1111/j.1558-5646.2010.01009.x](https://doi.org/10.1111/j.1558-5646.2010.01009.x).
- Normand S, Ricklefs RE, Skov F, Bladt J, Tackenberg O, Svenning J-C. 2011.** Postglacial migration supplements climate in determining plant species ranges in Europe. *Proceedings of the Royal Society of London B: Biological Sciences* **278**:3644–3653 DOI [10.1098/rspb.2010.2769](https://doi.org/10.1098/rspb.2010.2769).
- Novacek MJ. 2001.** *The biodiversity crisis: losing what counts.* New York: The New Press.

- Ohlemüller R, Anderson BJ, Araújo MB, Butchart SH, Kudrna O, Ridgely RS, Thomas CD. 2008.** The coincidence of climatic and species rarity: high risk to small-range species from climate change. *Biology Letters* 4:568–572 DOI [10.1098/rsbl.2008.0097](https://doi.org/10.1098/rsbl.2008.0097).
- Otto-Bliesner BL, Marshall SJ, Overpeck JT, Miller GH, Hu AX, CAPE Last Interglacial Project Members. 2006.** Simulating arctic climate warmth and icefield retreat in the last interglaciation. *Science* 311:1751–1753 DOI [10.1126/science.1120808](https://doi.org/10.1126/science.1120808).
- Parmesan C. 2006.** Ecological and evolutionary responses to recent climate change. *Annual Review of Ecology, Evolution & Systematics* 37:637–669 DOI [10.1146/annurev.ecolsys.37.091305.110100](https://doi.org/10.1146/annurev.ecolsys.37.091305.110100).
- Parmesan C, Yohe G. 2003.** A globally coherent fingerprint of climate change impacts across natural systems. *Nature* 421:37–42 DOI [10.1038/nature01286](https://doi.org/10.1038/nature01286).
- Pearson RG, Dawson TP. 2003.** Predicting the impacts of climate change on the distribution of species: are bioclimate envelope models useful? *Global Ecology & Biogeography* 12:361–371 DOI [10.1046/j.1466-822X.2003.00042.x](https://doi.org/10.1046/j.1466-822X.2003.00042.x).
- Pearson R, Dawson T, Berry P, Harrison P. 2002.** SPECIES: a spatial evaluation of climate impact on the envelope of species. *Ecological Modelling* 154:289–300 DOI [10.1016/S0304-3800\(02\)00056-X](https://doi.org/10.1016/S0304-3800(02)00056-X).
- Pearson RG, Raxworthy CJ, Nakamura M, Townsend Peterson A. 2007.** Predicting species distributions from small numbers of occurrence records: a test case using cryptic geckos in Madagascar. *Journal of Biogeography* 34:102–117 DOI [10.1111/j.1365-2699.2006.01594.x](https://doi.org/10.1111/j.1365-2699.2006.01594.x).
- Peters GP, Andrew RM, Boden T, Canadell JG, Ciais P, Quéré CL, Marland G, Raupach MR, Wilson C. 2012.** The challenge to keep global warming below 2 °C. *Nature Climate Change* 3:4–6 DOI [10.1038/nclimate1783](https://doi.org/10.1038/nclimate1783).
- Peterson AT. 2011.** Ecological niche conservatism: a time-structured review of evidence. *Journal of Biogeography* 38:817–827 DOI [10.1111/j.1365-2699.2010.02456.x](https://doi.org/10.1111/j.1365-2699.2010.02456.x).
- Peterson AT, Soberón J, Pearson RG, Anderson RP, Martínez-Myer E, Araújo MB. 2011.** *Ecological niches and geographic distributions*. Princeton: Princeton University Press.
- Petit RJ, Hu FS, Dick CW. 2008.** Forests of the past: a window to future changes. *Science* 320:1450–1452 DOI [10.1126/science.1155457](https://doi.org/10.1126/science.1155457).
- Phillips SJ, Anderson RP, Schapire RE. 2006.** Maximum entropy modeling of species geographic distributions. *Ecological Modelling* 190:231–259 DOI [10.1016/j.ecolmodel.2005.03.026](https://doi.org/10.1016/j.ecolmodel.2005.03.026).
- Pope VD, Gallani ML, Rowntree PR, Stratton RA. 2000.** The impact of new physical parametrizations in the Hadley centre climate model: HadAM3. *Climate Dynamics* 16:123–146 DOI [10.1007/s003820050009](https://doi.org/10.1007/s003820050009).
- Prentice IC, Bartlein PJ, Webb T. 1991.** Vegetation and climate change in eastern North America since the last glacial maximum. *Ecology* 72:2038–2056 DOI [10.2307/1941558](https://doi.org/10.2307/1941558).
- Raison JK, Chapman EA, Wright IC, Jacobs SWL. 1979.** Membrane lipid transitions: their correlation with the climatic distribution of plants. In: Lyons JM, Graham D,

- Raison JK, eds. *Low temperature stress in crop plants: the role of the membrane*. New York: Academic Press, 177–186.
- Raup DM, Sepkoski JJ. 1982.** Mass extinctions in the marine fossil record. *Science* 215:1501–1503 DOI [10.1126/science.215.4539.1501](https://doi.org/10.1126/science.215.4539.1501).
- Razgour O, Juste J, Ibáñez C, Kiefer A, Rebelo H, Puechmaille SJ, Arlettaz R, Burke T, Dawson DA, Beaumont M. 2013.** The shaping of genetic variation in edge-of-range populations under past and future climate change. *Ecology Letters* 16:1258–1266 DOI [10.1111/ele.12158](https://doi.org/10.1111/ele.12158).
- Renton M, Shackelford N, Standish RJ. 2012.** Habitat restoration will help some functional plant types persist under climate change in fragmented landscapes. *Global Change Biology* 18:2057–2070 DOI [10.1111/j.1365-2486.2012.02677.x](https://doi.org/10.1111/j.1365-2486.2012.02677.x).
- Rodríguez-Sánchez F, Arroyo J. 2008.** Reconstructing the demise of Tethyan plants: climate-driven range dynamics of Laurussince the Pliocene. *Global Ecology & Biogeography* 17:685–695 DOI [10.1111/j.1466-8238.2008.00410.x](https://doi.org/10.1111/j.1466-8238.2008.00410.x).
- Ruddiman WF. 2008.** *Earth's climate: past and future*. New York: WH Freeman.
- Sandel B, Arge L, Dalsgaard B, Davies RG, Gaston KJ, Sutherland WJ, Svenning J-C. 2011.** The influence of Late Quaternary climate-change velocity on species endemism. *Science* 334:660–664 DOI [10.1126/science.1210173](https://doi.org/10.1126/science.1210173).
- Stigall AL. 2012.** Using ecological niche modelling to evaluate niche stability in deep time. *Journal of Biogeography* 39:772–781 DOI [10.1111/j.1365-2699.2011.02651.x](https://doi.org/10.1111/j.1365-2699.2011.02651.x).
- Svenning JC, Skov F. 2004.** Limited filling of the potential range in European tree species. *Ecology Letters* 7:565–573 DOI [10.1111/j.1461-0248.2004.00614.x](https://doi.org/10.1111/j.1461-0248.2004.00614.x).
- Thuiller W. 2007.** Biodiversity: climate change and the ecologist. *Nature Reports Climate Change* 448:60–62 DOI [10.1038/448550a](https://doi.org/10.1038/448550a).
- Thuiller W, Lavorel S, Araújo MB. 2005.** Niche properties and geographical extent as predictors of species sensitivity to climate change. *Global Ecology & Biogeography* 14:347–357 DOI [10.1111/j.1466-822X.2005.00162.x](https://doi.org/10.1111/j.1466-822X.2005.00162.x).
- Thuiller W, Lavorel S, Araújo MB, Sykes MT, Prentice IC. 2005.** Climate change threats to plant diversity in Europe. *Proceedings of the National Academy of Sciences of the United States of America* 102:8245–8250 DOI [10.1111/j.1466-822X.2005.00162.x](https://doi.org/10.1111/j.1466-822X.2005.00162.x).
- Tomlinson S, Webber BL, Bradshaw SD, Dixon KW, Renton M. 2017.** Incorporating biophysical ecology into high-resolution restoration targets: insect pollinator habitat suitability models. *Restoration Ecology* Epub ahead of print Sep 6 2017 DOI [10.1111/rec.12561](https://doi.org/10.1111/rec.12561).
- Wang CW. 1961.** *Forests of China, with a survey of grassland and desert vegetation*. Cambridge: Harvard University Press.
- Warren M, Hill J, Thomas J, Asher J, Fox R, Huntley B, Roy D, Telfer M, Jeffcoate S, Harding P. 2001.** Rapid responses of British butterflies to opposing forces of climate and habitat change. *Nature* 414:65–69 DOI [10.1038/35102054](https://doi.org/10.1038/35102054).
- Weber E, Sun SG, Li B. 2008.** Invasive alien plants in China: diversity and ecological insights. *Biological Invasions* 10:1411–1429 DOI [10.1007/s10530-008-9216-3](https://doi.org/10.1007/s10530-008-9216-3).

- Woodward FI. 1987.** *Climate and plant distribution*. Cambridge: Cambridge University Press.
- Yang Y, Christian T. 2013.** *Pseudolarix amabilis*. The IUCN Red List of Threatened Species 2013: e.T34A2850347. Available at <http://dx.doi.org/10.2305/IUCN.UK.2013-1.RLTS.T34196A2850347.en> (accessed on 14 August 2017).
- Yates CJ, McNeill A, Elith J, Midgley GF. 2010.** Assessing the impacts of climate change and land transformation on *Banksia* in the South West Australian Floristic Region. *Diversity & Distributions* 16:187–201 DOI 10.1111/j.1472-4642.2009.00623.x.
- Yukimoto S, Adachi Y, Hosaka M, Sakami T, Yoshimura H, Hirabara M, Tanaka TY, . Shindo E, Tsujino H, Deushi M, Mizuta R, Yabu S, Obata A, Nakano H, Koshiro T, Ose T, Kitoh A. 2012.** A new global climate model of Meteorological Research Institute: MRI-CGCM3—model description and basic performance. *Journal of the Meteorological Society of Japan* 90A:23–64 DOI 10.2151/jmsj.2012-A02.
- Zanni M, Ravazzi C. 2007.** Description and differentiation of *Pseudolarix amabilis* pollen Palaeoecological implications and new identification key to fresh bisaccate pollen. *Review of Palaeobotany & Palynology* 145:35–75 DOI 10.1016/j.revpalbo.2006.08.004.