



Diverse hydrogen production and consumption pathways influence methane production in ruminants

Chris Greening¹ · Renae Geier² · Cecilia Wang³ · Laura C. Woods¹ · Sergio E. Morales³ · Michael J. McDonald¹ · Rowena Rushton-Green³ · Xochitl C. Morgan³ · Satoshi Koike⁴ · Sinead C. Leahy⁵ · William J. Kelly⁶ · Isaac Cann² · Graeme T. Attwood⁵ · Gregory M. Cook³ · Roderick I. Mackie²

Received: 7 December 2018 / Revised: 3 June 2019 / Accepted: 7 June 2019 / Published online: 26 June 2019
© The Author(s) 2019. This article is published with open access

Abstract

Farmed ruminants are the largest source of anthropogenic methane emissions globally. The methanogenic archaea responsible for these emissions use molecular hydrogen (H₂), produced during bacterial and eukaryotic carbohydrate fermentation, as their primary energy source. In this work, we used comparative genomic, metatranscriptomic and co-culture-based approaches to gain a system-wide understanding of the organisms and pathways responsible for ruminal H₂ metabolism. Two-thirds of sequenced rumen bacterial and archaeal genomes encode enzymes that catalyse H₂ production or consumption, including 26 distinct hydrogenase subgroups. Metatranscriptomic analysis confirmed that these hydrogenases are differentially expressed in sheep rumen. Electron-bifurcating [FeFe]-hydrogenases from carbohydrate-fermenting Clostridia (e.g., *Ruminococcus*) accounted for half of all hydrogenase transcripts. Various H₂ uptake pathways were also expressed, including methanogenesis (*Methanobrevibacter*), fumarate and nitrite reduction (*Selenomonas*), and acetogenesis (*Blautia*). Whereas methanogenesis-related transcripts predominated in high methane yield sheep, alternative uptake pathways were significantly upregulated in low methane yield sheep. Complementing these findings, we observed significant differential expression and activity of the hydrogenases of the hydrogenogenic cellulose fermenter *Ruminococcus albus* and the hydrogenotrophic fumarate reducer *Wolinella succinogenes* in co-culture compared with pure culture. We conclude that H₂ metabolism is a more complex and widespread trait among rumen microorganisms than previously recognised. There is evidence that alternative hydrogenotrophs, including acetogenic and respiratory bacteria, can prosper in the rumen and effectively compete with methanogens for H₂. These findings may help to inform ongoing strategies to mitigate methane emissions by increasing flux through alternative H₂ uptake pathways, including through animal selection, dietary supplementation and methanogenesis inhibitors.

These authors contributed equally: Chris Greening and Renae Geier

Supplementary information The online version of this article (<https://doi.org/10.1038/s41396-019-0464-2>) contains supplementary material, which is available to authorized users.

✉ Chris Greening
chris.greening@monash.edu

✉ Roderick I. Mackie
r-mackie@illinois.edu

¹ School of Biological Sciences, Monash University, Clayton, VIC 3800, Australia

² Department of Animal Sciences and Institute for Genomic Biology, University of Illinois at Urbana-Champaign, Urbana, IL

Introduction

Methane production by livestock accounts for over 5% of global greenhouse gas emissions annually [1]. These emissions mostly originate from the activity of methanogens within ruminants, which generate methane as an obligate

61801, USA

³ Department of Microbiology and Immunology, University of Otago, Dunedin 9016, New Zealand

⁴ Research Faculty of Agriculture, Hokkaido University, Sapporo, Japan

⁵ Grasslands Research Centre, AgResearch Ltd., Palmerston North 4410, New Zealand

⁶ Donvis Ltd., Palmerston North 4410, New Zealand

end-product of their energy metabolism [2]. Several lineages of methanogenic archaea are core members of the microbiome of the ruminant foregut [3–5]. Of these, hydrogenotrophic methanogens are dominant in terms of both methane emissions and community composition [6, 7], with global surveys indicating that *Methanobrevibacter gottschalkii* and *Methanobrevibacter ruminantium* comprise 74% of the rumen methanogen community [5]. These organisms use molecular hydrogen (H_2) to reduce carbon dioxide (CO_2) to methane through the Wolfe cycle of methanogenesis [8, 9]. Rumen methanogens have also been identified that use formate, acetate, methyl compounds and ethanol as substrates, but usually do so in conjunction with H_2 [5, 10–12]. Given their major contribution to greenhouse gas emissions, multiple programs are underway to mitigate ruminant methane production [13, 14]. To date, most strategies have focused on direct inhibition of methanogens using chemical compounds or vaccines [15–18]. A promising alternative strategy is to modulate the supply of substrates to methanogens, such as H_2 , for example, through dietary or probiotic interventions [14, 19, 20]. To achieve this, while maintaining health and productivity of the host animal, requires an understanding of the processes that mediate substrate supply to methanogens within the rumen.

H_2 , the main substrate supporting ruminal methanogenesis, is primarily produced through fermentation processes [6]. Various carbohydrate fermentation pathways lead to the production of H_2 as an end-product, together with volatile fatty acids and CO_2 [21–23]. This process is supported by hydrogenases, which reoxidise cofactors reduced during carbohydrate fermentation and dispose of the derived electrons by producing H_2 . Although it is unclear which rumen microorganisms mediate H_2 production in situ, a range of isolates have been shown to produce H_2 in vitro [24–28]. For example, the model rumen bacterium *R. albus* 7 reoxidises the reduced ferredoxin and NADH formed during glucose fermentation by using two different [FeFe]-hydrogenases depending on environmental conditions [29]. In addition, it is well-established that some rumen fungi and ciliates produce H_2 via hydrogenosomes [30, 31]. A debated source is the nitrogenase reaction, which produces H_2 while fixing N_2 ; whereas numerous rumen microorganisms encode putative nitrogenases [21], in situ data indicate that N_2 fixation occurs at negligible rates in the rumen [32, 33]. A large proportion of the H_2 produced by hydrogenogenic fermenters is directly transferred to hydrogenotrophic methanogens, in an ecological process known as interspecies hydrogen transfer [25, 34]. Particularly remarkable are the endosymbiotic and ectosymbiotic associations of methanogens, such as *M. ruminantium*, with rumen ciliates [35–37]. In addition to providing a continual substrate supply for methanogens, such symbioses benefit fermenters by maintaining H_2 at

sufficiently low concentrations for fermentation to remain thermodynamically favourable [38].

Various hydrogenotrophic bacteria are thought to compete with methanogens for the rumen H_2 supply. Most attention has focused on acetogens, which mediate conversion of H_2/CO_2 to acetate using [FeFe]-hydrogenases [39]. Several genera of acetogens have been isolated from the rumen, including *Eubacterium* [40], *Blautia* [41] and *Acetivomaculum* [42]. However, molecular surveys indicate their abundance is generally lower than hydrogenotrophic methanogens [43–45]. This is thought to reflect that methanogens outcompete acetogens owing to the higher free energy yield of their metabolic processes, as well as their higher affinity for H_2 . The dissolved H_2 concentration fluctuates in the rumen depending on diet, time of feeding and rumen turnover rates, but is generally at concentrations between 400 and 3400 nM [46]; these concentrations are typically always above the threshold concentrations required for methanogens (< 75 nM) but often below those of acetogens (< 700 nM) [47]. Despite this, it has been proposed that stimulation of acetogens may be an effective strategy for methane mitigation in methanogen-inhibited scenarios [14, 20, 48, 49]. Various microorganisms have also been isolated from cows and sheep that support anaerobic hydrogenotrophic respiration, including dissimilatory sulfate reduction (e.g., *Desulfovibrio desulfuricans*) [50, 51], fumarate and nitrate reduction (e.g., *Selenomonas ruminantium*, *Wolinella succinogenes*) [52–59] and trimethylamine *N*-oxide reduction (e.g., *Denitrobacterium detoxificans*) [60]. The first described and most comprehensively studied of these hydrogen oxidisers is *W. succinogenes*, which mediates interspecies hydrogen transfer with *R. albus* [25]. In all cases, respiratory electron transfer via membrane-bound [NiFe]-hydrogenases and terminal reductases generates a proton-motive force that supports oxidative phosphorylation [61]. It is generally assumed that these pathways are minor ones and are limited by the availability of oxidants. Promisingly, it has been observed that dietary supplementation with fumarate, sulfate, or nitrate can significantly reduce methane production in cattle, likely by stimulating alternative pathways of H_2 consumption [62, 63].

We postulate that mitigating methane emissions, while maintaining animal productivity, depends on understanding and controlling H_2 utilisation by methanogens. This requires a system-wide perspective of the schemes for production and concomitant utilisation of H_2 in the rumen. To facilitate this, we determined which organisms and enzymes are primarily responsible for H_2 production and consumption in rumen. First, we screened genome, metagenome and metatranscriptome data sets [21, 64, 65] to identify microbial genera, metabolic pathways and hydrogenase classes [66, 67] that mediate H_2 metabolism. We demonstrate that ruminants harbour a diverse community of

hydrogenogenic fermenters and hydrogenotrophic methanogens, acetogens and sulfate, fumarate and nitrate reducers. Second, we used the model system of the H₂-producing carbohydrate fermenter *R. albus* 7 and the H₂-utilising fumarate-reducing syntrophic partner *Wolinella succinogenes* DSM 1740 [25, 54, 55, 68] to gain a deeper mechanistic understanding of how and why ruminant bacteria regulate H₂ metabolism. We observed significant differences in the growth, transcriptome and metabolite profiles of these bacteria in co-culture compared with pure culture. Finally, we compared gene expression profiles associated with H₂ metabolism between low versus high methane yield sheep [64]. It was recently proposed, on the basis of community structure analysis, that fewer H₂-producing bacteria inhabit low methane yield sheep [69]. In this work, we provide evidence for an alternative explanation: H₂ uptake through non-methanogenic pathways accounts for these differences. Whereas the enzymes mediating fermentative H₂ production are expressed at similar levels, those supporting H₂ uptake through acetogenesis, fumarate reduction and nitrate ammonification pathways are highly upregulated in low methane yield sheep. In turn, these findings support that strategies to promote alternative H₂ uptake pathways, including through dietary modulation, may significantly reduce methane emissions.

Materials and methods

Comparative genomic analysis

The protein sequences of the 501 genomes of cultured rumen bacteria (410 from Hungate Collection [21], 91 from other sources) were retrieved from the Joint Genome Institute (JGI) genome portal. These sequences were then screened against local protein databases for the catalytic subunits of the three classes of hydrogenases (NiFe-hydrogenases, FeFe-hydrogenases, Fe-hydrogenases), nitrogenases (NifH), methyl-CoM reductases (McrA), acetyl-CoA synthases (AcsB), adenylylsulfate reductases (AprA), dissimilatory sulfite reductases (DsrA), alternative sulfite reductases (AsrA), fumarate reductases (FrdA), dissimilatory nitrate reductases (NarG), periplasmic nitrate reductases (NapA), ammonia-forming nitrite reductases (NrfA), DMSO/TMAO reductases (DmsA) and cytochrome *bd* oxidases (CydA). Hydrogenases were screened using the HydDB data set [66, 67], targeted searches were used to screen six protein families (AprA, AsrA, NarG, NapA, NrfA, DmsA, CydA) and comprehensive custom databases were constructed to screen five other protein families (NifH, McrA, AcsB, DsrA, FrdA) based on their total reported genetic diversity [70–74]. A custom Python script

incorporating the Biopython package [75] was designed to produce and parse BLAST results (https://github.com/woodlaur189/get_flanks_blast/releases). This script was used to batch-submit the protein sequences of the 501 downloaded genomes as queries for BLAST searches against the local databases. Specifically, hits were initially called for alignments with an e-value threshold of 1e-50 and the resultant XML files were parsed. Alignments producing hits were further filtered for those with coverage values exceeding 90% and percent identity values of 30–70%, depending on the target, and hits were subsequently manually curated. Table S1 and S2 provide the FASTA protein sequences, alignment details and distribution summaries of the filtered hits. For hydrogenases, the protein sequences flanking the hydrogenase large subunits were also retrieved; these sequences were used to classify group A [FeFe]-hydrogenases into subtypes (A1–A4), as previously described [66], and retrieve diaphorase sequences (HydB) associated with the A3 subtype. Partial [FeFe]-hydrogenase protein sequences from six incompletely sequenced rumen ciliates and fungi genomes were retrieved through targeted blastP searches [76] in NCBI.

Metagenomic and metatranscriptomic analysis

We analysed previously published data sets of 20 paired metagenomes and metatranscriptomes of sheep rumen contents [64]. All profiles were derived from the rumen contents of age-matched, pelleted lucerne-fed rams that were collected 4 h after morning feeding and subject to paired-end sequencing on the HiSeq2000 platform [64]. The samples were taken from 10 rams at two different sampling dates based on their measured methane yields [64, 77]; four rams were consistently low yield, four were consistently high yield, and two others switched in methane yield between the sampling dates (Table S3). The metagenome and metatranscriptome data sets analysed are accessible at the NCBI Sequence Read Archive (SRA; <http://www.ncbi.nlm.nih.gov/sra>) accession numbers SRA075938, and SRX1079958—SRX1079985 under bioproject number PRJNA202380. Each metagenome and metatranscriptome was subsampled to an equal depth of five million reads using seqtk (<https://github.com/lh3/seqtk>) seeded with parameter `-s100`. Subsampled data sets were then screened in DIAMOND (default settings, one maximum target sequence per query) [78] using the protein sequences retrieved from the 507 rumen microbial genomes (NiFe-hydrogenases, FeFe-hydrogenases, Fe-hydrogenases, HydB, NifH, McrA, AcsB, AprA, DsrA, AsrA, FrdA, NarG, NapA, NrfA, DmsA, CydA). Results were then filtered (length of amino acid > 40 residues, sequence identity > 65%). Subgroup classification and taxonomic assignment of the hydrogenase reads was based on their closest match

to the hydrogenase data set derived from the 507 genomes at either 65 or 85% identity. The full pipeline used is provided on GitHub (https://github.com/Cecilia-Wang/Diamond_line_reader_pipeline). The hits obtained are shown in Table S4 and S5. The number of reads with the rumen-specific hydrogenase data set (15,464 metagenome hits, 40,485 metatranscriptome hits) exceeded those obtained by screening with the generic data set from HydDB [67] (12,599 metagenome reads, 31,155 metatranscriptome reads), verifying that the rumen data set comprehensively captures hydrogenase diversity. For each data set, read count was normalised to account for the average length of each gene using the following formula: Normalised Read Count = Actual Read Count \times (1000/average gene length). Independent two-group Wilcoxon rank-sum tests were used to determine whether there were significant differences in the targets analysed between low and high methane yield sheep. Separate analyses were performed based on gene abundance, transcript abundance and RNA/DNA ratio.

Bacterial growth conditions

The bovine rumen isolates *R. albus* 7 [68] and *Wolinella succinogenes* DSM 1740 [54] were cultured anaerobically at 37 °C in modified Balch medium [79] (Table S6). Pre-cultures were grown in Balch tubes (18 \times 150 mm; Chemglass Life Sciences, Vineland, NJ) containing 20% v/v culture medium and sealed with butyl rubber stoppers crimped with aluminium caps. Cultures were grown in Pyrex side-arm flasks (Corning Inc., Corning, NY) containing 118 mL modified Balch medium. Two pre-cultures were grown before final inoculation, and all inoculum transfers were 5% (v/v). The headspace consisted of 20% CO₂ and 80% N₂ for *R. albus* pure cultures and the co-cultures, and 20% CO₂ and 80% H₂ for *W. succinogenes* pure cultures. Cultures were periodically sampled at 0, 3, 5, 7, 9 and 11 h for metabolite analysis and bacterial quantification. Each culture was also sampled at 0 and 24 h to analyse H₂ mixing ratios. Culture samples were immediately centrifuged (16,000 \times g, 10 min) in a bench-top centrifuge (Eppendorf, Hamburg, Germany). For metabolite analysis, the supernatant was collected and further centrifuged (16,000 \times g, 10 min) before high-performance liquid chromatography analysis.

Bacterial quantification

Quantitative PCR was used to quantify the copy numbers of *R. albus* and *W. succinogenes* under pure culture and co-culture. DNA was extracted from each pellet using the Fungal/Bacterial DNA MiniPrep kit according to the manufacturer's instructions (Zymo Research, Irvine, CA). Primers were designed to specifically amplify Rumal_2867 (*R. albus*

glucokinase gene; FW: CTGGGATTCCTGAACTTTCC; RV: ATGCATACTGCGTTAG) and WS0498 (*W. succinogenes* *flgL* gene; FW: CAGACTATACCGATGCAACTAC; RV: GAGCGGAGGAGATCTTTAATC). For quantification, amplicons of each gene were cloned into pGEM-T Easy vectors (Promega, Madison, WI). Vector inserts were sequenced to confirm proper insertion. Standard curves extended from 10² to 10¹⁰ copies mL⁻¹. DNA was amplified with iTaq Universal SYBR Green (Bio-Rad) on a LightCycler 480 (Roche Holding AG, Basel, Switzerland). The amplification conditions were as follows: initial denaturation for 5 min at 95 °C, 40 amplification cycles (15 s at 95 °C, 20 s at 60 °C, 10 s at 68 °C) and final extension for 5 min at 68 °C. Fluorescence was read during the extension phase of each cycle. The linear regression of the standard curve resulted in an $R^2 > 0.99$, efficiencies were between 97.8–98.5%, and primers were confirmed to not cross-react. Two-tailed tests were done on sample data using SAS Studio (SAS Institute Inc., Cary, NC) to compare growth rates between single and co-cultures. All populations were normally and independently distributed with equal variances.

Liquid and gas metabolite analysis

The concentrations of acetate, ethanol, fumarate, succinate and formate in the culture supernatants were analysed using an Ultra-Fast Liquid Chromatograph (UFLC; Shimadzu, Kyoto, Japan). The UFLC consisted of a DGU-20A5 degasser, a SIL-20A8HT autosampler, an LC-20AT solvent delivery unit, an RID-10A refractive index detector, a CBM-20A system controller, and a CTO-20AC column oven. The mobile phase was 5 mM H₂SO₄ passed through an Aminex HPX-87H ion exclusion column (Bio-Rad, Hercules, CA) at a flow rate of 0.4 mL min⁻¹, 25 °C. Percentage mixing ratios of H₂ were measured using a gas chromatograph (GC; Gow-Mac Series 580 Thermal Conductivity Gas Chromatograph, Gow-Mac Instrument Co., Bethlehem, PA). Samples were withdrawn directly from the culture tube in a gas-tight syringe and 0.5 mL was injected into GC for analysis using N₂ as the carrier gas. The flow rate was 60 mL min⁻¹, the detector was set to 80 °C, the injector was set to 80 °C and the oven was set to 75 °C. For both liquid and gas analyses, peak retention times and peak area were compared to standards of known concentration.

RNA extraction and sequencing

Each pure culture and co-culture used for transcriptome analysis was grown in duplicate in Balch tubes. Growth was monitored until the cultures were in mid-exponential phase; the change in OD₆₀₀ at this phase was 0.14 for *W. succinogenes*, 0.20 for *R. albus* and 0.35 for the co-culture. At mid-exponential phase, 5 mL cultures were harvested by

centrifugation ($13,000 \times g$, 4°C). Cell pellets were resuspended in $400\ \mu\text{L}$ fresh lysis buffer ($5\ \text{mM}$ EDTA, 0.5% SDS, $25\ \text{mM}$ lysozyme, $250\ \text{U mL}^{-1}$ mutanolysin and $150\ \mu\text{g mL}^{-1}$ proteinase K in $25\ \text{mM}$ sodium phosphate buffer, $\text{pH } 7.0$) and incubated under oxic conditions for $30\ \text{min}$ at 55°C with periodic vortexing. RNA was subsequently extracted under oxic conditions using an RNeasy Mini Kit following the manufacturer's protocol, including all optional steps (Qiagen, Hilden, Germany), and eluted with $50\ \mu\text{L}$ ultra-pure DEPC-treated water (Invitrogen, Carlsbad, CA). RNA quantity, quality and integrity were confirmed by Qubit Fluorometry (Invitrogen, Carlsbad, CA), Nanodrop UV-Vis Spectrophotometry (Thermo Fisher Scientific, model 2300c), and agarose gel electrophoresis respectively. Bacterial rRNA was removed from $1\ \mu\text{g}$ of total RNA with the MicroExpress Kit (Life Technologies, Carlsbad, CA). Libraries were prepared on the enriched mRNA fraction using the Stranded RNA Sample Prep Kit (Illumina, San Diego, CA). The barcoded libraries were pooled in equimolar concentration and sequenced on one lane for 101 cycles on a HiSeq2000 using a TruSeq SBS Sequencing Kit (Version 3). Fastq files were generated and demultiplexed with the bc12fastq Conversion Software (Illumina, version 1.8.4). The RNA-seq data were analysed using CLC Genomics Workbench version 5.5.1 (CLC Bio, Cambridge, MA). RNA-seq reads were mapped onto the reference genome sequences of *R. albus* 7 [80] and *Wolinella succinogenes* DSM 1740 [81] (Table S7 & S8). The RNA-seq output files were analysed for statistical significance as described [82] and q values were generated using the q value package in R [83]. Predicted subsystems and functions were downloaded and aligned to the RNA-seq transcriptional data using the RAST Server [84].

Results

H₂ metabolism is a common and diverse trait among rumen bacteria, archaea and eukaryotes

We searched the 501 reference genome sequences of rumen bacteria and archaea [21] for genes encoding the catalytic subunits of H₂-consuming and H₂-producing enzymes (Table S1 & S2). Of these, 65% encoded the capacity to metabolise H₂ via [FeFe]-hydrogenases (42%), [NiFe]-hydrogenases (31%), [Fe]-hydrogenases (2.4%) and/or nitrogenases (23%). This suggests that H₂ metabolism is a widespread trait among rumen microorganisms. We also identified multiple partial sequences of group A1 [FeFe]-hydrogenases in the incomplete genomes of six rumen fungi and ciliates. This is consistent with the known ability of these microorganisms to produce H₂ during cellulose fermentation [31]. The 329 hydrogenase- and

nitrogenase-positive genomes spanned 108 genera, 26 orders, 18 classes and 11 phyla (Fig. 1; Figure S1; Table S1 & S2).

We then classified the hydrogenases identified into subgroups. To do so, we used the phylogeny-based, functionally-predictive classification scheme of HydDB [67], which has been used to understand H₂ metabolism in a range of organisms and ecosystems [85–89]. In total, 273 strains encoded hydrogenases from classes that primarily evolve H₂ under physiological conditions (Table S2). These include group A1 and B [FeFe]-hydrogenases and group 4e [NiFe]-hydrogenases that couple ferredoxin oxidation to H₂ production in anaerobic bacteria [90–92]. However, the most widespread hydrogenases are the group A3 [FeFe]-hydrogenases, which were encoded in 43 genera, among them well-characterised carbohydrate fermenters such as *Ruminococcus*, *Lachnospirillum* and *Bacteroides*. These hydrogenases form heterotrimeric complexes, together with diaphorase subunits, that mediate the recently-discovered process of electron-conformation: coupling co-oxidation of NADH and ferredoxin produced during fermentative carbon degradation to production of H₂ [29, 93]. This reversible complex can also support hydrogenotrophic acetogenesis [94]. By retrieving the genes immediately upstream and downstream, we verified that the diaphorase subunits (HydB) of this complex were co-encoded with the retrieved hydrogenase subunits (Fig. 1; Table S2).

In addition, multiple organisms encoded hydrogenases and terminal reductases known to support hydrogenotrophic growth (Fig. 1). All 21 methanogen genomes surveyed harboured [NiFe]-hydrogenases together with the signature gene of methanogenesis (*mcrA*) (Fig. 1; Table S2). These include 14 *Methanobrevibacter* strains, which encoded a complete set of enzymes for mediating hydrogenotrophic methanogenesis through the Wolfe cycle [8], including the [Fe]-hydrogenase and the groups 3a, 3c, 4h and 4i [NiFe]-hydrogenases. Seven genomes encoded both [FeFe]-hydrogenases (A2, A3) and the marker gene for acetogenesis (*acsB*) (Table S2), including known hydrogenotrophic acetogens *Blautia schinkii* [41] and *Acetitomaculum ruminis* [42]. Several subgroups of the group 1 [NiFe]-hydrogenases, all membrane-bound enzymes known to support hydrogenotrophic respiration [66, 95], were also detected. Most notably, various *Selenomonas*, *Mitsuokella* and *Wolinella* strains encoded such hydrogenases together with the signature genes for fumarate reduction (*frdA*) and nitrate ammonification (*narG*, *napA*, *nrfA*). As anticipated, the group 1b [NiFe]-hydrogenase and *dsrA* gene characteristic of hydrogenotrophic sulfate reduction were also encoded in the three genomes of ruminal *Desulfovibrio* isolates (Fig. 1; Table S2).

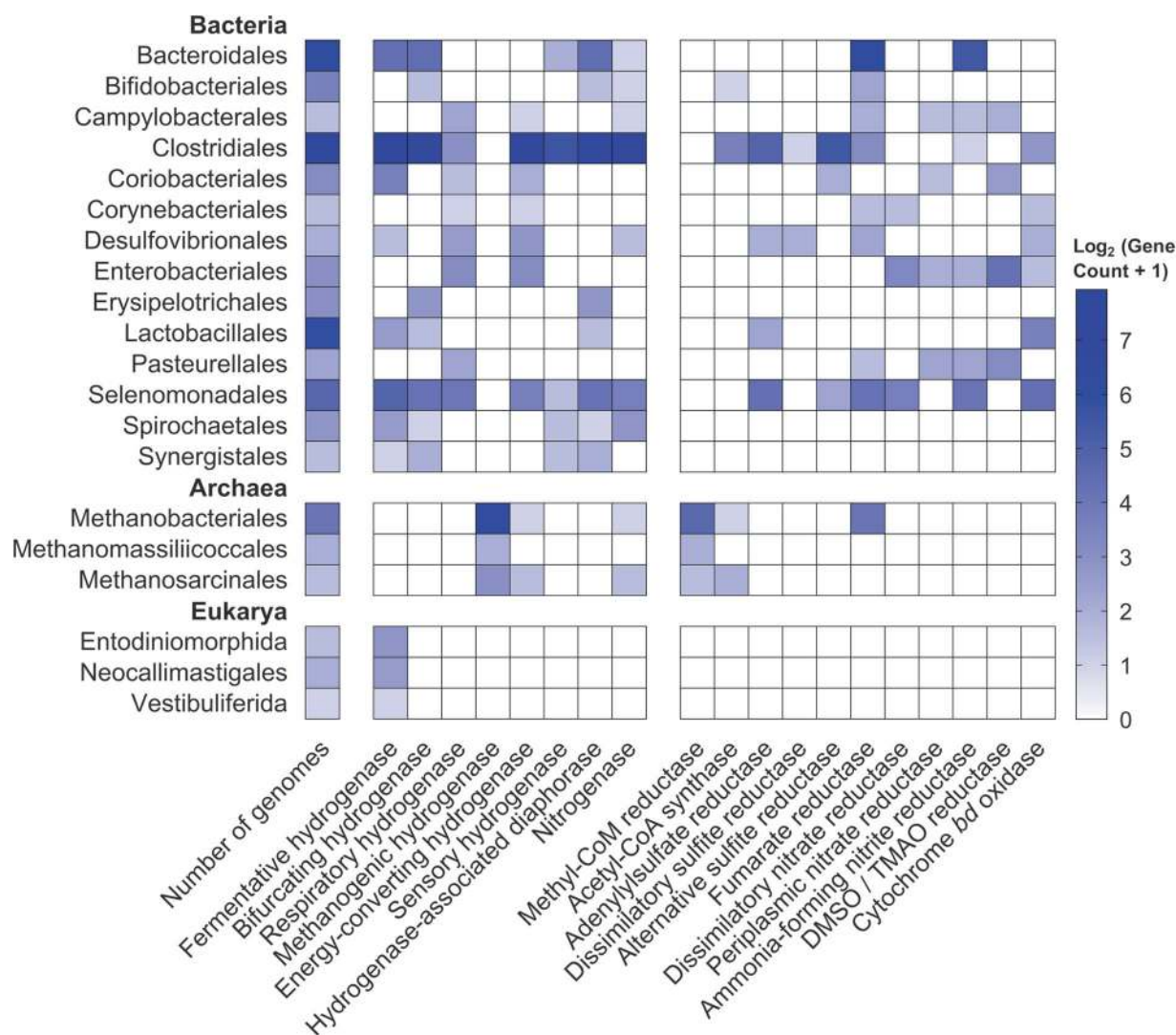


Fig. 1 Heatmap showing distribution of enzymes mediating H₂ production and H₂ consumption in orders of rumen microorganisms. Results are shown based on screens of the 501 genomes of cultured rumen bacteria and archaea (410 from the Hungate collection plus 91 other genomes). Partial hydrogenase sequences were also retrieved and classified from four rumen ciliates and two rumen fungi. The left-hand side of the heatmap shows the distribution of the catalytic subunits of enzymes that catalyse H₂ oxidation and production. These are divided into fermentative hydrogenases (H₂-producing; group A1, A2, B FeFe-hydrogenases), bifurcating hydrogenases (bidirectional; group A3, A4 FeFe-hydrogenases), respiratory hydrogenases (H₂-uptake; group 1b, 1c, 1d, 1f, 1i, 2d NiFe-hydrogenases), methanogenic hydrogenases (H₂-uptake; group 1k, 3a, 3c, 4h, 4i NiFe-hydrogenases, Fe-hydrogenases), energy-converting hydrogenases (bidirectional; group 4a, 4c, 4e, 4f, 4g NiFe-hydrogenases), sensory hydrogenases (group C FeFe-

H₂ is mainly produced in sheep by clostridial electron-bifurcating [FeFe]-hydrogenases and consumed by [NiFe]-hydrogenases of methanogens and selenomonads

We then investigated the relative abundance and expression levels of the retrieved hydrogenases in rumen communities.

hydrogenases) and nitrogenases (H₂-producing; NifH). The right-hand side shows the distribution of the catalytic subunits of key reductases in H₂ consumption pathways. They are genes for methanogenesis (McrA, methyl-CoM reductase), acetogenesis (AcsB, acetyl-CoA synthase), sulfate reduction (DsrA, dissimilatory sulfite reductase; AprA, adenylylsulfate reductase; AsrA, alternative sulfite reductase), fumarate reduction (FrdA, fumarate reductase), nitrate ammonification (NarG, dissimilatory nitrate reductase; NapA, periplasmic nitrate reductase; NrfA, ammonia-forming nitrite reductase), dimethyl sulfide and trimethylamine *N*-oxide reduction (DmsA, DMSO and TMAO reductase) and aerobic respiration (CydA, cytochrome *bd* oxidase). Only hydrogenase-encoding orders are shown. Table S2 shows the distribution of these enzymes by genome, Figure S1 depicts hydrogenase subgroup distribution by class, and Table S1 lists the FASTA sequences of the retrieved reads

To do so, we used 20 pairs of metagenomes and metatranscriptomes that were previously sequenced from the rumen contents of age- and diet-matched farmed sheep [64] (Table S3). Screening these data sets with hydrogenases retrieved from the rumen microbial reference genomes yielded 15,464 metagenome hits (0.015% of all reads) and 40,485 metatranscriptome hits (0.040%) (Table S4). Across

the metagenomes, the dominant hydrogenase reads originated from eleven subgroups (A1, A2, A3, B, 3a, 3c, 4e, 4g, 4h, 4i, Fe) (Fig. 2a & S2a) and three taxonomic orders (Clostridiales, Methanobacteriales, Selenomonadales) (Fig. 2c & S3a); this is concordant with the hydrogenase content in the genomes of the dominant community members [64, 65] (Table S2). Metatranscriptome analysis indicated these genes were differentially expressed: whereas A3, 1d, 3a, 3c and 4g genes were highly expressed (RNA/DNA expression ratio >4), others were expressed at moderate (A1, A2, Fe; ratio 1.5–2.5) or low levels (B, 4e, 4h, 4i; ratio <1.5) (Figure S2 & S3; Table S1). Though putative nitrogenase genes (*nifH*) were detected, expression ratios were low (av. 0.45), suggesting nitrogen fixation is not a significant H₂ source in sheep (Figure S4). This is consistent

with previous reports that nitrogenase activity in ovine rumen contents is low [33, 96].

Accounting for 54% of hydrogenase transcripts detected (Figs. 2b, 3a, S2), group A3 [FeFe]-hydrogenases appear to be the primary catalysts of H₂ production in ruminants. We assigned the retrieved transcripts to taxa based on their closest hits to the rumen genome hydrogenase data set (Table S4). Clostridia accounted for the majority of the hits (Fig. 2d), including *Ruminococcus* (22%), *Saccharofermentans* (9.2%) and *Lachnoclostridium* (7.4%) species known to fermentatively produce H₂ [29, 34, 97] (Figure S5 & S6). Transcripts from the characterised fermentative genera *Bacteroides*, *Butyrivibrio*, *Clostridium* and *Sarcina* were also moderately abundant. A further 21% of group A3 [FeFe]-hydrogenase hits were assigned to three

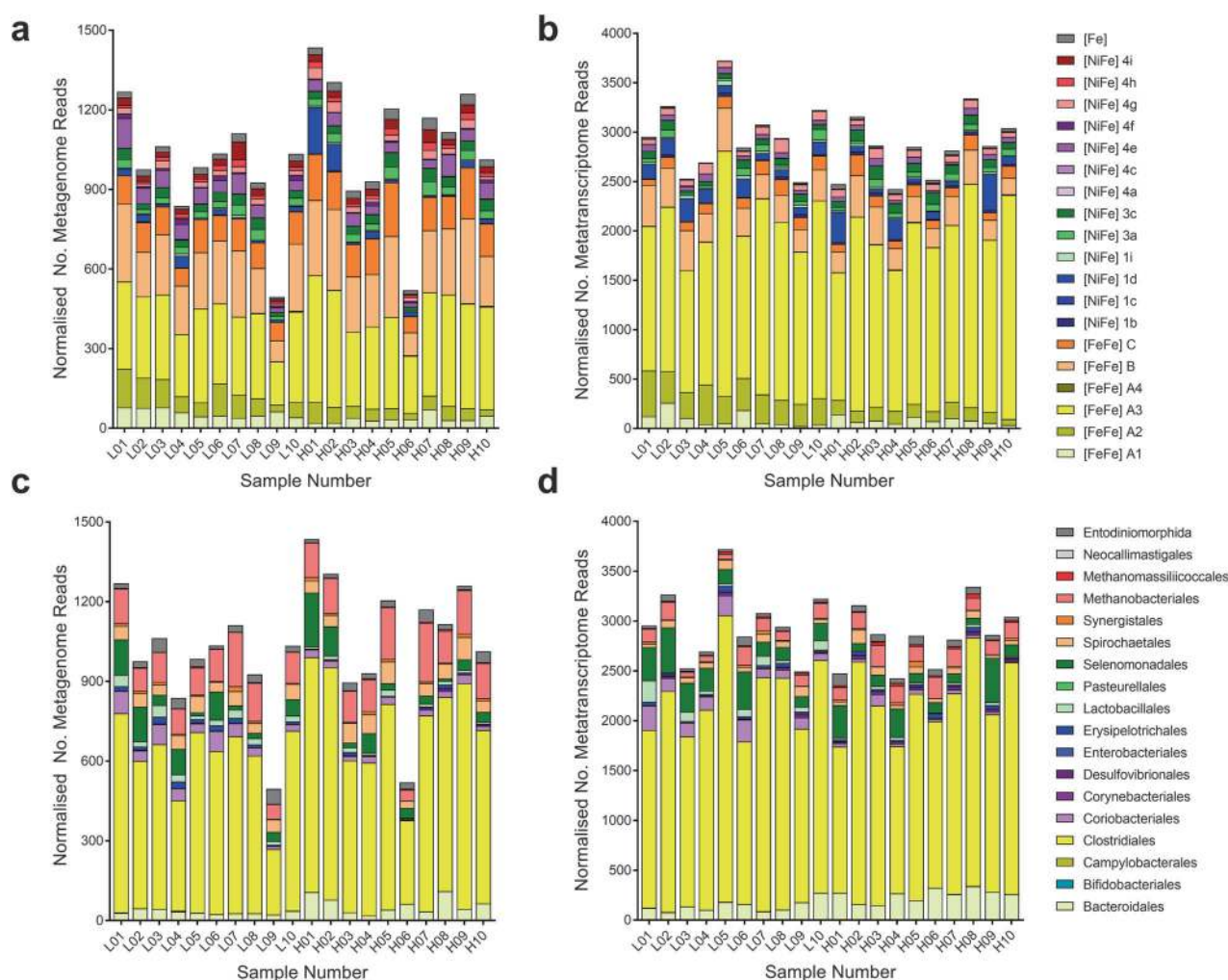
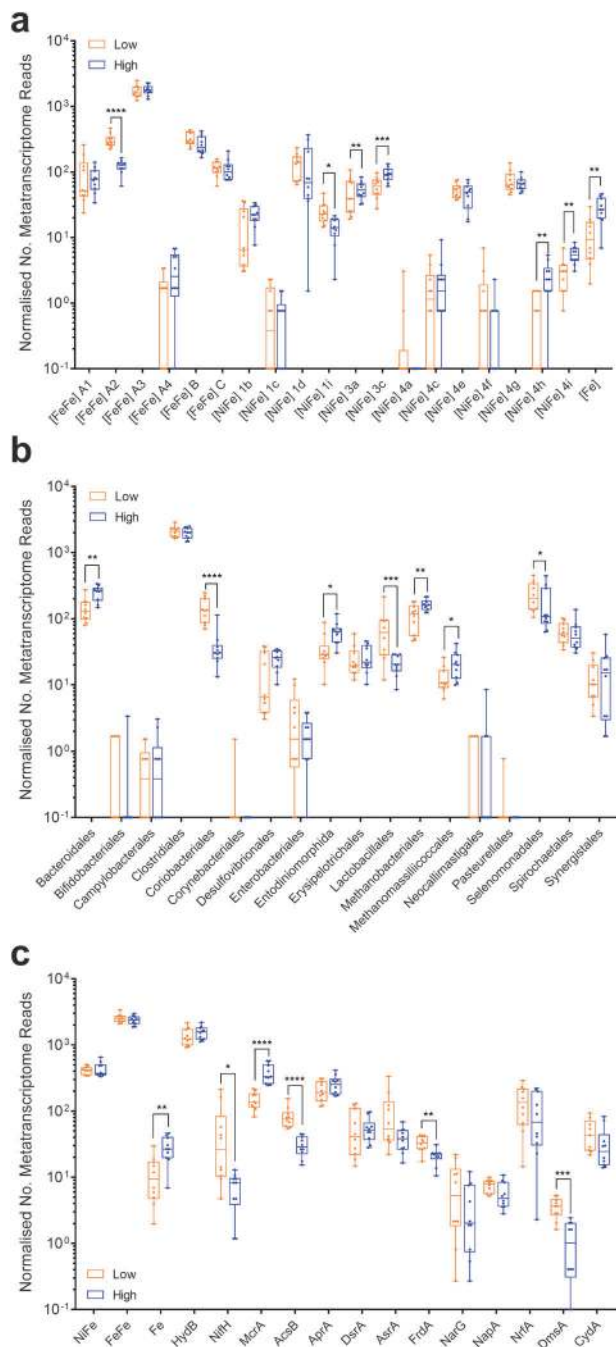


Fig. 2 Hydrogenase content in the metagenomes and metatranscriptomes of the microbial communities within rumen contents of high and low methane yield sheep. Hydrogenase content is shown based on hydrogenase subgroup **a**, **b** and predicted taxonomic affiliation **c**, **d** for metagenome data sets **a**, **c** and metatranscriptome data sets **b**, **d**. Hydrogenase-encoding sequences were retrieved from 20 paired shotgun metagenomes and metatranscriptomes randomly

subsampled at five million reads. Reads were classified into hydrogenase subgroups and taxonomically assigned at the order level based on their closest match to the hydrogenases within the genomes screened (Fig. 1). L01 to L10 are data sets for sheep that were low methane yield at time of sampling, H01 to H10 are data sets from sheep that were high methane yield at time of sampling (see Table S3 for full details)



uncharacterised cultured lineages within the Clostridia: Clostridiales R-7, Ruminococcaceae P7 and Lachnospiraceae YSB2008 (Figure S5 & S6). This is compatible with our previous studies showing unclassified microorganisms, especially from R-7 group, are abundant in rumen [21]. H₂-evolving hydrogenases from the A1 and B subgroups were also detected, but their RNA/DNA expression ratios were threefold lower than the A3 hydrogenases. Rumen ciliates such as *Epidinium* dominated A1 reads (Fig. 2d & S5), but it is likely that their abundance in the data sets is underestimated owing to the minimal genome coverage of

Fig. 3 Comparison of expression levels of H₂ production and H₂ uptake pathways in low and high methane yield sheep. Results are shown for 10 metatranscriptome data sets each from low methane yield sheep (orange) and high methane yield sheep (blue) that were randomly subsampled at five million reads. **a** Normalised count of hydrogenase transcript reads based on hydrogenase subgroup. **b** Normalised count of hydrogenase transcript reads based on predicted taxonomic affiliation. **c** Normalised count of transcript reads of key enzymes involved in H₂ production and H₂ consumption, namely the catalytic subunits of [NiFe]-hydrogenases (NiFe), [FeFe]-hydrogenases (FeFe), [Fe]-hydrogenases (Fe), hydrogenase-associated diaphorases (HydB), nitrogenases (NifH), methyl-CoM reductases (McrA), acetyl-CoA synthases (AcsB), adenylylsulfate reductases (AprA), dissimilatory sulphite reductases (DsrA), alternative sulfite reductases (AsrA), fumarate reductases (FrdA), dissimilatory nitrate reductases (NarG), periplasmic nitrate reductases (NapA), ammonia-forming nitrite reductases (NrfA), DMSO/TMAO reductases (DmsA) and cytochrome *bd* oxidases (CydA) are provided. For FrdA, NrfA and CydA, the numerous reads from non-hydrogenotrophic organisms (e.g., Bacteroidetes) were excluded. Each boxplot shows the 10 datapoints and their range, mean and quartiles. Significance was tested using independent two-group Wilcoxon rank-sum tests (* $p < 0.05$; ** $p < 0.01$; *** $p < 0.001$; **** $p < 0.0001$; full p values in Table S9, S10 and S11). Note the metagenome abundance and RNA/DNA ratio of these genes is shown in Figure S2 (hydrogenase subgroup), Figure S3 (hydrogenase taxonomic affiliation) and Figure S4 (H₂ uptake pathways). A full list of metagenome and metatranscriptome hits is provided for hydrogenases in Table S4 and H₂ uptake pathways in Table S5

these organisms to date. The expression of formate hydrogenlyases and other formate-dependent hydrogenases were extremely low in metatranscriptome data sets (Fig. 3c), indicating formate-dependent H₂ production is not a major pathway in situ.

The metatranscriptome data sets indicate that multiple H₂ uptake pathways operate in ruminants (Figs. 2 and 3). In agreement with historical paradigms [6], hydrogenotrophic methanogenesis appears to be the largest sink of H₂; methanogens accounted for 5.3% of normalised hydrogenase reads (Fig. 2d) and methyl-CoM reductase (*mcrA*) is the most expressed of the reductases surveyed (Fig. 3c). Consistent with their central roles in the CO₂-reducing pathway of methanogenesis [9], the F₄₂₀-reducing [NiFe]-hydrogenase (3a) [98] and the heterodisulfide reductase-associated [NiFe]-hydrogenase (3c) [99] of *Methanobrevibacter* species were among the most transcribed of all H₂ uptake enzymes (Fig. 3a and S5). In contrast, the Eha-type (4h), Ehb-type (4i) and [Fe]-hydrogenases were expressed at lower levels (Fig. 3a and S5), reflecting their secondary roles in the physiology of methanogens [100–102]. There was also strong evidence that hydrogenotrophic acetogenesis may be a more significant ruminal H₂ sink than previously recognised. Across the data set, acetyl-CoA synthases (*acsB*; 1135 normalised reads) were expressed at a quarter of the level of methyl-CoM reductases (*mcrA*; 5246 normalised reads) (Fig. 3c). For 74% of the reads, the closest matches were to predicted hydrogenotrophic acetogens isolated from rumen, including

Blautia, *Acetivomaculum* and *Oxobacter* (Figure S7 & Table S5). Consistently, genes encoding close homologues of the group A2 and group A3 [FeFe]-hydrogenases from these genera were moderately expressed in the metatranscriptomes (3.7%) (Figure S5). The other *acsB* reads likely originate from acetogens that use other electron donors, such as formate. No *acsB* hits from methanogens were detected.

Surprisingly, however, the most highly expressed H₂ uptake hydrogenase overall is the group 1d [NiFe]-hydrogenase of Selenomonadales (4.1%) (Figs. 3a, b and S5). This enzyme is likely to mediate the long-known capacity of *Selenomonas* species to grow by hydrogenotrophic fumarate reduction and nitrate ammonification [52, 53, 58]. Consistently, fumarate reductases (*frdA*), nitrate reductases (*narG*) and ammonia-forming nitrite reductases (*nrfA*) homologous to those in *S. ruminantium* were expressed in the metatranscriptomes (Fig. 3c). Normalised *nrfA* expression was fivefold higher than *narG*, indicating selenomonads may preferentially use external nitrite, although further studies are required to determine the source of nitrite, this compound is known to accumulate in the rumen depending on nitrate content of feed [103]. Reads corresponding to the group 1b [NiFe]-hydrogenase, periplasmic nitrate reductase (*napA*), *nrfA* and *frdA* from *Wolinella* was also detected, but at low levels (Table S4 & S5; Figure S5). Several other pathways in low abundance in the metagenome were also highly expressed, notably group 1b [NiFe]-hydrogenases and *dsrA* genes from *Desulfovibrio* species, as well as group 1i [NiFe]-hydrogenases from metabolically flexible Coriobacteriia (e.g., *Slackia*, *Denitrobacterium*) (Figure S4 & S5). The expression levels of the group 1b and 1d [NiFe]-hydrogenases, together with the functionally unresolved group 4g [NiFe]-hydrogenases, were the highest of all hydrogenases in data sets (RNA/DNA ratio > 10) (Figure S3). Though these findings need to be validated by activity-based studies in situ, they suggest that respiratory hydrogenotrophs are highly active and quantitatively significant H₂ sinks in the rumen despite often being detected in low abundance [5].

Culture-based studies demonstrate that hydrogenases mediating H₂ production and uptake are differentially regulated in response to hydrogen levels

In order to better understand how rumen bacteria regulate H₂ metabolism, we performed a culture-based study using *R. albus* 7 and *Wolinella succinogenes* DSM 1740. This system was chosen given it is the best-studied example of rumen microorganisms that participate in interspecies hydrogen transfer [25] and is relevant to H₂ transactions in the rumen, given *Ruminococcus* electron-bifurcating hydrogenases are the most abundant in the sheep

metatranscriptome data sets (Figure S5). We compared the growth, transcriptome and extracellular metabolite profiles of these strains in either pure culture or co-culture when grown on modified fumarate-supplemented Balch medium (Table S6). The concentrations of the metabolites consumed and produced by the strains varied between the conditions (Table S1; Figure S8) in a manner consistent with previous reports [24, 25, 29, 54] and the transcriptomic results (Fig. 4). Based on the ratios of the products observed, *R. albus* fermentatively degraded cellobiose to H₂, acetate and ethanol in pure culture (glucose + 3.3 ADP + 3.3 P_i → 2.6 H₂ + 1.3 acetate + 0.7 ethanol + 2 CO₂ + 3.3 ATP [29]) and H₂ and acetate in co-culture (glucose + 4 ADP + 4 P_i → 4 H₂ + 2 acetate + 2 CO₂ + 4 ATP [29]) (Fig. 4a–c). *W. succinogenes* grew by hydrogenotrophic fumarate respiration under both conditions by using exogenously supplied H₂ in pure culture and syntrophically-produced H₂ in co-culture (Fig. 4–f). Hence, *R. albus* channels fermentation through the pathway that yields stoichiometrically more ATP, H₂ and acetate, provided that H₂ concentrations are kept sufficiently low through interspecies hydrogen transfer for this to be thermodynamically favourable (see Zheng et al. [29] for stoichiometric and thermodynamic considerations).

Transcriptome profiling revealed that *R. albus* tightly regulates the expression of its three hydrogenases (Fig. 4a, b). Overall, 133 genes were differentially expressed (fold change > 2, *q* value < 0.05) in co-culture compared with pure culture (Table S7). Of these, the greatest fold change was the 111-fold downregulation of a putative eight-gene cluster encoding the ferredoxin-only hydrogenase (group A1 [FeFe]-hydrogenase), a bifunctional alcohol and aldehyde dehydrogenase, and regulatory elements including a putative sensory hydrogenase (group C [FeFe]-hydrogenase) (Fig. 4a, b). By suppressing expression of these enzymes, *R. albus* can divert carbon flux from ethanol production to the more energetically efficient pathway of acetate production; acetate fermentation produces equimolar levels of NADH and reduced ferredoxin, which can be simultaneously reoxidised by the electron-bifurcating hydrogenase (group A3 [FeFe]-hydrogenase) (Fig. 4c). Glycolysis enzymes and the phosphate acetyltransferase, acetate kinase and electron-bifurcating hydrogenase of the acetate production pathway were expressed at similarly high levels under both conditions (Fig. 4a, b). However, there was a significant increase in the biosynthesis of thiamine pyrophosphate, a cofactor for pyruvate dehydrogenase complex, in co-culture (Fig. 4a).

The fermentation stoichiometries of *R. albus* 7 measured in pure culture compared with co-culture (Table 1) were the same as we previously reported for the bacterium at high vs low concentrations of H₂ [29]. This suggests that the differences in regulation are primarily determined by H₂

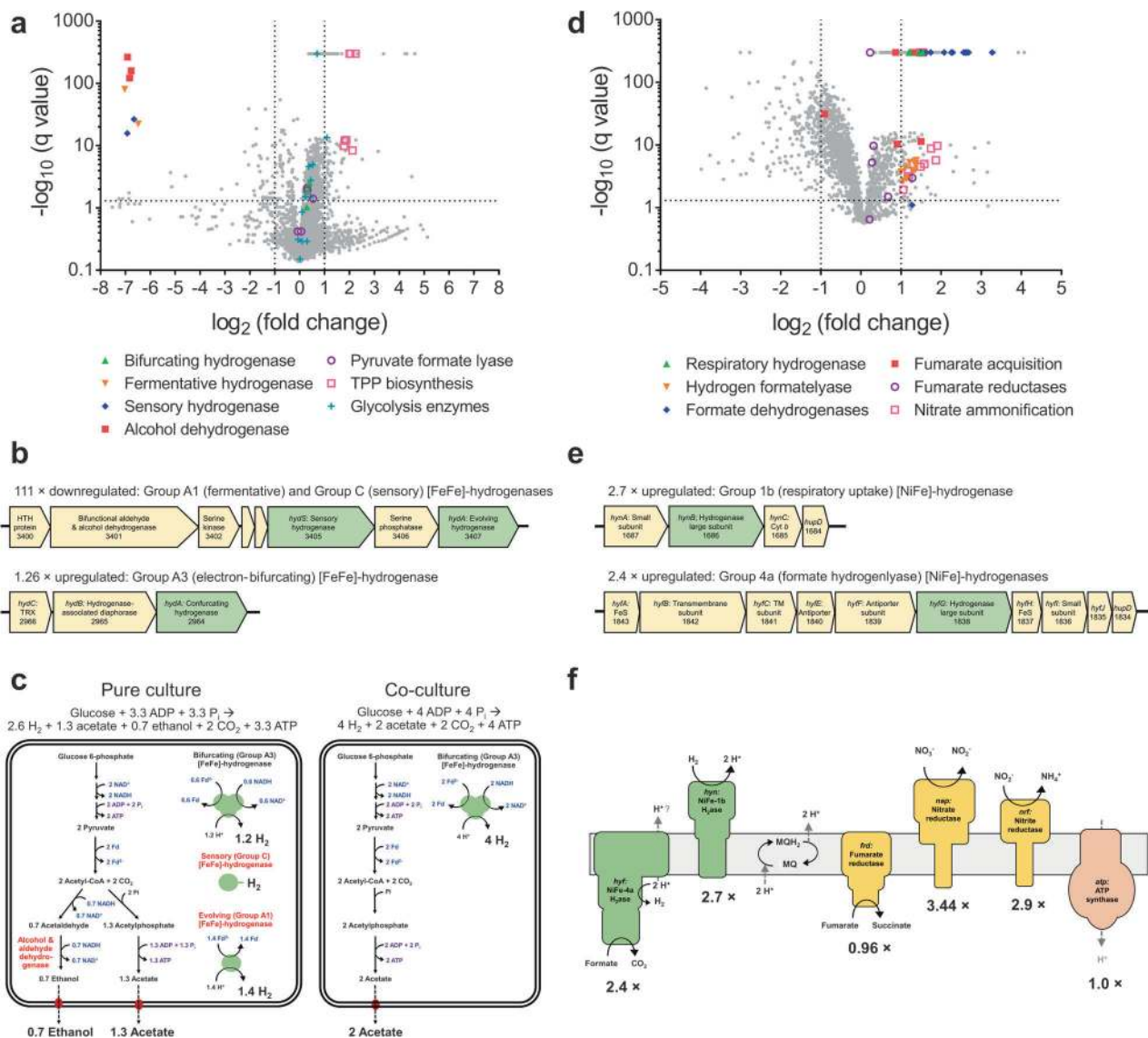


Fig. 4 Comparison of whole genome expression levels of *Ruminococcus albus* and *Wolinella succinogenes* in pure culture and co-culture. Pure cultures and co-cultures of *Ruminococcus albus* **a–c** and *Wolinella succinogenes* DSM 1740 **d–f** were harvested in duplicate during mid-exponential phase and subject to RNA sequencing. **a, d** Volcano plots of the ratio of normalised average transcript abundance for co-cultures over pure cultures. Each gene is represented by a grey dot and key metabolic genes, including hydrogenases, are highlighted as per the legend. The horizontal dotted lines indicate q values of 0.05 and the vertical dotted lines indicate twofold changes. **b, d** Predicted operon structure of the

three hydrogenases of *R. albus* and two hydrogenases of *W. succinogenes*. **e** Comparison of dominant fermentation pathways of *R. albus* in pure culture (left) and co-culture (right) based on transcriptome reads and metabolite profiling. Three enzymes with decreased expression in co-culture are in red font. **f** Respiratory chain composition of *W. succinogenes* in pure culture and co-culture based on transcriptome reads. Metabolite profiling indicated that the respiratory hydrogenase and fumarate reductases were active in both conditions. Proton translocation is thought to occur primarily through redox-loop mechanisms. A full list of read counts and expression ratios for each gene is provided in Table 1

levels, rather than by direct interactions with syntrophic partners. This regulation may be achieved through direct sensing of H₂ by the putative sensory group C [FeFe]-hydrogenase co-transcribed with the ferredoxin-only hydrogenase and alcohol dehydrogenase (Fig. 4e). In common with other enzymes of this class [66, 104, 105], this enzyme contains a subunit containing a H-cluster for H₂ binding and a PAS domain for signal transfer, as well as a

putative serine or threonine phosphatase subunit that may modify downstream regulators. Thus, analogous to the well-studied regulatory hydrogenases of aerobic bacteria [106, 107], this enzyme may directly sense H₂ levels and induce expression of the alcohol/aldehyde dehydrogenase and ferredoxin-only hydrogenase when H₂ concentrations are high through a feedback loop. H₂ sensing may be a general mechanism regulating hydrogenase expression in

Table 1 Comparison of growth parameters and metabolite profiles of *Ruminococcus albus* and *Wolinella succinogenes* in pure culture and co-culture

	<i>Ruminococcus albus</i>	<i>Wolinella succinogenes</i>	Co-culture
Growth parameters			
Growth yield (OD ₆₀₀)	0.79 ± 0.01	0.36 ± 0.01	0.93 ± 0.01
Specific growth rate (h ⁻¹)	0.58 ± 0.19	0.33 ± 0.06	0.57 ± 0.34 (Ra) 0.54 ± 0.11 (Ws)
Concentration changes of extracellular metabolites			
Hydrogen (%)	+5.3	-78.4	BDL
Fumarate (mM)	-5.5	-46.3	-43.1
Succinate (mM)	+2.2	+54.6	+55.4
Acetate (mM)	+21.8	0	+32.4
Ethanol (mM)	+8.7	0	+0.3
Formate (mM)	BDL	BDL	BDL
pH	-0.4	-0.4	-0.6

Growth of pure cultures and co-cultures of *Ruminococcus albus* 7 and *Wolinella succinogenes* DSM 1740 was monitored by qPCR. Values show means ± standard deviations of three biological replicates. Also shown is the change in extracellular pH, percentage hydrogen gas (measured by gas chromatography), and concentrations of fumarate, succinate, acetate, ethanol and formate (measured by ultra-fast liquid chromatography) between 0 and 12 h. Growth media was the same between the three conditions, except 80% H₂ was added for *W. succinogenes* growth, whereas no H₂ was added for the other conditions. Full liquid metabolite measurements are shown in Figure S8. BDL = below detection limit (1 mM for formate, 0.1% for H₂).

ruminants, given group C [FeFe]-hydrogenases are abundant in ruminant genome (Fig. 1), metagenome (Fig. 2a), and metatranscriptome data sets (Fig. 2b and 3a).

The transcriptome results also clarified understanding of hydrogenotrophic fumarate respiration by *W. succinogenes* (Fig. 4d). In both pure culture and co-culture, the group 1b [NiFe]-hydrogenase, fumarate reductase and F₁F₀-ATPase that mediate this process were expressed at high levels (Table S7; Fig. 4f). A periplasmic asparaginase, aspartate ammonia-lyase and dicarboxylate-binding proteins were also highly expressed; this suggests that the organism can efficiently produce and import additional fumarate from amino acid sources (Table S7). In total, 352 genes were significantly differentially regulated in co-culture (fold change > 2, *q* value < 0.05). The respiratory hydrogenase was among the upregulated genes (Fig. 4e), which may reflect the strain's faster growth rate in co-culture (Table 1). The periplasmic nitrate reductase and ammonia-forming nitrite reductase (Fig. 4f) were also induced, indicating some plasticity in electron acceptor usage, in line with the metatranscriptomic findings. Two formate dehydrogenases and a

formate hydrogenlyase (group 4a [NiFe]-hydrogenase) were highly expressed in co-culture (Fig. 4d, e), indicating the bacterium can potentially use formate transferred from *R. albus* as a supplemental electron donor to H₂ (Fig. 4a); consistently, *R. albus* is known to produce through formate pyruvate lyase activity and this enzyme was highly expressed in both pure culture and co-culture (Table S7), though any formate produced was below detection limits (1 mM) (Table 1).

Hydrogenotrophic acetogenesis, fumarate reduction and nitrate reduction pathways are significantly upregulated in low methane yield sheep

Finally, we tested whether the abundance and expression of hydrogenases and H₂ uptake pathways differed between high and low methane yield sheep. A current leading hypothesis, proposed on the basis of community composition [69], asserts that H₂ production levels account for differences in methane yield between sheep. To the contrary, the expression levels of the dominant H₂-evolving hydrogenases (e.g., group A3 [FeFe]-hydrogenases) and taxonomic orders (e.g., Clostridiales) were in fact extremely similar between the groups (Fig. 3a, b; Table S9 & S10).

We therefore tested an alternative hypothesis: H₂ utilisation through non-methanogenic pathways can reduce methane yield. In line with this hypothesis, the expression levels of the five methanogen hydrogenases and methyl-CoM reductase are significantly reduced in low methane yield sheep (Fig. 3a, c; Table S9 & S11), confirming a strong correlation with methane yield (Table S3). Concurrent increases in the gene expression for two major alternative H₂ sinks were detected, namely acetogenesis (*acsB*; *p* < 0.0001) and fumarate reduction (*frdA*; *p* = 0.002) (Fig. 3c; Table S10), concomitant with significant increases in the expression levels of *Blautia* and *Selenomonas* hydrogenases (Figure S5). Expression levels of *nrfA* were also on average 1.8-fold higher in low methane yield sheep, though there was much inter-sample variation in the read count for this gene. Whereas there are more transcripts of *mcrA* than other terminal reductases combined in high methane yield sheep, the transcript levels of *acsB* and *nrfA* together exceed those of *mcrA* in low methane yield sheep. Depending to what extent expression levels predict activity, hydrogenotrophic acetogens and selenomonads may therefore be more active than methanogens in low methane yield sheep and may significantly limit substrate supply for methanogenesis. Two other potential H₂ sinks are also upregulated in the low methane yield sheep: the putative group 1i [NiFe]-hydrogenase of *Coriobacterium* and, consistent with previous observations [65], the functionally unresolved group A2 [FeFe]-hydrogenase of *Sharpea*, *Olsenella* and *Oribacterium* (Fig. 3a, b, S5).

Discussion

To summarise, H₂ metabolism is a more widespread and complex process in ruminants than previously realised. Together, the genomic, metagenomic and metatranscriptomic surveys suggest that multiple orders of bacteria, archaea and eukaryotes encode and express enzymes mediating H₂ production and consumption in the rumen. We infer that fermentative Clostridia are the main source of H₂ in the rumen, which largely agrees with findings from activity-based and culture-based studies [6, 25, 26, 29], and that a range of methanogenic, acetogenic and respiratory hydrogenotrophs are present. Although this manuscript provides a relatively comprehensive understanding of H₂ transactions in the rumen, it is probable that other uncharacterised organisms and genes also contribute to this process. A more-detailed perspective of which taxa mediate H₂ cycling in the rumen would be possible by profiling the thousands of metagenome-assembled genomes recently recovered from ruminants [23, 108] and also better accounting for the role of the largely unsequenced rumen ciliates and fungi, which to date are underrepresented in genomic data sets. Further studies are also necessary to extend findings to other ruminants, such as bovines, and investigate how H₂ cycling responds to environmental factors such as diet.

One of the most-important findings of this work is that the recently characterised electron-bifurcating hydrogenases appear to primarily mediate ruminal H₂ production. These enzymes are highly upregulated compared with ferredoxin-only hydrogenases in situ and constitute over half of hydrogenase reads in these metatranscriptomes. We provide a rationale for this finding by showing that *R. albus*, a dominant H₂ producer within the rumen, expresses its electron-bifurcating hydrogenase and suppresses its ferredoxin-only hydrogenase when grown syntrophically with *Wolinella succinogenes*. In this condition, H₂ concentrations remain sufficiently low that the fermentation pathway producing higher levels of ATP, H₂ and acetate remains thermodynamically favourable. In the rumen, where tight coupling of hydrogenogenic and hydrogenotrophic processes usually keeps H₂ at sub-micromolar concentrations [46], Clostridia will also preferentially oxidise carbohydrates through higher ATP-yielding pathways and reoxidise the NAD and ferredoxin reduced using the electron-bifurcating hydrogenase [29]. It is likely that the ferredoxin-only hydrogenases are preferentially upregulated during the transient periods where H₂ levels are high, for example immediately after feeding [46]. Based on these findings and previously published results [29, 66, 104, 105], we propose that the hydrogenases and fermentation pathways are differentially regulated as a result of direct H₂ sensing by putative sensory [FeFe]-hydrogenases. A further

surprising finding is that uncharacterised lineages within the Clostridia account for a large proportion of the electron-bifurcating hydrogenase reads, emphasising the need for physiological and bacteriological characterisation of these organisms.

The other major finding of this work is that there are multiple highly active H₂ sinks in the rumen. We provide evidence, based on transcript levels of their hydrogenases and terminal reductases, that acetogens (*Blautia*, *Acetitomaculum*), fumarate and nitrate reducers (*Selenomonas*, *Wolinella*) and sulfate reducers (*Desulfovibrio*) are quantitatively significant H₂ sinks in sheep. In support of these findings, our culture-based study confirmed that the enzymes mediating hydrogenotrophic fumarate reduction and potentially nitrate ammonification are highly expressed by *W. succinogenes* in co-culture with *R. albus*. Although alternative H₂ uptake pathways have been previously detected in vitro [41, 42, 50–53, 57, 58], it has generally been assumed that they are quantitatively insignificant compared to hydrogenotrophic methanogenesis [5, 6, 46]. To the contrary, hydrogenase and terminal reductase transcripts from alternative H₂ uptake pathways are more numerous than those of methanogens in low methane yield sheep, and hence these pathways may collectively serve as a larger H₂ sink than methanogenesis under some circumstances. These findings justify activity-based studies to quantify H₂ flux within ruminants between methanogenic and non-methanogenic pathways. There is also evidence of other novel pathways operating in the rumen, mediated by the functionally unresolved group 1i [NiFe]-hydrogenases (*Slackia*, *Denitrobacterium*), group 4g [NiFe]-hydrogenase (*Clostridium*) and group A2 [FeFe]-hydrogenases (*Sharpea*, *Oribacterium*, *Olsenella*).

These findings also provide some insight into the basis of variation in methane emissions between ruminants. Methane yield in ruminants is a quantitative heritable trait [64, 77], to some extent, and there is much interest in developing host or microbiome markers to enable selection of animals with low methane yield traits [109]. Our study compared the abundance and expression of key functional genes in the rumen microbial communities of sheep that differed by an average of 28% in methane yield. In low methane yield sheep, there was significantly decreased expression of methyl-CoM reductase, increased expression of acetyl-CoA synthase and fumarate reductase and multiple changes in hydrogenase profiles. However, we detected few significant differences at the gene level. The similar metagenome profiles, combined with the metatranscriptome profiles of the phenotype-switching sheep, therefore suggest that alternative H₂ uptake pathways are partly inducible. Further studies with larger sample sizes are needed to assess whether transcripts of these functional genes can predict methane yield and, if so, whether they can be adopted

as biomarkers to facilitate animal selection or evaluate methane mitigation strategies. Our findings, in conjunction with other studies [109], indicate that the methyl-CoM reductase and hydrogenases of methanogens may be particularly promising and relevant biomarkers.

The strong correlation between H₂ uptake pathways and methane yield phenotypes nevertheless supports that modulating H₂ metabolism may be an effective methane mitigation strategy. One strategy is to develop inhibitors that redirect electron flux from H₂ production towards volatile fatty acid production. However, given the central role of H₂ metabolism in the physiology and ecology of most rumen microorganisms, this would be challenging to achieve without compromising rumen function and consequently ruminant nutrition. Furthermore, such strategies may have a converse effect on methane production, given lower H₂ concentrations restrict acetogens more than methanogens [46]. Instead, our metatranscriptome analyses support the concept that a more promising approach may be to stimulate alternative H₂ pathways such as fumarate, nitrate and sulfate respiration. One solution may be to supplement animal feeds with electron acceptors, such as fumarate, nitrate, or sulfate, that stimulate the dominant respiratory hydrogenotrophs. Such approaches have shown some promise in mitigating methane production both in vitro [110–112] and in field trials [62, 63, 113, 114]. These strategies may complement methanogenesis inhibitors [16, 17] by facilitating the redirection of H₂ flux from methanogens to other pathways. Although further studies are required, there is also growing evidence that redirecting H₂ flux can favour animal production by enabling recovery of energy that would otherwise be lost through methane emissions [115].

Acknowledgements This study was funded by the New Zealand Government to support the objectives of the Livestock Research Group of the Global Research Alliance on Agricultural Greenhouse Gases via a grant from the New Zealand Fund for Global Partnerships in Livestock Emissions Research (SOW14-GPLER4-AGR-SP6; awarded to G.T.A., S.C.L., W.J.K., R.M., S.K. and G.M.C.). Transcriptomic and metabolic research on the co-cultures was supported by the Agriculture and Food Research Initiative competitive grant 2012-67015-19451 from the USDA National Institute of Food and Agriculture (awarded to R.I.M. and I.C.). The study was also supported by an ARC DECRA Fellowship (DE170100310; awarded to C.G.), an ARC Future Fellowship (FT170100441; awarded to M.J.M.) and a PhD scholarship awarded by Monash University (L.C.W.).

Author contributions G.M.C., R.I.M., G.T.A., I.C., S.C.L., W.J.K., S.K. and C.G. conceived this study. C.G., R.I.M., G.M.C., I.C., S.E.M., M.J.M., X.C.M. and G.T.A. designed research, supervised students and analysed data. C.G., L.C.W., M.J.M. and S.C.L. performed the comparative genomic analysis. C.G., C.W., S.E.M., G.M.C., R.R.G., G.T.A., W.J.K., S.C.L. and X.C.M. performed the metagenomic and metatranscriptomic analysis. R.G. performed the co-culture experiments and R.G., R.I.M., I.C. and C.G. analysed the results. C.G. wrote and illustrated the paper with input from all authors.

Compliance with ethical standards

Conflict of interest The authors declare that they have no conflict of interest.

Publisher's note: Springer Nature remains neutral with regard to jurisdictional claims in published maps and institutional affiliations.

Open Access This article is licensed under a Creative Commons Attribution 4.0 International License, which permits use, sharing, adaptation, distribution and reproduction in any medium or format, as long as you give appropriate credit to the original author(s) and the source, provide a link to the Creative Commons license, and indicate if changes were made. The images or other third party material in this article are included in the article's Creative Commons license, unless indicated otherwise in a credit line to the material. If material is not included in the article's Creative Commons license and your intended use is not permitted by statutory regulation or exceeds the permitted use, you will need to obtain permission directly from the copyright holder. To view a copy of this license, visit <http://creativecommons.org/licenses/by/4.0/>.

References

1. Kirschke S, Bousquet P, Ciais P, Saunois M, Canadell JG, Dlugokencky EJ, et al. Three decades of global methane sources and sinks. *Nat Geosci.* 2013;6:813–23.
2. Beijer WH. Methane fermentation in the rumen of cattle. *Nature.* 1952;170:576.
3. Whitford MF, Teather RM, Forster RJ. Phylogenetic analysis of methanogens from the bovine rumen. *BMC Microbiol.* 2001;1:5.
4. Wright A-DG, Williams AJ, Winder B, Christophersen CT, Rodgers SL, Smith KD. Molecular diversity of rumen methanogens from sheep in Western Australia. *Appl Environ Microbiol.* 2004;70:1263–70.
5. Henderson G, Cox F, Ganesh S, Jonker A, Young W, Abecia L, et al. Rumen microbial community composition varies with diet and host, but a core microbiome is found across a wide geographical range. *Sci Rep.* 2015;5:14567.
6. Hungate RE. Hydrogen as an intermediate in the rumen fermentation. *Arch Microbiol.* 1967;59:158–64.
7. Hungate RE, Smith W, Bauchop T, Yu I, Rabinowitz JC. Formate as an intermediate in the bovine rumen fermentation. *J Bacteriol.* 1970;102:389–97.
8. Thauer RK. The Wolfe cycle comes full circle. *Proc Natl Acad Sci USA.* 2012;109:15084–5.
9. Leahy SC, Kelly WJ, Altermann E, Ronimus RS, Yeoman CJ, Pacheco DM, et al. The genome sequence of the rumen methanogen *Methanobrevibacter ruminantium* reveals new possibilities for controlling ruminant methane emissions. *PLoS ONE.* 2010;5:e8926.
10. Kelly WJ, Leahy SC, Li D, Perry R, Lambie SC, Attwood GT, et al. The complete genome sequence of the rumen methanogen *Methanobacterium formicicum* BRM9. *Stand Genomic Sci.* 2014;9:15.
11. Lambie SC, Kelly WJ, Leahy SC, Li D, Reilly K, McAllister TA, et al. The complete genome sequence of the rumen methanogen *Methanosarcina barkeri* CM1. *Stand Genomic Sci.* 2015;10:57.
12. Li Y, Leahy SC, Jeyanathan J, Henderson G, Cox F, Altermann E, et al. The complete genome sequence of the methanogenic archaeon ISO4-H5 provides insights into the methylotrophic lifestyle of a ruminal representative of the Methanomassiliicoccales. *Stand Genomic Sci.* 2016;11:59.

13. Martin C, Morgavi DP, Doreau M. Methane mitigation in ruminants: from microbe to the farm scale. *Animal*. 2010;4:351–65.
14. Buddle BM, Denis M, Attwood GT, Altermann E, Janssen PH, Ronimus RS, et al. Strategies to reduce methane emissions from farmed ruminants grazing on pasture. *Vet J*. 2011;188:11–17.
15. Wedlock DN, Janssen PH, Leahy SC, Shu D, Buddle BM. Progress in the development of vaccines against rumen methanogens. *Animal*. 2013;7:244–52.
16. Hristov AN, Oh J, Giallongo F, Frederick TW, Harper MT, Weeks HL, et al. An inhibitor persistently decreased enteric methane emission from dairy cows with no negative effect on milk production. *Proc Natl Acad Sci*. 2015;112:10663–8.
17. Henderson G, Cook GM, Ronimus RS. Enzyme- and gene-based approaches for developing methanogen-specific compounds to control ruminant methane emissions: a review. *Anim Prod Sci*. 2018;58:1017–26.
18. Weimar MR, Cheung J, Dey D, McSweeney C, Morrison M, Kobayashi Y, et al. Development of multi-well plate methods using pure cultures of methanogens to identify new inhibitors for suppressing ruminant methane emissions. *Appl Environ Microbiol*. 2017;83:e00396–17.
19. Morgavi DP, Forano E, Martin C, Newbold CJ. Microbial ecosystem and methanogenesis in ruminants. *Animal*. 2010;4:1024–36.
20. Malik PK, Bhatta R, Gagen EJ, Sejian V, Soren NM, Prasad CS. Alternate H₂ Sinks for Reducing Rumen Methanogenesis. In: *Climate change impact on livestock: adaptation and mitigation 2015*. Springer, 303–20.
21. Seshadri R, Leahy SC, Attwood GT, Teh KH, Lambie SC, Cookson AL, et al. Cultivation and sequencing of rumen microbiome members from the Hungate1000 Collection. *Nat Biotechnol*. 2018;36:359.
22. Solden LM, Naas AE, Roux S, Daly RA, Collins WB, Nicora CD, et al. Interspecies cross-feeding orchestrates carbon degradation in the rumen ecosystem. *Nat Microbiol*. 2018;3:1274.
23. Stewart RD, Auffret MD, Warr A, Wisner AH, Press MO, Langford KW, et al. Assembly of 913 microbial genomes from metagenomic sequencing of the cow rumen. *Nat Commun*. 2018;9:870.
24. Miller TL, Wolin MJ. Formation of hydrogen and formate by *Ruminococcus albus*. *J Bacteriol*. 1973;116:836–46.
25. Iannotti EL, Kafkewitz D, Wolin MJ, Bryant MP. Glucose fermentation products of *Ruminococcus albus* grown in continuous culture with *Vibrio succinogenes*: changes caused by interspecies transfer of H₂. *J Bacteriol*. 1973;114:1231–40.
26. Varel VH. Reisolation and characterization of *Clostridium longisporum*, a ruminal sporeforming cellulolytic anaerobe. *Arch Microbiol*. 1989;152:209–14.
27. Scheifinger CC, Linehan B, Wolin MJ. H₂ production by *Selenomonas ruminantium* in the absence and presence of methanogenic bacteria. *Appl Microbiol*. 1975;29:480–3.
28. Hino T, Miyazaki K, Kuroda S. Role of extracellular acetate in the fermentation of glucose by a ruminal bacterium, *Megasphaera elsdenii*. *J Gen Appl Microbiol*. 1991;37:121–9.
29. Zheng Y, Kahnt J, Kwon IH, Mackie RI, Thauer RK. Hydrogen formation and its regulation in *Ruminococcus albus*: involvement of an electron-bifurcating [FeFe]-hydrogenase, of a non-electron-bifurcating [FeFe]-hydrogenase, and of a putative hydrogen-sensing [FeFe]-hydrogenase. *J Bacteriol*. 2014;196:3840–52.
30. Gutiérrez J, Davis RE. Culture and metabolism of the rumen ciliate *Epidinium ecaudatum* Crawley. *Appl Microbiol*. 1962;10:305–8.
31. Bauchop T, Mountfort DO. Cellulose fermentation by a rumen anaerobic fungus in both the absence and the presence of rumen methanogens. *Appl Environ Microbiol*. 1981;42:1103–10.
32. Li Pun HH, Satter LD. Nitrogen fixation in ruminants. *J Anim Sci*. 1975;41:1161–3.
33. Granhall U, Cizuk P. Nitrogen fixation in rumen contents indicated by the acetylene reduction test. *Microbiology*. 1971;65:91–93.
34. Latham MJ, Wolin MJ. Fermentation of cellulose by *Ruminococcus flavefaciens* in the presence and absence of *Methanobacterium ruminantium*. *Appl Environ Microbiol*. 1977;34:297–301.
35. Vogels GD, Hoppe WF, Stumm CK. Association of methanogenic bacteria with rumen ciliates. *Appl Environ Microbiol*. 1980;40:608–12.
36. Finlay BJ, Esteban G, Clarke KJ, Williams AG, Embley TM, Hirt RP. Some rumen ciliates have endosymbiotic methanogens. *FEMS Microbiol Lett*. 1994;117:157–61.
37. Ng F, Kittelmann S, Patchett ML, Attwood GT, Janssen PH, Rakonjac J, et al. An adhesin from hydrogen-utilizing rumen methanogen *Methanobrevibacter ruminantium* M 1 binds a broad range of hydrogen-producing microorganisms. *Environ Microbiol*. 2016;18:3010–21.
38. Stams AJM, Plugge CM. Electron transfer in syntrophic communities of anaerobic bacteria and archaea. *Nat Rev Microbiol*. 2009;7:568.
39. Schuchmann K, Muller V. Autotrophy at the thermodynamic limit of life: a model for energy conservation in acetogenic bacteria. *Nat Rev Microbiol*. 2014;12:809–21.
40. Genthner BR, Davis CL, Bryant MP. Features of rumen and sewage sludge strains of *Eubacterium limosum*, a methanol- and H₂-CO₂-utilizing species. *Appl Environ Microbiol*. 1981;42:12–19.
41. Rieu-Lesme F, Morvan B, Collins MD, Fonty G, Willems A. A new H₂/CO₂-using acetogenic bacterium from the rumen: description of *Ruminococcus schinkii* sp. nov. *FEMS Microbiol Lett*. 1996;140:281–6.
42. Greening RC, Leedle JAZ. Enrichment and isolation of *Acetivomaculum ruminis*, gen. nov., sp. nov.: acetogenic bacteria from the bovine rumen. *Arch Microbiol*. 1989;151:399–406.
43. Morvan B, Dore J, Rieu-Lesme F, Foucat L, Fonty G, Gouet P. Establishment of hydrogen-utilizing bacteria in the rumen of the newborn lamb. *FEMS Microbiol Lett*. 1994;117:249–56.
44. Morvan B, Bonnemoy F, Fonty G, Gouet P. Quantitative determination of H₂-utilizing acetogenic and sulfate-reducing bacteria and methanogenic archaea from digestive tract of different mammals. *Curr Microbiol*. 1996;32:129–33.
45. Henderson G, Naylor GE, Leahy SC, Janssen PH. Presence of novel, potentially homoacetogenic bacteria in the rumen as determined by analysis of formyltetrahydrofolate synthetase sequences from ruminants. *Appl Environ Microbiol*. 2010;76:2058–66.
46. Janssen PH. Influence of hydrogen on rumen methane formation and fermentation balances through microbial growth kinetics and fermentation thermodynamics. *Anim Feed Sci Technol*. 2010;160:1–22.
47. Cord-Ruwisch R, Seitz H-J, Conrad R. The capacity of hydrogenotrophic anaerobic bacteria to compete for traces of hydrogen depends on the redox potential of the terminal electron acceptor. *Arch Microbiol*. 1988;149:350–7.
48. Joblin KN. Ruminal acetogens and their potential to lower ruminant methane emissions. *Aust J Agric Res*. 1999;50:1307–14.
49. Attwood G, McSweeney C. Methanogen genomics to discover targets for methane mitigation technologies and options for alternative H₂ utilisation in the rumen. *Aust J Exp Agric*. 2008;48:28–37.
50. Huisingh J, McNeill JJ, Matrone G. Sulfate reduction by a *Desulfovibrio* species isolated from sheep rumen. *Appl Microbiol*. 1974;28:489–97.
51. Howard BH, Hungate RE. *Desulfovibrio* of the sheep rumen. *Appl Environ Microbiol*. 1976;32:598–602.
52. Henderson C. The influence of extracellular hydrogen on the metabolism of *Bacteroides ruminicola*, *Anaerovibrio lipolytica* and *Selenomonas ruminantium*. *Microbiology*. 1980;119:485–91.

53. Martin SA, Park C-M. Effect of extracellular hydrogen on organic acid utilization by the ruminal bacterium *Selenomonas ruminantium*. *Curr Microbiol.* 1996;32:327–31.
54. Wolin MJ, Wolin EA, Jacobs NJ. Cytochrome-producing anaerobic vibrio, *Vibrio succinogenes*, sp. n. *J Bacteriol.* 1961;81:911.
55. Tanner ACR, Badger S, Lai C-H. Listgarten MAXA, Visconti RA, Socransky SS. *Wolinella* gen. nov., *Wolinella succinogenes* (*Vibrio succinogenes* Wolin et al.) comb. nov., and description of *Bacteroides gracilis* sp. nov., *Wolinella recta* sp. nov., <i>Campylobacter concisus sp. nov. *Int J Syst Evol Microbiol.* 1981;31:432–45.
56. Unden G, Hackenberg H, Kröger A. Isolation and functional aspects of the fumarate reductase involved in the phosphorylative electron transport of *Vibrio succinogenes*. *Biochim Biophys Acta.* 1980;591:275–88.
57. Jones GA. Dissimilatory metabolism of nitrate by the rumen microbiota. *Can J Microbiol.* 1972;18:1783–7.
58. Iwamoto M, Asanuma N, Hino T. Ability of *Selenomonas ruminantium*, *Veillonella parvula*, and *Wolinella succinogenes* to reduce nitrate and nitrite with special reference to the suppression of ruminal methanogenesis. *Anaerobe.* 2002;8:209–15.
59. Bokranz M, Katz J, Schröder I, Robertson AM, Kröger A. Energy metabolism and biosynthesis of *Vibrio succinogenes* growing with nitrate or nitrite as terminal electron acceptor. *Arch Microbiol.* 1983;135:36–41.
60. Anderson RC, Rasmussen MA, Jensen NS, Allison MJ. *Denitrobacterium detoxificans* gen. nov., sp. nov., a ruminal bacterium that respire on nitrocompounds. *Int J Syst Evol Microbiol.* 2000;50:633–8.
61. Schwartz E, Fritsch J, Friedrich B. H₂-metabolizing prokaryotes. Berlin, Heidelberg: Springer; 2013.
62. Van Zijderveld SM, Gerrits WJJ, Apajalahti JA, Newbold JR, Dijkstra J, Leng RA, et al. Nitrate and sulfate: effective alternative hydrogen sinks for mitigation of ruminal methane production in sheep. *J Dairy Sci.* 2010;93:5856–66.
63. Bayaru E, Kanda S, Kamada T, Itabashi H, Andoh S, Nishida T, et al. Effect of fumaric acid on methane production, rumen fermentation and digestibility of cattle fed roughage alone. *Nihon Chikusan Gakkaiho.* 2001;72:139–46.
64. Shi W, Moon CD, Leahy SC, Kang D, Froula J, Kittelmann S, et al. Methane yield phenotypes linked to differential gene expression in the sheep rumen microbiome. *Genome Res.* 2014;24:1517–25.
65. Kamke J, Kittelmann S, Soni P, Li Y, Tavendale M, Ganesh S, et al. Rumen metagenome and metatranscriptome analyses of low methane yield sheep reveals a *Sharpea*-enriched microbiome characterised by lactic acid formation and utilisation. *Microbiome.* 2016;4:56.
66. Greening C, Biswas A, Carere CR, Jackson CJ, Taylor MC, Stott MB, et al. Genomic and metagenomic surveys of hydrogenase distribution indicate H₂ is a widely utilised energy source for microbial growth and survival. *ISME J.* 2016;10:761–77.
67. Søndergaard D, Pedersen CNS, Greening C. HydDB: a web tool for hydrogenase classification and analysis. *Sci Rep.* 2016;6:34212.
68. Bryant MP, Small N, Bouma C, Robinson IM. Characteristics of ruminal anaerobic cellulolytic cocci and *Cillobacterium cellulosolvens* n. sp. *J Bacteriol.* 1958;76:529.
69. Kittelmann S, Pinares-Patiño CS, Seedorf H, Kirk MR, Ganesh S, McEwan JC, et al. Two different bacterial community types are linked with the low-methane emission trait in sheep. *PLoS ONE.* 2014;9:e103171.
70. Evans PN, Parks DH, Chadwick GL, Robbins SJ, Orphan VJ, Golding SD, et al. Methane metabolism in the archaeal phylum *Bathyarchaeota* revealed by genome-centric metagenomics. *Science.* 2015;350:434–8.
71. Adam PS, Borrel G, Gribaldo S. Evolutionary history of carbon monoxide dehydrogenase/acetyl-CoA synthase, one of the oldest enzymatic complexes. *Proc Natl Acad Sci.* 2018;115:201716667.
72. Anantharaman K, Hausmann B, Jungbluth SP, Kantor RS, Lavy A, Warren LA, et al. Expanded diversity of microbial groups that shape the dissimilatory sulfur cycle. *ISME J.* 2018;1:1715–28.
73. Lemos RS, Fernandes AS, Pereira MM, Gomes CM, Teixeira M. Quinol: fumarate oxidoreductases and succinate: quinone oxidoreductases: phylogenetic relationships, metal centres and membrane attachment. *Biochim Biophys Acta.* 2002;1553:158–70.
74. Boyd E, Peters JW. New insights into the evolutionary history of biological nitrogen fixation. *Front Microbiol.* 2013;4:201.
75. Cock PJA, Antao T, Chang JT, Chapman BA, Cox CJ, Dalke A, et al. Biopython: freely available Python tools for computational molecular biology and bioinformatics. *Bioinformatics.* 2009;25:1422–3.
76. Altschul SF, Gish W, Miller W, Myers EW, Lipman DJ. Basic local alignment search tool. *J Mol Biol.* 1990;215:403–10.
77. Pinares-Patiño CS, Hickey SM, Young EA, Dodds KG, MacLean S, Molano G, et al. Heritability estimates of methane emissions from sheep. *Animal.* 2013;7:316–21.
78. Buchfink B, Xie C, Huson DH. Fast and sensitive protein alignment using DIAMOND. *Nat Methods.* 2014;12:59.
79. Balch WE, Fox GE, Magrum LJ, Woese CR, Wolfe RS. Methanogens: reevaluation of a unique biological group. *Microbiol Rev.* 1979;43:260.
80. Suen G, Stevenson DM, Bruce DC, Chertkov O, Copeland A, Cheng J-F, et al. Complete genome of the cellulolytic ruminal bacterium *Ruminococcus albus* 7. *J Bacteriol.* 2011;193:5574–5.
81. Baar C, Eppinger M, Raddatz G, Simon J, Lanz C, Klimmek O, et al. Complete genome sequence and analysis of *Wolinella succinogenes*. *Proc Natl Acad Sci.* 2003;100:11690–5.
82. Baggerly KA, Deng L, Morris JS, Aldaz CM. Differential expression in SAGE: accounting for normal between-library variation. *Bioinformatics.* 2003;19:1477–83.
83. Storey JD, Tibshirani R. Statistical significance for genomewide studies. *Proc Natl Acad Sci.* 2003;100:9440–5.
84. Aziz RK, Bartels D, Best AA, DeJongh M, Disz T, Edwards RA, et al. The RAST Server: rapid annotations using subsystems technology. *BMC Genomics.* 2008;9:75.
85. Carere CR, Hards K, Houghton KM, Power JF, McDonald B, Collet C, et al. Mixotrophy drives niche expansion of verrucosus microbial methanotrophs. *ISME J.* 2017;11:2599–10.
86. Ji M, Greening C, Vanwonderghem I, Carere CR, Bay SK, Steen JA, et al. Atmospheric trace gases support primary production in Antarctic desert surface soil. *Nature.* 2017;552:400–3.
87. Dong X, Greening C, Bröls T, Conrad R, Guo K, Blaskowski S, et al. Fermentative Spirochaetes mediate necromass recycling in anoxic hydrocarbon-contaminated habitats. *ISME J.* 2018;12:2039–50.
88. Dyksma S, Pjevac P, Ovanesov K, Mussmann M. Evidence for H₂ consumption by uncultured Desulfobacterales in coastal sediments. *Environ Microbiol.* 2018;20:450–61.
89. Kessler AJ, Chen Y-J, Waite DW, Hutchinson T, Koh S, Popa ME et al. Bacterial fermentation and respiration processes are uncoupled in permeable sediments. *Nat Microbiol.* 2019;4:1014–23.
90. Peters JW, Lanzilotta WN, Lemon BJ, Seefeldt LC. X-ray crystal structure of the Fe-only hydrogenase (Cpl) from *Clostridium pasteurianum* to 1.8 Angstrom resolution. *Science.* 1998;282:1853–8.
91. Betian HG, Linehan BA, Bryant MP, Holdeman LV. Isolation of a cellulolytic *Bacteroides* sp. from human feces. *Appl Environ Microbiol.* 1977;33:1009–10.
92. Biswas R, Zheng T, Olson DG, Lynd LR, Guss AM. Elimination of hydrogenase active site assembly blocks H₂ production and increases ethanol yield in *Clostridium thermocellum*. *Biotechnol Biofuels.* 2015;8:20.

93. Schut GJ, Adams MWW. The iron-hydrogenase of *Thermotoga maritima* utilizes ferredoxin and NADH synergistically: a new perspective on anaerobic hydrogen production. *J Bacteriol.* 2009;191:4451–7.
94. Schuchmann K, Müller V. A bacterial electron-bifurcating hydrogenase. *J Biol Chem.* 2012;287:31165–71.
95. Vignais PM, Billoud B. Occurrence, classification, and biological function of hydrogenases: an overview. *Chem Rev.* 2007;107:4206–72.
96. Jones K, Thomas JG. Nitrogen fixation by the rumen contents of sheep. *Microbiology.* 1974;85:97–101.
97. Chen S, Niu L, Zhang Y. *Saccharofermentans acetigenes* gen. nov., sp. nov., an anaerobic bacterium isolated from sludge treating brewery wastewater. *Int J Syst Evol Microbiol.* 2010;60:2735–8.
98. Allegretti M, Mills DJ, McMullan G, Kühlbrandt W, Vonck J. Atomic model of the F₄₂₀-reducing [NiFe] hydrogenase by electron cryo-microscopy using a direct electron detector. *Elife.* 2014;3:e01963.
99. Wagner T, Koch J, Ermler U, Shima S. Methanogenic hetero-disulfide reductase (HdrABC-MvhAGD) uses two noncubane [4Fe-4S] clusters for reduction. *Science.* 2017;357:699–703.
100. Lie TJ, Costa KC, Lupa B, Korpole S, Whitman WB, Leigh JA. Essential anaplerotic role for the energy-converting hydrogenase Eha in hydrogenotrophic methanogenesis. *Proc Natl Acad Sci USA.* 2012;109:15473–8.
101. Major TA, Liu Y, Whitman WB. Characterization of energy-conserving hydrogenase B in *Methanococcus maripaludis*. *J Bacteriol.* 2010;192:4022–30.
102. Shima S, Pilak O, Vogt S, Schick M, Stagni MS, Meyer-Klaucke W, et al. The crystal structure of [Fe]-Hydrogenase reveals the geometry of the active site. *Science.* 2008;321:572–5.
103. Marais JP, Therion JJ, Mackie RI, Kistner A, Dennison C. Effect of nitrate and its reduction products on the growth and activity of the rumen microbial population. *Br J Nutr.* 1988;59:301–13.
104. Poudel S, Tokmina-Lukaszewska M, Colman DR, Refai M, Schut GJ, King PW et al. Unification of [FeFe]-hydrogenases into three structural and functional groups. *Biochim Biophys Acta.* 2016;1860:1910–21.
105. Chongdar N, Birrell JA, Pawlak K, Sommer C, Reijerse EJ, Rüdiger O, et al. Unique spectroscopic properties of the H-Cluster in a putative sensory [FeFe] hydrogenase. *J Am Chem Soc.* 2018;140:1057–68.
106. Greening C, Cook GM. Integration of hydrogenase expression and hydrogen sensing in bacterial cell physiology. *Curr Opin Microbiol.* 2014;18:30–8.
107. Lenz O, Friedrich B. A novel multicomponent regulatory system mediates H₂ sensing in *Alcaligenes eutrophus*. *Proc Natl Acad Sci USA.* 1998;95:12474–9.
108. Stewart RD, Auffret MD, Warr A, Walker AW, Roehle R, Watson M. The genomic and proteomic landscape of the rumen microbiome revealed by comprehensive genome-resolved metagenomics. *bioRxiv* 2018; 489443.
109. Auffret MD, Stewart R, Dewhurst RJ, Duthie C-A, Rooke JA, Wallace RJ, et al. Identification, comparison, and validation of robust rumen microbial biomarkers for methane emissions using diverse *Bos taurus* breeds and basal diets. *Front Microbiol.* 2018;8:2642.
110. Asanuma N, Iwamoto M, Hino T. Effect of the addition of fumarate on methane production by ruminal microorganisms in vitro. *J Dairy Sci.* 1999;82:780–7.
111. Patra AK, Yu Z. Combinations of nitrate, saponin, and sulfate additively reduce methane production by rumen cultures in vitro while not adversely affecting feed digestion, fermentation or microbial communities. *Bioresour Technol.* 2014;155:129–35.
112. Božić AK, Anderson RC, Carstens GE, Ricke SC, Callaway TR, Yokoyama MT, et al. Effects of the methane-inhibitors nitrate, nitroethane, lauric acid, Lauricidin® and the Hawaiian marine algae *Chaetoceros* on ruminal fermentation in vitro. *Bioresour Technol.* 2009;100:4017–25.
113. Van Zijderveld SM, Gerrits WJJ, Dijkstra J, Newbold JR, Hulshof RBA, Perdok HB. Persistency of methane mitigation by dietary nitrate supplementation in dairy cows. *J Dairy Sci.* 2011;94:4028–38.
114. Hulshof RBA, Berndt A, Gerrits WJJ, Dijkstra J, Van Zijderveld SM, Newbold JR, et al. Dietary nitrate supplementation reduces methane emission in beef cattle fed sugarcane-based diets. *J Anim Sci.* 2012;90:2317–23.
115. Ungerfeld, EM. Inhibition of rumen methanogenesis and ruminant productivity: a meta-analysis. *Front Vet Sci.* 2018;5:113.