

NBER WORKING PAPER SERIES

DOES INFLATION "GREASE THE
WHEELS OF THE LABOR MARKET"?

David Card
Dean Hyslop

Working Paper 5538

NATIONAL BUREAU OF ECONOMIC RESEARCH
1050 Massachusetts Avenue
Cambridge, MA 02138
April 1996

Prepared for the NBER Conference on Monetary Policy and Low Inflation, January 1996. We are grateful to Christina Romer, David Romer, and John Shea for comments and suggestions, and to John DiNardo for many helpful discussions on the material and methodology in this paper. We also thank David Lee for extraordinary research assistance. This paper is part of NBER's research programs in Economic Fluctuations and Growth, Labor Studies and Monetary Economics. Any opinions expressed are those of the authors and not those of the National Bureau of Economic Research.

© 1996 by David Card and Dean Hyslop. All rights reserved. Short sections of text, not to exceed two paragraphs, may be quoted without explicit permission provided that full credit, including © notice, is given to the source.

DOES INFLATION "GREASE THE
WHEELS OF THE LABOR MARKET"?

ABSTRACT

If nominal wages are downward rigid, moderate levels of inflation may improve labor market efficiency by facilitating real wage cuts. In this paper we attempt to test the hypothesis that downward real wage changes occur more readily in higher-inflation environments. Using individual wage change data from two sources, we find that about 6-10 percent of workers experience nominally rigid wages in a 10-percent inflation environment. This proportion rises to over 15 percent at a 5 percent inflation rate. We use the assumption of symmetry to generate counterfactual distributions of real wage changes in the absence of rigidities. These counterfactual distributions suggest that a 1 percent increase in the inflation rate reduces the fraction of workers with downward-rigid wages by about 0.8 percent, and allows real wages to fall about 0.06 percent faster. A market-level analysis of the effects of nominal rigidities, based on wage growth and unemployment at the state level, is less conclusive. We find only a weak statistical relationship between the rate of inflation and the pace of relative wage adjustments across local labor markets.

David Card
Department of Economics
Princeton University
Princeton, NJ 08544
and NBER

Dean Hyslop
Department of Economics
UCLA
Los Angeles, CA 90095

One of the basic tenets of Keynesian economics is that labor market institutions tend to prevent nominal wage cuts -- even in the face of high unemployment. An implication of this downward rigidity hypothesis is that inflation can ease labor market adjustments by speeding the decline of wages for individuals and markets buffeted by negative shocks.¹ According to this argument, a modest level of inflation may serve to "grease the wheels" of the labor market and reduce frictional unemployment. In sharp contrast, an emerging orthodoxy among many economists and central bankers is that stable aggregate prices reduce labor market frictions and lead to the lowest possible levels of equilibrium unemployment.

In this paper we attempt to evaluate the evidence that relative wage adjustments occur more readily in higher-inflation environments. We focus on two types of evidence. First, at the individual level, we use micro panel data to examine the evolution of individual real wages over time.² According to the downward rigidity hypothesis, individual wage changes should exhibit significant asymmetries, with a greater degree of asymmetry, the lower the inflation rate. Second, at the market level, average wages in a local labor market should fall faster in response to a given negative shock in a high-inflation environment than in low-inflation environments. This implies that the slope of the "cross-sectional Phillips-curve" -- a graph of the relationship between market-specific real wage growth and the market-level unemployment rate -- will be flatter in periods of low inflation, and steeper in periods of high inflation.

Our micro-level analysis is based on two complementary sources of data: rolling two-year panels constructed from matched Current Population Survey (CPS) files from 1979 to 1993; and

¹ This hypothesis is spelled out e.g. in Tobin (1972).

² Previous studies of the extent of nominal rigidity in individual wage data include McLaughlin (1994) and Kahn (1995). See also Lebow, Stockton, and Wascher (1995).

multi-year panels from the Panel Study of Income Dynamics (PSID). The CPS provides relatively large and broadly representative samples, while the PSID provides better detail on job changing, and also enables us to examine the extent of nominal rigidity over longer time frames (1, 2, and 3 years). Simple tabulations of both data sets lead to three basic conclusions. First, measured year-to-year changes in individual wages are quite variable, even for people who remain on the same job. In a typical year during the 1980s, 15-20 percent of non-job changers had measured nominal wage declines, and a similar fraction had real wage increases in excess of 10 percent.³ Second, the most likely nominal wage change is 0: on average during the 1980s, about 15 percent of non-job changers report rigid nominal wages from one year to the next. Third, the fraction of workers with rigid wages is strongly negatively related to the inflation rate, with each percentage point reduction in inflation leading to a 1.4 percentage point increase in the incidence of nominal rigidity.

The presence of a large "spike" at 0 in the distribution of measured nominal wage changes -- or at minus the inflation rate in the distribution of real wage changes -- leads to the question of what the distribution would look like in the absence of nominal wage rigidity. We use the simple assumption of symmetry to construct "counterfactual" distributions of real wage changes in the absence of rigidities. We then use the counterfactual distributions to measure the fraction of negative real wage changes "prevented" by nominal wage rigidities, and the net effect of nominal rigidities on average real wage growth. This exercise suggests that downward nominal rigidities in a typical year in the 1980s held up the real wage changes of workers by a maximum of about 1 percentage point per year.

³ Of course, some fraction of this measured variation is attributable to survey measurement error.

Our market-level analysis uses state-level average wages and unemployment from 1976 to 1991. The wage data are constructed from the annual March Current Population Survey, and are adjusted to reflect the varying composition of the workforce in each state in different years. Consistent with most of the recent literature on regional labor markets (e.g. Blanchflower and Oswald (1994)) we find that local unemployment exerts a strong influence on local wage determination: real wages fall in states with higher unemployment (relative to national trends), while real wages rise in states with lower unemployment. However, we find little evidence that the rate of wage adjustment across local markets is faster in a higher-inflation environment. Taken in combination with our micro-level findings, these results imply that nominal rigidities have a small effect on the aggregate economy, and that any efficiency gains from the "greasing" effect of higher inflation are probably modest.

I. Descriptive Analysis of the Distribution of Individual Wage Changes

a. Data Sources

Our analysis of individual-level wage changes is based on information from two data sources that collectively span the period from 1976 to 1993. Our first source consists of the "merged monthly earnings files" from the 1979 to 1993 Current Population Survey. Each month, the CPS collects hourly or weekly earnings information from employed workers in the one-quarter of the sample frame who will not be interviewed in the next month.⁴ One half of this group (or approximately one-eighth of all wage and salary workers in the overall sample) will be interviewed again in 12 months and asked the same earnings questions. The other half

⁴ The data pertain to the individual's main job as of the survey week, and are not collected for self-employed workers.

were interviewed 12 months earlier and provided comparable earnings data at that time. By matching individuals from consecutive CPS samples it is therefore possible to construct a series of "rolling panels" with 2 years of wage information. A typical panel contains about 60,000 individuals, of whom roughly 50,000 report data on either their hourly or weekly wage in both years.⁵

For most of our analysis of the CPS data we restrict attention to the roughly 50 percent of individuals who report being paid by the hour in both years of the panel.⁶ Ideally, since most models of nominal wage rigidity pertain to workers who stay on the same job, we would like to distinguish between individuals who change employers and those who did not. Unfortunately, the CPS does not regularly collect information on job tenure or on the identity of specific employers. As a crude approximation, we distinguish between individuals who report the same (2-digit) industry and occupation in the two years, and those who report a change in industry or occupation.⁷ Finally, in order to minimize the confounding effects that institutionally determined minimum wage rates may have on the analysis of nominal rigidities, most of our analysis also

⁵ Details of the matching algorithm and other information on the CPS samples are presented in the Data Appendix. We do not use imputed wage data that are allocated in the CPS files to non-respondents.

⁶ This fraction is quite stable over the sample period. The advantage of using hourly-rated workers is that we can be sure their payment method is the same in both years. The CPS lumps all other payment periods (weekly, monthly, annual, and commission) into a single "other" category.

⁷ Many of the observed industry or occupation switches are presumably attributable to misclassification errors (see Krueger and Summers (1988)). Changes in the industry and occupation coding system introduced between 1981 and 1983 necessitate slightly different procedures in these years -- see note (a) to Table A1.

excludes observations that are directly affected or potentially affected by minimum wage regulations.⁸

Our second source of data is the Panel Study of Income Dynamics (PSID). We constructed two four-year panels of wage observations from the PSID for the period from 1976 to 1979, and from 1985 to 1988.⁹ Although the PSID has far fewer observations than the CPS panels, and tends to over-represent certain groups (such as older workers), it has several other advantages that enhance its usefulness as a data source. First, individuals' wages and labor market experiences can be followed for several years in the PSID, while only consecutive year matches are possible with the CPS. Second, the PSID questionnaire collects information on firm-specific (or job-specific) tenure, allowing us to draw a cleaner distinction between job movers and stayers.¹⁰ Third, the PSID follows individuals who change addresses, while the CPS cross-sections can only be matched for people who remain at the same address. Finally, the PSID provides us with data from the mid-1970s, a period of high inflation that can be compared to the mid-1980s, when unemployment rates were similar but inflation rates were substantially lower.

⁸ DiNardo, Fortin, and Lemieux (1995) present evidence that minimum wages exert a major influence on the lower tail of the wage distribution. We consider a worker who is observed in periods $t-1$ and t to be affected by the minimum wage if his or her wage is less than or equal to the contemporaneous minimum in either period. We also consider a worker to be potentially affected if the wage in period $t-1$ is below the minimum for year t .

⁹ We decided to use two separate panels of 4 years each, rather than a single panel of individuals who were in the PSID sample from 1976 to 1988, in order to reduce the attrition caused by changing household composition, labor force entry and withdrawal, and the aging and refreshing of the PSID sample.

¹⁰ Brown and Light (1992) note that the PSID tenure data contain errors that affect measured job changes. We adopt their recommended strategy of assuming that a job change has occurred whenever reported tenure is less than elapsed time since the previous interview.

b. The Distribution of Individual Wage Changes

We begin our analysis by presenting a series of histograms representing the distributions of year-to-year changes in real log hourly wage rates for the CPS and PSID samples described above. Figure 1a contains the histograms for the 14 pairs of matched years from the CPS samples, based on wage changes for hourly-rated workers reporting the same industry and occupation in each year. For scale reasons we have censored the log real wage changes at +/- 0.35: the masses at the upper and lower extremes represent the cumulative fractions in the respective tails of the distribution. A vertical line at minus the annual inflation rate ($-\pi_t$) is drawn for each year to identify the real wage change associated with fixed nominal wages.¹¹

The histograms show that real wage changes tend to be centered around 0, with a prominent "spike" at $-\pi_t$ (i.e., at the point corresponding to fixed nominal wages). The size of the spike tends to be greater during periods of lower inflation: in the late 1970s when inflation was around 10%, the fraction of rigid nominal wages was 7-8 percent; in the mid-to-late 1980s, when inflation was at or below 5%, 15-20 percent of workers had constant nominal wages. Interestingly, it appears that there is a *deficit* in the distribution of wage changes to the left of $-\pi_t$, suggesting that the distribution of real wage changes is being "swept up" to the floor imposed by rigid nominal wages. Nevertheless, a considerable fraction of non-job-changers report nominal wage cuts in any year -- typically 15-20 percent.

¹¹ Throughout the paper we measure inflation by the change in the logarithm of the CPI-U-X1. This series differs from the "official" CPI-U during 1979-82, since it uses a rental equivalence measure of housing cost comparable to the post-1982 CPI-U.

Figure 1b presents the corresponding histograms of real wage changes for the PSID samples of hourly-rated workers in the same job in each year.¹² Despite some differences in the way the wage data are collected in the PSID and CPS surveys, and the more precise delineation of non-job-changers in the PSID, the wage change distributions from the two data sources are fairly similar.¹³ In particular, the PSID data also show a prominent spike in the distribution of real wages changes at $-\pi_1$. The spike is in the order of 10% during the high-inflation period 1976-79, and about 20% during the low-inflation period 1985-88. As in the CPS data, the wage change distributions in Figure 1b show a deficit to the left of the spike, suggesting that the real wages of some workers who might otherwise experience nominal wage cuts are "held up" by downward rigidities.

Two earlier studies -- by Kahn (1994) and McLaughlin (1994) -- present comparable analyses of the extent of nominal rigidity in wage data derived from the PSID. Kahn uses data from 1970 to 1988 on non-self-employed household heads who have the same employer in consecutive years. Kahn's graphs of the distributions of wage changes are very similar to those presented in Figure 1b, leading her to conclude that there is significant downward nominal rigidity, and also some evidence of "menu cost" effects (see below). McLaughlin uses data from 1976 to 1986 on household heads who report a wage or salary in consecutive years. Over this sample period he finds that about 7 percent of individuals have rigid nominal wages (see his

¹² The measures of job tenure used in the two panels of the PSID differ: for the 1976-79 panel job tenure refers to the position, while for the 1985-88 panel it refers to the employer.

¹³ Appendix Figure A1 shows the distributions of wage changes for all workers in the PSID who report wages in each year -- i.e. including non hourly-rated workers and those who change jobs. The patterns are similar to those in Figure 1b, except that the size of the spike is smaller -- approximately one-half of the size observed for hourly-rated non-job-changers -- and there is more mass in the tails of the distribution

Figure 4). Nevertheless, McLaughlin concludes that there is little evidence of nominally-induced asymmetries in the distribution of real wage changes. We believe that this conclusion arises from McLaughlin's decision to pool real wage changes from different years. As shown in Figures 1a and 1b, the spike in the distribution of real wage changes occurs at $-\pi_t$, which ranges from -2 to -11 percent in McLaughlin's sample. Pooling the data for different years thus obscures the spike in the real wage change distribution in any particular year.¹⁴

While most discussions of nominal wage rigidity implicitly focus on a yearly time frame, the degree of wage rigidity (either downward or upward) is clearly a function of the time horizon over which wage changes are measured. For example, we would expect to see a very high degree of nominal rigidity in week-to-week wage changes (at least in the U.S. labor market), but very little rigidity in decade-to-decade wage changes. To get a sense of the effects of different time frames, Figures 2a and 2b present histograms of real wage changes over 2 and 3 year time horizons, respectively, for hourly-rated workers in the PSID who remain with the same employer. These histograms have the same basic character as the year-to-year histograms in Figure 1b, although the magnitude of the spike corresponding to rigid nominal wages is smaller. During the low-inflation period 1985-88, about 10 percent of hourly rated non-job-changers had constant wages over two years, compared with only 3 percent in the high-inflation period 1976-79. Over a three-year horizon, the fraction of observations with rigid wages is about 5 percent in the low-inflation era, and about 1 percent in the late 1970s. Some degree of nominal wage

¹⁴ Lebow, Stockton, and Wascher (1995) use PSID data for 1970-88 to measure rigidity among hourly and non-hourly rated workers. Their estimate of the fraction of workers with rigid nominal wages and nominal wage cuts are similar to ours.

rigidity clearly persists over longer than a year. Furthermore, long-term rigidity is more pervasive during low-inflation periods than high-inflation periods.¹⁵

Tables 1 and 2 summarize some of the information contained in the histograms in Figures 1 and 2. Table 1, which pertains to our CPS samples of hourly-rate workers, presents the annual inflation rate, the unemployment rate,¹⁶ the median nominal wage change for all hourly-rated workers, the fraction of workers with measured nominal wage declines, and two estimates of the fraction of workers with zero nominal wage changes -- one for all hourly-rated workers, and a second for the subsample of workers unaffected by minimum wage regulations. Table 2 pertains to the PSID data, and shows the inflation rate and the fraction of workers with rigid nominal wages over 1- 2- and 3-year time frames in the 1976-79 and 1985-88 periods. For comparison purposes we report both the overall fraction of workers with rigid nominal wages (columns 2 and 5), and the fraction of hourly-rated non-job-changers with rigid wages (columns 3 and 6).

Taken as a whole, we believe that the data in Figures 1 and 2 and Tables 1 and 2 present a reasonable *prima facie* case for the existence of nominal wage rigidity for a significant fraction of workers. Although many non-job-changers report nominal wage cuts, the most likely outcome is for no change in nominal wages: between 6 and 17 percent report exactly the same nominal wage in one year as the next.¹⁷ Furthermore, the extent of rigidity is higher, the lower the rate of inflation. A regression of the fraction of workers with rigid wages in column 6 of Table 1

¹⁵ Appendix Figures A2a and A2b contain the histograms for 2 and 3-year wage changes for all workers from the PSID samples. These figures again show similar, although smaller, rigidity effects to those for hourly-rated non-job-changers, closely matching the patterns for single-year wage changes.

¹⁶ Measured as the average unemployment rate during the ending year of each change.

¹⁷ Note that any measurement error in wages is likely to lead to an over-statement of the probability of nominal wage declines and an understatement in the probability of rigid nominal wages. We consider the effects of measurement errors in more detail below.

on the inflation rate yields a coefficient of -1.39 ($t=12.1$) with an R-squared coefficient of 0.92. This implies that each percentage point decrease in the inflation rate increases the incidence of rigid wages among hourly-rated non-movers by 1.4 percentage points. Finally, inspection of the histograms in Figures 1 and 2 suggests that some of the mass at the rigid-wage spike represents workers who would have experienced even bigger real wage cuts in the absence of a nominal wage floor. In section III we present a more formal analysis of this issue. Before turning to this analysis, however, we consider two auxiliary questions: whether the extent of wage rigidity is systematically different for hourly-rated versus other workers; and whether the extent of measured nominal rigidity is affected by the tendency for workers to "round" their reported wages.

II. Is the Extent of Nominal Rigidity Overstated?

a. Hourly-rated Versus Other Workers

All of the CPS data analyzed in the last section, and most of the PSID data, pertain to workers who report that they were paid by the hour. In the matched CPS samples, however, only about one-half of workers report that they are paid by the hour in both the beginning and end years.¹⁸ This raises the question of whether measures of nominal rigidity based on hourly-rated workers are representative of the overall labor force.

¹⁸ The fraction is similar for workers who report the same industry and occupation in both years and are therefore classified as non-job-changers.

To get some evidence on this issue, we examined changes in reported weekly earnings for individuals in the CPS samples who reported being non-hourly-rated in both years of our two-year panels.¹⁹ The results of this analysis suggest that the incidence of rigid nominal wages is slightly *higher* for non-hourly workers. For example, between 1979 and 1980, 7.4 percent of "always hourly-rated" workers with no change in industry or occupation had rigid nominal wages, versus 10.9 percent of "always non-hourly" workers. Similarly, between 1987 and 1988 16.4 percent of "always hourly" workers had rigid wages, versus 18.4 percent of "always non-hourly" workers. There are some other differences between the distributions of real wage changes for hourly and non-hourly-rated workers. Most noticeably, the dispersion in real wage changes for non-hourly-rated workers tends to be larger: the inter-quartile range of the change in real weekly pay for non-hourly rated workers with the same industry and occupation is about 25-50 percent higher than the inter-quartile range of the change in real hourly pay for hourly rated workers with the same industry and occupation. We suspect that the measurement errors in weekly pay for non-hourly workers are larger than the errors in hourly pay for hourly workers, in part because workers are asked to report their "usual" weekly pay rather than a "straight-time" earnings measure. In any case, there is no evidence that nominal wage rigidity is lower for non-hourly rated workers, and for simplicity, we therefore confine our attention to hourly-rated workers in the remainder of this paper.

¹⁹ In principle, we can construct an hourly wage for non-hourly-rated workers by dividing usual weekly earnings by usual weekly hours. However, any measurement error in reported hours will lead to excessive volatility in imputed hourly wages.

b. Rounding of Wages and the Incidence of Measured Rigidities

One of the most prominent features of observed wage distributions is the tendency for workers to report "rounded" wage amounts, like \$5.00 per hour, or \$7.50 per hour. Among hourly-rated workers in our matched 1984-85 CPS file, for example, 34 percent reported an even dollar wage amount in 1984 and another 14 percent reported a wage rate ending in 0.50. If some or all of this phenomenon is due to systematic rounding (or "heaping") of data drawn from an underlying continuous distribution, then one explanation for measured nominal wage rigidity is that individuals with small nominal wage changes tend to report the same rounded wage amount in consecutive surveys. A simple tabulation of the probability of zero nominal wage growth by the initial level of wages reveals some support for this hypothesis. In the 1984-85 CPS file, 24.1 percent of individuals who reported an even wage amount in 1984 had rigid nominal wages between 1984 and 1985, versus a rigidity rate of only 9.2 percent for individuals who reported a wage amount not ending in either .00 or .50. In our matched CPS samples, individuals who reported an even dollar wage amount in the base year typically account for 55-60 percent of all those with rigid nominal wages.

The interpretation of these facts, however, depends crucially on the underlying explanation for spikes in the distribution of wages at dollar and 50 cent intervals. If the *true* wage distribution contains spikes, and employees are more likely to report their true wage if it is an easily remembered amount like \$5.00 or \$7.50 per hour, then the measured rigidity rate for individuals who report an even wage may be a better estimate of the true rate of nominal rigidity than the overall rigidity rate for all wage earners. Some support for this hypothesis comes from the fact that the residual variance of a conventional wage equation is slightly lower

when the model is fit to the subsample of workers who report a rounded wage amount than when the same model is fit to workers who report a wage that does not end in .00 or .50.²⁰ This evidence suggests that the noise in measured wages is lower for workers who report a rounded wage, contrary to the view that rounding is purely a result of measurement error.

To further explore this issue we used data from a January 1977 CPS validation study that collected self-reported wage information from workers and matching information from their employers (see Card (1996) for more information on this survey). Among hourly-rated workers paid above the minimum wage the probability of a rounded wage (ending in either .00 or .50) is 30 percent -- somewhat below the rate of 38 percent in our matched 1979-80 CPS sample.²¹ The probability that the employer reports a rounded wage is lower (20 percent) but is far from negligible. Overall, 44 percent of employers and employees reports exactly the same wage, with a significantly higher agreement rate (69 percent) conditional on the employer reporting a rounded wage. Treating the employer reports as truth, these data imply that about one-half of the observed mass at rounded wage values is attributable to spikes in the true distribution of wages, with the other half attributable to rounding errors.²²

²⁰ Specifically, we fit a model to the log hourly wage for hourly-rated workers in our pooled CPS files who report a wage ending in .00 or .50 and for those with other wages. The explanatory variables included education, a gender-specific cubic in experience, non-white and female dummies, and indicators for region and year. The residual standard error is slightly lower in the model for rounded wage observations than in the model for non-rounded observations. A similar finding holds by year.

²¹ The fraction of wages reported at even dollar or half-dollar amounts rose over the 1980s from 38 percent in 1979 to 48 percent in 1984 to 56 percent in 1992. We suspect that this trend may be due in part to inflation: at higher nominal wage levels, the percentage difference between "rounded" wage amounts is smaller, implying less "cost" to paying a "rounded" wage amount, and/or a smaller error in reporting a "rounded" amount.

²² Specifically, if 20 percent of employers report a rounded wage, and 69 percent of workers whose employer reports a rounded wage report the same wage, then 14 percent ($=0.20 \times 0.69$) of workers report a "true" rounded wage.

To get an indication of the potential contribution of rounding behavior to measured rigidity rates, we decided to perform a simple simulation. In the simulation, we assume that individual wage changes are generated from a continuous distribution, and that individuals have some probability of reporting either their true wage, a rounded wage, or their true wage plus a measurement error.²³ For plausible values of the parameters, the simulation implies that rounding generates a 4-5 percent rate of apparent nominal wage rigidity when the inflation rate is 5 percent and there is zero median real wage growth. We believe this is an upper bound on the fraction of observed nominal rigidity that can be attributed to rounding behavior. If some of the observed rounding is due to spikes in the true distribution of wages at even wage amounts, or if the probability of reporting a rounded wage is less persistent over time than we have assumed, then the share of observed wage rigidity attributable to rounding is smaller.

An important feature of rounding behavior is its symmetry. Provided that individuals round their wages to the nearest even amount, rounding causes nominal wage changes *above and below zero* to be drawn toward zero. In this regard, rounding by employees is similar to "menu costs" that cause employers not to adjust wages if the optimal wage adjustment is small. By comparison, downward nominal rigidities exert an asymmetric effect on workers who would otherwise experience a nominal wage cut. In the next section we show how the symmetric effect

²³ In the simulation, we assume that individual log wages are normally distributed according to a stationary autoregressive model, and that measured wages are generated as follows: with some probability (p_1) a worker reports the true wage; with some probability (p_2) the worker rounds the wage to the nearest even 50 cent amount; and with some probability ($1-p_1-p_2$) the worker reports the true wage plus a (normally distributed) random measurement error. We calibrated the model by fixing the cross-sectional standard deviation of true log wages and the correlation of true log wages across years at 0.45 and 0.95, respectively. We set $p_1=p_2=0.45$ and assumed that three-quarters of individuals who round their wage report in one year also round their report in the next year.

of rounding or related phenomena can be used to empirically distinguish the contribution of downward rigidities to the total measured rigidity rate.

III: Measuring the Effect of Inflation on Wage Rigidities

a. Conceptual Framework

Suppose that in the absence of rigidities the distribution of real wage changes would be continuously distributed with median m . In the presence of rigidities, suppose that some individuals whose nominal wages would otherwise fall experience zero wage growth. This scenario is illustrated in Figure 3a under the assumptions that $m=0$, that the inflation rate π is 5 percent, and that one half of individuals who would otherwise experience a negative real wage change are affected by downward rigidities. As illustrated by the figure, the net effect of downward nominal rigidity is to produce a *deficit* in the left-hand tail of the distribution of real wage changes (below $-\pi$) and a spike in the distribution at $-\pi$.²⁴ It is easy to see that as the inflation rate falls (i.e., as $-\pi$ moves to the right) the effect of nominal rigidity becomes more pronounced.

A second source of nominal wage rigidity that we will attempt to separately identify is that due to menu costs or rounding in reported wage levels. For example, suppose that if the "optimal" nominal wage change is between $\pm x$ percent, then there is some probability that the nominal wage will not change. Figure 3b illustrates this scenario when menu costs are present for wage changes of up to ± 2 percent, and the probability of non-adjustment declines

²⁴ Note that if the effect of the rigidities is translated entirely into quantity effects (i.e. unemployment) there will be no spike. However, the deficit in the left-hand tail of the distribution of observed wage changes will exist regardless of this possibility.

symmetrically from 25 percent for a zero wage change to 0 for a 2 percent nominal wage change. To the extent that the density is not constant around $-\pi$, this assumption implies that menu costs induce *asymmetric* deficits in the observed distribution of real wage changes on either side of $-\pi$: if $-\pi$ lies in the left-hand tail of the distribution, there will be a larger menu-cost deficit to the right of $-\pi$ than to the left. If both downward rigidities and menu costs are present, we would expect to see a deficit in the distribution of real wage changes immediately to the right of $-\pi$, a somewhat larger deficit to the left of $-\pi$, and a spike at $-\pi$ that is larger than the "deficit" to the left of $-\pi$ (by the amount of the deficit to the right of $-\pi$). In principle, if the fraction of underlying wage changes that have been *shifted down* to 0 can be estimated, then this fraction, suitably adjusted to take account of the different density on either side of the spike, can be subtracted from an estimate of the fraction of underlying wage changes that have been *shifted up* to 0 to obtain an estimate of the net effect of downward rigidities.

b. Identifying a Counterfactual Wage Change Distribution

The key issue in estimating the effect of nominal wage rigidities is the identification of a "counterfactual" distribution -- a model for the distribution of real wage changes in the absence of downward wage rigidities and menu-costs. The counterfactual that we adopt in this paper is based on the following three assumptions:

- (1) in the absence of rigidities, the distribution of wage changes would be symmetric;
 - (2) the upper-half of the distribution of observed wage changes is unaffected by rigidities;
- and
- (3) wage rigidities do not affect employment probabilities.

Under these assumptions, the upper half of the distribution of observed wage changes can be used to infer what the lower half would have looked like in the absence of rigidities.

Although there is no *a priori* reason for imposing assumption (1), we believe that symmetry is a natural starting point for building a counterfactual distribution. Moreover, most conventional models of wage determination imply symmetry. For example, if real wage outcomes in consecutive periods are jointly normally distributed, or if the individual wage determination process is stationary, then symmetry holds.²⁵ An alternative approach, pursued by Kahn (1995), is to use the observed distribution of wage changes in other periods to infer the counterfactual in the absence of rigidities. An important objection to this alternative is that the dispersion of wage changes may be affected by inflation. Thus in this paper we rely on the symmetry assumption.

The second assumption, that wage changes above the median are unaffected by downward rigidities, may seem relatively innocuous. However, the presence of measurement errors in wages may lead downward nominal rigidities to exert some influence on the upper half of the observed wage change distribution. Specifically, let Δw_t^* represent the true wage change of an given worker from period $t-1$ to t , and let

$$\Delta w_t = \Delta w_t^* + \Delta u_t ,$$

represent the measured wage change, where Δu_t is the measurement error in wage growth. Suppose that Δu_t is symmetric with median 0. Then if the distribution of true wage changes Δw_t^* is *asymmetric* (as implied by the downward rigidity hypothesis) the median of observed wage

²⁵ At least for workers in middle age, the assumption of stationarity may be appealing. If the process generating w_{it} , the real wage of individual i in period t , is stationary, then $w_{it} - w_{it-1}$ has the same distribution as $w_{it-1} - w_{it}$, implying that wage changes are symmetric.

changes will not necessarily equal the median of Δw_t^* . Indeed, if Δw_t^* has the shape illustrated in Figure 3a, then the median of observed wage changes will tend to exceed the median of Δw_t^* .²⁶ We return to this issue in more detail below.

The third assumption is perhaps the most problematic. Indeed, since much of the interest in downward nominal wage rigidity is driven by a concern over potential employment effects, the assumption that any employment effects may be ignored is troubling. One way to relax assumption (3) is to assume:

(3') a fraction 2α of jobs that would otherwise be observed -- all associated with nominal wage changes below the median -- are lost due to nominal wage rigidities.

In this case, a counterfactual distribution can be constructed by taking the observed distribution of wage changes beyond the $0.5-\alpha$ quantile, and building a symmetric lower tail. For example, if 2 percent of continuing jobs are lost because of downward wage rigidities, then an appropriate counterfactual is the symmetric distribution constructed from the observed distribution to the right of the 49th percentile. In the analysis below, we also construct such a "49th percentile counterfactual" distribution and derive summary statistics from this, as a robustness check on the results from the "median" counterfactual.²⁷

²⁶ Intuitively, measurement errors "smear" some of the true mass at $-\pi_t$ to the left and right of the spike. Any measurement errors larger than π_t will therefore displace a non-zero mass to the right of the median of Δw_t^* .

²⁷ An alternative is to construct the counterfactual distribution by imposing symmetry around the mode of the distribution of observed wage changes. This is equivalent to assuming that in the absence of rigidities, the wage change distribution would be symmetric with median equal to the mode. We tried this approach, but found that the resulting counterfactual distribution is extremely sensitive to the location of the mode. Also, in several years the mode is above the median, which would imply job gains, rather than job losses, from nominal rigidities.

Formally, let $f(x)$ denote the probability density function of observed real wage changes in some period (for some given sample of workers). Let $\tilde{f}(x)$ denote the counterfactual density function. Then assumptions (1)-(3) or (1)-(3') imply:

$$\tilde{f}(x) = k_c \cdot f(x), \quad x \geq c$$

$$\tilde{f}(x) = k_c \cdot f(2c-x), \quad x < c$$

where k_c is a constant and c is the point of symmetry. Under assumption (3), c is equal to the median observed wage change, while under assumption (3'), c is equal to the $0.5-\alpha$ quantile. Using the fact that $\tilde{f}(x)$ must integrate to 1, it is easy to see that $k_c = 0.5/(1-F(c))$, where F is the distribution function associated with f . Note that if $c=m$ (the observed median) then $F(c)=0.5$ and $k_c=1$. Otherwise, if c is the $0.5-\alpha$ quantile, then $k_c = 1/(1+2\alpha) \approx 1-2\alpha$.

c. Measuring the Effects of Rigidities

Given an observed distribution of real wage changes and a particular counterfactual distribution, it is possible to develop a variety of measures of the effect of nominal rigidities. We focus on two simple summary statistics: a measure of the fraction of people whose wages are affected by rigidities, and a measure of the net effect of rigidities on the average wage change.

1. Density Effects

In principle, nominal wage rigidities can affect workers whose wages would have fallen in the absence of rigidity, and people whose wages would have otherwise risen. Thus, we

decompose the fraction of workers affected by rigidities into an estimate of the fraction whose wages were "held up", and an estimate of the fraction whose wages were "held down". The former is the cumulative density of the counterfactual distribution that has been "swept up" to the nominal-wage rigidity spike (at $-\pi_t$):

$$(1) \quad su_t = \int_{-\infty}^{-\pi_t^-} (\tilde{f}(x) - f(x)) dx = \tilde{F}(-\pi_t^-) - F(-\pi_t^-) ,$$

where the upper limit of integration ($-\pi_t^-$) excludes the mass-point at $-\pi_t$, and $\tilde{F}(x)$ and $F(x)$ are the CDFs corresponding to $\tilde{f}(x)$ and $f(x)$ respectively. The latter is the cumulative density of the counterfactual distribution that has been "swept back" to the nominal-wage rigidity spike:

$$(2) \quad sb_t = \int_{-\pi_t^+}^{m_t} (\tilde{f}(x) - f(x)) dx = (\tilde{F}(m_t) - \tilde{F}(-\pi_t^+)) - (F(m_t) - F(-\pi_t^+)) ,$$

where m_t is the median real wage change in year t , and the lower limit of integration ($-\pi_t^+$) excludes the mass-point at $-\pi_t$. (Note that by assumption (2) above, we need only extend the upper limit of integration to the median). The total fraction of individuals affected by rigidities is $su_t + sb_t$, which is equal to the mass at the spike point (suitably normalized, if the point of symmetry for the construction of the counterfactual density is not equal to the median).

If estimates of $F(x)$ and $\tilde{F}(x)$ are available then su_t and sb_t can be evaluated directly.²⁸

In the absence of any menu costs or "rounding", su_t provides an estimate of the fraction of workers affected by downward wage rigidities. In the presence of menu costs or rounding, however, su_t will tend to overstate the effect of downward rigidities. Nevertheless, if menu costs affect an equal fraction of workers who otherwise would receive small nominal increases and decreases (as assumed in Figure 3b), then the *net* sweep-up $su_t - sb_t$ provides a lower bound estimate of the fraction of workers affected by downward nominal wage rigidity. To see why, notice that the counterfactual density to the right of $-\pi_t$ is bigger than the counterfactual density to the left. Thus if equal fractions of the counterfactual density on either side of the spike are affected by menu costs, the total density swept back to $-\pi_t$ by rounding or menu costs (measured by sb_t) will exceed the total density swept up to $-\pi_t$ by menu costs or rounding.

²⁸ Alternatively, using the definition of the counterfactual density it is easy to show that

$$(1') \quad su_t = k_c \cdot (1 - F(2c + \pi_t)) - F(-\pi_t),$$

where F is the distribution function of observed wage changes in year t , c is the point of symmetry for the counterfactual, and k_c is the constant defined earlier. This expression can be evaluated directly using the empirical distribution function for observed real wage changes. If c is set to the median real wage change in year t (m_t), this expression simplifies to

$$su_t = (1 - F(2m_t + \pi_t)) - F(-\pi_t),$$

and if $m_t = 0$ (which is roughly true for most of our sample years) then

$$su_t = (1 - F(\pi_t)) - F(-\pi_t),$$

which represents a simple difference between the fraction of real wage changes above π_t and the fraction below $-\pi_t$. Similarly, the fraction of the density swept back can be written as:

$$(2') \quad sb_t = k_c \cdot (F(2c + \pi_t) - F(2c)) - (F(c) - F(-\pi_t^+)),$$

which, if the point of symmetry is set to the median, reduces to

$$sb_t = F(2m_t + \pi_t) + F(-\pi_t^+) - 1,$$

or, to

$$sb_t = F(\pi_t) + F(-\pi_t^+) - 1,$$

if $m_t = 0$. This last expression is simply the fraction of observed wage changes between π_t and the median minus the fraction between the median and $-\pi_t$.

2. Wage Effects

In constructing a measure of the effect of nominal rigidities on average wage growth, we similarly distinguish between the effect for individuals whose wages are "held up" by rigidities and the effect for those whose wages are "held back". The effect on the former group is

$$(3) \quad \text{wsu}_t = \int_{-\infty}^{-\pi_t^-} (\tilde{f}(x) - f(x))(-\pi_t - x) dx$$

$$= -\pi_t \text{su}_t - E(\Delta w | \Delta w < -\pi_t; \tilde{f}) \times \tilde{F}(-\pi_t^-) + E(\Delta w | \Delta w < -\pi_t; f) \times F(-\pi_t^-),$$

which we refer to "wage sweep-up", while the effect on the latter group is

$$(4) \quad \text{wsb}_t = - \int_{-\pi_t^+}^{m_t} (\tilde{f}(x) - f(x))(-\pi_t - x) dx$$

$$= \pi_t \text{sb}_t + E(\Delta w | -\pi_t < \Delta w \leq m_t; \tilde{f}) \times (\tilde{F}(m_t) - \tilde{F}(-\pi_t^+))$$

$$- E(\Delta w | -\pi_t < \Delta w \leq m_t; f) \times (F(m_t) - F(-\pi_t^+)),$$

which we refer to as "wage sweep-back". Again, if estimates of the densities $f(w)$ and $\tilde{f}(x)$ are available, these expressions can be evaluated directly. Alternatively, they can be estimated using estimates of the fractions of individuals in various wage-change intervals, and the mean wage changes within these intervals.²⁹

²⁹ Specifically, using the definition of the counterfactual density it is straightforward to show that
 $(3') \quad \text{wsu}_t = k_c \cdot (1 - F(2c + \pi_t)) \cdot \{ E(\Delta w | \Delta w \geq 2c + \pi_t) - (\pi_t + 2c) \} - F(-\pi_t) \cdot \{ -\pi_t - E(\Delta w | \Delta w \leq -\pi_t) \}$,
 where the expectations are taken with respect to the actual distribution of wage changes. This expression can be evaluated using estimates of the fractions of real wage changes in the upper and lower tails of the observed wage change distribution and estimates of the conditional mean wage changes in the two tails. A similar expression can

3. Effects of Measurement Error

The nominal rigidity measures developed in equations 1-4 implicitly ignore any errors in reported wages. Random measurement errors will have several effects on the observed distribution of wage changes relative to the true underlying distribution. Most notably, the observed fraction of workers with rigid wages will be lower than the true fraction. In particular, assuming that the observed wage in period t w_t differs from the actual wage w_t^* by an error u_t , the observed wage change is

$$\Delta w_t = \Delta w_t^* + \Delta u_t.$$

If the distribution of true wage changes is continuous, apart from a spike at $-\pi_1$, only individuals with truly rigid wages who accurately report their wage change contribute to observed rigidity. The fraction of individuals with observed wage rigidity is therefore $P(\Delta w_t = 0) = R \times P(\Delta w_t^* = 0)$, where $R = P(\Delta u_t = 0 | \Delta w_t^* = 0)$ is the probability of accurately reporting the true wage change, conditional on rigid wages. We are unaware of any direct estimates of R . However, evidence from the January 1977 CPS validation survey provides an indication of the magnitude of this probability. In that survey, 44 percent of hourly-rated workers report exactly the same wage as their employers. Treating the employers' reports as error free, this estimate suggests that R lies between 0.2 ($=0.44^2$) and 0.44, depending on the persistence in individuals' probabilities of making an error-free wage report.³⁰ If employers have about the same probability of making an erroneous wage report as employees, however, then this estimate suggests a range for R between

be developed for wsb_t in terms of the fractions of wage changes in the intervals $[-\pi_1^+, c]$ and $[c, 2c + \pi_1]$, and the mean wage changes within these intervals.

³⁰ If the same individuals provide an error-free wage report in consecutive years then the probability of an error-free wage change is 0.44. If the probability of an error-free wage report is independent over time then the likelihood of an error-free change is 0.44^2 .

0.44 and 0.66 ($=0.44^{1/2}$), again depending on the persistence in the likelihood of making an error-free wage report. These estimates suggest that the observed fraction of rigid wages may understate the true rigidity rate by 30-80 percent.

A second implication of measurement error is that the observed distribution of wage changes will tend to show less evidence of menu costs than the true distribution. Specifically, suppose that with probability R individuals report their true wage change, and with probability $(1-R)$ they report their true wage change plus a continuously-distributed measurement error $\Delta\epsilon_t$. Then a fraction $(1-R)$ of the true mass at $-\pi_t$ is transformed into a distribution of observed wage changes centered on $-\pi_t$ with the density function of $\Delta\epsilon_t$. Assuming that $\Delta\epsilon_t$ has a "bell-shaped" distribution, this will add relatively more mass to the observed distribution just to the left and right of $-\pi_t$, partially "filling in" any deficit created by menu costs or rounding effects.

A third implication of measurement error, mentioned above, is that nominal rigidities in the lower half of the wage-change distribution may "spill-over" to the upper half, leading to a violation of the assumption that observed wage changes above the median are unaffected by rigidities. In particular, the addition of a symmetric measurement error to a right-skewed distribution of true wage changes, such as illustrated in Figure 3a, will tend to lead to a measured median above the true median wage change.

Figure 3c displays the qualitative effects of measurement error on the observed distribution of wage changes. As illustrated in the figure, reporting errors attenuate the magnitude of the spike in the observed distribution at $-\pi_t$, while at the same time adding "shoulders" to either side of the spike. In the figure some of the displaced mass spills over above the median, causing an upward bias in the observed median relative to the true median.

To get some idea of the quantitative effect of measurement errors on the accuracy of our rigidity measures, we performed a series of simulations in which we added measurement errors to a distribution of true wage changes like the one in Figure 3b, and then formed estimates of su , sb , wsu , and wsb . A complete description of the simulations is presented in Appendix B, along with a table showing the actual and estimated levels of sweep-up (su), sweep-back (sb) and wage sweep-up (wsu). Although limited in scope, the simulations suggest that measurement errors induce systematic downward biases in our estimates of downward rigidity effects. The estimates of wage sweep-up, for example, are downward biased by 10-30 percent under a plausible range of assumptions.

d. Kernel Density Estimates of the Actual and Counterfactual Distributions

As a preliminary step in describing the extent of nominal rigidities in our CPS and PSID samples, we used standard kernel estimation techniques to construct smoothed estimates of the densities of real wage changes, and corresponding estimates of the counterfactual densities. In contrast to simple histograms, which can display irregular "jumps", kernel density methods compute a weighted average of the density *near to* each point. In particular, the kernel estimator for the density at some value x is

$$\tilde{f}(x) = \frac{1}{nh} \sum_{i=1}^n K\left(\frac{x-x_i}{h}\right),$$

where n is the number of observations, h is a *bandwidth* parameter (sometimes called the *window width*), and $K(\cdot)$ is a kernel or weighting function, which integrates to 1 over the range of x .³¹

The smoothed kernel estimates give a clearer picture of the differences between the actual and counterfactual distributions of wage changes than can be obtained using simple histograms.

The actual and median-counterfactual densities for the CPS samples are shown in Figure 4. As is true of the simple histograms in Figure 1a, the smoothed densities of the observed data show noticeable spikes at the point corresponding to rigid nominal wages (i.e., at minus the inflation rate), with a larger spike in years with lower inflation rates. A comparison of the actual and counterfactual distributions shows a deficit in the left-tail of the actual distribution, and a small but typically noticeable deficit to the right of the spike point. These two characteristics are consistent with the stylized graph in Figure 3b. The observed data seem to show both downward nominal rigidity effects *and* the presence of menu costs associated with small wage changes.

To better pinpoint the differences between the actual and counterfactual distributions, Figure 5 presents graphs of the cumulative deviation between the two distributions at each point up to the median. For each wage change below the median, we compute the fraction of the actual distribution "missing" from the counterfactual distribution between that point and $-\pi_t$. Specifically, for each point below the spike (i.e., for each wage change $\Delta w < -\pi_t$), we estimate

³¹ Silverman (1986) provides a full treatment of the issues involved with density estimation. We estimate each of the densities at 250 equi-spaced points (x) in the range $(-0.35, 0.35)$ using an Epanechnikov kernel and a fixed bandwidth, $h=0.005$. We also tried other bandwidths and found that the resulting distributions were qualitatively similar.

$$G(\Delta w) = \frac{\int_{\Delta w}^{-\pi_t^-} (\tilde{f}(x) - f(x)) dx}{\int_{\Delta w}^{-\pi_t^-} \tilde{f}(x) dx} .$$

Similarly, for each point between the spike and the median (i.e., for each wage change $-\pi_t < \Delta w < m_t$), we estimate

$$G(\Delta w) = \frac{\int_{-\pi_t^+}^{\Delta w} (\tilde{f}(x) - f(x)) dx}{\int_{-\pi_t^+}^{\Delta w} \tilde{f}(x) dx} .$$

If nominal rigidities prevent some individuals' real wages from falling faster than the inflation rate, then $G(\Delta w)$ will be positive for all $\Delta w < -\pi_t$. Indeed, in the simple case where a fixed fraction f of real wage declines bigger than $-\pi_t$ are prevented, $G(\Delta w)$ will equal f . Similarly, to the extent that menu costs prevent some individuals nominal wages from rising, $G(\Delta w)$ will be positive for all $-\pi_t < \Delta w < m_t$.

In Figure 5 we have graphed the estimated $G(\Delta w)$ functions for each year after re-normalizing the real wage changes in a particular year relative to the spike point. That is, we graph $G(\Delta w + \pi_t)$, which is equivalent to graphing the deficits in the distributions of nominal wage changes. Inspection of the graphs suggests that in most years, $G(\Delta w)$ is roughly constant for Δw in the left-hand tail of the distribution, and in the range from one-quarter to one-half. Just below $-\pi_t$, the fraction displaced shows a sharp increase to one-half or more. Above the spike, $G(\Delta w)$

falls off steadily from about one-third. These patterns suggest that a substantial fraction of counterfactual wage changes are affected by downward nominal rigidity, and that menu costs and/or rounding also affect a sizeable fraction of the counterfactual distribution on either side of the spike.

e. Estimates of the Effects of Nominal Rigidities

Tables 3 and 4 present estimates of the four summary measures of the effect of nominal wage rigidity (su_t , sb_t , wsu_t , wsb_t) defined by equations (1) - (4), using our CPS samples of hourly-rated non-job-changers. Table 3 contains estimates of the density displacement effects su_t and sb_t for two choices of the point of symmetry: the median real wage change, and the 49th percentile real wage change. Recall that the latter is appropriate under the assumption that 2 percent of potential wage change observations are missing because of employment responses to downward wage rigidity.

Consider first the estimated sweep-up effects (su_t) presented in columns 2 and 3. Under the median counterfactual, nominal wage rigidities are estimated to affect between 6.2 and 6.9 percent of hourly-rated non-job-changers during the high inflation years from 1979 to 1982, and between 10.0 and 13.9 percent of workers during the low inflation period later in the sample. Using the 49th percentile counterfactual the estimated effects are fairly similar: between 5.9 and 6.6 percent during the high inflation years, and between 11.2 and 14.1 percent during the low inflation years.

The estimated density sweep-back effects (sb_t) in columns 4 and 5 are generally much smaller than the sweep-up effects, although in some years sweep-back accounts for up to one-

third of total nominal rigidity. If the sweep-back effects are interpreted as estimates of the effect of menu costs to the right of the spike, and if menu costs have a symmetric effect on negative and positive wage changes, then the difference ($su_t - sb_t$) provides a lower-bound estimate of the fraction of people affected by downward nominal wage rigidities. In the mid-1980s this fraction is around 8-12 percent.

Simple regressions of our estimates of su_t on the inflation rate in year t yield statistically significant coefficients of -0.81 and -0.97 using the median and 49th-percentile counterfactuals respectively, with t -statistics of 4.1 and 4.9. Analogous regressions of the net sweep-up effects ($su_t - sb_t$) on the inflation rate yield smaller and less significant coefficients of -0.44 and -0.73, with t -statistics 1.3 and 2.2. These estimates suggest that higher inflation reduces the effect of downward nominal rigidities. A 5 percentage point increase in the inflation rate is associated with a 2.2 to 5.0 percentage point reduction in the fraction of non-movers who are affected by downward nominal rigidity. As noted above, we suspect that this estimate is downward biased in magnitude to the extent that measured wage changes are incorrectly reported to the CPS.

Table 4 contains the estimated wage effects wsu_t and wsb_t associated with nominal rigidities. These vary over the sample period with larger effects in low-inflation years. Again, the estimates of wsu_t and wsb_t from the median and 49th percentile counterfactuals are fairly similar. The estimates imply that downward nominal rigidities raised the mean real wages of non-job-changers by between 0.3 and 1.2 percent, with an average effect of about 1 percent in the low-inflation years of the mid-1980s. On the other hand, nominal rigidities do not seem to have had a large negative effect on people whose nominal wages otherwise would have risen. The maximum estimated wage sweep-back effect is 0.2 percent, and the estimates are typically

less than 0.1 percent. On net, our estimates imply that nominal rigidities may have contributed to about 1 percent higher average growth for hourly-rated non-job-changers in the mid-1980s, with smaller effects in the earlier and later years of our sample period.

One interesting question that the estimated sweep-up effects in Tables 3 and 4 do not address is how far wage rigidities extend into the lower tail of the counterfactual distribution. For example, one might argue that the institutional forces that lead to downward rigidities have only limited power to resist large wage cuts. In this case, most of the measured sweep-up in Table 3 should arise from the interval of real wage changes just below $-\pi_t$.³² Of course if downward rigidities do prevent large wage cuts, we might expect some wage-change observations to be missing from the lower tail of the distribution, consistent with our "49th percentile" counterfactual. Appendix Tables A3 and A4 decompose the estimates of su_t and wsu_t into fractions attributable to nominal wage changes in 3 intervals: less than a 10 percent cut, from a 10 to 20 percent cut, and more than a 20 percent nominal cut. About 70 percent of the density swept up to the nominal rigidity spike is attributable to the interval of 0-10 percent nominal cuts. Another 20 percent is attributable to nominal cuts of 10 to 20 percent and only 10 percent is attributable to nominal cuts over 20 percent. The decomposition of wage sweep-up is more equal, since wages swept up from further in the tail make a bigger contribution to wsu_t . Indeed, roughly one-third of total estimated wage sweep-up is attributable to each of the three ranges.

Our estimates of wage sweep-up (wsu_t) and net wage sweep-up ($wsu_t - wsb_t$) over the 1980-93 period are significantly negatively correlated with the aggregate inflation rate. Regressions of wsu_t and ($wsu_t - wsb_t$) on the inflation rate yield coefficient estimates between -0.057 and

³² This ignores measurement errors in wage changes. Given an observed wage change in the lower tail of the observed wage change distribution, the best estimate of the true wage change is less negative.

-0.079, respectively, with t-statistics between 1.8 and 2.5. These estimates imply that a rise in the inflation rate from 3 percent to 8 percent is associated with about 0.3 percent slower real average wage growth for non-job-changers. We conclude that downward nominal wage rigidities exert a small but measurable effect on average wage growth, with a bigger effect in low-inflation years. Again, evidence from our simulations suggest that if anything, these estimates may be downward-biased (in absolute value) by the effects of reporting errors in the CPS wage data.

The conclusion that lower inflation rates increase the incidence of downward rigidity provides one possible insight into the "fact" that individuals seem to dislike inflation (see Shiller (1996)). Our estimates suggest that a lower inflation rate acts like a higher "minimum wage" for the rate of growth of real wages. Indeed, the similarity between the histograms in Figures 1a and 1b and histograms of real wage levels in the presence of a binding minimum wage is remarkable. The data in Figure 5 suggest that between one-quarter and one-half of non-job-changers who might have expected a nominal wage cut in the absence of any rigidities instead have rigid nominal wages. If workers have an implicit "guarantee" that their real wage will fall by no more than the inflation rate, their preference for a lower inflation rate is understandable.

IV. Market Level Evidence

While our analysis of individual wage data provides reasonably strong evidence that nominal rigidities affect the underlying distribution of real wage changes, much of the interest in nominal rigidities focusses at a higher level of aggregation. In this section, we therefore examine the evidence that state-level average real wages fall more quickly in response to a given level of labor market slack in periods of high inflation than in periods of low inflation.

As a point of departure, consider a collection of workers indexed by i in some local labor market j . Let U_j represent a measure of "slack" in market j in some period (e.g., the difference between a market demand shock and a market supply shock). Suppose that in the absence of rigidities,

$$(5) \quad \Delta w_{ij} = b^* U_j + \epsilon_{ij} ,$$

where Δw_{ij} is the real wage change for individual i in market j (over some specific time horizon) and ϵ_{ij} is a random term reflecting idiosyncratic factors. In the presence of downward nominal rigidities, suppose that a fraction f of nominal wage cuts required by equation (5) do not take place:

$$(6) \quad \Delta w_{ij} = b^* U_j + \epsilon_{ij} , \quad b^* U_j + \epsilon_{ij} > -\pi \\ = I_{ij} (-\pi) + (1-I_{ij}) \cdot (b^* U_j + \epsilon_{ij}) , \quad b^* U_j + \epsilon_{ij} < -\pi ,$$

where I_{ij} is a random indicator variable with mean f .³³ Equation (6) implies that a regression of the average wage change observed in market j on the slack variable U_j has a coefficient that varies with the aggregate inflation rate:

$$(7) \quad E(\Delta w_{ij} | U_j, \pi) = a(\pi) + b(\pi) \cdot U_j ,$$

with a smaller coefficient $b(\pi)$, the lower the inflation rate and the higher the fraction f of individuals affected by downward rigidities. If the measure of labor market slack is the unemployment rate, then equation (7) implies that the "cross-sectional Phillips curve" is flatter in periods with low inflation than in periods with high inflation.

To test this prediction, we used individual micro data from the March CPS files from 1977 to 1992 to construct estimates of the average wage of workers in each state from 1976

³³ Formally, equation (6) is a Tobit model with random censoring at $-\pi$.

to 1991. Specifically, we constructed two estimates of the average hourly wage for each state in each year: a simple average; and an adjusted average that accounts for differences in the observed characteristics of the workers in each state.³⁴ We then fit a variety of models of the form:

$$(8) \quad w_{jt} - w_{jt-1} = a_t + b_t \log U_{jt} + e_{jt},$$

where w_{jt} is the average wage index for state j in year t , a_t represents a year dummy, U_{jt} is the measured unemployment rate in the state in year t , and e_{jt} represents a residual. Finally, we analyzed the covariation between b_t (the slope coefficient in year t) and the inflation rate between years $t-1$ and t .

Two aspects of the specification in equation (8) deserve comment. First, equation (8) describes the change in the average wage, while equation (7) describes the average individual-level wage change. In the absence of selection biases associated with non-random movements in and out of the labor market, this is not a problem, since with a fixed population $E(\Delta w_{ijt}) = E(w_{ijt}) - E(w_{ijt-1})$ (taking expectations over individuals in state j). While there is some evidence of a cyclical component in the gap between the average wage change for continuing workers and the change in average wages for all workers (see Solon et al (1994)) this issue is somewhat less important in our application because an individual has to be unemployed (or out of the labor force) for an entire year in order not to have a wage in the March CPS data.

³⁴ To construct the adjusted average, we first estimated a wage prediction equation for each year that included various observable characteristics (education, labor market experience, dummies for race, gender, Hispanic status) as well as dummies for each state of residence. We then used the coefficients to predict a wage for each individual assuming that the individual lived in California. Finally, we constructed the average deviation of the observed wage from the predicted wage: this is our adjusted average (log) wage.

Second, although equation (8) is consistent with the original formulation of the Phillips curve, it is inconsistent with the formulation of the so-called "wage curve" recently popularized by Blanchflower and Oswald (1994). In particular, Blanchflower and Oswald argue that the wage level in a local labor market depends on the unemployment rate, while equation (8) implies that the rate of change of wages depends on the unemployment rate. A simple way to compare the two alternatives is to introduce the lagged unemployment rate into equation (8). If the correct model specifies the level of wages as a function of the level of unemployment then the first difference of wages will depend on current and lagged unemployment with equal and opposite coefficients. If the correct model specifies the rate of growth of wages as a function of the unemployment rate, then lagged unemployment will have an insignificant effect on wage growth.³⁵

Some evidence on this specific issue, and on the general performance of equation (8), is presented in Appendix Table 5, where we summarize the results of estimating various versions of (8) without allowing the coefficient b to vary across years. In brief, the estimates suggest that wage growth is fairly responsive to local unemployment: a doubling of the unemployment typically reduces the rate of wage growth by 1.7-2.4 percent per year. Moreover, consistent with the specification of the conventional Phillips curve, but contrary to the wage curve approach, lagged values of local unemployment exert no significant effect on wage growth. These conclusions are robust to minor changes in specification, including the

³⁵ It is also possible to formulate a test based on a model for the level of wages. Specifically, the wage curve hypothesis suggests that only the current unemployment rate affects the level of wages (controlling for state effects), while the Phillips curve specification implies that lagged unemployment terms enter in the model with equal (negative) coefficients. Our findings from this approach are consistent with the results based on a model in first-differences.

addition of dummies capturing permanent differences in wage growth across regions or states, the introduction of region \times year effects capturing region-specific cycles, alternative weighting schemes, and the use of raw versus adjusted average wages for each state.

Based on these findings we proceeded to estimate a series of models that exclude lagged unemployment, but allow the coefficient on current unemployment to vary across years. Estimates of the critical coefficients b_t from 5 such specifications are reported in Table 5. For reference, the top row in the table gives the estimates of the unemployment slopes from identical specifications when the slope b_t is constrained to be constant across years. The year-specific estimates of b_t are then tabulated, along with the estimated coefficients from simple OLS regressions of the estimated b_t 's on the inflation rate. Across the different specifications there is a tendency for unemployment to exert a bigger (more negative) effect on local wage determination in high inflation years. However, the correlation of b_t and π_t is weak: the biggest t-ratio (for the model in column 4) is around 1.

The estimates in the bottom row of Table 5 imply that a 5 percentage point increase in inflation leads to an increase in the magnitude of the slope coefficient relating wage growth to local unemployment of between 0 and 0.012. To understand the implications of these estimates suppose that $b_t = -0.034$ in an average year (as in column 2 of Table 5). Then real wage growth is about 2.3 percentage points per year slower in a state with an 8 percent unemployment rate than in a state with an 4 percent unemployment rate. Raising the inflation rate by 5 percentage points would widen this gap by an additional 0 to 0.8 percentage points. The upper range of this interval represents a sizeable increase in the "flexibility" of wages to local demand conditions between a low and high inflation regime. However, the imprecise

nature of our estimates makes it impossible to distinguish such a possibility from the alternative that higher inflation has no effect on the rate of relative wage adjustment.

V. Conclusions

A traditional concern about very low inflation is that nominal wages are downward rigid. In this paper we have attempted to assemble two types of evidence on the extent of such rigidities: micro-level evidence based on the distribution of individual-specific wage changes; and market level evidence based on the rate of adjustment of average real wages in a state to the state unemployment rates. Our micro analysis reveals three key insights. First, although many individuals experience (measured) nominal wage reductions from one year to the next, there is a substantial "spike" at 0 in the distribution of nominal wage changes. Second, the magnitude of this spike is very highly correlated with inflation. In the high-inflation era of the late 1970s, 6-10 percent of workers with the same job reported exactly the same wage from one year to the next. In the low-inflation era of the mid-1980s, this fraction rose to over 15 percent. Third, informal and formal analyses suggest that most (but not all) of workers with rigid nominal wages would have had an even bigger decline in their real wage in the absence of rigidities. During the mid-1980s, we estimate that downward nominal rigidities may have "held up" average real wages by 1 percent per year.

Our market level analysis of real wage responses to local unemployment is less conclusive. As previous researchers have noted, real wages grow more quickly in local labor markets with low unemployment, and decline in local labor markets with high unemployment. In principle, the existence of downward nominal rigidities implies that the rate of adjustment

to negative shocks will be faster, the higher the aggregate inflation rate. Empirically, however, we find only weak evidence of such an effect. The patterns of state-specific real wage growth and unemployment over the 1976-91 period have limited power to discern small but economically important effects of higher inflation on the rate of relative wage adjustments.

References

- Blanchflower, David G. and Andrew J. Oswald. The Wage Curve, Cambridge, Massachusetts and London: MIT Press, 1994.
- Brown, James N. and Audrey Light. "Interpreting Panel Data on Job Tenure", Journal of Labor Economics 10 (1992): 219-257.
- Card, David. "The Wage Curve: A Review", Journal of Economic Literature 33 (June 1995): 785-799.
- Card, David. "The Effect of Unions on the Structure of Wages: A Longitudinal Analysis", Econometrica 64 (1996), forthcoming.
- DiNardo, John, Nicole M. Fortin and Thomas Lemieux. "Labor Market Institutions and the Distribution of Wages, 1973-1992: A Semi-Parametric Analysis". Econometrica (forthcoming 1996).
- Kahn, Shulamit. "Evidence of Nominal Wage Stickiness from Microdata", Manuscript, Boston University School of Management.
- Krueger Alan B. and Lawrence H. Summers. "Efficiency Wages and the Inter-Industry Structure of Wages." Econometrica 56 (March 1988): 259-293.
- Lebow, David E., David J. Stockton, and William L. Wascher. "Inflation, Nominal Wage Rigidity, and the Efficiency of Labor Markets", Board of Governors of the Federal Reserve System, Finance and Economics Discussion Paper 94-45, October 1995.
- McLaughlin, Kenneth J. "Rigid Wages?", Journal of Monetary Economics, 34 (1994): 383-414.
- Shiller, Robert. "Why Do People Dislike Inflation?" Paper prepared for NBER Conference on Monetary Policy and Low Inflation, January 1996.
- Silverman, B.W. Density estimation for statistics and data analysis, London, Chapman and Hall, Monographs on statistics and applied probability, 1990.
- Solon, Gary, Robert Barsky and Jonathan Parker. "Measuring the Cyclical of Real Wages: How Important is Composition Bias?" Quarterly Journal of Economics 109 (February 1994): 1-26.
- Tobin, James. "Inflation and Unemployment." American Economic Review 62 (March 1972): 1-18.

Appendix A: Data Description and Sources

This appendix describes the construction of our matched CPS panels. We begin with the merged monthly "outgoing rotation group" files that pool the CPS sample observations in the two outgoing rotation groups (rotation groups 4 and 8) of each month of a given calendar year. The CPS sample design implies that households in rotation group 4 in a given month will be in rotation group 8 in the same month in the next year. For example, in the 1979 CPS sample there are 164,626 individuals age 16 and older in rotation groups 4 and 8, drawn from 80,557 uniquely identified households. Half of these individuals (those in group 8) were potentially interviewed previously in 1978, and the other half (in group 4) were potentially re-interviewed in 1980. Since the CPS sample frame is based on physical addresses, rather than specific individuals or families, any family that moves between 1979 and 1980 is "replaced" in the sample by the family that moves into their old housing unit. Moreover, individuals who move out of a family are not tracked to their new address. Finally, since the CPS does not assign unique person identifiers to individuals within households, there is some slippage in matching if an individual mis-reports a key characteristic (like race or age), or if a household contains two very similar people. These limitations imply that about 25-30 percent of individuals are unmatchable.

We matched individuals in rotation group 4 of year t with individuals in rotation group 8 in year $t+1$ by household identity number, interview month, sex, race, ethnicity, and age. We allowed for errors in age of plus or minus one year in the matching algorithm (this gives about 6 percent more successful matches than a strict requirement that age increments by 1). The overall match rates are between 70 and 75 percent in every year except 1984-85 and

1985-86. For example, 74.5 percent of the 164,626 individuals in rotation group 4 of the 1979 sample are successfully matched to a 1980 observation, and 74.4 percent of the 164,942 individuals in rotation group 4 of the 1992 sample are successfully matched to a 1993 observation. In July 1985 the CPS implemented a new sample frame: only individuals in the January-June 1985 CPS are matchable to observations in 1984, and only individuals in the October-December 1985 CPS are matchable to observations in 1986. These limitations lead to much lower match rates for 1984-85 (37.0 percent of all individuals in the 1984 sample) and 1985-86 (18.3 percent of all individuals in the 1985 sample).

Appendix B: Simulations of the Effect of Measurement Error

This appendix describes the simulations we used to evaluate the effect of measurement error on our estimates of sweep-up, sweep-back, wage sweep-up, and wage sweep-back. The simulations all begin with an underlying distribution of real wage changes in the absence of any rigidities. We assume that this is a normal distribution with mean 0 and standard deviation 0.12. The standard deviation of 0.12 is based on estimates of the dispersion in the upper half of the distribution of observed real wage changes in our CPS samples. To this underlying distribution we then add downward rigidities affecting a fraction of workers who would otherwise receive a nominal wage cut, and menu-cost rigidities affecting some individuals who would otherwise experience a "small" nominal wage change. Finally, we added a simple model of measurement error: with probability R the measurement error in the observed wage change is 0; with probability $(1-R)$ the measurement error is drawn from a normal distribution with mean 0.

In all simulations we adjusted the standard deviation of the measurement error component so that the overall contribution of measurement errors to the variance of observed real wage changes is 20 percent. Most available evidence suggests that this is probably a lower bound on the share of observed wage changes attributable to reporting errors (see e.g. McLaughlin (1994)). However, even large changes in the fraction of the variance in observed wage changes attributable to measurement error have relatively little effect in our simulations, holding constant the probability of an accurately reported wage change (R).

We modelled the effect of menu costs as follows. For all observations that would otherwise obtain an absolute nominal wage change Δw of less than or equal to g , we assume that a fraction $0.5(1 - |\Delta w|/g)$ have rigid nominal wages. We set g to either 0.03 or 0.06.

In the simulation model the rate of measured wage rigidity at any inflation rate is determined by three factors: the fraction of workers affected by downward nominal rigidities (i.e., the fraction "swept up"); the fraction affected by menu costs; and the fraction of individuals who accurately report their true wage change (R). We developed three scenarios that combine these factors so as to generate observed rigidity rates of about 8-9 percent at 10 percent inflation and observed rigidity rates of 12-14 percent at 5 percent inflation. One of these combines a relative high estimate of R (0.66) with a midrange estimate of the probability that a nominal wage cut is affected by downward rigidity (0.5) and a narrower range of menu costs (± 3 percent). The second combines a higher rate of menu-cost rigidity with a more moderate estimate of R (0.50). The third assumes a very high probability of downward rigidity, conditional on a negative nominal wage change (0.7).

Table B-1 summarizes the true and observed nominal rigidity effects under each scenario at three different inflation rates (10%, 5%, and 2%). In scenario 1, which has a "high" value of R , the true fraction of workers affected by downward rigidity varies from 9 to 21 percent, and between 3.5 and 5 percent of workers are affected by menu costs. The true wage sweep-up effect is relatively modest, ranging from 0.7 percent to 1.9 percent. (The wage sweep-back effects are uniformly close to zero in all our simulations and are not shown). Depending on the inflation rate, the observed density displacement and wage effects in this scenario are downward biased by 0-30 percent.

In scenario 2, which has a "high" fraction of workers affected by menu costs and/or rounding, the true sweep up effects are (virtually) the same as in scenario 1 and the measured effects are also similar. (The sweep up effects are just slightly smaller in scenario 2 than scenario 1 because we first allow the effect of menu costs and then impose downward rigidities. With more rigidity attributable to menu costs, the net effect of downward rigidity is lessened). Finally, in scenario 3, which has a "high" probability of downward rigidity for those who would otherwise experience wage cuts, the true sweep-up effects are slightly larger but the measured effects are about the same as in the other scenarios, implying slightly larger downward biases.

The final column of Table B-1 shows the ratio of estimated wage sweep-up to true wage sweep-up. Note that estimated wage sweep-up is typically downward-biased by 20-30 percent, with a larger bias the lower the inflation rate.

Table 1: Characteristics of Wage Change Distributions, CPS Samples

	Aggregate Data:		Median Nominal Wage Change (3)	Percent of all Hourly Workers with ^b		Percent Rigid (exclude min. wage) ^c (6)
	Inflation Rate ^a (1)	Unemployment Rate (2)		Nominal Cut (4)	Rigid Wage (5)	
1979-80	10.6	7.1	9.5	11.6	7.3	7.5
1980-81	9.1	7.6	9.4	12.1	7.2	7.8
1981-82	5.9	9.7	7.2	16.4	13.0	10.9
1982-83	4.1	9.6	4.9	17.7	17.1	14.8
1983-84	4.2	7.5	4.6	17.8	16.7	14.9
1984-85	3.5	7.2	4.4	18.4	16.4	15.2
1985-86	1.8	7.0	4.2	19.1	17.1	15.6
1986-87	3.6	6.2	4.1	19.1	17.3	16.1
1987-88	4.1	5.5	4.5	18.0	16.4	15.4
1988-89	4.7	5.3	4.7	17.2	15.5	14.8
1989-90	5.3	5.5	5.1	17.3	14.3	14.6
1990-91	4.1	6.7	4.9	18.2	14.9	15.7
1991-92	3.0	7.4	3.9	18.9	17.4	17.1
1992-93	2.9	6.8	3.6	20.3	17.1	16.6

Notes: Based on matched CPS samples. See text and Appendix for description of samples.

^a Inflation rate is 100 times the change in the log of the CPI-U-X1.

^b Individuals who report being paid by the hour in both years, and who report the same 2 digit industry and occupation in both years, except for 1982-83, 1983-84 and 1988-89 -- see appendix Table A1, note (a)

^c Sample excludes individuals whose first-year wage does not exceed the minimum wage in either year, or whose second-year wage does not exceed the minimum wage in the second year.

Table 2: Characteristics of Wage Change Distributions in PSID Samples

Year	Inflation Rate ^a (1)	Percent Rigid:		Year	Inflation Rate (4)	Percent Rigid:	
		All (2)	hourly ^b (3)			All (5)	hourly ^b (6)
1-Year Wage Changes							
1976-77	6.3	7.4	9.3	1985-86	1.8	8.8	15.6
1977-78	7.3	6.2	7.8	1986-87	3.6	10.1	16.5
1978-79	10.3	6.8	7.8	1987-88	4.1	10.6	16.0
2-Year Wage Changes							
1976-78	13.6	2.4	3.1	1985-87	5.4	4.7	7.9
1977-79	18.1	1.9	2.1	1986-88	7.6	5.3	8.4
3-Year Wage Changes							
1976-79	24.4	0.9	1.2	1985-88	9.5	2.8	4.7

Notes: The unemployment rates during the respective periods are as follows:

<u>Year</u>	<u>Unemployment</u>	<u>Year</u>	<u>Unemployment</u>
1977	7.1	1986	7.0
1978	6.1	1987	6.2
1979	5.8	1988	5.5

^a Inflation rate is 100 times the change in the log of the CPI-U-X1 over the relevant time period.

^b Individuals who report being paid by the hour in the beginning and ending years, and report no change in "position" (1976-79) or "employer" (1985-88).

Table 3: Estimated Fraction of Non-Job-Changers Affected by Nominal Wage Rigidities

Year	Inflation Rate (1)	<u>Density swept-up^a</u> Counterfactual:		<u>Density swept-back^b</u> Counterfactual:	
		Median (2)	49th Percentile (3)	Median (4)	49th Percentile (5)
1979-80	10.6	6.86	6.54	0.76	2.01
1980-81	9.1	6.20	5.92	2.02	2.88
1981-82	5.9	6.31	6.56	4.54	5.31
1982-83	4.1	9.98	11.60	4.79	4.17
1983-84	4.2	10.43	11.54	4.44	4.41
1984-85	3.5	10.84	11.24	4.49	4.92
1985-86	1.8	12.72	13.96	2.87	2.66
1986-87	3.6	13.45	13.49	2.66	3.63
1987-88	4.1	13.85	14.10	1.57	2.33
1988-89	4.7	13.04	14.09	1.82	1.77
1989-90	5.3	11.39	12.42	2.72	3.17
1990-91	4.1	10.79	12.09	4.89	4.59
1991-92	3.0	11.75	12.09	5.32	5.98
1992-93	2.9	11.10	12.13	5.45	5.43

Notes: Samples are based on matched CPS samples of hourly-rated workers who report the same industry and occupation code in consecutive years, and whose wages are not affected by the minimum wage in either year.

^a Estimated percent of workers who would have experienced a nominal wage cut in the absence of rigidities.

^b Estimated percent of workers who would have experienced a nominal wage increase in the absence of rigidities.

Table 4: Estimated Effect of Nominal Wage Rigidities on Average Real Wage Changes

Year	Inflation Rate (1)	<u>Wage swept-up^a</u> Counterfactual:		<u>Wage swept-back^b</u> Counterfactual:	
		Median (2)	49th Percentile (3)	Median (4)	49th Percentile (5)
1979-80	10.6	0.54	0.51	0.00	0.03
1980-81	9.1	0.35	0.32	0.01	0.11
1981-82	5.9	0.25	0.30	0.16	0.16
1982-83	4.1	0.75	0.83	0.09	0.06
1983-84	4.2	0.81	0.82	0.06	0.09
1984-85	3.5	0.93	0.99	0.08	0.06
1985-86	1.8	0.87	0.95	0.03	0.03
1986-87	3.6	1.17	1.20	0.03	0.05
1987-88	4.1	1.13	1.20	0.00	0.01
1988-89	4.7	1.10	1.18	0.01	0.00
1989-90	5.3	0.93	0.96	0.00	0.05
1990-91	4.1	0.71	0.80	0.07	0.05
1991-92	3.0	0.71	0.74	0.08	0.09
1992-93	2.9	0.72	0.78	0.07	0.07

Notes: Samples are based on matched CPS samples of hourly-rated workers who report the same industry and occupation code in consecutive years, and whose wages are not affected by the minimum wage in either year.

^a Estimated effect of nominal rigidities on average real wage change for workers who otherwise would have experienced a nominal wage cut, expressed in percentages.

^b Estimated effect of nominal rigidities on average real wage change for worker who otherwise would have experience a nominal wage increase, expressed in percentages. A positive entry means that rigidities reduced wages for this group.

Table 5: Estimated Effects of State Unemployment on Real Wage Growth

	Additional Control Variables Included in Models:				
	Year	Year & Region	Year × Region	Year & State	Year×Region & State
Pooled Slopes ^a	-0.025 (0.005)	-0.034 (0.006)	-0.025 (0.007)	-0.048 (0.007)	-0.056 (0.012)
Year-Specific Slopes ^b					
1976-77	0.018 (0.019)	0.008 (0.019)	0.002 (0.029)	-0.004 (0.020)	-0.028 (0.031)
1977-78	-0.020 (0.020)	-0.035 (0.020)	-0.027 (0.031)	-0.049 (0.021)	-0.057 (0.034)
1978-79	0.001 (0.020)	-0.015 (0.021)	-0.005 (0.030)	-0.033 (0.022)	-0.040 (0.033)
1979-80	-0.053 (0.020)	-0.068 (0.020)	-0.016 (0.030)	-0.088 (0.021)	-0.055 (0.033)
1980-81	-0.042 (0.018)	-0.056 (0.018)	-0.034 (0.026)	-0.074 (0.019)	-0.067 (0.028)
1981-82	-0.022 (0.019)	-0.037 (0.019)	-0.061 (0.030)	-0.056 (0.020)	-0.100 (0.032)
1982-83	-0.047 (0.018)	-0.060 (0.019)	-0.057 (0.026)	-0.080 (0.020)	-0.087 (0.028)
1983-84	-0.044 (0.017)	-0.058 (0.018)	-0.025 (0.025)	-0.076 (0.019)	-0.056 (0.028)
1984-85	-0.018 (0.019)	-0.029 (0.019)	-0.040 (0.029)	-0.046 (0.020)	-0.071 (0.031)
1985-86	-0.016 (0.016)	-0.024 (0.017)	0.018 (0.030)	-0.036 (0.017)	-0.011 (0.033)
1986-87	-0.062 (0.015)	-0.066 (0.015)	-0.030 (0.028)	-0.077 (0.016)	-0.060 (0.031)
1987-88	-0.004 (0.015)	-0.008 (0.016)	-0.023 (0.025)	-0.020 (0.016)	-0.050 (0.028)
1988-89	-0.027 (0.020)	-0.033 (0.020)	-0.017 (0.026)	-0.050 (0.021)	-0.045 (0.029)
1989-90	-0.030 (0.025)	-0.040 (0.025)	-0.069 (0.028)	-0.063 (0.027)	-0.099 (0.031)
1990-91	0.019 (0.023)	0.006 (0.023)	0.010 (0.027)	-0.012 (0.024)	-0.017 (0.029)
Effect of Inflation Rate on Estimated Slope ^c	-0.097 (0.275)	-0.197 (0.273)	-0.041 (0.286)	-0.251 (0.286)	-0.146 (0.298)

Notes: Standard errors in parentheses. Models are estimated on sample of 756 state × year observations. See note to Appendix Table A-5.

^aEstimated effect of unemployment on wage growth in model with constant coefficient.

^bEstimated effects of unemployment on wage growth in model with year-specific coefficients.

^cEstimated coefficient from OLS regression of year-specific unemployment effects on annual inflation rate (change in log CPI-U-X1).

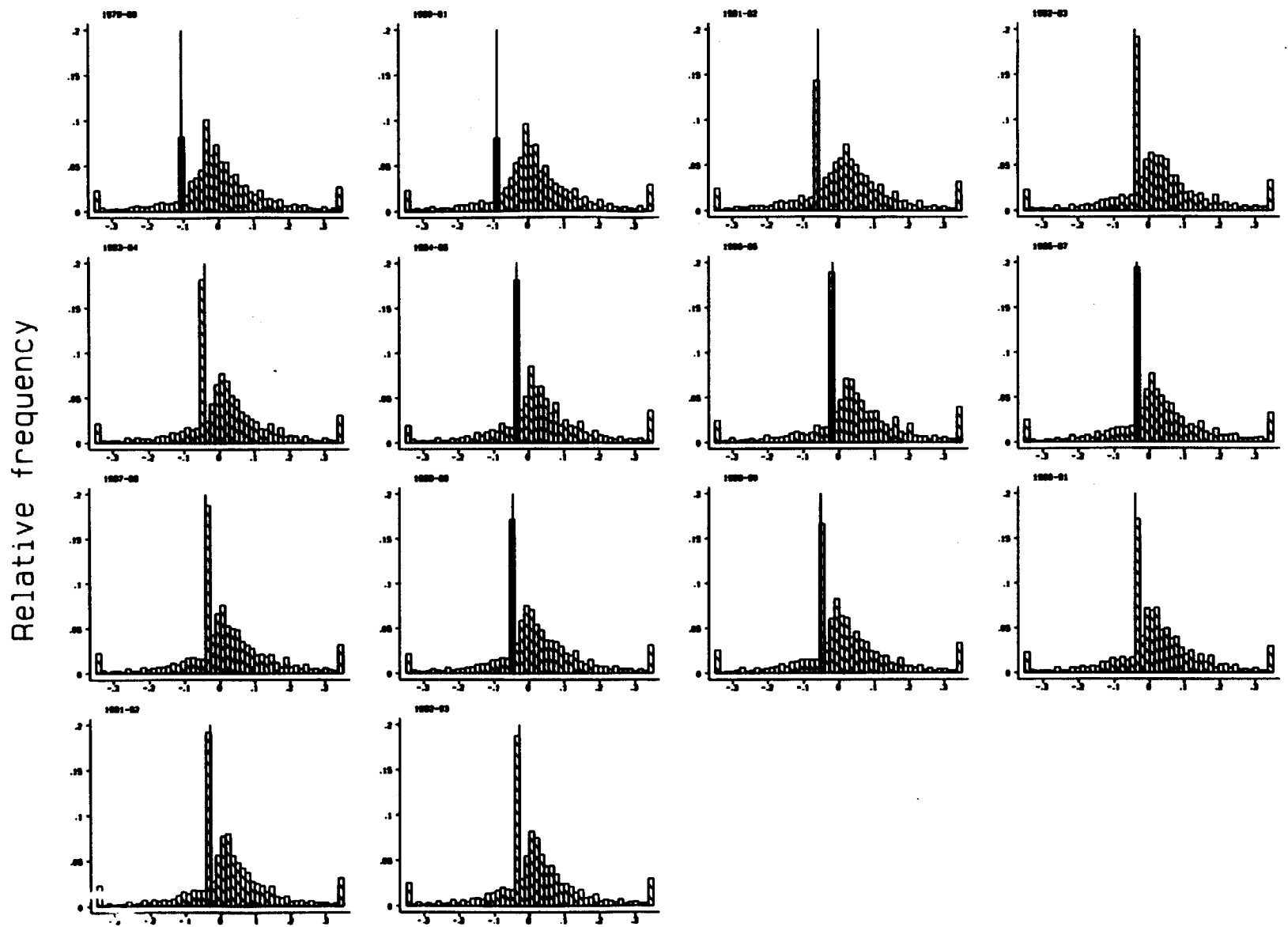


Figure 1a: Histograms of the Distribution of Log Real Wage Changes, Matched CPS Samples from 1979-80 to 1992-93

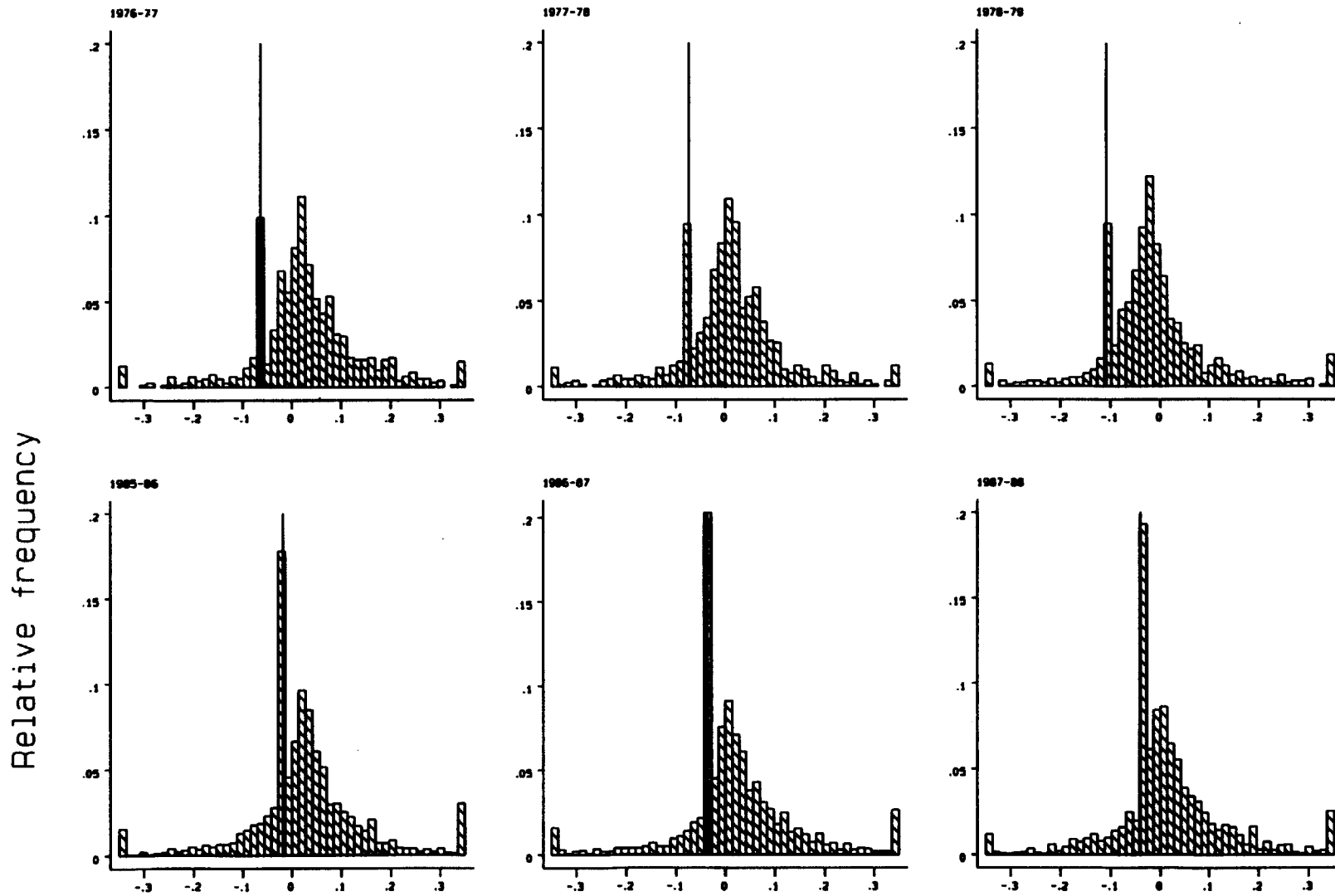


Figure 1b: Histograms of the Distribution of Log Real Wage Changes, PSID Samples 1976-79 and 1985-88, Hourly-rated workers, same employer

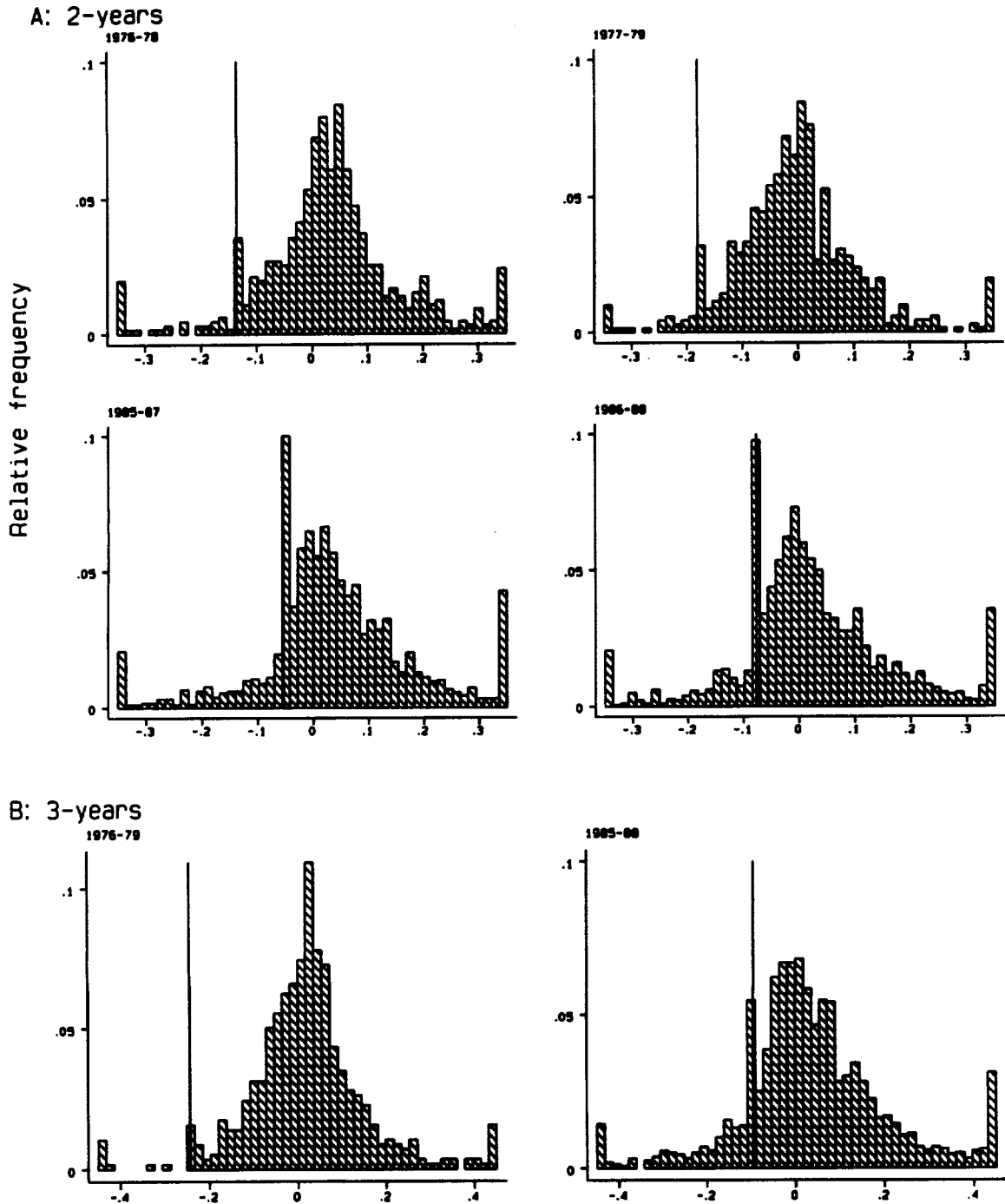


Figure 2: Histograms of the Distribution of Log Real Wage Changes, Over 2-year and 3-year Horizons, PSID Samples, Hourly-rated workers, same employer

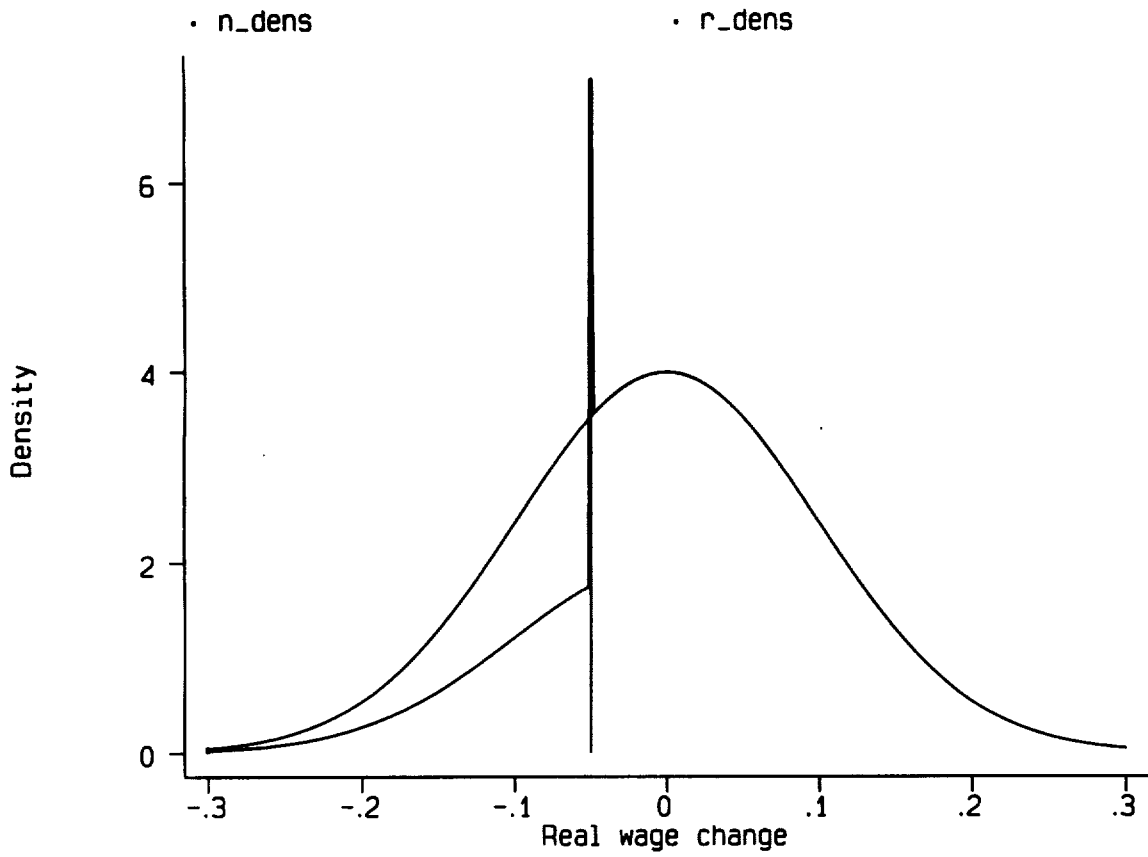


Figure 3a: Effect of Downward Nominal Rigidities on the Distribution of Real Wage Changes -- Theoretical Illustration

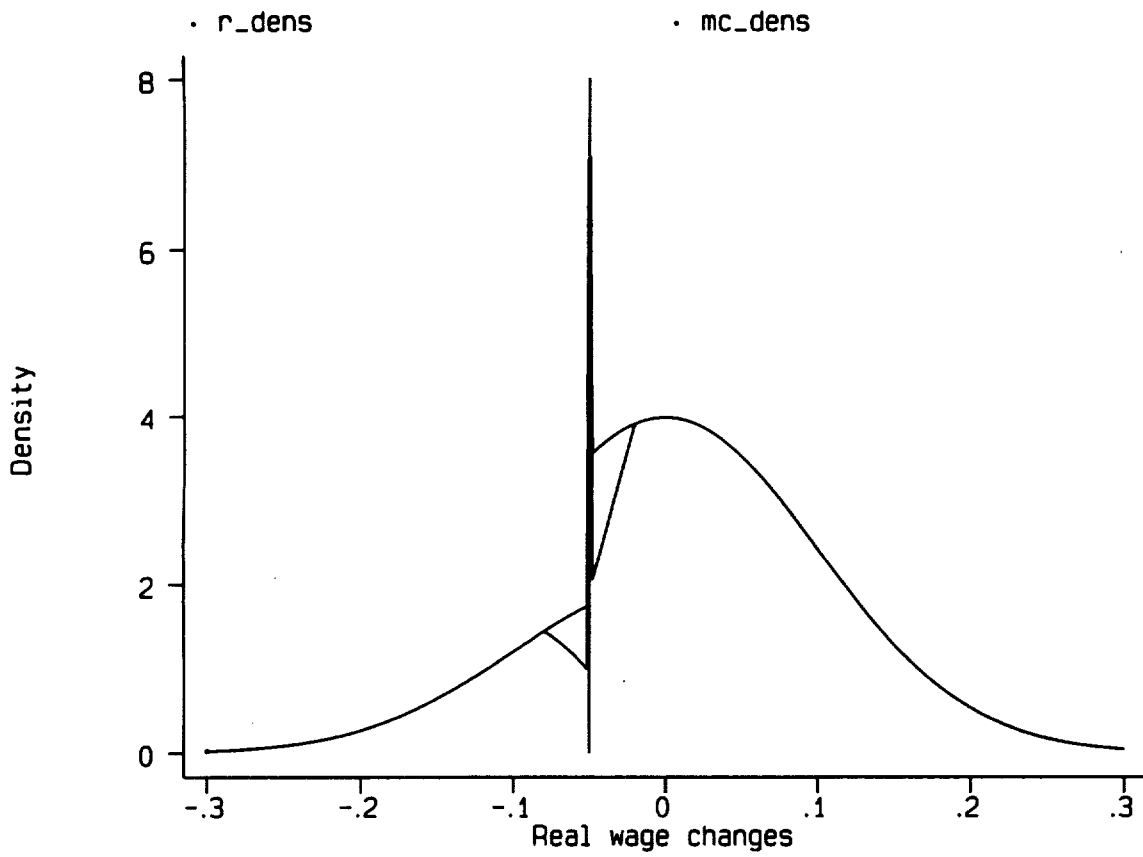


Figure 3b: Effect of Downward Nominal Rigidities and Menu Costs on the Distribution of Real Wage Changes -- Theoretical Illustration

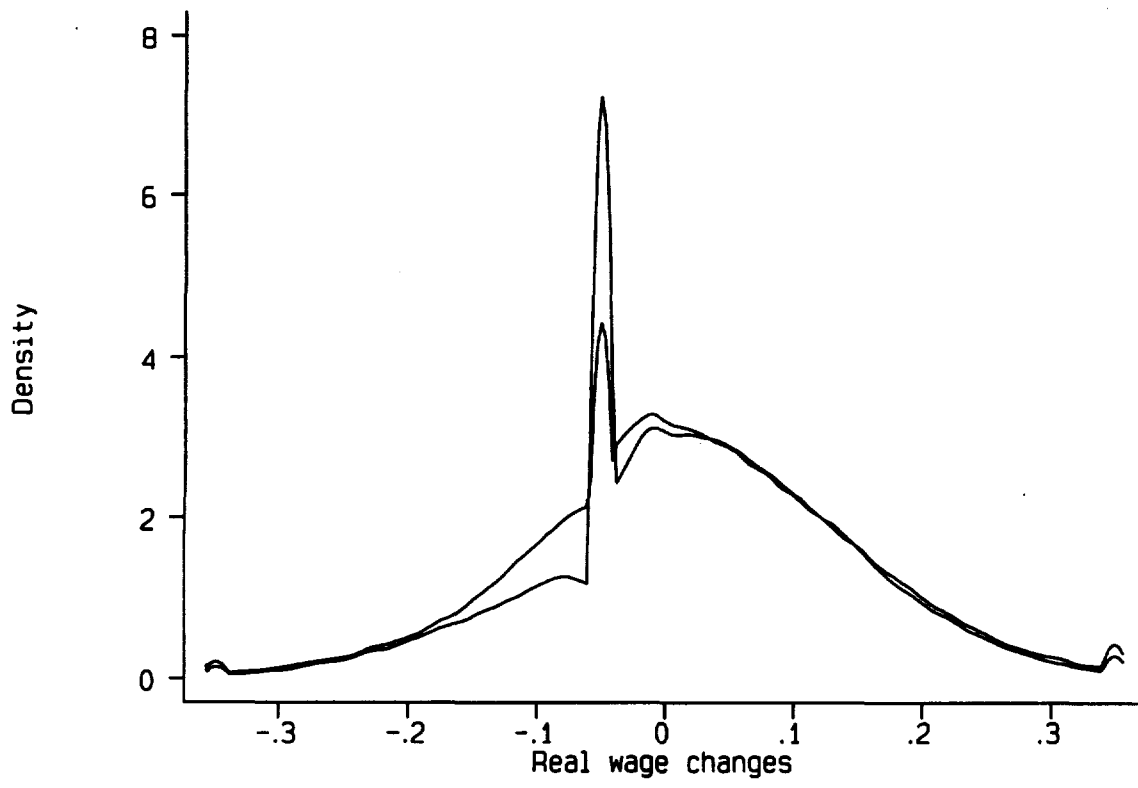


Figure 3c: Effect of Measurement Error on the Distribution of Real Wage Changes in the Presence of Menu Costs and Downward Rigidities -- Theoretical Illustration

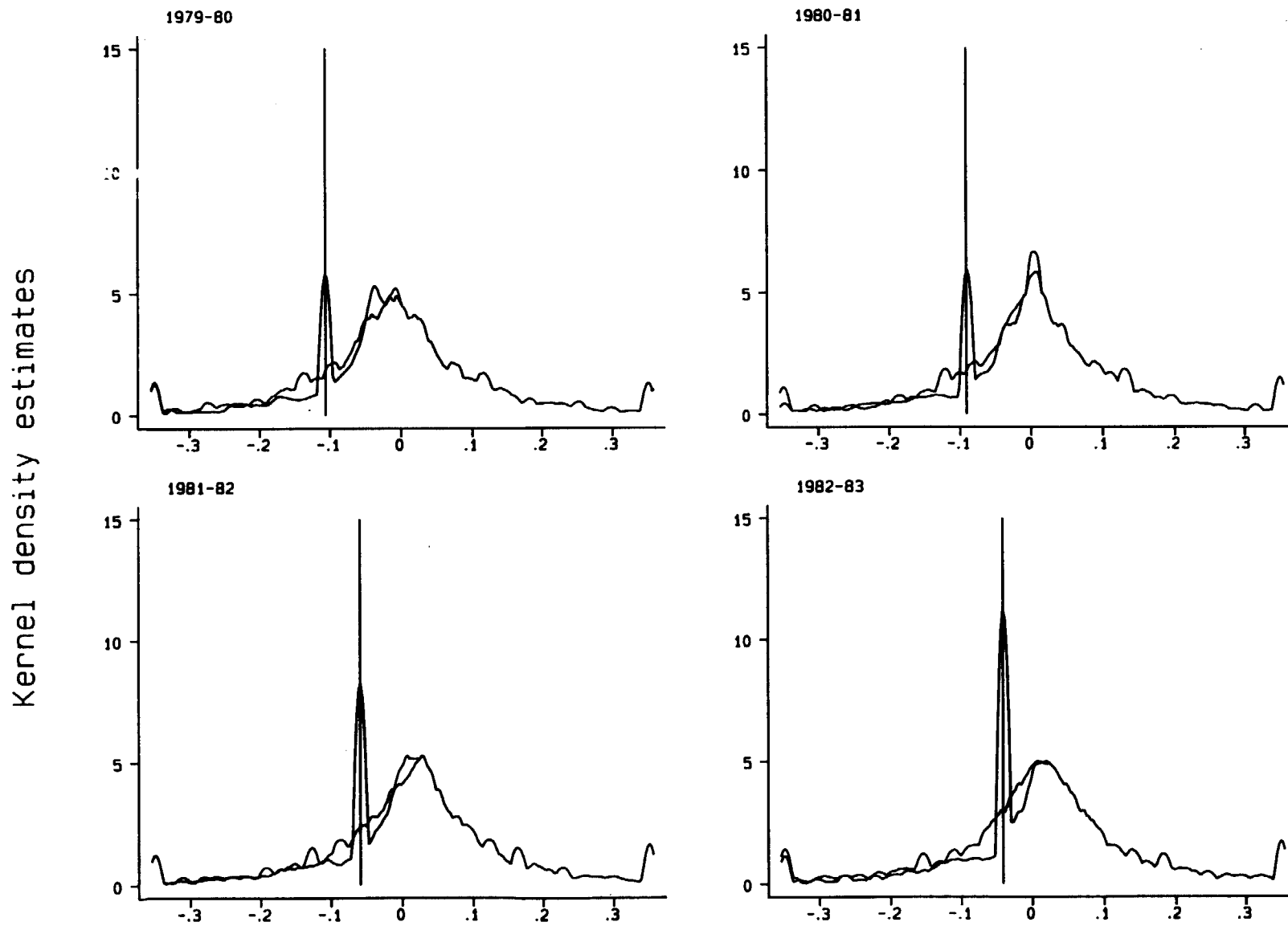


Figure 4: Smoothed (Kernel) Estimates of Actual and Counterfactual Densities of Real Wage Changes, CPS Samples from 1979-80 to 1982-83

Kernel density estimates

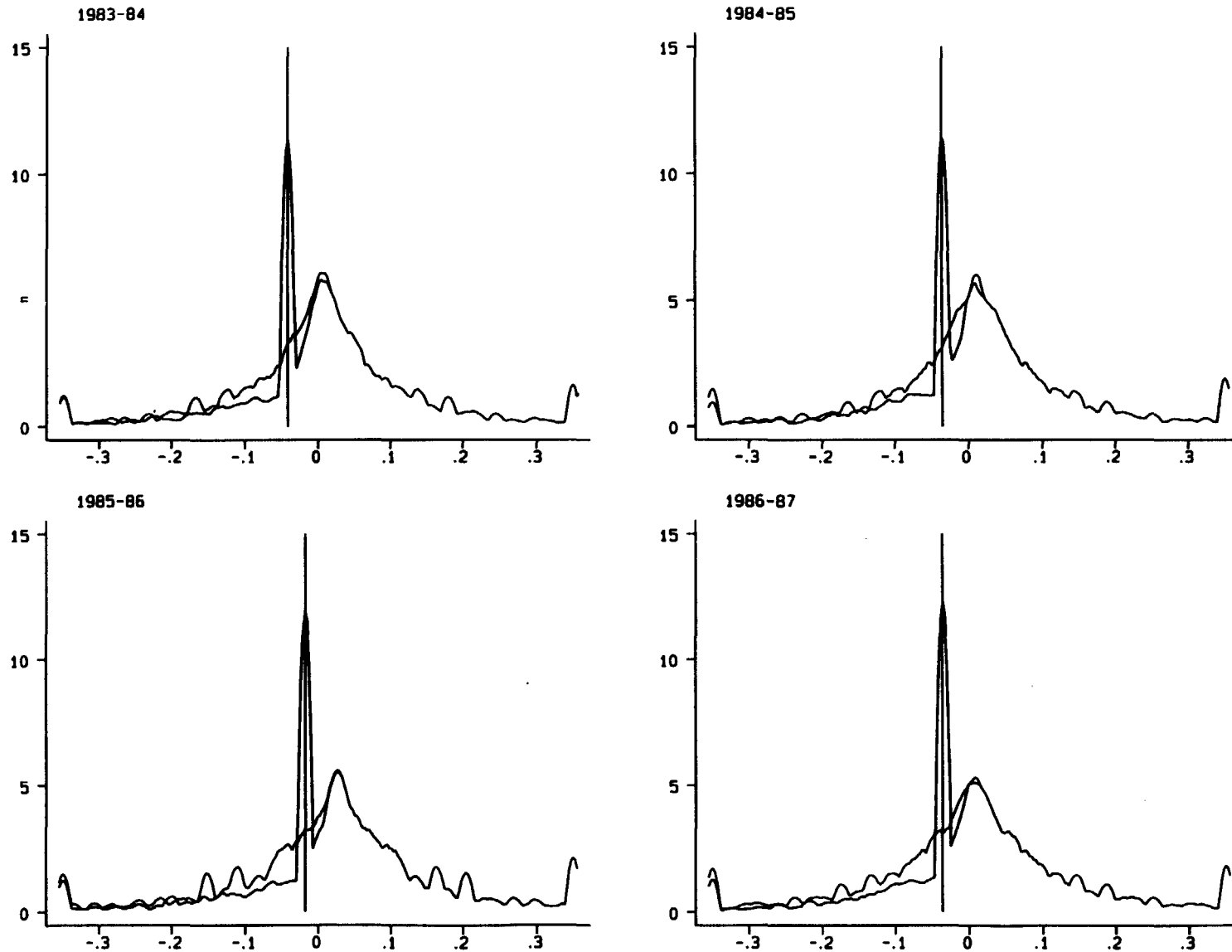


Figure 4 (Continued): Smoothed (Kernel) Estimates of Actual and Counterfactual Densities of Real Wage Changes, CPS Samples from 1983-84 to 1986-87

Kernel density estimates

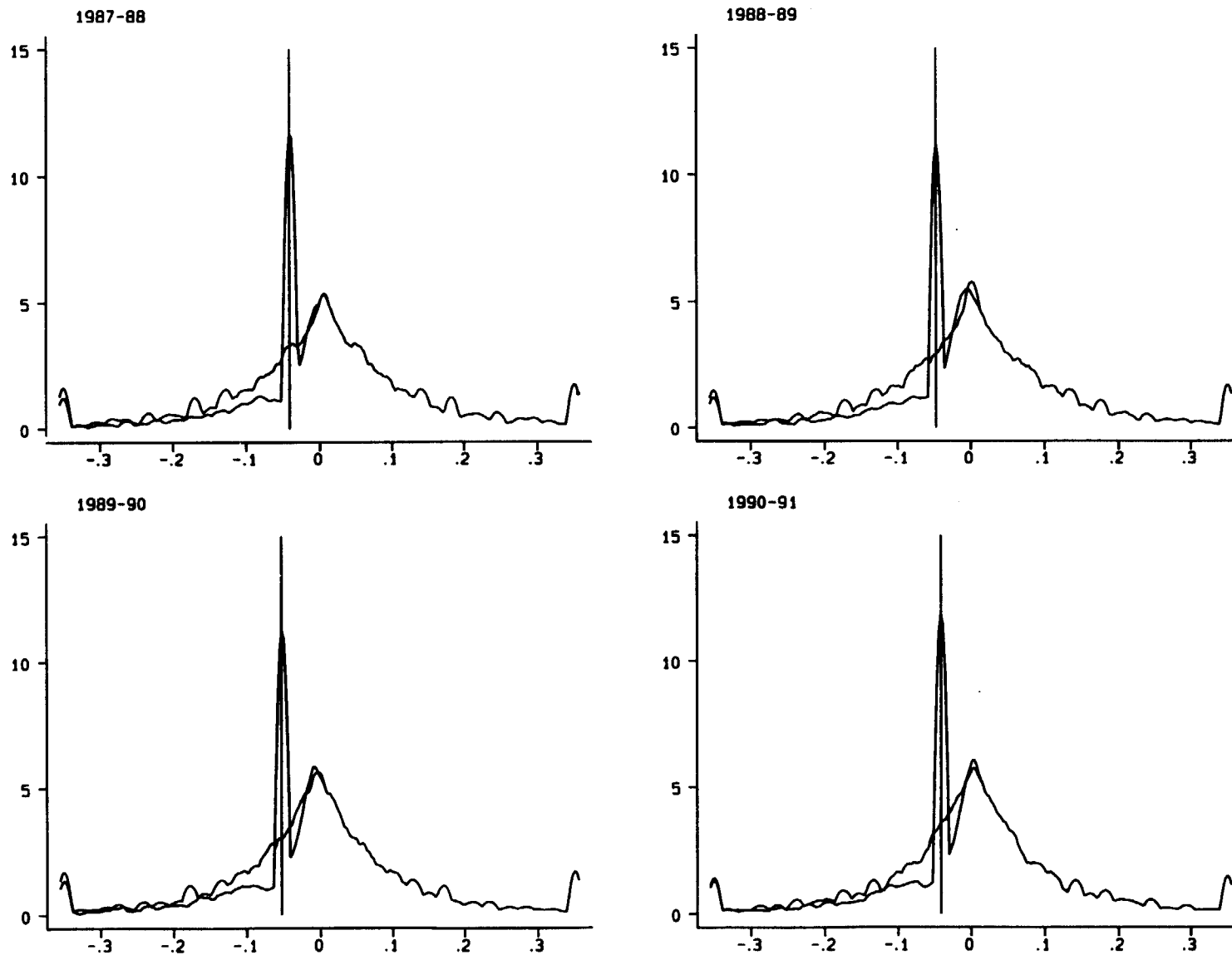


Figure 4 (Continued): Smoothed (Kernel) Estimates of Actual and Counterfactual Densities of Real Wage Changes, CPS Samples from 1987-88 to 1990-91

Kernel density estimates

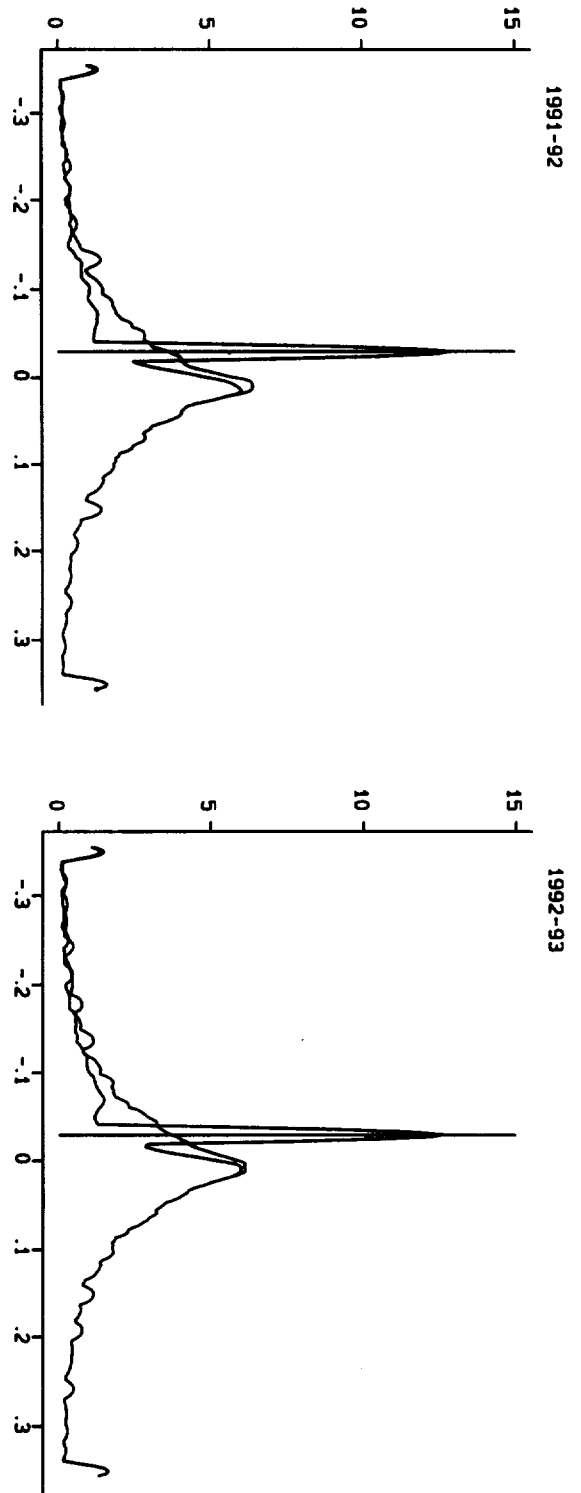


Figure 4 (Continued): Smoothed (Kernel) Estimates of Actual and Counterfactual Densities of Real Wage Changes, CPS Samples from 1991-92 to 1992-93

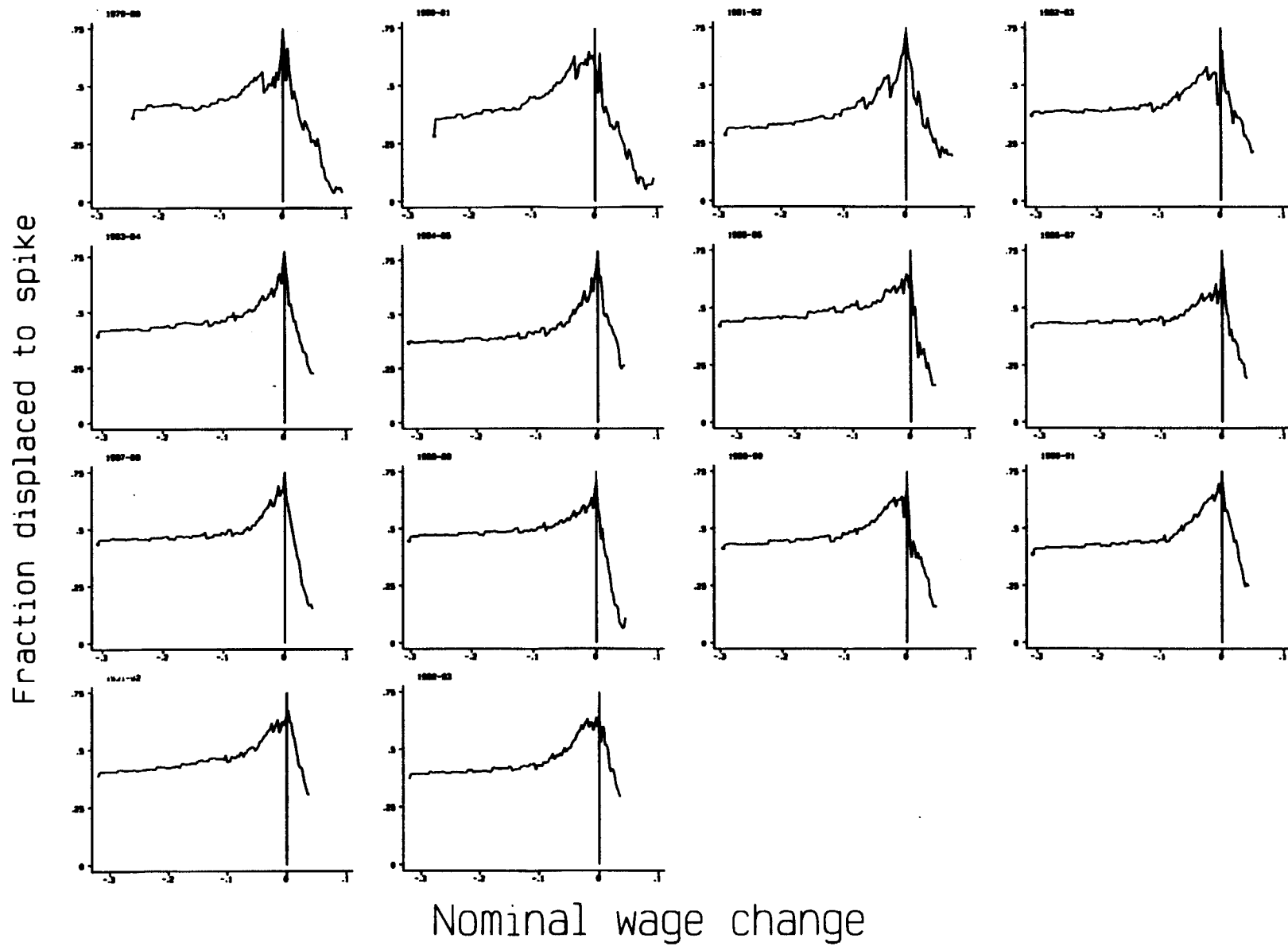


Figure 5: Cumulative Fraction of Counterfactual Density affected by Rigidities, CPS Samples from 1979-80 to 1991-92

Table A1: Matched CPS Sample Selection

Year	Total Number of Hourly-rated Workers in Matched CPS sample	Percent with Same Industry and Occupation ^a	... And Unaffected by Minimum Wage ^b
1979-80	19,792	58.9	47.3
1980-81	22,362	59.8	48.1
1981-82	22,127	61.5	52.9
1982-83	21,768	32.8	28.5
1983-84	21,737	47.7	42.4
1984-85	10,491	57.0	51.2
1985-86	5,904	54.9	50.2
1986-87	23,187	56.1	51.5
1987-88	21,906	55.8	51.9
1988-89	21,751	55.2	52.0
1989-90	22,952	55.3	50.4
1990-91	23,365	56.0	48.9
1991-92	23,089	55.7	50.5
1992-93	22,847	56.3	52.2

Notes: ^a The industry and occupations are matched using detailed (2-digit) industry and occupation codes for all years except 1982-83, 1983-84 and 1988-89. Matching for the 1983-84 sample is based on 3-digit 1980 census codes; for the 1982-83 sample, industry is matched using the detailed (2-digit) codes which are comparable across years, while occupation was matched using an algorithm devised to convert 1970 census 3-digit occupation codes to their 1980 census counterparts; and for the 1988-89 sample, occupation was matched using the detailed codes, and an algorithm was devised to match the detailed industry codes. The matching algorithms used for the 1982-83 and 1988-89 samples are available from the authors on request.

^b Observations are assumed to be affected by minimum wage effects if *either* $w_1 \leq \max(mw_1, mw_2)$, *or* $w_2 \leq mw_2$.

Table A2: PSID Sample Selection

Year	Total Number of Workers in 4-year Panel	Percent Hourly-rated With Same Employer: ^a
1976-77	1,965	41.2
1977-78	1,992	45.0
1978-79	2,214	41.3
1985-86	4,507	45.9
1986-87	4,447	45.0
1987-88	4,443	45.1

Notes: ^a Workers are treated as having changed employer if their reported tenure, in months, is less than the number of months since their previous interview. During 1976-79, tenure relates to time in the same *position*, while during 1985-88, tenures relates to time with the same employer.

Table A3: Decomposition of "Density Sweep-up" over the Range of Nominal Wage Changes

Year	Inflation Rate (1)	Density swept-up from ^a			
		All Negative Wage Changes (2)	Wage Changes Between -0.1 and 0 (3)	Wage Changes Between -0.2 and -0.1 (4)	Wage Changes < -0.20 (5)
1979-80	10.6	6.86	5.11	1.34	0.42
1980-81	9.1	6.20	5.22	0.42	0.56
1981-82	5.9	6.31	5.55	0.53	0.23
1982-83	4.1	9.98	6.54	2.07	1.37
1983-84	4.2	10.43	7.27	2.21	0.94
1984-85	3.5	10.84	7.45	1.86	1.53
1985-86	1.8	12.72	9.41	2.16	1.15
1986-87	3.6	13.45	9.20	2.26	1.99
1987-88	4.1	13.85	9.38	3.04	1.42
1988-89	4.7	13.04	8.79	2.87	1.37
1989-90	5.3	11.39	8.02	2.26	1.12
1990-91	4.1	10.79	7.97	2.48	0.34
1991-92	2.97	11.75	8.74	2.15	0.87
1992-93	2.95	11.10	8.09	2.07	0.94

Notes: Samples are based on matched CPS samples of hourly-rated workers who report the same industry and occupation code in consecutive years, and whose wages are not affected by the minimum wage in either year.

^a Computed assuming "median" counterfactual wage change distributions.

Table A4: Decomposition of "Wage Sweep-Up" over the Range of Nominal Wage Changes

Year	Inflation Rate (1)	Density swept-up from ^a			
		All Negative Wage Changes (2)	Wage Changes Between -0.1 and 0 (3)	Wage Changes Between -0.2 and -0.1 (4)	Wage Changes < -0.20 (5)
1979-80	10.6	0.54	0.19	0.21	0.14
1980-81	9.1	0.35	0.17	0.06	0.12
1981-82	5.9	0.25	0.18	0.08	-0.01
1982-83	4.1	0.75	0.18	0.27	0.29
1983-84	4.2	0.81	0.27	0.31	0.24
1984-85	3.5	0.93	0.24	0.28	0.40
1985-86	1.8	0.87	0.39	0.30	0.18
1986-87	3.6	1.17	0.36	0.32	0.49
1987-88	4.1	1.13	0.33	0.44	0.36
1988-89	4.7	1.10	0.33	0.40	0.36
1989-90	5.3	0.93	0.28	0.32	0.33
1990-91	4.1	0.71	0.25	0.37	0.09
1991-92	3.0	0.71	0.26	0.25	0.19
1992-93	2.9	0.72	0.23	0.28	0.21

Notes: Samples are based on matched CPS samples of hourly-rated workers who report the same industry and occupation code in consecutive years, and whose wages are not affected by the minimum wage in either year.

^a Computed assuming "median" counterfactual wage change distributions.

Table A5: Estimated Models for the First-Difference of State-Average Log Wages 1976-1991.

Dependent Variable:	Estimated Coefficients of Log State Unemployment Rate:				Residual Standard Error (5)	Other Controls Included:
	Current (1)	Lag 1 (2)	Lag 2 (3)	Lag 3 (4)		
1. Adjusted Log Wage (weighted)	-0.025 (0.005)	---	---	---	0.042	year effects
2. Adjusted Log Wage (weighted)	-0.044 (0.011)	0.021 (0.011)	---	---	0.042	year effects
3. Adjusted Log Wage (weighted)	-0.038 (0.011)	-0.004 (0.016)	0.002 (0.015)	0.021 (0.011)	0.042	year effects
4. Adjusted Log Wage (weighted)	-0.034 (0.006)	---	---	---	0.042	year and region effects
5. Adjusted Log Wage (weighted)	-0.048 (0.011)	0.016 (0.011)	---	---	0.042	year and region effects
6. Adjusted Log Wage (weighted)	-0.025 (0.007)	---	---	---	0.040	yearxregion effects
7. Adjusted Log Wage (weighted)	-0.023 (0.014)	-0.003 (0.014)	---	---	0.040	yearxregion effects
8. Unadjusted Log Wage (weighted)	-0.029 (0.012)	-0.002 (0.012)	---	---	0.048	year and region effects
9. Adjusted Log Wage (unweighted)	-0.049 (0.012)	0.018 (0.012)	---	---	0.038	year and region effects

Notes: All models are fit to sample of 765 observations (51 states \times 15 year-to-year changes). The dependent variable is the change from year $t-1$ to year t in the state average wage, derived from March CPS data for all individuals who worked positive weeks and reported positive earnings (age 16-68). In all rows except row 8, the state average wage is adjusted for the characteristics of workers in the state (using a year-specific wage prediction model). In all rows except row 9, the estimates are obtained by weighted OLS, using as weights the relative number of workers in the state in 1976. Standard errors in parentheses.

Table B1: Evaluation of Estimated Rigidity Effects in Presence of Measurement Errors

Width of Interval Affected by Menu Costs	Probability of Downward Nominal Rigidity	Probability of No Error in Δw	Inflation Rate	Based on True Wage Changes:			Based on Observed Wage Changes:				Ratio: Observed \div True wsu	
				Fraction Affected by:			Fraction Rigid	su	sb	wsu		
				Menu Costs	Downward Rigidity	True wsu						
Scenario 1:												
± 0.03	0.50	0.66	0.10	0.035	0.093	0.007	0.087	0.081	0.006	0.007	1.00	
			0.05	0.046	0.157	0.013	0.136	0.123	0.013	0.010	0.77	
			0.02	0.049	0.206	0.019	0.169	0.153	0.015	0.014	0.74	
Scenario 2:												
± 0.06	0.50	0.50	0.10	0.071	0.087	0.006	0.079	0.069	0.010	0.005	0.85	
			0.05	0.091	0.147	0.013	0.119	0.100	0.018	0.009	0.69	
			0.02	0.097	0.191	0.019	0.143	0.135	0.008	0.013	0.68	
Scenario 3:												
± 0.03	0.70	0.50	0.10	0.035	0.130	0.009	0.083	0.087	-0.003	0.007	0.78	
			0.05	0.046	0.223	0.019	0.134	0.130	0.003	0.013	0.68	
			0.02	0.049	0.290	0.027	0.168	0.154	0.013	0.016	0.59	

Notes: Based on simulations of wage changes and rigidity effects. See Appendix B. In all cases, the real wage change that would be observed in the absence of rigidities is assumed to be normally distributed with mean 0 and standard deviation 0.12. Also, the ratio of the variance of the measurement error in wage changes to the total variance of observed wage changes is set to 0.20.

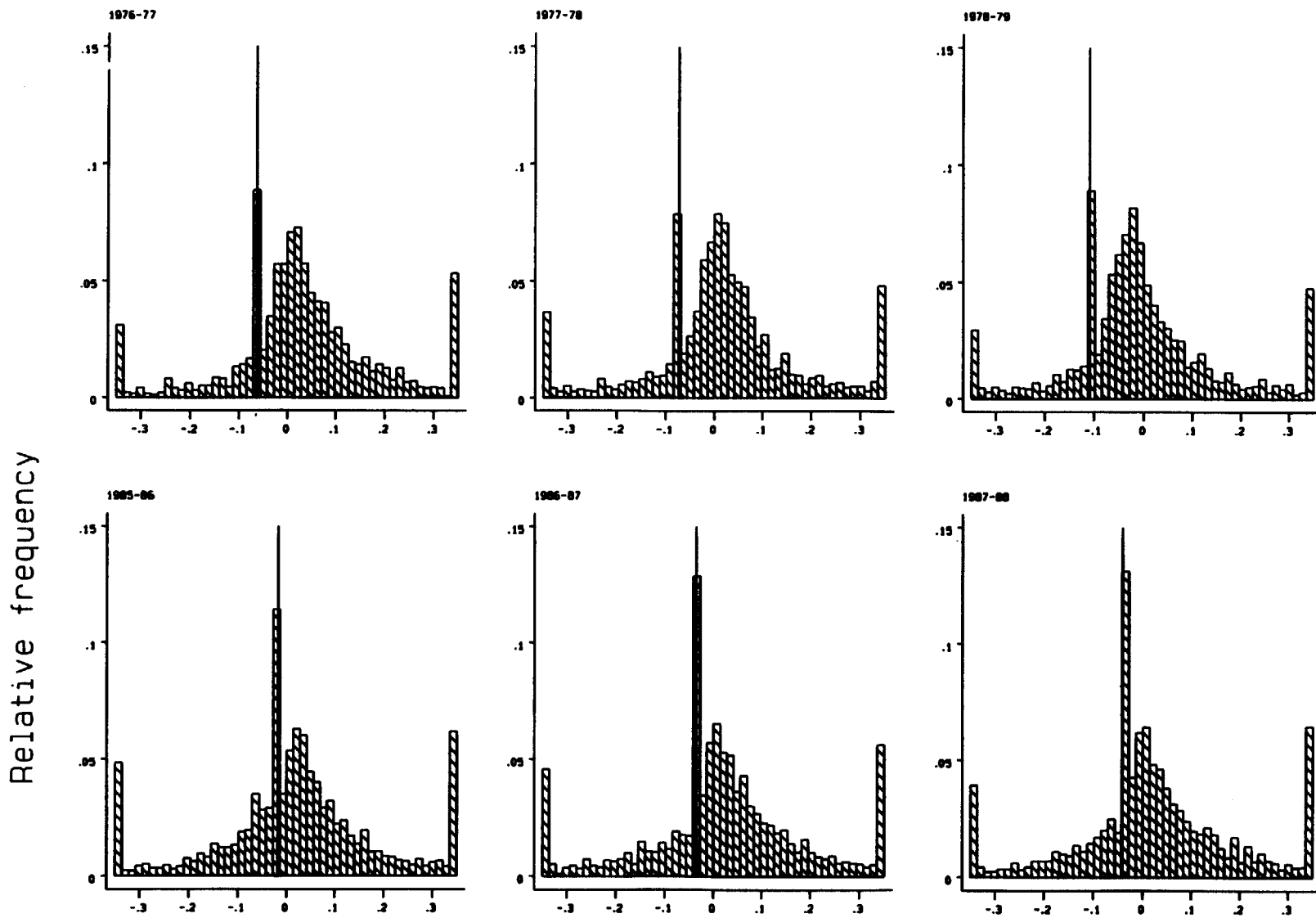


Figure A1: Histograms of Real Wage Changes for All Workers in PSID Samples, 1976-79 and 1985-88

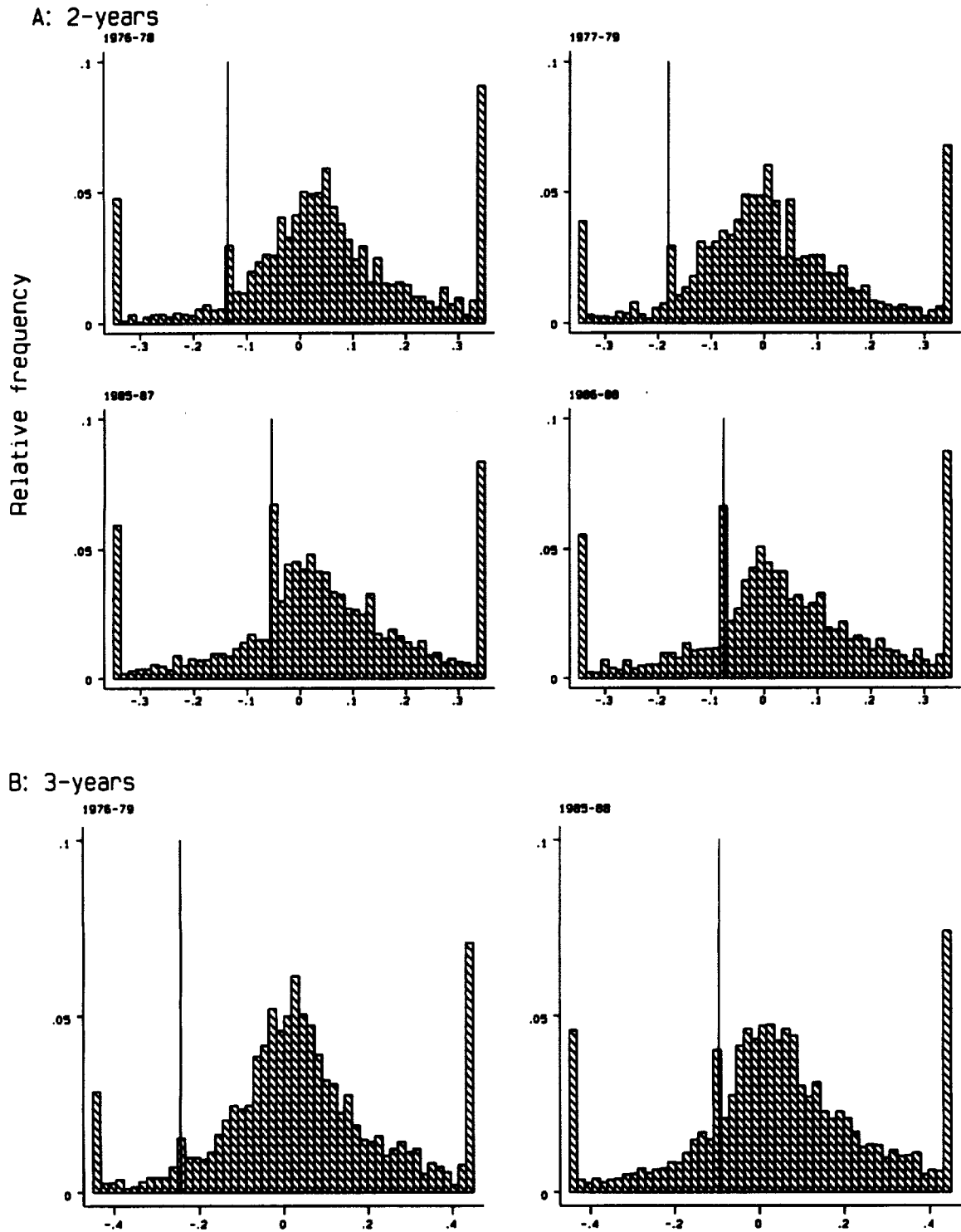


Figure A2: Histograms of Real Wage Changes for All Workers in PSID Samples, Over 2-year and 3-year Horizons, 1976-79 and 1985-88