

Double-Blind Comparison of First- and Second-Generation Antipsychotics in Early-Onset Schizophrenia and Schizoaffective Disorder: Findings From the Treatment of Early-Onset Schizophrenia Spectrum Disorders (TEOSS) Study

Linmarie Sikich, M.D.

Jean A. Frazier, M.D.

Jon McClellan, M.D.

Robert L. Findling, M.D.

Benedetto Vitiello, M.D.

Louise Ritz, M.B.A.

Denisse Ambler, M.D.

Madeline Puglia, B.A.

Ann E. Maloney, M.D.

Emily Michael, B.A.

Sandra De Jong, M.D.

Karen Slifka, R.N., C.S.

Nancy Noyes, C.P.N.P., C.S.

Stefanie Hlastala, Ph.D.

Leslie Pierson, M.P.H.

Nora K. McNamara, M.D.

Denise Delporto-Bedoya, M.A.

Robert Anderson, B.S.

Robert M. Hamer, Ph.D.

Jeffrey A. Lieberman, M.D.

Objective: Atypical (second-generation) antipsychotics are considered standard treatment for children and adolescents with early-onset schizophrenia and schizoaffective disorder. However, the superiority of second-generation antipsychotics over first-generation antipsychotics has not been demonstrated. This study compared the efficacy and safety of two second-generation antipsychotics (olanzapine and risperidone) with a first-generation antipsychotic (molindone) in the treatment of early-onset schizophrenia and schizoaffective disorder.

Method: This double-blind multisite trial randomly assigned pediatric patients with early-onset schizophrenia and schizoaffective disorder to treatment with either olanzapine (2.5–20 mg/day), risperidone (0.5–6 mg/day), or molindone (10–140 mg/day, plus 1 mg/day of benztropine) for 8 weeks. The primary outcome was response to treatment, defined as a Clinical Global Impression (CGI) improvement score of 1 or 2 and $\geq 20\%$ reduction in

Positive and Negative Syndrome Scale (PANSS) total score after 8 weeks of treatment.

Results: In total, 119 youth were randomly assigned to treatment. Of these subjects, 116 received at least one dose of treatment and thus were available for analysis. No significant differences were found among treatment groups in response rates (molindone: 50%; olanzapine: 34%; risperidone: 46%) or magnitude of symptom reduction. Olanzapine and risperidone were associated with significantly greater weight gain. Olanzapine showed the greatest risk of weight gain and significant increases in fasting cholesterol, low density lipoprotein, insulin, and liver transaminase levels. Molindone led to more self-reports of akathisia.

Conclusions: Risperidone and olanzapine did not demonstrate superior efficacy over molindone for treating early-onset schizophrenia and schizoaffective disorder. Adverse effects were frequent but differed among medications. The results question the nearly exclusive use of second-generation antipsychotics to treat early-onset schizophrenia and schizoaffective disorder. The safety findings related to weight gain and metabolic problems raise important public health concerns, given the widespread use of second-generation antipsychotics in youth for nonpsychotic disorders.

(*Am J Psychiatry Sikich et al.; AiA:1–13*)

Early-onset schizophrenia and schizoaffective disorder occurring prior to 18 years of age are associated with debilitating psychotic symptoms and psychosocial dysfunction (1, 2). Prognosis appears to be substantively worse than in adult-onset schizophrenia (1, 3–7). Safe and effective treatments are needed for these vulnerable youth. Most clinicians prescribe atypical (second-generation) antipsychotics based on assumptions of superior efficacy and tolerability (8). However, for adults with schizophrenia, the results of studies such as the Clinical Antipsychotic Trials of Intervention Effectiveness (CATIE) (9), the Cost Utility of

the Latest Antipsychotic Drugs in Schizophrenia Study (10), and the European First Episode Schizophrenia Trial (11) raise questions as to whether second-generation antipsychotics truly have superior efficacy over first-generation (typical) antipsychotics. Studies specifically comparing second-generation to first-generation antipsychotics for first-episode schizophrenia have had mixed results, with advantages for second-generation antipsychotics often small or limited to secondary outcomes (12–16).

There are few randomized, controlled trials comparing treatments for early-onset schizophrenia and schizoaffective

tive disorder. First-generation antipsychotics, such as haloperidol and loxapine, have shown efficacy (17, 18), but younger patients may be at higher risk for extrapyramidal side effects (19) and less responsive to these agents than adults (20). Among second-generation antipsychotics, recent randomized, controlled trials found that olanzapine (21), risperidone (22), and aripiprazole (23, 24) have shown efficacy in the acute treatment of adolescents with schizophrenia. Risperidone and aripiprazole have been approved by the U.S. Food and Drug Administration (FDA) for the treatment of adolescents with schizophrenia. Clozapine, a second-generation antipsychotic, was found to be superior to both haloperidol (25) and olanzapine (26) in youth with treatment-resistant schizophrenia. However, clozapine's side effect profile (27) limits its use to patients who have tried and failed other antipsychotics.

The publicly funded study Treatment of Early-Onset Schizophrenia Spectrum Disorders (TEOSS) was designed to rigorously compare the efficacy and safety of a first-generation antipsychotic, molindone, with two second-generation antipsychotics, olanzapine and risperidone, in the treatment of early-onset schizophrenia and schizoaffective disorder. The primary hypothesis was that treatment with olanzapine and risperidone would be associated with greater treatment response and greater tolerability than treatment with molindone. The safety information gained may also inform the widespread use of second-generation antipsychotics for pediatric behavioral and mood disorders.

Method

Study Setting and Design

The rationale and design of TEOSS have been detailed previously (28). Eligible subjects were randomly assigned to either molindone, olanzapine, or risperidone treatment under double-blind conditions for 8 weeks. The study was designed to have a total of 168 subjects equally distributed among three groups ($N=56$ in each treatment group) and to have 80% power to detect differences in response rates of 45% (molindone), 60% (risperidone), and 75% (olanzapine). The sample size available for analysis was 116 subjects, limiting our power to detect between-group differences less than 18%.

From February 2002 to May 2006, youth were screened at four academic sites: University of North Carolina at Chapel Hill, McLean Hospital and Cambridge Health Alliance at Harvard Medical School, University of Washington, and Case Western Reserve University. The study was reviewed and approved by the institutional review board at each site. Participant safety was also monitored regularly throughout the study by the National Institute of Mental Health (NIMH) Data and Safety Monitoring Board.

Participants

Eligible participants were 8–19 years old, with a focus on primarily younger participants, so that 30% or fewer of subjects were between 16 and 19 years old. Participants had a diagnosis of schizophrenia, schizoaffective disorder, or schizophreniform disorder and had current positive psychotic symptoms of at least moderate intensity, as rated on the Positive and Negative Syndrome Scale (PANSS) (29). DSM-IV diagnoses were made by a child psychiatrist and confirmed with the Children's Structured

Clinical Interview for DSM-IV (KID-SCID) (30) and a teleconference among the principal investigators. The KID-SCID uses the same mood, psychosis, and substance abuse modules as the Structured Clinical Interview for DSM-IV (SCID) (31). It was used to provide continuity with adult studies, which frequently use the SCID, and because its psychosis module has been used in studies of the longitudinal course of early-onset schizophrenia and schizoaffective disorder (6, 32). The initial diagnosis was reviewed upon completion of the study and revised as indicated, including reclassifying all those initially diagnosed with schizophreniform disorder. Individuals with prior evidence of mental retardation; current major depressive episode; active substance abuse; history of intolerance or nonresponse to any of the study treatments during a prior episode; history of an adequate trial of any of the study treatments during the current episode (defined as at least 8 weeks of treatment, including at least 2 weeks at the maximal dose allowed in the current study), or those individuals felt to be at imminent risk of harming themselves or others were excluded from the study. All participants with prior exposure to one of the study medications had the opportunity for greater drug exposure during the trial. All participants and their guardians provided written informed consent.

Interventions

Study medications were packaged in identical color-coded capsules. Dosing was flexible, allowing for clinician judgment within the following dose ranges: molindone, 10–140 mg/day; olanzapine, 2.5–20 mg/day; and risperidone, 0.5–6 mg/day. Medications were initiated at the lowest dose within the range and typically increased to the middle of the dose range within 10 days for those subjects age 12 years and older and within 14 days for those ages 8–11 years, according to the age-specific schedules provided elsewhere (28). All participants treated with molindone also received 1.0 mg benzotropine; all others received a placebo identical in appearance.

Antipsychotics and side effect medications in use at the time of random assignment were cross-tapered during the first 2 weeks of study treatment. Individuals whose mood symptoms had been well controlled on a stable dose of antidepressants or nonantipsychotic mood stabilizers for at least 4 weeks prior to study entry were allowed to continue those treatments during the study. Concomitant treatments with anticholinergic agents, propranolol, and benzodiazepines were guided by algorithms (28).

Outcomes

The primary outcome was responder status at the end of the acute trial. Responder status was defined a priori as a Clinical Global Impression (CGI) (33) improvement score of 1 ("very much improved") or 2 ("much improved"), plus $\geq 20\%$ reduction in baseline PANSS score and the ability to tolerate 8 weeks of treatment. Individuals who withdrew prior to 8 weeks were considered non-responders.

Additional efficacy measures included the PANSS positive and negative symptom subscales (an assessment of schizophrenia symptoms widely used in adults), the Brief Psychiatric Rating Scale for Children (BPRS-C) (34), and the Child and Adolescent Functional Assessment Scale (35). In each of these measures, higher scores reflect more severe symptoms. A combination of adult measures and child measures was used to fully assess psychotic symptoms and to establish validity of adult measures in this population.

Secondary safety and tolerability outcomes included neurological side effects, changes in weight and stature, vital signs, laboratory analyses, ECG analyses, and incidence of systematically elicited adverse events (36), serious adverse events, and treatment discontinuation for any reason. The Simpson-Angus Rating Scale (37), Barnes Rating Scale for Drug-Induced Akathisia (38), and

TABLE 1. Baseline Demographic and Clinical Characteristics of Subjects With Early-Onset Schizophrenia and Schizoaffective Disorder

Characteristic	Molindone Group (N=40)		Olanzapine Group (N=35)		Risperidone Group (N=41)		All Subjects (N=116)	
	N	%	N	%	N	%	N	%
Demographic Characteristics								
Age (years)								
8–11	7	18	7	20	6	15	20	17
12–15	23	58	20	57	22	54	65	56
16–19	10	25	8	23	13	32	31	27
Male	23	58	25	71	27	66	75	65
Female	17	43	10	29	14	34	41	35
Race								
White	28	70	21	60	25	61	74	64
Black	8	20	12	34	14	34	34	29
Other	4	10	2	6	2	5	8	7
Hispanic ethnicity	0	0	2	6	3	7	5	4
Baseline IQ	Mean	Range	Mean	Range	Mean	Range	Mean	Range
	93.8	60–127	90.9	54–128	94.4	55–158	91.6	54–158
Psychiatric History								
	N	%	N	%	N	%	N	%
Final diagnosis: Schizophrenia	26	65	22	63	28	68	76	66
Final diagnosis: Schizoaffective disorder	14	35	13	37	13	32	40	34
Prior diagnoses (excluding final diagnosis)								
None	14	35	17	49	15	37	46	40
Psychosis not otherwise specified	7	18	4	11	6	15	17	15
Attention deficit disorder	12	30	13	37	9	22	34	29
Affective disorder	9	23	7	20	12	29	28	24
Anxiety disorder	6	15	9	26	12	29	27	23
Disruptive behavior disorder	4	10	6	17	10	24	20	17
Learning disability	7	18	1	3	2	5	10	9
Autism spectrum disorder	2	5	2	6	3	7	7	6
Substance abuse	4	10	2	6	2	5	8	7
First psychotic episode	35	88	33	94	40	98	108	93
Antipsychotic-naïve	16	40	13	37	9	22	38	33
Hospitalized at baseline	4	10	2	6	6	15	12	10
Outpatient treatment only	22	55	21	60	16	39	59	51
Number of prior psychiatric admissions ^a	Mean	Range	Mean	Range	Mean	Range	Mean	Range
	0.6	0–3	0.8	0–4	0.9	0–3	0.8	0–4
Baseline Medications								
	N	%	N	%	N	%	N	%
Antipsychotics								
Olanzapine	2	5	2	6	6	15	10	9
Risperidone	17	43	13	37	15	37	45	39
Other second-generation antipsychotics	4	10	8	23	9	22	21	18
First-generation antipsychotics	1	3	0	0	1	2	2	2
Antidepressants								
Mood stabilizers ^b	4	10	4	11	5	12	13	11
Both antidepressants and mood stabilizers ^c	3	7	2	6	4	10	9	8
Benzodiazepine	0	0	0	0	1	2	1	1
Benzodiazepine	3	7	3	9	6	15	12	10
Baseline Clinical Characteristics								
	Mean	SD	Mean	SD	Mean	SD		
PANSS total score	99.7	20.3	100.3	17.4	103.3	21.6		
PANSS positive subscale score	26.0	5.1	26.4	5.9	26.7	6.4		
PANSS negative subscale score	24.2	8.3	25.0	6.8	25.9	8.6		
BPRS-C total score	41.8	10.2	42.0	11.4	45.0	12.5		
CAFAS 8-item total score ^d	91.1	27.3	101.2	40.4	100.8	34.6		
CGI severity score	5.6	0.9	5.5	0.7	5.7	1.0		
Weight (kg)	65.5	23.2	62.7	16.7	62.8	16.4		
Body mass index (kg/m ²)	24.0	5.9	23.5	4.5	23.2	5.3		
Fasting glucose (mg/dL)	84.0	10.6	86.9	12.0	83.8	8.0		
Fasting total cholesterol (mg/dL)	166.5	31.6	170.2	43.6	175.2	45.5		
Fasting low density lipoprotein cholesterol (mg/dL)	93.6	23.9	97.8	36.0	108.9	41.8		
Fasting high density lipoprotein cholesterol (mg/dL)	53.2	16.8	51.8	9.6	50.6	13.4		
Fasting triglycerides (mg/dL)	99.0	61.7	102.5	52.6	96.3	43.6		
Fasting insulin (mU/L)	10.0	7.9	16.2	18.0	14.6	17.2		
HOMA-IR (mUmol/L ²) ^e	2.4	1.9	2.1	0.8	2.3	2.2		
Prolactin (µg/L)	24.4	22.3	18.9	18.3	25.0	24.0		
Aspartate aminotransferase (U/L)	27.9	10.5	24.2	7.5	25.4	10.2		
Alanine transferase (U/L)	29.8	18.6	27.9	18.5	31.6	20.6		
QTc (msec)	406.6	17.1	403.9	18.4	408.3	23.4		

^a Includes any current hospitalization.

^b Includes lithium, valproic acid, carbamazepine, and other anticonvulsants (and excludes second-generation antipsychotics).

^c Includes subjects counted under antidepressants and under mood stabilizers.

^d CAFAS=Children and Adolescent Functional Assessment Scale.

^e HOMA-IR=Homeostasis Model Assessment.

Abnormal Involuntary Movement Scale (AIMS) (18) were employed to monitor extrapyramidal symptoms. Fasting metabolic parameters, prolactin levels, and routine blood and urine chemistries were monitored at weeks 0, 4, and 8. All other outcome measures, except the Child and Adolescent Functional Assessment Scale, were assessed weekly.

Diagnostic and outcome assessments were performed by clinicians blind to study treatment with experience in working with psychotic youth; these clinicians established and maintained interrater reliability on the KID-SCID, CGI, PANSS, and BPRS-C, with an intraclass correlation of ≥ 0.80 at in-person, cross-site meetings at the beginning and midpoint of the trial and within each site every 6 months. Reliability on the KID-SCID and CGI scale was assessed using vignettes; reliability on the PANSS and BPRS-C was assessed using taped interviews.

Statistical Analyses

After 90 participants had completed the acute trial, an interim analysis of responder status and key safety variables was made available to NIMH's Data and Safety Monitoring Board, but not other study personnel. Participants with at least one assessment after taking study medication comprised the intent-to-treat analysis population. In both the interim and final analyses, a Mantel-Haenszel chi-square test was used for the primary analysis of responder status. A three-way test was used rather than three separate pairwise comparisons to maximize statistical power, given the limited sample size. Statistical analyses for continuous secondary endpoints used last observation carried forward paired *t* tests to explore within-treatment effects and one-way analysis of variance (ANOVA) on last observation carried forward endpoints to compare groups. As a sensitivity analysis, we used a mixed model approach to repeated measures for the PANSS total score. Each distinct inference domain (e.g., symptoms, neurological effects, weight, and laboratory analyses) was analyzed independently. Consideration of multiple comparisons should be made within the given inference domain, such that significance should be assumed only if $p < 0.05/\text{number of assessments in that domain}$. Metabolic analyses included only those laboratory results obtained while youth were fasting. Differences in the ability to sustain treatment were examined using Kaplan-Meier survival curves. All analyses included site as a covariate. Proportions of each group experiencing specific adverse events were compared with chi-square tests. To avoid overlooking potentially important adverse events, no corrections for multiple comparisons were made.

Results

Discontinuation of Olanzapine Treatment

Random assignment to olanzapine treatment was discontinued in spring 2006 by NIMH's Data and Safety Monitoring Board following their review of the interim data, which showed a greater increase in weight with olanzapine than molindone or risperidone, without evidence of greater efficacy. Participants being treated with olanzapine at the time of the decision continued their participation, and the integrity of the study blind was maintained (28).

Characteristics and Disposition of Participants

The baseline characteristics of participants in each of the three treatment groups are shown in Table 1. Most participants were experiencing an acute exacerbation of a chronic illness and were severely ill. More detailed baseline information is reported elsewhere (2). Figure 1 depicts

participation in each phase of the study protocol and reasons for withdrawal.

The mean endpoint dose for molindone was 59.9 mg/day (SD=33.5). For olanzapine and risperidone, the mean endpoint doses were 11.4 mg/day (SD=5.0) and 2.8 mg/day (SD=1.4), respectively. Adjunctive benzodiazepine was administered to 39% of subjects treated with molindone, 20% of subjects treated with olanzapine, and 41% of subjects treated with risperidone. Forty-five percent of the molindone group received benzotropine in excess of the prophylactic blinded dose. Benzotropine was also provided to 14% of subjects on olanzapine and 34% of subjects on risperidone. Propranolol was prescribed for akathisia in 13% of subjects in the molindone group, 11% of subjects in the olanzapine group, and 7% of subjects in the risperidone group. The total dose of benzotropine was significantly greater in the molindone group than in the other two groups, with no group differences in benzodiazepine, propranolol, or added benzotropine doses.

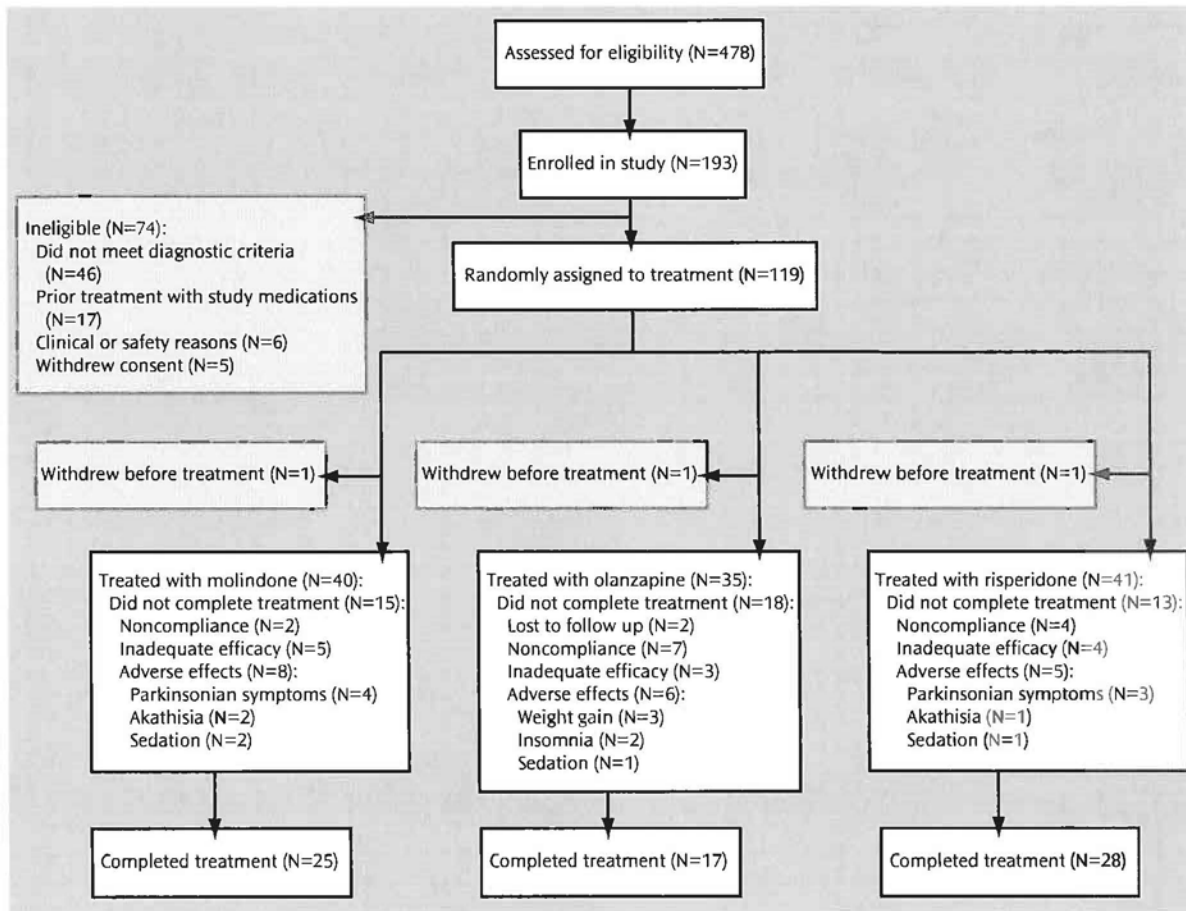
Treatment Response

Response was observed in 50% of subjects treated with molindone, 34% of subjects treated with olanzapine, and 46% of subjects treated with risperidone. There was no difference in the time course of treatment discontinuation (Figure 2A). Total PANSS scores, PANSS positive and negative symptom subscale scores, BPRS-C total scores, and Child and Adolescent Functional Assessment Scale 8-item total scores all showed significant improvement posttreatment, with average declines of 21%–47%. Symptom reduction was most pronounced during the first 2 weeks of treatment (Figure 2B). There were no significant differences among treatment groups on any last observation carried forward symptom measures. Furthermore, a supplementary mixed models analysis failed to find a between-group difference in PANSS total score. Exploratory analyses without correction for multiple comparisons found that youth without prior psychiatric diagnoses other than schizophrenia had greater reductions in PANSS scores (-28.6 , $SD=2.8$) than those with prior nonschizophrenia diagnoses (-21.2 , $SD=2.2$; $p=0.0376$), both across all treatment groups and within the risperidone group ($p=0.0155$). These same analyses did not detect any significant differences in response rate related to prior diagnosis. Exploratory analyses did not detect any significant differences related to site, diagnosis, duration of psychosis, prior antipsychotic treatment, previous treatment with risperidone, previous treatment with olanzapine, concomitant treatments, age, or gender within treatment groups or in the study as a whole.

Safety and Tolerability

Adverse events. Two participants (one receiving molindone and one receiving risperidone) required hospitalization after random assignment and prior to study treatment (for suicidality and worsening psychosis, respectively). Eight participants were hospitalized a total of nine times

FIGURE 1. CONSORT Diagram



during acute treatment: two (5%) in the molindone group, two (6%) in the olanzapine group, and four (10%) in the risperidone group. Reasons for hospitalization were worsening psychosis (N=6), anticholinergic-induced urinary retention (N=1), and suicidality followed by worsening psychosis (N=1).

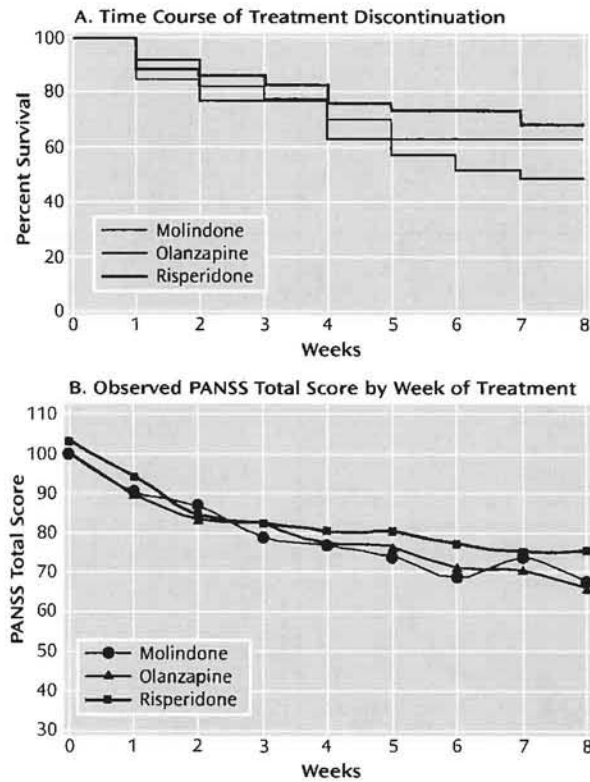
Adverse effects led to premature treatment discontinuation in eight patients in the molindone group, six patients in the olanzapine group, and five patients in the risperidone group (Figure 1). Frequent adverse events included sedation, irritability, and anxiety (data supplement Table 1). Participants in the molindone group reported significantly higher rates of drug-induced akathisia ($p < 0.0008$), participants in the olanzapine group reported significantly higher rates of weight gain and increased appetite ($p < 0.0001$ and $p < 0.0019$, respectively), and those in the risperidone group reported significantly higher rates of constipation ($p < 0.021$). Most patients experienced at least one adverse effect (molindone: N=36; olanzapine: N=26; risperidone: N=35).

Body mass and metabolic changes. Changes in weight and body mass index differed significantly among all three

groups (Figure 3A and Table 2). Youth treated with olanzapine gained an average of 6.1 kg (SD=3.6) and increased their body mass index by an average 2.2 kg/m² (SD=1.2) over the 8-week trial. Those subjects treated with risperidone gained 60% as much weight, whereas those subjects receiving molindone showed no changes in body mass. The olanzapine group also showed increases relative to the other groups in total cholesterol, low density lipoprotein cholesterol, insulin, alanine aminotransferase, and aspartate aminotransferase levels (Figure 3B). These changes suggest heightened risk for metabolic syndrome and acute steatohepatitis with olanzapine treatment.

Neurological side effects. The prevalence, severity, and functional consequences of neurological side effects are shown in Figure 3C. Few and generally mild extrapyramidal side effects were observed. Scores on the Barnes Rating Scale for Drug-Induced Akathisia increased significantly in the molindone group ($p < 0.027$), with 18% experiencing moderate or severe akathisia. The presence and severity of akathisia appeared independent of dose or treatment response. However, there were no between-group differences in maximum ratings on the Barnes scale. Akathisia

FIGURE 2. Symptom Improvement and Treatment Discontinuation in an 8-Week Study of Antipsychotics in Subjects With Early-Onset Schizophrenia and Schizoaffective Disorder



A: The proportion of each treatment group continuing treatment during each week of the trial. B: Mean PANSS total scores of observed cases during each week of the trial. The minimal possible score on the PANSS is 30; scores >60 are typically viewed as problematic.

led to treatment discontinuation in two participants receiving molindone and in one participant receiving risperidone. Three subjects, one in each treatment group, developed involuntary movements suggesting mild tardive dyskinesia.

Other analyses. Prolactin levels were significantly elevated in the risperidone group, which differed markedly from each of the other treatment groups. Rate-corrected QT intervals measured by ECG increased significantly by 11.2 msec (mean endpoint=423 msec, SD=16.8; $p=0.0019$) in the olanzapine group but not in the molindone (1.2 msec, SD=21.3) or risperidone (0.5 msec, SD=29.5) groups. Although changes were significant in the olanzapine group, differences were not detected across the three treatments.

Discussion

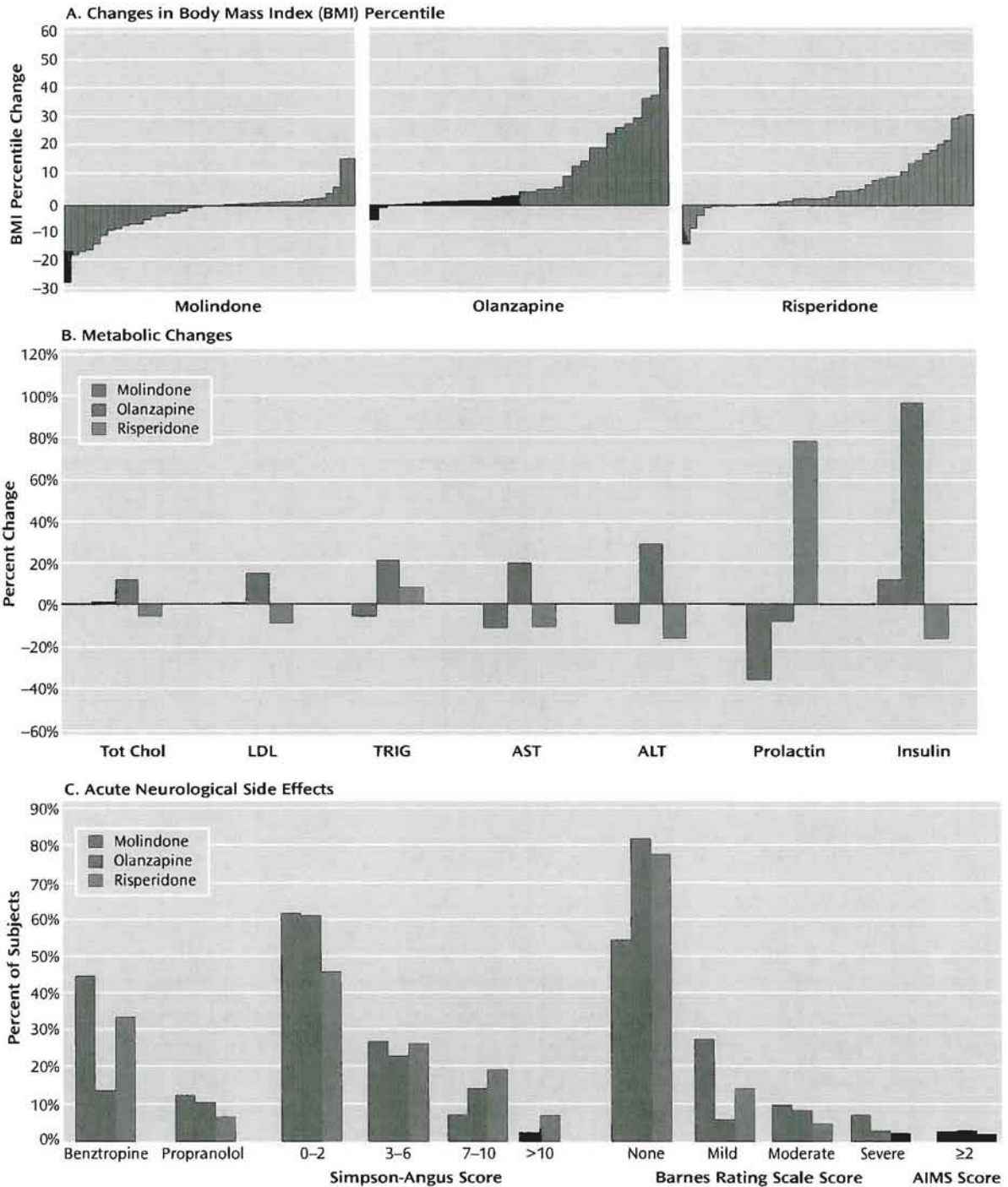
Second-generation antipsychotics olanzapine and risperidone did not demonstrate superior efficacy to molindone in the treatment of children and adolescents with early-onset schizophrenia and schizoaffective disorder. Across all three treatments, more than half the partici-

pants failed to achieve an adequate response after 8 weeks of therapy. The response rates were generally lower than those reported in studies of young adults with first-episode schizophrenia using similar criteria (13, 16, 40, 41). The response rate was similar to what has been reported in three recent studies of olanzapine in early-onset schizophrenia and schizoaffective disorder lasting 8, 12, and 6 weeks, respectively (26, 42, 43), but lower than what has been reported to the FDA for a 6-week trial of risperidone (22). The mean reductions in psychotic symptoms were modest, ranging from 20%–34% on the PANSS and 34%–41% on the BPRS-C. Furthermore, 10 participants (8%) required hospitalization during the acute trial, primarily as a result of increased psychotic symptoms. Doses of all medications were in the middle of the permitted ranges and generally considered moderate doses. Olanzapine and risperidone mean doses were comparable to those reported to the FDA for pediatric exclusivity studies and in studies of first-episode schizophrenia, but olanzapine doses were lower than those used in treatment-resistant samples (26, 42) or in chronic samples, such as those used in the Cost Utility of the Latest Antipsychotic Drugs in Schizophrenia Study and CATIE.

The three treatments did have significantly different safety profiles. Olanzapine resulted in more weight gain than either of the other medications and was uniquely associated with increases in lipid and insulin levels and liver function tests. Clinically significant changes in fasting glucose levels were not observed over the 8 weeks of treatment. This is not surprising, given that youth have large insulin reserves. The risks of obesity, dyslipidemia, and hyperinsulinemia associated with acute treatment generate considerable long-term risks for diabetes and cardiovascular disease. Prolactin levels were uniquely elevated with risperidone treatment, although the long-term health consequences of this are unclear. Subjects receiving molindone did report the adverse effect of akathisia more than those receiving second-generation antipsychotics. However, molindone treatment was not associated with more parkinsonian or dystonic symptoms than olanzapine or risperidone, likely due to prophylactic benztropine treatment. Although it is difficult to rank the clinical importance of different adverse effects, those associated with olanzapine and risperidone are likely to have persistent effects on long-term physical health, while those associated with molindone seem more likely to impact adherence to antipsychotic medication. However, in this trial, there was no greater attrition in the molindone group, despite more reports of akathisia.

The sample included youth with both first-episode and chronic early-onset schizophrenia and schizoaffective disorder, both treatment-naïve and antipsychotic-exposed individuals, and some individuals taking concomitant mood disorder medications. Although very few of the patients were hospitalized at the time of enrollment, many had been hospitalized previously (2). However, the sample did

FIGURE 3. Adverse Effects of Antipsychotic Treatment Experienced in Subjects With Early-Onset Schizophrenia and Schizoaffective Disorder



A: Children continuing on their growth trajectory would be expected to show no change in body mass index percentile. The mean change in body mass index percentile in the molindone group was -2.3 percentile (SD=8.0); in the olanzapine group: 10.8 percentile (SD=14.4); and in the risperidone group: 6.8 percentile (SD=10.3). Differences among treatment groups were significant at $p < 0.0001$. B: Only participants with paired fasting laboratory values of lipid and insulin levels were included in the analysis. Tot Chol=total cholesterol; LDL=low density lipoprotein cholesterol; TRIG=triglycerides; AST=aspartate aminotransferase; ALT=alanine aminotransferase. C: All youth in the molindone group received 1 mg/day of benzotropine in addition to any added benzotropine. Simpson-Angus scores reflect parkinsonian symptoms and dystonia on the Simpson-Angus Rating Scale. Akathisia is assessed with item 4 of the Barnes Rating Scale for Drug-Induced Akathisia. Tardive dyskinesia is assessed with the Abnormal Involuntary Movement Scale (AIMS). AIMS ratings ≥ 2 indicate at least two questionable movements.

TABLE 2. Outcomes of Antipsychotic Treatment in Subjects With Early-Onset Schizophrenia and Schizoaffective Disorder^a

Outcome Measures	Molindone Group (N=40)			Olanzapine Group (N=35)		
	N	%	95% CI	N	%	95% CI
Response	20	50	34 to 66	12	34	18 to 51
CGI improvement	24	60	44 to 76	17	49	31 to 66
	Mean	SD	95% CI	Mean	SD	95% CI
PANSS total change	-27.0***	17.7	-32.7 to -21.4	-26.6***	17.8	-32.9 to -0.3
Percent decrease from baseline	27%			27%		
PANSS positive subscale change	-8.8***	5.4	-10.5 to -7.1	-8.9***	6.0	-11.1 to -6.8
Percent decrease from baseline	34%			34%		
PANSS negative subscale change	-5.8***	6.8	-8.0 to -3.6	-5.3**	7.6	-8.0 to -2.6
Percent decrease from baseline	24%			21%		
BPRS-C total change	-16.3***	10.2	-19.6 to -13.0	-17.3***	11.2	-21.3 to -13.3
Percent decrease from baseline	39%			41%		
CAFAS 8-item total change ^b	-29.3***	36.4	-42.9 to -15.7	-40.0**	42.7	-58.9 to -21.1
Percent decrease from baseline	32%			40%		
Duration of treatment (weeks)	5.9	0.4		5.9	0.4	
Extrapyramidal symptoms						
Simpson-Angus Rating Scale change	0.1	2.2	-0.6 to 0.8	0.4	1.9	-0.3 to 1.1
Barnes Rating Scale for Drug-Induced Akathisia change	1.2*	3.3	0.1 to 2.3	0.2	2.1	-0.6 to 1.0
AIMS change	-0.2	2.2	-1.0 to 0.5	-0.2	2.3	-1.1 to 0.6
Weight parameters						
Weight change (kg)	0.3	2.9	-0.6 to 1.3	6.1***	3.6	4.9 to 7.4
Body mass index change (kg/m ²)	0.25	1.26	-0.3 to 0.6	2.2***	1.2	1.8 to 2.6
Body mass index percentile change	-2.3	8.0	-4.8 to 0.3	10.8***	14.4	5.8 to 15.8
Body mass index z-score change	-0.05	0.25	-0.13 to 0.03	0.39***	0.37	0.26 to 0.51
Laboratory parameters						
Total cholesterol change (mg/dL)	0.0	16.0	-7.0 to 6.9	19.9*	23.9	4.7 to 35.1
Number available for analysis	23			12		
HDL cholesterol change (mg/dL)	0.3	10.6	-4.4 to 5.0	1.1	8.3	-4.2 to 6.3
Number available for analysis	22			12		
LDL cholesterol change (mg/dL)	0.48	14.5	-6.1 to 7.1	14.7*	18.7	2.8 to 26.6
Number available for analysis	21			12		
Triglycerides change (mg/dL)	-5.8	44.7	-26.2 to 14.6	21.6	65.3	-19.9 to 63.1
Number available for analysis	21			12		
Glucose change (mg/dL)	0.9	12.0	-4.3 to 6.1	0.6	15.7	-9.4 to 10.6
Number available for analysis	23			12		
Insulin change (mU/L) ^c	1.2	7.1	-2.0 to 4.3	15.7	38.1	-2.1 to 33.5
Number available for analysis	22			20		
HOMA-IR change (mUmMol/L ²) ^d	0.5	1.9	-0.4 to 1.5	1.2	1.9	-0.2 to 2.6
Number available for analysis	17			10		
Alanine aminotransferase change (U/L)	-2.8	14.8	-8.3 to 2.7	8.0	24.4	-1.4 to 17.5
Aspartate aminotransferase change (U/L)	-3.2	10.0	-6.8 to 0.4	4.7	7.4	1.9 to 7.5
Prolactin change (µg/L)	-8.8	24.9	-18.1 to 0.5	-1.5	20.2	-9.8 to 6.9
QTc change (msec)	1.2	21.3	-6.4 to 8.9	11.2*	16.8	4.5 to 17.8

^a Significant within-group differences are denoted by asterisks.

^b CAFAS=Children and Adolescent Functional Assessment Scale.

^c The American Heart Association (AHA) considers normal insulin levels in children and adolescents to be <15 mU/L, borderline high levels to be 15–20 mU/L, and high levels to be >20 mU/L (39). Baseline insulin levels in the molindone and risperidone groups were normal and levels in the olanzapine group were borderline. The mean increase in the olanzapine group was double the baseline value and exceeded AHA's high threshold value.

^d HOMA-IR=Homeostasis Model Assessment.

*p<0.05. **p<0.001. ***p<0.0001.

fully reflect the racial and ethnic populations of the study sites. African American subjects were overrepresented (29% rather than the expected 15%), and Hispanic subjects may have been underrepresented (4% rather than the expected 6%–7%). This may reflect economic biases among Caucasian and African American individuals regarding willingness to participate in clinical research, as well as some cultural or language barriers in the Hispanic community. Nonetheless, the results should generalize well to community settings. The overall low rates of response have significant clinical and public health implications.

This study may also inform the design of future treatment studies in early-onset schizophrenia and schizoaffective disorder.

Such studies will likely need to involve a large number of sites with outpatient services to recruit a sufficient number of participants. Furthermore, with the increasing use of antipsychotics for multiple indications, it will likely be difficult to recruit a large proportion of antipsychotic-naive patients. This may be particularly true for younger patients, who are more likely to have significant behavioral problems prior to onset of clear psychotic symptoms. This may suggest the need for establishing drug-free baselines, although the ethical considerations and potential impact on recruitment would need to be carefully considered. It also may be important to conduct trials of longer duration to determine the prevalence of

Risperidone Group (N=41)			Between-Group Differences
N	%	95% CI	
19	46	30 to 62	
19	46	30 to 62	
Mean	SD	95% CI	
-23.7***	25.5	-31.8 to -15.7	
23%			
-8.4***	8.1	-10.9 to -5.8	
32%			
-5.1***	7.8	-7.5 to -2.6	
20%			
-15.4***	19.6	-21.6 to -9.2	
34%			
-47.5***	41.8	-63.7 to -31.3	
47%			
6.4	0.4		
0.6	2.5	-0.2 to 1.5	
0.4	2.4	-0.3 to 1.2	
-0.2	1.8	-0.7 to -0.4	
3.6***	4.0	2.4 to 4.9	Overall: F=25.61, p<0.0001; O>R, M; R>M
1.3***	1.5	0.8 to 1.8	Overall: F=21.48, p<0.0001; O>R, M; R>M
6.8***	10.3	3.5 to 10.1	Overall: F=13.93, p<0.0001; O>R, M; R>M
0.23***	0.29	0.14 to 0.32	Overall: F=31.53, p<0.0001; O>M; R>M
-10.2	26.7	-22.0 to 1.7	Overall: F=7.05, p<0.0019; O>R, M
22			
-4.0	9.4	-8.3 to 0.3	
21			
-9.6	22.2	-20.0 to 0.8	Overall: F=6.35, p=0.0035; O>R
20			
7.1	33.3	-7.4 to 22.9	
21			
1.2	7.3	-2.0 to 4.4	
22			
-2.4	19.4	-9.8 to 5.0	Overall: F=3.55, p=0.034; O>R
29			
0.0	1.7	-0.9 to 0.8	
18			
-5.2	19.5	-11.9 to 1.5	Overall: F=3.78, p=0.027; O>R
-2.8	9.7	-6.1 to 0.6	Overall: F=7.15, p=0.0013; O>R, M
19.5***	21.5	12.1 to 27.3	Overall: F=13.71, p<0.0001; R>M, O
0.5	29.5	-9.3 to 10.3	

slow response to treatment in this pediatric population, although again, the ethical ramifications of this would need to be considered.

Limitations

The most significant weakness of this study was the sample size, which was sufficient only to detect large differences across the three treatments and limited our ability to identify predictors of response or adverse effects. Although the study was designed to have sufficient power to detect moderate treatment effects, we were not able to achieve the designed sample size. Furthermore, only small differences among treatments emerged, which was not what we

predicted. We did not find any evidence of superiority of the two second-generation antipsychotics, risperidone and olanzapine, over the first-generation antipsychotic, molindone. Since current community standards generally consider second-generation antipsychotics to be the first-line treatment for early-onset schizophrenia and schizoaffective disorder, the failure to demonstrate superiority of risperidone and olanzapine is an important finding.

The decision to provide prophylactic benztropine to all youth treated with molindone may have minimized differences in extrapyramidal symptoms among the medications. In addition, anticholinergics like benztropine may have significant adverse neurocognitive effects. However, the ad-

ministration of prophylactic benztropine with first-generation antipsychotics is common practice. The duration of treatment in the study did not provide information about side effects that appear later, such as tardive dyskinesia.

Finally, different choices could have been made with regard to the specific medications studied. At the time the trial was initiated, olanzapine was widely used in the pediatric population, whereas quetiapine had a small market share. Ziprasidone and aripiprazole, both of which may have fewer metabolic side effects, were introduced subsequent to the initiation of the study. Efforts to introduce them partway through the study were not supported by the FDA or NIMH. We also considered utilizing a placebo for comparison, as opposed to a first-generation antipsychotic. We expected that this would increase the demonstrated efficacy of the second-generation antipsychotics, but it would not address the fundamental comparative questions. Distributing the sample among four treatment conditions rather than three would also have reduced statistical power. We also considered requiring a drug-free baseline to minimize the likelihood of finding no apparent benefit of substituting one partially effective treatment for another. However, concerns about the long-term consequences of delaying effective treatment and associated recruitment difficulties argued against including a placebo treatment group or a drug-free baseline. At the time the study was initiated, there were significant ethical concerns about utilizing any first-generation antipsychotic in comparison with second-generation antipsychotics, because second-generation antipsychotic treatment was the standard of care for early-onset schizophrenia and schizoaffective disorder. We felt any traditional medication selected as a comparator would have to provide a strong potential advantage to maintain therapeutic equipoise. Molindone was chosen as the best option among first-generation antipsychotics based on its low propensity for both weight gain and extrapyramidal side effects. Despite this advantage, molindone is not commonly used in clinical practice. A more frequently used medication, such as perphenazine or haloperidol, might have facilitated comparison with adult studies and acceptance in the community. Failure to require a drug-free baseline may have reduced response rates and led to earlier treatment discontinuation.

Another potential limitation of the study is the 8-week duration of treatment. Different patterns of response or risk of side effects might have emerged over a longer trial. Some young people may require more extended therapy to adequately respond, and it is likely that some aspects of the illness, such as negative symptoms, neurocognitive function, and associated anxiety, may require longer periods to recover (44, 45). However, published standards of care for early-onset schizophrenia and schizoaffective disorder recommend the use of 6- to 8-week trials (1). A longer acute phase trial would have increased the risk of exposing subjects to prolonged ineffective treatment. Fur-

thermore, antipsychotic medication trials in adults with schizophrenia suggest that nonresponse as early as 2–4 weeks after initiating treatment predicts nonresponse up to 12 weeks later (46–49).

Conclusions

The results of this study do not support the widely held assumption that risperidone and olanzapine, two of the most widely used second-generation antipsychotics, are superior to an advantageous first-generation antipsychotic for the treatment of early-onset schizophrenia and schizoaffective disorder. The safety data underscore the risks of weight gain and metabolic side effects with some second-generation antipsychotics, particularly olanzapine, and the importance of closely monitoring weight, glucose and lipid levels, and liver functioning.

These findings have broad public health implications. In the long term, the metabolic side effects of olanzapine and risperidone may place many youth at risk for diabetes and cardiovascular problems. Second-generation antipsychotics are now widely used to treat nonpsychotic mood and behavioral disorders in youth. The balance between potential therapeutic benefits and risk of adverse events needs to be carefully considered in this age group.

Further analyses from the Treatment of Early-Onset Schizophrenia Spectrum Disorders study will examine the outcomes and adverse effects of these treatments over 1 year. Additional studies with larger sample sizes are critically needed to compare the efficacy and side effect profiles of other widely used second-generation antipsychotics and midpotency first-generation antipsychotics in youth. Strategies to reduce weight gain and metabolic impact of antipsychotics must be developed and evaluated. The limited response in this study to all three medications, with fewer than 50% of subjects completing 8 weeks of treatment, emphasizes the need to develop more effective treatments for early-onset schizophrenia and schizoaffective disorder.

Presented in part at the 47th annual meeting of the New Clinical Drug Evaluation Unit, Boca Raton, Fla., June 11–14, 2007; the 54th annual meeting of the American Academy of Child and Adolescent Psychiatry, Boston, Oct. 23–28, 2007; the 46th annual meeting of the American College of Neuropsychopharmacology, Boca Raton, Fla., Dec. 9–13, 2007; and the 161st annual meeting of the American Psychiatric Association, Washington, D.C., May 3–8, 2008. Received May 21, 2008; revised June 13, 2008; accepted June 14, 2008 (doi: 10.1176/appi.ajp.2008.08050756). From the University of North Carolina at Chapel Hill; Cambridge Health Alliance, Harvard Medical School, Boston; University of Washington, Seattle; Case Western Reserve University, Cleveland; NIMH, Bethesda, Md.; Maine Medical Center Research Institute, Scarborough, Me.; and Columbia University, New York. Address correspondence and reprint requests to Dr. Sikich, University of North Carolina at Chapel Hill, CB #7160, Chapel Hill, NC 27514; lsikich@med.unc.edu (e-mail).

Dr. Sikich has received research support from Eli Lilly, Janssen, Pfizer, Bristol-Myers Squibb, Otsuka, Seaside Pharmaceuticals, and Neuropharm and has served as a consultant for Eli Lilly, Janssen, Pfizer, Bristol-Myers Squibb, and AstraZeneca. Dr. Frazier has received research support from Bristol-Myers Squibb, Otsuka, Johnson & Johnson, Eli Lilly, Forest, Janssen, and Pfizer; she has served as a

consultant to Eli Lilly; and she has served on the speakers bureau of AstraZeneca. Dr. McClellan has received research support from Pfizer. Dr. Findling has received research support from, acted as a consultant to, and/or served on the speakers bureau for Abbott, Adrenex, AstraZeneca, Bristol-Myers Squibb, Celltech-Medeva, Forest, Glaxo-SmithKline, Johnson & Johnson, Eli Lilly, Neuropharm, New River, Novartis, Organon, Otsuka, Pfizer, Sanofi-Aventis, Sepracor, Shire, Solvay, Supernus Pharmaceuticals, Validus, and Wyeth. Dr. Ambler has received research support from Pfizer, Shire, Bristol-Myers Squibb, Otsuka, Abbott, McNeill/Specialty Pharmaceuticals, Eli Lilly, Sanofi-Aventis, AstraZeneca, GlaxoSmithKline, Forest, Adrenex, Johnson & Johnson, and Validus. Dr. Hamer holds stock in Amgen, Bristol-Myers Squibb, Eli Lilly, Genentech, Proctor & Gamble, and Sepracor; he has served as a consultant or advisor to Wyeth, AstraZeneca, Johnson & Johnson, Epix Pharmaceuticals, Eli Lilly, eNabledMD, GlaxoSmithKline, Solvay, Allergan, Pfizer, Schwartz, Sanofi-Aventis, Somerset Pharmaceuticals, and Corcept Pharmaceuticals; and he has received research support from Eli Lilly, AstraZeneca, and Pfizer. Dr. Hamer's wife is a retired former employee of Bristol-Myers Squibb and, as such, holds some unexercised stock options in the company. Dr. Lieberman has served as an unpaid consultant/advisory board member for AstraZeneca, Allon, Bioline, Forest, Eli Lilly, GlaxoSmithKline, Organon, Pfizer, and Lundbeck; he has received grant support from Acadia, Merck, Janssen, Bristol-Myers Squibb, GlaxoSmithKline, Organon, and Pfizer; and he holds a patent with Repligen. The remaining authors report no competing interests.

Supported by NIMH grants MH-61528 to the University of North Carolina (Dr. SIKICH), MH-61464 to the University of Washington (Dr. McClellan), MH-62726 to Harvard Medical School (Dr. Frazier), and MH-61355 to Dr. Findling and NIH Research Career Development Awards to Drs. SIKICH (MH-01802) and Hlastala (MH-70570). Research was conducted at the Seattle Children's Hospital, University of Washington, and at the University of North Carolina, which are supported by NIH grants RR-00037 and RR-00046, respectively. Janssen and Eli Lilly provided risperidone and olanzapine, respectively, at no cost for the study.

The authors thank the participants in this study and their families, Drs. Tyehimba Hunt-Harrison and Joseph Jackson for assistance with patient assessments, and the study coordinators, research assistants, recruiters, and referring physicians.

NIMH had no role in the study design or the collection, analysis, interpretation, or reporting of data. However, Dr. Vitiello and Ms. Ritz, who are employed by NIMH, were key investigators in the trial and contributed to data management, analysis, interpretation, and reporting. The pharmaceutical companies that donated medications had no role in the design of the study or the collection, analysis, interpretation, or reporting of the data. The content of this publication does not necessarily reflect the views or policies of NIH, NIMH, or the Department of Health and Human Services. Mention of trade names, commercial products, or organizations does not imply endorsement by the U.S. government.

References

1. American Academy of Child and Adolescent Psychiatry: Practice parameter for the assessment and treatment of children and adolescents with schizophrenia. *J Am Acad Child Adolesc Psychiatry* 2001; 40(Suppl 7):4S-23S
2. Frazier JA, McClellan J, Findling RL, Vitiello B, Anderson R, Zablotzky B, Williams E, McNamara NK, Jackson JA, Ritz L, Hlastala SA, Pierson L, Varley JA, Puglia M, Maloney AE, Ambler D, Hunt-Harrison T, Hamer RM, Noyes N, Lieberman JA, SIKICH L: Treatment of Early-Onset Schizophrenia Spectrum disorders (TEOSS): demographic and clinical characteristics. *J Am Acad Child Adolesc Psychiatry* 2007; 46:979-988
3. Röpcke B, Eggers C: Early-onset schizophrenia: a 15-year follow-up. *Eur Child Adolesc Psychiatry* 2005; 14:341-350
4. Remschmidt H, Martin M, Fleischhaker C, Theisen FM, Hennighausen K, Gutenbrunner C, Schulz E: Forty-two-years later: the outcome of childhood-onset schizophrenia. *J Neural Transm* 2007; 114:505-512
5. Fleischhaker C, Schulz E, Tepper K, Martin M, Hennighausen K, Remschmidt H: Long-term course of adolescent schizophrenia. *Schizophr Bull* 2005; 31:769-780
6. McClellan J, McCurry C, Snell J, DuBose A: Early-onset psychotic disorders: course and outcome over a 2-year period. *J Am Acad Child Adolesc Psychiatry* 1999; 38:1380-1388
7. Kyriakopoulos M, Frangou S: Pathophysiology of early onset schizophrenia. *Int Rev Psychiatry* 2007; 19:315-324
8. Olsson M, Blanco C, Liu L, Moreno C, Laje G: National trends in the outpatient treatment of children and adolescents with antipsychotic drugs. *Arch Gen Psychiatry* 2006; 63:679-685
9. Lieberman JA, Stroup TS, McEvoy JP, Swartz MS, Rosenheck RA, Perkins DO, Keefe RS, Davis SM, Davis CE, Lebowitz BD, Severe J, Hsiao JK; Clinical Antipsychotic Trials of Intervention Effectiveness (CATIE) Investigators: effectiveness of antipsychotic drugs in patients with chronic schizophrenia. *N Engl J Med* 2005; 353:1209-1223
10. Jones PB, Barnes TR, Davies L, Dunn G, Lloyd H, Hayhurst KP, Murray RM, Markwick A, Lewis SW: Randomized controlled trial of the effect on quality of life of second- vs first-generation antipsychotic drugs in schizophrenia: Cost Utility of the Latest Antipsychotic Drugs in Schizophrenia Study (CULASS 1). *Arch Gen Psychiatry* 2006; 63:1079-1087
11. Kahn RS, Fleischhacker WW, Boter H, Davidson M, Vergouwe Y, Keet IP, Gheorghe MD, Rybakowski JK, Galderisi S, Libiger J, Hummer M, Dollfus S, López-Ibor JJ, Hranov LG, Gaebel W, Peuskens J, Lindfors N, Riecher-Rössler A, Grobbee DE; EUFEST study group: Effectiveness of antipsychotic drugs in first-episode schizophrenia and schizophreniform disorder: an open randomised clinical trial. *Lancet* 2008; 371:1085-1097
12. Schooler N, Rabinowitz J, Davidson M, Emsley R, Harvey PD, Kopala L, McGorry PD, Van Hove I, Eerdeken M, Swyzan W, De Smedt G; Early Psychosis Global Working Group: Risperidone and haloperidol in first-episode psychosis: a long-term randomized trial. *Am J Psychiatry* 2005; 162:947-953
13. Lieberman JA, Tollefson G, Tohen M, Green AI, Gur RE, Kahn R, McEvoy J, Perkins D, Sharma T, Zipursky R, Wei H, Hamer RM; HGDH Study Group: Comparative efficacy and safety of atypical and conventional antipsychotic drugs in first-episode psychosis: a randomized, double-blind trial of olanzapine versus haloperidol. *Am J Psychiatry* 2003; 160:1396-1404
14. Emsley RA: Risperidone in the treatment of first-episode psychotic patients: a double-blind multicenter study: Risperidone Working Group. *Schizophr Bull* 1999; 25:721-729
15. Sanger TM, Lieberman JA, Tohen M, Grundy S, Beasley C Jr, Tollefson GD: Olanzapine versus haloperidol treatment in first-episode psychosis. *Am J Psychiatry* 1999; 156:79-87
16. Crespo-Facorro B, Pérez-Iglesias R, Ramírez-Bonilla M, Martínez-García O, Llorca J, Luis Vázquez-Barquero J: A practical clinical trial comparing haloperidol, risperidone, and olanzapine for the acute treatment of first-episode nonaffective psychosis. *J Clin Psychiatry* 2006; 67:1511-1521
17. Pool D, Bloom W, Mielke DH, Roniger JJ Jr, Gallant DM: A controlled evaluation of loxitan in seventy-five adolescent schizophrenic patients. *Curr Ther Res Clin Exp* 1976; 19:99-104
18. Spencer EK, Campbell M: Children with schizophrenia: diagnosis, phenomenology, and pharmacotherapy. *Schizophr Bull* 1994; 20:713-725
19. Keepers GA, Clappison VJ, Casey DE: Initial anticholinergic prophylaxis for neuroleptic-induced extrapyramidal syndromes. *Arch Gen Psychiatry* 1983; 40:1113-1117
20. Meltzer HY, Rabinowitz J, Lee MA, Cola PA, Ranjan R, Findling RL, Thompson PA: Age at onset and gender of schizophrenic patients in relation to neuroleptic resistance. *Am J Psychiatry* 1997; 154:475-482
21. Kryzhanovskaya L, Schulz C, McDougle CJ, Frazier J, Shen J, Dittman R, Robertson-Plouch C, Bauer T, Xu W, Wang WV, Carlson

- J, Corya S, Tohen M: A double-blind, placebo-controlled study of olanzapine in adolescents with schizophrenia. *Neuropsychopharmacology* 2005; 30(Suppl 1):S258-S259
22. Haas M, Unis AS, Copenhaver M, Quiroz J, Kushner S, Kuskumakar V: Efficacy and safety of risperidone in adolescents with schizophrenia, in 2007 Annual Meeting New Research Program and Abstracts. Arlington, Va, American Psychiatric Association, 2007, pp 221-222
 23. Robb AS, Findling RL, Nyilas M, Forbes RA, McQuade RD, Mallikaarjun S, Pikalov A, Marcus R, Carson W: Efficacy of aripiprazole in the treatment of adolescents with schizophrenia, in 2007 Annual Meeting New Research Program and Abstracts. Arlington, Va, American Psychiatric Association, 2007, pp 319-320
 24. Findling RL, Robb AS, Nyilas M, Forbes RA, McQuade RD, Mallikaarjun S, Pikalov A, Marcus R, Carson W: Tolerability of aripiprazole in the treatment of adolescents with schizophrenia, in 2007 Annual Meeting New Research Program and Abstracts. Arlington, Va, American Psychiatric Association, 2007, p 319
 25. Kumra S, Frazier JA, Jacobsen LK, McKenna K, Gordon CT, Lenane MC, Hamburger SD, Smith AK, Alughband-Rad J, Rapoport JL: Childhood-onset schizophrenia: a double-blind clozapine-haloperidol comparison. *Arch Gen Psychiatry* 1996; 53:1090-1097
 26. Shaw P, Sporn A, Gogtay N, Overman G, Greenstein D, Gochman P, Tossell J, Lenane M, Rapoport JL: Childhood-onset schizophrenia: a double-blind, randomized clozapine-olanzapine comparison. *Arch Gen Psychiatry* 2006; 63:721-730
 27. Sporn A, Gogtay N, Ortiz-Aguayo R, Alfaro C, Tossell J, Lenane M, Gochman P, Rapoport JL: Clozapine-induced neutropenia in children: management with lithium carbonate. *J Child Adolesc Psychopharmacol* 2003; 13:401-404
 28. McClellan J, Sikich L, Findling RL, Frazier JA, Vitiello B, Hlastala SA, Williams E, Ambler D, Hunt-Harrison T, Maloney AE, Ritz L, Anderson R, Hamer RM, Lieberman JA: Treatment of Early-Onset Schizophrenia Spectrum disorders (TEOSS): rationale, design, and methods. *J Am Acad Child Adolesc Psychiatry* 2007; 46:969-978
 29. Kay SR, Fiszbein A, Opler LA: The Positive and Negative Syndrome Scale (PANSS) for schizophrenia. *Schizophr Bull* 1987; 13:261-276
 30. Matzner F, Silva R, Silva M, Chowdhury M, Nastasi L: Preliminary test-retest reliability of the KID-SCID, in 1997 Annual Meeting New Research Program and Abstracts. Washington, DC, American Psychiatric Association, 1997, pp 172-173
 31. First MB, Spitzer RL, Gibbon M, Williams JB: *User's Guide for the Structured Clinical Interview for DSM-IV Axis I Disorders Research Version (SCID-I)*. New York, New York State Psychiatric Institute, Biometrics Research, 1996
 32. Werry JS, McClellan JM, Chard L: Childhood and adolescent schizophrenic, bipolar, and schizoaffective disorders: a clinical and outcome study. *J Am Acad Child Adolesc Psychiatry* 1991; 30:457-465
 33. Rating scales and assessment instruments for use in pediatric psychopharmacology research. *Psychopharmacol Bull* 1985; 21:714-1124
 34. Hughes CW, Rintelmann J, Emslie GJ, Lopez M, MacCabe N: A revised anchored version of the BPRS-C for childhood psychiatric disorders. *J Child Adolesc Psychopharmacol* 2001; 11:77-93
 35. Hodges K: *Child and Adolescent Functional Assessment Scale*. Ypsilanti, Mich, Eastern Michigan University, Department of Psychology, 1990
 36. Kalachnik JE: Medication monitoring procedures: thou shall, here's how, in *Pharmacotherapy and Mental Retardation*. Edited by Gadow KD and Poling AD. Boston, College-Hill, 1988, pp 231-268
 37. Simpson GM, Angus JW: A rating scale for extrapyramidal side effects. *Acta Psychiatr Scand Suppl* 1970; 212:11-19
 38. Barnes TR: A rating scale for drug-induced akathisia. *Br J Psychiatry* 1989; 154:672-676
 39. Williams CL, Hayman LL, Daniels SR, Robinson TN, Steinberger J, Paridon S, Bazzarre T: Cardiovascular health in childhood: a statement for health professionals from the Committee on Atherosclerosis, Hypertension, and Obesity in the Young (AHOY) of the Council on Cardiovascular Disease in the Young, American Heart Association. *Circulation* 2002; 106:143-160
 40. Emsley R, Oosthuizen PP, Kidd M, Koen L, Niehaus DJ, Turner HJ: Remission in first-episode psychosis: predictor variables and symptom improvement patterns. *J Clin Psychiatry* 2006; 67:1707-1712
 41. Lieberman J, Jody D, Geisler S, Alvir J, Loebel A, Szymanski S, Woerner M, Borenstein M: Time course and biologic correlates of treatment response in first-episode schizophrenia. *Arch Gen Psychiatry* 1993; 50:369-376
 42. Kumra S, Kranzler H, Gerbino-Rosen G, Kester HM, De Thomas C, Kafantaris V, Correll CU, Kane JM: Clozapine and "high-dose" olanzapine in refractory early-onset schizophrenia: a 12-week randomized and double-blind comparison. *Biol Psychiatry* 2008; 63:524-529
 43. Kryzhanovskaya L, Schulz C, McDougale CJ, Frazier JA, Dittmann RW, Robertson-Pouch C, Bauer T, Xu W, Wang WV, Carlson J, Risser R, Tohen M: Efficacy and safety of olanzapine in adolescents with schizophrenia: results from a 6-week double-blind, placebo-controlled trial, in 2006 Annual Meeting New Research Program and Abstracts. Arlington, Va, American Psychiatric Association, 2006, p 161
 44. Ross RG, Novins D, Farley GK, Adler LE: A 1-year open-label trial of olanzapine in school-age children with schizophrenia. *J Child Adolesc Psychopharmacol* 2003; 13:301-309
 45. Emsley R, Rabinowitz J, Medori R: Time course for antipsychotic treatment response in first-episode schizophrenia. *Am J Psychiatry* 2006; 163:743-745
 46. Kinon BJ, Chen L, Ascher-Svanum H, Stauffer VL, Kollack-Walker S, Sniadecki JL, Kane JM: Predicting response to atypical antipsychotics based on early response in the treatment of schizophrenia. *Schizophr Res* 2008; 102:230-240
 47. Correll CU, Malhotra AK, Kaushik S, McMeniman M, Kane JM: Early prediction of antipsychotic response in schizophrenia. *Am J Psychiatry* 2003; 160:2063-2065
 48. Chang YC, Lane HY, Yang KH, Huang CL: Optimizing early prediction for antipsychotic response in schizophrenia. *J Clin Psychopharmacol* 2006; 26:554-559
 49. Leucht S, Busch R, Kissling W, Kane JM: Early prediction of antipsychotic nonresponse among patients with schizophrenia. *J Clin Psychiatry* 2007; 68:352-360