

University of Groningen

DTI in Context

Svetachov, Pjotr; Everts, Maarten H.; Isenberg, Tobias

Published in:
COMPUTER GRAPHICS FORUM

DOI:
[10.1111/j.1467-8659.2009.01692.x](https://doi.org/10.1111/j.1467-8659.2009.01692.x)

IMPORTANT NOTE: You are advised to consult the publisher's version (publisher's PDF) if you wish to cite from it. Please check the document version below.

Document Version
Publisher's PDF, also known as Version of record

Publication date:
2010

[Link to publication in University of Groningen/UMCG research database](#)

Citation for published version (APA):

Svetachov, P., Everts, M. H., & Isenberg, T. (2010). DTI in Context: Illustrating Brain Fiber Tracts In Situ. *COMPUTER GRAPHICS FORUM*, 29(3), 1023-1032. <https://doi.org/10.1111/j.1467-8659.2009.01692.x>

Copyright

Other than for strictly personal use, it is not permitted to download or to forward/distribute the text or part of it without the consent of the author(s) and/or copyright holder(s), unless the work is under an open content license (like Creative Commons).

The publication may also be distributed here under the terms of Article 25fa of the Dutch Copyright Act, indicated by the "Taverne" license. More information can be found on the University of Groningen website: <https://www.rug.nl/library/open-access/self-archiving-pure/taverne-amendment>.

Take-down policy

If you believe that this document breaches copyright please contact us providing details, and we will remove access to the work immediately and investigate your claim.

Downloaded from the University of Groningen/UMCG research database (Pure): <http://www.rug.nl/research/portal>. For technical reasons the number of authors shown on this cover page is limited to 10 maximum.

DTI in Context: Illustrating Brain Fiber Tracts In Situ Extra material

Pjotr Svetachov, Maarten H. Everts, and Tobias Isenberg
University of Groningen, The Netherlands

Abstract

This document provides some images from the paper shown larger, to make it easier to view them on-screen as well as notice details when printed. It is provided in both a regular and an anaglyphic 3D version. For viewing the latter, red-green or red-cyan glasses are required, using the red filter for the left eye.

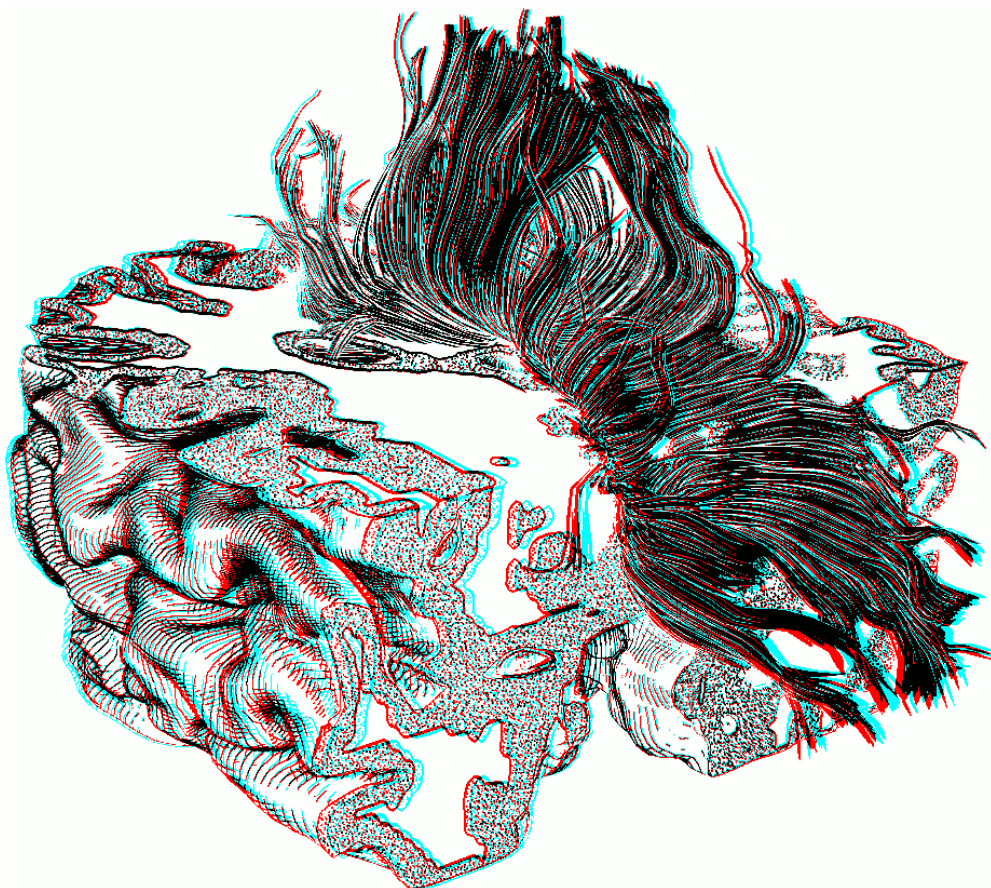


Figure 1: DTI fiber tracts shown with the lower part of the brain, using two cutting planes and a slight halo around the fiber tracts.

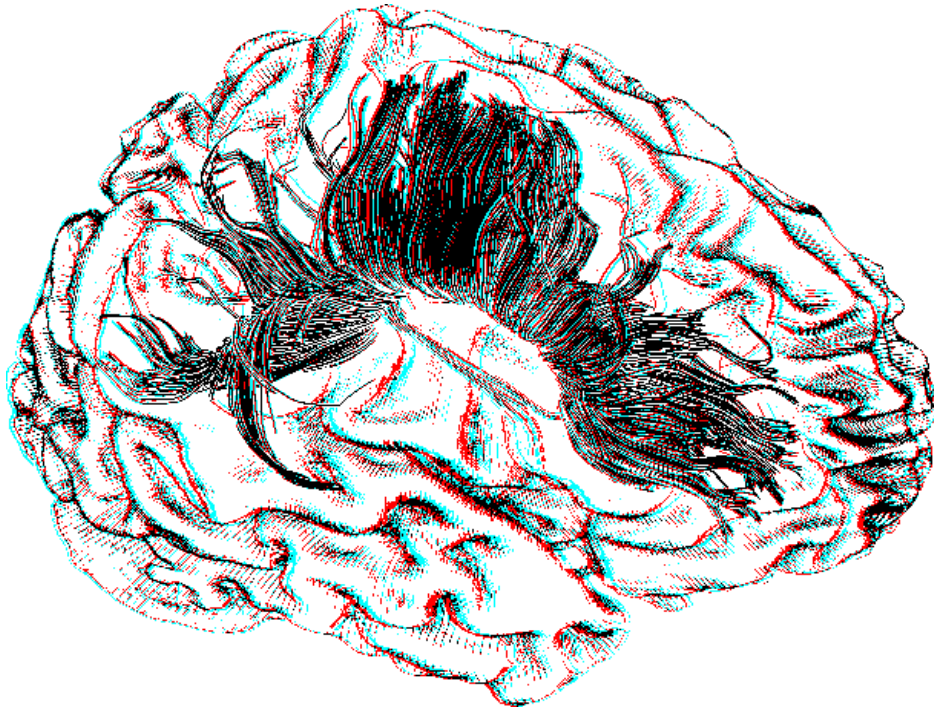


Figure 2: Composited illustration with halo to allow users to see the fiber tracts located inside the shown surface of the brain. This effect is visible best in animations or in 3D images such as anaglyphs.

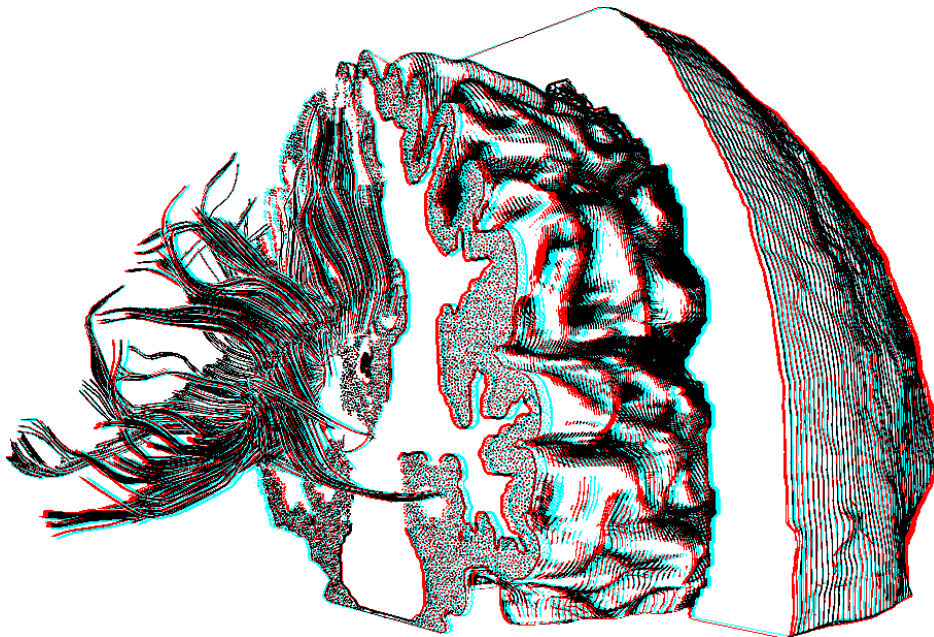


Figure 3: Two-stages of cutting planes are used to show context both from the skull and from the brain. Skull and brain use separate stylizations for the hatching.

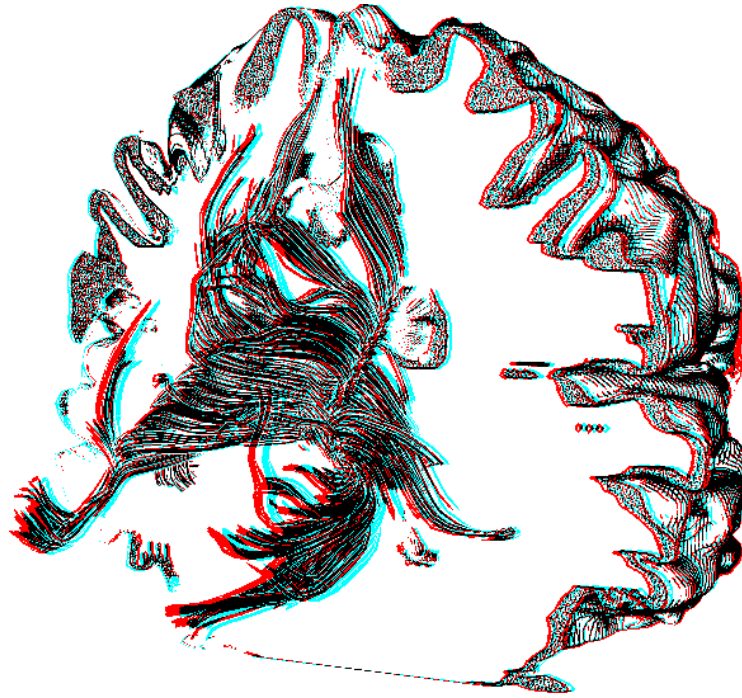


Figure 4: *The brain is illustrated with hatching perpendicular to the cutting plane (and some cross-hatching).*

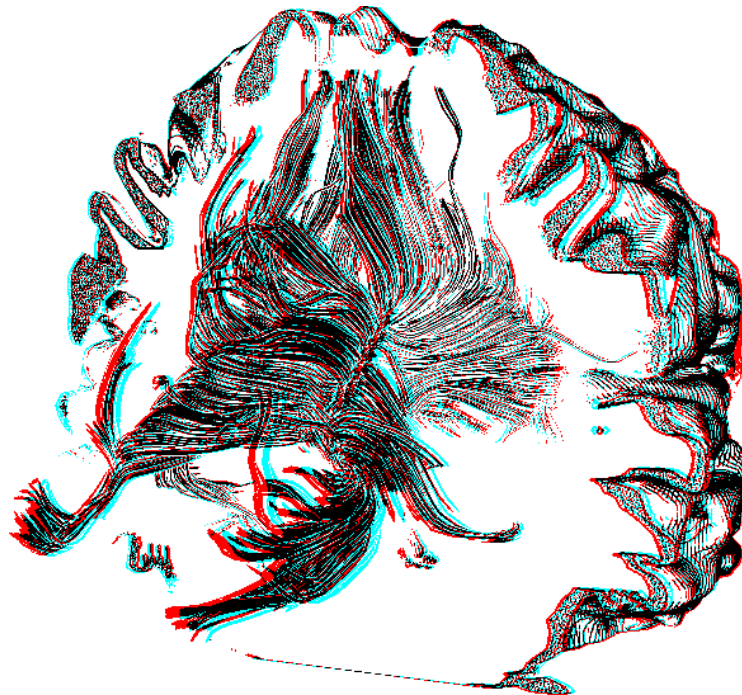


Figure 5: *Same as Fig. 4 but with fiber tract opacity enabled.*

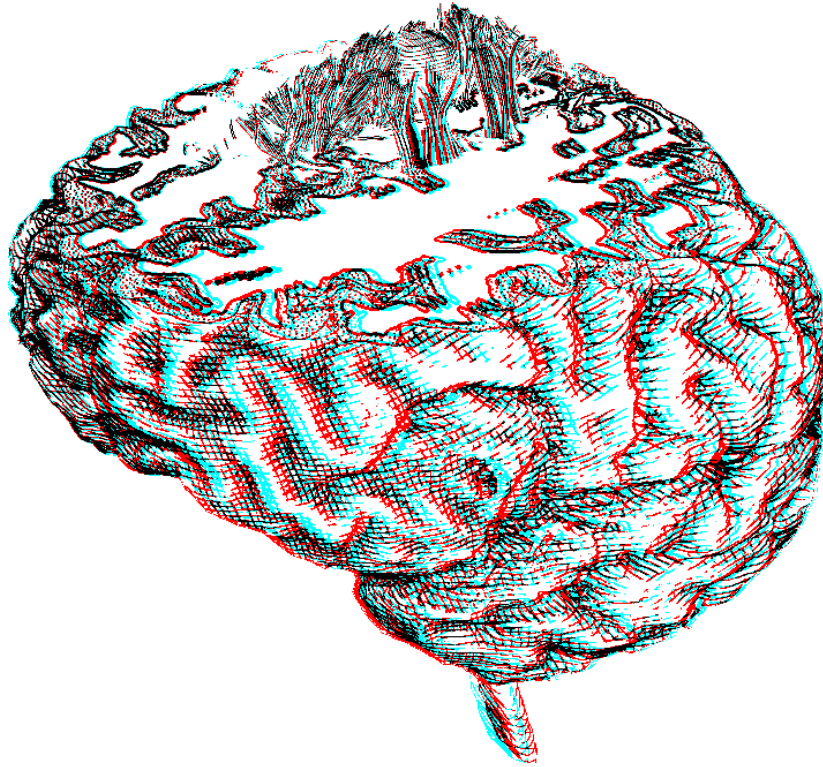


Figure 6: *Fiber tracts wrap around a tumor at the top.*

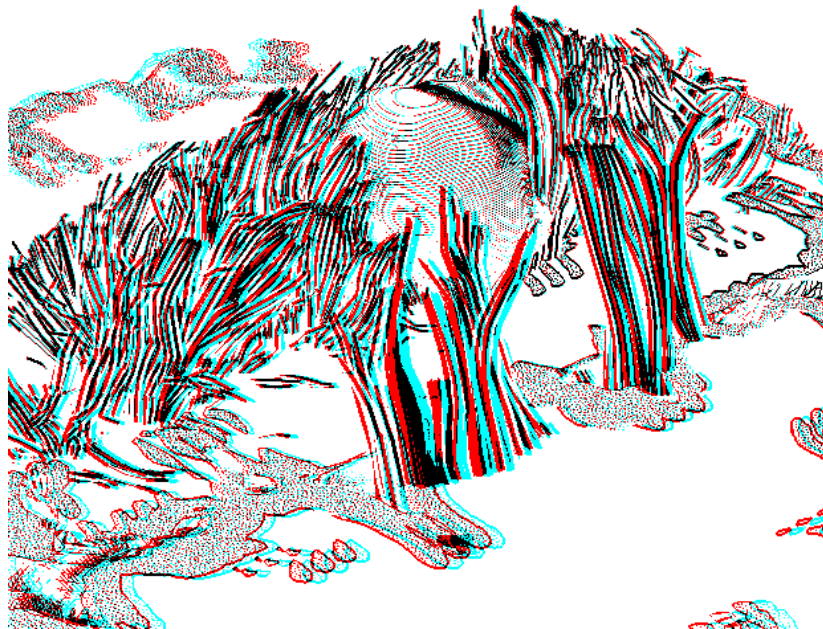


Figure 7: *A close-up of Fig. 6.*