

# Dust and Gas as Seeds for Metal-Poor Star Formation

Deidre A. Hunter

Lowell Observatory, 1400 West Mars Hill Road, Flagstaff, Arizona, USA  
email: dah@lowell.edu

**Abstract.** I address the issue of dust and gas as seeds for metal-poor star formation by reviewing what we know about star formation in nearby dwarf galaxies and its relationship to the gas and dust. I (try to) speculate on the extent to which processes in nearby galaxies mimic star formation in the early universe.

**Keywords.** galaxies: dwarf, galaxies: ISM, galaxies: evolution

---

## 1. Star formation and gas

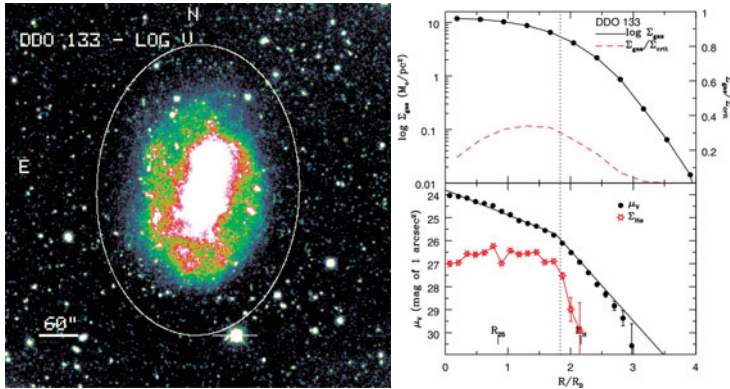
Star formation in dwarf galaxies (dIm) is occurring at low, and even very low, average atomic gas densities. The gas densities are sufficiently low that star formation is at best marginally unstable to large scale gravitational instabilities; moreover, the instability criterion does not predict where stars form (models: Safronov 1960, Toomre 1964, Quirk 1974; dwarf observations: Hunter & Plummer 1996, Meurer *et al.* 1996, van Zee *et al.* 1997, Hunter *et al.* 1998, Rafikov 2001, Leroy *et al.* 2008). (See, for example, Figure 1, right top.) This suggests that cloud formation in dwarfs is more difficult and inefficient than in the inner parts of spirals (Dong *et al.* 2003, Li *et al.* 2005a) and that other, more local, processes dominate (Elmegreen & Hunter 2006). Furthermore, we expect the difficulty in forming stars to increase as the galaxy mass decreases (Li *et al.* 2005b). So, just what do we know about star formation in dwarfs and its relationship to the (atomic) gas?

*Star formation is a local process.*

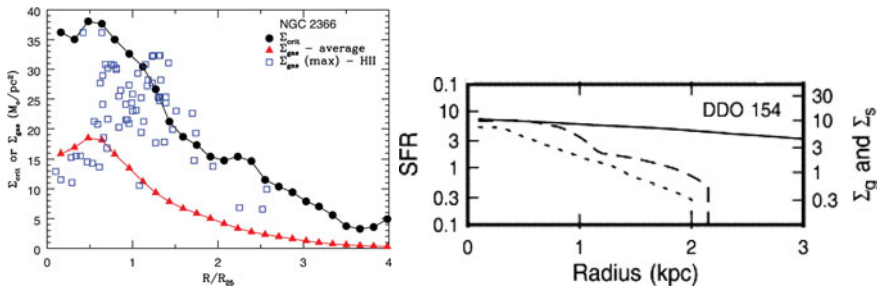
Since large-scale spontaneous gravitational instabilities are not dominant, other—local—processes must be important in tiny galaxies. That this is the case is seen observationally: star formation is occurring in HI clouds or complexes even where the *average* gas density is “too low” (Hunter & Gallagher 1985, 1986; Phillipps *et al.* 1990; van der Hulst *et al.* 1993; Taylor *et al.* 1994; van Zee *et al.* 1997; Meurer *et al.* 1998; de Blok & Walter 2006). For example, in NGC 2366 the HI peaks associated with star-forming regions are close to the Toomre critical density even though the average gas density in the surroundings is well below it (see Figure 2; Hunter *et al.* 2001a). Star formation in outer disks, where the gas is highly sub-critical, must certainly be a local process (Roye & Hunter 2000, Komiyama *et al.* 2003, Parodi & Binggeli 2003).

*Not all HI is equal.*

However, not all of the HI is equal when it comes to star formation. Braun (1997) found that 60–90% of HI is in cool filaments in spirals and dwarfs (but see Usero *et al.*, in prep), and it is the cool HI that we expect to be associated with new star formation. In fact, Young & Lo (1996) found that 20% of the HI in Leo A is in a component with a low velocity dispersion, and similarly for a small sample of other dwarfs (Young *et al.* 2003, Begum *et al.* 2006b). Even little Leo T, the recently discovered dIm in the Local Group with an  $M_V$  of only  $-7$  (Irwin *et al.* 2007), has a cool HI component ( $\sigma \sim 2$  km/s;



**Figure 1.** *Left:* V-band image of the dIm DDO 133. *Right, top:* Gas surface density of DDO 133 and  $\Sigma_{gas}/\Sigma_{crit}$ . The gas density is much lower than the Toomre critical density. *Right, bottom:* V-band and H $\alpha$  surface brightness profiles. The V profile is steeper in the outer disk.



**Figure 2.** *Left:* HI of dIm NGC 2366. The gas peaks in star-forming regions are close in density to the Toomre critical density even though the average surface density is much lower. Adapted from Hunter *et al.* (2001a). *Right:* Example of star formation rate profile (*long dashed line*) following the average surface density of older stars (*short dashed line*) better than it follows the average gas surface density (*solid line*). Adapted from Hunter *et al.* (1998).

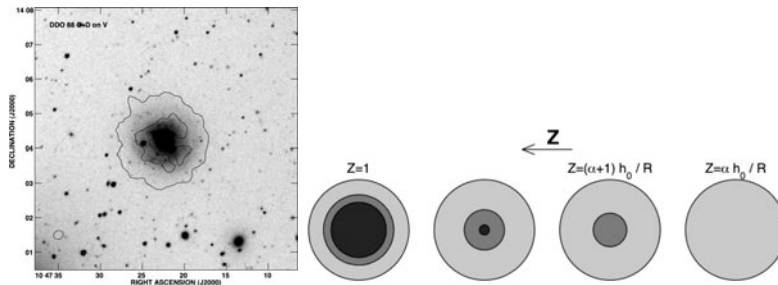
Ryan-Weber *et al.* 2008). In NGC 6822, de Blok & Walter (2006) concluded that the cool gas is more important in determining the star formation *locally* than the total HI, although the relationship between cool HI and star formation is not deterministically simple (Young *et al.* 2003, Begum *et al.* 2006b). Thus, the immediate reservoir of gas for cloud formation may not be as extensive as the integrated HI mass would indicate.

*Star formation follows the older stars.*

The azimuthally-averaged star formation rate follows the stellar surface density of the older stars with radius better than it follows the gas surface density in most dwarfs (see Figure 2). So, star formation appears to be tied to existing stars (Hunter & Gallagher 1985, Brosch *et al.* 1998, Hunter *et al.* 1998, Stewart *et al.* 2000, Parodi & Binggeli 2003, Hunter & Elmegreen 2004, Leroy *et al.* 2008), with some time averaging ( $10^8$  yrs, Andersen & Burkert 2000). In many galaxies, this is true even in the far outer disk.

*Stars blow holes, and porosity has consequences.*

One way for star formation to be tied to the presence of older stars is through star-induced star formation (Öpik 1953; Gerola *et al.* 1980; Comins 1983). Star formation changes the interstellar medium (ISM; Martin 1997, Mühle *et al.* 2005). Massive stars have strong winds and then die as supernovae, so where concentrations of massive stars form, large holes can be blown in the ISM (Puche *et al.* 1992, Martin 1998, Walter & Brinks 1999, Parodi & Binggeli 2003, Cannon *et al.* 2005, de Blok & Walter 2006). These holes are surrounded by higher density shells and in these shells star-forming clouds can



**Figure 3.** *Left:*  $V$  image of the Sm DDO 88 with contours of integrated HI emission ( $600 \times 520$  pc beam; Simpson *et al.* 2005). Stars have blown a 3-kpc diameter gas ring. *Right:* Sketch of molecular clumps as a function of metallicity from Bolatto *et al.* (1999). As the metallicity goes down, the molecular core traced by CO shrinks and the PDR grows.

develop (Mori *et al.* 1997, van Dyk *et al.* 1998). A beautiful example is Constellation III in the LMC (Dopita *et al.* 1985). There, stars that formed in the interior 12–16 Myr ago blew a 1.4-kpc size hole in the gas (Dolphin & Hunter 1998). More recently ( $\sim 6$  Myrs) stars have formed in the higher density shell surrounding the hole.

The action of the massive stars can create a swiss-cheese morphology in the ISM, and some dwarfs have lots of holes in their gas. In fact the filling factor in holes can be very high, exceeding that in M31 by factors of 3–800 (Oey *et al.* 2001; Bagetakos *et al.*, in prep). The rearrangement of the ISM can also be severe in tiny galaxies, and without shear, structures can last a long time. In DDO 88, for example, the HI looks like a giant doughnut and the ring, located at  $1/2R_H$ , contains 30% of the total HI mass (see Figure 3; Simpson *et al.* 2005). The massive stars may even blow the gas out of the galaxy, and completely away if the total mass is small enough, about  $10^7 M_\odot$  (Martin 1998, Mac Low & Ferrara 1999, Ferrara & Tolstoy 2000, but see Ott *et al.* 2005).

Not all holes have to be made by massive stars. There are holes in outer disks and low density HI regions without obvious young stars (LMC: Kim *et al.* 1999; Holmberg II: Rhode *et al.* 1999, Stewart *et al.* 2000, Bureau & Carignan 2002; DDO 154: Hoffman *et al.* 2001), and models show that these could be the result of turbulence and other processes such as thermal and gravitational instabilities (Wada *et al.* 2000, Piontek & Ostriker 2004, Dib & Burkert 2005, but see Sánchez-Salcedo 2001).

But what are the consequences of this porosity to star formation? Although secondary star formation can form in the shells, porosity in general may also regulate the star formation process by making it harder to form more stars—like a speed bump to star formation (Silk 1997, Scalo & Chappell 1999, Martin 1999, Parodi & Binggeli 2003). This is partly because the holes allow UV photons to heat the gas and reduce the cold gas supply (Silk 1997). In addition, one can imagine that the porosity would make it hard to form multiple generations beyond the second one. For example, in the LMC, the HI is so filamentary that it is hard to see how the second generation in the shell of Constellation III is going to have much of a chance to form a third generation (see the HI map of Kim *et al.* 1999). For the galaxy as a whole, which process—secondary star formation or regulating further star formation—wins or the roles they both play aren't clear.

One consequence of this on-going rearrangement of the ISM is that star formation must move around the galaxy on kpc scales. And this is what is observed (Payne-Gaposhkin 1974; Hodge 1969, 1980; Hunter *et al.* 1982; Hunter & Gallagher 1985, Hunter & Gallagher 1986, Schombert *et al.* 2001). These statistical sorts of fluctuations across a galaxy can be severe in dwarfs just because they are small. For example, you could end up with a

galaxy that is blue in one half, where star formation took place recently, and red in the other half, where older stars dominate (Hunter & Elmegreen 2006).

*There is evidence for turbulence compression.*

There is evidence for another local process taking place in dwarfs—turbulence compression. First, the ISM is structured into clouds of all sizes (that is, a fractal) whose distributions resemble those of compressible turbulence. This is seen in the LMC (Elmegreen *et al.* 2001), the SMC (Stanimirovic *et al.* 1999), and other nearby dwarfs (Westpfahl *et al.* 1999, Begum *et al.* 2006a). Second, other distributions are also consistent with sampling a fractal turbulent gas, including the HII region luminosity function (Kingsburgh & McCall 1998, Youngblood & Hunter 1999), H $\alpha$  probability distribution function (Hunter & Elmegreen 2004), V-band Fourier Transform power spectra (Willett *et al.* 2005), and star cluster mass functions (e.g., Hunter *et al.* 2003). In Holmberg II, for example, Dib & Burkert (2005) see correlated structure in the ISM for scales less than 6 kpc and argue for a turbulence driver that acts on scales of order 6 kpc.

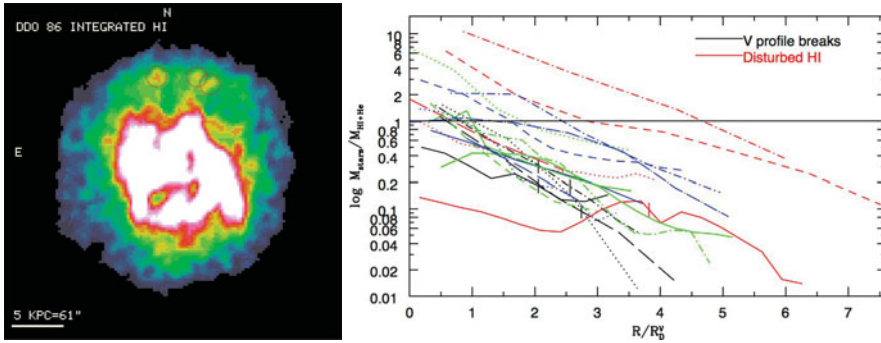
Turbulence can heat the gas and make it harder to form stars, thereby regulating star formation (Struck & Smith 1999). But it can also bring gas together and create density enhancements that become self-gravitating if the gas is dense enough for the gravitational potential energy to exceed the energy in turbulent motions (Krumholz & McKee 2005).

*Stars form in outer disks.*

Stars have formed in outer disks in the past, and FUV surface brightness profiles indicate that, in many dwarfs, young stars also exist far into the outer disk (Hunter *et al.*, in prep). Ultra-deep imaging shows that the stellar disks continue to surface brightnesses of even 30 mag/arcsec<sup>2</sup> in V with no end in sight (see Figure 1). Thus, stars have formed in extreme low-density conditions in dwarf outer disks, and this region poses a particularly difficult test of our understanding of the cloud/star formation process.

In outer disks, we often find complex stellar surface brightness profiles (see Figure 1). About 24% of a survey of 94 dIm show a stellar surface brightness profile that becomes suddenly steeper at about 2 disk scale lengths (Hunter & Elmegreen 2006). This kind of break is also seen in spirals (see, for example, Pohlen *et al.* 2002, Kregel & van der Kruit 2004) and in disks at redshifts of  $0.6 < z < 1.0$  (Pérez 2004). People have historically called this a “truncation” because they thought they were seeing the end of the disk, but I think it is better referred to as a break because it represents a change rather than an ending. The difference between spirals and dwarfs is that the break occurs much closer to the center of the galaxy in dwarfs.

What happens to the star formation process at the break? Different theoretical approaches predict such breaks: 1) Andersen & Burkert (2000) suggest that self-regulated evolution within a confining dark halo will lead naturally to exponential density profiles that are somewhat flatter in the central regions. 2) Schaye (2004) argues that star formation occurs where there is cold gas, triggering gravitational instabilities. The threshold gas column density for this transition is around  $3\text{--}10 \times 10^{20} \text{ cm}^{-2}$ . Tiny Leo T has a peak column density of  $7 \times 10^{20} \text{ cm}^{-2}$  and it has formed stars as recently as 200 Myr ago (Ryan-Weber *et al.* 2008, Irwin *et al.* 2007). And star formation is found where locally the gas density is greater than  $4\text{--}6 \times 10^{20} \text{ cm}^{-2}$  in a sample of low luminosity dwarfs (Hunter *et al.* 2001a, Begum *et al.* 2006b). The break, according to Schaye, occurs where the *average* gas density drops below this threshold. 3) Li *et al.* (2005b) determined from hydrodynamic simulations that there should be a sharp drop in the star formation rate at  $2 \times$  the disk scale length and that stars are more important than gas in destabilizing dwarf disks. 4) Elmegreen & Hunter (2006) suggest that inner disks are dominated by large-scale gravitational instabilities while in outer disks local processes driven by a low level of bulk motions of the gas form clouds with densities high enough *locally* to form



**Figure 4.** *Left:* Integrated HI map of dIrr DDO 86 ( $1.4 \times 1.3$  kpc beam). Circled HI peaks at  $5R_D$  have maxima of  $5 \times 10^{20} \text{ cm}^{-2}$ , within expected thresholds for star formation (Schaye 2004), even though the average  $\Sigma_{\text{gas}}$  there is  $3 \pm 1 \times 10^{20} \text{ cm}^{-2}$ . *Right:*  $M_{\text{gas}}/M_{\text{stars}}$  for dwarfs. Dwarfs become increasingly gas-rich with radius, implying a decreasing cloud formation efficiency.

stars (see Figure 4). The profile break is the transition from the dominance of large-scale processes to the dominance of local processes. This requires a low level of motion of the gas continuing into the outer disk, as is observed. One mechanism for producing local density enhancements is the magnetorotational instability, where the angular velocity decreases outward and magnetic fields are present. Piontek & Ostriker (2005) predict that turbulent velocity dispersions go up, reaching a quasi-steady plateau, as the average gas density goes down. This results in departures from thermal equilibrium and local density variations that might be particularly useful in outer disks. 5) Roškar *et al.* (2008) suggest that the break forms in a (spiral) disk within 1 Gyr and that the break moves outward as the gas cools. The break in their model corresponds to a rapid drop in the star formation rate associated with a drop in the cool gas surface density relative to the Toomre critical density. 6) Bournaud *et al.* (2007) suggest the outer exponential is built from tidal debris. All but the last model agree that the break corresponds to a change in the star formation rate due to changes in the physical conditions within the gas.

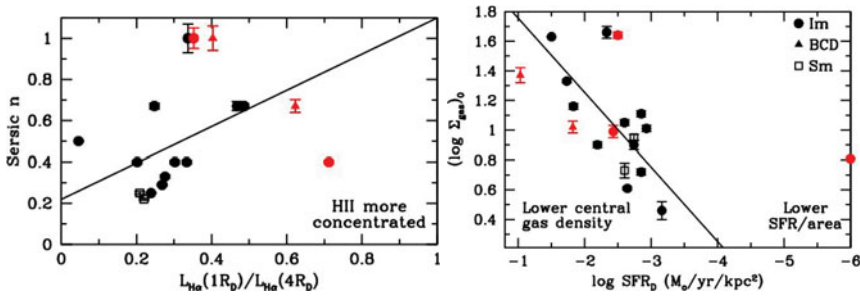
*There is a wide variety of gas surface density profiles.*

One thing all dwarfs have in common is that the ratio of the mass in stars to mass in gas changes steadily with radius. Dwarfs are usually gas dominated even in the centers, but become more so with radius. This implies a steady decrease in the large-scale cloud formation efficiency with radius (see Figure 4; Leroy *et al.* 2008).

The wide variety of gas surface density fall-offs with radius is striking. Some profiles are relatively flat (in terms of log of the surface density), some drop precipitously, and others decrease steadily. So, just what is the role of the gas in determining the nature of the stellar disk, especially outer disks? To explore the relationship of the HI profiles to properties of the stellar disk, I fit Sersic functions to HI surface density profiles of 19 dwarf galaxies:  $\log \Sigma_{\text{gas}}(R) = (\log \Sigma_{\text{gas}})_0 - 0.434(R/R_0)^{1/n}$ . Dwarfs are fit well with  $n \leq 1$ ; a higher  $n$  value means the gas is more centrally concentrated.

There are a few trends between the way the gas falls off with radius and the star-forming characteristics of the galaxies (see Figure 5). First, the star formation activity is more centrally concentrated in galaxies where the gas is more centrally concentrated. Second, the central gas density is more important in determining the integrated star formation rate than the details of the gas profile; a higher central gas density correlates with a higher integrated star formation rate. Third, galaxies with breaks in their stellar surface brightness profiles tend to have gas profiles that are less centrally concentrated (lower  $n$ ) and have lower central gas densities, but there are similar galaxies without





**Figure 5.** Results of fitting gas surface density profiles with Sersic functions. *Left:* Sersic  $n$  vs.  $L_{H\alpha}(1R_D)/L_{H\alpha}(4R_D)$ , a measure of the central concentration of the star formation activity. A higher  $n$  means a higher degree of central concentration of HI. The star formation activity is more centrally concentrated in galaxies where the HI is also more centrally concentrated. *Right:* The integrated star formation rate normalized to  $\pi R_D^2$  SFR $_D$  correlates with the central gas density, not the shape of the  $\Sigma_{gas}$  profile.

x

optical breaks as well. So, all in all, the gas does seem to play a role in determining the stellar disk, but the effects are not as dramatic as the variation in gas profiles.

#### No dark galaxies.

Almost all puddles of gas must form stars according to Taylor & Webster (2005). In their models the gas in galaxies with more than  $10^6 M_\odot$  in gas and stars becomes unstable and forms stars until there is a stellar radiation field to warm the ISM and stabilize it. The key to instability is efficient  $H_2$  cooling. Similarly, Warren *et al.* (2007) suggest that isolated galaxies with shallow dark matter potentials will produce the minimum quantity of stars needed to stabilize the gas disk. Taylor and Webster suggest that local dwarfs represent the minimum rates of self-regulated star formation. Leo T must define the extreme. It has only  $3 \times 10^5 M_\odot$  of HI and a peak column density of  $7 \times 10^{20}/\text{cm}^2$ , but it has formed stars in the past 200 Myrs (Irwin *et al.* 2007, Ryan-Weber *et al.* 2008).

#### Starbursts happen.

Lee *et al.* (2007) find evidence that the star formation histories of dwarfs with  $M_B > -15$  are more erratic than those of brighter dwarfs. Specifically, the equivalent width of  $H\alpha$  becomes more scattered. They argue that at this brightness level there is some change in the star formation process, or at least in the regulatory nature of the process. One possibility is that feedback from massive stars has a larger negative impact, and the evolution becomes bursty or at least “gasp” (Marconi *et al.* 1995, Schombert *et al.* 2001). This emphasizes the need to look for trends across the dwarf galaxy class.

Stinson *et al.* (2007) have simulated the collapse of dwarf galaxies. They find that supernovae feedback can quench star formation as the gas collapses. Gas flows out in a hot halo, cools, and then forms stars again. The result is episodic bursts of star formation. On the other hand, Li *et al.* (2005a) argue that direct feedback from starbursts is minor because most of the energy is deposited above the disk, not in it.

Blue Compact Dwarfs (BCDs) have, or are, undergoing enhanced star formation at some level. Furthermore, star formation has migrated to the center within the last Gyr (Noguchi 1988, Hunter & Elmegreen 2004, but see van Zee *et al.* 2001). The HI is more centrally concentrated (Chamaraux 1977, Taylor *et al.* 1994, Meurer *et al.* 1998, van Zee *et al.* 2001), and the distribution of HI has changed with time (Simpson & Gottesman 2000). Some have unusually large HII regions (Youngblood & Hunter 1999), and many have peculiar HI velocity fields. Sometimes there is some object nearby to blame for the starburst, but not always (c.f., Taylor 1997; Stil & Israel 1998; Méndez & Esteban 2000; Campos-Aquilar & Moles 1991; Telles & Terlevich 1995; Telles & Maddox 2000; Simpson

*et al.* 2008, in prep). Could some BCDs be advanced dwarf–dwarf mergers or dwarf and even-smaller-dwarf mergers (so there won't be a tidal tail, which we don't see)? BCDs may be showing us the frequency of dwarf–dwarf interactions.

## 2. Star formation and dust

The relationship between the gas and star formation is obvious since stars form out of gas clouds. The connection between dust and star formation is less direct. Dust affects the heating cycle in the ISM, and this affects the ability of the ISM to form cold, dense clouds that can form stars. The presence of even a small amount of dust can make a difference to the ability to form H<sub>2</sub> clouds (Schaye 2004). Thus, the low dust content *should* have consequences to the star formation process in dwarfs.

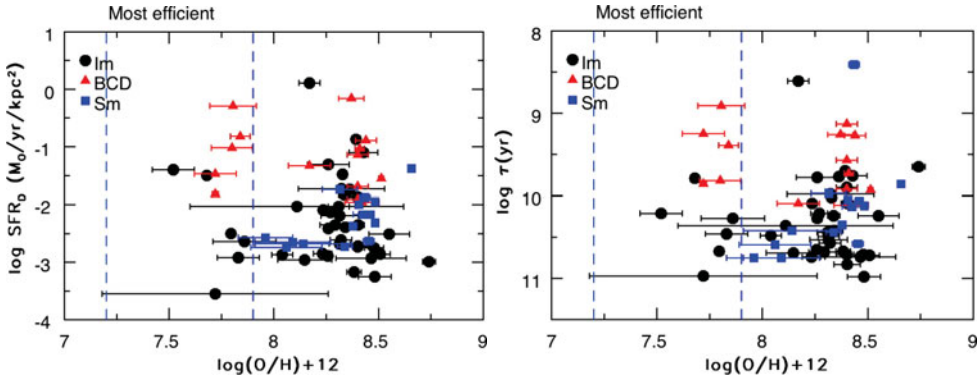
### *The dust and metal contents are low.*

Although there are embedded star-forming regions in dwarfs and even dust in outer disks (e.g., Hinz *et al.* 2006, Walter *et al.* 2007), the dust-to-gas ratio is lower in dwarfs than in spirals by factors of 2–25 (Hunter *et al.* 1989; Lisenfeld *et al.* 2002; Galliano *et al.* 2003; Böttner *et al.* 2003; Cannon *et al.* 2006a,b; Leroy *et al.* 2007; Walter *et al.* 2007), and the ratio falls with metallicity (Lisenfeld & Ferrara 1998). However, there is some evidence for large quantities of cold dust that we generally miss (Madden *et al.* 2006).

One consequence of the low dust content, coupled with high porosity in some dwarfs, is long sight-lines for stellar UV radiation. This heats the dust and gas in the diffuse ISM and on the surfaces of molecular clouds. This results in warmer FIR dust temperatures (Hunter *et al.* 1989, Walter *et al.* 2007), and is especially an issue in starbursts (Madden 2000). It also means deeper penetration of star-forming gas clouds. This results in large photodissociation regions (PDRs) and small molecular cores in the star-forming clouds (Poglitsch *et al.* 1995, Madden *et al.* 1997, Hunter *et al.* 2001b). When the molecular gas is detected, we usually find that stars are forming in giant molecular clouds, just like in spirals (Wilson & Reid 1991, Ohta *et al.* 1992, Wilson 1994, Taylor *et al.* 1999, Hunter *et al.* 2001b, Leroy *et al.* 2006), but the clouds in dwarfs have a different proportion of PDR and core. Bolatto *et al.* (1999) (Figure 3) suggest that the molecular core in a typical cloud, as traced by CO, shrinks and the PDR grows with decreasing metallicity. At very low metallicities a cloud could be entirely PDR. And yet, the products of the star formation process—HII region luminosity functions, cluster mass functions, and stellar initial mass functions—appear to be normal. Even the star formation efficiency within low metallicity clouds appear to be normal: In NGC 6822's Hubble V star forming region the star formation efficiency is a nominal 10% (Israel *et al.* 2003).

### *The dust is different.*

In dwarfs the mix of PAHs, large and small grains, and silicate and carbon grains is different than in spirals (Madden 2000, Hunter *et al.* 2001b, Engelbracht *et al.* 2005, Hogg *et al.* 2005, Madden *et al.* 2006, Hunter & Kaufman 2007, Rosenberg *et al.* 2008). Low metallicity ISMs are a hostile environment for PAHs: PAHs, as well as small grains, are destroyed by intense stellar radiation fields (Bolatto *et al.* 2000, 2007; Madden 2000; Hunter *et al.* 2001b; Galliano *et al.* 2003; but see Lisenfeld *et al.* 2002), and the presence of PAH emission decreases as the hardness of the radiation field increases (Madden *et al.* 2006). PAH emission relative to small grain emission correlates with metallicity (Engelbracht *et al.* 2005, Madden *et al.* 2006, Draine *et al.* 2007; Rosenberg *et al.* 2008; but see Walter *et al.* 2007). However, there is more PAH emission relative to starlight in higher star formation systems (Hunter *et al.* 2006, Jackson *et al.* 2006). So, there are differences in the nature of the dust in dwarfs compared to spirals, but does it make any difference? There is some evidence that FIR spectral energy distributions vary among



**Figure 6.**  $O/H$  vs. the  $SFR/\pi R_D^2$  (left) and vs.  $\tau = M_{gas}/SFR$  (right). The models of Spaans & Norman (1997) suggest that over the indicated metallicity range star formation is most efficient. The galaxies with the high star formation rates are BCDs, which may have other things going on, so we are not seeing an obvious effect. We need a better way to examine this prediction.

dwarfs, but this variation may not correlate with metallicity or the intensity of the stellar radiation field (Kiuchi *et al.* 2004).

*The lower dust content should affect the star formation process.*

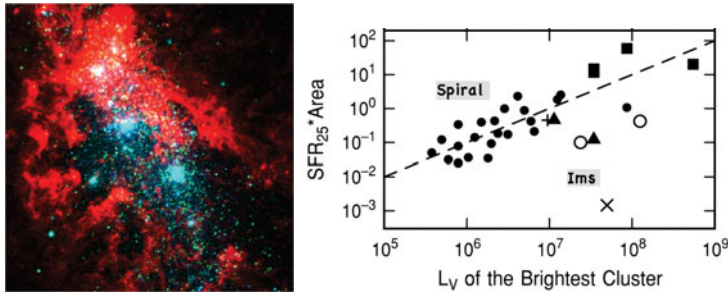
But does it? Dust traces star formation, but to what extent does the lower dust content and different relative dust components in dwarfs *affect* the star formation process? Weak cooling of the gas should result in less efficient cloud formation because cooling takes longer (Dib & Burkert 2005). According to Schaye (2004), we can also expect a higher threshold for star formation when the metallicity is lower. So one would think that a lower dust and metal content would mean that a galaxy would have a harder time forming cold clouds. This would be a particular problem in regions of lower gas density such as the outer disk. Calura *et al.* (2008) show how dust production and destruction in dwarfs is tied to the galaxy’s star formation history. But, the converse must also be true. The cooling problem would suggest that dwarfs have star formation histories in which the star formation *rate* increases at first and then levels off after the ISM reaches some metallicity. So, we expect the lower dust content to affect the star formation process and star formation histories, but the connection hasn’t been shown observationally.

### 3. Initiating star formation

So, what do we need to form stars: high enough gas density and cool enough gas temperatures. Spaans & Norman (1997) have argued that a multi-phase ISM emerges when the metallicity reaches  $0.02Z_{\odot}$ , and this is very important to the efficiency of star formation. Locally, the lowest metallicity star-forming galaxy has an oxygen abundance that is  $1/40 Z_{\odot}$  (SBS0335-052, Izotov *et al.* 2005). Increasing metallicity enhances atomic and molecular cooling; increasing dust content absorbs part of the stellar radiation field and boosts  $H_2$ , and life is good (for star formation). Things go sour when the metallicity reaches  $0.1Z_{\odot}$  and ambipolar diffusion for clouds is no longer important. Then the ease of star formation should go down. (See Figure 6).

But before the first stars form and there are no metals, it would seem that cloud formation by normal means would be difficult (Li *et al.* 2005a). However, we have heard at this meeting that a single generation of very massive stars forming in the initial dark matter mini-haloes can raise the metallicity of the gas to  $10^{-3}$ – $10^{-3.5} Z_{\odot}$  and that star formation enters the realm of quasi-normal above this critical metallicity. So, a freshly





**Figure 7.** *Left:* Super star clusters (*blue*) and ionized gas (*red*) in the starburst dwarf NGC 1569. Images are from *HST* observations presented by Hunter *et al.* (2000). *Right:* *V*-band luminosity of the brightest star cluster in spiral and dIm galaxies vs. integrated galactic star formation rate. The brightest clusters in dIm galaxies are too bright for the galaxies' star formation rates. Adapted from Billett *et al.* (2002).

formed dwarf galaxy would not be starting from zero metallicity. Even so, this threshold is well below the value of  $0.02Z_{\odot}$  where Spaans & Norman (1997) argue star formation becomes particularly easy.

I gather that some of the “small” galaxies in the early universe were dense objects—denser than dwarfs, and they became the central regions of today's spirals (Mao, Mo, & White 1998). Forming clouds in these units wouldn't be particularly difficult because the gas density was so high. But, maybe to get things going in dwarf galaxies in the early universe (but after the first stars have polluted the gas a little), you need an especially high gas density (for a dwarf). Then once the metallicity is raised to something like  $0.02Z_{\odot}$ , cloud formation becomes more efficient and can take place at lower gas densities.

How might we get the gas density up (temporarily) in (at least some) dwarfs? One way is through dwarf–dwarf interactions. Interactions, even minor ones, can have a big impact on a dwarf's ability to form stars (Dong *et al.* 2003). We see that some nearby dwarfs have formed very massive star clusters that are too big for the number of other clusters that are present (see Figure 7; Billett *et al.* 2002). These systems generally also show evidence for an external perturbation. Stellar bar structures also facilitate star formation in that barred dwarfs tend to have higher integrated star formation rates, and these can form in an interaction (Hunter & Elmegreen 2006). So, one could imagine the first dwarfs interacting and making massive star clusters or at least getting the high gas density necessary to begin forming stars.

But can a dwarf–dwarf interaction/merger make another dwarf, such as we see today? That this might be possible is suggested by the Local Group dIm WLM: conditions in this galaxy were right to form a globular cluster very early in life (Hodge *et al.* 1999) and yet today it looks like a typical dIm galaxy (Kepley *et al.* 2007). Many BCDs may be (minor?) dwarf–dwarf mergers. Once the current starburst is over in a BCD, would it be distinguishable from a regular dIm? In BCDs the HI tends to be more centrally concentrated, but Simpson & Gottesman (2000) argue that a starburst could move much of the HI back out to the edges of the optical galaxy. This scenario would produce HI ring structures, and such are seen in some dIm today (c.f. Figure 3, Simpson *et al.* 2005). We need simulations of dwarf–dwarf interactions in order to see what gas densities might be achieved and what the resulting galaxy would look like for different types of encounters.

#### 4. Relation to star formation in early star-forming units

So, if I wanted to look at present-day star formation processes that might be applicable to star formation in freshly formed dwarf galaxies, where would I look? First, look at

outer disks. Dwarfs are making star-forming clouds in outer disks where gas densities are quite low on average. Star formation out there must be pretty inefficient, but it does take place. So, outer disks are probably the place to look to understand the drivers for star formation in the smallest, lowest density objects in the early universe.

Second, look at dwarfs with a range of properties including metallicity, dust-to-gas ratios, and luminosities. We don't see any  $10^{-3}$ – $10^{-3.5} Z_{\odot}$  metallicity galaxies or dust-free dwarfs today. But, nearby dwarfs do allow us to see trends with these properties down to the most extreme objects like Leo T that are forming stars nearby.

Third, look at BCDs as examples of externally induced star formation processes that may have been especially important in the early universe.

## Acknowledgements

DAH gratefully acknowledges funding from the US National Science Foundation through grant AST-0707563 and comments by B. Elmegreen, J. Cannon, and E. Brinks.

## References

- Andersen, R.-P. & Burkert, A. 2000, *ApJ*, 531, 296  
Begum, A., Chhengalur, J. N., & Bhardwaj, S. 2006a, *MNRAS*, 372, 33  
Begum, A., *et al.* *MNRAS*, 365, 1220  
Billett, O. H., Hunter, D. A. & Elmegreen, B. G. 2002, *AJ*, 123, 1454  
Bolatto, A. D., Jackson, J. M., & Ingalls, J. G. 1999, *ApJ*, 513, 275  
Bolatto, A. D., Jackson, J. M., Wilson, C. D., & Moriarty-Schieven, G. 2000, *ApJ*, 532, 909  
Bolatto, A. D., *et al.* 2007, *ApJ*, 655, 212  
Böttner, C., Klein, U., & Heithausen, A. 2003, *A&A*, 408, 493  
Braun, R. 1997, *ApJ*, 484, 637  
Bournaud, F., Elmegreen, B. G., & Elmegreen, D. M. 2007, *ApJ*, 670, 237  
Brosch, N., Heller, A., & Almozno, E. 1998, *ApJ*, 504, 720  
Bureau, M. & Carignan, C. 2002, *AJ*, 123, 1316  
Calura, F., Pipino, A., & Matteucci, F. 2008, *A&A*, 479, 669  
Campos-Aguilar, A., & Moles, M. 1991, *A&A*, 241, 358  
Cannon, J. M., *et al.* 2005, *ApJ*, 630, L37  
Cannon, J. M., *et al.* 2006a, *ApJ*, 647, 293  
Cannon, J. M., *et al.* 2006b, *ApJ*, 652, 1170  
Chamaraux, P. 1977, *A&A*, 60, 67  
Comins, N. E. 1983, *ApJ*, 266, 543  
de Blok, W. J. G., & Walter, F., 2006, *AJ*, 131, 363  
Dib, S. & Burkert, A. 2005, *ApJ*, 630, 238  
Dolphin, A. E. & Hunter, D. A. 1998, *AJ*, 116, 1275  
Dong, S., Lin, D. N. C., & Murray, S. D. 2003, *ApJ*, 596, 930  
Dopita, M. A., Mathewson, D. S., & Ford, V. L. 1985, *ApJ*, 297, 599  
Draine, B. T., *et al.* 2007, *ApJ*, 663, 866  
Elmegreen, B. G. & Hunter, D. A. 2006, *ApJ*, 636, 712  
Elmegreen, B. G., Kim, S., & Staveley-Smith, L. 2001, *ApJ*, 548, 749  
Engelbracht, C. W., *et al.* 2005, *ApJ*, 628, 29  
Ferrara, A. & Tolstoy, E. 2000, *MNRAS*, 313, 291  
Galliano, F., *et al.* 2003, *A&A*, 407, 159  
Gerola, H., Seiden, P. E., & Schulman, L. S. 1980, *ApJ*, 242, 517  
Hinz, J., Misselt, K., Rieke, G., Smith, P. Blaylock, M., & Gordon, K. 2006, *ApJ*, 651, 874  
Hodge, P. 1980, *ApJ*, 156, 847  
Hodge, P. 1969, *ApJ*, 241, 125  
Hodge, P., Dolphin, A., Smith, T., & Mateo, M. 1999, *ApJ*, 521, 577  
Hogg, D. W., *et al.* 2005, *ApJ*, 624, 162

- Hoffman, G. L., Salpeter, E. E., & Carle, N. J. 2001, *AJ*, 122, 2428
- Hunter, D. A. & Elmegreen, B. G. 2004, *AJ*, 128, 2170
- Hunter, D. A. & Elmegreen, B. G. 2006, *ApJS*, 162, 49
- Hunter, D. A., Elmegreen, B. G., & Baker, A. L. 1998, *ApJ*, 493, 595
- Hunter, D. A., Elmegreen, B. G., Dupuy, T. G., & Mortonson, M. 2003, *AJ*, 126, 1836
- Hunter, D. A., Elmegreen, B. G., & Martin, E. 2006, *AJ*, 132, 801
- Hunter, D. A., Elmegreen, B. G., & van Woerden, H. 2001a, *ApJ*, 556, 773
- Hunter, D. A. & Gallagher, J. S. 1985, *ApJS*, 58, 533
- Hunter, D. A. & Gallagher, J. S. 1986, *PASP*, 98, 5
- Hunter, D. A., Gallagher, J. S., & Rautenkranz, D. 1982, *ApJS*, 49, 53
- Hunter, D. A., Gallagher, J. S., Rice, W. L., & Gillett, F. C. 1989, *ApJ*, 336, 152
- Hunter, D. A. & Kaufman, M. 2007, *AJ*, 134, 721
- Hunter, D. A., O'Connell, R., Gallagher, J., & Smecker-Hane, T. 2000, *AJ*, 120, 2383
- Hunter, D. A. & Plummer, J. D. 1996, *ApJ*, 462, 732
- Hunter, D. A., *et al.* 2001, *ApJ*, 553, 121
- Irwin, M. J., *et al.* 2007, *ApJ*, 656, 13
- Israel, F. P., Baas, F., Rudy, R. J., Skillman, E. D., & Woodward, C. E. 2003, *A&A*, 397, 87
- Izotov, Y. I., Thuan, T. X., & Guseva, N. G. 2005, *ApJ*, 632, 210
- Jackson, D. C., *et al.* 2006, *ApJ*, 646, 192
- Kepley, A., Wilcots, E., Hunter, D., & Nordgren, T. 2007, *AJ*, 133, 2242
- Kim, S., Dopita, M. A., Staveley-Smith, L., & Bessell, M. S. 1999, *AJ*, 118, 2797
- Kingsburgh, R. L. & McCall, M. L. 1998, *AJ*, 116, 2246
- Kiuchi, G., Ohta, K., Sawicki, M., & Allen, M. 2004, *AJ*, 128, 2743
- Komiyama, Y., *et al.* 2003, *ApJ*, 590, 17
- Kregel, M. & van der Kruit, P. C. 2004, *MNRAS*, 355, 143
- Krumholz, M. R. & McKee, C. F. 2005, *ApJ*, 630, 250
- Lee, J. C., Kennicutt, R. C., Funes, J. G., S. J., Sakai, S., & Akiyama, S. 2007, *ApJ*, 671, L113
- Leroy, A., Bolatto, A., Walter, F., & Blitz, L. 2006, *ApJ*, 643, 825
- Leroy, A., Bolatto, A., Stanimirovic, S., Mizuno, N., Israel, F., & Bot, C. 2007, *ApJ*, 658, 1027
- Leroy, A., *et al.* 2008, *AJ*, submitted
- Li, Y., Mac Low, M.-M., & Klessen, R. S. 2005a, *ApJ*, 620, L19
- Li, Y., Mac Low, M.-M., & Klessen, R. S. 2005b, *ApJ*, 626, 823
- Lisenfeld, U., Israel, F. P., Stil, J. M., & Sievers, A. 2002, *A&A*, 382, 860
- Lisenfeld, U. & Ferrara, A. 1998, *ApJ*, 496, 145
- Mac Low, M.-M. & Ferrara, A. 1999, *ApJ*, 513, 142
- Madden, S. C. 2000, *NewAR*, 44, 249
- Madden, S. C., Galliano, F., Jones, A. P., & Sauvage, M. 2006, *A&A*, 446, 877
- Madden, S. C., Poglitsch, A., Geis, N., Stacey, G. J., & Townes, C. H. 1997, *ApJ*, 483, 200
- Mao, S., Mo, H. J., & White, S. D. M. 1998, *MNRAS*, 297, L71
- Marconi, G., Tosi, M., Greggio, L., & Focardi, P. 1995, *AJ*, 109, 173
- Martin, C. L. 1997, *ApJ*, 491, 561
- Martin, C. L. 1998, *ApJ*, 506, 222
- Martin, C. L. 1999, *ApJ*, 513, 156
- Méndez, D. I. & Esteban, C. 2000, *A&A*, 359, 493
- Meurer, G. R., Carignan, C., Beaulieu, S. F., & Freeman, K. C. 1996, *AJ*, 111, 1551
- Meurer, G. R., Staveley-Smith, L., & Killeen, N. E. B. 1998, *MNRAS*, 300, 705
- Mori, M., Yoshii, Y., Tsujimoto, T., & Nomoto, K. 1997, *ApJ*, 478, 21
- Mühle, S., Klein, U., Wilcots, E. M., & Hüttemeister, S. 2005, *AJ*, 130, 524
- Noguchi, M. 1988, *A&A*, 201, 37
- Oey, M. S., Clarke, C. J., & Massey, P. 2001, in: De Boer, K. S., Dettmar, R.-J., & Klein, U. (eds.), *The Magellanic Clouds and other dwarf galaxies* (Aachen: Shaker-Verlag), p. 181
- Ohta, K., Sasaki, M., Yamada, T., Saito, M., & Nakai, N. 1992, *PASJ*, 44, 585
- Öpik, E. J. 1953, *IrAJ*, 2, 219
- Ott, J., Fabian, W., & Brinks, E. 2005, *MNRAS*, 358, 1453

- Parodi, B. R. & Binggeli, B. 2003, *A&A*, 398, 501
- Payne-Gaposhkin, C. 1974, *Smithsonian Contrib. Astrophys.*, No. 16
- Pérez, I. 2004, *A&A*, 427, L17
- Phillipps, S., Edmunds, M. G., & Davies, J. I. 1990, *MNRAS*, 244, 168
- Piontek, R. A. & Ostriker, E. C. 2004, *ApJ*, 601, 905
- Piontek, R. A. & Ostriker, E. C. 2005, *ApJ*, 629, 849
- Poglitsch, A., *et al.* 1995, *ApJ*, 454, 293
- Pohlen, M., Dettmar, R.-J., Lüticke, R., & Aronica, G. 2002, *A&A*, 392, 807
- Puche, D., Westpfahl, D., Brinks, E., & Roy, J.-R. 1992, *AJ*, 103, 1841
- Quirk, W. J. 1972, *ApJ*, 176, L9
- Rafikov, R. R. 2001, *MNRAS*, 323, 445
- Rhode, K. L., Salzer, J. J., Westpfahl, D. J., & Radice, L. A. 1999, *AJ*, 118, 323
- Rosenberg, J. L., *et al.* 2008, *ApJ*, 674, 814
- Roškar, R., *et al.* 2008, *ApJ*, 675, 65
- Roye, E. W. & Hunter, D. A. 2000, *AJ*, 119, 1145
- Ryan-Weber, E. V., *et al.* 2008, *MNRAS*, 384, 535
- Safronov, V. S. 1960, *Ann d'Ap*, 23, 979
- Sánchez-Salcedo, F. J. 2001, *ApJ*, 563, 867
- Scalo, J. & Chappell, D. 1999, *MNRAS*, 310, 1
- Schaye, J. 2004, *ApJ*, 609, 667
- Schombert, J. M., McGaugh, S. S., & Eder, J. A. 2001, *AJ*, 121, 2420
- Silk, J. 1997, *Apj*, 481, 703
- Simpson, C. E., & Gottesman, S. T. 2000, *AJ*, 120, 2975
- Simpson, C. E., Hunter, D. A., & Knezek, P. M. 2005, *AJ*, 129, 160
- Spaans, M. & Norman, C. A. 1997, *ApJ*, 483, 87
- Stanimirovic, S., *et al.* 1999, *MNRAS*, 302, 417
- Stewart, S. G., *et al.* 2000, *ApJ*, 529, 201
- Stil, J. M. & Israel, F. P. 1998, *A&A*, 337, 64
- Stinson, G. S., Dalcanton, J. J., Quinn, T., Kaufmann, T., & Wadsley, J. 2007, *ApJ*, 667, 170
- Struck, C. & Smith, D. C. 1999, *ApJ*, 527, 673
- Taylor, C. L. 1997, *ApJ*, 480, 524
- Taylor, C. L., Brinks, E., Pogge, R. W., & Skillman, E. D. 1994, *AJ*, 107, 97
- Taylor, C. L., Hüttemeister, S., Klein, U., & Greve, A. 1999, *A&A*, 349, 424
- Taylor, E. N. & Webster, R. L. 2005, *ApJ*, 634, 1067
- Telles, E. & Maddox, S. 2000, *MNRAS*, 311, 307
- Telles, E. & Terlevich, R. 1995, *MNRAS*, 275, 1
- Toomre, A. 1964, *ApJ*, 139, 1217
- van der Hulst, J. M., *et al.* 1993, *AJ*, 106, 548
- van Dyk, S. D., Puche, D., & Wong, T. 1998, *AJ*, 116, 2341
- van Zee, L., Haynes, M. P., Salzer, J. J., & Broeils, A. H. 1997, *AJ*, 113, 1618
- van Zee, L., Salzer, J. J., & Skillman, E. D. 2001, *AJ*, 122, 121
- Wada, K., Spaans, M., & Kim, S. 2000, *ApJ*, 540, 797
- Walter, F. & Brinks, E. 1999, *AJ*, 118, 273
- Walter, F., *et al.* 2007, *ApJ*, 661, 102
- Warren, B. E., Jerjen, H., & Koribalski, B. S. 2007, *AJ*, 134, 1849
- Westpfahl, D.J., Coleman, P. H., Alexander, J., & Tongue, T. 1999, *AJ*, 117, 868
- Willett, K. W., Elmegreen, B. G., & Hunter, D. A. 2005, *AJ*, 129, 2186
- Wilson, C. D. 1994, *ApJ*, 434, 11
- Wilson, C. D. & Reid, I. 1991, *ApJ*, 366, 11
- Young, L. M. & Lo, K. Y. 1996, *ApJ*, 462, 203
- Young, L. M., van Zee, L., Lo, K. Y., Dohm-Palmer, R. C., & Beierle, M. 2003, *ApJ*, 592, 111
- Youngblood, A. J. & Hunter, D. A. 1999, *ApJ*, 519, 55