



## Studies

# Dynamic role of iron supply in amelioration of cadmium stress by modulating antioxidative pathways and peroxidase enzymes in mungbean

Krishnav Biyani<sup>1</sup>, Durgesh Kumar Tripathi<sup>2</sup>, Jeong Hyun Lee<sup>3</sup> and Sowbiya Muneer<sup>4\*</sup>

<sup>1</sup>School of Bioscience and Technology, Vellore Institute of Technology, Vellore, Tamil Nadu, 632014 India

<sup>2</sup>Amity Institute of Organic Agriculture, Amity University, Noida, Uttar Pradesh, 201313 India

<sup>3</sup>Department of Horticulture, College of Agricultural Sciences, Chonnam National University, Guwangju, 500757 Korea

<sup>4</sup>School of Agricultural Innovations and Advanced Learning, Vellore Institute of Technology, Vellore, Tamil Nadu, 632014 India

**Received:** 14 September 2018 **Editorial decision:** 2 January 2019 **Accepted:** 1 February 2019 **Published:** 6 February 2019

**Associate Editor:** Zhulong Chan

**Citation:** Biyani K, Tripathi DK, Lee JH, Muneer S. 2019. Dynamic role of iron supply in amelioration of cadmium stress by modulating antioxidative pathways and peroxidase enzymes in mungbean. *AoB PLANTS* 11: plz005; doi: 10.1093/aobpla/plz005

**Abstract.** Iron deficiency and cadmium (Cd) stress causes a rapid change in plant physiology. The aim of this work was to characterize the effects of Fe supplementation on redox reactions in leguminous plants under Cd toxicity. The experiments were performed in hydroponic nutrient media, using mungbean grown under 300  $\mu$ M cadmium chloride with or without Fe for 10 days. The Fe concentration in plants grown under Fe deficiency was reduced by the presence of Cd; however, it recovered to control levels after Fe was supplied. Similarly, a very high Cd concentration was observed in plants grown under Fe deficiency in the presence of Cd toxicity but when Fe was supplied the Cd concentration decreased. After 5 days of Fe deficiency, the activities of antioxidant enzymes (superoxide dismutase, catalase, and glutathione reductase and ascorbate peroxidase) were significantly higher than in plants supplied with Fe in the absence or presence of Cd. However, after 10 days of Fe deficiency, these enzyme activities were severely decreased in the presence of Cd toxicity but increased when Fe was present. The activities of other peroxidase enzymes such as guaiacol peroxidase, syringaldazine peroxidase, polyphenol oxidase and benzidine peroxidase decreased after 10 days under Cd toxicity and were further reduced in the absence of Fe. Furthermore, the level of reduced glutathione and oxidized glutathione increased for the first 5 days under Cd toxicity under Fe deficiency but was reduced after Fe was supplied to Cd-treated plants. The data indicate that supply of Fe contributes to the alleviation of Cd toxicity in redox reaction pathways in mungbean plants.

**Key words:** ascorbate-glutathione cycle; Cd toxicity; Fe deprivation; enzymes activities; mungbean.

## Introduction

Although iron is abundant in the earth's crust, it is largely unavailable for plants, especially those growing in alkaline and calcareous soils. Higher plants such as graminaceous plants and dicots acquire iron in the form of phytosiderophores, which solubilize ferric Fe in the

rhizosphere (Romheld and Marschner 1996; Cohen *et al.* 1998; Kobayashi *et al.* 2006; Meda *et al.* 2007). Unlike graminaceous plants, legumes often experience Fe deficiency, which primarily affects their seed development (Santos *et al.* 2013). Moreover, plants under Fe deficiency express alterations in several physiological parameters

\*Corresponding author's e-mail address: [Sowbiya.muneer@vit.ac.in](mailto:Sowbiya.muneer@vit.ac.in)

such as in photosynthesis, respiration, nitrogen fixation, DNA synthesis and chlorophyll formation (Vasconcelos et al. 2006; Eva et al. 2011; Muneer et al. 2012).

When Fe uptake is very low in plants, they often accumulate toxic metals in their roots (Kobayashi et al. 2006; Eva et al. 2011). Cadmium is a common toxic metal that affects plant growth and development. Cadmium enters plants via roots and hinders basic metabolic reactions such as photosynthesis (Hasan et al. 2009). Cadmium induces oxidative stress by generating reactive oxygen species (ROS) (Romero et al. 2007) in the form of thiobarbituric acid (TBARS), hydrogen peroxide ( $H_2O_2$ ) and singlet oxygen ( $O_2^{-1}$ ). Reactive oxygen species are considered an unavoidable by-product of normal aerobic metabolism that can disrupt cellular homeostasis (Mittler 2002). Reactive oxygen species can also impact the expression of several genes and can also influence signal transduction pathways in many biological processes (Pitzschke et al. 2006). Reactive oxygen species react with several other biomolecules such as lipids, proteins and nucleic acids, causing lipid peroxidation (Muneer et al. 2014). However, plants use a diverse group of redox reactions involving superoxide dismutase (SOD), ascorbate peroxidase (APX), catalase (CAT), glutathione reductase (GR) and low molecular weight antioxidants such as reduced glutathione (GSH) and oxidized glutathione (GSSG) to scavenge different types of ROS and thereby protect cells against injury and potential damage (Mittler 2002).

The non-specific enzyme guaiacol peroxidase (GPOX) can metabolize guaiacol as a substrate and can function as an effective quencher of ROS in cells (Van Assche and Clijsters 1990). Several other peroxidase enzymes such as syringaldazine peroxidase (SPOX), polyphenol oxidase (PPO) and benzidine peroxidase (BPOX) are also known as stress ameliorating enzymes as well as being involved in lignin biosynthesis (Lee et al. 2007). In conjunction with these enzymes SOD, CAT, APX, DHAR (dehydroascorbate reductase), GR, GSH and GSSG play an essential role in the scavenging process. The improved and amended expression of these redox enzymes in response to biotic or abiotic stress is already well known (Bowler et al. 1992; Eide et al. 1996; Lee et al. 2009).

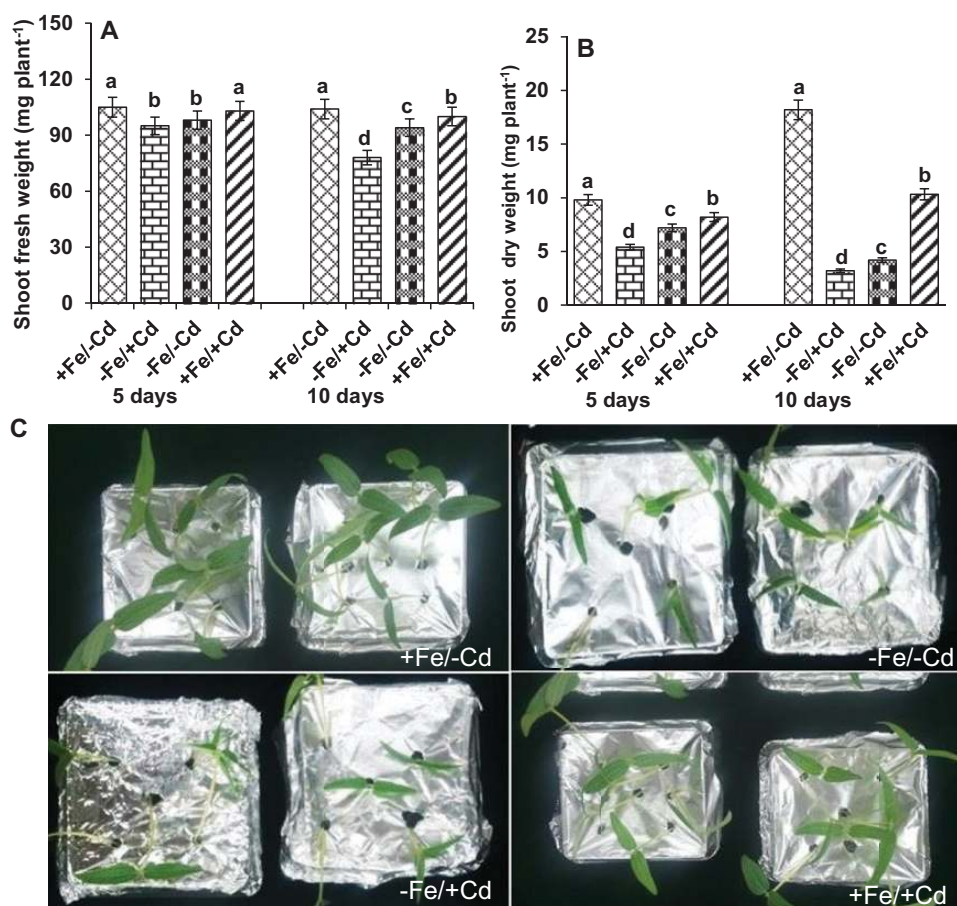
Although several studies have reported the effect of Fe levels on Cd toxicity in Strategy I plants (all plants except graminaceous monocots) based on the response to iron shortage (Eide et al. 1996; Korshunova et al. 1999; Vert et al. 2002; Yoshihara et al. 2006), little is known about the response to Cd toxicity in Fe-deficient leguminous plants (Fabaceae family) and particularly in mungbean plants, which are consumed in high quantities throughout the world (according to FAO statistics 2011). In a previous study, we analysed leguminous

plants under low levels of Cd toxicity (Muneer et al. 2012, 2013), but due to several anthropogenic activities, Cd levels in the soil have been increasing (López-Millán et al. 2009; Hashem 2013; Sánchez-Pardo et al. 2013), resulting in severe loss of crop productivity. Thus, the main aim of this study was to determine whether mungbean seedlings are able to modulate the uptake of Cd under supplementation of Fe for two different time intervals.

## Materials and Methods

### Growing conditions and Fe/Cd combined treatments

Surface-sterilized seeds of mungbean (*Vigna radiata* var. *radiata*, Korea) were germinated as described previously (Muneer et al. 2012). Experiments were conducted in 300 mL magenta boxes in a controlled plant growth chamber with a 16 h photoperiod (under  $100 \mu\text{mol m}^{-2} \text{s}^{-1}$  light). A day/night temperature and relative humidity regimes of  $25 \pm 2^\circ\text{C}$  and 70 % were implemented, respectively. Seeds were washed with 1 % sodium hypochlorite for 10 min followed by three washings in double-distilled water. Sterilized seeds were germinated in the dark on wet filter paper in covered petri dishes for 2 days. The germinated seeds were then transferred to quarter-strength Hoagland nutrient solution for an additional 14 days containing (at mM concentrations for the macro elements): 1.0  $\text{NH}_4\text{NO}_3$ ; 0.4  $\text{KH}_2\text{PO}_4$ ; 3.0  $\text{CaCl}_2$ ; 1.5  $\text{MgSO}_4$ ; 0.15  $\text{K}_2\text{HPO}_4$ ; 0.2 Fe(III)-EDTA; and ( $\mu\text{M}$  for the micro elements): 14  $\text{H}_3\text{BO}_3$ ; 5.0  $\text{MnSO}_4 \cdot \text{H}_2\text{O}$ ; 3.0  $\text{ZnSO}_4 \cdot 7\text{H}_2\text{O}$ ; 0.7  $\text{CuSO}_4 \cdot 5\text{H}_2\text{O}$ ; 0.7  $(\text{NH}_4)_6\text{MO}_7\text{O}_{24}$ ; 0.1  $\text{COCl}_2$ . The nutrient solution was continuously aerated and renewed every 3 days. On the 15th day, young mungbean plants were divided into four treatment groups receiving different treatments of Fe and Cd ( $\text{CdCl}_2$ ): adequate Fe (+Fe/-Cd, control), adequate Fe plus 300  $\mu\text{M}$  Cd (+Fe/+Cd), Fe-deprived without Cd (-Fe/-Cd) and Fe-deprived in presence of Cd (300  $\mu\text{M}$ ) (-Fe/+Cd), with four replicates. A high concentration of  $\text{CdCl}_2$  (300  $\mu\text{M}$ ) was used in this study, in contrast to our previous studies, in which plants were treated with a moderate concentration of 50  $\mu\text{M}$   $\text{CdCl}_2$  (Muneer et al. 2012, 2013). Fe deficiency was achieved by removing Fe sources (Fe(III)-EDTA) from the nutrient medium. The light conditions were supplemented using fluorescent light at a canopy height of  $200 \mu\text{mol m}^{-2} \text{s}^{-1}$  for 16 h per day. After 5 and 10 days of treatment, plant samples were taken and frozen in liquid nitrogen and stored in a freezer ( $-80^\circ\text{C}$ ) for further analysis. To analyse samples for chemical parameters, samples were dried in an oven for 24–48 h. For experiments 10–15 magenta boxes (containing four seedlings) for each treatment were used (Fig. 1 is a representation of the four treatments).



**Figure 1.** Changes in biomass (A) fresh weight, (B) dry weight and (C) morphological differences in leaves as affected by four Fe/Cd combined treatments: adequate Fe with -Cd (+Fe/-Cd, control), Fe-deficient with Cd stress (-Fe/+Cd), Fe-deficient -in absence of Cd (-Fe/-Cd) and adequate Fe with Cd stress (+Fe/+Cd) for 10 days. Vertical bars indicate  $\pm$ SE of the means for  $n = 4$ . Means denoted by a different letter are significantly different at  $P < 0.05$  according to the Tukey's studentized range test.

### Assessment of biomass and chemical analysis

The assessment of shoot biomass and chemical analysis of Fe and Cd concentrations were performed as described previously (Muneer et al. 2012).

### Determination of oxidative stress (TBARS and H<sub>2</sub>O<sub>2</sub>)

Thiobarbituric acid reactive substances (TBARS) were determined using the method of Heath and Packer (1968). Hydrogen peroxide was determined as described by Lin and Kao (2001a).

### Determination of non-protein thiol content and pigment analysis

Non-protein thiol contents were determined as described by Del Longo et al. (1993), while pigments like chlorophyll and carotenoid were determined using the dimethyl sulfoxide (DMSO) method, as previously described by Hiscox and Israelstam (1979), and calculated using formulae given by Arnon (1949).

### Enzyme assays

Ascorbate peroxidase activity was estimated according to Nokano et al. (2006), while SOD activity was determined using the method of Dhindsa et al. (1981), and CAT activity was determined using the method of Aebi (1984). Glutathione reductase activity was determined as described by Rao (1992).

### Determination of GSH and GSSG

Reduced GSH and oxidized GSSG were determined using the glutathione recycling method described by Anderson (1985).

### Peroxidase enzyme assays

Peroxidase enzymes were extracted as described by Lee et al. (2007) and the activity of each enzyme was measured using appropriate substrates. Guaiacol peroxidase activity was detected according to Lee and Lin (1995). Benzidine peroxidase activity was estimated according to Cuyper et al. (2002), while SPOX activity

was determined as described by Quiroga et al. (2000). Polyphenol oxidase activity was determined according to the method of Siriphanich and Kader (1985).

### Active staining of peroxidase-related enzymes

The peroxidase active staining of GPOX, SPOX, BPOX and PPO was determined as described by Lee et al. (2007).

### Statistical analysis

The results were analysed using statistical analysis software (SAS), with four replicates for each treatment. The conclusions were based on differences between means, with a significance level set at  $P < 0.05$ .

## Results

### Shoot biomass analysis under Fe and Cd treatments

Cd stress caused a significant decrease in shoot fresh and dry weight (Fig. 1A and B). The fresh and dry biomass accumulation of Cd-treated plants was significantly lower than in plants that were adequately supplemented with Fe (+Fe/+Cd). The greatest reduction was observed in -Fe/+Cd plants after 10 days of treatment (Fig. 1C, visual differences), whereas this effect was reversed after the addition of Fe to the plants (+Fe/+Cd), even in the presence of Cd treatment.

### Fe and Cd concentration

The concentration of Fe provides a sensitive marker with which to evaluate the response of normal or

Fe-deficient plants to Cd exposure. Plants responded to Fe deprivation by displaying a 54 % reduction in Fe concentration for the first 5 days (Fig. 2A). This reduction was more severe in Cd-treated plants (-Fe/+Cd) after 10 days of treatment (76 %), whereas Fe supplementation counteracted the negative effect of Cd toxicity. A high concentration of Cd was observed in Cd-treated plants (Fig. 2B), but the concentration decreased slowly in Cd-treated plants supplemented with Fe.

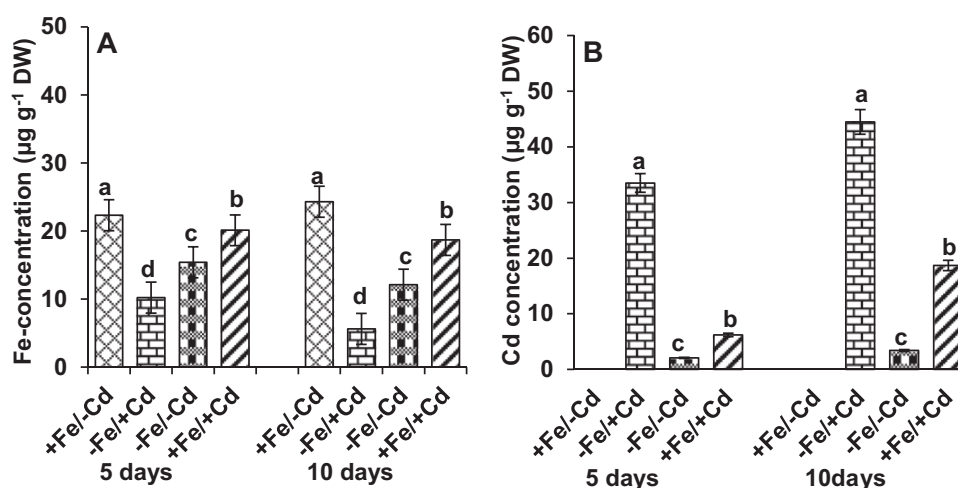
### Production of ROS in response to Cd toxicity and its alleviation by Fe supplementation

Cd-treated young mungbean leaves exhibited ROS accumulation in the form of TBARS and  $H_2O_2$ . Thiobarbituric acid reactive substance content increased significantly in Fe-deficient plants (Fig. 3A), and further increased following the addition of Cd (-Fe/+Cd). However, the concentration of TBARS decreased when Cd-treated plants were supplied with Fe (+Fe/+Cd).

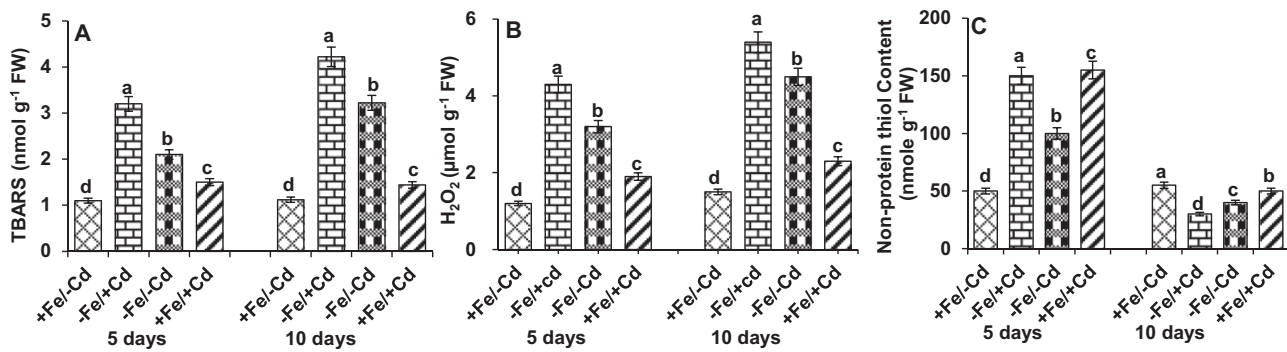
Similarly,  $H_2O_2$  concentration increased by 166 % in the first 5 days in the presence of Fe and Cd (+Fe/+Cd) and increased even more (by 258 %) in the absence of Fe (-Fe/+Cd) (Fig. 3B). The  $H_2O_2$  concentration increased by 260 % after 10 days of Fe deprivation in Cd-treated plants (-Fe/+Cd). The  $H_2O_2$  levels recovered when Fe was supplied to Cd-treated plants.

### Non-protein thiol content under Fe and Cd treatment

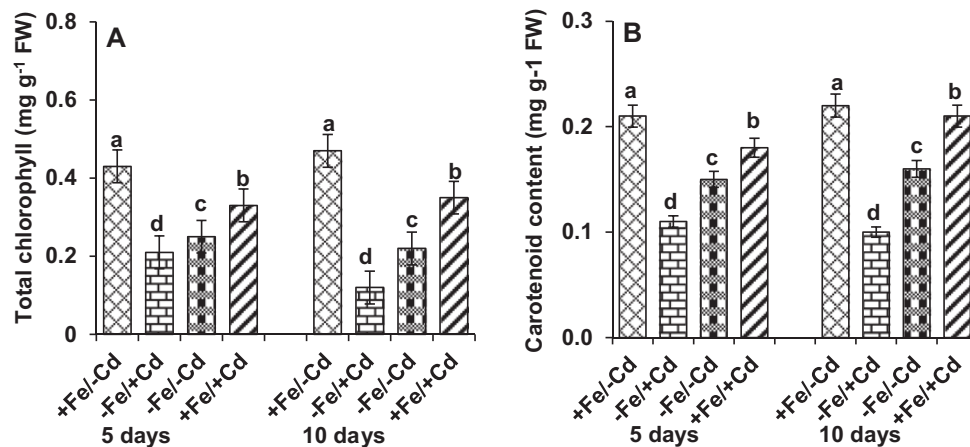
Non-protein thiol contents were used as an oxidative marker for Cd treatments (Fig. 3C). Fe-deficient plants



**Figure 2.** Changes in the concentration of (A) Fe and (B) Cd in leaves as affected by four Fe/Cd combined treatments: adequate Fe with -Cd (+Fe/-Cd, control), Fe-deficient with Cd stress (-Fe/+Cd), Fe-deficient -in absence of Cd (-Fe/-Cd) and adequate Fe with Cd stress (+Fe/+Cd) for 10 days. Vertical bars indicate  $\pm$ SE of the means for  $n = 4$ . Means denoted by a different letter are significantly different at  $P < 0.05$  according to the Tukey's studentized range test.



**Figure 3.** Reactive oxygen species production in the form of (A) TBARS and (B)  $H_2O_2$  and oxidative marker in the form of (C) non-protein thiol content in leaves as affected by four Fe/Cd combined treatments: adequate Fe with –Cd (+Fe/–Cd, control), Fe-deficient with Cd stress (–Fe/+Cd), Fe-deficient –in absence of Cd (–Fe/–Cd) and adequate Fe with Cd stress (+Fe/+Cd) for 10 days. Vertical bars indicate  $\pm$ SE of the means for  $n = 4$ . Means denoted by a different letter are significantly different at  $P < 0.05$  according to the Tukey’s studentized range test.



**Figure 4.** Changes in (A) total chlorophyll and (B) carotenoid content in leaves as affected by four Fe/Cd combined treatments: adequate Fe with –Cd (+Fe/–Cd, control), Fe-deficient with Cd stress (–Fe/+Cd), Fe-deficient –in absence of Cd (–Fe/–Cd) and adequate Fe with Cd stress (+Fe/+Cd) for 10 days. Vertical bars indicate  $\pm$ SE of the means for  $n = 4$ . Means denoted by a different letter are significantly different at  $P < 0.05$  according to the Tukey’s studentized range test.

increased their content of non-protein thiols during the first 5 days under Cd treatment (–Fe/+Cd). However, after 10 days of Fe deficiency, non-protein thiols decreased significantly by 45 % in Cd-treated plants, but when Fe was resupplied (+Fe/+Cd) to Cd-treated plants, the thiol content increased by 9 % compared to the control.

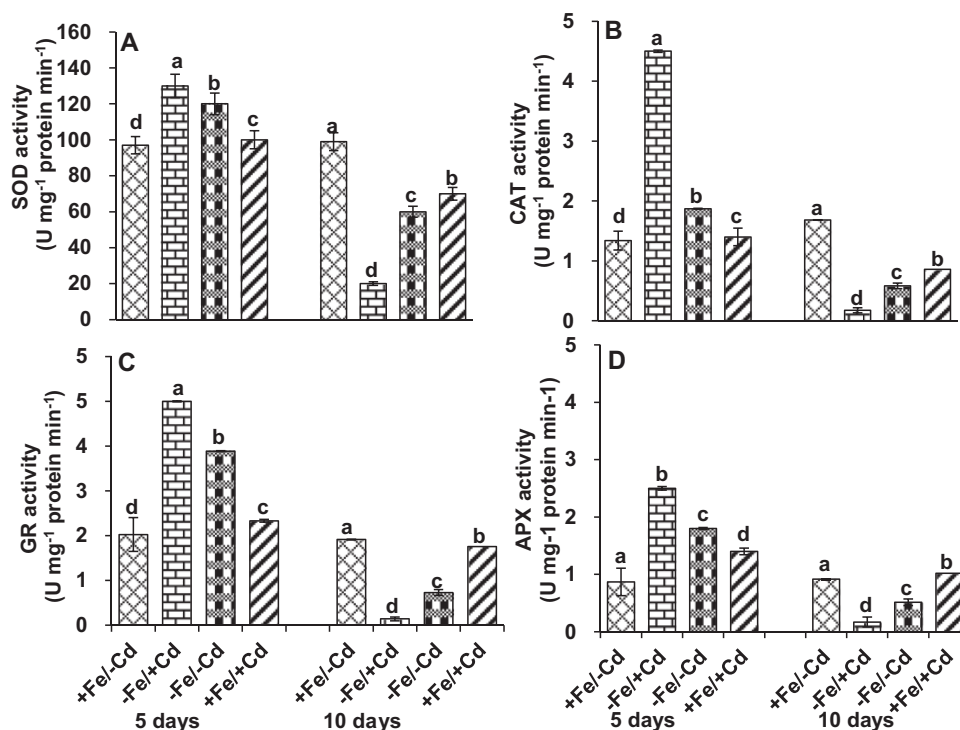
#### Degradation of photosynthetic pigments due to Cd toxicity and its improvement in response to Fe supplementation

After 10 days of Fe/Cd combined treatment the total chlorophyll and carotenoid content in Fe-deprived plants decreased significantly relative to the control (–Fe/–Cd) (Fig. 4A and B). Levels decreased more severely (by 74 and 54 %, respectively) in Cd-treated plants (–Fe/+Cd), but when Cd-treated plants were supplemented with Fe, the total chlorophyll and carotenoid content increased.

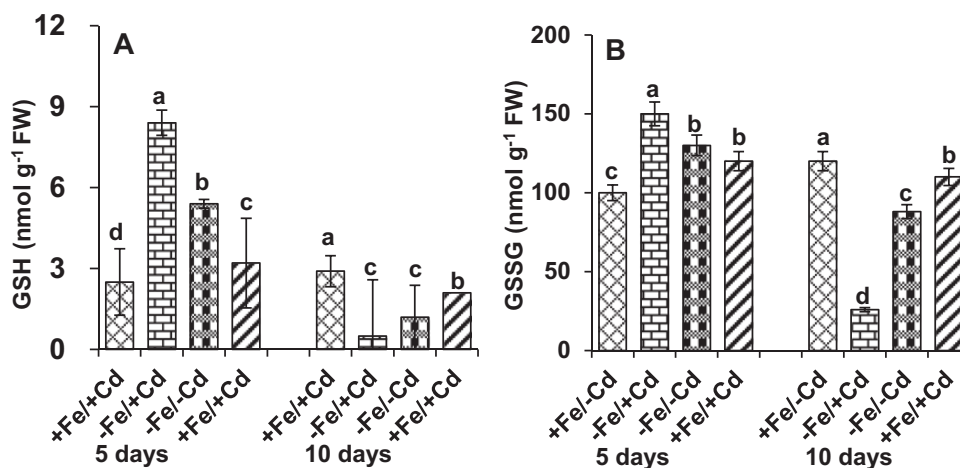
#### Changes in enzyme activities in response to Cd toxicity and their improvement in response to Fe supplementation

The antioxidant enzymes were induced as follows under Fe deprivation: SOD by 23 %, CAT by 38 %, GR by 94 % and APX by 65 %. The activity of these enzymes was most affected under Cd toxicity in the absence of Fe (–Fe/+Cd). After 10 days of Fe deprivation, the activity of these enzymes was reduced by >90 % on average compared to control young mungbean seedlings and decreased by 116 % for APX relative to the control (Fig. 5). The activity of these enzymes recovered when Fe was supplied.

The levels of GSH and GSSG in mungbean seedlings under Fe deprivation (–Fe/–Cd) increased by 116 and 50 %, respectively, in the first 5 days (Fig. 6A and B). After 10 days of Cd toxicity under Fe deprivation the level of GSH and GSSG was reduced by 82 and 78 %, respectively (–Fe/+Cd), whereas the negative effects of Cd treatment



**Figure 5.** Antioxidant enzyme activity: (A) superoxide dismutase (SOD), (B) catalase activity (CAT), (C) glutathione reductase activity (GR) and (D) ascorbate peroxidase activity (APX) in leaves as affected by four Fe/Cd combined treatments: adequate Fe with -Cd (+Fe/-Cd, control), Fe-deficient with Cd stress (-Fe/+Cd), Fe-deficient -in absence of Cd (-Fe/-Cd) and adequate with Cd stress (+Fe/+Cd) for 10 days. Vertical bars indicate  $\pm$ SE of the means for  $n = 4$ . Means denoted by a different letter are significantly different at  $P < 0.05$  according to the Tukey's studentized range test.

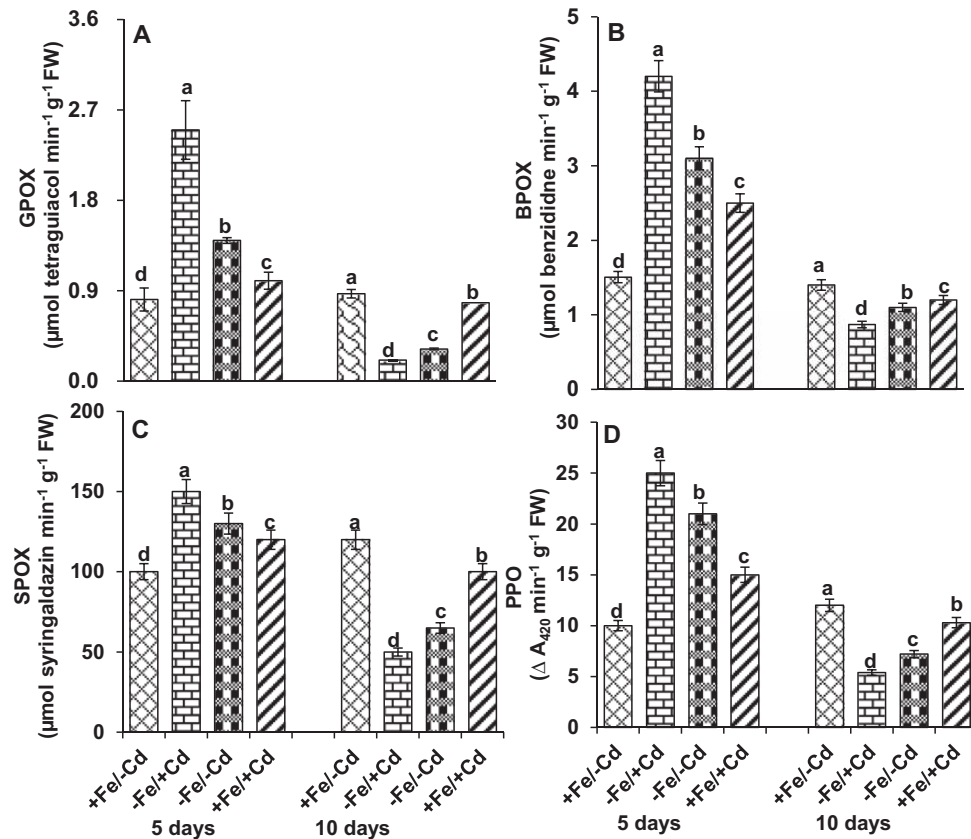


**Figure 6.** Non-enzymatic antioxidant activity: (A) GSH and (B) GSSG in leaves as affected by four Fe/Cd combined treatments: adequate Fe with -Cd (+Fe/-Cd, control), Fe-deficient with Cd stress (-Fe/+Cd), Fe-deficient -in absence of Cd (-Fe/-Cd) and adequate Fe with Cd stress (+Fe/+Cd) for 10 days. Vertical bars indicate  $\pm$ SE of the means for  $n = 4$ . Means denoted by a different letter are significantly different at  $P < 0.05$  according to the Tukey's studentized range test.

in mungbean plants on levels of GSH and GSSG were recovered by Fe supplementation.

Guaiacol peroxidase activity (Fig. 7A) was significantly induced for the first 5 days of Cd toxicity under Fe deprivation in mungbean seedlings; however, 10 days after Fe deprivation GPOX was significantly reduced by

63 % (-Fe/-Cd), but increased by 75 % under Cd treatment (-Fe/+Cd). Conversely, the activity of GPOX was maintained at control levels in Cd-treated plants when Fe was supplied. In mungbean plants a rapid 2.5-fold increase in BPOX was observed under Fe deprivation (-Fe/-Cd), with a 4-fold increase under Cd treatment



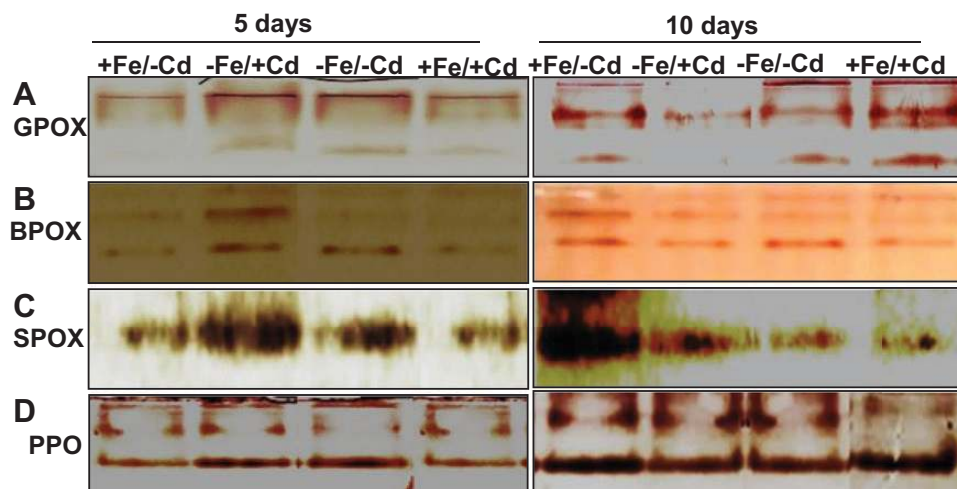
**Figure 7.** Peroxidase-related enzyme activities: (A) guaiacol peroxidase (GPOX), (B) benzidine peroxidase (BPOX), (C) syringaldazine peroxidase (SPOX) and (D) polyphenol oxidase (PPO) in leaves as affected by four Fe/Cd combined treatments: adequate Fe with  $-Cd$  (+Fe/ $-Cd$ , control), Fe-deficient with Cd stress ( $-Fe/+Cd$ ), Fe-deficient in absence of Cd ( $-Fe/-Cd$ ) and adequate Fe with Cd stress (+Fe/ $+Cd$ ) for 10 days. Vertical bars indicate  $\pm SE$  of the means for  $n = 4$ . Means denoted by a different letter are significantly different at  $P < 0.05$  according to the Tukey's studentized range test.

with Fe deprivation ( $-Fe/+Cd$ ) (Fig. 7B). Reduced activity of BPOX was observed after 10 days of Fe deprivation under Cd treatment, whereas its activity returned to control levels when Fe was supplied to Cd-treated plants. Similarly, SPOX increased significantly by 30 % under Fe deprivation (Fig. 7C) and a 50 % induction of SPOX was observed in Cd-treated, Fe-deprived plants. Conversely, the activity of SPOX in Fe-deprived plants was reduced by >58 % under Cd treatment, and returned to control levels in mungbean plants under Cd treatment with Fe supplementation. A significant induction of PPO (Fig. 7D) was observed in mungbean plants under Cd treatment with Fe deprivation 5 days after treatment, and a significant reduction 10 days after treatment. The negative effect of Cd toxicity on PPO activity was reversed by Fe supplementation.

### Changes in peroxidase isozymes in response to Cd toxicity and impact of Fe supplementation

After NATIVE-PAGE, the active staining of major peroxidase enzymes was used to identify the expression

of isozymes in mungbean leaves. The GPOX isozymes (at 64.7 kDa) were substantially induced in Fe-deprived plants under Cd treatment (Fig. 8) for the first 5 days, whereas expression was reduced after 10 days of Cd treatment under Fe deprivation. The expression level of GPOX was maintained at control levels when Fe was supplied to Cd-treated plants. Syringaldazine peroxidase isozymes are commonly detected at 51.4 kDa and were detected in all plants, with a higher expression level after 5 days in Cd-treated plants under Fe deprivation and a low expression level after 10 days ( $-Fe/+Cd$ ). The expression of SPOX was maintained at control levels by supplying Fe to Cd-treated mungbean plants (+Fe/ $+Cd$ ). Like GPOX and SPOX, the expression level of BPOX (at 48.9 kDa) under Cd treatment and Fe deprivation ( $-Fe/+Cd$ ) was higher after 5 days and lower after 10 days compared to the control (+Fe/ $-Cd$ ), whereas under Fe supplementation expression was maintained at control levels (+Fe/ $-Cd$ ) in Cd-treated plants. The level of PPO expression was similarly induced after 5 days and reduced after 10 days in Cd-treated plants



**Figure 8.** Active staining of peroxidase-associated enzymes: (A) guaiacol peroxidase (GPOX), (B) benzidine peroxidase (BPOX), (C) syringaldazine peroxidase (SPOX) and (D) polyphenol oxidase (PPO) in leaves as affected by four Fe/Cd combined treatments: adequate Fe with –Cd (+Fe/–Cd, control), Fe-deficient with Cd stress (–Fe/+Cd), Fe-deficient –in absence of Cd (–Fe/–Cd) and adequate Fe with Cd stress (+Fe/+Cd) for 10 days.

**Table 1.** Linear correlations between Fe concentration and other descriptive parameters. The correlation analysis was done at 5 and 10 days affected by four Fe/Cd combined treatments: sufficient in Fe with –Cd (+Fe/–Cd, control), Fe-deficient with Cd stress (–Fe/+Cd), Fe-deficient but –Cd (–Fe/–Cd) and sufficient Fe with Cd stress (+Fe/+Cd). The correlation coefficient ( $r$ ) and significant differences are given;  $n = 16$ . \* $P \leq 0.05$ ; \*\* $P \leq 0.01$ ; \*\*\* $P \leq 0.001$ .

	Fe		Fresh biomass	Dry biomass	Chlorophyll	Carotenoid		
5 days	Fe	–	$r = 0.981^{***}$	$r = 0.960^{***}$	$r = 0.881^{**}$	$r = 0.985^{***}$		
10 days	Fe	–	$r = 0.911^{**}$	$r = 0.899^{**}$	$r = 0.996^{***}$	$r = 0.943^{**}$		
	Fe		SOD	CAT	APX	GR	GSH	GSSG
5 days	Fe	–	$r = 0.430^*$	$r = 0.807^{**}$	$r = 0.753^{**}$	$r = 0.990^{***}$	$r = 0.831^{**}$	$r = 0.356^*$
10 days	Fe	–	$r = 0.442^*$	$r = 0.791^{**}$	$r = 0.810^{**}$	$r = 0.922^{**}$	$r = 0.969^{***}$	$r = 0.975^{***}$
	Fe		GPOX	BPOX	SPOX	PPO		
5 days	Fe	–	$r = 0.803^{**}$	$r = 0.843^{**}$	$r = 0.945^{***}$	$r = 0.956^{***}$		
10 days	Fe	–	$r = 0.731^{**}$	$r = 0.783^{**}$	$r = 0.978^{***}$	$r = 0.989^{***}$		

under Fe deprivation, whereas the expression level recovered after Fe supplementation in Cd-treated plants.

### Relationship between Fe concentration and other descriptive parameters related to antioxidative pathways and peroxidases

Linear correlations between Fe concentration and other descriptive parameters related to antioxidative pathways and peroxidases were assessed using the values obtained from the four treatment groups (Table 1). The Fe concentration in leaves was closely correlated with GSH, GSSG, SPOX and PPO ( $P < 0.001$ ) after 10 days of

treatment. The correlation between Fe concentration and total chlorophyll and carotenoid was significant, with  $P < 0.01$  at both 5 and 10 days of Fe/Cd treatment.

### Discussion

Mungbean plants are leguminous plants that are a good model for studying Fe-nutritional strategies under metal toxicity, since they are the most sensitive legumes in response to Fe (Muneer et al. 2012, 2013). Several physiological responses to Fe deficiency (Mahmoudi et al. 2005; Andaluz et al. 2009; Jeong and Connolly 2009) like those of photosynthetic pigments (PSI and PSII) (Graziano and



Lamitna 2005) in leguminous plants have been studied. However, little is known about the Fe–Cd interaction in leguminous plants, particularly in mungbean plants, one of the most commonly consumed foods worldwide (according to the FAO 2011). The present study was performed to understand the effect of Fe supplementation on redox reactions in Cd-treated plants. Initially, we observed the biomass of plants under four combined treatments and observed that shoot biomass decreased in Cd-treated plants. These results indicate that interactions between Cd and shoots lead to physiological modifications that in turn can affect the water balance, as already demonstrated in other studies (Muneer et al. 2012). We also observed that photosynthetic pigments (total chlorophyll and carotenoid content) were decreased in Cd-treated plants, whereas these negative effects were counteracted by the addition of Fe, suggesting that Fe supply could greatly enhance the growth of plants under Cd stress. A further observation was that the concentration of Fe decreased while Cd concentration increased to extreme levels in Fe-deficient and Cd-toxic plants (–Fe/+Cd) compared to the control, whereas, after Fe supplementation, the concentrations returned to control levels. Enhanced Fe accumulation is particularly important in relation to the need to sustain the PS biosynthetic pathway in Strategy II plants (Astolfi et al. 2010) and the reduction in ethylene production and almost total abolishment of expression of the nicotianamine synthetase gene (*LeNAS*) in the absence of Fe (Zuchi et al. 2009).

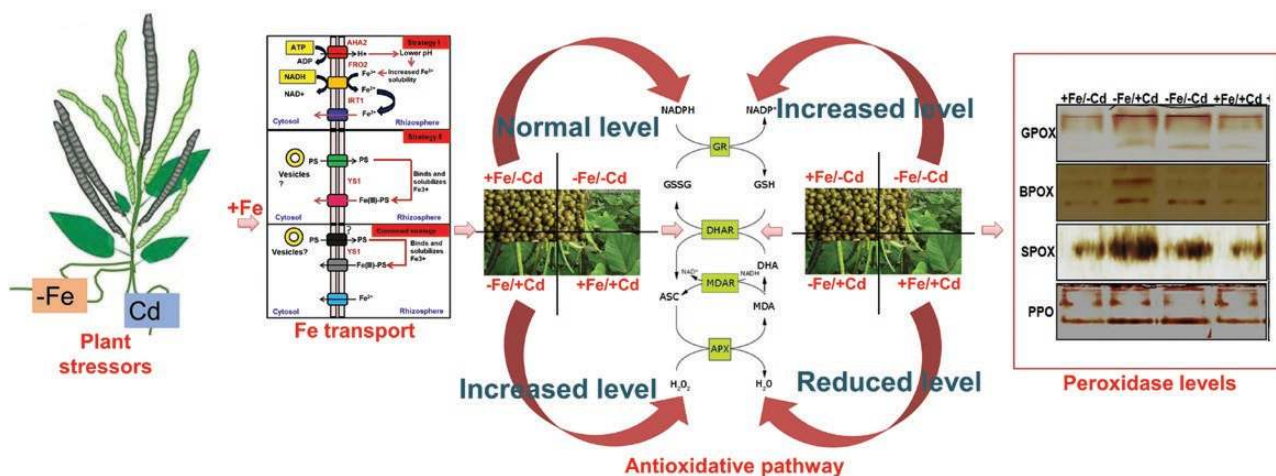
Cadmium is a reactive toxic metal that has a high affinity for functional groups of molecules such as phosphate, carboxyl, amino acid and thiol groups (Zheng et al. 2009). Our study showed that the non-protein thiol content in plants decreased over a prolonged period of Cd stress, whereas it increased in plants supplied with Fe. This indicates that Fe can counteract the negative effect of Cd stress. In our present study, we observed that mungbean leaves produced ROS in the form of TBARS and  $H_2O_2$  under Fe deprivation in the presence or absence of Cd treatment (Fig. 2), as do many other plant species under other stress conditions (Lee et al. 2007; Muneer et al. 2014). However, in the presence of Fe in Cd-treated mungbean plants, TBARS and  $H_2O_2$  levels were lower than in control plants. Oxidative damage has been considered one of the phytotoxic effects of ROS generation. Superoxide dismutase is one of the main enzymes in the ascorbate glutathione pathway, which dismutates the superoxide anion to  $H_2O_2$  (Molassiotis et al. 2005). Our results show that SOD decreased 10 days after Fe deprivation with Cd treatment (Fig. 5A), which indicates that a lack of Fe fails to quench ROS production, possibly due to the low availability of cysteine

and the failure or limitation of Fe chelates (Astolfi et al. 2010). However, supplementation of Fe (+Fe/+Cd) under Cd treatment increased SOD activity, which is consistent with previous findings (Muneer et al. 2012) showing that Fe is incorporated into the negative feedback of Cd treatment to maintain redox status.

Catalase is another important enzyme in the redox cycle and as a heme-containing compound, is likely to be affected by Fe deficiency (Ranieri et al. 2001; Shigeoka et al. 2002); thus, Fe deprivation with Cd toxicity (–Fe/+Cd) significantly decreased CAT (Fig. 3B). The reduction of CAT has been observed in many plants under various environmental stressors. Lee et al. (2009) observed that CAT increased under drought conditions in white clover leaves for the first 14 days, which suggests that CAT helps plants extinguish oxidative damage produced by ROS. The reduction of CAT might be due to the reduced expression of genes encoding for CAT (Qadir et al. 2004; Qureshi et al. 2007). However, in our study, CAT activity was increased by Fe supplementation in Cd-treated plants, which was consistent with our previous findings on the combined effect of Fe/Cd for 72 h on root nodules of mungbean plants (Muneer et al. 2012).

Another important aspect of this work concerns GR, which exists either in reduced or oxidized form. In this study, Cd treatment reduced GR activity (Fig. 5C) but Fe supplementation counteracted this effect. The reduction of GR activity might be due to the failure of the appearance of NADPH, which is required to reduce the Flavin nucleotides (NagaLakshmi and Prasad 2000), which then transfer their electrons to a disulphide bridge (–S–S–) in the enzyme. Meanwhile, the induction of GR activity in Fe-supplemented plants results in two sulfhydryl groups (–SH) that interact with GSSG and reduce it to GSH (Qureshi et al. 2007). Ascorbate peroxidase activity was reduced under Fe deprivation (Fig. 5D) and was further reduced by Cd treatment (–Fe/+Cd). Ascorbate peroxidase activity has been found to be reduced in the apoplasmic fluid as well as at the intracellular level. The reduced APX activity may result from the high demand for iron from the APX molecule as it contains a non-heme iron atom in addition to the heme group (Grill et al. 2001). However, the presence of Fe (+Fe/+Cd) under Cd treatment increased APX activity, which might be attributed to the limited heme-catalysed damage to the APX protein.

Glutathione acts as an essential non-enzymatic antioxidant that plays multiple roles in plant metabolism (Grill et al. 2001). The reduced (GSH) and oxidized (GSSG) forms of glutathione were reduced in the absence of Fe under Cd treatment (Fig. 6), but were increased by Fe supplementation (+Fe/+Cd). The oxidized and reduced



**Figure 9.** Diagrammatic representation of the present study for the transport of iron, and mungbean affected by four Fe/Cd combined treatments: adequate Fe with  $-Cd$  ( $+Fe/-Cd$ , control), Fe-deficient with Cd stress ( $-Fe/+Cd$ ), Fe-deficient but  $-Cd$  ( $-Fe/-Cd$ ) and adequate Fe with Cd stress ( $+Fe/+Cd$ ) days. The diagram represents how iron is transported to plants and how combined treatments of iron and cadmium interact with each other. Overall, the representation is about how iron helps mungbean to mitigate/alleviate ROS produced in response to cadmium stress.

forms of glutathione (GSH + GSSG) have been well documented in different species under various environmental conditions, and it has been reported that glutathione acts as a marker for oxidative damage (Anjum et al. 2013). An increment in GSH content was also observed in *Scendesmus bijugatus* in response to copper stress (NagaLakshmi and Prasad 2000), which indicated that glutathione acts as an antioxidative defence that plays a key role in acclimatizing the plant to environmental stress. The production of ROS is a universal redox-sensing mechanism operating at the cellular level (Noctor et al. 2002) that is detoxified by ascorbate-glutathione cycle enzymes; however, our results showed that in the absence of Fe, glutathione enzyme did not control the pathway in Cd-treated plants. This implies that supply of Fe could help mitigate Cd toxicity by keeping ROS under control and redox reactions active.

Peroxidase isozymes contribute to cell wall properties by catalysing covalent cross-links after oxidation of ester and phenolic compounds (Liyma et al. 1994). These isozymes were induced for the first 7 days and were highly expressed after 14 days of drought stress in white clover leaves (Lee et al. 2007). Guaiacol peroxidase, BPOX, SPOX and PPO are lignified enzymes that play a role in the antioxidative cycle. These enzymes mainly catalyse coumaryl, coniferyl and sinapyl (Boudet 1992). After 5 days of Fe deprivation with Cd toxicity ( $-Fe/+Cd$ ), GPOX, BPOX, SPOX and PPO activity increased (Fig. 7) with a concomitant increase in peroxide staining (Fig. 8). The increased peroxidase activity could alter the structure of cell wall, which in turn could be correlated with adaptation to

Fe deficiency (Cervilla et al. 2009). But 10 days after Fe deprivation in Cd-treated plants, the levels of these peroxidases were reduced and there was a lower level of active staining, whereas Fe supplementation reversed the negative effect by increasing the activity and expression of peroxidases. The observed reduction in activity of these isozymes could reflect the modification of cell wall and phenolic compounds present in the cell and strongly suggests that the presence of Fe reduces the induction of these peroxidases and thus reduces oxidative damage. From these studies we conclude that mungbean plants decrease the redox reactions under Cd treatment in Fe-deficient plants (for overall conclusions, please see Fig. 9), whereas supply of Fe ameliorates these negative effects by increasing redox reactions even in the presence of Cd.

## Source of Funding

Funded by VIT SEED GRANT.

## Contribution of Authors

S.M. designed the work and experiments, S.M. and K.B. performed the experiments, D.K.T. helped in statistical analysis of the data and helpful discussions. J.H.L. helped in the isozyme analysis. K.B. and S.M. wrote the paper. S.M. edited and finalized the manuscript.

## Conflict of interest

None declared.

## Acknowledgments

The authors are thankful to VIT for providing seed grant to corresponding author to carry out the work.

## Literature Cited

- Aebi H. 1984. Catalase in vitro. *Methods in Enzymology* **105**:121–126.
- Andaluz S, Rodríguez-Celma J, Abadía A, Abadía J, López-Millán AF. 2009. Time course induction of several key enzymes in *Medicago truncatula* roots in response to Fe deficiency. *Plant Physiology and Biochemistry* **47**:1082–1088.
- Anderson ME. 1985. Determination of glutathione and glutathione disulfide in biological samples. *Methods Enzymology* **113**:555–570.
- Anjum N, Singh N, Singh MK, Shah ZA, Duarte AC, Pereira E, Ahmad I. 2013. Single-bilayer graphene oxide sheet tolerance and glutathione redox system significance assessment in faba bean (*Vicia faba* L.). *Journal of Nanoparticle Research* **15**:1770–1777.
- Arnon JD 1949. Copper enzymes in isolated chloroplast. Polyphenoloxidase in *Beta vulgaris*. *Plant Physiology* **24**:1–15.
- Astolfi S, Zuchi S, Hubberten HM, Pinton R, Hoefgen R. 2010. Supply of sulphur to S-deficient young barley seedlings restores their capability to cope with iron shortage. *Journal of Experimental Botany* **61**:799–806.
- Boudet AM. 1992. Lignins and lignification: selected issue. *Plant Physiology Biochemistry* **38**:81–96.
- Bowler C, Van Montagu M, Inze D. 1992. Superoxide dismutase and stress tolerance. *Annual Reviews of Plant Physiology Plant Molecular Biology* **43**:83–91.
- Cervilla LM, Rosales MA, Rubio-Wilhelmi MM, Sánchez-Rodríguez E, Blasco B, Ríos JJ, Romero L, Ruiz JM. 2009. Involvement of lignification and membrane permeability in the tomato root response to boron toxicity. *Plant Science* **176**:545–552.
- Cohen CK, Fox TC, Garvin DF, Kochian LV. 1998. The role of iron-deficiency stress responses in stimulating heavy-metal transport in plants. *Plant Physiology* **116**:1063–1072.
- Cuypers A, Vangronsveld J, Clijsters H. 2002. Peroxidases in roots and primary leaves of *Phaseolus vulgaris* copper and zinc phytotoxicity: a comparison. *Journal of Plant Physiology* **159**:869–876.
- Del Longo OT, Gonzalez CA, Pastori GM, Trippi VS. 1993. Antioxidant defenses under hyperoxygenic and hyperosmotic conditions in leaves of two lines of maize with differential sensitivity to drought. *Plant and Cell Physiology* **34**:1023–1028.
- Dhindsa R, Plumb-Dhinds P, Thorpe TA. 1981. Leaf senescence correlated with increased level of membrane permeability, lipid peroxidation and decreased level of SOD and CAT. *Journal of Experimental Botany* **32**:93–101.
- Eide D, Broderius M, Fett J, Guerinot ML. 1996. A novel iron-regulated metal transporter from plants identified by functional expression in yeast. *Proceedings of National Academy of Sciences of the United States of America* **93**:5624–5628.
- Eva S, Solti A, Basa B, Mészáros I, Lévai L, Fodor F. 2011. Impact of moderate Fe excess under Cd stress on the photosynthetic performance of poplar (*Populus jacquemontiana* var. *glauca* cv. *Kopeczkii*). *Plant Physiology and Biochemistry* **49**:499–505.
- Graziano M, Lamattina L. 2005. Nitric oxide and iron in plants: an emerging and converging story. *Trends in Plant Science* **10**:4–8.
- Grill D, Tuteja M, De Kok LJ. 2001. Significance of glutathione in plant adaptation to the environment. In: De Kok LJ, ed. *Handbook of plant ecophysiology*, Vol. 2. Dordrecht, The Netherlands: Kluwer, 1–248.
- Hart JJ, Welch RM, Norvell WA, Sullivan LA, Kochian LV. 1998. Characterization of cadmium binding, uptake, and translocation in intact seedlings of bread and durum wheat cultivars. *Plant Physiology* **116**:1413–1420.
- Hasan SA, Fariduddin Q, Ali B, Hayat S, Ahmad A. 2009. Cadmium: toxicity and tolerance in plants. *Journal of Environmental Biology* **30**:165–174.
- Hashem HA. 2013. Cadmium toxicity induces lipid peroxidation and alters cytokinin content and antioxidant enzyme activities in mungbean. *Botany* **92**:1–7.
- Heath RL, Packer L. 1968. Photoperoxidation in isolated chloroplasts. I. Kinetics and stoichiometry of fatty acid peroxidation. *Archives of Biochemistry and Biophysics* **125**:189–198.
- Hiscox JD, Israelstam GF 1979. A method for the extraction of chlorophyll from leaf tissue without maceration. *Canadian Journal of Botany* **57**:1332–1334.
- Jeong J, Connolly EL 2009. Iron uptake mechanisms in plants: functions of the FRO family of ferric reductases. *Plant Sciences* **176**:709–714.
- Kobayashi T, Suzuki M, Inoue H, Itai RN, Takahashi M, Nakanishi H, Mori S, Nishizawa NK. 2006. Expression of iron-acquisition-related genes in iron-deficient rice is co-ordinately induced by partially conserved iron-deficiency-responsive elements. *Journal of Experimental Botany* **56**:1305–1316.
- Korshunova YO, Eide D, Clark WG, Guerinot ML, Pakrasi HB. 1999. The *IRT1* protein from *Arabidopsis thaliana* is a metal transporter with a broad substrate range. *Plant Molecular Biology* **40**:37–44.
- Laemmli UK. 1970. Cleavage of structural proteins during the assembly of the head of bacteriophage T4. *Nature* **227**:680–685.
- Lee BR, Jung WJ, Jin YL, Avicé JC, Ourry A, Kim TH. 2009. Water deficit-induced oxidative stress and the activation of antioxidant enzymes in white clover leaves. *Biologia Plantarum* **53**:505–510.
- Lee BR, Kim KY, Jung WJ, Avicé JC, Ourry A, Kim TH. 2007. Peroxidases and lignification in relation to the intensity of water-deficit stress in white clover (*Trifolium repens* L.). *Journal of Experimental Botany* **58**:1271–1279.
- Lee TM, Lin HY. 1995. Changes in soluble and cell wall bound peroxidase activities with growth in anoxia-treated rice (*Oryza sativa* L.) coleoptiles and roots. *Plant Sciences* **106**:1–7.
- Lin CC, Kao CH. 2001a. Cell wall peroxidase activity, hydrogen peroxide level and NaCl-inhibited root growth of rice seedlings. *Plant and Soil* **230**:135–143.
- Iiyama K, Lam T, Stone BA. 1994. Covalent cross-links in the cell wall. *Plant Physiology* **104**:315–320.
- López-Millán AF, Sagardoy R, Solanas M, Abadía A, Abadía J 2009. Cadmium toxicity in tomato (*Lycopersicon esculentum*) plants grown in hydroponics. *Environmental and Experimental Botany* **65**:376–385.
- Mahmoudi H, Ksouri R, Gharsalli M, Lachaâl M. 2005. Differences in responses to iron deficiency between two legumes: lentil (*Lens culinaris*) and chickpea (*Cicer arietinum*). *Journal of Plant Physiology* **162**:1237–1245.

- Meda AR, Scheuermann EB, Prechsl UE, Erenoglu B, Schaaf G, Hayen H, Weber G, von Wirén N. 2007. Iron acquisition by phytosiderophores contributes to cadmium tolerance. *Plant Physiology* **143**:1761–1773.
- Mittler R. 2002. Oxidative stress, antioxidants and stress tolerance. *Trends in Plant Science* **7**:405–410.
- Molassiotis AN, Diamantidis GC, Therios IN, Tsirakoglou V, Dimassi KN. 2005. Oxidative stress, antioxidant activity and Fe(III)-chelate reductase activity of five prunus rootstocks explants in response to Fe deficiency. *Plant Growth Regulator* **46**:69–78.
- Muneer S, Ahmad J, Qureshi MI. 2013. Involvement of Fe nutrition in modulating oxidative stress and the expression of stress response proteins in leaves of mungbean L. *Australian Journal of Crop Sciences* **7**:1333–1342.
- Muneer S, Jeong BR. 2015. Silicon decreases Fe deficiency responses by improving photosynthesis and maintaining composition of thylakoid multiprotein complex proteins in soybean plants (*Glycine max* L.). *Journal of Plant Growth Regulation* **34**:485–498.
- Muneer S, Kim TH, Choi BC, Lee BS, Lee JH. 2014. Effect of CO<sub>2</sub>, NO<sub>x</sub> and SO<sub>2</sub> on ROS production, photosynthesis and ascorbate-glutathione pathway to induce *fragaria* × *annasa* as a hyperaccumulator. *Redox Biology* **2**:91–98.
- Muneer S, Kim TH, Qureshi MI. 2012. Fe modulates Cd-induced oxidative stress and the expression of stress response proteins in the nodules of mungbean. *Plant Growth Regulation* **68**:421–433.
- Nagalakshmi N, Prasad MN. 2000. Responses of glutathione cycle enzymes and glutathione metabolism to copper stress in *Scenedesmus bijugatus*. *Plant Science* **160**:291–299.
- Nakano M, Nobuta K, Vemaraju K, Tej SS, Skogen JW, Meyers BC. 2006. Plant MPSS databases: signature-based transcriptional resources for analyses of mRNA and small RNA. *Nucleic Acids Research* **34**:D731–D735.
- Noctor G, Gomez L, Vanacker H, Foyer CH. 2002. Interactions between biosynthesis, compartmentation and transport in the control of glutathione homeostasis and signalling. *Journal of Experimental Botany* **53**:1283–1304.
- Pitzschke A, Forzani C, Hirt H. 2006. Reactive oxygen species signaling in plants. *Antioxidants & Redox Signaling* **8**:1757–1764.
- Qadir S, Qureshi MI, Javed S, Abdin MZ. 2004. Genotypic variation in phytoremediation potential of *Brassica juncea* cultivars exposed to Cd-stress. *Plant Sciences* **167**:1171–1181.
- Quiroga M, Guerrero C, Botella MA, Barceló A, Amaya I, Medina MI, Alonso FJ, de Forchetti SM, Tigier H, Valpuesta V. 2000. A tomato peroxidase involved in the synthesis of lignin and suberin. *Plant Physiology* **122**:1119–1127.
- Qureshi MI, Qadir S, Zolla L. 2007. Proteomics-based dissection of stress-responsive pathways in plants. *Journal of Plant Physiology* **164**:1239–1260.
- Ranieri A, Castagna A, Baldan B, Soldatini GF. 2001. Iron deficiency differently affects peroxidase isoforms in sunflower. *Journal of Experimental Botany* **52**:25–35.
- Rao MV. 1992. Cellular detoxification mechanisms to determine age dependent injury in tropical plant exposed to SO<sub>2</sub>. *Journal of Plant Physiology* **140**:733–740.
- Rizhsky L, Liang H, Shuman J, Shulaev V, Davletova S, Mittler R. 2004. When defense pathways collide. The response of *Arabidopsis* to a combination of drought and heat stress. *Plant Physiology* **134**:1683–1696.
- Romero-Puertas MC, Corpas FJ, Rodríguez-Serrano M, Gómez M, Del Río LA, Sandalio LM. 2007. Differential expression and regulation of antioxidative enzymes by cadmium in pea plants. *Journal of Plant Physiology* **164**:1346–1357.
- Romheld V, Marschner H. 1996. Fine regulation of iron uptake by the Fe-efficient plant *Helianthus annuus*. In: Harley JL, Russell RS, eds. *The soil-root interface*. London: Academic Press, 405–417.
- Sánchez-Pardo B, Carpena RO, Zornoza P. 2013. Cadmium in white lupin nodules: impact on nitrogen and carbon metabolism. *Journal of Plant Physiology* **170**:265–271.
- Santos CS, Silva AI, Serrao I, Carvalho AL, Vasconcelos MW. 2013. Transcriptomics analysis of iron deficiency related genes the legumes. *Food Research International* **54**:1162–1171.
- Shigeoka S, Ishikawa T, Tamoi M, Miyagawa Y, Takeda T, Yabuta Y, Yoshimura K. 2002. Regulation and function of ascorbate peroxidase isoenzymes. *Journal of Experimental Botany* **53**:1305–1319.
- Siriphanich J, Kader AA. 1990. Effects of CO<sub>2</sub> on cinnamic acid 4-hydroxylase in relation to phenolic metabolism in lettuce tissue. *Journal of the American Society for Horticultural Sciences* **110**:333–335.
- Van Assche F, Clijsters H. 1990. Effects of metals on enzyme activity in plants. *Plant Cell Environment* **13**:195–200.
- Vasconcelos M, Eckert H, Arahana V, Graef G, Grusak MA, Clemente T. 2006. Molecular and phenotypic characterization of transgenic soybean expressing the *Arabidopsis* ferric chelate reductase gene, *FRO2*. *Planta* **224**:1116–1128.
- Vert G, Grotz N, Dédaldéchamp F, Gaymard F, Guerinot ML, Briat JF, Curie C. 2002. *IRT1*, an *Arabidopsis* transporter essential for iron uptake from the soil and for plant growth. *The Plant Cell* **14**:1223–1233.
- Yoshihara T, Hodoshima H, Miyano Y, Shoji K, Shimada H, Goto F. 2006. Cadmium inducible Fe deficiency responses observed from macro and molecular views in tobacco plants. *Plant Cell Reports* **25**:365–373.
- Zheng X, Ma LQ, Qiu R, Tang Y. 2009. Response of non-protein thiols to Cd exposure in Cd hyperaccumulator *Arabis paniculata* Franch. *Environmental Experimental Botany* **66**:242–248.
- Zuchi S, Cesco S, Varanini Z, Pinton R, Astolfi S. 2009. Sulphur deprivation limits Fe-deficiency responses in tomato plants. *Planta* **230**:85–94.