

# Early impact of the coronavirus disease (COVID-19) pandemic and physical distancing measures on routine childhood vaccinations in England, January to April 2020

Helen I McDonald<sup>1,2</sup>, Elise Tessier<sup>3</sup>, Joanne M White<sup>3</sup>, Matthew Woodruff<sup>4</sup>, Charlotte Knowles<sup>4</sup>, Chris Bates<sup>4</sup>, John Parry<sup>4</sup>, Jemma L Walker<sup>1,2,5</sup>, J Anthony Scott<sup>1,2</sup>, Liam Smeeth<sup>1,2</sup>, Joanne Yarwood<sup>1,3</sup>, Mary Ramsay<sup>1,3</sup>, Michael Edelstein<sup>1,2,3</sup>

1. NIHR Health Protection Research Unit (HPRU) in Immunisation, London, United Kingdom

2. Department of Infectious Disease Epidemiology, London School of Hygiene and Tropical Medicine, London, United Kingdom

3. Immunisation and Countermeasures Division, Public Health England, Colindale, United Kingdom

4. The Phoenix Partnership (TPP) (Leeds) Ltd, Leeds, United Kingdom

5. Statistics, Modelling and Economics Department, Public Health England, Colindale, United Kingdom

Correspondence: Helen I McDonald ([helen.mcdonald@lshtm.ac.uk](mailto:helen.mcdonald@lshtm.ac.uk))

## Citation style for this article:

McDonald Helen I, Tessier Elise, White Joanne M, Woodruff Matthew, Knowles Charlotte, Bates Chris, Parry John, Walker Jemma L, Scott J Anthony, Smeeth Liam, Yarwood Joanne, Ramsay Mary, Edelstein Michael. Early impact of the coronavirus disease (COVID-19) pandemic and physical distancing measures on routine childhood vaccinations in England, January to April 2020. *Euro Surveill.* 2020;25(19):pii=2000848. <https://doi.org/10.2807/1560-7917.ES.2020.25.19.2000848>

Article submitted on 06 May 2020 / accepted on 14 May 2020 / published on 14 May 2020

**Using electronic health records, we assessed the early impact of coronavirus disease (COVID-19) on routine childhood vaccination in England by 26 April 2020. Measles-mumps-rubella vaccination counts fell from February 2020, and in the 3 weeks after introduction of physical distancing measures were 19.8% lower (95% confidence interval: -20.7 to -18.9) than the same period in 2019, before improving in mid-April. A gradual decline in hexavalent vaccination counts throughout 2020 was not accentuated by physical distancing.**

Childhood vaccination coverage in the United Kingdom (UK) is routinely monitored quarterly, but more timely monitoring is required during the disruption of a pandemic [1,2]. We analysed electronic patient records from primary care to describe changes in delivery of first doses of hexavalent vaccine (against diphtheria, tetanus, pertussis, polio, *Haemophilus influenzae* type b and hepatitis B) and measles-mumps-rubella (MMR) vaccine as part of the routine childhood vaccination programme in England during the coronavirus disease (COVID-19) outbreak until 26 April 2020 (weeks 1 to 17).

## Near real-time records of routine childhood vaccinations from primary care

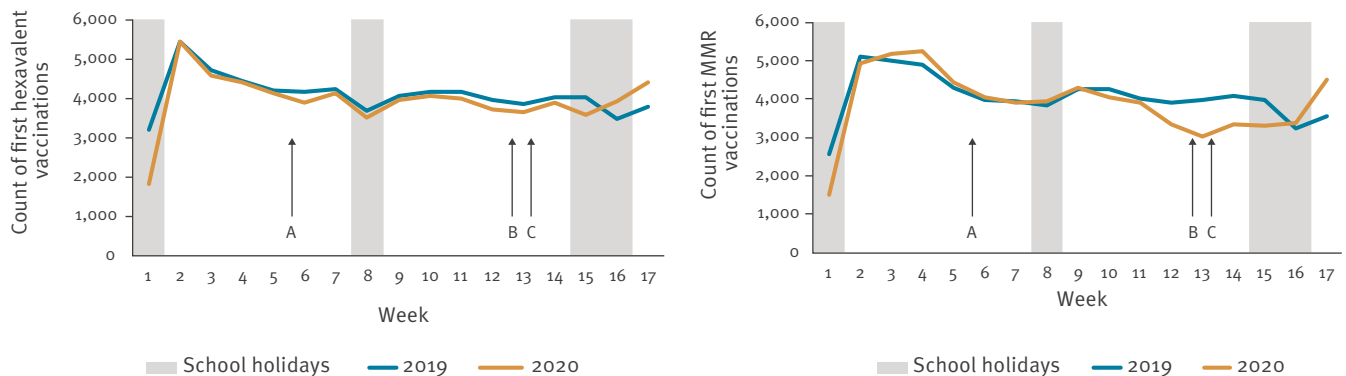
Two key milestones in the routine childhood immunisation programme delivered in primary care are first universal vaccinations at the age of 8 weeks, which include the hexavalent vaccine, and vaccinations at the age of 1 year, which include the first dose of MMR vaccine [3].

Aggregated weekly counts of the first hexavalent vaccinations delivered to infants younger than 6 months and of the first MMR vaccinations delivered to children aged 12 to 18 months were provided from The Phoenix Partnership (TPP) SystemOne for the first 17 weeks of 2019 and 2020. SystemOne is a software system which provides electronic patient records for more than 2,600 primary care practices in the UK and more than 35 child health providers [4]. Age ranges were selected to describe vaccinations delivered as part of the routine vaccination programme rather than catch-up campaigns, and match age ranges for national routine surveillance of vaccine coverage [1]. Data were anonymous throughout, having been originally extracted as aggregated weekly vaccination counts for the purpose of SystemOne data checks which use population level data.

To minimise changes in denominator, only providers active in SystemOne since 2018 contributed to the dataset. The majority of vaccinations entered into SystemOne are entered by general practices in real time. However, vaccinations delivered in general practices which use other patient record software may be recorded at a delay into the SystemOne integrated patient record by local Child Health systems co-ordinating vaccination scheduling. To avoid artefacts from lags in data recording, we included only vaccinations recorded on the same day as they were delivered (which comprised more than 70% of the total hexavalent and MMR vaccination doses recorded as delivered in weeks 1 to 17 of 2019).

**FIGURE 1**

Hexavalent and measles-mumps-rubella weekly vaccination counts, England, weeks 1–17, 2019 and 2020



For weeks 1 to 17, the dataset included 69,568 hexavalent doses delivered in 2019 and 67,116 in 2020 as well as 68,849 MMR doses delivered in 2019 and 66,301 in 2020.

### Ethical statement

This analysis was conducted as part of public health usual practice, and was not conducted for research. Ethics approval was therefore not sought.

### How did vaccination counts change during the COVID-19 pandemic?

Hexavalent vaccination counts followed a similar pattern in 2020 as in 2019, varying week by week; particularly low counts in week 1 of both years are probably explained by holidays (Figure 1). The MMR vaccination counts also followed a similar pattern in 2020 until week 11, when they fell, and remained low for several weeks before rising again in weeks 16 and 17.

The percent change in vaccinations counts in 2020 compared with 2019 varied over the course of the COVID-19 pandemic (Table). At the start of 2020 (weeks 1 to 9), hexavalent vaccination was 5.8% lower (95% confidence interval (CI): -6.0 to -5.5) and MMR vaccination 1.0% lower (95% CI: -1.1 to -0.9) compared with 2019. Weeks 10 to 12 were a transition period, with public discussion of physical distancing from at least week 10 [5]. On 12 March (week 11), the UK government advised that anyone with a new continuous cough or a fever should self-isolate for 7 days. Physical distancing measures were introduced nationally on 20 March (end of week 12) and subsequently extended on 23 March (start of week 13), closing schools and requiring everyone in the UK to avoid gatherings and non-essential use of public transport, limit contact with others and work from home if possible [6]. In weeks 10 to 12 of 2020, hexavalent vaccination was 4.4% lower (95% CI: -4.8 to -4.0) and MMR vaccination 7.2% lower (95% CI: -7.7 to -6.7) than in 2019.

In the 3 weeks after introduction of full physical distancing measures (weeks 13 to 15), hexavalent vaccination was 6.7% lower (95% CI: -7.1 to -6.2) and MMR vaccination 19.8% lower (95% CI: -20.7 to -18.9) than in 2019. Although physical distancing measures remained unchanged nationally throughout the rest of the study period, vaccination counts were higher in weeks 16 and 17 of 2020 than for the same weeks in 2019, for both vaccines.

Trends over time in the percent change of vaccination counts in 2020 compared with 2019 were modelled using Joinpoint regression (version 4.8.0.0), which finds the best fit for points of change in trend [7]. For the hexavalent vaccination, this suggested a general decrease in vaccination throughout weeks 1 to 15 in 2020 compared with the same weeks in 2019, which did not accentuate on introduction of physical distancing, but reversed in week 15, with a percent increase in weeks 16 and 17 of 2020 compared with 2019 (Figure 2). The percent change of first MMR doses delivered in 2020 compared with 2019 was steady until week 9, but then decreased to a low point of -24.2% (95% CI -25.9 to -22.5%) in week 13 before also reversing, with a percent increase in weeks 16 and 17 of 2020 compared with 2019 (Figure 2).

### How did changes in vaccination counts vary geographically?

In the 3 weeks following introduction of physical distancing measures (weeks 13–15), the percent change in hexavalent vaccination in 2020 compared with 2019 varied by region, ranging from increases of +17.4% (95% CI: 12.4 to 22.4) in Cheshire and Merseyside to decreases of more than -10% in Greater Manchester, London, the West Midlands and Yorkshire and the Humber. In contrast, MMR vaccination during weeks 13 to 15 was lower in 2020 than 2019 for all regions. The size of the percent decrease varied, with the greatest falls in London, Greater Manchester, and the West Midlands (Figure 3). By week 17 of 2020, the percent

TABLE

Hexavalent and measles-mumps-rubella vaccination counts in 2020 compared with 2019, by week, England, weeks 1–17

Week	Hexavalent vaccine first dose			MMR vaccine first dose		
	2019	2020	Percent change	2019	2020	Percent change
	n	n	% (95% CI) <sup>a</sup>	n	n	% (95% CI) <sup>a</sup>
1	3,191	1,835	-42.5 (-45.2 to -39.8)	2,564	1,515	-40.9 (-43.9 to -38.0)
2	5,447	5,441	-0.1 (-0.2 to 0.0)	5,098	4,935	-3.2 (-3.7 to -2.7)
3	4,720	4,591	-2.7 (-3.2 to -2.3)	5,005	5,170	3.3 (2.8 to 3.8)
4	4,426	4,418	-0.2 (-0.3 to -0.1)	4,893	5,246	7.2 (6.5 to 8.0)
5b	4,185	4,134	-1.2 (-1.6 to -0.9)	4,292	4,445	3.6 (3.0 to 4.1)
6	4,168	3,895	-6.5 (-7.4 to -5.7)	3,988	4,029	1.0 (0.7 to 1.3)
7	4,229	4,114	-2.7 (-3.2 to -2.2)	3,940	3,920	-0.5 (-0.7 to 1.3)
8	3,676	3,497	-4.9 (-5.6 to -4.1)	3,839	3,943	2.7 (2.1 to 3.2)
9	4,051	3,974	-1.9 (-2.3 to -1.5)	4,241	4,278	0.9 (0.6 to 1.2)
10	4,151	4,075	-1.8 (-2.2 to -1.4)	4,262	4,057	-4.8 (-5.5 to -4.1)
11	4,180	3,981	-4.8 (-5.4 to -4.1)	4,010	3,906	-2.6 (-3.1 to -2.1)
12b	3,967	3,704	-6.6 (-7.5 to -5.8)	3,905	3,332	-14.7 (-16.0 to -13.4)
13b	3,855	3,657	-5.1 (-5.9 to -4.4)	3,990	3,024	-24.2 (-25.9 to -22.5)
14	4,039	3,882	-3.9 (-4.5 to -3.3)	4,079	3,345	-18.0 (-19.4 to -16.6)
15	4,030	3,591	-10.9 (-12.0 to -9.8)	3,975	3,290	-17.2 (-18.6 to -15.8)
16	3,469	3,912	12.8 (11.7 to 13.9)	3,227	3,356	4.0 (3.3 to 4.7)
17	3,784	4,415	16.7 (15.5 to 17.9)	3,541	4,510	27.4 (25.9 to 28.8)
<b>Total</b>	<b>69,568</b>	<b>67,116</b>	<b>-3.5 (-3.7 to -3.4)</b>	<b>68,849</b>	<b>66,301</b>	<b>-3.7 (-3.8 to -3.6)</b>

CI: confidence interval; MMR: measles-mumps-rubella.

<sup>a</sup> 95% CI calculated using the Wilson method.<sup>b</sup> Events in 2020 included: World Health Organization declares Public Health Emergency of International Concern on 30 January (week 5); and successive introduction of physical distancing measures in the United Kingdom on 20 and 23 March (weeks 12 and 13).

change in vaccination counts in 2020 compared with 2019 had improved in all regions, but only two regions had reached the cumulative vaccination count seen in week 17 of 2019.

## Discussion

MMR vaccination started falling in 2020 before introduction of physical distancing measures implemented in response to the COVID-19 epidemic. In the first 3 weeks of physical distancing, MMR vaccination counts were 19.8% lower (95% CI: -20.7 to -18.9) than for the same period in 2019. There was a general decrease in hexavalent vaccinations delivered in 2020 compared with 2019, but no evidence of an increase in the rate of decline with the introduction of physical distancing measures. Counts of both vaccinations increased in weeks 16 and 17, despite physical distancing measures remaining in place.

One plausible explanation is that COVID-19 messaging about staying home initially overwhelmed the message that the immunisation programme was to remain operating as usual. In England, this appears to have affected MMR vaccination more than primary infant vaccinations, and qualitative work is underway to explore the reasons for this. The message to continue routine immunisation programmes became more visible when the Joint Committee for Immunisation and Vaccination published a statement in week 16, on 17

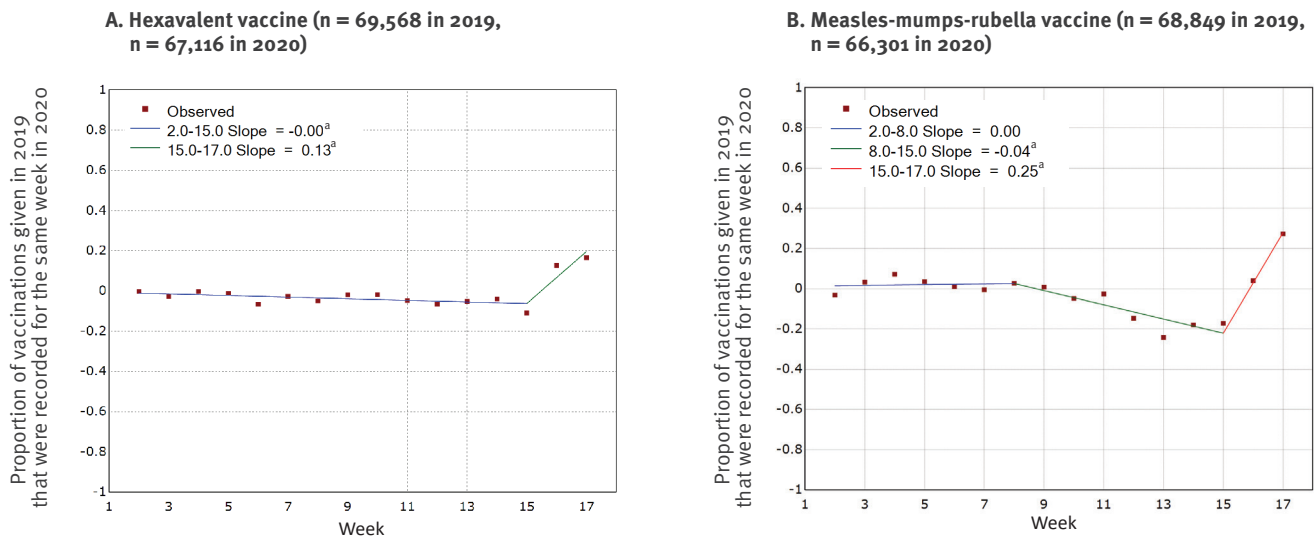
April [8]. The relative increase in week 16 of 2020 compared with 2019 could partly be attributed to a low vaccination count in 2019 because of school holidays – a similar decrease was seen in the same week in 2018 and 2017. This effect may have been less relevant in 2020 when schools were closed from week 13 and it was not possible to go on holidays because of the lockdown. However, a percent increase was also observed in week 17 for both vaccinations. This is promising for an early recovery in vaccination delivery following the encouragement to continue vaccinating, but will need monitoring to ensure it is sustained.

Our findings are consistent with reports of decreased vaccine counts in other high-income countries [9,10]. In particular, in the United States, routine paediatric vaccine counts decreased after a national emergency was declared on 13 March, and have recovered somewhat for measles-containing vaccinations to children younger than 2 years, which the authors suggest could reflect promotion of childhood vaccinations in the context of the pandemic for this age-group [11].

National physical distancing guidance applied across all regions, but the impact of the pandemic and physical distancing may vary by region, either as a result of a varying burden of disease (reducing healthcare capacity or preventing attendance), behavioural change (including physical distancing measures) or

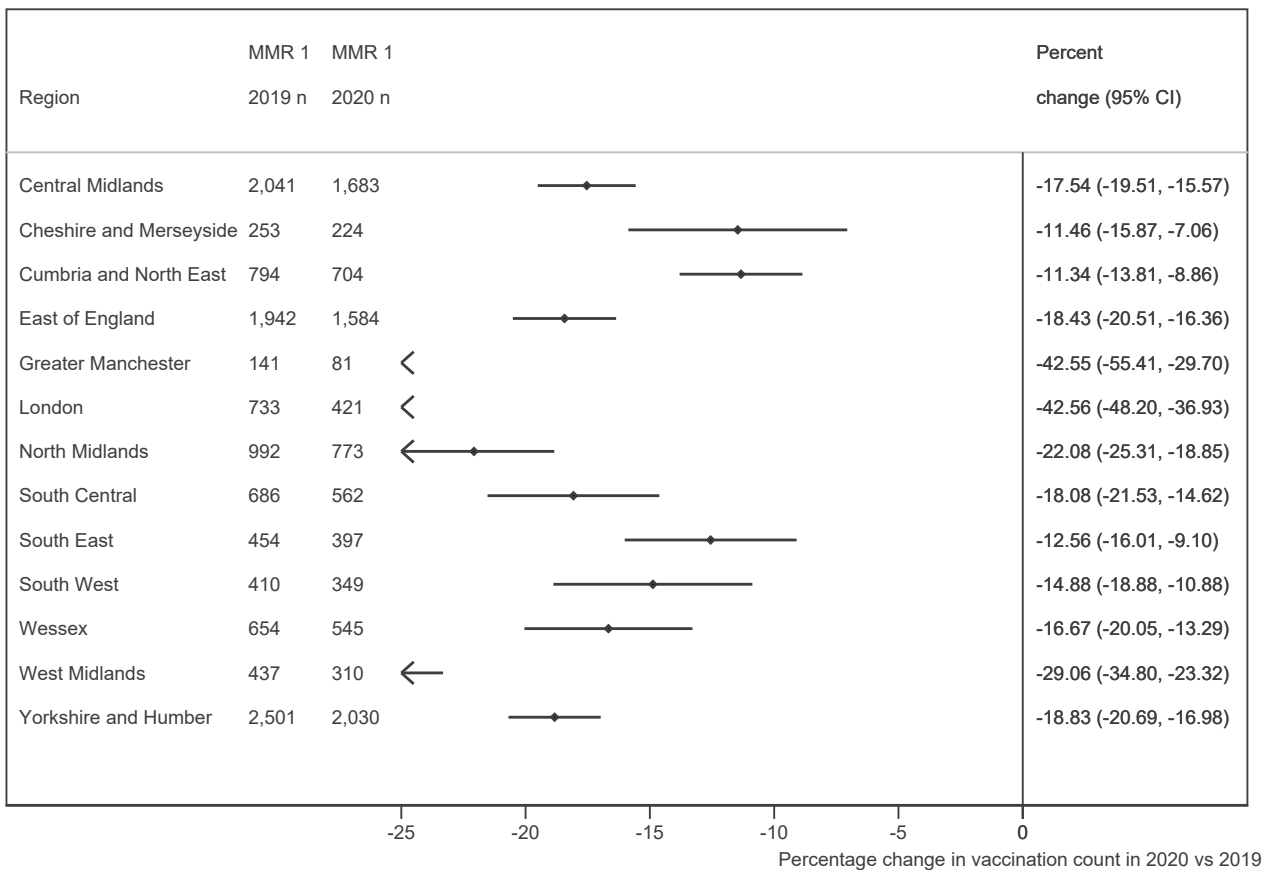
**FIGURE 2**

Percent change in hexavalent and measles-mumps-rubella vaccination in 2020 compared with 2019, by week<sup>a</sup>, England, weeks 1–17



**FIGURE 3**

Percent change in MMR vaccination counts in the first three weeks of physical distancing (weeks 13 to 15) of 2020 compared with 2019, by region



local initiatives to enable vaccination to continue. The greatest percent decrease in MMR vaccination in weeks 13 to 15 was seen in London, which had a high burden of COVID-19, but decreases in MMR vaccination were seen across all regions in this period, including regions with a low incidence of COVID-19 infection, suggesting that the changes were not solely due to COVID-19 infection burden. SystmOne use varies regionally but it is unlikely that software system choice would result in vaccination counts being unrepresentative within regions [12].

A limitation of this analysis is that changing counts of delivered vaccinations could be driven by numbers of eligible infants rather than vaccine coverage. Decreasing birth rates may plausibly explain the overall reduction in counts of both vaccines in 2020 compared with 2019 [13], and migration could play a role too, but these cannot explain the size and timing of the changes in MMR vaccination during weeks 10 to 17 of 2020. Deferral of data entry could explain some decrease in real-time vaccination counts, but not the subsequent increase. Comparison of vaccination counts in 2020 to 2019 could also be affected by any changes in vaccine coverage in 2019. National quarterly surveillance of hexavalent and first MMR vaccine coverage from 2017 to 2019 suggests that 2019 was unexceptional [2]. Over the long term, there has been a gradual but steady decline in childhood vaccine coverage, with a total decrease of ca 2% over the past 5 years for both vaccines [1]. While it is plausible that this trend has continued in 2020, the speed and magnitude of changes seen with MMR doses cannot be explained by these trends.

## Conclusion

It is vital that routine childhood vaccinations are timely, particularly for diseases such as measles for which a high coverage is required to prevent outbreaks [8,14]. The Regional Office for Europe of the World Health Organization has advised that routine immunisation services should continue to aim for high population immunity [15]. Countries will require immunisation recovery plans with innovative approaches to delivery that maintain physical distancing requirements. We report the impact of COVID childhood vaccinations delivered in primary care, but other vaccinations which are routinely delivered in schools (HPV, MenACWY, Td/IPV) have been interrupted by school closures, and will also require catch-up programmes. Continuous and timely assessment of vaccine coverage will be required to respond to potentially volatile changes during the COVID-19 pandemic.

## Acknowledgements

**Funding:** The research was funded by the National Institute for Health Research (NIHR) Health Protection Research Unit (HPRU) in Immunisation at the London School of Hygiene and Tropical Medicine in partnership with Public Health England (PHE). The views expressed are those of the authors and not

necessarily those of the NHS, the NIHR, the Department of Health and Social Care, or PHE.

## Conflict of interest statement

All authors have completed the ICMJE uniform disclosure form at [www.icmje.org/coi\\_disclosure.pdf](http://www.icmje.org/coi_disclosure.pdf) and declare: HIM, JLW, JAS, LS and MR had financial support from the National Institute for Health Research (NIHR) Health Protection Research Unit (HPRU) in Immunisation for the submitted work; Public Health England Immunisation and Countermeasures Division has provided vaccine manufacturers with post-marketing surveillance reports on vaccine-preventable infection which the companies are required to submit to the UK Licensing Authority in compliance with their Risk Management Strategy, and a cost recovery charge is made for these reports; no other relationships or activities that could appear to have influenced the submitted work.

## Authors' contributions

CB, JP and LS conceived the study, which CB, JP, HIM, ME, ET, MW, JLW and JMW designed. MW and CK extracted and prepared the dataset. HIM and ET analysed the data. HIM, ME, ET, JMW, MW, CK, CB, JP, JLW, JAS, LS, JY and MR contributed to interpretation of results. HIM, ET and ME drafted the manuscript which was critically edited by JAS, LS, JLW, JP, CB, MW, CK, JMW, MR and JY. HIM, ET, JMW, MW, CK, CB, JP, JLW, JAS, LS, JY, MR and ME reviewed and approved the final manuscript, and HIM is the guarantor.

## References

1. Office for National Statistics and Public Health England. Childhood vaccination coverage statistics - England 2018-192019. Leeds: NHS Digital; 26 Sep 2019. Available from: <https://digital.nhs.uk/data-and-information/publications/statistical/nhs-immunisation-statistics/england-2018-19>
2. Public Health England (PHE). Cover of vaccination evaluated rapidly (COVER) programme 2019 to 2020: quarterly data. London: PHE; [Accessed: 13 May 2020]. Available from: <https://www.gov.uk/government/statistics/cover-of-vaccination-evaluated-rapidly-cover-programme-2019-to-2020-quarterly-data>
3. Public Health England (PHE). Immunisation against infectious disease (the Green Book). Chapter 11: UK immunisation schedule. PHE publications gateway number 2019219. London: PHE; [Accessed: 10 May 2020]. Available from: <https://www.gov.uk/government/publications/immunisation-schedule-the-green-book-chapter-11>
4. The Phoenix Partnership (TPP). What is SystmOne? Leeds: TPP. [Accessed: 12 May 2020]. Available from: <https://www.tpp-uk.com/products/systmone/>
5. Public Health England (PHE). Coronavirus (COVID-19): What is social distancing? London: PHE. [Updated: 23 March 2020]. Available from: <https://publichealthmatters.blog.gov.uk/2020/03/04/coronavirus-covid-19-what-is-social-distancing/>
6. Public Health England (PHE). [Withdrawn] Guidance on social distancing for everyone in the UK. London: PHE. (23 March 2020 update) 2020. Available from: <https://www.gov.uk/government/publications/covid-19-guidance-on-social-distancing-and-for-vulnerable-people/guidance-on-social-distancing-for-everyone-in-the-uk-and-protecting-older-people-and-vulnerable-adults>
7. Kim HJ, Fay MP, Feuer EJ, Midthune DN. Permutation tests for joint regression with applications to cancer rates. *Stat Med.* 2000;19(3):335-51. [https://doi.org/10.1002/\(SICI\)1097-0258\(20000215\)19:3<335::AID-SIM336>3.0.CO;2-Z](https://doi.org/10.1002/(SICI)1097-0258(20000215)19:3<335::AID-SIM336>3.0.CO;2-Z) PMID: 10649300
8. Public Health England (PHE). Independent report. Statement from JCVI on immunisation prioritisation. London: PHE; 17 Apr 2020. Available from: <https://www.gov.uk/government/publications/jcvi-statement-on-immunisation-prioritisation/statement-from-jcvi-on-immunisation-prioritisation>
9. Times of Israel Staff. Vaccinations drop amid COVID-19 fears, raising specter of fresh measles outbreak. *Times of Israel.* 24

- Apr 2020. Available from: <https://www.timesofisrael.com/vaccinations-drop-amid-virus-fears-raising-specter-of-fresh-measles-outbreak/>
10. Hart C. Confessions of a pediatric practice management consultant. The Effect of COVID-19 On Immunization Rates. 6 Apr 2020. Available from: <https://chipsblog.pcc.com/the-effect-of-covid-19-on-immunization-rates>
  11. Santoli JM, Lindley MC, DeSilva MB, Kharbanda EO, Daley MF, Galloway L, et al. Effects of the COVID-19 Pandemic on Routine Pediatric Vaccine Ordering and Administration – United States, 2020. *MMWR Morb Mortal Wkly Rep.* 2020;69(19). <https://doi.org/10.15585/mmwr.mm6919e2>
  12. Kontopantelis E, Stevens RJ, Helms PJ, Edwards D, Doran T, Ashcroft DM. Spatial distribution of clinical computer systems in primary care in England in 2016 and implications for primary care electronic medical record databases: a cross-sectional population study. *BMJ Open.* 2018;8(2):e020738. <https://doi.org/10.1136/bmjopen-2017-020738> PMID: 29490968
  13. Office for National Statistics (ONS). Births in England and Wales: 2018. Newport: ONS. 1 Aug 2019. Available from: <https://www.ons.gov.uk/peoplepopulationandcommunity/birthsdeathsandmarriages/livebirths/bulletins/birthsummarytablesenglandandwales/2018>
  14. Funk S, Knapp JK, Lebo E, Reef SE, Dabbagh AJ, Kretsinger K, et al. Combining serological and contact data to derive target immunity levels for achieving and maintaining measles elimination. *BMC Med.* 2019;17(1):180. <https://doi.org/10.1186/s12916-019-1413-7> PMID: 31551070
  15. World Health Organization Regional Office for Europe (WHO/Europe). Guidance on routine immunization services during COVID-19 pandemic in the WHO European Region. Copenhagen: WHO/Europe. 20 Mar 2020. Available from: [http://www.euro.who.int/\\_\\_data/assets/pdf\\_file/0004/433813/Guidance-routine-immunization-services-COVID-19-pandemic.pdf?ua=1](http://www.euro.who.int/__data/assets/pdf_file/0004/433813/Guidance-routine-immunization-services-COVID-19-pandemic.pdf?ua=1)

### License, supplementary material and copyright

This is an open-access article distributed under the terms of the Creative Commons Attribution (CC BY 4.0) Licence. You may share and adapt the material, but must give appropriate credit to the source, provide a link to the licence and indicate if changes were made.

Any supplementary material referenced in the article can be found in the online version.

This article is copyright of the authors or their affiliated institutions, 2020.