

Protocol

Early Signs Monitoring to Prevent Relapse in Psychosis and Promote Well-Being, Engagement, and Recovery: Protocol for a Feasibility Cluster Randomized Controlled Trial Harnessing Mobile Phone Technology Blended With Peer Support

Andrew Gumley^{1,2}, BA, MAppSci, PhD; Simon Bradstreet¹, PhD; John Ainsworth³, PhD; Stephanie Allan¹, MA; Mario Alvarez-Jimenez^{4,5}, PhD; Louise Beattie¹, PhD; Imogen Bell⁴, PhD; Max Birchwood⁶, DSc; Andrew Briggs⁷, DPhil; Sandra Bucci^{8,9}, ClinPsyD; Emily Castagnini^{10,11}, MPH; Andrea Clark^{1,12}, MSc; Sue M Cotton⁴, PhD; Lidia Engel¹³, PhD; Paul French¹⁴, PhD; Reeva Lederman¹⁵, PhD; Shon Lewis^{8,9}, MD; Matthew Machin³, BEng (Hons); Graeme MacLennan¹⁶, MSc; Claire Matrunola^{1,12}, MSc; Hamish McLeod^{1,2}, PhD; Nicola McMeekin¹⁷, MSc; Cathrine Mihelopoulos¹³, PhD; Emma Morton¹⁸, PhD; John Norrie¹⁹, MSc; Frank Reilly²⁰, MSc; Matthias Schwannauer²¹, PhD; Swaran P Singh⁶, DM; Lesley Smith²⁰; Suresh Sundram²², PhD; David Thomson^{1,2}; Andrew Thompson^{4,6}, MD; Helen Whitehill^{1,20}, BA (Hons); Alison Wilson-Kay^{1,2}, MSc; Christopher Williams¹, MD; Alison Yung⁸, MD; John Farhall^{10,11}, PhD; John Gleeson¹⁸, PhD

¹Glasgow Institute of Health and Wellbeing, Glasgow Mental Health Research Facility, University of Glasgow, Glasgow, United Kingdom

²NHS Greater Glasgow and Clyde, Glasgow, United Kingdom

³Division of Informatics, Imaging, and Data Sciences, School of Health Sciences, University of Manchester, Manchester, United Kingdom

⁴Orygen, The National Centre of Excellence in Youth Mental Health, Melbourne, Australia

⁵Centre for Youth Mental Health, University of Melbourne, Melbourne, Australia

⁶Division of Mental Health and Wellbeing, University of Warwick, Warwick, United Kingdom

⁷London School of Hygiene and Tropical Medicine, London, United Kingdom

⁸Division of Psychology and Mental Health, School of Health Sciences, University of Manchester, Manchester, United Kingdom

⁹Greater Manchester Mental Health NHS Foundation Trust, Manchester, United Kingdom

¹⁰La Trobe University, Melbourne, Australia

¹¹NorthWestern Mental Health, Melbourne, Australia

¹²NHS Research Scotland Mental Health Network, Glasgow, United Kingdom

¹³Deakin University, Melbourne, Australia

¹⁴Manchester Metropolitan University, Manchester, United Kingdom

¹⁵School of Computing and Information Systems, Melbourne School of Engineering, University of Melbourne, Melbourne, Australia

¹⁶The Centre for Healthcare Randomised Trials, University of Aberdeen, Aberdeen, United Kingdom

¹⁷Glasgow Institute of Health and Wellbeing, University of Glasgow, Glasgow, United Kingdom

¹⁸Australian Catholic University, Melbourne, Australia

¹⁹Usher Institute, University of Edinburgh, Edinburgh, United Kingdom

²⁰Scottish Recovery Network, Glasgow, United Kingdom

²¹School of Health and Social Sciences, University of Edinburgh, Edinburgh, United Kingdom

²²Monash University, Melbourne, Australia

Corresponding Author:

Andrew Gumley, BA, MAppSci, PhD
Glasgow Institute of Health and Wellbeing
Glasgow Mental Health Research Facility
University of Glasgow
Fleming Pavilion
West of Scotland Science Park (Todd Campus)
Glasgow, G20 0XA
United Kingdom
Phone: 44 141 330 4852

Email: a.gumley@clinmed.gla.ac.uk

Abstract

Background: Relapse in schizophrenia is a major cause of distress and disability and is predicted by changes in symptoms such as anxiety, depression, and suspiciousness (early warning signs [EWSs]). These can be used as the basis for timely interventions to prevent relapse. However, there is considerable uncertainty regarding the implementation of EWS interventions.

Objective: This study was designed to establish the feasibility of conducting a definitive cluster randomized controlled trial comparing Early signs Monitoring to Prevent relapse in psychosis and prOmote Well-being, Engagement, and Recovery (EMPOWER) against treatment as usual (TAU). Our primary outcomes are establishing parameters of feasibility, acceptability, usability, safety, and outcome signals of a digital health intervention as an adjunct to usual care that is deliverable in the UK National Health Service and Australian community mental health service (CMHS) settings. We will assess the feasibility of candidate primary outcomes, candidate secondary outcomes, and candidate mechanisms for a definitive trial.

Methods: We will randomize CMHSs to EMPOWER or TAU. We aim to recruit up to 120 service user participants from 8 CMHSs and follow them for 12 months. Eligible service users will (1) be aged 16 years and above, (2) be in contact with local CMHSs, (3) have either been admitted to a psychiatric inpatient service or received crisis intervention at least once in the previous 2 years for a relapse, and (4) have an International Classification of Diseases-10 diagnosis of a schizophrenia-related disorder. Service users will also be invited to nominate a carer to participate. We will identify the feasibility of the main trial in terms of recruitment and retention to the study and the acceptability, usability, safety, and outcome signals of the EMPOWER intervention. EMPOWER is a mobile phone app that enables the monitoring of well-being and possible EWSs of relapse on a daily basis. An algorithm calculates changes in well-being based on participants' own baseline to enable tailoring of well-being messaging and clinical triage of possible EWSs. Use of the app is blended with ongoing peer support.

Results: Recruitment to the trial began September 2018, and follow-up of participants was completed in July 2019. Data collection is continuing. The database was locked in July 2019, followed by analysis and disclosing of group allocation.

Conclusions: The knowledge gained from the study will inform the design of a definitive trial including finalizing the delivery of our digital health intervention, sample size estimation, methods to ensure successful identification, consent, randomization, and follow-up of participants, and the primary and secondary outcomes. The trial will also inform the final health economic model to be applied in the main trial.

Trial Registration: International Standard Randomized Controlled Trial Number (ISRCTN): 99559262; <http://isrctn.com/ISRCTN99559262>

International Registered Report Identifier (IRRID): DERR1-10.2196/15058

(*JMIR Res Protoc* 2020;9(1):e15058) doi: [10.2196/15058](https://doi.org/10.2196/15058)

KEYWORDS

schizophrenia; psychosis; relapse; mHealth; randomized controlled trial

Introduction

Background

Relapse influences the long-term course of psychosis with rates identified as 28% (range 12%-47%), 43% (range 35%-54%), 54% (range 40%-63%) at 1, 1.5, 2, and 3 years follow-up, respectively [1], and more recent evidence shows similar relapse rates [2,3]. Relapse is also associated with poorer response to subsequent antipsychotic treatment [4]. Relapses can occur in up to 80% of participants at the 10-year follow-up [5] and can lead to higher inpatient and outpatient costs [6].

One important predictor of relapse is lack of acceptance of treatment and unplanned discontinuation of antipsychotic medication [1]. Poorer adherence often signals a lack of engagement with services and failure of services to build a collaborative working alliance [7]. Nonadherence to antipsychotic treatment is predicted by poorer insight, previous experience of involuntary treatment, poorer premorbid functioning, comorbid substance misuse, forensic history, poor

relationship with the prescriber, greater deprivation, and transfer to secondary care [8-10]. Relapse itself is an important marker of the severity and complexity of illness and is predicted by previous suicide attempts [11]; depression, hostility, and embarrassment [12]; poorer premorbid functioning; family criticism; substance misuse; social isolation [1]; and negative interpersonal style (possibly linked to poorer utilization of social support) [13].

Birchwood et al [14] pioneered the development of systematic early signs monitoring for relapse and its integration into routine care. It is now known that relapse is the culmination of a process of changes that commence days and sometimes weeks before psychosis symptoms reemerge or are exacerbated. These early warning signs (EWSs) include affective changes and incipient psychosis. These EWSs can be detected as early as 8 weeks before rehospitalization [15]. A systematic review [16] found that the sensitivity of early signs to relapse (proportion of relapses correctly predicted) ranged from 10% to 80% (median 61%) and specificity (proportion of nonrelapses correctly identified) ranged from 38% to 100% (median 81%). Detection

of relapse was improved by more frequent monitoring (at least fortnightly) and by the inclusion of both psychotic and affective symptoms.

A significant barrier to relapse prevention is fear of help seeking arising from previous experiences of relapse [17]. For example, people may avoid calling their care coordinator in the context of an increase in EWSs for fear of being admitted to the hospital. Research has demonstrated that fear of relapse is linked to more traumatic experiences of psychosis and hospital admission and greater fear of symptoms, such as voices and paranoia [18]. In a randomized controlled trial (RCT) of relapse detection, fear of relapse contributed independently to the prediction of relapse (sensitivity=72%, 95% CI 52-86; specificity=46%, 95% CI 32-60) compared with EWSs (sensitivity=79%, 95% CI 62-89; specificity=35%, 95% CI 23-50). Fear of recurrence was also associated with greater depression, feelings of entrapment, self-blame, and shame [19]. Therefore, it is important to include fear of recurrence in the monitoring of EWSs.

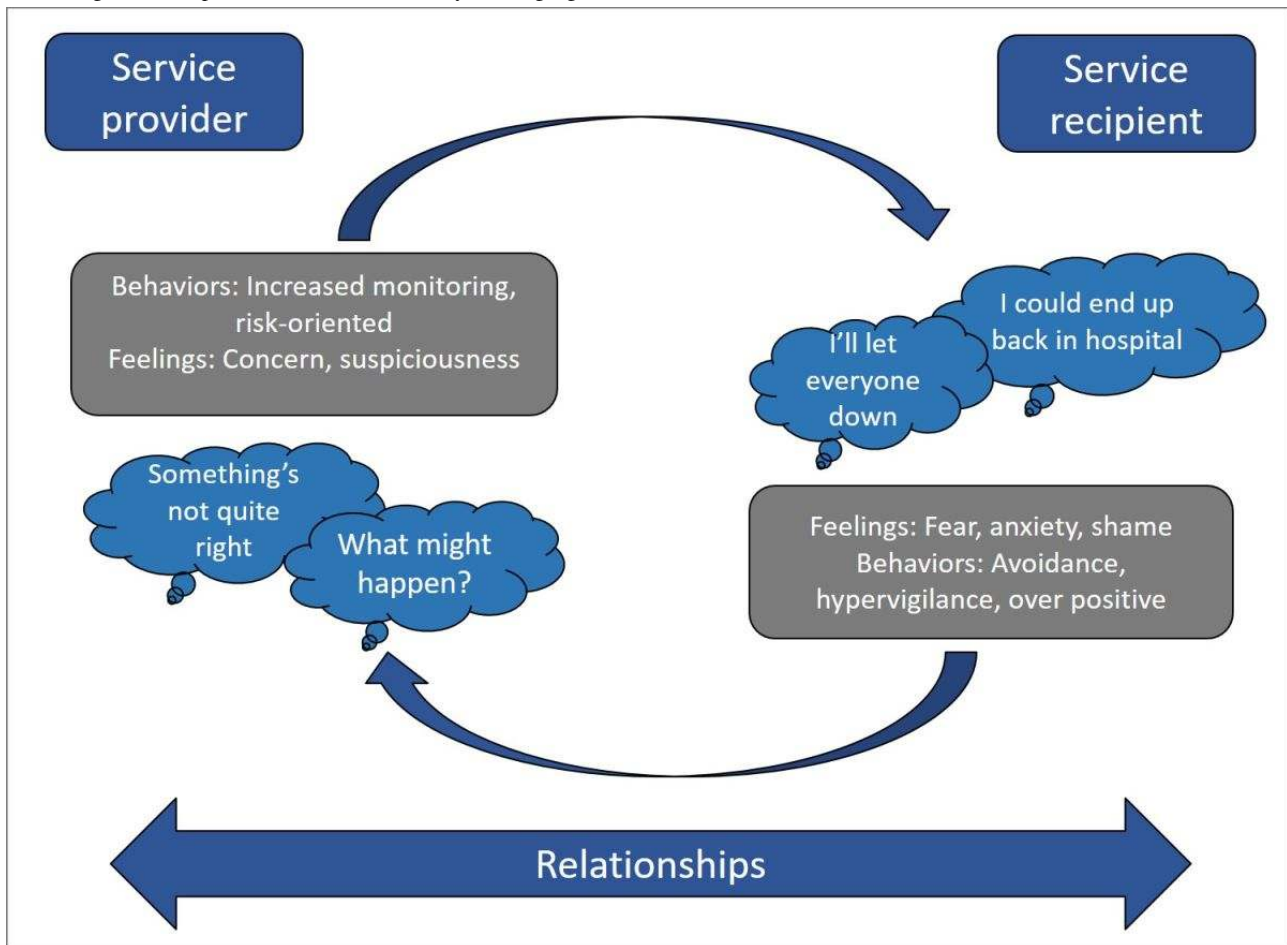
Fear of illness and stigma are closely related to emotional distress [20] and to poorer insight into schizophrenia [8]. Feelings of fear, depression, and helplessness are common emotional experiences before full relapse [21]. In an effort to minimize the stigma of illness and prevent relapse, people can adopt avoidant coping styles that are associated with increased risk of relapse [20]. These coping styles are associated with greater insecurity in relationships, lower self-esteem, lower levels of adherence, and reluctance to seek help in a crisis. Reluctance to seek help may result from greater fear of relapse arising from experiences of involuntary admission. In this sense, avoidance of help seeking can be understood from the perspective that people with experience of psychosis are attempting to minimize or avert the adverse consequences of help seeking based on their lived experience. A recent systematic review [22] found that greater difficulties in forming relationships were associated with poorer engagement with services, more problematic relationships with staff, and more frequent and longer hospital admissions. In sum, the detection of and action following EWSs may be constrained by poor relationships between service providers and people using services, avoidance of help seeking, perceived stigma, fear of relapse, and reluctance to disclose EWSs.

A Cochrane review focused on the effectiveness of interventions targeting recognition and management of EWSs of relapse in schizophrenia [23]. Significant effects in favor of EWS interventions were found for the number of participants relapsing (15 RCTs; n=1502; risk ratio [RR] 0.53, 95% CI 0.36-0.79) and the number of participants being rehospitalized (15 RCTs; n=1457; RR 0.48, 95% CI 0.35-0.66); however, the methodological quality of the trials was poor in terms of randomization, concealment, and blindness. Future EWS interventions need to address these methodological problems that limit their generalizability to usual care. Until this happens, EWS interventions cannot be recommended for routine implementation in health services [23].

An important aspect of service provision for those people at greatest risk of relapse is having access to an integrated mental health care system that enables clear shared planning for managing risk and relapse prevention. One example of this is the role of joint crisis plans (JCPs) in the United Kingdom. The CRIMSON study [24] was an individual-level RCT that compared the effectiveness of JCPs with treatment as usual (TAU) for people with a diagnosis of schizophrenia. There was no significant impact on the primary outcome (reduced coercion into hospital). It was noted that when faced with crisis, in spite of the considerable effort in developing the JCP with service users, the teams reverted to *custom and practice*. The staff did not consult JCPs in planning the team response to a crisis. Furthermore, people in receipt of services experienced an inability to influence clinicians' behaviors, and this was interpreted as signaling a lack of respect for their views and opinions. Consequently, they described their interactions with clinicians as *playing the game*, that is, appearing to comply with treatment decisions. Clinicians themselves experienced their interactions with people using services as ritualized, especially in the context of responding to increased risk [25].

Gumley and Park [17] highlighted that relapse prevention based on EWS monitoring relies on the person receiving services initiating help seeking in the context of feeling vulnerable and threatened. Many individuals find help seeking a challenge and may have had difficult or traumatic experiences of psychosis. Delay in help seeking narrows the window of opportunity for successful relapse prevention, which in turn increases reliance on coercive measures confirming pre-existing negative expectations. It is therefore essential to develop and evaluate an intervention that can facilitate safe and honest disclosure of possible EWSs while also reorienting the response of mental health teams and the actions of their staff in a crisis toward a more collaborative approach.

Our conceptual framework for improving relapse detection and prevention aims to understand how EWSs unfold in the context of important caring relationships. Figure 1 provides an illustration of our cognitive interpersonal model for EWSs. Fear of recurrence drives feelings of fear, anxiety, and shame. Coping strategies to regulate emotional distress (eg, increased hypervigilance, worrying, and avoidance) shape care providers' own cognitive and emotional responses to perceived increased risk of relapse. For example, care providers may interpret increased emotional distress or avoidance (eg, cancelling appointments) as evidence of increased risk prompting changes in clinical care and risk management. These changes may further confirm individuals' negative expectations of services and fear of recurrence. Therefore, interventions that can enhance positive emotional awareness (through self-monitoring), choice and autonomy (through self-management promotion), and improved communication (through increased understanding) could provide a means to disrupt and change negative interpersonal cycles.

Figure 1. Cognitive interpersonal framework for early warning signs.

Digital technology has the potential to offer a step change that can influence early signs monitoring both for people receiving and providing mental health services [26,27]. Mobile phones to support health care are promising for the delivery of interventions that are unconstrained by the limitations of existing treatment settings. Mobile phones are widely available and are continuously dropping in cost, and nearly 3 billion people are projected to own a mobile phone by 2020 [28]. Mobile phone ownership among people who experience psychosis is increasing with estimated rates of ownership from 66.4% (95% CI 54.1%-77.6%) rising to 81.4% (n=454) in more recent studies [29]. Furthermore, people with psychosis express an interest in the use of mobile phones to enhance contact with services and to support self-management [29,30]. Mobile phones, particularly *mobile phones*, offer opportunities for ecological momentary assessment (EMA) to collect data on repeated occasions, in real time, and in the context of daily life [31]. This enhances the ability to assess individuals in their usual context, temporally close to relevant events, and intensively and repeatedly as psychological processes unfold over time [32]. Bell et al [33] found that across 9 interventions (n=459), interventions for people with psychosis using EMA show satisfactory levels of feasibility and acceptability as well as preliminary evidence of improved clinical outcomes. Furthermore, studies that prospectively assess symptom course using mobile phone apps in people with psychosis show promise [34-45] in terms of feasibility of, acceptability of, and adherence to regular daily

monitoring and also delivery of in-time interventions to support coping [36] or delivery of cognitive behavioral therapy [38].

However, studies employing mobile phones to promote relapse detection and intervention are not without their challenges. The Information Technology–Aided Relapse Prevention Program in Schizophrenia (ITAREPS) utilized a weekly text-based monitoring system to detect EWSs in people with psychosis. This system gathers data on early signs of psychosis using text messaging with clinicians notified by alerts where scores breach a specified threshold. Treating clinicians are expected to increase medication by 20% within 24 hours of an alert. In the initial studies [46,47], adherence by people using services and family members was problematic, in that only 47% were described as *high users* with 70% return rates. In the ITAREPS RCT [48], trial adherence improved; however, adherence to the treatment protocol was problematic at 39% largely owing to conflicts between protocol-indicated medication increases and psychiatrists' clinical judgment. Komatsu et al [49] found that adherence to the ITAREPS protocol was improved when mental health nurses were involved in triaging EWS assessments. More recently, Eisner et al [50] demonstrated that over 6 months, adherence to mobile phone-based assessments of EWSs was 65% and successfully predicted increased psychotic symptoms 3 weeks later.

In sum, mobile phone technology offers a significant opportunity to deliver EMA-based monitoring of changes in well-being that are ecologically valid and contextually sensitive. Preliminary

studies show encouraging levels of user acceptability and engagement, and thus, they offer the potential to recognize EWSs and activate timely assessment and intervention to promote self-management and relapse prevention. However, there are important implementation challenges to ensure that these technologies can enhance relationships and shared decision making, particularly during times of increased stress and crisis.

Objectives

The overall aim of this study is to establish the feasibility of conducting a definitive cluster randomized controlled trial (cRCT) comparing Early signs Monitoring to Prevent relapse in psychosis and prOmote Well-being, Engagement, and Recovery (EMPOWER) against TAU. We will establish the parameters of the feasibility, acceptability, usability, safety, and outcome signals of an intervention as an adjunct to usual care that is easily deliverable in the National Health Service (NHS) and Australian community mental health service (CMHS) settings. The EMPOWER intervention aims (1) to enhance the recognition of EWSs by people using services and their carers and (2) to provide a stepped-care pathway that is either self-activated or in liaison with a carer and/or community health care professional, which then (3) triggers a relapse prevention strategy that can be stepped up to a whole team response to reduce the likelihood of a psychotic relapse.

Specifically, we aim to do the following:

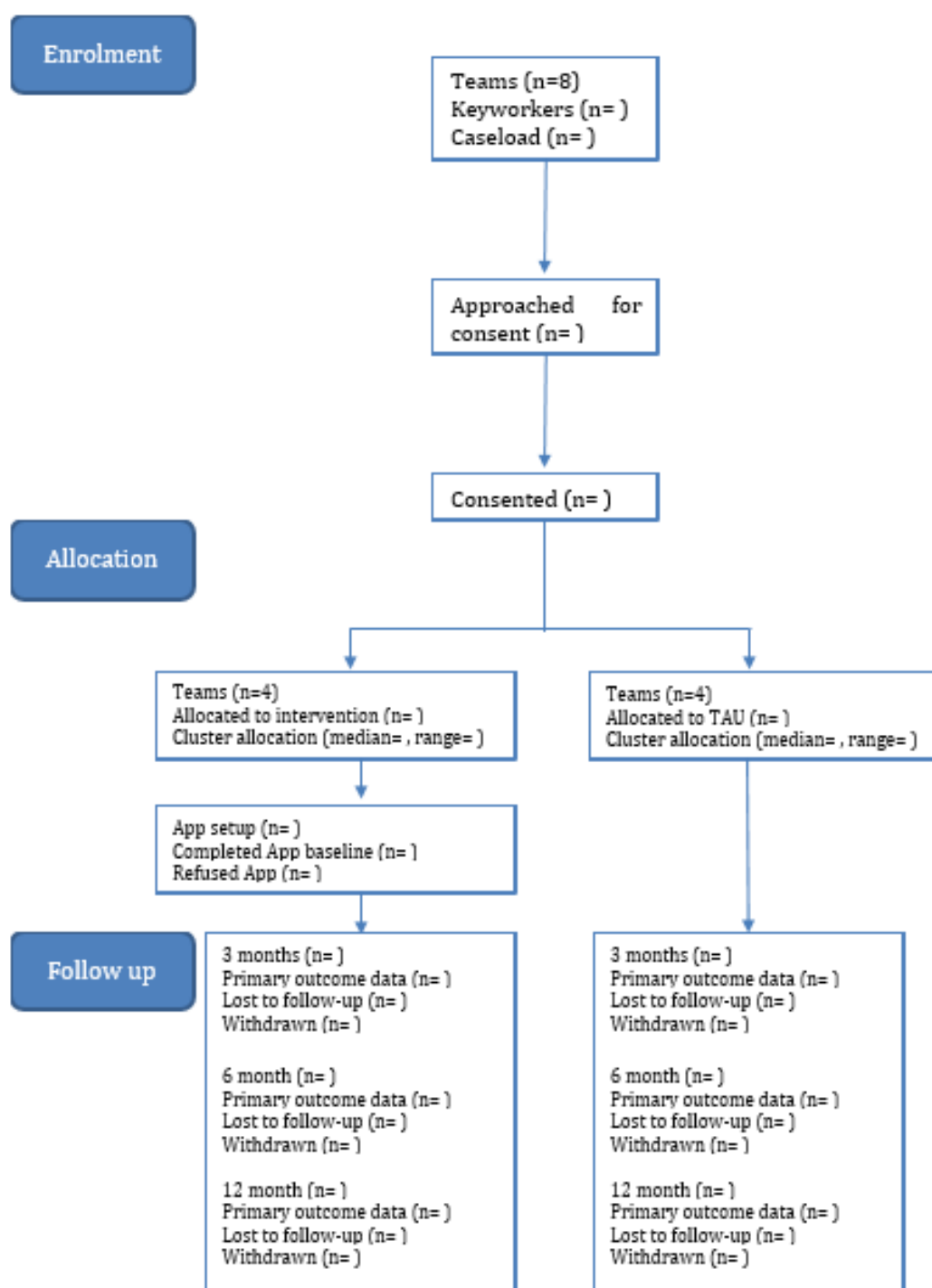
1. Enhance and tailor our mobile phone software app to deliver EWS monitoring, self-management interventions, and access to a relapse prevention pathway that is firmly embedded in whole team protocols and action.
2. Determine rates of eligibility, consent, and recruitment of potentially eligible participants (people using services, carers, and care coordinators) to the study.
3. Assess the performance and safety of the EMPOWER Class 1 Medical Device (CI/2017/0039).

4. Assess the feasibility, acceptability, and usability of the intervention including feedback on suggested enhancements from people receiving the intervention, peer support workers, and clinicians.
5. Assess primary and secondary outcomes to determine preliminary signals of efficacy of the EMPOWER Relapse Prevention Intervention as a basis for the estimation of sample size requirements of a future definitive trial.
6. Undertake a qualitative analysis of relapses to refine the intervention in the main trial.
7. Establish the study parameters and data-gathering frameworks required for a coordinated health economic evaluation of a full trial across the United Kingdom and Australia.

Methods

Trial Design

We will evaluate EMPOWER using a multicenter, 2-arm, parallel group cRCT involving 8 purposively selected CMHSs (2 in Melbourne, Australia, and 6 in Glasgow, Scotland) with 12-month follow-up. The CMHS will be the unit of randomization (the cluster), with the intervention delivered by the teams to people using services and with outcomes assessed within these clusters. The Standard Protocol Items: Recommendations for Interventional Trials checklist is provided as an additional file. The study is planned and implemented in concordance with the Consolidated Standards of Reporting Trials (CONSORT) cluster trial extension [51] and the extension to randomized pilot and feasibility trials [52]. We chose a cluster design as the EMPOWER intervention aims to enable a team-based response to people in receipt of services whose real-time EWS monitoring has activated a relapse prevention pathway. Our CONSORT diagram is detailed in Figure 2.

Figure 2. Consolidated Standards of Reporting Trials flow diagram. TAU: treatment as usual.

Ethics and Governance

The West of Scotland Research Ethics Service (GN16MH271 Ref: 16/WS/0225) and Melbourne Health Human Research Ethics Committee (HREC/15/MH/344) approved the study. The study sponsors are NHS Greater Glasgow & Clyde in the United Kingdom and North Western Mental Health in Australia.

Approvals from the NHS Health Research Authority and a notice of no objection for a trial of a medical device (CI/2017/0039) from the United Kingdom's Medicines and Health care products Regulatory Agency (MHRA) was also received for the trial, and it has been prospectively registered (ISRCTN99559262). The basic trial methods of enrolment, interventions, and assessments are summarized in [Table 1](#).

Table 1. Participant timeline.

Assessment timeline	Study period and time point				
	Enrolment (baseline)	Allocation (0 months)	Post allocation		Close-out (12 months)
			3 months	6 months	
Enrolment					
Eligibility screen	X ^a	— ^b	—	—	—
Informed consent	X	—	—	—	—
Allocation	—	X	—	—	—
Intervention					
EMPOWER ^c	—	—	X	X	X
Service user assessments					
Feasibility	X	—	X	X	X
Acceptability and usability		—	X	X	X
Remission status	X	—	X	X	X
Relapse		—	X	X	X
Positive and Negative Syndrome Scale	X	—	X	X	X
Personal and Social Performance Scale	X	—	X	X	X
Calgary Depression Scale for Schizophrenia	X	—	X	X	X
Time Line Follow Back	X	—	X	X	X
Hospital Anxiety and Depression Scale	X	—	X	X	X
Personal Beliefs about Illness Questionnaire	X	—	X	X	X
Service Attachment Scale	X	—	X	X	X
Medication Adherence Rating Scale	X	—	X	X	X
EuroQol 5 Dimension	X	—	X	X	X
Assessment of quality of life	X	—	X	X	X
RUQ ^d	X	—	X	X	X
Questionnaire for Personal Recovery	X	—	X	X	X
Generalized Self Efficacy Scale	X	—	X	X	X
Psychosis Attachment Measure	X	—	X	X	X
Perceived Criticism and Warmth Measure	X	—	X	X	X
Carer assessments					
Feasibility	X	—	X	X	X
Carer Quality of Life 7 Dimension	X	—	X	X	X
EuroQol 5 Domain 5 Level	X	—	X	X	X
Resource Use Questionnaire	X	—	X	X	X
Perceived Criticism and Warmth Measure	X	—	X	X	X
Involvement Evaluation Questionnaire	X	—	X	X	X
Care coordinator					
Feasibility	X	—	X	X	X
Service Engagement Scale	X	—	X	X	X

^aItem was applicable at the relevant study time point.

^bItem was not applicable at the relevant study time point.

^cEMPOWER: Early signs Monitoring to Prevent relapse in psychosis and prOMote Well-being, Engagement, and Recovery.

Preliminary Work—Patient and Public Involvement

At the outset of the study, we conducted extensive consultation with key stakeholders including mental health staff (n=88), people with lived experience (n=21), and carers (n=40) in a series of 25-focus groups across Glasgow and Melbourne. The stakeholder consultation shaped the development of the EMPOWER intervention [53]. The Scottish Recovery Network also played a key role in shaping further consultation with people with lived experience in further refining the intervention development and planning.

Eligibility Criteria

Participation will be sought from CMHS in NHS Greater Glasgow & Clyde in the United Kingdom and North Western Mental Health Services in Melbourne, Australia. All participants (mental health staff, service users, and carers) will be approached for their informed and written consent before assessment and randomization. Research assistants (RAs) will be responsible for recruitment and written informed consent. Recruitment took place between September 2018 and July 2019. Final follow-up assessments were completed end of June 2019.

Community Mental Health Services

We will likely engage CMHSs to have 5 or more care coordinators willing to participate for a period of 12 months and where potential care coordinators having eligible service users on their caseload being likely to consider participation.

Service Users

Service users from participating CMHSs are eligible for inclusion if they are adults (aged 16 years and above); are in contact with a local CMHS; have either been admitted to a psychiatric inpatient service at least once in the previous 2 years for a relapse of psychosis or received crisis intervention (eg, via a crisis intervention service, reengaged with a CMHS) in the previous 2 years for a relapse of psychosis; have received a diagnosis of schizophrenia-related disorder, specifically 295.40 schizophreniform disorder (International Classification of Diseases-10 [ICD10]=F20.81), 295.70 schizoaffective disorder (ICD10=F25), 295.90 schizophrenia (ICD10=F20.9), 297.10 delusional disorder (ICD10=F22); and are able to provide informed consent as adjudged by the care coordinator, if in doubt, the responsible consultant.

Carers

Carers of people receiving support from participating CMHSs will be eligible for inclusion if they have been nominated by eligible participants; they are in regular contact with the person receiving services; and they provide informed consent to participate in the study.

Exclusion Criteria

Individuals will be ineligible for participation if they do not meet the inclusion criteria outlined above. In addition, participants will be excluded if they have experienced a recent relapse operationally defined as having been discharged from the care of a crisis team or psychiatric inpatient service within the previous 4 weeks.

Interventions

In describing the EMPOWER intervention in the following section, we have utilized the Template for Intervention Description and Replication Checklist [54].

Early Signs Monitoring to Prevent Relapse in Psychosis and Promote Well-being, Engagement, and Recovery Intervention

Rationale

The rationale for the EMPOWER intervention was informed by the cognitive interpersonal model outlined in Figure 1 and has been designed to enable participants to daily monitor changes in their well-being. In EMPOWER, we refer to changes in well-being as *ebb and flow* as a means of moving away from risk-orientated monitoring that can sensitize individuals to increased fear of relapse. The terminology also conveys a normalizing framework for understanding changes in emotions and psychotic experiences in daily life. The EMPOWER intervention is blended with peer support. A peer support worker (PSW) is involved in setting up and personalizing the daily questionnaire, alongside regular fortnightly follow-up. Clinical triage of changes in well-being that are suggestive of EWSs is enabled through an EMPOWER algorithm that triggers a check in prompt (ChIP). This enables prompt identification of EWSs and triggers a relapse prevention pathway.

The EMPOWER app was developed through consultation with people using services, their carers, and mental health professionals. Service user participants have access to the EMPOWER app for up to 12 months of the intervention period. EMPOWER was developed as a flexible user-led tool to (1) daily monitor the *ebb and flow* of changes in their well-being which incorporates, (2) personalized EWS items, (3) enables the delivery of EMPOWER (self-management) messages directly to service users and, (4) provides a mobile phone user interface to enable service users to review their own data and keep a diary of their experiences.

Materials

Daily monitoring of well-being is initiated by pseudorandom mobile phone notifications to complete the EMPOWER questionnaire. The questionnaire contains 22 items reflecting 13 domains (eg, mood, anxiety, coping, psychotic experiences, self-esteem, connectedness to others, fear of relapse, and personalized EWSs). Items include both positive (eg, "I've been feeling close to others") and negative (eg, "I've been worrying about relapse") content. Each item is completed using a simple screen swipe that enables quick and efficient completion by users. Each item is automatically scored on a scale of 1 to 7. Where particular items score >3, users are invited to complete supplementary questions to enable a more fine-grained assessment of that domain. This provides up to a maximum of 56 questionnaire items. The questionnaire was piloted among 7 participants for an average of 36.7 days (range 32-49), and the app was completed on an average of 24.5 days (range 16-35), giving an overall rate of engagement of 68.9%.

Procedures

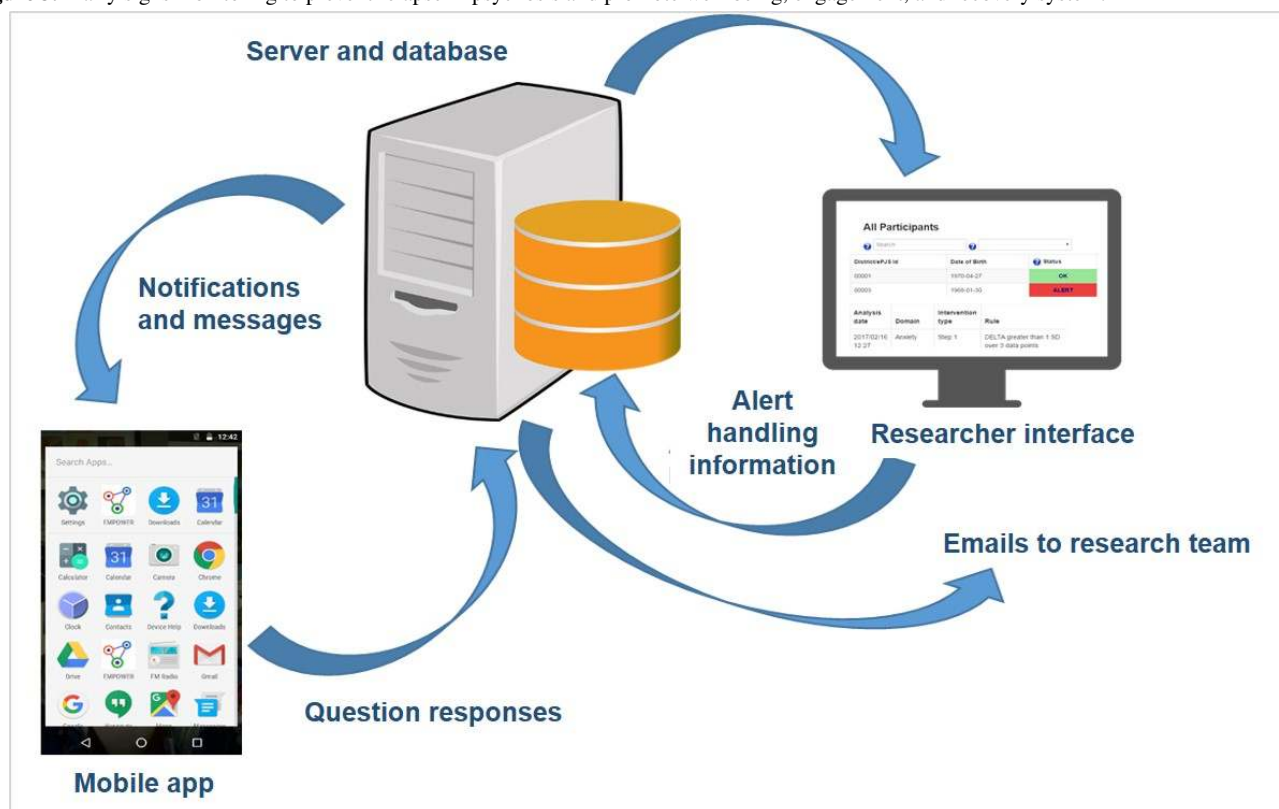
A PSW meets with participants on an individual basis to introduce the rationale for using the app, collaboratively sets up the app on their own or a study mobile phone, and supports the individual's familiarization with the handset and app functions. Participants are invited to choose up to 3 personalized EWS items to be included in the EMPOWER questionnaire, and further personalization of delusion specific items can also be made. Where possible, an individual's care coordinator and nominated carer are invited to contribute to this meeting. Participants are invited to undertake daily monitoring for an initial 4-week baseline period to help establish their personal baseline of the *ebb and flow* of their well-being. During this period, additional support is provided by PSWs through weekly telephone follow-up. This provides an opportunity to encourage usage of the app, solve any technical problems, and identify any adverse effects. At the end of the 4 weeks, a further meeting is arranged with a PSW or mental health nurse to review

monitoring, encourage engagement with EMPOWER messages, agree participants' preferences for actions in response to changes in well-being that are suggestive of EWSs and encourage continued utilization of local CMHSs for clinical care. All participants are offered ongoing fortnightly PSW support to encourage use of the app: to support their reflection on changes in well-being and their broader context including, for example, stressful life events, and to encourage use of self-management strategies prompted by EMPOWER messages.

Digital Procedures

The analysis and handling of questionnaire data is governed by the EMPOWER algorithm. The EMPOWER algorithm is a Class 1 Medical Device (ISO 14155:2011[E]), which is an algorithm that forms one part of a broader system that is designed to identify and respond to changes in well-being that are suggestive of EWSs. Figure 3 provides a graphical representation of the system's high-level components and data flow.

Figure 3. Early signs monitoring to prevent relapse in psychosis and promote well-being, engagement, and recovery system.



Participants use a mobile phone app that prompts them to answer a daily questionnaire about potential EWSs of psychosis. The data are then submitted to the EMPOWER server and analyzed by the EMPOWER algorithm. The algorithm compares a participant's latest data entry against their personal baseline. If changes exceed predefined thresholds, a ChIP is generated for the participant. The consequences of the ChIP are that the research team, which includes a registered mental health nurse (in the United Kingdom), clinical psychologists (United Kingdom and Australia), and general psychologist (Australia only), is emailed about the participant and that the participant's status is set to *alert* and is highly visible on a secure Web-based researcher interface. In addition to viewing and handling ChIPs,

researchers can also view longitudinal graphs of their participants' well-being and possible EWSs, filtered by question or by domain (group of questions). In response to ChIPs, a member of the research team checks in with the participant and based on the outcome of this triage assessment, they can share an update with the participants' care coordinator who can, if indicated, escalate increased support to the participant from their local CMHS to reduce risk of relapse. These actions are agreed on a case-by-case basis, and we did not constrain the service user's treatment provider to respond within a specific timeframe or indeed in a specific way. We have undertaken the responsibility to update the individual on any ongoing actions.

The EMPOWER algorithm also runs a separate process scan for EWS changes against the baseline. On the basis of these changes, the logic selects a message from the most appropriate of several content-based message pools (ie, one message pool contains helpful messages about *mood* and another about *anxiety and coping*). This message is delivered back to, and displayed on, the participant's EMPOWER app. Messages are intended to help people have a greater sense of control over their mental health and well-being and to support self-management.

Training and Support to Community Mental Health Service Staff

Following randomization of CMHSs to EMPOWER, we will aim to provide training to mental health staff in those teams based on our model of relapse prevention, which emphasizes (1) therapeutic alliance, (2) barriers to help seeking, (3) familiarization with app, (4) developing an individualized formulation of risk of relapse, and (5) developing a collaborative relapse prevention plan. Following this, we aim to meet with care coordinators on a fortnightly basis to provide support in the implementation of EMPOWER. These meetings are aimed to clarify and encourage formulation of any changes and participants' responses within the model and support clinicians to consider EMPOWER-consistent intervention options.

Treatment as Usual Control

TAU was chosen as a control condition in both the Glasgow and Melbourne centers as this provides a fair comparison with routine clinical practice. In Glasgow and Melbourne, secondary care is delivered by adult CMHSs, which largely involve regular, fortnightly, or monthly follow-up with a care coordinator and regular review by a psychiatrist. TAU is the modal comparison for digital interventions in schizophrenia. However, recent trials [38] have included active monitoring control groups. Our comparison with TAU will be reviewed before submitting the main trial application.

Outcomes

All outcome measures will be administered at baseline and subsequently at 3, 6, and 12 months by RAs who will have been trained in the use of all the instruments and scales and who have achieved a satisfactory level of interrater reliability. RAs have as a minimum a strong honors degree in Psychology or a related discipline. Regular interrater reliability assessments will be conducted during the trial. RAs will enter anonymized participant data onto an electronic case record form hosted by the University of Aberdeen, with the exception of relapse data. Relapse data will be entered by the trial manager (SB). Data quality and error checking will be conducted at each time point including baseline, 3 months, 6 months, and 12 months post randomization.

Primary Outcomes

Feasibility

For all participants, outcome assessment will include the proportion of eligible and willing service users who then consent and the proportion continuing for 3, 6, and 12 months to the end of the study. We will report on the perspectives of service users, carers, and mental health staff in relation to the frequency

of seeking help in relation to EWSs; the frequency in which a family member/carer has sought help in response to EWSs, and the frequency of clinical care that has changed in response to EWSs at 3, 6, and 12 months.

Acceptability and Usability

For those randomized to EMPOWER, we will report the length of time participants are willing to use the app and the number completing >33% of EWS datasets. We will also report the self-reported frequency of app use, frequency of sharing data with the keyworker, frequency of sharing data with the family member/carer, and frequency of accessing charts at 3, 6, and 12 months. We will also assess self-reported acceptability and usability using an adapted version of the Mobile App Rating Scale [55].

Safety—Adverse Events

Details of recording and reporting all adverse events is contained in our Standard Operating Procedure for Adverse Events that complies with Medical Devices Regulations 2002, ISO/FDIS 14155:2011 and Standards for Good Clinical Practice. An adverse event is defined as serious if it (1) results in death, (2) is a life-threatening illness or injury, (3) requires (voluntary or involuntary) hospitalization or prolongation of existing hospitalization, (4) results in persistent or significant disability or incapacity, or (5) is a medical or surgical intervention required to prevent any of the above, (6) leads to fetal distress, fetal death, or consists of a congenital anomaly or birth defect, or (7) is otherwise considered medically significant by the investigator. We will record any adverse device effects (serious or otherwise) arising from the EMPOWER algorithm. In addition, we will measure all adverse effects arising from study procedures including use of the EMPOWER app. We have prespecified (but not limited) these to (1) increased fear of relapse or paranoia associated with responding to questions in the EMPOWER app and (2) increased worries about surveillance by psychiatric services. We will also assess changes in fear of relapse using the Fear of Recurrence Scale [18].

The relationship between the investigational medical device and the occurrence of each adverse event will be assessed and categorized. In consultation with the RA and the trial manager, the chief investigator will use clinical judgment to determine the relationship. Alternative causes, such as natural history of the participant's underlying condition, concomitant therapy, and other risk factors, will be considered.

We also record medical device deficiencies, which is any inadequacy of the EMPOWER medical device. These can include malfunctions, end user errors, and inadequate labeling.

Performance

The following performance endpoints have been identified:

1. Each participant has the app successfully uploaded on a mobile phone.
2. Each participant has personalized EWSs included in the EMPOWER questionnaire.
3. Each participant receives a daily prompt to complete their questionnaire.

4. Participants receive an EMPOWER message each time they complete the questionnaire.
5. Following 4 weeks of usage, the EMPOWER algorithm calculates each of the participant's individualized baseline or variance of symptoms and experiences.
6. Participants can access charts of their symptoms and experiences covering 1-week and 1-month time intervals.
7. Following completion of the questionnaire, participants' data are transferred to the secure server.
8. Researchers access participants' questionnaire responses and generate charts to observe changes over time.
9. Researchers receive a record of alerts for each participant and can record actions in relation to these alerts.

Candidate Outcomes

Candidate Primary Outcome

Data related to symptom change and possible relapse will be extracted prospectively from electronic case notes by RAs. Relapse is defined as (1) a return or exacerbation in psychotic symptoms of at least moderate degree; (2) where symptoms have lasted at least one week in duration, and there is evidence of a decline in functioning or an increase in risk to self or others; and (3) there is evidence of a clinical response from services. Relapse criteria are summarized in [Table 2](#).

Table 2. Early signs monitoring to prevent relapse in psychosis and promote well-being, engagement, and recovery relapse criteria.

Criteria	Notes and definitions
A return or exacerbation in psychotic symptoms of at least moderate degree; If present score=1	<ul style="list-style-type: none"> • These are defined as first rank psychotic symptoms including hallucinations, delusions, thought disorder and persecutory paranoia • In line with Positive and Negative Syndrome Scale assessments, moderate severity means that these occur at least occasionally or intrude on daily life to a moderate extent
AND Where symptoms have lasted <i>at least</i> 1 week in duration; If present score=1	<ul style="list-style-type: none"> • There was clear evidence that duration of psychotic symptoms occurred over at least 1 week
AND Where there is evidence of a decline in functioning; If present score=1	<ul style="list-style-type: none"> • Includes a decline in one or more of the role performance areas identified from the Personal and Social Performance Scale: <ul style="list-style-type: none"> • Socially useful activities, including work and study (this should include cooperation with household tasks, voluntary work, and <i>useful</i> hobbies, such as gardening) • Personal and social relationships (this includes relationships with a partner or relatives and broader social relationships) • Self-care (personal hygiene, personal appearance, and dressing) • General domains to consider are physical and psychological health care; lodging (area of residence and living space care); contribution to household activities; participation in family life or residential/day-center life; intimate and sexual relationships; childcare; social network, friends, and helpers; general interests; financial management; use of transport; coping skills in crisis; keeping social rules
OR An increase in risk to self or others; If present score=1	<ul style="list-style-type: none"> • Increase in risk to self includes deliberate self-injury and/or suicidal ideation that was clinically significant in the investigator's judgment. Evidence is required of either an increase in thoughts or an intent to act upon such thoughts. These must occur within the context of the episode and be accompanied by a service response. The service response can be reflected in that there is a statement of increased risk, there is a note of discussing safety plans, or staff have ensured that the participant has access to crisis contacts • Increase in risk to others includes significant violent and aggressive behavior. This also includes homicidal ideation, with evidence of intent to act upon this. Violent and aggressive behavior should only be recorded as an increase in risk where there is evidence of a service response to manage this behavior
AND There is evidence of a clinical response from services; If present score for each of these criteria=1 (Maximum=3)	<ul style="list-style-type: none"> • An increase or change in medication, increased home visits, or referral to crisis services • Any hospital admission or imposition of a Community Treatment Order in response to psychosis • Use of the mental health act to enforce an involuntary hospital admission

RAs who are not blinded to the treatment condition extracted data from electronic case records to document all recorded episodes of changes in psychotic symptoms, functioning, risk, and clinical management. These episodes will provide the basis for individual anonymized case vignettes that are submitted to our independent and blinded adjudication panel. All vignettes will be fully anonymized and any information relating to the EMPOWER intervention will be concealed. This panel will contain expert clinicians/researchers who will have the necessary knowledge, experience, and skills to make independent blinded judgments regarding relapse/exacerbation. The panel will

determine that a relapse event has occurred and will also rate the severity of relapse on a 7-point scale based on the criteria included in [Table 2](#). We will report time to first relapse, type of relapse (Relapse, Exacerbation, and Unspecified). We will also report number (%) with (1) return or exacerbation in psychotic symptoms, (2) duration of at least one week, (3) reduction in functioning, (4) increase in risk, (5) change in clinical management, (6) admission to hospital, and (7) use of mental health act. We will report details of all relapse outcomes across both groups. All participants will be assessed at each follow-up point for the presence of any of these criteria

described in Table 2, enabling us to calculate a mean severity score across participants and allocated groups at each follow-up point.

Candidate Secondary Outcomes

We will also assess changes in symptoms, substance use, emotional distress, carer burden, service engagement, and adherence and health-related quality of life.

1. Mental health status: The Positive and Negative Syndrome Scale [56], Personal and Social Performance Scale [57], and the Calgary Depression Scale for Schizophrenia [58] will be completed with service user participants.
2. Substance use measures: Time line follow back for drugs and alcohol [59]
3. Emotional distress: Hospital Anxiety and Depression Scale [60] and the Personal Beliefs about Illness Questionnaire-Revised [61].
4. Service engagement: The Service Attachment Scale [62] and the Medication Adherence Rating Scale [63] will be completed by service user participants.
5. Health Economics: EuroQol 5 Dimension 5 Level (EQ-5D-5L) [64] and the Assessment of Quality of Life—8 Dimension (AQoL-8D) [65], the CarerQoL [66], and a Resource Use Questionnaire (RUQ).

Candidate Mechanisms

Measures have been selected that map directly onto hypothesized mechanisms of change and known predictors of relapse. Mechanisms of service user benefit are operationalized as improvements in personal recovery, empowerment, and utilization of social support.

1. Recovery and self-efficacy: Questionnaire for Personal Recovery [67] and the General Self-Efficacy Scale [68] will be completed by service user participants.
2. Social and interpersonal context: Psychosis Attachment Measure [69] and Perceived Criticism and Warmth Measure adapted from the Perceived Criticism Measure (PCM) [70] will be completed by service user participants.

Carer Outcomes

The Involvement Evaluation Questionnaire [71] will be completed as a measure of carers worrying, tension, urging, and supervision. A carer PCM adapted from the PCM described above will be used as a measure of carers' perspectives on relationship quality.

We will also assess Carer Health Economic Outcomes using a purposively designed RUQ, time cost questionnaire, the EQ-5D-5L, and the CarerQoL-7D.

Care Coordinator Outcomes

Participants care coordinators will complete the Service Engagement Scale [72].

Process Evaluation

In line with recent MRC Guidance on process evaluation of complex interventions [73], we will produce a logic model for the EMPOWER intervention and conduct a process evaluation. The process evaluation will be used to explore the ways in which

EMPOWER may operate to produce outcomes. Specifically, it will focus on intervention fidelity, exposure, reach, context, recruitment, retention, and contamination, as well as the acceptability of study procedures. We will interview service users, carers, mental health staff, and research staff to ensure a multiperspective understanding of the intervention. We will publish the protocol for the process evaluation elsewhere.

Sample Size

No formal sample size calculation is appropriate for this pilot phase. The proposed sample size of up to 120 service users across 40 care coordinators in 8 CMHSs is deemed to be sufficient to establish feasibility and obtain parameters (including the relevant ICCs for the cluster design) to inform the design and size of a future definitive, pragmatic, multicenter, and multinational cRCT.

Recruitment and Randomization

The unit of randomization is the CMHS (the cluster). Participating CMHSs will be randomized within stratified pairs to the EMPOWER Relapse Prevention Intervention or to continue their usual approach to care. A statistician at the Centre for Healthcare Randomised Trials (CHaRT) at the University of Aberdeen will provide the allocation codes. The 2 clusters in Australia form a single stratum. The 6 clusters in Glasgow will be paired based on similarity of catchment area in terms of social deprivation or CMHS type (eg, early intervention service).

Researchers will approach each eligible care coordinator and seek their consent to participate in the trial. Before randomization, consenting care coordinators will provide an anonymized list of their current potentially eligible caseload of people using services. This list will then be randomly ordered by CHaRT. Researchers will then approach identified people sequentially in blocks of up to 5 potentially eligible participants and seek informed consent to participate in the study. If there are further participants eligible for inclusion at the end of this block, the researcher will move onto the next block of 5 (if applicable). Care coordinators will provide participants with an easy-to-read information leaflet about the study to enable potential participants to express interest in finding out more information. In Australia, information posters will be displayed within staff areas of participating sites to inform care coordinators of the study and provide contact details of RAs, should they wish to participate.

We aim to approach and consent on an average of 3 participants per care coordinator (giving a total of up to 120 potential participants). Following consultation with the independent Data Management and Ethics Committee (DMEC) and the Study Steering Committee (SSC) in May 2018, these recruitment objectives were amended to 86 participants. This was because of a number of challenges to recruitment including (1) temporary suspension of the study to apply for registration with the MHRA, which delayed start up to recruitment, (2) comprehensive and detailed screening of all potential trial participants, (3) delays arising from care coordinators approaching potential participants, and (4) high rates of turnover among care coordinators. Following independent methodological and statistical advice, there was clear guidance that the original

feasibility aims will be met by the trial, and this change to recruitment targets was approved by the funders. After completing baseline assessments on all consenting service users in care coordinators' and CMHSs' caseload, the Clinical Trials Unit (CTU) at CHaRT will conduct randomization of the CMHSs. For Australia, with just 2 clusters, this will be by simple randomization by the CTU. For Glasgow, with 6 clusters, the CTU will create 3 pairs of teams based on similarity of the catchment area in terms of social deprivation (Carstairs) score or CMHS type (eg, early intervention service). The CTU will randomly allocate one member of the pair to the intervention, and the remaining member will be allocated to control.

We will explore in this pilot phase the best method of randomly allocating the clusters in the full trial, specifically to establish what matching factors (if any, and/or if matching at all is appropriate, methodologically) are suitable. Any violations of the study protocol will be recorded and reported to the Research Ethics Committee, SSC, and the independent DMEC.

Statistical Analysis

A full statistical analysis plan will be written before (and published on the CHaRT website) any analysis is being undertaken. All analyses will be carried out using the intention-to-treat principle with data from all participants included in the analysis including those who do not complete the intervention. Every effort will be made to follow up all participants in both arms for research assessments. The analysis will follow the guidelines of the CONSORT statement for clustered randomized trials and recommendations for the analysis of clustered randomized trials when presenting and analyzing the data. Here, we have potentially repeated measures on individual patients nested within care coordinators who are nested within teams (the unit of randomization) who are in turn nested within region (Australia and the United Kingdom or possibly to be known as Scotland). The analysis will adjust for these factors using appropriate random (service user, if relevant; care coordinator; and team) and fixed (region) effects. The trial statistician will remain blind until the main analyses are complete. Baseline characteristics of the study population will be summarized separately within each randomized group. Baseline characteristics will also be presented for drop-outs and completers within each treatment group.

A full Health Economic Statistical Analysis Plan will be written before any analysis is being undertaken. As part of the within trial economic evaluation, we propose to test 2 health-related quality of life measures (which can be used to assess Quality-Adjusted Life Years), the EQ-5D-5L, and the AQoL-8D in the feasibility trial. Although the EQ-5D-5L is very commonly used in the United Kingdom and Australian context, its sensitivity and appropriateness in people with schizophrenia has been seriously questioned [74]. The AQoL-8D is a newer HRQoL measure and was developed to be sensitive to the domains of quality of life that are important to people with mental health problems. A RUQ to capture costs incurred will also be tested. This questionnaire will need to be appropriate to both the United Kingdom and Australian context but may require some system-specific modules for services, which differ between the 2 settings.

Data Sharing

Data generated by this research will be made available as soon as possible based upon reasonable request to the study chief investigator.

Ethics Approval

West of Scotland Research Ethics Service (GN16MH271 Ref: REC/16/WS/0042) and Melbourne Health (HREC/15/MH/344).

Results

Recruitment to the trial began in September 2017, and follow-up of participants was completed in July 2019. The database lock was in July 2019, followed by analysis and disclosing of group allocation.

Discussion

Relapse among people with a diagnosis of schizophrenia is a major contributor to poorer outcomes in terms of greater symptom severity, distress, and risk of a range of adverse outcomes including coercion into care, self-harm, and suicide [8-12]. People diagnosed with schizophrenia worry about relapse, and this is linked to feelings of anxiety, shame, depression, and shorter time to relapse [18]. Relapse contributes to carers' experiences of distress and worry and has been linked to greater needs for continuity of communication with mental health care professionals [75]. Mental health staff are concerned about the impact of relapse on service users and carers, but the impact on their roles are also considerable in terms of responding to crises and increased risk [24]. These sources of strain place relationships under significant pressure, which can break down communication, anticipatory care, and shared decision making especially in the context of EWSs of relapse. This can potentially result in loss of collaboration, increased risk of disengagement, and greater use of coercion, thus confirming many of the fearful and threat-based expectations held by service users, carers, and, arguably, the staff [25].

On the basis of our theoretical model outlined earlier, we have developed an intervention that blends a digital intervention with peer support, with triage of increased risk of relapse to prompt early interventions that are attuned to needs of service users. Our approach uses digital technology to enable service users to monitor the *ebb and flow* of emotional well-being in daily life and utilizes an algorithm to deliver messages to enhance attunement, awareness, curiosity, and self-management in response to changes in well-being. In our theory, the blending of digital with peer support is important to cultivate helpful conversations to promote greater autonomy, empowerment, and recovery. We anticipate that conversations focused around the *ebb and flow* of changes in well-being in daily life can also increase opportunities for earlier help seeking, collaboration, and shared decision making in the event of possible EWSs facilitated by clinician triage into a relapse prevention pathway embedded in mental health services.

The EMPOWER trial will deliver the protocol for a blended digital intervention and will establish the feasibility of running a definitive cRCT. We will establish the safety, acceptability,

usability, and performance parameters of the EMPOWER intervention. We will learn how to optimize the identification, consent, and follow-up of potentially eligible participants. We will establish the feasibility of measuring and collecting our candidate primary, secondary, and mechanistic outcomes. However, in its own right, our study has a number of important broader implications for digital health interventions for people diagnosed with schizophrenia and psychosis. Our mobile phone app will be available for people to use for up to 1 year on a daily basis. To our knowledge, this will be the longest RCT of a mobile phone app in psychosis to date. In addition, the algorithm that underpins the assessment of *ebb and flow* is, to our knowledge, the first mental health app to be registered as a medical device trial (CI/2017/0039) by the United Kingdom's Medicines and Healthcare products Regulatory Agency.

We will also establish and report the rater reliability of our a priori definition of relapse that has been informed by our theoretical model [18] that underpins the intervention. In studies of relapse in schizophrenia, there is a lack of consensus as to the definitions of relapse measurement [76], very often studies actually fail to report their definitions of relapse [77], and, to our knowledge, none have ever consulted people with lived experience of psychosis on how relapse is measured and defined. Our approach to relapse assessment aims to address these major shortcomings in the literature making the theory, rationale, measurement, and interrater reliability of our definition explicit. In addition, our approach will enable us to report time to relapse, severity of relapse, and mean severity scores across groups at each follow-up timepoint.

Acknowledgments

The authors are grateful to all the service users, carers, and mental health staff and CMHSs who gave their time and resources to contribute to the development of this study during the consultation phase. This was critical in shaping the refinement of the EMPOWER intervention and outcomes. The authors are grateful to all the service users, carers, and mental health staff and CMHSs who gave their time and resources to contribute to the cRCT. The authors also express their gratitude to their SSC members, Professor David Kingdon (Chair), Professor Daniel Freeman (independent member), Professor Fiona Lobban (independent member), David Kavanagh (independent member), Frances Simpson (independent public and patient involvement representative), and Graham Morgan (independent public and patient involvement representative). The authors express their gratitude to their Data Monitoring and Ethics Committee members, Professor Emmanuelle Peters (Chair), Dr Alison Brabban (independent clinician), Professor Rod Taylor (independent statistician), and Professor Greg Murray (independent statistician). This study was funded in the United Kingdom by the National Institute for Health Research Health Technology Assessment program (project number 13/154/04) and in Australia by the National Health and Medical Research Council (APP1095879). It will be published in full in the Health Technology Assessment. This study is supported by NHS Research Scotland, through the Chief Scientist Office and the NHS Scotland Mental Health Network. The Health Services Research Unit is funded by the Chief Scientist Office of the Scottish Government Health Directorate. MA-J is supported by a Career Development Fellowship (APP1082934) from the National Health and Medical Research Council. SA is supported by a Cremore Research Fellowship, bequested to the University of Glasgow. The study sponsors and funders were not involved in the study design; collection, management, analysis, and interpretation of data; writing of the report; and the decision to submit the report for publication.

Authors' Contributions

AG is a chief investigator who together with JG and JF developed the study protocol alongside the other coinvestigators (JA, MA-J, MB, AB, SB, SBu, SMC, PF, RL, SL, GMaL, CM, JN, SM, SS, SSu, AT, CW, and AY) and has overall responsibility for the management and delivery of the trial. AG, JF, JG, SB, and EM finalized the study protocol for implementation. SB is the trial manager and is responsible for coordinating the trial. EM is the trial coordinator in Australia and is responsible for coordinating the trial in Melbourne. EM, HW, AC, CMa, and IB are RAs on the trial and have responsibility for participant recruitment and data capture. HMcL, SB, and EM developed and implemented standard operating procedures for participant assessment and data collection. AG, SB, JF, and EM oversee the design and implementation of the intervention. AWK, EM, EC, DT, and JA contributed to the development and implement the intervention. AB, CM, LE, and NMCM lead the health economic evaluation and modeling. SA is the process evaluation researcher. LB has implemented the evaluation of data quality at each follow-up. The Scottish Recovery Network via JF and LS led public and patient involvement at the outset of the study. All authors commented on and approved the final version of the paper.

Conflicts of Interest

AG reports personal fees from the University of Manchester, personal fees from the University of Exeter, personal fees from BABCP, and other interests with NHS Education for Scotland outside the submitted work. JA and SB report other interests with Affigo CIC, outside the submitted work. AB reports personal fees from Bayer, Merck, Janssen, Novartis, Sword Health, Amgen, and Daiichi Sankyo outside the submitted work. JF reports grants from National Health & Medical Research Council (Australia) during the conduct of the study and other interests with Melbourne Health (NorthWestern Mental Health) outside the submitted work. SL reports grants from MRC, nonfinancial support from Affigo CIC, and personal fees from Xenzone PLC outside the submitted work. HMcL reports grants from NIHR HTA during the conduct of the study. CM reports grants from National Health & Medical Research Council (Australia) during the conduct of the study. JN reports grants from the University of Aberdeen and the University of Edinburgh during the conduct of the study and declares membership of the following NIHR boards: CPR

decision-making committee; HTA Commissioning Board; HTA Commissioning Sub-Board (EOI); HTA Funding Boards Policy Group; HTA General Board; HTA Post-Board funding teleconference; NIHR CTU Standing Advisory Committee; NIHR HTA & EME Editorial Board; and Pre-exposure Prophylaxis Impact Review Panel. CW reports grants from NIHR during the conduct of the study and other interests with Five Areas Ltd outside the submitted work. MA-J was supported by a Career Development Fellowship (APP1082934) from the National Health and Medical Research Council. SA, SBr, SS, MS, FR, MB, SSu, PF, SC, LE, EM, GMaL, NMCM, AT, MM, RL, DT, HW, IB, AW-K, and LB all declare no conflicts of interest outside the submitted work.

Multimedia Appendix 1

Peer-reviewer report from the National Institute for Health Research - Health Technology Assessment Programme (NIHR-HTA). [\[PDF File \(Adobe PDF File\), 831 KB-Multimedia Appendix 1\]](#)

References

1. Alvarez-Jimenez M, Priede A, Hetrick SE, Bendall S, Killackey E, Parker AG, et al. Risk factors for relapse following treatment for first episode psychosis: a systematic review and meta-analysis of longitudinal studies. *Schizophr Res* 2012 Aug;139(1-3):116-128. [doi: [10.1016/j.schres.2012.05.007](https://doi.org/10.1016/j.schres.2012.05.007)] [Medline: [22658527](https://pubmed.ncbi.nlm.nih.gov/22658527/)]
2. Bergé D, Mané A, Salgado P, Cortizo R, Garnier C, Gomez L, et al. Predictors of relapse and functioning in first-episode psychosis: a two-year follow-up study. *Psychiatr Serv* 2016 Feb;67(2):227-233. [doi: [10.1176/appi.ps.201400316](https://doi.org/10.1176/appi.ps.201400316)] [Medline: [26467909](https://pubmed.ncbi.nlm.nih.gov/26467909/)]
3. Pelayo-Terán JM, Gajardo Galán VG, de la Ortiz-García de la Foz V, Martínez-García O, Tabarés-Seisdedos R, Crespo-Facorro B, et al. Rates and predictors of relapse in first-episode non-affective psychosis: a 3-year longitudinal study in a specialized intervention program (PAFIP). *Eur Arch Psychiatry Clin Neurosci* 2017 Jun;267(4):315-323. [doi: [10.1007/s00406-016-0740-3](https://doi.org/10.1007/s00406-016-0740-3)] [Medline: [27796500](https://pubmed.ncbi.nlm.nih.gov/27796500/)]
4. Takeuchi H, Siu C, Remington G, Fervaha G, Zipursky RB, Foussias G, et al. Does relapse contribute to treatment resistance? Antipsychotic response in first- vs second-episode schizophrenia. *Neuropsychopharmacology* 2019 May;44(6):1036-1042. [doi: [10.1038/s41386-018-0278-3](https://doi.org/10.1038/s41386-018-0278-3)] [Medline: [30514883](https://pubmed.ncbi.nlm.nih.gov/30514883/)]
5. Hui CL, Honer WG, Lee EH, Chang WC, Chan SK, Chen ES, et al. Long-term effects of discontinuation from antipsychotic maintenance following first-episode schizophrenia and related disorders: a 10 year follow-up of a randomised, double-blind trial. *Lancet Psychiatry* 2018 May;5(5):432-442. [doi: [10.1016/S2215-0366\(18\)30090-7](https://doi.org/10.1016/S2215-0366(18)30090-7)] [Medline: [29551618](https://pubmed.ncbi.nlm.nih.gov/29551618/)]
6. Ascher-Svanum H, Zhu B, Faries DE, Salkever D, Slade EP, Peng X, et al. The cost of relapse and the predictors of relapse in the treatment of schizophrenia. *BMC Psychiatry* 2010 Jan 7;10:2 [FREE Full text] [doi: [10.1186/1471-244X-10-2](https://doi.org/10.1186/1471-244X-10-2)] [Medline: [20059765](https://pubmed.ncbi.nlm.nih.gov/20059765/)]
7. Subotnik KL, Nuechterlein KH, Ventura J, Gitlin MJ, Marder S, Mintz J, et al. Risperidone nonadherence and return of positive symptoms in the early course of schizophrenia. *Am J Psychiatry* 2011 Mar;168(3):286-292 [FREE Full text] [doi: [10.1176/appi.ajp.2010.09010087](https://doi.org/10.1176/appi.ajp.2010.09010087)] [Medline: [21205805](https://pubmed.ncbi.nlm.nih.gov/21205805/)]
8. Day JC, Bentall RP, Roberts C, Randall F, Rogers A, Cattell D, et al. Attitudes toward antipsychotic medication: the impact of clinical variables and relationships with health professionals. *Arch Gen Psychiatry* 2005 Jul;62(7):717-724. [doi: [10.1001/archpsyc.62.7.717](https://doi.org/10.1001/archpsyc.62.7.717)] [Medline: [15997012](https://pubmed.ncbi.nlm.nih.gov/15997012/)]
9. Lambert M, Conus P, Cotton S, Robinson J, McGorry PD, Schimmelmann BG. Prevalence, predictors, and consequences of long-term refusal of antipsychotic treatment in first-episode psychosis. *J Clin Psychopharmacol* 2010 Oct;30(5):565-572. [doi: [10.1097/JCP.0b013e3181f058a0](https://doi.org/10.1097/JCP.0b013e3181f058a0)] [Medline: [20814327](https://pubmed.ncbi.nlm.nih.gov/20814327/)]
10. Puntis S, Oke J, Lennox B. Discharge pathways and relapse following treatment from early intervention in psychosis services. *BJPsych Open* 2018 Sep;4(5):368-374 [FREE Full text] [doi: [10.1192/bjo.2018.50](https://doi.org/10.1192/bjo.2018.50)] [Medline: [30202598](https://pubmed.ncbi.nlm.nih.gov/30202598/)]
11. Novick D, Haro JM, Suarez D, Perez V, Dittmann RW, Haddad PM. Predictors and clinical consequences of non-adherence with antipsychotic medication in the outpatient treatment of schizophrenia. *Psychiatry Res* 2010 Apr 30;176(2-3):109-113. [doi: [10.1016/j.psychres.2009.05.004](https://doi.org/10.1016/j.psychres.2009.05.004)] [Medline: [20185182](https://pubmed.ncbi.nlm.nih.gov/20185182/)]
12. Rummel-Kluge C, Schuster T, Peters S, Kissling W. Partial compliance with antipsychotic medication is common in patients with schizophrenia. *Aust N Z J Psychiatry* 2008 May;42(5):382-388. [doi: [10.1080/00048670801961107](https://doi.org/10.1080/00048670801961107)] [Medline: [18473256](https://pubmed.ncbi.nlm.nih.gov/18473256/)]
13. Gleeson JF, Rawlings D, Jackson HJ, McGorry PD. Agreeableness and neuroticism as predictors of relapse after first-episode psychosis: a prospective follow-up study. *J Nerv Ment Dis* 2005 Mar;193(3):160-169. [doi: [10.1097/01.nmd.0000154841.99550.d3](https://doi.org/10.1097/01.nmd.0000154841.99550.d3)] [Medline: [15729105](https://pubmed.ncbi.nlm.nih.gov/15729105/)]
14. Birchwood M, Smith J, Macmillan F, Hogg B, Prasad R, Harvey C, et al. Predicting relapse in schizophrenia: the development and implementation of an early signs monitoring system using patients and families as observers, a preliminary investigation. *Psychol Med* 1989 Aug;19(3):649-656. [doi: [10.1017/s0033291700024247](https://doi.org/10.1017/s0033291700024247)] [Medline: [2798634](https://pubmed.ncbi.nlm.nih.gov/2798634/)]
15. Spaniel F, Bakstein E, Ayz J, Hlinka J, Sieger T, Hrdlicka J, et al. Relapse in schizophrenia: definitively not a bolt from the blue. *Neurosci Lett* 2018 Mar 16;669:68-74. [doi: [10.1016/j.neulet.2016.04.044](https://doi.org/10.1016/j.neulet.2016.04.044)] [Medline: [27109788](https://pubmed.ncbi.nlm.nih.gov/27109788/)]

16. Eisner E, Drake R, Barrowclough C. Assessing early signs of relapse in psychosis: review and future directions. *Clin Psychol Rev* 2013 Jul;33(5):637-653. [doi: [10.1016/j.cpr.2013.04.001](https://doi.org/10.1016/j.cpr.2013.04.001)] [Medline: [23628908](https://pubmed.ncbi.nlm.nih.gov/23628908/)]
17. Gumley AI, Park C. Relapse prevention in early psychosis. In: French P, Reed M, Smith J, Shiers D, Rayne M, editors. *Promoting Recovery in Early Psychosis: A Practice Manual*. Chichester: West Sussex: Wiley-Blackwell; 2010:157-167.
18. White RG, Gumley AI. Postpsychotic posttraumatic stress disorder: associations with fear of recurrence and intolerance of uncertainty. *J Nerv Ment Dis* 2009 Nov;197(11):841-849. [doi: [10.1097/NMD.0b013e3181bea625](https://doi.org/10.1097/NMD.0b013e3181bea625)] [Medline: [19996723](https://pubmed.ncbi.nlm.nih.gov/19996723/)]
19. Gumley AI, MacBeth A, Reilly JD, O'Grady M, White RG, McLeod H, et al. Fear of recurrence: results of a randomized trial of relapse detection in schizophrenia. *Br J Clin Psychol* 2015 Mar;54(1):49-62. [doi: [10.1111/bjc.12060](https://doi.org/10.1111/bjc.12060)] [Medline: [25040487](https://pubmed.ncbi.nlm.nih.gov/25040487/)]
20. Birchwood M. Pathways to emotional dysfunction in first-episode psychosis. *Br J Psychiatry* 2003 May;182:373-375. [Medline: [12724236](https://pubmed.ncbi.nlm.nih.gov/12724236/)]
21. van Os J, Kapur S. Schizophrenia. *Lancet* 2009 Aug 22;374(9690):635-645. [doi: [10.1016/S0140-6736\(09\)60995-8](https://doi.org/10.1016/S0140-6736(09)60995-8)] [Medline: [19700006](https://pubmed.ncbi.nlm.nih.gov/19700006/)]
22. Gumley AI, Taylor HE, Schwannauer M, MacBeth A. A systematic review of attachment and psychosis: measurement, construct validity and outcomes. *Acta Psychiatr Scand* 2014 Apr;129(4):257-274. [doi: [10.1111/acps.12172](https://doi.org/10.1111/acps.12172)] [Medline: [23834647](https://pubmed.ncbi.nlm.nih.gov/23834647/)]
23. Morriss R, Vinjamuri I, Faizal MA, Bolton CA, McCarthy JP. Training to recognise the early signs of recurrence in schizophrenia. *Cochrane Database Syst Rev* 2013 Feb 28(2):CD005147. [doi: [10.1002/14651858.CD005147.pub2](https://doi.org/10.1002/14651858.CD005147.pub2)] [Medline: [23450559](https://pubmed.ncbi.nlm.nih.gov/23450559/)]
24. Thornicroft G, Farrelly S, Szmukler G, Birchwood M, Waheed W, Flach C, et al. Clinical outcomes of Joint Crisis Plans to reduce compulsory treatment for people with psychosis: a randomised controlled trial. *Lancet* 2013 May 11;381(9878):1634-1641 [FREE Full text] [doi: [10.1016/S0140-6736\(13\)60105-1](https://doi.org/10.1016/S0140-6736(13)60105-1)] [Medline: [23537606](https://pubmed.ncbi.nlm.nih.gov/23537606/)]
25. Farrelly S, Lester H, Rose D, Birchwood M, Marshall M, Waheed W, et al. Improving therapeutic relationships: joint crisis planning for individuals with psychotic disorders. *Qual Health Res* 2015 Dec;25(12):1637-1647. [doi: [10.1177/1049732314566320](https://doi.org/10.1177/1049732314566320)] [Medline: [25583956](https://pubmed.ncbi.nlm.nih.gov/25583956/)]
26. Gleeson JF, Alvarez-Jimenez M, Lederman R. Moderated online social therapy for recovery from early psychosis. *Psychiatr Serv* 2012 Jul;63(7):719. [doi: [10.1176/appi.ps.20120p719](https://doi.org/10.1176/appi.ps.20120p719)] [Medline: [22752039](https://pubmed.ncbi.nlm.nih.gov/22752039/)]
27. Lederman R, Wadley G, Gleeson J, Alvarez-Jimenez M. Using On-Line Technologies to Identify and Track Early Warning Signs of Psychosis. In: *Proceedings of the 21st European Conference on Information Systems ECIS Research in Progress*. 2013 Presented at: ECIS'13; 2013; Utrecht URL: http://aisel.aisnet.org/ecis2013_rip/1 [doi: [10.2139/ssrn.2557864](https://doi.org/10.2139/ssrn.2557864)]
28. Torous J, Andersson G, Bertagnoli A, Christensen H, Cuijpers P, Firth J, et al. Towards a consensus around standards for smartphone apps and digital mental health. *World Psychiatry* 2019 Feb;18(1):97-98 [FREE Full text] [doi: [10.1002/wps.20592](https://doi.org/10.1002/wps.20592)] [Medline: [30600619](https://pubmed.ncbi.nlm.nih.gov/30600619/)]
29. Firth J, Cotter J, Torous J, Bucci S, Firth JA, Yung AR. Mobile phone ownership and endorsement of 'mHealth' among people with psychosis: a meta-analysis of cross-sectional studies. *Schizophr Bull* 2016 Mar;42(2):448-455 [FREE Full text] [doi: [10.1093/schbul/sbv132](https://doi.org/10.1093/schbul/sbv132)] [Medline: [26400871](https://pubmed.ncbi.nlm.nih.gov/26400871/)]
30. Ben-Zeev D, Davis KE, Kaiser S, Krzysos I, Drake RE. Mobile technologies among people with serious mental illness: opportunities for future services. *Adm Policy Ment Health* 2013 Jul;40(4):340-343 [FREE Full text] [doi: [10.1007/s10488-012-0424-x](https://doi.org/10.1007/s10488-012-0424-x)] [Medline: [22648635](https://pubmed.ncbi.nlm.nih.gov/22648635/)]
31. Shiffman S, Stone AA, Hufford MR. Ecological momentary assessment. *Annu Rev Clin Psychol* 2008;4:1-32. [doi: [10.1146/annurev.clinpsy.3.022806.091415](https://doi.org/10.1146/annurev.clinpsy.3.022806.091415)] [Medline: [18509902](https://pubmed.ncbi.nlm.nih.gov/18509902/)]
32. Wright AG, Zimmermann J. Applied ambulatory assessment: Integrating idiographic and nomothetic principles of measurement. *Psychol Assess* 2019 Mar 21. [doi: [10.1037/pas0000685](https://doi.org/10.1037/pas0000685)] [Medline: [30896209](https://pubmed.ncbi.nlm.nih.gov/30896209/)]
33. Bell IH, Lim MH, Rossell SL, Thomas N. Ecological momentary assessment and intervention in the treatment of psychotic disorders: a systematic review. *Psychiatr Serv* 2017 Nov 1;68(11):1172-1181. [doi: [10.1176/appi.ps.201600523](https://doi.org/10.1176/appi.ps.201600523)] [Medline: [28669284](https://pubmed.ncbi.nlm.nih.gov/28669284/)]
34. Ainsworth J, Palmier-Claus JE, Machin M, Barrowclough C, Dunn G, Rogers A, et al. A comparison of two delivery modalities of a mobile phone-based assessment for serious mental illness: native smartphone application vs text-messaging only implementations. *J Med Internet Res* 2013 Apr 5;15(4):e60 [FREE Full text] [doi: [10.2196/jmir.2328](https://doi.org/10.2196/jmir.2328)] [Medline: [23563184](https://pubmed.ncbi.nlm.nih.gov/23563184/)]
35. Barnett I, Torous J, Staples P, Sandoval L, Keshavan M, Onnela J. Relapse prediction in schizophrenia through digital phenotyping: a pilot study. *Neuropsychopharmacology* 2018 Jul;43(8):1660-1666 [FREE Full text] [doi: [10.1038/s41386-018-0030-z](https://doi.org/10.1038/s41386-018-0030-z)] [Medline: [29511333](https://pubmed.ncbi.nlm.nih.gov/29511333/)]
36. Ben-Zeev D, Brenner CJ, Begale M, Duffecy J, Mohr DC, Mueser KT. Feasibility, acceptability, and preliminary efficacy of a smartphone intervention for schizophrenia. *Schizophr Bull* 2014 Nov;40(6):1244-1253 [FREE Full text] [doi: [10.1093/schbul/sbu033](https://doi.org/10.1093/schbul/sbu033)] [Medline: [24609454](https://pubmed.ncbi.nlm.nih.gov/24609454/)]
37. Ben-Zeev D, Brian R, Wang R, Wang W, Campbell AT, Aung MS, et al. CrossCheck: Integrating self-report, behavioral sensing, and smartphone use to identify digital indicators of psychotic relapse. *Psychiatr Rehabil J* 2017 Sep;40(3):266-275 [FREE Full text] [doi: [10.1037/prj0000243](https://doi.org/10.1037/prj0000243)] [Medline: [28368138](https://pubmed.ncbi.nlm.nih.gov/28368138/)]

38. Bucci S, Barrowclough C, Ainsworth J, Machin M, Morris R, Berry K, et al. Actissist: proof-of-concept trial of a theory-driven digital intervention for psychosis. *Schizophr Bull* 2018 Aug 20;44(5):1070-1080 [[FREE Full text](#)] [doi: [10.1093/schbul/sby032](https://doi.org/10.1093/schbul/sby032)] [Medline: [29566206](https://pubmed.ncbi.nlm.nih.gov/29566206/)]
39. Kerz M, Folarin A, Meyer N, Begale M, MacCabe J, Dobson RJ. SleepSight: A Wearables-based Relapse Prevention System for Schizophrenia. In: *Proceedings of the 2016 ACM International Joint Conference on Pervasive and Ubiquitous Computing: Adjunct*. 2016 Presented at: UbiComp'16; September 12-16, 2016; Heidelberg, Germany p. 113-116. [doi: [10.1145/2968219.2971419](https://doi.org/10.1145/2968219.2971419)]
40. Kumar D, Tully LM, Iosif AM, Zakskorn LN, Nye KE, Zia A, et al. A mobile health platform for clinical monitoring in early psychosis: implementation in community-based outpatient early psychosis care. *JMIR Ment Health* 2018 Feb 27;5(1):e15 [[FREE Full text](#)] [doi: [10.2196/mental.8551](https://doi.org/10.2196/mental.8551)] [Medline: [29487044](https://pubmed.ncbi.nlm.nih.gov/29487044/)]
41. Meyer N, Kerz M, Folarin A, Joyce DW, Jackson R, Karr C, et al. Capturing rest-activity profiles in schizophrenia using wearable and mobile technologies: development, implementation, feasibility, and acceptability of a remote monitoring platform. *JMIR Mhealth Uhealth* 2018 Oct 30;6(10):e188 [[FREE Full text](#)] [doi: [10.2196/mhealth.8292](https://doi.org/10.2196/mhealth.8292)] [Medline: [30377146](https://pubmed.ncbi.nlm.nih.gov/30377146/)]
42. Niendam TA, Tully LM, Iosif AM, Kumar D, Nye KE, Denton JC, et al. Enhancing early psychosis treatment using smartphone technology: a longitudinal feasibility and validity study. *J Psychiatr Res* 2018 Jan;96:239-246. [doi: [10.1016/j.jpsychires.2017.10.017](https://doi.org/10.1016/j.jpsychires.2017.10.017)] [Medline: [29126059](https://pubmed.ncbi.nlm.nih.gov/29126059/)]
43. Palmier-Claus JE, Ainsworth J, Machin M, Barrowclough C, Dunn G, Barkus E, et al. The feasibility and validity of ambulatory self-report of psychotic symptoms using a smartphone software application. *BMC Psychiatry* 2012 Oct 17;12:172 [[FREE Full text](#)] [doi: [10.1186/1471-244X-12-172](https://doi.org/10.1186/1471-244X-12-172)] [Medline: [23075387](https://pubmed.ncbi.nlm.nih.gov/23075387/)]
44. Palmier-Claus JE, Rogers A, Ainsworth J, Machin M, Barrowclough C, Lavery L, et al. Integrating mobile-phone based assessment for psychosis into people's everyday lives and clinical care: a qualitative study. *BMC Psychiatry* 2013 Jan 23;13:34 [[FREE Full text](#)] [doi: [10.1186/1471-244X-13-34](https://doi.org/10.1186/1471-244X-13-34)] [Medline: [23343329](https://pubmed.ncbi.nlm.nih.gov/23343329/)]
45. Eisner E, Drake RJ, Berry N, Barrowclough C, Emsley R, Machin M, et al. Development and long-term acceptability of ExPRESS, a mobile phone app to monitor basic symptoms and early signs of psychosis relapse. *JMIR Mhealth Uhealth* 2019 Mar 29;7(3):e11568 [[FREE Full text](#)] [doi: [10.2196/11568](https://doi.org/10.2196/11568)] [Medline: [30924789](https://pubmed.ncbi.nlm.nih.gov/30924789/)]
46. Spaniel F, Vohlídková P, Hrdlicka J, Kožený J, Novák T, Motlová L, et al. ITAREPS: information technology aided relapse prevention programme in schizophrenia. *Schizophr Res* 2008 Jan;98(1-3):312-317. [doi: [10.1016/j.schres.2007.09.005](https://doi.org/10.1016/j.schres.2007.09.005)] [Medline: [17920245](https://pubmed.ncbi.nlm.nih.gov/17920245/)]
47. Spaniel F, Vohlídková P, Kožený J, Novák T, Hrdlicka J, Motlová L, et al. The Information Technology Aided Relapse Prevention Programme in Schizophrenia: an extension of a mirror-design follow-up. *Int J Clin Pract* 2008 Dec;62(12):1943-1946 [[FREE Full text](#)] [doi: [10.1111/j.1742-1241.2008.01903.x](https://doi.org/10.1111/j.1742-1241.2008.01903.x)] [Medline: [18795967](https://pubmed.ncbi.nlm.nih.gov/18795967/)]
48. Španiel F, Hrdlička J, Novák T, Kožený J, Höschl C, Mohr P, et al. Effectiveness of the information technology-aided program of relapse prevention in schizophrenia (ITAREPS): a randomized, controlled, double-blind study. *J Psychiatr Pract* 2012 Jul;18(4):269-280. [doi: [10.1097/01.pra.0000416017.45591.c1](https://doi.org/10.1097/01.pra.0000416017.45591.c1)] [Medline: [22805901](https://pubmed.ncbi.nlm.nih.gov/22805901/)]
49. Komatsu H, Sekine Y, Okamura N, Kanahara N, Okita K, Matsubara S, et al. Effectiveness of information technology aided relapse prevention programme in schizophrenia excluding the effect of user adherence: a randomized controlled trial. *Schizophr Res* 2013 Oct;150(1):240-244 [[FREE Full text](#)] [doi: [10.1016/j.schres.2013.08.007](https://doi.org/10.1016/j.schres.2013.08.007)] [Medline: [23998952](https://pubmed.ncbi.nlm.nih.gov/23998952/)]
50. Eisner E, Bucci S, Berry N, Emsley R, Barrowclough C, Drake RJ. Feasibility of using a smartphone app to assess early signs, basic symptoms and psychotic symptoms over six months: A preliminary report. *Schizophr Res* 2019 Jun;208:105-113 [[FREE Full text](#)] [doi: [10.1016/j.schres.2019.04.003](https://doi.org/10.1016/j.schres.2019.04.003)] [Medline: [30979665](https://pubmed.ncbi.nlm.nih.gov/30979665/)]
51. Campbell MK, Piaggio G, Elbourne DR, Altman DG, CONSORT Group. Consort 2010 statement: extension to cluster randomised trials. *Br Med J* 2012 Sep 4;345:e5661. [doi: [10.1136/bmj.e5661](https://doi.org/10.1136/bmj.e5661)] [Medline: [22951546](https://pubmed.ncbi.nlm.nih.gov/22951546/)]
52. Eldridge SM, Chan CL, Campbell MJ, Bond CM, Hopewell S, Thabane L, PAFS consensus group. CONSORT 2010 statement: extension to randomised pilot and feasibility trials. *Pilot Feasibility Stud* 2016;2:64 [[FREE Full text](#)] [doi: [10.1186/s40814-016-0105-8](https://doi.org/10.1186/s40814-016-0105-8)] [Medline: [27965879](https://pubmed.ncbi.nlm.nih.gov/27965879/)]
53. Allan S, Bradstreet S, Mcleod H, Farhall J, Lambrou M, Gleeson J, EMPOWER Group, et al. Developing a hypothetical implementation framework of expectations for monitoring early signs of psychosis relapse using a mobile app: qualitative study. *J Med Internet Res* 2019 Oct 24;21(10):e14366 [[FREE Full text](#)] [doi: [10.2196/14366](https://doi.org/10.2196/14366)] [Medline: [31651400](https://pubmed.ncbi.nlm.nih.gov/31651400/)]
54. Hoffmann TC, Glasziou PP, Boutron I, Milne R, Perera R, Moher D, et al. Better reporting of interventions: template for intervention description and replication (TIDieR) checklist and guide. *Br Med J* 2014 Mar 7;348:g1687. [doi: [10.1136/bmj.g1687](https://doi.org/10.1136/bmj.g1687)] [Medline: [24609605](https://pubmed.ncbi.nlm.nih.gov/24609605/)]
55. Stoyanov SR, Hides L, Kavanagh DJ, Wilson H. Development and Validation of the User Version of the Mobile Application Rating Scale (uMARS). *JMIR Mhealth Uhealth* 2016 Jun 10;4(2):e72 [[FREE Full text](#)] [doi: [10.2196/mhealth.5849](https://doi.org/10.2196/mhealth.5849)] [Medline: [27287964](https://pubmed.ncbi.nlm.nih.gov/27287964/)]
56. Kay SR, Fiszbein A, Opler LA. The positive and negative syndrome scale (PANSS) for schizophrenia. *Schizophr Bull* 1987;13(2):261-276. [doi: [10.1093/schbul/13.2.261](https://doi.org/10.1093/schbul/13.2.261)] [Medline: [3616518](https://pubmed.ncbi.nlm.nih.gov/3616518/)]
57. Morosini PL, Magliano L, Brambilla L, Ugolini S, Pioli R. Development, reliability and acceptability of a new version of the DSM-IV Social and Occupational Functioning Assessment Scale (SOFAS) to assess routine social functioning. *Acta Psychiatr Scand* 2000 Apr;101(4):323-329. [Medline: [10782554](https://pubmed.ncbi.nlm.nih.gov/10782554/)]

58. Addington D, Addington J, Schissel B. A depression rating scale for schizophrenics. *Schizophr Res* 1990;3(4):247-251. [doi: [10.1016/0920-9964\(90\)90005-r](https://doi.org/10.1016/0920-9964(90)90005-r)] [Medline: [2278986](#)]
59. Sobell LC, Sobell MB. Alcohol Timeline Followback (TLFB). In: Rush Jr AJ, First MB, Blacker D, editors. *Handbook of Psychiatric Measures*. Washington, DC: American Psychiatric Publishing; 2000:477-479.
60. Zigmond AS, Snaith RP. The hospital anxiety and depression scale. *Acta Psychiatr Scand* 1983 Jun;67(6):361-370. [doi: [10.1111/j.1600-0447.1983.tb09716.x](https://doi.org/10.1111/j.1600-0447.1983.tb09716.x)] [Medline: [6880820](#)]
61. Birchwood M, Jackson C, Brunet K, Holden J, Barton K. Personal beliefs about illness questionnaire-revised (PBIQ-R): reliability and validation in a first episode sample. *Br J Clin Psychol* 2012 Nov;51(4):448-458. [doi: [10.1111/j.2044-8260.2012.02040.x](https://doi.org/10.1111/j.2044-8260.2012.02040.x)] [Medline: [23078213](#)]
62. Goodwin I, Holmes G, Cochrane R, Mason O. The ability of adult mental health services to meet clients' attachment needs: the development and implementation of the Service Attachment Questionnaire. *Psychol Psychother* 2003 Jun;76(Pt 2):145-161. [doi: [10.1348/147608303765951186](https://doi.org/10.1348/147608303765951186)] [Medline: [12855061](#)]
63. Thompson K, Kulkarni J, Sergejew AA. Reliability and validity of a new Medication Adherence Rating Scale (MARS) for the psychoses. *Schizophr Res* 2000 May 5;42(3):241-247. [doi: [10.1016/s0920-9964\(99\)00130-9](https://doi.org/10.1016/s0920-9964(99)00130-9)] [Medline: [10785582](#)]
64. Devlin NJ, Shah KK, Feng Y, Mulhern B, van Hout B. Valuing health-related quality of life: an EQ-5D-5L value set for England. *Health Econ* 2018 Jan;27(1):7-22 [FREE Full text] [doi: [10.1002/hec.3564](https://doi.org/10.1002/hec.3564)] [Medline: [28833869](#)]
65. Richardson J, Sinha K, Iezzi A, Khan MA. Modelling utility weights for the Assessment of Quality of Life (AQoL)-8D. *Qual Life Res* 2014 Oct;23(8):2395-2404. [doi: [10.1007/s11136-014-0686-8](https://doi.org/10.1007/s11136-014-0686-8)] [Medline: [24719017](#)]
66. Hoefman RJ, van Exel NJ, de Jong SL, Redekop WK, Brouwer WB. A new test of the construct validity of the CarerQoL instrument: measuring the impact of informal care giving. *Qual Life Res* 2011 Aug;20(6):875-887 [FREE Full text] [doi: [10.1007/s11136-010-9829-8](https://doi.org/10.1007/s11136-010-9829-8)] [Medline: [21197582](#)]
67. Neil ST, Kilbride M, Pitt L, Nothard S, Welford M, Sellwood W, et al. The questionnaire about the process of recovery (QPR): A measurement tool developed in collaboration with service users. *Psychosis* 2009;1(2):145-155. [doi: [10.1080/17522430902913450](https://doi.org/10.1080/17522430902913450)]
68. Schwarzer R, Jerusalem M. Generalized self-efficacy scale. In: Weinman J, Wright S, Johnston M, editors. *Measures in Health Psychology: A User's Portfolio*. England: Windsor; 1995:35-37.
69. Berry K, Wearden A, Barrowclough C, Liversidge T. Attachment styles, interpersonal relationships and psychotic phenomena in a non-clinical student sample. *Pers Individ Diff* 2016;41(4):707-718. [doi: [10.1016/j.paid.2006.03.009](https://doi.org/10.1016/j.paid.2006.03.009)]
70. Chambless DL, Blake KD. Construct validity of the Perceived Criticism Measure. *Behav Ther* 2009 Jun;40(2):155-163. [doi: [10.1016/j.beth.2008.05.005](https://doi.org/10.1016/j.beth.2008.05.005)] [Medline: [19433146](#)]
71. van Wijngaarden B, Schene AH, Koeter M, Vázquez-Barquero JL, Knudsen HC, Lasalvia A, et al. Caregiving in schizophrenia: development, internal consistency and reliability of the Involvement Evaluation Questionnaire--European Version. EPSILON Study 4. European Psychiatric Services: Inputs Linked to Outcome Domains and Needs. *Br J Psychiatry Suppl* 2000(39):s21-s27. [doi: [10.1192/bjp.177.39.s21](https://doi.org/10.1192/bjp.177.39.s21)] [Medline: [10945074](#)]
72. Tait L, Birchwood M, Trower P. A new scale (SES) to measure engagement with community mental health services. *J Ment Health* 2002;11(2):191-198. [doi: [10.1080/09638230020023570-2](https://doi.org/10.1080/09638230020023570-2)] [Medline: [21208145](#)]
73. Moore GF, Audrey S, Barker M, Bond L, Bonell C, Hardeman W, et al. Process evaluation of complex interventions: Medical Research Council guidance. *Br Med J* 2015 Mar 19;350:h1258 [FREE Full text] [doi: [10.1136/bmj.h1258](https://doi.org/10.1136/bmj.h1258)] [Medline: [25791983](#)]
74. Brazier J, Connell J, Papaioannou D, Mukuria C, Mulhern B, Peasgood T, et al. A systematic review, psychometric analysis and qualitative assessment of generic preference-based measures of health in mental health populations and the estimation of mapping functions from widely used specific measures. *Health Technol Assess* 2014 May;18(34):vii-viii, xiii [FREE Full text] [doi: [10.3310/hta18340](https://doi.org/10.3310/hta18340)] [Medline: [24857402](#)]
75. Lal S, Malla A, Marandola G, Thériault J, Tibbo P, Manchanda R, et al. 'Worried about relapse': Family members' experiences and perspectives of relapse in first-episode psychosis. *Early Interv Psychiatry* 2019 Feb;13(1):24-29. [doi: [10.1111/eip.12440](https://doi.org/10.1111/eip.12440)] [Medline: [28524541](#)]
76. Kishimoto T, Agarwal V, Kishi T, Leucht S, Kane JM, Correll CU. Relapse prevention in schizophrenia: a systematic review and meta-analysis of second-generation antipsychotics versus first-generation antipsychotics. *Mol Psychiatry* 2013 Jan;18(1):53-66 [FREE Full text] [doi: [10.1038/mp.2011.143](https://doi.org/10.1038/mp.2011.143)] [Medline: [22124274](#)]
77. Gleeson JF, Alvarez-Jimenez M, Cotton SM, Parker AG, Hetrick S. A systematic review of relapse measurement in randomized controlled trials of relapse prevention in first-episode psychosis. *Schizophr Res* 2010 Jun;119(1-3):79-88. [doi: [10.1016/j.schres.2010.02.1073](https://doi.org/10.1016/j.schres.2010.02.1073)] [Medline: [20347266](#)]

Abbreviations

- AQoL-8D:** Assessment of Quality of Life—8 Dimension
- CHaRT:** Centre for Healthcare Randomised Trials
- ChIP:** check in prompt
- CMHS:** community mental health service

CONSORT: Consolidated Standards of Reporting Trials
cRCT: cluster randomized controlled trial
CTU: Clinical Trials Unit
DMEC: Data Management and Ethics Committee
EMA: ecological momentary assessment
EMPOWER: Early signs Monitoring to Prevent relapse in psychosis and prOmote Well-being, Engagement, and Recovery
EQ-5D-5L: EuroQol 5 Dimension 5 Level
EWS: early warning sign
ICD10: International Classification of Diseases-10
ITAREPS: Information Technology–Aided Relapse Prevention Program in Schizophrenia
JCP: joint crisis plan
MHRA: Medicines and Healthcare products Regulatory Agency
NHS: National Health Service
PCM: perceived criticism measure
PSW: peer support worker
RA: research assistant
RCT: randomized controlled trial
RR: risk ratio
RUQ: Resource Use Questionnaire
SSC: Study Steering Committee
TAU: treatment as usual

Edited by G Eysenbach; submitted 17.06.19; peer-reviewed by E Eisner, T Campellone; comments to author 22.07.19; accepted 27.08.19; published 09.01.20

Please cite as:

Gumley A, Bradstreet S, Ainsworth J, Allan S, Alvarez-Jimenez M, Beattie L, Bell I, Birchwood M, Briggs A, Bucci S, Castagnini E, Clark A, Cotton SM, Engel L, French P, Lederman R, Lewis S, Machin M, MacLennan G, Matrunola C, McLeod H, McMeekin N, Mihalopoulos C, Morton E, Norrie J, Reilly F, Schwannauer M, Singh SP, Smith L, Sundram S, Thomson D, Thompson A, Whitehill H, Wilson-Kay A, Williams C, Yung A, Farhall J, Gleeson J

Early Signs Monitoring to Prevent Relapse in Psychosis and Promote Well-Being, Engagement, and Recovery: Protocol for a Feasibility Cluster Randomized Controlled Trial Harnessing Mobile Phone Technology Blended With Peer Support

JMIR Res Protoc 2020;9(1):e15058

URL: <https://www.researchprotocols.org/2020/1/e15058>

doi: [10.2196/15058](https://doi.org/10.2196/15058)

PMID:

©Andrew Gumley, Simon Bradstreet, John Ainsworth, Stephanie Allan, Mario Alvarez-Jimenez, Louise Beattie, Imogen Bell, Max Birchwood, Andrew Briggs, Sandra Bucci, Emily Castagnini, Andrea Clark, Sue M Cotton, Lidia Engel, Paul French, Reeva Lederman, Shon Lewis, Matthew Machin, Graeme MacLennan, Claire Matrunola, Hamish McLeod, Nicola McMeekin, Cathrine Mihalopoulos, Emma Morton, John Norrie, Frank Reilly, Matthias Schwannauer, Swaran P Singh, Lesley Smith, Suresh Sundram, David Thomson, Andrew Thompson, Helen Whitehill, Alison Wilson-Kay, Christopher Williams, Alison Yung, John Farhall, John Gleeson. Originally published in JMIR Research Protocols (<http://www.researchprotocols.org>), 09.01.2020. This is an open-access article distributed under the terms of the Creative Commons Attribution License (<https://creativecommons.org/licenses/by/4.0/>), which permits unrestricted use, distribution, and reproduction in any medium, provided the original work, first published in JMIR Research Protocols, is properly cited. The complete bibliographic information, a link to the original publication on <http://www.researchprotocols.org>, as well as this copyright and license information must be included.

Minerva Access is the Institutional Repository of The University of Melbourne

Author/s:

Gumley, A;Bradstreet, S;Ainsworth, J;Allan, S;Alvarez-Jimenez, M;Beattie, L;Bell, I;Birchwood, M;Briggs, A;Bucci, S;Castagnini, E;Clark, A;Cotton, SM;Engel, L;French, P;Lederman, R;Lewis, S;Machin, M;MacLennan, G;Matrunola, C;McLeod, H;McMeekin, N;Mihalopoulos, C;Morton, E;Norrie, J;Reilly, F;Schwannauer, M;Singh, SP;Smith, L;Sundram, S;Thomson, D;Thompson, A;Whitehill, H;Wilson-Kay, A;Williams, C;Yung, A;Farhall, J;Gleeson, J

Title:

Early Signs Monitoring to Prevent Relapse in Psychosis and Promote Well-Being, Engagement, and Recovery: Protocol for a Feasibility Cluster Randomized Controlled Trial Harnessing Mobile Phone Technology Blended With Peer Support

Date:

2020-01-01

Citation:

Gumley, A., Bradstreet, S., Ainsworth, J., Allan, S., Alvarez-Jimenez, M., Beattie, L., Bell, I., Birchwood, M., Briggs, A., Bucci, S., Castagnini, E., Clark, A., Cotton, S. M., Engel, L., French, P., Lederman, R., Lewis, S., Machin, M., MacLennan, G. ,... Gleeson, J. (2020). Early Signs Monitoring to Prevent Relapse in Psychosis and Promote Well-Being, Engagement, and Recovery: Protocol for a Feasibility Cluster Randomized Controlled Trial Harnessing Mobile Phone Technology Blended With Peer Support. JMIR RESEARCH PROTOCOLS, 9 (1), <https://doi.org/10.2196/15058>.

Persistent Link:

<http://hdl.handle.net/11343/250288>

License:

CC BY