

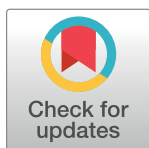
RESEARCH ARTICLE

Effect of exercise training on heart rate variability in type 2 diabetes mellitus patients: A systematic review and meta-analysis

Mathilde Picard¹, Igor Tauveron², Salwan Magdasy², Thomas Benichou¹, Reza Bagheri³, Ukadike C. Ugbolue⁴, Valentin Navel⁵, Frédéric Dutheil^{6*}

1 Endocrinology Diabetology and Metabolic Diseases, CHU Clermont–Ferrand, University Hospital of Clermont–Ferrand, Clermont-Ferrand, France, **2** Endocrinology Diabetology and Metabolic Diseases, Université Clermont Auvergne, GReD, CNRS, INSERM, CHU Clermont–Ferrand, University Hospital of Clermont–Ferrand, Clermont–Ferrand, France, **3** Exercise Physiology, University of Isfahan, Isfahan, Iran, **4** Health and Life Sciences, Institute for Clinical Exercise & Health Science, University of the West of Scotland, University of Strathclyde, Glasgow, Scotland, United Kingdom, **5** Translational Approach to Epithelial Injury and Repair, CHU Clermont-Ferrand, Université Clermont Auvergne, CNRS, INSERM, GReD, University Hospital of Clermont-Ferrand, Ophthalmology, Clermont-Ferrand, France, **6** Université Clermont Auvergne, CNRS, LaPSCo, Physiological and Psychosocial Stress, University Hospital of Clermont–Ferrand, CHU Clermont–Ferrand, Occupational and Environmental Medicine, WittyFit, Clermont–Ferrand, France

* frederic.dutheil@uca.fr



OPEN ACCESS

Citation: Picard M, Tauveron I, Magdasy S, Benichou T, Bagheri R, Ugbolue UC, et al. (2021) Effect of exercise training on heart rate variability in type 2 diabetes mellitus patients: A systematic review and meta-analysis. PLoS ONE 16(5): e0251863. <https://doi.org/10.1371/journal.pone.0251863>

Editor: Walid Kamal Abdelbasset, Prince Sattam Bin Abdulaziz University, College of Applied Medical Sciences, SAUDI ARABIA

Received: December 21, 2020

Accepted: May 4, 2021

Published: May 17, 2021

Peer Review History: PLOS recognizes the benefits of transparency in the peer review process; therefore, we enable the publication of all of the content of peer review and author responses alongside final, published articles. The editorial history of this article is available here: <https://doi.org/10.1371/journal.pone.0251863>

Copyright: © 2021 Picard et al. This is an open access article distributed under the terms of the [Creative Commons Attribution License](https://creativecommons.org/licenses/by/4.0/), which permits unrestricted use, distribution, and reproduction in any medium, provided the original author and source are credited.

Abstract

Background

Cardiac autonomic neuropathy is a common complication of type 2 diabetes mellitus (T2DM), that can be measured through heart rate variability (HRV)—known to be decreased in T2DM. Physical exercise can improve HRV in healthy population, however results are under debate in T2DM. We conducted a systemic review and meta-analysis to assess the effects of physical exercise on HRV in T2DM patients.

Method

PubMed, Cochrane, Embase, and ScienceDirect databases were searched for all studies reporting HRV parameters in T2DM patients before and after exercise training, until September 20th 2020, without limitation to specific years. We conducted random-effects meta-analysis stratified by type of exercise for each of the HRV parameters: RR-intervals (or Normal to Normal intervals–NN), standard deviation of RR intervals (SDNN), percentage of adjacent NN intervals varying by more than 50 milliseconds (pNN50), root mean square of successive RR-intervals differences (RMSSD), total power, Low Frequency (LF), High Frequency (HF) and LF/HF ratio. Sensitivity analyses were computed on studies with the highest quality.

Results

We included 21 studies (9 were randomized) for a total of 523 T2DM patients: 472 had an exercise training and 151 were controls (no exercise). Intervention was endurance (14 studies), resistance (2 studies), endurance combined with resistance (4 studies), and high intensity interval training (HIIT) (4 studies). After exercise training, all HRV parameters improved

Data Availability Statement: All relevant data are included within this article and its [Supporting information](#).

Funding: The authors received no specific funding for this work.

Competing interests: The authors have declared that no competing interests exist.

i.e. an increase in SDNN (effect size = 0.59, 95%CI 0.26 to 0.93), RMSSD (0.62, 0.28 to 0.95), pNN50 (0.62, 0.23 to 1.00), HF (0.58, -0.16 to 0.99), and a decrease in LF (-0.37, -0.69 to -0.05) and LF/HF (-0.52, -0.79 to -0.24). There were no changes in controls. Stratification by type of exercise showed an improvement in most HRV parameters (SDNN, RMSSD, pNN50, LF, HF, LF/HF) after endurance training, whereas mostly LF/HF was improved after both resistance training and HIIT. Supervised training improved most HRV parameters. Duration and frequency of training did not influence the benefits on HRV.

Conclusion

Exercise training improved HRV parameters in T2DM patients which may reflect an improvement in the activity of the autonomic nervous system. The level of proof is the highest for endurance training. Supervised training seemed beneficial.

1. Introduction

Type 2 diabetes mellitus (T2DM), a multifactorial metabolic disorder, has become a global epidemic with a worldwide increasing prevalence [1]. Although there are more than 400 million people with T2DM, by 2045 the prevalence is projected to increase by 51% [1, 2]. Among the many complications of T2DM, cardiac autonomic neuropathy (CAN) is one of the most serious, being strongly associated with the risk of mortality [3]. Its development is associated with the lesion of the autonomic nervous system and may be accompanied by coronary vessel ischemia, arrhythmias, “silent” myocardial infarction, severe orthostatic hypotension, and sudden death syndrome [4].

Interestingly, CAN can be measured through heart rate variability (HRV), that is strongly decreased in T2DM [5, 6]. Despite the gold standard to assess CAN using cardiovascular reflex tests [7], one of the most convenient and reliable assessments is through HRV. HRV can be measured easily using a portable device, non-intrusively and pain-free [8]. The autonomic system degeneration may occur quite early in the course of diabetes and the HRV analysis could be used for detecting subclinical CAN even before demonstration of clinical sign and symptoms. The HRV analysis can provide detailed information about the cardiac regulatory system and it has been demonstrated that T2DM patients exhibit a strong decrease in HRV [5, 6]. HRV is basically the variation between two consecutive heartbeats (RR-intervals) [9]. HRV can be analyzed through various parameters, classically classified as time and frequency domains. Time domains are calculation from RR-intervals (time between two heartbeats), and frequency domains are a more complex power spectral analysis of the HRV. Both domains comprise several parameters that provide information on the activity of the autonomic nervous system, such as sympathetic or parasympathetic activity [10].

Intensified multifactorial intervention in patients with T2DM reduced the risk of CAN progression by 68% [11–13]. Lifestyle modifications with increased physical activity and structured exercises can lead to improvements in HRV, independently of weight change in persons at high risk for diabetes, and in patients with T2DM [11, 14]. Exercise training is a cornerstone of lifestyle intervention [15–17], leading to improved HRV in healthy population [18], but it remains unclear to what extent physical exercise can improve HRV in T2DM. In T2DM, different modalities of exercise have been tested such as endurance [19–21], resistance [22, 23], or high intensity interval training (HIIT) [24, 25]. HIIT provides greater benefits to functional capacity compared to endurance training [26]. Resistance training likewise endurance

training, improves metabolic features, insulin sensitivity and reduces abdominal fat [27, 28]. However, benefits on HRV depending on exercise modality remain unclear. Moreover, other characteristics of training may influence the results. For example, supervised exercises have been proven to be more effective than non-supervised exercises, based on several outcomes [29–31]. Similarly, duration and frequency of training, are strongly linked with putative benefits, but evidence is scarce on HRV in T2DM. Characteristics of patients can also influence benefits of exercise on HRV [32, 33]. Lastly, the relationships between changes in HRV and clinical or biological parameters has also been poorly studied [34–36].

Therefore, we aimed to conduct a systematic review and meta-analysis 1) on the impact of exercise on HRV in patients with T2DM, 2) depending on modalities of exercise such as the type of exercise, its supervision or not, or duration and frequency of sessions, 3) and depending on characteristics of patients.

2. Methods

2.1 Ethics statement

Ethics approval and consent to participate were not applicable for a systematic review and meta-analysis. We did not include personal data or patients in this systematic review and meta-analysis. All authors have agreed to publish the results of this work.

2.2 Literature search

We reviewed all studies reporting the effect of exercise training on HRV in T2DM patients. Animal studies were excluded. The PubMed, Cochrane Library, Science Direct and Embase databases were searched until September 20th 2020, with the following keywords: diabetes AND (exercise OR physical) AND (“heart rate variability” OR HRV). The search was not limited to specific years and no language restrictions were applied. To be included, studies needed to describe our primary outcome variables i.e. HRV data before and after exercise training in T2DM patients, with or without a control group (no physical activity intervention). We excluded studies that assessed the effects of other intervention (such as dietary or psychological intervention) in combination with exercise training. Conferences, congresses or seminars, were excluded. In addition, reference lists from all publications meeting the inclusion criteria were manually searched to identify any further studies not found through the electronic search. Ancestry searches were also completed on previous reviews to locate other potentially eligible primary studies. Two authors (Mathilde Picard, Dutheil Frédéric) conducted the literature searches, reviewed the abstracts, and based on the selection criteria, decided the suitability of the articles for inclusion, and extracted the data. When necessary, disagreements were solved with a third author (Valentin Navel). We followed the guidelines outlined by PRISMA [37] (S1 Checklist).

2.3 Data extraction

The primary outcome analysed was HRV parameters. Time-domain parameters were RR-intervals (or Normal to Normal intervals–NN), standard deviation of RR intervals (SDNN), percentage of adjacent NN intervals varying by more than 50 milliseconds (pNN50), and root mean square of successive RR-intervals differences (RMSSD). Frequency-domain parameters were total power (TP), low frequency (LF), high frequency (HF) and LF/HF ratio. The RMSSD and pNN50 are associated with HF power and hence parasympathetic activity, whereas SDNN is correlated with LF power. Although LF power is an index of both sympathetic and parasympathetic activity, LF power is commonly considered as a measure of sympathetic modulations,

Table 1. Descriptive characteristics of HRV parameters.

HRV parameters			
Acronym	Full name	Unit	Interpretation
Time-domain			
RR	RR-intervals (or Normal to Normal intervals-NN) i.e. beat-by-beat variations of heart rate	ms	Overall autonomic activity
SDNN	Standard deviation of RR intervals	ms	Correlated with LF power
RMSSD	Root mean square of successive RR-intervals differences	ms	Associated with HF power and hence parasympathetic activity
pNN50	Percentage of adjacent NN intervals varying by more than 50 milliseconds	%	Associated with HF power and hence parasympathetic activity
Frequency-domain			
TP	Total power i.e. power of all spectral bands	ms ²	Overall autonomic activity
LF	Power of the high-frequency band (0.15–0.4 Hz)	ms ² (absolute power) or nu (relative power in normalized unit)	Index of both sympathetic and parasympathetic activity, with a predominance of sympathetic
HF	Power of the high-frequency band (0.15–0.4 Hz)		Represents the most efferent vagal (parasympathetic) activity to the sinus node
LF/HF	LF/HF ratio	-	Sympathovagal balance

<https://doi.org/10.1371/journal.pone.0251863.t001>

particularly when expressed in normalised units. In practical terms, an increase of the LF component is generally considered to be a consequence of an increased sympathetic activity [38]. HF power represents the most efferent vagal (parasympathetic) activity to the sinus node [8, 39–42]. Therefore, an increase of the HF component reflects an increased parasympathetic activity. The LF/HF ratio represents the sympathovagal balance (Table 1). Secondary outcomes included HRV parameters before exercise training, characteristics of training (modalities of exercise such as endurance, resistance, or high intensity interval training; supervised or not; duration and frequency of sessions; duration of training; intensity), characteristics of T2DM (duration of T2DM, HbA1c, treatments), clinical (body mass index, blood pressure, VO₂max or VO₂peak, treatments) and biological (total cholesterol, triglycerides, LDL-cholesterol, HDL-cholesterol) parameters, and sociodemographic (age, sex, smoking).

2.4 Quality of assessment

We used the Scottish Intercollegiate Guidelines Network (SIGN) criteria to check the quality of included articles, both for randomized and non-randomized clinical trials, with the dedicated evaluation grids. Checklists consisted of 10 and 7 items, respectively. We gave a general quality score for each included study based on the main causes of bias evaluated in section 1 of the checklist through 4 possibilities of answers (yes, no, can't say or not applicable) [43] (S1 Appendix). In addition, we also used the 0–10 Physiotherapy Evidence Database (PEDro) scale for a complementary overview of the quality of the studies (S2 Appendix).

2.5 Statistical considerations

We conducted meta-analyses on the effect of exercise on HRV parameters in T2DM. P values less than 0.05 were considered statistically significant. For the statistical analysis, we used Stata software (version 16, StataCorp, College Station, US) [44–48]. Main characteristics were synthesized for each study population and reported as mean ± standard-deviation (SD) for continuous variables and number (%) for categorical variables. We conducted random effects meta-analyses (DerSimonian and Laird approach) when data could be pooled (more than five data for the same outcome) [49]. Particular attention was paid towards short recordings (1 minute) of HRV parameters [50]. First, we calculated the effect size (ES, standardised mean

differences–SMD) [51] of each HRV parameter after exercise compared to baseline (before exercise) in T2DM. ES is a unitless measure centered at zero if HRV does not differ between measures before and after exercise. A positive ES denotes higher levels of the tested HRV parameter in T2DM patients after exercise. An ES of 0.8 reflects a large effect, 0.5 a moderate effect, and 0.2 a small effect. As ES is a unitless measure and as we compared data after and before exercise, frequency-domain HRV parameters measured in ms^2 or in normalized unit (nu) were combined. In addition, we conducted meta-analyses stratified on type of exercise (endurance, resistance, mixed, HIIT), supervision of exercise or not. We also conducted a meta-analysis on controls to verify the absence of changes within each HRV parameter. We searched for potential publication bias using funnel plots of all aforementioned meta-analyses and we evaluated heterogeneity by examining forest plots, confidence intervals (CI) and I-squared (I^2). A low heterogeneity is reflected by I^2 values <25%, modest for 25–50%, and high for >50%. We verified the strength of our results by conducting further meta-analyses (sensitivity analyses) after exclusion of studies that were not evenly distributed around the base of the funnel. Lastly, we reperformed the aforementioned meta-analyses only using the studies with the highest level of proof, i.e. only on randomised studies and only on randomized controlled studies. When possible (sufficient sample size), meta-regressions were proposed to study the relationship between changes in HRV parameter (RR intervals, RMSSD, pNN50, SDNN, total power, LF, HF, LF/HF) and clinically relevant parameters such as characteristics of intervention (type of exercise, supervised or not, duration and number of sessions, frequency, intensity), clinical parameters (time from T2DM diagnosis, HbA1c, etc.), sociodemographic (age, sex, etc.), or methods of measurement of HRV, and their changes when pertinent. Results were expressed as regression coefficients and 95% CI.

3. Results

An initial search produced 6641 possible articles. After removal of duplicates using Zotero® software, all possible articles were manually checked by two authors. The use of the selection criteria reduced the number of articles reporting the effect of exercise on HRV in T2DM patients to 21 articles in the systematic review, among which 18 articles were included in the meta-analysis (inter-reader agreement $\kappa = 0.89$) (Fig 1). Three articles were not included in the meta-analysis because they only reported ratio between longest and shortest RR-intervals; they were also distinguishable because they measured HRV manually on electrocardiogram recording of 1 minute [19, 52, 53]. All included articles were written in English. The main characteristics of the studies are reported in Table 2.

3.1 Quality of articles

The assessment of the quality of these 21 studies was performed using the score SIGN. Results varying from 20% [24] to 80 [23] for Yes responses, with a mean score of 45.7 ± 14.7 . Few studies showed a high level of proof mainly due to the lack of a control group or a poor method of randomisation (S2 Appendix and S1 Fig). Using the PEDro scale, scores ranged from 2 [19, 20, 24] to 6 [23, 54–56] out of 10 (S2 Appendix and S2 Fig).

3.2 Study designs and objectives

Included studies were published from 2003 to 2019 and conducted in various geographic locations. All the 21 included studies measured HRV parameters in T2DM patients before and after physical exercise program. Seven studies had a control group of T2DM patients without exercise: five were RCT [25, 52, 54, 56, 57] and two were non-RCT [19, 58]. Five studies compared different T2DM groups of exercise (and had no group without exercise): four were

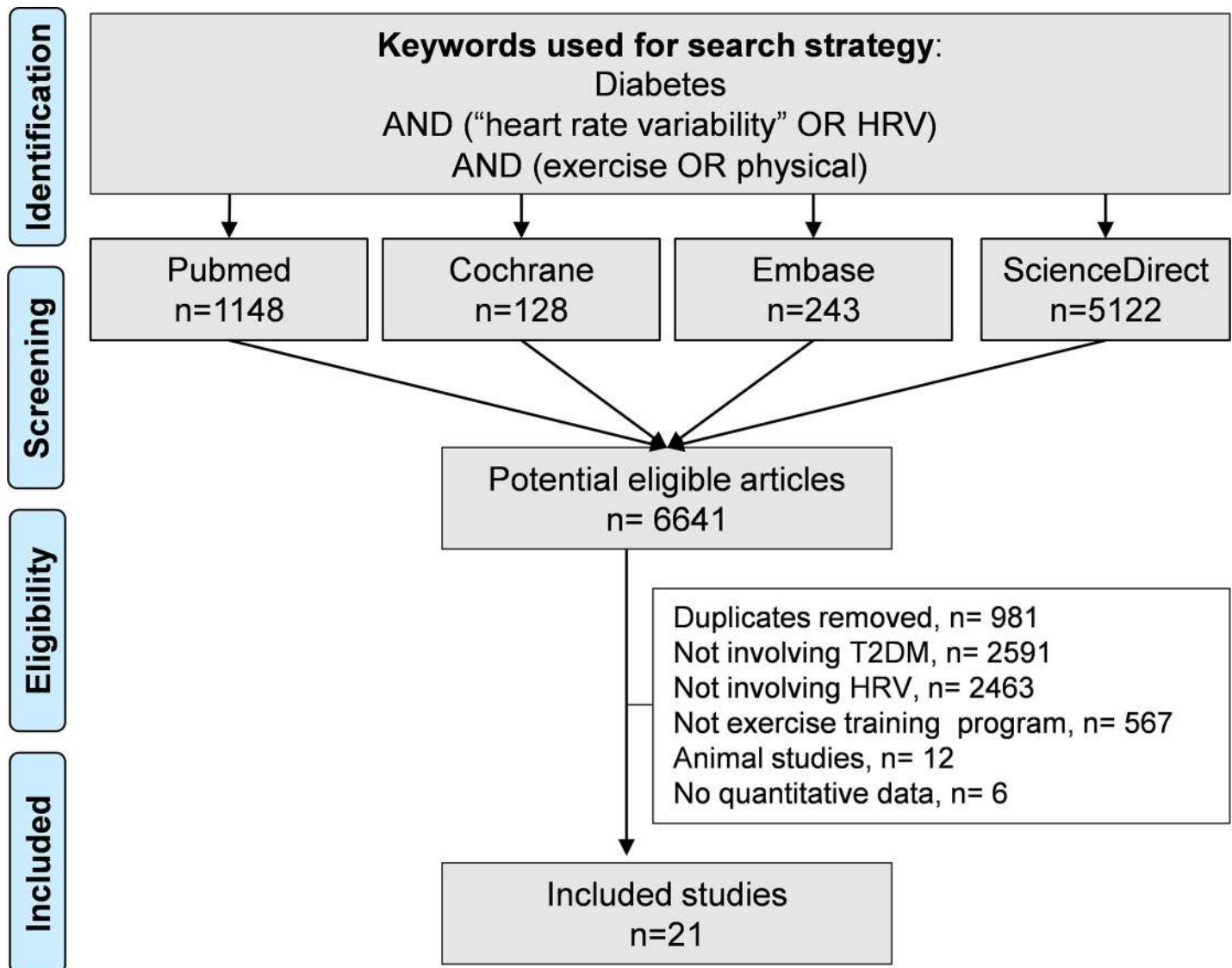


Fig 1. Flow diagram in accordance with the PRISMA guidelines.

<https://doi.org/10.1371/journal.pone.0251863.g001>

randomized [23, 53, 55, 59], and one not [22]. They assessed the influence of the type [23, 53, 55] or frequency/duration [22, 59] of exercise. Four studies had a control group of non-T2DM patients undergoing the same exercise training than the T2DM [20, 21, 60, 61]. One study compared T2DM patients with or without cardiac autonomic neuropathy [62]. Four were pre-post single group studies [24, 63–65].

3.3 Study characteristics: Inclusion and exclusion criteria

Included patients had to have T2DM, without further details for most studies. Inclusion criteria for T2DM patients were biological in five studies (fasting glucose > 126 mg/dl [19, 22, 52, 60, 61] or glucose levels > 200 mg/dl after an oral glucose tolerance test [60, 61]). Most studies included patients with sedentary behavior or low level of physical activity [21–23, 56, 60–62, 65, 66], i.e. less than 3 hours of physical activity per week [65] or less than 60 min moderate

Table 2. Characteristics of included studies.

Study	Country	Design	Patients			Exercise					HRV measures			Other outcomes*	
			n analyzed	Age, mean (years ±SD)	Men (%)	Type / group	Duration (months)	Intensity	Session /week	Supervision	HRV parameters*	Deep breathing	ECG (min)		
Abdelbasset 2019	Egypt	RCT	20	52.4 ±4.6	100%	HIIT	4	4 intervals of 4 min at 80–90% of MHR with 2 min at 50–60% of MHR between each	30 min	3	Yes	HRV lying (RR↘, SDNN↗, RMSSD↗, LF↗, HF↗, LF/HF↘)	No	5	HbA1c, BMI, total cholesterol, HDL, LDL, triglycerides, VO ₂
			20	51.5 ±5.1		Control					-				
Bellavere 2018	Italy	R Comp. Type of exercise	19	57.1 ±1.6	68%	End.	4	Up to 60–65% of HRR	60 min	3	Yes	HRV lying and standing (TP, LF↘, HF↗, LF/HF↘)	No	10	HbA1c, BMI, total cholesterol, HDL, LDL, triglycerides, VO ₂
			11	53.4 ±2.0	82%	Resist.		Up to 3 sets of 10 repetitions at 70–80% 1-RM			Yes				
Bhagyalakshmi 2007 ¹	India	Non-RCT	28	61.8 ±3.1	79%	End.	9	Unclear	45 min	7	Yes	HRV lying (↗ difference shortest and longest RR)	Yes	1	HbA1c
			20	59.5 ±2.8	50%	Control					-				
Cassidy 2019	UK	RCT	11	60.0 ±3.0	82%	HIIT	3	5 intervals of 2 min (up to 3 min 50 s) at > 80 RPM and RPE 16–17 with 3 min recovery between each	30–40 min	3	No	HRV lying (RR, SDNN, LF, HF, LF/HF)	No	20	HbA1c, BMI, blood pressure, VO ₂
			11	59.0 ±3.0	73%	Control					-				
Duennwald 2014	Austria	R Comp. Type of exercise	8	59.6 ±5.7	75%	HIIT	1	5 intervals of 4 min at 90–95% of MHR with 3 min at 70% of MHR between each 70% of MHR	42 min	3	Yes	HRV lying (RR, SDNN)	No	4	HbA1c, BMI, blood pressure, total cholesterol, HDL, VO ₂
			7	59.6 ±6.1	71%	End.					Yes				
Faulkner 2014	USA	Non-R T2DM vs no T2DM	9	14.7 ±1.8	11%	End. (T2DM)	4	60–75% of MHR	60 min	5	No	HRV 24h (RMSSD, pNN50, SDNN, TP, LF, HF)	No	1440	HbA1c, BMI, total cholesterol, HDL, LDL, triglycerides, VO ₂
			10	14.6 ±1.6	40%	End. (No T2DM)					No				
Figuroa 2007	USA	Non-R T2DM vs no T2DM	8	50.0 ±2.8	0%	End. (T2DM)	4	65% of VO ₂ peak	30–45 min	4	+/-	HRV lying (LF, HF, LF/HF)	Yes	5	HbA1c, BMI, blood pressure, VO ₂
			12	48.0 ±6.9	0%	End. (No T2DM)					+/-				

(Continued)

Table 2. (Continued)

Study	Country	Design	Patients			Exercise				HRV measures			Other outcomes*		
			n analyzed	Age, mean (years ±SD)	Men (%)	Type / group	Duration (months)	Intensity	Session /week	Supervision	HRV parameters*	Deep breathing		ECG (min)	
Goit 2014	Nepal	Pre-post	20	42.2 ±6.4	100%	End.	6	60–85% of HRR	50 min	3	Yes	HRV lying (SDNN, RMSSD /, pNN50 /, LF /, HF /, LF/HF /)	No	5	HbA1c, BMI, blood pressure, HDL, LDL, triglycerides
			41	44.2 ±4.5	100%	End.	6	50–70% of HRR	50 min	3	Yes	HRV lying (SDNN /, RMSSD /, pNN50 /, LF /, HF /, LF/HF /)	No	5	HbA1c, BMI, blood pressure, total cholesterol, HDL, LDL, triglycerides
Gouloupoulou 2010	USA	Non-R T2DM vs no T2DM	26	50.0 ±5.1	50%	End. (T2DM)	4	65% of VO ₂ peak	30–45 min	4	+/-	HRV lying (TP)	Yes	5	HbA1c, BMI, blood pressure, total cholesterol, HDL, LDL, triglycerides, VO ₂
			36	49.0 ±6.0	39%	End. (No T2DM)					+/-				
Kanaley 2009	USA	Non-R. T2DM vs no T2DM	22	50.0 ±1.6	45%	End. (T2DM)	4	65% of VO ₂ peak	30–45 min	4	+/-	HRV lying (TP)	Yes	5	HbA1c, BMI, VO ₂
			34	49.0 ±0.9	38%	End. (No T2DM)									
Kang 2016	Korea	RCT	8	56.0 ±7.4	0%	End. & Resist.	3	60% of HRR + 2 sets 9 exercises	30 + 30 min	3	Yes	HRV lying (RMSSD, SDNN, LF, HF, LF/HF)	No	5	HbA1c, BMI, blood pressure, total cholesterol, HDL, LDL, triglycerides, VO ₂
			8	57.5 ±4.6	0%	Control					-				
Loimaala 2003	Finland	RCT	24	53.6 ±6.2	100%	End. & Resist.	12	65–75% of VO ₂ peak 3 sets of 10–12 repetitions at 70–80% max. voluntary contraction	30 min	4	+/-	HRV lying (SDNN, pNN50, LF, HF, LF/HF)	No	1440	HbA1c, BMI, blood pressure, VO ₂
			25	54.0 ±5.0		Control					-				
Moawad 2015	Egypt	Non-R Comp. Type of exercise	20	50.5 ±8.6	100%	End.	3	60–85% of HRR RPE “very to fairly light” up to “somewhat hard”	50 min	3	Yes	HRV lying (RMSSD /, SDNN /, pNN50 /)	No	10	BMI, blood pressure
			18	51.3 ±6.1	100%	Resist.			5–20 min		-				

(Continued)

Table 2. (Continued)

Study	Country	Design	Patients			Exercise				HRV measures			Other outcomes*		
			n analyzed	Age, mean (years ±SD)	Men (%)	Type / group	Duration (months)	Intensity	Session /week	Supervision	HRV parameters*	Deep breathing		ECG (min)	
Pagkalos 2008	Greece	Non-R Comp. CAN status	15	55.8 ±5.6	27%	End. (CAN -)	6	70–85% of HRR	45–75 min	3	Yes	HRV lying (RMSSD↗, SDNN↗, pNN50↗, LF↗, HF↗, LF/HF↘)	No	1440	HbA1c, BMI, blood pressure, total cholesterol, HDL, LDL, triglycerides, VO ₂
			17	56.2 ±5.8	35%	End. (CAN +)				Yes					
Parpa 2009	USA	Pre-post	14	57.0 ±6.7	36%	HIIT	3	6 intervals of 2 min at 80–90% of MHR with 2 min at 50–60% MHR between each	30 min	4	Yes	HRV lying (SDNN↗)	No	5	Blood pressure
Sacre 2014	Australia	Non-RCT	22	59.0 ±10.0	59%	End. & Resist.	6	RPE “moderate-vigorous”	75 min	2	+/-	HRV lying (RR↘, SDNN↗, RMSSD, TP↗, LF, HF, LF/HF)	No	5	HbA1c, BMI, blood pressure, total cholesterol, HDL, LDL, triglycerides
			25	60.0 ±9.0	40%	Control									
Simmonds 2012	Australia	R Comp. frequency & duration of sessions	8	68.6 ±2.8	0%	End.	3	At 100% of Tge	60 min	2	unclear	HRV lying (RR, SDNN↗, RMSSD↗, LF, HF↗, LF/HF)	No	10	HbA1c, total cholesterol, HDL, LDL, triglycerides, VO ₂
			7	69.3 ±2.5	0%	End.			30 min	4	unclear				
Sridhar 2010 [†]	India	RCT	55	61.8 ±3.1	56%	End.	12	Unclear	45 min	5	Yes	HRV lying: ↗ ratio between longest RR and shortest	Yes	1	HbA1c, BMI, blood pressure
			50	59.5 ±2.8	55%	Control									
Wormgoor 2018 [†]	New Zealand	R Comp. Type of exercise	11	52.5 ±7.0	100%	End. & Resist.	3 and 6	Up to 26 min 55% eWLmax & 2 sets of 12 repetitions at 75% of 1-RM	60 min	3	+/-	HRV lying: ratio between longest RR and shortest	Yes	1	HbA1c, BMI, HDL, triglycerides, VO ₂
			11	52.2 ±7.1	100%	HIIT & Resist		Up to 12 (or 8) intervals of 1 min at 95% (or 120) eWLmax with 1 (or 2.25) min at 40 (or 30%) eWLmax between each & 2 sets of 12 repetitions at 75% of 1-RM							

(Continued)

Table 2. (Continued)

Study	Country	Design	Patients			Exercise					HRV measures		Other outcomes*		
			n analyzed	Age, mean (years ±SD)	Men (%)	Type / group	Duration (months)	Intensity	Session /week	Supervision	HRV parameters*	Deep breathing		ECG (min)	
Zoppini 2007	Italy	Pre-post	12	65.7 ±5.6	42%	End.	6	50–70% of HRR	60 min	2	Yes	HRV lying (RR, TP, LF, HF, LF/HF)	No	10	HbA1c, BMI, blood pressure, HDL, LDL, triglycerides

1-RM: one repetition maximum, DB: Deep Breathing, End.: endurance training, eWLMmax: estimate maximal workload, HBP: high-blood pressure; HIIT: high intensity interval training, HRR: heart rate reserve, MHR: maximum heart rate, N: sample size, Non-RCT: non-randomized controlled trial, R Comp. Type of exercise: randomized comparative on type of exercise, RCT: randomized controlled trial, Resist.: resistance training, RPE: rating of perceived exertion, RPM: revolutions per minute, Tge: gas-exchange threshold, +/- means partially supervised, * supervised during 12 weeks, not supervised after, data at 6 months considered as “partially supervised”.

*: only significant increase (↗) or decrease (↘) are presented (differences between groups or after vs before exercise training).

†: not included in the meta-analyses.

<https://doi.org/10.1371/journal.pone.0251863.t002>

vigorous activity per week [25], or not being involved in regular physical activity [20–23, 60–62]. Some studies required patients to be aged over 35 [53], 40 [23, 58, 60, 61] or 65 [59] years old, or under 60 [53, 60, 61], 65 [55], 70 [23], 74 [59] years old, or between 12 and 19 years old [20]. Nine studies included sex-specific populations: men [22, 53, 56, 57, 63, 64] or women [21, 54, 59]. Six studies included patients according to their body mass index (BMI): >30 [21, 56, 60, 61, 64] or between 24 and 36 kg.m⁻² [23]. The main exclusion criteria were: smoking [21, 23, 24, 55, 56, 59–61, 63–65], exogenous insulin [21, 22, 25, 55, 56, 59, 63], beta blockers or arrhythmia [19, 21, 23, 25, 52, 55, 56, 59–61, 63, 64], and cardiovascular disease [21, 23–25, 52, 53, 55, 56, 58, 60, 61, 63–66].

3.4 Characteristics of population

3.4.1 Sample size. Ranged from 11 [65] to 105 [52]. We included a total of 623 T2DM patients: 472 underwent an exercise training, and 151 were controls (no exercise training).

3.4.2 Age. The mean age of T2DM patients following exercise training was 54.5 years (95% CI 48.6 to 60.4), ranging from 69.3 ±2.5 [59] to 14.7 ±1.8 [20], and 58.4 years (95% CI 56.0 to 60.9) in the T2D controls, ranging from 60 ±9 [58] to 51.8 ±5.1 [56].

3.4.3 Gender. The proportion of men varied from 0% [21, 54, 59] to 100% [22, 53, 56, 57, 63, 64] in T2DM patients following exercise training, and also from 0% [54] to 100% [56, 57] in T2DM not following any exercise training with a mean of 60% (95% CI 50 to 70) and 60% (95% CI 36 to 83) respectively.

3.4.4 T2DM duration. The mean time from T2DM diagnosis was 9.1 years (95% CI 7.0 to 11.1) ranging from 18.6 ±4.6 [63] to 1.6 ±1.4 [20] years for T2D patients following exercise training and 6.2 years (95% CI 5.0 to 7.4) ranging from 8.3 ±4.2 [56] to 5 ±1 [25] for T2D controls. T2DM duration was not reported in 7 studies [21, 24, 54, 57, 59–61].

3.4.5 Metabolic control. (HbA1c) was reported in all studies except two [22, 24]. The mean HbA1c patients following exercise training was 7.5% (95% CI 7.2 to 7.7) in T2DM patients, ranging from 10.4 ±2.2 [64] to 6.4 ±0.6 [54], and 7.7% (95% CI 7.1 to 8.4) in controls, ranging from 8.7 ±0.32 [52] to 6.4 ±0.5 [54].

3.4.6 BMI. Was reported in all studies except four [19, 24, 59]. The mean BMI patients following exercise training was 29.5 kg/m² (95% CI 28.3 to 30.7) in T2DM patients, ranging from 39.2 ±9.4 [53] to 23.9 ±2.9 [54], and 28.3 kg/m² (95% CI 27.1 to 29.6) in controls, ranging from 34.6 ±1.8 [56] to 25.5 ±3.1 [54].

3.4.7 Blood pressure. was reported in all studies except seven [19, 20, 23, 53, 56, 59, 61]. Mean blood pressure (systolic/diastolic) following exercise training was 129.2/81.2 mmHg (95% CI 123.0/78.7 to 135.3/83.7) in T2DM patients, and ranged from 144.2/88.6 [52] to 117.3 [62] / 61.5 [60]. The Mean blood pressure was 133.2/79.6 mmHg (95% CI 119.8/73.0 to 146.7/86.1) in the control group without exercise, and ranged from 145.2/87.0 [52] to 119.0 [25] / 70.0 [58].

3.4.8 Blood lipid levels. Total cholesterol was reported in 11 studies [20, 23, 54–56, 58–60, 62–64] HDL cholesterol in 13 studies [20, 23, 53–56, 58–60, 62, 63, 65, 67], LDL in 11 [20, 23, 54, 56, 58–60, 62–65] and triglycerides in 12 studies [20, 23, 53, 54, 56, 59, 60, 62–65, 68].

3.4.9 Aerobic capacity. VO₂max and VO₂peak were reported in 3 [53, 54, 57] and 10 studies [20, 21, 23, 25, 55, 56, 59–62] respectively. Most studies measured VO₂ with gas exchange analysis during incremental exercise tests using cycle ergometer [20, 23, 25, 53, 55] or treadmill [21, 56, 57, 59–62]. VO₂max was extrapolated from sub-maximal measures in one study [54]. We chose to use VO₂peak as a generalization in this article. Mean VO₂peak was 24.3 mL.min⁻¹.kg⁻¹ (95% CI 22.3 to 26.2) for exercise groups; before commencing the training program, VO₂peak ranged from 18 ±2.8 mL.min⁻¹.kg⁻¹ [59] to 31.9 ±5.1 [57]. Mean VO₂peak

was $25.2 \text{ mL}\cdot\text{min}^{-1}\cdot\text{kg}^{-1}$ (95% CI 20.5 to 29.9) for controls, and ranged from 20.3 ± 1.8 [25] to 32.2 ± 6.4 [57].

3.5 Intervention

3.5.1 Type of exercise. Most studies (18/21) explored the effects of endurance training. Among those, 4 studies had endurance combined with resistance training [53, 54, 57, 58]. Two studies had only a group of resistance training [22, 23]. Five studies had an HIIT intervention [24, 25, 53, 55, 56], in combined form with resistance training in one study [53]. For endurance training and HIIT, treadmill or cycle ergometer were used in most of the studies, and outdoors walking in others, without further details in two study [57, 58]; stepper seat [22], isotonic machine [53] or weigh machine [23, 54] were used for resistance exercises.

3.5.2 Duration of exercise session. The duration of each exercise session ranged from 30 [21, 24, 25, 56, 57, 59–61] to 75 min [58, 62]. The duration gradually increased during the training program for 7 studies [21, 22, 25, 60–62, 68].

3.5.3 Frequency. The frequency of exercise session ranged from 2 [57, 58, 65] to 7 [19] times per weeks; 3 times per week in ten studies [22, 23, 25, 53–56, 62–64], 4 times in four studies [21, 24, 60, 61], 5 times in two studies [20, 52], and one study compared the effect of exercise twice and 4 times a week [59].

3.5.4 Duration of intervention. Varied from 1 [55] to 12 [52, 57] months; 3 months in five studies [22, 24, 25, 54, 59], 4 months in 6 studies [20, 21, 23, 56, 60, 61], 6 months in 6 studies [53, 62–65, 68] and 9 months in one study [19].

3.5.5 Intensity. For the endurance training program, the targeted intensity was based on maximal heart rate for 2 studies [20, 55] (varying from 60% [20] to 70% [55]), on heart rate reserve for 7 studies [22, 23, 54, 62–65] (varying from 50–70% [64, 65] to 70–85% [62]), and for percentage of VO_2peak in 4 studies [21, 57, 60, 61] (varying from 65% studies [21, 60, 61] to 65–75% [57]). Two studies did not provide precise details regarding the intensity of exercises [19, 52] and one used “moderate vigorous” exercises without further details [58]. The control of the intensity during exercise was achieved by using a heart rate monitor in 13 studies [20, 21, 23, 24, 53–55, 57–62], the Borg scale in one study [25], and was not reported in 7 studies [19, 22, 52, 56, 63–65]. Heterogeneity of intensity measurements precluded further analyses.

3.5.6 Supervision. The exercises were supervised in 12 studies [19, 22–24, 52, 54–56, 62–65], in one study the exercises were supervised for 3 months and non-supervised for 3 additional months [53], in 5 studies exercises were partially supervised [21, 57, 58, 60, 61], in 2 studies exercise were not supervised [20, 25], and the supervision was not mentioned in one study [59].

3.6 HRV measures

3.6.1 Measures condition. Most studies used ECG, achieved in a resting supine position, to determine HRV [19, 21, 23, 25, 53, 55, 56, 58, 60, 61, 63, 65, 67] up to 20 minutes [25]. Two studies used a 24-hour holter-ECG [20, 62] and two other studies used a chest strap coupled to a wristwatch receiver (Polar Electro Oy) [57, 59]. Most studies measured HRV at spontaneous breathing, while in deep breathing in six studies [19, 21, 52, 53, 60, 61]. After recording, most studies used a data acquisition system, except three that measured R-R intervals manually [19, 52, 63].

3.6.2 Duration of measures. Recordings lasted between one [19, 52, 53] and 20 min [25], 5 min in the majority of studies [21, 24, 54, 56, 60, 61, 63, 64, 68]; and 24 h in 3 studies [20, 57, 62].

3.6.3 Parameters reported. Most studies reported time and frequency domains, except three reporting only the ratio or the difference between the longest and the shortest RR interval [19, 52, 53]. For time domain parameters, RR intervals (RRI) was reported in 5 studies [25, 55, 59, 65, 68], SDNN in 13 studies [22, 24, 25, 54–57, 59, 62–64, 66, 68], RMSSD in 9 studies [20, 22, 54, 56, 59, 62–64, 68], and PNN50 in 6 studies [22, 57, 62–64, 66]. For frequency domain parameters, the total power was reported in 6 studies [23, 58, 60, 61, 65, 66], LF in 13 studies [20, 21, 23, 25, 54, 56, 57, 59, 62–65, 68], HF in 13 studies [20, 21, 23, 25, 54, 56–59, 62–65] and LF/HF in 12 studies [21, 23, 25, 54, 56–59, 62–65]. We excluded inconsistent data of LF/HF from one study [60].

3.7 Meta-analysis on the effect of physical exercise on HRV

After exercise training several time domains indices significantly improved in T2DM patients (Fig 2) i.e. an increased SDNN (effect size = 0.59, 95% CI 0.26 to 0.93) [22, 24, 25, 54–57, 59, 62–64, 66, 68], RMSSD (0.62, 0.28 to 0.95) [20, 22, 54, 56, 59, 62–64, 68], PNN50 (0.62, 0.23 to 1.00) [22, 57, 62–64, 66] (S3–S6 Figs). For frequency domains (Fig 3), LF decreased (-0.37, -0.69 to -0.05) [20, 21, 23, 25, 54, 56, 57, 59, 62–65, 68], HF (0.58, 0.16 to 0.99) [20, 21, 23, 25, 54, 56–59, 62–65], and LF/HF (-0.52, -0.79 to -0.24) [20, 21, 23, 25, 54, 56–59, 62–65] increased. All aforementioned meta-analyses had a high degree of heterogeneity (> 60%). TP did not differ between groups (0.03, -0.18 to 0.23) [23, 58, 60, 61, 65, 66] (S7–S10 Figs). None of these parameters varied in control groups from RCTs [25, 54, 56–58] (S3–S10 Figs).

3.8 Meta-analysis stratified by type of exercise

After **endurance** training, all time and frequency domains measures were improved in T2DM patients: SDNN (effect size = 0.65, 95%CI 0.19 to 1.10) [20, 22, 55, 59, 62–64], RMSSD (0.66, 0.21 to 1.11) [22, 59, 62–64, 66], PNN50 (0.87, 0.57 to 1.18) [20, 22, 62–64], and HF (0.56, 0.18 to 0.94) [20, 21, 23, 59, 62–65] were significantly higher; LF (-0.55, -0.95 to -0.15) [20, 21, 23, 59, 62–65] and LF/HF (-0.49, -0.74 to -0.24) [21, 23, 59, 62–65] were significantly lower. After **resistance** training, only LF (-0.9, -1.56 to -0.30) [23] and LF/HF (-0.96, -1.59 to -0.33) [23] were significantly lower, without any changes for other time (SDNN, RMSSD, and PNN50) and frequency (HF) domain parameters. After **combined endurance and resistance** training, there were no changes in any of HRV parameters. After **HIIT**, only two of the aforementioned parameters were improved: RMSSD (1.26, 0.58 to 1.94) [56] and LF/HF (-1.63, -2.64 to -0.62) [25, 56] (Figs 2 and 3).

For **comparisons between type of exercises**, metaregressions showed that LF/HF was more improved after endurance (0.55, 0.11 to 0.98) or resistance (1.022, 0.23 to 1.81) training compared with combined endurance and resistance training, and was more improved after HIIT compared with endurance (-1.19, -1.89 to -0.48) or combined endurance and resistance training (-1.73, -2.49 to -0.98). PNN50 was more improved after endurance training compared with combined endurance and resistance training (-1.12, -2.07 to -0.161) (Fig 4).

3.9 Meta-analysis stratified by type of supervision

After a **supervised** training, SDNN (effect size = 0.84; 95%CI 0.42 to 1.25) [22, 24, 54, 54–56, 62–64], RMSSD (0.82, 0.43 to 1.21) [22, 54, 56, 62–64], pPNN50 (0.85, 0.55 to 1.15) [20, 22, 62–64] were significantly higher; LF (-0.61, -1.01 to -0.21) [23, 54, 56, 62–65] and LF/HF (-0.72, -1.07 to -0.37) [23, 54, 56, 62–65] were significantly lower, HF (0.82, 0.26 to 1.37) [23, 54, 56, 62–65] was significantly higher. After a **partially supervised** training, there were no changes in any HRV parameters except an increase in LF (0.33, 0.01 to 0.65) [21, 57, 58]. After **unsupervised** training, only LF/HF (-1.09, -1.99 to -0.19) [25] was significantly lower (Figs 2 and 3).

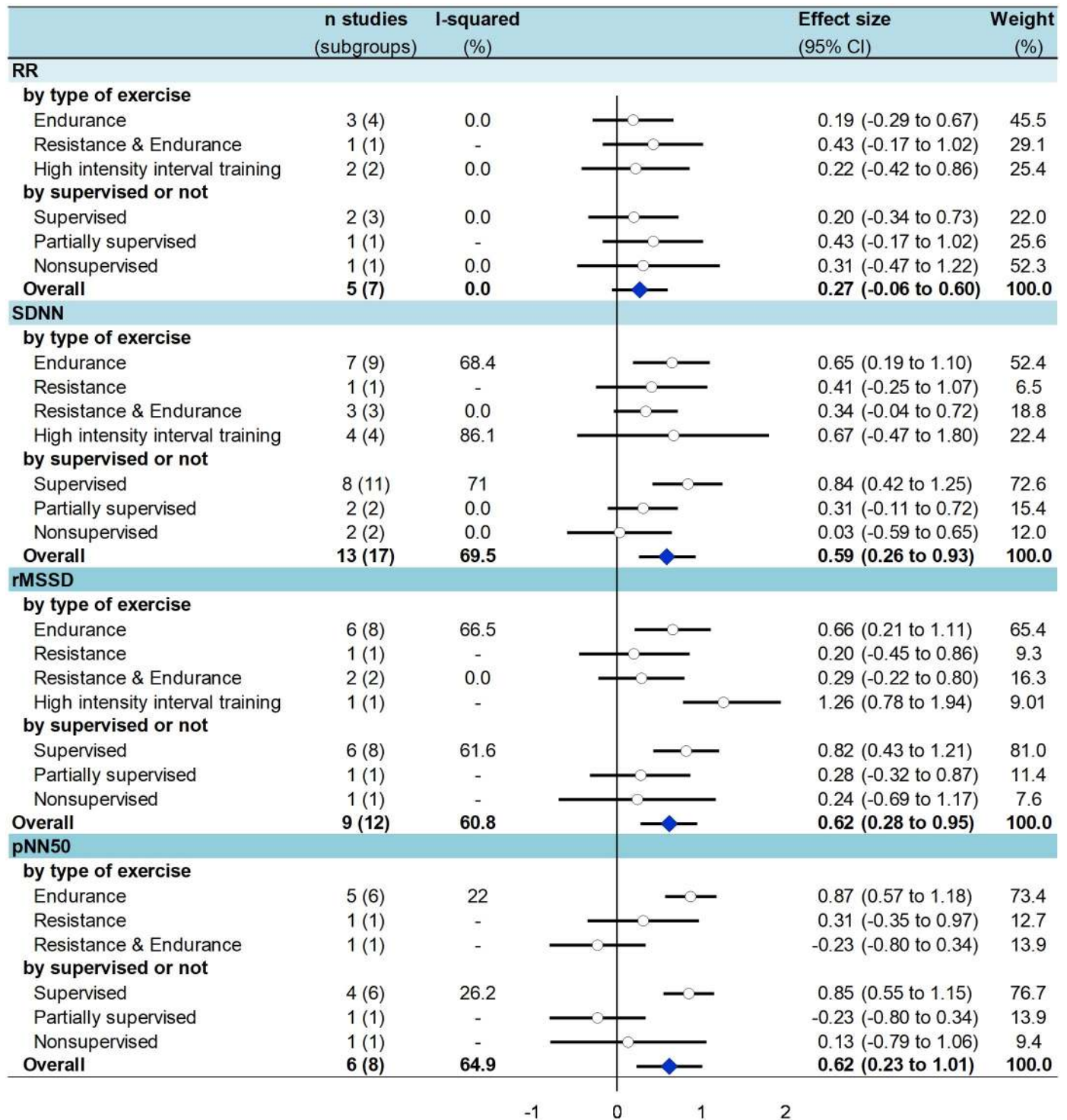


Fig 2. Summary of meta-analysis on the effect of exercise training on time domain parameters of HRV in T2DM patients—stratified by type of exercise and type of supervision.

<https://doi.org/10.1371/journal.pone.0251863.g002>

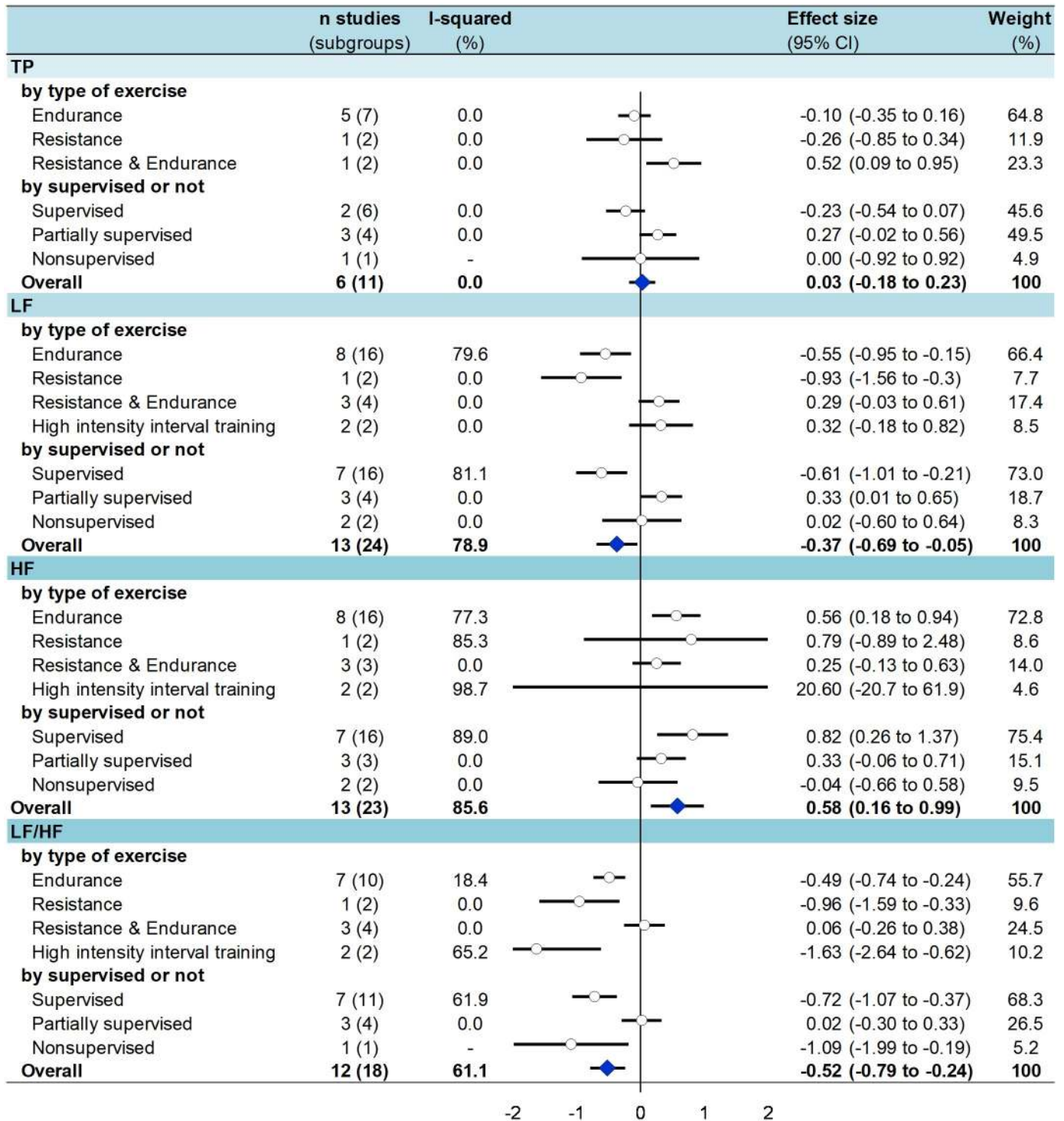


Fig 3. Summary of meta-analysis on the effect of exercise training on frequency domain parameters of HRV in T2DM patients—stratified by type of exercise and by type of supervision.

<https://doi.org/10.1371/journal.pone.0251863.g003>

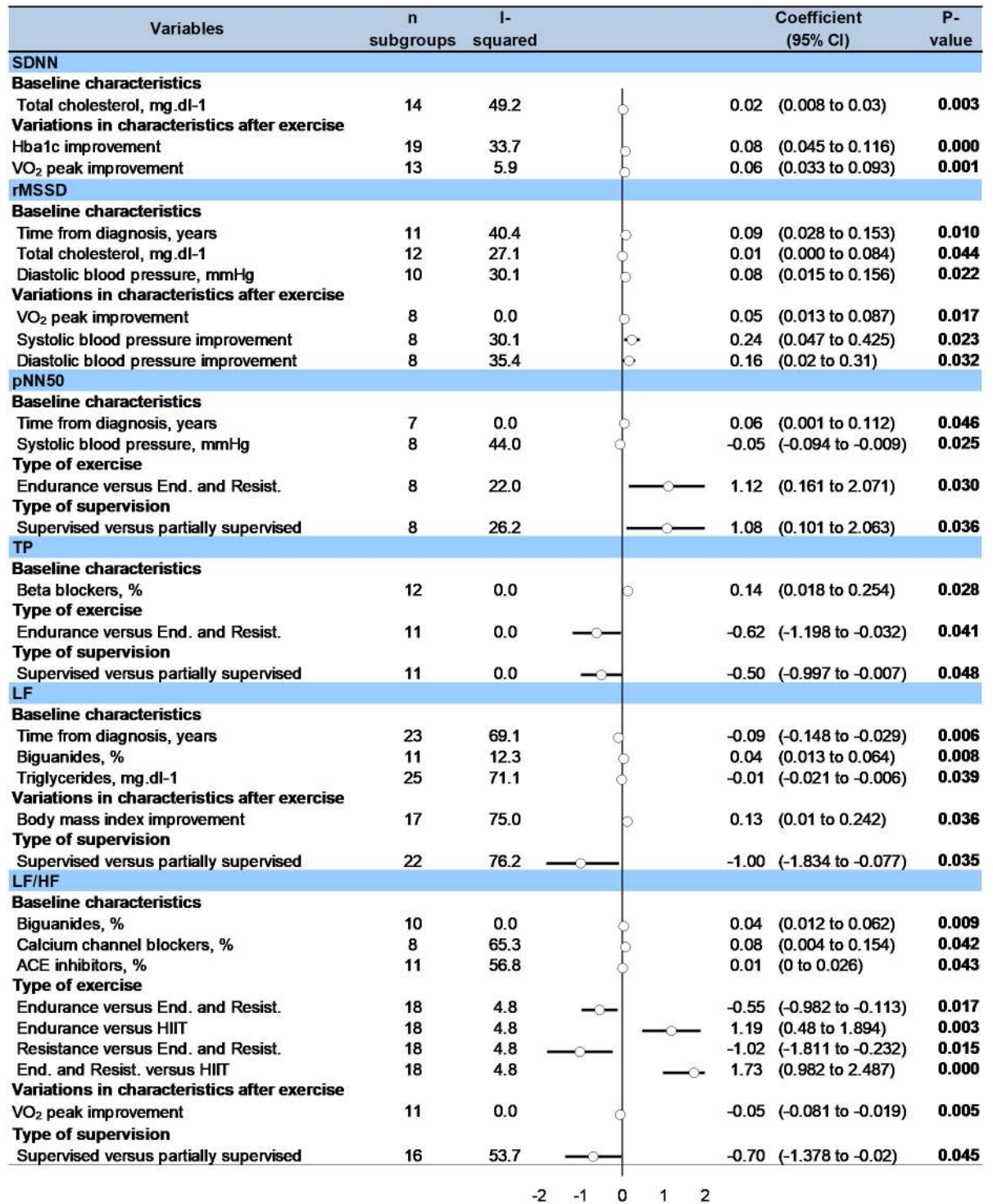


Fig 4. Meta-regressions on factors influencing the effect of exercise training on HRV parameters in T2DM patients.

<https://doi.org/10.1371/journal.pone.0251863.g004>

For comparisons between type of supervision, meta-regressions showed that *PNN50* (1.082, 0.10 to 2.06), *LF* (0.96, 0.08 to 1.83) and *LF/HF* (0.70, 0.02 to 1.38) were more improved after supervised exercise training compared to partially supervised (Fig 4).

3.10 Others metaregressions

Frequency of exercise session per week, as well as *session duration* or *total duration of training* were not significantly associated with the variation of any HRV parameters. Patients who improved the most their HRV parameters following exercise training were those with the longest *time from diagnosis of T2DM* (associated with an increased RMSSD and PNN50 following exercise training: 0.09, 0.03 to 0.15, $p = 0.010$, and 0.06, 0.001 to 0.11, $p = 0.046$, respectively; and a decrease in LF: -0.09, -0.15 to -0.03, $p = 0.006$), highest *total cholesterol* levels at baseline (associated with an increase SDNN and RMSSD following exercise training: 0.02, 0.01 to 0.03, $p = 0.003$, and 0.01, 0.001 to 0.08, $p = 0.044$, respectively), *triglycerides* (associated with a decrease in LF: -0.01, -0.02 to -0.006, $p = 0.039$), *diastolic blood pressure* (associated with an increase in RMSSD: 0.08, 0.02 to -0.16, $p = 0.022$). Patients using biguanides improved less LF and LF/HF after exercise training (0.04, 0.01 to 0.06, $p = 0.008$ and 0.04, 0.01 to 0.06, $p = 0.009$, respectively), as well as those using *calcium channel blockers* and *ACE inhibitors* (0.08, 0.004 to 0.15, $p = 0.042$ and 0.01, 0.001 to 0.03, $p = 0.043$ both for LF/HF, respectively), whereas users of *beta blockers* had a greater increase in TP (0.14, 0.02 to 0.25, $p = 0.028$) (Fig 4). Other variables (age, gender, body mass index, smoking, HbA1c, VO_2 peak, insulin therapy, duration or condition of ECG recording—deep breathing or not) were not significantly associated with the variation of any outcomes.

An improvement in *BMI* after exercise training was significantly associated with an improvement in LF (0.13, 0.01 to 0.24, $p = 0.036$). Similarly, *improvement of HbA1c* and of SDNN were linked (-0.08, -0.12 to -0.05, $p < 0.001$), as well as for *VO_2 peak* and SDNN (0.06, 0.03 to 0.09, $p = 0.001$), RMSSD (0.05, 0.01 to 0.09, $p = 0.017$) and LF/HF (-0.05, -0.08 to -0.02, $p = 0.005$). *Improvement of systolic and diastolic blood pressure* were linked to RMSSD improvement (-0.24; -0.43 to -0.05, $p = 0.023$; and -0.17; -0.31 to -0.02, $p = 0.032$, respectively) (Fig 4).

3.11 Sensitivity analyses

Funnel plots of meta-analyses are presented in S11 Fig. Meta-analyses were reperformed after the exclusion of studies that were not evenly distributed around the base of the funnel and showed similar results. The few studies with the highest level of proof (maximum 6 randomized studies per parameter and maximum 4 RCT per parameter) demonstrated an increase in HF and a decrease in the LF/HF ratio (S12 Fig).

4. Discussion

The main findings were that exercise training improved HRV in T2DM patients, with a decrease in sympathetic activity and an increase in parasympathetic activity. Endurance training demonstrated the strongest benefits on HRV parameters. Supervised training improved most HRV parameters, without influence of duration and frequency of training. Patients who benefited the most from exercise training were those with a longer time from diagnosis of T2DM and dyslipidaemia. Improvement in BMI, HbA1c, VO_2 peak and blood pressure after exercise training were linked to HRV improvements.

4.1 The benefits of exercise training on HRV in T2DM

There are overwhelming evidence that regular physical activity is associated with a reduced risk for all-cause mortality, and several chronic medical conditions [69]. Most international physical activity guidelines recommend to meet the goal of 150 min/week of moderate-to-vigorous intensity physical activity (MVPA) or 75 min/week of vigorous intensity physical activity

[70]. In T2DM patients, exercise leads to better glycemic control, insulin signaling, and blood lipids, reduced low-grade inflammation and improved vascular function [71]. To prevent cardiac autonomic neuropathy, a multifactorial approach is recommended [14], as it can reduce the risk of cardiac autonomic neuropathy progression by 68% [11–13]. Considering that cardiac autonomic neuropathy is a predictor for cardiometabolic events in T2DM patient [72], our meta-analysis showed strong evidence that physical exercise training can improve HRV, both in time and frequency domains. Then, physical exercise training could be a cost-effective intervention to prevent or slow down the cardiac autonomic neuropathy progression in T2DM [73]. Exercise training can improve vagal tone and hence decrease lethal arrhythmias. Even though mechanisms are not yet fully understood, angiotensin II and nitric oxide (NO) are potential mediators of the effects of exercise on vagal tone improvement [74].

4.2 Which type of exercise training?

Opinions differ over the exercise modalities that best limit cardiovascular risk [75]. In patients with metabolic syndrome, it has been shown that mixed training with high-intensity increased visceral fat loss, and that training with high-resistance intensity resulted in faster improvement [76]. Greater improvements in sympathovagal balance were demonstrated for patients with metabolic syndrome following a moderate intensity of training; whereas greater decreases in mean 24-hour heart rate were shown for high-intensity resistance training [39]. But the vast majority of the literature about the effects of exercise on glycemic parameters in T2DM has been centered on interventions involving aerobic exercise and there is ample evidence that aerobic exercise is a tried-and-true exercise modality for managing and preventing T2DM [71, 77]. Resistance training showed also benefits for T2DM patients including improvements in glycemic control, insulin resistance, fat mass, blood pressure, strength, and lean body mass [78]. We demonstrated that endurance training led to an improvement of all parameters of time and frequency domain measures, whereas resistance training and HIIT improved only some outcomes. However, the lack of significant results for other modalities than endurance training can be mainly due to insufficient number of studies reporting those modalities of training.

4.3 Supervision, frequency, and duration of exercise training

In general, there are strong evidences on the benefits of supervised training [79, 80]. In T2DM, we showed that after supervised exercise training, all HRV parameters were significantly improved whereas none of them was improved after partially supervised exercises and only the LF/HF ratio after unsupervised exercises. Our results are also in accordance with literature in T2DM demonstrating the benefits of supervised training on various parameters such as HbA1c, BMI, blood pressure, dyslipidemia or fitness, in comparison with non-supervised training [15, 81]. Interestingly, those benefits were demonstrated independently of dietary intervention. Despite only including studies assessing an exercise intervention alone, none of the included studies except two [53, 60] followed dietary intake and consequently this might have impacted our results. Furthermore, frequency and volume of exercise have been shown to be linked with metabolic improvement in T2DM [82]. Each aerobic exercise session added within a week may produce an additional reduction of 0.39% in HbA1c level [82]. Nevertheless, we did not find any association between frequency, duration of sessions or duration of interventions and HRV improvements. However, studies did not differ considerably between them (duration of sessions were mainly around 45 minutes, frequency of sessions were mainly around 3 sessions per week, and intensity of exercises were around 60–70% for most studies) without any study assessing the impact of low-intensity training.

4.4 Predictors of HRV improvements

Patients who benefited the most from exercise training were those with a longer term diagnosis of T2DM and dyslipidaemia (higher level of total cholesterol and triglycerides), suggesting that benefits might be higher in the most severe patients. Moreover, characteristics of patients such as age or gender may also influence the benefits of exercise training [32, 33, 83, 84]. Some studies reported greater training-induced improvements of HRV in older than in young adults [32, 33], others did not identify any differences [84]. In our meta regressions, age and gender were not associated with any improvement with respect to HRV parameters, BMI or smoking. This suggests that, to some extent, beginning exercise, even late in life can be effective. Finally, it is well known that hypertension is linked with poor HRV [85]. We demonstrated that benefits of exercise training were lower in T2DM patients taking antihypertensive medications, even if literature showed significant improvement in HRV parameters after exercise training in hypertensives patients [86, 87]. T2DM patients using metformin improved less their HRV after exercise compared with T2M patients that did not use metformin. This result may seem contradictory, as metformin has been shown to improve HRV [88]. We also note that most studies (14/21) did not report the use of metformin. Considering that metformin is the first medication to treat T2DM, our results may suffer from a bias of reporting.

4.5 Clinical and biological improvements associated with benefits of exercise on HRV

There is strong evidence showing that physical activity is associated with a reduction in all-cause mortality [89]. Exercise training is known to improve several metabolic parameters in T2DM patients such as HbA1c%, serum insulin and glucose, VO_2 peak [28, 90] but physiology of exercise benefits on HRV remains unclear. For example, it remains unclear to what extent changes in blood lipids contribute to the cardiovascular benefits of exercise [16, 91]. In our meta-analysis, an improvement in HDL, LDL, total cholesterol or triglycerides serum levels after exercise was not linked with any improvement in HRV parameters, suggesting that improvement in lipid levels would not be associated with exercise benefits [16, 91]. Conversely, we showed association between HRV improvements and improvement of Hba1c, BMI, and VO_2 peak after exercise suggesting that these parameters could be key contributors of exercise benefits on HRV [80]. Increased HRV were therefore linked with a better control of T2DM, and with fitness improvement. Beta blockers are known to affect HRV [92]. We cannot conclude that beta blockers influenced response in HRV to exercise, as only one study reported its use [58] and beta blockers being explicitly an exclusion criteria in most studies [19, 21, 23, 25, 52, 55, 56, 59–61, 63, 64].

4.6 Limitations

We inherited the limitations of all meta-analyses [93] and the limitations and biases of the individual studies investigated. Furthermore, we conducted the meta-analyses on only published articles, so they are theoretically exposed to publication bias. While the meta-analysis is based on a moderate number of studies, the use of broader keywords in the search strategy limits the number of missing studies. In addition, some studies were monocentric, limiting the generalizability of our results. Moreover, the generalizability of our results (improvement of HRV following exercise training) may also be limited to patients who have a T2DM rather well controlled (as they have an Hba1c 7.5%). Data collections and inclusion/exclusion criteria were not identical within each study, which may have affected our results, as well as heterogeneity due to different study designs. To reduce bias of measures, when a study reported HRV

in different positions [94], we limited data to decubitus measures, as position and conditions of measure may influence HRV. Most studies included were not RCT, precluding robust conclusions for our meta-analyses. For LF and HF, some studies reported measures in both ms^2 and normalized units. These reported measures have been included in our meta-analysis and therefore could be affecting the weighting of studies. However, we conducted sensitivity analyses with only one or the other unit to verify that it did not affect the results. We also limited the influence of extreme results and heterogeneity by repeating analyses after the exclusion of studies with results not evenly distributed around the funnel plots. Finally, even though in some studies [23, 24, 53, 55, 60, 62–65] patients were asked not to change their dietary intake, an assessment of their dietary intake should have been conducted to verify that the exercise intervention did not modify their eating habits (that could be a confounding factor).

5. Conclusion

Exercise training improved HRV parameters in T2DM patients, which may reflect an improvement in the activity of the autonomic nervous system. The level of proof was highest for endurance training (aerobic), whereas resistance (anaerobic) and high-intensity-interval training (alternating short intense anaerobic and less intense exercises) were promising. Supervised training seemed beneficial, whereas insufficient data precluded robust conclusions for duration and frequency of sessions. HRV improvements may be mediated by the improvement in clinical and biological parameters consecutive to exercise training.

Supporting information

S1 Checklist. PRISMA checklist.

(DOCX)

S1 Appendix. Quality of studies—Scottish Intercollegiate Guidelines Network (SIGN) grids.

(DOCX)

S2 Appendix. Quality of studies—Physiotherapy Evidence Database PEDro.

(PDF)

S1 Fig. Methodological quality of included articles using Scottish Intercollegiate Guidelines Network (SIGN) scale. For each item, criteria fulfilled: No: -, Yes: +, Unclear:?, Not applicable: NA.

(TIF)

S2 Fig. Methodological quality of included articles using PEDro.

(TIF)

S3 Fig. Effect of exercise training on RR in T2DM patients.

(PDF)

S4 Fig. Effect of exercise training on SDNN in T2DM patients.

(PDF)

S5 Fig. Effect of exercise training on RMSSD in T2DM patients.

(PDF)

S6 Fig. Effect of exercise training on pNN50 in T2DM patients.

(PDF)

S7 Fig. Effect of exercise training on TP in T2DM patients.
(PDF)

S8 Fig. Effect of exercise training on LF in T2DM patients.
(PDF)

S9 Fig. Effect of exercise training on HF in T2DM patients.
(PNG)

S10 Fig. Effect of exercise training on LF/HF in T2DM patients.
(PDF)

S11 Fig. Funnel plots.
(TIF)

S12 Fig. Summary of meta-analysis on the effect of exercise training on HRV in T2DM patients, using only the studies with the best methodological design (randomized studies, and randomized controlled studies).
(TIF)

Acknowledgments

We thank Nathalie Piñol-Domenech, librarian of the Clermont Auvergne University, and the librarians of University Health Sciences Library of Paris for their support in the elaboration of search strategy in databases and collection of full texts of articles.

Author Contributions

Conceptualization: Mathilde Picard, Igor Tauveron, Salwan Magdasy, Thomas Benichou, Frédéric Dutheil.

Data curation: Mathilde Picard, Frédéric Dutheil.

Formal analysis: Mathilde Picard, Salwan Magdasy, Thomas Benichou, Frédéric Dutheil.

Investigation: Mathilde Picard, Salwan Magdasy, Thomas Benichou, Frédéric Dutheil.

Methodology: Mathilde Picard, Igor Tauveron, Salwan Magdasy, Thomas Benichou, Reza Bagheri, Valentin Navel, Frédéric Dutheil.

Project administration: Igor Tauveron, Salwan Magdasy, Frédéric Dutheil.

Resources: Igor Tauveron, Frédéric Dutheil.

Software: Mathilde Picard, Frédéric Dutheil.

Supervision: Igor Tauveron, Thomas Benichou, Frédéric Dutheil.

Validation: Mathilde Picard, Igor Tauveron, Salwan Magdasy, Thomas Benichou, Reza Bagheri, Ukadike C. Ugbolue, Frédéric Dutheil.

Visualization: Mathilde Picard, Ukadike C. Ugbolue, Frédéric Dutheil.

Writing – original draft: Mathilde Picard, Valentin Navel, Frédéric Dutheil.

Writing – review & editing: Mathilde Picard, Reza Bagheri, Ukadike C. Ugbolue, Valentin Navel, Frédéric Dutheil.

References

1. Ogurtsova K, da Rocha Fernandes JD, Huang Y, Linnenkamp U, Guariguata L, Cho NH, et al. IDF Diabetes Atlas: Global estimates for the prevalence of diabetes for 2015 and 2040. *Diabetes Res Clin Pract.* 2017; 128: 40–50. <https://doi.org/10.1016/j.diabres.2017.03.024> PMID: 28437734
2. Atlas du diabete de la FID 9ème édition 2019. [cited 7 Sep 2020]. Available: <https://diabetesatlas.org/fr/>
3. Maser RE, Mitchell BD, Vinik AI, Freeman R. The association between cardiovascular autonomic neuropathy and mortality in individuals with diabetes: a meta-analysis. *Diabetes Care.* 2003; 26: 1895–1901. <https://doi.org/10.2337/diacare.26.6.1895> PMID: 12766130
4. Serhiyenko VA, Serhiyenko AA. Cardiac autonomic neuropathy: Risk factors, diagnosis and treatment. *World J Diabetes.* 2018; 9: 1–24. <https://doi.org/10.4239/wjd.v9.i1.1> PMID: 29359025
5. Benichou T, Pereira B, Mermillod M, Tauveron I, Pfabigan D, Maqdasy S, et al. Heart rate variability in type 2 diabetes mellitus: A systematic review and meta-analysis. *PloS One.* 2018; 13: e0195166. <https://doi.org/10.1371/journal.pone.0195166> PMID: 29608603
6. Wheeler T, Watkins PJ. Cardiac Denervation in Diabetes. *Br Med J.* 1973; 4: 584–586. <https://doi.org/10.1136/bmj.4.5892.584> PMID: 4758519
7. Ewing DJ, Martyn CN, Young RJ, Clarke BF. The value of cardiovascular autonomic function tests: 10 years experience in diabetes. *Diabetes Care.* 1985; 8: 491–498. <https://doi.org/10.2337/diacare.8.5.491> PMID: 4053936
8. Dutheil F, Chambres P, Hufnagel C, Auxiette C, Chausse P, Ghozi R, et al. “Do Well B.”: Design Of WELL Being monitoring systems. A study protocol for the application in autism. *BMJ Open.* 2015; 5: e007716. <https://doi.org/10.1136/bmjopen-2015-007716> PMID: 25710916
9. Hufnagel C, Chambres P, Bertrand PR, Dutheil F. The Need for Objective Measures of Stress in Autism. *Front Psychol.* 2017; 8: 64. <https://doi.org/10.3389/fpsyg.2017.00064> PMID: 28191002
10. Zygmunt A, Stanczyk J. Methods of evaluation of autonomic nervous system function. *Arch Med Sci AMS.* 2010; 6: 11–18. <https://doi.org/10.5114/aoms.2010.13500> PMID: 22371714
11. Gaede P, Vedel P, Larsen N, Jensen GVH, Parving H-H, Pedersen O. Multifactorial intervention and cardiovascular disease in patients with type 2 diabetes. *N Engl J Med.* 2003; 348: 383–393. <https://doi.org/10.1056/NEJMoa021778> PMID: 12556541
12. Gaede P, Vedel P, Parving HH, Pedersen O. Intensified multifactorial intervention in patients with type 2 diabetes mellitus and microalbuminuria: the Steno type 2 randomised study. *Lancet Lond Engl.* 1999; 353: 617–622. [https://doi.org/10.1016/S0140-6736\(98\)07368-1](https://doi.org/10.1016/S0140-6736(98)07368-1) PMID: 10030326
13. Oellgaard J, Gæde P, Rossing P, Rørth R, Køber L, Parving H-H, et al. Reduced risk of heart failure with intensified multifactorial intervention in individuals with type 2 diabetes and microalbuminuria: 21 years of follow-up in the randomised Steno-2 study. *Diabetologia.* 2018; 61: 1724–1733. <https://doi.org/10.1007/s00125-018-4642-y> PMID: 29850922
14. Pop-Busui R, Boulton AJM, Feldman EL, Bril V, Freeman R, Malik RA, et al. Diabetic Neuropathy: A Position Statement by the American Diabetes Association. *Diabetes Care.* 2017; 40: 136–154. <https://doi.org/10.2337/dc16-2042> PMID: 27999003
15. Balducci S, Zanuso S, Nicolucci A, Feo PD, Cavallo S, Cardelli P, et al. Effect of an Intensive Exercise Intervention Strategy on Modifiable Cardiovascular Risk Factors in Subjects With Type 2 Diabetes Mellitus: A Randomized Controlled Trial: The Italian Diabetes and Exercise Study (IDES). *Arch Intern Med.* 2010; 170: 1794–1803. <https://doi.org/10.1001/archinternmed.2010.380> PMID: 21059972
16. Nystoriak MA, Bhatnagar A. Cardiovascular Effects and Benefits of Exercise. *Front Cardiovasc Med.* 2018;5. <https://doi.org/10.3389/fcvm.2018.00005> PMID: 29445728
17. Kraus WE, Powell KE, Haskell WL, Janz KF, Campbell WW, Jakicic JM, et al. Physical Activity, All-Cause and Cardiovascular Mortality, and Cardiovascular Disease. *Med Sci Sports Exerc.* 2019; 51: 1270–1281. <https://doi.org/10.1249/MSS.0000000000001939> PMID: 31095084
18. Pichot V, Roche F, Denis C, Garet M, Duverney D, Costes F, et al. Interval training in elderly men increases both heart rate variability and baroreflex activity. *Clin Auton Res Off J Clin Auton Res Soc.* 2005; 15: 107–115. <https://doi.org/10.1007/s10286-005-0251-1> PMID: 15834767
19. Bhagyalakshmi S, Nagaraja H, Anupama B, Ramesh B, Prabha A, Niranjan M, et al. Effect of supervised integrated exercise on heart rate variability in type 2 diabetes mellitus. *Kardiol Pol.* 2007; 65: 363–368; discussion 369. PMID: 17530559
20. Faulkner MS, Michaliszyn SF, Hepworth JT, Wheeler MD. Personalized exercise for adolescents with diabetes or obesity. *Biol Res Nurs.* 2014; 16: 46–54. <https://doi.org/10.1177/1099800413500064> PMID: 23965300

21. Figueroa A, Baynard T, Fernhall B, Carhart R, Kanaley JA. Endurance training improves post-exercise cardiac autonomic modulation in obese women with and without type 2 diabetes. *Eur J Appl Physiol*. 2007; 100: 437–444. <https://doi.org/10.1007/s00421-007-0446-3> PMID: [17406886](https://pubmed.ncbi.nlm.nih.gov/17406886/)
22. Moawd SA, Mohamed ME, Othman MA. Impact of Moderate intensity Aerobic Exercise versus High Eccentric Strength Training on Heart Rate Variability in Diabetic Patients with Cardiac Autonomic Neuropathy. 3: 17.
23. Bellavere F, Cacciatori V, Bacchi E, Gemma ML, Raimondo D, Negri C, et al. Effects of aerobic or resistance exercise training on cardiovascular autonomic function of subjects with type 2 diabetes: A pilot study. *Nutr Metab Cardiovasc Dis*. 2018; 28: 226–233. <https://doi.org/10.1016/j.numecd.2017.12.008> PMID: [29402509](https://pubmed.ncbi.nlm.nih.gov/29402509/)
24. Parpa KM, Michaelides MA, Brown BS. Effect of High Intensity Interval Training on Heart Rate Variability in Individuals with Type 2 Diabetes. *J Exerc Physiol Online JEPonline*. 2009;12. Available: www.asep.org
25. Cassidy S, Vaidya V, Houghton D, Zalewski P, Seferovic JP, Hallsworth K, et al. Unsupervised high-intensity interval training improves glycaemic control but not cardiovascular autonomic function in type 2 diabetes patients: A randomised controlled trial. *Diab Vasc Dis Res*. 2019; 16: 69–76. <https://doi.org/10.1177/1479164118816223> PMID: [30541346](https://pubmed.ncbi.nlm.nih.gov/30541346/)
26. De Nardi AT, Tolves T, Lenzi TL, Signori LU, Silva AMV da. High-intensity interval training versus continuous training on physiological and metabolic variables in prediabetes and type 2 diabetes: A meta-analysis. *Diabetes Res Clin Pract*. 2018; 137: 149–159. <https://doi.org/10.1016/j.diabres.2017.12.017> PMID: [29329778](https://pubmed.ncbi.nlm.nih.gov/29329778/)
27. Yang Z, Scott CA, Mao C, Tang J, Farmer AJ. Resistance exercise versus aerobic exercise for type 2 diabetes: a systematic review and meta-analysis. *Sports Med Auckl NZ*. 2014; 44: 487–499. <https://doi.org/10.1007/s40279-013-0128-8> PMID: [24297743](https://pubmed.ncbi.nlm.nih.gov/24297743/)
28. Bacchi E, Negri C, Zanolin ME, Milanese C, Faccioli N, Trombetta M, et al. Metabolic effects of aerobic training and resistance training in type 2 diabetic subjects: a randomized controlled trial (the RAED2 study). *Diabetes Care*. 2012; 35: 676–682. <https://doi.org/10.2337/dc11-1655> PMID: [22344613](https://pubmed.ncbi.nlm.nih.gov/22344613/)
29. Stefanov T, Vekova A, Bonova I, Tzvetkov S, Kurktschiev D, Blüher M, et al. Effects of supervised vs non-supervised combined aerobic and resistance exercise programme on cardiometabolic risk factors. *Cent Eur J Public Health*. 2013; 21: 8–16. <https://doi.org/10.21101/cejph.a3801> PMID: [23741891](https://pubmed.ncbi.nlm.nih.gov/23741891/)
30. Coll-Fernández R, Coll R, Muñoz-Torrero JFS, Aguilar E, Ramón Álvarez L, Sahuquillo JC, et al. Supervised versus non-supervised exercise in patients with recent myocardial infarction: A propensity analysis. *Eur J Prev Cardiol*. 2016; 23: 245–252. <https://doi.org/10.1177/2047487315578443> PMID: [25802422](https://pubmed.ncbi.nlm.nih.gov/25802422/)
31. Nicolai SPA, Kruidenier LM, Leffers P, Hardeman R, Hidding A, Tejjink J a. W. Supervised exercise versus non-supervised exercise for reducing weight in obese adults. *J Sports Med Phys Fitness*. 2009; 49: 85–90. PMID: [19188900](https://pubmed.ncbi.nlm.nih.gov/19188900/)
32. Levy WC, Cerqueira MD, Harp GD, Johannessen KA, Abrass IB, Schwartz RS, et al. Effect of endurance exercise training on heart rate variability at rest in healthy young and older men. *Am J Cardiol*. 1998; 82: 1236–1241. [https://doi.org/10.1016/s0002-9149\(98\)00611-0](https://doi.org/10.1016/s0002-9149(98)00611-0) PMID: [9832101](https://pubmed.ncbi.nlm.nih.gov/9832101/)
33. Woo JS, Derleth C, Stratton JR, Levy WC. The influence of age, gender, and training on exercise efficiency. *J Am Coll Cardiol*. 2006; 47: 1049–1057. <https://doi.org/10.1016/j.jacc.2005.09.066> PMID: [16516092](https://pubmed.ncbi.nlm.nih.gov/16516092/)
34. Sjoberg N, Brinkworth GD, Wycherley TP, Noakes M, Saint DA. Moderate weight loss improves heart rate variability in overweight and obese adults with type 2 diabetes. *J Appl Physiol Bethesda Md* 1985. 2011; 110: 1060–1064. <https://doi.org/10.1152/jappphysiol.01329.2010> PMID: [21212252](https://pubmed.ncbi.nlm.nih.gov/21212252/)
35. Burger AJ, Weinrauch LA, D'Elia JA, Aronson D. Effect of glycemic control on heart rate variability in type I diabetic patients with cardiac autonomic neuropathy. *Am J Cardiol*. 1999; 84: 687–691. [https://doi.org/10.1016/s0002-9149\(99\)00417-8](https://doi.org/10.1016/s0002-9149(99)00417-8) PMID: [10498140](https://pubmed.ncbi.nlm.nih.gov/10498140/)
36. Andersen ST, Witte DR, Fleischer J, Andersen H, Lauritzen T, Jørgensen ME, et al. Risk Factors for the Presence and Progression of Cardiovascular Autonomic Neuropathy in Type 2 Diabetes: ADDITION-Denmark. *Diabetes Care*. 2018; 41: 2586–2594. <https://doi.org/10.2337/dc18-1411> PMID: [30305347](https://pubmed.ncbi.nlm.nih.gov/30305347/)
37. Moher D, Liberati A, Tetzlaff J, Altman DG, The PRISMA Group. Preferred Reporting Items for Systematic Reviews and Meta-Analyses: The PRISMA Statement. *PLoS Med*. 2009; 6: e1000097. <https://doi.org/10.1371/journal.pmed.1000097> PMID: [19621072](https://pubmed.ncbi.nlm.nih.gov/19621072/)
38. Sztajzel J. Heart rate variability: a noninvasive electrocardiographic method to measure the autonomic nervous system. *Swiss Med Wkly*. 2004; 134: 514–522. 2004/35/smw-10321 <https://doi.org/2004/35/smw-10321> PMID: [15517504](https://pubmed.ncbi.nlm.nih.gov/15517504/)
39. Boudet G, Walther G, Courteix D, Obert P, Lesourd B, Pereira B, et al. Paradoxical dissociation between heart rate and heart rate variability following different modalities of exercise in individuals with

- metabolic syndrome: The RESOLVE study. *Eur J Prev Cardiol.* 2017; 24: 281–296. <https://doi.org/10.1177/2047487316679523> PMID: 27856807
40. Dutheil F, Chaplais E, Vilmant A, Lanoir D, Courteix D, Duche P, et al. Effects of a short residential thermal spa program to prevent work-related stress/burnout on stress biomarkers: the ThermStress proof of concept study. *J Int Med Res.* 2019; 47: 5130–5145. <https://doi.org/10.1177/0300060519859119> PMID: 31510825
 41. Dutheil F, Chaplais E, Vilmant A, Courteix D, Duche P, Abergel A, et al. Stress management in obesity during a thermal spa residential programme (ObesiStress): protocol for a randomised controlled trial study. *BMJ Open.* 2019; 9: e027058. <https://doi.org/10.1136/bmjopen-2018-027058> PMID: 31874865
 42. Shaffer F, Ginsberg JP. An Overview of Heart Rate Variability Metrics and Norms. *Front Public Health.* 2017;5. <https://doi.org/10.3389/fpubh.2017.00005> PMID: 28197401
 43. Harbour R, Miller J. A new system for grading recommendations in evidence based guidelines. *BMJ.* 2001; 323: 334–336. <https://doi.org/10.1136/bmj.323.7308.334> PMID: 11498496
 44. Benoist d'Azy C, Pereira B, Naughton G, Chiambaretta F, Dutheil F. Antibio prophylaxis in Prevention of Endophthalmitis in Intravitreal Injection: A Systematic Review and Meta-Analysis. *PLoS One.* 2016; 11: e0156431. <https://doi.org/10.1371/journal.pone.0156431> PMID: 27257676
 45. Benoist d'Azy C, Pereira B, Chiambaretta F, Dutheil F. Oxidative and Anti-Oxidative Stress Markers in Chronic Glaucoma: A Systematic Review and Meta-Analysis. *PLoS One.* 2016; 11: e0166915. <https://doi.org/10.1371/journal.pone.0166915> PMID: 27907028
 46. Courtin R, Pereira B, Naughton G, Chamoux A, Chiambaretta F, Lanhers C, et al. Prevalence of dry eye disease in visual display terminal workers: a systematic review and meta-analysis. *BMJ Open.* 2016; 6: e009675. <https://doi.org/10.1136/bmjopen-2015-009675> PMID: 26769784
 47. Lanhers C, Pereira B, Naughton G, Trousselard M, Lesage F-X, Dutheil F. Creatine Supplementation and Upper Limb Strength Performance: A Systematic Review and Meta-Analysis. *Sports Med.* 2017; 47: 163–173. <https://doi.org/10.1007/s40279-016-0571-4> PMID: 27328852
 48. Lanhers C, Pereira B, Naughton G, Trousselard M, Lesage F-X, Dutheil F. Creatine Supplementation and Lower Limb Strength Performance: A Systematic Review and Meta-Analysis. *Sports Med.* 2015; 45: 1285–1294. <https://doi.org/10.1007/s40279-015-0337-4> PMID: 25946994
 49. DerSimonian R, Laird N. Meta-analysis in clinical trials. *Control Clin Trials.* 1986; 7: 177–188. [https://doi.org/10.1016/0197-2456\(86\)90046-2](https://doi.org/10.1016/0197-2456(86)90046-2) PMID: 3802833
 50. Heart rate variability: standards of measurement, physiological interpretation and clinical use. Task Force of the European Society of Cardiology and the North American Society of Pacing and Electrophysiology. *Circulation.* 1996; 93: 1043–1065. PMID: 8598068
 51. Citrome L, Magnusson K. Paging Dr Cohen, Paging Dr Cohen... An effect size interpretation is required STAT!: visualising effect size and an interview with Kristoffer Magnusson. *Int J Clin Pract.* 2014; 68: 533–534. <https://doi.org/10.1111/ijcp.12435> PMID: 24750523
 52. Sridhar B, Haleagrahara N, Bhat R, Kulur AB, Avabratha S, Adhikary P. Increase in the heart rate variability with deep breathing in diabetic patients after 12-month exercise training. *Tohoku J Exp Med.* 2010; 220: 107–113. <https://doi.org/10.1620/tjem.220.107> PMID: 20139661
 53. Wormgoor SG, Dalleck LC, Zinn C, Borotkanics R, Harris NK. High-Intensity Interval Training Is Equivalent to Moderate-Intensity Continuous Training for Short- and Medium-Term Outcomes of Glucose Control, Cardiometabolic Risk, and Microvascular Complication Markers in Men With Type 2 Diabetes. *Front Endocrinol.* 2018;9. <https://doi.org/10.3389/fendo.2018.00475> PMID: 30210450
 54. Kang S-J, Ko K-J, Baek U-H. Effects of 12 weeks combined aerobic and resistance exercise on heart rate variability in type 2 diabetes mellitus patients. *J Phys Ther Sci.* 2016; 28: 2088–2093. <https://doi.org/10.1589/jpts.28.2088> PMID: 27512271
 55. Duennwald T, Gatterer H, Wille M, Pocecco E, Philippe M, Kruesmann P, et al. Effects of Supervised Short-Term Exercise Training On Cardiorespiratory Control and Exercise Capacity in Type 2 Diabetes Patients. *J Diabetes Metab.* 2014; 5: 1–8. <https://doi.org/10.4172/2155-6156.1000418>
 56. Abdelbasset WKM, Abdelbasset WKM, Ahmed ASM, Mahmoud WSEE, Elnaggar RKA, Ahmed M. Effect of high intensity interval training on heart rate variability and aerobic capacity in obese adults with type 2 Diabetes Mellitus. 2019 [cited 25 Apr 2020]. Available: <http://repository.psau.edu.sa:80/jspui/handle/123456789/7582>
 57. Loimaala A, Huikuri HV, Kõõbi T, Rinne M, Nenonen A, Vuori I. Exercise training improves baroreflex sensitivity in type 2 diabetes. *Diabetes.* 2003; 52: 1837–1842. <https://doi.org/10.2337/diabetes.52.7.1837> PMID: 12829654
 58. Sacre JW, Jellis CL, Jenkins C, Haluska BA, Baumert M, Coombes JS, et al. A six-month exercise intervention in subclinical diabetic heart disease: effects on exercise capacity, autonomic and myocardial

- function. *Metabolism*. 2014; 63: 1104–1114. <https://doi.org/10.1016/j.metabol.2014.05.007> PMID: [24997499](https://pubmed.ncbi.nlm.nih.gov/24997499/)
59. Simmonds MJ, Minahan CL, Serre KR, Gass GC, Marshall-Gradisnik SM, Haseler LJ, et al. Preliminary findings in the heart rate variability and haemorrheology response to varied frequency and duration of walking in women 65–74 yr with type 2 diabetes. *Clin Hemorheol Microcirc*. 2012; 51: 87–99. <https://doi.org/10.3233/CH-2011-1514> PMID: [22240377](https://pubmed.ncbi.nlm.nih.gov/22240377/)
 60. Gouloupoulou S, Baynard T, Franklin RM, Fernhall B, Carhart R, Weinstock R, et al. Exercise Training Improves Cardiovascular Autonomic Modulation in Response to Glucose Ingestion in Obese Adults with and without Type 2 Diabetes-. *Metabolism*. 2010; 59: 901–910. <https://doi.org/10.1016/j.metabol.2009.10.011> PMID: [20015524](https://pubmed.ncbi.nlm.nih.gov/20015524/)
 61. Kanaley JA, Gouloupoulou S, Franklin RM, Baynard T, Holmstrup ME, Carhart R, et al. Plasticity of heart rate signalling and complexity with exercise training in obese individuals with and without type 2 diabetes. *Int J Obes* 2005. 2009; 33: 1198–1206. <https://doi.org/10.1038/ijo.2009.145> PMID: [19652657](https://pubmed.ncbi.nlm.nih.gov/19652657/)
 62. Pagkalos M, Koutlianos N, Kouidi E, Pagkalos E, Mandroukas K, Deligiannis A. Heart rate variability modifications following exercise training in type 2 diabetic patients with definite cardiac autonomic neuropathy. *Br J Sports Med*. 2008; 42: 47–54. <https://doi.org/10.1136/bjism.2007.035303> PMID: [17526623](https://pubmed.ncbi.nlm.nih.gov/17526623/)
 63. Goit RK, Paudel BH, Khadka R, Roy RK, Shrewastwa MK. Mild-to-moderate intensity exercise improves cardiac autonomic drive in type 2 diabetes. *J Diabetes Investig*. 2014; 5: 722–727. <https://doi.org/10.1111/jdi.12238> PMID: [25422774](https://pubmed.ncbi.nlm.nih.gov/25422774/)
 64. Goit RK, Pant BN, Shrewastwa MK. Moderate intensity exercise improves heart rate variability in obese adults with type 2 diabetes. *Indian Heart J*. 2018; 70: 486–491. <https://doi.org/10.1016/j.ihj.2017.10.003> PMID: [30170641](https://pubmed.ncbi.nlm.nih.gov/30170641/)
 65. Zoppini G, Cacciatori V, Gemma ML, Moghetti P, Targher G, Zamboni C, et al. Effect of moderate aerobic exercise on sympatho-vagal balance in Type 2 diabetic patients. *Diabet Med*. 2007; 24: 370–376. <https://doi.org/10.1111/j.1464-5491.2007.02076.x> PMID: [17335467](https://pubmed.ncbi.nlm.nih.gov/17335467/)
 66. Faulkner MS, Quinn L, Rimmer JH, Rich BH. Cardiovascular Endurance and Heart Rate Variability in Adolescents With Type 1 or Type 2 Diabetes. *Biol Res Nurs*. 2005; 7: 16–29. <https://doi.org/10.1177/1099800405275202> PMID: [15920000](https://pubmed.ncbi.nlm.nih.gov/15920000/)
 67. Goit R.K. Moderate intensity exercise improves heart rate variability in obese adults with type 2 diabetes. *Clin Neurophysiol*. 2018; 129: e87. <https://doi.org/10.1016/j.ihj.2017.10.003> PMID: [30170641](https://pubmed.ncbi.nlm.nih.gov/30170641/)
 68. Sacre JW, Jellis CL, Marwick TH, Coombes JS. Reliability of heart rate variability in patients with type 2 diabetes mellitus. *Diabet Med J Br Diabet Assoc*. 2012; 29: e33–40. <https://doi.org/10.1111/j.1464-5491.2011.03557.x> PMID: [22172021](https://pubmed.ncbi.nlm.nih.gov/22172021/)
 69. Warburton DER, Bredin SSD. Health benefits of physical activity: a systematic review of current systematic reviews. *Curr Opin Cardiol*. 2017; 32: 541–556. <https://doi.org/10.1097/HCO.0000000000000437> PMID: [28708630](https://pubmed.ncbi.nlm.nih.gov/28708630/)
 70. Colberg SR, Sigal RJ, Yardley JE, Riddell MC, Dunstan DW, Dempsey PC, et al. Physical Activity/Exercise and Diabetes: A Position Statement of the American Diabetes Association. *Diabetes Care*. 2016; 39: 2065–2079. <https://doi.org/10.2337/dc16-1728> PMID: [27926890](https://pubmed.ncbi.nlm.nih.gov/27926890/)
 71. KIRWAN JP, SACKS J, NIEUWOUDT S. The essential role of exercise in the management of type 2 diabetes. *Cleve Clin J Med*. 2017; 84: S15–S21. <https://doi.org/10.3949/ccjm.84.s1.03> PMID: [28708479](https://pubmed.ncbi.nlm.nih.gov/28708479/)
 72. Vinik A.I., Casellini C., Parson H.K., Colberg S.R., Nevoret M.-L. Cardiac autonomic neuropathy in diabetes: A predictor of cardiometabolic events. *Front Neurosci*. 2018;12. <https://doi.org/10.3389/fnins.2018.00591> PMID: [30210276](https://pubmed.ncbi.nlm.nih.gov/30210276/)
 73. Lanhers C, Walther G, Chapier R, Lesourd B, Naughton G, Pereira B, et al. Long-term cost reduction of routine medications following a residential programme combining physical activity and nutrition in the treatment of type 2 diabetes: a prospective cohort study. *BMJ Open*. 2017; 7: e013763. <https://doi.org/10.1136/bmjopen-2016-013763> PMID: [28416496](https://pubmed.ncbi.nlm.nih.gov/28416496/)
 74. Routledge FS, Campbell TS, McFetridge-Durdle JA, Bacon SL. Improvements in heart rate variability with exercise therapy. *Can J Cardiol*. 2010; 26: 303–312. [https://doi.org/10.1016/s0828-282x\(10\)70395-0](https://doi.org/10.1016/s0828-282x(10)70395-0) PMID: [20548976](https://pubmed.ncbi.nlm.nih.gov/20548976/)
 75. Vinet A, Obert P, Courteix D, Chapier R, Lesourd B, Verney J, et al. Different modalities of exercise improve macrovascular function but not microvascular function in metabolic syndrome: The RESOLVE randomized trial. *Int J Cardiol*. 2018; 267: 165–170. <https://doi.org/10.1016/j.ijcard.2018.05.073> PMID: [29866368](https://pubmed.ncbi.nlm.nih.gov/29866368/)
 76. Dutheil F, Lac G, Lesourd B, Chapier R, Walther G, Vinet A, et al. Different modalities of exercise to reduce visceral fat mass and cardiovascular risk in metabolic syndrome: the RESOLVE randomized trial. *Int J Cardiol*. 2013; 168: 3634–3642. <https://doi.org/10.1016/j.ijcard.2013.05.012> PMID: [23714599](https://pubmed.ncbi.nlm.nih.gov/23714599/)

77. Boulé NG, Kenny GP, Haddad E, Wells GA, Sigal RJ. Meta-analysis of the effect of structured exercise training on cardiorespiratory fitness in Type 2 diabetes mellitus. *Diabetologia*. 2003; 46: 1071–1081. <https://doi.org/10.1007/s00125-003-1160-2> PMID: 12856082
78. Gordon BA, Benson AC, Bird SR, Fraser SF. Resistance training improves metabolic health in type 2 diabetes: a systematic review. *Diabetes Res Clin Pract*. 2009; 83: 157–175. <https://doi.org/10.1016/j.diabres.2008.11.024> PMID: 19135754
79. Courteix D, Valente-dos-Santos J, Ferry B, Lac G, Lesourd B, Chapier R, et al. Multilevel Approach of a 1-Year Program of Dietary and Exercise Interventions on Bone Mineral Content and Density in Metabolic Syndrome—the RESOLVE Randomized Controlled Trial. *PloS One*. 2015; 10: e0136491. <https://doi.org/10.1371/journal.pone.0136491> PMID: 26376093
80. Fu Q, Levine BD. Exercise and the autonomic nervous system. *Handb Clin Neurol*. 2013; 117: 147–160. <https://doi.org/10.1016/B978-0-444-53491-0.00013-4> PMID: 24095123
81. Umpierre D, Ribeiro PAB, Kramer CK, Leitão CB, Zucatti ATN, Azevedo MJ, et al. Physical activity advice only or structured exercise training and association with HbA1c levels in type 2 diabetes: a systematic review and meta-analysis. *JAMA*. 2011; 305: 1790–1799. <https://doi.org/10.1001/jama.2011.576> PMID: 21540423
82. Umpierre D, Ribeiro P a. B, Schaan BD, Ribeiro JP. Volume of supervised exercise training impacts glycaemic control in patients with type 2 diabetes: a systematic review with meta-regression analysis. *Diabetologia*. 2013; 56: 242–251. <https://doi.org/10.1007/s00125-012-2774-z> PMID: 23160642
83. Lin X, Zhang X, Guo J, Roberts CK, McKenzie S, Wu W-C, et al. Effects of Exercise Training on Cardiorespiratory Fitness and Biomarkers of Cardiometabolic Health: A Systematic Review and Meta-Analysis of Randomized Controlled Trials. *J Am Heart Assoc Cardiovasc Cerebrovasc Dis*. 2015;4. <https://doi.org/10.1161/JAHA.115.002014> PMID: 26116691
84. Leicht AS, Allen GD, Hoey AJ. Influence of age and moderate-intensity exercise training on heart rate variability in young and mature adults. *Can J Appl Physiol Rev Can Physiol Appl*. 2003; 28: 446–461. <https://doi.org/10.1139/h03-033> PMID: 12955871
85. Schroeder EB, Liao D, Chambless LE, Prineas RJ, Evans GW, Heiss G. Hypertension, blood pressure, and heart rate variability: the Atherosclerosis Risk in Communities (ARIC) study. *Hypertens Dallas Tex* 1979. 2003; 42: 1106–1111. <https://doi.org/10.1161/01.HYP.0000100444.71069.73> PMID: 14581296
86. Masroor S, Bhati P, Verma S, Khan M, Hussain ME. Heart Rate Variability following Combined Aerobic and Resistance Training in Sedentary Hypertensive Women: A Randomised Control Trial. *Indian Heart J*. 2018; 70: S28–S35. <https://doi.org/10.1016/j.ihj.2018.03.005> PMID: 30595274
87. Cozza IC, Di Sacco THR, Mazon JH, Salgado MCO, Dutra SGV, Cesarino EJ, et al. Physical exercise improves cardiac autonomic modulation in hypertensive patients independently of angiotensin-converting enzyme inhibitor treatment. *Hypertens Res Off J Jpn Soc Hypertens*. 2012; 35: 82–87. <https://doi.org/10.1038/hr.2011.162> PMID: 21956728
88. Manzella D, Grella R, Esposito K, Giugliano D, Barbagallo M, Paolisso G. Blood pressure and cardiac autonomic nervous system in obese type 2 diabetic patients: effect of metformin administration. *Am J Hypertens*. 2004; 17: 223–227. <https://doi.org/10.1016/j.amjhyper.2003.11.006> PMID: 15001195
89. Paffenbarger RS, Hyde RT, Wing AL, Hsieh CC. Physical activity, all-cause mortality, and longevity of college alumni. *N Engl J Med*. 1986; 314: 605–613. <https://doi.org/10.1056/NEJM198603063141003> PMID: 3945246
90. Grace A, Chan E, Giallauria F, Graham PL, Smart NA. Clinical outcomes and glycaemic responses to different aerobic exercise training intensities in type II diabetes: a systematic review and meta-analysis. *Cardiovasc Diabetol*. 2017;16. <https://doi.org/10.1186/s12933-017-0497-7> PMID: 28122570
91. Leon AS, Sanchez OA. Response of blood lipids to exercise training alone or combined with dietary intervention. *Med Sci Sports Exerc*. 2001; 33: S502–515; discussion S528–529. <https://doi.org/10.1097/00005768-200106001-00021> PMID: 11427777
92. Elghozi JL, Girard A, Laude D. Effects of drugs on the autonomic control of short-term heart rate variability. *Auton Neurosci Basic Clin*. 2001; 90: 116–121. [https://doi.org/10.1016/S1566-0702\(01\)00276-4](https://doi.org/10.1016/S1566-0702(01)00276-4) PMID: 11485277
93. LeLorier J, Grégoire G, Benhaddad A, Lapierre J, Derderian F. Discrepancies between meta-analyses and subsequent large randomized, controlled trials. *N Engl J Med*. 1997; 337: 536–542. <https://doi.org/10.1056/NEJM199708213370806> PMID: 9262498
94. da Cruz CJG, Porto LGG, da Silva Rolim P, de Souza Pires D, Garcia GL, Molina GE. Impact of heart rate on reproducibility of heart rate variability analysis in the supine and standing positions in healthy men. *Clin Sao Paulo Braz*. 2019; 74: e806. <https://doi.org/10.6061/clinics/2019/e806> PMID: 31411277