

Effect of Vadasz Number on Magnetoconvection in a Darcy Porous Layer with Concentration Based Internal Heating

C. Israel-Cookey¹, L. Ebiwareme² and E. Amos^{2*}

¹Department of Physics, Rivers State University, Port Harcourt, Nigeria.

²Department of Mathematics, Rivers State University, Port Harcourt, Nigeria.

Authors' contributions

This work was carried out in collaboration among all authors. Authors CIC and LE designed the study and performed the analysis. Author EA presented the plots/tables and interpreted the results. All authors read and approved the final manuscript.

Article Information

DOI: 10.9734/ARJOM/2019/v12i430093

Editor(s):

(1) Dr. Junjie Chen, Department of Electrical Engineering, University of Texas at Arlington, USA.

Reviewers:

(1) João Batista Campos Silva, São Paulo State University - UNESP, Brazil.

(2) Yahaya Shagaiya Daniel, Kaduna State University, Nigeria.

(3) R. S. Lebelo, Vaal University of Education, South Africa.

Complete Peer review History: <http://www.sdiarticle3.com/review-history/46135>

Received: 24 October 2018

Accepted: 25 January 2019

Published: 12 March 2019

Original Research Article

Abstract

In this research article, the effect of Vadasz number on magnetoconvection in a Darcy Porous Layer with concentration based internal heating is studied. The flow is governed by the Oberbeck-Boussinesq model for Newtonian fluid. The stability analysis method based on the perturbation of infinitesimal amplitude is carried out using the normal mode analysis. The onset criterion for both the stationary and oscillatory convection on the stability of system is obtained. The analysis examines the effects of pertinent parameters on the stability of the system: magnetic field parameter, solutal Rayleigh number, Lewis number and Vadasz number. The result show that, internal heat parameter, Ri and Lewis number, Le , hastens the onset of instability in the system, whereas magnetic field, Ha , Vadasz number, Va and solutal Rayleigh number, Rs delay the onset of instability.

Keywords: Thermal Rayleigh number; double diffusive convection; normal mode analysis; Magnetoconvection; Concentration based internal heat.

*Corresponding author: E-mail: amos.emeka@ust.edu.ng;

1 Introduction

Studies on thermal instability with applied magnetic field in a Darcy porous layer with concentration based internal heating has received significant attention due to great number of areas of applications notably in industrial applications especially in nuclear reactors, cooling of electronic equipment, thermal insulation, food processing and reservoir modeling. Some of the researches in thermal instability in porous medium for different fluids and under various hydrodynamics and hydro magnetic conditions include [1,2,3,4,5,6,7,8]. Stability of a convective flow in a porous medium using Rayleigh's procedures was considered by Lapwood [9]. Also, [10] considered Rayleigh instability of the thermal boundary layer in a flow through a porous medium. Comprehensive study of convection in a porous medium are contained in many researchers [11,12,13,14,15].

Thermal instability in a porous medium that is heated and salted from below under various conditions has equally received significant attention. The work of Israel-Cookey et al. [16] is a classic example, where the effect of vertical magnetic field on the onset of double diffusion convection in a horizontal porous layer with convection based internal heat source is studied. Soret and magnetic field effect on thermosolutal convection in a porous medium with concentration based internal heat was considered by Isreal-Cookey et al. [17]. Cross-diffusion and reaction effect on double diffusive convection in a porous medium with concentration based internal heat source was studied by many researchers [18, 19,20].

In this study, we present the effect of Vadasz number on magnetoconvection in a Darcy porous layer with concentration based internal heating which hitherto has not been considered by other authors or researchers.

2 Mathematical Formulation

Consider an incompressible and electrically conducting fluid induced by concentration based internal heating of the form $Q_0(c^* - c_0)$ at the center between two parallel horizontal plates located at $z^* = 0$ and $z^* = h$. A Cartesian coordinate system (x^*, y^*, z^*) is chosen so that the origin is at the bottom of the porous layer and the gravitational force \vec{g} act downward, as shown in the Figure 1. The flow occur in the presence of a uniform externally applied vertical magnetic field $\vec{B} = B_0\vec{k}$. The induced magnetic field is neglected because the magnetic Reynold number is small. Opposing temperature and concentration gradients are applied across the porous layer such that the lower plate is maintained at temperature and concentration $T_0 + \Delta T$ and $c_0 + \Delta c$; while the upper plate at temperature, T_0 and concentration, c_0 , where T_0 and c_0 are reference temperature and concentration respectively.

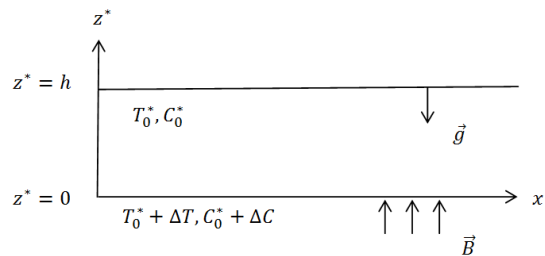


Fig. 1. Schematic diagram of the problem

Also, we assume that the fluid is Newtonian with viscosity, μ , thermal expansion coefficient, β_c , thermal conductivity, κ_T , diffusion coefficient, D_c and electric conductivity, σ_c .

We adopt the Boussinesq approximation [12]. The density of the mixture ρ , is expressed linearly on both temperature and concentration in the form

$$\rho = \rho_0[1 - \beta_T(T^* - T_0) + \beta_c(c^* - c_0)] \quad (1)$$

where ρ_0 is the reference density

Following many researchers [16,21] and [22] and the assumptions made, the governing equations become

$$\vec{\nabla}^* \cdot \vec{V}^* \quad (2)$$

$$\frac{\rho_0}{\phi} \frac{\partial \vec{V}^*}{\partial t^*} = -\nabla^* P^* + \rho_0 g [\beta_T (T^* - T_0) - \beta_c (c^* - c_0)] \vec{k} - \frac{\mu}{\kappa} \vec{V}^* + \mu_e \vec{\nabla}^{*2} \vec{V}^* + \vec{F}_L \quad (3)$$

$$A \frac{\partial T^*}{\partial t^*} + (\vec{V}^* \cdot \vec{\nabla}^*) T^* = \alpha_T \vec{\nabla}^{*2} T^* + Q_0 (c^* - c_0) \quad (4)$$

$$\phi \frac{\partial c^*}{\partial t^*} + ((\vec{V}^* \cdot \vec{\nabla}^*) c^* = \kappa_c \vec{\nabla}^{*2} c^* \quad (5)$$

$$\vec{J}^* = \sigma_c [E^* + \vec{V}^* \times \vec{B}^*], \quad \vec{\nabla}^* \cdot \vec{J}^* = 0 \quad (6)$$

With the following boundary conditions

$$\vec{V}^* = 0 \quad \text{on } z^* = 0, h \quad (7)$$

$$T^* = T_0 + \Delta T, c^* = c_0 + \Delta c \quad \text{on } z^* = 0 \quad (8)$$

$$T^* = T_0, c^* = c_0 \quad \text{on } z^* = h \quad (9)$$

where $\vec{V} = (u^*, v^*, w^*)$ is the velocity, P^* is the pressure, \vec{E} is the electric field, \vec{J} is the current density, κ is the permeability of the porous medium, ϕ is the porosity, $Q_0 = \frac{Q}{(\rho c_p)_f}$ is the heat source parameter, \vec{k} is the unit vector in the z – direction. The subscripts m and f denotes the medium and fluid respectively. Following the assumptions, the governing equations becomes:

The last term in Equation (3), \vec{F}_L represents the Lorentz force, which induces electromagnetic effect on the system. The appropriate form of Ohm's law given in Equation (6) for a moving medium employing the quasi-state approximation. The electric field, \vec{E}^* can be written in terms of the electrostatic potential, φ as

$$\vec{E} = -\nabla \varphi \quad (10)$$

In this article, we consider the case of electrically insulating boundaries for which $\vec{E} = 0$ on the account that the electrostatic potential is a constant, with this the current density given in equation (6) reduces to,

$$\vec{J}^* = \sigma_c (\vec{V}^* \times \vec{B}^*) \quad (11)$$

Hence, the Lorentz force $\vec{F}_L = \vec{J}^* \times \vec{B}$ becomes

$$\begin{aligned} \vec{F}_L &= \sigma_c (\vec{V}^* \times \vec{B}^*) \times \vec{B} \\ &= -\sigma_c B_0^2 (U^*, V^*, 0) \end{aligned} \quad (12)$$

Using Equation (12) and the scales $h, \frac{h^2 A}{\alpha_T}, \frac{\alpha_T}{h}, \frac{Kh}{(\alpha_T \mu)}$ for length, time, velocity and pressure respectively; together with $T = \frac{(T^* - T_0)}{\Delta T}$ for temperature, $c = \frac{(c^* - c_0)}{\Delta c}$ for concentration, $\varepsilon = \frac{\phi}{A}$ for porosity, $\vec{v} = h \vec{V}^*$, for the dimensionless equations governing the motion of the fluid are,

$$\vec{\nabla} \cdot \vec{V} = 0 \quad (13)$$

$$\left(\frac{1}{Va} \frac{\partial}{\partial t} + 1\right) \vec{V} + Ha^2(U, V, 0) = -\nabla P + Ra T \vec{k} - Rs c \vec{k} \quad (14)$$

$$\frac{\partial T}{\partial t} + (\vec{V} \cdot \vec{\nabla}) T = \nabla^2 T + Ri c \quad (15)$$

$$Le \varepsilon \frac{\partial c}{\partial t} + Le (\vec{V} \cdot \vec{\nabla}) c = \nabla^2 c \quad (16)$$

The boundary conditions are:

$$w = 0, T = 1, c = 1 \text{ on } z = 0 \quad (17)$$

$$w = 0, T = 0, c = 0 \text{ on } z = 1 \quad (18)$$

The dimensionless parameters are:

$Ra = \frac{\phi Pr}{Da}$ = Vadasz number, $Pr = \frac{Av}{\alpha_T}$ = Prandtl number, $Da = \frac{\kappa}{h^2}$ = Darcy number, $Ra = \frac{\rho_0 g \beta_T \kappa h \Delta T}{\mu \alpha_T}$ = Rayleigh number, $Le = \frac{\alpha_T}{\alpha_c}$ = Lewis number, $Ha^2 = \frac{\alpha_c \beta_0^2 k}{\mu}$ = Hartmann number, $Ri = \frac{h^2 Q_0 \Delta c}{\alpha_T \Delta T}$ = internal heat parameter, $Rs = \frac{\rho_0 g \beta_c k h \Delta c}{\mu \alpha_T}$ = solutal Rayleigh number.

2.1 Basic state

The basic state of the system is assumed to be quiescent and is described by

$$V_b = 0, T = T_b(z), c = c_b(z), p = p_b(z) \quad (19)$$

Substituting Equation (19) into Equations (13) – (16) and the boundary condition (17) and (18) yield the equations governing the basic state as

$$\frac{d^2 T_b}{dz^2} + Ri c_b = 0 \quad (20)$$

$$\frac{d^2 c_b}{dz^2} = 0 \quad (21)$$

$$\frac{d p_b}{dz} = Ra T_b - Rs c_b \quad (22)$$

Subject to

$$T_b = c_b = 1 \quad \text{on } z = 0 \quad (23)$$

$$T_b = c_b = 0 \quad \text{on } z = 1 \quad (24)$$

The integration of Equations (20) – (22), and application of boundary conditions (23) and (24), yield

$$T_b(z) = \frac{1}{6} [6(1 - z) + (2z - 3z^2 + z^3) Ri] \quad (25)$$

$$c_b(z) = 1 - z \quad (26)$$

$$P_b(z) = \int (Ra T_b(z) - Rs c_b(z)) dz \quad (27)$$

2.2 Linearization and perturbation solution

To study the stability of the basic state, we now superimpose small perturbations in the form

$$V = \vec{V}_b + \vec{v}, p = p_b(z) + p, T = T_b(z) + \theta, C = c_b(z) + \varphi \quad (28)$$

where \vec{v}, p, θ and φ are the perturbed quantities over their equilibrium counterparts and are assumed small. On substituting Equation (28) into Equations (13)–(16) and the boundary condition (17) and (18), and then using Equation (28), we obtain the linearized equations as

$$\vec{\nabla} \cdot \vec{V} = 0 \quad (29)$$

$$\left(\frac{1}{\nu a} \frac{\partial}{\partial t} + 1 \right) \vec{v} + Ha^2(u, v, 0) = -\nabla P + Ra \theta \vec{k} - Rs \varphi \vec{k} \quad (30)$$

$$\frac{\partial \theta}{\partial t} + (\vec{v} \cdot \vec{\nabla}) \theta + f(z)w = \nabla^2 \theta + Ri \varphi \quad (31)$$

$$Le \varepsilon \frac{\partial \varphi}{\partial t} + Le(\vec{v} \cdot \vec{\nabla}) \varphi - Lew = \nabla^2 \varphi \quad (32)$$

where $f(z) = \frac{\partial T_b}{\partial z}$ is the basic temperature gradient given by

$$\frac{\partial T_b}{\partial z} = -1 + \frac{Ri}{6}(2 - 6z + 3z^2)$$

The impermeable boundary conditions are

$$w = \theta = \varphi = 0 \quad \text{on } z = 0, 1 \quad (33)$$

Next, the pressure term is eliminated by taking the double curl of Equation (30) and keeping only the z – component. Then the system reduces to

$$\left(\frac{1}{\nu a} \frac{\partial}{\partial t} + 1 \right) \nabla^2 w + Ha^2 \frac{\partial^2 w}{\partial z^2} - Ra \nabla_h^2 \theta + Rs \nabla_h^2 \varphi = 0 \quad (34)$$

$$f(z)w + \left(\frac{\partial}{\partial t} - \nabla^2 \right) \theta - Ri \varphi = 0 \quad (35)$$

$$Lew - \left(Le \varepsilon \frac{\partial}{\partial t} - \nabla^2 \right) \varphi = 0 \quad (36)$$

where $\nabla_h^2 = \frac{\partial^2}{\partial x^2} + \frac{\partial^2}{\partial y^2}$ is the Laplacian in the horizontal plane.

The boundary condition for the system (34) – (36) are

$$w = \frac{\partial^2 w}{\partial z^2} = \theta = \varphi = 0 \quad \text{on } z = 0, 1 \quad (37)$$

Assuming further that, the conductive motion exhibit horizontal periodicity, then we seek a time dependent periodic disturbance of the form [23]

$$\begin{pmatrix} w \\ \theta \\ \varphi \end{pmatrix} = \begin{pmatrix} W(z) \\ \Theta(z) \\ \Phi(z) \end{pmatrix} f(x, y) e^{\sigma t} \quad (38)$$

where $\sigma = (\omega_r + i\omega_i)$ is the growth rate and is in general complex, with ω_r, ω_i real and $f(x, y)$ is a horizontal plane tilting the xy -plane periodically.

The substitution of Equation (38) into Equations (34) - (36) yield the eigenvalue problem.

$$\left(\frac{\sigma}{Va} + 1\right)(D^2 - a^2)w + Ha^2w + a^2Ra \Theta - a^2Rs \Phi = 0 \tag{39}$$

$$-f(z)w + (D^2 - a^2 - \sigma^2)\Theta + Ri \Phi = 0 \tag{40}$$

$$Le w + (D^2 - a^2 - Le \varepsilon \sigma)\Phi = 0 \tag{41}$$

where $D = \frac{\partial}{\partial z}$ and $\nabla_h^2 + a^2 f = 0$, a is the wave number

$$w = \Theta = \Phi = 0 \quad \text{on } z = 0, 1 \tag{42}$$

We further assume the eigenvalue of Equations (39) – (41) of the form

$$\begin{pmatrix} W(z) \\ \Theta(z) \\ \Phi(z) \end{pmatrix} = \begin{pmatrix} W_0 \\ \Theta_0 \\ \Phi_0 \end{pmatrix} \sin \pi z \tag{43}$$

where W_0, Θ_0, Φ_0 are constants. Substitution of Equation (43) into Equations (39) – (41) yield

$$H\bar{X} = 0 \tag{44}$$

where

$$H = \begin{pmatrix} J\left(1 + \frac{\sigma}{Va}\right) + \pi^2 Ha^2 & -a^2 Ra & a^2 Rs \\ 2F & J + \sigma & -Ri \\ -Le & 0 & J + Le \varepsilon \sigma \end{pmatrix}$$

$$\bar{X} = (W_0, \Theta_0, \Phi_0)^T, J = a^2 + \pi^2 \text{ and } F = \int_0^1 f(z) \sin^2 \pi z dz$$

The solvability of the eigenvalue problem in Equation (44) requires that $|H| = 0$ This requirement yields the thermal Rayleigh number, Ra as

$$Ra = \frac{4\pi^2 J\left(1 + \frac{\sigma}{Va}\right)(J + \sigma)(J + Le\varepsilon\sigma)}{a^2(b_2 + b_0 Le\varepsilon\sigma)} + \frac{4\pi^4 Ha^2(J + \sigma)(J + Le\varepsilon\sigma)}{a^2(b_2 + b_0 Le\varepsilon\sigma)} + \frac{4\pi^2 LeRs(J + \sigma)}{b_2 + b_0 Le\varepsilon\sigma} \tag{45}$$

where

$$\begin{aligned} b_0 &= 4\pi^2 + Ri \\ b_1 &= 4\pi^2 Le Ri \\ b_2 &= b_0 J + b_1 \end{aligned}$$

For neutral solutions, we set $\sigma = i\omega_i$ in Equation (45) and rearranging yields

$$Ra = \frac{4\pi^2}{\Delta} [\Delta_1 + i\omega_i \Delta_2] \tag{46}$$

where

$$\begin{aligned} \Delta_1 = & \frac{1}{a^2} \left[\left[J \left(1 + \frac{J}{Va} \right) + Le \varepsilon \left(J - \frac{\omega^2}{Va} \right) \right] Le \varepsilon J \omega^2 \right. \\ & \left. + J b_2 \left[\left[J \left(J - \frac{\omega^2}{Va} \right) - Le \varepsilon \left(1 + \frac{J}{Va} \right) \omega^2 \right] \right. \right. \\ & \left. \left. + Ha^2 \pi^2 [J Le \varepsilon (1 + Le \varepsilon) b_0 \omega^2 + (J^2 - Le \varepsilon \omega^2) b_2] \right] \right] + Le Rs (J b_2 + b_0 \omega^2) \\ \Delta_2 = & \frac{1}{a^2} \left[\left[\frac{J^2 Le \varepsilon b_0}{Va} (Le \varepsilon + 1) \omega^2 + J Le \varepsilon (Le \varepsilon \omega^2 - J^2) \right] b_0 + \left[J^2 \left(1 + \frac{1}{Va} \right) + J Le \varepsilon \left(J - \frac{\omega^2}{Va} \right) \right] b_2 \right. \\ & \left. + [(J + Le \varepsilon) b_2 - (J^2 - Le \varepsilon \omega^2) Le \varepsilon b_0] \right] + Le Rs (b_2 - J Le \varepsilon b_0) \\ \Delta = & b_2^2 + b_0^2 Le^2 \varepsilon^2 \omega^2 \end{aligned}$$

Since Ra is a physical quantity, it must be real. Hence from Equation (46), it follows that either $\omega = 0$ for the onset of stationary convection or $\Delta_2 = 0, \omega \neq 0$ for the onset of oscillatory convection.

3 Onset of Stationary Convection

For the validity of principle of exchange of stabilities to hold for marginal stationary convection, $\omega = 0$. Setting $\omega = 0$ in Equation (46) yields the Rayleigh number, Ra^{st} for the stationary convection as

$$Ra^{st} = \frac{4\pi^2}{b_2} \left[\frac{J^3}{a^2} + \frac{Ha^2 \pi^2 J^2}{a^2} + Le Rs J \right] \quad (47)$$

In the absence of $Ri = 0$,

$$Ra^{st} = \frac{1}{a_2} [J^2 + Ha^2 \pi^2 J] + Le Rs$$

Further, if $Ha = 0$, Ra^{st} simplifies to

$$Ra^{st} = \frac{(a^2 + \pi^2)^2}{a^2} + Le Rs \quad (48)$$

which coincides with the earlier results of many researchers [16] and [24]

Further, when $Rs = 0$, the stationary Rayleigh number given in Equation (48) reduces to the classical result of many researchers [9] and [25]

$$Ra^{st} = \frac{(a^2 + \pi^2)^2}{a^2} \quad (49)$$

In addition, Equation (48) gives the critical Rayleigh number $Ra_c^{st} = 4\pi^2$ with corresponding critical wave number, $a_c^{st} = \pi$

3.1 Oscillatory Convection

For the onset of oscillatory convection $\Delta_2 = 0$ and $\omega = 0$. Setting $\Delta_2 = 0$ and $Ra = Ra^{(os)}$ in Equation (46) gives the expression for Rayleigh number as

$$Ra^{OS} = \frac{4\pi^2}{a^2\Delta} \left\{ \left[J \left(1 + \frac{J}{Va} \right) + Le\varepsilon \left(J - \frac{\omega_i^2}{Va} \right) \right] Le\varepsilon J \omega_i^2 + J b_2 \left(J - \frac{\omega_i^2}{Va} \right) - Le\varepsilon \left(1 + \frac{J}{Va} \right) \omega_i^2 \right\} + Ha^2 \pi^2 \left[J Le\varepsilon (1 + Le\varepsilon) b_0 \omega_i^2 + (J^2 - Le\varepsilon \omega_i^2) b_2 \right] + \frac{4\pi^2 LeRs}{\Delta} (J b_2 + b_0 \omega_i^2) \quad (50)$$

where the frequency of oscillation is given by

$$\omega_i^2 = \frac{\{ [Ha^2 \pi^2 (J(J-1)(4\pi^2 + Ri) - 4\pi^2 LeRi) + JLe(a^2(4\pi^2 + Ri)Rs - 4\pi^2 J Ri)] - (4\pi^2 LeRi + J(4\pi^2 + Ri)) \left(\frac{J^3}{Va} + J^2 + Ha^2 \pi^2 J + a^2 LeRs \right) \}}{Le\varepsilon \left[\frac{4\pi^2 J}{Va} (J - Ri) + (Ha^2 \pi^2 + J) (4\pi^2 + Ri) \right]} \quad (51)$$

4 Discussion of Results

The influence of Vadasz number on magnetoconvection in Darcy porous layer with concentration based internal heating is studied analytically using the linear stability analysis technique. The expressions for both the stationary and oscillatory modes for different values of the governing parameters such as magnetic field parameter, Ha , solute Rayleigh number, Rs , internal heat parameter, Ri and Lewis number, Le , are computed and the results are displayed in Figs. 2-9.

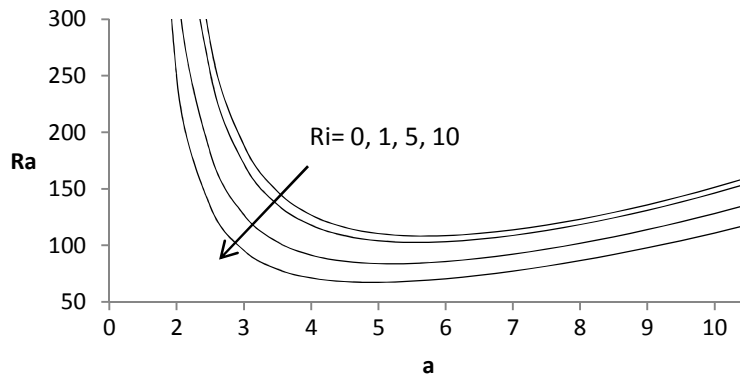


Fig. 2. Variation of thermal Rayleigh number for various values of internal heat parameter, Ri for stationary convection.

The Influence of the internal heat parameter on the onset of instability for fixed values of $Ha = 2, Rs = 5, Le = 1$ in stationary convection is displayed in Fig. 2. It is observed that increase in the internal heat decreases the thermal Rayleigh number, for stationary convection. This implies that internal heat hastens instability, which leads to a destabilization of the system.

Fig. 3 show numerically, the computed values for $Rs = 2, Ri = 2$ and the influence of the Magnetic field parameter, Ha on the thermal Rayleigh number. The result show that increase in Magnetic field increases the thermal Rayleigh number for the stationary mode. The result is an indication that Magnetic field stabilizes the system.

Fig. 4 depicts the influence of Lewis number, Le on the thermal Rayleigh number, Ra for fixed values of $Ha = 2, Rs = 2, Ri = 1$ in stationary convection. It is observed that increase in Lewis number leads to decrease in the thermal Rayleigh number, Ra which is an indication that Lewis number hastens the onset of instability in the system.

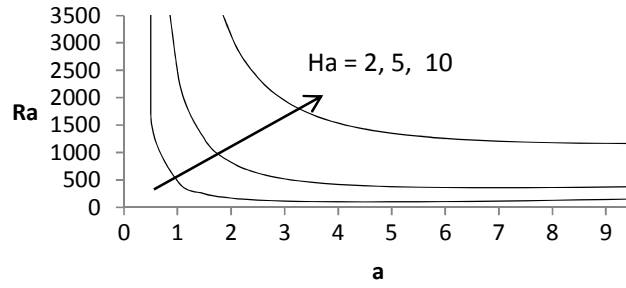


Fig. 3. Variation of thermal Rayleigh number for various values of the magnetic parameter, Ha for stationary convection

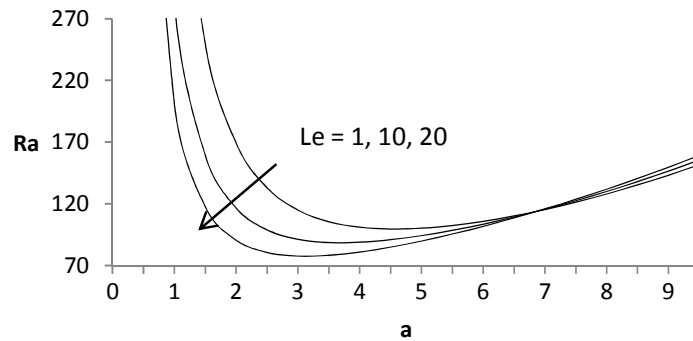


Fig. 4. Variation of thermal Rayleigh number for various values of the Lewis number, Le for stationary convection

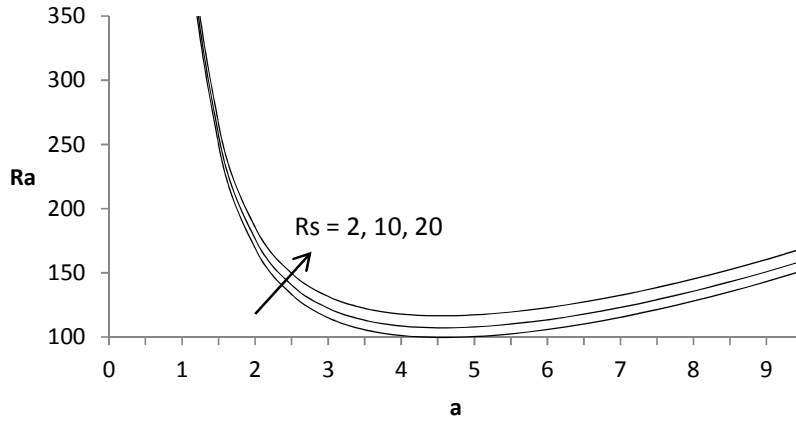


Fig. 5. Variation of thermal Rayleigh number for various values of Solutal Rayleigh number, Rs in stationary convection

The effect of solutal Rayleigh number, Rs on the thermal Rayleigh number for fixed $Ha = 2, Ri = 1, Le = 1$ is illustrated in Fig. 5. The result shows increase in solutal Rayleigh number increases the thermal Rayleigh number. This implies that solutal Rayleigh number stabilizes the system for stationary convection.

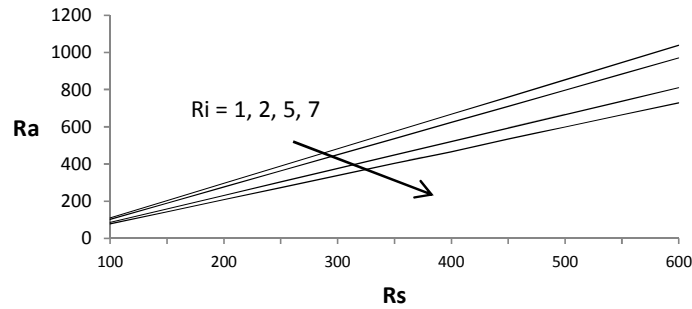


Fig. 6. Variation of thermal Rayleigh number with solutal Rayleigh number for various values of the internal heat parameter, Ri in stationary convection

Fig. 6 show the influence of the internal heat parameter, Ri on the thermal Rayleigh number for fixed $Ha = 2, Le = 1, a_c = \pi$. It is observed that increase in internal heat decreases the thermal Rayleigh number. This is an indication that, the system is destabilized in the presence of internal heat parameter.

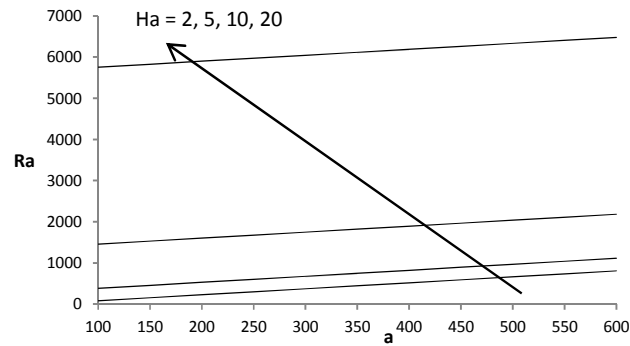


Fig. 7. Variation of thermal Rayleigh number for various values of magnetic parameters, Ha in oscillatory convection

Fig. 7 show a linear relationship between the thermal Rayleigh number, Ra and the solutal Rayleigh number, Rs for variations in the Magnetic field parameter, Ha . Increase in Magnetic field increases the thermal Rayleigh number which is an indication that the system is stabilized in the presence of Magnetic field for stationary convection.

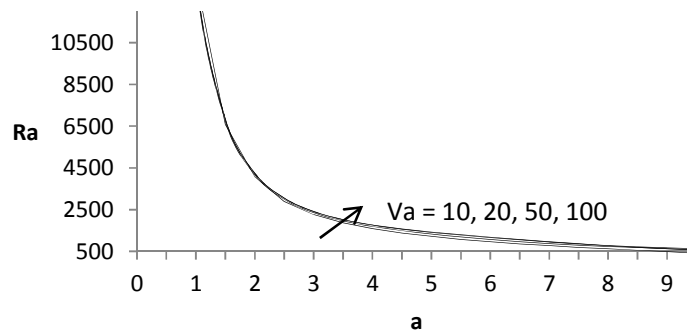


Fig. 8. Variation of thermal Rayleigh number for various values of the Vadasz number, Va in oscillatory convection

The influence of Vadasz number, Va on the thermal Rayleigh number, Ra for oscillatory convection with fixed values of $Ha = 10, Ri = 2$ is depicted in Fig. 8. The result show increase in Vadasz number increases the thermal Rayleigh number which indicates that Vadasz number delays the onset of instability in the system.

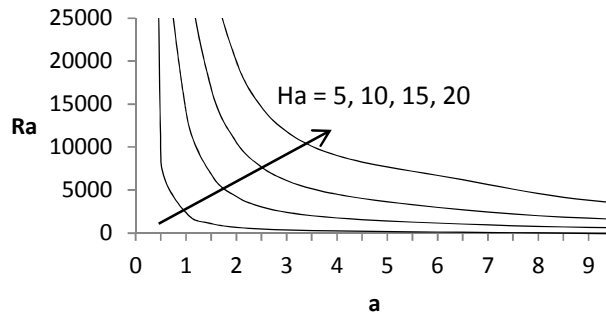


Fig. 9. Variation of thermal Rayleigh number for various values of magnetic parameter, Ha in oscillatory convection

Fig. 9 show the influence of Magnetic field parameter, Ha on the thermal Rayleigh number, Ra for fixed values of $Va = 50, Ri = 2$ for oscillatory convection. It is evident that increase in Magnetic field increases the thermal Rayleigh number, which is an indication of the stabilization of the system.

5 Conclusion

The effect of Vadasz number on magnetoconvection in a Darcy porous layer with concentration based internal heating has been studied using the linear stability analysis. The porous layer is heated and salted from below. The roles of the governing parameters on the stability of the system was investigated. The result show that, the presence of the internal heat parameter, Ri and Lewis number, Le destabilize the system for both stationary and oscillatory modes. On the other hand, positive increase in the values of the magnetic parameter, Ha , Vadasz number, Va , and solutal Rayleigh number stabilizes the system.

Competing Interests

Authors have declared that no competing interests exist.

References

- [1] Chandrasekhar S. Hydrodynamic and hydromagnetic stability. New York, (Dover Publication); 1961.
- [2] Vafai K. Handbook of porous media. Second ed. Taylor and Francis. London; 2005.
- [3] Nield DA, Bejan J. Convection in porous media. Springer-Verlag. New York; 2006.
- [4] Ingham DB, Pop I. Transport phenomena in porous media. Elsevier, Oxford. 1998;III.
- [5] Gaikwad SN, Karabe SS. Analysis of linear stability on double diffusive convection in fluid saturated anisotropic porous layer with Soret effect. Advances in Applied Science Research. 2012; 3(3):1611-1617.

- [6] Amos E, Isreal-Cookey C. Soret and magnetic effects on the onset of convection in a shallow horizontal porous layer with thermal radiation. *International Journal of Engineering and Applied Sciences*. 2016;8(2):10-18.
- [7] Motsa SS. On the onset of convection in a porous layer in the presence of Dufour and Sorets. *SAMSA Journal of Pure and Applied Mathematics*. 2008;3:58-65.
- [8] Gupta VK, Singh AK. Double diffusive reaction-convection in viscous fluid layer. *International Journal Industrial Mathematics*. 2014;6(4):285-296.
- [9] Lapwood ER. Convection of a fluid in a porous medium. *Proc, Cambridge. Phil. Soc*, 1948;44:508-521.
- [10] Wooding RA. Convection current in porous medium. *Proceedings of the Royal Society*. 1960;252:120.
- [11] Hadim H, North M. Forced vibration in a sintered porous channel with inlet and outlet slots. *International Journal of thermal Science*. 2005;44(1):33-42.
- [12] Nield DA, Bejan J. *Convection in porous media*. Springer-Verlag, New York; 2017.
- [13] Henk H. *Fluids in porous media*. Springer-Verlag, New York; 2016.
- [14] Howell JR. *Radiative transfer in porous media*. 2000;1:663-698.
- [15] Jacob B. *Dynamics of fluid in porous media*. Dover Publication; 1972.
- [16] Israel-Cookey C, Ebiwareme L, Amos E. Effect of vertical magnetic field on the onset of double-diffusive convection in a horizontal porous layer with concentration based internal heat source. *Asian Research Journal of Mathematics*. 2017;7(1):1-15.
- [17] Isreal-Cookey C, Amos E, Ebiwareme L. Soret and magnetic field effects on thermosolutal convection in a porous medium with concentration based internal heat source. *American Journal of Fluid Dynamics*. 2018;8(1):1-6.
- [18] Gupta VK, Singh AK. Double diffusive reaction-convection in viscous fluid layer. *International Journal of Industrial Mathematics*. 2008;3:50-56.
- [19] Malashetty MS, Biradar BS. The onset of double diffusive convection in a binary fluid saturated porous layer with cross-diffusion effects. *Physics of Fluids*. 2011;23:064109,1-13.
- [20] Deepika N, Narayana PAL. Nonlinear stability of double diffusive convection in a porous layer with through flow and concentration based internal heat source. *Transport in porous media*. 2016;111(3): 751-762.
- [21] Alok S, Bhadauria BS. Effect of internal heating on double diffusive convection in a couple stress fluid saturated anisotropic porous medium. *Advances in material science and applications*. 2012;3(1): 24-45.
- [22] Zhao M, Zhang Q, Wang S. Linear and nonlinear stability analysis of double diffusive convection in a Maxwell fluid saturated porous layer with internal heat source. *Journal of Applied Mathematics*. 2014;1-12.
- [23] Drazin PG, Reid WH. *Hydrodynamic stability*, Oxford University Press; 2004.

- [24] Horton CW, Rogers FT. Convection currents in a porous medium. Journal Applied Physics. 1945;16: 508-521.
- [25] Lambardo S, Mulone G, Straughan B. Nonlinear stability in the bernard problem for a double diffusive mixture in a porous medium. Math. Meth. Applied Sci. 2006;24:1229-1246.

© 2019 Israel-Cookey et al.; This is an Open Access article distributed under the terms of the Creative Commons Attribution License (<http://creativecommons.org/licenses/by/4.0>), which permits unrestricted use, distribution, and reproduction in any medium, provided the original work is properly cited.

Peer-review history:

The peer review history for this paper can be accessed here (Please copy paste the total link in your browser address bar)

<http://www.sdiarticle3.com/review-history/46135>