

# Effectiveness of strengthened stimulation during acupuncture for the treatment of Bell palsy: a randomized controlled trial

Sha-bei Xu MD PhD, Bo Huang MD PhD, Chen-yan Zhang MMed, Peng Du MD PhD, Qi Yuan MMed, Gui-juan Bi MMed, Gui-bin Zhang MD PhD, Min-jie Xie PhD, Xiang Luo MD, Guang-ying Huang MD PhD, Wei Wang MD PhD

See related editorial by Fletcher on page 459 and at [www.cmaj.ca/lookup/doi/10.1503/cmaj.130319](http://www.cmaj.ca/lookup/doi/10.1503/cmaj.130319)

## ABSTRACT

**Background:** The traditional Chinese theory of acupuncture emphasizes that the intensity of acupuncture must reach a threshold to generate *de qi*, which is necessary to achieve the best therapeutic effect. *De qi* is an internal compound sensation of soreness, tingling, fullness, aching, cool, warmth and heaviness, and a radiating sensation at and around the acupoints. However, the notion that *de qi* must be achieved for maximum benefit has not been confirmed by modern scientific evidence.

**Methods:** We performed a prospective multi-centre randomized controlled trial involving patients with Bell palsy. Patients were randomly assigned to the *de qi* ( $n = 167$ ) or control ( $n = 171$ ) group. Both groups received acupuncture: in the *de qi* group, the needles were manipulated manually until *de qi* was reached, whereas in the control group, the needles were inserted without any manipulation. All patients received prednisone as a

basic treatment. The primary outcome was facial nerve function at month 6. We also assessed disability and quality of life 6 months after randomization.

**Results:** After 6 months, patients in the *de qi* group had better facial function (adjusted odds ratio [OR] 4.16, 95% confidence interval [CI] 2.23–7.78), better disability assessment (differences of least squares means 9.80, 95% CI 6.29–13.30) and better quality of life (differences of least squares means 29.86, 95% CI 22.33–37.38). Logistic regression analysis showed a positive effect of the *de qi* score on facial-nerve function (adjusted OR 1.07, 95% CI 1.04–1.09).

**Interpretation:** Among patients with Bell palsy, acupuncture with strong stimulation that elicited *de qi* had a greater therapeutic effect, and stronger intensity of *de qi* was associated with the better therapeutic effects. Trial registration: Clinicaltrials.gov no. NCT00685789.

**Competing interests:** None declared.

This article has been peer reviewed.

**Correspondence to:** Wei Wang, [wwang\\_tjh@yahoo.com.cn](mailto:wwang_tjh@yahoo.com.cn)

**CMAJ 2013, DOI:10.1503/cmaj.121108**

The use of acupuncture has gained increasing attention worldwide.<sup>1,2</sup> There is a long-held belief in the traditional theory and clinical practice of acupuncture that the intensity of the stimulus must reach a threshold to elicit *de qi*, which plays a pivotal role in achieving the best therapeutic effects.<sup>3,4</sup> *De qi* — an internal compound sensation of soreness, tingling, fullness, aching, cool, warmth, heaviness and a radiating sensation at and around acupoints — is elicited by manipulation of the needles (rotated as well as being moved upward and downward).<sup>5</sup> The concept of *de qi*, originating from the long-term accumulation of clinical experiences, has been explained to some degree by several scientific studies.<sup>6–11</sup> However, this long-held belief has not been confirmed by sufficient evidence from randomized controlled trials.<sup>5</sup> Consequently, *de qi* and its related techniques have been neglected in acupuncture practice and

research. As such, the therapeutic effects of acupuncture may be seriously compromised.<sup>12–14</sup>

In this study, we compared the efficacy of acupuncture with either strong (intended to elicit *de qi*) or weak stimulation among patients with Bell palsy.

## Methods

### Participants

This study was carried out at 11 tertiary care hospitals in China. Patients were recruited from October 2008 to April 2010, and follow-up was continued until October 2010. All of the hospitals had registered acupuncturists with more than 10 years of professional experience.

To minimize the psychosocial effect of acupuncture, we included patients with Bell palsy, instead of pain-related diseases, because regeneration of facial nerves does not seem to be

as susceptible to the psychosocial effect as analgesia is. Eligible patients with Bell palsy were given a copy of the informed consent form and those who signed the form were recruited.

The study was approved by all local institutional ethics review boards and was conducted in accordance with the provisions of the Declaration of Helsinki and Good Clinical Practice guidelines.<sup>15</sup>

We included patients who met the following criteria: unilateral facial-nerve weakness without an identifiable cause within 168 hours after the onset of symptoms;<sup>16</sup> aged 18–65 years; and who had not received any treatment before randomization. We excluded participants who were illiterate; had facial paralysis caused by herpes zoster; had recurrent facial paralysis; had noticeable asymmetry of the face before the onset of illness (which may affect evaluation); and who had a history of peptic ulcer disease, severe hypertension, uncontrolled diabetes, liver and kidney dysfunction, mental illness or serious systemic diseases that may affect the treatment. We also excluded pregnant women.

### Interventions

All acupuncturists ( $n = 15$ ) were registered acupuncturists with more than 10 years of professional experience and had been trained in the standardized procedures by an acupuncture expert. During the treatment process, the acupuncturists explained “acupuncture” and “*de qi*” to patients in both groups in the same way. The acupuncture intervention was based on traditional Chinese acupuncture theory and previous Chinese literature.<sup>17</sup> Acupoints included Yangbai (gallbladder meridian 14, affected side), Dicang (stomach meridian [ST] 4, affected side), Jiache (ST 6, affected side), Xiaguan (ST 7, affected side), Yifeng (triple energizer meridian 17, affected side) and Hegu (large intestine meridian 4, contralateral). For both groups, treatment consisted of twenty 30-minute sessions (5 sessions per wk for 4 wk). The same number and type of needles ( $\Phi = 0.25$  mm  $\times$  25 mm disposable sterile acupuncture needles, Shanghai Taicheng Technology and Development Co., Ltd.) were used for

both groups. All patients received prednisone therapy as a basic treatment for 14 days (30 mg/d for 7 d, 20 mg/d for 4 d and 10 mg/d for 3 d).

In the *de qi* group, the needles were manipulated manually after insertion, using techniques such as lifting, thrusting and twirling, until *de qi* was achieved. The needles were left in place for 30 minutes. During the treatment session, the acupuncturist asked the patient about *de qi* every 10 minutes and manipulated the needles to maintain the intensity of the sensation. In the control group, the needles were inserted and left in place for 30 minutes without manipulation. Patients were kept out of contact with those in the opposite treatment group. All sessions for each patient were performed by the same acupuncturist.

### Outcomes

The primary outcome was facial-nerve function measured by use of the House–Brackmann score.<sup>18</sup> The House–Brackmann scale is based on a six-grade score: grade 1 indicates normal function and grade 6 indicates complete paralysis. Patients were asked to show 4 standard facial expressions: at rest, raised eyebrows, eyes tightly closed, and showing teeth, which were recorded by use of a digital camcorder. All digital data were assessed and graded independently by 3 neurologists at Tongji Hospital; the neurologists were unaware of the study-group assignments and the stage of assessment.

The secondary outcomes were disability (measured by the Facial Disability Index) and health-related quality of life (measured by the World Health Organization’s Quality of Life, brief version).<sup>19,20</sup>

Baseline assessment was performed on the day of randomization, and follow-up visits were conducted 6 months after randomization.

### Assessment of *de qi*

Immediately after removing the needles during the 1st, 5th, 10th, 15th and 20th sessions, patients were interviewed by another researcher on the team who did not know the treatment allocation. Patients were questioned about whether each of the 8 sensa-

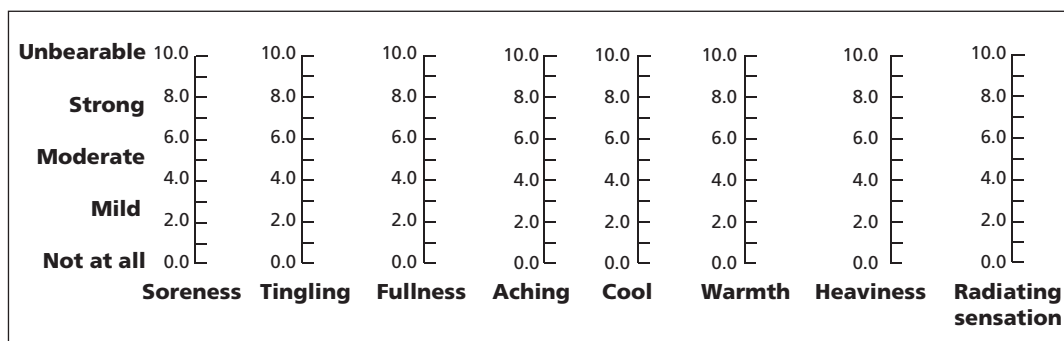


Figure 1: The visual analogue scale used to assess the intensity of *de qi*.

tions of *de qi* had occurred during the session. Intensity was rated using a visual analogue scale (Figure 1), which has commonly been used to measure the intensity of *de qi*.<sup>21–23</sup> The patient was asked to indicate his or her response to each sensation anywhere on the continuum. The score for the visual analogue scale was the sum of all 8 component scores. The overall *de qi* score was the mean score from all sessions.

### Sample size

Before the study, we assumed that 80% of patients would recover completely in the control group,<sup>24</sup> compared with 90% of patients in the *de qi* group. To detect a statistically significant difference between the 2 groups with at least 80% power at a 5% significance level, we planned to include 487 patients, which included a possible loss to follow-up of 10%.

### Randomization, implementation and blinding

To avoid bias, we stratified patients according to the interval between the onset of palsy and the start of treatment ( $\leq 72$  h or 72–168 h), score on the House–Brackmann Scale (2–3 or 4–5) and treatment centre. After a senior neurologist who

had been trained in the study procedures confirmed eligibility and written informed consent was obtained, patients were randomly assigned to either the *de qi* or control group via computer-generated random numbers. The treatment allocations were sealed in opaque envelopes that were opened sequentially. A third party, who was not involved in the trial, produced the randomization codes and the sealed envelopes. One person at each hospital was responsible for the envelopes. The senior neurologist, who confirmed eligibility of the patient, determined which stratum (House–Brackmann score and interval between onset of palsy and start of treatment) the patient belonged to. Then, the person in charge of the envelopes would give the specified envelope to the acupuncturist. To preserve masking, only the acupuncturists had access to the treatment allocation. The patients, recruiters and outcome assessors were all unaware of study-group assignments.

### Statistical analysis

We used two-tailed tests for all statistical analyses. Statistical significance was defined as  $p < 0.05$ . Quantitative data are presented as mean ( $\pm$  standard deviation [SD]), and qualitative data by frequency and percentage. We compared the rates of

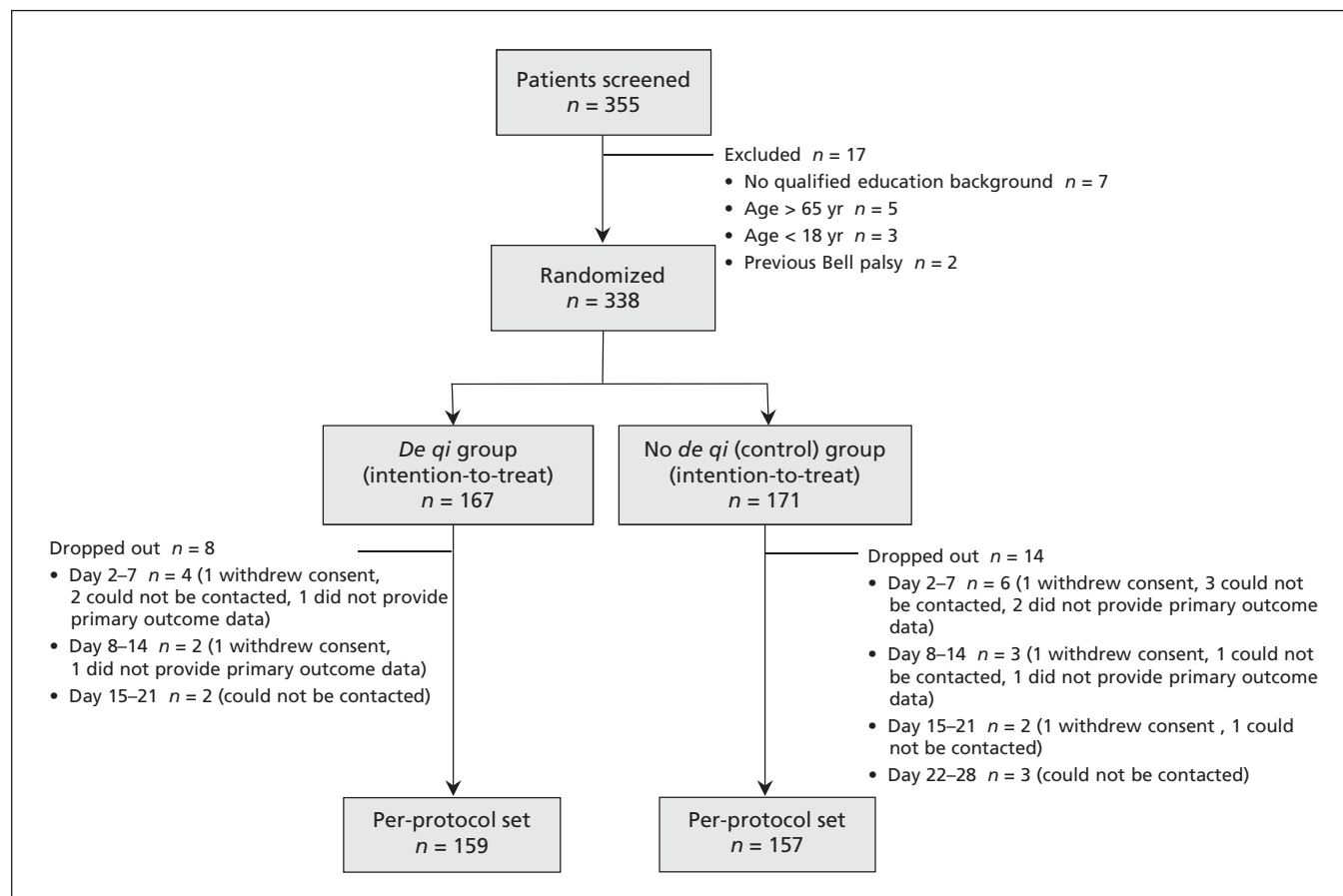


Figure 2: Flowchart of trial participants.

facial-nerve function (grade 1 on the House–Brackmann Scale) at 6 months between the control and treatment groups by logistic regression analysis; age, sex, treatment centre, interval between the onset of palsy and the start of treatment, and House–Brackmann score on day 1 were included

as covariables. We also calculated odds ratios (ORs) and 95% confidence intervals (CIs). Scores on the Facial Disability Index and the Quality of Life scale (brief version) at 6 months were secondary outcomes and were compared between groups by analysis of covariance (covariables: age, sex, treatment centre, interval between the onset of palsy and the start of treatment, House–Brackmann score on day 1, and Facial Disability Index score or Quality of Life score (brief version) on day 1, respectively). Differences of least squares means and 95% CIs were calculated.

Interaction terms for group and centre were added in the logistic regression model for the primary outcome and in the analysis of covariance models for the secondary outcomes. Logistic regression analysis was used to study the influence of the sum scores of *de qi* as continuous variable on the rates of grade 1 scores on the House–Brackmann Scale at 6 months; the analysis was adjusted for age, sex, treatment centre, interval between the onset of palsy and the start of treatment, and House–Brackmann score on day 1. We use the last observation carried forward to impute missing data.

## Results

Of the 355 patients referred for participation in the study, 338 (95.2%) were assigned to a treatment group. Final outcomes were available for 316 patients (93.5%) (Figure 2). Patient recruitment was stopped before the intended sample size was reached because the research grant expired. The decision to stop recruitment was made by the trial steering committee on administrative grounds without knowledge of the data.

The baseline characteristics of the *de qi* and control groups were similar ( $p > 0.05$ ; Table 1). The following tests for consistency found no significant difference between centres: grade 1 scores on the House–Brackmann scale (intention-to-treat:  $p = 0.5$ ; per protocol:  $p = 0.4$ ); scores on the Facial Disability Index (intention-to-treat:  $p = 0.6$ ; per protocol:  $p = 0.4$ ); Quality of Life scale (intention-to-treat:  $p = 0.2$ ; per protocol:  $p = 0.6$ ).

## Outcomes

Our analyses were based on the intention-to-treat principle using the imputed data set ( $n = 338$ ) and the per-protocol data set ( $n = 316$ ). At 6 months, facial-nerve function, disability and quality of life were significantly better in the *de qi* group than in the control group (Table 2).

## Additional analyses

Of the 316 patients who completed the 6-month follow-up visit, 262 (82.9%) rated *de qi* on the visual analogue scale, and the other 54 (17.1%)

**Table 1:** Baseline characteristics of the included patients

Characteristic	No. (%) of patients*	
	<i>De qi</i> group <i>n</i> = 167	Control group <i>n</i> = 171
Women	69 (41.3)	76 (44.4)
Men	98 (58.7)	95 (55.6)
Age, yr, mean $\pm$ SD	38.12 $\pm$ 12.76	38.15 $\pm$ 12.75
Interval between onset of palsy and start of treatment		
$\leq$ 72 h	108 (64.7)	98 (57.3)
> 72 to $\leq$ 168 h	59 (35.3)	73 (42.7)
House–Brackmann score†		
2	8 (4.8)	10 (5.9)
3	88 (52.7)	93 (54.4)
4	54 (32.3)	57 (33.3)
5	17 (10.2)	11 (6.4)
Facial Disability Index score, mean $\pm$ SD		
Physical function subscale	64.82 $\pm$ 14.13	67.84 $\pm$ 12.88
Social/well-being subscale	65.58 $\pm$ 14.82	67.58 $\pm$ 12.46
WHO Quality of Life (brief version) score, mean $\pm$ SD		
Physical domain	63.17 $\pm$ 13.16	63.30 $\pm$ 12.29
Psychological domain	59.47 $\pm$ 10.98	60.24 $\pm$ 10.36
Social domain	65.87 $\pm$ 14.00	67.93 $\pm$ 11.82
Environment domain	60.78 $\pm$ 12.21	60.71 $\pm$ 12.16
Education		
Junior middle school	47 (28.1)	49 (28.7)
Senior middle school	41 (24.6)	41 (24.0)
Junior college	17 (10.2)	19 (11.1)
Bachelor	59 (35.3)	58 (33.9)
Postgraduate	3 (1.8)	4 (2.3)
Occupation		
Civil servant	5 (3.0)	6 (3.5)
Technician	33 (19.8)	35 (20.5)
Clerk	27 (16.2)	30 (17.5)
Service	36 (21.6)	24 (14.0)
Worker	10 (6.0)	13 (7.6)
Student	32 (19.2)	33 (19.3)
Unemployed or retiree	24 (14.4)	30 (17.5)
Affected side		
Left	85 (50.9)	84 (49.1)
Right	82 (49.1)	87 (50.9)

Note: SD = standard deviation, WHO = World Health Organization.  
 \*Unless stated otherwise.  
 †Used to assess facial-nerve function.

stated that they could not understand or differentiate between the 8 elements of *de qi* and thus did not rate it. Of these patients, 24 were in the *de qi* group and 30 were in the control group.

The overall *de qi* score was significantly higher in the *de qi* group ( $n = 135$ ; mean 22.74 [ $\pm 3.56$  SD]) than in the control group ( $n = 127$ ; 14.85 [ $\pm 2.61$ ]) ( $p < 0.001$ ). When we set the threshold for *de qi* at a score of 20 on the visual analogue scale (using the assessment method proposed by Hui and colleagues<sup>21</sup>), *de qi* was achieved for 80.0% (108/135) of patients in the *de qi* group and 1.6% (2/127) of patients in the control group ( $p < 0.001$ ).

Among the 262 patients who rated *de qi* on the visual analogue scale, there was a positive effect of *de qi* on grade 1 scores on the House–Brackmann scale at 6 months (adjusted OR 1.07, 95% CI 1.04–1.09).

## Safety

No serious adverse events were reported. In total, 212 adverse events were reported in the *de qi* group (94 cases of minor bleeding, 73 cases of needling pain, 43 cases of bruising and 2 cases of faintness during treatment), and 203 adverse events were reported in the control group (83 cases of minor bleeding, 78 cases of needling pain, 38 cases of bruising, 3 cases of faintness during treatment and 1 case of drowsiness). All participants recovered fully from the adverse events.

## Interpretation

We found evidence that acupuncture with *de qi* improved facial muscle recovery, disability and quality of life among patients with Bell palsy. Stronger intensity of *de qi* was associated with better therapeutic effects. Examination of videotaped

**Table 2:** Outcomes among patients in the *de qi* and control groups at 6 months

Variable	Mean (95% CI)*		Adjusted† differences of least squares means (95% CI)*
	<i>De qi</i> group $n = 167$	Control group $n = 171$	
<b>Intention-to-treat analysis</b>			
Complete recovery, no. (%)‡	150 (89.8)	121 (70.8)	4.2 (2.2–7.8)§
Facial Disability Index	191.8 (189.3–194.3)	182.0 (179.6–184.5)	9.8 (6.3–13.3)
Physical function	98.2 (96.8–99.5)	94.8 (93.5–96.1)	3.4 (1.5–5.3)
Social function	93.6 (92.2–95.1)	87.2 (85.8–88.7)	6.4 (4.3–8.4)
WHO Quality of Life (brief version) score	340.1 (334.8–345.4)	310.3 (305.0–315.5)	29.9 (22.3–37.4)
Physical domain	93.8 (92.1–95.4)	86.2 (84.6–87.8)	7.6 (5.3–9.9)
Psychological domain	80.5 (79.3–81.8)	73.0 (71.8–74.2)	7.5 (5.8–9.3)
Social domain	85.6 (83.9–87.2)	85.6 (83.9–87.2)	7.2 (4.8–9.5)
Environment domain	80.2 (78.7–81.7)	72.7 (71.2–74.2)	7.5 (5.3–9.6)
<b>Per-protocol analysis</b>			
Complete recovery, no. (%)‡	150 (94.3)	121 (77.1)	6.0 (2.7–13.6)§
Facial Disability Index	194.8 (193.4–196.1)	185.8 (184.5–187.2)	9.0 (7.0–10.9)
Physical function	99.8 (99.3–100.3)	97.0 (96.5–97.5)	2.8 (2.0–3.5)
Social function	95.0 (93.8–96.1)	88.9 (87.7–90.0)	6.1 (4.4–7.8)
WHO Quality of Life (brief version) score	345.1 (340.5–349.7)	315.0 (310.4–319.6)	30.2 (23.6–36.7)
Physical domain	95.5 (94.1–96.8)	88.0 (86.7–89.4)	7.4 (5.6–9.3)
Psychological domain	81.7 (80.6–82.8)	74.0 (72.9–75.1)	7.7 (6.2–9.3)
Social domain	86.7 (85.2–88.2)	79.4 (77.9–81.0)	7.3 (5.1–9.5)
Environment domain	81.2 (79.8–82.7)	73.7 (72.2–75.1)	7.6 (5.5–9.6)

Note: CI = confidence interval, OR = odds ratio, WHO = World Health Organization.  
 \*Unless stated otherwise.  
 †Adjusted for age, sex, treatment centre, interval between onset of palsy and start of treatment, House–Brackmann score on day 1, and baseline score on the corresponding parameters (the scores on Facial Disability Index or its subscales, or the scores on World Health Organization Quality of Life, brief version or its subscales).  
 ‡Grade 1 on the House–Brackmann scale.  
 §Adjusted odds ratios (95% confidence intervals); adjusted for age, sex, treatment centre, interval between onset of palsy and start of treatment, and House–Brackmann score on day 1.

facial movements by an expert panel confirmed that the findings were consistent between the 11 included hospitals.

There has been controversy about whether much of the clinical benefit of acupuncture is because of the powerful psychologic effect. A systematic review of clinical trials reported that placebos had no significant effect on objective continuous outcomes,<sup>25</sup> and a recent systematic review of pooled data from meta-analyses suggests that acupuncture has a greater effect than placebo.<sup>26</sup> In our study, we used objective functional outcomes instead of a subjective outcome such as pain. Thus, the placebo effect was minimized.

In the promotion and spread of acupuncture, the individualized, humanized and interactive process of traditional acupuncture has often been misconstrued as a fixed, mechanized and one-way approach. Therefore, the best therapeutic effects of acupuncture often are not achieved in clinical practice. The negative findings of some randomized controlled trials on acupuncture might be because the procedural techniques were inadequate and the intensity of needle sensation was not sufficient. Of the 49 guidelines for acupuncture treatment in labour and postnatal wards in Sweden, only 2 guidelines mentioned the importance of achieving *de qi*.<sup>12</sup> A narrative review reported that only 6 out of the 47 included systematic reviews applied some criteria for the adequacy of acupuncture treatment.<sup>14</sup>

### Limitations

Our study had several limitations. We did not use sham acupuncture in the control (weak-stimulation) group because Chinese people generally trust in acupuncture, and informed consent for the use of sham acupuncture is very difficult to obtain from these patients. However, several clinical trials have shown that real acupuncture needling, especially with rotation, can elicit higher intensity sensations than sham or superficial needling.<sup>5,7,21,23,27</sup> Our observed rate of complete recovery in the control group (77.1% of patients) is similar to that in the corticosteroid group (76.7%) in a recent Cochrane review,<sup>28</sup> which suggests that patients in our control group had similar experiences to patients who received sham acupuncture.

Another limitation was that 17.1% of patients did not rate *de qi*, although we excluded patients who were illiterate. Thus, the findings about the association between the intensity of *de qi* and therapeutic effect must be interpreted with caution.

### Conclusion

For patients with Bell palsy treated with prednisone, the addition of strong-stimulation acupuncture, which can elicit a higher intensity of *de qi*,

significantly improved the therapeutic effect. *De qi* and its related techniques should be properly appreciated in acupuncture practice and research, and should be considered for inclusion in clinical guidelines for acupuncture.

### References

1. Sung JJ. Acupuncture for gastrointestinal disorders: myth or magic. *Gut* 2002;51:617-9.
2. Han JS. Acupuncture and endorphins. *Neurosci Lett* 2004;361:258-61.
3. Johnson MI, Benham AE. Acupuncture needle sensation: the emerging evidence. *Acupunct Med* 2010;28:111-4.
4. Kong J, Gollub R, Huang T, et al. Acupuncture *de qi*, from qualitative history to quantitative measurement. *J Altern Complement Med* 2007;13:1059-70.
5. Benham A, Phillips G, Johnson MI. An experimental study on the self-report of acupuncture needle sensation during deep needling with bi-directional rotation. *Acupunct Med* 2010;28:16-20.
6. Hsieh JC, Tu CH, Chen FP, et al. Activation of the hypothalamus characterizes the acupuncture stimulation at the analgesic point in human: a positron emission tomography study. *Neurosci Lett* 2001;307:105-8.
7. Wu MT, Hsieh JC, Xiong J, et al. Central nervous pathway for acupuncture stimulation: localization of processing with functional MR imaging of the brain — preliminary experience. *Radiology* 1999;212:133-41.
8. Takamoto K, Hori E, Urakawa S, et al. Cerebral hemodynamic responses induced by specific acupuncture sensations during needling at trigger points: a near-infrared spectroscopic study. *Brain Topogr* 2010;23:279-91.
9. Yin CS, Park HJ, Kim SY, et al. Electroencephalogram changes according to the subjective acupuncture sensation. *Neurol Res* 2010;32(Suppl 1):31-6.
10. Sandberg M, Lundberg T, Lindberg LG, et al. Effects of acupuncture on skin and muscle blood flow in healthy subjects. *Eur J Appl Physiol* 2003;90:114-9.
11. Lee S, Chae Y, Kim SN, et al. Short term effects by acupuncture to SP3 on the autonomic blood flow control. *Neurol Res* 2010;32(Suppl 1):37-42.
12. Schytt E, Halvarsson A, Pedersen-Draper C, et al. Incompleteness of Swedish local clinical guidelines for acupuncture treatment during childbirth. *Acta Obstet Gynecol Scand* 2011;90:77-82.
13. Benham A, Johnson MI. Could acupuncture needle sensation be a predictor of analgesic response? *Acupunct Med* 2009;27:65-7.
14. White A, Cummings M, Barlas P, et al. Defining an adequate dose of acupuncture using a neurophysiological approach — a narrative review of the literature. *Acupunct Med* 2008;26:111-20.
15. Ministry of Health of the People's Republic of China. Good Clinical Practice [Chinese]. Beijing: The Ministry; 2003. Available: [www.moh.gov.cn/mohzcfsgs/pgz/201105/51765.shtml](http://www.moh.gov.cn/mohzcfsgs/pgz/201105/51765.shtml) (accessed 2013 Feb 8).
16. Gildeen DH. Clinical practice. Bell Palsy. *N Engl J Med* 2004;351:1323-31.
17. Liang F, Li Y, Yu S, et al. A multicenter randomized control study on clinical acupuncture treatment of Bell palsy. *J Tradit Chin Med* 2006;26:3-7.
18. House JW, Brackmann DE. Facial nerve grading system. *Otolaryngol Head Neck Surg* 1985;93:146-7.
19. VanSwearingen JM, Brach JS. The Facial Disability Index: reliability and validity of a disability assessment instrument for disorders of the facial neuromuscular system. *Phys Ther* 1996;76:1288-98, discussion 1298-300.
20. World Health Organization. *The World Health Organization Quality of Life (WHOQOL) — BREF, Chinese edition*. Geneva (Switzerland): The Organization; 2004.
21. Hui KK, Nixon EE, Vangel MG, et al. Characterization of the "Deqi" response in acupuncture. *BMC Complement Altern Med* 2007;7:33.
22. Kong J, Fufa DT, Gerber AJ, et al. Psychophysical outcomes from a randomized pilot study of manual, electro, and sham acupuncture treatment on experimentally induced thermal pain. *J Pain* 2005;6:55-64.
23. Kou W, Gareus I, Bell JD, et al. Quantification of *DeQi* sensation by visual analog scales in healthy humans after immunostimulating acupuncture treatment. *Am J Chin Med* 2007;35:753-65.
24. Salinas RA, Alvarez G, Ferreira J. Corticosteroids for Bell palsy (idiopathic facial paralysis). *Cochrane Database Syst Rev* 2004;CD001942.
25. Hróbjartsson A, Gøtzsche PC. Is the placebo powerless? An

- analysis of clinical trials comparing placebo with no treatment. *N Engl J Med* 2001;344:1594-602.
26. Hopton A, MacPherson H. Acupuncture for chronic pain: Is acupuncture more than an effective placebo? A systematic review of pooled data from meta-analyses. *Pain Pract* 2010;10:94-102.
  27. Streitberger K, Kleinhenz J. Introducing a placebo needle into acupuncture research. *Lancet* 1998;352:364-5.
  28. Salinas RA, Alvarez G, Daly F, et al. Corticosteroids for Bell palsy (idiopathic facial paralysis). *Cochrane Database Syst Rev* 2010;CD001942.

**Affiliations:** From the Department of Neurology (Xu, B. Huang, C. Zhang, Xie, Luo, Wang), Key Laboratory of Neurological Diseases of Chinese Ministry of Education; Integrated Traditional and Western Medicine (Yuan, Bi, G. Huang), Tongji Hospital, Tongji Medical College, Huazhong University of Science and Technology, Wuhan, Hubei, China; the Department of Neurology (Du), Zhongshan Hospital, Fudan University, Shanghai, China; and the Department of Neurology (G. Zhang), Xiangyang Hospital Affiliated to Hubei University of Medicine, Xiangyang, Hubei, China.

**Contributors:** Sha-bei Xu and Bo Huang contributed equally to this article. Wei Wang, Sha-bei Xu, Bo Huang, Chen-yan Zhang, Peng Du, Qi Yuan, Gui-juan Bi, Gui-bin Zhang, Min-jie Xie, Xiang Luo and Guang-ying Huang conceived and designed the study. Wei Wang, Sha-bei Xu and Bo Huang supervised the trial. Sha-bei Xu planned the statistical analyses and wrote the first draft of the manuscript. Bo Huang and Chen-yan Zhang coordinated the trial and collected and analyzed the data. Bo Huang, Chen-yan Zhang,

Peng Du, Qi Yuan, Gui-juan Bi and Gui-bin Zhang recruited patients and ran the trial. Min-jie Xie, Xiang Luo and Guang-ying Huang contributed to the analysis, discussions and interpretation of data. All of the authors revised the article critically for important intellectual content and approved the final version submitted for publication.

**Funding:** This work was supported by grants from National Science Fund for Distinguished Young Scholars (no. 30725019), Natural Science Foundation of China (no. 81030021) and National Basic Research Program (nos. 2006CB504502, 2011CB504403 and 2011CB505200). The sponsors had no role in the design of the study, the collection, analysis or interpretation of the data, the writing of the manuscript or the decision to submit the article for publication.

**Acknowledgements:** The authors thank Dr. Zhaori Ge-tu for helpful discussion and Professor Ping Yin for providing statistical support. The authors thank the following investigators who participated in the study: Ling Liu, Hubei Hospital of Traditional Chinese Medicine; Guo-hua Chen, Wuhan No.1 Hospital; Gui-bin Zhang, Xiangyang No.1 People's Hospital; Zhao-hui Zhang, Renmin Hospital of Wuhan University; Xin Wang, Zhongshan Hospital, Fudan University; Jian-ping Wang, The Second Affiliated Hospital, Zhengzhou University; Wei Zhang, Yichang Hospital of Traditional Chinese Medicine; Yuan-wu Mei, Union Hospital, Tongji Medical College, Huazhong University of Science and Technology; Ming-wei Wang, The First Hospital of Hebei Medical University; Hong-hua Li, Wuhan General Hospital of Guangzhou Command PLA.

# GET THE CREDIT YOU DESERVE

New online  
accredited CME  
courses just released

Free for CMA members

REGISTER AT  
[cma.ca/cme-march](http://cma.ca/cme-march)

The image consists of three vertical panels, each showing a person sitting in a black armchair against a plain grey background. Below each person is a circular icon and a text label. The first panel shows a woman in a purple shirt and grey pants, with a green icon of a person and the text 'ACUTE/ CHRONIC PAIN'. The second panel shows a woman in a black suit, with a red icon of a hand holding a needle and the text 'TYPE 2 DIABETES'. The third panel shows a man in a blue shirt and jeans, with a purple icon of a heart and the text 'ACUTE CORONARY SYNDROMES'.

These courses were developed in collaboration with the CMA and Memorial University Professional Development and Conferencing Services through an educational grant from Pfizer Canada.



ASSOCIATION  
MÉDICALE  
CANADIENNE



CANADIAN  
MEDICAL  
ASSOCIATION