



Effects of Exercise on Sleep Quality and Insomnia in Adults: A Systematic Review and Meta-Analysis of Randomized Controlled Trials

Yi Xie^{1†}, Shuai Liu^{2†}, Xue-Jiao Chen¹, Hai-Han Yu¹, Yuan Yang^{1*} and Wei Wang^{1*}

¹ Department of Neurology, Tongji Hospital, Tongji Medical College, Huazhong University of Science and Technology, Wuhan, China, ² Reproductive Medicine Center, Tongji Hospital, Tongji Medicine College, Huazhong University of Science and Technology, Wuhan, China

OPEN ACCESS

Edited by:

Luigi De Gennaro,
Sapienza University of Rome, Italy

Reviewed by:

Chiara Baglioni,
Università degli Studi Guglielmo
Marconi, Italy
Kelly Lima,
Federal University of Santa
Catarina, Brazil

*Correspondence:

Wei Wang
wwang@vip.126.com
Yuan Yang
yuanyang70@hotmail.com

[†]These authors have contributed
equally to this work and share first
authorship

Specialty section:

This article was submitted to
Sleep Disorders,
a section of the journal
Frontiers in Psychiatry

Received: 05 February 2021

Accepted: 14 April 2021

Published: 07 June 2021

Citation:

Xie Y, Liu S, Chen X-J, Yu H-H, Yang Y
and Wang W (2021) Effects of
Exercise on Sleep Quality and
Insomnia in Adults: A Systematic
Review and Meta-Analysis of
Randomized Controlled Trials.
Front. Psychiatry 12:664499.
doi: 10.3389/fpsy.2021.664499

Study Objectives: We conducted a meta-analysis to assess the effects of different regular exercise (lasting at least 2 months on a regular basis) on self-reported and physiological sleep quality in adults. Varied exercise interventions contained traditional physical exercise (e.g., walking, cycling) and mind–body exercise characterized by gentle exercise with coordination of the body (e.g., yoga).

Methods: Procedures followed the Preferred Reporting Items for Systematic Reviews and Meta-Analyses (PRISMA) guidelines. Systematical searches were conducted in three electronic databases (PubMed, Embase, and Web of Science) for relevant research that involved adult participants without pathological diseases receiving exercise intervention. The search strategy was based on the population, intervention, comparison, and outcome study design (PICOS) framework. The self-reported outcomes included varied rating scales of Pittsburgh Sleep Quality Index (PSQI), Insomnia Severity Index (ISI), and Epworth Sleepiness Scale (ESS). Subgroup meta-analyses of PSQI scores were conducted based on type of exercise, duration of intervention, and participants' age and gender. The physiological outcomes were measured by Actigraph. All meta-analyses were performed in a fixed or random statistic model using Revman software.

Results: Twenty-two randomized controlled trials were included in the analysis. The overall analysis on subjective outcomes suggests that exercise interventions significantly improved sleep quality in adults compared with control interventions with lower PSQI (MD -2.19 ; 95% CI -2.96 to -1.41), ISI (MD -1.52 ; 95% CI -2.63 to -0.41), and ESS (MD -2.55 ; 95% CI -3.32 to -1.78) scores. Subgroup analyses of PSQI scores showed both physical and mind–body exercise interventions resulted in improvements of subjective sleep to the same extent. Interestingly, short-term interventions (≤ 3 months) had a significantly greater reduction in sleep disturbance vs. long-term interventions (> 3 months). Regarding physiological sleep, few significant effects were found in various sleep parameters except the increased sleep efficiency in the exercise group vs. control group.

Conclusions: Results of this systematic review suggest that regular physical as well as mind–body exercise primarily improved subjective sleep quality rather than

physiological sleep quality in adults. Specifically, self-reported sleep quality, insomnia severity, and daytime sleepiness could be improved or ameliorated with treatment of exercise, respectively, evaluated by PSQI, ISI, and ESS sleep rating scales.

Keywords: exercise interventions, sleep quality, insomnia, Pittsburgh Sleep Quality Index, Insomnia Severity Index, actigraph, meta-analysis, RCT

INTRODUCTION

It has been widely acknowledged that sleep is an important component for people's health and wellness across the whole life (1). In recent years, insomnia has become increasingly prevalent in adults, which could inevitably bring negative effects on their daily lives and work (2, 3). Chronic insomnia contains difficulties in falling asleep, maintaining sleep, and early morning wakening (4). It is reported that ~25% of the population of the United States described insomnia complaints, and nearly 10% fulfilled the diagnostic criteria for chronic insomnia (5–7). Insomnia is not an inherent part of aging but rather a result of multimorbidity and polypharmacy as well as society and labor factors (8, 9). Unseasonal and ineffective treatments of insomnia could constitute a risk factor of physical and mental illness, substance abuse and relapse, accidents, and even mortality (10–12).

Currently, the treatments for insomnia include pharmacological and non-pharmacological measures. Although widely used, pharmacotherapy is recommended for short-term use only due to potential risks concerning hazardous side-effects, tolerance, and dependency with long-term use (13, 14). Cognitive behavioral therapy (CBT) is considered the first choice of non-prescription treatment (15), and it contains a collection of techniques (cognitive therapy, stimulus control, relaxation, sleep restriction, and hygiene) tailored to each individual, aimed at reestablishing a restful sleep (16). However, psychological therapies still remain limited and unavailable to some extent, owing to practical considerations, including financial cost and availability of resources (17). Besides this, even when patients ensure they are following CBT principles they have learned in the past, detailed questioning often reveals lapses in compliance (18).

Exercise is proposed as an alternative non-pharmacological treatment for insomnia, characterized by a safe, inexpensive, and easily accessible means of improving sleep (19). Independent of a highly specialized clinician, exercise can be completed individually or as part of a group, supervised or not, in any location, and at any time as long as it is convenient to the individual. It is reported in a randomized controlled trial (RCT) that moderate-intensity physical activity was associated with significantly reduced insomnia symptom severity and significantly elevated mood (20). Similarly, a 16-week program of moderate-intensity aerobic physical activity plus sleep hygiene education was effective in improving self-reported sleep quality, mood, and quality of life in older adults with chronic insomnia (21). Different from traditional physical exercise, mind–body exercise, characterized by gentle and slow exercise with the coordination of the body and breath (22), has received recent attention in scientific research. Varied literatures suggest

that mind–body exercise (e.g., yoga, tai chi, qigong) also had beneficial effects for general health and sleep (23–25). Overall, exercise intervention shows potential superiority and promising development among non-pharmacological treatments for ameliorating insomnia and improving sleep quality, which require wider practice and application in the future.

Over the past few decades, a number of RCTs have examined the effects of exercise on sleep quality in adults (20, 23–43). However, these studies had conflicting results and no clear conclusions. We, therefore, conducted a systematic review and meta-analysis of RCTs to critically appraise the effect of exercise interventions on the sleep quality and insomnia in adults to provide a certain basis for the complementary or additional treatment of insomnia in clinical practice.

METHODS

Data Sources and Searches

This systematic review and meta-analysis was followed by recommendations from the Preferred Reporting Items for Systematic Reviews and Meta-Analysis (PRISMA) guideline (44). A computerized literature search was carried out using PubMed, Embase, and Web of Science to identify relevant articles from inception through March 31, 2020. The search combinations were (insomnia OR sleep disorder OR sleep disturbance OR sleep insufficiency OR sleep problem OR sleep complaint) AND (exercise OR physical activity OR aerobic activity OR sport OR yoga OR tai chi OR qigong OR Pilates OR Baduanjin).

Inclusion Criteria Based on PICOS

The PICOS framework was used to identify articles in the various databases (43, 44).

P (population) = Adult volunteers (≥ 18 years).

I (interventions) = Either traditional physical exercise (e.g., walking, cycling) or mind–body exercise characterized by gentle exercise with coordination of the body (e.g., yoga, tai chi), that lasted at least 2 months.

C (comparisons) = A suitable, non-physically active control group.

O (outcomes) = Validated subject or physiological measures to assess sleep quality with at least one of following measurements: PSQI, ISI, ESS rating scales and Actigraph.

S (study design) = Randomized controlled trial (RCT).

Exclusion Criteria

(1) Investigated sleep quality in the presence of another pathological disease (e.g., cancer, Parkinson's disease, depression, obstructive sleep apnea) in participants; (2) involved atypical types of exercise (not belonging to physical or mind–body

exercise), such as relaxation or music exercises; (3) examined atypical sleep regimens, such as studies with shift workers or utilizing experimentally induced insomnia; (4) involved no control group or a physically active control group only; (5) examined acute effects of exercise interventions; (6) conference abstract, observational study, dissertation, letter.

Outcomes

We, respectively, analyzed subjective and physiological sleep outcomes. Subjective measurements contained the self-reported scoring scales of Pittsburgh Sleep Quality Index (PSQI), Insomnia Severity Index (ISI), and Epworth Sleepiness Scale (ESS). PSQI assesses different aspects of sleep quality representing the past month and is currently the most common measure of sleep quality (45, 46). ISI is a brief, reliable, and valid instrument for measuring patients' perception of insomnia in general practice and is sensitive to treatment response (47, 48). ESS is a subjective approach to evaluate daytime sleepiness and commonly used in sleep studies and clinical settings, particularly in populations with OSA (49). Physiological sleep was monitored by Actigraphy, which had four primary testing contents including sleep onset latency (SOL), total sleep time (TST), wake after sleep onset (WASO), and sleep efficiency (SE).

Study Selection and Data Extraction

Retrieved articles were reviewed independently by three authors (YX, SL, and XJC) to choose potentially relevant articles. All disagreements on inclusion/exclusion were discussed and resolved by consensus. Two reviewers (YX and SL) independently extracted data from the included studies. The following information were extracted: the first author's name; publication year; age and gender of participants; numbers of participants in exercise and control groups, respectively; and type of exercise intervention. The information about characteristics of exercise programs included the total intervention duration (months), exercise session frequency (sessions/week), and length (minutes/session). Outcome effects contained the subjective (PSQI, ISI, ESS) and physiological (Actigraphy) measurements of sleep quality. The pre- and post-intervention means, standard deviation (SD), and number of participants in the intervention and control groups were extracted from each publication. When data was insufficient or missing, we contacted the authors for further information. The full data extraction is available in the **Supplementary Material**.

Risk of Bias Assessment

The methodological quality of each trial was examined using the risk of bias criteria recommended by the Cochrane Collaboration (50). This tool evaluates the following aspects: randomness of the allocation sequence (selection bias), concealment of the allocation sequence (selection bias), blinding of participants and personnel (performance bias), blinding to outcome assessment (detection bias), incomplete outcome data (attrition bias), selective outcome reporting (reporting bias), and any other biases. Each item was described as having either a low, high, or unclear risk of bias. The scoring was carried out independently by two authors (H-HY and X-JC).

Statistical Analysis

Effects on outcomes were expressed as the change in the measured scores from baseline to end point for exercise and control groups. If the trials did not provide changes in scores, values were calculated from scores at baseline and end point using the method recommended in the Cochrane Handbook (50). Mean differences (MDs) and 95% confidence intervals (CIs) were calculated for each study. A study including two intervention groups was split into two studies with respective exercise intervention.

We conducted subgroup meta-analyses based on the type of exercise (physical or mind-body), duration of exercise intervention (short- or long-term), gender of participants (both genders or only women), and age of participants (the elderly or the middle-aged).

Potential risk of publication bias was assessed through visual analysis of funnel plot symmetry when at least 10 trials reported the outcomes. We evaluated statistical heterogeneity using the Cochran χ^2 test and the I^2 statistic. For I^2 , a value of 0–25% represented insignificant heterogeneity, a value >25% but $\leq 50\%$ represented low heterogeneity, a value >50% but $\leq 75\%$ represented moderate heterogeneity, and a value >75% represented high heterogeneity (50). We performed fixed-effects analysis when heterogeneity was low ($I^2 \leq 50\%$). When heterogeneity was moderate or high ($I^2 > 50\%$), we decided a priori to use random-effects analysis.

All meta-analyses were performed using Revman (version 5.3). All tests were two-tailed, and $p < 0.05$ was considered statistically significant.

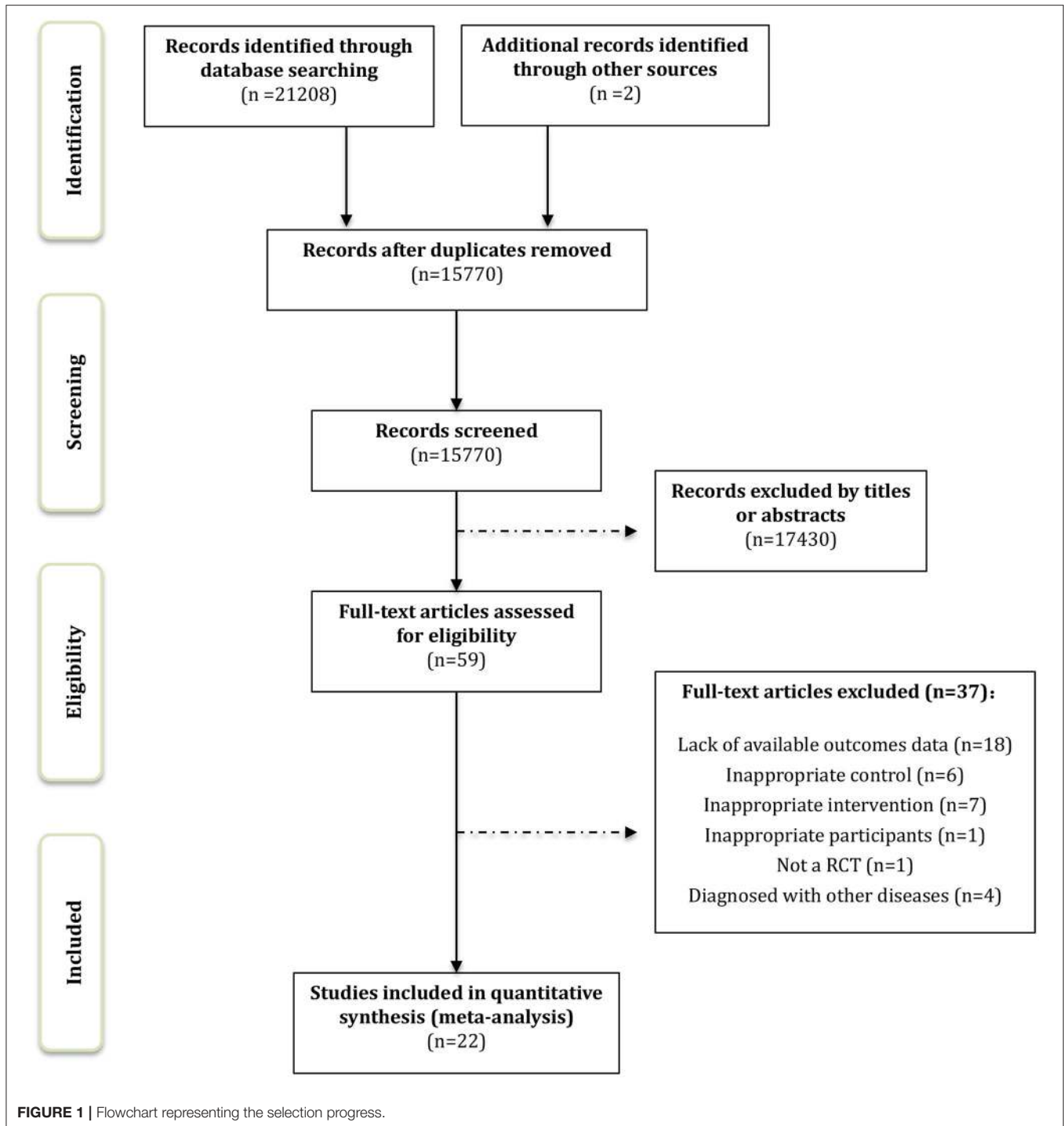
RESULTS

Search Results

We identified 21,066 records through the computerized retrieval and two additional articles through the manual search. A total of 17,489 articles were retained by removing duplicates. After screening titles and abstracts, 17,430 articles were excluded. The full texts of 59 remaining articles were reviewed for inclusion, and finally, 22 RCTs were considered eligible for systematic review and meta-analysis. Details of the study selection process are shown in **Figure 1**.

Characteristics of the Studies

We included 22 randomized control trials in the meta-analysis (20, 23–43). All studies were published between 1995 and 2019, involving 1,806 participants. The majority of studies included mixed-gender groups, seven studies focused on women only and, of these, one involved post-partum women (34), and five involved peri- or post-menopausal women (24, 25, 38, 39, 43). For exercise types, 13 trials performed physical exercise, and 11 trials performed mind-body exercise. Among these, two trials included both physical and mind-body exercise groups (39, 40). Total duration of exercise programs ranged from 2 to 12 months with respective frequency and length of sessions. Of these 22 articles, subjective sleep quality was assessed in 14 studies with the PSQI scale, in four studies with the ISI scale (20, 25, 27, 43), and in two studies with the ESS scale (28, 33). Six studies



evaluated physiological sleep conditions by the use of Actigraphy (27–29, 35, 39, 41). Details of study characteristics are presented in **Table 1**.

Quality Evaluation

The risk of bias summary for all studies included in the meta-analysis can be found in **Supplementary Figure 1**. **Supplementary Figure 2** shows the risk of bias for self-reported

and physiological measurement of each RCT according to the Cochrane risk of bias tool (50). Of these 22 trials, 12 trials described an adequate random sequence generation process, and five trials described the methods used for allocation concealment. As blinding of participants was not possible for exercise intervention (exercise vs. no exercise), the assessments for performance bias in all studies were high risks. Regarding blinding of outcome assessment, we judged studies separately

TABLE 1 | Characteristics of the included trials and participants.

Included studies	Participants gender	Participants' age (years)	Sample size (N)	Intervention	Intervention duration (months)	Session duration/frequency	Subjective outcomes	Physiological outcomes
Karimi et al. (26)	Men	≥60	IG = 23; CG = 23	Walking	2	30 min, 3 times/week	PSQI	–
Yeung et al. (27)	Both	18–65	IG = 18; CG = 19	Physical exercise training (ZTE _x)	2	2 h, twice/week	ISI	Actigraph
Tan et al. (28)	Men	30–65	IG = 24; CG = 21	Aerobic exercise	6	30–60 min, 1–5 times/week	ESS	Actigraph
Chen et al. (29)	Both	55–70	IG = 33; CG = 34	Aquatic exercise	2	60 min, twice/week	–	Actigraph
Inwin et al. (30)	Both	59–86	IG = 59; CG = 53	Tai Chi	4	40 min, 3 times/week	PSQI	–
Inwin et al. (23)	Both	≥55	IG = 48; CG = 25	Tai Chi	4	2 h, once/week	PSQI	–
Afonso et al. (25)	Women	50–65	IG = 15; CG = 15	Yoga	4	1 h, twice/week	ISI	–
Hartescu et al. (20)	Both	≥40	IG = 17; CG = 19	Walking	6	≥ 30 min, ≥ 5 times/week	ISI	–
King et al. (31)	Both	≥55	IG = 36; CG = 30	Aerobic exercise	12	60 min, 5 times/week	PSQI	–
King et al. (32)	Both	50–76	IG = 20; CG = 23	Aerobic exercise	4	60 min, 4 times/week	PSQI	–
Brandão et al. (33)	Both	≥60	IG = 64; CG = 61	Physical exercise	3	40 min, ≥3 times/week	PSQI ESS	–
Ashrafinia et al. (34)	Women	18–35	IG = 40; CG = 40	Pilates	2	30 min, 5 times/week	PSQI	–
Alessi et al. (35)	Both	≥65	IG = 33; CG = 32	Physical exercise	2.25	2 h, 5 times/week	–	Actigraph
Chen et al. (36)	Both	≥60	IG = 27; CG = 28	Baduanjin	3	30 min, 3 times/week	PSQI	–
Chen et al. (37)	Both	≥65	IG = 59; CG = 55	Wheelchair-bound senior elastic band exercise	6	40 min, 3 times/week	PSQI	–
Aibar-Almazan et al. (38)	Women	≥60	IG = 55; CG = 52	Pilates	3	60 min, twice/week	PSQI	–
Yeh and Chang (24)	Women	≥45	IG = 35; CG = 35	Qigong	3	30 min, once/week	PSQI	–
Buchanan et al. (39)	Women	40–62	IG1 = 52; IG2 = 54; CG = 80	IG1:Yoga; IG2:Aerobic exercise	3	IG1:90 min, once/week; IG2:40–60 min, 3 times/week	–	Actigraph
Elavsky and McAuley (40)	Women	42–58	IG1 = 63; IG2 = 61; CG = 39	IG1:Walking; IG2:Yoga	4	IG1:60 min, 3 times/week; IG2:90 min, twice/week	PSQI	–
Oudegeest-Sander et al. (41)	Both	≥65	IG = 11; CG = 10	Cycling	12	35 min, 3 times/week	–	Actigraph
Chen et al. (42)	Both	≥65	IG = 31; CG = 24	Yoga	6	70 min, 3 times/week	PSQI	–
Sternfeld et al. (43)	Women	40–62	IG = 79; CG = 131	Aerobic exercise	3	40–60 min, 3 times/week	PSQI ISI	–

IG, intervention group; CG, control group.

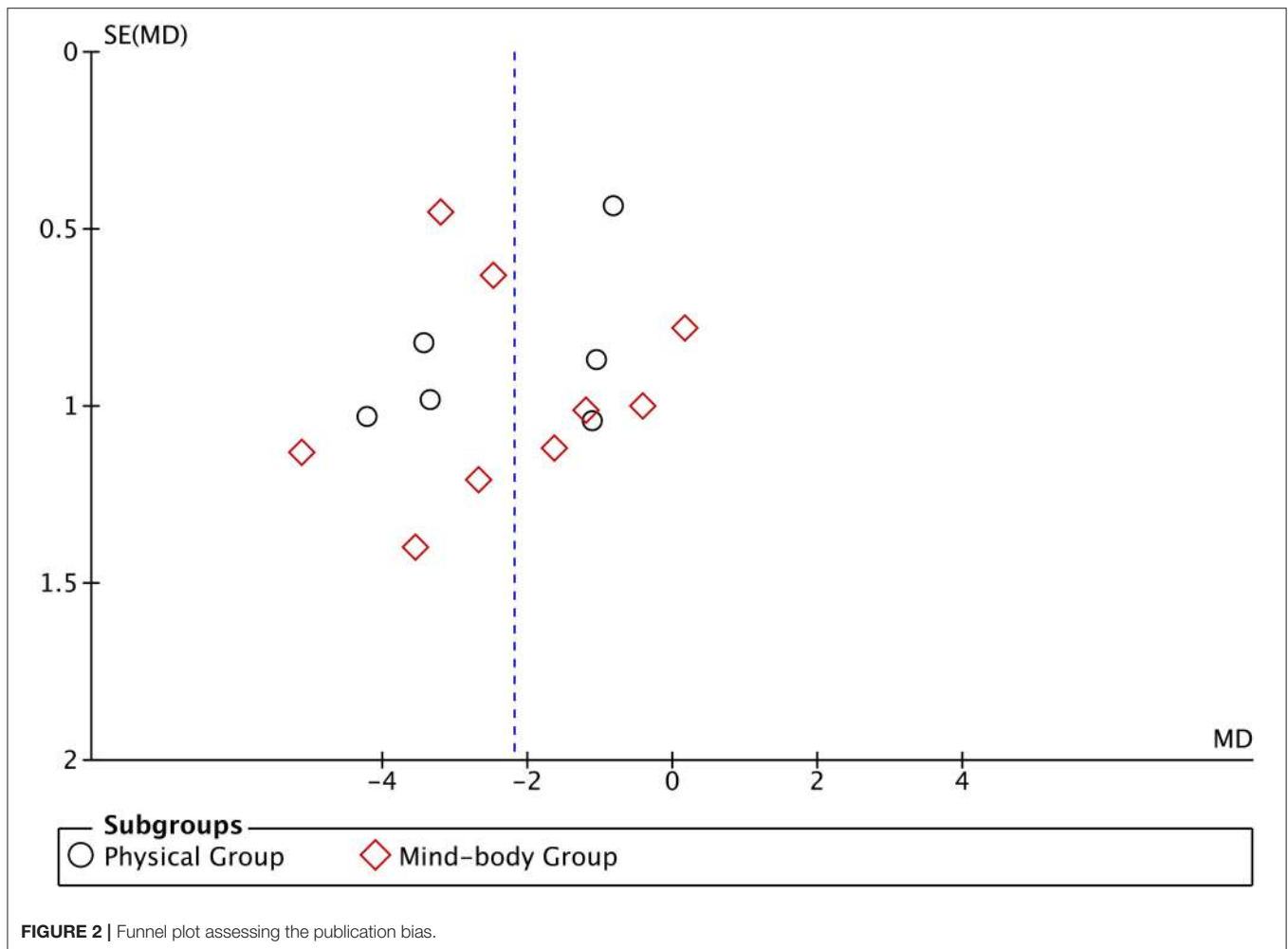


FIGURE 2 | Funnel plot assessing the publication bias.

for physiological and self-reported outcomes; thus, not 100% of studies had both these assessments. Blinding of self-reported outcomes assessments is not achievable in practice, and only studies with a physiological measurement (Actigraph) could be rated at low risk.

We used a funnel plot to check for potential publication bias (Figure 2). No obvious asymmetry was identified in the funnel plot, indicating that publication bias was unlikely.

Effects of Exercise on Sleep Quality in Subjective Outcomes

A total of 14 studies were included in the meta-analysis for the PSQI measurements. The pooling results of these studies suggest that exercise had a statistically significant effect on sleep quality vs. control (a larger reduction in PSQI score) with a pooled MD of -2.19 (95% CI -2.96 to -1.41 , $p < 0.00001$) (Figure 3). Heterogeneity among studies was found to be moderate ($X^2 = 46.6$, $df = 14$, $p < 0.00001$, $I^2 = 70\%$).

Four studies reported the outcomes of ISI measurements. As shown in Figure 4A, analysis indicates significant reduction of ISI score in the exercise group compared with the control group with a pooling MD of -1.52 (95% CI -2.63 to -0.41 , $p = 0.007$).

The heterogeneity among studies was found to be low ($X^2 = 3.24$, $df = 3$, $p = 0.36$, $I^2 = 8\%$). Two articles provided the evaluating outcomes of the ESS scale. The exercise group demonstrated evident decreased ESS scores vs. the control group with a pooling MD of -2.55 (95% CI -3.32 to -1.78 , $p < 0.00001$) (Figure 4B). Heterogeneity among studies was found to be low ($X^2 = 1.31$, $df = 1$, $p = 0.25$, $I^2 = 24\%$). Of these, one study showed high weight in the analysis due to a relatively large sample size and narrow confidence interval. Taking it into account, the exercise intervention still resulted in improvements of sleep quality in ESS scoring.

Subgroup Analysis

We further performed subgroup analyses of PSQI measurements in 14 studies based on the following variables: the type of exercise (physical or mind-body), duration of exercise intervention (short- or long-term), gender of participants (both genders or only women), and age of participants (the elderly or the middle-aged). Regarding the exercise type, physical exercise interventions (MD -2.22 ; 95% CI -3.47 to -0.97 ; $p = 0.0005$) and mind-body exercise interventions (MD -2.17 ; 95% CI -3.21 to -1.12 ; $p < 0.0001$) both had favorable effects on

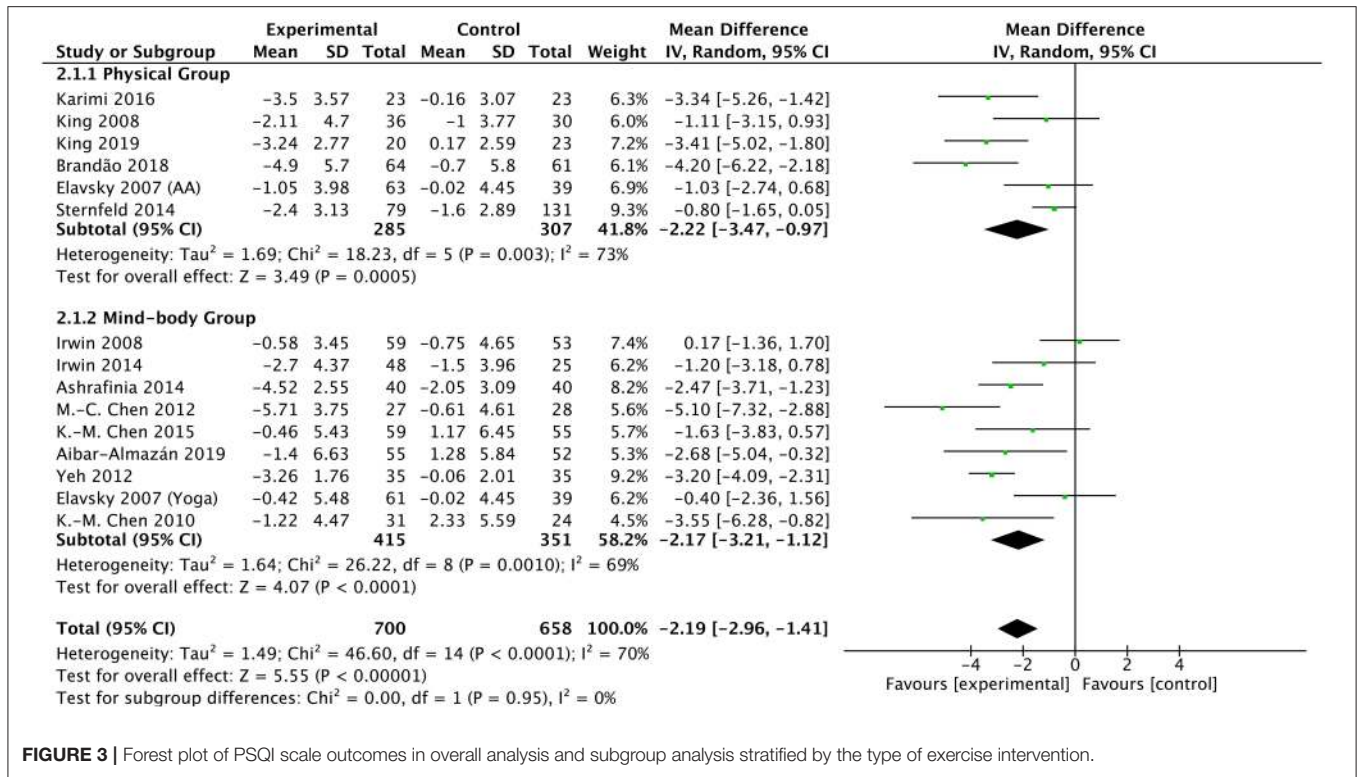


FIGURE 3 | Forest plot of PSQI scale outcomes in overall analysis and subgroup analysis stratified by the type of exercise intervention.

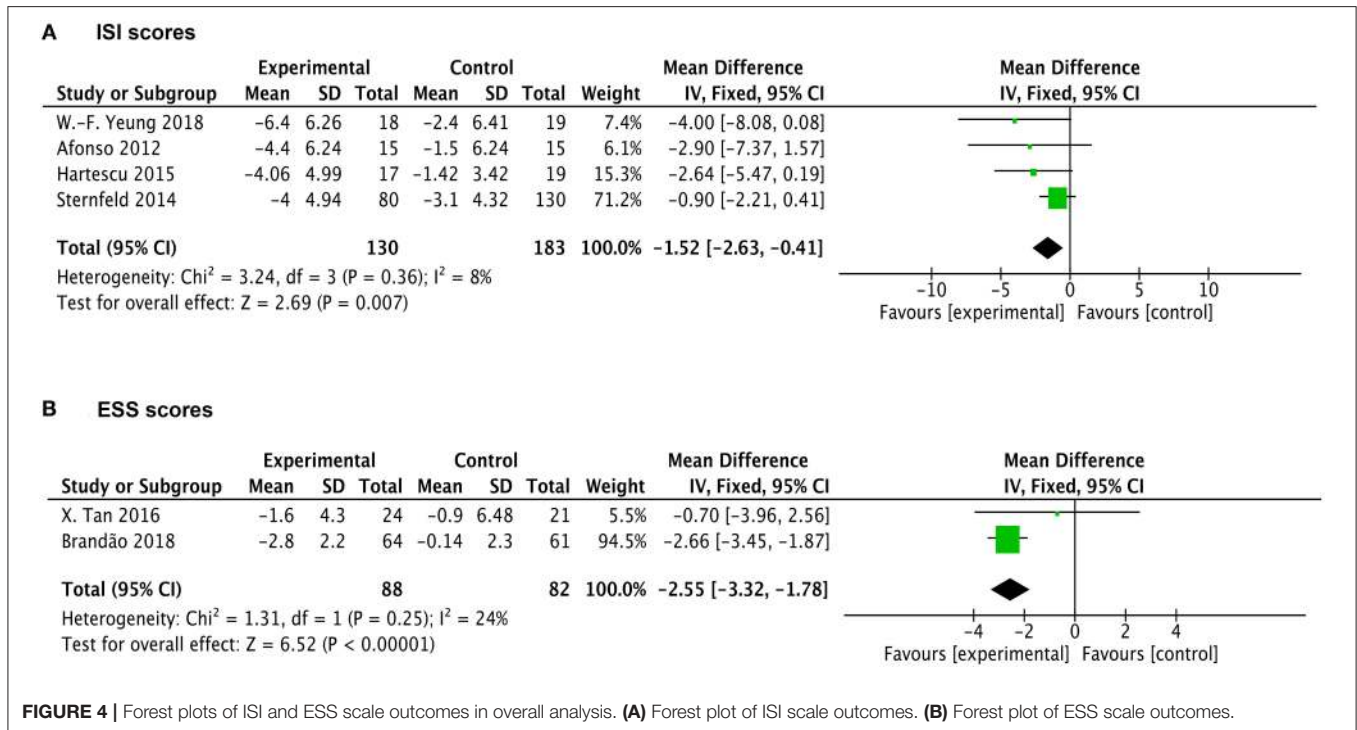


FIGURE 4 | Forest plots of ISI and ESS scale outcomes in overall analysis. **(A)** Forest plot of ISI scale outcomes. **(B)** Forest plot of ESS scale outcomes.

sleep disturbance (Figure 3, Table 2). There was no significant difference of enhancing effects between physical exercise and mind-body exercise ($p = 0.95$).

Considering subgroups by duration of exercise intervention, short-term (≤ 3 months) interventions (MD -2.95 ; 95% CI -4.08 to -1.81 ; $p < 0.00001$) had somewhat stronger benefits

TABLE 2 | Subgroup analysis bases on exercise type, exercise duration, participants' sex, participants' age.

Variable	No. of trials	No. of participants	Pooling estimates		I ²	P _{differences}
			MD (95%CI)	P-value		
Type of exercise						
Physical exercise	6	592	-2.22 [-3.47, -0.97]	0.0005	73%	0.95
Mind-body exercise	9	766	-2.17 [-3.21, -1.12]	0.001	69%	
Duration of exercise						
Short-term (≤3 months)	7	693	-2.95 [-4.08, -1.81]	<0.00001	77%	0.04
Long-term (>3 months)	8	665	-1.42 [-2.37, -0.47]	0.003	49%	
Gender of participants						
Women and men	8	643	-2.43 [-3.76, -1.10]	0.0003	72%	0.47
Women only	6	669	-1.80 [-2.86, -0.73]	0.0009	74%	
Age of participants						
The elderly	10	796	-2.54 [-3.62, -1.45]	<0.00001	66%	0.30
The middle-aged	5	562	-1.68 [-2.86, -0.50]	0.0009	69%	

MD, mean difference; CI, confidence interval.

on sleep than longer term (>3 months) interventions (MD -1.42; 95% CI -2.37 to -0.47; $p = 0.003$) (Table 2). The difference between these two subgroups was statistically significant ($p = 0.04$).

Regarding gender of participants, the results showed beneficial improvements of sleep quality in trials involving both men and women (MD -2.43; 95% CI -3.76 to -1.1; $p = 0.0003$) and trials involving women only (MD -1.8; 95% CI -2.86 to -0.73; $p = 0.0009$) (Table 2). Subgroup analysis of male participants only was excluded owing to just one study being eligible. Additionally, we performed subanalysis based on age of participants. As shown in Table 2, the exercise intervention seemed to have potentially larger benefit on the sleep quality in the elderly (MD -2.54; 95%CI -3.62 to -1.45; $p < 0.00001$) compared with the middle-aged (MD -1.68; 95% CI -2.86 to -0.50; $p = 0.005$) although this observed tendency was not statistically significant ($p = 0.3$).

Effects of Exercise on Sleep Quality in Physiological Outcomes

A total of six studies reported the data measured by Actigraph to evaluate the physiological sleep in participants. Of these, one trial contained two different exercise interventions (aerobic activity and yoga), one trial lacked the data of WASO, two trials lacked the data of SOL and WASO. Interestingly, we found a significantly favorable effect of exercise on physiological SE (MD 1.22; 95% CI 0.1 to 2.34; $p = 0.03$; $I^2 = 23%$) in participants vs. control intervention (Figure 5A). Other results show that, the participants under exercise intervention tended to have mild decreased SOL (MD -1.39; 95% CI -3.58 to 0.8; $p = 0.21$; $I^2 = 28%$) and total sleep time (MD -5.84; 95%CI -15.05 to 3.36; $p = 0.21$; $I^2 = 0%$) as well as less time of WASO (MD -3.2; 95%CI -7.06 to 0.66; $p = 0.1$; $I^2 = 0%$) compared with the control intervention (Figures 5B–D). However, these differences between two groups were all not statistically significant.

DISCUSSION

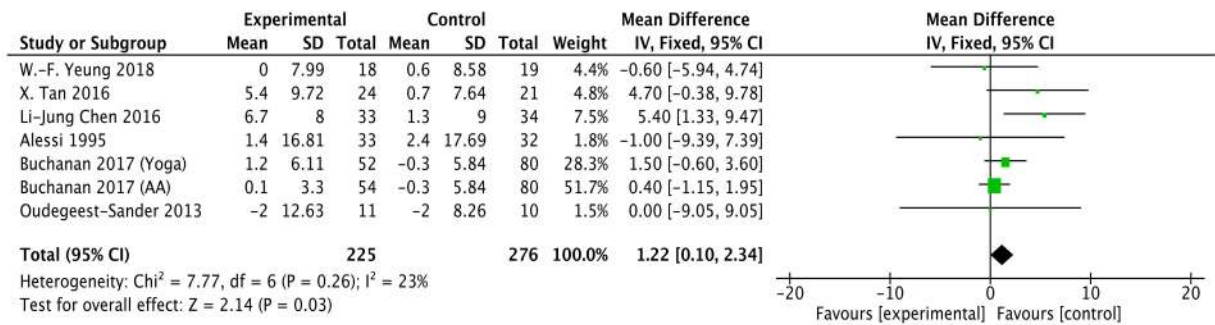
This systematic review and meta-analysis focused on RCTs to examine the effects of physical and mind-body exercises on sleep quality and insomnia in adults. Inclusion criteria were strictly set and applied to ensure that only adults without other clinical diseases were included. According to 22 eligible trials, we extracted and analyzed subjective sleep (PQSI, ISI, ESS scales) and physiological sleep (Actigraphy) outcomes to evaluate the sleep quality change after exercise interventions.

The overall analyses suggest evident improvements of exercise on self-reported sleep quality in adults. Significantly larger reductions in sleep rating scales (PSQI, ISI, and ESS) were found in the exercise groups with low-to-moderate heterogeneity among studies. Specifically, exercise had positive effects on sleep quality and poor sleep indicated by reduced PSQI scores. As well, insomnia severity in participants was partially relieved after intervention of exercise, presented by lower ISI scores. Compensatory daytime sleepiness, often resulting from poor sleep in the night, could also be improved by regular exercise with decreased ESS rating.

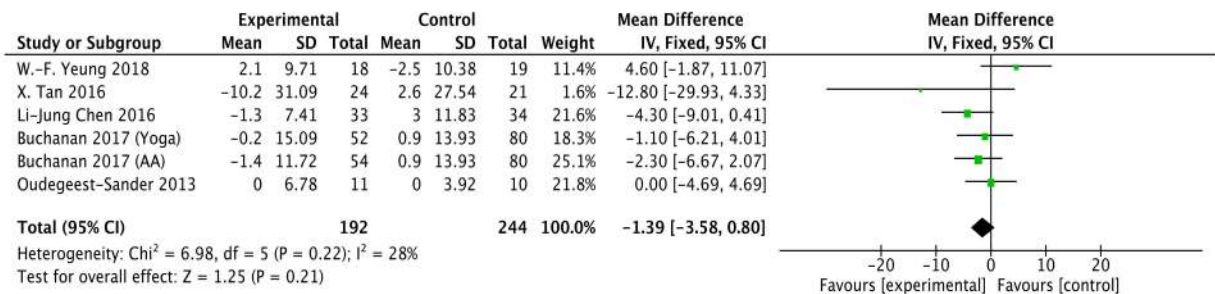
In the subgroup analyses of PSQI scores, our quantitative evaluation indicates that both physical and mind-body exercise could improve sleep in participants. However, results did not reveal an obvious superiority of specific exercise type (physical or mind-body) on sleep problems. We did not perform more detailed classification of exercise types (e.g., walking, swimming, cycling, yoga, tai chi) to carry out quantitative analysis due to a small number of studies for each item. It was reported that mind-body exercise might have a different or additional mechanistic route to sleep improvement beyond that of traditional physical exercise (13, 51).

Besides this, we examined the effects of subgroups sorted by duration of exercise intervention, gender, and age of participants in PSQI scores. Short-term (≤3 months) exercise seemed more effective for betterment of sleep disturbance compared with long-term (>3 months) exercise in the subgroup analysis. Given the

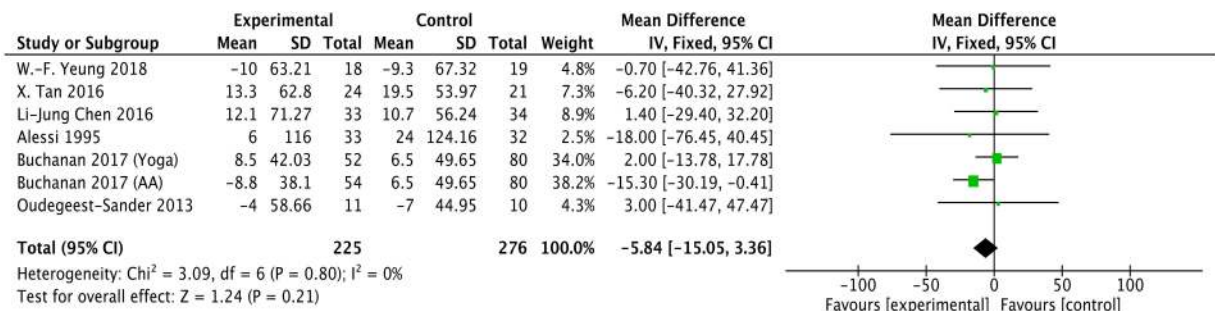
A Sleep efficiency



B Sleep onset latency



C Total sleep time



D Wake after sleep onset

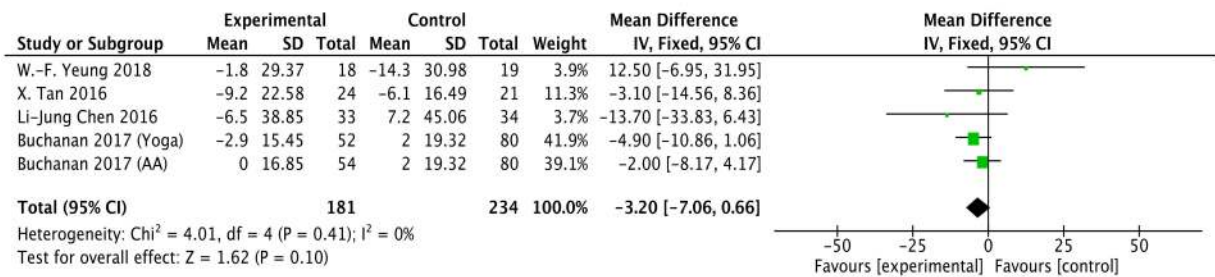


FIGURE 5 | Forests plot of Actigraph monitoring outcomes in overall analysis. **(A)** Forest plot of sleep efficiency outcomes. **(B–D)** Forest plot of sleep onset latency, total sleep time, wake after sleep onset, respectively.

variables of exercise types, it could not be judged that short-term exercise was more beneficial to sleep than long-term exercise. In one study with an intervention of cycling exercise, the exercise group demonstrated less SOL and increasing SE in the 6 month compared to the 12th month monitored by Actigraphy (41). The results of another trial involving yoga intervention indicated that participants had better self-reported sleep in the 6 month than the third month in PSQI scores (42). It was supposed that mind-body exercise might need a relatively longer intervention time to promote sleep quality compared with physical exercise, which provides references for us to choose adequate exercise type and duration. For gender of participants, there was no difference of sleep-improving function by exercise among trials containing women only and trials containing two genders. For subanalysis stratified by age of participants, exercise intervention showed significant effects on sleep disturbance in the middle aged. Although, in the elderly group, a tendency of larger relief was found although it was not statistically significant. In practice, sleep becomes more fragmented with age, characterized by the increased number of awakenings as well as the time spent awake at night (52, 53). Strong predictors of poor sleep in the elderly included mood disorders and physical illness (54, 55). It was postulated that the elderly were more susceptible to exercise intervention due to its mood-relief affects.

Physiological sleep quality was evaluated by use of Actigraphy, which is applied as the best choice for physiological measurement because polysomnography (PSG) is very expensive and difficult to implement (56). Quantitative analysis illustrates significantly increased SE in exercise groups vs. control groups. No significant differences were found in the items of SOL, TST, and WASO between groups from included studies although there existed mild tendencies of decreased SOL, TST, and WASO after exercise intervention. Despite evident effects being observed for subjective sleep outcomes, exercise was not shown to effectively improve physiological parameters of sleep in our meta-analysis. It was reported that, as validated questionnaires measured additional constructs that contributed to overall sleep quality (e.g., daytime impairment), exercise could potentially exert its effects through these constructs rather than impact sleep directly (13). This might partially explain the conflicting results between the physiological and subjective measures of sleep in individuals. Further mechanical explorations of subjective and physiological sleep could help to explain this conflict on a theoretical basis.

CBT has been commonly considered as the preferred treatment of insomnia (57). Two published studies compared the effects of exercise intervention and CBT on sleep quality in cancer patients. The results illustrated that both interventions produced clinically meaningful improvements of sleep; however, exercise was not significantly superior to CBT (58, 59). It was proposed that exercise could function as a complementary or additional method to ameliorate the sleep condition among people, playing a joint role with CBT (58, 59).

In clinical practice, exercise intervention could be achieved in many ways: at home or outside, spontaneous or supervised, at any time convenient to the individuals. Remarkably, exercise intervention should be implemented chronically on a regular basis, such as three to five times a week with a certain duration of

each time. A published trial reported that just 1 day of moderate-to-vigorous exercise compared with no-exercise did not facilitate sleep need or alter other sleep measures other than the amount of light sleep (60). Nowadays, increasing number of exercise apps emerge, which could generally record and monitor our exercise-related information, such as exercise duration and frequency, as well as our real-time heart rate and breath frequency, etc. (61, 62). These records serve as encouragement to patients and a reflection of patients' compliance with the clinician.

We acknowledge several limitations on this meta-analysis involving various factors. (1) Risk of bias was high in all included studies, related to lack of blinding to participants or personnel. (2) Heterogeneity of effects was moderate across studies in analysis of PSQI scales, possibly associated with insomnia prevalence also varying with ethnicity and obesity status (63). (3) Additionally, it is of certain significance to analyze the follow-up data after the finish of exercise intervention, which could reveal the longer-term effects of regular exercise. Due to a lack of complete and effective records about follow-up information in existing articles, we did not perform this part of the analysis in the study, which could be improved afterward. (4) The content of the control group appeared to influence outcomes with larger group differences observed in studies utilizing a wait-list control group, receiving no form of intervention or contact. It could be hypothesized that for those studies whereby the control group did receive some form of intervention (e.g., sleep seminar education, sleep hygiene, group recreational activities), participants gained some benefit through non-specific means. Alternatively, it might be that wait-list controls operated similar to placebo conditions (13, 64).

To the author's knowledge, this is the first meta-analysis research to investigate the sleep-enhancing effects of regular exercise in adults without other specific diseases (e.g., cancer, depression, etc.), involving both subjective and physiological sleep outcomes. Two published meta-analysis articles, respectively, explored the effects of exercise only on middle-aged women (65) and pregnant women (66). Some other meta-analysis studies assessed whether exercise improves sleep in adults who already have a diagnosis of insomnia (67, 68). One of them appraised several alternative interventions for participants with insomnia, including exercise, melatonin, and others. They found exercise was efficacious in ameliorating self-reported SOL with small-to-medium effects. However, the number of eligible studies for exercise intervention is still small to confirm the above conclusion (68). Herein, our study focused on the sleep-enhancing effects of exercise on the whole adult population, not limiting the initial sleep conditions of participants as the participants in most RCTs were not necessarily all diagnosed with insomnia but they were still experiencing or susceptible to poor sleep conditions. We further performed subgroup analyses based on the variables of exercise types and duration, participants' age and gender to explore more detailed links between exercise and sleep quality.

In conclusion, our systematic review and meta-analysis suggest that regular exercise exerts beneficial effects on sleep quality and insomnia in adults, primarily in subjective sleep measurements. Exercise could potentially serve as a

complementary and additional therapy of pharmacological measures and CBT therapy for treatments of chronic insomnia. Varied physical and mind-body exercise should be encouraged to perform in all age groups to relieve sleep problems.

DATA AVAILABILITY STATEMENT

The original contributions presented in the study are included in the article/**Supplementary Materials**, further inquiries can be directed to the corresponding author/s.

AUTHOR CONTRIBUTIONS

YX, SL, YY, and WW designed the study and wrote the protocol. Independent screening and data extraction of eligible studies was conducted by YX, SL, and X-JC. The studies' quality scoring was carried out independently by H-HY and X-JC. YX and SL conducted the statistical analysis and wrote the first draft of the manuscript. WW and YY critically revised the manuscript for important intellectual content. All authors contributed to and have approved the final manuscript.

REFERENCES

- Matricciani L, Bin YS, Lallukka T, Kronholm E, Wake M, Paquet C, et al. Rethinking the sleep-health link. *Sleep Health*. (2018) 4:339–48. doi: 10.1016/j.sleh.2018.05.004
- Ivanenko A, Gururaj BR. Classification and epidemiology of sleep disorders. *Child Adolesc Psychiatr Clin N Am*. (2009) 18:839–48. doi: 10.1016/j.chc.2009.04.005
- Kay-Stacey M, Attarian H. Advances in the management of chronic insomnia. *BMJ*. (2016) 354:i2123. doi: 10.1136/bmj.i2123
- Riemann D, Nissen C, Palagini L, Otte A, Perlis ML, Spiegelhalter K. The neurobiology, investigation, and treatment of chronic insomnia. *Lancet Neurol*. (2015) 14:547–58. doi: 10.1016/S1474-4422(15)00021-6
- LeBlanc M, Merette C, Savard J, Ivers H, Baillargeon L, Morin CM. Incidence and risk factors of insomnia in a population-based sample. *Sleep*. (2009) 32:1027–37. doi: 10.1093/sleep/32.8.1027
- Morin CM, Belanger L, LeBlanc M, Ivers H, Savard J, Espie CA, et al. The natural history of insomnia: a population-based 3-year longitudinal study. *Arch Intern Med*. (2009) 169:447–53. doi: 10.1001/archinternmed.2008.610
- Ohayon MM. Epidemiology of insomnia: what we know and what we still need to learn. *Sleep Med Rev*. (2002) 6:97–111. doi: 10.1053/smr.2002.0186
- Miner B, Kryger MH. Sleep in the aging population. *Sleep Med Clin*. (2017) 12:31–8. doi: 10.1016/j.jsmc.2016.10.008
- Morin CM, Drake CL, Harvey AG, Krystal AD, Manber R, Riemann D, et al. Insomnia disorder. *Nat Rev Dis Prim*. (2015) 1:15026. doi: 10.1038/nrdp.2015.26
- Sivertsen B, Lallukka T, Salo P, Pallesen S, Hysing M, Krokstad S, et al. Insomnia as a risk factor for ill health: results from the large population-based prospective HUNT study in Norway. *J Sleep Res*. (2014) 23:124–32. doi: 10.1111/jsr.12102
- Taylor DJ, Lichstein KL, Durrence HH. Insomnia as a health risk factor. *Behav Sleep Med*. (2003) 1:227–47. doi: 10.1207/S15402010BSM0104_5
- Kripke DE, Garfinkel L, Wingard DL, Klauber MR, Marler MR. Mortality associated with sleep duration and insomnia. *Arch Gen Psychiatry*. (2002) 59:131–6. doi: 10.1001/archpsyc.59.2.131
- Lowe H, Haddock G, Mulligan LD, Gregg L, Fuzellier-Hart A, Carter L-A, et al. Does exercise improve sleep for adults with insomnia? A systematic review with quality appraisal. *Clin Psychol Rev*. (2019) 68:1–12. doi: 10.1016/j.cpr.2018.11.002

FUNDING

This work was supported by the National Key Research and Development Program of China (2016YFC1300504 and 2020YFC0861000 to WW).

ACKNOWLEDGMENTS

We would like to thank Mao Liu, Qian Zhao, and Caihong Hu for their intensive support in realizing this study.

SUPPLEMENTARY MATERIAL

The Supplementary Material for this article can be found online at: <https://www.frontiersin.org/articles/10.3389/fpsy.2021.664499/full#supplementary-material>

Supplementary Figure 1 | Risk of bias summary.

Supplementary Figure 2 | Risk of bias assessments: –, low risk of bias; +, high risk of bias; ?, unclear risk of bias.

- Bianchi MT. Chronic insomnia. *Semin Neurol*. (2017) 37:433–8. doi: 10.1055/s-0037-1605344
- Riemann D, Baglioni C, Bjonvatn B, Dolenc Groselj L, Ellis JG, et al. European guideline for the diagnosis and treatment of insomnia. *J Sleep Res*. (2017) 26:675–700. doi: 10.1111/jsr.12594
- Morin CM, Benca R. Chronic insomnia. *Lancet*. (2012) 379:1129–41. doi: 10.1016/S0140-6736(11)60750-2
- Benca RM. Diagnosis and treatment of chronic insomnia: a review. *Psychiatr Serv*. (2005) 56:332–43. doi: 10.1176/appi.ps.56.3.332
- Abad VC, Guilleminault C. Insomnia in elderly patients: recommendations for pharmacological management. *Drugs Aging*. (2018) 35:791–817. doi: 10.1007/s40266-018-0569-8
- Youngstedt SD, Kline CE. Epidemiology of exercise and sleep. *Sleep Biol Rhythms*. (2006) 4:215–21. doi: 10.1111/j.1479-8425.2006.00235.x
- Hartescu I, Morgan K, Stevinson CD. Increased physical activity improves sleep and mood outcomes in inactive people with insomnia: a randomized controlled trial. *J Sleep Res*. (2015) 24:526–34. doi: 10.1111/jsr.12297
- Reid KJ, Baron KG, Lu B, Naylor E, Wolfe L, Zee PC. Aerobic exercise improves self-reported sleep and quality of life in older adults with insomnia. *Sleep Med*. (2010) 11:934–40. doi: 10.1016/j.sleep.2010.04.014
- Li Z, Liu S, Wang L, Smith L. Mind-body exercise for anxiety and depression in COPD patients: a systematic review and meta-analysis. *Int J Environ Res Public Health*. (2019) 17:22. doi: 10.3390/ijerph17010022
- Irwin MR, Olmstead R, Carrillo C, Sadeghi N, Breen EC, Witaranta T, et al. Cognitive behavioral therapy vs. Tai Chi for late life insomnia and inflammatory risk: a randomized controlled comparative efficacy trial. *Sleep*. (2014) 37:1543–52. doi: 10.5665/sleep.4008
- Yeh SC, Chang MY. The effect of Qigong on menopausal symptoms and quality of sleep for perimenopausal women: a preliminary observational study. *J Altern Complement Med*. (2012) 18:567–75. doi: 10.1089/acm.2011.0133
- Afonso RF, Hachul H, Kozasa EH, Oliveira Dde S, Goto V, Rodrigues D, et al. Yoga decreases insomnia in postmenopausal women: a randomized clinical trial. *Menopause*. (2012) 19:186–93. doi: 10.1097/gme.0b013e318228225f
- Karimi S, Soroush A, Towhidi F, Makhososi BR, Karimi M, Jamehshorani S, et al. Surveying the effects of an exercise program on the sleep quality of elderly males. *Clin Intervent Aging*. (2016) 11:997–1002. doi: 10.2147/CIA.S106808
- Yeung WF, Lai AY, Ho FY, Suen LK, Chung KF, Ho JY, et al. Effects of zero-time exercise on inactive adults with insomnia disorder: a pilot randomized controlled trial. *Sleep Med*. (2018) 52:118–27. doi: 10.1016/j.sleep.2018.07.025

28. Tan X, Alén M, Wiklund P, Partinen M, Cheng S. Effects of aerobic exercise on home-based sleep among overweight and obese men with chronic insomnia symptoms: a randomized controlled trial. *Sleep Med.* (2016) 25:113–21. doi: 10.1016/j.sleep.2016.02.010
29. Chen LJ, Fox KR, Ku PW, Chang YW. Effects of aquatic exercise on sleep in older adults with mild sleep impairment: a randomized controlled trial. *Int J Behav Med.* (2016) 23:501–6. doi: 10.1007/s12529-015-9492-0
30. Irwin MR, Olmstead R, Motivala SJ. Improving sleep quality in older adults with moderate sleep complaints: a randomized controlled trial of Tai Chi Chih. *Sleep.* (2008) 31:1001–8.
31. King AC, Pruitt LA, Woo S, Castro CM, Ahn DK, Vitiello MV, et al. Effects of moderate-intensity exercise on polysomnographic and subjective sleep quality in older adults with mild to moderate sleep complaints. *J Gerontol Ser A Biol Sci Med Sci.* (2008) 63:997–1004. doi: 10.1093/gerona/63.9.997
32. King AC, Oman RE, Brassington GS, Bliwise DL, Haskell WL. Moderate-intensity exercise and self-rated quality of sleep in older adults. A randomized controlled trial. *JAMA.* (1997) 277:32–7. doi: 10.1001/jama.1997.03540250040029
33. Brandão GS, Gomes G, Brandão GS, Callou Sampaio AA, Donner CF, Oliveira LVF, et al. Home exercise improves the quality of sleep and daytime sleepiness of elders: a randomized controlled trial. *Multidiscip Respir Med.* (2018) 13:2. doi: 10.1186/s40248-017-0114-3
34. Ashrafinia F, Mirmohammadi M, Rajabi H, Kazemnejad A, Sadeghniahaghghi K, Amelvalizadeh M, et al. The effects of Pilates exercise on sleep quality in postpartum women. *J Bodyw Mov Ther.* (2014) 18:190–9. doi: 10.1016/j.jbmt.2013.09.007
35. Alessi CA, Schnelle JF, MacRae PG, Ouslander JG, al-Samarrai N, Simmons SF, et al. Does physical activity improve sleep in impaired nursing home residents? *J Am Geriatr Soc.* (1995) 43:1098–102. doi: 10.1111/j.1532-5415.1995.tb07007.x
36. Chen MC, Liu HE, Huang HY, Chiou AF. The effect of a simple traditional exercise programme (Baduanjin exercise) on sleep quality of older adults: a randomized controlled trial. *Int J Nurs Stud.* (2012) 49:265–73. doi: 10.1016/j.ijnurstu.2011.09.009
37. Chen KM, Huang HT, Cheng YY, Li CH, Chang YH. Sleep quality and depression of nursing home older adults in wheelchairs after exercises. *Nurs Outlook.* (2015) 63:357–65. doi: 10.1016/j.outlook.2014.08.010
38. Aibar-Almazán A, Hita-Contreras F, Cruz-Díaz D, de la Torre-Cruz M, Jiménez-García JD, Martínez-Amat A. Effects of Pilates training on sleep quality, anxiety, depression and fatigue in postmenopausal women: a randomized controlled trial. *Maturitas.* (2019) 124:62–7. doi: 10.1016/j.maturitas.2019.03.019
39. Buchanan DT, Landis CA, Hohensee C, Guthrie KA, Otte JL, Paudel M, et al. Effects of yoga and aerobic exercise on actigraphic sleep parameters in menopausal women with hot flashes. *J Clin Sleep Med.* (2017) 13:11–8. doi: 10.5664/jcs.m.6376
40. Elavsky S, McAuley E. Lack of perceived sleep improvement after 4-month structured exercise programs. *Menopause.* (2007) 14(3 Pt 1):535–40. doi: 10.1097/01.gme.0000243568.70946.d4
41. Oudegeest-Sander MH, Eijvogels TH, Verheggen RJ, Poelkens F, Hopman MT, Jones H, et al. Impact of physical fitness and daily energy expenditure on sleep efficiency in young and older humans. *Gerontology.* (2013) 59:8–16. doi: 10.1159/000342213
42. Chen KM, Chen MH, Lin MH, Fan JT, Lin HS, Li CH. Effects of yoga on sleep quality and depression in elders in assisted living facilities. *J Nurs Res.* (2010) 18:53–61. doi: 10.1097/JNR.0b013e3181ce5189
43. Sternfeld B, Guthrie KA, Ensrud KE, LaCroix AZ, Larson JC, Dunn AL, et al. Efficacy of exercise for menopausal symptoms: a randomized controlled trial. *Menopause.* (2014) 21:330–8. doi: 10.1097/GME.0b013e31829e4089
44. Liberati A, Altman DG, Tetzlaff J, Mulrow C, Gotzsche PC, Ioannidis JP, et al. The PRISMA statement for reporting systematic reviews and meta-analyses of studies that evaluate healthcare interventions: explanation and elaboration. *BMJ.* (2009) 339:b2700. doi: 10.1136/bmj.b2700
45. Buysse DJ, Reynolds CF, 3rd, Monk TH, Berman SR, Kupfer DJ. The Pittsburgh sleep quality index: a new instrument for psychiatric practice and research. *Psychiatry Res.* (1989) 28:193–213. doi: 10.1016/0165-1781(89)90047-4
46. Mollaveya T, Thurairajah P, Burton K, Mollaveya S, Shapiro CM, Colantonio A. The Pittsburgh sleep quality index as a screening tool for sleep dysfunction in clinical and non-clinical samples: a systematic review and meta-analysis. *Sleep Med Rev.* (2016) 25:52–73. doi: 10.1016/j.smrv.2015.01.009
47. Bastien CH, Vallières A, Morin CM. Validation of the insomnia severity index as an outcome measure for insomnia research. *Sleep Med.* (2001) 2:297–307. doi: 10.1016/S1389-9457(00)00065-4
48. Morin CM, Belleville G, Bélanger L, Ivers H. The insomnia severity index: psychometric indicators to detect insomnia cases and evaluate treatment response. *Sleep.* (2011) 34:601–8. doi: 10.1093/sleep/34.5.601
49. Miletin MS, Hanly PJ. Measurement properties of the Epworth sleepiness scale. *Sleep Med.* (2003) 4:195–9. doi: 10.1016/S1389-9457(03)00031-5
50. Higgins JPT, Altman DG, Gotzsche PC, Juni P, Moher D, Oxman AD, et al. The cochrane collaboration's tool for assessing risk of bias in randomised trials. *BMJ.* (2011) 343:d5928–d. doi: 10.1136/bmj.d5928
51. Buric I, Farias M, Jong J, Mee C, Brazil IA. What is the molecular signature of mind-body interventions? A systematic review of gene expression changes induced by meditation and related practices. *Front Immunol.* (2017) 8:670. doi: 10.3389/fimmu.2017.00670
52. Ohayon MM, Carskadon MA, Guilleminault C, Vitiello MV. Meta-analysis of quantitative sleep parameters from childhood to old age in healthy individuals: developing normative sleep values across the human lifespan. *Sleep.* (2004) 27:1255–73. doi: 10.1093/sleep/27.7.1255
53. Gooneratne NS, Vitiello MV. Sleep in older adults: normative changes, sleep disorders, and treatment options. *Clin Geriatr Med.* (2014) 30:591–627. doi: 10.1016/j.cger.2014.04.007
54. Smagula SF, Stone KL, Fabio A, Cauley JA. Risk factors for sleep disturbances in older adults: evidence from prospective studies. *Sleep Med Rev.* (2016) 25:21–30. doi: 10.1016/j.smrv.2015.01.003
55. Hudgel DW. Critical review: CPAP and weight management of obstructive sleep apnea cardiovascular co-morbidities. *Sleep Med Rev.* (2018) 37:14–23. doi: 10.1016/j.smrv.2016.12.001
56. Chen D, Yin Z, Fang B. Measurements and status of sleep quality in patients with cancers. *Support Care Cancer.* (2018) 26:405–14. doi: 10.1007/s00520-017-3927-x
57. van Straten A, van der Zweerde T, Kleiboer A, Cuijpers P, Morin CM, Lancee J. Cognitive and behavioral therapies in the treatment of insomnia: a meta-analysis. *Sleep Med Rev.* (2018) 38:3–16. doi: 10.1016/j.smrv.2017.02.001
58. Mercier J, Ivers H, Savard J. A non-inferiority randomized controlled trial comparing a home-based aerobic exercise program to a self-administered cognitive-behavioral therapy for insomnia in cancer patients. *Sleep.* (2018) 41. doi: 10.1093/sleep/zsy149
59. Irwin MR, Olmstead R, Carrillo C, Sadeghi N, Nicassio P, Ganz PA, et al. Tai Chi Chih compared with cognitive behavioral therapy for the treatment of insomnia in survivors of breast cancer: a randomized, partially blinded, noninferiority trial. *J Clin Oncol.* (2017) 35:2656–65. doi: 10.1200/JCO.2016.71.0285
60. Wong SN, Halaki M, Chow CM. The effects of moderate to vigorous aerobic exercise on the sleep need of sedentary young adults. *J Sports Sci.* (2013) 31:381–6. doi: 10.1080/02640414.2012.733823
61. Li I, Bui T, Phan HT, Llado A, King C, Scrivener K. App-based supplemental exercise in rehabilitation, adherence, and effect on outcomes: a randomized controlled trial. *Clin Rehabil.* (2020) 34:1083–93. doi: 10.1177/0269215520928119
62. Lambert TE, Harvey LA, Avdalis C, Chen LW, Jeyalingam S, Pratt CA, et al. An app with remote support achieves better adherence to home exercise programs than paper handouts in people with musculoskeletal conditions: a randomised trial. *J Physiother.* (2017) 63:161–7. doi: 10.1016/j.jphys.2017.05.015
63. Chen X, Wang R, Zee P, Lutsey PL, Javaheri S, Alcantara C, et al. Racial/Ethnic differences in sleep disturbances: the multi-ethnic study of atherosclerosis (MESA). *Sleep.* (2015) 38:877–88. doi: 10.5665/sle.ep.4732
64. Furukawa TA, Noma H, Caldwell DM, Honyashiki M, Shinohara K, Imai H, et al. Waiting list may be a placebo condition in psychotherapy trials: a contribution from network meta-analysis. *Acta Psychiatr Scand.* (2014) 130:181–92. doi: 10.1111/acps.12275

65. Rubio-Arias JÁ, Marín-Cascales E, Ramos-Campo DJ, Hernandez AV, Pérez-López FR. Effect of exercise on sleep quality and insomnia in middle-aged women: a systematic review and meta-analysis of randomized controlled trials. *Maturitas*. (2017) 100:49–56. doi: 10.1016/j.maturitas.2017.04.003
66. Yang SY, Lan SJ, Yen YY, Hsieh YP, Kung PT, Lan SH. Effects of exercise on sleep quality in pregnant women: a systematic review and meta-analysis of randomized controlled trials. *Asian Nurs Res*. (2020) 14:1–10. doi: 10.1016/j.anr.2020.01.003
67. Banno M, Harada Y, Taniguchi M, Tobita R, Tsujimoto H, Tsujimoto Y, et al. Exercise can improve sleep quality: a systematic review and meta-analysis. *PeerJ*. (2018) 6:e5172. doi: 10.7717/peerj.5172
68. Baglioni C, Bostanova Z, Bacaro V, Benz F, Hertenstein E, Spiegelhalter K, et al. A systematic review and network meta-analysis of randomized controlled trials evaluating the evidence base of melatonin, light exposure,

exercise, and complementary and alternative medicine for patients with insomnia disorder. *J Clin Med*. (2020) 9:1949. doi: 10.3390/jcm9061949

Conflict of Interest: The authors declare that the research was conducted in the absence of any commercial or financial relationships that could be construed as a potential conflict of interest.

Copyright © 2021 Xie, Liu, Chen, Yu, Yang and Wang. This is an open-access article distributed under the terms of the Creative Commons Attribution License (CC BY). The use, distribution or reproduction in other forums is permitted, provided the original author(s) and the copyright owner(s) are credited and that the original publication in this journal is cited, in accordance with accepted academic practice. No use, distribution or reproduction is permitted which does not comply with these terms.