

RESEARCH ARTICLE

Effects of methimazole and propylthiouracil exposure during pregnancy on the risk of neonatal congenital malformations: A meta-analysis

Rongjing Song¹, Hepu Lin², Yue Chen¹, Xiuying Zhang^{3*}, Wanyu Feng^{1*}

1 Department of Pharmacy, Peking University People's Hospital, Beijing, China, **2** Affiliated Bayi Brain Hospital, PLA Army General Hospital, Beijing, China, **3** Department of Endocrinology and Metabolism, Peking University People's Hospital, Beijing, China

* zhangxiuying717@163.com (XYZ); renminyaojike12@sina.com (WYF)



OPEN ACCESS

Citation: Song R, Lin H, Chen Y, Zhang X, Feng W (2017) Effects of methimazole and propylthiouracil exposure during pregnancy on the risk of neonatal congenital malformations: A meta-analysis. PLoS ONE 12(7): e0180108. <https://doi.org/10.1371/journal.pone.0180108>

Editor: Ranji Cui, Jilin University, CHINA

Received: February 13, 2017

Accepted: June 11, 2017

Published: July 3, 2017

Copyright: © 2017 Song et al. This is an open access article distributed under the terms of the [Creative Commons Attribution License](https://creativecommons.org/licenses/by/4.0/), which permits unrestricted use, distribution, and reproduction in any medium, provided the original author and source are credited.

Data Availability Statement: All relevant data are within the paper and its Supporting Information files.

Funding: The authors received no specific funding for this work.

Competing interests: The authors have declared that no competing interests exist.

Abbreviations: MMI, methimazole; CMZ, carbimazole; PTU, propylthiouracil; ATDs, antithyroid drugs; GRADE, Grading of Recommendations Assessment, Development, and

Abstract

Objective

The aim of this study was to determine the effect of exposure to different antithyroid drugs during pregnancy on the incidence of neonatal congenital malformations.

Methods

A meta-analysis was performed to compare the incidence of neonatal congenital malformations after exposure to different antithyroid drugs during pregnancy. Twelve studies that met the inclusion criteria were included in this meta-analysis. PubMed, Embase, and CENTRAL databases were searched from inception until January 2017. Study designs included case-control studies, prospective cohort studies, and retrospective cohort studies.

Results

Twelve studies involving 8028 participants with exposure to different antithyroid drugs during pregnancy were included in this study; however, only 10 studies involving 5059 participants involved exposure to different antithyroid drugs exactly during pregnancy. Our results indicated that exposure to methimazole (MMI)/carbimazole (CMZ) only during pregnancy significantly increased the risk of neonatal congenital malformations compared to no antithyroid drug exposure (OR 1.88; 95%CI 1.33 to 2.65; P = 0.0004). No differences were observed between propylthiouracil (PTU) exposure and no antithyroid drug exposure only during pregnancy (OR 0.81; 95%CI 0.58 to 1.15; P = 0.24). Exposure to MMI/CMZ only during pregnancy significantly increased the risk of neonatal congenital malformations compared to that associated with exposure to PTU (OR 1.90; 95%CI 1.30 to 2.78; P = 0.001).

Conclusion

For pregnant women with hyperthyroidism, exposure to MMI/CMZ significantly increased the incidence of neonatal congenital malformations compared to exposure to PTU and no

Evaluations; NOS, the Newcastle–Ottawa Scale; OR, Odds ratio; 95%CI, 95% confidence interval; I^2 , heterogeneity; P, p value; vs., versus; /, or; &, and.

antithyroid drug exposure; however, no differences were observed between PTU exposure and no antithyroid drug exposure.

Introduction

The prevalence of hyperthyroidism during pregnancy is approximately 0.1–0.2% [1]. Graves' disease is the most common cause of gestational hyperthyroidism. In addition, other types of thyroid disorders, such as toxic multinodular goiter or solitary autonomously functioning nodules, induce gestational hyperthyroidism. Hyperthyroidism during pregnancy should be carefully treated because it can result in adverse maternal and neonatal outcomes. A cohort study performed by Mannisto et al. found that gestational hyperthyroidism was associated with an increased risk of labor induction, preeclampsia, superimposed preeclampsia, threatened and observed preterm births, and neonatal intensive care unit admission [2]. Therefore, there is a strong need to control hyperthyroidism during pregnancy.

Treatment options for hyperthyroidism include surgical treatment (partial or complete thyroidectomy), radioactive iodine, and antithyroid drugs (ATDs) [3]. Surgery and radioactive iodine therapy, however, are rarely used during pregnancy. Surgery should be reserved as the last line of treatment for the minority of severe cases of gestational hyperthyroidism and should only be performed during the second trimester of pregnancy. Radioactive iodine therapy is contraindicated during pregnancy because of the increased risk of subsequent fetal thyrotoxicosis [4]. Therefore, antithyroid agents, including methimazole (MMI)/carbimazole (CMZ) (pro-drug of methimazole) and propylthiouracil (PTU), have become the standard treatment for hyperthyroidism during pregnancy. However, their use is controversial owing to their adverse effects. MMI/CMZ can induce neonatal congenital malformations and PTU can induce maternal hepatotoxicity [3].

In recent years, new studies have indicated that PTU was associated with an increased risk of neonatal congenital anomalies [5, 6]. Chen's research indicated that there was a higher risk of major congenital anomalies in the group exposed to PTU during pregnancy than in the group exposed to MMI [7]. In contrast, the results of other studies indicated conflicting conclusions [8]. Li et al. found that PTU was a safer choice for treating pregnant women with hyperthyroidism with respect to the risk of birth defects [9]. Moreover, several trials found no association between the use of ATDs in pregnancy and neonatal congenital malformations [10].

Therefore, the most appropriate agent for the management of hyperthyroidism during pregnancy with respect to the incidence of neonatal congenital malformations remains unclear. In this meta-analysis, we evaluated the risk of neonatal congenital malformations after exposure to different ATDs during pregnancy to reassess the effects of MMI and PTU exposure during pregnancy. We hope these findings provide new evidence for the management of gestational hyperthyroidism using the two ATDs.

Materials and methods

Our meta-analysis follows the PRISMA (Preferred Reporting Items for Systematic Reviews and Meta-Analyses) guideline. The PRISMA flow diagram is shown in [Fig 1](#) and the PRISMA checklist is shown in the [S3 Table](#).

Inclusion and exclusion criteria

The studies had to meet all the following criteria for inclusion: 1) subjects were pregnant women with hyperthyroidism who required antithyroid therapy; 2) subjects were administered

MMI/CMZ and/or PTU; 3) neonatal congenital abnormalities, including any neonatal congenital abnormality or major neonatal congenital abnormalities, were presented as one or all of the outcomes in the study; 4) the study design was a case-control study, prospective cohort study, or retrospective cohort study. Studies published in English or Chinese and only studies with full text available were included in this meta-analysis. Case reports, systematic reviews, and studies without human data were excluded.

Literature search

Three databases (PubMed, Embase, and the Cochrane library (Cochrane Central Register of Controlled Trials)) were searched using the following keywords from inception to January 2017: pregnancy; methimazole; propylthiouracil; carbimazole; antithyroid agents; congenital abnormalities; congenital defects; and congenital malformations. The search strategy is shown in the [S1 Table](#).

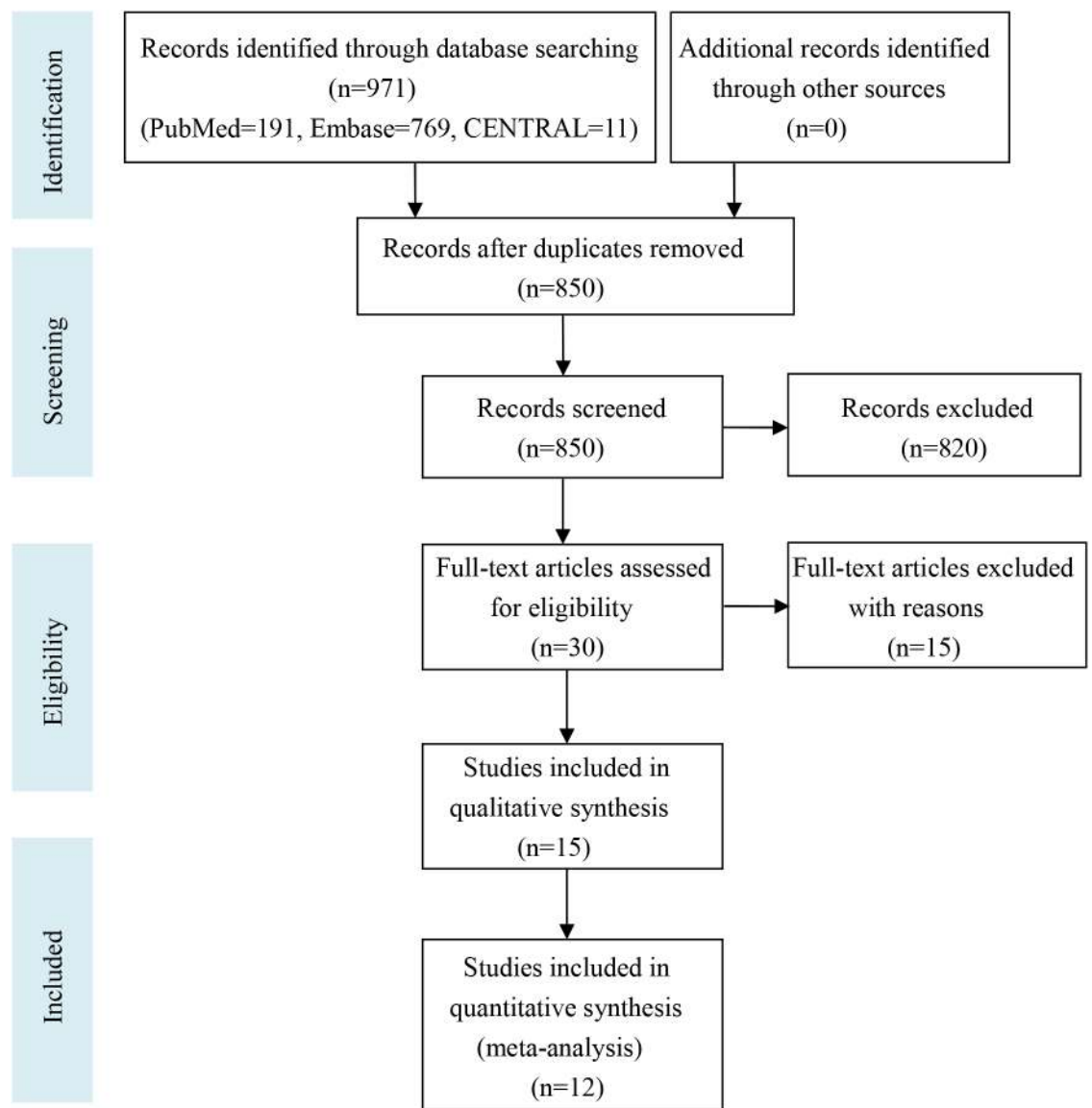


Fig 1. Flowchart of the study selection process for the meta-analysis.

<https://doi.org/10.1371/journal.pone.0180108.g001>

Study selection and data extraction

Rongjing Song and Hepu Lin independently performed the process of study selection and data collection. The following baseline data were collected for each study: authors, publication year, study design, study period, participants, exposure groups, no ATD group, control group, duration of exposure, and the type of congenital malformations. Disagreement was resolved by discussion with the third reviewer, Yue Chen.

Quality assessment of the included studies

Two independent authors (Rongjing Song and Yue Chen) assessed the quality of each included study using the Newcastle-Ottawa Scale (NOS) system [11]. The “star system” has been developed in which a study is evaluated on three broad perspectives: the selection of the study groups; the comparability of the groups; and the ascertainment of either the exposure or outcome of interest for case-control or cohort studies, respectively. Eight items were included in the three perspectives (four items in selection, one item in comparability, and three items in outcome/exposure). A study can be awarded a maximum of one star for each numbered item within the selection and outcome/exposure categories. However, a maximum of two stars can be given for an item in the comparability category. Therefore, a maximum of nine stars could have been given for each study.

Statistical analysis and quality evaluation of the evidence

Statistical analysis was performed using Review Manager software (version 5.3). We used the Mantel Haenszel method for all the outcomes in our meta-analysis because the outcomes were all dichotomous. The pooled outcomes were calculated using the odds ratio (OR) with 95% confidence intervals (CI). Heterogeneity was measured using I^2 statistics ($I^2 < 50\%$ was regarded as homogeneity) and a fixed-effects model was used in this study. P values less than 0.05 were considered statistically significant. Funnel plots were drawn using the software to assess publication bias. Sensitivity analysis was performed after excluding the studies with a small sample size (the sample size in the exposure group was less than or equal to 30). We used the grading of recommendations assessment, development, and evaluation (GRADE) system to evaluate the quality of evidence for the results [12]. Four grades were included in this working group grades of evidence: high quality, moderate quality, low quality, and very low quality.

Results

Literature search and study selection

The detailed search strategy is shown in the [S1 Table](#). [Fig 1](#) shows the process of study selection. A total of 971 studies were found in the three databases (PubMed = 191, Embase = 769, and CENTRAL = 11). No additional records were identified through other sources. After duplicates were removed, 850 records remained; however, 820 records were further removed after reading the titles and abstracts. Thirty full-text articles were read in detail for eligibility and 18 articles were excluded for various reasons. Finally, 12 studies were included in this meta-analysis [6–8,13–21].

Study characteristics and data extraction

The characteristics of the 12 included studies are shown in [Table 1](#). The publication year ranged from 1984 to 2016. Study areas included the United States, Japan, Europe, Israel, Taiwan, Denmark, and France. Case-control studies, retrospective cohort studies, and prospective cohort studies were included in this meta-analysis. The study periods and participants for each

Table 1. Characteristics of the 12 included studies in this meta-analysis.

First author /Publication year	Study region	Study type	Study period	Participants
Momotani 1984	Japan	Case-control study	August 1965 to May 1980	643 neonates from mothers with Graves' disease
Wing 1994	Unite State	Retrospective cohort study	1974 to 1990	185 pregnant patients with a history or diagnosis of hyperthyroidism
Gianantonio 2001	Europe	Prospective cohort study	NA	241 pregnancy women because of MMI exposure, and compared them with those of 1,089 pregnant women because of exposure to nonteratogenic drugs
Lian 2005	China	Retrospective cohort study	1 January 1983to 31 December 2003	100 cases of pregnancy with hyperthyroidism patients and 101 cases of newborn
Rosenfeld 2009	Israel	Prospective cohort study	1994 to 2004	PTU-exposed pregnancies of women and women exposed to nonteratogens
Clementi 2010	Unite State	Case-control study	1990 to 2004	18,131 cases with malformations and reported first-trimester exposure to medication
Chen 2011	Taiwan	Case-control study	1 January 2005 to 31 December 2005	A total of 2830 mothers with hyperthyroidism and 14150age-matched randomly selected mothers without hyperthyroidism
Yoshihara 2012	Japan	Retrospective cohort study	1 January 1999 to 31 December 2010	Women with Graves' disease who became pregnant
Andersen 2013	Denmark	Retrospective cohort study	1996 to 2008	817093 children live-born
Korelitz 2013	Unite State	Retrospective cohort study	2005 to 2009	Women aged 15–44 years, enrolled for at least 2 years, and who had a pregnancy during the study period
Lo 2015	Unite State	Retrospective cohort study	1 January 1996 to 31 December 2010	All pregnancies resulting in a live birth, among women age 15–49 years at the time of delivery
Hawken 2016	France	Retrospective cohort study	2005 to 2012	Ninety-five pregnancies

Abbreviations are as follows: MMI, methimazole; PTU, propylthiouracil; NA, not available.

<https://doi.org/10.1371/journal.pone.0180108.t001>

individual study are shown in [Table 1](#). [Tables 2](#) and [3](#) show the baseline data extracted from each study. The exposure groups included “MMI/CMZ,” “PTU,” or “MMI/CMZ and PTU.” Three studies involved a sample size in the exposure group that was less than or equal to 30 [[16](#), [20](#), [21](#)]. The definitions of “No ATD group” and “Control group” were slightly different in each included study (see [Tables 2](#) and [3](#)). Two studies involved exposure before pregnancy [[18](#), [19](#)] and another 10 studies involved exposure only during pregnancy. Seven studies involved only major congenital abnormalities [[6–8](#), [13–15](#), [17](#)] and two studies involved all birth defects [[18](#), [19](#)].

Quality assessment of the included studies

We performed a quality assessment of the 12 included studies using the NOS system, which is suitable for case-control studies and cohort studies [[11](#)]. The details of the star template are shown in the [S2 Table](#). We found that the ascertainment of exposure and the assessment of outcome were unclear in the Gianantonio study [[15](#)]. The exposed cohort was not representative in Lian’s study because only newborn cases delivered in the Peking Union Medical College Hospital were included [[16](#)]. There was not a “No ATD group” or “Control group” in Hawken’s study [[21](#)]; therefore, no star was given for the “selection of non-exposure cohort” or “comparability of cohorts based on the design or analysis” for this study. Therefore, the three cohort studies were given a total of six stars [[15](#), [16](#), [21](#)]. “No-Response Rate” was not mentioned in any case-control study included in this study [[6](#), [7](#), [13](#)]. The ascertainment of exposure was unclear in Clementi’s study [[6](#)]. Therefore, a total of seven stars were given to the

Table 2. Data extraction from the 12 included studies in this meta-analysis.

First author /Publication year	Exposure groups	No ATD group	Control group	Duration of exposure	Type of congenital malformations
Momotani 1984	MMI(2/117)	NA	Euthyroid and no MMI(1/350)	During the first trimester of pregnancy	Major malformations
Wing 1994	MMI(1/36) PTU (3/99)	No medications (1/43)	NA	During pregnancy	Major congenital malformations
Gianantonio 2001	MMI/CMZ(8/241)	Pregnant women exposure to nonteratogenic drugs (23/1089)	NA	During pregnancy	Major malformations
Lian 2005	MMI(5/12) PTU (1/28)	Hyperthyroidism and no ATD (1/61)	NA	During the first trimester of pregnancy	NA (Neonatal congenital malformations)
Rosenfeld 2009	PTU(1/80)	NA	Women exposed to nonteratogenic agents (34/1066)	Between the 4 th and 13 th gestational week	Major anomalies
Clementi 2010	MMI/CMZ(16/80) PTU(10/47)	NA	NA	During the first trimester of pregnancy	Major birth defect
Chen 2011	MMI(0/73) PTU (5/630)	Women with hyperthyroidism and not receiving ATD (15/2127)	Women in the comparison group, no hyperthyroidism and no ATD (92/14150)	During pregnancy	Major congenital anomalies
Yoshihara 2012	MMI(50/1426) PTU(26/1578)	Graves' disease without medicine(40/2065)	NA	During the first trimester of pregnancy	Major malformations

Abbreviations are as follows: MMI, methimazole; CMZ, carbimazole; PTU, propylthiouracil; ATD, antithyroid drugs; NA, not available; /, or; &, and.

<https://doi.org/10.1371/journal.pone.0180108.t002>

three case-control studies. Table 4 illustrates the total star template for each individual study. The results indicated that most of the data in this meta-analysis were from studies with a relatively high quality.

Meta-analysis for the risk of neonatal congenital malformation between different groups

As shown in Fig 2, eight studies provided a comparison between an “MMI/CMZ” exposure group and a “No ATD” group and included a total of 19054 participants. The results indicated

Table 3. Data extraction from the 12 included studies in this meta-analysis.

First author /Publication year	Exposure groups	No ATD group	Control group	Duration of exposure	Type of congenital malformations
Andersen 2013	MMI/CMZ(100/1097) PTU(45/564) MMI/CMZ &PTU(16/159)	ATD use, but not in pregnancy (190/3543)	Nonexposed, never ATD use (45982/811730)	6 months before pregnancy to the end of the 10 th gestational week	All birth defects
Korelitz 2013	MMI(6/108) PTU(66/915) MMI&PTU(14/126)	Thyrotoxicosis before/during/after pregnancy and no ATD (390/5932)	No thyrotoxicosis (37351/634858)	Over the 6 months before or during the pregnancy	Any congenital defect
Lo 2015	MMI(1/30) PTU(15/507) MMI&PTU(2/49)	Thyrotoxicosis diagnosis, no gestational ATD(52/1171)	NA	During pregnancy	NA (Congenital malformations)
Hawken 2016	CMZ(4/19) PTU(0/7)	NA	NA	During the first trimester of pregnancy	NA (Congenital malformation)

Abbreviations are as follows: MMI, methimazole; CMZ, carbimazole; PTU, propylthiouracil; ATD, antithyroid drugs; NA, not available; /, or; &, and.

<https://doi.org/10.1371/journal.pone.0180108.t003>

Table 4. The Newcastle-Ottawa Scale (NOS) quality assessment of the included studies in this meta-analysis.

Cohort Star Template				
Study	Selection (4)	Comparability (2)	Outcome (3)	Total (9)
Wing	☆☆☆☆	☆	☆☆☆	8
Gianantonio	☆☆☆	☆	☆☆	6
Lian	☆☆☆		☆☆☆	6
Rosenfeld	☆☆☆☆	☆	☆☆	7
Yoshihara	☆☆☆☆	☆	☆☆☆	8
Andersen	☆☆☆☆	☆☆	☆☆☆	9
Korelitz	☆☆☆☆	☆	☆☆☆	8
Lo	☆☆☆☆	☆	☆☆☆	8
Hawken	☆☆☆		☆☆☆	6

Case-Control Star Template				
Study	Selection (4)	Comparability (2)	Exposure (3)	Total (9)
Momotani	☆☆☆☆	☆	☆☆	7
Clementi	☆☆☆☆	☆☆	☆	7
Chen	☆☆☆☆	☆	☆☆	7

<https://doi.org/10.1371/journal.pone.0180108.t004>

that the risk of neonatal congenital malformation was significantly lower in the “No ATD” group than in the “MMI/CMZ” group (OR 1.72; 95%CI 1.41 to 2.09; $P < 0.00001$). Four studies offered a comparison between “MMI/CMZ” and “Control” and included a total of 1462483 participants. Similar to the above results, groups exposed to MMI/CMZ had a significantly increased risk of congenital malformations compared to “Control” groups (OR 1.61; 95%CI 1.32 to 1.97; $P < 0.00001$). Seven studies provided a comparison between PTU exposure and “No ATD” exposure and no differences were observed between the two groups (OR 1.10; 95% CI 0.92 to 1.32; $P = 0.30$). In contrast, the risk of neonatal congenital malformations was significantly increased in groups exposed to PTU when compared to a “Control” group (OR 1.29;

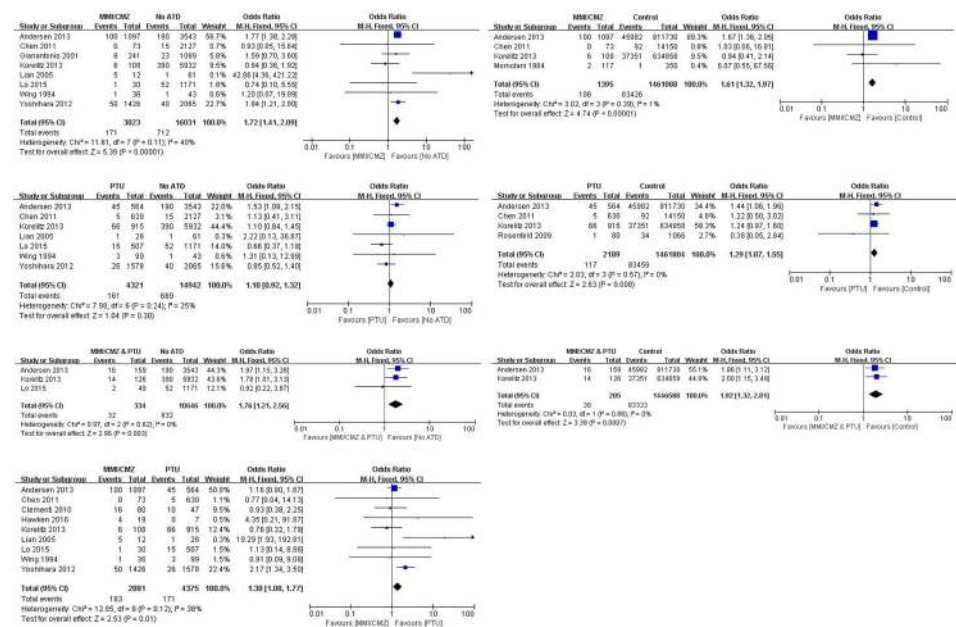


Fig 2. Risk of neonatal congenital malformations between different groups.

<https://doi.org/10.1371/journal.pone.0180108.g002>

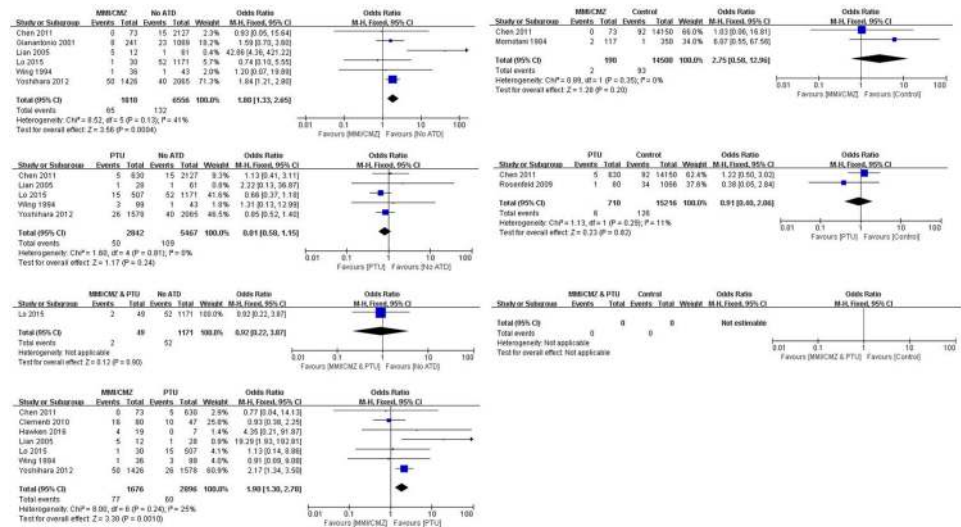


Fig 3. Risk of neonatal congenital malformations between different groups with exposure only during pregnancy.

<https://doi.org/10.1371/journal.pone.0180108.g003>

95%CI 1.07 to 1.55; $P = 0.008$). Three trials reported exposure in pregnant women to “MMI/CMZ & PTU” and “No ATD” and included a total of 10980 participants. The risk of neonatal congenital malformations in mothers exposed to “MMI/CMZ & PTU” was significantly higher than that in the “No ATD” groups (OR 1.76; 95%CI 1.21 to 2.56; $P = 0.003$). Two studies involved exposure in pregnant women to “MMI/CMZ & PTU” and “Control.” The results indicated that the risk of neonatal congenital malformations in the combination exposure group was significantly higher than that in the “Control” group (OR 1.92; 95%CI 1.32 to 2.81; $P = 0.0007$). Nine studies compared exposure to MMI/CMZ and PTU (2881 participants in the MMI/CMZ group; 4375 participants in the PTU group) to evaluate the risk of neonatal congenital malformations. The results indicated that exposure to MMI/CMZ significantly increased the risk of neonatal congenital malformations compared to exposure to PTU (OR 1.38; 95%CI 1.08 to 1.77; $P = 0.01$).

Fig 3 illustrates the results after removing two studies that involved exposure before pregnancy. The results indicated that groups exposed to MMI/CMZ had a significantly increased risk of neonatal congenital malformations compared to “No ATD” groups (OR 1.88; 95%CI 1.33 to 2.65; $P = 0.0004$). However, no differences were found between the “MMI/CMZ” and “Control” groups (OR 2.75; 95%CI 0.58 to 12.96; $P = 0.20$). No differences were found between PTU exposure and “No ATD” or “Control” with respect to the risk of neonatal congenital malformations (OR 0.81; 95%CI 0.58 to 1.15; $P = 0.24$; OR 0.91; 95%CI 0.40 to 2.06; $P = 0.82$). Only one study involved “MMI/CMZ & PTU” exposure and “No ATD.” No study reported a comparison between “MMI/CMZ & PTU” exposure and a “Control” group. Similar to the 12-study meta-analysis, those exposed to PTU had a significantly lower risk of neonatal congenital malformations compared to those exposed to MMI/CMZ (OR 1.90; 95%CI 1.30 to 2.78; $P = 0.001$).

Sensitivity analysis and heterogeneity test

Heterogeneity across studies was determined and sensitivity analyses were conducted. Funnel plots are shown in the S1 and S2 Figs and indicated that the three studies that involved a small sample size (sample size in exposure groups was less than or equal to 30) were the major source

Table 5. The summary outcomes of this meta-analysis (including those of sensitivity analysis).

All the 12 included studies (12 studies)	MMI/CMZ vs. No ATD	MMI/CMZ vs. Control	PTU vs. No ATD	PTU vs. Control	MMI/CMZ &PTU vs. No ATD	MMI/CMZ &PTU vs. Control	MMI/CMZ vs. PTU
No. of the included studies	8	4	7	4	3	2	9
Participants	19054	1462483	19263	1463993	10980	1446873	7256
Odds Ratio [95%CI]	1.72[1.41, 2.09]	1.61[1.32, 1.97]	1.10[0.92, 1.32]	1.29[1.07, 1.55]	1.76[1.21, 2.56]	1.92[1.32, 2.81]	1.38[1.08, 1.77]
I ²	40%	1%	25%	0%	0%	0%	38%
P	<0.00001	<0.00001	0.30	0.008	0.003	0.0007	0.01
Excluded studies with sample size less than or equal to 30 (9 studies)	MMI/CMZ vs. No ATD	MMI/CMZ vs. Control	PTU vs. No ATD	PTU vs. Control	MMI/CMZ &PTU vs. No ATD	MMI/CMZ &PTU vs. Control	MMI/CMZ vs. PTU
No. of the included studies	6	4	5	4	2	2	6
Participants	17780	1462483	17496	1463993	9760	1446873	6653
Odds Ratio [95%CI]	1.68[1.37, 2.05]	1.61[1.32, 1.97]	1.17[0.97, 1.42]	1.29[1.07, 1.55]	1.88[1.27, 2.77]	1.92[1.32, 2.81]	1.31[1.01, 1.69]
I ²	0%	1%	5%	0%	0%	0%	29%
P	<0.00001	<0.00001	0.11	0.008	0.002	0.0007	0.04
Only major congenital malformations (7 studies)	MMI/CMZ vs. No ATD	MMI/CMZ vs. Control	PTU vs. No ATD	PTU vs. Control	MMI/CMZ &PTU vs. No ATD	MMI/CMZ &PTU vs. Control	MMI/CMZ vs. PTU
No. of the included studies	4	2	3	2	0	0	4
Participants	7100	14690	6542	15926	0	0	3969
Odds Ratio [95%CI]	1.75[1.22, 2.53]	2.75[0.58, 12.96]	0.91[0.59, 1.41]	0.91[0.40, 2.06]	—	—	1.73[1.15, 2.59]
I ²	0%	0%	0%	11%	—	—	11%
P	0.003	0.20	0.67	0.82	—	—	0.008

Abbreviations are as follows: CI, confidence interval; I², heterogeneity; P, p value; MMI, methimazole; CMZ, carbimazole; PTU, propylthiouracil; ATD, antithyroid drugs; vs., versus; /, or; &, and.

<https://doi.org/10.1371/journal.pone.0180108.t005>

of heterogeneity across the studies [16, 20, 21]. Therefore, sensitivity analyses were performed after excluding those three studies. As shown in Table 5, treatment with MMI/CMZ significantly increased the risk of neonatal congenital malformations compared to “No ATD” (OR 1.68; 95% CI 1.37 to 2.05; P < 0.00001), which was consistent with the previous results. However, I² decreased from 40% to 0%. The risk of neonatal congenital malformations remained not different between PTU and “No ATD” (OR 1.17; 95%CI 0.97 to 1.42; P = 0.11) and I² decreased from 25% to 5%. The risk of neonatal congenital malformations appeared higher in patients exposed to MMI/CMZ than in those exposed to PTU (OR 1.31; 95%CI 1.01 to 1.69; P = 0.04), which was consistent with the previous results; however, I² decreased from 38% to 29%.

Sensitivity analyses were also performed in the 10 studies with exposure only during pregnancy. Table 6 illustrates the results of the sensitivity analyses. We found that MMI/CMZ significantly increased the risk of neonatal congenital malformations compared to “No ATD” (OR 1.75; 95%CI 1.22 to 2.53; P = 0.003) and I² decreased from 41% to 0%. In addition, MMI/CMZ significantly increased the risk of neonatal congenital malformations compared to PTU (OR 1.73; 95%CI 1.15 to 2.59; P = 0.008) and I² decreased from 25% to 11%.

Other outcomes—Risk of major neonatal congenital malformations

Seven studies provided the type of congenital malformation named as “major congenital malformation.” Therefore, we performed a meta-analysis that included only the studies that

Table 6. The summary outcomes of this meta-analysis with exposure only during pregnancy. (including those of sensitivity analysis).

All the 10 included studies (10 studies)	MMI/CMZ vs. No ATD	MMI/CMZ vs. Control	PTU vs. No ATD	PTU vs. Control	MMI/CMZ &PTU vs. No ATD	MMI/CMZ &PTU vs. Control	MMI/CMZ vs. PTU
No. of the included studies	6	2	5	2	1	0	7
Participants	8374	14690	8309	15926	1220	0	4572
Odds Ratio [95%CI]	1.88[1.33, 2.65]	2.75[0.58, 12.96]	0.81[0.58, 1.15]	0.91[0.40, 2.06]	0.92[0.22, 3.87]	—	1.90[1.30, 2.78]
I ²	41%	0%	0%	11%	—	—	25%
P	0.0004	0.20	0.24	0.82	0.90	—	0.001
Excluded studies with sample size less than or equal to 30 (7 studies)	MMI/CMZ vs. No ATD	MMI/CMZ vs. Control	PTU vs. No ATD	PTU vs. Control	MMI/CMZ &PTU vs. No ATD	MMI/CMZ &PTU vs. Control	MMI/CMZ vs. PTU
No. of the included studies	4	2	3	2	0	0	4
Participants	7100	14690	6542	15926	0	0	3969
Odds Ratio [95%CI]	1.75[1.22, 2.53]	2.75[0.58, 12.96]	0.91[0.59, 1.41]	0.91[0.40, 2.06]	—	—	1.73[1.15, 2.59]
I ²	0%	0%	0%	11%	—	—	11%
P	0.003	0.20	0.67	0.82	—	—	0.008
Only major congenital malformations (7 studies)	MMI/CMZ vs. No ATD	MMI/CMZ vs. Control	PTU vs. No ATD	PTU vs. Control	MMI/CMZ &PTU vs. No ATD	MMI/CMZ &PTU vs. Control	MMI/CMZ vs. PTU
No. of the included studies	4	2	3	2	0	0	4
Participants	7100	14690	6542	15926	0	0	3969
Odds Ratio [95%CI]	1.75[1.22, 2.53]	2.75[0.58, 12.96]	0.91[0.59, 1.41]	0.91[0.40, 2.06]	—	—	1.73[1.15, 2.59]
I ²	0%	0%	0%	11%	—	—	11%
P	0.003	0.20	0.67	0.82	—	—	0.008

Abbreviations are as follows: CI, confidence interval; I², heterogeneity; P, p value; MMI, methimazole; CMZ, carbimazole; PTU, propylthiouracil; ATD, antithyroid drugs; vs., versus; /, or; &, and.

<https://doi.org/10.1371/journal.pone.0180108.t006>

evaluated major neonatal congenital malformations. As shown in [Table 5](#), exposure to MMI/CMZ significantly increased the risk of major neonatal congenital malformations compared to “No ATD” exposure (OR 1.75; 95%CI 1.22 to 2.53; P = 0.003), which was consistent with the previous results. The risk of major neonatal malformations was significantly less in those exposed to PTU compared to that in those exposed to MMI/CMZ (OR 1.73; 95%CI 1.15 to 2.59; P = 0.008). In contrast, no differences were found in the other five comparisons. The comparison of the risk of major neonatal congenital malformations between the different groups after removing two studies involving exposure before pregnancy is shown in [Table 6](#). Consistent with the earlier results, statistical significant differences were only found in the comparisons between exposure to MMI/CMZ and “No ATD” (OR 1.75; 95%CI 1.22 to 2.53; P = 0.003) and exposure to PTU and exposure to MMI/CMZ (OR 1.73; 95%CI 1.15 to 2.59; P = 0.008).

Quality assessment of the evidence for all the results (GRADE) is shown in [Tables 7–10](#). The results ranged from very low to high according to the evaluation criteria.

Discussion

We divided our meta-analysis into two parts. The first part evaluated the outcomes of the 12 included studies. Exposure to MMI/CMZ during pregnancy significantly increased the risk of neonatal congenital malformations compared to “No ATD” groups and “Control” groups (the specific definition of “No ATD” and “Control” in each individual study are presented in [Tables 2 and 3](#)). These results were consistent with those of previous studies [[5](#), [9](#)]. The risk of

Table 7. GRADE for outcomes of this meta-analysis.

Outcomes	No of Participants (studies)	Quality of the evidence (GRADE)	Relative effect (95% CI)	Anticipated absolute effects	
MMI/CMZ VS No ATD	19054(8 studies ¹)	⊕⊖⊖⊖ VERY LOW due to risk of bias, inconsistency, imprecision	OR 1.72 (1.41 to 2.09)	Risk with No ATD	Risk difference with MMI/CMZ (95% CI)
				Study population	
				44 per 1000	30 more per 1000 (from 17 more to 44 more)
				Moderate	
				22 per 1000	15 more per 1000 (from 9 more to 23 more)
MMI/CMZ VS No Control	1462483 (4 studies ¹)	⊕⊕⊖⊖ LOW due to inconsistency, large effect	OR 1.61 (1.32 to 1.97)	Risk with Control	Risk difference with MMI/CMZ (95% CI)
				Study population	
				57 per 1000	32 more per 1000 (from 17 more to 49 more)
				Moderate	
				32 per 1000	19 more per 1000 (from 10 more to 29 more)
PTU VS No ATD	19263 (7 studies ¹)	⊕⊖⊖⊖ VERY LOW due to risk of bias, imprecision	OR 1.1 (0.92 to 1.32)	Risk with No ATD	Risk difference with PTU (95% CI)
				Study population	
				46 per 1000	4 more per 1000 (from 4 fewer to 14 more)
				Moderate	
				23 per 1000	2 more per 1000 (from 2 fewer to 7 more)

The basis for the **assumed risk** (e.g. the median control group risk across studies) is provided in footnotes. The **corresponding risk** (and its 95% CI) is based on the assumed risk in the comparison group and the **relative effect** of the intervention (and its 95% CI).

GRADE Working Group grades of evidence: High quality: Further research is very unlikely to change our confidence in the estimate of effect. **Moderate quality:** Further research is likely to have an important impact on our confidence in the estimate of effect and may change the estimate. **Low quality:** Further research is very likely to have an important impact on our confidence in the estimate of effect and is likely to change the estimate. **Very low quality:** We are very uncertain about the estimate.

¹ case-control and other study designs together.

Abbreviations are as follows: GRADE, Grading of Recommendations Assessment, Development, and Evaluations; MMI, methimazole; CMZ, carbimazole; PTU, propylthiouracil; ATD, antithyroid drugs; CI, Confidence interval; OR, Odds ratio; /, or.

<https://doi.org/10.1371/journal.pone.0180108.t007>

neonatal congenital malformations appeared to be higher in groups exposed to PTU compared to “Control” groups. However, no difference was observed between groups exposed to PTU and “No ATD” groups, which was different from the conclusion described by Li et al. [5]. This result indicated that neonatal congenital malformations that occurred in groups exposed to PTU may have been due to the gestational hyperthyroidism disorders rather than the administration of PTU. Therefore, we speculated that hyperthyroid states during pregnancy were not only associated with pregnancy loss, reduced fetal growth, and thyroid storm [22], but also put the fetus at a high risk of birth defects, which may exceed that of PTU exposure.

Three studies involved a change in drug exposure from MMI/CMZ to PTU (or vice versa) during pregnancy [18–20]. A group that changed from one drug to another was defined as an “MMI/CMZ & PTU” group in our study. As expected, the risk of neonatal congenital malformation in the “MMI/CMZ & PTU” groups was significantly higher than that in the “No ATD” or “Control” groups, which further suggested that MMI/CMZ was associated with a higher risk of birth defects. This result agreed with the report in the Food and Drug Administration

Table 8. GRADE for outcomes of this meta-analysis.

Outcomes	No of Participants (studies)	Quality of the evidence (GRADE)	Relative effect (95% CI)	Anticipated absolute effects	
PTU VS Control	1463993 (4 studies ¹)	⊕⊕⊕⊕ HIGH due to large effect	OR 1.29 (1.07 to 1.55)	Risk with Control	Risk difference with PTU (95% CI)
				Study population	
				57 per 1000	15 more per 1000 (from 4 more to 29 more)
				Moderate	
44 per 1000	12 more per 1000 (from 3 more to 23 more)				
MMI/CMZ & PTU VS No ATD	10980 (3 studies)	⊕⊕⊕⊖ MODERATE due to imprecision, large effect	OR 1.76 (1.21 to 2.56)	Risk with No ATD	Risk difference with MMI/CMZ & PTU (95% CI)
				Study population	
				59 per 1000	41 more per 1000 (from 12 more to 80 more)
				Moderate	
54 per 1000	37 more per 1000 (from 11 more to 73 more)				
MMI/CMZ & PTU VS Control	1446873 (2 studies)	⊕⊕⊕⊕ HIGH due to large effect	OR 1.92 (1.32 to 2.81)	Risk with Control	Risk difference with MMI/CMZ & PTU (95% CI)
				Study population	
				58 per 1000	47 more per 1000 (from 17 more to 89 more)
				Moderate	
58 per 1000	48 more per 1000 (from 17 more to 89 more)				
MMI/CMZ VS PTU	7256 (9 studies ¹)	⊕⊖⊖⊖ VERY LOW due to risk of bias, inconsistency, imprecision	OR 1.38 (1.08 to 1.77)	Risk with PTU	Risk difference with MMI/CMZ (95% CI)
				Study population	
				39 per 1000	14 more per 1000 (from 3 more to 28 more)
				Moderate	
30 per 1000	11 more per 1000 (from 2 more to 22 more)				

The basis for the **assumed risk** (e.g. the median control group risk across studies) is provided in footnotes. The **corresponding risk** (and its 95% CI) is based on the assumed risk in the comparison group and the **relative effect** of the intervention (and its 95% CI).

GRADE Working Group grades of evidence: High quality: Further research is very unlikely to change our confidence in the estimate of effect. **Moderate quality:** Further research is likely to have an important impact on our confidence in the estimate of effect and may change the estimate. **Low quality:** Further research is very likely to have an important impact on our confidence in the estimate of effect and is likely to change the estimate. **Very low quality:** We are very uncertain about the estimate.

¹ case-control and other study designs together.

Abbreviations are as follows: GRADE, Grading of Recommendations Assessment, Development, and Evaluations; MMI, methimazole; CMZ, carbimazole; PTU, propylthiouracil; ATD, antithyroid drugs; CI, Confidence interval; OR, Odds ratio; /, or; &, and.

<https://doi.org/10.1371/journal.pone.0180108.t008>

Adverse Event Reporting System files, in which there were 19 reports of birth defects following exposure to PTU (5% of all reports) and 40 reports following exposure to MMI (6.4% of all reports). The teratogenic effect of MMI may be associated with placental transfer [23, 24].

The essential comparison between MMI/CMZ and PTU exposure was performed using data from nine included studies. The results indicated that exposure to MMI/CMZ significantly increased the risk of neonatal congenital malformations compared to PTU exposure. This was consistent with the conclusions of the previous studies [9, 25]. The reasons for the

Table 9. GRADE for outcomes of this meta-analysis with exposure only during pregnancy.

Outcomes	No of Participants (studies)	Quality of the evidence (GRADE)	Relative effect (95% CI)	Anticipated absolute effects	
MMI/CMZ VS No ATD	8374 (6 studies ¹)	⊕⊖⊖⊖ VERY LOW due to risk of bias, inconsistency, imprecision	OR 1.88 (1.33 to 2.65)	Risk with No ATD	Risk difference with MMI/CMZ (95% CI)
				Study population	
				20 per 1000	17 more per 1000 (from 6 more to 32 more)
				Moderate	20 per 1000
MMI/CMZ VS No Control	14690 (2 studies ²)	⊕⊕⊕⊕ HIGH due to large effect	OR 2.75 (0.58 to 12.96)	Risk with Control	Risk difference with MMI/CMZ (95% CI)
				Study population	
				6 per 1000	11 more per 1000 (from 3 fewer to 71 more)
				Moderate	5 per 1000
PTU VS No ATD	8309 (5 studies ¹)	⊕⊕⊖⊖ LOW due to risk of bias, imprecision, large effect	OR 0.81 (0.58 to 1.15)	Risk with No ATD	Risk difference with PTU (95% CI)
				Study population	
				20 per 1000	4 fewer per 1000 (from 8 fewer to 3 more)
				Moderate	19 per 1000

The basis for the **assumed risk** (e.g. the median control group risk across studies) is provided in footnotes. The **corresponding risk** (and its 95% CI) is based on the assumed risk in the comparison group and the **relative effect** of the intervention (and its 95% CI).

GRADE Working Group grades of evidence: High quality: Further research is very unlikely to change our confidence in the estimate of effect. **Moderate quality:** Further research is likely to have an important impact on our confidence in the estimate of effect and may change the estimate. **Low quality:** Further research is very likely to have an important impact on our confidence in the estimate of effect and is likely to change the estimate. **Very low quality:** We are very uncertain about the estimate.

¹ case-control and other study designs together.

² case-control.

Abbreviations are as follows: GRADE, Grading of Recommendations Assessment, Development, and Evaluations; MMI, methimazole; CMZ, carbimazole; PTU, propylthiouracil; ATD, antithyroid drugs; CI, Confidence interval; OR, Odds ratio; /, or.

<https://doi.org/10.1371/journal.pone.0180108.t009>

negative findings reported by several trials may have been due to the methods used in their research [26].

The above results indicated that MMI/CMZ was not safe for treating hyperthyroidism during pregnancy and PTU was safer than MMI/CMZ with respect to the risk of neonatal congenital malformations. Sensitivity analyses were conducted after excluding three studies with a small sample size in the exposure group (less than or equal to 30), which indicated that these results were robust.

The duration of exposure was different for each individual study. Duration of exposure was described as “the first trimester of pregnancy” in five studies [6, 8, 13, 16, 21], “during pregnancy” in four studies [7, 14, 15, 20], “between the 4th and 13th gestational week” in one study [17], “6 months before pregnancy to the end of the 10th gestational week” in one study [18], and “over the 6 months before or during the pregnancy” in one study [19]. To eliminate the influence of exposure before pregnancy, we excluded the two studies conducted by Andersen

Table 10. GRADE for outcomes of this meta-analysis with exposure only during pregnancy.

Outcomes	No of Participants (studies)	Quality of the evidence (GRADE)	Relative effect (95% CI)	Anticipated absolute effects	
PTU VS Control	15926 (2 studies ¹)	⊕⊕⊕⊖ MODERATE due to large effect	OR 0.91 (0.4 to 2.06)	Risk with Control	Risk difference with PTU (95% CI)
				Study population	
				8 per 1000	1 fewer per 1000 (from 5 fewer to 9 more)
				Moderate	
		19 per 1000	2 fewer per 1000 (from 11 fewer to 19 more)		
MMI/CMZ & PTU VS No ATD	1220 (1 study)	⊕⊖⊖⊖ VERY LOW due to imprecision	OR 0.92 (0.22 to 3.87)	Risk with No ATD	Risk difference with MMI/CMZ & PTU (95% CI)
				Study population	
				44 per 1000	3 fewer per 1000 (from 34 fewer to 108 more)
				Moderate	
		44 per 1000	3 fewer per 1000 (from 34 fewer to 107 more)		
MMI/CMZ VS PTU	4572 (7 studies ¹)	⊕⊖⊖⊖ VERY LOW due to risk of bias, inconsistency, imprecision	OR 1.9 (1.3 to 2.78)	Risk with PTU	Risk difference with MMI/CMZ (95% CI)
				Study population	
				21 per 1000	18 more per 1000 (from 6 more to 35 more)
				Moderate	
		30 per 1000	26 more per 1000 (from 9 more to 49 more)		

The basis for the **assumed risk** (e.g. the median control group risk across studies) is provided in footnotes. The **corresponding risk** (and its 95% CI) is based on the assumed risk in the comparison group and the **relative effect** of the intervention (and its 95% CI).

GRADE Working Group grades of evidence: High quality: Further research is very unlikely to change our confidence in the estimate of effect. **Moderate quality:** Further research is likely to have an important impact on our confidence in the estimate of effect and may change the estimate. **Low quality:** Further research is very likely to have an important impact on our confidence in the estimate of effect and is likely to change the estimate. **Very low quality:** We are very uncertain about the estimate.

¹ case-control and other study designs together.

Abbreviations are as follows: GRADE, Grading of Recommendations Assessment, Development, and Evaluations; MMI, methimazole; CMZ, carbimazole; PTU, propylthiouracil; ATD, antithyroid drugs; CI, Confidence interval; OR, Odds ratio; /, or; &, and.

<https://doi.org/10.1371/journal.pone.0180108.t010>

and Korelitz. Therefore, the second part of our meta-analysis evaluated the 10 included studies in which the exposure was only during pregnancy.

MMI/CMZ significantly increased the risk of neonatal congenital malformations compared to “No ATD” groups; however, no difference was observed between MMI/CMZ and “Control” groups. The study bias (n = 146283 vs. n = 14690) and the different outcomes (‘any congenital defect’ vs. ‘major congenital anomalies’) may explain the different results from the comparison between MMI/CMZ and “Control” groups after exclusion of the 2 articles with before pregnancy exposure. No differences were observed between the group exposed to PTU and the “No ATD” or “Control” groups. No differences were observed in the comparison of MMI/CMZ vs. “Control” or PTU vs. “Control” when we limited the exposure to only during pregnancy. These results suggested that uncontrolled hyperthyroidism before pregnancy maybe associated with the occurrence of neonatal congenital malformations, and therefore, control of hyperthyroidism before pregnancy is recommended. Only one study provided a comparison between a group exposed to “MMI/CMZ & PTU” and a “No ATD” group, whereas no study

provided a comparison between a group exposed to “MMI/CMZ & PTU” and a “Control” group. The results of the comparison between MMI/CMZ and PTU agreed with previous results and indicated that PTU was safer than MMI/CMZ with respect to the risk of neonatal congenital malformations after we limited the exposure to only during pregnancy. Sensitivity analyses indicated the results were robust.

Generally, the incidence of birth defects diagnosed before 2 years of age was approximately 6% [27]. The first report of a birth defect following the use of MMI during pregnancy was a case of aplasia cutis [28]. Thereafter, various other types of birth defects were reported. PTU was usually associated with face and neck malformations (preauricular sinus and cysts). In comparison, MMI was usually associated with musculoskeletal, integumentary, digestive, and ocular defects [29, 30]. Combination therapy was associated with urinary system malformations [18].

In this study, we therefore performed a meta-analysis with respect to different types of neonatal congenital malformations. Seven studies described the malformations using the word “major” [6–8, 13–15, 17]. Lian, Lo, and Hawken described the malformations as “congenital malformations,” Andersen described the malformations as “all birth defects,” and Korelitz described the malformations as “any congenital defect.” Therefore, we further evaluated the risk of the major neonatal congenital malformations between different groups. Groups exposed to MMI/CMZ had a significantly increased risk of major neonatal congenital malformations compared to “No ATD” groups. No difference was observed between MMI/CMZ and “Control” groups. No differences were observed between groups exposed to PTU and “No ATD” or “Control” groups. Groups exposed to PTU had a lower risk of major neonatal congenital malformations compared to groups exposed to MMI/CMZ. Additionally, when we limited the exposure to only during pregnancy, we found that the results using the 10 studies were the same as those using the 12 studies. Therefore, we concluded that the risk of major neonatal congenital malformations following exposure to MMI/CMZ only during pregnancy was significantly higher than that following exposure to PTU.

Limitations in current evidence

There were several limitations to our study. First, unpublished studies were not included in our study, which may have induced publication bias. Second, the quality assessment of the included studies suggested that not all the studies were of high quality, which may have affected the accuracy of the results. Third, the quality assessment of the evidence for the results ranged from very low to high, suggesting that the quality of the evidence needed further verification. Fourth, the exact time of exposure during pregnancy was not described in each individual trial; therefore, we cannot provide evidence for a safer administration time of ATDs during pregnancy.

Conclusions

In this updated meta-analysis, the risk of neonatal congenital malformations after exposure to different ATDs during pregnancy was determined. In summary, for pregnant women with hyperthyroidism, no differences were observed between PTU exposure and no ATD exposure; however, PTU exposure led to less neonatal congenital malformations than MMI/CMZ exposure. Therefore, PTU was recommended during pregnancy with respect to neonatal congenital malformations. More trials are needed to confirm this conclusion in the future.

Supporting information

S1 Table. Search strategy.
(PDF)

S2 Table. The Newcastle-Ottawa Scale (NOS) quality assessment of the included studies in this meta-analysis (details).

(PDF)

S3 Table. PRISMA checklist.

(PDF)

S1 Fig. Funnel plot of the 12 included studies.

(TIF)

S2 Fig. Funnel plot of the 10 included studies involved exposure only during pregnancy.

(TIF)

Acknowledgments

Support for this study, including methodology and manuscript revision, was provided by Miaomiao Ma and Qingyu Luo.

Author Contributions

Conceptualization: RS WF XZ.

Data curation: RS HL.

Formal analysis: RS YC.

Funding acquisition: XZ WF.

Investigation: RS HL.

Methodology: RS YC.

Project administration: RS WF.

Resources: RS HL.

Software: RS YC.

Supervision: XZ WF.

Validation: XZ.

Visualization: WF.

Writing – original draft: RS.

Writing – review & editing: XZ WF.

References

1. Cooper DS, Laurberg P. Hyperthyroidism in pregnancy. *Lancet Diabetes Endocrinol.* 2013; 1(3):238–49. [https://doi.org/10.1016/S2213-8587\(13\)70086-X](https://doi.org/10.1016/S2213-8587(13)70086-X) PMID: [24622372](https://pubmed.ncbi.nlm.nih.gov/24622372/)
2. Mannisto T, Mendola P, Grewal J, Xie Y, Chen Z, Laughon SK. Thyroid diseases and adverse pregnancy outcomes in a contemporary US cohort. *J Clin Endocrinol Metab.* 2013; 98(7):2725–33. <https://doi.org/10.1210/jc.2012-4233> PMID: [23744409](https://pubmed.ncbi.nlm.nih.gov/23744409/)
3. Prunty JJ, Heise CD, Chaffin DG. Graves' Disease Pharmacotherapy in Women of Reproductive Age. *Pharmacotherapy.* 2016; 36(1):64–83. <https://doi.org/10.1002/phar.1676> PMID: [26799350](https://pubmed.ncbi.nlm.nih.gov/26799350/)
4. Bahn Chair RS, Burch HB, Cooper DS, Garber JR, Greenlee MC, Klein I, et al. Hyperthyroidism and other causes of thyrotoxicosis: management guidelines of the American Thyroid Association and

- American Association of Clinical Endocrinologists. *Thyroid*. 2011; 21(6):593–646. <https://doi.org/10.1089/thy.2010.0417> PMID: 21510801
5. Li H, Zheng J, Luo J, Zeng R, Feng N, Zhu N, et al. Congenital anomalies in children exposed to antithyroid drugs in-utero: a meta-analysis of cohort studies. *PLoS One*. 2015; 10(5):e0126610. <https://doi.org/10.1371/journal.pone.0126610> PMID: 25974033
 6. Clementi M, Di Gianantonio E, Cassina M, Leoncini E, Botto LD, Mastroiacovo P. Treatment of hyperthyroidism in pregnancy and birth defects. *J Clin Endocrinol Metab*. 2010; 95(11):E337–41. <https://doi.org/10.1210/jc.2010-0652> PMID: 20668039
 7. Chen CH, Xirasagar S, Lin CC, Wang LH, Kou YR, Lin HC. Risk of adverse perinatal outcomes with antithyroid treatment during pregnancy: a nationwide population-based study. *BJOG*. 2011; 118(11):1365–73. <https://doi.org/10.1111/j.1471-0528.2011.03019.x> PMID: 21624036
 8. Yoshihara A, Noh J, Yamaguchi T, Ohye H, Sato S, Sekiya K, et al. Treatment of graves' disease with antithyroid drugs in the first trimester of pregnancy and the prevalence of congenital malformation. *J Clin Endocrinol Metab*. 2012; 97(7):2396–403. <https://doi.org/10.1210/jc.2011-2860> PMID: 22547422
 9. Li X, Liu GY, Ma JL, Zhou L. Risk of congenital anomalies associated with antithyroid treatment during pregnancy: a meta-analysis. *Clinics (Sao Paulo)*. 2015; 70(6):453–9.
 10. Gianetti E, Russo L, Orlandi F, Chiovato L, Giusti M, Benvenga S, et al. Pregnancy outcome in women treated with methimazole or propylthiouracil during pregnancy. *J Endocrinol Invest*. 2015; 38(9):977–85. <https://doi.org/10.1007/s40618-015-0281-z> PMID: 25840794
 11. Wells GA, Shea B, O'Connell D, Peterson J, Welch V, Losos M, et al. The Newcastle-Ottawa Scale (NOS) for assessing the quality of nonrandomised studies in meta-analyses. 2011. Available: http://www.ohri.ca/programs/clinical_epidemiology/oxford.asp. Accessed May 14, 2014.
 12. Balshem H, Helfand M, Schünemann HJ, Oxman AD, Kunz R, Brozek J, et al. GRADE guidelines: 3. Rating the quality of evidence. *J Clin Epidemiol* 2011; 64: 401–6. <https://doi.org/10.1016/j.jclinepi.2010.07.015> PMID: 21208779
 13. Momotani N, Ito K, Hamada N, Ban Y, Nishikawa Y, Mimura T. Maternal hyperthyroidism and congenital malformation in the offspring. *Clin Endocrinol (Oxf)*. 1984; 20: 695–700.
 14. Wing DA, Millar LK, Koonings PP, Montoro MN, Mestman JH. A comparison of propylthiouracil versus methimazole in the treatment of hyperthyroidism in pregnancy. *Am J Obstet Gynecol*. 1994; 170: 90–95. PMID: 8296851
 15. Gianantonio ED, Schaefer C, Mastroiacovo PP, Cournot MP, Benedicenti F, Reuvers M. Adverse effects of prenatal methimazole exposure. *Teratology*. 2001; 64: 262–266. <https://doi.org/10.1002/tera.1072> PMID: 11745832
 16. Lian XL, Bai Y, Xu YH, Dai WX, Guo ZS. Effects of maternal hyperthyroidism and antithyroid drug therapy on congenital malformation of newborn infants. *Chin J Obstet Gynecol*. 2005; 40: 511–515. (In Chinese)
 17. Rosenfeld H, Ornoy A, Shechtman S, Diav-Citrin O. Pregnancy outcome, thyroid dysfunction and fetal goitre after in utero exposure to propylthiouracil: a controlled cohort study. *Br J Clin Pharmacol*. 2009; 68: 609–617. <https://doi.org/10.1111/j.1365-2125.2009.03495.x> PMID: 19843064
 18. Andersen SL, Olsen J, Wu CS, Laurberg P. Birth defects after early pregnancy use of antithyroid drugs: a Danish nationwide study. *J Clin Endocrinol Metab*. 2013; 98: 4373–4381. <https://doi.org/10.1210/jc.2013-2831> PMID: 24151287
 19. Korelitz JJ, McNally DL, Masters MN, Li SX, Xu Y, Rivkees SA. Prevalence of thyrotoxicosis, antithyroid medication use, and complications among pregnant women in the United States. *Thyroid*. 2013; 23: 758–765. <https://doi.org/10.1089/thy.2012.0488> PMID: 23194469
 20. Lo JC, Rivkees SA, Chandra M, Gonzalez JR, Korelitz JJ, Kuzniewicz MW. Gestational thyrotoxicosis, antithyroid drug use and neonatal outcomes within an integrated healthcare delivery system. *Thyroid*. 2015; 25(6):698–705. <https://doi.org/10.1089/thy.2014.0434> PMID: 25747892
 21. Hawken C, Sarreau M, Bernardin M, Delcourt AC, Muller A, Lefort G, et al. Management of Graves' disease during pregnancy in the Poitou-Charentes Region. *Ann Endocrinol (Paris)* (2016), <http://dx.doi.org/10.1016/j.ando.2016.03.003>.
 22. Rivkees SA, Mandel SJ. Thyroid disease in pregnancy. *Horm Res Paediatr*. 2011; 76 Suppl 1:91–6.
 23. Krassas GE, Poppe K, Glinier D. Thyroid function and human reproductive health. *Endocr Rev*. 2010; 31(5):702–55. <https://doi.org/10.1210/er.2009-0041> PMID: 20573783
 24. Taylor PN, Vaidya B. Side effects of anti-thyroid drugs and their impact on the choice of treatment for thyrotoxicosis in pregnancy. *Eur Thyroid J*. 2012; 1(3):176–85. <https://doi.org/10.1159/000342920> PMID: 24783017
 25. Bahn RS, Burch HS, Cooper DS, Garber JR, Greenlee CM, Klein IL, et al. The Role of Propylthiouracil in the Management of Graves' Disease in Adults: report of a meeting jointly sponsored by the American

- Thyroid Association and the Food and Drug Administration. *Thyroid*. 2009; 19(7):673–4. <https://doi.org/10.1089/thy.2009.0169> PMID: [19583480](https://pubmed.ncbi.nlm.nih.gov/19583480/)
26. Laurberg P, Andersen SL. Antithyroid Drug Use in Pregnancy and Birth Defects: Why Some Studies Find Clear Associations, and Some Studies Report None. *Thyroid*. 2015; 25(11):1185–90. <https://doi.org/10.1089/thy.2015.0182> PMID: [26359310](https://pubmed.ncbi.nlm.nih.gov/26359310/)
 27. Moore KL, Persaud TVN, Torchia MG. Human birth defects. In *The Developing Human: Clinically Oriented Embryology*, edn 9, pp 471–501. Philadelphia, PA, USA: Saunders/Elsevier, 2013.
 28. Milham SJ, Elledge W. Maternal methimazole and congenital defects in children. *Teratology* 1972; 5:125–126.
 29. Laurberg P, Andersen SL. ENDOCRINOLOGY IN PREGNANCY: Pregnancy and the incidence, diagnosing and therapy of Graves' disease. *Eur J Endocrinol*. 2016; 175(5):R219–30. <https://doi.org/10.1530/EJE-16-0410> PMID: [27280373](https://pubmed.ncbi.nlm.nih.gov/27280373/)
 30. Rivkees SA. Propylthiouracil versus methimazole during pregnancy: an evolving tale of difficult choices. *J Clin Endocrinol Metab*. 2013; 98(11):4332–5. <https://doi.org/10.1210/jc.2013-3549> PMID: [24194618](https://pubmed.ncbi.nlm.nih.gov/24194618/)