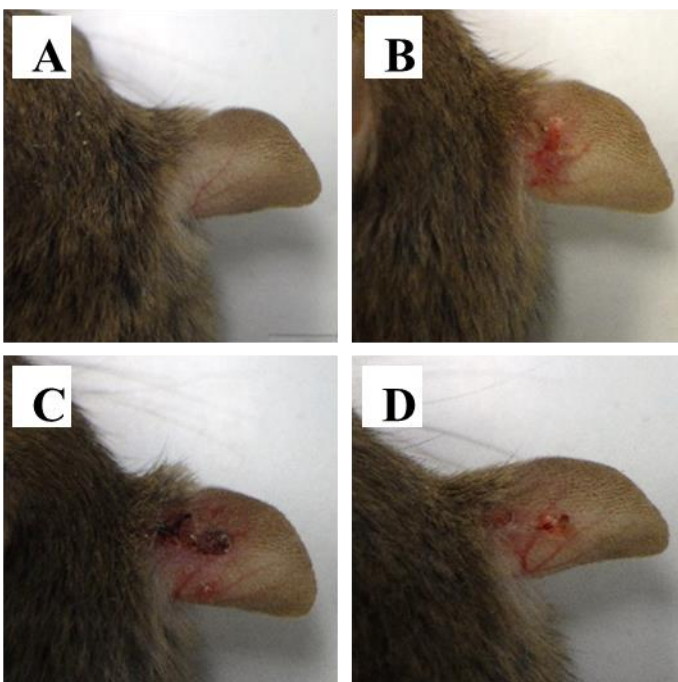


Supplementary Files

Effects of Styrene Monomer on a Mouse Model of Atopic Dermatitis

Tanaka M, et al

Supplementary Figure 1. Macroscopic features of the ears from (A) vehicle, (B) Dp, (C) L-SM + Dp, and (D) H-SM + Dp 24 hr after the last injection of Dp.



Supplementary Figure 2. Histamine levels in the sera. Sera from mice in each group were obtained at day 24 and prepared as described in the Materials and Methods section. Thereafter, histamine levels in the sera were measured using ELISA. Results are shown as mean \pm SE values of 8 to 10 mice.

