

# Effects of total body irradiation-based conditioning on allogeneic stem cell transplantation for pediatric acute leukemia: a single-institution study

Jongmoo Park, MD, PhD, Eun Kyung Choi, MD, Jong Hoon Kim, MD, Sang-wook Lee, MD, PhD, Si Yeol Song, MD, PhD, Sang Min Yoon, MD, Young Seok Kim, MD, PhD, Su Ssan Kim, MD, PhD, Jin-hong Park, MD, PhD, Jaehyeon Park, MD, Seung Do Ahn, MD, PhD

Department of Radiation Oncology, Asan Medical Center, University of Ulsan College of Medicine, Seoul, Korea

**Purpose:** To evaluate the effects of total body irradiation (TBI), as a conditioning regimen prior to allogeneic stem cell transplantation (allo-SCT), in pediatric acute leukemia patients.

**Materials and Methods:** From January 2001 to December 2011, 28 patients, aged less than 18 years, were treated with TBI-based conditioning for allo-SCT in our institution. Of the 28 patients, 21 patients were diagnosed with acute lymphoblastic leukemia (ALL, 75%) and 7 were diagnosed with acute myeloid leukemia (AML, 25%). TBI was completed 4 days or 1 day before stem cell infusion. Patients underwent radiation therapy with bilateral parallel opposing fields and 6-MV X-rays. The Kaplan-Meier method was used to calculate survival outcomes.

**Results:** The 2-year event-free survival and overall survival rates were 66% and 56%, respectively (71.4% and 60.0% in AML patients vs. 64.3% and 52.4% in ALL patients, respectively). Treatment related mortality rate were 25%. Acute and chronic graft-versus-host disease was a major complication; other complications included endocrine dysfunction and pulmonary complications. Common complications from TBI were nausea (89%) and cataracts (7.1%).

**Conclusion:** The efficacy and toxicity data in this study of TBI-based conditioning to pediatric acute leukemia patients were comparable with previous studies. However, clinicians need to focus on the acute and chronic complications related to allo-SCT.

**Keywords:** Total body irradiation, Acute lymphoid leukemia, Acute myeloid leukemia, Child, Stem cell transplantation

## Introduction

Acute leukemia is the most common pediatric cancer, of which acute lymphoblastic leukemia (ALL) is more common than acute myeloid leukemia (AML). The cure rate of acute leukemia has steadily improved since the use of intensive chemotherapy and the 5-year survival rate is now estimated

to be more than 85% for ALL [1] and 57% for AML patients [2,3]. Allogeneic stem-cell transplantation (allo-SCT) is now the treatment of choice for patients with high-risk disease and low survival expectancy with chemotherapy alone [4,5]. Prior to transplantation, conditioning therapy must sufficiently suppress the recipient's immunity to allow sustained engraftment, prevent rejection, and eradicate neoplastic cells.

Received 7 May 2014, Revised 30 June 2014, Accepted 1 September 2014.

Correspondence: Seung Do Ahn, MD, PhD, Department of Radiation Oncology, Asan Medical Center, University of Ulsan College of Medicine, 88 Olympic-ro 43-gil, Songpa-gu, Seoul 138-736, Korea. Tel: +82-2-3010-4427, Fax: +82-2-3010-6950, Email: sdahn@amc.seoul.kr

© This is an Open Access article distributed under the terms of the Creative Commons Attribution Non-Commercial License (<http://creativecommons.org/licenses/by-nc/3.0/>) which permits unrestricted non-commercial use, distribution, and reproduction in any medium, provided the original work is properly cited.

[www.e-roj.org](http://www.e-roj.org)

**Table 1.** Patient, disease, and transplantation characteristics (n = 28)

Characteristic	Value
Age (yr)	8 (3–15)
Sex	
Male	15 (53.6)
Female	13 (46.4)
ALL (n = 21)	
CR1	13 (61.9)
T-ALL	4
t(9;22)	8
Slow remission	4
Age ≥ 10 y	7
≥CR2	8 (38.1)
AML (n = 7)	
CR1	4 (57.1)
≥CR2	3 (42.9)
ECOG performance status	
0	3 (10.7)
1	21 (81.1)
2	2 (7.2)
≤3	0 (0)
BM	7 (25.0)
MSD / MUD	1/6
PB	18 (64.3)
MSD / MUD	3/15
UCB	3 (10.7)
Myeloablative conditioning	
13.2 Gy (1.65 Gy × 8 fraction, twice daily)	19 (67.8)
12.0 Gy (1.5 Gy × 8 fraction, twice daily)	6 (21.4)
13.5 Gy (1.5 Gy × 9 fraction, twice daily)	1 (3.6)
8.0 Gy (2.0 Gy × 4 fraction, once daily)	1 (3.6)
Non-myeloablative conditioning	
3.0 Gy (1.5 Gy × 2 fraction, twice daily)	1 (3.6)

Values are presented as median (range) or number (%).

ALL, acute lymphoblastic leukemia; AML, acute myeloid leukemia; ABL, acute biphenotypic leukemia; CR, complete remission; ECOG, Eastern Cooperative Oncology Group; BM, bone marrow; UCB, umbilical cord blood; PB, peripheral blood stem cell; MSD, matched sibling donor; MUD, matched unrelated donor.

Although consensus is yet to be reached, conditioning for allo-SCT is currently classified as follows: myeloablative conditioning, reduced intensity conditioning (RIC), and non-myeloablative conditioning. However, there is no standard choice of conditioning for allo-SCT and the decision is based upon recipient comorbidities, underlying conditions and disease status, donor, and graft. RIC is known to significantly reduce of treatment related mortality (TRM) although relapse rates after RIC may be higher [6–8]. In comparison with adult

patients, RIC and non-myeloablative conditioning are yet to be established in pediatric patients. Myeloablative conditioning continues to be the preferred regimen in pediatric patients. These conditioning regimens consist of chemotherapy and total body irradiation (TBI), which varies in total dose, dose rate, fraction size, and number of fraction for each conditioning regimen.

Two-thirds of long-term survivors reportedly develop TBI-related complications, including growth retardation, hormonal imbalance, neurological disorders, infertility, and secondary cancer. However, the efficacy and long-term influence of TBI based conditioning in Korean pediatric leukemia patients is not well remains poorly reported. Also, the effects on different types of leukemia are not well known. The aim of this study was to evaluate the effects of TBI-based conditioning prior to allo-SCT to pediatric acute leukemia patients.

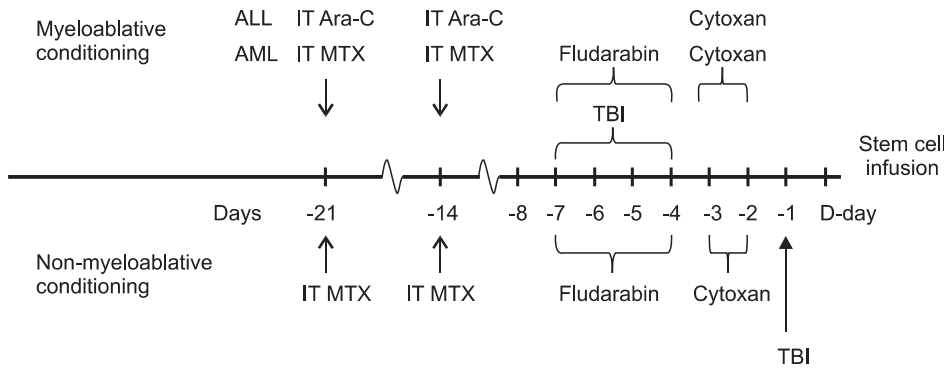
## Materials and Methods

We retrospectively reviewed 28 patients younger than 18 years with acute leukemia (21 ALL and 7 AML patients), who had received TBI-based conditioning for allo-SCT at our institution between January 2001 and December 2011. Patient characteristics are summarized in Table 1. All patients were in complete remission at the time of allo-SCT including a first complete remission (CR1) and a second or higher remission (≥CR2) after a first or higher relapse.

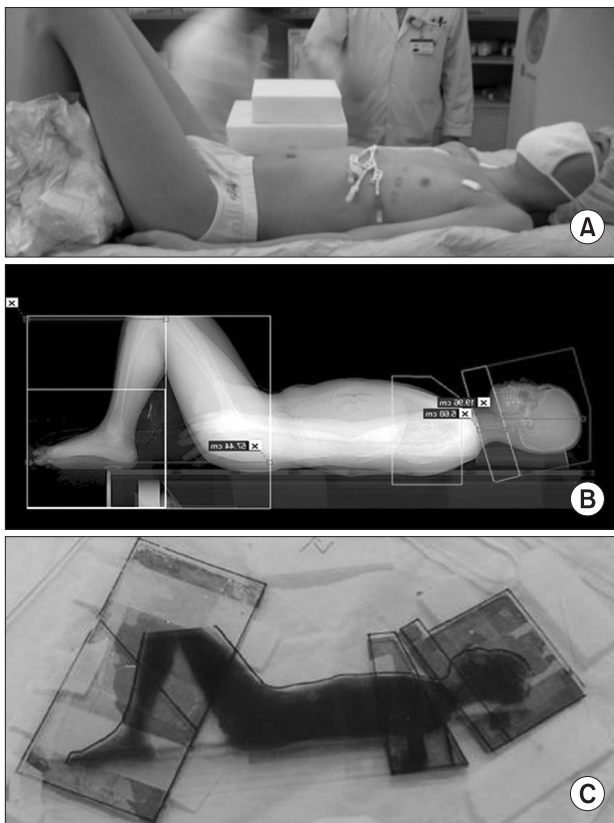
Conditioning chemotherapy was started 21 days before stem cell infusion (D-21). Patients were hospitalized for allo-SCT on D-8. TBI was completed at D-4 for myeloablative conditioning and on D-1 for non-myeloablative conditioning (Fig. 1). Chemotherapy regimens comprised either a single agent or a combination of agents.

Patients were placed in the supine position with whole-body vacuum immobilization, and some patients required knee-locking (Fig. 2A). Whole body images were obtained using a computed tomography (CT) simulator. An individualized lead compensator (Fig. 2B) was used to homogenize the whole-body dose to within ±5% in all patients. Treatment was administered using a linear accelerator with 6-MV X-rays, bilateral parallel opposing fields and extended SAD (475 cm). Thermoluminescence dosimetry was applied to the head, neck, chest (surface and lateral), umbilicus (left and right), pelvis, and to the medial sides of the thigh, knee, and malleolus.

Of all 28 patients, 27 (96.4%) underwent myeloablative conditioning and 1 (3.6%) underwent non-myeloablative



**Fig. 1.** Schedule for the total body irradiation (TBI) conditioning. TBI for myeloablative conditioning was completed 4 days before stem cell infusion. TBI for non-myeloablative performed on the last days before stem cell infusion. IT Ara-C, intrathecal cytarabine; IT MTX, intrathecal methotrexate; ALL, acute lymphoblastic leukemia; AML, acute myeloid leukemia.



**Fig. 2.** Total body irradiation (TBI) technique. (A) The patient in a supine position with his/her both knees bent. (B) Scout image obtained from CT simulation. (C) Individualized compensator mounted accessory tray.

conditioning. The doses of TBI for myeloablative conditioning were 13.2 Gy (1.65 Gy/fraction, twice daily, 19 patients), 12 Gy (1.5 Gy/fraction, twice daily, 6 patients), 8 Gy (2 Gy/fraction, once daily, 1 patient), and 13.5 Gy (1.5 Gy/fraction, twice daily and once on the last day, 1 patient). The dose of TBI for non-myeloablative conditioning was 3Gy (1.5 Gy/fraction, twice

daily). The dose rate was less than 12 cGy/min.

Acute graft-versus-host disease (GVHD) classically develops within 100 days of receiving a transplant, whereas chronic GVHD has no time limit. The National Institutes of Health classification criteria outline the diagnosis and classification of GVHD and its manifestations, which include late-onset acute GVHD and overlap syndrome [9,10]. Acute GVHD was diagnosed and graded according to Thomas et al's criteria [10-12]. Severity was graded from 0-IV, depending on invasion to the liver, skin, mucosa, and gastrointestinal tract (Table 2). Chronic GVHD was classified as limited or extensive according to Shulman et al's criteria [13] (Table 3).

TRM was defined as death due to causes other than relapse or refractory disease, such as infection, hemorrhage, organ failure, and metabolic abnormality (mainly tumor lysis syndrome). TRM included not only death unrelated to refractory or progressive disease before achieving remission, but also any death in CR.

Overall survival (OS) was defined as the relapsed time from the day of stem cell infusion to death. Event-free survival (EFS) was defined as the relapsed time from the day of stem cell infusion to disease relapse or graft failure. Survival analysis was performed by the Kaplan-Meier method and SPSS ver. 21 (IBM, Armonk, NY, USA).

## Results

### 1. Patient and treatment results

An overview of patient, disease and transplantation characteristics are shown in Table 1. The median follow-up period was 16.1 months (range, 1 to 71 months). Twenty-one ALL patients (61.9%) and 4 AML patient (57.1%) had previously undergone remission. Thirteen patients who received allo-SCT in CR1 fulfilled high risk or very high risk features, such

**Table 2.** Grading of acute GVHD

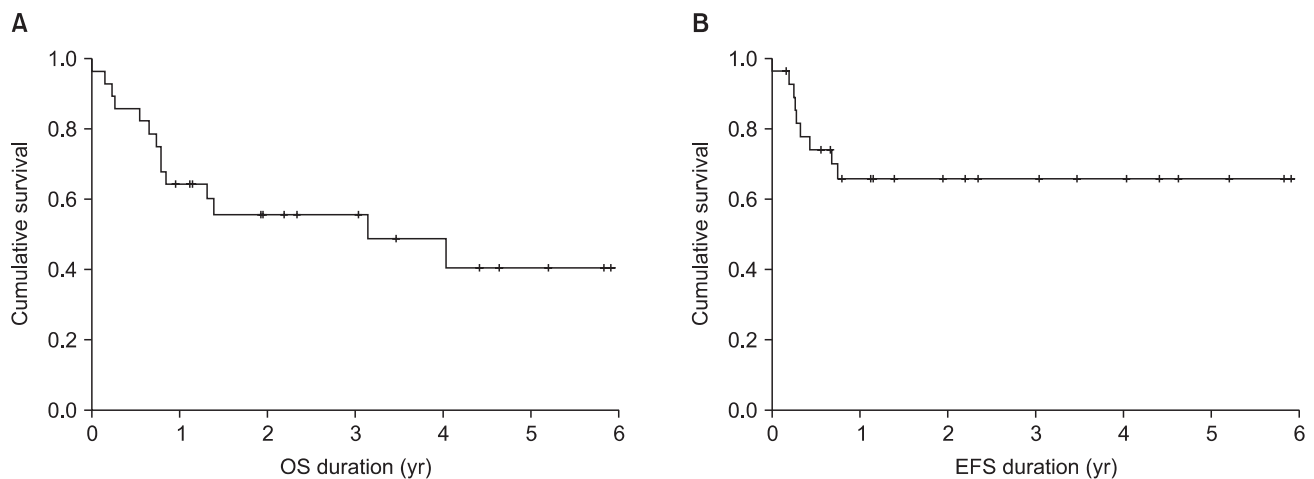
Stage	Skin	Liver (bilirubin)	GI (stool output/day)	
0	No GVHD rash	<2 mg/dL	<500 mL/day or persistent nausea	
1	Maculopapular rash <25% BSA	2–3 mg/dL	500–999 mL/day	
2	Maculopapular rash 25%–50% BSA	3.1–6 mg/dL	1,000–1,500 mL/day	
3	Maculopapular rash >50% BSA	6.1–15 mg/dL	Adult: >1,500 mL/day	
4	Generalized erythroderma plus bullous formation	>15 mg/dL	Severe abdominal pain with or without ileus	
Grade				
I	Stage 1–2	None	None	ECOG0
II	Stage 3 or	Stage 1 or	Stage 1 or	ECOG1
III	-	Stage 2–3 or	Stage 2–4	ECOG2
IV	Stage 4 or	Stage 4	-	ECOG3

GVHD, graft-versus-host disease; BSA, body surface area; GI, gastrointestinal; ECOG, Eastern Cooperative Oncology Group.

**Table 3.** Grading of chronic GVHD

Grade	
Limited disease	Localized skin involvement and/or evidence of hepatic dysfunction.
Extensive disease	Generalized skin involvement, or with localized skin involvement or hepatic dysfunction plus at least one of the following: - Liver histology showing chronic progressive hepatitis, bridging necrosis, or cirrhosis - Involvement of the eye - Involvement of minor salivary glands or oral mucosa - Involvement of any other target organ

GVHD, graft-versus-host disease.

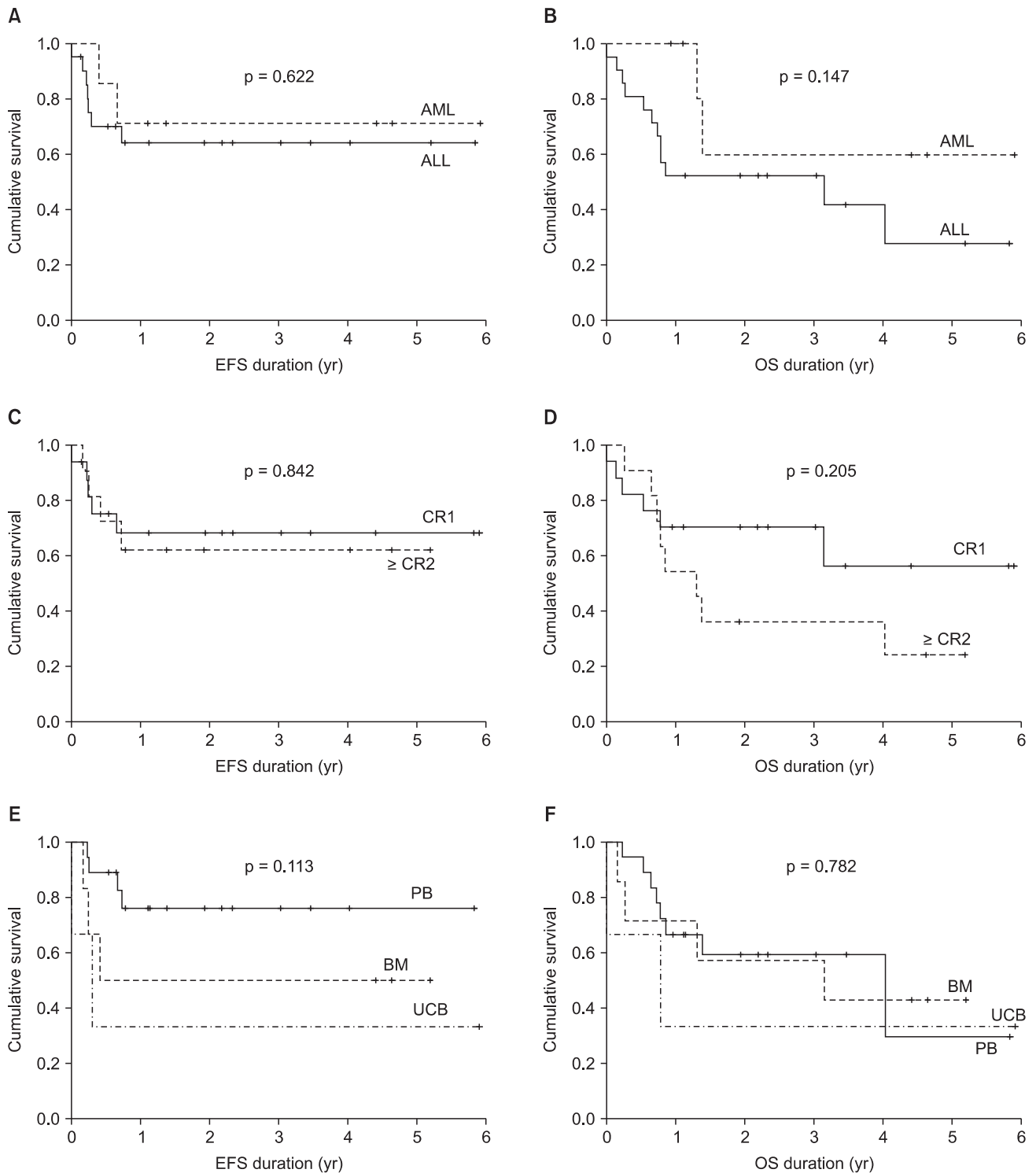


**Fig. 3.** (A) The 2-year event-free survival (EFS) of 66%. (B) The 2-year overall survival (OS) rate of 56%.

as T-ALL, t(9;22), slow remission and more than 10 years older. Fifteen patients were more than CR2. The Eastern Cooperative Oncology Group performance status prior to allo-SCT was 0 in 3 patients (10.7%), 1 in 21 patients (81.1%) and 2 in 2 patients (7.2%). The stem cell source was the bone marrow (BM) in 7 patients (25.0%), peripheral blood stem cells (PB) in 18

patients (64.3%), and umbilical cord blood (UCB) in 3 patients (10.7%). Engraftment was achieved in 92.9% of patients with neutrophil (absolute neutrophil count  $\geq 1,000/\mu\text{L}$ ) and platelet ( $\geq 20,000/\mu\text{L}$ ) recovery occurring at a median of 14 and 23 days, respectively.

The 2-year EFS and OS rates were 66% and 56%, respectively



**Fig. 4.** Two-year event-free survival (EFS) and 2-year overall survival (OS) outcomes in accordance with leukemia type, remission status, and source of transplantation. (A) The 2-year EFS values were 71.4% and 60.0% for AML and ALL, respectively. (B) The 2-year OS values for AML and ALL were 64.3% and 52.4%. (C) The 2-year EFS values for CR and  $\geq$ CR2 were 68.4% and 62.3%. (D) The 2-year OS values for CR and  $\geq$ CR2 were 70.6% and 36.4%. (E) The 2-year EFS values for stem cell transplantations from the PB, BM, and UCB were 59.3%, 57.1, and 33.3%. (F) The 2-year OS values for stem cell transplantations from the PB, BM, and UCB were 76.2%, 50.0, and 33.3%. ALL, acute lymphoblastic leukemia; AML, acute myeloid leukemia; CR, complete remission; BM, bone marrow; UCB, umbilical cord blood; PB, peripheral blood.

**Table 4.** Causes of death

	Total (n = 28)	ALL (n = 21)	AML (n = 7)
Relapse-related	6 (21.4)	4 (19.0)	2 (28.6)
Treatment-related	7 (25.0)	7 (33.3)	0 (0)
Pneumonia	2 (7.1)	2 (9.5)	0 (0)
Engraft failure	1 (3.6)	1 (4.7)	0 (0)
Disseminated fungal infection	1 (3.6)	1 (4.7)	0 (0)
Hemolytic uremic syndrome	1 (3.6)	1 (4.7)	0 (0)
Acute respiratory distress syndrome	1 (3.6)	1 (4.7)	0 (0)
Hepatorenal syndrome (AML)	1 (3.6)	1 (4.7)	0 (0)

Values are presented as number (%).

ALL, acute lymphoblastic leukemia; AML, acute myeloid leukemia; treatment-related, defined as any death not because of progressive disease.

(Fig. 3) and were compared according to leukemia type, remission status, and source for transplantation (Fig. 4). For the type of leukemia, the 2-year EFS and OS rates were 71.4% and 64.3% for AML, and 60.0% and 52.4% for ALL, respectively. In terms of remission status, the 2-year EFS and OS rates were 68.4% and 70.6% for CR1, and 62.3% and 36.4% for ≥CR2, respectively. While considering the source for transplantation, these values were 59.3% and 76.2% for PB, 57.1% and 50.0% for BM, 33.3% and 33.3% for UCB, respectively.

In total, 13 patients died after allo-SCT, 6 of leukemic relapse and 7 due to TRM, notably, all 13 were ALL patients. The total TRM rate was 25% (7/28 patients). Causes of transplant-related deaths included pneumonia, graft failure, infection, hemolytic uremic syndrome, acute respiratory distress syndrome, and hepatorenal syndrome (Table 4).

**2. Complications**

The complications are summarized in Table 5. Acute complications from TBI were nausea in 25 patients (89.2%), and vomiting in 10 patients (35.7%). Chronic complications from TBI developed in 5 patients (17.9%) (Table 6).

Two patients had multiple complications—short stature (defined as the third percentile of standard height), cataracts, and hepatic veno-occlusive disease (VOD) in one patient, and cataracts and short stature in the other patient.

Short stature was most common chronic complication from TBI (defined as the third percentile of standard height) in 4 patients. Two patients (7.1%) suffered hepatic VOD. Two patients (7.1%) developed cataracts after 25 and 32 months after TBI. Secondary neoplasm did not develop. Acute GVHD with a grade higher than 2 developed in 11 patients (39.3%). Chronic GVHD (extensive or limited) developed in 15 patients (53.6%). Acute complications other than GVHD developed in

**Table 5.** Allogeneic stem cell transplantation related complications (n = 28)

Characteristic	No. of patients (%)
Acute GVHD	17 (60.7)
Grade I	6 (21.4)
Grade II–IV	11 (39.3)
Chronic GVHD	15 (53.6)
Limited	3 (10.7)
Extensive	12 (42.9)
Non-GVHD acute complication	
Nausea	25 (89.2)
CMV infection	13 (46.4)
GI mucositis	8 (28.6)
Nephropathy	6 (21.4)
Hepatic VOD	2 (7.1)
Seizure	2 (7.1)
Hemorrhagic cystitis	1 (3.6)
Other	4 (14.3)
Non-GVHD chronic complications	
Endocrine dysfunction	5 (17.9)
Interstitial pneumonitis	5 (17.9)
Short stature	4 (14.3)
Cataract	2 (7.1)

Acute GVHD <100 days after transplant; chronic GVHD, no time limit.

GVHD, graft-versus-host disease; CMV, cytomegalovirus; VOD, veno-occlusive disease.

19 patients (67.9%). The most common complications were cytomegalovirus (CMV) infection (13%) and gastrointestinal mucositis (8%), among mild nausea, abdominal pain, and diarrhea. Late complications other than GVHD developed in 10 patients (35.7%). Endocrine dysfunction (n = 5) and pulmonary complications (n = 5) were the most common toxicities. Short stature and cataracts were reported in 4 and

**Table 6.** Late complication from TBI

Age (yr)	Gender	Type	Remission status	TBI regimen (Gy)	Complication (s)
12	M	ALL	CR3	8	Short stature
4	F	AML	CR2	13.2	Cataract
					Short stature
11	F	AML	CR1	13.2	VOD
6	F	ALL	CR2	13.2	Short stature
6	M	AML	CR1	13.2	VOD
					Cataract
					Short stature

TBI, total body irradiation; ALL, acute lymphoblastic leukemia; AML, acute myeloid leukemia; CR, complete remission; VOD, veno-occlusive disease; short stature, defined as shorter than the third percentile of standard height and had not diagnosed before treatment.

2 patients, respectively. Endocrine dysfunction occurred in 5 patients, 3 patients were diagnosed with hypogonadism and 2 patients with hypothyroidism. Among the 3 patients with hypogonadism, 2 received hormone replacement.

## Discussion and Conclusion

Allo-SCT is increasingly being used to treat children with acute leukemia, particularly in patients with high-risk disease. TBI was first reported in the 1970s, and has since been used as a conditioning regimen [14]. However at the time, the high dose of TBI resulted in a few patient fatalities. Consequently, radiation doses were reduced in order to improve safety during TBI. However, concerns regarding this type of treatment still remain about morbidity, and the complications associated with this treatment regimen, which may include cataracts, hypothyroidism, poor growth, neurocognitive effects, and risk of secondary neoplasms [15].

To reduce the incidence of adverse effects, numerous studies have attempted to replace TBI with chemotherapy in myeloablative conditioning, and RIC and non myeloablative conditioning were developed as a result. In this study, most patients (96.4%) underwent myeloablative conditioning with TBI. Myeloablative preparation traditionally uses two regimens: cyclophosphamide (Cy) combined with TBI, or with busulfan (Bu). These regimens have been compared in several retrospective and randomized trials, and in a meta-analysis. No significant differences have been determined in terms of EFS, OS, acute or chronic GVHD, or interstitial

pneumonitis [16-18]. However, non-TBI regimens conferred no advantage in reducing complications in comparison with TBI regimens. Furthermore, TBI has some advantages because it is not affected by blood flow or tumor site, and cheaper than chemotherapy. Hence, TBI with Cy remains the mainstay preparative regimen for myeloablative conditioning prior to allo-SCT. The development of advanced treatment strategies has enhanced clinical outcomes. However, TBI associated complications can cause irreversible damage and may lead to death when combined with allo-SCT related complications. Consequently, physicians need to monitor complications carefully, and patients must provide informed consent to receive all-SCT and TBI. However, few studies have investigated the results or complications associated with SCT and TBI treatment of Korean pediatric leukemia patients.

This single-institution retrospective study evaluated the effects of TBI-based conditioning prior to allo-SCT in pediatric acute leukemia patients; OS, EFS, TRM, and toxicity were investigated. The TBI treatment techniques vary depending on the machine, facility and characteristics of patients. Bilateral fields and parallel-opposed anterior/posterior (AP/PA) fields are commonly used in the conventional TBI treatment. The advantages of the AP/PA techniques include less variation in the thickness of the body in the superior-inferior direction and reduced radiation dose to the lungs. However, AP/PA techniques require the patients to be standing or lying on their side in our facility. Which is difficult to implement in pediatric patients, when considering the treatment duration, especially in, very young patients. Hence, the practice at our institution is typically to use the supine position

According to medical literature, 3- and 5-year EFS rates are reported to be 43%–70% [19-23] (Table 7). Although we investigated the 2-year EFS, our results are compatible with the findings of previous studies. We evaluated the 2-year EFS and OS rates leukemia type, remission status and source for transplantation. Although not statistically significant due to the small sample size of the current investigation, the EFS and OS in patients with AML were higher than in patients with ALL, in addition to the higher incidence of TRM in ALL. We found that that patients receiving peripheral blood stem cell transplantation during CR1 had the EFS and OS outcomes (not statistically significant). The largest proportion of fatalities was due to TRM. While improvements in chemotherapeutics have enable the use of higher doses in order to reduce in the relapse rates of leukemia patients, TRM still causes significant number of deaths. Previous studies have reported different rates of

Table 7. Literature review of all-SCT

Study	Disease	SCT type	Stage	No.	Median age (yr)	2-yr OS (%)	2-yr EFS (%)	aGVHD (≥Gr II, %)	cGVHD (Lm + Ex, %)	TRM (%)
Kang et al. [19]	AML	Auto	CR1	29	33	N/A	69 (4-yr)	N/A	N/A	3.4
Blaise et al. [22]	AML	Allo-MSD	CR1	50	32	75.0	72	34.0	37.8	8.0
Ringden et al. [20]	ALL	Allo-MSD	Any	20	34	76.0 (3-yr)	50 (3-yr)	22.0	35.0	9.0
	AML			32	64 (3-yr)					
	CML			26	83 (3-yr)					
Granados et al. [21]	ALL	Allo	Any	114	18	N/A	43 (6-yr)	30.3	7.9 (Ex only)	22.0
Chou et al. [23]	ALL	Allo	Any	58	8.4	N/A	N/A	27.0	21.0	38.0
	AML									
	CML									
Present study	ALL	Allo	Any	21	8	52.5	64.3	39.3	53.6	25.0
	AML			7	60.0	71.4				

Allo-SCT, allogeneic stem cell transplantation; OS, overall survival; EFS, event-free survival; aGVHD, acute graft versus host disease; cGVHD, chronic graft versus host disease; Gr, grade; Lm, limited; Ex, extensive; TRM, treatment related mortality; CR, complete remission; ALL, acute lymphoblastic leukemia; AML, acute myeloid leukemia; CML, Chronic myeloid leukemia; N/A, not acceptable.

TRM (3.5%–38.0%) arising from differences in the leukemia type (Table 7). Kang et al. [19] and Blaise et al. [22] reported TRM in AML patients exclusively. Ringden et al. [20] analyzed both AML and CML (Table 7). Our data show very low TRM in patients with AML (Table 4). However we found that TRM was higher in cases of ALL, in agreement with a recent report [24], where TRM was found to have decreased significantly from 33% to 5% over 25 years. The authors explained that the proportion of UCB contributed to reduction in TRM; however, in our study UCB transplantation failed to show improvement in EFS, OS or TRM outcomes. Of the 3 patients who received UCB transplantation, 1 died due to TRM, 1 died as a result of relapsed, and 1 showed chronic GVHD. Causes of TRM include pneumonia, graft failure, fungal infection, hemolytic uremic syndrome, acute respiratory distress syndrome, and hepatorenal syndrome. Non-myeloablative conditioning or RIC prior to SCT has been reported to decrease TRM [25], and RIC has lower toxic effects; however, RIC is currently administered to a select few patients at our institution. In our study, only 1 patient underwent non myeloablative conditioning and this patient died from relapsed ALL.

Nausea and vomiting were common during conditioning therapy, but were difficult to distinguish from chemotherapy associated complications. However, several complications are considered to be caused by TBI, including cataracts, hepatic VOD, short stature and secondary malignancy. Some studies have reported that TBI influences the final height [26,27]. Four patients developed growth retardation which is defined to be below the third percentile of standard height; these

patients had no prior diagnosis of short stature. Two patients developed cataracts 25 and 32 months after TBI. While none of the patients developed secondary malignancies, our study had short follow-up considering the time required for to develop a secondary malignancy.

Five patients (17.9%) were diagnosed with interstitial pneumonitis. Historically, interstitial pneumonitis has been found occur in nearly 40% of patients receiving TBI with a single, large fraction of 8–10 Gy [28]. Because interstitial pneumonia is related to the absolute absorbed dose of radiation in the lung, contemporary fractionated and low-dose TBI with concurrent chemotherapy decreases rate of interstitial pneumonitis. Our study findings are consistent with previous results in this instance [29,30]. Our institution uses a dose rate of less than 12 cGy/min; this lower dose rate has been associated with reduced rates of pneumonitis, nausea, and vomiting [30]. Additional reductions in dose rate may decrease complications further, but may require more than 1 hour per fraction to deliver each fraction 2 sessions per day, an impractical option for both patients and clinicians.

The most serious complication of allogeneic transplantation is GVHD, an intricate immune response that develops following allogeneic stimulation. In our study, 11 patients (39.8%) developed acute GVHD of a grade higher than II according to the criteria of Thomas et al. [10]. The clinical manifestations of chronic GVHD include not only skin dyspigmentation and nail dystrophy, but also symptoms resembling scleroderma and Sjögren syndrome, and can cause bronchiolitis, keratoconjunctivitis sicca, esophageal stricture,



malabsorption, cholestasis, hematocytopenia, and generalized immunosuppression [31,32]. Using Shulman et al's criteria [13], 12 patients (42.9%) developed extensive chronic GVHD. We found a higher incidence for acute and chronic GVHD in comparison with other TBI conditioning regimens.

The discrepancies in incidence of GVHD between this study and others may be explained by the fact that we analyzed pediatric patients, the differences in leukemia characteristics between studies, and the method by which GVHD was estimated. Our data indicate that, OS and EFS were not inferior to previous studies. Hence, given that GVHD is one of the major causes of death in leukemia patients, the most likely reason for the increased incidence of GVHD would be the difference in the leukemia characteristics in this study.

Other acute complications included CMV infection (46.4%), mucositis (28.6%), and nephropathy (21.4%). Endocrine dysfunction and short stature were the primary late complications. Five patients (17.9%) developed endocrine dysfunction and required endocrine therapy.

A lower total dose, a low-dose rate and fractionation during TBI reduces normal tissue toxicity [28], however, higher doses can improve survival outcomes for patients with leukemia [33,34]. Hence, the therapeutic ratio appears to be narrow. Comparisons of different TBI regimens are difficult because there have been few studies to date moreover there are many types of leukemia, each with a wide variety of characteristics. TBI regimen with a low dose rate and low dose per fraction may enable an increase in total dose. Techniques that improve conformity, such as field-in-field technique and tomotherapy, may enable an increase in the total dose of TBI as well. Further studies are needed in order to optimize the TBI regimen.

In summary, we evaluated acute pediatric leukemia patients who received allo-SCT with TBI conditioning, and the TBI conditioning was comparable with previous studies. However, allo-SCT with TBI conditioning can lead to severe complications. GVHD was the major complication in this study. Finally, all patients should receive support during the SCT and diligent follow minimize the impact of complications.

### Conflict of Interest

No potential conflict of interest relevant to this article was reported.

### References

1. Pulte D, Gondos A, Brenner H. Trends in 5- and 10-year

survival after diagnosis with childhood hematologic malignancies in the United States, 1990-2004. *J Natl Cancer Inst* 2008;100:1301-9.

2. Creutzig U, Zimmermann M, Ritter J, et al. Treatment strategies and long-term results in paediatric patients treated in four consecutive AML-BFM trials. *Leukemia* 2005;19:2030-42.
3. Lange BJ, Smith FO, Feusner J, et al. Outcomes in CCG-2961, a children's oncology group phase 3 trial for untreated pediatric acute myeloid leukemia: a report from the children's oncology group. *Blood* 2008;111:1044-53.
4. Rovelli A, Arrigo C, Nesi F, et al. The role of thalidomide in the treatment of refractory chronic graft-versus-host disease following bone marrow transplantation in children. *Bone Marrow Transplant* 1998;21:577-81.
5. Wachowiak J, Malicki J, Buczkowski D, et al. Allogeneic bone marrow transplantation in children with acute lymphoblastic leukaemia in the first and second complete remission conditioned with fractionated total body irradiation and cyclophosphamide or etoposide. *Rep Pract Oncol Radiother*, 2002;7:117-25.
6. Sorror ML, Maris MB, Storb R, et al. Hematopoietic cell transplantation (HCT)-specific comorbidity index: a new tool for risk assessment before allogeneic HCT. *Blood* 2005;106:2912-9.
7. Sorror ML, Storer BE, Maloney DG, Sandmaier BM, Martin PJ, Storb R. Outcomes after allogeneic hematopoietic cell transplantation with nonmyeloablative or myeloablative conditioning regimens for treatment of lymphoma and chronic lymphocytic leukemia. *Blood* 2008;111:446-52.
8. Scott BL, Sandmaier BM, Storer B, et al. Myeloablative vs nonmyeloablative allogeneic transplantation for patients with myelodysplastic syndrome or acute myelogenous leukemia with multilineage dysplasia: a retrospective analysis. *Leukemia* 2006;20:128-35.
9. Ferrara JL, Levine JE, Reddy P, Holler E. Graft-versus-host disease. *Lancet* 2009;373:1550-61.
10. Przepiorka D, Weisdorf D, Martin P, et al. 1994 Consensus Conference on Acute GVHD Grading. *Bone Marrow Transplant* 1995;15:825-8.
11. Thomas E, Storb R, Clift RA, et al. Bone-marrow transplantation (first of two parts). *N Engl J Med* 1975;292:832-43.
12. Thomas ED, Storb R, Clift RA, et al. Bone-marrow transplantation (second of two parts). *N Engl J Med* 1975;292:895-902.
13. Shulman HM, Sullivan KM, Weiden PL, et al. Chronic graft-versus-host syndrome in man: a long-term clinicopathologic study of 20 Seattle patients. *Am J Med* 1980;69:204-17.
14. Fefer A, Einstein AB, Thomas ED, et al. Bone-marrow transplantation for hematologic neoplasia in 16 patients with identical twins. *N Engl J Med* 1974;290:1389-93.

15. Shi-Xia X, Xian-Hua T, Hai-Qin X, Bo F, Xiang-Feng T. Total body irradiation plus cyclophosphamide versus busulphan with cyclophosphamide as conditioning regimen for patients with leukemia undergoing allogeneic stem cell transplantation: a meta-analysis. *Leuk Lymphoma* 2010;51:50-60.
16. Hartman AR, Williams SF, Dillon JJ. Survival, disease-free survival and adverse effects of conditioning for allogeneic bone marrow transplantation with busulfan/cyclophosphamide vs total body irradiation: a meta-analysis. *Bone Marrow Transplant* 1998;22:439-43.
17. Litzow MR, Perez WS, Klein JP, et al. Comparison of outcome following allogeneic bone marrow transplantation with cyclophosphamide-total body irradiation versus busulphan-cyclophosphamide conditioning regimens for acute myelogenous leukaemia in first remission. *Br J Haematol* 2002;119:1115-24.
18. Clift RA, Buckner CD, Thomas ED, et al. Marrow transplantation for chronic myeloid leukemia: a randomized study comparing cyclophosphamide and total body irradiation with busulfan and cyclophosphamide. *Blood* 1994;84:2036-43.
19. Kang KM, Choi BO, Chai GY, et al. Effect of cytarabine, melphalan, and total body irradiation as conditioning for autologous stem cell transplantation for patients with AML in first remission. *J Korean Soc Ther Radiol Oncol* 2003;21:192-8.
20. Ringden O, Ruutu T, Remberger M, et al. A randomized trial comparing busulfan with total body irradiation as conditioning in allogeneic marrow transplant recipients with leukemia: a report from the Nordic Bone Marrow Transplantation Group. *Blood* 1994;83:2723-30.
21. Granados E, de La Camara R, Madero L, et al. Hematopoietic cell transplantation in acute lymphoblastic leukemia: better long term event-free survival with conditioning regimens containing total body irradiation. *Haematologica* 2000;85:1060-7.
22. Blaise D, Maraninchi D, Archimbaud E, et al. Allogeneic bone marrow transplantation for acute myeloid leukemia in first remission: a randomized trial of a busulfan-Cytosan versus Cytosan-total body irradiation as preparative regimen: a report from the Group d'Etudes de la Greffe de Moelle Osseuse. *Blood* 1992;79:2578-82.
23. Chou RH, Wong GB, Kramer JH, et al. Toxicities of total-body irradiation for pediatric bone marrow transplantation. *Int J Radiat Oncol Biol Phys* 1996;34:843-51.
24. Mateos MK, O'Brien TA, Oswald C, et al. Transplant-related mortality following allogeneic hematopoietic stem cell transplantation for pediatric acute lymphoblastic leukemia: 25-year retrospective review. *Pediatr Blood Cancer* 2013;60:1520-7.
25. Levine JE, Uberti JP, Ayash L, et al. Lowered-intensity preparative regimen for allogeneic stem cell transplantation delays acute graft-versus-host disease but does not improve outcome for advanced hematologic malignancy. *Biol Blood Marrow Transplant* 2003;9:189-97.
26. Cohen A, Rovelli A, Bakker B, et al. Final height of patients who underwent bone marrow transplantation for hematological disorders during childhood: a study by the Working Party for Late Effects-EBMT. *Blood* 1999;93:4109-15.
27. Nathan PC, Wasilewski-Masker K, Janzen LA. Long-term outcomes in survivors of childhood acute lymphoblastic leukemia. *Hematol Oncol Clin North Am* 2009;23:1065-82, vii.
28. Keane TJ, Van Dyk J, Rider WD. Idiopathic interstitial pneumonia following bone marrow transplantation: the relationship with total body irradiation. *Int J Radiat Oncol Biol Phys* 1981;7:1365-70.
29. Shank B, Chu FC, Dinsmore R, et al. Hyperfractionated total body irradiation for bone marrow transplantation: results in seventy leukemia patients with allogeneic transplants. *Int J Radiat Oncol Biol Phys* 1983;9:1607-11.
30. Thomas ED, Clift RA, Hersman J, et al. Marrow transplantation for acute nonlymphoblastic leukemia in first remission using fractionated or single-dose irradiation. *Int J Radiat Oncol Biol Phys* 1982;8:817-21.
31. Copelan EA. Hematopoietic stem-cell transplantation. *N Engl J Med* 2006;354:1813-26.
32. Bhushan V, Collins RH Jr. Chronic graft-vs-host disease. *JAMA* 2003;290:2599-603.
33. Hows J, Bradley BA, Gore S, Downie T, Howard M, Gluckman E. Prospective evaluation of unrelated donor bone marrow transplantation. The International Marrow Unrelated Search and Transplant (IMUST) Study. *Bone Marrow Transplant* 1993;12:371-80.
34. Sierra J, Storer B, Hansen JA, et al. Unrelated donor marrow transplantation for acute myeloid leukemia: an update of the Seattle experience. *Bone Marrow Transplant* 2000;26:397-404.