

Review

Open Access

Eggshell and egg yolk proteins in fish: hepatic proteins for the next generation: oogenetic, population, and evolutionary implications of endocrine disruption

Augustine Arukwe*¹ and Anders Goksøyr^{2,3}

Address: ¹Great Lakes Institute for Environmental Research, University of Windsor, Ontario, 401 Sunset Avenue, Windsor, N9B 3P4, Canada, ²Biosense Laboratories AS, Thormøhlensgt. 55, N-5008, Bergen, Norway and ³Department of Molecular Biology, University of Bergen, N-5020 Bergen, Norway

Email: Augustine Arukwe* - arukwe@uwindsor.ca; Anders Goksøyr - anders@biosense.no

* Corresponding author

Published: 6 March 2003

Received: 14 November 2002

Comparative Hepatology 2003, **2**:4

Accepted: 6 March 2003

This article is available from: <http://www.comparative-hepatology.com/content/2/1/4>

© 2003 Arukwe and Goksøyr; licensee BioMed Central Ltd. This is an Open Access article: verbatim copying and redistribution of this article are permitted in all media for any purpose, provided this notice is preserved along with the article's original URL.

Abstract

The oocyte is the starting point for a new generation. Most of the machinery for DNA and protein synthesis needed for the developing embryo is made autonomously by the fertilized oocyte. However, in fish and in many other oviparous vertebrates, the major constituents of the egg, i.e. yolk and eggshell proteins, are synthesized in the liver and transported to the oocyte for uptake. Vitellogenesis, the process of yolk protein (vitellogenin) synthesis, transport, and uptake into the oocyte, and zonagenesis, the synthesis of eggshell *zona radiata* proteins, their transport and deposition by the maturing oocyte, are important aspects of oogenesis. The many molecular events involved in these processes require tight, coordinated regulation that is under strict endocrine control, with the female sex steroid hormone estradiol-17 β in a central role. The ability of many synthetic chemical compounds to mimic this estrogen can lead to unscheduled hepatic synthesis of vitellogenin and *zona radiata* proteins, with potentially detrimental effects to the adult, the egg, the developing embryo and, hence, to the recruitment to the fish population. This has led to the development of specific and sensitive assays for these proteins in fish, and the application of vitellogenin and *zona radiata* proteins as informative biomarkers for endocrine disrupting effects of chemicals and effluents using fish as test organisms. The genes encoding these important reproductive proteins are conserved in the animal kingdom and are products of several hundred million years of evolution.

Introduction

Teleost fish comprise more than 21,000 species, the largest group of vertebrates, inhabiting a wide variety of marine and freshwater environments from the abysses of the deep sea to high mountain lakes. Through more than 200 million years of evolution, this group has adapted to their habitats by adopting a diverse array of reproductive strategies [1]. A common principle for all fish, however, is the production of large yolky eggs through the development of the oocyte. The formation, development and maturation

of the female gamete and ovum (oogenesis) are intricate processes that require hormonal co-ordination. Oocyte growth is normally divided into four main stages, primary growth, formation of cortical alveoli, the vitellogenic period, and final maturation [2].

Oocytes are female ovarian cells that go through meiosis to become eggs. They are derived from oogonia, mitotic cells that develop from primordial germ cells migrating into the ovary early in embryogenesis [3]. In teleost fishes,

full-grown postvitellogenic oocytes in the ovary are physiologically arrested at the G2/M border in first meiotic prophase and cannot be fertilized. In order for fertilization to occur, the oocytes must complete the first meiotic division and full-grown oocytes will resume their first meiotic division under appropriate hormonal stimulation. First meiotic division involves the breakdown of the germinal vesicle (GVBD: germinal vesicle, GV, is the oocyte nucleus), chromosome condensation, assembly of the first meiotic spindle, and extrusion of the polar body. These cells, often termed primary oocytes, become secondary oocytes after the first meiotic division, and then undergo the second meiotic division to become mature eggs. Histologically, the primary growth stage may be separated into several stages [4]. The nucleus first contains one nucleolus, thereafter multiple nucleoli and later a "circum nuclear ring" of ribonuclear material develops, which may contain a distinct yolk nucleus (Balbani's vitelline body). Towards the end of the vitellogenic period, or by the beginning of the final maturation, the germinal vesicle (nucleus), which in the early stages is centrally located, moves to the periphery next to the micropyle [4]. Thus, the position of the germinal vesicle and the oocyte size may be used to estimate the start of final maturation.

In adult fish, the ovaries are generally paired structures attached to the body cavity on either side of the dorsal mesentry, except in lampreys [5] and some teleosts [6], where the two ovaries fuse into a single structure during development. In hagfish [5] and some elasmobranchs [7], only one ovary develops to adult. The structure of the growing ovarian follicle is remarkably similar in most fishes. The developing oocyte is located in the centre of the follicle and is surrounded by steroid producing follicle cells. The follicle cell layer generally consists of an inner sublayer, the granulosa cell layer, and one or two outer sublayers of theca cells. The theca and granulosa cell layers are separated by a basement membrane. Between the surface of the oocyte and the granulosa cell layer there is an acellular layer, the *zona radiata* or eggshell. During oocyte development, the *zona radiata* proteins (Zrp) are sequestered from circulating plasma and deposited in this position. At the same time, the oocyte is being filled with yolk proteins (lipovitellin, phosvitin), derived from vitellogenin (Vtg), another plasma protein found in sexually maturing female fish. Both of these protein groups, the Zrp and Vtg, so important constituents of the mature oocyte, are synthesized in the fish liver under endocrine regulation through the hypothalamic-pituitary-gonadal-liver axis. Herein, we will discuss the functional and developmental aspects of these hepatic-derived proteins, their regulation and role in oocyte maturation and fish reproduction. In addition, the use of these proteins as sensitive predictive and prognostic indicators for environmental endocrine disrupting chemicals will also be discussed.

Endocrine regulation of oogenic proteins

Pituitary gonadotropins (GtHs) and ovarian steroid hormones regulate oocyte growth and maturation in teleosts and other vertebrates [8]. Environmental changes, such as water temperature and photoperiod provide the cues to the central nervous system that triggers the maturation processes (Fig. 1). In response, the hypothalamus secretes gonadotropin-releasing hormone (GnRH). As the central regulator of hormonal cascades, GnRH stimulates the release of GtHs from the pituitary (Fig. 1). Although several GtHs have been identified from the teleost brain extract [9], two GtHs (GtH I & II) structurally similar to human follicle-stimulating hormone (FSH) and luteinising hormone (LH), respectively, are secreted from the teleost brain [10]. GtH I (FSH) is involved in vitellogenesis and zonagenesis, while GtH II (LH) plays a role in final oocyte maturation and ovulation [8,10]. GtH secretion is regulated through a feedback mechanism by estradiol-17 β (E₂) and testosterone [9]. Several feedback mechanisms also act on the gonadal development through the hypothalamus-pituitary-gonadal-liver axis, because these organs produce substances influencing each other, leading to gonadal development and spawning [9,10]. GnRH release is inhibited by dopamine, which in turn is affected by steroid levels [9]. In addition to being a precursor for E₂ and exerting feedback signals to the brain, testosterone is known to enhance stimulatory effects of gonadotropins *in vitro* [11]. Testosterone may also be involved in oocyte development [12], through the initiation of GVBD during final oocyte maturation [13].

E₂ is the major estrogen in female teleosts, but large amounts of the androgen, testosterone, is also produced by the ovary. The ovarian two-cell model synthesizes E₂ and testosterone, where the theca cells synthesize testosterone, which is subsequently aromatized by cytochrome P450aromatase (CYP19) to E₂ by the granulosa cells [8,14]. E₂ stimulates the production of Vtg and eggshell Zr-protein by the liver of female fish [15–19], as described below.

Egg yolk proteins

In oviparous animals, accumulation of yolk materials into oocytes during oogenesis and their mobilization during embryogenesis are key processes for successful reproduction. As mentioned above, most oocyte yolk proteins and lipids are derived from the enzymatic cleavage of complex precursors, predominantly Vtg and very low-density lipoprotein [1,3,20,21]. Yolk is then stored until the late stages of oogenesis, and is mobilized in the embryo to facilitate the hydration process in buoyant eggs and provide the nutrients for embryogenesis [21,22]. Vitellogenesis is defined as E₂-induced hepatic synthesis of egg yolk protein precursor, Vtg, its secretion and transport in blood to the ovary and its uptake into maturing oocytes [1,23–

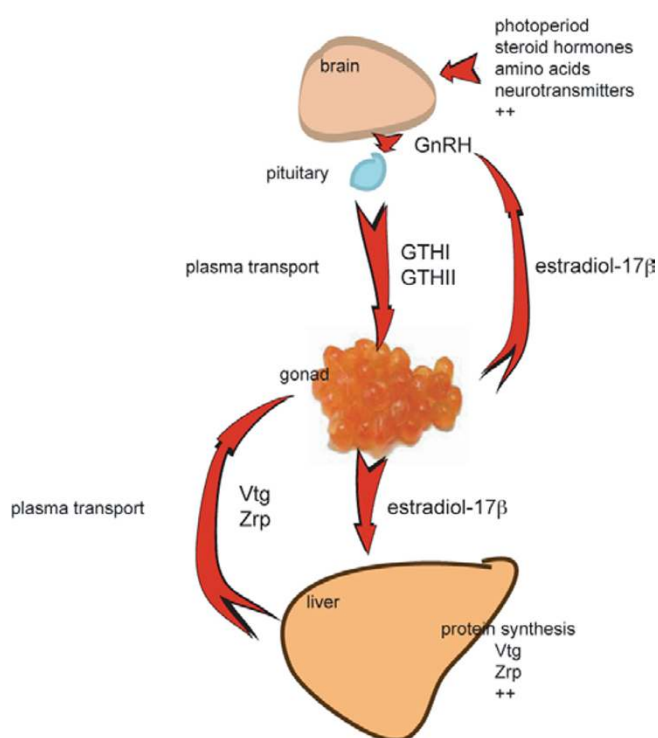


Figure 1

Schematic representation of the hypothalamus-pituitary-gonadal-liver (HPGL) axis during oogenic protein synthesis in female teleosts. The HPGL is regulated through the negative feedback mechanism by estradiol-17 β . The hypothalamus, pituitary, gonad and liver are all potential targets for endocrine disruptors, as discussed in the text. GtH = gonadotropin I & II.

26]. Vtg is a bulky (MW; 250–600 kDa) and complex calcium-binding phospholipoglycoprotein (ibid.). The classification of Vtg as phospholipoglycoprotein indicates the crucial functional groups that are carried on the protein backbone of the molecule, namely, lipids, some carbohydrates, and phosphate groups [23,27]. In addition, the ion-binding properties of Vtg serve as a major supply of minerals to the oocytes.

Oocyte growth in fish is due to the uptake of systemic circulating Vtg, which is then modified by, and deposited as yolk in the oocyte [28] (Fig. 2). Vtg is selectively sequestered by growing ovarian follicles by receptor-mediated endocytosis before deposition in the oocyte [23,29,30]. These specific oocyte Vtg receptors are clustered in clathrin-coated pits. Coated vesicles fuse with golgian lysosomes in the outer ovoplasm of the oocytes and form multivesicular bodies [31]. The golgian lysosomes contain cathepsin D, which process Vtg into yolk proteins [32]. Vtg is an important source of nutrients for egg and

larvae, making the vitellogenesis an important developmental process. In addition, teleost eggs contain maternal sex steroids [33], cortisol, and other lipophilic hormones like thyroxine that may enter the egg through Vtg [30,34]. It is not well understood which biological role(s) hormones in eggs play. However it has been hypothesized that they may act as metabolites or as synergists with other substances during early development.

Eggshell proteins

The envelope surrounding the animal egg plays significant roles in the reproductive and developmental processes; firstly as an interface between the egg and sperm, and secondly as an interface between the embryo and its environment [35]. The egg envelope is a major structural determinant of the eggshell in fish, and is often referred to as *zona radiata* because of its striated appearance under the light microscope [16] (Fig. 2). In mammals, these proteins function as sperm receptors and undergo a hardening process (also in fish) after fertilization. This process is important for the prevention of polyspermy, because the fish eggshell contains only one narrow canal or micropyle through which sperm gain access to the egg. In fish, the egg envelope is much thicker than in mammals, providing physical protection from the environment and playing a role in diffusive exchange of gases [35]. The micropyle is closed within minutes after the eggs are activated by exposure to fresh water, which initiates a cortical reaction necessary for development of fertilized eggs [36]. Ionic concentration of the medium lower than 0.1 M is needed for complete activation [37]. After activation, the *zona radiata* takes up water, gains resistance to breakage and can support up to 100 times more weight than oviductal eggs [38,39].

In eutherian mammals and fish, the *zona* proteins are composed of three-four distinctly conserved glycoproteins, but the differences in nomenclature and terminology complicates comparison. Several of the genes that encode the *zona* proteins have been characterized. For example, the exon-intron maps and coding sequence of mouse, pig and human homologues of *zona pellucida*, Zp2 [40–42], and mouse, human and hamster Zp3 [43–46] are well conserved. Thus, it has become increasingly clear that the proteins of the *zona pellucida* are conserved among eutherian mammals and that the proteins of the egg envelope are conserved among teleostean fish.

It has recently become more apparent that the proteins from the mammalian egg envelope are distinctly related to those of the teleostean envelope [47,48]. It was found that the synthetic site of Zr-protein is the liver in most teleost species. For example, rainbow trout, cod, and Atlantic salmon [18,19,48], medaka, *Oryzias latipes* [49–51], winter flounder, *Pseudopleuronectes americanus* [52], and

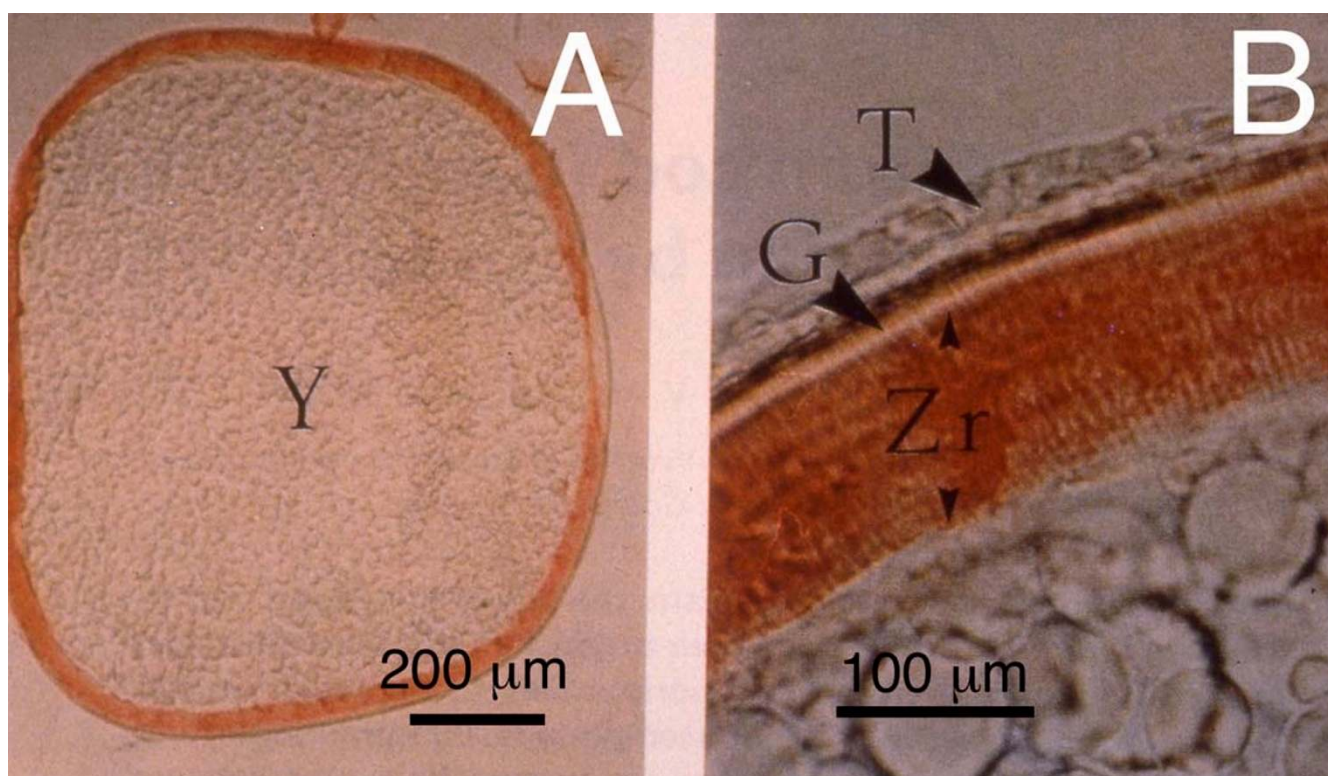


Figure 2

Immunohistochemical staining of a cod (*Gadus morhua*) ovarian follicle with oocyte, probed with rabbit antiserum to cod zona radiata proteins. The zona radiata proteins (Zr) and the yolk (Y) protein vitellogenin are both synthesized in the liver of most fish species and transported to the ovary. (A) Section of whole oocyte, demonstrating specific immunohistochemical staining of the zona radiata, with no cross-reaction to yolk material (Y). (B) Higher magnification of the cod follicle. Zr denotes the zona radiata (positively stained). The follicle cells (theca, T, and granulosa, G) are indicated with arrowheads. Spherical bodies represent unstained yolk granules. Reproduced from Oppen-Berntsen et al. [19], with permission from University of the Basque Country Press (UBC Press) and the author.

gilthead seabream, *Sparus aurata* [53], synthesize Zr-protein in the liver. Other species, such as carp, *Cyprinus carpio* [54,55], and pipefish, *Syngnathus scovelli* [56] appear to synthesize Zr-protein in the ovary. Hence, the primary sequence of Zr-proteins is known in many teleost species, including winter flounder [52], medaka [49,50], carp [54,55], Atlantic salmon [48], and rainbow trout [57–59]. Recently, the full genomic sequences of medaka Zrp genes (choriogenin L and H) were reported [60]. The genes were 2142 and 2643 bp long, and contained eight and seven exons, respectively. The H form was reported to contain a much longer exon 1 due to the presence of seven proline-rich amino acid tandem repeats. Similar repeats in the N-terminal region of Zrp genes have been reported from other fish species [48].

Zonagenesis is the E₂-induced hepatic synthesis of egg-shell proteins, zona radiata proteins (Zrp), their secretion

and transport in blood to the ovary and uptake into maturing oocytes

Terminology

In fish, the major portion of the egg envelope (i.e. the inner layer) has been varyingly labeled as pellucid or vitelline membrane, zona pellucida, chorion, eggshell, primary, secondary and tertiary envelope, zona radiata (interna and externa) or vitelline envelope [61–64] and some have suggested the term choriogenin for the precursor proteins found in plasma [50]. Comparative ultrastructural analysis of zona radiata from six salmonid species showed basic similarities, but species differences in the structure of zona radiata interna [65]. Since 1989, several reports have demonstrated the hepatic synthesis of precursor proteins of the inner layer subunits under the influence of estrogen, at least in most species [16–19,51,66]. Despite the confusing terminology used to designate this very

important class of structural protein in teleost fish and its critical role in development, there is still no commonly accepted term for these proteins [59]. However, the use of the above named terms has basically been for descriptive, structural and functional purposes. In the present context, the term "*zona radiata* proteins" (Zr-proteins) will be used to identify the constituent proteins of the inner layer of the envelope that surrounds the oocyte of the ovulated teleost egg. We have used *zona radiata* proteins, a descriptive term, to designate these proteins because of the striated appearance of this structure in light microscope, in accordance with the recommendations of Oppen-Berntsen [16]. We also use the term to describe the soluble protein monomers found in synthesizing liver cells and circulating in plasma.

Molecular mechanisms for oogenic protein gene expression

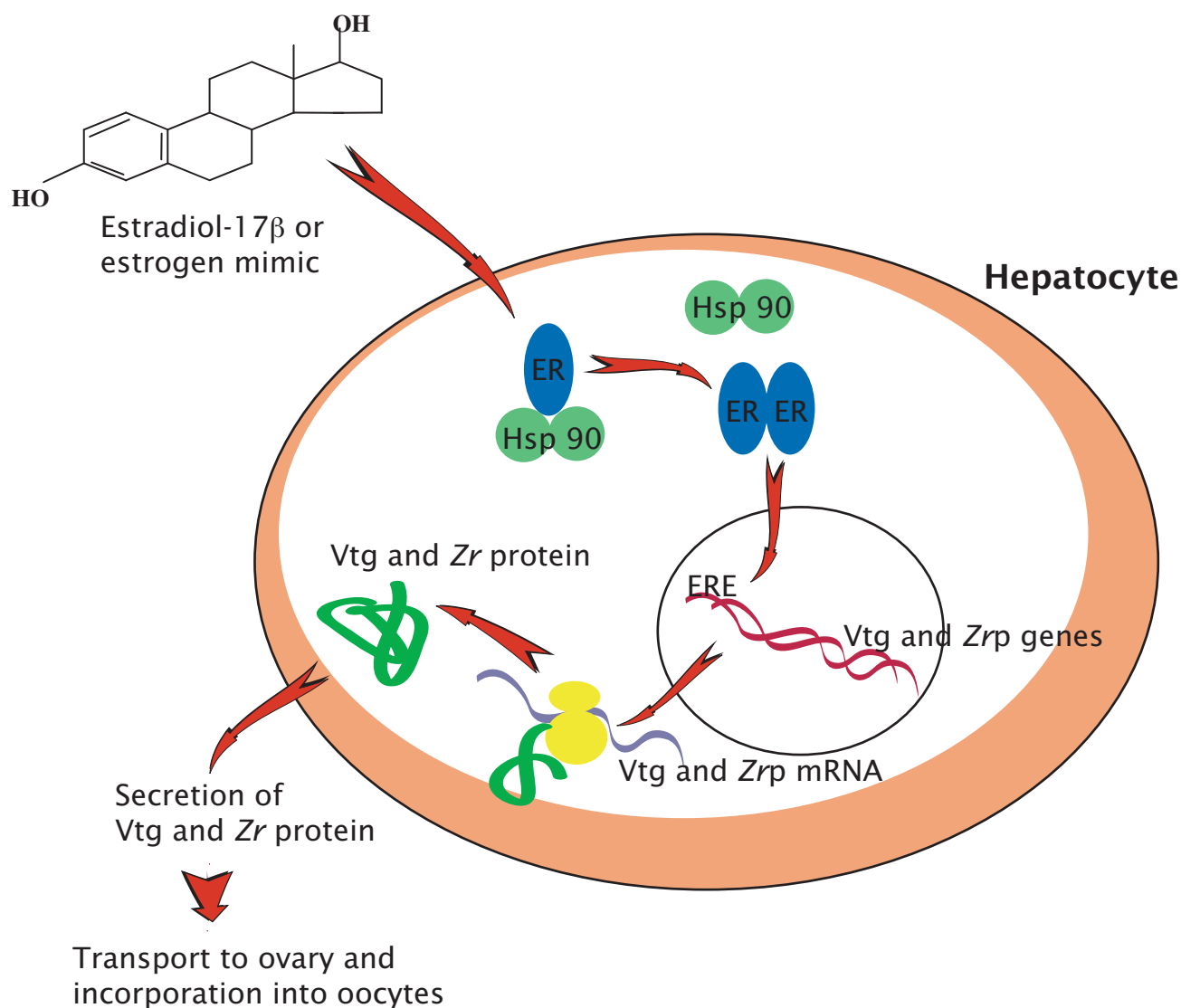
Vitellogenesis and zonagenesis are crucial for the reproduction of oviparous animals. The cellular and molecular events that occur in tissues that produce oogenic proteins and in the ovary provide ideal systems for the study of several fundamental biological processes [67]. For example, the abundantly transcribed Vtg genes are being used to analyze stage-, sex-, tissue- and hormone-specific gene expression. One research area that has received a lot of attention in recent time is xenobiotic modulation of gene expression in organisms (see later). Thus, selective gene expression is considered to be central to our understanding of cellular differentiation and the regulation of developmental processes [68]. The term gene expression is not always well defined, but most often it is used to indicate a change in the nature of, or rate at which, different genes are transcribed [15]. Recent advances in studies of the organization of eukaryotic genomes have also focused attention on the importance of structural features of expressed and unexpressed genes and on the post-transcriptional mechanisms that would determine the processing of primary transcripts into the correct messenger sequences [69,70].

Figure 3 shows an order of the molecular mechanisms that lead to the production of Zr-protein and Vtg in the hepatocyte: (1) E_2 produced by the ovarian follicular cells in response to GnH I is transported in plasma attached to sex hormone binding globulins (SHBGs: [71–76]) and enters the liver cells by either diffusion or receptor-mediated uptake. The physiological functions of the SHBGs are not fully understood. It is generally believed that these proteins play a role in the regulation of steroid amount available to target tissues and protect steroids from rapid metabolic degradation [77,78]. In addition to their role as sex steroid carriers, it has been proposed that SHBGs are involved in cellular signal transduction that involves nuclear steroid receptors through specific SHBGs membrane

receptors in different sex steroid sensitive tissues [for review see, [78]]. (2) In the liver, E_2 is retained in target cells by high affinity binding to a specific steroid-receptor protein, the E_2 -receptor (ER; [80]). In the absence of a ligand the ER is found as a monomer in association with heat shock protein 90 (hsp90). In the ligand binding process, the ER dissociates from hsp90 and usually goes through dimerization prior to translocation of the complex into the nucleus, involving a complex of coregulator proteins (more details on the molecular biology of ER forms and the events taking place in this process can be found in reviews such as [80–83]). (3) The hormone-receptor complex binds tightly in the nucleus at estrogen responsive elements (ERE) located upstream of, or within the estrogen-responsive genes in DNA. (4) This results in the activation or enhanced transcription of Vtg genes and subsequent increase and stabilization of Vtg messenger RNA (mRNA). At present, ERE for Zr-protein genes have not been identified in fish, although their response to E_2 is very similar to that of the Vtg genes. Given the speculation that different EREs on the DNA may be temporarily masked by associated proteins, thus resulting in sequential or partial induction of various estrogenic responses [84], it is possible that there may be subtle differences in the responsive elements for Zr-protein and Vtg. (5) Zr-protein and Vtg precursors are synthesized and modified extensively in the rough endoplasmic reticulum (RER); (6) modified Zr-protein and Vtg are secreted into the serum for transport to the ovary. (7) In the ovary, Zr-protein and Vtg are incorporated to serve different functions (see later).

The post-translational modifications occurring to the Zr-proteins prior to secretion into the systemic tracks are not well understood. However, more is known about Vtg post-translational modifications in teleost fish. Prior to secretion into the blood stream, the biochemical information concerning Vtg clearly indicates that substantial post-translational modification must occur in the liver cell to reach the end product seen in the serum. Several changes in hepatic morphology such as proliferation of RER and Golgi apparatus also accompany estrogen stimulation. Firstly, the protein backbone of the Vtg is synthesized on membrane bound ribosomes. Vtg shares this feature with other proteins destined for secretion from the hepatocytes [85]. Thereafter, the Vtg molecule is lipidated, glycosylated and phosphorylated. Although some information exists concerning the nature and extent of modifications of the Vtg molecule, rather limited information is available for fish with respect to the mechanisms, sequential events or location of these transformations.

Several metabolic changes occur during Vtg synthesis in the maturing female fish. This is reflected in the pronounced increases in liver weight, RNA contents, lipid

**Figure 3**

Simplified diagram of estradiol-17β (E₂) or E₂-mimic stimulated oogenic protein synthesis. Eggshell *zona radiata* proteins and the egg yolk protein precursor, vitellogenin are synthesized and secreted by the hepatocyte. They are transported in blood to the ovary and incorporated into maturing oocytes in female teleosts.

deposition, glycogen depletion, increases in plasma protein, calcium and magnesium and phosphoprotein contents [86,87]. These parameters can be used as indicators of plasma Vtg levels. In addition, Vtg and gonadal maturation are energetically very expensive processes, since the fullgrown gonads account for about 25% of the total weight of a mature female fish. The uptake of Vtg by growing oocytes is rapid, specific and saturable, and occurs by receptor-mediated endocytosis [88,89]. Vtg receptors (VTGRs) have been identified in the ovary of a

number of fish species [see 3, [90–92]], and was recently cloned and sequenced in rainbow trout and winter flounder [93–95]. The fish VTGRs are 70–80% similar to the chicken very low-density lipoprotein receptor VLDLR (ibid.). The enzymatic cleavage and processing of Vtg into oocyte yolk proteins and lipids is mediated by serine proteases and cathepsins found in ovary extracts [21,94]. After uptake, the Zrp monomers are cross-linked by a transglutaminase reaction to form the rigid structure of the fish eggshell inner layer [16].

Effects of xenobiotics on oogenic protein synthesis

The terms environmental estrogens, endocrine disruptors, endocrine modulators, eco-estrogens, environmental hormones, xenoestrogens, hormone-related toxicants, and phytoestrogens all have one thing in common, namely, they describe synthetic chemicals and natural plant or animal compounds that may affect the endocrine system (the biochemical messengers or communication systems of glands, hormones and cellular receptors that control the body's internal functions) of various organisms. Many of the effects caused by these substances have been associated with developmental, reproductive and other health problems in wildlife and laboratory animals [for reviews, see [97–100]]. There is also growing concern that these compounds may be affecting humans in similar ways [101,102].

The detailed mechanisms by which xenoestrogenic compounds mediate their induction of oogenic proteins is not fully understood, but it is known that they can bind with high affinity to the ER (as agonists) and initiate cell synthetic processes typical of natural estrogens. Some compounds also have the ability to bind to the receptor, but not eliciting estrogenic activities (as antiestrogens or antagonists), thereby blocking the binding site of natural estrogens [103–105]. During ovarian recrudescence, incorporation of oogenic proteins accounts for the major growth of the developing oocytes. A probable indirect measure of altered hepatic oogenic protein synthesis in fish exposed to xenobiotics is reduced or increased gonadosomatic index (GSI). A more direct quantification of these alterations can be obtained from plasma, hepatic and ovarian oogenic protein concentrations [106]. Modern and advanced molecular biology techniques are revolutionizing the process of oogenic protein quantitation in oviparous species [99].

Laboratory studies have been conducted to evaluate the impact of fish exposure to toxicants on ovarian development. Several effects have been observed and these include inhibition of oocyte development and maturation, increased follicular atresia of both yolked and previtellogenic oocytes, abnormal yolk deposition and formation within oocytes, and abnormal egg maturation and production [for reviews, see [98,99,102,106–108]].

Wester and Canton [109] observed the development of testis-ova in males and induced vitellogenesis in either sex of medaka (*Oryzias latipes*) exposed to β -HCH, demonstrating estrogenic effects of this compound. Similar responses have been observed when medaka was exposed to 4-nonylphenol (NP) and to bisphenol in more recent studies [110–112].

In designing a bioassay for xenoestrogens, toxicologists and biologists have used the induction of Vtg and Zr-protein in male and juvenile oviparous vertebrates as an effective and sensitive biomarker for xenoestrogens [113–118]. Using juvenile Atlantic salmon (*Salmo salar*) and different doses of NP, we saw that NP treatment significantly elevated plasma levels of Zr-protein and Vtg in a two week *in vivo* study, with the former showing more sensitivity to the xenoestrogen compound [115]. Higher sensitivity of Zr-protein when compared with Vtg evaluated with indirect ELISA has also been observed in with juvenile Atlantic salmon treated with different doses of an oil refinery treatment plant effluent [[115], Fig. 4] and with E₂ [119]. In both these studies, induced Zr-protein levels were apparent at lower E₂ doses, while Vtg was only induced at higher E₂ doses, thus indicating differential induction of both proteins as was observed using NP [115]. However, it could be argued that the differences in sensitivity could arise from different affinities of the antibodies used in the assays. Attempts to resolve this issue have focused on the development of quantitative assays for the two protein groups and their mRNAs (see below). In a recent study with medaka, Lee et al. [51] reported a differential sensitivity of the two *zona radiata* precursor genes choriogenin H and L, respectively, with choriogenin L mRNA responding at lower doses of estrogen than mRNA of the H form. Unfortunately, however, they did not compare the response directly with Vtg mRNA. In the study of Yadetie et al. [120], no clear differences were observed in the response of Vtg and Zrp mRNA levels of salmon exposed to NP. However, Celius et al. [57], employing a quantitative real time polymerase chain reaction assay (qPCR) for rainbow trout Vtg and Zrp, reported that Zrp mRNA was more responsive than Vtg mRNA to low doses of E₂ and the mycoestrogen α -zearalenol.

Furthermore, a large number of *in vivo* studies have also reported Vtg induction by xenobiotic estrogens in fish and amphibians, e.g. Jobling et al. [121] using rainbow trout (*Oncorhynchus mykiss*) and alkylphenolic chemicals; Donohoe and Curtis [122] using juvenile rainbow trout, *o*, *p'*-DDT and *o*, *p'*-DDE; Schwaiger et al. [123] using rainbow trout, common carp (*Carpio carpio*) and NP; and Janssen et al. [124] using flounder (*Platichthys flesus*) and polluted harbour sediment [reviewed in [99,102]]. All these studies showed significant elevations of Vtg at the tested dose of the chemicals. In other studies, Sumpter and Jobling [125], Pelissero et al. [126], Jobling and Sumpter [127], Celius et al. [128], have reported the *in vitro* induction of yolk protein synthesis (in a dose-dependent manner) of several environmental chemicals, including alkylphenol ethoxylate (APE) metabolites [129]. Both *in vitro* and *in vivo* studies have been used to study oogenic protein synthesis in fish. In a few studies where the two approaches have been directly compared, it has been shown that *in*

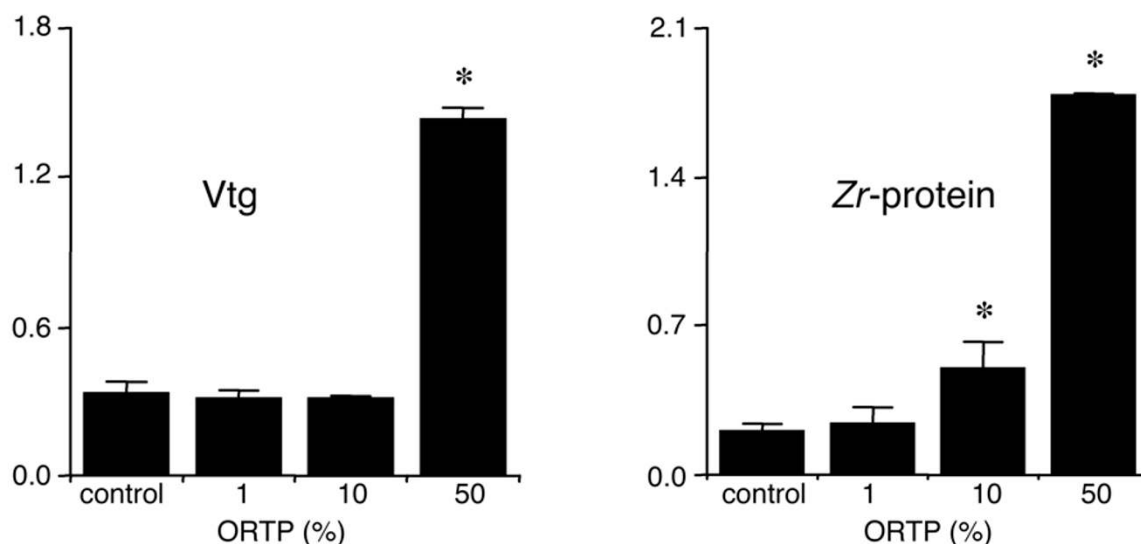


Figure 4

Immunochemical analysis using indirect ELISA of oogenic proteins in plasma of juvenile Atlantic salmon (*Salmo salar*) exposed to different concentrations of oil refinery treatment plant (ORTP) effluent. Proteins were detected with homologous antisera against Atlantic salmon *zona radiata* proteins (Zr-protein) and vitellogenin (Vtg). Data are given as mean ELISA absorbance values (492 nm) ± SD (n = 6 per treatment group). Data were analyzed using Dunnett's tests for comparison with control group. *Significantly different from control (p < 0.001). Reproduced with permission from Arukwe et al. [113].

vitro assessments for estrogenicity underestimate the *in vivo* response [114]. This is particularly evident with chemicals that require metabolic activation (proestrogens) or are capable of substantial bioaccumulation. In addition, they do not provide information on possible physiological alterations. Given that *in vitro* systems lack the complex metabolic processes that are typical of *in vivo* systems, the former system should only be used as a supplement to the latter system, and short-term *in vivo* assays using plasma Vtg measurements in small test fishes have been suggested to screen individual existing or new chemicals for estrogenic potency (ibid.).

Endocrine disruptors can also target other sites of the hypothalamus-pituitary-gonad-liver axis (Fig. 1), e.g. pituitary GtH release or ovarian aromatase activity [130,131]. However, this aspect is outside the scope of this review.

Use of Vtg/Zrp as biomarkers in chemical product testing

The increased awareness that chemicals in the environment can cause endocrine disruption in wildlife and, possibly, humans, has led international organizations such as OECD to consider developing new test methodologies for detecting EDCs. These methods will eventually be used as standard test procedures in the toxicity testing of new

and existing chemicals. Recent work in OECD and the US Environmental Protection Agency has focused on reviewing available methods for detecting endocrine disrupting effects of chemicals in wildlife, including fish. An implementation of Vtg as a core endpoint in a piscine short-term endocrine disrupter screen for chemicals, in combination with e.g. gross morphology and histology, is suggested. The tests should be applicable to different species, in particular zebrafish (*Danio rerio*), fathead minnow (*Pimephales promelas*), and medaka (*Oryzias latipes*) [132]. These fish share several attributes that make them ideal test species for reproductive toxicity testing, including small size at maturity, relatively short generation times, asynchronous spawning, and overall ease of culture. Sensitive and quantitative immunoassays for Vtg in these species have recently been developed in our laboratory [133].

Oogenic protein assays

Depending on the target organ or tissue, a wide variety of assays have been developed to measure oogenic protein expression in fish. These include radioimmunoassays; enzyme-linked immunosorbent assays (ELISAs) and immunohistochemistry using monoclonal and polyclonal antibodies (Abs), RNA protection assay and transcript analysis by Northern blotting or various variants of

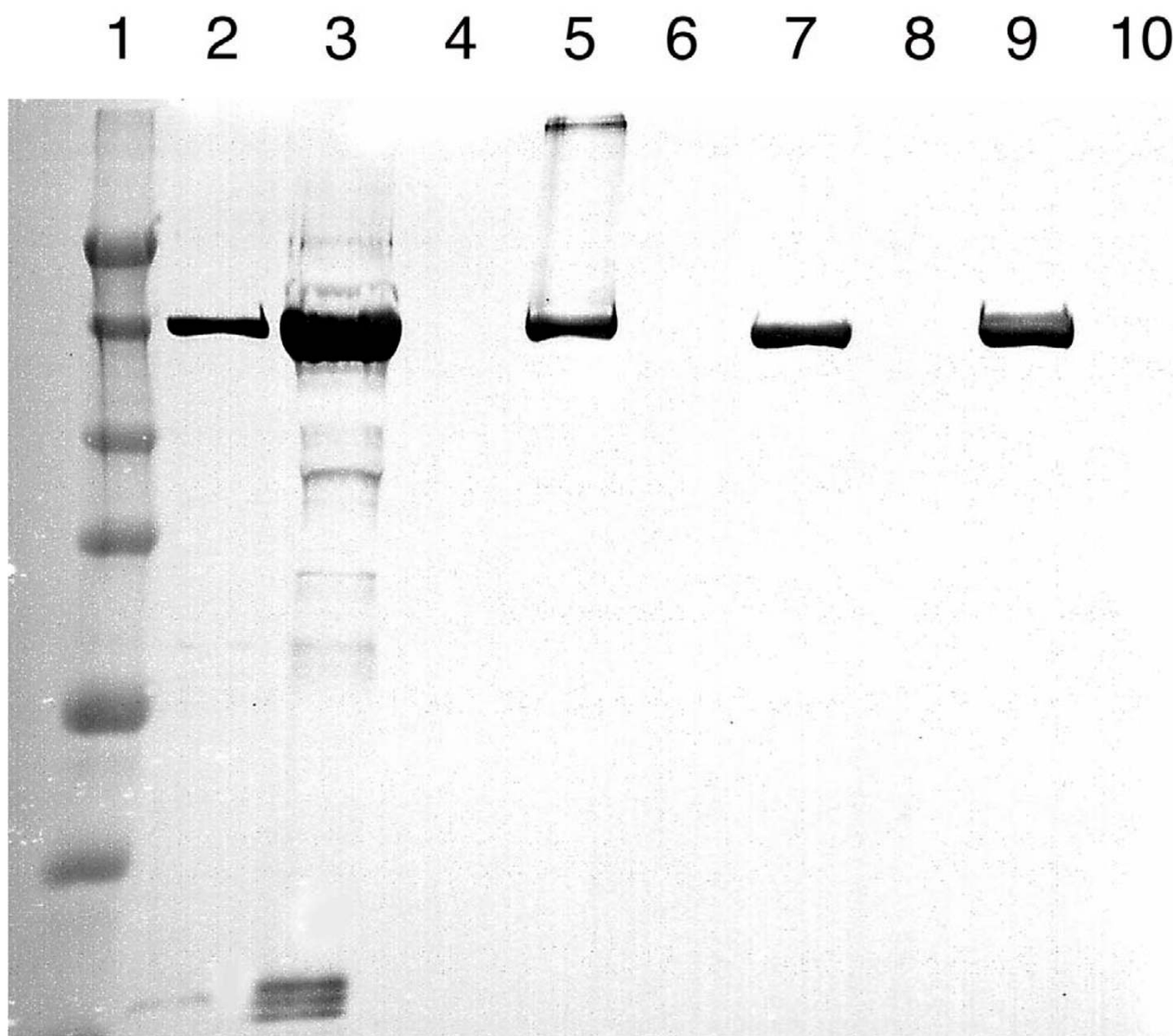


Figure 5

Cross-reactivity of a monoclonal zebrafish (*Danio rerio*) vitellogenin antibody to different cyprinid fish species. Monoclonal mouse anti-zebrafish vitellogenin IgG JE-10D4 (Biosense Laboratories AS, Bergen, Norway) was used to probe a Western blot with samples of: (1) Pre-stained molecular weight standard (Bio-Rad), (2) purified zebrafish Vtg, (3) whole-body homogenate sample of estradiol-17 β (E₂) treated zebrafish, (4) whole-body homogenate sample of control zebrafish, (5) plasma sample of E₂ treated carp (*Cyprinus carpio*), (6) plasma sample of control carp, (7) plasma sample of E₂ treated fathead minnow (*Pimephales promelas*), (8) plasma sample of control fathead minnow, (9) plasma sample of E₂ treated roach (*Rutilus rutilus*), (10) plasma sample of control roach. Reproduced with permission from Biosense Laboratories AS.

polymerase chain reaction (PCR). Recently, the use of real-time (quantitative) PCR is increasingly becoming a valuable tool in oogenic protein analysis. In plasma samples, these assays vary in their sensitivity, but some have the ability to detect very low levels of protein expression, i.e. 1 ng/ml or less [134–137]. Vtg assays based on polyclonal antibodies are generally restricted for use with the

homologous species, but some antibodies do cross-react with Vtg in other species (e.g. [135,138,139]) (Fig. 5).

The basic principle of a radioimmunoassay (RIA) is the use of radio labeled Abs or antigens (Ags) to detect Ag:Ab reactions. The Abs or Ags are labeled with the ¹²⁵I (iodine-125) isotope, and the presence of Ag:Ab reactions is de-

tected using a gamma counter. RIA techniques are well developed for egg yolk (Vtg) analysis (e.g. [140,141]), but have not been developed for the *zona radiata* proteins. Because this technique requires the use of radioactive substances, RIAs are more and more being replaced by other immunologic assays such as ELISAs, that over the last decade have reached similar levels of sensitivity.

The ELISA technique is a sensitive laboratory technique widely used to detect and quantitate Ags or Abs in a variety of biological samples. It can be quantitative (with a standard curve) or semi-quantitative (without a standard curve). The two most widely used principles for quantitative detection of proteins are the competitive ELISA and the sandwich ELISA techniques [142].

In addition to the general issues of antibody specificity and sensitivity, there are some specific challenges related to the development of quantitative immunoassays for the oogenic proteins Vtg and Zrp. For Vtg, although it is relatively easily purified from plasma of estrogenized fish (where it can reach levels of 50–150 mg/ml), it is an inherently unstable protein. The instability of Vtg is due to its role as a precursor for shorter peptide fragments, and it is very sensitive to proteolytic breakdown into these fragments. Care must therefore be taken during sampling to avoid proteolytic breakdown by adding suitable protease inhibitors [96]. This instability leads to some problems with immunization, since breakdown products may be more immunogenic than Vtg itself. In addition, it creates an important problem for the use of Vtg as a standard in quantitative assays, since users must ensure that each batch of standard is stored under conditions that prevent breakdown, and is quantitated in a consistent manner (see below). In our own laboratory, we have had success in finding conditions for stabilizing Vtg by lyophilization, although this has not been a straightforward task, and different species behave differently in this process (Goksøyr, Nilsen, Berg et al., unpublished results).

The dynamic range of Vtg concentrations found in fish plasma creates another problem. Plasma Vtg can vary maybe 100 million-fold, from a few ng/ml in unexposed male fish, to the 50–150 or above mg/ml found in estrogenized salmonids (e.g. [136]). To be able to quantify this enormous range in blind samples, the working range of the assay should preferentially be as wide as possible. Nevertheless, even with an assay covering several hundredfold variation, all samples need to be serially diluted at least 3–4 times to ensure that at least one dilution falls within the working range of the assay. Many of the recent assays published obtain this range (e.g. [133]).

The assay also needs to be robust and reproducible, and current experience in our laboratory demonstrates that the

sandwich type ELISA is more robust and reproducible over the working range of the assay compared to the competitive format.

The method used to quantify the standard must be consistent and reliable. For Vtg, many different methods are presented. In some cases, Vtg is weighed after a lengthy purification procedure. Others have used different protein quantification methods such as Lowry [143], Bradford [144], or the simple A280 absorbance measure. In all these cases, the sample needs to be quantitated towards a known sample. When bovine serum albumin (BSA), ovalbumin, or Immunoglobulin G is used, an assumption is made that Vtg behaves more or less similar to the chosen standard. Generally, this is not the case, and some laboratories develop their own "gold standard" of Vtg, which is used as the standard in quantitation. Again, this gold standard needs to be verified, and this can be done by quantitative amino acid analysis. In this case, one may want to take into account the non-proteinaceous parts of the Vtg, i.e. the lipid, phosphate, and carbohydrate parts. The lipid and phosphate parts have been reported for some species to represent 15–20% and 0.6–0.8%, respectively (e.g. [27]), whereas the carbohydrate portion is not well studied. In general, however, the protein part of the molecule is calculated to represent around 65–75% of the weight of the whole molecule, depending on species. The most important aspect of a protein to be used as a standard in an immunoassay is of course that the epitope(s) involved in the immunoassay maintain their stability. This can only be checked by a quality control using the immunoassay itself, so the question becomes a "hen or egg" issue. One way to manufacture a Vtg standard that maintains both proteolytic and epitope stability is to produce a synthetic peptide fragment that contains the epitope(s) of interest.

For Zrp, the challenges are somewhat different. Zrp are found in lower concentrations in plasma compared to Vtg, but recent analyses show that they may reach levels of 1–10 mg/ml in estrogenized rainbow trout [145]. The protein is much more stable than Vtg, probably due to the different natures of their fate in the oocyte. Whereas Vtg needs to be broken down to fulfill its role as nutrient for the embryo, the Zrp needs to be incorporated into the eggshell intact. In the eggshell, the Zrps will cross-link by a transglutaminase reaction to form the robust *zona radiata* structure upon fertilization and hardening [146]. The solubilization of Zrp from eggshells requires harsh conditions (ibid.), whereas it is more easily obtained from plasma. Although polyclonal antibodies for Zrp have been developed and used for some time [115,119], monoclonal antibodies (MAbs) to Zrp have only recently become available [147]. Screening a large panel of MAbs, it has become clear that the α - and β -form of Zrp are closely

related to each other, whereas the γ -form is structurally more different (Fig. 6; Berg, Bringsvor, Nilsen, Goksøyr, unpublished results). We have also shown that combining a γ -specific MAb with a polyclonal Zrp-antibody can be used to develop a quantitative sandwich ELISA for γ -Zrp, where the standard γ -form can be purified from plasma using the same MAb in immunoaffinity chromatography [145]. Because of the close similarity between the two other isomers, this has proven more difficult for the α - and β -form. However, comparing their relative responses both in ELISA and Western blots, it becomes clear that the α - and β -form are more responsive to estrogens than the γ -form of Zrp (Berg, Bringsvor, Nilsen, Goksøyr, unpublished results).

Oogenic mRNAs can be assayed by reverse transcriptase polymerase chain reaction (RT-PCR, e.g. [25]), or quantitative PCR techniques (qPCR, [57]). qPCR is a rather new method for the quantification of target mRNA sequences. Unlike conventional PCR, qPCR systems are probe-based PCR product detection. During amplification, annealing of the probe to its target sequence generates a substrate that is cleaved by the 5' nuclease activity of Taq DNA polymerase when the enzyme extends from an upstream primer into the region of the probe. This dependence on polymerization ensures that cleavage of the probe occurs only if the target sequence is being amplified. The development of fluorogenic probes made it possible to eliminate post-PCR processing for the analysis of probe degradation. The probe is an oligonucleotide with both a reporter fluorescent dye and a quencher dye attached. While the probe is intact, the proximity of the quencher greatly reduces the fluorescence emitted by the reporter dye by fluorescence resonance energy transfer (FRET) through space.

Probe design and synthesis has been simplified by the finding that adequate quenching is observed for probes with the reporter at the 5' end and the quencher at the 3' end. The qPCR has several advantages compared to other hybridization techniques. This includes; fluorogenic probes over DNA binding dyes require specific hybridization between probe and target to generate fluorescent signal. Thus, with fluorogenic probes, non-specific amplification due to mis-priming or primer-dimer artifact does not generate signal. Another advantage of fluorogenic probes is that they can be labeled with different, distinguishable reporter dyes. By using probes labeled with different reporters, amplification of two distinct sequences can be detected in a single PCR reaction. The disadvantage of fluorogenic probes is that different probes must be synthesized to detect different sequences.

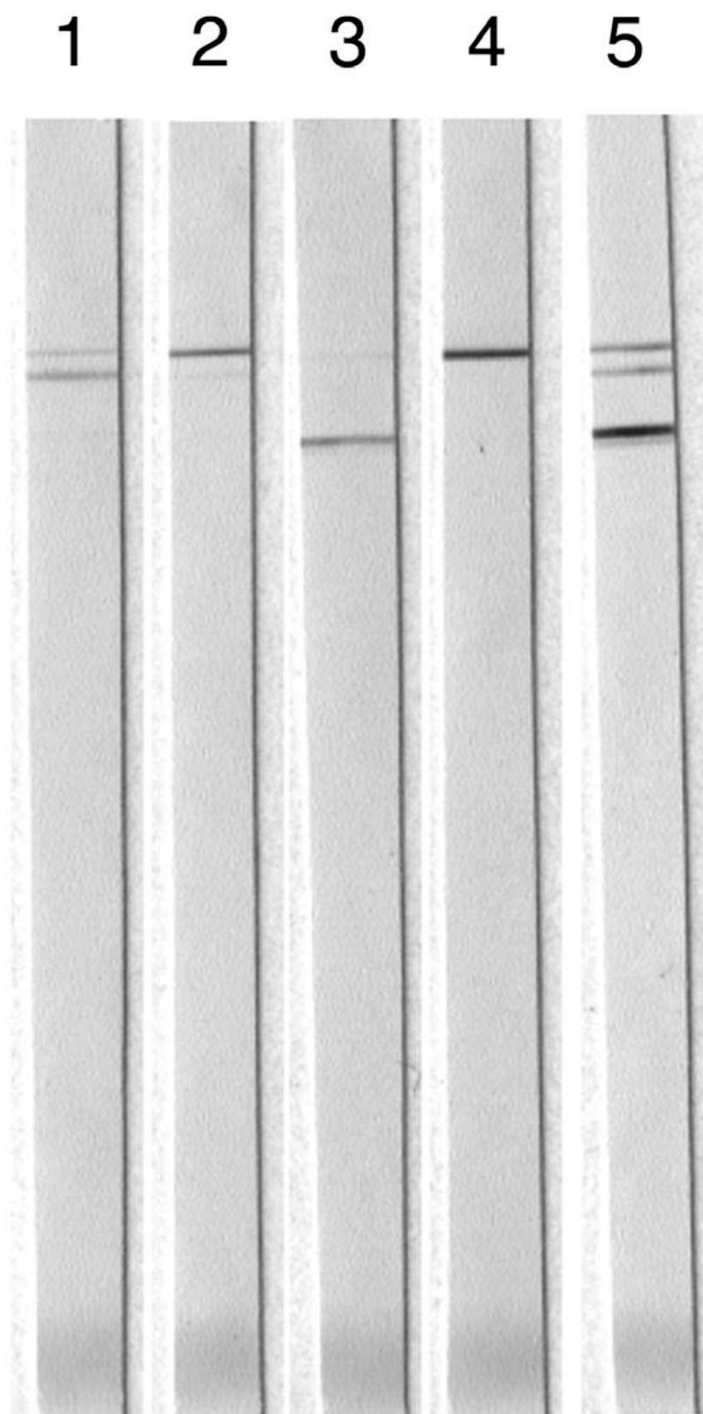
Other mRNA targetting assays for oogenic proteins, such as the RNA protection assay [148], have also been developed.

Cellular localization of hepatic oogenic protein synthesis has also been demonstrated using immunohistochemical analysis of exposed fish with specific antibodies [149,150] (Fig. 7). Immunohistochemistry is a valuable tool in the studies of estrogen and estrogen mimicking compound induced hepatic synthesis of Vtg and Zrp in oviparous vertebrates, especially in situations where blood samples are difficult to collect, e.g. when studying small-sized species. Although this technique is time-consuming, localization of Vtg in liver sections may provide insight into responses of different cell types that are important for understanding the role and mechanisms of the estrogens and estrogen mimicking compounds.

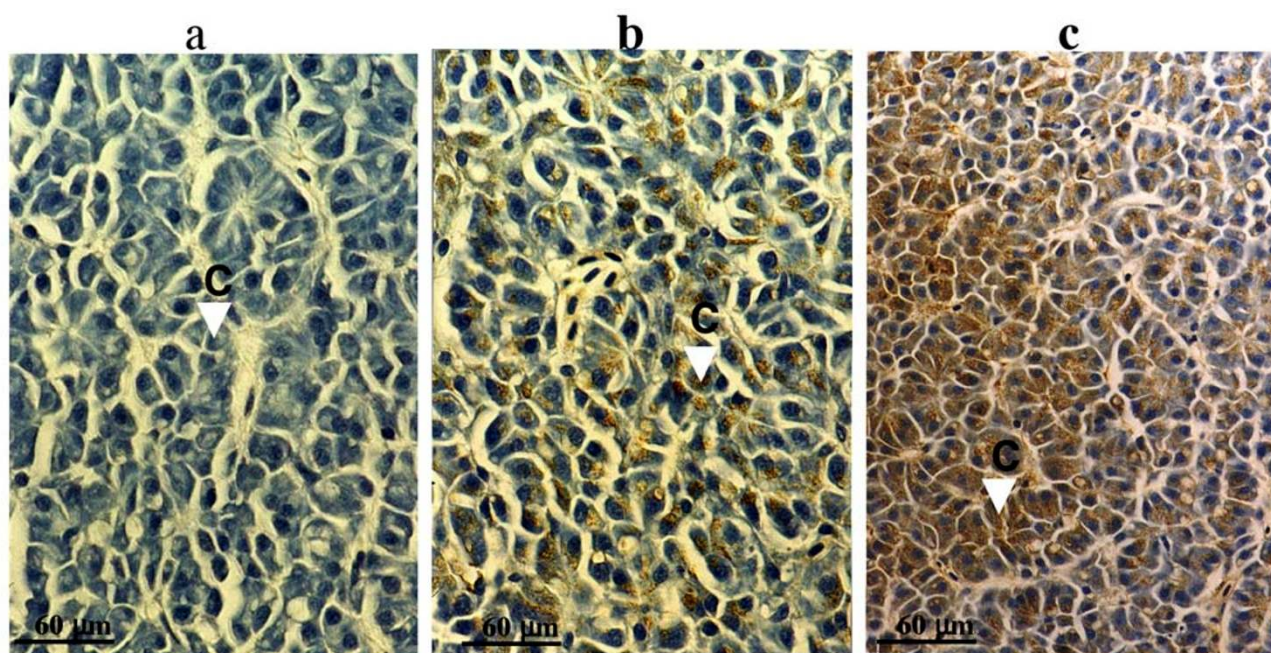
Effects and interactions of complex chemical mixtures

There are many potential xenobiotics and xenoestrogens in aquatic systems (e.g. pharmaceuticals, pesticides and personal care products). Thus, in the environment, chemical interactions have profound consequences since organisms, including fish, are exposed to complex mixtures of environmental pollutants [117]. These complex interactions have only recently become the focus of systematic investigations. There is no doubt that biomarkers (of exposure to environmental hazards, of effects to environmentally-induced cellular/molecular changes and of genetic susceptibility) are revolutionizing the science of risk assessment. Biomarker measurements have the ability to improve our accuracy, reliability and scientific basis for the quantitative assessment of environmental health risks. The relative importance of the influence of contaminants on biological systems is not well-understood or quantified mechanistically in complex chemical mixtures.

For example, exposure of juvenile rainbow trout to different doses of E_2 and CYP1A-inducers showed both elevation and reduction of plasma Vtg levels, depending on relative ratios of the test compounds [151–153]. In a recent study, exposure of juvenile salmon to an estrogen mimic (NP) and a CYP1A-inducer with documented anti-estrogenic activity (3,3',4,4'-tetrachlorobiphenyl; PCB-77) resulted in the potentiation of NP-induced synthesis of Vtg and Zr-proteins [117]. In addition, this study also showed that the reported effect depends on NP and PCB-77 ratios, seasonal factors and in which order the two compounds were given. Using the natural estrogen (E_2) in fish and mammals, the antiestrogenic effects of aryl hydrocarbon receptor (AhR) agonists are paralleled by the induction of CYP1A-dependent monooxygenase activities such as EROD [151,152], several E_2 hydroxylase activities and aryl hydrocarbon hydroxylase (AHH) [104,154,155]. AhR agonists do not competitively bind to the steroid hor-

**Figure 6**

Specificity of Atlantic salmon (*Salmo salar*) zona radiata protein antibodies. A plasma sample from estradiol-17 β treated salmon was probed with different monoclonal Zrp antibody supernatants and the polyclonal mouse antiserum. (1) Clone 2C4, showing equal specificity for the α - and β -isomer, (2) clone 3D7, showing highest specificity for the α -isomer, (3) clone 7F2, a γ -specific clone, (4) clone 8C4, a predominantly α -specific clone, and (5) polyclonal mouse antiserum, showing reactivity with all three isomers. (Berg, Nilsen, Goksøyr, unpublished results).

**Figure 7**

Immunohistochemical localization of vitellogenin (Vtg) in liver sections of control (a), nonylphenol- (b) and estradiol-17 β -treated (c) juvenile Atlantic salmon (*Salmon salar*). Cellular Vtg levels were detected with mouse monoclonal antibody (BN-5) against salmon Vtg. Yellow colors show strong Vtg-specific staining and as demonstrated primarily in endothelial cells, hepatic sinusoids, and cytoplasm of hepatocytes (labeled C). Blue stains show nuclei of hepatocytes. Goat anti-mouse horseradish peroxidase (GAM-HRP) was used as secondary antibody. Reproduced from Arukwe et al. [143] with permission from Taylor and Francis <http://www.tandf.co.uk>.

more receptors nor do steroid hormones bind to the AhR [156]. Therefore, the molecular mechanisms of interaction between ER and AhR agonists need to be explored in more details.

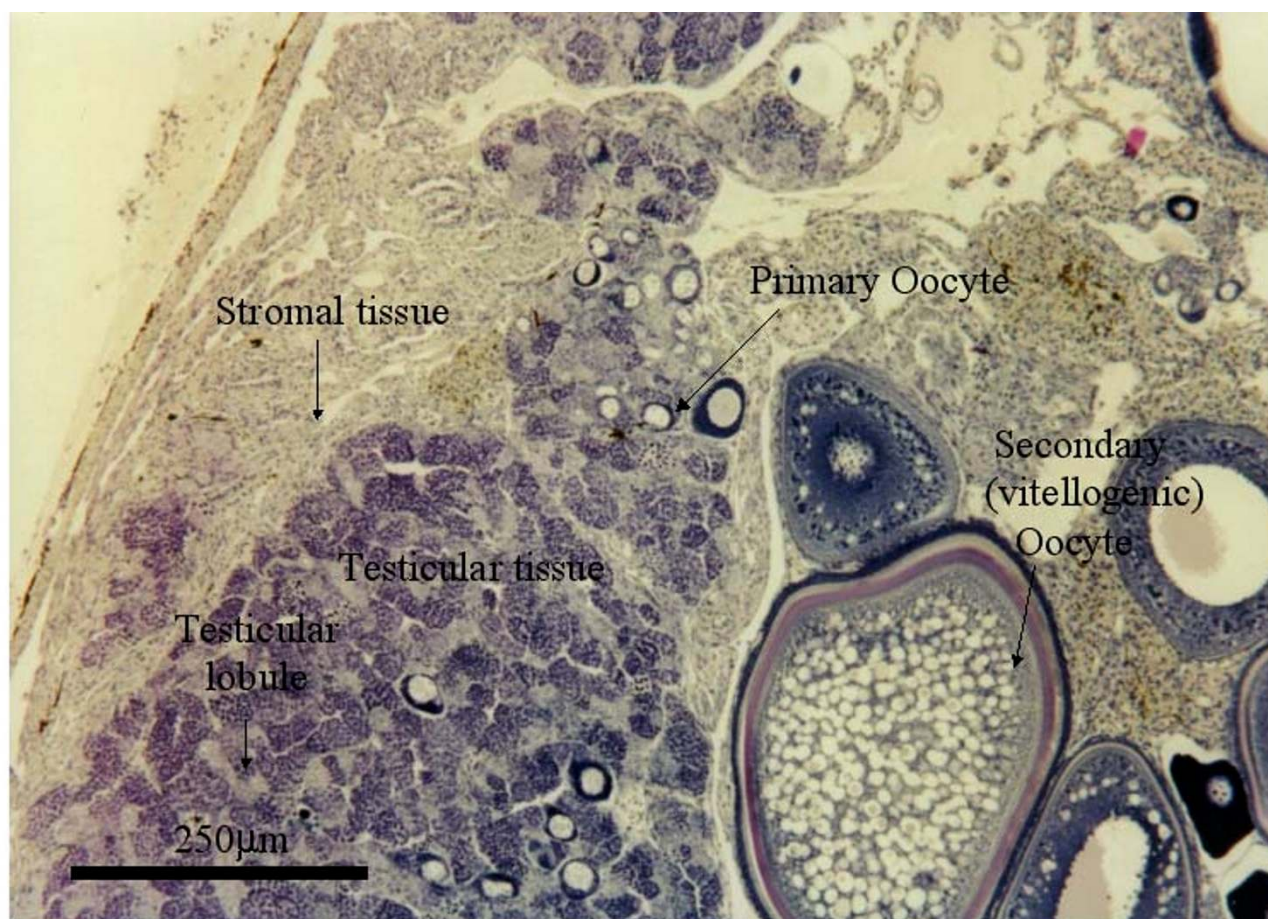
Possible consequences of precocious Vtg and Zrp induction

Reproductive development is a continuous process throughout ontogeny. Consequently, it is susceptible to the effects of xenoestrogens and/or xenobiotics at all stages of the life-cycle, including fertilization, embryonic development, sex differentiation, oogenesis or spermatogenesis, final maturation, ovulation or spermiation, and spawning. Thus, the sensitivity to a particular compound will vary depending on the stage of reproductive development [157].

Understanding the general principles by which chemical substances or foreign compounds (xenobiotics) interfere with fish reproduction is particularly important for meeting the larger objectives in aquatic reproductive toxicology, as it is impossible to empirically determine the biological specificity or how every compound affect the

reproductive life-history strategy of every species. Here we will briefly discuss the specific effects that can be extrapolated from a precocious hepatic synthesis of Vtg and Zrp.

Given the energetic cost of reproduction and the long decision time, it seems most likely that xenobiotically-induced hepatic Zrp and Vtg synthesis may cause an imbalance in the reproductive strategy of a given fish population. The reason is that an organism can only acquire a limited amount of energy for which several processes compete directly; an increase in the energetic allocation to one process must result in a decrease in energy allocation to others [158–160]. Thorpe [161] suggested that during maturation, the internal responses that are synchronized by external signals depend upon some genetically determined performance threshold, and that maturation processes will continue if this performance exceeds a set point at this critical time. Furthermore, maturation has developmental priority over somatic growth, and in salmonids survival after spawning implies a chance dependent balance between stored energy and that spent on reproduction [162]. Therefore, xenoestrogen-induced Vtg

**Figure 8**

Histological section of a grossly intersex gonad of the gudgeon, *Gobio gobio*, containing testicular tissues and both primary and secondary (vitellogenic) oocytes. Picture is a kind donation from Ronny van Aerle and Charles Tyler.

and Zrp synthesis outside the normal maturation period may result in wasteful use of stored energy resources. The ecological implication of this might be failure in the reproduction of affected individual fish, and in the long-term affecting recruitment of the entire population. Another possible deleterious effect is that high Vtg and/or Zrp concentrations might cause kidney failure and increased mortality rates as a result of metabolic stress [163]. Furthermore, although not yet demonstrated, there is a possibility that the reduced testicular growth could reduce fertility [121].

Xenoestrogen-induced changes in Zrp synthesis appear to have a higher potential for ecologically adverse effects than Vtg induction, because critical population parameters such as offspring survival and recruitment may be more directly affected. The argument for this, is that whereas subtle changes in Vtg content would not be of

great significance to the survival of the offspring, small changes in Zrp synthesis might cause the thickness and mechanical strength of the eggshell to be altered, thus causing a loss in its ability to prevent polyspermy during fertilization and to protect the embryo during development [115].

Intersex is another and a much more common condition caused by early exposure of fish larvae to estrogenic substances. The intersex condition in males usually takes the form of ovotestis. Bortone and Davis [164] have reviewed the subject, particularly with respect to the masculinisation of females caused by pulp mill effluents. Ovotestis is a partial feminization in which oocytes may appear in otherwise normal testes (Fig. 8). Little is known about the implications of this condition for reproductive functionality. Ovotestis can be induced in the laboratory by exposing fish larvae to weak estrogens like NP [110–

112], and has also been observed at prevalences ranging from 20 to 100% in wild fish populations exposed to estrogenic effluents [165,166].

Evolutionary aspects

From an evolutionary point of view, an appreciation of the oogenetic components will not be complete without considering how they evolved and what evolutionary factors have been driving their evolution. In the preceding discussions about oogenic proteins, it is clear that maternal influence in developmental modes that have direct roles in early embryonic patterning and gene regulation is not restricted to informational components such as maternal mRNAs and proteins as developmental biologists will generally consider it [167]. Maternal factors also include proteins and lipids that have structural or nutritive roles and that can play a large role in evolution of life histories and embryogenesis. The ability to transport fat, in the form of lipoprotein through the circulatory system by eukaryotes is one of their most significant functions right from the beginning of existence [168]. The reason and functional basis for why Vtg transport systems initially evolved provides clues into how energy in the form of water insoluble fat can be distributed from sites of synthesis and absorption to specific tissues and cells. Thus, the evolutionary advancement of storing energy in the form of fat has provided organisms with enormous advantage in adapting to environmental and developmental changes.

During vitellogenesis, oviparous species (i.e. nematodes, decapods, echinoderms, insects, fish, amphibians, birds, reptiles) display over three orders of magnitude increases in the transport of fat, for instance from the liver to oocytes, in order to facilitate egg development [3,15,67,168]. Thus, Vtgs can be regarded as ancient proteins that are normally encoded by a small variable number of genes [169]. One Vtg gene has been demonstrated in sea urchin and silkworm, three in the chicken, four in *Xenopus laevis* and six in *Caenorhabditis elegans* (ibid.). However, more recent analysis uncovered 20 Vtg genes and ten pseudogenes in rainbow trout [170]. Previously, comparative studies based on amino acid sequences and on gene organization support the hypothesis of a common evolutionary origin of the vertebrate and invertebrate Vtg genes [171–176]. More recently, this comparative analysis was extended to include other species groups in order to elucidate the events responsible for the relatively rapid diversification of the Vtg gene family [169].

For example, Vtg genes of the fruit fly, *Drosophila melanogaster*, are not obviously related to the Vtg genes of chicken, *X. laevis* and *C. elegans* [67]. The chicken and *Xenopus* genes both have 34 introns and have the same exon-intron organization. These genes are distantly relat-

ed to the *C. elegans* gene with only four introns, whose positions are apparently conserved in vertebrates, suggesting their presence at the same positions in the ancestral Vtg gene [177,178]. It has been suggested that prokaryotes and lower eukaryotes have streamlined their genome by intron sequence elimination. Given that this is true, the structural organization of the contemporary vertebrate Vtg gene may be more representative of the earliest gene than those of the invertebrates [67,177,178]. This assumption is supported by the study of Mouchel et al [169], which suggests that almost half of the splicing junctions identified in invertebrates are related neither to each other nor to vertebrate genes. The observed differences between vertebrate and invertebrate Vtg gene structure may also be explained by the "intron-late" theory [179,180], which hypothesizes that introns became inserted more recently, therefore assuming that insertions may be specific to each lineage. Irrespective of what the explanation may be, it has been suggested that Vtg genes have been re-organized through multiple insertions and deletions of intervening sequences during the evolution of the various lineages. Characterization of the Vtg region in the genome of the rainbow trout, e.g., revealed that this locus contains twenty complete genes and ten pseudogenes per haploid genome [170]. The Vtg genes differed from each other by insertion, deletion and rearrangement events, although, at the sequence level, they showed a high degree of similarity. Fluorescent in situ hybridization (FISH), pulsed-field gel electrophoresis (PFGE) and Southern analysis indicated that all gene copies are contained in a single 1,500-kb region, and that most of the genes form tandem arrays separated by a conserved 4.5-kb intergenic region. The presence of large reiterated fragments indicates that this region has been subjected to several amplification events. The presence of a retroposon element in Vtg intron 9 appeared to be responsible for the silencing of at least nine of the ten pseudogenes (ibid.).

It has become increasingly clear that the proteins of the *zona pellucida* are conserved among eutherian mammals and that the proteins of the *zona radiata* are conserved among teleostean fish. In most fish, sperm lack an acrosome and penetrate the *zona radiata* surrounding fish eggs via a discrete micropyle [40]. Most commonly, the micropylar channel is sufficiently narrow to permit the passage of a single sperm, and subsequent fusion with the plasma membrane induces the cortical granule reaction, resulting in a block to polyspermy [52]. In contrast, a prerequisite to successful fertilization in all vertebrates is penetration of sperm through an acellular envelope surrounding ovulated eggs. In mammals, sperm bind to the *zona pellucida*, the mammalian equivalent of fish *zona radiata*. Following the induction of the acrosome reaction and release of lytic enzymes, sperm penetrate the *zona* and fuse with the egg's plasma membrane, triggering the post fertiliza-

tion block to polyspermy [181]. More recently, it has become apparent that, although critical for speciation, the proteins from the mammalian egg envelope are distinctly related to those of the teleostean envelope [48]. Recently, the mouse *zona* proteins was successfully incorporated into the extracellular envelope surrounding *Xenopus* eggs, showing that they have been sufficiently conserved through 350 million years of evolution [182]. In general, the exon conservation at the same region in mammalian *zona pellucida* and fish *zona radiata* protein suggests that not only has this protein domain been duplicated in mammals, but that it has been conserved and used as an egg envelope protein in species that diverged 650 million years ago.

How ancient are these important components of eukaryotic reproduction? Recently, Walther [183] summarized his hypothesis that the oocyte and the sperm represent cellular lineages dating back to the two prokaryotic cell domains (eubacteria and archaea, respectively), which gradually evolved ever more complete but reversible coalescence or syngamy instead of permanent fusion to form an equilibrium between the two moneric prokarya and the prototypic zygote under photoseasonal polar conditions two billion years ago. The now commonly accepted theory of endosymbiosis as the origin of eukaryotic cells was presented independently by Jostein Goksøyr [184] and Lynn Margulis (Sagan) [185] to account for a eukaryotic cell with organelle. Walther's theory instead inserts a primordial syngamy to a dimeric prokaryotic cell (termed A-KARYON), and proposes that such sexual syngamy was the origin of symbiosis leading to organelles. According to this theory further endosymbiosis [184,185] created in one event the eukaryotic nucleolemma and the outer membrane of the mitochondrion, as the *second step* in cell evolution from moneric prokarya to dimeric *eukarya*. This theory depicts cell evolution by a dynamic interaction between only two moneric species in a unique event in cell evolution, which established *sexuality* as the dynamic fusion of these two cells or species. This dynamic model contrasts markedly from the view of an evolutionary past where cell evolution occurred by fusing a multitude of prokaryotic cell types to yield the static eukaryote, among which some later acquired sexuality (see also Margulis and Bermudes, [186]).

The evolution of the eggshell and egg yolk protein genes would appear to have been driven by different factors (protection vs. nutrition), but still in modern oviparous vertebrates they are being synthesized in close concert by the hepatic machinery under a common endocrine regulation. There is still a lot to be learnt about when these genes appeared and how they evolved in the interplay between hormones, environmental cues, speciation, repro-

ductive strategies, and the hepatic organ as their major site of synthesis today.

Conclusions

Different reproductive strategies have evolved among vertebrates, based on energy requirement, mating behavior, gamete structures, and the specificity of recognition molecules on the surface of sperm and eggs. In teleosts, environmental changes, such as photoperiod and water temperature provide signals that are received by the central nervous system. These signals lead to oocyte growth and maturation that are regulated by pituitary gonadotropins and ovarian sex steroids. An integral part of this process is the synthesis of the oogenic proteins, Vtg and Zr-proteins. E₂ is the major estrogen in female fish. E₂ stimulates the production of Vtg and Zr-proteins in the liver. The genes encoding these fish reproductive proteins are conserved in the animal kingdom and are products of several hundred million years of evolution.

An increasing number of widely used chemicals and their degradation products are found now to induce precocious synthesis of oogenic proteins in fish. Convincing evidence of this effect has been obtained from studies at the molecular and cellular levels of biological organization, in addition to reports on the individual level from laboratory studies. In addition, there are numerous reports demonstrating that fish populations are adversely affected by living in, and accumulating xenoestrogens. Although xenoestrogen-induced synthesis of oogenic proteins appears to possess a potential for ecologically adverse effects, as does inhibition and elevation of biotransformation enzymes, studies are still needed of critical population parameters such as offspring survival and recruitment to validate these findings at higher levels of biological organization.

Authors' contributions

AA and AG contributed equally to this review, with AA taking the lead.

Acknowledgements

We want to thank our collaborators and co-authors for their contribution to the work from our own laboratories that has been presented here, and Professor Bernt Walther and an anonymous referee for helpful comments to the manuscript. We are grateful to University of the Basque Country Press, Taylor and Francis, for their kind permission to use copyright-held material. We also thank Professor Charles Tyler for providing the ovotestis picture. The work of AA and AG has been sponsored by grants from the Norwegian Research Council and VISTA.

References

1. Tyler CR and Sumpter JP **Oocyte growth and development in teleost.** *Rev Fish Biol Fisheries* 1996, **6**:287-318
2. Selman K and Wallace RA **Cellular aspects of oocyte growth in teleosts.** *Zool Sci* 1989, **6**:211-231

3. Schneider WJ **Vitellogenin receptors: oocyte-specific members of the low-density lipoprotein receptor supergene family**. *Int Rev Cytol* 1996, **166**:103-137
4. Guraya SS **The cell and molecular biology of fish oogenesis**. *Monogr Dev Biol* 1986, **18**:1-223
5. Hoar WS **Reproduction**. In: *Fish Physiology* (Edited by: Hoar WS, Randall DJ) New York, Academic Press 1969, **III**:Chapter 1
6. Nagahama Y **The functional morphology of teleost gonads**. In: *Fish Physiology* (Edited by: Hoar WS, Randall DJ, Donaldson EM) New York, Academic Press 1983, **IX A**:Chapter 6
7. Dodd JM **Reproduction in cartilaginous fishes (Chondrichthyes)**. In: *Fish Physiology* (Edited by: Hoar WS, Randall DJ, Donaldson EM) New York, Academic Press 1983, **IX A**:Chapter 7
8. Nagahama Y **Gonadal steroid hormones: major regulators of gonadal sex differentiation and gametogenesis in fish**. In *Proceedings of the 6th International Symposium on Reproductive Physiology of Fish: 2000 July 4-9; Bergen* (Edited by: Norberg B, Kjesbu OS, Taranger GL, Andersson E, Stefansson SO) John Grieg A/S, Bergen, Norway 2000, 211-222
9. Peter RE and Yu KL **Neuroendocrine regulation of ovulation in fishes: basic and applied aspects**. *Rev Fish Biol Fisher* 1997, **7**:173-197
10. Swanson P **Salmon gonadotropins: reconciling old and new data**. In: *Proceedings of the 4th International Symposium on Reproductive Physiology of Fish: 1991; Sheffield* (Edited by: Scott AP, Sumpter JP, Kime DE, Rolfe MS) Sheffield, UK 1991, 2-7
11. Young G, Kagawa H and Nagahama Y **Oocyte maturation in the amago salmon (*Oncorhynchus rhodurus*): In vitro effects of salmon gonadotropin, steroids and cyanoketone (an inhibitor of 3 β -hydroxy- Δ 5-steroid dehydrogenase)**. *J Exp Zool* 1982, **224**:265-275
12. Marte CL and Lam TJ **Hormonal changes accompanying sexual maturation in captive milkfish (*Chanos chanos* Forsskal)**. *Fish Physiol Biochem* 1992, **10**:267-275
13. So YP, Idler DR, Truscott B and Walsh JM **Progestogens, androgens and their glucuronides in the terminal stages of oocyte maturation in landlocked Atlantic salmon**. *J Steroid Biochem* 1985, **23**:583-591
14. Kagawa H, Young G, Adachi S and Nagahama Y **Estradiol-17 β production in amago salmon (*Oncorhynchus rhodurus*) ovarian follicles: role of the thecal and granulosa cells**. *Gen Comp Endocrinol* 1982, **47**:440-448
15. Tata JR and Smith DF **Vitellogenesis: a versatile model for hormonal regulation of gene expression**. *Rec Prog Horm Res* 1979, **35**:47-90
16. Oppen-Berntsen DO **Oogenesis and hatching in teleostean fishes with special reference to eggshell proteins**. *Dr. Scient. Thesis, University of Bergen, Norway* 1990.
17. Hyllner SJ, Oppen-Berntsen DO, Helvik JV, Walther BT and Haux C **Oestradiol-17 beta induces the major vitelline envelope proteins in both sexes in teleosts**. *J Endocrinol* 1991, **131**:229-236
18. Oppen-Berntsen DO, Gram-Jensen E and Walther BT **Zona radiata proteins are synthesized by rainbow trout (*Oncorhynchus mykiss*) hepatocytes in response to oestradiol-17 β** . *J Endocrinol* 1992, **135**:293-302
19. Oppen-Berntsen DO, Hyllner SJ, Haux C, Helvik JV and Walther BT **Eggshell zona radiata proteins from cod (*Gadus morhua*) extra-ovarian origin and induction by estradiol-17 β** . *Int J Dev Biol* 1992, **36**:247-254
20. Wiegand MD **Composition, accumulation and utilization of yolk lipids in teleost fish**. *Rev Fish Biol Fish* 1996, **6**:259-286
21. Kwon JY, Prat F, Randal C and Tyler CR **Molecular characterization of putative yolk processing enzymes and their expression during oogenesis and embryogenesis in rainbow trout (*Oncorhynchus mykiss*)**. *Biol Reprod* 2001, **65**:1701-1709
22. Sire MF, Babin PJ and Vernier JM **Involvement of the lysosomal system in yolk protein deposit and degradation during vitellogenesis and embryonic development in trout**. *J Exp Zool* 1994, **269**:69-83
23. Mommsen PT and Walsh PJ **Vitellogenesis and oocyte assembly**. In: *Fish Physiology* (Edited by: Hoar WS, Randall DJ, Donaldson EM) Academic Press, New York 1988, **IIA**:347-406
24. Norberg B **Vitellogenesis in salmonid fish**. *Fil. Dr. Thesis, Department of Zoophysiology, University of Göteborg, Sweden* 1989.
25. Islinger M, Yuan H, Völkl A and Braunbeck T **Measurement of vitellogenin gene expression by RT-PCR as a tool to identify endocrine disruption in Japanese medaka (*Oryzias latipes* Biomarkers 2002, 7:80-93**
26. Pawlowski S, Islinger M, Völkl A and Braunbeck T **Temperature-dependent vitellogenin-mRNA expression in primary cultures of rainbow trout (*Oncorhynchus mykiss*) hepatocytes at 14 and 18°C**. *Toxicol in vitro* 2000, **14**:531-540
27. Silversand C and Haux C **Fatty acid composition of vitellogenin from four teleost species**. *J Comp Physiol* 1995, **164**:593-599
28. Wallace RA **Vitellogenesis and oocyte growth in non-mammalian vertebrates**. In: *Developmental Biology* (Edited by: Browder LW) Plenum Press, New York 1985, **1**:127-177
29. Wallace RA and Selman K **Ultrastructural aspects of oogenesis and oocyte growth in fish and amphibians**. *J Electron Microscop* 1990, **16**:175-201
30. Specker JL and Sullivan CV **Vitellogenesis in fishes: status and perspectives**. In: *Perspectives in Comparative Endocrinology* (Edited by: Davey KG, Peter RE, Tobe SS) Ottawa, National Research Council of Canada 1994, 304-315
31. Le Menn F, Davali B, Pelissero C, Ndiaye P, Bon E, Perazzolo L and Rodriguez JN **A new approach to fish vitellogenesis**. In *Proceedings of the 6th International Symposium on the Reproductive Physiology of Fish: 1999 July 4-9; Bergen* (Edited by: Norberg B, Kjesbu OS, Taranger GL, Andersson E, Stefansson SO) John Grieg A/S, Bergen, Norway 2000, 281-284
32. Carnevali O, Carletta R, Cambi A, Vita A and Bromage N **Yolk formation and degradation during oocyte maturation in sea-bream *Sparus aurata*: involvement of two lysosomal proteinases**. *Biol Reprod* 1999, **60**:140-146
33. Feist G, Schreck CB, Fitzpatrick MS and Redding JM **Sex steroid profiles of coho salmon (*Oncorhynchus kisutch*) during early development and sexual differentiation**. *Gen Comp Endocrinol* 1990, **80**:299-313
34. Mommsen TP, Vijayan MM and Moon TW **Cortisol in teleosts: dynamics. Mechanism of action and metabolic regulation**. *Rev Fish Biol Fisher* 1999, **9**:211-268
35. Grierson JP and Neville AC **Helicoidal architecture of fish eggshell**. *Tissue Cell* 1981, **13**:819-830
36. Ginsburg AS **Sperm-egg association and its relationship to the activation of the egg in salmonid fishes**. *J Embryo Exp Morphol* 1963, **31**:13-33
37. Yamamoto K **Activation of the egg of the dog-salmon by water and the associated phenomena**. *J Fac Sci Hokkaido University Ser VI Zool* 1951, **10**:303-319
38. Eddy FB **Osmotic properties of the perivitelline fluid and some properties of the chorion of Atlantic salmon eggs (*Salmo salar*)**. *J Zool* 1974, **174**:237-243
39. Manery JF, Fisher KC and Moore E **Water intake and membrane hardening of fish eggs**. *Fed Proc* 1947, **65**:163
40. Liang IF, Chamow SM and Dean J **Oocyte-specific expression of mouse ZP-2 – developmental regulation of the zona-pellucida genes**. *Mol Cell Biol* 1990, **10**:1507-1515
41. Liang IF and Dean J **Conservation of mammalian secondary sperm receptor genes enables the promoter of the human gene to function in mouse oocytes**. *Dev Biol* 1993, **156**:399-408
42. Taya T, Yamasaki N, Tsubamoto H, Hasegawa A and Koyama K **Cloning of a cDNA coding for porcine zona-pellucida glycoprotein ZPI and its genomic organization**. *Biochem Biophys Res Comm* 1995, **207**:790-799
43. Kinloch RA, Roller RJ, Fimiani CM, Wassarman DA and Wassarman PM **Primary structure of the mouse sperm receptor polypeptide determined by genomic cloning**. *Proc Natl Acad Sci USA* 1988, **85**:6409-6413
44. Kinloch RA, Ruizseiler B and Wassarman PM **Genomic organization and polypeptide primary structure of zona-pellucida glycoprotein-HZP3, the hamster sperm receptor**. *Dev Biol* 1990, **142**:414-421
45. Chamberlin ME and Dean J **Genomic organization of a sex specific gene – the primary sperm receptor of the mouse zona pellucida**. *Dev Biol* 1989, **131**:207-214
46. Chamberlin ME and Dean J **Human homolog of the mouse sperm receptor**. *Proc Natl Acad Sci USA* 1990, **87**:6014-6018
47. Epifano O, Liang IF and Dean J **Mouse ZPI encodes a zona-pellucida protein homologous to egg envelope proteins in mammals and fish**. *J Biol Chem* 1995, **270**:27254-27258

48. Oppen-Berntsen DO, Arukwe A, Yadetie F, Lorens JB and Male R **Salmon eggshell protein expression: A marker for environmental estrogens.** *Mar Biotechnol* 1999, **1**:252-260
49. Murata K, Sasaki T, Yasumasu S, Iuchi I, Enami J, Yasumasu I and Yamagami K **Cloning of cDNAs for the precursor protein of a low-molecular-weight subunit of the inner layer of the egg envelope (chorion) of the fish *Oryzias latipes*.** *Dev Biol* 1995, **167**:9-17
50. Murata K, Sugiyama H, Yasumasu S, Iuchi I, Yasumasu I and Yamagami K **Cloning of cDNA and estrogen-induced hepatic gene expression for choriogenin H, a precursor protein of the fish egg envelope (chorion).** *Proc Natl Acad Sci USA* 1997, **94**:2050-2055
51. Lee C, Na J, Lee K and Park K **Choriogenin mRNA induction in male medaka, *Oryzias latipes* as a biomarker of endocrine disruption.** *Aquat Toxicol* 2002, **61**:233-241
52. Lyons CE, Payette KL, Price JL and Huang RCC **Expression and structural-analysis of a teleost homolog of a mammalian zona-pellucida gene.** *J Biol Chem* 1993, **268**:21351-21358
53. Del-Giacco L, Vanoni C, Bonsignorio D, Duga S, Mosconi G, Santucci A and Cotelli F **Identification and spatial distribution of the mRNA encoding the gp49 component of the gilthead sea bream, *Sparus aurata*, egg envelope.** *Mol Reprod Dev* 1998, **49**:58-69
54. Chang YS, Wang SC, Tsao CC and Huang FL **Molecular cloning, structural analysis, and expression of carp ZP3 gene.** *Mol Reprod Dev* 1996, **44**:295-304
55. Chang YS, Hsu CC, Wang SC, Tsao CC and Huang FL **Molecular cloning, structural analysis, and expression of carp ZP2 gene.** *Mol Reprod Dev* 1997, **46**:258-267
56. Begovac PC and Wallace RA **Major vitelline envelope proteins in pipefish oocytes originate within the follicle and are associated with the Z3 layer.** *J Exp Zool* 1989, **251**:56-73
57. Celius T, Matthews JB, Giesy JP and Zacharewski TR **Quantification of rainbow trout (*Oncorhynchus mykiss*) zona radiata and vitellogenin mRNA levels using real-time PCR after in vivo treatment with estradiol-17 β or α -zearalenol.** *J Steroid Biochem Mol Biol* 2000, **75**:109-119
58. Hyllner SJ, Westerlund L, Olsson PE and Schopen A **Cloning of rainbow trout egg envelope proteins: members of a unique group of structural proteins.** *Biol Reprod* 2001, **64**:805-811
59. Arukwe A, Kullman SW, Berg K, Goksøyr A and Hinton DE **Molecular cloning of rainbow trout (*Oncorhynchus mykiss*) eggshell zona radiata protein complementary DNA: mRNA expression in 17 β -estradiol- and nonylphenol-treated fish.** *Comp Biochem Physiol* 2002, **132**:315-326
60. Lee C, Jeon SH, Na JG and Park K **Sequence analysis of choriogenin H gene of medaka (*Oryzias latipes*) and mRNA expression.** *Environ Toxicol Chem* 2002, **1**:1709-1714
61. Wilson EB **The Cell in Development and Heredity – 3rd Edition.** London, Macmillan 1928,
62. Anderson E **The formation of the primary envelope during oocyte differentiation in teleosts.** *J Cell Biol* 1967, **35**:193-212
63. Yamagami K, Hamazaki TS, Yasumasu S, Masuda K and Iuchi I **Molecular and cellular basis of formation, hardening, and breakdown of the egg envelope in fish.** *Int Rev Cytol* 1992, **136**:51-92
64. Kudo N, Miura T, Miura C and Yamauchi K **Expression and localization of eel testicular ZP-homologues in female Japanese eels (*Anguilla japonica*).** *Zool Sci* 2000, **17**:1297-1302
65. Schmehl MK and Graham EF **Comparative ultrastructure of the zona radiata from eggs of six species of salmonids.** *Cell Tissue Res* 1987, **250**:513-519
66. Hamazaki TS, Nagahama Y, Iuchi I and Yamagami K **A glycoprotein from the liver constitutes the inner layer of the egg envelope (zona pellucida interna) of the fish, *Oryzias latipes*.** *Dev Biol* 1989, **133**:101-110
67. Wahli W **Evolution and expression of vitellogenin genes.** *Trends Genet* 1988, **8**:227-32
68. Davidson EH **Gene activity in early development.** New York, Academic Press 1976,
69. Davidson EH, Klein WH and Britten RJ **Sequence organization in animal DNA and a speculation on hnRNA as a coordinate regulatory transcript.** *Dev Biol* 1977, **55**:69-84
70. Tupler R, Perini G and Green MR **Expressing the human genome.** *Nature* 2001, **409**:832-833
71. Fostier A and Breton B **Binding of steroids by plasma of a teleost: the rainbow trout *Salmo gairdnerii*.** *J Steroid Biochem* 1975, **6**:345-351
72. Lazier CB, Loneragan K and Mommsen TP **Hepatic estrogen receptors and plasma estrogen-binding activity in the Atlantic salmon.** *Gen Comp Endocrinol* 1985, **57**:234-245
73. Pottinger TG **Seasonal variation in specific plasma and target-tissue binding of androgens relative to plasma steroid levels in the brown trout *Salmo trutta* L.** *Gen Comp Endocrinol* 1988, **70**:334-344
74. Laidley CW and Thomas P **Partial characterization of a sex-steroid binding protein in the spotted sea trout (*Cynoscion nebulosus*).** *Biol Reprod* 1994, **51**:982-992
75. Övrevik J, Stenersen J, Nilssen K and Tollefsen K-E **Partial characterisation of a sex steroid-binding protein in plasma from Svalbard Charr (*Salvelinus alpinus* L.).** *Gen Comp Endocrinol* 2001, **122**:31-39
76. Tollefsen K-E **Interaction of estrogen mimics singly and in combination with plasma sex steroid-binding proteins in rainbow trout (*Oncorhynchus mykiss*).** *Aquat Toxicol* 2002, **56**:215-225
77. Petra PH, Stanczyk FZ, Namkung PC, Fritz MA and Novy MJ **Direct effect of sex steroid-binding protein (SBP) of plasma on the metabolic clearance rate of testosterone in the rhesus macaque.** *J Steroid Biochem* 1985, **22**:739-46
78. Rosner W **The functions of corticosteroid-binding globulin and sex hormone-binding globulin: recent advances.** *Endocrine Rev* 1990, **11**:80-91
79. Fortunati N **Sex hormone-binding globulin: Not only a transport protein. What news is around the corner?** *J Endocrinol Invest* 1999, **22**:223-234
80. Katzenellenbogen BS **Estrogen receptors: bioactivities and interactions with cell signaling pathways.** *Biol Reprod* 1996, **54**:287-293
81. Kuntz MA and Shapiro DJ **Dimerizing the estrogen receptor DNA binding domain enhances binding to estrogen response elements.** *J Biol Chem* 1997, **272**:27949-56
82. Tamrazi A, Carlson KE, Daniels JR, Hurth KM and Katzenellenbogen JA **Estrogen receptor dimerization: Ligand binding regulates dimer affinity and dimer dissociation rate.** *Mol Endocrinol* 2002, **16**:2706-2719
83. Tremblay GB and Giguere V **Coregulators of estrogen receptor action.** *Crit Rev Eukaryot Gene Expr* 2002, **12**:1-22
84. Ruh TS, Ruh MF and Singh RK **Nuclear acceptor sites: interaction with estrogen-versus antiestrogen-receptor complexes.** In: *Steroid receptors in health and diseases* (Edited by: Moudgil VK) New York, Plenum Press 1988, 233
85. Lewis JA, Clemens MJ and Tata JR **Morphological and biochemical changes in the hepatic endoplasmic reticulum and golgi apparatus of male *Xenopus laevis* after induction of egg-yolk protein synthesis by oestradiol-17 β .** *Mol Cell Endocrinol* 1976, **4**:311-329
86. Wiegand MD **Vitellogenesis in fishes.** In: *Reproductive Physiology of Fish* (Edited by: Richter CJ, Goos HJT) Pudoc, Wageningen, The Netherlands 1982, 136-146
87. Björnsson BTH, Haux C, Forlin L and Defetos LJ **The involvement of calcitonin in the reproductive physiology of the rainbow trout.** *J Endocrinol* 1986, **108**:17-23
88. Opresko LK and Wiley HS **Receptor-mediated endocytosis in *Xenopus* oocyte. I. Characterization of the vitellogenin receptor system.** *J Biol Chem* 1987, **262**:4109-4155
89. Opresko LK and Wiley HS **Receptor-mediated endocytosis in *Xenopus* oocyte. II. Evidence for two novel mechanisms of hormonal regulation.** *J Biol Chem* 1987, **262**:4116-4123
90. Chan SL, Tan CH, Pang MK and Lam TJ **Vitellogenin purification and development of assay for vitellogenin receptor in oocyte membranes of the tilapia (*Oreochromis niloticus* Linnaeus 1766).** *J Exp Zool* 1991, **257**:96-109
91. Tyler CR and Lancaster P **Isolation and characterization of the receptor for vitellogenin from follicles of the rainbow trout *Oncorhynchus mykiss*.** *J Comp Physiol* 1993, **163**:225-233
92. Tao Y, Berlinsky DL and Sullivan CV **Characterization of a vitellogenin receptor in white perch (*Morone americana*).** *Biol Reprod* 1996, **55**:646-656
93. Prat F, Coward K, Sumpter JP and Tyler CR **Molecular characterization and expression of two ovarian lipoprotein receptors**

- in the rainbow trout *Oncorhynchus mykiss*. *Biol Reprod* 1998, **58**:1146-1153
94. Perazzolo LM, Coward K, Davail B, Normand E, Tyler CR, Pakdel F, Schneider WJ and Le Menn F **Expression and localization of messenger ribonucleic acid for the vitellogenin receptor in ovarian follicles throughout oogenesis in the rainbow trout *Oncorhynchus mykiss***. *Biol Reprod* 1999, **60**:1057-1068
 95. Hiramatsu N, Hara A, Hiramatsu K, Fukada H, Weber GM, Denslow ND and Sullivan CV **Vitellogenin-derived yolk proteins of white perch *Morone americana*: Purification characterization and vitellogenin-receptor binding I**. *Biol Reprod* 2002, **67**:655-667
 96. Hiramatsu N, Ichikawa N, Fukada H, Fujita T, Sullivan CV and Hara A **Identification and characterization of proteases involved in specific proteolysis of vitellogenin and yolk proteins in salmonids**. *J Exp Zool* 2002, **292**:11-25
 97. Colborn T and Clement C **Chemically-induced alterations in sexual and functional development: The wildlife/human connection**. *Advances in modern environmental toxicology Vol XXI*. Princeton NJ, Princeton Scientific Publishing 1992.
 98. Arukwe A and Goksøyr A **Xenobiotics, xenoestrogens and reproduction disturbances in fish**. *Sarsia* 1998, **83**:225-241
 99. Goksøyr A, Arukwe A, Larsson J, Cajaraville MP, Hauser L, Nilsen BM, Lowe D and Matthiessen P **Links between the cellular and molecular response to pollution and the impact on reproduction and fecundity including the influence of endocrine disrupters**. In: *Impacts of Marine Xenobiotics on European Commercial Fish-Molecular Effects and Population Responses* (Edited by: Lawrence A) London, Caldwell Publishers 2003.
 100. Damstra T, Page SV, Herrman JL and Meredith T **Persistent organic pollutants: potential health effects?** *J Epidemiol Comm Health* 2002, **56**:824-825
 101. Toppari J, Larsen JC, Christiansen P, Giwerzman A, Grandjean P, Guillelte LJ Jr, Jégou B, Jensen TK, Jouannet P, Keiding N, Leffers H, McLachlan JA, Meyer O, Möller J, Rajpert-De Meyts E, Scheike T, Sharpe R, Sumpter J and Skakkebaek NE **Male reproductive health and environmental xenoestrogens**. *Environ Health Perspect* 1996, **104**:741-803
 102. Damstra T, Barlow S, Bergman A, Kavlock R and Van Der Kraak G **Global Assessment of the State-of-the-Science of Endocrine Disruptors**. *WHO/PCS/EDC/022* 2002.
 103. Safe SH **Environmental and dietary estrogens and human health: Is there a problem?** *Environ Health Perspect* 1995, **103**:346-315
 104. Safe S and Krishnan V **Cellular and molecular biology of aryl hydrocarbon (Ah) receptor-mediated gene expression**. *Arch Toxicol* 1995, **17**(Suppl):99-115
 105. Ahlborg UG, Lipworth L, Titus-Ernstoff Hsieh C-C, Hanberg A, Baron J, Trichopoulos D and Adami H-O **Organochlorine compounds in relation to breast cancer endometrial cancer and endometriosis: An assessment of the biological and epidemiological evidence**. *Crit Rev Toxicol* 1995, **25**:463-531
 106. Kime DE **The effects of pollution on reproduction in fish**. *Rev Fish Biol Fisher* 1995, **5**:52-96
 107. Lam TJ **Environmental influences on gonadal activity in fish**. In: *Fish Physiology Vol IX - Reproduction Part B* (Edited by: Hoar WS, Randall DJ, Donaldson EM) New York, Academic Press 1983, 65-116
 108. Susani L **Effects of contaminants on teleost reproduction: past and ongoing studies**. Washington, NOAA Technical Memorandum NOS OMA 29 1986.
 109. Wester PW and Canton JH **Histopathological study of *Oryzias latipes* (Medaka) after long-term β -hexachlorocyclohexane exposure**. *Aquat Toxicol* 1986, **9**:21-45
 110. Gimeno S, Gerritsen A, Bowmer T and Komen H **Feminization of male carp**. *Nature* 1996, **384**:221-222
 111. Gray MA and Metcalfe CD **Induction of testis-ova in Japanese medaka (*Oryzias latipes*) exposed to p-nonylphenol**. *Environ Toxicol Chem* 1997, **16**:1082-1086
 112. Kang IJ, Yokota H, Oshima Y, Tsuruda YOT, Imada N, Tadokoro H and Honjo T **Effects of bisphenol A on the reproduction of Japanese medaka (*Oryzias latipes*)**. *Environ Toxicol Chem* 2002, **21**:2394-2400
 113. Palmer BD and Palmer SK **Vitellogenin induction by xenobiotic estrogens in the red-eared turtle and African clawed frog**. *Environ Health Perspect* 1995, **103**:19-25
 114. Folmar LC, Hemmer MJ, Denslow ND, Kroll K, Chen J, Cheek A, Richman H, Meredith H and Grau EG **A comparison of the estrogenic potencies of estradiol, ethynylestradiol, diethylstilbestrol, nonylphenol and methoxychlor in vivo and in vitro**. *Aquat Toxicol* 2002, **60**:101-110
 115. Arukwe A, Knudsen FR and Goksøyr A **Fish zona radiata (egg-shell) protein: A sensitive biomarker for environmental estrogens**. *Environ Health Perspect* 1997, **105**:418-422
 116. Arukwe A, Kullman SW and Hinton DE **Differential biomarker gene and protein expressions in nonylphenol and estradiol-17 β treated juvenile rainbow trout (*Oncorhynchus mykiss*)**. *Comp Biochem Physiol* 2001, **129**:1-10
 117. Arukwe A, Yadetie F, Male R and Goksøyr A **In vivo modulation of nonylphenol-induced zonagenesis and vitellogenesis by the antiestrogen 3,3',4,4'-tetrachlorobiphenyl (PCB-77) in juvenile fish**. *Environ Toxicol Pharmacol* 2001, **10**:5-15
 118. Arukwe A, Celius T, Walther BT and Goksøyr A **Effects of xenoestrogen treatment on zona radiata protein and vitellogenin expression in Atlantic salmon (*Salmo salar*)**. *Aquat Toxicol* 2000, **49**:159-170
 119. Celius T and Walther BT **Oogenesis in Atlantic salmon (*Salmo salar* L.) occurs by zonagenesis preceding vitellogenesis in vivo and in vitro**. *J Endocrinol* 1998, **158**:259-266
 120. Yadetie F, Arukwe A, Goksøyr A and Male R **Induction of hepatic estrogen receptor in juvenile Atlantic salmon in vivo by the environmental estrogen 4-nonylphenol**. *Sci Tot Environ* 1999, **233**:301-310
 121. Jobling S, Sheahan D, Osborne JA, Matthiessen P and Sumpter JP **Inhibition of testicular growth in rainbow trout (*Oncorhynchus mykiss*) exposed to estrogenic alkylphenolic chemicals**. *Environ Toxicol Chem* 1996, **15**:194-202
 122. Donohoe RM and Curtis LR **Estrogenic activity of chlordecone op'-DDT and op'-DDE in juvenile rainbow trout: Induction of vitellogenesis and interaction with hepatic estrogen binding sites**. *Aquat Toxicol* 1996, **36**:31-52
 123. Schwaiger J, Spieser OH, Bauer C, Ferling H, Mallow U, Kalbfus W and Negele RD **Chronic toxicity of nonylphenol and ethynylestradiol: haematological and histopathological effects in juvenile Common carp (*Cyprinus carpio*)**. *Aquat Toxicol* 2000, **51**:69-78
 124. Janssen PAH, Dalessi DLWM, Lambert JGD, Vethaak AD, van Wezel AP and Goos HJTh **Oestrogenic effects in the flounder *Platichthys flesus* after exposure to polluted harbour sediment [abstract]**. 7th SETAC - Europe Annual Meeting: 1997 April 6-10; Amsterdam, The Netherlands
 125. Sumpter JP and Jobling S **Vitellogenesis as a biomarker for estrogenic contaminants of the aquatic environment**. *Environ Health Perspect* 1995, **103**:173-178
 126. Pelissero C, Flouriot G, Foucher JL, Bennetau B, Dunogues J, Gac FL and Sumpter JP **Vitellogenin synthesis in cultured hepatocytes; an in vitro test for the estrogenic potency of chemicals**. *J Steroid Biochem Mol Biol* 1993, **44**:263-272
 127. Jobling S and Sumpter JP **Detergent components in sewage effluents are weakly oestrogenic to fish: An in vitro study using rainbow trout (*Oncorhynchus mykiss*) hepatocytes**. *Aquat Toxicol* 1993, **27**:361-372
 128. Celius T, Haugen TB, Grotmol T and Walther BT **A sensitive zogenetic assay for rapid in vitro assessment of estrogenic potency of xenobiotics and mycotoxins**. *Environ Health Perspect* 1999, **107**:63-68
 129. Tollefsen KE, Mathisen R and Stenersen J **Estrogen mimics bind with similar affinity and specificity to the hepatic estrogen receptor in Atlantic salmon (*Salmo salar*) and rainbow trout (*Oncorhynchus mykiss*)**. *Gen Comp Endocrinol* 2002, **126**:14-22
 130. Yadetie F and Male R **Effects of 4-nonylphenol on gene expression of pituitary hormones in juvenile Atlantic salmon (*Salmo salar*)**. *Aquat Toxicol* 2002, **58**:113-29
 131. Yadetie F **Xenoestrogen modulated gene expression and development of molecular biomarkers in juvenile Atlantic salmon**. *Dr. Scient. Thesis, University of Bergen, Norway* 2001.
 132. OECD **2nd Expert Consultation on Endocrine Disrupter Testing in Fish** Tokyo, Japan 2000.
 133. Nilsen BM, Eidem JE, Kristiansen SI, Nilsen MV, Berg K and Goksøyr A **Development of quantitative vitellogenin-elisa assays for fish test species used in endocrine disruptor screening [abstract NORDTOX 2001]**. *Pharmacol Toxicol* 2001, **88**(suppl 1):P27
 134. Okumura H, Hara A, Saeki F, Todo T, Shinji A and Yamauchi K **Development of a sensitive sandwich enzyme-linked**

- immunosorbent assay (ELISA) for vitellogenin in the Japanese eel *Anguilla japonica* *Fish Sci* 1995, **61**:283-289
135. Tyler CR, Van der Eerden BJ, Sumpter JP, Jobling S and Panter G **Measurement of vitellogenin a biomarker for exposure to oestrogen in a wide variety of cyprinids.** *J Comp Physiol* 1996, **166**:418-426
 136. Tyler CR, van Aerle R, Nilsen MV, Blackwell R, Maddix S, Nilsen BM, Berg K, Hutchinson TH and Goksøyr A **Monoclonal antibody enzyme-linked immunosorbent assay to quantify vitellogenin for studies on environmental estrogens in the rainbow trout (*Oncorhynchus mykiss*).** *Environ Toxicol Chem* 2002, **21**:47-54
 137. Brion F, Nilsen BM, Eidem JK, Goksøyr A and Porcher JM **Development and validation of an enzyme-linked immunosorbent assay to measure vitellogenin in the zebrafish (*Danio rerio*).** *Environ Toxicol Chem* 2002, **21**:1699-1708
 138. Benfey TJ, Donaldson EM and Owen TG **An homologous radioimmunoassay for coho salmon (*Oncorhynchus kisutch*) vitellogenin with general applicability to other pacific salmonids.** *Gen Comp Endocrinol* 1989, **75**:78-82
 139. Nilsen BM, Berg K, Arukwe A and Goksøyr A **Monoclonal and polyclonal antibodies against fish vitellogenin for use in pollution monitoring.** *Mar Environ Res* 1998, **46**:153-157
 140. Norberg B and Haux C **Induction, isolation, and a characterization of the lipid content of plasma vitellogenin from two salmon species: rainbow trout (*Salmo gairdnerii*) and sea trout (*Salmo trutta*).** *Comp Biochem Physiol* 1985, **81**:869-876
 141. Sumpter JP **The purification, radioimmunoassay and plasma levels of vitellogenin from rainbow trout *Salmo gairdneri*.** In *Proceedings of the IXth International Symposium on Comparative Endocrinology: 1981 December 7-11; Hong Kong (Edited by: Lofts B) University Press* 1985, 355-357
 142. Crowther JR **The ELISA Guidebook. Methods in Molecular Biology Vol 149.** New Jersey, Humana Press 2001,
 143. Lowry OH, Rosebrough NJ, Farr AL and Randall RJ **Protein measurements with Folin phenol reagent.** *J Biol Chem* 1951, **193**:265-275
 144. Bradford MM **A rapid and sensitive method for the quantitation of microgram quantities of protein utilizing the principle of protein-dye binding.** *Anal Biochem* 1976, **72**:248-254
 145. Berg K, Bringsvor K, Nilsen MV, Walther BT, Goksøyr A and Nilsen BM **Monoclonal antibodies against zona radiata proteins for purification of individual Zrp-monomers and development of a quantitative Zrp-ELISA [abstract PRIMO 11].** *Mar Environ Res* 2002, **54**:745
 146. Oppen-Berntsen DO, Helvik JV and Walther BT **The major structural proteins of cod (*Gadus morhua*) eggshells and protein crosslinking during teleost egg hardening.** *Dev Biol* 1990, **137**:258-65
 147. Berg K, Nilsen MV, Walther B, Goksøyr A and Nilsen BM **Monoclonal antibodies against zona radiata proteins for detection of estrogenic effects in fish [abstract NORDTOX 2001].** *Pharmacol Toxicol* 2001, **88**(suppl 1):P06
 148. Islinger M, Pawlowski S, Hollert H, Völkl A and Braunbeck T **Measurement of vitellogenin-mRNA expression in primary cultures of rainbow trout hepatocytes in a non-radioactive dot blot/RNase protection-assay.** *Sci Total Environ* 1999, **233**:109-122
 149. Arukwe A, Nilsen BM, Berg K and Goksøyr A **Immunohistochemical analysis of the vitellogenin response in the liver of Atlantic salmon exposed to environmental estrogens.** *Biomarkers* 1999, **4**:373-380
 150. Bieberstein U and Braunbeck T **Immunohistochemical localization of vitellogenin in rainbow trout (*Oncorhynchus mykiss*) hepatocytes using immunofluorescence.** *Sci Total Environ* 1999, **233**:67-75
 151. Anderson MJ, Miller MR and Hinton DE **In vitro modulation of 17 β -estradiol-induced vitellogenin synthesis: Effects of cytochrome P4501A1 inducing compounds on rainbow trout (*Oncorhynchus mykiss*) liver cells.** *Aquat Toxicol* 1996, **34**:327-350
 152. Anderson MJ, Olsen H, Matsumura F and Hinton DE **In vivo modulation of 17 β -estradiol-induced vitellogenin synthesis and estrogen receptor in rainbow trout (*Oncorhynchus mykiss*) liver cells by β -naphthoflavone.** *Toxicol Appl Pharmacol* 1996, **137**:210-218
 153. Villalobos SA, Anderson MJ, Denison MS, Hinton DE, Tullis K, Kennedy IM, Jones AD, Chang DPY, Yang G and Kelley P **Dioxinlike properties of a trichloroethylene combustion-generated aerosol.** *Environ Health Perspect* 1996, **104**:734-743
 154. Gierthy JF, Lincoln DW, Kampcik SJ, Dickerman HW, Bradlow HL, Niwa T and Swaneck GE **Enhancement of 2- and 16 α -estradiol hydroxylation in MCF-7 human breast cancer cells by 2,3,7,8-tetrachlorodibenzo-p-dioxin.** *Biochem Biophys Res Commun* 1988, **157**:515-520
 155. Spink DC, Lincoln DW, Dickerman HW and Gierthy JF **2,3,7,8-Tetrachlorodibenzo-p-dioxin causes an extensive alteration of 17 β -estradiol metabolism in MCF-7 breast tumor cells.** *Proc Natl Acad Sci USA* 1990, **87**:6917-6921
 156. Safe S, Astroff B, Harris M, Zacharewski T, Dickerson R, Romkes M and Biegel I **2,3,7,8-Tetrachlorodibenzo-p-dioxin (TCDD) and related compounds as antiestrogens: Characterization and mechanism of action.** *Pharmacol Toxicol* 1991, **69**:400-409
 157. Donaldson EM **Reproductive indices as measures of the effects of environmental stressors in fish.** *Amer Fisheries Soc* 1990, **8**:109-122
 158. Ware DM **Bioenergetics of stock and recruitment.** *Can J Fish Aquat Sci* 1980, **37**:1012-1024
 159. Ware DM **Power and evolutionary fitness of teleosts.** *Can J Fish Aquat Sci* 1982, **39**:3-13
 160. Sibly R and Calow P **An integrated approach to life-cycle evolution using selective landscapes.** *J Theoret Biol* 1983, **102**:527-547
 161. Thorpe JE **Reproductive strategies in Atlantic salmon *Salmo salar* L.** *Aquacult Fish Manag* 1994, **25**:77-87
 162. Policansky D **Size, age and demography of metamorphosis and sexual maturation in fishes.** *Amer Zool* 1983, **23**:57-63
 163. Herman RL and Kincaid HL **Pathological effects of orally administered estradiol to rainbow trout.** *Aquaculture* 1988, **72**:165-172
 164. Bortone SA and Davis WP **Fish intersexuality as indicator of environmental stress.** *Biosci* 1994, **44**:165-172
 165. Allen MS, Miranda LE and Brock RE **Implications of compensatory and additive mortality to the management of selected sportfish populations Lakes.** *Reserv Res Manage* 1996, **3**:67-79
 166. Jobling S, Nolan M, Tyler CR, Brighty G and Sumpter JP **Widespread sexual disruption in wild fish.** *Environ Sci Technol* 1998, **32**:2498-2506
 167. Byrne M, Villinski JT, Cisternas P, Siegel RK, Popodi E and Raff RA **Maternal factors and the evolution of developmental mode: evolution of oogenesis in *Helicidaris erythrogramma*.** *Dev Genes Evol* 1999, **209**:275-283
 168. Davis RA **Evolution of processes and regulators of lipoprotein synthesis: from birds to mammals.** *J Nutr* 1997, **127**:795S-800S
 169. Mouchel N, Trichet V, Naimi BY, Le Pennec JP and Wolff J **Structure of a fish (*Oncorhynchus mykiss*) vitellogenin gene and its evolutionary implication.** *Gene* 1997, **197**:147-52
 170. Trichet V, Buisine N, Mouchel N, Moran P, Pendas AM, Le Pennec JP and Wolff J **Genomic analysis of the vitellogenin locus in rainbow trout (*Oncorhynchus mykiss*) reveals a complex history of gene amplification and retroposon activity.** *Mol Gen Genet* 2000, **263**:828-837
 171. Gerber-Huber S, Nardelli D, Haefliger JA, Cooper DN, Givel F, Germond JE, Engel J, Green NM and Wahli W **Precursor-product relationship between vitellogenin and the yolk proteins as derived from the complete sequence of a *Xenopus* vitellogenin gene.** *Nucleic Acids Res* 1987, **15**:4737-4760
 172. van het Schip FD, Samallo J, Broos J, Ophuis J, Mojet M, Gruber M and Ab G **Nucleotide sequence of a chicken vitellogenin gene and derived amino acid sequence of the encoded yolk precursor protein.** *J Mol Biol* 1987, **196**:245-260
 173. Spieth J, Nettleton M, Zucker-Aprison E, Lea K and Blumenthal T **Vitellogenin motifs conserved in nematodes and vertebrates.** *J Mol Evol* 1991, **32**:429-438
 174. Trewitt PM, Heilmann LJ, Degruillier SS and Kumaran AK **The boll weevil vitellogenin gene: nucleotide sequence structure and evolutionary relationship to nematode and vertebrate vitellogenin genes.** *J Mol Evol* 1992, **34**:478-492
 175. Yano K, Sakurai MT, Izumi S and Tomino S **Vitellogenin gene of the silkworm, *Bombyx mori*: Structure and sex-dependent expression.** *FEBS Lett* 1994, **356**:207-211
 176. Davail B, Pakdel F, Bujo H, Perazzolo LM, Wacławek M, Schneider WJ and Le Menn F **Evolution of oogenesis: the receptor for vitellogenin from the rainbow trout.** *J Lipid Res* 1998, **39**:1929-1937
 177. Nardelli D, Gerber-Huber S, van het Schip FD, Gruber M, Ab G and Wahli W **Vertebrate and nematode genes coding for yolk**

- proteins are derived from a common ancestor.** *Biochem* 1987, **26**:6397-6402
178. Nardelli D, van het Schip FD, Gerber-Huber S, Haefliger J-A, Gruber M, Ab G and Wahli W **Comparison of the organization and fine structure of a chicken and a *Xenopus laevis* vitellogenin gene.** *J Biol Chem* 1987, **262**:15377-15385
 179. Rogers J **Exon shuffling and intron insertion in serine proteases genes.** *Nature* 1985, **315**:458-459
 180. Cavalier-Smith T **Intron phylogeny: a new hypothesis.** *Trends Genet* 1991, **7**:145-148
 181. Yanagimachi R **Fertility of mammalian spermatozoa: its development and relativity.** *Zygote* 1994, **2**:371-372
 182. Doren S, Landsberger N, Dwyer N, Gold L, Blanchette-Mackie J and Dean J **Incorporation of mouse zona pellucida proteins into the envelope of *Xenopus laevis* oocytes.** *Dev Genes Evolut* 1999, **209**:330-339
 183. Walther BT **Do life's three domains mirror the origin of sex?** *J Biosci* 2000, **25**:217-220
 184. Goksøyr J **Evolution of eukaryotic cells.** *Nature* 1967, **214**:461
 185. Sagan L **On the origin of mitosing cells.** *J Theor Biol* 1967, **14**:225-274
 186. Margulis L and Bermudes D **Symbiosis as a mechanism of evolution: Status of the endosymbiosis theory.** *Symbiosis* 1985, **1**:101-124

Publish with **BioMed Central** and every scientist can read your work free of charge

"BioMed Central will be the most significant development for disseminating the results of biomedical research in our lifetime."

Sir Paul Nurse, Cancer Research UK

Your research papers will be:

- available free of charge to the entire biomedical community
- peer reviewed and published immediately upon acceptance
- cited in PubMed and archived on PubMed Central
- yours — you keep the copyright

Submit your manuscript here:
http://www.biomedcentral.com/info/publishing_adv.asp

