



## Electrical control of spontaneous emission and strong coupling for a single quantum dot

**Laucht, A.; Hofbauer, F.; Hauke, N.; Angele, J.; Stobbe, Søren; Kaniber, M.; Böhm, G.; Lodahl, Peter; Amann, M-C; Finley, J.J.**

*Published in:*  
New Journal of Physics

*Link to article, DOI:*  
[10.1088/1367-2630/11/2/023034](https://doi.org/10.1088/1367-2630/11/2/023034)

*Publication date:*  
2009

*Document Version*  
Publisher's PDF, also known as Version of record

[Link back to DTU Orbit](#)

*Citation (APA):*  
Laucht, A., Hofbauer, F., Hauke, N., Angele, J., Stobbe, S., Kaniber, M., Böhm, G., Lodahl, P., Amann, M-C., & Finley, J. J. (2009). Electrical control of spontaneous emission and strong coupling for a single quantum dot. *New Journal of Physics*, 11(2), 023034. <https://doi.org/10.1088/1367-2630/11/2/023034>

---

### General rights

Copyright and moral rights for the publications made accessible in the public portal are retained by the authors and/or other copyright owners and it is a condition of accessing publications that users recognise and abide by the legal requirements associated with these rights.

- Users may download and print one copy of any publication from the public portal for the purpose of private study or research.
- You may not further distribute the material or use it for any profit-making activity or commercial gain
- You may freely distribute the URL identifying the publication in the public portal

If you believe that this document breaches copyright please contact us providing details, and we will remove access to the work immediately and investigate your claim.

## Electrical control of spontaneous emission and strong coupling for a single quantum dot

This article has been downloaded from IOPscience. Please scroll down to see the full text article.

2009 New J. Phys. 11 023034

(<http://iopscience.iop.org/1367-2630/11/2/023034>)

View [the table of contents for this issue](#), or go to the [journal homepage](#) for more

Download details:

IP Address: 192.38.90.17

The article was downloaded on 28/09/2012 at 12:46

Please note that [terms and conditions apply](#).

## Electrical control of spontaneous emission and strong coupling for a single quantum dot

A Laucht<sup>1</sup>, F Hofbauer<sup>1</sup>, N Hauke<sup>1</sup>, J Angele<sup>1</sup>,  
S Stobbe<sup>2</sup>, M Kaniber<sup>1</sup>, G Böhm<sup>1</sup>, P Lodahl<sup>2</sup>,  
M-C Amann<sup>1</sup> and J J Finley<sup>1,3</sup>

<sup>1</sup> Walter Schottky Institut, Technische Universität München,  
Am Coulombwall 3, D-85748 Garching, Germany

<sup>2</sup> DTU Fotonik, Department of Photonics Engineering,  
Technical University of Denmark, DTU—Building 345V,  
DK-2800 Kgs Lyngby, Denmark  
E-mail: [finley@wsi.tum.de](mailto:finley@wsi.tum.de)

*New Journal of Physics* **11** (2009) 023034 (11pp)

Received 24 October 2008

Published 20 February 2009

Online at <http://www.njp.org/>

doi:10.1088/1367-2630/11/2/023034

**Abstract.** We report the design, fabrication and optical investigation of electrically tunable single quantum dots—photonic crystal defect nanocavities operating in both the weak and strong coupling regimes of the light–matter interaction. Unlike previous studies where the dot–cavity spectral detuning was varied by changing the lattice temperature, or by the adsorption of inert gases at low temperatures, we demonstrate that the quantum-confined Stark effect can be employed to quickly and reversibly switch the dot–cavity coupling simply by varying a gate voltage. Our results show that exciton transitions from individual dots can be tuned by  $\sim 4$  meV relative to the nanocavity mode before the emission quenches due to carrier tunneling escape. This range is much larger than the typical linewidth of the high- $Q$  cavity modes ( $\sim 100$   $\mu$ eV) allowing us to explore and contrast regimes where the dots couple to the cavity or decay by spontaneous emission into the two-dimensional photonic bandgap. In the weak-coupling regime, we show that the dot spontaneous emission rate can be tuned using a gate voltage, with Purcell factors  $\geq 7$ . New information is obtained on the nature of the dot–cavity coupling in the weak coupling regime, and electrical control of zero-dimensional polaritons is demonstrated for the highest- $Q$  cavities ( $Q \geq 12\,000$ ). Vacuum Rabi splittings up to  $\sim 120$   $\mu$ eV are observed, larger than the linewidths

<sup>3</sup> Author to whom any correspondence should be addressed.

of either the decoupled exciton ( $\gamma \leq 40 \mu\text{eV}$ ) or cavity mode. These observations represent a voltage switchable optical nonlinearity at the single photon level, paving the way towards *on-chip* dot-based nano-photonic devices that can be integrated with passive optical components.

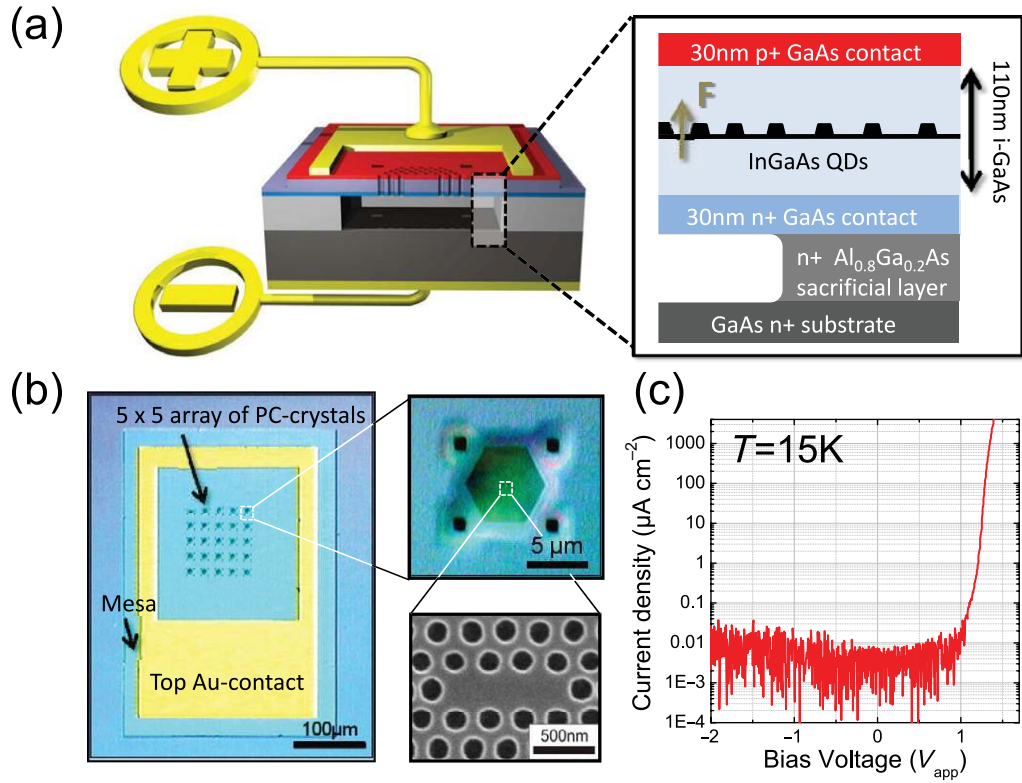
Spontaneous emission (SE) is very fundamental and is often regarded as an inherent property of an excited atom, molecule or quantum dot (QD). However, this view overlooks the fact that it is not only a property of the emitter, but also a property of the combined emitter–vacuum system [1]. The irreversibility of SE comes about due to the infinite number of vacuum states available to the emitted photon. If the photonic environment is modified, for instance by placing the emitter within a cavity, SE can be inhibited, enhanced or even made to become reversible [2, 3].

For semiconductor QDs in high finesse cavities, a wide range of novel optoelectronic devices have been realized using such cavity quantum electrodynamic phenomena. Examples include high efficiency single photon sources [4]–[7], low threshold, high bandwidth nanocavity lasers [8]–[10] and even *single-QD* optical components such as mirrors [11] and phase shifters [12].

All such single-QD cavity quantum electrodynamic devices call for a method to precisely control the spectral detuning between the QDs and the cavity mode ( $\Delta = \hbar(\omega_{\text{QD}} - \omega_{\text{cav}})$ ). Until now, this has been done by slowly tuning the lattice temperature [13]–[15] or by condensing inert gases at low temperatures [16, 17]. A major drawback of both these methods is that they are slow, rendering them impractical for future single-QD devices.

In this paper, we demonstrate an electrically contacted single-QD photonic crystal (PC) nanocavity that allows  $\Delta$  to be rapidly and reversibly switched over  $\sim 4 \text{ meV}$  using the quantum confined Stark effect (QCSE) [18]. In the weak-coupling regime of cavity quantum electrodynamics, we observe a voltage switchable Purcell effect [19] ( $F_p \geq 7$ ) as well as a non-resonant coupling [17, 20], which is active for  $\Delta \leq 5 \text{ meV}$ . For cavities with  $Q \geq 10\,000$ , we observe strong coupling [21, 22] with vacuum Rabi splittings up to  $\sim 120 \mu\text{eV}$ , representing a voltage switchable optical nonlinearity. Our techniques could be readily extended to realize *on-chip* PC single-QD optoelectronic devices with modulation bandwidths in the gigahertz (GHz) range. This may pave the way towards the realization of on-chip, coherent single-QD quantum photonic devices.

The samples investigated are GaAs p–i–n photodiode structures patterned into membrane PCs as depicted schematically in figure 1(a) (see appendix A) [23]. A single layer of InGaAs self-assembled QDs with an areal density  $\leq 20 \mu\text{m}^{-2}$  are incorporated in the intrinsic region of the device, such that they are subject to an axial electric field that can be tuned by varying the voltage applied across the p–i–n junction ( $V_{\text{app}}$ ). An array of  $5 \times 5$  PCs were defined into the photodiode window in the top-contact, at the center of each of which  $L3$  nanocavities [24] were placed (figure 1(b)). The  $L3$  nanocavities support six strongly localized modes within the two-dimensional (2D) photonic bandgap with  $Q$ -factors ranging from  $3000 \leq Q \leq 15\,000$  [24]. As discussed below, this allows the measurements to be performed in both the weak and strong coupling regimes of the light–matter interaction. Figure 1(c) shows a typical current–voltage trace recorded without illumination at  $T = 15 \text{ K}$ . Clear rectifying behavior is observed with a forward bias current onset of  $V_{\text{bi}} \sim 1.1 \text{ V}$ , corresponding to the built-in potential in the

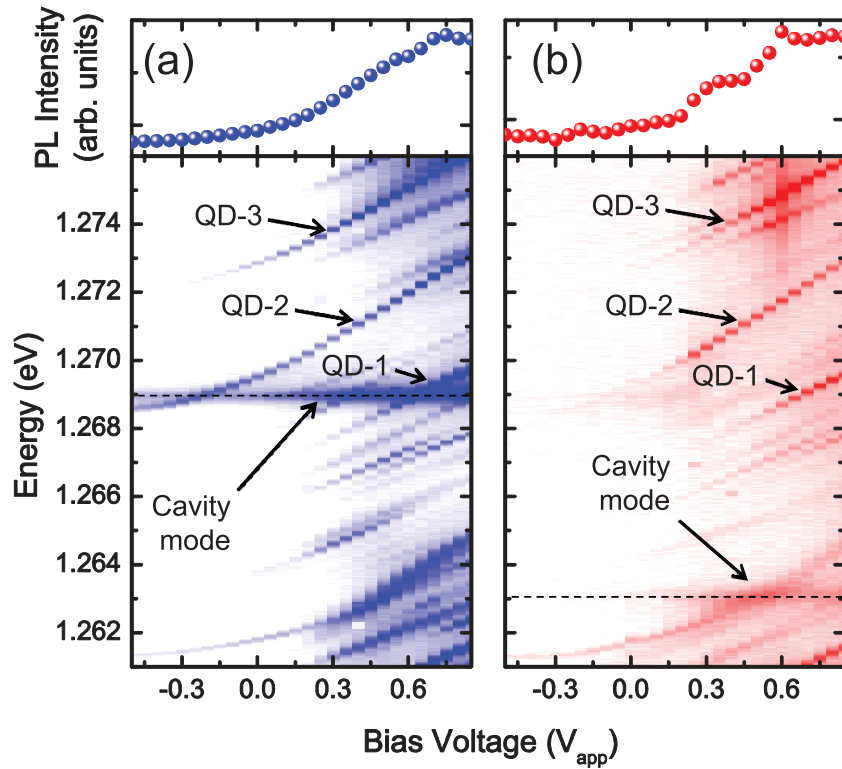


**Figure 1.** Electrically tunable single-QD PC nanocavities investigated. (a) Schematic cross-sectional representation of the device and layer sequence of the active region. The polarity of the static electric field ( $F$ ) is indicated. (b) Microscope image of one of the diode windows showing the  $5 \times 5$  array of PCs and image of higher magnification depicting a single PC. The scanning electron microscope image shows one of the  $L3$  cavities at the center of each PC. (c) Current–voltage characteristic of the device recorded without illumination.

membrane p–i–n diode<sup>4</sup>, and negligible current flow ( $<0.01 \mu\text{A cm}^{-2}$ ) in reverse bias. From the built-in potential and the device geometry, we estimate the static electric field to be  $F \sim (V_{\text{bi}} - V_{\text{app}})/d$ , where  $d = 110 \text{ nm}$  is the thickness of the intrinsic region and  $V_{\text{app}}$  is the applied electrostatic potential. Thus, we expect that static electric fields in the range  $0 \text{ kV cm}^{-1} \leq |F| \leq 100 \text{ kV cm}^{-1}$  can be applied parallel to the QD-growth axis, as depicted in figure 1(a).

Typical  $V_{\text{app}}$ -dependent micro-photoluminescence ( $\mu\text{PL}$ ) measurements recorded from one of the  $L3$  cavities are presented in the false color plot in figure 2(a). A number of sharp emission lines are observed, all of which shift to lower energy as  $V_{\text{app}}$  reduces, corresponding to increasing  $F$ . In addition, a prominent feature is observed at  $\hbar\omega_{\text{cav}} = 1269.0 \text{ meV}$ , the energy of which is unaffected by the bias voltage. We identify this feature as being due to the fundamental

<sup>4</sup> We note that the onset voltage of our photodiodes is typically  $\sim 1.1 \text{ V}$  instead of the  $\sim 1.5 \text{ V}$  expected for a GaAs p–i–n structure. This discrepancy arises due to the low doping level of the GaAs n-contact ( $2 \times 10^{18} \text{ cm}^{-3}$ ) and  $\text{Al}_{0.8}\text{Ga}_{0.2}\text{As}$  sacrificial layers. This low doping level was experimentally found to be required to obtain high finesse cavity modes.



**Figure 2.**  $\mu$ PL measurements of a typical single-QD nanocavity at 15 K before and after detuning the cavity mode using nitrogen deposition. (a) Before nitrogen deposition showing the cavity mode unaffected by the gate voltage  $V_{app}$ , while QD transitions shift due to the QCSE. The three QDs discussed in the text are labeled QD-1, QD-2 and QD-3, respectively. (b) Equivalent data to that presented in (a) after adsorption of molecular nitrogen. The upper panels of (a) and (b) show the spectrally integrated  $\mu$ PL yield as a function of  $V_{app}$ .

cavity mode of the  $L3$  defect nanocavity and the shifting peaks as single exciton transitions from different QDs located in the cavities [25, 26]. The QD peaks shift to lower energy with reducing bias due to the QCSE, while the mode emission remains fixed due to the negligible variation of the refractive index of the PC GaAs matrix  $\sim 200$  meV below the direct bandgap. The spectrally integrated luminescence intensity is plotted as a function of  $V_{app}$  in the upper panels of figure 2. The total  $\mu$ PL intensity remains approximately constant for  $V_{app} \geq 0.6$  V and quenches rapidly for  $V_{app} < 0.6$  V due to carrier tunneling escape from the QDs in the internal field [18]. The data presented in figure 2(a) show that the QD transitions can be tuned by  $|\Delta| \sim 2\text{--}4$  meV relative to the nanocavity mode<sup>5</sup> before quenching due to carrier tunneling prevents PL experiments. Three different QD transitions, labeled QD-1, QD-2 and QD-3 on figure 2(a), will be studied below using time-resolved spectroscopy. The tuning range provided by the QCSE is much larger than the linewidth of the high- $Q$  cavity mode ( $Q = 4020$ ), allowing us to explore and contrast

<sup>5</sup> Even when no QD transition is in resonance, we are still able to detect emission from the mode, as reported by other groups [15, 17]. We attribute this to a yet unknown coupling between QD states and the cavity mode as investigated by Kaniber *et al* [20].



regimes where QD transitions spectrally couple to the optical cavity, decay by SE into the 2D photonic bandgap or are quenched due to carrier tunneling escape from the QDs.

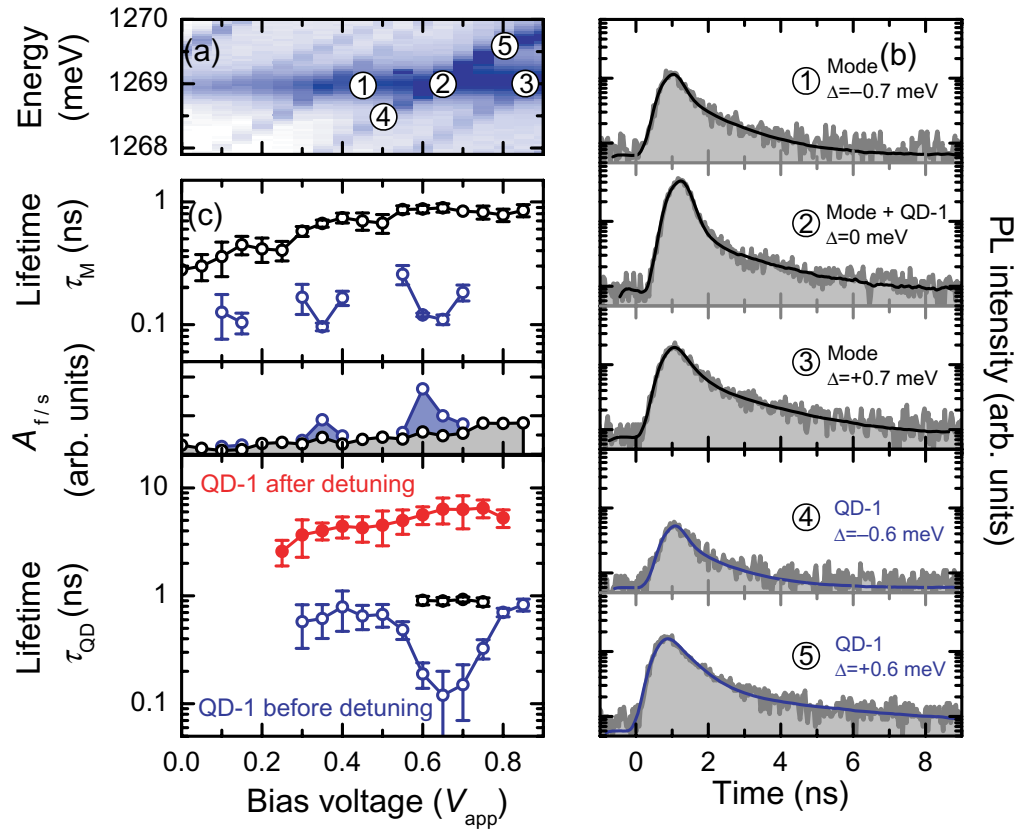
By controllably adsorbing molecular nitrogen into the PC structure, the cavity mode can be controllably red-shifted [16, 17]. Figure 2(b) shows  $\mu$ PL recorded from the same nanocavity after the mode has been red-shifted by  $-6$  meV. We note that after shifting, the emission energies and  $V_{\text{app}}$  dependence of QD-1, QD-2 and QD-3 remain unchanged. Before detuning the mode, we systematically performed time-resolved measurements detecting QD-1 and the cavity mode emission as a function of  $V_{\text{app}}$ . Clearly, QD-1 is electro-optically fine-tuned through the cavity mode over a bias range where tunneling escape from the QDs is negligible and  $\Delta = 0$  meV for  $V_{\text{app}} = +0.65$  V. Thus, the measured decay dynamics directly reflects on the SE lifetime and its dependence on QD-cavity detuning ( $\Delta$ ). Similar measurements were then repeated on QD-1 *after* detuning the mode. These complementary measurements, before and after detuning, permit us to investigate the SE dynamics with and without spectral coupling to the mode, but at equal values of  $V_{\text{app}}$  and, thus,  $F$ .

Selected results of our time-resolved measurements are summarized in figure 3. Five situations of interest, labeled 1–5, are marked on the false color plot in figure 3(a). Traces 1, 2 and 3 in figure 3(b) were recorded with detection on the *cavity mode* with  $V_{\text{app}} = +0.45$  V,  $+0.65$  V and  $+0.85$  V, corresponding to QD-1 being detuned by  $\Delta = -0.7$  meV,  $0$  meV and  $+0.7$  meV, respectively. In contrast, traces 4 and 5 were recorded with detection *on* QD-1 for  $V_{\text{app}} = +0.50$  V and  $+0.80$  V, corresponding to  $\Delta = -0.6$  meV and  $+0.6$  meV, respectively. When  $\Delta \neq 0$ , the observed decay transients detected on the mode are mono-exponential and exhibit a characteristic lifetime close to  $\tau_{\text{Mode}} \sim 0.8$  ns.<sup>6</sup> In strong contrast, for  $\Delta = 0$  meV (situation 2), emission from QD-1 and the cavity mode are superimposed and a clear biexponential decay transient is observed (see figure 3(b)). The time constants extracted with detection on the cavity mode and QD-1 are plotted in the upper and lower panels of figure 3(c), respectively. Besides QD-1, two other weaker transitions shift through the cavity mode at  $V_{\text{app}} = +0.35$  V and  $V_{\text{app}} = +0.15$  V, respectively. As for QD-1, each time a transition shifts into resonance with the cavity mode, we observe a bi-exponential decay, with the fast component being identified as the Purcell-enhanced emission of the QD into the cavity mode [19]. This interpretation is confirmed by examining the bias-dependent time-integrated amplitudes of the fast ( $A_f$ ) and slow ( $A_s$ ) decay components (figure 3(c)—middle panel). The intensity of the slow decay component (black trace) does not exhibit resonances and decreases monotonically upon reducing  $V_{\text{app}}$  in a manner that is fully analogous to figure 2(a) (upper panel). In strong contrast, the superimposed fast decay (blue trace) *only* appears when a QD transition is tuned into resonance and is strongest exactly in resonance.

For large QD-cavity detunings (i.e.  $|\Delta| \geq \hbar\omega_{\text{cav}}/Q = 315$   $\mu$ eV), the QD SE-lifetime remains almost constant at  $\tau_{\Delta \neq 0}^{\text{QD}} \sim 0.7$  ns (blue open circles in figure 3(c)—lower panel), while for zero detuning it is  $\tau_{\Delta=0}^{\text{QD}} = 0.12$  ns, limited by the temporal response of our detection system<sup>7</sup>. This result represents a direct measurement of an electrically tunable Purcell effect, where the

<sup>6</sup> The measured lifetime for the cavity mode does not reflect the photon loss rate from the cavity, rather the timescale over which the cavity mode is fed via the non-resonant coupling mechanism from off-resonant QDs [20]. The exact process mediating this off-resonant coupling remains the subject of ongoing investigations but it may be due to shake-up of many body processes or coupling of the exciton to the phonon bath.

<sup>7</sup> Since the fast component of the decay is at the resolution limit of our avalanche photo diodes, we can only ascertain that the lifetime is shorter than  $\tau_{\text{QD-on}} < 0.1$  ns.

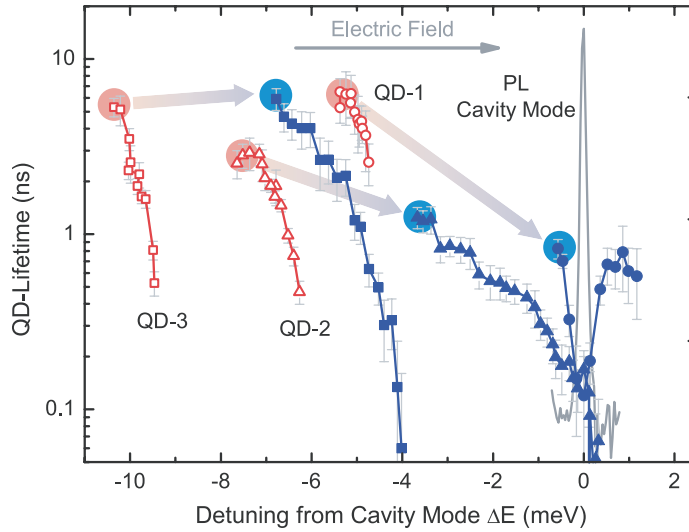


**Figure 3.** Lifetime measurements on cavity mode and QD. (a) False-color PL plot giving an overview of the investigated situation. (b) Decay transients recorded on the cavity mode (traces 1, 2 and 3) and QD-1 (traces 2, 4 and 5) as indicated in (a). (c) Upper panel: lifetimes measured on the cavity mode as a function of  $V_{app}$  (black circles). The blue trace shows the fast component for voltages where a biexponential decay is observed. Middle panel: corresponding PL intensity for the slow (black) and fast (blue) decay components  $A_{f/s}$ . Lower panel: lifetimes measured on QD-1 as a function of  $V_{app}$  (blue open circles). The black trace shows the slow component of the biexponential decays. The lifetimes recorded on the QD when the cavity mode was shifted away by adsorption of nitrogen are plotted by the red filled circles.

ratio of lifetimes yields a Purcell factor of  $F_p \geq 7$ . We note that the dependence of  $\tau^{QD}$  on  $\Delta$  in figure 3(c) (lower panel) reflects precisely the spectral profile of the mode linewidth observed in PL ( $315 \mu\text{eV}$ ) confirming that the observed SE-rate enhancement is due to the Purcell effect. Close to  $\Delta = 0$ , we detect the cavity mode background emission (black open circles) as a slow component in the decay transients (see, e.g. figure 3, situation 2).

In order to separate the influence of the spectral proximity of the mode from the  $V_{app}$ -dependence due to tunneling, we repeated the time-resolved measurements on QD-1 after strongly detuning the mode via controlled nitrogen deposition [16, 17] (figure 2(b)). The resulting decay transients were found to be purely mono-exponential and the resulting SE lifetimes are plotted in figure 3(c) (lower panel) as the filled red circles. In strong contrast to

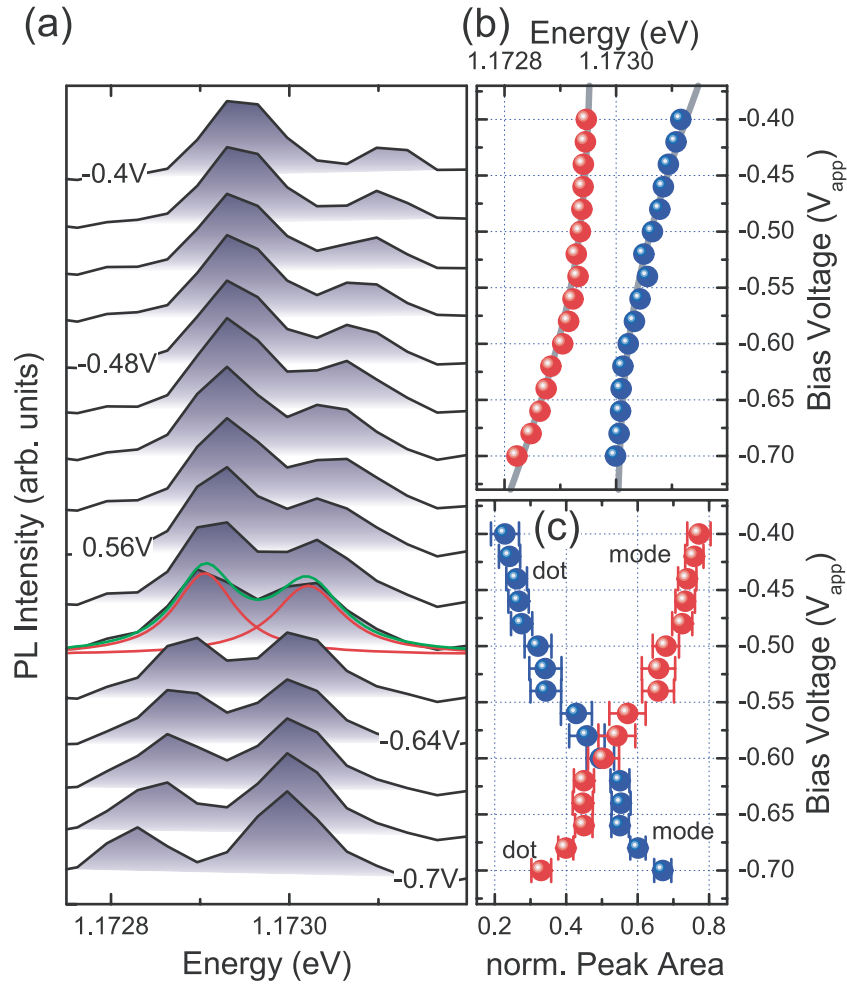




**Figure 4.** Comparison of  $V_{\text{app}}$ -dependent lifetime measurements on QD-1, QD-2 and QD-3 plotted versus the detuning from the cavity mode. Lifetime-dependent measurements recorded from QD-1 (circles), QD-2 (triangles) and QD-3 (squares) recorded as a function of  $V_{\text{app}}$ . Filled blue (open red) symbols correspond to measurements performed on the same QD transitions before (after) detuning the mode by nitrogen deposition. The first point in each data set is recorded at the same value of  $V_{\text{app}} = +0.8$  V, clearly revealing that the non-resonant coupling mechanism is active for detunings up to  $\sim 5$  meV as discussed in the text.

the case before detuning, the SE lifetime reduces monotonically as  $V_{\text{app}}$  reduces, varying from  $\sim 6$  to  $\sim 3$  ns as  $V_{\text{app}}$  is reduced from  $+0.7$  to  $+0.3$  V. Resonances are *not* observed as expected since QD-1 is now strongly detuned from the cavity mode ( $\Delta \sim 6$  meV over this bias range). Although these lifetimes are characteristic of QDs emitting into a 2D photonic bandgap [7], it is remarkable that they are  $\sim 8$  times longer, when compared with the saturation value of  $\tau_{\Delta \neq 0}^{\text{QD}} \sim 0.7$  ns before the nitrogen-tuning (compare with open blue circles in figure 3(c)—bottom panel). This observation indicates that two distinct mechanisms influence the SE lifetime: (i) Purcell effect due to direct radiative coupling to the cavity mode and (ii) non-resonant coupling between the QD and the cavity mode that is active over a much larger range of detunings. Such a non-resonant QD-cavity coupling mechanism, as has previously been revealed by photon cross-correlation spectroscopy [15, 17, 20] and explained by possible theories [27, 28], clearly plays a role in these experiments.

To further elucidate the energy range over which this non-resonant coupling mechanism is active, in figure 4 we summarize the  $V_{\text{app}}$ -dependent lifetime measurements performed on QD-1, QD-2 and QD-3 as a function of energy detuning  $\Delta$  from the cavity mode. Two data sets are plotted for each QD: before (filled blue symbols) and after (open red symbols) shifting the cavity mode by nitrogen deposition. Each data set represents measurements where  $V_{\text{app}}$  was varied from  $0.8$  V in  $-0.05$  V steps, the electric field  $F$  increasing as indicated in figure 4. The data presented clearly reveal the reduction of the measured SE lifetime at high  $F$  due to non-radiative tunneling escape of carriers from the QD as discussed in the text. Comparison of



**Figure 5.** Demonstration of electrically controlled strong coupling. (a) Waterfall plot of PL spectra for different bias voltages. (b) Peak center position for the left (red trace) and the right (blue trace) peak for various detunings. The gray curves show the theoretical expectation fitted to the data. (c) Normalized peak area for the left (red trace) and the right (blue trace) peak.

the pairs of data sets from the three QDs reveals information about the energy range over which the non-resonant coupling mechanism is active. For example, comparison of the first point of the data sets for QD-1 (circles), both recorded at  $V_{app} \sim +0.8$  V, shows that the lifetime shortens dramatically, before and after shifting, from  $\sim 6.5$  to  $\sim 0.8$  ns as  $\Delta$  reduces from  $\sim -5.4$  to  $\sim -0.5$  meV. For QD-2 (triangles), which is detuned by  $\Delta = -3.6$  meV at low  $F$ , a weaker, albeit similar change of the lifetime is observed from 3.0 to 1.2 ns. Only for QD-3 (squares), which is strongly detuned from the mode by  $\Delta \sim -6.8$  meV for low  $F$ , are the  $V_{app}$  data similar for both cases, before and after detuning. Although we do not know how well positioned QD-3 is with respect to an anti-node of the cavity mode, this observation is a strong indication that the non-resonant coupling mechanism is at least active for detunings as large as  $\sim 5$  meV, an observation consistent with suggested mechanisms as being due to decay into a continuum of final states for multiple charged QDs [20] or phonon-assisted decay.

In the final section of this paper we demonstrate electrical control of zero-dimensional polaritons in a high- $Q$  cavity with  $Q \sim 12\,500$ .<sup>8</sup> For a low excitation power of  $P \sim 1\text{ W cm}^{-2}$ , the QD is far from being saturated, and we have the possibility to observe vacuum Rabi splitting. In figure 5(a), we show a series of PL spectra recorded with high spectral resolution for different bias voltages and observe clear QD–cavity anticrossing. This anticrossing unambiguously demonstrates that the QD–cavity system is in the strong coupling regime [21] and becomes even clearer when we plot the center peak position of both peaks as a function of applied bias as in figure 5(b). The gray curves are obtained from theory with parameters fitted to the data and are in excellent agreement with the experiment. From the fits, we extract a vacuum Rabi splitting of  $121\text{ }\mu\text{eV}$ , similar to values reported [13]–[15], [17] by other groups for self-assembled QDs. Figure 5(c) shows the peak intensities of the higher and lower energy peaks normalized to the total emission intensity plotted for various detunings. For  $V_{\text{app}} = -0.7\text{ V}$ , the lower energy peak is predominantly exciton-like and has a weak intensity compared with the higher energy peak that is predominantly cavity-like. As the two peaks are shifted into resonance, the intensities become similar and both peaks represent strongly coupled, single-QD exciton polariton states. When the system is then detuned away from resonance they exchange characteristic properties; the lower energy peak becomes cavity mode-like and the higher energy peak exciton-like. These observations unequivocally prove the strong coupling character of this anticrossing in an electrically tunable system.

In summary, we have demonstrated electrically tunable single-QD PC nanocavities operating in the weak and strong coupling regimes of the light–matter interaction. In the weak coupling regime, we demonstrated electrical control of the radiative lifetime, with evidence for a short-range reduction of the SE lifetime due to the Purcell effect and a long-range interaction that is active for QD–cavity detunings up to  $\Delta \sim 5\text{ meV}$ . For structures operating in the strong coupling regime, we have observed an electrically switchable optical nonlinearity present at the single-QD, single-photon level.

## Acknowledgments

We acknowledge the financial support of the Deutsche Forschungsgemeinschaft via the Sonderforschungsbereich 631, Teilprojekt B3 and the German Excellence Initiative via the Nanosystems Initiative Munich (NIM).

## Appendix A

### A.1 Semiconductor structure

The samples studied were GaAs p–i–n photodiode structures and nominally consist of the following layers: firstly, we deposited a 500 nm thick, n-type ( $n = 2 \times 10^{18}\text{ cm}^{-3}$ , Si-dopant)  $\text{Al}_{0.8}\text{Ga}_{0.2}\text{As}$  sacrificial layer followed by a 35 nm thick, n-type GaAs lower contact layer ( $n = 2 \times 10^{18}\text{ cm}^{-3}$ , Si-dopant). This is followed by a 110 nm thick intrinsic GaAs waveguide core into the center of which we grew a single layer of QDs by depositing 7.36 ML of  $\text{In}_{0.4}\text{Ga}_{0.6}\text{As}$  at  $595\text{ }^\circ\text{C}$  and a rate of  $0.04\text{ ML s}^{-1}$ . A 35 nm thick p-type ( $p = 2 \times 10^{19}\text{ cm}^{-3}$ , C-dopant) GaAs

<sup>8</sup> Very recently an electro-optically tunable single dot micropillar nanocavity operating in the strong coupling regime was presented by Kistner *et al* [29]. Our approach using PC nanocavities is quite distinct and potentially more scalable since it allows tunable cavities to be integrated together with waveguides onto a chip.

top contact was then grown to complete the structure. After the growth, we established an Ohmic back contact to the buried  $n^+$  layers and defined  $300\text{ }\mu\text{m} \times 400\text{ }\mu\text{m}$  photodiode mesas using photolithography and wet etching techniques.  $200\text{ }\mu\text{m} \times 200\text{ }\mu\text{m}$  windows were opened in the metallic top contact for optical access. Inside each window we then formed an array of  $5 \times 5$  PC nanocavities by combining electron beam lithography and  $\text{Cl}_2$ -Ar reactive ion etching to define a lattice of cylindrical air holes (radius  $r$ ) arranged in a hexagonal lattice with period  $a = 260\text{ nm}$  and  $r/a \sim 0.3$ . Nanocavities were formed by three missing hole line defects with detuned outer holes. Finally, suspended PC membrane structures were fabricated by selectively removing the  $\text{Al}_{0.8}\text{Ga}_{0.2}\text{As}$  layer beneath the GaAs waveguide core to leave a free-standing, p-i-n-doped GaAs membrane.

### A.2 Optical characterization

The sample was mounted in a liquid He-flow cryostat and cooled down to  $T = 15\text{ K}$ . For excitation, we used a pulsed Ti:sapphire laser ( $f_{\text{laser}} = 80\text{ MHz}$ ,  $2\text{ ps}$  duration pulses) tuned into resonance with a higher energy cavity mode ( $1.305\text{ eV} < E_{\text{Laser}} < 1.355\text{ eV}$ ) in order to excite QDs located inside the cavity only [25, 26]. The QD  $\mu\text{PL}$  was collected via a  $100\times$  microscope objective (numerical aperture = 0.5) providing a spatial resolution of  $\sim 1\text{ }\mu\text{m}$  and the signal was spectrally analyzed by a  $0.55\text{ m}$  imaging monochromator and detected with a Si- or an InGaAs-based, liquid nitrogen cooled charge coupled device detector. For time-resolved measurements, we used a fast silicon avalanche photodiode that provided a temporal resolution of  $\sim 100\text{ ps}$  after deconvolution.

## References

- [1] Haroche S and Kleppner D 1989 Cavity quantum electrodynamics *Phys. Today* **42** 24
- [2] Haroche S 1992 *Fundamental Systems in Quantum Optics* ed J Dalibard, J M Raimond and J Zinn-Justin (Amsterdam: North-Holland) chapter 13, pp 767–940
- [3] Khitrova G, Gibbs H M, Kira M, Koch S and Scherer A 2006 Vacuum Rabi splitting in semiconductors *Nat. Phys.* **2** 81–90
- [4] Englund D 2005 Controlling the spontaneous emission rate of single quantum dots in a 2D photonic crystal *Phys. Rev. Lett.* **95** 013903
- [5] Chang W H 2006 Efficient single photon sources based on low density quantum dots in photonic crystal nanocavities *Phys. Rev. Lett.* **96** 117401
- [6] Kaniber M *et al* 2007 Efficient spatial redistribution of quantum dot spontaneous emission from two-dimensional photonic crystals *Appl. Phys. Lett.* **91** 061106
- [7] Kaniber M *et al* 2008 Highly efficient single-photon emission from single quantum dots within a two-dimensional photonic band-gap *Phys. Rev. B* **77** 073312
- [8] Painter O 1999 Two dimensional photonic band-gap defect mode laser *Science* **284** 1819–21
- [9] Park H G 2004 Electrically driven single-cell photonic crystal laser *Science* **305** 1444–7
- [10] Altug H, Englund D and Vuckovic J 2006 Ultrafast photonic crystal nanocavity laser *Nat. Phys.* **2** 484
- [11] Englund D, Faraon A, Fushman I, Stoltz N, Petroff P and Vuckovic J 2007 Controlling cavity reflectivity with a single quantum dot *Nature* **450** 857
- [12] Fushman I, Englund D, Faraon A, Stoltz N, Petroff P and Vuckovic J 2008 Controlled phase shifts with a single quantum dot *Science* **320** 769
- [13] Reithmaier J P *et al* 2004 Strong coupling in a single quantum dot-semiconductor microcavity system *Nature* **432** 197–200

- [14] Yoshie T *et al* 2004 Vacuum Rabi splitting with a single quantum dot in a photonic crystal nanocavity *Nature* **432** 200–3
- [15] Press D *et al* 2007 Photon antibunching from a single quantum-dot-microcavity system in the strong coupling regime *Phys. Rev. Lett.* **98** 117402
- [16] Mosor S *et al* 2005 Scanning a photonic crystal slab nanocavity by condensation of xenon *Appl. Phys. Lett.* **87** 141105
- [17] Hennessy K *et al* 2007 Quantum nature of a strongly coupled single quantum dot–cavity system *Nature* **445** 896–9
- [18] Finley J J *et al* 2004 Quantum-confined Stark shifts of charged exciton complexes in quantum dots *Phys. Rev. B* **70** 201308
- [19] Purcell E 1946 Spontaneous emission probabilities at radio frequencies *Phys. Rev.* **69** 681
- [20] Kaniber M *et al* 2008 Investigation of the nonresonant dot–cavity coupling in two-dimensional photonic crystal nanocavities *Phys. Rev. B* **77** 161303
- [21] Andreani L C *et al* 1999 Strong-coupling regime for quantum boxes in pillar microcavities: theory *Phys. Rev. B* **60** 13276
- [22] Laussy F, del Valle E and Tejedor C 2008 Strong-coupling of quantum dots in microcavities *Phys Rev Lett.* **101** 083601
- [23] Hofbauer F *et al* 2007 Electrically probing photonic bandgap phenomena in contacted defect nanocavities *Appl. Phys. Lett.* **91** 201111
- [24] Akahane Y *et al* 2003 High- $Q$  photonic nanocavity in a two-dimensional photonic crystal *Nature* **425** 944
- [25] Nomura M *et al* 2006 Enhancement of light emission from single quantum dot in photonic crystal nanocavity by using cavity resonant excitation *Appl. Phys. Lett.* **89** 241124
- [26] Kaniber M *et al* 2009 Efficient and selective cavity-resonant excitation for single photon generation *New. J. Phys.* **11** 013031
- [27] Hughes S *et al* 2008 Role of electron–phonon scattering on single-quantum-dot vacuum Rabi splitting in a photonic-crystal nanocavity *IEEE Lasers and Electro-Optics Society (LEOS) Annual Meeting* 3591
- [28] Yamaguchi M *et al* 2008 Photon emission by nanocavity-enhanced quantum anti-Zeno effect in solid-state cavity quantum-electrodynamics *Opt. Express* **16** 18067
- [29] Kistner C *et al* 2008 *Opt. Express* **16** 15006