



6-6-2018

Endometrial Response to Conceptus-Derived Estrogen and Interleukin-1 β at the Time of Implantation in Pigs

Hakhyun Ka

Yonsei University, South Korea

Heewon Seo

Yonsei University, South Korea

Yohan Choi

University of Kentucky, yohan.choi@uky.edu


Inkyu Yoo

Yonsei University, South Korea

Jisoo Han

Yonsei University, South Korea

Follow this and additional works at: https://uknowledge.uky.edu/obgyn_facpub

 Part of the [Animal Sciences Commons](#), [Biotechnology Commons](#), and the [Obstetrics and Gynecology Commons](#)

[Right click to open a feedback form in a new tab to let us know how this document benefits you.](#)

Repository Citation

Ka, Hakhyun; Seo, Heewon; Choi, Yohan; Yoo, Inkyu; and Han, Jisoo, "Endometrial Response to Conceptus-Derived Estrogen and Interleukin-1 β at the Time of Implantation in Pigs" (2018). *Obstetrics and Gynecology Faculty Publications*. 23.

https://uknowledge.uky.edu/obgyn_facpub/23

This Review is brought to you for free and open access by the Obstetrics and Gynecology at UKnowledge. It has been accepted for inclusion in Obstetrics and Gynecology Faculty Publications by an authorized administrator of UKnowledge. For more information, please contact UKnowledge@lsv.uky.edu.

Endometrial Response to Conceptus-Derived Estrogen and Interleukin-1 β at the Time of Implantation in Pigs

Digital Object Identifier (DOI)

<https://doi.org/10.1186/s40104-018-0259-8>

Notes/Citation Information

Published in *Journal of Animal Science and Biotechnology*, v. 9, 44, p. 1-17.

© The Author(s). 2018

This article is distributed under the terms of the Creative Commons Attribution 4.0 International License (<http://creativecommons.org/licenses/by/4.0/>), which permits unrestricted use, distribution, and reproduction in any medium, provided you give appropriate credit to the original author(s) and the source, provide a link to the Creative Commons license, and indicate if changes were made. The Creative Commons Public Domain Dedication waiver (<http://creativecommons.org/publicdomain/zero/1.0/>) applies to the data made available in this article, unless otherwise stated.

REVIEW

Open Access



Endometrial response to conceptus-derived estrogen and interleukin-1 β at the time of implantation in pigs

Hakhyun Ka^{1*}, Heewon Seo^{1,2}, Yohan Choi^{1,3}, Inkyu Yoo¹ and Jisoo Han¹

Abstract: The establishment of pregnancy is a complex process that requires a well-coordinated interaction between the implanting conceptus and the maternal uterus. In pigs, the conceptus undergoes dramatic morphological and functional changes at the time of implantation and introduces various factors, including estrogens and cytokines, interleukin-1 β 2 (IL1B2), interferon- γ (IFNG), and IFN- δ (IFND), into the uterine lumen. In response to ovarian steroid hormones and conceptus-derived factors, the uterine endometrium becomes receptive to the implanting conceptus by changing its expression of cell adhesion molecules, secretory activity, and immune response. Conceptus-derived estrogens act as a signal for maternal recognition of pregnancy by changing the direction of prostaglandin (PG) F_{2 α} from the uterine vasculature to the uterine lumen. Estrogens also induce the expression of many endometrial genes, including genes related to growth factors, the synthesis and transport of PGs, and immunity. IL1B2, a pro-inflammatory cytokine, is produced by the elongating conceptus. The direct effect of IL1B2 on endometrial function is not fully understood. IL1B activates the expression of endometrial genes, including the genes involved in IL1B signaling and PG synthesis and transport. In addition, estrogen or IL1B stimulates endometrial expression of IFN signaling molecules, suggesting that estrogen and IL1B act cooperatively in priming the endometrial function of conceptus-produced IFNG and IFND that, in turn, modulate endometrial immune response during early pregnancy. This review addresses information about maternal-conceptus interactions with respect to endometrial gene expression in response to conceptus-derived factors, focusing on the roles of estrogen and IL1B during early pregnancy in pigs.

Keywords: Conceptus, Endometrium, Estrogen, Interleukin-1 β , Pig, Uterus

Background

A high rate of embryonic mortality occurs in all mammals. In pigs, embryonic mortality before day (d) 30 of pregnancy can be up to 40%, and most embryonic losses occur during the peri-implantation period [1]. An understanding of the cellular and molecular mechanisms underlying conceptus–endometrial interactions for the establishment of pregnancy is essential to reducing embryonic mortality. In pigs, the establishment of pregnancy is a complex process that requires well-coordinated interactions between the implanting conceptus (embryo/fetus and associated extraembryonic membranes) and the maternal uterus. This leads to an extended lifespan for the corpus luteum (CL) for continued production of progesterone in the ovary and the secretion of

histotrophs and immune modulation for conceptus development and placentation in the endometrium [2, 3].

During the peri-implantation period, the porcine conceptus undergoes dramatic morphological changes from spherical (3 to 10 mm in diameter) to ovoidal to tubular (10 to 50 mm in length) and then to filamentous forms (100 to 800 mm in length) as it secretes a variety of factors, including estrogens and cytokines, interleukin-1 β 2 (IL1B2), interferon- γ (IFNG), and IFN- δ (IFND), into the uterine lumen. It also migrates in the uterine lumen for appropriate embryo spacing and uses noninvasive implantation to develop a true epitheliochorial placenta [2, 4, 5]. Meanwhile, the endometrium, which is affected by progesterone from the ovary during this period, prepares for conceptus implantation by producing histotrophs such as growth factors, ions, amino acids, monosaccharides, enzymes, nutrient binding proteins, and extracellular matrix (ECM) proteins and by changing the gene expression, cellular morphology, and maternal immune environment to

* Correspondence: hka@yonsei.ac.kr

¹Department of Biological Science and Technology, Yonsei University, Wonju 26493, Republic of Korea

Full list of author information is available at the end of the article



allow the adhesion of the conceptus trophoctoderm to the endometrial epithelial cells and the development of an allogeneic fetus [3, 6, 7].

Conceptus-derived factors affect various aspects of endometrial function. Estrogens and IL1B2 are produced by the elongating conceptus on d 10–12 of pregnancy [2, 3]. Estrogens signal a maternal recognition of pregnancy in pigs because they act on a redirection of endometrial prostaglandin (PG) $F_{2\alpha}$ secretion from the uterine vasculature to the uterine lumen to protect the corpus luteum and ensure continued production of progesterone [2, 8]. Estrogens also affect the expression of endometrial genes involved in PG production, calcium movement, and IFN signaling [2, 9–11]. The direct effect of conceptus-derived IL1B2 at the maternal–conceptus interface is not fully understood, but it has been shown that IL1B induces the expression of many endometrial genes related to PG production and transport and the IL1B and IFN signaling pathways [10, 12, 13]. On d 12–20 of pregnancy, the conceptus trophoctoderm produces significant amounts of IFN- γ (IFNG) and IFN- δ (IFND) with the highest antiviral activity on d 14–d 16 of pregnancy in pigs [14–16]. IFNG is the predominant type II IFN, comprising approximately 75% of antiviral activity in uterine flushings, and IFND is a novel type I IFN in pigs [14–16]. Unlike IFN- τ (IFNT), a type I IFN produced by the conceptus and acting as a signal for maternal recognition of pregnancy by preventing endometrial production of luteolytic $PGF_{2\alpha}$ in ruminants [17], IFND and IFNG do not have an anti-luteolytic effect in pigs [18]. IFNs secreted by the conceptus trophoctoderm induce many IFN-stimulated genes and class I and II major histocompatibility complex (MHC) molecules in the endometrium [19–22], but detailed function of IFNs at the maternal–conceptus interface is not fully understood in pigs.

Several recent reviews have well described the events and the molecules involved in the establishment of pregnancy during the peri-implantation period in pigs [2, 9, 23, 24]. The present review highlights current information, focusing on the roles of conceptus-derived estrogen and IL1B during the implantation period in pigs.

Estrogen, progesterone, and their receptors during the estrous cycle and early pregnancy

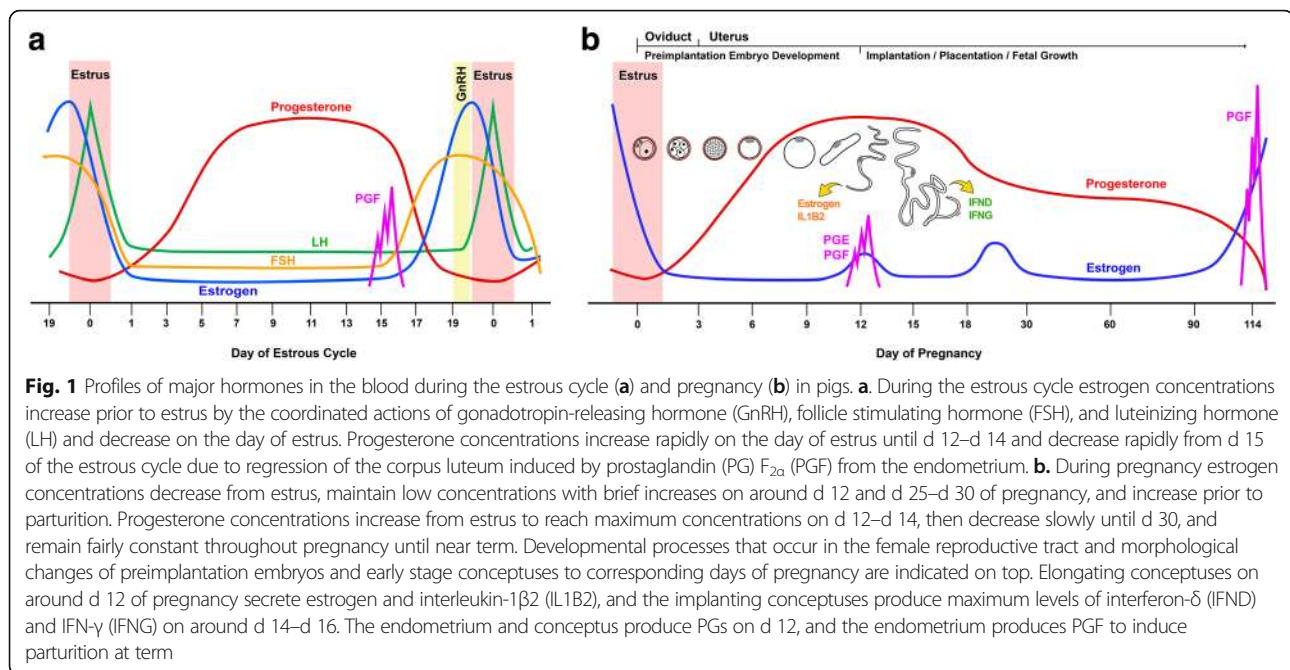
The estrous cycle and establishment and maintenance of pregnancy are regulated by the orchestrated actions of various hormones from hypothalamus, pituitary, ovary, uterus and conceptus. These hormones include gonadotropin-releasing hormone (GnRH) from the hypothalamus, follicle stimulating hormone (FSH) and luteinizing hormone (LH) from the pituitary, estrogen and progesterone from the ovary, estrogen from the conceptus and $PGF_{2\alpha}$ from the uterus (Fig. 1).

Estrogen

Plasma estrogen concentrations in pigs increase prior to estrus and decrease on the day of estrus. During the estrous cycle, the mean plasma concentrations of estradiol are less than 20 pg/mL until d 16 or d 17, and then they increase to their maximal concentration of 50 pg/mL 1 or 2 d prior to estrus [25, 26]. Between d 12 and d 15 of the estrous cycle, estrone and estradiol concentrations are elevated in cyclic pigs [27]. There is no difference in plasma estradiol concentrations between cyclic and pregnant pigs for the first two weeks after the onset of estrus [25], but the estradiol concentrations in the utero-ovarian vein between d 12 and d 17 are higher in pregnant pigs than in cyclic pigs [28] (Fig. 1). Estrogen concentrations in the uterine lumen are estimated by analyzing uterine flushing from pigs [27, 29, 30]. In cyclic pigs, estrone and estradiol contents are constant at 200 to 300 pg between d 6 and d 16 of the estrous cycle, and estrone content increases to 1,000 pg on d 18. In pregnant pigs, estradiol content is about 300 pg until d 10 after the onset of estrus, at which point it increases to about 1,400 pg between d 10 and d 12, decreases to d 15, and then increases again on d 18. The estrone content in pregnant pigs also increases to 1,500 pg on d 8, decreases to d 12, then increases slowly to 3,700 pg on d 18 [27]. Total recoverable estrone, estradiol, and estriol in cyclic pigs do not change, whereas in pregnant pigs, total estrone and estradiol increase about 6-fold from d 10 to d 12. Total recoverable estrone sulfate and estradiol sulfate also increase from d 10 to d 12 in pregnant pigs [31]. The increase in estrogen concentrations in the uterine lumen of pregnant pigs reflects estrogen production by the conceptus, which converts androgens to estrogens [32, 33]. Catechol estrogens (2- and 4-hydroxyestradiol) are also converted from estradiol by porcine conceptuses during early pregnancy [34, 35].

Progesterone

Progesterone is secreted by the CL, adrenal cortex, and placenta and is necessary for implantation, the regulation of uterine development, uterine secretion, mammary gland development, and lactogenesis. Plasma progesterone concentrations increase rapidly from less than 1 ng/mL on the day of estrus to about 30 ng/mL on d 12 and d 14 in both cyclic and pregnant pigs. In cyclic pigs, progesterone concentrations decrease rapidly from d 15 to less than 1 ng/mL on d 18 of the estrous cycle [25, 26]. This decrease in progesterone concentrations in cyclic pigs results from CL regression induced by $PGF_{2\alpha}$ from the uterine endometrium. In pregnant pigs, progesterone concentrations decrease slowly from d 14 to d 30, reaching 10–20 ng/mL, and then remain fairly constant throughout pregnancy until near term [25, 36] (Fig. 1). Progesterone is also present in the lumen of the uterus [27, 30]. Progesterone



in uterine flushing increases from d 14 to d 16 and then decreases to d 18 of pregnancy [27]. Concentrations of pregnenolone, progesterone, and pregnenolone sulfate in uterine flushing between d 9 and d 15 are higher in pregnant pigs than in cyclic pigs [30].

Receptors for estrogen and progesterone

Estrogen and progesterone actions in the uterus are primarily mediated through estrogen receptor- α (ESR1) and progesterone receptor (PGR), respectively. In pigs, the expression of ESR1 and PGR changes depending on the estrous cycle and pregnancy. Nuclear *ESR1* concentrations increase from estrus (d 0) to d 12 of the estrous cycle and then decrease by d 15. Endometrial *ESR1* mRNA expression is highest on d 10, declines by d 15, and then increases by d 18 in cyclic and pregnant pigs. However, in pregnant pigs *ESR1* remains suppressed after d 18 of pregnancy [37]. In cyclic and pregnant pigs, ESR1 proteins are localized in luminal epithelial (LE) and glandular epithelial (GE) cells and the stroma at estrus. ESR1 is detectable in LE and GE cells between d 5 and d 15 of the estrous cycle and pregnancy, whereas ESR1 in the stroma decreases markedly during this period. Between d 10 and d 12, strong ESR1 staining is detectable in LE and GE cells. On d 15, ESR1 staining decreases in LE and GE cells and then increases in LE and GE cells and the stroma on d 18 of the estrous cycle in cyclic pigs, but remains low after d 18 in pregnant pigs [37]. Estrogen receptor- β (ESR2), a subtype of nuclear estrogen receptors, is expressed in LE and GE cells in the endometrium during the estrous cycle and pregnancy and in conceptus trophoctoderm on d 12 [38], but

regulation and function of ESR2 is not fully understood in pigs [39, 40]. The presence of the membrane-associated estrogen receptors including membrane-bound ESR1 and G-protein coupled estrogen receptor 1 (GPER1), which activate non-genomic actions of estrogen, has been described in various tissue and cell types in several species [41, 42]. However, the expression of membrane-bound ESR1 or GPER1 has not been determined in the porcine endometrium.

PGR expression in the porcine uterus during the estrous cycle and pregnancy has been determined [43–45]. The endometrial *PGR* concentrations are highest between d 0 and d 5 of the estrous cycle, decrease by d 10 and d 11, and then remain low until the next proestrus phase. This pattern is the same in pregnant pigs until d 11 to d 12, and low abundance of endometrial *PGR* expression are maintained until d 85 of pregnancy. *PGR* protein is localized in LE and GE cells and the stroma between d 0 and d 5 with strong intensity. *PGR* in LE and GE cells declines from d 7, is not detectable in LE or superficial GE cells on d 12, and then increases by d 18 in cyclic pigs. In pregnant pigs, the pattern of *PGR* localization is the same as for cyclic pigs until d 12, but *PGR* staining in epithelial cells does not increase until the late stage of pregnancy. Stromal *PGR* is detectable throughout the estrous cycle and pregnancy, even though staining intensity is lower between d 5 and d 15 of the estrous cycle and pregnancy than at estrus. Stromal *PGR* increases on d 18 in cyclic pigs but not in pregnant pigs. *PGR* is localized to the myometrium throughout all day of the estrous cycle and pregnancy.

The down-regulation of PGR in uterine LE cells during the implantation period is a phenomenon common to several mammalian species, including pigs, ruminants, humans, and mice, indicating that loss of PGR in the uterine epithelial cells is a prerequisite for uterine receptivity to implantation, gene expression by uterine epithelial cells, and transport of molecules in the uterine lumen for a developing conceptus [46]. Because progesterone profoundly affects uterine receptivity for implantation, this paradox could be explained by stromal cell-derived growth factors known as progestamedins that are produced and released from uterine stromal and myometrial cells and express PGR through the action of progesterone [47, 48]. However, the presence of several membrane progesterone receptors, progesterone membrane component 1 (PGRMC1) and PGRMC2, and progesterin and adipoQ receptor (PAQR) 5 to PAQR9, which are all G-protein-coupled receptors, has been shown in reproductive tissues and other tissues in humans, mice, and bovines [49–51]. Our study also shows that endometrial epithelial cells express PGRMC1, PGRMC2 and PAQRs during the estrous cycle and pregnancy in pigs (Kim and Ka, unpublished data), suggesting that those membrane progesterone receptors in endometrial epithelial cells could be responsible for progesterone actions during the progesterone-dominant period of the estrous cycle and pregnancy.

Conceptus development during early pregnancy

In pigs, following fertilization, cleavage of the embryo occurs in the oviduct. Four-cell embryos enter the uterus approximately 48 h after ovulation, develop to the blastocyst stage by d 5, and then shed the zona pellucida on d 6 or d 7 [52–54]. Blastocysts measure less than 3 mm in diameter until d 10 with considerable variation [55]. During this period, the blastocysts secrete estrogen [32] and migrate in the uterus for spacing prior to implantation [53, 55, 56]. Shortly before implantation, between d 11 and d 12, porcine blastocysts undergo dramatic morphological changes, as described above. In contrast, morphological elongation of blastocysts does not occur in rodents or primates, and extraembryonic membranes are formed after implantation [57–59]. During the peri-implantation period, porcine conceptuses secrete a variety of molecules, such as estrogen, cytokines, PGs, growth factors, and proteases [2, 3].

The initial elongation from spherical blastocysts to filamentous conceptuses is achieved by cellular remodeling, not by cellular hyperplasia because the mitotic index and DNA contents of the conceptuses do not change during elongation [31]. The conceptus elongation process includes changes in microfilament orientation by rearrangement of the actin cytoskeleton [60, 61] and junctional complexes of trophoblast cells and

the migration of the endoderm at the tip of the epiblast [29]. It has been proposed that epiblast-derived fibroblast growth factor 4 (FGF4) is involved in communication with the trophoblast cells by binding to FGF receptor 2 (FGFR2) and activating the mitogen-activated protein kinase (MAPK) signaling pathway in the trophoblast cells of the spherical and ovoidal conceptuses prior to the elongation process [62]. FGF4 treatment of porcine trophoblast cells in vitro induces cell migration and activates the protein kinase B (also known as the AKT) signaling pathway [63]. In addition, bone morphogenetic protein 4 from extraembryonic mesoderm is also involved in the cellular reorganization of trophoblast cells during conceptus elongation [62]. Further growth and development of the conceptus during the peri-implantation period is stimulated by many growth factors and cytokines produced by the endometrium, including epidermal growth factor (EGF) [64, 65], FGF7 [66], insulin-like growth factor-1 (IGF1) [67], interleukin 6 (IL6), leukemia inhibitory factor [68], and transforming growth factor beta (TGFβ) [69].

Conceptus adhesion to the endometrium

The adhesion cascade for the implantation of a porcine conceptus to the maternal endometrium proceeds through a sequence of events: 1) hatching of the blastocyst from the zona pellucida, 2) precontact and orientation of the conceptus to the uterine LE cells, 3) apposition of the trophoblast to the uterine LE cells, and 4) adhesion of the trophoblast to the uterine LE cells [2, 59]. Although the initial early stages of implantation are common to all species, the invasion of the trophoblast across the uterine LE cells and stroma does not occur in pigs, which uses non-invasive implantation and a true epithelio-chorial type of placenta [70]. In pigs, attachment of the conceptus to the uterine epithelium initiates around d 13 to d 14, and full attachment is completed after d 18 [71]. Conceptus trophoblast cells during this period are apposed closely to the uterine epithelium, and the embryonic disc region is rigidly attached to the uterine epithelium, with more distal regions of the chorion separated from the luminal surface [72].

The endometrial LE cells undergo morphological and functional changes during the adhesion phase. The apical-basal polarity of the LE cells decreases as the columnar epithelium with microvilli changes into cuboidal epithelium with a loss of microvilli [72]. Tight junctions between endometrial LE cells are in the basolateral region. In addition, the nuclei of LE cells become larger and more vesicular, and the cytoplasm is less dense and accumulated, with glycogen droplets at the basal side [71–73]. The apical surfaces of the LE cells are covered with a thick filamentous glycocalyx during the attachment phase [71, 73]. Mucin 1 (MUC1), a transmembrane mucin

glycoprotein in glycocalyx, is down-regulated during the implantation period in pigs and ruminants [74, 75]. MUC1 is known to act as an anti-adhesive component between LE cells and trophoctoderm cells by sterically inhibiting cell-cell and cell-ECM binding [58, 76]. Thus, it is suggested that down-regulation of MUC1 results in exposure of low-affinity carbohydrate ligand binding molecules such as selectins and galectins as well as a variety of cell adhesion molecules, including cadherins and integrins [23]. In humans and rabbits, the pattern of MUC1 expression in endometrial epithelial cells is somewhat different: MUC1 expression in LE cells increases during the receptive phase but is locally reduced at the attachment sites by cell surface proteases (shedases) derived from the blastocyst or blastocyst-induced paracrine factors [58, 77]. It is believed that progesterone induces epithelial MUC1 expression, and down-regulation of PGR causes the disappearance of MUC1 on the uterine LE and superficial GE cells for the establishment of uterine receptivity to implantation [58].

Among many cell adhesion molecules, the roles of integrin and several ECM proteins have been well studied in the adhesion process between endometrial LE and trophoctoderm cells in domestic animal species, including pigs and sheep [23, 76]. Integrins are heterodimeric glycoprotein receptors composed of non-covalently linked α and β subunits that bind to the Arg-Gly-Asp (RGD) and non-RGD amino acid sequences of various ECM components and cell adhesion molecules [76]. The activation of integrin receptors in LE and trophoctoderm cells in the implantation adhesion process causes cytoskeletal reorganization and changes in gene expression for adhesion, migration, and invasion [76]. In pigs, uterine LE cells express integrin subunits $\alpha 1$, $\alpha 3$, $\alpha 4$, $\alpha 5$, $\alpha \nu$, $\beta 1$, $\beta 3$, and $\beta 5$; trophoctoderm cells express $\alpha 1$, $\alpha 4$, $\alpha 5$, $\alpha \nu$, $\beta 1$, and $\beta 3$; and $\alpha \nu \beta 1$, $\alpha \nu \beta 3$, $\alpha \nu \beta 5$, $\alpha 4 \beta 1$, and $\alpha 5 \beta 1$ are localized at the attachment sites between uterine LE and trophoctoderm cells [78]. Secreted phosphoprotein 1 (SPP1; also known as osteopontin), fibronectin, and vitronectin, which are ECM protein ligands for integrin receptors, are expressed in the endometrium at the time of LE and trophoctoderm cell adhesion [78–80]. SPP1 is known to bind to $\alpha \nu \beta 1$, $\alpha \nu \beta 3$, $\alpha \nu \beta 5$, and $\alpha 4 \beta 1$; fibronectin interacts with $\alpha 4 \beta 1$; and vitronectin binds mainly to $\alpha \nu \beta 3$ [23, 78]. The expression of SPP1 in the endometrium is particularly induced by estrogen of conceptus origin at the uterine LE cells juxtaposed to the conceptus trophoctoderm, beginning around d 12 and extending to all LE cells by d 20. High abundance of SPP1 expression is maintained at the maternal-conceptus interface throughout pregnancy [79, 81, 82]. In vitro analysis using porcine trophoctoderm (pTr) cells and uterine endometrial epithelial (pUE) cells has shown that SPP1 binds directly to the $\alpha \nu \beta 6$ integrin subunits of pTr

cells and the $\alpha \nu \beta 3$ on pUE cells, suggesting that SPP1 acts as a bidirectional bridging ligand during conceptus implantation [80]. The expression and function of SPP1 in the adhesion cascade at the uterine-conceptus interface has been shown in several species, including humans, mice, rabbits, and sheep, suggesting that the SPP1-mediated cell adhesion process for conceptus implantation is conserved across species [23]. Furthermore, latency-associated peptide (LAP), part of the TGF β complex, binds to integrin receptors $\alpha \nu \beta 1$, $\alpha \nu \beta 3$, and $\alpha \nu \beta 5$ at the apical surfaces of uterine LE and trophoctoderm cell attachments, suggesting that LAP-integrin complexes also promote conceptus attachment [83]. Overall, these findings indicate that in pigs the cell adhesion cascade between endometrial LE and conceptus trophoctoderm cells during the implantation period is a complex process that involves a variety of adhesive factors.

Maternal recognition of pregnancy

Progesterone is required for pregnancy maintenance beyond the estrous cycle in most mammals, including pigs, ruminants, rodents, and primates [84]. To sustain progesterone production from the CL and maintain a pregnancy, species use a variety of strategies to abrogate luteolysis. In general, the conceptus produces antiluteolytic signals that prevent the secretion or action of PGF $_{2\alpha}$ (pigs and ruminants) or that are directly luteotrophic to keep the CL secreting progesterone (primates).

Maternal recognition of pregnancy is usually defined as the rescue of the CL from undergoing luteolysis, although maternal function is altered as early as the period when the embryo is in the oviduct, and the mechanism to establish pregnancy and maintain CL function varies among species. The presence of a maternal recognition signal from pig conceptuses was predicted by studies on the effect of flushing conceptuses from uterine horns on various days of pregnancy. Removal of conceptuses from the uterus between d 4 and d 10 does not affect the CL lifespan [85], whereas flushing conceptuses from the uterus on or after d 12 increases the inter-estrous interval by 3 or more days [86]. Therefore, signals for maternal recognition of pregnancy in pigs are produced by conceptuses on about d 12 for the maintenance of pregnancy. Perry and coworkers first demonstrated that estrogen was produced by conceptuses during the period of maternal recognition of pregnancy in pigs [32]. There is considerable evidence for the antiluteolytic effects of estrogen [2]. Administration of exogenous estrogen in cyclic pigs between d 11 and d 15 extends the inter-estrous interval and decreases the concentration, peak height, and pulse frequency of PGF $_{2\alpha}$ release from the uterus [87]. Estrogen treatment on d 9.5, d 11, d 12.5, d 14, d 15.5 or d 14–16 of the estrous cycle results in an inter-estrous interval of about 30 d [88]. Daily treatment between d 11 and d 15 or two period

treatments on d 11 and d 14 to d 16, corresponding to the pattern of estrogen production by conceptuses, prolongs CL function beyond d 60. The uterine content of total recoverable estrogens (estrone, estradiol, and estriol) in pregnant pigs increases on d 11 to d 12, declines on d 13 to d 14, and then increases after d 14 of pregnancy, whereas in cyclic pigs, estrogen concentration does not increase before d 15 of the estrous cycle when preovulatory follicles are present [30, 31].

The current theory of maternal recognition of pregnancy in the pig is the endocrine-exocrine theory [8]. It suggests that uterine endometrial cells differentially secrete $\text{PGF}_{2\alpha}$ or luteolysin, depending on estrogen secreted by conceptuses. In cyclic pigs, endometrial $\text{PGF}_{2\alpha}$ is secreted into the uterine vasculature, which is transported to the ovary to cause luteolysis on d 15 to d 16 of the estrous cycle (endocrine). However, in pregnant pigs, the uterine endometrium's response to estrogen produced by conceptuses from d 11 and d 12 to d 15 is to secrete $\text{PGF}_{2\alpha}$ into the uterine lumen, where it is sequestered to exert its biological actions in the uterus or be metabolized to prevent luteolysis (exocrine) [2, 8]. Indeed, $\text{PGF}_{2\alpha}$ concentration in the utero-ovarian vein is significantly higher in cyclic pigs on d 13 to d 17 than in pregnant pigs [28]. This theory is also supported by a report that in cyclic pigs, total recoverable $\text{PGF}_{2\alpha}$ per uterine horn was 1.98 ng on d 11, 210.2 ng on d 17, and 66.2 ng on d 19 of the estrous cycle, whereas in pigs treated with estrogen between d 11 and d 15, total recoverable $\text{PGF}_{2\alpha}$ was 1.9 ng, 4,144.3 ng, and 4,646.7 ng on the same respective days [87]. PGE_2 concentrations in the uterine lumen also increase on d 11 to d 14 in pigs [31]. In contrast to $\text{PGF}_{2\alpha}$, PGE_2 could have a luteotrophic effect and protect the CL against the luteolytic action of $\text{PGF}_{2\alpha}$ [89, 90]. Another possible mechanism for preventing luteolysis during maternal recognition of pregnancy is an increase in the PGE_2 : $\text{PGF}_{2\alpha}$ ratio in response to estrogen secreted by conceptuses in the uterus [90–94]. Therefore, PG synthesis and secretion appear to be critical and tightly regulated to modulate luteolysis and maternal recognition of pregnancy in the uterine endometrium in pigs.

Conceptus estrogens and their role in endometrial function

Conceptus estrogens

It is well established that the elongating conceptus produces estrogens at the time of implantation in pigs, as stated previously [2, 32]. The expression of 17α -hydroxylase (CYP17A1) and aromatase (CYP19A1), enzymes responsible for the synthesis of estrogens, is detectable in the trophoblast cells of spherical to filamentous conceptuses on d 11 and d 12 [67, 95]. Unconjugated estrogens (estrone, estradiol, and estriol) and

sulfur-conjugated estrogens (estrone sulfate, estradiol sulfate and estriol sulfate) are observed in uterine fluids [31, 96]. Estrogen sulfotransferase produced by the endometrium is responsible for the conversion of free estrogens to conjugated estrogens [96, 97]. Catechol estrogens, 2- and 4-hydroxyestradiols, are also produced by the elongating conceptuses, which exhibit estrogen-2-hydroxylase and estrogen-4-hydroxylase activity [34, 35, 98]. In mice, catechol estrogens are involved in the activation of dormant blastocysts for implantation in delayed-implanting mice [99]. Although it has been reported that catechol estrogen induces uterine vasodilation when infused into the uterine artery [100] and changes PG production in cultured endometrial tissues in vitro [101, 102], the role of catechol estrogens in the implantation process is not fully understood in pigs.

Growth factor expression

The onset of estrogen production by the implanting conceptus coincides with the time of maternal recognition of pregnancy in pigs, and estrogen acts as a maternal pregnancy recognition signal [2, 8]. Conceptus-derived estrogens regulate the expression of a variety of genes involved in cell proliferation, adhesion, migration, PG production, ion and nutrient transport, and immune response in an endometrium primed with progesterone during the implantation period. Many growth factors, including connective tissue growth factor [103], EGF, heparin-binding EGF [64, 104, 105], FGF1, FGF2 [106], and FGF7 [107], IGF1 and IGF2 [108], TGF β 1, TGF β 2, and TGF β 3 [109], and vascular endothelial growth factor [110], are expressed by the endometrium and conceptus during the implantation period and regulate cell division, proliferation, morphogenesis, and differentiation [5]. Among them, the most well-studied growth factors induced by conceptus estrogen during early pregnancy are IGF1 and FGF7. The endometrial transcripts and proteins of IGF1 secreted into the uterine lumen are greatest on d 12 of pregnancy, coincident with maximal estrogen production by the conceptus in pigs [108, 111, 112]. *IGF1* expression is localized in the LE, GE, endothelial, and vascular smooth muscle cells of the endometrium and conceptus trophoblast [113]; IGF2 is localized in the LE and GE; and IGF-binding protein 2 (IGFBP2) is localized in epithelial and stromal cells [111]. Estrogen injection into ovariectomized pigs and acute estrogen treatment of pigs on d 11 of the estrous cycle increases the endometrial expression and secretion of IGF1 [108]. IGF receptors and IGFBPs regulating the bioavailability of IGFs are expressed by endometrial and conceptus tissues, and IGFBPs are present in the uterine lumen during early pregnancy [67, 111, 114, 115]. It has been shown that IGF1 and IGF2 increase the proliferation of porcine endometrial GE cells in vitro [116]. In

addition, it is proposed that IGF1 acts through the stimulation of CYP19A1 expression for conceptus estrogen production based on the overlapping expression patterns of CYP19A1 in the conceptus and IGF concentrations in the uterine lumen [67].

FGF7, also known as keratinocyte growth factor, is a member of the heparin-binding FGF family and stimulates epithelial growth and differentiation [117]. Because FGF7 usually originates from mesenchymal cells and mediates epithelial–mesenchymal interactions in many tissues, including the reproductive tract [117, 118], it was hypothesized that FGF7 is expressed in endometrial stromal cells and regulates epithelial cell function by acting as a progestamedin in the uterine endometrium during the progesterone-dominant period. Contrary to that hypothesis, *FGF7* in the porcine uterus is expressed in endometrial epithelial cells, predominantly in LE cells during early pregnancy and in GE cells during late pregnancy [107]. *FGF7* expression is abundant between d 12 and d 15 of the estrous cycle and pregnancy, with the greatest abundance on d 12 of pregnancy; FGF7 protein is also detectable in uterine flushing on d 12 of both the estrous cycle and pregnancy [107]. Treatment of endometrial explants with estradiol and estradiol injection into ovariectomized pigs increase the expression of *FGF7* in the endometrium, indicating that the dramatic increase in endometrial *FGF7* expression is induced by estrogen of conceptus origin [66, 119]. The FGF7 receptor 2IIIb (*FGFR2IIIb*) is expressed in both the endometrial epithelium and conceptus trophoctoderm [107]. Treatment of FGF7 with pTr cells, a trophoctoderm cell line derived from d 12 porcine conceptuses, increases [³H]thymidine incorporation, phosphorylation of FGFR2IIIb and extracellular signal-regulated kinases 1/2 (ERK1/2), and expression of urokinase-type plasminogen activator (*PLAU*), a marker for differentiation of porcine trophoctoderm cells, indicating that FGF7 acts on the proliferation and differentiation of the conceptus trophoctoderm in a paracrine manner [66]. The role of FGF7 in endometrial epithelial cells is not yet understood.

SPP1 expression

The adhesion process between the endometrial epithelium and conceptus trophoctoderm requires various cell adhesion molecules to be expressed and produced by the endometrium and trophoctoderm [76]. Among the many cell adhesion molecules, SPP1 is the best-characterized molecule to be induced by conceptus-derived estrogen. SPP1, an ECM protein, is a highly phosphorylated acidic glycoprotein that stimulates cell-cell adhesion, increases cell-ECM communication, and promotes cell migration [120]. Endometrial secretion of SPP1 has been shown in several species, including pigs, sheep, humans, nonhuman primates, and rodents [23]. In pigs, *SPP1* expression in the

endometrium increases dramatically in LE cells at the time of conceptus implantation. Endometrial LE expression of SPP1 is maintained until late pregnancy, and *SPP1* expression in GE cells is first detected on d 35 and increases thereafter [79]. Estrogen induction of endometrial *SPP1* expression is evidenced by the finding that *SPP1* expression is first detected in endometrial LE cells in direct contact with the implanting conceptus and expands to all LE cells by d 20. Also, injection of estradiol into cyclic pigs to induce pseudopregnancy increases endometrial *SPP1* expression [79, 81]. Immunoreactive SPP1 proteins are found in endometrial LE and GE cells and trophoctoderm cells, as well as in uterine flushing [79, 81]. Because SPP1 directly binds to the $\alpha\beta6$ integrin subunit of pTr cells and the $\alpha\beta3$ on pUE cells, as noted previously, and because SPP1 can also interact with other integrin receptors, such as $\alpha5\beta1$, $\alpha\beta1$, $\alpha\beta5$, $\alpha\beta6$, $\alpha8\beta1$, $\alpha4\beta1$, $\alpha9\beta1$, and $\alpha4\beta7$, it is suggested that SPP1 acts as a bidirectional bridging ligand to stimulate cell adhesion, migration, and proliferation for conceptus implantation and placentation [80, 121].

Calcium secretion and the expression of calcium-regulatory molecules

Calcium plays critical roles in a variety of physiological processes, including bone formation, muscle contraction, and neuronal excitability. At the cellular level, it regulates cell growth, proliferation, differentiation, and death by mediating many cell functions, such as intracellular signaling and cell adhesion [122, 123]. In pigs, it is well established that conceptus estrogen induces endometrial calcium secretion into the uterine lumen during the implantation period; endometrial calcium secretion increases significantly as the conceptuses elongate from tubular to filamentous conceptus stage and decreases by d 14 [29, 88], and endometrial calcium secretion increases in response to estrogen injection into cyclic pigs at 12 h, peaks by 24 h, and declines by 48 h [124, 125]. Although the mechanism underlying estrogen-induced calcium release in the endometrium is not fully understood at the cellular or tissue level in pigs, the expression of calcium extrusion molecules, ATPase Ca^{2+} transporting plasma membrane (also called plasma membrane calcium ATPase), solute carrier family 8 (also called sodium/calcium exchanger), and solute carrier family 24 (also called potassium-dependent sodium/calcium exchanger), in the endometrium indicates that they could be involved in mediating the extrusion of calcium ions across the plasma membranes of cells in the endometrium [126]. During early pregnancy, the expression of stanniocalcin 1 (STC1) has been shown in endometrial LE cells, induced by ovarian progesterone and conceptus estrogen [127], suggesting the possibility of a role for STC1 in endometrial calcium secretion. It is also

likely that calcium secretion into the uterine lumen is regulated through a paracellular mechanism at the endometrial epithelial tight junctions, which play a role in the permeability of the paracellular barrier and are differentially expressed in endometrial epithelial cells during early pregnancy in pigs (Choi and Ka, unpublished data).

At the time of implantation in pigs, estrogen also increases endometrial expression of transient receptor potential cation channel subfamily V member 6 (TRPV6), a calcium ion channel responsible for the absorption of calcium ions into the cell, and S100 calcium-binding protein G (S100G, also called calbindin-D9k), an intracellular calcium transport protein [128, 129]. The expression of *TRPV6* and *S100G* has been detected in endometrial LE and trophoctoderm cells during early pregnancy, indicating that calcium ions are needed for epithelial and trophoctoderm cell functions during the implantation period [128]. Estrogen also increases endometrial calcium absorption in cultured porcine endometrial explant tissues, most likely through TRPV6 (Choi and Ka, unpublished data). The cell adhesion process between endometrial epithelial cells and trophoctoderm cells during the implantation period involves many cell adhesion molecules, including integrins, cadherins, selectins, and ECM proteins such as SPP1, which all require calcium ions for appropriate functional activity and are present at the attachment sites at the maternal–conceptus interface in pigs [23, 76]. In addition, it has been shown that the cell adhesion process activates intracellular calcium signaling. Interactions between endometrial epithelial cells and trophoblastic cells in vitro increase calcium influx and intracellular calcium signaling in endometrial epithelial cells in humans [130, 131]. Thus, it is likely that calcium ions secreted by the endometrium and absorbed into endometrial epithelial and conceptus trophoctoderm cells play a critical role in the cell adhesion process.

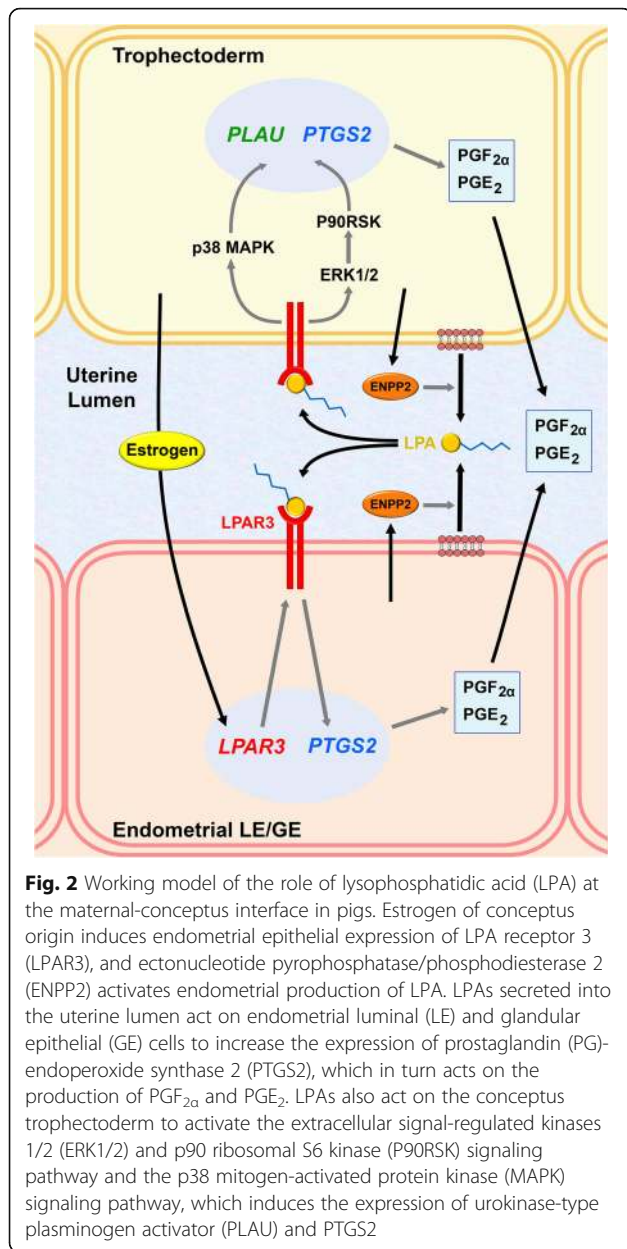
Regulation of LPA-LPAR3 signaling

Lysophosphatidic acids (LPAs), simple phospholipid-derived mediators, induce many growth factor-like biological effects, such as cell proliferation, survival, migration, and differentiation, via G protein-coupled receptors in various cell types and are found in various body fluids, including serum, saliva, seminal plasma, and follicular fluid [132, 133]. Our study in pigs showed that LPAs (LPA16:0, LPA18:0, LPA18:1, LPA18:2, and LPA20:4) are detectable in uterine lumen, with higher amounts of LPA16:0, LPA18:0, and LPA18:2 on d 12 of pregnancy than on d 12 of the estrous cycle. LPA receptor 3 (LPAR3) is expressed in endometrial epithelial cells, with the greatest abundance on d 12 of pregnancy. In addition, endometrial expression of *LPAR3* is increased by estradiol, indicating that conceptus estrogen is responsible for endometrial

LPAR3 induction [134]. The production of LPAs is mediated by ectonucleotide pyrophosphatase/phosphodiesterase 2 (ENPP2; also called autotaxin), a key enzyme with lysophospholipase D (lysoPLD) activity [135]. In pigs, the uterine endometrium, specifically GE cells, and the conceptus trophoctoderm express *ENPP2*, and lysoPLD activity is detected in uterine flushing from d 12 of both the estrous cycle and pregnancy, with higher concentrations on d 12 of pregnancy suggesting the involvement of conceptus signals in increased lysoPLD activity [136]. In mice, deletion of the *Lpar3* gene causes delayed implantation, aberrant embryo spacing, hypertrophic placentas, and embryonic death, along with the reduction of PG-endoperoxide synthase 2 (*PTGS2*) expression, which results in PGE₂ and PGI₂ secretion in the endometrium [137]. In the pig uterus, LPA increases *PTGS2* expression in the endometrium [134]. In a cultured porcine trophoctoderm cell line, pTr, LPA activates the ERK1/2 and p90 ribosomal S6 kinase signaling pathway and increases cell proliferation and migration and the expression of *PTGS2* and *PLAU* [138]. The presence of LPA in uterine flushing and LPA-induced increases in cell proliferation and the production of PGE₂ and PGF_{2α} in trophoctoderm cells have been shown in sheep [139]. Overall, these findings indicate that in pigs, conceptus estrogen activates the production of LPA and increased endometrial *LPAR3* expression to regulate endometrial PG production and the proliferation and differentiation of conceptus trophoctoderm cells (Fig. 2). Furthermore, because embryo spacing is altered in *Lpar3*-null mice [137], it is likely that the migration and spacing of pig blastocysts, which are critical events preceding implantation and placentation, are also regulated by LPA in pregnant pigs. Recently, it has been reported that *CYP19A1*-null porcine embryos elongate normally but show lowered estrogen production on d 14 postestrus, suggesting that estrogen synthesis is not essential for conceptus elongation [24].

PG synthesis

PGs derived from the conceptus or endometrium play essential roles in implantation, decidualization, and conceptus development at the maternal–conceptus interface in mammals [140, 141]. In ruminants, IFNT, the maternal pregnancy recognition signal from the conceptus, suppresses the pulsatile release of endometrial PGF_{2α} required for luteolysis by silencing endometrial *ESRI* and *OXTR* expression, although basal concentrations of PGF_{2α} are produced in the endometrium during the implantation period, and PG content in the uterine lumen is much higher during early pregnancy than during the estrous cycle [46, 142]. Conceptus estrogen in pigs increases the production of PGE₂ and PGF_{2α} in the porcine endometrium [10, 91, 124, 143]. Synthesis of PGs involves the sequential actions of several enzymes, including phospholipase A₂, PG-endoperoxide synthase 1



(PTGS1), PTGS2, and PG synthases [144, 145]. Aldo-keto reductase 1B1 (AKR1B1) is the major PGF_{2α} synthase responsible for PGF_{2α} synthesis from PGH₂ in bovine and human uterine endometria [146–148]. Our study has also shown that AKR1B1 is responsible for producing PGF_{2α} in the porcine endometrium [10]. Interestingly, *AKR1B1* expression dramatically increases in LE cells of the endometrium on d 12 of pregnancy in pigs, coinciding with conceptus estrogen production [10]. Treatment of endometrial explants with estrogen and estrogen injection into cyclic pigs up-regulate endometrial expression of *AKR1B1* [10, 149], indicating that *AKR1B1* is induced by conceptus estrogen and responsible for increased endometrial production of PGF_{2α}.

PG activity during the implantation process includes increased endometrial vascular permeability, endometrial gene expression, and conceptus elongation in many species [94, 140, 141, 150]. In sheep, blocking PG synthesis in the conceptus and endometrium by an intrauterine infusion of meloxicam, a PTGS inhibitor, from d 8 to d 14 post-mating suppresses conceptus elongation on d 14 post-mating, indicating that PGs are essential for conceptus elongation [141]. PGs also regulate the expression of elongation- and implantation-related genes, including *GRP*, *IGFBP1*, *LGALS15*, and *HSD11B1*, in the endometrial epithelium during the implantation period in sheep [142]. In pigs, an intrauterine infusion of PGE₂ directly inhibits PGF_{2α}-induced regression of the CL in a dose-dependent manner, suggesting that PGE₂ has a luteotrophic effect that protects the CL against the luteolytic action of PGF_{2α} [89, 90, 151]. Recently, Kaczynski and coworkers showed that in pigs, PGF_{2α} induces endometrial expression of vascular endothelial growth factor-A, biglycan, matrix metalloproteinase 9, IL1A, and TGFB3, suggesting that PGF_{2α} is involved in angiogenesis and tissue remodeling during early pregnancy [152]. Nevertheless, the detailed functions of PGs at the maternal-conceptus interface in pigs still need further study.

Regulation of IFN signaling

Conceptus estrogen is also critical to the activation of the endometrial expression of IFN signaling molecules during early pregnancy. Signal transduction and activator of transcription 1 (STAT1) is a key molecule involved in the activation of IFN-stimulated genes (ISGs) in response to type I and II IFNs [153]. *STAT1* expression in the porcine endometrium is detected in LE cells on d 12 of pregnancy and in stromal cells from d 15 of pregnancy [20]. Furthermore, intramuscular estrogen injection into cyclic pigs increases LE expression of *STAT1*, and an intrauterine infusion of conceptus secretory proteins induces stromal expression of *STAT1* [20], indicating that conceptus estrogen and IFNs regulate cell type-specific *STAT1* expression in the endometrium during early pregnancy in pigs. IFN-regulatory factor 2 (*IRF2*), known as a potential transcriptional repressor of ISGs that works by competitively inhibiting IRF1 binding to the promoters of IFN-stimulated responsive elements of ISGs [154], is expressed in endometrial LE cells, with the greatest abundance seen during early pregnancy [19]. Endometrial LE expression of *IRF2* is increased by estrogen, suggesting that *IRF2* could suppress the expression of ISGs in endometrial LE cells in pigs [19]. In addition to regulating the expression of intracellular signaling molecules that mediate IFN actions, estrogen also affects the expression of receptors for IFNs in the endometria of pigs. Type I IFNs (including IFND) and type II IFN (IFNG) bind to their heterodimeric type I IFN

receptors, IFNAR1 and IFNAR2, and type II IFN receptors, IFNGR1 and IFNGR2, respectively, to transduce signals into the cell [153, 155, 156]. In the porcine endometrium, *IFNAR1* and *IFNAR2* are expressed primarily in LE cells, with the greatest abundance seen on d 12 of pregnancy. The expression of *IFNAR2*, but not *IFNAR1*, is increased by estrogen in endometrial explant cultures [11]. *IFNGR1* and *IFNGR2* are also expressed in the porcine endometrium (endometrial *IFNGR2* expression is greatest on d 12 of pregnancy), and endometrial expression of *IFNGR2*, but not *IFNGR1*, is increased by estrogen in endometrial explant tissues (Choi and Ka, unpublished data). These data suggest that estrogen of conceptus origin induces endometrial expression of IFN receptors to prime the endometrium to respond to IFNs produced by the conceptus during the following few days of estrogen secretion, affecting endometrial function for the establishment of pregnancy.

Conceptus-derived IL1B and its role in endometrial function

Conceptus IL1B

IL1B, a well-known pro-inflammatory cytokine, has been shown to play important roles in the implantation process, mediating conceptus-endometrial interactions in several mammalian species, including humans, non-human primates, mice, and pigs [3, 157–159]. IL1B production by elongating porcine conceptuses between d 11 and d 12 of pregnancy has been known since the first report of Tuo and coworkers [160]. Recently, Mathew and colleagues have further shown that the *IL1B* gene expressed by porcine conceptuses, *IL1B2*, is different from the classic *IL1B* gene [4]. The IL1 signaling system consists of two ligands (IL1A and IL1B), two receptors (IL1R1 and IL1R2), an IL1 receptor accessory protein (IL1RAP), and an IL1 receptor antagonist (IL1RN) [161]. IL1R1 is a signaling receptor, whereas IL1R2 is a decoy receptor that does not transduce a signal. A complex composed of IL1B, IL1R1, and IL1RAP is required to initiate IL1B cell signaling. The porcine uterine endometrium expresses *IL1B*, *IL1R1*, *IL1RAP*, and *IL1RN* during the estrous cycle and pregnancy [136, 162]. It has been shown that in pigs, treatment of endometrial tissues with recombinant IL1B2 proteins activates the nuclear factor-kappa B (NFkB) signaling pathway in endometrial epithelial cells [4], and IL1B induces the ERK1/2 and p38 MAPK signaling pathways in the pUE endometrial epithelial cell line [63], indicating that IL1B might activate a wide variety of genes in endometrial epithelial cells during the establishment of pregnancy.

Regulation of IL1B signaling system

The IL1B receptor subtypes, *IL1R1* and *IL1RAP*, are expressed in the endometrium with the greatest

abundance on d 12 of pregnancy, whereas *IL1RN* is expressed at low abundance during early pregnancy in pigs [136, 162]. Endometrial *IL1R1* and *IL1RAP* expression is primarily localized in endometrial LE and GE cells [136]. The great abundance of *IL1B*, *IL1R1*, and *IL1RAP* and low abundance of *IL1RN* at the maternal–conceptus interface during the implantation period suggest that endometrial *IL1R1* and *IL1RAP* expression is regulated by factors of conceptus origin, such as estrogen and IL1B, and that IL1B secreted by the conceptus plays a critical role in implantation by binding to IL1R1 and IL1RAP on the uterine endometrium. Indeed, the results from endometrial explant cultures show that IL1B increases the expression of *IL1R1* and *IL1RAP* in the endometrium of pigs. In addition, estradiol increases the expression of *IL1RAP* in endometrial tissue, indicating that IL1B and estrogen cooperate in the activation of the endometrial IL1B signaling system by activating endometrial *IL1RAP* expression during early pregnancy in pigs [136].

PG synthesis

The involvement of IL1B in PG production in the endometrium has been shown in several species, including primates, pigs, and ruminants [4, 10, 141, 163–166]. In baboons, IL1B induces the expression of endometrial *PTGS2* and *IGFBP1* in decidualizing stromal cells to mediate trophoblast invasion and decidualization [163, 164]. In the porcine endometrium, the expression of PG synthetic enzymes is also induced by IL1B [4, 10, 166]. Treating porcine endometrial explant tissue with IL1B or IL1B2 increases the expression of *PTGS1*, *PTGS2*, and *AKR1B1* [4, 10] and the production of PGE [166], suggesting that in addition to conceptus estrogen, IL1B is responsible for the increased endometrial production of PGs in pigs. Recently, it has been indicated that *IL1B2*-null porcine embryos develop normally to the blastocyst stage and form a normal spherical shape but fail to rapidly elongate or survive in utero, with reduced production of estrogen and PGs at the maternal–conceptus interface [24]. IL1B increases the expression of IL1B receptors (*IL1R1* and *IL1RAP*) and *CYP19A1* [4, 10, 166, 167], which indicates that the actions of IL1B are critical for the conceptus-derived production of PGs and estrogen in pigs. In sheep, blocking PG synthesis in the conceptus and endometrium results in the inhibition of conceptus elongation from the ovoidal or tubular form to the filamentous form during early pregnancy, which indicates that PGs are essential for conceptus elongation [141]. However, it is likely that there is no direct effect of PGs on conceptus elongation in pigs, because inhibition of PG synthesis between d 11 to d 12 of pregnancy does not block rapid elongation of conceptuses from spherical to filamentous forms [168].

PG transport

PGs can cross the cell membrane by simple diffusion at very low amounts but require a facilitated transporter for efficient influx and efflux [169]. The best-characterized PG transporters are the ATP-binding cassette sub-family C member 4 (ABCC4; also known as multidrug resistance-associated protein 4) [170, 171] and solute carrier organic anion transporter family member 2A1 (SLCO2A1; also known as PG transporter). ABCC4 is a transmembrane efflux transporter that can pump its substrates across membranes against a diffusion gradient [171], and SLCO2A1 is responsible for PG influx rather than efflux [172]. The expression of ABCC4 and SLCO2A1 in the endometrium has been shown in several species. ABCC4 is expressed in the bovine endometrium during the estrous cycle and mediates $\text{PGF}_{2\alpha}$ and PGE_2 secretion from endometrial cells [173], and SLCO2A1 is expressed in the uterine endometrium in humans, ruminants, and mice [174–177]. In pigs, endometrial ABCC4 and SLCO2A1 expression is biphasic during pregnancy, with the greatest abundance on d 12 and d 90 of pregnancy. IL1B treatment of endometrial explants from d 12 of the estrous cycle increases ABCC4 and SLCO2A1 expression [13]. In addition, other possible PG transporters, ABCC1, ABCC9, SLCO4C1, and SLCO5A1, are expressed in the porcine endometrium during pregnancy, with the highest expression of SLCO5A1 on d 12 of pregnancy. The expression of SLCO4C1 and SLCO5A1 is increased by IL1B in endometrial tissues in pigs [178]. These data indicate that IL1B derived from the conceptus is involved not only in PG synthesis but also in PG transport in the endometrium during the implantation period in pigs.

ABCC4 and SLCO2A1 are localized at either the apical or basolateral membrane, depending on the cell type [174, 179–181]. Apical localization of ABCC4 in the renal proximal tubule epithelium results in urate exit from the cell into the lumen [181], and SLCO2A1 expressed in the apical membrane of polarized kidney cells is responsible for apical uptake of PGE_2 [182]. Subcellular localization of those transport proteins seems to be important because it could determine the direction of PG transport. In the porcine endometrium, the expression of ABCC4 is localized mainly in endometrial LE and GE cells, and the expression of SLCO2A1 is localized primarily in endometrial LE and vascular endothelial cells [13]. The pattern of expression and cellular localization of ABCC4 and SLCO2A1 and their mode of action suggest that ABCC4 and SLCO2A1 regulate uterine luminal and utero-ovarian concentrations of PGE_2 and $\text{PGF}_{2\alpha}$, resulting in high concentrations of uterine luminal PGE_2 and $\text{PGF}_{2\alpha}$ and utero-ovarian PGE_2 at the time of conceptus elongation and the secretion of IL1B and estrogens for pregnancy recognition signaling and implantation. Thus, the location of those PG transporters could be critical for regulating the direction of PG

movement in the uterine endometrium as related to the endocrine versus exocrine secretion of $\text{PGF}_{2\alpha}$. Nonetheless, the detailed mechanisms of ABCC4 and SLCO2A1 action at the cellular and molecular levels still need further study.

Salivary lipocalin 1 expression

Lipocalins are a large group of small extracellular proteins that act as transporters of hydrophobic compounds in aqueous biological fluids [183]. The uterine endometrium is known to produce various types of lipocalins, including retinol binding protein in pigs and ruminants [184, 185], uterocalin in mares [186], and lipocalin 2 in mice [187]. Salivary lipocalin (SAL1) is a member of the lipocalin family originally identified as a boar-specific sex pheromone-binding protein [188, 189]; it is also a component of uterine secretions [190]. SAL1 is expressed in endometrial GE cells at the greatest abundance on d 12 of pregnancy, and endometrial SAL1 protein is secreted into the uterine lumen. SAL1 expression is increased by IL1B treatment in endometrial explants, indicating that IL1B of conceptus origin induces SAL1 expression in the endometrium on d 12 of pregnancy [191]. In addition, the abundance of SAL1 mRNA significantly increases in an endometrium with embryos cloned by somatic cell nuclear transfer compared with an endometrium with normal embryos on d 30 of pregnancy [82]. These data suggest that proper expression of SAL1 is required for the establishment of pregnancy in pigs. In porcine conceptus tissues on d 12 and d 15 of pregnancy, SAL1 mRNA is not detectable, but SAL1 proteins are localized in conceptus trophoblast cells [191], indicating that SAL1 produced in the endometrium using IL1B of conceptus origin transports lipid ligand(s) to the implanting conceptus. Although the identity of the ligand(s) and role of SAL1 at the maternal–fetal interface during the implantation period are not fully understood, the data published so far suggest that SAL1 is a newly identified transport protein that could play a critical role in the establishment of pregnancy in pigs.

Regulation of IFN signaling molecules

It has been suggested that IL1B plays an important role in the implantation process by regulating the immune response at the maternal–fetal interface [192], but the detailed function of IL1B in the regulation of maternal immune response is not well understood. In humans, IL1 increases production of granulocyte-macrophage colony-stimulating factor in uNK cells, which increase in the endometrium during the mid-secretory phase and contribute a major cellular component of the decidua during pregnancy [193]. Geisert and coworkers have shown that IL1B activates the NF κ B signaling

pathway in the endometrium [3, 4] and might be involved in activating a variety of cytokines that regulate the maternal immune response in pigs. As previously stated, the porcine endometrium expresses the IFN receptors, *IFNAR1* and *IFNAR2*, in the greatest abundance on d 12 of pregnancy, and IL1B increases the expression of *IFNAR1* and *IFNAR2* in endometrial explant tissues obtained from the uterus on d 12 of the estrous cycle [11], indicating that in addition to estrogen, IL1B is involved in regulating type I IFN receptor expression in the porcine endometrium. IL1B also increases the expression of *STAT1* in endometrial tissues (Choi and Ka, unpublished data). These data suggest that one of the mechanisms by which IL1B regulates the maternal immune response in pigs could be the activation of the IFN signaling pathway.

Conclusions

Establishing a pregnancy requires well-coordinated interactions between the conceptus and the maternal uterine endometrium involving the tightly regulated expression of genes and the production of secretory molecules from the conceptus and the endometrium. Inappropriate interactions result in the failure of normal embryo development and lead to embryonic mortality. This review has focused on the events that occur at the maternal–conceptus interface and the roles of conceptus-derived estrogen and IL1B in

endometrial responsiveness during early pregnancy in pigs (Fig. 3). Data from many researchers and our laboratories indicate that estrogen and IL1B derived from elongating porcine conceptuses are involved in cell adhesion and the production of various histotrophs that are essential for the establishment of pregnancy. In particular, estrogen and IL1B cooperate in the endometrial expression of IFN signaling molecules and prime the endometrium to increase its responsiveness to the actions of IFNG and IFND, which are secreted by the conceptus following its production of estrogen and IL1B during early pregnancy. Although we have not discussed the role of conceptus-derived IFNs in this review, those critical immune regulators change the maternal endometrial immune environment to protect the mother and increase tolerance to the semi-allograft conceptus. However, the roles of estrogen and IL1B at the maternal–conceptus interface are far from completely understood and require further analysis. Also, the mechanisms by which IFN activity affects the maternal immune response to achieve immune tolerance to an implanting conceptus for the maintenance of pregnancy need further study in pigs. Studies of the implantation process and the molecules involved provide valuable opportunities to understand the fundamental mechanisms that underlie the establishment of pregnancy in pigs, a species that forms a true epitheliochorial type of placenta.

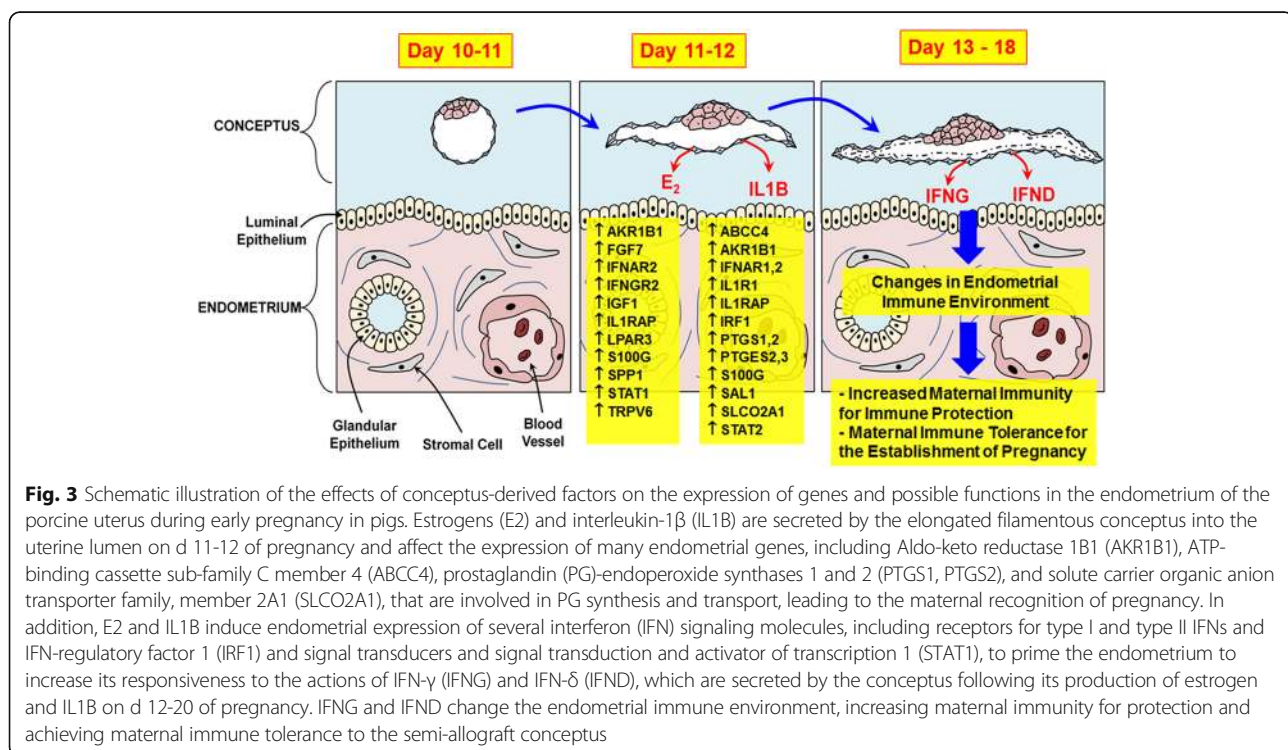


Fig. 3 Schematic illustration of the effects of conceptus-derived factors on the expression of genes and possible functions in the endometrium of the porcine uterus during early pregnancy in pigs. Estrogens (E_2) and interleukin-1 β (IL1B) are secreted by the elongated filamentous conceptus into the uterine lumen on d 11-12 of pregnancy and affect the expression of many endometrial genes, including Aldo-keto reductase 1B1 (AKR1B1), ATP-binding cassette sub-family C member 4 (ABCC4), prostaglandin (PG)-endoperoxide synthases 1 and 2 (PTGS1, PTGS2), and solute carrier organic anion transporter family, member 2A1 (SLCO2A1), that are involved in PG synthesis and transport, leading to the maternal recognition of pregnancy. In addition, E_2 and IL1B induce endometrial expression of several interferon (IFN) signaling molecules, including receptors for type I and type II IFNs and IFN-regulatory factor 1 (IRF1) and signal transducers and signal transduction and activator of transcription 1 (STAT1), to prime the endometrium to increase its responsiveness to the actions of IFN- γ (IFNG) and IFN- δ (IFND), which are secreted by the conceptus following its production of estrogen and IL1B on d 12-20 of pregnancy. IFNG and IFND change the endometrial immune environment, increasing maternal immunity for protection and achieving maternal immune tolerance to the semi-allograft conceptus

Abbreviations

ABCC4: ATP-binding cassette sub-family C member 4;; AKR1B1: Aldo-keto reductase 1B1; CL: Corpus luteum; CYP17A1: 17 α -hydroxylase; CYP19A1: Aromatase; ECM: Extracellular matrix; EGF: Epidermal growth factor; ENPP2: Ectonucleotide pyrophosphatase/phosphodiesterase 2; ERK1/2: Extracellular signal-regulated kinases 1/2;; ESR1: Estrogen receptor- α ; FGF: Fibroblast growth factor; FGFR: Fibroblast growth factor receptor; FGFR2IIIb: Fibroblast growth factor receptor 2IIIb; GE: Glandular epithelial; IRF: Interferon- δ ; IFNG: Interferon- γ ; IGF1: Insulin-like growth factor-1; IGFBP2: Insulin-like growth factor -binding protein 2; IL1B: Interleukin-1 β ; IL1R1: Interleukin-1 receptor 1; IL1RAP: Interleukin-1 receptor accessory protein; IL1RN: Interleukin-1 receptor antagonist; IL6: Interleukin 6; IRF: Interferon-regulatory factor; LAP: Latency-associated peptide; LE: Luminal epithelial; LPA: Lysophosphatidic acid; MAPK: Mitogen-activated protein kinase; MHC: Major histocompatibility complex; MUC1: Mucin 1; NFkB: Nuclear factor-kappa B; PAQR: Progesterin and adipoQ receptor; PGE₂: Prostaglandin E; PGE₂: Prostaglandin F₂ α ; PGR: Progesterone receptor; PGRMC: Progesterone membrane component; PLAU: Urokinase-type plasminogen activator; PTGS2: Prostaglandin -endoperoxide synthase 2; pTr: Porcine trophectoderm cells; pUE: Porcine uterine endometrial epithelial cells; RGD: Arg-Gly-Asp; S100G: S100 calcium-binding protein G; SAL1: Salivary lipocalin 1; SLC02A1: Solute carrier organic anion transporter family member 2A1; SPP1: Secreted phosphoprotein 1; STC1: Stanniocalcin 1; TGF: Transforming growth factor beta; TRPV6: Transient receptor potential cation channel subfamily V member 6

Acknowledgments

The authors thank all the members of the Animal Biotechnology Laboratory, Yonsei University, for their support and assistance throughout the projects.

Funding

Support for the work from the authors' laboratory described in this review paper has been provided by the BioGreen 21 Program (200506030501; 20070301034040; 20080401034003; PJ007997; PJ009610; PJ01110301; PJ01119103), the Rural Development Administration, and a National Research Foundation grant funded by the Korean Government (KRF-2005-003-F00017, KRF-2007-521-F00030, NRF-2010-0012304, NRF-2010-10012304; NRF-2012R1A2A2A01047079; NRF-2015R1D1A1A01058356), Republic of Korea.

Authors' contributions

HK, HS, YC, IY, and JH contributed to the writing of this review paper. All authors read and approved the manuscript.

Ethics approval and consent to participate

This is a review paper; however, all results reported based on research by the authors was approved by the Institutional Animal Care and Use Committee of Yonsei University.

Competing interests

The authors declare that they have no competing interests.

Author details

¹Department of Biological Science and Technology, Yonsei University, Wonju 26493, Republic of Korea. ²Department of Veterinary Integrated Biosciences, Texas A&M University, College Station, TX 77843-2471, USA. ³Department of Obstetrics and Gynecology, University of Kentucky College of Medicine, Lexington, Kentucky 40536-0298, USA.

Received: 2 November 2017 Accepted: 25 April 2018

Published online: 06 June 2018

References

- Pope WF. Embryonic mortality in swine. In: Zavy MT, Geisert RD, editors. Embryonic Mortality in Domestic Species. Boca Raton: CRC Press; 1994. p. 53–77.
- Bazer FW, Johnson GA. Pig blastocyst-uterine interactions. *Differentiation*. 2014;87(1-2):52–65.
- Geisert RD, Lucy MC, Whyte JJ, Ross JW, Mathew DJ. Cytokines from the pig conceptus: roles in conceptus development in pigs. *J Anim Sci Biotechnol*. 2014;5(1):51.
- Mathew DJ, Newsom EM, Guyton JM, Tuggle CK, Geisert RD, Lucy MC. Activation of the transcription factor nuclear factor-kappa B in uterine luminal epithelial cells by interleukin 1 Beta 2: a novel interleukin 1 expressed by the elongating pig conceptus. *Biol Reprod*. 2015;92(4):107.
- Jaeger LA, Johnson GA, Ka H, Garlow JG, Burghardt RC, Spencer TE, et al. Functional analysis of autocrine and paracrine signalling at the uterine-conceptus interface in pigs. *Reprod Suppl*. 2001;58:191–207.
- Croy BA, Wessels JM, Linton NF, van den Heuvel M, Edwards AK, Cellular TC. molecular events in early and mid gestation porcine implantation sites: a review. *Soc Reprod Fertil Suppl*. 2009;66:233–44.
- Bazer FW. Pregnancy recognition signaling mechanisms in ruminants and pigs. *J Anim Sci Biotechnol*. 2013;4(1):23.
- Bazer FW, Thatcher WW. Theory of maternal recognition of pregnancy in swine based on estrogen controlled endocrine versus exocrine secretion of prostaglandin F2alpha by the uterine endometrium. *Prostaglandins*. 1977; 14(2):397–400.
- Waclawik A, Kaczmarek MM, Blitek A, Kaczynski P, Ziecik AJ. Embryo-maternal dialogue during pregnancy establishment and implantation in the pig. *Mol Reprod Dev*. 2017;84(9):842–55.
- Seo H, Choi Y, Shim J, Yoo I, Ka H. Comprehensive analysis of prostaglandin metabolic enzyme expression during pregnancy and the characterization of AKR1B1 as a prostaglandin F synthase at the maternal-conceptus interface in pigs. *Biol Reprod*. 2014;90(5):99.
- Jang H, Choi Y, Yoo I, Han J, Kim M, Ka H. Characterization of interferon alpha and beta receptor IFNAR1 and IFNAR2 expression and regulation in the uterine endometrium during the estrous cycle and pregnancy in pigs. *Theriogenology*. 2017;88:166–73.
- Seo H, Choi Y, Shim J, Choi Y, Ka H. Regulatory mechanism for expression of IL1B receptors in the uterine endometrium and effects of IL1B on prostaglandin synthetic enzymes during the implantation period in pigs. *Biol Reprod*. 2012;87(2):31.
- Seo H, Choi Y, Shim J, Yoo I, Ka H. Prostaglandin transporters ABCC4 and SLC02A1 in the uterine endometrium and conceptus during pregnancy in pigs. *Biol Reprod*. 2014;90(5):100.
- La Bonnardiere C, Martinat-Botte F, Terqui M, Lefevre F, Zouari K, Martal J, et al. Production of two species of interferon by Large White and Meishan pig conceptuses during the peri-attachment period. *J Reprod Fertil*. 1991; 91(2):469–78.
- Mege D, Lefevre F, Labonnardiere C. The porcine family of interferon-omega: cloning, structural analysis, and functional studies of five related genes. *J Interferon Res*. 1991;11(6):341–50.
- Cencic A, Guillomot M, Koren S, La Bonnardiere C. Trophoblastic interferons: do they modulate uterine cellular markers at the time of conceptus attachment in the pig? *Placenta*. 2003;24(8-9):862–9.
- Spencer TE, Johnson GA, Bazer FW, Burghardt RC. Implantation mechanisms: insights from the sheep. *Reproduction*. 2004;128(6):657–68.
- Lefevre F, Guillomot M, D'Andrea S, Battegay S, La Bonnardiere C. Interferon-delta: the first member of a novel type I interferon family. *Biochimie*. 1998;80(8-9):779–88.
- Joyce MM, Burghardt JR, Burghardt RC, Hooper RN, Jaeger LA, Spencer TE, et al. Pig conceptuses increase uterine interferon-regulatory factor 1 (IRF1), but restrict expression to stroma through estrogen-induced IRF2 in luminal epithelium. *Biol Reprod*. 2007;77(2):292–302.
- Joyce MM, Burghardt RC, Geisert RD, Burghardt JR, Hooper RN, Ross JW, et al. Pig conceptuses secrete estrogen and interferons to differentially regulate uterine STAT1 in a temporal and cell type-specific manner. *Endocrinology*. 2007;148(9):4420–31.
- Kim M, Seo H, Choi Y, Shim J, Bazer FW, Ka H. Swine leukocyte antigen-DQ expression and its regulation by interferon-gamma at the maternal-fetal interface in pigs. *Biol Reprod*. 2012;86(2):43.
- Han J, Gu MJ, Yoo I, Choi Y, Jang H, Kim M, et al. Analysis of cysteine-X-cysteine motif chemokine ligands 9, 10, and 11, their receptor CXCR3, and their possible role on the recruitment of immune cells at the maternal-conceptus interface in pigs. *Biol Reprod*. 2017;97(1):69–80.
- Johnson GA, Burghardt RC, Bazer FW. Osteopontin: a leading candidate adhesion molecule for implantation in pigs and sheep. *J Anim Sci Biotechnol*. 2014;5(1):56.
- Geisert RD, Whyte JJ, Meyer AE, Mathew DJ, Juarez MR, Lucy MC, et al. Rapid conceptus elongation in the pig: An interleukin 1 beta 2 and estrogen-regulated phenomenon. *Mol Reprod Dev*. 2017;84(9):760–74.

25. Guthrie HD, Henricks DM, Handlin DL. Plasma estrogen, progesterone, and luteinizing hormone prior to estrus and during pregnancy in pigs. *Endocrinology*. 1972;91(3):675–9.
26. Henricks DM, Guthrie HD, Handlin DL. Plasma estrogen, progesterone and luteinizing hormone levels during the estrous cycle in pigs. *Biol Reprod*. 1972;6(2):210–8.
27. Zavy MT, Bazer FW, Thatcher WW, Wilcox CJ. A study of prostaglandin F2 alpha as the luteolysin in swine: V. Comparison of prostaglandin F, progesterone, estrone and estradiol in uterine flushings from pregnant and nonpregnant gilts. *Prostaglandins*. 1980;20(5):837–51.
28. Moeljono MP, Thatcher WW, Bazer FW, Frank M, Owens LJ, Wilcox CJ. A study of prostaglandin F2alpha as the luteolysin in swine: II Characterization and comparison of prostaglandin F, estrogens and progesterone concentrations in utero-ovarian vein plasma of nonpregnant and pregnant gilts. *Prostaglandins*. 1977;14(3):543–55.
29. Geisert RD, Renegar RH, Thatcher WW, Roberts RM, Bazer FW. Establishment of pregnancy in the pig: I. Interrelationships between preimplantation development of the pig blastocyst and uterine endometrial secretions. *Biol Reprod*. 1982;27(4):925–39.
30. Stone BA, Seemark RF. Steroid hormones in uterine washings and in plasma of gilts between days 9 and 15 after oestrus and between days 9 and 15 after coitus. *J Reprod Fertil*. 1985;75(1):209–21.
31. Geisert RD, Brookbank JW, Roberts RM, Bazer FW. Establishment of pregnancy in the pig: II. Cellular remodeling of the porcine blastocyst during elongation on day 12 of pregnancy. *Biol Reprod*. 1982;27(4):941–55.
32. Perry JS, Heap RB, Amoroso EC. Steroid hormone production by pig blastocysts. *Nature*. 1973;245(5419):45–7.
33. Heap RBFA, Staple LD. *Endocrinology of trophoblast in farm animals*. In: Loke YW, Whyte A, editors. *Biology of Trophoblast*. New York, NY: Elsevier Science Publishers; 1983.
34. Fischer HE, Bazer FW, Fields MJ. Steroid metabolism by endometrial and conceptus tissues during early pregnancy and pseudopregnancy in gilts. *J Reprod Fertil*. 1985;75(1):69–78.
35. Mondschein JS, Hersey RM, Dey SK, Davis DL, Weisz J. Catechol estrogen formation by pig blastocysts during the preimplantation period: biochemical characterization of estrogen-2/4-hydroxylase and correlation with aromatase activity. *Endocrinology*. 1985;117(6):2339–46.
36. Robertson HA, King GJ. Plasma concentrations of progesterone, oestrone, oestradiol-17beta and of oestrone sulphate in the pig at implantation, during pregnancy and at parturition. *J Reprod Fertil*. 1974; 40(1):133–41.
37. Geisert RD, Brenner RM, Moffatt RJ, Harney JP, Yellin T, Bazer FW. Changes in oestrogen receptor protein, mRNA expression and localization in the endometrium of cyclic and pregnant gilts. *Reprod Fertil Dev*. 1993;5(3):247–60.
38. Kowalski AA, Graddy LG, Vale-Cruz DS, Choi I, Katzenellenbogen BS, Simmen FA, et al. Molecular cloning of porcine estrogen receptor-beta complementary DNAs and developmental expression in periimplantation embryos. *Biol Reprod*. 2002;66(3):760–9.
39. Knapczyk-Stwora K, Durlęj M, Duda M, Czernichowska-Ferreira K, Tabacka-Lonczynska A, Slomczynska M. Expression of oestrogen receptor alpha and oestrogen receptor beta in the uterus of the pregnant swine. *Reprod Domest Anim*. 2011;46(1):1–7.
40. Sukjumlong S, Persson E, Dalin AM, Janson V, Sahlin L. Messenger RNA levels of estrogen receptors alpha and beta and progesterone receptors in the cyclic and inseminated/early pregnant sow uterus. *Anim Reprod Sci*. 2009;112(3–4):215–28.
41. Arnal JF, Lenfant F, Metivier R, Flouriot G, Henrion D, Adlanmerini M, et al. Membrane and Nuclear Estrogen Receptor Alpha Actions: From Tissue Specificity to Medical Implications. *Physiol Rev*. 2017;97(3):1045–87.
42. Olde B, Leeb-Lundberg LM. GPR30/GPER1: searching for a role in estrogen physiology. *Trends Endocrinol Metab*. 2009;20(8):409–16.
43. Geisert RD, Pratt TN, Bazer FW, Mayes JS, Watson GH. Immunocytochemical localization and changes in endometrial progesterin receptor protein during the porcine oestrous cycle and early pregnancy. *Reprod Fertil Dev*. 1994; 6(6):749–60.
44. Sukjumlong S, Dalin AM, Sahlin L, Persson E. Immunohistochemical studies on the progesterone receptor (PR) in the sow uterus during the oestrous cycle and in inseminated sows at oestrus and early pregnancy. *Reproduction*. 2005;129(3):349–59.
45. Steinhäuser CB, Bazer FW, Burghardt RC, Johnson GA. Expression of progesterone receptor in the porcine uterus and placenta throughout gestation: correlation with expression of uteroferrin and osteopontin. *Domest Anim Endocrinol*. 2017;58:19–29.
46. Bazer FW, Song G, Kim J, Dunlap KA, Satterfield MC, Johnson GA, et al. Uterine biology in pigs and sheep. *J Anim Sci Biotechnol*. 2012;3(1):23.
47. Spencer TE, Bazer FW. Biology of progesterone action during pregnancy recognition and maintenance of pregnancy. *Front Biosci*. 2002;7:d1879–98.
48. Cunha GR, Cooke PS, Kurita T. Role of stromal-epithelial interactions in hormonal responses. *Arch Histol Cytol*. 2004;67(5):417–34.
49. Kowalik MK, Slonina D, Rekawiecki R, Kotwica J. Expression of progesterone receptor membrane component (PGRMC) 1 and 2, serpine mRNA binding protein 1 (SERBP1) and nuclear progesterone receptor (PGR) in the bovine endometrium during the estrous cycle and the first trimester of pregnancy. *Reprod Biol*. 2013;13(1):15–23.
50. Pru JK, Clark NC. PGRMC1 and PGRMC2 in uterine physiology and disease. *Front Neurosci*. 2013;7:168.
51. Zhang L, Kanda Y, Roberts DJ, Ecker JL, Losel R, Wehling M, et al. Expression of progesterone receptor membrane component 1 and its partner serpine 1 mRNA binding protein in uterine and placental tissues of the mouse and human. *Mol Cell Endocrinol*. 2008;287(1–2):81–9.
52. Oxenreider SL, Day BN. Transport and Cleavage of Ova in Swine. *J Anim Sci*. 1965;24:413–7.
53. Hunter RH. Chronological and cytological details of fertilization and early embryonic development in the domestic pig, *Sus scrofa*. *Anat Rec*. 1974; 178(2):169–85.
54. Papaioannou VE, Ebert KM. Development of fertilized embryos transferred to oviducts of immature mice. *J Reprod Fertil*. 1986;76(2):603–8.
55. Anderson LL. Growth, protein content and distribution of early pig embryos. *Anat Rec*. 1978;190(1):143–53.
56. Dhindsa DS, Dziuk PJ, Norton HW. Time of transuterine migration and distribution of embryos in the pig. *Anat Rec*. 1967;159(3):325–30.
57. Renfree MB, Wallace GI, Young IR. Effects of progesterone, oestradiol-17 beta and androstenedione on follicular growth after removal of the corpus luteum during lactational and seasonal quiescence in the tammar wallaby. *J Endocrinol*. 1982;92(3):397–403.
58. Carson DD, Bagchi I, Dey SK, Enders AC, Fazleabas AT, Lessey BA, et al. Embryo implantation. *Dev Biol*. 2000;223(2):217–37.
59. Guillomot M. Cellular interactions during implantation in domestic ruminants. *J Reprod Fertil Suppl*. 1995;49:39–51.
60. Albertini DF, Overstrom EW, Ebert KM. Changes in the organization of the actin cytoskeleton during preimplantation development of the pig embryo. *Biol Reprod*. 1987;37(2):441–51.
61. Mattson BA, Overstrom EW, Albertini DF. Transitions in trophectoderm cellular shape and cytoskeletal organization in the elongating pig blastocyst. *Biol Reprod*. 1990;42(1):195–205.
62. Valdez Magana G, Rodriguez A, Zhang H, Webb R, Alberio R. Paracrine effects of embryo-derived FGF4 and BMP4 during pig trophoblast elongation. *Dev Biol*. 2014;387(1):15–27.
63. Jeong W, Kim J, Bazer FW, Song G, Kim J. Stimulatory effects of interleukin-1 beta on development of porcine uterine epithelial cell are mediated by activation of the ERK1/2 MAPK cell signaling cascade. *Mol Cell Endocrinol*. 2016;419:225–34.
64. Kim YJ, Lee GS, Hyun SH, Ka HH, Choi KC, Lee CK, et al. Uterine expression of epidermal growth factor family during the course of pregnancy in pigs. *Reprod Domest Anim*. 2009;44(5):797–804.
65. Jeong W, Song G, Bazer FW, Kim J. Insulin-like growth factor I induces proliferation and migration of porcine trophectoderm cells through multiple cell signaling pathways, including protooncogenic protein kinase 1 and mitogen-activated protein kinase. *Mol Cell Endocrinol*. 2014;384(1–2):175–84.
66. Ka H, Jaeger LA, Johnson GA, Spencer TE, Bazer FW. Keratinocyte growth factor is up-regulated by estrogen in the porcine uterine endometrium and functions in trophectoderm cell proliferation and differentiation. *Endocrinology*. 2001;142(6):2303–10.
67. Green ML, Simmen RC, Simmen FA. Developmental regulation of steroidogenic enzyme gene expression in the periimplantation porcine conceptus: a paracrine role for insulin-like growth factor-I. *Endocrinology*. 1995;136(9):3961–70.
68. Bitek A, Morawska E, Ziecik AJ. Regulation of expression and role of leukemia inhibitory factor and interleukin-6 in the uterus of early pregnant pigs. *Theriogenology*. 2012;78(5):951–64.

69. Jaeger LA, Spiegel AK, Ing NH, Johnson GA, Bazer FW, Burghardt RC. Functional effects of transforming growth factor beta on adhesive properties of porcine trophoblast. *Endocrinology*. 2005;146(9):3933–42.
70. Perry JS. The mammalian fetal membranes. *J Reprod Fertil*. 1981;62(2):321–35.
71. Dantzer V. Electron microscopy of the initial stages of placentation in the pig. *Anat Embryol (Berl)*. 1985;172(3):281–93.
72. Keys JL, King GJ. Microscopic examination of porcine conceptus-maternal interface between days 10 and 19 of pregnancy. *Am J Anat*. 1990;188(3):221–38.
73. Dantzer V. Scanning electron microscopy of exposed surfaces of the porcine placenta. *Acta Anat (Basel)*. 1984;118(2):96–106.
74. Bowen JA, Burghardt RC. Cellular mechanisms of implantation in domestic farm animals. *Semin Cell Dev Biol*. 2000;11(2):93–104.
75. Johnson GA, Bazer FW, Jaeger LA, Ka H, Garlow JE, Pfarrer C, et al. Muc-1, integrin, and osteopontin expression during the implantation cascade in sheep. *Biol Reprod*. 2001;65(3):820–8.
76. Burghardt RC, Johnson GA, Jaeger LA, Ka H, Garlow JE, Spencer TE, et al. Integrins and extracellular matrix proteins at the maternal-fetal interface in domestic animals. *Cells Tissues Organs*. 2002;172(3):202–17.
77. Brayman M, Thathiah A, Carson DD. MUC1: a multifunctional cell surface component of reproductive tissue epithelia. *Reprod Biol Endocrinol*. 2004;2:4.
78. Bowen JA, Bazer FW, Burghardt RC. Spatial and temporal analyses of integrin and Muc-1 expression in porcine uterine epithelium and trophoblast in vivo. *Biol Reprod*. 1996;55(5):1098–106.
79. Garlow JE, Ka H, Johnson GA, Burghardt RC, Jaeger LA, Bazer FW. Analysis of osteopontin at the maternal-placental interface in pigs. *Biol Reprod*. 2002;66(3):718–25.
80. Erikson DW, Burghardt RC, Bayless KJ, Johnson GA. Secreted phosphoprotein 1 (SPP1, osteopontin) binds to integrin alpha v beta 6 on porcine trophoblast cells and integrin alpha v beta 3 on uterine luminal epithelial cells, and promotes trophoblast cell adhesion and migration. *Biol Reprod*. 2009;81(5):814–25.
81. White FJ, Ross JW, Joyce MM, Geisert RD, Burghardt RC, Johnson GA. Steroid regulation of cell specific secreted phosphoprotein 1 (osteopontin) expression in the pregnant porcine uterus. *Biol Reprod*. 2005;73(6):1294–301.
82. Ka H, Seo H, Kim M, Moon S, Kim H, Lee CK. Gene expression profiling of the uterus with embryos cloned by somatic cell nuclear transfer on day 30 of pregnancy. *Anim Reprod Sci*. 2008;108(1-2):79–91.
83. Massuto DA, Hooper RN, Kneese EC, Johnson GA, Ing NH, Weeks BR, et al. Intrauterine infusion of latency-associated peptide (LAP) during early porcine pregnancy affects conceptus elongation and placental size. *Biol Reprod*. 2010;82(3):534–42.
84. Niswender GD, Juengel JL, Silva PJ, Rollyson MK, McIntush EW. Mechanisms controlling the function and life span of the corpus luteum. *Physiol Rev*. 2000;80(1):1–29.
85. Dhindsa DS, Dziuk PJ. Influence of varying the proportion of uterus occupied by embryos on maintenance of pregnancy in the pig. *J Anim Sci*. 1968;27(3):668–72.
86. van der Meulen J, Helmond FA, Oudenaarden CP. Effect of flushing of blastocysts on days 10-13 on the life-span of the corpora lutea in the pig. *J Reprod Fertil*. 1988;84(1):157–62.
87. Frank M, Bazer FW, Thatcher WW, Wilcox CJ. A study of prostaglandin F2alpha as the luteolytic agent in swine: IV An explanation for the luteolytic effect of estradiol. *Prostaglandins*. 1978;15(1):151–60.
88. Geisert RD, Zavy MT, Wettemann RP, Biggers BG. Length of pseudopregnancy and pattern of uterine protein release as influenced by time and duration of oestrogen administration in the pig. *J Reprod Fertil*. 1987;79(1):163–72.
89. Akinlosotu BA, Diehl JR, Gimenez T. Sparing effects of intrauterine treatment with prostaglandin E2 on luteal function in cycling gilts. *Prostaglandins*. 1986;32(2):291–9.
90. Akinlosotu BA, Diehl JR, Gimenez T. Prostaglandin E2 counteracts the effects of PGF2 alpha in indomethacin treated cycling gilts. *Prostaglandins*. 1988;35(1):81–93.
91. Christenson LK, Farley DB, Anderson LH, Ford SP. Luteal maintenance during early pregnancy in the pig: role for prostaglandin E2. *Prostaglandins*. 1994;47(1):61–75.
92. Davis DL, Blair RM. Studies of uterine secretions and products of primary cultures of endometrial cells in pigs. *J Reprod Fertil Suppl*. 1993;48:143–55.
93. Ziecik AJ. Old, new and the newest concepts of inhibition of luteolysis during early pregnancy in pig. *Domest Anim Endocrinol*. 2002;23(1-2):265–75.
94. Waclawik A. Novel insights into the mechanisms of pregnancy establishment: regulation of prostaglandin synthesis and signaling in the pig. *Reproduction*. 2011;142(3):389–99.
95. Conley AJ, Christenson LK, Ford SP, Christenson RK. Immunocytochemical localization of cytochromes P450 17 alpha-hydroxylase and aromatase in embryonic cell layers of elongating porcine blastocysts. *Endocrinology*. 1994;135(6):2248–54.
96. Dwyer RJ, Robertson HA. Oestrogen sulphatase and sulphotransferase activities in the endometrium of the sow and ewe during pregnancy. *J Reprod Fertil*. 1980;60(1):187–91.
97. Kim JG, Vallet JL, Rohrer GA, Christenson RK. Characterization of porcine uterine estrogen sulfotransferase. *Domest Anim Endocrinol*. 2002;23(4):493–506.
98. Chakraborty C, Dey SK, Davis DL. Pattern and tissue distribution of catechol estrogen forming activity by pig conceptuses during the peri-implantation period. *J Anim Sci*. 1989;67(4):991–8.
99. Paria BC, Lim H, Wang XN, Liehr J, Das SK, Dey SK. Coordination of differential effects of primary estrogen and catecholestrogen on two distinct targets mediates embryo implantation in the mouse. *Endocrinology*. 1998;139(12):5235–46.
100. Reynolds LP. Utero-ovarian interactions during early pregnancy: role of conceptus-induced vasodilation. *J Anim Sci*. 1986;62(Suppl 2):47–61.
101. Zhang Z, Davis DL. Cell-type specific responses in prostaglandin secretion by glandular and stromal cells from pig endometrium treated with catecholestrogens, methoxyestrogens and progesterone. *Prostaglandins*. 1992;44(1):53–64.
102. Rosenkrans CF, Jr., Paria BC, Davis DL, Milliken G. In vitro synthesis of prostaglandin E and F2 alpha by pig endometrium in the presence of estradiol, catechol estrogen and ascorbic acid. *J Anim Sci*. 1990;68(2):435–443.
103. Moussad EE, Rageh MA, Wilson AK, Geisert RD, Brigstock DR. Temporal and spatial expression of connective tissue growth factor (CCN2; CTGF) and transforming growth factor beta type 1 (TGF-beta1) at the utero-placental interface during early pregnancy in the pig. *Mol Pathol*. 2002;55(3):186–92.
104. Kennedy TG, Brown KD, Vaughan TJ. Expression of the genes for the epidermal growth factor receptor and its ligands in porcine oviduct and endometrium. *Biol Reprod*. 1994;50(4):751–6.
105. Kim GY, Besner GE, Steffen CL, McCarthy DW, Downing MT, Luquette MH, et al. Purification of heparin-binding epidermal growth factor-like growth factor from pig uterine luminal flushings, and its production by endometrial tissues. *Biol Reprod*. 1995;52(3):561–71.
106. Gupta A, Bazer FW, Jaeger LA. Immunolocalization of acidic and basic fibroblast growth factors in porcine uterine and conceptus tissues. *Biol Reprod*. 1997;56(6):1527–36.
107. Ka H, Spencer TE, Johnson GA, Bazer FW. Keratinocyte growth factor: expression by endometrial epithelia of the porcine uterus. *Biol Reprod*. 2000;62(6):1772–8.
108. Simmen RC, Simmen FA, Hofig A, Farmer SJ, Bazer FW. Hormonal regulation of insulin-like growth factor gene expression in pig uterus. *Endocrinology*. 1990;127(5):2166–74.
109. Gupta A, Ing NH, Bazer FW, Bustamante LS, Jaeger LA. Beta transforming growth factors (TGF β s) at the porcine conceptus-maternal interface. Part I: expression of TGF β 1, TGF β 2, and TGF β 3 messenger ribonucleic acids. *Biol Reprod*. 1998;59(4):905–10.
110. Kaczmarek MM, Waclawik A, Blitek A, Kowalczyk AE, Schams D, Ziecik AJ. Expression of the vascular endothelial growth factor-receptor system in the porcine endometrium throughout the estrous cycle and early pregnancy. *Mol Reprod Dev*. 2008;75(2):362–72.
111. Simmen FA, Simmen RC, Geisert RD, Martinat-Botte F, Bazer FW, Terqui M. Differential expression, during the estrous cycle and pre- and postimplantation conceptus development, of messenger ribonucleic acids encoding components of the pig uterine insulin-like growth factor system. *Endocrinology*. 1992;130(3):1547–56.
112. Ko Y, Choi I, Green ML, Simmen FA, Simmen RC. Transient expression of the cytochrome P450 aromatase gene in elongating porcine blastocysts is correlated with uterine insulin-like growth factor levels during peri-implantation development. *Mol Reprod Dev*. 1994;37(1):1–11.
113. Persson E, Sahlin L, Masironi B, Dantzer V, Eriksson H, Rodriguez-Martinez H. Insulin-like growth factor-I in the porcine endometrium and placenta:

- localization and concentration in relation to steroid influence during early pregnancy. *Anim Reprod Sci.* 1997;46(3-4):261–81.
114. Chastant S, Monget P, Localization TM. quantification of insulin-like growth factor-I (IGF-I) and IGF-II/mannose-6-phosphate (IGF-II/M6P) receptors in pig embryos during early pregnancy. *Biol Reprod.* 1994;51(4):588–96.
115. Lee CY, Green ML, Simmen RC, Simmen FA. Proteolysis of insulin-like growth factor-binding proteins (IGFBPs) within the pig uterine lumen associated with peri-implantation conceptus development. *J Reprod Fertil.* 1998;112(2):369–77.
116. Badinga L, Song S, Simmen RC, Clarke JB, Clemmons DR, Simmen FA. Complex mediation of uterine endometrial epithelial cell growth by insulin-like growth factor-II (IGF-II) and IGF-binding protein-2. *J Mol Endocrinol.* 1999;23(3):277–85.
117. Rubin JS, Bottaro DP, Chedid M, Miki T, Ron D, Cheon G, et al. Keratinocyte growth factor. *Cell Biol Int.* 1995;19(5):399–411.
118. Cooke PS, Buchanan DL, Kurita T, Lubahn DB, Cunha GR. Stromal-epithelial cell communication in the female reproductive tract. In: Bazer FW, editor. *The Endocrinology of Pregnancy.* Totowa, NJ: Humana Press Inc; 1998.
119. Ka H, Al-Ramadan S, Erikson DW, Johnson GA, Burghardt RC, Spencer TE, et al. Regulation of expression of fibroblast growth factor 7 in the pig uterus by progesterone and estradiol. *Biol Reprod.* 2007;77(1):172–80.
120. Denhardt DT, Guo X. Osteopontin: a protein with diverse functions. *FASEB J.* 1993;7(15):1475–82.
121. Johnson GA, Burghardt RC, Bazer FW, Spencer TE. Osteopontin: roles in implantation and placentation. *Biol Reprod.* 2003;69(5):1458–71.
122. Berridge MJ, Bootman MD, Roderick HL. Calcium signalling: dynamics, homeostasis and remodelling. *Nat Rev Mol Cell Biol.* 2003;4(7):517–29.
123. Clapham DE. Calcium signaling. *Cell.* 2007;131(6):1047–58.
124. Geisert RD, Thatcher WW, Roberts RM, Bazer FW. Establishment of pregnancy in the pig: III. Endometrial secretory response to estradiol valerate administered on day 11 of the estrous cycle. *Biol Reprod.* 1982;27(4):957–65.
125. Young KH, Bazer FW, Simpkins JW, Roberts RM. Effects of early pregnancy and acute 17 beta-estradiol administration on porcine uterine secretion, cyclic nucleotides, and catecholamines. *Endocrinology.* 1987;120(1):254–63.
126. Choi Y, Seo H, Shim J, Yoo I, Ka H. Calcium extrusion regulatory molecules: differential expression during pregnancy in the porcine uterus. *Domest Anim Endocrinol.* 2014;47:1–10.
127. Song G, Dunlap KA, Kim J, Bailey DW, Spencer TE, Burghardt RC, et al. Stanniocalcin 1 is a luminal epithelial marker for implantation in pigs regulated by progesterone and estradiol. *Endocrinology.* 2009;150(2):936–45.
128. Choi Y, Seo H, Kim M, Ka H. Dynamic expression of calcium-regulatory molecules, TRPV6 and S100G, in the uterine endometrium during pregnancy in pigs. *Biol Reprod.* 2009;81(6):1122–30.
129. Choi Y, Seo H, Shim J, Kim M, Ka H. Regulation of S100G Expression in the Uterine Endometrium during Early Pregnancy in Pigs. *Asian-Australas J Anim Sci.* 2012;25(1):44–51.
130. Thie M, Herter P, Pommerenke H, Durr F, Sieckmann F, Nebe B, et al. Adhesiveness of the free surface of a human endometrial monolayer for trophoblast as related to actin cytoskeleton. *Mol Hum Reprod.* 1997;3(4):275–83.
131. Tinel H, Denker HW, Thie M. Calcium influx in human uterine epithelial RL95-2 cells triggers adhesiveness for trophoblast-like cells. Model studies on signalling events during embryo implantation. *Mol Hum Reprod.* 2000;6(12):1119–30.
132. Ishii I, Fukushima N, Ye X, Chun J. Lysophospholipid receptors: signaling and biology. *Annu Rev Biochem.* 2004;73:321–54.
133. Gardell SE, Dubin AE, Chun J. Emerging medicinal roles for lysophospholipid signaling. *Trends Mol Med.* 2006;12(2):65–75.
134. Seo H, Kim M, Choi Y, Lee CK, Ka H. Analysis of lysophosphatidic acid (LPA) receptor and LPA-induced endometrial prostaglandin-endoperoxide synthase 2 expression in the porcine uterus. *Endocrinology.* 2008;149(12):6166–75.
135. Aoki K, Nakajima M, Hoshi Y, Saso N, Kato S, Sugiyama Y, et al. Effect of aminoguanidine on lipopolysaccharide-induced changes in rat liver transporters and transcription factors. *Biol Pharm Bull.* 2008;31(3):412–20.
136. Seo H, Choi Y, Shim J, Kim M, Ka H. Analysis of the lysophosphatidic acid-generating enzyme ENPP2 in the uterus during pregnancy in pigs. *Biol Reprod.* 2012;87(4):77.
137. Ye X, Hama K, Contos JJ, Anliker B, Inoue A, Skinner MK, et al. LPA3-mediated lysophosphatidic acid signalling in embryo implantation and spacing. *Nature.* 2005;435(7038):104–8.
138. Jeong W, Seo H, Sung Y, Ka H, Song G, Kim J. Lysophosphatidic Acid (LPA) Receptor 3-Mediated LPA Signal Transduction Pathways: A Possible Relationship with Early Development of Peri-Implantation Porcine Conceptus. *Biol Reprod.* 2016;94(5):104.
139. Liszewska E, Reinaud P, Billon-Denis E, Dubois O, Robin P, Charpigny G. Lysophosphatidic acid signaling during embryo development in sheep: involvement in prostaglandin synthesis. *Endocrinology.* 2009;150(1):422–34.
140. Kennedy TG, Gillio-Meina C, Phang SH. Prostaglandins and the initiation of blastocyst implantation and decidualization. *Reproduction.* 2007;134(5):635–43.
141. Dorniak P, Bazer FW, Spencer TE. Prostaglandins regulate conceptus elongation and mediate effects of interferon tau on the ovine uterine endometrium. *Biol Reprod.* 2011;84(6):1119–27.
142. Brooks K, Burns G, Spencer TE. Conceptus elongation in ruminants: roles of progesterone, prostaglandin, interferon tau and cortisol. *J Anim Sci Biotechnol.* 2014;5(1):53.
143. Wacławik A, Rivero-Muller A, Blitek A, Kaczmarek MM, Brokken LJ, Watanabe K, et al. Molecular cloning and spatiotemporal expression of prostaglandin F synthase and microsomal prostaglandin E synthase-1 in porcine endometrium. *Endocrinology.* 2006;147(1):210–21.
144. Smith WL, DeWitt DL, Garavito RM. Cyclooxygenases: structural, cellular, and molecular biology. *Annu Rev Biochem.* 2000;69:145–82.
145. Park JY, Pillinger MH, Abramson SB. Prostaglandin E2 synthesis and secretion: the role of PGE2 synthases. *Clin Immunol.* 2006;119(3):229–40.
146. Madore E, Harvey N, Parent J, Chapdelaine P, Arosh JA, Fortier MA. An aldose reductase with 20 alpha-hydroxysteroid dehydrogenase activity is most likely the enzyme responsible for the production of prostaglandin f2 alpha in the bovine endometrium. *J Biol Chem.* 2003;278(13):11205–12.
147. Fortier MA, Krishnaswamy K, Danyod G, Boucher-Kovalik S, Chapdelaine PA. postgenomic integrated view of prostaglandins in reproduction: implications for other body systems. *J Physiol Pharmacol.* 2008;59(Suppl 1):65–89.
148. Bresson E, Boucher-Kovalik S, Chapdelaine P, Madore E, Harvey N, Laberge PY, et al. The human aldose reductase AKR1B1 qualifies as the primary prostaglandin F synthase in the endometrium. *J Clin Endocrinol Metab.* 2011;96(1):210–9.
149. Ross JW, Ashworth MD, White FJ, Johnson GA, Ayoubi PJ, DeSilva U, et al. Premature estrogen exposure alters endometrial gene expression to disrupt pregnancy in the pig. *Endocrinology.* 2007;148(10):4761–73.
150. Dey SK, Lim H, Das SK, Reese J, Paria BC, Daikoku T, et al. Molecular cues to implantation. *Endocr Rev.* 2004;25(3):341–73.
151. Ford SP, Christenson LK. Direct effects of oestradiol-17 beta and prostaglandin E-2 in protecting pig corpora lutea from a luteolytic dose of prostaglandin F-2. alpha. *J Reprod Fertil.* 1991;93(1):203–9.
152. Kaczynski P, Kowalewski MP, Wacławik A. Prostaglandin F2alpha promotes angiogenesis and embryo-maternal interactions during implantation. *Reproduction.* 2016;151(5):539–52.
153. Platanias LC. Mechanisms of type-I- and type-II-interferon-mediated signalling. *Nat Rev Immunol.* 2005;5(5):375–86.
154. Harada H, Fujita T, Miyamoto M, Kimura Y, Maruyama M, Furia A, et al. Structurally similar but functionally distinct factors, IRF-1 and IRF-2, bind to the same regulatory elements of IFN and IFN-inducible genes. *Cell.* 1989;58(4):729–39.
155. Schroder K, Hertzog PJ, Ravasi T, Hume DA. Interferon-gamma: an overview of signals, mechanisms and functions. *J Leukoc Biol.* 2004;75(2):163–89.
156. Schreiber G, Piehler J. The molecular basis for functional plasticity in type I interferon signaling. *Trends Immunol.* 2015;36(3):139–49.
157. Simon C, Frances A, Piquette GN, el Danasouri I, Zurawski G, Dang W, et al. Embryonic implantation in mice is blocked by interleukin-1 receptor antagonist. *Endocrinology.* 1994;134(2):521–8.
158. Takacs P, Kauma S. The expression of interleukin-1 alpha, interleukin-1 beta, and interleukin-1 receptor type I mRNA during preimplantation mouse development. *J Reprod Immunol.* 1996;32(1):27–35.
159. Mor G, Cardenas I, Abrahams V, Guller S. Inflammation and pregnancy: the role of the immune system at the implantation site. *Ann N Y Acad Sci.* 2011;1221:80–7.
160. Tuo W, Harney JP, Bazer FW. Developmentally regulated expression of interleukin-1 beta by peri-implantation conceptuses in swine. *J Reprod Immunol.* 1996;31(3):185–98.
161. Mantovani A, Muzio M, Ghezzi P, Colotta C, Introna M. Regulation of inhibitory pathways of the interleukin-1 system. *Ann N Y Acad Sci.* 1998;840:338–51.

162. Ross JW, Malayer JR, Ritchey JW, Geisert RD. Characterization of the interleukin-1beta system during porcine trophoblastic elongation and early placental attachment. *Biol Reprod.* 2003;69(4):1251–9.
163. Strakova Z, Srisuparp S, Fazleabas AT. Interleukin-1beta induces the expression of insulin-like growth factor binding protein-1 during decidualization in the primate. *Endocrinology.* 2000;141(12):4664–70.
164. Strakova Z, Mavrogianis P, Meng X, Hastings JM, Jackson KS, Cameo P, et al. In vivo infusion of interleukin-1beta and chorionic gonadotropin induces endometrial changes that mimic early pregnancy events in the baboon. *Endocrinology.* 2005;146(9):4097–104.
165. Kang J, Akoum A, Chapdelaine P, Laberge P, Poubelle PE, Fortier MA. Independent regulation of prostaglandins and monocyte chemoattractant protein-1 by interleukin-1beta and hCG in human endometrial cells. *Hum Reprod.* 2004;19(11):2465–73.
166. Franczak A, Zmijewska A, Kurowicka B, Wojciechowicz B, Kotwica G. Interleukin 1beta-induced synthesis and secretion of prostaglandin E(2) in the porcine uterus during various periods of pregnancy and the estrous cycle. *J Physiol Pharmacol.* 2010;61(6):733–42.
167. Nester JE. Interleukin-1 stimulates the aromatase activity of human placental cytotrophoblasts. *Endocrinology.* 1993;132
168. Geisert RD, Rasby RJ, Minton JE, Wetteman RP. Role of prostaglandins in development of porcine blastocysts. *Prostaglandins.* 1986;31(2):191–204.
169. Schuster VL. Prostaglandin transport. *Prostaglandins Other Lipid Mediat.* 2002;68-69:633–47.
170. Kanai N, Lu R, Satriano JA, Bao Y, Wolkoff AW, Schuster VL. Identification and characterization of a prostaglandin transporter. *Science.* 1995;268(5212):866–9.
171. Russel FG, Koenderink JB, Masereeuw R. Multidrug resistance protein 4 (MRP4/ABCC4): a versatile efflux transporter for drugs and signalling molecules. *Trends Pharmacol Sci.* 2008;29(4):200–7.
172. Chan BS, Bao Y, Schuster VL. Role of conserved transmembrane cationic amino acids in the prostaglandin transporter PGT. *Biochemistry.* 2002; 41(29):9215–21.
173. Lacroix-Pepin N, Danyod G, Krishnaswamy N, Mondal S, Rong PM, Chapdelaine P, et al. The multidrug resistance-associated protein 4 (MRP4) appears as a functional carrier of prostaglandins regulated by oxytocin in the bovine endometrium. *Endocrinology.* 2011;152(12):4993–5004.
174. Banu SK, Arosh JA, Chapdelaine P, Fortier MA. Molecular cloning and spatio-temporal expression of the prostaglandin transporter: a basis for the action of prostaglandins in the bovine reproductive system. *Proc Natl Acad Sci U S A.* 2003;100(20):11747–52.
175. Banu SK, Lee J, Satterfield MC, Spencer TE, Bazer FW, Arosh JA. Molecular cloning and characterization of prostaglandin (PG) transporter in ovine endometrium: role for multiple cell signaling pathways in transport of PGF2alpha. *Endocrinology.* 2008;149(1):219–31.
176. Kang J, Chapdelaine P, Parent J, Madore E, Laberge PY, Fortier MA. Expression of human prostaglandin transporter in the human endometrium across the menstrual cycle. *J Clin Endocrinol Metab.* 2005;90(4):2308–13.
177. Gao F, Lei W, Diao HL, Hu SJ, Luan LM, Yang ZM. Differential expression and regulation of prostaglandin transporter and metabolic enzymes in mouse uterus during blastocyst implantation. *Fertil Steril.* 2007;88(4 Suppl):1256–65.
178. Jang H, Choi Y, Yoo I, Han J, Kim M, Expression KH. regulation of prostaglandin transporters, ATP-binding cassette, subfamily C, member 1 and 9, and solute carrier organic anion transporter family, member 2A1 and 5A1 in the uterine endometrium during the estrous cycle and pregnancy in pigs. *Asian-Australas J Anim Sci.* 2017;30(5):643–52.
179. van Aubel RA, Smeets PH, Peters JG, Bindels RJ, Russel FG. The MRP4/ABCC4 gene encodes a novel apical organic anion transporter in human kidney proximal tubules: putative efflux pump for urinary cAMP and cGMP. *J Am Soc Nephrol.* 2002;13(3):595–603.
180. Rius M, Nies AT, Hummel-Eisenbeiss J, Jedlitschky G, Keppler D. Cotransport of reduced glutathione with bile salts by MRP4 (ABCC4) localized to the basolateral hepatocyte membrane. *Hepatology.* 2003;38(2):374–84.
181. Bataille AM, Goldmeyer J, Renfro JL. Avian renal proximal tubule epithelium urate secretion is mediated by Mrp4. *Am J Physiol Regul Integr Comp Physiol.* 2008;295(6):R2024–33.
182. Endo S, Nomura T, Chan BS, Lu R, Pucci ML, Bao Y, et al. Expression of PGT in MDCK cell monolayers: polarized apical localization and induction of active PG transport. *Am J Physiol Renal Physiol.* 2002;282(4):F618–22.
183. Flower DR. The lipocalin protein family: structure and function. *Biochem J.* 1996;318(Pt 1):1–14.
184. Clawitter J, Trout WE, Burke MG, Araghi S, Roberts RMA. novel family of progesterone-induced, retinol-binding proteins from uterine secretions of the pig. *J Biol Chem.* 1990;265(6):3248–55.
185. Harney JP, Ott TL, Geisert RD, Bazer FW. Retinol-binding protein gene expression in cyclic and pregnant endometrium of pigs, sheep, and cattle. *Biol Reprod.* 1993;49(5):1066–73.
186. Crossett B, Allen WR, Stewart F. A 19 kDa protein secreted by the endometrium of the mare is a novel member of the lipocalin family. *Biochem J.* 1996;320(Pt 1):137–43.
187. Chu ST, Huang HL, Chen JM, Chen YH. Demonstration of a glycoprotein derived from the 24p3 gene in mouse uterine luminal fluid. *Biochem J.* 1996;316(Pt 2):545–50.
188. Marchese S, Pes D, Scalon A, Carbone V, Pelosi P. Lipocalins of boar salivary glands binding odours and pheromones. *Eur J Biochem.* 1998;252(3):563–8.
189. Loebel D, Scalon A, Paolini S, Fini C, Ferrara L, Breer H, et al. Cloning, post-translational modifications, heterologous expression and ligand-binding of boar salivary lipocalin. *Biochem J.* 2000;350 Pt. 2:369–79.
190. Kayser JP, Kim JG, Cerny RL, Vallet JL. Global characterization of porcine intrauterine proteins during early pregnancy. *Reproduction.* 2006;131(2): 379–88.
191. Seo H, Kim M, Choi Y, Ka H. Salivary lipocalin is uniquely expressed in the uterine endometrial glands at the time of conceptus implantation and induced by interleukin 1beta in pigs. *Biol Reprod.* 2011;84(2):279–87.
192. Paulesu L, Jantra S, letta F, Brizzi R, Bigliardi E. Interleukin-1 in reproductive strategies. *Evol Dev.* 2008;10(6):778–88.
193. Jokhi PP, King A, Loke YW. Production of granulocyte-macrophage colony-stimulating factor by human trophoblast cells and by decidual large granular lymphocytes. *Hum Reprod.* 1994;9(9):1660–9.

Ready to submit your research? Choose BMC and benefit from:

- fast, convenient online submission
- thorough peer review by experienced researchers in your field
- rapid publication on acceptance
- support for research data, including large and complex data types
- gold Open Access which fosters wider collaboration and increased citations
- maximum visibility for your research: over 100M website views per year

At BMC, research is always in progress.

Learn more [biomedcentral.com/submissions](https://www.biomedcentral.com/submissions)

