

*Review*

# Endosymbiotic associations within protists

Eva C. M. Nowack\* and Michael Melkonian

*Botany Department, University of Cologne, Cologne, Germany*

The establishment of an endosymbiotic relationship typically seems to be driven through complementation of the host's limited metabolic capabilities by the biochemical versatility of the endosymbiont. The most significant examples of endosymbiosis are represented by the endosymbiotic acquisition of plastids and mitochondria, introducing photosynthesis and respiration to eukaryotes. However, there are numerous other endosymbioses that evolved more recently and repeatedly across the tree of life. Recent advances in genome sequencing technology have led to a better understanding of the physiological basis of many endosymbiotic associations. This review focuses on endosymbionts in protists (unicellular eukaryotes). Selected examples illustrate the incorporation of various new biochemical functions, such as photosynthesis, nitrogen fixation and recycling, and methanogenesis, into protist hosts by prokaryotic endosymbionts. Furthermore, photosynthetic eukaryotic endosymbionts display a great diversity of modes of integration into different protist hosts.

In conclusion, endosymbiosis seems to represent a general evolutionary strategy of protists to acquire novel biochemical functions and is thus an important source of genetic innovation.

**Keywords:** metabolic complementation; prokaryotic endosymbionts; eukaryotic endosymbionts; evolution; integration

## 1. INTRODUCTION

Endosymbiosis, in the sense of endocytobiosis, with one symbiotic partner (the endosymbiont) living intracellularly within the second symbiotic partner (the host), is the most intimate form of symbiosis. The establishment of an endosymbiotic relationship typically seems to be driven through complementation of the host's limited metabolic capabilities by the biochemical versatility of the endosymbiont, thereby enabling the host to thrive in environments or on diets previously inaccessible (Hoffmeister & Martin 2003; Douglas 2009). For the endosymbiont, the symbiosis provides a nutrient-rich, sheltered environment; yet, it is difficult to demonstrate that endosymbionts benefit significantly from interaction with their hosts (Douglas & Smith 1989). Therefore, some authors regard the process of endosymbiosis rather as an enslavement of the endosymbiont than as a mutually beneficial relationship.

As illustrated by the evolutionary acquisition of plastids and mitochondria, in its most extreme case, an endosymbiosis may lead to an inseparable merger of two symbiotic partners to yield a novel chimeric organism in a process termed 'symbiogenesis' (Mereschkowsky 1910). In the course of symbiogenesis, genes are transferred from the endosymbiont to the host nuclear genome, a process dubbed 'endosymbiotic gene transfer' (EGT); the respective gene products are targeted to the former endosymbiont

that is then regarded as a genetically integrated cell organelle (e.g. Timmis *et al.* 2004).

Owing to the profound impact that acquisition of plastids and mitochondria had for the evolution of life, the term endosymbiosis is often used as an equivalent for the acquisition of these organelles. At the same time, the myriad transient or stable endosymbiotic relationships that have evolved more recently and repeatedly all across the tree of life are often overlooked. Host partners in these relationships are typically eukaryotes, owing to their larger cell size, phagocytosis and restricted metabolic capabilities, whereas the endosymbiont partners may be either pro- or eukaryotes.

In the context of plastid acquisition, endosymbioses involving a prokaryotic endosymbiont (a cyanobacterium) are referred to as 'primary endosymbioses' leading to 'primary plastids', as opposed to sequential endosymbioses involving photosynthetic eukaryotes that are termed 'secondary' and 'tertiary endosymbioses' leading to secondary and 'tertiary plastids' (Gould *et al.* 2008; Archibald 2009; Keeling 2009). It is, however, important to note that the same terms are used differently by zoologists: 'primary endosymbionts' are here bacterial endosymbionts that live inside specialized animal host cells in mutually obligate associations, whereas 'secondary endosymbionts' are facultative bacterial endosymbionts that coexist with a primary endosymbiont and are not essential for the survival of the host (Moya *et al.* 2008). Here, we will use the terms in the former sense.

Although the scope of this article is restricted to endosymbionts in protists, i.e. unicellular eukaryotes, there are countless fascinating and well-studied

\* Author for correspondence (eva.nowack@uni-koeln.de).

One contribution of 12 to a Theme Issue 'Evolution of organellar metabolism in unicellular eukaryotes'.

examples of endosymbioses in multicellular organisms, particularly animals. Insects such as aphids and tsetse flies have been able to occupy their ecological niches only due to nutritional support of their bacterial endosymbionts (Moya *et al.* 2008). Eukaryotic life in deep-sea habitats surrounding hydrothermal vents depends to a large extent on thiotrophic (i.e. sulphur oxidizing) bacterial endosymbionts as primary producers (Dubilier *et al.* 2008).

In multicellular hosts, however, endosymbionts are typically restricted to specialized organs or tissues, whereas in unicellular hosts, the whole organism is directly involved in the symbiosis. Even though in a few cases EGT was described in multicellular organisms, where endosymbionts had access to the host's germ line owing to their presence in developing gametes (Dunning Hotopp *et al.* 2007; Nikoh *et al.* 2008; Klasson *et al.* 2009), most horizontal gene transfers into eukaryotes have been described in phagotrophic, unicellular eukaryotes (Andersson 2005). Because unicellular organisms have no sequestered germ line, integration of DNA from their food organisms or endosymbionts appears to be rather frequent (Doolittle 1998). Thus, genetic integration seems to be more readily established in protists and it was likely not by chance that all organelles evolved in unicellular organisms.

The phenomenon of endosymbiosis (i) is widespread over the tree of life and various ecosystems, (ii) is of great physiological importance in many eukaryotic groups, (iii) represents a general mechanism of cellular evolution in eukaryotes, and (iv) could aid in understanding the evolutionary process of organogenesis (Keeling & Palmer 2008). However, owing to the large diversity in phylogenetic affiliation of both partners, the different physiological functions performed by the endosymbionts, as well as the various degrees and modes of integration of the endosymbionts into the protist host cell, no exhaustive treatment of endosymbiotic associations is possible given the limited space of a short review article. Here, we will address different conceptual models of endosymbiosis using selected examples from the recent literature comprising both prokaryotic and eukaryotic endosymbionts of protists and highlight their impact on our current view of eukaryotic evolution.

## 2. PROKARYOTIC ENDOSYMBIONTS IN PROTISTS

### (a) *Photosynthetic endosymbionts*

The origin of photosynthesis in the biosphere introduced an energy resource orders of magnitude larger than that available from redox reactions associated with weathering or hydrothermal activity (Des Marais 2000). Through the endosymbiotic acquisition of plastids, this virtually infinite source of energy became directly available to eukaryotes. In the course of evolution, primary photosynthetic eukaryotes diversified; additionally, plastids spread horizontally via secondary and tertiary endosymbioses (Gould *et al.* 2008; Archibald 2009). Today, photosynthetic eukaryotes exhibit a bewildering diversity of primary producers that provide the Earth with most of its biomass. Despite the large evolutionary success of

photosynthetic eukaryotes, plastids had a monophyletic origin within the cyanobacteria and were likely acquired only once, probably more than 1 Gyr ago (Moreira *et al.* 2000; McFadden & van Dooren 2004; Rodríguez-Ezpeleta *et al.* 2005). Thus, our knowledge of the evolutionary processes leading from a free-living cyanobacterium to an integrated photosynthetic organelle is highly speculative, as is the question of why the acquisition of primary plastids apparently remained a singular event.

Only recently, evidence for a second, more recent primary endosymbiosis leading to a photosynthetic eukaryote was presented for the amoeba *Paulinella chromatophora* (Marin *et al.* 2005). This places *P. chromatophora* in a centre stage for understanding early events in the evolution of a phototrophic eukaryote.

### (i) *The amoeba P. chromatophora with photosynthetic cyanobacterial endosymbionts*

*Paulinella chromatophora* (figure 1a,b) is a thecate amoeba of cercozoan affiliation (Bhattacharya *et al.* 1995; Cavalier-Smith & Chao 2003) that occurs ubiquitously in freshwater ponds and lakes. In contrast to their closest marine relatives that feed on cyanobacteria (Johnson *et al.* 1988; Hannah *et al.* 1996), *P. chromatophora* has dispensed with phagotrophic nutrition (Lauterborn 1895; Penard 1905; Kies 1974). Instead, it carries two sausage-shaped photosynthetic entities, termed chromatophores (Lauterborn 1895), that support the phototrophic lifestyle of the amoeba (Kies & Kremer 1979). A high level of symbiotic integration of the chromatophores is implied by the strict synchronization of chromatophore division with the host cell cycle (Hoogenraad 1927 and Nowack, E. C. M. & Melkonian, M. 2006 (unpublished observations)). The chromatophores are enclosed by a membrane of unknown origin and are located in the cytoplasm of the amoeba. They resemble in colour and ultrastructure (possession of carboxysomes, unstacked thylakoids and a peptidoglycan wall) cyanobacteria of the genus *Synechococcus* (Kies 1974); however, they are roughly 20 times larger than free-living *Synechococcus* spp. Phylogenetic analyses of the complete ribosomal operon as well as of a concatenated multiple protein dataset revealed that the chromatophores evolved from  $\alpha$ -cyanobacteria (i.e. the *Prochlorococcus/Synechococcus* clade), separating them clearly from plastids that evolved from  $\beta$ -cyanobacteria (Marin *et al.* 2005, 2007; Yoon *et al.* 2006). Different isolates of *P. chromatophora* differ notably in molecular sequence data and morphology of their thecae, suggesting the existence of different species; however, the well-supported monophyly of their chromatophores in phylogenetic analyses of the 16S rRNA strongly suggests that their chromatophores arose from a common cyanobacterial ancestor (Yoon *et al.* 2009).

The analysis of the complete chromatophore genome sequence of *P. chromatophora* strain CCAC 0185 revealed a fundamental genome reduction (Nowack *et al.* 2008). The single, circular chromosome of 1.02 Mb encodes only 867 protein-coding genes and is, therewith, the smallest cyanobacterial genome reported to date. Although the

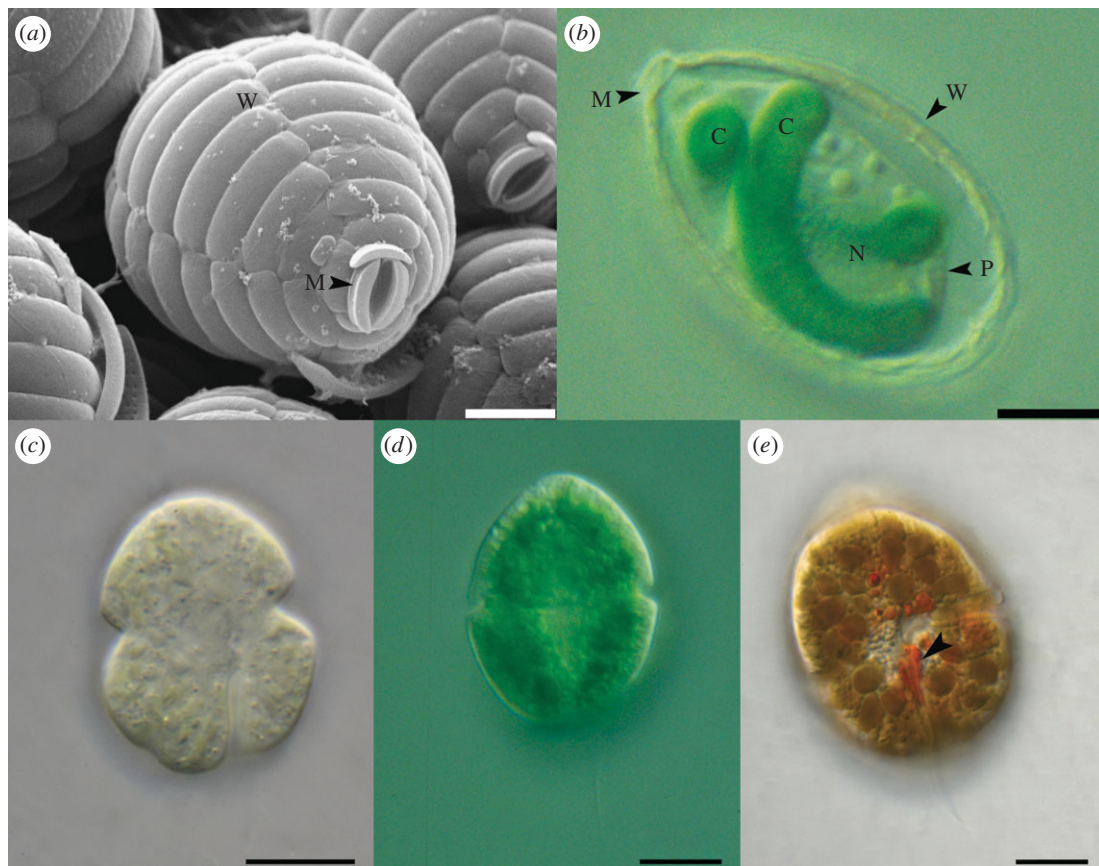


Figure 1. *Paulinella chromatophora* cells. (a) Scanning electron microscopic image. (b) Light microscopic image (differential interference contrast). C, chromatophore; M, mouth opening; N, nucleus; P, plasma membrane and W, cell wall composed of silica scales. Light microscopic images of dinoflagellates with unusual plastids. (c) *L. chlorophorum*, (d) *G. aeruginosum*, and (e) *K. foliaceum*, arrowhead highlights the eyespot. Images kindly provided by Barbara Surek (c,e) and Karl-Heinz Linne von Berg (d). Scale bar, (a,b) 5  $\mu\text{m}$ ; (c–e) 10  $\mu\text{m}$ .

chromatophore genome contains an almost complete set of photosynthesis genes, it lacks not only genes thought to be dispensable for an intracellular lifestyle but also genes of essential pathways for amino acid and cofactor biosynthesis (figure 2a), characterizing the chromatophore as a photosynthetic entity that is absolutely dependent on its host for growth and survival. The inability to produce several proteinogenic amino acids and critical cofactors strongly implies that the host cell compensates for functions missing in the chromatophore. Intriguingly, the strong metabolic interdependence of host cell and chromatophore contrasts with the paucity of chromatophore-encoded transport systems, raising the question, how metabolite exchange is accomplished.

Furthermore, the chromatophore genome analysis revealed the lack of a few low-molecular weight components of the photosystems and several enzymes essential for DNA replication such as ligases. These findings strongly suggest protein import into the chromatophore, as the functions lacking clearly cannot be compensated at the metabolite level. Recently, the first evidence for gene transfer from the chromatophore to the nuclear genome of *P. chromatophora* was reported. The *psaE* gene, which encodes a low-molecular weight photosystem I subunit, is not present on the chromatophore genome but was identified as a *P. chromatophora* expressed sequence tag (EST) sequence (Nakayama & Ishida 2009). The *psaE* cDNA contains a typical

eukaryotic polyA tail, and the genomic sequence exhibits introns; these features strongly suggest that the gene is located on the nuclear genome. However, although import of the nuclear-encoded PsaE protein into the chromatophore is likely, no direct evidence for protein import was presented yet.

#### (b) Nitrogen-fixing or recycling endosymbionts

Nitrogen is a common component of numerous biomolecules and accordingly essential for the growth and development of all organisms. Whereas the major part of nitrogen occurs as molecular nitrogen ( $\text{N}_2$ ) in the atmosphere, in many terrestrial and aquatic habitats biologically available nitrogen represents a growth-limiting factor. Nevertheless, only some bacteria possess the ability to fix atmospheric  $\text{N}_2$  by means of the nitrogenase enzyme complex. Eukaryotes, in contrast, are only able to use atmospheric  $\text{N}_2$  through symbiotic interactions with  $\text{N}_2$ -fixing bacteria. Such kinds of symbioses are well known for multicellular organisms, as exemplified by the legume/rhizobia endosymbioses, but are also frequent in protists.

#### (i) The diatom *Rhopalodia gibba* with $\text{N}_2$ -fixing cyanobacterial endosymbionts

One well-studied example is the pennate freshwater diatom *Rhopalodia gibba*. *Rhopalodia gibba* cells host—in addition to a photosynthetically active



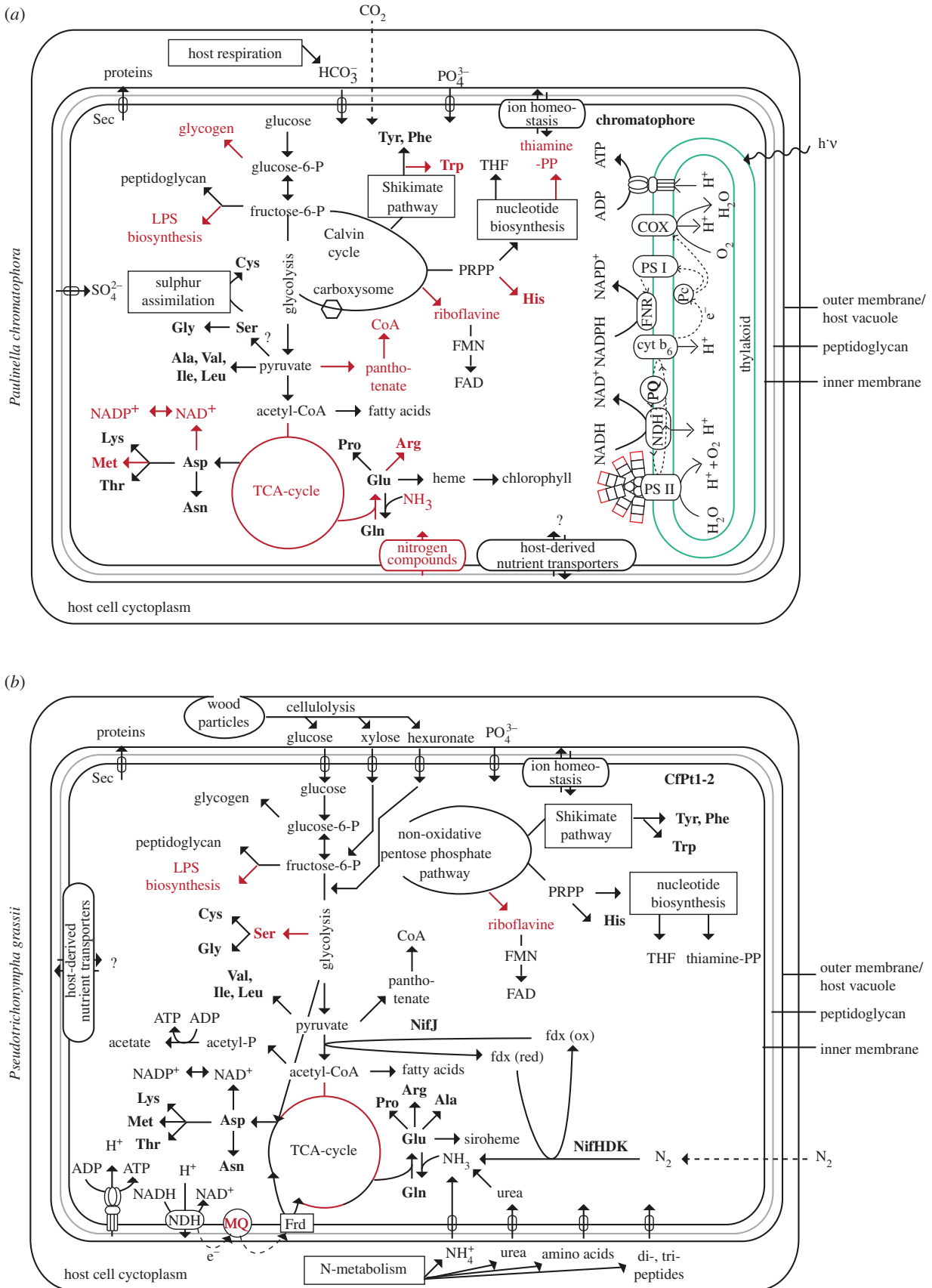


Figure 2. Metabolism of bacterial endosymbionts in protists as deduced from their genome sequences. Arrows in black represent pathways largely encoded and arrows in red represent pathways largely missing. (a) Chromatophore of *Paulinella* and (b) CfPt1-2 Bacteroides-type endosymbiont of the cellulolytic termite gut flagellate *P. grassii* (modified from Hongoh *et al.* 2008b). Question marks denote uncertainties in function or identity of a protein. Amino acids are in bold. COX, cytochrome-c oxidase; FNR, ferredoxin:NADP<sup>+</sup> reductase; FRD, fumarate reductase; MQ, menaquinone; NDH, NADH dehydrogenase; PQ, plastoquinone and PRPP, 5-phosphoribosyl 1-pyrophosphate.

secondary plastid—one to four cyanobacterial endosymbionts of ellipsoid shape (*ca*  $6 \times 5 \mu\text{m}$  in size) in cytoplasmic vacuoles (Drum & Pankratz 1965; Geitler 1977). The endosymbionts, referred to as ‘spheroid bodies’, are closely related to the  $\text{N}_2$ -fixing cyanobacterium *Cyanothece* (Prechtel *et al.* 2004). Fragments of the genome of the spheroid bodies that were recently sequenced support the previous notion that the *R. gibba* endosymbionts are able to fix  $\text{N}_2$  (Floener & Bothe 1980), but have dispensed with photosynthesis: a complete set of genes involved in  $\text{N}_2$  fixation was identified, whereas essential photosynthesis genes were found to be eroded to pseudogenes (Kneip *et al.* 2008).

An advanced level of symbiotic integration is indicated by the following findings: *R. gibba* cells were never observed without spheroid bodies; the maximum number of spheroid bodies per cell seems to be restricted; spheroid bodies are vertically transmitted and attempts to cultivate the endosymbiont outside of the host cell have failed (Drum & Pankratz 1965; Prechtel *et al.* 2004).

(ii) *Cellulolytic termite gut flagellates with nitrogen-fixing or recycling Bacteroidales-type endosymbionts*

In terrestrial habitats or diets nitrogen also often represents a limiting factor, as exemplified by wood-feeding termites. For the digestion of lignocelluloses, the predominant component of woody plants, lower termites rely on anaerobic flagellates of the Parabasalia and Oxymonadida that are located in their hindgut; the majority of which harbour numerous prokaryotic endosymbionts (Ohkuma 2003). Widespread and often predominating in the gut microbial communities are bacteria belonging to the candidate phylum Termite Group 1 (TG1) of the Bacteroidales (Stingl *et al.* 2005; Ohkuma *et al.* 2007). The endosymbiotic bacteria colonize the cytoplasm of their flagellate hosts in large numbers and are surrounded by two membranes; the outermost membrane being either derived from the outer membrane of the Gram-negative bacterium or from the host (Stingl *et al.* 2005). Since neither endosymbiotic bacteria nor the flagellates are cultivable, these symbiotic associations are not readily accessible for research.

Recently, two complete genome sequences of the TG1 species CfPt1-2 and Rs-D17 were obtained from endosymbiont DNA extracted from two different single flagellate host cells by whole genome amplification (Hongoh *et al.* 2008a,b). These genome sequences yielded the first insight into the physiological basis of the symbiotic association between cellulolytic termite gut protists and their bacterial endosymbionts.

CfPt1-2, the endosymbiont of *Pseudotrichonympha grassii* (Parabasalia), accounts for 70 per cent of the bacterial cells in the gut of the termite *Coptotermes formosanus*. About  $10^5$  endosymbionts are housed within a single flagellate cell. A genome analysis of the 1.1 Mb chromosome of the endosymbiont, encoding a meagre 758 protein-coding genes, demonstrated not only its ability to recycle putative host nitrogen waste products, such as ammonium and urea, for

biosynthesis of several amino acids and cofactors, but also revealed the unexpected ability to fix  $\text{N}_2$  (figure 2b).

Rs-D17 is the endosymbiont of *Trichonympha agilis* (Parabasalia) that thrives in the gut of the termite *Reticulitermes speratus*. Here, about  $4 \times 10^3$  endosymbionts are housed within a single flagellate cell. The circular chromosome of 1.1 Mb, encoding 761 protein-coding genes, does not encode enzymes of the nitrogenase complex and, therewith, precludes the ability of the bacterium to fix  $\text{N}_2$ . However, the fact that biosynthetic capabilities for 15 amino acids and various cofactors were not only retained, but some of the respective genes had even been duplicated, implies a function of the endosymbiont in the supply of these essential compounds, deficient in lignocellulose food, to their host protists and eventually to the termite.

These highly complex bacteria/flagellate/termite symbiotic associations probably support the ability of lower termites to survive on recalcitrant plant matter as the sole nutrient source and, thereby, contribute largely to the success of these insects of worldwide distribution.

(c) *Methanogenic endosymbionts*

(i) *Anaerobic ciliates with methanogenic archaeal endosymbionts*

Anaerobic ciliates occur worldwide in anoxic aquatic sediments as well as symbiotically in the guts of many animals, in particular, those which rely on fermenting bacteria for digestion of structural plant matter (Fenchel & Finlay 1991a). Many free-living anaerobic ciliates are known to contain endosymbiotic methanogenic archaea, e.g. *Metopus contortus*, *Trimyema* sp. and *Cyclidium porcatum* (Fenchel & Finlay 1991a; van Hoek *et al.* 2000). These ciliates contain hydrogenosomes, i.e.  $\text{H}_2$ -evolving redox organelles that are thought to have been derived from mitochondria (Boxma *et al.* 2005). The endosymbionts, distantly related methanogenic archaea (Embley & Finlay 1993), probably use the  $\text{H}_2$  produced by the hydrogenosomes to reduce  $\text{CO}_2$  and generate energy and excrete dissolved organics that are used by the host (Fenchel & Finlay 1991a). However, owing to the absence of genomic data for these endosymbionts, the nature of the associations remains speculative.

Apparently, all of these symbioses have a facultative character for both partners (Fenchel & Finlay 1991a); however, for a few ciliate species (e.g. *M. contortus*), increased growth rates were determined in the presence of the symbionts (Fenchel & Finlay 1991b; Shinzato *et al.* 2007).

An intriguing aspect of the symbioses is their morphological diversity. In *M. contortus*, the cell wall of the endosymbiont appears to be stripped away, which goes along with an increase in the size of the symbiont (Finlay & Fenchel 1991; Embley *et al.* 1992). The endosymbiont of *Trimyema* retains its cell wall but changes size and shape to form a large stellate structure (Embley & Finlay 1993). In both cases, host hydrogenosomes closely associate with the enlarged

symbionts. *Cyclidium porcatum* cells contain a unique complex of ca 8 µm length containing hydrogenosomes, eubacteria (of unknown affiliation) and methanogens; the latter two tightly integrated into the strongly fissured organelle (Esteban *et al.* 1993). A recent survey of ESTs in anaerobic rumen ciliates identified archaeal and eubacterial genes that were probably acquired by EGT. Among these, genes involved in the catabolism of complex carbohydrates were over-represented, suggesting that the acquisition of these genes has greatly facilitated the colonization of the rumen by anaerobic ciliates (Ricard *et al.* 2006).

#### (d) *General remarks on bacterial endosymbionts within protists*

The prokaryotic endosymbionts presented here exemplify extremely diverse physiological concepts, encompassing a photosynthetic cyanobacterial endosymbiont in a heterotrophic amoeba, a N<sub>2</sub>-fixing, non-photosynthetic cyanobacterial endosymbiont in a photosynthetic diatom, nitrogen-fixing and recycling endosymbionts of the Bacteroidales in cellulolytic, anaerobic gut flagellates and methanogenic archaea in anaerobic free-living and rumen ciliates.

The range of prokaryotic endosymbionts within protists in nature is much larger. It has been estimated that about 5 per cent of all algal cells in natural populations are likely to contain endosymbiotic bacteria (Surek & Melkonian 1983). Countless free-living amoebae and ciliates house bacterial endosymbionts (Fokin 2004; Schmitz-Esser *et al.* 2008). Amoebal hosts have lately attracted considerable scientific interest as they are hypothesized to represent (i) 'training grounds' for pathogens, adapting bacteria to intracellular environments (Molmeret *et al.* 2005), (ii) genetic 'melting pots' promoting cross-species conjugation as a result of the co-occurrence of different intracellular bacteria in amoebae (Ogata *et al.* 2006), and (iii) reservoirs for pathogens enabling their survival outside their specific host species (Greub & Raoult 2004; Horn 2008).

Unfortunately, for the majority of the endosymbiotic bacteria reported in protists, still not much more than a morphological description is available, precluding any conclusions about their physiological role as well as a clear recognition of the bacteria as endosymbionts, pathogens or prey.

Recent advances in genome sequencing technology allowed the rapid determination of complete genome sequences of prokaryotic genomes at reasonable costs. As a result, a better understanding of the physiological basis of many bacterial endosymbioses, mainly in invertebrates, has been achieved. Here, the crucial nutritional role of endosymbionts in diverse lineages has been unveiled (for reviews see Zientz *et al.* 2004; Baumann 2005; Moya *et al.* 2008). Common features in genome evolution of endosymbiotic bacteria were discovered such as acquisition of an AT-bias and genome reduction (Moya *et al.* 2008). Genome reduction is typically biased towards loss of genes that are clearly dispensable in an intracellular environment, and also loss of regulatory functions, biosynthetic pathways for metabolites

provided by the host cell, DNA repair capacities and transport functions (e.g. Shigenobu *et al.* 2000; Akman *et al.* 2002; Gil *et al.* 2003; Kuwahara *et al.* 2007). The same features generally apply also for the bacterial endosymbionts of protists.

The survival of the endosymbionts despite the lack of essential genes is preferentially explained through compensation of the lacking functions by the host at the metabolite level. However, sufficient transport capacities to explain the large-scale metabolite import are consistently missing from endosymbiont genomes, suggesting the insertion of host-derived transport systems into the endosymbiont. Since also in primary plastids the majority of solute transporters are host derived (Tyra *et al.* 2007), typical early steps in the evolution of a stable endosymbiotic relationship between pro- and eukaryote seem to be the loss of biosynthetic capacity for essential metabolites in the endosymbiont and complementation of the lost functions by the host using host-derived transport systems.

Typical genome sizes of endosymbiotic bacteria range between 0.4 and 1.9 Mb; however, in the extreme case of *Carsonella ruddii*, an endosymbiotic bacterium present in psyllids, phloem sap-feeding insects, the genome has shrunk to less than 0.16 Mb (Nakabachi *et al.* 2006). The reductive process was accompanied by the loss of a large number of the genes involved in DNA replication, transcription and translation (Tamames *et al.* 2007). Since these functions cannot be compensated at the metabolite level, protein import is obviously required for the maintenance of this unit. With the discovery of the extraordinarily reduced genome of *C. ruddii*, the hitherto clear distinction between endosymbionts and organelles began to blur.

### 3. EUKARYOTIC ENDOSYMBIONTS IN PROTISTS

In contrast to the diversity of functions fulfilled by prokaryotic endosymbionts, the main function performed by eukaryotic endosymbionts is photosynthesis. Many aquatic multicellular organisms live in symbioses with photosynthetic algae as typified by the well-known examples of corals, clams or the cnidarian *Hydra*. Algal symbioses are particularly advantageous in photic, oligotrophic environments. Even though Foraminifera display a wide variety of algal endosymbionts and secondary plastids evolved from algal endosymbionts in the Excavata (Euglenophyta) and the Rhizaria (Chlorarachniophyceae), the greatest diversity of eukaryotic endosymbionts in protists is clearly found within the Chromalveolates.

According to the higher complexity of eukaryotic cells compared with prokaryotic cells, also the modes of endosymbiotic integration found among eukaryotic endosymbionts spans a much wider array than that found among prokaryotic endosymbionts (reviewed by Schnepf 2004).

#### (a) *Paramecium bursaria*

The common freshwater ciliate *Paramecium bursaria* (figure 3a) hosting green-algal symbionts of the genus *Chlorella* is a textbook example of endosymbiosis in

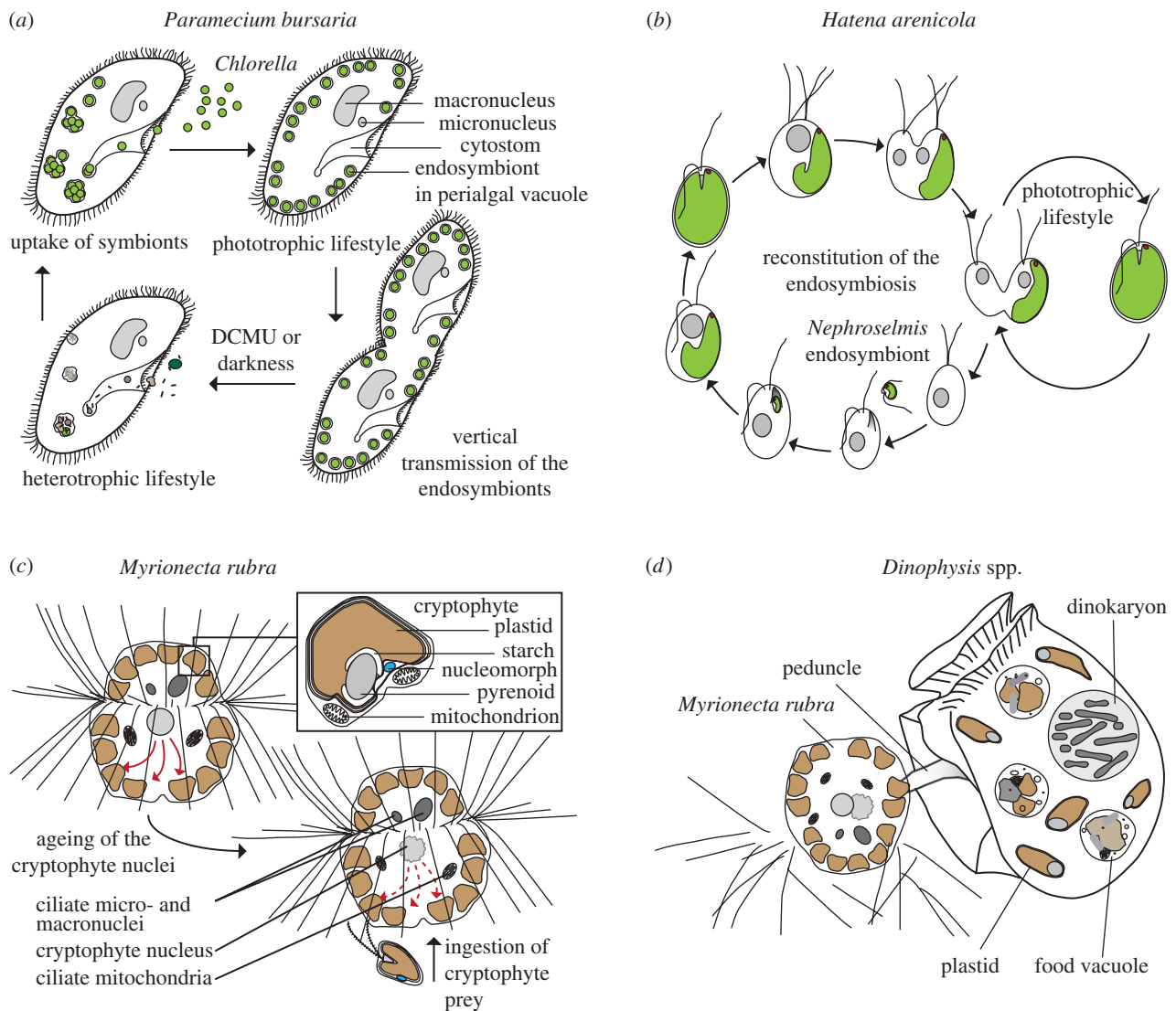


Figure 3. Life history of protists with photosynthetic eukaryotic endosymbionts. (a) In *P. bursaria* aposymbiosis can be induced by DCMU (DCMU = 3-(3,4-Dichlorophenyl)-1,1-dimethylurea) treatment or growth in the dark. Upon availability of *Chlorella* cells, the symbiosis is reconstituted in the light. (b) Cell division of *H. arenicola* yields one symbiont-bearing green and one symbiont-lacking colourless cell, which reconstitutes the phototrophic lifestyle by ingestion of a *Nephroselmis* cell (modified from Okamoto & Inouye 2006). (c) In *M. rubra*, performance of the cryptophyte-derived kleptoplastids depends on transcriptional activity of the cryptophyte nuclei (symbolized by red arrows). Ageing nuclei are replaced by the uptake of new cryptophyte prey. (d) *Dinophysis* cell during myzocytotic uptake of kleptoplastids from *Myrionecta rubra*.

protists. The ciliate contains hundreds of endosymbionts in individual perialgal vacuoles close to the surface of the cell (Kodama & Fujishima 2009) that are vertically transmitted to daughter cells upon host cell division (Siegel 1960). Endosymbionts supply the host mainly with photosynthetically fixed carbon in the form of maltose, supporting photoautotrophic growth of the ciliate (Brown & Nielsen 1974), while the host provides the endosymbiont with nitrogen compounds (Reisser 1976). Phylogenetic analyses of SSU rDNA and ITS2 revealed four distinct lineages of endosymbionts from the Chlorellaceae and a second green-algal clade containing species of *Coccomyxa* and *Paradoxia multisetata*, suggesting multiple origins of the symbiosis (Hoshina & Imamura 2008). Interestingly, despite its apparent stability, the symbiotic association is not obligatory, i.e. both partners can be grown separately and under appropriate conditions, and the symbiosis can be reconstituted (Weis 1983).

**(b) Hatena arenicola**

*Hatena arenicola* is a katablepharid flagellate recently described from an intertidal beach in Japan that shows a peculiar life history (Okamoto & Inouye 2005, 2006): In natural populations, most *H. arenicola* cells harbour a green-algal endosymbiont of the genus *Nephroselmis* bounded by a single membrane of unknown origin. Remarkably, upon cell division, the endosymbiont is inherited only by one of the two daughter cells, resulting in a symbiont-bearing green cell and a symbiont-free colourless cell that re-establishes the phototrophic lifestyle by ingestion of a new *Nephroselmis* cell (figure 3b). The endosymbiont occupies a distinct position and orientation inside the host cell, with the endosymbiont's eyespot always placed at the apex of the host cell, indicating a closely regulated interaction between both partners.

Interestingly, the uptake of the correct *Nephroselmis* species or strain within a short time leads to dramatic



morphological changes in both symbiotic partners: free-living *Nephroselmis* cells are about 10 µm in length and kidney shaped. In contrast, in the endosymbiont the plastid is selectively enlarged up to 10-fold its original size, one to four endosymbiont nuclei were observed, other cell components, such as the endomembrane system, mitochondria and cytoskeleton including flagella, are degraded to various degrees. In the colourless *H. arenicola* cells, a complex apical feeding apparatus forms that degenerates within a short time after uptake of the endosymbiont. Unfortunately, as of yet *H. arenicola* cannot be cultured, hampering a closer examination of this fascinating symbiotic association.

**(c) *Myrionecta rubra* Jankowski (= *Mesodinium rubrum* Lohmann = *Cyclotrichium meunieri* Powers)**

A striking example of cellular chimerism was recently discovered in the ubiquitous marine ciliate *Myrionecta rubra*, which has attracted the interest of the scientific community for decades owing to recurrent red tides caused by its massive blooms (Ryther 1967; Lindholm 1985).

*Myrionecta rubra* contains cryptophyte plastids (Taylor *et al.* 1969; Hibberd 1977) that are most closely related to the free-living *Geminigera cryophila* (Johnson *et al.* 2006) and enable the phototrophic lifestyle of the ciliate (Smith & Barber 1979). *Myrionecta rubra* depends on ingestion of cryptophyte prey to sustain growth and a culture of the fragile ciliate was only successfully established when it was provided with the cryptophyte *Teleaulax* sp. (later determined to be *G. cryophila*; Johnson *et al.* 2006) as prey (Gustafson *et al.* 2000).

The cryptophyte plastids of *M. rubra* have long been known to be organized in numerous 'complexes' that besides plastids also contain cryptophyte cytoplasm and mitochondria (figure 3c), and that are bounded by a host vacuole membrane and two ER membranes (Taylor *et al.* 1969). Interestingly, cryptophyte nuclei are also observed in *M. rubra*, but are sequestered independently from the plastidal complexes (Johnson *et al.* 2007). The cryptophyte nucleus retains its function for up to 30 days, is transcriptionally active and serves plastids derived from multiple cryptophyte cells (Johnson *et al.* 2007). Thus, the sequestered cryptophyte nuclei appear to regulate the cryptophyte organelle performance. Because the retention time of prey nuclei is shorter than that for plastids, an average *M. rubra* cell may have eight cryptophyte plastids per single prey nucleus and prey nuclei need to be replaced by continuous feeding on cryptophyte algae (Johnson *et al.* 2007). Loss of prey nuclei results in the inability of the plastids to divide, leading to a decline in organelle number and biochemical potential. Thus, *M. rubra* cells apparently depend on recurrent stealing of cryptophyte nuclei, a highly unusual lifestyle, termed 'karyoklepty' by Johnson *et al.* (2007).

**(d) *Dinoflagellates***

Dinoflagellates do not only represent frequent endosymbionts, but also readily form endosymbiotic

associations with a variety of algae, in which they function as host partners (Schnepf & Elbrächter 1999). In line with their readiness to accept algal endosymbionts, dinoflagellates display an unusual diversity of stable secondary and tertiary plastids. Besides the peridinin-containing plastids, probably of red-algal origin, that are probably the ancestral state, there are haptophyte-derived 19'-hexanoyloxy- and/or 19'-butanoyloxy-fucoxanthin-containing plastids (e.g. in *Karenia* spp., *Karlodinium maicrum*), and green-algal-derived chlorophyll b-containing plastids (e.g. in *Lepidodinium viride* and *Lepidodinium chlorophorum*; figure 1c). The finding of non-peridinin-containing plastids implies the repeated replacement of plastids via secondary and tertiary symbiosis. Numerous dinoflagellates harbour algal endosymbionts at different stages of symbiotic integration and are likely in the process of acquisition of novel secondary or tertiary plastids. Interestingly, different host cells evolved a variety of strategies to obtain photosynthetic units.

**(e) *Dinoflagellates with cryptophyte-derived endosymbionts***

In several dinoflagellate lineages, unstable phycobillin-containing plastids occur that originate from cryptophytes.

*Amphidinium poecilochroum* and *Gymnodinium aeruginosum* (= *G. acidotum*) contain cryptophyte-derived plastids that are surrounded by four envelope membranes including a nucleomorph. The plastids are accompanied by varying amounts of further cryptophyte cell material that is separated from the host cytoplasm by a further (probably) host-derived vacuole. *Amphidinium poecilochroum* pierces cryptophyte prey with its peduncle and ingests their cytoplasm and organelles under formation of a phagocytotic vacuole, a process known as 'myzocytosis' (Larsen 1988). Subsequently, ingested cell material including plastids is slowly digested. It is unclear whether the cryptophyte plastids represent food only or whether they remain photosynthetically active for some time and thus, have to be considered kleptoplastids. Kleptoplastidy is the temporary retention of plastids, obtained from ingested algal prey, that remain functional providing photosynthetic products to the predator (host).

Unlike *A. poecilochroum*, which can ingest several cryptophyte cells, each *G. aeruginosum* cell (figure 1d) contains only a single cryptophyte cell; this displays besides plastids, mitochondria, endomembrane system, and in 10–30% of the cases, a cryptophyte nucleus (Wilcox & Wedemayer 1984; Schnepf *et al.* 1989; Farmer & Roberts 1990). The ingested cryptophyte is not restricted to a small phagocytic vacuole, but is strongly lobed throughout the host cell (Farmer & Roberts 1990). *Gymnodinium aeruginosum* becomes colourless after four to seven cell divisions after isolation of single cells from natural samples and finally dies (Melkonian, M. 2002 (unpublished observations)). It is likely that deterioration of the plastid starts after digestion of the symbiont nucleus. In co-culture with *Chroomonas*, *G. aeruginosum* has been maintained over nine months (Fields & Rhodes 1991). Whereas



many *Chroomonas* strains can serve as prey for *G. aeruginosum*, only few are apparently able to re-establish kleptoplastidy (Melkonian, M. 2006 (unpublished observations)).

A very peculiar case of kleptoplastidy has recently been studied in some detail in *Dinophysis* spp. Photosynthetic members of the toxin-producing, bloom-forming genus *Dinophysis* contain plastids of cryptophyte origin (Schnepf & Elbrächter 1988; Takishita *et al.* 2002). These are surrounded by two membranes only, and a nucleomorph is absent (Lucas & Vesik 1990). Establishment of cultures of *Dinophysis* spp. had consistently failed, no matter which cryptophyte species was offered as prey, until the ciliate *M. rubra* (see above) was provided as prey (Park *et al.* 2006). This method turned out to be useful for further *Dinophysis* species (Nagai *et al.* 2008; Nishitani *et al.* 2008; Park *et al.* 2008). Apparently, *Dinophysis* spp. feed myzocytotically on *M. rubra*, ingesting preferably the cryptophyte-derived kleptoplastids (figure 3d), which they retain for up to two months (Park *et al.* 2008). However, it was not yet unambiguously demonstrated that *M. rubra* is the only source of plastids in *Dinophysis* spp., nor is it understood which role *M. rubra* plays in preparing the kleptoplastids for operation in *Dinophysis* spp.

#### (f) *Dinoflagellates with diatom-derived endosymbionts*

In several dinoflagellates, peridinin-containing plastids are replaced by diatom-derived fucoxanthin-containing endosymbionts, e.g. *Durinskia baltica* (= *Peridinium balticum*), *Kryptoperidinium foliaceum* (= *Peridinium foliaceum* = *Glenodinium foliaceum*), *Gymnodinium quadrilobatum*, *Peridiniopsis* spp. and *Peridinium quinquecorne* (Schnepf & Elbrächter 1999; Takano *et al.* 2008). A red eyespot surrounded by three membranes, present in the dinoflagellate host cell, probably represents a remnant of the former peridinin plastid. As opposed to the host cells, which appear monophyletic, phylogenies of plastid-encoded *rbcL* and endosymbiont-encoded 18S rRNA genes reveal multiple origins of the endosymbionts within the diatoms (Takano *et al.* 2008). Nevertheless, dinoflagellates with diatom-derived endosymbionts represent the most stable endosymbiotic association discussed in this section.

Host cell and endosymbiont are highly interdigitated and are separated by a single membrane of unknown origin (compare Eschbach *et al.* 1990; Schnepf & Elbrächter 1999). The endosymbiont retains in addition to the four membrane-bounded plastid, the diatom nucleus, cytoplasm, ER, ribosomes and mitochondria (Schnepf & Elbrächter 1999). For *K. foliaceum* (figure 1e) and *D. baltica*, the functionality of both endosymbiont and host mitochondria was demonstrated by the expression analysis of essential genes of the electron transport chain (Imanian & Keeling 2007). This is apparently the first example of functional polyphyletic mitochondria within one cell. Photosynthetic products are transferred to the host cell, where they are stored as starch (Dodge 1986).

The cell cycles of endosymbiont and host are synchronized, which enables prolonged photoautotrophic

cultures of the cells. Interestingly, division of the diatom nucleus occurs amitotically, and neither chromatin condensation nor spindles are observed (Dodge 1971; Tippit & Pickett-Heaps 1976). The variable size of the resulting daughter nuclei suggests a loss of function of the endosymbiont genome owing to EGT of endosymbiont nuclear genes to the dinokaryon (Figueroa *et al.* 2009). In the sexual cycle of *D. baltica* and *K. foliaceum* plasmogamy and karyogamy of the host were shown to be followed by that of the endosymbiont (Chesnick & Cox 1989; Figueroa *et al.* 2009). Although the *Kryptoperidinium*/diatom symbiosis is binucleate in culture, natural blooms of *K. foliaceum* have been found in which an endosymbiont nucleus could not be detected, suggesting kleptoplastidy may occur as well in this organism (Kempton *et al.* 2002).

#### (g) *Foraminifera*

Larger foraminifera are amoeboid protists of the Rhizaria living in calcified shells that reach giant sizes of 0.01–6 cm and are abundant in the benthos of tropical and semi-tropical marine habitats (Lee 1995). These foraminifera host a polyphyletic array of endosymbiotic algae, such as dinoflagellates, diatoms, chlorophytes, rhodophytes, chrysophytes and haptophytes, that reside within the host cytoplasm enclosed in a symbiont vacuole (Richardson 2001; Holzmann *et al.* 2006).

Foraminiferal endosymbionts are vertically transmitted during asexual reproduction of the host. Upon gametogenesis, however, the large size of most endosymbionts compared with foraminiferal gametes precludes retention of the endosymbiont; hence, symbionts need to be reacquired after gametogamy, leading to a cyclic nature of the interaction (Röttger *et al.* 1998). The relationship between foraminiferal host species and particular endosymbionts is not generally fixed, i.e. the same host species may harbour different endosymbiont species, sometimes within one cell (Lee *et al.* 1989). However, in the soritid foraminifera, which host dinoflagellate endosymbionts of the genus *Symbiodinium*, 14 out of 22 soritid phylotypes revealed strict symbiont specificity and only one was found to be the host for more than two phylotypes of *Symbiodinium* (Garcia-Cuetos *et al.* 2005).

Even though most foraminiferal hosts are mixotrophic and only few can grow without any obvious food source (e.g. *Heterostegina depressa*), host cells usually cannot survive for longer periods without their endosymbiotic algae (Lee 1995). In contrast, for the algal endosymbionts the symbiosis is not obligate.

#### (h) *General remarks on eukaryotic endosymbionts within protists*

In this section, various conceptual models for the integration of eukaryotic endosymbionts into protist cells were presented, ranging from periodic associations of two facultative symbiotic partners, via temporary retention of photosynthetic prey cells or their organelles, to permanent, obligate symbioses. Any model may go along with dramatic morphological changes of one or both partners.

The destruction of prey cells precludes interpreting kleptoplastids as true endosymbionts and the process of kleptoplastidy is best characterized as predation with farming of the prey organelles. An important question is what sustains the long-term stability of the kleptoplastids, when the prey cells are destroyed and the eukaryotic nucleus, sometimes also the nucleomorph, which encodes essential plastid proteins (Douglas *et al.* 2001) are lost. An interesting solution is presented by the karyoklepty found in *M. rubra*, i.e. the uptake of transcriptionally active cryptophyte nuclei to operate the cryptophyte kleptoplastids. Dinoflagellates may encode many genes necessary for plastid function on their nuclear genome; a fact that might facilitate the integration of new photosynthetic endosymbionts. This hypothesis is substantiated by the finding of plastid genes in the heterotrophic dinoflagellate *Cryptocodinium cohnii* (Sanchez-Puerta *et al.* 2007), suggesting that many (or perhaps all) colourless dinoflagellates may harbour previously undetected leucoplasts, as well as the demonstration of retention and use of many genes for plastid-targeted proteins, originating from the ancestral peridinin-containing plastid in *Karolodinium micrum*, a dinoflagellate with a tertiary haptophyte-derived plastid (Patron *et al.* 2006).

Kleptoplastids are found in a wide range of host species such as ciliates (Stoecker *et al.* 1987; Esteban *et al.* 2009), foraminifera (Richardson 2001) and also in multicellular organisms (Mujer *et al.* 1996). Interestingly, EGT was recently demonstrated in the sea slug *Elysia chlorotica*, which feeds on the xanthophyte *Vaucheria litorea*, and retains its plastids in functional state for up to nine months (Mujer *et al.* 1996). Despite the lack of algal nuclei, not only presence, but also expression of the *Vaucheria psbO* gene, a nuclear-encoded plastid-targeted gene with an essential function in photosystem II, was demonstrated in the sea slug tissue (Rumpho *et al.* 2008). As argued above, genetic integration should be facilitated in protists as opposed to multicellular organisms, owing to the absence of a sequestered germ line. Thus, kleptoplastids provide their hosts not only temporarily with photosynthetic products and perhaps oxygen in anoxic habitats as was recently suggested for the common freshwater ciliate *Histiobalantium natans* (Esteban *et al.* 2009), but might become genetically integrated, either by pre-existing plastid functions encoded on the host nucleus, or by EGT enabled by a simultaneous uptake of prey nuclei. In conclusion, kleptoplastids might represent a useful intermediate step in the acquisition of novel plastids.

Secondary and tertiary plastids evolved several times independently from eukaryotic phototrophs, whereas the origin of photosynthetic organelles by primary endosymbiosis was presumably a unique event and only recently the first case of an independent acquisition of a primary photosynthetic endosymbiont was described. This ratio might reflect the larger difficulties of integrating a prokaryotic system into a eukaryotic cell: gene transfer between two eukaryotic systems might be facilitated by similar genome structures (presence of eukaryotic ribosome binding sites, introns, polyadenylation signals, etc.). Additionally,

and maybe more importantly, evolution of a protein import mechanism to target the former prokaryotic compartment, likely the main hurdle for genetic integration of a prokaryote into a eukaryotic cell, is already established in secondary and tertiary endosymbioses. The new eukaryotic endosymbiont can be accessed via the endomembrane system (Gould *et al.* 2008).

#### 4. CONCLUSIONS AND FUTURE PERSPECTIVES

The evolutionary success of endosymbioses is evident from the wide range of eukaryote groups that have established endosymbiotic associations. Endosymbionts in protists may be prokaryotes that perform a multitude of new biochemical functions in the host cells, such as photosynthesis, nitrogen fixation, nitrogen recycling, methanogenesis or sulphide oxidation. Moreover, eukaryotic photosynthetic endosymbionts found various modes of integration into different host cells. Thus, endosymbiosis represents a common evolutionary strategy of eukaryotes to acquire novel biochemical potential and novel compartments to fulfil the respective functions.

If EGT (but not necessarily protein import) occurs, endosymbiosis represents, furthermore, a source of genetic innovation in eukaryotes, a requirement that is met in bacteria by frequent inter- or intraspecies horizontal gene transfer (e.g. Zhaxybayeva *et al.* 2006). Cases of EGT were detected in several multicellular organisms, even though direct proof of protein import is still pending. The stable retention of endosymbionts with enormously reduced genomes such as *Carsonella ruddii*, as well as the presence of a gene encoding a subunit of photosystem I in the nuclear genome of *P. chromatophora*, however, imply that the evolution of some kind of protein import mechanism is possible outside canonical organelles. These findings illustrate the difficulties drawing a clear line between endosymbiont and organelle and provide a new view on the classical concept of the eukaryotic cell.

Organisms such as *Paulinella*, *Myrionecta* and *Dinophysis* have been known for decades. Still only recently they started to unveil their secrets, driven by progress in sequencing technologies and culture experiments. Moreover, there are numerous endosymbiotic associations in nature, about which only scarce knowledge is available and that might reveal fascinating new insights into eukaryotic evolution and diversity, which cannot be obtained from studies of the classical model organisms.

Attempts to study additional endosymbiotic associations in laboratory cultures should be encouraged. A culture represents an indispensable base to examine the life cycle of an endosymbiosis and, therewith, determine the stability of the association, its permanent or periodic, obligate or facultative nature. Phylogenetic studies, which do not necessarily depend on the availability of a culture, may help to understand the specificity of a symbiotic relationship and elucidate its evolutionary history. For a broad understanding of the physiological role of an endosymbiont, genome studies are indispensable. As exemplified by the

genomes of the endosymbionts of gut-dwelling flagellates, complete genome sequences do not depend any longer on a culture of the organism or symbiosis of interest, but may be obtained from a limited number of cells by whole genome amplification.

Important questions that still need to be addressed in most endosymbiotic relationships are how does the host cell control growth and division of the endosymbiont, which means of communication exist between the symbiotic partners and by which mechanisms are metabolites, or even proteins, exchanged. An answer to these questions could also help to understand the complex process of organelle evolution that shaped life on this planet once and forever.

## REFERENCES

- Akman, L., Yamashita, A., Watanabe, H., Oshima, K., Shiba, T., Hattori, M. & Aksoy, S. 2002 Genome sequence of the endocellular obligate symbiont of tsetse flies, *Wigglesworthia glossinidia*. *Nat. Genet.* **32**, 402–407. (doi:10.1038/ng986)
- Andersson, J. O. 2005 Lateral gene transfer in eukaryotes. *Cell. Mol. Life Sci.* **62**, 1182–1197. (doi:10.1007/s00018-005-4539-z)
- Archibald, J. M. 2009 The puzzle of plastid evolution. *Curr. Biol.* **19**, R81–R88. (doi:10.1016/j.cub.2008.11.067)
- Baumann, P. 2005 Biology of bacteriocyte-associated endosymbionts of plant sap-sucking insects. *Annu. Rev. Microbiol.* **59**, 155–189. (doi:10.1146/annurev.micro.59.030804.121041)
- Bhattacharya, D., Helmchen, T. & Melkonian, M. 1995 Molecular evolutionary analyses of nuclear-encoded small-subunit ribosomal RNA identify an independent rhizopod lineage containing the Euglyphina and the Chlorarachniophyta. *J. Eukaryot. Microbiol.* **42**, 65–69. (doi:10.1111/j.1550-7408.1995.tb01541.x)
- Boxma, B. *et al.* 2005 An anaerobic mitochondrion that produces hydrogen. *Nature* **434**, 74–79. (doi:10.1038/nature03343)
- Brown, J. A. & Nielsen, P. J. 1974 Transfer of photosynthetically produced carbohydrate from endosymbiotic *Chlorellae* to *Paramecium bursaria*. *J. Protozool.* **21**, 569–570.
- Cavalier-Smith, T. & Chao, E. E. Y. 2003 Phylogeny and classification of phylum Cercozoa (Protozoa). *Protist* **154**, 341–358. (doi:10.1078/143446103322454112)
- Chesnick, J. M. & Cox, E. R. 1989 Fertilization and zygote development in the binucleate dinoflagellate *Peridinium balticum* (Pyrrhophyta). *Am. J. Bot.* **76**, 1060–1072. (doi:10.2307/2444528)
- Des Marais, D. J. 2000 Evolution—when did photosynthesis emerge on earth? *Science* **289**, 1703–1705.
- Dodge, J. D. 1971 Dinoflagellate with both a mesocaryotic and a eucaryotic nucleus. 1. Fine structure of nuclei. *Protoplasma* **73**, 145–157. (doi:10.1007/BF01275591)
- Dodge, J. D. 1986 A re-examination of the relationship between unicellular host and eucaryotic endosymbiont with special reference to *Glenodinium foliaceum*. In *Endocytobiology*, vol. 2 (eds H. E. A. Schenk & W. Schwemmler), pp. 1015–1026. Berlin, Germany: de Gruyter.
- Doolittle, W. E. 1998 You are what you eat: a gene transfer ratchet could account for bacterial genes in eukaryotic nuclear genomes. *Trends Genet.* **14**, 307–311. (doi:10.1016/S0168-9525(98)01494-2)
- Douglas, A. E. 2009 The microbial dimension in insect nutritional ecology. *Funct. Ecol.* **23**, 38–47. (doi:10.1111/j.1365-2435.2008.01442.x)
- Douglas, A. E. & Smith, D. C. 1989 Are endosymbioses mutualistic? *Trends Ecol. Evol.* **4**, 350–352.
- Douglas, S. *et al.* 2001 The highly reduced genome of an enslaved algal nucleus. *Nature* **410**, 1091–1096. (doi:10.1038/35074092)
- Drum, R. W. & Pankratz, S. 1965 Fine structure of an unusual cytoplasmic inclusion in the diatom genus *Rhopalodia*. *Protoplasma* **60**, 141–149. (doi:10.1007/BF01248136)
- Dubilier, N., Bergin, C. & Lott, C. 2008 Symbiotic diversity in marine animals: the art of harnessing chemosynthesis. *Nat. Rev. Microbiol.* **6**, 725–740. (doi:10.1038/nrmicro1992)
- Dunning Hotopp, J. C. *et al.* 2007 Widespread lateral gene transfer from intracellular bacteria to multicellular eukaryotes. *Science* **317**, 1753–1756. (doi:10.1126/science.1142490)
- Embley, T. M. & Finlay, B. J. 1993 Systematic and morphological diversity of endosymbiotic methanogens in anaerobic ciliates. *Antonie van Leeuwenhoek* **64**, 261–271. (doi:10.1007/BF00873086)
- Embley, T. M., Finlay, B. J. & Brown, S. 1992 RNA sequence analysis shows that the symbionts in the ciliate *Metopus contortus* are polymorphs of a single methanogen species. *FEMS Microbiol. Lett.* **97**, 57–61. (doi:10.1111/j.1574-6968.1992.tb05439.x)
- Eschbach, S., Speth, V., Hansmann, P. & Sitte, P. 1990 Freeze-fracture study of the single membrane between host cell and endocytobiont in the dinoflagellates *Glenodinium foliaceum* and *Peridinium balticum*. *J. Phycol.* **26**, 324–328. (doi:10.1111/j.0022-3646.1990.00324.x)
- Esteban, G., Guhl, B. E., Clarke, K. J., Embley, T. M. & Finlay, B. J. 1993 *Cyclidium porcatum* n. sp.: a free-living anaerobic scuticociliate containing a stable complex of hydrogenosomes, eubacteria and archaeobacteria. *Eur. J. Protistol.* **29**, 262–270.
- Esteban, G. F., Finlay, B. J. & Clarke, K. J. 2009 Sequestered organelles sustain aerobic microbial life in anoxic environments. *Environ. Microbiol.* **11**, 544–550. (doi:10.1111/j.1462-2920.2008.01797.x)
- Farmer, M. A. & Roberts, K. R. 1990 Organelle loss in the endosymbiont of *Gymnodinium acidotum* (Dinophyceae). *Protoplasma* **153**, 178–185. (doi:10.1007/BF01354002)
- Fenchel, T. & Finlay, B. J. 1991a The biology of free-living anaerobic ciliates. *Eur. J. Protistol.* **26**, 201–215.
- Fenchel, T. & Finlay, B. J. 1991b Endosymbiotic methanogenic bacteria in anaerobic ciliates: significance for the growth efficiency of the host. *J. Protozool.* **38**, 18–22.
- Fields, S. D. & Rhodes, R. G. 1991 Ingestion and retention of *Chroomonas* spp. (Cryptophyceae) by *Gymnodinium acidotum* (Dinophyceae). *J. Phycol.* **27**, 525–529. (doi:10.1111/j.0022-3646.1991.00525.x)
- Figuerola, R. I., Bravo, I., Fraga, S., Gracés, E. & Llaveria, G. 2009 The life cycle of *Kryptoperidinium foliaceum*, a dinoflagellate with two eukaryotic nuclei. *Protist* **160**, 285–300. (doi:10.1016/j.protis.2008.12.003)
- Finlay, B. J. & Fenchel, T. 1991 Polymorphic bacterial symbionts in the anaerobic ciliated protozoan *Metopus*. *FEMS Microbiol. Lett.* **79**, 187–190. (doi:10.1111/j.1574-6968.1991.tb04526.x)
- Floener, L. & Bothe, H. 1980 Nitrogen fixation in *Rhopalodia gibba*, a diatom containing blue-greenish inclusions symbiotically. In *Endocytobiology, endosymbiosis and cell biology* (eds W. Schwemmler & H. E. A. Schenk), pp. 541–552. Berlin, Germany: Walter de Gruyter & Co.
- Fokin, S. I. 2004 Bacterial endocytobionts of ciliophora and their interactions with the host cell. *Int. Rev. Cytol.* **236**, 181–249. (doi:10.1016/S0074-7696(04)36005-5)
- García-Cuetos, L., Pochon, X. & Pawłowski, J. 2005 Molecular evidence for host-symbiont specificity in soritid



- Foraminifera. *Protist* **156**, 399–412. (doi:10.1016/j.protis.2005.08.003)
- Geitler, L. 1977 Life history of the Epithemiaceae *Epithemia*, *Rhopalodia* and *Denticula* (Diatomophyceae) and their presumable symbiotic spheroid bodies. *Plant Syst. Evol.* **128**, 259–275. (doi:10.1007/BF00984562)
- Gil, R. *et al.* 2003 The genome sequence of *Blochmannia floridanus*: comparative analysis of reduced genomes. *Proc. Natl Acad. Sci. USA* **100**, 9388–9393. (doi:10.1073/pnas.1533499100)
- Gould, S. B., Waller, R. R. & McFadden, G. I. 2008 Plastid evolution. *Annu. Rev. Plant Biol.* **59**, 491–517. (doi:10.1146/annurev.arplant.59.032607.092915)
- Greub, G. & Raoult, D. 2004 Microorganisms resistant to free-living amoebae. *Clin. Microbiol. Rev.* **17**, 413–433. (doi:10.1128/CMR.17.2.413-433.2004)
- Gustafson, D. E., Stoecker, D. K., Johnson, M. D., Van Heukelem, W. F. & Sneider, K. 2000 Cryptophyte algae are robbed of their organelles by the marine ciliate *Mesodinium rubrum*. *Nature* **405**, 1049–1052. (doi:10.1038/35016570)
- Hannah, F., Rogerson, A. & Anderson, O. R. 1996 A description of *Paulinella indentata* n. sp. (Filosea: Euglyphina) from subtidal coastal benthic sediments. *J. Eukaryot. Microbiol.* **43**, 1–4. (doi:10.1111/j.1550-7408.1996.tb02464.x)
- Hibberd, D. J. 1977 Observations on ultrastructure of the cryptomonad endosymbiont of the red water ciliate *Mesodinium rubrum*. *J. Mar. Biol. Assoc. UK* **57**, 45–61. (doi:10.1017/S0025315400021226)
- Hoffmeister, M. & Martin, W. 2003 Interspecific evolution: microbial symbiosis, endosymbiosis and gene transfer. *Environ. Microbiol.* **5**, 641–649. (doi:10.1046/j.1462-2920.2003.00454.x)
- Holzmann, M., Berney, C. & Hohenegger, J. 2006 Molecular identification of diatom endosymbionts in nummulitid Foraminifera. *Symbiosis* **42**, 93–101.
- Hongoh, Y. *et al.* 2008a Complete genome of the uncultured Termite Group 1 bacteria in a single host protist cell. *Proc. Natl Acad. Sci. USA* **105**, 5555–5560. (doi:10.1073/pnas.0801389105)
- Hongoh, Y. *et al.* 2008b Genome of an endosymbiont coupling N<sub>2</sub> fixation to cellulolysis within protist cells in termite gut. *Science* **322**, 1108–1109. (doi:10.1126/science.1165578)
- Hoogenraad, H. R. 1927 Zur Kenntnis der Fortpflanzung von *Paulinella chromatophora* Lauterb. *Zool. Anz.* **72**, 140–150.
- Horn, M. 2008 Chlamydiae as symbionts in eukaryotes. *Annu. Rev. Microbiol.* **62**, 113–131. (doi:10.1146/annurev.micro.62.081307.162818)
- Hoshina, R. & Imamura, N. 2008 Multiple origins of the symbioses in *Paramecium bursaria*. *Protist* **159**, 53–63. (doi:10.1016/j.protis.2007.08.002)
- Imanian, B. & Keeling, P. J. 2007 The dinoflagellates *Durinskia baltica* and *Kryptoperidinium foliaceum* retain functionally overlapping mitochondria from two evolutionarily distinct lineages. *BMC Evol. Biol.* **7**, 172. (doi:10.1186/1471-2148-7-172)
- Johnson, P. W., Hargraves, P. E. & Sieburth, J. M. 1988 Ultrastructure and ecology of *Calycomonas ovalis* Wulff, 1919 (Chrysophyceae), and its redescription as a testate rhizopod, *Paulinella ovalis* n. comb. (Filosea: Euglyphina). *J. Protozool.* **35**, 618–626.
- Johnson, M. D., Tengs, T., Oldach, D. & Stoecker, D. K. 2006 Sequestration, performance, and functional control of cryptophyte plastids in the ciliate *Myrionecta rubra* (Ciliophora). *J. Phycol.* **42**, 1235–1246. (doi:10.1111/j.1529-8817.2006.00275.x)
- Johnson, M. D., Oldach, D., Delwiche, C. F. & Stoecker, D. K. 2007 Retention of transcriptionally active cryptophyte nuclei by the ciliate *Myrionecta rubra*. *Nature* **445**, 426–428. (doi:10.1038/nature05496)
- Keeling, P. J. 2009 Chromalveolates and the evolution of plastids by secondary endosymbiosis. *J. Eukaryot. Microbiol.* **56**, 1–8. (doi:10.1111/j.1550-7408.2008.00371.x)
- Keeling, P. J. & Palmer, J. D. 2008 Horizontal gene transfer in eukaryotic evolution. *Nat. Rev. Genet.* **9**, 605–618. (doi:10.1038/nrg2386)
- Kempton, J. W. *et al.* 2002 *Kryptoperidinium foliaceum* blooms in South Carolina: a multi-analytical approach to identification. *Harmful Algae* **1**, 383–392. (doi:10.1016/S1568-9883(02)00051-3)
- Kies, L. 1974 Electron microscopical investigations on *Paulinella chromatophora* Lauterborn, a thecamoeba containing blue-green endosymbionts (cyanelles). *Protoplasma* **80**, 69–89. (doi:10.1007/BF01666352)
- Kies, L. & Kremer, B. P. 1979 Function of cyanelles in the thecamoeba *Paulinella chromatophora*. *Naturwissenschaften* **66**, 578–579. (doi:10.1007/BF00368819)
- Klasson, L., Kambris, Z., Cook, P. E., Walker, T. & Sinkins, S. P. 2009 Horizontal gene transfer between *Wolbachia* and the mosquito *Aedes aegypti*. *BMC Genomics* **10**, 9. (doi:10.1186/1471-2164-10-33)
- Kneip, C., Voss, C., Lockhart, P. J. & Maier, U. G. 2008 The cyanobacterial endosymbiont of the unicellular algae *Rhopalodia gibba* shows reductive genome evolution. *BMC Evol. Biol.* **8**, 16. (doi:10.1186/1471-2148-8-30)
- Kodama, Y. & Fujishima, M. 2009 Timing of perialgal vacuole membrane differentiation from digestive vacuole membrane in infection of symbiotic algae *Chlorella vulgaris* of the ciliate *Paramecium bursaria*. *Protist* **160**, 65–74. (doi:10.1016/j.protis.2008.06.001)
- Kuwahara, H. *et al.* 2007 Reduced genome of the thioautotrophic intracellular symbiont in a deep-sea clam, *Calyptogena okutanii*. *Curr. Biol.* **17**, 881–886. (doi:10.1016/j.cub.2007.04.039)
- Larsen, J. 1988 An ultrastructural study of *Amphidinium poecilochroum* (Dinophyceae), a phagotrophic dinoflagellate feeding on small species of cryptophytes. *Phycologia* **27**, 366–377.
- Lauterborn, R. 1895 Protozoenstudien. *Z. Wiss. Zool.* **59**, 537–544.
- Lee, J. J. 1995 Living sands—the symbiosis of protists and algae can provide good models for the study of host symbiont interactions. *Bioscience* **45**, 252–261. (doi:10.2307/1312418)
- Lee, J. J., McEnery, M. E., Terkuile, B., Erez, J., Röttger, R., Rockwell, R. F., Faber, W. W. & Lagziel, A. 1989 Identification and distribution of endosymbiotic diatoms in larger foraminifera. *Micropaleontology* **35**, 353–366. (doi:10.2307/1485677)
- Lindholm, T. 1985 *Mesodinium rubrum*—a unique photosynthetic ciliate. *Adv. Aquat. Microbiol.* **3**, 1–48.
- Lucas, I. A. N. & Vesik, M. 1990 The fine structure of two photosynthetic species of *Dinophysis* (Dinophysiales, Dinophyceae). *J. Phycol.* **26**, 345–357. (doi:10.1111/j.0022-3646.1990.00345.x)
- Marin, B., Nowack, E. C. M. & Melkonian, M. 2005 A plastid in the making: evidence for a second primary endosymbiosis. *Protist* **156**, 425–432. (doi:10.1016/j.protis.2005.09.001)
- Marin, B., Nowack, E. C. M., Glöckner, G. & Melkonian, M. 2007 The ancestor of the *Paulinella* chromatophore obtained a carboxysomal operon by horizontal gene transfer from a *Nitrococcus*-like gamma-proteobacterium. *BMC Evol. Biol.* **7**, 85. (doi:10.1186/1471-2148-7-85)
- McFadden, G. I. & van Dooren, G. G. 2004 Evolution: red algal genome affirms a common origin of all plastids.

- Curr. Biol.* **14**, R514–R516. (doi:10.1016/j.cub.2004.06.041)
- Mereschkowsky, C. S. 1910 Theorie der zwei Plasmaarten als Grundlage der Symbiogenese, einer neuen Lehre von der Entstehung der Organismen. *Biol. Centralb.* **30**, 278–303.
- Molmeret, M., Horn, M., Wagner, M., Santic, M. & Abu Kwaik, Y. 2005 Amoebae as training grounds for intracellular bacterial pathogens. *Appl. Environ. Microbiol.* **71**, 20–28. (doi:10.1128/AEM.71.1.20-28.2005)
- Moreira, D., Le Guyader, H. & Philippe, H. 2000 The origin of red algae and the evolution of chloroplasts. *Nature* **405**, 69–72. (doi:10.1038/35011054)
- Moya, A., Peretó, J., Gil, R. & Latorre, A. 2008 Learning how to live together: genomic insights into prokaryote-animal symbioses. *Nat. Rev. Genet.* **9**, 218–229. (doi:10.1038/nrg2319)
- Mujer, C. V., Andrews, D. L., Manhart, J. R., Pierce, S. K. & Rumpho, M. E. 1996 Chloroplast genes are expressed during intracellular symbiotic association of *Vaucheria litorea* plastids with the sea slug *Elysia chlorotica*. *Proc. Natl Acad. Sci. USA* **93**, 12 333–12 338. (doi:10.1073/pnas.93.22.12333)
- Nagai, S., Nitshitani, G., Tomaru, Y., Sakiyama, S. & Kamiyama, T. 2008 Predation by the toxic dinoflagellate *Dinophysis fortii* on the ciliate *Myrionecta rubra* and observation of sequestration of ciliate chloroplasts. *J. Phycol.* **44**, 909–922. (doi:10.1111/j.1529-8817.2008.00544.x)
- Nakabachi, A., Yamashita, A., Toh, H., Ishikawa, H., Dunbar, H. E., Moran, N. A. & Hattori, M. 2006 The 160-kilobase genome of the bacterial endosymbiont *Carsonella*. *Science* **314**, 267. (doi:10.1126/science.1134196)
- Nakayama, T. & Ishida, K. 2009 Another acquisition of a primary photosynthetic organelle is underway in *Paulinella chromatophora*. *Curr. Biol.* **19**, R284–R285. (doi:10.1016/j.cub.2009.02.043)
- Nikoh, N., Tanaka, K., Shibata, F., Kondo, N., Hizume, M., Shimada, M. & Fukatsu, T. 2008 *Wolbachia* genome integrated in an insect chromosome: evolution and fate of laterally transferred endosymbiont genes. *Genome Res.* **18**, 272–280. (doi:10.1101/gr.7144908)
- Nishitani, G., Nagai, S., Takano, Y., Sakiyama, S., Baba, K. & Kamiyama, T. 2008 Growth characteristics and phylogenetic analysis of the marine dinoflagellate *Dinophysis infundibulus* (Dinophyceae). *Aquat. Microb. Ecol.* **52**, 209–221. (doi:10.3354/ame01233)
- Nowack, E. C. M., Melkonian, M. & Glöckner, G. 2008 Chromatophore genome sequence of *Paulinella* sheds light on acquisition of photosynthesis by eukaryotes. *Curr. Biol.* **18**, 410–418. (doi:10.1016/j.cub.2008.02.051)
- Ogata, H., La Scola, B., Audic, S., Renesto, P., Blanc, G., Robert, C., Fournier, P. E., Claverie, J. M. & Raoult, D. 2006 Genome sequence of *Rickettsia bellii* illuminates the role of amoebae in gene exchanges between intracellular pathogens. *PLoS Genet.* **2**, 733–744. (doi:10.1371/journal.pgen.0020076)
- Ohkuma, M. 2003 Termite symbiotic systems: efficient bio-recycling of lignocellulose. *Appl. Microbiol. Biotechnol.* **61**, 1–9.
- Ohkuma, M., Sato, T., Noda, S., Ui, S., Kudo, T. & Hongoh, Y. 2007 The candidate phylum ‘Termite Group 1’ of bacteria: phylogenetic diversity, distribution, and endosymbiont members of various gut flagellated protists. *FEMS Microbiol. Ecol.* **60**, 467–476. (doi:10.1111/j.1574-6941.2007.00311.x)
- Okamoto, N. & Inouye, I. 2005 A secondary symbiosis in progress? *Science* **310**, 287. (doi:10.1126/science.1116125)
- Okamoto, N. & Inouye, I. 2006 *Hatena arenicola* gen. et sp. nov., a katablepharid undergoing probable plastid acquisition. *Protist* **157**, 401–419. (doi:10.1016/j.protis.2006.05.011)
- Park, M. G., Kim, S., Kim, H. S., Myung, G., Kang, Y. G. & Yih, W. 2006 First successful culture of the marine dinoflagellate *Dinophysis acuminata*. *Aquat. Microb. Ecol.* **45**, 101–106. (doi:10.3354/ame045101)
- Park, M. G., Park, J. S., Kim, M. & Yih, W. 2008 Plastid dynamics during survival of *Dinophysis caudata* without its ciliate prey. *J. Phycol.* **44**, 1154–1163. (doi:10.1111/j.1529-8817.2008.00579.x)
- Patron, N. J., Waller, R. F. & Keeling, P. J. 2006 A tertiary plastid uses genes from two endosymbionts. *J. Mol. Biol.* **357**, 1373–1382. (doi:10.1016/j.jmb.2006.01.084)
- Penard, E. 1905 Notes sur quelques Sarcodiniés—12. *Paulinella chromatophora* Lauterborn. *Rev. Suisse Zool.* **13**, 585–616.
- Prechtel, J., Kneip, C., Lockhart, P., Wenderoth, K. & Maier, U. G. 2004 Intracellular spheroid bodies of *Rhopalodia gibba* have nitrogen-fixing apparatus of cyanobacterial origin. *Mol. Biol. Evol.* **21**, 1477–1481. (doi:10.1093/molbev/msh086)
- Reisser, W. 1976 Metabolic interactions between *Paramecium bursaria* Ehrbg. and *Chlorella* spec. in *Paramecium bursaria*-symbiosis: 1. Nitrogen and carbon metabolism. *Arch. Microbiol.* **107**, 357–360. (doi:10.1007/BF00425352)
- Ricard, G. et al. 2006 Horizontal gene transfer from bacteria to rumen ciliates indicates adaptation to their anaerobic, carbohydrates-rich environment. *BMC Genomics* **7**, 22. (doi:10.1186/1471-2164-7-22)
- Richardson, S. L. 2001 Endosymbiont change as a key innovation in the adaptive radiation of Soritida (Foraminifera). *Paleobiology* **27**, 262–289. (doi:10.1666/0094-8373(2001)027<0262:ECAAki>2.0.CO;2)
- Rodríguez-Ezpeleta, N., Brinkmann, H., Burey, S. C., Roure, B., Burger, G., Löffelhardt, W., Bohnert, H. J., Philippe, H. & Lang, B. F. 2005 Monophyly of primary photosynthetic eukaryotes: green plants, red algae, and glaucophytes. *Curr. Biol.* **15**, 1325–1330. (doi:10.1016/j.cub.2005.06.040)
- Röttger, R., Dettmering, C., Krüger, R., Schmaljohann, R. & Hohenegger, J. 1998 Gametes in nummulitids (Foraminifera). *J. Foraminifer. Res.* **28**, 345–348.
- Rumpho, M. E., Worful, J. M., Lee, J., Kannan, K., Tyler, M. S., Bhattacharya, D., Moustafa, A. & Manhart, J. R. 2008 Horizontal gene transfer of the algal nuclear gene *psbO* to the photosynthetic sea slug *Elysia chlorotica*. *Proc. Natl Acad. Sci. USA* **105**, 17 867–17 871. (doi:10.1073/pnas.0804968105)
- Ryther, J. H. 1967 Occurrence of red water off Peru. *Nature* **214**, 1318–1319. (doi:10.1038/2141318a0)
- Sanchez-Puerta, M. V., Lippmeier, J. C., Apt, K. E. & Delwiche, C. F. 2007 Plastid genes in a non-photosynthetic dinoflagellate. *Protist* **158**, 105–117. (doi:10.1016/j.protis.2006.09.004)
- Schmitz-Esser, S., Toenshoff, E. R., Haider, S., Heinz, E., Hoenninger, V. M., Wagner, M. & Horn, M. 2008 Diversity of bacterial endosymbionts of environmental *Acanthamoeba* isolates. *Appl. Environ. Microbiol.* **74**, 5822–5831. (doi:10.1128/AEM.01093-08)
- Schnepf, E. 2004 Protoctists and microalgae: antagonistic and mutualistic associations and the symbiogenesis of plastids. In *Progress in botany*, vol. 65 (eds K. Esser, U. Lüttge, W. Beyschlag & J. Murata), pp. 3–51. Berlin, Germany: Springer-Verlag.
- Schnepf, E. & Elbrächter, M. 1988 Cryptophycean-like double membrane-bound chloroplast in the dinoflagellate, *Dinophysis* Ehrenb.: evolutionary, phylogenetic and toxicological implications. *Bot. Acta* **101**, 196–203.

- Schnepf, E. & Elbrächter, M. 1999 Dinophyte chloroplasts and phylogeny—a review. *Grana* **38**, 81–97.
- Schnepf, E., Winter, S. & Mollenhauer, D. 1989 *Gymnodinium aeruginosum* (Dinophyta): a blue-green dinoflagellate with a vestigial, anucleate, cryptophycean endosymbiont. *Plant Syst. Evol.* **164**, 75–91. (doi:10.1007/BF00940431)
- Shigenobu, S., Watanabe, H., Hattori, M., Sakaki, Y. & Ishikawa, H. 2000 Genome sequence of the endocellular bacterial symbiont of aphids *Buchnera* sp. APS. *Nature* **407**, 81–86. (doi:10.1038/35024074)
- Shinzato, N., Watanabe, I., Meng, X. Y., Sekiguchi, Y., Tamaki, H., Matsui, T. & Kamagata, Y. 2007 Phylogenetic analysis and fluorescence *in situ* hybridization detection of archaeal and bacterial endosymbionts in the anaerobic ciliate *Trimyema compressum*. *Microb. Ecol.* **54**, 627–636. (doi:10.1007/s00248-007-9218-1)
- Siegel, R. W. 1960 Hereditary endosymbiosis in *Paramecium bursaria*. *Exp. Cell Res.* **19**, 239–252. (doi:10.1016/0014-4827(60)90005-7)
- Smith, W. O. & Barber, R. T. 1979 Carbon budget for the autotrophic ciliate *Mesodinium rubrum*. *J. Phycol.* **15**, 27–33. (doi:10.1111/j.0022-3646.1979.00027.x)
- Stingl, U., Radek, R., Yang, H. & Brune, A. 2005 'Endomicrobia': cytoplasmic symbionts of termite gut protozoa form a separate phylum of prokaryotes. *Appl. Environ. Microbiol.* **71**, 1473–1479. (doi:10.1128/AEM.71.3.1473-1479.2005)
- Stoecker, D. K., Michaels, A. E. & Davis, L. H. 1987 Large proportion of marine planktonic ciliates found to contain functional chloroplasts. *Nature* **326**, 790–792. (doi:10.1038/326790a0)
- Surek, B. & Melkonian, M. 1983 Intracellular bacteria in the Euglenophyceae: prolonged axenic culture of an alga–bacterial system. In *Endocytobiology*, vol. 2 (eds H. E. A. Schenk & W. Schwemmler), pp. 475–486. Berlin, Germany: de Gruyter.
- Takano, Y., Hansen, G., Fujita, D. & Horiguchi, T. 2008 Serial replacement of diatom endosymbionts in two freshwater dinoflagellates, *Peridiniopsis* spp. (Peridinales, Dinophyceae). *Phycologia* **47**, 41–53. (doi:10.2216/07-36.1)
- Takishita, K., Koike, K., Maruyama, T. & Ogata, T. 2002 Molecular evidence for plastid robbery (Kleptoplastidy) in *Dinophysis*, a dinoflagellate causing diarrhetic shellfish poisoning. *Protist* **153**, 293–302. (doi:10.1078/1434-4610-00106)
- Tamames, J., Gil, R., Latorre, A., Peretó, J., Silva, F. J. & Moya, A. 2007 The frontier between cell and organelle: genome analysis of *Candidatus Carsonella ruddii*. *BMC Evol. Biol.* **7**, 7. (doi:10.1186/1471-2148-7-181)
- Taylor, F. J. R., Blackbou, D. J. & Blackbou, J. 1969 Ultrastructure of chloroplasts and associated structures within marine ciliate *Mesodinium rubrum* (Lohmann). *Nature* **224**, 819–821. (doi:10.1038/224819a0)
- Timmis, J. N., Ayliffe, M. A., Huang, C. Y. & Martin, W. 2004 Endosymbiotic gene transfer: organelle genomes forge eukaryotic chromosomes. *Nat. Rev. Genet.* **5**, 123–135. (doi:10.1038/nrg1271)
- Tippit, D. H. & Pickett-Heaps, J. D. 1976 Apparent amitosis in the binucleate dinoflagellate *Peridinium balticum*. *J. Cell Sci.* **21**, 273–289.
- Tyra, H. M., Linka, M., Weber, A. P. M. & Bhattacharya, D. 2007 Host origin of plastid solute transporters in the first photosynthetic eukaryotes. *Genome Biol.* **8**, R212. (doi:10.1186/gb-2007-8-10-r212)
- van Hoek, A. H. A. M., van Alen, T. A., Sprakel, V. S. I., Leunissen, J. A. M., Brigge, T., Vogels, G. D. & Hackstein, J. H. P. 2000 Multiple acquisition of methanogenic archaeal symbionts by anaerobic ciliates. *Mol. Biol. Evol.* **17**, 251–258.
- Weis, D. 1983 Infection in *Paramecium bursaria* as an inductive process. In *Endocytobiology*, vol. 2 (eds H. E. A. Schenk & W. Schwemmler), pp. 523–532. Berlin, Germany: de Gruyter.
- Wilcox, L. W. & Wedemayer, G. J. 1984 *Gymnodinium acidotum* Nygaard (Pyrrophyta), a dinoflagellate with an endosymbiotic cryptomonad. *J. Phycol.* **20**, 236–242. (doi:10.1111/j.0022-3646.1984.00236.x)
- Yoon, H. S., Reyes-Prieto, A., Melkonian, M. & Bhattacharya, D. 2006 Minimal plastid genome evolution in the *Paulinella* endosymbiont. *Curr. Biol.* **16**, R670–R672. (doi:10.1016/j.cub.2006.08.018)
- Yoon, H. S., Nakayama, T., Reyes-Prieto, A., Andersen, R. A., Boo, S. M., Ishida, K. & Bhattacharya, D. 2009 A single origin of the photosynthetic organelle in different *Paulinella* lineages. *BMC Evol. Biol.* **9**, 98. (doi:10.1186/1471-2148-9-98)
- Zhaxybayeva, O., Gogarten, J. P., Charlebois, R. L., Doolittle, W. F. & Papke, R. T. 2006 Phylogenetic analyses of cyanobacterial genomes: quantification of horizontal gene transfer events. *Genome Res.* **16**, 1099–1108. (doi:10.1101/gr.5322306)
- Zientz, E., Dandekar, T. & Gross, R. 2004 Metabolic interdependence of obligate intracellular bacteria and their insect hosts. *Microbiol. Mol. Biol. Rev.* **68**, 745–770. (doi:10.1128/MMBR.68.4.745-770.2004)