

# Endothelial Function in Cardiovascular Precision Medicine: A Consensus Paper of the European Society of Cardiology Working Groups on Atherosclerosis and Vascular Biology, Aorta and Peripheral Vascular Diseases, Coronary Pathophysiology and Microcirculation, and Thrombosis

Yvonne Alexander<sup>1†</sup>, Elena Osto<sup>2,3†</sup>, Arno Schmidt-Trucksäss<sup>4†</sup>, Michael Shechter<sup>5,6†</sup>, Danijela Trifunovic<sup>7†</sup>, Dirk J. Duncker<sup>8†</sup>, Victor Aboyans<sup>9</sup>, Magnus Bäck<sup>10,11</sup>, Lina Badimon<sup>12</sup>, Francesco Cosentino<sup>13</sup>, Marco De Carlo<sup>14</sup>, Maria Dorobantu<sup>15</sup>, David G. Harrison<sup>16</sup>, Tomasz J. Guzik<sup>17,18</sup>, Imo Hofer<sup>19</sup>, Paul D. Morris<sup>20,21</sup>, Giuseppe D. Norata<sup>22</sup>, Rosa Suades<sup>13</sup>, Stefano Taddei<sup>23</sup>, Gemma Vilahur<sup>12</sup>, Johannes Waltenberger<sup>24,25</sup>, Christian Weber<sup>26,27,28,29</sup>, Fiona Wilkinson<sup>1</sup>, Marie-Luce Bochaton-Piallat<sup>30</sup>, and Paul C. Evans<sup>20,21\*</sup>

<sup>1</sup>Centre for Bioscience, Faculty of Science & Engineering, Manchester Metropolitan University, Manchester, UK; <sup>2</sup>Institute of Clinical Chemistry, University and University Hospital Zurich, University Heart Center, Zurich, Switzerland; <sup>3</sup>Laboratory of Translational Nutrition Biology, Swiss Federal Institute of Technology, Zurich, Switzerland; <sup>4</sup>Division of Sports and Exercise Medicine, Department of Sport, Exercise and Health, Medical Faculty, University of Basel, Basel, Switzerland; <sup>5</sup>Leviev Heart Center, Chaim Sheba Medical Center, Tel Hashomer, Israel; <sup>6</sup>Sackler Faculty of Medicine, Tel Aviv University, Tel Aviv, Israel; <sup>7</sup>Cardiology Department, Clinical Centre of Serbia, Faculty of Medicine, University of Belgrade, Belgrade, Serbia; <sup>8</sup>Division of Experimental Cardiology, Department of Cardiology, Thoraxcenter, Erasmus MC, University Medical Center Rotterdam, Rotterdam, The Netherlands; <sup>9</sup>Department of Cardiology, Dupuytren University Hospital, Inserm U-1094, Limoges University, Limoges, France; <sup>10</sup>Department of Cardiology, Center for Molecular Medicine, Karolinska University Hospital, Solna, Stockholm, Sweden; <sup>11</sup>INSERM U1116, Université de Lorraine, Centre Hospitalier Régional Universitaire de Nancy, Vandoeuvre les Nancy, France; <sup>12</sup>Cardiovascular Program-ICCC, IR-Hospital de la Santa Creu i Sant Pau, CiberCV, Autonomous University of Barcelona, Barcelona, Spain; <sup>13</sup>Unit of Cardiology, Karolinska Institute and Karolinska University Hospital, Solna, Stockholm, Sweden; <sup>14</sup>Catheterization Laboratory, Azienda Ospedaliero-Universitaria Pisana, Pisa, Italy; <sup>15</sup>'CarolDavila' University of Medicine and Pharmacy, Bucharest, Romania; <sup>16</sup>Vanderbilt University School of Medicine, Nashville, TN, USA; <sup>17</sup>Institute of Cardiovascular and Medical Sciences, University of Glasgow, Glasgow, UK; <sup>18</sup>Department of Medicine, Jagiellonian University Collegium Medicum, Cracow, Poland; <sup>19</sup>Laboratory of Clinical Chemistry and Hematology, University Medical Centre Utrecht, The Netherlands; <sup>20</sup>Department of Infection, Immunity and Cardiovascular Disease, Bateson Centre & INSIGNEO Institute, University of Sheffield, Sheffield S10 2RX, UK; <sup>21</sup>Insigneo Institute for In Silico Medicine, Sheffield, UK; <sup>22</sup>Department of Pharmacological and Biomolecular Sciences, Università degli Studi di Milano, Milan, Italy; <sup>23</sup>Department of Clinical and Experimental Medicine, University of Pisa, Pisa, Italy; <sup>24</sup>Department of Cardiovascular Medicine, Medical Faculty, University of Münster, Münster, Germany; <sup>25</sup>SRH Central Hospital Suhl, Suhl, Germany; <sup>26</sup>Institute for Cardiovascular Prevention (IPEK), Ludwig-Maximilian-Universität (LMU) München, Munich, Germany; <sup>27</sup>German Center for Cardiovascular Research (DZHK), partner site Munich Heart Alliance, Munich, Germany; <sup>28</sup>Munich Cluster for Systems Neurology (SyNergy), Munich, Germany; <sup>29</sup>Department of Biochemistry, Cardiovascular Research Institute Maastricht (CARIM), Maastricht University, Maastricht, The Netherlands; and <sup>30</sup>Department of Pathology and Immunology, Faculty of Medicine, University of Geneva, Geneva, Switzerland

Received 10 February 2020; revised 8 March 2020; editorial decision 11 March 2020; accepted 7 April 2020

This article was guest edited by an Executive Deputy Editor, Pasquale Maffia.

## Abstract

Endothelial cells (ECs) are sentinels of cardiovascular health. Their function is reduced by the presence of cardiovascular risk factors, and is regained once pathological stimuli are removed. In this European Society for Cardiology Position Paper, we describe endothelial dysfunction as a spectrum of phenotypic states and advocate further studies to determine the role of EC subtypes in cardiovascular disease. We conclude that there is no single ideal method for measurement of endothelial function. Techniques to measure coronary epicardial and micro-vascular function

\* Corresponding author. Tel: +44 114 2159525, E-mail: paul.evans@sheffield.ac.uk

† These authors contributed equally to the study.

Published on behalf of the European Society of Cardiology. All rights reserved. © The Author(s) 2020. For permissions, please email: journals.permissions@oup.com.

are well established but they are invasive, time-consuming, and expensive. Flow-mediated dilatation (FMD) of the brachial arteries provides a non-invasive alternative but is technically challenging and requires extensive training and standardization. We, therefore, propose that a consensus methodology for FMD is universally adopted to minimize technical variation between studies, and that reference FMD values are established for different populations of healthy individuals and patient groups. Newer techniques to measure endothelial function that are relatively easy to perform, such as finger plethysmography and the retinal flicker test, have the potential for increased clinical use provided a consensus is achieved on the measurement protocol used. We recommend further clinical studies to establish reference values for these techniques and to assess their ability to improve cardiovascular risk stratification. We advocate future studies to determine whether integration of endothelial function measurements with patient-specific epigenetic data and other biomarkers can enhance the stratification of patients for differential diagnosis, disease progression, and responses to therapy.

## Keywords

Endothelial function • Cardiovascular

# 1. Defining endothelial function and dysfunction

## 1.1 What is endothelial dysfunction?

The vascular endothelium acts as a semipermeable barrier to regulate an exchange of fluids, nutrients, and metabolites, and is critical to haemostasis and vascular health. In healthy arteries, endothelial cells (ECs) exist in a quiescent state that is maintained by laminar blood,<sup>1,2</sup> and by circulating cytoprotective factors such as high-density lipoprotein.<sup>3</sup> However, several stimuli including chronic disease states,<sup>4</sup> metabolic conditions [e.g. type 2 diabetes mellitus (T2DM), obesity, dyslipidemia], smoking,<sup>5</sup> and disturbed blood flow<sup>6–8</sup> interrupt the quiescent phenotype and drive EC dysfunction.<sup>9,10</sup> In 1998, Hunt and Jurd<sup>10</sup> defined dysfunctional ECs by five key characteristic mechanisms: (i) loss of vascular integrity, (ii) increased expression of adhesion molecules, (iii) pro-thrombotic phenotype, (iv) production of cytokines, and (v) upregulation of human leucocyte antigen molecules. It is now known that EC dysfunction is not a single-pathological state but instead represents a spectrum of phenotypes associated with pathophysiologically heterogeneous alterations in vascular tone, permeability, inflammation, and de-differentiation, leading to the loss of homeostatic functions of endothelium (Figure 1). Indeed, recent single-cell RNA sequencing studies have revealed multiple distinct EC subtypes for instance with aneurysms and atherosclerosis, thus emphasizing the heterogeneity of ECs in diseased tissues.<sup>11–14</sup> Aside from tissue-resident endothelium, EC dysfunction also involves changes in circulating endothelial colony-forming cells (ECFCs) and endothelial-derived micro-vesicles (EMVs) that have major roles in cardiovascular health and disease.

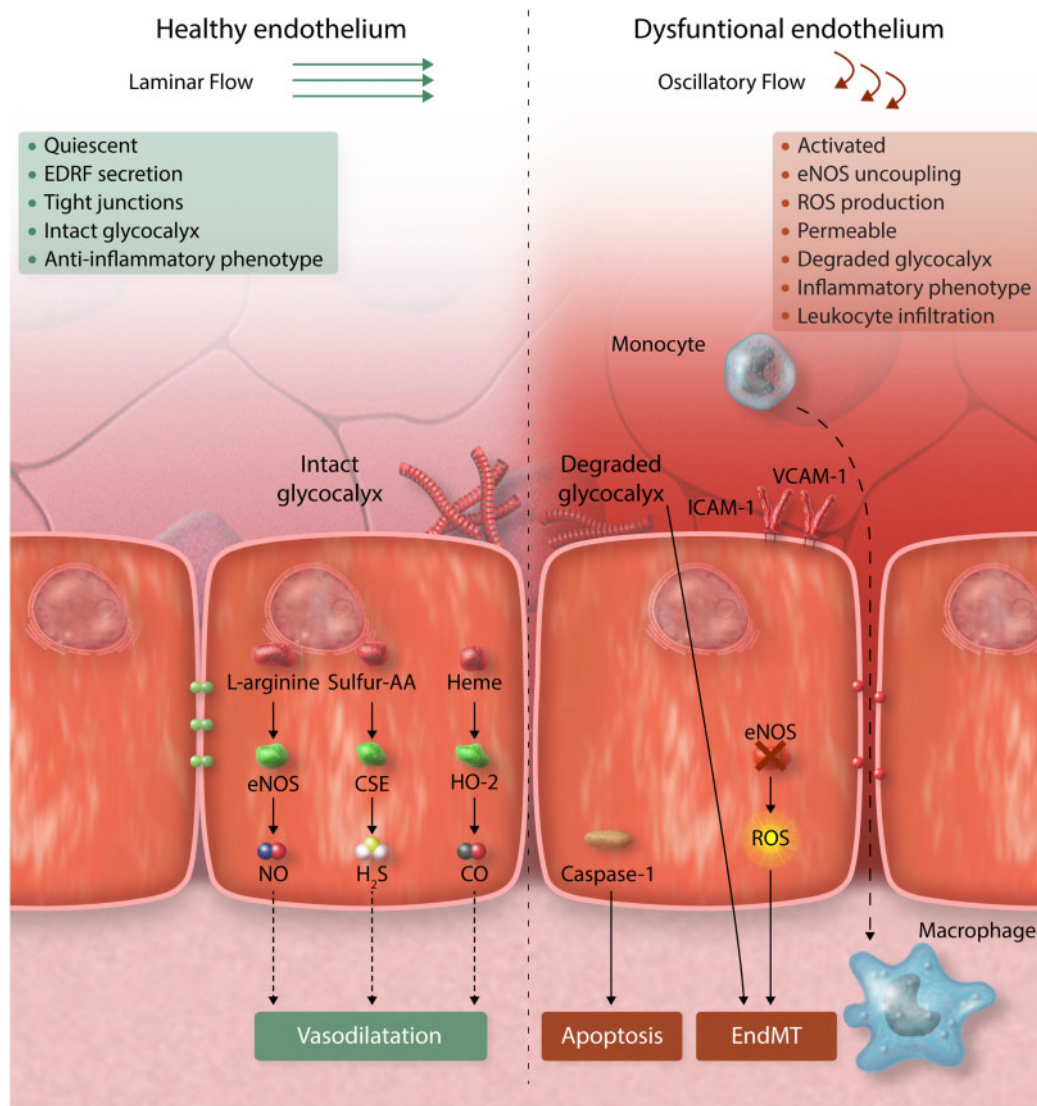
## 1.2 Vascular tone, nitric oxide, and superoxide anion

In physiological conditions, maintenance of appropriate endothelial function provides vasorelaxant and protective properties through release of vasoactive substances such as nitric oxide (NO), prostacyclin (PGI<sub>2</sub>), and/or endothelium-derived hyperpolarizing factor.<sup>4,9,10</sup> For their discovery of NO as a signalling molecule in the cardiovascular system, Ferid Murad, Robert Furchgott, and Louis Ignarro earned the Nobel Prize for medicine in 1998. NO, a gaseous mediator produced by ECs, is generated from the nitrogen atom of L-arginine and O<sub>2</sub>,<sup>15</sup> and catalysed by endothelial nitric oxide synthase (eNOS).<sup>16</sup> While primarily defined through its regulation of vasorelaxation and vascular tone, NO exerts several atheroprotective effects including protection against oxidative stress, platelet activation and aggregation, inflammation, and smooth

muscle cell (SMC) proliferation.<sup>17</sup> However, the bioavailability of NO is reduced by numerous cardiovascular risk factors.<sup>18</sup> eNOS dimer is the main contributor to homeostatic NO in healthy cells. In pathology, when important co-factors such as tetrahydrobiopterin (BH4) are depleted, eNOS becomes uncoupled, and its monomers contribute to reactive oxygen species (ROS) production<sup>19</sup> which is a driver of EC dysfunction. Reduced bioavailability of NO can also be due to oxidative inactivation. Indeed, loss of BH4 is often linked to vascular oxidative stress, characteristic for all major clinical risk factors for atherosclerosis, including diabetes, hypertension, hypercholesterolaemia, and smoking.<sup>20</sup> In human vasculature, endothelial and smooth muscle NADPH oxidases contribute to superoxide anion production.<sup>21–23</sup> Rapid scavenging of NO by superoxide with generation of strongly prooxidant peroxynitrite (ONOO<sup>-</sup>) remains the principal mechanism of endothelial dysfunction in wide range of clinical conditions. ONOO<sup>-</sup> is in turn able to oxidize BH4 to BH2 contributing to eNOS uncoupling.<sup>24</sup> In some cases, eNOS substrate L-arginine or co-factor NADPH bioavailability may be limited, or eNOS expression inhibited by epigenetic modifications, including miRNA. The relative importance of these distinct mechanisms of loss of NO bioavailability may differ in individual patients leading to the need for precision medicine approaches. These could be achieved by biomarker screening, such as plasma BH4, miRNA, L-arginine allowing for targeted approach to pathology underlying the dysfunction. Lack of bioavailability of other mediators, such as prostacyclin, can provide an important factor in the pathogenesis of vascular disease. For example, cardiovascular effects of Cox-2 inhibitors have been linked to loss of vascular PGI<sub>2</sub> production which promoted development of endothelial dysfunction.<sup>25</sup>

## 1.3 Vascular permeability and inflammation

It is well recognized that pro-atherogenic stimuli and cardiovascular risk factors, including diabetes, obesity, and smoking cause functional and structural changes in the permeability properties of the endothelium. These alterations are characterized by a rise in the movement of plasma across the vessel wall and into the surrounding tissues, comprehensively reviewed elsewhere.<sup>26</sup> Numerous studies show that endothelial permeability, inflammation, and atherosclerosis are inextricably linked. Interleukin (IL)-1 $\beta$  is a cytokine that is activated by the NLRP3 inflammasome, a master regulator involved in innate immunity. Thus, as a result of NLRP3 inflammasome/IL1 $\beta$  activation by cholesterol crystals, lipids and triglyceride-rich lipoproteins, pathogen-associated molecular patterns, and disturbed blood flow,<sup>27–34</sup> ECs will be activated and express adhesion molecules (e.g. vascular adhesion molecule-1, inter-cellular cell



**Figure 1** Endothelial dysfunction describes multiple phenotypic states. Left panel: In homeostatic conditions, the healthy endothelium regulates the physiological vascular function and structure through multiple beneficial effects of nitric oxide (NO), hydrogen sulphide (H<sub>2</sub>S), and carbon monoxide (CO), as detailed in the text. Right panel: Dysfunctional endothelium is characterized by decreased production of NO and chronic increase of reactive oxygen species (ROS) able to overwhelm the intra-cellular antioxidant defence leading to onset and progression of atherosclerosis. AA, amino acids; EndMT, endothelial-mesenchymal transition; eNOS, endothelial nitric oxide synthase.

adhesion molecule-1, E-selectin) to drive vascular inflammation and atherosclerosis initiation and progression. Mendelian randomization studies have now shown strong links between specific inflammatory proteins and lipid metabolism in patients with an inflammatory status, providing the impetus to develop novel systemic and vascular immunomodulatory approaches to address the public health challenge of cardiovascular disease (CVD). Thus, genetic screens linking metabolic and plasma proteomic profiles with causal effects are becoming an attractive approach in the cardiovascular precision medicine arena<sup>35,36</sup> and may provide both novel targets and/or an improved prognostic tool for stroke, ischaemic heart disease, and T2DM.<sup>37</sup>

#### 1.4 Phenotypic plasticity

The full details of EC plasticity are outside the scope of this ESC Position Paper but have been extensively reviewed elsewhere.<sup>38–40</sup> It is now

established that endothelial-to-mesenchymal transition (EndMT), a process characterized by loss of EC markers, gain of mesenchymal markers, activation, and delamination, is of particular relevance in atherosclerosis.<sup>40</sup> Endothelial-lineage tracing studies from the Simons laboratory revealed that ECs activated in response to TGF $\beta$  signalling undergo EndMT leading to migration, de-differentiation, and contribution to plaque formation and progression.<sup>41</sup> Kovacic *et al.*<sup>42</sup> used endothelial-specific lineage-tracking, to show that EndMT-derived fibroblast-like cells are present in atherosclerotic lesions, and co-express endothelial and fibroblast/mesenchymal proteins, a recognized hallmark of EndMT. Further studies have revealed that EndMT is driven by disturbed flow, oxidative stress, and hypoxia<sup>42–44</sup>; all of which trigger progression of atherosclerosis. However, the contribution of EndMT-derived cells to plaque development is an area of ongoing investigation.

## 1.5 Organ-specific EC specialization

ECs are specialized in different vascular beds, such as the unique vasculature of the kidneys or the blood–brain barrier. Specific subtypes of ECs have also been found in adipose tissue, gut, and other tissues, and multiple distinct EC subtypes have been revealed by single-cell sequencing in aorta<sup>13</sup> and atherosclerotic plaques.<sup>11</sup> Unravelling the as yet unknown molecular pathways that specify and sustain each organ functional and structural diversity will set the stage for deciphering the pathogenesis of several disorders, allowing future attempts at reversal of endothelial dysfunction and improved patient outcome. At the same time, while molecular mechanisms appear to differ between different vascular beds, clinically measured vascular dysfunction can correlate between different arterial beds<sup>45</sup> as well as between arterial and venous endothelium<sup>46</sup> suggesting that endothelial dysfunction can be systemic.

## 1.6 ECFCs and EMVs

ECFCs comprise a heterogeneous population of cells that have distinct roles in angiogenesis and vascular repair. A number of reports suggest their numbers increase with disease activity in patients with vasculitis and other vascular disorders and that progenitor repair cells become exhausted in disease (Figure 2).<sup>47,48</sup> ECFCs can be cultured from patients and analysed for pathophysiological properties and epigenetic markers and this approach has the potential to inform precision cardiovascular medicine. EMVs are extracellular vesicles of 0.2–5 µm diameter that are produced by ECs in response to a variety of stimuli.<sup>49</sup> They can exert paracrine and autocrine actions on vascular cells with the potential to modulate key intra-cellular signalling pathways, promoting disease progression via transfer of a range of bioactive molecules (growth factors, proteases, and microRNAs) to adjacent cells (Figure 2).

## 1.7 Summary

Although a conventional definition of endothelial dysfunction has focused on NO dysregulation and an altered redox status,<sup>50</sup> EC dysfunction involves a range of plastic phenotypic states with inflammation and enhanced permeability. Indeed, it is clear from recent studies that ECs assume multiple diverse phenotypes associated with various disease states including hypertension, atherosclerosis, and the development of heart failure (Figure 1). This is exemplified by fate mapping and single-cell RNAseq studies that have revealed multiple EC phenotypes associated with health and disease<sup>11–14</sup> and recent insights into the function of ECFCs and EMVs in CVD (Figure 2). Together, these findings have led to growing interest in assessing endothelial function by a range of traditional and novel methods, discussed below, to inform about individual patient risk, to guide best therapy, clinical management, and ultimately to establish whether it is feasible to target endothelial dysfunction and attenuate CVD progression.<sup>51,52</sup> This could enhance the field in applying novel endothelial function tests and endothelial damage biomarkers to innovate a more personalized approach to cardiovascular medicine.

## 2. Measuring endothelial function

The ideal method to assess endothelial function should be non-invasive, easy to use, prospectively validated in different cohorts and ethnic groups, with an incremental value over standard, clinically established risk markers, cost-effective, measured according to methodological consensus and providing reference values as a basis for treatment.<sup>53,54</sup> Both invasive and non-invasive methods to assess vascular endothelial function

have their advantages and disadvantages (Table 1). The basic principle of these methods, however, is similar. Healthy arteries dilate in response to reactive hyperaemia via increased shear stress (flow-mediated vasodilatation) or in response to endothelium-dependent vasodilators, such as acetylcholine (ACh), bradykinin, or serotonin, via release endothelium-derived vasoactive substances, for example, NO.<sup>55</sup> In disease states, this process of endothelial-dependent dilatation may be reduced or absent. It should be noted that vascular responses are not only determined by local function at the point of measurement but also by the structure and physiology of resistance arteries and micro-vasculature. Furthermore, vascular dysfunction can also be endothelium-independent function via alterations in vascular structure and SMC function rather than changes in EC. Responses to exogenous NO donors (e.g. glycerol-trinitrate) or vasodilators acting directly on vascular smooth muscle (e.g. adenosine) can be compared to differentiate endothelium-dependent from endothelium-independent responses. This section focuses on methods which are already established and which have the perspective to be implemented in clinical practice. Research methods, such as infusion of NO synthase inhibitors, such as L-NMMA, are out of the scope of this paper and will not be discussed in detail. It should be noted that our assessment of the various methods for quantifying endothelial function should not be interpreted as a recommendation of any particular product or technology manufacturer.

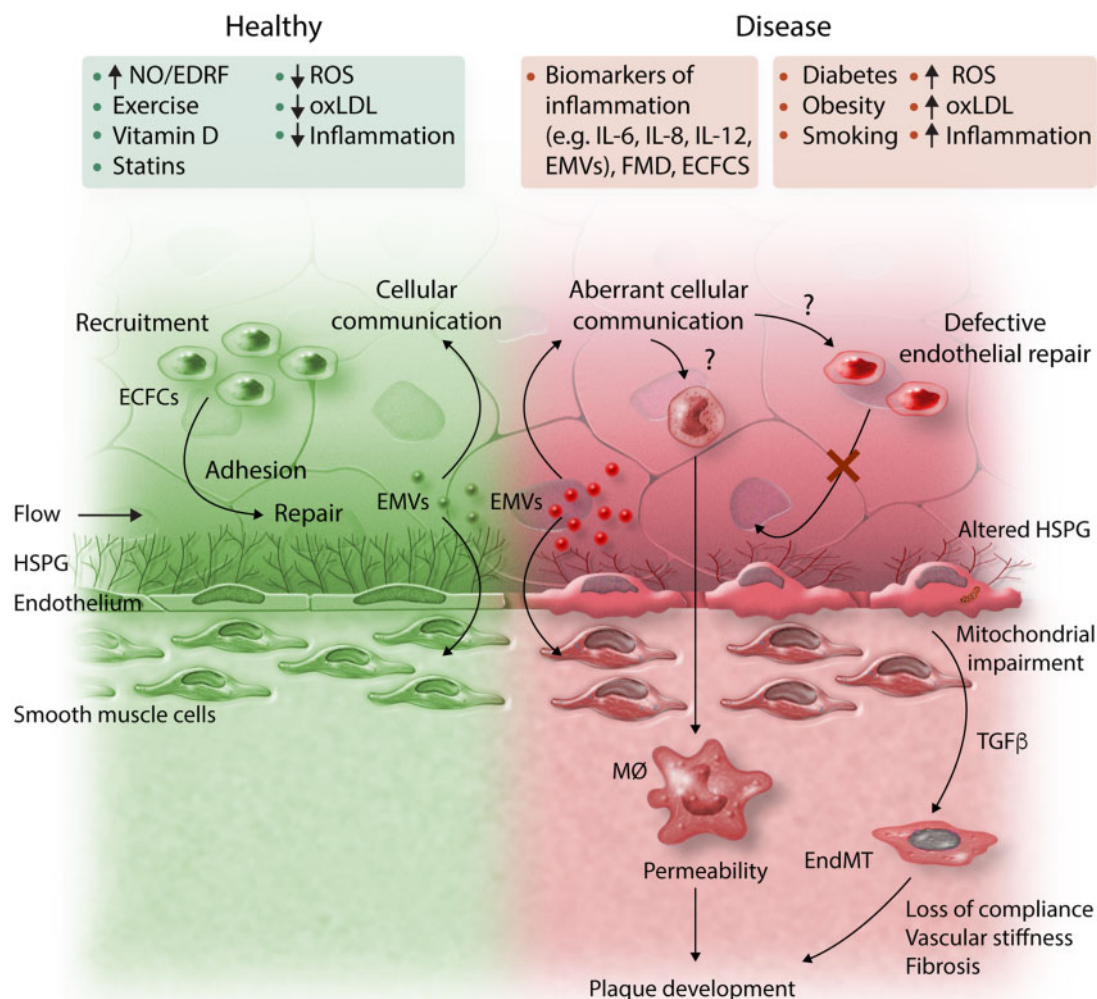
## 2.1 Coronary circulation

### 2.1.1 Coronary epicardial function

Coronary endothelial function is assessed by performing measurements in both epicardial and resistance vessels. Although these methods are invasive, they have the advantage of measuring EC function directly in a clinically important vascular bed. Vasomotor responses of epicardial coronary arteries are measured using quantitative coronary angiography or intra-vascular ultrasound (IVUS) to quantify changes in vessel diameters in response to endothelium-dependent pharmacological interventions. Vessels and segments with an intact endothelium vasodilate in response to ACh and other endothelial-stimulating substances, whereas vessels with dysfunctional endothelium will exhibit reduced vasodilatation or vasoconstriction due to a direct activation of muscarinic receptors on vascular SMCs.<sup>56,57</sup> The observation that endothelial-dependent flow-mediated dilatation (FMD) of coronary epicardial vessels is impaired in atherosclerosis<sup>58,59</sup> inspired studies of responses to flow in the peripheral vasculature later as a potential surrogate indicator of coronary artery disease (CAD) (see below). Finally, it should be mentioned that this technique should be used with caution, as serious (although rare) side effects may occur that carry risks for the patient, such as severe coronary vasoconstriction or the induction of arrhythmias.

### 2.1.2 Coronary micro-vascular function

Changes in coronary blood flow (CBF) have been suggested as a surrogate parameter for micro-vascular function.<sup>60</sup> Coronary flow reserve (CFR) is defined as the ratio of maximal CBF during maximal coronary hyperaemia in response to a stimulus (such as adenosine infusion, pacing, or exercise), divided by the resting CBF. This maximal blood flow response (CFR) is both endothelium and non-endothelium dependent and a CFR <2.0 is considered abnormal.<sup>61</sup> There are no invasive methods for measuring CBF directly in clinical practice. Instead, wire-based Doppler flow velocity or thermodilution techniques are used as surrogates but these are technically challenging and can lack reproducibility. Thus, there



**Figure 2** Schematic representation of the endothelial factors underlying cardiovascular risk. ECFCs, endothelial colony-forming cells; EMVs, endothelial micro-vesicles; EndMT, endothelial-mesenchymal transition; FMD, flow-mediated dilatation; HSPG, heparan sulphate proteoglycans; IL, interleukin; MØ, macrophage; MR-proADM, mid-regional pro-adrenomedullin; NO, nitric oxide; oxLDL, oxidized low-density lipoprotein; ROS, reactive oxygen species; TGFβ, transforming growth factor beta.

is a need for an accurate method for measurement of volumetric CBF. To determine endothelium-dependent micro-vascular function, the percentage increase in CBF in response to endothelial-dependent vasodilation is analysed. Non-invasive functional tests have also been developed to assess the coronary micro-vasculature, which include positron emission tomography,<sup>62</sup> myocardial perfusion imaging,<sup>63</sup> blood oxygen level-dependent MRI,<sup>64</sup> and echocardiography.<sup>63</sup>

## 2.2 Peripheral techniques to assess endothelial function

The abovementioned invasive techniques may be suitable for patients requiring coronary angiography for other clinical indications. However, invasive functional coronary angiograms may not be indicated or feasible for assessment of vascular function in the asymptomatic patient. Because of this, non- or less-invasive surrogate techniques have been developed to quantify macro-vascular as well as micro-vascular endothelial

function.<sup>65–67</sup> While these techniques can be used to assess the general function of the vasculature, they do not provide information on local vascular dysregulation, for example, dysfunction at branch and bends exposed to disturbed shear stress.<sup>68–70</sup>

### 2.2.1 Plethysmography of the forearm circulation

This technique measures changes in forearm blood flow by plethysmography in both arms in response to vasoactive substances which are introduced via a cannulated brachial artery.<sup>71,72</sup> An advantage is that responses to vasoactive hormones or drugs can be quantified therefore providing information on both endothelial-dependent and endothelial-independent vasodilation. The infused hormones and drugs have negligible systemic effects, and therefore, the contralateral limb can be used as an internal control. A disadvantage is that this technique is considered semi-invasive nature due to the reliance on arterial cannulation.

**Table 1** Techniques used in to assess endothelial function

Technique	Vascular bed	Advantages	Disadvantages
Coronary epicardial function	Epicardial macro-vascular Conduit arteries	Assessment directly in the coronary vascular bed Gold standard	Invasive Expensive Time intensive Limited to those undergoing coronary angiography Impractical for serial measurements
Coronary micro-vascular function	Coronary micro-vascular Resistance arteries	Assessment in the coronary micro-vasculature	Invasive Expensive Time intensive Limited to those undergoing coronary angiography Impractical for serial measurements
Venous plethysmography	Forearm vasculature Micro-vasculature	Easy access Correlation with invasive vascular function Possibility to infuse vascular-active substances directly Contralateral arm as a control	Invasive (cannulation of the brachial artery) Time-consuming
Flow-mediated vasodilation of brachial artery	Brachial artery Conduit artery	Easy access Correlation with invasive epicardial vascular function Many outcome studies Inexpensive Possibility to assess other important parameters (flow, baseline arterial diameters, flow-mediated constriction)	Inter- and intra-observer variability Difficult to perform Need for standardization Different protocols
Finger plethysmography	Finger Micro-vasculature	Easy to access and perform Low inter- and intra-observer variability Correlation with invasive micro-vascular vascular function	Dependent on different non-endothelial factors Lack of normal/reference values and of randomized clinical trials addressing prospective validation, incremental value, and clinical outcome
Retinal endothelial function	Retinal arterioles	Easy access Partial correlation with invasive vascular function Sensitive to interventions	High costs per measurement system Inter- and intra-observer variability Training needed to perform Need for standardization Different protocols Lack of normal/reference values and of randomized clinical trials addressing prospective validation, incremental value, and clinical outcome

### 2.2.2 Flow-mediated vasodilation of brachial artery

Due to its non-invasive approach, flow-mediated vasodilatation (FMD) of the brachial artery has become the most widely used technique to evaluate endothelial function. The technique quantifies the ability of larger conduit arteries to dilate in response to reactive hyperaemia after a brief (5 min) suprasystolic occlusion of the brachial artery using a blood pressure cuff. The resultant reactive hyperaemia causes an increase in endothelial shear stress in upstream artery, which in turn stimulates release of NO. Celermajer *et al.*<sup>73</sup> were the first to evaluate this response *in vivo* by measuring changes in the diameter of the brachial artery by ultrasound, later shown to be NO-dependent,<sup>74–76</sup> although other

vasodilator pathways may be involved.<sup>77</sup> Of note, FMD assessment of peripheral endothelial function has been shown to correlate with coronary artery endothelial function.<sup>65,67</sup> Although FMD may appear to be a simple technique, it is challenging and necessitates extensive training of operators and standardization.<sup>78–81</sup> This is outlined in dedicated guidelines<sup>78,81–83</sup> which highlight the critical importance of image acquisition and site selection, study preparation, cuff occlusion time, sphygmomanometer probe position, and application of edge-detection software. These guidelines are of critical importance, as they emphasize the need to standardize protocols and technology to improve reproducibility and data interpretation of FMD.<sup>84</sup> The semi-automatic measurement of

brachial FMD with self-adjusting ultrasound probes and automatic edge detection of the arterial wall will likely facilitate the usage in clinical practice and has already established reference values for a Japanese population.<sup>85</sup> While FMD assesses the function of conduit arteries, the stimulus for FMD is an important parameter of peripheral micro-vascular function because reactive hyperaemia is dependent on maximal forearm resistance.<sup>86,87</sup> Indeed, shear stress and velocity changes induced by hyperaemia have shown stronger correlations with cardiovascular risk factors than FMD<sup>88</sup> and these parameters also predict cardiovascular outcomes.<sup>89,90</sup> Moreover, baseline brachial artery diameter measurements *per se* have been shown to correlate with clinical outcomes.<sup>91,92</sup> This finding reveals a significant limitation of the *in vivo* assessment of endothelium-dependent vasodilation. In contrast to the *ex vivo* situation, the baseline arterial tone cannot be standardized. Therefore, the amount of additional dilatation depends on the initial diameter of the vessel and could paradoxically show poor FMD in a situation of initial vasodilation due to a well-functioning endothelium (e.g. in pregnancy or in hyperthermia). These influencing factors strongly warrant a strict standardization of the measurement environment (e.g. room temperature, resting phase) and the consideration of clinical conditions that may influence baseline diameter and vasodilation.<sup>81</sup>

### 2.2.3 Finger plethysmography

Endothelial function measurement using peripheral arterial tonometry was first used by Bonetti *et al.*<sup>93,94</sup> to identify patients with early coronary atherosclerosis. A device has been developed to quantify pulsatile arterial volume changes by finger plethysmography. Plethysmographic recordings of the finger arterial pulse wave amplitude are captured with pneumatic probes.<sup>94</sup> In this technique, increased arterial blood volume in the fingertip leads to increased pulsatile arterial column changes, thereby increasing the measured signal. Similar to FMD, a pressure cuff is placed on the arm and used to induce reactive hyperaemia in one arm. It is notable that measurements in the contralateral arm serve as an internal control that can be used to correct for any changes in vascular tone that may occur during the test. An index between the two arms is, therefore, calculated as a marker for endothelial function. It should be noted however that pulse amplitude augmentation in response to reactive hyperaemia is a complex response because it integrates changes due to altered flow in addition to vessel dilatation and it is only partially NO-dependent.<sup>95</sup> Further studies demonstrated that impaired digital EC function correlates with coronary micro-vascular function in patients with early atherosclerosis<sup>66</sup> and that this parameter predicts cardiovascular events.<sup>96</sup> In two large cross-sectional studies (>1900 patients in the Framingham cohort<sup>97,98</sup> and >5000 individuals in the Gutenberg Heart Study<sup>99</sup>), vascular dysfunction measured by digital plethysmography was associated with multiple cardiovascular risk factors but had little or no correlation with FMD, suggesting that these measurements provide information on different aspects of vascular biology. A disadvantage of the proprietary device is the high cost per measurement system, the lack of reusability, and the limited parameters offered for further analysis. Moreover, we recognize that technologies such as finger plethysmography that rely on a small number of device manufacturers may be more vulnerable to commercial factors.

### 2.2.4 Retinal endothelial function

For the assessment of the retinal endothelial function, several types of provocation are possible including flicker light.<sup>100</sup> The vessel's reactions are at least partially dependent on NO release and partially attributed to

neurovascular coupling.<sup>100,101</sup> Solid data for patient groups are still lacking, partly due to variation in the flicker response between individuals due to variation in the baseline diameter of retinal vessels.<sup>102,103</sup> Moreover, a consensus on the protocol used in order to achieve a better comparability of study results, is still lacking.<sup>104</sup> These concerns should be addressed, as should the study of larger and more representative groups of individuals and patient cohorts before recommendations for wider use in clinical practice and prevention can be made. Nevertheless, flicker-induced dilatation of retinal vessels has been shown to depend on age and gender in individuals free of major risk factor burden and prevalent disease.<sup>105</sup> It is impaired in patients with obesity,<sup>104,106</sup> renal disease,<sup>107</sup> and diabetes compared to age-matched healthy controls.<sup>108,109</sup> In hypertension, flicker-induced dilation is also reduced<sup>110,111</sup> and it is associated with an increase of inflammatory biomarkers.<sup>110</sup> Since many of the studies of retinal flicker rely on a single commercial device, it should be noted that retinal flicker measurement may be considered less resilient from a commercial perspective than those associated with multiple industry products.

## 2.3 Summary

There is not an ideal method for empirical measurement of endothelial function. Techniques to measure coronary epicardial and micro-vascular function are well established but they are invasive, time-consuming, and expensive. Several techniques are available for measurement of reactive hyperaemia in peripheral arteries, which provide a less-invasive assessment of endothelial function. FMD of the brachial arteries is the most commonly used, but it is technically demanding and requires a high degree of training and experience to ensure accurate measurements, but semi-automatic, easier to use tools are approaching. Techniques, such as finger plethysmography, are easier to use; however, the utility of newer methods is restricted because of a lack of methodological consensus, lack of reference values in healthy individuals, and limited validation in large clinical trials.

## 3. Endothelial dysfunction and arterial disease

### 3.1 Arterial hypertension

Hypertensive patients have impaired endothelial-dependent vasodilatation both in coronary arteries<sup>112</sup> and in the forearm<sup>113</sup> (see [Supplementary material online, Table S1](#)), and data from the Framingham offspring cohort suggest that the degree of endothelial dysfunction is positively associated with the severity of hypertension.<sup>114</sup> However, in a cohort of 3500 ethnically diverse persons from the Multi-Ethnic Study of Atherosclerosis, until now the largest clinical study in the field, impaired FMD was not a significant independent predictor of hypertension development, after adjustment for co-variables.<sup>115</sup> A possible explanation for these seemingly disparate observations is that the interaction between EC function and hypertension may vary between populations. This underscores the importance of developing reference FMD values for different populations. It is also plausible that stratification of patients (e.g. using omics/epigenetics data or via analysis of ECFCs or EMVs) may identify sub-groups where FMD values are more accurately coupled to disease risk<sup>116</sup> (see Section 4).

## 3.2 Diabetes

Diabetes is associated with a two- to four-fold increased risk of CVD, mainly attributable to hyperglycaemia, dyslipidaemia, and oxidative stress.<sup>117</sup> Endothelium-dependent vasodilation in peripheral<sup>118</sup> and coronary<sup>119</sup> arteries of patients with T2DM is blunted (see [Supplementary material online, Table S2](#)), principally due to loss or reduction of NO.<sup>120</sup> The relationship between insulin resistance and endothelial dysfunction is complex and endothelial dysfunction probably precedes the onset of T2DM. Indeed, polymorphisms of eNOS are multivariable predictors of incidence of T2DM.<sup>121</sup> Several mechanisms of endothelial dysfunction are proposed in the setting of DM including: increased oxidative stress,<sup>122</sup> uncoupling of eNOS,<sup>123</sup> pro-inflammatory activation of EC,<sup>124</sup> mitochondrial dysfunction,<sup>125</sup> impaired endothelial repair potential,<sup>126</sup> and increased permeability.<sup>127,128</sup> Although the role of endothelial dysfunction in pathogenesis of micro- and macro-vascular complications is well-documented, endothelium-dependent peripheral vascular tests do not appear to improve risk stratification in patients with T2DM.<sup>129,130</sup> However, given the range of endothelial mediators and their multiple mechanisms of action which contribute to endothelial abnormalities, FMD may not represent the most appropriate measure of the early signs of endothelial metabolic disturbances.

## 3.3 Coronary artery disease

Multiple studies have addressed the hypothesis that endothelial dysfunction may improve risk stratification above well-established risk scores/factors for CAD (see [Supplementary material online, Table S3](#)), thereby offering the possibility of early and personalized therapy. Consistent with this concept, peripheral macro-vascular endothelial dysfunction, estimated by FMD<sup>91,131,132</sup> or finger plethysmography<sup>133</sup> was demonstrated to independently predict major adverse cardiac events (MACE) in several populations at risk for CAD. Moreover, a recent systematic review and meta-analysis including 35 FMD studies and 6 peripheral arterial tonometry studies found that these tests provided a similar prognostic value in predicting cardiovascular events.<sup>134</sup> In contrast, three large prevention trials failed to confirm the predictive value of FMD (macro-vascular endothelial dysfunction), but instead found that markers of *micro-vascular* endothelial dysfunction (hyperaemic velocity in FATE<sup>89</sup> and invasive forearm technique with Ach in PIVUS<sup>135</sup>) were associated with increased MACE risk and improved risk discrimination substantially, independent of established risk scores. The reason why FMD had prognostic value in some, but not in all populations is uncertain, but could be related to differences in the age and physical activity of the populations that were studied.<sup>89,131,132,136</sup> It is also plausible that FMD may predict cardiovascular risk in a proportion of patients but not in others. It follows that integrating FMD measurements with patient-specific genetic and epigenetic characteristics may provide a personalized approach for predicting cardiovascular risk.

### 3.3.1 Ischaemia and no obstructive CAD

A substantial proportion of patients, especially women with anginal symptoms and myocardial ischaemia, have an absence of flow-limiting obstruction in the epicardial arteries at coronary angiography.<sup>137,138</sup> This syndrome has been increasingly recognized and recently termed as Ischemia and No Obstructive Coronary Artery disease (INOCA) or Angina and No Obstructive Coronary Artery (ANOCA) disease. The pathophysiology of INOCA includes dysfunctionality in coronary macro-vascular (i.e. epicardial coronary arteries) and/or micro-vascular compartment (i.e. small intramural pre-arteriolar coronary arteries). Bairey

Merz et al.<sup>139</sup> have identified a series of investigations to define INOCA including measurement of endothelial dysfunction. A panel of invasive measurements includes coronary vasomotor testing with intra-coronary adenosine (to measure CFR that estimates endothelium-independent micro-vascular function), Ach (to measure endothelium-dependent coronary vasoreactivity) and nitroglycerin (to measure endothelium-independent macro-vascular function; see [Supplementary material online, Table S4](#)). Coronary endothelial dysfunction is defined as micro-vascular, if the change in CBF in response to Ach is <50%, and macro-vascular in case of Ach-induced epicardial vasoconstriction.<sup>140</sup> The results of such testing should help to guide therapy in individual patients, for example, to determine whether micro-vascular endothelial dysfunction is involved.

### 3.3.2 Chronic coronary syndromes and progression to plaque instability

Coronary macro- and micro-vascular endothelial dysfunction can predict acute vascular events independently of conventional CAD risk factors and angiographically proven coronary atherosclerosis. For example, although patients with high-risk coronary anatomy (left main stenosis and three vessels with CAD) were excluded,<sup>141</sup> the detection of micro-vascular endothelial dysfunction was associated with a 2.4-fold increase in event rates, while the detection of epicardial endothelial dysfunction was associated with a 1.4-fold elevation of event rates (independently from other risk factors and presence of CAD). These associations point to the importance of coronary endothelial dysfunction for the transition from a stable to unstable form of atherosclerotic disease. Furthermore, peripheral endothelial dysfunction (brachial plethysmography) distinguished subjects at a higher risk for cardiac and total vascular events in populations with documented CAD, highlighting the importance of systemic endothelial changes in plaque progression.<sup>142</sup> Atherosclerosis is a focal disease<sup>143</sup> and it is therefore noteworthy that coronary segments with a higher degree of endothelial dysfunction are associated with more vulnerable plaque containing a necrotic core (evaluated by IVUS<sup>70</sup>) suggesting that localized EC dysfunction may predict focal progression into culprit lesions and acute coronary syndromes.

### 3.3.3 Acute coronary syndromes (STEMI, NSTEMI, and MINOCA)

The pathophysiological mechanism underlying type 2 myocardial infarction (MI) is an acute mismatch between oxygen supply and demand, leading to acute ischaemic myocardial injury.<sup>144</sup> Mechanisms include coronary artery spasm and/or coronary micro-vascular dysfunction.<sup>144</sup> During the course of atherosclerosis, local inflammation and oxidative stress affect endothelial function and promote plaque vulnerability, with consequent platelet adhesion, vasospasm, stasis, and coronary thrombosis, leading to acute coronary syndrome.<sup>145</sup> Importantly, endothelial dysfunction is present not only at the site of the culprit lesion but also in distant, non-culprit coronary arteries, even with normal angiographic appearance.<sup>146</sup> Aggravation also occurs in peripheral endothelial dysfunction after acute coronary syndrome and its normalization predicts a lower risk of future events.<sup>147</sup> Relatively few studies have correlated endothelial dysfunction with MI with Non-Obstructive Coronary Arteries (MINOCA) which arises, due to either atherosclerotic plaque disruption and coronary thrombosis (i.e. type 1 MI), or coronary vasospasm (i.e. type 2 MI), along with other possible causes. In the Stockholm Myocardial Infarction with Normal Coronaries (SMINC) study, peripheral micro-vascular endothelial function was normal in MINOCA



patients compared to controls.<sup>148</sup> Overall, although micro-vascular dysfunction is presumed to be a causal component in ACS, both in type 1 and even more frequently in type 2 MI, there are uncertainties whether it is a contributor or a biomarker of disease risk.

### 3.4 Summary

There is a wealth of evidence that endothelial dysfunction is a key player in the initiation of atherosclerosis and plaque progression. Endothelial dysfunction in coronary macro- or micro-vascular compartments may predict and/or drive disease progression into culprit lesions, acute coronary syndromes, and INOCA. Consistent with this, endothelial dysfunction has been demonstrated in asymptomatic individuals with risk factors for atherosclerosis (i.e. before clinical manifestation of the diseases) and, large clinical trials demonstrated that micro-vascular endothelial dysfunction can independently predict MACE in populations at risk for CAD. However, there are several examples in the literature where the correlation between EC dysfunction and disease risk varies considerably between studies. This can be partly attributed to technical considerations, thereby underlying the importance of methodological consistency, but may also be related to biological factors that vary between individuals and/or between populations therefore requiring a precision medicine approach.

## 4. Endothelial function in precision medicine

### 4.1 Can endothelial function measurements be used to stratify patients for therapy?

Results from most clinical trials have documented that despite the successful control of cardiovascular risk factors achieved with cardiovascular drugs, the impact on cardiovascular morbidity and mortality reduction is limited (~20–45%). Consequently, tools that might enable identification of those patients who develop future events, despite optimal treatment are urgently needed. Several findings support the possibility that endothelial function could be used to identify patients that remain at high cardiovascular risk. For example, among 251 Japanese men with newly diagnosed stable CAD and concurrent impaired brachial artery FMD, those whose endothelial function did not improve after 6 months of optimized pharmacological treatment showed a significant higher event rate of cardiovascular events (26%) in the 31 months follow-up compared to those with improved endothelial function (10%).<sup>149</sup> On the other hand, EC function can also identify patients with favourable responses to lifestyle changes, such as increased exercise, or pharmacological interventions. For example, moderate aerobic physical exercise can improve endothelium-dependent vasodilation, not only in healthy middle-aged men<sup>150</sup> but also in patients with arterial hypertension,<sup>151</sup> CAD,<sup>152</sup> and chronic heart failure.<sup>153</sup> Endothelial function has also been improved by weight reduction either by diet<sup>154,155</sup> or bariatric surgery,<sup>156</sup> dietary interventions with foods rich in polyphenols (fruits, green tea, and cocoa)<sup>157,158</sup> as well as smoking cessation.<sup>159</sup> Beyond lifestyle interventions, the first finding that EC function measurements can be used to monitor pharmacological responses was obtained from controlled studies with statins.<sup>160,161</sup> The mechanism is likely related to the documented anti-inflammatory and antioxidant properties of statins that result in improved availability of vascular NO.<sup>162</sup> Endothelial function can also be used to monitor responses to other drugs with an effect on

cardiovascular risk factors<sup>163</sup> and some diabetes modulating drugs such as metformin<sup>164</sup> or glitazones.<sup>164–166</sup>

### 4.2 Integrating endothelial functional measurements with biomarkers of vascular function

Genetic and epigenetic differences contribute to variation in endothelial function both in healthy individuals and in patients with CVD. Therefore, the ability to delineate patients at high cardiovascular risk and identify responders and non-responders to therapy can potentially be enhanced by integrating endothelial function measurements with genomic and epigenomic datasets. Non-coding RNAs are epigenetic markers of potential clinical use due to their high plasma stability and advances in experimental techniques used in their assessment. For example, the detection of specific circular RNAs and microRNAs in plasma has been linked to CAD and ACS<sup>167</sup> and Sapp *et al.*<sup>168</sup> found that alterations in miR-126-5p correlated with endothelial function in response to exercise in healthy individuals. There may also be value in quantitation of classical markers such as sICAM, sVCAM, IL-6, IL-8, IL-12, hsCRP, and NO for integration with endothelial function assessment. There is also considerable interest in using circulating EMVs and ECFCs as a surrogate of endothelial health.<sup>169</sup> For example, anti-inflammatory treatment of patients with systemic lupus erythematosus simultaneously improved endothelial function and reduced EMV levels<sup>170</sup> suggesting that EMV levels may report on vascular function. Of particular note, a recent study from Zacharia *et al.*<sup>171</sup> found that endothelial function correlated with circulating micro-vesicles in patients with ACS. Moreover, studies of circulating ECFCs revealed that they correlate with enhanced micro-vascular function and repair in patients with acute MI.<sup>172,173</sup> These tools will significantly contribute to the field of precision medicine and identify patients at high risk of developing both micro- and macro-vascular complications.<sup>174</sup>

### 4.3 Summary

Measurement of endothelial function can be used to monitor responses to lifestyle changes and pharmacological intervention, and can identify patients that remain at residual risk despite optimal therapy. The prognostic value of endothelial function measurement may be enhanced by integration with patient-specific information from omics and epigenetic studies and/or from analysis of the physiology of EMVs and ECFCs. These data may be combined through an algorithm that will enhance risk stratification and improve patient management.<sup>175,176</sup>

## Supplementary material

Supplementary material is available at *Cardiovascular Research* online.

## Consensus statements

- Endothelial dysfunction does not describe a single endothelial phenotype but is characterized by a spectrum of phenotypic states, exemplified by multiple EC subsets and plasticity in atherosclerosis. The vascular biology community should delineate the contribution of various EC dysfunctional states to CVD and develop new technologies to measure pathogenic EC subsets in the clinic.
- FMD of the brachial arteries, the most commonly used measure of endothelial function, predicted cardiovascular risk in some large clinical

trials but not others. Thus, we recommend that a consensus, semi-automated methodology is adopted in future studies to minimize technical variation, and that reference FMD values are established for different populations.

- (3) Newer techniques to measure endothelial dysfunction that are relatively easy to perform, such as finger plethysmography and the retinal flicker test, have the potential for increased clinical use provided a consensus is achieved on the measurement protocol used. In addition, larger clinical studies are needed to establish reference values and to assess their clinical utility.
- (4) Future work should determine whether the prognostic value of endothelial function measurement can be enhanced by integration with patient-specific information from omics and epigenetic studies and/or from analysis of patient-derived EMVs and ECFCs.

## Writing Process

This Position Paper was written by the following ESC Working Groups: Atherosclerosis and Vascular Biology, Aorta and Peripheral Vascular Diseases, Coronary Pathophysiology and Microcirculation, and Thrombosis. This topic was discussed at an ESC-sponsored session entitled 'Endothelial Cell Dysfunction' held at the European Vascular Biology Organisation meeting in 2016 (Maastricht, The Netherlands) which was Chaired by Prof. Paul Evans (Sheffield, UK) and Prof. Marie-Luce Bochaton-Piallat (Geneva, Switzerland). This session included talks from Prof. Arno Schmidt-Trucksäss (Basel, Switzerland), Dr Rosa Suades Soler (Karolinska Institutet, Sweden), Prof. Danijela Trifunovic (Belgrade, Serbia), Prof. Michael Shechter (Tel Aviv, Israel), Dr Elena Osto (Zürich, Switzerland) and Prof. Yvonne Alexander (Manchester, UK). It was followed by a writing meeting attended by the Chairs, speakers and Prof Dirk Duncker (Rotterdam, The Netherlands). Other worldwide experts in the field of endothelial function testing were subsequently recruited to the writing process.

## Acknowledgements

We thank Anne Jomard, MSc, from the Institute of Clinical Chemistry, University and University Hospital Zurich, Switzerland for excellent support with text and image editing.

**Conflict of interest:** V.A. has received funding from Amgen, Bayer, Sanofi, Novartis, NovoNordisk, BMS, and Pfizer. M.S. is a member of the Scientific Advisory Board, Itamar Medical Inc., Israel. The other authors have no conflict of interest to declare.

## Funding

This work was supported by grants from the Swedish Heart and Lung Foundation (Grant No. 20180571) awarded to M.B.; the Spanish Ministry of Economy, Competitiveness and Science -SAF2016-76819-R and Carlos III Institute of Health grants TERCEL—RD16/0011/0018 and CIBERCV awarded to L.B.; the Swiss National Science Foundation (Grant No. 310030\_185370/1) awarded to M.-L.B.-P.; the Swedish Research Council (VR 2016-02706) Swedish Heart and Lung Foundation (20170717) and Konung Gustav: Vs och Drottning Victorias Frimurarestiftelse awarded to F.C.; a grant from The Netherlands Cardiovascular Research Initiative (CVON2014-11), an initiative with financial support from the Dutch Heart Foundation awarded to D.J.D.; grants from the British Heart Foundation awarded to P.C.E. and P.D.M.; a Wellcome Trust Clinical Research Career Development Fellowship to P.D.M. (214567/Z/18/Z); grants from National Institutes of Health Grants R35 HL140016 and Program Project Grant P01 HL129941 awarded to D.G.H.; grants from Fondazione Cariplo 2016-0852, Italian Ministry of Education, University and Research PRIN 2017K55HLC, European

Foundation for the Study of Diabetes (EFSD) and Fondazione Telethon GGP19146 awarded to G.D.N.; grants from the Swiss National Science Foundation Prima and Sinergia Grant (PROOP3\_179861/1 and CRSII5\_180317/1), the Swiss Card-Onco-Grant—Alfred and Annemarie von Sick Grant, the Hartmann Müller—Foundation and Jubilaeumsstiftung von SwissLife awarded to E.O.; a grant from the European Society of Cardiology Research Grant awarded to R.S.; a grant (PGC2018-094025-B-I00) from the Spanish Ministry of Science and Innovation and funds FEDER 'Una Manera de Hacer Europa' awarded to G.V.; grants from Deutsche Forschungsgemeinschaft (DFG), SFB1123-A1/10/B4 and Excellence Cluster SyNergy; and by the European Research Council (ERC AdG No. 692511 awarded to C.W. and ERC CoG No. 726318-InflammaTENSION awarded to T.J.G.) and ERA-Net-CVD (PLAQUEFIGHT) 01KL1808 awarded to T.J.G.

## References

1. Kalucka J, Bierhansl L, Conchinha NV, Missiaen R, Elia I, Bruning U, Scheinok S, Treps L, Cantelmo AR, Dubois C, de Zeeuw P, Goveia J, Zecchin A, Taverna F, Morales-Rodriguez F, Brajic A, Conradi LC, Schoors S, Harjes U, Vriens K, Pilz GA, Chen R, Cubbon R, Thienpont B, Cruys B, Wong BW, Ghesquiere B, Dewerdin M, De Bock K, Sagaert X, Jessberger S, Jones EAV, Gallez B, Lambrechts D, Mazzone M, Eelen G, Li X, Fendt SM, Carmeliet P. Quiescent endothelial cells upregulate fatty acid beta-oxidation for vasculoprotection via redox homeostasis. *Cell Metab* 2018;**28**:881–894.e13.
2. Shah AV, Birdsey GM, Peghaire C, Pitulescu ME, Dufton NP, Yang Y, Weinberg I, Osuna Almagro L, Payne L, Mason JC, Gerhardt H, Adams RH, Randi AM. The endothelial transcription factor ERG mediates angiopoietin-1-dependent control of Notch signalling and vascular stability. *Nat Commun* 2017;**8**:16002.
3. Cardner M, Yalcinkaya M, Goetze S, Luca E, Balaz M, Hunjadi M, Hartung J, Shemet A, Kränkel N, Radosavljevic S, Keel M, Othman A, Karsai G, Hornemann T, Claassen M, Liebisch G, Carreira E, Ritsch A, Landmesser U, Krützfeldt J, Wolfmum C, Wollscheid B, Beerenwinkel N, Rohrer L, von Eckardstein A. Structure-function relationships of HDL in diabetes and coronary heart disease. *JCI Insight* 2020;**5**: e131491.
4. Li X, Sun X, Carmeliet P. Hallmarks of endothelial cell metabolism in health and disease. *Cell Metab* 2019;**30**:414–433.
5. Dikalov S, Itani H, Richmond B, Arslanbaeva L, Vergeade A, Rahman SMJ, Boutaud O, Blackwell T, Massion PP, Harrison DG, Dikalova A. Tobacco smoking induces cardiovascular mitochondrial oxidative stress, promotes endothelial dysfunction, and enhances hypertension. *Am J Physiol Heart Circ Physiol* 2019;**316**:H639–H646.
6. Miao H, Hu YL, Shiu YT, Yuan S, Zhao Y, Kaunas R, Wang Y, Jin G, Usami S, Chien S. Effects of flow patterns on the localization and expression of VE-cadherin at vascular endothelial cell junctions: in vivo and in vitro investigations. *J Vasc Res* 2005;**42**: 77–89.
7. Souilhol C, Serbanovic-Canic J, Fragiadaki M, Chico TJ, Ridger V, Roddie H, Evans PC. Endothelial responses to shear stress in atherosclerosis: a novel role for developmental genes. *Nat Rev Cardiol* 2020;**17**:52–63.
8. Thoumine O, Nerem RM, Girard PR. Oscillatory shear stress and hydrostatic pressure modulate cell-matrix attachment proteins in cultured endothelial cells. *In Vitro Cell Dev Biol Anim* 1995;**31**:45–54.
9. Cai H, Harrison DG. Endothelial dysfunction in cardiovascular diseases: the role of oxidant stress. *Circ Res* 2000;**87**:840–844.
10. Hunt BJ, Jurd KM. Endothelial cell activation. A central pathophysiological process. *BMJ* 1998;**316**:1328–1329.
11. Chen P-Y, Qin L, Li G, Wang Z, Dahlman JE, Malagon-Lopez J, Gujja S, Cilfone NA, Kauffman KJ, Sun L, Sun H, Zhang X, Aryal B, Canfran-Duque A, Liu R, Kusters P, Sehgal A, Jiao Y, Anderson DG, Gulcher J, Fernandez-Hernando C, Lutgens E, Schwartz MA, Pober JS, Chittenden TW, Tellides G, Simons M. Endothelial TGF- $\beta$  signalling drives vascular inflammation and atherosclerosis. *Nat Metab* 2019;**1**: 912–926.
12. Kalluri AS, Vellarikkal SK, Edelman ER, Nguyen L, Subramanian A, Ellinor PT, Regev A, Kathiresan S, Gupta RM. Single-cell analysis of the normal mouse aorta reveals functionally distinct endothelial cell populations. *Circulation* 2019;**140**:147–163.
13. Li Z, Solomonidis EG, Meloni M, Taylor RS, Duffin R, Dobie R, Magalhaes MS, Henderson BEP, Louwe PA, D'Amico G, Hodivala-Dilke KM, Shah AM, Mills NL, Simons BD, Gray GA, Henderson NC, Baker AH, Brittan M. Single-cell transcriptome analyses reveal novel targets modulating cardiac neovascularization by resident endothelial cells following myocardial infarction. *Eur Heart J* 2019;**40**: 2507–2520.
14. Lukowski SW, Patel J, Andersen SB, Sim SL, Wong HY, Tay J, Winkler I, Powell JE, Khosrotehrani K. Single-cell transcriptional profiling of aortic endothelium identifies a hierarchy from endovascular progenitors to differentiated cells. *Cell Rep* 2019;**27**: 2748–2758.e3.
15. Palmer RM, Ashton DS, Moncada S. Vascular endothelial cells synthesize nitric oxide from L-arginine. *Nature* 1988;**333**:664–666.

16. Shimokawa H, Godo S. Nitric oxide and endothelium-dependent hyperpolarization mediated by hydrogen peroxide in health and disease. *Basic Clin Pharmacol Toxicol* 2020. <https://doi.org/10.1111/bcpt.13377>.
17. Tousoulis D, Kampoli AM, Tentolouris C, Papageorgiou N, Stefanadis C. The role of nitric oxide on endothelial function. *Curr Vasc Pharmacol* 2012;**10**:4–18.
18. Kojda G, Cheng YC, Burchfield J, Harrison DG. Dysfunctional regulation of endothelial nitric oxide synthase (eNOS) expression in response to exercise in mice lacking one eNOS gene. *Circulation* 2001;**103**:2839–2844.
19. Deanfield JE, Halcox JP, Rabelink TJ. Endothelial function and dysfunction: testing and clinical relevance. *Circulation* 2007;**115**:1285–1295.
20. Guzik TJ, West NEJ, Black E, McDonald D, Ratnatunga C, Pillai R, Channon KM. Vascular superoxide production by NAD(P)H oxidase – association with endothelial dysfunction and clinical risk factors. *Circ Res* 2000;**86**:E85–E90.
21. Guzik TJ, Chen W, Gongora MC, Guzik B, Lob HE, Mangalat D, Hoch N, Dikalov S, Rudzinski P, Kapelak B, Sadowski J, Harrison DG. Calcium-dependent NOX5 nicotinamide adenine dinucleotide phosphate oxidase contributes to vascular oxidative stress in human coronary artery disease. *J Am Coll Cardiol* 2008;**52**:1803–1809.
22. Guzik TJ, Mussa S, Gastaldi D, Sadowski J, Ratnatunga C, Pillai R, Channon KM. Mechanisms of increased vascular superoxide production in human diabetes mellitus: role of NAD(P)H oxidase and endothelial nitric oxide synthase. *Circulation* 2002;**105**:1656–1662.
23. Guzik TJ, Sadowski J, Guzik B, Jopek A, Kapelak B, Przybyłowski P, Wierzbicki K, Korbut R, Harrison DG, Channon KM. Coronary artery superoxide production and NOX isoform expression in human coronary artery disease. *Arterioscler Thromb Vasc Biol* 2006;**26**:333–339.
24. Landmesser U, Dikalov S, Price SR, McCann L, Fukai T, Holland SM, Mitch WE, Harrison DG. Oxidation of tetrahydrobiopterin leads to uncoupling of endothelial cell nitric oxide synthase in hypertension. *J Clin Invest* 2003;**111**:1201–1209.
25. Ruan CH, So SP, Ruan KH. Inducible COX-2 dominates over COX-1 in prostacyclin biosynthesis: mechanisms of COX-2 inhibitor risk to heart disease. *Life Sci* 2011;**88**:24–30.
26. Mundi S, Massaro M, Scoditti E, Carluccio MA, van Hinsbergh VWM, Iruela-Arispe ML, De Caterina R. Endothelial permeability, LDL deposition, and cardiovascular risk factors—a review. *Cardiovasc Res* 2018;**114**:35–52.
27. Caplan BA, Gerrity RG, Schwartz CJ. Endothelial cell morphology in focal areas of in vivo Evans blue uptake in the young pig aorta. I. Quantitative light microscopic findings. *Exp Mol Pathol* 1974;**21**:102–117.
28. de Jager SCA, Meeuwse JAL, van Pijpen FM, Zoet GA, Barendrecht AD, Franx A, Pasterkamp G, van Rijn BB, Goumans MJ, den Ruijter HM. Preeclampsia and coronary plaque erosion: manifestations of endothelial dysfunction resulting in cardiovascular events in women. *Eur J Pharmacol* 2017;**816**:129–137.
29. Dewey CF Jr, Bussolari SR, Gimbrone MA Jr, Davies PF. The dynamic response of vascular endothelial cells to fluid shear stress. *J Biomech Eng* 1981;**103**:177–185.
30. Gerrity RG, Richardson M, Caplan BA, Cade JF, Hirsh J, Schwartz CJ. Endotoxin-induced vascular endothelial injury and repair. II. Focal injury, en face morphology, (3H)thymidine uptake and circulating endothelial cells in the dog. *Exp Mol Pathol* 1976;**24**:59–69.
31. Norata GD, Grigore L, Raselli S, Redaelli L, Hamsten A, Maggi F, Eriksson P, Catapano AL. Post-prandial endothelial dysfunction in hypertriglyceridemic subjects: molecular mechanisms and gene expression studies. *Atherosclerosis* 2007;**193**:321–327.
32. Norata GD, Grigore L, Raselli S, Seccomandi PM, Hamsten A, Maggi FM, Eriksson P, Catapano AL. Triglyceride-rich lipoproteins from hypertriglyceridemic subjects induce a pro-inflammatory response in the endothelium: molecular mechanisms and gene expression studies. *J Mol Cell Cardiol* 2006;**40**:484–494.
33. Reynolds J, Ray D, Alexander MY, Bruce I. Role of vitamin D in endothelial function and endothelial repair in clinically stable systemic lupus erythematosus. *Lancet* 2015;**385**:583.
34. Reynolds JA, Ray DW, Zeef LAH, O'Neill T, Bruce IN, Alexander MY. The effect of type 1 IFN on human aortic endothelial cell function in vitro: relevance to systemic lupus erythematosus. *J Interferon Cytokine Res* 2014;**34**:404–412.
35. Chong M, Sjaarda J, Pigeyre M, Mohammadi-Shemirani P, Lali R, Shoamanesh A, Gerstein HC, Paré G. Novel drug targets for ischemic stroke identified through Mendelian randomization analysis of the blood proteome. *Circulation* 2019;**140**:819–830.
36. Li M, Kwok MK, Fong SSM, Schooling CM. Indoleamine 2,3-dioxygenase and ischemic heart disease: a Mendelian randomization study. *Sci Rep* 2019;**9**:8491.
37. Caruso P, Dunmore BJ, Schlosser K, Schoors S, Dos Santos C, Perez-Iratxeta C, Lavoie JR, Zhang H, Long L, Flockton AR, Frid MG, Upton PD, D'Alessandro A, Hadinnapola C, Kiskin FN, Taha M, Hurst LA, Ormiston ML, Hata A, Stenmark KR, Carmeliet P, Stewart DJ, Morrell NW. Identification of microRNA-124 as a major regulator of enhanced endothelial cell glycolysis in pulmonary arterial hypertension via PTBP1 (polypyrimidine tract binding protein) and pyruvate kinase M2. *Circulation* 2017;**136**:2451–2467.
38. Dejana E, Hirschi KK, Simons M. The molecular basis of endothelial cell plasticity. *Nat Commun* 2017;**8**:14361.
39. Kovacic JC, Dimmeler S, Harvey RP, Finkel T, Aikawa E, Krenning G, Baker AH. Endothelial to mesenchymal transition in cardiovascular disease: JACC state-of-the-art review. *J Am Coll Cardiol* 2019;**73**:190–209.
40. Souilhol C, Harmsen MC, Evans PC, Krenning G. Endothelial-mesenchymal transition in atherosclerosis. *Cardiovasc Res* 2018;**114**:565–577.
41. Chen P-Y, Qin L, Baeyens N, Li G, Afolabi T, Budatha M, Tellides G, Schwartz MA, Simons M. Endothelial-to-mesenchymal transition drives atherosclerosis progression. *J Clin Invest* 2015;**125**:4514–4528.
42. Evrard SM, Lecce L, Michelis KC, Nomura-Kitabayashi A, Pandey G, Purushothaman KR, d'Escamard V, Li JR, Hadri L, Fujitani K, Moreno PR, Benard L, Rimmel P, Cohain A, Mecham B, Randolph GJ, Nabel EG, Hajjar R, Fuster V, Boehm M, Kovacic JC. Endothelial to mesenchymal transition is common in atherosclerotic lesions and is associated with plaque instability. *Nat Commun* 2016;**7**:11853.
43. Mahmoud MM, Serbanovic-Canic J, Feng S, Souilhol C, Xing RY, Hsiao S, Mammoto A, Chen J, Ariaans M, Francis SE, Van der Heiden K, Ridger V, Evans PC. Shear stress induces endothelial-to-mesenchymal transition via the transcription factor Snail. *Sci Rep* 2017;**7**:3375.
44. Moonen J-R, Lee ES, Schmidt M, Maleszewska M, Koerts JA, Brouwer LA, Van Kooten TG, van Luyn MJA, Zeebregts CJ, Krenning G, Harmsen MC. Endothelial-to-mesenchymal transition contributes to fibro-proliferative vascular disease and is modulated by fluid shear stress. *Cardiovasc Res* 2015;**108**:377–386.
45. Shi Y, Vanhoutte PM. Macro- and microvascular endothelial dysfunction in diabetes. *J Diabetes* 2017;**9**:434–449.
46. Guzik TJ, Sadowski J, Kapelak B, Jopek A, Rudzinski P, Pillai R, Korbut R, Channon KM. Systemic regulation of vascular NAD(P)H oxidase activity and NOX isoform expression in human arteries and veins. *Arterioscler Thromb Vasc Biol* 2004;**24**:1614–1620.
47. Fadini GP, Mehta A, Dhindsa DS, Bonora BM, Sreejit G, Nagareddy P, Quyyumi AA. Circulating stem cells and cardiovascular outcomes: from basic science to the clinic. *Eur Heart J* 2019. <https://doi.org/10.1093/eurheartj/ehz923>.
48. Medina RJ, Barber CL, Sabatier F, Dignat-George F, Melero-Martin JM, Khosrotehrani K, Ohneda O, Randi AM, Chan JKY, Yamaguchi T, Van Hinsbergh VWM, Yoder MC, Stitt AW. Endothelial progenitors: a consensus statement on nomenclature. *Stem Cells Transl Med* 2017;**6**:1316–1320.
49. Sluijter JPG, Davidson SM, Boulanger CM, Buzas EI, de Kleijn DPV, Engel FB, Giricz Z, Hausenloy DJ, Kishore R, Lecour S, Leor J, Madonna R, Perrino C, Prunier F, Sahoo S, Schifflers RM, Schulz R, Van Laake LW, Ytrehus K, Ferdinandy P. Extracellular vesicles in diagnostics and therapy of the ischaemic heart: Position Paper from the Working Group on Cellular Biology of the Heart of the European Society of Cardiology. *Cardiovasc Res* 2018;**114**:19–34.
50. Flammer AJ, Anderson T, Celermajer DS, Creager MA, Deanfield J, Ganz P, Hamburg NM, Luscher TF, Shechter M, Taddei S, Vita JA, Lerman A. The assessment of endothelial function: from research into clinical practice. *Circulation* 2012;**126**:753–767.
51. Premer C, Kanelidis AJ, Hare JM, Schulman IH. Rethinking endothelial dysfunction as a crucial target in fighting heart failure. *Mayo Clin Proc Innov Qual Outcomes* 2019;**3**:1–13.
52. Schächinger V, Britten MB, Zeiger AM. Prognostic impact of coronary vasodilator dysfunction on adverse long-term outcome of coronary heart disease. *Circulation* 2000;**101**:1899–1906.
53. Hlatky MA, Greenland P, Arnett DK, Ballantyne CM, Criqui MH, Elkind MSV, Go AS, Harrell FE, Hong Y, Howard BV, Howard VJ, Hsue PY, Kramer CM, McConnell JP, Normand S-LT, O'Donnell CJ, Smith SC, Wilson PWF; American Heart Association Expert Panel on Subclinical Atherosclerotic Diseases and Emerging Risk Factors and the Stroke Council. Criteria for evaluation of novel markers of cardiovascular risk: a scientific statement from the American Heart Association. *Circulation* 2009;**119**:2408–2416.
54. Vlachopoulos C, Xaplanteris P, Aboyans V, Brodmann M, Cifková R, Cosentino F, De Carlo M, Gallino A, Landmesser U, Laurent S, Lekakis J, Mikhailidis DP, Naka KK, Protogerou AD, Rizzoni D, Schmidt-Trucksäss A, Van Bortel L, Weber T, Yamashina A, Zimlichman R, Boutouyrie P, Cockcroft J, O'Rourke M, Park JB, Schillaci G, Sillesen H, Townsend RR. The role of vascular biomarkers for primary and secondary prevention. A position paper from the European Society of Cardiology Working Group on peripheral circulation: endorsed by the Association for Research into Arterial Structure and Physiology (ARTERY) Society. *Atherosclerosis* 2015;**241**:507–532.
55. Flammer AJ, Luscher TF. Human endothelial dysfunction: EDRFs. *Pflügers Arch Eur J Physiol* 2010;**459**:1005–1013.
56. Ludmer PL, Selwyn AP, Shook TL, Wayne RR, Mudge GH, Alexander RW, Ganz P. Paradoxical vasoconstriction induced by acetylcholine in atherosclerotic coronary arteries. *N Engl J Med* 1986;**315**:1046–1051.
57. Puri R, Liew GY, Nicholls SJ, Nelson AJ, Leong DP, Carbone A, Copus B, Wong DT, Beltrame JF, Worthley SG, Worthley MI. Coronary beta2-adrenoreceptors mediate endothelium-dependent vasoreactivity in humans: novel insights from an in vivo intravascular ultrasound study. *Eur Heart J* 2012;**33**:495–504.
58. Cox DA, Vita JA, Treasure CB, Fish RD, Alexander RW, Ganz P, Selwyn AP. Atherosclerosis impairs flow-mediated dilation of coronary arteries in humans. *Circulation* 1989;**80**:458–465.
59. Nabel EG, Selwyn AP, Ganz P. Large coronary arteries in humans are responsive to changing blood flow: an endothelium-dependent mechanism that fails in patients with atherosclerosis. *J Am Coll Cardiol* 1990;**16**:349–356.

60. Beltrame JF, Crea F, Camici P. Advances in coronary microvascular dysfunction. *Heart Lung Circ* 2009;**18**:19–27.
61. Camici PG, Crea F. Coronary microvascular dysfunction. *N Engl J Med* 2007;**356**:830–840.
62. Schindler TH, Schelbert HR, Quercioli A, Dilsizian V. Cardiac PET imaging for the detection and monitoring of coronary artery disease and microvascular health. *JACC Cardiovasc Imaging* 2010;**3**:623–640.
63. Leung DY, Leung M. Non-invasive/invasive imaging: significance and assessment of coronary microvascular dysfunction. *Heart* 2011;**97**:587–595.
64. Utz W, Jordan J, Niendorf T, Stoffels M, Luft FC, Dietz R, Friedrich MG. Blood oxygen level-dependent MRI of tissue oxygenation: relation to endothelium-dependent and endothelium-independent blood flow changes. *Arterioscler Thromb Vasc Biol* 2005;**25**:1408–1413.
65. Anderson TJ, Uehata A, Gerhard MD, Meredith IT, Knab S, Delagrange D, Lieberman EH, Ganz P, Creager MA, Yeung AC, Selwyn AP. Close relation of endothelial function in the human coronary and peripheral circulations. *J Am Coll Cardiol* 1995;**26**:1235–1241.
66. Bonetti PO, Pumper GM, Higano ST, Holmes DR Jr, Kuvin JT, Lerman A. Noninvasive identification of patients with early coronary atherosclerosis by assessment of digital reactive hyperemia. *J Am Coll Cardiol* 2004;**44**:2137–2141.
67. Takase B, Uehata A, Akima T, Nagai T, Nishioka T, Hamabe A, Satomura K, Ohsuzu F, Kurita A. Endothelium-dependent flow-mediated vasodilation in coronary and brachial arteries in suspected coronary artery disease. *Am J Cardiol* 1998;**82**:1535–1539, A7–8.
68. Chatzizisis YS, Coskun AU, Jonas M, Edelman ER, Feldman CL, Stone PH. Role of endothelial shear stress in the natural history of coronary atherosclerosis and vascular remodeling: molecular, cellular, and vascular behavior. *J Am Coll Cardiol* 2007;**49**:2379–2393.
69. Gimbrone MA, Topper JN, Nagel T, Anderson KR, Garcia-Cardeña G. Endothelial dysfunction, hemodynamic forces, and atherogenesis. *Ann N Y Acad Sci* 2006;**902**:230–239; discussion 239–240.
70. Lavi S, Bae JH, Rihal CS, Prasad A, Barsness GW, Lennon RJ, Holmes DR Jr, Kuvin JT, Lerman DR. Segmental coronary endothelial dysfunction in patients with minimal atherosclerosis is associated with necrotic core plaques. *Heart* 2009;**95**:1525–1530.
71. Linder L, Kiowski W, Buhler FR, Luscher TF. Indirect evidence for release of endothelium-derived relaxing factor in human forearm circulation in vivo. Blunted response in essential hypertension. *Circulation* 1990;**81**:1762–1767.
72. Petrie JR, Ueda S, Morris AD, Murray LS, Elliott HL, Connell JM. How reproducible is bilateral forearm plethysmography? *Br J Clin Pharmacol* 1998;**45**:131–139.
73. Celermajer DS, Sorensen KE, Gooch VM, Spiegelhalter DJ, Miller OI, Sullivan ID, Lloyd JK, Deanfield JE. Non-invasive detection of endothelial dysfunction in children and adults at risk of atherosclerosis. *Lancet* 1992;**340**:1111–1115.
74. Joannides R, Haefeli WE, Linder L, Richard V, Bakkali EH, Thuillez C, Lüscher TF. Nitric oxide is responsible for flow-dependent dilatation of human peripheral conduit arteries in vivo. *Circulation* 1995;**91**:1314–1319.
75. Joannides R, Richard V, Haefeli WE, Linder L, Lüscher TF, Thuillez C. Role of basal and stimulated release of nitric oxide in the regulation of radial artery caliber in humans. *Hypertension* 1995;**26**:327–331.
76. Lieberman EH, Gerhard MD, Uehata A, Selwyn AP, Ganz P, Yeung AC, Creager MA. Flow-induced vasodilation of the human brachial artery is impaired in patients <40 years of age with coronary artery disease. *Am J Cardiol* 1996;**78**:1210–1214.
77. Parker BA, Tschakovsky ME, Augeri AL, Polk DM, Thompson PD, Kiernan FJ. Heterogenous vasodilator pathways underlie flow-mediated dilation in men and women. *Am J Physiol Heart Circ Physiol* 2011;**301**:H1118–H1126.
78. Charakida M, Masi S, Luscher TF, Kastelein JJ, Deanfield JE. Assessment of atherosclerosis: the role of flow-mediated dilatation. *Eur Heart J* 2010;**31**:2854–2861.
79. Corretti MC, Anderson TJ, Benjamin EJ, Celermajer D, Charbonneau F, Creager MA, Deanfield J, Drexler H, Gerhard-Herman M, Herrington D, Vallance P, Vita J, Vogel R; International Brachial Artery Reactivity Task Force. Guidelines for the ultrasound assessment of endothelial-dependent flow-mediated vasodilation of the brachial artery: a report of the International Brachial Artery Reactivity Task Force. *J Am Coll Cardiol* 2002;**39**:257–265.
80. Deanfield J, Donald A, Ferri C, Giannattasio C, Halcox J, Halligan S, Lerman A, Mancina G, Oliver JJ, Pessina AC, Rizzoni D, Rossi GP, Salvetti A, Schiffrin EL, Taddei S, Webb DJ; Working Group on Endothelin and Endothelial Factors of the European Society of Hypertension. Endothelial function and dysfunction. Part I: methodological issues for assessment in the different vascular beds: a statement by the Working Group on Endothelin and Endothelial Factors of the European Society of Hypertension. *J Hypertens* 2005;**23**:7–17.
81. Thijssen DHJ, Bruno RM, van Mil A, Holder SM, Fata F, Greyling A, Zock PL, Taddei S, Deanfield JE, Luscher T, Green DJ, Ghiadoni L. Expert consensus and evidence-based recommendations for the assessment of flow-mediated dilation in humans. *Eur Heart J* 2019;**40**:2534–2547.
82. Harris RA, Nishiyama SK, Wray DW, Richardson RS. Ultrasound assessment of flow-mediated dilation. *Hypertension* 2010;**55**:1075–1085.
83. Thijssen DH, Black MA, Pyke KE, Padilla J, Atkinson G, Harris RA, Parker B, Widlansky ME, Tschakovsky ME, Green DJ. Assessment of flow-mediated dilation in humans: a methodological and physiological guideline. *Am J Physiol Heart Circ Physiol* 2011;**300**:H2–H12.
84. Donald AE, Halcox JP, Charakida M, Story C, Wallace SM, Cole TJ, Friberg P, Deanfield JE. Methodological approaches to optimize reproducibility and power in clinical studies of flow-mediated dilation. *J Am Coll Cardiol* 2008;**51**:1959–1964.
85. Tomiyama H, Kohro T, Higashi Y, Takase B, Suzuki T, Ishizu T, Ueda S, Yamazaki T, Furumoto T, Kario K, Inoue T, Koba S, Watanabe K, Takemoto Y, Hano T, Sata M, Ishibashi Y, Node K, Maemura K, Ohya Y, Furukawa T, Ito H, Ikeda H, Yamashina A. Reliability of measurement of endothelial function across multiple institutions and establishment of reference values in Japanese. *Atherosclerosis* 2015;**242**:433–442.
86. Mitchell GF, Parise H, Vita JA, Larson MG, Warner E, Keane JF Jr, Keyes MJ, Levy D, Vasan RS, Benjamin EJ. Local shear stress and brachial artery flow-mediated dilation: the Framingham Heart Study. *Hypertension* 2004;**44**:134–139.
87. Mitchell GF, Vita JA, Larson MG, Parise H, Keyes MJ, Warner E, Vasan RS, Levy D, Benjamin EJ. Cross-sectional relations of peripheral microvascular function, cardiovascular disease risk factors, and aortic stiffness: the Framingham Heart Study. *Circulation* 2005;**112**:3722–3728.
88. Philpott AC, Lonn E, Title LM, Verma S, Buithieu J, Charbonneau F, Anderson TJ. Comparison of new measures of vascular function to flow mediated dilatation as a measure of cardiovascular risk factors. *Am J Cardiol* 2009;**103**:1610–1615.
89. Anderson TJ, Charbonneau F, Title LM, Buithieu J, Rose MS, Conradson H, Hildebrand K, Fung M, Verma S, Lonn E. Microvascular function predicts cardiovascular events in primary prevention: long-term results from the Firefighters and Their Endothelium (FATE) study. *Circulation* 2011;**123**:163–169.
90. Huang AL, Silver AE, Shvenke E, Schopfer DW, Jahangir E, Titas MA, Shpilman A, Menzoian JO, Watkins MT, Raffetto JD, Gibbons G, Woodson J, Shaw PM, Dhady M, Eberhardt RT, Keane JF Jr, Gokce N, Vita JA. Predictive value of reactive hyperemia for cardiovascular events in patients with peripheral arterial disease undergoing vascular surgery. *Arterioscler Thromb Vasc Biol* 2007;**27**:2113–2119.
91. Yeboah J, Crouse JR, Hsu FC, Burke GL, Herrington DM. Brachial flow-mediated dilation predicts incident cardiovascular events in older adults: the Cardiovascular Health Study. *Circulation* 2007;**115**:2390–2397.
92. Yeboah J, Folsom AR, Burke GL, Johnson C, Polak JF, Post W, Lima JA, Crouse JR, Herrington DM. Predictive value of brachial flow-mediated dilation for incident cardiovascular events in a population-based study: the multi-ethnic study of atherosclerosis. *Circulation* 2009;**120**:502–509.
93. Kusche-Vihrog K, Callies C, Fels J, Oberleithner H. The epithelial sodium channel (ENaC): mediator of the aldosterone response in the vascular endothelium? *Steroids* 2010;**75**:544–549.
94. Kuvin JT, Patel AR, Sliney KA, Pandian NG, Sheffy J, Schnall RP, Karas RH, Udelson JE. Assessment of peripheral vascular endothelial function with finger arterial pulse wave amplitude. *Am Heart J* 2003;**146**:168–174.
95. Nohria A, Gerhard-Herman M, Creager MA, Hurler S, Mitra D, Ganz P. Role of nitric oxide in the regulation of digital pulse volume amplitude in humans. *J Appl Physiol* 2006;**101**:545–548.
96. Rubinshtein R, Kuvin JT, Soffler M, Lennon RJ, Lavi S, Nelson RE, Pumper GM, Lerman LO, Lerman A. Assessment of endothelial function by non-invasive peripheral arterial tonometry predicts late cardiovascular adverse events. *Eur Heart J* 2010;**31**:1142–1148.
97. Hamburg NM, Keyes MJ, Larson MG, Vasan RS, Schnabel R, Pryde MM, Mitchell GF, Sheffy J, Vita JA, Benjamin EJ. Cross-sectional relations of digital vascular function to cardiovascular risk factors in the Framingham Heart Study. *Circulation* 2008;**117**:2467–2474.
98. Hamburg NM, Palmisano J, Larson MG, Sullivan LM, Lehman BT, Vasan RS, Levy D, Mitchell GF, Vita JA, Benjamin EJ. Relation of brachial and digital measures of vascular function in the community: the Framingham Heart study. *Hypertension* 2011;**57**:390–396.
99. Schnabel RB, Schulz A, Wild PS, Sinning CR, Wilde S, Eleftheriadis M, Herkenhoff S, Zeller T, Lubos E, Lackner KJ, Warnholtz A, Gori T, Blankenberg S, Munzel T. Noninvasive vascular function measurement in the community: cross-sectional relations and comparison of methods. *Circ Cardiovasc Imaging* 2011;**4**:371–380.
100. Newman EA. Functional hyperemia and mechanisms of neurovascular coupling in the retinal vasculature. *J Cereb Blood Flow Metab* 2013;**33**:1685–1695.
101. Kondo M, Wang L, Bill A. The role of nitric oxide in hyperaemic response to flicker in the retina and optic nerve in cats. *Acta Ophthalmol Scand* 2009;**75**:232–235.
102. Houben A, Martens RJH, Stehouwer C. Assessing microvascular function in humans from a chronic disease perspective. *J Am Soc Nephrol* 2017;**28**:3461–3472.
103. Sharifzad M, Witkowska KJ, Aschinger GC, Sapeta S, Rauch A, Schmid D, Werkmeister RM, Garhofer G, Schmetterer L. Factors determining flicker-induced retinal vasodilation in healthy subjects. *Invest Ophthalmol Vis Sci* 2016;**57**:3306–3312.
104. Kotliar KE, Lanzl IM, Schmidt-Trucksass A, Sitnikova D, Ali M, Blume K, Halle M, Hanssen H. Dynamic retinal vessel response to flicker in obesity: a methodological approach. *Microvasc Res* 2011;**81**:123–128.
105. Seshadri S, Ekart A, Gherghel D. Ageing effect on flicker-induced diameter changes in retinal microvessels of healthy individuals. *Acta Ophthalmol* 2016;**94**:e35–e42.
106. Patel SR, Bellary S, Karimzad S, Gherghel D. Overweight status is associated with extensive signs of microvascular dysfunction and cardiovascular risk. *Sci Rep* 2016;**6**:32282.
107. Günthner R, Hanssen H, Hauser C, Angermann S, Lorenz G, Kemmerer S, Matschkal J, Braunisch MC, Kühle C, Rendlers L, Moog P, Wassertheurer S, Baumann M, Hammes H-P, Mayer CC, Haller B, Stryeck S, Madl T, Carbajo-Lozoya J, Heemann

- U, Kotliar K, Schmaderer C. Impaired retinal vessel dilation predicts mortality in end-stage renal disease. *Circ Res* 2019;**124**:1796–1807.
108. Nguyen TT, Kawasaki R, Wang JJ, Kreis AJ, Shaw J, Vilser W, Wong TY. Flicker light-induced retinal vasodilation in diabetes and diabetic retinopathy. *Diabetes Care* 2009;**32**:2075–2080.
  109. Sorensen BM, Houben AJ, Berendschot TT, Schouten JS, Kroon AA, van der Kallen CJ, Henry RM, Koster A, Sep SJ, Dagnelie PC, Schaper NC, Schram MT, Stehouwer CD. Prediabetes and type 2 diabetes are associated with generalized microvascular dysfunction: the Maastricht study. *Circulation* 2016;**134**:1339–1352.
  110. Machalińska A, Pius-Sadowska E, Babiak K, Sałacka A, Safranow K, Kawa MP, Machaliński B. Correlation between flicker-induced retinal vessel vasodilatation and plasma biomarkers of endothelial dysfunction in hypertensive patients. *Curr Eye Res* 2018;**43**:128–134.
  111. Nagel E, Vilser W, Lanzl I. Age, blood pressure, and vessel diameter as factors influencing the arterial retinal flicker response. *Invest Ophthalmol Vis Sci* 2004;**45**:1486–1492.
  112. Panza JA, Quyyumi AA, Brush JE Jr, Epstein SE. Abnormal endothelium-dependent vascular relaxation in patients with essential hypertension. *N Engl J Med* 1990;**323**:22–27.
  113. Brush JE Jr, Faxon DP, Salmon S, Jacobs AK, Ryan TJ. Abnormal endothelium-dependent coronary vasomotion in hypertensive patients. *J Am Coll Cardiol* 1992;**19**:809–815.
  114. Benjamin EJ, Larson MG, Keyes MJ, Mitchell GF, Vasan RS, Keaney JF Jr, Lehman BT, Fan S, O'Spiuk E, Vita JA. Clinical correlates and heritability of flow-mediated dilation in the community: the Framingham Heart Study. *Circulation* 2004;**109**:613–619.
  115. Shimbo D, Muntner P, Mann D, Viera AJ, Homma S, Polak JF, Barr RG, Herrington D, Shea S. Endothelial dysfunction and the risk of hypertension: the multi-ethnic study of atherosclerosis. *Hypertension* 2010;**55**:1210–1216.
  116. Savoia C, Volpe M, Grassi G, Borghi C, Agabiti Rosei E, Touyz RM. Personalized medicine—a modern approach for the diagnosis and management of hypertension. *Clin Sci* 2017;**131**:2671–2685.
  117. De Rosa S, Arcidiacono B, Chiefari E, Brunetti A, Indolfi C, Foti DP. Type 2 diabetes mellitus and cardiovascular disease: genetic and epigenetic links. *Front Endocrinol* 2018;**9**:2.
  118. McVeigh GE, Brennan GM, Johnston GD, McDermott BJ, McGrath LT, Henry WR, Andrews JW, Hayes JR. Impaired endothelium-dependent and independent vasodilation in patients with type 2 (non-insulin-dependent) diabetes mellitus. *Diabetologia* 1992;**35**:771–776.
  119. Nitenberg A, Ledoux S, Valensi P, Sachs R, Attali JR, Antony I. Impairment of coronary microvascular dilation in response to cold pressor-induced sympathetic stimulation in type 2 diabetic patients with abnormal stress thallium imaging. *Diabetes* 2001;**50**:1180–1185.
  120. Williams SB, Cusco JA, Roddy MA, Johnstone MT, Creager MA. Impaired nitric oxide-mediated vasodilation in patients with non-insulin-dependent diabetes mellitus. *J Am Coll Cardiol* 1996;**27**:567–574.
  121. Monti LD, Barlassina C, Citterio L, Galluccio E, Berzuini C, Setola E, Valsecchi G, Lucotti P, Pozza G, Bernardinelli L, Casari G, Piatti P. Endothelial nitric oxide synthase polymorphisms are associated with type 2 diabetes and the insulin resistance syndrome. *Diabetes* 2003;**52**:1270–1275.
  122. San Martin A, Du P, Dikalova A, Lassegue B, Aleman M, Gongora MC, Brown K, Joseph G, Harrison DG, Taylor WR, Jo H, Griendling KK. Reactive oxygen species-selective regulation of aortic inflammatory gene expression in type 2 diabetes. *Am J Physiol Heart Circ Physiol* 2007;**292**:H2073–H2082.
  123. Alp NJ, Mussa S, Khoo J, Cai S, Guzik T, Jefferson A, Goh N, Rockett KA, Channon KM. Tetrahydrobiopterin-dependent preservation of nitric oxide-mediated endothelial function in diabetes by targeted transgenic GTP-cyclohydrolase I overexpression. *J Clin Invest* 2003;**112**:725–735.
  124. Piga R, Naito Y, Kokura S, Handa O, Yoshikawa T. Short-term high glucose exposure induces monocyte-endothelial cells adhesion and transmigration by increasing VCAM-1 and MCP-1 expression in human aortic endothelial cells. *Atherosclerosis* 2007;**193**:328–334.
  125. Nishikawa T, Edelstein D, Du XL, Yamagishi S, Matsumura T, Kaneda Y, Yorek MA, Beebe D, Oates PJ, Hammes HP, Giardino I, Brownlee M. Normalizing mitochondrial superoxide production blocks three pathways of hyperglycaemic damage. *Nature* 2000;**404**:787–790.
  126. Yiu KH, Tse HF. Specific role of impaired glucose metabolism and diabetes mellitus in endothelial progenitor cell characteristics and function. *Arterioscler Thromb Vasc Biol* 2014;**34**:1136–1143.
  127. Pardali E, Makowski LM, Leffers M, Borscheper A, Waltenberger J. BMP-2 induces human mononuclear cell chemotaxis and adhesion and modulates monocyte-to-macrophage differentiation. *J Cell Mol Med* 2018;**22**:5429–5438.
  128. Waltenberger J. VEGF resistance as a molecular basis to explain the angiogenesis paradox in diabetes mellitus. *Biochem Soc Trans* 2009;**37**:1167–1170.
  129. Papaioannou GI, Kasapis C, Seip RL, Grey NJ, Katten D, Wackers FJ, Inzucchi SE, Engel S, Taylor A, Young LH, Chyun DA, Davey JA, Iskandrian AE, Ratner RE, Robinson EC, Carolan S, Heller GV. Value of peripheral vascular endothelial function in the detection of relative myocardial ischemia in asymptomatic type 2 diabetic patients who underwent myocardial perfusion imaging. *J Nucl Cardiol* 2006;**13**:362–368.
  130. Venuraju S, Jeevarethinam A, Mehta VS, Ruano S, Dumo A, Nair D, Rosenthal M, Darko D, Cohen M, Rakhit R, Lahiri A. Predicting severity of coronary artery disease in patients with diabetes using endothelial function measured with peripheral arterial tonometry: PROCED study. *Angiology* 2019;**70**:613–620.
  131. Rossi R, Nuzzo A, Origliani G, Modena MG. Prognostic role of flow-mediated dilation and cardiac risk factors in post-menopausal women. *J Am Coll Cardiol* 2008;**51**:997–1002.
  132. Shechter M, Shechter A, Koren-Morag N, Feinberg MS, Hiersch L. Usefulness of brachial artery flow-mediated dilation to predict long-term cardiovascular events in subjects without heart disease. *Am J Cardiol* 2014;**113**:162–167.
  133. Shechter M, Matetzky S, Prasad M, Goitein O, Goldkorn R, Naroditsky M, Koren-Morag N, Lerman A. Endothelial function predicts 1-year adverse clinical outcome in patients hospitalized in the emergency department chest pain unit. *Int J Cardiol* 2017;**240**:14–19.
  134. Matsuzawa Y, Kwon TG, Lennon RJ, Lerman LO, Lerman A. Prognostic value of flow-mediated vasodilation in brachial artery and fingertip artery for cardiovascular events: a systematic review and meta-analysis. *J Am Heart Assoc* 2015;**4**:e002270.
  135. Lind L, Berglund L, Larsson A, Sundstrom J. Endothelial function in resistance and conduit arteries and 5-year risk of cardiovascular disease. *Circulation* 2011;**123**:1545–1551.
  136. Suzuki T, Hirata K, Elkind MS, Jin Z, Rundek T, Miyake Y, Boden-Albala B, Di Tullio MR, Sacco R, Homma S. Metabolic syndrome, endothelial dysfunction, and risk of cardiovascular events: the Northern Manhattan Study (NOMAS). *Am Heart J* 2008;**156**:405–410.
  137. Camici PG, Crea F. Microvascular angina: a women's affair? *Circ Cardiovasc Imaging* 2015;**8**:e003252.
  138. Haider A, Bengs S, Luu J, Osto E, Siller-Matula JM, Muka T, Gebhard C. Sex and gender in cardiovascular medicine: presentation and outcomes of acute coronary syndrome. *Eur Heart J* 2020;**41**:1328–1336.
  139. Bairey Merz CN, Pepine CJ, Walsh MN, Fleg JL, Camici PG, Chilian WM, Clayton JA, Cooper LS, Crea F, Di Carli M, Douglas PS, Galis ZS, Gurbel P, Handberg EM, Hasan A, Hill JA, Hochman JS, Iturriaga E, Kirby R, Levine GN, Libby P, Lima J, Mehta P, Desvigne-Nickens P, Olive M, Pearson GD, Quyyumi AA, Reynolds H, Robinson B, Sopko G, Taqueti V, Wei J, Wenger N. Ischemia and No Obstructive Coronary Artery Disease (INOCA): developing evidence-based therapies and research agenda for the next decade. *Circulation* 2017;**135**:1075–1092.
  140. Beltrame JF, Crea F, Kaski JC, Ogawa H, Ong P, Sechtem U, Shimokawa H, Bairey Merz CN, Coronary Vasomotion Disorders International Study Group. International standardization of diagnostic criteria for vasospastic angina. *Eur Heart J* 2017;**38**:2565–2568.
  141. Halcox JP, Schenke WH, Zalos G, Mincemoyer R, Prasad A, Waclawiw MA, Nour KR, Quyyumi AA. Prognostic value of coronary vascular endothelial dysfunction. *Circulation* 2002;**106**:653–658.
  142. Heitzer T, Schlinzig T, Krohn K, Meinertz T, Münzel T. Endothelial dysfunction, oxidative stress, and risk of cardiovascular events in patients with coronary artery disease. *Circulation* 2001;**104**:2673–2678.
  143. Kwak BR, Bäck M, Bochaton-Piallat M-L, Caligiuri G, Daemen MJAP, Davies PF, Hofer IE, Holvoet P, Jo H, Krams R, Lehoux S, Monaco C, Steffens S, Virmani R, Weber C, Wentzel JJ, Evans PC. Biomechanical factors in atherosclerosis: mechanisms and clinical implications. *Eur Heart J* 2014;**35**:3013–3020.
  144. Thygesen K, Alpert JS, Jaffe AS, Chaitman BR, Bax JJ, Morrow DA, White HD, Group ESCSD. Fourth universal definition of myocardial infarction (2018). *Eur Heart J* 2019;**40**:237–269.
  145. Tousoulis D, Charakida M, Stefanadis C. Endothelial function and inflammation in coronary artery disease. *Heart* 2006;**92**:441–444.
  146. Elbaz M, Carrie D, Baudeux JL, Arnal JF, Maupas E, Lotterie JA, Perret B, Puel J. High frequency of endothelial vasomotor dysfunction after acute coronary syndromes in non-culprit and angiographically normal coronary arteries: a reversible phenomenon. *Atherosclerosis* 2005;**181**:311–319.
  147. Careri G, Nerla R, Di Monaco A, Russo G, Stazi A, Villano A, Sestito A, Lanza GA, Crea F. Clinical correlates and prognostic value of flow mediated dilation in patients with non-ST segment elevation acute coronary syndromes. *Am J Cardiol* 2013;**111**:51–57.
  148. Daniel M, Ekenback C, Agewall S, Brolin EB, Caidahl K, Cederlund K, Collste O, Eurenius L, Frick M, Younis-Hassan S, Henareh L, Jernberg T, Malmqvist K, Spaak J, Sorensson P, Hofman-Bang C, Tornvall P. Risk factors and markers for acute myocardial infarction with angiographically normal coronary arteries. *Am J Cardiol* 2015;**116**:838–844.
  149. Kitta Y, Obata JE, Nakamura T, Hirano M, Kodama Y, Fujioka D, Saito Y, Kawabata K, Sano K, Kobayashi T, Yano T, Nakamura K, Kugiyama K. Persistent impairment of endothelial vasomotor function has a negative impact on outcome in patients with coronary artery disease. *J Am Coll Cardiol* 2009;**53**:323–330.
  150. DeSouza CA, Shapiro LF, Clevenger CM, Dinenna FA, Monahan KD, Tanaka H, Seals DR. Regular aerobic exercise prevents and restores age-related declines in endothelium-dependent vasodilation in healthy men. *Circulation* 2000;**102**:1351–1357.
  151. Higashi Y, Sasaki S, Kurisu S, Yoshimizu A, Sasaki N, Matsuura H, Kajiyama G, Oshima T. Regular aerobic exercise augments endothelium-dependent vascular

- relaxation in normotensive as well as hypertensive subjects: role of endothelium-derived nitric oxide. *Circulation* 1999;**100**:1194–1202.
152. Hambrecht R, Wolf A, Gielen S, Linke A, Hofer J, Erbs S, Schoene N, Schuler G. Effect of exercise on coronary endothelial function in patients with coronary artery disease. *N Engl J Med* 2000;**342**:454–460.
  153. Hambrecht R, Hilbrich L, Erbs S, Gielen S, Fiehn E, Schoene N, Schuler G. Correction of endothelial dysfunction in chronic heart failure: additional effects of exercise training and oral L-arginine supplementation. *J Am Coll Cardiol* 2000;**35**:706–713.
  154. Dod HS, Bhardwaj R, Sajja V, Weidner G, Hobbs GR, Konat GW, Manivannan S, Gharib W, Warden BE, Nanda NC, Beto RJ, Ornish D, Jain AC. Effect of intensive lifestyle changes on endothelial function and on inflammatory markers of atherosclerosis. *Am J Cardiol* 2010;**105**:362–367.
  155. Shechter M, Beigel R, Freimark D, Matetzky S, Feinberg MS. Short-term sibutramine therapy is associated with weight loss and improved endothelial function in obese patients with coronary artery disease. *Am J Cardiol* 2006;**97**:1650–1653.
  156. Osto E, Doytcheva P, Corteville C, Bueter M, Dorig C, Stivala S, Buhmann H, Colin S, Rohrer L, Hasballa R, Tailleux A, Wolfrum C, Tona F, Manz J, Vetter D, Spliethoff K, Vanhoutte PM, Landmesser U, Pattou F, Staels B, Matter CM, Lutz TA, Luscher TF. Rapid and body weight-independent improvement of endothelial and high-density lipoprotein function after Roux-en-Y gastric bypass: role of glucagon-like peptide-1. *Circulation* 2015;**131**:871–881.
  157. Cardozo LF, Pedrucci LM, Stenwinkel P, Stockler-Pinto MB, Daleprane JB, Leite M Jr, Mafra D. Nutritional strategies to modulate inflammation and oxidative stress pathways via activation of the master antioxidant switch Nrf2. *Biochimie* 2013;**95**:1525–1533.
  158. Sudano I, Spieker LE, Hermann F, Flammer A, Corti R, Noll G, Luscher TF. Protection of endothelial function: targets for nutritional and pharmacological interventions. *J Cardiovasc Pharmacol* 2006;**47**(Suppl. 2):S136–S150; discussion S172–S176.
  159. Celermajer DS, Sorensen KE, Georgakopoulos D, Bull C, Thomas O, Robinson J, Deanfield JE. Cigarette smoking is associated with dose-related and potentially reversible impairment of endothelium-dependent dilation in healthy young adults. *Circulation* 1993;**88**:2149–2155.
  160. Grigore L, Raselli S, Garlaschelli K, Redaelli L, Norata GD, Pirillo A, Catapano AL. Effect of treatment with pravastatin or ezetimibe on endothelial function in patients with moderate hypercholesterolemia. *Eur J Clin Pharmacol* 2013;**69**:341–346.
  161. Reriani MK, Dunlay SM, Gupta B, West CP, Rihal CS, Lerman LO, Lerman A. Effects of statins on coronary and peripheral endothelial function in humans: a systematic review and meta-analysis of randomized controlled trials. *Eur J Cardiovasc Prev Rehabil* 2011;**18**:704–716.
  162. Bonetti PO, Lerman LO, Napoli C, Lerman A. Statin effects beyond lipid lowering—are they clinically relevant? *Eur Heart J* 2003;**24**:225–248.
  163. Tousoulis D, Simopoulou C, Papageorgiou N, Oikonomou E, Hatzis G, Siasos G, Tsiamis E, Stefanadis C. Endothelial dysfunction in conduit arteries and in microcirculation. Novel therapeutic approaches. *Pharmacol Ther* 2014;**144**:253–267.
  164. Meaney E, Vela A, Samaniego V, Meaney A, Asbn J, Zempoalteca J-C, Elisa ZN, Emma MN, Guzman M, Hicks J, Ceballos G. Metformin, arterial function, intima-media thickness and nitrooxidation in metabolic syndrome: the Mefisto study. *Clin Exp Pharmacol Physiol* 2008;**35**:895–903.
  165. Esposito K, Ciotola M, Carleo D, Schisano B, Saccomanno F, Sasso FC, Cozzolino D, Assaloni R, Merante D, Ceriello A, Giugliano D. Effect of rosiglitazone on endothelial function and inflammatory markers in patients with the metabolic syndrome. *Diabetes Care* 2006;**29**:1071–1076.
  166. Hanefeld M, Marx N, Pflutzner A, Baurecht W, Lubben G, Karagiannis E, Stier U, Forst T. Anti-inflammatory effects of pioglitazone and/or simvastatin in high cardiovascular risk patients with elevated high sensitivity C-reactive protein: the PIOSTAT Study. *J Am Coll Cardiol* 2007;**49**:290–297.
  167. Navickas R, Gal D, Laucivicius A, Taparaukaitė A, Zdanūtė M, Holvoet P. Identifying circulating microRNAs as biomarkers of cardiovascular disease: a systematic review. *Cardiovasc Res* 2016;**111**:322–337.
  168. Sapp RM, Evans WS, Eagan LE, Chesney CA, Zietowski EM, Prior SJ, Ranadive SM, Hagberg JM. The effects of moderate and high intensity exercise on circulating markers of endothelial integrity and activation in young, healthy men. *J Appl Physiol* 2019;doi: 10.1152/jappphysiol.00477.2019.
  169. Paschalaki KE, Randi AM. Recent advances in endothelial colony forming cells toward their use in clinical translation. *Front Med* 2018;**5**:295.
  170. Parker B, Al-Husain A, Pemberton P, Yates AP, Ho P, Gorodkin R, Teh LS, Alexander MY, Bruce IN. Suppression of inflammation reduces endothelial microparticles in active systemic lupus erythematosus. *Ann Rheum Dis* 2014;**73**:1144–1150.
  171. Zacharia E, Antonopoulos AS, Oikonomou E, Papageorgiou N, Pallantz Z, Miliou A, Mystakidi VC, Simantiris S, Kriebardis A, Orogas N, Valasiadi E, Papaioannou S, Galiatsatos N, Antoniadis C, Tousoulis D. Plasma signature of apoptotic microvesicles is associated with endothelial dysfunction and plaque rupture in acute coronary syndromes. *J Mol Cell Cardiol* 2020;**138**:110–114.
  172. Massa M, Campanelli R, Bonetti E, Ferrario M, Marinoni B, Rosti V. Rapid and large increase of the frequency of circulating endothelial colony-forming cells (ECFCs) generating late outgrowth endothelial cells in patients with acute myocardial infarction. *Exp Hematol* 2009;**37**:8–9.
  173. Meneveau N, Deschaseaux F, Seronde MF, Chopard R, Schiele F, Jehl J, Tiberghien P, Bassand JP, Kantelip JP, Davani S. Presence of endothelial colony-forming cells is associated with reduced microvascular obstruction limiting infarct size and left ventricular remodelling in patients with acute myocardial infarction. *Basic Res Cardiol* 2011;**106**:1397–1410.
  174. Coco C, Sgarra L, Potenza MA, Nacci C, Pasculli B, Barbano R, Parrella P, Montagnani M. Can epigenetics of endothelial dysfunction represent the key to precision medicine in type 2 diabetes mellitus? *Int J Mol Sci* 2019;**20**:E2949.
  175. Schiro A, Wilkinson FL, Weston R, Smyth JV, Serracino-Ingloff F, Alexander MY. Endothelial microparticles as conveyors of information in atherosclerotic disease. *Atherosclerosis* 2014;**234**:295–302.
  176. Schiro A, Wilkinson FL, Weston R, Smyth JV, Serracino-Ingloff F, Alexander MY. Elevated levels of endothelial-derived microparticles, and serum CXCL9 and SCGF-beta are associated with unstable asymptomatic carotid plaques. *Sci Rep* 2015;**5**:16658.