

Energetic, vibrational, and electronic properties of silicon using a nonorthogonal tight-binding model

N. Bernstein, M. J. Mehl, and D. A. Papaconstantopoulos

Center for Computational Materials Science, Naval Research Laboratory, Washington, DC 20375

N. I. Papanicolaou

Department of Physics, Solid State Division, University of Ioannina, P.O. Box 1186, GR-45110 Ioannina, Greece

Martin Z. Bazant* and Efthimios Kaxiras

Department of Physics and Division of Engineering and Applied Sciences, Harvard University, Cambridge, Massachusetts 02138

(Received 17 December 1999; revised manuscript received 28 February 2000)

We present calculations of energetic, electronic, and vibrational properties of silicon using a nonorthogonal tight-binding (TB) model derived to fit accurately first-principles calculations. Although it was fit only to a few high-symmetry bulk structures, the model can be successfully used to compute the energies and structures of a wide range of configurations. These include phonon frequencies at high-symmetry points, bulk point defects such as vacancies and interstitials, and surface reconstructions. The TB parametrization reproduces experimental measurements and *ab initio* calculations well, indicating that it describes faithfully the underlying physics of bonding in silicon. We apply this model to the study of finite temperature vibrational properties of crystalline silicon and the electronic structure of amorphous systems that are too large to be practically simulated with *ab initio* methods.

I. INTRODUCTION

As the capabilities of materials simulations increase, so does the demand for methodologies that can capture the important physics accurately while being fast enough to simulate large systems for long periods of time. Semiconductors such as silicon, where the quantum-mechanical nature of the electrons mediating the directional interatomic bonding is important, have been especially challenging to describe accurately using empirical potential interactions.¹ The simplest method that captures the quantum-mechanical nature of the electrons, the minimal basis tight-binding (TB) model, is becoming a popular method for simulating such systems.²⁻¹⁰ The main challenge in developing these models has been the determination of the Hamiltonian matrix elements (and in the case of nonorthogonal bases, the overlap matrix elements) as a function of interatomic distance. The most common approach is to fit the results of either total-energy calculations or band-structure features to experiment or *ab initio* calculations, assuming a particular functional form with some free parameters for the distance dependence of the matrix elements. Most of the models in the literature, however, suffer from certain shortcomings. Many models assign a large part of the total energy of the system to a repulsive pair potential to compensate for adopting an orthogonal set of basis orbitals.^{2,5,6} Some models do not give an accurate description of the band structure of the ground state,⁷ or the energetics of important features of bulk semiconducting systems, such as point defects.^{3,4} Some models were intended for use for a specific application, and were optimized and tested only for geometries relevant to that application.⁹ Finally, other models use a very large number of free parameters and fit a very large number of structures, leading to potentially unphysical values for the parameters and the suspicion that the good fit to the data set may not guarantee reliability.⁸

In the past, TB models have mainly been used as interpolative schemes assuming that the configurations that were being fit will encompass the configurational space where the model will be used. In this paper we use the (nonorthogonal) NRL-TB method,¹¹ an extrapolative method that uses parameters obtained from fitting *ab initio* calculations of a few high-symmetry structures, to compute the energies of a wide range of geometries for silicon. We find that the results compare very well to *ab initio* calculations for configurations that are substantially different from those included in the fitting data set. This increases our confidence that the reason for the accurate results in the tested configurations is that the physics underlying the model is correct.

This paper is organized as follows: In Sec. II we describe the functional form of our TB parametrization and the fitting data set. In Sec. III we discuss applications of the TB model to bulk properties such as the diamond lattice band structure and energies of other lattices, point defect properties such as formation and relaxation energies, and surface energies and reconstructions. We also report on two applications of the TB model that would be impractical with *ab initio* methods, one using molecular dynamics (MD) simulations to compute finite temperature properties of the bulk crystal, and another using the model to compute electronic properties of large amorphous systems. In the final section we summarize the results.

II. FUNCTIONAL FORM AND FITTING

In this paper we present results for two parametrizations, one using a sp^3 basis, which has already been presented in some detail,¹⁰ and another using a sp^3d^5 basis. Since their functional forms are nearly identical and have already been presented, we will only give a brief summary here. The total

energy of the system is written as the sum of the energies of the occupied electronic eigenstates. The onsite Hamiltonian matrix elements vary with the local density, allowing the NRL-TB method be fit to linearized augmented plane wave (LAPW) eigenvalues that have been shifted so that the LAPW total energy is equal to the eigenvalue sum. Therefore all of the contributions to the total energy are accounted for in the eigenvalue sum and the addition of a repulsive pair potential, a feature common to most TB models, is not needed.

The energies of the electronic states and the corresponding eigenvectors are the solutions to a generalized eigenvalue equation with Hamiltonian and overlap matrix elements parametrized as follows: The basis used to describe the Hamiltonian and overlap matrices is a set of one s , three p , and for one of the parametrizations five d orbitals around each atom, with all interactions assumed to be in the two-center approximation.¹² A local atomic density at atom i is defined as

$$\rho_i = \sum_j e^{-\lambda^2 |\vec{R}_j - \vec{R}_i|} f(|\vec{R}_j - \vec{R}_i|), \quad (1)$$

where \vec{R}_i is the position of atom i and λ is a fitting parameter. The cutoff function $f(R)$ is given by

$$f(R) = \begin{cases} \left[1 + \exp\left(\frac{R - R_c + 5L_c}{L_c}\right) \right]^{-1} & R \leq R_c \\ 0 & R > R_c, \end{cases} \quad (2)$$

where R_c is 12.5 a.u. and L_c is 0.5 a.u. The onsite matrix elements are given in terms of the local atomic density ρ_i as

$$h_{il} = \alpha_l + \beta_l \rho_i^{2/3} + \gamma_l \rho_i^{4/3} + \chi_l \rho_i^2, \quad (3)$$

where l is the orbital type index (s , p , or d) and α_l , β_l , γ_l , and χ_l are fitting parameters. The distance dependent parts of the two-center Hamiltonian matrix elements are given by

$$H_{ll'\mu}(R) = (a_{ll'\mu} + b_{ll'\mu}R + c_{ll'\mu}R^2) \exp(-g_{ll'\mu}^2 R) f(R), \quad (4)$$

where l and l' are orbital type indices, μ is an index for the type of interaction between orbitals (σ , π , or δ), and the parameters $a_{ll'\mu}$, $b_{ll'\mu}$, $c_{ll'\mu}$, and $g_{ll'\mu}$ are fitting parameters. The distance dependent parts of the overlap matrix elements are

$$S_{ll'\mu}(R) = (\delta_{ll'} + t_{ll'\mu} + q_{ll'\mu}R + r_{ll'\mu}R^2) \times \exp(-u_{ll'\mu}^2 R) f(R), \quad (5)$$

where $t_{ll'\mu}$, $q_{ll'\mu}$, $r_{ll'\mu}$, and $u_{ll'\mu}$ are fitting parameters, and $\delta_{ll'}$ is the Kronecker delta. Note that the symbols for some of the parameters are different from those used in Ref. 10. The overlap matrix elements have similar functional form to the Hamiltonian matrix elements, but are constrained to go to the correct value, zero or one, at zero interatomic separation. The angular dependence of the Hamiltonian and overlap matrix elements is the standard two-center Slater-Koster form.¹²

The 41 parameters used by the functional form for the sp^3 basis parametrization are fit to four high-symmetry crystal

TABLE I. Parameters for the sp^3 basis tight-binding model.

Onsite parameters				
λ	1.1036			
Orbital	α (Ry)	β (Ry)	γ (Ry)	χ (Ry)
s	-0.0532	-0.9076	-8.8308	56.5661
p	0.3579	0.3036	7.0922	-77.4786
Hamiltonian matrix parameters				
Interaction	a (Ry)	b (Ry/a.u.)	c (Ry/a.u. ²)	g (a.u. ^{-1/2})
$H_{ss\sigma}$	219.5608	-16.2132	-15.5049	1.2644
$H_{sp\sigma}$	10.1279	-4.4039	0.2267	0.9227
$H_{pp\sigma}$	-22.9590	1.7208	1.4191	1.0314
$H_{pp\pi}$	10.2654	4.6718	-2.2162	1.1113
Overlap matrix parameters				
Interaction	t (a.u. ⁻¹)	q (a.u. ⁻²)	r (a.u. ⁻³)	u (a.u. ^{-1/2})
$S_{ss\sigma}$	5.1576	0.6600	-0.0815	1.1081
$S_{sp\sigma}$	8.8736	-16.2408	5.1823	1.2407
$S_{pp\sigma}$	11.2505	-1.1701	-1.0591	1.1376
$S_{pp\pi}$	-692.1842	396.1532	-13.8172	1.5725

lattices: simple cubic (sc), face-centered cubic (fcc), body-centered cubic (bcc), and the diamond structure. The fitting data set includes both the total energy and band structure of each lattice, as computed by LAPW *ab initio* density-functional theory (DFT) calculations in the local-density approximation (LDA) for a wide range of volumes around the energy minimum. The diamond lattice data included the widest range of volumes, from 12.2 Å³/atom to 22.7 Å³/atom. The sc lattice structures ranged from 12.6 Å³/atom to 18.5 Å³/atom, the fcc lattice from 12.7 Å³/atom to 15.0 Å³/atom, and the bcc lattice from 13.0 Å³/atom to 16.0 Å³/atom. The best-fit root-mean-square (rms) error of the valence-band energies for the diamond lattice is 0.12 eV, and the rms error for the crystal lattice total energies is 0.020 eV.

The sp^3d^5 basis parametrization has 69 parameters, which were fit to the diamond lattice band structure at volumes ranging from 13.5 Å³/atom to 22.7 Å³/atom. This set of parameters does not allow for any Hamiltonian or overlap matrix elements between different d orbitals, but allows all interactions between s and p orbitals, as well as $s-d$ and $p-d$ interactions. Since this model is optimized for accuracy in the band structure, we adjusted the DFT/LDA calculations, which predict an indirect gap of 0.5 eV, by applying a uniform shift of 0.67 eV to the conduction bands of the ideal volume diamond lattice, matching the band gap to the experimental result.^{13,14} For the other lattice constants in the fit we shifted the conduction band so that the gap was scaled up by a factor of 1.17/0.5 = 2.34. The shift amount increased monotonically from 0.67 eV for larger volumes and decreased monotonically for smaller volumes. The best fit rms error for the diamond lattice valence band and lower two conduction bands is 0.21 eV, and the rms error for the diamond lattice total energies is 0.004 eV.

The parameters that result from this fit for the sp^3 and sp^3d^5 basis models are listed in Tables I and II, respectively. The sp^3 basis Hamiltonian and overlap matrix elements are plotted in Fig. 1, and the onsite matrix elements for the dia-

TABLE II. Parameters for the sp^3d^5 basis tight-binding model.

Onsite parameters				
λ	1.1108			
Orbital	α (Ry)	β (Ry)	γ (Ry)	χ (Ry)
s	-0.0555	-1.1131	-7.3201	74.8905
p	0.4127	-0.0907	5.3155	-44.0417
d	0.9691	-0.9151	-5.9743	602.0289
Hamiltonian matrix parameters				
Interaction	a (Ry)	b (Ry/a.u.)	c (Ry/a.u. ²)	g (a.u. ^{-1/2})
$H_{ss\sigma}$	234.6937	-18.6013	-15.0266	1.2502
$H_{sp\sigma}$	9.5555	-4.1279	0.2499	0.8761
$H_{pp\sigma}$	-22.6782	1.3611	1.3879	1.01655
$H_{pp\pi}$	-1.5942	4.7914	-1.5693	1.1030
$H_{sd\sigma}$	-7571.4416	2.2354	7.0122	1.6234
$H_{pd\sigma}$	-1.8087	-3.4695	-7.7637	1.6294
$H_{pd\pi}$	0.8933	0.1058	-0.0224	0.8217
Overlap matrix parameters				
Interaction	t (a.u. ⁻¹)	q (a.u. ⁻²)	r (a.u. ⁻³)	xu (a.u. ^{-1/2})
$S_{ss\sigma}$	2.4394	0.9091	-0.0749	1.0590
$S_{sp\sigma}$	-12.0027	-14.6860	6.1856	1.2218
$S_{pp\sigma}$	13.9608	-1.1961	-1.2606	1.1118
$S_{pp\pi}$	188.0012	-143.3625	33.5043	1.4340
$S_{sd\sigma}$	11.4724	-0.4454	-0.5838	1.0598
$S_{pd\sigma}$	-0.6071	0.05789	0.0221	0.8130
$S_{pd\pi}$	-2.1340	-0.5209	-0.0948	1.0580

mond structure are plotted in Fig. 2. The variation of the onsite matrix elements with nearest-neighbor distance is structure dependent because they have a nonlinear dependence on the density, which is itself a structure-dependent quantity. Note that the $ss\sigma$, $pp\sigma$, and $pp\pi$ Hamiltonian and overlap parameters have the expected sign, while the $sp\sigma$ parameters are opposite in sign to the usual convention.¹² However, this sign is not physically meaningful, since it is determined by the (arbitrary) choice of sign of the s and p basis orbitals, and does not affect the eigenvalues or energies computed with the model. Cohen *et al.* have also used a similar method to generate parameters for silicon.⁹ They used a somewhat different functional form and concentrated their fitting and tests on high-pressure phases. Since we are interested in applying this TB model to complex structures, including defects and surfaces, but at or near atmospheric pressure, we have employed a different set of geometries for our fitting data set.

III. APPLICATIONS

To test the transferability of the sp^3 parameters we computed the total energy of a range of structures important for condensed phases of silicon including bulk systems, point defects, and surfaces. First we review the diamond lattice band structure, cohesive energies of a number of bulk lattices as a function of volume, and the elastic constants of the diamond structure, as presented in Ref. 10. To address the issue of improving the diamond lattice band structure we

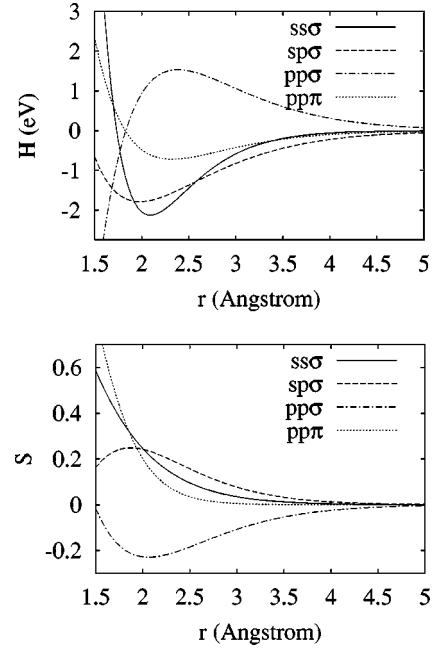


FIG. 1. Hamiltonian matrix elements (upper panel) and overlap matrix elements (lower panel) for the sp^3 parametrization plotted as a function of interatomic distance.

present an electronic structure calculation using the sp^3d^5 parametrization. We expand our analysis of the sp^3 parameters to include phonon spectra at several high-symmetry points. As a more stringent test we use this parametrization to compute the energies of some lower-symmetry configurations. For the bulk we simulate important point defects, including several low-energy interstitial configurations, the vacancy, and the concerted exchange pathway for diffusion. For the (100) and (111) surfaces we compute ideal surface energies as well as relaxation energies for a number of reconstructions. From MD simulations we compute the mean-squared atomic displacement for a range of temperatures, the vibrational density-of-states, and the phonon-dispersion relations. Finally, we use the sp^3d^5 basis model to study the electronic structure of large amorphous systems.

A. Bulk

The band structure of the diamond structure lattice, which was part of the fitting data set, is shown in Fig. 3. The valence band is in very good agreement with LAPW calculations. The conduction band is not as well described, with the

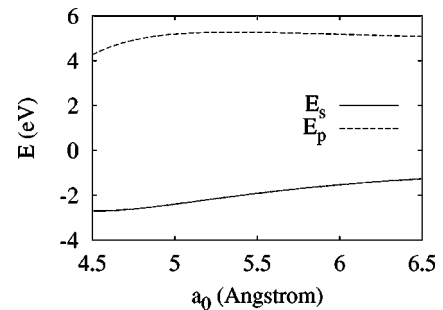


FIG. 2. Onsite matrix elements for the sp^3 parametrization for the diamond structure plotted as a function of the lattice constant.

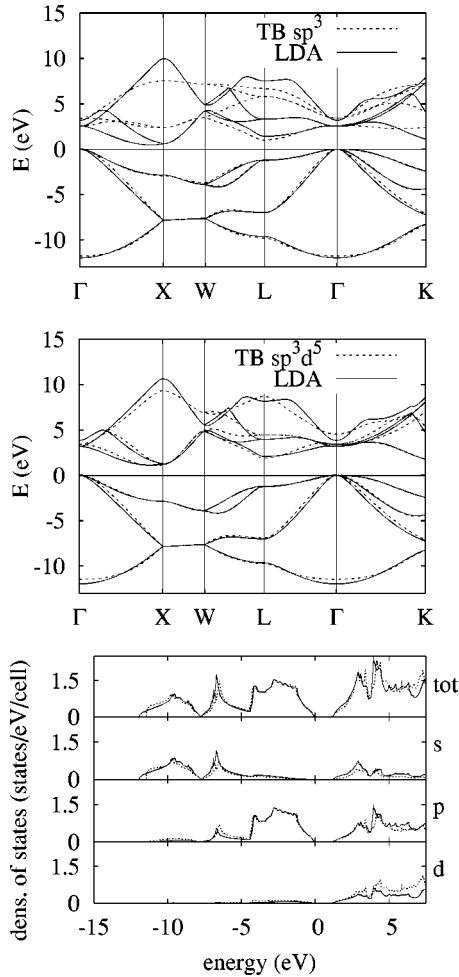


FIG. 3. Band structure of Si in the diamond lattice computed with the sp^3 (upper panel) and sp^3d^5 (middle panel) bases, and the density-of-states for the sp^3d^5 model (bottom panel). Dashed lines are TB results, solid lines are DFT/LDA results (a rigid shift has been applied to the DFT/LDA conduction-band results used for the sp^3d^5 basis model). All energies are referred to as the valence-band maximum.

minimum indirect gap of 1.02 eV appearing at the L point rather than at approximately three fourths of the way from the Γ to the X point as first-principles calculations and experiments have established. The size of the gap is somewhat smaller than the experimental value of 1.17 eV,¹⁵ although it is larger than the DFT/LDA prediction to which it was fitted.

We have addressed the issue of obtaining a better fit of the gap and the conduction band and came to the following conclusions. The addition of five d orbitals to the basis improves the fit of the conduction band, as can be seen in Fig. 3. The lowest-energy conduction band is nearly perfect when compared to a LAPW calculation with a rigid 0.67 eV shift of the conduction bands,^{13,14} and the higher bands are also closer to the LAPW calculation than with the sp^3 basis model. The valence bands are very well described, although the lowest band at the Γ point is too flat. The density-of-states (DOS), including its decomposition into contributions from different angular momentum states (which is found using TB eigenvectors that were not fitted), is also in very good agreement with DFT/LDA calculations. The three peaks in the valence band are clear, as is the decomposition into

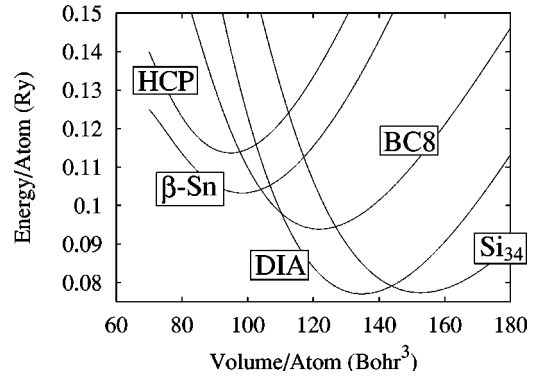


FIG. 4. Total energy vs volume for the diamond structure as well as a number of crystal structures for Si not included in the fitting, computed using the TB model. Si_{34} is a clathrate structure, BC8 is the body centered eight-atom structure, β -Sn is the structure of the β phase of tin, and hcp is the hexagonal-close packed structure.

mainly s character in the lowest peak, mixed s and p character in the middle peak, and p character in the third peak. There is very little d character in the valence band, while the conduction band is mainly of mixed p and d character, with smaller s contribution.

To obtain such a good fit for the band structure the sp^3d^5 model was fit only to the full diamond lattice band structure at all volumes. The lack of other structures and energy information in the fitting data set deteriorates the energetics of the model. We decided that the best compromise is to use the minimal sp^3 basis for all total-energy calculations presented in this paper, and to use the sp^3d^5 to compute the electronic structure of amorphous silicon presented later in this section. We note in passing that in his book, Papaconstantopoulos¹⁶ was able to obtain a good fit of the conduction band near the gap with a sp^3 basis model. However, that work differs from the present approach in two important ways: first, it utilizes three-center integrals and second, it treats the Hamiltonian and overlap matrix elements for the first three neighbor shells as independent parameters, rather than giving them as an analytical functional form that varies with distance. These differences provide the flexibility that produces a better fit to the conduction states.

The total energies as a function of volume for a wide range of structures are shown in Fig. 4, and their equilibrium structural and energy properties are listed in Table III. All of the structures have higher energy than the diamond structure, including some low-energy, rarely examined theoretical phases such as hexagonal diamond and the clathrate structures.¹⁷ The TB model reproduces the LAPW results very well for the four structures to which it was fit, as can be seen from the equilibrium energies, volumes, and bulk moduli listed in Table IV. These quantities were computed using a Birch fit¹⁸ to the fitting data and the sp^3 TB model calculations. The elastic constants of the ground-state diamond structure are listed in Table V. Those that do not involve shear, c_{11} and c_{12} , are within 22% of LAPW calculations and 14% of experiment.¹⁹ The shear elastic constant computed without allowing for relaxation of the internal degrees of freedom of the two-atom unit cell c_{44}^* , is 34% larger than the LAPW result. Allowing for the internal relaxation brings c_{44} within 19% of experiment.¹⁹ A detailed compari-

TABLE III. Equilibrium energies and structural features of hypothetical crystal lattices for Si computed with the sp^3 TB model. E is equilibrium energy relative to the diamond structure in eV per atom, V is the volume in \AA^3 per atom, and c/a is the unit cell aspect ratio. The internal structural parameter x for the H-Dia structure is the position $(\frac{1}{3}, \frac{2}{3}, x)$ of the atom at site $4f$, and for the BC8 structure is the position (x, x, x) of the atom at site $16c$. Notation for the lattice types is the same as in Fig. 4

Lattice	E	V	c/a	x
Dia	0.000	19.97		
H-Dia	0.021	19.94	1.647	0.0630
BC8	0.229	18.05		0.1008
β -Sn	0.357	14.56	0.5278	
SH	0.389	14.93	0.9479	
ω	0.480	13.77	0.5917	
HCP	0.498	14.04	1.637	

son of the energetic and structural parameters of two clathrate structures, Si_{34} and Si_{46} , comparing results of our TB model with experiment, DFT calculations, and results of an orthogonal TB model, is shown in Table VI. The energy differences between the clathrates and the diamond structure are lower than in DFT calculations, although they are of the correct sign. The structures, including both the lattice constant and the internal structural parameters of the basis, are within 1% of the experimental values.^{20,21} This agreement is as good as that provided by DFT/LDA plane-wave calculations²² or by an *ab initio* localized orbital method,¹⁷ and substantially better than the orthogonal TB model of Goodwin *et al.*² tested by Kahn and Lu.²³

Phonon frequencies at high-symmetry points in the Brillouin zone (BZ) computed with the TB model using the frozen phonon approximation are compared with experimentally measured values in Table VII.²⁴ The agreement is quite good: the TB results are within 15% of experiment for all but three of the modes, the X_3 , L_1 , and W_2 modes, which are off by about 25%, 30%, and 60%, respectively. While this good description of the phonon spectra is a nontrivial test of the

TABLE IV. Equilibrium energy relative to the diamond structure (E) in eV per atom, volume (V) in \AA^3 per atom, and bulk modulus (B) in GPa, for the lattice structures in the fitting data set, computed with the sp^3 TB model and with LAPW DFT/LDA.

Lattice		TB	DFT/LDA
Diamond	E	0.000	0.000
	V	19.97	19.78
	B	108.3	96.4
sc	E	0.279	0.338
	V	15.17	15.76
	B	101.5	105.6
fcc	E	0.495	0.484
	V	14.28	13.85
	B	117.1	93.54
bcc	E	0.474	0.439
	V	13.58	14.08
	B	88.56	111.3

TABLE V. Elastic constants in GPa for the diamond structure, computed with the sp^3 TB model, LAPW DFT/LDA calculations, and experiment. c_{44}^* is the shear elastic modulus computed without allowing for relaxation of the internal degrees of freedom in the two-atom unit cell.

	TB	DFT/LDA	Expt. ^a
c_{11}	179	152	166
c_{12}	73	60	64
c_{44}^*	135	101	
c_{44}	95		80

^aFrom Ref. 19.

model, it represents only infinitesimal deviations of atomic positions from the diamond structure, which was part of the fitting data set. In the following sections we show that this TB model can also accurately describe the energies of configurations that are substantially different from those in the fitting data set.

B. Point defects

The ground-state structure for silicon is the covalently bonded, open network of the diamond structure. Since strong covalent bonds in the ideal lattice allow for little atomic motion at temperatures below the melting point, processes such as diffusion are dominated by point defects, which are far more mobile than perfectly bonded atoms.²⁵ The formation energy of such defects strongly influences their concentrations and is therefore an important material property. In

TABLE VI. Energy differences ΔE relative to the diamond structure and structural parameters for the two optimized clathrate structures, Si_{34} and Si_{46} . ΔE is given in eV/atom, the lattice constant a_0 is given in \AA , and the internal parameters are given in terms of the lattice constant. Using the notation of Ref. 17, the parameters of the Si_{34} structure are the position (x_e, x_e, x_e) of the atom at site $32a$, and the position (x_g, x_g, z_g) of the atom at site $96g$. The parameters of the Si_{46} structure are the position (x_i, x_i, x_i) of the atom at site $16i$ and the position $(0, y_k, z_k)$ of the atom at site $24k$. PW denotes plane-wave basis DFT/LDA calculations from Ref. 22, LO denotes local orbital DFT/LDA calculations from Ref. 17, OTB denotes the orthogonal tight-binding results from Ref. 23, and NRL-TB denotes the present paper. Note that the experimental samples are actually of $\text{Na}_x\text{Si}_{34}$ with $x < 11$, and $\text{Na}_8\text{Si}_{46}$.

	Exper.	PW	LO	OTB	NRL-TB
Si_{34}					
ΔE		0.077	0.055		0.004
a_0	14.62	14.55	14.864	14.479	14.543
x_e	0.219	0.2171	0.2174	0.2020	0.2171
x_g	0.183	0.1825	0.1824	0.1823	0.1824
z_g	0.371	0.3705	0.3701	0.3703	0.3704
Si_{46}					
ΔE			0.069		0.018
a_0	10.19		10.355	10.055	10.089
x_i	0.183		0.1837	0.1835	0.1835
y_k	0.116		0.1172	0.1174	0.1171
z_k	0.310		0.3077	0.3077	0.3082

TABLE VII. Phonon frequencies (in cm^{-1}) at high-symmetry points of the BZ computed with the TB model and measured experimentally. $\Delta = (0,0,\pi/a)$ and $\Sigma = (0,\pi/2a,\pi/2a)$.

	TB	Exp. ^a
Γ	531	518
X_1 (L)	405	415
X_3 (L)	508	406
X_4 (T)	160	150
L_1 (L)	553	417
L_2 (L)	333	383
L_{3+} (T)	533	487
L_{3-} (T)	127	114
W_1	371	403
W_2	221	140
$W_{2'}$	514	470
Δ_1 (L)	235	237
Δ_3	518	500
Δ_4	144	131
$\Delta_{4'}$	525	474
Σ_1	238	270
$\Sigma_{1'}$	528	500
Σ_2	150	141
Σ_3	210	201
$\Sigma_{3'}$	452	464
Σ_4	525	480

^aFrom Ref. 24.

Table VIII we list the formation energies of three interstitial configurations, the tetrahedral, hexagonal, and $\langle 110 \rangle$ split, and of the vacancy. All defect energies were computed using a 16.29 \AA cube cell with 216 ± 1 atoms, and sampling the BZ at the Γ point. To compute the relaxed configurations a conjugate-gradient algorithm was used,²⁶ with the atomic positions relaxed until the force on each atom was less than 3 meV/\AA . In agreement with *ab initio* calculations the $\langle 110 \rangle$ split is the lowest-energy interstitial configuration, followed by the tetrahedral and hexagonal configurations.^{27,28} The formation and relaxation energies of all three interstitial configurations are within 10% of the range of DFT/LDA calculations.^{27–29} The formation energy of the ideal vacancy is also accurately predicted, although its relaxation energy is about twice as large as DFT/LDA calculations predict.^{27,30}

The relaxed geometries are in approximate agreement with *ab initio* results,^{27,28,30} although there are some differ-

TABLE VIII. Formation energies E_f^{ideal} and relaxation energies ΔE_f^{relax} , in eV, for point defects computed using the TB model and comparison to DFT/LDA results. Since the structure of the ideal split interstitial is not uniquely defined, the energy listed under E_f^{ideal} is actually the relaxed formation energy.

	TB		LDA ^a	
	E_f^{ideal}	ΔE_f^{relax}	E_f^{ideal}	ΔE_f^{relax}
$\langle 110 \rangle$ split interstitial	3.7		3.3	
Tetrahedral interstitial	4.8	0.3	3.7–4.8	0.1–0.2
Hexagonal interstitial	5.4	0.5	4.3–5.0	0.6–1.1
Vacancy	4.2	1.0	3.3–4.3	0.4–0.6

^aFrom Refs. 27–30.

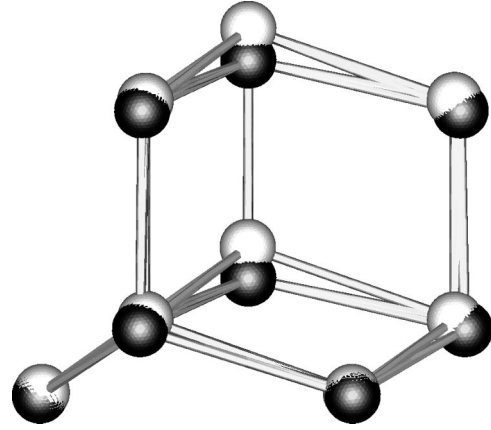


FIG. 5. Structure of the tetrahedral interstitial in ideal (white spheres) and relaxed (black spheres) configurations, with bonds connecting atoms within 2.5 \AA . The geometry is viewed along the $\langle 110 \rangle$ direction with the $\langle 1\bar{1}1 \rangle$ direction pointing up.

ences. The tetrahedral interstitial reduces its symmetry, with three of the four atoms that surround it relaxing outward and the fourth relaxing inward, while the interstitial atom itself moves parallel to the fourth atom. A diagram of this configuration, shown in Fig. 5, makes clear that the relaxed interstitial atom has moved part way (0.34 \AA) towards a hexagonal site without significantly stretching ($<2.5\%$) any of its bonds. This geometry differs from the DFT/LDA work where the relaxed interstitial had the full symmetry of the initial configuration,²⁷ although whether those calculations were restricted to maintain tetrahedral symmetry or simply found no energy gain from breaking the symmetry is not stated. The hexagonal interstitial retains its ideal hexagonal symmetry with the six ring atoms moving outward by 0.1 \AA , in perfect agreement with the DFT/LDA results.²⁷ The four atoms around vacancy relax inward by about 0.28 \AA , in good agreement with DFT/LDA calculations, which find an inward relaxation of 0.25 \AA . However the structure keeps the full tetrahedral symmetry rather than reducing to the symmetry of the tetragonal structure that *ab initio* calculations predict.^{27,30}

To test the accuracy of the TB model in describing the breaking of bonds within a relatively undisturbed solid we computed the energy for the concerted exchange pathway for diffusion.^{31,32} The energy along the path for the ideal and relaxed configurations, as well as DFT/LDA results,^{31,32} are plotted in Fig. 6. The ideal energy is within 22% of the DFT/LDA calculation throughout the path, with no spurious minima. The relaxation energy is substantially too high, although the relaxed length of the bond between the diffusing atoms of 2.15 \AA is nearly identical to the DFT/LDA result.

Point defect configurations include substantial deviations from the ideal lattice geometry and several inequivalent atomic sites. In such a situation it is possible for charge to be transferred between atoms. If this charge transfer is substantial, the applicability of a model with no Coulombic interaction or charge self-consistency may be in doubt. The variation of the onsite energies in our TB model could potentially exacerbate this effect. To measure the amount of charge transfer we performed a Mulliken population analysis on the

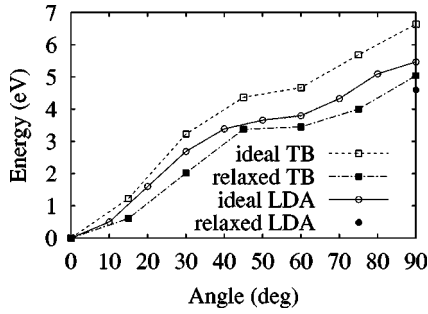


FIG. 6. Energy along the concerted exchange pathway for the diffusion of atoms without vacancies or interstitials. DFT/LDA calculations of the ideal configuration from Ref. 31 are plotted in a solid line, TB calculations of the ideal configurations in a dashed line, and TB calculations of the relaxed configurations in a dot-dash line. The relaxed DFT/LDA value is only available for the saddle point.

vacancy, the tetrahedral interstitial, and the hexagonal interstitial. The deviation of the charge from neutrality (four electrons per atom) was modest, less than half an electron in every case, and as low or lower for the relaxed configurations as for the ideal ones. By comparison, a nonorthogonal TB model⁷ with constant onsite energies predicted somewhat smaller charge transfers (by 30% to 50%), except for the ideal tetrahedral interstitial where it predicted $-0.65e$ as compared with $-0.35e$ on the interstitial atom. This comparison indicates that the variation of the onsite elements does not substantially increase the charge transfer, which are neglected by most TB models.

C. Surfaces

The properties of the silicon surface are critical for processes such as surface growth and etching. Since atoms on a surface have an asymmetric environment and lower coordination than in the bulk, the resulting configurations are qualitatively different from the types of geometries that this TB parametrization was fitted to. Therefore, surface structures provide an important test of the transferability of the param-

eters. We compute the surface energies of the ideal (100) and (111) surfaces, as well as the relaxation energies for some simple but representative reconstructions of these surfaces. For both surfaces we use a symmetric slab configuration [24 layers for the (100) surface, 6 bilayers for the (111) surface] and a set of k points equivalent to a 4×4 mesh in the full planar BZ of the 1×1 surface unit cell. For the (100) surface we examined the 2×1 buckled dimer reconstruction, and for the (111) surface we examined 2×2 reconstructions with adatoms at three inequivalent sites, the T_4 , H_3 , and B_2 . The results of these calculations are listed in Table IX.

The energetics of the ideal surfaces are in agreement with DFT/LDA calculations,^{33,34} with the (111) surface about 0.8 eV lower in energy than the (100) surface. Both the relaxation energy and the structure of the buckled dimer reconstruction of the (100) surface are in good agreement with DFT/LDA calculations.^{33,35,36} One of the three adatom reconstructions of the (111) surface, with the adatom at the T_4 site, is related to the dominant features of the ground-state 7×7 reconstruction.³⁷ The H_3 adatom site is a metastable position that is involved in the diffusion of adatoms. The energy of the B_2 site, which lies halfway along the path connecting the T_4 and H_3 sites, determines the barrier for migration between them.

The TB model predicts the same ordering in energy as DFT/LDA calculations for the three adatom sites,^{34,38,39} an improvement over previous nonorthogonal TB models.⁷ The agreement is not quantitative, however, as the TB model overestimates the binding energy of the adatom at the T_4 site by about 50%. In this position the adatom forms a bond of length of 2.34 Å to the atom underneath, and bonds of length 2.42 Å to the three next-nearest-neighbors. DFT/LDA calculations predict corresponding bond lengths of 2.43 Å and 2.47 Å.³⁴ The surface atom that does not form bonds to the adatom, called the rest atom, makes three bonds of length 2.38 Å with angles of 100.5°, in very good agreement with the DFT/LDA result of 2.34 Å long bonds with angles of 99.9°. The binding energy of the adatom in the H_3 site is somewhat underestimated as compared with DFT/LDA calculations.^{34,39} In this site the adatom makes three 2.39 Å

TABLE IX. Surface energies γ (in eV per 1×1 surface unit cell), for the (100) and (111) surfaces of Si, relaxation energies $\Delta\gamma$ (in eV per 1×1 surface unit cell) relative to the ideal surface, and selected structural features, computed using the TB model and compared with DFT/LDA results.

		TB	DFT/LDA ^a
(100) surface			
Ideal surface	γ (eV)	2.13	2.5
1×1 relaxed surface	$\Delta\gamma$ (eV)	-0.02	-0.03
2×1 buckled dimer recons. surf.	$\Delta\gamma$ (eV)	-0.90	-0.93
dimer bond length	d (Å)	2.36	2.19
dimer tilt angle	θ	17°	15°
(111) surface			
Ideal surface	γ (eV)	1.31	1.39
1×1 relaxed surface	$\Delta\gamma$ (eV)	-0.02	
2×2 T_4 adatom reconstruction	$\Delta\gamma$ (eV)	-0.45	-0.27 - -0.30
2×2 B_2 adatom reconstruction	$\Delta\gamma$ (eV)	-0.04	-0.10
2×2 H_3 adatom reconstruction	$\Delta\gamma$ (eV)	-0.12	-0.16 - -0.25

^aFrom Refs. 33-36 and 39.

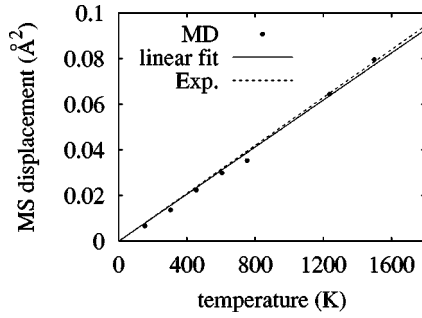


FIG. 7. Mean-squared displacement of atoms in the diamond lattice as a function of temperature. The points are computed from MD simulations, the solid line is a linear fit going through the origin, and the dashed line is a line with a slope corresponding to the experimental measurement as discussed in the text.

bonds with its nearest neighbors. No DFT/LDA results for adatom-surface bond lengths are available. The rest atom makes three 2.40 \AA long bonds with angles of 101.1° , as compared with 2.34 \AA long bonds with angles of 104.9° in DFT/LDA calculations. In the B_2 site the TB model adatom makes two bonds of length 2.33 \AA with the surface. The binding energy in this configuration is underestimated as compared to the DFT/LDA result.³⁹

D. Finite temperature properties

To examine some finite temperature properties of the diamond structure crystal we used the NRL TB-MD molecular-dynamics package⁴⁰ developed by Kirchoff to evolve a 512-atom unit cell at constant energy for 2000 molecular-dynamics time steps (each step corresponds to 2.0 fs), varying the initial kinetic energy of the atoms. From the resulting positions we computed the mean-squared displacement. This quantity, plotted against the temperature measured in the sample, is shown in Fig. 7. A linear fit of the mean-squared displacement gives a slope of $1.72 \times 10^5 \text{ \AA}^2/\text{K}$. In comparison, the Debye temperature, extracted from experimental measurements of the temperature dependence of x-ray diffraction peak broadening,⁴¹ corresponds to a mean-squared atomic displacement temperature coefficient of $1.75 \times 10^5 \text{ \AA}^2/\text{K}$.⁴²

From the Fourier transforms of velocity autocorrelation functions calculated during MD simulation we obtained the vibrational density-of-states.⁴³ The phonon-dispersion curves were extracted from the Fourier transform of the velocity and position dependent autocorrelation function for a given polarization and k vector.⁴³ The vibrational densities-of-states from two MD simulations, one at 300 K and one at 1500 K, are plotted in Fig. 8. The overall shapes are quite similar, although the high-temperature curve is smoother. The peaks are shifted to lower frequencies at 1500 K, indicating a softening of the vibrational modes. The corresponding phonon-dispersion relations are plotted in Fig. 8, and compared against experimental values extracted from the graphs of Ref. 44. The dispersion relations from the 300 K MD simulation are in good agreement with experiment. The only significant errors are an underestimate of the frequencies of the second branch between the Γ and L points [$\Lambda_1(A)$] and an overestimate of the frequencies of the highest two branches near the X point [$\Delta_5(O)$, $\Delta_2'(O)$, $\Sigma_2(O)$, and $\Sigma_1(O)$].

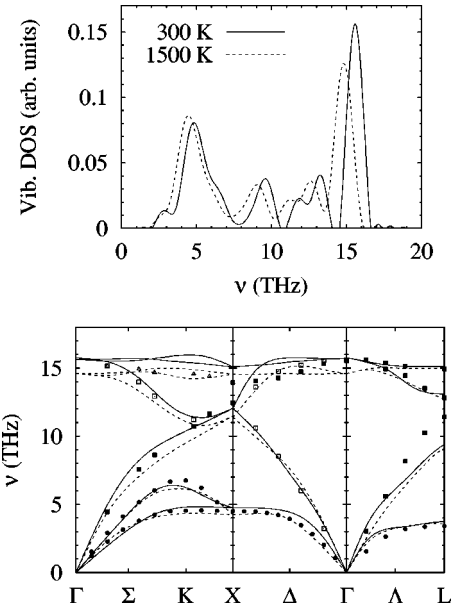


FIG. 8. Vibrational densities-of-states (upper panel) and phonon dispersion curves (lower panel) extracted from the velocity-velocity correlation function computed during a molecular-dynamics simulation at 300 K (solid line) and 1500 K (dashed line). Dots are experimental data measured at or below 300 K, extracted from the figures in Ref. 44.

Some, although not all, of the vibrational frequencies in the 1500 K MD simulation are lower than at 300 K, a result that is consistent with the differences between the vibrational densities-of-states in Fig. 8. The high-frequency branches have the largest shifts, with many of them shifting down by 0.5 THz, about 5%. The low-frequency branches, with the exception of the Λ direction, also shift down, with a particularly prominent shift of the second branch at the K point [$\Sigma_3(A)$].

E. Amorphous structures

As an illustration of the expanded modeling capabilities offered by the present TB parametrizations for Si, we study the electronic properties of bulk and surface structures in amorphous Si (a-Si). We emphasize at the outset that the following discussion is concerned mostly with demonstrating the capabilities of the approach, rather than the physics of a-Si, the latter being a broader problem beyond the scope of the present paper.

Based on many experimental and theoretical studies,^{45,46} it is widely accepted that a-Si has the basic structure of a continuous random network (CRN) of tetrahedrally bonded atoms,^{47–49} but the question of defects has been the subject of considerable debate in recent years^{50,51} and remains controversial.⁵² Experimental results appear to favor undercoordinated, three-fold bonded atoms as the dominant defects (so-called “dangling bonds”). On the other hand, theoretical simulations, using a wide variety of *ab initio*,^{52,53} semiempirical^{54–56} and empirical^{57–63} methods, consistently produce both undercoordinated as well as overcoordinated (fivefold bonded) defects, with a significant preference for the latter. The type of bonding arrangements at the surface of a-Si is even less clear than in the case of bulk defects, since

surface-specific measurements are not readily available. It has been reported that *ab initio* relaxation of a bulk-terminated CRN model produces a surface with roughly equal numbers of threefold and fivefold bonded atoms.⁶⁴ Deviations from the tetrahedral bonding pattern, either in the bulk or at the surface, are crucial in determining the electronic properties of the material because they introduce states in the gap.^{52–54,64,65}

In order to study the electronic properties of bulk and surface a-Si, we first prepare a $32.9 \text{ \AA} \times 65.8 \text{ \AA} \times 16.5 \text{ \AA}$ bulk amorphous sample with 1728 atoms. Because such a large sample is impractical to generate using any electronic structure based simulation method, we simulate the quenching of the liquid with an interatomic potential,⁶⁶ following a procedure similar to the one used in Ref. 62. The resulting structure has over 96% tetrahedral coordination, with only fivefold coordinated defects.

To model the surfaces of a-Si, we considered two qualitatively different 1728 atom slabs. The “cleaved sample” is created from the bulk structure by turning off the periodic boundary conditions in the third direction. The “quenched sample” is created directly from the liquid phase by turning off periodic boundary conditions in the third direction and quenching the resulting liquid slab with the interatomic potential. Not surprisingly, the quenched surfaces are slightly rougher (by about 1 \AA) than the cleaved surfaces. The cleaved surfaces regions contain mostly (65%) fourfold coordinated atoms, with a predominance of threefold (29%) over fivefold (6%) coordinated atoms. On the other hand, the quenched surfaces have somewhat higher fourfold coordination (72%), with many (27%) fivefold and almost no (1%) threefold coordinated atoms. Note that these surfaces are fully reconstructed, and therefore “bulk” concepts of defects do not apply; many of the fourfold coordinated atoms do not have tetrahedral bond angles, and the fivefold coordinated atoms tend to appear in clusters near the top layer of the surface, rather than as isolated floating bonds below the top layer.

While the size of these samples makes calculating their electronic structure with first-principles methods impractical, the sp^3d^5 basis TB parametrization described in Sec. II makes such a study feasible. In Fig. 9 we compare the electronic DOS of the three amorphous samples computed with the TB model (see also Fig. 3 for the diamond structure crystal electronic DOS). The bulk amorphous sample DOS is much smoother than the crystal, in agreement with other simulation results.^{53,67} There are only two peaks in the valence band, corresponding to the highest and lowest peaks of the DOS of the crystal. Despite the structural differences between the two surface models, their overall DOS is quite similar, showing that the electronic signatures of undercoordinated and overcoordinated atoms at the amorphous surface are difficult to distinguish. This result is consistent with the arguments of Pantelides for bulk defects.⁵⁰ The DOS of the surface samples differ from that of the bulk sample essentially only in the gap region. This indicates that all surface-related defects produce gap states, consistent with analogous results for bulk defects.^{52,54,65} It is also interesting that the surface DOS above the gap region is depleted relative to the bulk one. A more detailed analysis of these results will be given elsewhere.⁶⁸ Here, we wish to point out only the effi-

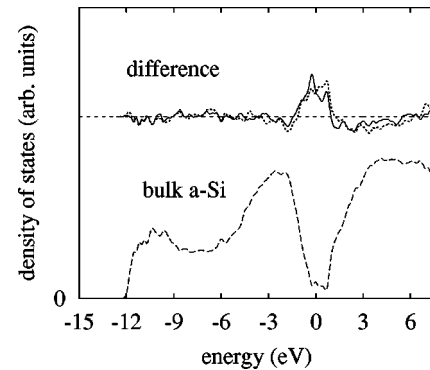


FIG. 9. The electronic TB DOS computed with the sp^3d^5 parametrization for the bulk and surface a-Si samples. The lower curve (dashed line) is the DOS for the bulk amorphous sample. The two upper curves show the excess DOS associated with the surfaces, plotted as the difference between the cleaved sample DOS and bulk amorphous DOS (dotted line), and the difference between the quenched sample DOS and the bulk amorphous DOS (solid line).

ciency of the approach in generating reliable electronic structure information for large systems.

IV. SUMMARY

We have applied the NRL-TB method to generate TB models for Si that were fit to LAPW results of a small number of high-symmetry crystal structures. We found that the resulting Hamiltonians are transferable to a much wider range of geometries. A model with a nonorthogonal sp^3 basis reproduces DFT/LDA and experimental measurements for a wide range of material properties, including elastic constants and phonon frequencies, point defect formation energies, and surface energies and reconstructions. In fact, this TB model is as good or better at describing the energetics of point defects than some models that included such structures in their fitting process. It is also the only nonorthogonal TB model we are aware of that correctly describes the energy sequence of different adatom configurations on the (111) surface of silicon. The ability of the model to accurately describe such diverse systems, despite having been fitted to a small number of high-symmetry crystal structures, increases our confidence that the model captures the essential physics of bonding in solid-state silicon systems.

The efficiency of the model makes it possible to study finite temperature properties of large silicon systems through molecular-dynamics simulation, an application that would be impractical with DFT/LDA methods. We have shown that the model reproduces experimental results for atomic mean-squared displacements as a function of temperature in bulk silicon. Phonon densities-of-states and dispersion curves extracted from MD simulations at different temperatures show good agreement with experiment at low temperatures, and a substantial softening of many modes at higher temperatures. By adding d orbitals and modifying the fitting data set, we obtained a model that accurately reproduces both the valence and conduction bands of silicon in the diamond structure, at the price of deterioration in the accuracy of the energetics. This sp^3d^5 parametrization makes possible the study of the

electronic structure of amorphous systems with nearly 2000 atoms.

ACKNOWLEDGMENTS

This work was supported by the U.S. Office of Naval Research and the Common High Performance Computing Software Support Initiative (CHSSI) of the United States Department of Defense High Performance Computing Modernization Program (HPCMP). Partial computer support was given by the ASC MSRC at the Wright-Patterson Air Force

Base in Dayton, Ohio, and by the Maui High Performance Computing Center, through an allocation from the DoD High Performance Computing Grand Challenge program. The work of N.B. was supported by the National Research Council Associateship Program. The work of M.Z.B. and E.K. was supported by the Materials Research Science and Technology Center of Harvard University, which is funded by the National Science Foundation. The authors would like to thank Dr. F. Kirchoff for assistance with the NRL TB-MD package, and Dr. J. Feldman for many useful discussions.

*Present address: Department of Mathematics, Massachusetts Institute of Technology, Cambridge, MA 01239.

¹For a review of empirical interatomic potentials for Si see H. Balamane, T. Halicioglu, and W. A. Tiller, *Phys. Rev. B* **46**, 2250 (1992), and references therein.

²A. P. Sutton, M. W. Finnis, D. G. Pettifor, and Y. Ohta, *J. Phys. C* **21**, 35 (1988); L. Goodwin, A. J. Skinner, and D. G. Pettifor, *Europhys. Lett.* **9**, 701 (1989).

³P. Blaudeck, Th. Frauenheim, D. Porezag, G. Seifert, and E. Fromm, *J. Phys.: Condens. Matter* **C4**, 6389 (1992); Th. Frauenheim, F. Weich, Th. Köhler, S. Uhlmann, D. Porezag, and G. Seifert, *Phys. Rev. B* **52**, 11 492 (1995).

⁴M. Menon and K. R. Subbaswamy, *Phys. Rev. B* **47**, 12 754 (1993); **50**, 11 577 (1994).

⁵I. Kwon, R. Biswas, C. Z. Wang, K. M. Ho, and C. M. Soukoulis, *Phys. Rev. B* **49**, 7242 (1994).

⁶J. L. Mercer, Jr. and M. Y. Chou, *Phys. Rev. B* **49**, 8506 (1994).

⁷N. Bernstein and E. Kaxiras, *Phys. Rev. B* **56**, 10 488 (1997).

⁸T. J. Lenosky, J. D. Kress, I. Kwon, A. F. Voter, B. Edwards, D. F. Richards, S. Yang, and J. B. Adams, *Phys. Rev. B* **55**, 1528 (1997).

⁹R. E. Cohen, L. Stixrude, and E. Wasserman, *Phys. Rev. B* **56**, 8575 (1997).

¹⁰D. A. Papaconstantopoulos, M. J. Mehl, S. C. Erwin, and M. R. Pederson, in *Tight-Binding Approach to Computational Materials Science*, edited by P. E. A. Turchi, A. Gonis, and L. Colombo, MRS Symposia Proceedings No. 491 (Materials Research Society, Pittsburgh, 1998), p. 221.

¹¹R. E. Cohen, M. J. Mehl, and D. A. Papaconstantopoulos, *Phys. Rev. B* **50**, 14 694 (1994); M. J. Mehl and D. A. Papaconstantopoulos, *ibid.* **54**, 4519 (1996); M. J. Mehl and D. A. Papaconstantopoulos, in *Topics in Computational Materials Science*, edited by C. Y. Fong (World Scientific, Singapore, 1998).

¹²W. A. Harrison, *Electronic Structure and the Properties of Solids* (Dover, New York, 1989).

¹³G. A. Baraff and M. Schlüter, *Phys. Rev. B* **30**, 3460 (1984).

¹⁴V. Fiorentini and A. Baldereschi, *Phys. Rev. B* **51**, 17 196 (1995).

¹⁵N. W. Ashcroft and N. D. Mermin, *Solid State Physics* (Saunders College, Philadelphia, 1976).

¹⁶D. Papaconstantopoulos, *Handbook of the Band Structures of Elemental Solids* (Pergamon Press, New York, 1986).

¹⁷G. B. Adams, M. O'Keefe, A. A. Demkov, O. F. Sankey, and Y.-M. Huang, *Phys. Rev. B* **49**, 8048 (1994).

¹⁸F. Birch, *J. Geophys. Res.* **83**, 1257 (1978).

¹⁹*A Physicist's Desk Reference, The Second Edition of Physics Vade Mecum*, edited by H. L. Anderson (American Institute of Physics, New York, 1989).

²⁰C. Cros, M. Pouchard, and P. Hagenmuller, *Comput. Rend. Hebd.*

Seances Acad. Sci. **260**, 4764 (1965).

²¹J. S. Kasper, P. Hagenmuller, M. Pouchard, and C. Cros, *Science* **150**, 1713 (1965).

²²J. Dong, O. F. Sankey, and G. Kern, *Phys. Rev. B* **60**, 950 (1999).

²³D. Kahn and J. P. Lu, *Phys. Rev. B* **56**, 13 898 (1997).

²⁴G. Dolling, in *Inelastic Scattering of Neutrons in Solids and Liquids*, edited by S. Eklund (IAEA, Vienna, 1963), Vol. II, p. 37; G. Nilsson and G. Nelin, *Phys. Rev. B* **6**, 3777 (1972).

²⁵S. M. Hu, *Mater. Sci. Eng., R.* **R13**, 105 (1994); **R13**, 185 (1994).

²⁶W. H. Press, B. P. Flannery, S. A. Teukolsky, and W. T. Vetterling, *Numerical Recipes in C* (Cambridge University Press, Cambridge, 1988).

²⁷P. J. Kelly and R. Car, *Phys. Rev. B* **45**, 6543 (1992).

²⁸P. E. Blöchl, E. Smargiassi, R. Car, D. B. Laks, W. Andreoni, and S. T. Pantelides, *Phys. Rev. B* **70**, 2435 (1993).

²⁹Y. Bar-Yam and J. D. Joannopoulos, *Phys. Rev. Lett.* **52**, 1129 (1984).

³⁰H. Seong and L. J. Lewis, *Phys. Rev. B* **53**, 9791 (1996).

³¹K. C. Pandey, *Phys. Rev. Lett.* **57**, 2287 (1986).

³²E. Kaxiras and K. C. Pandey, *Phys. Rev. B* **47**, 1659 (1993).

³³M. T. Yin and M. L. Cohen, *Phys. Rev. B* **24**, 2303 (1981).

³⁴R. D. Meade and D. Vanderbilt, *Phys. Rev. B* **40**, 3905 (1989).

³⁵I. P. Batra, *Phys. Rev. B* **41**, 5048 (1990).

³⁶J. Dąbrowski and M. Scheffler, *Appl. Surf. Sci.* **56-58**, 15 (1992).

³⁷K. Takayanagi, Y. Tanishiro, M. Takahashi, and S. Takahashi, *J. Vac. Sci. Technol. A* **3**, 1502 (1985); *Surf. Sci.* **164**, 367 (1985).

³⁸K. Cho and E. Kaxiras, *Europhys. Lett.* **39**, 287 (1997).

³⁹K. Cho (private communication).

⁴⁰The NRL TB-MD software is available on the World Wide Web at <http://cst-www.nrl.navy.mil/bind/dodtbd>

⁴¹B. W. Batterman and D. R. Chipman, *Phys. Rev.* **127**, 690 (1962).

⁴²B. E. Warren, *X-Ray Diffraction* (Dover, New York, 1990).

⁴³N. I. Papanicolaou, I. E. Lagaris, G. A. Evangelakis, *Surf. Sci.* **337**, L819 (1995).

⁴⁴R. Tubino, L. Piseri, and G. Zerbi, *J. Chem. Phys.* **56**, 1022 (1972).

⁴⁵R. Zallen, *Physics of Amorphous Solids* (Wiley, New York, 1983).

⁴⁶S. Roorda, W. C. Sinke, J. M. Poate, D. C. Jacobson, S. Dierker, B. S. Dennis, D. J. Eaglesham, F. Spaepen, and P. Fuoss, *Phys. Rev. B* **44**, 3702 (1991), and references therein.

⁴⁷W. H. Zachariasen, *J. Ann. Chem. Soc.* **54**, 3481 (1932).

⁴⁸D. E. Polk and D. S. Boudreaux, *Phys. Rev. Lett.* **31**, 92 (1973).

⁴⁹F. Wooten, K. Winer, and D. Weaire, *Phys. Rev. Lett.* **54**, 1392 (1985).

⁵⁰S. T. Pantelides, *Phys. Rev. Lett.* **57**, 2979 (1986); **58**, 1344 (1987).

⁵¹J. C. Phillips, *Phys. Rev. Lett.* **58**, 2824 (1987); S. T. Pantelides,

- ibid.* **58**, 2825 (1987); M. Stutzmann and D. K. Biegelsen, *ibid.* **60**, 1682 (1988); S. T. Pantelides, *ibid.* **60**, 1683 (1988).
- ⁵²M. Fornari, M. Peressi, S. de Gironcoli, and A. Baldereschi, *Europhys. Lett.* **47**, 481 (1999).
- ⁵³R. Car and M. Parinello, *Phys. Rev. Lett.* **60**, 204 (1988); F. Buda, G. L. Chiarotti, I. Štich, R. Car, and M. Parinello, *J. Non-Cryst. Solids* **114**, 7 (1989); I. Štich, R. Car, and M. Parinello, *Phys. Rev. B* **44**, 11 092 (1991).
- ⁵⁴D. A. Drabold, P. A. Fedders, O. Sankey, and J. D. Dow, *Phys. Rev. B* **42**, 5135 (1990); P. A. Fedders, D. A. Drabold, and S. Klemm, *Phys. Rev. B* **45**, 4048 (1992).
- ⁵⁵N. Mousseau and L. J. Lewis, *Phys. Rev. Lett.* **78**, 1484 (1997); *Phys. Rev. B* **56**, 9461 (1997).
- ⁵⁶L. J. Lewis and N. Mousseau, *Comput. Mater. Sci.* **12**, 210 (1998).
- ⁵⁷M. D. Kluge, J. R. Ray, and A. Rahman, *Phys. Rev. B* **36**, 4234 (1987).
- ⁵⁸R. Biswas, G. S. Grest, and C. M. Soukoulis, *Phys. Rev. B* **36**, 7437 (1987).
- ⁵⁹P. C. Kelires and J. Tersoff, *Phys. Rev. Lett.* **61**, 562 (1988).
- ⁶⁰W. D. Luedtke and U. Landman, *Phys. Rev. B* **37**, 4656 (1988); **40**, 1164 (1989); **40**, 11 733 (1989).
- ⁶¹J. M. Holender and G. J. Morgan, *J. Phys.: Condens. Matter* **3**, 1947 (1991); **3**, 7241 (1991).
- ⁶²J. F. Justo, M. Z. Bazant, E. Kaxiras, V. V. Bulatov, and S. Yip, *Phys. Rev. B* **58**, 2539 (1998).
- ⁶³G. T. Barkema and N. Mousseau, *Phys. Rev. Lett.* **77**, 4358 (1996); N. Mousseau and G. T. Barkema, *Phys. Rev. E* **57**, 2419 (1998).
- ⁶⁴K. Kilian, D. A. Drabold, and J. B. Adams, *Phys. Rev. B* **48**, 17 393 (1993).
- ⁶⁵J. Dong and D. A. Drabold, *Phys. Rev. Lett.* **80**, 1928 (1998).
- ⁶⁶M. Z. Bazant, E. Kaxiras, and J. F. Justo, *Phys. Rev. B* **56**, 8542 (1997); M. Z. Bazant and E. Kaxiras, *Phys. Rev. Lett.* **77**, 4370 (1996).
- ⁶⁷G. Servalli and L. Colombo, *Europhys. Lett.* **22**, 107 (1993).
- ⁶⁸M. Z. Bazant and E. Kaxiras (unpublished).