

# Engineering the isobutanol biosynthetic pathway in *Escherichia coli* by comparison of three aldehyde reductase/alcohol dehydrogenase genes

Shota Atsumi · Tung-Yun Wu · Eva-Maria Eckl · Sarah D. Hawkins · Thomas Buelter · James C. Liao

Received: 3 May 2009 / Revised: 2 June 2009 / Accepted: 6 June 2009 / Published online: 16 July 2009  
© The Author(s) 2009. This article is published with open access at Springerlink.com

**Abstract** Biofuels synthesized from renewable resources are of increasing interest because of global energy and environmental problems. We have previously demonstrated production of higher alcohols from *Escherichia coli* using a 2-keto acid-based pathway. Here, we have compared the effect of various alcohol dehydrogenases (ADH) for the last step of the isobutanol production. *E. coli* has the *yqhD* gene which encodes a broad-range ADH. Isobutanol production significantly decreased with the deletion of *yqhD*, suggesting that the *yqhD* gene on the genome contributed to isobutanol production. The *adh* genes of two bacteria and one yeast were also compared in *E. coli* harboring the isobutanol synthesis pathway. Overexpression of *yqhD* or *adhA* in *E. coli* showed better production than *ADH2*, a result confirmed by activity measurements with isobutyraldehyde.

**Keywords** Biofuel · Metabolic engineering · Isobutanol · Alcohol dehydrogenase

## Introduction

To meet the increasing global demand for energy and reduce the negative environmental impact, biofuels derived from renewable sources have become increasingly important. In particular, increasing attention has been paid to higher alcohols as potential substitutes for gasoline. Those alcohols possess a host of qualities making them more suitable as a liquid fuel than ethanol, including lower vapor pressure, lower hygroscopicity, and higher energy density. However, efficient production of these alcohols is challenging (Atsumi et al. 2008a; Cann and Liao 2008; Connor and Liao 2008; Inui et al. 2008; Shen and Liao 2008).

We previously devised a biosynthetic strategy to produce higher alcohols in *Escherichia coli* which takes advantage of the amino acid biosynthesis capability to produce various 2-keto acids and the broad substrate range of 2-keto acid decarboxylases (KDCs) and alcoholdehydrogenases (ADHs; Atsumi et al. 2008b). In this work, we investigate the effect of various ADHs which convert isobutyraldehyde to isobutanol in the isobutanol biosynthesis pathway. ADHs are oxidoreductases that catalyze the reversible oxidation of alcohols to aldehydes or ketones, with the corresponding reduction of nicotinamide adenine dinucleotide (NAD) or NAD phosphate (NADP; Jornvall et al. 1987). There is a versatile set of ADHs with distinct structural differences, different substrate specificities, and different use of cofactors and metals (Jornvall et al. 1987).

In a previous experiment (Atsumi et al. 2008b), isobutyraldehyde was detected only in trace amounts with the overexpression of *ADH2* from *Saccharomyces cerevisiae*, indicating sufficient activity of ADH for reducing isobutyraldehyde to isobutanol in the strain (JCL260/pSA55/pSA69; Atsumi et al. 2008b). However, *E. coli* has six genes (*adhE*, *adhP*, *eutG*, *yiaY*, *yqhD*, and *yjgB*) coding for

S. Atsumi · J. C. Liao (✉)  
Department of Chemical and Biomolecular Engineering,  
University of California,  
Los Angeles, CA 90095, USA  
e-mail: liaoj@ucla.edu

T.-Y. Wu  
Department of Chemical Engineering,  
National Tsing-Hua University,  
Hsinchu 30043 Taiwan, Republic of China

E.-M. Eckl · S. D. Hawkins · T. Buelter  
Gevo, Inc,  
Englewood, CO 80112, USA

various ADHs. It was unclear how much these ADHs contributed to the isobutanol production. In particular, YqhD has a preference for alcohols longer than C3, and it does not show detectable enzymatic activity when tested with short-chain alcohols as substrates (Sulzenbacher et al. 2004). However, its activity for isobutyraldehyde has not been reported. In this work, we first investigated whether ADHs of *E. coli* play a role in the isobutanol production (Perez et al. 2008). To improve the isobutanol production further, we also compared the activities of Adh2 from *S. cerevisiae* and AdhA from *Lactococcus lactis* for isobutanol production in *E. coli*. These ADHs along with YqhD from *E. coli* were purified and characterized in vitro and in vivo.

## Materials and methods

### Reagents

Restriction enzymes and Antarctic phosphatase were from New England Biolabs (Ipswich, MA, USA). Rapid DNA ligation kit was from Roche (Mannheim, Germany). KOD DNA polymerase was from EMD Chemicals (San Diego, CA, USA). Oligonucleotides were from Operon (Huntsville, AL, USA).

### Strains and plasmids

A list of the strains and plasmids used is given in Table 1. All oligonucleotides are listed in Table 2. The *yqhD* gene was deleted by P1 transduction from a strain JW2978 (Baba et al. 2006). The *yqhD* deletion was confirmed with polymerase chain reaction (PCR). To clone *kivd* which

encodes KDC, we used genomic DNA of *L. lactis* (ATCC) as PCR template with a pair of primers A96 and A97. PCR products were digested with Acc65I and SphI and cloned into pZE12-luc (Lutz and Bujard 1997) cut with the same enzyme, creating pSA129. To clone *yqhD*, genomic DNA of *E. coli* MG1655 was used as PCR template with a pair of primers K453 and A257. PCR products were digested with SphI and XbaI and cloned into pSA129 cut with the same enzyme, creating pSA138. To clone *adhA*, genomic DNA of *L. lactis* was used as PCR template with a pair of primers A121 and A122. PCR products were digested with SphI and XbaI and cloned into pSA55 cut with the same enzyme, creating pSA65.

For protein overexpression and purification, *ADH2*, *adhA*, and *yqhD* were amplified with primers A287 and A288, A289 and A290, and A292 and A299, respectively. PCR products were digested with BamHI and Sall and cloned into pETDuet-1 (Novagen (Madison, WI, USA)) cut with the same enzymes, creating pTW2, pTW3, and pTW4.

### Medium and culture conditions for isobutanol production

M9 medium containing 36 g/L glucose, 5 g/L yeast extract, 100 µg/ml ampicillin, 30 µg/ml kanamycin, and 1,000th dilution of Trace Metal Mix A5 (2.86 g H<sub>3</sub>BO<sub>3</sub>, 1.81 g MnCl<sub>2</sub>·4H<sub>2</sub>O, 0.222 g ZnSO<sub>4</sub>·7H<sub>2</sub>O, 0.39 g Na<sub>2</sub>MoO<sub>4</sub>·2H<sub>2</sub>O, 0.079 g CuSO<sub>4</sub>·5H<sub>2</sub>O, 49.4 mg Co (NO<sub>3</sub>)<sub>2</sub>·6H<sub>2</sub>O per liter water) was used for cell growth. Preculture in test tubes containing 3 ml of medium was performed at 37°C overnight on a rotary shaker (250 rpm). Overnight culture was diluted 1:100 into 20 ml of fresh medium in a 250-ml screw cap conical flask. Cells were grown at 37°C for 3 h, followed by adding 0.1 mM isopropyl-β-D-thio-galactoside (IPTG). Production was

**Table 1** Strains and plasmids used in this study

Strain	Relative Characteristics	Reference
BW25113	<i>rrnB</i> <sub>T14</sub> <i>ΔlacZ</i> WJ16 <i>hsdR</i> 514 <i>ΔaraBAD</i> <sub>AH33</sub> <i>ΔrhaBAD</i> <sub>LD78</sub>	Datsenko and Wanner 2000
JCL16	BW25113/F' [traD36, proAB <sup>+</sup> , lacI <sup>q</sup> ZΔM15]	Atsumi et al. 2008a
JCL260	Same as JCL16 but with <i>ΔadhE</i> , <i>ΔfrdBC</i> , <i>Δfir-ldhA</i> , <i>Δpta</i> , <i>Δpf1B</i>	Atsumi et al. 2008a
SA542	Same as JCL260 but <i>ΔyqhD</i>	This work
Plasmid		
pSA55	ColE1 ori; Amp <sup>R</sup> ; P <sub>L</sub> lacO <sub>1</sub> : <i>kivd-ADH2</i>	Atsumi et al. 2008b
pSA65	ColE1 ori; Amp <sup>R</sup> ; P <sub>L</sub> lacO <sub>1</sub> : <i>kivd-adhA</i> ( <i>L. lactis</i> )	This work
pSA69	p15A ori; Kan <sup>R</sup> ; P <sub>L</sub> lacO <sub>1</sub> : <i>alsS-ilvCD</i>	Atsumi et al. 2008b
pSA129	ColE1 ori; Amp <sup>R</sup> ; P <sub>L</sub> lacO <sub>1</sub> : <i>kivd</i>	This work
pSA138	ColE1 ori; Amp <sup>R</sup> ; P <sub>L</sub> lacO <sub>1</sub> : <i>kivd-yqhD</i>	This work
pTW2	Derivative of pETDuet-1 with <i>yqhD</i>	This work
pTW3	Derivative of pETDuet-1 with <i>ADH2</i>	This work
pTW4	Derivative of pETDuet-1 with <i>adhA</i>	This work

**Table 2** Primer sequences

Primer name	Sequence 5' → 3'
A96	CGAGCGGTACCATGTATACAGTAGGAGATTACCTAT
A97	GCCTGCGCATGCTTATGATTTATTTTGTTCAGCAAAT
A121	GCCTGCGCATGCAAGGAGATATACCATGAAAGCAGCAGTAGTAAGACACA
A122	GCTCTAGATTATTTAGTAAAATCAATGACCAT
A257	GCTCTAGATTAGCGGGCGGCTTCGTATATACGG
A287	CGGGATCCGAACAACCTTAATCTGCACACCCCAA
A288	ACGCAGTCGACTTAGCGGGCGGCTTCGTATATACGG
A289	CGGGATCCGTCTATTCCAGAAACTCAAAAAGCCA
A290	ACGCAGTCGACTTATTTAGAAGTGTCAACAACGTAT
A292	ACGCAGTCGACTTATTTAGTAAAATCAATGACCATT
A299	CGGGATCCGAAAGCAGCAGTAGTAAGACACAATC
K453	TGAGCATGCAGGAGAAAGGTCACATGAACAACCTTAATCTGCACACCCCAAC

performed at 30°C on a rotary shaker (250 rpm) for 24 h. Gas chromatography-flame ionization detector analysis is carried out as previously described (Atsumi et al. 2008b).

#### Protein purification

YqhD was overexpressed from pTW2 in *E. coli* BL21 Star™ (DE3) (Invitrogen (Carlsbad, CA, USA)). Adh2 and AdhA were overexpressed from pTW3 and pTW4, respectively, in BL21-CodonPlus(DE3)-RIL-X (Stratagene, Cedar Creek, TX, USA). Overexpressed proteins were purified with Ni-NTA Spin Columns (Qiagen (Valencia, CA, USA)). Protein concentrations were determined by the Bradford assay (Bio-Rad (Hercules, CA, USA)).

#### Protein solubility assay

The strains with pTW2, pTW3, and pTW4 were grown to OD<sub>600</sub> value of 0.4–0.6 in 5 mL Luria–Bertani medium at 37°C, followed by adding 1 mM IPTG. Protein overexpression was performed at 30°C for 4 h. The cells were centrifuged, resuspended in 250 µl BugBuster Protein Extraction Reagent (Novagen, San Diego, CA, USA), and incubated at room temperature for 20 min for cell lysis. To separate soluble and insoluble proteins, the samples were centrifuged for 50 min (13,000 rpm, 4°C). Supernatant was taken as a soluble sample. The cell pellets were resuspended by 250 µl 8 M urea and centrifuged. Supernatant was taken as an insoluble sample. Soluble and insoluble protein samples were visually assessed by 12% sodium dodecyl sulfate polyacrylamide gel electrophoresis (SDS-PAGE).

#### Enzyme activity assay

The reaction mixture contained 50 mM 3-(*N*-morpholino) propanesulfonic acid buffer, pH 7.0, 0.25 mM NAD(P)H, a defined aldehyde (acetaldehyde or isobutyraldehyde) as

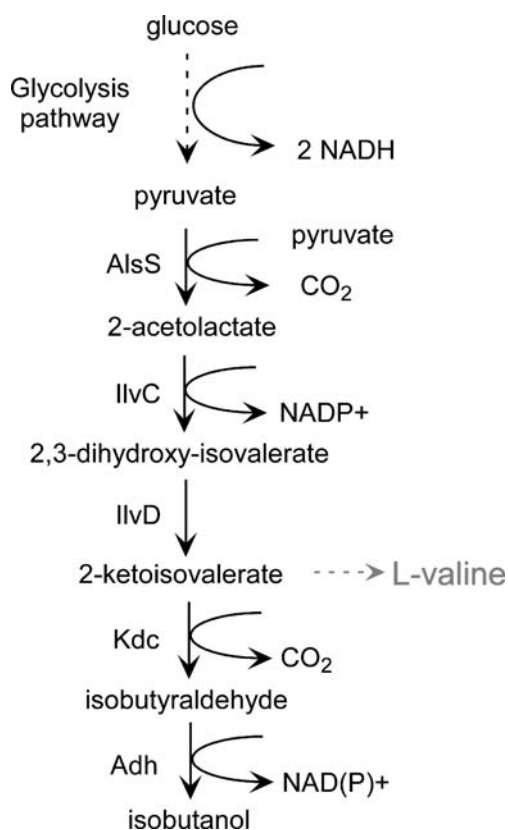
substrate, and purified ADH (100 nM). The mixture was incubated at 37°C, and NAD(P)H oxidation was determined at 340 nm using a spectrophotometer (Beckman Coulter DU800). One unit of enzyme activity was defined as the amount of protein that oxidizes 1 pmol of NAD(P)H/min at 37°C. The  $K_m$  values for different aldehydes and the  $V_{max}$  were extrapolated after nonlinear regression of the experimental points with Gauss–Newton method using Matlab.

## Results

#### Effects of *E. coli* ADHs on isobutanol production

In a previous study to produce isobutanol, the carbon source was converted to 2-ketoisovalerate, through overexpressed AlsS (*Bacillus subtilis*), IlvC (*E. coli*), and IlvD (*E. coli*; Atsumi et al. 2008b; Fig. 1). The resulting 2-ketoisovalerate is then converted to isobutanol using KDC (de la Plaza et al. 2004) and ADH (Fig. 1). In addition, six genes that are involved in byproduct formation were deleted (Atsumi et al. 2008b). The isobutanol strain (JCL260/pSA55/pSA69) produced more than 20 g/L in 112 h (Atsumi et al. 2008b). The production host, JCL260, has  $\Delta adhE$  to reduce ethanol production. Thus, the strain still has five genes (*adhP*, *eutG*, *viaY*, *yqhD*, and *yjgB*) on the genome coding for ADHs.

To evaluate the effects of these ADHs for isobutanol production, isobutanol production was tested without overexpression of ADH from plasmids (Fig. 2a). This strain (JCL260/pSA69/pSA129) produced 7.4 g/L isobutanol after 24 h which is similar to those of the strain expressing *ADH2* of *S. cerevisiae* from pSA55 (Fig. 2a and Table 1). Since there is no *adh* gene on plasmids, the *E. coli* ADHs are responsible for the conversion of isobutyraldehyde to isobutanol.



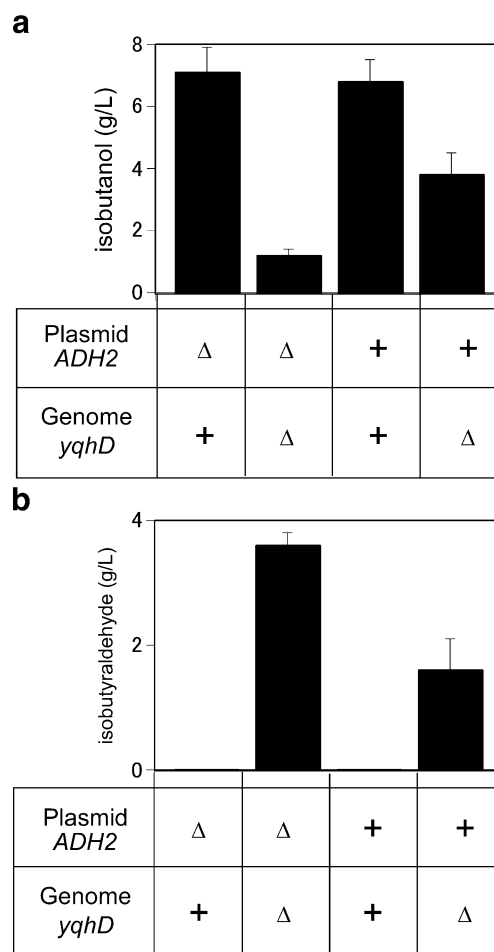
**Fig. 1** The pathway for isobutanol production. The KDC-dependent synthetic pathway for isobutanol production. *AlsS* acetolactate synthase, *IlvC* acetohydroxy acid isomeroreductase, *IlvD* dihydroxy-acid dehydratase, *Kdc* 2-ketoacid decarboxylase, *Adh* alcohol dehydrogenase

#### Elimination of *yqhD* decreases isobutanol production

Among these ADHs, *YqhD* is known to have a preference for longer-chain substrates. *YqhD* is an NADPH/ $Zn^{2+}$ -dependent enzyme (Sulzenbacher et al. 2004). To identify the effect of *YqhD* for isobutyraldehyde reductase activity, the *yqhD* gene was deleted from the genome. Isobutanol production with  $\Delta yqhD$  decreased by 80% (Fig. 2a). Isobutyraldehyde was accumulated (Fig. 2b). These results indicate that *YqhD* contributed significantly to the isobutyraldehyde reductase activity in *E. coli*.

#### Overexpression of *ADH2*, *adhA*, and *yqhD*

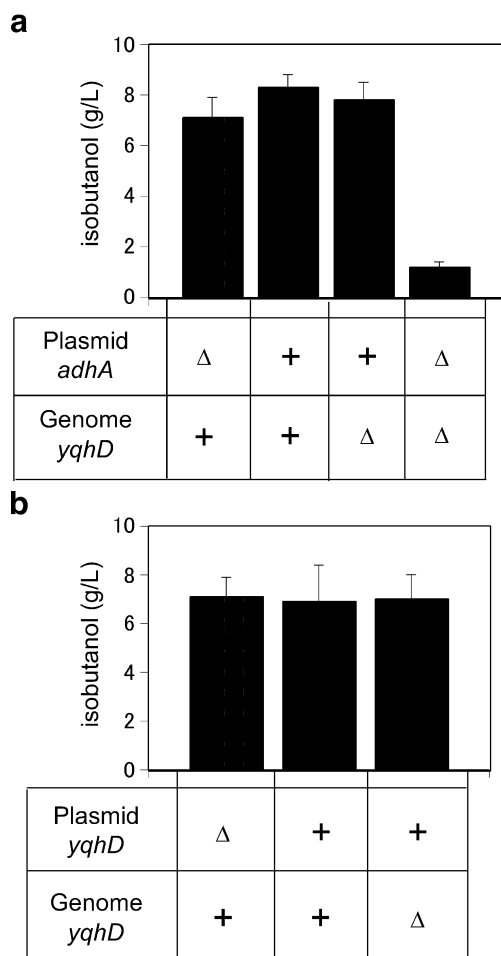
To study the effects of overexpression of various ADHs, we cloned three *adh* genes on plasmids. First, overexpression of *ADH2* from *S. cerevisiae* did not increase isobutanol production compared to the strain without overexpression (Fig. 2a). A deletion of the *yqhD* gene from this strain resulted in a decrease of isobutanol production to 3.8 g/L from 6.8 g/L and the accumulation of isobutyraldehyde (2.7 g/L; Fig. 2b). However, this was higher than the production (1.4 g/L) from the strain ( $\Delta yqhD$ ) without



**Fig. 2** Isobutanol production with *YqhD* and *Adh2*. The cells were grown in M9 medium containing 5 g/L yeast extract and 36 g/L of glucose in shake flasks at 30°C with 0.1 mM IPTG for 24 h. Optical density at 600 nm ( $OD_{600}$ ) of all strains described here at 24 h was ~6.0. Overexpressed and deleted genes are indicated below the axis. Plasmid *ADH2* (triangle) and (plus sign) indicate pSA129 and pSA55, respectively. **a** Isobutanol production. **b** Isobutyraldehyde production

overexpression of *ADH2* (Fig. 2a). This result suggests that *Adh2* has some activities toward isobutyraldehyde but is not as efficient as *YqhD* in *E. coli*.

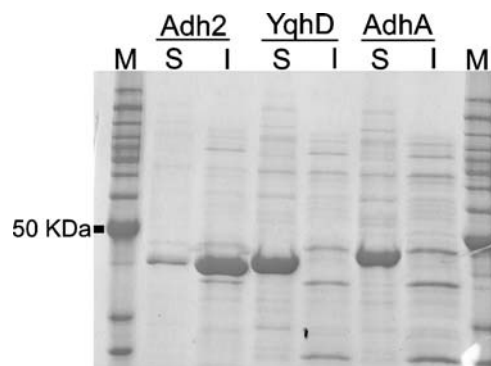
The *adhA* gene of *L. lactis* was identified by genomic sequencing (Bolotin et al. 2001). *AdhA* of *L. lactis* has not been characterized biochemically. However, for isobutanol production, we used KDC encoded by the *kivd* gene from *L. lactis* which shows a broad-range substrate specificity (Atsumi et al. 2008b; de la Plaza et al. 2004); therefore, we expected that *AdhA* could have a broad-range substrate specificity. Overexpression of *adhA* from pSA65 (Table 1) increased isobutanol production slightly in the  $yqhD^+$  strain (Fig. 3a). Interestingly, a deletion of the chromosomal *yqhD* gene in the presence of the overexpressed *AdhA* did not reduce isobutanol production (Fig. 3a). In addition, isobutyraldehyde was detected only in trace amounts (data not



**Fig. 3** Isobutanol production with overexpressed YqhD and AdhA. Comparison of isobutanol production by each combination of over-expression and deletion of Adhs. Overexpressed and deleted genes are indicated below the axis.  $OD_{600}$  of all strains described here at 24 h was ~6.0. **a** The effects of AdhA on isobutanol production. Plasmid *adhA* (triangle) and (plus sign) indicate pSA129 and pSA65, respectively. **b** The effects of YqhD on isobutanol production. Plasmid *yqhD* (triangle) and (plus sign) indicate pSA129 and pSA138, respectively

shown), indicating that the activity of AdhA toward isobutyraldehyde is relatively high.

Finally, we tested whether overexpression of *yqhD* could improve the isobutanol production. In our system, the *yqhD* gene was cloned into a high copy plasmid (~70 copies; pSA138, Table 1). Isobutanol production was measured with or without overexpression of *yqhD*. Unexpectedly, both strains showed the similar productivity (Fig. 3b). To eliminate the possibility for no expression of *yqhD* from the plasmids, we tested isobutanol production using the strain with  $\Delta yqhD$  on the genome. The deletion did not change isobutanol production (Fig. 3b), suggesting that YqhD was expressed well from plasmids. The results indicate that chromosomal *yqhD* expression has saturated the isobutanol production capability of the strain.



**Fig. 4** Expression of Adh2, YqhD, and AdhA. The soluble and insoluble portions of ADHs expressed from *E. coli* at 30°C were examined using SDS-PAGE. *M* Invitrogen Benchmark Ladder, *S* soluble fraction, *I* insoluble fraction

#### Characterization of ADHs

We further assessed the efficiency of expression and the solubility of three ADHs in *E. coli*. As shown in Fig. 4, Adh2 is highly prone to misfolding and aggregation in the heterologous host *E. coli*. While significant amounts of soluble protein of YqhD and AdhA were detected, nearly all of the overexpressed Adh2 was found in the insoluble fractions of the cell lysate (Fig. 4).

To purify these proteins, Adh2, AdhA, and YqhD were expressed from a His tag plasmid (pTW2, pTW3, and pTW4) and purified as described in “Materials and methods.” The kinetic parameters were measured for these proteins by monitoring NAD(P)H oxidation. The  $K_m$  values for acetaldehyde and isobutyraldehyde and the  $k_{cat}$  are reported in Table 3. YqhD showed the highest  $K_m^{acetaldehyde}$  value compared to AdhA and Adh2 (Table 3). YqhD showed lower  $K_m$  value for isobutyraldehyde than that for acetaldehyde and the similar  $k_{cat}$  for both substrates (Table 3). This is consistent with the data of previous

**Table 3** Aldehyde reductase activity in vitro

	Cofactor	Substrate	$K_m$ (mM)	$k_{cat}$ ( $s^{-1}$ )	$k_{cat}/K_m$
YqhD	NADPH	Acetaldehyde	27.6± 12.4	1.1± 0.1	0.05
Adh2	NADH	Acetaldehyde	0.14± 0.02	6.6± 0.5	46.9
AdhA	NADH	Acetaldehyde	0.5± 0.2	10.0± 0.3	20.9
AdhA	NADPH	Acetaldehyde	ND	ND	ND
YqhD	NADPH	Isobutyraldehyde	1.8± 1.3	1±0.1	0.7
Adh2	NADH	Isobutyraldehyde	385.1± 30.7	0.9± 0.1	2.2× 10 <sup>-3</sup>
AdhA	NADH	Isobutyraldehyde	9.1± 2.9	6.6± 0.2	0.8

report (Sulzenbacher et al. 2004). The  $K_m^{\text{acetaldehyde}}$  and  $K_m^{\text{isobutyraldehyde}}$  values of Adh2 are 0.14 and 385 mM, respectively, indicating that Adh2 prefers a short-chain substrate (Table 3). This result is consistent with isobutanol production described above. As predicted by sequence analysis, AdhA from *L. lactis* did not show any detectable enzymatic activity when tested with NADPH as a cofactor (Table 3). AdhA showed relatively small substrate preference towards acetaldehyde, but it exhibited the highest activity for isobutyraldehyde among the three enzymes tested. The glycolysis pathway produces two NADH per glucose but does not produce NADPH. Therefore, NADH-dependent enzymes should be preferred for isobutanol production. These results suggest that AdhA is most suitable for isobutanol production in an engineered pathway, consistent with the data shown in Fig. 3.

## Discussion

The last step of isobutanol production in *E. coli* was examined by employing various ADHs. We found that YqhD contributed significantly to the isobutyraldehyde reductase activity in *E. coli*. We further compared three enzymes for the last step and found that AdhA from *L. lactis* showed the highest isobutyraldehyde reductase activity. The in vitro enzyme assay showed that AdhA was NADH-dependent, consistent with the prediction based on sequence. AdhA contains a highly conserved sequence Gly–X–Gly–X–X–Gly (where X is any amino acid) in many NADH-binding domains (Scrutton et al. 1990). Adh2 from *S. cerevisiae* was highly prone to misfolding and aggregation in the heterologous host *E. coli*.

There is strong incentive to devise a synthetic pathway for the production of valuable metabolites in a user-friendly organism. In this regard, *E. coli* is a well-characterized microorganism with a set of readily available tools for genetic manipulation, and its physiological regulation is well-studied. However, the expression of heterologous proteins may result in inefficient translation and misfolding (Baneyx and Mujacic 2004). To achieve high productivity of the target products, it is desirable to seek enzymes that are compatible to the host. Nearly all of the overexpressed Adh2 was found in the insoluble fraction of the cell lysate, indicating that Adh2 is highly prone to misfolding and aggregation when expressed in *E. coli*. Although a number of strategies have been developed to improve the folding of a protein (Fisher et al. 2006; Fowler et al. 2005), the comparison of several enzymes from a broad range of possibilities allowed us to identify an ideal enzyme for our purpose.

We found YqhD and AdhA were active toward isobutyraldehyde, but Adh2 shows a high  $K_m^{\text{isobutyraldehyde}}$  value.

For YqhD, it is consistent with the previous report that YqhD has a preference for longer-chain substrates (Perez et al. 2008; Sulzenbacher et al. 2004). The crystal structure indicates that YqhD has an elongated shape of the active site (Sulzenbacher et al. 2004). The large size of the active site is in agreement with the enzyme's preference for long substrates. For AdhA, in the absence of actual crystallographic data, we cannot discuss the specific mechanisms responsible for the broad-range substrate binding, but it might have a large active site cavity. Possibilities still exist that alternative ADHs from other organisms might show better activity toward isobutyraldehyde in *E. coli*. The crystal structures of more than 100 ADHs have been elucidated (e.g., Schwarzenbacher et al. 2004; Valencia et al. 2004). It is possible to use the structural information to identify ADHs that have large active sites. The use of the structural data could facilitate such exploration to identify better enzymes.

**Acknowledgments** This work was partially supported by the UCLA-DOE Institute for Genomics and Proteomics. T. W. is supported by a Graduate Students Study Abroad Program from a National Science Council of R.O.C (Taiwan) (NSC-096-2917-I-007-102).

**Open Access** This article is distributed under the terms of the Creative Commons Attribution Noncommercial License which permits any noncommercial use, distribution, and reproduction in any medium, provided the original author(s) and source are credited.

## References

- Atsumi S, Cann AF, Connor MR, Shen CR, Smith KM, Brynildsen MP, Chou KJ, Hanai T, Liao JC (2008a) Metabolic engineering of *Escherichia coli* for 1-butanol production. *Metab Eng* 10(6):305–311
- Atsumi S, Hanai T, Liao JC (2008b) Non-fermentative pathways for synthesis of branched-chain higher alcohols as biofuels. *Nature* 451(7174):86–89
- Baba T, Ara T, Hasegawa M, Takai Y, Okumura Y, Baba M, Datsenko KA, Tomita M, Wanner BL, Mori H (2006) Construction of *Escherichia coli* K-12 in-frame, single-gene knockout mutants: the Keio collection. *Mol Syst Biol* 2:E1–E11
- Baneyx F, Mujacic M (2004) Recombinant protein folding and misfolding in *Escherichia coli*. *Nat Biotechnol* 22(11):1399–1408
- Bolotin A, Wincker P, Mauger S, Jaillon O, Malarme K, Weissenbach J, Ehrlich SD, Sorokin A (2001) The complete genome sequence of the lactic acid bacterium *Lactococcus lactis* ssp. *lactis* IL1403. *Genome Res* 11(5):731–753
- Cann AF, Liao JC (2008) Production of 2-methyl-1-butanol in engineered *Escherichia coli*. *Appl Microbiol Biotechnol* 81(1):89–98
- Connor MR, Liao JC (2008) Engineering of an *Escherichia coli* strain for the production of 3-methyl-1-butanol. *Appl Environ Microbiol* 74(18):5769–5775
- Datsenko KA, Wanner BL (2000) One-step inactivation of chromosomal genes in *Escherichia coli* K-12 using PCR products. *Proc Natl Acad Sci U S A* 97(12):6640–6645

- de la Plaza M, Fernandez de Palencia P, Pelaez C, Requena T (2004) Biochemical and molecular characterization of alpha-ketoisovalerate decarboxylase, an enzyme involved in the formation of aldehydes from amino acids by *Lactococcus lactis*. FEMS Microbiol Lett 238(2):367–374
- Fisher AC, Kim W, DeLisa MP (2006) Genetic selection for protein solubility enabled by the folding quality control feature of the twin-arginine translocation pathway. Protein Sci 15(3):449–458
- Fowler SB, Poon S, Muff R, Chiti F, Dobson CM, Zurdo J (2005) Rational design of aggregation-resistant bioactive peptides: reengineering human calcitonin. Proc Natl Acad Sci U S A 102(29):10105–10110
- Inui M, Suda M, Kimura S, Yasuda K, Suzuki H, Toda H, Yamamoto S, Okino S, Suzuki N, Yukawa H (2008) Expression of *Clostridium acetobutylicum* butanol synthetic genes in *Escherichia coli*. Appl Microbiol Biotechnol 77(6):1305–1316
- Jornvall H, Persson B, Jeffery J (1987) Characteristics of alcohol/polyol dehydrogenases. The zinc-containing long-chain alcohol dehydrogenases. Eur J Biochem 167(2):195–201
- Lutz R, Bujard H (1997) Independent and tight regulation of transcriptional units in *Escherichia coli* via the LacR/O, the TetR/O and AraC/I1-I2 regulatory elements. Nucleic Acids Res 25(6):1203–1210
- Perez JM, Arenas FA, Pradenas GA, Sandoval JM, Vasquez CC (2008) *Escherichia coli* YqhD exhibits aldehyde reductase activity and protects from the harmful effect of lipid peroxidation-derived aldehydes. J Biol Chem 283(12):7346–7353
- Schwarzenbacher R, von Delft F, Canaves JM, Brinen LS, Dai X, Deacon AM, Elsliger MA, Eshaghi S, Floyd R, Godzik A et al (2004) Crystal structure of an iron-containing 1,3-propanediol dehydrogenase (TM0920) from *Thermotoga maritima* at 1.3 Å resolution. Proteins 54(1):174–177
- Scrutton NS, Berry A, Perham RN (1990) Redesign of the coenzyme specificity of a dehydrogenase by protein engineering. Nature 343(6253):38–43
- Shen CR, Liao JC (2008) Metabolic engineering of *Escherichia coli* for 1-butanol and 1-propanol production via the keto-acid pathways. Metab Eng 10(6):312–320
- Sulzenbacher G, Alvarez K, Van Den Heuvel RH, Versluis C, Spinelli S, Campanacci V, Valencia C, Cambillau C, Eklund H, Tegoni M (2004) Crystal structure of *E. coli* alcohol dehydrogenase YqhD: evidence of a covalently modified NADP coenzyme. J Mol Biol 342(2):489–502
- Valencia E, Larroy C, Ochoa WF, Pares X, Fita I, Biosca JA (2004) Apo and Holo structures of an NADPH-dependent cinnamyl alcohol dehydrogenase from *Saccharomyces cerevisiae*. J Mol Biol 341(4):1049–1062