

5-21-2010

Enhanced Oxygen Activation over Supported Bimetallic Au-Ni Catalysts

Bert D. Chandler

Trinity University, bchandle@trinity.edu

Cormac G. Long

Trinity University

John D. Gilbertson

Trinity University

Christopher J. Pursell

Trinity University, cpursell@trinity.edu

G. Vijayaraghavan

See next page for additional authors

Follow this and additional works at: https://digitalcommons.trinity.edu/chem_faculty

Part of the [Chemistry Commons](#)

Repository Citation

Chandler, B. D., Long, C. G., Gilbertson, J. D., Pursell, C. J., Vijayaraghavan, G., & Stevenson, K. J. (2010). Enhanced oxygen activation over supported bimetallic Au-Ni catalysts. *Journal of Physical Chemistry C*, 114(26), 11498-11508

This Article is brought to you for free and open access by the Chemistry Department at Digital Commons @ Trinity. It has been accepted for inclusion in Chemistry Faculty Research by an authorized administrator of Digital Commons @ Trinity. For more information, please contact jcostanz@trinity.edu.

Authors

Bert D. Chandler, Cormac G. Long, John D. Gilbertson, Christopher J. Pursell, G. Vijayaraghavan, and K. J. Stevenson

Enhanced Oxygen Activation over Supported Bimetallic Au–Ni Catalysts

Bert D. Chandler,^{*,†} Cormac G. Long,[†] John D. Gilbertson,^{†,‡} Christopher J. Pursell,[†] Ganesh Vijayaraghavan,[§] and Keith J. Stevenson[§]

Department of Chemistry, Trinity University, San Antonio, Texas 78212-7200, and Department of Chemistry, University of Texas at Austin, 1 University Station A5300, Austin, Texas 78712-0165

Received: March 1, 2010; Revised Manuscript Received: May 21, 2010

New bimetallic Ni–Au supported nanoparticle catalysts were prepared by using dendrimer templated nanoparticles. Amine-terminated generation 5 polyamidoamine (PAMAM) dendrimers were anchored to a commercial silica with a siloxane linked anhydride. The dendrimer was then alkylated and used to template Ni–Au nanoparticles, which were subsequently extracted into organic solution as thiol monolayer protected clusters (MPCs). Transmission electron microscopy (TEM) and energy dispersive spectroscopy (EDS) indicated bimetallic nanoparticles of about 2 nm in size. Nanoparticles were deposited onto P-25 TiO₂, and the capping thiol ligands were removed under flowing H₂. DRIFTS infrared spectra of adsorbed CO showed only Au on the catalyst surface; no bands attributable to Ni or NiO were observed. Density functional theory (DFT) calculations showed that Au is substantially more stable than Ni on the surface of model slabs. DFT calculations also indicated that the incorporation of Ni into Au slabs results in stronger adsorption of O and CO on Au surfaces. Catalysts were evaluated with low-temperature CO oxidation. Kinetics studies indicated a substantial modification of Au catalysis through Ni incorporation. Apparent activation energies decreased by more than 50% and O₂ reaction orders increased from 0.2 to 0.9. These results are placed in the context of the available literature regarding support effects for Au catalysts. The observed changes to Au chemistry in the current work are substantially larger than previous reports have attributed to support effects. A Michaelis–Menten (enzyme) treatment of the kinetics data indicated that the O₂ reactivity constant increased by a factor of 40 for catalysts with high Ni content. This was in good qualitative agreement with the DFT calculations. At the same time, the introduction of Ni reduced the relative number of catalytically active sites.

Introduction

The high activity of supported gold catalysts for catalyzing CO oxidation at subambient temperatures has been well documented over the past 20 years.^{1,2} The last several years have seen intense interest in applying Au catalysts to a variety of new reactions, particularly the Water-Gas Shift reaction and low temperature oxidation and epoxidation reactions that use O₂ as the terminal oxidant.^{3,4} In spite of the substantial research activity in gold-catalyzed oxidation reactions, the origins of the catalytic activity are still not well understood. Important issues under investigation include oxygen binding and activation, the importance of the support in affecting catalytic activity, the Au oxidation state necessary for high activity, the sensitivity to water or surface hydroxyl groups, and the strong dependence on particle size and morphology.²

The binding and activation of molecular oxygen is generally considered to be the key catalytic step in highly active Au oxidation catalysts.² For CO oxidation, the literature provides a general consensus that O₂ activation occurs on only a fraction of the surface Au atoms, probably predominately corner or edge sites.² A number of models propose that O₂ is activated at or near the metal–support interface,^{1,5} which may partially account for the unusually high sensitivity of Au catalysts to the support material and preparation method. Both computational studies

and studies on model systems under UHV conditions have shed considerable light onto the unique activity of Au catalysts;^{6–8} however, different models suggest a variety of answers to the key issues.⁹ Further, a recent review highlights the difficulties of preparing active supported nanoparticle (NP) catalysts, and the challenges of comparing them to model systems (computational and UHV).²

Whether they arise from various support effects or preparation methods, the changes to catalytic activity have largely been phenomenological in origin; in other words, catalyst-to-catalyst differences have been discovered, reported, and in some cases rationalized. There have been far fewer attempts to control the catalytic chemistry of Au based on some sort of catalyst design principles. One potential method for intentionally affecting catalytic activity is to incorporate other metals into Au NPs. Au has long been used as a diluent for “more reactive” metals (e.g., Pt and Pd).¹⁰ For example, dilution of Pd with Au generates materials with exceptional catalytic activity and selectivity in the oxidation of ethylene to vinyl acetate.¹¹ However, there are exceedingly few studies of bimetallic Au catalysts where Au is the primary active component. Recent studies have examined Au–Cu^{12,13} and Au–Ag¹⁴ catalysts for CO and benzyl alcohol oxidation,¹⁵ and Louis’ group has reported that trace amounts of Pd enhance the reactivity of Au.¹⁶ Beyond these investigations, we are unaware of any systematic investigation of incorporating heterometals into Au NP catalysts.

One of the primary reasons for this dearth of studies into bimetallic Au-based catalysts is the difficulty in preparing them. In general, bulk alloys between Au and other transition metals are not thermodynamically stable at ambient temperatures (Pd,

* To whom correspondence should be addressed. E-mail: bert.chandler@trinity.edu. Phone: (210) 999-7557. Fax: (210) 999-7569.

[†] Trinity University.

[‡] Current address: Department of Chemistry, Western Washington University, 516 High St., Bellingham, Washington 98225-9150.

[§] University of Texas at Austin.

Cu, and Ag are notable exceptions).¹⁷ Therefore, traditional catalyst preparation methods generally lead to supported catalysts composed of mixtures of monometallic NPs rather than bimetallic nanometer scale alloys. We have previously shown, however, that it is possible to use solution NP preparation techniques to prepare heterogeneous catalysts with compositions inside bulk miscibility gaps,¹⁸ and that it is possible to exert substantial control over catalyst activity by adjusting bimetallic metal ratios.¹⁹ Herein, we report on our efforts to develop methods for tuning the catalytic activity of Au NP catalysts by controllably incorporating heterometals into supported Au NPs. The focus of this study was to prepare a series of Ni–Au catalysts and perform reaction kinetics studies in order to understand how Ni incorporation affects the catalysis. To our knowledge, this is the first attempt to tune Au catalysts in such a manner.

The Ni–Au system has long been of interest, as incorporating Au into Ni-based steam reforming catalysts improves sulfur tolerance;²⁰ however, there are few studies examining the effects of Ni on catalysis by Au. Of note is Lahr and Ceyer's recent UHV study showing enhanced low-temperature reactivity between preadsorbed O atoms and CO over Au/Ni(111) surface alloys.^{21,22} This discovery has yet to be translated into the preparation of highly active supported catalysts. The bulk phase diagram shows Ni and Au are immiscible at temperatures below 500 K,²³ so traditional catalyst preparation methods lead to mixtures of monometallic NPs rather than bimetallic nanometer scale alloys.^{24,25} Despite this phase segregation, there are reports that Ni–Au catalysts show improved performance for hydrodechlorination²⁵ and that NiO improves performance for CO oxidation²⁶ and allylbenzene isomerization.²⁷

Advances in solution phase NP preparation techniques, however, have made it possible to prepare metastable nanometer scale alloys with compositions throughout bulk miscibility gaps.^{18,28,29} This, in turn, offers potential synthetic routes to new catalysts with unique activities and selectivities. Several groups, including our own, have recently reported solution syntheses to Ni–Au NPs.^{26,30,31} Notably, one study showed that Ni–Au NPs are appropriate precursors to heterogeneous Au/NiO/SiO₂ catalysts.²⁶ On the basis of these results, and particularly our previous experience preparing Ni–Au NPs in solution, we therefore set out to tune Au catalysts by incorporating varying amounts of Ni into the NP syntheses.

Beyond developing new catalyst preparation techniques, quantitative kinetics are important measures for determining how heterometals might affect Au catalysts. It is therefore of fundamental and practical interest and importance to gain deeper insight into Au-based oxidation reactions, and to develop methods for improving their performance as catalysts for chemical transformations. Surface science studies have contributed greatly to our understanding of reaction mechanisms over Au,³² but studies of oxygen activation on bench scale catalysts have been scarce.³³ Oxygen binding by Au single crystals and NPs is weak (less than 10 kJ/mol),³³ and direct measurements of the O₂ adsorption equilibrium constant have been unsuccessful. However, we recently employed a Michaelis–Menten technique that allows for the extraction of a kinetic O₂ binding constant during CO oxidation catalysis.³³ This study showed O₂ binding to be quite consistent over two Au/TiO₂ catalysts prepared by very different means. In the current work, we extend these studies to the newly prepared Ni–Au catalysts to evaluate the degree to which Ni incorporation affects catalysis by Au and to provide insight into how this modification might occur.

Experimental Section

Materials and Reagents. Davicat SI 1403 (Grace Davison) silica was sieved to 40–60 mesh and calcined at 500 °C overnight. Amine-terminated generation 5 polyamidoamine (PAMAM) dendrimer was purchased from Dendritech. HAuCl₄ (99%, Alfa), NiCl₂·6H₂O (99%, Alfa), decanethiol (98% Aldrich), and 1,2-epoxydodecane (98% Aldrich) were used as received. 3-(Triethoxysilyl)propylsuccinic anhydride, 95%, was purchased from Gelest and used as received. Reagent grade toluene, methanol, ethanol, and DMF (Fischer) were dried under molecular sieves (Davison, grade 564, 3 Å) and otherwise used as received. Water was purified to a resistivity of 17–18 MΩ·cm with a Barnstead Nanopure system. P25 Titania (Aerolyst 7711) was generously provided by Degussa Corporation. The World Gold Council test (nominally 1% Au/TiO₂) catalyst was purchased from the World Gold Council.

Characterization. Solution UV–visible absorbance spectra were collected on a Jasco V-530 spectrometer with quartz cells. Transmission electron microscopy (TEM) analysis of the NPs was performed with a JEOL 2010F instrument operating at 200 kV. NPs suspended in hexane were drop cast onto a 150 mesh Cu TEM grid covered with a thin amorphous carbon film. Image analysis was performed with DigitalMicrograph 3.6.1 (Gatan) software. Elemental analyses were performed by Desert Analytics (Tucson, AZ). DRIFT spectra were collected on a Thermo-Nicolet Nexus 470 FT-IR, using a Thermo-Electron environmental cell accessory.

Functionalization of 40–60 Silica. A 25 mL sample of toluene was added to a 50 mL Erlenmeyer flask containing 2 g of freshly calcined 40–60 silica. Then 2 mL of 3-(triethoxysilyl)propylsuccinic anhydride was added to the slurry and the flask was sealed and allowed to stir on a shaker at 60 rpm overnight. This slurry was then filtered under vacuum, rinsed with 50 mL of EtOH (2 × 25 mL), and allowed to dry on the filter.

Dendrimer Anchoring and Alkylation. A 30 mg sample of G5-NH₂ PAMAM dendrimer (1.04 μmol) was dissolved with sonication in a minimal amount of EtOH (~3 mL) in a 20 mL vial. To this vial was added DMF until just before the solution became cloudy, typically ~10 mL. The solution from the vial was then added to a 50 mL Erlenmeyer flask containing anhydride functionalized silica (~2 g) collected from the above procedure. The flask was sealed, placed in a shaker at 60 rpm, and heated at 45 °C for 24 h. The anchored amine-terminated dendrimer is denoted SiO₂-G₅NH₂.

To the above slurry was added 1 g (5.4 mmol) of 1,2-epoxydodecane. The solution was shaken at 50 rpm in a sealed vessel at 45 °C for 48 h. After reaction, the solid was filtered via vacuum, rinsed with EtOH, and allowed to dry in a vacuum oven at 40 °C overnight. The anchored, alkylated amine-terminated dendrimer is denoted SiO₂-G₅C₁₂.

Preparation of Au DENs. A 300 mg sample of the solid obtained from above (with an average loading of 0.52 nmol of dendrimer/mg of silica) was placed in a 25 mL vial containing 10 mL of toluene and allowed to sit for 30 min producing a 15.6 μM slurry. To that mixture was added 7.8 mg of HAuCl₄ (23 μmol) in 5.3 mL of EtOH to give a 147:1 Au:dendrimer molar ratio. The vial was sealed and placed on a shaker at 60 rpm for 1 h and then filtered, rinsed with 10 mL (3×) of toluene, and redispersed in 20 mL of fresh toluene in a vial containing a stir bar. Then 2.0 mL of freshly prepared 50 mM NaBH₄ in MeOH was added to the stirring yellow slurry, instantly changing the color from yellow to brown.

Preparation of Ni–Au DENs. A 300 mg sample of the anchored/alkylated dendrimer silica with an average loading of 0.52 nmol of dendrimer/mg of silica was placed in a 25 mL vial containing 10 mL of toluene and allowed to sit for 30 min producing a 15.6 μM slurry. To that mixture were added 2 mg (8.6 μmol) of $\text{NiCl}_2 \cdot 6\text{H}_2\text{O}$ in 1 mL of EtOH and 6.3 mg (18.5 μmol) of HAuCl_4 in 2 mL of EtOH to give a 147:1 metal:dendrimer ratio. Au:Ni ratios were adjusted to 2, 1.5, 1, 0.5, and 0.3. The vial was sealed and placed on a shaker at 60 rpm for 1 h and then filtered, rinsed with 10 mL (3 \times) of toluene, and redispersed in 20 mL of fresh toluene in a vial containing a stir bar. The vial was sealed with a septum and deoxygenated by sparging Ar for 30 min with stirring. Then 2.0 mL of freshly prepared and deoxygenated 50 mM NaBH_4 in MeOH was added to the stirring yellow/green slurry under flowing Ar, instantly changing the color of the solid from yellow/green to brown.

Extraction and Purification of Ni–Au MPCs. A deoxygenated solution of 3.0 mL of decanethiol in 5 mL of toluene was instantly added under flowing Ar to the above mixture containing the anchored Ni–Au DENs with vigorous stirring (magnetic stir bar with stirrer set on high). The solution turns from colorless to brown instantly, but was allowed to stir for at least 30 min, yielding a brown solution of extracted Ni–Au MPCs. The toluene solution containing the MPC product was filtered and purified by first concentrating the solution to 1 mL on a rotary evaporator and then adding 15 mL of ethanol to precipitate the MPCs. Centrifugation resulted in separation of the MPCs from excess free *n*-alkanethiol and other impurities. The MPCs were washed and centrifuged twice with ethanol to ensure complete purification.

MPC Deposition and Thiol Removal (Catalyst Activation). The purified Au MPCs were deposited onto TiO_2 by adapting a literature method.³⁴ Briefly, sufficient Au MPCs to produce a 0.2 wt % Au loading were dissolved in a minimum amount of methylene chloride and added to a vigorously stirring suspension of 100 mg of TiO_2 in 5 mL of methylene chloride. The suspension was stirred until the methylene chloride was no longer colored (ca. 5 min). The TiO_2 was then rinsed 3 times with 5 mL of methylene chloride and dried in air for 1 h at 393 K. The MPC/ TiO_2 samples (typically 100 mg) were placed in a tube furnace and treated under flowing H_2/N_2 (50/50 mixture, 20 mL/min) at 563 K for 16 h. The initial ramp in temperature from 298 to 563 K was 2.2 deg/min for 2 h.

Elemental Analysis via Atomic Absorption Spectroscopy. Gold and nickel elemental concentrations were determined with a Varian SpectraAA 220FS, using an acetylene/air flame and a previously described protocol.^{30,35} Briefly, solid samples were placed in an Erlenmeyer flask. Freshly prepared aqua regia (3 mL) was then added to the sample and allowed to digest at room temperature for 30 min. The sample was then heated slowly to 60 $^\circ\text{C}$ for 2 h. The sample was transferred to a volumetric flask (10 mL) and NH_4OH was added dropwise until the sample was neutralized. The sample was then diluted to the mark with nanopure water and subsequently analyzed. Experimental errors for the method and the spectrometer are typically less than 5%.

X-ray Photoelectron Spectroscopy. X-ray photoelectron spectroscopy (XPS) spectra were collected with a Kratos AXIS Ultra DLD photoelectron spectrophotometer, using a monochromatic Aluminum X-ray source at 160 W. Each high-resolution analysis had a pass energy of 60 eV that was lowered at steps of 100 meV and the dwell time of 1000 ms. To exclude any effects on the values of binding energies due to charging of the sample during the XPS analysis, all data were corrected

by using the AXIS charge neutralization system, which provides charge compensation on all types of conductive materials and is particularly important when using a monochromatic X-ray source.

Infrared Spectroscopy of Adsorbed CO. FTIR spectra were collected with a Thermo-Nicolet Nexus 470 spectrometer equipped with a DTGS detector with a resolution of 16 cm^{-1} . A powder sample was placed in an in situ DRIFT cell (Thermo-SpectraTech), sealed, and treated under flowing H_2 at 423 K for 30 min. The cell was then flushed with He at 423 K for 30 min and cooled to 293 K under flowing He (5 min), then a background spectrum of the sample was collected (32 scans). Flowing CO (5% in He) was then introduced to the sample chamber for 5 min and a spectrum was recorded. Reference spectra of gas-phase CO and CO_2 were subtracted from sample spectra with the Omnic software, yielding the spectrum of CO adsorbed on the catalyst.

CO Oxidation Catalysis. The CO oxidation reactor system consisted of a custom built laboratory scale single pass plug-flow microreactor, as described previously.³³ Supported catalyst samples were diluted 1250:1 with 400 mesh silicon carbide (Aldrich) and placed in the microreactor. All reactions were performed at ambient pressure with 1% CO in the feed, which was maintained with Porter mass flow controllers. The diluted catalyst mass, nominally 250 mg, and gas flows, typically near 25 mL/min, were adjusted to maintain differential reactor conditions and conversions studied were always between 1% and 2%. Changes in CO oxidation activity were measured as a function of temperature as well as CO and O_2 feed concentration. All activities were determined by averaging steady state conversion data for approximately 2 h, usually between 1 and 3 h after introducing CO to the activated catalyst. Each activity measurement was performed with a fresh catalyst sample.

Computational Methods. All DFT calculations were performed at the Center for Atomic Scale Materials Design at the Danish Technical University in Copenhagen, Denmark. Metal slab, adsorption, and gas-phase energies were calculated by using the plane wave DFT code DACAPO.³⁶ Kohn–Sham one electron valence states were expanded in a basis of plane waves with kinetic energies up to 30 Ry. Vanderbilt nonlocal ultrasoft pseudopotentials were used to describe the core electrons. The exchange correlation (xc)-energy was described employing the RPBE generalized gradient correction self-consistency.³⁶

For all surfaces, a $6 \times 6 \times 1$ Monkhorst-Pack **k**-point sampling in the irreducible Brillouin zone was used. The occupation of the one electron states was calculated at a temperature of $k_B T = 0.1$ eV, and all energies were extrapolated to $T = 0$ K. Lattice constants have been determined by separate calculations on the bulk metals. The (111) surfaces were modeled with (2×2) surface unit cells with a slab thickness of four layers. Neighboring slabs were separated by more than 10 Å of vacuum. The bottom-most layer was fixed to the Au lattice and the top three layers were allowed to relax.

Adsorption calculations were performed fixing all metal atoms, allowing only the adsorbate to relax. Atomic oxygen adsorption energies were calculated relative to the O_2 energy from H_2O splitting by using the experimental reaction energy and that for H_2 and H_2O in the gas phase.³⁷ This avoids difficulties associated with the DFT treatment of the triplet state of gas-phase O_2 .³⁸ CO adsorption energies were calculated relative to gas-phase CO.

Results and Discussion

We set out to tune the catalytic properties of Au/ TiO_2 catalysts by incorporating Ni into solution phase Au NPs. NPs were

TABLE 1: Catalyst Composition Data

synthesis Au:Ni mass ratio	measured wt % Ni	measured wt % Au	total wt % metal	measured Au:Ni mass ratio	mol % Ni	mol % Au	catalyst designation
1	0.062	0.078	0.14	1.3	73%	27%	AuNi ₃
2	0.043	0.087	0.13	2.0	62%	38%	AuNi ₂
4	0.045	0.175	0.22	3.9	46%	54%	Au ₁ Ni ₁
5	0.040	0.190	0.23	4.8	41%	59%	Au ₂ Ni ₃
6	0.040	0.249	0.29	6.2	35%	65%	Au ₂ Ni

prepared by adapting our previously reported synthetic protocols for preparing Ni@Au core–shell NPs.³⁰ Briefly, the surface of a commercial high surface area, high pore volume silica was functionalized with 3-(triethoxysilyl)propylsuccinic anhydride. Amine-terminated generation 5 PAMAM dendrimers were used to open the surface anhydride, thus anchoring the dendrimers to the silica. The anchored dendrimers were subsequently alkylated with 1,2-epoxydodecane to yield a hydrophobic dendrimer surface. Ni^{II} and Au^{III} were introduced to the dendrimer interior by dissolving the precursor salts in ethanol and adding a small aliquot of the ethanol solution to the anchored, alkylated dendrimer suspended in toluene. After metal uptake was complete, the salts were reduced with sodium borohydride in toluene with use of standard Schlenk techniques. In the absence of water and air, NPs were then extracted from the dendrimer interior with decanethiol in toluene or methylene

chloride, yielding monolayer protected clusters (MPCs). The details of these synthetic protocols and characterization information have already been reported for monometallic Au NPs and Ni@Au core–shell NPs.^{30,39}

Catalyst Synthesis and Characterization. The total metal:dendrimer ratio was held constant at 147:1 for all syntheses; only the Au:Ni ratios were adjusted to yield catalysts with Au:Ni molar ratios ranging from pure Au to 75% Ni (mass ratios from 6 to 1). Catalyst designations (Au, Au₂Ni, Au₃Ni₂, Au₁Ni₁, AuNi₂, AuNi₃) are based on the atomic ratios of Au and Ni. A representative TEM micrograph and particle size distribution are shown in Figure 1; single particle EDS spectra confirmed the presence of both Ni and Au in individual NPs.³⁰ Preliminary TEM studies indicate the presence of a range of particle compositions, as Crooks' group has reported for other dendrimer templated bimetallic nanoparticle systems.⁴⁰

The MPCs were deposited onto P-25 TiO₂ via spontaneous adsorption from CH₂Cl₂, and activated by heating to 300 °C under flowing H₂/N₂ for 16 h (see details in the Experimental Section). This pretreatment has been previously shown to produce highly active Au catalysts from Au MPCs.^{33,34} Catalyst compositions after pretreatment were confirmed by atomic adsorption spectroscopy (AAS). Table 1 shows the total metal loadings were near 0.2 wt % and elemental ratios were in good agreement with the metal ratios used in the synthesis. Additionally, the Au₁Ni₁ catalyst synthesis was repeated three times to evaluate reproducibility (see the Supporting Information). For all three preparations, the bulk catalyst composition was within 5% of the mole ratio set during NP synthesis.

Catalyst surface composition was evaluated by using DRIFT spectroscopy of adsorbed CO. The DRIFTS spectrum of CO on the Au₁Ni₁ catalyst, shown in Figure 2, contains a single peak at 2105 cm⁻¹. A similar spectrum was collected for a 1% AuNi₃/TiO₂ catalyst (see the Supporting Information). This peak is consistent with CO adsorbed on surface Au atoms.³³ Notably,

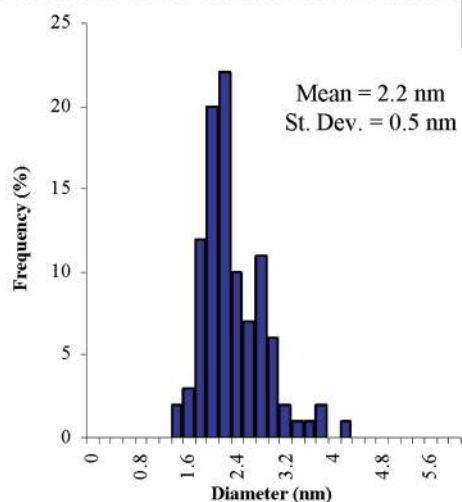
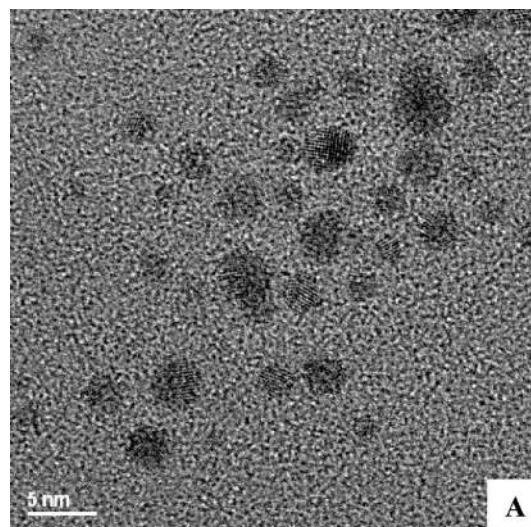


Figure 1. (A) Representative TEM image for Au₁Ni₁ nanoparticles. (B) Size histogram of Au₁Ni₁ nanoparticles (105 particles counted).

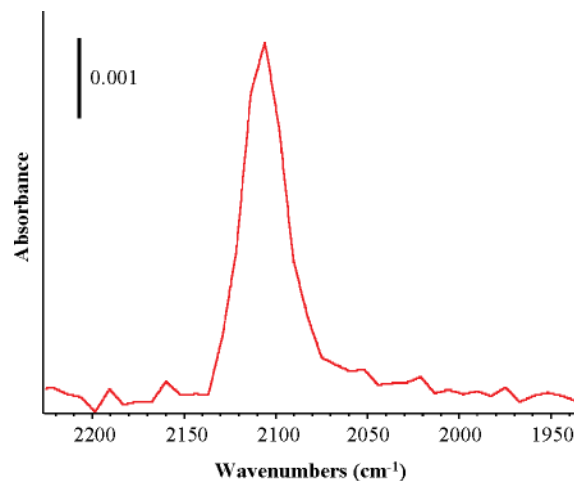


Figure 2. DRIFTS IR spectrum of CO adsorbed on an activated Au₁Ni₁ catalyst at room temperature.

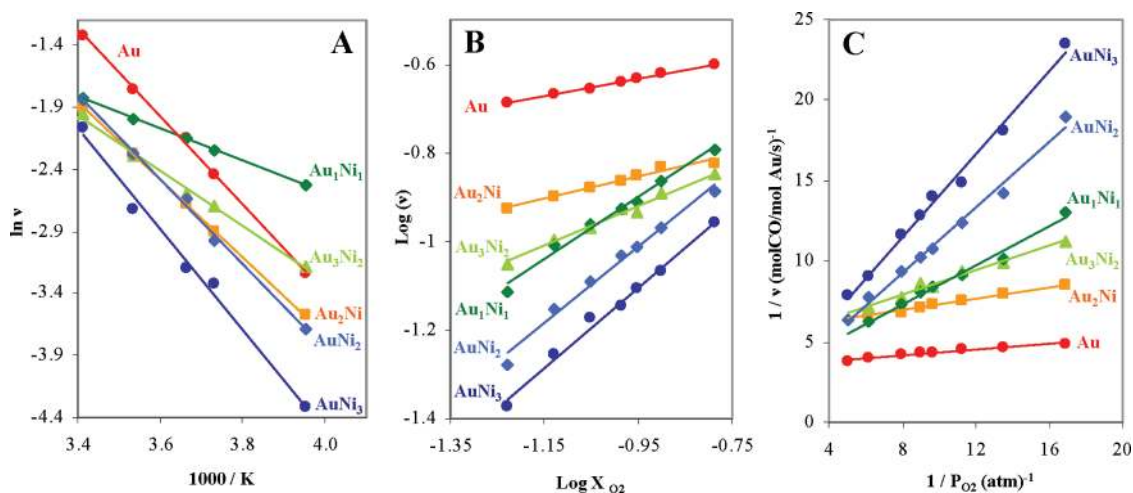


Figure 3. CO oxidation results for Au–Ni catalysts; rates are in mol CO/mol Au/s: (A) Arrhenius plots of the temperature dependence; (B) oxygen pressure dependence; and (C) double reciprocal plots for extracting kinetic characterization parameters.

there are no peaks attributable to surface Ni ($\sim 2060\text{ cm}^{-1}$)^{41,42} or NiO (ca. 2170 cm^{-1}).²⁷ The absence of these peaks suggests that the NPs retain their Ni@Au core–shell structure after alkythiol removal. This is also consistent with the large Au surface segregation energy in Au-based alloys,⁴³ which provides a strong driving force for creating the Au shell. We also performed additional DFT calculations, which showed that Au was substantially more stable on the surface (vide infra). Although the IR data indicate that Au is predominately on the catalyst surface, the low metal loadings make it impossible to rule out the possibility that small amounts of surface Ni or NiO may also be present at levels below the detection limits.

CO Oxidation Catalysis. The activated NPs were evaluated as CO oxidation catalysts by using a differential single pass plug flow microreactor, as described in the Experimental Section and in our previous study, which reported an in-depth comparison between the pure Au catalyst here and a conventionally prepared test catalyst.³³ Particle sizes (via TEM), XPS spectra, CO binding equilibrium constants (measured by infrared spectroscopy),⁴⁴ and CO oxidation catalysis kinetics (apparent activation energies and O₂ reaction orders) were all the same within very reasonable experimental errors for the MPC and the WGC catalysts. The only significant difference between the WGC and MPC catalysts is that the catalytic activity of the MPC catalyst is about 40% higher. Thus, there are no deleterious effects of using the thiol-stabilized precursor, and the MPC system is an appropriate model for traditionally prepared Au catalysts.

CO oxidation kinetics data (Arrhenius plots, O₂ reaction orders, and double reciprocal plots) were all collected by using catalysts diluted 1250:1 with SiC. Catalyst masses and flow rates, and therefore space velocities, were adjusted so that conversions were always maintained between 1% and 2%. These conditions have been shown to maintain the catalysts under kinetic control.³³ These data are presented in Figure 3. The changes in the slopes of the lines fitted to the data in Figure 3 all show the NP Ni content has a dramatic effect on the kinetic parameters. These data are summarized in Figure 4, which plots the various kinetic parameters against the bulk catalyst Ni content determined by AA spectroscopy. Both apparent activation energy (E_{app} , Figures 3A and 4A) and the O₂ reaction order (Figures 3B and 4A) show substantial changes as the Ni content increases above 30 mol % Ni. The behavior of the kinetics

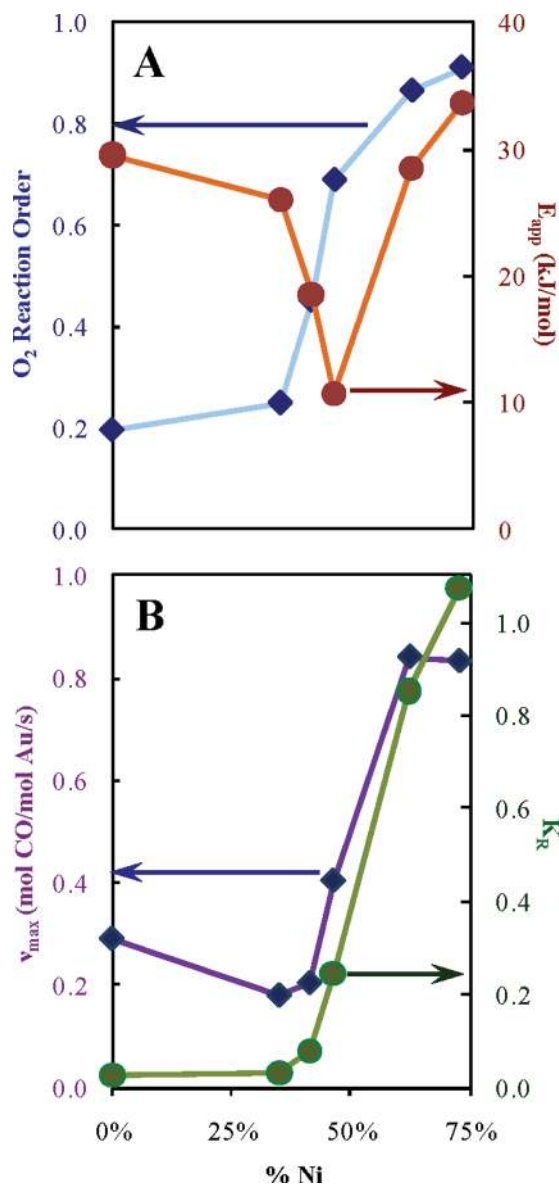
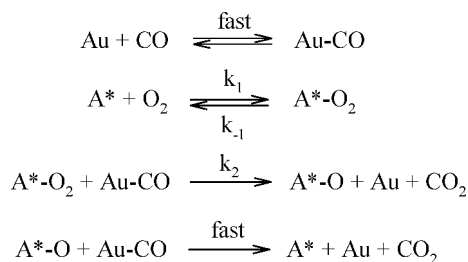


Figure 4. Changes in CO oxidation catalysis parameters: (A) O₂ reaction order and apparent activation energy and (B) extracted kinetic parameters v_{max} and K_R as a function of catalyst Ni content.

SCHEME 1



parameters diverges above about 50 mol % Ni, with E_{app} going through a minimum for the Au₁Ni₁ catalyst. The oxygen dependence, on the other hand, shows a relatively steady trend toward increasing reaction orders with additional Ni.

The magnitude of the changes in these kinetic parameters is remarkable, and indicates a substantial modification of Au reactivity. The changes in E_{app} are somewhat difficult to interpret because they depend on intrinsic kinetic barriers, heats of adsorption, and relative surface coverages. However, the magnitude of changes observed here is exceptionally large, as E_{app} for Au₁Ni₁ is 60% of the E_{app} value for monometallic Au. Unfortunately, activation energies reported in the literature vary enormously depending on reaction conditions (particularly conversions, which generally are not held constant), research group, and catalyst preparation method.⁴⁵ It is therefore very difficult to look to the literature for meaningful comparisons. Under our reaction conditions, however, the MPC-based Au/TiO₂ catalyst had essentially the same activation energy as a traditionally prepared Au/TiO₂ catalyst (within 1 kJ/mol). Further, our measurements are all made at very low conversion (1–2%) and the average error in the E_{app} measurements is ± 0.8 kJ/mol. This is strong evidence that the observed differences between the Ni-containing catalysts are real and substantial.

The changes in O₂ reaction order with Ni incorporation are similarly dramatic when considered in light of the available literature.⁴⁶ More directly, the Haruta and Davis groups, both of whom performed relatively low conversion studies similar to ours, report essentially the same O₂ dependence as we observe for monometallic Au (0.2–0.25).^{47,48} Vannice's group indicated similar dependences for their catalysts, although they did not report specific values.⁴⁹ The available O₂ reaction orders for Au supported on transition metal oxides are also similar to or smaller than those for titania supports: Co₃O₄ (0.27),⁴⁷ Fe₂O₃ (0.05),⁴⁷ and CeO₂ (0.18).^{50,51} Calla and Davis report a slightly higher value for Au/Al₂O₃ (0.36), although this value is substantially impacted by the amount of water in the feed.⁵² These studies are generally consistent, indicating that the oxygen reaction order for monometallic supported Au catalysts is 0.1–0.35. Measured reaction orders can strongly depend on the pressure range; although these are not always reported, most groups work at or below atmospheric O₂ pressure. With that in mind, the changes we observe by incorporating Ni into the NP synthesis (O₂ orders from 0.2 to 0.9) are much larger than those reported in the literature, even for Au supported on several different transition metal oxides (Ti, Co, Fe).⁴⁵

Oxygen pressure dependence data can also be interpreted in terms of a Michaelis–Menten type treatment.³³ The primary advantage of this treatment is that it provides a means of extracting quantitative parameters that describe O₂ reactivity for individual gold catalysts. A full derivation of this treatment has been published and can also be found in the Supporting Information.³³ Briefly, a simple mechanism (Scheme 1), which has also been suggested by DFT calculations,^{53,54} is used to

describe the reaction. Applying a typical kinetic derivation utilizing the steady-state approximation yields the following expression:

$$\frac{1}{\nu_{\text{rxn}}} = \frac{K_{\text{R}}}{\nu_{\text{max}}} \left(\frac{1}{P_{\text{O}_2}} \right) + \frac{1}{\nu_{\text{max}}} \quad (1)$$

where

$$\nu_{\text{max}} = k_2[\text{Au-CO}][\text{A}^*]_{\text{T}} \quad (2)$$

and

$$K_{\text{R}} = \frac{k_{-1} + k_2[\text{Au-CO}]}{k_1} \quad (3)$$

The [Au-CO] term represents the surface concentration or coverage of CO⁵⁵ and [A*]_T is the total number of active sites, which is assumed to be a subset of the total number of surface Au sites. K_{R} and ν_{max} are descriptive kinetic parameters comparable to those employed in enzyme kinetics.⁵⁶ Analogous to the Michaelis–Menten constant, K_{R} is a measure of the reactivity or instability of adsorbed O₂. Similarly, ν_{max} depends both on the intrinsic reaction barrier and the number of active sites, which is generally considered unknown for CO oxidation over Au/TiO₂ catalysts. This kinetic treatment has been previously published and has been shown to do a good job of describing kinetic data for CO oxidation over Au catalysts. By using this treatment, the MPC derived Au catalyst was shown to have essentially the same K_{R} value as a traditionally prepared Au/TiO₂ catalyst; the only difference between the two catalysts was in a slightly larger ν_{max} value for the MPC catalyst, which was concluded to have about 40% more active sites.³³

The double reciprocal plots predicted by eq 1 and shown in Figure 3C are linear, indicating that the kinetic data are well described by this treatment. The extracted kinetic parameters are plotted as a function of Ni content in Figure 4B (tabulated values are in the Supporting Information). Both parameters begin to change sharply as the mol % Ni increases above 30% and continue to increase as the Ni content increases. The changes in K_{R} values are especially large, increasing by a factor of 40 from Au to AuNi₃. The changes to ν_{max} , which increases by a factor of 3, are smaller, suggesting that a smaller number of more active Au sites result from incorporating Ni into the NP synthesis.

Catalyst-to-catalyst reproducibility was evaluated by preparing and testing the Au₁Ni₁ catalyst three separate times. Relative standard deviations in ν_{max} and K_{R} due to the synthesis and measurement reproducibility were 22% and 32%, respectively. Note that the errors in kinetic testing (32%) are larger than those in the synthetic reproducibility (22%). Although these errors appear large, they arise from the double inverse treatment of the data. For the six runs used to evaluate reproducibility, the reaction order was 0.70 ± 0.06 , which is a very reasonable error (8.5%) given the literature on this reaction. Further, the errors in the extracted K_{R} values (ca. 30%) are small relative to the changes in K_{R} (4000%). This confirms that the changes observed in the kinetic parameters result from modifying Au by incorporating different amounts of Ni into the NP synthesis rather than errors in the measurements or synthetic protocol.

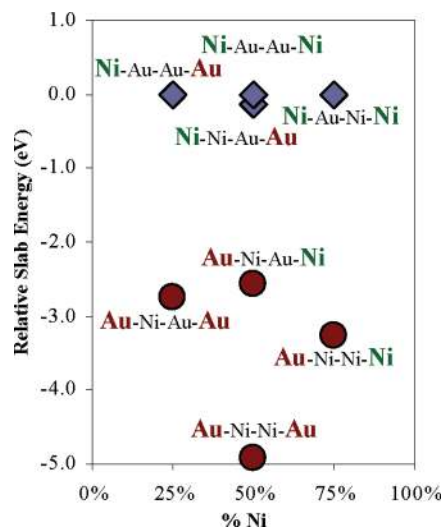


Figure 5. DFT calculation results on Au(111) slabs. Slab energies for Au–Ni slabs; the colored atoms indicate the surface layers. Reported energies are relative to the slab with the maximum number of exposed Ni surfaces for that composition; energies are only comparable for slabs with the same overall composition.

To our knowledge, this is the first attempt to tune supported Au catalysts in a controllable fashion by incorporating a second metal into the NP. The kinetic data show that Ni incorporation has large effects on oxygen binding and activation, which is of widespread importance for the development of new Au-based oxidation catalysts.^{3,4} Increases in K_R and ν_{\max} indicate that incorporating Ni substantially increases oxygen reactivity at the Au active sites. The ν_{\max} value depends on both the intrinsic reactivity and the number of active sites, so its smaller overall increase suggests that higher amounts of Ni may reduce the total number of active sites.

DFT Calculations. Both computational⁵⁷ and experimental^{58,59} studies have shown that incorporating Ni into Pt catalysts decreases the catalysts' ability to bind many adsorbates, making Pt–Ni materials potential low-temperature hydrogenation catalysts. We therefore performed DFT calculations on the Au–Ni system to gain further insight into these new catalysts and to understand how Ni might activate Au for CO oxidation. A combination of electronic and structural factors can influence bimetallic catalysts. For clarity, we refer to electronic influences as those arising from the nascent interactions between metals (e.g., modification of the d-band center, shifts in electron density due to electronegativity differences, etc.). Structural effects include geometry changes arising from lattice and atom size mismatches. These structural effects also include electronic differences arising from the introduction of under-coordinated surface atoms on roughened or higher index surfaces.

DFT calculations were performed on 4-layer Au(111)–Ni slabs to investigate the relative stabilities of model structures and to evaluate potential electronic influences of Ni on CO and O adsorption. Figure 5 shows the relative stability of model Au–Ni structures, based on the Au fcc lattice. The effects of lattice strain are well-known, with compressive strain generally inducing weaker substrate binding, due to stronger lateral metal–metal interactions, and expansive or tensile strain inducing stronger substrate binding, due to weaker lateral metal–metal interactions.⁶⁰ Therefore, the Au fcc lattice was used to isolate electronic effects and eliminate potential effects of lattice strain. The results presented in Figure 5 indicate that structures in which Au is on the surface of the slab are substantially more stable than when Au is in the center layers. This is not surprising given

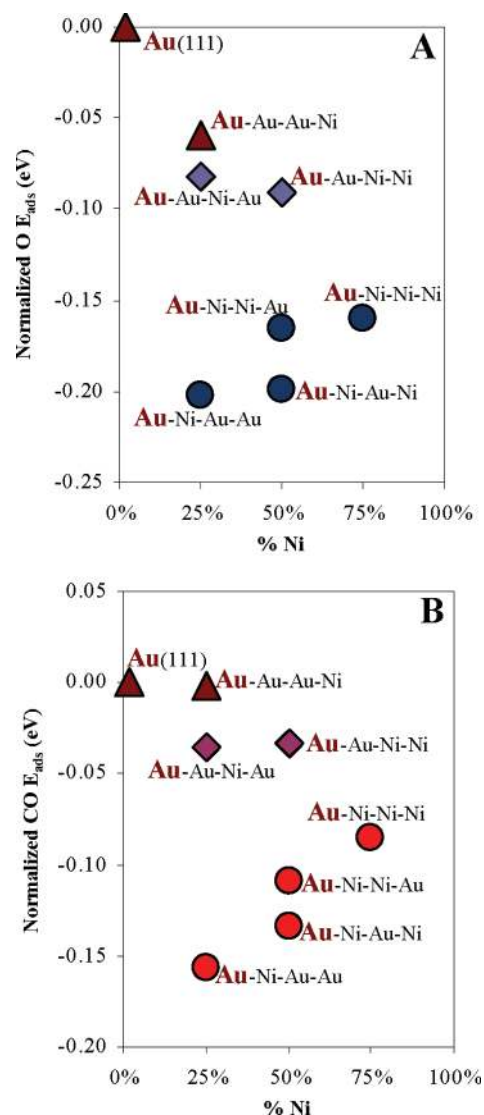


Figure 6. (A) Energies for O adsorption (3-fold hollow sites) on planar (111) slabs; the first (colored) layer indicates the adsorbing layer. (B) Energies for CO adsorption (atop sites) on planar (111) slabs. The first (colored) layer indicates the adsorbing layer (\blacktriangle = $\text{Au}_{\text{ads}}\text{-Au-Au-X}$; \blacklozenge = $\text{Au}_{\text{ads}}\text{-Au-X-X}$; \bullet = $\text{Au}_{\text{ads}}\text{-X-X-X}$).

the large surface segregation energies for Au-based alloys.⁴³ Structures with Ni–Au mixtures in the middle two layers had nearly the same overall energy as the pure layer slabs presented in Figure 5. Since mixing the middle two layers had only small effects on the overall slab stability, for clarity, those results are omitted here and can be found in the Supporting Information.

The O and CO adsorption energy calculations in Figure 6 give an indication of the potential nascent electronic influences for this bimetallic system. Atomic rather than molecular oxygen is used to speed the calculation, as O_2 adsorption has been shown to scale linearly with O adsorption for several metals,⁵³ including a number of Au surfaces and clusters.^{53,61} The data for the 25% Ni slabs show that incorporating a subsurface monolayer of Ni into the Au lattice increases the O adsorption energy by about 0.2 eV. This effect diminishes as the Ni layer moves farther from the surface, indicating additional Au layers effectively screen the electronic influences. The O–Au–Ni–X–X data (Figure 6A in dark blue) show O adsorption is relatively insensitive to structures in the third and fourth layers, which is also consistent with the screening observed in the 25% Ni data.

The trends for CO adsorption energies are similar, although the maximum effect of Ni incorporation is slightly smaller at 0.15 eV.

DFT calculations on model slabs are not ideal models for real catalysts. They do not include important factors such as particle size and composition distributions, support effects, the presence of numerous different high index planes or of more reactive corner and edge atoms, and the ability of supported NPs to relax in three dimensions to relieve lattice strain. These issues are extraordinarily expensive to deal with computationally; however, these effects are not necessarily well understood from an experimental standpoint, either. Fixing the bottom layer of the slab to the Au lattice admittedly provides an imperfect model for nanoparticle catalysts and ignores potential structural effects. However, this approach isolates the electronic effects originating from electron donation from these ill-defined and complicated potential structural effects. Although adsorption energies may not map directly onto NP catalyst, the trends that are unveiled are the important results. In this case, the DFT calculations suggest that introducing Ni into Au NPs results in an electronic modification of the Au surface that has stronger interactions with O and CO.

Interpreting Kinetics and DFT Data. On the whole, the kinetics data indicate that adding Ni to Au NPs results in the catalysts with more reactive surface oxygen. At first glance, this appears to contradict the DFT calculations, which suggest that oxygen is bound more strongly when subsurface Ni is incorporated into Au slabs. To address this, it is important to carefully discuss the origins and meaning of K_R . Once adsorbed onto the Au surface, the mechanism in Scheme 1 provides two reaction pathways for O_2 . It can either (a) desorb or (b) react with surface CO, proceeding to form the CO_2 product. K_R describes the total reactivity of adsorbed O_2 ; it is the ratio of the sum of the rates for processes a and b to the rate of adsorption. Figure 4B shows that K_R increases with the catalyst Ni content; therefore, the most straightforward interpretation of these data, with no additional assumptions, is that adsorbed O_2 becomes more reactive as Ni is incorporated into the catalyst. This definition draws no conclusion regarding which pathway (desorption or reaction) is favored, only that the O_2 is more reactive toward one or both of the pathways, relative to the rate constant for adsorption.

The DFT calculations suggest that incorporating Ni into the catalysts increases the O adsorption energy. Although perhaps not immediately obvious, this trend correlates well with the kinetics results, which indicate that Ni incorporation increases O_2 reactivity. The explanation for this apparent contradiction is as follows. Atomic O adsorption studies are used because they scale linearly with O_2 adsorption energies, yet are less expensive to calculate.⁵³ DFT calculations have also shown that a number of Brønsted–Evans–Polanyi (BEP) relations, which are merely linear free energy relationships (LFERs), exist between adsorption energies and important transition states in a number of catalytic reactions. For CO oxidation catalysis, the transition state energy for O_2 splitting to 2O scales linearly with O adsorption energy for several metals, including several Au surfaces and clusters.^{53,61} Similarly, the transition state energies for the reaction between adsorbed CO and adsorbed O_2 or O scale linearly with the sum of the O and CO adsorption energies.^{53,61} So, the DFT results in Figure 6, which suggest that the electronic effects of incorporating Ni into Au slabs induces stronger O and CO binding, predict that these surfaces will show enhanced CO oxidation activity. This is entirely consistent with the kinetics measurements, which show that Ni

incorporation increases the measured K_R values, which describe the overall reactivity of adsorbed O_2 .

It is also important to note that the K_R values are not an explicit binding constant. In the study that first offered the Michaelis–Menten treatment for CO oxidation over Au catalysts, we initially interpreted K_R in terms of an O_2 binding constant by assuming that the reaction with CO was slow relative to simple O_2 dissociation. The current data from the Ni–Au catalysts suggest that this may not be a good assumption; rather, the K_R term may be dominated by the term originating from the forward reaction with CO. This is perhaps more easily seen by expanding the Michaelis–Menten treatment. First, the equilibrium expression for CO binding can be used to describe the first step in the mechanism, which is assumed to be a rapidly established pre-equilibrium:

$$K_{CO} = \frac{[Au-CO]}{P_{CO}[Au]_{CO}} \quad (4)$$

This allows K_R and v_{max} to be expressed as:

$$v_{max} = k_2 K_{CO} P_{CO} [Au]_{CO} [A^*]_T \quad (5)$$

and

$$K_R = \frac{k_{-1} + k_2 K_{CO} P_{CO} [Au]_{CO}}{k_1} \quad (6)$$

or

$$K_R = \frac{1}{K_{O_2}} + \frac{k_2 K_{CO} P_{CO} [Au]_{CO}}{k_1} \quad (7)$$

Where $[Au]_{CO}$ is the concentration of Au surface sites capable of binding CO. For Au/TiO₂ catalysts, the number of CO binding sites has been shown to be less than the total number of surface sites.^{44,62,63}

K_R should be strictly interpreted in terms the total reactivity of adsorbed O_2 ; this can only correspond to a maximum value for the O_2 binding constant (K_R is inversely related to the equilibrium binding constant). The Ni–Au data show dramatic increases in K_R relative to pure Au. One of two scenarios must then hold true, either (a) the first part of the K_R term dominates and O_2 binding gets substantially weaker upon Ni incorporation or (b) K_R is dominated by the forward reaction with CO.

The first scenario seems unlikely. O_2 binding by Au is exceedingly weak; in fact, the only direct evaluation of the O_2 binding constant by Au catalysts is our kinetic determination,³³ which yields only a maximum value. It is difficult to imagine catalysts that bind oxygen even more weakly than pure Au, and especially 40 times more weakly, being effective CO oxidation catalysts. The second scenario seems much more likely. On the basis of the DFT calculations, both the k_2 and K_{CO} portions of the second term in the K_R expression (eqs 6 and 7) would be expected to be affected by structural and electronic changes arising from Ni incorporation. The product of these two terms would amplify the effects of structural/electronic changes on the K_R term, and could reasonably give rise to a 40-fold increase in K_R . Therefore, the data for the Ni–Au catalysts are most consistent with Ni enhancing both O_2 binding and reaction, with

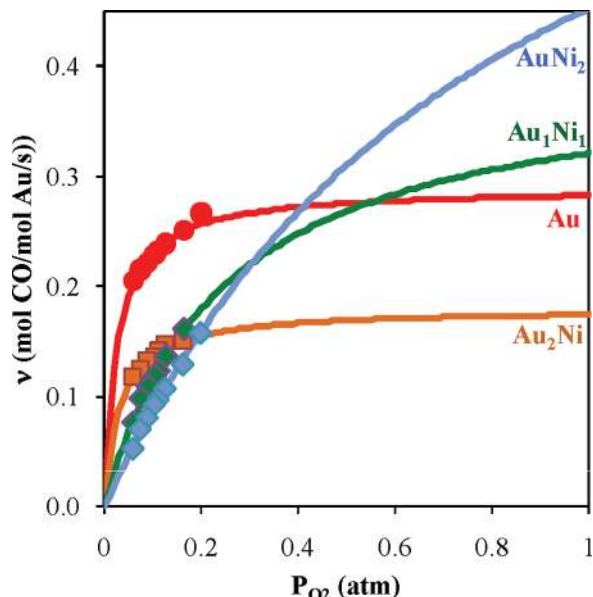


Figure 7. Oxygen saturation plots for Ni–Au catalysts at 20 °C. Closed symbols are experimental data; fitted lines come from the K_R and ν_{\max} values determined with eq 1.

the measurable K_R term being dominated by the reaction ($k_2K_{CO}P_{CO}[Au]_{CO}$) term.

The K_R and ν_{\max} descriptors also originate from the O_2 pressure dependence data, so it is useful to consider how these factors interrelate, and what they can tell us about how Ni modifies Au catalysts. This is often interpreted in terms of the oxygen reaction order, which originates from a slightly different mathematical treatment of the O_2 pressure dependence data. Changes in the oxygen reaction order do not necessarily indicate a change in the reaction mechanism; however, they do provide important information regarding this key mechanistic step. In a simple sense, the experimental reaction order relates to where the catalyst operates along the kinetic oxygen saturation curve for a given pressure range. Catalysts with reaction orders near 0 operate near the kinetic saturation limit (i.e., where the O_2 reaction proceeds as quickly as possible, not necessarily where the surface is saturated with O_2). Catalysts with reaction orders near 1 operate “earlier” on the saturation curve, where oxygen binding/reaction is more sensitive to the oxygen pressure and reaction rates are readily enhanced by increasing the partial pressure of oxygen in the feed. In terms of catalyst characterization, the reaction order can also be interpreted as describing the shape of the saturation curve for a given catalyst, under the conditions of the catalytic reaction. Low reaction orders suggest a saturation curve compressed to lower pressures (i.e., saturation occurs at lower pressures), while higher reaction orders suggest a saturation curve that is elongated over a wider pressure range.

Full oxygen saturation curves can be readily generated from the K_R and ν_{\max} descriptors by rearranging and plotting eq 1; those plots are shown in Figure 7 (the Au_2Ni_3 and $AuNi_3$ catalysts were omitted for clarity). The plots very clearly show how changes in the oxygen pressure dependence, and hence in K_R and ν_{\max} , affect the bend of the saturation curve for the different catalysts. Not surprisingly, they indicate that catalyst performance depends substantially on the reaction conditions.

The oxygen saturation plots also provide some further insight into how Ni changes catalysis by Au. Of note is the change in K_R (40-fold increase) relative to ν_{\max} (3-fold increase). The primary difference between these two descriptors is that ν_{\max} includes a relative measure of the number of active sites present

on the catalyst. Comparing the saturation curves for the Au and Au_2Ni catalysts, it is clear that they behave similarly. Both are largely saturated in the range shown and the shapes of the curves are generally the same, arising from the similarities of the K_R values (0.026 and 0.032, respectively). The only real difference between these two catalysts is that Au_2Ni is approximately 40% less active than Au/TiO₂. This indicates that the two catalysts have roughly the same inherent ability to catalyze the reaction, but that Au_2Ni has about 40% fewer active sites. As the Ni content of the catalyst increases, the modifications to the active site(s) become more substantial, evidenced by the changes in the shapes of the curves and higher saturation pressures for Au_1Ni_1 and $AuNi_2$. This may also help to explain why the catalysts with greater Ni content do not have greater overall activities at lower pressures: although adding Ni results in active sites that can more easily bind and activate oxygen, it decreases the relative number of active sites.

Comments on Ni. The nature and state of the Ni are important factors in understanding how Ni might be tuning catalysis by Au. We have attempted several XPS studies of these materials in order to determine the Ni oxidation state. Unfortunately, the metal loadings attainable through our current synthetic procedures are low enough that we have not been able to observe peaks attributable to Ni. Further, the Au peaks are also small and are too broad relative to the background noise to reliably evaluate any changes in Au core electron binding energies. We are currently working to develop synthetic procedures that will allow us to prepare larger amounts of catalysts with higher weight loadings in order to address this question more completely.

At the same time, placing the experimental data into the context of the calculations, the synthesis, and the available literature provides some guidance. First, the computational study indicates that the increased O_2 binding observed in the kinetics experiments is consistent with reduced Ni⁰ being present near the active site. Second, a number of the synthetic procedures are designed to favor the preparation of reduced Ni species. The metal salts are treated with borohydride, which is a strong enough reducing agent to reduce Ni^{II} to Ni⁰.⁶⁴ Additionally, Au preferentially segregates to the surface of Ni–Au alloys⁴³ and thiol stabilizers enhance this effect by binding Au more strongly than Ni.³⁰ MPC isolation and deposition are then carried out in the absence of O_2 by using Schlenk techniques, and the supported MPCs are subsequently treated in flowing H_2 at 300 °C for 16 h immediately prior to kinetic testing. Given these treatments and the mild reaction conditions, it is reasonable to conclude that reduced Ni species are possibly and even likely present.

Third, the infrared spectra of CO adsorbed to the catalysts show no peaks that can be assigned to either Ni⁰ or Ni oxide surface species. If NiO species are present, they must be so at levels below the detection limits of the CO adsorption experiment. Fourth, the changes we observe in the O_2 reaction order for the highest Ni content catalysts are higher than those reported in the literature for several transition metal oxide supports. As discussed previously, reaction orders between 0.15 and 0.35 have been reported for Au supported on Ti, Co, and Fe oxides. The reaction orders of 0.7, 0.85, and 0.9 for Au_1Ni_1 , $AuNi_2$, and $AuNi_3$, respectively, are much larger than the literature reports. This indicates that the data for the Ni–Au catalysts are therefore not consistent with what one would expect for variances due to metal–support interactions. In other words, it appears that Ni incorporation into the NP synthesis results in a different Ni–Au

interaction that has a larger effect on the CO oxidation catalysis than one would expect based on support effects alone.

Admittedly, this is somewhat circumstantial evidence. Since XPS studies have been inconclusive, we cannot rule out the presence or possible role of Ni oxide in these catalysts, in spite of our reasonable efforts. Regardless of the ultimate cause of these effects, the data clearly show that incorporating Ni into the Au NP synthesis results in a previously unreported ability to tune the kinetics of CO oxidation catalysis. We look forward to future experiments using improved synthetic methods that will allow us to begin addressing questions regarding the origins of the unique catalytic properties of the Ni–Au catalysts.

Conclusions

Using anchored dendrimers to prepare DENs and MPCs, we developed a synthesis for controllably incorporating Ni into supported Au NP catalysts. TEM indicated particles on the order of 2 nm and confirmed that Ni and Au were present in individual NPs. Kinetics studies showed that Ni has dramatic effects on CO oxidation catalysis by Au. These effects are substantially larger than previous reports for support effects on Au-based CO oxidation catalysts. Beyond large changes in the apparent activation energy, Ni incorporation appears to tune the oxygen reactivity, with increasing Ni contents resulting in greater O₂ reaction orders and more reactive surface O₂. Infrared spectroscopy of adsorbed CO showed only surface Au; there was no evidence for the presence of surface Ni⁰ or NiO in the infrared spectrum. Complementary DFT calculations indicate that there is a strong driving force for segregating Au to the surface of Ni–Au alloys, consistent with the absence of Ni–CO peaks in the infrared spectrum. Further, CO and O adsorption energy calculations were also generally consistent with the increased oxygen reactivity observed in CO oxidation kinetics. Further analysis of the kinetics data indicated that, although Ni incorporation increased the reactivity of surface oxygen, it reduced the relative number of active sites on the catalyst. To our knowledge, this is the first example of controllably tuning the heterogeneous catalytic properties of Au by doping with another metal.

Acknowledgment. The authors gratefully acknowledge the Robert A. Welch Foundation (Grant nos. W-1552 and F-1529) and the U.S. National Science Foundation (Grant no. CHE-0449549) for financial support of our work. The Kratos XPS was funded by the National Science Foundation under grant CHE-0618242. B.D.C. gratefully acknowledges the donors of the Petroleum Research Fund for a UFS grant to support his academic leave at the Center for Atomic-Scale Materials Design, which is supported by the Lundbeck Foundation. The authors also thank the Danish Center for Scientific Computing for computer time and Prof. Jens K. Nørskov, Dr. Frank Abild-Pederson, and Mr. Tao Jiang for their helpful discussions and guidance in performing DFT calculations.

Supporting Information Available: Additional TEM micrographs and DRIFTS spectra; catalyst composition and CO oxidation kinetics data; reproducibility data; rate law derivation; and detailed experimental section. This material is available free of charge via the Internet at <http://pubs.acs.org>.

References and Notes

- (1) Bond, G. C.; Louis, C.; Thompson, D. T. *Catalysis by Gold*; Imperial College Press: London, UK, 2006; Vol. 6.
- (2) Kung, M. C.; Davis, R. J.; Kung, H. H. *J. Phys. Chem. C* **2007**, *111*, 11767.

- (3) Corma, A.; Garcia, H. *Chem. Soc. Rev.* **2008**, *37*, 2096.
- (4) Hashmi, S. K.; Hutchings Graham, J. *Angew. Chem., Int. Ed. Engl.* **2006**, *45*, 7896.
- (5) Comotti, M.; Li, W.-C.; Spliethoff, B.; Schueth, F. *J. Am. Chem. Soc.* **2006**, *128*, 917.
- (6) Chen, M. S.; Goodman, D. W. *Science (Washington, DC, U.S.)* **2004**, *306*, 252.
- (7) Stiehl, J. D.; Kim, T. S.; McClure, S. M.; Mullins, C. B. *J. Am. Chem. Soc.* **2004**, *126*, 13574.
- (8) Matthey, D.; Wang, J. G.; Wendt, S.; Matthiesen, J.; Schaub, R.; Laegsgaard, E.; Hammer, B.; Besenbacher, F. *Science (Washington, DC, U.S.)* **2007**, *315*, 1692.
- (9) Janssens, T. V. W.; Clausen, B. S.; Hvolbaek, B.; Falsig, H.; Christensen, C. H.; Blligaard, T.; Nørskov, J. K. *Top. Catal.* **2007**, *44*, 15.
- (10) *Catalysis by Metals and Alloys*; Ponec, V., Bond, G. C., Eds.; Elsevier: Amsterdam, The Netherlands, 1995; Vol. 95.
- (11) Kumar, D.; Chen, M. S.; Goodman, D. W. *Catal. Today* **2007**, *123*, 77.
- (12) Mozer, T. S.; Dziuba, D. A.; Vieira, C. T. P.; Passos, F. B. *J. Power Sources* **2009**, *187*, 209.
- (13) Liu, X.; Wang, A.; Wang, X.; Mou, C.-Y.; Zhang, T. *Chem. Commun. (Cambridge, U.K.)* **2008**, 3187.
- (14) Liu, X.; Wang, A.; Yang, X.; Zhang, T.; Mou, C.-Y.; Su, D.-S.; Li, J. *Chem. Mater.* **2009**, *21*, 410.
- (15) Della Pina, C.; Falletta, E.; Rossi, M. *J. Catal.* **2008**, *260*, 384.
- (16) Cardenas-Lizana, F.; Gomez-Quero, S.; Hugon, A.; Delannoy, L.; Louis, C.; Keane, M. A. *J. Catal.* **2009**, *262*, 235.
- (17) Ferro, R.; Saccone, A.; Maccio, D.; Delfino, S. *Gold Bull.* **2003**, *36*, 39.
- (18) Lang, H.; Maldonado, S.; Stevenson, K. J.; Chandler, B. D. *J. Am. Chem. Soc.* **2004**, *126*, 12949.
- (19) Hoover, N. N.; Auten, B. J.; Chandler, B. D. *J. Phys. Chem. B* **2006**, *110*, 8606.
- (20) Besenbacher, F.; Chorkendorff, I.; Clausen, B. S.; Hammer, B.; Molenbroek, A. M.; Nørskov, J. K.; Stensgaard, I. *Science* **1998**, *279*, 1913.
- (21) Lahr, D. L.; Ceyer, S. T. *J. Am. Chem. Soc.* **2006**, *128*, 1800.
- (22) Wang, G.-C.; Jiao, J.; Bu, X.-H. *J. Phys. Chem. C* **2007**, *111*, 12335.
- (23) Bienzle, M.; Oishi, T.; Sommer, F.; Cmpds, J. A. *J. Alloys Compd.* **1995**, *220*, 182.
- (24) Molenbroek, A. M.; Nørskov, J. K.; Clausen, B. S. *J. Phys. Chem. B* **2001**, *105*, 5450.
- (25) Yuan, G.; Louis, C.; Delannoy, L.; Keane, M. A. *J. Catal.* **2007**, *247*, 256.
- (26) Zhou, S.; Yin, H.; Schwartz, V.; Wu, Z.; Mullins, D.; Eichhorn, B.; Overbury, S. H.; Dai, S. *ChemPhysChem* **2008**, *9*, 2475.
- (27) Tkachenko, O. P.; Kustov, L. M.; Nikolaev, S. A.; Smirnov, V. V.; Klementiev, K. V.; Naumkin, A. V.; Volkov, I. O.; Vasil'kov, A. Y.; Murzin, D. Y. *Top. Catal.* **2009**, *52*, 344.
- (28) Luo, J.; Maye, M. M.; Petkov, V.; Kariuki, N. N.; Wang, L.; Njoki, P.; Mott, D.; Lin, Y.; Zhong, C.-J. *Chem. Mater.* **2005**, *17*, 3086.
- (29) Hills, C. W.; Mack, N. H.; Nuzzo, R. G. *J. Phys. Chem. B* **2003**, *107*, 2626.
- (30) Auten, B. J.; Hahn, B. P.; Vijayaraghavan, G.; Stevenson, K. J.; Chandler, B. D. *J. Phys. Chem. C* **2008**, *112*, 5365.
- (31) Chen, D.; Li, J.; Shi, C.; Du, X.; Zhao, N.; Sheng, J.; Liu, S. *Chem. Mater.* **2007**, *19*, 3399.
- (32) Liu, X.; Madix, R. J.; Friend, C. M. *Chem. Soc. Rev.* **2008**, *37*, 2243.
- (33) Long, C. G.; Gilbertson, J. D.; Vijayaraghavan, G.; Stevenson, K. J.; Pursell, C. J.; Chandler, B. D. *J. Am. Chem. Soc.* **2008**, *130*, 10103.
- (34) Zheng, N.; Stucky, G. D. *J. Am. Chem. Soc.* **2006**, *128*, 14278.
- (35) Lang, H.; May, R. A.; Iversen, B. L.; Chandler, B. D. *J. Am. Chem. Soc.* **2003**, *125*, 14832.
- (36) Hammer, B.; Hansen, L. B.; Nørskov, J. K. *Phys. Rev. B* **1999**, *59*, 7413.
- (37) Nørskov, J. K.; Rossmeisl, J.; Logadottir, A.; Lindqvist, L.; Kitchin, J. R.; Blligaard, T.; Jonsson, H. *J. Phys. Chem. B* **2004**, *108*, 17886.
- (38) Kurth, S.; Perdew, J. P.; Blaha, P. *Int. J. Quantum Chem.* **1999**, *75*, 889.
- (39) Gilbertson, J. G.; Vijayaraghavan, G.; Stevenson, K. J.; Chandler, B. D. *Langmuir* **2007**, *23*, 11239.
- (40) Ye, H.; Crooks, R. M. *J. Am. Chem. Soc.* **2007**, *129*, 3627.
- (41) Yoshinobu, J.; Takagi, N.; Kawai, M. *Phys. Rev. B: Condens. Matter Phys.* **1994**, *49*, 16670.
- (42) De Bokx, P. K.; Bonne, R. L. C.; Geus, J. W. *Appl. Catal.* **1987**, *30*, 33.
- (43) Ruban, A. V.; Skriver, H. L.; Nørskov, J. K. *Phys. Rev. B: Condens. Matter Phys.* **1999**, *59*, 15990.
- (44) Hartshorn, H.; Pursell, C. J.; Chandler, B. D. *J. Phys. Chem. C* **2009**, *113*, 10718.
- (45) Aguilar-Guerrero, V.; Gates, B. C. *Catal. Lett.* **2009**, *130*, 108.
- (46) Although many research groups have employed CO oxidation as a test reaction, relatively few have reported reaction orders. For a complete

review of the available kinetics studies, see Aguillar-Guerrero and Gates' review: *Catal. Lett.* **2009**, *130*, 108.

(47) Haruta, M.; Tsubota, S.; Kobayashi, T.; Kageyama, H.; Genet, M.; Delmon, B. *J. Catal.* **1993**, *144*, 175.

(48) Calla, J. T.; Davis, R. J. *J. Catal.* **2006**, *241*, 407.

(49) Lin, S. D.; Bollinger, M.; Vannice, M. A. *Catal. Lett.* **1993**, *17*, 245.

(50) Aguilar-Guerrero, V.; Gates, B. C. *Chem. Commun.* **2007**, 3210.

(51) Aguilar-Guerrero, V.; Gates, B. C. *J. Catal.* **2008**, *260*, 351.

(52) Calla, J. T.; Davis, R. J. *Ind. Eng. Chem. Res.* **2005**, *44*, 5403.

(53) Falsig, H.; Hvolboek, B.; Kristensen, I. S.; Jiang, T.; Bligaard, T.; Christensen, C. H.; Norskov, J. K. *Angew. Chem., Int. Ed.* **2008**, *47*, 4835.

(54) Nørskov and co-workers recently proposed a similar mechanism based on DFT calculation. The primary difference between Scheme 1 and the DFT results is that Scheme 1 assumes that the reaction between surface O atoms and adsorbed CO (the last step in the scheme) is fast. The DFT study found this last reaction step to be fast for Au catalysts and further found that direct reaction between surface bound O₂ and adsorbed CO was required to accurately describe Au catalysts.

(55) The surface coverage of CO is treated as a constant during the reaction, based on the independence of the reaction rate on CO pressure (reaction order = 0).

(56) Our first paper deriving and employing the Michaelis–Menten treatment used K_R to describe O₂ reactivity. On the basis of various feedback, we have changed the name of the constant so that it is not confused with a constant designed to describe inhibition.

(57) Kitchin, J. R.; Norskov, J. K.; Barteau, M. A.; Chen, J. G. *J. Chem. Phys.* **2004**, *120*, 10240.

(58) Murillo, L. E.; Goda, A. M.; Chen, J. G. *J. Am. Chem. Soc.* **2007**, *129*, 7101.

(59) Menning, C. A.; Hwu, H. H.; Chen, J. G. *J. Phys. Chem. B* **2006**, *110*, 15471.

(60) Mavrikakis, M.; Hammer, B.; Norskov, J. K. *Phys. Rev. Lett.* **1998**, *81*, 2819.

(61) Jiang, T.; Mowbray, D. J.; Dobrin, S.; Falsig, H.; Hvolbaek, B.; Bligaard, T.; Norskov, J. K. *J. Phys. Chem. C* **2009**, *113*, 10548.

(62) Oxford, S. M.; Henao, J. D.; Yang, J. H.; Kung, M. C.; Kung, H. H. *Appl. Catal., A* **2008**, *339*, 180.

(63) Menegazzo, F.; Manzoli, M.; Chiorino, A.; Boccuzzi, F.; Tabakova, T.; Signoretto, M.; Pinna, F.; Pernicone, N. *J. Catal.* **2006**, *237*, 431.

(64) Latimer, W. M. *Oxidation Potentials*, 2nd ed.; Prentice-Hall, Inc: New York, 1952.

JP101845D