



## Article

# Enhancement of Exchange Bias and Perpendicular Magnetic Anisotropy in CoO/Co Multilayer Thin Films by Tuning the Alumina Template Nanohole Size

Mohamed Salaheldeen <sup>1,2,3,\*</sup>, Ayman Nafady <sup>4</sup> , Ahmed M. Abu-Dief <sup>5</sup> , Rosario Díaz Crespo <sup>2</sup>,  
María Paz Fernández-García <sup>2</sup> , Juan Pedro Andrés <sup>6,7</sup> , Ricardo López Antón <sup>6,7</sup> , Jesús A. Blanco <sup>2</sup>   
and Pablo Álvarez-Alonso <sup>2,8,\*</sup>

<sup>1</sup> Physics Department, Faculty of Science, Sohag University, Sohag 82524, Egypt

<sup>2</sup> Departamento de Física, Universidad de Oviedo, C/Federico García Lorca 18, 33007 Oviedo, Spain; charo@uniovi.es (R.D.C.); fernandezpaz@uniovi.es (M.P.F.-G.); jabr@uniovi.es (J.A.B.)

<sup>3</sup> Departamento de Física Aplicada, EIG, Universidad del País Vasco, UPV/EHU, 20018 San Sebastián, Spain

<sup>4</sup> Chemistry Department, College of Science, King Saud University, Riyadh 11451, Saudi Arabia; anafady@ksu.edu.sa

<sup>5</sup> Chemistry Department, Faculty of Science, Sohag University, Sohag 82524, Egypt; amamohammed@taibahu.edu.sa

<sup>6</sup> Instituto Regional de Investigación Científica Aplicada (IRICA), Universidad de Castilla-La Mancha, 13071 Ciudad Real, Spain; juanpedro.andres@uclm.es (J.P.A.); ricardo.lopez@uclm.es (R.L.A.)

<sup>7</sup> Departamento de Física Aplicada, Universidad de Castilla-La Mancha, 13071 Ciudad Real, Spain

<sup>8</sup> Instituto Universitario de Tecnología Industrial de Asturias, Universidad de Oviedo, 33203 Gijón, Spain

\* Correspondence: m.salaheldin@science.sohag.edu.eg (M.S.); alvarezapablo@uniovi.es (P.Á.-A.)



**Citation:** Salaheldeen, M.; Nafady, A.; Abu-Dief, A.M.; Díaz Crespo, R.; Fernández-García, M.P.; Andrés, J.P.; López Antón, R.; Blanco, J.A.; Álvarez-Alonso, P. Enhancement of Exchange Bias and Perpendicular Magnetic Anisotropy in CoO/Co Multilayer Thin Films by Tuning the Alumina Template Nanohole Size. *Nanomaterials* **2022**, *12*, 2544. <https://doi.org/10.3390/nano12152544>

Academic Editors: Paola Tiberto and Imre Bakonyi

Received: 15 June 2022

Accepted: 21 July 2022

Published: 24 July 2022

**Publisher's Note:** MDPI stays neutral with regard to jurisdictional claims in published maps and institutional affiliations.

**Abstract:** The interest in magnetic nanostructures exhibiting perpendicular magnetic anisotropy and exchange bias (EB) effect has increased in recent years owing to their applications in a new generation of spintronic devices that combine several functionalities. We present a nanofabrication process used to induce a significant out-of-plane component of the magnetic easy axis and EB. In this study, 30 nm thick CoO/Co multilayers were deposited on nanostructured alumina templates with a broad range of pore diameters,  $34 \text{ nm} \leq D_p \leq 96 \text{ nm}$ , maintaining the hexagonal lattice parameter at 107 nm. Increase of the exchange bias field ( $H_{EB}$ ) and the coercivity ( $H_C$ ) (12 times and 27 times, respectively) was observed in the nanostructured films compared to the non-patterned film. The marked dependence of  $H_{EB}$  and  $H_C$  with antidot hole diameters pinpoints an in-plane to out-of-plane changeover of the magnetic anisotropy at a nanohole diameter of  $\sim 75 \text{ nm}$ . Micromagnetic simulation shows the existence of antiferromagnetic layers that generate an exceptional magnetic configuration around the holes, named as antivortex-state. This configuration induces extra high-energy superdomain walls for edge-to-edge distance  $> 27 \text{ nm}$  and high-energy stripe magnetic domains below 27 nm, which could play an important role in the change of the magnetic easy axis towards the perpendicular direction.

**Keywords:** nanostructured thin films; micromagnetic simulation; domain walls; perpendicular magnetic anisotropy; exchange bias



**Copyright:** © 2022 by the authors. Licensee MDPI, Basel, Switzerland. This article is an open access article distributed under the terms and conditions of the Creative Commons Attribution (CC BY) license (<https://creativecommons.org/licenses/by/4.0/>).

## 1. Introduction

Modern discoveries in materials science have clearly demonstrated that the scalability of the intrinsic physical properties of materials can lead to the development of new or improved technological applications. Recently, nanostructured magnetic materials exhibiting unique magnetic moment configuration have attracted a great deal of attention because of their outstanding utility in mobile communications, biomedical sensors, logic circuits, and high-density data storage devices [1–6]. In this respect, decreasing the dimension of the nanostructured thin films near to its critical length could lead to significant differences in the magnetic properties compared to non-patterned thin films [7]. This is clearly evident

in the exchange bias (EB) effect, a magnetic effect that usually appears at the interface of the antiferromagnetic (AFM) and ferromagnetic (FM) phases related to the exchange coupling between them [8–11]. The EB phenomenon is characterized by an enhancement of the coercive field ( $H_C$ ) and a displacement of the hysteresis loop along the applied magnetic field after the samples have been field-cooled [8,12]. Due to its interfacial origin, the magnitude of this loop shifts and the so-called exchange bias field ( $H_{EB}$ , defined as  $H_{EB} = \frac{H_{C1} + H_{C2}}{2}$ , in which  $H_{C1}$  and  $H_{C2}$  are the left and right coercive fields, respectively) is inversely proportional to the thickness of the FM layer [13]. In view of their peculiar properties, magnetic materials unveiling strong EB behavior have gained much interest owing to their widespread applications in sensors [14], spintronic devices [15,16], drug carriers [17], and magnetic read heads for magnetic information storage devices [18]. In addition, AFM/FM multilayer (ML) thin films with strong perpendicular magnetic anisotropy (PMA) have become a key factor in improving magnetic logic chips, spintronic devices, and random-access memory devices [19–21].

In this regard, AFM/FM CoO/Co MLs represent an excellent system for investigating the EB phenomenon [22,23], since cobalt is a widely used FM material in magnetic media recording, and CoO orders antiferromagnetically exhibiting high magnetocrystalline anisotropy and moderate Néel temperature ( $T_N = 290$  K) [24–26]. However, fabricating CoO/Co MLs with large perpendicular magnetic anisotropy is still challenging. Conventional methods to obtain CoO/Co with PMA use multilayer structures of AFM/FM/non-magnetic metal or metal oxide interfaces [27–29], but these methods may affect some magnetic parameters of CoO/Co, such as magnetization saturation ( $M_S$ ) and damping coefficient [28,30]. An alternative approach that has already proven its success with other materials, such as Co/Permalloy [31,32], consists of using antidot nanostructured templates, which allows tailoring the physical properties of any host-patterned material through the variation of its geometric parameters, such as the hole size and the neighboring interdistance [33]. In particular, it has been reported that, for FM/AFM antidot thin films, the coercivity and EB field can be engineered by controlling the thickness of the FM layer, the diameter of the pores, and the density of the pores [9,34–36]. Nonetheless, the magnetic behavior of CoO/Co-MLs-based antidot nanostructured thin films has been investigated in only a few works, although the specimens have shown in-plane easy magnetization direction [37]; the case of CoO/[Co/Pd] MLs represents, however, a noteworthy exception presenting PMA—although the antidot structure results in an enhancement, not an induction of PMA [38]. Therefore, if highly effective PMA could be achieved in CoO/Co, this standard material would become interesting for perpendicular bit-patterned magnetic storage media applications and magnetic random-access memory with spin transfer torque magnetic random-access memories [19,39].

With this intention, we have explored a route to induce a PMA on CoO/Co ML by nanostructuration. We have used a low-cost technique consisting of depositing magnetic films onto nanoporous anodic alumina (NAA) templates, which provides self-assembling nanopores with reproducible two-dimensional hexagonal symmetry through well-defined control of geometrical parameters, such as lattice symmetry, edge-to-edge distance, pore length, and pore size [33]. Furthermore, an almost perfect periodicity of the hexagonal ordering (equivalent to that obtained by lithographic methods) can be achieved by adding a pre-patterning step before the anodization process of the alumina surface [33,40].

In this contribution, via precise control and manipulation of the geometrical parameters of CoO/Co antidot thin films, we examine the induced changes in magnetic properties such as magnetic anisotropy and EB field. By varying the antidot hole diameter,  $D$ , from 32 to 93 nm while keeping the lattice constant ( $p = 108$  nm)—corresponding to a reduction in the network width, i.e., the edge-to-edge distance,  $W$ , from 76 to 13 nm—we disclose the conditions for the change of the magnetic anisotropy easy axis direction from in-plane (INP) to out-of-plane (OOP).

## 2. Materials and Methods

### 2.1. Synthesis Method

The synthesis of the CoO/Co ML antidot arrays is divided into two main steps: the fabrication of NAA substrates with a constant lattice parameter  $p = 108$  nm and pore diameter varying between  $34 \pm 2$  nm and  $96 \pm 3$  nm, and subsequent deposition of magnetic layers on it.

**Synthesis of the templates.** NAA membranes (area of  $1.5 \times 1.5$  cm<sup>2</sup>, thickness of 500  $\mu$ m) were fabricated by two-step mild anodization of an aluminum foil (99.999% purity). To improve the surface smoothness of Al foils, an electropolishing process was performed in a mixture of H<sub>3</sub>PO<sub>4</sub> and H<sub>2</sub>SO<sub>4</sub>, then they were washed at 50 V in a perchloric acid and ethanol solution (1:3 vol., 9 °C) for 10 min, as described elsewhere [41,42]. As the first anodization step produces disordered pores, a second anodization step was performed (5 h duration). A chemical etching process was carried out in 6 wt% orthophosphoric acid at 40 °C for etching times,  $t_{\text{etch}}$ , between 25 and 75 min, to obtain NAA membranes with different pore sizes that varied in the range  $34 \text{ nm} \leq D_p \leq 96 \text{ nm}$ , as reported in our previous investigation [31,43].

**Deposition process.** Nonepitaxial [CoO/Co] MLs were deposited on NAA templates by thermal evaporation (Edwards E306A, Cheshire, UK) in ultrahigh vacuum at pressures below  $10^{-5}$  Pa [33,44–46]. Reference continuous ML of the same composition was deposited onto a 0.1 mm thick glass substrate at room temperature. A 5 nm thick Pd layer was deposited as a buffer layer. Next, 1.5 nm of Co (99.99% purity) was deposited and oxidized for 10 min in an oxygen atmosphere at a pressure of  $3 \times 10^2$  Pa as reported elsewhere [20]. Then, the oxide layer was shielded by 0.9 nm of Co. After 7 repetitions of [CoO/Co], a 1 nm thick Pd layer (99.99%) was deposited as a capping layer to avoid oxidation. The layer thickness was controlled during the deposition process using a calibrated setup of crystal quartz and was confirmed with X-ray reflectivity measurements as we shall see later.

### 2.2. Samples Characterization

The hole diameter and the lattice constant of the nanostructured sample were measured using a high-resolution scanning electron microscope, HR-SEM (JEOL-6610LV). High-resolution transmission electron microscopy, HR-TEM, images were acquired with a JEM JEOL 2100 microscope operating at 200 kV to determine the nanostructure and crystallographic order of the films. The continuous sample was manually milled, and the resulting powders were dispersed in ethanol by ultra-sonication and localized in a carbon grid. X-ray reflectivity (XRR) measurements were taken on a conventional  $\theta$ - $\theta$  reflectometer (Bruker D8 Advance, Berlin, Germany) equipped with a Göbel mirror, a knife edge filter, and Cu K $\alpha$  radiation. XRR measurement data were fitted using commercial LEPTOS7 software, V7.10.12 (Bruker). The magneto-optical properties of the antidot arrays and continuous [CoO/Co] MLs were analyzed using a magneto-optical Kerr Effect, MOKE magnetometer. MOKE measurements were performed at room temperature in the INP direction using transverse T-MOKE, and in the OOP direction using polar P-MOKE. Complementary magnetic measurements of [CoO/Co] ML antidot and continuous thin films were obtained by a vibrating sample magnetometer, VSM, with applied magnetic fields up to 20 kOe, measured in the temperature range from 60 K to 300 K and in both INP and OOP directions to the film plane. The obtained data were corrected for the magnetic signal from the substrates (a glass in the case of the reference sample and alumina membrane for the antidot sample) and the sample holder.

### 2.3. Micromagnetic Simulation

Micromagnetic simulation of [CoO/Co]<sub>2</sub> MLs was performed using OOMMF software [47]. The simulations were carried out for samples with a size of 500 nm  $\times$  500 nm  $\times$  6 nm, discretized with the unit cell of 2 nm  $\times$  2 nm  $\times$  0.5 nm, so that, in the Z direction, each Co layer was discretized in 3 cells FM and each CoO layer was split into 2 outer FM layers in contact with adjacent Co layers and a central AFM layer. For simulation, the standard

parameters of the Co material were used:  $1.4 \times 10^3$  emu/cm<sup>3</sup> as saturation magnetization and  $3 \times 10^{-6}$  as exchange constant. An exchange constant of  $-1.5 \times 10^{-6}$  which is half that of Co was used for the CoO layer to ensure that  $T_N$  is lower than Curie temperature, as normally seen in AFM oxides relative to their native FM metals [48]. At the FM/AFM interface, a ferromagnetic interaction with the same cobalt parameters was considered.

### 3. Results

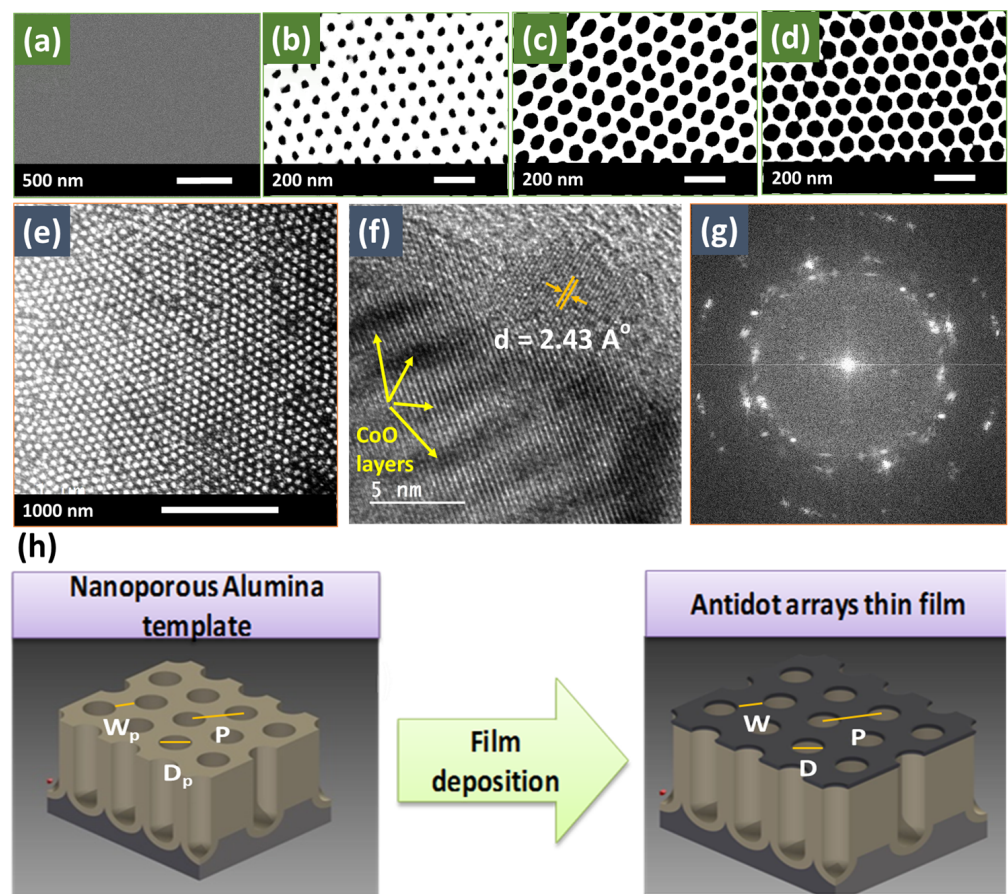
All specimens were analyzed using HR-SEM to estimate the geometrical parameters of NAA templates and CoO/Co ML antidot array thin films before and after the deposition process, as summarized in Table 1. Well-ordered hexagonal arrangements of holes with  $p = 107 \pm 3$  nm were observed in all templates. Figure 1a illustrates the non-patterned CoO/Co ML sample with total thickness  $t = 30$  nm, and Figure 1b–d plot three selected images of CoO/Co ML antidot samples ( $S_2$ ,  $S_4$ , and  $S_5$ , respectively) with different hole diameters. The lowest value of the magnetic surface coverage ratio,  $C = \left(1 - \frac{\pi D^2}{2\sqrt{3}p^2}\right) \times 100$  (see ref. [49] for further details), was obtained for CoO/Co ML antidot array samples with hole diameter  $94 \pm 3$  nm (see Table 1), being lower than for other systems obtained using similar techniques [50–52]. The large variation of the magnetic surface coverage allowed us to investigate the influence of the geometric parameters of CoO/Co ML antidot films deposited on NAA on the exchange bias effect and the magnetic anisotropy.

**Table 1.** Geometrical parameters [pore diameter,  $D_p$ , and  $W_p (= p - D_p)$ ] of NAA templates as a function of  $t_{\text{etch}}$ . In addition, the magnetic surface coverage ratio percentage,  $C$ , for [CoO/Co] ML antidot array thin films with different hole diameter,  $D$ , and separation distance  $W (= p - D)$  between holes for the nanopatterned samples. A sketch of the geometrical parameters is shown in Figure 1h.

Sample	Time Etching (min)	$D_p$ (nm)	$W_p$ (nm)	$D$ (nm)	$W$ (nm)	$C$ (%)
$S_{TF}$	-	-	-	0	-	100
$S_1$	25	$34 \pm 3$	$73 \pm 3$	$32 \pm 1$	$75 \pm 2$	92
$S_2$	34	$64 \pm 3$	$40 \pm 3$	$61 \pm 3$	$43 \pm 4$	69
$S_3$	48	$78 \pm 2$	$24 \pm 3$	$75 \pm 3$	$27 \pm 3$	51
$S_4$	65	$87 \pm 4$	$23 \pm 3$	$85 \pm 3$	$23 \pm 2$	44
$S_5$	75	$96 \pm 3$	$11 \pm 3$	$94 \pm 3$	$12 \pm 2$	29

HR-TEM micrograph of a CoO/Co ML antidot array sample obtained after being released from the NAA is presented in Figure 1e, which shows that the thin film nanoholes successfully duplicate the structure of the highly hexagonal ordered NAA template. Figure 1f represents a high-magnification image of the non-patterned CoO/Co ML, in which the ML structure is visible. The existence of defined regions with clear periodicity of the atoms supports the notion that the film has a polycrystalline structure even though MLs have been deposited onto an amorphous SiO<sub>2</sub> substrate, which has been previously observed in this system [24] and has been corroborated by means of selected area electron diffraction (SAED) (Figure 1g). All the observed rings detected can be indexed as Bragg reflections of face-centered cubic (FCC) crystal structures: rock salt of CoO [ $a = 4.25$  (2) Å] and metallic cobalt [ $a = 3.57$  (2) Å].

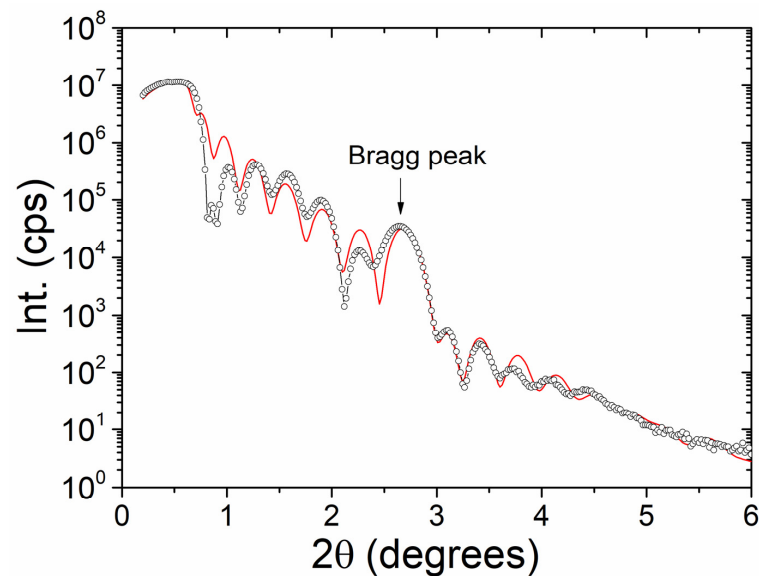
The XRR measurement is plotted in Figure 2. We have fitted these data using the LEPTOS7 software, defining each layer by its thickness, density, and roughness. From the fit, we have determined the following thicknesses (in nm) for the continuous ML: Glass/Pd(4.0)/[CoO(1.9)/Co(1.4)]<sub>×7</sub>/Pd(0.9), values that agree fairly well with the nominal values—apart from the increase of the thickness of the oxidized Co layer. The estimated average roughness of the magnetic layers is about 0.8 nm, pointing out the formation of a moderately well-defined ML structure.



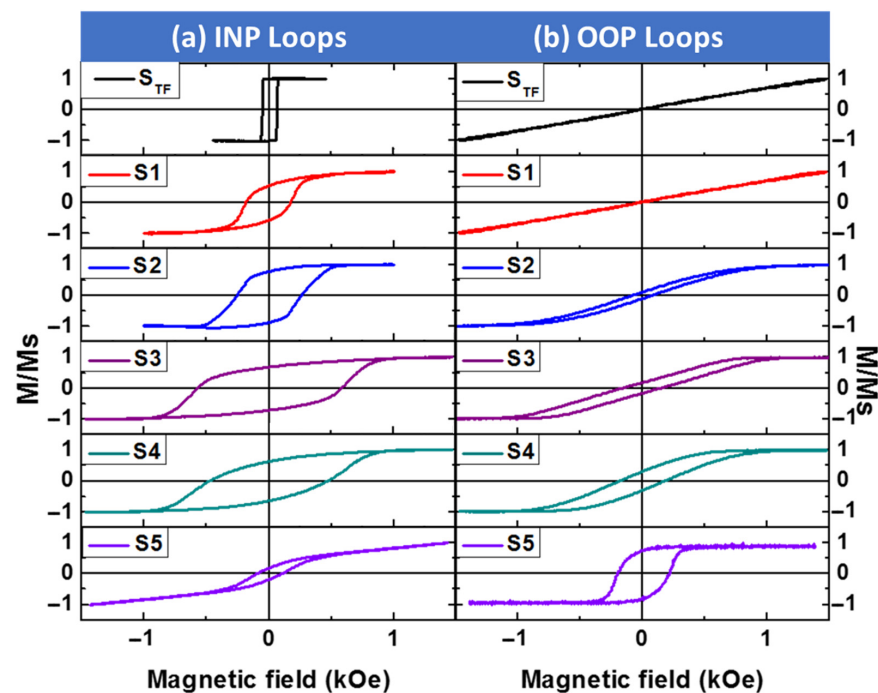
**Figure 1.** HR-SEM images of [CoO/Co] MLs deposited (a) on the top surface of a glass substrate to obtain the non-patterned sample as a reference, and (b–d) on the top surface of the NAA with different hole diameter. (e) HR-TEM image of [CoO/Co] ML antidot arrays taken at low magnification. (f) HR-TEM image of the continuous thin film obtained at high magnification, showing the interplanar distance of 2.43 Å corresponding to the (111) Bragg reflection of CoO; (g) shows the SAED pattern for continuous thin film, indicating coarse crystalline grains, as well as the first strongest Bragg diffraction rings (111) and (200) associated with the FCC crystal structure of both Co and CoO (see the text for further details); (h) illustrates the sketch of alumina membrane with its geometrical parameters before and after the MLs deposition.

Room temperature surface magnetic properties of the non-patterned and antidot CoO/Co ML thin films have been measured along the INP and OOP directions by T-MOKE and P-MOKE, respectively. In Figure 3a,b, both the T-MOKE and P-MOKE hysteresis loops of the CoO/Co ML antidot films are represented; the results are plotted for patterned samples with nanohole diameters ranging between 32 and 94 nm, as well as for the continuous CoO/Co MLs of identical thickness, serving as a reference sample. Neither INP nor OOP hysteresis loops for any of the antidot or non-patterned samples exhibit an EB field at room temperature (300 K), which might be expected from the Néel temperature of CoO ( $T_N = 290$  K) [30]. However, the magnetic anisotropy of the antidot array samples shows a dramatic change in its nature with the diameter of the antidot hole at room temperature: for continuous thin film ( $S_{TF}$ ) and nanopatterned specimens with  $D \leq 75$  nm (i.e.,  $S_1$ ,  $S_2$ , and  $S_3$ ), the magnetization is found to be along the INP direction, as a result of the high coercivity and remnant magnetization (relative to saturation magnetization) shown by the INP hysteresis loops. In fact, the maximum value of INP coercivity,  $H_{C||}$ , of approximately 595 Oe was detected for the antidot specimen  $S_3$  with  $D = 75$  nm, which is almost 12 times higher than the value of the coercive field obtained for the reference sample (see Figures 3 and 4). Meanwhile, we found a huge saturating field and close

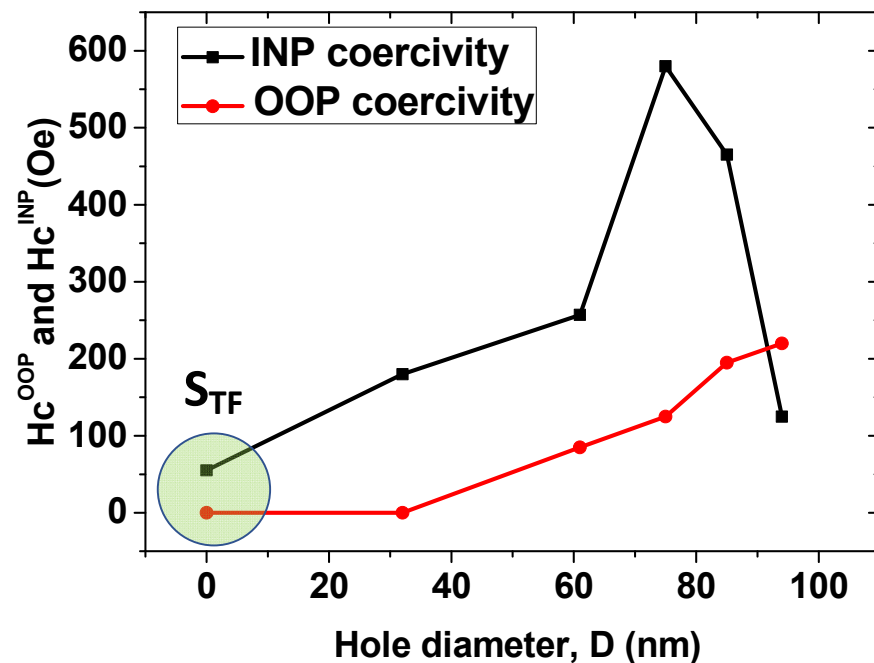
to zero remnant magnetization along the OOP direction, as illustrated in Figure 3b. A significant decrease in  $H_{C\parallel}$  (to 488 Oe) and an increase in the OOP coercivity,  $H_{C\perp}$ , (from 136 to 175 Oe) have been observed for the  $S_4$  antidot array sample, as plotted in Figure 4. Finally, a sharp reduction of  $H_{C\parallel}$  has been detected for the  $S_5$  antidot sample accompanied by an increase in  $H_{C\perp}$  (provoking  $H_{C\perp}$  to become larger than  $H_{C\parallel}$ ) and remanence in the OOP direction, as shown in Figures 3 and 4, suggesting the existence of a dominant perpendicular component of the magnetic anisotropy.



**Figure 2.** The X-ray reflectivity (XRR) data (open circles) and simulation (red line) of the non-patterned /Pd/[CoO/Co] $_{\times 7}$ /Pd ML thin films with layer thickness 30 nm.



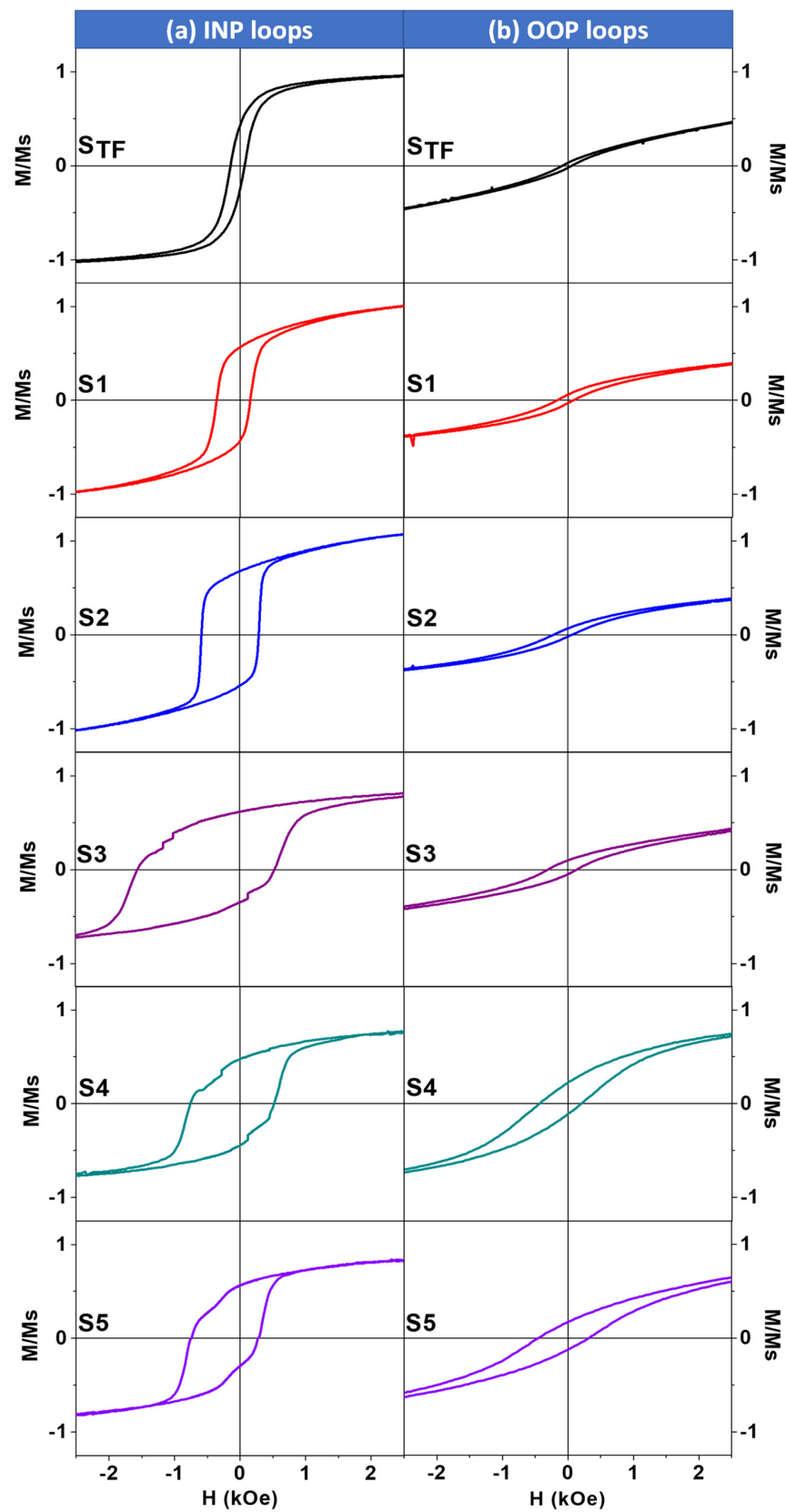
**Figure 3.** (a) INP and (b) OOP MOKE hysteresis loops for non-patterned and antidot CoO/Co ML samples with different hole diameters ranging from  $34 \pm 3$  to  $96 \pm 3$  nm and fixed layer thickness ( $t = 30$  nm) and a constant lattice parameter ( $p = 108$  nm) at room temperature (300 K).



**Figure 4.** Room temperature coercivity measured along the OOP and INP directions for the antidot CoO/Co MLs with fixed layer thickness ( $t = 30$  nm) and a constant lattice parameter ( $p = 108$  nm) as a function of antidot hole diameter. Lines are guides for the eyes.

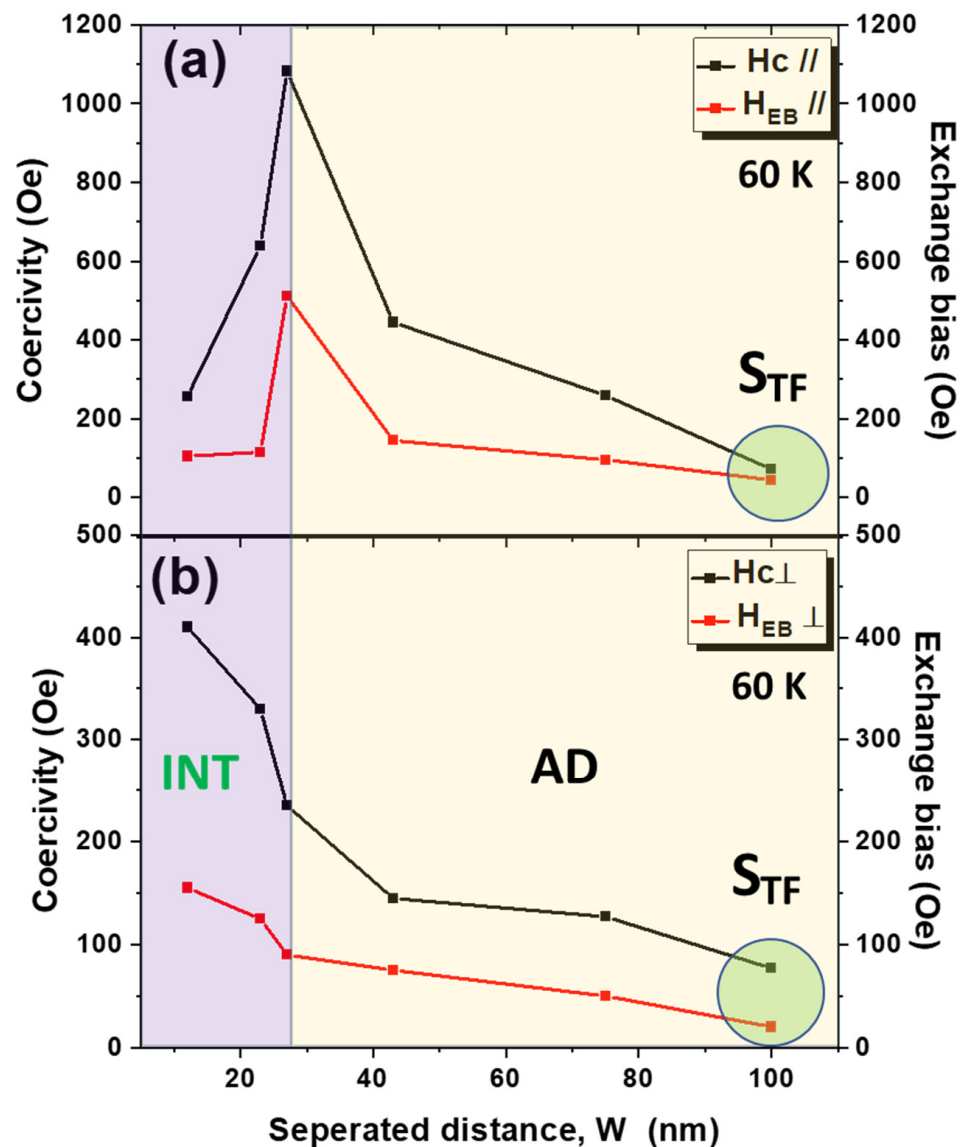
The enhancement of the OOP magnetic anisotropy of CoO/Co MLs with the increase of antidot hole diameter is strongly related to the change in magnetostatic energy of the nanostructured system [33,53]. In addition, the increment of antidote hole diameter modifies the structure of the micromagnetic domain and creates different kinds of magnetic domain separated with superdomain walls with different energies, as reported elsewhere [11,51,54,55]. The growth of superdomain walls with high energy enhances, therefore, the OOP magnetic signal by increasing the antidote hole diameter, as illustrated in the micromagnetic simulation section (see below) and reported elsewhere [33,55].

Figure 5 illustrates the INP and OOP hysteresis loops measured after field cooling under an applied magnetic field of 20 kOe (parallel to the film plane for INP loops and perpendicular to the film plane for OOP loops) from room temperature to 60 K for continuous and antidot CoO/Co ML samples. The variations of INP and OOP  $H_C$  and  $H_{EB}$  for the non-patterned and antidot array CoO/Co ML samples with different hole diameters at 60 K are plotted in Figure 6. The INP and OOP loops for the continuous film exhibit negative exchange bias fields of 45 and 20 Oe, respectively. For nanostructured samples, large comparisons to the reference thin film sample-coercivity and exchange bias fields in both directions are observed. The reader must note that, although CoO/Co system has shown high values of the EB, as reported by F. Radu et al. [56], the magnetic exchange bias field of CoO/Co system depends on several parameters, such as layer thickness, number of AFM/FM layers, temperature annealing, deposition conditions, and the method of the deposition, as discussed elsewhere [11,22,36,57].  $H_{C||}$ ,  $H_{C\perp}$ , in-plane exchange bias field,  $H_{EB||}$ , and out-of-plane exchange bias field,  $H_{EB\perp}$ , increase for the antidot array sample  $S_1$  to 259 Oe, 127 Oe, 96 Oe, and 55 Oe, respectively. By further enlarging the antidot hole, a monotonic increase in  $H_{C\perp}$  and  $H_{EB\perp}$  was observed with the antidot hole diameter. The maximums of  $H_{C\perp}$  and  $H_{EB\perp}$ , reached for the  $S_5$  antidot array sample, are 410 Oe and 155 Oe, respectively (i.e., approximately 7 times higher than the corresponding values for the  $S_{TF}$  at the same temperature). In the case of  $H_{C||}$  and  $H_{EB||}$ , both reach their maximums in the  $S_3$  antidot array sample, corresponding to 1.09 kOe and 0.55 kOe, respectively, although they are lower than the values reported for CoO/Co core/shell nanoparticles ( $H_C = 3.5$  kOe and  $H_{EB} = 4.6$  kOe) deposited without dilution in a paramagnetic matrix [58].



**Figure 5.** (a) INP and (b) OOP  $M(H)$  curves measured at 60 K after field cooling ( $H_{\text{cool}} = 20$  kOe) for the CoO/Co MLs and (S<sub>1</sub>–S<sub>5</sub>) CoO/Co ML antidot array samples with different hole diameters ranging from  $34 \pm 3$  to  $96 \pm 3$  nm and fixed layer thickness ( $t = 30$  nm) and a constant lattice parameter ( $p = 108$  nm).





**Figure 6.** Variation of the coercivity and the EB field for continuous and antidot CoO/Co MLs with different edge-to-edge distance for (a) the in-plane and (b) the OOP direction at 60 K. Lines are guides for the eyes. We have assigned the value  $W = 100$  nm to  $S_{TF}$  to facilitate comparison.

The reduction in  $H_{C||}$  observed for  $S_4$  and  $S_5$  antidot array samples agrees well with the trend noticed at room temperature, despite the observed reorientation of the magnetic anisotropy of  $S_5$  from the out-of-plane magnetic anisotropy at room temperature to the in-plane magnetic anisotropy at 60 K. Note also that INP loops for  $S_3$  and  $S_4$  show multistep magnetic behavior, which indicates a strong pinning effect induced by the antidot symmetry [59]. This multistep behavior visible in  $M(H)$  loops could be associated with edge defects at the nanostructure boundaries. Presumably, the hysteresis loops observed also show a signal originating from material that has entered the pores or was deposited on the edges and walls of the pores. In fact, this edge effect increases as the antidote hole diameter does. For this reason, the edge effect might play an important role in the reduction of in-plane coercivity and improvement of the OOP magnetic signal.

From the dependence of the INP and OOP  $H_C$  and  $H_{EB}$  on the values of  $W$  shown in Figure 6, we can distinguish two regimes:

1. Antidot (AD) regime:  $W > 27$  nm. The antidot arrays are well disconnected from each other, and the expected tendency of both  $H_{C||}$  and  $H_{EB||} \propto 1/W$  is detected, as illustrated in Figure 6a, as well as nucleation, hindering, and pinning of the magnetic

domain walls. According to Castan-Guerrero et al. [54], this behavior is related to the mobility of the domain wall: when  $W$  decreases, there is less mobility of the domain wall, and  $H_{C||}$  and  $H_{EB||}$  increase.

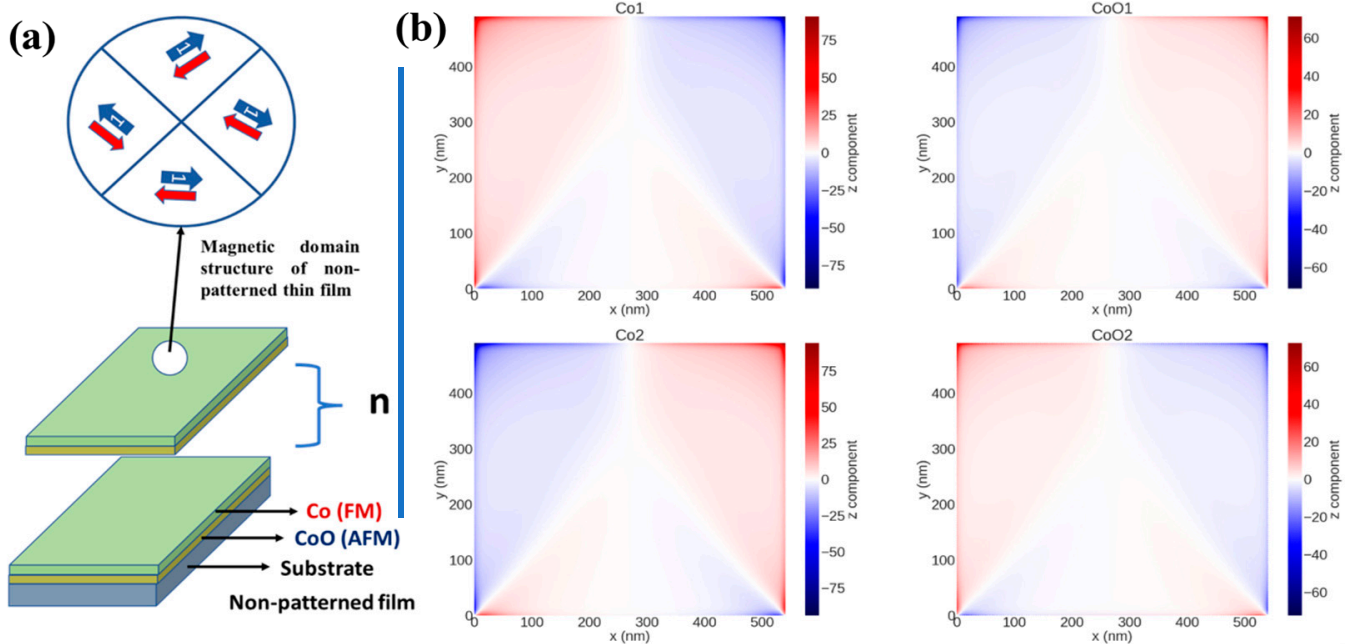
2. Intermediate regime (INT):  $0 < W \leq 26$  nm. When the distance between antidots is small enough, a modification in the  $H_{C||}$  and  $H_{EB||}$  behavior with the geometry is observed (see Figure 6a). In this case, as  $W$  is reduced (i.e.,  $D$  increases), the propagation of the domain wall becomes harder and the linear dependence of  $H_{C||}$  and  $H_{EB||}$  on  $W^{-1}$  is gradually lost. With a further decrease of  $W$ , the edges of the holes become too narrow and the magnetic area that has to be nucleated with a reversed magnetic domain is reduced [54]. As a result,  $H_{C||}$  and  $H_{EB||}$  decrease.

#### 4. Micromagnetic Simulations

For a better understanding of the magnetization reversal process of the CoO/Co AFM/FM nanopatterned thin films, we have performed micromagnetic simulation with OOMMF software for samples of Co/CoO/Co/CoO (the layers have been labeled as Co1, CoO1, Co2, and CoO2, respectively) nanostructured thin films with different hole diameters, and for non-patterned thin film as well for comparison. We have chosen four layers to reduce the time of simulation process while keeping reasonable accuracy that allows us to monitor the effect of adding AFM layers to FM layers. Moreover, we have concentrated on the magnetic structure at the remanence state to avoid any additional effect because of the external magnetic field. In addition, studying the remanence state of the samples gives us a clear description of their magnetization reversal process [54,55,60,61].

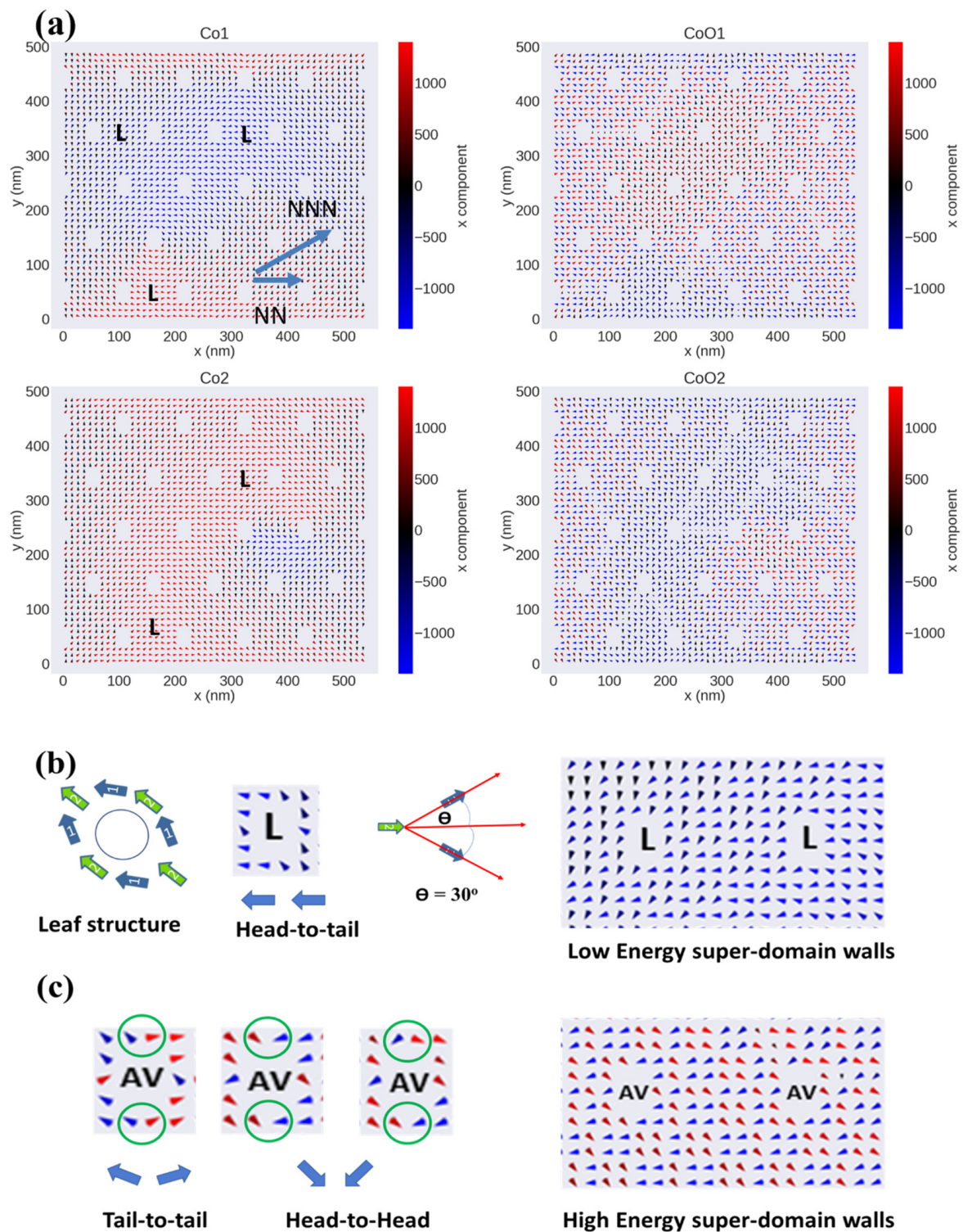
Figure 7a represents the magnetic layers deposited onto the glass used for the micromagnetic simulation. A large area with a multimagnetic domain structure is observed in all four simulated layers (Figure 7b). For FM/AFM ML nanostructured samples with different hole diameters, a noticeable change of the micromagnetic structure can be observed: for nanostructured samples with  $W \gg 27$  nm, the FM layers exhibit a leaf-structured state (the so-called L-state) [33,60] (see Figure 8a,b), in which the angle between the average magnetization surrounded by four holes forming the hexagonal primitive cell (green arrows in Figure 8b) and the average magnetization of the area between two nearest neighbors (blue arrows) is  $30^\circ$  (see ref. [61] for more details). The magnetic anisotropy for these nanostructured samples follows the near-neighbor rule, which predicts that the difference between the orientation of the near-neighbor easy magnetization axis (NN) and the orientation of the next-near-neighbor hard magnetization axis (NNN) for the hexagonal symmetry is  $30^\circ$  [62]. This magnetic domain configuration is the main factor responsible for the increase of both  $H_{C||}$  and  $H_{EB||}$  with  $W$  reduction [34]. Moreover, the connection between holes with L-state with different direction of the magnetic moment distribution generally generates two kinds of magnetic superdomain walls [55]: (1) low-energy superdomain walls (LE-SDWs), for which tail-to-head or head-to-tail rules are applied, and (2) high-energy superdomain walls (HE-SDWs), for which head-to-head and tail-to-tail rules are applied, and which are the main cause of the perpendicular magnetic signal (PMS) [55]. In this sense, HE-SDWs are present in CoO1 and CoO2 layers because of the strong interaction between FM/AFM. In this case, a new kind of magnetic spin moment arrangement around the hole is created, which we call the anti-vortex (AV)-state, where head-to-head or tail-to-tail rules are applied in one or more parts of the area around the hole (see Figure 8c). Therefore, the main mechanism of the magnetization reversal process for the AFM layers is HE-SDWs rather than LE-SDWs magnetic movement.

By investigating the  $z$  component of the magnetization in nanostructured samples with  $W \gg 27$  nm (see Figure 9), we have found that the Co1 and CoO1 layers show a stripe magnetic domain structure (shown in purple color). We think that this kind of stripe magnetic domain is related to the induced HE-SDWs, as we have explained in the latter paragraph [55]. However, this is not observed in our studies with a lower number of layers (not shown), suggesting that the PMS rises from the formation of AV states as a consequence of the AFM interactions between layers.

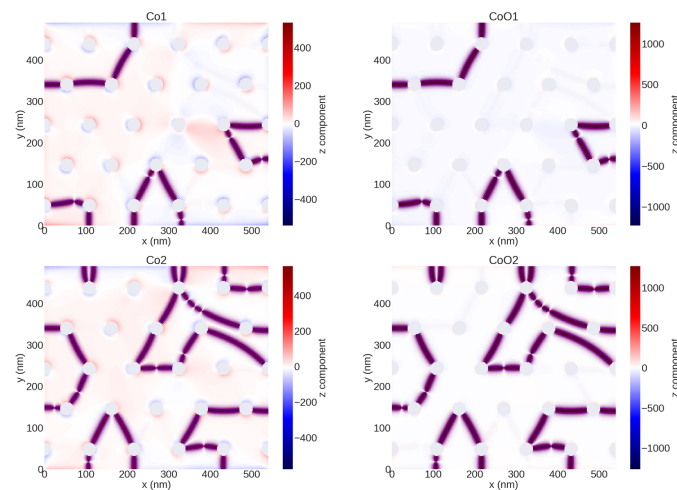


**Figure 7.** (a) Schematics of the spin configurations when the external magnetic field is parallel to the sample plane and sample layers distribution of CoO/Co non-patterned thin film. (b) Magnetic domain structure of four continuous layers of Co and CoO in the remanence state obtained by OOMMF when the external applied field was oriented along the x-axis.

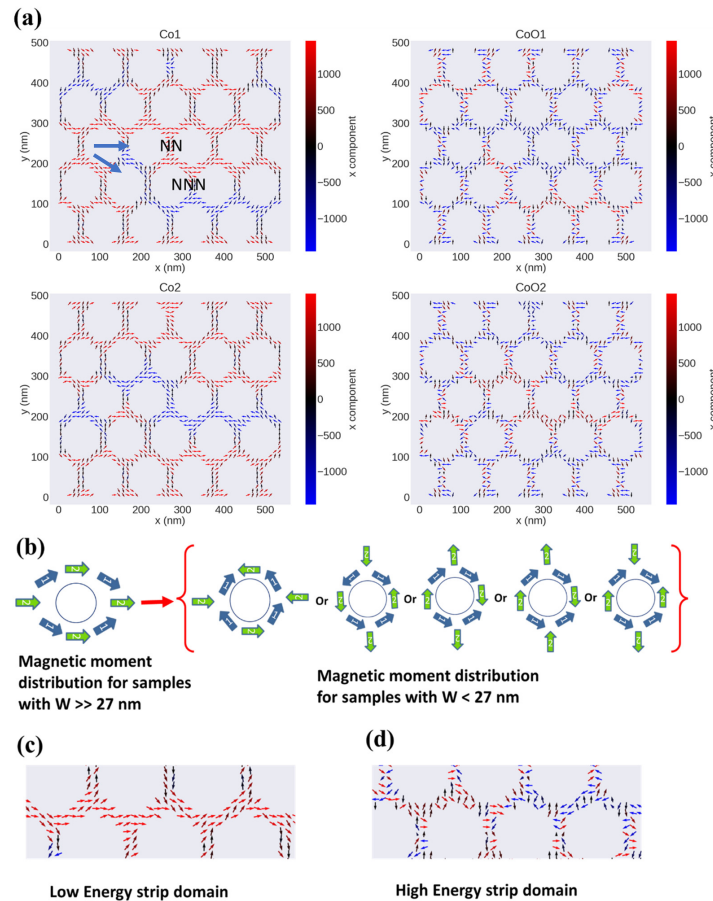
By increasing the hole diameter (i.e., decreasing  $W$  below 27 nm), a change in the easy and hard magnetization axes occurs; now the angle between the easy axis and the hard axis is  $60^\circ$  instead of  $30^\circ$ , as sketched in Figure 10 and reported in refs. [61,63]. Therefore, the NNN turns out to be the easy magnetization axis and NN becomes the hard axis of magnetization. This change induces different arrangements of the magnetic moments around the holes that enhance the head-to-head and tail-to-tail magnetic moment interaction rather than head-to-tail or tail-to-head for the samples with large  $W$ , as illustrated in Figure 10b. Each head-to-head and tail-to-tail magnetic moment interaction contributes to the appearance of PMS. Moreover, a zigzag structure of stripe magnetic domains is observed, in which the magnetic moment between the holes connects head-to-tail or tail-to-head for the Co1 and Co2 layers. This connection creates a low-energy stripe magnetic domain, as can be seen in Figure 10a,c. Meanwhile, for CoO1 and CoO2 layers, high-energy stripe magnetic domains are created because of the formation of the AV-state. Therefore, the magnetization reversal process for FM/AFM samples with  $W < 27$  nm is based on the movement of the low-/high-energy magnetic stripe domain. This scenario agrees with the magnetic domain structure for the z component, in which PMSs are related to the head-to-head or tail-to-tail magnetic moment interaction. The enhancement of PMS for FM nanostructured thin film with  $W < 27$  nm was detected and studied in detail in our previous work [31,33,64]. The strong induced PMS in the FM layer is stable enough to overcome the FM/AFM coupling between the layers, as there is no significant change in the PMS for AFM layers.



**Figure 8.** (a) The micromagnetic simulation of the INP magnetic domain structure of CoO/Co nanostructured thin films with  $W = 76$  nm and fixed lattice parameter  $p = 108$  nm at the remanence state for the four layers Co1, CoO1, Co2, and CoO2, respectively. (b) Schematic of the leaf spin configuration around a single hole. The connection between two neighboring holes with leaf structure, which induced low-energy superdomain walls, is also indicated. (c) Magnetic moment spin configuration around the single hole for the FM/AFM layer that induces high-energy superdomain walls, in which the head-to-tail or tail-to-head rules are applied.



**Figure 9.** Micromagnetic simulation of the OPP magnetic domain structure of CoO/Co nanostructured thin films with  $W = 76$  nm and fixed lattice parameters 108 nm at the remanence state for the four layers Co1, CoO1, Co2, and CoO2, respectively.



**Figure 10.** (a) Micromagnetic simulation of the INP magnetic domain structure of CoO/Co nanostructured thin films with  $W = 14$  nm and fixed lattice parameter  $p = 108$  nm at the remanence state for the four layers Co1, CoO1, Co2, and CoO2, respectively. (b) Schematics of the spin configurations around the single hole for samples with  $W \gg 27$  nm and samples with  $W < 27$  nm. (c) Detail of the low-energy-induced magnetic strip domains for the FM layer, in which the tail-to-head or head-to-tail rules are applied. (d) Detail of the high-energy magnetic strip domain for FM/AFM layers where the head-to-tail and tail-to-head rules are applied.

## 5. Discussion

The main experimental findings of the current investigation concerning these CoO/Co multilayer thin films are related to the observation of a remarkable increase, in more than one order of magnitude, in both the exchange-bias field and the coercivity, when comparing the values of CoO/Co multilayer thin films to those of the non-patterned films. In addition, it is worth noting that the clear dependence of these magnitudes with antidot hole diameters suggested the existence of a crossover between in-plane to out-of-plane magnetic anisotropy at the critical nanohole diameter of  $\sim 75$  nm. On the other hand, from the dependence of both coercive and exchange-bias fields with hole diameters, different magnetic arrangements could be suggested in which the magnetization reversal process changes from superdomain wall displacement from a unique low-energy configuration to coherent magnetization rotation. In fact, these experimental results were supported by micromagnetic simulations, in which the existence of antiferromagnetic layers generating an exceptional magnetic configuration around the holes could play a major role in the magnetic process. After considering different magnetic arrangements, we have come to the conclusion that the observed magnetic behavior could be attributed to changes in the superdomain wall pinning in the AFM and in FM layers due to the presence of holes. In this sense, the nanoholes modify the magnetic domain structure, leading to a so-called antivortex state configuration that could be responsible for inducing extra high-energy superdomain walls for samples with edge-to-edge distance  $W \gg 27$  nm and high-energy stripe magnetic domains for  $W < 27$  nm, so that the two anticipated regimes are disclosed. Thus, the present findings suggest a possible mechanism that reinforces the presence of perpendicular magnetic moments in these CoO/Co multilayer thin films with this morphology by tuning the alumina template nanohole size, although it is likely that the direction of the magnetic easy axis is tilted with respect to the sample surface. Further investigations are needed to elucidate this issue.

## 6. Conclusions

We have successfully used a low-cost and effective approach for the synthesis of ultra-dense CoO/Co sub-30 nm nanoarrays with different geometric parameters. This technique uses conventional nonporous anodic alumina membranes as templates in combination with thermal evaporation deposition of a metallic Co thin film, and enables the precise control of the magnitude of the magnetic anisotropy and the exchange bias of the nanostructured samples. The obtained results propose a unified explanation of the magnetic behavior of AFM/FM antidot array thin films along with the modification of magnetic anisotropy,  $H_{C||}$  and  $H_{EB||}$  behavior with antidot hole diameter, and edge-to-edge distance that occurs at the critical antidot geometric points ( $W = 27$  nm,  $D = 75$  nm). At these critical values of antidots, the maximums of  $H_{C||}$  (for the entire temperature range) and  $H_{EB||}$  (at 60 K) are reached, a consequence of the competition between two different complex domain-wall pinning mechanisms occurring among the neighboring holes and the inner wall of the holes.  $H_{C||}$  and  $H_{EB||}$  begin to decrease for  $D > 75$  nm and  $W < 27$  nm due to the misalignment of the AFM and FM spins, the formation of an incomplete AFM domain wall, and the weakening of the AFM anisotropy. The enhancement of the out-of-plane component of the magnetization easy direction was detected for antidot samples with  $D \geq 85$  nm (i.e.,  $W \leq 23$  nm) in the temperature range (300 K–150 K). For deep understanding of the magnetization reversal mechanism of the nanostructured samples with different geometric parameters, a micromagnetic simulation by OOMMF was conducted. The strong FM/AFM coupling induced a unique distribution around the hole (called AV-state). These magnetic configurations enhance the PMA signal by creating extra HE-SDWs and HE-strip magnetic domains. As a major outcome, this work provides a successful fabrication route of large areas of multifunctional nanostructures with improved magnetic properties. The remarkable enhancement of perpendicular magnetic anisotropy and exchange bias interactions in these nanostructures can be useful in CoO spintronic applications, such as thermo-magnetic

recording patterned media, giant or tunneling applications, and magnetoresistance based on template-assisted deposition methods.

**Author Contributions:** Conceptualization, M.S., M.P.F.-G., J.A.B. and P.Á.-A.; methodology, M.S. and P.Á.-A.; software, R.D.C.; validation, M.P.F.-G. and J.P.A.; formal analysis, M.S., A.N., A.M.A.-D. and R.D.C.; investigation, M.S., A.N., A.M.A.-D., R.D.C., J.P.A. and R.L.A.; resources, A.N., A.M.A.-D., J.P.A. and J.A.B.; data curation, P.Á.-A.; writing—original draft preparation, M.S.; writing—review and editing, all authors; visualization, M.S., R.D.C. and P.Á.-A.; supervision, P.Á.-A.; project administration and funding acquisition, J.A.B. and R.L.A. All authors have read and agreed to the published version of the manuscript.

**Funding:** This work was financially supported by Spanish MCIU and AEI and European FEDER (MCIU-19-RTI2018-094683-B-C52 and PGC2018-099530-B-C31) and the Principado de Asturias (SV-PA-21-AYUD/2021/51822). The authors gratefully acknowledge the financial support from the Plan Propio de la Universidad de Castilla-La Mancha (FEDER, EU) for the “Grupo de Materiales Magnéticos (GMM)”. We also extend our sincere appreciation to the Researchers Supporting Project (RSP-2022/79) at King Saud University, Riyadh, Saudi Arabia, for partial funding of this work.

**Institutional Review Board Statement:** Not applicable.

**Informed Consent Statement:** Not applicable.

**Data Availability Statement:** The data presented in this study are openly available in Materials Cloud at 10.24435/materialscloud:jpg-e7.

**Acknowledgments:** Authors are indebted to C. Quirós from CINN (CSIC—Univ. de Oviedo) and Eng. Mostafa Hassan from Nanomembrane-Egypt and D. Martínez Blanco and A.J. Quintana García from scientific and technological services (SCTs) at the University of Oviedo for all technical support.

**Conflicts of Interest:** The authors declare no conflict of interest. The funders had no role in the design of the study; in the collection, analyses, or interpretation of data; in the writing of the manuscript; or in the decision to publish the results.

## References

1. Li, T.; Pickel, A.D.; Yao, Y.; Chen, Y.; Zeng, Y.; Lacey, S.D.; Li, Y.; Wang, Y.; Dai, J.; Wang, Y.; et al. Thermoelectric properties and performance of flexible reduced graphene oxide films up to 3,000 K. *Nat. Energy* **2018**, *3*, 148–156. [[CrossRef](#)]
2. Hoop, M.; Ribeiro, A.S.; Rösch, D.; Weinand, P.; Mendes, N.; Mushtaq, F.; Chen, X.Z.; Shen, Y.; Pujante, C.F.; Puigmartí-Luis, J.; et al. Mobile Magnetic Nanocatalysts for Bioorthogonal Targeted Cancer Therapy. *Adv. Funct. Mater.* **2018**, *28*, 1705920. [[CrossRef](#)]
3. Saccone, M.; Schöll, A.; Velten, S.; Dhuey, S.; Hofhuis, K.; Wuth, C.; Huang, Y.-L.; Chen, Z.; Chopdekar, R.V.; Farhan, A. Towards artificial Ising spin glasses: Thermal ordering in randomized arrays of Ising-type nanomagnets. *Phys. Rev. B* **2020**, *99*, 224403. [[CrossRef](#)]
4. Skjærvø, S.H.; Marrows, C.H.; Stamps, R.L.; Heyderman, L.J. Advances in artificial spin ice. *Nat. Rev. Phys.* **2019**, *2*, 13–28. [[CrossRef](#)]
5. Lehmann, J.; Donnelly, C.; Derlet, P.M.; Heyderman, L.J.; Fiebig, M. Poling of an artificial magneto-toroidal crystal. *Nat. Nanotechnol.* **2018**, *14*, 141–144. [[CrossRef](#)] [[PubMed](#)]
6. Ruiz-Clavijo, A.; Caballero-Calero, O.; Martín-González, M.S. Revisiting anodic alumina templates: From fabrication to applications. *Nanoscale* **2021**, *13*, 2227–2265. [[CrossRef](#)]
7. Navas, D.; Trabada, D.G.; Vázquez, M. Nanoimprinted and Anodized Templates for Large-Scale and Low-Cost Nanopatterning. *Nanomaterials* **2021**, *11*, 3430. [[CrossRef](#)]
8. Kiwi, M. Exchange Bias Theory. *J. Magn. Magn. Mater.* **2001**, *234*, 584–595. [[CrossRef](#)]
9. Shams, N.N.; Rahman, M.T.; Lai, C.-H. Defect mediated tuning of exchange bias in IrMn/CoFe nanostructure. *J. Appl. Phys.* **2009**, *105*, 07D722. [[CrossRef](#)]
10. Maniv, E.; Murphy, R.A.; Haley, S.C.; Doyle, S.; John, C.; Maniv, A.; Ramakrishna, S.K.; Tang, Y.-L.; Ercius, P.; Ramesh, R.; et al. Exchange bias due to coupling between coexisting antiferromagnetic and spin-glass orders. *Nat. Phys.* **2021**, *17*, 525–530. [[CrossRef](#)]
11. Blachowicz, T.; Ehrmann, A. Exchange Bias in Thin Films—An Update. *Coatings* **2021**, *11*, 122. [[CrossRef](#)]
12. Meiklejohn, W.H.; Bean, C.P. New Magnetic Anisotropy. *Phys. Rev. (Series I)* **1957**, *105*, 904–913. [[CrossRef](#)]
13. Nogués, J.; Schuller, I.K. Exchange Bias. *J. Magn. Magn. Mater.* **1999**, *192*, 203–232. [[CrossRef](#)]
14. Sharma, P.P.; Albisetti, E.; Monticelli, M.; Bertacco, R.; Petti, D. Exchange Bias Tuning for Magnetoresistive Sensors by Inclusion of Non-Magnetic Impurities. *Sensors* **2016**, *16*, 1030. [[CrossRef](#)]

15. Yang, S.-H.; Ryu, K.-S.; Parkin, S. Domain-wall velocities of up to  $750 \text{ m s}^{-1}$  driven by exchange-coupling torque in synthetic antiferromagnets. *Nat. Nanotechnol.* **2015**, *10*, 221–226. [[CrossRef](#)]
16. Murphy, R.A.; Darago, L.E.; Ziebel, M.E.; Peterson, E.A.; Zaia, E.W.; Mara, M.W.; Lussier, D.; Velasquez, E.O.; Shuh, D.K.; Urban, J.J.; et al. Exchange Bias in a Layered Metal–Organic Topological Spin Glass. *ACS Central Sci.* **2021**, *7*, 1317–1326. [[CrossRef](#)]
17. Issa, B.; Obaidat, I.M.; Albiss, B.A.; Haik, Y. Magnetic Nanoparticles: Surface Effects and Properties Related to Biomedicine Applications. *Int. J. Mol. Sci.* **2013**, *14*, 21266–21305. [[CrossRef](#)]
18. Wang, J.; Omi, T.; Sannomiya, T.; Muraishi, S.; Shi, J.; Nakamura, Y. Strong perpendicular exchange bias in sputter-deposited CoPt/CoO multilayers. *Appl. Phys. Lett.* **2013**, *103*, 042401. [[CrossRef](#)]
19. Dieny, B.; Chshiev, M. Perpendicular magnetic anisotropy at transition metal/oxide interfaces and applications. *Rev. Mod. Phys.* **2017**, *89*, 025008. [[CrossRef](#)]
20. Perzanowski, M.; Marszalek, M.; Zarzycki, A.; Krupinski, M.; Dziedzic, A.; Zabala, Y. Influence of Superparamagnetism on Exchange Anisotropy at CoO/[Co/Pd] Interfaces. *ACS Appl. Mater. Interfaces* **2016**, *8*, 28159–28165. [[CrossRef](#)]
21. Yıldırım, O.; Hilliard, D.; Arekapudi, S.S.P.K.; Fowley, C.; Cansever, H.; Koch, L.; Ramasubramanian, L.; Zhou, S.; Boettger, R.; Lindner, J.; et al. Ion-Irradiation-Induced Cobalt/Cobalt Oxide Heterostructures: Printing 3D Interfaces. *ACS Appl. Mater. Interfaces* **2020**, *12*, 9858–9864. [[CrossRef](#)]
22. Menéndez, E.; Modarresi, H.; Dias, T.; Geshev, J.; Pereira, L.M.C.; Temst, K.; Vantomme, A. Tuning the Ferromagnetic–Antiferromagnetic Interfaces of Granular Co–CoO Exchange Bias Systems by Annealing. *J. Appl. Phys.* **2014**, *115*, 133915. [[CrossRef](#)]
23. Dias, T.; Menéndez, E.; Liu, H.; Van Haesendonck, C.; Vantomme, A.; Temst, K.; Schmidt, J.E.; Giulian, R.; Geshev, J. Rotatable anisotropy driven training effects in exchange biased Co/CoO films. *J. Appl. Phys.* **2014**, *115*, 243903. [[CrossRef](#)]
24. Brems, S.; Buntinx, D.; Temst, K.; Van Haesendonck, C.; Radu, F.; Zabel, H. Reversing the Training Effect in Exchange Biased CoO/Co Bilayers. *Phys. Rev. Lett.* **2005**, *95*, 157202. [[CrossRef](#)] [[PubMed](#)]
25. Miltényi, P.; Gierlings, M.; Keller, J.; Beschoten, B.; Güntherodt, G.; Nowak, U.; Usadel, K.D. Diluted Antiferromagnets in Exchange Bias: Proof of the Domain State Model. *Phys. Rev. Lett.* **2000**, *84*, 4224–4227. [[CrossRef](#)]
26. Fernández-García, M.P.; Gorria, P.; Sevilla, M.; Fuertes, A.B.; Boada, R.; Chaboy, J.; Aquilanti, G.; Blanco, J.A. Co nanoparticles inserted into a porous carbon amorphous matrix: The role of cooling field and temperature on the exchange bias effect. *Phys. Chem. Chem. Phys.* **2010**, *13*, 927–932. [[CrossRef](#)]
27. Huang, Q.; Dong, Y.; Zhao, X.; Wang, J.; Chen, Y.; Bai, L.; Dai, Y.; Dai, Y.; Yan, S.; Tian, Y. Electrical Control of Perpendicular Magnetic Anisotropy and Spin-Orbit Torque-Induced Magnetization Switching. *Adv. Electron. Mater.* **2019**, *6*, 1900782. [[CrossRef](#)]
28. Chung, W.S.; Yang, S.M.; Kim, T.W.; Hong, J.P. Ultrathin Co–O oxide layer-driven perpendicular magnetic anisotropy in a CoO/[Co/Pd]<sub>m</sub> multilayer matrix upon annealing. *Sci. Rep.* **2016**, *6*, 37503. [[CrossRef](#)]
29. Zhang, F.; Liu, Z.; Wen, F.; Li, L.; Wang, P.; Li, X.; Ming, X. Exchange biasing and interlayer coupling in Co/Pt/Co/CoO multilayers with perpendicular anisotropy. *Thin Solid Films* **2017**, *623*, 102–109. [[CrossRef](#)]
30. Ztürk, M.; Snr, E.; Demirci, E.; Erkovan, M.; Öztürk, O.; Akdoğan, N. Exchange Bias Properties of [Co/CoO]<sub>n</sub> Multilayers. *J. Appl. Phys.* **2012**, *112*, 093911. [[CrossRef](#)]
31. Salaheldeen, M.; Goyeneche, M.L.M.; Alvarez-Alonso, P.; Fernandez, A. Enhancement the perpendicular magnetic anisotropy of nanopatterned hard/soft bilayer magnetic antidot arrays for spintronic application. *Nanotechnology* **2020**, *31*, 485708. [[CrossRef](#)] [[PubMed](#)]
32. Mitrofanov, A.; Chen, G.; Kozhanov, A.; Urazhdin, S. Exchange bias without directional anisotropy in permalloy/CoO bilayers. *Phys. Rev. B* **2021**, *104*, 144413. [[CrossRef](#)]
33. Salaheldeen, M.; Mendez, M.; Vega, V.; Fernández, A.; Prida, V.M. Tuning Nanohole Sizes in Ni Hexagonal Antidot Arrays: Large Perpendicular Magnetic Anisotropy for Spintronic Applications. *ACS Appl. Nano Mater.* **2019**, *2*, 1866–1875. [[CrossRef](#)]
34. Rahman, M.T.; Shams, N.N.; Wang, D.S.; Lai, C.-H. Enhanced exchange bias in sub-50-nm IrMn/CoFe nanostructure. *Appl. Phys. Lett.* **2009**, *94*, 082503. [[CrossRef](#)]
35. Gong, W.J.; Liu, W.; Feng, J.N.; Kim, D.S.; Choi, C.J.; Zhang, Z.D. Effect of antiferromagnetic layer thickness on exchange bias, training effect, and magnetotransport properties in ferromagnetic/antiferromagnetic antidot arrays. *J. Appl. Phys.* **2014**, *115*, 133909. [[CrossRef](#)]
36. Morales, R.; Flores, A.N.; Vargas, N.M.; Giuliani, J.; Schuller, I.K.; Monton, C. Ultradense Arrays of Sub-100 nm Co/CoO Nanodisks for Spintronics Applications. *ACS Appl. Nano Mater.* **2020**, *3*, 4037–4044. [[CrossRef](#)]
37. Tripathy, D.; Adeyeye, A.O. Probing the exchange bias in Co/CoO nanoscale antidot arrays using anisotropic magnetoresistance. *Phys. Rev. B* **2009**, *79*, 064413. [[CrossRef](#)]
38. Perzanowski, M.; Krupinski, M.; Zarzycki, A.; Dziedzic, A.; Zabala, Y.; Marszalek, M. Exchange Bias in the [CoO/Co/Pd]<sub>10</sub> Antidot Large Area Arrays. *ACS Appl. Mater. Interfaces* **2017**, *9*, 33250–33256. [[CrossRef](#)]
39. Yang, H.; Chen, G.; Cotta, A.A.C.; N'Diaye, A.T.; Nikolaev, S.A.; A Soares, E.; Macedo, W.A.A.; Liu, K.; Schmid, A.K.; Fert, A.; et al. Significant Dzyaloshinskii–Moriya interaction at graphene–ferromagnet interfaces due to the Rashba effect. *Nat. Mater.* **2018**, *17*, 605–609. [[CrossRef](#)]



40. Zhang, C.; Li, W.; Yu, D.; Wang, Y.; Yin, M.; Wang, H.; Song, Y.; Zhu, X.; Chang, P.; Chen, X.; et al. Wafer-Scale Highly Ordered Anodic Aluminum Oxide by Soft Nanoimprinting Lithography for Optoelectronics Light Management. *Adv. Mater. Interfaces* **2017**, *4*, 1601116. [[CrossRef](#)]
41. Masuda, H.; Fukuda, K. Ordered Metal Nanohole Arrays Made by a Two-Step Replication of Honeycomb Structures of Anodic Alumina. *Science* **1995**, *268*, 1466–1468. [[CrossRef](#)] [[PubMed](#)]
42. Shaban, M.; Ahmed, A.M.; Abdel-Rahman, E.; Hamdy, H. Fabrication and characterization of micro/nanoporous Cr film for sensing applications. *Microporous Mesoporous Mater.* **2014**, *198*, 115–121. [[CrossRef](#)]
43. Salaheldeen, M.; Abu-Dief, A.M.; Martínez-Goyeneche, L.; Alzahrani, S.O.; Alkhatib, F.; Álvarez-Alonso, P.; Blanco, J.Á. Dependence of the Magnetization Process on the Thickness of Fe70Pd30 Nanostructured Thin Film. *Materials* **2020**, *13*, 5788. [[CrossRef](#)] [[PubMed](#)]
44. Metawa, A.; El-Hossary, F.; Raaif, M.; SalahEl-Deen, M.; El-Moula, A.A.A. Langmuir probe and optical emission spectroscopy studies for RF magnetron sputtering during TiON thin film deposition. *Chin. J. Phys.* **2020**, *68*, 168–177. [[CrossRef](#)]
45. Salaheldeen, M.; Vega, V.; Caballero-Flores, R.; Prida, V.M.; Fernández, A. Influence of nanoholes array geometrical parameters on magnetic properties of Dy–Fe antidot thin films. *Nanotechnology* **2019**, *30*, 455703. [[CrossRef](#)]
46. Prida, V.; Salaheldeen, M.; Pfitzer, G.; Hidalgo, A.; Vega, V.; González, S.; Teixeira, J.; Fernández, A.; Hernando, B. Template Assisted Deposition of Ferromagnetic Nanostructures: From Antidot Thin Films to Multisegmented Nanowires. *Acta Phys. Pol. A* **2017**, *131*, 822–827. [[CrossRef](#)]
47. Donahue, M.; Porter, D. OOMMF User’s Guide, version 1.0. Available online: <https://doi.org/10.6028/NIST.IR.6376> (accessed on 13 July 2022).
48. Ky, V.H.; Hieu, N.T.; Tung, D.K.; Phong, L.T.H.; Manh, D.H.; Kunca, B.; Marcin, J.; Skorvanek, I. Experimental Study and Monte-Carlo Simulation of Exchange Bias Effect in Co-CoO Composite Powder Fabricated by High-Energy Ball Milling. *J. Electron. Mater.* **2019**, *48*, 7952–7959. [[CrossRef](#)]
49. Krupinski, M.; Mitin, D.; Zarzycki, A.; Szkudlarek, A.; Giersig, M.; Albrecht, M.; Marszalek, M. Magnetic transition from dot to antidot regime in large area Co/Pd nanopatterned arrays with perpendicular magnetization. *Nanotechnology* **2017**, *28*, 085302. [[CrossRef](#)]
50. Saldanha, D.R.; Dugato, D.A.; Mori, T.J.A.; Daudt, N.F.; Dorneles, L.S.; Denardin, J.C. Tailoring the Magnetic and Magneto-Transport Properties of Pd/Co Multilayers and Pseudo-Spin Valve Antidots. *J. Phys. D: Appl. Phys.* **2018**, *51*, 395001. [[CrossRef](#)]
51. Wiedwald, U.; Gräfe, J.; Lebecki, K.M.; Skripnik, M.; Haering, F.; Schütz, G.; Ziemann, P.; Goering, E.; Nowak, U. Magnetic switching of nanoscale antidot lattices. *Beilstein J. Nanotechnol.* **2016**, *7*, 733–750. [[CrossRef](#)]
52. Béron, F.; Kaidatzis, A.; Velo, M.F.; Arzuza, L.C.C.; Palmero, E.M.; Del Real, R.P.; Niarchos, D.; Pirola, K.R.; García-Martín, J.M. Nanometer Scale Hard/Soft Bilayer Magnetic Antidots. *Nanoscale Res. Lett.* **2016**, *11*, 86. [[CrossRef](#)] [[PubMed](#)]
53. Salaheldeen, M.; Vega, V.; Ibabe, A.; Jaafar, M.; Asenjo, A.; Fernandez, A.; Prida, V.M. Tailoring of Perpendicular Magnetic Anisotropy in Dy<sub>13</sub>Fe<sub>87</sub> Thin Films with Hexagonal Antidot Lattice Nanostructure. *Nanomaterials* **2018**, *8*, 227. [[CrossRef](#)] [[PubMed](#)]
54. Castán-Guerrero, C.; Herrero-Albillos, J.; Bartolome, F.; Rodríguez, L.A.; Magén, C.; Kronast, F.; Gawronski, P.; Chubykalo-Fesenko, O.; Merazzo, K.M.J.; Vavassori, P.; et al. Magnetic antidot to dot crossover in Co and Py nanopatterned thin films. *Phys. Rev. B* **2014**, *89*, 144405. [[CrossRef](#)]
55. Hu, X.K.; Sievers, S.; Müller, A.; Janke, V.; Schumacher, H.W. Classification of super domains and super domain walls in permalloy antidot lattices. *Phys. Rev. B* **2011**, *84*, 024404. [[CrossRef](#)]
56. Radu, F.; Etzkorn, M.; Siebrecht, R.; Schmitte, T.; Westerholt, K.; Zabel, H. Interfacial domain formation during magnetization reversal in exchange-biased CoO/Co bilayers. *Phys. Rev. B* **2003**, *67*, 134409. [[CrossRef](#)]
57. Sharma, A.; Tripathi, J.; Kumar, Y.; Ugochukwu, K.; Kumar, D.; Gupta, M.; Chaudhary, R. Exchange bias in Co/CoO thin films deposited onto self-assembled nanosphere arrays. *J. Magn. Magn. Mater.* **2020**, *510*, 166599. [[CrossRef](#)]
58. Skumryev, V.; Stoyanov, S.; Zhang, Y.; Hadjipanayis, G.; Givord, D.; Nogues, J. Beating the superparamagnetic limit with exchange bias. *Nature* **2003**, *423*, 850–853. [[CrossRef](#)]
59. Merazzo, K.J.; Castán-Guerrero, C.; Herrero-Albillos, J.; Kronast, F.; Bartolome, F.; Sesé, J.; DEL Real, R.P.; García, L.M.; Vazquez, M. X-ray photoemission electron microscopy studies of local magnetization in Py antidot array thin films. *Phys. Rev. B* **2012**, *85*, 184427. [[CrossRef](#)]
60. Wang, C.C.; O Adeyeye, A.; Singh, N. Magnetic antidot nanostructures: Effect of lattice geometry. *Nanotechnology* **2006**, *17*, 1629–1636. [[CrossRef](#)]
61. Manzin, A.; Bottauscio, O. Micromagnetic modelling of the anisotropy properties of permalloy antidot arrays with hexagonal symmetry. *J. Phys. D Appl. Phys.* **2012**, *45*, 95001. [[CrossRef](#)]
62. Gräfe, J.; Haering, F.; Tietze, T.; Audehm, P.; Weigand, M.; Wiedwald, U.; Ziemann, P.; Gawronski, P.; Schütz, G.; Goering, E.J. Perpendicular magnetisation from in-plane fields in nano-scaled antidot lattices. *Nanotechnology* **2015**, *26*, 225203. [[CrossRef](#)] [[PubMed](#)]
63. Haering, F.; Wiedwald, U.; Häberle, T.; Han, L.; Plettl, A.; Koslowski, B.; Ziemann, P. Geometry-induced spin-ice structures prepared by self-organization on the nanoscale. *Nanotechnology* **2013**, *24*, 55305. [[CrossRef](#)] [[PubMed](#)]
64. Salaheldeen, M.; Vega, V.; Fernández, A.; Prida, V. Anomalous in-plane coercivity behaviour in hexagonal arrangements of ferromagnetic antidot thin films. *J. Magn. Magn. Mater.* **2019**, *491*, 165572. [[CrossRef](#)]