

# Entomological patterns in the human African trypanosomiasis focus of Komo Mondah, Gabon

\*Kohagne TL<sup>1</sup>, M'eyi MP<sup>2</sup>, Mimpfoundi R<sup>3</sup>, Louis JF<sup>1</sup>

1. Programme sous régional de lutte contre la trypanosomiase humaine africaine, Organisation de Coordination pour la lutte contre les Endémies en Afrique Centrale (OCEAC)
2. Programme National de lutte contre la Trypanosomiase Humaine Africaine (PNLTHA), Ministère de la Santé, des Affaires Sociales, de la Solidarité et de la Famille, Gabon
3. Laboratoire de Parasitologie et Ecologie parasitaire, Faculté des Sciences, B.P. 812, Université de Yaoundé I.

## Abstract

**Background:** The incidence of sleeping sickness is still considerable in the Komo Mondah focus, in spite of case-detection strategy. A combined strategy that associated both mass screening and vector control is effective for the control of the disease. In the perspective of a targeted vector control in main transmission sites, we have carried out an entomological survey in the epicentre of the focus.

**Objectives:** To determine tsetse flies distribution, human-fly contact point and eventually risk factors for acquisition of the disease.

**Methods:** "Vavoua" traps were set for *Glossina* in four biotopes selected after an interview of HAT patients concerning their working places. Tsetse were captured and dissected. DNA from organs was analysed by PCR for trypanosome infections. The origin of blood meals was determined by ELISA.

**Results:** The focus is infested by three species of *Glossina*: *G. palpalis palpalis* (1149: 91.85%) found in all biotopes; *G. fuscipes fuscipes* (85: 6.79%) and *G. caliginea* (17: 1.36%) found in water spots and landing stages. They are infected by three subgenera of trypanosomes and only *G. palpalis palpalis* is infected by human trypanosomes. *G. fuscipes fuscipes* is infected by *T. brucei* sl and *G. caliginea* is not infected. Flies are absent at the periphery of houses except in one village. Only 29.20% of blood meals were from humans. Landing stages built in swamp mangrove are presenting the higher index of epidemiological risk and populations are exposed to the disease when they go to the area for taking their fishing boats.

**Conclusion:** Swamp mangrove would be targeted in priority during a vector control campaign.

**Key-words:** Transmission, Human African Trypanosomiasis, *Glossina*, Gabon.

*African Health Sciences* 2010; 10(4): 341 - 348

## Introduction

The occurrence of Human African Trypanosomiasis (HAT) in an area is acutely determined by the presence of three factors: the parasite (*Trypanosoma*), the vector (*Glossina* or tsetse fly) and the human host. Tsetse populations are influenced mainly by density-independent factors such as temperature and humidity, which in turn depend on vegetation cover. Fly densities are determined by the availability of hosts and of suitable habitats. The effect of tsetse population density on disease transmission is controversial, since the relationships between transmission and fly density clearly differ in different endemic areas<sup>1</sup>. It is known that the closeness of

human-fly contact is particularly important for the transmission of *Trypanosoma brucei gambiense*, and it is probably a major factor in the distribution of the disease<sup>2,3</sup>. Although the transmission modalities of HAT are one of the fundamental characteristics of a given focus, they are often unknown or neglected. Many entomological factors are involved in the transmission of the disease such as teneral state, density and mobility of *Glossina*<sup>4</sup>. When associated to others as human behaviour<sup>5</sup> and the presence of an animal reservoir<sup>6</sup>, these factors contribute to maintain the disease in an area.

The Komo Mondah focus is located in the distribution area of *Glossina palpalis palpalis* Robineau-Desvoidy, 1830 in Central Africa. It is an old sleeping sickness focus. In 1922, the incidence of the disease in the area was 0.78%<sup>7</sup>. Forty years later, some authors<sup>8</sup> reported that 69 HAT cases were detected in the Estuaire province where the Komo Mondah focus is located. The situation remained less known up to year 1991 when an evaluation scientific expedition of the International Scientific Council for

### \*Corresponding author:

Kohagne Tongue L  
Organisation de Coordination pour la  
lutte contre les Endémies en Afrique  
Centrale OCEAC, B.P. 15665  
Yaoundé Cameroon  
Tel.: (+237) 22 10 38 49  
Fax: (+237) 22 23 00 65.  
Email: [kohagne\\_oceac@yahoo.fr](mailto:kohagne_oceac@yahoo.fr)

Trypanosomiasis Research and Control “ISCTRC”<sup>9</sup> revealed that 45 new cases were detected in the country with 95.6% coming from the Estuaire province. From 2003 to 2006, more than thirty new cases were actively detected per year in the focus by the medical team of the national sleeping sickness control program (Programme National de Lutte contre la Trypanosomiase Humaine Africaine “PNLTHA”, unpublished). The Komo Mondah focus provides the 65% of the overall HAT cases diagnosed in the whole country. The incidence of the disease is still considerable in spite of case-detection strategy put in place by the national control program. It is known that a strategy that associated both mass screening and vector control is effective for the control of sleeping sickness. Little is known about entomological features of HAT in the Komo

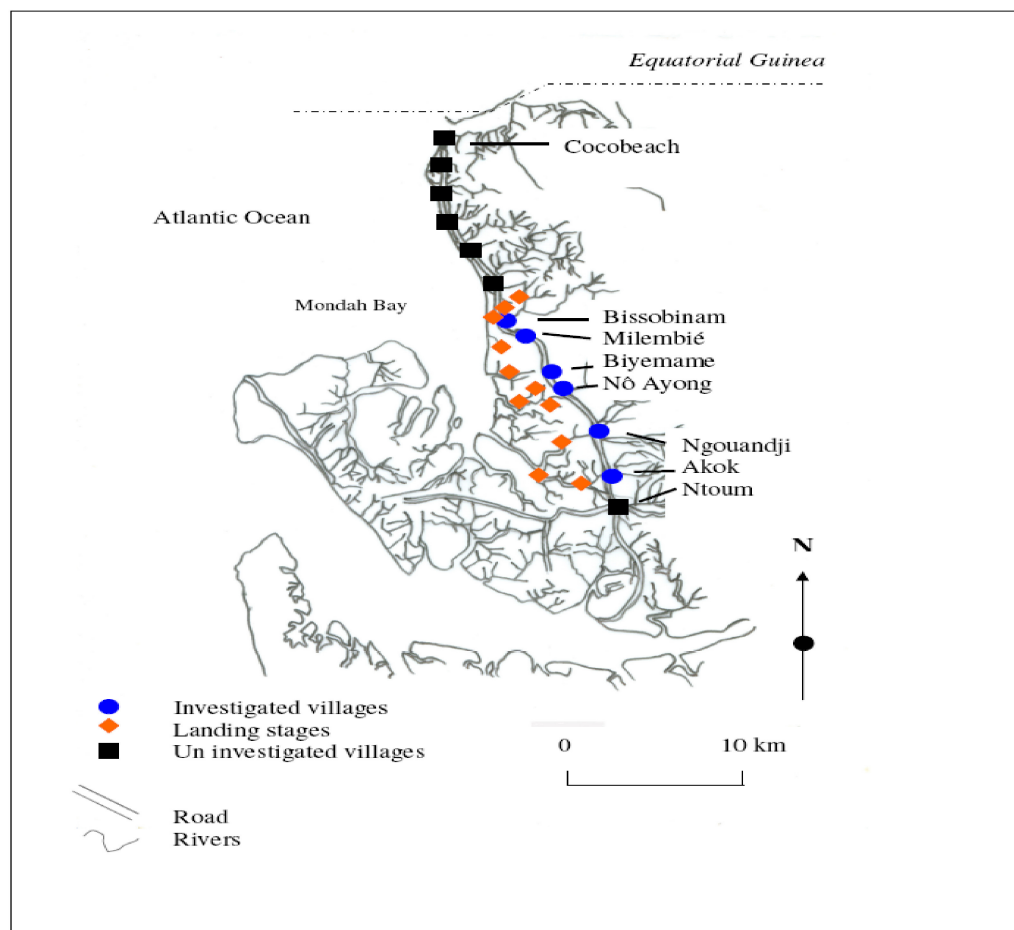
Mondah focus and as far as we are aware, only long-standing publications<sup>10,11</sup> are available. This focus is sitting astride humid forest and swamp mangrove where trapping is quite difficult. In the perspective of a targeted vector control in main transmission sites, we have carried out an entomological survey in the epicentre of the focus.

## Methods

### Survey zone

The survey zone, located in coastal plain, extends over six villages (epicentre of the focus) from Ntoum to Cocobeach : Akok (00°51’N, 009°74’E), Ngouandji (00°58’N, 009°70’E), Nô Ayong (00°62’N, 009°68’E), Biyemame (00°65’N, 009°66’E), Milembié (00°67’N, 009°64’E) and Bissobinam (00°95’N, 009°58’E) (fig.1).

**Figure 1: The Human African Trypanosomiasis focus of Komo Mondah**



This focus is of a great epidemiological interest because it is opposite to the HAT Kogo focus of Equatorial Guinea, less than 5 kilometres (by maritime way) from Cocobeach. There are two kinds of vegetations: mangrove at the coastline and tropical rain forest between sea and villages. The climate is equatorial type with four seasons: two dry seasons from December to January and from May to September and two rainy seasons from October to November and from February to April. Fishing is the main activity in the area and there are many landing stages (where fishers tie their boat up) located for the most part, at more than six kilometres from the village, except in Bissobinam and Nô Ayong. Houses are built out of wood along the main road in hamlets. Some families have pitched camp near landing stages for drying and/or smoking fish. Livestock farming is scarce in the area. Villagers are rearing mainly goats, poultry, cats and dogs.

### Data collection

The survey was carried out during the schools holidays of March because some families living in Libreville used to spend their holidays in the area and are exposed to the disease. Records of HAT patients actively or passively diagnosed from 2002 to 2007, living in the study area and treated at N'Kembo hospital (Libreville), healed or not, were reviewed, and relevant demographic data (name, village of residence, age, gender and the year of the first diagnosis) collected. A follow-up of the patients was then undertaken with the help of the chief of the village and a village nurse. They were informed about the purpose of the survey and asked for consent. Then, they were asked to respond to a standard questionnaire concerning their activities during the last two years prior to diagnosis of the disease since only those ones were easy to remember. Typical activities were as follows: fishing, farming, hunting, forestry activity, domestic activities related to water such as bathing, laundry and search of water for household use.

### Entomological survey

After the interview, all working places were prospected and four biotopes were retained for trapping: border of the village, water spots, farms (food crops) and landing stages. "Vavoua" traps<sup>12</sup> were then set out in each village, from the border of houses to the coastal area.

Each trap site was cleared to ensure reasonable visibility of the trap and traps were examined twice a day, at 10 a.m. and at 4 p.m., during four days. Data on the species and sex of tsetse captured in each trap were recorded according to the computer-based identification key for tsetse flies<sup>13</sup>. Flies were dissected 24h after capture in a drop of sterile 0.9% saline water on a microscope slide under a magnifying glass. Midgut, proboscis and salivary glands were examined under a light microscope at a 400X magnification, for the search of trypanosomes. Organs, both infected and uninfected were then transferred separately into microfuge tubes containing 50µl of 70% ethanol and stored at 4°C in the field and at -20°C in the laboratory until use for PCR analysis. Teneral flies were identified by the residual sac from the larval stage in the midgut<sup>14</sup>. Blood meals from flies were collected on Whatman n°4 papers and stored with desiccant in dark and dry conditions until analysis by ELISA.

### PCR amplification

DNA was extracted from organs using the "ReadyAmp® Genomic DNA Purification System" (Promega) Kit as previously described<sup>15</sup>. The supernatant collected was used directly for PCR or stored at -20°C. Three pairs of specific primers for *Trypanosoma congolense* "forest type", *Trypanosoma brucei* s.l. and *Trypanosoma vivax* were used<sup>16,17</sup>. Amplification was done on 25 µl of mixture containing 5 µl of DNA extract, 10 mM Tris-HCl (pH 9), 50 mM KCl, 3 mM MgCl<sub>2</sub>, 200 µM dNTP (dTTP, dATP, dCTP and dGTP), 1 µM oligonucleotide primers and 0.25 units of *Taq* (*Thermos Aquaticus*) DNA polymerase (Appligene-Oncor, USA). Positive (2.5 ng of reference DNA) and negative (without DNA) controls were then included in each set of experiments. The reaction mixtures were overlaid of paraffin oil to prevent evaporation. One denaturing step at 94°C was programmed before 30 amplification cycles. Each cycle contained a denaturing step at 94°C for 1 min, annealing at 60°C for 1 min and extension at 72°C for 1 min. The *Taq* DNA polymerase was added during the first cycle when temperature reached 60°C (hot-start PCR). The last elongation step was extended to 15 min. The amplified products were analysed on 1.5% agarose gel containing ethidium bromide and visualised by UV light. Samples positives to *T. brucei* s.l. were then amplified with primers specific for *T. brucei gambiense* group 1<sup>18</sup>. Amplification was performed as previous apart from annealing which was at 62°C. PCR test

was repeated on all PCR positive and also on some negative samples randomly selected.

## ELISA

ELISA was performed as previously described<sup>19</sup>; human, pig, goat and sheep antibodies were tested. Origin of a sample was determined when its optic density was higher than the mean of optic densities of negative controls of which was added for two times the standard-deviation.

## Data analysis

The human-fly contact and the index of epidemiological risk were calculated respectively as follows<sup>20,21</sup>:

With  $k$  a constant equal to 632 in farms and 623 at the edge of villages,  $n$  the number of human blood meals,  $C$  the number of captured flies;  $a$  is a constant equal to 1.23 in farms and 0.63 at the edge of villages,  $P$  the number of used traps,  $j$  the number of trapping days and  $t$  the number of teneral flies.

Data were analysed using the computer statistical package for the social sciences (SPSS) for Windows version 12.0. The incidence of HAT

according to sex and age was used to test any relationship with age and gender. Overall data were compared using a chi-squared test.

## Results

The study sample included 106 HAT patients diagnosed from 2002 to 2007 and present in the area at the time of the survey. We didn't keep out people living in Libreville and take in account only their activities while being in the study area. HAT patient's age were ranged from 9 to 76 years old. Most of them were fishermen (74.47%). Only few individuals were housewives (3.77%) or civil servants (1.88%) (table 1). Few of them were originating from Cameroon (5.7%) and Equatorial Guinea (10.4%) which are endemic countries of sleeping sickness but they were settled in Gabon for more than ten years and had never stayed in a known HAT focus other than the Komo Mondah focus. The number of HAT male patients 68/106 (64.2%) was significantly higher than females 38/106 (35.8%) ( $p=0.02$ , 95% confidence interval [95% CI] 0.36-0.90) and there were no significant differences between different age groups.

**Table 1: Population sample (HAT cases) by age, sex and main activity**

	Less than or equal to 20		21 - 40		41 - 60		Greater than or equal to 60	
	Males	Females	Males	Females	Males	Females	Males	Females
Fishing	14	7	8	5	12	10	20	3
Studying	10	7	3	1	0	0	0	0
Civil service	0	0	1	0	0	1	0	0
Housework	0	1	0	1	0	2	0	0

## Distribution of the vectors and infection rate

A total of 1251 tsetse flies were captured in the six villages; *Glossina* were absent at the border of all villages, except in Bissobinam; in Akok and Ngouandji, they were also absent from farms. On the opposite, they were present in water spots and landing stages in all villages screened. Apparent density per trap (ADT) was significantly different per biotopes and per villages ( $\chi^2=12.14; p<0.05$ ). The highest ADT was observed in landing stages in Bissobinam (table 2). Three species and sub-species

of *Glossina* were captured: *Glossina palpalis palpalis* (1149; 91.85%), *Glossina fuscipes fuscipes* Newstead, 1911 (85; 6.79%) and *Glossina caliginea* Austen, 1929 (17; 1.36%). *G. palpalis palpalis* was found in all biotopes while *G. caliginea* and *G. fuscipes fuscipes* were found only in water spots and landing stages. Teneral flies of *G. palpalis palpalis* were identified in water spots and landing stages of all villages and also in farms in Bissobinam (table 2); those of *G. fuscipes fuscipes* were found only in landing stages in Akok. No *G. caliginea* teneral fly was captured.

**Table 2: Apparent density of Glossina and teneral flies per trap (ADT)**

Villages Biotopes	Akok	Ngouandji	Nô Ayong	Biyemame	Milembié	Bissobinam
Border of the village	0	0	0	0	0	0.75 <sup>a</sup> / 0
Water spots	1.25 <sup>a</sup> / 0.07 <sup>b</sup>	1.08 <sup>a</sup> / 0.11 <sup>b</sup>	1.06 <sup>a</sup> / 0.08 <sup>b</sup>	1.31 <sup>a</sup> / 0.29 <sup>b</sup>	1.19 <sup>a</sup> / 0.20 <sup>b</sup>	2.62 <sup>a</sup> / 0.25 <sup>b</sup>
Farms (food crops)	0	0	0.25 <sup>a</sup> / 0	2.13 <sup>a</sup> / 0	1.0 <sup>a</sup> / 0	2.12 <sup>a</sup> / 0.17 <sup>b</sup>
Landing stages	1.4 <sup>a</sup> / 0.27 <sup>b</sup>	1.67 <sup>a</sup> / 0.22 <sup>b</sup>	17.25 <sup>a</sup> / 1.17 <sup>b</sup>	4.58 <sup>a</sup> / 0.89 <sup>b</sup>	8.38 <sup>a</sup> / 0.75 <sup>b</sup>	20.16 <sup>a</sup> / 0.96 <sup>b</sup>

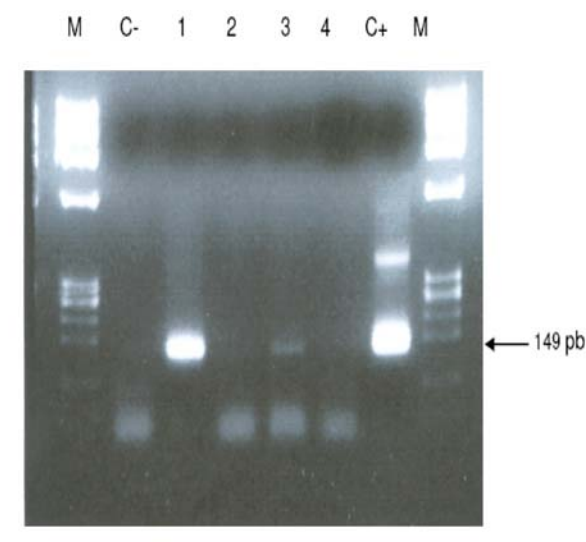
<sup>a</sup>Apparent density per trap of Glossina

<sup>b</sup>Apparent density per trap of teneralis

Females were more captured (sex ratio=0.63) and significantly more infected than males ( $\chi^2=21.23$ ;  $p<0.05$ ). 104 Glossina of the total dissected flies (550) were found infected by the three species of trypanosomes tested: *Trypanosoma brucei* sl (65/104; 62.5%), *T. congolense* “forest type” (14/104; 13.46%) and *T. vivax* (11/104; 10.58%) with 13.46% (14/104) of mixed infections of *T. brucei* sl and *T. congolense*.

*T. brucei* sl was found in all biotopes and 18.5% (12/65) of *T. brucei gambiense* group 1 were distinguished from *T. brucei* sl. This sub-specie was identified only in landing stages of Nô Ayong, Biyemame and Bissobinam. *G. palpalis palpalis* were infected by all species of trypanosomes identified, *G. fuscipes fuscipes* was infected only by *T. brucei* sl and *G. caliginea* was not found infected.

**Figure 2: Ethidium stained gel showing PCR products of an infected fly with *T. brucei gambiense* group 1 (TRBPA 1/2) primer sets**



**Feeding behaviour and index of epidemiologic risk**

Feeding behaviour was not significantly different between males and females ( $\chi^2=0.00$ ;  $p>0.05$ ). No blood meal was identified from pigs and sheep, while 29.20% (40/137) of blood meals were from humans, 4.38% (6/137) from goats and 66.44% (91/137) were unidentified. Most (95/137) of blood meals were from *G. palpalis palpalis* and 32.63% (31/91) of these blood meals originated from humans, while *G. caliginea* didn't feed on humans (table 3).

**Table 3: Origin of blood meals of Glossina**

	<i>G. palpalis palpalis</i> n=95		<i>G. fuscipes fuscipes</i> n= 33		<i>G. caliginea</i> =9	
	Blood meals	%	Blood meals	%	Blood meals	%
Human	31	32.63	9	27.27	0	0
Goats	2	2.11	2	6.06	2	22.22
Undetermined	62	65.26	22	66.67	7	77.78
Total	95	-	33	-	9	-

Higher index of epidemiologic risk was found in landing stages of all villages investigated (table 4). In water spots of Ngouandji and Biyemame, index was low and no risk was observed in farms, except in Bissobinam.

**Table 4: Index of epidemiologic risk per biotopes and per villages**

	Akok	Ngouandji	Nô Ayong	Biyemame	Milembié	Bissobinam
Border of villages	0	0	0	0	0	0
Water spots	0	0.00068	0	0.0031	0	0
Farms (food crops)	0	0	0	0	0	0.019
Landing stages	0.0029	0.020	1.005	0.72	0.13	0.85

## Discussion

Fly densities are determined by the availability of hosts and suitable habitats<sup>1</sup>. The apparent density per trap (ADT) remained relatively low (less than 5 *Glossina*/trap/day) in all biotopes of all villages, except landing stages of Nô Ayong and Bissobinam where it was more than 15 *Glossina*/trap/day. Absence of pigs in the area could justify the low density of flies<sup>22</sup>. Besides, the survey was carried during rainy season where environmental conditions are not suitable for tsetse flies. High ADT of *Glossina* observed in landing stages of these villages could be due to the numerous of landing stages in these areas. We have noticed that the more frequent the number of landing stages, the more important the *Glossina* density. One could think that the presence of tsetse flies around Bissobinam village is due to the proximity of river which offers suitable environmental conditions for tsetse.

Three species of *Glossina* were captured: *Glossina palpalis palpalis*, *Glossina caliginea*, and *Glossina fuscipes fuscipes*. These results agree with observations made by previous authors<sup>10,11,23</sup> who showed the predominance of *G. palpalis palpalis* in the area. The presence of *G. caliginea* only in water spots and landing stages would be due to their alliance with mangrove forest. *G. palpalis palpalis* was found in all biotopes while *G. fuscipes fuscipes* were found only in water spots and landing stages. An author has observed a progressive replacement of *G. fuscipes quanzensis* by *G. palpalis palpalis* in Congo<sup>24</sup>. It is difficult for us to assert that *G. palpalis palpalis* is pushing away *G. fuscipes fuscipes* from the Komo Mondah focus only in the regards of our results, though *G. palpalis palpalis* and *G. fuscipes fuscipes* were not simultaneously caught in the same biotope. It is known that *G. fuscipes fuscipes* is rarely found far from open water or riverine habitats<sup>3</sup> while *G. palpalis palpalis* is highly mobile and maintain a close association with villages<sup>25</sup>. The presence of teneral flies in water spots and landing stages indicates that these areas are reproduction sites of tsetse flies; reproduction sites of *G. f. fuscipes* were observed only in some landing stages of Akok village. Infected

tsetse flies were found in landing stages of all villages investigated; they were also found in water spots of Biyemame and Bissobinam. *G. palpalis palpalis* was infected by human trypanosomes and seems to be the main vector of HAT in the focus. A tsetse fly must be teneral to become infected<sup>26</sup>. Since *G. fuscipes fuscipes* was not infected by *T. b. gambiense* and teneral captured only in Akok where no human trypanosomes were identified, one can conclude that this specie is not involved in the transmission of disease, but it can be a potential vector since HAT cases are diagnosed in this village. Mixed infections were observed only in landing stages which are natural habitats for wild animals. These results were also observed in some HAT foci of Cameroon<sup>17</sup>.

A recent study showed that such a feature depends more on the vectorial capacities of flies than concurrent trypanosome infections in the host<sup>127</sup>. Infection rate of tsetse flies in a given biotope is in relation with hosts present in this biotope<sup>28</sup>. The presence of animal's trypanosomes (*Nannomonas*, *Duttonella*, *Trypanozoon*) in this focus links with the number of feeds taken upon animals. In fact, only 29.2% of blood meals were from humans. As origins of more than 65% of blood meals were unidentified, feeding behaviour of *Glossina* in this focus is not well elucidated. A previous study has described the presence of many reptiles: big lizards (*Varanus niloticus*) and crocodiles (*Crocodylus cataphractus*, *Osteolemus tetraspis*) upon which *Glossina* feed<sup>23</sup>. Domestic and wild animals can harbour human trypanosomes<sup>29,30</sup> and are more or less involved in the epidemiology of sleeping sickness. The importance of blood meals coming from animals suggests the need to determine the role animals play in the epidemiological cycle of sleeping sickness in the Komo Mondah focus. This test will be performed by heteroduplex technique which is more exact than ELISA<sup>31</sup>. The presence of *T. congolense* could be in relation with goats since it has been observed that *Glossina* feed sometimes upon them<sup>32</sup>; however many others animals such as Suidae (Warthog, Potamochoerus) can harbour *Nannomonas*.

It seems that landing stages are main transmission sites of the disease in the focus. Human contracts the disease during his presence in this biotope when he is taking fishing boats and this could explain the fact that fishing is the main activity of 75% of HAT cases. A low index of epidemiologic risk was observed in water spots of Ngouandji and Biyemame. According to the PNLTHA, high incidence of the disease is observed in Bissobinam (PNLTHA, unpublished). Bissobinam is the only village where tsetse flies were caught in all biotopes and where index of epidemiologic risk was also observed in farms. This village is more irrigated than others and the presence of water alone in an endemic area increases the risk for contracting the disease by more than three folds<sup>33</sup>.

### Conclusion

*Glossina palpalis palpalis* is the main vector of sleeping sickness in the Komo Mondah focus. Tsetse flies are rare around villages and human contracts the disease essentially when he goes to the swamp mangrove for boarding or landing before or after fishing; landing stages being more hazardous biotopes. *Glossina* feed more upon animals and three trypanosomes subgenera are present. A vector control would be targeted in priority in swamp mangrove where are located main transmission sites of the disease.

### Acknowledgments

We thank administrative and sanitary authorities of Komo-Mondah and Noya for their hospitality and help. We are grateful to villagers for their collaboration during this research. Technical assistance was provided by the technical staff of PNLTHA/Gabon and PSR-THA/OCEAC.

### References

1. WHO - Control and surveillance of african trypanosomiasis. *Report of a WHO Expert Committee*. Geneva: World Health Organisation, *Technical Report Series* ; 1998 : n° 881
2. Nash TAM -Tsetse flies in British West Africa. Colonial Office, 1-75, HMSO, London, 1948.
3. Leak SGA - Tsetse biology and ecology. Their role in the epidemiology and control of trypanosomiasis. CABI Publishing, New York, USA, 1999.
4. Laveissière C, Couret D, Staak C, Hervouët JP - *Glossina palpalis* et ses hôtes en secteur forestier de Côte d'Ivoire. Relations avec l'épidémiologie de la trypanosomiase humaine. *Cab. ORSTOM, Sér Ent Méd Parasitol* 1985; 23: 167-185.
5. Hervouët JP & Laveissière C - Ecologie humaine et maladie du sommeil en Côte d'Ivoire. *Cahiers ORSTOM, série Entomologie Médicale et Parasitologie* 1987; 34: 101-111.
6. Mehlitz D - Les réservoirs animaux de la maladie du sommeil. Document OMS, TRY/EC/WP/85, 1985.
7. Sicé A - La trypanosomiase humaine au Gabon. Organisation du laboratoire et de la station de traitement des trypanosomés de Libreville. *Annales de Médecine et de pharmacie coloniales* 1922; 20: 151-158.
8. Gateff C, Fouchet M - La trypanosomiase dans la région de l'Estuaire du Gabon, épidémiologie. *Méd Trop* 1968; 28: 177-198.
9. ISCTRC - Formulaire pour l'évaluation du contrôle et de la surveillance de la trypanosomiase humaine africaine, Gabon -21<sup>ème</sup> réunion, Yamoussokro, Côte d'Ivoire; 1991.
10. Challier A - Enquête sur les glossines des foyers de trypanosomiase humaine en République du Gabon - Prospection des gîtes de l'Estuaire et de l'Ogooué Maritime. Recommandations pour une campagne de lutte. Rapport final Organisation mondiale de la santé, Bureau Régional de l'Afrique, 1970.
11. Mboumba M - Lutte contre les glossines au Gabon, foyer de l'Estuaire. Rapport final du Service National d'Assainissement. 1977.
12. Laveissière C, Grébaud P - Recherches sur les pièges à glossines (Diptera; Glossinidae). Mise au point d'un modèle économique: le piège «Vavoua». *Trop Med Parasitol* 1990; 41: 185-192.
13. Brunhes J, Cuisance D, Geoffroy B, Hervy JP - Les glossines ou mouches tsé-tsé. Logiciel d'identification et d'enseignement. Editions ORSTOM, Montpellier, France, 1998.
14. Laveissière C - Détermination de l'âge des glossines ténérales. *Cab. ORSTOM, sér Ent Méd Parasitol* 1975; 13: 3-11.
15. Penchenier L, Dumas V, Grébaud P, Reifemberg JM, Cuny G - Improvement of blood and fly gut processing for diagnosis of Trypanosomosis. *Parasite* 1996; 4: 387-389.
16. Masiga DK, Smith JA, Hayes P, Bromidge JT, Gibson WC - Sensitive detection of trypanosomes in tsetse flies by DNA amplification. *Int J Parasitol* 1992; 22: 909-918.



17. Morlais I, Grébaud P, Bodo JM, Djoha S, Cuny G - Characterization of trypanosome infection by polymerase chain reaction (PCR) amplification in wild tsetse flies in Cameroon. *Parasitology* 1998; 116: 547-554.
18. Herder S, Simo G, Nkinin S, Njiokou F – Identification of trypanosomes in wild animals from Southern Cameroon using the Polymerase Chain Reaction (PCR), *Parasites* 2002; 9: 345-349.
19. Beier JC, Perkins PV, Kords J, Diggs D, Gargam TP, Koech DK – Blood meal identification by direct enzyme-linked immunosorbent assay (ELISA) tested on anopheles (Diptera: Culicidae) in Kenya. *J Med Entomol* 1988; 25: 19-16.
20. Laveissière C, Sane B, Meda HA - Measurement of risk in endemic areas of human african trypanosomiasis in Côte d'Ivoire. *Trans R Soc Trop Med Hyg* 1994; 88: 645-648.
21. Laveissière C, Grébaud P - Risk index of sleeping sickness transmission: simplification of the calculation. *Insect Sci Applic* 2003; 23 (2): 99-102.
22. Kagbadouno M, Camara M, Bouyer J, Hervouet JP, Courtin F, Jamonneau V et al – Tsetse elimination: its feasibility in the historical sleeping sickness focus of Loos islands, Guinea. *Parasite* 2009; 16 (1): 29-35.
23. Lancien J, Sarda J, Ekouague L, Bekale - Une première expérience de lutte par piégeage contre les mouches tsé-tsé, dans la mangrove gabonaise. Rapport final ORSTOM, 1985.
24. Gouteux JP – Un cas d'exclusion géographique chez les glossines : l'avancée de *G. palpalis palpalis* vers Brazzaville (Congo) au détriment de *G. palpalis quanzensis*. *Insect Sci Applic* 1992 ; 13 (1) : 59-67.
25. Baldry DAT - Local distribution and ecology of *Glossina palpalis* and *Glossina tachinoides* in forest foci of west african human trypanosomiasis, with special reference to associations between peri-domestic tsetse and their hosts. *Ins Sci Appl* 1980; 1: 85-93.
26. Dukes HL – Studies on the factors that may influence the transmission of the polymorphic trypanosomes by tsetse. IX. On the infectivity to *Glossina* of the trypanosome in the blood of mammal. *Ann Trop Med Parasitol* 1935; 29: 131-143.
27. Van Den Bossche P, De Deken R, Brandt J, Geerts S, Geysen D, Berkvens D - The transmission of mixed *Trypanosoma brucei brucei*/*T. congolense* infections by tsetse (*Glossina morsitans morsitans*). *Veterinary Parasitology*, 2004; 119 (3): 147-153.
28. Nekpeni EB, Eouzan JP, Dagnogo M – Infection de *Glossina palpalis palpalis* (Diptera, Glossinidae) par les trypanosomes en zone forestière de Gagnoa en Côte d'Ivoire. *Trop Med Parasitol*, 1991; 42: 399-403.
29. Njiokou F, Laveissière C, Simo G, Nkinin S, Grébaud P, Cuny G, Herder S - Wild fauna as a probable animal reservoir for *Trypanosoma brucei gambiense* in Cameroon. *Journal of molecular epidemiology and evolutionary genetics in infectious diseases* 2006; 6(2): 147-153.
30. Simo G, Asonganyi T, Nkinin SW, Njiokou F, Herder S - High prevalence of *Trypanosome brucei gambiense* group 1 from the Fontem sleeping sickness focus in Cameroon. *Veterinary Parasitology* 2006; 139 (1), 57-66.
31. Njiokou F, Simo G, Nkinin S, Laveissière C, Herder S. Infection rate of *Trypanosoma brucei* sl, *T. congolense* “forest type”, *T. vivax* and *T. simae* in small wild vertebrates in south Cameroon. *Acta Tropica* 2004; 62, 139-146
32. Ndoutamia G, Brahim A, Nadjindoroum P, Moudaidandi G, Diimgang G, Loubadjim R – Sensibilité des chèvres Kirdimi et Sahéliennes du Tchad à la trypanosomose à *Trypanosoma congolense*. *Revue Elev Méd Vét Pays Trop*, 2000; 53 (1): 9-15.
33. Laveissière C, Hervouet JP, Couret D - Localisation et fréquence du contact homme-glossine en secteur forestier de Côte d'Ivoire: 1. Recherche des points épidémiologiquement dangereux dans l'environnement végétal. *Cah ORSTOM, Sér Ent Parasitol* 1986; 24: 21-35.