



# Environmental drivers of drought deciduous phenology in the Community Land Model

K. M. Dahlin<sup>1,2</sup>, R. A. Fisher<sup>2</sup>, and P. J. Lawrence<sup>2</sup>

<sup>1</sup>Department of Geography, Michigan State University, East Lansing, Michigan, USA

<sup>2</sup>Climate and Global Dynamics Division, National Center for Atmospheric Research, Boulder, Colorado, USA

Correspondence to: K. M. Dahlin (kdahlin@msu.edu)

Received: 6 March 2015 – Published in Biogeosciences Discuss.: 16 April 2015

Revised: 30 July 2015 – Accepted: 5 August 2015 – Published: 26 August 2015

**Abstract.** Seasonal changes in plant leaf area have a substantial impact on global climate. The presence of leaves and the time when they appear affect surface roughness and albedo, and the gas exchange occurring between leaves and the atmosphere affects carbon dioxide concentrations and the global water system. Thus, correct predictions of plant phenological processes are important for understanding the present and future states of the Earth system. Here we compare plant phenology as estimated in the Community Land Model (CLM) to that derived from satellites in drought deciduous regions of the world. We reveal a subtle but important issue in the CLM: anomalous green-up during the dry season in many semi-arid parts of the world owing to rapid upwards water movement from wet to dry soil layers. We develop and implement a solution for this problem by introducing an additional criterion of minimum cumulative rainfall to the leaf-out trigger in the drought deciduous algorithm. We discuss some of the broader ecological impacts of this change and highlight some of the further steps that need to be taken to fully incorporate this change into the CLM framework.

## 1 Introduction

Ecosystems change with the seasons in response to environmental cues. Some of those cues are fixed, like day length, while others are climate-driven and therefore vary from year to year. The combination of fixed and climate-driven phenological cues poses an interesting problem in the face of climate change – climate-related drivers of phenology (temperature and rainfall patterns) are likely to change (Lau et al., 2013), while fixed cues will remain unchanged. Phenologi-

cal shifts due to climate change have already been identified (e.g., Parmesan and Yohe, 2003). Phenology can refer to a large number of patterns and behaviors in plants and animals that shift with the seasons. Here, however, because we are focused on land surface model simulations, we use phenology specifically to refer to intra-annual variations in leaf area index (LAI). Leaf area can vary significantly within a year and is, therefore, a critical control on land–atmosphere feedbacks (Lawrence et al., 2012).

Recent advances have greatly improved our ability to predict seasonal patterns in northern temperate deciduous forests (Richardson et al., 2012), but our understanding of phenological patterns in stress or drought deciduous plants (also called “raingreen”) remains weak (Guan et al., 2014; Jenerette et al., 2010; Ma et al., 2013). The semi-arid ecosystems that host the majority of drought deciduous woody plants have relatively low biomass but make up a large fraction of global land area ( $\sim 30\%$ ; Scholes and Hall, 1996). Their extensiveness alone makes them important to global radiation budgets, but additionally these systems are likely very sensitive to climate change given their apparent bistability (Scholes and Hall, 1996; Staver et al., 2011). In semi-arid ecosystems leaf-out is typically thought to be a function of water availability (Reich, 1995; White et al., 1997); however, some woody plants leaf out several weeks before the first rains of the season (Archibald and Scholes, 2007).

In an Earth system modeling context, the timing and magnitude of plant phenology, and how these processes may change, are critical for approximating the energy and carbon balances of the planet. Prognostic phenology has only recently been incorporated into Earth system models, however, and its fidelity, particularly in semi-arid regions, re-

mains poorly tested (Blyth et al., 2011; Lawrence et al., 2011; Randerson et al., 2009). Lawrence et al. (2012) found that the prognostic phenology in the Community Land Model version 4 (CLM4(CN)) degraded estimates of latent heat flux and other biophysical properties in comparison to using prescribed, satellite-derived phenology (CLM4SP). Wang et al. (2013) compared intra-annual variation in the fraction of absorbed photosynthetically active radiation (fAPAR) in CLM4CN to satellite-derived estimates and found substantial differences in regional averages, zonal means, and inter-annual trends. It is difficult, however, to isolate the impact of the drought deciduous phenology algorithm using these regional and zonal estimates.

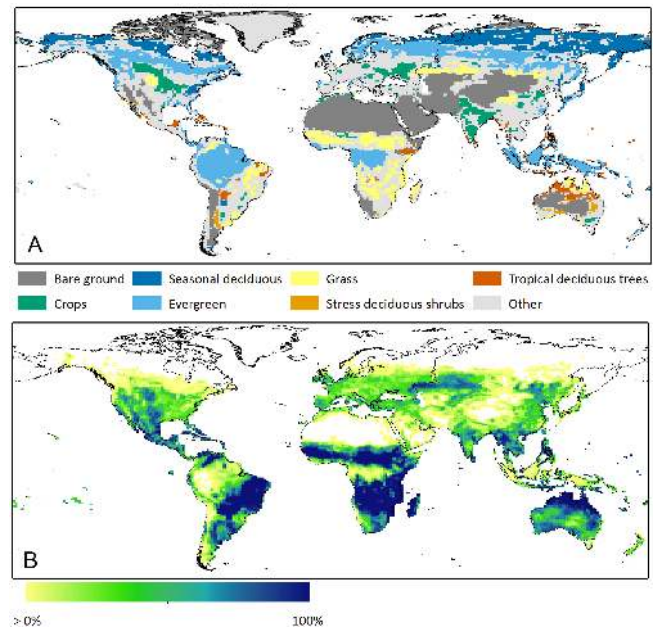
Satellite-derived estimates of greenness, fAPAR, and LAI have greatly improved our ability to study the environmental drivers of phenology (Reed et al., 2009); however, the majority of studies have focused on northern deciduous and boreal forests (e.g., Delbart et al., 2006; White et al., 2009; Yang et al., 2012). While fewer studies have focused on remote sensing of phenology in semi-arid systems, Zhang et al. (2005) found a strong relationship between greenness onset and the start of the rainy season across the semi-arid parts of Africa. They found a weaker relationship, however, between dormancy and the end of rainy seasons, and they attribute this weakness to differences in soil properties. Similarly, Ma et al. (2013) found a strong relationship between greenness and rainfall in northern Australia in both seasonal timing and amplitude and Bradley et al. (2011) found a close relationship between rainfall and seasonality in Amazonian savannas. Interestingly, in Africa, Zhang et al. (2005) also showed a strong relationship between latitude and both green-up and dormancy onset, even in the narrow band of the Sahelian and sub-Saharan region, suggesting a possible link between phenology and subtle changes in photoperiod at least in northern Africa. Recently Guan et al. (2014) showed a relationship between woody plant cover and phenological timing in African savannas.

In this study we address three questions related to the representation of drought deciduous phenology in the CLM. (1) How well does the CLM capture phenological patterns of LAI among different drought deciduous plant functional types (PFTs) as compared to satellite-derived estimates?; (2) which parameters in the current version of the CLM have the most leverage on drought deciduous phenology?; and (3) do changes in the phenology algorithms in the CLM improve the model's representation of seasonal cycles regionally?

## 2 Methods

### 2.1 Model description

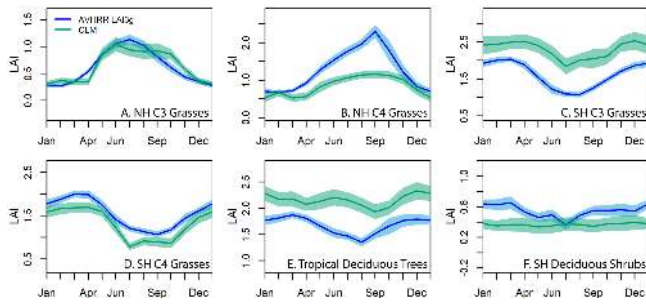
The CLM is the terrestrial component of the Community Earth System Model (CESM; Lawrence et al., 2011); it simulates biogeophysical and biogeochemical processes includ-



**Figure 1.** (a) Areas of the globe dominated by a single PFT (> 50 %) grouped where appropriate (e.g., there are actually three grass PFTs). (b) Percent cover of drought deciduous PFTs within the natural vegetation component of each grid cell; gray areas have zero percent cover of drought deciduous vegetation. For visual clarity, grid cells with < 50 % natural vegetation (e.g., grid cells that are mostly water) are not shown in both maps.

ing radiation interactions with vegetation and soil, heat transfer in soil and snow, hydrology, and plant photosynthesis and respiration. In this paper we use the most recent release of the Community Land Model with active biogeochemistry, CLM4.5BGC (Oleson et al., 2013). Henceforth, references in this paper to the “CLM” refer to CLM4.5BGC.

The CLM is run here on a  $1.25^\circ \times 0.9375^\circ$  grid, and each grid cell is, where applicable, divided into fractions representing vegetated land, lakes, glaciers, and urban areas. Within the vegetated fraction of a grid cell there may be multiple PFTs representing a coarse division of biodiversity along its major axes of variation: trees/shrubs/grass, broadleaf/needleleaf, C3/C4 photosynthesis mechanisms and phenological habit (evergreen, cold deciduous and stress/drought deciduous). There are currently 15 non-crop PFTs in the CLM, four of which follow the drought deciduous phenology algorithm (Oleson et al., 2013). Figure 1 shows where these different PFTs dominate the globe. Over time the relative cover of the PFTs may shift, as may the overall fraction of vegetation, depending on shifts in land use, though these shifts have been minor in recent decades. In the simulations used in this paper these shifts in PFT fractions and cover are prescribed from satellite observations (Lawrence and Chase, 2007) as opposed to emerging from vegetation competition (Bonan et al., 2003).



**Figure 2.** Annual LAI cycles for LAI3g and CLM averaged for 1982–2010; shaded areas represent one standard deviation. Each plot is averaged across a region as shown in Fig. 1. (a) Northern Hemisphere (NH) C3 grasses; (b) NH C4 grasses; (c) Southern Hemisphere (SH) C3 grasses; (d) SH C4 grasses; (e) Tropical deciduous trees; (f) SH broadleaved deciduous shrubs.

In the CLM, drought deciduous plants are represented by the “stress deciduous” phenology type, as distinct from the evergreen or “seasonal” (cold) deciduous phenology types. This designation allows for plants to lose their leaves via the impact of cold, via the impact of drought, or via the onset of short days, thus allowing the model to simulate, for example, grass vegetation growing in an environment that is both seasonally cold and seasonally dry. If the triggers for offset are not reached in a given year, drought deciduous vegetation will follow the evergreen phenology algorithm, gaining and losing fixed fractions of carbon with each time step. This stress deciduous algorithm, described in more detail below and in Oleson et al. (2013), was developed in part from White et al. (1997), though that study was particularly focused on grass phenology.

The deciduous algorithms are hierarchical, such that plants classified as stress deciduous but growing at high latitudes or in cold climates will follow the same onset/offset rules as cold/seasonally deciduous plants. From the beginning of a dormant period a “freezing day accumulator” is activated whereby time steps with temperatures below freezing (0 °C) are summed and if this sum exceeds 15 days then the plants will follow both the winter deciduous and drought deciduous algorithms. Leaf onset can only be triggered if day length is greater than 6 h, a latitude-specific sum of growing degree days has been reached (described in Oleson et al., 2013) and the soil wetness criteria described below have been met.

In seasonally dry, warm regions (the focus of this paper) where day length is never less than 6 h, leaf onset for the stress deciduous phenology type is determined by soil wetness. At the end of the previous offset period an accumulated soil water index (SWI) is set to zero and accumulation is calculated as

$$SWI^n = \begin{cases} SWI^{n-1} + f_{\text{day}} & \text{for } \psi_{\text{soil } 3} \geq \psi_{\text{threshold}} \\ SWI^{n-1} & \text{for } \psi_{\text{soil } 3} < \psi_{\text{threshold}} \end{cases}, \quad (1)$$

where  $n$  and  $n - 1$  refer to the values in the previous and current time steps,  $\Psi_{\text{soil } 3}$  is the soil water potential (MPa) in the third soil layer (6.23–9.06 cm),  $\Psi_{\text{threshold}}$  is  $-2$  MPa, and  $f_{\text{day}}$  is a time step (30 min in CLM) as a fraction of a day. Onset is triggered when SWI exceeds 15 days.

The rate of leaf onset (fraction of onset per time step), which in the CLM is represented as the transfer of C and N from a storage pool to the “display” leaf pool, is determined by the number of days prescribed for onset, fixed at 30 days. The rate ( $r_{\text{onset}}$ ) at each time step is defined as

$$r_{\text{onset}} = \begin{cases} \frac{2}{t_{\text{onset}}} & \text{for } t_{\text{onset}} \neq \Delta t \\ \frac{1}{\Delta t} & \text{for } t_{\text{onset}} = \Delta t \end{cases}, \quad (2)$$

where  $t_{\text{onset}}$  is time remaining in the current onset period in seconds and  $\Delta t$  is the length of a time step (1800 s). The flux of C out of the storage pool is then defined as the amount in the C storage pool at that time step multiplied by  $r_{\text{onset}}$ . These functions result in a linearly decreasing flux out of the transfer pool, so the rate of increase in LAI over the onset period steadily decreases as C moves from the storage pool to the display pool (see Fig. 14.1 in Oleson et al., 2013). During the onset period, C and N are also transferred from storage pools for fine roots, live and dead stems, and live and dead coarse roots into these components’ respective displayed growth pools. During the growing season, C and N taken up by the plant are accumulated in transfer pools, to be used in the next growing season.

As long as the leaf onset period is complete, leaf offset can be triggered by short (< 6 h) day length, a period of cold temperatures (described in Oleson et al., 2013) or if the soil dryness criteria described below has been met.

The offset soil wetness index (OSWI) can potentially start accumulating time steps once the previous leaf onset phase is complete. The algorithm differs slightly from the onset trigger in that OSWI can increase or decrease as described below.

$$OSWI^n = \begin{cases} OSWI^{n-1} + f_{\text{day}} & \text{for } \psi_{\text{soil } 3} \leq \psi_{\text{threshold}} \\ \max(OSWI^{n-1} - f_{\text{day}}, 0) & \text{for } \psi_{\text{soil } 3} > \psi_{\text{threshold}} \end{cases} \quad (3)$$

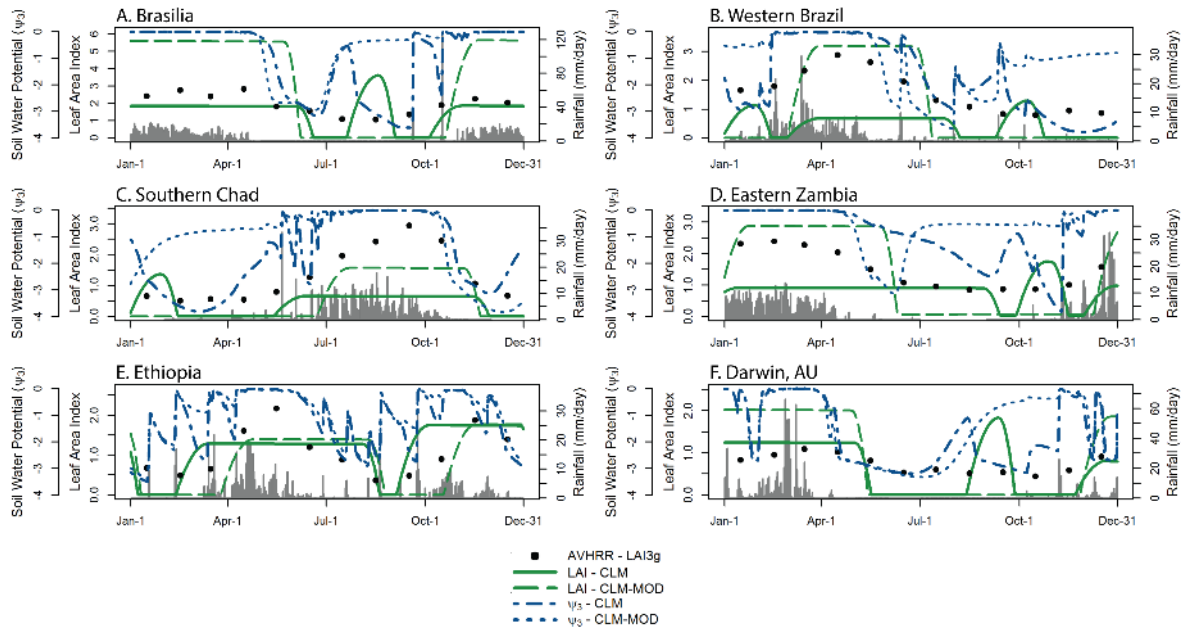
where  $\Psi_{\text{threshold}}$  is  $-2$  MPa, and leaf offset is triggered when OSWI equals 15 days.

Similar to the rate of leaf onset, leaf offset rate is a function of the amount of time left in the offset period, fixed at 15 days:

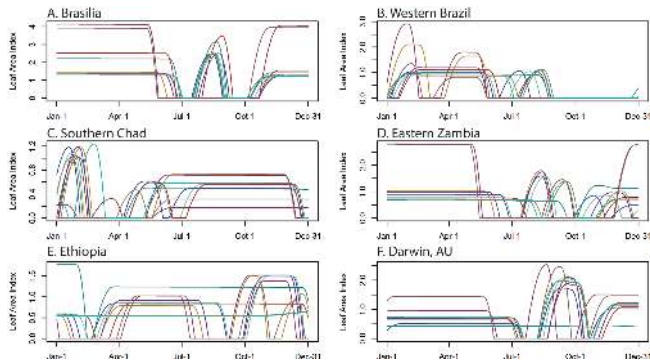
$$r_{\text{offset}} = \frac{2\Delta t}{t_{\text{offset}}^2} \quad (4)$$

Carbon fluxes into the litter pool are only calculated for leaves and fine roots (stems and coarse roots cannot shrink). Nitrogen fluxes into the litter pool reflect retranslocation of N prior to offset. See Oleson et al. (2013) for more details.

The model runs used in the global simulations described here ran for 45 years, and were started from an equilibrium baseline state generated by a standard CLM spin-up



**Figure 3.** Seasonal cycles of rainfall ( $\text{mm day}^{-1}$ , gray bars), leaf area index (LAI, green lines and black dots) and soil water potential in the third layer (MPa, blue lines) in CLM and CLM-MOD for 1 year (2001).



**Figure 4.** Illustration of Latin hypercube (LH) variable exploration analysis results – here each line represents one simulation from 1 year of the LH analysis without the additional rainfall trigger. Each line is from a model run with slightly different values for the variables considered. In actuality 100 simulations were performed, but for visual clarity we are showing a selection of 10 simulations.

run (as described in detail by Koven et al., 2013) cycling meteorological conditions of 1948–1972. The present-day run (1965–2010) used CRU-NCEP meteorological reanalysis data (Vivoy, 2012) and transient  $\text{CO}_2$  concentrations to drive the model. Soil type and land cover are prescribed in the model, and recent work has suggested that the soil resistance parameterization may be unrealistic in arid ecosystems (Swenson and Lawrence, 2014). More details on CLM are available in Oleson et al. (2013).

## 2.2 Satellite-derived LAI

We compared the model-derived estimates of LAI to those estimated from the Advanced Very High Resolution Radiometer sensors (AVHRR) onboard NOAA satellites. These data are available twice per month and span 1981 to 2011. They are supplied at  $1/12^\circ$  resolution. A detailed description of the development of the LAI product (hereafter LAI3g) is in Zhu et al. (2013).

To ensure the most appropriate comparison possible, the LAI3g data set was rescaled to match the mean monthly LAI output from the CLM. First, the two LAI3g maps generated for each month were averaged, and then the LAI3g pixels were aggregated (averaged) to match the size of a CLM grid cell ( $\sim 165$  pixels per grid cell). If more than 80% of the grid cell did not have values in LAI3g (mostly applicable at high latitudes), the entire grid cell was removed from further analysis. Finally, the aggregated LAI3g data was resampled using a nearest neighbor approach to align with the CLM grid for further analysis. All spatial and statistical analyses were performed in R (R Core Team, 2013) using the ncd (Pierce, 2011), raster (Hijmans and van Etten, 2013) and rgdal (Bivand et al., 2013) packages.

## 2.3 Comparing LAI3g to CLM LAI

We first compared LAI3g to the CLM output for 1982 (the first full year of LAI3g) to 2010 (the last available year of the CRU-NCEP forcing data set for CLM), aggregating values by zones based on dominant PFT and hemisphere. To aggregate into PFT classes, we only considered grid cells domi-

nated by a single drought deciduous PFT (> 50 % cover), permitting six possible comparisons with a sufficient number of grid cells for comparison: Northern Hemisphere (NH) temperate C3 grasses ( $n = 180$ ), NH C4 grasses ( $n = 234$ ), tropical deciduous trees ( $n = 242$ ), Southern Hemisphere (SH) deciduous shrubs ( $n = 68$ ), SH C3 grasses ( $n = 160$ ), and SH C4 grasses ( $n = 271$ ). Note that the actual number of grid cells compared from year to year varied slightly with changes in land cover and, in the case of LAI3g, available data. The counts listed here are the averages for each PFT. To visually assess the comparison between LAI3g and CLM, we plotted the monthly means and standard deviations for these seven regions. We also computed the  $R^2$  and root mean squared error (RMSE) across all 29 years' monthly values to assess CLM's ability to fit the seasonality and the magnitude of the LAI3g values. Due to the temporal coarseness of these data and the irregular seasonal patterns found in many of our areas of interest, we did not fit a continuous function to these data.

## 2.4 Point simulations and parameter sensitivity tests

Given the observed mismatches between LAI3g seasonality and CLM predictions among drought deciduous woody plants (see Discussion), we conducted an analysis of how the parameters determining phenology in the model affect the model outcome. The use of global or regional simulations to assess the sensitivity of models to their structural and parametric assumptions is problematic on account of both the computational requirements to do so and the high dimensionality of the model outputs, which can hinder understanding. To avoid these issues, we conducted a sensitivity test on the major model parameters that control seasonality in LAI at the point scale. In these point simulations we focused on low-latitude drought deciduous ecosystems, and selected six locations dominated by tropical deciduous trees, grasses, or a combination of the two (Table 1).

The phenology model contains three empirical parameters that collectively describe the leaf onset and offset algorithms:

1. critical soil water potential ( $\Psi_{\text{threshold}}$ ) values for leaf onset and offset (default =  $-2$  MPa);
2. soil water potential days to onset/offset (SWI/OSWI) threshold (default = 15 days);
3. quantity of carbon assimilation which is directed to current leaf growth rather than storage ( $F_{\text{current}}$ ) (default = 0.0).

To determine what impact the choice of these parameters has on the model outcome, we conducted a Latin hypercube analysis (McKay et al., 1979), beginning the model from a spun-up state with default parameters. We then perturbed the parameters and ran the model forwards until a new LAI equilibrium condition was detected. Because the nitrogen cycle is active in CLM, soil biogeochemical equilibrium can

in some circumstances (particularly at high latitudes) take many decades or even centuries to achieve, we therefore set a threshold for the new equilibrium state as the absence of a trend in LAI resulting in a 2 % increase over a 5-year period. Given the high temperature and relatively low biomass and productivity of the ecosystems in question, in our simulations LAI equilibrium was in practice typically reached after the first 5-year period of the simulation. As with the global simulations, we used the CRU-NCEP reanalysis forcing data, extracted at the six points of interest, to drive the point simulations.

The Latin hypercube methodology is a computationally inexpensive means of investigating a multi-dimensional parameter space, because each run of the model perturbs every parameter, and the algorithm ensures that the distribution of sampled points is distributed efficiently (but not uniformly) through parameter space. For this study, since we were comparing the model output to monthly satellite observations, we did not manipulate the number of days for onset (30) or offset (15) to occur. We also did not consider the growing degree days and day length parameters because the focus of this study was on tropical and subtropical regions where these components of the algorithm are not active.

For the critical soil moisture potential threshold,  $\Psi_{\text{threshold}}$ , we investigated values from 0 to  $-3.5$  MPa (where the default value is  $-2$  MPa). The upper end of this range is the maximum possible value for saturated soils, whereas the bottom end of the range was determined from a prior set of sensitivity tests which determined that sensitivity below this range was very low (i.e., the soil moisture potential in the third layer rarely drops below  $-3.5$  MPa, and so leaves remain on continuously for those simulations at our locations of interest). For the number of days of onset, SWI, we followed a similar protocol and found that the range of sensitivity was focused between 5 and 35 days (where the default is 15 days). For the fraction of displayed assimilated carbon ( $F_{\text{current}}$ ) we varied the values between 0 and 0.5, (where the default is zero). The sensitivity of average LAI to this parameter was low in all cases; however, since LAI does not change through a single growing season if  $F_{\text{current}} = 0$ , changing  $F_{\text{current}}$  does have an impact on the intra-annual cycle.

To assess the performance of the different models in the Latin hypercube test, we originally plotted the coefficients of determination between the different models' LAI values and the LAI3g data at those points. However, this result did not illustrate any clear optimum in model performance either for the parameters of the existing model, nor for the rainfall threshold. We illustrate this using the time series data in Fig. 4, which highlight the unusual behavior of the model, and to assess whether the extra green-up period during the dry season had been eliminated in any of the parametric permutations. We ascribe the lack of a clear parametric signal to two effects. First, the LAI3g data were necessarily aggregated to monthly values, meaning that the primarily sub-

**Table 1.** List of locations for point simulations and percent cover of plant functional types (PFTs). PFTs with no coverage at any point are not listed.

Point.name	Latitude	Longitude	Bare ground	Broadleaf Evergreen Tree Tropical	Broadleaf Evergreen Tree Temperate	Broadleaf Deciduous Tree Tropical	C3 Grasses	C4 Grasses	Crops
Brasilia	-15	-51	0.46	1.69	0	16.52	8.83	62.35	10.15
Western Brazil	-6	-39	2.66	0	0	35.4	9.04	40.6	12.3
South Chad	11	18	1.34	0	0	34.26	0.03	60.22	4.16
Eastern Zambia	-13	32	0.22	0.56	1.27	26.4	37.81	26.39	7.35
South Ethiopia	5.5	40	8.75	0.13	0.02	63.1	19.12	5.42	3.47
Darwin Australia	-15	130.5	15.94	0	0	35.73	0	48.33	0

monthly variation between ensemble members was masked. Second, the timing of the secondary leaf-on period in the dry season was the emergent property of the oscillatory (and thus somewhat chaotic) dynamics of the soil–vegetation feedback on soil moisture. We thus conclude that the model deficiency is caused by structural, not parametric, issues.

Once we determined that we could not eliminate the dry season green-up by changing the existing model parameters, we considered four possible additions to the model. The first three are described here but, for brevity, are not quantified in the results. First, we considered that using the third soil layer in CLM may be an arbitrary choice of soil depth, and that usage of the soil moisture potential derived drought index (“BTRAN”, Oleson et al., 2013), which is weighted by vertical root fraction across the whole rooting depth profile, might provide a more physiologically relevant metric and be less prone to increases due to upwards moisture diffusion in the dry season. However, since the exponential root profile in the CLM weights the top soil layers (including layer 3) more strongly than the lower layers with fewer roots, this metric was just as prone to increasing water potential during the dry season as soil water potential in the third soil layer.

Second, we implemented leaf onset as a function of a total column soil moisture content threshold rather than soil moisture potential. We postulated that the redistribution of water causes the erroneous behavior and that this would not impact total column moisture. However, the establishment of a single global threshold for total soil moisture is challenging as a number of different variables impact soil moisture, including the variation in soil water retention capacities between different land points, and by the interaction between leaf area, evaporation rate and deep soil moisture content. Variation in rainfall and evaporation rates affects the equilibrium water content of deep soils, which changes the total column soil moisture content between locations and years, but not the physiologically relevant upper soil moisture potential. Therefore, we abandoned this possible driver of drought deciduous phenology.

Third, we considered a metric of triggering leaf flush by the rate of change of total column soil moisture, rather than soil moisture potential. However, this methodology also gen-

erates erroneous behavior, on account of the ability of the CLM hydrology model to extract water from the water table or aquifer along a water potential gradient. Thus, when water potential is low in the bottom soil layer in the dry season, the rate of change of total soil moisture can be positive without any input from rainfall.

## 2.5 Rainfall model

To correct biases uncovered in the model output (described below) we introduced a simple trigger into the model, that time-averaged 10-day precipitation must exceed a given threshold before leaf onset is triggered. This approach requires the addition of a new parameter, `rain_threshold`, into the model, which is the threshold over which the sum of precipitation over 10 days must be for leaf-on to occur. Leaf onset is thus triggered if 10-day rain is higher than `rain_threshold` and if the SWI is greater than 15 days.

We then used a Latin hypercube approach again to determine the sensitivity of the model to `rain_threshold` at our six chosen geographical points. We considered a range of rainfall rates, requiring that it rain 20 mm over the course of 5 to 60 days in order for plants to begin growing leaves. To test the global impact of these parameter changes, we ran CLM with the new rainfall-based trigger and compared the results both at several points and globally.

## 2.6 Global simulations

We used a number of different metrics to globally compare CLM to the LAI3g data and, later, to the modified version of the model (CLM-MOD). First we compared maps of maximum annual LAI and differences between the three maps. We also developed an algorithm to count the number of LAI peaks per year in all three data sets on grid cells with an LAI range greater than 1 by counting the number of times per year that the difference between one month’s LAI and the next was negative, then taking the mode across all 29 years. Finally, we calculated the coefficient of determination ( $R^2$ ) in each grid cell, comparing the monthly LAI3g data to CLM and CLM-MOD to identify areas with strong agreement be-

tween the remotely sensed data and the models, and areas with weak relationships.

The recent focus on land model benchmarking has led to a number of additional suggested methods for assessing seasonality in models compared to data (e.g., Randerson et al., 2009; Kelley et al., 2013); however, none of the proposed metrics would have captured the central issue addressed in this paper – model output with two or more peaks per year, data with only one – as they begin with the unstated assumption that seasonality is unimodal over the course of a year, as do measures of the start and end of the growing season. In Randerson et al. (2009) seasonality is assessed by identifying the month of peak LAI and comparing that to MODIS LAI (MOD15A2), and in Kelley et al. (2013) several, more complicated metrics are introduced (Eqs. 7–9) to again produce single numbers to compare a model's seasonality to a benchmark data set. In these examples, as in other benchmarking studies, the focus is on producing a single number, which, while useful, can miss important details.

### 3 Results

#### 3.1 Seasonal patterns in CLM

We found generally good agreement between LAI3g and CLM averaged across grass-dominated regions. In a comparison of monthly values from 1982 to 2010 for the single PFT dominated regions in Fig. 1,  $R^2$  values ranged from 0.54 to 0.9 (Table 2) with the majority of the grass  $R^2$  values greater than 0.7. Figure 2 shows the monthly values across all years, and we see similar results – generally good correspondence, especially in seasonal pattern, between LAI3g and the CLM runs in the grass-dominated regions. The root mean squared error (RMSE) values in Table 2 and Fig. 2b and c show that CLM does not always capture the appropriate LAI values in grasslands, but the seasonal cycle is reasonably correct.

In contrast, CLM does not successfully capture phenological patterns or values in areas dominated by woody drought deciduous vegetation. Among tropical deciduous trees CLM-predicted LAI appears to be both too high and out of phase with the satellite observations (Fig. 2e) while CLM shows no apparent seasonality among deciduous shrubs in the Southern Hemisphere (Fig. 2f), while LAI3g shows a slight cycle ranging from 0.4 to 0.7 LAI.

#### 3.2 Point simulations and sensitivity tests

To look more closely at seasonal patterns in drought deciduous locations, we selected six points around the globe across a range of latitudes dominated by a mixture of broadleaf deciduous tropical trees, and C3 and C4 grasses (Table 1), all of which use the same stress deciduous phenology algorithm. To better understand the phenological patterns, we re-ran CLM using the same methods as described above but recording daily outputs of relevant parameters including LAI, soil

water potential, rainfall, and others. Plots of the seasonal cycles at these specific points using daily model output (solid green lines in Fig. 3) revealed a pattern whereby CLM appears to put leaves on during the “brown season” in the LAI3g data in some of the points in addition to during the LAI3g green season. We note, however, that some areas in reality do have two separate growing seasons per year (e.g., Fig. 3e). Despite the lack of rainfall, soil water potential in the third soil layer in CLM rises during the dry season and is extremely variable in the dry season, on account of periods of high transpiration when plants leaf out (blue dot-dashed line in Fig. 3).

We used the output from the Latin hypercube approach at these six points to vary the parameters of interest (days to onset/offset, critical soil water potential, carbon assimilation) to assess whether modification of parameter values could ameliorate the problem of plants leafing out during the dry season in CLM. We found, however, that simply varying the parameters of the existing model within the parameter space investigated (and assuming no large nonlinearities in the model response surface) did not remove the dry season leaf-out in the model (Fig. 4).

In order to address this issue, we considered a number of structural perturbations to the leaf-on and leaf-off algorithms (described in the discussion below), but ultimately decided on adding a new parameter, `rain_threshold`, to the model. We then used the same Latin hypercube approach to determine the best fitting values for this parameter (Fig. 5). This additional leaf-on criterion, set so that 20 mm of rain must accumulate over 10 days in order for leaf onset to occur, led to a removal of the brown season leaf-out in CLM (dashed green line in Fig. 3) without preventing two green seasons per year, as is possible in some semi-arid regions (e.g., parts of Ethiopia, Fig. 3e). While this new rainfall threshold improved model performance both at our points and globally (see below), we note that the model did not appear to be particularly sensitive to the amount of rain that fell, as long as some rain did fall, but this threshold, and the drought deciduous algorithm as a whole, deserves more research into seasonal drivers.

#### 3.3 Global simulations

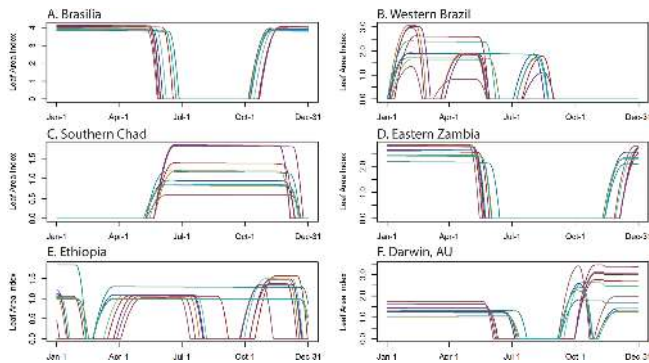
To test how well the additional rainfall parameter performed globally, we ran CLM with the new rainfall parameter for 45 years (CLM-MOD) from the same equilibrium baseline state as was used in the first run described. Measures of maximum LAI (Fig. 6) and mean LAI (data not shown) in CLM-MOD showed closer matches to LAI3g than CLM. While CLM values remain far too high in the evergreen tropics, the maximum LAI values in deciduous savanna regions did increase appropriately in CLM-MOD to better match the LAI3g data.

To test whether the poor fit between CLM and LAI3g was due to multiple annual LAI peaks in CLM we counted the number of peaks per year in each data set (Fig. 7). We found

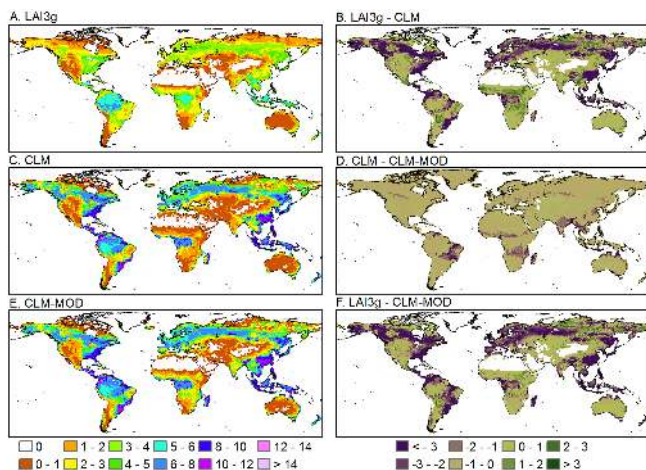
**Table 2.**  $R^2$  and RMSE of AVHRR LAI3g v. CLM monthly data for all 29 years.

		NH C3 grass	NH C4 grass	tropical DT	SH DS	SH C3 grass	SH C4 grass
CLM	$R^2$	0.79	0.72	0.08	0.05	0.41	0.85
	RMSE	0.15	0.29	0.18	0.10	0.27	0.13

NH is Northern Hemisphere, DS is deciduous shrub, DT is deciduous tree, SH is Southern Hemisphere.



**Figure 5.** Illustration of Latin hypercube (LH) variable exploration analysis results as with Fig. 4 – here each line represents one simulation from 1 year of the LH analysis with the additional rainfall trigger.



**Figure 6.** Maximum annual LAI averaged across the 29-year time period (1982–2010) in LAI3g, CLM, and CLM-MOD, and the differences between these three maps.

that in the observations, only areas in the humid tropics had multiple peaks in the LAI3g data (“peaks” in these cases being relatively small fluctuations), while CLM showed multiple peaks per year throughout many of the savanna regions of the world. CLM-MOD has more areas with only one peak, particularly in sub-Saharan Africa. To quantify these changes to the model we constructed confusion matrices to compare the peak counts in LAI3g to those in CLM and CLM-MOD

(Table 3) for grid cells with > 50 % drought deciduous cover (Fig. 1). Overall, CLM-MOD had a slightly poorer performance, matching the number of peaks in the LAI3g data set 42.5 % of the time, while CLM matched LAI3g 43.7 % of the time. However, these unweighted summary numbers mask improvements in CLM-MOD. CLM only correctly predicted a single peak 8.9 % of the time, while CLM-MOD correctly predicted single peaks 59 % of the time, and CLM-MOD never predicted more than two peaks in a year, matching the LAI3g data. The overall degradation in CLM-MOD is due to fewer correctly identified grid cells with zero or two peaks.

We compared monthly data and mapped the point-wise coefficients of determination ( $R^2$ ) globally to consider how well CLM LAI seasonality matched the LAI3g data set (Fig. 8a). There were moderate to good relationships ( $R^2 > 0.4$ ) in the higher latitudes for the standard model, but notably poorer relationships in the lower latitudes, particularly in savanna regions. In contrast, a comparison between LAI3g and CLM-MOD showed improvements in savanna regions, with the most dramatic improvements in sub-Saharan Africa (Fig. 8b). Predicting the phenology of the Brazilian cerrado continues to be a challenge in CLM-MOD, shifting from two peaks in CLM to no peaks in CLM-MOD, but the heterogeneity revealed in the LAI3g data set suggests that this region may need closer consideration and a separate phenology algorithm.

## 4 Discussion

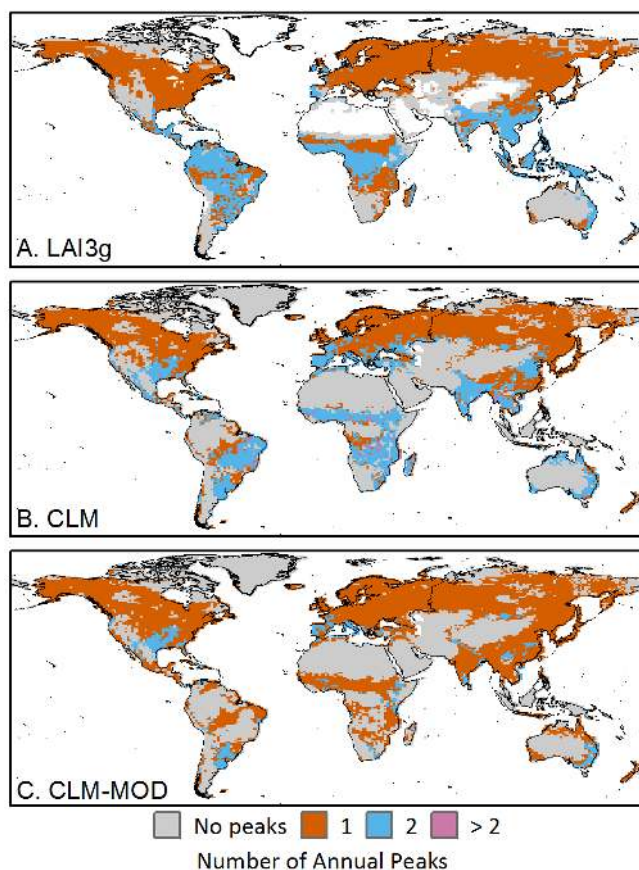
### 4.1 Comparing LAI3g to CLM LAI

By comparing the satellite LAI3g data to output from CLM, we found that while the model performed reasonably well in temperate grasslands both in seasonal cycle and in magnitude, it performed poorly in areas of tropical grasslands, mixed grassland and drought deciduous trees (savannas) and areas dominated by drought deciduous trees. Closer examination of individual grid cells in tropical regions revealed that these points often experience leaf flush during the dry season in the model, which is not the case in the satellite data, or in reality. This additional leaf flush not only impacts the phenological cycle, but also affects the overall amount of carbon stored in plants and their maximum LAI, as plants spend their stored carbon unnecessarily in the dry season,

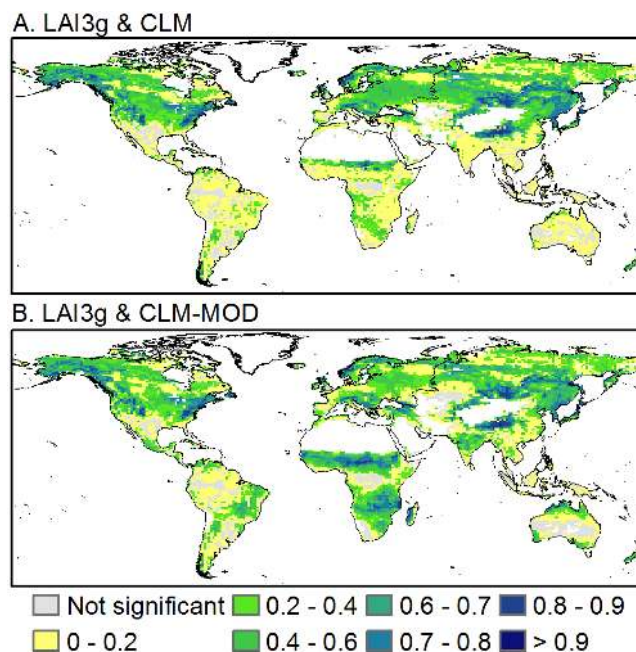


**Table 3.** Confusion matrices comparing grid cell peak counts between LAI3g and the two model data sets. “%” rows and columns are the percent of the correct values (diagonal) compared to the sums for the respective rows and columns. n/a is not applicable.

		A. LAI3g vs. CLM LAI3g					B. LAI3g vs. CLM-MOD LAI3g						
		0	1	2	>2	%			0	1	2	>2	%
CLM	0	436	164	145	0	58.5	CLM-MOD	0	365	279	277	0	39.6
	1	28	74	130	0	31.9		1	242	439	407	0	43.2
	2	196	555	499	0	39.9		2	60	63	125	0	50.4
	>2	7	42	35	0	0		>2	0	0	0	0	n/a
	%	65.4	8.9	61.7	n/a	43.7		%	54.7	59.0	15.5	n/a	42.5

**Figure 7.** Mode of annual peak count analysis for the three simulations. (a) LAI3g; (b) CLM; (c) CLM-MOD.

leaving less carbon available during the wet season for growing leaves. This addition of leaf carbon in the dry season also may affect the fire cycle in varying ways around the dry tropics. While these runs of the model were not coupled to a dynamic atmosphere, we expect that this dry season leaf flush could also impact the climate, potentially having an unrealistic cooling effect by moving more water into the atmosphere during what should be a very dry time of year, but also darkening the land surface, possibly leading to a slight warming.

**Figure 8.** Coefficients of determination ( $R^2$ ) between LAI3g and the two model versions.

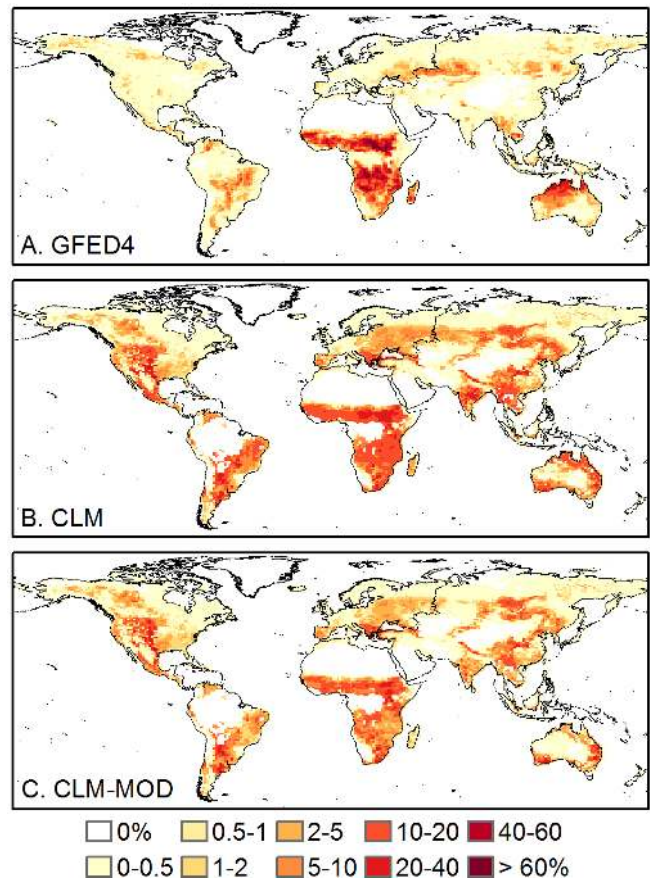
The mechanism behind the dry season leaf flush is an increase in soil water potential in the dry season to levels above the prescribed leaf-out threshold. These increases derive from the assumption in CLM that all of the land surface sits on top of an unconfined aquifer. In most cases this aquifer is either irrelevant because plenty of soil water is available or it is essential to plant survival in areas where aquifers do exist in the real world. In semi-arid systems, however, this extra pool of soil water becomes problematic in the dry season. The top soil layers dry out due to soil evaporation and, when plants are active, evapotranspiration, establishing a water potential gradient which causes water to be transferred by mass flow from the aquifer up through the soil column to the shallow soil layers until eventually the moisture potential reaches the trigger for plants to leaf out. As per the drought deciduous phenology algorithm, once leaf-out is triggered it must

be completed, so plants begin to grow leaves but then the increased evapotranspiration rate quickly draws the soil moisture down below leaf off threshold levels, so leaf drop begins again, typically as soon as the leaf-out period (30 days) has ended. The degree to which aquifers in reality contribute to dry season evapotranspiration is largely unconstrained because there are no global data sets for depth to water table, making it impossible to non-arbitrarily define where plants should have access to ground water and where they should not. Refinements of the soil water algorithms in CLM and access to new data sources like the NASA Soil Moisture Active Passive mission (SMAP; Entekhabi et al., 2014) will likely improve this part of the model, but like many aspects of the CLM, more global-scale data are needed.

#### 4.2 Soil water and rainfall in CLM

To address the erroneous dry season leaf flush, we tested a number of different model alterations, beginning with the least invasive – adjusting existing parameters – and ending with adding an additional rule to the drought deciduousness algorithm. We experimented with four alternative methodologies for triggering leaf onset, described in the methods section (2.4), but for brevity we have only shown results from the last and most effective approach.

The hydrological issues in CLM are complex, and derive from the need to operate an internally consistent global model of the water cycle in the absence of critical data at the appropriate scale (depth to water table, the unsaturated hydraulic conductivity of deep soils, etc.). In an ideal case, improvements in hydrology might allow the existing phenological model to operate correctly. However, here we took a more pragmatic approach and so we partially decoupled the soil hydrology and the phenology models, allowing rainfall inputs to directly impact leaf phenology without interacting with the assumptions of the hydrology model. Leaving the condition of soil water potential in the third soil layer in place, we then added the additional condition that the rainfall accumulated over the last 10 days should be higher than a threshold value (20 mm). Thus, if soil moisture rose above the threshold level, but little or no rain had fallen, plants would not leaf out. The new model performs better both for the point simulations and in global simulations, both in terms of the seasonal cycle of LAI, where the average point-wise coefficient of determination ( $R^2$ ) between modeled and observed monthly satellite LAI of drought deciduous dominated points (> 50 % drought deciduous cover) is significantly higher for the new model (0.31 vs. 0.13). While there was no substantial change in the overall peak count accuracy (Table 3), CLM-MOD had zero drought deciduous dominated grid cells with > 2 peaks and a substantial improvement in the identification of single-peak grid cells (8.9 to 59 %). The added rainfall trigger did, however, reduce the number of zero peak and two peak grid cells correctly identified. This result highlights the need for more research into



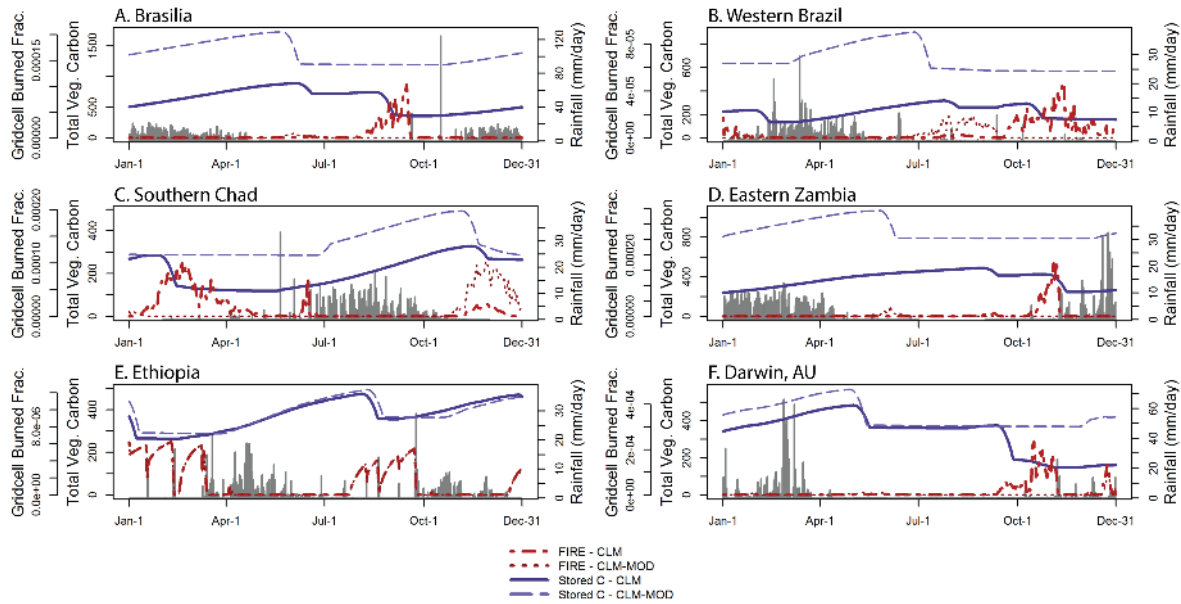
**Figure 9.** Average burned area fraction per year across the time period where data was available (1996–2010) for GFED4, CLM, and CLM-MOD, and the differences between these maps.

the diversity of drought deciduous phenology drivers around the world.

#### 4.3 Impacts of modifications to the model

This relatively small change to the drought deciduous phenology algorithm had wide ranging impacts within the CLM. Because carbon was not being unnecessarily spent to grow leaves during the dry season, which was then not replenished since there was not enough water to maintain photosynthesis, CLM-MOD showed substantially higher overall carbon stores in savanna regions (Fig. 10, blue lines). Over time, this increase in vegetation carbon could lead to more realistic soil carbon levels, which have been shown to be too low in savanna regions in CLM (Wieder et al., 2013).

Fire is a critical component of savanna ecology and has been a focus of recent efforts to improve the CLM (Li et al., 2014). Our change to the drought deciduous phenology algorithm does have an impact on the fire cycle, but unfortunately, though not surprisingly, it degrades the fire model's performance relative to a global fire data set (GFED4; Giglio et al., 2013). Comparing the average total annual fire fractions



**Figure 10.** Seasonal cycles of rainfall ( $\text{mm day}^{-1}$ ; gray bars), total vegetation carbon ( $\text{g C m}^{-2}$ ; blue lines), and grid cell burned fraction ( $\text{day}^{-1}$ ; red lines) in CLM and CLM-MOD for 1 year (2001).

for each grid cell with drought deciduous cover greater than 50 % across the time period for which we have both GFED4 data and CLM output (1996–2010), we find a correlation between GFED4 and CLM of 0.35 (global correlation = 0.44), and a correlation of 0.23 with CLM-MOD (global correlation = 0.33). This degradation of fire model performance is not surprising, however, given that the fire model was developed using CLM4.0CN with the erroneous dry season green up and a different forcing data set. As shown in Fig. 9, fraction of area burned per grid cell decreases in many areas in CLM-MOD, likely due to the fact that less fuel is being produced in the dry season, and seasonality shifts as well (Fig. 10, red lines). Future work will include exploring the impacts of this change to CLM on fire and other ecosystem properties.

Two other outstanding questions about LAI in CLM remain. First, in savanna regions in the CLM LAI drops to zero during the dry season, implying that across an entire grid cell all vegetation is perfectly drought deciduous (Figs. 3–6). The reality is, of course, far more complex, as reflected in the LAI3g data set which rarely drops below 1.0 in savanna regions when aggregated to the CLM grid. The focus of this study was on improving the timing and magnitude of peak LAI; however, improving dry season values is also a concern. This is a deeper question in the CLM, as it relates to the overall land cover data. It is possible, for example, that there is evergreen vegetation in these grid cells, while the land cover classification determines that all grid cells with a significant seasonal LAI signal are 100 % “drought deciduous”. Even if drought deciduous and evergreen vegetation types did not co-exist in the same ecosystem type, within-grid-cell spatial

heterogeneity might also allow for their coexistence within a whole grid cell (e.g., riparian areas or areas with shallow ground water that are able to stay green year-round). Second, though also not the focus of this study, it is clear from Fig. 6 that CLM is dramatically overestimating LAI across the mesic regions of the terrestrial biosphere. This issue, often masked when only mean annual values or zonal means are considered, deserves more attention, and it is likely that recent detailed studies of carbon allocation (e.g., Doughty et al., 2014) could improve this part of the model.

A question also remains as to whether our new representation of leaf phenology, in spite of its improved performance, constitutes a better predictive model of current and future ecosystem behavior. In general, we hope to construct ecosystem models that represent hypotheses of how plants function that we might test against observations. In this case, we find that the existing hypothesis – that plants respond to the soil water potential of the upper soil – does not adequately represent phenological patterns. However, this explanation is complicated because the predictions depend also on the properties of soil water in the model. Given a perfect representation of soil moisture, we might find that the existing leaf-on hypothesis is a good approximation of average vegetation behavior. However, at present the coupling of these two complex systems produces unexpected results. By tying the vegetation behavior to the actual climate drivers we are reducing the complexity of the problem; however, we are also reducing the capacity of the model to be responsive to the nuances of climate drivers. For example, the same rainfall amount in high and low humidity regimes will have different impacts on net soil moisture.

Ideally, models should represent the mechanisms by which ecological processes operate in as much fidelity as we understand. The representation of drought phenology is interesting, however, as we suspect that there are many different phenological strategies in the tropics that the CLM classifies with the same algorithm (e.g., Archibald and Scholes, 2007). This means that in the absence of the representation of these numerous phenological strategies in the model, we are really representing the net behavior of ecosystems, rather than the exact mechanisms pertaining to a single species. The fact that CLM-MOD improved model performance most significantly in Africa and less so in Australia and South America by some metrics (Fig. 7) suggests that evolutionary differences between plants could play a significant role in determining phenological patterns between continents. In a higher-fidelity land surface model, we might ideally allow numerous phenological algorithms to compete for light and water resources, and the ecosystem LAI profile would reflect the net behavior of the successful algorithms. This type of modeling is now theoretically possible (e.g., Fisher et al., 2010, 2015), and will be investigated in future versions of the CLM.

## 5 Conclusions

By comparing satellite-derived estimates of LAI to LAI values produced by the latest version of the CLM, we revealed a small but significant issue in the CLM – the tendency for leaves to flush during the dry season in drought deciduous PFTs due to unrealistic upwards movement of water through the soil column. We tested a number of different approaches to address this issue; however, we found that tying leaf flushing to rainfall directly produced results that better matched the satellite data. While this change to the drought deciduous phenology algorithm does not reflect our understanding of how plants respond to their environment in the real world, without better data on soil water movement at scales relevant to global land surface modeling it is difficult to rely on the soil water model to drive plant physiology. Changing the drought deciduous phenology algorithm to remove dry season leaf flushes improved overall LAI values in savanna systems as well as changed the amount of carbon stored in these systems and altered the fire cycle. We also emphasize that this issue would have been impossible to detect with a standard “benchmarking” type of metric for measuring seasonality, and it was difficult to identify until daily model outputs were reported and analyzed (i.e., Fig. 3). Future work will include exploring different drought deciduous phenology algorithms for different PFTs and testing the importance of this change in a coupled Earth system model.

*Acknowledgements.* The authors thank the members of the Terrestrial Sciences Section at NCAR for helpful discussions of this work, and we thank Dr. Ranga Myneni and his group for providing the LAI3g data set. K. M. Dahlin was funded by an Advanced

Study Program Postdoctoral Fellowship at NCAR. We would also like to acknowledge the high-performance computing support from Yellowstone (ark:/85065/d7wd3xhc) provided by NCAR’s Computational and Information Systems Laboratory. NCAR is sponsored by the National Science Foundation.

Edited by: T. Keenan

## References

- Archibald, S. and Scholes, R. J.: Leaf green-up in a semi-arid African savanna – separating tree and grass responses to environmental cues, *J. Veg. Sci.*, 18, 583–594, 2007.
- Bivand, R., Keitt, T., and Rowlingson, B.: *rgdal*: Bindings for the geospatial data abstraction library, available at: <http://cran.r-project.org/package=rgdal> (last access: January 2015), 2013.
- Blyth, E., Clark, D. B., Ellis, R., Huntingford, C., Los, S., Pryor, M., Best, M., and Sitch, S.: A comprehensive set of benchmark tests for a land surface model of simultaneous fluxes of water and carbon at both the global and seasonal scale, *Geosci. Model Dev.*, 4, 255–269, doi:10.5194/gmd-4-255-2011, 2011.
- Bonan, G. B., Levis, S., Sitch, S., Vertenstein, M., and Oleson, K. W.: A dynamic global vegetation model for use with climate models?: concepts and description of simulated vegetation dynamics, *Glob. Change Biol.*, 9, 1543–1566, doi:10.1046/j.1365-2486.2003.00681.x, 2003.
- Bradley, A. V., Gerard, F. F., Barbier, N., Weedon, G. P., Anderson, L. O., Huntingford, C., Aragão, L. E. O. C., Zelazowski, P., and Arai, E.: Relationships between phenology, radiation and precipitation in the Amazon region, *Glob. Change Biol.*, 17, 2245–2260, doi:10.1111/j.1365-2486.2011.02405.x, 2011.
- Delbart, N., Le Toan, T., Kergoat, L., and Fedotova, V.: Remote sensing of spring phenology in boreal regions: A free of snow-effect method using NOAA-AVHRR and SPOT-VGT data (1982–2004), *Remote Sens. Environ.*, 101, 52–62, doi:10.1016/j.rse.2005.11.012, 2006.
- Doughty, C. E., Malhi, Y., Arujo-Murakami, A., Metcalfe, D. B., Silva-Espejo, J. E., Arroyo, L., Heredia, J. P., Pardo-Toledo, E., and Mendizabal, L. M.: Allocation trade-offs dominate the response of tropical forest growth to seasonal and interannual drought, *J. Ecol.*, 95, 2192–2201, doi:10.1890/13-1507.1, 2014.
- Entekhabi, D., Yueh, S., O’Neill, P. E., Kellogg, K. H., Allen, A., Bindlish, R., Brown, M., Chan, S., Colliander, A., and Crow, W. T.: *SMAP Handbook*, JPL Publication JPL 400-1567, Jet Propulsion Laboratory, Pasadena, California, 182 pp., 2014.
- Fisher, R., McDowell, N., Purves, D., Moorcroft, P., Sitch, S., Cox, P., Huntingford, C., Meir, P., and Ian Woodward, F.: Assessing uncertainties in a second-generation dynamic vegetation model caused by ecological scale limitations, *New Phytol.*, 187, 666–681, doi:10.1111/j.1469-8137.2010.03340.x, 2010.
- Fisher, R. A., Muszala, S., Vertenstein, M., Lawrence, P., Xu, C., McDowell, N. G., Knox, R. G., Koven, C., Holm, J., Rogers, B. M., Lawrence, D., and Bonan, G.: Taking off the training wheels: the properties of a dynamic vegetation model without climate envelopes, *Geosci. Model Dev. Discuss.*, 8, 3293–3357, doi:10.5194/gmdd-8-3293-2015, 2015.
- Giglio, L., Randerson, J. T., and Van Der Werf, G. R.: Analysis of daily, monthly, and annual burned area using the fourth-

- generation global fire emissions database (GFED4), *J. Geophys. Res.-Biogeo.*, 118, 317–328, doi:10.1002/jgrg.20042, 2013.
- Guan, K., Wood, E. F., Medvigy, D., Kimball, J., Pan, M., Caylor, K. K., Sheffield, J., Xu, X., and Jones, M. O.: Terrestrial hydrological controls on land surface phenology of African savannas and woodlands, *J. Geophys. Res.-Biogeo.*, 119, 1652–1669, doi:10.1002/2013JG002572, 2014.
- Hijmans, R. J. and van Etten, J.: raster: Geographical data analysis and modeling, available at: <http://cran.r-project.org/package=raster> (last access: January 2015), 2013.
- Jenerette, G. D., Scott, R. L., and Huete, A. R.: Functional differences between summer and winter season rain assessed with MODIS-derived phenology in a semi-arid region, *J. Veg. Sci.*, 21, 16–30, doi:10.1111/j.1654-1103.2009.01118.x, 2010.
- Kelley, D. I., Prentice, I. C., Harrison, S. P., Wang, H., Simard, M., Fisher, J. B., and Willis, K. O.: A comprehensive benchmarking system for evaluating global vegetation models, *Biogeosciences*, 10, 3313–3340, doi:10.5194/bg-10-3313-2013, 2013.
- Koven, C. D., Riley, W. J., Subin, Z. M., Tang, J. Y., Torn, M. S., Collins, W. D., Bonan, G. B., Lawrence, D. M., and Swenson, S. C.: The effect of vertically resolved soil biogeochemistry and alternate soil C and N models on C dynamics of CLM4, *Biogeosciences*, 10, 7109–7131, doi:10.5194/bg-10-7109-2013, 2013.
- Lau, W. K.-M., Wu, H.-T., and Kim, K.-M.: A canonical response of precipitation characteristics to global warming from CMIP5 models, *Geophys. Res. Lett.*, 40, 3163–3169, doi:10.1002/grl.50420, 2013.
- Lawrence, D. M., Oleson, K. W., Flanner, M. G., Thornton, P. E., Swenson, S. C., Lawrence, P. J., Zeng, X., Yang, Z.-L., Levis, S., Sakaguchi, K., Bonan, G. B., and Slater, A. G.: Parameterization improvements and functional and structural advances in Version 4 of the Community Land Model, *J. Adv. Model. Earth Syst.*, 3, M03001, doi:10.1029/2011MS000045, 2011.
- Lawrence, D. M., Oleson, K. W., Flanner, M. G., Fletcher, C. G., Lawrence, P. J., Levis, S., Swenson, S. C., and Bonan, G. B.: The CCSM4 Land Simulation, 1850–2005: Assessment of Surface Climate and New Capabilities, *J. Climate*, 25, 2240–2260, doi:10.1175/JCLI-D-11-00103.1, 2012.
- Lawrence, P. J. and Chase, T. N.: Representing a new MODIS consistent land surface in the Community Land Model (CLM 3.0), *J. Geophys. Res.*, 112, G01023, doi:10.1029/2006JG000168, 2007.
- Li, F., Bond-Lamberty, B., and Levis, S.: Quantifying the role of fire in the Earth system – Part 2: Impact on the net carbon balance of global terrestrial ecosystems for the 20th century, *Biogeosciences*, 11, 1345–1360, doi:10.5194/bg-11-1345-2014, 2014.
- Ma, X., Huete, A., Yu, Q., Coupe, N. R., Davies, K., Broich, M., Ratana, P., Beringer, J., Hutley, L. B., Cleverly, J., Boulain, N., and Eamus, D.: Spatial patterns and temporal dynamics in savanna vegetation phenology across the North Australian Tropical Transect, *Remote Sens. Environ.*, 139, 97–115, doi:10.1016/j.rse.2013.07.030, 2013.
- McKay, M. D., Beckman, R. J., and Conover, W. J.: Comparison of Three Methods for Selecting Values of Input Variables in the Analysis of Output from a Computer Code, *Technometrics*, 21, 239–245, doi:10.1080/00401706.1979.10489755, 1979.
- Oleson, K. W., Lawrence, D. M., Bonan, G. B., Drewniak, B., Huang, M., Koven, C., Levis, S., Li, F., Riley, W., Subin, Z., Swenson, S., Thornton, P. E., Bozbiyik, A., Fisher, R., Heald, C., Kluzek, E., Lamarque, J.-F., Lawrence, P., Leung, L., Lipscomb, W., Muszala, S., Ricciuto, D., Sacks, W., Sun, Y., Tang, J., and Yang, Z. L.: Technical description of version 4.5 of the Community Land Model (CLM), NCAR Tech. Note, 503+STR(June), doi:10.5065/D6RR1W7M, 2013.
- Parmesan, C. and Yohe, G.: A globally coherent fingerprint of climate change impacts across natural systems, *Nature*, 421, 37–42, doi:10.1038/nature01286, 2003.
- Pierce, D.: ncdf: Interface to unidata netCDF files, available at: <http://cran.r-project.org/package=ncdf> (last access: January 2015), 2011.
- Randerson, J. T., Hoffman, F. M., Thornton, P. E., Mahowald, N. M., Lindsay, K., Lee, Y.-H., Nevison, C. D., Doney, S. C., Bonan, G., Stöckli, R., Covey, C., Running, S. W., and Fung, I. Y.: Systematic assessment of terrestrial biogeochemistry in coupled climate-carbon models, *Glob. Change Biol.*, 15, 2462–2484, doi:10.1111/j.1365-2486.2009.01912.x, 2009.
- R Core Team: R Development Core Team: *Environ. Stat. Comput.*, available at: <http://www.R-project.org> (last access: January 2015), 2013.
- Reed, B. C., Schwartz, M. D., and Xiao, X.: Remote sensing phenology: Status and the way forward, in: *Phenology of Ecosystem Processes: Applications in global change research*, edited by: A. Noormets, 231–246, Springer Science + Business Media LLC, Dordrecht, Heidelberg, London, New York, 2009.
- Reich, P. B.: Phenology of tropical forests: Patterns, causes, and consequences, *Can. J. Bot.*, 73, 164–174, 1995.
- Richardson, A. D., Anderson, R. S., Arain, M. A., Barr, A. G., Bohrer, G., Chen, G., Chen, J. M., Ciais, P., Davis, K. J., Desai, A. R., Dietze, M. C., Dragoni, D., Garrity, S. R., Gough, C. M., Grant, R., Hollinger, D. Y., Margolis, H. a., McCaughey, H., Migliavacca, M., Monson, R. K., Munger, J. W., Poulter, B., Raczka, B. M., Ricciuto, D. M., Sahoo, A. K., Schaefer, K., Tian, H., Vargas, R., Verbeeck, H., Xiao, J., and Xue, Y.: Terrestrial biosphere models need better representation of vegetation phenology: results from the North American Carbon Program Site Synthesis, *Glob. Change Biol.*, 18, 566–584, doi:10.1111/j.1365-2486.2011.02562.x, 2012.
- Scholes, R. J. and Hall, D. O.: The carbon budget of tropical savannas, woodlands, and grasslands, in *SCOPE 56 – Global Change: Effects on Coniferous forests and grasslands*, edited by: Breymeyer, A. I., Hall, D. O., Melillo, J. M., and Agren, G. I., John Wiley & Sons Ltd, Chichester, UK, 1996.
- Staver, A. C., Archibald, S., and Levin, S. A.: The global extent and determinants of savanna and forest as alternative biome states, *Science*, 334, 230–232, doi:10.1126/science.1210465, 2011.
- Swenson, S. C. and Lawrence, D. M.: Assessing a dry surface layer-based soil resistance parameterization for the Community Land Model using GRACE and FLUXNET-MTE data, *J. Geophys. Res.-Atmos.*, 119, 299–312, doi:10.1002/2014JD022314, 2014.
- Viovy, N.: CRU-NCEP Version 4, available at: [http://dods.extra.cea.fr/data/p529viouv/cruncep/V4\\_1901\\_2012/](http://dods.extra.cea.fr/data/p529viouv/cruncep/V4_1901_2012/) last access: August 2012.
- Wang, K., Mao, J., Dickinson, R., Shi, X., Post, W., Zhu, Z., and Myneni, R.: Evaluation of CLM4 Solar Radiation Partitioning Scheme Using Remote Sensing and Site Level FPAR Datasets, *Remote Sens.*, 5, 2857–2882, doi:10.3390/rs5062857, 2013.
- White, M. A., Thornton, P. E., and Running, S. W.: A continental phenology model for monitoring vegetation responses to interan-

- nual climatic variability, *Global Biogeochem. Cy.*, 11, 217–234, doi:10.1029/97GB00330, 1997.
- White, M. A., de BEURS, K. M., Didan, K., Inouye, D. W., Richardson, A. D., Jensen, O. P., O’Keefe, J., Zhang, G., Nemani, R. R., van LEEUWEN, W. J. D., Brown, J. F., de WIT, A., Schaepman, M., Lin, X., Dettinger, M., Bailey, A. S., Kimball, J., Schwartz, M. D., Baldocchi, D. D., Lee, J. T., and Lauenroth, W. K.: Intercomparison, interpretation, and assessment of spring phenology in North America estimated from remote sensing for 1982–2006, *Glob. Change Biol.*, 15, 2335–2359, doi:10.1111/j.1365-2486.2009.01910.x, 2009.
- Wieder, W. R., Bonan, G. B., and Allison, S. D.: Global soil carbon projections are improved by modelling microbial processes, *Nature Climate Change*, 3, 909–912, doi:10.1038/nclimate1951, 2013.
- Yang, X., Mustard, J. F., Tang, J., and Xu, H.: Regional-scale phenology modeling based on meteorological records and remote sensing observations, *J. Geophys. Res.*, 117, G03029, doi:10.1029/2012JG001977, 2012.
- Zhang, X., Friedl, M. A., Schaaf, C. B., and Strahler, A. H.: Monitoring the response of vegetation phenology to precipitation in Africa by coupling MODIS and TRMM instruments, *J. Geophys. Res.*, 110, D12103, doi:10.1029/2004JD005263, 2005.
- Zhu, Z., Bi, J., Pan, Y., Ganguly, S., Anav, A., Xu, L., Samanta, A., Piao, S., Nemani, R., and Myneni, R.: Global Data Sets of Vegetation Leaf Area Index (LAI)3g and Fraction of Photosynthetically Active Radiation (FPAR)3g Derived from Global Inventory Modeling and Mapping Studies (GIMMS) Normalized Difference Vegetation Index (NDVI3g) for the Period 1981 to 2, *Remote Sens.*, 5, 927–948, doi:10.3390/rs5020927, 2013.