

Enzyme Encapsulation by Static Mixer Method for Hydrolysis of Lactose

Hui Ian Tan, Monwar Hossain* and Lu Zhang[#]

Department of Chemical & Petroleum Engineering, United Arab Emirates University, P.O. Box 17555, Al Ain, UAE

Abstract: Enzyme immobilisation has been intensively investigated due to its advantages such as enzyme recovery, reusability and improved stability over a wide range of pH and temperatures. The encapsulation of β -galactosidase in κ -carrageenan is presented in this report for potential application in dairy industry. The immobilisation was carried out by emulsifying oil and κ -carrageenan with a static mixer device. This is a new approach and has the advantage of producing smaller beads (e.g. smaller than 100 μm size) which can be used in continuous processing. The main factors tested were the total flow rate through the static mixer (Q_t , in the range 220 – 440 ml/min) and κ -carrageenan to oil volumetric fraction (ϵ , in the range 0.05-0.2). The average bead sizes obtained were in the range of 19 - 52 μm , with smaller sizes obtained with an increase of Q_t . The bead sizes decreased with (i) the decrease in emulsified droplets coalescence and oil inclusion in the beads and (ii) with the decrease in the values of WG_{top} (defined by the weight percentage of beads found underneath the oil layer).

The bead performance was tested using lactose and 2-nitrophenyl- β -galactopyranoside (ONPG) and the kinetic parameters, lactose conversion and stability were determined at the optimum conditions. The attained optimum pH and temperature were 7 (similar to free enzyme) and 21°C, respectively. The encapsulated β -galactosidase tested at optimum conditions in 5% (w/v) lactose solution was able to convert 76.47% of lactose after six days. These findings contribute to the further understanding of the encapsulation technique and demonstrates the potential of using κ -carrageenan as an encapsulation material for β -galactosidase.

Keywords: Static mixer, Emulsion, β -galactosidase, κ -Carrageenan, microencapsulation.

1. INTRODUCTION

Approximately 70% of the world's adult population are lactose intolerant [1] although 370 million tons of milk is produced worldwide. This creates a huge demand for lactose reduced dairy products. Industrially, 3.2 million tons of lactose dissolved in whey are accumulated each year in the world, half of which is utilised but the other half amount is disposed as waste. The lactose in this waste needs to be broken down as it poses an environmental threat due to its low biodegradability [2]. Due to these problems faced by the dairy industry the need for improving the lactose hydrolysis process is important.

To hydrolyse the lactose, two methods have been proposed in the literature. The first method is to perform hydrolysis with acids at high temperature (150 °C), which is not favourable in the food industry because of undesirable effects on the product. The second method is by an enzyme catalysed reaction at a mild pH and temperature (4-40 °C) [3]. For the enzymatic conversion of lactose, β -galactosidase from *Kluyveromyces fragilis* or commonly known as lactase

is chosen [4,5]. β -galactosidase works better at the natural temperature and pH of milk. It can retain activity at low temperature up to 4 °C [6] and is also recognised as safe (GRAS) [7]. However, β -galactosidase is relatively expensive and continuously degrades during storage. So a method such as encapsulation of enzyme is required to protect the β -galactosidase activity *in vitro* and *in vivo*. The encapsulation process is mild and has advantages for enzymatic process [8, 9], can be re-used several times [10] and in the spherical form has special hydrodynamic properties suitable for bioreactors [9].

Droplet and emulsification methods are commonly used to produce spherical gel beads. The beads are formed by passing the encapsulation material/enzyme mixture solution through a needle or orifice [9, 11]. Extensive research has been carried out to improve and optimize the process [11].

The concept of emulsification is to form an emulsion by mixing encapsulation/enzyme solution in a non-aqueous phase typically vegetable oil [11]. Emulsification is generally carried out in a turbine stirred reactor [12]. An alternative approach is to replace the stirred tank with a static mixer which has the potential for continuous processing with lower cost. This technique is better with bead sizes below 500 μm , it is easier to control the process and has less scale-up issues [13-16].

*Address corresponding to this author at the Department of Chemical & Petroleum Engineering, United Arab Emirates University, P.O. Box 17555, Al Ain, UAE; Tel: +971-3-7135315; Fax: +971-3-7624262; E-mail: mmonwar@uaeu.ac.ae

[#]Present address: Fonterra, Palmerston North, New Zealand; E-mail: Lu.Zhang@auckland.ac.nz

κ -Carrageenan, a natural biopolymer, as an encapsulating material has been extensively used in food products for almost 600 years [17]. Gelation can be initiated by the reduction of temperature or in the presence of ions, such as K^+ , Rb^+ , Cs^+ , NH_4^+ [11, 17]. There has been limited study on the use of static mixer for microencapsulation [12-14]. Study carried out by Belyaeva *et al.* [12] suggested procedures and feasibility region for forming discrete and spherical beads. The increase of elements in the static mixer and total volume flow rate in the static mixer have been found to affect the bead size with no effect on size distribution [13, 14].

In another study by Decamps *et al.* [15], it was concluded that an increase in static mixer diameter results in the increase of average bead diameter and size distribution. To avoid this effect the use of multiple medium size static mixers in parallel were suggested.

The main objectives of the present work were (i) to optimise the encapsulation of β -galactosidase by emulsification with the utilisation of a static mixer, (ii) to investigate the factors influencing the bead production and (iii) to analyse the bead performance in a batch enzyme reactor. The encapsulation method used in the present study is similar to those reported in the literature [12, 15].

2. MATERIALS AND METHODS

2.1. Chemicals

2-Nitrophenyl β -D-galactopyranoside (ONPG), α -lactose monohydrate (reagent grade), β -galactosidase (from *Kluyveromyces lactis*), potassium chloride (reagent grade), chitosan (from crab shells practical grade) and Glucose (GO) assay kit- all were obtained from Sigma-Aldrich, MO, USA. Commercial peanut oil is from AMCO New Zealand. All other reagents were of analytical grade.

2.2. κ -Carrageenan and β -Galactosidase Solution Preparation

10 mL of 750 units/mL β -galactosidase solution was prepared. The enzymes were diluted at a factor of 4 in 0.1 M dibasic sodium phosphate-citric acid buffer (pH 6.5) containing 3 mM of $MgCl_2$.

1.5% (w/w) κ -carrageenan solution is used in the present study. 1.5 g of κ -carrageenan powder was added into 90 mL of 0.01 M KCl. The suspended solution was stirred and heated to 70 °C. It was held for 20 minutes to completely dissolve the κ -carrageenan and cooled down to the 45 °C or 50°C for bead production. 10 mL of β -galactosidase solution was then mixed into the κ -carrageenan solution just before the start of bead production.

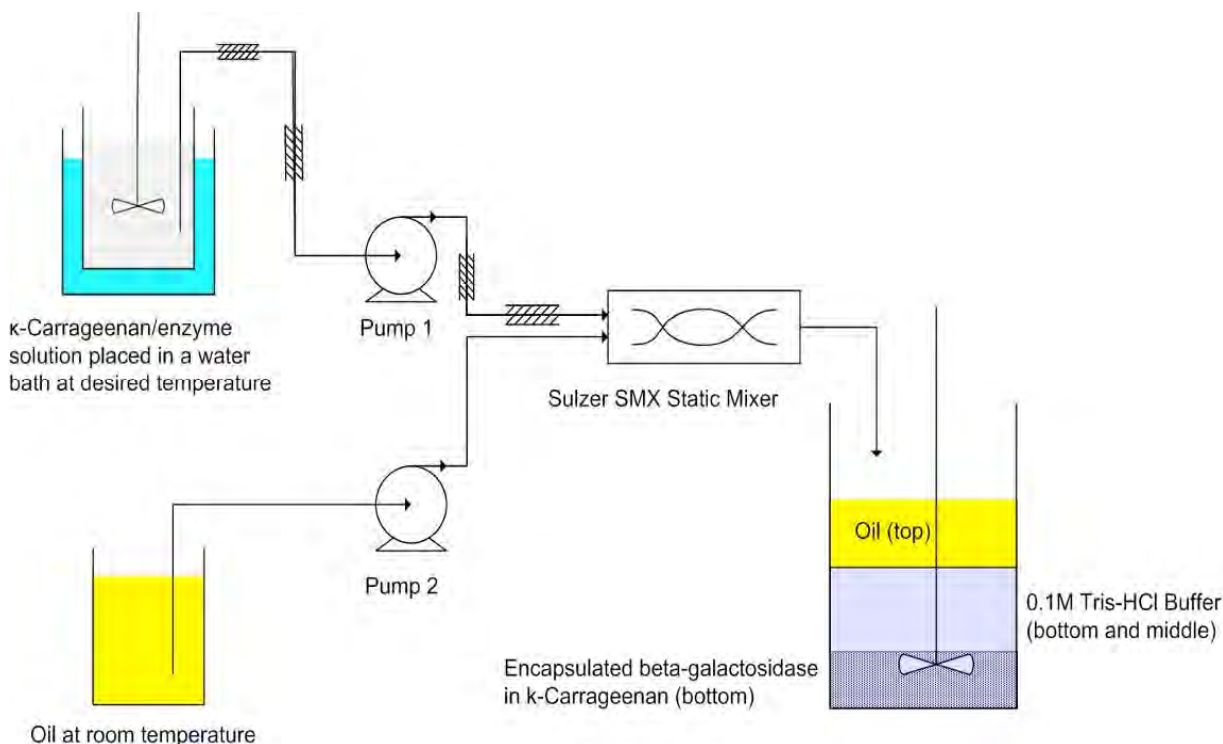


Figure 1: A schematic of the experimental setup for β -galactosidase bead production.

2.3. β -Galactosidase Bead Production by Static Mixer

The prepared κ -carrageenan/enzyme solution was placed in the water bath with continuous agitation (overhead stirrer at low rpm) (Figure 1) at a temperature of 45 °C or 50 °C. Peanut oil was used as the continuous phase and held at 21°C (room temperature). The process was started by feeding the static mixer (Sulzer Chemtech Ltd, Winterthur, Switzerland) with κ -carrageenan/enzyme solution and oil at the required flow rate. The static mixer consisted of four elements with 6 mm diameter. The total flow rate through the static mixer (Q_t) was varied at 220, 240, 420 and 440 mL/min which corresponded to a κ -carrageenan to oil volumetric fraction (ϵ) of 0.1, 0.2, 0.05 and 0.1, respectively.

The resulting liquid-liquid emulsion was collected in a stirred beaker containing 0.1 mol Tris-HCl buffer with 0.2 mol KCl (pH 8.1) at 4°C. It was then left at room temperature for two hours to allow the formed gel beads to harden and transfer to the aqueous phase. After two hours, the oil was decanted and the beads were recovered from the Tris-HCl buffer by vacuum filtration through a 30 μ m mesh and filter paper. During the separation, the beads were rinsed with 1% (v/v) Tween 80 in 0.2 M KCl solution and 0.1 M Tris-HCl buffer.

The retrieved beads were gently stirred in 0.2 % (w/v) chitosan solution (pH 6) at room temperature for 30 minutes. The beads were then separated using the same method as stated above. The damp beads were stored at 4°C without medium for further analysis.

2.4. Characterisation of β -Galactosidase Beads

A certain amount of beads were placed onto a glass slide under a cover slip and viewed using an optical microscope (Nikon MULTIZOOM AZ100, Japan). Images were taken and analysed to obtain an average bead size. 'Image J' was used to obtain the diameter measurements.

The beads were also observed with scanning electron microscopy (SEM, Philips XL30S SEM, Amsterdam, Netherlands). 20 μ L of the dispersed beads was placed on a cover slip mounted on metal holders using double-sided adhesive tape. The samples were air dried overnight before coating them with platinum. It was done with a coating device (Polaron SC7640 Sputter Coater, East Sussex, UK) at 5 to 10 mA, 1.1 kV. Images were captured for analysis.

2.5. β -Galactosidase Activity Assays

The enzyme activity was assayed using an artificial substrate, 2-nitrophenyl- β -galactopyranoside (ONPG), and the natural substrate, lactose. The yellow colour developed due to the formation of ONP was measured at 420 nm with a diode-array spectrophotometer. One unit of enzyme activity with ONPG substrate (OAU) is defined as the amount of enzyme which catalyses the conversion of 1 mM of ONPG to ONP per minute at testing conditions.

For lactose related tests, 1 g of damp beads was tested with 10 mL of 5% (w/v) α -lactose solution (dissolved in 0.1 M sodium phosphate buffer) at room temperature and pH 7. 1 mL of sample was withdrawn at different times and filtered through a 30 μ m mesh into 1 mL of double deionised (D-D) water. It was placed in boiling water (\approx 100°C) for 10 minutes to deactivate any enzyme. The samples were then diluted with D-D water and tested with the glucose assay kit. The glucose concentration was measured using a glucose (GO) assay kit. The pink colour developed was measured at 540 nm with a diode-array spectrophotometer. One unit of enzyme activity with α -lactose (LAU) is defined as the amount of enzyme which catalyses the conversion of 1 mM of lactose to glucose per minute at testing conditions.

2.6. Operational Stability Test

The encapsulated β -galactosidase was tested for reusability with ONPG substrate. This test was done by recovering the beads after use and rinsing it with 0.1 M Tris-HCl buffer. The beads were then suspended into a fresh substrate and tested for enzyme activity. This was repeated until the enzyme lost at least 50% of its activity.

2.7. Storage Stability Test

The residual activity of the encapsulated enzyme stored at 4°C without buffer was tested using ONPG substrate. The storage times were 1, 2, 3 and 4 weeks after the beads were made.

2.8. Long Lactose Hydrolysis Test

The beads were tested with 5% (w/v) lactose solution pH 7 at R.T. and 4 °C for up to 6 days. The apparatus used for this test were autoclaved (121 °C, 15 minutes) to minimise microbial growth. 0.1% sodium azide was also added into the lactose solution for the same reason.

2.9. Optimum Conditions

The activity of β -galactosidase beads was determined using ONPG substrate at temperatures of 21 °C (R.T.), 25 °C, 30 °C and 35 °C at pH 7 for three hours. The beads were also tested at pH of 6.0, 6.5, 7.0, 7.5 and 8.0 at R.T. for three hours.

3. RESULTS AND DISCUSSION

3.1. Effects of κ -Carrageenan/Enzyme Solution Temperature

As mentioned earlier the κ -carrageenan/enzyme solution was held at a temperature of 45 °C and 50 °C. The temperature was varied to study the effect it had on bead production. During this process of incubation, no complication was experienced due to premature gelation in the pipes between the static mixer and pump 1 (Figure 1). Several batches were trialled at 45 °C and premature gelation occasionally occurred later on in the process. This posed a problem as it obstructed the flow between the static mixer and pump 1 and resulted in the formation of gels which did not have a distinct shape.

A simple test was done to estimate the drop in temperature between the static mixer and pump 1. A thermocouple was placed at the inlet of the static mixer and κ -Carrageenan/enzyme solution was fed to the static mixer at 50 °C with a flow rate of 40 or 20 mL/min. The temperature at the inlet of the static mixer was recorded. The temperature drop of the solutions for both the tested flow rates was $\pm 3^\circ\text{C}$. This could be the reason for the premature gelation. Similar results were reported for a temperature range of 37 °C – 42 °C and gelation with 1.5% (w/w) κ -carrageenan in deionised water or 10 mM CaCl_2 solution [12, 18].

Even though the pipe length between the static mixer and pump 1 was reduced and insulated as much as possible, there was a large temperature drop in the κ -carrageenan/enzyme solution at the slow flow rate used. It was observed that the solution being fed to the static mixer was almost stagnant in the pipes due to the low flow rate especially at 20 mL/min. This resulted in a slow “turn over” of κ -carrageenan/enzyme solution. The κ -carrageenan in the pipes was replaced by “new” κ -carrageenan/enzyme solution at a low rate. The slow rate allowed the solution to lose heat thus explaining the reason for the occurrence of premature gelation after a certain period of time.

If no premature gelation occurred, the κ -carrageenan/enzyme solution would enter the static

mixer at a temperature close to the gelation temperature. However gelation probably did not occur immediately due to the rapid cooling by the oil which was at R.T. Therefore the solution was still able to be emulsified. The gelation temperature is dependent on the concentration of κ -carrageenan and more importantly the cooling rate of the κ -carrageenan solution. An increase in concentration raises the gelation temperature but an increase in cooling rate decreases the temperature [12, 18]. The rise in gelation temperature could denature β -galactosidase. Studies have shown that free β -galactosidase which is exposed to 50 °C for 25 minutes loses up to 50% of its activity. The enzyme can maintain more than half of its activity for 200 minutes at 45 °C [19, 20]. In the present study, the κ -carrageenan/enzyme solution was held at 50 °C for approximately 5 to 10 minutes during the entire duration of the bead production process. The residual activity at 10 minutes would have been approx. 90%, higher than what we have observed.

3.2. Effects of Q_t and ϵ on Bead Size, Quality and Activity

3.2.1. Effect on Bead Size

The effect of Q_t on bead size is discussed firstly. Q_t of 220 and 240 mL/min are regarded as low flow rates while 420 and 440 mL/min as high. The average bead sizes obtained from Figure (2A, B, C and D) were 19, 52, 13 and 27 μm , respectively. The sizes obtained were smaller than the mesh size used to filter the encapsulated β -galactosidase. The reason is related to the experimental procedure involved. During vacuum filtration, the beads formed a layer of filter cake that prevented smaller size beads from passing through. Furthermore, filter paper was also used which acted as a support for the filter cake. Hence beads which were under 30 μm could be obtained.

A comparison was done between the low and high flow rate results. There is a general trend that the bead size decreases with the increase in the flow rate. This is similar to other studies where the same outcome is obtained [12, 15]. Q_t has an effect on the mixing intensity and time. An increase in flow rate results in higher shear and elongation forces acting on the solution. This then induces an increase in dissipated energy which promotes droplet disintegration [12, 15]. The slight change in average bead size is also evident in the results reported in [12], where the bead mean diameter is not highly influenced by the range of flow rate tested at 200 to 400 mL/min. If the sizes obtained from Q_t of 220 and 440 mL/min are compared, an

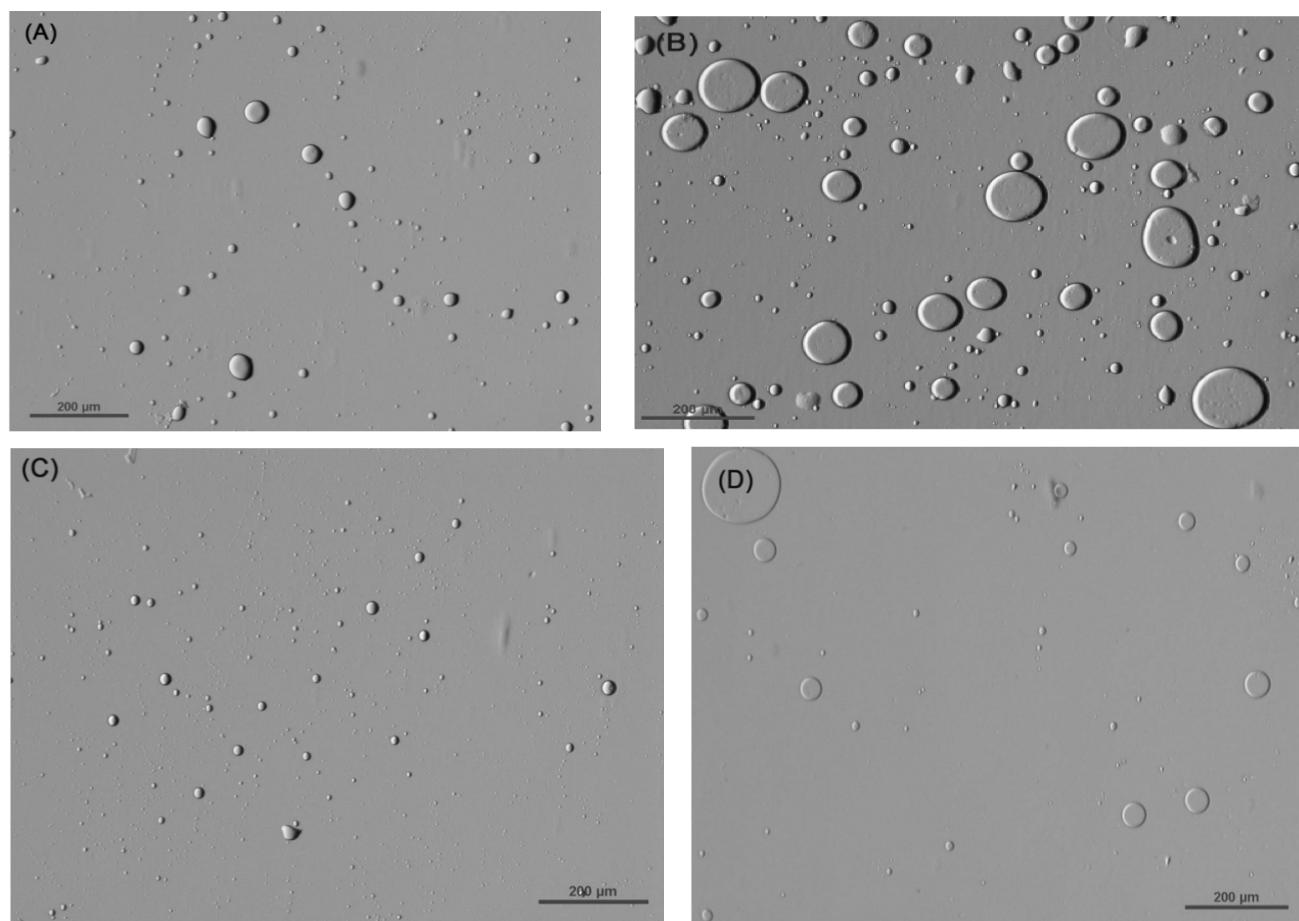


Figure 2: Optical microscope images of encapsulated β -galactosidase at different Q_t of (A) 220 mL/min (B) 240 mL/min (C) 420 mL/min and (D) 440 mL/min.

increase is seen instead of the expected decrease. The reason could be due to oil inclusions. This is explained later in the section.

The effect of κ -carrageenan to oil volumetric fraction (ϵ) on bead size is studied as two groups which are the low and high flow rate. In the present study, ϵ is increased from 0.1 to 0.2 at low rate flow rate (220 to 240 mL/min). Figure (2A and B) show that the average size was increased by 33 μm . This is probably due to the coalescence between the emulsified droplets which occurs at low flow rate as mentioned in the literature [15]. It was also showed that in the coalescence occurred in most of the samples studied at ϵ of 0.1 [12]. Hence higher coalescence would be observed at 0.2. The increase in coalescence rate is due to the increase of κ -carrageenan/enzyme solution to oil. This results in a higher concentration of κ -carrageenan/enzyme solution which raises the probability of the molecules colliding with each other [21].

At high flow rate, the rate of coalescence between the emulsified droplets should not increase as ϵ

increases [15]. Hence a similar size was expected but this is not the case as the results show an increase in bead size. The high flow rate group showed an increase of 14 μm (Figure 2C and D) as ϵ was increased from 0.05 to 0.1 (420 to 440 mL/min). A possible explanation could be oil inclusions in beads tend to happen at high flow rate [12] due to the increase in inertial forces acting on the dispersed droplets. The oil inclusion could increase the bead size as well at flow rates of 220 and 440 mL/min.

3.2.2. Effect on Bead Quality

The effects of Q_t and ϵ on bead quality were also studied. The overall quality of beads produced was gauged by the weight percentage of beads located below the oil layer labelled as WB_{top} (Figure 3). The yield percentage is defined as the weight of encapsulated β -galactosidase recovered over 100 g of κ -carrageenan/enzyme solution. It was expected that all the beads would settle at the bottom of the container due to the difference in density but this was not observed in the present study.

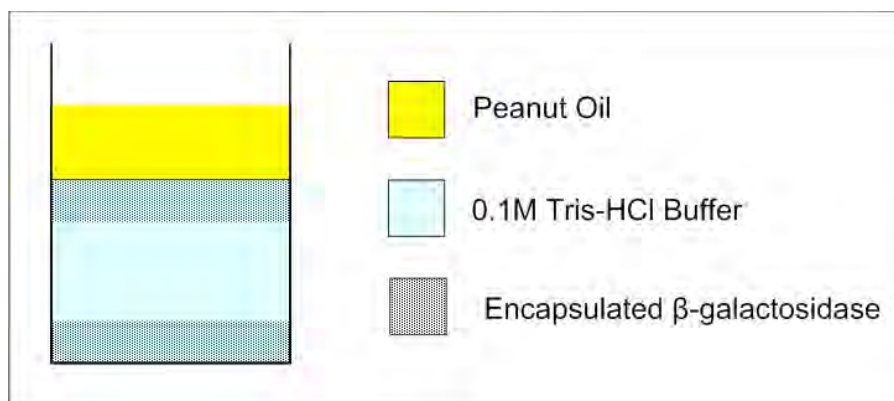


Figure 3: Free β -galactosidase from *Kluyveromyces fragilis* was tested at pH 7.2 with ONPG substrate for thermal stability [Santos, *et al*, 1998].

The schematic shown in Figure 3 was observed for all Q_t tested. The encapsulated beads located at the bottom could be regarded as good quality beads due to its translucent physical appearance compared to the beads beneath the oil layer which had a shade of pale yellow. The settled beads could also be dispersed easily if agitated but the beads under the oil layer remained coalesced. This suggests that the settled beads are discrete. A possible reason for the “floating” beads is oil inclusions in the bead. The oil traces would reduce the density of the beads thus allowing them to float just beneath the oil layer. Another possibility is the entrapment of oil between the aggregated beads which would also reduce the beads’ bulk density and cause a similar outcome as mentioned before. This may also further strengthen the aggregation between the oil and κ -carrageenan molecules.

The main reason for the occurrence of the two κ -carrageenan beads layer is that the static mixer used in the present study had insufficient elements (four elements were used) to provide complete or good emulsification. The number of mixing elements determines the residence time of the solution in the mixer to form homogenised beads [12, 15].

The WB_{top} obtained for beads produced with Q_t of 220, 240, 420 and 440 mL/min were 22, 88, 35 and 29%. The effect of Q_t on bead quality is compared between Q_t of 220 and 440 mL/min as they have the same ϵ . The yield for beads made from Q_t of 220 and 440 mL/min were 45.6% and 46.6% respectively. The weight yield from a similar study was 58 to 66% [12]. The WB_{top} for Q_t of 220 mL/min was 7% lower than that for 440 mL/min suggesting better quality beads at Q_t of 220 mL/min. Although a high flow rate could provide more energy and also could promote oil inclusion [12, 13]. The oil inclusions would cause an increase in

WB_{top} . However at a lower flow rate, the κ -carrageenan/enzyme solution and oil would have more mixing/residence time in the static mixer. This results in a better emulsification thus reducing WB_{top} .

The change of ϵ from 0.1 to 0.2 at low flow rate showed a WB_{top} increase of 66%. The huge difference is possibly due to the increase in bead aggregation as concentration of κ -carrageenan/enzyme solution increases. Therefore more oil is entrapped between the beads which cause the increase of WB_{top} .

At high flow rates there was a decrease of 6% in WB_{top} when ϵ was changed from 0.05 to 0.1. It was expected that the WB_{top} for Q_t of 440 mL/min (ϵ of 0.1) would be higher than 420 mL/min (ϵ of 0.05) due to the higher possibility of aggregation between the beads. This was not observed in our result and could be explained as the degree of ϵ applied may not have caused significant bead aggregation difference. The dominating factor on WB_{top} could be due to oil inclusion which is unpredictable in the present study. This could result in the unexpected difference of 6% in WB_{top} .

3.2.3. Effect on Bead Activity

The beads obtained from different Q_t and ϵ , were tested for three hours with ONPG substrate. The results are shown in Figure 4. The highest activity was achieved with beads made from Q_t of 220 mL/min. Beads made from Q_t of 420 and 440 mL/min showed a 26.73 and 17.21% activity drop respectively. The lowest activity of 57.35% was obtained with beads made from Q_t of 240 mL/min. The lower activity drop seen at the high flow rates compared to Q_t of 220 mL/min could be due to the oil inclusions in the beads. The oil might interfere with the internal diffusion of the product and substrate especially later in the experiment. This may cause a build up of products in

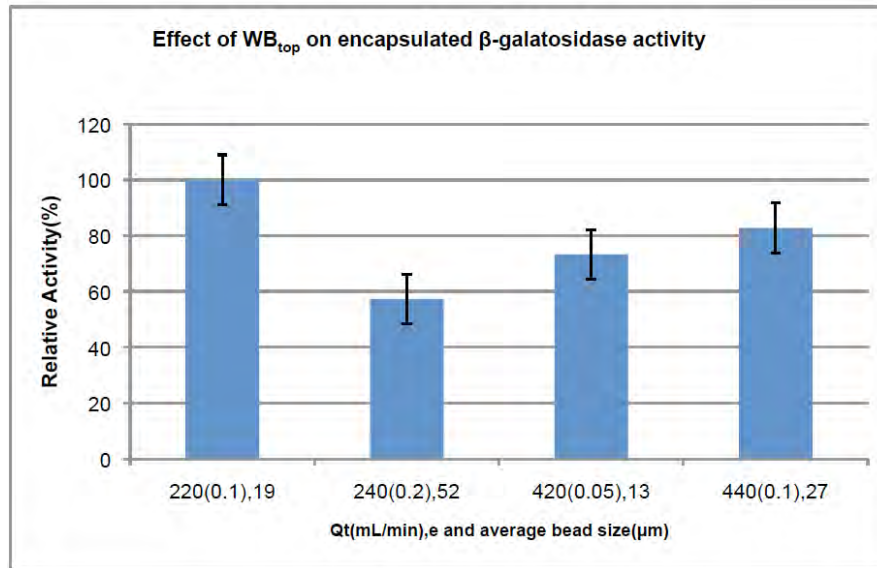


Figure 4: A schematic of encapsulated β -galactosidase collected in a liquid-liquid emulsion. The beads were formed under the peanut oil layer and settled at the base of the receiving container.

the beads as the reaction progresses. The hydrolysis process would eventually be affected due to product inhibition by galactose. The low activity from beads made with Q_t of 240 mL/min is related to ϵ and is discussed in the following paragraph.

The increase of ϵ from 0.1 to 0.2 in the low flow rate group showed a decrease in activity. The reason could be due to the high aggregation between the beads which reduces the amount of surface area for the

substrate to diffuse into the beads. The remaining traces of oil between the beads that were not washed off would also increase the external diffusion resistance and hinder the substrate diffusion into the beads. The presence of oil traces in the enzyme activity test is due to the experimental method as described. The beads retrieved from the top were rinsed a couple times with 0.1 M Tris-HCl buffer. It was then mixed with the bottom layer beads. The bead were then chitosan

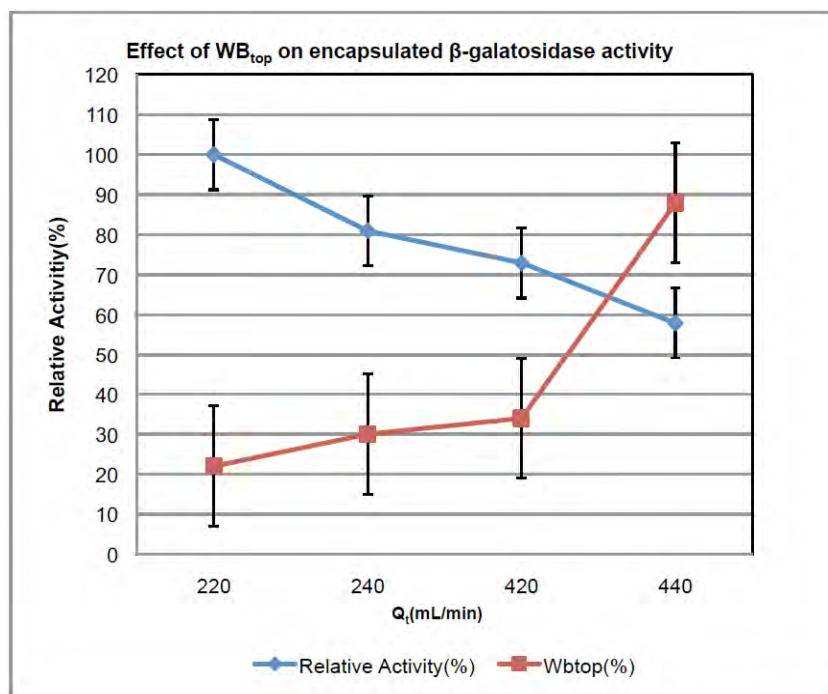


Figure 5: Comparison between maximum bead activities and WB_{top} at flow rates of 220, 240, 420 and 440 mL/min and ϵ of 0.1, 0.2, 0.05 and 0.1.

coated and used for activity testing. The beads prepared at flow rate of 240 mL/min had the highest WB_{top} of 88% and also the lowest activity of 57.35%.

The increase of ϵ from 0.05 to 0.1 in the high flow rate group showed an increase in activity. The reason is again related to the quality of the beads produced. The beads made from Q_t of 420 mL/min showed a higher WB_{top} compared to Q_t of 440 mL/min. This was translated to the bead activity which showed that the activity was higher for beads made with Q_t of 440 mL/min.

It was also observed that as WB_{top} increases the relative activity decreases (Figure 5). This further indicates that the activity is affected by the quality of the beads. No distinctive trend between the average bead size and activity could be concluded from the results. The reason may be due to the unquantifiable external diffusion resistance caused by uneven chitosan coating, clumping of beads and traces of oil

on the beads. Overall, there is no direct influence of Q_t and ϵ on the bead production process.

3.3. Encapsulated β -Galactosidase Morphology

The beads were viewed under a SEM to study its morphology. The images confirmed that the beads are approximately spherical in shape. Figures (6A and 6B) show beads with rough surfaces compared to the bead in Figure 6C which was not submerged in chitosan. Hence the rough surface observed is due to the successful coating of the beads with chitosan. A similar image was presented in the literature [22].

3.4. Operational Stability Test

The encapsulated β -galactosidase obtained at Q_t of 220 mL/min was tested with ONPG substrate to demonstrate its reusability. The beads retained 52.65% of its initial activity after four repeated cycles as shown in Figure 7. This result is similar to those reported in

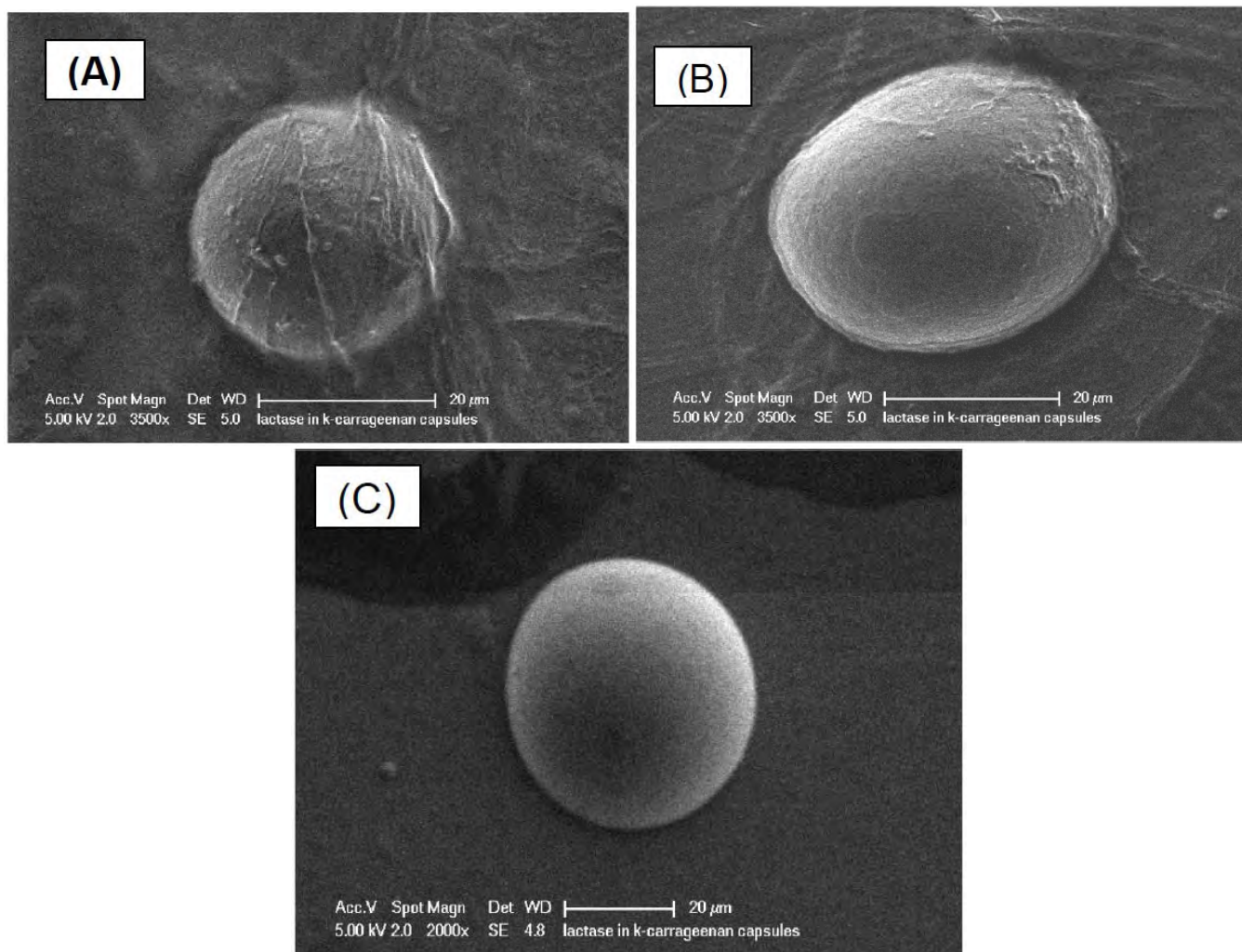


Figure 6: Effect of WB_{top} on bead activity. The increase in WB_{top} resulted in a decrease in relative bead activity.

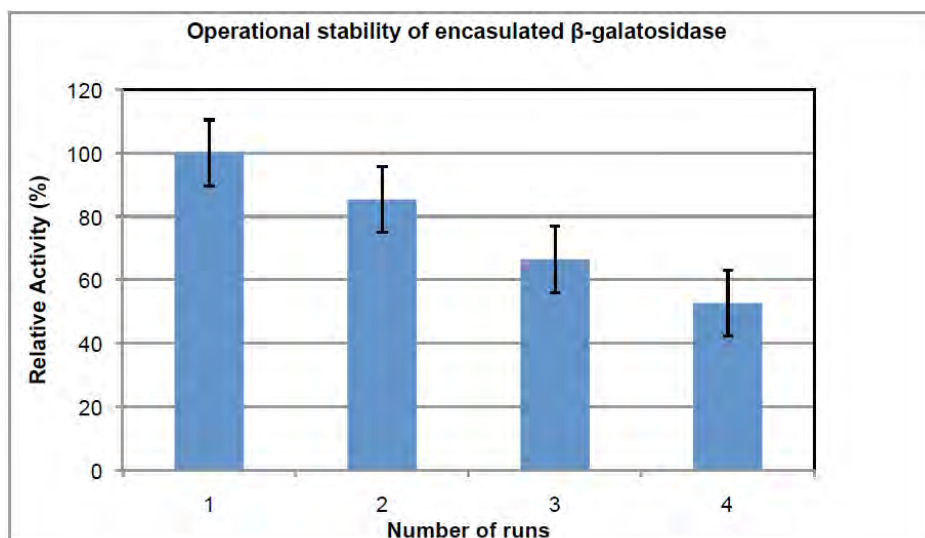


Figure 7: (A-C): SEM images of encapsulated β -galactosidase at Q_t of (A) 220 mL/min (B) 440 mL/min and (C) 220 mL/min without chitosan coating.

the literature [12, 13]. The beads showed low reusability even after coating with chitosan, similar to those obtained in previous work [12]. This may have been caused by the uneven chitosan coating on the bead that would have lowered the retention capability.

3.5. Storage Stability Test

The encapsulated β -galactosidase obtained, at Q_t of 440 mL/min, was tested with ONPG substrate to demonstrate its storage stability. The beads were stable for up to one week. It retained 57.17% of its initial activity (100%) after three weeks of storage as shown in Figure 8. The beads were stored in distilled

water (without any buffer) to reduce leaching during storage (following the method in [23] for encapsulation of lipase in κ -carrageenan), which showed higher activity retention of 50% for four days. Although the storage stability does not have any direct effect on the bead production process, it is important to understand the performance of the beads upon storage.

3.6. Long Lactose Hydrolysis Test

The encapsulated β -galactosidase was tested with 5% (w/v) lactose solution at R.T. and 4°C for six days. The result from the R.T test shows 8.06×10^3 LAU after three hours. This translated to 1% of lactose

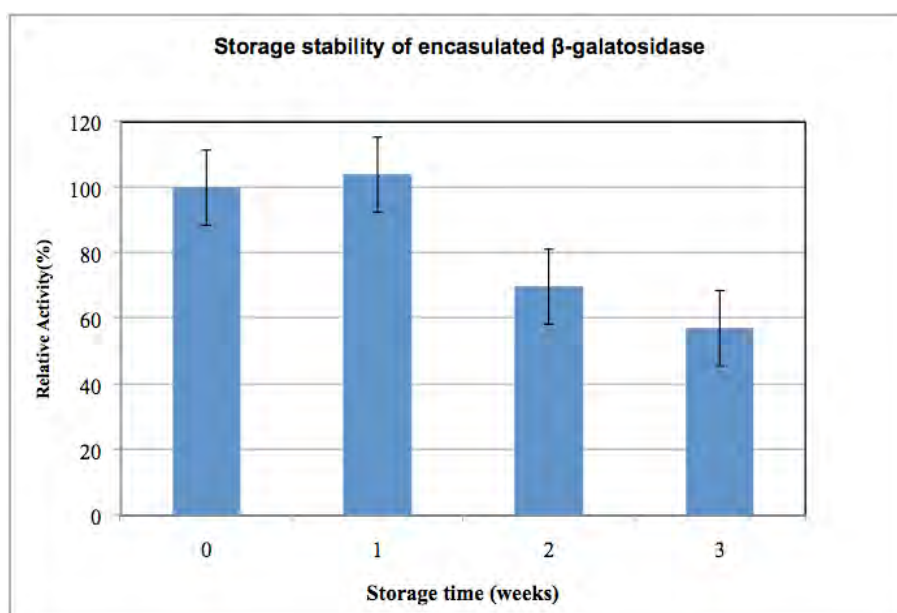


Figure 8: Repeatability of encapsulated β -galactosidase tested at pH 7, 21°C with 3.67 mM ONPG substrate.

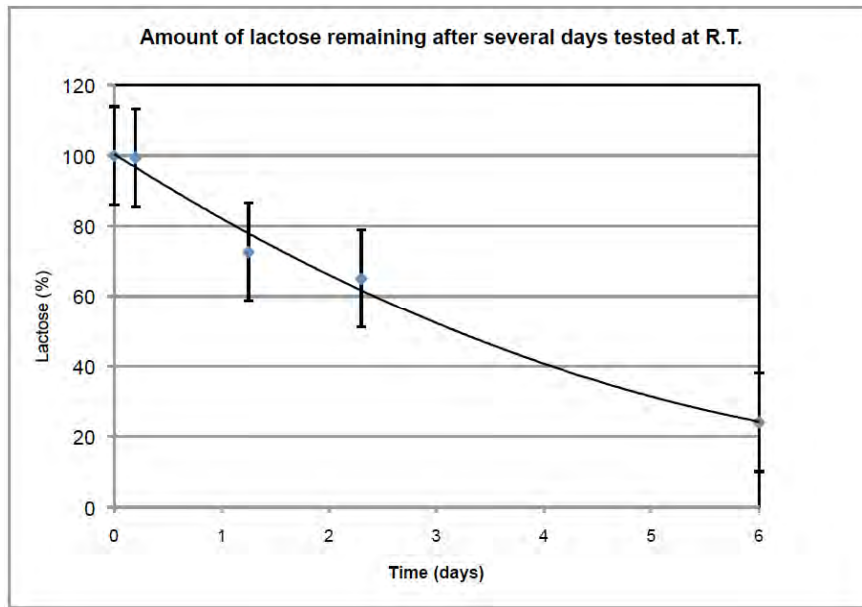


Figure 9: Storage stability of encapsulated β -galactosidase at pH 7, 21°C with 3.67 mM ONPG.

conversion. However 76.74% lactose conversion or 1.23×10^2 LAU was achieved over six days as seen in Figure 9.

The experiment carried out at 4°C resulted in a 0.2% lactose conversion after three hours. The final conversion achieved after six days was only 2% or 3.33×10^4 LAU as shown in Figure 10. A chart from a section in the Food Science and Technology showed that almost 20% lactose hydrolysis in milk is achieved

at 20 °C and 7% at 5 °C after 18 hours [24]. This finding is used to compare with the result obtained from the first three hours. The drop of 65% lactose hydrolysis is close to the 80% drop obtained in the present study. A possible reason for the low conversion after six days at 4°C is because of the experimental method. The solution was not stirred after the first three hours. This would affect the diffusion of the substrate and products going into and out of the beads.

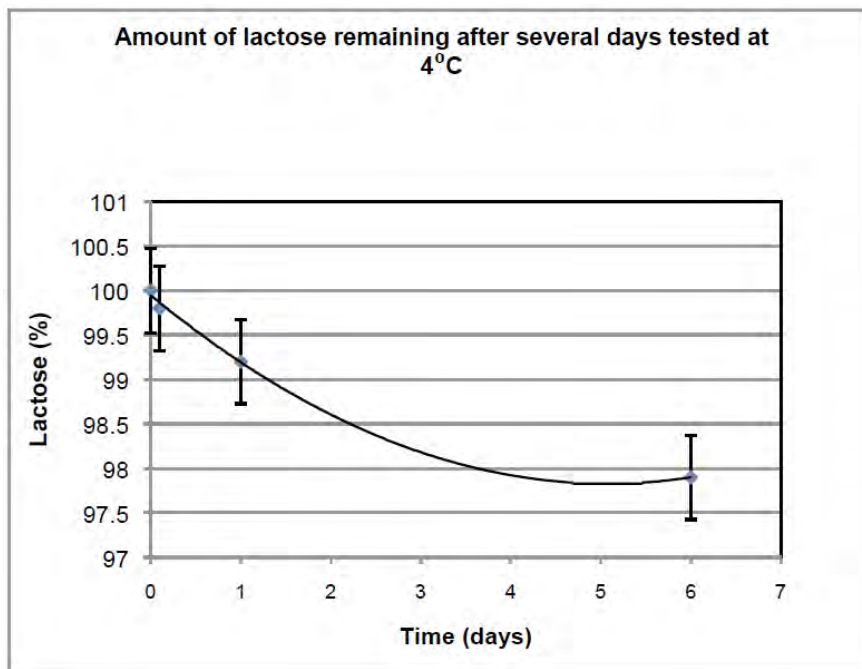


Figure 10: Lactose (%) in residual solution over a period of six days. Beads (prepared at Q_t of 220 mL/min) were tested in 5% (w/v) lactose solution, at pH 7 and 21°C.

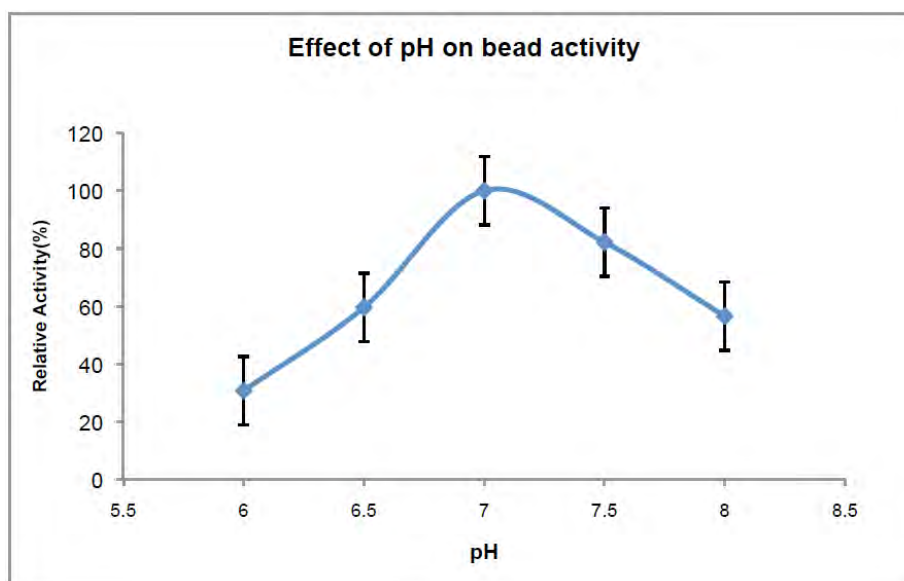


Figure 11: Lactose (%) remaining in solution over six days. Beads (made with Q_t of 220 mL/min) were tested in 5% (w/v) lactose solution, pH 7 at 4°C. 97.92% lactose remained after six days.

The optimum conditions were obtained with beads formulated at Q_t of 440 mL/min. They were tested with ONPG substrate for three hours. The highest activity was obtained at pH of 7 as shown in Figure 11. It is comparable to that of free β -galactosidase from *K. Lactis* [7]. Other studies on encapsulation of β -galactosidase also showed only a slight change in the optimum pH [25, 26]. A possible reason is that the enzyme is immobilised using a physical method in the present study. Therefore the ionisable groups in the active site of β -galactosidase are more likely to remain the same compared to methods which require covalent bonding or polymerisation. The beads showed higher activity in alkali condition compared to acidic condition. This trend is similar to those of the other studies [7, 26].

4. CONCLUSIONS

The encapsulation of β -galactosidase was successfully carried out by emulsifying oil and κ -carrageenan with a static mixer device. This method of immobilisation has produced smaller beads with size less than 100 μm with added advantage of continuous processing option. The main factors that affected the size were: the total flow rate through the static mixer (Q_t , in the range 220 – 440 ml/min) and κ -carrageenan to oil volumetric fraction (ϵ , in the range 0.05-0.2). The average bead sizes obtained were in the range of 19-52 μm , with smaller sizes obtained with an increase of Q_t .

The bead performance was tested using lactose and 2-nitrophenyl- β -galactopyranoside (ONPG) and

the optimum conditions of pH (a value of, similar to that of free enzyme) and temperature (of 37 °C) were determined. At the optimum conditions the encapsulated β -galactosidase, tested with 5% (w/v) lactose solution, was able to convert 76.47% of lactose after six days. The stability of the encapsulated enzyme was similar to those in the literature (retained 57.17% of its initial activity after 3 weeks) and can be used a few times without significant loss of activity. Overall these findings contribute to the further understanding of the encapsulation technique and demonstrates the potential of using κ -carrageenan as an encapsulation material for β -galactosidase.

ACKNOWLEDGEMENTS

The authors would like to thank the University of Auckland, New Zealand, for funding this research.

REFERENCES

- [1] Paige DM. Lactose intolerance. In: Caballero B, Allen L, Prentice A, editors. Encyclopedia of Human Nutrition. 2nd ed. Oxford: Elsevier 2005.
- [2] Novalin S, Neuhaus W, Kulbe KD. A new innovative process to produce lactose-reduced skim milk. *J Biotechnol* 2005; 119(2): 212-18. <http://dx.doi.org/10.1016/j.jbiotec.2005.03.018>
- [3] Ladero M, Santos A, Garcia-Ochoa F. Kinetic modeling of lactose hydrolysis with an immobilized β -galactosidase from *Kluyveromyces fragilis*. *Enz Microb Technol* 2000; 27: 583-92. [http://dx.doi.org/10.1016/S0141-0229\(00\)00244-1](http://dx.doi.org/10.1016/S0141-0229(00)00244-1)
- [4] Mammarella EJ, Rubiolo AC. Study of the deactivation of β -galactosidase entrapped in alginate-carrageenan gels. *J Mol Cat B Enzymatic* 2005; 34: 7-13. <http://dx.doi.org.ezproxy.uaeu.ac.ae/10.1016/j.molcatb.2005.04.007>

- [5] Li X, Zhou QZK, Chen XD. Pilot-scale lactose hydrolysis using beta-galactosidase immobilized on cotton fabric. *Chem Eng Proc* 2007; 46: 497-500.
<http://dx.doi.org.ezproxy.uaeu.ac.ae/10.1016/cep.2006.02.011>
- [6] Cheetham PSJ. Principles of industrial biocatalysis and bioprocessing. In: Wiseman A., editor. *Handbook of enzyme biotechnology*, 3rd ed. UK: Ellis Horwood 1995.
- [7] Zhou QZK, Chen XD. Effects of temperature and pH on the catalytic activity of the immobilized β -galactosidase from *Kluyveromyces lactis*. *Biochem Eng J* 2001; 9: 33-40.
[http://dx.doi.org.ezproxy.uaeu.ac.ae/10.1016/S1369-703X\(01\)00118-8](http://dx.doi.org.ezproxy.uaeu.ac.ae/10.1016/S1369-703X(01)00118-8)
- [8] Lu L, Zhao M, Wang Y. Immobilization of laccase by alginate-chitosan microcapsules and its use in dye decolorization. *World J Microbiol Biotechnol* 2007; 23: 159-66.
<http://dx.doi.org/10.1007/s11274-006-9205-6>
- [9] Flickinger CM, Drew, SW. Microencapsulation, in *Encyclopedia of Bioprocess Technology - Fermentation, Biocatalysis and Bioseparation*. New York: Wiley 1999.
- [10] Betigeri SS, Neau SH. Immobilization of lipase using hydrophilic polymers in the form of hydrogel beads. *Biomaterials* 2002; 23: 3627-36.
[http://dx.doi.org/10.1016/S0142-9612\(02\)00095-9](http://dx.doi.org/10.1016/S0142-9612(02)00095-9)
- [11] Van De Velde F, Lourenco ND, Pinheiro HM. and Bakker, M. Carrageenan: A Food-Grade and Biocompatible Support for Immobilisation Techniques. *Adv Syn Catal* 2002; 344: 815-35.
[http://dx.doi.org/10.1002/1615-4169\(200209\)344:8<815::AID-ADSC815>3.0.CO;2-H](http://dx.doi.org/10.1002/1615-4169(200209)344:8<815::AID-ADSC815>3.0.CO;2-H)
- [12] Reis CP, Neufeld RJ, Vilela S, Ribeiro A, Oacutenio J, Veiga F. Review and current status of emulsion/dispersion technology using an internal gelation process for the design of alginate particles. *J Microencapsulation* 2006; 23: 245-57.
<http://dx.doi.org/10.1080/02652040500286086>
- [13] Belyaeva E, Valle DD, Poncelet D. Immobilization of α -chymotrypsin in κ -carrageenan beads prepared with the static mixer. *Enz Microbiol Technol* 2004a; 34: 108-13.
<http://dx.doi.org.ezproxy.uaeu.ac.ae/10.1016/enzictech.2003.07.009>
- [14] Belyaeva E, Valle DD, Neufeld RJ, Poncelet D. New approach to the formulation of hydrogel beads by emulsification/thermal gelation using a static mixer. *Chem Eng Sci* 2004b; 59: 2913-20.
<http://dx.doi.org.ezproxy.uaeu.ac.ae/10.1016/ces.2004.04.010>
- [15] Decamps C, Norton S, Poncelet D, Neufeld RJ. Continuous pilot plant-scale immobilization of yeast in κ -carrageenan gel beads. *AIChE J* 2004; 50: 1599-605.
<http://dx.doi.org/10.1002/aic.10143>
- [16] Raymond MC, Neufeld RJ, Poncelet D. Encapsulation of brewers yeast in chitosan coated carrageenan microspheres by emulsification/thermal gelation. *Artificial Cells, Blood Substitutes, and Immobilization. Biotechnol* 2004; 32: 275-91.
<http://dx.doi.org/10.1081/BIO-120037832>
- [17] Yi Y, Neufeld RJ. Immobilization of cells in polysaccharide Gels, in Dumitriu S, editor. *Polysaccharides: Structural diversity and functional versatility*. New York: Marcel Dekker 1998.
- [18] Iijima M, Hatakeyama T, Takahashi M, Hatakeyama H. Effect of thermal history on kappa-carrageenan hydrogelation by differential scanning calorimetry. *Thermochimica Acta* 2007; 452: 53-8.
<http://dx.doi.org.ezproxy.uaeu.ac.ae/10.1016/j.tca.2006.10.019>
- [19] Santos A, Ladero M, Garcia-Ochoa F. Kinetic modeling of lactose hydrolysis by a β -Galactosidase from *Kluyveromyces fragilis*. *Enz Microb Technol* 1998; 22: 558-67.
[http://dx.doi.org.ezproxy.uaeu.ac.ae/10.1016/S0141-0229\(97\)00236-6](http://dx.doi.org.ezproxy.uaeu.ac.ae/10.1016/S0141-0229(97)00236-6)
- [20] Matioli G, Moraes FF, Zanin GM. Hydrolysis of lactose by β -galactosidase from *Kluyveromyces fragilis*: characterization of the enzyme. *Acta Scientiarum* 2001; 23: 655-59.
- [21] McClements DJ. *Emulsion formation, in Food emulsions: Principles, Practices and Techniques*. New York: CRC 2005.
- [22] Ribeiro AJ, Silva C, Ferreira D, Veiga F. Chitosan-reinforced alginate microspheres obtained through the emulsification/internal gelation technique. *Eur J Pharm Sci* 2005; 25: 31-40.
<http://dx.doi.org.ezproxy.uaeu.ac.ae/10.1016/j.ejps.2005.01.016>
- [23] Desai PD, Dave AM, Devi S. Entrapment of lipase into κ -carrageenan beads and its use in hydrolysis of olive oil in biphasic system. *J Mol Cat B Enzymatic* 2004; 31: 143-50.
<http://dx.doi.org.ezproxy.uaeu.ac.ae/10.1016/j.molcatb.2004.08.004>
- [24] Rodriguez-Nogales JM, Lopez AD. A novel approach to develop β -galactosidase entrapped in liposomes in order to prevent an immediate hydrolysis of lactose in milk. *Intl Dairy J* 2006; 16: 354-60.
<http://dx.doi.org.ezproxy.uaeu.ac.ae/10.1016/j.idairyj.2005.05.007>
- [25] Wadiak DT, Carbonell RG. Kinetic Behaviour of microencapsulated β -galactosidase. *Biotechnol Bioeng* 1975; 17: 1157-81.
<http://dx.doi.org/10.1002/bit.260170806>
- [26] Rogalski J, Dawidowicz A, Leonowicz A. Lactose hydrolysis in milk by immobilized β -galactosidase. *J Mol Cat* 1994; 93: 233-45.
[http://dx.doi.org.ezproxy.uaeu.ac.ae/10.1016/0304-5102\(94\)00092-1](http://dx.doi.org.ezproxy.uaeu.ac.ae/10.1016/0304-5102(94)00092-1)
- [27] Bayramoglu G, Yagmur T, Yakup A. Immobilization of β -galactosidase onto magnetic poly(GMA-MMA) beads for hydrolysis of lactose in bed reactor. *Catalysis Communications* 2006; 8: 1094-101.
<http://dx.doi.org.ezproxy.uaeu.ac.ae/10.1016/j.catcom.2006.10.029>