

# Epithelial-mesenchymal transitions: insights from development

Jormay Lim<sup>1</sup> and Jean Paul Thiery<sup>1,2,\*</sup>

## Summary

Epithelial-mesenchymal transition (EMT) is a crucial, evolutionarily conserved process that occurs during development and is essential for shaping embryos. Also implicated in cancer, this morphological transition is executed through multiple mechanisms in different contexts, and studies suggest that the molecular programs governing EMT, albeit still enigmatic, are embedded within developmental programs that regulate specification and differentiation. As we review here, knowledge garnered from studies of EMT during gastrulation, neural crest delamination and heart formation have furthered our understanding of tumor progression and metastasis.

**Key words:** Epithelial-mesenchymal transition, Gastrulation, Neural crest, Heart morphogenesis

## Introduction

Epithelial-mesenchymal transition (EMT) is an evolutionarily conserved developmental process that contributes to the formation of the body plan, histogenesis and organogenesis. In the late 19th century, mesenchymal and epithelial cells were recognized as having distinct phenotypes (Duval, 1879) and, although EMT was apparent to embryologists (Platt, 1894), it only became interesting to developmental biologists in the 1960s. Following pioneering work from Elizabeth Hay (Greenburg and Hay, 1982; Hay, 2005), we now know that epithelial cells lose apicobasal polarity and intercellular junctions during EMT. These changes in cell polarity and adhesion disrupt the epithelial basement membrane and allow cellular penetration into an extracellular matrix (ECM)-rich compartment: a process referred to as delamination (see Glossary, Box 1). These newly formed mesenchymal cells transiently express distinct mesenchymal markers, acquire a front-rear polarity and become invasive, favoring cell-ECM rather than cell-cell adhesions.

Interestingly, EMT is not irreversible: cells frequently cycle between epithelial and mesenchymal states via EMT and the reverse process, mesenchymal-epithelial transition (MET). Importantly, EMT has been implicated in pathological conditions, such as organ fibrosis, and in cancer, where it contributes to tumor progression and metastasis (Kalluri and Weinberg, 2009; Thiery et al., 2009). As such, much effort has been devoted to understanding the molecular regulation of EMT during development as an insight into the role and regulation of EMT in pathology.

EMT is context dependent, occurring within the framework of other signaling mechanisms, such as cell fate induction, commitment and differentiation. However, the precise events that drive EMT are not fully understood. Genetic studies in *Drosophila* originally identified the transcription factors Twist and Snail as potential drivers

of EMT during gastrulation (Leptin and Grunewald, 1990). Soon after, a Snail ortholog, Slug (Snai2), was shown to be involved in EMT in chicken embryo gastrulation (Nieto et al., 1994). Since then, several genes encoding transcription factors, cell polarity proteins and effector proteins have been shown to govern EMT in normal and transformed epithelial cells (see Table 1), suggesting that novel mechanisms govern EMT (Peinado et al., 2007; Moustakas and Heldin, 2009; Thiery et al., 2009; Nieto, 2011; Valastyan and Weinberg, 2011). In this Primer (see Box, Development: the big picture), we explore the molecular programs that govern EMT in various developmental contexts and discuss how these developmental studies have provided clues into the control and activation of EMT during cancer.

## EMT during development

Four waves of EMT and MET have been described during morphogenesis and organogenesis (see Table 2 for a summary of these different events during development). In mammals, for example, EMT occurs following implantation in the primitive endoderm to form the parietal endoderm (Veltmaat et al., 2000). Subsequently, during implantation, trophoblasts localized at the tip of chorionic villi undergo EMT and invade the endometrium (Kokkinos et al., 2010). EMT, and the reverse process MET, then occur at various stages throughout embryonic development, but we shall focus on the stages of gastrulation, neural crest delamination and heart formation, as they represent three distinct mechanisms of development that are associated with EMT.

## Gastrulation: formation of mesoderm and mesendoderm

Different morphogenetic movements during gastrulation (see Glossary, Box 1) apply to different species. Even in the most ancient of species, such as cnidarians, there are no fewer than nine different mechanisms operating during gastrulation (Byrum and Martindale, 2004). In all cases, these complex morphogenetic movements incorporate epithelial cell plasticity, such as when cells invaginate or involute (see Glossary, Box 1) as cell collectives. Interestingly, in the early stages of body plan formation, cells participating in collective migration exchange neighbors through convergence-extension movements (Keller and Shook, 2004). EMT is one of the mechanisms activated during gastrulation that allows cells to ingress (see Glossary, Box 1) into a defined region of the embryo (the primitive streak in amniotes, the vegetal pole in sea urchin and the ventral furrow in *Drosophila*; see Glossary, Box 1)

### Development: the big picture

This Primer is part of a series entitled 'Development: the big picture'. This series aims to highlight key developmental systems or processes that have been the subject of intense study because they have broad implications for other developmental, cell and molecular systems, or for disease and therapeutics. Keep an eye out for other articles in this series over the coming months!

<sup>1</sup>Institute of Molecular Cell Biology, A\*STAR, 61 Biopolis Drive, 138673, Singapore.

<sup>2</sup>Cancer Science Institute, National University of Singapore, 14 Medical Drive, 117599, Singapore.

\*Author for correspondence (jpthiery@imcb.a-star.edu.sg)

**Box 1. Glossary**

**Delamination.** The process whereby cells separate from an epithelial layer.

**Endocardial cushion.** A structure formed by endocardial cells that undergo epithelial-mesenchymal transition (EMT) in an hyaluronic acid-rich extracellular matrix region named 'cardiac jelly'.

**Epicardium.** The outer cell layer of the heart primordium derived from the pro-epicardium, a cluster of cells proximal to the heart and liver.

**Gastrulation.** The embryonic stage corresponding to the formation of the three primary germ layers: ectoderm, mesoderm and endoderm. Gastrulation involves either collective cell migration through invagination or involution (partial EMT), or individual cell migration by ingression (EMT).

**Heart primordium.** A group of mesodermal cells specified for heart development during gastrulation. These cells assemble into two cardiogenic mesodermal layers, which later migrate anteriorly and fuse into a single heart tube.

**Ingression.** A process that allows single cells to delaminate and migrate into the sub-epiblast territory; it is typical of EMT.

**Invagination.** The process that drives an epithelium to fold inwards or outwards through the coordinated constriction of the apex of cells.

**Involution.** The mechanism by which a group of cells detaches and migrates into the adjacent territory as cell collectives.

**Neural crest.** A term originally proposed by Marshall in 1879 to define a group of cells in the neural fold of vertebrates that undergoes EMT and migrates extensively before differentiating into cells that give rise to craniofacial structures, most of the peripheral nervous system and melanocytes.

**Primitive streak.** A transient groove, formed at the onset of gastrulation, into which epiblast cells ingress to give rise mesoderm and definitive endoderm in amniotes.

**Somite.** A segmental mass of cells derived from paraxial mesoderm forming in a rostrocaudal sequence on each side of the neural tube posterior to the rhombencephalon. Somites will give rise to the vertebra, dermis and striated muscles.

**Vegetal pole.** A group of cells localized in the ventral side of the embryo from which the primary mesenchyme cells ingress in the blastocoelic cavity.

**Ventral furrow.** The site of gastrulation in insects appearing as a transient invagination of the blastoderm in the ventral side of the embryo from which mesodermal cells will delaminate.

using shared signal transduction pathways (Thiery et al., 2009). This stresses the importance of evolutionarily conserved genes, such as Snail family members, in driving EMT.

**Gastrulation and EMT in *Drosophila* embryos**

In the *Drosophila* embryo, the ventral furrow is determined following establishment of the dorsal-ventral gradient (Leptin, 2005). Upon activation and binding of Spätzle to the Toll receptor, Dorsal (an ortholog of NF $\kappa$ B) is activated and transported to the nucleus (Roth, 2003; Reeves and Stathopoulos, 2009; Lynch and Roth, 2011). Dorsal induces the transcription of *Snail* and *Twist*, both of which encode two major proteins in gastrulation that control mitotic arrest, invagination of fated ventral mesoderm and the delamination of mesodermal cells (Stathopoulos and Levine, 2002) (Fig. 1A). *Twist* inhibits *String*, a Cdc25 homolog that is essential for entry into mitosis (Grosshans and Wieschaus, 2000), and regulates apical constriction of cells via actomyosin contractility (Martin et al., 2009). *Twist* induces expression of the transmembrane protein T48 which promotes constriction of adherens junctions with RhoGEF2, inducing rapid invagination

(Kolsch et al., 2007). *Twist* also induces the localization of tumor necrosis factor receptor-associated factor 4 (Traf4) to newly assembled apical junctional complexes (Mathew, Rembold et al., 2011). Importantly, *Twist* and *Snail* regulate the transcriptional switching of E- to N-cadherin (Oda et al., 1998). Repression by *Snail* requires the co-repressors CtBP (Nibu et al., 1998b; Nibu et al., 1998a; Qi et al., 2008) and Ebi (*Drosophila* transducin  $\beta$ -like 1); Ebi forms a complex with the histone deacetylase, Hdac3 (Qi et al., 2008). In invaginated mesodermal cells, the fibroblast growth factor (FGF) signaling components, Branchless (FGF), Htl (FGFR) and Stumps (Dof, FGFR-docker) are crucial for gastrulation (Beiman et al., 1996; Vincent et al., 1998; Stathopoulos et al., 2004; Kadam et al., 2009; Klingseisen et al., 2009). They cause flattening of mesodermal cells, the interaction of mesodermal cells with the underlying ectoderm and the dorsal migration of these cells following EMT, all of which are accompanied by a redistribution and progressive loss of E-cadherin-associated adherens junctions (McMahon et al., 2010; Clark et al., 2011).

**Gastrulation and EMT in sea urchin embryos**

Similar to *Drosophila*, gastrulation is also pre-determined in sea urchin embryos, with *Twist* and *Snail*, again, the main drivers of EMT. Their expression is induced locally at the vegetal pole under the control of Wnt8 signaling, which initiates the nuclear localization of  $\beta$ -catenin and the activation of several transcription factors (Fig. 1B). Pioneering work in sea urchin embryos traced the ingression of primary mesenchymal cells (PMC) using a single green fluorescent protein (GFP)-labeled micromere (Peterson and McClay, 2003). More recent studies have shown that *Twist* or *Snail* inhibition delays ingression of the PMC; in particular, *Snail* represses the transcription of *Lytechinus variegatus* Goliath (LvG)-cadherin and is also required for the endocytosis of cadherin (Wu and McClay, 2007; Wu et al., 2008). Furthermore, FoxN2/3 perturbation in sea urchin inhibits PMC ingression (Rho and McClay, 2011). These micromere-labeling experiments paved the way for the further identification of the molecular events involved in cell shape, invasion, detachment and mitotic interplay. The progressive assembly of this gene regulatory network exemplifies the complexity of preparatory gastrulation mechanisms and EMT (Davidson et al., 2002; McClay, 2011).

**Gastrulation and EMT in mouse embryos**

Gastrulation in the mouse embryo is rapid and thus requires rapid changes in gene expression and function. The downregulation of E-cadherin, for example, is controlled both at the transcriptional level by *Snai1* and at the post-translational level by P38 interacting protein (IP)-p38-MAP kinase complex and the FERM protein (EPB4.1L5) (Zohn et al., 2006; Lee et al., 2007; Hirano et al., 2008). In mouse embryos, and in chick, cells specified for gastrulation are not as strictly programmed as those in *Drosophila* or in sea urchin embryos. Nevertheless, embryos are patterned by morphogenetic gradients, and the site of gastrulation is restricted so that only a defined cell population undergoes EMT. Once again, *Snail*, namely its orthologs, *Snai1* and *Snai2*, are key inducers of EMT in gastrulating mouse embryos (Barrallo-Gimeno and Nieto, 2005). *Snai1* knockout mice show a gastrulation phenotype, similar to that seen in *Drosophila*, suggesting a conserved role for *Snai1* in EMT (Carver et al., 2001). By contrast, *Snai2* deletion in mice shows no EMT failure (Jiang et al., 1998). In chicken, *Snai2* is expressed in the primitive streak and its perturbation does lead to a gastrulation phenotype (Nieto et al., 1994). The repression of mesendodermal *Snai2* by ectodermal *Sox3*, ensures integrity of the

**Table 1. Transcription and polarity factors involved in EMT**

Transcription factors		
Snail1 and Snail2	Contain a Snail/Gfi (SNAG) repressor domain at the N terminus and four or five zinc fingers in the C-terminal domain. Bind to E-boxes of the E-cadherin gene promoter and repress its transcription.	Peinado et al., 2007
Zeb1 and Zeb2	Contain a central homeodomain, four N-terminal zinc fingers and three C-terminal zinc fingers. Zeb factors bind to bipartite E-boxes as in the E-cadherin promoter.	Peinado et al., 2007
Twist	Contains a basic helix-loop-helix motif that interacts with Bmi1, together with the PRC2 complex to repress E-cadherin and p16INK4a through chromatin remodeling. Twist also binds to the E-box of PDGFR $\alpha$ , and this regulation is important for extracellular matrix degradation in tumor metastasis.	Yang et al., 2010; Eckert et al., 2011
Srp and GATA	Contains two GATA-type zinc fingers that bind to the consensus sequence AGATAG within regulatory regions.	Brown et al., 2004; Brewer and Pizzev, 2006
Wt1	Contains four zinc fingers at the C-terminal domain and a proline/glutamine-rich DNA-binding domain at the N terminus.	Hohenstein and Hastie, 2006; Miller-Hodges and Hohenstein, 2012
Smad	Contains two MAD homology domains. Eight Smad isoforms are functionally classified as TGF $\beta$ receptor-regulated Smads (R-Smads are isoforms 1, 2, 3, 5 and 8), common-mediator Smad (Co-Smad is isoform 4) and inhibitory Smads (I-Smads are isoforms 6 and 7).	Moustakas and Heldin, 2009
Polarity genes		
<i>Par3</i>	Contains three PDZ domains and an atypical protein kinase C (PKC)-binding domain.	St Johnston and Ahringer, 2010
<i>Par6</i>	Contains a PDZ domain and forms the apical protein complex with Par3 and atypical PKCs.	St Johnston and Ahringer, 2010
<i>Crumbs (Crb)</i>	A transmembrane protein, with a large extracellular domain composed of 29 epidermal growth factor-like repeats and four laminin A globular-domain-like repeats. Crb was discovered in <i>Drosophila</i> as an essential protein for maintaining apicobasal polarity and the integrity of embryonic epithelia.	Hurd et al., 2003; St Johnston and Ahringer, 2010; Laprise and Tepass, 2011
<i>Epb4.115</i>	Contains a FERM domain at the N terminus, which binds to p12-catenin; the C terminus binds to paxillin.	Hirano et al., 2008

non-ingressing ectoderm, whereas, reciprocally, Snail2 represses Sox3 to induce EMT in the primitive streak. Similarly, mutual repression between Snail and Sox3 is observed in the mouse (Acloque et al., 2011) (Fig. 2A). The integrity of the basement membrane in areas outside the primitive streak is maintained by fibronectin leucine-rich transmembrane protein 3 (Flrt3) expressed in anterior visceral endoderm (AVE) (Egea et al., 2008). In *Flrt3* mutant mice, the basement membrane in the AVE is disrupted and the neighboring anterior epiblast cells display EMT characteristics (Egea et al., 2008).

Various other factors have been identified in EMT in mouse gastrulation (Fig. 2B). Members of the thrombospondin type 1 repeat (TSR) superfamily are ECM components important for growth factor activity. Upon O-fucosylation of TSR by the protein O-fucosyltransferase 2 (*Pofut2*), EMT in the primitive streak is restricted. As such, *Pofut2* mutants show elevated expressions of FGF8, Nodal and Wnt3 (Du et al., 2010), crucial signaling proteins in gastrulation (Niswander and Martin, 1992; Crossley and Martin, 1995; Liu et al., 1999; Ciruna and Rossant, 2001; Yamamoto et al., 2001; Iratni et al., 2002; Norris et al., 2002; Garcia-Garcia and Anderson, 2003). Eomesodermin (*Eomes*) is a T-box transcription factor expressed in the posterior epiblast prior to streak formation, later in the streak and in the newly formed mesendoderm (Ryan et al., 1996; Russ et al., 2000; Arnold et al., 2008). *Eomes* is important for gastrulation and EMT, acting upstream of *Mesp* (Fig. 2A,B), a basic helix-loop-helix (bHLH) transcription factor expressed in the posterior epiblast (Saga et al., 1996; Saga et al., 1997). *Eomes* is involved in *Mesp1*-mediated cardiac specification, and *Mesp1/Mesp2* double mutant or *Eomes* conditional knockout

in the mouse epiblast causes failure of cell ingression from the primitive streak (Kitajima et al., 2000; Arnold et al., 2008). Definition of the endoderm cell lineage requires *Eomes/Nodal* signaling; by comparison, cardiac fate specification requires low levels of Nodal and occurs independently of Foxh1/*Smad4* activation (Costello et al., 2011). This is one of numerous cases where EMT regulators play additional roles in cell fate determination.

Recently, FGFR signaling in chick primitive streak cell movement was studied using the tyrosine kinase inhibitor SU5402. FGFR inhibition altered mesoderm formation, albeit without affecting Snail2 and E-cadherin, suggesting alternate mechanisms for gastrulation in the chick when compared with the mouse (Hardy et al., 2011). These new challenging results, however, should be considered carefully, as there are currently no FGFR-specific inhibitors available and L-CAM (the chicken ortholog of mouse E-cadherin) is downregulated at the primitive streak level (Thiery et al., 1984). Newly formed mesodermal cells retain some E-cadherin expression (Nakaya et al., 2008), which is also seen in the mouse and sea urchin, as E-cadherin proteins cannot be quickly downregulated by transcriptional repression. However, post-translational mechanisms for E-cadherin degradation have been described previously (Wu and McClay, 2007).

Small G-proteins also crucially regulate cytoskeletal reorganization and EMT during gastrulation (Fig. 2A,B). Indeed, *Rac1* knockout is embryonic lethal, owing to apoptosis in newly formed mesodermal cells (Sugihara et al., 1998). Furthermore, failure to downregulate RhoA causes basement membrane retention and a failure of EMT, suggesting that cell delamination causes the

**Table 2. Successive epithelial-mesenchymal transition during embryonic development**

Targeted cell or tissue	Resulting structures	References
<b>Primary EMT</b>		
Primitive endoderm cells	Parietal endoderm cells	Verheijen and Defize, 1999; Veltmaat et al., 2000
Trophectoderm	Giant trophoblast	Vicovac and Aplin, 1996; Sutherland, 2003; Kokkinos et al., 2010; Abell et al., 2011
Epiblast at primitive streak Neural crest	Mesodermal and endodermal cells Mesectoderm, peripheral nervous system, enteric nervous system, endocrine cells and melanocytes	See text See text
<b>Mesodermal cell MET</b>		
Axial mesoderm	Notochord	Hay, 2005; Ohta et al., 2010
Paraxial mesoderm	Somites	Dale et al., 2006; Morales et al., 2007
Intermediate mesoderm	Precursors of the urogenital system	Perez-Pomares and Munoz-Chapuli, 2002
Lateral mesoderm	Somatopleure and splanchnopleure	Perez-Pomares and Munoz-Chapuli, 2002
Node precursors from anterior primitive streak	Ciliated rosette-like clusters that inserted into endodermal layer to form the node	Lee et al., 2010
<b>Secondary EMT</b>		
Epithelium of palatal halves	Mesenchymal cells in fused palate	Nawshad, 2008; San Miguel et al., 2011
Somites (dorsal part)	Dermal mesenchyme and myoblast	Gros et al., 2005
Somites (ventral part)	Sclerotomal mesenchyme cells	Christ et al., 2007
Liver diverticulum	Septum transversum mesenchyme	Tanimizu and Miyajima, 2007
Pancreatic bud	Langerhans islets	Johansson and Grapin-Botton, 2002
Somatopleure	Connective tissue of body wall mesenchyme	Christ et al., 1983
Splanchnopleure	Endocardial progenitors, angioblast and hemotopoietic stem cells	Eichmann et al., 2005; Tavian and Peault, 2005
<b>Secondary MET</b>		
Endocardial progenitors	Endocardium	
Mesoderm in close proximity to liver bud	Proepicardium (adjacent to sinus venosus endothelium)	Schlueter et al., 2006; Schlueter and Brand, 2009; Svensson, 2010; Torlopp et al., 2010
Presumptive kidney mesenchyme	Pretubular clusters around the Wolfian duct-derived ureteric bud	Stark et al., 1994; Perantoni et al., 1995; Urban et al., 2006
<b>Tertiary EMT</b>		
Endocardium	Endocardial cushion mesenchyme	
Proepicardium	Mesothelial cells	Carmona et al., 2000; Watt et al., 2004
<b>Tertiary MET</b>		
Mesothelial cells	Epicardium	Watt et al., 2004; Torlopp et al., 2010
<b>Quaternary EMT</b>		
Epicardium	Sub-epicardial mesenchymal cells	

EMT, epithelial-mesenchymal transition; MET mesenchymal-epithelial transition.

basement membrane to break down (Nakaya et al., 2008). In summary, studies of EMT during gastrulation in a variety of model organisms have uncovered a wealth of data about EMT processes and their partial conservation throughout evolution.

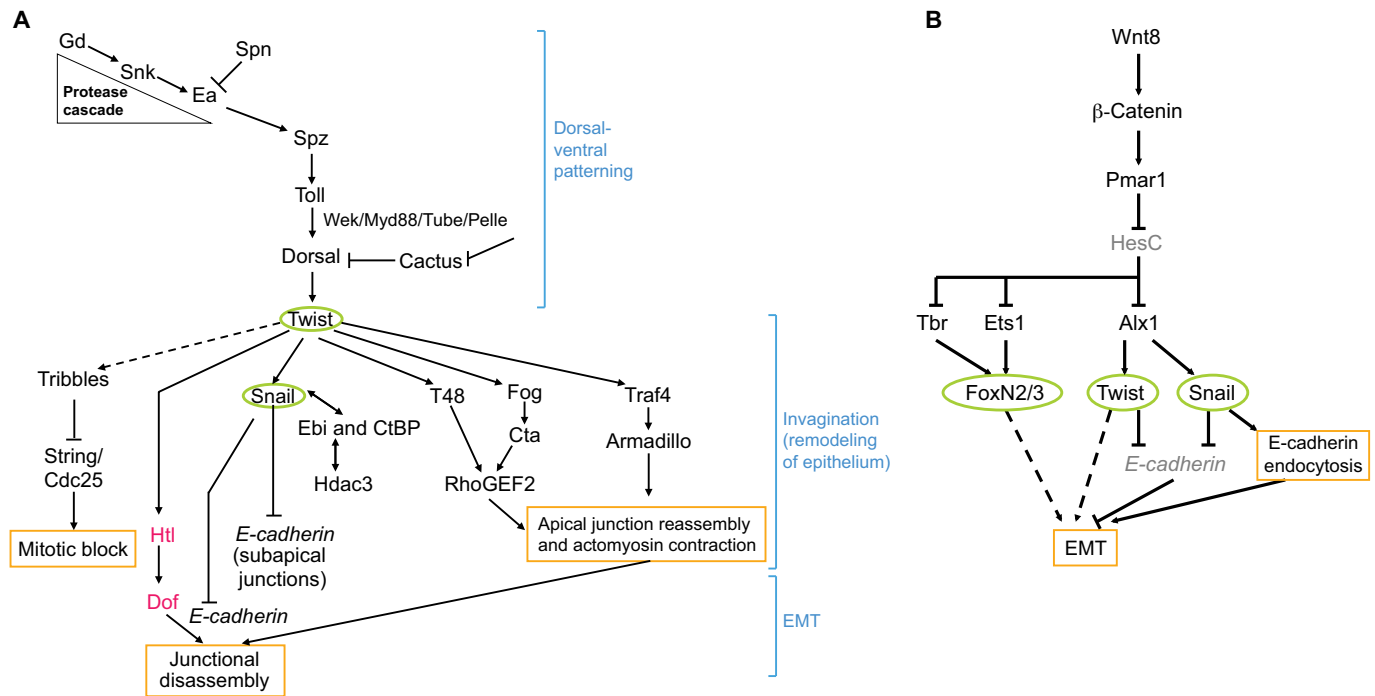
## The neural crest

### Delamination and EMT

Neural crest cells (see Glossary, Box 1) originate in the neural fold or the neural tube, according to a rostrocaudal gradient along the body axis. Neural crest cells then delaminate and migrate as mesenchymal-like cells in defined routes before reaching their target sites, where they differentiate into various derivatives (Sauka-Spengler and Bronner-Fraser, 2008; Minoux and Rijli, 2010; Theveneau and Mayor, 2011). Cranial neural crest, including most vagal crest, must be distinguished from trunk neural crest; in the chick, this has been defined as located anteriorly or posteriorly to somite numbers 3/4, respectively (Ferguson and Graham, 2004). Major morphological differences in these two regions affect crest cell delamination and migration into adjacent territories. The precise origin of the cranial neural crest is still a controversial issue,

whereas trunk crest cells originate in the dorsal neural tube. The two regions also differ when overexpressing *Snail2*, which enhances the production and migration of chick cranial neural crest, but not trunk crest (del Barrio and Nieto, 2002).

Trunk neural crest delamination is spatiotemporally coordinated with the formation of somites (see Glossary, Box 1) from the paraxial mesoderm. Bone morphogenetic protein 4 (BMP4), a member of the TGF $\beta$  superfamily, promotes neural crest delamination, and its activation is exquisitely regulated by *Noggin* (Fig. 3), an antagonist that is itself inhibited by signaling from the newly formed somites (Sela-Donenfeld and Kalcheim, 1999; Sela-Donenfeld and Kalcheim, 2000). *Noggin* overexpression inhibits BMP4 and *Wnt1* expression, whereas in embryos grafted with *Noggin*-producing cells,  $\beta$ -catenin overexpression rescues delamination and reactivates G1/S transition in the neural crest (Burstyn-Cohen et al., 2004). BMP is modulated by *crossveinless 2* (Cv-2), which causes premature neural crest migration when overexpressed (Coles et al., 2004). BMP-Wnt signaling is also triggered by retinoid acid (RA), which forms a rostrocaudal gradient in the paraxial mesoderm. Meanwhile, an opposing

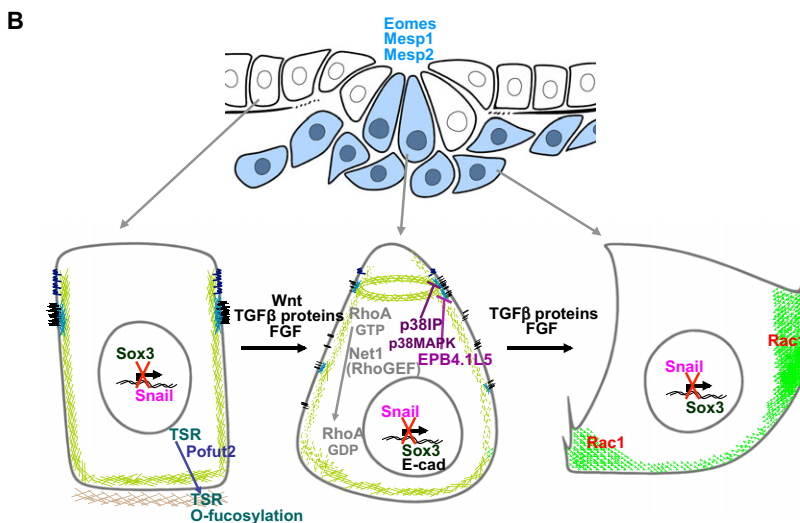
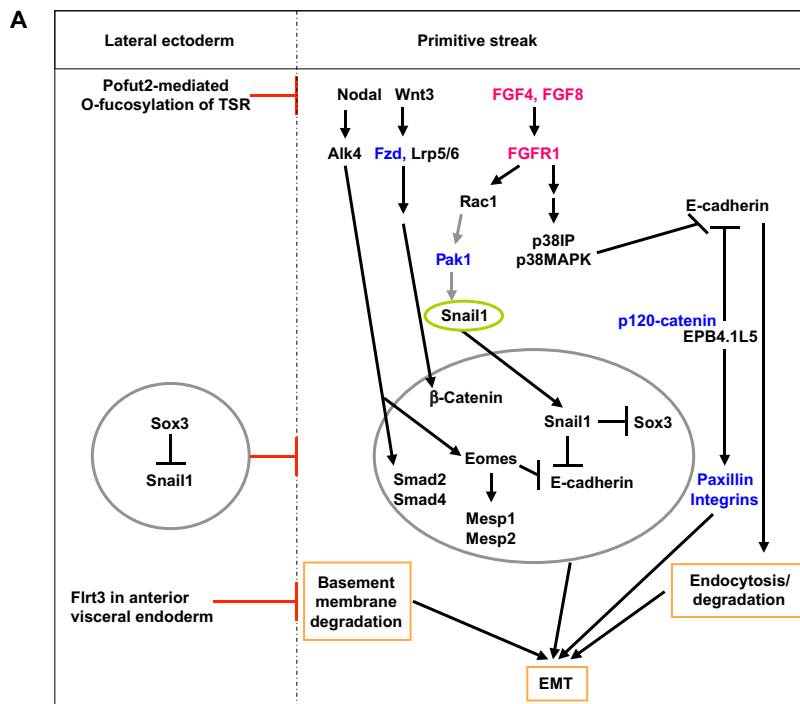


**Fig. 1. Molecular pathways operating during gastrulation in *Drosophila* and sea urchin embryos.** (A) During dorsoventral patterning of the *Drosophila* embryo, a small extracellular space forms in the ventral region between the embryo and an outer vitelline membrane. A protease cascade operates in this space through Gastrulation defective (Gd), Snake (Snk) and Easter (Ea) to activate Spätzle (Spz). The serine protease inhibitor Spinophilin (Spn) inhibits the activity of Ea. An active form of Spz causes the dimerization of its receptor Toll, which recruits adaptors and the kinase complex of Weckle (Wek), MyD88, Tube and Pelle. The activated receptor complex then causes degradation of Cactus (*Drosophila* I $\kappa$ B) and the released Dorsal (*Drosophila* NF $\kappa$ B) translocates to the nucleus where it increases the expression of Twist. Downstream of Twist, a set of factors controls the mitotic block (via Tribbles and inhibition of String/Cdc25). During invagination, junction-transient disassembly is achieved by Snail. Snail transcriptional repression may also be mediated through Ebi and CtBP binding, and the consequent Hdac3-induced histone deacetylation. T48 and Fog cause contraction of the actin-myosin network that is essential for apical constriction via RhoGEF2. Cta mediates signal from Fog to RhoGEF2. During apical constriction, Traf4 controls the apical localization of Armadillo. When the invaginated cells collapse, EMT is triggered by FGF signaling through Heartless (Htl) and Downstream of FGF (Dof/Stumps), while Snail inhibits the expression of *E-cadherin*. (B) In sea urchin embryos, Wnt8 signaling (via  $\beta$ -catenin and Pmar1) leads to HesC repression before ingress. Subsequently, removal of HesC-mediated repression of Ets1, aristaless-like 1 (Alx1) and Tbr in primary mesenchymal cells causes ingress, mediated by FoxN2/3, Twist and Snail. Snail promotes endocytosis of *E-cadherin*, which leads to rapid changes in cell adhesion in addition to transcriptional repression.

gradient of FGF signaling prevents neural crest specification and EMT in the trunk by maintaining Noggin expression (Martinez-Morales et al., 2011). It was originally assumed that BMP-Wnt and Snail2 caused cytoskeleton remodeling via RhoB to promote migration (Liu and Jessell, 1998; del Barrio and Nieto, 2002). However, Rho activity is high in the trunk neural fold and prevents EMT through maintenance of N-cadherin; EMT occurs only with diminished Rho activity (Groysman et al., 2008). Delamination of trunk neural crest cells have been examined using live-cell imaging, which revealed that neural crest cell EMT cannot be explained solely by dissolution of adherens junctions. Actomyosin-based contractility in the apical surface can contribute to the neural crest detachment from the neural epithelium, leaving junctional complexes in the ruptured cell tails. In addition, not all neural crest cells detach during mitosis when the plane of cytokinesis is parallel to the basal surface (Ahlstrom and Erickson, 2009b; Ahlstrom and Erickson, 2009a). Thus, the biomechanics of EMT are not fully understood. Similarly, there are uncertainties in the current understanding of the contribution of BMP, Wnt and FGF signals in regulating adhesion and migration machineries.

SoxE protein members Sox8, Sox9 and Sox10 are expressed at different times during neural development (Cheung and Briscoe,

2003). In particular, Sox9 is implicated in crest cell specification and Sox10 in the maintenance of crest cell pluripotency (Kim et al., 2003; Cheung et al., 2005). BMP triggers Sox9-dependent induction of Snail2 (Sakai et al., 2006). Indeed, electroporation of Sox9 into the neural tube causes the expression of several neural crest markers along the entire neural tube (Sox10, Snail2, Cad6B and Foxd3), whereas delamination is dorsally restricted (Cheung and Briscoe, 2003). Snail2 electroporation, together with Sox9, is sufficient to induce EMT in the entire neural tube (Cheung et al., 2005). Of note, the expression of Snail2 and Sox9 can reprogram adult mammary cells into stem cells and promote breast cancer cell metastasis (Guo et al., 2012). Comparatively, electroporation of the winged-helix transcription factor FoxD3 enhances Hnk1 expression, a neural crest cell marker throughout the neural tube; but only those cells located at the dorsal border of the neural tube undergo EMT (Kos et al., 2001). In cooperation with Sox9, the basic leucine-zipper transcription factor Atf4 promotes EMT through induction of Foxd3 (Suzuki et al., 2010). Atf4 is an unstable transcription factor whose transient stability is ensured by the p300 histone acetyltransferase (Suzuki et al., 2010). Foxd3 downregulates N-cadherin expression and induces  $\beta$ 1-integrin and laminin, which are required for migration and enhancing Sox10



## Fig. 2. Epithelial-mesenchymal transition during gastrulation in mouse and chick embryos.

(A) Processes involved in gastrulation in the mouse include the Nodal, Wnt and FGF signaling pathways. Sox3, Pofut2-mediated O-fucosylation of TSR and Flrt3 contribute to boundary formation between the ectoderm and the primitive streak (red inhibitory lines). Fzd and Lrp5/6 are receptors in canonical Wnt signaling. Proteins in blue are important intermediates in the pathways that promote epithelial-mesenchymal transition, but inactivation of the genes encoding these proteins does not give rise to gastrulation phenotypes. However, gastrulation is affected by the inactivation of the genes encoding the proteins listed in red and black. (B) This scheme applies mostly to chick and mouse embryos. Blue cells in the primitive streak express Eomes, Mesp1 and Mesp2, which are responsible for delamination. Signaling in cells located in the epiblast (left) ensures maintenance of the epithelial phenotype via the expression of Pofut2 and Sox3. Upon activation by Wnt, TGF and FGF proteins, cells in the primitive streak (middle) undergo apical constriction (indicated by green ring of contracting actin) to allow invagination before ingress. RhoA downregulation by Net1, a RhoGEF, destabilizes basal microtubules and contributes to the breakdown of the basement membrane. Snail represses Sox3 and E-cadherin, which is also downregulated post-transcriptionally by p38IP-p38MAPK and EPB4.1L5. In the migratory cells (right), Rac1 mediates cell protrusion. Actin cytoskeleton is in green; delaminating cells are in blue.

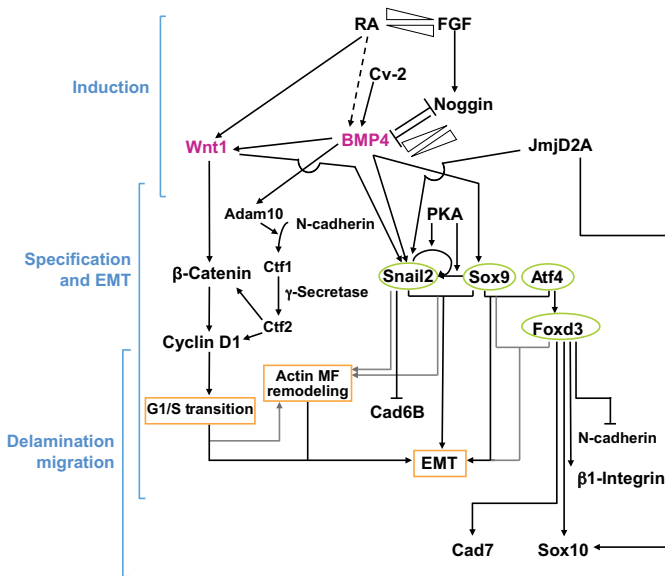
expression (Cheung et al., 2005). N-cadherin overexpression at the dorsal neural tube prevents neural crest delamination (Nakagawa and Takeichi, 1998), while Snail2 represses cadherin 6B expression to permit EMT (Taneyhill et al., 2007). N-cadherin protein, but not mRNA, is downregulated during neural crest delamination, and the extracellular domain is cleaved by the metalloproteinase Adam10 upon BMP-mediated stimulation (Shoval et al., 2007). Subsequently, the C-terminal fragment of N-cadherin (Ctf1) is further cleaved by  $\gamma$ -secretase, generating a soluble Ctf2, which stimulates  $\beta$ -catenin nuclear translocation and the subsequent induction of cyclin D1 transcription and neural crest migration (Shoval et al., 2007).

Epigenetic regulation in neural crest precursors is mediated by the histone-demethylase JumonjiD2A (JmjD2A) (Strobl-Mazzulla et al., 2010). Loss-of-function of JmjD2A results in the depletion of several neural crest specifiers, particularly Snail2 and Sox10, which both have an H3K9me3 epigenetic mark 0.5 kb upstream of the

transcriptional start site. However, Snail2 is also associated with an H3K36me3 epigenetic mark for activation. Clearly, JmjD2A, which transiently binds to the Sox10 promoter prior to activation, is modifying the chromatin landscape in both directions, possibly allowing gradual activation of genes following neural crest induction. The delayed activation of Sox10 suggests the need of an additional transcriptional activator for Sox10. Epigenetic mechanisms should be investigated to define their contribution to EMT in a cellular context. It appears that many of the genes have overlapping functions during various stages of NC development, i.e. induction, EMT and migration, and hence it is difficult to identify genes that solely control EMT (Thiery and Sleeman, 2006).

### Current issues in definitively assessing the role of individual genes in EMT

Some genes that control the initial steps of neural crest determination and specification have appeared in evolution prior



**Fig. 3. Epithelial-mesenchymal transition in trunk neural crest cells in chick embryos.** BMP4 and Wnt1 signals stimulate neural crest delamination. BMP4 and Wnt1 signals are antagonized by Noggin, which in turn is inhibited by signaling from somites. BMP4 and Noggin levels show an opposing rostrocaudal gradient. Mesodermal gradients of retinoic acid (RA) and FGF are also rostrocaudally opposed, and are important for the timing of neural crest cell specification and epithelial-mesenchymal transition (EMT). Increased crossveinless 2 (Cv-2) expression causes premature neural crest delamination, probably by promoting BMP4 activity. BMP4 is important for Snail2 and Sox9 expression, and protein kinase A (PKA) signaling is important for cooperative Sox9 and Snail2 binding at the promoter of Snail2. Histone-demethylase JumonjiD2A (Jmjd2A) epigenetically marks Snail2 and Sox10 early during gastrulation to allow transcription to operate at a later stage. Wnt1 signaling, by contrast, activates G1/S transition via  $\beta$ -catenin and cyclin D1. Cyclin D1 transcription can also be activated by the C-terminal fragment N-cadherin (Ctf2). N-cadherin cleavage depends on BMP4-induced activity of metalloproteinase Adam10 followed by the activity of  $\gamma$ -secretase. Overexpression of both Snail2 and Sox9 results in massive delamination, possibly via changes in the intercellular adhesion molecule repertoire, as Snail2 represses cadherin 6B gene expression. Sox9, together with ATF4, induces EMT via FoxD3 induction, which in turn upregulates the expression of Sox10,  $\beta$ 1-integrin and cadherin 7, while downregulating N-cadherin. Black lines and arrows represent epistasis, as established by experiments; gray arrows represent assumptions based on knowledge gained in other contexts. Actin microfilament (MF) remodeling is assumed to be important for EMT.

to the formation of the neural crest in vertebrates. These genes are expressed in several amphioxus species, in cephalochordates and in *Ciona intestinalis*, a urochordate species closest to vertebrates; the last may have co-opted existing networks in a novel combination to establish the neural crest. However, none of these genes induces EMT in prochordates (Trainor et al., 2003; Bertrand and Escriva, 2011). Furthermore, in the mouse, the deletion of genes associated with neural crest formation in other models often results in phenotypes that do not affect induction, specification or delamination, but rather differentiation. *Zeb2* is so far the only gene whose deletion leads to phenotype that might be associated with an EMT defect; *Sox10*-expressing cranial neural crest cells form but fail to

delaminate in *Zeb2*-knockout mice (Van de Putte et al., 2003). The lack of an EMT phenotype may result from the possibility that EMT is engaged prior to the activation of Cre in conditional knockouts of potential EMT inducers. Furthermore, the EMT phenotype may only be observed with the deletion of two or several factors, as the chicken trunk neural crest requires the joint action of Sox9/Snail2 or Sox9/Atf4 (Cheung et al., 2005; Sakai et al., 2006; Suzuki et al., 2010).

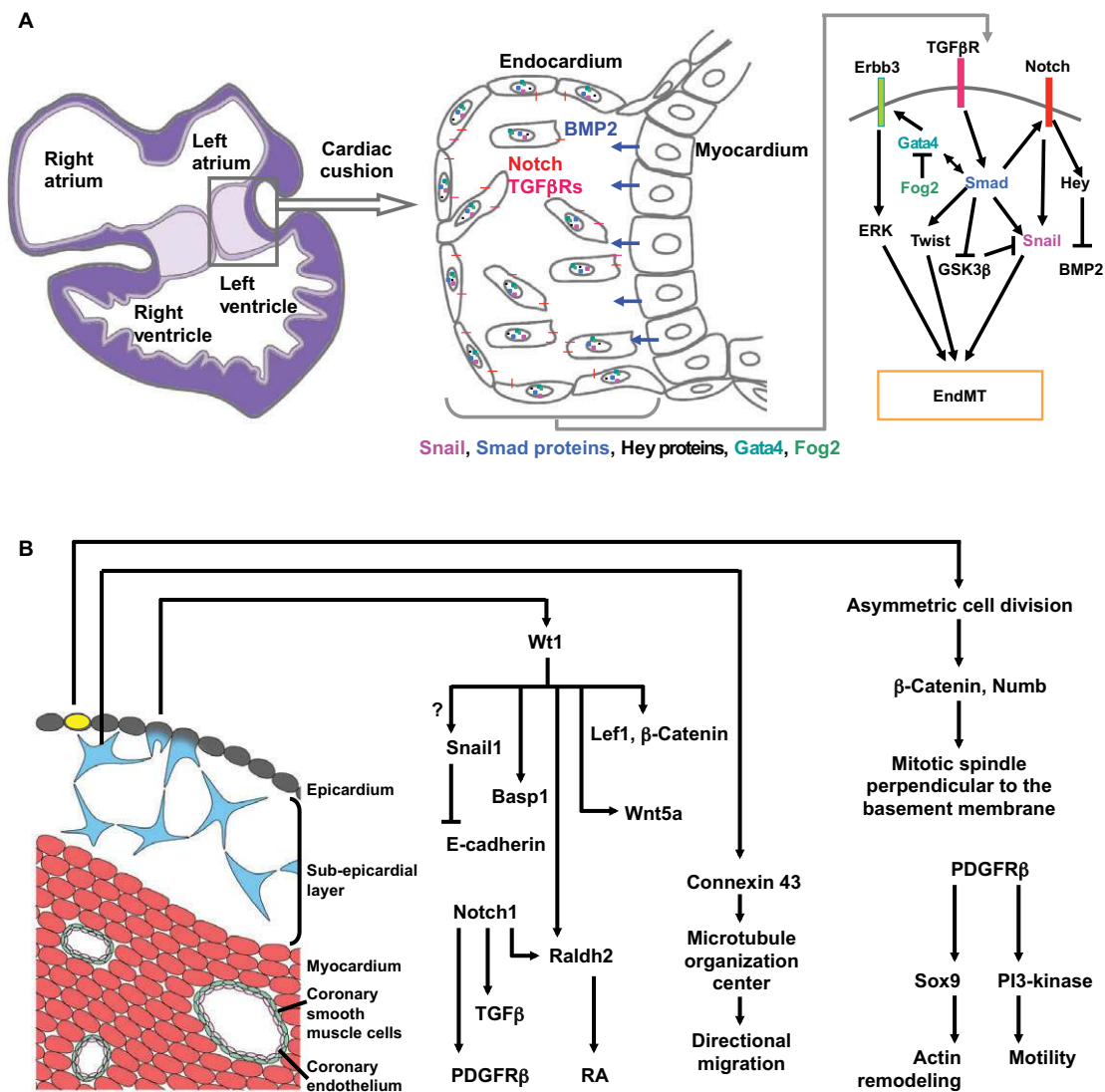
Overall, the genetic regulatory network that controls EMT in the neural crest is not fully understood, especially in terms of how extracellular signals control epigenetic mechanisms, cell cycle, polarity, adhesion, migration and cytoskeletal remodeling. It is likely that neural crest cells progressively engage into EMT, with the delamination phase activated only when the local environment become permissible.

### Heart morphogenesis: cardiac cushion, heart valve and epicardium development

Heart morphogenesis involves the complex cycling between EMT and MET that is initiated during gastrulation. First, cardiac-specified cells undergo EMT, migrate rostrally and form two cardiogenic territories through MET. This leads to the formation of the heart primordium (see Glossary, Box 1). A second cycle of EMT/MET creates the endothelial cell lining of the heart, followed by a third cycle that forms the endocardial cushion (see Glossary, Box 1) and its derivatives (Fig. 4A). This third cycle of EMT during cardiac morphogenesis involves endothelial cells from the atrioventricular canal (AVC) and the outflow track (OFT); thus, this should in fact be designated as an endothelial-mesenchymal transition (EndMT) (see Box 2). MET drives the formation of the epicardium (see Glossary, Box 1) from a cluster of mesothelial-derived cells that develop beneath the sinus venosus in the E9.0-9.5 mouse embryo, which are themselves formed by EMT of the pro-epicardium. Subsequently, in the fourth cycle of EMT, a group of epicardial cells delaminates and gives rise to epicardial-derived cells (EPDCs), the mesenchymal cells that populate the sub-epicardium and form coronary smooth muscle, endothelial cells and cardiac fibroblasts (Fig. 4B) (Chua et al., 2011).

The first cycle of EMT at gastrulation involves induction of Snail1/2, which contributes to the formation of mesenchymal cells; part of this cell population rapidly acquires myogenic properties in response to a complex signaling pathway mediated by TGF $\beta$  family members (Ladd et al., 1998). The formation of the endocardium in the second cycle also involves TGF $\beta$  family members (Sugi and Markwald, 2003), although the detailed mechanisms remain to be explored. Most studies have focused on the third (involving EndMT; Box 2) and fourth (Fig. 4) cycles of EMT, partly owing to the availability of suitable experimental approaches, but also in order to understand the origin of major congenital heart defects (Bruneau, 2008; Perez-Pomares and de la Pompa, 2011). EMT in the fourth cycle differs quite substantially from the classical mechanisms of EMT driven by Snail, as in EndMT or as seen during gastrulation and neural crest delamination.

The zinc-finger transcription factor Wilms tumor gene 1 (*Wt1*), is inactivated in a significant fraction of pediatric kidney cancers, designated as Wilms tumors (Call et al., 1990; Gessler et al., 1990; Huang et al., 1990). *Wt1* is expressed in pro-epicardium, in the developing epicardium and in EPDCs (Moore et al., 1999). *Wt1* knockout mice show impaired formation of an intact epicardium (Moore et al., 1999), while *Wt1* *Gata5*-Cre conditional knockout mice have a reduced number of EPDCs (Martinez-Estrada et al.,



**Fig. 4. Epithelial-mesenchymal transition and mesenchymal-epithelial transition during heart formation in chick and mouse embryos.** (A) The cartoon on the left depicts formation of the cardiac cushion located at the atrio-ventricular region. The detail (middle) illustrates how myocardial BMP2, endocardial Notch1 and TGF $\beta$  receptors determine the site for endothelial-mesenchymal transition (EndMT), which leads to the formation of the cardiac cushion. Transcription factors, such as Snail1, the Smad proteins, the Hey proteins, Gata4 and Fog proteins, are important for this process. Depiction of the network that connects BMP, Notch and ErbB3 signaling, leading to EndMT, is shown on the right. (B) Cross-sectional representation of the external part of the embryonic heart at 11 days (left). Gray, epicardial cells; blue, subepicardial cells; red, myocardial cells; pink, coronary endothelial cells; green, coronary smooth muscle cells; yellow, epicardial cells undergoing asymmetrical cell division; gray turning blue, cells undergoing epithelial-mesenchymal transition (EMT). The series of molecular events occurring in delaminating epicardial cells is shown alongside: cells (yellow) undergo EMT when they exhibit a microtubule spindle orientation perpendicular to the basement membrane. The orientation of the spindle is dependent on the maintenance of adherens junctions mediated by  $\beta$ -catenin and Numb localization. Platelet-derived growth factor receptor  $\beta$  (PDGFR $\beta$ ) activates Sox9 and PI3-kinase for actin remodeling and motility. The gap junctional protein connexin 43 connects to microtubules linked to the organizing center for its alignment with the direction of cell migration. Wt1 activates Snail, which in turn represses E-cadherin; this mechanism is still debated (Martinez-Estrada et al., 2010; von Gise et al., 2011). Wt1 also activates canonical and non-canonical Wnt signaling, and directly stimulates the transcription of *Raldh2*, which in turn facilitates the synthesis of retinoic acid (RA). Notch signaling is also important for *Raldh2* expression and acts upstream of TGF $\beta$  and PDGFR $\beta$  in driving migration of epicardial-derived cells.

2010). It is debatable whether Wt1 causes epicardial EMT by activating Snail1 and repressing E-cadherin by directly binding to their promoters (Martinez-Estrada et al., 2010) or by promoting canonical and non-canonical Wnt pathways (von Gise et al., 2011); the latter is supported by the impaired EPDC formation observed following the conditional knockout of  $\beta$ -catenin in pro-epicardium (Zamora et al., 2007). An interesting attempt to unravel Wt1 function showed that the *Wnt4* gene is activated in kidney

mesenchyme undergoing MET, but is repressed in epicardium undergoing EMT, with both processes directly mediated by Wt1 binding to the same transcriptional regulatory site of *Wnt4* (Essafi et al., 2011). In the kidney mesenchyme, the CBP co-activator is recruited to the Wt1-bound *Wnt4* locus, whereas, in the epicardium, the brain-abundant membrane-attached signal protein 1 (Basp1) co-repressor is recruited. The boundary of the *Wnt4* locus is marked by CCCTC-binding factor (CTCF) and by cohesin, and loss of Wt1



switches the *Wnt4* locus chromatin domain into either a repressed or an activated state. Loss of *Ctcf* expands the on/off switch to the flanking region, affecting neighboring genes; however, it does not affect Wt1-mediated regulation of the chromatin structure.

Epicardium- and myocardium-derived signals mediate epicardial cell delamination, migration in the sub-epicardial space and invasion into myocardium (Perez-Pomares and de la Pompa, 2011). However, it is unclear which signals primarily induce EMT. In vitro, TGF $\beta$  promotes EMT in epicardial explants (Compton et al., 2006), but TGF $\beta$  is produced mostly by the epicardium, suggesting an autocrine mechanism. Defective EMT and migration is observed following epicardial-specific deletion of platelet-derived growth factor receptor  $\beta$  (PDGFR $\beta$ ), which signals through the activation of phosphoinositide 3-kinase (PI3K) and Sox9 (Mellgren et al., 2008; Smith et al., 2011). Notch signaling may also play a role in epicardial EMT, as a constitutively active Notch1 intracellular domain promotes EMT in epicardial cells; this is probably mediated by Raldh2/RA signaling, as Notch1 deletion results in reduced Raldh2 expression (del Monte et al., 2011; Grieskamp et al., 2011). Wt1 also controls RA signaling via the activation of Raldh2 (Guadix et al., 2011; von Gise et al., 2011) (Fig. 4B).

Evidence suggests that overexpression of TGF $\beta$  receptor 3 (TGF $\beta$ RIII) in a *Tgfb3* knockout background rescues epicardial cell invasion. However, this rescue is diminished by siRNA targeting of the partitioning-defective protein Par6 (Pard6a – Mouse Genome Informatics) and the E3-ubiquitin ligase Smurf1 (Sanchez and Barnett, 2011), suggesting that the Par6-Smurf1-RhoA pathway, and hence regulation of cell polarity, is also important in epicardial EMT. In addition to epithelial polarity, the microtubule spindle during cell division plays an intriguing role in epicardial EMT; only epicardial cells with a microtubule spindle positioned perpendicular to the basement membrane enter into the sub-epicardium. Perturbation of  $\beta$ -catenin disrupts adherens junctions, causing an abnormal distribution of Numb and randomized spindle orientation (Wu et al., 2010). The gap junction protein connexin 43 (Cx43; Gja1 – Mouse Genome Informatics) regulates the microtubule-organizing center of epicardial cells through tubulin binding (Rhee et al., 2009). Indeed, *Cx43*-knockout mice show a coronary vascular developmental defect due to failed alignment between the microtubule-organizing center and the direction of epicardial cell migration.

Epicardial EMT has received much attention recently, but no clear-cut delineation has been made between the mechanisms promoting EMT and migration, and those regulating the subsequent differentiation into several distinct lineages. The promoters used in vivo for conditional deletion are already expressed in the pro-epicardium rather than uniquely in the epicardium.

### Diversity of mechanisms potentially driving EMT

The aforementioned studies demonstrate that distinct paracrine or autocrine signals can trigger EMT and that EMT is regulated by numerous ECM components and soluble growth factors that activate downstream signaling cascades and other signaling pathways (Fig. 5) (Tucker et al., 1990; Miettinen et al., 1994; Valles et al., 1996; Zoltan-Jones et al., 2003; Shintani et al., 2008). These signaling pathways elicit a mesenchymal phenotype by promoting the disassembly of junctional complexes and inducing actin cytoskeleton re-organization, favoring the activation of transcriptional regulators, such as Snail1 and Snail2, to prioritize EMT over other mechanisms, such as proliferation or differentiation (Blanco et al., 2007; Franco et al., 2010).

### Box 2. Heart EndMT

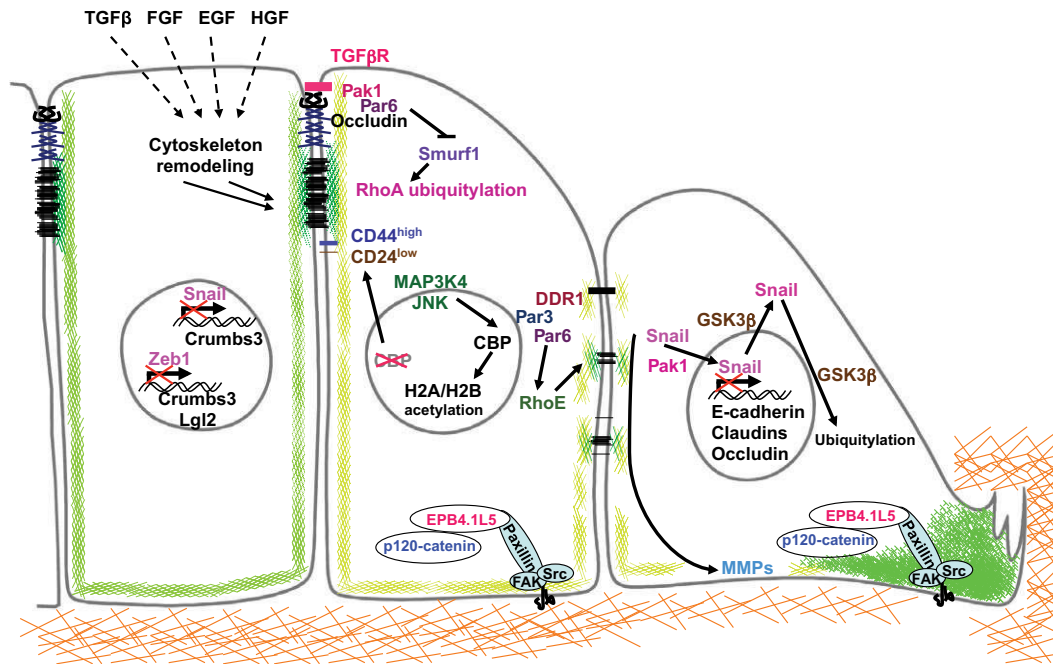
The acronym EndMT (endothelial-mesenchymal transition) is used to distinguish endothelial cell delamination from the more common epithelial cell delamination. EndMT occurs in endothelial cells invading the cardiac jelly to form a cardiac cushion, which subsequently establishes the atrioventricular valves (Nakajima et al., 2000). EndMT is controlled by three distinct signaling pathways: TGF $\beta$ , Notch and Erbb3.

In chick embryos, TGF $\beta$  induces epithelial to mesenchymal transition (EMT) and cell invasion into the extracellular matrix via activation of TGF $\beta$ RII and TGF $\beta$ RIII, an essential co-receptor (Townsend et al., 2012). TGF $\beta$  signaling is linked to actin remodeling, possibly in part through zyxin, a focal adhesion-associated LIM protein implicated in EndMT under TGF $\beta$ -Twist1-zyxin regulation (Mori et al., 2009). In mouse embryos, BMP2 signaling drives EndMT, as shown by the absence of a cardiac cushion in endothelial *Smad4* knockout mice (Moskowitz et al., 2011). Deletion of the long form of latent TGF $\beta$  binding protein 1 (Ltbp1) generates a hypoplastic endocardial cushion and hyperplastic valves, revealing both its promotion and attenuation roles in EMT in different contexts (Todorovic et al., 2011).

In the second pathway, Notch promotes TGF $\beta$ 2-induced EMT and induces the transcription of Snail1 (Timmerman et al., 2004). Mutations of *NOTCH1* or its ligand *JAG1* in humans cause heart valve defects (Li et al., 1997; Garg et al., 2005). Knockout of the Notch target *Hey2* or a double knockout of *Hey1/Heyl* leads to defects involving ventricular septal and atrioventricular pulmonary valves (Fischer et al., 2007). The valve presumptive territory expands if the balance of myocardial BMP2 or endocardial Notch1 is perturbed. Mice with constitutive endocardial Notch1 activity exhibit ectopic levels of *Hey1* and *Heyl*. Furthermore, invasive behavior is triggered following BMP2 treatment and can be inhibited by reducing Snail1, TGF $\beta$ 2 or Notch1 levels. Notch1 activation in myocardium represses BMP2 and impairs EndMT, whereas Notch1 deletion in the endocardium abolishes endocardial *Hey1*, *Hey2* and *Heyl* expression, and extends BMP2 expression to the ventricular endocardium (Luna-Zurita et al., 2010).

The third pathway, which is mediated by Erbb3 signaling, is regulated by *Gata4* upstream of Erbb3, a member of the epidermal growth factor receptor (EGFR) tyrosine kinase family (Rivera-Feliciano et al., 2006). A Tie-2 Cre-specific deletion of *Gata4* causes a failure of EndMT and cardiac cushion formation. Increased EMT is found in the *Fog2* (*Zfp2*)-knockout explant culture of outflow tract and atrioventricular canal cushions in a collagen gel invasion assay, suggesting that *Fog2*, a GATA interaction partner, attenuates *Gata4* function in EndMT (Flagg et al., 2007). In addition, *Gata4* interacts with *Smad4* and cooperatively activates *Id2* in atrioventricular septal development (Moskowitz et al., 2011).

Importantly, EMT involves the disruption of epithelial polarity. Snail1 represses the transcription of *Crumbs3* (*Crb3* – Mouse Genome Informatics), thus abolishing the junctional complexes of Par and Crumbs, proteins that are involved in establishing cell polarity (Whiteman et al., 2008). Similarly, *Zeb1* promotes metastasis and loss of cell polarity (Spaderna et al., 2008). In *Drosophila*, the posterior midgut joins the anterior midgut in a partial EMT. During this process, Serpent, an ortholog of GATA repressor, represses *Crumbs* transcription (Campbell et al., 2011). In addition, signaling regulatory molecules act directly on polarity proteins, bypassing transcription factors, such as Snail and Zeb1. For example, TGF $\beta$ RI binds to the tight junction protein occludin and locally assembles into a complex containing Par6 (Barrios-Rodiles et al., 2005). Activated TGF $\beta$ RII phosphorylates Par6, which binds to Smurf1 and causes RhoA ubiquitylation and the



**Fig. 5. Major signaling proteins and transcription factors involved in epithelial-mesenchymal transition.** The first cell (left) represents a cell with intact junctional complexes and epithelial polarity. The two other cells are progressively engaging in epithelial-mesenchymal transition (EMT). Growth factors activate membrane receptors, leading to changes in actin cytoskeleton remodeling and the loss of apicobasal polarity. The DDR1 complex activates RhoE, which weakens actomyosin contractility at points of cell-cell contact (Hidalgo-Carcedo et al., 2011). TGF $\beta$  receptors localized in tight junctions trigger non-canonical pathways, leading to RhoA ubiquitylation and degradation, and the destabilization of cortical actin microfilament-associated tight junctions. The activation of transcriptional repressors, such as Snail and Serpent (Srp/GATA), downregulates genes encoding junctional proteins, including E-cadherin, claudins and occludin, thus compromising epithelial integrity (Spaderna et al., 2008; Whiteman et al., 2008; Campbell et al., 2011). EPB4.1L5 sequesters p120-catenin, which in turn weakens adherens junctions binding to paxillin and promotes  $\beta$ 1-integrin-based cell-matrix adhesion.  $\beta$ 1-Integrin signaling complex presumably contains FAK and Src. In *Drosophila*, partial EMT in the posterior midgut and is controlled by Srp (Campbell et al., 2011). Srp represses an apical polarity gene, *Crb*, resulting in the re-distribution of E-cadherin (not shown). Likewise Snail represses Crumbs3 and Zeb1 represses Crumbs3 and Lgl2. Partial EMT is also evident in trophoblast stem cells, in which the loss of CBP or downregulation of H2A/H2B acetylation promotes a CD44<sup>high</sup>/CD24<sup>low</sup> phenotype; this can be reproduced by Snail overexpression (Abell et al., 2011). CBP activity is controlled by MAP3K4/JNK. Full-blown EMT can be executed by Snail. Snail is phosphorylated by Pak1 (Pak – FlyBase) and glycogen synthase kinase 3 $\beta$  (GSK3 $\beta$ ) for activation and downregulation, respectively (Zhou et al., 2004; Yang et al., 2005). Matrix metalloproteinases (MMPs) are also activated by Snail.

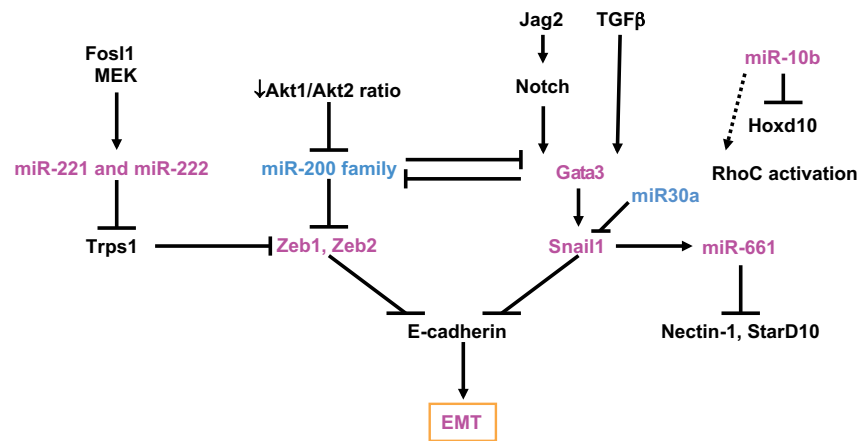
dissolution of junctions (Ozdamar et al., 2005). Dynamic changes in other small G-proteins, such as Rac1 and Cdc42, cause actin cytoskeleton remodeling, potentially leading to the loss of intercellular adhesion and cell movement through the formation of filopodia and lamellipodia (Braga et al., 1997; Tapon and Hall, 1997; Chu et al., 2004).

Theoretically, in every case, extracellular stimulation, transcription factor-linked signaling, cell polarity changes and cytoskeletal remodeling have to be accomplished for the manifestation of EMT. However, cell polarity and cytoskeletal remodeling have not been carefully analyzed. Studies using cultured cells independently of developmental context have therefore contributed breakthrough discoveries for unraveling EMT.

### Understanding EMT in cancer: insights from development

Most tumors are carcinomas, i.e. derived from epithelia. Carcinomas initially remain confined within a basement membrane, but eventually infiltrate into the surrounding stroma and intravasate into the blood and lymph vessels where they are passively transported to distant sites. Circulating carcinoma cells

can extravasate and localize in the parenchyma of distant organs where they will resume growth to form metastatic tumors (Talmadge and Fidler, 2010). Numerous features in the metastatic cascade resemble embryonic cells undergoing EMT and invasive migration. Recurrent observations prompted the hypothesis that carcinomas may have co-opted these mechanisms for invasion and distant dissemination (Thiery, 2002; Kalluri and Weinberg, 2009). The role of EMT in tumor progression has been repeatedly emphasized, including the transient acquisition of stemness (Polyak and Weinberg, 2009; Thiery et al., 2009; Valastyan and Weinberg, 2011). Although still debated, there is increasing evidence that some carcinoma move as solitary cells; but collective invasive migration also seems to play a major role (Thiery, 2009). Deciphering the complex pathways that drive EMT in development offers a unique opportunity to investigate whether similar pathways are re-activated during carcinoma progression. Vice versa, knowledge acquired in studying invasion and metastatic cascades may provide new leads for developmental studies. Such an example is the discovery of the roles of alternative splicing and miRNAs in EMT. Alternative splicing of FGFR2 in association with induced EMT was initially documented in the rat carcinoma cell-line NBT-II



**Fig. 6. Micro-RNA network regulating epithelial-mesenchymal transition.** Major signaling pathways involved in the regulation of transcription factors, such as Snail and Zeb proteins, repress the transcription of E-cadherin and cause epithelial-mesenchymal transition (EMT). Fosl1 is a leucine zipper protein that forms the transcription factor complex AP1. Fosl1 causes miR-221 and miR-222 to target Trps1, which in turn inhibits Zeb2 (Stinson et al., 2011). Zeb1 and Zeb2 are also targeted by the miR-200 family (Christoffersen et al., 2007; Burk et al., 2008; Gregory et al., 2008; Korpál et al., 2008), which is regulated by the ratio of the levels of Akt1 to Akt2 (Iliopoulos et al., 2009). The reciprocal inhibitory relationship of miR-200 with Gata3, which is stimulated by Jag2 and Notch signals are also important for EMT, and TGF $\beta$ -triggered Gata3 induces EMT via Snail1 (Yang et al., 2011). Snail1 is targeted by miR-30a (Kumarswamy et al., 2011). However, Snail1 activates miR-661 (Vetter et al., 2010). MicroRNA important for cancer metastasis also include miR-10b, which targets homeobox D10 (Hoxd10) and activates RhoC (Ma et al., 2007). It is uncertain whether these regulatory micro-RNAs and EMT factors encompass a regulatory network. Micro-RNAs that attenuate Zeb or Snail transcripts are shown in blue. Micro-RNAs that play a role in promoting EMT are shown in pink.

(Savagner et al., 1994). This is regulated through the mutual exclusion of exons IIIb and IIIc by epithelial splicing regulatory proteins (Esrp1 and Esrp2) (Warzecha et al., 2009). The ESRP-regulated splicing network revealed a high-affinity ESRP-binding motif in transcripts of genes encoding multiple regulators of cell polarity, adhesion and migration, as well as the vesicular transport system (Warzecha et al., 2010). An alternative splicing signature for EMT has also been generated through RNA deep-sequencing analysis in a breast cancer cell line. The results revealed possible functions of RBFOX, muscleblind-like (MBNL), CEFL, hnRNP and ESRP classes of splicing factors in the regulation of EMT-dependent splicing (Shapiro et al., 2011). The identification of MBNL1 is particularly interesting, as it exhibits a restricted expression pattern in canal region endocardium and ventricular myocardium during endocardial cushion development in chick embryos. Furthermore, *MBNL1* knockdown in atrioventricular explants increases the TGF-dependent EMT in endocardial cells (Vajda et al., 2009). Thus, it will be interesting to determine the phenotypes of ESRP-deficient mice.

New studies using cancer lines have shown that some microRNAs can be incorporated into the EMT networks (Fig. 6). Importantly, independent studies on microRNAs in cultured cells modeling EMT have led to the discoveries of miR-200 families that downregulate Zeb protein transcriptional repressors of E-cadherin (Christoffersen et al., 2007; Burk et al., 2008; Gregory et al., 2008; Korpál et al., 2008; Brabletz and Brabletz, 2010). Interestingly, Zeb2 is also regulated by the trichorhinophalangeal syndrome type 1 protein (Trps1) of the GATA family of transcriptional repressors. Trps1 is targeted by miR-221/ miR-222, which are themselves induced by the basal-like transcription factor Fosl1 (Fra1) via mitogen-activated protein kinase kinase (MEK) activation (Stinson et al., 2011). Perturbation of the miRNA processing machinery protein Dicer (*Dicer1* – Mouse Genome Informatics) has revealed

the possible role of miRNAs in development. The conditional deletion of *Dicer* using Wnt1-Cre did not perturb neural crest delamination, but affected neurogenesis and the craniofacial skeleton (Huang et al., 2010; Zehir et al., 2010). Moreover, transgenic mice, in which *Dicer1* was deleted in the proepicardium, die immediately after birth with profound cardiac defects, including impaired coronary vessel development; this implicates micro-RNA processing as having a role in epicardial EMT (Singh et al., 2011).

## Conclusion

In most species, EMT contributes to a number of different developmental events and is essential for proper morphogenesis and organogenesis. Diverse mechanisms control the execution of EMT and these are embedded into other programs that control cell fate induction, commitment and differentiation. Genetic analyses in *Drosophila* set the basis for understanding epistasis in the EMT program in gastrulation. These and subsequent studies demonstrated that Snail and Twist play major roles in modulating cell shape in the early phase of gastrulation in invertebrates, whereas only Snail is used in vertebrates. However, FGF signaling is shared between *Drosophila* and mouse gastrulation. The detailed gene regulatory network that governs gastrulation and EMT in each species is not yet available, but much progress has been made with the sea urchin model.

The neural crest exhibits another striking example of EMT, although detailed molecular pathways have also not been established. Undoubtedly, Snail is, once again, crucial in neural crest EMT, although other transcriptional regulators contribute indirectly to the delamination and early differentiation programs. Although Zeb2 involvement is clear, the inactivation of numerous other genes expressed in the neural territory has not yielded phenotypes compatible with EMT functions. Recent findings for JmjD2A in chicken and Wt1 in mouse have increased the repertoire

of candidate genes that should be investigated for their role in cancer invasion and metastasis. Heart morphogenesis also offers an attractive model for examining the molecular control of EMT. In the mouse, several new pathways controlling EndMT have been uncovered, with Snail acting as an important effector and Wt1 mediating a crucial initiation step in epicardial EMT (Fig. 4).

In vitro studies with normal epithelial cells and carcinoma cells have complemented the developmental studies. These cell-based studies have thus generated a wealth of information for deciphering the molecular mechanisms of EMT, and have also identified novel players, such as regulatory proteins, for alternative splicing and microRNAs. Together, these findings deepen our understanding of EMT in both development and disease, and will undoubtedly help to provide new therapeutic strategies for interfering with cancer invasion and metastasis.

#### Funding

The authors' research is funded by the Institute of Molecular and Cell Biology, A-star, Singapore.

#### Competing interests statement

The authors declare no competing financial interests.

#### References

- Abell, A. N., Jordan, N. V., Huang, W., Prat, A., Midland, A. A., Johnson, N. L., Granger, D. A., Mieczkowski, P. A., Perou, C. M., Gomez, S. M. et al. (2011). MAP3K4/CBP-regulated H2B acetylation controls epithelial-mesenchymal transition in trophoblast stem cells. *Cell Stem Cell* **8**, 525-537.
- Acloque, H., Ocana, O. H., Matheu, A., Rizzoti, K., Wise, C., Lovell-Badge, R. and Nieto, M. A. (2011). Reciprocal repression between Sox3 and snail transcription factors defines embryonic territories at gastrulation. *Dev. Cell* **21**, 546-558.
- Ahlstrom, J. D. and Erickson, C. A. (2009a). The neural crest epithelial-mesenchymal transition in 4D: a 'tail' of multiple non-obligatory cellular mechanisms. *Development* **136**, 1801-1812.
- Ahlstrom, J. D. and Erickson, C. A. (2009b). New views on the neural crest epithelial-mesenchymal transition and neuroepithelial interkinetic nuclear migration. *Commun. Integr. Biol.* **2**, 489-493.
- Arnold, S. J., Hofmann, U. K., Bikoff, E. K. and Robertson, E. J. (2008). Pivotal roles for eomesodermin during axis formation, epithelium-to-mesenchyme transition and endoderm specification in the mouse. *Development* **135**, 501-511.
- Barrallo-Gimeno, A. and Nieto, M. A. (2005). The Snail genes as inducers of cell movement and survival: implications in development and cancer. *Development* **132**, 3151-3161.
- Barrios-Rodiles, M., Brown, K. R., Ozdamar, B., Bose, R., Liu, Z., Donovan, R. S., Shinjo, F., Liu, Y., Dembowy, J., Taylor, I. W. et al. (2005). High-throughput mapping of a dynamic signaling network in mammalian cells. *Science* **307**, 1621-1625.
- Beiman, M., Shilo, B. Z. and Volk, T. (1996). Heartless, a Drosophila FGF receptor homolog, is essential for cell migration and establishment of several mesodermal lineages. *Genes Dev.* **10**, 2993-3002.
- Bertrand, S. and Escriva, H. (2011). Evolutionary crossroads in developmental biology: amphioxus. *Development* **138**, 4819-4830.
- Blanco, M. J., Barrallo-Gimeno, A., Acloque, H., Reyes, A. E., Tada, M., Allende, M. L., Mayor, R. and Nieto, M. A. (2007). Snail1a and Snail1b cooperate in the anterior migration of the axial mesoderm in the zebrafish embryo. *Development* **134**, 4073-4081.
- Brabletz, S. and Brabletz, T. (2010). The ZEB/miR-200 feedback loop—a motor of cellular plasticity in development and cancer? *EMBO Rep.* **11**, 670-677.
- Braga, V. M., Machesky, L. M., Hall, A. and Hotchin, N. A. (1997). The small GTPases Rho and Rac are required for the establishment of cadherin-dependent cell-cell contacts. *J. Cell Biol.* **137**, 1421-1431.
- Brewer, A. and Pizzey, J. (2006). GATA factors in vertebrate heart development and disease. *Expert Rev. Mol. Med.* **8**, 1-20.
- Brown, C. O., 3rd, Chi, X., Garcia-Gras, E., Shirai, M., Feng, X. H. and Schwartz, R. J. (2004). The cardiac determination factor, Nkx2-5, is activated by mutual cofactors GATA-4 and Smad1/4 via a novel upstream enhancer. *J. Biol. Chem.* **279**, 10659-10669.
- Bruneau, B. G. (2008). The developmental genetics of congenital heart disease. *Nature* **451**, 943-948.
- Burk, U., Schubert, J., Wellner, U., Schmalhofer, O., Vincan, E., Spaderna, S. and Brabletz, T. (2008). A reciprocal repression between ZEB1 and members of the miR-200 family promotes EMT and invasion in cancer cells. *EMBO Rep.* **9**, 582-589.
- Burstyn-Cohen, T., Stanleigh, J., Sela-Donenfeld, D. and Kalcheim, C. (2004). Canonical Wnt activity regulates trunk neural crest delamination linking BMP/noggin signaling with G1/S transition. *Development* **131**, 5327-5339.
- Byrum, C. A. and Martindale, M. Q. (2004). Gastrulation in the Cnidaria and Ctenophora. In *Gastrulation* (ed. C. D. Stern), Chapter 3. New York: Cold Spring Harbor Laboratory Press.
- Call, K. M., Glaser, T., Ito, C. Y., Buckler, A. J., Pelletier, J., Haber, D. A., Rose, E. A., Kral, A., Yeger, H., Lewis, W. H. et al. (1990). Isolation and characterization of a zinc finger polypeptide gene at the human chromosome 11 Wilms' tumor locus. *Cell* **60**, 509-520.
- Campbell, K., Whissell, G., Franch-Marro, X., Battle, E. and Casanova, J. (2011). Specific GATA factors act as conserved inducers of an endodermal-EMT. *Dev. Cell* **21**, 1051-1061.
- Carmona, R., Gonzalez-Iriarte, M., Macias, D., Perez-Pomares, J. M., Garcia-Garrido, L. and Munoz-Chapuli, R. (2000). Immunolocalization of the transcription factor Slug in the developing avian heart. *Anat. Embryol.* **201**, 103-109.
- Carver, E. A., Jiang, R., Lan, Y., Oram, K. F. and Gridley, T. (2001). The mouse snail gene encodes a key regulator of the epithelial-mesenchymal transition. *Mol. Cell. Biol.* **21**, 8184-8188.
- Cheung, M. and Briscoe, J. (2003). Neural crest development is regulated by the transcription factor Sox9. *Development* **130**, 5681-5693.
- Cheung, M., Chaboissier, M. C., Mynett, A., Hirst, E., Schedl, A. and Briscoe, J. (2005). The transcriptional control of trunk neural crest induction, survival, and delamination. *Dev. Cell* **8**, 179-192.
- Christ, B., Jacob, M. and Jacob, H. J. (1983). On the origin and development of the ventrolateral abdominal muscles in the avian embryo. An experimental and ultrastructural study. *Anat. Embryol.* **166**, 87-101.
- Christ, B., Huang, R. and Scaal, M. (2007). Amniote somite derivatives. *Dev. Dyn.* **236**, 2382-2396.
- Christoffersen, N. R., Silaharoglu, A., Orom, U. A., Kauppinen, S. and Lund, A. H. (2007). miR-200b mediates post-transcriptional repression of ZFX1B. *RNA* **13**, 1172-1178.
- Chu, Y. S., Thomas, W. A., Eder, O., Pincet, F., Perez, E., Thiery, J. P. and Dufour, S. (2004). Force measurements in E-cadherin-mediated cell doublets reveal rapid adhesion strengthened by actin cytoskeleton remodeling through Rac and Cdc42. *J. Cell Biol.* **167**, 1183-1194.
- Chua, K. N., Poon, K. L., Lim, J., Sim, W. J., Huang, R. Y. and Thiery, J. P. (2011). Target cell movement in tumor and cardiovascular diseases based on the epithelial-mesenchymal transition concept. *Adv. Drug Deliv. Rev.* **63**, 558-567.
- Ciruna, B. and Rossant, J. (2001). FGF signaling regulates mesoderm cell fate specification and morphogenetic movement at the primitive streak. *Dev. Cell* **1**, 37-49.
- Clark, I. B., Muha, V., Klingseisen, A., Leptin, M. and Muller, H. A. (2011). Fibroblast growth factor signalling controls successive cell behaviours during mesoderm layer formation in Drosophila. *Development* **138**, 2705-2715.
- Coles, E., Christiansen, J., Economou, A., Bronner-Fraser, M. and Wilkinson, D. G. (2004). A vertebrate crossveinless 2 homologue modulates BMP activity and neural crest cell migration. *Development* **131**, 5309-5317.
- Compton, L. A., Potash, D. A., Mundell, N. A. and Barnett, J. V. (2006). Transforming growth factor-beta induces loss of epithelial character and smooth muscle cell differentiation in epicardial cells. *Dev. Dyn.* **235**, 82-93.
- Costello, I., Pimeisl, I. M., Drager, S., Bikoff, E. K., Robertson, E. J. and Arnold, S. J. (2011). The T-box transcription factor Eomesodermin acts upstream of Mesp1 to specify cardiac mesoderm during mouse gastrulation. *Nat. Cell Biol.* **13**, 1084-1091.
- Crossley, P. H. and Martin, G. R. (1995). The mouse Fgf8 gene encodes a family of polypeptides and is expressed in regions that direct outgrowth and patterning in the developing embryo. *Development* **121**, 439-451.
- Dale, J. K., Malapert, P., Chal, J., Vilhais-Neto, G., Maroto, M., Johnson, T., Jayasinghe, S., Trainor, P., Herrmann, B. and Pourquie, O. (2006). Oscillations of the snail genes in the presomitic mesoderm coordinate segmental patterning and morphogenesis in vertebrate somitogenesis. *Dev. Cell* **10**, 355-366.
- Davidson, E. H., Rast, J. P., Oliveri, P., Ransick, A., Calestani, C., Yuh, C. H., Minokawa, T., Amore, G., Hinman, V., Arenas-Mena, C. et al. (2002). A genomic regulatory network for development. *Science* **295**, 1669-1678.
- del Barrio, M. G. and Nieto, M. A. (2002). Overexpression of Snail family members highlights their ability to promote chick neural crest formation. *Development* **129**, 1583-1593.
- del Monte, G., Casanova, J. C., Guadix, J. A., MacGrogan, D., Burch, J. B., Perez-Pomares, J. M. and de la Pompa, J. L. (2011). Differential Notch signaling in the epicardium is required for cardiac inflow development and coronary vessel morphogenesis. *Circ. Res.* **108**, 824-836.
- Du, J., Takeuchi, H., Leonhard-Melief, C., Shroyer, K. R., Dlugosz, M., Haltiwanger, R. S. and Holdener, B. C. (2010). O-fucosylation of thrombospondin type 1 repeats restricts epithelial to mesenchymal transition (EMT) and maintains epiblast pluripotency during mouse gastrulation. *Dev. Biol.* **346**, 25-38.
- Duval, M. (1879). *Atlas d'Embryologie*. Paris: Masson.

- Eckert, M. A., Lwin, T. M., Chang, A. T., Kim, J., Danis, E., Ohno-Machado, L. and Yang, J. (2011). Twist1-induced invadopodia formation promotes tumor metastasis. *Cancer Cell* **19**, 372-386.
- Egea, J., Erlacher, C., Montanez, E., Burtcher, I., Yamagishi, S., Hess, M., Hampel, F., Sanchez, R., Rodriguez-Manzanique, M. T., Bosl, M. R. et al. (2008). Genetic ablation of FLRT3 reveals a novel morphogenetic function for the anterior visceral endoderm in suppressing mesoderm differentiation. *Genes Dev.* **22**, 3349-3362.
- Eichmann, A., Yuan, L., Moyon, D., Lenoble, F., Pardanaud, L. and Breant, C. (2005). Vascular development: from precursor cells to branched arterial and venous networks. *Int. J. Dev. Biol.* **49**, 259-267.
- Essafi, A., Webb, A., Berry, R. L., Slight, J., Burn, S. F., Spraggon, L., Velecela, V., Martinez-Estrada, O. M., Wiltshire, J. H., Roberts, S. G. et al. (2011). A wt1-controlled chromatin switching mechanism underpins tissue-specific wnt4 activation and repression. *Dev. Cell* **21**, 559-574.
- Ferguson, C. A. and Graham, A. (2004). Redefining the head-trunk interface for the neural crest. *Dev. Biol.* **269**, 70-80.
- Fischer, A., Steidl, C., Wagner, T. U., Lang, E., Jakob, P. M., Friedl, P., Knobloch, K. P. and Gessler, M. (2007). Combined loss of Hey1 and HeyL causes congenital heart defects because of impaired epithelial to mesenchymal transition. *Circ. Res.* **100**, 856-863.
- Flagg, A. E., Earley, J. U. and Svensson, E. C. (2007). FOG-2 attenuates endothelial-to-mesenchymal transformation in the endocardial cushions of the developing heart. *Dev. Biol.* **304**, 308-316.
- Franco, D. L., Mainez, J., Vega, S., Sancho, P., Murillo, M. M., de Frutos, C. A., Del Castillo, G., Lopez-Blau, C., Fabregat, I. and Nieto, M. A. (2010). Snail1 suppresses TGF-beta-induced apoptosis and is sufficient to trigger EMT in hepatocytes. *J. Cell Sci.* **123**, 3467-3477.
- Garcia-Garcia, M. J. and Anderson, K. V. (2003). Essential role of glycosaminoglycans in Fgf signaling during mouse gastrulation. *Cell* **114**, 727-737.
- Garg, V., Muth, A. N., Ransom, J. F., Schluterman, M. K., Barnes, R., King, I. N., Grossfeld, P. D. and Srivastava, D. (2005). Mutations in NOTCH1 cause aortic valve disease. *Nature* **437**, 270-274.
- Gessler, M., Poustka, A., Cavenee, W., Neve, R. L., Orkin, S. H. and Bruns, G. A. (1990). Homozygous deletion in Wilms tumours of a zinc-finger gene identified by chromosome jumping. *Nature* **343**, 774-778.
- Greenburg, G. and Hay, E. D. (1982). Epithelia suspended in collagen gels can lose polarity and express characteristics of migrating mesenchymal cells. *J. Cell Biol.* **95**, 333-339.
- Gregory, P. A., Bert, A. G., Paterson, E. L., Barry, S. C., Tsykin, A., Farshid, G., Vadas, M. A., Khew-Goodall, Y. and Goodall, G. J. (2008). The miR-200 family and miR-205 regulate epithelial to mesenchymal transition by targeting ZEB1 and SIP1. *Nat. Cell Biol.* **10**, 593-601.
- Grieskamp, T., Rudat, C., Ludtke, T. H., Norden, J. and Kispert, A. (2011). Notch signaling regulates smooth muscle differentiation of epicardium-derived cells. *Circ. Res.* **108**, 813-823.
- Gros, J., Manceau, M., Thome, V. and Marcelle, C. (2005). A common somitic origin for embryonic muscle progenitors and satellite cells. *Nature* **435**, 954-958.
- Grosshans, J. and Wieschaus, E. (2000). A genetic link between morphogenesis and cell division during formation of the ventral furrow in *Drosophila*. *Cell* **101**, 523-531.
- Groysman, M., Shoval, I. and Kalcheim, C. (2008). A negative modulatory role for rho and rho-associated kinase signaling in delamination of neural crest cells. *Neural Dev.* **3**, 27.
- Guadix, J. A., Ruiz-Villalba, A., Lettice, L., Velecela, V., Munoz-Chapuli, R., Hastie, N. D., Perez-Pomares, J. M. and Martinez-Estrada, O. M. (2011). Wt1 controls retinoic acid signalling in embryonic epicardium through transcriptional activation of Raldh2. *Development* **138**, 1093-1097.
- Guo, W., Keckesova, Z., Donaher, J. L., Shibue, T., Tischler, V., Reinhardt, F., Itzkovitz, S., Noske, A., Zurrer-Hardi, U., Bell, G. et al. (2012). Slug and Sox9 cooperatively determine the mammary stem cell state. *Cell* **148**, 1015-1028.
- Hardy, K. M., Yatskiyevych, T. A., Konieczka, J., Bobbs, A. S. and Antin, P. B. (2011). FGF signalling through RAS/MAPK and PI3K pathways regulates cell movement and gene expression in the chicken primitive streak without affecting E-cadherin expression. *BMC Dev. Biol.* **11**, 20.
- Hay, E. D. (2005). The mesenchymal cell, its role in the embryo, and the remarkable signaling mechanisms that create it. *Dev. Dyn.* **233**, 706-720.
- Hidalgo-Carcedo, C., Hooper, S., Chaudhry, S. I., Williamson, P., Harrington, K., Leitinger, B. and Saij, E. (2011). Collective cell migration requires suppression of actomyosin at cell-cell contacts mediated by DDR1 and the cell polarity regulators Par3 and Par6. *Nat. Cell Biol.* **13**, 49-58.
- Hirano, M., Hashimoto, S., Yonemura, S., Sabe, H. and Aizawa, S. (2008). EPB41L5 functions to post-transcriptionally regulate cadherin and integrin during epithelial-mesenchymal transition. *J. Cell Biol.* **182**, 1217-1230.
- Hohenstein, P. and Hastie, N. D. (2006). The many facets of the Wilms' tumour gene, WT1. *Hum. Mol. Genet.* **15**, R196-R201.
- Huang, A., Campbell, C. E., Bonetta, L., McAndrews-Hill, M. S., Chilton-MacNeill, S., Coppes, M. J., Law, D. J., Feinberg, A. P., Yeger, H. and Williams, B. R. (1990). Tissue, developmental, and tumor-specific expression of divergent transcripts in Wilms tumor. *Science* **250**, 991-994.
- Huang, T., Liu, Y., Huang, M., Zhao, X. and Cheng, L. (2010). Wnt1-mediated conditional loss of Dicer results in malformation of the midbrain and cerebellum and failure of neural crest and dopaminergic differentiation in mice. *J. Mol. Cell Biol.* **2**, 152-163.
- Hurd, T. W., Gao, L., Roh, M. H., Macara, I. G. and Margolis, B. (2003). Direct interaction of two polarity complexes implicated in epithelial tight junction assembly. *Nat. Cell Biol.* **5**, 137-142.
- Iliopoulos, D., Polyarchou, C., Hatziaepostolou, M., Kottakis, F., Maroulakou, I. G., Struhl, K. and Tschlis, P. N. (2009). MicroRNAs differentially regulated by Akt isoforms control EMT and stem cell renewal in cancer cells. *Sci. Signal.* **2**, ra62.
- Iratni, R., Yan, Y. T., Chen, C., Ding, J., Zhang, Y., Price, S. M., Reinberg, D. and Shen, M. M. (2002). Inhibition of excess nodal signaling during mouse gastrulation by the transcriptional corepressor DRAP1. *Science* **298**, 1996-1999.
- Jiang, R., Lan, Y., Norton, C. R., Sundberg, J. P. and Gridley, T. (1998). The *Slug* gene is not essential for mesoderm or neural crest development in mice. *Dev. Biol.* **198**, 277-285.
- Johansson, K. A. and Grapin-Botton, A. (2002). Development and diseases of the pancreas. *Clin. Genet.* **62**, 14-23.
- Kadam, S., McMahon, A., Tzou, P. and Stathopoulos, A. (2009). FGF ligands in *Drosophila* have distinct activities required to support cell migration and differentiation. *Development* **136**, 739-747.
- Kalluri, R. and Weinberg, R. A. (2009). The basics of epithelial-mesenchymal transition. *J. Clin. Invest.* **119**, 1420-1428.
- Keller, R. and Shook, D. (2004). Gastrulation in amphibians. In *Gastrulation* (ed. C. D. Stern), Chapter 13. New York: Cold Spring Harbor Laboratory Press.
- Kim, J., Lo, L., Dormand, E. and Anderson, D. J. (2003). SOX10 maintains multipotency and inhibits neuronal differentiation of neural crest stem cells. *Neuron* **38**, 17-31.
- Kitajima, S., Takagi, A., Inoue, T. and Saga, Y. (2000). MesP1 and MesP2 are essential for the development of cardiac mesoderm. *Development* **127**, 3215-3226.
- Klingseisen, A., Clark, I. B., Gryzik, T. and Muller, H. A. (2009). Differential and overlapping functions of two closely related *Drosophila* FGF8-like growth factors in mesoderm development. *Development* **136**, 2393-2402.
- Kokkinos, M. I., Murthi, P., Wafai, R., Thompson, E. W. and Newgreen, D. F. (2010). Cadherins in the human placenta-epithelial-mesenchymal transition (EMT) and placental development. *Placenta* **31**, 747-755.
- Kolsch, V., Seher, T., Fernandez-Ballester, G. J., Serrano, L. and Leptin, M. (2007). Control of *Drosophila* gastrulation by apical localization of adherens junctions and RhoGEF2. *Science* **315**, 384-386.
- Korpal, M., Lee, E. S., Hu, G. and Kang, Y. (2008). The miR-200 family inhibits epithelial-mesenchymal transition and cancer cell migration by direct targeting of E-cadherin transcriptional repressors ZEB1 and ZEB2. *J. Biol. Chem.* **283**, 14910-14914.
- Kos, R., Reedy, M. V., Johnson, R. L. and Erickson, C. A. (2001). The winged-helix transcription factor FoxD3 is important for establishing the neural crest lineage and repressing melanogenesis in avian embryos. *Development* **128**, 1467-1479.
- Kumarswamy, R., Mudduluru, G., Ceppi, P., Muppala, S., Kozlowski, M., Niklinski, J., Papotti, M. and Allgayer, H. (2011). MicroRNA-30a inhibits epithelial-to-mesenchymal transition by targeting Snai1 and is downregulated in non-small cell lung cancer. *Int. J. Cancer* **130**, 2044-2053.
- Ladd, A. N., Yatskiyevych, T. A. and Antin, P. B. (1998). Regulation of avian cardiac myogenesis by activin/TGFbeta and bone morphogenetic proteins. *Dev. Biol.* **204**, 407-419.
- Laprise, P. and Tepass, U. (2011). Novel insights into epithelial polarity proteins in *Drosophila*. *Trends Cell Biol.* **21**, 401-408.
- Lee, J. D., Silva-Gagliardi, N. F., Tepass, U., McGlade, C. J. and Anderson, K. V. (2007). The FERM protein Epb4.115 is required for organization of the neural plate and for the epithelial-mesenchymal transition at the primitive streak of the mouse embryo. *Development* **134**, 2007-2016.
- Lee, J. D., Migeotte, I. and Anderson, K. V. (2010). Left-right patterning in the mouse requires Epb4.115-dependent morphogenesis of the node and midline. *Dev. Biol.* **346**, 237-246.
- Leptin, M. (2005). Gastrulation movements: the logic and the nuts and bolts. *Dev. Cell* **8**, 305-320.
- Leptin, M. and Grunewald, B. (1990). Cell shape changes during gastrulation in *Drosophila*. *Development* **110**, 73-84.
- Li, L., Krantz, I. D., Deng, Y., Genin, A., Banta, A. B., Collins, C. C., Qi, M., Trask, B. J., Kuo, W. L., Cochran, J. et al. (1997). Alagille syndrome is caused by mutations in human Jagged1, which encodes a ligand for Notch1. *Nat. Genet.* **16**, 243-251.
- Liu, J. P. and Jessell, T. M. (1998). A role for rhoB in the delamination of neural crest cells from the dorsal neural tube. *Development* **125**, 5055-5067.
- Liu, P., Wakamiya, M., Shea, M. J., Albrecht, U., Behringer, R. R. and Bradley, A. (1999). Requirement for Wnt3 in vertebrate axis formation. *Nat. Genet.* **22**, 361-365.

- Luna-Zurita, L., Prados, B., Grego-Bessa, J., Luxan, G., del Monte, G., Benguria, A., Adams, R. H., Perez-Pomares, J. M. and de la Pompa, J. L. (2010). Integration of a Notch-dependent mesenchymal gene program and Bmp2-driven cell invasiveness regulates murine cardiac valve formation. *J. Clin. Invest.* **120**, 3493-3507.
- Lynch, J. A. and Roth, S. (2011). The evolution of dorsal-ventral patterning mechanisms in insects. *Genes Dev.* **25**, 107-118.
- Ma, L., Teruya-Feldstein, J. and Weinberg, R. A. (2007). Tumour invasion and metastasis initiated by microRNA-10b in breast cancer. *Nature* **449**, 682-688.
- Martin, A. C., Kaschube, M. and Wieschaus, E. F. (2009). Pulsed contractions of an actin-myosin network drive apical constriction. *Nature* **457**, 495-499.
- Martinez-Estrada, O. M., Lettice, L. A., Essafi, A., Guadix, J. A., Slight, J., Velecela, V., Hall, E., Reichmann, J., Devenney, P. S., Hohenstein, P. et al. (2010). Wt1 is required for cardiovascular progenitor cell formation through transcriptional control of Snail and E-cadherin. *Nat. Genet.* **42**, 89-93.
- Martinez-Morales, P. L., Diez del Corral, R., Olivera-Martinez, I., Quiroga, A. C., Das, R. M., Barbas, J. A., Storey, K. G. and Morales, A. V. (2011). FGF and retinoic acid activity gradients control the timing of neural crest cell emigration in the trunk. *J. Cell Biol.* **194**, 489-503.
- Mathew, S. J., Rembold, M. and Leptin, M. (2011). Role for Traf4 in polarizing adherens junctions as a prerequisite for efficient cell shape changes. *Mol. Cell Biol.* **31**, 4978-4993.
- McClay, D. R. (2011). Evolutionary crossroads in developmental biology: sea urchins. *Development* **138**, 2639-2648.
- McMahon, A., Reeves, G. T., Supatto, W. and Stathopoulos, A. (2010). Mesoderm migration in *Drosophila* is a multi-step process requiring FGF signaling and integrin activity. *Development* **137**, 2167-2175.
- Mellgren, A. M., Smith, C. L., Olsen, G. S., Eskicak, B., Zhou, B., Kazi, M. N., Ruiz, F. R., Pu, W. T. and Talquist, M. D. (2008). Platelet-derived growth factor receptor beta signaling is required for efficient epicardial cell migration and development of two distinct coronary vascular smooth muscle cell populations. *Circ. Res.* **103**, 1393-1401.
- Meulemans, D. and Bronner-Fraser, M. (2004). Gene-regulatory interactions in neural crest evolution and development. *Dev. Cell* **7**, 291-299.
- Miettinen, P. J., Ebner, R., Lopez, A. R. and Derynck, R. (1994). TGF-beta induced transdifferentiation of mammary epithelial cells to mesenchymal cells: involvement of type I receptors. *J. Cell Biol.* **127**, 2021-2036.
- Miller-Hodges, E. and Hohenstein, P. (2012). WT1 in disease: shifting the epithelial-mesenchymal balance. *J. Pathol.* **226**, 229-240.
- Minoux, M. and Rijli, F. M. (2010). Molecular mechanisms of cranial neural crest cell migration and patterning in craniofacial development. *Development* **137**, 2605-2621.
- Moore, A. W., McInnes, L., Kreidberg, J., Hastie, N. D. and Schedl, A. (1999). YAC complementation shows a requirement for Wt1 in the development of epicardium, adrenal gland and throughout nephrogenesis. *Development* **126**, 1845-1857.
- Morales, A. V., Acloque, H., Ocana, O. H., de Frutos, C. A., Gold, V. and Nieto, M. A. (2007). Snail genes at the crossroads of symmetric and asymmetric processes in the developing mesoderm. *EMBO Rep.* **8**, 104-109.
- Mori, M., Nakagami, H., Koibuchi, N., Miura, K., Takami, Y., Koriyama, H., Hayashi, H., Sabe, H., Mochizuki, N., Morishita, R. et al. (2009). Zyxin mediates actin fiber reorganization in epithelial-mesenchymal transition and contributes to endocardial morphogenesis. *Mol. Biol. Cell* **20**, 3115-3124.
- Moskowitz, I. P., Wang, J., Peterson, M. A., Pu, W. T., Mackinnon, A. C., Oxburgh, L., Chu, G. C., Sarkar, M., Berul, C., Smoot, L. et al. (2011). Transcription factor genes *Smad4* and *Gata4* cooperatively regulate cardiac valve development. [corrected]. *Proc. Natl. Acad. Sci. USA* **108**, 4006-4011.
- Moustakas, A. and Heldin, C. H. (2009). The regulation of TGFbeta signal transduction. *Development* **136**, 3699-3714.
- Nakagawa, S. and Takeichi, M. (1998). Neural crest emigration from the neural tube depends on regulated cadherin expression. *Development* **125**, 2963-2971.
- Nakajima, Y., Yamagishi, T., Hokari, S. and Nakamura, H. (2000). Mechanisms involved in valvuloseptal endocardial cushion formation in early cardiogenesis: roles of transforming growth factor (TGF)-beta and bone morphogenetic protein (BMP). *Anat. Rec.* **258**, 119-127.
- Nakaya, Y., Sukowati, E. W., Wu, Y. and Sheng, G. (2008). RhoA and microtubule dynamics control cell-basement membrane interaction in EMT during gastrulation. *Nat. Cell Biol.* **10**, 765-775.
- Nawshad, A. (2008). Palatal seam disintegration: to die or not to die? that is no longer the question. *Dev. Dyn.* **237**, 2643-2656.
- Nibu, Y., Zhang, H. and Levine, M. (1998a). Interaction of short-range repressors with *Drosophila* CtBP in the embryo. *Science* **280**, 101-104.
- Nibu, Y., Zhang, H., Bajor, E., Barolo, S., Small, S. and Levine, M. (1998b). dCtBP mediates transcriptional repression by Knirps, Kruppel and Snail in the *Drosophila* embryo. *EMBO J.* **17**, 7009-7020.
- Nieto, M. A. (2011). The ins and outs of the epithelial to mesenchymal transition in health and disease. *Annu. Rev. Cell Dev. Biol.* **27**, 347-376.
- Nieto, M. A., Sargent, M. G., Wilkinson, D. G. and Cooke, J. (1994). Control of cell behavior during vertebrate development by *Slug*, a zinc finger gene. *Science* **264**, 835-839.
- Niswander, L. and Martin, G. R. (1992). Fgf-4 expression during gastrulation, myogenesis, limb and tooth development in the mouse. *Development* **114**, 755-768.
- Norris, D. P., Brennan, J., Bikoff, E. K. and Robertson, E. J. (2002). The Foxh1-dependent autoregulatory enhancer controls the level of Nodal signals in the mouse embryo. *Development* **129**, 3455-3468.
- Oda, H., Tsukita, S. and Takeichi, M. (1998). Dynamic behavior of the cadherin-based cell-cell adhesion system during *Drosophila* gastrulation. *Dev. Biol.* **203**, 435-450.
- Ohta, S., Schoenwolf, G. C. and Yamada, G. (2010). The cessation of gastrulation: BMP signaling and EMT during and at the end of gastrulation. *Cell Adh. Migr.* **4**, 440-446.
- Ozdamar, B., Bose, R., Barrios-Rodiles, M., Wang, H. R., Zhang, Y. and Wrana, J. L. (2005). Regulation of the polarity protein Par6 by TGFbeta receptors controls epithelial cell plasticity. *Science* **307**, 1603-1609.
- Peinado, H., Olmeda, D. and Cano, A. (2007). Snail, Zeb and bHLH factors in tumour progression: an alliance against the epithelial phenotype? *Nat. Rev. Cancer* **7**, 415-428.
- Perantoni, A. O., Dove, L. F. and Karavanova, I. (1995). Basic fibroblast growth factor can mediate the early inductive events in renal development. *Proc. Natl. Acad. Sci. USA* **92**, 4696-4700.
- Perez-Pomares, J. M. and Munoz-Chapuli, R. (2002). Epithelial-mesenchymal transitions: a mesodermal cell strategy for evolutive innovation in Metazoans. *Anat. Rec.* **268**, 343-351.
- Perez-Pomares, J. M. and de la Pompa, J. L. (2011). Signaling during epicardium and coronary vessel development. *Circ. Res.* **109**, 1429-1442.
- Peterson, R. E. and McClay, D. R. (2003). Primary mesenchyme cell patterning during the early stages following ingression. *Dev. Biol.* **254**, 68-78.
- Platt, J. B. (1894). Ontogenetische differenzierung des ektoderms in necturus. *Archiv für Mikroskopische Anatomie* **43**, 911-966.
- Polyak, K. and Weinberg, R. A. (2009). Transitions between epithelial and mesenchymal states: acquisition of malignant and stem cell traits. *Nat. Rev. Cancer* **9**, 265-273.
- Qi, D., Bergman, M., Aihara, H., Nibu, Y. and Mannervik, M. (2008). *Drosophila* Ebi mediates Snail-dependent transcriptional repression through HDAC3-induced histone deacetylation. *EMBO J.* **27**, 898-909.
- Reeves, G. T. and Stathopoulos, A. (2009). Graded dorsal and differential gene regulation in the *Drosophila* embryo. *Cold Spring Harb. Perspect. Biol.* **1**, a000836.
- Rhee, D. Y., Zhao, X. Q., Francis, R. J., Huang, G. Y., Mably, J. D. and Lo, C. W. (2009). Connexin 43 regulates epicardial cell polarity and migration in coronary vascular development. *Development* **136**, 3185-3193.
- Rho, H. K. and McClay, D. R. (2011). The control of foxN2/3 expression in sea urchin embryos and its function in the skeletogenic gene regulatory network. *Development* **138**, 937-945.
- Rivera-Feliciano, J., Lee, K. H., Kong, S. W., Rajagopal, S., Ma, Q., Springer, Z., Izumo, S., Tabin, C. J. and Pu, W. T. (2006). Development of heart valves requires *Gata4* expression in endothelial-derived cells. *Development* **133**, 3607-3618.
- Roth, S. (2003). The origin of dorsoventral polarity in *Drosophila*. *Philos. Trans. R. Soc. Lond. B Biol. Sci.* **358**, 1317-1329.
- Russ, A. P., Wattler, S., Colledge, W. H., Aparicio, S. A., Carlton, M. B., Pearce, J. J., Barton, S. C., Surani, M. A., Ryan, K., Nehls, M. C. et al. (2000). Eomesodermin is required for mouse trophoblast development and mesoderm formation. *Nature* **404**, 95-99.
- Ryan, K., Garrett, N., Mitchell, A. and Gurdon, J. B. (1996). Eomesodermin, a key early gene in *Xenopus* mesoderm differentiation. *Cell* **87**, 989-1000.
- Saga, Y., Hata, N., Kobayashi, S., Magnuson, T., Seldin, M. F. and Taketo, M. M. (1996). MesP1: a novel basic helix-loop-helix protein expressed in the nascent mesodermal cells during mouse gastrulation. *Development* **122**, 2769-2778.
- Saga, Y., Hata, N., Koseki, H. and Taketo, M. M. (1997). Mesp2: a novel mouse gene expressed in the presegmented mesoderm and essential for segmentation initiation. *Genes Dev.* **11**, 1827-1839.
- Sakai, D., Suzuki, T., Osumi, N. and Wakamatsu, Y. (2006). Cooperative action of Sox9, Snail2 and PKA signaling in early neural crest development. *Development* **133**, 1323-1333.
- San Miguel, S., Serrano, M. J., Sachar, A., Henkemeyer, M., Svoboda, K. K. and Benson, M. D. (2011). Ephrin reverse signaling controls palate fusion via a PI3 kinase-dependent mechanism. *Dev. Dyn.* **240**, 357-364.
- Sanchez, N. S. and Barnett, J. V. (2011). TGFbeta and BMP-2 regulate epicardial cell invasion via TGFbetaR3 activation of the Par6/Smurf1/RhoA pathway. *Cell Signal.* **24**, 539-548.
- Sauka-Spengler, T. and Bronner-Fraser, M. (2008). A gene regulatory network orchestrates neural crest formation. *Nat. Rev. Mol. Cell Biol.* **9**, 557-568.
- Savagner, P., Valles, A. M., Jouanneau, J., Yamada, K. M. and Thiery, J. P. (1994). Alternative splicing in fibroblast growth factor receptor 2 is associated with induced epithelial-mesenchymal transition in rat bladder carcinoma cells. *Mol. Biol. Cell* **5**, 851-862.

- Schlueter, J. and Brand, T.** (2009). A right-sided pathway involving FGF8/Snai1 controls asymmetric development of the proepicardium in the chick embryo. *Proc. Natl. Acad. Sci. USA* **106**, 7485-7490.
- Schlueter, J., Manner, J. and Brand, T.** (2006). BMP is an important regulator of proepicardial identity in the chick embryo. *Dev. Biol.* **295**, 546-558.
- Sela-Donenfeld, D. and Kalcheim, C.** (1999). Regulation of the onset of neural crest migration by coordinated activity of BMP4 and Noggin in the dorsal neural tube. *Development* **126**, 4749-4762.
- Sela-Donenfeld, D. and Kalcheim, C.** (2000). Inhibition of noggin expression in the dorsal neural tube by somitogenesis: a mechanism for coordinating the timing of neural crest emigration. *Development* **127**, 4845-4854.
- Shapiro, I. M., Cheng, A. W., Flytzanis, N. C., Balsamo, M., Condeelis, J. S., Oktay, M. H., Burge, C. B. and Gertler, F. B.** (2011). An EMT-driven alternative splicing program occurs in human breast cancer and modulates cellular phenotype. *PLoS Genet.* **7**, e1002218.
- Shintani, Y., Fukumoto, Y., Chaika, N., Svoboda, R., Wheelock, M. J. and Johnson, K. R.** (2008). Collagen I-mediated up-regulation of N-cadherin requires cooperative signals from integrins and discoidin domain receptor 1. *J. Cell Biol.* **180**, 1277-1289.
- Shoval, I., Ludwig, A. and Kalcheim, C.** (2007). Antagonistic roles of full-length N-cadherin and its soluble BMP cleavage product in neural crest delamination. *Development* **134**, 491-501.
- Singh, M. K., Lu, M. M., Massera, D. and Epstein, J. A.** (2011). MicroRNA-processing enzyme Dicer is required in epicardium for coronary vasculature development. *J. Biol. Chem.* **286**, 41036-41045.
- Smith, C. L., Baek, S. T., Sung, C. Y. and Tallquist, M. D.** (2011). Epicardial-derived cell epithelial-to-mesenchymal transition and fate specification require PDGF receptor signaling. *Circ. Res.* **108**, e15-e26.
- Spaderna, S., Schmalhofer, O., Wahlbuhl, M., Dimmler, A., Bauer, K., Sultan, A., Hlubek, F., Jung, A., Strand, D., Eger, A. et al.** (2008). The transcriptional repressor ZEB1 promotes metastasis and loss of cell polarity in cancer. *Cancer Res.* **68**, 537-544.
- St Johnston, D. and Ahringer, J.** (2010). Cell polarity in eggs and epithelia: parallels and diversity. *Cell* **141**, 757-774.
- Stark, K., Vainio, S., Vassileva, G. and McMahon, A. P.** (1994). Epithelial transformation of metanephric mesenchyme in the developing kidney regulated by Wnt-4. *Nature* **372**, 679-683.
- Stathopoulos, A. and Levine, M.** (2002). Linear signaling in the Toll-Dorsal pathway of *Drosophila*: activated Pelle kinase specifies all threshold outputs of gene expression while the bHLH protein Twist specifies a subset. *Development* **129**, 3411-3419.
- Stathopoulos, A., Tam, B., Ronshaugen, M., Frasch, M. and Levine, M.** (2004). *pyramus* and *thisbe*: FGF genes that pattern the mesoderm of *Drosophila* embryos. *Genes Dev.* **18**, 687-699.
- Stinson, S., Lackner, M. R., Adai, A. T., Yu, N., Kim, H. J., O'Brien, C., Spoerke, J., Jhunjunhua, S., Boyd, Z., Januario, T. et al.** (2011). TRPS1 targeting by miR-221/222 promotes the epithelial-to-mesenchymal transition in breast cancer. *Sci. Signal.* **4**, ra41.
- Strobl-Mazzulla, P. H., Sauka-Spengler, T. and Bronner-Fraser, M.** (2010). Histone demethylase *Jmjd2A* regulates neural crest specification. *Dev. Cell* **19**, 460-468.
- Sugi, Y. and Markwald, R. R.** (2003). Endodermal growth factors promote endocardial precursor cell formation from precardiac mesoderm. *Dev. Biol.* **263**, 35-49.
- Sugihara, K., Nakatsuji, N., Nakamura, K., Nakao, K., Hashimoto, R., Otani, H., Sakagami, H., Kondo, H., Nozawa, S., Aiba, A. et al.** (1998). *Rac1* is required for the formation of three germ layers during gastrulation. *Oncogene* **17**, 3427-3433.
- Sutherland, A.** (2003). Mechanisms of implantation in the mouse: differentiation and functional importance of trophoblast giant cell behavior. *Dev. Biol.* **258**, 241-251.
- Suzuki, T., Osumi, N. and Wakamatsu, Y.** (2010). Stabilization of ATF4 protein is required for the regulation of epithelial-mesenchymal transition of the avian neural crest. *Dev. Biol.* **344**, 658-668.
- Svensson, E. C.** (2010). Deciphering the signals specifying the proepicardium. *Circ. Res.* **106**, 1789-1790.
- Talmadge, J. E. and Fidler, I. J.** (2010). AACR centennial series: the biology of cancer metastasis: historical perspective. *Cancer Res.* **70**, 5649-5669.
- Taneyhill, L. A., Coles, E. G. and Bronner-Fraser, M.** (2007). *Snai2* directly represses *cadherin6B* during epithelial-to-mesenchymal transitions of the neural crest. *Development* **134**, 1481-1490.
- Tanimizu, N. and Miyajima, A.** (2007). Molecular mechanism of liver development and regeneration. *Int. Rev. Cytol.* **259**, 1-48.
- Tapon, N. and Hall, A.** (1997). *Rho*, *Rac* and *Cdc42* GTPases regulate the organization of the actin cytoskeleton. *Curr. Opin. Cell Biol.* **9**, 86-92.
- Tavian, M. and Peault, B.** (2005). Embryonic development of the human hematopoietic system. *Int. J. Dev. Biol.* **49**, 243-250.
- Theveneau, E. and Mayor, R.** (2011). Collective cell migration of the cephalic neural crest: the art of integrating information. *Genesis* **49**, 164-176.
- Thiery, J. P.** (2002). Epithelial-mesenchymal transitions in tumour progression. *Nat. Rev. Cancer* **2**, 442-454.
- Thiery, J. P.** (2009). Metastasis: alone or together? *Curr. Biol.* **19**, R1121-1123.
- Thiery, J. P. and Sleeman, J. P.** (2006). Complex networks orchestrate epithelial-mesenchymal transitions. *Nat. Rev. Mol. Cell Biol.* **7**, 131-142.
- Thiery, J. P., Delouvee, A., Gallin, W. J., Cunningham, B. A. and Edelman, G. M.** (1984). Ontogenetic expression of cell adhesion molecules: L-CAM is found in epithelia derived from the three primary germ layers. *Dev. Biol.* **102**, 61-78.
- Thiery, J. P., Aclouque, H., Huang, R. Y. and Nieto, M. A.** (2009). Epithelial-mesenchymal transitions in development and disease. *Cell* **139**, 871-890.
- Timmerman, L. A., Grego-Bessa, J., Raya, A., Bertran, E., Perez-Pomares, J. M., Diez, J., Aranda, S., Palomo, S., McCormick, F., Izpisua-Belmonte, J. C. et al.** (2004). Notch promotes epithelial-mesenchymal transition during cardiac development and oncogenic transformation. *Genes Dev.* **18**, 99-115.
- Todorovic, V., Finnegan, E., Freyer, L., Zilberberg, L., Ota, M. and Rifkin, D. B.** (2011). Long form of latent TGF-beta binding protein 1 (Ltbp1L) regulates cardiac valve development. *Dev. Dyn.* **240**, 176-187.
- Torlopp, A., Schlueter, J. and Brand, T.** (2010). Role of fibroblast growth factor signaling during proepicardium formation in the chick embryo. *Dev. Dyn.* **239**, 2393-2403.
- Townsend, T. A., Robinson, J. Y., How, T., DeLaughter, D. M., Blobel, G. C. and Barnett, J. V.** (2012). Endocardial cell epithelial-mesenchymal transformation requires Type III TGFbeta receptor interaction with GIPC. *Cell Signal.* **24**, 247-256.
- Trainor, P. A., Melton, K. R. and Manzanares, M.** (2003). Origins and plasticity of neural crest cells and their roles in jaw and craniofacial evolution. *Int. J. Dev. Biol.* **47**, 541-553.
- Tucker, G. C., Boyer, B., Gavrilovic, J., Emonard, H. and Thiery, J. P.** (1990). Collagen-mediated dispersion of NBT-II rat bladder carcinoma cells. *Cancer Res.* **50**, 129-137.
- Urban, A. E., Zhou, X., Ungos, J. M., Raible, D. W., Altmann, C. R. and Vize, P. D.** (2006). FGF is essential for both condensation and mesenchymal-epithelial transition stages of pronephric kidney tubule development. *Dev. Biol.* **297**, 103-117.
- Vajda, N. A., Brimacombe, K. R., LeMasters, K. E. and Ladd, A. N.** (2009). *Muscleblind-like 1* is a negative regulator of TGF-beta-dependent epithelial-mesenchymal transition of atrioventricular canal endocardial cells. *Dev. Dyn.* **238**, 3266-3272.
- Valastyan, S. and Weinberg, R. A.** (2011). Tumor metastasis: molecular insights and evolving paradigms. *Cell* **147**, 275-292.
- Valles, A. M., Boyer, B., Tarone, G. and Thiery, J. P.** (1996). *Alpha 2 beta 1* integrin is required for the collagen and FGF-1 induced cell dispersion in a rat bladder carcinoma cell line. *Cell Adhes. Commun.* **4**, 187-199.
- Van de Putte, T., Maruhashi, M., Francis, A., Nelles, L., Kondoh, H., Huylebroeck, D. and Higashi, Y.** (2003). Mice lacking ZFHx1B, the gene that codes for Smad-interacting protein-1, reveal a role for multiple neural crest cell defects in the etiology of Hirschsprung disease-mental retardation syndrome. *Am. J. Hum. Genet.* **72**, 465-470.
- Veltmaat, J. M., Orello, C. C., Ward-Van Oostwaard, D., Van Rooijen, M. A., Mummery, C. L. and Defize, L. H.** (2000). *Snail* is an immediate early target gene of parathyroid hormone related peptide signaling in parietal endoderm formation. *Int. J. Dev. Biol.* **44**, 297-307.
- Verheijen, M. and Defize, L. H.** (1999). Signals governing extraembryonic endoderm formation in the mouse: involvement of the type 1 parathyroid hormone-related peptide (PTHrP) receptor, p21Ras and cell adhesion molecules. *Int. J. Dev. Biol.* **43**, 711-721.
- Vetter, G., Saumet, A., Moes, M., Vallar, L., Le Becq, A., Laurini, C., Sabbah, M., Arar, K., Theillet, C., Lecellier, C. H. et al.** (2010). miR-661 expression in *SNAIL*-induced epithelial to mesenchymal transition contributes to breast cancer cell invasion by targeting *Nectin-1* and *StarD10* messengers. *Oncogene* **29**, 4436-4448.
- Vicovac, L. and Aplin, J. D.** (1996). Epithelial-mesenchymal transition during trophoblast differentiation. *Acta Anat. (Basel)* **156**, 202-216.
- Vincent, S., Wilson, R., Coelho, C., Affolter, M. and Leptin, M.** (1998). The *Drosophila* protein *Dof* is specifically required for FGF signaling. *Mol. Cell* **2**, 515-525.
- von Gise, A., Zhou, B., Honor, L. B., Ma, Q., Petryk, A. and Pu, W. T.** (2011). *WT1* regulates epicardial epithelial to mesenchymal transition through beta-catenin and retinoic acid signaling pathways. *Dev. Biol.* **356**, 421-431.
- Warzecha, C. C., Sato, T. K., Nabet, B., Hogensch, J. B. and Carstens, R. P.** (2009). *ESRP1* and *ESRP2* are epithelial cell-type-specific regulators of *FGFR2* splicing. *Mol. Cell* **33**, 591-601.
- Warzecha, C. C., Jiang, P., Amirikian, K., Dittmar, K. A., Lu, H., Shen, S., Guo, W., Xing, Y. and Carstens, R. P.** (2010). An *ESRP*-regulated splicing programme is abrogated during the epithelial-mesenchymal transition. *EMBO J.* **29**, 3286-3300.
- Watt, A. J., Battle, M. A., Li, J. and Duncan, S. A.** (2004). *GATA4* is essential for formation of the proepicardium and regulates cardiogenesis. *Proc. Natl. Acad. Sci. USA* **101**, 12573-12578.

- Whiteman, E. L., Liu, C. J., Fearon, E. R. and Margolis, B. (2008). The transcription factor snail represses Crumbs3 expression and disrupts apico-basal polarity complexes. *Oncogene* **27**, 3875-3879.
- Wu, M., Smith, C. L., Hall, J. A., Lee, I., Luby-Phelps, K. and Tallquist, M. D. (2010). Epicardial spindle orientation controls cell entry into the myocardium. *Dev. Cell* **19**, 114-125.
- Wu, S. Y. and McClay, D. R. (2007). The Snail repressor is required for PMC ingression in the sea urchin embryo. *Development* **134**, 1061-1070.
- Wu, S. Y., Yang, Y. P. and McClay, D. R. (2008). Twist is an essential regulator of the skeletogenic gene regulatory network in the sea urchin embryo. *Dev. Biol.* **319**, 406-415.
- Yamamoto, M., Meno, C., Sakai, Y., Shiratori, H., Mochida, K., Ikawa, Y., Saijoh, Y. and Hamada, H. (2001). The transcription factor FoxH1 (FAST) mediates Nodal signaling during anterior-posterior patterning and node formation in the mouse. *Genes Dev.* **15**, 1242-1256.
- Yang, M. H., Hsu, D. S., Wang, H. W., Wang, H. J., Lan, H. Y., Yang, W. H., Huang, C. H., Kao, S. Y., Tzeng, C. H., Tai, S. K. et al. (2010). Bmi1 is essential in Twist1-induced epithelial-mesenchymal transition. *Nat. Cell Biol.* **12**, 982-992.
- Yang, Y., Ahn, Y. H., Gibbons, D. L., Zang, Y., Lin, W., Thilaganathan, N., Alvarez, C. A., Moreira, D. C., Creighton, C. J., Gregory, P. A. et al. (2011). The Notch ligand Jagged2 promotes lung adenocarcinoma metastasis through a miR-200-dependent pathway in mice. *J. Clin. Invest.* **121**, 1373-1385.
- Yang, Z., Rayala, S., Nguyen, D., Vadlamudi, R. K., Chen, S. and Kumar, R. (2005). Pak1 phosphorylation of snail, a master regulator of epithelial-to-mesenchyme transition, modulates snail's subcellular localization and functions. *Cancer Res.* **65**, 3179-3184.
- Zamora, M., Manner, J. and Ruiz-Lozano, P. (2007). Epicardium-derived progenitor cells require beta-catenin for coronary artery formation. *Proc. Natl. Acad. Sci. USA* **104**, 18109-18114.
- Zehir, A., Hua, L. L., Maska, E. L., Morikawa, Y. and Cserjesi, P. (2010). Dicer is required for survival of differentiating neural crest cells. *Dev. Biol.* **340**, 459-467.
- Zhou, B. P., Deng, J., Xia, W., Xu, J., Li, Y. M., Gunduz, M. and Hung, M. C. (2004). Dual regulation of Snail by GSK-3beta-mediated phosphorylation in control of epithelial-mesenchymal transition. *Nat. Cell Biol.* **6**, 931-940.
- Zohn, I. E., Li, Y., Skolnik, E. Y., Anderson, K. V., Han, J. and Niswander, L. (2006). p38 and a p38-interacting protein are critical for downregulation of E-cadherin during mouse gastrulation. *Cell* **125**, 957-969.
- Zoltan-Jones, A., Huang, L., Ghatak, S. and Toole, B. P. (2003). Elevated hyaluronan production induces mesenchymal and transformed properties in epithelial cells. *J. Biol. Chem.* **278**, 45801-45810.