



Erratum: mRNA Turnover Rate Limits siRNA and microRNA Efficacy

Citation

Larsson, Erik, Chris Sander, and Debora Marks. 2010. Erratum: mRNA turnover rate limits siRNA and microRNA efficacy. *Molecular Systems Biology* 6: 454.

Published Version

doi:10.1038/msb.2010.113

Permanent link

<http://nrs.harvard.edu/urn-3:HUL.InstRepos:4774016>

Terms of Use

This article was downloaded from Harvard University's DASH repository, and is made available under the terms and conditions applicable to Other Posted Material, as set forth at <http://nrs.harvard.edu/urn-3:HUL.InstRepos:dash.current.terms-of-use#LAA>

Share Your Story

The Harvard community has made this article openly available. Please share how this access benefits you. [Submit a story](#).

[Accessibility](#)

ERRATUM

mRNA turnover rate limits siRNA and microRNA efficacy

Erik Larsson^{1,*}, Chris Sander¹ and Debora Marks^{2,*}

¹ Computational Biology Center, Memorial Sloan Kettering Cancer Center, New York, NY, USA and ² Department of Systems Biology, Harvard Medical School, Boston, MA, USA

* Corresponding authors. D Marks, Department of Systems Biology, Harvard Medical School, 200 Longwood Avenue, Alpert 536, Boston, MA 02115, USA. Tel.: +1 617 953 4107; Fax: +1 646 422 0717; E-mail: deboramarks@gmail.com or E Larsson, Computational Biology Center, Memorial Sloan-Kettering Cancer Center, New York, NY 10065, USA. Tel.: +1 646 888 2610; Fax: +1 212 422 0717; E-mail: larsson@cbio.mskcc.org

Molecular Systems Biology 6: 454; published online 21 December 2010; doi:10.1038/msb.2010.113

Correction to: *Molecular Systems Biology* 6: 433. doi:10.1038/msb.2010.89; published online 16 November 2010

Since the publication of the above paper, the authors have noticed that the correspondence details for E Larsson were incorrect: Computational Biology Program should have read Computational Biology Center. The correct details are shown above.

The authors also noticed an error in Figure 5. During typesetting, both the dashed vertical line at -1.5 on the x axis, used to indicate the threshold for generating the bar graph to the right, and the dashed green curve were moved to the left.

Please see the corrected figure below.

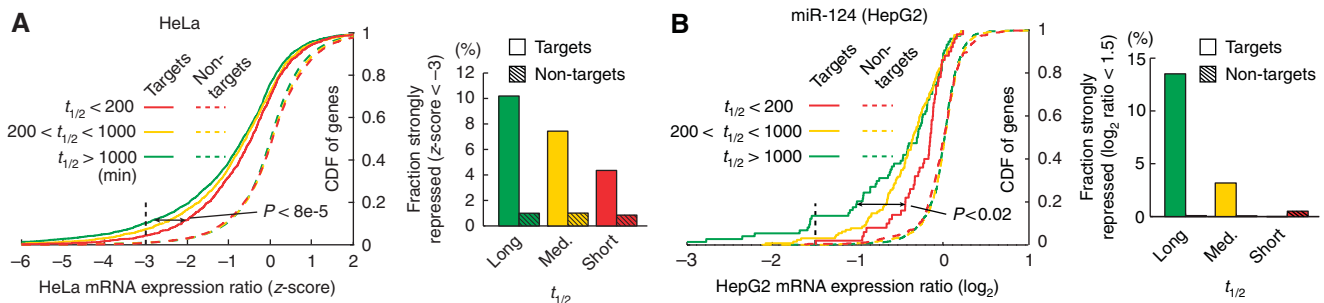
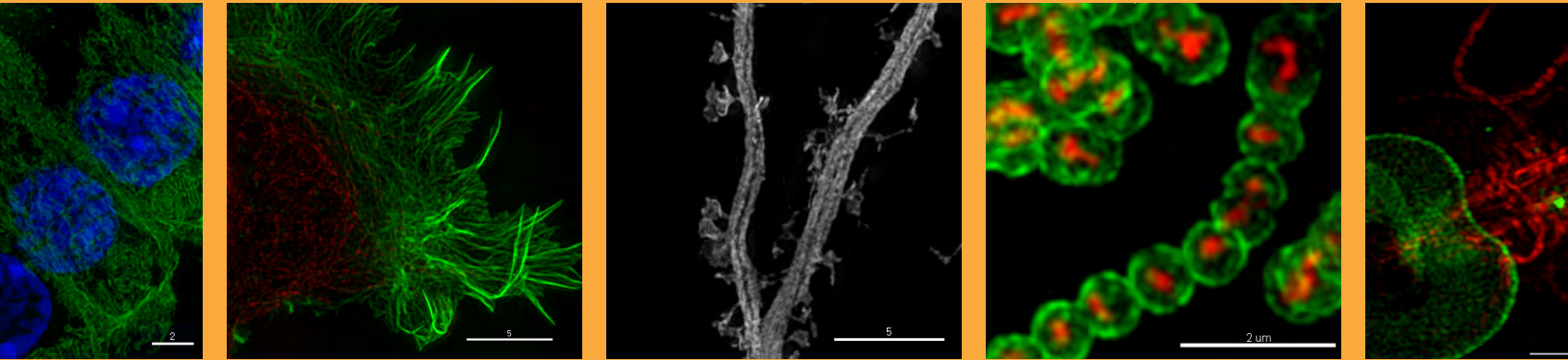


Figure 5 High-turnover mRNAs are less influenced by microRNA overexpression. **(A)** Genes were divided into three bins based on their half-lives ($t_{1/2}$). The plot shows the cumulative distribution function (CDF) of relative mRNA expression levels after transfection of synthetic microRNAs. Z-normalized \log_2 -transformed mRNA expression ratios from 20 microRNA overexpression experiments were pooled. The bar graphs indicate, for each half-life bin, the fraction of predicted targets or non-targets that were strongly repressed ($z\text{-score} < -3$). **(B)** Similar analysis based on a time series of miR-124 overexpression in HepG2 cells. Result shown is for 24 h after transfection. Source data is available for this figure at www.nature.com/msb.

Real data.
Real installations.
Real super-resolution imaging.



Learn more about the DeltaVision OMX super-resolution imaging system at www.superresolution.com.