

## Naturally occurring lung CD4<sup>+</sup>CD25<sup>+</sup> T cell regulation of airway allergic responses depends on IL-10 induction of TGF- $\beta$

This information is current as of August 9, 2022.

A. Joetham, K. Takada, C. Taube, N. Miyahara, S. Matsubara, T. Koya, Y.-H. Rha, A. Dakhama and E. W. Gelfand

*J Immunol* 2007; 178:5400; ;  
doi: 10.4049/jimmunol.178.8.5400  
<http://www.jimmunol.org/content/178/8/5400>

### Why *The JI*? [Submit online.](#)

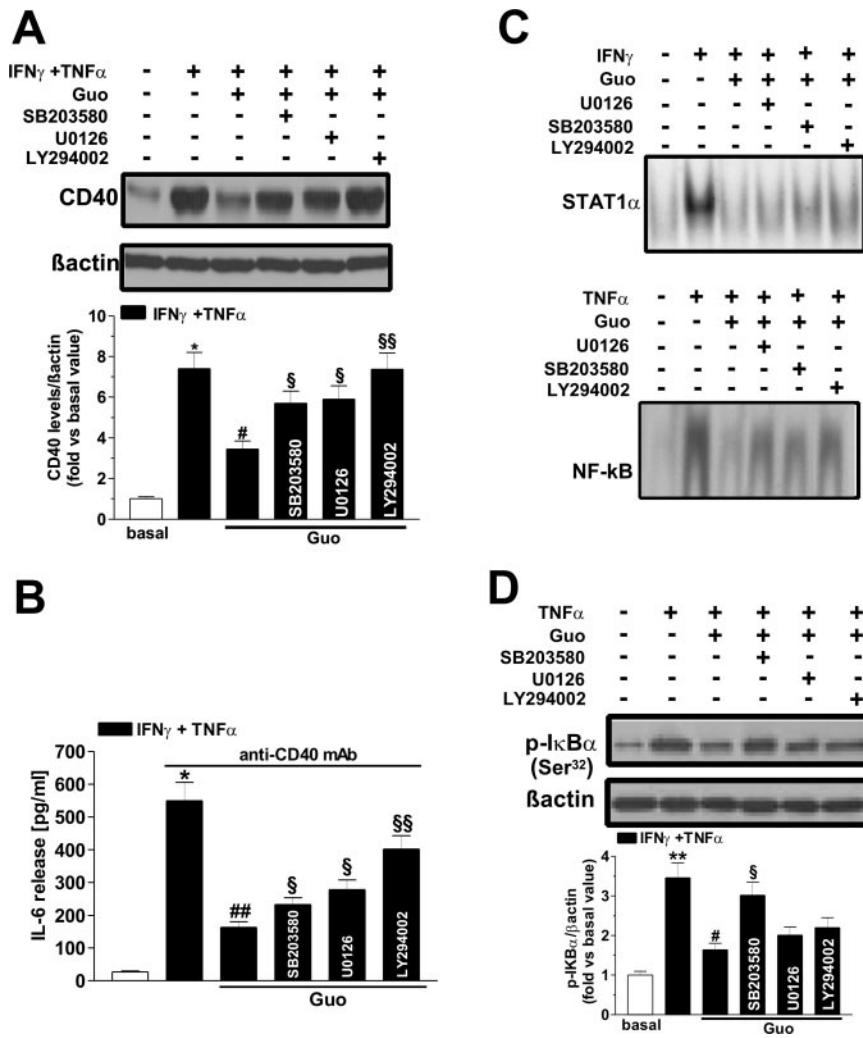
- **Rapid Reviews! 30 days\*** from submission to initial decision
- **No Triage!** Every submission reviewed by practicing scientists
- **Fast Publication!** 4 weeks from acceptance to publication

*\*average*

**Subscription** Information about subscribing to *The Journal of Immunology* is online at: <http://jimmunol.org/subscription>

**Permissions** Submit copyright permission requests at: <http://www.aai.org/About/Publications/JI/copyright.html>

**Email Alerts** Receive free email-alerts when new articles cite this article. Sign up at: <http://jimmunol.org/alerts>



Joetham, A., K. Takada, C. Taube, N. Miyahara, S. Matsubara, T. Koya, Y.-H. Rha, A. Dakhama, and E. W. Gelfand. 2007. Naturally occurring lung CD4<sup>+</sup>CD25<sup>+</sup> T cell regulation of airway allergic responses depends on IL-10 induction of TGF- $\beta$ . *J. Immunol.* 178: 1433–1442.

The second author's last name is misspelled and the fifth author's first name is incorrect. The corrected author line is shown below.

Anthony Joetham, Katsuyuki Takeda, Christian Taube, Nobuaki Miyahara, Shigeki Matsubara, Toshiyuki Koya, Yeong-Ho Rha, Azzeddine Dakhama, and Erwin W. Gelfand