
Estimating Spatio-Temporal Risks from Volcanic Eruptions Using an Agent-Based Model



J. Jumadi¹, Nick Malleson², Steve Carver², Duncan Quincey³

¹Faculty of Geography, Universitas Muhammadiyah Surakarta, Jl. A. Yani Tromol Pos 1 Pabel, Surakarta 57162, Indonesia

²Centre for Spatial Analysis and Policy, School of Geography, University of Leeds, Woodhouse Lane, Leeds LS2 9JT, United Kingdom

³River Basin Processes & Management, School of Geography, University of Leeds, Woodhouse Lane, Leeds LS2 9JT, United Kingdom

Correspondence should be addressed to jumadi@ums.ac.id

Journal of Artificial Societies and Social Simulation 23(2) 2, 2020

Doi: 10.18564/jasss.4241 Url: <http://jasss.soc.surrey.ac.uk/23/2/2.html>

Received: 18-12-2016

Accepted: 01-02-2020

Published: 31-03-2020

Abstract: Managing disasters caused by natural events, especially volcanic crises, requires a range of approaches, including risk modelling and analysis. Risk modelling is commonly conducted at the community/regional scale using GIS. However, people and objects move in response to a crisis, so static approaches cannot capture the dynamics of the risk properly, as they do not accommodate objects' movements within time and space. The emergence of Agent-Based Modelling makes it possible to model the risk at an individual level as it evolves over space and time. We propose a new approach of Spatio-Temporal Dynamics Model of Risk (STDMR) by integrating multi-criteria evaluation (MCE) within a georeferenced agent-based model, using Mt. Merapi, Indonesia, as a case study. The model makes it possible to simulate the spatio-temporal dynamics of those at risk during a volcanic crisis. Importantly, individual vulnerability is heterogeneous and depends on the characteristics of the individuals concerned. The risk for the individuals is dynamic and changes along with the hazard and their location. The model is able to highlight a small number of high-risk spatio-temporal positions where, due to the behaviour of individuals who are evacuating the volcano and the dynamics of the hazard itself, the overall risk in those times and places is extremely high. These outcomes are extremely relevant for the stakeholders, and the work of coupling an ABM, MCE, and dynamic volcanic hazard is both novel and contextually relevant.

Keywords: ABM, Volcanic Crisis, Risk Estimation, Spatio-Temporal Modeling, MCE, Merapi

Introduction

- 1.1 During natural disasters, the level of hazard varies over space and time, due to various factors. During volcanic eruptions, for example, the spatial extent of the impact is controlled by the contrasting nature of the volcanic sources, the type and magnitude of the explosive eruptions, and the local topography (Lirer et al. 2010). Likewise, with regards to floods, the specific hazard can vary depending on hydro-meteorological aspects and drainage basin topography (Merz et al. 2006; Yan et al. 2015). Such spatio-temporal variability of hazards means that the associated *risks* can be dynamic over time and space. This is especially true during volcanic crises, where the time and location are critical in defining the risk to human populations; 'being in the wrong place at the wrong time' can lead to fatalities. Under certain conditions, those residing in the vicinity of a volcano may need to evacuate hazardous areas quickly. This is often the only way to reduce the risk from a volcanic impact because it is almost impossible to survive the hazardous material emissions that occur during an eruption, such as pyroclastic flows and toxic gases (d'Albe 1979).
- 1.2 The combination of the mobile nature of people together with the spatio-temporal variability of hazards means that risks are dynamic. Better spatio-temporal modelling is required to estimate these dynamics rather than relying on a static risk map (Alcorn et al. 2013). Risk modelling is important in understanding the potential

impact of certain hazards, and so is important for disaster management. This is traditionally conducted at the community/regional scale using GIS. For example, Biass et al. (2012) successfully analysed risk, focusing on the impact of tephra fallout from the Cotopaxi volcano, and produced several thematic maps that included the social risk level.

- 1.3 Meanwhile, Alcorn et al. (2013) more comprehensively analysed the volcanic risk of Valles Caldera, New Mexico, focusing on testing and demonstrating a GIS-based Multi-Criteria Evaluation (MCE) for risk assessment. Both the hazard and vulnerability were combined based on several criteria using MCE. Similarly, Scaini et al. (2014) used spatial overlay analysis of the hazard and vulnerability maps in GIS to generate risk maps for Tenerife, Spain. Although both Alcorn et al. (2013) and Scaini et al. (2014) present more comprehensive analyses regarding the hazards than Biass et al. (2012), they share a similar limitation with respect to their accounting of the dynamic risks posed to mobile individuals.
- 1.4 Such GIS-based overlay analyses face difficulties in modelling dynamic aspects due to the GIS' inability to handle both space and time appropriately. While static risk analyses can provide spatial risk information that is suitable for assessing the risk to fixed elements, such as buildings, infrastructure, and economic units, they are less appropriate for modelling the risk to those with the ability to move during an emergency in response to unfolding events. Therefore, models that can represent the dynamics of individual risk over time and space are required. Agent-based Models (ABMs), which are able to simulate agent behaviour in non-linear systems (Clarke 2014; Malleson et al. 2014; Srdljinić & Škunca 2003), provide a new approach to risk analysis that focuses on the individuals who are ultimately at risk. However, the concept of individual risk in the typical ABMs of evacuation is less well-developed. Therefore, this paper proposes to use MCE to model individual risks that involve multiple attributes to address this issue.
- 1.5 In an ABM, people are represented as agents who have heterogeneous characteristics and behaviour (Crooks & Castle 2012) and are able to navigate their environment and interact with other agents. Furthermore, heterogeneity can be introduced into the population of agents, which allows the modelling of individual variations with regards to vulnerability and mobility. The coupling of an ABM with a dynamic hazard model therefore provides an ideal framework through which to represent the dynamic risk to individuals during a volcanic emergency.
- 1.6 ABMs have been used to simulate emergency situations but are limited in terms of taking into account the dynamics of associated risks. The spatial scale of the emergencies as well as the type of hazard vary from buildings (e.g. fire; Shi et al. (2009)) to regions (e.g. earthquake, Bernardini et al. (2014); wildfire, Wise (2014); hurricanes, Zhang et al. (2009) and tsunami, Mas et al. (2012)). The dynamics of hazard has been commonly implemented; for instance, Mas et al. (2012) used numerical models to simulate inundation due to a tsunami while Wise (2014) used cellular automata to simulate wildfire propagation. However, the dynamic nature of risk includes the interaction of hazards with the elements at risk, especially people, and this was inadequately incorporated into the models used in these examples.
- 1.7 In this paper, we propose a new approach of the Spatio-temporal Dynamics Model of Risk (STD MR) and provide a case study using a pre-developed agent-based evacuation model for Mt. Merapi (Jumadi et al. 2018, 2017). This approach first creates an individual-level (synthetic) population of agents who live in the area surrounding a volcano. Each agent has a unique vulnerability and, since vulnerability comprises several factors (Cutter et al. 2003), MCE is used to create a single social vulnerability index for each individual based on his/her place of residence. This is coupled with a dynamic hazard model to capture the dynamics of risk as applied to the individual. The model is able to highlight a small number of high-risk spatio-temporal positions where, due to the behaviour of the individuals evacuating the volcano and the dynamics of the hazard itself, the overall risk at those times and in those places is extremely high. The outcomes are interesting and extremely relevant for the stakeholders, and the work of coupling an ABM, MCE, and dynamic volcanic hazard is both novel and contextually relevant. The paper is organised as follows: in Section 2, we describe the background concept of the approach; Section 3 then presents the methodology for applying the model and case study; Section 4 provides the results of the experimentation and the spatiotemporal analysis of the results; and, lastly, Section 5 discusses the outcomes and overall conclusion.

Background: Modelling the Dynamics of Risk

- 2.1 The previous section discussed the importance of incorporating the spatio-temporal dynamic of a hazard into the modelling of human risk. This section provides the background concept of the approach through the integration of Multi-Criteria Evaluation (MCE) into an ABM. The vulnerability of people to a volcanic hazard is multi-faceted, so MCE is a useful technique that can be used to quantify this value (Armas & Gavrís 2013). Meanwhile,

ABM is used here to account for the nature of the social processes in an emergency situation, which are complex (Dash & Gladwin 2007). Representing human behaviour in such a situation is extremely challenging due to the difficulties associated with modelling human behaviour. Specifically, the responses and behaviour of people during a disaster will vary according to their socioeconomic and demographic characteristics (Christia 2012; Donovan 2010; Dove 2008; Lavigne et al. 2008; Riando 2009). This integration is conceptually able to model the dynamics of human risk to natural hazards in a spatio-temporal manner.

2.2 The risk is considered here to be the probability of harmful consequences or expected losses that result from the interaction between hazards and vulnerable people or objects (Blaikie et al. 2014; UNISDR 2004). Risk is estimated to be a function of hazard and vulnerability using Equation 1 (Sar et al. 2015; UNISDR 2004). Consequently, when the value of the hazard changes, the risk will change as well. For example, consider a population with a degree of vulnerability arising from living in the certain hazard zone (Figure 1). During a volcanic emergency, the magnitude and intensity of the hazards vary with respect to the proximity to the summit, as well as the topographical conditions that determine the direction of the flow of volcanic material. As the population may be moving during the crisis, their hazard level will vary over time (t_1 to t_2). Simultaneously, the hazard will vary due to the changing intensity of the volcanic activity. Therefore, the degree of risk varies in both cases. The aforementioned concept of risk with regards to the mobile nature of people and the dynamics of hazard can be used to formulate the spatio-temporal risk model on an individual basis.

$$\text{Risk} = \text{Hazard} * \text{Vulnerability} \quad (1)$$

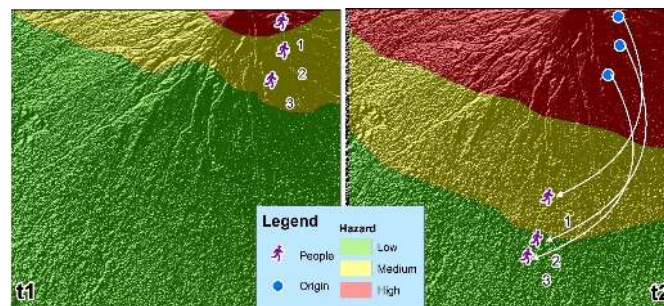


Figure 1: Illustration of moving people and the dynamics of hazard over time and space.

2.3 Individual risk (Newhall & Hoblitt 2002) is the probability that a particular individual, at known coordinates, will be killed or injured by the volcano within a specified period. In this research, we specify the hazard as a potentially damaging eruption that may cause loss of life, injury, and social disruption (UNISDR 2004). A map of the hazard can consist of several elements. Specifically, in the case of volcanic hazards, these elements include the types of hazardous material that are emitted during the eruption, such as the Pyroclastic Density Current (PDC), lava flow, and tephra fallout (Alcorn et al. 2013). In the study area, the historical records have been compiled to form a single hazard map (BNPB 2011). Meanwhile, we describe vulnerability as the characteristics of a person or group that influence their capacity to anticipate, cope with, resist, and recover from the consequences of a natural hazard (Blaikie et al. 2014). Vulnerability is multidimensional in nature and can be measured using a combination of many different variables (Lummen & Yamada 2014). Here, we quantify vulnerability using the Social Vulnerability Index (SoVI) (Cutter et al. 2003). The SoVI has been developed based on several attributes; namely, socioeconomic status (income, political power, prestige), gender, race and ethnicity, age, commercial and industrial development, employment loss, rural/urban, residential property, infrastructure and lifelines, renters, occupation, family structure, education, population growth, medical services, social dependence, and special needs populations (Cutter et al. 2003). This index has been widely used to measure social vulnerability regarding environmental hazards in various regions (Armas & Gavris 2013; Chakraborty et al. 2005; Garbutt et al. 2015; Letsie & Grab 2015; Schmidlein et al. 2008; Tapsell et al. 2010; Yoon 2012).

2.4 Individual risk assessment has different criteria from risk assessment for the community/region. A risk assessment on a regional scale, using a community or group of people as the assessment unit, uses criteria based on the characteristics of the community and the region where the population lives, although there is no literature describing risk assessment on an individual basis. Therefore, in this research, we define several characteristics of individuals (or 'agents') to generate the SoVI and assess the hazard degree of their specific location to provide the value of the hazard at a particular time. The concept used here to define individual risk consists of three parts: defining the socio-economic parameters for individual vulnerability; defining the hazard at the

individual location; and measuring the risk. There are several socioeconomic parameters that are used in the vulnerability assessment through the application of an MCE. Meanwhile, the hazard is assessed based on the person's location within the given hazard zone. The risk is defined based on the measured vulnerability and the hazard level (Figure 2).

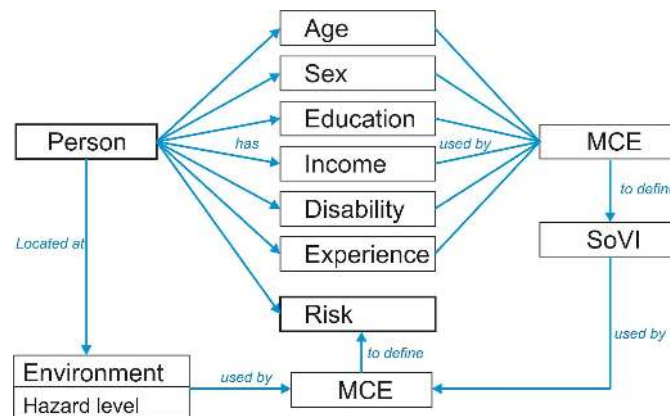


Figure 2: Individual risk concept using Multi-Criteria Evaluation (MCE) based on physical (hazard) and social (person attribute) variables.

- 2.5** MCE plays a major role in defining individual risk. In the individual risk model, MCE is used to evaluate both SoVI and the risk as the final result, based on the criteria provided. MCE, also called Multi-Criteria Analysis (MCA), was originally a technique used to make a decision based on multiple criteria and conflicting priorities (Voogd 1983). Later, this concept was widely used to analyse problems or assess values that consist of multiple criteria or attributes (Abella & Van Westen 2007; Armas & Gavris 2013; Labadie & Prodhon 2014). Thus, MCE is often used to analyse the compromises which exist between multiple choice alternatives, while GIS provides the ability to analyse complex spatial problems from several layers of spatial data. MCE analysis starts with the construction of an evaluation matrix that contains elements that reflect the characteristics of the set of alternatives, based on a specific set of criteria. Each element can be weighted based on its contribution to the goal using several techniques; namely, ranking, rating, pairwise comparison (AHP), and trade-off (Malczewski 1999). Commonly, two techniques are employed to aggregate this element so that the final result can be achieved through a weighted linear combination (WLC) and Boolean overlay (Eastman 1999; Malczewski 2000).
- 2.6** Finally, those concepts need to be implemented in an ABM to simulate the dynamics. Although potentially powerful, and successfully integrated into GIS (Carver 1991), the integration of MCE and ABM is rare. Bishop et al. (2009) discussed the potential use of MCE in exploring the various outcomes of decision-making processes by human agents with different preferences, while (Gao & Hailu 2012) applied MCE in an Agent-based Simulation as a Decision Support System regarding the selection of fisheries management strategies. However, we found no articles using such an approach for disaster risk modelling. ABM has emerged as a valuable alternative to the traditional aggregate mathematical modelling, as it can accommodate the complexity of a system through its ability to capture the interactions between agents on the same or different scales (Gilbert & Troitzsch 2005). While an ABM consists of discrete ‘agents’ that can interact within an environment (Gilbert 2008) and has the ability to incorporate the complex, multiple attributes of individuals, it lacks a method for evaluating those attributes into a single decision/value. MCE, on the other hand, appears promising with regard to solving this problem, and so has the potential to be integrated into the model.

Materials and Method

- 3.1** The basic concepts of integrating multi-criteria evaluation (MCE) into Agent-based Modelling (ABM) for the Spatio-temporal Dynamics Model of Risk (STDMM) were theoretically discussed in the previous section. In this section, we provide an overview of the application of STDMM. It starts with an introduction to the study area, an outline of the process of collecting data from this area for use in the model, and the integration of STDMM to the ABM of evacuation. This ABM is developed based on the spatio-temporal volcanic evacuation model framework (Jumadi et al. 2017) that has been improved with the individual evacuation decision model and subjected to validation using real data (Jumadi et al. 2018). An overview on how the ABM works and integrates the STDMM is provided below.

Study area

- 3.2** Merapi Volcano is located on Java Island, Indonesia, and poses a potential hazard to the surrounding communities. Recent work suggests that the potential for Merapi erupting is far higher now than has been found historically (Andreastuti et al. 2000; Camus et al. 2000). These risks were confirmed by the most recent event, that occurred in 2010. This potential eruption style varies between either Sub-Plinian or Plinian. In disaster studies, volcanic explosivity indices (VEI) are often used to describe the potential destructiveness of an eruption. The VEI ranges from 0 (least destructive) to 8 (most destructive) (Newhall & Self 1982). The VEI of Merapi's eruptions ranged from 1-3 but unexpectedly increased to 4 in 2010 (Surono et al. 2012). As a consequence of the VEI 4 eruption in 2010, the area surrounding Merapi suffered the worst disaster of the last century.
- 3.3** Eruption activities commonly produce diverse hazardous events, and Merapi has unique hazard types. *Nue'es ardentes* (Bardintzeff 1984) and lahars (Lavigne & Thouret 2003) are two particular hazards that are harmful to the communities besides the explosion (Thouret et al. 2000) and the slight impact of ash (Damby et al. 2013). *Nue'es ardentes* is produced by gravitational dome collapse, whereby the impact's extent is commonly controlled by its topographical character (Kelfoun et al. 2000). It can travel up to 3.5 km from only a few individual events (Abdurachman et al. 2000), whereas lahars events are usually initiated by high rainfall intensity (Lavigne & Thouret 2003). Lahars are the overbank flows of pyroclastic material coupled with rainwater and are considered the most dangerous part of the material flow system in Merapi (Charbonnier & Gertisser 2008). The direction of this flow is strongly influenced by the initial flow direction and the topography, that affect the subsequent spatial extent of the hazard (Itoh et al. 2000).
- 3.4** The eruption in 2010 strongly affected the geomorphological structure (Saepuloh et al. 2013) and geological character (Gertisser et al. 2012) of Merapi, which has implications for the spatial extent of the hazard map (BNPB 2011, 2008). Also, the eruption changed the potential direction of the pyroclastic or lahar flows. It can be predicted that the southern flank of Merapi will probably be more heavily impacted by the next eruption than elsewhere (Figure 4). Based on this, we use the Sleman Regency, an administrative region located on the southern flank of Merapi, as a case study. Sleman (Figure 3) is geographically located between 107°15' 03" and 107°29' 30" east longitude, and 7°34' 51" and 7°47' 30" South latitude. Sleman covers 57,482 hectares/574.82 km² or about 18% of Yogyakarta Province. Administratively, this region consists of 17 districts, 86 villages, and 1,212 hamlets.

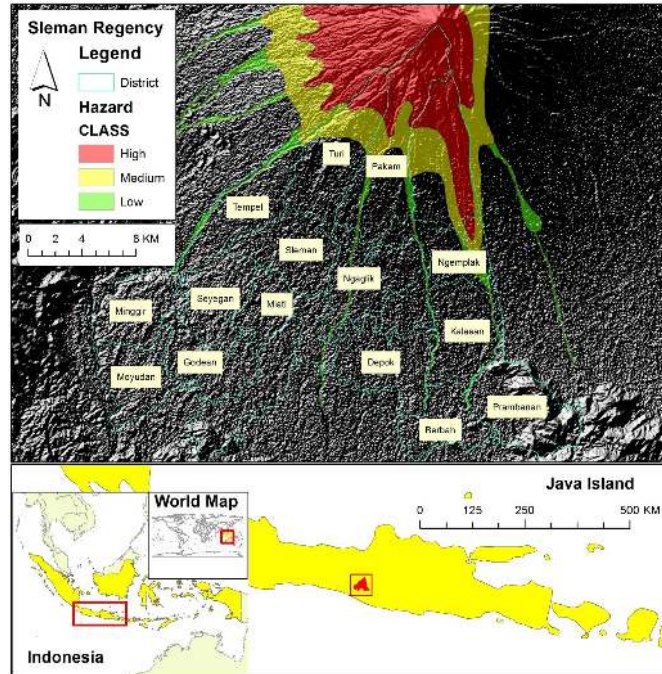


Figure 3: Study area.

Data collection

- 3.5** The data used here are collected from primary and secondary sources. The secondary data consist of admin-

istrative boundaries, volcanic hazard zones, shelter locations, land use, census microdata, and road networks. The primary data are drawn from an extensive questionnaire survey undertaken in 2016. The survey data were used to complete the variables of the census microdata (Center 2015) in order to create the population of human agents as well as develop the evacuation decision-making process (Jumadi et al. 2018).

- 3.6 The questionnaire was developed to gather information regarding the mechanisms used in decision-making and the interaction of people during eruption crises in the Mt. Merapi region. A literature review was conducted to explore the variables that influence the decision-making and interaction. Five primary variables were assessed via the questionnaire survey; namely, socio-demographic characteristics, perception of volcanic hazard, decision-making behaviour, interaction during a crisis, and willingness to accept and act on an alert. The question list was developed based on these variables. The demographic characteristics are used in this research to characterize each agent as well as identify its social vulnerability. Meanwhile, the decision-making process takes place when people start to evacuate. It explores the variability of the population in terms of making decisions during a crisis. The main indicator of this behaviour is the start time, related to the onset of the enhanced activity of the volcano. The questionnaire explores the factors that might motivate or demotivate people when making decisions about whether or not to evacuate. The interaction is also taken into account on the questionnaire. In this case, data on the probability that people will forward their information about alerts and the associated impacts on their decisions are needed.
- 3.7 In order to collect these variables, stratified random sampling was applied. Household member samples, represented as building units, were selected randomly for each building block (*dusun*). This area segmentation is based on the fact that each *dusun* has one village chief who mobilises people (*Rukun Tangga*) and, commonly, in the rural areas of Indonesia, has homogenous social characteristics. Twelve villages were selected within a radius of 20 km. Several ring buffers with distance ranges of 5 km were created to define the sampling areas, with three villages selected from each range. Furthermore, ten participants from each village were selected randomly, resulting in 120 participants in total.
- 3.8 The results of the survey were statistically analysed to develop the evacuation decision model (Jumadi et al. 2018, see). The data from the survey were tabulated and analysed using SPSS. The result of the regression analysis is used to develop the driving forces governing the decision to evacuate or stay that is implemented as the decision-making rule of the agent in the ABM.

Agent-based STDMR of volcanic evacuation

General framework

- 3.9 The ABM of the volcanic evacuation simulation was developed based on the relationship model between the volcano and the surrounding population. The basic model and its complete documentation is provided in a previous publication (Jumadi et al. 2017). This model marries the physical environment and social interactions to generate the value of risk (Cova 1999; Pons et al. 2014; Sengupta & Bennett 2003), as presented in Figure 4. The physical variables are generated from the characteristics of the volcano and its hazard zone, including the VEI, activity length, activity level, and the spatial extent of the hazard (Figure 4). The VEI can also be used to estimate the spatial extent of the impact, and is generated based on the eruption record of the volcano. The probability distribution of the VEI is used to define the VEI in the simulation. Eruption records can also be used to estimate the length of the crisis (activity length). Considering that volcanic activity fluctuates within a period of crisis, the activity level from the rest condition (i.e. period of inactivity) to the climax of the event can be estimated. This activity level is also related to the hazard.

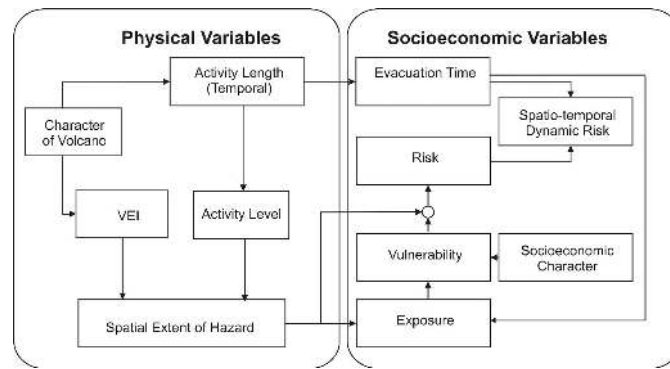


Figure 4: General Framework of the ABM. The left-hand box (Physical Variables) illustrates how the VEI and activity level are used to estimate the spatial extent of the volcanic hazard. The VEI and the length of the activity are the physical characteristics of the volcano as recorded in the literature. These feed into the socioeconomic variables (right-hand box) that are the attributes of the human-agents and are used to assess the overall risk. The hazard (which varies spatially and temporally) is used to estimate the exposure to the population and, subsequently, the overall risk. The activity length is used to estimate the evacuation time (the period during which the risk changes dynamically as a result of people's movement) and, subsequently, the spatiotemporal risk dynamic which quantifies the risk at every time period (t).

Synthetic population generation

- 3.10** To create human-agents, census microdata (Center 2015) and a separate survey of 120 households are used. We use conditional probability (Monte Carlo Simulation) to generate the synthetic population of agents (Heppenstall et al. 2011; Moeckel et al. 2003), a complete description of which is provided elsewhere (Jumadi et al. 2018). In this model, human-agents are generated for each sub-district of Sleman in individual units, grouped as households. It would be advantageous to create an agent to represent every person, but the AnyLogic PLE limits the total number of agents to 50,000. Therefore, approximately 50,000 (6% of the total population of study area) representative agents were created. The characteristics of the people are used in order to calculate the SoVI variables; they, together with the other variables, influence the decisions of the agents (for further details on this, see Jumadi et al. 2018). Each agent is initialised with characteristics that are randomly drawn from probability distributions generated from the census microdata and survey data.

Model Description

- 4.1** The model is documented using Overview, the Design Concept, Detail (ODD protocol) (Grimm et al. 2006; Polhill 2010), as presented in the following sub-sections. Further details are provided at: <https://tinyurl.com/stdmr>.

Overview

Purpose

- 4.2** This model is designed to demonstrate how the risk varies over a spatio-temporal range of volcanic activity. Here, the risk dynamically changes along with the changes of hazard due to the different volcanic activity levels.

Entities, state variables, scales, and environment

- 4.3** The model consists of three agents, namely, the volcano, stakeholder, and people (population), that interact within the geographical environment (Jumadi et al. 2017). The volcano acts as an agent, which initiates the hazardous situation and influences the environment as a potential threat to the surrounding population. The other agents in the interactions are the stakeholder and the population. The stakeholder, in this case the authorities (government), plays a role in observing and analysing the activities of the volcano and in issuing warnings

Entity	Attribute name	Attribute type	Description
Volcano	Latitude	Double	Latitude of the volcano location
	Longitude	Double	Longitude of the volcano location
	Activity length	Integer	The duration of the crisis
	Activity level	Double	This represents the level of volcanic activity expressed qualitatively from low (1) to high (4)
People	VEI		Volcanic Explosivity Index
	Activity Scenarios	List<double>	Contains a list of the scenarios of activity length of each level (low to high)
	District ID	Integer	Number of districts where people live
	Latitude	Double	Latitude of current location
	Longitude	Double	Longitude of current location
	Home latitude	Double	Latitude of home location
	Home longitude	Double	Longitude of home location
	Movement speed	Double	Speed of movement (km/h)
	Hazard level	Integer	The hazard level of the agent location
	Destination	Shelter	The selected destination for evacuation
	Links	List<People>	List of people generated randomly to express agents' relationship
	Age	Integer	Age of person generated from custom distribution based on census data
	Education	Integer	Education level of person generated from custom distribution based on census data
	Sex	Integer	Gender (male = 1, female = 2) of person generated from custom distribution based on census data
	PersonallIntension (PI)	Integer	The degree of peoples motivation to evacuate by themselves (taken from survey).
	ProtectProperty (PP)	Integer	The degree of people's motivation to stay to protect their property (taken from survey).
	SeeTheExplosion (SE)	Boolean	Whether the agent saw the volcano erupt or not.
	Perception	Integer	This value describes how a good agent perceives the hazard.
	CulturalBelief (CB)	Integer	The degree of people's motivation to stay due to their belief (estimated from literature, only assigned to the aged and low educated people).
	GovernmentAlert (GA)	Integer	The degree of people's motivation to evacuate when they receive an alert from the stakeholder (taken from survey).
	FeelingDanger (FD)	Integer	Quantification of feeling in danger.
	FeelingSafe (FS)	Integer	Quantification of feeling safe. This will be deduced when FD increases.
	NotKnowTheDestination (ND)	Integer	The degree of people's motivation to stay because they do not where to go (taken from survey).
TransportConcern (TC)	Integer	The degree of people's motivation to stay because they have problem with transportation (taken from survey).	
SocialInfluence (SI)	Integer	The degree of people's motivation to evacuate due to their social relation decision (taken from survey).	
Income	Integer	The level of income/wage of the person generated from the probability distribution (from the micro data statistics).	
Disability	Integer	Express whether the person has disability attributes or not.	
Experience	Integer	Express whether the person has experience of a past disaster or not.	
Vulnerability	Integer	Degree of Social Vulnerability Index (SoVI).	
Risk	Integer	Degree of risk of person in accordance with the hazard level and vulnerability.	
Stakeholder	Alert level	Integer	Alert level as a result of volcanic activity observation
	Links	List<People>	List of random people who directly receive the alert
Environment	Districts	List<Polygon>	The boundaries of districts (polygon)
	Hazard zone	List<Polygon>	The hazard zones (see Figure 1)
	Shelters	List<Point>	Location of shelters as evacuation destinations
	Routes	List<Object>	Routes where people are moving, loaded from Open Street Map (OSM)

Table 1: Overview of the entities and attributes

to the population. In the ABM simulation, each agent displays specific behaviour and mechanisms when interacting with others as well as with the environment. The environment is represented through spatial data with dynamic hazard properties. An overview of the attributes of the model is provided in Table 1 (extended from Jumadi et al. 2018).

Process overview and scheduling

4.4 The human agents in this model are the focus of the observation. They should act to protect themselves from danger in a crisis. Therefore, the human-agents utilise a decision mechanism that allows them to take the decision to evacuate in dangerous conditions. This evacuation decision is based on the Normal – Investigating – Evacuating state model that is provided elsewhere (Jumadi et al. 2018). Conceptually, this evacuation decision is influenced by several factors, including: (1) risk communication and warning; (2) perception of risk; (3) community and social network influence; and (4) disaster likelihood, environmental cues, and natural signal (Ahsan et al. 2016; Dash & Gladwin 2007; Lim et al. 2016). The mechanism of the individual decision during evacuation, based on the literature review, is provided in Figure 5. The transition between the different states is based on threshold-based rules (Kennedy 2012; Robinson et al. 2011) that evaluate the strength of the force to evacuate based on various factors.

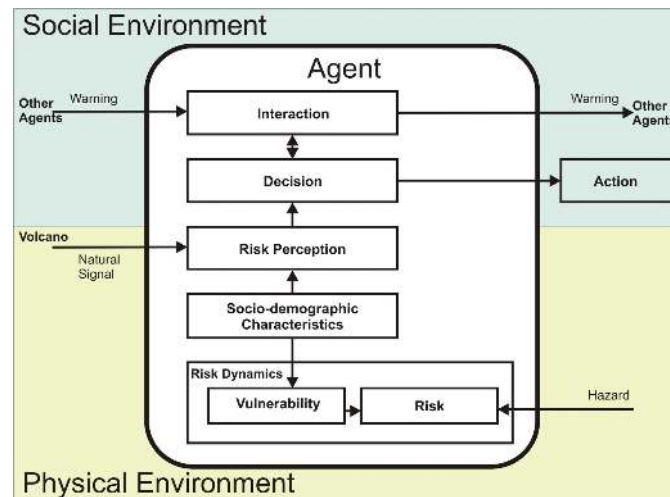


Figure 5: Main agent (people) characteristics.

4.5 The risk to individuals is evaluated based on the hazard and vulnerability variables. The hazard level is measured by the environmental properties in the agent's location, whereas the vulnerability of individuals is based on the SoVI, which is itself evaluated based on its socio-demographic character. The following subsection elaborates on this risk model in detail. The risk to the individual might change after the decision to move is made since their location changes. When people move during an evacuation process, the hazard of their environment will change, resulting in the risk changing also. Therefore, the value of the risk is dynamic over time as an individual moves.

Design concepts

4.6 The following concepts will be used in this model:

1. **Emergence:** the population risk patterns emerge from the behaviour of individuals in making the decision whether to evacuate or not. The individual risk is analysed using the SoVI attributes (Chakraborty et al. 2005; Cutter et al. 2003) and the individual's environmental hazard susceptibility (BNPB 2011).
2. **Sensing:** Every individual in the population understands its position which they use to analyse the hazard.
3. **Interaction:** there are various interactions in the model:
 - (a) interaction between the VEI with the spatial extent of the hazard;
 - (b) interaction between the hazard and the people;
 - (c) interaction between the volcanic activity and the alert level of the stakeholder (the alert level will increase with increasing volcanic activity).
4. **Stochasticity:** the characteristics of the volcano, such as its VEI, type of hazard and spatial extent of hazard zone are summed up based on the literature.
5. **Observation:** the spatial pattern of risk of people will be recorded at the end of each experiment. These data will be further used in spatial analysis using GIS.

Details

4.7 Based on the concept of the individual risk model (Section 2), risk comprises two main components: hazard and vulnerability. Here, we provide a calculation procedure based on MCE to implement this into the ABM of evacuation. Consequently, Java functions are designed based on this concept and implemented into the previous model (see Appendix A) (Jumadi et al. 2018).

VEI	Hazard Zone	1			2			3			4		
		L	M	H	L	M	H	L	M	H	L	M	H
III (H)		L	M	M	L	M	M	M	H	H	M	H	H
II (M)		L	M	M	L	M	M	M	M	H	M	M	H
I (L)		L	L	M	L	L	M	L	M	M	L	M	M

Table 2: Matrix relation of VEI, VAL and the hazard level within the hazard zones. Notes: L: Low hazard level, M: Medium hazard level, H: High hazard level

Hazard

4.8 We implement a dual hazard model to set up the environment of the agent-based evacuation model (Figure 6). The first hazard model (a) is the actual spatial extent of the hazard for Merapi, based on several historical records of eruptions, including the one that occurred in 2010 (actual hazard) (BNPB 2011). The distribution of hazards in this map is strongly based on the physical record present in volcanic material deposits, while the second hazard model (b) is the one used by the government to alert the population at risk during the 2010 eruption (perceived hazard) (Mei et al. 2013). This hazard model is a rough estimation based on the distance from the volcano, as well as being closely related to the administrative boundaries. This makes it easier for the authorities when delivering the evacuation command or for practical purposes. For example, it will be easier for people to remember that “people at a distance up to 10 km are in danger” (hazard model b) rather than “people in a medium hazard zone are in danger” (hazard model a). The first hazard model will be used to define the individual risk, while the second hazard model will be used for the decision-making regarding evacuation. This is based on the assumption that using the second hazard model will result in fewer errors compared to using the first hazard model (Jumadi et al. 2018), while the second hazard model does not directly mean the actual hazard, and so is inappropriate for assessing the true risk. Therefore, we implement a dual hazard in order to obtain a better outcome for the evacuation decision while retaining the precision of the risk.

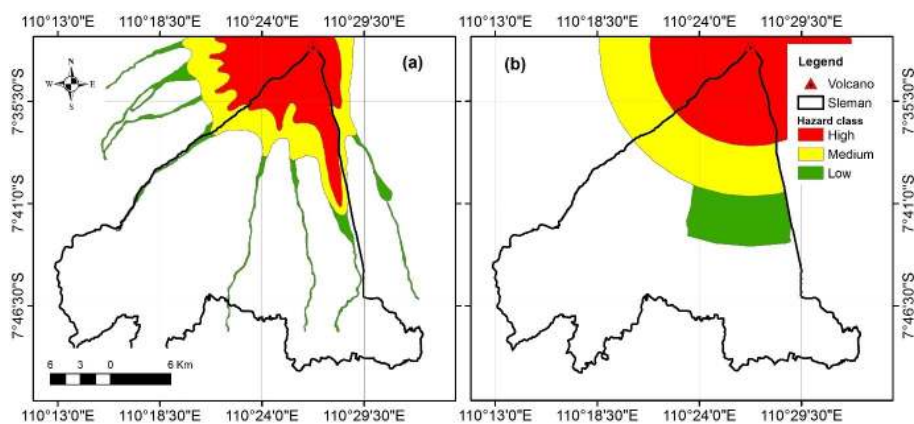


Figure 6: Dual hazard model implementation: (a) actual hazard map (BNPB 2011), (b) perceived hazard map based on that used for the evacuation order during the 2010 eruption (Mei et al. 2013).

4.9 The hazard is classified into three zones (Figure 7). The hazard level of each zone will dynamically change over the course of the simulation as the volcanic activity changes. The rules governing hazard levels are based on the function of several variables concerning the characteristics of the volcano. The VEI and Volcanic Activity Level (VAL) are provided in Table 2 (Jumadi et al. 2017). The changing hazard levels within those zones are illustrated in Figure 7. Finally, the hazard level in the agent’s location (based on its coordinates) is classified and scored

Criteria	Theme of attributes	Description	Pairwise comparison index (H)
Hazard level	High	Highly hazardous	0.723
	Medium	Hazardous	0.216
	Low	Less Hazardous	0.061

Table 3: Hazard level classification and scoring

based on Table 3. The hazard value is then used in the risk calculation.

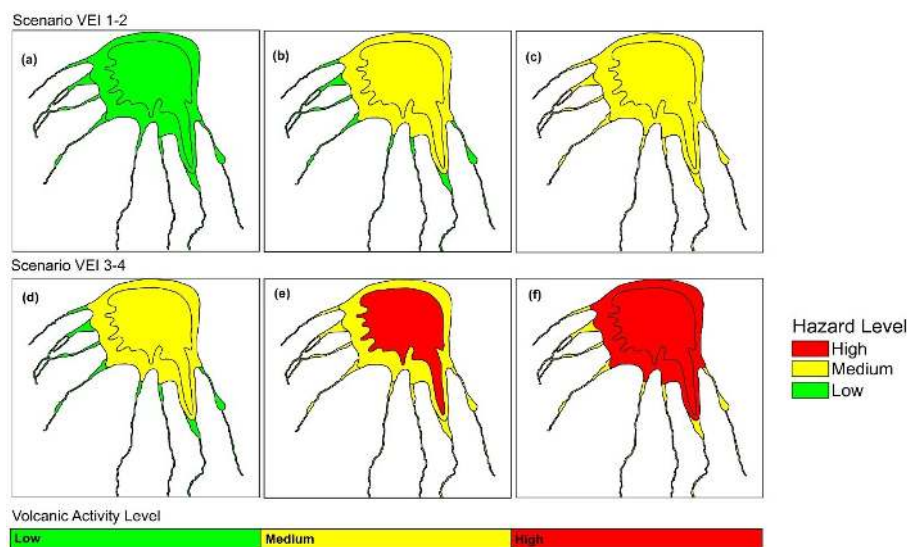


Figure 7: Hazard dynamics scenarios. Impact of the VEI scenario and VAL on the spatial distribution of the hazard level: (a) Low VAL on VEI 1-2, (b) Medium VAL on VEI 1-2, (c) High VAL on VEI 1-2, (d) Low VAL on VEI 3-4, (e) Medium VAL on VEI 3-4, (f) High VAL on VEI 3-4.

Vulnerability

4.10 The vulnerability index used in the model is based on the Social Vulnerability Index (SoVI) from Cutter et al. (2003). The attributes of the agent (person) are scored and the score for each attribute is defined using a pairwise comparison weighting based on local knowledge and a literature review (Saaty 2008). Each theme of the attribute is ranked based on the vulnerability level (Cutter et al. 2003). The result of the pairwise comparison analysis is shown in Table 4. In the absence of detailed data indicating otherwise, the classification used by Cutter et al. (2003) is interpreted as a simple binary value of “vulnerable” or “less vulnerable”. This gives rise to values in the Pairwise Comparison Index of 0.75 and 0.25, respectively. While this may simplify the SoVI, as a demonstration of the utility of this approach this is deemed sufficient for the purposes of this paper. Finally, we aggregate the social attributes using Equation 2 to calculate the SoVI (Chakraborty et al. 2005).

$$SoVI = \frac{\sum_{i=1}^n I_i}{n} \quad (2)$$

Risk

4.11 The calculation of the individual risk is based on the risk concept proposed by UNISDR (2004) and Sar et al. (2015), as previously explained in Section 2. We express the individual risk as a certain quantification that can be classified. The formula for providing the value is presented in Equation 3 with a weighting rule based on Table 5. This equation generates the risk of individuals as a risk index (R_i) using a weighted linear combination (WLC) (Malczewski 2000). Once the index has been obtained, it is classified into three classes, based on Table 6.

$$R_i = (Hw_h)(SoVIw_v) \quad (3)$$

Criteria	Theme of attributes	Description	Pairwise comparison index (I)
Age	Elderly and Child (>75 years and <14 years)	Vulnerable	0.75
	Adult (15-75 year)	Less Vulnerable	0.25
Sex	Female	Vulnerable	0.75
	Male	Less Vulnerable	0.25
Education	Basic Education	Vulnerable	0.75
	High Education	Less Vulnerable	0.25
Income	Live in Poverty	Vulnerable	0.75
	Standard Living	Less Vulnerable	0.25
Disability	Disable	Vulnerable	0.75
	Non-Disabled	Less Vulnerable	0.25
Experience	No Experience	Vulnerable	0.75
	Experience of Previous Eruption	Less Vulnerable	0.25

Table 4: Variables classification and scoring to determine the social vulnerability index (SoVI)

Classification	Description	Weight (w)
Hazard (h)	Important	0.75
SoVI (v)	Less important	0.25

Table 5: Weight of the hazard and SoVI in defining risk.

R_i range	Classification	Description
0.18 <	Low	Less Risky
0.18 - 0.33	Medium	Slightly Less Risky
> 0.33	High	Risky

Table 6: Weight of the hazard and SoVI in defining risk.

Implementation, experimentation and analysis

4.12 The model is implemented using AnyLogic, a multimethod (Agent-based, System Dynamics, and Discrete Event) simulation modelling tool developed by the AnyLogic Company (Borschev 2013). An overview of the agents' statechart to express the behavioural rules of the agents is provided using Unified Modelling Language (UML) in Figure 8, while detailed documentation of the ABM application is provided at the OpenABM repository (<https://tinyurl.com/stdmr>). These statecharts show the implementation of the model in AnyLogic (Jumadi et al. 2017, see) for the conceptual design and OpenABM repository (<https://tinyurl.com/stdmr>) for the code). A statechart is typically a state transition diagram used to define event- and time-driven behaviour in AnyLogic (Grigoriev 2015). There are three main statecharts for human-agents (Figure 8a), including observing the hazard, evacuation decisions, and alerting the community. The 'observing hazard' statechart enables the human-agents to sense the hazard in their location and classify its level, based on Table 1. The 'evacuation decision' statechart is used by the agents to decide whether or not they need to evacuate (see Section 3.9 and Jumadi et al. 2018 for details on the evacuation decision model). When the human-agent feels in danger, decisions are made by the individual regarding whether to evacuate or to stay where they are. Meanwhile, the volcano and stakeholder agent have only one statechart each. The volcano is utilised with the statechart of volcanic activity generator, thereby giving the stakeholder agent the ability to make decisions based on the volcanic activity. The stakeholders will alert people when the volcano displays a high level of activity.

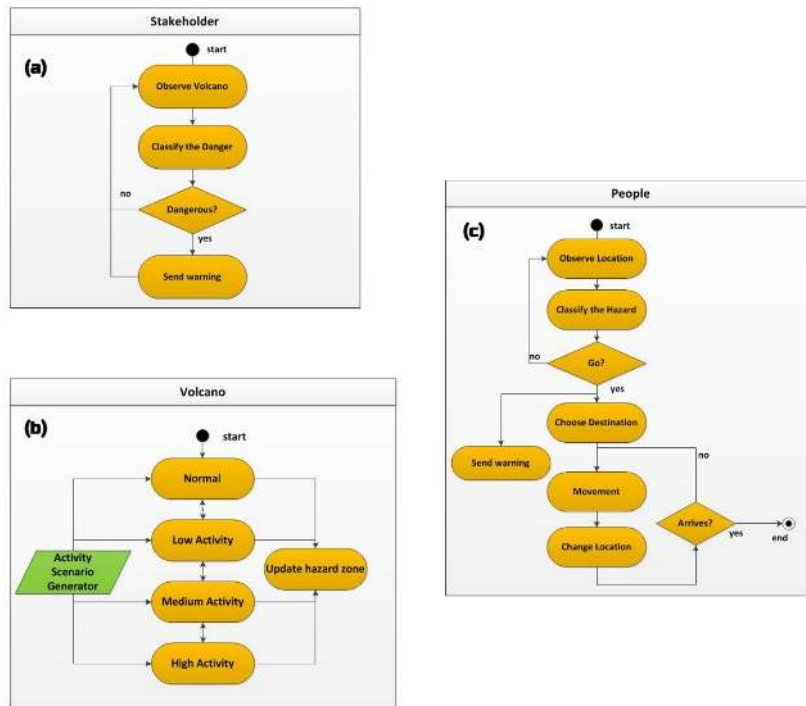


Figure 8: UML overview of the Agents' Statecharts expressing the Agents' Behaviour.

4.13 Using the developed model, experiments can be used to show how the spatio-temporal dynamics of risk vary with the magnitude of the hazard (VEI) and the crisis length. Here, we explore the eruptive activity via a scenario using VEI 4 and a Crisis Length of 102 days to mimic the eruption that occurred in 2010 (Mei et al. 2013; Surono et al. 2012). The results, presented as the coordinates of people and their associated risk level, are then analysed using kernel density analysis to identify the risk hotspots (Lin et al. 2011; Thakali et al. 2015). To produce the final risk hotspot, we run the experiment 30 times to provide sufficient samples for statistical analysis based on the central limit theorem (Ghasemi & Zahediasl 2012; Haneberg 2004) and spatially average the results.

Verification and validation

4.14 In implementing the model structure discussed above, we need to ensure that the model works in regard to the overall concept (verification) as well as ensuring a close fit to the real world (validation). Verification was conducted through visualisation (Hawe et al. 2012), by means of graphical output monitoring and inspecting the statecharts. For validation, we used a retrodiction approach among various other validation techniques (Hawe et al. 2012). This approach focuses on measuring the replicative validity of the model — i.e. the ability of the simulation to generate output that matches the real data (Troitzsch 2004). We compare the spatial pattern of risk in the predicted maximum level of hazard intensity with the real spatial pattern of casualties that occurred in 2010. For this purpose, we used a qualitative approach to provide the comparison of both real data and the simulation outputs (Crooks & Hailegiorgis 2014) in which the plausibility of the output was judged by the authors.

Results

5.1 Section 3 provided a technical overview of the model; we now describe the simulation experiments and spatio-temporal analysis of the results, and discuss the outcome with reference to related works, highlighting the potential implementation with regard to supporting emergency management.

The STDMR

5.2 The purpose of the experiment is to highlight the veracity of the approach (coupling an ABM with a physical hazard model and an MCE to determine individual vulnerability and, consequently, individual risk) and to show that the overall outcomes are valuable for practical emergency management. The outcome of the experiment can be saved for further analysis as well as directly reviewed during the simulation (e.g. Figure 9). Figure 9 shows the result, illustrating the spatial distribution of the people at risk as well as the dynamic of the risk level. Subfigures a–d illustrate the changing level of risk as the emergency develops. Initially, most individuals have low (or negligible) risk (see Figure 9a) but, as the hazard spreads, the risk becomes far greater (see Figure 9b and c). In Figure 9d, few people at risk remain due to the mass evacuations when most people move away from the hazard zone during a high level of volcanic activity. The remaining people are considered reluctant to move as a consequence of the variability of individuals' decisions (see Jumadi et al. 2018).

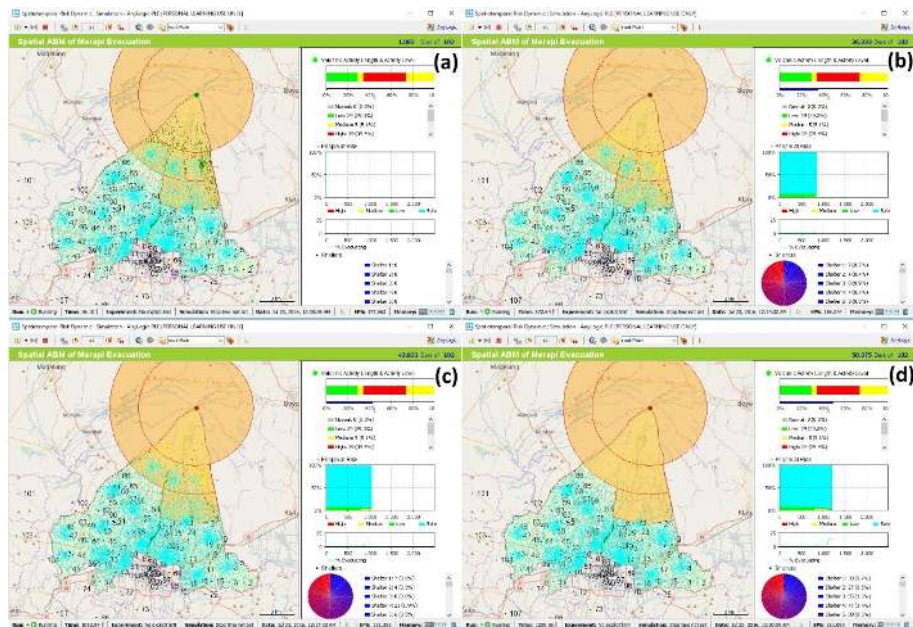


Figure 9: Spatio-temporal risk dynamic simulation model displays, showing (a) the initial conditions before the volcanic activity starts; most individuals have low or negligible risk; (b) the growing individual risk level due to the increasing volcanic activity; (c) the number of people moving after the government issues an alert; and (d) the reluctant people who remain in the hazard zone during the crisis. There are four graphs in the interface: these show, from top to the bottom: the volcanic activity level and progress of the simulation; the risk composition of the individuals; the percentage of evacuees; and the distribution of evacuation in the shelters. See the animated image at <https://goo.gl/QYqihw>.

5.3 The saved output from the simulations is used to provide the spatio-temporal densities of those at risk by demonstrating the dynamic responses of the agents to the changing hazard levels. The Kernel density maps provide a better approximation of the spatial distribution of those at risk compared to the distribution of points (Figure 9), because the agent population is distributed randomly using the Monte Carlo approach (Section 3.10). Therefore, using the point distribution of those at risk directly to understand the risk can be misleading. We used GIS (see Sections 4.1–4.2) to explore the dynamic risk over time by analysing individuals' locations and attributes (risk level attribute). Figure 10 presents the results of the varying density of the individuals at risk at various time points in the simulation. From these results, we can see that the level of risk to humans can change dynamically depending on the state of the volcano agent. The risk values not only depend on the level of hazard but also the number of people at risk. This model can show the impact of the evacuation processes on the outcome of disaster risk reduction responses. This result confirms the importance of providing risk assessments through a dynamic rather than static model.

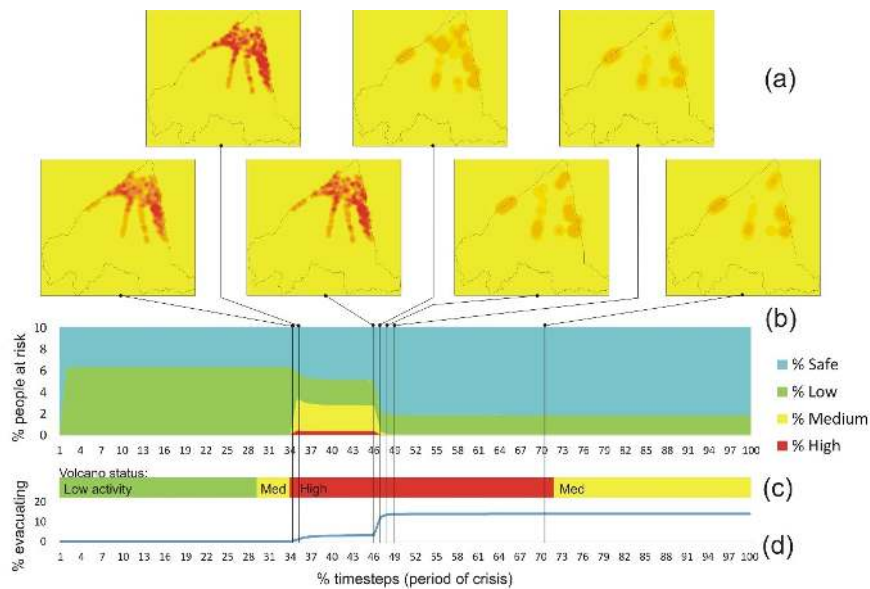


Figure 10: The STDRM Analysis. The densities of people at risk (a) are applied to the people at risk's distribution graph (b), the simulated temporal volcanic activities graph (c) and the temporal curve of the percentage of the evacuees' accumulation (d).

The risk hotspots

5.4 In this study, we use the term 'risk hotspots' to indicate the geographical locations regarding people at risk who are reluctant to evacuate during the simulated crisis. Hotspots are defined as relatively high-risk locations (Thakali et al. 2015). To create a hotspot, we analyse the density of the individuals (using kernel density analysis) who are at risk as the volcanic activity increases. A risk hotspot is, therefore, a place with a substantial concentration of people who are at risk and reluctant to leave at a time when the activity of the volcano is high. We captured the distribution of individuals who remain in their location until the end of the volcano's high-activity period (see Figure 10). The Risk Hotspots are provided in Figure 11. From the figure, it is clear that the risk hotspots are mainly located in three areas. The first is in Cangkringan District, the second around Ngaglik District, and the third around Tempel District. These are in the high and medium hazard zones, where individuals are at risk of direct volcanic events, such as toxic gases, nue'es ardentes, and PDC, especially where these hazards are concentrated lower down the volcano slopes through topographic channelling effects long river valleys.

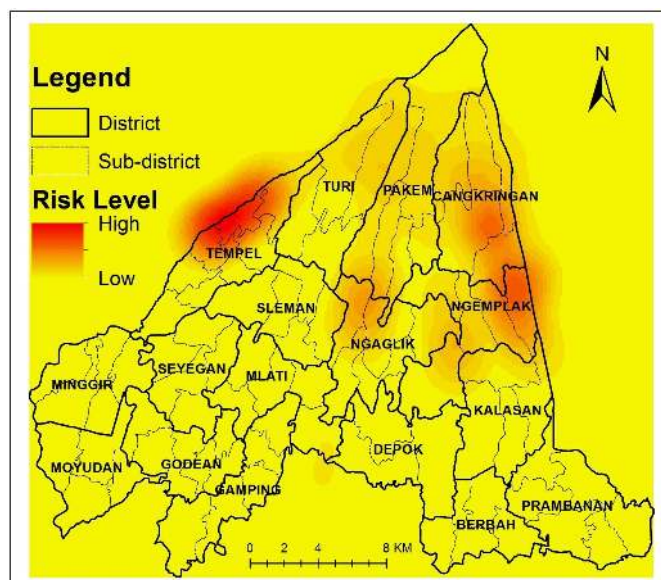


Figure 11: The risk hotspots.

Validation of results

- 5.5** The most striking result of the simulation is that we can now highlight the risk hotspots as an emerging result of the evacuation decisions of individuals during a crisis, that has a similar spatial pattern as the real casualties' distribution data. This can improve the decisions of disaster managers in focusing resources to mobilise and facilitate evacuation processes in hotspot areas. These hotspots can also be used to identify the areas that may attract potentially high casualties when disasters occur.
- 5.6** A qualitative comparison between the risk hotspots and the distribution of casualties in the 2010 eruption reveals close similarities (Figure 12). This map was derived from casualty data provided by the local government of Sleman (Pemkab Sleman 2010). The distribution of casualties map also shows a relatively high percentage of casualties in Cangkringan District, but there are discrepancies in Pakem and Turi Districts.

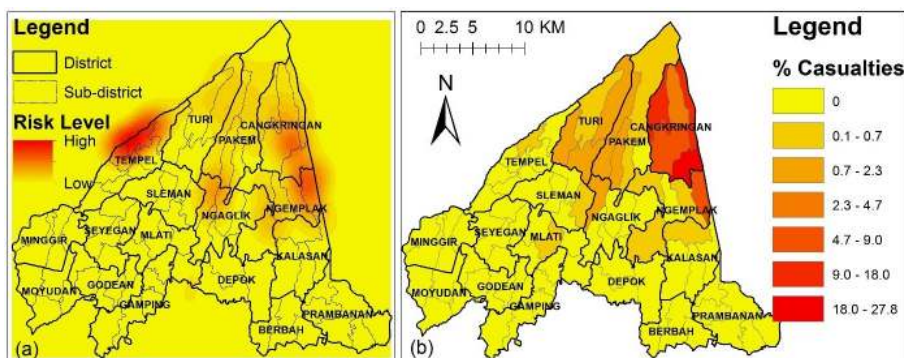


Figure 12: The risk hotspots (a) and distribution of casualties in the 2010 eruption (b). Source: (a) Simulations, (b) Casualties Data (Pemkab Sleman 2010).

Discussion and Conclusions

- 6.1** In this paper, a new approach of Spatio-temporal Dynamics Model of Risk (STD MR) is proposed and a case study using a pre-developed agent-based evacuation model of Mt. Merapi is provided (Jumadi et al. 2018, 2017). This approach first creates an individual-level population (synthetic population) of agents who live in the area surrounding a volcano. Each agent has a unique vulnerability and, since vulnerability comprises several factors (Cutter et al. 2003), MCE is used to create a single social vulnerability index for each individual. This is coupled

with a dynamic hazard model to capture the dynamics of risk. The model is able to highlight a small number of high-risk spatio-temporal positions where, due to the behaviour of individuals evacuating the volcano and the dynamics of the hazard itself, the overall risk at those times and in those places is extremely high. Nevertheless, the outcomes are interesting and extremely relevant for the stakeholders, and the work of coupling an ABM, MCE, and dynamic volcanic hazard is both novel and relevant for decision-makers and disaster management experts alike.

- 6.2** The STDMM integrates the MCE-based individual risk model into an ABM simulation, and can show the impact of the evacuation processes on the disaster risk reduction outcome. This can be used to measure the effectiveness of evacuation plans in reducing risk. For instance, this can be used to compare how well a staged evacuation strategy works compared to a simultaneous evacuation strategy (Jumadi et al. 2019). The staged strategy has been proven to be a better strategy compared to the simultaneous strategy in reducing clearance times by minimising the potential traffic congestion (Chen 2012; Chen & Zhan 2008), whereas the effectiveness of this strategy, considering various groups of risk, has been demonstrated by Jumadi et al. (2019) using the STDMM approach.
- 6.3** Moreover, this approach can improve the existing static GIS-based risk analyses that are commonly conducted in hazardous areas/regions (Alcorn et al. 2013; Martins et al. 2012). It achieves this in two ways. Firstly, enabling the population at risk to move during the crisis the model creates a considerably more realistic spatial distribution of the population. Secondly, accounting for the individual risk to people as well as the dynamic volcanic activity makes the resulting pattern of risk far more realistic. This model can provide an individual-level of risk that can produce a more detailed spatial pattern of risk compared to regional-level risk analysis.
- 6.4** The integration of MCE-ABM for STDMM has been successfully presented in this paper to illustrate the dynamic changes in volcanic risk in a spatio-temporal manner. The ability of the model to demonstrate the effect of the evacuation processes on the risk reduction outcome can be used to measure the effectiveness of various evacuation plans to reduce the risk. Moreover, from the simulation, we present the risk hotspots that reflect the concentration of those at risk at particular sites as the outcome of the evacuation decision of individuals. This simulation can potentially be used to increase the decision-making processes regarding evacuation. Knowing the hotspots can help the decision-makers to allocate more resources towards managing and mobilising these areas.
- 6.5** However, there are some limitations that can be addressed for future research. These include the weighting method, general applicability, and further improvement of the model rules. For the weighting method, we suggest adding more discrimination to the Social Vulnerability Index (SoVI) beyond a binary classification where detailed data are available. In addition, this model needs further analysis of its robustness by testing how the approach might be applied in the context of either other volcanoes or different hazard types, such as flooding, etc. where there is a strong spatio-temporal component. Moreover, this model can be improved in terms of the decision-making rules of the agents and the agent interactions. For example, the destination choice rule should be improved, as this has not yet been calibrated or validated. It is important to compare the distribution of evacuees with the real data as this reflects the validity of the destination choice rule of the agent. In 2010, the populations within the danger zone in Merapi evacuated to temporary shelters (evacuation centres) distributed outside the danger zone. These shelters were commonly public facilities such as stadiums, schools, mosques/churches, etc. Moreover, the probability of unsuccessful contact following the agent interaction might affect an outcome that is ignored in this model. This model assumed that all agents always successfully make contact with their connections and always follow the commands given. Also, it is possible for people to ignore the evacuation order altogether.

Acknowledgements

This article is partly funded by the Education and Culture Attaché Department, Embassy of the Republic of Indonesia, London, UK; Directorate General of Higher Education, Minister of Research, Technology and Higher Education, Indonesia; and Universitas Muhammadiyah Surakarta. The authors gratefully acknowledge comments and input from anonymous reviewers and the assistance of the editor.

Appendix: Example of risk classification in Java

```
1 public class person {
2     /*
3     @Parameters: Attributes assigned using probability distribution
4     */
5     public int Age;
6     public int Sex;//1=Male, 2=Female
7     public int Education;//1=no high school, 2=high school
8     public int Income;//1=below standard minimum, 2=standard minimum or above
9     public int Disability;//1=Disable, 2=Non Disable
10    public int Experience;//1=No Experience, 2=Experienced
11
12    /*
13    @Variables: Attributes assigned based on the calculation of above attributes (dynamic)
14    */
15    public double[] coordinates;
16    public double Vulnerability;
17    public double Risk;
18
19    public void init() {
20
21        /* == SKIPPED CODE DUE TO NEED EXTERNAL FUNCTION ==
22        @Parameters Initiation: Attributes assigned based on the calculation
23        * of above attributes (dynamic)
24        */
25        /* RUNNING FUNCTION TO ASSIGN PARAMETERS RANDOMLY BASED ON PROBABILITY DISTRIBUTION
26        * see: http://www.xjtek.com/files/book/Randomness%20in%20AnyLogic%20models.pdf
27        * .....
28        */
29
30        /* == SKIPPED CODE DUE TO NEED EXTERNAL FUNCTION ==
31        * RUNNING FUNCTION TO ASSIGN COORDINATES RANDOMLY WITHIN THE AREAS
32        * USING CENTRE GRAVITY MODEL APPROACH
33        * .....
34        */
35
36        this.Vulnerability = this.getSoVI();
37        this.Risk = this.getRisk();
38    }
39
40    private int getAgeRank(int age)
41    {
42        int sc=0; if(age>75|age<14) { sc=1; } else if(age<=75&&age>=14){sc=2;}
43        return sc;
44    }
45    private double getVarIndex(int index)
46    {
47        double ind=0;
48        switch (index)
49        { case 1:ind=1;break; case 2:ind=0.5;break;
50        }
51        return ind;
52    }
53    private double getHazardIndex(int index)
54    {
55        double ind=0;
56        switch (index) { case 1:ind=1;break; case 2:ind=0.5;break; case 3:ind=0.33;break;}
57        return ind;
58    }
59    private int getRiskClass(double risk)
60    {
61        int rc=0;
62        if(risk<0.44){rc=1;} else if(risk<=0.44&&risk>=0.72){rc=2;} else {rc=3;}
63        return rc;
64    }
65    private double getSoVI(){
66        double sovi = 0;
67        double AgeScore = this.getVarIndex(this.getAgeRank(this.Age));
68        double SexScore = this.getVarIndex(this.Sex);
69        double EducationScore = this.getVarIndex(this.Education);
70        double IncomeScore = this.getVarIndex(this.Income);
71        double DisabilityScore = this.getVarIndex(this.Disability);
72        double ExperienceScore = this.getVarIndex(this.Experience);
73
74        sovi = (AgeScore+SexScore+EducationScore+IncomeScore+DisabilityScore +ExperienceScore)/6;
75
76        return sovi;
77    }
78    private int getRisk(){
79        double riskLevel = 0;
80        int riskClass=0;
81        double hazardIndex = getHazardIndex(this.getHazardLevelAtTheLocation());
82        riskLevel= hazardIndex * this.getSoVI();
83        riskClass=this.getRiskClass(riskLevel);
84        return riskClass;
85    }
86
87    private int getHazardLevelAtTheLocation(){
88        int hazardLevel = 0;
89        /* == SKIPPED CODE DUE TO NEED EXTERNAL FUNCTION ==
90        * GET THE RISK LEVEL ATTRIBUTE FROM THE HAZARD ZONE THAT TOPOLOGICALLY
91        * CONTAINS THIS coordinates
92        * THE VALUE WILL BE ASSIGNED TO hazardLevel
93        * see: http://66.235.179.199:8081/help/index.jsp?topic=/com.xj.anylogic.help/html/markup/GIS\_Region.html
94        */
95        return hazardLevel;
96    }
97 }
98
99
```

Figure 13:

References

- Abdurachman, E., Bourdier, J.-L. & Voight, B. (2000). Nu'és ardentes of 22 november 1994 at Merapi volcano, Java, Indonesia. *Journal of Volcanology and Geothermal Research*, 100(1-4), 345–361
- Abella, E. C. & Van Westen, C. (2007). Generation of a landslide risk index map for Cuba using spatial multi-criteria evaluation. *Landslides*, 4(4), 311–325
- Ahsan, M. N., Takeuchi, K., Vink, K. & Ohara, M. (2016). A systematic review of the factors affecting the cyclone evacuation decision process in Bangladesh. *Journal of Disaster Research*, 11(4), 742–753
- Alcorn, R., Panter, K. S. & Gorsevski, P. V. (2013). A GIS-based volcanic hazard and risk assessment of eruptions sourced within Valles Caldera, New Mexico. *Journal of Volcanology and Geothermal Research*, 267, 1–14
- Andreastuti, S. D., Alloway, B. V. & Smith, I. E. M. (2000). A detailed tephrostratigraphic framework at Merapi Volcano, Central Java, Indonesia: Implications for eruption predictions and hazard assessment. *Journal of Volcanology and Geothermal Research*, 100(1-4), 51–67
- Armas, I. & Gavris, A. (2013). Social vulnerability assessment using spatial multi-criteria analysis (SEVI model) and the Social Vulnerability Index (SoVI model) – A case study for Bucharest, Romania. *Natural Hazards and Earth System Science*, 13(6), 1481–1499
- Bardintzeff, J. M. (1984). Merapi volcano (Java, Indonesia) and Merapi-type nu'e ardente. *Bulletin Volcanologique*, 47(3), 433–446
- Bernardini, G., D'Orazio, M., Quagliarini, E. & Spalazzi, L. (2014). An agent-based model for earthquake pedestrians' evacuation simulation in urban scenarios. *Transportation Research Procedia*, 2, 255–263
- Bias, S., Frischknecht, C. & Bonadonna, C. (2012). A fast GIS-based risk assessment for tephra fallout: The example of Cotopaxi volcano, Ecuador-Part II: Vulnerability and risk assessment. *Natural Hazards*, 64(1), 615–639
- Bishop, I. D., Stock, C. & Williams, K. J. (2009). Using virtual environments and agent models in multi-criteria decision-making. *Land Use Policy*, 26(1), 87–94
- Blaikie, P., Cannon, T., Davis, I. & Wisner, B. (2014). *At Risk: Natural Hazards, People's Vulnerability and Disasters*. London: Routledge
- BNPB (2008). Peta kawasan rawan bencana gunung merapi. Retrieved from <http://www.webcitation.org/6pimWt1Fc>
- BNPB (2011). Peta kawasan rawan bencana merapi. Retrieved 10 October 2015, from http://geospasial.bnpb.go.id/wp-content/uploads/2011/05/2011-04-29_KRB_Area_Terdampak_Langsung
- Borschev, A. (2013). *The Big Book of Simulation Modeling: Multimethod Modeling with AnyLogic 6*. Lebanon, NJ: AnyLogic North America
- Camus, G., Gourgaud, A., Mossand-Berthommier, P.-C. & Vincent, P.-M. (2000). Merapi (Central Java, Indonesia): An outline of the structural and magmatological evolution, with a special emphasis to the major pyroclastic events. *Journal of Volcanology and Geothermal Research*, 100(1-4), 139–163
- Carver, S. J. (1991). Integrating multi-criteria evaluation with geographical information systems. *International Journal of Geographical Information System*, 5(3), 321–339
- Center, M. P. (2015). Integrated Public Use Microdata Series, International: Version 6.4 [dataset]. Retrieved from <http://doi.org/10.18128/D020.V6.4>
- Chakraborty, J., Tobin, G. A. & Montz, B. E. (2005). Population evacuation: Assessing spatial variability in geographical risk and social vulnerability to natural hazards. *Natural Hazards Review*, 6(1), 23–33
- Charbonnier, S. J. & Gertisser, R. (2008). Field observations and surface characteristics of pristine block-and-ash flow deposits from the 2006 eruption of Merapi Volcano, Java, Indonesia. *Journal of Volcanology and Geothermal Research*, 177(4), 971–982
- Chen, X. (2012). Agent-based micro-simulation of staged evacuations. *International Journal of Advanced Intelligence Paradigms*, 4(1), 22–35

- Chen, X. & Zhan, F. B. (2008). Agent-based modelling and simulation of urban evacuation: Relative effectiveness of simultaneous and staged evacuation strategies. *Journal of the Operational Research Society*, 59(1), 25–33
- Christia, M. (2012). Experiences of people affected Merapi eruption in 2010: A qualitative study conducted in Krinjing village Indonesia (University of Oslo). Retrieved from <https://www.duo.uio.no/handle/10852/30048>
- Clarke, K. C. (2014). Cellular automata and agent-based models. In M. M. Fischer & P. Nijkamp (Eds.), *Handbook of Regional Science*, (pp. 1217–1233). Berlin/Heidelberg: Springer
- Cova, T. J. (1999). GIS in emergency management. *Geographical Information Systems*, 2, 845–858
- Crooks, A. T. & Castle, C. J. E. (2012). The integration of agent-based modelling and geographical information for geospatial simulation. In A. J. Heppenstall, A. T. Crooks, L. M. See & M. Batty (Eds.), *Agent-Based Models of Geographical Systems*, (pp. 219–251). Berlin/Heidelberg: Springer
- Crooks, A. T. & Hailegiorgis, A. B. (2014). An agent-based modeling approach applied to the spread of cholera. *Environmental Modelling & Software*, 62, 164–177
- Cutter, S. L., Boruff, B. J. & Shirley, W. L. (2003). Social vulnerability to environmental hazards. *Social Science Quarterly*, 84(2), 242–261
- d'Albe, E. F. (1979). Objectives of volcanic monitoring and prediction. *Journal of the Geological Society*, 136(3), 321–326
- Damby, D. E., Horwell, C. J., Baxter, P. J., Delmelle, P., Donaldson, K., Dunster, C., Fubini, B., Murphy, F. A., Natrass, C., Sweeney, S., Tetley, T. D. & Tomatis, M. (2013). The respiratory health hazard of tephra from the 2010 centennial eruption of Merapi with implications for occupational mining of deposits. *Journal of Volcanology and Geothermal Research*, 261, 376–387
- Dash, N. & Gladwin, H. (2007). Evacuation decision making and behavioral responses: Individual and household. *Natural Hazards Review*, 8(3), 69–77
- Donovan, K. (2010). Doing social volcanology: Exploring volcanic culture in Indonesia. *Area*, 42(1), 117–126
- Dove, M. R. (2008). Perception of volcanic eruption as agent of change on Merapi volcano, Central Java. *Journal of Volcanology and Geothermal Research*, 172(3–4), 329–337
- Eastman, J. R. (1999). Multi-criteria evaluation and GIS. *Geographical Information Systems*, 1(1), 493–502
- Gao, L. & Hailu, A. (2012). Ranking management strategies with complex outcomes: An AHP-fuzzy evaluation of recreational fishing using an integrated agent-based model of a coral reef ecosystem. *Environmental Modelling & Software*, 31, 3–18
- Garbutt, K., Ellul, C. & Fujiyama, T. (2015). Assessment of social vulnerability under three flood scenarios using an open source vulnerability index. Presentation at *GISRUK 2015*, Leeds, UK. <https://doi.org/10.6084/m9.figshare.1491375>
- Gertisser, R., Charbonnier, S. J., Keller, J. & Quidelleur, X. (2012). The geological evolution of Merapi volcano, Central Java, Indonesia. *Bulletin of Volcanology*, 74(5), 1213–1233
- Ghasemi, A. & Zahediasl, S. (2012). Normality tests for statistical analysis: A guide for non-statisticians. *International Journal of Endocrinology and Metabolism*, 10(2), 486
- Gilbert, N. (2008). *Agent-Based Models*. London: Sage
- Gilbert, N. & Troitzsch, K. (2005). *Simulation for the Social Scientist*. New York, NY: McGraw-Hill Education
- Grigoriev, I. (2015). Anylogic 7 in three days (2nd ed.). Retrieved from <http://www.anylogic.com/free-simulation-book-and-modeling-tutorials>
- Grimm, V., Berger, U., Bastiansen, F., Eliassen, S., Ginot, V., Giske, J., Goss-Custard, J., Grand, T., Heinz, S. K., Huse, G., Huth, A., Jepsen, J. U., Jørgensen, C., Mooij, W. M., Müller, B., Pe'er, G., Piou, C., Railsback, S. F., Robbins, A. M., Robbins, M. M., Rossmanith, E., Rügen, N., Strand, E., Souissi, S., Stillman, R. A., Vabø, R., Visser, U. & DeAngelis, D. L. (2006). A standard protocol for describing individual-based and agent-based models. *Ecological Modelling*, 198(1–2), 115–126

- Haneberg, W. (2004). *Computational Geosciences with Mathematica*. Cham: Springer
- Hawe, G. I., Coates, G., Wilson, D. T. & Crouch, R. S. (2012). Agent-based simulation for large-scale emergency response: A survey of usage and implementation. *ACM Computing Surveys (CSUR)*, 45(1), 8
- Heppenstall, A. J., Harland, K., Smith, D. M. & Birkin, M. H. (2011). Creating realistic synthetic populations at varying spatial scales: A comparative critique of population synthesis techniques. *Geocomputation 2011 Conference Proceedings*, UCL, London. Retrieved from <http://www.geocomputation.org/2011/papers/heppenstall.pdf>
- Itoh, H., Takahama, J., Takahashi, M. & Miyamoto, K. (2000). Hazard estimation of the possible pyroclastic flow disasters using numerical simulation related to the 1994 activity at Merapi Volcano. *Journal of Volcanology and Geothermal Research*, 100(1-4), 503–516
- Jumadi, J., Carver, S. & Quincey, D. (2017). A conceptual design of spatio-temporal agent-based model for volcanic evacuation. *Systems*, 5(4), 53
- Jumadi, J., Heppenstall, A. J., Malleson, N. S., Carver, S. J., Quincey, D. J. & Manville, V. R. (2018). Modelling individual evacuation decisions during natural disasters: A case study of volcanic crisis in Merapi, Indonesia. *Geosciences*, 8(6), 196
- Jumadi, J., Carver, S. J. & Quincey, D. J. (2019). An agent-based evaluation of varying evacuation scenarios in Merapi: Simultaneous and staged. *Geosciences*, 9(7), 317
- Kelfoun, K., Legros, F. & Gourgaud, A. (2000). A statistical study of trees damaged by the 22 november 1994 eruption of Merapi volcano (Java, Indonesia): relationships between ash-cloud surges and block-and-ash flows. *Journal of Volcanology and Geothermal Research*, 100(1-4), 379–393
- Kennedy, W. G. (2012). Modelling human behaviour in agent-based models. In A. J. Heppenstall, A. T. Crooks, L. M. See & M. Batty (Eds.), *Agent-Based Models of Geographical Systems*, (pp. 167–179). Berlin/Heidelberg: Springer
- Labadie, N. & Prodhon, C. (2014). A survey on multi-criteria analysis in logistics: Focus on vehicle routing problems. In L. Benyoucef, J.-C. Hennes & M. K. Tiwari (Eds.), *Applications of Multi-Criteria and Game Theory Approaches. Manufacturing and Logistics*, (pp. 3–29). Cham: Springer
- Lavigne, F., De Coster, B., Juvin, N., Flohic, F., Gaillard, J.-C., Texier, P., Morin, J. & Sartohadi, J. (2008). People's behaviour in the face of volcanic hazards: Perspectives from Javanese communities, Indonesia. *Journal of Volcanology and Geothermal Research*, 172(3-4), 273–287
- Lavigne, F. & Thouret, J.-C. (2003). Sediment transportation and deposition by rain-triggered lahars at Merapi Volcano, Central Java, Indonesia. *Geomorphology*, 49(1-2), 45–69
- Letsie, M. M. & Grab, S. W. (2015). Assessment of social vulnerability to natural hazards in the Mountain Kingdom of Lesotho. *Mountain Research and Development*, 35(2), 115–125
- Lim, M. B. B., Lim, H. R., Piantanakulchai, M. & Uy, F. A. (2016). A household-level flood evacuation decision model in Quezon City, Philippines. *Natural Hazards*, 80(3), 1539–1561
- Lin, Y.-P., Chu, H.-J., Wu, C.-F., Chang, T.-K. & Chen, C.-Y. (2011). Hotspot analysis of spatial environmental pollutants using kernel density estimation and geostatistical techniques. *International Journal of Environmental Research and Public Health*, 8(1), 75–88
- Lirer, L., Petrosino, P. & Alberico, I. (2010). Hazard and risk assessment in a complex multi-source volcanic area: The example of the Campania Region, Italy. *Bulletin of Volcanology*, 72(4), 411–429
- Lummen, N. S. & Yamada, F. (2014). Implementation of an integrated vulnerability and risk assessment model. *Natural Hazards*, 73(2), 1085–1117
- Malczewski, J. (1999). *GIS and Multicriteria Decision Analysis*. Chichester: Wiley
- Malczewski, J. (2000). On the use of weighted linear combination method in GIS: Common and best practice approaches. *Transactions in GIS*, 4(1), 5–22

- Malleson, N., See, L., Evans, A. & Heppenstall, A. (2014). Optimising an agent-based model to explore the behaviour of simulated burglars. In V. Dabbaghian & V. K. Mago (Eds.), *Theories and Simulations of Complex Social Systems*, (pp. 179–204). Berlin/Heidelberg: Springer
- Martins, V. N., e Silva, D. S. & Cabral, P. (2012). Social vulnerability assessment to seismic risk using multicriteria analysis: The case study of Vila Franca do Campo (São Miguel Island, Azores, Portugal). *Natural Hazards*, 62(2), 385–404
- Mas, E., Suppasri, A., Imamura, F. & Koshimura, S. (2012). Agent-based simulation of the 2011 great East Japan earthquake/tsunami evacuation: An integrated model of tsunami inundation and evacuation. *Journal of Natural Disaster Science*, 34(1), 41–57
- Mei, E. T. W., Lavigne, F., Picquout, A., de Bélizal, E., Brunstein, D., Grancher, D., Sartohadi, J., Cholik, N. & Vidal, C. (2013). Lessons learned from the 2010 evacuations at Merapi volcano. *Journal of Volcanology and Geothermal Research*, 261, 348–365
- Merz, R., Blöschl, G. & Parajka, J. (2006). Spatio-temporal variability of event runoff coefficients. *Journal of Hydrology*, 331(3-4), 591–604
- Moeckel, R., Spiekermann, K. & Wegener, M. (2003). Creating a synthetic population. Proceedings of the 8th International Conference on Computers in Urban Planning and Urban Management (CUPUM). Retrieved from http://www.spiekermann-wegener.com/pub/pdf/CUPUM_2003_Synpop.pdf
- Newhall, C. & Hoblitt, R. (2002). Constructing event trees for volcanic crises. *Bulletin of Volcanology*, 64(1), 3–20
- Newhall, C. G. & Self, S. (1982). The Volcanic Explosivity Index (VEI) an estimate of explosive magnitude for historical volcanism. *Journal of Geophysical Research: Oceans*, 87(C2), 1231–1238
- Pemkab Sleman (2010). Jumlah Korban Meninggal Bencana Erupsi Merapi per Tanggal 25 November 2010 mencapai 270 orang. Retrieved 1 July 2018, from <http://www.webcitation.org/70aRtPVrc>
- Polhill, J. G. (2010). ODD updated. *Journal of Artificial Societies and Social Simulation*, 13(4), 9
- Pons, M., Johnson, P. A., Rosas, M. & Jover, E. (2014). A georeferenced agent-based model to analyze the climate change impacts on ski tourism at a regional scale. *International Journal of Geographical Information Science*, 28(12), 2474–2494
- Rianto, T. (2009). Spatial analysis of volcanic risk perception. Case study in local community at Merapi volcano dangerous zones. Master's Thesis, ITC, University of Twente. Retrieved from http://www.itc.nl/library/papers_2009/msc/aes/rianto.pdf
- Robinson, E. J., Franks, N. R., Ellis, S., Okuda, S. & Marshall, J. A. R. (2011). A simple threshold rule is sufficient to explain sophisticated collective decision-making. *PLoS ONE*, 6(5), e19981
- Saaty, T. L. (2008). Decision making with the analytic hierarchy process. *International Journal of Services Sciences*, 1(1), 83–98
- Saepuloh, A., Urai, M., Aisyah, N., Widiwijayanti, C. & Jousset, P. (2013). Interpretation of ground surface changes prior to the 2010 large eruption of Merapi volcano using ALOS/PALSAR, ASTER TIR and gas emission data. *Journal of Volcanology and Geothermal Research*, 261, 130–143
- Sar, N., Chatterjee, S. & Adhikari, M. D. (2015). Integrated remote sensing and GIS based spatial modelling through analytical hierarchy process (AHP) for water logging hazard, vulnerability and risk assessment in Keleghai river basin, India. *Modeling Earth Systems and Environment*, 1(4), 31
- Scaini, C., Felpeto, A., Martí, J. & Carniel, R. (2014). A GIS-based methodology for the estimation of potential volcanic damage and its application to Tenerife Island, Spain. *Journal of Volcanology and Geothermal Research*, 278, 40–58
- Schmidtlein, M. C., Deutsch, R. C., Piegorsch, W. W. & Cutter, S. L. (2008). A sensitivity analysis of the social vulnerability index. *Risk Analysis*, 28(4), 1099–1114
- Sengupta, R. R. & Bennett, D. A. (2003). Agent-based modelling environment for spatial decision support. *International Journal of Geographical Information Science*, 17(2), 157–180

- Shi, J., Ren, A. & Chen, C. (2009). Agent-based evacuation model of large public buildings under fire conditions. *Automation in Construction*, 18(3), 338–347
- Srblijinović, A. & Škunca, O. (2003). An introduction to agent based modelling and simulation of social processes. *Interdisciplinary Description of Complex Systems: INDECS*, 1(1-2), 1–8
- Surono, Jousset, P., Pallister, J., Boichu, M., Buongiorno, M. F., Budisantoso, A., Costa, F., Andreastuti, S., Prata, F., Schneider, D., Clarisse, L., Humaida, H., Sumarti, S., Bignami, C., Griswold, J., Carn, S., Oppenheimer, C. & Lavigne, F. (2012). The 2010 explosive eruption of Java's Merapi volcano — A '100-year' event. *Journal of Volcanology and Geothermal Research*, 241, 121–135
- Tapsell, S., McCarthy, S., Faulkner, H. & Alexander, M. (2010). Social vulnerability to natural hazards. state of the art report from CapHaz-Net's WP4. London. Retrieved from http://www.researchgate.net/profile/Sue_Tapsell/publication/228612637_Social_vulnerability_to_natural_hazards/links/02e7e52af16270d6a6000000.pdf
- Thakali, L., Kwon, T. J. & Fu, L. (2015). Identification of crash hotspots using kernel density estimation and kriging methods: A comparison. *Journal of Modern Transportation*, 23(2), 93–106
- Thouret, J.-C., Lavigne, F., Kelfoun, K. & Bronto, S. (2000). Toward a revised hazard assessment at Merapi volcano, Central Java. *Journal of Volcanology and Geothermal Research*, 100(1-4), 479–502
- Troitzsch, K. G. (2004). Validating simulation models. In *18th European Simulation Multi-Conference. Networked Simulations and Simulation Networks*, (pp. 98–106). Magdeburg
- UNISDR (2004). Living with risk: A global review of disaster reduction initiatives. United Nations International Strategy for Disaster Reduction, Geneva, Switzerland
- Voogd, H. (1983). *Multicriteria Evaluation for Urban and Regional Planning*. London: Pion
- Wise, S. (2014). Using social media content to inform agent-based models for humanitarian crisis response. Ph.D. Thesis, George Mason University. Retrieved from <http://digilib.gmu.edu:8080/jspui/handle/1920/8879>
- Yan, K., Di Baldassarre, G., Solomatine, D. P. & Schumann, G. J.-P. (2015). A review of low-cost space-borne data for flood modelling: Topography, flood extent and water level. *Hydrological Processes*, 29(15), 3368–3387
- Yoon, D. K. (2012). Assessment of social vulnerability to natural disasters: A comparative study. *Natural Hazards*, 63(2), 823–843
- Zhang, B., Chan, W. K. & Ukkusuri, S. V. (2009). Agent-based modeling for household level hurricane evacuation. Proceedings of the 2009 Winter Simulation Conference (WSC), pp. 2778–2784. <https://doi.org/10.1109/WSC.2009.5429248>