



Published in final edited form as:

*Nat Commun.* ; 5: 3514. doi:10.1038/ncomms4514.

## Estimating the effective density of engineered nanomaterials for *in vitro* dosimetry

Glen DeLoid<sup>1,\*†</sup>, Joel M. Cohen<sup>1,†</sup>, Tom Darrah<sup>2</sup>, Raymond Derk<sup>3</sup>, Liying Wang, Georgios Pyrgiotakis<sup>1</sup>, Wendel Wohlleben<sup>4</sup>, and Philip Demokritou<sup>1,†,\*</sup>

<sup>1</sup>Center for Nanotechnology and Nanotoxicology, Department of Environmental Health, Harvard School of Public Health, 655 Huntington Ave Boston, MA 02115

<sup>2</sup>Division of Earth and Ocean Sciences, Nicholas School of the Environment, 207A Old Chemistry Building, Box 90227 Duke University, Durham, NC

<sup>3</sup>National Institute for Occupational Safety and Health, Health Effects Laboratory Division, Pathology and Physiology Research Branch, Morgantown, West Virginia

<sup>4</sup>BASF SE, GMC/R – G201, 67056 Ludwigshafen, Germany

### Abstract

The need for accurate *in vitro* dosimetry remains a major obstacle to the development of cost-effective toxicological screening methods for engineered nanomaterials. An important key to accurate *in vitro* dosimetry is the characterization of sedimentation and diffusion rates of nanoparticles suspended in culture media, which largely depend upon the effective density and diameter of formed agglomerates in suspension. Here we present a rapid and inexpensive method for accurately measuring the effective density of nano-agglomerates in suspension. This novel method is based on the volume of the pellet obtained by bench-top centrifugation of nanomaterial

---

\*corresponding authors: Glen DeLoid, Philip Demokritou, gdeloid@hsph.harvard.edu, pdemokri@hsph.harvard.edu.

†equally contributing authors: Glen DeLoid, Joel M. Cohen, Philip Demokritou

### Disclaimer

The findings and conclusions in this report are those of the authors and do not necessarily represent the views of the National Institute for Occupational Safety and Health.

### Competing Financial Interests

None of the authors have any competing financial interests in the work described in this manuscript.

### Author Contributions

Glen DeLoid: Co-developed volumetric centrifugation concept, supporting equations and design of volumetric centrifugation experiments, performed volumetric centrifugation experiments, performed analysis of volumetric centrifugation data, and co-wrote manuscript.

Joel Cohen: Co-developed volumetric centrifugation concept, supporting equations, and design of volumetric centrifugation experiments, prepared and characterized nanomaterial suspensions, designed and performed analytical ultracentrifugation experiments and analysis, and co-write manuscript.

Tom Darrah: performed ICP-MS experiments and analysis and participated in writing relevant sections of manuscript

Georgios Pyrgiotakis: designed and performed AFM experiments and force calculations to verify structural stability of agglomerates, and participated in writing relevant sections of the manuscript.

Raymond Derk: participated in design of experiments, performance of cytotoxicity assays and analysis, and writing of relevant sections of manuscript

Liying Rojasakul: participated in design of experiments, performance of cytotoxicity assays and analysis, and writing of relevant sections of manuscript

Wendel Wohlleben: participated in design of AUC experiments and in writing relevant sections of the manuscript.

Philip Demokritou: Supervised project, co-developed volumetric centrifugation concept, supporting equations, and design of volumetric centrifugation experiments, prepared VENGES nanomaterials, and co-wrote manuscript.

suspensions in a packed cell volume tube, and is validated against gold-standard analytical ultracentrifugation data. This simple and cost-effective method allows nanotoxicologists to correctly model nanoparticle transport, and thus attain accurate dosimetry in cell culture systems, which will greatly advance the development of reliable and efficient methods for toxicological testing and investigation of nano-bio interactions *in vitro*.

---

## INTRODUCTION

The unique physical and chemical properties exhibited by engineered nanomaterials (ENMs), which are distinct from those of their micron-sized counterparts, and which endow them with exceptional performance in consumer products, may also be responsible for unique biological effects that can render them unsafe for humans and for the environment<sup>1-3</sup>. Efficient and cost-effective toxicological testing is therefore required to keep pace of the rapidly growing array of ENMs entering the consumer market<sup>1,4</sup>, and to enable studies that will provide a critical understanding of the relationships between the physicochemical properties of ENMs, including size, morphology, surface chemistry, and crystallinity, and their biological effects. Given the high cost of animal testing, there is a pressing need for reliable high-throughput *in vitro* screening methods<sup>1,4-6</sup>. To date however, despite the impressive progress made in developing high throughput *in vitro* assays, the results have too often conflicted with those of animal studies,<sup>4-10</sup> and so have not earned widespread acceptance. Although differences between the two systems, particularly the interaction between multiple cell types and organismic processes operating in *in vivo* systems, which are absent in *in vitro* systems, may account for much of this disparity, it is likely that inaccurate characterization of *in vitro* dose, particularly failure to account for particle transformation and kinetics and their effect on mass transport of ENMs within cell culture systems, has contributed substantially to this problem<sup>11-14</sup>.

In a typical cytotoxicity study, ENMs are suspended in media for application to cells in culture, and dose is reported as either the total particle mass, particle number, particle surface area, or particle volume per unit volume of liquid media (concentration), or per unit sedimentation surface (surface area of the well<sup>13,15,16</sup>). More recently, attention has been drawn to the mass transport (sedimentation and/or diffusion) of particles in suspension, which proceeds at a rate governed by the mass transport properties (sedimentation and diffusion coefficients) of the formed agglomerates in suspension<sup>13,16,17</sup>. These suspended forms are in most cases agglomerates consisting of multiple primary ENM particles as well as trapped suspension fluid and associated proteins as depicted in Figure 1a. The fate and transport of the formed agglomerates in suspension determine the effective dose delivered to cells.<sup>11-14</sup> Accurate dosimetry therefore requires accurate characterization of agglomerate properties, particularly their effective diameter and density, which, along with the density and viscosity of the suspending fluid, determine mass transport phenomena (See Supplementary Note 1, Supplementary Equations 1-11 for detailed treatment of mass transport phenomena). Within the typical size range of the agglomerated forms found in *in vitro* experimental nanotoxicology systems (~100-300 nm), although diffusion does occur, transport is dominated by sedimentation, and it is therefore particularly important to characterize the properties that govern that process, specifically diameter and effective

density.<sup>12–14</sup> Whereas the effective diameter (applicable to transport), denoted as the hydrodynamic diameter,  $d_H$ , is readily measured by contemporary analytical methods such as dynamic light scattering (DLS), and is sufficient for modeling the diffusion component of transport, determination of agglomerate density, necessary for modeling sedimentation, presents a greater challenge. The effective density of nano-agglomerates in liquid suspension refers to the density of the agglomerate unit, which includes both particles and media components, as opposed to the density of the primary particle, which is simply the density of the raw ENM material. For flame generated fractal nanomaterials, particle interactions in cell culture media typically used for *in vitro* toxicity assays may lead to the formation of agglomerates with media and proteins trapped within its empty spaces (Figure 1a). Because the entrapped media and proteins often have considerably lower density than the primary particles, the effective density of the agglomerate unit can be significantly lower than that of the raw material<sup>13,16</sup>. The Sterling equation, based on a fractal model of agglomerate structure, has been used to obtain rough estimates of agglomerate effective density<sup>18</sup> (Supplementary Note 2, Supplementary Equations 12–13). This equation, however, requires a theoretical fractal dimension (DF) value for the agglomerated ENM, which can be neither measured nor verified, and the practical validity of this approach thus remains unproved. Alternatively, the sedimentation coefficient of a suspended ENM can be measured directly by analytical ultracentrifugation (AUC)<sup>19,20</sup>, thereby eliminating the need to explicitly determine effective density. Although the combination of DLS and AUC results may provide accurate measurement of ENM effective density, AUC requires relatively expensive equipment that is not readily available to many nanotoxicology labs, and is moreover limited by a low throughput of at best several samples per hour, which would render the task of characterizing the thousands of ENMs that await testing an impractically costly and time-consuming one.

We conceived a simple, low cost, high-throughput method for estimating effective density based on the volume of the pellet obtained by low speed, bench-top centrifugation of an ENM suspension in a packed cell volume (PCV) tube. In this report we present our rationale for and results from this method, which we refer to as the Volumetric Centrifugation Method (VCM). Our findings demonstrate close agreement between our VCM approach and gold-standard AUC data for various classes of materials including flame-generated fractal ENM agglomerates as well as non-agglomerating nanospheres. We also demonstrate that the effective density estimated by this method can be used to accurately determine the rate of ENM agglomerate deposition and thus delivered dose of ENM in an *in vitro* system. Numerical estimates of delivered dose are validated for various materials using a novel neutron-activated tracer particle system, highlighting the utility and accuracy of employing direct measurement of effective density via VCM to calculate the dose delivered to cells over time. This simple and cost-effective method allows nanotoxicologists to correctly model nanoparticle transport, and thus attain accurate dosimetry in cell culture systems, which will greatly advance the development of reliable and efficient methods for toxicological testing and investigation of nano-bio interactions *in vitro*.

## RESULTS

### Volumetric Centrifugation Method (VCM)

The PCV tube, originally designed and typically used for measuring biomass of cultured mammalian cells<sup>21</sup>, consists of a wide-bore sample loading upper chamber that tapers to a volumetric pellet-capturing capillary (Figure 1c). In volumetric centrifugation a sample of ENM suspension is centrifuged in a PCV tube to produce a pellet consisting of both packed agglomerates and the media remaining between them (inter-agglomerate media) (Figure 1c). In the ideal case, assuming perfect stacking of ENM agglomerates with no intervening space, the total volume of agglomerate in a sample of ENM suspension,  $V_{agg}$ , is simply the measured volume of the pellet collected by centrifugation,  $V_{pellet}$ . Since the volume of ENM,  $V_{ENM}$ , is readily derived from the known mass of ENM in suspension and the material density, the volume of media trapped within agglomerates,  $V_{media}$ , can be calculated as

$$V_{media} = V_{agg} - V_{ENM}. \quad (1)$$

The effective density of the agglomerates,  $\rho_{EV}$ , can then be calculated as a volume weighted average of ENM density,  $\rho_{ENM}$ , and media density,  $\rho_{media}$ , as

$$\rho_{EV} = \frac{(\rho_{media} V_{media}) + (\rho_{ENM} V_{ENM})}{V_{agg}}. \quad (2)$$

However, in reality the stacking of agglomerates is not perfect, and media remains interspersed between the stacked agglomerates (inter-agglomerate media, distinct from intra-agglomerate media, See Figure 1c). Thus,  $V_{agg}$  comprises a fraction of the pellet, which we define as the stacking factor,  $SF$ :

$$V_{agg} = V_{pellet} \times SF. \quad (3)$$

Substituting the right side of equation (3) for  $V_{agg}$  in equations (1) and (2), replacing  $V_{ENM}$  with the equivalent in terms of the ENM density,  $\rho_{ENM}$ , and ENM mass,  $M_{ENM}$ , and simplifying, yields

$$\rho_{EV} = \rho_{media} + \left[ \left( \frac{M_{ENM}}{V_{pellet} SF} \right) \left( 1 - \frac{\rho_{media}}{\rho_{ENM}} \right) \right]. \quad (4)$$

For soluble materials we must account for the portion of the original sample mass that is solubilized and which therefore does not contribute to the suspended agglomerate volume. This can be accomplished by subtracting the solubilized mass ( $M_{ENMsol}$ ), which can be measured, for example, by ICPMS, from  $M_{ENM}$  in equation 4:

$$\rho_{EV} = \rho_{media} + \left[ \left( \frac{M_{ENM} - M_{ENMsol}}{V_{pellet} SF} \right) \left( 1 - \frac{\rho_{media}}{\rho_{ENM}} \right) \right] \quad (5)$$

(See Supplementary Note 3, Supplementary Equations 14–22 for a full derivation of equations 4 and 5). Failure to account for this loss of the solubilized portion of the mass from  $M_{ENM}$  would result in over-estimation of effective density for these materials.

The value of  $SF$  depends on the efficiency of agglomerate stacking. In the case of uniform spheres, possible values for  $SF$  may range from 0.634 for random close stacking<sup>22</sup>, to the theoretical maximum of 0.74 for ordered stacking<sup>23</sup>. For the roughly spherical agglomerates typically observed with nano metal and metal oxide ENMs (see EM image, Figure 1a), we expect  $SF$  values to approximate the theoretical value for random close stacking (0.634), whereas for non-agglomerating spherical ENMs we expect  $SF$  to approach the theoretical value for ordered stacking (0.74). These theoretical  $SF$  values can be verified from the sedimentation coefficients measured for representative ENMs of each type using AUC. Specifically, from the sedimentation coefficient,  $s$ , of an ENM in liquid suspension measured by AUC (Supplementary Note 1, Supplementary Equation 9), the agglomerate density can be expressed as

$$\rho_{agg} = \frac{18\eta s}{d_H^2} + \rho_{media}, \quad (6)$$

where  $\eta$  is the viscosity of the suspending media. The stacking factor can then be obtained by equating  $\rho_{EV}$  in Equation (4), and  $\rho_{agg}$  in equation (5), and solving for  $SF$ , to yield

$$SF = \left( \frac{d^2 M_{ENM}}{18\eta s V_{pellet}} \right) \left( 1 - \frac{\rho_{media}}{\rho_{ENM}} \right). \quad (7)$$

### Stacking Factor validation

Stacking factors were calculated for representatives of two major classes of ENMs (agglomerating flame-generated metal oxides and non-agglomerating metal nanospheres) from sedimentation coefficients measured by AUC with structure-insensitive interference detection (see methods). As examples of flame-generated metal oxide ENMs, which exhibit similar chain-like aggregated primary particle morphologies and form roughly spherical agglomerates (Supplementary Fig. 1), and which we therefore assume have similar stacking efficiencies, we estimated  $SF$  for CeO<sub>2</sub> ( $d_H = 179$  nm) and SiO<sub>2</sub> ( $d_H = 135$  nm). As a representative of a uniform spherical, non-agglomerating metal ENMs, we estimated  $SF$  for gold nanospheres suspended in DI H<sub>2</sub>O ( $d_H = 29$  nm).

Stacking factors for the CeO<sub>2</sub>, SiO<sub>2</sub> and gold nanospheres were estimated from AUC sedimentation coefficient profiles (provided in Supplementary Fig. 2) to be 0.610, 0.538 and 0.764, respectively. The  $SF$  value of 0.610 and 0.538 for flame-generated CeO<sub>2</sub> and SiO<sub>2</sub>

particles are, as expected given their spherical agglomerate shape, close to the theoretical value of 0.634 for random stacking of uniform spheres, and the  $SF$  of 0.764 for gold nanospheres is very close to the theoretical value of 0.74 for ordered stacking of uniform spheres. Therefore, for the family of agglomerating metal and metal oxide ENMs, which comprises 90% by volume of ENMs in the market,<sup>24</sup> the theoretical  $SF$  value of 0.634 provides a reasonable approximation. Similarly, the theoretical  $SF$  value of 0.74 is a suitable estimate for non-agglomerating nanometals. The aptness of these approximations is further supported by the fact that small differences in  $SF$  result in even smaller differences in  $\rho_{EV}$ . For example, using the theoretical rather than measured  $SF$  values to calculate  $\rho_{EV}$  for  $CeO_2$  and  $SiO_2$  alters the result by only 1.2% in the case of  $CeO_2$  (from 1.492 to 1.474 g cm<sup>-3</sup>) and by 1.7% in the case of  $SiO_2$  (from 1.131 to 1.112 g cm<sup>-3</sup>). Further, replacing the estimated  $SF$  for  $CeO_2$  with a value 50% larger than the measured  $SF$  (0.910) results in only an 11% change in calculated  $\rho_{EV}$ , from 1.492 to 1.333 g cm<sup>-3</sup>. It is thus clear that effective density is relatively insensitive even to considerable errors in  $SF$ , and that we can therefore confidently employ the theoretical values in our method.

### Effective Densities of ENMs by VCM and Sterling equation

Effective densities of several widely used ENMs were measured by VCM, and results were compared to densities obtained using the Sterling equation. ENMs studied included flame pyrolysis-generated metal oxides currently under investigation by the Organization for Economic Cooperation and Development<sup>25</sup>, as well as non-agglomerating, gold nanospheres developed for biomedical applications. ENM properties, including crystal size, specific surface area, morphology, hydrodynamic diameter and zeta potential in suspension, were characterized using contemporary analytical techniques, as described in methods. Additional ENM dispersion properties and representative TEM images of ENMs are shown in Supplementary Table 1 and Supplementary Fig. 1 respectively.

Suspensions of ENMs, stably dispersed in cell culture media using protocols developed and previously reported by the authors<sup>16</sup>, were centrifuged in PCV tubes for 1 h at 2000 × *g*. In order to ensure that all of the suspended ENM was contained within the pellet, we analyzed supernatants, collected after centrifugation at various speeds, by inductively coupled plasma mass spectrometry (ICP-MS). This analysis verified that negligible amounts of ENMs remained in suspension following centrifugation (See Supplementary Table 2). ENM effective density,  $\rho_{EV}$ , was estimated from measured pellet volume as described above using equation (4). The theoretical  $SF$  value for randomly stacked spheres (0.634) was used to calculate  $\rho_{EV}$  for all metal oxide ENMs, and the theoretical  $SF$  value for ordered stacking of spheres (0.74) was used for the non-agglomerating gold particles (See Table 1).

Effective densities estimated by VCM ( $\rho_{EV}$ ) and using the Sterling equation ( $\rho_{ES}$ ) are summarized in Table 1. Whereas gold nanospheres exhibited a  $\rho_{EV}$  value only slightly less than the density of elemental gold (17.73 vs. 19.3 g cm<sup>-3</sup>), consistent with minimal agglomeration, all other ENMs exhibited  $\rho_{EV}$  values closer to the density of the dispersion media (RPMI/10% FBS, 1.0084 g cm<sup>-3</sup>) than to that of the raw ENM. This is a clear indication that ENMs formed agglomerates containing large amounts of trapped intra-agglomerate media (see Figure 1a). It is worth noting that since  $\rho_{EV}$  values approach the



density of the dispersion media as ENMs become more extensively agglomerated, that  $\rho_{EV}$  also represents an indirect indicator of an ENM's agglomeration potential (degree of agglomeration in suspension). In general  $\rho_{EV}$  for flame-generated metal oxide ENMs correlated with raw material density, which may suggest that agglomerates of these ENMs are composed of comparable relative proportions of particles and trapped media. Effective density also correlated with primary particle size among the three CeO<sub>2</sub> ENMs investigated ( $\rho_{EV}$  of 2.358, 1.625, and 1.474 g cm<sup>-3</sup> for CeO<sub>2</sub> with  $d_{BET}$  of 71.3, 27.9, and 5.4 nm, respectively). For many of the ENMs investigated  $\rho_{EV}$  and  $\rho_{ES}$  (estimated by the Sterling equation) were in reasonably close agreement. In those cases in which the results of the two methods did not agree,  $\rho_{ES}$  was generally greater than  $\rho_{EV}$ . This was most evident in the case of CeO<sub>2</sub> ( $d_{BET}$  = 71.3 nm) for which the value of  $\rho_{ES}$  was more than twice that of  $\rho_{EV}$ .

The small variation observed among triplicate measurements (<5% standard deviation, Table 1) for all materials examined suggests that the proposed method is both highly reproducible and robust. This is further demonstrated by the close agreement between our VCM results and those obtained via the gold standard analytical ultracentrifugation method (AUC) (Supplemental Fig. 2) for both a relatively high density material (CeO<sub>2</sub>), and a relatively low density material (SiO<sub>2</sub>), as well as for non-agglomerating gold nanospheres. However, it should be noted that slight variations in media formulation or dispersion protocol can result in differences in agglomeration state and thus effective density. For example  $\rho_{EV}$  of CeO<sub>2</sub> ( $d_{BET}$  = 5.4 nm) is 1.473 g cm<sup>-3</sup> in RPMI/10% FBS vs. 1.374 g cm<sup>-3</sup> in F12K/10% FBS. Dispersion protocol can also greatly influence agglomeration state, polydispersity and stability, and has been a source of much inconsistency in the past. Recently, however, a standardized protocol has emerged<sup>16,25,26</sup>, which was used in the present study, and has been proven to result in highly reproducible and stable suspensions<sup>16,27-29</sup>

### Effective Density Stability Over Time

All ENM suspensions in this study were prepared using a recently developed protocol that ensures sonication above the critical energy required to achieve small agglomerates that are stable in size over time (for 24–48 hours<sup>16</sup>). Other groups have also reported stable agglomerate sizes over 24–48 hours using similar protocols for insoluble metal oxide ENMs<sup>27-29</sup>.

In order to verify that the effective density of insoluble ENMs is stable over the time, we measured the effective density of a representative insoluble material following incubation in cell culture media for up to 24 hours. CeO<sub>2</sub> ( $d_{BET}$  = 27.9 nm) suspended in RPMI/10% FBS maintained a relatively stable effective density:  $\rho_{EV}$  = 1.474 g cm<sup>-3</sup> immediately following dispersion, 1.440 g cm<sup>-3</sup> at 4 hours, and 1.442 g cm<sup>-3</sup> at 24 hours. These data confirm the relative stability of effective density over time for insoluble ENMs.

For partially soluble materials, dynamic changes to agglomerate size and effective density over time must be accounted for in the fate and transport algorithm (e.g. in vitro sedimentation diffusion dosimetry model, ISDD), in order to accurately estimate delivered dose. For these materials, equation 5, which accounts for the solubilized component, must be used to calculate effective density. For example, the VCM method was utilized to measure

the effective density of ZnO ENMs ( $d_{\text{BET}} = 63$  nm) following 24 hours incubation in cell culture media. To account for the effect of ion shedding on agglomerate density, we used the 35% dissolution reported for ZnO at 24 hours<sup>30</sup> in equation 5. The effective density for this material decreased from  $1.65 \text{ g cm}^{-3}$  immediately following suspension to  $1.37 \text{ g cm}^{-3}$  after a 24 hour incubation. These data suggest that dissolution not only reduces the mass of the particulate form, for which equation 5 provides the appropriate correction, but can also have a significant impact on agglomeration state and effective density. Thus, for partially soluble ENMs, accurate dosimetry would require comprehensive time-resolved dissolution as well as effective density measurements, in addition to a fate and transport model capable of employing such time-resolved dissolution and density data.

### Effect of ENM concentration and suspending media

We performed additional experiments to assess the effect of initial ENM concentration and suspending media formulation on  $\rho_{\text{EV}}$  measured by VCM. Differences in  $\rho_{\text{EV}}$  measured over a range of initial ENM concentrations typically used for nanotoxicity studies ( $50$  to  $250 \mu\text{g cm}^{-3}$ ) were negligible ( $\sim 7\%$ , see Supplementary Table 3). Differences among three media formulations tested (RPMI alone, RPMI + 10% FBS and F12K + 10% FBS) were somewhat larger ( $\sim 12\%$ , see Supplementary Table 4), consistent with the dependence of agglomerate structure on media-particle specific properties<sup>16</sup> (Supplementary Table 4).

### Stability of ENM agglomerates during centrifugation

Although forces exerted on ENMs during low speed centrifugation are exceedingly small (in the fN range), in order to rule out the possibility that agglomerate structures were altered by centrifugation we performed atomic force microscopy (AFM) experiments. Forces up to six orders of magnitude greater than those experienced during centrifugation were applied to agglomerates deposited onto a sample grid either prior to or following centrifugation (See Supplementary Methods) and the deformation of agglomerates was assessed. The results of these experiments (See Supplementary Fig. 3, 4) revealed that forces experienced by agglomerates during low speed centrifugation do not result in their deformation, and that agglomerates maintained their original architecture as expected. Further analysis of agglomerate stability is provided in the Supplementary Discussion.

### Role of effective density in ENM transport *in vitro*

To examine the impact of effective density on ENM delivery to cells *in vitro*, we used the recently developed ISDD model to compute the fraction of administered ENM that would be deposited on cells over time, assuming a particle density of either the raw ENM material,  $\rho_{\text{ENM}}$ , the VCM measured effective density,  $\rho_{\text{EV}}$ , or the Sterling model effective density,  $\rho_{\text{ES}}$ . Representative results, illustrated in Figure 2, demonstrate that the assignment of density substantially affects the rate of ENM deposition. In general, deposition calculated based on either  $\rho_{\text{EV}}$  or  $\rho_{\text{ES}}$  proceeds more slowly than that calculated based on  $\rho_{\text{ENM}}$ . Moreover, with the exception of non-agglomerating gold nanospheres, for which all three densities, and accordingly all three corresponding deposition rates, are nearly identical, deposition at  $\rho_{\text{EV}}$  proceeds more slowly than at  $\rho_{\text{ES}}$ , as determined by the relatively lower densities estimated by the VCM approach.



These results illustrate the important contribution of density to sedimentation velocity (Supplementary Equation (9)), and underscore the importance of the characterization of ENM transformations and agglomerate properties in calculating the dose delivered to cells in an *in vitro* system. The time required for 90% of administered ENM to be deposited,  $t_{90}$ , estimated from ISDD model outputs based on  $\rho_{EV}$  and  $d_H$  for all ENMs studied using previously described methods<sup>16</sup>, was also calculated and illustrated in Figure 3. These results further demonstrate the importance of effective density, along with agglomerate size, in determining the time required for ENM delivery, with ENMs having relatively greater values for both  $\rho_{EV}$  and  $d_H$  being deposited most rapidly and those with smaller values for both properties being deposited most slowly (e.g. CuO,  $d_H = 310$  nm,  $\rho_{EV} = 2.214$  g cm<sup>-3</sup>,  $t_{90} = 16$  h vs. VENGES SiO<sub>2</sub>,  $d_H = 135$  nm,  $\rho_{EV} = 1.131$  g cm<sup>-3</sup>,  $t_{90} = 171$  h).

### Effective density and delivered dose for soluble materials

Because dissolution and agglomeration are dynamic processes, the portion of mass dissolved, and agglomerate size and density may vary over time for soluble materials. Thus for greatest accuracy  $M_{ENMsol}$  and  $d_H$ , and from these  $\rho_{EV}$ , should be measured over the time of exposure. These time-resolved values should then be utilized by the transport simulation model (i.e. ISDD) to accurately estimate delivered dose.

We should also note that for soluble materials such as ZnO and CuO, the dosimetry data presented in Figure 3 is limited by the fact that effective density measurements were obtained immediately following dispersion, and do not reflect dissolution during dispersion or the dynamic nature of agglomerate size and density due to dissolution over time. In light of this limitation, the data presented remain useful primarily for comparison of the material densities with the agglomerate effective densities (which are likely over-estimated), and to highlight the impact of effective density on particle delivery to cells *in vitro*.

In addition, for completion of dosimetry calculations, both the particulate and soluble components must be correctly identified and considered separately in order to properly assess the mechanistic effects of both ionic and particulate portions of the dose<sup>31,32</sup>. The ionic exposure component may be also reported as the dose of soluble ions per volume exposure media or per cm<sup>2</sup> sedimentation surface (surface area of the cell culture well).

### Experimental validation of VCM-derived delivered dosimetry

In order to validate the proposed dosimetry approach based on effective densities determined by VCM, suspensions of three flame-generated and neutron-activated ENMs (CeO<sub>2</sub>, ( $d_{XRD} = 28.4$  nm), CeO<sub>2</sub> ( $d_{XRD} = 119$  nm) or SiO<sub>2</sub> coated CeO<sub>2</sub> ( $d_{XRD} = 28.4$  nm)) were applied to transwell insert membranes with 3  $\mu$ m pores (Supplementary Fig. 5). This is a well-established method for accurately tracking gamma emitting isotopes, in this case <sup>141</sup>Ce, with high sensitivity and correlates extremely well with total particle mass<sup>33</sup>. Following 24 hours incubation delivered dose was measured by gamma spectroscopy, defined as the sum of particles that deposited on or passed through membrane. Evaluation of membranes for particle loss (by adherence of particles to the membrane) confirmed that for all three materials tested more than 98% of particles passed freely through the membrane pores without adhering (data not shown).

The results, summarized in Figure 4, reveal a close agreement (<9% difference) between the percent of administered dose measured in the basolateral compartments of the transwell system and the delivered doses based on effective densities measured by VCM. This is a clear validation of the proposed dosimetric approach for ENMs and indicates that the VCM method provides accurate measurements of effective density of the ENM agglomerates.

It is also worth noting that the fate and transport numerical model used here (ISDD model) has been partially validated only for non agglomerating, non-industrially relevant fluorescently labeled polystyrene spheres of various agglomerate diameter<sup>13,34</sup> and super paramagnetic iron oxide particles<sup>13</sup>. These results therefore provide the first validation for the ISDD model using industrially relevant ENMs.

### In Vitro Toxicity Characterization

In order to evaluate the potential impact of effective density and particokinetics on *in vitro* toxicity assessment, we compared administered and delivered mass dose-responses for a representative ENM ( $\text{CeO}_2$ ,  $d_{\text{BET}} = 27.9$  nm,  $\rho_{\text{EV}} = 1.625$  g cm<sup>-3</sup>). Adherent human airway epithelial cells (Calu-3) were exposed for either 24, 48 or 72 hours over a range of administered doses, mean delivered doses (averaged over time of exposure) were calculated by the VCM-ISDD model based on  $\rho_{\text{EV}}$  and  $d_{\text{H}}$ , and cytotoxicity was assessed by the WST-1 assay as described in methods. Supplementary Fig. 6 illustrates the substantial difference between administered and delivered dose-response curves for  $\text{CeO}_2$ , which suggests that the administered dose (which assumes complete deposition of suspended material) substantially underestimates the toxicity of this material. For example, the maximum dose evaluated for the 24 hour time point decreases from 31.6  $\mu\text{g cm}^{-2}$  to 11.4  $\mu\text{g cm}^{-2}$  when administered dose is converted to delivered dose. These results, though preliminary, highlight the potential importance of accurate measurement of effective density and particokinetics in *in vitro* dosimetry for nanotoxicology studies.

In a separate meta-analysis of previously published cytotoxicity data for CoO and  $\text{Co}_3\text{O}_4$  nanoparticles<sup>30</sup> based on the LDH assay in BEAS-2B cells, dose-response curves generated using doses based on agglomerate size and effective density revealed a substantial change in relative hazard ranking of these materials compared to that based on administered dose-response curves. As depicted in Supplementary Fig. 7a, the dose-response curves based on administered dose values suggest that CoO is considerably more toxic than  $\text{Co}_3\text{O}_4$ , especially at administered doses of 5  $\mu\text{g}$  and above. However, the volumetric centrifugation method revealed that CoO has an effective density almost twice that of  $\text{Co}_3\text{O}_4$  (CoO,  $\rho_{\text{EV}} = 2.39$  g cm<sup>-3</sup> vs.  $\text{Co}_3\text{O}_4$   $\rho_{\text{EV}} = 1.37$  g cm<sup>-3</sup>), and as a result the delivered dose of  $\text{Co}_3\text{O}_4$  was significantly lower than the delivered dose of CoO after a 24 hour exposure. The resulting delivered dose-response curves (Supplementary Fig. 7b) suggest that  $\text{Co}_3\text{O}_4$  is nearly as cytotoxic as CoO on a delivered mass basis.

### Effect of Polydispersity

As a further validation of the proposed VCM approach, we assessed the possible error in dosimetry due to polydispersity of ENM agglomerate density (Supplementary Fig. 8). Our results suggest that faster-settling and slower-settling agglomerates roughly balance, such

that the total particle calculated by the ISDD model using average values for  $d_H$  and  $\rho_{EV}$  does not differ greatly from that calculated as the corresponding sum of ISDD results for binned sub-populations of agglomerate sizes and densities. Specifically, ignoring polydispersity by using average values for  $d_H$  and  $\rho_{EV}$  introduced a systematic error of ~6%, which is sufficiently negligible to permit a valid prediction of administered dose delivered to cells during a given incubation period. Additional analysis of polydispersity effects is provided in the Supplementary Discussion.

## DISCUSSION

Since cellular response to a biologically active substance should relate more closely to the quantity of the substance coming into contact with cells than to its transient initial distribution (e.g., administered mass concentration), nanotoxicity in an *in vitro* system should be better represented in relation to the mean delivered dose based on accurate modeling of mass transport, than to the initial concentration (administered dose) of an ENM. Evaluation of cytotoxicity based on delivered dose calculations, derived from accurate characterization of ENM properties in suspension, may thus help to eliminate the disparity between *in vitro* and *in vivo* nanotoxicology outcomes, which in turn could finally enable the kind of efficient and reliable screening methods needed to assess the safety of an ever-increasing number and variety of ENMs being introduced.

One important property usually neglected in *in vitro* nanotoxicology studies is effective density, which determines the fate and transport phenomena and thus the dose delivered to cells *in vitro*. It also defines the agglomeration state of ENMs in biological media and thus their active surface area. Our findings demonstrate the accuracy and utility of the proposed volumetric centrifugation method for estimation of ENM effective density in suspension and its use in approximating *in vitro* dosimetry in nanotoxicology. We have shown that effective density estimated by this method can be used to accurately determine the delivered dose of ENM in an *in vitro* system and that this versatile method may be applied to fractal ENM agglomerates such as metal and metal oxides as well as non-agglomerating nanospheres. It may also be applicable to partially soluble ENMs when supported with time-resolved dissolution characterization in applicable liquid media, although we should note that at present a transport model capable of incorporating such time-variant properties is not available. Our group has also recently successfully utilized the volumetric centrifugation method to measure effective density and investigate dosimetry implications for carbon based ultrafine particles emitted from printing equipment<sup>35</sup>.

The primary potential source of error in the VCM approach resides in the use of representative values of the stacking factor,  $SF$ . For instance, due to minor differences in polydispersity or agglomerate shape,  $SF$  values may not be exactly identical among ENMs of a given class, as we have observed for  $CeO_2$  ( $SF = 0.61$ ) and  $SiO_2$  ( $SF = 0.538$ ). Both of these observed values, however, are close to the theoretical value for randomly stacked spheres (0.634), and the corresponding change in  $\rho_{EV}$  resulting from such a small deviation from the theoretical  $SF$  value is relatively small. Moreover, given the morphological similarity among flame-generated metal oxide ENMs, we believe that differences in  $SF$  within this class would generally be small, and that in all cases the true value of  $SF$  would be

sufficiently close to the theoretical value that  $\rho_{EV}$  could be reliably calculated based on the theoretical value alone. In the context of dosimetry for nanotoxicology, the magnitude of errors in  $\rho_{EV}$  and delivered dose resulting from this approximation would be relatively negligible.

For several ENMs investigated the effective density determined by VCM was not greatly different from that calculated using the Sterling equation (although for some ENMs and suspension conditions the differences were significant). To the best of our knowledge this is also the first indirect validation of the Sterling equation, which in turn can be employed to correct the standard AUC evaluation with specific respect to the fractal morphology of ENM agglomerates<sup>36</sup>. Although our data suggest that for most metal oxide ENMs the estimation of density using the Sterling equation may be sufficiently accurate, it should be noted that close correspondence between  $\rho_{ES}$  and  $\rho_{EV}$  was dependent upon a specific choice of fractal dimension (2.3), which is slightly larger than the value of 2.1 derived from scattering data and claimed as universally valid for reaction-limited colloidal agglomeration<sup>36,37</sup>.

Particle characteristics may be influenced by dynamic interactions with proteins commonly found in cell culture media. Any effect of the protein corona will be reflected in the size of the agglomerate and the effective density over the time of the exposure. Thus, the approach described above, of utilizing time-resolved measurements of hydrodynamic diameter and effective density in transport modeling for suspensions that are not stable over time, would also address the dynamic nature of the protein corona. Moreover, in addition to our validation experiments discussed above, recent studies have validated the ISDD model for super paramagnetic iron oxide particles and polystyrene beads suspended in protein-supplemented media, suggesting that the dynamic nature of particle-protein interactions likely has little impact on particle transport *in vitro*<sup>13,34</sup>.

In conclusion, the simplicity and efficiency of the proposed VCM method will enable nanotoxicologists to incorporate accurate dosimetry modeling in their *in vitro* system designs, which will be a major step toward the development of inexpensive, accurate and reproducible *in vitro* screening assays, and a major advancement for nano-environmental health and safety research.

## METHODS

### Nanomaterials and characterization

ENMs investigated are listed in Table 1. SiO<sub>2</sub>, Fe<sub>2</sub>O<sub>3</sub>, and CeO<sub>2</sub> ENM powders were generated in-house by flame spray pyrolysis using the Harvard Versatile Engineered Nanomaterial Generation System (VENGES) recently developed by the authors<sup>38,39</sup>. Additional metal oxide ENM powders were purchased from commercial vendors (SiO<sub>2</sub> and TiO<sub>2</sub>: EVONIK, Essen, Germany; CuO: Sigma Aldrich, St Louis, MO; ZnO: Alfa Aesar, Ward Hill, MA, USA).

Spherical monodisperse gold nanospheres, which were donated by Dr. Srinivas Sridhar at Northeastern University, were prepared in suspension as previously described<sup>40</sup>. Briefly, 500ml of 1 mM HAuCl<sub>4</sub> in a round bottom flask was heated to a rolling boil with vigorous

stirring. 50 ml of 38.8 mM sodium citrate solution was added rapidly. After a color change from pale yellow to purple, indicating formation of gold nanoparticles, boiling was continued for another 15 minutes, after which the heating source was removed and the solution stirred for an additional 15 minutes. The solution was filtered through 0.45  $\mu\text{m}$  syringe filters and stored at 4  $^{\circ}\text{C}$ .

For powdered ENMs specific surface area,  $SSA$ , defined as the particle surface area per mass ( $\text{m}^2 \text{g}^{-1}$ ), was determined by the nitrogen adsorption/Brunauer-Emmett-Teller (BET) method using a Micrometrics Tristar 3000 (Micrometrics, Inc., Norcross, GA, USA) for each ENM. The equivalent primary particle diameter,  $d_{\text{BET}}$ , was calculated, assuming spherical particles, as

$$d_{\text{BET}} = \frac{6}{SSA \times \rho_p}, \quad (8)$$

where  $\rho_p$  is the particle density, which was obtained for each particle from the densities of component materials, at 20 $^{\circ}\text{C}$ , reported in the CRC handbook of Chemistry and Physics<sup>41</sup>. Particle crystal size and diameter was also determined by X-ray diffraction using a Scintag XDS2000 powder diffractometer (Scintag Inc., Cupertino, CA, USA), reported here as  $d_{\text{XRD}}$ . ENM powder primary particle morphology and size were further characterized, and for monodisperse gold nanospheres primary particle diameter was estimated by transmission electron microscopy (TEM) using a Zeiss Libra 120 microscope (Carl Zeiss GmbH, Jena, Germany). The TEM image of  $\text{CeO}_2$  agglomerates suspended in RPMI/10%FBS in Figure 1 was acquired with a JEOL 2100 microscope (JEOL Inc., Peabody, MA, USA) fitted with a Poseidon 500 electrochemistry liquid cell platform (Protochips, Inc., Raleigh, NC, USA).

### ENM dispersal and characterization in suspension

Dispersions were prepared based on a protocol recently developed by the authors<sup>16</sup>. Sonication was performed in deionized water (DI  $\text{H}_2\text{O}$ ) using the critical dispersion sonication energy ( $DSE_{\text{cr}}$ ), which was determined as previously described for each ENM<sup>16</sup>. ENMs were dispersed at 5  $\text{mg cm}^{-3}$  in 3 ml of solute in 15 ml conical polyethylene tubes using a Branson Sonifier S-450A (Branson Ultrasonics, Danbury, CT, USA), calibrated by the calorimetric calibration method previously described<sup>16,26</sup>, whereby the power delivered to the sample was determined to be 1.75 W, fitted with a 3 inch cup horn (maximum power output of 400 W at 60 Hz, continuous mode, output level 3) in which tubes were immersed so that sample and cup water menisci were aligned. Stock DI  $\text{H}_2\text{O}$  suspensions were then diluted to final concentrations in either RPMI or F12K cell culture media, each either alone or supplemented with 10% heat inactivated fetal bovine serum (FBS), and vortexed for 30 seconds. Dispersions were analyzed for hydrodynamic diameter ( $d_{\text{H}}$ ), polydispersity index (PdI), zeta potential ( $\zeta$ ), and specific conductance ( $\sigma$ ) by DLS using a Zetasizer Nano-ZS (Malvern Instruments, Worcestershire, UK). pH was measured using a VWR symPHony pH meter (VWR International, Radnor, PA, USA).

### Effective density by volumetric centrifugation

One ml samples of 50, 100 or 250  $\mu\text{g cm}^{-3}$  suspensions of metal oxide ENMs or 1.0  $\text{mg cm}^{-3}$  suspensions of gold nanospheres were dispensed into TPP packed cell volume (PCV) tubes (Techno Plastic Products, Trasadingen, Switzerland) and centrifuged at 1,000, 2,000 or 3,000  $\times g$  for one hour. Agglomerate pellet volumes,  $V_{\text{pellet}}$ , were measured using a slide rule-like *easy-measure* device also obtained from the PCV tube manufacturer. Effective agglomerate densities were calculated from  $V_{\text{pellet}}$  values of triplicate samples for each ENM and condition as described above using equation (4). Media density was calculated from the mass of a 50 ml sample by subtracting the weight of a 50 ml volumetric flask from the weight of the same flask containing 50 ml of media (RPMI or F12K  $\pm$  10% FBS) at 20°C, and agglomerate stacking factors,  $SF$ , were determined by analytical ultracentrifugation as described below.

### Stacking Factor estimation by analytical ultracentrifugation

Dispersions of 0.1  $\text{mg cm}^{-3}$  VENGES  $\text{CeO}_2$  ( $d_{\text{BET}} = 5.4$  nm) and VENGES  $\text{SiO}_2$  ( $d_{\text{BET}} = 18.6$  nm) in RPMI + 10% FBS, and 0.1  $\text{mg cm}^{-3}$  gold nanospheres ( $d_{\text{H}} = 29$  nm) in deionized water were prepared and 400  $\mu\text{l}$  of each were loaded into sample cells of a ProteomeLab™ XL-A/XL-I An-60 Ti rotor (Beckman Coulter, Brea, CA, USA) equipped with interference optics. Reference cells for  $\text{CeO}_2$ ,  $\text{SiO}_2$  and gold nanospheres were loaded and balanced with either RPMI + 10% FBS or deionized water. Samples were centrifuged at 3,000 rpm (122  $\times g$ ) in a ProteomeLab™ XL-I analytical ultracentrifuge (Beckman Coulter, Brea, CA, USA). Raw AUC interference data were analyzed using Sedfit software, as described elsewhere<sup>19, 42</sup>, to generate sedimentation coefficient profiles for each sample. The stacking factor,  $SF$ , for each ENM was estimated from the weighted mean sedimentation coefficient using equation (6).

### Effective density estimation by the Sterling Model

Effective density based on Sterling model<sup>18</sup> was calculated using Supplementary equations (21–22) assuming a fractal dimension ( $DF$ ) of 2.3. Hydrodynamic diameter,  $d_{\text{H}}$ , and primary particle diameter,  $d_{\text{BET}}$ , were measured as described above. In the case of gold nanospheres, which were generated in solution and for which a  $d_{\text{BET}}$  value therefore does not exist, the primary particle diameter was estimated from TEM images (20 nm). Media density,  $\rho_{\text{media}}$ , was measured as described above.

### Inductively coupled plasma mass spectrometry

Sample preparation was conducted in a Class 100 trace metal free clean hood in the Earth and Ocean Sciences Department at Duke University. Samples were agitated for 30 minutes and vortexed for one minute prior to preparation. Class A polypropylene test tubes were pre-washed in 5% nitric acid bath to remove potential metal contamination. 0.1 ml of each sample was transferred to the corresponding pre-labeled analytical vials and verified gravimetrically to  $\pm 0.001$  mg. Samples were diluted  $\sim 100 \times$  in water purified to 18.2  $\text{M}\Omega$  cm resistance using a Milli-Q water purification system (Millipore, Bedford, MA, USA), and then acidified using trace metal-free concentrated (15.9 M) ultra-pure nitric acid (Thermo Fisher Scientific, Waltham, MA, USA). Internal standards consisting of known quantities of



indium (In) and bismuth (Bi) were added to samples to correct for instrumental drift. All analytical standards, procedural blanks, and interference check standards were prepared in an analogous fashion.

Cerium content was measured using a Perkin Elmer axial field technology DRC II inductively coupled plasma mass spectrometer (ICP-MS). Prior to sample analysis, the ICP-MS was optimized for sensitivity, stability, and to reduce the formation of doubly charged species and oxide interferences using a multi-element tuning solution containing Mg, In, Ba, Ce, Bi, and U. Optimization continued until  $\text{CeO}^+/\text{Ce}^+$  and  $\text{Ba}^{++}/\text{Ba}^+$  were simultaneously less than 2%. These interferences were quantified to correct for instrumental and procedural backgrounds and isobaric interferences, respectively. During sample analysis sample lines were rinsed to reduce memory effects by washing sequentially with Milli-Q purified water for two minutes and 2% nitric acid for an additional two minutes between analyses. ICP-MS analyses were conducted as previously reported<sup>43,44</sup>. Throughout the analysis,  $\text{CeO}^+/\text{Ce}^+$  was <2.1%. Ce detection was performed by simultaneously monitoring  $^{140}\text{Ce}$  and  $^{142}\text{Ce}$ . No isobaric interferences were observed for  $^{140}\text{Ce}$  and  $^{142}\text{Ce}$  was corrected for Ne interferences. Calculated solution concentrations obtained from  $^{140}\text{Ce}$  and  $^{142}\text{Ce}$  varied by less than 3.1% on average. [Ce] quantification was obtained using a 7-point external calibration curve spiked with known quantities of Ce in a linear range from 0.050 ng g<sup>-1</sup> to 100 ng g<sup>-1</sup><sup>43,44</sup>. Known aliquots of Ce spikes were analyzed as unknowns to determine external precision as 2.7%. Five duplicate analyses (n=5) were performed for all analytes for each sample solution.

### Delivered dose computation

The *in vitro* sedimentation, diffusion and dosimetry (ISDD) model proposed by Hinderliter *et al.*<sup>13</sup> was used to calculate the fraction of administered particles deposited standard 96-well plates as a function of time  $f_D(t)$  as previously described<sup>16</sup>. In addition to effective density (estimated either by volumetric centrifugation or from the Sterling model), ISDD model inputs included the hydrodynamic diameter,  $d_H$ , measured by DLS, the media column height (3.15 mm), temperature (310K), media density, (1.00 g cm<sup>-3</sup>), media dynamic viscosity (0.00074 Pa s)<sup>13</sup>, and administered (initial suspension) particle concentration (100 μg cm<sup>-3</sup>). For each ENM the model-derived  $f_D(t)$  was fit to a Gompertz sigmoidal equation,

$$f_D(t) = 1 - e^{-\alpha t}, \quad (9)$$

where  $t$  is time (h), and  $\alpha$  is an ENM- and media-specific deposition fraction constant (h<sup>-1</sup>). Solving equation (8) for the time  $t$  at which the fraction  $f_D(t)$  of administered particles is delivered yields

$$t = -\frac{\ln(1 - f_D(t))}{\alpha}. \quad (10)$$

Equation (9) was used to calculate the time required for delivery of 90% of the administered dose,  $t_{90}$ , for each ENM dispersion using the specific deposition function constants,  $\alpha$ , and an  $f_D(t)$  value of 0.90.

## Validation of proposed dosimetry methodology

ENM powders were irradiated with neutrons for up to 24 hours at the Nuclear Reactor Laboratory (Massachusetts Institute of Technology, Cambridge, MA), and the radioactive  $^{141}\text{Ce}$  ENMs ( $\text{CeO}_2$ ,  $\text{SiO}_2$ -coated  $\text{CeO}_2$ ) were stored in irradiation tubes.  $^{141}\text{Ce}$  is a gamma emitter with a half-life of 32 days, and the successful production of radioactive ENMs following irradiation was confirmed by gamma energy spectrometry using a Packard gamma counter (Cobra Quantum, Packard Instrument, IL). ENMs were quantified as percentage of total administered mass dose, based on total measured radioactivity (counts per minute, CPM). Concentration calibrations were performed for each ENM by measuring radioactivity for a measured and known total ENM mass in suspension, and measuring radioactivity of serial dilutions by half down to  $5 \text{ ng cm}^{-3}$  (data not shown).

100  $\mu\text{l}$  of ENM suspensions at a concentration of  $12.5 \mu\text{g cm}^{-3}$  were applied to transwell systems without cells for 24 hours (Supplemental Figure 5). Following exposure, all supernatant and transwell inserts were collected from culture plates and set aside for analysis by gamma spectroscopy. Supernatants were collected from the transwell, and transwell inserts were set aside for measurement by gamma spectroscopy. All liquid present in the basolateral compartment of the transwell was then collected, and each basal well was washed 3 times with PBS and collected. Gamma counts were measured for apical compartments (including supernatant and transwell insert), as well as for the basal compartment (including collected media and PBS wash) by gamma spectroscopy. The mass balance of ENMs measured in the apical and basal compartments was compared to gamma readings for ENM suspensions of equivalent total particle mass ( $1.25 \mu\text{g}$ ). All experiments were conducted in triplicate.

## Supplementary Material

Refer to Web version on PubMed Central for supplementary material.

## Acknowledgments

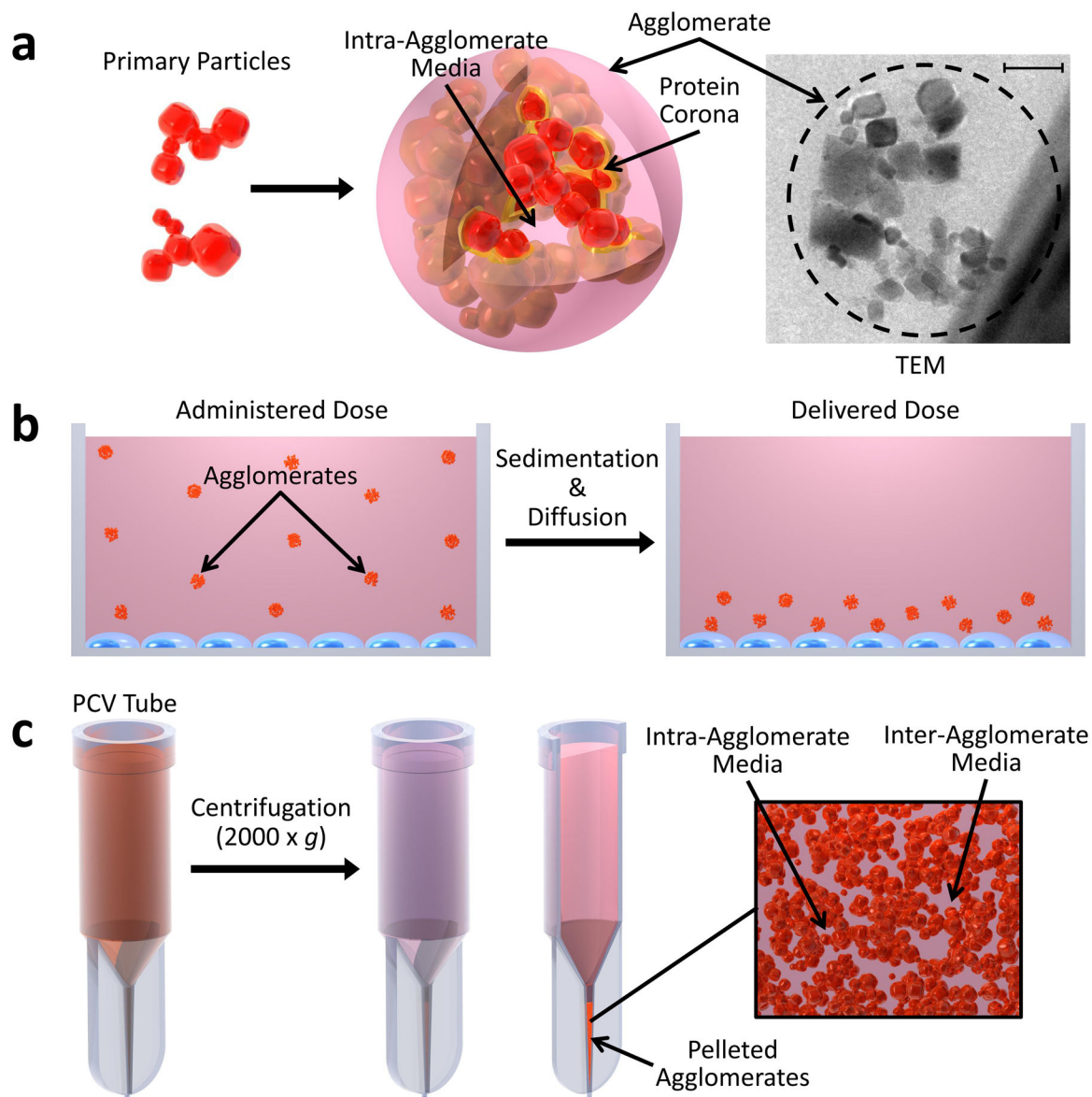
The authors thank Dr. Georgios Sotiriou (Particle Technology Laboratory, ETH Zurich) for the electron microscopy imaging, BET and XRD analysis of the ENM samples, Dr Srinivas Sridhar and Dr Rajiv Kumar at Northeastern University for providing the gold nanospheres, and Dr Justin Teeguarden (Pacific Northwest National Laboratory, Richland, WA, US) for providing the MATLAB software implementation of the ISDD dose delivery model used in this work. This research project was supported by NIEHS grant (ES-0000002), NSF grant (ID 1235806) and the Center for Nanotechnology and Nanotoxicology at The Harvard School of Public Health. This work was performed in part at the Harvard Center for Nanoscale Systems (CNS), a member of the National Nanotechnology Infrastructure Network (NNIN), which is supported by the National Science Foundation under NSF award no. ECS-0335765

## References

1. Nel A, Xia T, Mädler L, Li N. Toxic potential of materials at the nanolevel. *Science*. 2006; 311:622–627.
2. Bakand S, Hayes A, Dechsakulthorn F. Nanoparticles: a review of particle toxicology following inhalation exposure. *Inhal Toxicol*. 2012; 24:125–135. [PubMed: 22260506]
3. Pirela S, Molina R, Watson C, Cohen JM, Bello D, Demokritou P, Brain J. Effects of copy center particles on the lungs: A toxicological characterization using a Balb/c mouse model. *Inhal Toxicol*. 2013; 25:498–508. [PubMed: 23895351]

4. Krewski D, et al. Toxicity testing in the 21st century: a vision and a strategy. *J Toxicol Environ Health B Crit Rev.* 2010; 13:51–138. [PubMed: 20574894]
5. Gangwal S, et al. Informing selection of nanomaterial concentrations for ToxCast *in vitro* testing based on occupational exposure potential. *Environ Health Perspect.* 2011; 119:1539–1546. [PubMed: 21788197]
6. Oberdörster G. Nanotoxicology: *in vitro-in vivo* dosimetry. *Environ Health Perspect.* 2012; 120:A13–A13.
7. Han A, et al. Assessing the relevance of *in vitro* studies in nanotoxicology by examining correlations between *in vitro* and *in vivo* data. *Toxicology.* 2012; 297:1–9.
8. Lai DY. Toward toxicity testing of nanomaterials in the 21st century: a paradigm for moving forward. *Wiley Interdiscip Rev Nanomed Nanobiotechnol.* 2012; 4:1–15.
9. Rivera Gil P, Oberdörster G, Elder A, Puentes V, Parak WJ. Correlating physico-chemical with toxicological properties of nanoparticles: the present and the future. *ACS Nano.* 2010; 4:5527–5531.
10. Demokritou P, Gass S, Pyrgiotakis G, Cohen JM, Goldsmith W, McKinney W, Frazer D, Ma J, Schwegler-Berry D, Brain J, Castranova V. An *in vivo* and *in vitro* toxicological characterization of realistic nanoscale CeO<sub>2</sub> inhalation exposures. *Nanotoxicology.* 2013; 7:1338–1350. [PubMed: 23061914]
11. Ludwig K. Oxide nanoparticle uptake in human lung fibroblasts: effects of particle size, agglomeration, and diffusion at low concentrations. *Environ Sci Technol.* 2005; 39:9370–9376.
12. Teeguarden JG, Hinderliter PM, Orr G, Thrall BD, Pounds JG. Particokinetics *in vitro*: dosimetry considerations for *in vitro* nanoparticle toxicity assessments. *Toxicol Sci.* 2007; 95:300–312. [PubMed: 17098817]
13. Hinderliter PM, et al. ISDD: A computational model of particle sedimentation, diffusion and target cell dosimetry for *in vitro* toxicity studies. Part *Fibre Toxicol.* 2010; 710.1186/1743-8977-7-36
14. Cho EC, Zhang Q, Xia Y. The effect of sedimentation and diffusion on cellular uptake of gold nanoparticles. *Nat Nanotechnol.* 2011; 6:385–391. [PubMed: 21516092]
15. Rushton EK, Jiang J, Leonard SS, Eberly S, Castranova V, Biswas P, Elder A, Han X, Gelein R, Finkelstein J, Oberdorster G. Concept of assessing nanoparticle hazards considering nanoparticle dose-metric and chemical biological response metrics. *J Toxicol Environ Health.* 2010; 73:445–461.
16. Cohen J, DeLoid G, Pyrgiotakis G, Demokritou P. Interactions of engineered nanomaterials in physiological media and implications for *in vitro* dosimetry. *Nanotoxicology.* 2012; 7:417–431.
17. Wittmaack K. Novel dose metric for apparent cytotoxicity effects generated by *in vitro* cell exposure to silica nanoparticles. *Chem Res Toxicol.* 2011; 24:150–158. [PubMed: 21171596]
18. Sterling MC Jr, Bonner JS, Ernest AN, Page CA, Autenrieth RL. Application of fractal flocculation and vertical transport model to aquatic sol-sediment systems. *Water Res.* 2005; 39:1818–1830. [PubMed: 15899280]
19. Zook JM, Rastogi V, Maccuspie RI, Keene AM, Fagan J. Measuring agglomerate size distribution and dependence of localized surface plasmon resonance absorbance on gold nanoparticle agglomerate size using analytical ultracentrifugation. *ACS Nano.* 2011; 5:8070–8079.
20. Carney RP, et al. Determination of nanoparticle size distribution together with density or molecular weight by 2D analytical ultracentrifugation. *Nat Commun.* 2011; 2 published online. 10.1038/ncomms1338
21. Stettler M, et al. New disposable tubes for rapid and precise biomass assessment for suspension cultures of mammalian cells. *Biotechnol Bioeng.* 2006; 95:1228–1233. [PubMed: 16865737]
22. Song C, Wang P, Makse HA. A phase diagram for jammed matter. *Nature.* 2008; 453:629–632. [PubMed: 18509438]
23. Gauss CF, Besprechung des Buchs von LA. Seeber: Untersuchungen über die Eigenschaften der positiven ternären quadratischen Formen usw. *Göttingische Gelehrte Anzeigen.* 1876; 2:188–196.
24. Wegner K, Pratsinis SE. Scale-up of nanoparticle synthesis in diffusion flame reactors. *Chem Eng Sci.* 2003; 58:4581–4589.
25. Organisation for Economic Co-operation and Development (OECD). Preliminary Guidance Notes on Sample Preparation and Dosimetry for the Safety Testing of Manufactured Nanomaterials.

2010. [http://www.oecd.org/officialdocuments/displaydocument/?cote=env/jm/mono\(2012\)40&doclanguage=en](http://www.oecd.org/officialdocuments/displaydocument/?cote=env/jm/mono(2012)40&doclanguage=en)
26. Taurozzi JS, Hackley VA, Wiesner MR. Ultrasonic dispersion of nanoparticles for environmental, health and safety assessment - issues and recommendations. *Nanotoxicology*. 2011; 5:711–729.
  27. Murdock RC, Braydich-Stolle L, Schrand A, Schlager JJ, Hussain SM. Characterization of Nanomaterial Dispersion in Solution to In Vitro Exposure Using Dynamic Light Scattering Technique. *Toxicol Sci*. 2008; 101:239–253.
  28. Ji Z, Jin X, George S, Xia T, Meng H, Wang X, Suarez E, Zhang H, Hoek EMV, Godwin H, Nel AE, Zink JI. Dispersion and Stability Optimization of TiO<sub>2</sub> Nanoparticles in Cell Culture Media. *Environ Sci Technol*. 2010; 44:7309–7314.
  29. Zook J, MacCuspie RI, Locascio LE, Halter MD, Elliot JT. Stable nanoparticle aggregates/agglomerates of different sizes and the effect of their size on hemolytic cytotoxicity. *Nanotoxicology*. 2011; 5:517–530.
  30. Zhang H, Ji Z, Xia T, Meng H, Low-Kam C, Liu R, Pokhrel S, Lin S, Wang X, Liao YP, Wang M, Li L, Rallo R, Damoiseaux R, Telesca D, Madler L, Cohen Y, Zink JI, Nel AE. Use of Metal Oxide Nanoparticle Band Gap to Develop a Predictive Paradigm for Oxidative Stress and Acute Pulmonary Inflammation. *ACS Nano*. 2012; 6:4349–4368.
  31. Xia T, Zhao Y, Sager T, George S, Pokhrel S, Li N, Schoenfeld D, Meng H, Lin S, Wang X, Wang M, Ji Z, Zink JI, Madler L. Decreased dissolution of ZnO by iron doping yields nanoparticles with reduced toxicity in the rodent lung and zebrafish embryos. *ACS Nano*. 2011; 5:1223–1235.
  32. Gass S, Cohen JM, Pyrgiotakis G, Sotiriou GA, Pratsinis SE, Demokritou P. A safer formulation concept for flame-generated engineered nanomaterials. *ACS Sustain Chem Eng*. 2013; 1:843–857.
  33. He X, Zhang H, Ma Y, Bai W, Zhang Z, Lu K, Ding Y, Zhao Y, Chai Z. Lung deposition and extrapulmonary translocation of nano-ceria after intratracheal instillation. *Nanotechnology*. 2010; 16:285103.
  34. Khanbeigi RA, Kumar A, Sadouki F, Lorenz C, Forbes B, Dailey LA, Collins H. The delivered dose: Applying pharmacokinetics to in vitro investigations of nanoparticle internalization by macrophages. *Journal of Controlled Release*. 2012; 162:259–266.
  35. Khatri M, Bello D, Pal AK, Cohen JM, Woskie S, Gassert T, Lan J, Gu AZ, Demokritou P, Gainers P. Evaluation of cytotoxic, genotoxic and inflammatory responses of nanoparticles from photocopiers in three human cell lines. *Part Fibre Toxicol*. 2013; 1010.1186/1743-8977-10-42
  36. Lin MY, Lindsay HM, Weitz DA, Ball RC, Klein R, Meakin P. Universal reaction-limited colloid aggregation. *Phys Rev A*. 1990; 41:2005–2020.
  37. Wohlleben W. Validity range of centrifuges for the regulation of nanomaterials: from classification to as-tested coronas. *J Nanopart Res*. 2012; 1410.1007/s11051-012-1300-z
  38. Demokritou P, et al. Development and characterization of a Versatile Engineered Nanomaterial Generation System (VENGES) suitable for toxicological studies. *Inhal Toxicol*. 2010; 22:2107–116.
  39. Sotiriou GA, et al. A novel platform for pulmonary and cardiovascular toxicological characterization of inhaled engineered nanomaterials. *Nanotoxicology*. 2012; 6:680–690.
  40. Zhu T, Vasilev K, Kreiter M, Mittler S, Knoll W. Surface modification of citrate-reduced colloidal gold nanoparticles with 2-mercaptosuccinic acid. *Langmuir*. 2003; 19:9518–9525.
  41. Haynes, WM. *CRC Handbook of Chemistry and Physics*. 92. CRC Press/Taylor and Francis; Boca Raton, FL, USA: 2011.
  42. Schuck P. Size-distribution analysis of macromolecules by sedimentation velocity ultracentrifugation and Lamm equation modeling. *Biophys J*. 2000; 78:1606–1619.
  43. Darrah TH, et al. Incorporation of excess gadolinium into human bone from medical contrast agents. *Metallomics*. 2009; 1:479–488.
  44. McLaughlin MP, Darrah TH, Holland PL. Palladium(II) and Platinum (II) Bind Strongly to an Engineered Blue Copper Protein. *Inorg Chem*. 2011; 50:11294–11296.

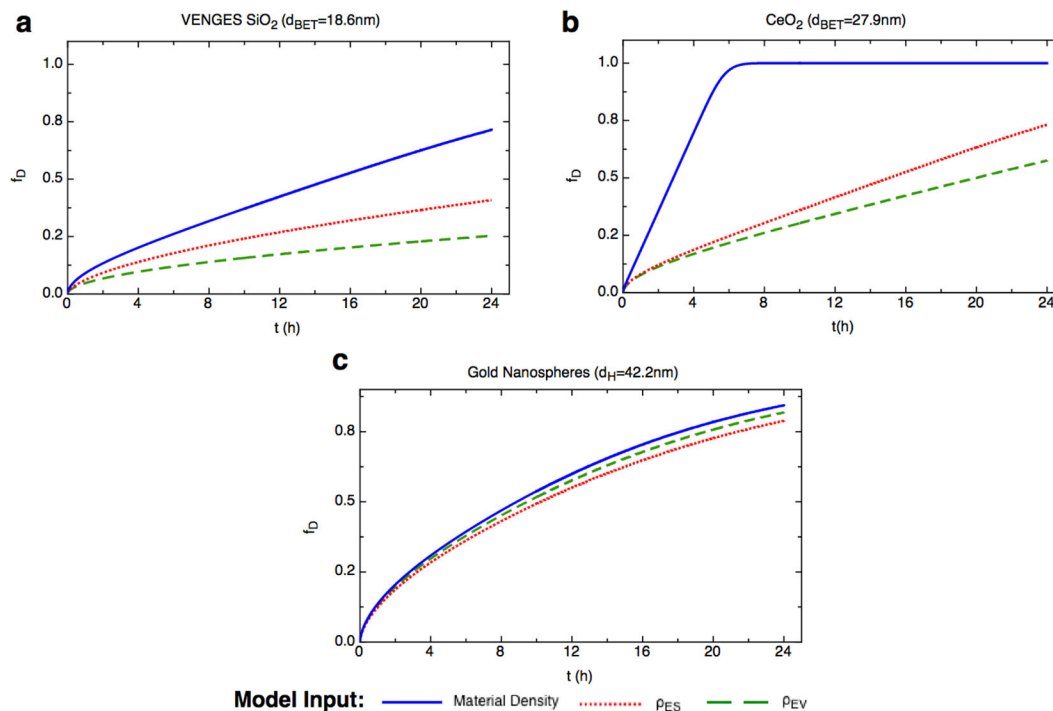


**Figure 1. Agglomeration of ENMs, transport in culture and volumetric centrifugation**

**a.** ENM primary particles suspended in cell culture media exist as agglomerates consisting of multiple primary particles, which may be enveloped by a corona of proteins from the media, and media trapped between primary particles (intra-agglomerate media). The TEM image of CeO<sub>2</sub> agglomerates suspended in RPMI/10% FBS was acquired with a JEOL 2100 microscope fitted with a Poseidon 500. Scale bar represents 50 nm. **b.** ENM agglomerates within suspensions applied to cells settle toward the cells over time as a result of mass transport (sedimentation and diffusion). The initial administered dose is the concentration of ENM in the initially homogeneous suspension. As transport progresses agglomerates are concentrated near or deposited onto the cells. The mass of ENM deposited per area is the delivered dose. **c.** In volumetric centrifugation a sample of ENM suspension is centrifuged in a packed cell volume (PCV) tube to produce a pellet, the volume of which can be measured and used to estimate the effective density of the ENM in suspension. The pellets

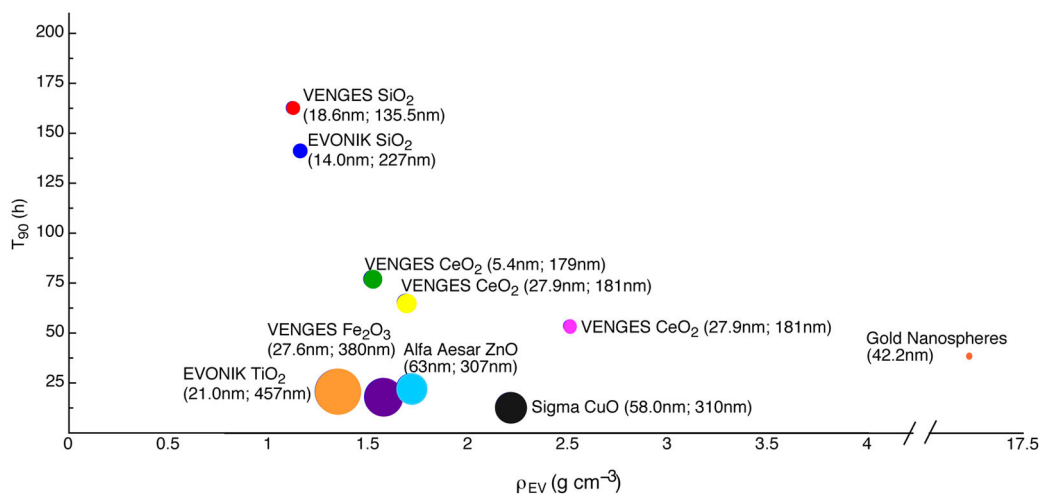
contain both packed agglomerates and the media remaining between them (inter-agglomerate media). We refer to fraction of the pellet volume occupied by agglomerates as the stacking factor ( $SF$ ).





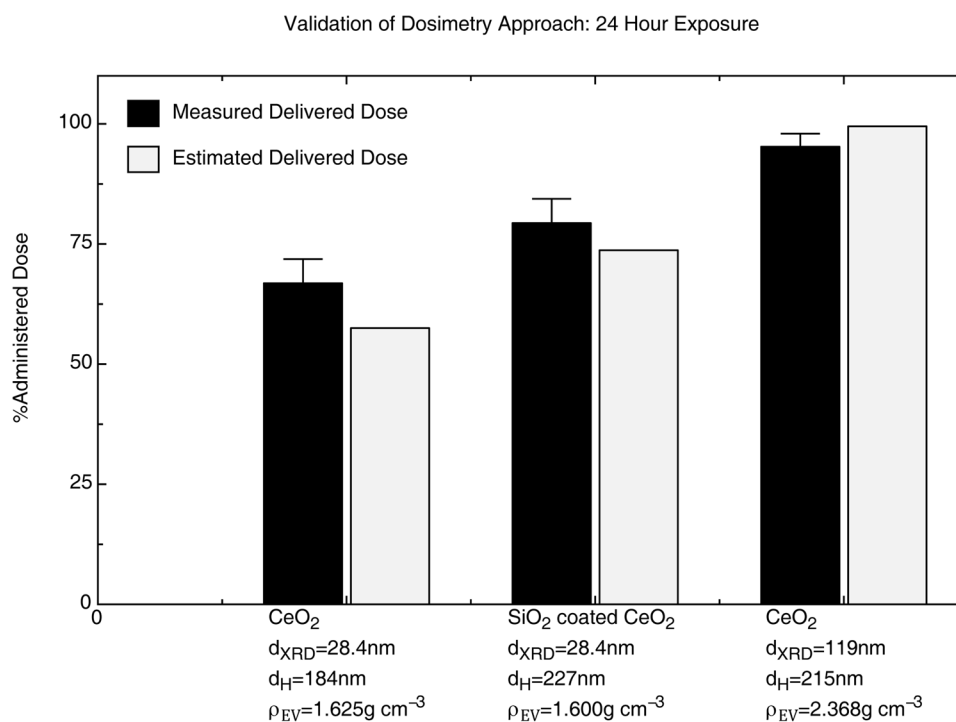
**Figure 2. Role of effective density in the rate of ENM deposition**

Modeling of transport over time demonstrates the important role of ENM density in determining the rate of ENM deposition, indicated here by  $f_D$ , the fraction of the administered dose (total mass of ENM in suspension) deposited at a given time. Assuming a density equal to that of the raw material (solid lines) results in an overestimation of deposition rate to a degree that depends upon the tendency of the ENM to form agglomerates that contain trapped media. Deposition rate curves are shown for three of the ENMs investigated suspended in cell culture media typically used for *in vitro* nanotoxicology study (RPMI/10% FBS): **a**, VENGES SiO<sub>2</sub> ( $d_{BET} = 18.6$  nm), **b**, CeO<sub>2</sub> ( $d_{BET} = 27.9$  nm), **c**, Gold nanospheres ( $d_H = 42.2$  nm). The dotted and dashed lines represent deposition based on densities determined by volumetric centrifugation and the Sterling method, respectively.



**Figure 3. Roles of agglomerate density and diameter in particle delivery to cells**

Density and particle size both play important roles in determining the rate of ENM deposition. The combined effects of these two parameters results in a wide range, among the ENMs investigated, in the rate of deposition and consequently the time required for 90% of the ENM in suspension to be deposited, indicated here by  $T_{90}$ . Effective density ( $\rho_{EV}$ ) is represented along the x axis. The diameter of the bubbles corresponding to each ENM represents and is relatively scaled to the agglomerate or hydrodynamic diameter ( $d_H$ ) of the ENM.



**Figure 4. Validation of VCM effective density and dosimetry approach**

In order to validate the proposed dosimetry approach based on effective densities determined by VCM, suspensions of flame-generated and neutron-activated ENMs (CeO<sub>2</sub> ( $d_{XRD} = 28.4$  nm), SiO<sub>2</sub> coated CeO<sub>2</sub> ( $d_{XRD} = 28.4$  nm), and CeO<sub>2</sub> ( $d_{XRD} = 119$  nm) suspended in DMEM/5% FBS) were applied to transwell insert membranes with 3  $\mu\text{m}$  pores. Following 24 hours incubation delivered dose was measured by gamma spectroscopy, defined as the sum of particles that deposited on or passed through the porous transwell insert membrane. Differences between delivered doses measured by the transwell approach and those estimated by particle transport modeling based on effective density calculated by VCM was <9% for all three materials tested. All experiments were done in triplicate. Error bars represent standard deviation.

Table 1

ENM properties and effective densities by volumetric centrifugation and Sterling method

Material	SSA (m <sup>2</sup> g <sup>-1</sup> )	d <sub>BET</sub> (nm)	d <sub>XRD</sub> (nm)	d <sub>H</sub> (nm)	ρ <sub>ENM</sub> (g cm <sup>-3</sup> )	SF	ρ <sub>EY</sub> (g cm <sup>-3</sup> )	ρ (g cm <sup>-3</sup> )
VENGES SiO <sub>2</sub>	147	18.6	NA	135.5 ± 9.53	2.648	0.634	1.112 ± 0.001	1.410
VENGES Fe <sub>2</sub> O <sub>3</sub>	41.5	27.6	19.6	380 ± 3.60	5.242	0.634	1.518 ± 0.03	1.516
VENGES CeO <sub>2</sub>	144	5.4	9.5	179 ± 3.76	7.215	0.634	1.474 ± 0.007	1.536
VENGES CeO <sub>2</sub>	59	27.9	23.7	181 ± 29.8	7.215	0.634	1.625 ± 0.008	1.999
VENGES CeO <sub>2</sub>	11	71.3	119	131 ± 5.17	7.215	0.634	2.368 ± 0.039	5.060
EVONIK SiO <sub>2</sub>	200	14	N/A	227 ± 2.50	2.648	0.634	1.147 ± 0.003	1.318
EVONIK TiO <sub>2</sub>	50	21	33	457 ± 20.9	4.23	0.634	1.315 ± 0.007	1.374
Sigma CuO	17.23	58.0	22	310 ± 7.57	6.315	0.634	2.099 ± 0.031	2.644
Alfa Aesar ZnO	17	63	22.3	307 ± 96.5	5.606	0.634	1.650 ± 0.07	2.520
Au Nanospheres	NA*	20*	20*	42.2 ± 24.7	19.3	0.74	17.73 ± 0.26	15.07

SSA: (specific surface area) by nitrogen adsorption/Brunauer-Emmett-Teller (BET) method. d<sub>BET</sub>: primary particle diameter determined from SSA, d<sub>XRD</sub>: particle diameter as determined by X-ray diffraction, d<sub>H</sub>: hydrodynamic diameter determined by DLS, ρ<sub>ENM</sub>: raw ENM material density, SF: stacking factor, ρ<sub>EY</sub>: effective density estimated by volumetric centrifugation, ρ<sub>EY</sub>: effective density estimated by Sterling equation.

\* Gold nanospheres were generated in suspension, and were therefore not characterized by BET or XRD. The primary particle size shown here was estimated from TEM images of nanospheres in suspension.

Errors (±) indicate standard deviations based on three measurements.