

Estrogen Action Via the G Protein-Coupled Receptor, GPR30: Stimulation of Adenylyl Cyclase and cAMP-Mediated Attenuation of the Epidermal Growth Factor Receptor-to-MAPK Signaling Axis

EDWARD J. FILARDO, JEFFREY A. QUINN, A. RAYMOND FRACKELTON, JR., AND KIRBY I. BLAND

Departments of Surgery (E.J.F., K.I.B.) and Medicine (E.J.F., J.A.Q.), Rhode Island Hospital (E.J.F., J.A.Q., K.I.B.) and Roger Williams Hospital (A.R.F.) and Brown University, Providence, Rhode Island 02903

Estrogen triggers rapid yet transient activation of the MAPKs, extracellular signal-regulated kinase (Erk)-1 and Erk-2. We have reported that this estrogen action requires the G protein-coupled receptor, GPR30, and occurs via G $\beta\gamma$ -subunit protein-dependent transactivation of the epidermal growth factor (EGF) receptor through the release of pro-heparan-bound EGF from the cell surface. Here we investigate the mechanism by which Erk-1/-2 activity is rapidly restored to basal levels after estrogen stimulation. Evidence is provided that attenuation of Erk-1/-2 activity by estrogen occurs via GPR30-dependent stimulation of adenylyl cyclase and cAMP-dependent signaling that results in Raf-1 inactivation. We show that 17 β -E2 represses EGF-induced activation of the Raf-to-Erk pathway in human breast carcinoma cells that express GPR30, including MCF-7 and SKBR3 cells which express both or neither, ER, respectively. MDA-MB-231 cells, which express ER β , but not ER α , and low levels of GPR30 protein, are unable to stimulate adenylyl cyclase or promote estrogen-mediated blockade of EGF-induced activation of

Erk-1/-2. Pretreatment of MDA-MB-231 cells with cholera toxin, which ADP-ribosylates and activates G α s subunit proteins, results in G protein-coupled receptor (GPCR)-independent adenylyl cyclase activity and suppression of EGF-induced Erk-1/-2 activity. Transfection of GPR30 into MDA-MB-231 cells restores their ability to stimulate adenylyl cyclase and attenuate EGF-induced activation of Erk-1/-2 by estrogen. Moreover, GPR30-dependent, cAMP-mediated attenuation of EGF-induced Erk-1/-2 activity was achieved by ER antagonists such as tamoxifen or ICI 182, 780; yet not by 17 α -E2 or progesterone. Thus, our data delineate a novel mechanism, requiring GPR30 and estrogen, that acts to regulate Erk-1/-2 activity via an inhibitory signal mediated by cAMP. Coupled with our prior findings, these current data imply that estrogen balances Erk-1/-2 activity through a single GPCR via two distinct G protein-dependent signaling pathways that have opposing effects on the EGF receptor-to-MAPK pathway. (*Molecular Endocrinology* 16: 70-84, 2002)

EPIDERMAL GROWTH FACTOR (EGF) receptor (EGFR) belongs to a family of transmembrane tyrosine kinase receptors (EGFR/erbB1, HER2/erbB2, HER3/erbB3, and HER4/erbB4) that play a critical role in regulating normal cell growth and physiology (1). In general, EGFRs dictate cellular responses based on their ability to activate intracellular signaling cascades that effect biochemical events necessary to alter cell structure and function. The MAPKs, p42/44 MAPK [also known as extracellular signal-regulated kinase (Erk)-1/-2] are key downstream mediators of EGFR function because they phosphorylate and thereby

modify the function of numerous proteins that collectively regulate polymerization of the actin cytoskeleton, mobilization of myosin, cell cycle checkpoints, and gene transcription (2).

Stimulation of the EGFR-to-MAPK pathway is initiated by the specific binding of cognate ligands, such as EGF, TGF α , heregulin, and heparan-bound EGF (HB-EGF), to specific EGFRs. This interaction results in the formation of EGFR homo- and heterodimers and autophosphorylation of tyrosyl residues within their cytoplasmic domains. Specific recognition of these phosphotyrosines by the adapter proteins Grb-2 and/or Shc, and guanine nucleotide exchange factors, such as Sos, serves to link-activated EGFR to MAPK via the monomeric GTPase, p21Ras. Thus activated, Ras is capable of recruiting the serine-threonine kinase Raf-1, which in turn promotes cascade phosphorylation and activation of Mek-1 and its dedicated substrates Erk-1 and Erk-2 (3). Under conditions of normal growth and behavior, activation of the EGFR to

Abbreviations: EGF, Epidermal growth factor; EGFR, EGF receptor; Erk, extracellular signal-regulated kinase; HB-EGF, heparan-bound EGF; GPCR, G protein-coupled receptor; ICI 182, 780, (7 α -[9-[(4,4,5,5,5-pentafluoropentyl)sulphonylnonyl]estra-1,3,5(10)-triene-3,17 β -diol], a high affinity ER antagonist; MBP, myelin basic protein; Mek, MAPK/ERK kinase (same as MAP kinase kinase); SHBGR, a membrane receptor on breast and prostate cancer cells.

MAPK pathway is transient and attenuated by a variety of control mechanisms, which prevent downstream activation of Erk-1/-2 (4), as well as by phosphatases, which dephosphorylate, and thereby inactivate, Erk-1/-2 (5). In contrast, constitutive activation of the EGFR to MAPK pathway results in dysregulated cellular behaviors associated with carcinogenesis (6, 7).

Several lines of evidence suggest that dysregulation of the EGFR to MAPK pathway may have particular significance for breast carcinogenesis. First, overexpression of the EGFR family member, HER2, is a common event in breast tumors (8), an event that is known to increase both the amplitude and duration of EGF-stimulated Erk-1/-2 activation (9). Second, Erk-1-mediated phosphorylation of serine residue 118 of the ER enhances its gene activation function (10, 11). Third, estrogen stimulates activation of Erk-1/-2 (12–15). In this regard, constitutive Erk-1/-2 may initiate dysregulated cellular behaviors exhibited by estrogen-independent tumors; additionally, Erk-1/-2 may also provide a mechanism whereby hyperactive growth factor signaling may activate estrogen-dependent tumor growth. The association of increased Erk-1/-2 activity with invasive breast cancer suggests this hypothesis (16).

Aside from receptor tyrosine kinases, as represented by the EGFRs, G protein-coupled receptors (GPCRs) comprise a second major class of transmembrane receptors that signal via Erk-1/-2. Unlike EGFRs, GPCRs activate Erk-1/-2 through several distinct mechanisms, some of which couple via the monomeric GTPases, Ras or Rap; others activate Raf or Mek directly (17). In some instances, GPCR stimulation leads to the activation of Src-related tyrosine kinases and the assembly of Grb-2/Sos/Shc complexes on the cytoplasmic domain of EGFRs (18). In conjunction with the finding that Src can directly phosphorylate the EGFR (19), these observations suggest that GPCRs may activate EGFRs via Src-mediated phosphorylation of the EGFR cytoplasmic tail. More recently, ligands for some GPCRs, including endothelin, bombesin, and lysophosphatidic acid have been shown to transactivate the EGFR through their ability to cleave and release surface-associated precursors of EGF-related polypeptides (20). These findings parallel observations that other receptors that lack intrinsic enzymatic function, such as integrins (21) and cytokine receptors (22), also transactivate the EGFR. The fact that may different receptors transactivate the EGFR to MAPK pathway suggests that coordinated signaling is required to regulate the activity of this commonly used signaling axis.

Recently, we have shown that GPR30 is required for estrogen-induced activation of the MAPKs, Erk-1 and Erk-2 (23). This activation response is rapid and occurs via G $\beta\gamma$ -subunit protein-dependent release of surface-associated HB-EGF and transactivation of the EGF receptor. GPR30-dependent, estrogen-mediated Erk-1/-2 activation is transient, rapidly returning to basal levels 10–15 min after initial exposure to estrogen. This rapid inactivation of Erk-1/-2 implies the existence of a tightly

controlled regulatory mechanism. Others have shown that estrogen (24–26) also promotes stimulation of adenylyl cyclase activity and production of intracellular cAMP. In some cell settings, cAMP acts as a potent inhibitor of Erk-1/-2 activity (27, 28). In other cell types, Erk-1/-2 are activated by cAMP via its ability to promote B-raf-mediated stimulation of Mek-1 (29). Because adenylyl cyclases are commonly linked to GPCRs (30, 31) we investigated whether GPR30 participates in estrogen-mediated stimulation of adenylyl cyclase. Here, we show that GPR30 is required for estrogen-induced stimulation of adenylyl cyclase and cAMP-mediated inhibition of Erk-1/-2. Moreover, we demonstrate that ER antagonists, including the antiestrogens tamoxifen and 7 α -[9-[(4,4,5,5,5-pentafluoropentyl)sulphinyl]nonyl]estra-1,3,5(10)-triene-3,17 β -diol (ICI 182,780), can also induce these same GPR30-dependent rapid signaling events. Our results suggest that estrogens and antiestrogens signal via GPR30-mediated stimulation of adenylyl cyclase to inhibit the EGFR to MAPK pathway.

RESULTS

Estrogen-Mediated Stimulation of Adenylyl Cyclase Activity Is ER-Independent and Requires the Expression of GPR30

Estrogen stimulates intracellular cAMP production through its ability to activate adenylyl cyclase in the plasma membrane via an as-yet-to-be determined mechanism (24, 25). Prior studies demonstrating estrogen promotes this activity in MCF-7 cells that express known estrogen receptors has led to the hypothesis that the ER may regulate adenylyl cyclase activity (24). More recent data have shown that G α_s -proteins are required in these cells for estrogen-mediated stimulation of adenylyl cyclase (32). Traditionally, adenylyl cyclase activity is known to be regulated by receptors that couple to heterotrimeric G proteins (30). Although the ER has been shown to exist in the plasma membrane (33, 34), there are no known functional motifs within the structure of the ER that permit G α_s protein coupling or activation (35). Because we have shown that GPR30 is required for transactivation of the EGFR by estrogen (23), we queried whether this receptor, or the known ERs, promote estrogen-mediated stimulation of adenylyl cyclase.

To discriminate between these possibilities, we measured the ability of estrogen to stimulate cAMP production in membranes isolated from human SKBR3 breast cancer cells that express neither ER α nor ER β (36) yet express GPR30 protein (23). SKBR3 membranes exposed to 17 β -E2 produced substantial levels of cAMP (Fig. 1A). This activity was not promoted by the isomer, 17 α -E2. In agreement with the observations of Aronica and colleagues (24), demonstrating that ER antagonists can stimulate adenylyl cyclase activity in MCF-7 membranes, the antiestrogen ICI 182, 780, also stimulated cAMP production in

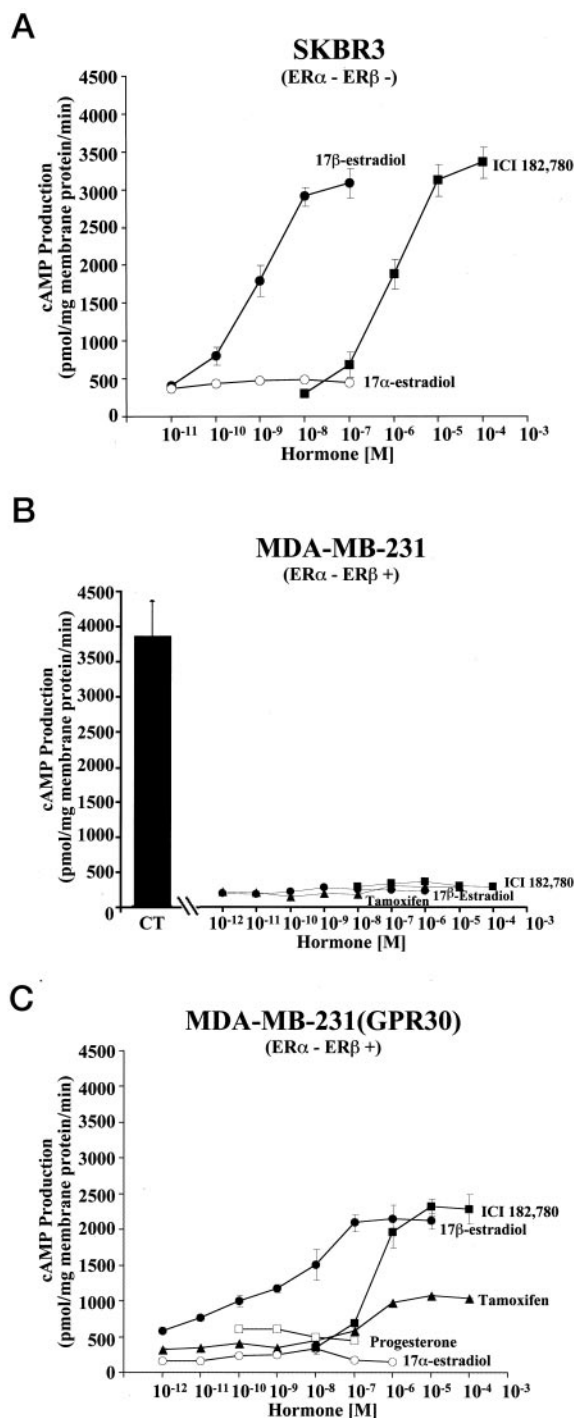


Fig. 1. Estrogen Stimulation of Adenylyl Cyclase Activity Is ER Independent and Requires the Expression of GPR30

Adenylyl cyclase activity was determined from membranes prepared from SKBR3 as well as vector- or GPR30-transfected MDA-MB-231 human breast cancer cells which were stimulated with either cholera toxin (CT) (1 μ g/ml) or various concentrations of 17 β -E2, 17 α -E2, 4-hydroxy-tamoxifen, ICI 182, 780, or progesterone. The y-axis values are on a linear scale and represent picomoles of cAMP generated per milligram of membrane protein per minute. The x-axis values are expressed on a logarithmic scale as the molar concentration of hormone. Each data point represents the mean \pm the sd of quadruplicate samples.

membranes from SKBR3 cells (Fig. 1A). In contrast, as had been previously noted by others (24), we found that membranes from MDA-MB-231 cells that express ER β but not ER α protein (37) did not generate cAMP upon exposure to either 17 β -E2 or ER antagonists (Fig. 1B). Nevertheless, cholera toxin, an agonist that ADP-ribosylates and directly activates G α s subunit proteins, stimulated a 15-fold increase in cAMP in MDA-MB-231 membranes, indicating that the MDA-MB-231 membrane preparations retained G α s proteins capable of activating adenylyl cyclase (Fig. 1B).

Membranes prepared from MDA-MB-231 cells that were forced to overexpress GPR30 protein were tested for their ability to produce cAMP in response to estrogen stimulation. We found that membranes isolated from GPR30-transfected MDA-MB-231 cells supported stimulation of adenylyl cyclase after exposure to either 17 β -E2, tamoxifen, or ICI 182, 780 (Fig. 1C). The saturation dose for 17 β -E2-mediated stimulation of adenylyl cyclase activity was near 1 μ M, whereas approximately 10 nM of 17 β -E2 showed a half-maximal response. Half-maximal stimulation was achieved with 0.2 μ M ICI 182, 780, a concentration that closely approximates the half-maximal dose for a response of similar amplitude in SKBR3 cells (Fig. 1A). No increases in cAMP production were observed in MDA-MB-231 (GPR30) membranes treated with 17 α -E2, an isomer of 17 β -E2 that is unable to support ER function. Similarly, the sex steroid hormone progesterone failed to elicit cAMP production from MDA-MB-231 (GPR30) membranes. Collectively, these results indicate that GPR30 acts independently of the known ERs to promote estrogen-mediated stimulation of adenylyl cyclase.

Inhibition of PKA Prolongs Estrogen-Induced Erk-1 and Erk-2 Activity

Agents that elevate intracellular cAMP possess either stimulate or inhibit Erk-1/-2 activity in different cell types (27–29). The ability of cAMP to activate Erk-1/-2 has been attributed to the cellular expression of the 95-kDa isoforms of B-Raf (29). Therefore, we measured B-Raf expression in MDA-MB-231 (GPR30) cells by Western blotting (Fig. 2A). Simian SV40-transformed COS-7 kidney epithelial cells, which undergo Erk-1/-2 activation in response to cAMP, expressed elevated levels of both the 95-kDa and 68-kDa isoforms of B-Raf. In contrast, MDA-MB-231 (GPR30) breast cancer cells grown in serum expressed the 95-kDa isoform of B-Raf, and little, if any, detectable 68-kDa B-Raf (Fig. 2A). However, we found that when these cells were serum-starved they failed to express detectable levels of 95-kDa B-Raf. This finding is consistent with a prior report noting that the 95-kDa isoform of B-Raf is inhibited in serum-starved cells (38) and suggests that serum-starved MDA-MB-231(GPR30) cells may be refractory to cAMP-dependent activation of Erk. To directly test this hypothesis, Erk-1/-2 phosphorylation was measured after exposure of MDA-MB-231 (GPR30) cells to either cholera toxin or dibutyryl cAMP, a

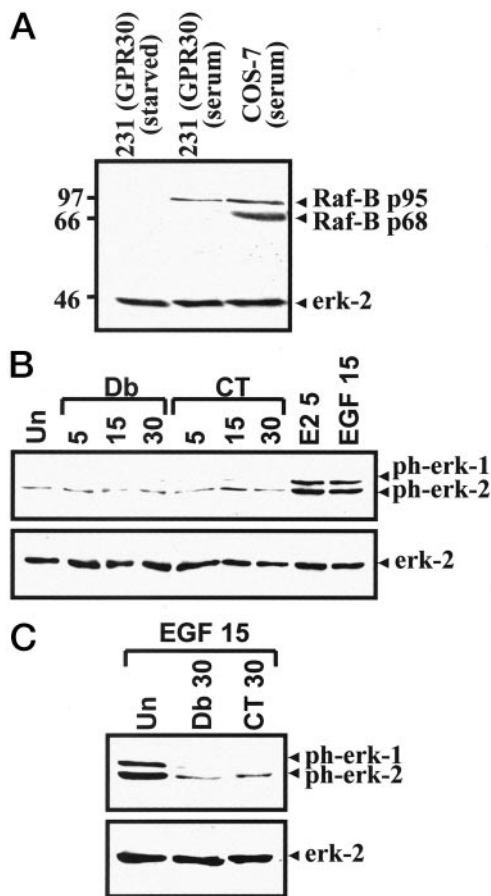


Fig. 2. cAMP Does Not Activate Erk-1/-2 in MDA-MB-231 (GPR30) Breast Cancer Cells

A, Fifty micrograms of protein from whole-cell lysates of COS-7 cells or MDA-MB-231 (GPR30) cells grown in serum, or starved, were subjected to Western blotting with a B-Raf-specific antibody that recognizes both the 95- and 68-kDa isoforms. The same filter was reprobed with Erk-2 antibodies to confirm equivalent protein loading. B, Serum-starved MDA-MB-231(GPR30) cells were untreated or treated with cholera toxin (1 μg/ml), dibutyryl cAMP (1 mM), 17β-E2 (1 nM), or EGF (1 ng/ml) for various lengths of time (minutes) and lysed in detergent. C, Alternatively, cells were preexposed to cholera toxin (1 μg/ml), dibutyryl cAMP (1 mM), or left untreated for 30 min and then stimulated with EGF (100 ng/ml) for 15 min prior to lysis. Fifty micrograms of protein from each detergent lysate was electrophoresed through 15% reducing SDS-polyacrylamide gels, transferred to nitrocellulose, and probed with antibodies specific for phosphorylated Erk-1 and -2. The nitrocellulose membrane was then stripped and reprobed with antibodies that recognize total (phosphorylation state-independent) Erk-2 protein. The position of phosphorylated Erk-1/-2 protein or total Erk-2 protein are indicated at left.

membrane-permeable cAMP congener. Although either estrogen or EGF induced Erk-1/-2 activation in MDA-MB-231 (GPR30) cells, neither cholera toxin nor dibutyryl cAMP promoted Erk-1/-2 stimulation (Fig. 2B). However, MDA-MB-231 (GPR30) cells exposed to either cholera toxin or dibutyryl cAMP were able to blunt EGF-induced Erk-1/-2 activity, suggesting that cAMP antagonizes

Erk in these cells (Fig. 2C). This finding implies that via its ability to stimulate adenylyl cyclase, estrogen may transmit a cAMP inhibitory signal that acts to attenuate estrogen-mediated, transactivation of the EGFR-to-Erk signaling axis.

To investigate whether the restoration of Erk-1/-2 from peak activity levels to basal levels in MDA-MB-231 (GPR30) cells was associated with 17β-E2-induced cAMP-dependent inhibition of Erk-1/-2, we determined the effects of KT5720, a cAMP-dependent PKA inhibitor on the kinetics of estrogen-mediated Erk-1/-2 activation. After stimulation, detergent lysates were prepared and Erk-1/-2 activity and expression was determined by immunoblotting using phosphorylation state-dependent and -independent antibodies. As previously reported (23), 17β-E2-induced a rapid increase in the phosphorylation state of Erk-1 and Erk-2 in these cells. However, as observed in Fig. 3, the duration of this response is transient. Increases in Erk-1/-2 phosphorylation were detected as early as 1 min after exposure to 17β-E2. Peak Erk-1/-2 phosphorylation levels occurred at 5 min (3- to 4-fold increase) with Erk-1/-2 activity returning to baseline levels by 30–60 min. Cells exposed to KT5720 for 2 h exhibited reduced basal levels of Erk-1/-2 activity relative to untreated control cells. However, after estrogen stimulation, the rate and amplitude of the Erk-1/-2 activation response in KT5720 pretreated cells was similar to that observed in control cells with peak activity observed within 5 min. In contrast to untreated control cells, KT5720-treated cells maintained elevated levels of Erk-1/-2 activity for an extended period of time (greater than 1 h) after estrogen stimulation (Fig. 3). This observation suggests that activation of cAMP-dependent PKA is required to restore estrogen-induced Erk-1/-2 activity to basal levels.

Estrogen Represses EGF-Induced Erk-1/-2 Activation Via Its Ability to Generate cAMP Via GPR30

To further assess the mechanism by which estrogen inhibits Erk-1/-2 activity, we examined the ability of 17β-E2 to suppress EGF-induced Erk-1/-2 phosphorylation. As described previously (23) and shown in Fig. 4A, stimulation of quiescent MCF-7 cells (ERα+, ERβ+, GPR30+) with EGF induces substantial (5- to 10-fold) increases in the phosphorylation state, or activity, of Erk-1/-2 within 15 min. Pretreatment of MCF-7 cells with 17β-E2 for 30 min significantly inhibited EGF-induced Erk-1/-2 phosphorylation or activity (Fig. 4A). This state of E2-induced suppression of EGF-induced Erk-1/-2 phosphorylation could be measured in cells maintained in 17β-E2 for as long as 120 min prior to EGF stimulation. Reprobing these filters with phosphorylation state-independent Erk-2 antibodies verified that these changes in Erk-1/-2 phosphorylation were not due to changes in Erk-2 protein expression. To address whether the suppressive effect of estrogen on EGF-stimulated Erk-1/-2 activity might be due to a delay of the onset of EGF-induced

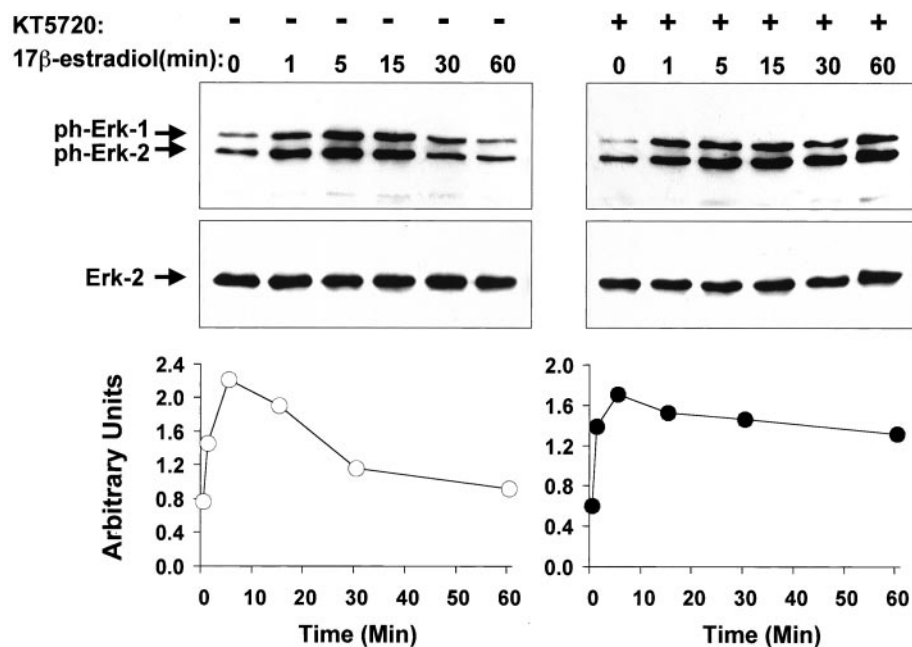


Fig. 3. Inhibition of PKA Activation Results in Prolonged Estrogen-Mediated Activation of Erk-1/-2

Serum-deprived human MCF-7 breast adenocarcinoma cells were pretreated with the cAMP congener, KT5270, or vehicle before stimulation with 1 nM 17 β -E2 (17 β -E2) for the indicated lengths of time (minutes) and then lysed in detergent. Expression of phosphorylated Erk-1/-2 or total Erk-2 protein was determined as described in Fig. 2. The position of phosphorylated Erk-1/-2 protein or total Erk-2 protein are indicated at *left*. The data shown are representative of at least three independent experiments. *Below*, Band intensities from this experiment were quantified using NIH Image software. Results were normalized to total Erk-2 expression in each sample and plotted as arbitrary units.

Erk-1/-2 activation, Erk-1/-2 phosphorylation was measured in MCF-7 cells that were pretreated with estrogen and then stimulated with EGF for various lengths of time. Basal Erk-1/-2 phosphorylation levels were observed in cells that had been pretreated with 17 β -E2 and subsequently challenged with EGF for any of the time intervals tested (Fig. 4B), indicating that 17 β -E2 did not delay the onset of EGF-induced Erk-1/-2 activity in these cells. ER-antagonists, 4-hydroxytamoxifen or ICI 182,780 behaved similarly to 17 β -E2 with regards to their ability to attenuate EGF-induced Erk-1/-2 phosphorylation (data not shown). To determine whether the estrogen-induced suppressive effect on EGF-induced Erk-1/-2 activity also occurs via activation of cAMP-dependent PKA, MCF-7 cells were incubated with KT5270 before exposure to tamoxifen and then stimulated with EGF. KT5270-treatment completely abrogated tamoxifen-mediated attenuation of EGF-induced phosphorylation of Erk-1/-2 in these cells (Fig. 5A). No changes were observed in the expression of total Erk-2 protein in response to KT5270, whereas this treatment abolished tamoxifen-mediated repression of EGF-induced Erk-1/-2 activity (Fig. 5A). We found that estrogen suppression of EGF-induced Erk-1/-2 was also observed in ER-negative SKBR3 cells (Fig. 5B). Repression of EGF-induced Erk-1/-2 activity in these cells was achieved by not only 17 β -E2 but also the ER-antagonists tamoxifen and ICI 182,780 (Fig. 5B). As was the case for

MCF-7 cells (Fig. 5A), estrogen-mediated repression of EGF-induced Erk-1/-2 activation in SKBR3 cells was similarly sensitive to the cAMP congener, KT5270 (Fig. 5B). Because KT5270 functions as an inhibitor of cAMP-dependent PKA (39), our data suggests that PKA-mediated, cAMP-dependent signaling is necessary for repression of Erk-1/2 activity by estrogens and antiestrogens. These findings indicate that the ER is not required for this estrogen suppressor activity.

To determine whether GPR30 might promote this estrogen suppressor activity, we compared the effect of estrogen on EGF-induced stimulation of Erk-1/-2 activity in parental MDA-MB-231 or MDA-MB-231 cells forced to overexpress GPR30 protein. Upon exposure to EGF, serum-deprived MDA-MB-231 cells exhibited a 3- to 5-fold increase in Erk-1/-2 phosphorylation and activity (Fig. 6A). Prior exposure to tamoxifen (Fig. 5A) or 17 β -E2 (data not shown) did not inhibit EGF-induced stimulation of Erk-1/-2 phosphorylation in these cells. However, exposure of these parental MDA-MB-231 cells to either dibutyl cAMP or the potent cAMP agonist, cholera toxin resulted in a dramatic reduction of EGF-stimulated Erk-1/-2 activity and phosphorylation (Fig. 6A). In contrast, GPR30-transfected MDA-MB-231 cells expressed the estrogen suppressor phenotype. These cells exhibited 20-fold less EGF-induced Erk-1/-2 phosphorylation after tamoxifen treatment than mock-transfected MDA-MB-

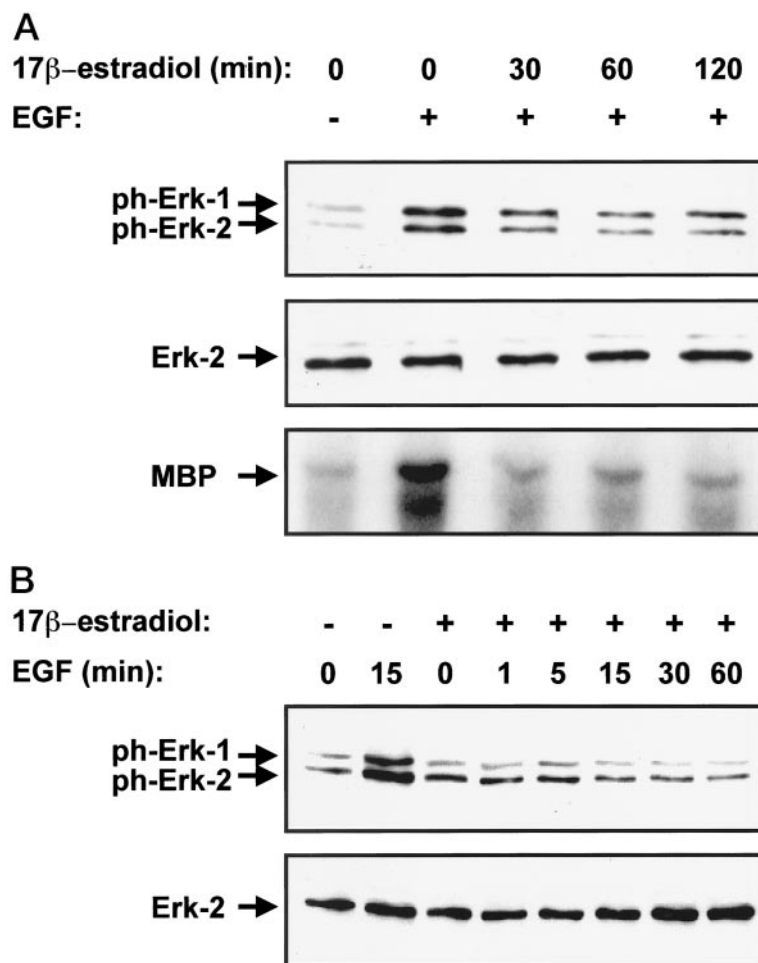


Fig. 4. Attenuation of EGF-Induced Erk-1/-2 Activity by Estrogen

Phospho-Erk expression was determined in serum-deprived MCF-7 cells that were exposed to estrogen before EGF-stimulation. A, Cells were pretreated with 1 nM 17 β -E2 for various lengths of time (0–120 min) and then stimulated with 100 ng/ml EGF for 15 min and lysed in detergent. B, Cells were pretreated with 1 nM 17 β -E2 for 30 min and then stimulated with 100 ng/ml of EGF for various lengths of time (1–60 min) and then extracted in detergent. Expression of phosphorylated Erk-1/-2 or total Erk-2 protein was determined as described above.

231 cells (Fig. 7). A similar inhibition of EGF-induced Erk-1/-2 phosphorylation was observed for MDA-MB-231(GPR30) cells treated with 17 β -E2 (data not shown). However, attenuation of EGF-induced Erk-1/-2 phosphorylation was not inhibited in MDA-MB-231 (GPR30) cells exposed to 500 nM of either the inactive 17 α -E2 isomer or progesterone (Fig. 8). No differences were observed between vector- and GPR30-transfected MDA-MB-231 cells in total Erk-2 protein expression under any of these conditions (Figs. 7 and 8). Thus, collectively these data suggest that the cAMP-signaling pathway promoting estrogen-mediated repression of Erk-1/-2 is intact in MDA-MB-231 cells, and that these cells are unable to potentiate estrogen suppressor activity due to a defect in the pathway leading to G α s-subunit protein activation. Overexpression of GPR30 protein reconstitutes the estrogen suppressor phenotype suggesting that GPR30 is required for estrogen-mediated suppression

of the EGFR-to-MAPK signaling axis. Moreover, these data provide specificity for the GPR30-dependent responses measured here, and suggest a novel mechanism by which estrogenic hormones can regulate growth factor signaling.

Attenuation of Estrogen-Induced Erk-1 and Erk-2 Activity Does Not Effect EGFR Activation or Internalization

We have previously demonstrated that estrogen stimulation of GPR30-expressing breast carcinoma cells results in transactivation of the EGFR through release of surface-associated HB-EGF (23). To determine whether attenuation of estrogen-induced Erk-1/-2 activity is associated with a decrease in EGFR activity, EGFR tyrosine phosphorylation was measured in detergent lysates prepared from MDA-MB-231(GPR30) cells that were exposed to estrogen for various peri-

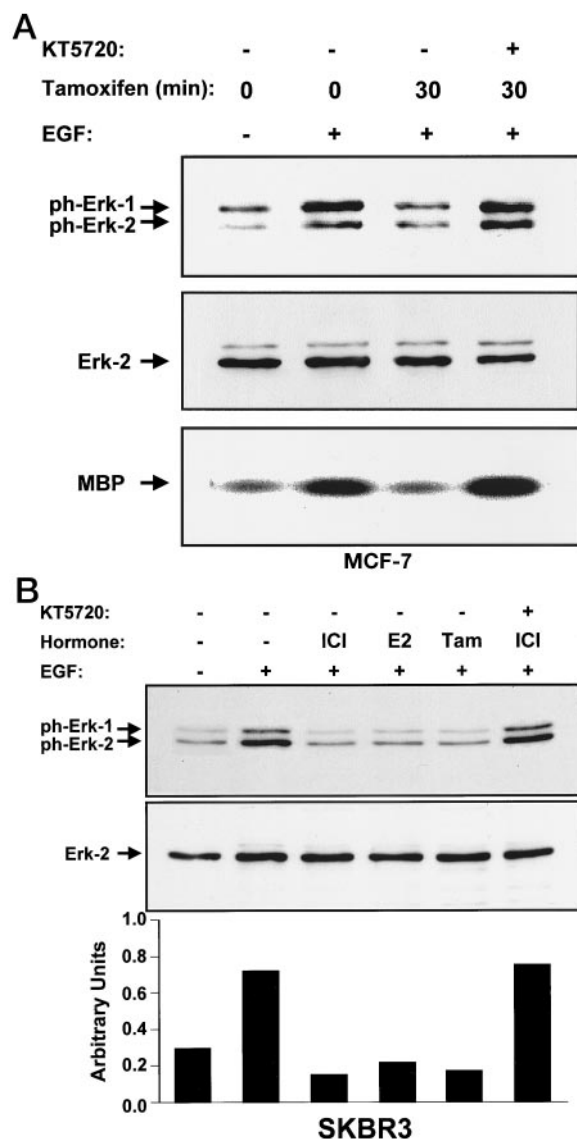


Fig. 5. Attenuation of EGF-Induced Erk-1/-2 Activity by Estrogens or Antiestrogens Is Abrogated by the cAMP Congener, KT5720

After a 1-h exposure to KT5720 (10 μ M) or vehicle (DMSO), MCF-7 cells (A) or SKBR3 cells (B) were treated with 17β -E2 (1 nM), 4-hydroxy-tamoxifen (1 μ M), or ICI 182,780 (1 μ M) for 30 min and then stimulated with EGF (100 ng/ml; 15 min). Detergent extracts were prepared and the expression of phosphorylated Erk-1/-2 or total Erk-2 protein were determined as described previously. *Below*, Band intensities from this experiment were quantified using NIH Image software. Results were normalized to total Erk-2 expression in each sample and plotted as arbitrary units.

ods of time. Significant EGFR tyrosine phosphorylation was observed as early as 3 min following exposure to 17β -E2 (Fig. 9A). Comparable amounts of tyrosine phosphorylated erbB1/EGFR was observed at 60 min after estrogen stimulation (Fig. 9A), even though basal levels of phosphorylated Erk-1/-2 are present at these later time points (Fig. 3). To further

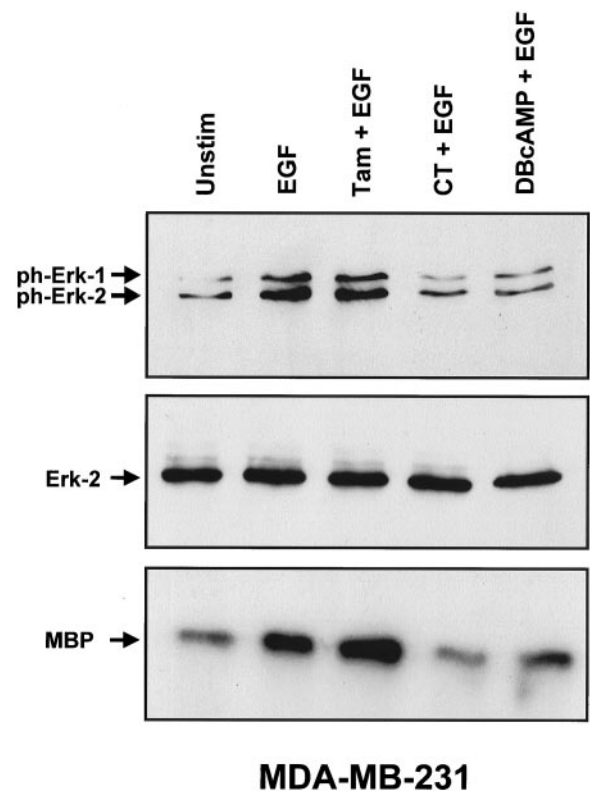


Fig. 6. Tamoxifen-Mediated Attenuation of EGF-Induced Phosphorylation of Erk-1/-2 Does Not Occur in MDA-MB-231 Breast Carcinoma Cells

MDA-MB-231 (ER α - ER β +) breast carcinoma cells were pretreated with either 1 μ M 4-hydroxytamoxifen (Tam), 1 μ g/ml cholera toxin (CT) or 1 mM dibutyl cAMP (dB) for 1 h, stimulated with 100 ng/ml EGF for 15 min, and detergent lysates were prepared. Expression of phospho-Erk-1/-2 and total Erk-2 protein was determined as previously described. Erk-1/-2 activity was measured from these lysates by standard immune complex kinase assay using MBP as an exogenous substrate.

investigate whether restoration of Erk-1/-2 to basal levels of activity after estrogen stimulation may be the consequence of EGF receptor down-modulation, surface expression of erbB1/EGFR was measured after estrogen stimulation (Fig. 9B). MDA-MB-231(GPR30) cells were treated with 17β -E2 or EGF, or pretreated with 17β -E2 for 30 min and then exposed to EGF. After stimulation at 37 C, cells were fixed in paraformaldehyde, immunostained with Ab-1, an ErbB1/EGFR-specific monoclonal antibody directed against an epitope that maps outside the EGF-binding pocket of the receptor, and analyzed by flow cytometry. As observed in Fig. 9B, exposure of cells to EGF (100 ng/ml) for 15 min resulted in a 50% decrease in surface EGFR. In contrast, less than a 5% decrease in surface EGFR was observed in cells exposed to estrogen for 3, 10, 30, or 60 min. Yet, cells which were pre-exposed to 17β -E2, internalized 50% of their surface EGFR within 15 min subsequent to stimulation with EGF (Fig. 9B). Taken together, these data imply that the restoration

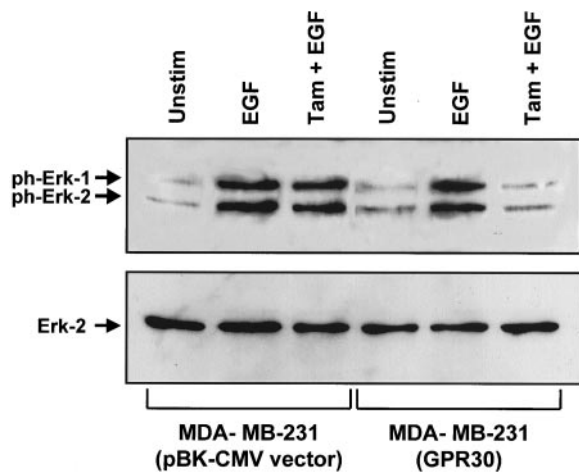


Fig. 7. Expression of GPR30 in MDA-MB-231 Breast Carcinoma Cells Restores Estrogen-Mediated Repression of EGF-Induced Erk-1/2 Phosphorylation

Detergent lysates were prepared from vector- or GPR30-transfected MDA-MB-231 cells that were unstimulated, EGF stimulated, or pretreated with 1 μ M 4-hydroxytamoxifen (Tam) for 1 h before EGF stimulation. Fifty micrograms of cellular protein was electrophoresed through SDS-polyacrylamide and transferred to nitrocellulose. Phosphorylated Erk-1/2 proteins were detected by immunoblotting with phospho-Erk-specific antibodies. The membrane was then stripped and reblotted with antibodies that detect total Erk-2 protein.

of estrogen-induced Erk-1/2 activity to basal levels observed by 30 min following exposure to estrogen is not due to a decrease in EGFR activity or expression and suggests that the estrogen-induced blockade of Erk-1/2 activity occurs downstream of the EGFR.

Estrogen-Mediated Attenuation of EGF-Induced Erk-1 and Erk-2 Activity Is the Result of Raf-1 Inactivation

To better define the mechanism associated with estrogen-mediated repression of EGF-induced Erk-1/2 activation, we measured the phosphorylation status of Mek-1 and the activity of Raf-1, which serve as intermediate components of the EGFR-to-Erk cascade. EGF stimulation of MDA-MB-231(GPR30) cells induced rapid Mek-1 phosphorylation (Fig. 9C) and Raf-1 activity (Fig. 9D). 17 β -E2 stimulation of these cells also induced rapid, yet transient, Mek-1 and Raf-1 phosphorylation and activity with a kinetic response that paralleled the activation response observed for estrogen-induced Erk-1/2 phosphorylation observed in Fig. 3. Both Raf-1 and Mek-1 activation by 17 β -E2 in this cell background is dependent on GPR30 expression (data not shown). Pretreatment with 17 β -E2 abrogated both EGF-induced Mek-1 phosphorylation (Fig. 9C) and Raf-1 activation (Fig. 9D), suggesting that estrogen-mediated repression of EGF-induced Erk-1/2 activity occurs at, or upstream of, Raf-1.

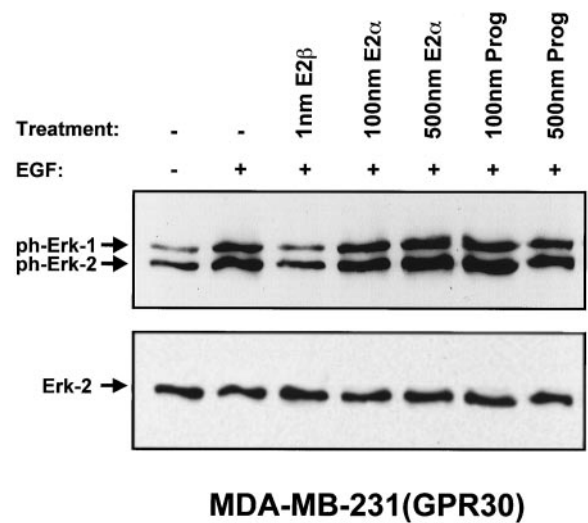


Fig. 8. GPR30-Dependent Attenuation of EGF-Induced Activation of Erk-1/2 Does Not Occur in Cells Treated with 17 α -E2 or Progesterone

Expression of phospho-Erk or total Erk-2 protein was measured in detergent lysates prepared from GPR30-transfected MDA-MB-231 breast carcinoma cells that were pretreated with either 17 β -E2 (E2 β), 17 α -E2 (E2 α), or progesterone (Prog) for 1 h prior to stimulation with 100 ng/ml EGF for 15 min.

To further investigate the inhibitory effect of estrogen on the EGFR-to-Erk signaling pathway, we employed a Ras affinity assay to measure the ability of endogenous Ras-1 to couple to a GST fusion protein containing the Ras-binding domain of Raf-1. Raf-1/Ras complexes were detected as early as 3 min following exposure to estrogen or EGF (Fig. 9E). However, these complexes were transient and were no longer detected after 30 min of exposure to either stimulant. Cells pretreated with a diphtheria toxin mutant, CRM-197, that sequesters HB-EGF from the cell surface (40), abrogated estrogen-mediated activation of Ras, demonstrating that extracellular release of HB-EGF is necessary for estrogen-induced Ras activity. In contrast, cells exposed to estrogen for 30 min, a time interval sufficient to stimulate cAMP (Fig. 1) and restore Erk to baseline (Fig. 9E), did not block EGF-induced Ras activation yet did blunt EGF-induced stimulation of Erk (Fig. 9E).

Thus, together these data suggest that restoration of Erk-1/2 activity to basal levels in breast carcinoma cells stimulated by estrogen or growth factor is achieved through GPR30-mediated stimulation of adenylyl cyclase, which suppresses the EGFR-to-Erk pathway through PKA-dependent inhibition of Raf-1 activity. Furthermore, these data imply that breast tumors that fail to express GPR30, or produce mutant variants of this GPCR that are unable to couple to adenylyl cyclase, may no longer be able to effectively regulate the EGFR-to-Erk pathway in response to estrogens or antiestrogens.

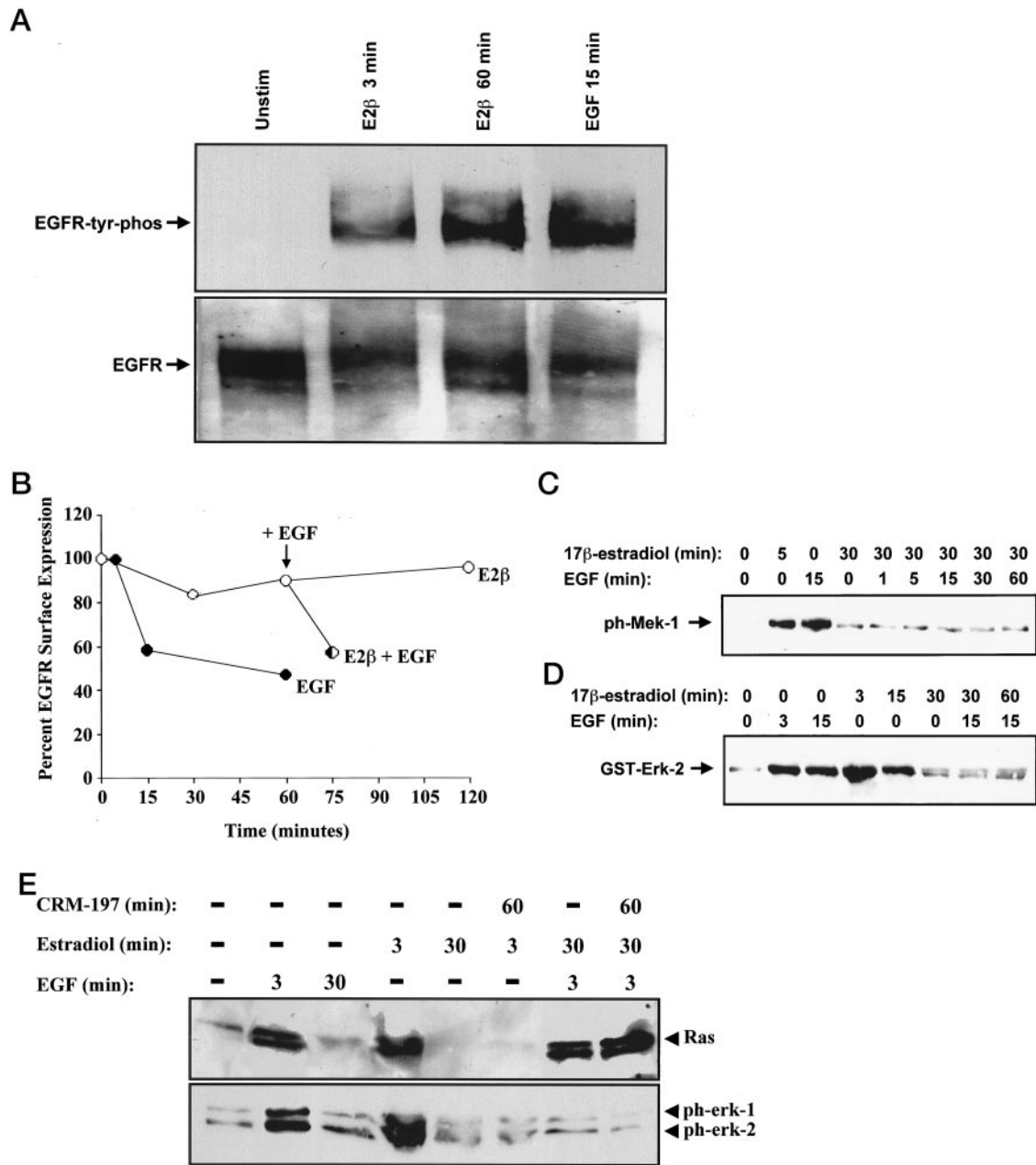


Fig. 9. Inhibition of EGF-Induced Erk-1/-2 Activity by Estrogen Occurs at the Level of Raf-1

A, Serum-deprived MDA-MB-231(GPR30) cells that were untreated or stimulated with EGF or 17β-E2 for the indicated lengths of time (minutes) were lysed in detergent. After immunoprecipitation with the ErbB1-specific monoclonal antibody, Ab-1, tyrosine-phosphorylated EGFR was detected by immunoblotting with the phosphotyrosine-specific antibody, PY20. EGFR recovery was assessed by stripping this nitrocellulose membrane and reprobing with sheep anti-EGFR antibodies. B, EGFR surface expression was assessed by flow cytometry using ErbB1-specific antibodies in MDA-MB-231 (GPR30) cells that were untreated, exposed to EGF, or pretreated with 17β-E2 before EGF stimulation. Cells were then fixed in paraformaldehyde and immunostained with the ErbB1-specific monoclonal antibody, 29.1, which reacts with an epitope external to the EGF-ligand binding domain on the receptor. Activity of Mek-1 (C) or Raf-1 (D) was measured in detergent lysates prepared from MDA-MB-231 (GPR30) cells that were untreated, EGF stimulated, or pretreated with 17β-E2 before EGF stimulation. Mek-1 activity was determined from 50 μg of total cellular protein by probing immunoblots with phospho-Mek-specific antibodies. Raf-1 activity was assessed in a cascade assay using immunopurified Raf-1, GST-Mek-1, and GST-Erk-1. Erk-1 phosphorylation was measured using phospho-specific Erk-1/-2 antibodies. (E) MDA-MB-231 (GPR30) cells were treated with EGF, 17β-E2, the diphtheria toxin mutant, CRM-197 (200 ng/ml), or combinations thereof, for the indicated times and then lysed in detergent. One milligram of cellular lysate was incubated with GST-Raf1RBD fusion protein and analyzed by Western blot for GTP-loaded Ras. P-erk expression in these samples was assessed in parallel by blotting with phospho-Erk-specific antibodies.

DISCUSSION

Estrogen exerts its effects on a diverse array of target tissues. At present, it is uncertain whether all of these effects are mediated by the known estrogen receptors, ER α and ER β . It has long been appreciated that these ERs belong to the steroid hormone receptor superfamily and function as ligand-activated transcription factors (41). Over the past decade, a number of investigators have reported that estrogen (12, 15, 24, 42–45), and other steroid hormones (46–49) trigger rapid intracellular signaling events typically associated with membrane receptors that possess intrinsic tyrosine kinase activity or couple to heterotrimeric G proteins. Previously, we have demonstrated that estrogen acts via the GPCR, GPR30, to promote rapid transactivation of the EGFR to MAPK pathway through the release of pro-HB-EGF (23). Here, we show that through GPR30, estrogen stimulates adenylyl cyclase and inhibits Erk-1/-2 activity via a cAMP-dependent mechanism. Together these data demonstrate that estrogen signals via GPR30 to trigger opposing G protein-dependent signaling mechanisms that act to balance Erk-1/-2 activity. This mechanism of GPCR-Erk-1/-2 regulation is consistent with prior data showing a dual regulatory effect on MAPK by a single β -adrenergic receptor (50).

Here we provide several lines of evidence suggesting that estrogen-mediated activation of adenylyl cyclase occurs independently of known ERs but rather requires GPR30 protein. First, the antiestrogens, tamoxifen and ICI 182, 780, do not antagonize estrogen-induced activation of adenylyl cyclase but rather act as agonists capable of stimulating adenylyl cyclase activity (Fig. 1). Second, we show that either antiestrogens or 17 β -E2 are able to promote activation of adenylyl cyclase activity in MCF-7 and SKBR3 human breast cancer cell lines that express both (37) or neither (23, 36) ER α and ER β , respectively, but do express elevated levels of GPR30 protein. Conversely, we find that MDA-MB-231 cells that express ER β , but not ER α and express only low levels of GPR30 protein are unable to stimulate adenylyl cyclase activity (Fig. 1B) or mediate cAMP-dependent suppression of the EGFR to MAPK pathway (Fig. 6). However, we do show that MDA-MB-231 cells forced to overexpress GPR30 are able to regulate these activities (Figs. 1C and 7) in response to estrogen.

A requirement for GPR30 in stimulation of adenylyl cyclase by estrogen is consistent with studies that have implicated GPCRs and G proteins in rapid membrane signaling events mediated by estrogen (32, 33, 45) and other steroid hormones (47–49). Our finding that antiestrogens also promote adenylyl cyclase stimulation has previously been reported by others who demonstrated that ER antagonists, namely tamoxifen and ICI 164, 384, could stimulate this activity and generate intracellular cAMP in human MCF-7 breast cells (24). These investigators also found increased

levels of cAMP in the uterus of rats injected with either estrogen or the aforementioned antiestrogens. In this regard, it is noteworthy that prolonged tamoxifen use in women has been associated with endometrial hyperplasia (51) and that intrauterine injection of cholera toxin has been induced estrogen-like growth in the uterus of rats (52). Others have provided evidence that estrogen induced stimulation of adenylyl cyclase may occur via a GPCR-dependent mechanism (26, 32). These investigators have shown that SHBG, a serum protein that binds circulating estrogen and androgens with high affinity, when unliganded, specifically interacts with a membrane receptor on breast and prostate cancer cells, termed SHBGR. Upon exposure to estrogen or androgens, these preformed SHBG/SHBGR complexes bind hormone and stimulate adenylyl cyclase activity (32). Although the molecular nature of the SHBG receptor remains unknown, recent data demonstrating that: 1) nonhydrolyzable GTP analogs inhibit SHBG binding and 2) a dominant negative G α s-subunit protein decreases estrogen-induced, SHBG-dependent cAMP signaling, indicates that this receptor may belong to the GPCR superfamily (53). Although it is possible that GPR30 may serve as a receptor for SHBG, in our experiments, as well as those conducted by others (24), no exogenous factors are required to initiate estrogen-induced activation of adenylyl cyclase. Furthermore, in contrast to the findings reported for SHBG-mediated estrogen action (25), we find that GPR30-dependent activation of adenylyl cyclase can also be promoted by the antiestrogens, tamoxifen, and ICI 182, 780 (Fig. 1C).

In other cell types, cAMP agonists are known to promote stimulation of MAPK activity via activation of the monomeric GTPase, Rap-1, which in turn, promotes B-Raf-mediated activation of Mek-1 and Erk-1/-2 (29). A similar Rap-1 dependent mechanism is activated in LNCaP prostatic carcinoma cells in response to agents that elevate cAMP (54). We have found that neither dibutyryl cAMP or cholera toxin are capable of inducing rapid activation of Erk-1/-2 in MDA-MB-231 (GPR30) cells (Fig. 2B), an effect that we show is likely due to the fact that these cells down-modulate the 95-kDa B-Raf isoform upon serum starvation (Fig. 2A). We show that estrogen-mediated repression of EGF-induced activation of the Raf-to-Erk cascade can be reversed by the cell permeant cAMP congener, KT5720 (Fig. 3). Because this analog irreversibly binds to the regulatory subunits of PKA, and thereby prevents its catalytic activation, our data indicate that estrogen mediated suppression of the EGFR-to-MAPK cascade via GPR30 occurs via PKA-dependent signaling. Other hormones and agonists that elevate cAMP are known to oppose activation of the EGFR-to-MAPK cascade in many other cell types. Several distinct PKA-dependent inhibitory mechanisms have been shown to operate. Direct phosphorylation of Raf-1 by PKA at serine residues 43 (28, 55) and 621 (56, 57) have been proposed to be responsible

for this inhibitory effect. Still others have provided evidence that PKA may act upstream of Raf-1 (58). Here we show that estrogen promotes Raf-1 inactivation (Fig. 9D), which, in turn, is associated with decreased activity of Erk-1/-2 and its activating kinase Mek-1 (Fig. 9C). Our data indicate that this estrogen action does not interfere with the ability of Ras to couple to Raf-1 *in vitro* (Fig. 9E). However, we did not explore the possibility that estrogen promotes cAMP-dependent signals via GPR30 that prevent *in vivo* coupling of Ras to Raf-1. This mechanism of GPCR-dependent inhibition of Erk has been associated with Rap-1-dependent sequestration of Raf-1 in HEK293 cells (59).

Estrogen-responsive cells employ both serum growth factors and estrogen for their growth and survival. Coordinated signaling between growth factor receptors and estrogen receptors is required for controlled growth and behavior of normal mammary epithelium. The discovery that these distinct extracellular stimuli utilize common intracellular signaling pathways, as exemplified by the EGFR-to-MAPK signaling axis, further emphasizes this concept. Several lines of evidence support the concept that the EGFR-MAPK signaling axis is a common pathway that is regulated by estrogen. EGF-related ligands enhance ER transcriptional activity (60), and this has been shown to result from MAPK-mediated phosphorylation of serine 118 within the activation function II (ATF-II) domain of the ER (10, 11). In this regard, these studies indicate that the ER lies downstream of the EGFR-MAPK signaling axis and may enhance ER-dependent cellular growth. Conversely, estrogen has been shown to increase EGFR expression and activity in the uterus (61, 62). However, it is important to note that this response is transient, and ultimately, results in the restoration of EGFR expression to levels observed before estrogen stimulation (63). Studies designed to investigate the refractoriness of ER-transfected cells to undergo estrogen-dependent proliferation have demonstrated that EGFR signaling must be silenced for estrogen-dependent proliferation to occur in these cells (64). Others have shown that estrogen can inhibit serum-mediated, MAPK-dependent growth of vascular smooth muscle cells (65).

Although our studies indicate that GPR30 may affect estrogen-mediated regulation of the EGFR-MAPK axis, others have also indicated that the ER may promote activation of MAPK (12–15). A novel functional role for the ER in rapid estrogen has also been suggested from studies that have indicated that the ER can engage and promote activation of phosphatidylinositol 3' OH kinase (66) and PKB/AKT (67). It is noteworthy that these downstream signaling effectors lie downstream of receptor tyrosine kinases, including the EGFR. Although the data presented here and previously (23) strongly suggest that GPR30 participates in the regulation of the EGFR-to-MAPK signaling axis, whether or not GPR30 acts alone or functions as part of a receptor complex remains to be determined. However, it is worth reiterating that we have demon-

strated that estrogen is capable of regulating the EGFR-to-MAPK signaling axis in SKBR3 breast cancer cells that lack ER α as well as ER β , but express GPR30 (data presented here and in Ref. 23). It is possible, however, in other cell types, GPR30 may form a signaling complex with the ER, or communicate with the ER to promote rapid nongenomic estrogen signaling.

A schematic diagram depicting a likely mechanism by which GPR30 may regulate growth factor receptor and ER signal transduction pathways is shown in Fig. 10. We have previously shown that estrogenic hormones and GPR30 act to stimulate G $\beta\gamma$ -subunit protein dependent transactivation of the EGFR-to-Erk signaling axis through the release of proHB-EGF (23). Here, we demonstrate that estrogen also stimulates adenylyl cyclase activity and cAMP-dependent PKA-mediated suppression of the EGFR-Erk pathway. Our model outlines a regulatory loop comprised of opposing signals, triggered by estrogen and requiring GPR30, that serve to balance the EGFR-to-Erk pathway. Although our experiments indicate that these opposing mechanisms can be activated by estrogen *in vitro*, our results raise an interesting question regarding which one of these opposing estrogen-induced signals prevails in breast tumors *in vivo*. Amplification of EGFRs is the most common genetic alteration associated with breast cancer and is detected in 30% of all breast tumors and primarily among those tumors that fail to express ER (8). Likewise, dysregulated expression of MAPK has been reported to be a frequent event in breast cancer (16). However, mutations in Ras genes are rarely observed (less than 5% of all breast cancer cases) even though they occur frequently in other carcinomas (68). These data suggest that intermediate components of the EGFR-to-Erk cascade are tightly regulated in normal breast epithelial cells. In this regard, genetic alterations that affect signaling pathways that attenuate the EGFR-MAPK signaling cascade, including loss or mutation of GPR30, may be a common occurrence in breast cancer.

The existence of an alternative membrane-localized G protein-coupled receptor for estrogen would provide a new paradigm by which steroid hormone-activated signals interdigitate with growth factor-mediated signals to regulate the cellular behavior of steroid hormone responsive cells. Finally, the identification of GPR30 as an important mediator of estrogen action may provide further insight into the molecular mechanisms by which breast carcinomas grow and survive.

MATERIALS AND METHODS

Cell Culture

Human MCF-7 (ER α +, ER β +), MDA-MB-231 (ER α -, ER β +), and SKBR3 (ER α -, ER β -) breast carcinoma cell lines were obtained from the American Tissue Culture Collection (Manassas, VA). MDA-MB-231 (GPR30) cells are stable transfectants expressing GPR30 protein and have been described previously (23). Both MCF-7 and SKBR3 cells

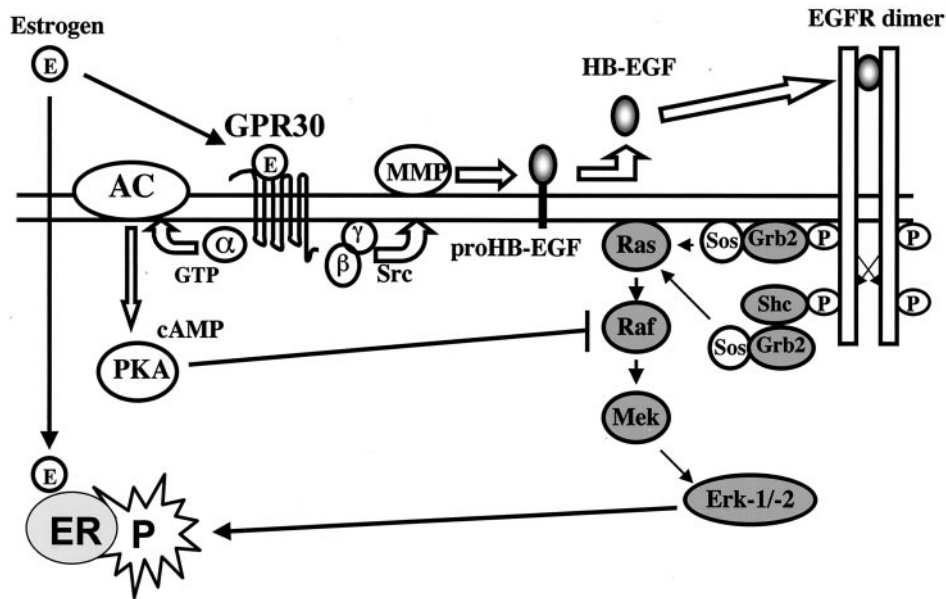


Fig. 10. Proposed Mechanism by Which Estrogen Acts via GPR30 to Regulate Growth Factor Receptor and ER Signal Transduction Pathways

Data presented here suggest that via GPR30, estrogens as well as antiestrogens are capable of stimulating adenylyl cyclase activity, which in turn, leads to PKA-mediated suppression of EGF-induced Erk-1/-2 activity. Previously, we have shown that estrogen and antiestrogens act via GPR30 to promote EGFR transactivation through a Gβγ-subunit protein pathway that promotes Src-mediated, metalloproteinase (MMP)-dependent cleavage and release of HB-EGF from the cell surface. Thus, via GPR30, estrogen may balance Erk-1/-2 activity by stimulating two distinct G protein signaling pathways that have opposing effects on the EGFR-to-MAPK axis.

express elevated levels of GPR30 protein relative to MDA-MB-231 cells (23). All cultures were grown in phenol red-free DMEM/Ham’s F12 media (1:1) supplemented with 10% fetal bovine serum and 100 μg/ml gentamicin. MDA-MB-231 (GPR30) cells were maintained in the same medium supplemented with 500 μg/ml geneticin (Sigma, St. Louis, MO).

Growth Factors, Estrogens, and Antiestrogens, cAMP Agonists, and Congeners

Recombinant human EGF was purchased from the Upstate Biotechnology, Inc. (Lake Placid, NY). Water-soluble 17β-E2; its inactive isomer, 17α-E2; progesterone; 4-hydroxytamoxifen; and cholera toxin were purchased from Sigma. The pure ER antagonist, ICI 182, 780 was obtained from Tocris Chemicals (Ballwin, MN). Dibutylr-cAMP was obtained from Roche Molecular Biochemicals (Indianapolis, IN) and the cell permeant cAMP congener, KT5720 from Calbiochem (La Jolla, CA). The diphtheria toxin mutant, CRM-197, was purchased from Berna Products (Coral Gables, FL).

Antibodies

The p42/44 MAPK antibody that recognizes total Erk-1 and Erk-2 protein (phosphorylation state-independent) and phospho-specific antibodies that recognize either phosphorylated Erk-1 and -2 (phospho-Erk), or phosphorylated Mek-1 (phospho-Mek) were purchased from New England Biolabs, Inc., now Cell Signaling Technologies, Inc. (Beverly, MA). The Erk-2 antibodies were also purchased from the same vendor and are also known to cross react with Erk-1. Monoclonal antibodies Ab-1 (Calbiochem) and 29.1 (Sigma) recognize the ErbB1/EGFR receptor and do not cross-react with ErbB2

(Her-2/Neu), ErbB3, or ErbB4. Monoclonal antibody 29.1 recognizes an epitope external to the ligand binding domain of the EGFR and does not interfere with EGF binding. The phosphotyrosine-specific monoclonal antibody, PY20, was purchased from Transduction Laboratories, Inc., Lexington, KY). Raf-1 (C-12) antibodies raised against a peptide from the carboxyl terminus of the human Raf-1 protein were purchased from Santa Cruz Biotechnology, Inc. (Santa Cruz, CA). Antibodies that recognize the 95- and 68-kDa isoforms of B-Raf (C-19) were purchased from the same vendor. Ras monoclonal antibody (clone RAS10) recognizes both the Ha- and Ki-Ras isoforms at 21 kDa and was obtained from Upstate Biotechnology, Inc.

Conditions for Cell Stimulation

Breast carcinoma cells were seeded onto 90-mm Falcon tissue culture dishes in phenol-red free DMEM/F12 medium containing 10% FCS. The following day, the cell monolayers were washed three times with phenol-red free, serum-free DMEM/F12, and exchanged for fresh phenol-red free, serum-free media on each of the following 3 d. Stimulations of quiescent cells were carried out at 37 in serum-free medium as described in the figure legends. After stimulation, monolayers were washed twice with ice-cold PBS, and lysed in ice-cold RIPA buffer (150 mM NaCl, 100 mM Tris, pH 7.5, 1% deoxycholate, 0.1% sodium dodecyl sulfate, 1% Triton X-100, 3.5 mM NaVO₄, 2 mM phenylmethylsulfonyl fluoride, 50 mM NaF, 100 mM sodium pyrophosphate plus a protease inhibitor cocktail; Complete, Roche Molecular Biochemicals). Crude lysates were clarified by centrifugation and cellular protein concentration was determined using the bichichoninic acid method according to manufacturer’s suggestions (Pierce Chemical Co., Rockford, IL). Detergent lysates were stores at –70 C until use.

Western Blotting

Total cellular protein (50 μ g) was boiled in standard Laemmli buffer with reducing agents and resolved by SDS-PAGE. Proteins were electrotransferred onto nitrocellulose membranes (0.45 μ m pore size; Schleicher & Schuell, Inc., Keene, NH) using a semi-dry transfer cell (CBS Scientific Co., Del Mar, CA) at 1 mA/cm² for 4 h. Phospho-Erk was detected by probing membranes, which were preblocked in Tris-buffered saline containing 0.1% Tween-20 and 2% BSA (TBST-BSA), with phospho-Erk-specific antibodies diluted 1:1,000 in TBST-BSA for 1 h at room temperature. Rabbit antibody-antigen complexes were detected with horseradish peroxidase-coupled goat antibodies to rabbit IgG diluted 1:5,000 in TBST-BSA and visualized by enhanced chemiluminescence (Amersham Pharmacia Biotech, Arlington Heights, IL). Relative levels of total Erk-2 protein in each sample were determined by stripping the phospho-specific Erk rabbit antibodies from the nitrocellulose membrane and reprobing with antibodies to Erk-2. Phosphorylated Mek-1 protein was detected in much the same manner, except that filters to be probed with phospho-Mek antibodies were blocked in TBST containing 5% nonfat dry milk and antibodies were delivered overnight in TBST-BSA. Apparent molecular weights were determined from Rainbow molecular weight standards (Amersham Pharmacia Biotech).

Adenylyl Cyclase Activity

Cells (50 \times 10⁶) were homogenized in 20 ml of 10 mM Tris-HCl (pH 7.4), 5 mM EDTA samples were sonicated, and sedimented twice (1,000 \times g for 5 min and 40,000 \times g for 20 min). The membrane pellet was resuspended at a final concentration of 3–5 mg/ml in 75 mM Tris-HCl, pH 7.4, 2 mM EDTA, 5 mM MgCl₂ and stored at – 80 C. Ten micrograms of membrane protein were added to reactions containing 1 mM ATP, 50 nM GTP, 0.2 IU pyruvate kinase, 0.1 IU myokinase, 2.5 mM phosphoenolpyruvate, and 1.0 mM isobutylmethylxanthine, and treated with 17 β -E2, 17 α -E2, progesterone, 4-hydroxytamoxifen, or cholera toxin for 20 min at 37 C. Reactions were terminated by precipitating the samples with ice-cold ethanol. Supernatants were dried and cAMP was measured in a competitive ELISA using rabbit cAMP-specific antisera (Cayman Biochemicals, Ann Arbor, MI).

Detection of Erk-1/-2 and Raf-1 Activity

Erk-1/-2 activity was measured by standard immune complex assay utilizing myelin basic protein (MBP) as a substrate. Erk-1 and -2 were immunopurified from 500 μ g of lysate using 2 μ g/sample of p42/44 MAPK antibody plus 50 μ l of a 50% slurry of protein G-agarose (Pierce Chemical Co.). Erk immunoprecipitates were washed twice in 50 mM HEPES (pH 7.9), 100 mM NaCl and then resuspended in immune complex kinase buffer: 25 mM HEPES, pH 7.9, 1 mM DTT, 10 mM cold ATP, 50 μ M ³²P γ -ATP (0.25 μ Ci), and 8 μ g MBP (Upstate Biotechnology, Inc.). After a 30-min incubation at 30 C, samples were boiled in standard Laemmli buffer and subjected to SDS-PAGE. Gels were dried and exposed to Kodak XAR film for autoradiography. Raf-1 activity using a kinase cascade assay kit, essentially as described by the manufacturer (Upstate Biotechnology, Inc.). Raf-1 was immunoprecipitated from 500 μ g of lysate using 2 μ g/sample of Raf-1 antibody plus 50 μ l of a 50% slurry of protein G-agarose. Raf-1 immunoprecipitates were washed three times in assay dilution buffer (20 mM MOPS, pH 7.2; 25 mM β -glycerol phosphate, 5 mM EGTA, 1 mM sodium orthovanadate, and 1 mM dithiothreitol) and then resuspended in the same buffer containing 1 mM ATP, 75 mM MgCl₂ and 0.4 μ g of unactivated (unphosphorylated) Gst-Mek1 protein. After a 30-min incubation at 30 C, 1.0 μ g of unactivated (unphosphorylated) Gst-Erk2 was added to this kinase reaction and incubated

an additional 30 min at the same temperature. The reaction was terminated by the addition of boiling standard Laemmli buffer. Products of the reaction were separated by SDS-PAGE and phosphorylated GST-Erk2 was detected by immunoblotting using phospho-Erk-specific antibodies as described above.

Affinity Assay for Ras Activation

Serum-starved cells were stimulated at 37 C for indicated times and then immediately lysed in ice-cold MLB lysis buffer (25 mM HEPES, pH 7.5, 150 mM NaCl, 1% Igepal CA-630, 0.25% sodium deoxycholate, 10% glycerol, 25 mM NaF, 10 mM MgCl₂, 1 mM EDTA, 1 mM sodium orthovanadate, 10 μ g/ml leupeptin, 10 μ g/ml aprotinin). Per the manufacturer's specifications, activated Ras was isolated from these lysates using GST-Raf1BD coupled to glutathione agarose beads (Upstate Biotechnology, Inc.). Proteins were eluted from the beads by boiling in 2 \times Laemmli buffer, resolved through 12% SDS-polyacrylamide gels and transferred to nitrocellulose. Membranes were then blocked in PBS containing 0.05% Tween 20 and 5% nonfat dried milk and probed with a Ras monoclonal antibody (clone RAS10) overnight at 4 C. Ras antibodies were detected using horseradish peroxidase-coupled antimouse secondary antibodies and a chemiluminescent substrate.

Detection of Phosphotyrosyl Residues on the EGFR

Tyrosine phosphorylation of the EGFR was assessed by immunoblotting EGFR immunoprecipitates with phosphotyrosine-specific antibodies. EGFR was immunoprecipitated from 250 μ g of total cell protein, extracted in RIPA buffer using 2 μ g/sample of the ErbB1-specific monoclonal antibody, Ab-1. EGFR-Ab-1 complexes were precipitated with 50 μ l of a 50% slurry of protein G-agarose (Pierce Chemical Co.). EGFR immunoprecipitates were washed, resuspended in standard Laemmli buffer containing reducing agents, and subjected to SDS-PAGE. After electrophoresis, the immunoprecipitated material was then transferred to nitrocellulose membranes, blocked with TBST-BSA, and then immunoblotted with the phosphotyrosine-specific monoclonal antibody, PY20.

EGFR Internalization

Serum-deprived MDA-MB-231 (GPR30) cells were detached in HEPES-buffered saline containing 5 mM EDTA, washed twice in phenol red-free DMEM/F12 containing 0.5% BSA and resuspended at a concentration of 10⁶/ml in the same buffer in the absence of BSA. One million cells were aliquoted into flow cytometry tubes and allowed to equilibrate to 37 C in a water bath for 15 min. Samples were either untreated or exposed to 1 nM 17 β -E2 or 10 ng/ml of EGF for various lengths of time at 37 C. After stimulation, cells were fixed by adding an equal volume of 8% paraformaldehyde to each sample. Cells were collected by centrifugation, washed twice in PBS-containing 0.5% BSA (PBS-BSA) and resuspended in the same. Fixed cells were incubated with 5 μ g/ml EGFR mAb 29.1 for 30 min at room temperature. Cells were then washed twice in PBS-BSA, resuspended in the same buffer containing a 1:250 dilution of fluorescein isothiocyanate-conjugated antimouse IgG antibodies, and incubated for 30 min at room temperature. Cells were then centrifuged, washed, and surface expression was assessed by flow cytometry using a FACScan instrument.

Acknowledgments

The authors would like to acknowledge Eva Paradis for providing excellent secretarial support and Dr. Timothy W. Baba for carefully reviewing this manuscript.

Received May 29, 2001. Accepted September 21, 2001.

Address all correspondence and requests for reprints to: Edward J. Filardo, Rhode Island Hospital, Department of Medicine, Division of Clinical Pharmacology, Aldrich Building, Room 712, 593 Eddy Street, Providence, Rhode Island 02903. E-mail: Edward_Filardo@brown.edu.

This work was supported by Institutional Research Training Grant IN-45-38 from the American Cancer Society, the T. J. Martell Foundation (to E.J.F.), and by National Cancer Institute Grants CA74285-01A1 and A670818.

REFERENCES

- Stern DF 2000 Tyrosine kinase signalling in breast cancer: ErbB family receptor tyrosine kinases. *Breast Cancer Res* 2:176–183
- Chang L, Karin M 2001 Mammalian MAP kinase signalling cascades. *Nature* 410:37–40
- English J, Pearson G, Wilsbacher J, Swantek J, Karandikar M, Xu S, Cobb MH 1999 New insights into the control of MAP kinase pathways. *Exp Cell Res* 253:255–270
- Pearson G, Robinson F, Beers Gibson T, Xu Be B, Karandikar M, Berman K, Cobb MH 2001 Mitogen-activated protein (MAP) kinase pathways: regulation and physiological functions. *Endocr Rev* 22:153–183
- Keyse SM 2000 Protein phosphatases and the regulation of mitogen-activated protein kinase signalling. *Curr Opin Cell Biol* 12:186–192
- Marshall CJ 1995 Specificity of receptor tyrosine kinase signaling: transient vs. sustained extracellular signal-regulated kinase activation. *Cell* 80:179–185
- Klemke RL, Cai S, Giannini AL, Gallagher PJ, de Lanerolle P, Cheresch DA 1997 Regulation of cell motility by mitogen-activated protein kinase. *J Cell Biol* 137:481–492
- Slamon DJ, Godolphin W, Jones LA, Holt JA, Wong SG, Keith DE, Levin WJ, Stuart SG, Udove J, Ullrich A, Press M 1989 Studies of the HER-2/neu proto-oncogene in human breast and ovarian cancer. *Science* 244:707–712
- Graus-Porta D, Beerli RR, Hynes NE 1995 Single-chain antibody-mediated intracellular retention of ErbB-2 impairs Neu differentiation factor and epidermal growth factor signaling. *Mol Cell Biol* 15:1182–1191
- Arnold SF, Obourn JD, Jaffe H, Notides AC 1995 Phosphorylation of the human estrogen receptor by mitogen-activated protein kinase and casein kinase II: consequence on DNA binding. *J Steroid Biochem Mol Biol* 55:163–172
- Kato S, Endoh H, Masuhiro Y, Kitamoto T, Uchiyama S, Sasaki H, Masushige S, Gotoh Y, Nishida E, Kawashima H, Metzger D, Chambon P 1995 Activation of the estrogen receptor through phosphorylation by mitogen-activated protein kinase. *Science* 270:1491–1494
- Migliaccio A, Di Domenico M, Castoria G, de Falco A, Bontempo P, Nola E, Auricchio F 1996 Tyrosine kinase/p21ras/MAP-kinase pathway activation by estradiol-receptor complex in MCF-7 cells. *EMBO J* 15:1292–1300
- Endoh H, Sasaki H, Maruyama K, Takeyama K, Waga I, Shimizu T, Kato S, Kawashima H 1997 Rapid activation of MAP kinase by estrogen in the bone cell line. *Biochem Biophys Res Commun* 235:99–102
- Watters JJ, Campbell JS, Cunningham MJ, Krebs EG, Dorsa DM 1997 Rapid membrane effects of steroids in neuroblastoma cells: effects of estrogen on mitogen activated protein kinase signalling cascade and c-fos immediate early gene transcription. *Endocrinol* 138:4030–4033
- Improta-Brears T, Whorton AR, Codazzi F, York JD, Meyer T, McDonnell D 1999 Estrogen-induced activation of mitogen-activated protein kinase requires mobilization of intracellular calcium. *Proc Natl Acad Sci USA* 96:4686–4691
- Sivaraman VS, Wang H-Y, Nuovo GJ, Malbon CC 1997 Hyperexpression of mitogen-activated protein kinase in human breast cancer. *J Clin Invest* 99:1478–1483
- Luttrell LM, Daaka Y, Lefkowitz RJ 1999 Regulation of tyrosine kinase cascades by G-protein-coupled receptors. *Curr Opin Cell Biol* 11:177–183
- Luttrell LM, Della Rocca GJ, van Biesen T, Luttrell DK, Lefkowitz RJ 1997 G $\beta\gamma$ -subunits mediate src-dependent phosphorylation of the epidermal growth factor receptor. *J Biol Chem* 273:4637–4644
- Biscardi JS, Maa MC, Tice DA, Cox ME, Leu TH, Parsons SJ 1999 c-Src-mediated phosphorylation of the EGF receptor on Tyr845 and Tyr1101 is associated with modulation of receptor function. *J Biol Chem* 274:8335–8343
- Prenzel N, Zwick E, Daub H, Leserer M, Abraham R, Wallasch C, Ullrich A 1999 EGF receptor transactivation by G-protein-coupled receptors requires metalloproteinase cleavage of proHB-EGF. *Nature* 402:884–888
- Moro L, Venturino M, Bozzo C, Silengo L, Altruda F, Beguinot L, Tarone G, Defilippi P 1998 Integrins induce activation of EGF receptor: role in MAP kinase induction and adhesion-dependent cell survival. *EMBO J* 17:6622–6632
- Qiu Y, Ravi L, Kung HJ 1998 Requirement of ErbB2 for signalling by interleukin-6 in prostate carcinoma cells. *Nature* 393:83–85
- Filardo EJ, Quinn JA, Bland KI, Frackelton Jr AR 2000 Estrogen-induced activation of Erk-1 and Erk-2 requires the G-protein coupled receptor homolog, GPR30, and occurs via transactivation of the epidermal growth factor receptor through release of HB-EGF. *Mol Endocrinol* 14:1649–1660
- Aronica SM, Kraus WL, Katzenellenbogen BS 1994 Estrogen action via the cAMP signaling pathway: stimulation of adenylate cyclase and cAMP-regulated gene transcription. *Proc Natl Acad Sci USA* 91:8517–8521
- Nakhla AM, Khan MS, Romas NP, Rosner W 1994 Estradiol causes the rapid accumulation of cAMP in human prostate. *Proc Natl Acad Sci USA* 91:5402–5405
- Fortunati N, Fissore F, Fazzari A, Piovani F, Catalano MG, Becchis M, Berta I, Frairia R 1999 Estradiol induction of cAMP in breast cancer cells is mediated by foetal calf serum (FCS) and sex hormone-binding globulin. *J Steroid Biochem Mol Biol* 70:73–80
- Cook SJ, McCormick F 1993 Inhibition by cAMP of Ras-dependent activation of Raf. *Science* 262:1069–1072
- Wu J, Dent P, Jelinek T, Wolfman A, Weber MJ, Sturgill TW 1993 Inhibition of the EGF-activated MAP kinase signaling pathway by adenosine 3', 5'-monophosphate. *Science* 262:1065–1068
- Vossler MR, Yao H, York RD, Pan MG, Rim CS, Stork PJ 1997 cAMP activates MAP kinase and Elk-1 through a B-Raf- and Rap1-dependent pathway. *Cell* 89:73–82
- Sunahara RK, Dessauer CW, Gilman AG 1996 Complexity and diversity of mammalian adenylyl cyclases. *Ann Rev Pharmacol Toxicol* 36:461–480
- Schoneberg T, Schultz G, Gudermann T 1999 Structural basis of G protein-coupled receptor function. *Mol Cell Endocrinol* 151:181–193
- Rosner W, Hyrb DJ, Khan MS, Nakhla AM, Romas NA 1999 Androgen and estrogen signaling at the cell membrane via G proteins and cyclic adenosine monophosphate. *Steroids* 64:100–106
- Razandi M, Pedram A, Greene G, Levin ER 1999 Cell membrane and nuclear estrogen receptors (ERs) originate from a single transcript: studies of ER α and ER β expressed in Chinese hamster ovary cells. *Mol Endocrinol* 13:307–319
- Watson CS, Norfleet AM, Pappas TC, Gametchu B 1999 Rapid actions of estrogens in GH3/B6 pituitary tumor

- cells via a plasma membrane version of estrogen receptor alpha. *Steroids* 64:5–13
35. Dechering K, Boersma C, Mosselman S 2000 Estrogen receptors α and β : two receptors of a kind? *Curr Med Chem* 7:561–576
 36. Vladusic EA, Hornby AE, Guerra-Vladusic FK, Lakins J, Lupu R 2000 Expression and regulation of estrogen receptor β in human breast tumors and cell lines. *Oncol Rep* 7:157–167
 37. Dotzlaw H, Leygue E, Watson PH, Murphy LC 1997 Expression of estrogen receptor- β in human breast tumors. *J Clin Endocrinol Metab* 82:2371–2374
 38. Peraldi P, Frodin M, Barnier JV, Calleja V, Scimeca JC, Filloux C, Calothy G, Van Obberghen E 1995 Regulation of the MAP kinase cascade in PC12 cells: B-Raf activates MEK-1 (MAP kinase or ERK kinase) and is inhibited by cAMP. *FEBS Lett* 357:290–296
 39. Kase H, Iwahashi K, Nakanishi S, Matsuda Y, Yamada K, Takahashi M, Murakata C, Sato A, Kaneko M 1987 K-252 compounds, novel and potent inhibitors of protein kinase C and cyclic nucleotide-dependent protein kinases. *Biochem Biophys Res Commun* 142:436–440
 40. Cieplak W, Gaudin HM, Eidels L 1987 Diphtheria toxin receptor: identification of specific diphtheria toxin-binding proteins on the surface of Vero and BS-C-1 cells. *J Biol Chem* 262:13246–13253
 41. Beato M, Herrlich P, Schutz G 1995 Steroid hormone receptors: many actors in search of a plot. *Cell* 83:851–857
 42. Nakhla AM, Khan MS, Rosner W 1990 Biologically active steroids activate receptor-bound human sex hormone-binding globulin to cause LNCaP cells to accumulate adenosine 3',5'-monophosphate. *J Clin Endocrinol Metab* 71:398–404
 43. Le Mallay V, Grosse B, Lieberherr M 1997 Cell signaling and estrogens in female rat osteoblasts: a possible involvement of unconventional non-nuclear receptors. *J Biol Chem* 272:11902–11907
 44. Tesarik J, Mendoza C 1995 Nongenomic effects of 17 β -estradiol on maturing human oocytes: relationship to oocyte development potential. *J Clin Endocrinol Metab* 80:1438–1443
 45. Benten WP, Stephan C, Lieberherr M, Wunderlich F 2001 Estradiol signaling via sequestrable surface receptors. *Endocrinology* 142:1669–1677
 46. Lieberherr M, Grosse B 1994 Androgens increase intracellular calcium concentration and inositol 1,4,5-trisphosphate and diacylglycerol formation via a pertussis toxin-sensitive G-protein. *J Biol Chem* 269:7217–7223
 47. Machelon V, Nome F, Grosse B, Lieberherr M 1996 Progesterone triggers rapid transmembrane calcium influx and/or calcium mobilization from endoplasmic reticulum, via a pertussis-insensitive G-protein in granulosa cells in relation to luteinization process. *J Cell Biochem* 61:619–628
 48. Falkenstein E, Heck M, Gerdes D, Grube D, Christ M, Weigel M, Buddhikot M, Meizel S, Wehling M 1999 Specific progesterone binding to a membrane protein and related nongenomic effects on Ca^{2+} -fluxes in sperm. *Endocrinology* 140:5999–6002
 49. Benten WP, Lieberherr M, Stamm O, Wrehlke C, Guo Z, Wunderlich F 1999 Testosterone signaling through internalizable surface receptors in androgen receptor-free macrophages. *Mol Biol Cell* 10:3113–3123
 50. Crespo P, Xu N, Simonds WF, Gutkind JS 1995 Dual effect of β -adrenergic receptors on mitogen-activated protein kinase. Evidence for a $\beta\gamma$ -dependent activation and a $\text{G}\alpha\text{s}$ -cAMP-mediated inhibition. *J Biol Chem* 270:25259–25265
 51. Cano A, Hermenegildo C 2000 The endometrial effects of SERMs. *Hum Reprod Update* 6:244–254
 52. Stewart PJ, Webster RA 1983 Intrauterine injection of cholera toxin induces estrogen-like uterine growth. *Biol Reprod* 29:671–679
 53. Nakhla AM, Leonard J, Hryb DJ, Rosner W 1999 Sex hormone-binding globulin receptor signal transduction proceeds via a G protein. *Steroids* 64:213–216
 54. Chen T, Cho RW, Stork PJ, Weber MJ 1999 Elevation of cyclic adenosine 3', 5' monophosphate potentiates activation of mitogen-activated protein kinase by growth factors in LNCaP prostate cells. *Cancer Res* 59:213–218
 55. Morrison DK, Heidecker G, Rapp UR, Copeland TD 1993 Identification of the major phosphorylation sites of the Raf-1 kinase. *J Biol Chem* 268:17309–17316
 56. Hafner S, Adler HS, Mischak H, Janosch P, Heidecker G, Wolfman A, Pippig S, Lohse M, Ueffing M, Kolch W 1994 Mechanism of inhibition of raf-1 by protein kinase A. *Mol Cell Biol* 14:6696–6703
 57. Mischak H, Seitz T, Janosch P, Eulitz M, Steen H, Schellerer M, Philipp A, Kolch W 1996 Negative regulation of Raf-1 by phosphorylation of serine 621. *Mol Cell Biol* 16:5409–5418
 58. Sidovar MF, Kozlowski P, Lee JW, Collins MA, He Y, Graves LM 2000 Phosphorylation of serine 43 is not required for inhibition of c-Raf kinase by the cAMP-dependent protein kinase. *J Biol Chem* 275:28688–28694
 59. Schmitt JM, Stork PJS 2000 β 2-adrenergic receptor activates extracellular signal-regulated kinases (ERKs) via the small G-protein Rap1 and the serine/threonine kinase B-Raf. *J Biol Chem* 275:25342–25350
 60. Ignar-Trowbridge DM, Pimentel M, Parker MG, McLachlan JA, Korach KS 1996 Peptide growth factor cross-talk with the estrogen receptor requires the A/B domain and occurs independently of protein kinase C or estradiol. *Endocrinology* 137:1735–1744
 61. Mukku VR, Stancel GM 1985 Regulation of epidermal growth factor receptor by estrogen. *J Biol Chem* 260:9820–9824
 62. Das SK, Tsukamura H, Paria BC, Andrews GK, Dey SK 1994 Differential expression of epidermal growth factor receptor (EGF-R) gene and regulation of EGF-R bioactivity by progesterone and estrogen in the adult mouse uterus. *Endocrinology* 134:971–981
 63. Yarden RI, Lauber AH, El-Ashry D, Chrysogelos SA 1996 Bimodal regulation of epidermal growth factor receptor by estrogen in breast cancer cells. *Endocrinology* 137:2739–2747
 64. Briand P, Lundholt BK, Skouv J, Lykkesfeldt AE 1999 Growth response of breast epithelial cells to estrogen is influenced by EGF. *Mol Cell Endocrinol* 153:1–9
 65. Morey AK, Pedram A, Razandi M, Prins BA, Hu RM, Biesiada E, Levin ER 1998 Oestrogen and progesterone inhibit the stimulated production of endothelin-1. *Endocrinol* 138:3330–3339
 66. Simoncini T, Hafezi-Moghadam A, Brazil DP, Ley K, Chin WW, Liao JK 2000 Interaction of oestrogen receptor with the regulatory subunit of phosphatidylinositol-3-OH kinase. *Nature* 407:538–541
 67. Haynes MP, Sinha D, Russell KS, Collinge M, Fulton D, Morales-Ruiz M, Sessa WC, Bender JR 2000 Membrane estrogen receptor engagement activates endothelial nitric oxide synthase via the PI3-kinase-Akt pathway in human endothelial cells. *Circ Res* 87:677–682
 68. Clark GJ, Der CJ 1995 Aberrant function of the Ras signal transduction pathway in human breast cancer. *Breast Cancer Res Treat* 35:133–144