



Evolution of surface velocities and ice discharge of Larsen B outlet glaciers from 1995 to 2013

J. Wuite¹, H. Rott^{1,2}, M. Hetzenecker¹, D. Floricioiu³, J. De Rydt⁴, G. H. Gudmundsson⁴, T. Nagler¹, and M. Kern⁵

¹ENVEO IT GmbH, Innsbruck, Austria

²Institute for Meteorology and Geophysics, University of Innsbruck, Austria

³Institute for Remote Sensing Technology, German Aerospace Center, Oberpfaffenhofen, Germany

⁴British Antarctic Survey, Cambridge, UK

⁵ESA-ESTEC, Noordwijk, the Netherlands

Correspondence to: J. Wuite (jan.wuite@enveo.at)

Received: 2 December 2014 – Published in The Cryosphere Discuss.: 23 December 2014

Revised: 10 April 2015 – Accepted: 17 April 2015 – Published: 9 May 2015

Abstract. We use repeat-pass SAR data to produce detailed maps of surface motion covering the glaciers draining into the former Larsen B Ice Shelf, Antarctic Peninsula, for different epochs between 1995 and 2013. We combine the velocity maps with estimates of ice thickness to analyze fluctuations of ice discharge. The collapse of the central and northern sections of the ice shelf in 2002 led to a near-immediate acceleration of tributary glaciers as well as of the remnant ice shelf in Scar Inlet. Velocities of most of the glaciers discharging directly into the ocean remain to date well above the velocities of the pre-collapse period. The response of individual glaciers differs and velocities show significant temporal fluctuations, implying major variations in ice discharge as well. Due to reduced velocity and ice thickness the ice discharge of Crane Glacier decreased from 5.02 Gt a^{-1} in 2007 to 1.72 Gt a^{-1} in 2013, whereas Hektor and Green glaciers continue to show large temporal fluctuations in response to successive stages of frontal retreat. The velocity on Scar Inlet ice shelf increased 2–3-fold since 1995, with the largest increase in the first years after the break-up of the main section of Larsen B. Flask and Leppard glaciers, the largest tributaries to Scar Inlet ice shelf, accelerated. In 2013 their discharge was 38 % and 46 % higher than in 1995.

1 Introduction

Atmospheric warming and changes in ocean conditions during the past decades led to wide-spread retreat of ice shelves around the Antarctic Peninsula (API) (Cook and Vaughan, 2010). Progressive retreat culminated in the final disintegration of the Larsen A Ice Shelf in January 1995 and of the northern and central sections of the Larsen B Ice Shelf in March 2002 (Rott et al., 1996; Rack and Rott, 2004; Glasser and Scambos, 2008). The glaciers flowing from the Antarctic Peninsula plateau, previously feeding the ice shelves, became tidewater glaciers. Most of these glaciers accelerated significantly, resulting in increased ice discharge (Rott et al., 2002; De Angelis and Skvarca, 2003; Rignot et al., 2004; Scambos et al., 2004). The response of these glaciers to ice-shelf disintegration is of particular interest not only for quantifying the contributions of API outlet glaciers to sea level rise, but also for studying processes of ice shelf retreat and its interactions with grounded ice (Viel and Payne, 2005; Hulbe et al., 2008).

Investigations on retreat and acceleration of glaciers in the Larsen Ice Shelf region so far focused mainly on the Larsen B embayment. Rignot et al. (2004) and Scambos et al. (2004) reported on acceleration of main glaciers draining into the Larsen B embayment, based on analysis of satellite images. Rott et al. (2011) derived velocities of nine Larsen B glaciers in pre-collapse state and in 2008 and 2009 from high-resolution radar images, and estimated calving fluxes and mass balance. Estimates of the mass balance of Larsen

B glaciers in recent years have been derived from changes in surface topography. Shuman et al. (2011) and Scambos et al. (2011) tracked elevation changes over the period 2001 to 2009 using optical stereo imagery and laser altimetry of ICE-Sat (Ice, Cloud and Land Elevation Satellite) and of the ATM (airborne thematic mapper) sensor. Shuman et al. (2011) reported a combined mass loss of 8.4 Gt a^{-1} for these glaciers for the period 2001 to 2006, excluding ice lost by frontal retreat. Berthier et al. (2012) explained that the mass loss of former Larsen B tributary glaciers continued at almost the same rate over the period 2002 to 2011, reporting a mass loss rate of 9.04 Gt a^{-1} for the period 2006 to 2010/2011. Scambos et al. (2014) used satellite laser altimetry and satellite stereo-imagery to map ice elevation change and inferred mass changes for 33 glacier basins of the northern API over the time span 2001–2010. They report a mass balance of -7.9 Gt a^{-1} for the tributaries to the Larsen B embayment and -1.4 Gt a^{-1} for the tributaries to the remnant ice shelf in Scar Inlet.

These reports provide estimates of mass depletion for the Larsen B tributaries integrated over multi-year periods. Here we present a new analysis of satellite data showing the spatial and temporal variability in velocities over the whole Larsen B area dating back to 1995. We have included new satellite data not used in any previous studies so far, and have also re-processed satellite radar images to generate fully consistent and comparable data sets on surface velocities. Our work includes both recent acquisitions by high resolution radar sensors as well as archived data, some of which have not been exploited until now. Velocity data and estimates of ice thickness are used to derive ice discharge at different epochs, showing significant temporal variability as well. The data sets provide a comprehensive basis for studying the dynamic response of the ice masses to the disintegration of Larsen B, including the glaciers that are draining now directly into the ocean as well as the remnant ice shelf in Scar Inlet and its tributary glaciers.

2 Data and methods

We derived maps of ice flow velocities from repeat-pass Synthetic Aperture Radar (SAR) data of the satellite missions ERS-1, ERS-2, Envisat, TerraSAR-X (TSX), and ALOS, applying either offset tracking or SAR interferometry (InSAR). The source data were obtained from the archives at the European Space Agency (ESA) and the German Aerospace Center (DLR). We retrieved two-dimensional surface displacement in radar geometry which we projected onto the surface, defined by the ASTER-based Antarctic Peninsula digital elevation model (API-DEM) of Cook et al. (2012), in order to produce maps of surface velocities. The maps of the surface velocity vector are provided in Antarctic polar stereographic projection resampled to a 50 m grid. The DEM is compiled from ASTER scenes from a range of dates between 2000 and

2009 which are unspecified in the final product (Cook et al., 2012). During this period various glaciers have been subject to major drawdown. The sensitivity analysis on the impact of possible DEM errors shows that even in extreme cases of surface lowering the induced error in geocoded velocity is below 1 %.

The spatial resolution of the SAR images along the flight track and in radar line of sight (LOS) ranges from $3.3 \text{ m} \times 1.2 \text{ m}$ for TSX to $5.6 \text{ m} \times 9.6 \text{ m}$ for the Advanced Synthetic Aperture Radar (ASAR) of Envisat. The time span of the repeat pass image pairs ranges from one day for ERS-1/ERS-2 tandem images to 46 days for ALOS Phased Array L-band SAR (PALSAR) images. Because of temporal decorrelation of the phase of the backscatter signal the interferometric (InSAR) method could only be applied for ERS-1/ERS-2 tandem images, available on several dates of the years 1995 to 1999. InSAR data of a single swath provide the surface displacement in LOS. We combined image pairs of ascending and descending orbits to derive 2-D velocity fields for the period late 1995 to early 1996. Being well before the collapse of the Larsen B Ice Shelf, this period is of particular importance as reference for studying the impact of ice shelf disintegration on tributary glaciers. For 1999, ERS SAR data were available only from single view direction. Assuming unaltered flow direction since 1995/1996, we derived velocity maps in November 1999, using the argument from the velocity vectors of crossing orbits.

For retrieving maps of ice motion from the TSX SAR, Envisat ASAR and ALOS PALSAR we apply the offset tracking technique which is based on cross-correlation of templates in SAR amplitude images. Offset tracking delivers along track and LOS velocity components from a single image pair. It is less sensitive to displacement than InSAR, but this drawback is (at least partly) compensated by the longer time span between the repeat pass images (Rott, 2009). We used templates of 64×64 and 96×96 pixels size and applied sampling steps of 10 pixels for generating velocity maps. TSX images are our main data sources for velocity maps between 2007 and 2013, complemented by occasionally available ALOS PALSAR data. Envisat ASAR data are the basis for velocity maps for 2003 to 2006 on large glaciers and on the Scar Inlet ice shelf.

The uncertainty of retrieved velocities differs between the sensors. The ERS InSAR motion maps are based on InSAR pairs of good coherence. One fringe (phase cycle of 2π) corresponds to 7.2 cm projected onto a horizontal surface. Assuming an uncertainty of 0.2 fringes for a point on the moving glacier surface and 0.2 for the zero velocity reference points on ice free surfaces, for ERS InSAR the uncertainty in surface velocity of grounded ice is $\pm 0.02 \text{ m d}^{-1}$. On floating ice control points without horizontal motion are used as reference, so that the observed signal corresponds to the tidal displacement. The phase differences between individual reference points, located around the Seal Nunataks and in inlets along Jason Peninsula, are less than 0.5 fringes. Assuming an

uncertainty of 0.2 fringes for the moving ice shelf and of 0.5 fringes for the reference points, the uncertainty in horizontal velocity of floating ice is $\pm 0.04 \text{ m d}^{-1}$.

For offset tracking, the accuracy depends on the pixel size, the time interval, and the quality of features in order to obtain good correlation peaks. We excluded areas of low correlation, so that the uncertainty for the retrieval of displacement is in the order of 0.2 to 0.3 pixels. The resulting uncertainties in the magnitude of surface motion are $\pm 0.05 \text{ m d}^{-1}$ for TSX SAR, $\pm 0.08 \text{ m d}^{-1}$ for ALOS PALSAR and $\pm 0.15 \text{ m d}^{-1}$ for Envisat ASAR.

The mass flux across a gate of width Y [m] near the calving front or grounding line is computed according to

$$F_Y = \rho_{\text{ice}} \int_{y=0}^{y=Y} [u_m(y) \sin\theta H(y)] dy, \quad (1)$$

where ρ_{ice} is the density of ice, u_m is the vertically averaged horizontal velocity, θ is the angle between the velocity vector and the gate, H is the ice thickness. We use a column-averaged ice density of 900 kg m^{-3} to convert ice volume into mass. For calving glaciers, full sliding is assumed across calving fronts, so that u_m corresponds to the surface velocity, u_s , obtained from satellite data. For glaciers discharging into the ice shelf, we estimate the ice deformation at the flux gates applying the laminar flow approximation (Paterson, 1994) using a rate factor as derived by Hulbe et al. (2008) for outlet glaciers to Larsen B. The results show moderate values of deformation velocities. For Crane Glacier, the resulting vertically averaged velocity (pre-collapse) is $u_m = 0.96 u_s$; for other glaciers, $u_m = 0.95 u_s$. Ice thickness at the flux gates is obtained from various sources. For Flask and Starbuck glaciers, radar sounding data are available (Farinotti et al., 2013, 2014). For Crane Glacier, the cross section of the calving gate is deduced from bathymetric data (Zgur et al., 2007; Rott et al., 2011). For Leppard Glacier, ice thickness data of Huss and Farinotti (2014) are used. For calving fluxes of Crane, Hektoria and Green glaciers, the ice thickness in the center of the flux gate is estimated from surface height above sea level assuming flotation. The central sections of these glacier fronts have been floating at least since 2007. The surface elevation near the calving front is obtained from laser ranging data of ICESat and the ATM (Shuman et al., 2011; Krabill and Thomas, 2013, 2014) and in 2011 and 2013 also from digital elevation data of TanDEM-X (Krieger et al., 2013). For uncertainty estimates of mass fluxes through the gates, we assume $\pm 10\%$ error of the cross section area for Starbuck, Flask and Crane glaciers, and $\pm 20\%$ for Hektoria, Green, Jorum and Leppard glaciers. For velocity across the gate, we assume $\pm 5\%$ uncertainty.

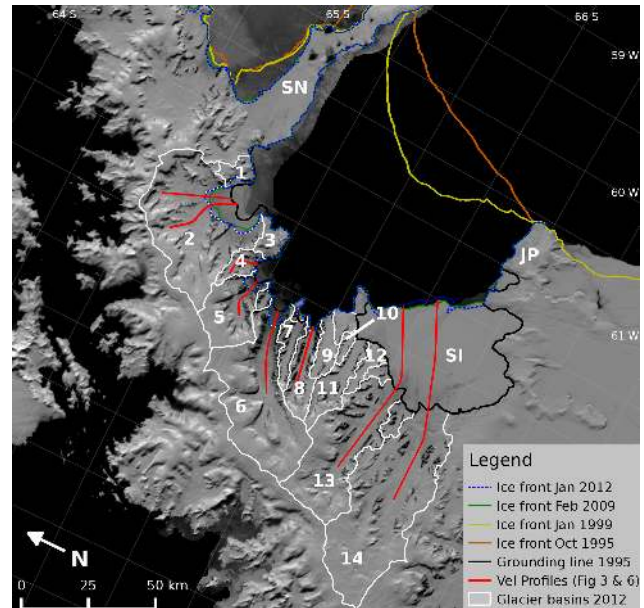


Figure 1. Overview map of glacier basins in the Larsen B region. Background: 2009 MODIS mosaic (Haran et al., 2014). Names and size of basins in Table 1. Glacier boundaries inland are based on the ASTER DEM (courtesy A. Cook). Coastlines and grounding line derived from ERS and Landsat images (ERS-1 and -2 were used). SN – Seal Nunataks, SI – Scar Inlet, JP – Jason Peninsula. Red lines show location of velocity profiles in Figs. 3 and 6.

3 Evolution of glacier velocities

3.1 Velocities and frontal retreat of glaciers draining into Larsen B embayment

The location of the glacier basins is shown in Fig. 1, and the areas of the basins for the region upstream of the 1995 grounding line and of the 2012 glacier fronts are specified in Table 1. The basin outlines inland were provided by A. Cook based on the ASTER derived Antarctic Peninsula DEM (API-DEM) (Cook et al., 2012). The positions of the grounding lines in 1995 are from the ERS InSAR analysis of Rack (2000). The update of glacier fronts and areas in 2012 is based on a Landsat image of 12 January 2012. Before 2002 all glaciers between the Seal Nunataks and Jason Peninsula drained into Larsen B Ice Shelf. Since its collapse, in March 2002, they drain into a wide bay and in the remnant part of the ice shelf in Scar Inlet. The area of the Larsen B tributary glaciers decreased by 270 km^2 since 1995. The 2012 area refers to the ice front rather than the grounding line, so that the total loss in grounded ice extent is slightly higher because frontal sections of some glaciers are floating.

The largest glaciers north of Scar Inlet, where the ice shelf disappeared in 2002, are the Hektoria, Green, Evans (HGE) and Crane glaciers. Before the ice shelf breakup the frontal zone of HGE glaciers was formed by the confluence of the three glaciers, stretching across a wide bay. Following the ice

Table 1. Area of glacier basins (in km²) shown in Fig. 1 above the October 1995 grounding line and updated for glacier fronts on 12 January 2012, and change of glacier area 1995 to 2012. NC – no significant change of front position or grounding line. The areas of glacier basins include rock outcrops and mountain slopes.

Nr.	Glacier	Area (km ²) 10/1995	Area (km ²) 01/2012	ΔArea (km ²) 1995–2012
1	Hektoria Glacier Headland	118.13	100.64	–17.49
2	HGE	1588.97	1415.05	–173.92
3	Evans Glacier Headland	124.38	119.49	–4.89
4	Punchbowl	129.56	117.82	–11.74
5	Jorum	484.09	460.36	–23.73
6	Crane	1354.29	1319.74	–34.55
7	Mapple	154.97	155.43	+0.46
8	Melville	295.26	291.18	–4.08
9	Pequod	151.06	150.64	–0.42
10	Rachel	51.27	51.27	NC
11	Starbuck	300.69	300.69	NC
12	Stubb	109.92	109.92	NC
13	Flask	1144.84	1144.84	NC
14	Leppard	1877.08	1877.08	NC
	Sum	7884.51	7614.15	–270.36

shelf collapse the frontal regions of HGE retreated quickly (Rack and Rott, 2004; Scambos et al., 2004), suggesting that they were lightly grounded and sensitive to changes in ice-shelf buttressing. The ice shelf collapse resulted in the progressive breakup of increasingly large areas of grounded ice concomitant with acceleration of ice flow and dynamic thinning, amounting to a total retreat of 174 km² by January 2012. On Crane Glacier, the loss of grounded ice has been smaller (35 km²) because the terminus is confined in a narrow fjord. Jorum Glacier lost 24 km² in grounded ice; Punchbowl Glacier lost 12 km², and Melville Glacier lost 4.1 km². The frontal positions of Mapple and Pequod glaciers have been stationary.

An overview map of surface velocities for the Larsen B region is shown in Fig. 2a for the year 1995 based on ERS InSAR data. As already reported by Rott et al. (2011), the 1995 velocities of outlet glaciers to Larsen-B agree within a few percent with the velocities retrieved from 1999 InSAR data. There is no indication for a significant temporal trend in velocity on any of the glaciers. The velocities, derived from InSAR data on various dates in 1995 and 1999 differ by less than 5% at any of the flux gates. Varying tidal deformation along the ice shelf margins, observed in the different interferograms, did not affect the ice motion at these flux gates which are located several kilometers inland of the 1995–1999 grounding zone.

Figure 2b is a composite of several velocity maps from TSX and ALOS PALSAR offset tracking analysis of the years 2008 to 2012. As the figures show, a major flow acceleration is observed for HGE, Jorum, and Crane glaciers. Flask and Leppard glaciers in Scar Inlet also accelerated, but at a lower rate. In order to investigate the temporal evolution

of velocities we extracted profiles along the central flow line of the main glaciers: Hektoria, Green, Jorum, Crane, Punchbowl and Melville glaciers, now terminating with calving fronts (Fig. 3), and Flask and Leppard which are still confined by the remnant part of Larsen B Ice Shelf. The location of the profiles is charted in Fig. 1. The map of velocity changes (Fig. 2c) and the longitudinal profiles show that the flow acceleration extends far upstream on the large glaciers, whereas on the smaller glaciers the acceleration has been modest and confined to the lower part of the tongues.

The velocity of Hektoria and Green glaciers is presently still much higher than in 1995, but has been subject to strong variations since 2002 associated with glacier thinning and frontal retreat. The velocity profiles (Fig. 3) show periods of acceleration followed by gradual deceleration. In 2008 Hektoria and Green glaciers still had a common terminal section, but the lower terminus was already heavily fractured (Fig. 4). In 2009 a major section along the front broke away leading to another rise in velocities. In November 2009 the frontal velocity of Hektoria and Green glaciers was about twice the velocity at the same point in October 2008. The high velocities persisted until March 2012, after which significant slowdown and an interim advance of the floating tongues was observed in 2013.

Ice flow and calving fluxes of Crane and Jorum glaciers have been investigated by Rott et al. (2011) based on ERS InSAR data of 1995 and 1999 and TerraSAR-X data of several dates between October 2008 and November 2009. During 2008/09 the velocity was comparatively stable on both glaciers (Rott et al., 2011). Our analysis of the extended TSX data set shows a strong deceleration since 2007. The velocity in the center of the flux gate 1 km upstream of the

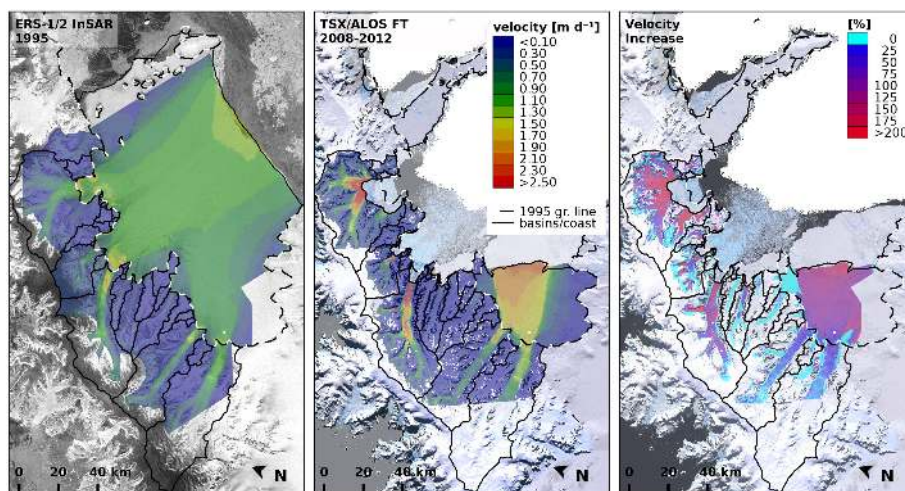


Figure 2. Maps of glacier surface velocity in the Larsen B region. Left: based on ERS InSAR data of October/November 1995 (background RAMP mosaic; Jezek et al., 2013). Center: based on TSX and PALSAR offset tracking 2008–2012. Right: Velocity increase 2008–2012 vs. 1995. Background LIMA mosaic (Bindshadler et al., 2008). The dashed line shows the position of the 1995 grounding line. Front positions are from October 1995 (left) and January 2012 (center and right).

2008 glacier front decreased from 6.8 m d^{-1} in June 2007 to 5.2 m d^{-1} in November 2008 and October 2009, and to 2.9 m d^{-1} in November 2013. Between 2003 and 2007 the strong acceleration of Crane Glacier caused dynamic thinning and subsidence on the order of 150 m on the lower terminus (Scambos et al., 2011). In spite of continued thinning, although with reduced rate, the position of the glacier front has been rather stable since 2006. The shape of the glacier bedrock in form of a deep canyon, inferred from bathymetric data, indicates that the central part of the lower terminus has been ungrounded for several years (Rott et al., 2011). This suggests that lateral drag plays a key role in maintaining the frontal position since 2006. Also the velocity of the Jorum Glacier terminus is still higher than before ice shelf collapse. As on Crane Glacier, the velocity decreased since 2007, but at smaller percentage.

The velocities of the glaciers that are originating east of the main ice divide are small, and the flow acceleration has been modest. On Punchbowl Glacier, the velocity at the central flow line near the calving gate increased from 0.20 m d^{-1} in 1995 to 0.50 m d^{-1} in 2008 to 2012, on Melville Glacier from 0.25 m d^{-1} in 1995 to 0.40 m d^{-1} in 2008 and 0.70 m d^{-1} in 2012 (Fig. 3). Whereas Punchbowl and Melville Glaciers have been subject to frontal retreat, the frontal positions of Mapple and Pequod glaciers have been stable. This is reflected in the observed velocities near the front. On both glaciers, a temporary acceleration is observed in 2007: on Pequod Glacier from 0.29 m d^{-1} in 1995 to 0.40 m d^{-1} in 2007; on Mapple Glacier from 0.16 m d^{-1} in 1995 to 0.21 m d^{-1} in 2007. During the period 2008 to 2012 the velocities returned to the pre-collapse values.

The velocity variations of the outlet glaciers are clearly dominated by multi-annual trends triggered by ice shelf dis-

integration. On some of the glaciers, seasonal variations in velocity by a few per cent are observed, but not in every year. Compared to the long term trend this signal is not significant.

3.2 Velocities of Scar Inlet ice shelf and tributary glaciers

The area of the ice shelf in Scar Inlet decreased from 3463 km^2 on 18 March 2002 (Rack and Rott, 2004) to 1870 km^2 in January 2012. The velocities on the ice shelf section which is nourished by Flask and Leppard glaciers increased 2–3-fold since 1995/1999. This section is separated by distinct shear zones from the ice shelf sections along Jason Peninsula and the section downstream of Starbuck and Stubb glaciers (Fig. 5). Major rifts are apparent on the ice shelf in the ASAR image of 28 January 2004, indicating that the disintegration of the main section of Larsen B Ice Shelf affected the stability of the remnant ice shelf in Scar Inlet rather soon. In June 2004 the velocities along the central flow lines downstream of Flask and Leppard glaciers had already doubled compared to the pre-collapse values (Fig. 6), another indication that the Larsen B disintegration event had a rather immediate impact on the stress field of Scar Inlet ice shelf. In the profiles of 1995 and 1999, based on one-day InSAR repeat pass data, we exclude the tidal deformation zone because of ambiguity between horizontal motion and vertical displacement.

In spite of still being backed up by an ice shelf, both Flask and Leppard glaciers accelerated since 1995/1999 (Fig. 6). Between 1995 and 1999, there are no apparent differences in velocity. On Flask Glacier, the mean velocity in 2009–2013 at the flux gate, 6 km above the grounding line, is 41 % higher than the velocity in 1995/1999. On Leppard Glacier,

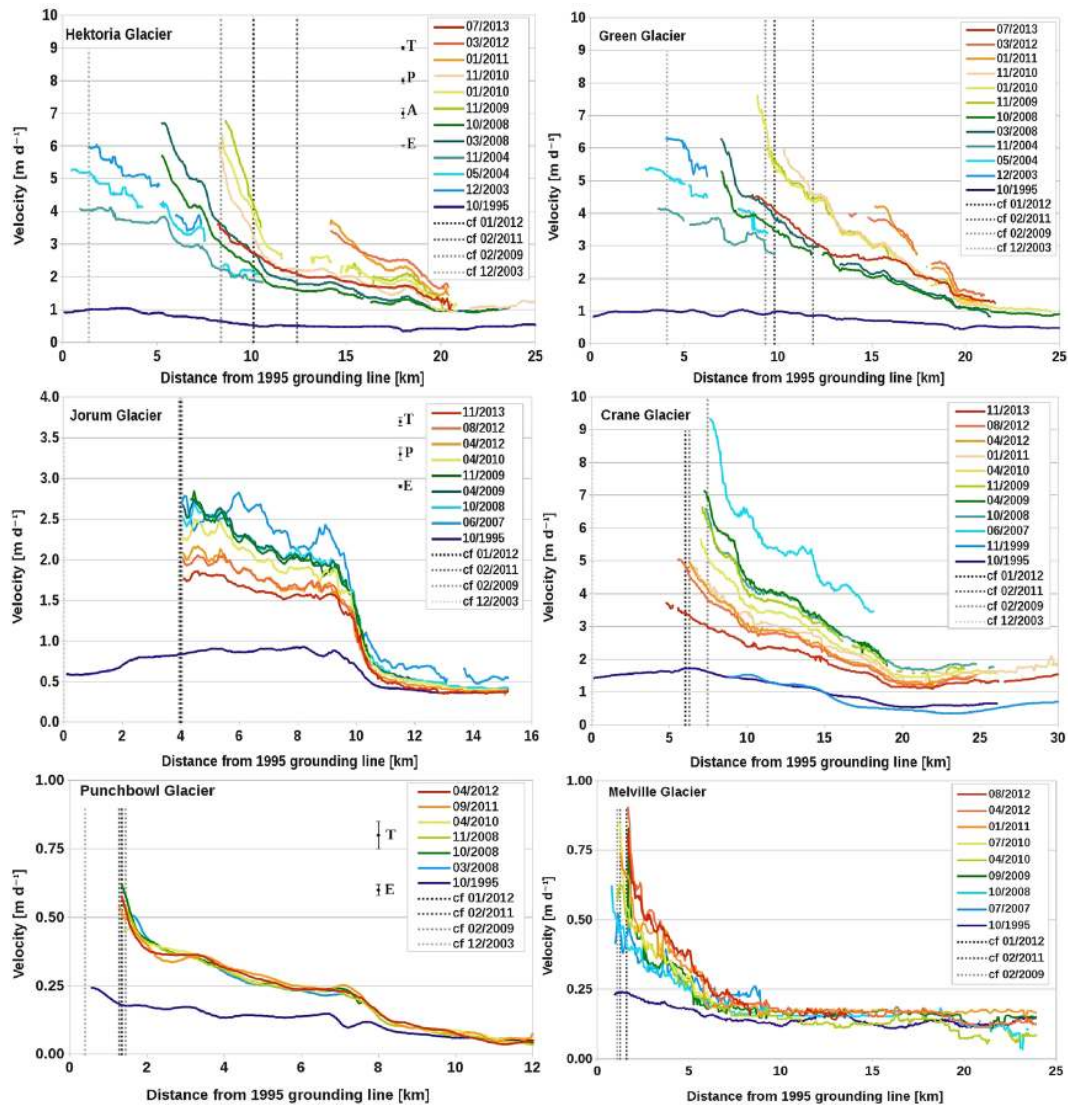


Figure 3. Surface velocities along the central flow line of Hektoria, Green, Jorum, Crane, Punchbowl and Melville glaciers and their frontal positions at different dates (month/year). The x and y scales are different for individual glaciers. Vertical lines show positions of calving front. The vertical bars show uncertainties in velocity for TerraSAR-X (T) 2007 to 2013; PALSAR (P), November 2009; ASAR (A) 2003, 2004; ERS (E) 1995, 1999.

the velocity at the flux gate, 4 km above the grounding line, increased by 45%. The signal of acceleration between the two periods extends more than 30 km up-glacier, with the velocity change decreasing with distance from the grounding zone. The acceleration of the glaciers is in line with substantial acceleration of Scar Inlet ice shelf since 2002. The main speed-up happened before 2009. Between September 2009 and July 2013 the velocities have been rather stable. The smaller Rachel, Starbuck and Stubb glaciers do not show any significant change in velocities since 1995.

4 Temporal variations of ice discharge

Estimates of ice discharge of Crane, Jorum, Hektoria, and Green glaciers in different years are presented in Table 2. The estimated discharge of Hektoria and Green glaciers for 1995 amounts to 1.19 Gt a^{-1} using the same gate near the 2008 front as Rott et al. (2011) (Fig. 4). By February/March 2004, 2 years after the collapse, the maximum velocity at this gate was 5.1 m d^{-1} (1862 m a^{-1}), 5 times higher than in 1995. A transect on Hektoria Glacier, acquired by the NASA ATM in 2004 (Krabill and Thomas, 2013), allows for an estimate of an ice thickness of 406 m under the assumption of flotation, resulting in a flux of 4.74 Gt a^{-1} . The estimate for 2008 by Rott et al. (2011) amounts to 2.88 Gt a^{-1} . At that

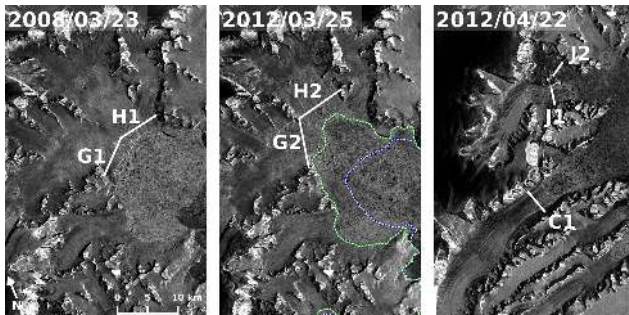


Figure 4. Section of TerraSAR-X amplitude images. Left and center: HGE glaciers on 23 March 2008 and 25 March 2012, with flux gates on Hektoria (H) and Green (G) glaciers and location of the glacier front on 24 December 2004 (dotted blue line) and 25 March 2012 (dotted green line). Right: TSX image of Crane (C) and Jorum (J) glaciers on 22 April 2012 with flux gates.

time the two glaciers still formed a single calving front. The maximum velocity at the front was 4.23 m d^{-1} (1545 m a^{-1}) and the maximum ice thickness at the (floating) calving gate, inferred from an ICESat profile, is estimated at 268 m. Because of the retreat of the terminus by 4 km between 2008 and 2011, the gates for the 2010 and 2013 fluxes are shifted inland (Fig. 4). A transect of surface elevation on Hektoria Glacier was measured in 2011 by the ATM during the Ice-Bridge campaign. The freeboard at the gate is 55 m, resulting in a maximum ice thickness of 450 m assuming freely floating ice. The corresponding numbers for the calving fluxes, with November 2010 velocities, are 1.67 Gt a^{-1} for Hektoria Glacier and 1.99 Gt a^{-1} for Green Glacier, adding up to 3.66 Gt a^{-1} which is 27% higher than the flux in 2008. By July 2013 the combined flux decreased to 3.05 Gt a^{-1} . This illustrates the impact of velocity variations on calving fluxes, resulting in major fluctuations of glacier net mass balance within a few years.

For computing the ice flux for Crane Glacier, the same flux gate 1 km inland of the ice front in 2008 and 2009 is used as by Rott et al. (2011) (Fig. 4). Because of slow down of ice flow (Fig. 3) and reduction in ice thickness, the calving flux of Crane Glacier decreased significantly during recent years. Based on the June 2007 analysis, the flux across the gate is estimated at 5.02 Gt a^{-1} , 4.4 times higher than the pre-collapse calving flux of 1.15 Gt a^{-1} . Until November 2013 it decreases to 1.72 Gt a^{-1} , one third of the 2007 flux.

In 1995 the combined mass flux of Jorum Glacier across the 2008 calving gates of the two glacier branches amounted to 0.35 Gt a^{-1} (Rott et al., 2011). For 2008, the elevation data from an ICESat transect close to the gates were used to estimate the maximum ice thickness. For estimating the ice thickness in 2012, we use surface elevation data of the TanDEM-X satellite mission, which show surface lowering by a few meters since 2008. The estimated calving

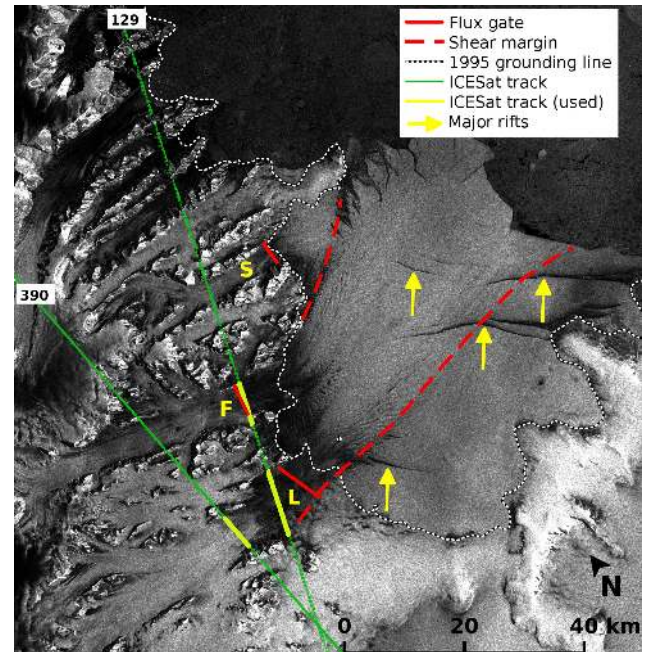


Figure 5. Envisat ASAR image of Scar Inlet ice shelf and tributary glaciers, 28 January 2004. Red lines show the flux gates for Flask (F), Leppard (L) and Starbuck (S) glaciers. The broken red lines delimit the outflow downstream of Flask and Leppard glaciers. The yellow sections of the ICESat tracks are used for deriving surface elevation change on Leppard and Flask glaciers. The arrows point to major rifts.

flux for the two branches of Jorum Glacier decreased from 0.61 Gt a^{-1} in 2008 to 0.45 Gt a^{-1} in 2013.

For Starbuck, Flask and Leppard glaciers, data on ice thickness are available from ice sounding measurements and ice flow modeling (Farinotti et al., 2013, 2014; Huss and Farinotti, 2014). On Starbuck Glacier, the TSX ice motion data of 2009 and 2011 do not reveal any significant difference compared to 1995 (Fig. 7). Therefore the discharge has likely not changed significantly either. The flux through the cross section near the grounding line, with maximum velocity of 0.34 m d^{-1} (124 m a^{-1}), is estimated at 0.067 Gt a^{-1} (Table 3). The ice on Flask and Leppard glaciers is thicker and velocities are higher. For Flask Glacier, the mass flux is derived for a gate along a transverse profile 4 km above the grounding line (Fig. 7). This corresponds to the position of radio echo sounding profile 1, acquired by the BAS Polarimetric Airborne Survey Instrument in November 2011 (Farinotti et al., 2013). In the center of the profile the ice thickness is 690 m. In 1995 and 1999, the velocities in the center are 1.31 (478 m a^{-1}) and 1.36 m d^{-1} (496 m a^{-1}), respectively, the resulting ice discharge across the gates is 0.78 Gt a^{-1} and 0.80 Gt a^{-1} for the 2 years. On Flask Glacier, the velocities in 2009–2013 vary between 1.76 (642 m a^{-1}) and 1.93 m d^{-1} (704 m a^{-1}), and the ice discharge ranges from 1.0 – 1.23 Gt a^{-1} , without a clear temporal

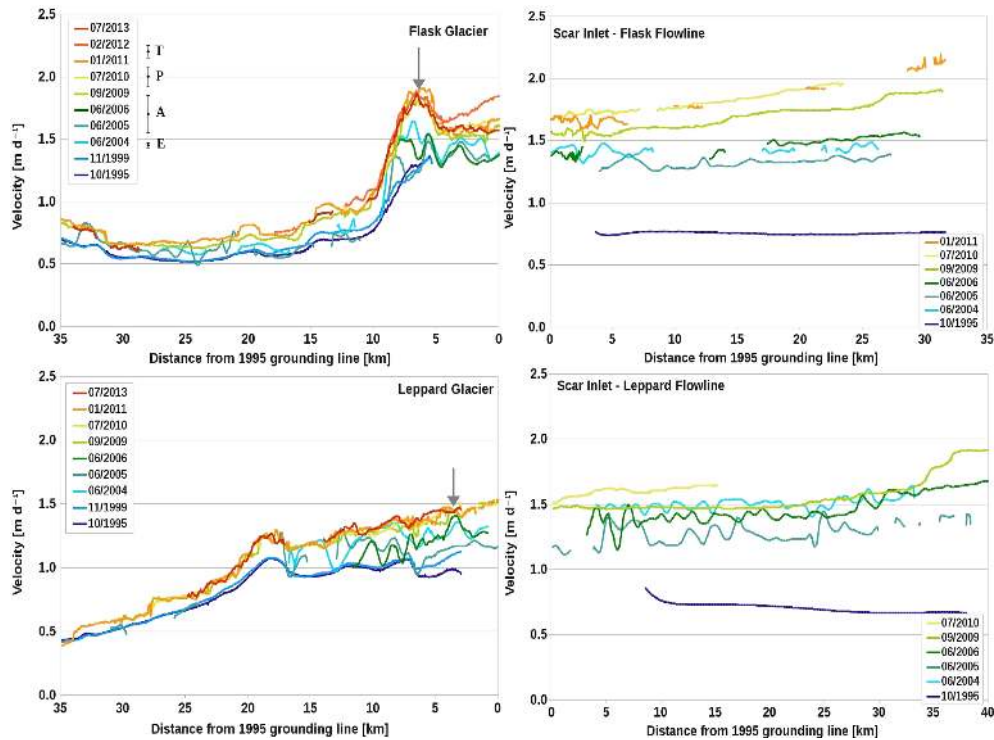


Figure 6. Surface velocities along the central flow line of Flask (top left) and Leppard (bottom left) glaciers and downstream of these glaciers on Scar Inlet ice shelf (right, top and bottom). Different y scale for the Leppard flow line. The arrow shows the location of the flux gate. Position of flow-line profiles shown in Fig. 1 and of flux gates in Fig. 5. The vertical bars show uncertainties in velocity for TerraSAR-X (T) 2009–2013; PALSAR (P) November 2009; ASAR (A) 2004–2006; ERS (E) 1995, 1999.

trend. The discharge increased between 37 and 56 % compared to 1995 and 1999. On Leppard Glacier, the center line velocity at the gate near the grounding line has increased from 1.00 (365 m a^{-1}) in 1995 to 1.44 m d^{-1} (526 m a^{-1}) in 2009 and 1.48 m d^{-1} (541 m a^{-1}) in 2013. The flux increased from 1.22 in 1995 to 1.74 Gt a^{-1} in 2011 and 1.78 Gt a^{-1} in 2013, an increase of 43 and 46 %, respectively. As for Flask Glacier, there is no significant difference between 2009 and 2013.

The flow acceleration and increased ice discharge results in dynamic thinning which is confirmed by ICESat laser altimeter measurements. For analysis of elevation change, we selected dates with closely spaced ICESat repeat tracks: track 129 of 1 June 2004 and 27 November 2008 shifted by 31 m on Leppard Glacier and 28 m on Flask Glacier; track 390 of 18 June 2004 and 19 March 2008 shifted by 71 m on Leppard Glacier. We corrected for the shift by taking into account the surface slope derived from the API-DEM. For track no. 129, crossing Flask Glacier 0.5 km downstream and Leppard Glacier 5 km upstream of the flux gate, we obtain a mean annual rate of surface elevation change of -1.93 m a^{-1} on Leppard Glacier and of -2.22 m a^{-1} on Flask Glacier. For track no. 390, we obtain for a profile across Leppard Glacier 13 km upstream of the flux gate a mean annual rate of elevation change of -1.71 m a^{-1} .

5 Discussion

In line with previous studies, our data shows a drastic increase in flow velocities of major tributary glaciers following the collapse of Larsen B Ice Shelf in early 2002. Reduced back stress and frontal retreat caused flow acceleration that propagated up-glacier. Beyond that, our analysis of new velocity data shows that some of the glaciers slowed down significantly during recent years. Strong acceleration and increase of calving flux is observed for HGE glaciers and Crane Glacier, downstream of which the seafloor map shows deep troughs (Lavoie et al., 2015).

Scambos et al. (2004) present data of ice motion in 2001, 2002, and 2003 along selected points of the central flowlines of the glaciers Crane, Jorum, Hektoria, and Green, derived by feature tracking in Landsat images. They report for a point near the Hektoria Glacier front a velocity increase from 1 m d^{-1} in 2001 to 5 m d^{-1} in early 2003. Rignot et al. (2004) derived velocities up to 6 m d^{-1} in 2003 near the front of Hektoria Glacier from Radarsat images which agrees with our analysis of ASAR data of December 2003. Scambos et al. (2011) derived velocities for six periods between April 2002 and December 2009 for a point 6 km upstream of the Crane Glacier front, showing a maximum velocity of

Table 2. Drainage area above the flux gate, velocities at the center of the flux gate (V_c), discharge across the flux gates, and difference of discharge vs. 1995; for glaciers draining into Larsen B embayment.

Glacier	Gate	Area km ²	Date YYYY-MM	V_c (m a ⁻¹)	Discharge (Gt a ⁻¹)	$\Delta 1995$ –Date 2 (Gt a ⁻¹)
Crane	C1	1235	1995/99*	548	1.15 ± 0.13	
			2007-06	2464	5.02 ± 0.56	–3.87
			2008/09*	1882	2.92 ± 0.33	–1.77
			2010-04	1650	2.44 ± 0.27	–1.29
			2011-01	1329	2.21 ± 0.25	–1.06
			2012-08	1292	2.15 ± 0.24	–1.00
			2013-11	1059	1.72 ± 0.19	–0.57
Jorum	J1	382	1995/99*	475	0.35 ± 0.07	
			2008/09*	865	0.53 ± 0.11	–0.18
			2012-04	759	0.39 ± 0.08	–0.04
	J2	52	1995/99*	68	0.04 ± 0.02	
			2008/09*	146	0.08 ± 0.02	–0.04
			2012-04	153	0.06 ± 0.01	–0.02
Hectoria-Green	H1 & G1	1188	1995/99*	387	1.19 ± 0.25	
			2004-03	1862	4.74 ± 0.98	–3.55
			2008/09*	1545	2.88 ± 0.59	–1.69
Hectoria	H2	341	2010-11	822	1.67 ± 0.34	
			2013-07	741	1.49 ± 0.31	
Green	G2	618	2010-11	1278	1.99 ± 0.41	
			2013-07	1095	1.56 ± 0.31	

* From Rott et al. (2011). In this table, the format YYYY/YY represents a range of years.

Table 3. Drainage area above the flux gate, velocities at the center of the flux gate (V_c), discharge across the flux gates, and difference of discharge vs. 1995; for glaciers draining into Scar Inlet ice shelf.

Glacier	Area (km ²)	Date (YYYY-MM)	V_c (m a ⁻¹)	Discharge (Gt a ⁻¹)	$\Delta 1995$ –Date 2 (Gt a ⁻¹)
Starbuck	296	1995-10	124	0.07 ± 0.01	
		2009-09	125	0.07 ± 0.01	
		2011-01	124	0.07 ± 0.01	
Flask	1003	1995-10	478	0.78 ± 0.09	
		1999-11	496	0.80 ± 0.09	
		2009-09	661	1.11 ± 0.12	–0.33
		2011-01	704	1.23 ± 0.14	–0.45
		2012-02	690	1.15 ± 0.13	–0.37
		2013-07	642	1.08 ± 0.12	–0.30
Leppard	1822	1995-10	365	1.22 ± 0.25	
		2009-10	526	1.74 ± 0.36	–0.52
		2013-07	541	1.78 ± 0.37	–0.56

5.3 m d⁻¹ in January 2006, similar to the value of 5.5 m d⁻¹ we derived for this point from TSX data of June 2007.

Subsequently, our analysis shows significant deceleration for Crane Glacier since mid-2007, yet over this time period the position of the ice front has remained comparatively stable. Possibly this is due to a reduction in the ratio between

driving stress and lateral shear, in accordance with decreasing surface slope on the lower glacier terminus. Targeted ice-flow modeling is required to further address this issue. From June 2007 to November 2013 the calving flux of Crane Glacier decreased from 5.02 to 1.72 Gt a⁻¹. Under the assumption that the pre-collapse flux corresponds to the bal-

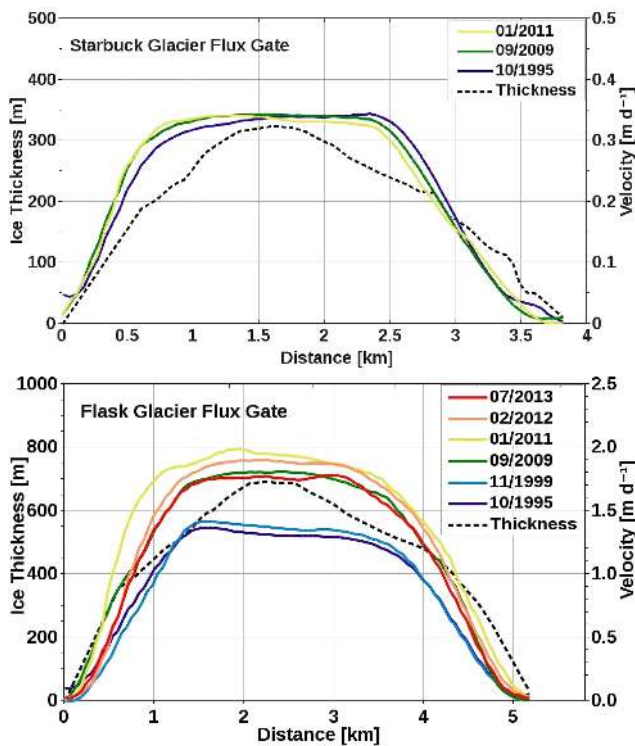


Figure 7. Ice thickness and surface velocity across the flux gate of Starbuck Glacier (top) and Flask Glacier (bottom). Ice thickness from Farinotti et al. (2013, 2014).

ance flux (Rott et al., 2011), the resulting rate of mass loss decreased from 3.87 to 0.57 Gt a^{-1} . Based on differencing of DEMs from optical stereo imagery in combination with ICESat data, Scambos et al. (2014) report a mean loss rate of 2.24 Gt a^{-1} for the period March 2003–November 2008. This is 42 % lower than our estimate for June 2007 and 27 % higher than our estimate for 2008/09. These large temporal variations emphasize the importance of using common epochs when comparing glacier contributions to sea level rise obtained by different methods.

Whereas on Crane Glacier a period of major flow acceleration during the first 5 years after ice shelf disintegration was followed by a steady gradual decrease in velocity, the flow behavior of Hektoría and Green glaciers has been more variable. Periods with increased flow velocities and frontal retreat alternated with periods of comparatively stable front positions or short-term advance. ASTER and ICESat data show substantial elevation losses on lower Green Glacier amounting to about 100 m during the time span November 2001–late 2008 (Shuman et al., 2011). Scambos et al. (2014) report for the HG glaciers a mean loss rate of 3.84 Gt a^{-1} for the period March 2003–November 2008 out of which $0.53 \text{ km}^3 \text{ a}^{-1}$ are attributed to the loss of ice volume above floating for the retreating glacier area. Our estimate of the calving flux across the 2008/09 gate, located about 4 km inland of the 2004 ice front, yields 4.74 Gt a^{-1} for March 2004 and 2.88 Gt a^{-1} for

2008/09. With the estimated balance flux of 1.19 Gt a^{-1} (Rott et al., 2011), the resulting net balance for the glacier area above the 2008/09 gate amounts to -3.55 Gt a^{-1} based on velocities of March 2004. For 2008, the estimated net balance is -1.69 Gt a^{-1} . The loss rate increased in 2010/2011, and decreased in 2013, with the discharge in Table 3 referring to gates shifted inland because of frontal retreat.

Hektoría, Green and Evans glaciers, forming a joined terminus in a wide bay in 2002, have been particularly vulnerable to stress perturbation after ice shelf collapse as evident from the frontal retreat. Successive phases of transition from weakly grounded to floating ice due to flow acceleration and thinning, associated with major calving events, have been maintaining high rates of mass depletion for the HGE glaciers to date. Crane and Jorum glaciers, terminating in deep and narrow fjords, have been subject to acceleration and major mass depletion during the first 5 years after ice shelf collapse, but slowed down afterwards. Similar behavior after retreat into narrow fjords is observed for Sjögren and Boydell glaciers in the Prince Gustav Channel and for the Dinsmoor, Bombardier and Edgeworth glaciers in the Larsen A embayment (Rott et al., 2014). The ratio of longitudinal stress to lateral shear stress is critical for glacier motion in narrow valleys (Hulbe et al., 2008). Decreasing ice thickness and surface slope affect driving stresses and cause deceleration in flow. However, considering the ongoing thinning of the terminus and the resulting decrease of lateral shear stress, it can be concluded that Crane and Jorum glaciers will still be subject to major retreat before reaching a new equilibrium state further inland.

The two main glaciers draining into Scar Inlet ice shelf, Flask and Leppard glaciers, have also been affected by flow acceleration in recent years. GPS measurements at stakes on Larsen B located 50 km downstream of these glaciers showed flow acceleration in the order of 10 % between 1994 and 1999 (Rack, 2000). This indicates that also the southern sections of Larsen B Ice Shelf had weakened mechanically previous to the disintegration event in 2002, as reported for the northern and central sections (Rack et al., 2000; Rack and Rott, 2004). Our analysis of substantial flow acceleration and development of rifts, evident in satellite data of 2004, implies that the break-up had a near immediate impact on the stress field of the ice shelf. Fricker and Padman (2012) report for two crossover points on Scar Inlet ice shelf relatively constant elevation change of $\sim -0.19 \text{ m a}^{-1}$ during 1992–2008. Our analysis of the temporal evolution of ice shelf flow suggests that changes in the rheology and stress field might not have been continuous during this period. The main speed-up on Scar Inlet ice shelf occurred during the first 2 years after the disintegration of the northern and central sections of Larsen B, whereas changes later on were more gradual. Given the spatial pattern of acceleration, with main speed-up in the ice shelf section nourished by Flask and Leppard glaciers, further weakening has to be expected along the shear margins of this section, as well as for the ice imme-

diately downstream of the grounding zone. Numerical models of Larsen B Ice Shelf in pre-collapse state show a band of weak ice along the shear zone that separates the outflow of Leppard Glacier from the slowly moving ice along Jason Peninsula (Rack et al., 2000; Vieli et al., 2006). The differential acceleration of flow and the formation of additional rifts, which are evident in ASAR and TSX images since 2004, indicate that ice in this zone is further weakening.

Whereas the ice at the flux gates of Leppard and Flask glaciers accelerated from 1995 to 2009 by 44 and 38 %, respectively, the velocity of Starbuck Glacier has been stable. This can on one hand be attributed to the bedrock topography, on the other hand to the rather modest mass turnover. The lower terminus of Starbuck Glacier is firmly grounded, with a broad sub-glacial ridge in the area of the grounding zone (Farinotti et al., 2014). Under the assumption of mass balance equilibrium, supported by the observed steady ice motion since 1995, a specific surface mass balance $b_n = 230 \text{ kg m}^{-2}$ is inferred from the ice flux across the grounding line.

The stable velocity in 1995 and 1999 suggests that Flask Glacier has been close to equilibrium state in those years. Thus, assuming equilibrium condition, the 1995 mass flux of 0.78 Gt a^{-1} across the flux gate results in $b_n = 779 \text{ kg m}^{-2}$, 3.4 times higher than the specific mass balance on Starbuck Glacier. The large difference in b_n can be explained by the strong west–east decrease of accumulation (Turner et al., 2002). Flask Glacier flows down from the main ice divide of the peninsula, whereas Starbuck Glacier originates on a small ice plateau 25 km to the east, separated from the main divide by the deep trough of Crane Glacier.

Flask and Leppard glaciers have responded to the changing stress conditions on the ice shelf in front by acceleration. The bedrock of Flask and Leppard glaciers ascends towards the grounding zone from depressions several kilometers upstream (Farinotti et al., 2013; Huss and Farinotti, 2014). The height of the glacier surface above the bedrock suggests that the glaciers are still firmly grounded above at the flux gates. Consequently, changes in the force balance of the grounding zone probably played a main role for initializing flow acceleration.

Scambos et al. (2014) report rates of mass change of $+0.12 \text{ Gt a}^{-1}$ for Flask Glacier and -1.31 Gt a^{-1} for Leppard Glacier, based on differencing of optical stereo DEMs from November 2001 to November 2006 and ICESat data from 2003 to 2008. Our analysis over recent years does not show a contrasting behavior for the two glaciers. Under assumption that the 1995 fluxes correspond to the balance fluxes, we obtain for different dates between 2009 and 2013 mass change rates of -0.30 to -0.44 Gt a^{-1} for Flask Glacier and -0.52 to -0.56 Gt a^{-1} for Leppard Glacier.

6 Conclusions

The collapse of the main section of Larsen B Ice Shelf in March 2002 triggered a near immediate response of most tributary glaciers with increased velocities maintained to date. Acceleration of ice flow is also observed on the remnant part of the ice shelf in Scar Inlet and its main tributaries. The behavior of the individual glaciers varies, and velocities show significant fluctuations over time. Whereas, after an initial speed up, Crane and Jorum glaciers slowed down significantly since mid-2007, the Hektoria and Green glaciers continue to show widespread fluctuations in velocity and periods of major frontal retreat alternating with more stationary positions or short term frontal advance. These differences in the response are related to glacier geometry and bedrock features. Crane and Jorum glaciers retreated into deep and narrow fjords while Hektoria and Green glaciers still calve into a wide bay. Temporal fluctuations of flow velocity are a main factor for fluctuations in ice discharge, emphasizing the importance of common epochs for reconciling glacier mass balance estimates derived by different methods (Shepherd et al., 2012).

Because of the combined effect of slow down and decrease in ice thickness, the ice discharge of Crane Glacier decreased by 66 % between 2007 and 2013 and of Jorum Glacier by 26 %. Both glaciers are expected to retreat further inland before reaching a new equilibrium in spite of slow-down, concluding from ongoing thinning and the increase of floating ice area. Hektoria and Green glaciers maintained variable but consistently high rates of mass depletion in recent years, as the calving front alternated between floating and weakly grounded phases.

The increase of flow velocity on Scar Inlet ice shelf and its larger tributaries started soon after the 2002 Larsen B collapse event, but changes have been discontinuous with most of the increase in the first years followed by comparatively small variations in velocity since 2009. On the smaller tributaries, changes have been modest or absent. The velocity on the ice shelf section downstream of Flask and Leppard glaciers, the largest tributaries, increased 2–3-fold since 1995/1999. The velocity at the flux gates of these glaciers increased until 2009 by 38 and 44 %, respectively, with minor fluctuations in velocity in later years. This suggests that the Scar Inlet ice shelf and its main tributary glaciers may have temporarily adjusted to the loss of the back stress from the main Larsen B Ice Shelf. However, considering the sustained high flow velocities and the enhanced formation and extension of cracks along the shear margins of the central ice shelf section, this state will not be long-lasting. These are clear signs for flow instability that will very likely lead to a complete disintegration of Scar Inlet ice shelf in the near future.

Acknowledgements. The authors would like to thank A. Cook (Univ. Swansea, UK) for providing outlines of glacier basins. The TerraSAR-X data and TanDEM-X data were made available by DLR through project HYD1864 and XTI_GLAC0457, respectively. The ERS SAR and Envisat ASAR data were made available by ESA through Envisat AO project ID-308. The ICESat laser altimeter data were downloaded from the NASA Distributed Active Archive Center, US National Snow and Ice Data Center (NSIDC), Boulder, Colorado. The work was supported by the European Space Agency, ESA Contract No.4000105776/12/NL/CBi.

Edited by: C. Haas

References

- Berthier, E., Scambos, T. A., and Shuman, C. A.: Mass loss of Larsen B tributary glaciers (Antarctic Peninsula) unabated since 2002, *Geophys. Res. Lett.*, 39, L13501, doi:10.1029/2012GL051755, 2012.
- Bindschadler, R., Vornberger, P., Fleming, A., Fox, A., Mullins, J., Binnie, D., Paulsen, S. J., Granneman, B., and Gorodetzky, D.: The Landsat Image Mosaic of Antarctica, *Remote Sens. Environ.*, 112, 4214–4226, doi:10.1016/j.rse.2008.07.006, 2008.
- Cook, A. J. and Vaughan, D. G.: Overview of areal changes of the ice shelves on the Antarctic Peninsula over the past 50 years, *The Cryosphere*, 4, 77–98, doi:10.5194/tc-4-77-2010, 2010.
- Cook, A. J., Murray, T., Luckman, A., Vaughan, D. G., and Bartrand, N. E.: A new 100-m Digital Elevation Model of the Antarctic Peninsula derived from ASTER Global DEM: methods and accuracy assessment, *Earth Syst. Sci. Data*, 4, 129–142, doi:10.5194/essd-4-129-2012, 2012.
- De Angelis, H. and Skvarca, P.: Glacier surge after ice shelf collapse, *Science*, 299, 1560–1562, doi:10.1126/science.1077987, 2003.
- Farinotti, D., Corr, H. F. J., and Gudmundsson, G. H.: The ice thickness distribution of Flask Glacier, Antarctic Peninsula, determined by combining radio-echo soundings, surface velocity data and flow modelling, *Ann. Glaciol.*, 54, 18–24, doi:10.3189/2013AoG63A603, 2013.
- Farinotti, D., King, E. C., Albrecht, A., Huss, M., and Gudmundsson, G. H.: The bedrock topography of Starbuck Glacier, Antarctic Peninsula, as measured by ground based radio-echo soundings, *Ann. Glaciol.*, 55, 22–28, 2014.
- Fricker, H. A. and Padman, L.: Thirty years of elevation change on Antarctic Peninsula ice shelves from multimission satellite radar altimetry, *J. Geophys. Res.*, 117, C02026, doi:10.1029/2011JC007126, 2012.
- Glasser, N. F. and Scambos, T. A.: A structural glaciological analysis of the 2002 Larsen B ice-shelf collapse, *J. Glaciol.*, 54, 3–16, 2008.
- Haran, T., Bohlander, J., Scambos, T. A., Painter, T., and Fahnestock, M.: MODIS Mosaic of Antarctica 2008–2009 (MOA2009) Image Map 2009, Boulder, Colorado USA: National Snow and Ice Data Center, doi:10.7265/N5KP8037, 2014.
- Hulbe, C. L., Scambos, T. A., Youngberg, T., and Lamb A. K.: Patterns of glacier response to disintegration of the Larsen B Ice Shelf, Antarctic Peninsula, *Global Planet. Chang.*, 63, 1–8, 2008.
- Huss, M. and Farinotti, D.: A high-resolution bedrock map for the Antarctic Peninsula, *The Cryosphere*, 8, 1261–1273, doi:10.5194/tc-8-1261-2014, 2014.
- Jezeq, K. C., Curlander, J. C., Carsey, F., Wales, C., and Barry, R. G.: RAMP AMM-1 SAR Image Mosaic of Antarctica. Version 2. Boulder, Colorado, USA, National Snow and Ice Data Center, 2013.
- Krabill, W. B. and Thomas, R.: Pre-IceBridge ATM L2 Icessn Elevation, Slope, and Roughness. Boulder, Colorado, USA, NASA DAAC at the National Snow and Ice Data Center, 2013.
- Krabill, W. B. and Thomas, R.: IceBridge ATM L2 Icessn Elevation, Slope, and Roughness. Version 2. Boulder, Colorado, USA, NASA DAAC at the National Snow and Ice Data Center, 2014.
- Krieger, G., Zink, M., Bachmann, M., Bräutigam, B., Schulze, D., Martone, M., Rizzoli, P., Steinbrecher, U., Anthony, J. W., De Zan, F., Hajnsek, I., Papathanassiou, K., Kugler, F., Rodriguez Cassola, M., Younis, M., Baumgartner, S., Lopez Dekker, P., Prats, P., and Moreira, A.: TanDEM-X: a radar interferometer with two formation flying satellites, *Acta Astronaut.*, 89, 83–98, doi:10.1016/j.actaastro.2013.03.008, 2013.
- Lavoie, C., Domack, E. W., Pettit, E. C., Scambos, T. A., Larter, R. D., Schenke, H.-W., Yoo, K. C., Gutt, J., Wellner, J., Canals, M., Anderson, J. B., and Amblas, D.: Configuration of the Northern Antarctic Peninsula Ice Sheet at LGM based on a new synthesis of seabed imagery, *The Cryosphere*, 9, 613–629, doi:10.5194/tc-9-613-2015, 2015.
- Paterson, W. S. B.: *The physics of glaciers*, Third Edition, Oxford, etc., Elsevier, 1994.
- Rack, W.: Dynamic behaviour and disintegration of the northern Larsen Ice Shelf, Antarctic Peninsula, Ph.D. thesis, University of Innsbruck, Austria, 166 pp., 2000.
- Rack, W., Doake, C. S. M., Rott, H., Siegel, A., and Skvarca, P.: Interferometric analysis of the deformation pattern of the Northern Larsen Ice Shelf, Antarctic Peninsula, compared to field measurements and numerical modeling, *Ann. Glaciol.*, 31, 205–210, 2000.
- Rack, W. and Rott, H.: Pattern of retreat and disintegration of Larsen B Ice Shelf, Antarctic Peninsula, *Ann. Glaciol.*, 39, 505–510, 2004.
- Rignot, E., Casassa, G., Gogineni, P., Rivera, A., and Thomas, R.: Accelerated ice discharges from the Antarctic Peninsula following the collapse of the Larsen B Ice Shelf, *Geophys. Res. Lett.*, 31, L18401, doi:10.1029/2004GL020697, 2004.
- Rott, H.: Advances in interferometric synthetic aperture radar (InSAR) in earth system science, *Prog. Phys. Geog.*, 33, 769–791, doi:10.1177/0309133309350263, 2009.
- Rott, H., Skvarca, P., and Nagler, T.: Rapid collapse of Northern Larsen Ice Shelf, Antarctica, *Science*, 271, 788–792, 1996.
- Rott, H., Rack, W., Skvarca, P., and De Angelis, H.: Northern Larsen Ice Shelf, Antarctica: Further retreat after collapse, *Ann. Glaciol.*, 34, 277–282, 2002.
- Rott, H., Müller, F., Nagler, T., and Floricioiu, D.: The imbalance of glaciers after disintegration of Larsen-B ice shelf, Antarctic Peninsula, *The Cryosphere*, 5, 125–134, doi:10.5194/tc-5-125-2011, 2011.
- Rott, H., Floricioiu, D., Wuite, J., Scheiblauer, S., Nagler, T., and Kern, M.: Mass changes of outlet glaciers along the Nordensjøkøld Coast, northern Antarctic Peninsula, based on TanDEM-

- X satellite measurements, *Geophys. Res. Lett.*, 41, 8123–8129, doi:10.1002/2014GL061613, 2014.
- Scambos, T. A., Bohlander, J. A., Shuman, C. A., and Skvarca, P.: Glacier acceleration and thinning after ice shelf collapse in the Larsen B embayment, Antarctica, *Geophys. Res. Lett.*, 31, L18402, doi:10.1029/2004GL020670, 2004.
- Scambos, T. A., Berthier, E., and Shuman, C. A.: The triggering of subglacial lake drainage during rapid glacier drawdown: Crane Glacier, Antarctic Peninsula, *Ann. Glaciol.*, 52, 74–82, 2011.
- Scambos, T. A., Berthier, E., Haran, T., Shuman, C. A., Cook, A. J., Ligtenberg, S. R. M., and Bohlander, J.: Detailed ice loss pattern in the northern Antarctic Peninsula: widespread decline driven by ice front retreats, *The Cryosphere*, 8, 2135–2145, doi:10.5194/tc-8-2135-2014, 2014.
- Shepherd, A., Ivins, E. R., Geruo, A., Barletta, V. R., Bentley, M. J., Bettadpur, S., Briggs, K. H., Bromwich, D. H., Forsberg, R., Galin, N., Horwath, M., Jacobs, S., Joughin, I., King, M. A., Lenaerts, J. T., Li, J., Ligtenberg, S. R., Luckman, A., Luthcke, S. B., McMillan, M., Meister, R., Milne, G., Mouginot, J., Muir, A., Nicolas, J. P., Paden, J., Payne, A. J., Pritchard, H., Rignot, E., Rott, H., Sørensen, L. S., Scambos, T. A., Scheuchl, B., Schrama, E. J., Smith, B., Sundal, A. V., van Angelen, J. H., van de Berg, W. J., van den Broeke, M. R., Vaughan, D. G., Velicogna, I., Wahr, J., Whitehouse, P. L., Wingham, D. J., Yi, D., Young, D., and Zwally, H. J.: A reconciled estimate of ice-sheet mass balance, *Science*, 338, 1183–1189, doi:10.1126/science.1228102, 2012.
- Shuman, C. A., Berthier, E., and Scambos, T. A.: 2001–2009 elevation and mass losses in the Larsen A and B embayments, Antarctic Peninsula, *J. Glaciol.*, 57, 737–754, 2011.
- Turner, J., Lachlan-Cope, T. A., Marshall, G. J., Morris, E. M., Mulvaney, R., and Winter, W.: Spatial variability of Antarctic Peninsula net surface mass balance, *J. Geophys. Res.*, 107, AAC 4-1–AAC 4-18, doi:10.1029/2001JD000755, 2002.
- Vieli, A. and Payne, A. J.: Assessing the ability of numerical ice sheet models to simulate grounding line migration, *J. Geophys. Res.-Earth*, 110, F01003, doi:10.1029/2004JF000202, 2005.
- Vieli, A., Payne, A. J., Du, Z., and Shepherd, A.: Numerical modelling and data assimilation of the Larsen B Ice Shelf, Antarctic Peninsula, *Philos. T. R. Soc. A*, 364, 1815–1839, doi:10.1098/rsta.2006.1800, 2006.
- Zgur, F., Rebesco, M., Domack, E. W., Leventer, A., Brachfeld, S., and Willmott, V.: Geophysical survey of the thick, expanded sedimentary fill of the new-born Crane fjord (former Larsen B Ice Shelf, Antarctica), in: *Antarctica: A Keystone in a Changing World – Online Proceedings of the 10th ISAES*, edited by: Cooper, A., Raymond, C., and the 10th ISAES Editorial Team, USGS Open-File Report 2007–1047, Extended Abstract 141, p. 4, 2007.