

Evolution of the pseudogap from Fermi arcs to the nodal liquid

A. KANIGEL^{1,2}, M. R. NORMAN², M. RANDEIRA³, U. CHATTERJEE^{1,2}, S. SOUMA¹, A. KAMINSKI⁴, H. M. FRETWELL⁴, S. ROSENKRANZ², M. SHI^{1,5}, T. SATO⁶, T. TAKAHASHI⁶, Z. Z. LI⁷, H. RAFFY⁷, K. KADOWAKI⁸, D. HINKS², L. OZYUZER² AND J. C. CAMPUZANO^{1,2*}

¹Department of Physics, University of Illinois at Chicago, Chicago, Illinois 60607, USA

²Materials Science Division, Argonne National Laboratory, Argonne, Illinois 60439, USA

³Department of Physics, Ohio State University, Columbus, Ohio 43210, USA

⁴Ames Laboratory and Department of Physics and Astronomy, Iowa State University, Ames, Iowa 50011, USA

⁵Swiss Light Source, Paul Scherrer Institute, CH-5232 Villigen, Switzerland

⁶Department of Physics, Tohoku University, 980-8578 Sendai, Japan

⁷Laboratoire de Physique des Solides, Université Paris-Sud, 91405 Orsay Cedex, France

⁸Institute of Materials Science, University of Tsukuba, Ibaraki 305-3573, Japan

*e-mail: jcc@uic.edu

Published online: 25 June 2006; doi:10.1038/nphys334

The response of a material to external stimuli depends on its low-energy excitations. In conventional metals, these excitations are electrons on the Fermi surface—a contour in momentum (k) space that encloses all of the occupied states for non-interacting electrons. The pseudogap phase in the copper oxide superconductors, however, is a most unusual state of matter¹. It is metallic, but part of its Fermi surface is ‘gapped out’ (refs 2,3); low-energy electronic excitations occupy disconnected segments known as Fermi arcs⁴. Two main interpretations of its origin have been proposed: either the pseudogap is a precursor to superconductivity⁵, or it arises from another order competing with superconductivity⁶. Using angle-resolved photoemission spectroscopy, we show that the anisotropy of the pseudogap in k -space and the resulting arcs depend only on the ratio $T/T^*(x)$, where $T^*(x)$ is the temperature below which the pseudogap first develops at a given hole doping x . The arcs collapse linearly with $T/T^*(x)$ and extrapolate to zero extent as $T \rightarrow 0$. This suggests that the $T = 0$ pseudogap state is a nodal liquid—a strange metallic state whose gapless excitations exist only at points in k -space, just as in a d -wave superconducting state.

In Fig. 1a,b we show data for a slightly underdoped sample of $\text{Bi}_2\text{Sr}_2\text{CaCu}_2\text{O}_{8+\delta}$ (Bi2212) with a transition temperature $T_c = 90$ K, for the superconducting state at 40 K, and the pseudogap phase at 140 K. The energy distribution curves (EDCs) at the Fermi momentum k_F , which have been symmetrized⁴ to remove the effects of the Fermi function on the spectra. k_F is determined by the minimum separation between the peaks in the symmetrized spectra along each momentum cut. Fifteen momentum cuts were measured, as shown in Fig. 1e. Details of the symmetrization

procedure are explained in the Methods section. The difference between the spectra in the two states is apparent: sharp spectral peaks are present in the superconducting state, indicating long-lived excitations, and the superconducting gap vanishes only at points in the Brillouin zone, known as nodes; on the other hand, the spectra in the pseudogap phase are much broader, indicating short-lived excitations. Although a pseudogap is seen in cuts 1–7, substantial parts of the Fermi surface, cuts 8–15, show spectra peaked at the Fermi energy, indicating a Fermi arc of gapless excitations.

The gap size can be estimated as half the peak-to-peak separation in energy. A more quantitative estimate is obtained by using a simple phenomenological function to describe the spectral lineshapes⁷ (described in the Methods section), shown as black lines in Fig. 1a,b. Figure 1d shows the gap size from these fits as a function of the Fermi surface angle (defined in Fig. 1e). Note the abrupt opening of the pseudogap (red circles) at the end of the arc compared with the d -wave shape of the superconducting gap (black squares). Figure 1c shows the symmetrized EDCs at k_F for a very underdoped sample with $T_c = 25$ K, measured at 55 K (Ca-rich Bi2212, $\text{Bi}_{2.1}\text{Sr}_{1.4}\text{Ca}_{1.5}\text{Cu}_2\text{O}_{8+\delta}$, see ref. 8). For this doping, there is a very short Fermi arc—much shorter than the one seen in Fig. 1b,d, for the less underdoped $T_c = 90$ K sample.

Figure 2a,b shows two spectral intensity maps, taken at 110 K and 200 K, at the Fermi energy for a $T_c = 70$ K sample. The solid line corresponds to a tight binding fit to the normal-state Fermi surface⁹, and the red circles represent the experimental Fermi momenta. The gapless Fermi arc (high-intensity region), which is longer at 200 K than at 110 K, can clearly be seen. Figure 2c shows the angular anisotropy of the gap for these two temperatures from

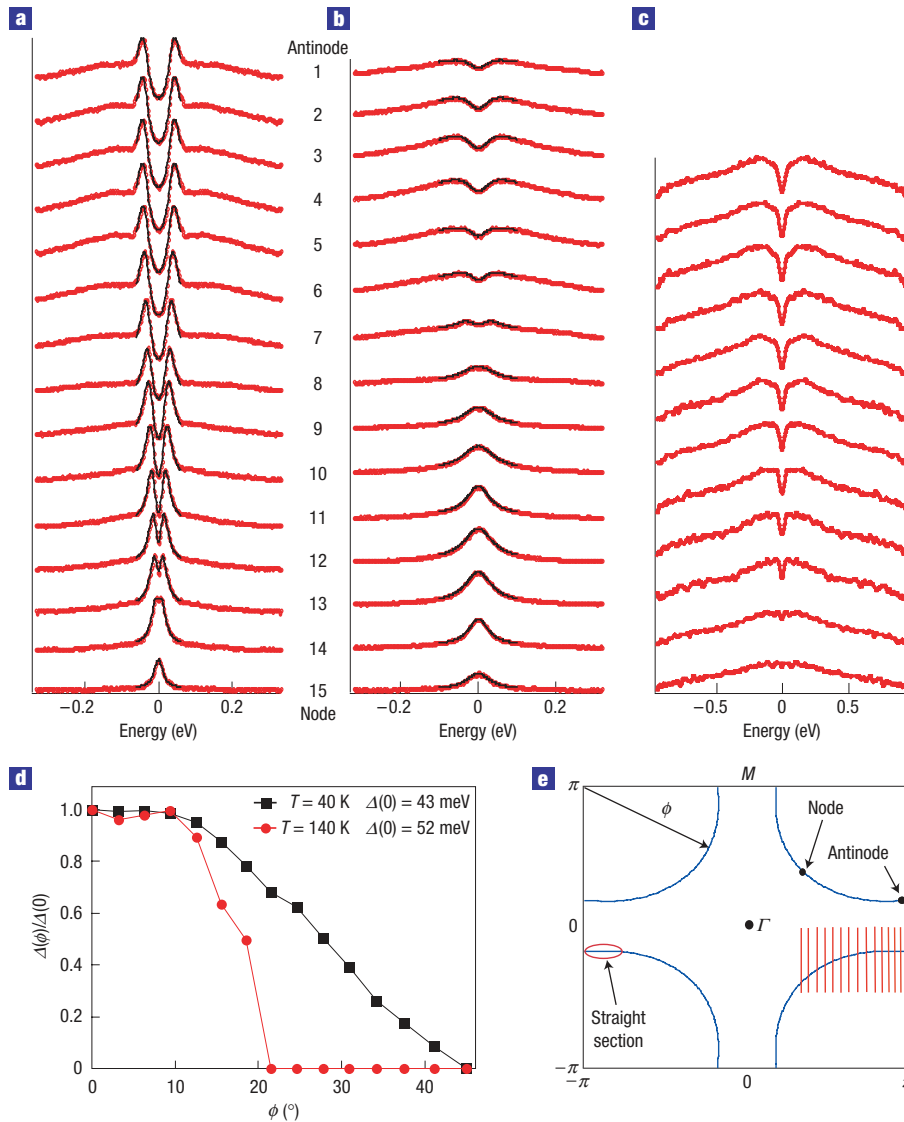


Figure 1 Symmetrized EDCs for underdoped samples along the Fermi surface. **a**, $T_c = 90$ K sample in the superconducting state at $T = 40$ K. **b**, $T_c = 90$ K sample in the pseudogap phase at $T = 140$ K. The bottom EDC is at the node, whereas the top is at the antinode, as defined in **e**. **c**, Symmetrized EDCs for a very underdoped, $T_c = 25$ K, sample (corresponding to k_F points 4–15), measured at 55 K in the pseudogap state. For this sample, the spectral weight is much reduced relative to higher doping values. We therefore removed the extrinsic background¹⁹. **d**, Variation of the gap around the Fermi surface extracted from **a** and **b**. The uncertainty in the gap is ± 4 meV for the pseudogap, and ± 2 meV for the superconducting gap. **e**, Location of the momentum cuts (red lines), Fermi surface (blue curves), and special points (node and antinode) in the zone.

the fits (as in Fig. 1d). Indeed, at 200 K, the onset of the gap at the end of the Fermi arc is steeper than at 110 K, and the arc is longer. Note that the gap size remains roughly constant in the straight section of the Fermi surface near the antinode. In this region, the Fermi surface is essentially parallel to the Brillouin-zone axis (Fig. 1e).

We now discuss our most important finding. As shown in Figs 1 and 2, the anisotropy of the pseudogap around the Fermi surface is temperature and doping dependent. Despite this, we find the rather remarkable result that the momentum dependence of the gaps from samples with different temperatures and different doping values can be scaled by defining a reduced temperature $t = T/T^*(x)$ and by normalizing the gap by its value at the antinode. To demonstrate this scaling, we show six data sets in Fig. 3

with different temperatures and doping, but which are divided into two groups, one with $t = 0.9$ and the other with $t = 0.45$. For comparison, we show the angular anisotropy of the d -wave superconducting gap (blue dashed line). It is well known¹⁰ that the magnitude of the pseudogap at the antinode tracks T^* as a function of x . Surprisingly, the entire momentum and temperature dependence of the normalized pseudogap $\Delta(\phi)/\Delta(0)$ only depends on $T/T^*(x)$, whereas the T_c of the sample does not play a role. We note that scaling with T^* has been observed for susceptibility and transport data^{11–13}.

However, the gap size alone does not provide a full description of the low-energy excitations in the pseudogap state, for which we also need to consider the temperature dependence of the intensities. The inset of Fig. 2c shows symmetrized EDCs for a $T_c = 89$ K

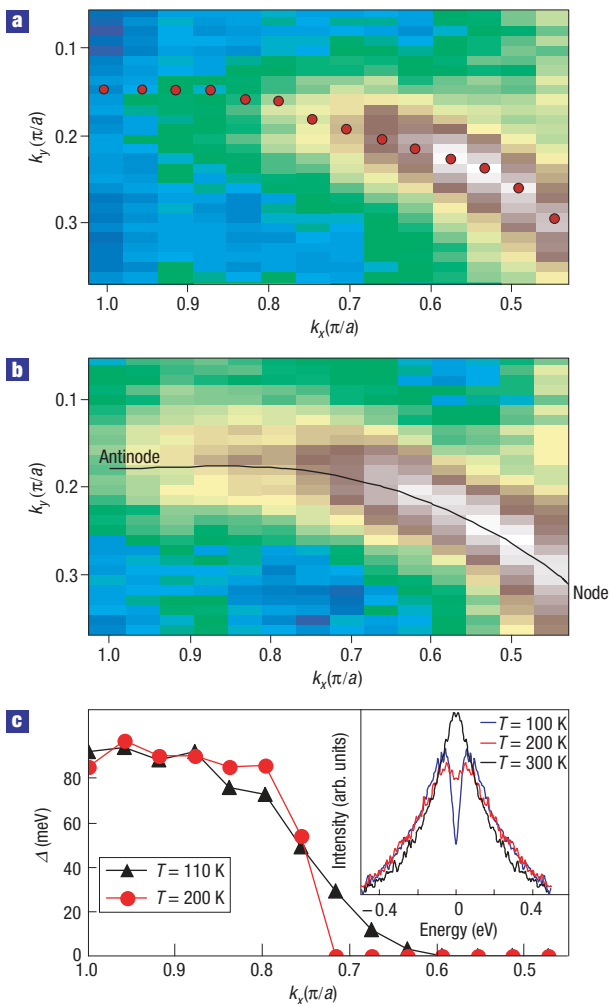


Figure 2 Intensity maps at the Fermi energy for an underdoped $T_c = 70$ K sample. **a**, 110 K (the red circles are measured k_f values). **b**, 200 K. **c**, Angular anisotropy of the gap along the Fermi surface from the data of **a** and **b**. The inset shows the temperature variation of the symmetrized EDCs at the antinode for a $T_c = 89$ K sample, with the EDC at 300 K in the gapless normal state above T^* .

film at the antinode. As the temperature increases, the gap does not change, but rather there is a filling-in of low-energy spectral weight^{1,4,7}, with the pseudogap effectively disappearing for $T > T^*$. We quantify the loss of spectral weight in the pseudogap region as $L(\phi) = [1 - I(0, \phi)/I(\Delta, \phi)]$, where $I(0, \phi)$ is the symmetrized intensity at the Fermi energy and at an angle ϕ (defined in Fig. 1e), and $I(\Delta, \phi)$ is that at the gap energy at the same angle. Figure 4a shows $L(\phi)$ for all values of doping and temperature, as a function of the Fermi surface angle ϕ . Points corresponding to $L(\phi) = 0$ have no loss of low-energy spectral weight, and hence correspond to the Fermi arc. $L(\phi)$ as a function of t exhibits the general trend of the pseudogap (although we note that the temperature dependence of the filling of the gap does depend on T_c (ref. 7)). It also permits us to precisely determine the lengths of the Fermi arcs. We now discuss the scaling of the Fermi arcs.

We find from Fig. 4 that the length of the Fermi arc increases with temperature up to the straight sections of the Fermi surface shown in Fig. 1e. As is clearly seen from Fig. 3, the Fermi surface in the straight section is gapped for all $T < T^*(x)$. As a consequence,

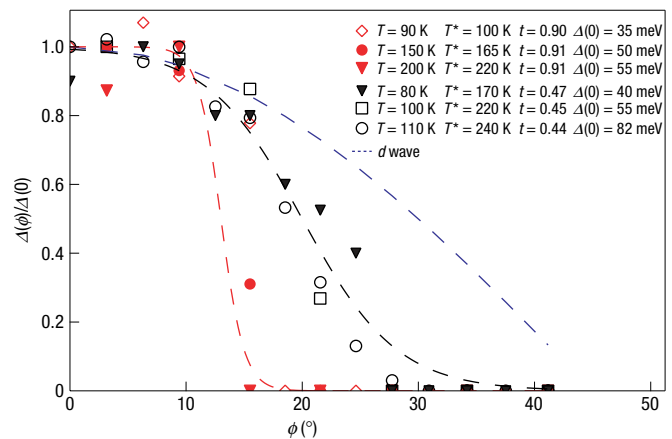


Figure 3 Gap size (normalized to its value at the antinode) as a function of Fermi surface angle (defined in Fig. 1d) for two particular reduced temperatures. $t = T/T^* = 0.45$ (black) and 0.9 (red). Δ is set to zero if the spectrum is gapless. The data are from several samples with different doping levels, as characterized by T^* . The error in T^* is ± 10 K. The dashed lines are guides to the eye.

as t approaches 1, the variation of the gap becomes more abrupt—that is, the transition from the gapless Fermi arc to the pseudogap takes place over a shorter range of momentum. In the straight section of the Fermi surface, the gap does not close, but instead fills in as T approaches T^* (ref. 7). As the gap is relatively momentum independent in the straight section, the arc seems to suddenly expand to the full Fermi surface as T passes through T^* .

Our main conclusion is shown in Fig. 4b, where we find that the length of the Fermi arc is a linear function of t (in the range $0 < t = T/T^*(x) < 1$), and the arc extrapolates to a point node as $t \rightarrow 0$. Above T^* , the arc covers the full length of the Fermi surface. As the temperature is reduced below T^* , there is an abrupt opening of the gap over the straight part of the Fermi surface, as discussed above. As t is lowered further, the length of the arc decreases linearly all the way from $t = 1.0$ to $t = 0.1$. The limit of $t = 0$ is currently inaccessible, because the Bi2212 samples available are all superconducting at sufficiently low temperatures. However, a simple extrapolation of the linear t dependence of the arc length implies that the arcs would shrink to point nodes in a zero-temperature pseudogap state (we emphasize that all of the data presented in Fig. 4b are in the pseudogap state above T_c). We note in passing that the crossing of the arc with the $(0, 0) - (\pi, \pi)$ line does not move to $(\pi/2, \pi/2)$ on decreasing t , so the Fermi surface is not shrinking, but instead the arcs are gapped out.

Our results indicate that the low-temperature limit of the momentum dependence of the pseudogap is identical to that of a d -wave superconductor. This agrees with many aspects of the ‘nodal liquid’ model suggested by Balents *et al.*¹⁴, in which quantum disorder in a d -wave superconductor leads to a state with no long-range phase coherence, but with the same low-energy excitation spectrum. The similarity of the zero-temperature electronic structure of the superconducting and pseudogap states is also in accord with thermal conductivity experiments carried out in very underdoped $\text{YBa}_2\text{Cu}_3\text{O}_{6+\delta}$ samples at milli-Kelvin temperatures¹⁵.

On the other hand, the limit of $t \rightarrow 1$ presents a somewhat different picture, one with a gap located only in the straight parts of the underlying Fermi surface. This type of momentum dependence has been suggested to be due to an instability associated with a finite q -vector that spans the distance between the straight segments of

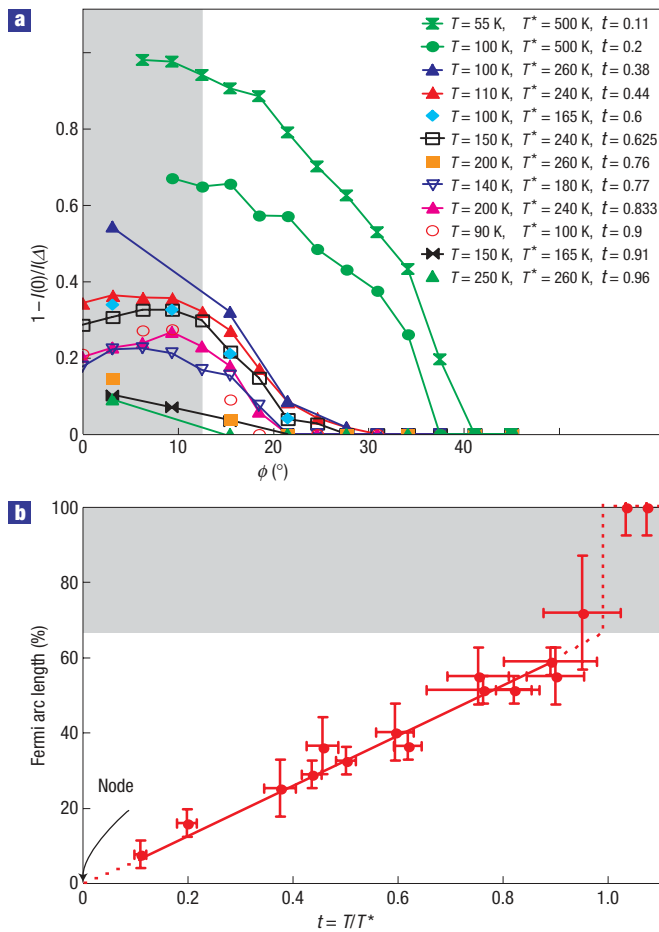


Figure 4 Loss of low-energy spectral weight $L(\phi)$ and scaling of arc lengths with T/T^* . **a**, $L(\phi) = [1 - I(0, \phi)/I(\Delta, \phi)]$, where $I(\Delta, \phi)$ is the symmetrized intensity at the gap energy at the Fermi point labelled by ϕ , and $I(0, \phi)$ is that at the Fermi energy at the same point. Different symbols correspond to various t . The grey area represents the straight section of the Fermi surface. **b**, Variation of the arc length with respect to the reduced temperature $t = T/T^*$. On the y axis, 0% is the node and 100% is the antinode (see Fig. 1e). The error bars on the arc length depend on the angular sampling density. The horizontal error bars are defined as the angular separation between data points, and the vertical ones are given by the errors in determining T^* (described in Methods). The variation of the arc length below T^* is linear in t . Above T^* , the gap in the straight section disappears, and the full Fermi surface is recovered.

the Fermi surface¹⁶. However, as t decreases from 1, the curved parts of the Fermi surface start to develop a gap. The green data points in Fig. 4a show a smooth d -wave-like angular dependence, except for the very small Fermi arc near the node. That is, the pseudogap in the $t \rightarrow 0$ limit simply looks like a d -wave gap.

METHODS

SAMPLES AND MEASUREMENTS

We measured six underdoped $\text{Bi}_2\text{Sr}_2\text{CaCu}_2\text{O}_{8+\delta}$ samples with different doping levels (T_c between 70 and 90 K). Two of them are single crystals grown by the floating-zone method, the other four are thin films grown by radiofrequency magnetron sputtering. We also measured a highly underdoped single-crystal sample⁸ ($\text{Bi}_{2.1}\text{Sr}_{1.4}\text{Ca}_{1.5}\text{Cu}_2\text{O}_{8+\delta}$) with a T_c of 25 K. All samples were mounted

with the $(0, 0) \rightarrow (\pi, 0)$ (that is, the bond) direction parallel to the photon polarization, and cleaved *in situ* at pressures less than 2×10^{-11} torr. Measurements were carried out at the Synchrotron Radiation Center in Madison, Wisconsin on the U1 and PGM undulator beamlines, using Scienta electron analyser models R4000, SES2002, SES200, or SES50, with energy resolution ranging from 16 to 30 meV, and a momentum resolution of $0.01\text{--}0.02 \text{ \AA}^{-1}$ for a photon energy of 22 eV. The samples were in contact with gold during the experiment for the purpose of accurately referencing the chemical potential. We measured cuts in momentum space perpendicular to $\Gamma\text{--}M$, in the Y quadrant of the Brillouin zone to minimize complications due to the superlattice¹⁷. The cuts cover the region from the node to the antinode of the d -wave superconducting gap, as shown in Fig. 1e. We have checked that our results are independent of the incident photon energy.

DATA ANALYSIS

The first step is to accurately identify the Fermi momentum k_F in the presence of a pseudogap. We do this by finding the k -point with the minimum gap along a given cut in the symmetrized data, $I(\omega) = I_{\text{ARPES}}(\omega) + I_{\text{ARPES}}(-\omega)$, where I_{ARPES} is the measured angle-resolved photoemission intensity. (We note that k_F cannot be determined by looking at the peak of the momentum distribution curves in the presence of an energy gap¹⁸.) The symmetrized intensity at k_F effectively divides out the Fermi function⁴, and thus provides a clear view of the gap. Although this procedure assumes that the unoccupied part of the excitation spectrum is the same as that of the occupied part over the small energy range of the gap, we have obtained similar results by simply dividing the data by the resolution-broadened Fermi function. The gap may now be obtained from one half of the peak-to-peak distance. For a more precise determination of the gap, we fit the spectra using a simple phenomenological self-energy⁷: $\Sigma(\mathbf{k}, \omega) = -i\Gamma_1 + \Delta^2/(\omega + i\Gamma_0)$, where Γ_1 is the single-particle scattering rate, Δ is the energy gap, and Γ_0 is an inelastic broadening parameter that describes the filling-in of the subgap spectral weight (Γ_0 is zero in the superconducting state). Note that the spectral intensity is proportional to the imaginary part of G , where $G^{-1} = \omega - \Sigma$ at k_F . This phenomenological expression gives an accurate representation of the spectra for all values of k_F , temperature, and doping (as can be seen in Fig. 1).

T^* DETERMINATION

Several different methods were used to determine the pseudogap temperature T^* . (1) For three of the samples with lower T^* , we measured T^* directly from ARPES by observing the appearance of gapless excitations. (2) For those with higher T^* , the pseudogap temperature was determined by the established relation¹⁰ between the superconducting gap size and T^* in $\text{Bi}_2\text{Tl}_{212}$. (3) An independent method for determining T^* is to use the inelastic broadening parameter $\Gamma_0(T)$ of the phenomenological self-energy⁷. It is known⁷ that $\Gamma_0(T)$ increases linearly with T , and T^* is determined by $\Gamma_0(T^*) = \Delta(\phi = 0)$. (4) Yet another independent way to obtain T^* is from the T -dependence of $L(\phi) = [1 - I(0, \phi)/I(\Delta, \phi)]$ at the antinode $\phi = 0$. We find that $L(\phi = 0)$ is a linearly decreasing function of T , and extrapolates to 0 at $T = T^*$. All of the above methods give consistent values of T^* (see the Supplementary Information for further details).

Received 17 November 2005; accepted 4 May 2006; published 25 June 2006.

References

- Timusk, T. & Statt, B. The pseudogap in high-temperature superconductors: An experimental survey. *Rep. Prog. Phys.* **62**, 61–122 (1999).
- Ding, H. *et al.* Spectroscopic evidence for a pseudogap in the normal state of underdoped high- T_c superconductors. *Nature* **382**, 51–54 (1996).
- Loeser, A. G. *et al.* Excitation gap in the normal state of underdoped $\text{Bi}_2\text{Sr}_2\text{CaCu}_2\text{O}_{8+\delta}$. *Science* **273**, 325–329 (1996).
- Norman, M. R. *et al.* Destruction of the Fermi surface in underdoped high- T_c superconductors. *Nature* **392**, 157–160 (1998).
- Randeria, M. in *Proc. Int. School of Physics 'Enrico Fermi' on Conventional and High Temperature Superconductors* (eds Iadonisi, G., Schrieffer, J. R. & Chialfo, M. L.) 53–75 (IOS Press, Amsterdam, 1998).
- Norman, M. R., Pines, D. & Kallin, C. The pseudogap: friend or foe of high T_c ? *Adv. Phys.* **54**, 715–733 (2005).
- Norman, M. R., Randeria, M., Ding, H. & Campuzano, J. C. Phenomenology of the low-energy spectral function in high- T_c superconductors. *Phys. Rev. B* **57**, R11093–R11096 (1998).
- Ozyuzer, L. *et al.* Probing the phase diagram of $\text{Bi}_2\text{Sr}_2\text{CaCu}_2\text{O}_{8+\delta}$ with tunneling spectroscopy. *IEEE Trans. Appl. Supercond.* **13**, 893–896 (2003).
- Norman, M. R., Randeria, M., Ding, H. & Campuzano, J. C. Phenomenological models for the gap anisotropy of $\text{Bi}_2\text{Sr}_2\text{CaCu}_2\text{O}_8$ as measured by angle-resolved photoemission spectroscopy. *Phys. Rev. B* **52**, 615–622 (1995).
- Campuzano, J. C. *et al.* Electronic spectra and their relation to the (π, π) collective mode in high- T_c superconductors. *Phys. Rev. Lett.* **83**, 3709–3712 (1999).

11. Nakano, T. *et al.* Magnetic properties and electronic conduction of superconducting $\text{La}_{2-x}\text{Sr}_x\text{CuO}_4$. *Phys. Rev. B* **49**, 16000–16008 (1994).
12. Wuyts, B. *et al.* Resistivity and Hall effect of metallic oxygen-deficient $\text{YBa}_2\text{Cu}_3\text{O}_x$ films in the normal state. *Phys. Rev. B* **53**, 9418–9432 (1996).
13. Konstantinovic, Z., Li, Z. Z. & Raffy, H. Normal state transport properties of single and double layered $\text{Bi}_2\text{Sr}_2\text{Ca}_{n-1}\text{Cu}_n\text{O}_y$ thin films and the pseudogap effect. *Physica C* **341–348**, 859–862 (2000).
14. Balents, L., Fisher, M. P. A. & Nayak, C. Nodal liquid theory of the pseudo-gap phase of high- T_c superconductors. *Int. J. Mod. Phys. B* **12**, 1033–1068 (1998).
15. Sutherland, M. *et al.* Delocalized fermions in underdoped cuprate superconductors. *Phys. Rev. Lett.* **94**, 147004 (2005).
16. Shen, K. M. *et al.* Nodal quasiparticles and antinodal charge ordering in $\text{Ca}_{2-x}\text{Na}_x\text{CuO}_2\text{Cl}_2$. *Science* **307**, 901–904 (2005).
17. Ding, H. *et al.* Electronic excitations in $\text{Bi}_2\text{Sr}_2\text{CaCu}_2\text{O}_{8+\delta}$: Fermi surface, dispersion, and absence of bilayer splitting. *Phys. Rev. Lett.* **76**, 1533–1536 (1996).
18. Norman, M. R., Eschrig, M., Kaminski, A. & Campuzano, J. C. Momentum distribution curves in the superconducting state. *Phys. Rev. B* **64**, 184508 (2001).
19. Kaminski, A. *et al.* Identifying the background signal in angle-resolved photoemission spectra of high-temperature cuprate superconductors. *Phys. Rev. B* **69**, 212509 (2004).

Acknowledgements

This work was supported by NSF DMR-0305253, the US DOE, Office of Science, under Contract Nos W-31-109-ENG-38 (ANL) and W-7405-Eng-82 (Ames), and the MEXT of Japan. The Synchrotron Radiation Center is supported by NSF DMR-0084402. Correspondence and requests for materials should be addressed to J.C.C. Supplementary Information accompanies this paper on www.nature.com/naturephysics.

Competing financial interests

The authors declare that they have no competing financial interests.

Reprints and permission information is available online at <http://npg.nature.com/reprintsandpermissions/>