

 Open access • Journal Article • DOI:10.1103/PHYSREVC.96.064606





Examination of evidence for collinear cluster tri-partition — [Source link](#)

Yu. V. Pyatkov, D. V. Kamanin, A. A. Alexandrov, I. A. Alexandrova ...+7 more authors

Published on: 11 Dec 2017 - Physical Review C (American Physical Society)

Related papers:

- [Collinear cluster tri-partition of \$^{252}\text{Cf}\$ \(sf\) and in the \$^{235}\text{U}\$ \(nth, f \) reaction](#)
- [The collinear cluster tri-partition \(CCT\) of \$^{252}\text{Cf}\$ \(sf\): New aspects from neutron gated data](#)

Share this paper:    

View more about this paper here: <https://typeset.io/papers/examination-of-evidence-for-collinear-cluster-tri-partition-hypub8b74n>

Examination of evidence for collinear cluster tri-partition

Yu. V. Pyatkov,^{1,2} D. V. Kamanin,² A. A. Alexandrov,² I. A. Alexandrova,² Z. I. Goryainova,² V. Malaza,³ N. Mkaza,³
E. A. Kuznetsova,² A. O. Strekalovsky,² O. V. Strekalovsky,² and V. E. Zhuchko²

¹*National Nuclear Research University MEPhI (Moscow Engineering Physics Institute), Moscow, Russia*

²*Joint Institute for Nuclear Research, Dubna, Russia*

³*University of Stellenbosch, Faculty of Military Science, Military Academy, Saldanha 7395, South Africa*

(Received 10 August 2017; published 11 December 2017)

Background: In a series of experiments at different time-of-flight spectrometers of heavy ions we have observed manifestations of a new at least ternary decay channel of low excited heavy nuclei. Due to specific features of the effect, it was called collinear cluster tri-partition (CCT). The obtained experimental results have initiated a number of theoretical articles dedicated to different aspects of the CCT. Special attention was paid to kinematics constraints and stability of collinearity.

Purpose: To compare theoretical predictions with our experimental data, only partially published so far. To develop the model of one of the most populated CCT modes that gives rise to the so-called “Ni-bump.”

Method: The fission events under analysis form regular two-dimensional linear structures in the mass correlation distributions of the fission fragments. The structures were revealed both at a highly statistically reliable level but on the background substrate, and at the low statistics in almost noiseless distribution. The structures are bounded by the known magic fragments and were reproduced at different spectrometers. All this provides high reliability of our experimental findings. The model of the CCT proposed here is based on theoretical results, published recently, and the detailed analysis of all available experimental data.

Results: Under our model, the CCT mode giving rise to the Ni bump occurs as a two-stage breakup of the initial three body chain like the nuclear configuration with an elongated central cluster. After the first scission at the touching point with one of the side clusters, the predominantly heavier one, the deformation energy of the central cluster allows the emission of up to four neutrons flying apart isotropically. The heavy side cluster and a dinuclear system, consisting of the light side cluster and the central one, relaxed to a less elongated shape, are accelerated in the mutual Coulomb field. The “tip” of the dinuclear system at the moment of its rupture faces the heavy fragment or the opposite direction due to a single turn of the system around its center of gravity.

Conclusions: Additional experimental information regarding the energies of the CCT partners and the proposed model of the process respond to criticisms concerning the kinematic constraints and the stability of collinearity in the CCT. The octupole deformed system formed after the first scission is oriented along the fission axis, and its rupture occurs predominantly after the full acceleration. Noncollinear true ternary fission and far asymmetric binary fission, observed earlier, appear to be the special cases of the decay of the prescission configuration leading to the CCT.

Detection of the $^{68-72}\text{Ni}$ fission fragments with a kinetic energy $E < 25\text{MeV}$ at the mass-separator Lohengrin is proposed for an independent experimental verification of the CCT.

DOI: [10.1103/PhysRevC.96.064606](https://doi.org/10.1103/PhysRevC.96.064606)

I. INTRODUCTION

In recent publications [1–3], we have presented experimental indications of the possible existence of a new at least ternary decay channel of low excited heavy nuclei known as collinear cluster tri-partition (CCT). The bulk of the results have been obtained by using the “missing mass” approach. It means that two decay products (fragments) were detected in coincidence using a double armed time-of-flight spectrometer, while the significant difference between their total mass $M_s = M_1 + M_2$ and the mass of a mother system served as a sign of at least ternary decay. A fragment mass is calculated by the energy E and the velocity V . Mainly a scattering of fragments at the entrance of an E detector gives background events simulating ternary decay. Selection of the “true” events was provided by applying the gates on the fragments momenta, velocities, experimental neutron multiplicity, and the parameters sensitive to the fragment nuclear charge. Observation of the specific

linear structures in the M_1 – M_2 distributions (mass correlation plots) served as a criterion for a sufficient suppression of the background. Statistical reliability of the typical structures against a random background was estimated to exceed 98% [2]. The structures were reproduced at the spectrometers of two types. Earlier experiments were performed using gas filled detectors (modules of the FOBOS setup [4]). Later we switched to solid-state detectors, namely timing detectors, on the microchannel plates and the mosaics of PIN diodes (COMETA setup [2] and similar ones [3]).

Even though mass reconstruction procedures for these two types of spectrometers strongly differ, the obtained results are in good agreement. All the structures revealed are somehow related to the magic fragments, such as ^{128}Sn , ^{134}Te , $^{72,68}\text{Ni}$, and the others. Thus, now we have an entire collection of different CCT manifestations, observed through the linear structures in the mass correlation distributions of the decay products [3].

Completely new results obtained in our experiments suggested independent experimental verification. To perform such an experiment at the mass-separator Lohengrin (ILL, Grenoble, France), estimation of the expected parameters of the CCT products was performed in the recent work [5]. The parameters should be compared with our experimental findings, only partially published so far.

II. EXPERIMENTAL RESULTS

Below we discuss one of the most pronounced manifestations of the CCT called “Ni bump,” observed for $^{252}\text{Cf}(sf)$ and in the reaction $^{235}\text{U}(n_{th}, f)$, using the detector modules of the FOBOS spectrometer (experiment Ex1) [4]. Figure 1 shows the two-dimensional distribution ($M_2 - M_1$) of the two registered masses of the coincident fragments in a logarithmic scale. The collinear fission events with a relative angle of $180 \pm 2^\circ$ fragments constitute the distribution. The “tails” in the mass distributions, marked 3-6 in Fig. 1(a), extend from regions (1) and (2), which correspond to conventional binary fission. The tails are mainly caused by the scattering of the fragments on both foils, and/or on the grid edges of the “stop” avalanche counters, and/or in the ionization chambers. The existence of the small but important asymmetry should be emphasized in the experimental arrangement for two arms, which consists of the thin source backing ($50 \mu\text{g}/\text{cm}^2$ of Al_2O_3) of the target and the “start” detector foil, located only in arm 1 [Fig. 1(a)]. It is a marked difference in the counting rate and in the shapes of tails (3) and (4) that draws our attention. In the case shown in Fig. 1(a), there is a distinct “bump,” marked (7), on top of the latter tail (4). The bump is located in the region corresponding to a large “missing” mass. We admitted the presence of the bump in arm 1 only due to the joint influence of the scattered medium and blocking grid on the initially collinear pair of the CCT products [1]. The statistical significance of the events in the structure (7) can be deduced from Fig. 1(b), in which the M_1 spectra (projection of the $M_2 - M_1$ distribution onto M_1 axis) are presented in a comparative manner. For experiment Ex2, performed at the modified FOBOS spectrometer [2], the difference spectrum between tails (4) and (3) is depicted in the figure. The yield of the events in each difference spectrum is approximately 4×10^{-3} relative to the total number of the events in the distribution shown in Fig. 1(a). A pronounced peak in the spectra in Fig. 1(b), centered on 68 u, is associated with a magic isotope of ^{68}Ni , and that is why bump (7) was called the “Ni bump.”

The internal structure of the Ni bump was described in detail in experiment Ex3 at the COMETA spectrometer [2]. This methodically quite different experiment confirmed our previous observations concerning the structures in the missing mass distributions. In this case, there is no tail caused by the scattering from the material in front of the E detectors. Figure 2(a) shows the region of the mass distribution for the fission fragments (FFs) from $^{252}\text{Cf}(sf)$ around the Ni bump ($M_1 = 68-80 \text{ u}$, $M_2 = 128-150 \text{ u}$). The structures are seen in the spectrometer arm facing the source backing only. No additional selection of the fission events was applied in this case, which resulted in the experiment having almost no background. A rectangularlike structure below the locus

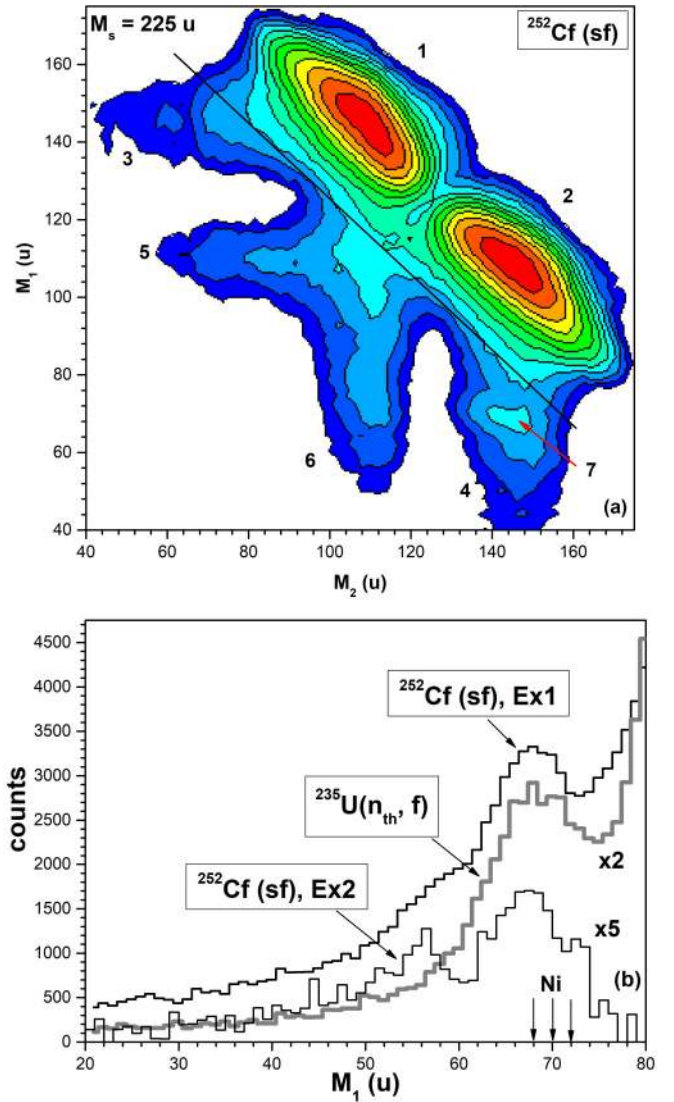


FIG. 1. (a) Ex1: contour map (in logarithmic scale, the steps between the lines are approximately factor 2.5) of the mass-mass distribution of the collinear fragments of $^{252}\text{Cf}(sf)$, detected in coincidence in the two opposite arms of the FOBOS spectrometer. The arrow marks a specific bump in arm1. (b) Projection of the Ni bump onto M_1 axis obtained in three different experiments performed at the FOBOS spectrometer modules. It should be noted that (a) was published in Ref. [1] and (b) in Ref. [2].

of binary fission is bound by magic nuclei (their masses are marked by the numbered arrows), namely ^{128}Sn (1), ^{68}Ni (2), and ^{72}Ni (3). In Fig. 2(b), we demonstrate the projection of the linear structure seen at the masses of 68 and 72 u. Two tilted diagonal lines with $M_s = 196 \text{ u}$ and $M_s = 202 \text{ u}$ (marked by number 4) start from the partitions 68/128 and 68/134 (all the nuclei are magic) respectively. The discussion of these structures is beyond the scope of this paper.

In fact, only two fragments were detected in each decay event. The mass and velocity of the “missed” fragment were calculated based on the laws of mass and momentum conservation. In each event showing the missing mass (ternary event), we mark the masses of the fragments in order of

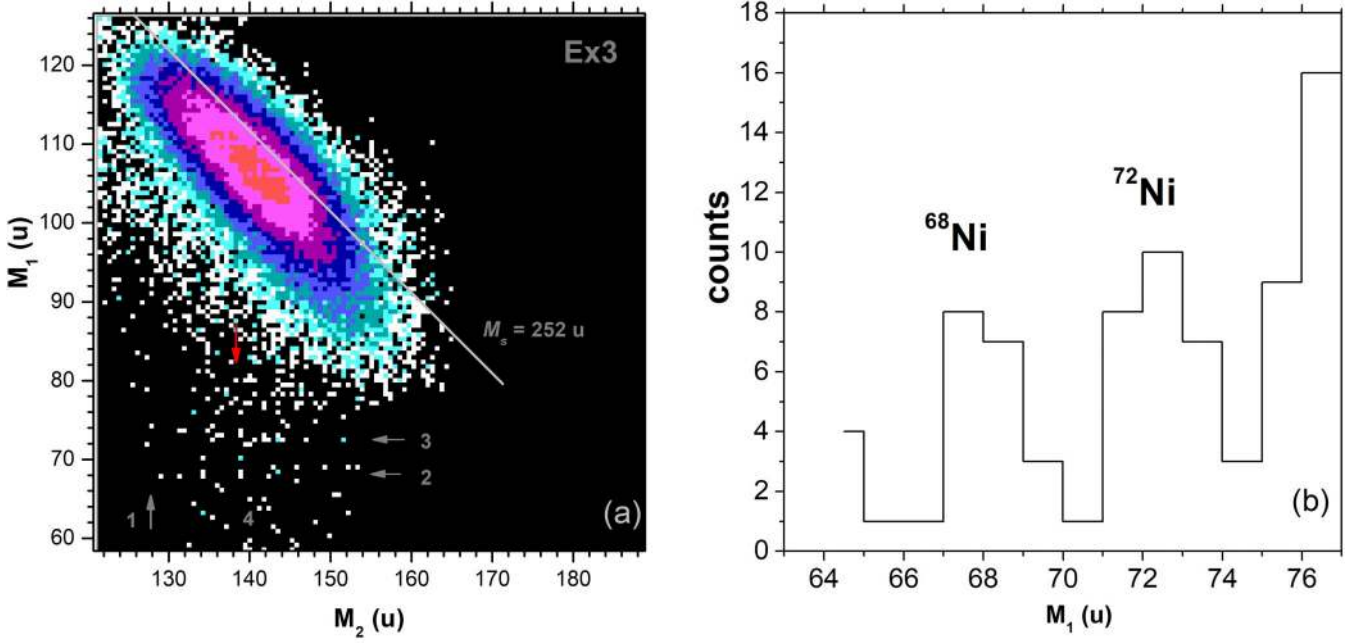


FIG. 2. Ex3: region of the mass-mass distribution for the FFs from $^{252}\text{Cf}(sf)$ around the Ni bump [similar to that marked by an arrow in Fig. 1(a)]. It should be noted that (b) was published in Ref. [2].

their decreasing masses M_H, M_L , and M_T (ternary particle) respectively. Figure 3(a) demonstrates a correlation between the velocities of two lighter partners of the ternary decay. Only the events for which $M_L = (67-75)$ u [Ni-peaks in Fig. 2(b)] are under analysis. Their total yield does not exceed 2.5×10^{-4} per binary fission. Three different groups of events are vividly seen in the figure. They are marked by the signs $w1-w3$ respectively. The panels illustrating the decay scenario will be discussed below. The energy spectrum of the detected Ni nuclei is depicted in Fig. 3(b). The energy correlations E_L-E_T and E_L-E_H are shown in Figs. 3(c) and 3(d).

Even though there are only a few points on the line 1 ($M_1 \approx 128$ u) in Fig. 2(a), the energy spectrum of the Sn fragment clearly shows two peaks, centered respectively at $E_2 \sim 20$ MeV (predominantly) and $E_2 \sim 90$ MeV.

The spectrum of the excitation energy in the scission point $E_{\text{ex}} = Q_3 - \text{TKE}_3$ (where Q_3 is an energy released in ternary decay, TKE_3 is a total kinetic energy of three decay partners) is presented in Fig. 4.

The region of the Ni bump, almost free from the background, was observed in Ex2 [Fig. 5(a)] due to the application of the gate on the experimental neutron multiplicity $n = 2$ and an additional gate in the V_1-E_1 distribution [2]. Real multiplicity was estimated to be approximately 4 for the isotropic neutron source. The lines corresponding to the magic isotopes of $^{68,72}\text{Ni}$ (marked by arrows 1 and 2) are seen. From the left side, the structure is bounded by a magic ^{128}Sn fragment (its mass is marked by arrow 3 on the M_2 axis). The energy spectrum of these fragments is shown in Fig. 5(b). Good “cleaning” of the distribution from the background in Fig. 5(a) allows observing the lightest partners of the ternary decay. The tilted lines at the bottom of Fig. 5(a) marked by numbers 4–8 correspond to the magic missing fragments with mass numbers: 68, 72, 80, 85, and 102 respectively.

For the events on lines 4 and 5, $E_T = 30-50$ MeV, that is compatible with the energy of ternary particles from the group $w2a$ in Fig. 3(c). The energy spectrum of the Ni fragments [Fig. 5(b)] is also compatible with the most energetic peak in Fig. 3(b). Here, the absence of two other peaks with the energies of approximately 60 and 20 MeV can be explained correspondingly by the selection with the gate [see Fig. 9(a) in Ref. [2]] in the V_1-E_1 distribution and missing of the low energy Ni ions in the foils of the FOBOS modules used in Ex2.

Experimental information regarding the energies of the CCT partners presented in this section allowed us to formulate an adequate scenario of tri-partition and chose appropriate parameters of a pre-scission configuration (Sec. IV).

III. THEORETICAL BACKGROUND

Among all the theoretical articles initiated by the results of the experiments mentioned above, article [6] deserves special attention. The theoretical model of Ref. [6] was described in detail in Refs. [7,8]. Under the three-center shell model the potential energy surfaces for few ternary combinations in a fission channel were calculated for the ^{252}Cf nucleus. The fission barrier for the $^{132}\text{Sn}+^{48}\text{Ca}+^{72}\text{Ni}$ ternary splitting is shown in Fig. 6. According to the figure, the exit point corresponds to $R \sim 22.4$ fm, i.e., elongation of the system exceeds the length of the configuration of three touching spheroids. If just a Ca nucleus took upon itself all extra elongation, the axis ratio of the corresponding spheroid would be approximately 1:1.6. In fact, as it is the case with heavy actinides, a scission point can be reached after descent from the barrier at larger elongations. Another point to be stressed is that the maximal total shell correction of three magic nuclei, forming the pre-scission chain (~ 10 MeV), exceeds the corresponding value, even for the double magic ^{208}Pb nucleus

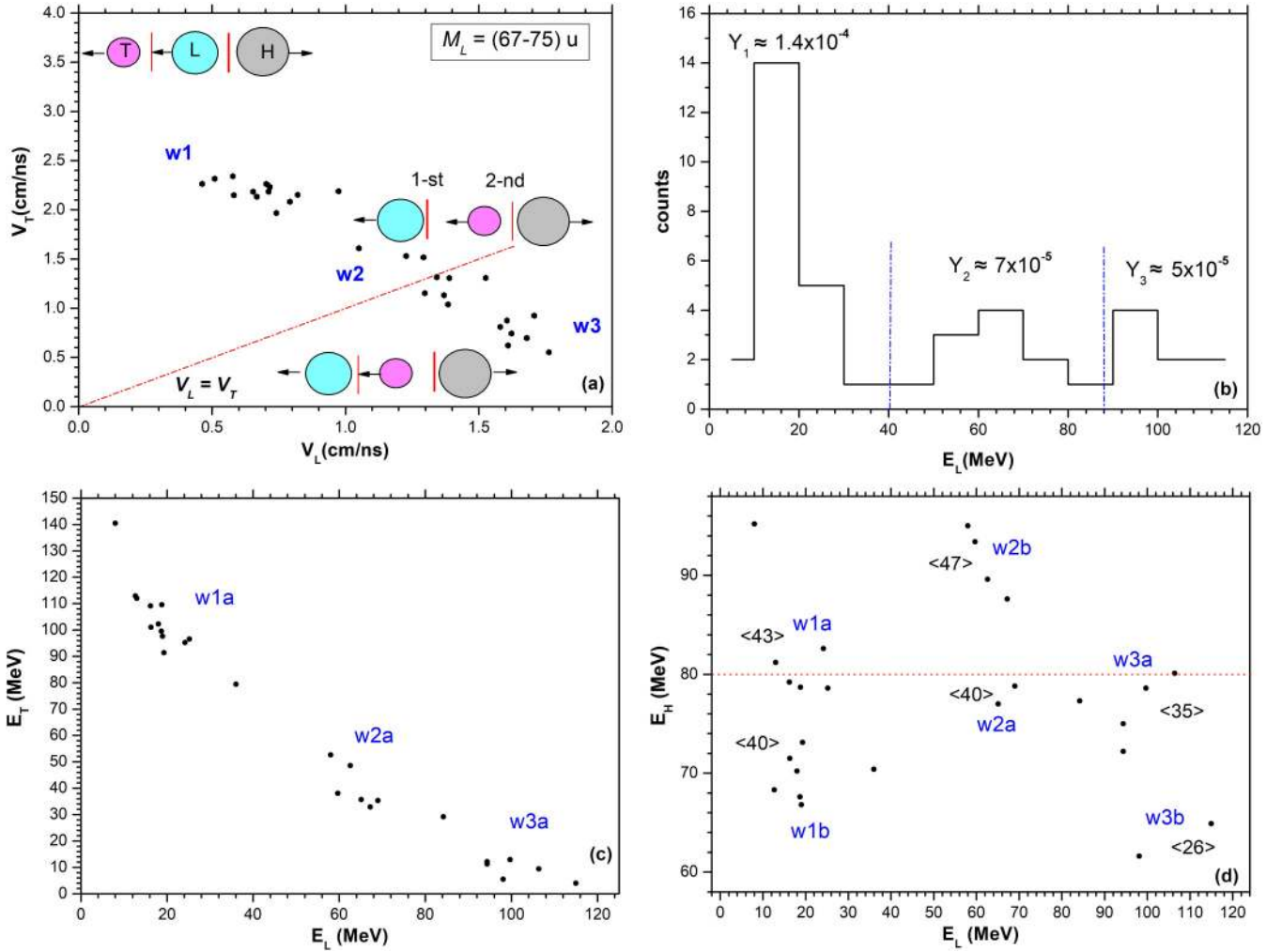


FIG. 3. Ex3: velocities V and energies E for the ternary events with $M_L = (67-75) u$ [Ni peaks in Fig. 2(b)]. Correlation between the velocities of two lighter partners of the ternary decay (a); energy spectrum of the detected Ni nuclei (the yields per binary fission are marked above each peak) (b); energy correlations E_L-E_T and E_L-E_H (c) and (d) respectively. The sketches in the panels illustrate the decay scenario to be discussed below. See the text for details.

(~ 9 MeV [9]). Thus, the elongated shape of the nuclear system minimizing the Coulomb energy and the big shell correction gives rise to the valleys of true ternary fission, revealed in the paper under discussion.

In the work of Ref. [10], an approach of the trinuclear system (TNS) was applied for the analysis of the spontaneous ternary fission of ^{252}Cf . Both the Coulomb and nuclear forces between decay partners were taken into account. *The stage that precedes the formation of the TNS is not studied* [11]. Selected results of Refs. [10,11] are displayed in Fig. 7.

The scheme showing the variables used in the calculation is presented in the inset in Fig. 7(a). The potential energy $V(R_{12}, x_3, y_3 = 0)$ of the TNS as a function of x_3 at different values of R_{12} is shown in Figs. 7(a) and 7(b). The potential energy surface $V(R_{12}, x_3, y_3)$ at the value of $R_{12} = (22, 24)$ fm is presented in Figs. 7(c) and 7(d).

At the distances $R_{12} < 24$ fm, there is a potential pocket between the side nuclei ^{70}Ni and ^{132}Sn for the third fragment of ^{50}Ca [see, for instance Fig. 7(c)]. According to the authors of Ref. [10], with further elongation starting from $R_{12} = 24$ fm

[Fig. 7(d)], “there is no minimum for Ca in the valley around Ni at $x_3 > 0$ fm, $y_3 > 0$ fm.” This conclusion is only formally true if the lightest fragment (^{50}Ca) is supposed to be located exclusively *between* the side heavy fragments [see the inset in Fig. 7(a)]. The analysis in Refs. [12,13] shows also that “the collinear geometry with the *lightest fragment at the center* between two heavier nuclei is expected to give the highest probabilities in the decay.” This conclusion is definitely valid only for a *prescission configuration* of the decaying system. The situation changes after the first rupture. Indeed, there is a potential *valley along the surface* of a Ni nucleus with the bottom sloped to the potential minimum in the point that we marked by a triangle in red in the scheme in Fig. 7(a). The slope of the valley bottom is evidently due to the decrease of the Coulomb energy contribution from Sn with increase of the distance R_{32} . The similar potential minimum on the surface of Sn is marked by a triangle in blue.

The possible fission channels into fragments of similar size are predicted from potential-energy surface (PES) calculations in Ref. [14]. These PESs show pronounced minima for several

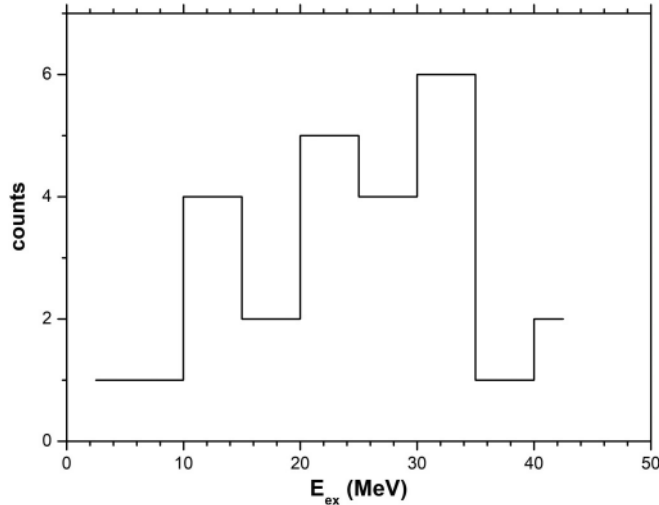


FIG. 4. Ex3: the spectrum of excitation energy in the scission point $E_{\text{ex}} = Q_3 - \text{TKE}_3$ for the events presented in Fig. 3.

ternary fragmentations involving magic nuclei. The statistical fission process is considered, and the observed yield of the distinct CCT mode is supposed to be proportional to its *phase space*. Rectangular structures in the experimental mass-mass distributions of the FFs (Figs. 3 and 5 in Ref. [14]) are treated on a qualitative level as the direct manifestation of the PES landscape. In fact, the symmetry of the experimental structures observed is only due to the symmetry of the spectrometer arms. The experimental data discussed in Ref. [14] are still waiting for an adequate theoretical interpretation.

An original approach to the description of the CCT was proposed in Ref. [15]. It is quite different from the TNS concept and generically involves fission into three fragments. The mechanism in question is driven by a *hexadecapole*

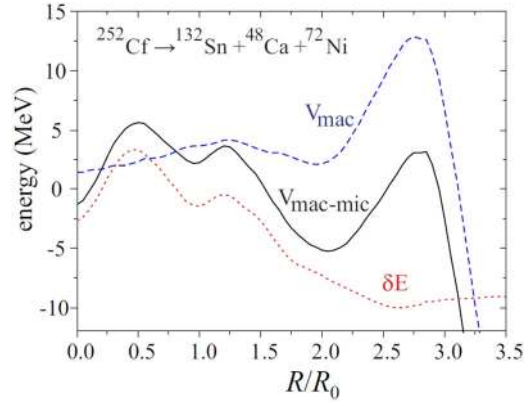


FIG. 6. Macroscopic potential energy (dashed line), shell correction (dotted line), and total macro-microscopic potential energy (solid line) of the ^{252}Cf nucleus corresponding to the $^{132}\text{Sn} + ^{48}\text{Ca} + ^{72}\text{Ni}$ ternary splitting [6]. Here R is an approximate distance between the mass centers of the side fragments, $R_0 = 1.16 A^{1/3}$ is a radius of a mother nucleus.

deformation of the fissioning nucleus and its scission could occur by means of tunneling of two identical side clusters through the very high Coulomb barriers. How realistic this approach is depends on the probability of such a fission way to be estimated at least in order of magnitude.

The detailed analysis of the CCT regarding kinematic constraints and stability of collinearity was proposed in Ref. [5]. Three different models were under consideration. The “sequential” decay model is based on two sequential binary fissions, with long time scales between successive scissions. The “almost sequential” decay model suggests the formation of partially accelerated fragments before the second scission. No intermediate steps or fragments are expected under the “true ternary” decay model.

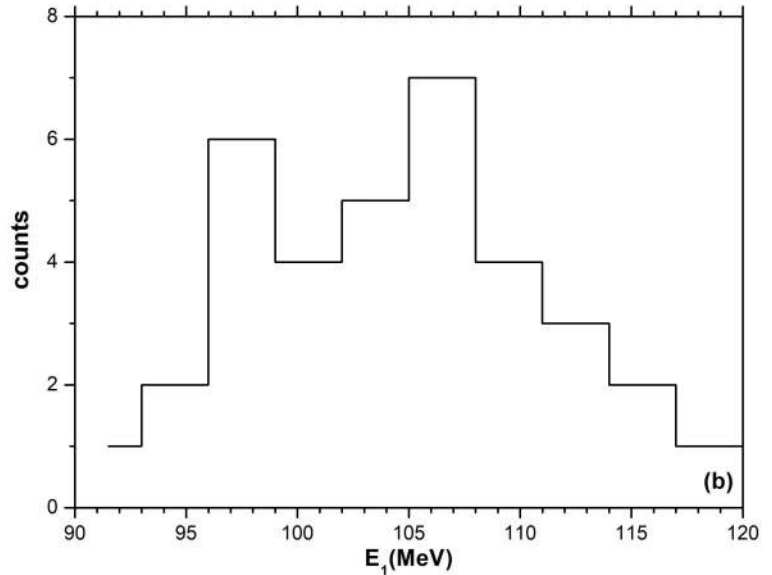
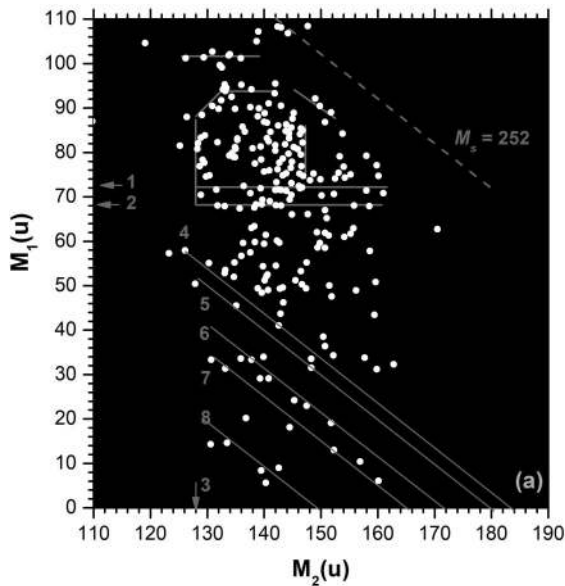


FIG. 5. Ex2: (a) results for experimental neutron multiplicity, $n = 2$, the mass-mass distribution of the FFs, and an additional gate in the $V_1 - E_1$ plot [2]. The lines are drawn to guide the eye. (b) Energy E_1 for $^{68,72}\text{Ni}$ nuclei [marked by arrows 1 and 2 in (a)]. It should be noted that Fig. 5(a) was published in Ref. [2]. See the text for more details.

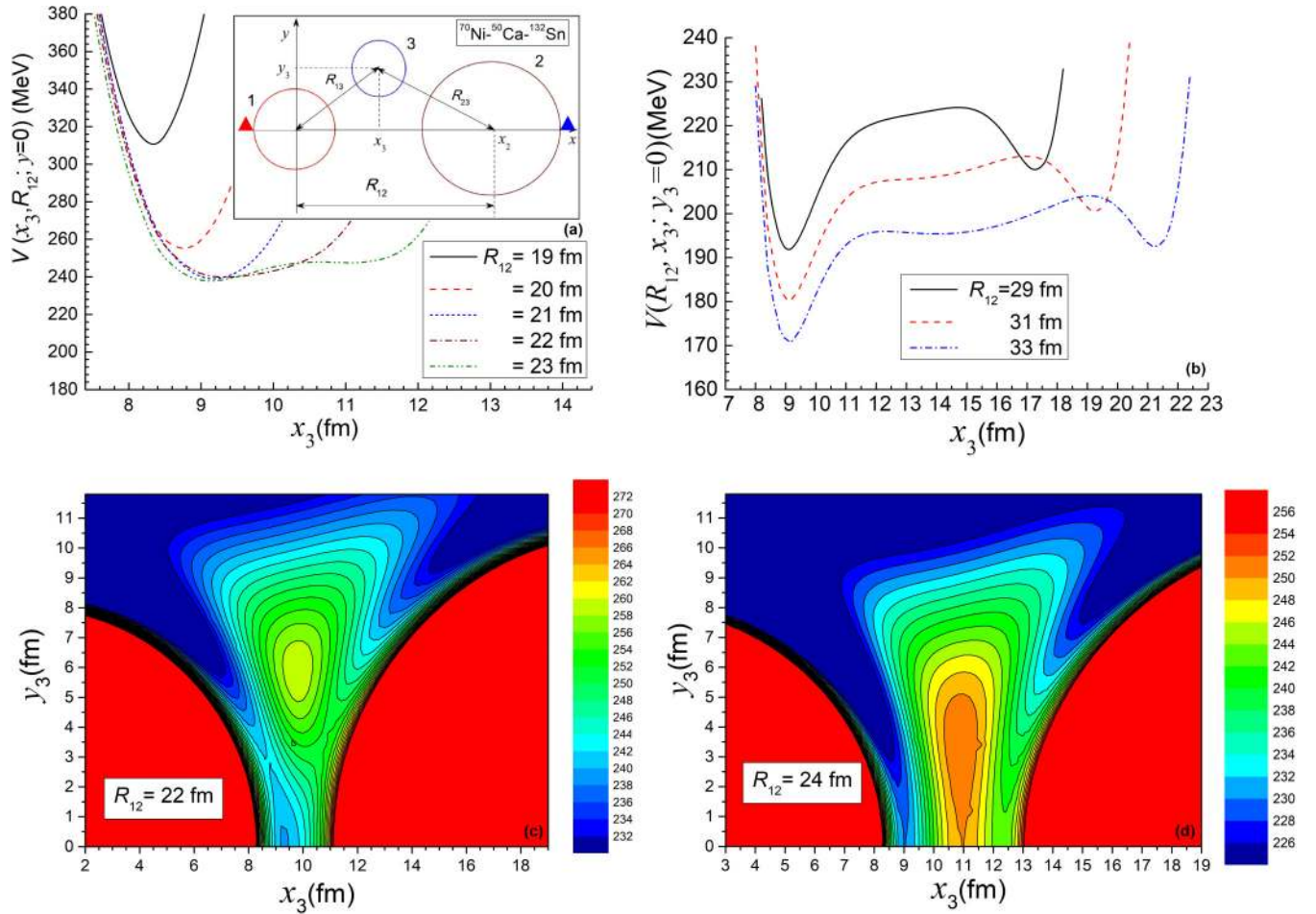


FIG. 7. The potential energy $V(R_{12}, x_3, y_3 = 0)$ of the TNS as a function of x_3 at different values of $R_{12} = 19, 20, 21, 22, 23$ fm. Inset: the scheme showing the variables used in the calculation [10] of the potential energy $V(R_{12}, x_3, y_3)$ (a). The same is true for the $R_{12} = 26, 27, 28$ fm (b). The potential energy surface $V(R_{12}, x_3, y_3)$ as a function of the position x_3 and y_3 of the center-of-mass of the middle fragment “3” (Ca) at the value of $R_{12} = 21$ fm (the relative distance between centers of fragments’ masses “1” and “2”) (c) and of $R_{12} = 24$ fm (d).

The FFs energies found under the sequential decay model [Fig. 9(b) in Ref. [5]] are identical to the ones calculated by Vijayaraghavan *et al.* [16] (see Fig. 6 of Ref. [16]). In both works, a very artificial way was used to introduce the excitation energy of the intermediate fragment E^*_{IF} , forming after the first rupture. This energy is subtracted from the energy going into the fragments’ kinetic energies at the first step [formula (8) in Ref. [16]], but then it is added to the kinetic energies of the fragments forming at the second step [formula (16) in Ref. [16]]. Such an approach does not violate the law of energy conservation, *but the full conversion of the excitation energy of the fissioning system into the kinetic energy of fragments contradicts the well-known experimental facts* [17]. As a result, under the model, regardless of the E^*_{IF} value, the predicted total kinetic energy of all three fragments, TKE_3 , stays constant and equal to the reaction energy. Even if one ignores the incorrect way of introducing E^* , the resultant “true cold ternary fission” is extremely improbable or forbidden. An increase of the energies of Ni and Ca with increase of E^*_{IF} [Fig. 8(a)] could be regarded as a model artefact. Based on Fig. 8(a), the conclusion of the authors of Ref. [5] that “if events are found above the maximum energy of binary fission

(shown by the red lines), the origin must be ternary fission” is warped and cannot be a criterion for searching for the ternary fission events. It should be stressed that the criticism above is the only way of taking into account E^*_{IF} , but it is not the idea of sequential two-step ternary decay.

Under the “true ternary” decay model, the total excitation energy TXE of a decaying system is subtracted from Q value, and the difference defines the kinetic energies of the fragments according to the laws of energy and momentum conservation. The total kinetic energy decreases with an increase of TXE [Fig. 8(b)].

At the end of this section, there should be mentioned a group of the theoretical articles dedicated to the prediction of the absolute yields of some CCT modes. We cover them in chronological order.

Under the three-cluster model within a spherical approximation and satisfying the condition on the FF masses $A_1 \geq A_2 \geq A_3$ independent and overall relative yields are calculated for the partitions with $A_3 = 1-84$ [18]. The obtained estimations agree poorly with the known experimental data. For instance, the ratio of the yields $Y(^4\text{He})/Y(^{10}\text{Be})$ differs from the experimental one Ref. [19] by at least six orders

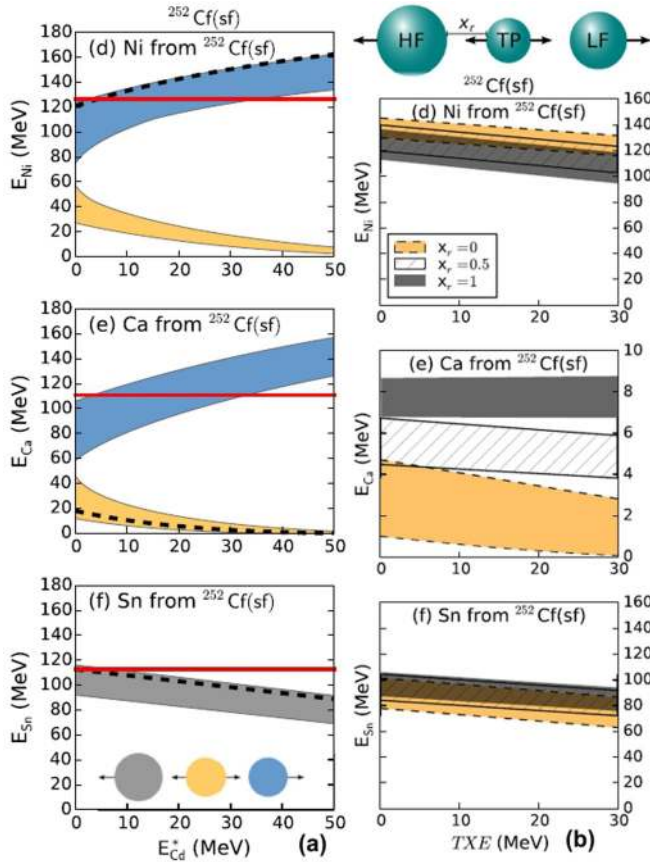


FIG. 8. Areas of attainable final fragment kinetic energies vs the excitation energy of the intermediate fragment in the sequential decay $^{252}\text{Cf}(sf) \rightarrow \text{Sn} + \text{Cd} \rightarrow \text{Sn} + \text{Ca} + \text{Ni}$. The colors indicate formation position, as shown by the inset (a). Similar graphs but for the true ternary decay $^{252}\text{Cf}(sf) \rightarrow \text{Sn} + \text{Ca} + \text{Ni}$. Each figure is a specific element, and different areas indicate the choice of x_r , as shown in the upper part of the figure (b). Contact position of the TP with LF corresponds to $x_r = 1$ (appropriate regions are shown in black) [5].

of magnitude (Fig. 5 in Ref. [19]). In the next work of the same authors, this difference is somewhat smaller (Fig. 10 in Ref. [20]) but still too big to unconditionally believe the conclusions of the article.

In the work [21], the yield of ternary fission products is calculated using the statistical model based on the driving potentials for the fissionable system. The asymmetric fission channel as the first stage of a sequential mechanism is supposed. The conclusion about the agreement of the theoretical results of the yield of ^{80}Ge and ^{84}Se isotopes with the experimental data is likely based on a misunderstanding of these data. Predicted yield for the partition $^{82}\text{Ge}-^{72}\text{Ni}-^{82}\text{Ge}$ (Table II in Ref. [21]) is approximately 3×10^{-4} , while the corresponding experimental value does not exceed 1.6×10^{-6} [Fig. 7(d) in Ref. [22]].

The “almost sequential” mechanism of true ternary fission is analyzed in detail in Ref. [23]. The authors consider the collinear sequential ternary decay with a very short time between the ruptures of two necks connecting the middle

cluster of the ternary nuclear system and outer fragments. The quadrupole deformation parameters of the first-excited 2+ state of nuclei are used in calculation of the PES. A probability of approximately 10^{-3} per binary fission is obtained for the yield of clusters such as ^{70}Ni , $^{80-82}\text{Ge}$, ^{86}Se , and ^{94}Kr in the ternary fission of ^{252}Cf . The yield agrees with the experimental one at least for the Ni clusters [Fig. 3(b)], taking into account some part of the experimental yield below the experimental energy threshold. A crucial test for the adequacy of the adopted model would be the evaluation of both the yields and energies of the fragments in the unified approach for the comparison with the experimental data (Fig. 3).

Three collinear touching deformed fission fragments are supposed to constitute a configuration of the system after scission of necks in a three-fragment fission [24]. Initial nucleus undergoes ternary fission through the lowest barrier, and the yield of the three-fragment partition is proportional to the total fragment intrinsic energy E^* at the lowest barrier point. The calculated values of the absolute yields for the light particles Be–Si agree with the experimental data. At the same time, the partition into three magic clusters $^{72}\text{Ni} + ^{48}\text{Ca} + ^{132}\text{Sn}$, rated as the most favorable for $^{252}\text{Cf}(sf)$ in Refs. [6,10], is forbidden in the approach under discussion because $E^* < 0$. The authors note that similar fission channels “may appear in the framework of other mechanisms of the three-fragment formation.”

Thus, in most reviewed theoretical works dedicated to true ternary fission and the CCT the concept of a dinuclear or trinuclear system (TSM) is implemented. The stage that precedes the formation of a prescission configuration is not studied [11], which provides a principal uncertainty in initial conditions for the further analysis. In contrast, the calculations based on the three-center shell model allow tracing of the shape of the decaying nucleus in the valley of true ternary fission from the ground state up to the exit point from under the fission barrier [6]. We combine both approaches in our scission point calculations (Sec. IV), aimed at reproduction of experimental FF energies (Fig. 3).

IV. SCISSION POINT CALCULATIONS

The following scenario of the CCT process can be proposed based on our experimental findings and recent theoretical calculations. According to Ref. [6], the exit point from under the barrier in the potential valley leading to the $^{132}\text{Sn} + ^{48}\text{Ca} + ^{72}\text{Ni}$ ternary splitting (Fig. 6) corresponds to a much more elongated configuration in comparison with the chain of three touching spherical nuclei. The distance R_{12} between the centers of the side clusters was estimated to be above ~ 23 fm. Likely, the central fragment (Ca) takes upon itself almost all extra elongation. After a rupture occurs, for instance on the boundary of Ca and Sn clusters, the Ni cluster very quickly (in comparison to full acceleration time) attracts the Ca “neck.” Part of the released deformation energy is spent on emission of neutrons flying apart isotropically. Thus, the formed pear-shaped Ni–Ca dinuclear system can rotate around the center of its gravity by 180° , so that the Ca “tip” appears in the position marked by a red triangle in Fig. 7(a). Such orientation is the most energetically favorable. Octupole vibrations [25] could be another reason for the change in the

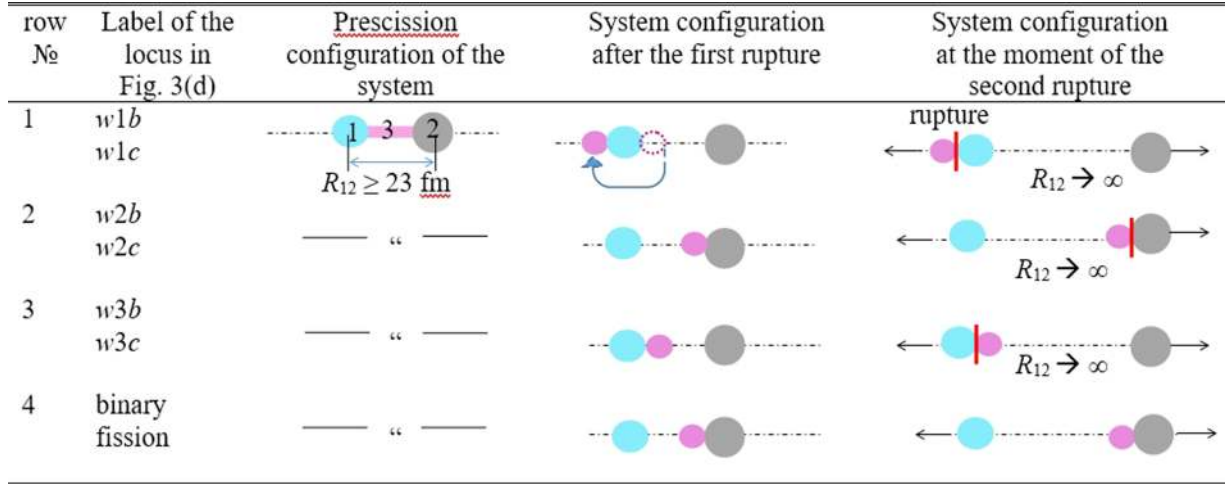


FIG. 9. Pictograms illustrating scenarios of different CCT modes observed in the experiment. See the text for details.

orientation of the tip. Formation of the Ca-Sn system with similar features is less probable [10], but if it forms after the first rupture, the Ca tip can turn to the position marked by a blue triangle in Fig. 7(a).

The formed dinuclear system can evolve towards fusion or rupture. In the first case, we deal with a binary fission of a mother nucleus, and in the second instance with a ternary fission.

The key propositions of the CCT scenario above could be detailed to explain the experimental results presented in Fig. 3. It is noteworthy that each group of events $w1-w3$, seen in Fig. 3(a), consists of two subgroups in plot E_H-E_L [Fig. 3(d)], which differ by the mean mass of the lightest cluster (shown in brackets) and the energies of the side clusters.

Presumable decay scenarios for all subgroups are presented in Fig. 9. A precision configuration of the system is demonstrated in the third column of the figure. For all the cases fission fragment FF_1 is supposed to be ^{70}Ni , the mass of the FF_2 corresponds to the mean mass of the lightest cluster [shown in brackets in Fig. 3(d)], and the mass of the heavy cluster is calculated using the law of mass conservation. The FF charges are calculated according to the hypothesis of unchanged charge density. Configurations of the system after the first and the second ruptures are shown respectively in the fourth and the fifth columns of the table. Parameters of the calculations and the results obtained are presented in Table I.

The following text comments on each row of Fig. 9.

Row 1. After the first rupture, the formed pear-shaped dinuclear system rotates around the center of its gravity by 180° , acquiring a more energetically favorable position. It can also happen during the acceleration due to octupole vibration of the dinuclear system. A low energy of FF_2 is due to its deceleration after the second rupture.

Row 2. The fragments FF_1 and FF_3 in the events from group $w2$ [Fig. 3(a)] have very close velocities, which cannot occur if the second rupture takes place in the dinuclear system FF_1-FF_3 . In contrast, the forming of the dinuclear system FF_3-FF_2 after the first rupture should be considered.

Row 3. Small velocities of the FF_2 in the locus $w3$ [Fig. 3(a)] are assumed to be due to deceleration after the second rupture. This sets the order of the fragments FF_1 and FF_2 at the scission.

Row 4. A significant feature of the precision ternary configuration used above is that for the binary fission, predicted via this configuration, $\text{TKE} \sim 140 \text{ MeV}$, which agrees well with the experimental value calculated in Refs. [26,27] for far asymmetric binary fission, with Ni as a light fragment.

The results of the calculations are compared with the experimental ones in Table I. Mean values of E_H, V_L, V_T with the standard deviations from them were calculated using experimental data for each locus $w1b-w3c$ in Fig. 3(d). Strictly speaking, it is not evident that these mean values would be self-consistent, namely satisfy the laws of energy and momentum conservation. And so, the following approach to testing has been developed.

In the case of ternary decay, after full acceleration (at infinity) of all the fragments, both laws of energy and momentum conservation should be met:

$$E_1 + E_2 + E_3 = E_{\text{int}},$$

$$\vec{p}_1 + \vec{p}_2 + \vec{p}_3 = 0, \quad (1)$$

where E_{int} is the interaction energy between the fragments at the beginning of the acceleration; E_i and p_i are respectively their energies and momenta. Thus, there are three unknown velocities, and one has only two equations for their determination. However, changing step by step one of the velocities or energies, for instance E_H , we can solve the set of Eq. (1) for each fixed value of E_H . The result of such calculations for the locus $w3b$ (see Table I and Fig. 9) is shown in Fig. 10. According to the algorithm, any vertical line intersecting both the E_H axis and the curves above provides a trio of parameters, namely $\{E_H, V_L, V_T\}$, satisfying the system (1).

Under this approach the mean values of E_H, V_L, V_T are reproduced with approximately a 5% margin of error at $E_{\text{int}} = \text{TKE}_{\text{exp}}$. Estimated R_{12} values based on TKE_{exp} for each configuration of the system after the first rupture (Fig. 9) are also shown in Table I. We varied R_{12} in order to satisfy the

TABLE I. Results of the model calculations. Ternary partitions close to the experimental ones and based on magic constituents (marked in bold) are shown in square brackets. See the text for details.

No.	Locus	Nucl. configuration	R_{12} , fm	$E_{H\text{sec}}$ MeV	E_H , MeV	V_L , cm/ns	$V_{L\text{sec}}$, cm/ns	V_T , cm/ns
1	$w1b$	$^{70}\text{Ni}-^{43}\text{S}-^{139}\text{Xe}$ [$^{70}\text{Ni}-^{42}\text{S}-^{140}\text{Xe}$]	≤ 27	71	80.4 ± 1.8	0.71 ± 0.1		2.16 ± 0.06
2	$w1c$	$^{70}\text{Ni}-^{39}\text{Si}-^{143}\text{Ba}$ [$^{70}\text{Ni}-^{38}\text{Si}-^{144}\text{Ba}$]	≤ 30	58	69.5 ± 2.6	0.68 ± 0.06		2.19 ± 0.13
3	$w2b$	$^{70}\text{Ni}-^{47}\text{Ar}-^{135}\text{Te}$ [$^{72}\text{Ni}-^{46}\text{Ar}-^{134}\text{Te}$]	≤ 35		91.4 ± 3.1	1.30 ± 0.06	1.34	1.33 ± 0.22
4	$w2c$	$^{70}\text{Ni}-^{40}\text{S}-^{142}\text{Xe}$ [$^{70}\text{Ni}-^{42}\text{S}-^{140}\text{Xe}$]	≤ 35		77.9 ± 1.3	1.36 ± 0.03	1.34	1.31 ± 0.004
5	$w3b$	$^{70}\text{Ni}-^{35}\text{Al}-^{147}\text{La}$ [$^{70}\text{Ni}-^{34}\text{Mg}-^{148}\text{Ce}$]	≤ 32	60	76.6 ± 3.1	1.62 ± 0.04		0.78 ± 0.08
6	$w3c$	$^{70}\text{Ni}-^{26}\text{Ne}-^{156}\text{Nd}$ [$^{70}\text{Ni}-^{28}\text{Ne}-^{154}\text{Nd}$]	≤ 28	52	63.2 ± 2.3	1.68 ± 0.1		0.58 ± 0.05
7	bin. fiss.	$^{70}\text{Ni}-^{50}\text{Ca}/^{132}\text{Sn}$ ^{182}Yb			TKE 141 MeV			
					$E_{\text{Ni}} = 102 \text{ MeV}$			

equality

$$E_b + E_C = \text{TKE}_{\text{exp}},$$

where E_b is the interaction energy of the constituents of the dinuclear system, formed after the first rupture at the Coulomb barrier; E_C is the energy of the Coulomb interaction of these constituents with the side fragment. Knowing R_{12} one can estimate the energy $E_{H\text{sec}}$ (or velocity $V_{L\text{sec}}$) of the fragment separated first under condition of sequential fission. By definition, within this model, the second rupture occurs after the full acceleration at $R_{12} \rightarrow \infty$. The estimated values are approximately 80% of the experimental ones. This indicates that the real ternary fission should be treated as “almost sequential” but it is very close to the sequential one. It should be noted

that the rotation of the dinuclear system during acceleration (row 1 in Fig. 9) greatly reduces the actual E_{int} . We mark this condition with the sign (\leq) for the corresponding R_{12} values in Table I.

V. RESPONSES TO SOME CRITICAL QUESTIONS

There are some obvious questions concerning the nature of the CCT process and specificity of its observation in an experiment. We propose our current understanding of both.

A. Why such a high total yield of the CCT is observed in comparison with conventional ternary fission

1. Conventional ternary fission

Ternary decay of the heavy nucleus with emission of predominantly α particles, in the plane approximately perpendicular to the fission axis, is known as conventional ternary fission or just ternary fission. Such decay was observed for the first time in 1947 in photoemulsion, containing a uranium salt, after irradiation by slow neutrons [28].

The characteristics of the angular distributions point to emission of α particles from a region between the two nascent fragments during the neck rupture. The yield ratio of ternary/binary fission (t/b) in thermal neutron-induced fission stays close to 2×10^{-3} for reactions, ranging from $^{229}\text{Th}(n_{\text{th}}, f)$ up to $^{251}\text{Cf}(n_{\text{th}}, f)$. In spontaneous fission, the t/b ratios are slightly larger [29]. For the reaction $^{249}\text{Cf}(n_{\text{th}}, f)$, the heaviest isotopes detected at the mass-separator Lohengrin were ^{37}Si and ^{37}S (t/b $\approx 10^{-9}$) [30].

Remarkable conclusions concerning the mechanism of ternary fission were put forward in the theoretical works [31,32]. The relative yields of various light charge particles (LCPs) are determined by the formation probability of the LCP and the likelihood of ternary decay. Formation probability

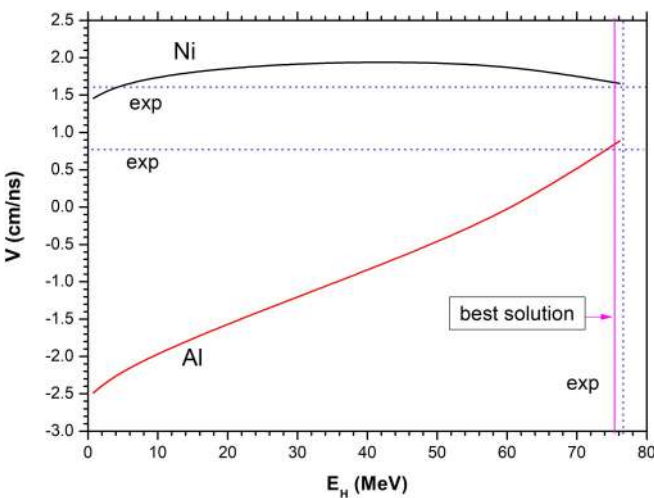


FIG. 10. Velocities V_L, V_T and energy E_H of the ternary fragments satisfying the system (1). Calculations were performed for the locus $w3b$. See text for details.

TABLE II. Correlation of the formation probabilities S and experimental relative yields Y_{exp} of different LCPs. The values of S and Y_{exp} are given with respect to those for ^4He [31].

LCP	$Y_{\text{exp}}/Y_{\text{exp}}(^4\text{He})$	$S/S_{^4\text{He}}$
^4He	1	1
^7Li	5×10^{-3}	4.2×10^{-3}
^{10}Be	1.3×10^{-2}	5×10^{-2}
^{11}Be	6×10^{-4}	2.1×10^{-4}
^{14}C	5×10^{-3}	2.5×10^{-3}
^{20}O		1.3×10^{-4}

is proportional to the spectroscopic factor. By definition, the spectroscopic factor is the weight of a certain binary configuration in the wave function of the nucleus. Table II demonstrates a revealed correlation between the formation probabilities S and experimental yields Y_{exp} of different LCPs.

Thus, one can conclude that the probability of ternary decay depends weakly on the type of the LCP. And hence, the yields of different LCPs are ruled by their formation probabilities S . The latter was estimated as $S(^{14}\text{C}) = S(^4\text{He})^3$, $S(^{20}\text{O}) = S(^4\text{He})^4$, and so on. Based on the arguments above, the authors came to the conclusion that “the sequential formation of the LCP from the correlated ^4He in the region between two heavy fragments looks realistic.” Analyzing the possibility of the multicluster accompanied fission of ^{252}Cf , the authors of Refs. [33,34] also pointed out that “the most favorable mechanism of such a decay mode should be the emission from an elongated neck formed between the two heavy fragments.” Emission of light clusters accompanying fission, e.g., α particles, ^{10}Be , ^{14}C , ^{20}O , or combinations of them were studied.

Following this approach, a rapid decrease of the LCP yield with an increase of their masses is explained by the power-law decrease of the formation probabilities S .

2. CCT mechanism

As was noted in Sec. V, the same elongated prescission configuration of a decaying nucleus can lead both to the CCT and to far asymmetric binary fission with the TKE ~ 140 MeV. Low values of the TKE are directly correlated with increased multiplicity ν of the fission neutrons [35], confirming the concept of the cold deformed fission [36]. According to the experimental data [37,38], an emission of even eight neutrons for $^{252}\text{Cf}(sf)$ exceeds 10^{-3} (Table III), i.e., *highly deformed prescission configurations occur with the probability comparable to the total yield of the CCT events*.

Calculations [39] performed in ten-dimensional deformation space demonstrate the shapes of a decaying Cf nucleus at large deformations (Fig. 11) in potential valleys 3 and 4. The distance between the centers of the side constituents (R_{12}) are equal to approximately 18 and 23 fm.

After the rupture at the narrowest section of the neck, almost all deformation energy [Fig. 11(b)] concentrates in the light (c) or heavy fragment (d).

TABLE III. Neutron-emission probabilities for ^{252}Cf from [37] and from [38].

ν	Ref. [37]	Ref. [38]
0	0.0025 ± 0.0004	0.0022 ± 0.0001
1	0.0282 ± 0.0024	0.0256 ± 0.0013
2	0.1199 ± 0.0081	0.1239 ± 0.0014
3	0.2681 ± 0.0278	0.2715 ± 0.0011
4	0.3056 ± 0.0118	0.3046 ± 0.0005
5	0.1951 ± 0.0217	0.1866 ± 0.0006
6	0.0674 ± 0.0158	0.0681 ± 0.0004
7	0.0084 ± 0.0048	0.0152 ± 0.0001
8	0.0045 ± 0.0030	0.0021 ± 0.0000
9	0.0004 ± 0.0015	0.0002 ± 0.0000

Typical shapes of a fissioning nucleus at large deformations are confirmed independently by the neutron data from [40] (Fig. 12).

At high neutron multiplicities almost all deformation energy is concentrated in the light [Fig. 12(a)] or the heavy fragment [Fig. 12(b)] in agreement with the shape of the nucleus in valley 3 and valley 4 respectively. For the ^{248}Cm , such a tendency was traced up to the $\nu_L/\nu_H = 9/0$. Just for a sense of the scale of yields of highly deformed scission configurations, one can cite the relative total yield Y_R of the fission events at $\nu_{\text{tot}} = 6$ and $\nu_L/\nu_H = 6/0$. Y_R was estimated to be 2.19% and 0.72% for ^{248}Cm and ^{252}Cf respectively [41].

We assume that in contrast to conventional ternary fission the CCT occurs as a two-step decay of an extremely deformed prescission nuclear configuration in the valley of true ternary fission ([6], Fig. 6) or states associated with cold deformed fission in the binary channel. According to the neutron data, the population of such states reaches several percent.

Presumably, the states of the fissioning nucleus in valley 3 could give rise to the rectangular structure in Fig. 2(a) consisting of two horizontal lines $M_1 = 68$ and 72 u, and the vertical line $M_2 = 128$ u. At high values of E^* , the magic Sn cluster is well preformed in the body of the mother system [Fig. 11(a), valley 3], while the nascent deformed light cluster has enough energy for a breakup [Fig. 11(b)]. Predominantly, the magic clusters of Ni, Ge, Sr, and Mo [2] are formed. Cluster decay from the excited state [42] might be the mechanism responsible for this “breakup” process.

Vertical line $M_2 = 128$ u (^{128}Sn) could be the result of such a scenario. At less excitation, the mass of the heavy fragment shifts towards larger masses [Fig. 11(b)], while the light clusters mentioned above, including Ni, continue to form. The lines $M_1 = 68$ and 72 u display this way.

The less populated valley 4 could give rise to the ternary events from the locus $w2$ [Fig. 3(a)]. The shape of the fissioning system there suggests that light magic clusters, marked in panel (d), [Fig. 11(a)] become free after the first rupture.

It appears that there is a profound analogy of the CCT mechanism proposed here and the process of nonequilibrium fission discussed in Ref. [43]. Kinematically complete experiments have been performed on two- and three-body exit channels in the reactions $^{84}\text{Kr} + ^{166}\text{Er}$ and $^{129}\text{Xe} + ^{122}\text{Sn}$ at 12.5 MeV/u. The FF angular distribution observed was consistent

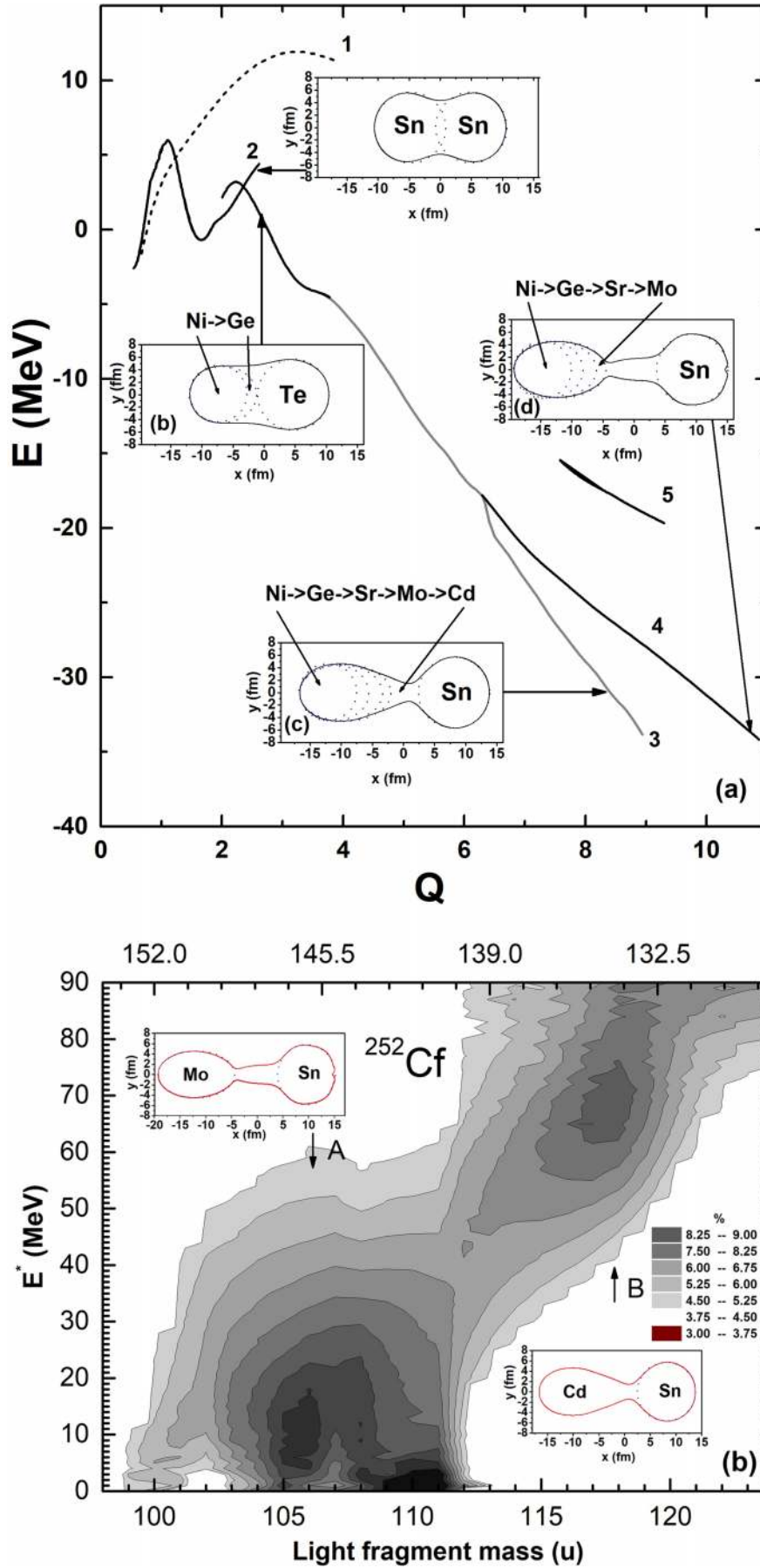


FIG. 11. Potential energy of a fissioning ^{252}Cf nucleus, corresponding to the bottoms of the potential valleys, as a function of Q , proportional to its quadrupole moment. The valleys found are marked by numbers 1–5. The panels depict the shapes of the system at the points marked by arrows (a). The conditional experimental mass-energy distribution $P(M|E^*)$, where E^* is an excitation energy at the scission point. The panels depict the shapes of the fissioning system following from the calculations ascribed to the two dominant structures [39] (b).

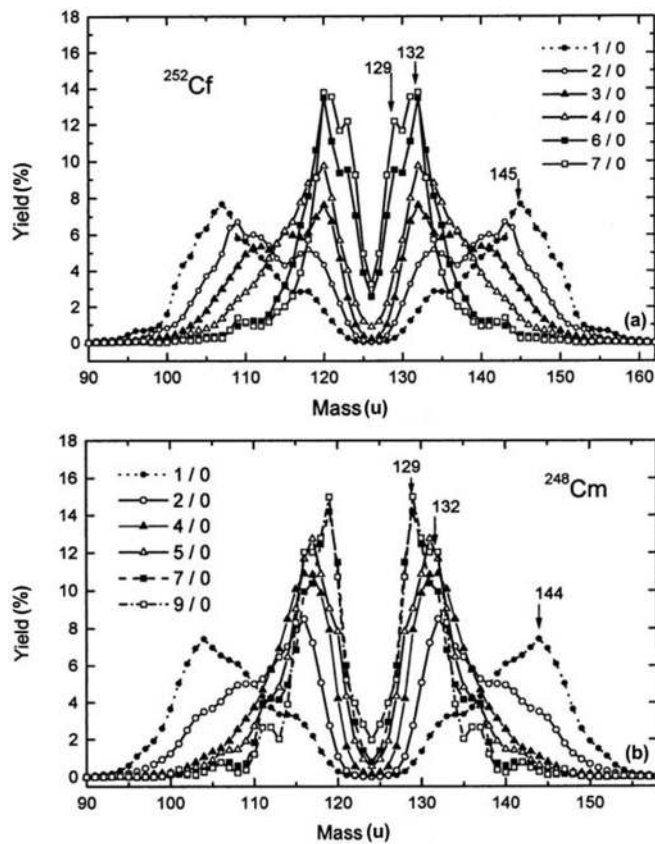


FIG. 12. Partial fragment mass distributions for fixed numbers of emitted neutrons for ^{252}Cf (a),(b), ν_L/ν_H denotes the number of neutrons emitted from the light and heavy fragments, respectively. The yield is normalized to the total number of events with the neutron multiplicity $\nu_{\text{tot}} = \nu_L + \nu_H$ [40].

with an orientation of the fission axis, being approximately collinear with the axis of the first scission. A time scale of 10^{-21} s between the consecutive scission acts was established. The following scenario of the interaction was proposed: “The primary deep-inelastic collision results in *strongly elongated and mass-asymmetrically deformed fragments* with deformation axes about collinear with the line of separation. A *fraction of up to 10% is so strongly deformed that it directly proceeds toward scission without passing through a shape-equilibrated stage, keeping the memory of the initial orientation.*”

B. Collinearity in the ternary decay

The preference of the prolate, chainlike saddle point configurations in fission into three equal fragments was shown first in Refs. [44,45]. A collinear prescission configuration of the decaying system is only a necessary but not a sufficient condition for collinear tri-partition. There are two factors that could be decisive in noncollinear kinematics of the ternary decay.

1. Ejection of the central fragment from the fission axis by the side fragments

Obviously, at the scission configuration of the system, shown in Fig. 7(a), at any offset of the FF₃ from the fission axis, there is a force, acting on the fragment in the direction perpendicular to the axis. In the notation of Ref. [5], the “true ternary” decay process could be considered only a hypothesis. Only under this hypothesis, the authors came to the expected conclusion that “collinearity is extremely unstable.” In contrast, all the scission scenarios agreeing with the experimental results (Table I and Fig. 9) can be attributed to sequential or almost sequential ones. The dinuclear system formed after the first rupture decays predominantly at $R_{12} > 40$ fm that provides collinear (at the experimental angular resolution) tri-partition [8].

2. Possible rotation of the dinuclear system before its decay

The origin of the angular momentum of a fission fragment is explained by the excitation of transverse vibrations in a fissioning nucleus before the rupture. A linear increase of the fragments’ spins as a function of the fragments’ excitation energy appears to be closely related to their deformation [46]. According to Figs. 11 and 12, a heavy fragment is born slightly deformed, thus getting low or even zero spin (this is the case, at least for a spherical Sn nucleus). Keeping in mind zero spin of a mother Cf nucleus, one could also expect low spin of the nascent light fragment. However, as it was pointed out in Ref. [47]: “Even for the spontaneous fission of Cf, which has an angular momentum of zero, the products do not have to have identical and canceling angular momentum. Whatever deviations that do exist between the two primary products can be made up by orbital angular momentum of the system.” Collective vibrations such as wriggling, tilting, bending, and twisting can bear angular momentum [48], but only if they are really allowed for the specific prescission shape of the nucleus.

Thus, a reliable prediction of the intrinsic angular momentum of the dinuclear system forming after the first rupture seems a nontrivial task. One could expect low and even zero spin; and in any case, the arbitrary extrapolation of the conclusions, typical for binary fission to the CCT, is questionable.

C. Peculiarities of experimental observation of the CCT

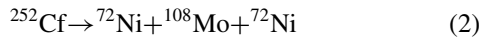
One of the questions addressed by our experiments [5] is connected to the fact that the Ni bump is observed predominantly in the spectrometer arm facing the source backing [Fig. 1(a)]. A similar effect concerning the yield of ternary fission events is mentioned also in Ref. [49].

The results of our recent experiments on fission fragments, passing through different metal foils [50,51], allow us to assume that the bulk of the fragments from the conventional binary fission are born in the shape-isomer states. The Coulomb excitation leads to a breakup of the fragment while it passes the foil. The driving potential for the typical FF [50] shows a general tendency to fusion of the constituents

and pronounced minima for the partitions that involve magic clusters. The lifetime against fusion is a function of the FF excitation. For the extremely excited FFs in the CCT, this time could be quite short. Even the slight Coulomb excitation, caused by FF scattering at the small angle, occurring just in the source backing, can lead to the FF breakup.

Thus, the influence of the Coulomb excitation is too small to significantly impact the results of our calculations (Table I) that are consistent with the experiment. It should be stressed that we also have observed the CCT modes showing quite the same manifestation in both spectrometer arms [52].

The next point that needs clarification is the results of the experimental work [53] of Kravtsov and Solyakin, dedicated to searching for the collinear tri-partition of ^{252}Cf . They did not observe any disintegration of the type



at the level 7.5×10^{-6} for the mass of the central fragment $75\text{ u} < M_3 < 152\text{ u}$ under the condition that the side fragments' momenta are similar. The used selection rule excludes the possibility to reveal the events from the Ni bump (Fig. 3) under discussion.

Even for the configuration (2), in more realistic sequential decay, the momenta of the side fragments would differ radically, and such a mode would be lost as well.

VI. DISCUSSION

A. Some facts in support of the CCT

The “true ternary” decay model, used in Ref. [5], at $x_r = 1$ [Fig. 8(b)] and with the appropriate choice of TXE is similar to the decay scenario which we successfully applied for the analysis of the loci $w3$ (Fig. 9). Indeed, the predicted energies of all three fragments obtained in Ref. [5] [Fig. 8(b)] are in good agreement with our experimental results for the $w3$ group of events (Figs. 3 and 4: TXE ~ 30 MeV, $E_L = 90\text{--}110$ MeV, $E_T < 8$ MeV, $E_H \sim 80$ MeV). It should be mentioned that our experimental results shown in Figs. 3(a) and 3(b) were published [54] three years before the work [5]. Nevertheless, they are not discussed in Ref. [5], and the conclusion of the authors, “For true ternary fission, any significant TXE > 0 MeV is therefore not expected,” contradicts the experimental data.

Unfortunately, the configuration “Ni centered” was not considered in the “true ternary” decay model. That is why, despite our criticism of Ref. [5], in the implementation of the sequential decay model, its predictions (Fig. 7 in Ref. [5]) in a semiquantitative manner are comparable with our experimental results for the locus $w1a$ in Fig. 3(c). Experimental values $E_{LF} \sim 20$ MeV and $E_{TP} \sim 100$ MeV are confirmed.

Returning to the scenario of the CCT process proposed here (Sec. IV), we would like to emphasize that it does not exclude a noncollinear decay of a prescission TNS. Decay of the dinuclear system forming after the first rupture can happen with some probability at < 40 fm. This value is a conditional border of the intercluster distances that provides collinear

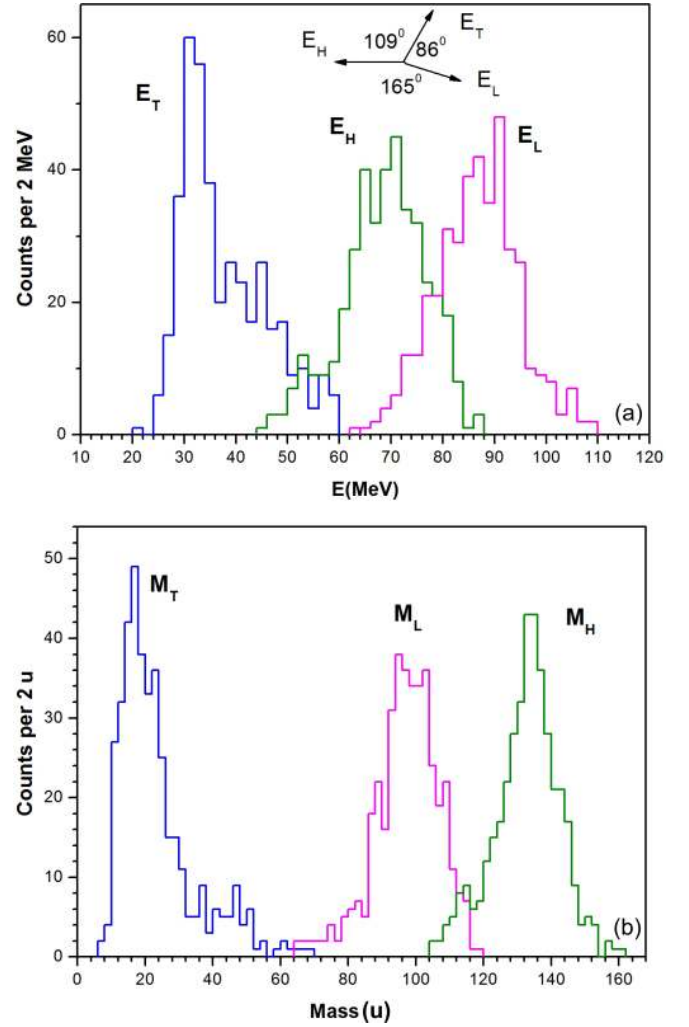


FIG. 13. Energy spectrum of ^{252}Cf ternary fission events, measured with a low-energy threshold of 25 MeV. The inset indicates the corresponding mean angles (a). Mass distribution calculated from the measured energies and angles using momentum conservation [49] (b).

decay geometry [10]. It is such type of events that possibly were observed in the series of the latest experiments [49,55].

The mass and energy spectra for ^{252}Cf ternary fission events obtained in Ref. [49] are shown in Fig. 13. They agree well with those obtained in Ref. [55]. Low-energy threshold of 25 MeV, used in the measurements [49] [compare with Fig. 3(b)], could be a reason for disagreement in the yields of the ternary events in Refs. [49] and [55] respectively. The yield of the lightest peak in Fig. 13(b) is approximately 10^{-6} per binary fission. Parameters of the ternary decay products in Fig. 13 correlate well with our data for the loci $w2$ and $w3$ in Fig. 3.

B. Binary and ternary fission: Different fission ways?

Our arguments concerning a possible CCT mechanism along with the experimental results are based on three different theoretical approaches. These approaches are (1) the concept

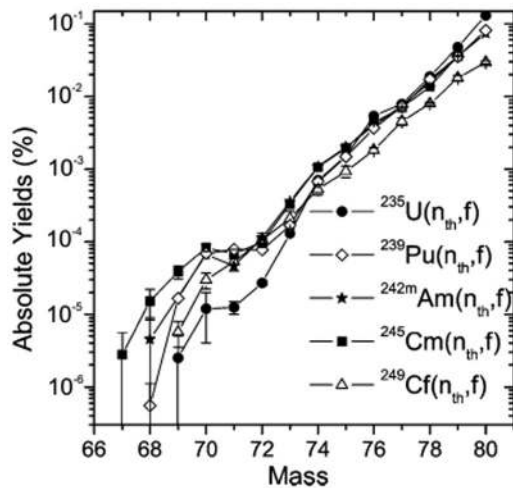


FIG. 14. Absolute fragment-mass yields for the reactions induced by thermal neutrons [57].

of the trinuclear system [11]; (2) calculation of the potential energy surface (PES) of the fissioning ^{252}Cf nucleus under the three-center shell model (TSM) [6]; (3) calculation of the PES in ten-dimensional deformation space [39]. Only the last two approaches describe the evolution of the system starting from the ground state. TSM calculations predict a separate valley of ternary fission with an additional third hump at the exit (Fig. 6). The last barrier is apparently connected with formation of the second pinch on the neck [56] or preformation of the chain of three partially overlapping nuclei. At the scission point, the masses of all three nascent fragments, which are predominantly magic nuclei, are well defined.

In the alternative approach [39], evolution of a fissioning nucleus leads, at high elongation, to a specific nuclear shape (Fig. 10, valley 3) with a strongly deformed light nascent fragment. After the first rupture, the highly excited light fragment could undergo cluster decay. As in the case of cluster radioactivity [34], one of the CCT partners should be a magic nucleus.

The question of which fission way is actually responsible for the CCT remains open. In any case, very deformed prescission configuration is predicted, which agrees with our experimental results and model calculations (Table I and Fig. 9).

C. Recommendations for independent experimental verification of the CCT

The most desirable approach to independent experimental verification of the CCT consists in involvement of the methodic alternative to the 2V-2E method used in our work. In this sense, the mass-separator Lohengrin appears to be a good choice. Moreover, a series of experiments dedicated to observation of the light FFs from the far asymmetric fission, including isotopes of Ni, has been already performed at the Lohengrin (Fig. 14).

For the reaction $^{249}\text{Cf}(n_{\text{th}}, f)$, the yield of the mass 72 u is approximately 10^{-6} per binary fission, while the authors of Ref. [5] refer to a much lower yield: 10^{-8} . For the same FF energy range, we have the yield 5×10^{-5} in $^{252}\text{Cf}(sf)$ [Figs. 3(b) and 3(c)]. The shoulder in the mass yields around

the mass number ~ 70 was also observed in experiments with a twin ionization chamber, and the 2E method was applied for calculation of the fragment mass of binary fission. The yield of ^{72}Ni was approximately 10^{-5} per binary fission, and its energy was about 104 MeV [26,27]. The yields of the same order were observed for Ni isotopes in far asymmetric neutron induced fission of ^{236}U [58].

The energy range of the detected Ni nuclei at the Lohengrin covers energies specific for both binary and ternary fission [*w3a* group in Fig. 3(c)]. Thus, a total yield $\sim 6 \times 10^{-5}$ per binary fission could be expected. Strictly speaking, direct comparison of the yields of the fragments close to Ni in spontaneous $^{252}\text{Cf}(sf)$ and neutron induced fission $^{249}\text{Cf}(n_{\text{th}}, f)$ is not absolutely legitimate. For instance, huge differences in FF mass spectra for $^{258}\text{Fm}(sf)$ and $^{257}\text{Fm}(n_{\text{th}}, f)$ are well known [59].

In our opinion, registration of the Ni isotopes with the energy lower than 25 MeV, specific for the CCT only [Fig. 3(b)], would be a significant evidence of the existence of this decay channel.

Other candidates for a verification experiment could be the lightest CCT partners in the mass range of 32–50 u (missing masses in the fission events incorporated into the linear structures marked by arrows 2 and 3 in Fig. 3).

Nucleon composition of the corresponding nuclei is determined by the heavier magic partners of ternary decay (see, for instance, the ternary partitions shown in bold in Table I). The yield of each composition does not exceed 10^{-6} per binary fission. This yield is much higher than that measured in Ref. [30] for some LCP from the mass range under discussion, but such LCP energies are not consistent with those predicted in Fig. 3(c). Searching for the fast LCP seems to be a less promising verification experiment in comparison with the detection of the low energy Ni fragments.

In Sec. I we discussed multiple problems associated with identification of the CCT events when using time-of-flight spectrometers. The judgment of the authors of Ref. [5] that the effect would have been “easily detected in the past” contradicts the existence of these objective problems. Two basic characteristics of the effect, namely almost zero energy of one of the decay partners (most often) and almost collinear geometry of their velocities, make detection of all three CCT fragments a complicated methodic problem.

In conclusion, we would recommend registration of the Ni isotopes with the energy lower than 25 MeV at the mass separator Lohengrin as the primary experiment for verification of the CCT.

ACKNOWLEDGMENTS

This work was supported, in part, by the Russian Science Foundation and fulfilled in the framework of MPhI Academic Excellence Project (Contract No. 02.a03.21.0005, 27.08.2013) by the Department of Science and Technology of the Republic of South Africa (RSA) and Bundesministerium für Bildung und Forschung (Germany). We are grateful to N. V. Antonenko, G. G. Adamian, V. I. Furman, A. K. Nasirov, A. V. Karpov, and F. F. Karpeshin for fruitful discussions.

- [1] Yu. V. Pyatkov, D. V. Kamanin, W. von Oertzen, A. A. Alexandrov, I. A. Alexandrova, O. V. Falomkina, N. A. Kondratjev, Yu. N. Kopatch, E. A. Kuznetsova, Yu. E. Lavrova, A. N. Tyukavkin, W. Trzaska, and V. E. Zhuchko, *Eur. Phys. J. A* **45**, 29 (2010).
- [2] Yu. V. Pyatkov, D. V. Kamanin, W. von Oertzen, A. A. Alexandrov, I. A. Alexandrova, O. V. Falomkina, N. Jacobs, N. A. Kondratjev, E. A. Kuznetsova, Yu. E. Lavrova, V. Malaza, Yu. V. Ryabov, O. V. Strekalovsky, A. N. Tyukavkin, and V. E. Zhuchko, *Eur. Phys. J. A* **48**, 94 (2012).
- [3] D. V. Kamanin and Yu. V. Pyatkov, in *Clusters in Nuclei*, Lecture Notes in Physics No. 875, edited by C. Beck (Springer, Berlin, 2013), Vol. 3, p. 183.
- [4] H.-G. Orltipp and FOBOS Collaboration, *Nucl. Instrum. Methods Phys. Res. A* **403**, 65 (1998).
- [5] P. Holmval, U. Köster, A. Heinz, and T. Nilsson, *Phys. Rev. C* **95**, 014602 (2017).
- [6] A. V. Karpov, *Phys. Rev. C* **94**, 064615 (2016).
- [7] V. I. Zagrebaev, A. V. Karpov, and W. Greiner, *Phys. Rev. C* **81**, 044608 (2010).
- [8] V. Zagrebaev and W. Greiner, in *Clusters in Nuclei*, Lecture Notes in Physics No. 818, edited by C. Beck (Springer, Berlin, 2010), Vol. 1, p. 267.
- [9] A. Diaz-Torres, *Phys. Lett. B* **594**, 69 (2004).
- [10] A. K. Nasirov, R. B. Tashkhodjaev, and W. von Oertzen, *Eur. Phys. J. A* **52**, 135 (2016).
- [11] R. B. Tashkhodjaev, A. K. Nasirov, and E. K. Alpomeshev, *Phys. Rev. C* **94**, 054614 (2016).
- [12] K. R. Vijayaraghavan, M. Balasubramaniam, and W. von Oertzen, *Phys. Rev. C* **90**, 024601 (2014).
- [13] K. R. Vijayaraghavan, M. Balasubramaniam, and W. von Oertzen, *Phys. Rev. C* **91**, 044616 (2015).
- [14] W. von Oertzen and A. K. Nasirov, *Phys. Lett. B* **734**, 234 (2014).
- [15] F. F. Karpeshin, *Phys. At. Nucl.* **78**, 548 (2015).
- [16] K. R. Vijayaraghavan, W. von Oertzen, and M. Balasubramaniam, *Eur. Phys. J. A* **48**, 27 (2012).
- [17] Ch. Straede, C. Budtz-Jorgensen, and H.-H. Knitter, *Nucl. Phys. A* **462**, 85 (1987).
- [18] K. Manimaran and M. Balasubramaniam, *Eur. Phys. J. A* **45**, 293 (2010).
- [19] C. Wagemans, in *The Nuclear Fission Process*, edited by C. Wagemans (CRC, Boca Raton, London, 1991), Chapter 12, p. 545.
- [20] K. Manimaran and M. Balasubramaniam, *Phys. Rev. C* **83**, 034609 (2011).
- [21] R. B. Tashkhodjaev, A. K. Nasirov, and W. Scheid, *Eur. Phys. J. A* **47**, 136 (2011).
- [22] Yu. V. Pyatkov, D. V. Kamanin, Yu. N. Kopach, A. A. Alexandrov, I. A. Alexandrova, S. B. Borzakov, Yu. N. Voronov, V. E. Zhuchko, E. A. Kuznetsova, Ts. Panteleev, and A. N. Tyukavkin, *Phys. At. Nucl.* **73**, 1309 (2010).
- [23] R. B. Tashkhodjaev, A. I. Muminov, A. K. Nasirov, W. von Oertzen, and Y. Oh, *Phys. Rev. C* **91**, 054612 (2015).
- [24] V. Yu. Denisov, N. A. Pilipenko, and I. Yu. Sedykh, *Phys. Rev. C* **95**, 014605 (2017).
- [25] S. G. Rohozinski, *Rep. Prog. Phys.* **51**, 541 (1988).
- [26] G. Barreau, A. Sicre, F. Caïtucoli, M. Asghar, T. P. Doan, B. Leroux, G. Martinez, and T. Benfoughal, *Nucl. Phys. A* **432**, 411 (1985).
- [27] C. Budtz-Jorgensen and H.-H. Knitter, *Nucl. Phys. A* **490**, 307 (1988).
- [28] T. San-Tsiang, H. Zah-Wei, L. Vigneron, and R. Chastel, *Phys. Rev.* **71**, 382 (1947).
- [29] F. Gönnerwein, M. Mutterer, and Yu. Kopatch, *Europhys. News* **36**, 11 (2008).
- [30] I. Tsekhanovich, Z. Büyükmumcu, M. Davi, H. O. Denschlag, F. Gönnerwein, and S. F. Boulyga, *Phys. Rev. C* **67**, 034610 (2003).
- [31] A. V. Andreev, G. G. Adamian, N. V. Antonenko, S. P. Ivanova, S. N. Kuklin, and W. Scheid, *Eur. Phys. J. A* **30**, 579 (2006).
- [32] G. Adamian, N. Antonenko, and W. Scheid, in *Clusters in Nuclei*, Lecture Notes in Physics No. 848, edited by C. Beck (Springer, Berlin, 2012), Vol. 2, p. 165.
- [33] D. N. Poenaru, W. Greiner, J. H. Hamilton, A. V. Ramayya, E. Hourany, and R. A. Gherghescu, *Phys. Rev. C* **59**, 3457 (1999).
- [34] D. Poenaru and W. Greiner, in *Clusters in Nuclei* (Ref. [8]), Vol. 1, pp. 1–56.
- [35] B. Signarbieux, R. Babinet, H. Nifenecker, and J. Poitou, in *Proceedings of the 3rd IAEA Symposium on the Physics and Chemistry of Fission, Rochester, New York, 13–17 August 1973*, edited by the Agency's editorial staff (IAEA, Vienna, 1974), Vol. II, pp. 179–189.
- [36] T. D. Thomas, W. M. Gibson, and G. I. Sufford, in *Symposium on Physics and Chemistry of Fission*, edited by the Agency's editorial staff (IAEA, Vienna, 1966), Vol. 1, p. 467.
- [37] J. F. Wild, J. van Aarle, W. Westmeier, R. W. Loughed, E. K. Hulet, K. J. Moody, R. J. Dougan, E.-A. Koop, R. E. Glaser, R. Brandt, and P. Patzelt, *Phys. Rev. C* **41**, 640 (1990).
- [38] R. R. Spencer, R. Gwin, and R. Ingle, *Nucl. Sci. Eng.* **80**, 603 (1982).
- [39] Yu. V. Pyatkov, V. V. Pashkevich, Yu. E. Penionzhkevich, V. G. Tishchenko, A. V. Unzhakova, H.-G. Orltipp, P. Gippner, C.-M. Herbach, and W. Wagner, *Nucl. Phys. A* **624**, 140 (1997).
- [40] V. A. Kalinin, V. N. Dushin, V. A. Jakovlev, B. F. Petrov, A. S. Vorobyev, A. B. Laptov, O. A. Shcherbakov, and F.-J. Hambsch, in *Proceedings of the "Seminar on Fission Pont D'Oye V, Castle of Pont d' Oye, Habay-la-Neuve, Belgium, 16–19 September, 2003*, edited by C. Wagemans, J. Wagemans, and P. D'hondt (World Scientific, Singapore, 2004), pp. 73–82.
- [41] A. S. Vorobiev, Ph.D. thesis, B. P. Konstantinov Petersburg Institute of Nuclear Physics, 2004 (in Russian), <http://www.gigabaza.ru/doc/2737-all.html>.
- [42] S. N. Kuklin, G. G. Adamian, and N. V. Antonenko, *Phys. Part. Nucl.* **47**, 206 (2016).
- [43] P. Glässel, D. V. Harrach, and H. J. Specht, *Z. Phys. A* **310**, 189 (1983).
- [44] H. Diehl and W. Greiner, *Phys. Lett. B* **45**, 35 (1973).
- [45] H. Diehl and W. Greiner, *Nucl. Phys. A* **229**, 29 (1974).
- [46] H. Nifenecker, C. Signarbieux, M. Ribrag, J. Poitou, and J. Matuszek, *Nucl. Phys. A* **189**, 285 (1972).
- [47] J. B. Wilhelmy, E. Cheifetz, R. C. Jared, S. G. Thompson, and H. R. Bowman, *Phys. Rev. C* **5**, 2041 (1972).
- [48] L. G. Moretto and R. P. Schmitt, *Phys. Rev. C* **21**, 204 (1980).
- [49] P. Schall, P. Heeg, M. Mutterer, and J. P. Theobald, *Phys. Lett. B* **191**, 339 (1987).
- [50] Yu. V. Pyatkov, D. V. Kamanin, A. A. Alexandrov, I. A. Alexandrova, E. A. Kuznetsova, Yu. E. Lavrova, A. O. Strekalovsky,

- O. V. Strekalovsky, and V. E. Zhuchko, *Phys. Proc.* **74**, 67 (2015).
- [51] D. V. Kamanin, Yu. V. Pyatkov, A. A. Alexandrov, I. A. Alexandrova, N. Mkaza, V. Malaza, E. A. Kuznetsova, A. O. Strekalovsky, O. V. Strekalovsky, and V. E. Zhuchko, *J. Phys.: Conf. Ser.* **863**, 012045 (2017).
- [52] Yu. V. Pyatkov, D. V. Kamanin, J. E. Lavrova, N. Mkaza, V. Malaza, and A. O. Strekalovsky, *J. Phys.: Conf. Ser.* **863**, 012046 (2017).
- [53] A. V. Kravtsov and G. E. Solyakin, *Phys. Rev. C* **60**, 017601 (1999).
- [54] Yu. V. Pyatkov, D. V. Kamanin, W. von Oertzen, A. A. Alexandrov, I. A. Alexandrova, N. A. Kondratyev, E. A. Kuznetsova, O. V. Strekalovsky, and V. E. Zhuchko, in *Proceedings of the 20th International Seminar on Interaction of Neutrons with Nuclei (ISINN), Alushta, Ukraine, May 21–26, 2012*, edited by the JINR Publishing Department (JINR, Dubna, 2013), pp. 104–110.
- [55] M. L. Muga, C. R. Rice, and W. A. Sedlacek, *Phys. Rev. Lett.* **18**, 404 (1967).
- [56] V. M. Strutinsky, N. Ya. Lyashchenko, and N. A. Popov, *Nucl. Phys.* **46**, 639 (1963).
- [57] D. Rochman, I. Tsekhanovich, F. Gönnenwein, V. Sokolov, F. Storrer, G. Simpson, and O. Serot, *Nucl. Phys. A* **735**, 3 (2004).
- [58] A. A. Goverdovsky, V. F. Mitrofanov, and V. A. Khrjachkov, *Phys. Atomic Nuclei*. **58**, 1546 (1995) (in Russian).
- [59] D. C. Hoffman, J. B. Wilhelmy, J. Weber, W. R. Daniels, E. K. Hulet, R. W. Loughheed, J. H. Landrum, J. F. Wild, and R. J. Dupzyk, *Phys. Rev. C* **21**, 972 (1980).