

Cite this: *Nanoscale Adv.*, 2020, 2, 2602

Exchange-bias *via* nanosegregation in novel $\text{Fe}_{2-x}\text{Mn}_{1+x}\text{Al}$ ($x = -0.25, 0, 0.25$) Heusler films†

S. Kurdi,^{ID}*^a M. Ghidini,^{ID}*^{bca} G. Divitini,^{ID}^a B. Nair,^a A. Kursumovic,^a P. Tiberto,^d S. S. Dhese^c and Z. H. Barber^a

Exchange-bias has been reported in bulk nanocrystalline Fe_2MnAl , but individual thin films of this Heusler alloy have never been studied so far. Here we study the structural and magnetic properties of nanocrystalline thin films of $\text{Fe}_{2-x}\text{Mn}_{1+x}\text{Al}$ ($x = -0.25, 0$ and 0.25) obtained by sputtering and *ex situ* post-deposition annealing. We find that Fe_2MnAl films display exchange-bias, and that varying Mn concentration determines the magnitude of the effect, which can be either enhanced (in $\text{Fe}_{1.75}\text{Mn}_{1.25}\text{Al}$) or suppressed (in $\text{Fe}_{2.25}\text{Mn}_{0.75}\text{Al}$). X-ray diffraction shows that our films present a mixed L_{2_1} -B2 Heusler structure where increasing Mn concentration favors the partial transformation of the L_{2_1} phase into the B2 phase. Scanning transmission electron microscopy (STEM) and energy dispersive X-ray spectroscopy (EDX) reveal that this composition-driven $\text{L}_{2_1} \rightarrow \text{B2}$ transformation is accompanied by phase segregation at the nanoscale. As a result, the $\text{Fe}_{2-x}\text{Mn}_{1+x}\text{Al}$ films that show exchange-bias ($x = 0, 0.25$) are heterogeneous, with nanograins of an Fe-rich phase embedded in a Mn-rich matrix (a non-negative matrix factorisation algorithm was used to give an indication of the phase composition from EDX data). Our comparative analysis of XRD, magnetometry and X-ray magnetic circular dichroism (XMCD), shows that the Fe-rich nanograins and Mn-rich matrix are composed of a ferromagnetic L_{2_1} phase and an antiferromagnetic B2 phase, respectively, thus revealing that exchange-coupling between these two phases is the cause of the exchange-bias effect. Our work should inspire the development of single-layer, environmentally friendly spin valve devices based on nanocomposite Heusler films.

Received 31st October 2019
Accepted 28th April 2020

DOI: 10.1039/c9na00689c

rsc.li/nanoscale-advances

Introduction

For a sustainable economy, the development of environmentally friendly magnetic applications is a priority.^{1,2} In this field, magnetic materials for energy applications (*i.e.* permanent magnets and magnetocalorics) have insofar been at the forefront, with focus on reducing cost by replacing rare with abundant elements,^{3,4} and on exploring simpler and greener device designs.⁵ However, the same criteria can be extended to other applications.

Magnetic field sensors based on the spin-valve device concept require a multilayer stack comprising two soft ferromagnetic (FM) layers and an antiferromagnetic (AFM) layer (usually IrMn). The magnetization of the outer FM layer is free to rotate in response to external magnetic fields, while the magnetization of the inner FM layer is pinned to the underlying

AFM layer *via* the exchange-bias effect.⁶ A simpler, cost-effective device could be obtained if the multilayer stack were replaced with a single layer of material with exchange-bias. For optimum sustainability, this single layer should contain neither Ir (one of the scarcest elements in the earth's crust) nor any other scarce or hazardous material.⁷

Exchange-bias has long been known in heterogeneous granular systems that present the necessary coexistence of AFM and FM phases at the nanoscale.⁸ These systems have been shown to work at room temperature⁹ and have been proposed for spintronics applications. Suitable morphologies comprise: (i) core-shell nanoparticles obtained by mechanical milling,¹⁰ thermal decomposition¹¹ and different chemical routes;¹²⁻¹⁴ (ii) magnetic nanoparticles embedded in AFM matrices obtained by cluster beam deposition,¹⁵⁻¹⁷ selective reduction¹⁸ and co-sputtering;¹⁹ and (iii) phase segregated alloys obtained by mechanical²⁰ and thermal²¹⁻²³ treatments.

Moreover, exchange-bias has been reported in alloys with a nominally homogeneous composition, where the separation between FM and AFM phases can be intrinsically established by structural phase transformations²⁴ and/or chemical disorder.^{25,26} These conditions occur in Mn-based Heusler alloys that present the shape memory effect,²⁷⁻³⁵ compensated ferromagnetism³⁶ and spin glass behaviour.^{21,37,38} The observation of

^aDepartment of Materials Science and Metallurgy, University of Cambridge, CB3 0FS Cambridge, UK. E-mail: sk862@cantab.ac.uk

^bDepartment of Physics, Mathematics and Computer Science, University of Parma, 43130 Parma, Italy. E-mail: massimo.ghidini@unipr.it

^cDiamond Light Source, Chilton, Didcot, OX11 0DE Oxfordshire, UK

^dThe National Institute for Metrological Research (INRIM), 10135 Torino, Italy

† Electronic supplementary information (ESI) available. See DOI: 10.1039/c9na00689c



exchange-bias in nominally single Heusler alloys is intriguing for spintronic devices because of their highly spin-polarized conduction band.^{39–42}

The Heusler alloy Fe_2MnAl is promising for application in environmentally friendly spin valve devices because it is ferromagnetic at room temperature,^{43,44} it is made of abundant non-hazardous materials and can be prepared as core/shell nanoparticles that display exchange-bias.⁴⁵ However, Fe_2MnAl has not been studied in the form of individual thin films to date.

Here, we report on the structural and magnetic properties of nanocrystalline thin films of $\text{Fe}_{2-x}\text{Mn}_{1+x}\text{Al}$ ($x = -0.25, 0, 0.25$) obtained by sputtering and *ex situ* post-deposition annealing. We show that our films display a mixed L_{2_1} – B_2 Heusler structure in which substitution of Mn for Fe progressively drives the $\text{L}_{2_1} \rightarrow \text{B}_2$ phase transformation. Macroscopic magnetic measurements reveal that this transformation favours exchange-bias, but depresses magnetization. A detailed STEM investigation shows that these crystallographic and magnetic changes are the result of a nanosegregation process, which ultimately leads to a heterogeneous microstructure in which coarsened crystal grains of an Fe-rich phase are embedded in a Mn-rich phase. We use a non-negative matrix factorisation (NMF) algorithm^{46,47} to give an indication of the composition of the two phases. Moreover, we clarify the magnetic nature of the phases *via* a quantitative comparison between macroscopic and microscopic magnetic measurements of the $\text{Fe}_{1.75}\text{Mn}_{1.25}\text{Al}$ film. XMCD measurements yield an overall magnetic moment which exceeds, by a factor of two, the value obtained from the (macroscopic) saturation magnetization calculated over the whole volume of the film, measured by SQUID magnetometry. However, we find good agreement when we use the volume of the Fe-rich phase as determined from the STEM images, such that we are able to identify the Fe-rich phase as the L_{2_1} ferromagnetic phase and the Mn-rich phase as the antiferromagnetic B_2 phase. In this heterogeneous L_{2_1} – B_2 mixed state, the exchange-bias results from the exchange-coupling between phase-separated ferromagnetic and antiferromagnetic regions. Our environmentally friendly nanocomposite Heusler films should be of interest for developing single-layer spin valve devices which are sustainable.

Experimental

$\text{Fe}_{2-x}\text{Mn}_{1+x}\text{Al}$ films ($x = -0.25, 0$ and 0.25) with a thickness of 200 nm and 2.5 nm-thick Al capping layers were grown by multi-target DC-magnetron sputtering on thermally oxidized Si substrates. After reaching a base pressure of 1×10^{-7} Pa in the deposition system, the films and capping layers were deposited at a rate of 0.06 nm s^{-1} and 0.017 nm s^{-1} respectively (in a 99.999% Ar atmosphere with a pressure of 1.37 Pa). The power supplied to each of the (elemental) magnetron targets was carefully controlled in order to control the individual deposition rates, and hence the film composition. The samples were subsequently annealed *ex situ* at 300 °C for 9 h in a vacuum of 1×10^{-6} Pa to induce structural ordering.

After annealing, the nominal compositions (calculated from the deposition rates of the individual elements) were confirmed

by energy dispersive X-ray analysis (EDX) using a Camscan MX2600 FEG-SEM. To rule out any possible artefacts arising from the interaction of the electron beam with the substrate in these 200 nm-thick films, subsequently used for the magnetic studies, compositions were also confirmed in 600 nm-thick twin samples that were specifically grown for this purpose.

The surface morphology of the films was studied by tapping mode atomic force microscopy (AFM) (Bruker, MM8 with a Nanoscope V controller). We used TAP300AL Budget Sensors cantilevers and we analysed the images using the Gwyddion software package.⁴⁸

Structural characterisation was carried out by X-ray diffraction (XRD) using a Bruker D8 Advance diffractometer. To eliminate the substrate peaks we used an off-coupled $\theta/2\theta$ scan with an 8° θ offset, which did not affect the intensity of the diffraction peaks, given that our films were untextured. The experimental peak intensities were determined by profile fitting using HighScore+ software. The theoretical intensities corresponding to the fully ordered crystals that we have used for our quantitative analysis (Fig. 1) were calculated using the VESTA⁴⁹ software package.

The film morphology and elemental spatial distribution were analysed with a FEI Osiris scanning transmission electron microscope (STEM) operated at 200 kV. The microscope was equipped with a high brightness electron gun and a large area EDX detector (Bruker Super-X, 0.9 sr solid angle for collection). Images were acquired in STEM-HAADF (High Angle Annular Dark Field) mode, in which the brightness depends upon the local thickness and average atomic number. For STEM studies, $\text{Fe}_{2-x}\text{Mn}_{1+x}\text{Al}$ ($x = -0.25, 0, 0.25$) films with a 50 nm thickness and 2.5 nm Al capping layers were deposited and annealed *ex situ* (under the same conditions as above) on commercial TEM sample supports made of 200 nm-thick SiN membranes on 200 μm -thick Si chips with a $0.1 \times 0.1 \text{ mm}^2$ window. The EDX data were analyzed using a NMF (Non-negative Matrix Factorisation) algorithm³² run inside Hyperspy,⁵⁰ an open-source python-based toolkit for the analysis of electron microscopy data. The NMF algorithm improves the signal-to-noise ratio (SNR) and

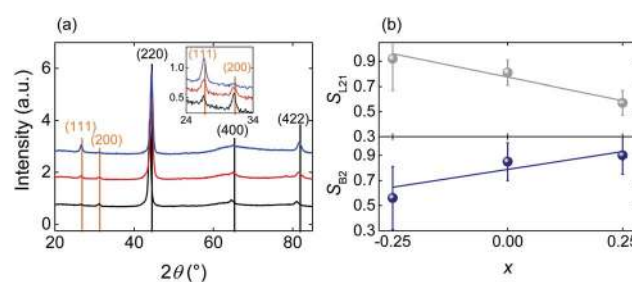


Fig. 1 Structural characterization of the annealed $\text{Fe}_{2-x}\text{Mn}_{1+x}\text{Al}$ films. (a) Full (main panel) and zoomed (inset) XRD scans for $\text{Fe}_{2.25}\text{Mn}_{0.75}\text{Al}$ (blue), Fe_2MnAl (red) and $\text{Fe}_{1.75}\text{Mn}_{1.25}\text{Al}$ (black) compositions. Fundamental and superlattice reflections are labelled in black and orange respectively. (b) Order parameters⁵⁶ $S_{\text{L}_{2_1}}$ and S_{B_2} as a function of composition x . Error bars represent the standard errors determined by repeating the measurements on three equivalent films for each value of x .



enables correlations between the spatial distribution of elements to be identified. Such correlations emerge from statistical analysis and consist of maps that describe the distribution of chemical compounds rather than just elements. The algorithm can be thought of as a generalised fitting routine in which a set of EDX spectra are modelled into a linear combination of different factors (which can be both single elements and chemical compounds), weighted by a set of corresponding loadings. The loading for each pixel represents the weight in the linear combination that reconstructs the original dataset and thus indicates the presence of a given component (and therefore the associated compound) in that pixel.

All the magnetic measurements were carried out on the 200 nm-thick $\text{Fe}_{2-x}\text{Mn}_{1+x}\text{Al}$ films.

Hysteresis loops and thermal dependence of the magnetization were measured in the range 2–300 K using a Quantum Design Magnetic Property Measurement System (MPMS 3).

XMCD measurements were performed on the I06 beamline at Diamond Light Source to measure either the atomic magnetic moments of Fe and Mn (using total electron yield detection) or element-selective hysteresis loops (using fluorescence detection). Total electron yield essentially probes surface magnetisation (due to the ~ 5 nm electron escape length), while fluorescence detection probes to a depth of ~ 200 nm and allows accurate measurements in variable magnetic fields.

To determine the magnetic moments, soft X-ray absorption spectra (XAS) near the Fe and Mn $L_{3,2}$ edges were obtained at 1.6 K for parallel (I^+) and antiparallel (I^-) alignment of photon helicity with respect to the applied magnetic field. Magnetic fields in the range ± 6 T were applied to magnetize the sample, at an angle 75° with respect to the film normal. The XMCD signal ($I^+ - I^-$) was then analyzed using XMCD sum rules^{51–53} to extract the overall magnetic moments of Fe and Mn and separate their orbital and spin contributions for two samples of $\text{Fe}_{1.75}\text{Mn}_{1.25}\text{Al}$ grown in the same deposition run. A correction factor of 1.47 was used to adjust the Mn spin moment in order to remove intermixing complications between the L_3 and L_2 edges.⁵⁴

Results

The XRD patterns of the as-deposited $\text{Fe}_{2-x}\text{Mn}_{1+x}\text{Al}$ films (ESI Note 1†) show only principal reflections of the type $(h + k + l)/2 = 2n$, consistent with the films being isotropic nanocrystals that display the disordered A2 Heusler structure and no traces of spurious phases.⁵⁵ After heat-treatment, the (111) and (200) superlattice reflections appear with intensities that vary strongly with x , consistent with the creation of chemical order due to the formation of the B2 and $L_{2,1}$ phases (Fig. 1a).

For the varying Mn content of the heat treated films, we have performed a quantitative analysis of the XRD patterns to determine the degree of B2 and $L_{2,1}$ ordering *via* the order parameters S_{B2} and $S_{L_{2,1}}$.⁵⁶ To minimize experimental uncertainties, we prepared and analyzed three equivalent samples for each value of x . For each sample we measured the peak intensities $I_{111}(I_{200})$ relative to I_{220} , I_{400} and I_{422} , thus obtaining $3 \times 3 = 9$ independent measurements of $S_{L_{2,1}}$, (S_{B2})⁵⁶ for each value of

x . We find that the average of $S_{L_{2,1}}$, for these nine measurements decreases with x , while the average of S_{B2} increases, showing that Mn enrichment favors the $L_{2,1} \rightarrow B2$ transformation (Fig. 1b). Therefore, with the increasing Mn content, Fe is more likely to occupy the Fe sites (8c) implying that X - YZ disorder decreases, while Mn and Al are more likely to exchange their sites (4a and 4b respectively) implying that Y - Z disorder increases.

The SQUID hysteresis loops measured at $T = 4$ K for the heat-treated $\text{Fe}_{2-x}\text{Mn}_{1+x}\text{Al}$ ($x = -0.25, 0, 0.25$) films (Fig. 2a) show that the coercivity increases linearly with the increasing Mn content (from 47 mT for $\text{Fe}_{2.25}\text{Mn}_{0.75}\text{Al}$ to 186 mT for $\text{Fe}_{1.75}\text{Mn}_{1.25}\text{Al}$) while the saturation magnetization decreases linearly (from 360 kA m^{-1} for $\text{Fe}_{2.25}\text{Mn}_{0.75}\text{Al}$ to 110 kA m^{-1} for $\text{Fe}_{1.75}\text{Mn}_{1.25}\text{Al}$) as previously observed in bulk samples of a similar composition.⁴³

After field-cooling to $T = 4$ K, the $\text{Fe}_{1.75}\text{Mn}_{1.25}\text{Al}$ film shows the exchange-bias effect (Fig. 2b) with the exchange-bias field $H_{\text{eb}} = (H_{\text{c1}} - H_{\text{c2}})/2 = 11.0 \pm 0.2$ mT ($H_{\text{eb}} = 36.0 \pm 0.5$ mT after field cooling to $T = 2$ K, ESI Note 2†). The shift of the hysteresis loop is apparent in the second quadrant because of the circumstantial increase in coercivity. After cooling to $T = 4$ K, $H_{\text{eb}} = 4.7 \pm 0.7$ mT for the Fe_2MnAl film and $H_{\text{eb}} = 0.0 \pm 0.2$ mT for the $\text{Fe}_{2.25}\text{Mn}_{0.75}\text{Al}$ film, showing that H_{eb} decreases linearly with the decreasing Mn content (inset Fig. 2b).

We have used XMCD to investigate the element-specific magnetic behaviour of these films. For films of all compositions, the saturated XMCD signal of the element selective hysteresis loops is ~ 5 times larger for Fe (Fig. 3a) than for Mn (Fig. 3b), showing that Fe provides the dominant contribution to the overall magnetic moment. Moreover, with the increasing Mn content, both Fe and Mn moments decrease, in agreement with the decrease of the overall magnetic moment detected by SQUID magnetometry. With the increasing Mn content, the Fe XMCD loops show a dramatic decrease in remanent magnetization and low-field susceptibility, accompanied by a progressive increase in high-field susceptibility. These changes are

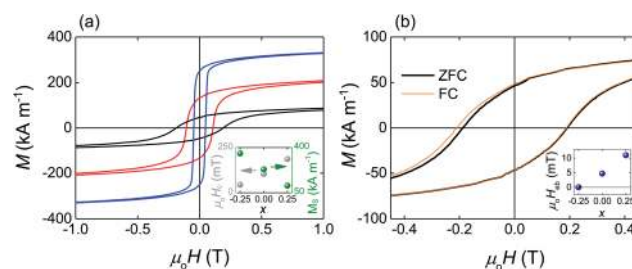


Fig. 2 Saturation magnetization, coercivity and exchange bias as a function of composition. (a) Hysteresis loops measured at $T = 4$ K after cooling in zero magnetic field for $\text{Fe}_{2.25}\text{Mn}_{0.75}\text{Al}$ (blue), Fe_2MnAl (red) and $\text{Fe}_{1.75}\text{Mn}_{1.25}\text{Al}$ (black). Inset: coercive field $\mu_0 H_c$ (grey) and saturation magnetization M_s (green) as a function of composition x at $T = 4$ K. (b) Hysteresis loops for the $\text{Fe}_{1.75}\text{Mn}_{1.25}\text{Al}$ film measured at $T = 4$ K after cooling in a zero (thick black line) and in a 600 mT (thin orange line) applied magnetic field. Inset: exchange-bias field $\mu_0 H_{\text{eb}}$ measured at $T = 4$ K as a function of composition. All the presented hysteresis loops are zooms of experimental loops obtained by sweeping the applied magnetic field in the range ± 7 T.



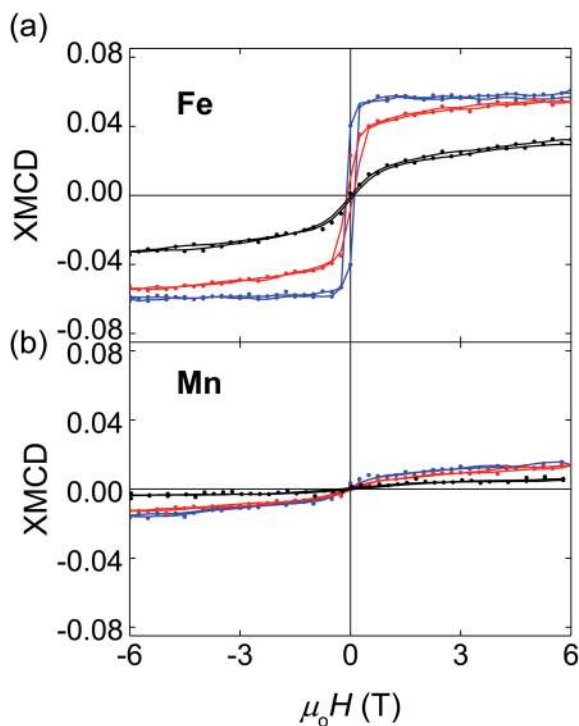


Fig. 3 XMCD element selective hysteresis loops as a function of composition. (a) Fe and (b) Mn XMCD hysteresis loops measured at $T = 1.6$ K for $\text{Fe}_{1.75}\text{Mn}_{1.25}\text{Al}$ (black), Fe_2MnAl (red) and $\text{Fe}_{2.25}\text{Mn}_{0.75}\text{Al}$ (blue). Points and solid lines represent raw and smoothed data respectively.

consistent with the hypothesis that part of the XMCD signal increasingly originates from a canted AFM phase. Similarly clear trends with the increasing Mn content are not evident in the Mn XMCD loops because of the poorer signal to noise ratio.

For the $\text{Fe}_{1.75}\text{Mn}_{1.25}\text{Al}$ film, analysis of the XMCD data (Fig. 4c and d) using sum rules^{51–53} yields $0.60 \pm 0.03 \mu_{\text{B}}$ for the magnetic moment of Fe, $0.15 \pm 0.06 \mu_{\text{B}}$ for Mn, and $1.25 \pm 0.08 \mu_{\text{B}}/\text{f.u.}$ for the total magnetic moment (we have used 3.4 and 4.5 for the 3d-hole number for Mn and Fe respectively^{57,58}). Table 1

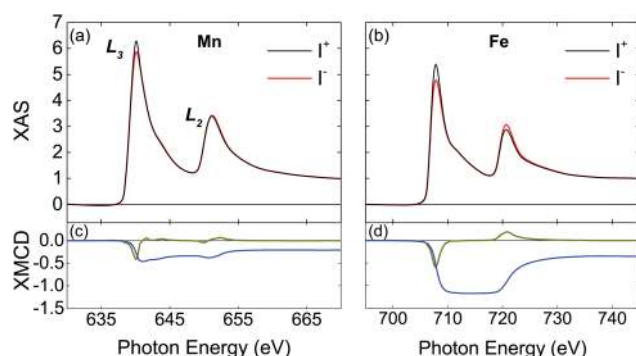


Fig. 4 XAS and XMCD spectra for $\text{Fe}_{1.75}\text{Mn}_{1.25}\text{Al}$. For the (a and c) Mn and (b and d) Fe L_2 and L_3 absorption edges, we present (a and b) X-ray absorption spectra measured with right (black) and left (red) circularly polarized light, (c and d) XMCD spectrum (green) and the integral of the XMCD spectrum (blue). All data measured at $T = 1.6$ K in a 6 T applied magnetic field.

Table 1 Summary of the XMCD sum rule analysis for the $\text{Fe}_{1.75}\text{Mn}_{1.25}\text{Al}$ film (m_{spin} , m_{orb} and m_{tot} (μ_{B}) denote the measured spin, orbital and total magnetic moments respectively)

	Fe	Mn
m_{spin}	0.57 ± 0.01	0.12 ± 0.01
m_{orb}	0.03 ± 0.03	0.03 ± 0.06
m_{tot}	0.60 ± 0.03	0.15 ± 0.06

summarizes the m_{spin} , m_{orb} and m_{tot} for the $\text{Fe}_{1.75}\text{Mn}_{1.25}\text{Al}$ film. m_{spin} dominates the total magnetic moment due to orbital hybridization and the orbital moment has been shown to be negligible.⁵⁹ The trend is also consistent with previous XMCD reports for Fe_2MnAl .⁶⁰

Given that both the Fe and the Mn moments are positive, we conclude that ferromagnetic Fe–Mn interactions are predominant. We could not apply XMCD sum rules to the films richer in Fe because their XAS spectra measured in total electron yield did not possess the required high-quality, due to some degree of surface oxidation (ESI Note 3†). Our $\text{Fe}_{1.75}\text{Mn}_{1.25}\text{Al}$ film did not show any trace of surface oxidation (even though it is the richest in Mn, which has higher oxygen affinity than Fe) likely because it displays low surface roughness, such that protection from the 2.5 nm-thick Al capping layer is very effective (ESI Note 4†).

For the increasing Mn content, changes in the magnetic properties of our Heusler films can be explained by the formation of an antiferromagnetic phase. This antiferromagnetic phase can only be the B2 phase, given that our XRD analysis shows that a partial $L_{21} \rightarrow B2$ phase transformation is the only change to the crystal structure that is induced by the increasing Mn content. The L_{21} phase of bulk Fe_2MnAl is ferromagnetic⁴³ while the B2 phase can be argued to be antiferromagnetic.^{61,62} Therefore, the properties of our films are understood in terms of a mixed state, where ferromagnetism from the L_{21} phase coexists with antiferromagnetism from the B2 phase as in bulk Ni_2MnAl .^{61,62}

For bulk Heusler alloys in the L_{21} –B2 mixed state, the magnetization curves obtained as a function of temperature after cooling with (FC) and without (ZFC) an applied magnetic field are split.^{43,62} This splitting is incompatible with a collinear homogeneous antiferromagnetic state, and has been attributed to pinning of ferromagnetic moments *via* antiferromagnetic anisotropy.^{43,62,63} This suggestion implies that the L_{21} –B2 mixed state is heterogeneous, with separated ferromagnetic and antiferromagnetic regions. However, in the absence of direct observations, the microstructure of the mixed L_{21} –B2 Heusler state has remained so far elusive.

In our nanocrystalline films, we observe split ZFC–FC curves (ESI Note 5†), consistent with the L_{21} –B2 mixed state and an heterogeneous microstructure. To check this conclusion directly, we have performed a STEM study with composition analysis (Fig. 5). The STEM-HAADF images for the increasing Mn content (Fig. 5a–c) show that the films are nanocrystalline with an average grain size that increases from 28 ± 2 nm (for $x = -0.25$) to 82 ± 3 nm (for $x = 0.25$). The corresponding elemental maps show that with the increasing Mn content the grains



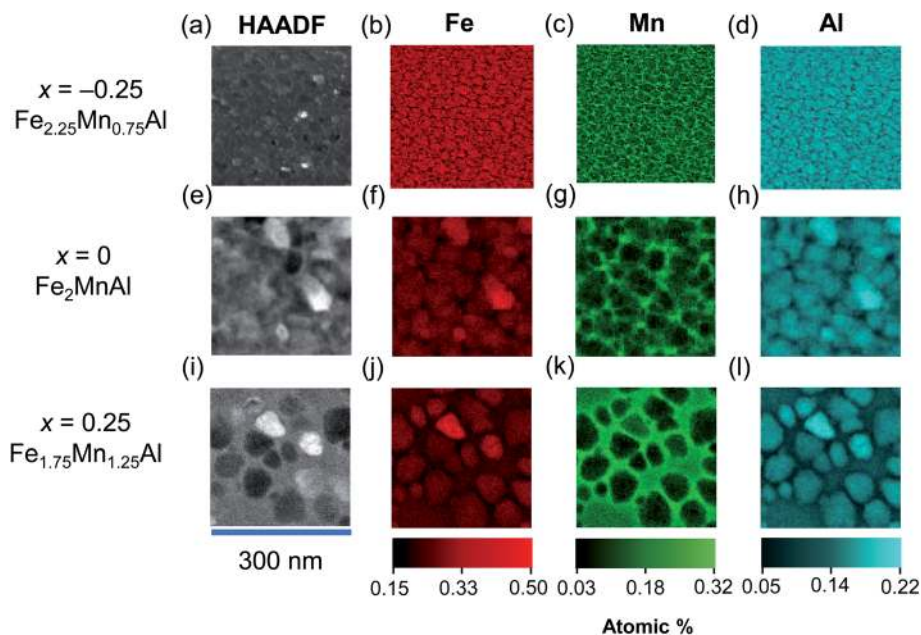


Fig. 5 Nanosegregation in $\text{Fe}_{2-x}\text{Mn}_{1+x}\text{Al}$ films with exchange-bias. HAADF images (a, e and i) for (a–d) $\text{Fe}_{2.25}\text{Mn}_{0.75}\text{Al}$ (e–h) Fe_2MnAl and (i–l) $\text{Fe}_{1.75}\text{Mn}_{1.25}\text{Al}$ and elemental quantitative EDX maps for (b, f and j) Fe, (c, g and k) Mn and (d, h and l) Al.

become progressively richer in Fe (Fig. 5d–f) and poorer in Mn (Fig. 5g–i), while the intergrain volume becomes richer in Mn and poorer in Fe. The elemental maps for Al (Fig. 5j–l) indicate a behavior similar to that of Fe. The elemental maps suggest that substituting Mn for Fe drives the nanosegregation of a Mn-rich phase outside the grains, with an Fe-rich phase inside the grains.

For the Fe_2MnAl and $\text{Fe}_{1.75}\text{Mn}_{1.25}\text{Al}$ films, that show the exchange-bias effect, NMF analysis (Fig. 6a and b) yields two separate Fe–Mn–Al ternary phases, one Fe-rich and a Mn-rich.

The compositions of these ternary phases (Table 2) should be taken as qualitative, because they can be affected by local inhomogeneities in EDX artifacts, such as fluorescence peaks and different local absorptions of emitted X-rays. While the quantification of larger-area integrated EDX data provides a more accurate estimate of the film composition, NMF demonstrates the segregation into the two phases and unambiguously shows that they are ternary compounds of Fe, Mn and Al. For both the Fe_2MnAl and the $\text{Fe}_{1.75}\text{Mn}_{1.25}\text{Al}$ films, the spatial maps (loadings) of the Fe-rich and Mn-rich phases show

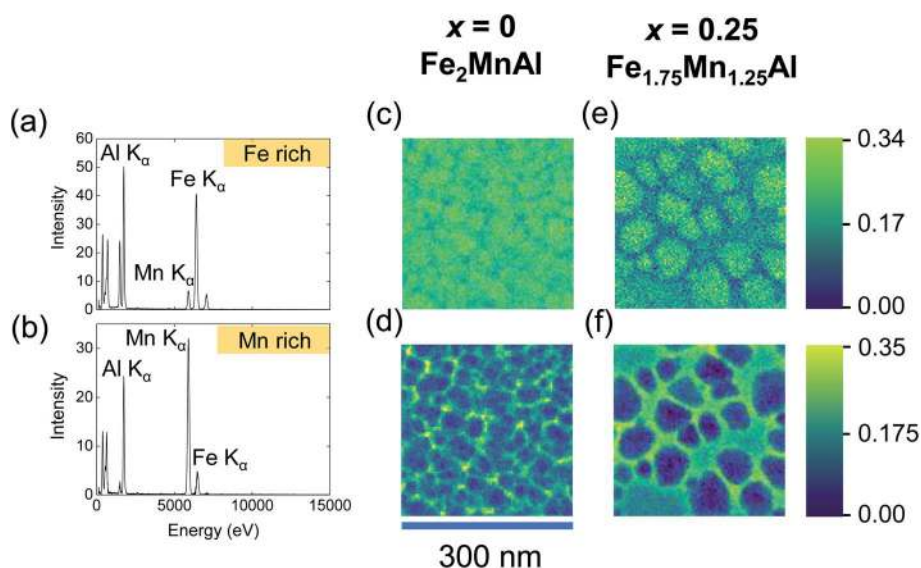


Fig. 6 Compositions of the segregated phases in Fe_2MnAl and $\text{Fe}_{1.75}\text{Mn}_{1.25}\text{Al}$ films by NMF analysis of the EDX spectra. EDX spectra for the (a) Fe-rich and (b) Mn-rich NMF factors and the corresponding loadings (spatial maps) are shown for (c and d) Fe_2MnAl and (e and f) $\text{Fe}_{1.75}\text{Mn}_{1.25}\text{Al}$ films. The colour scale intensity indicates the weight of the factor for a given pixel.



Table 2 Compositions of the nanosegregated Fe-rich and Mn-rich phases determined using the NMF algorithm for the Fe₂MnAl and Fe_{1.75}Mn_{1.25}Al films that present exchange-bias

Film	Fe-rich phase	Mn-rich phase
Fe ₂ MnAl	Fe _{2.3±0.1} Mn _{0.56±0.05} Al _{1.10±0.05}	Fe _{0.44±0.02} Mn _{3.3±0.2} Al _{0.23±0.01}
Fe _{1.75} Mn _{1.25} Al	Fe _{2.25±0.1} Mn _{0.85±0.05} Al _{0.91±0.05}	Fe _{0.45±0.02} Mn _{3.4±0.2} Al _{0.15±0.01}

that intragrain volumes are Fe-rich, while intergrain volumes are Mn-rich. For the Fe_{2.25}Mn_{0.75}Al film (data not shown), the Fe-rich factor did not show clear grains as they were homogeneously distributed over length scales consistent with negligible nanosegregation for this sample.

We now combine the microstructural information that we obtained by STEM with quantitative SQUID and XMCD magnetometry, to show that the exchange-bias effect originates from the observed nanosegregation process.

For the Fe_{1.75}Mn_{1.25}Al film, the total magnetic moment deduced from the SQUID data (using the volume of the whole film) is $0.55 \pm 0.01 \mu_B/\text{f.u.}$, *i.e.* $\sim 44\%$ of the value $1.25 \pm 0.08 \mu_B/\text{f.u.}$ obtained by XMCD. This discrepancy can be solved by noting that, due to phase segregation, the Fe-rich grains constitute $\sim 45\%$ of the field of view of a $2 \mu\text{m} \times 2 \mu\text{m}$ STEM image (zoomed image shown in Fig. 5i). Using the reduced volume occupied by the Fe-rich phase instead of the whole film, SQUID magnetometry yields a total magnetic moment of $1.22 \pm 0.06 \mu_B/\text{f.u.}$ in good agreement with XMCD. Therefore, only the Fe-rich phase is ferromagnetic, while the Mn-rich phase is antiferromagnetic.

The Fe-rich grains constitute $\sim 71\%$ of the field of view of a $2 \mu\text{m} \times 2 \mu\text{m}$ STEM image of the Fe₂MnAl film (zoomed image shown in Fig. 5f). Therefore the packing fraction of the Mn-rich (Fe-rich) phase increases (decreases) with the Mn content from $\sim 29\%$ (71%) in the Fe₂MnAl film, to $\sim 55\%$ (45%) in the Fe_{1.75}Mn_{1.25}Al film. This trend mirrors the increase (decrease) of the S_{B2} (S_{L2_1}) order parameter with the increasing Mn content (Fig. 1b) which suggests that the Mn-rich segregated phase is the B2 phase, while the Fe-rich segregated phase is the L₂₁ phase. Consistently, XRD shows no sign of other phases, either crystalline (*e.g.* β -Mn phase⁶⁴) or amorphous (as expected, in view of our magnetic data and heat treatments).

Therefore, our samples present an heterogeneous L₂₁-B2 mixed state, with ferromagnetic nanograins surrounded by antiferromagnetic regions. This microstructure is similar to core-shell systems where the exchange-bias results from interfacial exchange-coupling between the ferromagnetic core nanoparticles and the surrounding antiferromagnetic matrix.¹⁵

In summary, we have presented the first study of the magnetic and structural properties of Heusler Fe₂MnAl individual thin films. The films of interest display a mixed L₂₁-B2 crystallographic structure (induced by post-deposition heat treatments) and are phase-separated due to a nanosegregation process which depends on the Mn concentration. This nanosegregation creates a microstructure similar to core/shell systems, and thus establishes an exchange-bias effect that can be tuned by varying the Mn concentration. We show that exchange-bias arises from interfacial exchange-coupling

between the Fe-rich ferromagnetic L₂₁ phase and the Mn-rich antiferromagnetic B2 phase. Our report of exchange-bias in an environmentally friendly nanocomposite film should inspire the development of single-layer spin valve devices which are sustainable.

Conflicts of interest

There are no conflicts to declare.

Acknowledgements

This work was funded by H2020-MSCA-ITN-2014 SELECTA (grant agreement no. 642642 of the European Commission). G. D. acknowledges funding from the European Union Horizon 2020 research and innovation programme under grant agreement no. 823717 – ESTEEM3. We thank Diamond Light Source for time on beamline I06 (proposal SI18619). We also thank Mary Vickers, Jan-Michael Schmalhorst, Rui Wu, Marco Coisson, Markus Meinert and Thomas Forrest for helpful discussions.

References

- 1 D. Niarchos, G. Giannopoulos, M. Gjoka, C. Sarafidis, V. Psycharis, J. Ruzs, A. Edström, O. Eriksson, P. Toson, J. Fidler, E. Anagnostopoulou, U. Sanyal, F. Ott, L.-M. Lacroix, G. Viau, C. Bran, M. Vazquez, L. Reichel, L. Schultz and S. Fähler, *JOM*, 2015, **67**, 1318–1328.
- 2 *Report on Critical Raw Materials for the EU: Critical Raw Materials Profiles*, Eur. Commission, 2014, pp. 1–202, https://ec.europa.eu/growth/sectors/raw-materials/specific-interest/critical_en.
- 3 S. H. Nie, L. J. Zhu, J. Lu, D. Pan, H. L. Wang, X. Z. Yu, J. X. Xiao and J. H. Zhao, *Appl. Phys. Lett.*, 2013, **102**, 152405.
- 4 J. M. D. Coey, *Scr. Mater.*, 2012, **67**, 524–529.
- 5 O. Gutfleisch, M. A. Willard, E. Brück, C. H. Chen, S. G. Sankar and J. P. Liu, *Adv. Mater.*, 2011, **23**, 821–842.
- 6 W. H. Meiklejohn and C. P. Bean, *Phys. Rev.*, 1957, **105**, 904–913.
- 7 A. Hirohata, T. Huminiuc, J. Sinclair, H. Wu, M. Samiepour, G. Vallejo-Fernandez, K. O'Grady, J. Balluf, M. Meinert, G. Reiss, E. Simon, S. Khmelevskiy, L. Szunyogh, R. Y. Díaz, U. Nowak, T. Tsuchiya, T. Sugiyama, T. Kubota, K. Takanashi, N. Inami and K. Ono, *J. Phys. D: Appl. Phys.*, 2017, **50**, 443001.
- 8 J. Nogués, J. Sort, V. Langlais, V. Skumryev, S. Suriñach, J. S. Muñoz and M. D. Baró, *Phys. Rep.*, 2005, **422**, 65–117.



- 9 J. A. De Toro, D. P. Marques, P. Muñoz, V. Skumryev, J. Sort, D. Givord and J. Nogués, *Phys. Rev. Lett.*, 2015, **115**, 057201.
- 10 R. H. Kodama and A. E. Berkowitz, *Phys. Rev. B: Condens. Matter Mater. Phys.*, 1999, **59**, 6321–6336.
- 11 S. Mourdikoudis, K. Simeonidis, M. Angelakeris, I. Tsiaoussis, O. Kalogirou, C. Desvaux, C. Amiens and B. Chaudret, *Mod. Phys. Lett. B*, 2007, **21**, 1161–1168.
- 12 R. K. Zheng, G. H. Wen, K. K. Fung and X. X. Zhang, *Phys. Rev. B: Condens. Matter Mater. Phys.*, 2004, **69**, 214431.
- 13 P. Brahma, S. Banerjee, D. Das, P. K. Mukhopadhyay, S. Chatterjee, A. K. Nigam and D. Chakravorty, *J. Magn. Magn. Mater.*, 2002, **246**, 162–168.
- 14 J. D. A. Gomes, M. H. Sousa, F. A. Tourinho, R. Aquino, G. J. Da Silva, J. Depeyrot, E. Dubois and R. Perzynski, *J. Phys. Chem. C*, 2008, **112**, 6220–6227.
- 15 V. Skumryev, S. Stoyanov, Y. Zhang, G. Hadjipanayis, D. Divord and J. Nogués, *Nature*, 2003, **423**, 850–853.
- 16 C. Binns, N. Domingo, A. M. Testa, D. Fiorani, K. N. Trohidou, M. Vasilakaki, J. A. Blackman, A. M. Asaduzzaman, S. Baker, M. Roy and D. Peddis, *J. Phys.: Condens. Matter*, 2010, **22**, 436005.
- 17 A. Perez, P. Melinon, V. Dupuis, P. Jensen, B. Prevel, J. Tuaille, L. Bardotti, C. Martet, M. Treilleux, M. Broyer, M. Pellarin, J. L. Vaille, B. Palpant and J. Lerme, *J. Phys. D: Appl. Phys.*, 1997, **30**, 709–721.
- 18 J. Sort, V. Langlais, S. Doppiu, B. Dieny, S. Suriñach, J. S. Muñoz, M. D. Baró, C. Laurent and J. Nogués, *Nanotechnology*, 2004, **15**, S211–S214.
- 19 J. Y. Yi, G. A. Hirata and M. L. Rudee, *Mater. Res. Soc. Symp. Proc.*, 2001, **674**, 4.1–4.6.
- 20 Y. Shi, J. Ding, Z. X. Shen, W. X. Sun and L. Wang, *Solid State Commun.*, 2000, **115**, 237–241.
- 21 S. Koga and K. Narita, *J. Appl. Phys.*, 1982, **53**, 1655–1659.
- 22 S. J. Kim, D. H. Lim, S. J. Kim, C. S. Yoon and C. K. Kim, *IEEE Trans. Magn.*, 2003, **39**, 2690–2692.
- 23 F. Jiménez-Villacorta, J. L. Marion, T. Sepehrifar, M. Daniil, M. A. Willard and L. H. Lewis, *Appl. Phys. Lett.*, 2012, **100**, 112408.
- 24 P. Song, L. Ma, G. K. Li, C. M. Zhen, C. Wang, E. K. Liu, W. H. Wang, J. L. Chen, G. H. Wu, Y. H. Xia, J. Zhang, C. M. Xie, H. Li and D. L. Hou, *Phys. Rev. Appl.*, 2019, **11**, 054018.
- 25 A. K. Nayak, M. Nicklas, S. Chadov, C. Shekhar, Y. Skourski, J. Winterlik and C. Felser, *Phys. Rev. Lett.*, 2013, **110**, 127204.
- 26 X. Wang, M. M. Li, J. Li, J. Y. Yang, L. Ma, C. M. Zhen, D. L. Hou, E. K. Liu, W. H. Wang and G. H. Wu, *Appl. Phys. Lett.*, 2018, **113**, 212402.
- 27 M. Khan, I. Dubenko, S. Stadler and N. Ali, *Appl. Phys. Lett.*, 2007, **91**, 072510.
- 28 H. C. Xuan, Q. Q. Cao, C. L. Zhang, S. C. Ma, S. Y. Chen, D. H. Wang, Y. W. Du, H. C. Xuan, Q. Q. Cao, C. L. Zhang, S. C. Ma, S. Y. Chen and D. H. Wang, *Appl. Phys. Lett.*, 2010, **96**, 202502.
- 29 Z. Li, C. Jing, J. Chen, S. Yuan, S. Cao, J. Zhang, Z. Li, C. Jing, J. Chen, S. Yuan, S. Cao and J. Zhang, *Appl. Phys. Lett.*, 2007, **91**, 112505.
- 30 R. Vishnoi and D. Kaur, *J. Alloys Compd.*, 2011, **509**, 2833–2837.
- 31 N. Teichert, A. Boehnke, A. Behler, B. Weise, A. Waske and A. Hütten, *Appl. Phys. Lett.*, 2015, **106**, 192401.
- 32 A. Behler, N. Teichert, B. Dutta, A. Waske, T. Hickel, A. Auge, A. Hütten and J. Eckert, *AIP Adv.*, 2013, **3**, 122112.
- 33 R. Machavarapu and G. Jakob, *AIP Adv.*, 2015, **5**, 037108.
- 34 A. K. Nayak, K. G. Suresh and A. K. Nigam, *J. Phys. D: Appl. Phys.*, 2009, **42**, 115004.
- 35 X. G. Zhao, M. Tong, C. W. Shih, B. Li, W. C. Chang, W. Liu and Z. D. Zhang, *J. Appl. Phys.*, 2013, **113**, 17A913.
- 36 A. K. Nayak, M. Nicklas, S. Chadov, P. Khuntia, C. Shekhar, A. Kalache, M. Baenitz, Y. Skourski, V. K. Guduru, A. Puri, U. Zeitler, J. M. D. Coey and C. Felser, *Nat. Mater.*, 2015, **14**, 679–684.
- 37 H. Pan, L. Ma, G. K. Li, L. Y. Jia, C. M. Zhen, D. L. Hou, W. H. Wang, E. K. Liu, J. L. Chen and G. H. Wu, *Intermetallics*, 2017, **86**, 116–120.
- 38 Z. Han, B. Qian, D. Wang, P. Zhang and F. Jiang, *Appl. Phys. Lett.*, 2013, **103**, 172403.
- 39 I. Galanakis, P. H. Dederichs and N. Papanikolaou, *Phys. Rev. B: Condens. Matter Mater. Phys.*, 2002, **66**, 174429.
- 40 R. A. de Groot and F. Mueller, *Phys. Rev. Lett.*, 1981, **50**, 2024–2027.
- 41 J. Kübler, *Physica B+C*, 1984, **127**, 257–263.
- 42 Y. Sakuraba, J. Nakata, M. Oogane, H. Kubota, Y. Ando, A. Sakuma and T. Miyazaki, *Jpn. J. Appl. Phys.*, 2005, **44**, L1100–L1102.
- 43 C. Paduani, A. Migliavacca, W. E. Pöttker, J. Schaf, J. C. Krause, J. D. Ardisson, C. A. Samudio Pérez, A. Y. Takeuchi and M. I. Yoshida, *Phys. B*, 2007, **398**, 60–64.
- 44 K. H. J. Buschow, P. Engen and P. G. van Engen, *J. Magn. Magn. Mater.*, 1981, **25**, 90–96.
- 45 A. Vinesh, H. Bhargava, N. Lakshmi and K. Venugopalan, *J. Appl. Phys.*, 2009, **105**, 07A309.
- 46 V. P. Pauca, J. Piper and R. J. Plemmons, *Linear Algebra Its Appl.*, 2006, **416**, 29–47.
- 47 S. Cacovich, F. Matteocci, M. Abdi-Jalebi, S. D. Stranks, A. Di Carlo, C. Ducati and G. Divitini, *ACS Appl. Energy Mater.*, 2018, **1**, 7174–7181.
- 48 D. Nečas and P. Klapetek, *Cent. Eur. J. Phys.*, 2012, **10**, 181–188.
- 49 K. Momma and F. Izumi, *J. Appl. Crystallogr.*, 2011, **44**, 1272–1276.
- 50 F. de la Peña, E. Prestat, V. Tonaas Fauske, P. Burdet, P. Jokubauskas, M. Nord, T. Ostasevicius, K. E. MacArthur, M. Sarahan, D. N. Johnstone, J. Taillon, J. Lähnemann, V. Migunov, A. Eljarrat, J. Caron, T. Aarholt, S. Mazzucco, M. Walls, T. Slater and F. Winkler, *hyperspy/hyperspy: HyperSpy v1.5 (Version v1.5)*. Zenodo, July 26, 2019, DOI: 10.5281/zenodo.3352325.
- 51 P. Carra, B. T. Thole, M. Altarelli and X. Wang, *Phys. Rev. Lett.*, 1993, **70**, 694–697.
- 52 B. T. Thole, P. Carra, F. Sette and G. Van Der Laan, *Phys. Rev. Lett.*, 1992, **68**, 1943–1946.



- 53 C. T. Chen, Y. U. Idzerda, H. J. Lin, N. V. Smith, G. Meigs, E. Chaban, G. H. Ho, E. Pellegrin and F. Sette, *Phys. Rev. Lett.*, 1995, **75**, 152–155.
- 54 K. W. Edmonds, N. R. S. Farley, T. K. Johal, G. Van Der Laan, R. P. Champion, B. L. Gallagher and C. T. Foxon, *Phys. Rev. B: Condens. Matter Mater. Phys.*, 2005, **71**, 064418.
- 55 P. J. Webster and K. R. A. Ziebeck, *J. Phys. Chem. Solids*, 1971, **32**, 1221–1231.
- 56 Y. Takamura, R. Nakane and S. Sugahara, *J. Appl. Phys.*, 2009, **105**, 07B109.
- 57 P. Klaer, B. Balke, V. Alijani, J. Winterlik, G. H. Fecher, C. Felser and H. J. Elmers, *Phys. Rev. B: Condens. Matter Mater. Phys.*, 2011, **84**, 144413.
- 58 H. J. Elmers, G. H. Fecher, D. Valdaitsev, S. A. Nepijko, A. Gloskovskii, G. Jakob, G. Schönhense, S. Wurmehl, T. Block, C. Felser, P. C. Hsu, W. L. Tsai and S. Cramm, *Phys. Rev. B: Condens. Matter Mater. Phys.*, 2003, **67**, 104412.
- 59 I. Galanakis, *Phys. Rev. B: Condens. Matter Mater. Phys.*, 2005, **71**, 012413.
- 60 K. Soda, O. Yoshimoto, H. Nozaki, T. Takeuchi, U. Mizutani, H. Kato, M. Kato, Y. Nishino, S. Imada, S. Suga, T. Matsushita and Y. Saitoh, *J. Synchrotron Radiat.*, 2001, **8**, 455–456.
- 61 T. Tsuchiya, T. Kubota, T. Sugiyama, T. Huminiuc, A. Hirohata and K. Takanashi, *J. Phys. D: Appl. Phys.*, 2016, **49**, 235001.
- 62 M. Acet, E. Duman, E. F. Wassermann, L. Mañosa and A. Planes, *J. Appl. Phys.*, 2002, **92**, 3867–3871.
- 63 C. Paduani, A. Migliavacca, M. L. Sebben, J. D. Ardisson, M. I. Yoshida, S. Soriano and M. Kalisz, *Solid State Commun.*, 2007, **141**, 145–149.
- 64 C. E. A. Guimarães, J. R. C. Proveti, V. P. Nascimento, A. Biondo, C. Larica and E. C. Passamani, *J. Magn. Magn. Mater.*, 2018, **458**, 225–231.

