

 Open access • Journal Article • DOI:10.1103/PHYSREVB.81.134510

Experimental demonstration of a robust and scalable flux qubit — Source link

Richard Harris, J. Johansson, Andrew J. Berkley, Mark W. Johnson ...+15 more authors

Institutions: D-Wave Systems, University of Kansas

Published on: 07 Apr 2010 - Physical Review B (American Physical Society)

Topics: Flux qubit, Phase qubit, Charge qubit and Noise spectral density

Related papers:

- [Quantum annealing with manufactured spins](#)
- [A Quantum Adiabatic Evolution Algorithm Applied to Random Instances of an NP-Complete Problem](#)
- [Quantum annealing in the transverse Ising model](#)
- [Experimental investigation of an eight-qubit unit cell in a superconducting optimization processor](#)
- [Compound Josephson-junction coupler for flux qubits with minimal crosstalk](#)

Share this paper:    

View more about this paper here: <https://typeset.io/papers/experimental-demonstration-of-a-robust-and-scalable-flux-49ognh89jo>



Experimental demonstration of a robust and scalable flux qubit

R. Harris,¹ J. Johansson,¹ A. J. Berkley,¹ M. W. Johnson,¹ T. Lanting,¹ Siyuan Han,² P. Bunyk,¹ E. Ladizinsky,¹ T. Oh,¹ I. Perminov,¹ E. Tolkacheva,¹ S. Uchaikin,¹ E. M. Chapple,¹ C. Enderud,¹ C. Rich,¹ M. Thom,¹ J. Wang,¹ B. Wilson,¹ and G. Rose¹

¹*D-Wave Systems, 4401 Still Creek Drive, Burnaby, British Columbia, Canada V5C 6G9*

²*Department of Physics and Astronomy, University of Kansas, Lawrence, Kansas 66045, USA*

(Received 23 September 2009; revised manuscript received 11 February 2010; published 7 April 2010)

A rf-superconducting quantum interference device (SQUID) flux qubit that is robust against fabrication variations in Josephson-junction critical currents and device inductance has been implemented. Measurements of the persistent current and of the tunneling energy between the two lowest-lying states, both in the coherent and incoherent regimes, are presented. These experimental results are shown to be in agreement with predictions of a quantum-mechanical Hamiltonian whose parameters were independently calibrated, thus justifying the identification of this device as a flux qubit. In addition, measurements of the flux and critical current noise spectral densities are presented that indicate that these devices with Nb wiring are comparable to the best Al wiring rf SQUIDs reported in the literature thus far, with a $1/f$ flux noise spectral density at 1 Hz of $1.3_{-0.5}^{+0.7} \mu\Phi_0/\sqrt{\text{Hz}}$. An explicit formula for converting the observed flux noise spectral density into a free-induction-decay time for a flux qubit biased to its optimal point and operated in the energy eigenbasis is presented.

DOI: [10.1103/PhysRevB.81.134510](https://doi.org/10.1103/PhysRevB.81.134510)

PACS number(s): 85.25.Dq, 03.67.Lx

I. MOTIVATION

Experimental efforts to develop useful solid-state quantum information processors have encountered a host of practical problems that have substantially limited progress. While the desire to reduce noise in solid-state qubits appears to be the key factor that drives much of the recent work in this field, it must be acknowledged that there are formidable challenges related to architecture, circuit density, fabrication variation, calibration, and control that also deserve attention. For example, a qubit that is inherently exponentially sensitive to fabrication variations with no recourse for *in situ* correction holds little promise in any large-scale architecture, even with the best of modern fabrication facilities. Likewise, a qubit that requires an inordinate number of custom-tuned time-dependent control signals to be launched onto the chip, in order to correct for fabrication variations or to compensate for unintended on-chip crosstalk, would also not be useful in a large-scale processor. Thus, a qubit designed in the absence of information concerning its ultimate use in a larger-scale system may prove to be of little utility in the future. In what follows, we present an experimental demonstration of a superconducting flux qubit¹ that has been specifically designed to address several issues that pertain to the implementation of a large-scale quantum information processor. While noise is not the central focus of this paper, we nonetheless present experimental evidence that, despite its physical size and relative complexity, the observed flux noise in this flux qubit is comparable to the quietest such devices reported on in the literature to date.

It has been well established that rf superconducting quantum interference devices (SQUIDs) can be used as qubits given an appropriate choice of device parameters. Such devices can be operated as a flux-biased phase qubit using two intrawell energy levels² or as a flux qubit using any pair of interwell levels.¹ This paper will focus on an experimental

demonstration of a rf-SQUID flux qubit using the two lowest-lying states. The design is shown to be *robust* in that the undesirable effects from realistic levels of fabrication variations can be readily compensated *in situ*. In addition, the design is deemed to be *scalable* in two respects. First, the signals needed to compensate for fabrication variations are *static* flux biases, as opposed to custom-tuned time-dependent flux biases. This is a significant advantage as the qubit can then be controlled by static on-chip magnetic memory devices that are programmed using a scalable control signal architecture based on single flux quantum (SFQ) circuitry. Such a scheme makes economical use of what will inevitably be a limited number of on-chip bias lines in any practical processor. Second, the design allows one to compensate for fabrication variations both within single qubits and between multiple qubits, thus providing a means of homogenizing qubit parameters across a multiqubit device. It is stressed that this latter issue is of critical importance in the development of useful large-scale quantum information processors that could potentially involve thousands of qubits.³ Note that in this regard, the ion-trap approach to building a quantum information processor has a considerable advantage in that the qubits are intrinsically identical, albeit the challenge is then to characterize and control the trapping potential with high fidelity.⁴ While our research group's express interest is in the development of a large-scale superconducting adiabatic quantum optimization (AQO) processor,^{5,6} it should be noted that many of the practical problems confronted herein are also of concern to those interested in implementing gate model quantum computation (GMQC) processors⁷ using superconducting technologies.

This paper is organized as follows. In Sec. II, a theoretical argument is presented to justify the rf-SQUID design that has been implemented. It is shown that this flux qubit design is robust against fabrication variations in Josephson-junction critical current. Second, it is argued why it is necessary to

include a tunable inductance in the flux qubit body to account for both differences in inductance between qubits in a multiqubit device and to compensate for changes in qubit inductance during operation. Thereafter, the focus of the paper shifts toward an experimental demonstration of the rf-SQUID flux qubit. The architecture of the experimental device and its operation are discussed in Sec. III and then a series of experiments to characterize the rf SQUID and to highlight its control are presented in Sec. IV. Section V contains measurements of properties that indicate that this more complex rf SQUID is indeed a flux qubit. Flux and critical current noise measurements and a formula for converting the measured flux noise spectral density into a free-induction (Ramsey) decay time are presented in Sec. VI. A summary of key conclusions is provided in Sec. VII. Detailed calculations of multiple Josephson-junction rf-SQUID Hamiltonians have been placed in Appendixes A and B.

II. RF-SQUID FLUX QUBIT DESIGN

The behavior of most superconducting devices is governed by three types of macroscopic parameters: the critical currents of any Josephson junctions, the net capacitance across the junctions, and the inductance of the superconducting wiring. The Hamiltonian for many of these devices can generically be written as

$$\mathcal{H} = \sum_i \left[\frac{Q_i^2}{2C_i} - E_{Ji} \cos(\varphi_i) \right] + \sum_n U_n \frac{(\varphi_n - \varphi_n^x)^2}{2}, \quad (1)$$

where C_i , $E_{Ji} = I_i \Phi_0 / 2\pi$, and I_i denote the capacitance, Josephson energy, and critical current of Josephson junction i , respectively. The terms in the first sum are readily recognized as being the Hamiltonians of the individual junctions for which the quantum-mechanical phase across the junction φ_i and the charge collected on the junction Q_i obey the commutation relation $[\Phi_0 \varphi_i / 2\pi, Q_j] = i\hbar \delta_{ij}$. The index n in the second summation is over closed inductive loops. External fluxes threading each closed loop, Φ_n^x , have been represented as phases $\varphi_n^x \equiv 2\pi \Phi_n^x / \Phi_0$. The quantum-mechanical phase drop experienced by the superconducting condensate circulating around any closed loop is denoted as φ_n . The overall potential-energy scale factor for each closed loop is given by $U_n \equiv (\Phi_0 / 2\pi)^2 / L_n$. Here, L_n can be either a geometric inductance from wiring or Josephson inductance from large junctions.⁸ Hamiltonian (1) will be used as the progenitor for all device Hamiltonians that follow.

A. Compound-compound Josephson-junction structure

A sequence of rf-SQUID architectures is depicted in Fig. 1. The most primitive version of such a device is depicted in Fig. 1(a) and more complex variants in Figs. 1(b) and 1(c). For the single-junction rf SQUID [Fig. 1(a)], the phase across the junction can be equated to the phase drop across the body of the rf SQUID: $\varphi_1 = \varphi_q$. The Hamiltonian for this device can then be written as

$$\mathcal{H} = \frac{Q_q^2}{2C_q} + V(\varphi_q), \quad (2a)$$

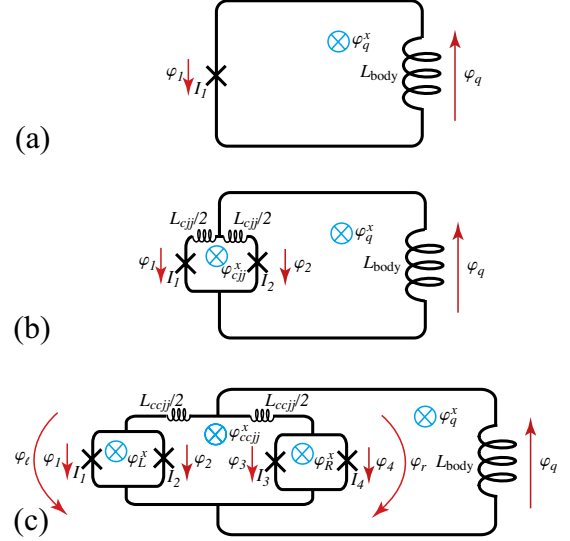


FIG. 1. (Color online) (a) A single-junction rf-SQUID qubit. (b) CJJ rf-SQUID qubit. (c) CCJJ rf-SQUID qubit. Junction critical currents I_i and junction phases φ_i ($1 \leq i \leq 4$) as noted. Net device phases are denoted as φ_α , where $\alpha \in (\ell, r, q)$. External fluxes, Φ_n^x , are represented as phases $\varphi_n^x \equiv 2\pi \Phi_n^x / \Phi_0$, where $n \in (L, R, \text{cjj}, \text{ccjj}, q)$. Inductances of the rf-SQUID body, CJJ loop, and CCJJ loop are denoted as L_{body} , L_{cjj} , and L_{ccjj} , respectively.

$$V(\varphi_q) = U_q \left\{ \frac{(\varphi_q - \varphi_q^x)^2}{2} - \beta \cos(\varphi_q) \right\}, \quad (2b)$$

$$\beta = \frac{2\pi L_q I_q^c}{\Phi_0}, \quad (2c)$$

with the qubit inductance $L_q \equiv L_{\text{body}}$, qubit capacitance $C_q \equiv C_1$, and qubit critical current $I_q^c \equiv I_1$ in this particular case. If this device has been designed such that $\beta > 1$ and is flux biased such that $\varphi_q^x \approx \pi$, then the potential energy $V(\varphi_q)$ will be bistable. With increasing β an appreciable potential-energy barrier forms between the two local minima of $V(\varphi_q)$, through which the two lowest-lying states of the rf SQUID may couple via quantum tunneling. It is these two lowest-lying states, which are separated from all other rf-SQUID states by an energy of order of the rf-SQUID plasma energy $\hbar \omega_p \equiv \hbar / \sqrt{L_q C_q}$, that form the basis of a qubit. One can write an effective low-energy version of Hamiltonian (2a) as⁹

$$\mathcal{H}_q = -\frac{1}{2} [\epsilon \sigma_z + \Delta_q \sigma_x], \quad (3)$$

where $\epsilon = 2|I_q^p|(\Phi_q^x - \Phi_0/2)$, $|I_q^p|$ is the magnitude of the persistent current that flows about the inductive q loop when the device is biased hard [$\epsilon \gg \Delta_q$] to one side, and Δ_q represents the tunneling energy between the otherwise degenerate countercirculating persistent current states at $\Phi_q^x = \Phi_0/2$.

A depiction of the one-dimensional potential energy and the two lowest-energy states of an rf SQUID at degeneracy ($\Phi_q^x = \Phi_0/2$) for nominal device parameters is shown in Fig. 2. In this diagram, the ground and first-excited states are denoted by $|g\rangle$ and $|e\rangle$, respectively. These two energy levels constitute the energy eigenbasis of a flux qubit. An alternate

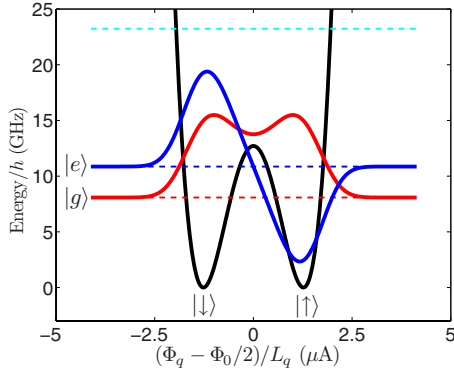


FIG. 2. (Color online) Depiction of the two lowest-lying states of an rf SQUID at degeneracy ($\epsilon=0$) with nomenclature for the energy basis ($|g\rangle, |e\rangle$) and flux basis ($|\downarrow\rangle, |\uparrow\rangle$) as indicated.

representation of these states, which is frequently referred to as either the flux or persistent current basis, can be formed by taking the symmetric and antisymmetric combinations of the energy eigenstates: $|\downarrow\rangle = (|g\rangle + |e\rangle)/\sqrt{2}$ and $|\uparrow\rangle = (|g\rangle - |e\rangle)/\sqrt{2}$, which yield two roughly Gaussian-shaped wave functions that are centered about each of the wells shown in Fig. 2. The magnitude of the persistent current used in Eq. (3) is then defined by $|I_q^p| \equiv |\langle \uparrow | (\Phi_q - \Phi_0/2)/L_q | \uparrow \rangle|$. The tunneling energy is given by $\Delta_q = \langle e | \mathcal{H}_q | e \rangle - \langle g | \mathcal{H}_q | g \rangle$.

The aforementioned dual representation of the states of a flux qubit allows two distinct modes of operation of the flux qubit as a binary logical element with a logical basis defined by the states $|0\rangle$ and $|1\rangle$. In the first mode, the logical basis is mapped onto the energy eigenbasis: $|0\rangle \rightarrow |g\rangle$ and $|1\rangle \rightarrow |e\rangle$. This mode is useful for optimizing the coherence times of flux qubits as the dispersion of Hamiltonian (3) is flat as a function of Φ_q^x to first order for $\epsilon \approx 0$, thus providing some protection from the effects of low-frequency flux noise.¹⁰ However, this is not a convenient mode of operation for implementing interactions between flux qubits.^{11,12} In the second mode, the logical basis is mapped onto the persistent current basis: $|0\rangle \rightarrow |\downarrow\rangle$ and $|1\rangle \rightarrow |\uparrow\rangle$. This mode of operation facilitates the implementation of interqubit interactions via inductive couplings, but does so at the expense of coherence times. GMQC schemes exist that attempt to leverage the benefits of both of the above modes of operation.^{13–15} On the other hand, those interested in implementing AQO strictly use the second mode of operation cited above. This, very naturally, leads to some interesting properties. First and foremost, in the coherent regime at $\epsilon=0$, the ground state maps onto $|g\rangle = (|0\rangle + |1\rangle)/\sqrt{2}$, which implies that it is a superposition state with a fixed phase between components in the logical basis. Second, the logical basis is not coincident with the energy eigenbasis, except in the extreme limit $|\epsilon|/\Delta_q \gg 1$. As such, the qubit should not be viewed as an otherwise free spin- $\frac{1}{2}$ in a magnetic field, rather it maps onto an Ising spin subjected to a magnetic field with both a longitudinal ($B_z \rightarrow \epsilon$) and a transverse ($B_x \rightarrow \Delta_q$) component.¹⁶ In this case, it is the competition between ϵ and Δ_q which dictates the relative amplitudes of $|\downarrow\rangle$ and $|\uparrow\rangle$ in the ground-state wave function $|g\rangle$, thereby enabling logical operations that make *no* explicit use of the excited state $|e\rangle$. This latter mode of operation of the flux qubit has connections to the

fields of quantum magnetism¹⁷ and optimization theory.¹⁸ Interestingly, systems of coupled flux qubits that are operated in this mode bear considerable resemblance to Feynman's original vision of how to build a quantum computer.¹⁹

While much seminal work has been done on single junction and the related three-Josephson-junction rf-SQUID flux qubit,^{20–31} it has been recognized that such devices would be impractical in a large-scale quantum information processor as their properties are exceptionally sensitive to fabrication variations. In particular, in the regime $E_{J1} \gg \hbar\omega_p$, $\Delta_q \propto \exp(-\hbar\omega_p/E_{J1})$. Thus, it would be unrealistic to expect a large-scale processor involving a multitude of such devices to yield from even the best superconducting fabrication facility. As such, these devices cannot be viewed as being robust. Moreover, implementation of AQO requires the ability to actively tune Δ_q from being the dominant energy scale in the qubit to being essentially negligible during the course of a computation. Thus the single-junction rf-SQUID flux qubit is of limited practical utility and has passed out of favor as a prototype qubit.

The next step in the evolution of the single-junction flux qubit and related variants was the compound Josephson-junction (CJJ) rf SQUID, as depicted in Fig. 1(b). This device was first reported upon by Han *et al.*³² and was the first type of flux qubit to display signatures of quantum superposition of macroscopic states.³³ The CJJ rf SQUID has been used by other research groups^{13,34,35} and a related four-Josephson-junction device has been proposed.^{20,21} The CJJ rf-SQUID flux qubit and related variants have reappeared in a gradiometric configuration in more recent history.^{14,36,37} Here, the single junction of Fig. 1(a) has been replaced by a flux biased dc SQUID of inductance L_{cjj} that allows one to tune the critical current of the rf SQUID *in situ*. Let the applied flux threading this structure be denoted by Φ_{cjj}^x . It is shown in Appendix A that the Hamiltonian for this system can be written as

$$\mathcal{H} = \sum_n \left[\frac{Q_n^2}{2C_n} + U_n \frac{(\varphi_n - \varphi_n^x)^2}{2} \right] - U_q \beta_{\text{eff}} \cos(\varphi_q - \varphi_q^0), \quad (4a)$$

where the sum is over $n \in \{q, \text{cjj}\}$, $C_q \equiv C_1 + C_2$, $1/C_{\text{cjj}} \equiv 1/C_1 + 1/C_2$, and $L_q \equiv L_{\text{body}} + L_{\text{cjj}}/4$. The two-dimensional potential energy in Hamiltonian (4a) is characterized by

$$\beta_{\text{eff}} = \beta_+ \cos\left(\frac{\varphi_{\text{cjj}}}{2}\right) \sqrt{1 + \left[\frac{\beta_- \tan(\varphi_{\text{cjj}}/2)}{\beta_+}\right]^2}, \quad (4b)$$

$$\varphi_q^0 \equiv 2\pi \frac{\Phi_q^0}{\Phi_0} = -\arctan\left(\frac{\beta_- \tan(\varphi_{\text{cjj}}/2)}{\beta_+}\right), \quad (4c)$$

$$\beta_{\pm} \equiv 2\pi L_q (I_1 \pm I_2) / \Phi_0. \quad (4d)$$

Note that if $\cos(\varphi_{\text{cjj}}/2) < 0$, then $\beta_{\text{eff}} < 0$ in Hamiltonian (4a). This feature provides a natural means of shifting the qubit degeneracy point from $\varphi_q^x = \pi$, as in the single-junction rf-SQUID case, to $\varphi_q^x \approx 0$. It has been assumed in all that follows that this π -shifted mode of operation of the CJJ rf SQUID has been invoked.

Hamiltonian (4a) is similar to that of a single-junction rf SQUID, except that it has a φ_{cjj} -dependent tunnel barrier through β_{eff} , and an effective critical current $I_q \equiv I_1 + I_2$. For $L_{\text{cjj}}/L_q \ll 1$, it is reasonable to assume that $\varphi_{\text{cjj}} \approx 2\pi\Phi_{\text{cjj}}^x/\Phi_0$. Consequently, the CJJ rf SQUID facilitates *in situ* tuning of the tunneling energy through Φ_{cjj}^x . In this regard, the CJJ rf-SQUID flux qubit can be viewed as being considerably more robust than its single-junction progenitor as one can tune the device to yield a useful tunneling energy. While this is clearly desirable, one does pay for the additional flexibility by adding more complexity to the rf-SQUID design and thus more potential room for fabrication variations. The minimum achievable barrier height is ultimately limited by any so-called *junction asymmetry* which leads to finite β_- . In practice, for $\beta_-/\beta_+ = (I_1 - I_2)/(I_1 + I_2) \lesssim 0.05$, this effect is of little concern. However, a more insidious effect of junction asymmetry can be seen via the change of variables $\varphi_q - \varphi_q^0 \rightarrow \varphi_q$ in Eq. (4a), namely, an apparent Φ_{cjj}^x -dependent flux offset: $\Phi_q^x \rightarrow \Phi_q^x - \Phi_q^0(\Phi_{\text{cjj}}^x)$. If the purpose of the CJJ is to simply allow the experimentalist to target a constant Δ_q , then the presence of $\Phi_q^0(\Phi_{\text{cjj}}^x)$ can be readily compensated via the application of a static flux offset. On the other hand, any mode of operation that explicitly requires altering Δ_q during the course of a quantum computation^{13–15,35,38,39} would also require active compensation for what amounts to a nonlinear crosstalk from Φ_{cjj}^x to Φ_q^x . While it may be possible to approximate this effect as a linear crosstalk over a small range of Φ_{cjj}^x if the junction asymmetry is small, one would nonetheless need to implement precise *time-dependent* flux bias compensation to utilize the CJJ rf SQUID as a flux qubit in any quantum computation scheme. Such precise custom-tuned compensation is feasible in laboratory scale few-qubit systems. However, this approach is by no means scalable to very large quantum information processors as it would entail one custom-tuned time-dependent compensation signal per qubit, thus requiring an inordinate number of on-chip control lines that must meet very tight ac crosstalk specifications and a correspondingly large number of wire bonds to pass all of the individual compensation signals to the chip.

A second problem with the CJJ rf-SQUID flux qubit is that one cannot homogenize both of the flux qubit parameters $|I_q^p|$ and Δ_q between a multitude of such devices that possess different β_{\pm} over a broad range of Φ_{cjj}^x . While one can accomplish this task to a limited degree in a perturbative manner about carefully chosen CJJ biases for each qubit,⁴⁰ the equivalence of $|I_q^p|$ and Δ_q between those qubits will be approximate at best. Therefore, the CJJ rf SQUID does not provide a convenient means of accommodating fabrication variations between multiple flux qubits and cannot be regarded as being scalable.

Given that the CJJ rf SQUID provides additional flexibility at a cost, it is by no means obvious that one can design a better rf-SQUID flux qubit by adding even more junctions. Specifically, it is desirable to have a device that builds upon the robustness of the CJJ rf-SQUID flux qubit, but provides a truly scalable device in two respects. First, the device must facilitate the homogenization of both of the flux qubit parameters $|I_q^p|$ and Δ_q between a multitude of such devices given realistic levels of fabrication variations. Second, it is preferable that the compensation signals that are invoked to ho-

mogenize $|I_q^p|$ and Δ_q be purely *time-independent* fluxes. If this latter condition has been met, then the compensation signals can be generated using a form of on-chip magnetic memory that is programmed via SFQ circuitry,⁴¹ as opposed to routing multiple bias lines onto the chip to reach each individual qubit. The SFQ-based approach to providing on-chip control signals to flux and phase qubits has been discussed in the literature^{42,43} and is built upon established superconducting technologies that are compatible with rf-SQUID qubit fabrication methods. Furthermore, the SFQ-based approach is viewed as a natural step in the development of scalable superconducting quantum information processors as it allows one to program a very large number of devices with a relatively small number of on-chip control lines.

The rf-SQUID topology shown in Fig. 1(c), hereafter referred to as the compound-compound Josephson-junction (CCJJ) rf SQUID, satisfies all of the conditions cited above. Here, each junction of the CJJ in Fig. 1(b) has been replaced by a dc SQUID, which will be referred to as left (*L*) and right (*R*) minor loops, and will be subjected to external flux biases Φ_L^x and Φ_R^x , respectively. The role of the CJJ loop in Fig. 1(b) is now played by the CCJJ loop of inductance L_{ccjj} which will be subjected to an external flux bias Φ_{ccjj}^x . It is shown in Appendix B that if one chooses *static* values of Φ_L^x and Φ_R^x such that the net critical currents of the minor loops are equal, then it can be described by an effective two-dimensional Hamiltonian of the form

$$\mathcal{H} = \sum_n \left[\frac{Q_n^2}{2C_n} + U_n \frac{(\varphi_n - \varphi_n^x)^2}{2} \right] - U_q \beta_{\text{eff}} \cos(\varphi_q - \varphi_q^0), \quad (5a)$$

where the sum is over $n \in \{q, \text{ccjj}\}$, $C_q \equiv C_1 + C_2 + C_3 + C_4$, $1/C_{\text{ccjj}} \equiv 1/(C_1 + C_2) + 1/(C_3 + C_4)$, and $L_q \equiv L_{\text{body}} + L_{\text{cjj}}/4$. The effective two-dimensional potential energy in Hamiltonian (5a) is characterized by

$$\beta_{\text{eff}} = \beta_+(\Phi_L^x, \Phi_R^x) \cos\left(\frac{\varphi_{\text{ccjj}} - \varphi_{\text{ccjj}}^0}{2}\right), \quad (5b)$$

where $\beta_+(\Phi_L^x, \Phi_R^x) = 2\pi L_q I_q^c(\Phi_L^x, \Phi_R^x)/\Phi_0$, with

$$I_q^c(\Phi_L^x, \Phi_R^x) \equiv (I_1 + I_2) \cos\left(\frac{\pi\Phi_L^x}{\Phi_0}\right) + (I_3 + I_4) \cos\left(\frac{\pi\Phi_R^x}{\Phi_0}\right).$$

Given an appropriate choice of Φ_L^x and Φ_R^x , the *q* and CCJJ loops will possess apparent flux offsets of the form

$$\Phi_q^0 = \frac{\Phi_0 \varphi_q^0}{2\pi} = \frac{\Phi_L^0 + \Phi_R^0}{2}, \quad (5c)$$

$$\Phi_{\text{ccjj}}^0 = \frac{\Phi_0 \varphi_{\text{ccjj}}^0}{2\pi} = \Phi_L^0 - \Phi_R^0, \quad (5d)$$

where $\Phi_{L(R)}^0$ is given by Eq. (B3c), which is purely a function of $\Phi_{L(R)}^x$ and junction critical currents. As such, the apparent flux offsets are *independent* of Φ_{ccjj}^x . Under such conditions, we deem the CCJJ to be *balanced*. Given that the intended mode of operation is to hold Φ_L^x and Φ_R^x constant, then the

offset phases φ_L^0 and φ_R^0 will also be constant. The result is that Hamiltonian (5a) for the CCJJ rf SQUID becomes homologous to that of an ideal CJJ rf SQUID [$\beta_- = 0$ in Eqs. (4b) and (4c)] with apparent *static* flux offsets. Such static offsets can readily be calibrated and compensated for *in situ* using either analog control lines or on-chip programmable flux sources.⁴⁴ For typical device parameters and junction variability on the order of a few percent, these offsets will be $\sim 1 \rightarrow 10$ $m\Phi_0$. Equations (5a)–(5d) with $\Phi_q^0 = \Phi_{\text{ccjj}}^0 = 0$ will be referred to hereafter as the ideal CCJJ rf-SQUID model.

The second advantage of the CCJJ rf SQUID is that one can readily accommodate for variations in critical current between multiple flux qubits. Note that in Eq. (5b) that the maximum height of the tunnel barrier is governed by $\beta_+(\Phi_L^x, \Phi_R^x) \equiv \beta_L(\Phi_L^x) + \beta_R(\Phi_R^x)$, where $\beta_{L(R)}$ is given by Eq. (B3b). One is free to choose any pair of (Φ_L^x, Φ_R^x) such that $\beta_L(\Phi_L^x) = \beta_R(\Phi_R^x)$, as dictated by Eq. (B6). Consequently, $\beta_+ = 2\beta_R(\Phi_R^x)$ in Eq. (5b). One can then choose Φ_R^x , which then dictates Φ_L^x , so as to homogenize β_+ between multiple flux qubits. The result is a set of nominally uniform flux qubits where the particular choice of (Φ_L^x, Φ_R^x) for each qubit merely results in unique static flux offsets Φ_q^0 and Φ_{ccjj}^0 for each device.

To summarize up to this point, the CCJJ rf SQUID is robust against Josephson-junction fabrication variations both within an individual rf SQUID and between a plurality of such devices. The variations can be effectively tuned out purely through the application of *static* flux biases, which is of considerable advantage when envisioning the implementation of large-scale quantum information processors that use flux qubits.

B. L tuner

The purpose of the CCJJ structure was to provide a means of coming to terms with fabrication variations in Josephson junctions both within individual flux qubits and between sets of such devices. However, junctions are not the only key parameter that may vary between devices or are fabrication variations responsible for all of the potential variation. In particular, it has been experimentally demonstrated that the inductance of a qubit L_q that is connected to other qubits via tunable mutual inductances is a function of the coupler configuration.⁴⁵ Let the bare inductance of the qubit in the presence of no couplers be represented by L_q^0 and the mutual inductance between the qubit and coupler i be represented by $M_{\text{co},i}$. If the coupler possesses a first-order susceptibility χ_i , as defined in Ref. 45, then the net inductance of the qubit can be expressed as

$$L_q = L_q^0 - \sum_i M_{\text{co},i}^2 \chi_i. \quad (6)$$

Given that qubit properties such as Δ_q can be exponentially sensitive to variations in L_q , then it is undesirable to have variations in L_q between multiple flux qubits or to have L_q change during operation. This could have a deleterious impact upon AQO in which it is typically assumed that all qubits are identical and they are intended to be annealed in unison.⁵ From the perspective of GMQC, one could very

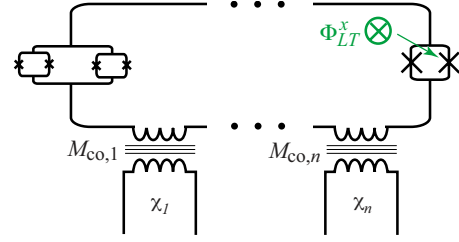


FIG. 3. (Color online) CCJJ rf SQUID with L tuner connected to multiple tunable inductive couplers via transformers with mutual inductances $M_{\text{co},i}$ and possessing susceptibilities χ_i . The L tuner is controlled via the external flux bias Φ_{LT}^x

well attempt to compensate for such effects in a CJJ or CCJJ rf-SQUID flux qubit by adjusting the tunnel barrier height to hold Δ_q constant, but doing so alters $|I_q^p|$, which then alters the coupling of the qubit to radiative sources, thus demanding further compensation. Consequently, it also makes sense from the perspective of GMQC that one finds a means of rendering L_q uniform between multiple qubits and insensitive to the settings of inductive coupling elements.

In order to compensate for variations in L_q , we have inserted a tunable Josephson inductance⁸ into the CCJJ rf-SQUID body, as depicted in Fig. 3. We refer to this element as an inductance (L) tuner. This relatively simple element comprises a dc SQUID whose critical current vastly exceeds that of the CCJJ structure, thus ensuring negligible phase drop across the L tuner. Assuming that the inductance of the L -tuner wiring is negligible, the L tuner modifies Eq. (6) in the following manner:

$$L_q = L_q^0 - \sum_i M_{\text{co},i}^2 \chi_i + \frac{L_{J0}}{\cos(\pi\Phi_{LT}^x/\Phi_0)}, \quad (7)$$

where $L_{J0} \equiv \Phi_0/2\pi I_{LT}^c$, I_{LT}^c is the net critical current of the two junctions in the L tuner, and Φ_{LT}^x is an externally applied flux bias threading the L -tuner loop. For modest flux biases such that $I_{LT}^c \cos(\pi\Phi_{LT}^x/\Phi_0) \gg I_q^c$, Eq. (7) is a reliable model of the physics of the L tuner.

Given that the L tuner is only capable of augmenting L_q , one can only choose to target $L_q > L_q^0 - \sum_i M_{\text{co},i}^2 \chi_i^{\text{AFM}} + L_{J0}$, where χ_i^{AFM} is the maximum antiferromagnetic (AFM) susceptibility of interqubit coupler i . In practice, we choose to restrict operation of the couplers to the range $-\chi_i^{\text{AFM}} < \chi_i < \chi_i^{\text{AFM}}$ such that the maximum qubit inductance that will be encountered is $L_q = L_q^0 + \sum_i M_{\text{co},i}^2 \chi_i^{\text{AFM}} + L_{J0}$. We then choose to prebias Φ_{LT}^x for each qubit to match the maximum realized $L_q \equiv L_q^{\text{max}}$ among a set of flux qubits. Thereafter, one can hold $L_q = L_q^{\text{max}}$ as couplers are adjusted by inverting Eq. (7) to solve for an appropriate value of Φ_{LT}^x . Thus, the L tuner provides a ready means of compensating for small variations in L_q between flux qubits and to hold L_q constant as inductive interqubit coupling elements are adjusted.

III. DEVICE ARCHITECTURE, FABRICATION, AND READOUT OPERATION

To test the CCJJ rf-SQUID flux qubit, we fabricated a circuit containing 8 such devices with pairwise interactions

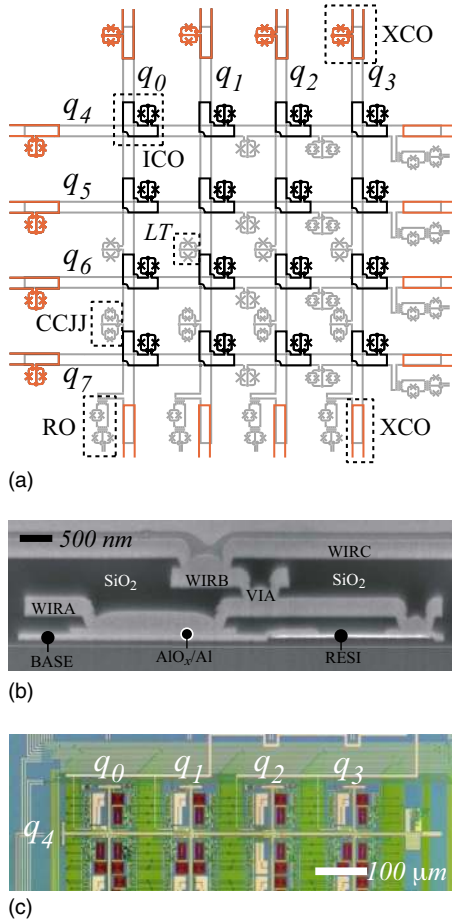


FIG. 4. (Color online) (a) Schematic of the analog components of the test device. Qubits (light gray) are denoted as $q_0 \dots q_7$. One readout (RO), CCJJ, and L tuner (LT) each have been indicated in dashed boxes. Internal couplers (ICO, black) mediate couplings between qubits within this eight-qubit unit cell. External couplers (XCO, red) are used to couple qubits in different unit cells in larger arrays. (b) SEM of a cross section of the fabrication profile. Metal layers denoted as BASE, WIRA, WIRB, and WIRC. Insulating layers labeled as SiO_2 . An example via (VIA), Josephson junction (AlO_x/Al), and resistor (RESI) are indicated. (c) Optical image of a portion of a device completed up to the patterning of WIRB. Portions of qubits $q_0 \dots q_3$ and the entirety of q_4 are visible, as well as much of the external bias wiring and several PMM elements.

mediated by a network of 16 *in situ* tunable CJJ rf-SQUID interqubit couplers.⁴⁵ Each qubit was also coupled to its own dedicated quantum flux parametron (QFP)-enabled readout.⁴⁶ A high-level schematic of the device architecture is shown in Fig. 4(a). External flux biases were provided to target devices using a sparse combination of analog current bias lines to facilitate device calibration and local on-chip sources that we refer to as programmable magnetic memory (PMM). These local flux sources consisted of storage inductors that could hold an integer number of flux quanta that were programmed by a SFQ demultiplexer circuit. By inductively coupling the storage loops to their target devices, we were able to implement on-chip digital-to-analog converters for applying flux biases. The PMM has been described in detail in Ref. 44. Note that the extrema of the CCJJ rf-SQUID

qubits in Fig. 4(a) are coincident with portions of open-circuited interqubit couplers. These latter elements, hereafter referred to as external couplers, allow this eight-qubit unit cell to be tiled on a square grid to create larger arrays of coupled qubits. Tiling the unit cell to the left, right, top, and bottom closes the metal loops forming the external couplers that mediate interqubit coupling between qubits in different unit cells. In such a scenario, any qubit that is not at the periphery of an array will be coupled to six other qubits, while those on the periphery will be connected to five other qubits. This tiling has been explicitly depicted and is discussed further in Ref. 44.

The processor was fabricated from an oxidized Si wafer with Nb/Al/ Al_2O_3 /Nb trilayer junctions and four Nb wiring layers separated by planarized plasma enhanced chemical vapor deposited SiO_2 . A scanning electron micrograph of the process cross section is shown in Fig. 4(b). The Nb metal layers have been labeled as BASE, WIRA, WIRB, and WIRC. The flux qubit wiring was primarily located in WIRB and consisted of $2\text{-}\mu\text{m}$ -wide leads arranged as an approximately $900\text{-}\mu\text{m}$ -long differential microstrip located 200 nm above a ground plane in WIRA. CJJ rf-SQUID coupler wiring was primarily located in WIRC, stacked on top of the qubit wiring to provide inductive coupling. PMM flux storage loops were implemented as stacked spirals of $13\text{--}20$ turns of $0.25\text{-}\mu\text{m}$ -wide wiring with $0.25\text{-}\mu\text{m}$ separation in BASE and WIRA (WIRB). Stored flux was picked up by one-turn washers in WIRB (WIRA) and fed into transformers for flux-biasing devices. External control lines were located in BASE and WIRA. All of these control elements resided below a ground plane in WIRC. The ground plane under the qubits and over both the PMM and external control lines were electrically connected using extended vias in WIRB so as to form a nearly continuous superconducting shield between the analog devices on top and the bias circuitry below. To provide biases to target devices with minimal parasitic crosstalk, transformers for biasing qubits, couplers, QFPs, and dc SQUIDs using bias lines and/or PMM elements were enclosed in superconducting boxes with BASE and WIRC forming the top and bottom, respectively, and vertical walls formed by extended vias in WIRA and WIRB. Minimal-sized openings were placed in the vertical walls through which the vias and target device wiring passed at opposing ends of each box.

An optical image of a portion of a device completed up to WIRB is shown in Fig. 4(c). Qubits are visible as elongated objects, WIRB PMM spirals are visible as dark rectangles, and WIRB washers are visible as light rectangles with slits. The particular chip used in this study had a total of 72 pairs of differentially driven external biases to control the coupled eight-qubit system and a variety of on-chip diagnostic tools. For reference, we have also fabricated and are currently testing a coupled 128-qubit system that uses a total of only 84 pairs of differentially driven external biases. Much of the inherent scalability of this particular adiabatic quantum information processor design is due to the extensive use of PMM.

We have studied the properties of all eight CCJJ rf-SQUID flux qubits on this chip in detail and report upon one such device herein. The performance of the collective eight-

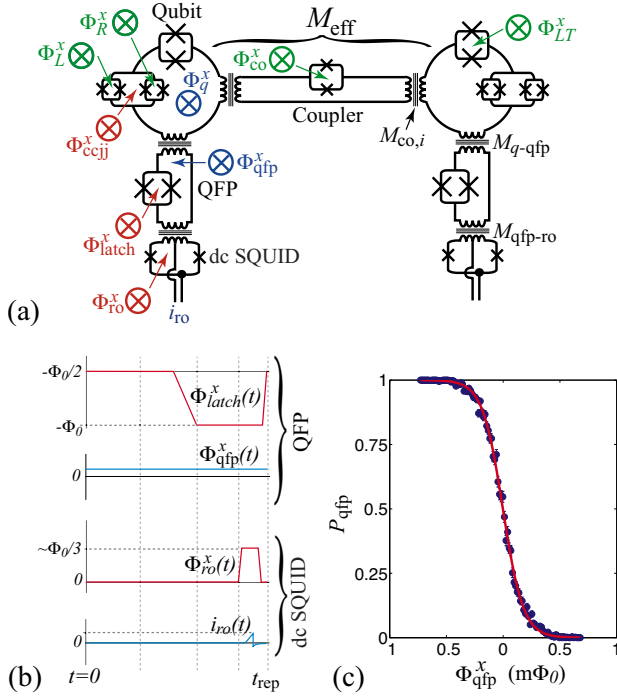


FIG. 5. (Color online) (a) Schematic representation of a portion of the circuit reported upon herein. Canonical representations of all externally controlled flux biases Φ_a^x , readout current bias i_{ro} , and key mutual inductances M_a are indicated. (b) Depiction of latching readout wave form sequence. (c) Example QFP state population measurement as a function of the dc level Φ_{qfp}^x with no qubit signal. Data have been fit to Eq. (8).

qubit system will be the topic of a separate publication. To clearly establish the *lingua franca* of our work, we have depicted a portion of the multiqubit circuit in Fig. 5(a). Canonical representations of the external flux biases needed to operate a qubit, a coupler, and a QFP-enabled readout are labeled on the diagram. The fluxes Φ_L^x , Φ_R^x , Φ_{LT}^x , and Φ_{co}^x were only ever subjected to dc levels in our experiments that were controlled by PMM. The remaining fluxes and readout current biases were driven by a custom-built 128-channel room-temperature current source. The mutual inductances between qubit and QFP (M_{q-qfp}), between QFP and dc SQUID (M_{qfp-ro}), qubit and coupler ($M_{co,i}$), and Φ_{co}^x -dependent interqubit mutual inductance (M_{eff}) have also been indicated. Further details concerning cryogenics, magnetic shielding, and signal filtering have been discussed in previous publications.⁴⁴⁻⁴⁷ We have calibrated the relevant mutual inductances between devices *in situ* and have attempted to measure a significant portion of the parasitic cross couplings between bias controls (both analog lines and PMM elements) into unintended devices. These cross couplings were typically below our measurement threshold $\lesssim 0.1$ fH while designed mutual inductances between bias controls and intended devices were typically $\mathcal{O}(1)$ pH. Much of the 4 orders in magnitude separation between intended versus unintended mutual inductances can be attributed to the extensive use of ground planes and the encapsulation of transformers described above. Such careful shielding is critical for producing high-density and scalable superconducting device architectures.

Since much of what follows depends on a clear understanding of our QFP-enabled readout mechanism, we present a brief review of its operation herein. The flux and readout current wave form sequence involved in a single-shot readout is depicted in Fig. 5(b). Much like the CJJ qubit,⁴⁷ the QFP can be adiabatically *annealed* from a state with a monostable potential ($\Phi_{latch}^x = -\Phi_0/2$) to a state with a bistable potential ($\Phi_{latch}^x = -\Phi_0$) that supports two countercirculating persistent current states. The matter of which persistent current state prevails at the end of an annealing cycle depends on the sum of Φ_{qfp}^x and any signal from the qubit mediated via M_{q-qfp} . The state of the QFP is then determined with high fidelity using a synchronized flux pulse and current bias ramp applied to the dc SQUID. The readout process was typically completed within a repetition time $t_{rep} < 50$ μ s.

An example trace of the population of one of the QFP persistent current states P_{qfp} versus Φ_{qfp}^x , obtained using the latching sequence depicted in Fig. 5(b), is shown in Fig. 5(c). This trace was obtained with the qubit potential held monostable ($\Phi_{ccjj}^x = -\Phi_0/2$) such that it presented minimal flux to the QFP and would therefore not influence P_{qfp} . The data have been fit to the phenomenological form

$$P_{qfp} = \frac{1}{2} \left[1 - \tanh \left(\frac{\Phi_{qfp}^x - \Phi_{qfp}^0}{w} \right) \right], \quad (8)$$

with width $w \sim 0.18$ $m\Phi_0$ for the trace shown therein. When biased with constant $\Phi_{qfp}^x = \Phi_{qfp}^0$, which we refer to as the QFP degeneracy point, this transition in the population statistics can be used as a highly nonlinear flux amplifier for sensing the state of the qubit. Given that $M_{q-qfp} = 6.28 \pm 0.01$ pH for the devices reported upon herein and that typical qubit persistent currents in the presence of negligible tunneling $|I_q^p| \gtrsim 1$ μ A, then the net flux presented by a qubit was $2M_{q-qfp}|I_q^p| \gtrsim 6$ $m\Phi_0$, which far exceeded w . By this means, one can achieve the very high qubit state readout fidelity reported in Ref. 46. On the other hand, the QFP can be used as a linearized flux sensor by engaging Φ_{qfp}^x in a feedback loop and actively tracking Φ_{qfp}^0 . This latter mode of operation has been used extensively in obtaining many of the results presented herein.

IV. CCJJ RF-SQUID CHARACTERIZATION

The purpose of this section is to present measurements that characterize the CCJJ, L tuner, and capacitance of a CCJJ rf SQUID. All measurements shown herein have been made with a set of standard bias conditions given by $\Phi_L^x = 98.4$ $m\Phi_0$, $\Phi_R^x = -89.3$ $m\Phi_0$, $\Phi_{LT}^x = 0.344$ Φ_0 , and all interqubit couplers tuned to provide $M_{eff} = 0$, unless indicated otherwise. The logic behind this particular choice of bias conditions will be explained in what follows. This section will begin with a description of the experimental methods for extracting L_q and I_q^c from persistent current measurements. Thereafter, data that demonstrate the performance of the CCJJ and L tuner will be presented. Finally, this section will conclude with the determination of C_q from macroscopic resonant tunneling data.

A. High-precision persistent current measurements

The most direct means of obtaining information regarding a CCJJ rf SQUID is to measure the persistent current $|I_q^p|$ as a function of Φ_{ccjj}^x . A reasonable first approach to measuring this quantity would be to sequentially prepare the qubit in one of its persistent current states and then the other and use the QFP in feedback mode to measure the difference in flux sensed by the QFP, which equals $2M_{q\text{-qfp}}|I_q^p|$. A fundamental problem with this approach is that it is sensitive to low-frequency (LF) flux noise,⁴⁸ which can alter the background flux experienced by the QFP between the sequential measurements. For a typical measurement with our apparatus, the act of locating a single QFP degeneracy point to within $20 \mu\Phi_0$ takes on the order of 1 s, which means that two sequential measurements would only be immune to flux noise below 0.5 Hz. We have devised a LF flux noise rejection scheme that takes advantage of the fact that such noise will generate a correlated shift in the apparent degeneracy points if the sequential preparations of the qubit can be interleaved with single-shot measurements that are performed in rapid succession. If these measurements are performed with repetition time $t_{\text{rep}} \sim 1$ ms, then the measurements will be immune to flux noise below ~ 1 kHz.

A depiction of the LF flux noise rejecting persistent current measurement sequence is shown in Fig. 6(a). The wave forms comprise two concatenated blocks of sequential annealing of the qubit to a target Φ_{ccjj}^x in the presence of an alternating polarizing flux bias $\pm\Phi_q^x$ followed by latching and single-shot readout of the QFP. The QFP flux bias is engaged in a differential feedback mode in which it is pulsed in alternating directions by an amount $\delta\Phi_m$ about a mean level Φ_m . The two single-shot measurements yield binary results for the QFP state and the *difference* between the two binary results is recorded. Gathering a statistically large number of such differential measurements then yields a differential population measurement δP_{qfp} . Conceptually, the measurement works in the manner depicted in Fig. 6(b): the two different initializations of the qubit move the QFP degeneracy point to some unknown levels $\Phi_m^0 \pm \delta\Phi_m^0$, where Φ_m^0 represents the true mean of the degeneracy points at any given instant in time and $2\delta\Phi_m^0$ is the true difference in degeneracy points that is independent of time. Focusing on flux biases that are close to the degeneracy point, one can linearize Eq. (8)

$$P_{\text{qfp},\pm} \approx \frac{1}{2} - \frac{1}{2w} [\Phi_{\text{qfp}}^x - (\Phi_m^0 \pm \delta\Phi_m^0)]. \quad (9)$$

Assuming that the rms LF flux noise $\Phi_n \ll w$ and that one has reasonable initial guesses for $\Phi_m^0 \pm \delta\Phi_m^0$, then the use of the linear approximation should be justified. Applying $\Phi_{\text{qfp}}^x = \Phi_m \pm \delta\Phi_m$ and sufficient repetitions of the wave form pattern shown in Fig. 6(a), the differential population will then be of the form

$$\delta P_{\text{qfp}} = P_{\text{qfp},+} - P_{\text{qfp},-} = \frac{1}{w} [-\delta\Phi_m + \delta\Phi_m^0], \quad (10)$$

which is *independent* of Φ_m and Φ_m^0 . Note that the above expression contains only two independent variables, w and

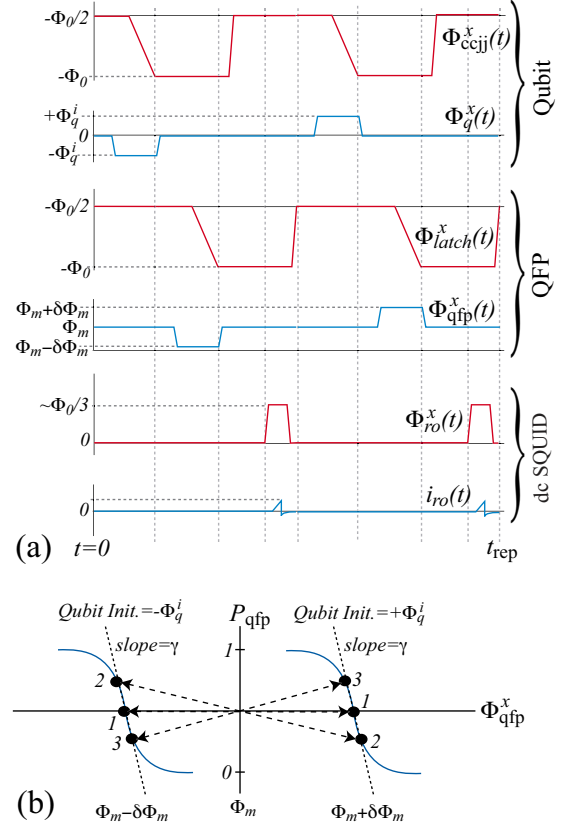


FIG. 6. (Color online) (a) Low-frequency flux noise rejecting qubit persistent current measurement sequence. Wave forms shown are appropriate for measuring $|I_q^p(\Phi_{\text{ccjj}}^x)|$ for $-\Phi_0 \leq \Phi_{\text{ccjj}}^x \leq 0$. The Φ_{ccjj}^x wave form can be offset by integer Φ_0 to measure the periodic behavior of this quantity. Typical repetition time is $t_{\text{rep}} \sim 1$ ms. (b) Depiction of QFP transition and correlated changes in QFP population statistics for the two different qubit initializations.

$\delta\Phi_m^0$, and that δP_{qfp} is purely a linear function of $\delta\Phi_m$. By sampling at three values of $\delta\Phi_m$, as depicted by the pairs of numbered points in Fig. 6(b), the independent variables in Eq. (10) will be overconstrained, thus readily yielding $\delta\Phi_m^0$. One can then infer the qubit persistent current as follows:

$$|I_q^p| = \frac{2\delta\Phi_m^0}{2M_{q\text{-qfp}}} = \frac{\delta\Phi_m^0}{M_{q\text{-qfp}}}. \quad (11)$$

Example measurements of $|I_q^p(\Phi_{\text{ccjj}}^x)|$ are shown in Fig. 7. These data, for which $1.5 \leq |\beta_{\text{eff}}| \leq 2.5$, have been fit to the ideal CCJJ rf-SQUID model by finding the value of $\varphi_q \equiv \varphi_q^{\text{min}}$ for which the potential in Eq. (5a) is minimized

$$|I_q^p| = \frac{\Phi_0 |\varphi_q^{\text{min}} - \varphi_q^x|}{2\pi L_q}. \quad (12)$$

The best fit shown in Fig. 7 was obtained with $L_q = 265.4 \pm 1.0$ pH, $L_{\text{ccjj}} = 26 \pm 1$ pH, and $I_q^c = 3.103 \pm 0.003$ μA . For comparison, we had estimated $L_q = 273$ pH at the standard bias condition for Φ_{LT}^x and $L_{\text{ccjj}} = 20$ pH from design.

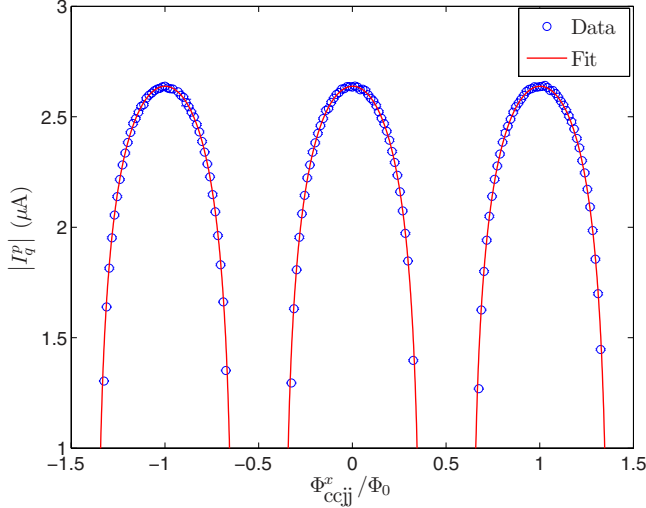


FIG. 7. (Color online) Example measurements of $|I_q^c(\Phi_{ccjj}^x)|$.

In practice, we have found that the LF flux noise rejecting method of measuring $|I_q^c|$ effectively eliminates any observable $1/f$ component in that measurement's noise spectral density to within statistical error. Finally, it should be noted that the LF flux noise rejecting method is applicable to any measurement of a difference in flux sensed by a linearized detector. In what follows herein, we have made liberal use of this technique to calibrate a variety of quantities *in situ* using both QFPs and other qubits as flux detectors.

B. CCJJ

In this section, the CCJJ has been characterized as a function of Φ_L^x and Φ_R^x with all other static flux biases set to the standard bias condition cited above. Referring to Eq. (B4c), it can be seen that the qubit degeneracy point Φ_q^0 is a function of Φ_{ccjj}^x through γ_0 if the CCJJ has not been balanced. To accentuate this functional dependence, one can anneal the CCJJ rf SQUID with Φ_{ccjj}^x wave forms of opposing polarity about a minimum in $|\beta_{\text{eff}}|$, as found at $\Phi_{ccjj}^x = -\Phi_0/2$. The expectation is that the *apparent* qubit degeneracy points will be antisymmetric about the mean given by setting $\gamma_0 = 0$ in Eq. (B4c). The wave form sequence for performing a differential qubit degeneracy point measurement is depicted in Fig. 8. In this case, the QFP is used as a latching readout and the qubit acts as the linearized detector of its own apparent annealing polarization-dependent flux offset. As with the $|I_q^c|$ measurement described above, this LF flux noise rejecting procedure returns a *difference* in apparent flux sensed by the qubit and not the absolute flux offsets. To find balanced pairs of (Φ_L^x, Φ_R^x) in practice, we set Φ_R^x to a constant and used the LF flux noise rejecting procedure inside a software feedback loop that controlled Φ_L^x to null the difference in apparent degeneracy point to a precision of $20 \mu\Phi_0$. Balanced pairs of (Φ_L^x, Φ_R^x) are plotted in Fig. 9(a). These data have been fit to Eq. (B6) using $\beta_{R,+}/\beta_{L,+}$ as a free parameter. The best fit shown in Fig. 9(a) was obtained with $1 - \beta_{R,+}/\beta_{L,+} = (4.1 \pm 0.3) \times 10^{-3}$, which then indicates an approximately 0.4% asymmetry between the pairs of junctions in the L and R loops.

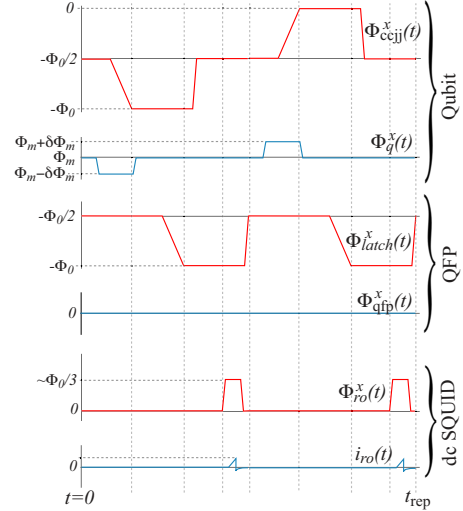


FIG. 8. (Color online) Schematic of low-frequency noise rejecting differential qubit degeneracy point measurement sequence. The qubit is annealed with a Φ_{ccjj}^x signal of opposing polarity in the two frames and the qubit flux bias is controlled via feedback.

A demonstration of how the CCJJ facilitates tuning of I_q^c is shown in Fig. 9(b). Here, the measurable consequence of altering I_q^c that was recorded was a change in $|I_q^c|$ at $\Phi_{ccjj}^x = -\Phi_0$. These data have been fit to the ideal CCJJ rf-SQUID model with the substitution

$$I_q^c(\Phi_R^x, \Phi_L^x) = I_c^0 \cos\left(\frac{\pi\Phi_R^x}{\Phi_0}\right) \quad (13)$$

and using the values of L_{ccjj} and L_q obtained from fitting the data in Fig. 7, but treating I_c^0 as a free parameter. Here, Φ_L^x on the left side of Eq. (13) is a function of Φ_R^x per the CCJJ balancing condition Eq. (B6). The best fit was obtained with $I_c^0 = 3.25 \pm 0.01 \mu\text{A}$. This latter quantity agrees well with the designed critical current of four $0.6 \mu\text{m}$ diameter junctions in parallel of $3.56 \mu\text{A}$. Thus, it is possible to target a desired I_q^c by using Eq. (13) to select Φ_R^x and then Eq. (B6) to select Φ_L^x . The standard bias conditions for Φ_L^x and Φ_R^x quoted previously were chosen so as to homogenize I_q^c among the eight CCJJ rf SQUIDs on this particular chip.

C. L tuner

To characterize the L tuner, we once again turned to measurements of $|I_q^c(\Phi_{ccjj}^x = -\Phi_0)|$, but this time as a function of Φ_{LT}^x . Persistent current results were then used to infer $\delta L_q = L_q(\Phi_{LT}^x) - L_q(\Phi_{LT}^x = 0)$ using the ideal CCJJ rf-SQUID model with L_{ccjj} and I_c^0 held constant and treating L_q as a free parameter. The experimental results are plotted in Fig. 10(a) and have been fit to

$$\delta L_q = \frac{L_{J0}}{\cos(\pi\Phi_{LT}^x/\Phi_0)}, \quad (14)$$

and the best fit was obtained with $L_{J0} = 19.60 \pm 0.04 \text{ pH}$. Modeling this latter parameter as $L_{J0} = \Phi_0/2\pi I_{LT}^c$, we estimate $I_{LT}^c = 16.79 \pm 0.04 \mu\text{A}$, which is close to the design

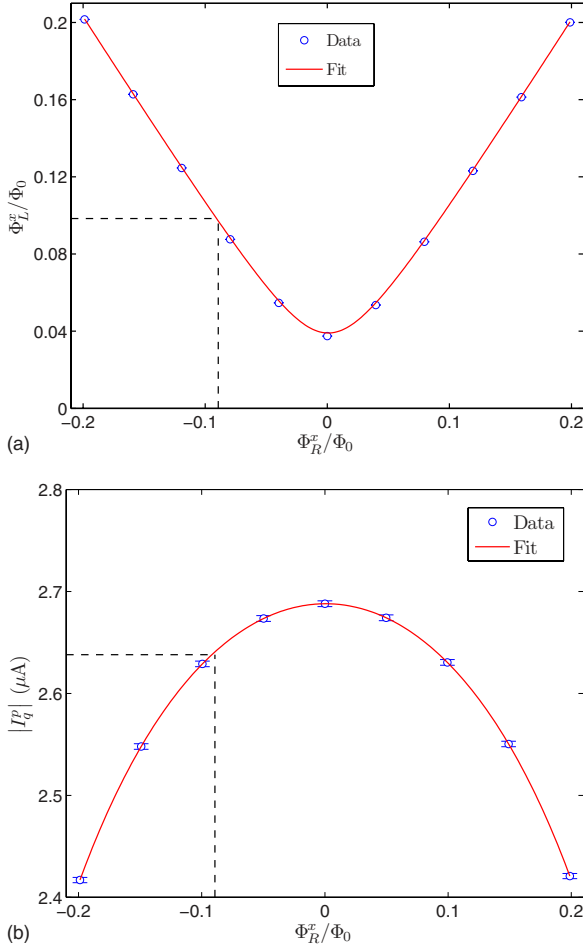


FIG. 9. (Color online) (a) Minor lobe balancing data and fit to Eq. (B6). The standard bias conditions for Φ_L^x and Φ_R^x are indicated by dashed lines. (b) $|I_q^p(\Phi_{\text{ccjj}}^x = -\Phi_0)|$ vs Φ_R^x , where Φ_L^x has been chosen using Eq. (B6). Data have been fit to the ideal CCJJ rf-SQUID model. The standard bias condition for Φ_R^x and the resultant $|I_q^p(\Phi_{\text{ccjj}}^x = -\Phi_0)|$ are indicated by dashed lines.

value of 16.94 μA . The standard bias condition for Φ_{LT}^x was chosen so as to homogenize L_q among the eight CCJJ rf-SQUID flux qubits on this chip and to provide adequate bipolar range to accommodate interqubit coupler operation.

To demonstrate the use of the L tuner, we have probed a worst-case scenario in which four CJJ rf-SQUID couplers connected to the CCJJ rf SQUID in question are tuned in unison. Each of the couplers had been independently calibrated per the procedures described in Ref. 45, from which we obtained $M_{\text{co},i} \approx 15.8$ pH and $\chi_i(\Phi_{\text{co}}^x)$ ($i \in \{1, 2, 3, 4\}$). Each of these devices provided a maximum AFM interqubit mutual inductance $M_{\text{AFM}} = M_{\text{co},i}^2 \chi_{\text{AFM}} \approx 1.56$ pH, from which one can estimate $\chi_{\text{AFM}} \approx 6.3$ nH $^{-1}$. Measurements of $|I_q^p|$ with and without active L -tuner compensation as a function of coupler bias Φ_{co}^x , as applied to all four couplers simultaneously, are presented in Fig. 10(b). The predictions from the ideal CCJJ rf-SQUID model, obtained by using $L_q = 265.4$ pH (with compensation) and L_q obtained from Eq. (6) (without compensation), are also shown. Note that the two data sets and predictions all agree to within experimental error at $\Phi_{\text{co}}^x = 0.5 \Phi_0$, which corresponds to the all zero cou-

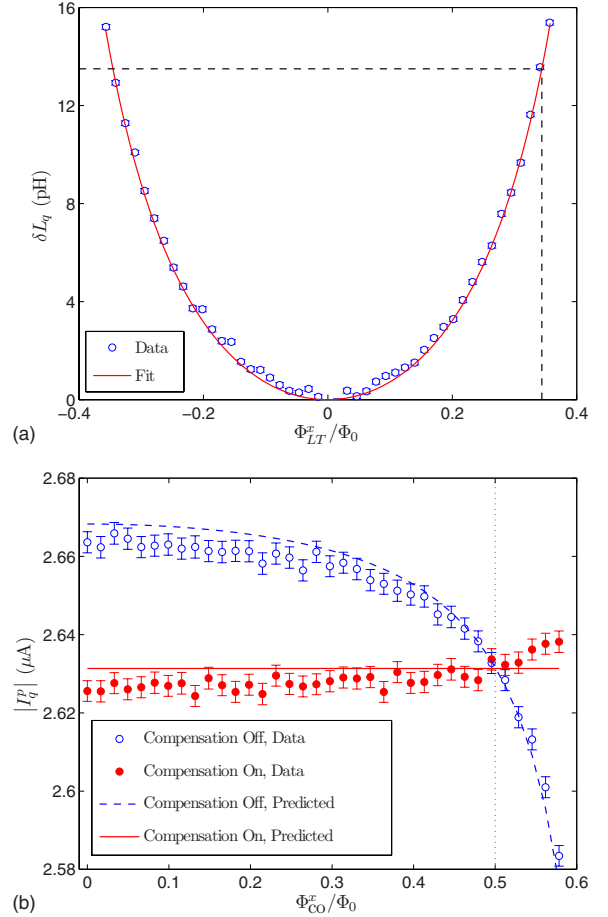


FIG. 10. (Color online) (a) L -tuner calibration and fit to Eq. (14). The standard bias condition for Φ_{LT}^x and the resultant δL_q are indicated by dashed lines. (b) Observed change in maximum qubit persistent current with and without active L -tuner compensation and predictions for both cases.

pling state ($M_{\text{eff}} = 0$). The experimental results obtained without L -tuner compensation agree reasonably well with the predicted Φ_{co}^x dependence. As compared to the case without compensation, it can be seen that the measured $|I_q^p|$ shows considerably less Φ_{co}^x dependence when L -tuner compensation is provided. However, the data suggest a small systematic deviation from the inductance models Eqs. (6) and (7). At $\Phi_{\text{ccjj}}^x = -\Phi_0$, for which it is estimated that $\beta_{\text{eff}} \approx 2.43$, $|I_q^p| \propto 1/L_q$. Given that the data for the case without compensation are below the model for $\Phi_{\text{co}}^x/\Phi_0 < 0.5$, then it appears that we have slightly underestimated the change in L_q . Consequently, we have provided insufficient ballast inductance when the L -tuner compensation was activated.

D. rf-SQUID capacitance

Since I_q^c and L_q directly impact the CCJJ rf-SQUID potential in Hamiltonian (5a), it was possible to infer CCJJ and L -tuner properties from measurements of the ground state persistent current. In contrast, the rf-SQUID capacitance C_q appears in the kinetic term in Hamiltonian (5a). Consequently, one must turn to alternate experimental methods that invoke excitations of the CCJJ rf SQUID in order to charac-

terize C_q . One such method is to probe macroscopic resonant tunneling (MRT) between the lowest-lying state in one well into either the lowest-order (LO, $n=0$) state or into a higher-order (HO, $n>0$) state in the opposing well of the rf-SQUID double-well potential.³⁶ The spacing of successive HOMRT peaks as a function of rf-SQUID flux bias Φ_q^x will be particularly sensitive to C_q . HOMRT has been observed in many different rf SQUIDs and is a well-established quantum-mechanical phenomenon.^{36,49,50} LOMRT proved to be more difficult to observe in practice and was only reported upon relatively recently in the literature.⁴⁷ We refer the reader to this latter reference for the experimental method for measuring MRT rates.

Measurements of the initial decay rate $\Gamma \equiv dP_{\downarrow}/dt|_{t=0}$ versus Φ_q^x are shown in Fig. 11(a) with the order of the target level n as indicated. The maximum observable Γ was imposed by the bandwidth of the apparatus, which was ~ 5 MHz. The minimum observable Γ was dictated by experimental run time constraints. In order to observe many HO resonant peaks within our experimental bandwidth, we have successively raised the tunnel barrier height in roughly equal intervals by tuning the target Φ_{ccjj}^x . The result is a cascade of resonant peaks atop a monotonic background.

The authors of Ref. 49 attempted to fit their HOMRT data to a sum of Gaussian-broadened Lorentzian peaks. It was found that they could obtain satisfactory fits within the vicinity of the tops of the resonant features but that the model was unable to correctly describe the valleys between peaks. We had reached the same conclusion with the very same model as applied to our data. However, it was empirically observed that we could obtain excellent fits to all of the data by using a model composed of a sum of purely Gaussian peaks plus a background that varies exponentially with Φ_q^x ,

$$\frac{\Gamma(\Phi_q^x)}{\hbar} = \sum_n \sqrt{\frac{\pi}{8}} \frac{\Delta_n^2}{W_n} e^{-(\epsilon - \epsilon_p^n)^2/2W_n^2} + \Gamma_{\text{bkgd}} e^{\Phi_q^x/\delta\Phi_{\text{bkgd}}}, \quad (15)$$

where $\epsilon \equiv 2|I_p^n|(\Phi_q^x - \Phi_q^0)$. These fits are shown in Fig. 11(a). A summary of the Gaussian width parameter W_n in Fig. 11(b) is shown solely for informational purposes. We will refrain from speculating why there is no trace of Lorentzian line shapes or on the origins of the exponential background herein, but rather defer a detailed examination of HOMRT to a future publication.

For the purposes of this paper, the key results to take from the fits shown in Fig. 11(a) are the positions of the resonant peaks, as plotted in Fig. 11(c). These results indicate that the peak spacing is very uniform: $\delta\Phi_{\text{MRT}} = 1.55 \pm 0.01$ m Φ_0 . One can compare $\delta\Phi_{\text{MRT}}$ to the predictions of the ideal CCJJ rf-SQUID model using the previously calibrated $L_q = 265.4$ pH, $L_{\text{ccjj}} = 26$ pH, and $I_q^c = 3.103$ μ A, with C_q treated as a free parameter. From such a comparison, we estimate $C_q = 190 \pm 2$ fF.

The relatively large value of C_q quoted above can be reconciled with the CCJJ rf-SQUID design by noting that, unlike other rf-SQUID flux qubits reported upon in the literature, our qubit body resides proximate to a superconducting ground plane so as to minimize crosstalk. In this case, the

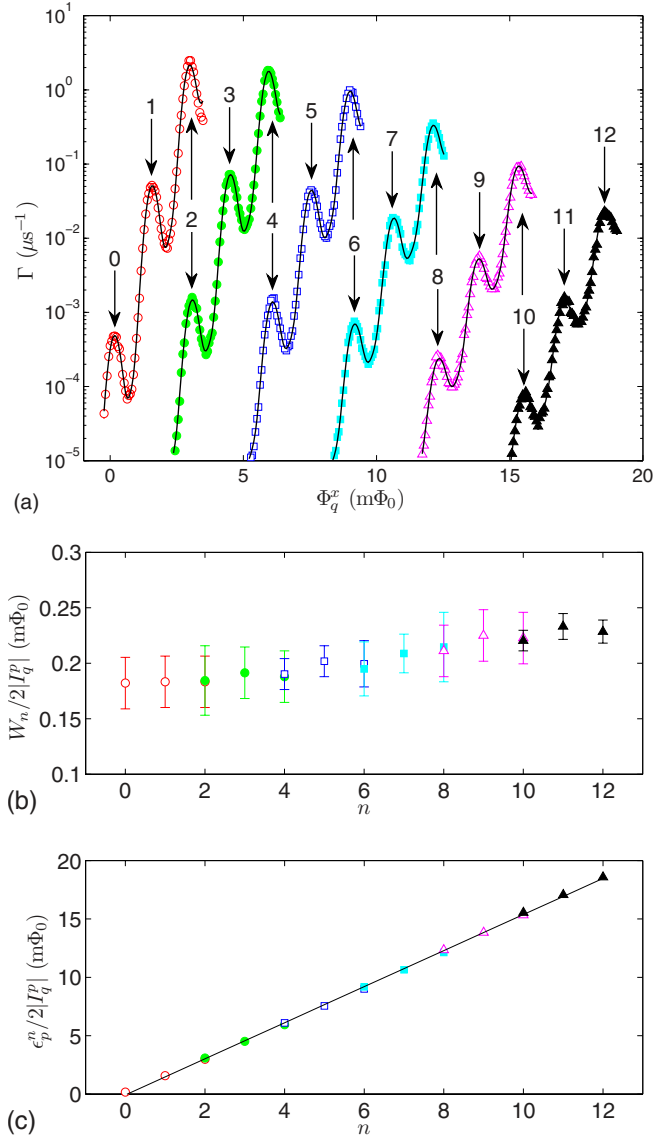


FIG. 11. (Color online) (a) HOMRT peaks fitted to Eq. (15). Data shown are for $\Phi_{\text{ccjj}}^x/\Phi_0 = -0.6677, -0.6735, -0.6793, -0.6851, -0.6911,$ and -0.6970 , from left to right, respectively. Number of levels in target well n as indicated. (b) Best fit Gaussian width parameter W_n as a function of n . (c) Best fit peak position ϵ_p^n as a function of n .

qubit wiring can be viewed as a differential transmission line of length $\ell/2 \sim 900$ μm , where ℓ is the total length of qubit wiring, with the effective Josephson junction and a short on opposing ends. The transmission line will present an impedance of the form $Z(\omega) = -jZ_0 \tanh(\omega\ell/2\nu)$ to the effective Josephson junction, with the phase velocity $\nu \equiv 1/\sqrt{L_0 C_0}$ defined by the differential inductance per unit length $L_0 \sim 0.26$ pH/ μm and capacitance per unit length $C_0 \sim 0.18$ fF/ μm , as estimated from design. If the separation between differential leads is greater than the distance to the ground plane, then $\ell/2\nu \approx \sqrt{L_{\text{body}} C_{\text{body}}/4}$, where $C_{\text{body}} \sim 640$ fF is the total capacitance of the qubit wiring to ground. Thus, one can model the high-frequency behavior of the shorted differential transmission line as an inductance L_{body} and a capacitance $C_{\text{body}}/4$ connected in parallel with

the CCJJ. Taking a reasonable estimated value of $40 \text{ fF}/\mu\text{m}^2$ for the capacitance per unit area of a Josephson junction, one can estimate the total capacitance of four $0.6 \mu\text{m}$ diameter junctions in parallel to be $C_J \sim 45 \text{ fF}$. Thus we estimate $C_q = C_J + C_{\text{body}}/4 \sim 205 \text{ fF}$, which is in reasonable agreement with the best fit value of C_q quoted above.

With all of the controls of the CCJJ rf SQUID having been demonstrated, we reach the first key conclusion of this paper: the CCJJ rf SQUID is a robust device in that parametric variations, both within an individual device and between a multitude of such devices, can be accounted for using purely static flux biases. These biases have been applied to all eight CCJJ rf SQUIDs on this particular chip using a truly scalable architecture involving on-chip flux sources that are programmed by only a small number of address lines.⁴⁴

V. QUBIT PROPERTIES

The purpose of the CCJJ rf SQUID is to provide an ideal as possible flux qubit.¹ By this statement, it is meant that the physics of the two lowest-lying states of the device can be described by an effective Hamiltonian of the form Eq. (3) with $\epsilon = 2|I_q^p|(\Phi_q^x - \Phi_q^0)$, $|I_q^p|$ being the magnitude of the persistent current that flows about the inductive loop when the device is biased hard to one side, Φ_q^0 being a static flux offset, and Δ_q representing the tunneling energy between the lowest-lying states when biased at its degeneracy point $\Phi_q^x = \Phi_q^0$. Thus, $|I_q^p|$ and Δ_q are the defining properties of a flux qubit, regardless of its topology.⁹ Given the complexity of a six-junction device with five closed superconducting loops, it is quite justifiable to question whether the CCJJ rf SQUID constitutes a qubit. These concerns will be directly addressed herein by demonstrating that measured $|I_q^p|$ and Δ_q agree with the predictions of the quantum-mechanical Hamiltonian (5a) given independently calibrated values of L_q , L_{ccjj} , I_c , and C_q .

Before proceeding, it is worth providing some context with regards to the choice of experimental protocols that have been described below. To be explicit, a qubit is defined as a quantum-mechanical two-level system described by Hamiltonian (3) into which binary information is encoded. This definition does not imply any particular experimental method by which the qubit must be studied. For those researchers attempting to implement superconducting hardware that is amenable to GMQC in which the logical basis is encoded into the energy eigenbasis of the qubit, experiments that involve resonant pulses to drive excitations in the qubit (such as Rabi oscillations,²² Ramsey fringes,^{22,30} and spin echo^{22,30,31}) are the natural modality for studying qubits. Such experiments are convenient in this case as the methods can be viewed as basic gate operations and the infrastructure is presumably similar to what one may use to implement such a gate model quantum computer. However, such methods are not the exclusive means of characterizing qubits. For those whose interests lie in developing hardware for AQO or forms of GMQC that likewise encode the logical basis into the flux basis, it is far more convenient to have a set of tools for characterizing quantum-mechanical properties that require only low bandwidth bias controls. Such methods, some appropriate in the coherent regime^{51,52} and others in the in-

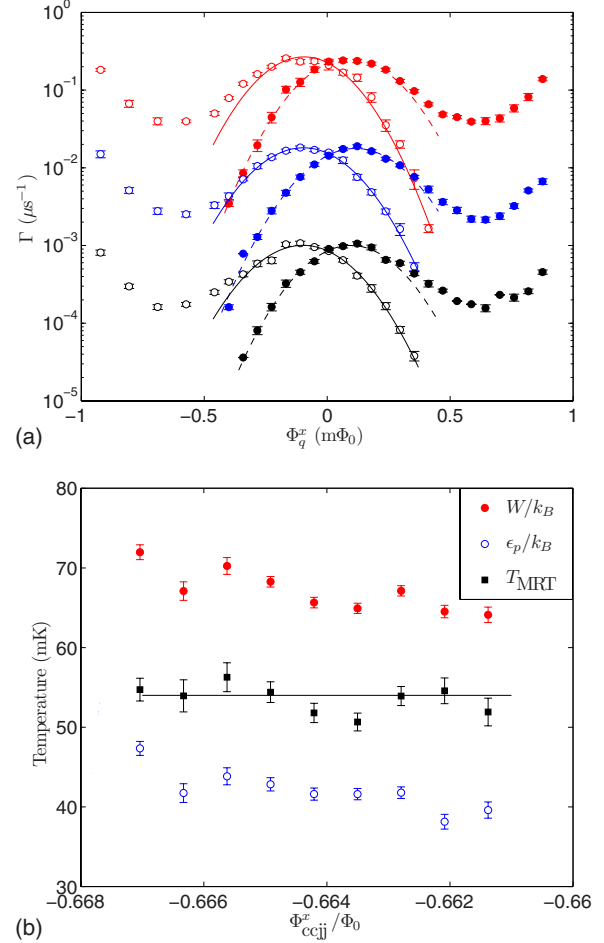


FIG. 12. (Color online) (a) Example LOMRT peaks fitted to Eq. (16). Data shown are for $\Phi_{\text{ccjj}}^x/\Phi_0 = -0.6621$, -0.6642 , and -0.6663 , from top to bottom, respectively. Data from the qubit initialized in $|\downarrow\rangle$ ($|\uparrow\rangle$) are indicated by solid (hollow) points. (b) Energy scales obtained from fitting multiple LOMRT traces.

coherent regime,^{36,47,53} have been reported in the literature. We have made use of such low-frequency methods as our apparatuses typically possess 128 low bandwidth bias lines to facilitate the adiabatic manipulation of a large number of devices.

One possible means of probing quantum-mechanical tunneling between the two lowest-lying states of a CCJJ rf SQUID is via MRT.⁴⁷ Example LOMRT decay rate data are shown in Fig. 12(a). We show results for both initializations, $|\downarrow\rangle$ and $|\uparrow\rangle$, and fits to Gaussian peaks, as detailed in Ref. 47

$$\frac{\Gamma(\Phi_q^x)}{\hbar} = \sqrt{\frac{\pi \Delta_q^2}{8 W}} e^{-(\epsilon - \epsilon_p)^2/2W^2}. \quad (16)$$

A summary of the fit parameters ϵ_p and W versus Φ_{ccjj}^x is shown in Fig. 12(b). We also provide estimates of the device temperature using the formula

$$k_B T_{\text{MRT}} = \frac{W^2}{2\epsilon_p}. \quad (17)$$

As expected, T_{MRT} shows no discernible Φ_{ccjj}^x dependence and is scattered about a mean value of $53 \pm 2 \text{ mK}$. A sum-

mary of Δ_q versus Φ_{ccjj}^x will be shown in conjunction with more experimental results at the end of this section. For further details concerning LOMRT, the reader is directed to Ref. 47.

A second possible means of probing Δ_q is via a Landau-Zener (LZ) experiment.⁵³ In principle, this method should be applicable in both the coherent and incoherent regimes. In practice, we have found it only possible to probe the device to modestly larger Δ_q than we can reach via LOMRT purely due to the low bandwidth of our bias lines. Results from such experiments on the CCJJ rf-SQUID flux qubit will be summarized at the end of this section. We see no fundamental limitation that would prevent others with higher bandwidth apparatuses to explore the physics of the CJJ or CCJJ flux qubit at the crossover between the coherent and incoherent regimes using the Landau-Zener method.

In order to probe the qubit tunnel splitting in the coherent regime using low bandwidth bias lines, we have developed an experimental procedure for sensing the expectation value of the qubit persistent current, similar in spirit to other techniques already reported in the literature.⁵¹ An unfortunate consequence of the choice of design parameters for our high-fidelity QFP-enabled readout scheme is that the QFP is relatively strongly coupled to the qubit, thus limiting its utility as a detector when the qubit tunnel barrier is suppressed. One can circumvent this problem within our device architecture by tuning an interqubit coupler to a finite mutual inductance and using a second qubit as a latching sensor, in much the same manner as a QFP. Consider two flux qubits coupled via a mutual inductance M_{eff} . The system Hamiltonian can then be modeled as

$$\mathcal{H} = - \sum_{i \in \{q,d\}} \frac{1}{2} [\epsilon_i \sigma_z^{(i)} + \Delta_i \sigma_x^{(i)}] + J \sigma_z^{(q)} \sigma_z^{(d)}, \quad (18)$$

where $J \equiv M_{\text{eff}} |I_q^p| |I_d^p|$. Let qubit q be the flux source and qubit d serve the role of the detector whose tunnel barrier is adiabatically raised during the course of a measurement, just as in a QFP single shot measurement depicted in Fig. 5. In the limit $\Delta_d \rightarrow 0$, one can write analytic expressions for the dispersion of the four lowest energies of Hamiltonian (18)

$$E_{1\pm} = \pm \frac{1}{2} \sqrt{(\epsilon_q - 2J)^2 + \Delta_q^2} - \frac{1}{2} \epsilon_d, \\ E_{2\pm} = \pm \frac{1}{2} \sqrt{(\epsilon_q + 2J)^2 + \Delta_q^2} + \frac{1}{2} \epsilon_d. \quad (19)$$

As with the QFP, let the flux bias of the detector qubit be engaged in a feedback loop to track its degeneracy point where $P_{d,\downarrow} = 1/2$. Assuming Boltzmann statistics for the thermal occupation of the four levels given by Eq. (19), this condition is met when

$$P_{d,\downarrow} = \frac{1}{2} = \frac{e^{-E_{2-}/k_B T} + e^{-E_{2+}/k_B T}}{\sum_{\alpha \in \{1\pm, 2\pm\}} e^{-E_\alpha/k_B T}}. \quad (20)$$

Setting $P_{d,\downarrow} = 1/2$ in Eq. (20) and solving for ϵ_d then yields an analytic formula for the balancing condition

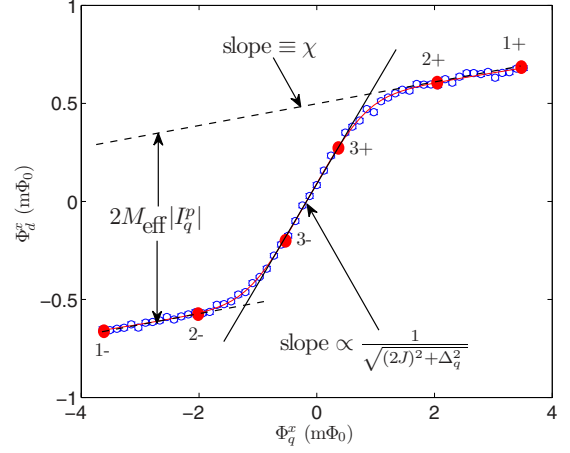


FIG. 13. (Color online) Example coupled flux trace taken at $\Phi_{\text{ccjj}}^x = -0.6513 \Phi_0$ used to extract large Δ_q in the coherent regime.

$$\epsilon_d = \frac{F(+)-F(-)}{2} + k_B T \ln \left(\frac{1 + e^{-F(+)/k_B T}}{1 + e^{-F(-)/k_B T}} \right),$$

$$F(\pm) \equiv \sqrt{(\epsilon_q \pm 2J)^2 + \Delta_q^2}. \quad (21)$$

While Eq. (21) may look unfamiliar, it readily reduces to an intuitive result in the limit of small coupling $J \ll \Delta_q$ and $T \rightarrow 0$,

$$\epsilon_d \approx M_{\text{eff}} |I_q^p| \frac{\epsilon_q}{\sqrt{\epsilon_q^2 + \Delta_q^2}} = M_{\text{eff}} \langle g | \hat{I}_q^p | g \rangle, \quad (22)$$

where $|g\rangle$ denotes the ground state of the source qubit and $\hat{I}_q^p \equiv |I_q^p| \sigma_z^{(q)}$ is the source qubit persistent current operator. Thus, Eq. (21) is an expression for the expectation value of the source qubit's ground-state persistent current in the presence of backaction from the detector and finite temperature. Setting $\epsilon_i = 2|I_i^p|(\Phi_i^x - \Phi_i^0)$ and rearranging then gives an expression for the flux bias of the detector qubit as a function of flux bias applied to the source qubit. Given independent calibrations of $M_{\text{eff}} = 1.56 \pm 0.01$ pH for a particular coupler set to $\Phi_{\text{co}}^x = 0$ on this chip, $T \approx 53$ mK from LOMRT fits, and $|I_q^p| = 1.25 \pm 0.02$ μA at the CCJJ bias where the LOMRT rate approaches the bandwidth of our bias lines, one can then envision tracing out Φ_d^x versus Φ_q^x and fitting to Eq. (21) to extract the source qubit parameters $|I_q^p|$ and Δ_q .

An example Φ_d^x versus Φ_q^x data set for source CCJJ flux bias $\Phi_{\text{ccjj}}^x = -0.6513 \Phi_0$ is shown in Fig. 13. The solid curve in this plot corresponds to a fit to Eq. (21) with a small background slope that we denote as χ . We have confirmed from the ideal CCJJ rf-SQUID model that χ is due to the diamagnetic response of the source rf SQUID to changing Φ_q^x . This feature becomes more pronounced with increasing C_q and is peaked at the value of Φ_{ccjj}^x for which the source qubit potential becomes monostable, $\beta_{\text{eff}} = 1$. Nonetheless, the model also indicates that χ in no way modifies the dynamics of the rf SQUID, thus the qubit model still applies. From fitting these particular data, we obtained $|I_q^p| = 0.72 \pm 0.04$ μA and $\Delta_q/h = 2.64 \pm 0.24$ GHz.

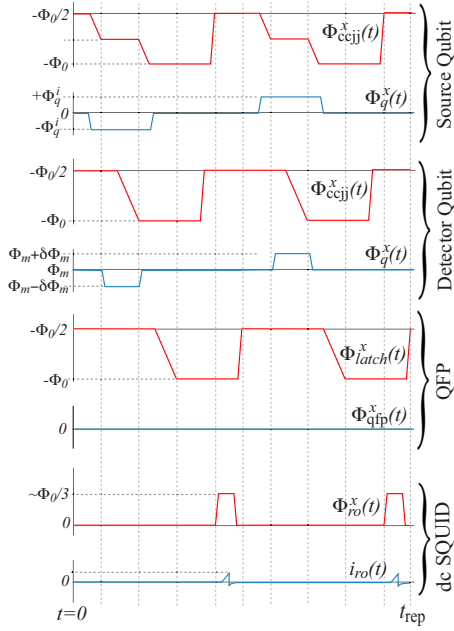


FIG. 14. (Color online) Depiction of large Δ_q measurement wave forms. The wave form sequence is similar to that of Fig. 6, albeit the source qubit's tunnel barrier is partially suppressed ($-\Phi_0/2 < \Phi_{ccjj}^x < -\Phi_0$) and a second qubit (as opposed to a QFP) serves as the flux detector.

In practice, we have found it inefficient to take detailed traces of Φ_d^x versus Φ_q^x as this procedure is susceptible to corruption by LF flux noise in the detector qubit. As an alternative approach, we have adapted the LF flux noise rejecting procedures presented in Sec. VI to measure a series of three differential flux levels in the detector qubit. The wave forms needed to accomplish this task are depicted in Fig. 14. Here, the dc SQUID and QFP connected to the detector qubit are used in latching readout mode while the detector qubit is annealed in the presence of a differential flux bias $\Phi_m \pm \delta\Phi_m$ which is controlled via feedback. Meanwhile, the source qubit's CCJJ bias is pulsed to an intermediate level $-\Phi_0 < \Phi_{ccjj}^x < -\Phi_0/2$ in the presence of an initialization flux bias $\pm\Phi_q^i$. By choosing two appropriate pairs of levels $\pm\Phi_q^i$, as indicated by the solid points 1 \pm and 2 \pm in Fig. 13, one can extract $|I_q^p|$ and χ from the two differential flux measurements. In order to extract Δ_q , we then choose a pair of $\pm\Phi_q^i$ in the center of the trace, as indicated by the solid points 3 \pm , from which we obtain the central slope $d\Phi_d^x/d\Phi_q^x$. Taking the first derivative of Eq. (21) and evaluating at $\Phi_q^x=0$ yields

$$\frac{d\Phi_d^x}{d\Phi_q^x} - \chi = \frac{2M_{\text{eff}}|I_q^p|^2}{\sqrt{(2J)^2 + \Delta_q^2}} \tanh\left[\frac{\sqrt{(2J)^2 + \Delta_q^2}}{2k_B T}\right]. \quad (23)$$

Given independent estimates of all other parameters, one can then extract Δ_q from this final differential flux measurement.

A summary of experimental values of the qubit parameters $|I_q^p|$ and Δ_q versus Φ_{ccjj}^x is shown in Fig. 15. Here, we have taken Δ_q from LOMRT and Landau-Zener experiments in the incoherent regime and from the LF flux noise rejecting persistent current procedure discussed above in the coherent regime. The large gap between the three sets of measure-

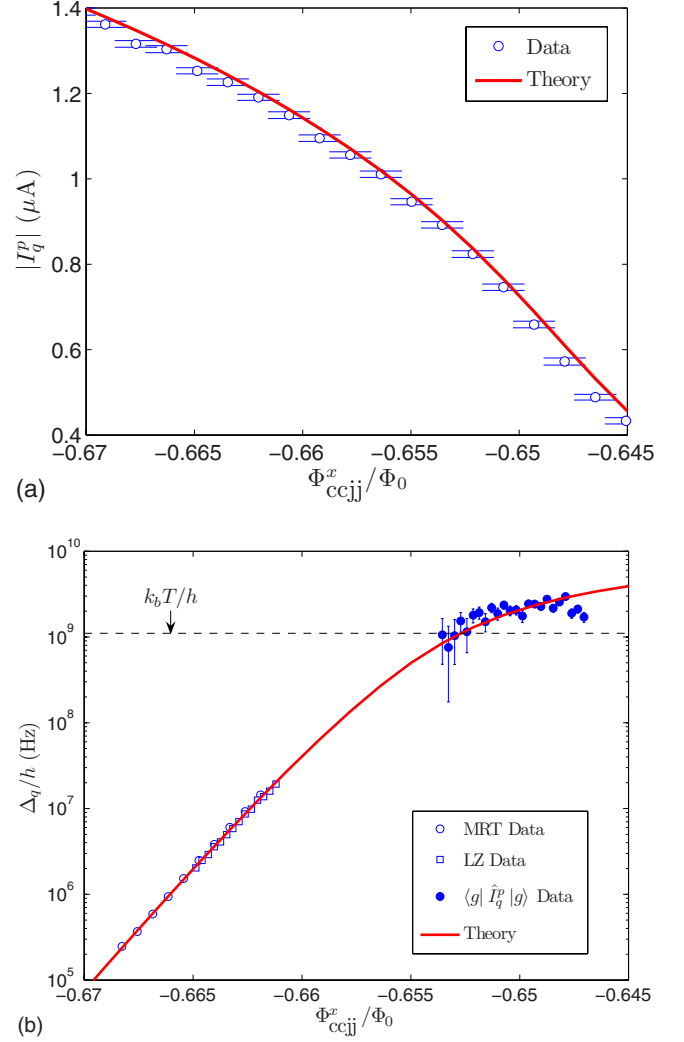


FIG. 15. (Color online) (a) Magnitude of the persistent current $|I_q^p|$ as a function of Φ_{ccjj}^x . (b) Tunneling energy Δ_q between two lowest-lying states of the CCJJ rf SQUID as a function of Φ_{ccjj}^x as characterized by MRT and LZ in the incoherent regime and coupled ground-state persistent current ($\langle g|\hat{I}_q^p|g\rangle$) in the coherent regime. Solid curves are the predictions of the ideal CCJJ rf-SQUID model using independently calibrated L_q , L_{ccjj} , I_q^c , and C_q with no free parameters.

ments is due to two reasons. First, the relatively low bandwidth of our bias lines does not allow us to perform MRT or Landau-Zener measurements at higher Δ_q where the dynamics are faster. Second, while the coherent regime method worked for $\Delta_q > k_B T$, it proved difficult to reliably extract Δ_q in the opposite limit. As such, we cannot make any precise statements regarding the value of Φ_{ccjj}^x which serves as the delineation between the coherent and incoherent regimes based on the data shown in Fig. 15(b). Regulating the device at lower temperature would assist in extending the utility of the coherent regime method to lower Δ_q . On the other hand, given that Eq. (16) predicts that $\Gamma \propto \Delta_q^2$, one would have to augment the experimental bandwidth by at least 2 orders of magnitude to gain one order of magnitude in Δ_q via either MRT or LZ experiments.

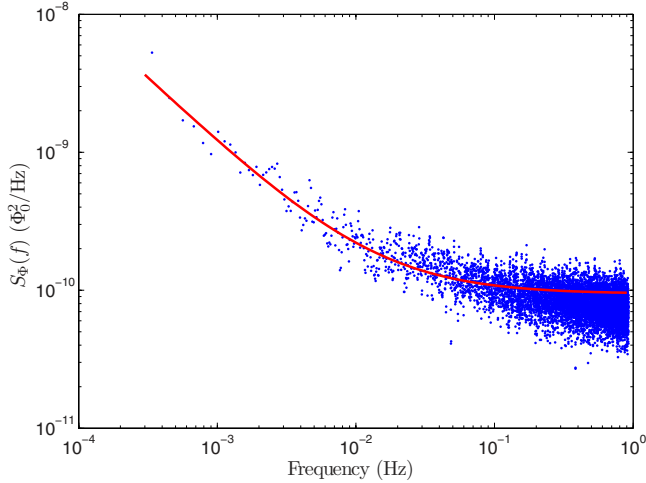


FIG. 16. (Color online) Low-frequency flux noise in the CCJJ rf-SQUID flux qubit. Data (points) have been fit to Eq. (24) (solid curve).

The solid curves in Fig. 15 were generated with the ideal CCJJ rf-SQUID model using the independently calibrated $L_q=265.4$ pH, $L_{ccjj}=26$ pH, $I_q^c=3.103$ μ A, and $C_q=190$ fF. Note that there are no free parameters. It can be seen that the agreement between theory and experiment is quite reasonable. Thus we reach the second key conclusion of this paper: the CCJJ rf SQUID can be identified as a flux qubit as the measured $|I_q^p|$ and Δ_q agree with the predictions of a quantum-mechanical Hamiltonian whose parameters were independently calibrated.

VI. NOISE

With the identification of the CCJJ rf SQUID as a flux qubit firmly established, we now turn to assessing the relative quality of this device in comparison to other flux qubits reported upon in the literature. In this section, we present measurements of the low-frequency flux and critical current spectral noise densities, $S_\phi(f)$ and $S_I(f)$, respectively. Finally, we provide explicit links between $S_\phi(f)$ and the free-induction (Ramsey) decay time T_2^* that would be relevant if this flux qubit is to be used as an element in a gate model quantum information processor.

A. Flux noise

Low-frequency ($1/f$) flux noise is ubiquitous in superconducting devices and is considered a serious impediment to the development of large-scale solid-state quantum information processors.⁴⁸ We have performed systematic studies of this property using a large number of flux qubits of varying geometry⁵⁴ and, more recently, as a function of materials and fabrication parameters. These latter studies have aided in the reduction of the amplitude of $1/f$ flux noise in our devices and will be the subject of a forthcoming publication. Using the methods described in Ref. 54, we have generated the one-sided flux noise spectral density $S_\phi(f)$ shown in Fig. 16. These data have been fit to the generic form

$$S(f) = \frac{A^2}{f^\alpha} + w_n, \quad (24)$$

with best fit parameters $\alpha=0.95 \pm 0.05$, $\sqrt{w_n} = 9.7 \pm 0.5$ $\mu\Phi_0/\sqrt{\text{Hz}}$, and amplitude A such that $\sqrt{S_\phi(1 \text{ Hz})} = 1.3_{-0.5}^{+0.7}$ $\mu\Phi_0/\sqrt{\text{Hz}}$. Thus we reach the third key conclusion of this paper: we have demonstrated that it is possible to achieve $1/f$ flux noise levels with Nb wiring that are as low as the best rf-SQUID qubits possessing Al wiring that have been reported upon in the literature.^{30,31,48} Moreover, we have measured similar spectra from a large number of identical flux qubits, both on the same and different chips, and can state with confidence that the $1/f$ amplitude reported herein is reproducible. Given the experimentally observed geometric scaling of $S_\phi(1 \text{ Hz})$ in Ref. 54 and the relatively large size of the flux qubit bodies reported upon herein, we consider the prospects of observing even lower $1/f$ noise in smaller flux qubits from our Nb fabrication process to be very promising.

The observation cited above has important consequences for the future development of large-scale superconducting quantum information processors based on rf-SQUID flux qubits. Note that as of the time of writing, that there has been a near unanimous abandonment of Nb in favor of Al in the superconducting qubit community as it has been hypothesized that oxides on the surface of Nb wiring could possess magnetic moments,⁵⁵ which, in turn, could play a critical role in dephasing.^{56,57} These data indicate that choosing Al over Nb for the wiring may not be so critical in the quest to minimize $1/f$ flux noise levels. Thus, the optimal choice between Nb and Al for building scalable quantum information processors does not appear to be driven by a difference in achievable $1/f$ flux noise levels. On the other hand, Nb has historically been the material of choice for SFQ circuitry⁴¹ and is the staple of most large-scale superconducting foundry efforts. Besides the qubits themselves, SFQ circuitry may prove to be an integral part of the development of practical large-scale superconducting quantum information processors. We have described one such architecture herein that makes use of SFQ-derived programmable on-chip memory so as to bias a plurality of devices with only a modest number of external control lines. Taking the above statements into consideration, it is argued that Nb should be the metal of choice in the development of scalable superconducting quantum information processors that use flux qubits.

B. Critical current noise

A second noise metric of note is the critical current noise spectral density $S_I(f)$. This quantity has been studied extensively and a detailed comparison of experimental results is presented in Ref. 58. A recent study of the temperature and geometric dependence of critical current noise has been published in Ref. 59. Based on Eq. (18) of Ref. 58, we estimate that the $1/f$ critical current noise from a single 0.6 μm diameter junction, as found in the CCJJ rf-SQUID flux qubit, will have an amplitude such that $\sqrt{S_I(1 \text{ Hz})} \sim 0.2$ pA/ $\sqrt{\text{Hz}}$. Unfortunately, we were unable to directly measure critical current noise in the flux qubit. While the QFP-enabled read-

out provided high-fidelity qubit state discrimination when qubits are fully annealed to $\Phi_{\text{ccjj}}^x = -\Phi_0$, this readout mechanism simply lacked the sensitivity required for performing high-resolution critical current noise measurements. In lieu of a measurement of $S_I(f)$ from a qubit, we have characterized this quantity for the dc SQUID connected to the qubit in question. The dc SQUID had two $0.6 \mu\text{m}$ junctions connected in parallel. A time trace of the calibrated switching current $I_{\text{sw}} \approx I_c$ was obtained by repeating the wave form sequence depicted in Fig. 5(b) except with $\Phi_{\text{latch}}^x = -\Phi_0/2$ at all time (QFP disabled, minimum persistent current) and $\Phi_{\text{ro}}^x = 0$ to provide minimum sensitivity to flux noise. Assuming that the critical current noise from each junction is uncorrelated, the best that we could establish was an upper bound of $\sqrt{S_I(1 \text{ Hz})} \lesssim 7 \text{ pA}/\sqrt{\text{Hz}}$ for a single $0.6 \mu\text{m}$ diameter junction.

Given the upper bound cited above for critical current noise from a single junction, we now turn to assessing the relative impact of this quantity on the CCJJ rf-SQUID flux qubit. It is shown in Appendix B that fluctuations in the critical currents of the individual junctions of a CCJJ generate apparent flux noise in the flux qubit by modulating Φ_q^0 . Inserting critical current fluctuations of magnitude $\delta I_c \lesssim 7 \text{ pA}/\sqrt{\text{Hz}}$ and a mean junction critical current $I_c = I_q^c/4 \sim 0.8 \mu\text{A}$ into Eq. (B10) yields qubit degeneracy point fluctuations $|\delta\Phi_q^0| \lesssim 0.1 \mu\Phi_0/\sqrt{\text{Hz}}$. This final result is at least 1 order of magnitude smaller than the amplitude of $1/f$ flux noise inferred from the data in Fig. 16. As such, we consider the effects of critical current noise in the CCJJ rf SQUID to be tolerable.

C. Estimation of T_2^*

While measurements of noise spectral densities are the most direct way of reporting on and comparing between different qubits, our research group is frequently asked what is the dephasing time for our flux qubits. The answer presumably depends very strongly on bias settings, for recall that we have measured properties of the CCJJ rf-SQUID flux qubit in both the coherent and incoherent regimes. Given that our apparatuses contain only low-bandwidth bias lines for enabling AQO, we are unable to measure dephasing within our own laboratory. Collaborative efforts to measure dephasing for our flux qubits are in progress. In the meantime, we provide a rough estimate below for our flux qubits if they were biased to the optimal point, $\Phi_q^x = \Phi_q^0$, based on the measured $S_\Phi(f)$ and subjected to a free-induction decay, or Ramsey fringe, experiment. In Refs. 30 and 31, the authors inferred $1/f$ flux noise amplitudes from measurements of T_2^* —in our analysis, we perform a similar calculation in reverse in order to infer T_2^* from a measured $1/f$ flux noise amplitude. Referring to Eq. (33a) of Ref. 60 and key results from Ref. 61, the mean-squared phase noise for a flux qubit at the optimal point will be given by

$$\langle \phi_n^2(t) \rangle = \frac{1}{\hbar^2} \frac{(2|I_q^p|)^4}{2\Delta_q^2} \int_{f_m}^{\Delta/h} df S_{\Phi^2}(f) \frac{\sin^2(\pi ft)}{(\pi f)^2}, \quad (25)$$

where $S_{\Phi^2}(\omega)$ represents the quadratic flux noise spectral density and f_m is the measurement cutoff frequency. Assum-

ing that the first-order spectral density $S_\Phi(\omega) = 2\pi A^2/\omega$, then $S_{\Phi^2}(\omega)$ can be written as

$$\begin{aligned} S_{\Phi^2}(\omega) &= \frac{1}{2\pi} \int dt e^{-i\omega t} \langle \Phi_n^2(t) \Phi_n^2(0) \rangle \\ &= 8\pi^2 A^4 \frac{\ln(\omega/\omega_{\text{ir}})}{\omega}, \end{aligned} \quad (26)$$

where $\omega_{\text{ir}} \equiv 2\pi f_{\text{ir}}$ denotes an infrared cutoff of the $1/f$ noise spectral density. Inserting Eq. (26) into Eq. (25) and rendering the integral dimensionless then yields

$$\langle \phi_n^2(t) \rangle = \frac{t^2}{\hbar^2} \frac{(2|I_q^p|A)^4}{\pi\Delta_q^2} \int_{f_{\text{min}} t}^{\Delta t/\hbar} dx \frac{\ln(x/f_{\text{ir}} t) \sin^2(\pi x)}{x^3}, \quad (27)$$

where $f_{\text{min}} = \max[f_m, f_{\text{ir}}]$. We have numerically studied the behavior of the integral in Eq. (27). In the very long measurement time limit, the integral is cut off by f_{ir} and the integral varies as $1/t^2$, which then cancels the factor of t^2 in the numerator of Eq. (27). This means that the mean-squared phase noise eventually reaches a finite limit. However, the more experimentally relevant limit is $f_m \gg f_{\text{ir}}$, for which we found empirically that the integral varies roughly as $5[\ln(f_m/f_{\text{ir}})]^2$ over many orders of magnitude in the argument of the logarithm. In this latter limit, the result is independent of t , so Eq. (27) can be rewritten as $\langle \phi_n^2(t) \rangle = t^2/(T_2^*)^2$, which then yields the following formula for T_2^* :

$$T_2^* \approx \left[\frac{1}{\hbar^2} \frac{(2|I_q^p|A)^4}{\pi\Delta_q^2} 5 \ln(f_m/f_{\text{ir}}) \right]^{-1/2}. \quad (28)$$

Since flux noise spectra seem to obey the $1/f$ form down to at least 0.1 mHz and researchers are generally concerned with dephasing over times of order $1 \mu\text{s}$, then it is fair to consider $f_m/f_{\text{ir}} \sim 10^{10}$. For a nominal value of Φ_{ccjj}^x such that the flux qubit is in the coherent regime, say $-0.652 \Phi_0$, the qubit parameters are $\Delta_q/h \approx 2 \text{ GHz}$ and $|I_q^p| \approx 0.7 \mu\text{A}$. Substituting these quantities into Eq. (27) then yields $T_2^* \sim 150 \text{ ns}$. This estimate of the dephasing time is comparable to that observed in considerably smaller flux qubits with comparable $1/f$ flux noise levels.^{30,31}

VII. CONCLUSIONS

One can draw three key conclusions from the work presented herein. First, the CCJJ rf SQUID is a robust and scalable device in that it allows for *in situ* correction for parametric variations in Josephson-junction critical currents and device inductance, both within and between flux qubits using only static flux biases. Second, the measured flux qubit properties, namely, the persistent current $|I_q^p|$ and tunneling energy Δ_q , agree with the predictions of a quantum-mechanical Hamiltonian whose parameters have been independently calibrated, thus justifying the identification of this device as a flux qubit. Third, it has been experimentally demonstrated that the low-frequency flux noise in this all-Nb wiring flux qubit is comparable to the best all-Al wiring devices reported upon in the literature. Taken in summation, these three conclusions represent a significant step forward in the develop-

ment of useful large-scale superconducting quantum information processors.

ACKNOWLEDGMENTS

We thank J. Hilton, P. Spear, A. Teaciuc, F. Cioata, M. Amin, F. Brito, D. Averin, A. Kleinsasser, and G. Kerber for useful discussions. S.H. was supported in part by NSF Grant No. DMR-0325551.

APPENDIX A: CJJ RF SQUID

Let the qubit and CJJ loop phases be defined as

$$\varphi_q \equiv (\varphi_1 + \varphi_2)/2, \quad (\text{A1a})$$

$$\varphi_{\text{cjj}} \equiv \varphi_1 - \varphi_2, \quad (\text{A1b})$$

respectively. Furthermore, assume that the CJJ loop has an inductance L_{cjj} that is divided symmetrically between the two paths. Using trigonometric relations, one can write a Hamiltonian for this system in terms of modes in the q and CJJ loops that has the following form:

$$\mathcal{H} = \sum_n \left[\frac{Q_n^2}{2C_n} + U_n \frac{(\varphi_n - \varphi_n^x)^2}{2} \right] - U_q \beta_+ \cos\left(\frac{\varphi_{\text{cjj}}}{2}\right) \cos(\varphi_q) + U_q \beta_- \sin\left(\frac{\varphi_{\text{cjj}}}{2}\right) \sin(\varphi_q), \quad (\text{A2a})$$

$$\beta_{\pm} = \frac{2\pi L_q (I_1 \pm I_2)}{\Phi_0}, \quad (\text{A2b})$$

where the sum is over $n \in \{q, \text{cjj}\}$, $C_q \equiv C_1 + C_2$, $1/C_{\text{cjj}} \equiv 1/C_1 + 1/C_2$, $U_n \equiv (\Phi_0/2\pi)^2/L_n$, $L_q \equiv L_{\text{body}} + L_{\text{cjj}}/4$, and $[\Phi_0 \varphi_n/2\pi, Q_n] = i\hbar$. The Josephson potential energy of Hamiltonian (A2a) can be rearranged by defining an angle θ such that $\tan \theta = (\beta_-/\beta_+) \tan(\varphi_{\text{cjj}}/2)$. Further trigonometric manipulation then yields Eqs. (4a)–(4d).

APPENDIX B: CCJJ RF SQUID

Following the same logic as for the CJJ rf SQUID, one can define four orthogonal quantum-mechanical degrees of freedom as follows:

$$\varphi_L \equiv \varphi_1 - \varphi_2, \quad (\text{B1a})$$

$$\varphi_R \equiv \varphi_3 - \varphi_4, \quad (\text{B1b})$$

$$\varphi_{\text{ccjj}} \equiv \varphi_\ell - \varphi_r = \frac{\varphi_1 + \varphi_2}{2} - \frac{\varphi_3 + \varphi_4}{2}, \quad (\text{B1c})$$

$$\varphi_q \equiv \frac{\varphi_\ell + \varphi_r}{2} = \frac{\varphi_1 + \varphi_2 + \varphi_3 + \varphi_4}{4}. \quad (\text{B1d})$$

Using the same strategy as in Appendix A, one can use trigonometric identities to first express the Josephson potential in terms of the L and R loop modes

$$\mathcal{H} = \sum_n \frac{Q_n^2}{2C_n} + \sum_m U_m \frac{(\varphi_m - \varphi_m^x)^2}{2} - U_q \beta_{L^+} \cos\left(\frac{\varphi_L}{2}\right) \cos(\varphi_\ell) + U_q \beta_{L^-} \sin\left(\frac{\varphi_L}{2}\right) \sin(\varphi_\ell) - U_q \beta_{R^+} \cos\left(\frac{\varphi_R}{2}\right) \cos(\varphi_r) + U_q \beta_{R^-} \sin\left(\frac{\varphi_R}{2}\right) \sin(\varphi_r), \quad (\text{B2a})$$

$$\beta_{L(R),\pm} \equiv \frac{2\pi L_q (I_{1(3)} \pm I_{2(4)})}{\Phi_0}, \quad (\text{B2b})$$

where the first sum is over $n \in \{L, R, \ell, r\}$ and the second sum is over closed inductive loops $m \in \{L, R, \text{ccjj}, q\}$. As before, each of the modes obeys the commutation relation $[\Phi_0 \varphi_n/2\pi, Q_n] = i\hbar$. Here, $1/C_{L(R)} = 1/C_{1(3)} + 1/C_{2(4)}$, $C_{\ell(r)} = C_{1(3)} + C_{2(4)}$, and $U_m = (\Phi_0/2\pi)^2/L_m$.

We have found it adequate for our work to assume that $L_{L,R}/L_q \ll 1$, which then allows one to reduce the four-dimensional system given in Hamiltonian (B2a) to two dimensions. Consequently, we will substitute $\varphi_{L(R)} = \varphi_{L(R)}^x$ and ignore the L and R kinetic terms henceforth. Assuming that the inductance of the CCJJ loop is divided equally between the two branches one can then write $L_q = L_{\text{body}} + L_{\text{ccjj}}/4$. With these approximations and the θ strategy presented in Appendix A, one can rearrange the Josephson potential terms to yield the following:

$$\mathcal{H} = \sum_n \frac{Q_n^2}{2C_n} + \sum_m U_m \frac{(\varphi_m - \varphi_m^x)^2}{2} - U_q \beta_L \cos(\varphi_\ell - \varphi_L^0) - U_q \beta_R \cos(\varphi_r - \varphi_R^0), \quad (\text{B3a})$$

$$\beta_{L(R)} = \beta_{L(R),+} \cos\left(\frac{\varphi_{L(R)}^x}{2}\right) \sqrt{1 + \left[\frac{\beta_{L(R),-}}{\beta_{L(R),+}} \tan\left(\frac{\varphi_{L(R)}^x}{2}\right) \right]^2}, \quad (\text{B3b})$$

$$\varphi_{L(R)}^0 = -\arctan\left(\frac{\beta_{L(R),-}}{\beta_{L(R),+}} \tan(\varphi_{L(R)}^x/2)\right), \quad (\text{B3c})$$

where the first sum is over $n \in \{\ell, r\}$ and the second sum is over $m \in \{\text{ccjj}, q\}$. The Josephson potential is given by a sum of two cosines, as encountered in the CJJ rf-SQUID derivation of Hamiltonian (A2a) from Hamiltonian (1). These two terms can be rewritten in the same manner by defining $\beta_{\pm} = \beta_L \pm \beta_R$. The result, similar to Hamiltonian (A2a), can then be subjected to the θ strategy to yield

$$\mathcal{H} = \sum_n \left[\frac{Q_n^2}{2C_n} + U_n \frac{(\varphi_n - \varphi_n^x)^2}{2} \right] - U_q \beta_{\text{eff}} \cos(\varphi_q - \varphi_q^0), \quad (\text{B4a})$$

where the sum is over $n \in \{q, \text{ccjj}\}$ and the capacitances are defined as $C_q = C_1 + C_2 + C_3 + C_4$ and $1/C_{\text{ccjj}} = 1/(C_1 + C_2) + 1/(C_3 + C_4)$. The other parameters are defined as

$$\beta_{\text{eff}} = \beta_+ \cos\left(\frac{\gamma}{2}\right) \sqrt{1 + \left[\frac{\beta_-}{\beta_+} \tan\left(\frac{\gamma}{2}\right) \right]^2}, \quad (\text{B4b})$$

$$\varphi_q^0 = \frac{\varphi_L^0 + \varphi_R^0}{2} + \gamma_0, \quad (\text{B4c})$$

$$\gamma \equiv \varphi_{\text{ccij}} - (\varphi_L^0 - \varphi_R^0), \quad (\text{B4d})$$

$$\gamma_0 \equiv -\arctan\left(\frac{\beta_- \tan(\gamma/2)}{\beta_+}\right), \quad (\text{B4e})$$

$$\beta_{\pm} \equiv \beta_L \pm \beta_R. \quad (\text{B4f})$$

Hamiltonian (B4a) inherits much of its complexity from junction asymmetry both within the minor loops, which gives rise to $\varphi_{L(R)}^0$, and effective junction asymmetry between the minor loops, which gives rise to γ_0 . For arbitrary external flux biases and nominal spread in junction critical current, the CCJJ rf SQUID offers no obvious advantage over the CJJ rf SQUID. However, upon choosing biases Φ_L^x and Φ_R^x such that

$$\beta_L = \beta_R, \quad (\text{B5})$$

then $\beta_- = 0$, and consequently $\gamma_0 = 0$. With these substitutions, Hamiltonian (B4a) yields Hamiltonian (5a). Note that for $\beta_{L(R),-}/\beta_{L(R),+} \ll 1$ and modest $\Phi_{L(R)}^x$ that the so-called CCJJ balancing condition given by Eqs. (B3b) and (B5) can be written approximately as

$$\beta_{L,+} \cos\left(\frac{\varphi_L^x}{2}\right) \approx \beta_{R,+} \cos\left(\frac{\varphi_R^x}{2}\right),$$

which, upon solving for φ_L^x , yields

$$\Phi_L^x = \frac{\Phi_0}{\pi} \arccos\left[\frac{\beta_{R,+} \cos\left(\frac{\pi\Phi_R^x}{\Phi_0}\right)}{\beta_{L,+}}\right]. \quad (\text{B6})$$

It is possible for critical current noise to couple into the φ_q degree of freedom in any compound junction rf-SQUID qubit via modulation of the junction asymmetry-dependent apparent qubit flux offset Φ_q^0 . In the case of the CCJJ rf SQUID, all three quantities on the right side of Eq. (B4c) are ultimately related to the critical currents of the individual junctions. Given typical junction parameter spreads from our fabrication facility

$$\left|\frac{\beta_{L(R),-}}{\beta_{L(R),+}}\right| = \left|\frac{I_{1(3)} - I_{2(4)}}{I_{1(3)} + I_{2(4)}}\right| \sim \mathcal{O}(0.01),$$

one can write an approximate expression for $\varphi_{L(R)}^0$ using Eq. (B3c)

$$\varphi_{L(R)}^0 \approx -\frac{I_{1(3)} - I_{2(4)}}{I_{1(3)} + I_{2(4)}} \tan\left(\frac{\varphi_{L(R)}^x}{2}\right) \approx -\frac{I_{1(3)} - I_{2(4)}}{2I_c} \tan\left(\frac{\varphi_{L(R)}^x}{2}\right) \quad (\text{B7})$$

and for γ_0 using Eqs. (B3b), (B4d), and (B4e)

$$\begin{aligned} \gamma_0 &\approx \frac{(I_3 + I_4) \cos\left(\frac{\varphi_L^x}{2}\right) - (I_1 + I_2) \cos\left(\frac{\varphi_L^x}{2}\right)}{(I_1 + I_2) \cos\left(\frac{\varphi_L^x}{2}\right) + (I_3 + I_4) \cos\left(\frac{\varphi_L^x}{2}\right)} \tan\left(\frac{\gamma}{2}\right) \\ &\approx \frac{(I_3 + I_4) \cos\left(\frac{\varphi_L^x}{2}\right) - (I_1 + I_2) \cos\left(\frac{\varphi_L^x}{2}\right)}{2I_c \left[\cos\left(\frac{\varphi_L^x}{2}\right) + \cos\left(\frac{\varphi_R^x}{2}\right)\right]} \tan\left(\frac{\gamma}{2}\right), \end{aligned} \quad (\text{B8})$$

where I_c represents the mean critical current of a single junction. The CCJJ rf SQUID is intended to be operated with only small flux biases in the minor loops, thus $\cos\left(\frac{\varphi_L^x}{2}\right) \approx \cos\left(\frac{\varphi_R^x}{2}\right) \approx 1$. It is also reasonable to assume that $\gamma \approx \varphi_{\text{ccij}}^x$ as the corrections to $\tan(\gamma/2)$ from $\varphi_{L(R)}^0$ and from the effective two dimensionality of the rf-SQUID potential will be very small. Inserting Eqs. (B7) and (B8) into Eq. (B4c) then yields

$$\begin{aligned} \varphi_q^0 &\approx -\frac{I_1}{2I_c} \left[\tan\left(\frac{\varphi_L^x}{2}\right) + \frac{1}{2} \tan\left(\frac{\varphi_{\text{ccij}}^x}{2}\right) \right] - \frac{I_2}{2I_c} \left[-\tan\left(\frac{\varphi_L^x}{2}\right) \right. \\ &\quad \left. + \frac{1}{2} \tan\left(\frac{\varphi_{\text{ccij}}^x}{2}\right) \right] - \frac{I_3}{2I_c} \left[\tan\left(\frac{\varphi_R^x}{2}\right) - \frac{1}{2} \tan\left(\frac{\varphi_{\text{ccij}}^x}{2}\right) \right] \\ &\quad - \frac{I_4}{2I_c} \left[-\tan\left(\frac{\varphi_R^x}{2}\right) - \frac{1}{2} \tan\left(\frac{\varphi_{\text{ccij}}^x}{2}\right) \right]. \end{aligned} \quad (\text{B9})$$

For the typical operating parameters described in this paper, $\Phi_{L(R)}^x/\Phi_0 \sim 0.1$ and the device acts as a qubit for $\Phi_{\text{ccij}}^x/\Phi_0 \sim 0.65$. For these flux biases, the magnitudes of the terms within the square braces in Eq. (B9) are all of order 1. Therefore, for general flux bias conditions, the apparent qubit flux offset is roughly given by

$$\Phi_q^0 \approx -\frac{\Phi_0 (I_1 + I_2) - (I_3 + I_4)}{4\pi I_c}.$$

Assume that each junction experiences critical current fluctuations of magnitude δI_c . If each junction's fluctuations are independent, then the root-mean-square variation of the qubit degeneracy point $|\delta\Phi_q^0|$ will be

$$|\delta\Phi_q^0| \approx \frac{\Phi_0 \delta I_c}{2\pi I_c}. \quad (\text{B10})$$

Thus, critical current fluctuations generate apparent flux noise in the CCJJ rf-SQUID flux qubit.

¹M. F. Bocko, A. M. Herr, and M. J. Feldman, *IEEE Trans. Appl. Supercond.* **7**, 3638 (1997).

²J. M. Martinis, S. Nam, J. Aumentado, and C. Urbina, *Phys. Rev. Lett.* **89**, 117901 (2002).

³D. DiVincenzo, [arXiv:0905.4839](https://arxiv.org/abs/0905.4839) (unpublished).

⁴J. P. Home, D. Hanneke, J. D. Jost, J. M. Amini, D. Leibfried, and D. J. Wineland, *Science* **325**, 1227 (2009).

⁵E. Farhi, J. Goldstone, S. Gutmann, J. Lapan, A. Lundgren, and

D. Preda, *Science* **292**, 472 (2001).

⁶G. E. Santoro, R. Martonák, E. Tosatti, and R. Car, *Science* **295**, 2427 (2002).

⁷M. A. Nielsen and I. L. Chuang, *Quantum Computation and Quantum Information* (Cambridge University Press, London, 2000).

⁸T. van Duzer and C. W. Turner, *Principles of Superconductive Devices and Circuits* (Prentice Hall PTR, Upper Saddle River,

- 1999).
- ⁹A. J. Leggett, S. Chakravarty, A. T. Dorsey, M. P. A. Fisher, A. Garg, and W. Zwerger, *Rev. Mod. Phys.* **59**, 1 (1987).
 - ¹⁰D. Vion, A. Aassime, A. Cottet, P. Joyez, H. Pothier, C. Urbina, D. Esteve, and M. H. Devoret, *Science* **296**, 886 (2002).
 - ¹¹P. Bertet, C. J. P. M. Harmans, and J. E. Mooij, *Phys. Rev. B* **73**, 064512 (2006).
 - ¹²A. O. Niskanen, K. Harrabi, F. Yoshihara, Y. Nakamura, S. Lloyd, and J. S. Tsai, *Science* **316**, 723 (2007).
 - ¹³S. Poletto, F. Chiarello, M. G. Castellano, J. Lisenfeld, A. Lukashenko, C. Cosmelli, G. Torrioli, P. Carelli, and A. V. Ustinov, *New J. Phys.* **11**, 013009 (2009).
 - ¹⁴R. H. Koch, J. R. Rozen, G. A. Keefe, F. M. Milliken, C. C. Tsuei, J. R. Kirtley, and D. P. DiVincenzo, *Phys. Rev. B* **72**, 092512 (2005).
 - ¹⁵A. J. Kerman and W. D. Oliver, *Phys. Rev. Lett.* **101**, 070501 (2008).
 - ¹⁶J. Brooke, D. Bitko, T. F. Rosenbaum, and G. Aeppli, *Science* **284**, 779 (1999).
 - ¹⁷S. F. Edwards and P. W. Anderson, *J. Phys. F: Met. Phys.* **5**, 965 (1975).
 - ¹⁸S. Kirkpatrick, C. D. Gelatt, Jr., and M. P. Vecchi, *Science* **220**, 671 (1983).
 - ¹⁹R. P. Feynman, *Int. J. Theor. Phys.* **21**, 467 (1982).
 - ²⁰T. P. Orlando, J. E. Mooij, L. Tian, C. H. van der Wal, L. S. Levitov, S. Lloyd, and J. J. Mazo, *Phys. Rev. B* **60**, 15398 (1999).
 - ²¹J. E. Mooij, T. P. Orlando, L. Levitov, L. Tian, C. H. van der Wal, and S. Lloyd, *Science* **285**, 1036 (1999).
 - ²²C. H. van der Wal, A. C. J. ter Haar, F. K. Wilhelm, R. N. Schouten, C. J. P. M. Harmans, T. P. Orlando, S. Lloyd, and J. E. Mooij, *Science* **290**, 773 (2000).
 - ²³I. Chiorescu, Y. Nakamura, C. J. P. M. Harmans, and J. E. Mooij, *Science* **299**, 1869 (2003).
 - ²⁴J. B. Majer, F. G. Paauw, A. C. J. ter Haar, C. J. P. M. Harmans, and J. E. Mooij, *Phys. Rev. Lett.* **94**, 090501 (2005).
 - ²⁵W. D. Oliver, Y. Yu, J. C. Lee, K. K. Berggren, L. S. Levitov, and T. P. Orlando, *Science* **310**, 1653 (2005).
 - ²⁶D. M. Berns, W. D. Oliver, S. O. Valenzuela, A. V. Shytov, K. K. Berggren, L. S. Levitov, and T. P. Orlando, *Phys. Rev. Lett.* **97**, 150502 (2006).
 - ²⁷D. M. Berns, M. S. Rudner, S. O. Valenzuela, K. K. Berggren, W. D. Oliver, L. S. Levitov, and T. P. Orlando, *Nature (London)* **455**, 51 (2008).
 - ²⁸B. L. T. Plourde, T. L. Robertson, P. A. Reichardt, T. Hime, S. Linzen, C.-E. Wu, and J. Clarke, *Phys. Rev. B* **72**, 060506(R) (2005).
 - ²⁹M. Grajcar *et al.*, *Phys. Rev. Lett.* **96**, 047006 (2006).
 - ³⁰F. Yoshihara, K. Harrabi, A. O. Niskanen, Y. Nakamura, and J. S. Tsai, *Phys. Rev. Lett.* **97**, 167001 (2006).
 - ³¹K. Kakuyanagi, T. Meno, S. Saito, H. Nakano, K. Semba, H. Takayanagi, F. Deppe, and A. Shnirman, *Phys. Rev. Lett.* **98**, 047004 (2007).
 - ³²S. Han, J. Lapointe, and J. E. Lukens, *Phys. Rev. B* **46**, 6338 (1992).
 - ³³J. R. Friedman, V. Patel, W. Chen, S. K. Tolpygo, and J. Lukens, *Nature (London)* **406**, 43 (2000).
 - ³⁴F. Chiarello, P. Carelli, M. G. Castellano, C. Cosmelli, L. Gangemi, R. Leoni, S. Poletto, D. Simeone, and G. Torrioli, *Supercond. Sci. Technol.* **18**, 1370 (2005).
 - ³⁵M. G. Castellano, F. Chiarello, P. Carelli, C. Cosmelli, F. Mattioli, and G. Torrioli, [arXiv:0909.2499](https://arxiv.org/abs/0909.2499) (unpublished).
 - ³⁶R. Rouse, S. Han, and J. E. Lukens, *Phys. Rev. Lett.* **75**, 1614 (1995).
 - ³⁷F. G. Paauw, A. Fedorov, C. J. P. M. Harmans, and J. E. Mooij, *Phys. Rev. Lett.* **102**, 090501 (2009).
 - ³⁸W. M. Kaminsky, S. Lloyd, and T. P. Orlando, *Quantum Computing and Quantum Bits in Mesoscopic Systems* (Kluwer Academic, New York, 2003).
 - ³⁹D. Aharonov, W. van Dam, J. Kempe, Z. Landau, and S. Lloyd, *SIAM J. Comput.* **37**, 166 (2007).
 - ⁴⁰R. Harris *et al.*, *New J. Phys.* **11**, 123022 (2009).
 - ⁴¹K. K. Likharev and V. K. Semenov, *IEEE Trans. Appl. Supercond.* **1**, 3 (1991).
 - ⁴²V. K. Semenov and D. V. Averin, *IEEE Trans. Appl. Supercond.* **13**, 960 (2003).
 - ⁴³E. M. Tolkacheva, D. V. Balashov, M. I. Khabipov, and A. B. Zorin, *Supercond. Sci. Technol.* **21**, 125010 (2008).
 - ⁴⁴M. Johnson, P. Bunyk, F. Maibaum, E. Tolkacheva, A. Berkley, E. Chapple, R. Harris, J. Johansson, T. Lanting, I. Perminov, E. Ladizinsky, T. Oh, and G. Rose, [arXiv:0907.3757](https://arxiv.org/abs/0907.3757) (unpublished).
 - ⁴⁵R. Harris, T. Lanting, A. J. Berkley, J. Johansson, M. W. Johnson, P. Bunyk, E. Ladizinsky, N. Ladizinsky, T. Oh, and S. Han, *Phys. Rev. B* **80**, 052506 (2009).
 - ⁴⁶A. Berkley, M. Johnson, P. Bunyk, R. Harris, J. Johansson, T. Lanting, E. Ladizinsky, E. Tolkacheva, M. Amin, and G. Rose, [arXiv:0905.0891](https://arxiv.org/abs/0905.0891) (unpublished).
 - ⁴⁷R. Harris *et al.*, *Phys. Rev. Lett.* **101**, 117003 (2008).
 - ⁴⁸F. Wellstood, C. Urbina, and J. Clarke, *Appl. Phys. Lett.* **85**, 5296 (2004).
 - ⁴⁹D. Bennett, L. Longobardi, V. Patel, W. Chen, D. Averin, and J. Lukens, [arXiv:0811.2268](https://arxiv.org/abs/0811.2268) (unpublished).
 - ⁵⁰D. S. Crankshaw, K. Segall, D. Nakada, T. P. Orlando, L. S. Levitov, S. Lloyd, S. O. Valenzuela, N. Markovic, M. Tinkham, and K. K. Berggren, *Phys. Rev. B* **69**, 144518 (2004).
 - ⁵¹A. Izmalkov, S. H. W. van der Ploeg, S. N. Shevchenko, M. Grajcar, E. Il'ichev, U. Hübner, A. N. Omelyanchouk, and H. G. Meyer, *Phys. Rev. Lett.* **101**, 017003 (2008).
 - ⁵²Y. S. Greenberg, A. Izmalkov, M. Grajcar, E. Il'ichev, W. Krech, H. G. Meyer, M. H. S. Amin, and A. Maassen van den Brink, *Phys. Rev. B* **66**, 214525 (2002).
 - ⁵³J. Johansson, M. H. S. Amin, A. J. Berkley, P. Bunyk, V. Choi, R. Harris, M. W. Johnson, T. M. Lanting, S. Lloyd, and G. Rose, *Phys. Rev. B* **80**, 012507 (2009).
 - ⁵⁴T. Lanting *et al.*, *Phys. Rev. B* **79**, 060509(R) (2009).
 - ⁵⁵R. J. Cava, B. Batlogg, J. J. Krajewski, H. F. Poulsen, P. Gammel, W. F. Peck, and L. W. Rupp, *Phys. Rev. B* **44**, 6973 (1991).
 - ⁵⁶L. Faoro and L. B. Ioffe, *Phys. Rev. Lett.* **100**, 227005 (2008).
 - ⁵⁷S. Sendelbach, D. Hover, A. Kittel, M. Mück, J. M. Martinis, and R. McDermott, *Phys. Rev. Lett.* **100**, 227006 (2008).
 - ⁵⁸D. J. Van Harlingen, T. L. Robertson, B. L. T. Plourde, P. A. Reichardt, T. A. Crane, and J. Clarke, *Phys. Rev. B* **70**, 064517 (2004).
 - ⁵⁹S. Pottorf, V. Patel, and J. E. Lukens, *Appl. Phys. Lett.* **94**, 043501 (2009).
 - ⁶⁰J. M. Martinis, S. Nam, J. Aumentado, K. M. Lang, and C. Urbina, *Phys. Rev. B* **67**, 094510 (2003).
 - ⁶¹Y. Makhlin and A. Shnirman, *Phys. Rev. Lett.* **92**, 178301 (2004).