

## Research article

**Expression of nm23-H1 gene product in esophageal squamous cell carcinoma and its association with vessel invasion and survival**

Masaki Tomita\*, Takanori Ayabe, Yasunori Matsuzaki, Masao Edagawa, Masayuki Maeda, Tetsuya Shimizu, Masaki Hara and Toshio Onitsuka

Address: Department of Surgery II, Miyazaki Medical College Kihara 5200, Kiyotake, Miyazaki, 889-1692, Japan

E-mail: Masaki Tomita\* - [mtomita@post.miyazaki-med.ac.jp](mailto:mtomita@post.miyazaki-med.ac.jp); Takanori Ayabe - [ayabe@fc.miyazaki-med.ac.jp](mailto:ayabe@fc.miyazaki-med.ac.jp);Yasunori Matsuzaki - [matuzaki@fc.miyazaki-med.ac.jp](mailto:matuzaki@fc.miyazaki-med.ac.jp); Masao Edagawa - [meda@fc.miyazaki-med.ac.jp](mailto:meda@fc.miyazaki-med.ac.jp);Masayuki Maeda - [MASA@post.miyazaki-med.ac.jp](mailto:MASA@post.miyazaki-med.ac.jp); Tetsuya Shimizu - [kairiku@fc.miyazaki-med.ac.jp](mailto:kairiku@fc.miyazaki-med.ac.jp);Masaki Hara - [haramasa@fc.miyazaki-med.ac.jp](mailto:haramasa@fc.miyazaki-med.ac.jp); Toshio Onitsuka - [ono@fc.miyazaki-med.ac.jp](mailto:ono@fc.miyazaki-med.ac.jp)

\*Corresponding author

Published: 19 April 2001

Received: 5 March 2001

BMC Cancer 2001, 1:3

Accepted: 19 April 2001

This article is available from: <http://www.biomedcentral.com/1471-2407/1/3>

(c) 2001 Tomita et al, licensee BioMed Central Ltd.

**Abstract**

**Background:** We assessed the nm23-H1 gene product expression and its relationship with lymphatic and blood vessel invasion in patients with esophageal squamous cell carcinoma.

**Methods:** Formalin-fixed and paraffin-embedded tissue sections from 45 patients who were treated surgically were used in this study. Pathologists graded lymphatic and blood vessel invasion in each of the tissue samples. Expression of nm23-H1 gene product was determined using a specific monoclonal antibody.

**Results:** Expression of nm23-H1 gene product was present in 17 (37.8%) cases. We found an inverse correlation between nm23-H1 gene product expression and lymphatic vessel invasion, whereas no correlation between nm23-H1 gene product expression and blood vessel invasion. Overall survival rate was not different between nm23-H1 gene product positive and negative patients ( $p = 0.21$ ). However, reduced expression of nm23-H1 gene product was associated with shorter overall survival in patients with involved lymph nodes ( $p < 0.05$ ), but not in patients without involved lymph nodes ( $p = 0.87$ ).

**Conclusions:** In patients with esophageal squamous cell carcinoma, there appears to be an inverse relationship between nm23-H1 gene product expression and lymphatic vessel invasion. Furthermore, nm23-H1 gene product expression might be a prognostic marker in patients with involved lymph nodes. Our data does not demonstrate any correlation between nm23-H1 gene product expression and blood vessel invasion.

**Background**

Expression of nm23-H1 gene product is thought to play a specific biological role in suppressing tumor metastasis [1,2]. A number of studies of human malignant tumors including breast [3–5], gastric [6,7], colorectal [8,9], hepatocellular [10], and ovarian [11] carcinomas have

demonstrated a correlation between reduced expression of nm23 mRNA or its gene product and increased metastasis, resulting in poorer prognosis. With regard to lung cancer, however, previous studies have shown that nm23 gene product expression is unrelated to patient survival [12]. The reasons for these conflicting results remain un-

clear. Although very little attention has been given to the role of nm23-H1 gene product in esophageal squamous cell carcinoma, two studies report on the relationship between nm23-H1 expression and patient survival [13,14]. It is general knowledge that vessel invasion is the first and necessary step at the outset of the metastatic cascade. What remains to be seen, however, is whether nm23-H1 gene product expression is associated with lymphatic or blood vessel invasion in patients with esophageal squamous cell carcinoma. The present study examines this question.

## Materials and methods

### Patients and tissue samples

Forty-five randomly selected patients (39 men, 6 women) with primary esophageal squamous cell carcinoma who were treated surgically at Miyazaki Medical College were included in this study. TNM staging was accomplished in all patients [15]. Surgically resected tissue samples previously fixed in formalin and embedded in paraffin were used in this study. Following the Guidelines for the Clinical and Pathologic Studies on Carcinoma of the Esophagus (Japanese Society for Esophageal Diseases, 1999), pathologists graded lymphatic and blood vessel invasion in each of the tissue samples. Briefly, lymphatic vessel invasion was graded according to the following: ly0: none; ly1: mild; ly2: moderate; and ly3: severe. Blood vessel invasion was also graded as follows: v0: none; v1: mild; v2: moderate; and v3: severe.

### Immunohistochemical studies

The specific monoclonal antibody against nm23-H1 gene product (Novocastra Laboratories, Newcastle, UK) was used to detect gene product expression. Before staining, serial 4  $\mu\text{m}$ -thick sections were deparaffinized in three changes of lemosol and rehydrated through a descending series of ethanol. These sections were then immersed in 0.6%  $\text{H}_2\text{O}_2$  in methanol for 20 minutes at room temperature to block endogenous peroxidase activity. After blocking nonspecific protein bindings by an overnight incubation with Block Ace (Dainippon Inc., Osaka, Japan), the sections were incubated with primary antibodies (1:200) at 4°C overnight. Subsequently, sections were incubated with the secondary antiserum (1:500) for 1 hour, followed by an incubation with peroxidase antiperoxidase (PAP) complex for 30 minutes at room temperature. The sections were visualized using a Diaminobenzidine/Metal Concentration (10X) and Stable Peroxide Substrate Buffer (1x) system (Pierce, Rockford, IL, USA). The sections were then washed with water and counterstained with hematoxylin. Immunohistochemical results were assessed semiquantitatively by two authors, taking into account the percentage of nm23-H1 protein positive cancer cells within the maximum cut-surface specimen of the tumor tissue. Patients

with greater than 50% of cancer cells staining more intensely than stromal cells were considered positive for nm23-H1 gene product expression.

### Statistical analysis

Data was analyzed using the  $X^2$  test with Yates' correlation. Survival curves were plotted according to the Kaplan-Meier method, and the prognostic significance was evaluated by the generalized Wilcoxon test. A  $p$  value less than 0.05 was considered significant.

## Results

Expression of nm23-H1 gene product was present in 17 (37.8%) cases and appeared diffusely throughout the cytoplasm of the cancer cells (Fig. 1). In the majority of nm23-H1 gene product positive cancers, most of tumor cells contained a homologous cytoplasmic pattern for nm23-H1 gene product. Table 1 shows the relationship between nm23-H1 gene product expression and clinical characteristics. Expression of nm23-H1 gene product was not correlated with these clinical factors. Lymph node metastasis in positive nm23-H1 gene product cases was 9/17 (52.9%); in negative cases, 13/28 (46.4%). There was no significant correlation between nm23-H1 gene product expression and lymph node metastasis.

Lymphatic vessel invasion gradings included: 1 ly0, 18 ly1, 24 ly2, and 2 ly3. Since the ly0 and ly3 numbers were low, lymphatic vessel invasion was classified into two groups: ly0+ly1 and ly2+ly3. Lymph node metastasis in the ly0+ly1 and ly2+ly3 groups was 6/19 (31.6%) and 17/26 (65.4%), respectively. These numbers indicate a relationship between lymphatic vessel invasion and lymph node metastasis ( $p < 0.05$ ).

Table 2 shows the relationship between nm23-H1 gene product expression and lymphatic vessel invasion, and blood vessel invasion. Expression of nm23-H1 gene product in the ly0+ly1 and ly2+ly3 groups was 12/19 (63.2%) and 5/26 (19.2%), respectively, while numbers for the nm23-H1 negative cases were 7/19 (36.8%) and 21/26 (80.8%), respectively, indicating an inverse relationship between nm23-H1 gene product expression and lymphatic vessel invasion ( $p < 0.01$ ). Blood vessel invasion gradings included 14 v0, 27 v1, 4 v2, and no v3 cases. Of these numbers, expression of nm23-H1 gene product was present in 7 v0, 7 v1, and 3 v2 cases. In nm23-H1 gene product negative patients, there were 7 v0, 20 v1, and 1 v2 cases. As is apparent from these numbers, we found no correlation between nm23-H1 gene product expression and blood vessel invasion.

**Table 1: Clinical characteristics**

		nm23(-)	nm23(+)	Total	p-value
Gender	Male	24	15	39	NS
	Female	4	2	6	
Age	<60	5	7	12	NS
	>60	23	10	33	
Location	Upper thoracic	5	2	7	NS
	Mid thoracic	12	11	23	
	Lower thoracic	11	4	15	
PT	pT1	3	7	10	NS
	pT2	5	2	7	
	pT3	20	8	28	
	pT4	0	0	0	
PN	pN0	15	8	23	NS
	pN1	13	9	22	
Stage	I	3	6	9	NS
	II	14	5	19	
	III	7	4	11	
	IV	4	2	6	
Differentiation	Well	4	3	7	NS
	Moderate	18	10	28	
	Poor	6	4	10	

NS: not significant

The number of patients who underwent pre- or post-operative radiotherapy in nm23-H1 positive and negative groups was 9/17 (52.9%) and 13/28 (53.6%), respectively, and there was no difference between these groups. In the present series, no correlation between 5-year survival rates and nm23-H1 gene product expression was found (22.9% vs. 23.8%,  $p = 0.21$ ). However, in patients with involved lymph nodes, 5-year survival rates of nm23-H1 gene product positive and negative group was 16.7% and 7.7%, respectively. As shown Fig. 2, reduced expression of nm23-H1 gene product was associated with shorter overall survival in patients with involved lymph nodes ( $p < 0.05$ ). In patients without involved lymph nodes, there was no significant difference in patients' survival between these groups ( $p = 0.87$ ).

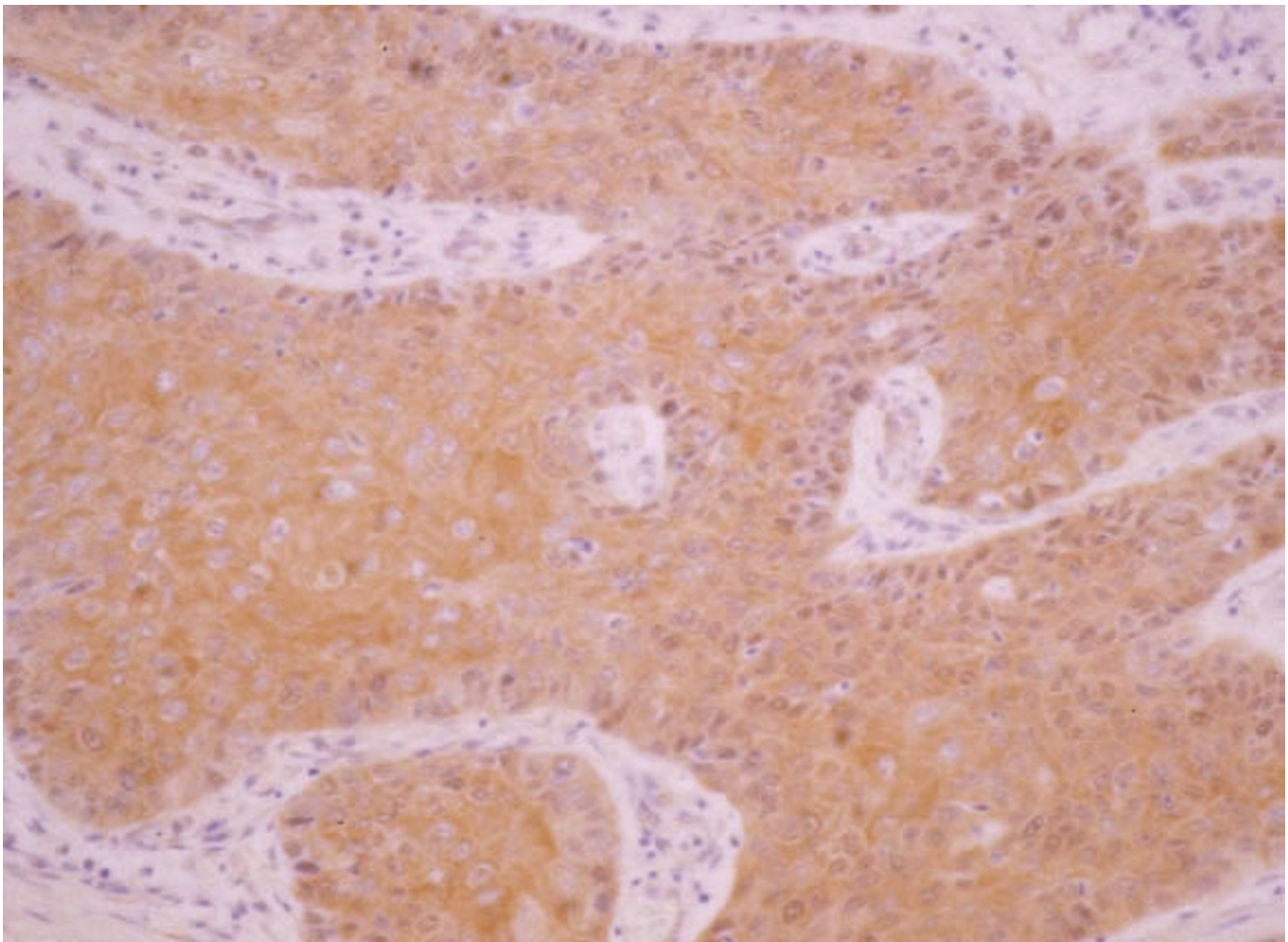
### Discussion

Our study revealed nm23-H1 gene product expression in 17 (37.8%) of 45 patients with esophageal squamous cell carcinoma. Other researchers have reported similar findings in patients with this type of cancer. Patel et al. [13] demonstrated positive nm23 staining in 13 (29%) of

45 patients with T3-4N1M0 esophageal carcinoma, and Iizuka et al. [14] reported positive nm23 staining in 23 (46%) of 50 patients. Two possible explanations for the wide range of percentages in these studies include differences in the specificity of the antibody used or differences in the method for evaluating nm23-H1 gene product staining.

Earlier studies have reported a clear correlation between lymphatic vessel invasion and regional lymph node metastases in esophageal squamous cell carcinoma [16,17]. Our data also suggests an association between lymphatic vessel invasion and lymph node metastasis.

Although in certain other cancers [3,6,9,18], nm23-H1 gene product expression appears to be related to lymph node metastasis, our study of patients with esophageal squamous cell carcinoma showed no correlation between nm23-H1 gene product expression and lymph node metastasis, findings compatible with those of Iizuka et al. [14]. We did observe, however, an inverse correlation between nm23-H1 gene product expression and lymphatic



**Figure 1**  
Positive staining for nm23-H1 gene product in esophageal squamous cell carcinoma (original magnification × 100).

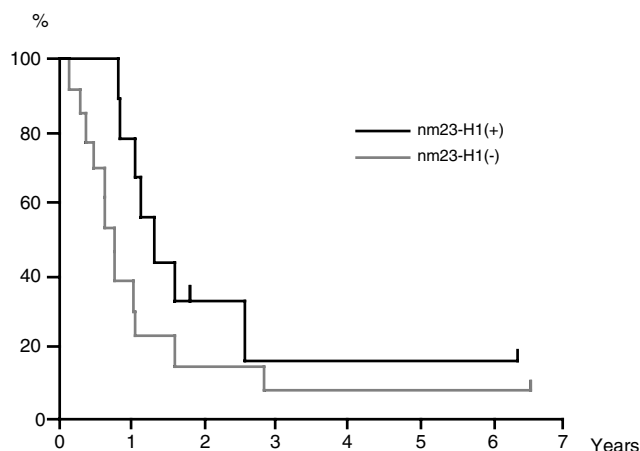
vessel invasion. These results suggest that expression of nm23-H1 gene product may not have implications for lymph node metastasis but may play a part in local invasion. However, our results and Iizuka et al. [14] also showed that reduced expression of nm23-H1 in esophageal squamous cell carcinoma is associated with a shorter overall survival rate in patients with lymph node involvement, but not in patients without lymph node involvement. Moreover, lymphatic vessel invasion is the first and necessary step at the outset of the metastatic cascade. It has been demonstrated that lymphatic vessel invasion is an independent prognostic factor in esophageal squamous cell carcinoma [16]. Thus, taken together, one must consider the possibility that, in esophageal squamous cell carcinoma, nm23-H1 gene product plays a role in the metastatic process following lymphatic spread. Further studies are required to determine the ex-

act role of nm23-H1 gene product in the lymphatic spread of cancer cells in this type of carcinoma.

**Table 2: Relationship between nm23-H1 gene product expression and lymphatic and blood vessel invasion.**

	nm23-H1 (-)	nm23-H1 (+)	p-value
Lymphatic vessel invasion			$p < 0.01$
ly0+ly1	7	12	
ly2+ly3	21	5	
Blood vessel invasion			NS
v0	7	7	
v1	20	7	
v2	1	3	
v3	0	0	

NS: not significant



**Figure 2**

The survival of patients categorized according to nm23-H1 gene product expression in patients with involved lymph nodes ( $p = 0.027$ ).

Furthermore, additional studies are needed to clarify the exact relationship between nm23-H1 gene product expression and blood vessel invasion. Among breast cancer studies, Dueñas et al. [19] reported a correlation between nm23-H1 expression and blood vessel invasion, while Royds et al. [20] found no such correlation. In colorectal cancer, Yamaguchi et al. and Royds et al. found no significant correlation between nm23-H1 expression and blood vessel invasion [10,21]. In gastric cancer, interestingly, Müller et al. reported a positive correlation between nm23-H1 expression and blood vessel invasion [8]. Our present study on esophageal squamous cell carcinoma found no correlation between nm23-H1 gene product expression and blood vessel invasion. To the best of our knowledge, there are no previous studies on the relationship between nm23-H1 expression and distant metastasis in esophageal squamous cell carcinoma although Sarbia et al. [16] demonstrated a clear correlation between blood vessel invasion and distant metastases. Our data suggests that, in esophageal squamous cell carcinoma, nm23-H1 gene product expression may not be associated with distant metastasis.

Cohn et al. [22] suggested that, in colorectal cancer, allelic deletion of the nm23-H1 gene has been shown to have possible antimetastatic functions. Although we did not determine allelic deletion in the presence of nm23-H1 gene product expression in our study, the possibility remains that changes in the nm23-H1 locus have an antimetastatic function in esophageal squamous cell carcinoma as well. Metastasis is a cascade of linked sequential steps involving multiple host-tumor interactions. To form a metastatic focus, a tumor cell or group of cells is required to leave the primary tumor, invade local

tissues and basement membranes, enter the circulation, avoid host immunological responses, attach to a distant vascular bed, extravasate into the interstitium of the target organ, and colonize to form a second tumor [23]. Further studies are required to clarify the specific role of nm23-H1 gene product in this multi-step metastatic process.

In conclusion, we found an inverse correlation between nm23-H1 gene product expression and lymphatic vessel invasion but found no correlation between nm23-H1 gene product and blood vessel invasion in patients with esophageal squamous cell carcinoma. Furthermore, nm23-H1 gene product expression might be a prognostic marker in patients with involved lymph nodes.

## Acknowledgements

The authors wish to thank Mrs. Yasuko Tobayashi for her skillful technical assistance.

## References

1. Steeg PS, Bevilacqua G, Kooper L, Thorgeirsson UP, Talmadge JE, Liotta LA, Sobel ME: **Evidence for a novel gene associated with low tumor metastatic potential.** *J Natl Cancer Inst* 1988, **80**:200-204
2. Leone A, Flatow U, King CR, Sandeen MA, Margulies IMK, Liotta LA, Steeg PS: **Reduced tumor incidence, metastatic potential, and cytokine responsiveness of nm23- transfected melanoma cells.** *Cell* 1991, **65**:25-35
3. Bevilacqua D, Sobel ME, Liotta LA, Steeg PS: **Association of low nm23 RNA levels in human primary infiltrating ductal breast carcinomas with lymph node involvement and other histopathological indicators of high metastatic potential.** *Cancer Res* 1989, **49**:5185-5190
4. Hennessy C, Henry JA, May FEB, Westley BR, Angus B, Lennard TWJ: **Expression of the antimetastatic gene nm23 in human breast cancer.** *J Natl Cancer Inst* 1991, **83**:281-285
5. Hirayama R, Sawai S, Takagi Y, Mishima Y, Kimura N, Shimada N, Esaki Y, Kurashima C, Utsunomiya M, Hirokawa K: **Positive relationship between expression of anti-metastatic factor (nm23 gene product or nucleotide diphosphate kinase) and good prognosis in human breast cancer.** *J Natl Cancer Inst* 1991, **83**:1249-1250
6. Nakayama H, Yasui W, Yokozaki H, Tahara E: **Reduced expression of nm23 is associated with metastasis of human gastric carcinomas.** *Jpn J Cancer Res* 1993, **84**:184-190
7. Müller W, Schneiders A, Hommel G, Gabbert HE: **Expression of nm23 in gastric carcinoma: association with tumor progression and poor prognosis.** *Cancer* 1998, **83**:2481-2487
8. Tannapfel A, Katalinic A, Kockerling F, Wittekind C: **The prediction of lymph node metastases in colorectal cancer by expression of the nucleoside diphosphate kinase/nm23-H1 and histopathological variables.** *Am J Gastroenterol* 1997, **92**:1182-1186
9. Yamaguchi A, Urano T, Fushida S, Furukawa K, Nishimura G, Yone-mura Y, Miyazaki I, Nakagawara G, Shiku H: **Inverse association of nm23-H1 expression by colorectal cancer with liver metastasis.** *Br J Cancer* 1993, **68**:1020-1024
10. Nakayama T, Ohtsuru A, Nakao K, Shima M, Nakata K, Watanabe K, Ishii N, Kimura N, Nagataki S: **Expression in human hepatocellular carcinoma of nucleotide diphosphate kinase, a homologue of the nm23 gene product.** *J Natl Cancer Inst* 1992, **84**:1349-1354
11. Higashiyama M, Doi O, Yokouchi H, Kodama K, Nakamori S, Tateishi R, Kimura N: **Immunohistochemical analysis of nm23 gene product/NDP kinase expression in pulmonary adenocarcinoma: lack of prognostic value.** *Br J Cancer* 1992, **66**:33-536
12. Mandai M, Konishi I, Koshiyama M, Mori T, Arai S, Tashiro H, Okamura H, Nomura H, Hirai H, Fukumoto M: **Expression of metastasis-related nm23-H1 and nm23-H2 genes in ovarian**

- carcinomas: correlation with clinicopathology, EGFR, c-erb-2, and c-erb B-3 genes, and sex steroid receptor expression.** *Cancer Res* 1994, **54**:1825-1830
13. Patel DD, Bhatavdekar JM, Chikhlikar PR, Patel YV, Shah NG, Ghosh N, Suthar TP, Balar DB: **Clinical significance of p53, nm23, and bcl-2 in T3-4N1M0 oesophageal carcinoma: an immunohistochemical approach.** *J Surg Oncol* 1997, **65**:111-116
  14. Iizuka N, Tangoku A, Hayashi H, Yosino S, Abe T, Morioka T, Oka M: **The association between nm23-H1 expression and survival in patients with esophageal squamous cell carcinoma.** *Cancer Lett* 1999, **138**:139-144
  15. Sobin LH, Wittekind C: **UICC International Union Against Cancer. TNM Classification of Management Tumors. 5th edn., Wiley-Liss Inc, New York, 1997, 54-58**
  16. Sarbia M, Porschen R, Borchard F, Horstmann O, Willers R, Gabbert HE: **Incidence and prognostic significance of vascular and neural invasion in squamous cell carcinomas of the esophagus.** *Int J Cancer* 1995, **61**:333-336
  17. Nishimaki T, Tanaka O, Suzuki T, Aizawa K, Hatakeyama K, Muto T: **Patterns of lymphatic spread in thoracic esophageal cancer.** *Cancer* 1994, **74**:4-11
  18. Marone M, Scambia G, Ferrandina G, Giannitelli C, Benedetti P, Iacovella S, Leone A, Mancuso S: **Nm23 expression in endometrial and cervical cancer: inverse correlation with lymph node involvement and myometrial invasion.** *Br J Cancer* 1996, **74**:1063-1068
  19. Dueñas GA, Abad HM, Garcia MJ, Paz BJ, Cruz HJ, Gonzalez SR: **Analysis of nm23-H1 expression in breast cancer. Correlation with p53 expression and clinicopathologic findings.** *Cancer Lett* 1996, **101**:137-142
  20. Royds JA, Stephenson TJ, Rees RC, Shorthouse AJ, Silcocks PB: **Nm23 protein expression in ductal in situ and invasive human breast carcinoma.** *J Natl Cancer Inst* 1993, **85**:727-731
  21. Royds JA, Cross SS, Silcocks PB, Scholefield JH, Rees RC, Stephenson TJ: **Nm23 'anti-metastatic' gene product expression in colorectal carcinoma.** *J Pathol* 1994, **172**:261-266
  22. Cohn KH, Wang FS, Desoto-LaPaix F, Solomon WB, Patterson LG, Arnold MR, Weimar J, Feldman JG, Levy AT, Leone A, Steeg PS: **Association of nm23-H1 allelic deletions with distant metastases in colorectal carcinoma.** *Lancet* 1991, **338**:722-724
  23. Fidler IJ, Hart IR: **Biological diversity in metastatic neoplasms: origins and implications.** *Science* 1982, **217**:998-1003

### Pre-publication history

The pre-publication history for this paper can be accessed here:

<http://www.biomedcentral.com/content/backmatter/1471-2407-1-3-b1.pdf>

Publish with **BioMedcentral** and every scientist can read your work free of charge

"BioMedcentral will be the most significant development for disseminating the results of biomedical research in our lifetime."

Paul Nurse, Director-General, Imperial Cancer Research Fund

Publish with **BMC** and your research papers will be:

- available free of charge to the entire biomedical community
- peer reviewed and published immediately upon acceptance
- cited in PubMed and archived on PubMed Central
- yours - you keep the copyright



Submit your manuscript here:

<http://www.biomedcentral.com/manuscript/>

[editorial@biomedcentral.com](mailto:editorial@biomedcentral.com)