



King's Research Portal

DOI:

[10.1103/PhysRevLett.124.017003](https://doi.org/10.1103/PhysRevLett.124.017003)

Document Version

Publisher's PDF, also known as Version of record

[Link to publication record in King's Research Portal](#)

Citation for published version (APA):

Simkovic, F., LeBlanc, J., Kim, A. J., Deng, Y., Prokof'ev, N., Svistunov, B., & Kozik, E. (2020). Extended Crossover from a Fermi Liquid to a Quasiantiferromagnet in the Half-Filled 2D Hubbard Model. *Physical Review Letters*, 124(1), [017003]. <https://doi.org/10.1103/PhysRevLett.124.017003>

Citing this paper

Please note that where the full-text provided on King's Research Portal is the Author Accepted Manuscript or Post-Print version this may differ from the final Published version. If citing, it is advised that you check and use the publisher's definitive version for pagination, volume/issue, and date of publication details. And where the final published version is provided on the Research Portal, if citing you are again advised to check the publisher's website for any subsequent corrections.

General rights

Copyright and moral rights for the publications made accessible in the Research Portal are retained by the authors and/or other copyright owners and it is a condition of accessing publications that users recognize and abide by the legal requirements associated with these rights.

- Users may download and print one copy of any publication from the Research Portal for the purpose of private study or research.
- You may not further distribute the material or use it for any profit-making activity or commercial gain
- You may freely distribute the URL identifying the publication in the Research Portal

Take down policy

If you believe that this document breaches copyright please contact librarypure@kcl.ac.uk providing details, and we will remove access to the work immediately and investigate your claim.

Extended Crossover from a Fermi Liquid to a Quasiantiferromagnet in the Half-Filled 2D Hubbard Model

Fedor Šimkovic IV,^{1,*} J. P. F. LeBlanc,² Aaram J. Kim,¹ Youjin Deng,³ N. V. Prokof'ev,^{4,5}
B. V. Svistunov,^{4,5,6} and Evgeny Kozik^{1,†}

¹*Department of Physics, Kings College London, Strand, London WC2R 2LS, United Kingdom*


²*Department of Physics and Physical Oceanography, Memorial University of Newfoundland,
St. John's, Newfoundland and Labrador A1B 3X7, Canada*

³*Hefei National Laboratory for Physical Sciences at Microscale and Department of Modern Physics,
University of Science and Technology of China, Hefei, Anhui 230026, China*

⁴*Department of Physics, University of Massachusetts, Amherst, Massachusetts 01003, USA*

⁵*National Research Center "Kurchatov Institute," 123182 Moscow, Russia*

⁶*Wilczek Quantum Center, School of Physics and Astronomy and T. D. Lee Institute, Shanghai Jiao Tong University,
Shanghai 200240, China*

 (Received 30 December 2018; revised manuscript received 8 October 2019; published 10 January 2020)

The ground state of the Hubbard model with nearest-neighbor hopping on the square lattice at half filling is known to be that of an antiferromagnetic (AFM) band insulator for any on-site repulsion. At finite temperature, the absence of long-range order makes the question of how the interaction-driven insulator is realized nontrivial. We address this problem with controlled accuracy in the thermodynamic limit using self-energy diagrammatic determinant Monte Carlo and dynamical cluster approximation methods and show that development of long-range AFM correlations drives an extended crossover from Fermi liquid to insulating behavior in the parameter regime that precludes a metal-to-insulator transition. The intermediate crossover state is best described as a non-Fermi liquid with a partially gapped Fermi surface.

DOI: [10.1103/PhysRevLett.124.017003](https://doi.org/10.1103/PhysRevLett.124.017003)

The interaction driven metal-to-insulator (MIT) transition has been for many years a problem of central focus for the field of strongly correlated electron systems (see, e.g., Refs. [1,2] and references therein). Particularly challenging has been the quantitative, and even qualitative, understanding of the MIT in two-dimensional systems. Here, the basic model—the single-band Hubbard model with nearest-neighbor hopping on the square lattice—can nowadays be accurately emulated and probed with ultracold atoms in optical lattices [3–8] at ever decreasing temperatures, putting controlled experimental studies of the this problem within reach. The model is given by the Hamiltonian

$$H = \sum_{\mathbf{k},\sigma} (\epsilon_{\mathbf{k}} - \mu) c_{\mathbf{k}\sigma}^\dagger c_{\mathbf{k}\sigma} + U \sum_i n_{i\uparrow} n_{i\downarrow}, \quad (1)$$

where μ is the chemical potential, \mathbf{k} (quasi)momentum with the lattice constant set to unity, $n_{i\sigma}$ the number operator of fermions with spin σ on the square lattice site i , U the on-site repulsion, and $\epsilon_{\mathbf{k}} = -2t[\cos(k_x) + \cos(k_y)]$. For the description of the MIT, nonperturbative numerical methods, such as the dynamical mean-field theory (DMFT) and related cluster and diagrammatic extensions [1,2,9–15], have played a central role. In the single-site paramagnetic DMFT [1] solution, which becomes exact in the limit of infinite dimensions, the metallic phase at half filling (the

average density per site $\langle n \rangle = 1$) persists down to zero temperature at weak interactions. It is separated from the Mott insulator by a first-order MIT at a sufficiently large value of $U = U_c$, ending at a finite temperature with an Ising critical point. Extensions of DMFT to small (up to 16 sites) real-space clusters [10–12] have shown that the inclusion of short-range spin fluctuations changes this picture substantially—a non-Fermi-liquid (nFL) state with a Fermi surface (FS) gap in certain momentum sectors continuously develops at a finite U before the transition, the value of U_c is reduced, and the slope of the first-order line is inverted.

It is, however, well known that the ground state of the model (1) at $\langle n \rangle = 1$ is an antiferromagnet (AFM) at any $U > 0$. As revealed by Slater [16], the FS nesting, i.e., the existence of a single wave vector $\mathbf{Q} = (\pi, \pi)$ that connects any point on the FS to another FS point, makes the interacting Fermi gas unstable against formation of the spin density wave with the wave vector \mathbf{Q} already at infinitesimally small U . The corresponding unit-cell doubling makes the ground state a band insulator. While the Mermin-Wagner theorem [17] forbids the long-range order at $T > 0$, the AFM correlation length ξ is exponentially large at low temperature, $\log \xi \propto t/T$; i.e., for practical purposes, the system is best described as a quasi-AFM. Indeed, experiments with ultracold atoms [7] observed a

perfect AFM state in model (1) on a $\sim 10 \times 10$ lattice at temperatures as high as $T \sim 0.25t$. Such AFM correlations are explicitly truncated (and typically suppressed) in cluster DMFT calculations unless linear cluster sizes are comparable to ξ [18], which becomes computationally prohibitive at low T even at half filling [19]. Recent work [2] based on the dynamical vertex approximation (D Γ A), a diagrammatic extension of DMFT capable of capturing long-range correlations approximately, and determinant quantum Monte Carlo (DQMC) simulations indicates that the low-temperature crossover from the Fermi liquid (FL) to the quasi-AFM insulator preempts and precludes the MIT.

In this Letter, we aim at establishing the picture of developing an insulating AFM state with controlled accuracy using the recently introduced Σ DDMC approach [20] (a similar approach was developed in Ref. [21]). The method deterministically sums all topologies of Feynman diagrams for self-energy (for introduction, see, e.g., Ref. [22]) by means of determinants [23,24] with a recursive scheme in the spirit of Rossi's algorithm [25] to extract only one-particle irreducible diagrams. Integration over internal variables is performed by Monte Carlo sampling, and the thermodynamic limit (TDL) is taken explicitly. Compared to the standard DiagMC approach [26,27], where diagram topologies are sampled stochastically, Σ DDMC enables access to substantially higher (~ 10 – 12) expansion orders and more accurate determination of the self-energy.

Our main result is summarized in Fig. 1. At sufficiently low temperature, $T \lesssim 0.25t$, we observe the crossover from the low- U metallic FL state with a well-defined FS (the red region) to the quasi-AFM insulator with temperature-activated quasiparticles (the blue region). In between, there is a transitional nFL regime (the gray region) bound by two lines $T_{\text{an}}(U)$ (red points) and $T_n(U)$ (blue points): as T is lowered, the quasiparticle gap continuously develops along the FS, first appearing at the antinodal point $\mathbf{k}_{\text{an}} = (\pi, 0)$ at $T_{\text{an}}(U)$ and proliferating to the nodal point $\mathbf{k}_n = (\pi/2, \pi/2)$ at $T_n(U)$. Thus, the crossover involves a regime with a partially gapped FS and damped gapless quasiparticles elsewhere on the FS, the so-called pseudogap driven by extending AFM fluctuations [28–34], similar to that found at the MIT for the model (1) in eight-site cluster DMFT [11]. It extends over an appreciable range of parameters at larger U (or T). When quasiparticle properties could be meaningfully defined ($T \lesssim 0.25t$), we find that already at $U \gtrsim 4t$ the FL is lost and the self-energy reveals a charge gap. This value is significantly smaller than the critical $U_c \sim 5$ – $6t$ found for the MIT in small-cluster DMFT results [10–12]. This leaves no room for the MIT in the Hubbard model (1) without additional frustration of antiferromagnetic correlations—the FL-quasi-AFM crossover destroys the FL before it can undergo a first-order transition everywhere where the FL can be defined. $U = 4t$ is the upper bound on the interaction strength beyond which the low- T behavior is not qualitatively different from

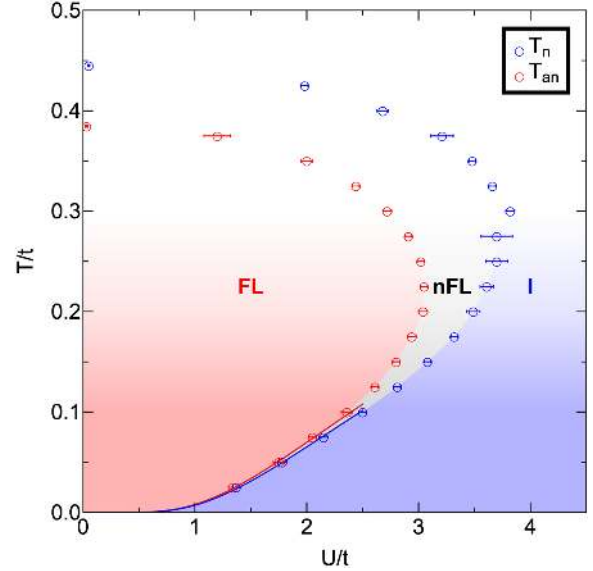


FIG. 1. Crossover lines between the Fermi-liquid (FL, red), non-Fermi-liquid (nFL, gray), and quasi-AFM insulator (I, blue) regimes of the half-filled 2D Hubbard model (1) on the square lattice in the U - T plane obtained by Σ DDMC. The solid lines fit data by the functions $T_{\text{an}} = a \exp(-b/\sqrt{U})$ and $T_n = a' \exp(-b'/\sqrt{U})$ with $\{a, b, a', b'\} = \{6.99, 6.51, 4.7, 6.08\}$. It follows that below $U = 2.5t$ the low-temperature physics is of the mean-field character, while beyond $U = 4t$ the low-temperature behavior is expected to resemble that of the Heisenberg model.

that of the Heisenberg model. As the crossover is expected to become increasingly mean-fieldlike at smaller $U < 2.5t$, driven by magnetic correlations with large ξ , it is rather instructive that in this regime the crossover temperatures $T_{\text{an}}(U)$ and $T_n(U)$ approximately coincide and both are captured by the mean-field Néel temperature ansatz $a \exp(-b/\sqrt{U})$ with empirical parameters that agree with estimates found in Ref. [35].

We verify our results in Fig. 1 against large-scale dynamical cluster approximation (DCA) calculations at higher temperatures. DCA is a nonperturbative momentum space variant of cluster DMFT with which we utilize an auxiliary-field cluster impurity solver [9,36,37]. Results for cluster sizes up to 144 sites reveal very slow convergence of the self-energy with cluster size. We further illustrate the significance of finite-size errors by comparing Σ DDMC results in the TDL to Σ DDMC calculations on finite lattices.

In the FL theory, the quasiparticle residue at the chemical potential is a positive number less than unity. It is defined through $\lim_{\omega \rightarrow 0} [\partial \text{Re} \Sigma_{\mathbf{k}}(\omega) / \partial \omega]$ (with $\Sigma_{\mathbf{k}}(\omega)$ the self-energy at the momentum \mathbf{k} and real frequency ω). On the Matsubara (imaginary-frequency) axis, in the low-temperature limit, this is equivalent through a Wick rotation to $\lim_{i\omega_n \rightarrow 0} [\partial \text{Im} \Sigma_{\mathbf{k}}(i\omega_n) / \partial \omega_n]$. In contrast, $\Sigma_{\mathbf{k}}(\omega)$ in an insulator exhibits a pole at $\omega = 0$. At sufficiently low temperature, when discrete values of $\omega_n = 2\pi T(n + 1/2)$

remain closely spaced to perform the limit $\omega_n \rightarrow 0$, this qualitative difference provides a metric to define the state: if $\text{Im}\Sigma_{\mathbf{k}}(i\omega_0) > \text{Im}\Sigma_{\mathbf{k}}(i\omega_1)$ for all \mathbf{k} on the FS the state is metallic (FL-like, referred to as FL below); when the reverse is true, $\text{Im}\Sigma_{\mathbf{k}}(i\omega_0) < \text{Im}\Sigma_{\mathbf{k}}(i\omega_1)$ on the whole FS, the system exhibits an insulating behavior by opening a quasigap at finite temperature. Throughout we use a shorthand notation, $\Delta\Sigma_{\mathbf{k}} = \text{Im}\Sigma_{\mathbf{k}}(i\omega_0) - \text{Im}\Sigma_{\mathbf{k}}(i\omega_1)$, positive (negative) values of which imply FL (insulator) states. This characterization loses its meaning in a thermal state when the first frequency $\omega_1 = 3\pi T$ is of the order of the Fermi energy.

Σ DDMC performs a numerically exact evaluation of the coefficients a_n in the Taylor-series expansion of Σ in powers of U —which at half filling takes on the form

$$\Sigma_{\mathbf{k}\sigma}(i\omega, T, \mu = U/2, U) = \sum_{n=1}^{\infty} a_{2n, \mathbf{k}\sigma}(i\omega, T) U^{2n} \quad (2)$$

—up to a maximal order n_* , the truncation of the series being the only approximation. In general, reconstructing $\Sigma_{\mathbf{k}\sigma}(i\omega)$ from its series is a problem by itself [20]. In the regime of interest, however, the crossover lines are always within the series convergence radius, and, in principle, the result can be obtained by taking the sum up to a sufficiently high n_* to ensure that the truncation error is negligible compared to the statistical error. We are able to compute $\{a_n\}$ with statistical errors $\lesssim 10\%$ up to order $n_* = 12$ for temperatures $T \geq 0.1$ and up to order $n_* = 10$ for $0.025 \leq T \leq 0.1$. We further extrapolate the series by using the standard Dlog-Padé-type approximants [38,39] and verify that the systematic error of the extrapolation procedure is small compared to the statistical error (see the Supplemental Material [40]).

Figure 2 illustrates how the crossover diagram, Fig. 1, was obtained. It shows the variation with U of $\text{Im}\Sigma(i\omega_0)$

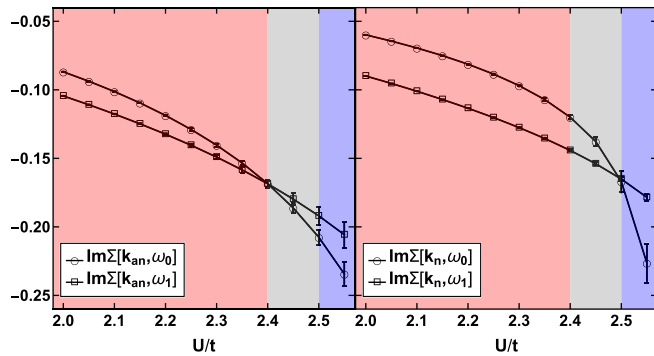


FIG. 2. Illustration of the FL-to-insulator crossover at $T/t = 0.1$: evolution of the self-energy (imaginary part) at the two lowest Matsubara frequencies ω_0 and ω_1 at the momentum $\mathbf{k}_{\text{an}} = (\pi, 0)$ (left panel) and $\mathbf{k}_n = (\pi/2, \pi/2)$ (right panel) with increasing U . Colors correspond to FL, nFL, and quasi-AFM insulator regions of Fig. 1.

and $\text{Im}\Sigma(i\omega_1)$ at the antinodal and nodal points ($\text{Re}\Sigma = 0$ at the FS). At $U = 2t$, the values at ω_0 are higher than at ω_1 , which is typical for a FL. As U is increased, $\Delta\Sigma_{\mathbf{k}}$ shows a trend toward nFL behavior by first changing its sign at \mathbf{k}_{an} (we take it as the onset of the nFL behavior). Following our measure, we mark the region of U and T where $\Delta\Sigma_{\mathbf{k}} > 0$ for all momenta on the FS as FL (red shading). Similarly, the insulating region (blue shading) corresponds to $\Delta\Sigma_{\mathbf{k}} < 0$ for all \mathbf{k} on the FS. The nFL pseudogap regime (gray) falls in between the two: it has $\Delta\Sigma_{\mathbf{k}} > 0$ at some momenta on the FS and $\Delta\Sigma_{\mathbf{k}} < 0$ at others. Correspondingly, the nFL state is bounded by the temperature scales $T_{\text{an}}(U)$ and $T_n(U)$ where $\Delta\Sigma_{\mathbf{k}} = 0$ at momenta \mathbf{k}_{an} and \mathbf{k}_n , respectively. As the gap proliferates along the FS between $T_{\text{an}}(U)$ and $T_n(U)$, we expect that the heat capacity C_V to T ratio decreases before growing due to the AFM quasiorder near the insulator boundary and eventually reaching the asymptotic $C_V/T \propto T$ law due to spin waves deep in the insulating regime.

At small U , both crossover temperatures scale exponentially according to the BCS solution for the mean-field AFM transition, $T_{\text{an}} = a \exp(-b/\sqrt{U})$ and $T_n = a' \exp(-b'/\sqrt{U})$, with the fit parameters $a = 6.99$, $b = 6.51$, $a' = 4.7$, $b' = 6.08$ (see Fig. 1), suggesting the crossover is being driven by extended AFM correlations.

At high temperature $T \gtrsim 0.25t$, the data points corresponding to $\Delta\Sigma_{\mathbf{k}_{\text{an},n}} = 0$ lose their meaning as boundaries between FL, nFL, and insulator regimes (white region in Fig. 1). Given that $\text{Im}\Sigma(i\omega_n)$ is a negative-valued function approaching zero at large frequencies, it is clear that by increasing T in the FL regime $\Delta\Sigma$ will change the sign, marking a crossover to the thermal gas, not the nFL, state. Nonetheless, we plot the results for $\Delta\Sigma_{\mathbf{k}_{\text{an},n}} = 0$ at high temperature as TDL benchmarks for other numerical techniques.

Providing the controlled extrapolation of finite-system numerical results to the TDL has been long recognized as important. Thus far it has been accomplished, in particular, by large-system-size studies of the 3D Hubbard model near the AFM Néel transition [41–43]. In 2D, the extremely slow finite-size scaling due to the exponential growth of the AFM correlation length near the crossover makes Fig. 1 challenging to reproduce by finite-size methods, even if they do not suffer from the fermionic sign problem at half filling (cf. DQMC results for this problem in Ref. [2]). In the Supplemental Material [40], we further illustrate the difficulty of obtaining $T_{\text{an}}(U)$, $T_n(U)$ through extrapolation to the TDL by the example of Σ DDMC calculations on finite-size lattices of dimensions $L \times L$, where any value of L is accessible at the same computational cost.

To verify our results by an independent method, we resort to the DCA, which produces unbiased results after extrapolation to the TDL. At low temperatures, the extrapolation is extremely challenging. Figure 3 shows DCA results for $\text{Im}\Sigma_{\mathbf{k}}(i\omega_n)$ at $U = 3t$, $T = 0.12t$, and

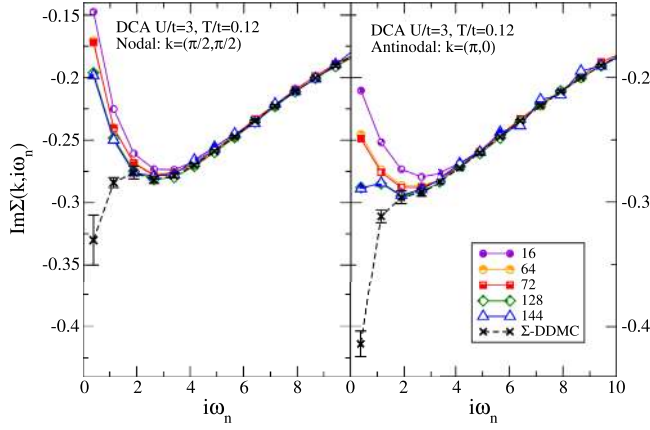


FIG. 3. Imaginary part of the self-energy obtained by DCA and compared to Σ DDMC at \mathbf{k}_n (left) and \mathbf{k}_{an} (right) in the insulating regime, $U/t = 3$, $T/t = 0.12$ (cluster sizes are $N_c = 16, 64, 72, 128, 144$).

various cluster sizes $16 \leq N_c \leq 144$. At $\mathbf{k} = \mathbf{k}_n$ (left panel), the results show the FL behavior for all accessible system sizes, while the Σ DDMC results are insulatorlike. At $\mathbf{k} = \mathbf{k}_{an}$ (right panel), the character changes from FL to insulating as a function of N_c when cluster sizes exceed 100, reaching qualitative agreement with the Σ DDMC data. Bigger clusters are required for a quantitatively accurate extrapolation. Note that if the data for only $N_c \leq 72$ were available, one would be led to conclude that the state at $U = 3t$, $T = 0.12t$ is a FL. [Similarly, in the DQMC study of Ref. [2], small-system-size data in what is actually a FL regime show insulatorlike behavior, resulting in a large error bar of the extrapolation to the TDL.] It is not surprising then that past work limited to substantially smaller cluster sizes [10–12] observed the MIT at $U_c > 5t$, while the TDL system is, in fact, already insulating at smaller U . In general, finite-size effects are less severe at higher T , and a controlled extrapolation of DCA data to the TDL is feasible: extrapolated DCA results for the crossover temperatures are in quantitative agreement with Σ DDMC for $T \gtrsim 0.2t$ (see the Supplemental Material [40]).

Arbitrary momentum resolution of Σ DDMC allows us to observe the structure correlations in the momentum space. Figure 4 shows the Brillouin zone map of $\text{Im}\Sigma_{\mathbf{k}}(\omega_0)$ and $\Delta\Sigma_{\mathbf{k}}$ and relates them to the measurable with ultracold atoms (quasi)momentum distribution $n(\mathbf{k})$ at the experimentally relevant $T = 0.2t$ and three values of U that are seen in Fig. 1 to be in the metallic ($U = 2t$), nFL ($U = 3.6t$), and insulator ($U = 4t$) regimes, respectively. As U is increased, $|\text{Im}\Sigma_{\mathbf{k}}(\omega_0)|$ exhibits relatively small change away from the FS and grows substantially along the FS, with the largest value at \mathbf{k}_{an} and the smallest within the FS at \mathbf{k}_n . At the same time, $\Delta\Sigma_{\mathbf{k}}$ remains positive for all \mathbf{k} in the metallic regime, but islands of negative values appear around \mathbf{k}_{an} at $U = 3.6t$ [below $T_{an}(U)$]. At $U = 4t$ [below $T_n(U)$], $\Delta\Sigma_{\mathbf{k}}$ is negative along the whole FS, with the

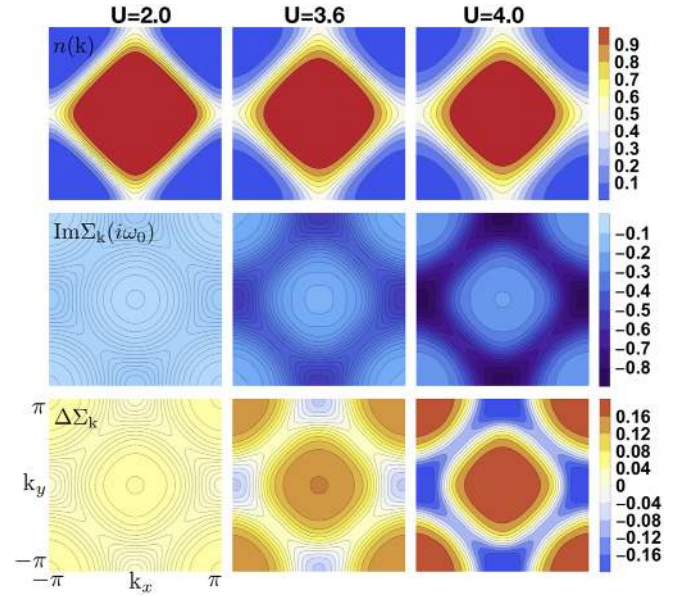


FIG. 4. (Quasi)momentum distribution $n(\mathbf{k})$ (top row), $\text{Im}\Sigma_{\mathbf{k}}(i\omega_0)$ (middle row), and $\Delta\Sigma_{\mathbf{k}}$ (bottom row) in the Brillouin zone at $T = 0.2t$ and different values of U (columns).

lowest (most insulatorlike) values around \mathbf{k}_{an} . Interestingly, away from the FS, the change in $\Delta\Sigma_{\mathbf{k}}$ is opposite: it grows, becoming more FL-like, upon increasing U . The corresponding $n(\mathbf{k})$ shows gradual smearing of the step at the FS as U increases and the system crosses from the FL to insulating regime. This smearing is more pronounced around \mathbf{k}_{an} : the diamond-shaped region of occupied states in the metallic regime shrinks and evolves toward a circle across the crossover, providing an observable signature of developing correlations.

In conclusion, we have revealed the scenario of the metal-to-quasiantiferromagnetic-insulator crossover in the 2D Hubbard model (1) qualitatively different from the MIT previously suggested for this system [10–12] and in qualitative agreement with the recent DGA [2,13] and DQMC [2] results. The crossover could not be captured by the small-cluster DMFT restricted to the paramagnetic solution, predicting the MIT instead. The insulating regime sets in at all values of U due to extended AFM correlations that transform the system into the quasi-AFM after an intermediate nFL pseudogap regime. The quantitative shape of the crossover is different from that reported in Refs. [2,13]: it is described by the mean-field AFM transition at small U and features a nFL regime that transforms to insulating behavior below $U \approx 4t$. All our results are obtained with controlled accuracy and offer guidance for precision experiments with ultracold atoms in optical lattices, as well as unbiased numerical techniques, in the ongoing effort to describe the phase diagram of the Hubbard model. In particular, the most nontrivial correlated regime is realized for $2.5t < U < 4t$ and temperatures

$T \lesssim 0.25t$. At weaker coupling, $U < 2.5t$, the low-temperature behavior is governed by the mean-field BCS-type physics, while at $U > 4t$ the low-temperature state is expected to qualitatively resemble that of the Heisenberg model [44]. By continuity of the key mechanism, the long-range AFM correlations (quantified, e.g., in Ref. [35]), this qualitative crossover picture is valid in a range of nonzero next-to-nearest-neighbor hopping t' and doping δ . The question of whether the conventional MIT scenario is realized at certain (large-enough) t' requires further systematic investigation.

We are grateful to Antoine Georges, Alexander Lichtenstein, Andy Millis, Thomas Schäfer, and Alessandro Toschi for discussions of the results. F.Š., A. J. K., and E. K. are grateful to the Precision Many-Body Group at UMass Amherst, where a part of this work was carried out, for hospitality. This work was supported by the Simons Foundation as a part of the Simons Collaboration on the Many-Electron Problem, the EPSRC through Grant No. EP/P003052/1, the National Science Foundation under the Grant No. DMR-1720465, and the MURI Program “advanced quantum materials—a new frontier for ultracold atoms” from AFOSR. J. P. F. L. was funded by NSERC and computational resources were provided by Compute Canada.

*Present address: Centre de Physique Théorique, École Polytechnique, CNRS, Université Paris-Saclay, 91128 Palaiseau, France and Collège de France, 11 place Marcelin Berthelot, 75005 Paris, France.

†Corresponding author.
evgeny.kozik@kcl.ac.uk

- [1] A. Georges, G. Kotliar, W. Krauth, and M. J. Rozenberg, *Rev. Mod. Phys.* **68**, 13 (1996).
- [2] T. Schäfer, F. Geles, D. Rost, G. Rohringer, E. Arrigoni, K. Held, N. Blümer, M. Aichhorn, and A. Toschi, *Phys. Rev. B* **91**, 125109 (2015).
- [3] I. Bloch, *Nat. Phys.* **1**, 23 (2005).
- [4] M. Lewenstein, A. Sanpera, V. Ahufinger, B. Damski, A. Sen, and U. Sen, *Adv. Phys.* **56**, 243 (2007).
- [5] D. Greif, G. Jotzu, M. Messer, R. Desbuquois, and T. Esslinger, *Phys. Rev. Lett.* **115**, 260401 (2015).
- [6] M. F. Parsons, A. Mazurenko, C. S. Chiu, G. Ji, D. Greif, and M. Greiner, *Science* **353**, 1253 (2016).
- [7] A. Mazurenko, C. S. Chiu, G. Ji, M. F. Parsons, M. Kanász-Nagy, R. Schmidt, F. Grusdt, E. Demler, D. Greif, and M. Greiner, *Nature (London)* **545**, 462 (2017).
- [8] M. A. Nichols, L. W. Cheuk, M. Okan, T. R. Hartke, E. Mendez, T. Senthil, E. Khatami, H. Zhang, and M. W. Zwierlein, *Science* **363**, 383 (2019).
- [9] T. A. Maier, M. Jarrell, T. Pruschke, and M. Hettler, *Rev. Mod. Phys.* **77**, 1027 (2005).
- [10] H. Park, K. Haule, and G. Kotliar, *Phys. Rev. Lett.* **101**, 186403 (2008).
- [11] P. Werner, E. Gull, O. Parcollet, and A. J. Millis, *Phys. Rev. B* **80**, 045120 (2009).
- [12] E. Gull, O. Parcollet, and A. J. Millis, *Phys. Rev. Lett.* **110**, 216405 (2013).
- [13] G. Rohringer and A. Toschi, *Phys. Rev. B* **94**, 125144 (2016).
- [14] L. Fratino, M. Charlebois, P. Sémon, G. Sordi, and A.-M. S. Tremblay, *Phys. Rev. B* **96**, 241109(R) (2017).
- [15] E. G. C. P. van Loon, M. I. Katsnelson, and H. Hafermann, *Phys. Rev. B* **98**, 155117 (2018).
- [16] J. C. Slater, *Phys. Rev.* **82**, 538 (1951).
- [17] N. D. Mermin and H. Wagner, *Phys. Rev. Lett.* **17**, 1133 (1966).
- [18] J. P. F. LeBlanc and E. Gull, *Phys. Rev. B* **88**, 155108 (2013).
- [19] J. P. F. LeBlanc *et al.* (Simons Collaboration on the Many-Electron Problem), *Phys. Rev. X* **5**, 041041 (2015).
- [20] F. Šimkovic and E. Kozik, *Phys. Rev. B* **100**, 121102(R) (2019).
- [21] A. Moutenet, W. Wu, and M. Ferrero, *Phys. Rev. B* **97**, 085117 (2018).
- [22] A. A. Abrikosov, L. P. Gor'kov, and I. E. Dzyaloshinski, *Methods of Quantum Field Theory in Statistical Physics* (Dover Publications Inc., New York, 1975).
- [23] A. Rubtsov, [arXiv:cond-mat/0302228](https://arxiv.org/abs/cond-mat/0302228).
- [24] A. N. Rubtsov, V. V. Savkin, and A. I. Lichtenstein, *Phys. Rev. B* **72**, 035122 (2005).
- [25] R. Rossi, *Phys. Rev. Lett.* **119**, 045701 (2017).
- [26] K. Van Houcke, E. Kozik, N. Prokofev, and B. Svistunov, *Phys. Procedia* **6**, 95 (2010).
- [27] E. Kozik, K. Van Houcke, E. Gull, L. Pollet, N. Prokof'ev, B. Svistunov, and M. Troyer, *Europhys. Lett.* **90**, 10004 (2010).
- [28] A.-M. S. Tremblay, B. Kyung, and D. Sénéchal, *Low Temp. Phys.* **32**, 424 (2006).
- [29] K. Jin, N. P. Butch, K. Kirshenbaum, J. Paglione, and R. L. Greene, *Nature (London)* **476**, 73 (2011).
- [30] D. Sénéchal and A.-M. S. Tremblay, *Phys. Rev. Lett.* **92**, 126401 (2004).
- [31] A. Macridin, M. Jarrell, T. Maier, P. R. C. Kent, and E. D'Azevedo, *Phys. Rev. Lett.* **97**, 036401 (2006).
- [32] O. Gunnarsson, T. Schäfer, J. P. F. LeBlanc, E. Gull, J. Merino, G. Sangiovanni, G. Rohringer, and A. Toschi, *Phys. Rev. Lett.* **114**, 236402 (2015).
- [33] W. Wu, M. Ferrero, A. Georges, and E. Kozik, *Phys. Rev. B* **96**, 041105(R) (2017).
- [34] W. Wu, M. S. Scheurer, S. Chatterjee, S. Sachdev, A. Georges, and M. Ferrero, *Phys. Rev. X* **8**, 021048 (2018).
- [35] F. Šimkovic IV, Y. Deng, N. Prokof'ev, B. Svistunov, I. Tupitsyn, and E. Kozik, *Phys. Rev. B* **96**, 081117(R) (2017).
- [36] M. H. Hettler, M. Mukherjee, M. Jarrell, and H. R. Krishnamurthy, *Phys. Rev. B* **61**, 12739 (2000).
- [37] M. Jarrell, T. Maier, C. Huscroft, and S. Moukouri, *Phys. Rev. B* **64**, 195130 (2001).
- [38] G. A. Baker, Jr., *Phys. Rev.* **124**, 768 (1961).
- [39] D. L. Hunter and G. A. Baker, Jr., *Phys. Rev. B* **19**, 3808 (1979).
- [40] See Supplemental Material at <http://link.aps.org/supplemental/10.1103/PhysRevLett.124.017003> for more details.

- [41] P. R. C. Kent, M. Jarrell, T. A. Maier, and T. Pruschke, *Phys. Rev. B* **72**, 060411(R) (2005).
- [42] S. Fuchs, E. Gull, L. Pollet, E. Burovski, E. Kozik, T. Pruschke, and M. Troyer, *Phys. Rev. Lett.* **106**, 030401 (2011).
- [43] E. Kozik, E. Burovski, V. W. Scarola, and M. Troyer, *Phys. Rev. B* **87**, 205102 (2013).
- [44] A. J. Kim, F. Šimkovic IV, and E. Kozik, [arXiv:1905.13337](https://arxiv.org/abs/1905.13337).