

 Open access • Journal Article • DOI:10.1080/15412555.2018.1484440

External Validation and Recalculation of the CODEX Index in COPD Patients. A 3CIAplus Cohort Study — [Source link](#)

Pere Almagro, Pablo Martínez-Cambor, Marc Miravittles, Mónica Rodríguez-Carballeira ...+32 more authors

Institutions: Dartmouth College, Johannes Kepler University of Linz, Universidad Autónoma de San Luis Potosí, Paracelsus Private Medical University of Salzburg ...+17 more institutions

Published on: 14 Mar 2019 - COPD: Journal of Chronic Obstructive Pulmonary Disease (Taylor & Francis)

Topics: Population

Related papers:

- [A Comorbidity Index for Mortality Prediction in Chinese Patients with ESRD Receiving Hemodialysis](#)
- [Palliative care and prognosis in COPD: a systematic review with a validation cohort.](#)
- [Predicting COPD 1-year mortality using prognostic predictors routinely measured in primary care](#)
- [Derivation and Validation of a Risk Index to Predict All-Cause Mortality in Type 2 Diabetes Mellitus](#)
- [Development and validation of comorbidity index in South Korea.](#)

Share this paper:    

View more about this paper here: <https://typeset.io/papers/external-validation-and-recalculation-of-the-codex-index-in-1nshun5ye4>

External validation and recalculation of the CODEX index in COPD patients:

Almagro, Pere; Turner, Alice; Martinez-Cambolor, Pablo; Miravittles, Marc; Navarro, Annie; Lamprecht, Bernd; Ramírez-García, S.; Kaiser, Bernhard; Casanova, Ciro; Alfageme, Inmaculada; Esteban, Cristobal; de Torres, Juan; Soler-Cataluña, Juan J; Marin, Jose; Celli, Bartolome; Ter Riet, Gerben; Sobradillo, Patricia; Lange, P; Garcia-Aymerich, Judith; Josep, Anto

DOI:

[10.1080/15412555.2018.1484440](https://doi.org/10.1080/15412555.2018.1484440)

License:

None: All rights reserved

Document Version

Peer reviewed version

Citation for published version (Harvard):

Almagro, P, Turner, A, Martinez-Cambolor, P, Miravittles, M, Navarro, A, Lamprecht, B, Ramírez-García, S, Kaiser, B, Casanova, C, Alfageme, I, Esteban, C, de Torres, J, Soler-Cataluña, JJ, Marin, J, Celli, B, Ter Riet, G, Sobradillo, P, Lange, P, Garcia-Aymerich, J, Josep, A, Han, MK, Langhammer, A, Steinberg, A, Leivseth, L, Bakke, P, Johannessen, A, Oga, T, Cosio, B, Ancochea, J, Echazarreta, A, Roche, N, Burgel, P-R, Sin, D, Puhon, M & Soriano, J 2019, 'External validation and recalculation of the CODEX index in COPD patients: A 3C1Aplus cohort study', *COPD: Journal of Chronic Obstructive Pulmonary Disease*, vol. 16, no. 1, pp. 8-17. <https://doi.org/10.1080/15412555.2018.1484440>

[Link to publication on Research at Birmingham portal](#)

Publisher Rights Statement:

This is an Accepted Manuscript of an article published by Taylor & Francis in COPD: Journal of Chronic Obstructive Pulmonary Disease on 14/03/2019, available online: <https://www.tandfonline.com/doi/full/10.1080/15412555.2018.1484440>

General rights

Unless a licence is specified above, all rights (including copyright and moral rights) in this document are retained by the authors and/or the copyright holders. The express permission of the copyright holder must be obtained for any use of this material other than for purposes permitted by law.

- Users may freely distribute the URL that is used to identify this publication.
- Users may download and/or print one copy of the publication from the University of Birmingham research portal for the purpose of private study or non-commercial research.
- User may use extracts from the document in line with the concept of 'fair dealing' under the Copyright, Designs and Patents Act 1988 (?)
- Users may not further distribute the material nor use it for the purposes of commercial gain.

Where a licence is displayed above, please note the terms and conditions of the licence govern your use of this document.

When citing, please reference the published version.

Take down policy

While the University of Birmingham exercises care and attention in making items available there are rare occasions when an item has been uploaded in error or has been deemed to be commercially or otherwise sensitive.

If you believe that this is the case for this document, please contact UBIRA@lists.bham.ac.uk providing details and we will remove access to the work immediately and investigate.



External validation and recalculation of the CODEX index in COPD patients. A 3CIAplus cohort study.

Journal:	<i>COPD: Journal Of Chronic Obstructive Pulmonary Disease</i>
Manuscript ID	COPD-2017-0290.R1
Manuscript Type:	Original Paper
Date Submitted by the Author:	10-May-2018
Complete List of Authors:	<p>Almagro, Pere ; University Hospital Mutua de Terrassa, Multimorbidity Unit. Internal Medicine Department Martinez-Cambor, Pablo; 3. Biomedical Data Science. Geisel School of Medicine at Dartmouth. Hanover. United States, Biomedical Data Science Miravittles, Marc; Hospital Universitari Vall d'Hebron, Pneumology Rodriguez-Carballeira, Monica; Hospital Universitario Mutua de Terrassa, Internal Medicine Department Navarro, Annie; Hospital Universitario Mutua de Terrassa, Pneumology Lamprecht, Bernd; Paracelsus Medical University Salzburg, University Clinic of Pneumology; General Hospital Linz, Department of Pulmonary Medicine Ramirez Garcia-Luna, Ana Sofia; 8. Facultad de Medicina, Universidad Autónoma de San Luis Potosí, San Luis Potosí, Mexico Kaiser, Berhard; 6. Department of Pulmonary Medicine, Kepler-University-Hospital, Linz, Austria; 7. Faculty of Medicine, Johannes-Kepler-University, Linz, Austria Alfageme, Inmaculada; Hospital Universitario Valme, Seville, Spain , Pneumology Casanova, Ciro; Hospital Nuestra Señora de la Candelaria, Tenerife, Spain Esteban, Cristobal; Hospital Galdakao-Usansolo, Galdakao, Bizkaia, Spain Juan Jose, Soler Cataluña; Hospital Arnau de Vilanova, Valencia, Spain, Pneumology de Torres, Juan P.; Clinica Universidad de Navarra, Pulmonary Celli, Bart; St. Elizabeth's Medical Center, Pulmonary Critical Care Marin, Jose; Hospital Universitario Miguel Servet, Pulmonary ter Riet, Gerben; 17. Department of General Practice, Academic Medical Center-University of Amsterdam (AMC), Amsterdam, The Netherlands Sobradillo, Patricia; Hospital Universitario Araba, sede Txagorritxu, Pneumology</p>

	<p>Lange, Peter; Copenhagen University, Department of Public Health; Hvidovre Hospital, Section of Respiratory Medicine</p> <p>Garcia Aymerich, Judith; ISGlobal, Centre for Research in Environmental Epidemiology (CREAL), Barcelona, Spain ; Universitat Pompeu Fabra (UPF), Barcelona, Spain</p> <p>Anto, Josep M; 20. ISGlobal, Centre for Research in Environmental Epidemiology (CREAL), Barcelona, Spain ; Universitat Pompeu Fabra (UPF), Barcelona, Spain</p> <p>Turner, Alice; University of Birmingham,</p> <p>Han, Meilan; University of Michigan, Pulmonary and Critical Care Medicine</p> <p>Langhammer, Arnulf; Norwegian University of Science and Technology, Department of Public Health and General Practice</p> <p>Stenberg, Alice; 26. Department of Epidemiology, Johns Hopkins Bloomberg School of Public Health. Baltimore USA;</p> <p>Leivseth, Linda; 27. Centre for Clinical Documentation and Evaluation, Northern Norway Regional Health Authority, Tromso, Norway</p> <p>Bakke, Per; 28. Department of Clinical Science, University of Bergen, Bergen, Norway</p> <p>Johannessen, Ane; Haukeland University Hospital, Centre for clinical research</p> <p>Oga, Toru; Kyoto University, Graduate School of Medicine, Respiratory Care and Sleep Control Medicine</p> <p>Cosio, Borja; Hospital Universitario Son Espases, Respiratory Medicine; Ciber Enfermedades Respiratorias,</p> <p>Ancochea, Julio; 32. Servicio de Neumología, Hospital Universitario de la Princesa (IISP), Universidad Autónoma de Madrid, Cátedra UAM-Linde, Madrid, Spain</p> <p>Echazarreta, Andres; 33. Servicio de Neumonología, Hospital San Juan de Dios de La Plata, Buenos Aires, Argentina</p> <p>Roche, Nicolas; 34. Service de Pneumologie AP-HP, Hôpitaux Universitaires Paris Centre, France</p> <p>Burgel, Pierre-Regis; 35. Respiratory Medicine, Paris Descartes University, Paris, France</p> <p>Sin, Don; University of British Columbia,</p> <p>Puhan, Milo; 38. Epidemiology, Biostatistics and Prevention Institute, University of Zurich, Zurich, Switzerland</p> <p>Soriano, Joan; 39. Instituto de Investigación Hospital Universitario de la Princesa (IISP), Universidad Autónoma de Madrid, Cátedra UAM-Linde, Madrid, Spain</p>
Keywords:	prognosis, survival, multimorbidity, comorbidity, COPD, CODEX index

TITLE PAGE**External validation and recalculation of the CODEX index in COPD patients. A 3CIAplus cohort study.****Running head: External validation of the CODEX index. 3CIA cohort study**

Pere Almagro¹, Pablo Martínez-Cambor^{2,3}, Marc Miravittles⁴, Mónica Rodríguez Carballeira¹, Annie Navarro⁵, Bernd Lamprecht^{6,7}, Ana S Ramirez-Garcia Luna⁸, Bernhard Kaiser⁹, Inmaculada Alfageme¹⁰, Ciro Casanova¹¹, Cristobal Esteban¹², Juan J Soler-Cataluña¹³, Juan P de-Torres¹⁴, Bartolome R Celli¹⁵, Jose M Marin¹⁶, Gerben ter Riet¹⁷, Patricia Sobradillo¹⁸, Peter Lange¹⁹, Judith Garcia-Aymerich^{20,21,22}, Josep M Anto^{20,21,22}, Alice M Turner²³, MeiLan K Han²⁴, Arnulf Langhammer²⁵, Alice Stenberg²⁶, Linda Leivseth²⁷, Per Bakke²⁸, Ane Johannessen²⁹, Toru Oga³⁰, Borja Cosío³¹, *Julio Ancochea*³², *Andres Echazarreta*³³, Nicolas Roche³⁴, Pierre-Régis Burgel³⁵, Don D Sin^{36,37}, Milo A Puhan³⁸, Joan B Soriano³⁹, for the 3CIA collaboration

AUTHOR AFFILIATIONS

1. Multimorbidity Patients Unit, Internal Medicine, Hospital Universitari Mutua de Terrassa, Universitat de Barcelona, Barcelona, Spain
2. Universidad Autónoma de Chile, Chile
3. Geisel School of Medicine at Dartmouth, Hanover, NH, United States.
4. Pneumology Department, Hospital Universitari Vall d'Hebron, CIBER de Enfermedades Respiratorias (CIBERES), Barcelona, Spain
5. Pneumology Service, Hospital Universitari Mútua Terrassa, Barcelona, Spain.
6. Department of Pulmonary Medicine, Kepler-University-Hospital, Linz, Austria
7. Faculty of Medicine, Johannes-Kepler-University, Linz, Austria
8. Facultad de Medicina, Universidad Autónoma de San Luis Potosí, San Luis Potosí, Mexico
9. Department of Pulmonary Medicine, Paracelsus Medical University Hospital, Salzburg, Austria
10. Hospital Universitario Valme, Seville, Spain
11. Hospital Nuestra Señora de la Candelaria, Tenerife, Spain
12. Hospital Galdakao-Usansolo, Galdakao, Bizkaia, Spain
13. Servicio de Neumología, Hospital Arnau de Vilanova, Valencia, Spain
14. Clínica Universidad de Navarra, Pamplona, Spain
15. Harvard University, Brigham and Women's Hospital, Pulmonary and Critical Care Medicine, Boston, MA, USA
16. Hospital Universitario Miguel Servet, Zaragoza, and CIBER de Enfermedades Respiratorias (CIBERES), Spain
17. Department of General Practice, Academic Medical Center-University of Amsterdam (AMC), Amsterdam, The Netherlands
18. Hospital Universitario Araba, Sede Txagorritxu, Vitoria, Spain
19. Section of Social Medicine, Department of Public Health, Copenhagen University, Copenhagen City Heart Study, Frederiksberg Hospital, Frederiksberg, Copenhagen, Denmark
20. ISGlobal, Centre for Research in Environmental Epidemiology (CREAL), Barcelona, Spain
21. Universitat Pompeu Fabra (UPF), Barcelona, Spain

22. CIBER Epidemiología y Salud Pública (CIBERESP), Barcelona, Spain
23. University of Birmingham, Edgbaston, UK,
24. University of Michigan, Ann Arbor, MI, USA
25. Department of Public Health and Nursing, NTNU, Norwegian University of Science and Technology Trondheim, Norway
26. Department of Epidemiology, Johns Hopkins Bloomberg School of Public Health, Baltimore, MD, USA
27. Centre for Clinical Documentation and Evaluation, Northern Norway Regional Health Authority, Tromsø, Norway
28. Department of Clinical Science, University of Bergen, Bergen, Norway
29. Department of Global Public Health and Primary Care, University of Bergen, Bergen, Norway
30. Department of Respiratory Care and Sleep Control Medicine, Kyoto University, Kyoto, Japan
31. Department of Respiratory Medicine, Hospital Son Espases-IdISPa, Ciberes, Mallorca, Spain
32. Servicio de Neumología, Hospital Universitario de la Princesa (IISP), Universidad Autónoma de Madrid, Cátedra UAM-Linde, Madrid, Spain
33. Servicio de Neumonología, Hospital San Juan de Dios de La Plata, Buenos Aires, Argentina
34. Service de Pneumologie AP-HP, Hôpitaux Universitaires Paris Centre, France
35. Respiratory Medicine, Paris Descartes University, Paris, France
36. James Hogg Research Centre, University of British Columbia, Vancouver, BC, Canada
37. Division of Respiratory Medicine, Department of Medicine, St Paul's Hospital, Vancouver, BC, Canada
38. Epidemiology, Biostatistics and Prevention Institute, University of Zurich, Zurich, Switzerland
39. Instituto de Investigación Hospital Universitario de la Princesa (IISP), Universidad Autónoma de Madrid, Cátedra UAM-Linde, Madrid, Spain

Corresponding author:

Pere Almagro, Multimorbidity Patients Unit, Internal Medicine Department, Hospital Universitari Mutua de Terrassa, Universitat de Barcelona, Barcelona, Spain

Pza. Dr. Robert nº 5

Terrassa 08221, Barcelona, Spain

e-mail: 19908pam@comb.es

Phone: + 34 93 736 5050

Fax: + 34 93 736 5550

Keywords: prognosis, COPD, mortality, survival, multicomponent index, comorbidities

Abbreviations:

COPD: Chronic Obstructive Pulmonary Disease.

FEV1: Forced Expiratory Volume in the first second.

mMRC: modified dyspnea scale of the Medical Research Council

3CIA: COPD Cohorts Collaborative International Assessment

Post-BD: post bronchodilator

STROBE: STrengthening the Reporting of OBservational studies in Epidemiology.

25%-75% IQR: 25%-75% interquartile range

ROC: receiver operating characteristic curve

AUC: area under the curve

NNE: nearest-neighbor estimator

ESMI: COPD in internal medical services

HR: Hazard Ratio

95% C.I.: 95% Confidence Interval

CODEX index: Comorbidity, Obstruction, Dyspnea, Exacerbations

mCODEX index: modified CODEX index

BODE: Body mass index, Obstruction, Dyspnea, Exercise

BODEX: Body mass index, Obstruction, Dyspnea, Exacerbations

ADO: Age, Dyspnea, Obstruction

HADO: Health, Activity, Dyspnea, Obstruction

DOSE: Dyspnea, Obstruction, Smoking, Obstruction

PEARL: Previous admissions, eMRCD score, Age, Right-sided heart failure, Left-sided heart failure.

Abstract

The CODEX index was developed and validated in patients hospitalized for COPD exacerbation to predict the risk of death and readmission within one year after discharge. Our study aimed to validate the CODEX index in a large external population of COPD patients with variable durations of follow-up. Additionally, we aimed to recalculate the thresholds of the CODEX index using the cut-offs of variables previously suggested in the 3CIA study (mCODEX).

Individual data on 2,755 patients included in the COPD Cohorts Collaborative International Assessment Plus (3CIA+) were explored. A further two cohorts (ESMI AND EGARPOC-2) were added. To validate the CODEX index, the relationship between mortality and the CODEX index was assessed using cumulative/dynamic ROC curves at different follow-up periods, ranging from 3 months up to 10 years. Calibration was performed using univariate and multivariate Cox proportional hazard models and Hosmer-Lemeshow test.

A total of 3,321 (87.8% males) patients were included with a mean \pm SD age of 66.9 ± 10.5 years, and a median follow-up of 1,064 days (IQR 25%-75% 426-1643), totalling 11,190 person-years. The CODEX index was statistically associated with mortality in the short- (≤ 3 months), medium- (≤ 1 year) and long-term (10 years), with an area under the curve of 0.72, 0.70 and 0.76 respectively. The mCODEX index performed better in the medium-term (< 1 year) than the original CODEX, and similarly in the long-term.

In conclusion, CODEX and mCODEX index are good predictors of mortality in patients with COPD, regardless of disease severity or duration of follow-up.

INTRODUCTION

The study of prognosis has been inseparable from medical practice for centuries (1). Some prognostic scores have been widely validated, such as the Karnofsky, Charlson, APACHE and other indices, while others have never been externally validated and their usefulness is debatable (2-4).

The most commonly used variable for evaluating the severity and mortality risk in COPD is postbronchodilator FEV₁, expressed as a percentage of predicted value according to ethnicity, age, sex and height (FEV₁%). Indeed, FEV₁% predicts survival, not only in respiratory patients, but also in cardiovascular disorders and even in the general population (5-8). In COPD, severity of airflow limitation has been classified according to different thresholds, which have changed over time and which have been endorsed by different scientific societies (9). To date, the most widely accepted classification, for the sake of simplicity and its broad implementation, is the staging proposed by the Global Obstructive Lung Disease Initiative (GOLD) to evaluate with the degree of postbronchodilator FEV₁% expressed as percentage of their predicted value ($\geq 80\%$; 50-79%; 30-49%; $\leq 29\%$ for mild, moderate, severe and very severe airflow limitation, respectively), although these suggested cut-offs are slightly different from those validated for mortality in prospective cohort studies (namely, $\geq 85\%$; 55-84%; 35-54%; $\leq 34\%$) (7-8). The second variable in importance for staging COPD is dyspnea, often measured with the modified scale of the Medical Research Council (mMRC), which in patients with more severe obstruction is an even better predictor of mortality than FEV₁% alone (10,11). These two variables were historically the first prognostic variables recognized in COPD (12,13). Additionally, the combination of these two

1
2
3 variables—airflow limitation and dyspnea—is the cornerstone of most of the
4
5 multicomponent indices developed for COPD prognosis including BODE,
6
7 BODEx, ADO, DOSE and HADO (14-18). There are other important variables to
8
9 evaluate prognosis in COPD, such as sub-phenotypes and the risk of
10
11 exacerbations or comorbidities, among others (15,19).
12

13
14 The CODEX index was developed and validated in patients hospitalized for an
15
16 acute exacerbation of COPD with the objective of evaluating the prognosis in
17
18 the short- (3-months) and medium-term (1-year) for mortality, hospital
19
20 readmission or their combination (19). Later, it was revalidated in a small cohort
21
22 of outpatients with severe COPD for mortality and exacerbations, and more
23
24 recently exclusively for mortality in another retrospective study performed in a
25
26 cohort of ambulatory patients (20,21). Finally, CODEX index was compared with
27
28 other index for the combination of 90-day mortality and readmissions after a
29
30 hospitalization for COPD exacerbation (22). However, to date formal validation
31
32 of its accuracy across a variety of COPD patient cohorts, and different follow-up
33
34 periods has not been done.
35
36

37
38 Our main objective was the validation and recalculation of the CODEX index for
39
40 mortality, in a broader cohort of COPD patients, recruited either at the general
41
42 population, outpatient or hospital levels, with different stages of severity and
43
44 with varying periods of follow-up ranging from 3 months up to 10 years.
45
46
47
48
49
50
51
52
53
54
55
56
57
58
59
60

METHODS

We obtained individual pooled data from 26 cohort studies from 8 countries, all previously published, and from the COPD Cohorts Collaborative International Assessment (3CIA) consortium database, later expanded to 3CIA+ (7). Briefly, the 3CIA database contains individual data from 16,332 COPD patients, at the outpatient and hospital levels, spirometrically confirmed by a post-BD ratio $FEV_1/FVC < 0.7$, according to the GOLD criteria (7). The 3CIA+ cohort has follow-up data and information on age, sex, pre-and post-BD FEV_1 , mMRC dyspnea scale and mortality, among others. Only in a number of 3CIA+ cohorts were data of comorbidity measured with Charlson index and number of hospitalizations in the previous year available. For the current study, we selected exclusively those cohorts in which Charlson index and number of severe exacerbations in the previous year were available in the database, since both are required to calculate the CODEX index. CODEX index is composed of the combination of $FEV_1\%$, dyspnea and number of severe COPD exacerbations in the previous year, stratified according to the BODE and BODEX thresholds, but replacing body mass index with the original age-adjusted Charlson index, the most widely recognized prognostic index of comorbidity (3). Severe exacerbations were defined as those that required hospitalization or emergency room visits (6,15). (Table 1)

The original, age-adjusted Charlson index is a standard scale with 15 chronic diseases graded for severity, including COPD, in which one point is added to the total score of comorbidity for each decade of life over the age of 50 years (3). To calculate the CODEX index, age-adjusted Charlson was stratified in tertiles, while the stratification of %predicted FEV_1 and dyspnea was the same

1
2
3 as is used in both the BODE and BODEX indices and the thresholds for
4
5 exacerbations were those used in the BODEX index. In the present study, we
6
7 attempted to recalculate the CODEX index (mCODEX) by replacing the original
8
9 CODEX thresholds for FEV₁% and dyspnea (mMRC) with the previously
10
11 suggested cut-offs based on survival prediction analysis in 3CIA and ADO,
12
13 which are ≥85%; 55-84%; 35-54%; <34% for FEV₁% and 0-1; 2; 3 and 4 for
14
15 dyspnea (7,8,16). Thus, possible scores for the CODEX and mCODEX indices
16
17 range from 0 to 10 points (19). (Table 1)
18
19

20
21 Two cohorts not previously included in 3CIA+, namely ESMI and EGARPOC-2,
22
23 were added. Since the CODEX index was developed using the data of the
24
25 ESMI study, and in order to rule out a possible bias, a previous subanalysis was
26
27 carried out to assess the AUCs of the ESMI study vs. the rest of the cohorts.
28
29 ESMI and EGARPOC-2 contain all the variables included in 3CIA+, plus the
30
31 Charlson index and follow-up for mortality (20,23). All the original cohort studies
32
33 were approved by the respective ethics committees and all patients gave their
34
35 informed consent. For the development of the present study the STROBE
36
37 recommendations for observational cohort studies were followed (24).
38
39

40 41 Statistical analysis

42
43 Categorical variables were expressed as absolute frequencies and
44
45 percentages, and continuous variables were summarized as mean and
46
47 standard deviation, or median and 25-75% interquartile range (25%-75% IQR),
48
49 wherever appropriate. Comparisons among means were made using the
50
51 Student t-test or Mann-Whitney test according to normality assumptions. For
52
53 validation purposes, we used the cumulative/dynamic area under the receiver
54
55 operating characteristic curve (ROC) to express the ability of both CODEX and
56
57
58
59
60

1
2
3 mCODEX indices to predict all-cause mortality for short-term (0 to 3-months),
4
5 medium-term (3 to 12-months) and long-term follow-up (1-10-years). Dynamic
6
7 cumulative ROC curves were selected as they are considered the most
8
9 appropriate method when the considered outcome (in our case mortality) is a
10
11 time-dependent variable. We used the nearest-neighbor estimator (NNE)
12
13 proposed by Heagerty, Lumley and Pepe to estimate the AUC, and the naïve
14
15 bootstrap procedure to estimate 95% confidence intervals (95% CI) (25).
16
17 Detailed methodology is available elsewhere (26). Calibration was performed
18
19 with univariate and multivariate Cox proportional hazard models and Hosmer-
20
21 Lemeshow test. Mortality curves were calculated using the Kaplan-Meier
22
23 estimator. Univariate Cox proportional hazard models were used to study the
24
25 crude effect of the CODEX and mCODEX tertiles on survival. A random-effect
26
27 multivariable Cox proportional hazard model including sex and age was used to
28
29 study the adjusted effect of the CODEX and mCODEX tertiles on survival. In
30
31 order to deal with the sample heterogeneity, a gaussian frailty term was added
32
33 to both models, which were stratified by cohort (25,27). Finally, we explored the
34
35 reliability of CODEX and mCODEX in different subgroups stratified by sex, age,
36
37 FEV1(%) and dyspnea. For all analyses, we used free software R ([www.r-](http://www.r-project.org)
38
39 [project.org](http://www.r-project.org)). In particular, package `survivalROC` and `survival` were used to
40
41 compute the AUC indices and develop the time-dependent analysis. A two-
42
43 sided p value below 0.05 was considered statistically significant.
44
45
46
47
48
49
50
51
52
53
54
55
56
57
58
59
60

Results

Twelve of the 26 cohorts included in the 3CIA contain in their protocol the data necessary to calculate the CODEX index, specifically Charlson index and the number of exacerbations in the previous year, totaling 3,142 patients. Of these 3,142 patients initially included, 363 were excluded due to a lack of individual data to calculate CODEX index and 24 for missing follow-up.

These excluded patients had better lung function (mean FEV₁ %: 56.2 % vs. 51.6%; $p < 0.001$) and were more often male [394/2,785 (14.3%) vs. 32/387 (8.3%); $p = 0.002$], with no differences on the dyspnea scale (median 2.72 vs 2.40; $p = 0.381$) or age (mean 66.8 vs. 67.2 years; $p = 0.415$). A total of 566 patients from the ESMI and EGARPOC cohorts were added to the study. (Figure 1) In all included patients, data to calculate the CODEX index were available, and hence we did not impute missing data.

The AUC for ESMI study compared with the global cohort was nearly identical, and therefore we decided to maintain it in both the validation and recalibration cohort. (Figure E1 Supplementary material)

In sum, a total of 3,321 patients were included in the study, with a mean age of 66.9 (SD 10.5) years, and 87.8% were males. The median follow-up was 1,064 days with an interquartile range (IQR) 25-75% of 426 to 1,643 days, totaling an experience of 11,990 person-years. The main characteristics of the studied population are presented in Table 2, while the distribution of CODEX and mCODEX indices is detailed in Figure 2. A total of 1,175 (35.4%) patients were included after a hospitalization for exacerbation of COPD, while 2,146 (64.6%) were selected in ambulatory settings. Hospitalized patients were older [72 (9.4)

1
2 vs. 64.1 (10) years; $p < 0.001$], with higher scores in the Charlson index [6.8 (2.6)
3 vs. 4.3 (2.2); $p < 0.001$], lower values of FEV₁% [46 (17.1) vs. 53.9 (19.8);
4 $p < 0.001$], higher scores in the mMRC dyspnea scale [median 3 (IQR 75%:3-4)
5 vs. 2 (IQR 75%: 2-3); $p < 0.001$], and without differences for gender and severe
6 exacerbations in the previous year. Both CODEX [5.4 (2) vs. 3.8 (2.2); $p < 0.001$]
7 and mCODEX [5.7 (1.7) vs. 4.3 (1.9); $p < 0.001$] showed higher scores in
8 hospitalized patients.
9
10

11
12 The overall observed mortality ranged from 6.3% (1-year) and 20% (3-years) to
13 58% at 10-years. The AUC for CODEX and mortality ranged from 0.72 (95% CI:
14 0.60-0.77) at 3 months to 0.76 (95% CI:0.70-0.79) at 10 years, and between
15 0.73 (95% C.I.:0.67-0.78) at 3 months and 0.75 (95% C.I.: 0.69-0.79) at 10 years
16 in the mCODEX. The mCODEX performed slightly better, although without
17 statistically significant differences, in the short (3-months) and medium term (1-
18 year), and similarly in the rest of the follow-up. (Table 3) Both models were well
19 calibrated according to the Hosmer-Lemeshow test. (Table E-1, Supplementary
20 material)
21
22

23
24 Table 4 shows the hazard ratios (HR) and their respective 95% confidence
25 intervals for crude and adjusted survival, one in which just the covariate of
26 interest was included, and another random-effect one adjusted for age, sex and
27 cohort. Other covariables were not included since the CODEX and mCODEX
28 indices already contained comorbidity, obstruction, dyspnea and previous
29 exacerbations. The hazard ratio of the highest and lowest tertiles was 4.59
30 (95% C.I.:3.93-4.74) and 5.02 (95% C.I.:4.17-6.05) for CODEX and mCODEX in
31 the unadjusted model and 3.93 (95% C.I.:3.27-4.44) and 4.31 (95% C.I.: 5.54-
32
33
34
35
36
37
38
39
40
41
42
43
44
45
46
47
48
49
50
51
52
53
54
55
56
57
58
59
60

1
2
3 5.26), respectively, in the adjusted model. Figure 3 shows the Kaplan-Meier
4 estimates for the survival curves stratified by tertiles of CODEX and mCODEX.
5
6

7
8 Table 5 presents the sensitivity analysis for subgroups stratified by age, gender,
9
10 FEV₁% and dyspnea at clinically relevant cut-offs and different follow-up
11 periods, graphically displayed in Figures 4A and 4B. In these analyses, CODEX
12 and mCODEX performed well, confirming that both indices are useful in the
13 different population subgroups, and highlighting the high AUC in the younger
14 patients in the short term (0.95 and 0.84 at 3 and 6 months, respectively) for
15 CODEX and mCODEX. Inversely, the utility of both indices in women in the
16 short and medium term (<3-years) was lower for CODEX than for mCODEX
17 (0.66 and 0.64 vs. 0.7 and 0.71) at 3 and 12 months, respectively. Of note, the
18 predictive capacity of CODEX and mCODEX for mortality in the short and
19 medium term was higher in outpatients (Table 5. Figures 4A and 4B).
20
21
22
23
24
25
26
27
28
29
30

31 32 Discussion

33
34
35 Our study confirms the utility of the CODEX index to predict mortality in a large
36 set of COPD patients. The study design—a pooled-analysis of individual patient-
37 data from several cohorts—sample size and the different degrees of severity of
38 the patients in the different cohorts maximize its high external validity.
39
40 Importantly, these replication results were consistent in sensitivity analyses and
41 across different COPD sub-populations.
42
43
44
45
46
47
48

49 Additionally, we recalculated the original CODEX index with different thresholds
50 for FEV₁% and dyspnea, previously obtained from the 3CIA cohort for survival
51 prediction. Of note, these new cut-offs were similar to those found in a large-
52
53
54
55
56
57
58
59
60

1
2
3 scale international validation study conducted in 10 cohorts including 13,914
4 patients in the validation of the ADO index (7,8,16).
5
6

7
8 In the past few years, a number of multicomponent prognostic indices have
9 been developed to predict progression and outcomes in COPD patients (29).
10 These scores were created by the combination of different variables with
11 diverse thresholds, but their usefulness and reproducibility are highly variable.
12 Some of them were created basically with statistical criteria, for others
13 calculation is complex, some were based on literature reviews and most have
14 never been externally validated (4,30,31).
15
16
17
18
19
20
21
22

23
24 To date, the most frequently referenced multicomponent prognostic scale in
25 COPD is the BODE index, originally developed in ambulatory patients with a
26 low burden of comorbidity, and subsequently validated in other populations
27 (14,32). The BODE index has also shown good sensitivity in detecting changes
28 in the progression and outcomes of COPD, such as exacerbations, pulmonary
29 rehabilitation, lung volume reduction techniques and lung transplantation,
30 among others (33-36). Following BODE, several other multicomponent indices
31 have been developed and validated in different populations and with diverse
32 objectives. The DECAF score was developed and later validated to predict in-
33 hospital mortality in patients with COPD exacerbations, while the DOSE index
34 was developed in primary care to evaluate the risk of exacerbations; it was later
35 related with mortality (17,37-40). The ADO index has been shown to have a
36 high discriminatory power (AUC 0.85 and 0.73 for the updated cohort and
37 derivation cohort respectively) and calibration for 3-year mortality, although
38 some authors feel that the weight of age in ADO may be excessive (16,41). A
39 modification of BODE is the BODEx index, which replaces the 6-minute walking
40
41
42
43
44
45
46
47
48
49
50
51
52
53
54
55
56
57
58
59
60

1
2
3 test with severe exacerbations in the previous year, and which has a similar 3-
4 year predictive value (15). More recently, a new tool (PEARL score) has been
5 developed to predict the risk of death or readmission at 90 days after hospital
6 discharge. This study was performed in 2,417 patients included in the DECAF
7 study who survived to discharge. PEARL score was superior to ADO, BODEX,
8 and DOSE in all three cohorts, and to CODEX within the internal and external
9 validation cohorts, but similar in the internal validation cohort (AUC for
10 CODEX=0.66 vs PEARL 0.68) (22).
11
12
13
14
15
16
17
18
19

20 All these indices have been externally validated and even directly compared in
21 others cohorts (42,43). External validation is essential to determine the
22 reproducibility of prediction models and to explore whether predictions obtained
23 by the model are valid in other populations (44,45).
24
25
26
27
28
29

30 CODEX index was originally developed in a multicenter cohort of patients
31 hospitalized for COPD exacerbation, and externally validated in the original
32 publication in three other similar cohorts (19). Later, it was revalidated in two
33 cohorts of ambulatory patients with good discrimination (AUC: 0.80) (20,21).
34 This is in accordance with the data of the present study that show a higher
35 predictive capacity in outpatients, retaining similar values of AUC to those
36 observed in the original study for hospitalized patients.
37
38
39
40
41
42
43
44
45

46 CODEX has several strengths and some weaknesses. Among the strengths are
47 that its variables are easy to collect, and all closely and clinically related to the
48 prognosis of these patients, especially the impact of comorbidity measured with
49 the original age-adapted Charlson index (46). Additionally, CODEX was
50 superior to BODEX, DOSE and updated ADO in patients hospitalized for COPD
51
52
53
54
55
56
57
58
59
60

1
2
3 in the short and medium term (19). However, to date few external validations
4 are available, and its performance in the longer term and in other populations
5 has not been studied. Our results confirm the ability of the CODEX index to
6 predict mortality in a large sample of patients and across diverse COPD
7 populations, with different degrees of severity. In COPD multicomponent indices
8 are useful to compare the severity of the disease among different populations,
9 and to enhance informed decision-making with the patient. However, the
10 individual prognosis in COPD is highly variable and these models can assist
11 clinicians but do not replace clinical judgment. (47)
12
13
14
15
16
17
18
19
20
21
22

23 Additionally, we attempted to improve CODEX by modifying the cut-offs for
24 FEV₁% and dyspnea with those suggested previously in 3CIA, which are very
25 similar to those proposed by Puhan et al. in the updated ADO (7,8,16).
26 Updating a predictive model is often desirable, especially when the model is
27 applied in settings that differ from that of the development sample or when
28 investigating new thresholds of included variables if there are new data that
29 suggest an improvement of its predictive capacity (44,45). This new mCODEX
30 performed slightly better, in the short term (3-months) and medium term (1-
31 year), and similarly in longer follow-up times. The most plausible explanation for
32 the small differences found between CODEX and mCODEX is the small
33 differences in the thresholds selected, confirming the reliability of the cut-offs
34 previously selected in the BODE and BODEx index. Although these differences
35 could have been maximized with statistical criteria their clinical applicability
36 would be more doubtful.
37
38
39
40
41
42
43
44
45
46
47
48
49
50
51
52

53
54 Our study has several limitations. First, mortality was the only outcome
55 assessed, while in the original publication CODEX index was related to three
56
57
58
59
60

1
2
3 outcomes, namely risk of mortality, hospital admissions and their combination.
4
5 Regrettably we do not have sufficient, consistent data on 3CIA+ in hospital
6
7 admissions after inclusion of patients. In this sense the present study is similar
8
9 to the previous publications of prognostic indices in COPD (BODE, BODEX,
10
11 ADO...) that have mortality as the exclusive outcome (14-16). Second, our
12
13 study had a clear predominance of men. Whereas in the 3CIA+ study the
14
15 percentage of women was 31%, in our study after the exclusion of patients with
16
17 missing data for Charlson index and previous severe exacerbations, this
18
19 percentage dropped to 12%. Nevertheless, the number of women (404) was
20
21 sufficient to detect differences between gender groups above or equal to 0.15
22
23 standard deviation at the standard statistical power of 80%. The rest of the
24
25 differences between included and excluded cohorts are small; patients without
26
27 Charlson index were slightly older with a similar number of severe
28
29 exacerbations in the previous year and similar level of dyspnea. Third, there
30
31 was great variability in the severity and outcomes across the individual studies
32
33 included. However, this might also be considered a strength because it enabled
34
35 inclusion of patients with a full range of COPD disease severity.
36
37
38
39

40 To conclude, our study confirms the utility of the CODEX index for mortality
41
42 prediction in a large cohort of COPD patients. Its reliability was demonstrated
43
44 across diverse COPD populations, in all subgroups analyzed and in different
45
46 periods of follow-up.
47
48
49
50
51
52
53
54
55
56
57
58
59
60

1
2
3 Declaration of interest
4

5 The authors declare that they have no conflict of interests with the present
6 manuscript.
7
8

9
10 Role of the funding source
11

12
13 We received no specific funding for this work. PA, PMC and JBS accept final
14 responsibility for the integrity of the work as a whole. They had full access to all
15 data in the study, and they take responsibility for the accuracy of all the
16 analyses.
17
18
19
20
21

22
23 Acknowledgments: The COCOMICS study was funded in part by a grant from
24 the Spanish Society of Pneumology and Thoracic surgery (SEPAR) coded with
25 the number 057/12.SEPAR 2013. We thank Tom Yohannan (professional
26 medical copy-editor) for his editorial assistance.
27
28
29
30

31
32 Conception and design: PA, PMC, MRC, AN, JBS. Analysis and interpretation:
33 PA, PMC, MRC, AN, JBS. Drafting the manuscript for important intellectual
34 content: PA, PMC, MM, MRC, AN, BL, ASR, BK, IA, CC, CE, JJSC, JPT, BRC,
35 JMM, GTR, PS, PL, JGA, JMA, AMT, MLKH, AL, TO, BC, JA, AE, NR, PRB,
36 DDS, MAP, JBS.
37
38
39
40
41
42
43
44
45
46
47
48
49
50
51
52
53
54
55
56
57
58
59
60

References:

1. Charles Joseph Singer EAU. A short history of medicine. Second edition. Oxford University press; 1962.
2. Evans C MM. Prognostic uncertainty in terminal care: can the Karnofsky index help? *Lancet*. 1985;8439:1204–6.
3. Charlson ME, Pompei P, Ales KL MC. A new method of classifying prognostic comorbidity in longitudinal studies: development and validation. *J Chronic Dis*. 1987;40(5):373–83.
4. Salpeter SR, Luo EJ, Malter DS, Stuart B. Systematic review of noncancer presentations with a median survival of 6 months or less. *Am J Med*. 2012;125:512.e1-512.e16.
5. Schünemann HJ, Dorn J, Grant BJ, Winkelstein W Jr TM. Pulmonary function is a long-term predictor of mortality in the general population: 29-year follow-up of the Buffalo Health Study. *Chest*. 2000;118(3):656–64.
6. Vogelmeier CF, Criner GJ, Martinez FJ, Anzueto A, Barnes PJ, Bourbeau J, et al. Global Strategy for the diagnosis, management, and prevention of chronic obstructive lung disease 2017 Report. GOLD Executive Summary. *Am J Respir Crit Care Med*. 2017;195 (5):557-582.
7. Soriano JB, Lamprecht B, Ramírez AS, Martinez-Cambor P, Kaiser B, Alfageme I, et al. Mortality prediction in chronic obstructive pulmonary disease comparing the GOLD 2007 and 2011 staging systems: A pooled analysis of individual patient data. *Lancet Respir Med*. 2015;3(6):443–50.

- 1
2
3 8. Almagro P, Martinez-Cambor P, Soriano JB, Marin JM, Alfageme I,
4 Casanova C, et al. Finding the best thresholds of FEV1 and dyspnea to predict 5-
5 year survival in COPD patients: The COCOMICS study. PLoS One.
6
7 2014;9(2):1–7.
8
9
- 10
11
12 9.-Atsou K, Chouaid C, Hejblum G. Variability of the chronic obstructive
13 pulmonary disease key epidemiological data in Europe: systematic review. BMC
14
15 Med. 2011;9:7.
16
17
- 18
19 10.- Bestall JC, Paul EA, Garrod R, Garnham R, Jones PW, Wedzicha JA.
20
21 Usefulness of the Medical Research Council (MRC) dyspnea scale as a
22
23 measure of disability in patients with chronic obstructive pulmonary disease.
24
25 Thorax. 1999;54(7):581–6.
26
27
- 28
29 11. Nishimura K, Izumi T, Tsukino M, Oga T. Dyspnea is a better predictor of
30
31 5-year survival than airway obstruction in patients with COPD. Chest.
32
33 2002;121(5):1434–40.
34
35
- 36
37 12.-Jones NL, Burrows B, Fletcher CM. Serial studies of 100 patients with
38
39 chronic airway obstruction in London and Chicago. Thorax. 1967 ;22(4):327-35.
40
41
- 42
43 13.-Renzetti AD Jr. Prognosis in chronic obstructive pulmonary disease. Med
44
45 Clin North Am. 1967;51:363-71.
46
47
- 48
49 14. Celli BR, Cote CG, Marin JM, Montes de Oca M, Mendez RA, Pinto Plata
50
51 V, et al. The body mass index, airflow obstruction, dyspnea and exercise
52
53 capacity index in chronic obstructive pulmonary disease. N Engl J Med.
54
55 2004;350(10):1005–12.
56
57
58
59
60

- 1
2
3 15. Soler-Cataluña JJ, Martínez-García MÁ, Sánchez LS, Tordera MP,
4
5 Sánchez PR. Severe exacerbations and BODE index: Two independent risk
6
7 factors for death in male COPD patients. *Respir Med.* 2009;103(5):692–9.
8
9
- 10 16. Puhan MA, Hansel NN, Sobradillo P, Enright P, Lange P, Hickson D, et
11
12 al. Large-scale international validation of the ADO index in subjects with COPD:
13
14 an individual subject data analysis of 10 cohorts. *BMJ Open.* 2012;2:2012–152.
15
16
- 17 17. Jones RC, Donaldson GC, Chavannes NH, Kida K, Dickson-Spillmann
18
19 M, Harding S, et al. Derivation and validation of a composite index of severity in
20
21 chronic obstructive pulmonary disease: The DOSE index. *Am J Respir Crit Care*
22
23 *Med.* 2009;180(12):1189–95.
24
25
- 26 18. Esteban C, Quintana JM, Moraza J, Aburto M, Aguirre U,
27
28 Aguirregomoscorta JI, et al. BODE-Index vs HADO-score in chronic obstructive
29
30 pulmonary disease: Which one to use in general practice? *BMC Med.*
31
32 2010;8:28.
33
34
35
- 36 19.- Almagro P, Soriano JB, Cabrera FJ, Boixeda R, Alonso-Ortiz MB,
37
38 Barreiro B, et al. Short- and medium-term prognosis in patients hospitalized for
39
40 COPD exacerbation: the CODEX index. *Chest.* 2014;145(5):972–80.
41
42
- 43 20.-Navarro A, Costa R, Rodriguez-Carballeira M, Yun S, Lapuente A, Barrera
44
45 A, et al. Prognostic assessment of mortality and hospitalizations of outpatients
46
47 with advanced chronic obstructive pulmonary disease. Usefulness of the
48
49 CODEX index. *Rev Clín Esp.* 2015;215(8):431–8.
50
51
- 52 21.-Golpe R, Suárez-Valor M, Veres-Racamonde A, Cano-Jiménez E, Martín-
53
54 Robles I, Sanjuán-López P, Pérez-de-Llano L. Octogenarian patients with
55
56
57
58
59
60

1
2
3 chronic obstructive pulmonary disease: Characteristics and usefulness of
4 prognostic indexes. *Med Clin (Barc)*. [Epub ahead of print]
5
6

7
8 22.-Echevarria C, Steer J, Heslop-Marshall K, Stenton SC, Hickey PM, Hughes
9 R, et al. The PEARL score predicts 90-day readmission or death after
10 hospitalisation for acute exacerbation of COPD. *Thorax*. 2017 72(8):686-693.
11
12

13
14 23. Almagro P, Cabrera FJ, Diez J, Boixeda R, Alonso Ortiz MB, Murio C, et al.
15 Comorbidities and short-term prognosis in patients hospitalized for acute
16 exacerbation of COPD: the EPOC en Servicios de medicina interna (ESMI)
17 study. *Chest*. 2012;142(5):1126-33.
18
19
20
21
22

23
24 24.- von Elm E, Altman DG, Egger M, Pocock SJ, Gøtzsche PC,
25 Vandembroucke JP; STROBE Initiative. The Strengthening the Reporting of
26 Observational Studies in Epidemiology (STROBE) statement: guidelines for
27 reporting observational studies. *Lancet*. 2007;370(9596):1453-7.
28
29
30
31
32

33
34 25.- Heagerty PJ, Lumley T, Pepe MS. Time-dependent ROC curves for
35 censored survival data and a diagnostic marker. *Biometrics*. 2000;56(2):337-44.
36
37

38
39 26.- Martínez-Cambor P, Bayón GF, Pérez-Fernández S. Cumulative/dynamic
40 ROC curve estimation. *Journal of Statistical Computation and Simulation*.
41 2016;86: 3582-3594.
42
43
44

45
46 27.- O'Quigley J, Stare J. Proportional hazards models with frailties and random
47 effects. *Stat Med*. 2002;21(21):3219-33.
48
49

50
51 28.- Steyerberg EW. Prognosis Research Strategy (PROGRESS) 3: prognostic
52 model research. *PLoS Med*. 2013;10(2):e1001381.
53
54
55

1
2
3
4
5
6 29.- Dijk WD, Bemt Lv, Haak-Rongen Sv, Bischoff E, Weel Cv, Veen JC, et al.
7
8 Multidimensional prognostic indices for use in COPD patient care. A systematic
9
10 review. *Respir Res.* 2011;12:151.

11
12
13 30.- Connors AF Jr, Dawson NV, Thomas C, Harrell FE Jr, Desbiens N,
14
15 Fulkerson WJ, et al. Outcomes following acute exacerbation of severe chronic
16
17 obstructive lung disease. The SUPPORT investigators (Study to Understand
18
19 Prognoses and Preferences for Outcomes and Risks of Treatments). *Am J*
20
21 *Respir Crit Care Med.* 1996;154(4):959-67.

22
23
24 31.- Mannino D, Sin DD. Development and validation of a prognostic index for
25
26 health outcomes in chronic obstructive pulmonary disease. *Arch Intern Med.*
27
28 2008;168(1):71-9.

29
30
31 32.- Sanjaume M, Almagro P, Rodríguez-Carballeira M, Barreiro B, Heredia JL,
32
33 Garau J. Post-hospital mortality in patients re-admitted due to COPD. Utility of
34
35 BODE index. *Rev Clin Esp.* 2009;209(8):364-70.

36
37
38 33.- Cote CG, Dordelly LJ, Celli BR. Impact of COPD exacerbations on patient-
39
40 centered outcomes. *Chest.* 2007;131:696-704.

41
42
43 34.-Güell MR, Cejudo P, Ortega F, Puy MC, Rodríguez-Trigo G, Pijoan JI, et al.
44
45 Benefits of long-term pulmonary rehabilitation maintenance program in severe
46
47 COPD Patients: 3 year follow-up. *Am J Respir Crit Care Med.* 2017;195(5):622-
48
49 629.

50
51
52 35.- Imfeld S, Bloch KE, Weder W, Russi EW. The BODE index after lung
53
54 volume reduction surgery correlates with survival. *Chest.* 2006;129(4):873-8.

1
2
3 36.- Lahzami S, Bridevaux PO, Soccacal PM, Wellinger J, Robert JH, Ris HB, et
4 al. Survival impact of lung transplantation for COPD. *Eur Respir J*. 2010
5 ;36(1):74-80.
6
7

8
9
10 37.- Steer J, Gibson J, Bourke SC. The DECAF Score: predicting hospital
11 mortality in exacerbations of chronic obstructive pulmonary disease. *Thorax*.
12 2012;67(11):970-6.
13
14

15
16
17 38.- Echevarria C, Steer J, Heslop-Marshall K, et al. Validation of the DECAF
18 score to predict hospital mortality in acute exacerbations of COPD. *Thorax*.
19 2016;71(2):133-40.
20
21
22

23
24 39.- Jones RC, Price D, Chavannes NH, , Lee AJ, Hyland ME, Ställberg B, et al.
25 Multi-component assessment of chronic obstructive pulmonary disease: an
26 evaluation of the ADO and DOSE indices and the global obstructive lung
27 disease categories in international primary care data sets. *NPJ Prim Care
28 Respir Med*. 2016;26:16010.
29
30
31
32
33

34
35
36 40.- Sundh J, Janson C, Lisspers K, Ställberg B, Montgomery S. The Dyspnea,
37 Obstruction, Smoking, Exacerbation (DOSE) index is predictive of mortality in
38 COPD. *Prim Care Respir J*. 2012;21(3):295-301.
39
40
41
42

43 41.- Celli BR, Marin JM, Cote CG, Aguirre A, Macario CC. Prognostic
44 assessment of patients with COPD. *Lancet*. 2009;374(9705):1885.
45
46
47

48 42.- Marin JM, Alfageme I, Almagro P, Casanova C, Esteban C, Soler-Cataluña
49 JJ, et al. Multicomponent indices to predict survival in COPD: the COCOMICS
50 study. *Eur Respir J*. 2013;42(2):323-32.
51
52
53
54
55
56
57
58
59
60

1
2
3 43.-Ou CY, Chen CZ, Yu CH, Shiu CH, Hsiue TR. Discriminative and predictive
4
5 properties of multidimensional prognostic indices of chronic obstructive
6
7 pulmonary disease: a validation study in Taiwanese patients. *Respirology*. 2014
8
9 ;19(5):694-9.
10

11
12 44.- Collins GS, de Groot JA, Dutton S, Omar O, Shanyinde M, Tajar A, et al.
13
14 External validation of multivariable prediction models: a systematic review of
15
16 methodological conduct and reporting. *BMC Med Res Methodol*. 2014;14:40.
17

18
19 45.- Nieboer D, van der Ploeg T, Steyerberg EW. Assessing discriminative
20
21 performance at external validation of clinical prediction models. *PLoS One*.
22
23 2016;11(2):e0148820.
24

25
26 46.- Donaldson GC, Wedzicha JA. The CODEX index: a collection or digest of
27
28 laws: a code. *Chest*. 2014;145 (5):934-5.
29

30
31 47.- Almagro P, Yun S, Sangil A, Rodríguez-Carballeira M, Marine M, Landete
32
33 P, Soler-Cataluña JJ, Soriano JB, Miravittles M. Palliative care and prognosis in
34
35 COPD: a systematic review with a validation cohort. *Int J Chron Obstruct*
36
37 *Pulmon Dis*. 2017 ;12:1721-1729.
38
39
40
41
42
43
44
45
46
47
48
49
50
51
52
53
54
55
56
57
58
59
60

1
2
3
4 Figure footnotes

5
6 Figure 1

7
8
9
10 Strengthening the Reporting of Observational Studies in Epidemiology
11 (STROBE) flowchart of participants and causes of exclusion.
12
13

14
15 Figure 2

16
17 Distribution of CODEX and mCODEX in the study population. N= number of
18 subjects for each point of CODEX and mCODEX.
19
20
21

22
23 Figure 3

24
25 Kaplan-Meier curves for mortality stratified in tertiles for CODEX and mCODEX.
26
27 The gray shading represents the 95% confidence intervals.
28
29

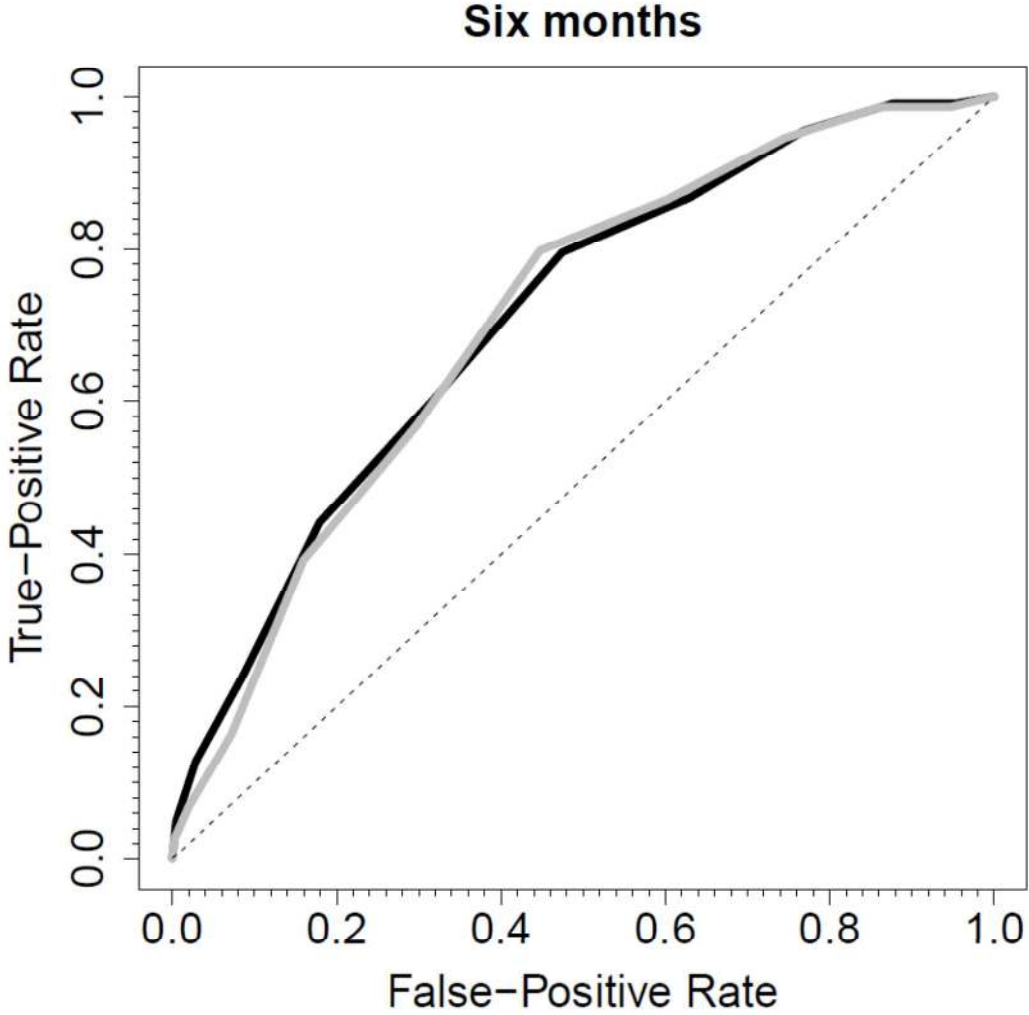
30
31 Figure 4 a) and b).

32
33 AUCs and 95% confidence intervals for mortality, stratified by relevant
34 subgroups for a) CODEX, and b) mCODEX, and different periods of follow-up.
35
36
37
38
39
40
41
42
43
44
45
46
47
48
49
50
51
52
53
54
55
56
57
58
59
60

1
2
3
4
5
6
7
8
9
10
11
12
13
14
15
16
17
18
19
20
21
22
23
24
25
26
27
28
29
30
31
32
33
34
35
36
37
38
39
40
41
42
43
44
45
46
47
48
49
50
51
52
53
54
55
56
57
58
59
60

Supplementary material

Figure E1 Supplementary material



1
2
3 Comparative/Dynamics AUCs at 6-months' mortality, ESMI (gray line), vs. total
4 cohorts (black line)
5

6 Table E1.

	CODEX	m-CODEX
Hosmer-Lemeshow test		
	p	p
3 months	0.06	0.07
12 months	0.48	0.21
3 years	0.83	0.79
5 years	0.48	0.7
10 years	0.53	0.76

7
8
9
10
11
12
13
14
15
16 Calibration for CODEX and mCODEX during different follow-up periods,
17 performed with Hosmer-Lemeshow test. In this test values greater than 0.05
18 indicate good calibration of the model.
19
20
21
22
23
24
25
26
27
28
29
30
31
32
33
34
35
36
37
38
39
40
41
42
43
44
45
46
47
48
49
50
51
52
53
54
55
56
57
58
59
60

Table 1

Variables and thresholds to estimate the CODEX and mCODEX indices

CODEX	POINTS	0	1	2	3
	Charlson index *	0-4	5-7	≥8	
	FEV1 (%) PBD	≥65	50-64	36-49	≤35
	Dyspnea (mMRC)	0-1	2	3	4
	Severe exacerbations	0	1-2	≥3	
mCODEX	POINTS	0	1	2	3
	Charlson index *	0-4	5-7	≥8	
	FEV1 (%) PBD	≥85	55-84	35-54	≤35
	Dyspnea (mMRC)	0	1-2	3	4
	Severe exacerbations	0	1-2	≥3	

The Charlson index is adjusted for age, according to the original description, adding 1 point for each decade after 50 years and preserving 1 point for COPD.

Table 2

Demographic and clinical characteristics of the study participants

	Descriptive
Patient-years	11,183.19
Age, mean±sd	66.9±10.5
Gender, male, n (%)	2,917 (87.8)
BMI, mean±sd	27.6±5.1
FEV1 (ml), mean±sd	1.41±0.62
FVC (ml), mean±sd	3.26±1.3
%FEV1%, mean±sd	51.1±19.2
GOLD classification	
Mild	293 (8.8)
Moderate	1,299 (39.1)
Severe	1,018 (30.7)
Very severe	711 (21.4)
Dyspnea (mMRC)	
0	14 (0.4)
1	565 (17)
2	1007 (30.3)
3	1043 (31.4)
4	692 (20.8)
Charlson index, mean±sd	2.9 (2.07)
Exacerbations*, mean±sd	0.99±1.72
Smoking history	
Former	2,472 (74.4)
Current	710 (21.4)
Non-smoker	79 (2.4)
Missing	60 (1.8)
Pack-years, mean±sd	45.2±31.4
6MWT, mean±sd	374±128
Setting of inclusion	
Hospitalized	2,146 (64.6%)

1
2
3
4
5
6
7
8
9
10
11
12
13
14
15
16
17
18
19
20
21
22
23
24
25
26
27
28
29
30
31
32
33
34
35
36
37
38
39
40
41
42
43
44
45
46
47
48
49
50
51
52
53
54
55
56
57
58
59
60

Outpatients	
-------------	--

Exacerbations*= number of severe exacerbations in the previous year.

For Peer Review Only

Table 3

Cumulative/dynamic area under the ROC curves, and 95% confidence interval at different periods of follow-up.

Area under dynamic cumulative ROC curves (95% C.I.)		
	CODEX	mCODEX
3 months	0.716 (0.655; 0.774)	0.729 (0.670; 0.783)
6 months	0.710 (0.663; 0.755)	0.716 (0.670; 0.760)
1 year	0.696 (0.662; 0.730)	0.709 (0.667; 0.733)
5 years	0.706 (0.679; 0.731)	0.710 (0.683; 0.734)
10 years	0.757 (0.702; 0.789)	0.753 (0.693; 0.786)

95% C.I.= 95 Confidence Interval

1
2
3
4
5
6
7
8
9
10
11
12
13
14
15
16
17
18
19
20
21
22
23
24
25
26
27
28
29
30
31
32
33
34
35
36
37
38
39
40
41
42
43
44
45
46
47
48
49
50
51
52
53
54
55
56
57
58
59
60

For Peer Review Only

Table 4. Hazard ratios (HR) and their respective 95% confidence intervals for crude and adjusted survival

	CODEX		mCODEX	
	Crude	Adjusted	Crude	Adjusted
Tertile 1	1 [Ref.]	1 [Ref.]	1 [Ref.]	1 [Ref.]
Tertile 2	2.41 (2.00; 2.91)	2.09 (1.72; 2.53)	2.84 (2.41; 3.34)	2.49 (2.10; 2.93)
Tertile 3	4.59 (3.83; 5.40)	3.93 (3.27; 4.74)	5.02 (4.17; 6.05)	4.31 (5.54; 5.26)

[Ref.]=Reference. Adjusted for sex, age, and frailty model for cohort.

Table 5. Sensitivity analysis for subgroups and mortality, at different follow-up periods.

			Area under C/D ROC curve (95% CI)	
			CODEX	mCODEX
Age				
< 60 N=857	3 months	0.950 (0.927; 0.981)	0.952 (0.931; 0.982)	
	6 months	0.838 (0.704; 0.945)	0.823 (0.650; 0.949)	
	1 year	0.718 (0.586; 0.840)	0.720 (0.584; 0.838)	
	5 years	0.674 (0.610; 0.733)	0.695 (0.635; 0.753)	
	10 years	0.682 (0.593; 0.757)	0.683 (0.603; 0.757)	
61-70 N=1143	3 months	0.712 (0.570; 0.831)	0.703 (0.557; 0.826)	
	6 months	0.720 (0.635; 0.800)	0.709 (0.623; 0.790)	
	1 year	0.706 (0.640; 0.769)	0.701 (0.633; 0.764)	
	5 years	0.721 (0.677; 0.764)	0.716 (0.672; 0.759)	
	10 years	0.767 (0.708; 0.820)	0.745 (0.685; 0.799)	
+70 N=1321	3 months	0.632 (0.549; 0.711)	0.647 (0.571; 0.719)	
	6 months	0.631 (0.561; 0.697)	0.645 (0.577; 0.719)	
	1 year	0.628 (0.580; 0.674)	0.631 (0.583; 0.677)	
	5 years	0.641 (0.595; 0.688)	0.637 (0.589; 0.683)	
	10 years	0.675 (0.499; 0.748)	0.644 (0.466; 0.762)	
Gender				
Men N=2917	3 months	0.719 (0.659; 0.776)	0.729 (0.674; 0.784)	
	6 months	0.708 (0.659; 0.754)	0.714 (0.667; 0.759)	
	1 year	0.695 (0.661; 0.730)	0.700 (0.666; 0.734)	
	5 years	0.704 (0.676; 0.732)	0.708 (0.682; 0.736)	
	10 years	0.758 (0.699; 0.789)	0.752 (0.694; 0.784)	
Women N=404	3 months	0.659 (0.332; 0.967)	0.695 (0.402; 0.967)	
	6 months	0.694 (0.463; 0.901)	0.712 (0.497; 0.900)	
	1 year	0.642 (0.434; 0.827)	0.653 (0.455; 0.826)	
	5 years	0.689 (0.606; 0.763)	0.698 (0.612; 0.772)	
	10 years	0.664 (0.540; 0.794)	0.730 (0.506; 0.856)	
Setting of Inclusion				
Outpatients N=2196	3 months	0.750 (0.671; 0.822)	0.766 (0.689; 0.835)	
	6 months	0.729 (0.668; 0.786)	0.732 (0.669; 0.790)	
	1 year	0.722 (0.667; 0.756)	0.715 (0.671; 0.735)	
	5 years	0.699 (0.667; 0.733)	0.703 (0.671; 0.757)	
	10 years	0.737 (0.675; 0.779)	0.729 (0.668; 0.771)	
Hospitalized N=1175	3 months	0.653 (0.550; 0.755)	0.664 (0.566; 0.759)	
	6 months	0.678 (0.600; 0.752)	0.684 (0.610; 0.757)	
	1 year	0.658 (0.604; 0.712)	0.660 (0.606; 0.713)	
	5 years	0.691 (0.644; 0.737)	0.693 (0.647; 0.737)	
	10 years	0.747 (0.677; 0.814)	0.741 (0.669; 0.808)	

		Area under C/D ROC curve (95% CI)	
		CODEX	mCODEX
%FEV1			
< 40% N=1107	3 months	0.628 (0.519; 0.733)	0.628 (0.521; 0.731)
	6 months	0.629 (0.548; 0.705)	0.628 (0.547; 0.705)
	1 year	0.623 (0.563; 0.680)	0.626 (0.567; 0.683)
	5 years	0.615 (0.564; 0.665)	0.607 (0.555; 0.659)
	10 years	0.704 (0.528; 0.782)	0.701 (0.531; 0.780)
40%-60% N=1174	3 months	0.788 (0.675; 0.883)	0.798 (0.697; 0.881)
	6 months	0.716 (0.627; 0.796)	0.736 (0.647; 0.815)
	1 year	0.691 (0.629; 0.749)	0.703 (0.641; 0.757)
	5 years	0.653 (0.608; 0.699)	0.670 (0.626; 0.715)
	10 years	0.658 (0.584; 0.728)	0.645 (0.572; 0.713)
+60% N=987	3 months	0.755 (0.590; 0.885)	0.783 (0.624; 0.900)
	6 months	0.731 (0.601; 0.843)	0.743 (0.618; 0.852)
	1 year	0.720 (0.618; 0.812)	0.714 (0.619; 0.799)
	5 years	0.659 (0.598; 0.717)	0.672 (0.608; 0.731)
	10 years	0.680 (0.611; 0.738)	0.683 (0.621; 0.743)
mMRC			
0-1 N=579	3 months	0.709 (0.516; 0.858)	0.733 (0.516; 0.882)
	6 months	0.749 (0.616; 0.856)	0.768 (0.622; 0.883)
	1 year	0.712 (0.601; 0.812)	0.717 (0.597; 0.824)
	5 years	0.720 (0.647; 0.786)	0.719 (0.648; 0.784)
	10 years	0.675 (0.581; 0.769)	0.676 (0.585; 0.766)
2 N=1007	3 months	0.761 (0.647; 0.858)	0.773 (0.647; 0.874)
	6 months	0.727 (0.637; 0.808)	0.716 (0.619; 0.799)
	1 year	0.741 (0.677; 0.802)	0.735 (0.671; 0.796)
	5 years	0.707 (0.651; 0.756)	0.715 (0.663; 0.764)
	10 years	0.762 (0.692; 0.825)	0.766 (0.701; 0.831)
3 N=1043	3 months	0.678 (0.565; 0.781)	0.684 (0.562; 0.792)
	6 months	0.673 (0.580; 0.756)	0.682 (0.589; 0.765)
	1 year	0.700 (0.640; 0.757)	0.704 (0.642; 0.762)
	5 years	0.728 (0.685; 0.771)	0.726 (0.683; 0.768)
	10 years	0.700 (0.630; 0.763)	0.708 (0.634; 0.773)
4 N=692	3 months	0.693 (0.604; 0.777)	0.675 (0.584; 0.763)
	6 months	0.714 (0.633; 0.788)	0.707 (0.624; 0.783)
	1 year	0.640 (0.567; 0.713)	0.635 (0.562; 0.707)
	5 years	0.597 (0.537; 0.656)	0.590 (0.531; 0.650)
	10 years	0.740 (0.633; 0.830)	0.734 (0.522; 0.823)

AUC: Area under the cumulative dynamic ROC curve. 95% C.I.= 95% Confidence interval. N= number of patients. Sensitivity analysis for age, gender, FEV1%, dyspnea (mMRC), and setting of inclusion.

1
2
3
4
5
6
7
8
9
10
11
12
13
14
15
16
17
18
19
20
21
22
23
24
25
26
27
28
29
30
31
32
33
34
35
36
37
38
39
40
41
42
43
44
45
46
47
48
49
50
51
52
53
54
55
56
57
58
59
60

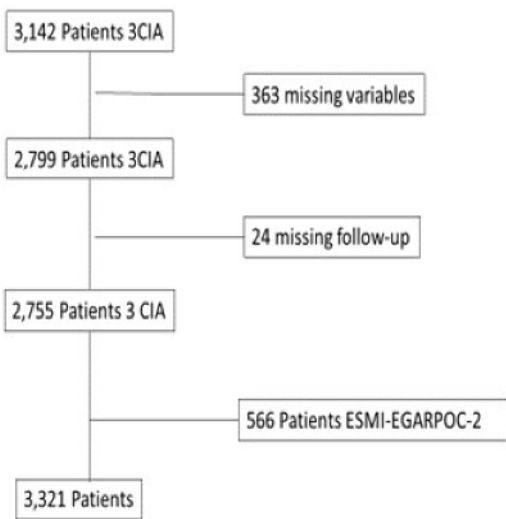
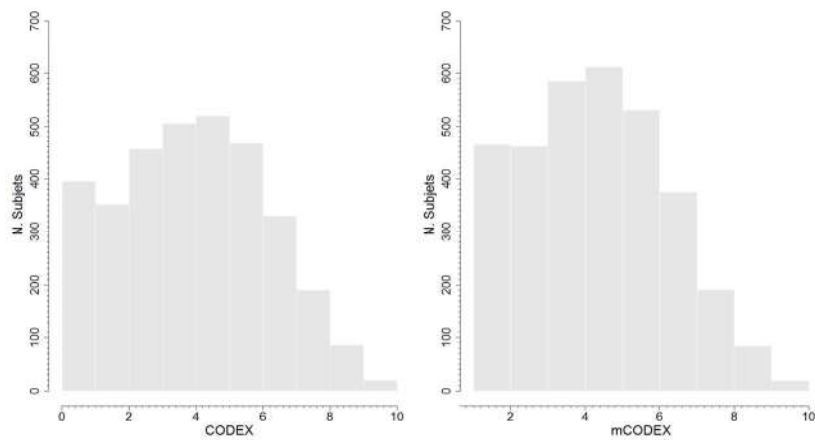


Figure 1

Strengthening the Reporting of Observational Studies in Epidemiology (STROBE) flowchart of participants and causes of exclusion.

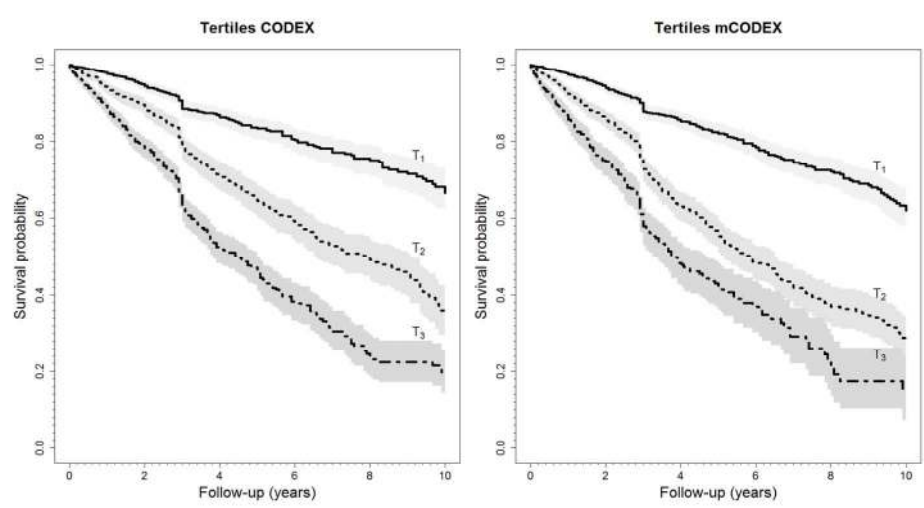
only



Distribution of CODEX and mCODEX in the study population. N= number of subjects for each point of CODEX and mCODEX.

Review Only

1
2
3
4
5
6
7
8
9
10
11
12
13
14
15
16
17
18
19
20
21
22
23
24
25
26
27
28
29
30
31
32
33
34
35
36
37
38
39
40
41
42
43
44
45
46
47
48
49
50
51
52
53
54
55
56
57
58
59
60



Kaplan-Meier curves for mortality stratified in tertiles for CODEX and mCODEX. The gray shading represents the 95% confidence intervals.

Review Only

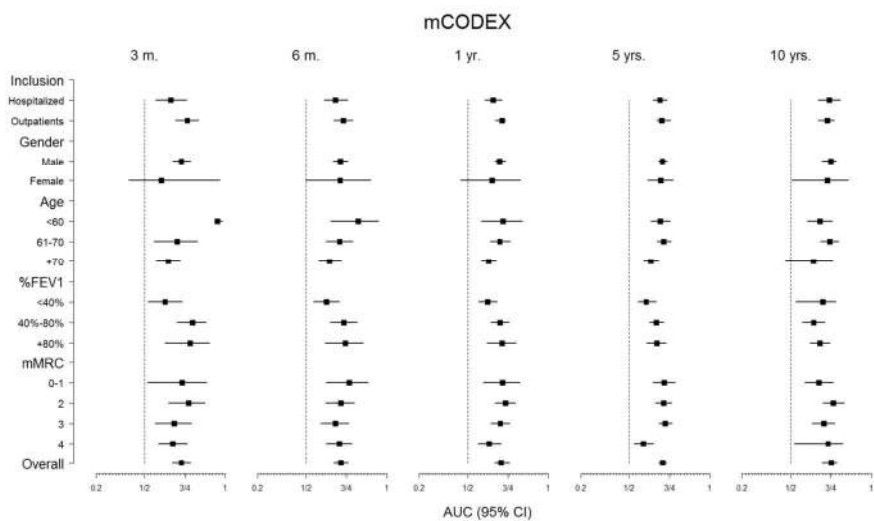


FIGURE 4B

Review Only

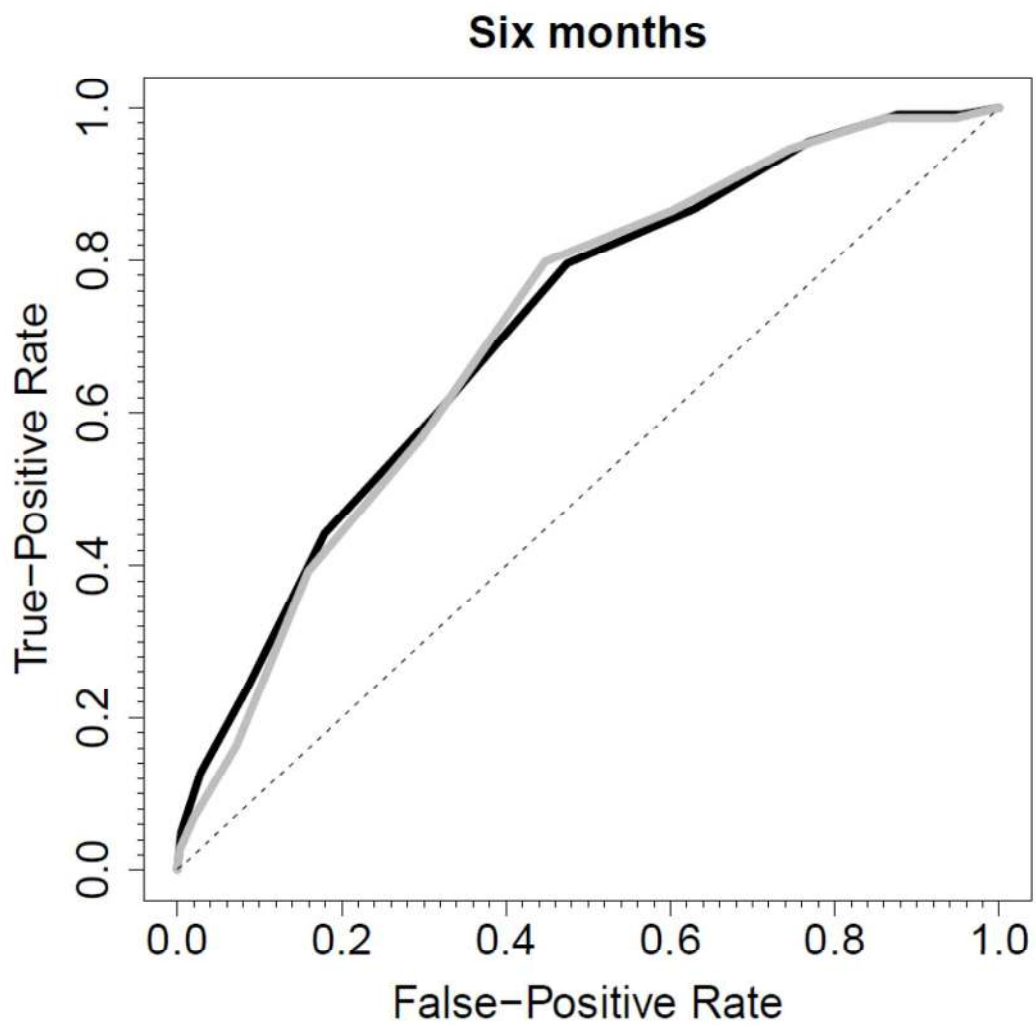
Supplementary material

Table E1.

	CODEX	m-CODEX
Hosmer-Lemeshow test		
	p	p
3 months	0.06	0.07
12 months	0.48	0.21
3 years	0.83	0.79
5 years	0.48	0.7
10 years	0.53	0.76

Calibration for CODEX and mCODEX during different follow-up periods, performed with Hosmer-Lemeshow test. In this test values greater than 0.05 indicate good calibration of the model.

Figure E1 Supplementary material



Comparative/Dynamics AUCs at 6-months' mortality, ESMI (gray line), vs. total cohorts (black line)

1
2
3
4
5
6
7
8
9
10
11
12
13
14
15
16
17
18
19
20
21
22
23
24
25
26
27
28
29
30
31
32
33
34
35
36
37
38
39
40
41
42
43
44
45
46
47
48
49
50
51
52
53
54
55
56
57
58
59
60

For Peer Review Only