

EXTINCTION LAW VARIATIONS AND DUST EXCITATION IN THE SPIRAL GALAXY NGC 300

H. ROUSSEL,¹ A. GIL DE PAZ,² M. SEIBERT,¹ G. HELOU,¹ B. F. MADORE,² AND C. MARTIN¹

Received 2004 December 29; accepted 2005 June 14

ABSTRACT

We investigate the possible origin of the strong radial gradient in the ultraviolet-to-infrared ratio in the nearby late-type spiral galaxy NGC 300 and emphasize the importance of local variations in the geometry of the interstellar medium, concluding that they cannot be neglected with respect to metallicity effects. This analysis is based on a combination of maps obtained both from space using *GALEX* (1350 to 2750 Å) and *Spitzer* (3–160 μm) and from the ground (*UBVRI*, H α , and H β). We select ionizing stellar clusters associated with H II regions of widely varying morphologies and derive their fundamental parameters from population synthesis fitting of their spectral energy distributions, carefully measured to eliminate local background emission accurately. From these fits, we conclude that the stellar extinction law is highly variable in the line of sight of young clusters of similar ages. In the particular model geometry that we consider most appropriate to the sampled regions, we checked that our findings are not significantly altered by the correct treatment of radiative transfer effects. The variations are systematic in nature, in the sense that extinction laws of the Milky Way or LMC type, with a prominent 2175 Å absorption feature and a modest far-ultraviolet slope, are associated with compact H II regions (the compactness being quantified in two different ways), while clusters surrounded by diffuse H II regions follow extinction laws of the 30 Doradus or SMC type, with a weaker 2175 Å feature and a steeper far-ultraviolet rise. The Calzetti starburst attenuation law, although most often degenerate with the 30 Doradus extinction law, overpredicts ionizing photon fluxes by large amounts. We also find that the extinction law variations are correlated with the column density of dust species emitting in the near- and mid-infrared. Finally, we briefly discuss the nebular to stellar extinction ratios and the excitation of aromatic band carriers, invalidating their claimed association with cold dust.

Subject headings: dust, extinction — galaxies: individual (NGC 300) — galaxies: ISM — galaxies: star clusters — H II regions — ultraviolet: galaxies

1. INTRODUCTION

NGC 300 is a gas-rich galaxy of Sd type, at a distance of only 2.1 Mpc (Freedman et al. 1992). Its total extent in the blue light is more than 20', and its inclination on the line of sight, derived from H I kinematics, is about 50° (Puche et al. 1990). It contains numerous bright H II complexes (Sérsic 1966; Deharveng et al. 1988) and forms stars at a current total rate of about 0.15 M_{\odot} yr⁻¹ (Helou et al. 2004). NGC 300 was targeted for surveys of supernova remnants; between 20 and 40 candidates were found by various selection methods (Blair & Long 1997; Pannuti et al. 2000; Payne et al. 2004), evidence that star formation has been going on for an extended period at a significant rate. Large numbers of Wolf-Rayet stars were also found (Breysacher et al. 1997; Schild et al. 2003). The oxygen abundance in the nebular gas phase varies between about 1.4 and 0.4 times the solar neighborhood value, from the center up to a radial distance of about 10' (Deharveng et al. 1988).

Many bubble-like structures are seen in the H α emission, especially in the outer disk, where they reach diameters of ~600 pc. About 50% of the total H α flux arises from the diffuse ionized gas component (Hoopes et al. 1996). Judging from the morphology of H II regions and the position of the most likely exciting sources, the hydrogen gas may be ionized very far away from young clusters (in projected distance). This argues for the existence of aged star-forming sites and a high degree of porosity of the interstellar medium (ISM) around them. The large number

of resolved stellar clusters and the variety of their associated H II regions, observed at a resolution of a few tens of parsecs, make it possible to study in great detail general patterns in the extinction and dust heating within a single galaxy.

Deriving spatially resolved extinction in galaxies of different types and determining how the extinction law is affected by properties of the ISM such as metallicity and geometric configuration is a first step toward assessing the validity of common recipes used to correct for extinction the global ultraviolet emission of galaxies. This knowledge is fundamental to obtaining good prescriptions to estimate star formation rates and ages from current and future ultraviolet and infrared surveys.

In this paper, we analyze jointly images of the stellar light from the far-ultraviolet (FUV) to the far-red, of the hydrogen recombination emission in the H α and H β lines, and of the infrared emission from 3 to 160 μm. The data are described in § 2. After deriving large-scale infrared-to-ultraviolet ratio and extinction maps (§ 3), we focus on individual star-forming complexes selected in H α and in the ultraviolet, and we constrain the fundamental properties of ionizing stellar clusters to assess how critically the extinction law and excitation of mid-infrared emitting dust at these spatial scales depend on the local geometry of the ISM (§ 4). The results are discussed topic by topic in § 5 and summarized in § 6.

2. DATA

2.1. Ultraviolet Images

NGC 300 was observed with the *Galaxy Evolution Explorer* (*GALEX*) space telescope in the FUV and near-ultraviolet (NUV) bands at effective wavelengths of 1516 and 2267 Å (Martin et al. 2005; Morrissey et al. 2005). *GALEX* has a circular field of view

¹ California Institute of Technology, Pasadena, CA 91125; hroussel@irastrro.caltech.edu.

² Carnegie Observatories, Carnegie Institution of Washington, Pasadena, CA 91101.

of $1''.2$ in diameter, and observations are performed in a spiral dither pattern. The data from the photon-counting, multichannel plate detectors were processed with the analysis pipeline operated by the Caltech Science Operations Center, which converts the photon lists into flux-intensity images and applies flat-fielding and first-order geometric distortion corrections. The absolute calibration is derived from ground test data that show good agreement, to within 10%, with observations of white dwarf standard stars (Morrissey et al. 2005). See also the *GALEX* Ultraviolet Atlas of Nearby Galaxies (A. Gil de Paz et al. 2005, in preparation), in which NGC 300 is included, for more information.

The angular resolution is of the order of $5''$ (FWHM) but varies with source brightness and position across the field. In particular, the point-spread function (PSF) in the FUV band is slightly elliptical (elongated along the southeast to northwest direction) in some parts of the map. A first distortion correction between the NUV and FUV maps was estimated using Legendre polynomials of order 4 and cross-correlating the positions of about 900 stars and clusters. Distortion residuals and PSF variations were handled separately for each individual subfield of size $\sim 2'$ by fitting nearby point sources with Gaussians in the FUV, NUV, and U bands.

2.2. Infrared Images

Broadband infrared images were acquired with the *Spitzer Space Telescope* at effective wavelengths of 3.6, 4.5, 5.7, 8.0, 24, 71, and 156 μm , and were first discussed by Helou et al. (2004). The data processing and mosaicking is also described in this paper. The angular resolution (FWHM) of the mosaics is $2''.5$ – $3''$ between 3.6 and 8 μm , $5''.7$ at 24 μm , $16''$ at 70 μm , and $38''$ at 160 μm .

The mid-infrared bands record gradually varying contributions, as a function of wavelength, from stars and dust, the global 3.6 μm emission being dominated by photospheres, the global 8 μm emission deriving mainly from aromatic band carriers, and longer wavelength bands covering essentially the thermal continuum from very small to big dust grains.

The photospheric component was subtracted from the 8 μm map as explained in Helou et al. (2004). A model for intermediate to old stellar populations was derived from the Starburst99 population synthesis model (Leitherer et al. 1999) and was found to be remarkably invariant for solar and half-solar metallicities and a broad range of star formation histories (excluding very young populations). On the assumption that the 3.6 μm emission is entirely of stellar origin, this map was then used to normalize the photospheric spectrum at each point to which the relevant filter transmission curves were applied. This procedure may be inaccurate locally, because of the contribution from young stars, but the 8 μm emission is heavily dominated by dust in star-forming regions, so that neglecting young stellar populations should not introduce any significant error.

2.3. Optical Images

Mosaics in the *UBVI* bands of $20'.5 \times 20'.5$ were obtained from Kim et al. (2004). An R -band mosaic of $25' \times 25'$ and $H\alpha + [\text{N II}]$ and $H\beta$ maps in narrowband filters (in a field of view of $8'.85 \times 8'.85$) were acquired at the Las Campanas Irénée du Pont 2.5 m Telescope with the direct CCD camera. The angular resolution in all the broadband optical images, after the mosaicking and the geometric transformations applied to align them, is of the order of $1''.7$ to $2''$ (FWHM).

We also used an $H\alpha$ mosaic covering the same field as the R -band mosaic to measure the $H\alpha$ flux of the outermost H II

regions; the residual background was subtracted locally in each subfield separately. The map acquired by Hoopes et al. (1996), kindly provided to us by C. Hoopes, supplied a means of checking the $H\alpha + [\text{N II}]$ flux calibration by comparing aperture photometry measurements on several bright H II complexes in both maps; fluxes from the map of Hoopes et al. (1996) are systematically lower by about 10%.

The $H\beta$ photometric accuracy, however, is much more uncertain, because this line has a much smaller equivalent width than the $H\alpha$ line and larger errors are introduced by continuum subtraction and correction for stellar absorption features. Because of these uncertainties, if no flux correction is applied, the $H\alpha/H\beta$ decrement values are unphysical in the case B recombination assumption and in disagreement with published values for individual H II regions. In order to correct them and derive an estimate of the nebular extinction from $H\alpha$ and $H\beta$ photometry, we scaled the decrement in such a way that extinction values derived by Webster & Smith (1983) from spectrophotometry for five regions could be reproduced. We used an intrinsic $H\alpha/H\beta$ ratio of 2.86, appropriate for electronic densities and temperatures $\leq 10^3 \text{ cm}^{-3}$ and $\sim 10^4 \text{ K}$, respectively, and replaced the extinction law assumed by Webster & Smith (1983) with the Cardelli et al. (1989) law. This procedure requires that the raw $H\alpha/H\beta$ flux ratio be underestimated by 30% on average. Applying the above correction, the derived global extinction (from total fluxes in the $H\beta$ field of view) is $A(H\alpha) = 0.5 \text{ mag}$.

3. LARGE-SCALE UV/IR RATIO AND EXTINCTION

The ultraviolet disk reaches much farther out than the infrared disk. To quantify this statement, we convolved all maps to the resolution of the 160 μm map and estimated the total infrared emission (TIR) from a linear combination of the 24, 70, and 160 μm powers (Dale & Helou 2002). To reach the 160 μm FWHM, the maps at wavelengths up to 24 μm were first convolved with a model of the PSF at 70 μm ;³ these and the 70 μm map were then convolved with Gaussians of the appropriate widths. We computed surface brightness profiles in the FUV band and in the TIR, averaged in elliptical annuli to account for the inclination of NGC 300 (Fig. 1). The FUV band was preferred over the NUV band for this comparison, because while the ratio of the extinction in these two bands is close to 1 (smaller than 1.3 for various extinction laws), the intrinsic FUV/NUV ratio of young stellar populations is ≥ 1 , the FUV band avoids the variable 2175 Å feature of the interstellar extinction curve (see § 5.4), and the FUV band is minimally contaminated by foreground stars. The radial profile of the FUV/NUV ratio was, however, computed in the same fashion as the FUV/TIR profile and is shown in Figure 2. On average, the FUV/TIR ratio increases exponentially with deprojected distance from the center, with irregularities mainly due to the FUV emission being less smooth than the infrared emission. The FUV/TIR ratio increases by at least a factor 5, maybe up to a factor 10, between the center and the outermost regions where it is still measurable. Also shown in Figure 1 is the opposite of the average slope of the metallicity gradient as derived by Deharveng et al. (1988). The slope of the FUV/TIR gradient is very similar, although somewhat smaller. At any given distance from the center, however, the dispersion in FUV/TIR ratios among individual star-forming regions is at least a factor 2, whereas the standard deviation of abundances is only of 0.11 dex, which seems to indicate that metallicity

³ Available at <http://ssc.spitzer.caltech.edu/mips/psf.html>.

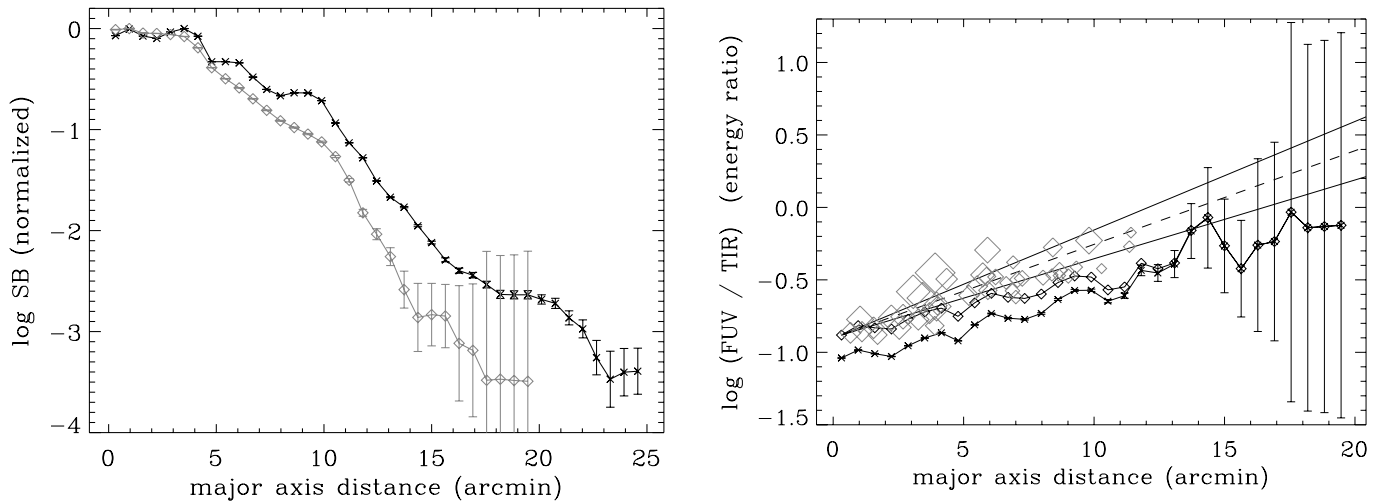


FIG. 1.—*Left*: Radial profiles of the FUV and infrared surface brightnesses, measured in elliptical annuli oriented along the galaxy major axis. The black line corresponds to the FUV band and the gray line connecting the diamonds to the total infrared emission estimated from the 24, 70, and 160 μm maps. The curves are normalized by their maximum value. *Right*: Radial profile of the FUV to infrared energy ratio, before (*stars*) and after (*diamonds*) correction of the FUV map for extinction. The energy emitted in the FUV band was computed with a filter equivalent width of 268 \AA . The linear dashed line represents the opposite of the metallicity gradient derived by Deharveng et al. (1988), with its uncertainty range indicated by the linear solid lines. The big gray diamonds are individual FUV sources, measured at the same angular resolution of 38", within 76" apertures; their size is proportional to the square root of the FUV flux corrected for extinction, using the results from Fig. 4.

effects are not solely responsible for the FUV/TIR gradient. The UV-brightest regions tend to be deficient in infrared emission compared with their fainter counterparts. From studies of large samples of galaxies, a clear decrease of the global ultraviolet to infrared flux ratio was found as a function of a measure of the star formation rate (Wang & Heckman 1996) or as a function of the blue luminosity (Buat & Burgarella 1998) or the stellar mass (Pierini & Möller 2003). Interpreting the ultraviolet-to-infrared ratio variations within resolved galaxies could help constrain the underlying causes of this behavior.

A stellar extinction map of NGC 300 can be derived from a simple energy balance calculation, using all the maps between 1516 \AA and 3.5 μm to reconstruct the stellar emission. The emerging fluxes in the FUV, NUV, *UBVRI*, and IRAC1 (3.5 μm) bands were interpolated by realistic stellar spectral energy dis-

tributions, using the actual filter transmission curves. Assuming several different extinction laws, the power absorbed in this range is set equal to the total power emitted in the infrared. The resulting extinction map, with superposed apertures showing the individual regions studied and discussed in § 4, also superposed on the $\text{H}\alpha$ mosaic of Figure 3, is shown in Figure 4. The derived $A(\text{FUV})$ ranges between 0.1 and 0.6 [$A(V)$ between 0 and 0.23]. Uncertainties of 20% in the flux calibration at both 70 and 160 μm could increase the $A(\text{FUV})$ extinction values by 0.05 mag.

The large H II complexes including shell-like structures correspond to regions of lower extinction, consistent with the idea that they are aged star-forming sites having partly dispersed the

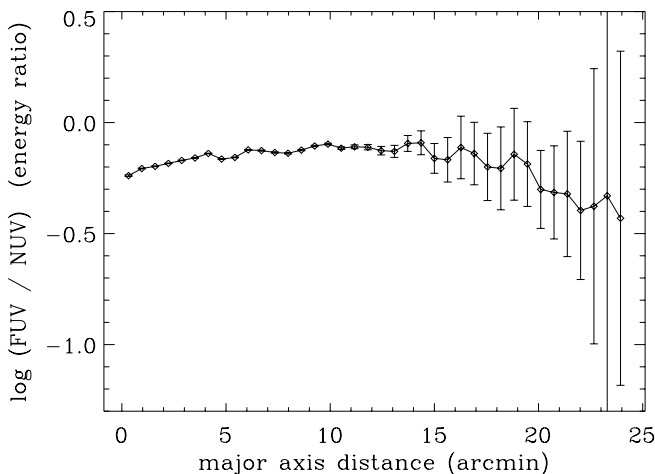


FIG. 2.—Radial profile of the FUV to NUV energy ratio, computed in the same way and at the same angular resolution as the FUV/TIR profile. Since the differential extinction between the two bands is very small, the extinction-corrected profile, if plotted, would be almost indistinguishable. We used filter equivalent widths of 268 and 732 \AA , respectively. The flux density ratio is higher by a factor 1.22, or 0.087 dex. The error bars represent the 3 σ uncertainties on the ratio.

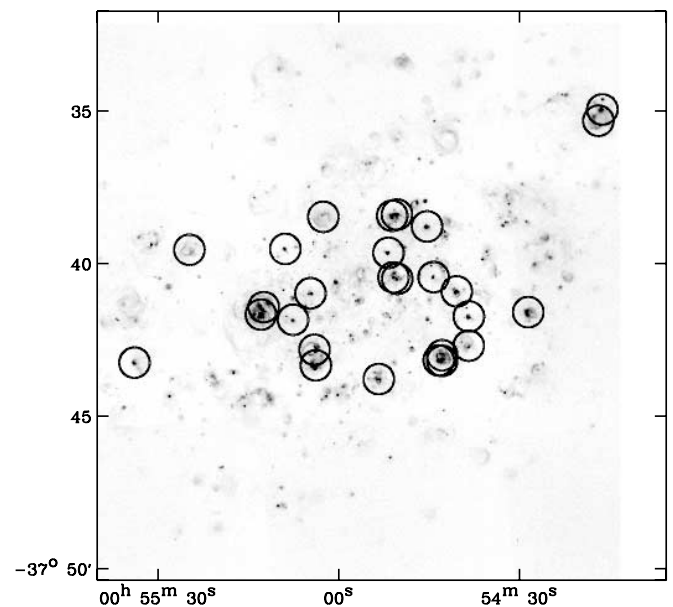


FIG. 3.— $\text{H}\alpha$ mosaic, with circles around the H II complexes discussed in § 4 superposed. Their diameter is here arbitrarily fixed at 1' for clarity. The horizontal axis represents the right ascension and the vertical axis the declination, in the J2000.0 equatorial coordinate system.

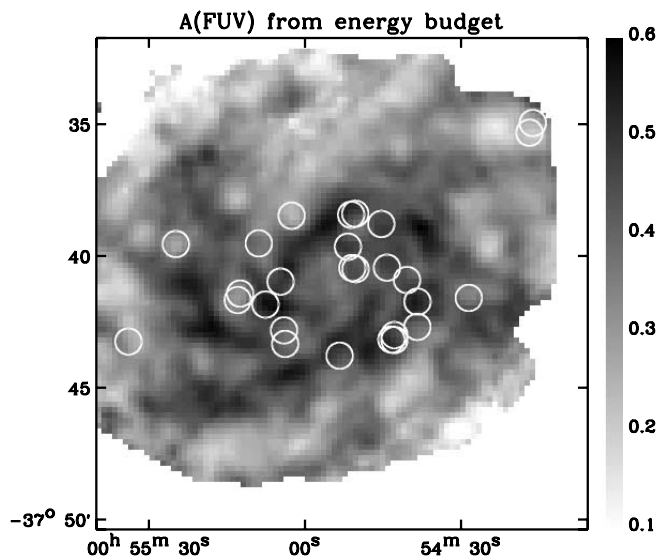


FIG. 4.—Extinction in the FUV band (1516 Å) derived from an energy balance argument: the power absorbed between 0.1 and $3\ \mu\text{m}$ is set equal to the total infrared power. The assumed extinction law is that of Cardelli et al. (1989), but results are very similar with the other laws considered in this paper. The superposed circles represent the locations of the H II complexes discussed in § 4. The coordinate axes are as in Fig. 3.

molecular and dust material around them. The correspondence with gas column density cannot be tested because no map in a molecular transition is available. The H I map of Puche et al. (1990), with a beam size of $17''$, allows us to see partial correspondence with the H I column density, however, especially in the outer disk (Fig. 5); the fact that there is no robust correlation with the extinction map is expected because H I does not trace adequately the total gas mass, which is usually dominated by the molecular phase in the inner parts of the disk where active star formation is taking place.

The radial profile of the ratio of the total stellar power (integrated between $1000\ \text{\AA}$ and $3.5\ \mu\text{m}$) to the total infrared power is notably different from the FUV/TIR profile: it shows a sharp decline from the center up to the pseudoring of most active star formation, reaching a minimum around a radial distance of $3'$ to $4'$, then rises again to reach its central value at a radial distance close to $10'$.

Several effects can contribute to the large-scale FUV/TIR gradient, as follows:

1. The most obvious possibility is the variations in metallicity, which are expected to cause direct variations in the dust-to-gas ratio. However, various lines of evidence suggest that other parameters play a more fundamental role. Although the global dust-to-gas ratio of galaxies seems correlated with the far-infrared surface density (Andreani et al. 1995), which traces both the column density of dust and the star formation rate surface density, the dust to H I mass ratio of irregular galaxies is highly variable but not correlated with metallicity (Hunter et al. 1989). Sauvage et al. (1990) also showed that the far-infrared to blue flux ratio of dwarf galaxies is not correlated with their oxygen abundance. Within NGC 300, the nebular gas phase metallicity gradient, as determined by Deharveng et al. (1988), is slightly steeper than the FUV/TIR gradient. Interestingly, Bot et al. (2004) found that the dust-to-gas ratio of the SMC is much lower than expected from a linear scaling with metallicity, although the situation may differ between star-forming regions and the diffuse ISM.

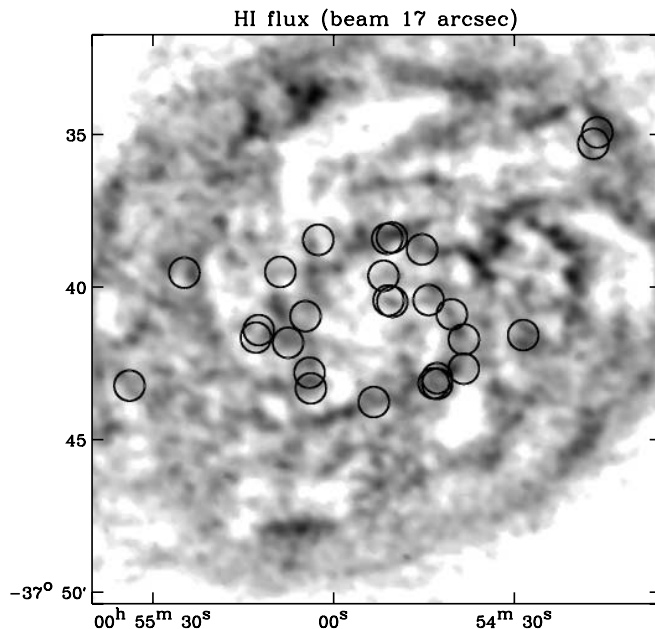


FIG. 5.—H I flux map from Puche et al. (1990), with the same coordinate axes and the same superposed circles as in Figs. 3 and 4.

2. The large-scale variations of the FUV/TIR ratio may also be affected significantly by the cumulative effects of local variations in the geometry of the sources. Several factors can contribute to systematically increase the distance between stellar clusters and the absorbing dust, including notably a decrease in the volume density of all the phases of the ISM and the maturity of the star-forming regions; i.e., the outer disk could contain slightly more evolved young stellar populations that have had time to disperse gas and dust away. Aged star formation complexes indeed seem to efficiently increase the porosity of the surrounding ISM, because they are associated with diffuse, shell-like H II regions and are affected by lower extinction.

3. The spectral energy distribution (SED) of the heating radiation could change in such a way that the total dust heating efficiency decreases. The fraction of the total stellar power emitted in the FUV band varies from less than 2% in the central region of the galaxy to about 5% in the outermost part of the disk at and beyond a radial distance of $10'$ (the whole SED being corrected for extinction). The nonionizing part of the stellar radiation thus becomes on average more energetic in the outer disk (the old populations have a smaller scale length than the younger populations emitting in the ultraviolet), and the dust heating balance should shift progressively from big grains emitting in the far-infrared to smaller grains emitting in the mid-infrared, which could explain part of the far-infrared flux deficit. We indeed observe a slight increase of the F_{24}/TIR fraction in the outer disk (by about 30%–40% compared with the annulus of intense star formation). However, this increase is too modest to account for the FUV/TIR gradient, which is mirrored closely by a similar FUV/ F_{24} gradient.

Figure 2 shows the radial profile of the FUV/NUV energy ratio, which decreases on average beyond a radial distance of $\sim 10'$. Such a decrease of the FUV/NUV ratio in the outermost part of the disk cannot be explained by extinction or metallicity effects. It thus seems reasonable to assume that a gradient exists in the age of the youngest stellar populations radiating in the ultraviolet. The range of FUV/NUV colors observed at large

scales corresponds to average stellar population ages between about 16 Myr at radial distances near $10'$ and ~ 300 Myr in the outermost disk.

In order to assess the role played by the geometry of the ISM in the FUV/TIR variations and to distinguish among the causes mentioned above, we now turn to individual H II complexes showing a wide range of morphologies, presumably corresponding to very different geometries. We take advantage of the high spatial resolution of the data from the UV to the near-infrared and characterize individual stellar clusters or small groups of clusters. If each one consists of coeval populations, then it is possible to lift the star formation history degeneracy that affects the large-scale emission.

4. SMALL-SCALE PROPERTIES OF H II COMPLEXES

4.1. Selection of H II Regions/Young Stellar Clusters

We selected individual stellar clusters or groups of clusters associated with prominent H II regions that are visible in all the optical bands and sufficiently bright in the FUV and NUV bands to allow accurate photometry. Because of the selection method, the sample is biased against highly obscured regions, for which the analysis described in § 4.3 would not be possible. Bright $24 \mu\text{m}$ sources that are not detected in the ultraviolet are discussed in § 5.7. We also avoided objects with very complicated structure (making the identification of the clusters ionizing a particular H II region ambiguous), or contaminated by foreground stars, or blending with nearby regions. The sample covers a large range of morphologies, mid-infrared colors, and UV-to-infrared ratios. They were labeled according to the H II region that they excite, as named in the catalog of Deharveng et al. (1988); the letter sublabels follow a different convention. Detailed notes, pertaining both to the morphology and to the modeling results, can be found in the Appendix. The large-scale distribution of the selected H II regions can be seen in the H α mosaic of Figure 3. Small-scale images of the cluster field in the U band, in H α , and at $8 \mu\text{m}$ are shown in Figure 6.

Table 1 lists, for each group of clusters, the initial diameter of the stellar photometric aperture (see § 4.2) and some observables: the H α flux (corrected for an average [N II] contribution to the total H α + [N II] flux of 10%), the nebular extinction derived from the H α /H β decrement, and the H α / R ratio measured within the stellar photometric area, R referring to line-subtracted broadband flux (i.e., pure stellar emission). H α equivalent widths can be obtained by multiplying H α / R by 1262 \AA (the equivalent width of the R filter). We also measured the F_{24}/F_8 ratio at the peak of the $24 \mu\text{m}$ emission (which can be offset from both the exciting clusters and the peak of the H α emission), within a resolution element (2.5 times the $24 \mu\text{m}$ FWHM, except for confused regions for which the aperture was reduced to the FWHM in order to avoid neighboring sources), after convolving the $8 \mu\text{m}$ map to the $24 \mu\text{m}$ angular resolution.

Table 1 also indicates the association of the H II regions with supernova remnants in the catalogs of Pannuti et al. (2000), Payne et al. (2004), and Blair & Long (1997). We fail to see any direct connection between the presence of a supernova remnant and the morphology of the H II region, as some of these are classified here as compact (see in § 5.4 the discussion about a quantification of the compactness of the H II regions and the significance of this parameter in interpreting the results). Among these cataloged remnants, weak X-ray sources are found close to D40, D45, and D53; the radio sources are all very weak, and some have flat radio spectral indices, consistent with thermal emission. Such is the case for the regions D61, D77, and D84.

The influence of these candidate young supernova remnants on the surrounding ISM is thus unclear, and the shell-like structures visible in the H α emission may correspond to older events.

4.2. Photometry

Special care was devoted to refining the photometric method so as to obtain accurate SEDs for the young clusters. In order to remove the local background from old populations, we devised a method appropriate to the combination of UV and optical data. We had to take into account the facts that the underlying emission can vary significantly on the scale of the considered regions, that its brightness relative to that of the clusters is variable from one band to the other, increasing with wavelength and being very high in the R and I bands, and that confusion causes any simple aperture to be contaminated by old stellar populations and foreground stars. We define two diameters, constraining the source to be contained within the smaller (D_1) and estimating the background within the larger (D_2). Using the U band, where the background and contamination by old populations are minimal, we then determine refined photometric “apertures” in the following way. The average brightness b and standard deviation σ of the background in D_2 are computed iteratively in a narrowing brightness interval ($\pm 2 \sigma_i$, where σ_i is the standard deviation at each step) until convergence is achieved. Then the source flux is summed over the pixels above $b + 3 \sigma$ within D_1 and the background averaged over the pixels below $b + 3 \sigma$ within D_2 (not excluding D_1). Then we use the exact same pixels to compute the source flux and background in all the other optical bands, which have been previously aligned to within $0''.2$, and control the results visually to ensure that no visible foreground star contaminates the aperture and that D_1 and D_2 were appropriately chosen. We find that this method produces significantly better results than measuring the background in a concentric annulus or another aperture centered on a nearby empty patch. For clusters that are single in the optical bands, we obtain good fits with a single-population model, which is not the case when we use the alternative methods above.

Since the PSF of the *GALEX* images varies across the field of view and is slightly elliptical in the FUV band, and because of residual distortion between the FUV and NUV images, we had to refine the photometric technique for the *GALEX* bands. In each small field around a selected cluster, we use point sources to fit positional offsets with respect to the optical images, and we determine the FWHM of the cluster independently in the FUV and NUV bands. In a few instances, where the selected cluster is partially confused by nearby clusters, we fitted and removed the latter before performing aperture photometry on the target. In a few cases when we have to truncate the aperture to avoid confusion, we apply an aperture correction, computed according to the assumption that the source is perfectly Gaussian. The measured broadband fluxes are listed in Table 2.

4.3. Stellar Population Fits

We used the Starburst99 synthesis model (Leitherer et al. 1999) to compute spectra of instantaneously formed stellar clusters, with the metallicity $Z = 0.008$, well suited to NGC 300, and a Salpeter initial mass function (IMF) between 0.1 and $120 M_{\odot}$.

The transmission curves of the filters used in the observations were applied to the model spectra before doing any comparison between the models and the measured fluxes. For the optical filters, we used the definitions of the Johnson-Cousins system given by Fukugita et al. (1995 and references therein). For the

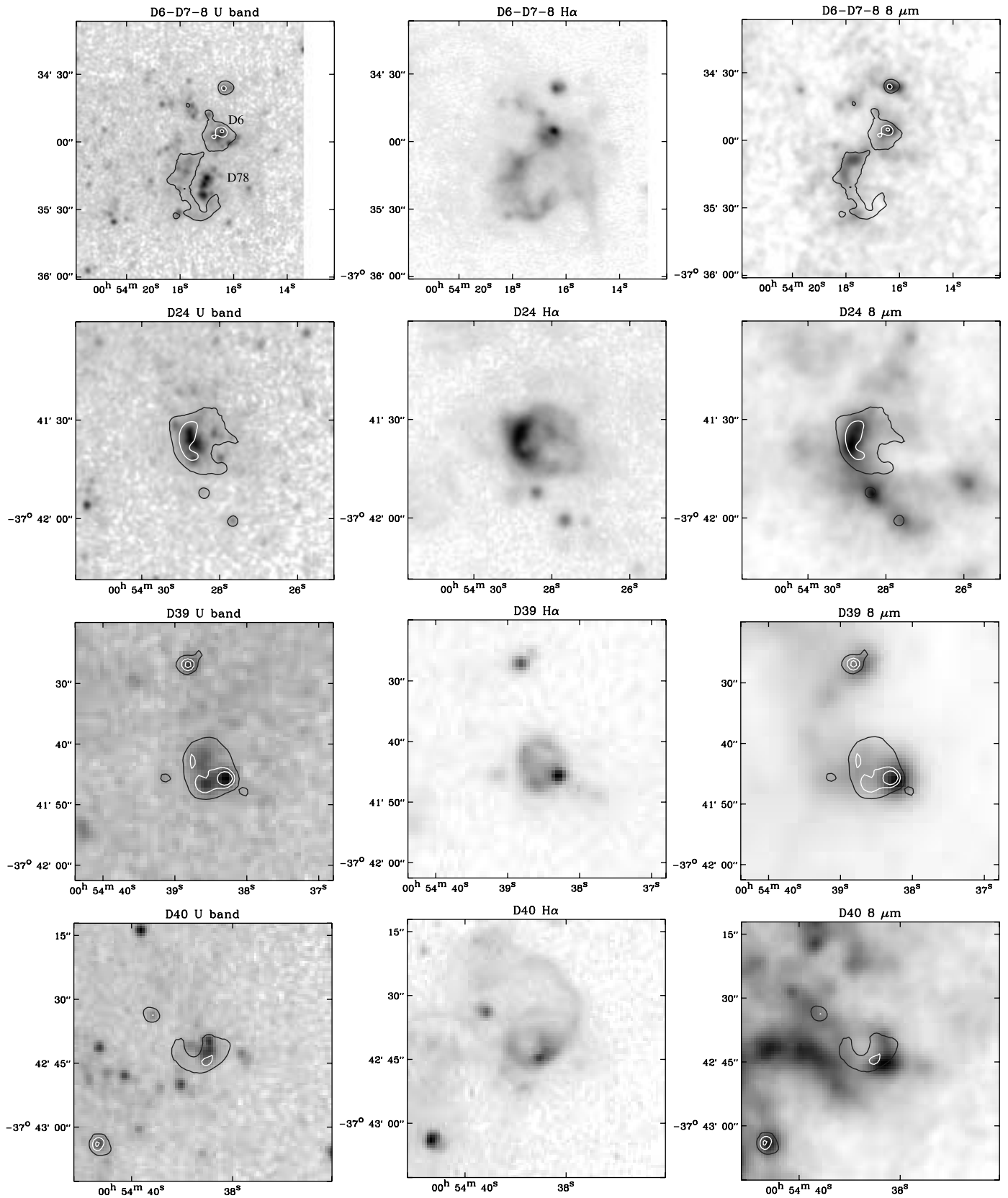


FIG. 6.—Maps of the complexes in U (preferred to FUV and NUV because of the more advantageous angular resolution), in $H\alpha$, and at $8\ \mu\text{m}$. The horizontal axis represents the right ascension and the vertical axis the declination, in the J2000.0 equatorial coordinate system. The scale varies from one complex to another. $H\alpha$ contours are superposed onto the U -band and $8\ \mu\text{m}$ images. The intensity scale is linear for the $8\ \mu\text{m}$ images and square root for U and $H\alpha$.

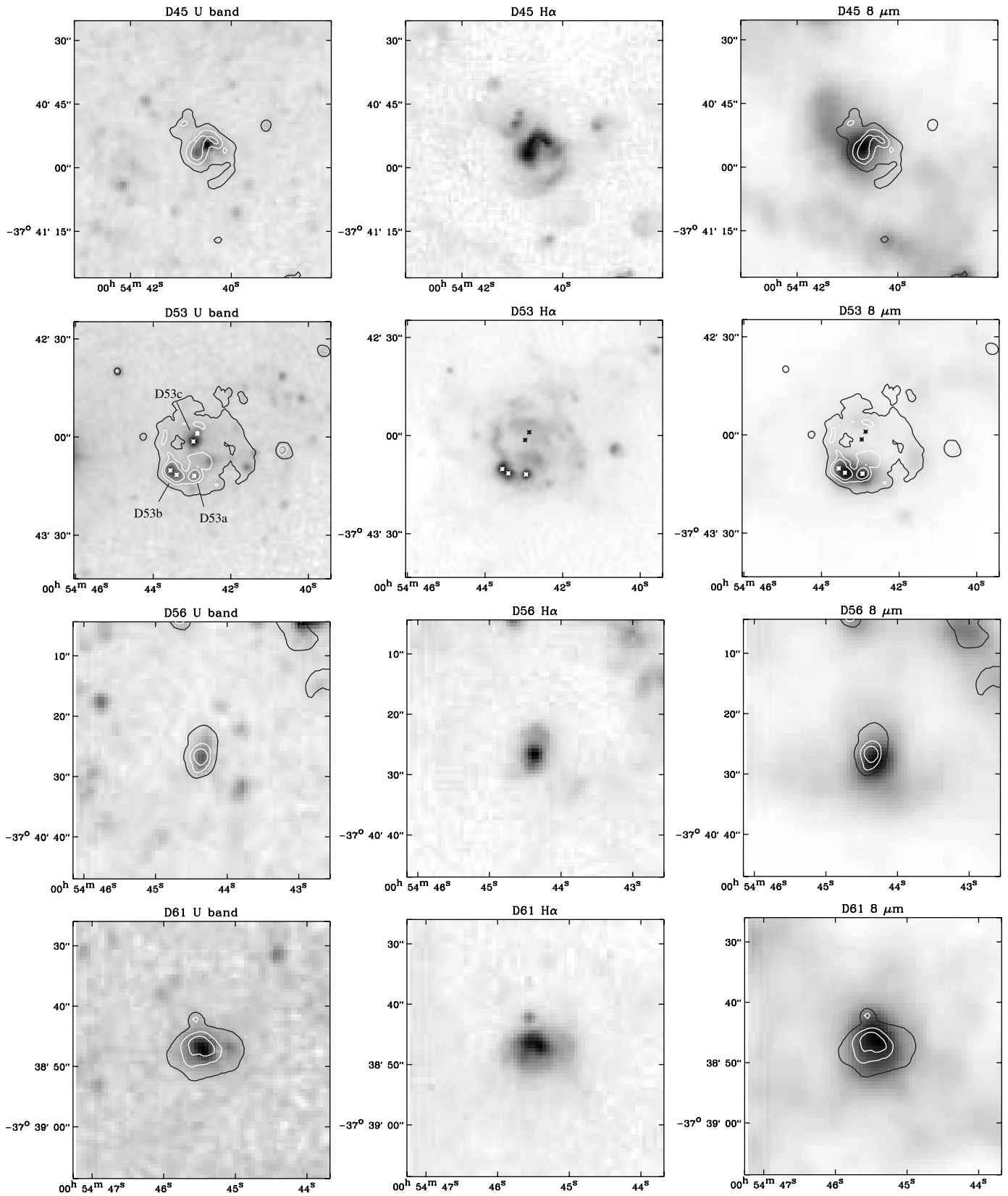


FIG. 6.— *Continued*

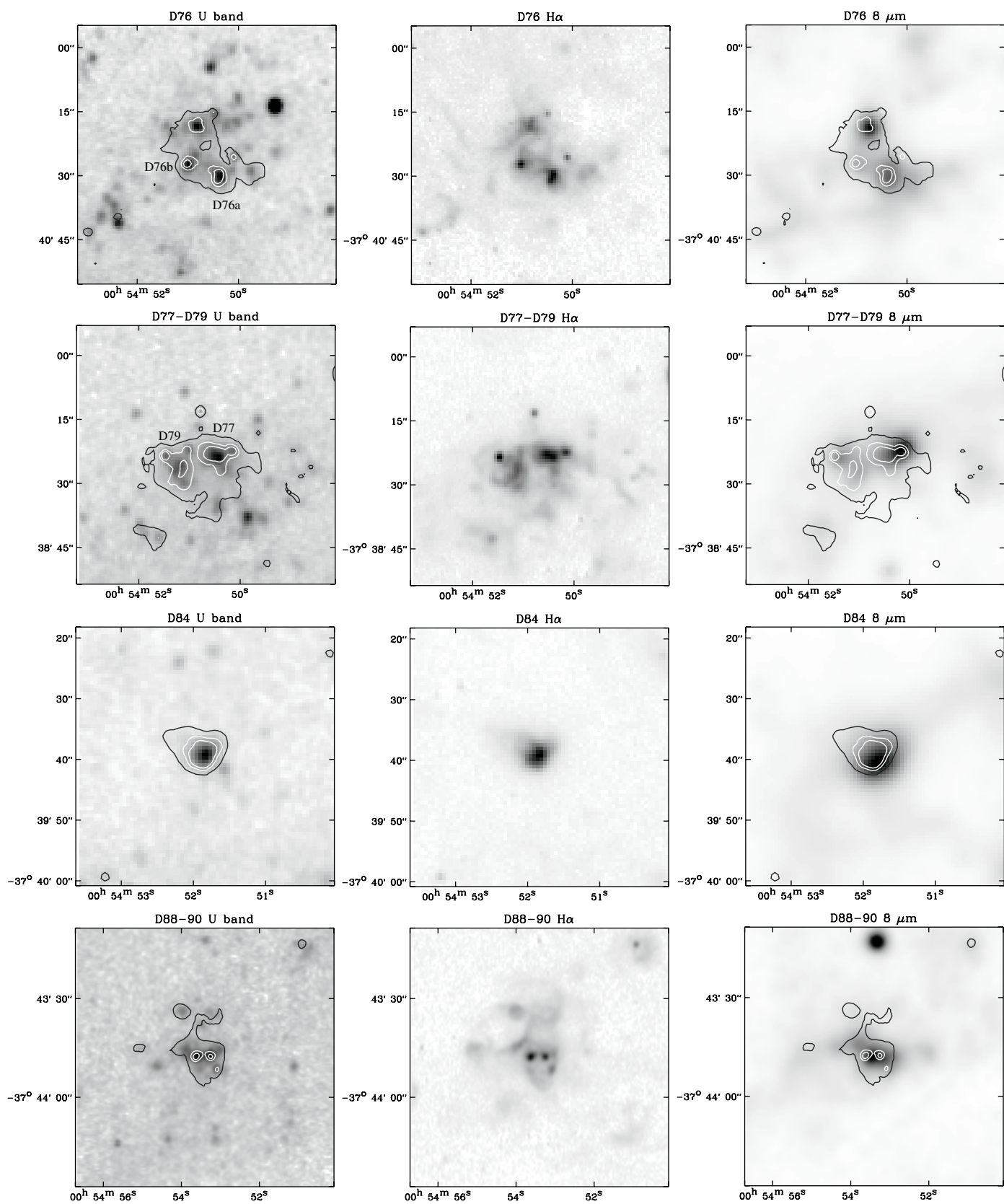


FIG. 6.— *Continued*

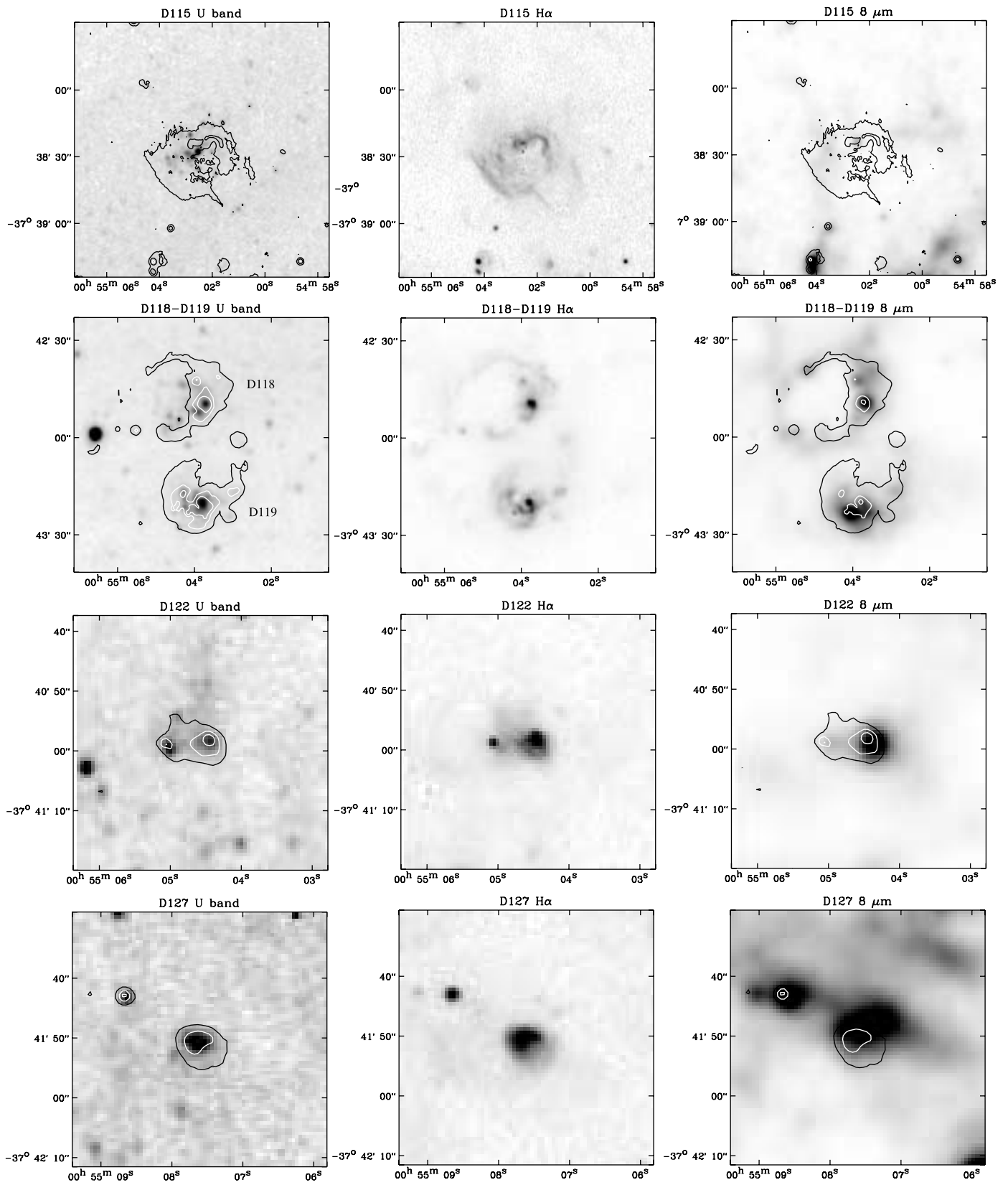


FIG. 6.— *Continued*

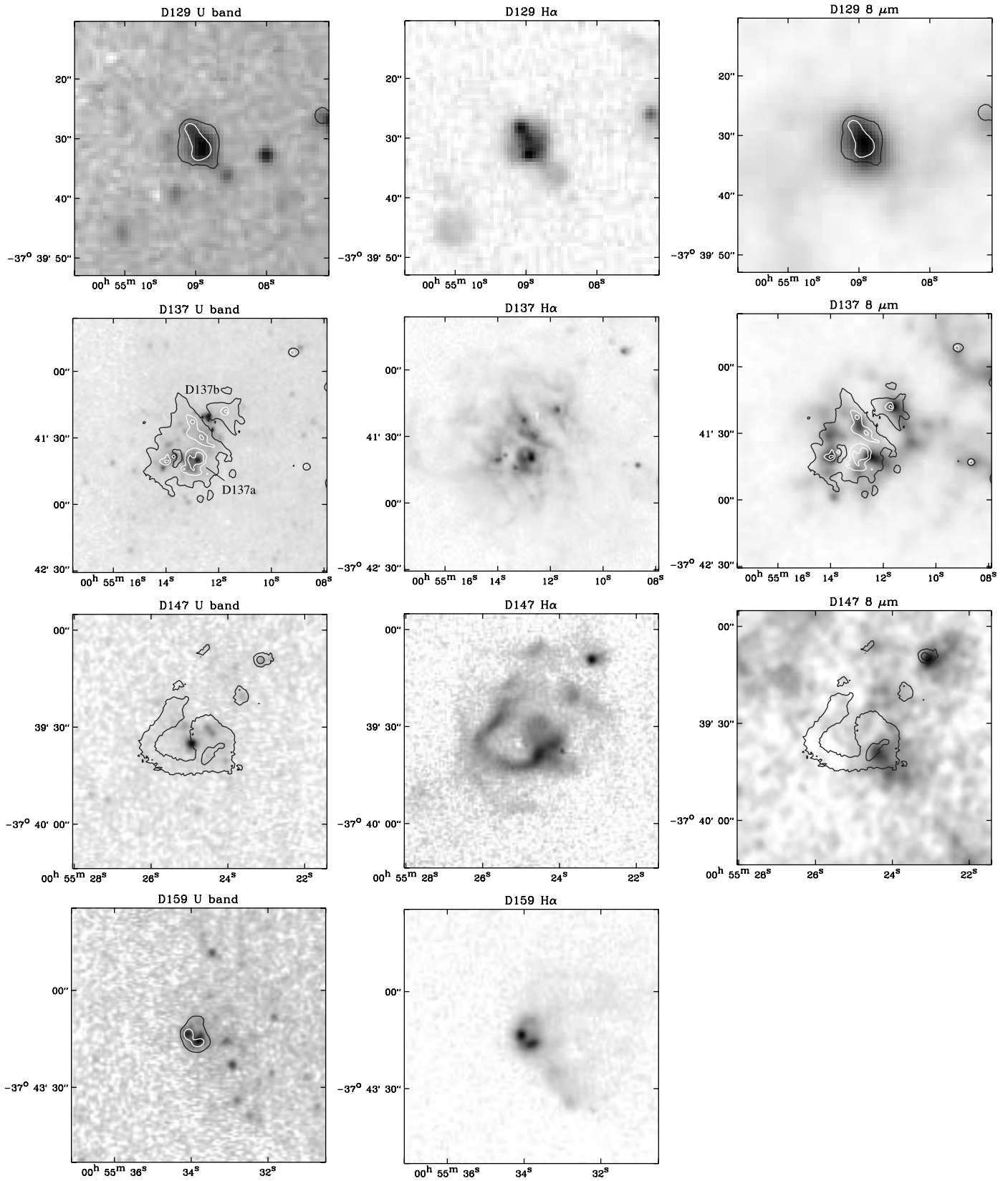


FIG. 6.— *Continued*

TABLE 1
LIST OF SELECTED CLUSTERS

Name	R.A. (J2000.0)	Decl. (J2000.0)	D_1^a (arcsec)	$F(\text{H}\alpha)$ ($10^{-18} \text{ W m}^{-2}$)	$A(\text{H}\alpha)$ (mag)	$\text{H}\alpha/R$	F_{24}/F_8 (peak)
D6.....	00 54 16.5	-37 34 56	18.0	139.0	...	0.44	3.32
D7-8.....	00 54 17.1	-37 35 19	33.6	652.0	...	0.15	1.93
D24†.....	00 54 28.7	-37 41 36	24.0	549.0	0.38	0.38	1.30
D39*.....	00 54 38.5	-37 41 44	12.0	172.0	0.82	0.87	1.76
D40*.....	00 54 38.5	-37 42 41	14.4	173.0	0.15	0.28	0.94
D45†*.....	00 54 40.5	-37 40 55	10.8	363.0	0.81	0.41	0.93
D53a†*.....	00 54 42.9	-37 43 12	6.0	156.0	0.79	1.11	3.42
D53b†*.....	00 54 43.5	-37 43 11	8.4	365.0	0.69	0.80	2.64
D53c†*.....	00 54 42.9	-37 43 00	10.8	380.0	0.39	0.11	~1
D56.....	00 54 44.3	-37 40 27	9.6	109.0	0.85	0.70	1.00
D61*.....	00 54 45.4	-37 38 47	12.0	255.0	0.62	0.75	1.21
D76a*.....	00 54 50.4	-37 40 30	8.4	123.0	0.88	0.69	0.97
D76b.....	00 54 51.0	-37 40 27	7.2	93.0	0.59	0.43	1.31
D77*.....	00 54 50.4	-37 38 24	12.0	407.0	0.38	0.47	2.07
D79*.....	00 54 51.2	-37 38 26	16.8	323.0	0.55	0.46	1.76
D84*.....	00 54 51.8	-37 39 39	12.0	316.0	0.66	0.90	2.22
D88-90.....	00 54 53.4	-37 43 47	33.6	435.0	0.51	0.32	1.36
D115.....	00 55 02.6	-37 38 28	36.0	327.0	0.37	0.04	1.21
D118*.....	00 55 04.1	-37 42 51	30.0	753.0	0.65	0.33	2.27
D119*.....	00 55 03.9	-37 43 20	26.4	985.0	0.49	0.47	2.22
D122.....	00 55 04.7	-37 40 58	14.4	149.0	1.06	0.63	1.06
D127.....	00 55 07.6	-37 41 51	10.8	104.0	0.70	0.59	0.94
D129†.....	00 55 08.9	-37 39 31	15.6	109.0	0.58	0.51	0.99
D137a*.....	00 55 13.0	-37 41 41	13.2	919.0	0.41	0.27	3.43
D137b†.....	00 55 12.4	-37 41 26	28.8	938.0	0.57	0.20	1.21
D147.....	00 55 24.7	-37 39 33	26.4	148.0	...	0.10	1.04
D159†*.....	00 55 33.9	-37 43 15	24.0	196.0	...	0.31	...

NOTE.—Units of right ascension are hours, minutes, and seconds, and units of declination are degrees, arcminutes, and arcseconds. Clusters named according to the associated H II region in the catalog of Deharveng et al. (1988). An asterisk after the name of an object indicates association with a supernova remnant in the radio/X-ray catalogs of Pannuti et al. (2000) and Payne et al. (2004), and a dagger indicates association with a supernova remnant in the optical catalog of Blair & Long (1997).

^a This is the diameter encompassing the pixels selected for the measurement of the cluster fluxes (see § 4.2 for details on the photometric procedure).

ultraviolet and infrared filters, we used the actual transmission curves of *GALEX*⁴ and *Spitzer*.⁵

We fit the observed FUV-NUV-UBVRI flux densities using three alternate extinction laws—Cardelli et al. (1989) for the Milky Way, with the ratio of total to selective extinction $R_V = A(V)/E(B - V) = 3.1$, appropriate for the diffuse ISM; Fitzpatrick (1986) for the LMC average and for the 30 Doradus complex—and the attenuation law of Calzetti et al. (1994). The results should be interpreted keeping in mind that the first three extinction curves were derived toward the line of sight of individual stars, and the last one is in principle only valid for the integrated emission of starburst galaxies, while we are applying them to spatial extractions within regions ranging between 60 and 300 pc in diameter. While Misselt et al. (1999) have shown that the type of extinction law attributed by Fitzpatrick (1986) to 30 Doradus is in fact mostly observed in a region adjacent to 30 Doradus, the LMC2 giant shell, we retain the terminology of Fitzpatrick (1986) for reference to the particular extinction curve that he derived. Updated extinction curves for the LMC have been published by Misselt et al. (1999). Given that we are interested in extracting qualitative variations in the apparent local extinction law (see § 5.4) and that the discrete extinction curves used here

are in fact part of a continuum in dust properties (Gordon et al. 2003), these curves are sufficient for our purposes.

We fit the cluster spectral energy distributions in a simple dust screen configuration, which is implicit in the four extinction curves considered here, i.e., ignoring the effects of scattering and radiative transfer through layers of dust mixed with the stars. These effects are extensively described by, e.g., Witt et al. (1992) and Calzetti (2001). Allowing the relative geometry of stars and dust to be unconstrained would introduce insurmountable degeneracy with the fitted parameters of the stellar populations. But there is another motivation for assuming that the stars are not mixed with the dust. Our photometric technique, in effect, is designed to extract the emission from discrete stellar clusters and remove efficiently background or foreground extended emission (§ 4.2). We argue that the stellar clusters can thus be treated as a collection of point sources, each with its own dust shell. This is especially true of the class of clusters we call compact (see § 5.4 for a quantitative definition). The smallest FWHM of the images represents a linear distance of 20 pc, to be compared with the FWHMs of young clusters in spiral galaxies of up to 10 pc, as quantified by Larsen (2004). Even though the dust screen assumption does not reflect the likely geometry of the sources, we show in § 5.4 that it is a good approximation for shell-type sources, for which the inclusion of radiative transfer effects (in particular scattering effects) does not alter our conclusions. Furthermore, the results concerning the variations of the attenuation law (which includes radiative transfer effects,

⁴ Available at http://galexgi.gsfc.nasa.gov/tools/Resolution_Response/index.html.

⁵ Available at http://ssc.caltech.edu/irac/spectral_response.html and http://ssc.caltech.edu/mips/spectral_response.html.

TABLE 2
BROADBAND UV-OPTICAL PHOTOMETRIC MEASUREMENTS

Name	FUV (μJy)	NUV	U	B	V	R	I
D6.....	892 ($\pm 1\%$)	819 ($\pm 1\%$)	835 ($\pm 2\%$)	603 ($\pm 2\%$)	540 ($\pm 2\%$)	575 ($\pm 2\%$)	391 ($\pm 4\%$)
D7-8.....	2419 ($\pm 1\%$)	2052 ($\pm 1\%$)	1442 ($\pm 2\%$)	1090 ($\pm 2\%$)	834 ($\pm 2\%$)	795 ($\pm 2\%$)	611 ($\pm 4\%$)
D24.....	1377 ($\pm 1\%$)	1315 ($\pm 1\%$)	1275 ($\pm 1\%$)	898 ($\pm 1\%$)	730 ($\pm 2\%$)	809 ($\pm 2\%$)	482 ($\pm 4\%$)
D39.....	287 ($\pm 2\%$)	257 ($\pm 2\%$)	392 ($\pm 2\%$)	205 ($\pm 3\%$)	166 ($\pm 4\%$)	288 ($\pm 5\%$)	110 ($\pm 11\%$)
D40.....	510 ($\pm 1\%$)	489 ($\pm 1\%$)	439 ($\pm 2\%$)	309 ($\pm 3\%$)	234 ($\pm 4\%$)	272 ($\pm 4\%$)	133 ($\pm 11\%$)
D45.....	526 ($\pm 1\%$)	613 ($\pm 1\%$)	862 ($\pm 2\%$)	574 ($\pm 2\%$)	472 ($\pm 2\%$)	645 ($\pm 3\%$)	326 ($\pm 5\%$)
D53a.....	246 ($\pm 1\%$)	196 ($\pm 2\%$)	322 ($\pm 2\%$)	153 ($\pm 2\%$)	141 ($\pm 3\%$)	258 ($\pm 3\%$)	131 ($\pm 6\%$)
D53b.....	733 ($\pm 1\%$)	632 ($\pm 1\%$)	913 ($\pm 1\%$)	519 ($\pm 1\%$)	452 ($\pm 2\%$)	712 ($\pm 2\%$)	376 ($\pm 3\%$)
D53c.....	1387 ($\pm 1\%$)	1390 ($\pm 1\%$)	1182 ($\pm 1\%$)	971 ($\pm 1\%$)	849 ($\pm 1\%$)	933 ($\pm 2\%$)	846 ($\pm 3\%$)
D56.....	225 ($\pm 2\%$)	200 ($\pm 2\%$)	276 ($\pm 2\%$)	165 ($\pm 4\%$)	134 ($\pm 6\%$)	213 ($\pm 8\%$)	80 ($\pm 18\%$)
D61.....	398 ($\pm 1\%$)	356 ($\pm 1\%$)	518 ($\pm 2\%$)	301 ($\pm 2\%$)	242 ($\pm 3\%$)	403 ($\pm 4\%$)	181 ($\pm 9\%$)
D76a.....	310 ($\pm 1\%$)	276 ($\pm 2\%$)	338 ($\pm 4\%$)	203 ($\pm 5\%$)	148 ($\pm 10\%$)	246 ($\pm 12\%$)	145 ($\pm 14\%$)
D76b.....	360 ($\pm 1\%$)	301 ($\pm 1\%$)	274 ($\pm 3\%$)	189 ($\pm 5\%$)	147 ($\pm 8\%$)	214 ($\pm 11\%$)	132 ($\pm 19\%$)
D77.....	1202 ($\pm 1\%$)	1082 ($\pm 1\%$)	906 ($\pm 3\%$)	606 ($\pm 4\%$)	503 ($\pm 4\%$)	700 ($\pm 5\%$)	419 ($\pm 11\%$)
D79.....	929 ($\pm 1\%$)	817 ($\pm 1\%$)	908 ($\pm 2\%$)	593 ($\pm 2\%$)	482 ($\pm 3\%$)	717 ($\pm 3\%$)	398 ($\pm 5\%$)
D84.....	411 ($\pm 2\%$)	354 ($\pm 2\%$)	621 ($\pm 2\%$)	381 ($\pm 2\%$)	341 ($\pm 4\%$)	535 ($\pm 5\%$)	275 ($\pm 9\%$)
D88-90.....	1183 ($\pm 1\%$)	1252 ($\pm 1\%$)	1273 ($\pm 1\%$)	880 ($\pm 2\%$)	700 ($\pm 2\%$)	877 ($\pm 3\%$)	491 ($\pm 5\%$)
D115.....	1713 ($\pm 1\%$)	1766 ($\pm 1\%$)	1516 ($\pm 1\%$)	1529 ($\pm 1\%$)	1332 ($\pm 2\%$)	1329 ($\pm 2\%$)	1326 ($\pm 3\%$)
D118.....	2594 ($\pm 1\%$)	2587 ($\pm 1\%$)	2294 ($\pm 1\%$)	1688 ($\pm 2\%$)	1372 ($\pm 3\%$)	1645 ($\pm 3\%$)	914 ($\pm 5\%$)
D119.....	2887 ($\pm 1\%$)	2771 ($\pm 1\%$)	3007 ($\pm 1\%$)	1887 ($\pm 1\%$)	1401 ($\pm 2\%$)	1882 ($\pm 2\%$)	894 ($\pm 6\%$)
D122.....	252 ($\pm 2\%$)	239 ($\pm 2\%$)	369 ($\pm 3\%$)	232 ($\pm 4\%$)	177 ($\pm 6\%$)	292 ($\pm 8\%$)	153 ($\pm 15\%$)
D127.....	163 ($\pm 2\%$)	139 ($\pm 2\%$)	212 ($\pm 3\%$)	137 ($\pm 5\%$)	119 ($\pm 7\%$)	188 ($\pm 8\%$)	138 ($\pm 8\%$)
D129.....	369 ($\pm 2\%$)	309 ($\pm 2\%$)	354 ($\pm 2\%$)	210 ($\pm 3\%$)	161 ($\pm 3\%$)	245 ($\pm 4\%$)	105 ($\pm 10\%$)
D137a.....	4124 ($\pm 1\%$)	3784 ($\pm 1\%$)	2966 ($\pm 1\%$)	2323 ($\pm 1\%$)	1853 ($\pm 1\%$)	1900 ($\pm 1\%$)	1182 ($\pm 2\%$)
D137b.....	3397 ($\pm 1\%$)	3516 ($\pm 1\%$)	3625 ($\pm 1\%$)	2913 ($\pm 1\%$)	2446 ($\pm 1\%$)	2744 ($\pm 1\%$)	2046 ($\pm 2\%$)
D147.....	925 ($\pm 1\%$)	835 ($\pm 1\%$)	615 ($\pm 1\%$)	560 ($\pm 1\%$)	433 ($\pm 2\%$)	410 ($\pm 2\%$)	276 ($\pm 7\%$)
D159.....	696 ($\pm 1\%$)	664 ($\pm 1\%$)	554 ($\pm 2\%$)	354 ($\pm 3\%$)	296 ($\pm 5\%$)	406 ($\pm 5\%$)	228 ($\pm 11\%$)

NOTE.—Including the emission-line contributions to the U and R bands. The given error bars are the formal measurements uncertainties only, to which we added 10% for the flux calibration uncertainty.

as opposed to the pure extinction law) are independent of any assumptions about the source geometry.

Note that scattering should be a negligible component of the Calzetti et al. (1994) law, because light scattered in the line of sight compensates on average light scattered out of the line of sight for regions of large size (several kiloparsecs).

The flux calibration uncertainty is assumed to be 10% for all the filters, to which the formal measurement uncertainty is added. The fits were not constrained to reproduce the 3–5 μm data but only not to overproduce them (within the error bars), even when these bands are dominated by stellar emission. We find in some cases that no single coeval population can reproduce the photometric data, in which case we allow two populations of different ages but same extinction. This occurs for the double cluster D53c and for some complex fields associated with very large H II regions (D137b, D115). All the other regions were fitted with a single population.

In H II regions, the H α and [O II] lines at 6563 and 3727 \AA , respectively, contribute a large fraction of the total flux in the R and U bands (up to 50% in R and up to 40% in U , respectively, within the chosen apertures), except in very diffuse H II regions. The contribution of the H β and [O III] lines can be neglected because they are observed through low-transmission parts of the B and V filters and are intrinsically weaker. We accounted for H α and [O II] fluxes by subtracting scaled versions of the H α map from the R and U maps, using the [O II]/H α ratios measured by Webster & Smith (1983) and d’Odorico et al. (1983) and correcting them for differential extinction. Whenever a measurement of the [O II]/H α ratio is lacking, we adopt the average ratio of the H II regions discussed by Webster & Smith (1983) and

d’Odorico et al. (1983) ([O II]/H α = 1.13). Because the [O II] contribution estimated in this way is uncertain and because of possible aperture mismatch, we attach less weight to the U -band data than to those from the other bands, recovering an updated [O II]/H α ratio from the SED fits (Table 3).

The fits are superposed on the observed SEDs in Figure 7 for a subsample of the stellar clusters, and the corresponding confidence interval plots are shown in Figure 8. The output parameters of the fits are the age(s) of the clusters, their mass(es), and the monochromatic extinction at 1516 \AA , the effective wavelength of the FUV filter. The extinction and ages take discrete values, varying in steps of 0.1 mag and 1 Myr, respectively. For each extinction, each age of the young clusters, and optionally each age of older clusters, the masses have to be solved from a set of seven equations (for the seven bands from the FUV to I). In order not to bestow a larger weight on any particular combination of bands, we solve separately each equation with the new equation resulting from the sum of all the fluxes, and then we compute the average of the seven solutions, with a lower weight for the U band. The ionizing photon flux predicted by the best fit is compared with the ionizing photon flux estimated from the H α flux, corrected for extinction using the H α /H β decrement, but is left unconstrained by the observations. We usually find agreement to within 20%, with a few exceptions (Table 3). To determine the confidence intervals of the cluster parameters, the various fits are only constrained to reproduce the ionizing photon flux from the best fit to within 30% (we set a constraint on the error but not on the absolute value).

We expect the error on the observed ionizing photon flux to be large, because of uncertainties on the H α /H β decrement,

TABLE 3
RESULTS OF THE POPULATION SYNTHESIS FITTING

Name	$A(1516 \text{ \AA})$ (mag)	Age ^a (Myr)	Mass ($10^3 M_{\odot}$)	Age ^b (2)	Mass ^b (2)	[O II]/H α ^c	$N_{\text{Lyc}}^{\text{model}}/N_{\text{Lyc}}^{\text{mesd}}$	$F_{3-5 \mu\text{m}}^*/F_{3-5 \mu\text{m}}^{\text{tot}}$
D6.....	0.2 ^{+0.2} _{-0.1}	4 ⁺¹ ₋₀	10.2 ^{+6.1} _{-0.5}	1.0/1.3	1.1-1.1-1.1-1.2	<0.33
D7-8.....	0.0 ^{+0.2} _{-0.0}	3	15.1 ^{+2.1} _{-0.1}	1.1*/...	0.9-0.9-0.9-1.0	~1
D24.....	0.7 ^{+0.1} _{-0.2}	3	15.9 ^{+0.9} _{-1.6}	1.2/1.1	...-1.1-1.3	<0.64
D39.....	1.0 \pm 0.2	3	4.6 ^{+0.4} _{-0.6}	1.1*/1.9	0.7-0.6-...-...	<0.26
D40.....	0.5 \pm 0.1	3	5.0 \pm 0.3	1.1*/1.2	...-1.3-1.6	<0.86
D45.....	1.5 ^{+0.2} _{-0.1}	3	13.4 ^{+1.3} _{-0.7}	1.5/1.8	...-1.0-...	<0.86
D53a.....	1.0 \pm 0.2	1-2	3.9 ^{+0.5} _{-0.3}	1.4/1.5	1.0-1.2-...-...	<0.24
D53b.....	1.1 ^{+0.1} _{-0.2}	3	12.4 ^{+0.8} _{-1.3}	1.4/1.4	0.9-...-...	<0.24
D53c.....	0.6 \pm 0.2	3	13.0 ^{+2.6} _{-2.2}	31	20	1.4/...	...-1.3-...	~1
D56.....	1.0 \pm 0.2	3	3.6 ^{+0.5} _{-0.4}	1.1*/1.7	0.8-0.8-...-...	<0.17
D61.....	1.1 ^{+0.1} _{-0.2}	3	6.9 ^{+0.4} _{-0.8}	1.1*/1.4	0.8-0.8-...-...	<0.41
D76a.....	0.8 ^{+0.2} _{-0.1}	3	4.1 ^{+0.6} _{-0.3}	1.6/1.7	0.9-0.8-...-...	<0.17
D76b.....	0.4 \pm 0.1	3	3.2 ^{+0.3} _{-0.2}	1.1*/0.8	1.2-1.2-...-...	<0.22
D77.....	0.4 \pm 0.1	3	11.0 ^{+0.8} _{-1.0}	0.9/0.5	1.0-1.0-1.0-1.1	<0.27
D79.....	0.8 ^{+0.2} _{-0.1}	3	12.4 ^{+1.6} _{-1.0}	1.2/1.1	1.2-1.3-...-...	<0.36
D84.....	1.5 ^{+0.2} _{-0.1}	3	10.3 ^{+1.3} _{-0.5}	1.1*/1.2	0.9-...-...	<0.25
D88-90.....	0.9 \pm 0.1	3	17.1 \pm 0.9	1.1*/1.3	...-1.3-1.7	<0.26
D115.....	0.7 ^{+0.1} _{-0.7}	5 ⁺⁰ ₋₂	36 ⁺⁷ ₋₂₈	9	16	1.1*/...	...-0.9-1.5	<0.63
D118.....	0.7 \pm 0.1	3	31 \pm 2	1.0/0.8	...-1.2-1.4	<0.51
D119.....	0.6 ^{+0.2} _{-0.1}	3	31 ⁺⁴ _{-0.7}	1.3/1.7	...-1.1-1.3	<0.60
D122.....	1.4 ^{+0.2} _{-0.1}	3	5.8 ^{+0.7} _{-0.3}	1.1*/2.1	...-0.8-...-...	<0.17
D127.....	1.4 \pm 0.1	3	3.7 \pm 0.2	1.1*/1.2	1.0-...-...	<0.23
D129.....	0.6 ^{+0.1} _{-0.2}	3	3.9 ^{+0.3} _{-0.5}	1.1*/1.5	1.1-...-...	<0.34
D137a.....	0.4 \pm 0.1	3	37 ⁺¹ ₋₁	0.8/0.4	...-1.4-1.4-1.4	<0.86
D137b.....	0.9 ^{+0.3} _{-0.4}	3 ⁺⁰ ₋₂	45 ⁺¹³ ₋₃₈	32	62	1.1*/1.1	...-1.4-2.0	<0.69
D147.....	0.0 ^{+0.1} _{-0.0}	5	11.9 ^{+0.8} _{-0.1}	1.1*/...	0.9-0.9-0.9-0.9	<0.80
D159.....	0.4 \pm 0.1	3	6.4 ^{+0.3} _{-0.4}	1.1*/0.7	...-1.2-1.5	<0.40

^a When no error bar on the age is given, it means that the 1 σ interval is smaller than the time step of 1 Myr used in the fits.

^b Since the age and mass of secondary stellar populations are always ill constrained, this table indicates only the best-fit values.

^c The first value is the input (from Webster & Smith [1983] or d'Odorico et al. [1983]), or the average ratio of the regions discussed in these papers when followed by an asterisk; the second value is the output of the best fit (not given if the H α /R ratio is below 0.15, too low to derive [O II]/H α from the fits). All the subregions of D53 were assumed to have the same [O II]/H α ratio.

^d The ratio of the ionizing photon flux predicted by the model to that estimated from the observations is given for the best fit of each applicable extinction law, in the following order: Milky Way, LMC, 30 Dor, and Calzetti et al. (1994). Whenever the 30 Dor and Calzetti et al. (1994) laws both provide acceptable fits, since the Calzetti et al. (1994) law predicts an ionizing photon flux usually in excess, the cluster parameters and their confidence intervals are derived only for the 30 Dor law (the Calzetti et al. [1994] law produces larger masses and higher extinctions).

because of uncertainties in the extent of the region directly under the influence of the ionizing stars, and because an unknown fraction of the ionizing photons may leak out of the H II regions. The few cases in which the agreement between the model value and the observed value is poorer than 20% may be due to local errors in the subtraction of the continuum and stellar absorption from the H β line or to increased porosity of the surrounding ISM. One of the regions for which the best-fit model overpredicts the measured ionizing photon flux by a large percentage is D137b (by 40% for the 30 Doradus law and 100% for the Calzetti et al. [1994] law). This region also stands out as the most peculiar in terms of morphology of the hydrogen gas, suggesting that previous generations of stars in the recent past have injected lots of mechanical energy in the surrounding medium, carving a tunnel-shaped void. It can thus be hypothesized that a sizeable fraction of the ionizing photons are leaking out of the visible H II region. According to studies of the diffuse ionized gas in spiral galaxies, up to 50% of the ionizing photons may escape H II regions (Ferguson et al. 1996). Alternatively, the inclusion of a second population increases the degeneracy of the fits, and the fitted stellar extinction could be too high.

We assess the validity of the different extinction laws by first comparing the χ^2 -values of the best fits. But since the absolute uncertainty was fixed arbitrarily to 10%, not taking into account

the smaller relative uncertainty between the two *GALEX* bands, we consider that a χ^2 -value close to unity does not necessarily indicate that the fit is acceptable. We also check its ability to reproduce colors, in particular the FUV – NUV color, which is the most useful discriminant between the different extinction laws. The ratio of the extinction in these two bands varies from ~1.00 for the Milky Way and ~1.10 for the LMC to ~1.27 for 30 Doradus and ~1.20 for the Calzetti et al. (1994) law.

Whenever some significant interstellar component at 3–5 μm was indicated by the population synthesis model, we confirmed this finding by examining the morphology of the dust and stellar clusters (i.e., by checking that the structure of the 3–5 μm emission is much more similar to that at 8 μm than to that of the stars).

5. RESULTS AND DISCUSSION

5.1. Ages

One characteristic of the fits assuming instantaneous star formation is that they nearly always predict a cluster age of 3 Myr, with the notable exception of D53a, which is fitted with a stellar population of 1 to 2 Myr and is one of the regions with the highest F_{24}/F_8 flux ratios. This uniformity of age is likely an artifact of adopting too simplified a representation of the clusters (instantaneous star formation model with coarse time steps of

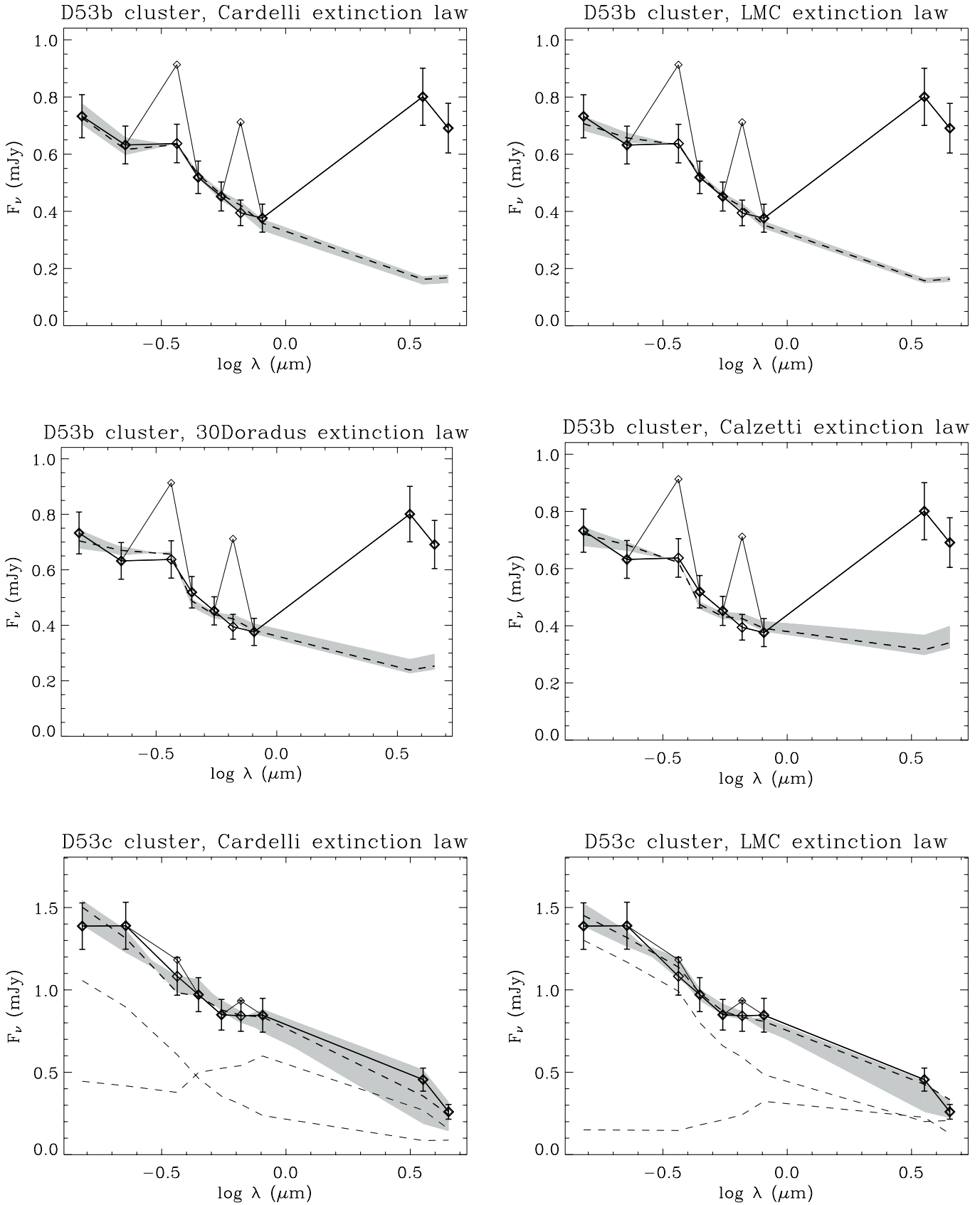


FIG. 7.—Fits of a few stellar cluster SEDs. The line connecting the diamonds with error bars represents the observed SED after removing the $H\alpha$ and $[O\text{ II}]$ contributions from the R and U bands; the connected symbols without error bars represent the total (line + stellar) R - and U -band fluxes. The dashed line is the best fit with the relevant extinction law, and the gray shading shows the 1σ range of solutions. When present, two additional dashed lines indicate that two populations of different ages were fitted and represent their separate SEDs.

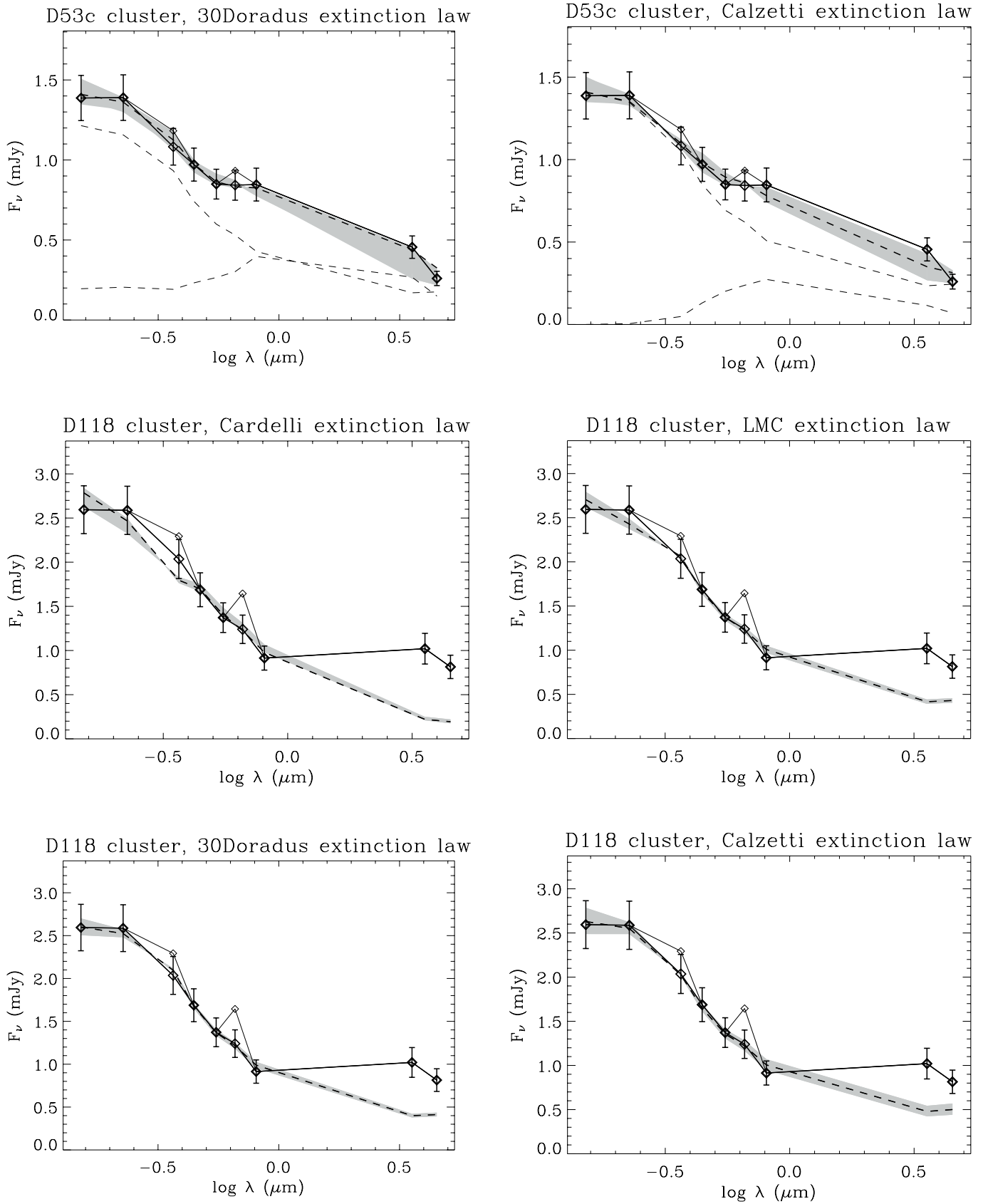


FIG. 7.—Continued

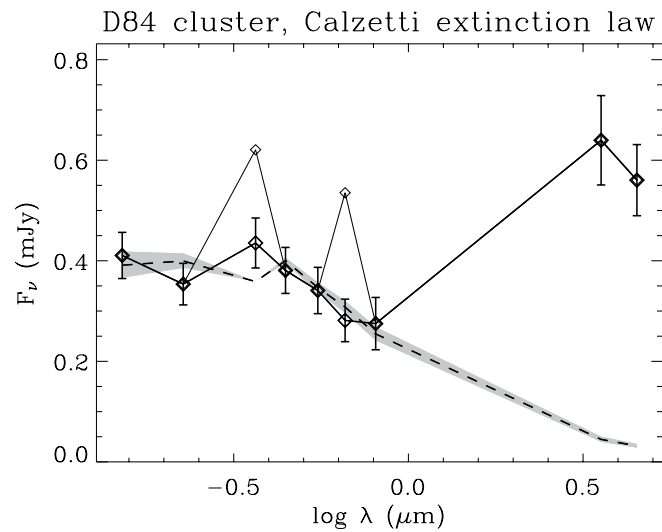
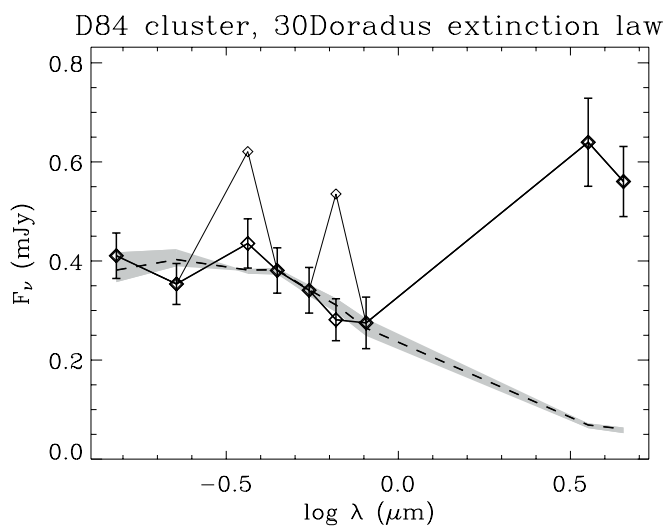
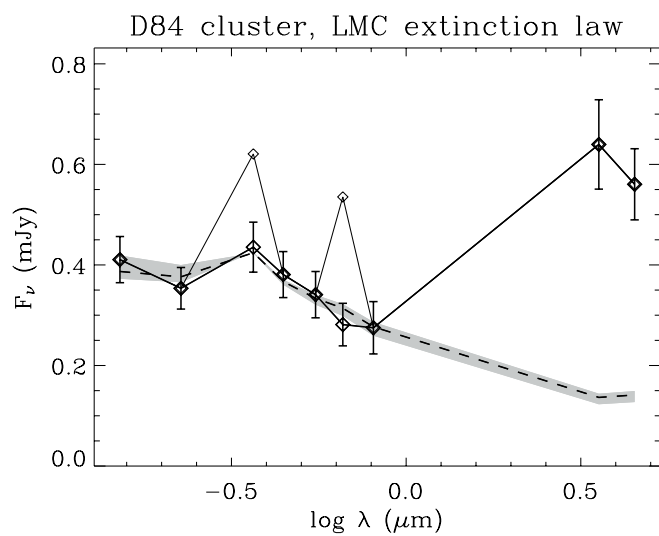
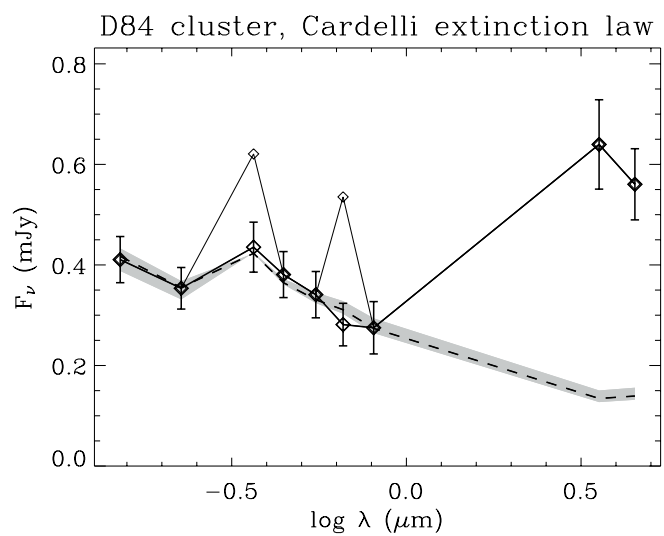


FIG. 7.—Continued

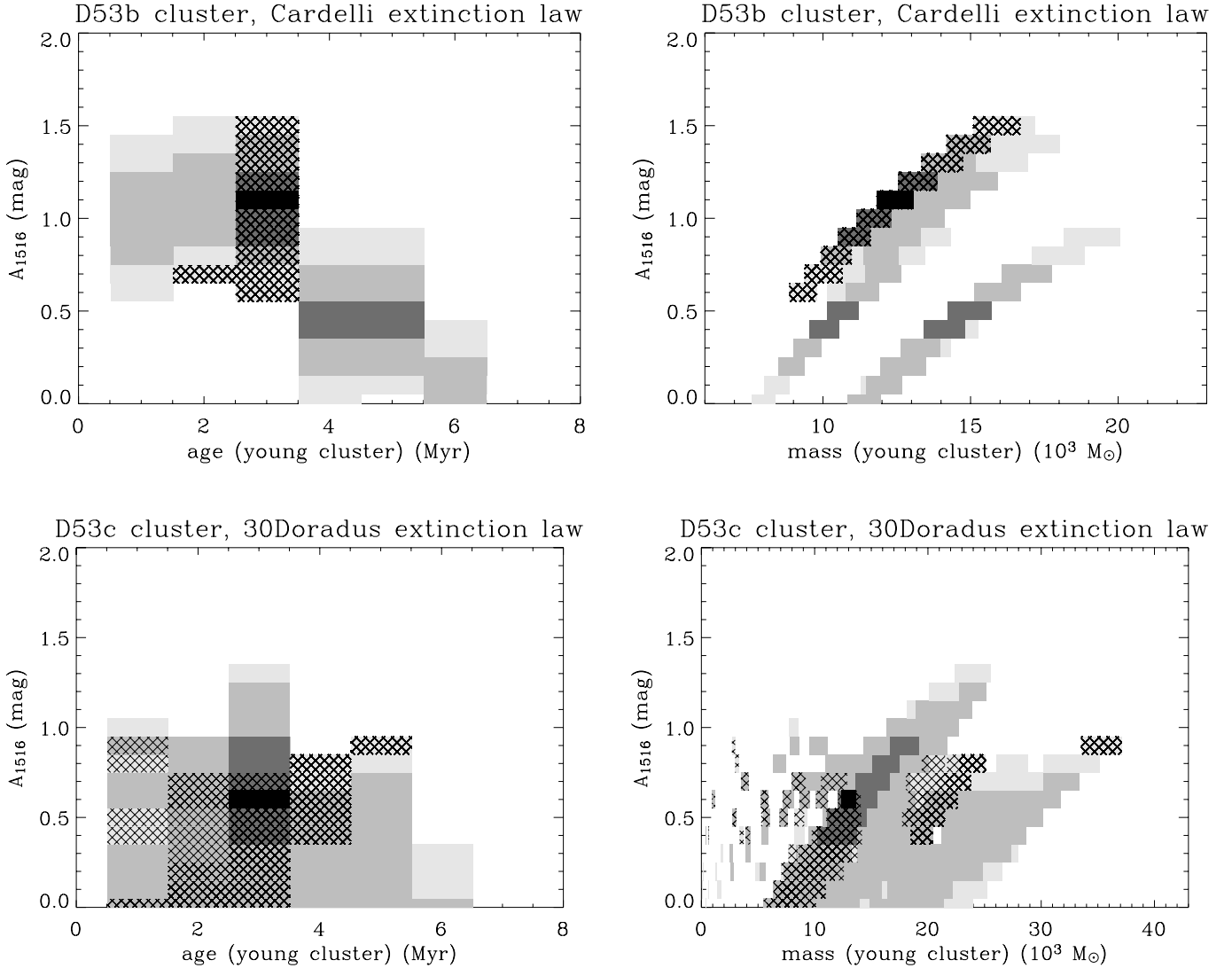


FIG. 8.—Confidence interval plots for the fits shown in Fig. 7. The areas of increasing gray intensity represent the 3, 2, and 1 σ intervals without any constraint on the ionizing photon flux error (see text), and the black rectangle indicates the best fit. Due to the discrete nature of the extinction and age grids, individual solutions with error intervals (± 0.05 mag, ± 0.5 Myr, and $\pm 5\%$ for the mass) are plotted rather than contours. The hatched areas correspond to solutions predicting an ionizing photon flux within 30% of the value estimated from the $H\alpha$ and $H\beta$ maps. No constraint on the FUV/NUV color is implied in χ^2 -values.

1 Myr), whereas their formation may go on for several mega-years instead of being coeval. That the clusters are all young and were observed before the bulk of supernova explosions can be inferred from the fact that they produce a significant amount of ionizing radiation, since most were selected to be associated with bright $H\text{ II}$ regions. The case of D53a is interesting, as it confirms that complexes containing younger stars tend to have higher ratios of very small grain emission to aromatic band emission (Savage et al. 1990; Roussel et al. 2001; Dale et al. 2004).

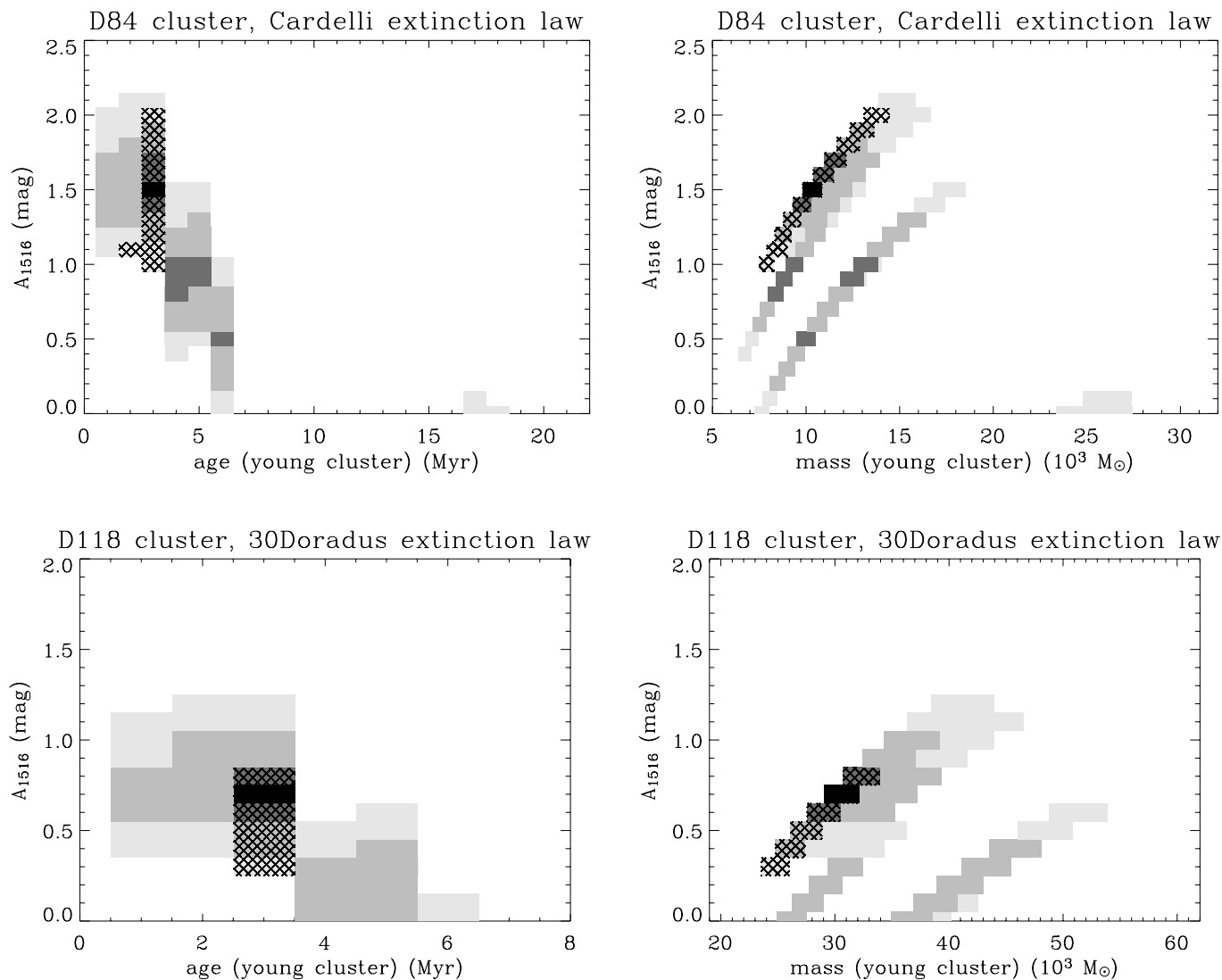
5.2. Masses

When considering such small stellar populations as those extracted here, formed of one or a few young clusters, statistical fluctuations of the mass spectrum of massive stars may become severe enough to affect the results of the fits. For the adopted IMF, the ratio $N(M > M_{\text{hot}})/M_{\text{tot}}$, where the numerator is the number of stars more massive than the threshold M_{hot} and the denominator is the total cluster mass as given in Table 3, is equal to $0.1264M_{\text{hot}}^{-1.35} - 0.0002$, with masses in units of solar mass. The whole range of cluster masses in Table 3 thus cor-

responds to between 9 and 126 O stars with $M_{\text{hot}} = 16 M_{\odot}$ (Vacca 1994). Adopting as a working definition of ionizing stars $M_{\text{hot}} = 10 M_{\odot}$ (Kennicutt 1984), the cluster masses also correspond to between 17 and 245 ionizing stars. The sampling of the IMF is thus a concern for the smallest clusters analyzed in this paper, in which a single ionizing star may account for up to 5% of the FUV emission. Note that a few regions for which we could not obtain any satisfactory fits were discarded from our sample; one of the possible reasons for this is small-number statistics of ionizing stars in low-mass stellar clusters.

5.3. Stellar and Nebular Extinctions

The fitted stellar extinction at the effective wavelength of the FUV filter varies between nearly 0 to ~ 1.5 mag. Its correspondence with the nebular extinction is shown in Figure 9. The lack of a tight correlation between the two can be understood in terms of spatial offsets between $H\text{ II}$ regions and clusters, and highly variable geometric configurations from one region to another. Within this sample, the $A(H\alpha)/A_R$ ratio ranges from 1 to more than 3.5. The deviation from the value usually adopted

FIG. 8.—*Continued*

for actively star-forming galaxies (Calzetti et al. 1994) can thus be greater than $\pm 50\%$ for individual regions.

There is a good qualitative correspondence between the extinction map at a resolution of $38''$ and the extinctions of individual regions derived from the population synthesis fits, considering that significant deviations are expected from the fact that extinction is highly variable on small scales. It should also be noted that while the population synthesis fits give the extinction of the young stellar clusters only, the extinction in Figure 4, by construction, includes all the stellar populations at any given location. Since intermediate-age and old populations are on average much less affected by extinction at any wavelength, because they are decoupled over time from their parent gas clouds, the extinction values derived from the global energy budget are expected to be much lower than those of the ionizing clusters; this is indeed observed.

5.4. Extinction Law and Geometry of the Interstellar Medium

We find clear differences in which extinction laws are applicable, as a function of the geometry of the H II regions with respect to the exciting clusters. The most compact regions follow either the Milky Way or the LMC law, whereas the clusters associated with H II regions forming shells and diffuse struc-

tures follow either the 30 Doradus or the Calzetti et al. (1994) law. Usually, the degeneracy between the latter two cannot be lifted, but models using the Calzetti et al. (1994) attenuation law systematically overpredict the ionizing photon flux by much larger amounts than the 30 Doradus law. We therefore consider the 30 Doradus law to yield a more reliable representation of the data, even though the stellar SED fits are formally of comparable quality using either of these two laws.

To qualitatively ascertain the consequences of neglecting radiative transfer effects, we examine the predictions of the DIRTY model (Witt & Gordon 2000; Gordon et al. 2001; Misselt et al. 2001) with empirically derived dust properties in the configuration of a dust shell surrounding a stellar cluster, which is appropriate for our sample (§ 4.3). The dust properties of the LMC2 giant shell (called 30 Doradus here), not included in the original models, were derived by Gordon et al. (2003).⁶ The results obtained from the pure extinction laws for the Milky Way, the LMC2 region, and the SMC are compared with those obtained from the corresponding attenuation laws for two types of local dust distribution: homogeneous and clumpy, the latter using the

⁶ The data tables were retrieved from the DIRTY Web site, at <http://dirty.as.arizona.edu>.

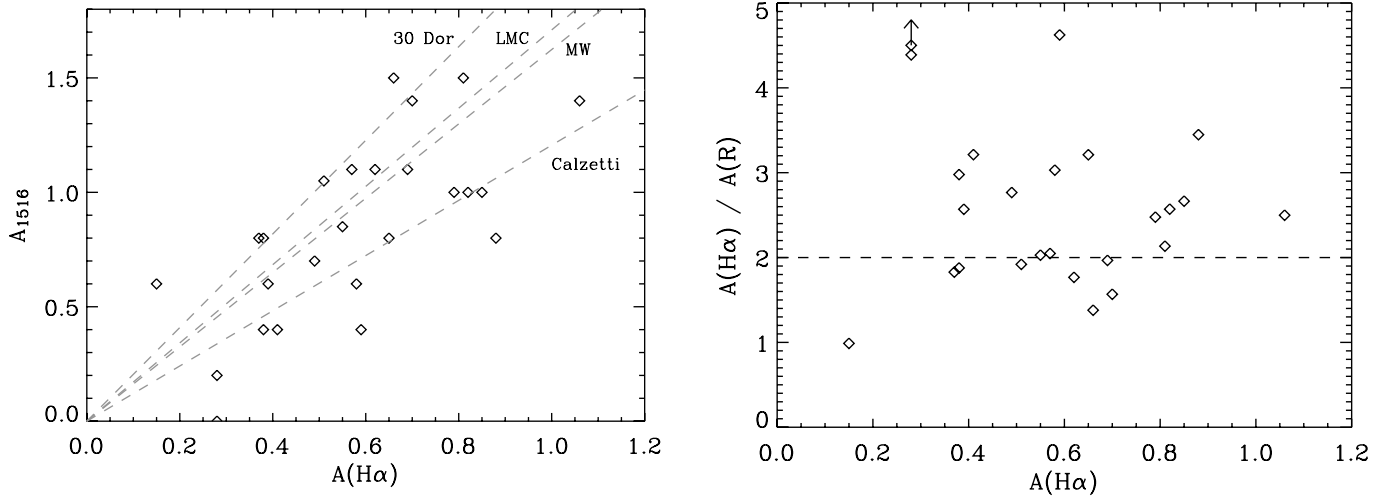


FIG. 9.—*Left*: Relationship between the nebular extinction at 6563 \AA , estimated from the $H\alpha/H\beta$ decrement, and the stellar extinction at 1516 \AA derived from the SED fits. The dashed lines represent the prediction of the ratio of stellar to nebular extinction $A(R) = 0.5A(H\alpha)$ from Calzetti et al. (1994), extrapolated to the FUV band using the four extinction laws considered in this paper. *Right*: Ratio of the nebular extinction at 6563 \AA to the stellar extinction in the R band, removing the ambiguity on the extinction law that was appropriately chosen for each cluster according to the fit results. The dashed line shows again the prediction from Calzetti et al. (1994). The two points at $A(H\alpha) = 0.28$ and $A(H\alpha)/A(R) \simeq 4.4$ are D6 and D7–8, which lie outside the $H\beta$ map and for which we adopted the $H\alpha/H\beta$ decrement of Webster & Smith (1983); the fitted stellar extinction of D7–8, being zero, was replaced by its upper limit (Table 3).

parameters defined by Witt & Gordon (2000). While other geometric configurations are available within DIRTY and are more applicable to the extended emission of large regions within galaxies, it is beyond the scope of this observational study to perform comprehensive modeling. We stress that the basic result of large variations in the attenuation law, whether they correspond to genuine variations in the extinction law or not, is independent of any assumptions about the relative geometry of stars and dust.

Figure 10 shows the extinction and attenuation curves in the model shell configuration for a particular optical depth, which corresponds to $A_{1516} = 0.7$ using the Cardelli extinction law, within the range of derived extinction values for our clusters. The inclusion of scattering produces emerging spectra that are bluer, with significantly higher FUV/NUV ratios, as more light is scattered in the line of sight than out. It is thus conceivable that the clusters that were well fitted with the Cardelli extinction law could be equally well fitted with a LMC- or SMC-based attenuation law. However, even at the low optical depth considered in Figure 10, the attenuation curves applicable to the clumpy case are extremely gray and thus would not provide any good fit to the observed SEDs, since they would predict too much intrinsic emission in the optical bands.

We now examine the aptitude of each attenuation law to reproduce the observed FUV/NUV flux density ratios. Figure 11 shows the predictions from the DIRTY model. The intrinsic FUV/NUV ratio of a 3 Myr old cluster is 1.18, and it varies between 1.13 and 1.31 for ages between 1 and 5 Myr. This uncertainty is reflected in the error bars in Figure 11.

Clusters well fitted with the Cardelli or LMC extinction law.— The data points overlap only with the Milky Way extinction law and the LMC2 extinction and attenuation laws. However, the attenuation law using the LMC2 dust properties, in the homogeneous case, is not much different from the pure extinction law; i.e., the effects of scattering are almost negligible. It is in principle possible to reproduce the observed FUV/NUV ratios with the LMC2 or 30 Doradus laws, but only if the clusters are younger (1 or 2 Myr). This seems unlikely, since the predicted ionizing photon fluxes would then be in strong excess with respect to the observational estimates (which are more

robust for the compact $H II$ regions associated with these clusters than for the diffuse $H II$ regions).

We note that the effects of scattering are strongest for the Milky Way dust properties and that none of the clusters would be well represented in the dust shell configuration with the Milky Way attenuation laws (i.e., including scattering), either in the homogeneous or in the clumpy case.

Clusters well fitted with the 30 Doradus extinction law.— The data points lie in between the LMC2 (30 Doradus) and the SMC laws. Again, the SMC-dust attenuation law, in the homogeneous case, is very close to the pure extinction law, and the effects of scattering are also very small in this configuration. But the extinction laws in the line of sight of these clusters may span the full range between the 30 Doradus and the SMC laws.

We conclude that the correct treatment of radiative transfer effects would not drastically alter our qualitative conclusions in what follows, unless stars had extended spatial distributions and were significantly mixed with the dust, which we argue is very unlikely for the stellar clusters that we classify as compact.

To quantify the compactness of the regions in a convenient way, we use the $H\alpha/R$ flux ratio, measured in the area defining the stellar aperture (i.e., if the $H II$ region extends far away from the clusters, only a fraction of the $H\alpha$ emission is considered in this ratio). While this is proportional to the $H\alpha$ equivalent width, we argue below that it is also a valid measure of the compactness of the $H II$ region. Although it is potentially distorted by differential extinction between the nebular phase and the stars, this effect should not be large. Using the results from Figure 9, we derive that for the highest extinctions, observed values of $H\alpha/R$ close to 1 at one extreme or close to 0.2 at the other extreme may be shifted by up to 0.9 upward or 0.2 upward, respectively, when corrected for extinction. Since the regions with the highest extinctions are also those with the highest $H\alpha/R$ -values, correcting rigorously for extinction would preserve the trend discussed below. Figure 12 confirms that the $H\alpha/R$ ratio provides a reliable quantification of the degree of compactness of the entire $H II$ region. We prefer to adopt the $H\alpha/R$ indicator, because it is a relatively unbiased measurement: unlike the ordinate of Figure 12, it does not imply any assumption about the

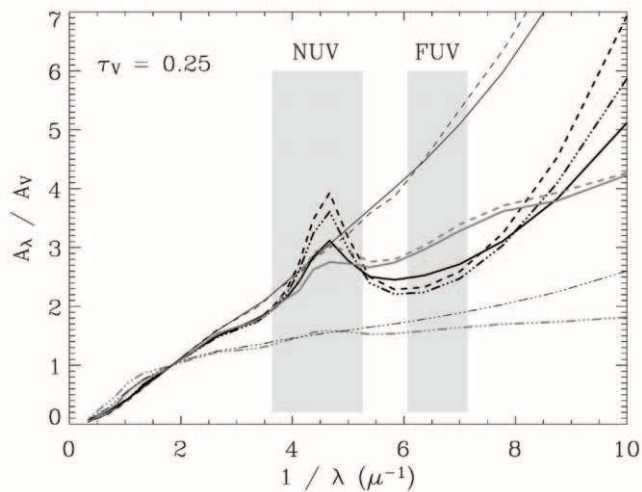


FIG. 10.—Extinction and attenuation laws predicted by the DIRTY model, with an opacity $\tau_V = 0.25$ (corresponding to $A_{1516} = 0.7$ using the Cardelli extinction law) for the Milky Way (thick black curves), the LMC2 region (thick gray curves) and the SMC (thin black curves). The extinction laws are shown as continuous lines; the attenuation laws in the homogeneous dust distribution case as dashed lines; and the attenuation laws in the clumpy dust distribution case as three-dot-dashed lines. The approximate FWHMs of the *GALEX* transmission curves are indicated.

total extent of the H II region, which is difficult to define owing to the presence of neighboring H II regions and the diffuse and filamentary aspect of the H α emission.

Figure 13 shows the dependence of the extinction law on the H α /R ratio. Whenever a region sits in between two extinction laws, it means that its SED is formally as well represented with either law as with the other. Unconstrained regions are those whose SED is well fitted by at least three of the four extinction laws (usually because of very small extinction). To indicate cases in which the measured ionizing flux is overestimated by a large amount by the Calzetti et al. (1994) attenuation law, the points are plotted closer to the 30 Doradus law locus. The main discriminant between the various extinction laws is the $A(\text{FUV})/A(\text{NUV})$ ratio (§ 4.3). The increase in $A(\text{FUV})/A(\text{NUV})$, going from the Cardelli et al. (1989) law to the LMC law to the 30 Doradus law, is due to both the gradual disappearance of the so-called 2175 Å bump, which is covered by the NUV band, and the steepening of the FUV rise. Although the Calzetti et al. (1994) law is devoid of the 2175 Å bump, the corresponding $A(\text{FUV})/A(\text{NUV})$ ratio is slightly smaller than that of the 30 Doradus law, because the Calzetti et al. (1994) law has a flatter wavelength dependence.

That the extinction law should vary within a galaxy is not a complete surprise given that some significant variations have been observed within the Milky Way and the Magellanic Clouds. In the SMC, Lequeux et al. (1982) discussed the line of sight to a star with a Milky Way-type extinction law. In the LMC, Misselt et al. (1999) discussed a line of sight associated with a giant shell, with a much weaker 2175 Å bump than its immediate surroundings. In the Milky Way, LMC-type extinction laws have been found toward low-density lines of sight (Clayton et al. 2000), and a SMC-type extinction law was derived toward a region suggested to have been profoundly affected by supernova shocks (Valencic et al. 2003). Although the disappearance of the 2175 Å bump, together with the steepening of the FUV rise, are usually ascribed to a decrease in metallicity, which could explain the differences between the average extinction laws of the Milky Way and Magellanic Clouds, Mas-Hesse & Kunth (1999) found no such

dependence of the extinction curve on metallicity for a sample of dwarf star-forming galaxies. As pointed out by Misselt et al. (1999), an apparent dependence on metallicity may be only an indirect effect, because the dust grain properties and geometry of the ISM are expected to be on average related to the metallicity.

It has been suggested that the intensity of star formation in the local environment could be the main driver of the extinction law shape, causing the destruction or processing of the dust grains responsible for the 2175 Å feature, via radiation hardness and supernova shocks (Fitzpatrick & Massa 1986; Gordon et al. 1997; Gordon & Clayton 1998; Mas-Hesse & Kunth 1999). This scenario is fully in line with the attribution of part of the 2175 Å feature to aromatic hydrocarbons (Joblin et al. 1992; Duley & Seahra 1998), as this dust species is known to be less resilient than very small grains and subject to being destroyed by intense radiation fields. Supporting this identification, Vermeij et al. (2002) reported variations of the mid-infrared band ratios (caused by changes in molecular structure, or degree of ionization and hydrogenation) that are correlated with the strength of the 2175 Å bump. It has been proposed that aromatic hydrocarbons are also responsible for part of the FUV rise (Puget & Léger 1989), and very small carbonaceous grains (of three-dimensional structure) are sometimes assumed to be the main contributor to the 2175 Å bump (Draine & Lee 1984; Hecht 1986; Sakata et al. 1994).

The present work, however, supports the idea that geometry effects are much more important than the distinction between quiescent and actively star-forming regions. According to the SED fits, all the exciting clusters have very similar ages. Therefore, rather than being a pure indicator of the evolution of the clusters, as the equivalent widths of the H recombination lines are usually assumed to be, the H α /R ratio can be interpreted here as mainly governed by the geometric evolution of the whole region, bearing traces of previous generations of stars in the shaping of the interstellar gas. Indeed, the giant shells of hydrogen that are observed in many locations across the disk of NGC 300, where they are illuminated by ionizing clusters, may have been carved by supernova explosions, in which case they signal past star formation at the same location more than 5 Myr ago. The difference in geometry between the regions D53a–b and D53c, which are part of the same complex and whose exciting clusters have approximately the same age, is particularly significant. High F_{24}/F_8 ratios, indicative of intense radiation fields, can also be found both in compact and diffuse star formation complexes. The most obvious difference between clusters associated with a Milky Way–LMC extinction law and those associated with a 30 Doradus–Calzetti law is in the distribution of the material around them. For the latter, both the atomic hydrogen and the mid-infrared-emitting dust (aromatic hydrocarbons and very small grains) have been removed to far away, presumably by stellar winds and supernova shocks from previous generations of stars at the same location. This does not preclude important differences as well in the processing of dust grains by supernova shocks, but if the modified dust is dissipated together with the gas, it is only weakly participating in the extinction of the clusters.

We can speculate that the effects of a varying extinction law within and among galaxies may resemble the effects of a varying IMF (Rosa & Benvenuti 1994), since for a given optical depth, the emerging ultraviolet continuum is much flatter in the case of a 30 Doradus–Calzetti law than it is for a Milky Way law. An upper mass cutoff of the IMF is not supported in NGC 300, since Wolf-Rayet features have been observed throughout its disk (Schild et al. 2003).

Finally, we can expect the behavior of more massive galaxies and of starbursts, where H II regions may generally be more

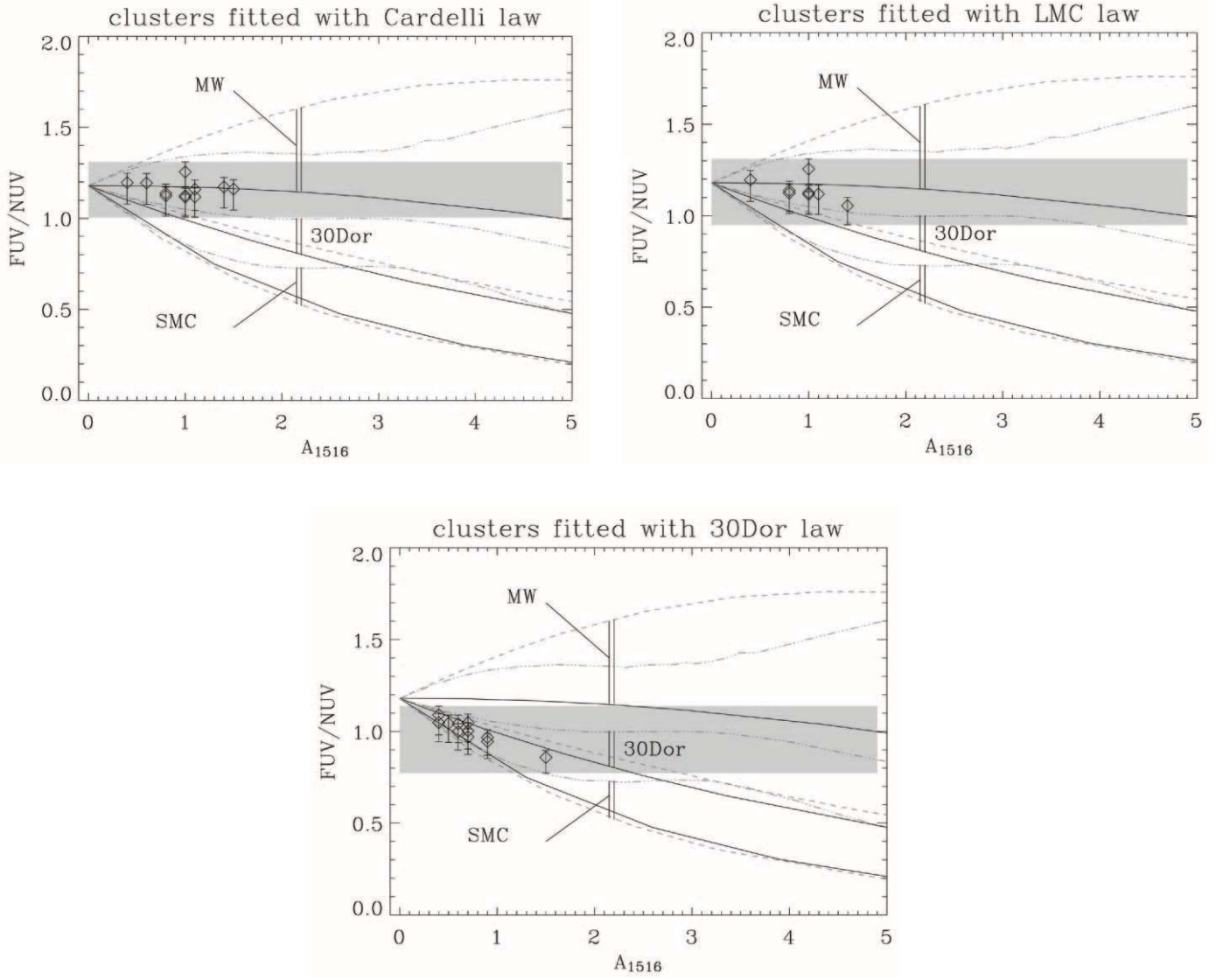


FIG. 11.—Predictions of the DIRTY model for the observed FUV/NUV flux density ratio of a 3 Myr old cluster, as a function of the extinction at 1516 Å. The continuous lines represent the pure extinction laws folded in the DIRTY model: Milky Way, LMC2 (called 30 Dor here), and SMC. The dashed lines represent the corresponding attenuation laws in the homogeneous case, and the three-dots-dashed lines the attenuation laws in the clumpy case. The vertical double bars show the total range of FUV/NUV colors derived from each extinction law at $A_{1516} = 2.2$, for easier identification. On each panel, the observed FUV/NUV ratios of the clusters well fitted with each considered extinction law (Cardelli, LMC, and 30 Dor) are overlotted. The clusters with unconstrained extinction laws (well fitted with all three laws) are omitted; some clusters are in common for the Cardelli and LMC laws (see Table 3). The error bars account for the color variations expected when the age of the clusters is allowed to vary from 1 to 5 Myr. The maximal range of color variations, including these error bars, is indicated by a gray rectangle.

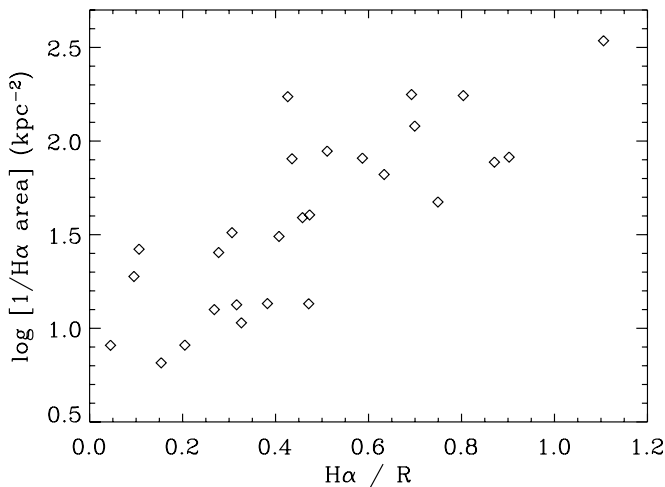


FIG. 12.—Relation between the $H\alpha/R$ flux ratio, measured inside the stellar “aperture,” and the inverse projected surface area of the entire $H II$ region. The area was summed inside an aperture chosen to encompass as much of the $H II$ region as possible without including nearby $H II$ regions and using only the pixels above 6σ .

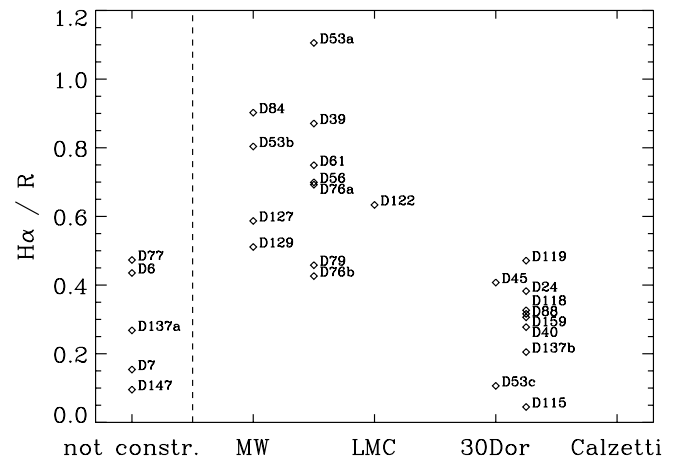


FIG. 13.—Compactness of the regions (as quantified by the $H\alpha/R$ flux ratio) and extinction laws that are able to reproduce the observed spectral energy distributions from the FUV to the I band (see text). The label “not constr.” means that the extinction law shape is not constrained by the stellar SED fits.

centrally distributed and more compact than in NGC 300, to be significantly different.

5.5. Interstellar Emission in the Near-Infrared

In some regions, we detect a clear excess at 3–5 μm above the stellar model. The improvement with respect to the previous treatment in Helou et al. (2004) (where it was assumed that the 3.5 μm emission covered by the IRAC1 band is entirely stellar) allows us to derive more accurately the amount of interstellar emission at these wavelengths. However, our method restricts the detectable interstellar component at 3–5 μm to the exact location of the stellar emission; if the hot dust in this wavelength range is significantly offset from the exciting source, it will not be detected. The 3.5/4.5 μm color of young clusters is very similar to that of dust (close to 1), making it very difficult to separate the two components if extensive information at other wavelengths does not exist. Complexes where the interstellar component at 3–5 μm is high with respect to the stellar fluxes (within the stellar aperture) are among the most compact (Figs. 14 and 13).

To explore the link between the extinction law and the dust emission, we adopt measurements of the 3–5 μm interstellar emission, as the favorable angular resolution in these bands allows us to select the dust emission within the stellar “apertures,” directly in the line of sight of the clusters. Figure 14 confirms that switching from the $H\alpha$ equivalent width to the column density of near-infrared-emitting dust in the line of sight of the clusters gives the same trend as seen in Figure 13: the shape of the extinction law seems to depend importantly on the amount of interstellar material which reemits the absorbed energy in the near- to mid-infrared. We cannot explore related variations in the mid-infrared to far-infrared colors, because the angular resolution at far-infrared wavelengths is too coarse.

Even though this 3–5 μm dust component may not be physically related to the other mid-infrared dust species, the aromatic band carriers and very small grains, Figure 15 shows that it scales reasonably well with the 8 μm aromatic band emission. These measurements suffer from the degraded angular resolution at 8 μm combined with the narrow stellar “apertures” used to fit and extract the interstellar component from the 3.6 μm band, but they are nevertheless in line with the $F_{3.6}/F_8$ flux ratios derived by Lu (2004) for interstellar emission in star-forming galaxies, as well as for the general ISM of the Milky Way.

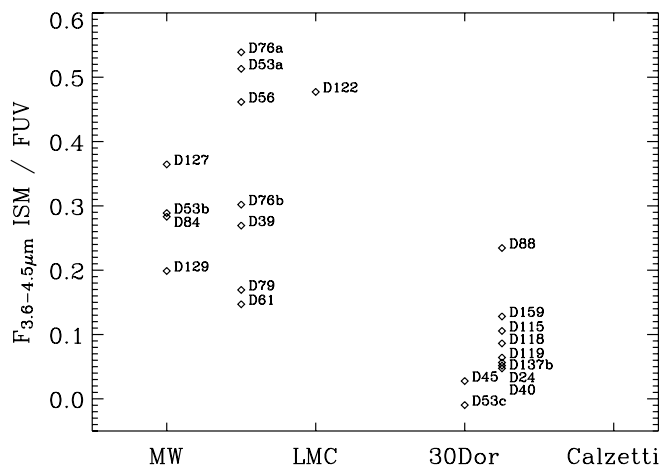


FIG. 14.—Ratio of the estimated interstellar component flux at 3.6–4.5 μm to the extinction-corrected FUV flux (chosen as normalization because it should be closely correlated with the heating intensity of the considered dust species) and applicable extinction laws.

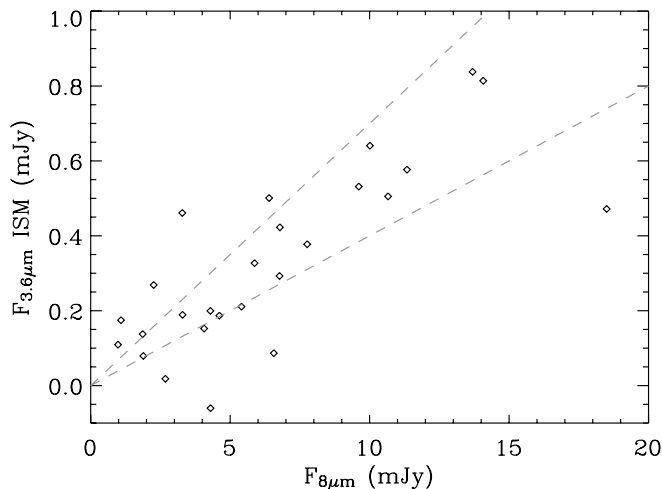


FIG. 15.—Correlation between the interstellar component at 3.6 μm and the aromatic band emission at 8 μm , measured within the stellar apertures, at the 8 μm angular resolution. The dashed lines show brackets on the interstellar $F_{3.6}/F_8$ flux ratio derived by Lu (2004). The relation with the 24 μm emission is apparently less tight, but we are severely limited by the degraded angular resolution at this wavelength, about twice as large as at 8 μm .

5.6. Porosity of the Interstellar Medium and Excitation of Aromatic Band Carriers

Examination of the morphology of the $H\text{ II}$ complexes in $H\alpha$ provides evidence that the ISM is highly porous in some regions and thus that the 8 μm -emitting dust can be heated by photons traveling as far as several hundred parsecs (since the NUV photons travel farther away than the ionizing photons, which are able to excite $H\alpha$ emission a few hundred parsec away from the clusters). Diffuse emission also exists at 24 μm , but is harder to detect, because it is intrinsically fainter than at 8 μm and is observed at much lower angular resolution, increasing the confusion by nearby bright sources, and because the 8 μm observations are deeper. Although the 8 $\mu\text{m}/H\alpha$ flux ratio varies dramatically from bright $H\text{ II}$ regions to more diffuse regions (Helou et al. 2004) and the 8 μm emission has a more filamentary aspect than the $H\alpha$ and 24 μm emission, virtually every 8 μm peak is associated with a nearby $H\alpha$ peak (see Fig. 6).

The claim of Haas et al. (2002) that aromatic band emission is more closely correlated with very cold dust than with hot dust within galaxies does not withstand examination in NGC 300. Figure 16 shows the relation between the aromatic band emission at 8 μm and the emission in the far-infrared, at 70 and 160 μm . As a comparison, the relation between 24 μm and the far-infrared emission is also included. The 160 μm emission can be considered a tracer of the cold dust, and the 70 μm emission arises from dust that is on average hotter, with a significant contribution from impulsively heated very small grains (Désert et al. 1990). Figure 16 indicates clearly that aromatic bands are not associated with cold dust and are not excited by the same radiation as the big grains. In the 8 μm –70 μm diagram, at high surface brightnesses, a branch with a slightly lower slope than in the low-brightness part is visible. This branch is slightly more prominent in the 8 μm –24 μm diagram; it is linked with the disappearance of the aromatic bands from inside the $H\text{ II}$ regions. Nevertheless, the 8 μm –70 μm and 8 μm –24 μm relations are much closer to linearity than the 8 μm –160 μm relation. The linearity between the 8 and 850 μm surface brightnesses reported by Haas et al. (2002), obtained at low angular resolution in galaxies of moderate angular size and,

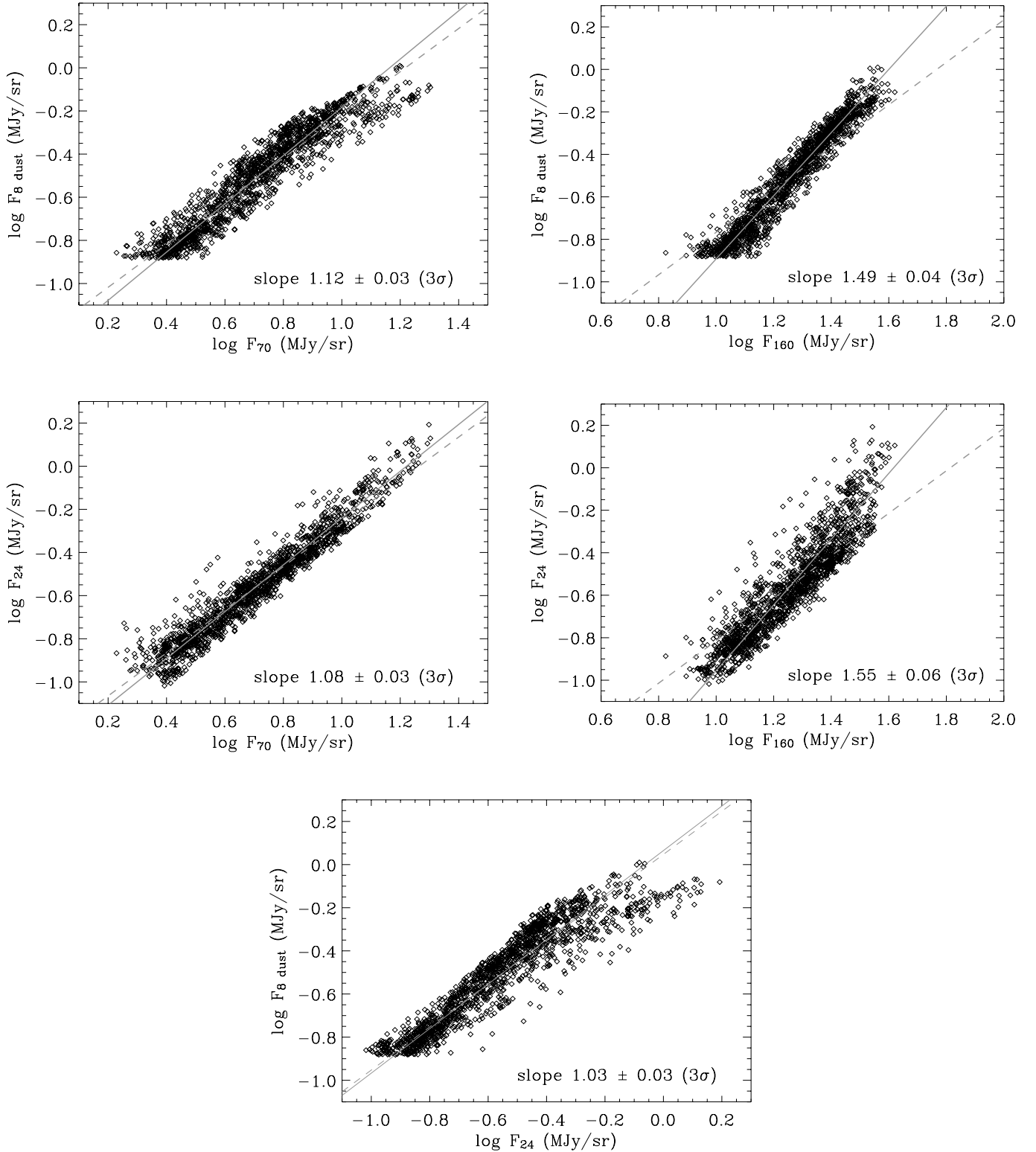


FIG. 16.—Correlation between the emission at 8 and 24 μm and the emission at 70 and 160 μm , at the angular resolution of the 160 μm image. The solid lines indicate the least absolute deviation fits, and the dashed lines have a slope of 1.

more importantly, at mediocre sensitivity at 850 μm , may simply be a consequence of extracting only the brightest and most active regions, which generally have dust temperature distributions shifted toward higher values, and discarding more diffuse regions, with their cooler dust temperatures. Their result thus does not imply that the aromatic bands and the cold dust

component are physically related, nor that they are heated by the same radiation.

5.7. Embedded and Bare Sources

Within the inner disk, a few nonstellar sources bright at 24 μm have weak optical and no ultraviolet counterparts (Table 4). Two

TABLE 4

24 μm SOURCES WITH WEAK OPTICAL AND NO ULTRAVIOLET COUNTERPART

R.A. (J2000.0)	Decl. (J2000.0)	Identification
00 54 41.7	−37 40 22	Ultracompact H II region?
00 54 50.4	−37 38 51	Background galaxy?
00 54 50.7	−37 41 55	Ultracompact H II region?
00 54 53.3	−37 43 13	Background galaxy?
00 54 59.8	−37 39 27	Ultracompact H II region?
00 55 01.7	−37 39 32	Ultracompact H II region?
00 55 05.9	−37 42 14	D125—ultracompact H II region?

NOTE.—Units of right ascension are hours, minutes, and seconds, and units of declination are degrees, arcminutes, and arcseconds.

of these are probably background distant galaxies, judging from their morphology in optical high-resolution images. The five other sources coincide with very faint H α emission, have no other optical counterpart, and may be ultracompact H II regions. We consider it likely at least for the object cataloged by Deharveng et al. (1988) as the faint and small H II region D125. If the H α /H β decrement of D125 can be trusted, it indicates a lower limit of the extinction in the H α line of 2.8 mag, much higher than for the H II regions associated with the clusters examined here (see Table 1). Its mid-infrared counterpart has the highest F_{24}/F_8 ratio in the galaxy (~ 4.5) and is still visible at 70 μm despite the degraded angular resolution.

Conversely, some FUV and H α sources are not associated with any detectable mid-infrared dust emission. These regions are of low brightness and diffuse in the H α emission, suggesting that they are aged H II regions, excited by slightly evolved clusters (see the previous paragraph). Both types of sources contribute negligibly to the emission from the optically bright disk, but the latter (bare sources) become predominant in the outer disk.

6. SUMMARY AND CONCLUSION

The large-scale UV/IR ratio gradient observed in NGC 300 is probably the consequence of a combination of factors, all causing an increase in the mean free path of ultraviolet photons. In this paper, we have focussed on geometric factors and shown that they cannot be neglected.

Throughout the disk of NGC 300, mid-infrared peaks are commonly offset from both the ionized gas peaks and stellar clusters, except for compact regions (Helou et al. 2004). This is because we are able to partially resolve H II regions from photodissociation regions. However, in the outer disk, even the far-infrared emission sometimes appears significantly displaced from the location of the ultraviolet sources at a resolution of 38'' (FWHM) or about 400 pc. In the outer disk, dust may be removed away from star-forming sites more efficiently than in the inner disk, either because the volume density of the ISM is decreased or because the exciting clusters are older on average and have injected more nonthermal energy into the ISM.

There are several examples of very porous star-forming sites at distances of 3'–4' (~ 2 kpc) from the center, from which both the hydrogen gas and the dust have been removed (such as D118 and D137); as they belong to the optically bright part of the disk, where presumably the molecular gas density remains high, i.e., above the threshold for gravitational instabilities discussed by Kennicutt (1989), these individual H II complexes are unable to affect significantly the global UV/IR radial pro-

file. However, such regions may become dominant in the outer disk.

Most of the H α emission in the outer disk is in the form of diffuse, very large shells, which supports either one of the factors invoked above for dust removal: either the gas is very rapidly pushed away, during the lifetime of ionizing stars because the ISM is more tenuous, or the exciting stellar populations are older on average, so that they had more time to blow the gas away by their winds and supernova explosions. Good supporting examples of the hypothesis of aged stellar populations are the clusters D115 and D147, which are bright in the FUV but seem to contain slightly evolved stellar populations (on the order of 5 Myr, as opposed to 3 Myr for most clusters). Since it is not possible to measure and fit the SEDs of a reasonably large number of clusters associated with giant shells in the outer disk, however, we cannot constrain the importance of this scenario relative to that of the others (but see also Fig. 2).

From population synthesis fitting of individual young stellar clusters or small groups of clusters, we find that the stellar attenuation law varies significantly on the explored spatial scales of ~ 100 pc, and we argue that this empirical result likely corresponds to real variations in the extinction law as well. Just as the UV/IR ratio does not depend only on age and metallicity, there is ample evidence that the apparent correlation between the shape of the extinction law and the metallicity or the mode of star formation (active vs. quiescent) is only a secondary effect of a more direct cause. We argue that the strength of the 2175 Å bump and the steepness of the FUV rise, whatever the responsible dust species, are directly related to the degree of compactness of the star-forming regions and to the column density of interstellar material in front of the clusters. While most of the young stellar clusters considered here have similar ages and have not produced supernova explosions yet, the only obvious difference between them is that some appear to have formed in regions deeply affected by previous generations of stars. These are associated with diffuse, shell-like H II regions of large dimensions. If we divide star-forming complexes in two categories based on the degree of compactness of the H α emission, we find that the most compact regions follow either the Milky Way or the average LMC extinction law, whereas the most diffuse regions follow an extinction law with a decreased 2175 Å bump and/or a steeper FUV rise. While we cannot ascribe these features to a particular dust species, we show, using the near-infrared dust component extracted from our SED fitting procedure (thanks to the favorable angular resolution), that the distinction between the two types of morphologies and the two types of extinction laws is related to the column density of near-infrared emitting dust lying in the line of sight of the clusters.

We can hypothesize that the main difference in dust nature causing the change of extinction law between the compact and diffuse regions is related to a changing proportion of dust grains very close to the H II region that have been processed by hard ultraviolet radiation from the young stars with respect to grains lying farther away that have not been processed in the same way. This photoprocessing is likely occurring very fast, so that the observed dust properties of compact H II regions should be systematically different from the dust properties of diffuse regions where dust lies farther away from the exciting stars. According to Boulanger et al. (1990), who discussed the ubiquitous and large variations in mid-infrared to far-infrared colors within and among nearby molecular clouds, such variations cannot be explained only by changes in the radiation field but require actual variations in the abundance of small grains with respect to big

grains. They proposed that these abundance variations are caused by photoprocessing on timescales comparable to those of the mixing of gas by turbulent motions in clouds. Habart et al. (2001) and Abergel et al. (2002) also discussed abundance variations of small grains and aromatic hydrocarbons in resolved photodissociation regions and molecular clouds. This speculation would be consistent with the fact that the dust emitting in the 3–5 μm range is likely excited inside or very close to H II regions (Helou et al. 2004) and, as we have seen here, that its excitation has a close correspondence to the shape of the extinction law.

We thank Sang Chul Kim and Charles Hoopes for graciously providing their *UBVI* and H α images, respectively, of NGC 300. We are most grateful to Karl Gordon for computing new DIRTY models incorporating the LMC2 extinction law, ahead of schedule and upon our request; the corresponding data tables are publicly available on the DIRTY Web site (<http://dirty.as.arizona.edu>). This research has made use of the NASA/IPAC Extragalactic Database (NED), which is operated by the Jet Propulsion Laboratory, California Institute of Technology, under contract with the National Aeronautics and Space Administration.

APPENDIX

NOTES ON INDIVIDUAL REGIONS⁷

D53a.—Compact, associated with very hot dust at 24 μm and 3–5 μm . Since the emission is confused by nearby clusters in the *GALEX* bands, we had to subtract a Gaussian representation of these contaminating clusters and apply a large aperture correction to the FUV and NUV fluxes because of the small size of the aperture.

D53b.—Compact, associated with hot dust at 24 μm and 3–5 μm . Two distinct clusters can be distinguished but are well fitted with a single stellar population.

D53c.—Two clusters, one with a very red SED. The morphology in the various bands clearly indicates that interstellar emission is negligible at 3–5 μm . The fits included a second population but were not constrained to reproduce the 3–5 μm fluxes. The modeling confirms, however, the stellar nature of the 3–5 μm emission. The ionized gas is diffuse and forms an extended fragmentary shell of size ~ 200 pc.

D118.—Complex region with several clusters, which can be fitted by a single population. The ionized gas and the dust are distributed in both compact regions and a giant shell.

D119.—Same remarks as for D118.

D137b.—This complex region stands out as very peculiar: the ionized gas and dust seem to form two walls on each side of the brightest cluster, separated by ~ 80 pc in projected distance. Star formation has thus had dramatic effects on the shaping of the surrounding ISM. The H α and dust peaks are coincident with weak UV sources, presumably because of extinction effects, while the cluster dominating the UV emission is located in a zone nearly void of interstellar emission. Since the complex contains redder stellar sources besides these clusters, we allow for a second population in the fits. This increases dramatically the degeneracy of the younger population parameters.

D84.—Compact region, associated with hot dust at 24 μm and 3–5 μm .

⁷ Including the clusters for which the fits are shown in Fig. 7.

REFERENCES

- Abergel, A., et al. 2002, *A&A*, 389, 239
 Andreani, P., Casoli, F., & Gerin, M. 1995, *A&A*, 300, 43
 Blair, W. P., & Long, K. S. 1997, *ApJS*, 108, 261
 Bot, C., Boulanger, F., Lagache, G., Cambr sy, L., & Egret, D. 2004, *A&A*, 423, 567
 Boulanger, F., Falgarone, E., Puget, J. L., & Helou, G. 1990, *ApJ*, 364, 136
 Breysacher, J., Azzopardi, M., Testor, G., & Muratorio, G. 1997, *A&A*, 326, 976
 Buat, V., & Burgarella, D. 1998, *A&A*, 334, 772
 Calzetti, D. 2001, *PASP*, 113, 1449
 Calzetti, D., Kinney, A. L., & Storchi-Bergmann, T. 1994, *ApJ*, 429, 582
 Cardelli, J. A., Clayton, G. C., & Mathis, J. S. 1989, *ApJ*, 345, 245
 Clayton, G. C., Gordon, K. D., & Wolff, M. J. 2000, *ApJS*, 129, 147
 Dale, D. A., & Helou, G. 2002, *ApJ*, 576, 159
 Dale, D. A., et al. 2004, *ApJ*, 601, 813
 Deharveng, L., et al. 1988, *A&AS*, 73, 407
 D sert, F. X., Boulanger, F., & Puget, J. L. 1990, *A&A*, 237, 215
 d’Odorico, S., Rosa, M., & Wampler, E. J. 1983, *A&AS*, 53, 97
 Draine, B. T., & Lee, H. M. 1984, *ApJ*, 285, 89
 Duley, W. W., & Seahra, S. 1998, *ApJ*, 507, 874
 Ferguson, A. M., Wyse, R. F., Gallagher, J. S., & Hunter, D. A. 1996, *AJ*, 111, 2265
 Fitzpatrick, E. L. 1986, *AJ*, 92, 1068
 Fitzpatrick, E. L., & Massa, D. 1986, *ApJ*, 307, 286
 Freedman, W. L., et al. 1992, *ApJ*, 396, 80
 Fukugita, M., Shimasaku, K., & Ichikawa, T. 1995, *PASP*, 107, 945
 Gordon, K. D., Calzetti, D., & Witt, A. N. 1997, *ApJ*, 487, 625
 Gordon, K. D., & Clayton, G. C. 1998, *ApJ*, 500, 816
 Gordon, K. D., Clayton, G. C., Misselt, K. A., Landolt, A. U., & Wolff, M. J. 2003, *ApJ*, 594, 279
 Gordon, K. D., Misselt, K. A., Witt, A. N., & Clayton, G. C. 2001, *ApJ*, 551, 269
 Haas, M., Klaas, U., & Bianchi, S. 2002, *A&A*, 385, L23
 Habart, E., Verstraete, L., Boulanger, F., Pineau des For ts, G., Le Peintre, F., & Bernard, J. P. 2001, *A&A*, 373, 702
 Hecht, J. H. 1986, *ApJ*, 305, 817
 Helou, G., et al. 2004, *ApJS*, 154, 253
 Hoopes, C. G., Walterbos, R. A., & Greenawalt, B. E. 1996, *AJ*, 112, 1429
 Hunter, D. A., Gallagher, J. S., Rice, W. L., & Gillett, F. C. 1989, *ApJ*, 336, 152
 Joblin, C., L ger, A., & Martin, P. 1992, *ApJ*, 393, L79
 Kennicutt, R. C. 1984, *ApJ*, 287, 116
 ———. 1989, *ApJ*, 344, 685
 Kim, S. C., Sung, H., Park, H. S., & Sung, E. C. 2004, *Chinese J. Astron. Astrophys.*, 4, 299
 Larsen, S. S. 2004, *A&A*, 416, 537
 Leitherer, C., et al. 1999, *ApJS*, 123, 3
 Lequeux, J., et al. 1982, *A&A*, 113, L15
 Lu, N. 2004, *ApJS*, 154, 286
 Martin, D. C., et al. 2005, *ApJ*, 619, L1
 Mas-Hesse, J. M., & Kunth, D. 1999, *A&A*, 349, 765
 Misselt, K. A., Clayton, G. C., & Gordon, K. D. 1999, *ApJ*, 515, 128
 Misselt, K. A., Gordon, K. D., Clayton, G. C., & Wolff, M. J. 2001, *ApJ*, 551, 277
 Morrissey, P., et al. 2005, *ApJ*, 619, L7
 Pannuti, T. G., et al. 2000, *ApJ*, 544, 780
 Payne, J. L., et al. 2004, *A&A*, 425, 443
 Pierini, D., & M ller, C. S. 2003, *MNRAS*, 346, 818
 Puche, D., & Carignan, C., & Bosma, A. 1990, *AJ*, 100, 1468
 Puget, J. L., & L ger, A. 1989, *ARA&A*, 27, 161

- Rosa, M. R., & Benvenuti, P. 1994, *A&A*, 291, 1
Roussel, H., et al. 2001, *A&A*, 372, 406
Sakata, A., Wada, S., Tokunaga, A. T., Narisawa, T., Nakagawa, H., & Ono, H. 1994, *ApJ*, 430, 311
Sauvage, M., Vigroux, L., & Thuan, T. X. 1990, *A&A*, 237, 296
Schild, H., Crowther, P. A., Abbott, J. B., & Schmutz, W. 2003, *A&A*, 397, 859
Sérsic, J. L. 1966, *Z. Astrophys.*, 64, 212
Vacca, W. D. 1994, *ApJ*, 421, 140
Valencic, L. A., Clayton, G. C., Gordon, K. D., & Smith, T. L. 2003, *ApJ*, 598, 369
Vermeij, R., Peeters, E., Tielens, A. G., & van der Hulst, J. M. 2002, *A&A*, 382, 1042
Wang, B., & Heckman, T. M. 1996, *ApJ*, 457, 645
Webster, B. L., & Smith, M. G. 1983, *MNRAS*, 204, 743
Witt, A. N., & Gordon, K. D. 2000, *ApJ*, 528, 799
Witt, A. N., Thronson, H. A., & Capuano, J. M. 1992, *ApJ*, 393, 611