

RESEARCH

Open Access



Extracellular vesicles carry cellulases in the industrial fungus *Trichoderma reesei*

Renato Graciano de Paula¹, Amanda Cristina Campos Antoniêto¹, Karoline Maria Vieira Nogueira¹, Liliane Fraga Costa Ribeiro¹, Marina Campos Rocha², Iran Malavazi², Fausto Almeida¹ and Roberto Nascimento Silva^{1*} 

Abstract

Background: *Trichoderma reesei* is the most important industrial producer of lignocellulolytic enzymes. These enzymes play an important role in biomass degradation leading to novel applications of this fungus in the biotechnology industry, specifically biofuel production. The secretory pathway of fungi is responsible for transporting proteins addressed to different cellular locations involving some cellular endomembrane systems. Although protein secretion is an extremely efficient process in *T. reesei*, the mechanisms underlying protein secretion have remained largely uncharacterized in this organism.

Results: Here, we report for the first time the isolation and characterization of *T. reesei* extracellular vesicles (EVs). Using proteomic analysis under cellulose culture condition, we have confidently identified 188 vesicular proteins belonging to different functional categories. Also, we characterized EVs production using transmission electron microscopy in combination with light scattering analysis. Biochemical assays revealed that *T. reesei* extracellular vesicles have an enrichment of filter paper (FPase) and β -glucosidase activities in purified vesicles from 24, 72 and 96, and 72 and 96 h, respectively. Furthermore, our results showed that there is a slight enrichment of small RNAs inside the vesicles after 96 h and 120 h, and presence of hsp proteins inside the vesicles purified from *T. reesei* grown in the presence of cellulose.

Conclusions: This work points to important insights into a better understanding of the cellular mechanisms underlying the regulation of cellulolytic enzyme secretion in this fungus.

Keywords: *Trichoderma reesei*, Extracellular vesicles, Cellulases, Secretion, Proteome

Background

Trichoderma reesei is one of the main producers of cellulolytic and xylanolytic enzymes, being the most studied fungus involved with lignocellulosic degradation [1–4]. It has the ability to colonize a wide range of habitats and is able to fully break down different types of biomass by secreting a range of enzymes and metabolites [5–9]. In *T. reesei*, the gene expression and secretion of enzymes are directly dependent on the different chemical signals produced from diverse substrates. This feature provides the

ability to grow in a wide range of carbon sources and the production a variable range of cellulases [10].

The natural ability to produce and secrete large amounts of protein makes *T. reesei* an interesting host for production of heterologous proteins used in various different industrial applications [11]. In this fungus, the secretory pathway is an important route of cell communication with the environment. It is responsible for secreting molecules to send distinct signals to other cells, hydrolytic enzymes to obtain nutrients and respond or adapt to changes in the microenvironment [12]. Regarding this, different organelles are responsible for the biosynthesis, assembly, folding and modifications of proteins in the secretory pathways [13]. In process of proteins synthesis, proteins are synthesized in the ribosomes and

*Correspondence: rsilva@fmrp.usp.br

¹ Department of Biochemistry and Immunology, Ribeirao Preto Medical School, University of Sao Paulo, Ribeirao Preto, São Paulo 14049-900, Brazil
Full list of author information is available at the end of the article



then, are transported through the rough endoplasmic reticulum (ER), and thus, the polypeptides are translocated into the lumen of this organelle [14]. Once in the ER lumen, the polypeptides may undergo various post-translational modifications [15].

After trafficking inside the ER, the proteins are directed from ER to the Golgi complex, and this process involves packaging proteins in coat protein complex II (COPII)-coated vesicles [16, 17]. In *T. reesei*, genomic analysis has indicated the presence of the gene encoding COPII-coated vesicles for the anterograde transport from ER to Golgi complex [12, 18]. Right after proteins are delivered to the Golgi complex they undergo proteolytic processing to generate mature polypeptides [19]. Finally, in the last step of the secretory pathway, the protein needs to be transported from Golgi complex to the plasma membrane, and this process involves vesicle formation. Extracellular vesicles (EVs) are defined as a heterogeneous group of cell-derived membranous structures comprising exosomes and microvesicles, which originate from the endosomal system or which are shed from the plasma membrane, respectively [20].

During this process of vesicles formation, different regulatory proteins have an essential role. In this scenario, GTPase Arf1 has a crucial participation in the formation of the exomer, which is responsible to coat vesicles designated to the plasma membrane [21], and GTPases Sec4, Rho1, Rho3, and Cdc42 need to be activated to promote the final docking event allowing the coated-vesicles reach the plasma membrane [22, 23]. Finally, SNARE proteins such as Sec9, Snc1, Sso1, and Sso2 are equally important in vesicle and plasma membrane fusion [24]. Regarding, in *T. reesei*, *snc1*, *sso1*, and *sso2* have been identified in subapical areas of the hyphal plasma membrane [25].

Using bioinformatic analysis of signal sequences, Druzhinina et al. [26] suggested that the majority of the secreted proteins in *T. reesei* are hydrolases, small cysteine-rich proteins, proteases, lipases, nucleases, oxidases, and phosphatases. Furthermore, beyond the secretion of holocellulolytic enzymes, this fungus has the ability to secrete laccases, glyoxal oxidase, peroxin, peroxidase, catalase, glutathione transferase, cytochrome oxidase and cytochrome peroxidase [27]. Regarding holocellulolytic enzymes, the cellobiohydrolases (Cel7a and Cel6a) and the endoglucanases (Cel7b and Cel5a) are the most common cellulolytic enzymes identified in the secretome of this fungus [28, 29]. Though all this knowledge about cellulase secretion on *T. reesei*, there is a series of questions regarding the secretory pathway of cellulases that remain unanswered, including (1) How does cellulose trigger the induction of cellulases? (2) What are the intracellular signaling pathways? (3) What are the subcellular locations of cellulases? So, here we

showed for the first time the identification and characterization of extracellular vesicles in *T. reesei* along with the proteomic content analysis of extracellular vesicles (EVs) in the presence of cellulose.

Methods

Fungal strain and growth conditions

The *Trichoderma reesei* strain QM6a Δ tmus53 Δ pyr4 [30] used in this study was obtained from the Institute of Chemical Engineering & Technical Biosciences of Vienna University of Technology, TU Vienna, Austria. The strain was maintained at 4 °C on MEX medium [malt extract 3% (w/v) and agar-agar 2% (w/v)], which was supplemented with 5 mM uridine in the case of the *pyr4* deletion strain. For all experiments, a spore suspension of QM6a Δ tmus53 Δ pyr4 strain containing 10⁶ cells/mL was precultured into 200 mL of Mandels–Andreotti medium [31] supplemented with glycerol 1% (w/v) for 24 h and then transferred to a 200 mL of fresh Mandels–Andreotti medium containing 1% of Avicel [32, 33]. The cultures were incubated on an orbital shaker (200 rpm) at 30 °C for 24, 48, 72, 96 or 120 h. For glucose experiments, the fungus was grown in 2% glucose for 24 h. The resulting culture supernatant was collected by filtration and used for EVs isolation. All experiments were performed in three biological replicates.

Vesicles isolation and characterization

Extracellular vesicles were isolated as previously described for other fungi [34–37], with slight modifications. *T. reesei* fungal cells were separated from culture supernatants by centrifugation at 4000 \times g for 30 min at 4 °C, and the pellets discarded. The obtained supernatants were concentrated approximately 50-fold through polystyrene membranes using Amicon ultrafiltration system (cutoff, 100 kDa). The resulting supernatant was centrifuged at 60,000 \times g for 1 h at 4 °C. The supernatants were discarded, and the pellets washed twice with 0.1 M phosphate-buffered saline (PBS) by sequential resuspension and centrifuging them at 60,000 \times g for 1 h at 4 °C.

The size-distribution and quantification of extracellular vesicles preparations were measured by nanoparticle-tracking analysis (NTA) using a NanoSight NS300 (Malvern Instruments, Malvern, UK) equipped with fast video capture and particle-tracking software, as previously described [38]. Purified vesicles from *T. reesei* were 20 \times diluted into 1 mL of PBS, and each sample was then injected into a NanoSight sample cubicle. The measurements were obtained in triplicate and analyzed using NanoSight software (version 3.2.16). The data on the sizes of extracellular vesicles from *T. reesei* are expressed as the calculated mean \pm SD of size distribution.

Transmission electron microscopy (TEM)

Mycelia aliquots withdrawn from QM6aΔ*tmus53*Δ*pyr4* at 24, 48, 72, 96 and 120 h during culture in the presence of Avicel, and glucose and glycerol at 24 h were centrifuged at 6000×g and immediately fixed in 0.1 M sodium phosphate buffer (pH 7.4) containing 2.5% (v/v) of glutaraldehyde and 2% (w/v) of paraformaldehyde for 24 h at 4 °C. Samples were encapsulated in agar (2% w/v) and subjected to fixation (1% OsO₄), contrasting (1% uranyl acetate), ethanol dehydration, and a two-step infiltration process with Spurr resin (Electron Microscopy Sciences) of 16 h and 3 h at room temperature (RT). Additional infiltration was provided under vacuum at RT before embedment in BEEM capsules (Electron Microscopy Sciences) and polymerization at 60 °C for 72 h. Semithin (0.5-μm) survey sections were stained with toluidine blue to identify the areas of best cell density. Ultrathin sections (60 nm) were prepared and stained again with uranyl acetate (1%) and lead citrate (2%). Transmission electron microscopy (TEM) images were obtained using a Philips CM-200 electron microscope at an acceleration voltage of 120 kV using a MegaView3 camera and iTEM 5.0 software (Olympus Soft Imaging Solutions GmbH).

Proteomic analysis

The vesicles samples were sonicated to release protein content. Subsequently, total protein was quantified using the Bradford method and concentrated using Amicon Ultra 0.5 mL centrifugal filters (MWCO 3 kDa) (Millipore, Burlington, Massachusetts, EUA). Proteins were suspended in 250 μL 100 mM NH₄HCO₃ containing 8 M urea and reduced with 5 mM dithiothreitol 37 °C for 1 h. Reduced thiol groups were alkylated with 100 mM NH₄HCO₃ containing 8 M urea and 50 mM iodoacetamide for 1 h at RT in the dark. Protein digestion was carried out by incubating the samples with trypsin 20 ng/μL (Promega; Madison, WI, USA; 1:50; w/w) overnight at 37 °C. After quenching the reaction with trifluoroacetic acid (TFA) to a final concentration of 1% TFA, the peptide mixture was desalted, concentrated on ziptip (Millipore) [39]. Recovered peptides were dissolved in 0.1% formic acid and then subjected to nanoLC-MS/MS analysis, using Bruker Maxis Q-TOF coupled to a nanoLC (NanoAcquity Waters). The peptides were loaded onto a nanoAcquity UPLC® 2G-V/MTrap 5 μm Symmetry® C18 180 μm × 20 mm precolumn (Waters). The elution was made with a linear gradient of 2–85% acetonitrile in 0.1% aqueous solution of formic acid. The gradient was performed over 85 min using nanoAcquity UPLC® 1.7 μm BEH130 100 μm × 100 mm (Waters) column at a flow rate of 0.3 μL/min.

Raw files were converted to .dta files for a Mascot database (Mascot software; Matrix Science; Boston, MA, USA) search. A database containing *T. reesei* protein sequences was searched using Mascot software (version 2.3) for protein identification. Moreover, acquired raw data were converted to mzXML and automatically processed by an in-house installation of Labkey Server v12, using the X!Tandem search algorithm [40]. The minimum criterion for peptide matching was performed using a Peptide Prophet [41] score greater than 0.8. Peptides that met these criteria were further grouped to protein sequences using the Protein Prophet [42] algorithm and only proteins with an error rate of 5% or less and two peptides sequences identified were considered as valid identifications. A combined list of proteins identified in all replicates (*n* = 3) and MASCOT-LabKey Server searches were condensed to remove redundant IDs such as orthologous sequences, redundant database entries, and indistinguishable isoforms based on observed peptide coverage.

RNA isolation

RNA was extracted from lyophilized vesicles samples using the TRIzol® RNA kit (Invitrogen Life Technologies, CA, USA), according to the manufacturer's instructions. The RNA concentration was determined by spectrophotometric OD at 260/280, and the RNA integrity was verified by both the Agilent 2100 Bioanalyzer.

Enzyme activity assays

The vesicles samples were sonicated to release protein content. Subsequently, β-glucosidase and filter paper (FPase) activities were assayed in the isolated vesicles or supernatant culture by the ability to hydrolyze pNPG (*p*-nitrophenyl-β-D-glucopyranoside) and filter paper, respectively, following published protocols [43–46]. For β-glucosidase activity, the reaction consisted of 10 μL of isolated vesicle suspension or 10 μL supernatant, 50 μL of 50 mM sodium acetate buffer and 40 μL of 5 mM of a specific substrate. The reactions were incubated at 50 °C for 15 min (β-glucosidase), followed by the addition of 100 μL of 1 M sodium carbonate [47]. The enzymatic activities were performed in a 96-well microplate, and absorbance was read at 405 nm using the xMark™ Microplate Spectrophotometer (Bio-Rad, CA, USA). Filter paper activity (FPase) was determined by an enzymatic reaction employing Whatman filter paper no. 1, 30 μL of isolated vesicle suspension or 30 μL of supernatant, and 30 μL of 100 mM citrate buffer pH 5.0 [47]. The reactions were incubated at 50 °C for 18 h. Next, 60 μL of dinitrosalicylic acid (DNS) was added to the reaction, which was then heated at 95 °C for 5 min. The FPase activity was also assayed in a 96-well microplate, and absorbance was

read at 540 nm using the xMark™ Microplate Spectrophotometer (Bio-Rad, CA, USA). One enzyme unit was defined as the amount of enzyme capable of liberating 1 μmol of reducing sugar per minute [43].

Results

Identification and characterization of *T. reesei* extracellular vesicles

This work shows the first characterization of extracellular vesicles (EVs) of *T. reesei* (Fig. 1). Our results showed that *T. reesei* was able to produce a significant number of extracellular vesicles from 24 h of induction in the presence cellulose exhibiting the highest level of production at 96 h (Fig. 1a, c). The majority of the EVs population displayed diameter size ranging from 100 to 200 nm, with a mean size of 144 nm (Fig. 1b and Additional file 1: Fig. S1). Figure 1a–c shows a representative view of the different vesicles sizes and location obtained by supernatant purification. The mean concentration of particles in the supernatants from 24, 48, 72, 96 and 120 h were 4.61×10^9 , 2.83×10^{10} , 7.89×10^9 , 4.11×10^{10} and 1.09×10^{10} particles/mL, respectively. As expected, no particles were found in the medium alone (negative control; data not shown). Also, to confirm that the

vesicles originated from live cells and not from membranes released from dead cells, we analyzed a control preparation from each time of culture supernatants of *T. reesei* mycelia that had been killed by heating at 70 °C for 24 h and then inoculated in minimal medium and cultivated in parallel under the same conditions as those used for the live cells. Our NTA results demonstrated that no nanoparticles were generated from the heat-killed *T. reesei* mycelia (data not shown).

Interestingly, our analysis demonstrated the growth of *T. reesei* in the presence of cellulose generate a higher number of EVs than compared to the repressive or neutral carbon sources glucose or glycerol, respectively (Additional file 1: Fig. S3c). As shown in this figure, in the presence of glucose and glycerol we have a few numbers of EVs. The NTA analysis showed that the EVs purified from glycerol are smaller than glucose and cellulose culture, exhibiting a size of 108 nm, 153 nm, and 144 nm, respectively (Additional file 1: Fig. S3a and b). These results suggest that there is an unknown mechanism involving EVs production in *T. reesei* in the presence of cellulose.

Transmission electron microscopy analysis of vesicles from mycelium revealed a large amount of EVs in samples

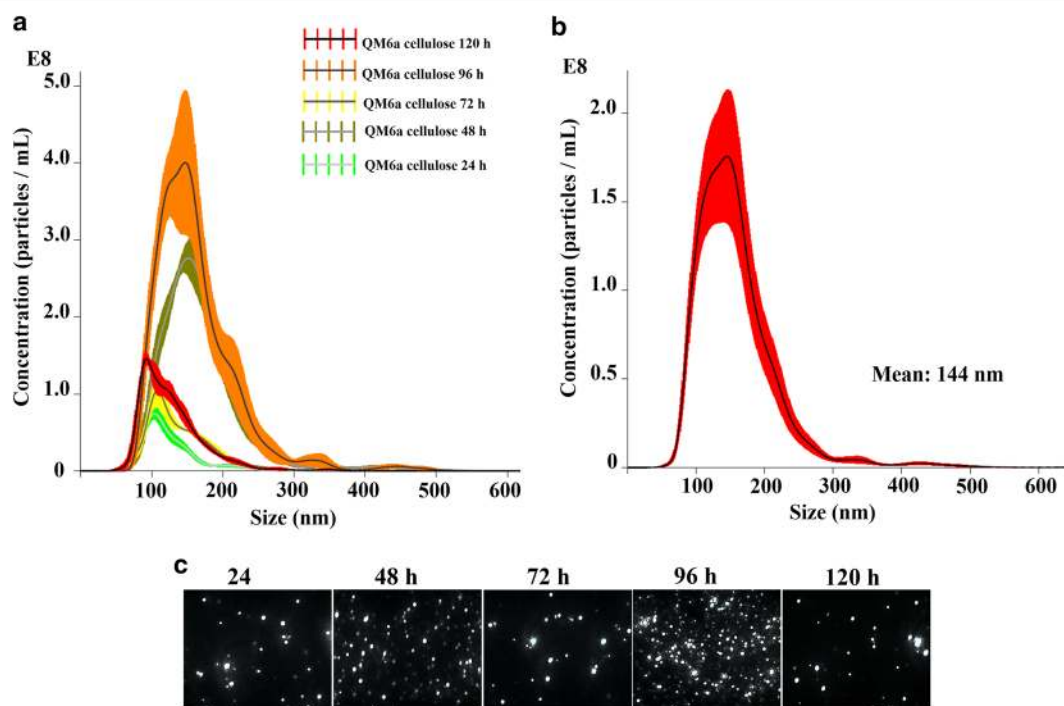


Fig. 1 Nanoparticle-tracking analysis (NTA) of extracellular vesicles (EVs) produced by *T. reesei*. **a** Histogram showing the EV particle-size distribution (EVs $\times 10^8$ /mL vs size in nanometers) from the cellulose-supernatant culture at 24, 48, 72, 96 and 120 h post-induction in the presence of cellulose. **b** Histogram showing the calculated mean \pm SD of size distribution by NTA analysis of purified *T. reesei* EVs. **c** Screenshots from video recorded using NanoSight NS300, showing the distribution of EVs from the cellulose-supernatant culture at 24, 48, 72, 96 and 120 h. These results are based on three replicates of three independent experiments

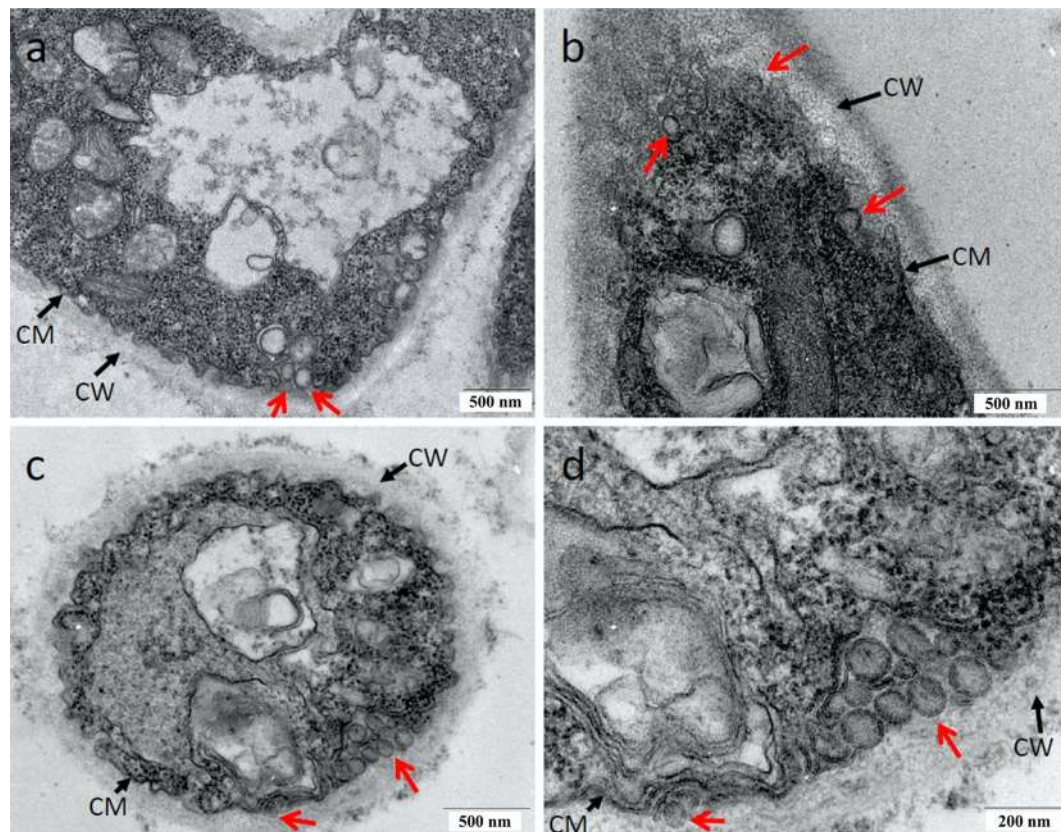


Fig. 2 TEM analyses of vesicles in *Trichoderma reesei* mycelium cells. **a–d** The occurrence of vesicles in association with the cytoplasmic membrane and cell wall is evident after growth for 48 h in the presence of cellulose. Black arrows indicate the cell wall (CW) and cell membrane (CM). Red arrows indicate the *T. reesei* vesicles. Bars, 500 nm (**a–c**) and 200 nm (**d**)

isolated from *T. reesei* cellulose culture (Fig. 2). The vesicles seem to be mainly associated with the cytoplasmic membrane (CM) (Fig. 2a, c) and some of them were visualized in association with the cell wall (CW) (Fig. 2b, d). Similarly, we also able to identify vesicles from mycelium cultivated in the presence of glycerol and glucose (Additional file 1: Fig. S4). However, our results showed that mycelia isolated from these conditions have a small number of EVs when compared to cellulose (Fig. 2). These results suggest that vesicles of *T. reesei* are produced in the presence of cellulose, glucose, and glycerol and are secreted via the canonical secretory pathway involving passage through the cell wall, in turn, releasing extracellular proteins to the extracellular space, thus providing additional evidence for the existence of an extracellular vesicular transport mechanism.

Proteomic analysis

In order to analyze the effects of cellulases secretion in response to cellulose, we identified the protein content of the EVs. Our report contains the first EVs proteomic analysis of *T. reesei* during growth in the presence of

an inductive carbon source. Accordingly, EVs were isolated from cell-free culture supernatants from *T. reesei* and analyzed by LC–MS/MS. A total of 188 proteins were identified in a time-course experiment (24 h to 120 h) of cultivation in the presence of cellulose (Additional file 2). Among these proteins, 33 of them were identified exclusively in vesicles originating from cell-free culture supernatant induction at 24 h, 14 found exclusively at 48 h, 49 shown exclusively at 72 h, 37 found exclusively at 96 h and 29 identified exclusively at 120 h in the presence of cellulose (Fig. 3a). These results strongly suggest dynamics in vesicle content production during the cellulose utilization by the fungus. Consistently, a small number of proteins were commonly identified among the conditions examined and only one protein, encoding an RNA-binding protein involved with rRNA biogenesis (ID 78062) was identified in all time points (Fig. 3a). Furthermore, our data showed that 12 proteins with chaperones-related activity, which are involved in folding protein, were identified inside the *T. reesei* EVs (Table 1). These results suggest that protein folding, stability, and modifications to reach

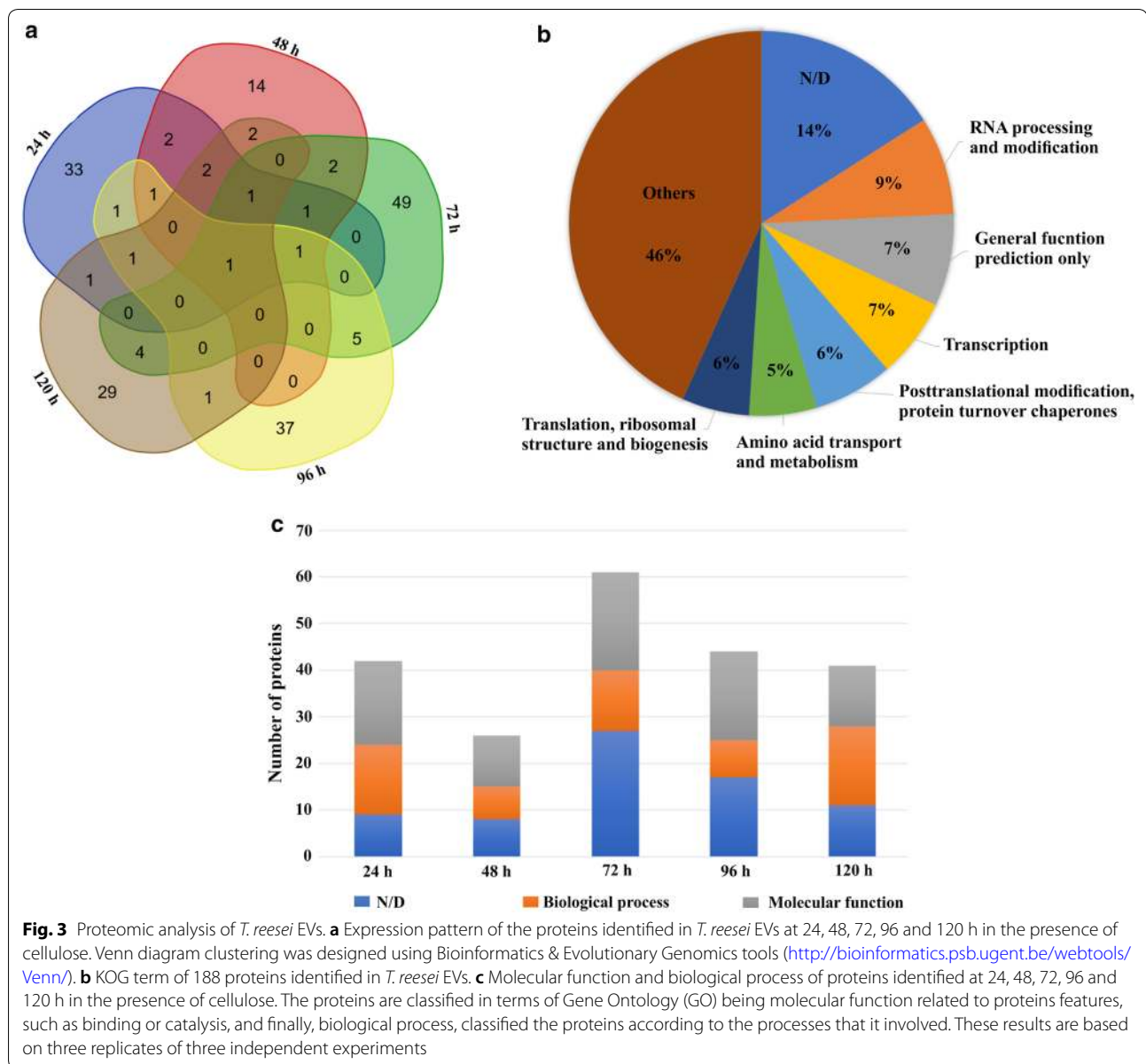


Fig. 3 Proteomic analysis of *T. reesei* EVs. **a** Expression pattern of the proteins identified in *T. reesei* EVs at 24, 48, 72, 96 and 120 h in the presence of cellulose. Venn diagram clustering was designed using Bioinformatics & Evolutionary Genomics tools (<http://bioinformatics.psb.ugent.be/webtools/Venn/>). **b** KOG term of 188 proteins identified in *T. reesei* EVs. **c** Molecular function and biological process of proteins identified at 24, 48, 72, 96 and 120 h in the presence of cellulose. The proteins are classified in terms of Gene Ontology (GO) being molecular function related to proteins features, such as binding or catalysis, and finally, biological process, classified the proteins according to the processes that it involved. These results are based on three replicates of three independent experiments

native structure could be an active process inside *T. reesei* EVs.

The vesicular proteins were categorized by the biological process using KOG annotation and was demonstrated that they are involved (Fig. 3b) with six principal groups, including, 9% RNA processing-related proteins, 7% with general functions, 7% transcription-related proteins, 6% of proteins associated to posttranslational modification, 5% involved with amino acid transport and metabolism and 6% translation-related proteins. Regarding the remaining proteins, including CAZymes, 46% were related to other functions and 14% are still uncharacterized. Again, our time-course categorization by molecular

function and biological process showed that the functional composition of *T. reesei* vesicles content is very diverse (Fig. 3c). These results suggest that the protein content of the vesicles is highly variable, and possibly correlated with different growth stages of the fungus during cultivation in presence of cellulose.

CAZy-related proteins are enriched inside *T. reesei* EVs

Interestingly, our proteomic analysis showed that there are some CAZy-related proteins inside de *T. reesei* EVs after growth in the presence of cellulose (Table 2). In this respect, we identified nine CAZymes inside the EVs including, a glycoside hydrolase (GH) GH64

Table 1 Chaperone-like proteins identified inside *T. reesei* extracellular vesicles

Protein ID	Description	GO	KOG	Identification time
119924	Hsp70 nucleotide exchange factor FES1, putative	#N/D	Posttranslational modification, protein turnover, chaperones	24 h
119731	Heat shock protein hsp60 mitochondrial precursor protein	Cellular protein metabolism	Posttranslational modification, protein turnover, chaperones	24 h, 48 h, 72 h and 120 h
66183	Peptidase_Serine carboxypeptidase	Proteolysis and peptidolysis	Posttranslational modification, protein turnover, chaperones	24 h
73678	Calnexin, high identity with <i>A. niger</i> clxA	Calcium ion binding	Posttranslational modification, protein turnover, chaperones	24 h
36822	Unknown protein	Catalytic activity	Posttranslational modification, protein turnover, chaperones	24 h
48001	Unknown protein with DnaJ domain	Unfolded protein binding	Posttranslational modification, protein turnover, chaperones	48 h
107011	Unknown protein	Unfolded protein binding	Posttranslational modification, protein turnover, chaperones	72 h
104390	Glutathione S-transferase	Glutathione transferase activity	Posttranslational modification, protein turnover, chaperones	72 h
124282	Unknown protein, SET and MYND domain	#N/D	Posttranslational modification, protein turnover, chaperones	96 h
21444	Unknown protein	Hydrogen-transporting ATPase activity, rotational mechanism	Posttranslational modification, protein turnover, chaperones	120 h
21461	ATP-dependent protease La, putative	ATP binding	Posttranslational modification, protein turnover, chaperones	120 h
123922	Peptidyl-prolyl isomerase	Protein folding	Posttranslational modification, protein turnover, chaperones	72 h and 96 h

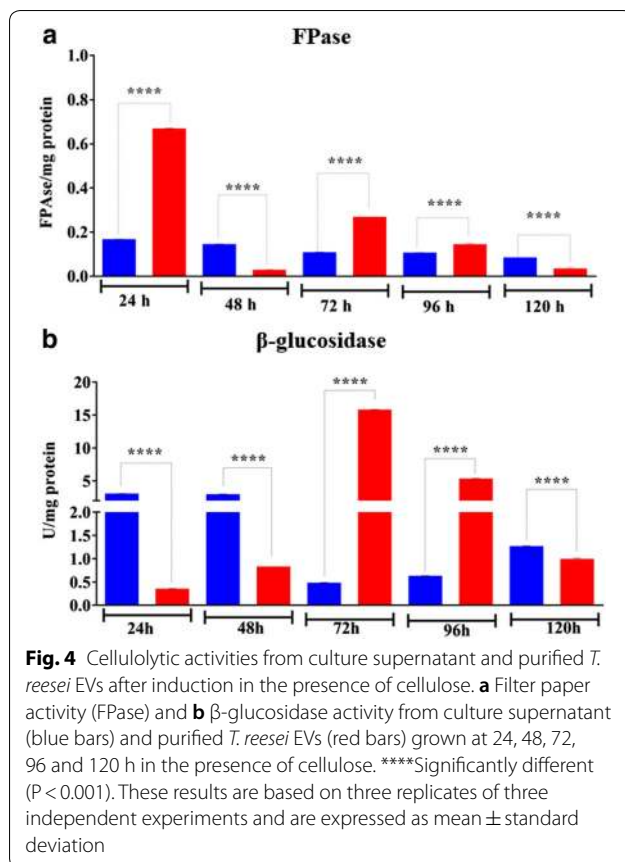
Table 2 CAZy-related proteins identified inside *T. reesei* extracellular vesicles

Protein ID	Description	GO	KOG	Identification time
124175	GH64 endo-1,3- β -glucanase	#N/D	#N/D	72 h and 120 h
124016	GH36 α -galactosidase AGL2	Carbohydrate metabolism	#N/D	96 h and 120 h
121746	Glycoside hydrolase family 55 (candidate exo-1,3-b-glucanase)	Carbohydrate metabolism	#N/D	72 h and 120 h
123649	β -1,6- <i>N</i> -Acetylglucosaminyltransferase	Carbohydrate transport and metabolism	Carbohydrate transport and metabolism	72 h and 96 h
123538	Candidate membrane-bound β -1,3-glucanosyltransglycosylase (GH72 β -1,3-glucanosyltransferase)	#N/D	#N/D	48 h
80833	GH18 chitinase Chi18-5	Hydrolase activity	Carbohydrate transport and metabolism	72 h
21725	GH20 exochitinase nag1	Carbohydrate metabolism	Carbohydrate transport and metabolism	120 h
123989	Glycoside hydrolase family 7 (cel7a)	Carbohydrate metabolism	Function unknown	48 h and 120 h
112271	GT2 chitin synthase chs3	Chitin biosynthesis	Cell wall/membrane/envelope biogenesis	72 h

endo-1,3- β -glucanase, a GH36 α -galactosidase (AGL2), a GH55 candidate exo-1,3- β -glucanase, two glycosyltransferases (β -1,6-*N*-acetylglucosaminyltransferase), a GH72 (candidate membrane-bound β -1,3-glucanosyltransglycosylase), and three proteins related to chitinolytic enzyme machinery of fungi (GH18 chitinase Chi18-5, a GH20 exochitinase nag1—possibly involved with mycoparasitism and GT2 chitin synthase

chs3—involved with chitin biosynthesis). Finally, we demonstrated that the cellobiohydrolase Cel7a belonging to GH7 family, the dominant enzyme of the *T. reesei* cellulolytic complex was also identified in the EVs cellulose proteome.

In addition, enzymatic assay revealed that the specific filter paper activity (FPase) was higher in purified EVs from 24, 72, and 96 h of cultivation in presence



of cellulose when compared to culture supernatant at the same time (Fig. 4a). The lowest FPase activity was detected inside vesicles from 48 to 120 h of cultivation in the presence of cellulose. Curiously, although our proteomic analysis was not able to identify β-glucosidase inside cellulose-purified EVs, the specific β-glucosidase activity was higher in purified EVs from 72 to 96 h of cultivation when compared to culture supernatant at the same time (Fig. 4b). In the same assay, cellulose-purified EVs at 24 h, 48 h, and 120 h presented significantly lower β-glucosidase activity than the supernatant culture. Our enzymatic assay revealed that EVs isolated from glucose and glycerol showed almost undetectable level of cellulase activity (Additional file 1: Fig. S5). These results suggest that there is an intriguing mechanism of β-glucosidase and total cellulase enrichment inside the vesicles in the presence of cellulose.

Concomitantly, our RNA analysis revealed that there is a slight enrichment of RNA inside vesicles from 96- and 120 h of induction by cellulose. This content consisted mostly of EVs RNA molecules less than 200 nucleotides (Additional file 1: Fig. S2). This result suggests that *T. reesei* is able to release small RNAs from extracellular

vesicles and these RNA-containing vesicles may be important to regulate various biological processes in this fungus.

Discussion

Previous studies with other organisms such as *Saccharomyces cerevisiae* [48], *Cryptococcus neoformans* [49] and *Histoplasma capsulatum* [50] revealed that fungal extracellular vesicles carry proteins with highly diverse functions. Similarly, our data revealed that the extracellular vesicles of *T. reesei* have a wide range of proteins (Additional file 2). The same way, our proteomic analyses also pointed out important findings of vesicle formation and transport in *T. reesei* in response to cellulose presence. The coat protein complex II (COPII) generates transport vesicles that mediate protein transport from the endoplasmic reticulum (ER) [17]. After synthesis, most of the secretory proteins within the endoplasmic reticulum are transported to the Golgi via COPII-coated vesicles and, the formation of COPII-coated vesicles is regulated by small GTPases [51, 52]. Then, assembly of the COPII coat is initiated through activation of the small Ras-like GTPases by ER-bound transmembrane guanine-nucleotide exchange factor (GEF), promoting the recruitment of Sec23/Sec24, an inner-coat complex component, by activated-small GTPases to form the pre-budding complex with cargo proteins [53, 54].

Our results demonstrated that some components involved with intracellular trafficking, secretion, and vesicular transport such as vesicle coat complex COPII-Sec24 and small GTPases, belonging to COPII-GTPase-Sec24 secretion pathway were identified at EVs proteome in *T. reesei* in presence of cellulose. Similarly, we demonstrated that induction promoted by cellulose led to the production of EVs enriched with specific small GTPases such as IDs 80898 and 77031, which are involved in polar growth, exocytosis, endocytosis and secretory-vesicle fusion to the plasma membrane [55–57]. In addition, a vesicle-associated membrane protein (VAMP/Synaptobrevin) involved with trafficking proteins were equally identified in our data. This protein is a crucial component of *trans*-Golgi network (TGN)-endosomal system for vesicular transport, being responsible to the export, sorting, and recycling of numerous soluble and membrane-associated lysosomal and secretory pathway proteins [58, 59]. Interestingly, it has been shown that fungal cell wall plays an important role in the secretion process since many of the proteins secreted are structurally associated with the plasma membrane and the cell wall [60].

Furthermore, a number of cellular processes such as secretion involve the transport of intracellular membrane vesicles that may be attended by the actin cytoskeleton remodeling [55]. Here, we identified several proteins

including actin and tubulin structural molecules associated with microtubule-based movement inside *T. reesei* EVs supporting the evidence for a vesicle trafficking under the presence of cellulose from 24 to 120 h of culture. These results provide evidence to a canonical mechanism of protein secretion in this fungus, involving the formation and recruitment of new proteins for constructing secretory pathways in the presence of cellulose. *T. reesei* EVs were also enriched with proteins involved with posttranslational modification, protein turnover, and chaperones. Among them, we identified two heat shock proteins (Hsp70 and Hsp60), a carboxypeptidase, a peptidyl-prolyl isomerase, a molecular chaperone protein with a DnaJ domain and an ER-chaperone calnexin located in the membrane of the endoplasmic reticulum to ensure the proper folding of glycoproteins [61]. These findings suggest that there is an appropriated folding process involving the formation of disulphide bond to develop the tertiary and quaternary structures of the protein to provide a proper protein secretion process in response to an inductive carbon source. Moreover, our results identified for the first time the presence of Hsp proteins inside *T. reesei* EVs. Hsp proteins have been suggested to be exported by an interesting mechanism mediated by the insertion of the protein into the membrane of export vesicles [62, 63]. O'Neill and Quah [64] have suggested that extracellular Hsp are likely to act as indicators of the stress conditions, priming other cells, particularly of the immune system, to avoid the propagation of the insult. Additionally, so extracellular Hsp, for instance, Hsp70, is associated with export vesicles, displaying a robust activation of macrophages [64]. Together, our results suggest that Hsp proteins associated with *T. reesei* EVs might be an additional mechanism of *T. reesei* to environmental sensing by the fungus, and future studies are required to better understand their importance in EVs and possible involved mechanisms.

About the holocellulolytic biomass degradation system of *T. reesei*, it has been shown that is one of the most studied within the filamentous fungi. This fungus has the ability to produce a high cellulase content due to the efficient capability to sense and transport nutrient for rapid induction and secretion of cellulases [32, 65–67]. However, there is a series of questions regarding the secretory pathway of cellulases that remain unanswered. Since cellulases are secreted enzymes, the control of their biosynthesis may require various steps of the secretory pathway [68]. In *T. reesei*, studies have shown that cellulases are resident in the endoplasmic reticulum-derived vesicles attached to the outside surface of the membrane [69]. First of all, the cellulase expression and secretion requires an induction that might include the formation of new proteins for constructing secretory pathways [70]. *T.*

reesei secretes large amounts of extracellular cellulolytic enzymes [71, 72] which are regulated in a coordinated manner that depends on the availability of the carbon sources [32, 66, 73, 74]. However, there is an open discussion about the nature of such an inducer molecule, since cellulose is unlikely to directly trigger the cellulase induction because of its insolubility [75]. Here, we showed that in the presence of cellulose *T. reesei* is able to produce a high concentration of EVs when compared to glucose and glycerol. In the presence of glucose, a readily available carbon source, the fungus can activate the mechanism of catabolite carbon repression (CCR) and inhibit the production of cellulolytic complex enzymes to avoid unnecessary energy expenditure [6, 76]. This way, our results suggest that growth in the presence of cellulose can promote an increase in EVs production and these particles might be enriched with cellulases through an unclear mechanism yet. Our results are according to those observed in *Fibrobacter succinogenes*, a cellulolytic bacterium, in which it was showed that cellulose induces vesicles formation [77]. This way, our results suggest that *Fibrobacter* and *Trichoderma* might share some physiological similarities in EVs formation. However, even with these similarities, the mechanisms involved with EVs formation in both organisms might be different in various aspects. So, further experiments are necessary to fully understanding of the factors controlling EVs formation in *T. reesei*. At this moment, we were able to show that there is a presence of cellulase inside *T. reesei* EVs, and this could be involved in cellulose degradation as supported by the presence of CAZymes inside EVs as demonstrated by our proteomic analysis.

In this context, reports have suggested that there are different mechanisms underlying cellulase secretion, one specific secretory pathway independent of cellulose, another induced by cellulose, and a third one that occurs separately of the carbon source [78]. So, how would cellulose trigger the induction of cellulases? Different studies investigating this aspect postulated the induction function of a low molecular weight and soluble compound derived from cellulose [79, 80]. A hypothesis is that *T. reesei* has low levels of constitutive cellulase promoting the cellulose breakdown when it becomes available [81]. Gong and Tsao [82] and Stutzenberger [83] proposed a model for the first steps of the cellulose degradation process through the action of cellulases. These authors suggested the conidia surface contains cellobiohydrolases that degrade the cellulose into cello-oligosaccharides, which in turn may be either hydrolyzed until glucose for immediate consumption or transglycosylated to sophorose, by the action of a constitutive β -glucosidase. The sophorose obtained from the cello-oligosaccharides processing then acts as an inducer for de novo production

and secretion of cellulases, starting a cycle where glucose and sophorose are produced until complete cellulose degradation. It was also demonstrated that the cellobiohydrolases Cel7a and Cel6a, and the endoglucanase Cel5a are constitutive of the conidia surface and, along with the β -glucosidase, these enzymes are crucial for the initiation of cellulases induction for cellulose breakdown [84, 85]. Similarly, the existence of a constitutive β -glucosidase on the plasma membrane has also been suggested [86, 87]. Foreman et al. [88] also suggested that CEL5B contains the consensus sequence for membrane-anchoring via a glycosylphosphatidylinositol residue which make it an interesting candidate for generating the inducer of cellulase formation. Similarly, the acetyl xylan esterase Axe2, which is also predicted to contain a glycosylphosphatidylinositol anchor, may be involved in the primary induction of some hemicellulases [88]. Therefore, we argue that *T. reesei* secretes vesicles containing cellulases that in turn releases cellobiose and glucose for cellulase induction and production, as well as glucose for fungal growth. However, as discussed above the mechanisms of induction of cellulase expression are complex and some aspects are unclear yet. Probably, there is crosstalk between different molecular mechanisms involved in cellulase formation. This way, our results brings light into how this process can trigger in *T. reesei*. Nevertheless, there is a still undefined role in regulated mechanisms of cellulase induction and secretion in this fungus, and future studies are required to better understand their importance in EVs and possible involved mechanisms. Furthermore, as an additional mechanism, *T. reesei* can secrete heat-shock proteins since these proteins were identified in EVs indicating novel strategies of environmental sensing by the fungus.

Burnet et al. [89] showed that *Fibrobacter succinogenes*, an important degrader of lignocellulosic plant material in the herbivore gut is able to produce extracellular vesicles. Forsberg et al. [90] suggested the use of these vesicles in cellulose degradation. According to this author, vesicles containing cellulases are released from the outer membrane via bleb formation. They posited that these vesicles could be released into the area between the cellulose and cell. Additionally, they demonstrated vesicles adhering to cellulose and vesicles either attached to the outer membrane or in the extracellular medium, but only in the stationary cultures. Also, is suggested that the use of vesicles during stationary phase may act as a delivery mechanism for a concentrated cocktail of cellulases to actively degrade cellulose at the site of attachment [90]. This way, cellulose is degraded and, the resulting celodextrins would be transported into the cell for further breakdown. When attached cells reach stationary phase, the outer membrane blebs off and forms vesicles in order

to continue cellulose degradation in a nutritionally limited environment [91]. These findings are consistent with a previous report showing that the presence of cellulose induces vesicles formation [77].

Likewise, Arntzen et al. [92] showed that OMVs (Outer Membrane Vesicles) produced by *F. succinogenes* are equipped with a diverse suite of enzymes able to depolymerize most common plant polysaccharides, including cellulose. Moreover, OMVs might assist the metabolism of the host cell by deconstructing non-essential polysaccharides that restrict access to the host's target carbon source [92]. Finally, in *F. succinogenes*, cellulose binding proteins are arranged in novel putative complexes in OMVs, suggesting that this bacterium degrades biomass using means that differ fundamentally from well-known degradative machinery in nature. As proposed by *F. succinogenes*, *T. reesei* can use EVs to secrete cellulases to make the process of cellulose degradation more efficiently. Moreover, the production of EVs enriched with CAZymes might be in response to an inductive carbon source as proposed by [77], contributing to a favorable process of the economy of energy.

Recently, it was demonstrated that plants packages small RNAs in extracellular vesicles directed to fungal pathogens to silence virulence genes [93], showing that plant extracellular vesicles (mainly exosomes) have a crucial role in cross-kingdom sRNA trafficking between *Arabidopsis* and the fungal pathogen *Botrytis cinerea*. Likewise, the human pathogens *C. neoformans*, *Paracoccidioides brasiliensis*, and *Candida albicans*, and the model yeast *S. cerevisiae* can accumulate small RNAs inside extracellular vesicles [37]. Also, in *H. capsulatum*, EVs carry RNA-binding proteins, as well as mRNAs and non-coding RNAs [94]. The process of RNA export mediated by EVs have been discussed as a universal mechanism for inter-kingdom and intra-kingdom communication [95], and it is reasonable to suggest that RNAs transported by fungal EVs might play important role in cell communication [96]. Since EVs were reported involved in reverted avirulent phenotype by mechanisms vesicular RNA dependent in *Cryptococcus gattii* [97], it is also reasonable to suggest that enrichment of small RNAs in the EVs 96- and 120 h in *T. reesei*, might have a still undefined role in regulated mechanisms of gene expression in this fungus, and future studies are required to better understand their importance in EVs and possible involved mechanisms.

The presence of numerous secretion pathways in filamentous fungi might provide information about their high secretory capacity. Nevertheless, the molecular machinery for protein secretion in filamentous fungi remains mostly unknown [98]. There are many unclear issues regarding fungal EVs biosynthesis and unloading.

Thus, to understand the biological functions of fungal EVs should reveal important roles of EVs in several biological processes [96]. Galectin-3, a mammalian β -galactoside-binding protein, has been reported playing disruption and internalization of EVs produced from *C. neoformans* [35] and *P. brasiliensis* [99] by macrophages. However, additional studies are needed to discern how EVs deliver their cargo, as well as to identify new molecules playing a lytic effect on fungal EVs. Briefly, our data showed the first characterization and proteomic analysis of *T. reesei* EVs in the presence of cellulose. Here, we present some new evidence supporting that the secretory pathway from *T. reesei* has the basic machinery for vesicle trafficking, similar to other filamentous fungi and eukaryotes. In initial signaling in presence of cellulose, *T. reesei* secretes a great number of vesicles enriched with cellulases and heat shock proteins (Hsps) to breakdown the cellulose polymer and, for carbon source recognition and environmental sensing, respectively. Then, cellobiose released after cellulose degradation can be both cleaved to glucose or transglycosylated to form sophorose. In turn, glucose may be used for fungal growth while cellobiose and sophorose may induce the cellulase expression by regulation of the main transcription factors involved with the control of cellulase expression. Finally, the synthesized cellulases might be packaging in vesicles and released to an environment to ensure cellulose breakdown. The data open new approach in order to generate mutants to increase biomass degradation.

Conclusions

Currently, the filamentous fungi *T. reesei* have been established as the most important holocellulase producer used by biotechnology industries. Thus, genomics, transcriptomics, proteomics, and secretomics analyses have been employed as excellent approaches to the better understanding of mechanisms involved with cellulase gene expression and secretion in this fungus. This way, knowledge about the mechanisms involved in the recognition of environmental signals is extremely important in fungal biology comprehension. In conclusion, our study brings new insights about the cellulase secretion in *T. reesei* and suggests that there are additional secretory pathways involved in cellulase secretion in this fungus since a few numbers of cellulases were found associated with cellulose-purified EVs.

Additional files

Additional file 1: Fig. S1. Characterization of *Trichoderma reesei* EVs. Mean size distribution by Nanoparticle Tracking Analysis (NTA) of purified *T. reesei* EVs from the cellulose-supernatant culture at 24, 48, 72, 96 and 120 h.

These results are based on three replicates of three independent experiments. **Fig. S2.** Bioanalyzer profile of the RNA content of EVs from the *T. reesei* fungus grown at 24, 72, 96 and 120 h in the presence of cellulose. **Fig. S3.** Characterization of *Trichoderma reesei* EVs. Mean size distribution by Nanoparticle Tracking Analysis (NTA) of purified *T. reesei* EVs from glycerol (**a**), glucose (**b**), and both conditions (**c**) at 24 h. These results are based on three replicates of three independent experiments. **Fig. S4** TEM analyses of vesicles in *Trichoderma reesei* mycelium cells. The occurrence of vesicles in association with the cytoplasmic membrane and cell wall is evident after growth for 24 h in the presence of glucose and glycerol. Black arrows indicate the CW (cell wall) and CM (cell membrane). Red arrows indicate the *T. reesei* vesicles. Bars, 500 nm and 200 nm. **Fig. S5** Cellulolytic activities from purified *T. reesei* EVs after growth in the presence of cellulose, glycerol and glucose. (**a**) Filter paper activity (FPase) and (**b**) β -glucosidase activity from purified *T. reesei* EVs grown at 24 h in the presence of respective carbon source. **** = Significantly different ($P < 0.001$). These results are based on three replicates of three independent experiments and are expressed as mean \pm standard deviation.

Additional file 2. List of vesicular proteins identified in *T. reesei* EVs in the presence of cellulose.

Abbreviations

EVs: extracellular vesicles; ER: endoplasmic reticulum; MEX: malt extract; NTA: nanoparticle-tracking analysis; TEM: transmission electron microscopy; pNPG: *p*-nitrophenyl- β -D-glucopyranoside; FPase: filter paper activity; CM: cytoplasmic membrane; CW: cell wall; KOG: EuKaryotic Orthologous Groups; CAZy: Carbohydrate-Active enZymes.

Acknowledgements

We are thankful to Professor Astrid Mach-Aigner from TU-Wien for providing the QM6a Δ mus53 Δ pyr4 strain used in this study, Maria D. Seabra Ferreira (Laboratório de Microscopia Eletrônica, Departamento de Biologia Celular e Molecular e Bioagentes Patogênicos, Faculdade de Medicina de Ribeirão Preto) for the microscopy sample preparations and Centro de Caracterização e Desenvolvimento de Protocolos em Nanotecnologia (Instituto de Química—UNESP-Araraquara) for acquisition of images. We also would like to thank Vania Blasques Bueno (Analytical Center of Institute of Chemistry-USP) to assist us in performing mass spectrometry analysis.

Authors' contributions

RNS and RGP conceived and designed the experiments. RGP performed *T. reesei* manipulation, vesicles experiments, proteomic analysis, enzymatic assays, interpreted results and wrote the manuscript. ACCA, IM and MCR performed and interpreted TEM. KMVN performed enzymatic assays. LFCR performed proteomic sample preparations. FA interpreted the vesicles analysis. All authors read and approved the final manuscript.

Funding

This work was supported by Coordination of Superior Level Staff Improvement (CAPES) and the State of São Paulo Research Foundation (FAPESP) (proc. 2016/23233-9 and 2017/04206-3).

Availability of data and materials

All data supporting our findings can be found in Additional files 1 and 2, which have been provided as additional materials.

Ethics approval and consent to participate

Not applicable.

Consent for publication

Not applicable.

Competing interests

The authors declare that they have no competing interests.

Author details

¹ Department of Biochemistry and Immunology, Ribeirão Preto Medical School, University of São Paulo, Ribeirão Preto, São Paulo 14049-900, Brazil.

² Departamento de Genética e Evolução, Centro de Ciências Biológicas e da Saúde, Universidade Federal de São Carlos, São Paulo, Brazil.

Received: 19 December 2018 Accepted: 7 June 2019

Published online: 15 June 2019

References

- Bischof RH, Ramoni J, Seiboth B. Cellulases and beyond: the first 70 years of the enzyme producer *Trichoderma reesei*. *Microb Cell Fact*. 2016;15:1–13.
- Li Y, Liu C, Bai F, Zhao X. Overproduction of cellulase by *Trichoderma reesei* RUT C30 through batch-feeding of synthesized low-cost sugar mixture. *Bioresour Technol*. 2016;216:503–10.
- Huang J, Chen D, Wei Y, Wang Q, Li Z, Chen Y, et al. Direct ethanol production from lignocellulosic sugars and sugarcane bagasse by a recombinant *Trichoderma reesei* strain hj48. *Sci World J*. 2014. <https://doi.org/10.1155/2014/798683>.
- Adav SS, Sze SK. *Trichoderma* secretome: an overview. In: Gupta VK, Schmoll M, Herrera-Estrella A, Upadhyay RS, Druzhinina I, Tuohy MG, editors. *Biotechnology and biology of Trichoderma*. 1st ed. Waltham: Elsevier; 2014. p. 103–14.
- Samuels GJ. *Trichoderma*: a review of biology and systematics of the genus. *Mycol Res*. 1996;100:923–35.
- Gupta VK, Steindorff AS, de Paula RG, Silva-Rocha R, Mach-Aigner AR, Mach RL, et al. The post-genomic era of *Trichoderma reesei*: what's next? *Trends Biotechnol*. 2016;34:970–82.
- Harman GE, Herrera-Estrella AH, Horwitz BA, Lorito M. Special issue: *Trichoderma*-from basic biology to biotechnology. *Microbiology*. 2012;158:1–2.
- Schuster A, Schmoll M. Biology and biotechnology of *Trichoderma*. *Appl Microbiol Biotechnol*. 2010;87:787–99.
- Kubicek CP, Komon-Zelazowska M, Druzhinina IS. Fungal genus *Hypocrea/Trichoderma*: from barcodes to biodiversity. *J Zhejiang Univ Sci B*. 2008;9:753–63.
- Bazafkan H, Tisch D, Schmoll M. Regulation of glycoside hydrolase expression in *Trichoderma*. In: Gupta VK, Schmoll M, Herrera-Estrella A, Upadhyay R, Druzhinina I, Tuohy MG, editors. *Biotechnology and biology of Trichoderma*. Amsterdam: Elsevier; 2014. p. 527.
- Saloheimo M, Pakula T, Aro N, Joensuu J. Protein production—quality control and secretion stress responses in *Trichoderma reesei*. In: Gupta VK, Schmoll M, Herrera-Estrella A, Upadhyay R, Druzhinina I, Tuohy MG, editors. *Biotechnology and biology of Trichoderma*. Amsterdam: Elsevier; 2014.
- Hernández-Chávez M, González-Hernández R, Trujillo-Esquivel J, Hernández-Cervantes A, Mora-Montes H. The secretory pathway in the filamentous fungus *Trichoderma*. In: Gupta VK, Schmoll M, Herrera-Estrella A, Upadhyay R, Druzhinina I, Tuohy MG, editors. *Biotechnology and biology of Trichoderma*. Amsterdam: Elsevier; 2014.
- Aebi M, Bernasconi R, Clerc S, Molinari M. N-glycan structures: recognition and processing in the ER. *Trends Biochem Sci*. 2010;35:74–82.
- Kottmeier K, Ostermann K, Bley T, Rödel G. Hydrophobin signal sequence mediates efficient secretion of recombinant proteins in *Pichia pastoris*. *Appl Microbiol Biotechnol*. 2011;91:133–41.
- Antonin W, Meyer H-A, Hartmann E. Interactions between Spc2p and other components of the endoplasmic reticulum translocation sites of the yeast *Saccharomyces cerevisiae*. *J Biol Chem*. 2000;275:34068–72.
- Bonifacio JS, Glick BS. The mechanisms of vesicle budding and fusion. *Cell*. 2004;116:153–66.
- Sato K, Nakano A. Mechanisms of COPII vesicle formation and protein sorting. *FEBS Lett*. 2007;581:2076–82.
- Cai H, Reinisch K, Ferro-Novick S. Coats, tethers, Rabs, and SNAREs work together to mediate the intracellular destination of a transport vesicle. *Dev Cell*. 2007;12:671–82.
- Zhou A, Webb G, Zhu X, Steiner DF. Proteolytic processing in the secretory pathway. *J Biol Chem*. 1999;274:20745–8.
- van Niel G, D'Angelo G, Raposo G. Shedding light on the cell biology of extracellular vesicles. *Nat Rev Mol Cell Biol*. 2018;19:213–28.
- Wang C-W, Hamamoto S, Orci L, Schekman R. Exomer: a coat complex for transport of select membrane proteins from the trans-Golgi network to the plasma membrane in yeast. *J Cell Biol*. 2006;174:973–83.
- Novick P, Guo W. Ras family therapy: Rab, Rho and Ral talk to the exocyst. *Trends Cell Biol*. 2002;12:247–9.
- Brennwald P, Rossi G. Spatial regulation of exocytosis and cell polarity: yeast as a model for animal cells. *FEBS Lett*. 2007;581:2119–24.
- Jahn R, Scheller RH. SNAREs—engines for membrane fusion. *Nat Rev Mol Cell Biol*. 2006;7:631–43.
- Valkonen M, Kalkman ER, Saloheimo M, Penttilä M, Read ND, Duncan RR. Spatially segregated SNARE protein interactions in living fungal cells. *J Biol Chem*. 2007;282:22775–85.
- Druzhinina IS, Shelest E, Kubicek CP. Novel traits of *Trichoderma* predicted through the analysis of its secretome. *FEMS Microbiol Lett*. 2012;337:1–9.
- Adav SS, Ravindran A, Chao LT, Tan L, Singh S, Sze SK. Proteomic analysis of pH and strains dependent protein secretion of *Trichoderma reesei*. *J Proteome Res*. 2011;10:4579–96.
- Jun H, Kieselbach T, Jönsson LJ. Enzyme production by filamentous fungi: analysis of the secretome of *Trichoderma reesei* grown on unconventional carbon source. *Microb Cell Fact*. 2011;10:68.
- Druzhinina IS, Kubicek CP. Genetic engineering of *Trichoderma reesei* cellulases and their production. *Microb Biotechnol*. 2017;10:1485–99.
- Derntl C, Kiesenhofer DP, Mach RL, Mach-Aigner AR. Novel strategies for genomic manipulation of *Trichoderma reesei* with the purpose of strain engineering. *Appl Environ Microbiol*. 2015;81:6314–23.
- Schmoll M, Schuster A, Silva Rdo N, Kubicek CP. The G-alpha protein GNA3 of *Hypocrea jecorina* (Anamorph *Trichoderma reesei*) regulates cellulase gene expression in the presence of light. *Eukaryot Cell*. 2009;8:410–20.
- Castro LS, De Paula RG, Antonieto ACC, Gabriela F, Silva-rocha R, Silva RN. Understanding the role of the master regulator XYR1 in *Trichoderma reesei* by global transcriptional analysis. *Front Microbiol*. 2016;7:175.
- de Paula RG, Antonieto ACC, Carraro CB, Lopes DCB, Persinoti GF, Peres NTA, et al. The duality of the MAPK signaling pathway in the control of metabolic processes and cellulase production in *Trichoderma reesei*. *Sci Rep*. 2018;8:14931.
- Rodrigues ML, Nimrichter L, Oliveira DL, Frases S, Miranda K, Zaragoza O, et al. Vesicular polysaccharide export in *Cryptococcus neoformans* is a eukaryotic solution to the problem of fungal trans-cell wall transport. *Eukaryot Cell*. 2007;6:48–59.
- Almeida F, Wolf JM, da Silva TA, DeLeon-Rodriguez CM, Rezende CP, Pessoni AM, et al. Galectin-3 impacts *Cryptococcus neoformans* infection through direct antifungal effects. *Nat Commun*. 2017;8:1968.
- da Silva TA, Roque-Barreira MC, Casadevall A, Almeida F. Extracellular vesicles from *Paracoccidioides brasiliensis* induced M1 polarization in vitro. *Sci Rep*. 2016;6:35867.
- Peres da Silva R, Puccia R, Rodrigues ML, Oliveira DL, Joffe LS, César GV, et al. Extracellular vesicle-mediated export of fungal RNA. *Sci Rep*. 2015;5:7763.
- Bitencourt TA, Rezende CP, Quaressemin NR, Moreno P, Hatanaka O, Rossi A, et al. Extracellular vesicles from the dermatophyte *Trichophyton interdigitale* modulate macrophage and keratinocyte functions. *Front Immunol*. 2018;9:2343.
- Silva BMA, Prados-Rosales R, Espadas-Moreno J, Wolf JM, Luque-Garcia JL, Gonçalves T, et al. Characterization of *Alternaria infectoria* extracellular vesicles. *Med Mycol*. 2014;52:202–10. <https://doi.org/10.1093/mmy/myt003>.
- MacLean B, Eng JK, Beavis RC, McIntosh M. General framework for developing and evaluating database scoring algorithms using the TANDDEM search engine. *Bioinformatics*. 2006;22:2830–2.
- Keller A, Nesvizhskii AI, Kolker E, Aebersold R. Empirical statistical model to estimate the accuracy of peptide identifications made by MS/MS and database search. *Anal Chem*. 2002;74:5383–92.
- Nesvizhskii AI, Keller A, Kolker E, Aebersold R. A statistical model for identifying proteins by tandem mass spectrometry. *Anal Chem*. 2003;75:4646–58.
- dos Santos Castro S, Antonieto ACC, Pedersoli WR, Silva-Rocha R, Persinoti GF, Silva RN. Expression pattern of cellulolytic and xylanolytic genes regulated by transcriptional factors XYR1 and CRE1 are affected by carbon source in *Trichoderma reesei*. *Gene Expr Patterns*. 2014;14:88–95.

44. Hiden A, Inoue H, Tsukahara K, Yano S, Fang X, Endo T, et al. Production and characterization of cellulases and hemicellulases by *Acremonium cellulolyticus* using rice straw subjected to various pretreatments as the carbon source. *Enzyme Microb Technol*. 2011;48:162–8.
45. Lopes FAC, Steindorff AS, Geraldine AM, Brandão RS, Monteiro VN, Lobo M, et al. Biochemical and metabolic profiles of *Trichoderma* strains isolated from common bean crops in the Brazilian Cerrado, and potential antagonism against *Sclerotinia sclerotiorum*. *Fungal Biol*. 2012;116:815–24.
46. Wang M, Zhao Q, Yang J, Jiang B, Wang F, Liu K, et al. A mitogen-activated protein kinase Tmk3 participates in high osmolarity resistance, cell wall integrity maintenance and cellulase production regulation in *Trichoderma reesei*. *PLoS ONE*. 2013;8:e72189.
47. Antonieto ACC, Ramos Pedersoli W, dos Santos Castro L, da Silva Santos R, Silva Cruz AH, Nogueira KMV, et al. Deletion of pH regulator pac-3 affects cellulase and xylanase activity during sugarcane bagasse degradation by *Neurospora crassa*. *PLoS ONE*. 2017;12:e0169796.
48. Oliveira DL, Nakayasu ES, Joffe LS, Guimarães AJ, Sobreira TJP, Nosanchuk JD, et al. Characterization of yeast extracellular vesicles: evidence for the participation of different pathways of cellular traffic in vesicle biogenesis. *PLoS ONE*. 2010;5:e11113. <https://doi.org/10.1371/journal.pone.0011113>.
49. Rodrigues ML, Nakayasu ES, Oliveira DL, Nimrichter L, Nosanchuk JD, Almeida IC, et al. Extracellular vesicles produced by *Cryptococcus neoformans* contain protein components associated with virulence. *Eukaryot Cell*. 2008;7:58–67.
50. Albuquerque PC, Nakayasu ES, Rodrigues ML, Frases S, Casadevall A, Zancoppe-Oliveira RM, et al. Vesicular transport in *Histoplasma capsulatum*: an effective mechanism for trans-cell wall transfer of proteins and lipids in ascomycetes. *Cell Microbiol*. 2008;10:1695–710. <https://doi.org/10.1111/j.1462-5822.2008.01160.x>.
51. D'Arcangelo JG, Stahmer KR, Miller EA. Vesicle-mediated export from the ER: COPII coat function and regulation. *Biochim Biophys Acta Mol Cell Res*. 2013;1833:2464–72.
52. Saito K, Maeda M, Katada T. Regulation of the Sar1 GTPase cycle is necessary for large cargo secretion from the endoplasmic reticulum. *Front Cell Dev Biol*. 2017;5:75.
53. Barlowe C, Schekman R. SEC12 encodes a guanine-nucleotide-exchange factor essential for transport vesicle budding from the ER. *Nature*. 1993;365:347–9. <https://doi.org/10.1038/365347a0>.
54. Miller EA, Beilharz TH, Malkus PN, Lee MCS, Hamamoto S, Orci L, et al. Multiple cargo binding sites on the COPII subunit Sec24p ensure capture of diverse membrane proteins into transport vesicles. *Cell*. 2003;114:497–509.
55. Van Aelst L, D'Souza-Schorey C. Rho GTPases and signaling networks. *Genes Dev*. 1997;11:2295–322.
56. Johnson DL. Cdc42: an essential Rho-type GTPase controlling eukaryotic cell polarity. *Microbiol Mol Biol Rev*. 1999;63:54–105.
57. de Oliveira JMPF, van Passel MWJ, Schaap PJ, de Graaf LH. Shotgun proteomics of *Aspergillus niger* microsomes upon D-xylose induction. *Appl Environ Microbiol*. 2010;76:4421–9.
58. Steegmaier M, Klumperman J, Foletti DL, Yoo JS, Scheller RH. Vesicle-associated membrane protein 4 is implicated in trans-Golgi network vesicle trafficking. *Mol Biol Cell*. 1999;10:1957–72.
59. Chaineau M, Danglot L, Galli T. Multiple roles of the vesicular-SNARE TI-VAMP in post-Golgi and endosomal trafficking. *FEBS Lett*. 2009;583:3817–26. <https://doi.org/10.1016/j.febslet.2009.10.026>.
60. Peberdy JF. Protein secretion in filamentous fungi—trying to understand a highly productive black box. *Trends Biotechnol*. 1994;12:50–7.
61. Lamriben L, Graham JB, Adams BM, Hebert DN. N-glycan-based ER molecular chaperone and protein quality control system: the calnexin binding cycle. *Traffic*. 2016;17:308–26. <https://doi.org/10.1111/tra.12358>.
62. Vega VL, Rodríguez-Silva M, Frey T, Gehrmann M, Diaz JC, Steinem C, et al. Hsp70 translocates into the plasma membrane after stress and is released into the extracellular environment in a membrane-associated form that activates macrophages. *J Immunol*. 2008;180:4299–307.
63. De Maio A. Extracellular heat shock proteins, cellular export vesicles, and the Stress Observation System: a form of communication during injury, infection, and cell damage. It is never known how far a controversial finding will go! Dedicated to Ferruccio Ritossa. *Cell Stress Chaperones*. 2011;16:235–49.
64. O'Neill HC, Quah BJC. Exosomes secreted by bacterially infected macrophages are proinflammatory. *Sci Signal*. 2008;1:pe8.
65. dos Santos Castro L, Pedersoli WR, Antonieto ACC, Steindorff AS, Silva-Rocha R, Martinez-Rossi NM, et al. Comparative metabolism of cellulose, sophorose and glucose in *Trichoderma reesei* using high-throughput genomic and proteomic analyses. *Biotechnol Biofuels*. 2014;7:41.
66. de Paula RG, Antonieto ACC, Ribeiro LFC, Carraro CB, Nogueira KMV, Lopes DCB, et al. New genomic approaches to enhance biomass degradation by the industrial fungus *Trichoderma reesei*. *Int J Genom*. 2018;2018:1–17.
67. Schmoll M, Dattenböck C, Carreras-Villaseñor N, Mendoza-Mendoza A, Tisch D, Alemán MI, et al. The genomes of three uneven siblings: footprints of the lifestyles of three *Trichoderma* Species. *Microbiol Mol Biol Rev*. 2016;80:205–327.
68. Kubicek CP, Messner R, Gruber F, Mach RL, Kubicek-Pranz EM. The *Trichoderma* cellulase regulatory puzzle: from the interior life of a secretory fungus. *Enzym Microb Technol*. 1993;15:90–9.
69. Glenn M, Ghosh A, Ghosh BK. Subcellular fractionation of a hyper-cellulolytic mutant, *Trichoderma reesei* Rut-C30: localization of endoglucanase in microsomal fraction. *Appl Environ Microbiol*. 1985;50:1137–43.
70. Yan S, Wu G. Secretory pathway of cellulase: a mini-review. *Biotechnol Biofuels*. 2013;6:177.
71. Song X, Wang Y, Zhang S, Yan S, Li T, Yao L. Characterization of the dielectric constant in the *Trichoderma reesei* Cel7B active site. *J Chem Inf Model*. 2015;55:1369–76.
72. Treebupachatsakul T, Shioya K, Nakazawa H, Kawaguchi T, Morikawa Y, Shida Y, et al. Utilization of recombinant *Trichoderma reesei* expressing *Aspergillus aculeatus* beta-glucosidase I (JN11) for a more economical production of ethanol from lignocellulosic biomass. *J Biosci Bioeng*. 2015;120:657–65.
73. Dashtban M, Buchkowski R, Qin W. Effect of different carbon sources on cellulase production by *Hypocrea jecorina* (*Trichoderma reesei*) strains. *Int J Biochem Mol Biol*. 2011;2:274–86.
74. Amore A, Giacobbe S, Faraco V. Regulation of cellulase and hemicellulase gene expression in fungi. *Curr Genomics*. 2013;14:230–49.
75. Suto M, Tomita F. Induction and catabolite repression mechanisms of cellulase in fungi. *J Biosci Bioeng*. 2001;92:305–11.
76. Antonieto ACC, de Paula RG, Dos Santos L, Silva-Rocha R, Persinoti GF, Silva RN. *Trichoderma reesei* CRE1-mediated carbon catabolite repression in response to sophorose through RNA sequencing analysis. *Curr Genomics*. 2016;17:119–31.
77. Gaudet G, Gaillard B. Vesicle formation and cellulose degradation in *Bacteroides succinogenes* cultures: ultrastructural aspects. *Arch Microbiol*. 1987;148:150–4.
78. McGavin M, Lam J, Forsberg CW. Regulation and distribution of *Fibrobacter succinogenes* subsp. *succinogenes* S85 endoglucanases. *Appl Environ Microbiol*. 1990;56:1235–44.
79. El-Gogary S, Leite A, Crivellaro O, Eveleigh DE, El-Dorri H. Mechanism by which cellulose triggers cellobiohydrolase I gene expression in *Trichoderma reesei*. *Proc Natl Acad Sci USA*. 1989;86:6138–41.
80. Carle-Urrioste JC, Escobar-Vera J, El-Gogary S, Henrique-Silva F, Torigoi E, Crivellaro O, et al. Cellulase induction in *Trichoderma reesei* by cellulose requires its own basal expression. *J Biol Chem*. 1997;272:10169–74.
81. Gritzali M, Brown R. The cellulase systems of *Trichoderma*: relationships between purified extracellular enzymes from induced or cellulose-grown cells. *Adv Chem*. 1979;181:237–60.
82. Gong C-S, Tsao GT. Cellulase and biosynthesis regulation. *Annu Rep Ferment Process*. 1979;3:111–40.
83. Stutzenberger F. Regulation of cellulolytic activity. *Annu Rep Ferment Process*. 1985;8:111–54.
84. Messner R, Kubicek-Pranz EM, Gsur A, Kubicek CP. Cellobiohydrolase II is the main conidial-bound cellulase in *Trichoderma reesei* and other *Trichoderma* strains. *Arch Microbiol*. 1991;155:601–6.
85. Seiboth B, Hakola S, Mach RL, Suominen PL, Kubicek CP. Role of four major cellulases in triggering of cellulase gene expression by cellulose in *Trichoderma reesei*. *J Bacteriol*. 1997;179:5318–20.
86. Umile C, Kubicek C. A constitutive, plasma-membrane bound beta-glucosidase in *Trichoderma reesei*. *FEMS Microbiol Lett*. 1986;34:291–5.
87. Kubicek CP. Involvement of a conidial endoglucanase and a plasma-membrane-bound beta-glucosidase in the induction of endoglucanase synthesis by cellulose in *Trichoderma reesei*. *J Gen Microbiol*. 1987;133:1481–7.

88. Foreman PK, Brown D, Dankmeyer L, Dean R, Diener S, Dunn-Coleman NS, et al. Transcriptional regulation of biomass-degrading enzymes in the filamentous fungus *Trichoderma reesei*. *J Biol Chem*. 2003;278:31988–97.
89. Burnet MC, Dohnalkova AC, Neumann AP, Lipton MS, Smith RD, Suen G, et al. Evaluating models of cellulose degradation by *Fibrobacter succinogenes* S85. *PLoS ONE*. 2015;10:e0143809.
90. Forsberg CW, Beveridge TJ, Hellstrom A. Cellulase and xylanase release from *Bacteroides succinogenes* and its importance in the rumen environment. *Appl Environ Microbiol*. 1981;42:886–96.
91. Beveridge TJ. Structures of gram-negative cell walls and their derived membrane vesicles. *J Bacteriol*. 1999;181:4725–33.
92. Arntzen MØ, Várnai A, Mackie RI, Eijsink VGH, Pope PB. Outer membrane vesicles from *Fibrobacter succinogenes* S85 contain an array of carbohydrate-active enzymes with versatile polysaccharide-degrading capacity. *Environ Microbiol*. 2017;19:2701–14.
93. Cai Q, Qiao L, Wang M, He B, Lin F-M, Palmquist J, et al. Plants send small RNAs in extracellular vesicles to fungal pathogen to silence virulence genes. *Science*. 2018;360:1126–9. <https://doi.org/10.1126/science.aar4142>.
94. Alves LR, Silva RP da, Sanchez DA, Zamith-Miranda D, Rodrigues ML, Goldenberg S, et al. Extracellular vesicle-mediated RNA release in *Histoplasma capsulatum*. *bioRxiv*. Cold Spring Harbor Laboratory; 2019;570291.
95. Tsatsaronis JA, Franch-Arroyo S, Resch U, Charpentier E. Extracellular vesicle RNA: a universal mediator of microbial communication? *Trends Microbiol*. 2018;26:401–10.
96. Rodrigues ML, Casadevall A. A two-way road: novel roles for fungal extracellular vesicles. *Mol Microbiol*. 2018;110:11–5.
97. Bielska E, Sisquella MA, Aldeieg M, Birch C, O'Donoghue EJ, May RC. Pathogen-derived extracellular vesicles mediate virulence in the fatal human pathogen *Cryptococcus gattii*. *Nat Commun*. 2018;9:1556.
98. Valkonen M. Functional studies of the secretory pathway of filamentous fungi. The effect of unfolded protein response on protein production. Helsinki: VTT Publ; 2003. p. 505.
99. Hatanaka O, Rezende CP, Moreno P, Freitas Fernandes F, Oliveira Brito PKM, Martinez R, et al. Galectin-3 inhibits *Paracoccidioides brasiliensis* growth and impacts paracoccidioidomycosis through multiple mechanisms. *mSphere*. 2019;4:e00209-19.

Publisher's Note

Springer Nature remains neutral with regard to jurisdictional claims in published maps and institutional affiliations.

Ready to submit your research? Choose BMC and benefit from:

- fast, convenient online submission
- thorough peer review by experienced researchers in your field
- rapid publication on acceptance
- support for research data, including large and complex data types
- gold Open Access which fosters wider collaboration and increased citations
- maximum visibility for your research: over 100M website views per year

At BMC, research is always in progress.

Learn more biomedcentral.com/submissions

