

 Open access • Journal Article • DOI:10.1007/S10270-012-0270-Z

Extracting models from source code in software modernization — Source link

Javier Luis Cánovas Izquierdo, Jesús García Molina

Institutions: École des mines de Nantes, University of Murcia

Published on: 01 May 2014 - Software and Systems Modeling (Springer Berlin Heidelberg)

Topics: Software modernization, Source code, Domain-specific language, Syntax (programming languages) and Transformation language

Related papers:

- [Reverse engineering and design recovery: a taxonomy](#)
- [MoDisco: a Model Driven Reverse Engineering Framework](#)
- [An Architecture-Driven Modernization Tool for Calculating Metrics](#)
- [Design Patterns: Elements of Reusable Object-Oriented Software](#)
- [Language-driven system design](#)

Share this paper:    

View more about this paper here: <https://typeset.io/papers/extracting-models-from-source-code-in-software-modernization-4jgonb5rsw>



HAL
open science

Extracting Models from Source Code in Software Modernization

Javier Cánovas, Jesus Garcia Molina

► **To cite this version:**

Javier Cánovas, Jesus Garcia Molina. Extracting Models from Source Code in Software Modernization. Software and Systems Modeling, Springer Verlag, 2014, 13 (2), pp.21. 10.1007/s10270-012-0270-z . hal-00752688

HAL Id: hal-00752688

<https://hal.inria.fr/hal-00752688>

Submitted on 16 Nov 2012

HAL is a multi-disciplinary open access archive for the deposit and dissemination of scientific research documents, whether they are published or not. The documents may come from teaching and research institutions in France or abroad, or from public or private research centers.

L'archive ouverte pluridisciplinaire **HAL**, est destinée au dépôt et à la diffusion de documents scientifiques de niveau recherche, publiés ou non, émanant des établissements d'enseignement et de recherche français ou étrangers, des laboratoires publics ou privés.

Extracting Models from Source Code in Software Modernization

Javier Luis Cánovas Izquierdo^{1,2}, Jesús García Molina¹

¹ University of Murcia, Spain, e-mail: {jlcánovas, jmolina}@um.es

² AtlanMod, École des Mines de Nantes – INRIA – LINA, France, e-mail: javier.canovas@inria.fr

The date of receipt and acceptance will be inserted by the editor

Abstract Model-driven software modernization is a discipline in which Model-Driven Development (MDD) techniques are used in the modernization of legacy systems. When existing software artefacts are evolved, they must be transformed into models in order to apply MDD techniques such as model transformations. Since most modernization scenarios (e.g., application migration) involve dealing with code in general purpose programming languages (GPL), the extraction of models from GPL code is an essential task in a model-based modernization process. This activity could be performed by tools to bridge *grammarware* and MDD technical spaces, which is normally carried out by dedicated parsers.

Gra2MoL is a Domain-Specific Language (DSL) tailored to the extraction of models from GPL code. This DSL is actually a text-to-model transformation language which can be applied to any code conforming to a grammar. Gra2MoL aims to reduce the effort needed to implement *grammarware*-MDD bridges since building dedicated parsers is a complex and time-consuming task. Like ATL and RubyTL languages, Gra2MoL incorporates the binding concept needed to write mappings between grammar elements and metamodel elements in a simple declarative style. The language also provides a powerful query language which eases the retrieval of scattered information in syntax trees. Moreover, it incorporates extensibility and grammar reuse mechanisms. This paper describes Gra2MoL in detail and includes a case study based on the application of the language in the extraction of models from Delphi code.

Key words Model-Driven Engineering, Model-Driven Software Development, Domain-Specific Languages, Software Modernization, Model-Driven Software Modernization.

1 Introduction

Model-Driven Software Development (MDD) is gaining increasing acceptance, mainly as a result of its ability to raise the level of abstraction and automation in the construction of software. Although the most common MDD approaches (e.g., MDA, software factories or domain-specific development) are aimed at building new software systems, models have also shown the potential to evolve existing systems. MDD techniques, as metamodeling and model transformations, can help to reduce software evolution costs and improve the quality of the artifacts evolved by automating many basic activities in software change processes, such as representing source code at a higher level of abstraction [1] or obtaining information such as metrics [2].

The growing interest in using MDD to manage software evolution is mainly focused on the reengineering or modernization of legacy systems. Several software migration projects have been carried out with model-driven approaches [1, 3, 4]; modernization tool vendors are offering model-driven solutions (OBEO or Mia Software); and the OMG's Architecture Driven Modernization (ADM) initiative [5] is defining a set of standard metamodels with which represent the information normally managed in modernization tasks.

When software artefacts are evolved by applying MDD, it is necessary for them to be represented as models in order to execute model transformations that generate new evolved artefacts. For example, in a scenario of language-to-language

migration, the first step is to extract models from the application code written in the source language. Similarly, in a modernization process to improve the data quality, models should be extracted from data schemas. Once these initial models have been obtained, model transformations can be applied to generate higher level abstraction models and finally the new artefacts (e.g., code in other language or an improved data schema). Other operations on models, such as model comparison or synchronization, may also be applied.

Since most modernization scenarios [6], such as language-to-language conversion or platform migration, involve dealing with code expressed in some general purpose programming languages (GPL), techniques and tools providing efficient means to extract models from GPL code are essential in model-driven modernization. In these scenarios, models conforming to a target metamodel (e.g., an abstract syntax tree metamodel) should be obtained from source code conforming to the grammar of a GPL. Although a modernization can also involve non-GPL code, which could also conform to a grammar (e.g., code of scripting language), most of the source code to be evolved is GPL code.

The relationship between the pairs of concepts grammar/program and metamodel/model is an example of a bridge between two different technical spaces [7], in particular *grammarware* and MDD (a.k.a. *modelware*). Several tools whose aim is to define textual Domain-Specific Languages (DSLs), such as Xtext [8] or EMFText [9], provide a *grammarware-modelware* bridge which allows models to be extracted from a DSL program. However, these tools are not appropriate for the extraction of models from GPL code because DSLs have a simpler structure than GPLs, which require an in-depth customization of the tool. Dedicated parsers (a.k.a. model discoverers) [1,3] are therefore normally implemented to obtain models from code conforming to a grammar. These parsers perform model generation tasks in addition to code parsing. Firstly, a syntax tree (i.e., an abstract or concrete syntax tree) is created from the source code, and this syntax tree is then traversed to obtain the information needed to create the model elements. This is a complex task which requires both collecting scattered information and resolving references in the syntax tree.

Since the construction of such dedicated parsers is a time-consuming task, we have defined a DSL, called Gra2MoL (Grammar-to-Model Transformation Language), which has been specifically designed to extract models from GPL code,

although it can be used for any software language conforming to a grammar. Model transformations are classified into three categories [10]: model-to-model transformations whose input and output are models; model-to-text transformations, which generate software artefacts (e.g., GPL code and database schemas) from a source model, and text-to-model transformations which obtain models from existing software artefacts. Gra2MoL would therefore be a text-to-model transformation language whose source artifacts must be described by a grammar. While there are a number of transformation languages for model-to-model transformations (e.g., ATL [11], QVT [12] or RubyTL [13]) and model-to-text transformations (e.g., MofScript [14], Xpand [15]), Gra2MoL might be considered the first proposal for a text-to-model language, at least to the best of our knowledge.

When designing a model transformation language, two key design choices are how to express the mappings between source and target elements and how to navigate through the source artefact. Gra2MoL allows mappings to be established between grammar elements and target metamodel elements in a declarative manner that is similar to how mappings are expressed in model-to-model transformation languages such as ATL or RubyTL by using the *binding* construct [11]. Furthermore, as a Gra2MoL transformation represents the code in the form of a syntax tree, Gra2MoL provides a powerful query language to ease the navigation and querying of such a tree when writing mappings.

A first version of Gra2MoL, which supported the core features of the language, was presented in [16,17]. Since then, the language has evolved to include new basic features such as: i) reuse mechanisms at rule-level (i.e., mixin rules), ii) a new kind of rule for dealing with expressions efficiently (i.e., skip rules), and iii) an extensibility mechanism to add new operators. In addition, the development of new features along with the experience gained in using the language in several case studies (model extraction from PL/SQL, Delphi, Bash scripts and more are included in the Gra2MoL website [18]) allowed us to identify new functionalities with which to improve the expressiveness, usability and performance. The new added extensions are the following: i) iterators and operators in the query language, ii) copy rules as they exist in ATL and RubyTL, iii) CDO and Morsa model repositories are supported to manage large models efficiently, and iv) support for island grammars. Experiences with Gra2MoL have shown significant advantages in relation to using dedicated parsers: a

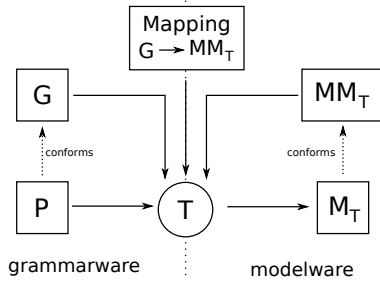


Fig. 1 Process of extracting models from source code.

reduction in development time, the maintenance is facilitated and existing grammars can be reused.

This paper is organized as follows. Section 2 analyzes the difficulties encountered when using existing solutions for model extraction, and the motivation for Gra2MoL is presented. In Section 3, we describe the language used to query concrete syntax trees provided by Gra2MoL. Section 4 presents the main features of Gra2MoL and explains how it has been implemented, while Section 5 shows an example of the language. Finally, Section 6 presents our conclusions and some future work.

2 Model Extraction from Source Code

This section aims to motivate the approach proposed in this paper. Firstly, model extraction is presented as a task which requires a bridge to be built from *grammarware* to *modelware*, and then several approaches are contrasted as possible techniques for implementing such a bridge. We identify the main issues to be addressed and discuss the limitations of each approach. Finally, we introduce the Gra2MoL language and indicate how this DSL overcomes the limitations identified previously.

Figure 1 shows the elements involved in the process of extracting models from code conforming to a grammar. This process is a text-to-model transformation T which has as its input a program P along with the grammar definition G to which it conforms. The transformation manages P as either an Abstract Syntax Tree (AST) or a Concrete Syntax Tree (CST). In this paper, we will use the term “syntax tree” to refer to both AST and CST. The execution of T generates a target model M_T conforming to a target metamodel MM_T representing the information to be extracted, which is usually more complex than a syntax tree. The extraction process is driven by a specification of the mappings between the grammar elements and the metamodel elements. As we will see,

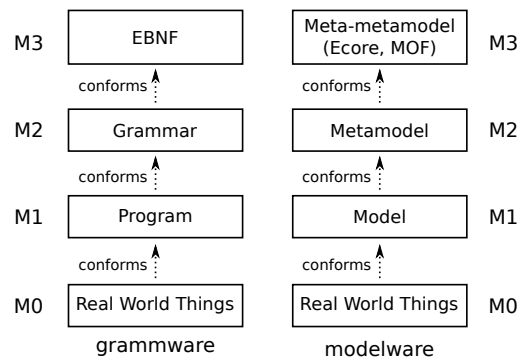


Fig. 2 Bridge between *grammarware* and MDE technical spaces.

the form of these mappings is different depending on each approach considered for the extraction.

The notion of bridging technical spaces is proposed in [7] to address the integration of MDD with other technologies (e.g., grammar, XML or ontologies). A text-to-model transformation is therefore an example of a task which requires a unidirectional bridge to be built between *grammarware* and *modelware* technical spaces as illustrated in Figure 2, which shows OMG’s layered metamodeling architecture as realized for these technical spaces.

With GPL code, creating this bridge requires an efficient mechanism with which to traverse syntax trees since the model elements to be extracted are usually composed of information that is scattered in such trees. In particular, this scattering is mainly caused by the means used to represent the references between elements. Models are graphs and any model element can directly refer to another, whereas in a syntax tree that represents certain code which conforms to a GPL grammar, the references between grammar elements are implicitly established by means of identifiers. Transforming an identifier-based reference into an explicit reference involves looking for the “identified” node on the syntax tree. For instance, if a model element is extracted from a “function call” statement where one argument is a global variable, certain necessary information, such as the type of the variable or the function signature, is located outside the current scope ([19] calls this kind of transformations global-to-local transformations). The scattering problem may also appear when the semantic gap between the source code and the target metamodel is high, e.g., a model element representing a metric that counts the number of classes could require the traversal of the source code in order to count all class declarations in Java.

Two main issues to be tackled by a mechanism for extracting models from GPL code are therefore: i) establishing the mapping between grammar elements and metamodel elements, and ii) retrieving scattered information from syntax trees. Next, we analyze how dedicated parsers, DSL definition tools, program transformation languages and model-to-model transformation languages could be used to build *grammarware-modelware* bridges in the case of GPL code.

2.1 Approaches for Model Extraction

Dedicated Parsers

The chosen strategy is normally that of creating dedicated parsers. Given a grammar and a target metamodel, a dedicated parser provides a specific solution which performs both parsing and model generation tasks. The former is in charge of extracting a syntax tree from the source code and the latter traverses this syntax tree in order to generate the target model. For example, both in [1] and [4] dedicated parsers are built to extract models from PL/SQL code. However, dedicated parser development is a time-consuming and expensive task because the syntax tree traversals must be hardcoded in order to both collect scattered information and resolve references. In addition, mappings are also hardcoded, which hinders maintainability. The effort required is usually alleviated by automatically extracting an AST from the source code. This step is performed by using an API, which is intended to make the management of this tree easier. An example of such APIs is the JDT Eclipse project [20], which works with Java source code. But APIs do not currently exist for a number of the GPLs widely used in modernization (e.g., PL/SQL language). In addition, although these APIs tackle AST extraction and management, a mechanism for retrieving scattered information must still be hard-coded, so APIs do not considerably shorten the development time.

A strategy to help to build dedicated parsers is supported by the MoDisco (Model Discovery) modernization framework [21], which is part of the Eclipse Generative Modeling Technology (GMT) component [22]. This framework is currently under development and its objective is to facilitate the construction of tools to support software modernization use cases. It provides i) a set of metamodels to describe software systems (e.g., an implementation of the KDM metamodel [23]), ii) tools to understand complex systems (e.g., a model editor specially adapted to deal with huge models)

and iii) dedicated parsers (“discoverers” in MoDisco terminology) to obtain models from legacy systems and use them in modernization use cases. The discoverers which are currently available allow models representing the syntax tree to be extracted from XML files and Java source code. The developer must therefore traverse the extracted models to obtain models conforming to the target metamodel and model-to-model transformations are still needed. It is also important to note that our approach was developed at the same time that MoDisco was being implemented.

DSL Definition Tools

The definition of textual DSLs aimed to express models in MDD solutions is another scenario in which a *grammarware-modelware* bridge is needed. Since textual DSL definition tools (a.k.a language workbenches [24]) provide the functionality of converting DSL programs into models and vice versa, they must implement one of these bridges. These tools generate a dedicated parser and a DSL editor from the specification of the DSL’s abstract and concrete syntaxes. They may therefore be considered as an alternative to developing a dedicated parser.

Two approaches are supported by these tools in order to specify both the abstract and the concrete syntaxes. In grammar-based tools, such as Xtext [8] and TEF [25], the developer uses an EBNF-like notation to specify both the grammar, which include rules intended to specify the mapping for the corresponding metamodel, and the concrete syntax. In some cases, such as in Xtext, the metamodel can also be automatically generated from this specification. On the other hand, metamodel-based tools, such as EMFText [9] and TCS [26], have as input a metamodel with annotations that specify the concrete syntax, and the grammar is automatically generated from this annotated metamodel. Indeed, a tool can support both approaches as in the case of the last version of Xtext.

Metamodel-based definition tools are not well suited to dealing with GPLs as is stated in [26]: “If the problem at hand is to develop a single, eventually general purpose language then the efforts for developing a dedicated parser are worthwhile” (rather than using TCS). As a DSL has a simpler structure than a GPL, these tools do not address several problems encountered in the management of GPL code. This unsuitability is evidenced when EMFText is used to implement bridges for GPLs. The tool must be customized in depth, mainly to adapt the generated grammar to the GPL one. For instance, the work needed to implement a Java bridge im-

plied so many changes to the tool that a new project called Jamopp [27] had to be created. Moreover, these approaches are not well suited to a model-driven modernization since a metamodel corresponding to the GPL grammar is not usually available.

With regard to grammar-based approaches, several important limitations arise when they are used to extract models from GPL code. Regarding Xtext, the metamodel generated is of poor quality because it includes superfluous elements and grammatical aspects, and the semantic gap between this metamodel and the desired target metamodel (e.g., an AST metamodel) is thus very high. A model-to-model transformation is therefore required to convert models generated by Xtext into models conforming to the desired metamodel. However, since current model-to-model transformation languages do not offer an efficient mechanism to resolve the problem of gathering scattered information, the definition of this transformation is a complex task, as described below when commenting on model transformation languages. With regard to TEF, although this tool can use any target metamodel, it only provides mechanisms to resolve simple references existing in DSLs (i.e., identifier-based references), for more complex references (e.g., package-based references in GPLs) it would require reference solvers to be hardcoded.

Moreover, neither existing grammar reuse (i.e., the reuse of grammars for well-known parser generators such as ANTLR) nor the reuse of Xtext/TEF grammar specifications is promoted. On the one hand, translating a grammar specification provided by a parser generator into the EBNF-based specification used is extremely complicated since some parser options which are needed to recognize GPLs cannot be specified (e.g., in Java, the use of backtracking or the inclusion of syntactic predicates). On the other hand, these grammar specifications are oriented towards a specific metamodel so they include specific rules for such a metamodel.

Wimmer et al. [28] and Kunert [29] have proposed improving the quality of the generated metamodel by applying heuristics and including manual annotations to the grammar. However, the quality of the metamodel generated from a GPL grammar is still low and it is necessary to additionally define a model-to-model transformation. Moreover, tools supporting these two approaches are not yet available.

Prinz et al. [30] presented a metamodel-based approach to define the SDL language which outlines a notation for expressing mappings between grammar and metamodel el-

ements. However, when using this framework with GPLs, the main problem which arises is the lack of support for resolving references. Although the concept of *identifier resolvers* is incorporated to tackle this problem, it is still necessary to hardcode them.

Program Transformation Languages

Program transformation languages, such as Stratego/XT [31] and TXL [32], could be used to extract models from source code by expressing the abstract syntax as a context-free grammar rather than a metamodel. However, when such languages are used, the following limitations are encountered. Firstly, the result of a program transformation execution is a program conforming to a grammar, and a tool for bridging *grammarware* and *modelware* would still therefore be needed to obtain the model conforming to the target metamodel. Secondly, grammar reuse is not promoted because each toolkit uses its own grammar definition language. Moreover, each toolkit only provides a limited number of GPL grammars (i.e., Java and C in Stratego and TXL).

Model Transformation Languages

Similarly, model-to-model transformation languages could also be used by first obtaining a simple intermediate model (i.e., a syntax tree model) from the code by means of a dedicated parser. However, defining the transformation would lead to an important problem: the inadequacy of the query language. Most model transformation languages, such as ATL or QVT, provide a variant of the OCL navigation language [33] which allows model graphs to be traversed. Although OCL-like expressions are appropriate for most practical model-to-model transformations, they are not convenient for typical global-to-local transformations involved in a model extraction from GPL code: long navigation chains must be written using dot notation, as we illustrate in Section 3. Integrating a more suitable query language into an existing model transformation language would involve important changes if a language supporting two different query mechanisms were to be obtained. For instance, a plugin mechanism could be implemented.

2.2 Our approach for Model Extraction

In the context of an Oracle Forms migration project, we confronted model extraction from PL/SQL code. We therefore considered the definition of a domain specific language in order to overcome the limitations of the previously discussed approaches. This DSL had to shorten the development time,

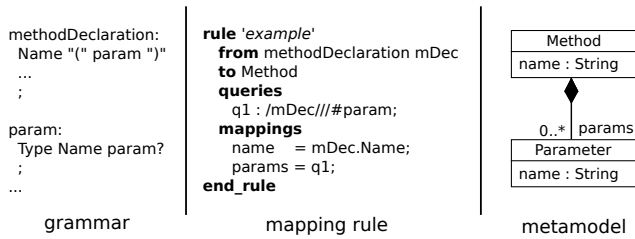


Fig. 3 Simple example of a Gra2MoL mapping definition.

make the maintenance easier and promote the reuse of existing grammars (e.g. ANTLR and JavaCC grammars). To achieve these objectives, it was necessary to raise the two key design issues indicated in Section 2: how can mappings between grammar elements and metamodel elements be expressed in a simple and readable way, and what notation is appropriate when retrieving scattered information from syntax trees.

The DSL created, denominated as Gra2MoL (Grammar To Model Transformation Language), provides constructs with which to write mappings at a high level of abstraction in a declarative style similar to how mappings are expressed in model-to-model transformation languages such as ATL or RubyTL. With regard to the support of traversing syntax trees, Gra2MoL provides a powerful query language for syntax trees. This query language is introduced in the following section and the DSL is described in detail in Section 4.

Figure 3 shows a first example of how Gra2MoL is used. A Gra2MoL definition consists of a set of rules, each one of which express the mapping between a grammar element and a model element. The Gra2MoL definition shown in the example is very simple, and only contains the rule named `example` which transform a `methodDeclaration` grammar element (see Figure 3a) into the `Method` metamodel element (see Figure 3c) according to the *from* and *to* parts of the rule. The *mapping* part express how the information of the model element is obtained from the information in the syntax tree. In this example, the `name` attribute of the `Method` model element is first initialized by accessing to the `Name` grammar element of the `methodDeclaration` grammar element received by the rule (variable `mDec`). The `params` reference is then initialized by using the `q1` query, which collects every `param` grammar element representing the parameters of the method. Note that mappings are specified explicitly and a specific query language is used to traverse the syntax tree.

Table 1 contrasts Gra2MoL with the approaches analyzed. The columns show the properties which are compared: the

ability to navigate the syntax tree; which artifacts must be created; whether pre-processing (only required in MoDisco when there is no discoverer for the GPL at hand) and/or post-processing is necessary (it is normally required to eventually obtain a model conforming to the desired metamodel); whether it is possible to reuse existing (e.g., grammars provided by ANTLR) and provided grammars (i.e., grammars defined by the formalism used in the approach); and the main purpose of the approach. The artifacts to be created, and both the pre-processing and post-processing tasks determine the level of effort involved in each approach. For instance, we note that bridging and program transformation approaches require more complex tasks than Gra2MoL, such as writing model-to-model transformations or defining a GPL grammar, whereas in Gra2MoL it is only necessary to create the transformation definition and the target metamodel. Both model-to-model and MoDisco approaches requires a great effort to define the model transformation needed to obtain the target model. In addition, MoDisco also requires implementing the discoverer if the language involved is not Java or XML. With regard to the creation of a dedicated parser, Gra2MoL turns a hard-coding task into the writing of a grammar-to-model transformation definition using a language specially tailored to the extraction of models. As a consequence, development time is reduced by using Gra2MoL.

3 A Query Language for Concrete Syntax Trees

As stated previously, transforming GPL into models involves the intensive use of traversals through the syntax tree to collect scattered information. A model extraction language must therefore provide a powerful query language, which facilitates the access to tree nodes outside the current construct scope (i.e., a rule). Figure 4 illustrates the scattering problem for a simple example of extracting an ASTM model element from a Delphi procedure. ASTM (Abstract Syntax Tree Metamodel) [35] is a metamodel provided by ADM to represent the source code of the software system as ASTs. Since the scattered information problem appears in both AST and CST, and obtaining a CST is easier than obtaining an AST, Gra2MoL uses CSTs to represent the source code. The CST shown in Figure 4 corresponds with a procedure declaration which includes a variable declaration and an assignment statement initializing the declared variable. The `BinaryExpression` model element represents binary expressions, which are used to represent assignments in ASTM. This model element has

Table 1 Comparison of Gra2MoL with the analyzed approaches. NA = Not applicable, G = Grammar, MM_T = Target metamodel, MM_I = Intermediate metamodel, T = Transformation definition, P = Dedicated parser, T_{PT} = Program transformation definition, G_{xt} = xText/TEF grammar, $m2m$ = model-to-model transformation definition, G_{AS} = Abstract syntax grammar, D = Discoverer.

Approach	Syntax tree navigation	Artifacts to be created	Pre processing	Post processing	Existing grammar reuse	Provided grammar reuse	Purpose
Dedicated parser (+ API)	GPL code (+ primitives)	MM_T P	None	None	Yes	NA	Specific model extraction
MoDisco	OCL-like query languages	MM_T D	Discoverer (if not dealing with Java or XML)	M2M transf.: $MM_I \rightarrow MM_T$	Yes	NA	General purpose model extraction
DSL definition tools	Poor support	G_{xt} MM_T $m2m$	None	M2M transf.: $MM_I \rightarrow MM_T$	No	No	DSL creation
Program transf.	Stratego incorporates a query language [34]	MM_T T_{PT} G_{AS} $m2m$	None	Extracting a model from a program conforming to G_{AS}	Limited (a few grammars)	Yes	Program transformation
Model transf.	OCL-like query languages	MM_T P $m2m$	None	None	Yes	NA	Model transformation
Gra2MoL	<i>Structure-shy</i> query language	MM_T T	None	None	Yes	NA	General purpose model extraction

two properties to register the right-hand side and left-hand side expressions of the assignment (i.e., `rightOperand` and `leftOperand` references, respectively) in addition to a property to specify that the binary expression is an assignment (i.e., `operator` reference). As can be observed, whereas all the information needed to initialize the right-hand side attribute (the `expression` grammar element of the assignment) is inside the current scope (depicted as an oval), the information needed to initialize the left-hand side attribute is outside this scope, because the `msg` variable declaration is referenced by an identifier. A query language might therefore help to resolve this reference to the `msg` variable, by providing navigation constructs for accessing the corresponding declaration node and retrieving the variables properties.

We have created a *structure-shy* query language, inspired by XPath [36], which allows a CST of the source code to be navigated without the need to specify each navigation step. The terms “*structure-shy*” is often used to refer to behaviour specifications (e.g., queries) which are loosely bounded to the data structures on which operations (e.g., syntax trees) are applied.

In order to navigate the CST, the nodes are “typed” using the grammar definition, and each tree node registers the name of the grammar element as its type. Figure 5 illustrates the conformance relationships between the CST and the gram-

mar definition, showing a CST for several Delphi procedures along with the corresponding fragment of Delphi grammar. The conformance rules are those commonly used to create a tree of this kind:

- A non-terminal element corresponds to a tree node. For instance, the `decl_section` non-terminal element corresponds to the `decl_section` tree node in Figure 5.
- A terminal element corresponds to a leaf. In Figure 5, the `ID` terminal corresponds to the `ID` leaf.
- A production rule is represented by a node hierarchy whose parent corresponds to the non-terminal element on the left-hand side of the rule, and a child for each grammar element on the right-hand side by applying the previous rules. In Figure 5, the `decl_section` production rule is represented by the hierarchy whose root is a `decl_section` tree node.

A query consists of a sequence of query operations, each of which includes four elements: an operator, a node type, a filter expression (optional) and an access expression (optional). Moreover, a query can be prefixed by a control statement. The EBNF expression for a query operation is:

```
[control] { ('/'|'//'|'///') ('#')? nodeType
           [filterExpression] [accessExpression] }
```

We have defined three operators with which to query and navigate over CSTs: `/`, `//` and `///`. The `/` operator returns the

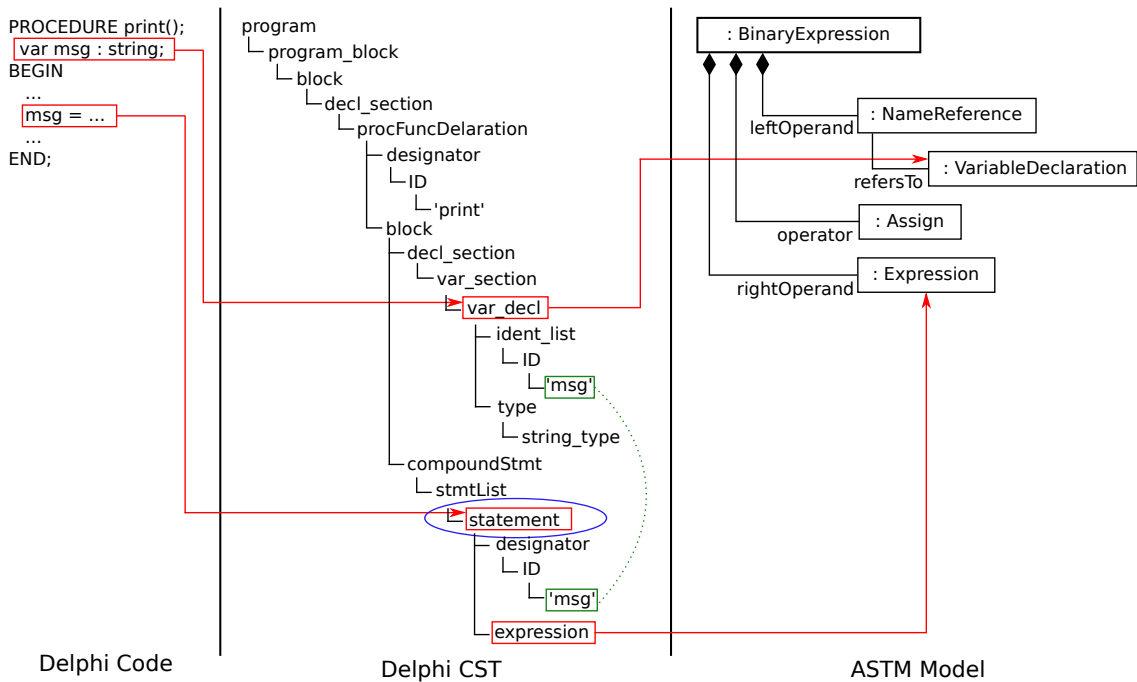


Fig. 4 Example of scattered information. The oval indicated the current scope and the dotted line indicates an identifier-based reference between tree elements.

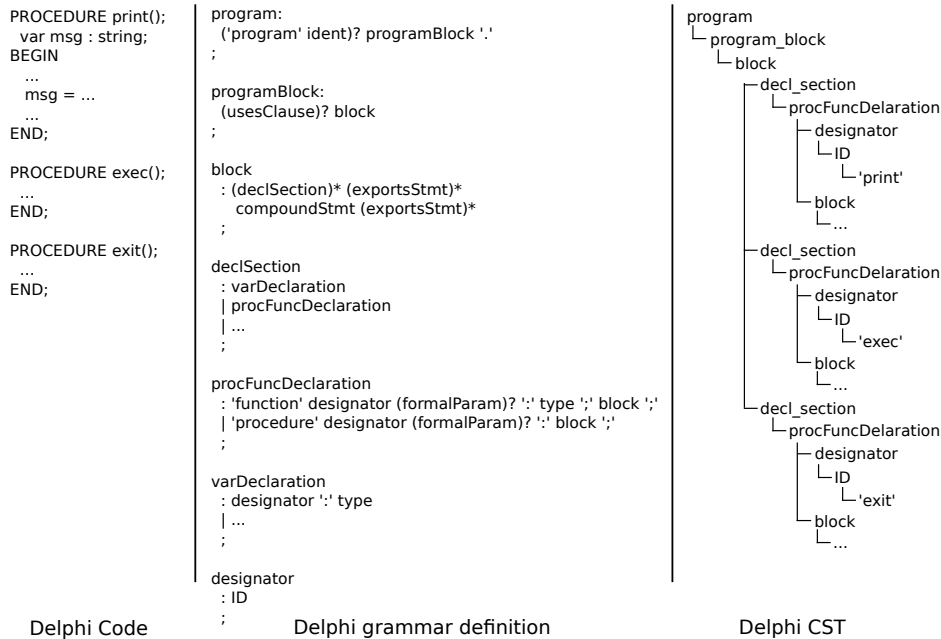


Fig. 5 CST for an excerpt of the Delphi grammar.

immediate children of a node and is similar to dot-notation (e.g., in OCL). The // and /// operators permit the traversal of all the child nodes (direct and indirect), thus retrieving all nodes of a given type. The /// operator differs slightly from the // operator. Whereas the /// operator searches the syntax tree in a recursive manner, the // operator only matches the nodes whose depth is less than or equal to the depth of

the first matched node. The /// operator is, therefore, only used to extract information from recursive grammar structures. These two operators allow us to ignore intermedie superfluous nodes, thus making the query definition easier, since it specifies what kind of node must be matched, but not how to reach it, in a structure-shy manner. The mapCall

```

Locals(p : program) : Sequence(varDeclaration)
post result =
if(p.programBlock.block.declSection = oclIsUndefined())
then
  Sequence {}
else
  p.programBlock.block.declSection->
    select (pd | ds.oclIsKindOf(procFuncDeclaration))->
    collect(e | e.block.declSection->flatten())->
    select (vd | ds.oclIsKindOf(varDeclaration))
endif

```

Fig. 6 OCL query for extracting all the variable declarations of every procedure of the Delphi CST shown in Figure 5.

Function rule defined in Section 5.3 will illustrate the difference between both operators.

Since a query could return one or more subtrees, the # operator is used to indicate the root node from which the information needed can be accessed. This operator must be associated with one and only one query operation of the sequence of operations forming a query.

For instance, in order to extract all the Delphi variable declarations defined in every procedure of the Delphi CST shown in Figure 5, the following query could be expressed as `/program//#varDeclaration`. The same query expressed in OCL is shown in Figure 6. It is worth mentioning how the clarity, legibility and conciseness are improved.

Query operations can also include a filter expression, which is enclosed in curly brackets. A filter expression is a logical expression which is applied to the leaves of the node specified in a query operation. Each operand of a filter expression is a boolean function which checks the properties of a leaf, such as its value or whether it exists. Only those nodes that satisfy the filter expression will be selected. For example, the query `/program//#varDeclaration/designator{ID.exists}&& ID.eq('print')}` will select every procedure grammar element with an ID leaf and the value of this leaf must be `print` in the Delphi CST shown in Figure 5.

Finally, query operations can also include an access expression enclosed in square brackets, which is used to access to sibling nodes through indexing. For instance, the query `/program//procFuncDeclaration[0]` will select the first procedure grammar element of the CST in Figure 5, which is the `print` procedure.

The sequence of query operations that forms a query expression can be prefixed by a control statement which is surrounded by curly braces at the beginning of the query. This statement allows the execution of a query to be managed by performing either a pre-process (i.e., query parameterization) or a post-process (i.e., filtering). On the one hand, the query

```

q1 : //#varDeclaration;
q2 : {for each v in q1} //statement/designator{ID.eq(v.ID)};
(a)
-----
q3 : {greatest varDeclaration.Value} //procFuncDeclaration
    //varDeclaration;
(b)

```

Fig. 7 Control statement examples: (a) shows the use of such statement to parameterize a query whereas (b) shows a filtering post-process.

parameterization allows a query to be executed by using external information such as each of the result elements of a previous query. Figure 7a shows an example of query parameterization which includes two queries. The query `q1` collects all the variable declarations of a Delphi program and the query `q2` then uses a `for each` iterator which parameterizes the query in order to obtain all the assignment statements which use such variables. Notice that the control statement is in charge of launching the query `q2` as many times as result elements have `q1`, bounding each element in the `v` variable.

On the other hand, control statements can also be used to filter the result elements once a query has been executed. Figure 7b shows a query which collects all the variable declarations (i.e., `varDeclaration` elements) included in a procedure and then the `greatest` control statement then selects the variable whose `Value` leaf is the greatest. Gra2MoL includes the control statements explained previously along with the `while` and `least` statements, which allow executing a query as many times as the `while` condition and selecting the leaf whose value is the least, respectively. Moreover, the developer can define new statements by using the extension mechanism explained in Section 4.5.

4 The Gra2MoL Language

Gra2MoL has been designed as a text-to-model transformation language. It is a rule-based language with rules whose structure is similar to that provided in languages such as ATL or RubyTL, with two important differences: i) the source element of a rule is a grammar element rather than a metamodel element and ii) the navigation through the source code is expressed by the query language presented for CSTs, rather than an OCL-based-language.

An excerpt of the Gra2MoL abstract syntax, expressed as a metamodel, is shown in Figure 8a and the concrete syntax is illustrated in Figure 8b. As can be seen, a transformation definition consists of a set of transformation rules (Rule element). Gra2MoL includes four types of rules: normal, copy,

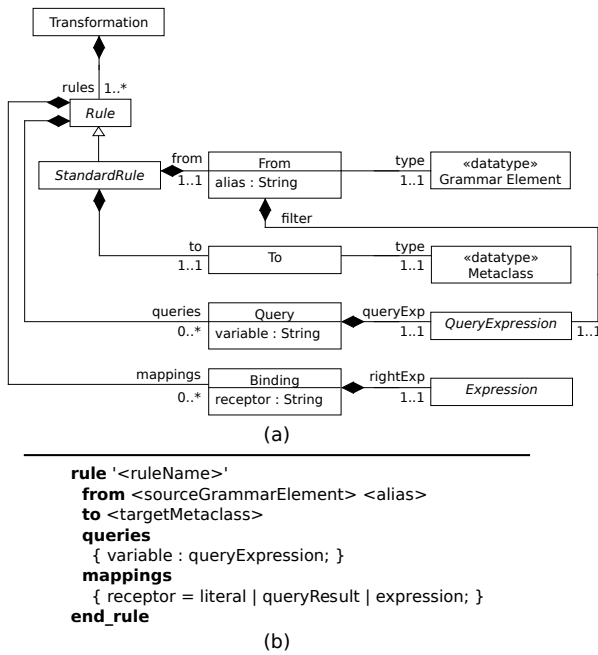


Fig. 8 (a) Excerpt of the abstract syntax of Gra2MoL and (b) a skeleton of its concrete syntax.

skip and mixin, as illustrated in Figure 9. Normal rules are used to express a mapping between a grammar element and a metamodel element, and they are therefore the rules normally required. Copy rules are normal rules but they can transform a source element more than once. On the other hand, skip and mixin rules incorporate special behaviour into Gra2MoL transformations which is explained in Section 4.3. Since normal and skip rules have the same syntactical structure, they are categorized as standard rules. A standard rule is composed of four parts:

- The *from* part specifies a grammar non-terminal symbol, and declares a variable that will be bound to a tree node when the rule is applied. This variable can be used by any expression within the rule. The *from* part can also include query operations (i.e., a filter) to check the structure to be satisfied by the nodes whose type is the non-terminal symbol.
- The *to* part specifies the target element metaclass.
- The *queries* part contains a set of query expressions which allow information to be retrieved from the CST. The result of these queries will be used in the assignments of the mappings part.
- Finally, the *mappings* part contains a set of bindings to assign a value to the properties of the target element. It is also possible to use control or imperative structures such

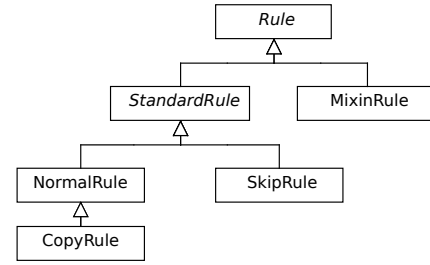


Fig. 9 Gra2MoL rule types.

as *if* statements or new statement to create instances of metaclasses, as occurs in Section 5.

4.1 Bindings and Rule Conformance

In order to express the relationship between a source grammar element and a target metamodel element, Gra2MoL incorporates the binding construct used in ATL and RubyTL. The syntax and semantics of this construct have been slightly altered to be incorporated into Gra2MoL. A binding is written as an assignment using the operator =. The left-hand side must be a property of the target element metaclass. The right-hand side can be the variable specified in the *from* part of the rule, a literal value or a query identifier.

The rule evaluation is determined by a binding-based scheduling mechanism inspired by the mechanisms of ATL and RubyTL. The definitions of rule conformance and well-formed transformation stated for RubyTL in [13] are applicable to Gra2MoL, with simple changes.

Rule conformance. A rule conforms to a binding if the type in its *from* part conforms to the type in the right-hand side of the binding and the type in its *to* part conforms to the type in the left-hand side of the binding, where the type conformance is defined as follows.

Type conformance. A metaclass A_m conforms to a metaclass B_m if they are the same or A_m is a subtype of B_m , whereas a node type A_n conforms to a node type B_n if they are the same.

Well-formed transformation definition. A transformation definition is well-formed if for each binding involving a non-primitive type as left-hand side type, there exist one or more conforming rules but there is one and only one applicable rule. This means that if two or more conforming rules exist, their filter conditions must be exclusive, since only one of them can be applied.

The application of a binding therefore implies that a conforming rule exists which transforms the type of the right-

hand side of the binding into the type of the left-hand side of the binding.

4.2 Rule Evaluation

Every Gra2MoL transformation definition must have an entry point in order to start the transformation execution. The entry point is the first normal rule of the transformation definition and its mappings are in charge of starting the transformation execution. In a Gra2MoL transformation definition, only standard rules (i.e., normal, copy and skip rules) are eligible to be applied by a mapping, whereas mixin rules are applied when the referring rule is executed, as we explain in the following section.

When a rule is applied to a node, the filter located in the *from* part is first checked and then, if the node satisfies the filter, the rule will be executed. If it is a standard rule, an instance of the target metaclass is created. Finally, the rule bindings are executed regardless the rule type. In the application of a binding, three situations may arise according to the nature of the right-hand side.

- If it is a literal value, the value is directly assigned to the property of the left-hand side.
- If it is a query identifier, the query is executed and a rule conforming to this binding is looked up in the transformation definition. Whenever a conforming rule is found, it is applied by using the element of the right-hand side of the binding as the source grammar element.
- If it is an expression, it is evaluated and two situations may arise, depending on whether the result is a node whose type corresponds to a terminal (a leaf) or a non-terminal symbol. If it is a leaf, the result is a primitive type and is directly assigned; otherwise, a rule to resolve the binding is looked up and executed, as was explained in the previous case.

4.3 Skip and Mixin Rules

Transforming the arithmetic and logical expressions of the source code requires Gra2MoL to provide a special mechanism to deal with the grammar structures usually involved. The use of expressions in a programming language normally causes the addition of a number of grammar rules which creates a new parse tree. These grammar rules are normally defined in a chained manner in which each rule adds a new

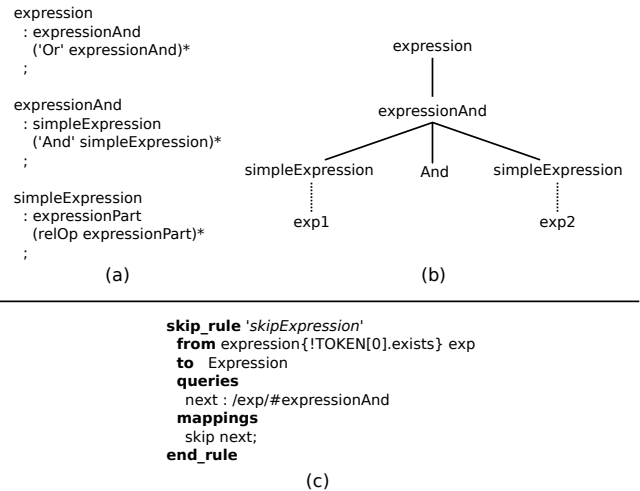


Fig. 10 (a) Grammar rules to parse both AND and OR expressions and (b) the corresponding syntax tree for the expression `expr1 And expr2`. (c) Skip rule for the `expression` grammar element.

operator to the expression (see Figure 10a). Using normal rules, the mappings between the grammar and metamodel elements are usually direct, for instance, an OR expression is normally mapped into a metamodel element which represents OR binary expressions. However, in some cases, parsing a grammar element does not mean creating a model element. For instance, given the grammar in Figure 10a, if the `expression` grammar element does not contain the operator (i.e., the OR token in the example, see Figure 10b), parsing an `expression` grammar element will not imply creating a metamodel element which represents an OR binary expression.

Gra2MoL therefore provides a special type of rule, called skip rules, which are mainly aimed at extracting models from expressions of programming languages. Skip rules allow the creation of the instance of the metaclass specified in the *to* part of the rule to be delayed until some computations to grammar elements have been performed, for instance, the existence of the OR token in the example. Depending on the result of such computations, the execution can be transferred to the appropriate rule by using the `skip` operator in the *mappings* part. Figure 10c shows the skip rule dealing with those `expression` grammar elements which not contain the OR token, transferring the execution to the rule dealing with the `expressionAnd` token (i.e., the following grammar rule dealing with expressions in the *skip* example). Note that skip rules can also be defined in a chained manner, as we illustrate in Section 5.

```

rule 'myNormalRule'
from declSection dec
to Declaration
mixin myMixinRule
queries
  q1 : ...
  ...
mappings
  attr1 = ...;
  ...
end_rule

mixin_rule 'myMixinRule'
from declSection dec
queries
  q1 : /dec//#varDeclaration;
mappings
  vars = q1;
end_rule

```

Fig. 11 Mixin rule use.

Like other model transformation languages such as RubyTL, Gra2MoL includes a type of rule, called mixin rules, which aims to provide a mechanism for reusing rules. The queries and mappings which are common to several rules can be extracted into a mixin rule. Both normal and skip rules can then import mixin rules in order to add the queries and mappings they define. A mixin rule has the same syntactical structure as a normal rule except that it does not have *to* part. A normal or skip rule can import a mixin rule only if the *from* part of both rules specifies the same grammar element. In order to express the importation of a mixin rule, the *mixin* part has been added to the rule structure described above. Figure 11 shows a mixin rule called `myMixinRule` and a normal rule called `myNormalRule` using it. The rule `myMixinRule` will be executed just before executing the rule `myNormalRule`. Note that the *from* part of both rules is the same and the *dec* variable used in the query `q1` of the mixin rule is bounded to the declaration grammar element received by the normal rule.

4.4 Implementation

The execution of a Gra2MoL transformation is split into three steps. The first step is in charge of building the CST of the source code, the second step obtains the abstract syntax model from the Gra2MoL textual definition and finally the third one interprets and executes the transformation definition.

Current implementation of Gra2MoL uses ANTLR grammar definitions. These definitions can be enriched with actions in order to create the CST. However, we are interested in using ANTLR grammar definitions without attached actions for two reasons: (1) to alleviate the grammar developer from the burden of creating the CST programmatically and (2) to promote grammar reuse. We have therefore defined an enrichment process which automatically adds the actions needed to build the CST to the grammar rules. This process also supports the use of island grammars, which is a mechanism applied when the main language contains one or more sublan-

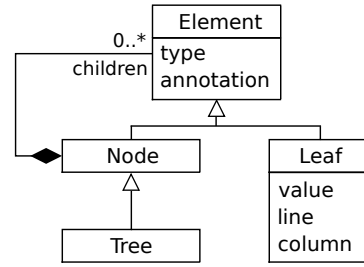


Fig. 12 CST metamodel.

guages (e.g., the Javadoc language in Java). In this case, the developer must modify the grammar rule of the main language which links to the island grammar in order to configure the enrichment process (more information on how to tune the grammar to support island grammars is provided in the Gra2MoL website [18]).

Gra2MoL uses a metamodel internally to generically represent CSTs of the parsed source code. This metamodel is shown in Figure 12. There are three kinds of elements in a CST model, namely Leaf, Node and Tree. Leaf represents a tree node which corresponds to a recognized terminal symbol. Node represents a tree node which corresponds to a recognized non-terminal symbol and is composed of one or more children nodes, either of the Leaf or Node type. The type attribute identifies the grammar symbol whose recognition has yielded the tree node creation (this is needed to navigate through the CST, as was explained in Section 3). Finally, Tree represents the root node of the tree. The creation of models conforming to this metamodel is driven by the conformance rules explained in Section 3.

The execution process of a Gra2MoL transformation is shown in Figure 13. Figure 13a shows the pre-processing step *T* to enrich the ANTLR grammar while Figure 13b shows the step to obtain the abstract syntax model from the textual definition. The latter step is actually a kind of bootstrap process (i.e., Gra2MoL is used to extract a model from the Gra2MoL transformation definition) which has four inputs: the Gra2MoL concrete syntax definition, which is defined by the grammar of the language ($G_{Gra2MoL}$); the Gra2MoL abstract syntax ($MM_{Gra2MoL}$); the transformation definition ($G2MM$) and the text input which conforms to the concrete syntax (i.e., the transformation definition of the main process). The result of the bootstrap process is the abstract syntax model ($M_{Gra2MoL}$), which is later used by the Gra2MoL Engine. The bootstrap process allowed us to implement the DSL without the need to use other DSL definition tools, thus illus-

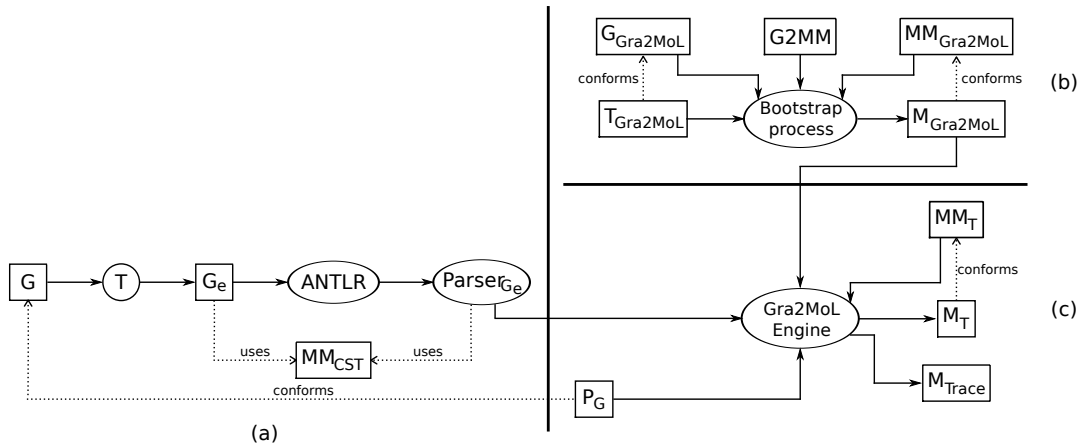


Fig. 13 Gra2MoL transformation process.

trating that our approach might also be used to implement textual DSLs.

Figure 13c shows the Gra2MoL Engine, which receives the abstract syntax model, the resulting enriched parser from the pre-processing step and the source code to be transformed. The artefacts generated by the Gra2MoL engine are the model conforming to the target metamodel and a trace model containing the information concerning which target elements have been created, from which source grammar elements and by which rule.

Note that Figure 13c is the same as Figure 1, except that a parser is an input to the Gra2MoL engine to build the CST model. This parser is generated from the grammar (G_e) enriched with actions intended to create CST models conforming to the metamodel MM_{CST} shown in Figure 12. Since the CST can become huge when extracting a large number of source files, the Gra2MoL transformation process can be configured to store this tree into a model repository (CDO [37] and Morsa [39] model repositories are currently supported), which allows big models to be managed efficiently, thus improving performance (more information about how to set up the process is provided in the Gra2MoL website [18]).

Gra2MoL is distributed as a plugin for the Eclipse IDE which can be downloaded from the Gra2MoL website [18]. The plugin incorporates an editor to manage transformation definitions, which include some assistance mechanisms such as syntax highlighting, auto-completion or code folding. Figure 14 shows a screenshot of the Gra2Mol editor. A launcher with which to execute transformations from Eclipse is also provided.

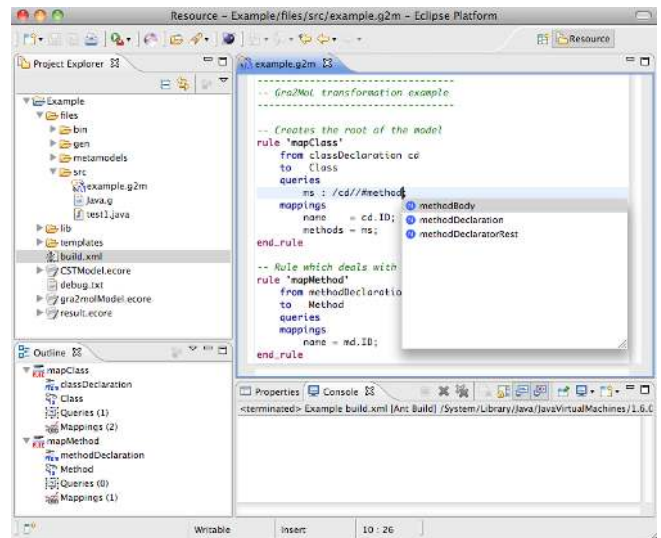


Fig. 14 Gra2MoL Eclipse plugin.

4.5 Extension Mechanism

Gra2MoL offers extension points to extend some language capabilities. There are two main extension points: the mapping operators (i.e., operators to be used in the right-hand side part of a binding) and the query language. Such extensions can be implemented in and incorporated into the transformation engine by using the extension framework provided, which is shown in Figure 15. Since Gra2MoL has been developed in Java, implementing a new extension is achieved by class inheritance.

When extending Gra2MoL with a new mapping operator, a subclass of the MappingExtension abstract class (located in left-hand part of Figure 15) must be created. This subclass must implement the abstract method execute, which performs the specific behavior of this operator, and optionally incorporates a method called getKeywords to specify the

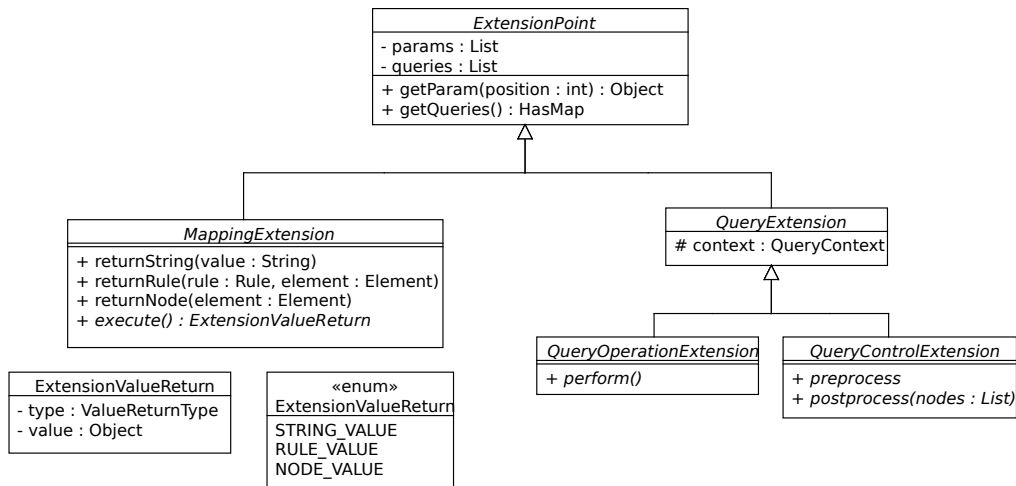


Fig. 15 Extending the Gra2MoL language. Classes composing the extension framework.

keywords which identify the new operator (if it is not provided, the keyword must be established by a property file). The `MappingExtension` abstract class also includes several methods to help the developer to build the result of the mapping operator, which can be a string value (`returnString` method), a rule (`returnRule` method) or a node (`returnNode` method). Moreover, `MappingExtension` inherits from the common root of the hierarchy, the `ExtensionPoint` abstract class, which allows the parameters of the operator (`getParam` method) or the queries included in the rule (`getQueries` method) to be accessed. Gra2MoL supports calls to new mapping operators by using the `ext` keyword in the mappings part of a rule. A binding which uses a new operator will thus use the `ext` keyword followed by the keyword of the new operator and optionally a list of parameters. For instance, Figure 16a shows a rule which uses the extension mechanism in the mappings part and calls to `toUpperCase` operator, which receives the `VALUE` string and transforms it to upper case. Figure 16b shows the implementation of the class inheriting from `MappingExtension`.

The query language can also be extended to incorporate new query control statements and operators for filter expressions. They can be added to the language by extending the `QueryControlExtension` and `QueryOperationExtension` abstract classes shown in the right-hand part of the Figure 15 respectively. Both abstract classes inherit from `QueryExtension`, which allows accessing to the context of the queries part (i.e., accessing to the results of other queries) and in turns inherits from `ExtensionPoint`. In the same way as the mapping operators, the query language extensions can also incorporate a

```

rule 'extensionExample'
from varDeclaration vd
to ValuedElement
queries
mappings
value = ext toUpperCase(vd.VALUE);
end_rule
  
```

(a)

```

public class UpperCaseExtension extends MappingExtension {
@Override
public ExtensionValueReturn execute() {
String value = (String) getParam(0);
return value.toUpperCase();
}
public String[] getKeywords() {
return new String[] { "toUpperCase" };
}
}
  
```

(b)

Fig. 16 New mapping operator example. (a) The use of the `ext` keyword to call to the new mapping operator. (b) The implementation of the mapping operator.

method called `getKeywords` to specify the keywords which identify them.

With regard to new query control statements, the subclass inheriting from the `QueryControlExtension` abstract class must implement both the `preprocess` and the `postprocess` methods, which allow developers to manage the query execution. The `preprocess` method is called before the query execution whereas the `postprocess` method is called after the query execution and receives the list of result nodes. The new query control operators can be called by using the `ext` keyword in the control part of a query. For instance, Figure 17a shows a query control statement called `removeDuplicates` which remove variables whose `VALUE` leaf is the same once the query has been executed. Figure 17b shows an excerpt of the implementation of the corresponding class. Note that it is only necessary to implement the `postprocess` method.


```

q1 : { ext removeDuplicates } //varDeclaration;

```

(a)

```

public class TestControlExtension extends QueryControlExtension {
public void preprocess() { }
public List<Element> postprocess(List<Element> nodes) {
    List<Element> resultList = removeDuplicates(nodes);
    return resultList;
}
private List<Element> removeDuplicates(List<Element> nodes) {
    ...
}
public static String[] keywords() {
    return new String[] { "removeDuplicates" };
}
}

```

(b)

Fig. 17 New query control statement example. (a) The query using the query control statement. (b) An excerpt of the implementation of such statement.

On the other hand, when adding new query operators, the subclass inheriting from `QueryOperationExtension` must implement the `perform` method. This method is applied to the leaf of the node to which the operator is applied and returns a boolean value indicating whether the node satisfies the operator. For instance, Figure 18a shows a query using an operator called `isSurroundedBy` which checks whether the `VALUE` leaf of the node is surrounded by a character given as parameter. Figure 18b shows an excerpt of the corresponding class implementing the query operator.

5 Example

Delphi is a programming language which is a dialect of Object Pascal. The language has been extensively used to develop business applications, especially in RAD solutions. However, there are a number of applications developed in old versions of Delphi which require adaption or modernization (e.g., supporting new language versions or migrating to other platforms). Gra2MoL has been used within the context of a project to migrate Delphi applications to Java platform, in order to extract models from Delphi source code. This project uses the ASTM to represent the source code of the software system. Once the ASTM models are obtained, MDD techniques (i.e., model-to-model and model-to-text transformations) are applied to obtain the migrated system. In this section we describe how the Gra2MoL transformation definition was implemented since the rest of the migration process is not within the scope of this article. In particular, this example covers the transformation of a subset of Delphi statements.

Figures 19 and 20 respectively show the parts of the Delphi grammar and the ASTM metamodel considered in this

```

q1 : //var_decl{VALUE.isSurroundedBy("<");

```

(a)

```

public class testQueryOperation extends QueryOperationExtension {
    ...
public boolean perform() {
    ExpressionElement element = filter.getElement();
    Leaf leaf = node.getLeaf(element.getName(), element.getPosition());
    return (leaf != null && leaf.isSurroundedBy(getParam(0))) ? true : false;
}
private boolean isSourroundedBy(String char) {
    ...
}
public static String[] keywords() {
    return new String[] { "isSourroundedBy" };
}
}

```

(b)

Fig. 18 A new query operator example. (a) The query using the new query operator (b) An excerpt of the implementation of such operator.

example. Both the grammar and the metamodel are explained as follows and we then go on to describe the Gra2MoL transformation rules for this example.

5.1 The Delphi Grammar

The grammar includes the rules needed to parse a subset of Delphi statements. Note that some of them have been simplified or reduced for the sake of simplicity. It therefore includes the `block` grammar rule representing Delphi blocks composed of an optional declaration section (`declSection` grammar rule) and a set of statements (`compoundStmt` grammar rule), which can be surrounded (i.e., including before and/or after) by export statements (`exportsStmt` grammar rule). The `declSection` grammar rule derives into a `varDeclaration` and `procFuncDeclaration` rules, which allows a variable and either a procedure or a function to be declared. Although these declaration grammar rules are used in the example to illustrate implicit references in the code, they have been greatly simplified for the sake of conciseness. The `compoundStmt` grammar rule refers to the `stmtList` rule, which in turn refers to the `statement` grammar rule. The statements considered in this example are assignments and function calls (the two alternatives of the `statement` grammar rule, respectively).

The grammar also includes a subset of the grammar rules needed to parse expressions, which will be used to illustrate the use of skip rules. The `expression` grammar rule allows defining optionally an OR logical expression where each operand is represented by an `expressionAnd` grammar rule, which in turn allows an AND logical expression to be defined. Each operand of an `expressionAnd` grammar rule is represented

```

block
: (declSection)* (exportsStmt)*
  compoundStmt (exportsStmt)*
;

declSection
: varDeclaration
| procFuncDeclaration
| ...
;

varDeclaration
: designator ':' type
| ...
;

procFuncDeclaration
: 'function' designator (formalParam)? ':' type ';' block ';'
| 'procedure' designator (formalParam)? ':' block ';'
;

compoundStmt
: 'begin' stmtList 'end'
;

stmtList
: (statement ';')*
;

statement
| designator ':=' expression
| designator '(' (param ')')?
| ...
;

param
: expression (',' param)?
;
designator
: ID
;

expression
: expressionAnd ('Or' expressionAnd)*
;

expressionAnd
: simpleExpression ('And' simpleExpression)*
;

simpleExpression
: expressionPart (relOp expressionPart)*
;

expressionPart
: NUMBER
| designator
| ...
;

relOp
: '=' | '>' | '<' | '<=' | '>=' | '<>'
| ...
;

```

Fig. 19 An excerpt of the Delphi grammar used in the example.

by a simple Expression grammar rule, which uses optionally a logical operator (relOp grammar rule). The operands of simple Expression are represented by expressionPart, which can derive into a number (NUMBER token), a string value (STRING token) or an element reference (designator alternative).

5.2 The ASTM Metamodel

The ASTM metamodel excerpt shown in Figure 20 includes the elements used to represent the subset of statements and expressions considered in the grammar. In ASTM, the Statement hierarchy represents the statements of a programming language. The Figure includes the BlockStatement metaclass, which represents blocks of statements (substatements reference) and the ExpressionStatement metaclass, which represents an expression statement (expression reference) and allows assignments, references, literals and function calls to be represented. Note that ASTM models are more complex than AST models because they incorporate metaclasses which allow cross-references between elements to be represented (i.e., NameReference hierarchy explained below). Thus, ASTM models are actually abstract syntax graphs.

In ASTM, the expressions of a programming language are represented by means of the elements of the Expression hierarchy. Figure 20 includes the BinaryExpression metaclass with which to represent both assignment and logical expressions; the NameReference metaclass, which allows elements referring to other abstract syntax tree elements to be represented (e.g., the use of a variable and its declaration or the call to a function and its declaration); the Literal metaclass with which to represent literal values; and the FunctionCallExpression metaclass with which to represent function calls. The BinaryExpression metaclass refers to the right-hand and left-hand side of the binary expression (rightOperand and leftOperand references, respectively) along with the operator of such an expression (operator reference), which is represented by the metaclasses of the BinaryOperator hierarchy. The NameReference metaclass refers to the DefinitionObject (refersTo reference), which is the root metaclass of every definition or declaration element in ASTM (e.g., VariableDeclaration and FunctionDeclaration metaclasses). The IdentifierReference is subclass of NameReference and allows simple references to be represented (e.g., the name of either a variable or a function). The Literal metaclass includes the value attribute for storing the literal value and has IntegerLiteral and StringLiteral as subclasses of representing integer and string values, respectively. Finally, the FunctionCallExpression metaclass refers to the declaration of the called function (calledFunction reference) and the parameters (actualParams reference), which are actually represented

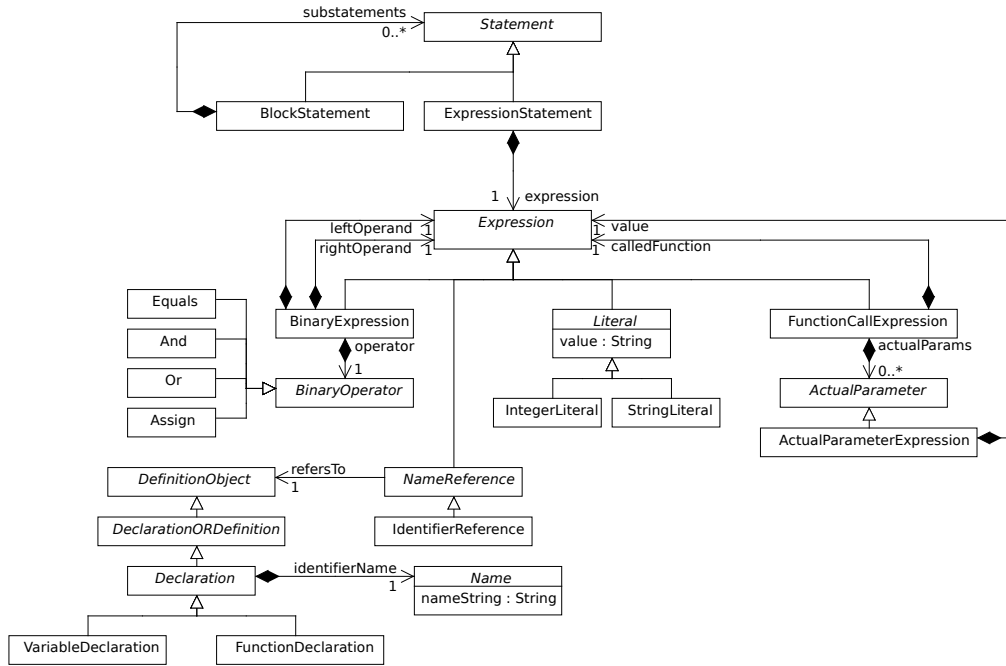


Fig. 20 An excerpt of the ASTM metamodel used in the example.

by the metaclass `ActualParameterExpression` referring to the expression used as a parameter.

5.3 Transformation Rules Dealing with Statements

The Gra2MoL transformation definition developed consists of 38 rules but owing to lack of space, in this section we only present the rules involved in the example (the complete definition of the transformation can be downloaded from [18]). We first describe the rules used to transform the statements considered in this example and then the rules dealing with expressions, as they will use the skip rule type.

Figure 21 shows the set of rules used to transform blocks of statements. The `mapBlock` rule starts the transformation execution. This rule has only one binding whose right-hand side is a query identifier (`stats`) and whose left-hand side refers to the `subStatements` reference of the `BlockStatement` metaclass. The query is therefore executed and the rules conforming the binding are then looked up and executed for each result element. In this case, `mapCallFunction` and `mapAssignment` rules conform to the binding, but the `from` filter allows the selection of only one for each query result element, depending on the existence of the `:=` token in the statement grammar element.

The `mapAssignment` rule defines the mapping between the statement grammar element containing the `:=` token and the `ExpressionStatement` metaclass. This rule there-

fore creates an instance of the `ExpressionStatement` metaclass and its queries obtain both the left-hand side and right-hand side elements of the assignment (`lElem` and `rElem` queries, respectively). The rule includes a set of mappings to initialize the expression reference of the instance created. First, a new instance of `BinaryExpression` is created and assigned to this reference. Then, the operator reference is established by creating an `Assign` metaclass instance, which specifies that the `BinaryExpression` created by the rule is an assignment expression. The last two mappings are bindings whose right-hand side is a query identifier (`lElem` and `rElem`, respectively) and left-hand side is a reference (`leftOperand` and `rightOperand`, respectively). Note that the last three mappings use the dot notation in the left-hand part of the binding to access to the properties of the model element referred by the expression property. The mapping using the `lElem` query identifier will apply the rule `locateFromDesignator` since the query obtains the `designator` grammar element from the left-hand side of the assignment code statement and it is the only one that conforms to the binding. On the other hand, the `rElem` query obtains the expression grammar element of the assignment code statement and the mapping result will therefore apply the rule that deals with expressions, which will be explained in Section 5.4.

The `locateFromDesignator` rule defines the mapping between the `designator` grammar element and the `IdentifierReference` metaclass. The rule therefore cre-

```

rule 'mapBlock'
from block b
to astm::gastm::BlockStatement
queries
  stats : /b/compoundStmt//statement;
mappings
  subStatements = stats;
end_rule

rule 'mapAssignment'
from statement{TOKEN[0].eq(":=")} st
to astm::gastm::ExpressionStatement
queries
  lElem : /st/#designator;
  rElem : /st/#expression;
mappings
  expression          = new astm::gastm::BinaryExpression;
  expression.operator = new astm::gastm::Assign;
  expression.leftOperand = lElem;
  expression.rightOperand = rElem;
end_rule

rule 'mapCallFunction'
from statement{!TOKEN[0].eq(":=")} st
to astm::gastm::ExpressionStatement
queries
  dElem : /st/#designator;
  eElem : /st//##expression;
mappings
  expression          = new astm::gastm::FunctionCallExpression;
  expression.calledFunction = dElem;
  expression.actualParams = eElem;
end_rule

rule 'locateFromDesignator'
from designator d
to astm::gastm::IdentifierReference
queries
  varloc : //varDeclaration//designator{ID.eq(d.ID)};
  metloc : //procFuncDeclaration//designator{ID.eq(d.ID)};
mappings
if(metloc.hasResults) then
  refersTo = metloc;
else
  refersTo = varloc;
end_if
end_rule

rule 'mapVariableDeclaration'
from varDeclaration varDecl
to astm::gastm::VariableDefinition
  ...
end_rule

rule 'mapProcFuncDeclaration'
from procFuncDeclaration pfDecl
to astm::gastm::FunctionDefinition
  ...
end_rule

rule 'mapParameter'
from expression exp
to astm::gastm::ActualParameterExpression
queries
mappings
  value = exp;
end_rule

```

Fig. 21 Transformation rules dealing with statements.

ates an instance of the `IdentifierReference` metaclass and its purpose is to locate the referred element through the source code. The queries of this rule thus traverse the CST in order to locate either the variable or the referred function/procedure declaration (`varloc` and `metloc` query identifiers, respectively). These queries use the `//` operator to find the `designator` grammar element, which specifies the identifier of either the variable or the function/procedure, facilitating the definition of the traversal of the syntax tree. Note that such a reference is actually a cross-reference between elements of the syntax tree and how easy is to resolve it by using the Gra2MoL query language. It is also important to note that the reference format could involve defining some query extension (e.g., if the reference involves dealing with particular scopes). In the mappings section, an if statement checks whether either a variable or function/procedure has been found (i.e., they have result elements) and establishes the `refersTo` reference. If a function/procedure has been found, the binding involving the `metloc` query identifier will be applied and the `mapProcFuncDeclaration` rule will then be executed, which will initialize the `refersTo` reference to the instance of the `FunctionDeclaration` metaclass. On the other hand, if a variable has been found, the binding involving the `varloc` query identifier will be applied and then the `mapVariableDeclaration` rule will be executed, which will initialize the `refersTo` reference to the instance of the

`VariableDeclaration` metaclass created by this rule. Since the example only covers the transformation rules dealing with some statements, these two rules are not shown in their entirety.

The `mapCallFunction` rule defines the mapping between the `statement` grammar element, which does not contain the `:=` token, and the `ExpressionStatement` metaclass. Like the `mapAssignment` rule, this rule also creates an instance of `ExpressionStatement` metaclass but the `expression` property must refer to an instance of `FunctionCallExpression`. The queries contained in this rule obtain the name of the called function/procedure (`dElem` query) and the set of parameters (`eElem` query). The last query illustrates the meaning of the `///` operator. Since the `param` grammar rule is defined recursively, the `///` allows the CST to be traversed in order to retrieve every `param` node. This rule includes a set of mappings to initialize the `expression` reference of the metaclass created. First, a new instance of `FunctionCallExpression` is created and assigned to this reference. The next mapping is a binding whose right-hand side part is a query identifier (`dElem`) and whose left-hand side the called `Function` reference. The query is applied and a rule conforming this binding will be executed. In this case, the only rule that can be executed is the `locateFromDesignator` rule explained above. The last mapping of the `mapCallFunction` is also a binding whose right-hand side is a query identifier

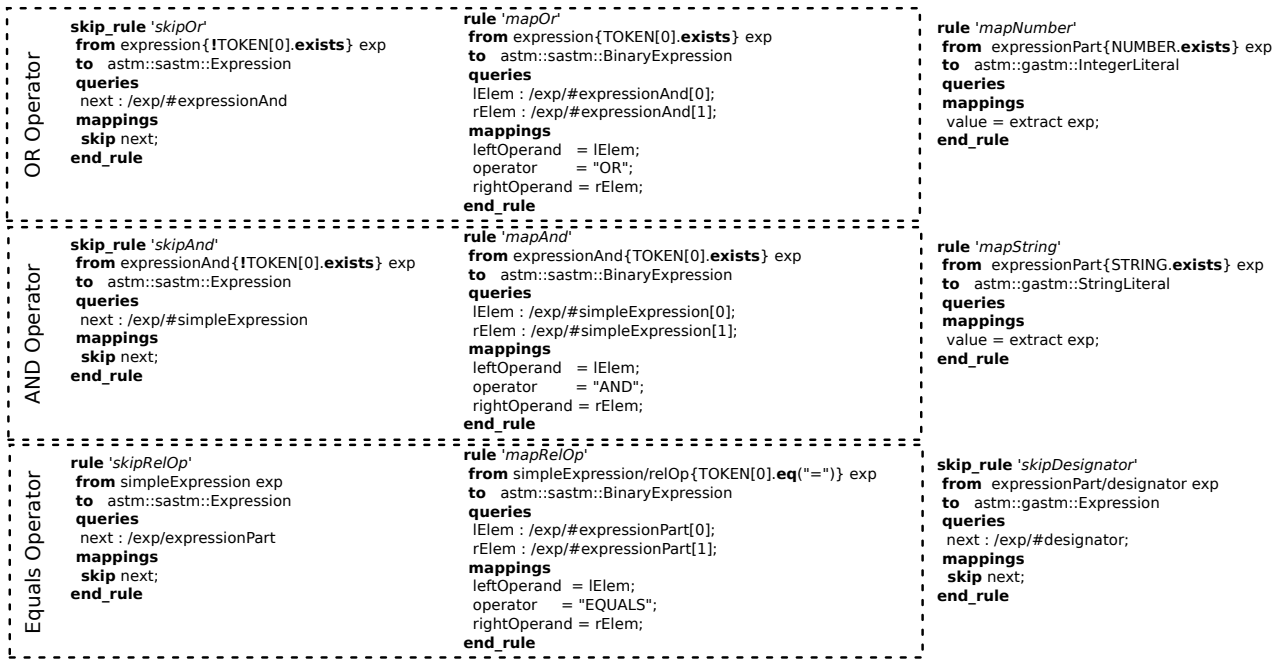


Fig. 22 Transformation rules for dealing with expressions in the Delphi example.

(eElem) and left-hand side is the actualParams reference. In this case, once the query is executed, the mapParameter rule is applied for each query result.

The mapParameter rule defines the mapping between the expression grammar element and the ActualParameterExpression metaclass. The rule therefore creates an instance of ActualParameterExpression metaclass and contains only one binding whose right-hand side is the grammar element received by the rule and the left-hand side is the value reference. Since the application of this binding will execute the rules that deal with expressions, it will be explained below.

5.4 Transformation Rules Dealing with Expressions

When defining Gra2MoL transformation rules for expression grammar rules, the pattern to be used is the following: for each expression grammar rule, two transformation rules must be added. The former is a skip rule dealing with the grammar element that does not contain the operator token and the latter is a normal rule dealing with the grammar element that contains it. The new skip rule must transfer the execution to the next grammar element dealing with expressions, whereas the new normal rule must transform the current grammar element. For instance, skipOr and mapOr are the rules which deal with the expression grammar element. The skipOr

rule is a skip rule which transfers the transformation execution to the expressionAnd grammar element whether the expression grammar element does not have the OR token. On the other hand, the mapOr rule is a normal rule which deals with the expression grammar element containing the OR token.

Thus, when an expression grammar element is being evaluated (e.g., the last bindings of mapAssignments and mapParameter), either the skipOr or the mapOr could be executed depending on the existence of the OR token. If it does not exist, the skipOr rule is executed so that the next query locates the next grammar element dealing with expressions (i.e. the expressionAnd element) and executes the skip next statement, which transfers the execution to that rule whose from part conforms to expressionAnd and whose to part conforms to Expression metaclass. In this case, the candidate rules are skipAnd and mapAnd. On the other hand, if the OR token exists, the mapOr rule is executed so that an instance of the BinaryExpression metaclass is created and both its operator (operator reference) and operands (leftOperand and rightOperand references) are initialized, which causes those rules conforming to this binding to be triggered. In this case, since the type of the queries are expressionAnd grammar elements, the candidate rules also are skipAnd and mapAnd. For the sake of simplicity, the rule only deals with expressions containing two operands.

```

path : string;
procedure deleteFile (path : string, mode : integer);
begin
...
end

```

```

begin
path := "debug.txt";
deleteFile(path, 0);
end

```

Fig. 23 Delphi code example.

Notice that the pattern is repeated in the `skipAnd` and `mapAnd` rules for the `expressionAnd` grammar element as well as in the `skipRelOp` and `mapRelOp` rules for the simple `Expression` grammar element. The `mapNumber`, `mapString` and `skipDesignator` rules are the end of the expression transformation. The `mapNumber` and `mapString` rules create an `IntegerLiteral` or `StringLiteral` that stores the value of the expression element in the `value` attribute. On the other hand, the `skipDesignator` rule transfers the execution to that rule which deals with the `designator` grammar element (i.e., the `locateFromDesignator` rule described before). Note that this use of skip rules differs slightly from the use explained previously. In this case, it is used to transfer the execution to that rule which is in charge of transforming a particular grammar element (i.e., `designator` grammar element in this case), thus allowing developers to control the transformation execution flow.

Figure 23 shows a Delphi code snippet and Figure 24 shows the model created by means of applying the transformation rules described previously. Note that the transformation starts dealing with the boxed source code.

6 Conclusions and Future Work

The description in this paper has been focused on its usefulness in extracting models from GPL code. However, this domain specific language is actually a text-to-model transformation which can be used to extract models from any code conforming to a grammar. To the best of our knowledge, Gra2MoL is the first approach for the definition of a text-to-model transformation language.

Figure 25 shows the main Gra2MoL features according to the feature diagram proposed in [38] as a framework for the classification of model transformation languages. Gra2MoL is a unidirectional language, whose source domain is the grammar realm and whose target domain is the MDE realm. A Gra2MoL transformation definition consists of rules which

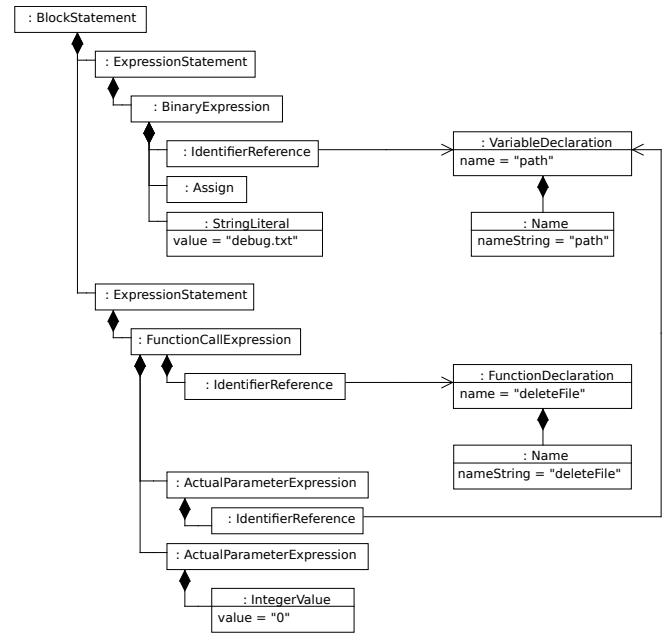


Fig. 24 ASTM model obtained by means of applying the transformation rules to the Delphi code shown in Figure 23.

transform grammar elements into model elements by manipulating the CST of the source code. Rules are resolved implicitly and in a deterministic manner, although the developer can alter the rule scheduling by using skip rules. The language also incorporates mixin rules as a reuse mechanism, in addition to copy rules which allow a source element to be transformed more than once. With regard to the trace information, the Gra2MoL engine creates a separate trace model automatically. Moreover, a powerful language has been defined to navigate and query a CST in a structure-shy manner. The language has been applied a several case studies (downloadable from [18]), thus allowing us to identify new functionalities with which to improve its expressiveness, usability and performance.

With regard to future work, we are working on scalability issues such as analyzing the performance impact of managing a CST either in memory or in a model repository. We are additionally studying the incorporation of a phasing mechanism to allow transformation definitions to be organized and modularity to be promoted. We also plan to incorporate a trace query mechanism to improve the transformation control. Finally, we are working on supporting another parser generators in order to increase the number of existing grammars that can be reused.

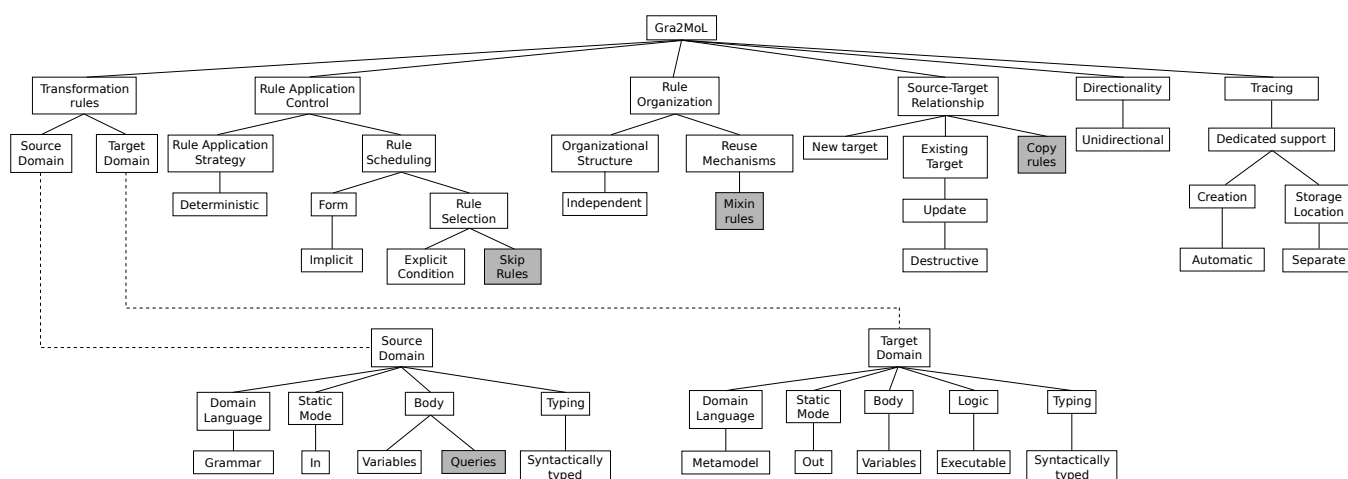


Fig. 25 Feature diagram showing the features of Gra2MoL according to [38]. Gra2MoL specific features are depicted as filled boxes.

Acknowledgement

This work has been supported by the Spanish government (TIN2009-11555 project) and the Fundación Séneca of the Regional Government of Murcia (15389/PI/10 grant).

References

1. Heckel, R., Correia, R., Matos, c., El-Ramly, M., Koutsoukos, G., Andrade, L.: Architectural Transformations: From Legacy to Three-Tier and Services. In: Mens, T., Demeyer, S. (eds.) Software Evolution, pp. 139–170, Springer, Heidelberg (2008)
2. Cánovas, J.L., Molina, J.G.: An Architecture-Driven Modernization Tool for Calculating Metrics. *IEEE Softw.* 27, 37–43 (2010)
3. Andrade, L. F., Gouveia, J., Antunes, M., El-Ramly M., Koutsoukos, G.: Forms2Net - Migrating Oracle Forms to Microsoft .NET. In: Generative and Transformational Techniques in Software Engineering, pp. 261–277 (2006)
4. Reus, T., Geers, H., Deursen, A.: Harvesting Software Systems for MDA-Based Reengineering. In: European Conference on Model Driven Architecture - Foundations and Applications, LNCS 4066, pp. 213–225 (2006)
5. ADM initiative website. <http://adm.omg.org>. Accessed 6 March 2012
6. ADM Task Force: Architecture-driven modernization scenarios. OMG (2006).
7. Kurtev, I., Bézivin, J., Aksit, M.: Technological spaces: An initial appraisal. In: Cooperative Information Systems, DOA’2002 Federated Conferences, Industrial track (2002).
8. Xtext project. <http://www.eclipse.org/Xtext>. Accessed 6 March 2012
9. EMFText project. <http://emftext.org>. Accessed 6 March 2012
10. Czarnecki, K., Helsen, S.: Feature-based survey of model transformation approaches. In: *IBM Syst.*, 45(3), 621–646 (2006)

11. Jouault, F., Allilaire, F., Bézivin, J., Kurtev, I.: ATL: A model transformation tool. *Sci. Comp. Program.* 72(1-2), pp. 31–39 (2008)
12. Heaton, L.: Meta Object Facility (MOF) 2.0 Query/View/Transformation Specification. OMG (2005)
13. Cuadrado, J. S., Molina, J.G., Tortosa, M. M.: Rubytl: A practical, extensible transformation language. In: European Conference on Model Driven Architecture - Foundations and Applications, LNCS 4066, pp. 158-172 (2006)
14. Mofscript project. <http://www.eclipse.org/gmt/mofscript>. Accessed 6 March 2012
15. Xpand website. <http://wiki.eclipse.org/Xpand>. Accessed 6 March 2012
16. Cánovas, J.L., Cuadrado, J. S., Molina, J.G.: Gra2MoL: A domain specific transformation language for bridging grammarware to modelware in software modernization. In: Workshop Model Driven Software Evolution (2008)
17. Cánovas, J.L., Molina, J.G.: A domain specific language for extracting models in software modernization. In: European Conference on Model Driven Architecture Foundations and Applications, LNCS 5562, pp. 82–97 (2009)
18. Gra2MoL website. <http://modelum.es/gra2mol>. Accessed 6 March 2012
19. Wijngaarden, J., Visser, E.: Program transformation mechanics. a classification of mechanisms for program transformation with a survey of existing transformation systems. In: Tech. Rep. UU-CS-2003-048, Department of Information and Computing Sciences, Utrecht University (2003)
20. JDT Eclipse project. <http://www.eclipse.org/jdt>. Accessed 6 March 2012
21. MoDisco. <http://www.eclipse.org/gmt/modisco>. Accessed 6 March 2012
22. GMT Eclipse project. <http://www.eclipse.org/gmt>. Accessed 6 March 2012

23. KDM metamodel specification. <http://www.omg.org/spec/KDM>. Accessed 6 March 2012
24. Fowler, M.: *Domain-Specific Languages*. Addison Wesley (2011)
25. Scheidgen, M.: Textual Modelling Embedded into Graphical Modelling. In: *European Conference on Model Driven Architecture Foundations and Applications*, LNCS 4530, pp. 153–168 (2008)
26. Jouault, F., Bézivin, J., Kurtev, I.: TCS: a dsl for the specification of textual concrete syntaxes in model engineering. In: *Generative Programming and Component Engineering*, pp. 249–254 (2006)
27. JAMOPP project. <http://jamopp.inf.tu-dresden.de>. Accessed 6 March 2012
28. Wimmer M., Kramler, G.: Bridging grammarware and modelware. In: *Satellite Events at the MoDELS 2005 Conference*, pp. 159-168 (2006)
29. Kunert, A.: Semi-automatic generation of metamodels and models from grammars and programs. *Fifth Intl. Workshop on Graph Transformation and Visual Modeling Techniques*. E. N. in *Theoretical Computer Science* **211** (2008) 111-119.
30. Prinz, A., Scheidgen, M., Tveit, M. S.: A model-based standard for SDL. In: *International SDL Forum conference on Design for dependable systems*, pp. 1–18 (2007)
31. Stratego/XT. <http://strategoxt.org>. Accessed 6 March 2012
32. TXL. <http://www.txl.ca>. Accessed 6 March 2012
33. OCL constraint language. OMG (2006)
34. Wijngaarden, J.: *Code Generation from a Domain Specific Language*, MSc Thesis (2003)
35. ASTM metamodel specification. <http://www.omg.org/spec/ASTM>. Accessed 6 March 2012
36. Xpath. <http://www.w3.org/TR/xpath>. Accessed 6 March 2012
37. CDO project. <http://www.eclipse.org/cdo>. Accessed 6 March 2012
38. Czarnecki, K., Helsen, S.: Classification of model transformation approaches. In: *Proceedings of the 2nd OOPSLA Workshop on Generative Technique in the Context of the Model Driven Architecture* (2003)
39. Espinazo-Pagán, J., Sánchez Cuadrado, J., García Molina, J.: Morsa: A Scalable Approach for Persisting and Accessing Large Models. In: *International Conference on Model Driven Engineering Languages & Systems*, pp. 77–92 (2011)