

# Extreme magnification of a star at redshift 1.5 by a galaxy-cluster lens

Patrick L. Kelly<sup>1,2</sup>, Jose M. Diego<sup>3</sup>, Steven Rodney<sup>4</sup>, Nick Kaiser<sup>5</sup>, Tom Broadhurst<sup>6,7</sup>, Adi Zitrin<sup>8</sup>, Tommaso Treu<sup>9</sup>, Pablo G. Pérez-González<sup>10</sup>, Takahiro Morishita<sup>9,11,12</sup>, Mathilde Jauzac<sup>13,14,15</sup>, Jonatan Selsing<sup>16</sup>, Masamune Oguri<sup>17,18,19</sup>, Laurent Pueyo<sup>20</sup>, Timothy W. Ross<sup>1</sup>, Alexei V. Filippenko<sup>1,21</sup>, Nathan Smith<sup>22</sup>, Jens Hjorth<sup>16</sup>, S. Bradley Cenko<sup>23,24</sup>, Xin Wang<sup>9</sup>, D. Andrew Howell<sup>25,26</sup>, Johan Richard<sup>27</sup>, Brenda L. Frye<sup>22</sup>, Saurabh W. Jha<sup>28</sup>, Ryan J. Foley<sup>29</sup>, Colin Norman<sup>30</sup>, Marusa Bradac<sup>31</sup>, Weikang Zheng<sup>1</sup>, Gabriel Brammer<sup>20</sup>, Alberto Molino Benito<sup>32</sup>, Antonio Cava<sup>33</sup>, Lise Christensen<sup>16</sup>, Selma E. de Mink<sup>34</sup>, Or Graur<sup>35,36,37</sup>, Claudio Grillo<sup>38,16</sup>, Ryota Kawamata<sup>39</sup>, Jean-Paul Kneib<sup>40</sup>, Thomas Matheson<sup>41</sup>, Curtis McCully<sup>25,26</sup>, Mario Nonino<sup>42</sup>, Ismael Perez-Fournon<sup>43,44</sup>, Adam G. Riess<sup>30,20</sup>, Piero Rosati<sup>45</sup>, Kasper Borello Schmidt<sup>46</sup>, Keren Sharon<sup>47</sup>, & Benjamin J. Weiner<sup>22</sup>

<sup>1</sup>*Department of Astronomy, University of California, Berkeley, CA 94720-3411, USA*

<sup>2</sup>*School of Physics and Astronomy, University of Minnesota, 116 Church Street SE, Minneapolis, MN 55455, USA*

<sup>3</sup>*IFCA, Instituto de Física de Cantabria (UC-CSIC), Av. de Los Castros s/n, 39005 Santander, Spain*

<sup>4</sup>*Department of Physics and Astronomy, University of South Carolina, 712 Main St., Columbia, SC 29208, USA*

<sup>5</sup>*Institute for Astronomy, University of Hawaii, 2680 Woodlawn Drive, Honolulu, HI 96822-1839, USA*

<sup>6</sup>*Department of Theoretical Physics, University of the Basque Country, Bilbao 48080, Spain*

<sup>7</sup>*IKERBASQUE, Basque Foundation for Science, Alameda Urquijo, 36-5 48008 Bilbao, Spain*

<sup>8</sup>*Physics Department, Ben-Gurion University of the Negev, P.O. Box 653, beer-sheva 8410501, Israel*

<sup>9</sup>*Department of Physics and Astronomy, University of California, Los Angeles, CA 90095*

<sup>10</sup>*Departamento de Astrofísica, Facultad de Ciencias Físicas, Universidad Complutense de Madrid, E-28040 Madrid, Spain*

<sup>11</sup>*Astronomical Institute, Tohoku University, Aramaki, Aoba, Sendai 980-8578, Japan*

<sup>12</sup>*Institute for International Advanced Research and Education, Tohoku University, Aramaki, Aoba, Sendai 980-8578, Japan*

<sup>13</sup>*Centre for Extragalactic Astronomy, Department of Physics, Durham University, Durham DH1 3LE, U.K.*

<sup>14</sup>*Institute for Computational Cosmology, Durham University, South Road, Durham DH1 3LE, U.K.*

<sup>15</sup>*Astrophysics and Cosmology Research Unit, School of Mathematical Sciences, University of KwaZulu-Natal, Durban 4041, South Africa*

<sup>16</sup>*Dark Cosmology Centre, Niels Bohr Institute, University of Copenhagen, Juliane Maries Vej 30, DK-2100 Copenhagen, Denmark*

<sup>17</sup>*Research Center for the Early Universe, University of Tokyo, Tokyo 113-0033, Japan*

<sup>18</sup>*Department of Physics, University of Tokyo, 7-3-1 Hongo, Bunkyo-ku, Tokyo 113-0033, Japan*

<sup>19</sup>*Kavli Institute for the Physics and Mathematics of the Universe (Kavli IPMU, WPI), University*

*of Tokyo, 5-1-5 Kashiwanoha, Kashiwa, Chiba 277-8583, Japan*

<sup>20</sup>*Space Telescope Science Institute, 3700 San Martin Dr., Baltimore, MD 21218, USA*

<sup>21</sup>*Miller Senior Fellow, Miller Institute for Basic Research in Science, University of California, Berkeley, CA 94720, USA*

<sup>22</sup>*Steward Observatory, University of Arizona, 933 N. Cherry Ave., Tucson, AZ 85721, USA*

<sup>23</sup>*Astrophysics Science Division, NASA Goddard Space Flight Center, Mail Code 661, Greenbelt, MD 20771, USA*

<sup>24</sup>*Joint Space-Science Institute, University of Maryland, College Park, MD 20742, USA*

<sup>25</sup>*Las Cumbres Observatory, 6740 Cortona Dr., Suite 102, Goleta, CA 93117, USA*

<sup>26</sup>*Department of Physics, University of California, Santa Barbara, CA 93106-9530, USA*

<sup>27</sup>*Univ Lyon, Univ Lyon1, ENS de Lyon, CNRS, Centre de Recherche Astrophysique de Lyon UMR5574, F-69230, Saint-Genis-Laval, France*

<sup>28</sup>*Department of Physics and Astronomy, Rutgers, The State University of New Jersey, Piscataway, NJ 08854, USA*

<sup>29</sup>*Department of Astronomy and Astrophysics, UCO/Lick Observatory, University of California, 1156 High Street, Santa Cruz, CA 95064, USA*

<sup>30</sup>*Department of Physics and Astronomy, The Johns Hopkins University, 3400 N. Charles St., Baltimore, MD 21218, USA*

<sup>31</sup>*Department of Physics, University of California, Davis, 1 Shields Avenue, Davis, CA 95616, USA*

<sup>32</sup>*Instituto de Astronomia, Geofísica e Ciências Atmosféricas, Universidade de São Paulo, 05508-*

090, São Paulo, Brazil

<sup>33</sup>*Department of Astronomy, University of Geneva, 51, Ch. des Maillettes, CH-1290 Versoix, Switzerland*

<sup>34</sup>*Anton Pannekoek Institute for Astronomy, University of Amsterdam, NL-1090 GE Amsterdam, the Netherlands*

<sup>35</sup>*Harvard-Smithsonian Center for Astrophysics, 60 Garden Street, Cambridge, MA 02138*

<sup>36</sup>*Department of Astrophysics, American Museum of Natural History, Central Park West and 79th Street, New York, NY 10024, USA*

<sup>37</sup>*NSF Astronomy and Astrophysics Postdoctoral Fellow*

<sup>38</sup>*Dipartimento di Fisica, Università degli Studi di Milano, via Celoria 16, I-20133 Milano, Italy*

<sup>39</sup>*Department of Astronomy, Graduate School of Science, The University of Tokyo, 7-3-1 Hongo, Bunkyo-ku, Tokyo 113-0033, Japan*

<sup>40</sup>*Laboratoire d'Astrophysique, Ecole Polytechnique Federale de Lausanne (EPFL), Observatoire de Sauverny, CH-1290 Versoix, Switzerland*

<sup>41</sup>*National Optical Astronomical Observatory, Tucson, AZ 85719, USA*

<sup>42</sup>*INAF, Osservatorio Astronomico di Trieste, via Bazzoni 2, 34124 Trieste, Italy*

<sup>43</sup>*Instituto de Astrofísica de Canarias (IAC), E-38205 La Laguna, Tenerife, Spain*

<sup>44</sup>*Universidad de La Laguna, Dpto. Astrofísica, E-38206 La Laguna, Tenerife, Spain*

<sup>45</sup>*Dipartimento di Fisica e Scienze della Terra, Università degli Studi di Ferrara, via Saragat 1, I-44122, Ferrara, Italy*

<sup>46</sup>*Leibniz-Institut für Astrophysik Potsdam (AIP), An der Sternwarte 16, 14482 Potsdam, Germany*

<sup>47</sup>*University of Michigan, Department of Astronomy, 1085 South University Avenue, Ann Arbor, MI 48109-1107, USA*

**Galaxy-cluster gravitational lenses can magnify background galaxies by a total factor of up to  $\sim 50$ . Here we report an image of an individual star at redshift  $z = 1.49$  (dubbed “MACS J1149 Lensed Star 1 (LS1)”) magnified by  $> 2000$ . A separate image, detected briefly  $0.26''$  from LS1, is likely a counterimage of the first star demagnified for multiple years by a  $\gtrsim 3 M_{\odot}$  object in the cluster. For reasonable assumptions about the lensing system, microlensing fluctuations in the stars’ light curves can yield evidence about the mass function of intracluster stars and compact objects, including binary fractions and specific stellar evolution and supernova models. Dark-matter subhalos or massive compact objects may help to account for the two images’ long-term brightness ratio.**

The pattern of magnification arising from a foreground strong gravitational lens changes with distance behind it. At each specific distance behind the lens, the locations that are most highly magnified are connected by a so-called caustic curve. Near the caustic curve in the source plane, magnification changes rapidly. Over a distance of only tens of parsecs close to the MACS J1149 galaxy cluster’s caustic at  $z = 1.5$ , for example, magnification falls from a maximum of  $\sim 5000$  to only  $\sim 50$ . Since the sizes of even compact galaxies are hundreds of parsecs, their total magnifications cannot exceed  $\sim 50$ .

However, a well-aligned individual star adjacent to the caustic of a galaxy cluster could, in theory, become magnified by a factor of many thousands<sup>1</sup>. When a galaxy cluster’s caustic curve

is mapped from the source plane defined at a specific redshift to the image plane on the sky, it is called the critical curve. Consequently, a highly magnified star should be found close to the foreground galaxy cluster’s critical curve.

## 1 A Lensed Blue Supergiant at Redshift $z = 1.49$

In *Hubble Space Telescope (HST)* Wide Field Camera 3 (WFC3) infrared (IR) imaging taken on 29 April 2016 to construct light curves of the multiple images of Supernova (SN) Refsdal<sup>2–11</sup>, we detected an unexpected change in flux of an individual point source (dubbed “MACS J1149 Lensed Star 1 (LS1)”) in the MACS J1149 galaxy-cluster field<sup>12</sup>. As shown in Fig. 1, the unresolved blue source lies close to the cluster’s critical curve at its host galaxy’s redshift of  $z = 1.49$ <sup>5–11</sup>. Fig. 2 shows that, while the location of the critical curve differs by  $\sim 0.25''$  among lens models, the blue source is no farther than  $\sim 0.13''$  from the critical curves of all publicly available, high-resolution models.

The MACS J1149 galaxy cluster lens creates two partial, merging images of LS1’s host galaxy separated by the cluster critical curve, as well as an additional full image. As shown in Extended Data Fig. 3, LS1’s predicted position inside the third, full image is near the tip of a spiral arm. According to our lens model, LS1 is  $7.9 \pm 0.5$  kpc from the nucleus of the host galaxy. The multiply imaged SN Refsdal exploded at a different position in the same galaxy<sup>13–16</sup>.

At the peak of the microlensing event in May 2016 (Lensing Event “Lev16A”), LS1 was a factor of  $\sim 4$  times brighter than it appeared in archival *HST* imaging during 2013–2015. Fig. 3

shows that the additional flux we measured at LS1’s position has a spectral energy distribution (SED) statistically consistent with the source’s SED during 2013–2015. As shown in Fig. 3, model spectra of mid-to-late B-type stars at  $z = 1.49$  with photospheric temperatures of 11,000–14,000 K<sup>17</sup> provide a good match to the SED of LS1 ( $\chi^2 = 12.9$  for 6 degrees of freedom;  $\chi^2_\nu = 2.15$ ), given that our model does not account for changes in magnification between the epochs when observations in separate filters were obtained. SED fitting finds probability peaks at  $\sim 8$  and  $\sim 35$  Myr (see Extended Data Fig. 1) for the age of the arc underlying LS1’s position.

A lensed luminous star provides a perhaps unexpected explanation (and yet the only reasonable one we could find) for the transient’s variable light curve and unchanging SED. Except for finite-source effects, gravitational lensing will magnify a star’s emission at all wavelengths equally. Therefore, as we observe for LS1, the SED of a lensed background star should remain the same, even as it appears brighter or fainter owing to changes in its magnification. By contrast, the SEDs of stellar outbursts and supernovae change as they brighten by the factor of  $\sim 4$  observed in May 2016.

As shown in Fig. 3, LS1’s SED exhibits a strong Balmer break, which indicates that the lensed object has a relatively high surface gravity. Stars, including blue supergiants, exhibit spectra with a strong Balmer break, but stellar outbursts and explosions have low surface gravity and lack a strong Balmer break. The temperature of 11,000–14,000 K inferred from fitting the Balmer break is also substantially larger than that of almost all H-rich transients during outburst such as luminous blue variables (LBVs). While Lyman absorption of a background active galactic nucleus (AGN) at

$z \approx 9$  could potentially produce a continuum break at  $\sim 9500 \text{ \AA}$ , the AGN’s flux blueward of the break would be almost entirely absorbed, and additional images would be expected.

Our ray-tracing simulations, which are described in detail in Ref. 18, show that the MACS J1149 galaxy cluster’s gravitational potential effectively increases the Einstein radii of individual stars in the intracluster medium by a factor of  $\sim 100$  along the line of sight to LS1. Consequently, even though intracluster stars account for  $\lesssim 1\%$  of the cluster’s mass along the line of sight to LS1, overlapping caustics arising from intracluster stars should densely cover the source plane of the host galaxy at  $z = 1.49$ , as demonstrated by our simulation plotted in Extended Data Fig. 2. By contrast, Galactic microlensing magnification can be fully modeled using the caustic of a single star or stellar system.

The ray-tracing simulations show that a star at LS1’s location should experience multiple microlensing events over a period of a decade with typical magnifications of  $10^3$ – $10^4$ . In Fig. 4, we display the 2004–2017 light curve of LS1 constructed from all optical and IR *HST* observations of the field, and we show ray-tracing simulations that can describe LS1’s light curve.

## **2 A Separate Microlensing Event at a Different Position**

A foreground gravitational lens made of smoothly distributed matter should form a pair of images of a static background source at equal angular offsets from the critical curve. However, only a single, persistent point source is apparent near the critical curve in *HST* imaging taken during the period 2004–2017. We initially considered the possibility that LS1 happens to be sufficiently close



to the galaxy cluster’s caustic that its pair of images have a small angular separation unresolved in *HST* data. As we continued to monitor the MACSJ1149 cluster field, however, we detected an unexpected new source (“Lev16B”) on 30 October 2016 offset by  $0.26''$  from LS1. We measure magnitudes of  $F125W = 25.78 \pm 0.12$  AB ( $\lambda_{\text{pivot}} = 1.25 \mu\text{m}$ ) and  $F160W = 26.16 \pm 0.22$  AB ( $\lambda_{\text{pivot}} = 1.54 \mu\text{m}$ ). The  $F125W - F160W$  color (which corresponds approximately to rest-frame  $V - R$ ) of the new source is consistent with that of LS1, which has  $F125W - F160W = -0.11 \pm 0.10$  mag AB.

We consider that the new source could either be the counterimage of LS1, or a different lensed star. As can be seen in Fig. 1, the pair of images of LS1’s host galaxy that meet at the critical curve appear flipped relative to each other. These images are said to have opposite parity, a property of lensed images set by the sign of the determinant of the lensing magnification matrix. Assuming they are counterimages, Lev16B and LS1/Lev16A would have negative and positive parity, respectively.

We have found from our ray-tracing simulations that the parity of an image of a lensed background star strongly affects its microlensing variations<sup>18</sup>. Extended Data Fig. 2 shows that, while an image of a background star on LS1/Lev16A’s side of the critical curve always has magnification of  $\gtrsim 300$ , its counterimage on Lev16B’s side has extensive regions of much lower magnification ( $\sim 30$ ) in the source plane. If LS1 fell in such a low-magnification region on Lev16B’s side for much of the period 2004–2017, that could explain why LS1/Lev16B was not detected except on 30 October 2016, as shown in Extended Data Fig. 7. A  $\gtrsim 3 M_{\odot}$  object, such as a stellar binary

system, or a neutron star or black hole, can cause an image of a star to have low magnification for sufficiently long periods on Lev16B's side of the critical curve.

### 3 Properties of Lensed Star 1

If we assume that LS1/Lev16A and Lev16B are counterimages, then our model predicts each has an average magnification of 600. Different cluster models, however, show a factor of  $\sim 2$  disagreement about the magnification at LS1's position<sup>5–10</sup>. LS1 had  $F125W \approx 28.15$  mag in 2004–2008, corresponding to an absolute magnitude of  $M_V = -9.0 \pm 0.75$  (sys) for a magnification of  $\sim 600$  per image.

Post-main-sequence stars in the Small Magellanic Cloud (SMC) that have  $U - B$  and  $B - V$  colors approximately matching those of LS1 ( $-0.40$  and  $-0.05$  mag, respectively) have luminosities reaching  $M_V \gtrsim -8.8$  mag<sup>19</sup>. The two statistically significant peaks in May 2016 could correspond to a projected separation for a binary star system of  $\sim 25$  AU for a transverse velocity of  $1000 \text{ km s}^{-1}$  (see Methods).

If LS1 instead consists of an unresolved pair of images, then the lensed star would need to have an offset of  $\lesssim 0.06$  pc of the caustic curve to be unresolved in *HST* imaging (see Methods). Its total magnification would be  $\sim 10000$ , corresponding to a star with  $M_V \approx -6$  mag.

#### 4 Monte Carlo Simulation of Stellar Population Near Galaxy Cluster’s Caustic

We next perform simulations that allow us to estimate the probabilities (a) that LS1/Lev16A and Lev16B are counterimages of each other, and (b) of discovering a lensed star in *HST* galaxy-cluster observations. We use measurements of the arc underlying LS1’s position to estimate the number and luminosities of stars near the galaxy cluster’s caustic. For different potential stellar luminosity functions, we calculate the number of expected bright lensed stars and microlensing events.

The underlying arc extends for  $\sim 0.2''$  ( $\sim 340$  pc in the source plane) along the galaxy cluster’s critical curve. If LS1/Lev16A and Lev16B are counterimages, then the lensed star is offset from the caustic by 2.2 pc in the source plane according to our lensing model. In our simulation, we populate the source plane region within  $0.4''$  of the critical curve, or 21.9 pc from the caustic, with stars.

We first need to infer the total luminosity in stars in the  $21.9 \text{ pc} \times 340 \text{ pc}$  region adjacent to the galaxy cluster’s caustic. Gravitational lensing conserves the surface brightness, and we use the arc’s  $F125W \approx 25 \text{ mag arcsec}^{-2}$  surface brightness to compute its absolute rest-frame  $V$  surface brightness, which yields an estimate for the luminosity density of  $120 L_{\odot} \text{ pc}^{-2}$ .

The next step is to place stars in the  $21.9 \text{ pc} \times 340 \text{ pc}$  region adjacent to the caustic (within  $0.4''$  of the critical curve), whose area of  $7100 \text{ pc}^2$  should enclose a total luminosity of  $8.5 \times 10^5 L_{\odot}$ . We consider power-law luminosity functions where the number of stars with luminosity between  $L$  and  $L+dL$  is proportional to  $L^{-\alpha} dL$ . For luminosity functions with  $-1.5 \leq \alpha \leq 3$ , we normalize the

luminosity function so that the integrated luminosity equals  $8.5 \times 10^5 L_{\odot}$  and compute the expected number of stars in each  $0.1 L_{\odot}$  interval. We draw from a Poisson distribution to determine the number of stars in each luminosity bin, and assign each star a random position within 21.9 pc of the caustic.

We next compute the average magnification  $\bar{\mu}$  of each star. For a lens consisting of only smooth matter, the predicted magnification at an offset  $R$  in parsecs from the caustic is  $\bar{\mu} = 880 / \sqrt{R}$ . Our ray-tracing simulations find that the average magnification deviates from this prediction closer than  $\sim 1.3$  pc from the caustic curve ( $0.1''$  from the critical curve) due to microlensing. To estimate  $\bar{\mu}$  for stars closer than  $0.10''$  to the critical curve, we interpolate in the image plane between  $\bar{\mu} = 5000$  at the critical curve and  $\bar{\mu} = 680$  at an offset of  $0.10''$ .

Our next step is to estimate the number of bright microlensing peaks ( $F125W \leq 26$  mag) we expect to find in existing *HST* observations of the MACS J1149 galaxy-cluster field. LS1 is expected to have a transverse velocity of order  $1000 \text{ km s}^{-1}$  relative to the cluster lens (see Methods), which corresponds approximately to LS1/Lev16A's two-week peak duration<sup>1</sup>. If *HST* observations taken within a period of 10 days are counted as a single observation, then there were  $N_{\text{obs}} = 50$  observations of the MACS J1149 field in all optical and IR wide-band filters through 13 April 2017, and  $N_{\text{obs}} = 37$  observations through 15 April 2016 just before the detection of LS1.

After taking into account stellar microlensing, the fraction of the source plane where the

magnification exceeds  $\mu$  is (Kaiser et al., in preparation)

$$f_S(\mu, \bar{\mu}) \approx 2.5 \times 10^{-4} \left( \frac{\kappa}{3 \times 10^{-3}} \right) \left( \frac{\bar{\mu}}{500} \right)^3 \left( \frac{\mu}{10^4} \right)^{-2}, \quad (1)$$

where  $\mu$  is the total amplification,  $\kappa$  is the surface density of stars making up the intracluster light (ICL) in units of the critical density, and  $\bar{\mu}$  is the expected magnification if the cluster consisted entirely of smoothly distributed matter. Eq. 1 does not apply at offsets smaller than  $\sim 1.3$  pc from the cluster caustic where the optical depth for microlensing exceeds unity. Our ray-tracing simulations indicate, however, that the formula should provide a reasonable first-order approximation at smaller distances from the caustic when we use our estimate of the average magnification  $\bar{\mu}$  near the critical curve<sup>18</sup>. The number of expected microlensing events with magnification exceeding  $\mu$  for each star will be  $N_{\text{obs}} \times f_S(\mu, \bar{\mu})$ .

The simulations provide support for the hypothesis that Lev16A and Lev16B are counterimages of LS1. Extended Data Fig. 4 shows that, if a star has an average apparent  $F125W$  brightness of at least 27.7 mag similar to LS1, then it will be responsible for  $\gtrsim 99\%$  of  $F125W \leq 26$  mag events. Likewise, Extended Data Fig. 5 shows that observing a bright lensed star sufficiently close to the caustic that its images are unresolved ( $\lesssim 0.06$  pc from the caustic) is a factor of ten less probable than observing a resolved pair of bright images of a lensed star.

In nearby galaxies, the bright end of the luminosity function has a power law index of  $\alpha \approx 2.5$ . Young star-forming regions such as 30 Doradus, however, can have shallower functions where  $\alpha \approx 2$ . Extended Data Fig. 5 suggests that the probability of observing a persistent bright lensed star ( $F125W \leq 27.7$  mag) in the underlying arc may be  $\sim 10\%$  in existing *HST* observations, given

a shallow stellar luminosity function where  $\alpha \approx 2$ . For the steeper mean luminosity function ( $\alpha \approx 2.5$ ) measured for nearby galaxies<sup>20</sup>, we find a probability of 0.01–0.1%. The probability of observing at least one bright ( $F125W \leq 26$  mag) microlensing event is  $\sim 3\%$  for  $\alpha \approx 2$ , and  $\sim 0.1\%$  for  $\alpha \approx 2.5$ . We have repeated our simulation using the distribution of stars in 30 Doradus in the Large Magellanic Cloud (LMC), which yields similar probabilities as for the case where  $\alpha \approx 2$ .

To estimate to first order the probability of finding a lensed star in all existing *HST* galaxy-cluster observations, we make the simplifying assumption that all strong lensing arcs have properties similar to that underlying LS1. Of the total time used to image cluster fields with *HST*, only at most  $\sim 10\%$  has been used to observe MACS J1149. Each of several dozen galaxy cluster fields monitored by *HST* contains  $\sim 4$  giant arcs<sup>21</sup>. Consequently, to take into account all *HST* galaxy-cluster observations, we need to multiply our above Monte Carlo probabilities by an approximate factor of  $10 \times 4 = 40$ . This suggests that the probability of finding a lensed star may be reasonable, but only if the average stellar luminosity function at high redshift is shallower than  $\alpha \approx 2.5$ .

We note that we detected a new potential source (Lev 2017A) which has a  $\sim 4\sigma$  significance in the WFC3-IR imaging acquired on 3 January 2017, although the significance is only  $\sim 2.5\sigma$  considering all *HST* imaging and the independent apertures adjacent to the critical curve.

## 5 Multiple Limits on the Physical Size of Lensed Star 1

Each bright microlensing peak must correspond to light from an individual star in the source plane, given the small area of high magnification adjacent to the microcaustics of intracluster stars. Ad-

ditional considerations provide evidence that the persistent source, LS1, is too compact to be a typical stellar cluster, and is instead a single stellar system (e.g., an individual star or a binary). If LS1 consists of two unresolved counterimages at the location of the critical curve, then LS1 must be more compact than  $\sim 0.06$  pc given the upper limit on its angular size ( $\lesssim 0.040''$ ; see Methods).

If Lev16A and Lev16B are instead mutual counterimages, the limit on LS1’s angular size constrains it to have a physical dimension perpendicular to the caustic of  $\lesssim 1\text{--}2$  pc, which is significantly smaller than the typical size of a stellar cluster.

The absence of a persistent image at Lev16B’s position places a stronger potential limit on LS1’s size. To explain the lack of a persistent counterimage at Lev16B’s location, all stars in a hypothetical stellar association at LS1’s position would need to fall in a region of low magnification on the Lev16B side of the critical curve. Ray-tracing simulations indicate that LS1 would need to be smaller than  $\sim 0.1$  pc. A hypothetical dark matter (DM) subhalo, however, could also potentially demagnify a counterimage at Lev16B’s position.

## **6 Inferences from LS1/Lev16A and Lev16B Assuming They Are Mutual Counterimages**

We next compare the *HST* light curve for LS1/Lev16A and Lev16B with simulated light curves created for different assumptions about intracluster stellar population and the abundance of  $30 M_{\odot}$  primordial black holes (PBHs). In our ray-tracing simulations, LS1/Lev16A and Lev16B are counterimages with average magnifications from the cluster of 600.

We assume (a) all intracluster light (ICL) stars are single, or (b) apply mass-dependent binary fractions and mass ratios<sup>22</sup>. We use a stellar-mass density of  $6.3_{-3.3}^{+10.3} \times 10^6 M_{\odot} \text{ kpc}^{-2}$  for a Chabrier initial mass function (IMF), or higher densities estimated in an improved analysis of  $1.1_{-0.3}^{+0.3} \times 10^7 M_{\odot} \text{ kpc}^{-2}$  and  $1.9_{-0.6}^{+0.6} \times 10^7 M_{\odot} \text{ kpc}^{-2}$  for Chabrier and Salpeter IMFs, respectively. The most massive star that is still living found in the intracluster medium (ICM) at  $z = 0.54$  is assumed to have  $M = 1.5 M_{\odot}$ . In Extended Data Figs. 8, 9, and 10, we plot the simulated light curves for an  $R = 100 R_{\odot}$  lensed star where we adopt the “Woosley02”<sup>23</sup>, “Fryer12”<sup>24</sup>, or “Spera15”<sup>25</sup> models of stellar evolution and core-collapse physics.

For steps of  $50 \text{ km s}^{-1}$  in the range  $100\text{--}2000 \text{ km s}^{-1}$ , we stretch the simulated light curves and identify the regions that best match the data. Table 1 lists the average  $\chi^2$  value for the 150 best matches  $\langle \chi^2 \rangle$ . To interpret differences in  $\langle \chi^2 \rangle$  values, we fit simulated light curves, and compute the difference  $\Delta \langle \chi^2 \rangle$  values between the  $\langle \chi^2 \rangle$  values of the generative (“true”) model and of the best-fitting model. For 68% of simulated light curves,  $\Delta \langle \chi^2 \rangle \lesssim 13$ , and for 95% of simulated light curves,  $\Delta \langle \chi^2 \rangle \lesssim 25$ .

For stars with  $-7.5 > M_V > -9.5 \text{ mag}$ , a range consistent with the most luminous stars in the SMC and LMC given the uncertainty in magnification, models constructed using a prescription for the binary fraction<sup>22</sup> are favored over those where all stars are single (see Extended Data Fig. 11). The  $\langle \chi^2 \rangle$  statistics also favor the Fryer12 stellar model, and a Salpeter IMF over a Chabrier IMF (see Methods). The fitting also provides evidence against models where 1% and 3% of DM consists of  $30 M_{\odot}$  PBHs<sup>26</sup>. Within the confidence intervals, the differences remain robust when extending



the upper  $M_V$  limit to  $-10.5$  mag.

Table 1 also shows  $\langle\chi^2\rangle$  values if we restrict the absolute magnitude to  $-7.5 < M_V < -8.5$  (for  $\mu = 600$ ), although such a low luminosity would be difficult to reconcile with LS1’s light curve. The Fryer12 model and a Salpeter IMF are still favored, but there is no preference for the binary prescription.

Although our confidence intervals assume that our estimates for the stellar-mass density and magnification are correct, it may be reasonable to assume that differences in  $\langle\chi^2\rangle$  values will be robust to modest errors in these parameters. Our cluster model also does not include DM subhalos, which could affect the average fluxes of the images. Although our fits do not favor models where  $30 M_\odot$  PBHs account for 1% or 3% of DM, PBHs consisting of  $\gtrsim 3\%$  of DM could produce a slowly varying average magnification, and potentially explain the absence of flux at Lev16B’s position.

1. Miralda-Escude, J. The magnification of stars crossing a caustic. I - Lenses with smooth potentials. *ApJ* **379**, 94–98 (1991).
2. Kelly, P. L. *et al.* Multiple images of a highly magnified supernova formed by an early-type cluster galaxy lens. *Science* **347**, 1123–1126 (2015). 1411.6009.
3. Rodney, S. A. *et al.* SN Refsdal: Photometry and Time Delay Measurements of the First Einstein Cross Supernova. *ApJ* **820**, 50 (2016). 1512.05734.

4. Kelly, P. L. *et al.* Deja Vu All Over Again: The Reappearance of Supernova Refsdal. *ApJ* **819**, L8 (2016). 1512.04654.
5. Oguri, M. Predicted properties of multiple images of the strongly lensed supernova SN Refsdal. *MNRAS* **449**, L86–L89 (2015). 1411.6443.
6. Sharon, K. & Johnson, T. L. Revised Lens Model for the Multiply Imaged Lensed Supernova, SN Refsdal in MACS J1149+2223. *ApJ* **800**, L26 (2015). 1411.6933.
7. Diego, J. M. *et al.* A free-form prediction for the reappearance of supernova Refsdal in the Hubble Frontier Fields cluster MACSJ1149.5+2223. *MNRAS* **456**, 356–365 (2016). 1504.05953.
8. Jauzac, M. *et al.* Hubble Frontier Fields: predictions for the return of SN Refsdal with the MUSE and GMOS spectrographs. *MNRAS* **457**, 2029–2042 (2016). 1509.08914.
9. Grillo, C. *et al.* The Story of Supernova Refsdal Told by Muse. *ApJ* **822**, 78 (2016). 1511.04093.
10. Kawamata, R., Oguri, M., Ishigaki, M., Shimasaku, K. & Ouchi, M. Precise Strong Lensing Mass Modeling of Four Hubble Frontier Field Clusters and a Sample of Magnified High-redshift Galaxies. *ApJ* **819**, 114 (2016). 1510.06400.
11. Treu, T. *et al.* "Refsdal" Meets Popper: Comparing Predictions of the Re-appearance of the Multiply Imaged Supernova Behind MACSJ1149.5+2223. *ApJ* **817**, 60 (2016). 1510.05750.

12. Ebeling, H. *et al.* A Complete Sample of 12 Very X-Ray Luminous Galaxy Clusters at  $z \lesssim 0.5$ . *ApJ* **661**, L33–L36 (2007). astro-ph/0703394.
13. Smith, G. P. *et al.* Hubble Space Telescope Observations of a Spectacular New Strong-Lensing Galaxy Cluster: MACS J1149.5+2223 at  $z = 0.544$ . *ApJ* **707**, L163–L168 (2009). 0911.2003.
14. Zitrin, A. & Broadhurst, T. Discovery of the Largest Known Lensed Images Formed by a Critically Convergent Lensing Cluster. *ApJ* **703**, L132–L136 (2009). 0906.5079.
15. Yuan, T.-T., Kewley, L. J., Swinbank, A. M., Richard, J. & Livermore, R. C. Metallicity Gradient of a Lensed Face-on Spiral Galaxy at Redshift 1.49. *ApJ* **732**, L14 (2011). 1103.3277.
16. Karman, W. *et al.* Highly ionized region surrounding SN Refsdal revealed by MUSE. *A&A* **585**, A27 (2016). 1509.07515.
17. Castelli, F. & Kurucz, R. L. New Grids of ATLAS9 Model Atmospheres. *ArXiv Astrophysics e-prints* (2004). astro-ph/0405087.
18. Diego, J. M. *et al.* Dark matter under the microscope: Constraining compact dark matter with caustic crossing events. *ArXiv e-prints* (2017). 1706.10281.
19. Dachs, J. Photometry of bright stars in the Small Magellanic Cloud. *A&A* **9**, 95–109 (1970).
20. Bresolin, F. *et al.* A Hubble Space Telescope Study of Extragalactic OB Associations. *AJ* **116**, 119–130 (1998).

21. Xu, B. *et al.* The Detection and Statistics of Giant Arcs behind CLASH Clusters. *ApJ* **817**, 85 (2016). 1511.04002.
22. Duchêne, G. & Kraus, A. Stellar Multiplicity. *ARA&A* **51**, 269–310 (2013). 1303.3028.
23. Woosley, S. E., Heger, A. & Weaver, T. A. The evolution and explosion of massive stars. *Reviews of Modern Physics* **74**, 1015–1071 (2002).
24. Fryer, C. L. *et al.* Compact Remnant Mass Function: Dependence on the Explosion Mechanism and Metallicity. *ApJ* **749**, 91 (2012). 1110.1726.
25. Spera, M., Mapelli, M. & Bressan, A. The mass spectrum of compact remnants from the PARSEC stellar evolution tracks. *MNRAS* **451**, 4086–4103 (2015). 1505.05201.
26. Bird, S. *et al.* Did LIGO Detect Dark Matter? *Physical Review Letters* **116**, 201301 (2016). 1603.00464.
27. Zitrin, A. *et al.* Hubble Space Telescope Combined Strong and Weak Lensing Analysis of the CLASH Sample: Mass and Magnification Models and Systematic Uncertainties. *ApJ* **801**, 44 (2015). 1411.1414.
28. Keeton, C. R. On modeling galaxy-scale strong lens systems. *General Relativity and Gravitation* **42**, 2151–2176 (2010).
29. Lotz, J. M. *et al.* The Frontier Fields: Survey Design and Initial Results. *ApJ* **837**, 97 (2017). 1605.06567.

30. Jones, D. O., Scolnic, D. M. & Rodney, S. A. PythonPhot: Simple DAOPHOT-type photometry in Python. *Astrophysics Source Code Library* (2015). 1501.010.
31. Rodney, S. A. *et al.* Illuminating a Dark Lens : A Type Ia Supernova Magnified by the Frontier Fields Galaxy Cluster Abell 2744. *ApJ* **811**, 70 (2015). 1505.06211.
32. Conroy, C., Gunn, J. E. & White, M. The Propagation of Uncertainties in Stellar Population Synthesis Modeling. I. The Relevance of Uncertain Aspects of Stellar Evolution and the Initial Mass Function to the Derived Physical Properties of Galaxies. *ApJ* **699**, 486–506 (2009). 0809.4261.
33. Conroy, C. & Gunn, J. E. The Propagation of Uncertainties in Stellar Population Synthesis Modeling. III. Model Calibration, Comparison, and Evaluation. *ApJ* **712**, 833–857 (2010). 0911.3151.
34. Kroupa, P. On the variation of the initial mass function. *MNRAS* **322**, 231–246 (2001).
35. Cardelli, J. A., Clayton, G. C. & Mathis, J. S. The relationship between infrared, optical, and ultraviolet extinction. *ApJ* **345**, 245–256 (1989).
36. Marigo, P. & Girardi, L. Evolution of asymptotic giant branch stars. I. Updated synthetic TP-AGB models and their basic calibration. *A&A* **469**, 239–263 (2007). astro-ph/0703139.
37. Marigo, P. *et al.* Evolution of asymptotic giant branch stars. II. Optical to far-infrared isochrones with improved TP-AGB models. *A&A* **482**, 883–905 (2008). 0711.4922.

38. Asplund, M., Grevesse, N., Sauval, A. J. & Scott, P. The Chemical Composition of the Sun. *ARA&A* **47**, 481–522 (2009). 0909.0948.
39. Foreman-Mackey, D., Hogg, D. W., Lang, D. & Goodman, J. emcee: The MCMC Hammer. *PASP* **125**, 306–312 (2013). 1202.3665.
40. Dolphin, A. E. WFPC2 Stellar Photometry with HSTPHOT. *PASP* **112**, 1383–1396 (2000). astro-ph/0006217.
41. Watson, W. A. *et al.* The halo mass function through the cosmic ages. *MNRAS* **433**, 1230–1245 (2013). 1212.0095.
42. Zitrin, A. *et al.* New multiply-lensed galaxies identified in ACS/NIC3 observations of Cl0024+1654 using an improved mass model. *MNRAS* **396**, 1985–2002 (2009). 0902.3971.
43. Oguri, M. The Mass Distribution of SDSS J1004+4112 Revisited. *PASJ* **62**, 1017–1024 (2010). 1005.3103.
44. Jullo, E. *et al.* A Bayesian approach to strong lensing modelling of galaxy clusters. *New Journal of Physics* **9**, 447 (2007). 0706.0048.
45. Suyu, S. H. & Halkola, A. The halos of satellite galaxies: the companion of the massive elliptical lens SL2S J08544-0121. *A&A* **524**, A94 (2010). 1007.4815.
46. Suyu, S. H. *et al.* Disentangling Baryons and Dark Matter in the Spiral Gravitational Lens B1933+503. *ApJ* **750**, 10 (2012). 1110.2536.

47. Schmidt, K. B. *et al.* Through the Looking GLASS: HST Spectroscopy of Faint Galaxies Lensed by the Frontier Fields Cluster MACSJ0717.5+3745. *ApJ* **782**, L36 (2014). 1401.0532.
48. Treu, T. *et al.* The Grism Lens-Amplified Survey from Space (GLASS). I. Survey overview and first data release. *ApJ* **812**, 114 (2015). 1509.00475.
49. Kelly, P. L. *et al.* SN Refsdal: Classification as a Luminous and Blue SN 1987A-like Type II Supernova. *ApJ* **831**, 205 (2016). 1512.09093.
50. Chabrier, G. The Galactic Disk Mass Function: Reconciliation of the Hubble Space Telescope and Nearby Determinations. *ApJ* **586**, L133–L136 (2003).
51. Gaudi, B. S. & Petters, A. O. Gravitational Microlensing near Caustics. I. Folds. *ApJ* **574**, 970–984 (2002). astro-ph/0112531.
52. Treu, T. *et al.* The Initial Mass Function of Early-Type Galaxies. *ApJ* **709**, 1195–1202 (2010). 0911.3392.
53. Auger, M. W. *et al.* Dark Matter Contraction and the Stellar Content of Massive Early-type Galaxies: Disfavoring “Light” Initial Mass Functions. *ApJ* **721**, L163–L167 (2010). 1007.2409.
54. Spiniello, C., Koopmans, L. V. E., Trager, S. C., Czoske, O. & Treu, T. The X-Shooter Lens Survey - I. Dark matter domination and a Salpeter-type initial mass function in a massive early-type galaxy. *MNRAS* **417**, 3000–3009 (2011). 1103.4773.

55. Cappellari, M. *et al.* Systematic variation of the stellar initial mass function in early-type galaxies. *Nature* **484**, 485–488 (2012). 1202.3308.
56. van Dokkum, P. G. & Conroy, C. A substantial population of low-mass stars in luminous elliptical galaxies. *Nature* **468**, 940–942 (2010).
57. Conroy, C. & van Dokkum, P. G. The Stellar Initial Mass Function in Early-type Galaxies From Absorption Line Spectroscopy. II. Results. *ApJ* **760**, 71 (2012).
58. Newman, A. B., Smith, R. J., Conroy, C., Villaume, A. & van Dokkum, P. The Initial Mass Function in the Nearest Strong Lenses from SNELLS: Assessing the Consistency of Lensing, Dynamical, and Spectroscopic Constraints. *ArXiv e-prints* (2016). 1612.00065.
59. Barnabè, M. *et al.* A low-mass cut-off near the hydrogen burning limit for Salpeter-like initial mass functions in early-type galaxies. *MNRAS* **436**, 253–258 (2013). 1306.2635.
60. Conroy, C., van Dokkum, P. G. & Villaume, A. The Stellar Initial Mass Function in Early-type Galaxies from Absorption Line Spectroscopy. IV. A Super-Salpeter IMF in the Center of NGC 1407 from Non-parametric Models. *ApJ* **837**, 166 (2017). 1612.00013.
61. Alves de Oliveira, C. *et al.* Spectroscopy of brown dwarf candidates in IC 348 and the determination of its substellar IMF down to planetary masses. *A&A* **549**, A123 (2013). 1211.4029.
62. Moraux, E., Bouvier, J., Stauffer, J. R. & Cuillandre, J.-C. Brown dwarfs in the Pleiades cluster: Clues to the substellar mass function. *A&A* **400**, 891–902 (2003). astro-ph/0212571.



63. Renzini, A. & Ciotti, L. Transverse Dissections of the Fundamental Planes of Elliptical Galaxies and Clusters of Galaxies. *ApJ* **416**, L49 (1993).
64. Edwards, L. O. V., Alpert, H. S., Trierweiler, I. L., Abraham, T. & Beizer, V. G. Stellar populations of BCGs, close companions and intracluster light in Abell 85, Abell 2457 and IIZw108. *MNRAS* **461**, 230–239 (2016). 1606.00967.
65. Smartt, S. J., Eldridge, J. J., Crockett, R. M. & Maund, J. R. The death of massive stars - I. Observational constraints on the progenitors of Type II-P supernovae. *MNRAS* **395**, 1409–1437 (2009). 0809.0403.
66. Gerke, J. R., Kochanek, C. S. & Stanek, K. Z. The search for failed supernovae with the Large Binocular Telescope: first candidates. *MNRAS* **450**, 3289–3305 (2015). 1411.1761.
67. Pejcha, O. & Thompson, T. A. The Landscape of the Neutrino Mechanism of Core-collapse Supernovae: Neutron Star and Black Hole Mass Functions, Explosion Energies, and Nickel Yields. *ApJ* **801**, 90 (2015). 1409.0540.
68. Hamann, W.-R., Schoenberner, D. & Heber, U. Mass loss from extreme helium stars. *A&A* **116**, 273–285 (1982).
69. Hamann, W.-R. & Koesterke, L. Spectrum formation in clumped stellar winds: consequences for the analyses of Wolf-Rayet spectra. *A&A* **335**, 1003–1008 (1998).
70. Smith, N. Mass Loss: Its Effect on the Evolution and Fate of High-Mass Stars. *ARA&A* **52**, 487–528 (2014). 1402.1237.

71. Belczynski, K. *et al.* Compact Object Modeling with the StarTrack Population Synthesis Code. *ApJS* **174**, 223–260 (2008). [astro-ph/0511811](#).
72. Belczynski, K. *et al.* On the Maximum Mass of Stellar Black Holes. *ApJ* **714**, 1217–1226 (2010). [0904.2784](#).
73. Sana, H. *et al.* Binary Interaction Dominates the Evolution of Massive Stars. *Science* **337**, 444 (2012).
74. Sharon, K. *et al.* The Type Ia Supernova Rate in Redshift 0.5-0.9 Galaxy Clusters. *ApJ* **718**, 876–893 (2010). [1006.3757](#).
75. Postman, M. *et al.* The Cluster Lensing and Supernova Survey with Hubble: An Overview. *ApJS* **199**, 25 (2012). [1106.3328](#).
76. Graur, O. *et al.* Type-Ia Supernova Rates to Redshift 2.4 from CLASH: The Cluster Lensing And Supernova Survey with Hubble. *ApJ* **783**, 28 (2014). [1310.3495](#).
77. Freedman, W. L. The upper end of the stellar luminosity function for a sample of nearby resolved late-type galaxies. *ApJ* **299**, 74–84 (1985).
78. Grammer, S. & Humphreys, R. M. The Massive Star Population in M101. I. The Identification and Spatial Distribution of the Visually Luminous Stars. *AJ* **146**, 114 (2013). [1307.7148](#).
79. Bastian, N. *et al.* Hierarchical star formation in M33: fundamental properties of the star-forming regions. *MNRAS* **379**, 1302–1312 (2007). [0706.0495](#).

80. Cook, D. O. *et al.* The connection between galaxy environment and the luminosity function slopes of star-forming regions. *MNRAS* **462**, 3766–3799 (2016). 1607.03553.
81. Oke, J. B. *et al.* The Keck Low-Resolution Imaging Spectrometer. *PASP* **107**, 375 (1995).
82. Pettini, M. & Pagel, B. E. J. [OIII]/[NII] as an abundance indicator at high redshift. *MNRAS* **348**, L59–L63 (2004).
83. Yuan, T., Kobayashi, C. & Kewley, L. J. H II Region Metallicity Constraints Near the Site of the Strongly Lensed Supernova SN Refsdal at Redshift 1.49. *ApJ* **804**, L14 (2015). 1503.08822.
84. Wang, X. *et al.* The Grism Lens-amplified Survey from Space (GLASS). X. Sub-kiloparsec Resolution Gas-phase Metallicity Maps at Cosmic Noon behind the Hubble Frontier Fields Cluster MACS1149.6+2223. *ApJ* **837**, 89 (2017). 1610.07558.
85. Steidel, C. C. *et al.* Strong Nebular Line Ratios in the Spectra of  $z \sim 2-3$  Star Forming Galaxies: First Results from KBSS-MOSFIRE. *ApJ* **795**, 165 (2014). 1405.5473.
86. Maiolino, R. *et al.* AMAZE. I. The evolution of the mass-metallicity relation at  $z \lesssim 3$ . *A&A* **488**, 463–479 (2008). 0806.2410.
87. Grevesse, N. & Sauval, A. J. Standard Solar Composition. *Space Sci. Rev.* **85**, 161–174 (1998).

88. Kim, A., Goobar, A. & Perlmutter, S. A Generalized K Correction for Type IA Supernovae: Comparing R-band Photometry beyond  $z=0.2$  with B, V, and R-band Nearby Photometry. *PASP* **108**, 190 (1996). [astro-ph/9505024](#).
89. Peng, C. Y., Ho, L. C., Impey, C. D. & Rix, H.-W. Detailed Structural Decomposition of Galaxy Images. *AJ* **124**, 266–293 (2002). [astro-ph/0204182](#).
90. Morishita, T. *et al.* Characterizing Intra-cluster light at  $z \sim 0.5$  in the Hubble Frontier Fields. *ArXiv e-prints* (2016). [1610.08503](#).
91. Schlegel, D. J., Finkbeiner, D. P. & Davis, M. Maps of Dust Infrared Emission for Use in Estimation of Reddening and Cosmic Microwave Background Radiation Foregrounds. *ApJ* **500**, 525 (1998).
92. Kriek, M. *et al.* An Ultra-Deep Near-Infrared Spectrum of a Compact Quiescent Galaxy at  $z = 2.2$ . *ApJ* **700**, 221–231 (2009). [0905.1692](#).
93. Bruzual, G. & Charlot, S. Stellar population synthesis at the resolution of 2003. *MNRAS* **344**, 1000–1028 (2003).
94. Paczynski, B. Gravitational microlensing at large optical depth. *ApJ* **301**, 503–516 (1986).

**Supplementary Information** is linked to the online version of the paper at [www.nature.com/nature](http://www.nature.com/nature).

**Acknowledgements** We express our appreciation to the Directors of the Space Telescope Science Institute, the Gemini Observatory, the GTC, and the European Southern Observatory for granting us discretionary time. We thank B. Katz, D. Kushnir, B. Periello, I. Momcheva, T. Royale,

L. Strolger, D. Coe, J. Lotz, M. L. Graham, R. Humphreys, R. Kurucz, A. Dolphin, M. Kriek, S. Rajendran, T. Davis, I. Hubeny, C. Leitherer, F. Nieva, D. Kasen, J. Mauerhan, D. Kelson, J. M. Silverman, A. Oscoz Abaz, and Z. Levay for help with the observations or other assistance. The Keck Observatory was made possible with the support of the W.M. Keck Foundation. NASA/STScI grants 14041, 14199, 14208, 14528, 14872, and 14922 provided financial support. P.L.K., A.V.F., and W.Z. are grateful for assistance from the Christopher R. Redlich Fund, the TABASGO Foundation, and the Miller Institute for Basic Research in Science (U.C. Berkeley). The work of A.V.F. was completed in part at the Aspen Center for Physics, which is supported by NSF grant PHY-1607611. J.M.D. acknowledges support of projects AYA2015-64508-P (MINECO/FEDER, UE), AYA2012-39475-C02-01, and the consolidator project CSD2010-00064 funded by the Ministerio de Economía y Competitividad. P.G.P.-G. acknowledges support from Spanish Government MINECO AYA2015-70815-ERC and AYA2015-63650-P Grants. M.O. is supported by JSPS KAKENHI Grant Numbers 26800093 and 15H05892. M.J. acknowledges support by the Science and Technology Facilities Council [grant ST/L00075X/1]. R.J.F. is supported by NSF grant AST-1518052 and Sloan and Packard Foundation Fellowships. M.N. acknowledges support from PRIN-INAF-2014 1.05.01.94.02. O.G. was supported by NSF Fellowship under award AST-1602595. J.H. acknowledges support from a VILLUM FONDEN Investigator Grant [number 16599]. *HST* imaging was obtained at <https://archive.stsci.edu>.

**Author Contributions** P.K. planned and analyzed observations, wrote the manuscript, and developed simulations. P.K., S.R., P.G.P.-G., T.M., M.J., J.S., A.V.F., J.H., M.G., D.H., B.L.F., M.B., W.Z., G.B., A.M.B., A.C., L.C., C.G., J-P.K., T.M., C.M., M.N., I.P.-F., A.G.R., P.R., K.B.S, and

B.J.W. obtained follow-up *HST* and ground-based imaging. J.M.D. developed microlensing simulations. S.R., T.B., A.Z., T.T., P.G.P-G., M.J., M.O., A.V.F., N.S., J.H., B.L.F., and S.E.d.M. helped to prepare the manuscript. N.K. interpreted the microlensing events and derived analytic rate formula. T.B., A.Z., T.T., M.J., M.O., X.W., S.W.J., R.J.F., S.E.d.M., O.G., and B.J.W. aided the interpretation. P.G.P-G. modeled the arc's SED. T.M. modeled the ICL. M.O., J.R., R.K., and K.S. modeled the galaxy cluster. L.P., and C.N. considered the possibility that Icarus could exhibit diffraction effects. T.W.R. analyzed the microlensing simulations. N.S. aided interpretation of the star's SED. X.W. estimated the gas-phase metallicity at Icarus' location. M.N. extracted photometry of Icarus using a complementary pipeline.

**Author Information** Data used for this publication may be retrieved from the NASA Mikulski Archive for Space Telescopes (<http://archive.stsci.edu>). Reprints and permissions information is available at [www.nature.com/reprints/](http://www.nature.com/reprints/). The authors declare no competing financial interests. Correspondence should be addressed to P.K. ([patrick.l.kelly@gmail.com](mailto:patrick.l.kelly@gmail.com)).

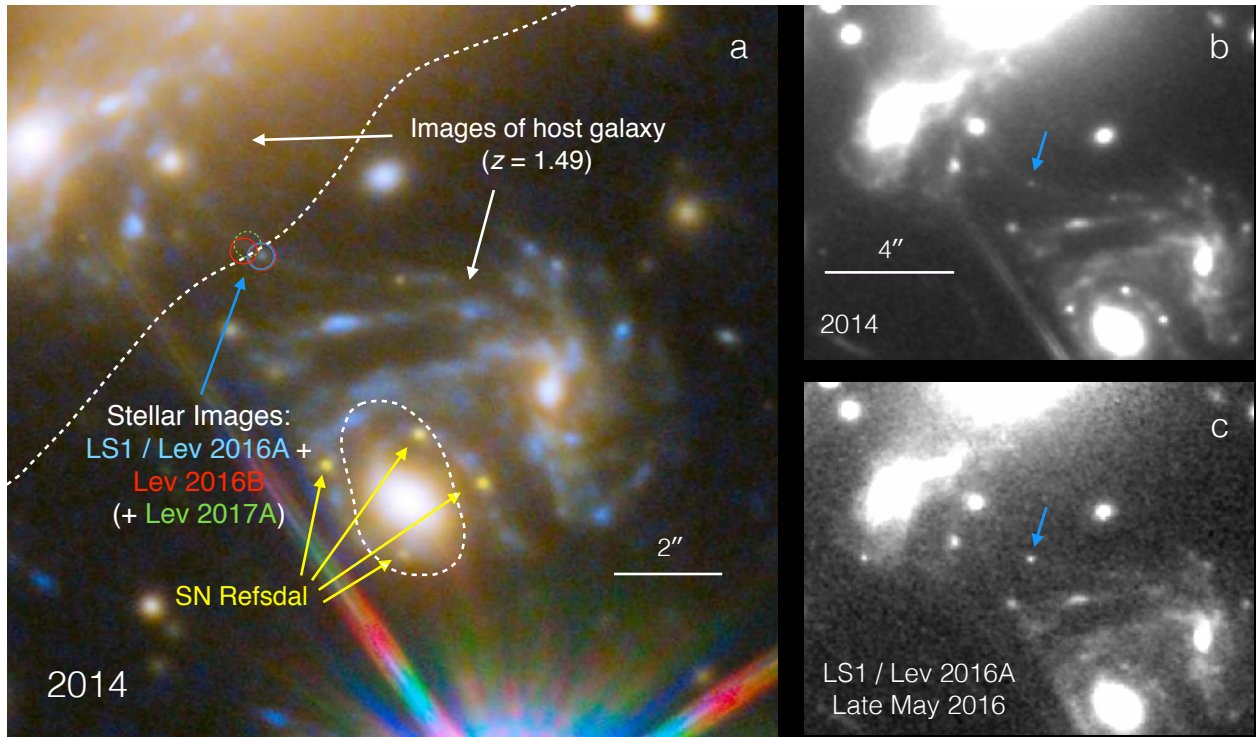


Figure 1: Locations of lensing events coinciding with background spiral galaxy near the MACSJ1149 galaxy cluster's critical curve. Left panel shows the positions of magnified images of stars LS1 / Lev16A and Lev16B as well as candidate Lev 2017A close to ( $\lesssim 0.13''$ ) the critical curve, where magnification rises rapidly. Dashed line shows the location of the critical curve from the CATS cluster model<sup>8</sup>. The Einstein Cross formed from yellow point sources consists of images of SN Refsdal<sup>2</sup>. Right panel shows the field in 2014, and in May 2016 when LS1 exhibited a microlensing peak.

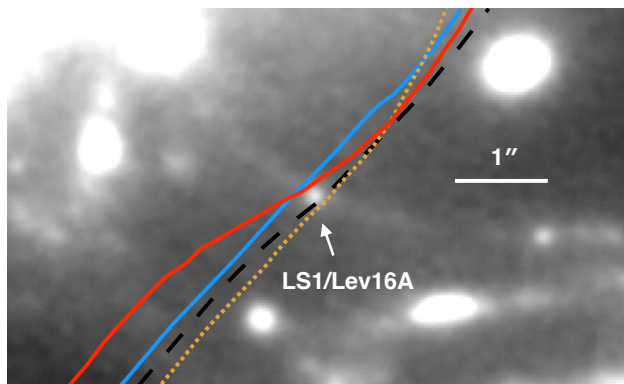


Figure 2: Proximity of LS1/Lev16A to the MACS J1149 galaxy-cluster critical curve for multiple galaxy-cluster lens models. Critical curves for models with available high-resolution lens maps including Ref. 8 (CATS; solid red), Ref. 27 (short-dash orange), Ref. 10 (solid blue), and Ref. 28 (long-dash black) are superposed on the *HST* WFC3-IR F125W image. Although predictions for the location of the critical curve near LS1 disagree by  $\sim 0.25''$ , LS1 lies within  $\sim 0.13''$  of all of these models' predictions.



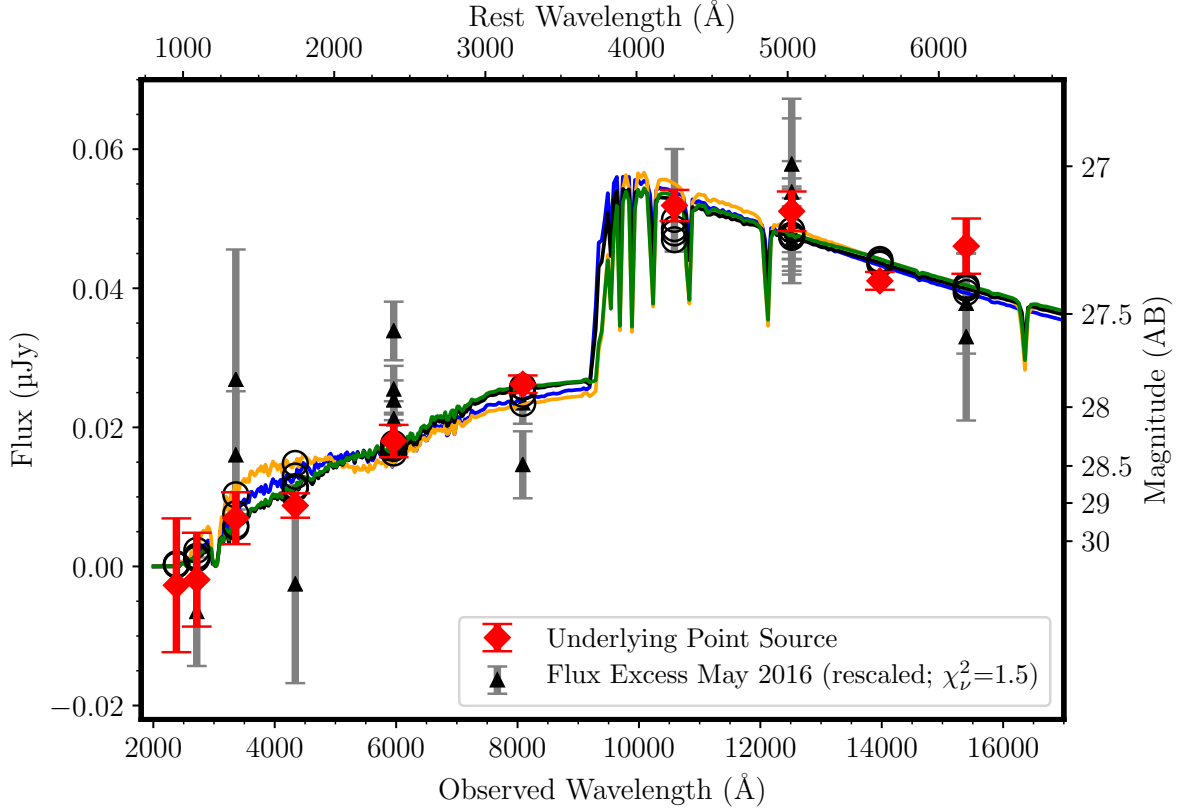


Figure 3: The SEDs of LS1 measured in 2013–2015 (red) and of the rescaled, excess flux density at LS1’s position close to its May 2016 peak (Lev16A; black) are consistent. Rescaling the SED of the flux excess to match to that of the 2013–2015 source yields  $\chi^2_{\nu} = 1.5$ , indicating that they are statistically consistent with each other despite a flux density difference of a factor of  $\sim 4$ . The SED shows a strong Balmer break consistent with the host-galaxy redshift of 1.49, and stellar atmosphere models<sup>17</sup> of a mid-to-late B-type star provide a reasonable fit. The blue curve has  $T = 11,180$  K,  $\log g = 2$ ,  $A_V = 0.02$ , and  $\chi^2 = 16.3$ ; the orange curve has  $T = 12,250$  K,  $\log g = 4$ ,  $A_V = 0.08$ , and  $\chi^2 = 30.6$ ; the black curve has  $T = 12,375$  K,  $\log g = 2$ ,  $A_V = 0.08$ , and  $\chi^2 = 12.9$ ; and the green curve has  $T = 13,591$  K,  $\log g = 4$ ,  $A_V = 0.13$ , and  $\chi^2 = 16.5$ . Black circles show the expected flux density for each model.

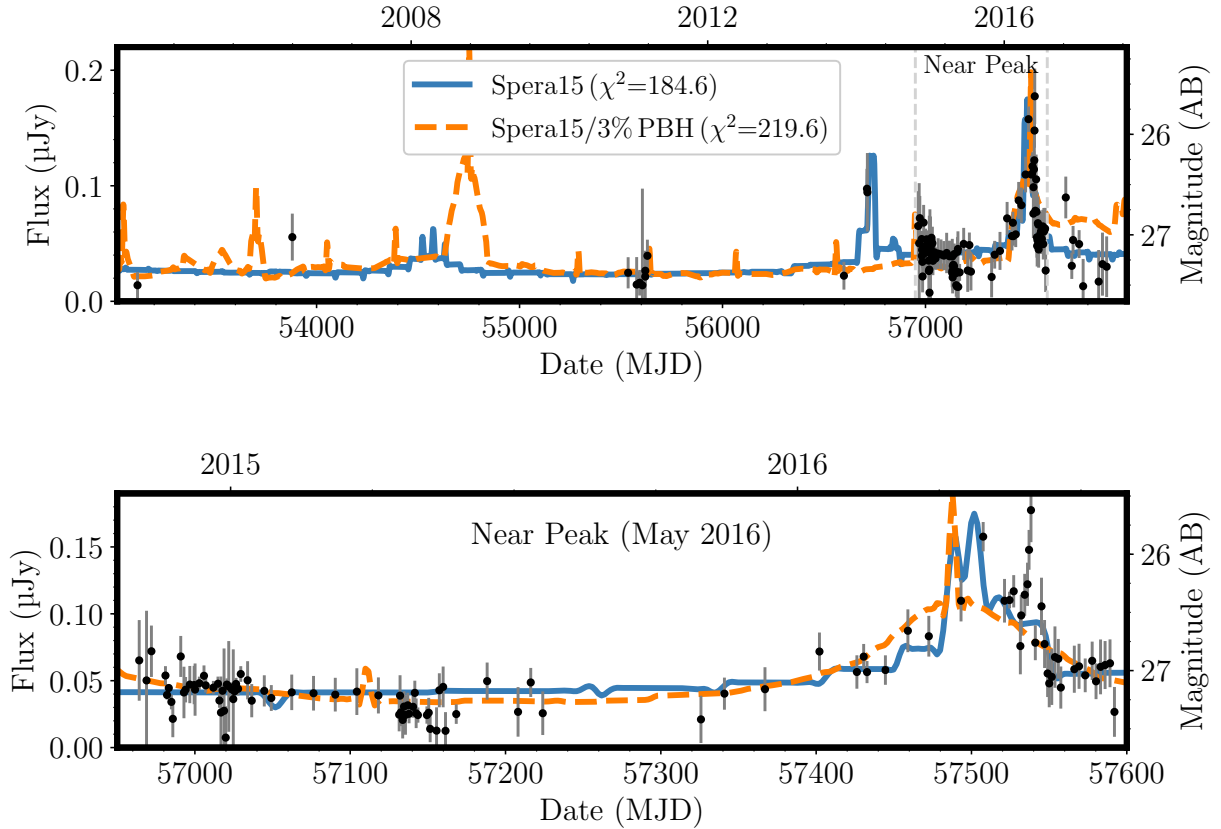


Figure 4: Light curve of the magnified star LS1, and best-matching simulated light curves during each interval. Fluxes measured through all wide-band *HST* filters are converted to *F125W* using LS1’s SED. The upper panel shows LS1’s full *HST* light curve which begins in 2004. The lower panel shows the most densely sampled part of the light curve including the May 2016 peak (Lev16A). This maximum shows two successive peaks that may correspond to a lensed binary system of stars at  $z = 1.49$ .

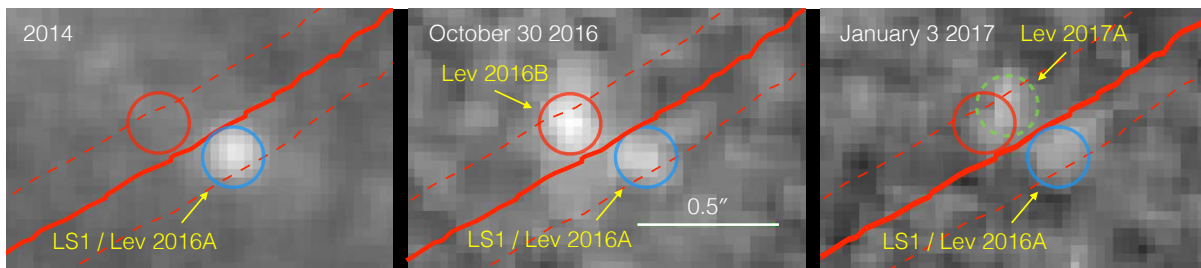


Figure 5: Highly magnified stellar images located near the MACSJ1149 galaxy cluster’s critical curve. The left panel shows LS1 in 2014; we detected LS1 when it temporarily brightened by a factor of  $\sim 4$  in late-April 2016. The center panel shows the appearance of a new image dubbed Lev16B on 30 October 2016. The solid red curve marks the location of the cluster’s critical curve from the CATS cluster model<sup>8</sup>, and the dashed lines show the approximate  $1\sigma$  uncertainty from comparison of multiple cluster lens models<sup>5–10</sup>. The position is consistent with the possibility that it is a counterimage of LS1. The right panel shows the candidate named Lev 2017A with  $\sim 4\sigma$  significance detected on 3 January 2017. If a microlensing peak, Lev 2017A must correspond to a different star.

	$-7.50 > M_V > -9.50$						$-7.50 > M_V > -8.50$					
	$\langle \chi^2 \rangle$	$\Sigma$	Model	PBH	T	IMF	$\langle \chi^2 \rangle$	$\Sigma$	Model	PBH	T	IMF
	Low Stellar-Mass Density											
<b>Best</b>	356.0	L	Fryer12		B	Cha	416.3	L	Fryer12		B	Cha
	366.5	L	Woosley02		B	Cha	462.1	L	Spera15		S	Cha
	372.4	L	Spera15		B	Cha	464.0	L	Woosley02		S	Cha
	383.6	L	Woosley02		S	Cha	488.9	L	Spera15	3%	S	Cha
	392.4	L	Spera15		S	Cha	516.5	L	Woosley02		B	Cha
	403.0	L	Fryer12		S	Cha	534.0	L	Spera15		B	Cha
	406.8	L	Spera15	1%	S	Cha	560.6	L	Fryer12		S	Cha
<b>Worst</b>	462.4	L	Spera15	3%	S	Cha	567.2	L	Spera15	1%	S	Cha
	High Stellar-Mass Density											
<b>Best</b>	347.4	H	Spera15		B	Sal	412.1	H	Spera15		B	Sal
<b>Worst</b>	367.8	H	Spera15		B	Cha	508.3	H	Spera15		B	Cha

Table 1: Comparison between model light curves and observed 2004-2017 light curves for LS1 / Lev16A and Lev16B. Measured  $\langle \chi^2 \rangle$  statistics provide evidence about the binary fraction and IMF of the stellar population responsible for the intracluster light (ICL), distinguish among stellar evolution and supernova models<sup>23–25</sup>, and disfavor the possibility that 1–3% of dark matter consists of  $30 M_{\odot}$  PBHs. To interpret differences in  $\langle \chi^2 \rangle$  values, we fit simulated light curves, and compute the difference  $\Delta \langle \chi^2 \rangle$  values between the  $\langle \chi^2 \rangle$  values of the generative (“true”) model and of the best-fitting model. For 68% of simulated light curves,  $\Delta \langle \chi^2 \rangle \lesssim 13$ , and for 95% of simulated light curves,  $\Delta \langle \chi^2 \rangle \lesssim 25$ . These simulations assume that our estimates for the galaxy cluster’s magnification and stellar-mass density are correct. The  $\Sigma$  column denotes whether light curves were computed with a low (L) or high (H) stellar-mass density. The “Type” column specified whether the stars are single (S), or have the mass-dependent binary fraction and mass ratios of stars determined at low redshift (B)<sup>22</sup>. The “IMF” column specifies whether a Chabrier (“Cha”) or Salpeter (“Sal”) IMF was used to assemble the ICL stellar population.

## Methods:

***HST* Imaging.** The *HST* observations include those from GO programs (and Principal Investigators) 12065 (M. Postman), 13459 (T.T.), 13504 (J. Lotz), 13790 and 14208 (S.R.), and 14041, 14199, 14528, 14872, and 14922 (P.K.).

**Constructing Light Curve.** All optical and IR *HST* imaging of the MACS J1149 field with moderate depth has yielded a detection of LS1. For each instrument and wide-band filter combination, we constructed a light curve for LS1. We first measured LS1’s flux in a deep template coaddition of *Hubble* Frontier Fields and early SN Refsdal follow-up imaging. The *Hubble* Frontier Fields program<sup>29</sup> acquired deep imaging of the MACS J1149 galaxy cluster between November 2013 and May 2015 in the ACS WFC *F435W* ( $\lambda_c = 0.43 \mu\text{m}$ ), *F606W* ( $\lambda_c = 0.59 \mu\text{m}$ ), and *F814W* ( $\lambda_c = 0.81 \mu\text{m}$ ), and the WFC3 IR *F105W* ( $\lambda_{\text{pivot}} = 1.05 \mu\text{m}$ ), *F125W* ( $\lambda_{\text{pivot}} = 1.25 \mu\text{m}$ ), *F140W* ( $\lambda_{\text{pivot}} = 1.39 \mu\text{m}$ ), and *F160W* ( $\lambda_{\text{pivot}} = 1.54 \mu\text{m}$ ) wide-band filters. The second step was to measure the differences in LS1’s flux between the deep template coadded image and at each imaging epoch. We accomplished this latter step by subtracting the deep template coaddition from coadditions of imaging at each epoch, and measuring the change in LS1’s flux from these resulting difference images.

To measure LS1’s flux in each deep template coaddition, we first fit and then subtracted the ICL surrounding the BCG. We next measured the flux at LS1’s position inside an aperture radius of  $r = 0.10''$  using the PythonPhot package<sup>30</sup>. To measure the uncertainty in the background from

the underlying arc, we placed a series of four nonoverlapping apertures having  $r = 0.10''$  along it. We use the standard deviation of these aperture fluxes as an estimate of the uncertainty in the background. Aperture corrections were calculated from coadditions of the standard stars P330E and G191B2B<sup>31</sup>.

For each *HST* visit, we created a coadded image of all exposures acquired in each wide-band filter. We next subtracted the deep template coaddition from the visit coaddition to create a difference image. Using the PythonPhot package<sup>30</sup>, we measured the flux inside of an  $r = 0.10''$  circular aperture in the difference image. We finally computed the total flux at each epoch by adding the flux measured from the deep template coaddition and that measured from each difference image.

There is no source apparent at Lev16B's position in deep template coadditions. Therefore, we do not add any flux measured from the deep template coaddition to the light curve we construct for Lev16B, which is plotted in Extended Data Fig. 7.

**Estimating LS1's Color.** LS1's brightness changed between the epochs when the deep template imaging was acquired by the *Hubble* Frontier Fields and SN Refsdal follow-up programs. However, the MACSJ1149 cluster field was monitored using *F125W* (and *F160W*) with a cadence of  $\sim 2$  weeks after the discovery of SN Refsdal in November 2014<sup>2</sup>. We measured LS1's *F125W* light curve from these data, and performed a fit to the light curve using a third-order polynomial.

We used the polynomial to estimate LS1’s  $F125W$  flux at the average epoch when the deep template imaging in each detector and filter was acquired. The ratio between the  $F125W$  flux and that in the other filter (e.g.,  $F140W$ ) provides a measurement of LS1’s color ( $F140W - F125W$ , in this example). We restricted the *Hubble* Frontier Fields imaging to that taken between November 2014 and May 2015, since monitoring of SN Refsdal is available to construct LS1’s IR light curve beginning in November 2014.

**Creating a Combined Light Curve.** We used our estimates of LS1’s color to convert the light curves measured in all available optical and IR filters to  $F125W$  light curves, and combined them. We also binned all  $F125W$  observations to construct the combined light curve plotted in Fig. 4 and used to fit models.

**Constraints on the Age of Stellar Population in Underlying Arc** To compute models using Flexible Stellar Population Synthesis (FSPS)<sup>32,33</sup>, we adopt a simple stellar population with an instantaneous burst of star formation, and include nebular and continuum emission. We use Python bindings (<http://dan.iel.fm/python-fsps/current/>) to FSPS to calculate simple stellar populations with a Kroupa IMF<sup>34</sup> and a Cardelli extinction law<sup>35</sup> with  $R_V = 3.1$ . These models use the Padova isochrones<sup>36,37</sup>.

A recent analysis finds a solar oxygen abundance of  $12 + \log(\text{O}/\text{H}) = 8.69 \pm 0.05$  dex and a solar metallicity<sup>38</sup> of  $Z = 0.0134$ . We therefore calculate models using  $\log(Z/Z_\odot) = -0.35$ , which

corresponds to  $Z = 0.006$  and is best matched with the FSPS parameter  $z_{\text{met}} = 15$ .

To estimate the age and dust extinction of the adjacent stellar population along the arc, we use `emcee`<sup>39</sup>, which is an implementation of a Markov Chain Monte Carlo (MCMC) ensemble sampler. We adopt a uniform prior on the stellar population age from 0 to 3 Gyr, and a uniform prior on the extinction  $A_V$  from 0 to 2 mag.

**Ability to Detect Pair of Images of a Star Adjacent to Cluster Caustic.** A possibility is that we do not observe a pair of images of LS1, because it is very close to the cluster caustic and the available *HST* imaging is not able to resolve its two images. Here we calculate how close the star must be to the caustic. If LS1 lay very close to the critical curve, then Lev16B would correspond to the microlensing event of a different star, at an offset of  $0.26''$  from the cluster critical curve.

For a star sufficiently close to the caustic, the pair of images will not be resolved with *HST*. Our simulations suggest that demagnifying one of the two images will be unlikely when the star is close to the cluster caustic, although they do not include expected dark-matter subhalos. The angular resolution of *HST* is greatest in the *F606W* band ( $\lambda_c = 0.59 \mu\text{m}$ ) and almost as sharp in the *F814W* band ( $\lambda_c = 0.81 \mu\text{m}$ ), and observations in these wide-band filters provide the best opportunity to test whether LS1 consists of two adjacent images. We use coadditions of imaging taken by the *Hubble* Frontier Fields program. To determine the limit we can place on the separation of two possible images, we inject pairs of point sources having the same combined magnitude as the images made using the ACS WFC *F606W* and ACS WFC *F814W* exposures at each epoch.



The full width at half-maximum intensity (FWHM) of our ACS point-spread-function (PSF) models constructed from observations of the standard stars P330E and G191B2B only agree within 10% with the measured FWHM of the stars in our coadded images. Consequently, the measured FWHM of the injected pairs of PSFs should not correspond directly to what we would measure in the ACS data. Therefore, we compute the fractional increase in the measured FWHM with the increasing separation between the pair of injected PSFs. Next, we multiply the FWHM estimated from the stars in each image by this factor to compute limits from the ACS imaging.

We inject 100 fake stars with the same magnitude using models of the ACS WFC *F606W* and *F814W* PSF. After injecting the point sources in a grid, we use the IRAF task `imexam` to estimate the Gaussian FWHM (GFWHM) using the “comma” command from the simulated data. The `imexam` model we use has a Gaussian profile, and we specify three radius adjustments while the fit is optimized. Pixels are fit within 3 pix ( $0.03'' \text{ pix}^{-1}$ ) of the center, and we use a background buffer of 5 pix.

These simulations show that any separation between the two images greater than  $0.035$ – $0.040''$  can be detected  $>95\%$  of the time. The upper limit implies that the star would have to be closer than  $0.06 \text{ pc}$  to the cluster caustic. As we show in Extended Data Fig. 5, the relative probability of a persistently bright ( $F125W < 27.7 \text{ mag}$ ) star being located within  $0.06 \text{ pc}$  is  $\lesssim 10\%$ .

DOLPHOT<sup>40</sup> fit parameters for the images of LS1, Lev16B, and Lev 2017A fall in the range expected for point sources in the DOLPHOT reference manual <http://americano.dolphinim.com/dolphot/dolphot.pdf>, although these criteria are not highly sensitive to a pair of images.

**Transverse Velocity of Star.** We use the following expression [Equation 12 of Ref. 1] for the apparent transverse velocity of a lensed source:

$$v_{\perp} = \left| \frac{v_s - v_o}{(1 + z_s)} - \frac{D_s(v_l - v_o)}{D_l(1 + z_l)} \right|, \quad (2)$$

where  $D_l$  and  $D_s$  are the angular-diameter distances of the lens and source, and  $v_o$ ,  $v_l$ , and  $v_s$  are (respectively) the transverse velocities of the observer, the lens, and the source with respect to the caustic. The expression only applies for a universe without spatial curvature.

Cosmological simulations have found that merging galaxy-cluster halos and subhalos have pairwise velocities of  $\sim 500\text{--}1500 \text{ km s}^{-1}$  with tails to lower and higher velocity<sup>41</sup>. Given the expected velocity of the lens, the peculiar velocities of Earth ( $\sim 400 \text{ km s}^{-1}$ ) and of the host galaxy relative to the Hubble flow, and the motion of the star ( $< 200\text{--}300 \text{ km s}^{-1}$ ) relative to its host galaxy, a typical transverse velocity should be  $1000 \text{ km s}^{-1}$ . In our light-curve fitting analysis, we consider transverse velocities of  $100\text{--}2000 \text{ km s}^{-1}$ .

**Intrinsic Luminosity of Lensed Star.** While extremely luminous stars are rare in the nearby universe, they require smaller magnification and can be at a greater distance from the caustic. For a lens with a smooth distribution of matter, the magnification  $\mu$  falls within the distance  $d$  from the caustic as  $\mu \propto 1/\sqrt{d}$ . Therefore, the area  $A$  in the source plane in which the magnification is greater than  $\mu$  scales as  $A(> \mu) \propto 1/\mu^2$ . The observed flux  $F$  of a lensed object is  $F \propto L\mu$ , where the object's luminosity is  $L$ . Therefore, a star with luminosity  $L$  appears brighter than  $f$  inside an area  $A(> f; L) \propto L^2$ .

**Galaxy-Cluster Lens Model.** Prior to the identification of LS1 in late-April 2016, the cluster potential had been modeled using the codes LTM<sup>27,42</sup>, WSLAP+<sup>7</sup>, GLAFIC<sup>5,10,43</sup>, LENSTOOL<sup>6,8,44</sup>, and GLEE<sup>9,45,46</sup>. These used several different sets of multiply imaged galaxies<sup>11</sup>, which included new data from the Grism-Lensed Survey from Space (GLASS; PI Treu)<sup>47,48</sup>, MUSE (PI Grillo)<sup>9</sup>, and grism follow-up observations of SN Refsdal (PI Kelly)<sup>49</sup>.

In Fig. 5, we plot as an example the position of the critical curve from the CATS model<sup>8</sup> created using LENSTOOL<sup>44</sup>, showing that it passes close to the position of LS1. The critical curves of all of these models, however, pass within similarly small offsets from LS1’s coordinates.

For the simulation of the light curves of a star passing close to the cluster caustic, we use the WSLAP+ model of the cluster mass distribution<sup>7</sup> and draw stars randomly from a Chabrier IMF<sup>50</sup> until the stellar mass density equals the value we estimate of  $1.1_{-0.3}^{+0.3} \times 10^7 \text{ M}_\odot \text{ kpc}^{-2}$  for a Chabrier IMF and  $1.9_{-0.6}^{+0.6} \times 10^7 \text{ M}_\odot \text{ kpc}^{-2}$  for a Salpeter IMF.

The WSLAP+ cluster lens model, which includes only smoothly distributed matter and cluster galaxies, yields several important relations describing the magnification near the critical curve, and the relationship between lensed  $\theta$  and unlensed  $\beta$  angles. The magnification  $\bar{\mu}$  for a smooth cluster model [e.g., Eq. 35 of Ref. 51] can be described as  $\bar{\mu} = 155/\theta$ , where  $\theta$  is the observed angular offset from the critical curve in arcseconds, and  $\bar{\mu} = 19/\sqrt{\beta}$  relates the unlensed angular position  $\beta$  and  $\bar{\mu}$ . The angles  $\beta$  and  $\theta$  follow the relation  $\beta = \theta^2/66.5$ , and both  $\beta$  and  $\theta$  are in units of arcseconds.

We simulate the light curves of caustic-crossing events using a resolution of  $1 \mu\text{arcsec}$  per pixel over an area of  $\sim 83 \text{ pc} \times 6.5 \text{ pc}$  in the lens plane. This area is aligned in the direction where a background source moving toward the cluster caustic would appear to be moving. If the background star is moving with an apparent velocity of  $1000 \text{ km s}^{-1}$  in the source plane, its associated counterimage would take  $\sim 400 \text{ yr}$  to cross the  $83 \text{ pc}$  of the simulated region, which corresponds to  $(1.2 \times 10^{-7})'' \text{ yr}^{-1}$ . The lensed star is given a transverse velocity of  $1000 \text{ km s}^{-1}$  in the source plane; the resulting light curve can be stretched to simulate different transverse velocities. Owing to the high magnification, the counterimages' apparent motion in the image plane is large.

$N$ -body simulations show that clusters of galaxies contain (and are surrounded by) a large number of subhalos. Smaller subhalos near the cluster center may not survive the tidal forces of the cluster and are easily disrupted. The larger surviving halos and smaller subhalos along the line of sight can produce small distortions in the deflection field that could in principle distort the critical curve (and caustic). Lens models of MACSJ1149 do predict such distortions around the member galaxies. However, since the typical scales of the distortion in the deflection field are proportional to the square root of the mass of the lens, the distortions from the surviving halos are orders of magnitude larger than the scale of the distortion associated to the microlenses (from the ICL). Consequently, on the scales relevant for this work ( $\sim 0.2''$ ), the combined deflection field of the cluster plus the DM substructure can still be considered as a smooth distribution and the critical curve could still be well approximated by a straight line.

For a cluster model populated with stars in the ICM, Extended Data Fig. 14 shows the “trains”

or multiple counterimages of a single background star near the cluster’s caustic. Replacing the cluster’s smoothly varying matter distribution with an increasing fraction of  $\sim 30 M_{\odot}$  PBHs yields an increasingly long train, although its expected extent ( $\sim 3$  milliarcsec) when PBHs account for 10% of DM would be smaller than would be possible to detect in the *HST* imaging.

**Initial Mass Function for Stellar and Substellar Objects.** Strong lensing and kinematic<sup>52–55</sup>, as well as spectroscopic<sup>56,57</sup> analyses of early-type galaxies have found evidence that the IMF of stars in early-type galaxies may be “bottom-heavy” – a larger fraction of stars have subsolar masses than is observed in the Milky Way. Spectroscopic evidence for a Salpeter-like bottom-heavy IMF in the inner regions of early-type galaxies comes from the strength of spectral features sensitive to the surface gravity of stars with  $M \lesssim 0.3 M_{\odot}$ <sup>56,57</sup>. However, these two sets of diagnostics do not always show agreement in the same galaxies, and the discrepancy is not yet understood<sup>58</sup>. In Extended Data Fig. 9, we show that a Salpeter IMF yields a substantially higher frequency of microlensing peaks than a Chabrier IMF.

In stellar kinematics and strong lensing, the DM is assumed to follow a simple parameteric (e.g., power-law) function near the galaxy center, while stellar matter is assumed to trace the optical emission. The total matter profile inferred from observations is decomposed into stellar and DM components, and the  $M_*/L$  ratio of the stellar component is used to place constraints on the IMF.

Substellar objects having masses below the H-burning limit ( $M \approx 0.08 M_{\odot}$ ) are not generally included as a component of the stellar mass in kinematic and lensing analyses. Substellar masses,

however, should also trace the stellar mass distribution. The inferred  $M_*/L$  ratios near the centers of elliptical galaxies are approximately twice as large as those expected for Milky-Way-like Chabrier IMFs, e.g., Refs. 52–54. If the stellar IMF in early-type galaxies has a Salpeter slope, the ratio of  $\sim 2$  would imply that a Salpeter IMF cannot extend to object masses significantly smaller than the H-burning limit<sup>59</sup>.

Indeed, the integral of the Salpeter IMF from zero mass through the H-burning limit diverges, so the IMF of substellar objects must be less steep than Salpeter below the  $0.08 M_\odot$ . The integral of a Chabrier IMF in the range  $0 < M < 0.10 M_\odot$  is  $\lesssim 10\%$  of the integral in  $0.10 < M < 100 M_\odot$ . High signal-to-noise-ratio spectra of NGC 1407 are best fit by a super-Salpeter IMF ( $\Gamma = 1.7$ ;  $dN/d \log m \propto m^{-\Gamma}$ ) to the H-burning limit<sup>60</sup>.

In the Milky Way, surveys of substellar objects find that their mass function is likely flat or declining with decreasing mass. IR imaging of the young Milky-Way cluster IC 348 yields a population of brown dwarf stars consistent with log-normal mass distribution<sup>61</sup>.  $\Gamma = 0.0$  and  $\Gamma = -0.3$  provide a reasonable fit to the populations of objects with masses smaller than  $0.1 M_\odot$  in IC 348 and Rho Oph, respectively. Analysis of the Pleiades open clusters to  $0.03 M_\odot$  found a population consistent with a log-normal distribution with  $m_c = 0.25 M_\odot$  and  $\sigma_{\log m} = 0.52$ <sup>62</sup>.

For this analysis, we only include objects with initial masses greater than  $0.01 M_\odot$ . For the light curves generated with a Chabrier IMF, we assume that the IMF continues to this lower-mass cutoff. For the Salpeter light curves, the Salpeter form truncates at  $0.05 M_\odot$ ; for lower initial masses, we assume that the number density of objects is constant in logarithmic intervals.

**Mass Function of Surviving Stars and Compact Remnants in the ICM.** For a given a star-formation history, GALAXEV computes the mass in surviving stars and in remnants using the Renzini93 prescription for the mapping between zero-age main-sequence masses and remnant masses (the initial–final mass function)<sup>63</sup>. Dead stars with initial masses  $M_i < 8.5 M_\odot$  become white dwarfs with mass  $0.077 M_\odot + 0.48 M_i$ ; those with  $8.5 M_\odot \leq M_i < 40 M_\odot$  become  $1.4 M_\odot$  neutron stars; and those with  $M_i \geq 40 M_\odot$  become BHs with  $0.5 M_i$ .

We assume that the most massive surviving star found in the ICM at  $z = 0.54$  has a mass of  $1.5 M_\odot$ , approximately the expected value for a  $\sim 4.5$  Gyr stellar population. For stars with masses  $\gtrsim 1.5 M_\odot$ , we use three separate theoretical initial–final mass functions to compute the distribution of remnant masses.

The evolution of massive stars and the mass of their remnants is expected to depend on the stars’ mass-loss rate, which is thought to vary significantly with their metallicity. Integral field-unit (IFU) spectroscopy of low-redshift galaxy clusters has been able to place approximate constraints on the metallicity and age of the stars found in the ICM. IFU spectroscopy within  $\sim 75$  kpc of the BCGs of the nearby Abell 85, Abell 2457, and II Zw 108 galaxy clusters found that the ICL light can be best fit by a combination of substantial contributions from an old population ( $\sim 13$  Gyr) with high metallicity ( $Z \approx 2 Z_\odot$ ) and from a younger population ( $\sim 5$  Gyr) with low metallicity ( $Z \approx 0.5 Z_\odot$ )<sup>64</sup>.

**Light-Curve Fitting.** To fit the LS1 / Lev16A and Lev16B light curves, we identify the peaks in the simulated light curves that are  $2\sigma$  above each light curve’s mean magnification. We next stretch the model light curves in time for transverse velocities in the range  $100\text{--}2000\text{ km s}^{-1}$  in steps of  $50\text{ km s}^{-1}$ . For each light curve and velocity, we find a best-fitting solution for a series of intervals in absolute magnitudes between  $M_V = -7$  and  $M_V = -10.5$  mag in increments of  $0.5$  mag. For each interval and peak, we find the best-fitting value of  $M_V$  within the upper and lower bounds in luminosity.

For the set of fits at each transverse velocity and each  $M_V$  interval, we rank all peaks according to the  $\chi^2$  values separately for LS1 / Lev16A and Lev16B. We then pair these ranked lists of best-fitting peaks (i.e., the best-fitting peak for LS1 / Lev16A is matched with that for Lev16B, etc.), and add the  $\chi^2$  values for each pair together. Next, we identify the best  $\chi^2$  values for all values of transverse velocity and ranges in absolute luminosity, and assemble a list of these best  $\chi^2$  values. Our goodness-of-fit statistic  $\langle\chi^2\rangle$  is the average of the 150 best  $\chi^2$  values.

**Interpreting the  $\chi^2$  Statistic Using Simulated Light Curves.** To interpret the  $\langle\chi^2\rangle$  values, we generate fake light curves for each of the models listed in Table 1. The simulation for each model yields a magnification over a 406 yr period for a transverse velocity of  $1000\text{ km s}^{-1}$ . For lensed stars with absolute magnitudes  $M_V$  of  $-8$ ,  $-9$ , and  $-10$ , we create simulated apparent light curves, and we append the light curve after reversing the temporal axis to create effectively an 812 yr light curve.



For each simulated light curve, we identify all peaks where the apparent  $F125W$  AB magnitude is brighter than 26.5 mag. For each peak, we randomly select a transverse velocity drawn from a uniform distribution in the interval  $100\text{--}2000\text{ km s}^{-1}$ . We use the cadence and flux uncertainties of the measured light curve of LS1 to generate a fake light curve. We next shift the peak of the measured light curve of LS1 / Lev16A (or Lev16B) to match the peak of the simulated model light curve. We then create a fake observation by sampling the simulated light curve at the same epochs as the actual measurements, and adding Gaussian noise matching the measurement uncertainties.

For each such simulated light curve, we compute the  $\langle\chi^2\rangle$  statistic using the full set of models. The region of the simulated light curve used to create the fake data set is excluded from fitting. As shown in Extended Data Fig. 13, the combined  $\langle\chi^2\rangle$  statistic we measure for LS1 / Lev16A and Lev16B falls inside of the expected range of values. We note that a significant fraction of simulated light curves have average values of  $\langle\chi^2\rangle > 1000$ , implying that they are not well-fit by other regions of the simulated light curves.

For all simulated light curve where the average  $\langle\chi^2\rangle$  value is within 100 of the value we measure for LS1 / Lev16A and Lev16B, we calculate the difference  $\Delta\langle\chi^2\rangle$  values between the  $\langle\chi^2\rangle$  values of the generative (“true”) model and of the best-fitting model. For 68% of simulated light curves,  $\Delta\langle\chi^2\rangle \lesssim 13$ , and, for 95% of simulated light curves,  $\Delta\langle\chi^2\rangle \lesssim 25$ .

**Massive Stellar Evolution Models** The fates of massive stars remain poorly understood owing to the complexity of massive stellar evolution and the physics of supernova (SN) explo-

sions. Indirect evidence suggests that a fraction of massive stars may collapse directly to a black hole instead of exploding successfully<sup>65,66</sup>, due to (for example) failure of the neutrino mechanism<sup>67</sup>. We compute light curves and magnification maps using three sets of predictions for the initial–final mass function<sup>23–25</sup>. As a first model, we adopt the initial–final mass function predicted by the solar-metallicity, single stellar evolution models<sup>23</sup> (Woosley02) [Fig. 9 of Ref. 24]. In the Woosley02 models, the prescription for driven mass-loss rate at solar metallicity causes stars with initial masses  $\gtrsim 33 M_{\odot}$  to end their lives with significantly reduced He core masses, leading such stars to become BH remnants with masses no larger than 5–10  $M_{\odot}$ . The Woosley02 mass-loss prescription uses theoretical models of radiation-driven winds for OB-type stars with  $T > 15,000$  K, and empirical estimates for Wolf-Rayet stars<sup>68</sup> that have been adjusted downward by a factor of three to account for the effects of clumping in the stellar wind<sup>69</sup>. The mass-loss rate for single O-type stars during their main-sequence evolution may have been overestimated by a factor of 2–3, owing to unmodeled clumping in their winds<sup>70</sup>.

A second (Fryer12) initial–final mass function was computed for single stars at subsolar metallicity ( $Z = 0.3 Z_{\odot}$ ;  $Z = 0.006$ ) [the “DELAYED” curve in Fig. 11 of Ref. 24]. These predictions use the StarTrack population synthesis code<sup>71,72</sup>. According to this model, BHs with masses up to 30  $M_{\odot}$  form from the collapse of massive stars.

Finally, we use a third initial–final mass function (Spera15) [Fig. 6 of Ref. 25] to calculate the masses of remnants for the stellar population making up the ICM. The Spera15 relation we adopt was computed using the PARSEC evolution tracks for stars with metallicity  $Z = 0.006$ , and

explosion models where the SN is “delayed,” occurring  $\gtrsim 0.5$  s after the initial bounce. According to the Spera15 initial–final mass relation we adopt, stars having initial masses  $\gtrsim 33 M_{\odot}$  become BHs with masses within the range 20–50  $M_{\odot}$ . Approximately 70% of massive stars exchange mass with a companion, while  $\sim 1/3$  of stars will merge<sup>73</sup>. It is also possible that the success of explosions is not related in a simple way to the stars’ initial mass or density structure, given the potentially complex dependence of the critical neutrino luminosity for a successful explosion on these progenitor properties<sup>67</sup>.

**Observations of Similar Cluster Fields with *HST*.** Massive galaxy clusters have been the target of extensive *HST* imaging and grism-spectroscopy campaigns in the last several years, and these need to be taken into account when considering the probability of finding a highly magnified star microlensed by stars making up the ICL. Detecting transients requires at least two separate observing epochs, which is possible only for programs designed with more than a single visit, or when archival imaging is available. In addition to smaller search efforts<sup>74</sup>, large programs have been the Cluster Lensing and Supernova survey with *Hubble* (CLASH)<sup>75</sup>, the GLASS<sup>47,48</sup>, the *Hubble* Frontier Fields<sup>29</sup>, and the Reionization Lensing Cluster Survey (RELICS). Transients in *Hubble* Frontier Fields and GLASS imaging have been subsequently observed by the FrontierSN program.

With a total of 524 orbits, CLASH acquired imaging of 25 galaxy-cluster fields. A search for transients in the CLASH imaging made use of template archival imaging when available. The survey acquired imaging over a period of three months of each cluster field with repeated visits in

each filter. Each epoch had an integration time of 1000–1500 s. The systematic search for transients in CLASH imaging had near-infrared limiting magnitudes at each epoch of  $F125W \approx 26.6$  and  $F160W \approx 26.7$  mag AB [see Tab. 1 of Ref. 76].

The *Hubble* Frontier Fields program used 140 orbits to observe each of 6 galaxy-cluster fields (total of 840 orbits). For each cluster, ACS optical and WFC3 IR imaging split into in two campaigns, each of which lasted for approximately a month. These were separated from each other by a period of  $\sim 6$  months to allow the telescope roll angles to differ by  $\sim 180^\circ$ , to image a parallel field adjacent to the cluster with the same instruments. Each of six to twelve epochs in each WFC3 IR wideband filter for each cluster field had an integration time of  $\sim 5500$  s. The systematic search for transients in near-infrared *Hubble* Frontier Field imaging by the FrontierSN team (PI: Rodney) had near-infrared limiting magnitudes at each epoch of  $F125W \approx 27.5$  and  $F160W \approx 27.2$  mag AB.

The GLASS survey<sup>47,48</sup> acquired WFC3 IR grism spectroscopy of ten galaxy-cluster fields over 140 orbits. The survey acquired direct pre-imaging in the WFC3 IR  $F105W$  and  $F140W$  over four epochs

The probability of observing a luminous star adjacent to a caustic will depend on the number of lensed galaxies that overlap a galaxy cluster’s caustic. For massive clusters, caustic curves coincide with the ICL, so magnified stars should exhibit microlensing fluctuations. Earlier work has estimated that a  $10^5 L_\odot$  star ( $M_V \approx -7.5$  mag) in a giant arc (with  $z = 0.7$ ) and crossing the caustic of cluster Abell 370 ( $z = 0.375$ ), a *Hubble* Frontier Fields target, would remain brighter

than  $V = 28$  mag for 700 yr, given a  $V$ -band limiting magnitude of 28 and a  $300 \text{ km s}^{-1}$  transverse velocity<sup>1</sup>.

A study of *HST* imaging of CLASH galaxy-cluster fields<sup>21</sup> has found that each cluster field contains  $4 \pm 1$  giant arcs with length  $\geq 6''$  and length-to-width ratio  $\geq 7$ . Given that the host galaxy of LS1 would not be classified as a giant arc according to these criteria, it is likely that additional galaxies in each field may lie on the cluster caustic.

An approximate census finds that  $\lesssim 10\%$  of *HST* galaxy-cluster observing time has been used to image MACS J1149. Considering the full set of *HST* cluster observations, and the results of our Monte Carlo simulations for the single arc underlying LS1 (1–3% for a shallow  $\alpha \approx 2$  luminosity function; 0.01–0.1% for  $\alpha \approx 2.5$ ), the probability of observing at least one bright magnified star adjacent to a critical curve should be appreciable, in particular if the average luminosity function is more shallow at high redshifts than in the nearby universe.

## Supplementary Information:

**Simulation Using Stars Near Center of 30 Doradus.** We used the SIMBAD (<http://simbad.u-strasbg.fr/simbad/>) catalog to retrieve information for objects in the H II region 30 Doradus in the LMC. Stars were first selected from the catalog having  $V$ -band magnitudes and closer than  $20'$  to its center ( $\sim 280$  pc). We include objects classified as stars, and exclude F,G,K, or M type stars unless they are classified as supergiants. Using a distance of 49 kpc to the LMC, we calculated the stars' absolute magnitudes  $M_V$ , and their distances from the center of the cluster. For 10,000 trials, we randomly placed the cluster's CC within 20 pc of the 30 Doradus' center, and rotated the stars around the center of 30 Doradus by an angle drawn from a uniform distribution. We find a probability of  $\sim 1\%$  of finding a star with a persistent average brightness of at least 27.7 mag, and we find that such a star will also be responsible for  $\gtrsim 99\%$  of  $<26$  mag microlensing events. These probabilities are similar to those we estimated from our simulation where the positions of luminous stars near the CC were drawn randomly from a uniform distribution

**Slope of Stellar Luminosity Function in 30 Doradus.** We have also used the SIMBAD catalog of stellar sources to estimate the stellar luminosity function of bright stars in 30 Doradus. Placing stars in 0.5 mag bins by their absolute  $V$ -band magnitudes, we measure a power-law index of  $\alpha \approx -2$ . No correction is applied for crowding, or the binary fraction.

**Slope of the Stellar Luminosity Function in Nearby Galaxies.** Stars found in OB associations in seven nearby galaxies observed with *HST* show a luminosity function of  $\alpha = 2.53 \pm 0.08$ <sup>20</sup>. The stellar luminosity function for stars more luminous than  $M_V < -8.5$  mag is not well constrained, the number counts of the  $M_V < -8.5$  mag stars in this study are consistent with the slope measured for stars with  $-8.5 < M_V < -5$  mag. The slope of  $\alpha = 2.53 \pm 0.08$  agrees approximately with a separate earlier analysis<sup>77</sup>, which studied the slope of the upper end of the stellar luminosity function of the bluest stars in nearby galaxies using ground-based imaging and found  $\alpha = 2.68 \pm 0.08$ , although the latter analysis extended only to  $M_V \approx -9.5$  mag [see Fig. 7 of Ref. 77]. A second census of the stellar population in galaxy M101 shows that it may host a small number of luminous stars with absolute magnitude  $-10 \lesssim M_V \lesssim -11$  [see Fig. 7 of Ref. 78].

The luminosity function of OB associations<sup>79</sup> can be well described by a power-law function having an index  $\alpha \approx 2$ . The luminosity function of star-forming regions may become flatter in galaxies with higher star-formation rates and star-formation rate densities<sup>80</sup>.

**Ground-Based Follow-up Campaigns.** We observed the field with direct imaging with the Low Resolution Imaging Spectrometer (LRIS)<sup>81</sup> on the Keck-I 10 m telescope on 6 May 2016 (PI Filippenko). Director’s Discretionary programs with the GTC (PI Pérez González; GTC2016-052), the Very Large Telescope (PI Selsing; 297.A-5026), Gemini North (PI Kelly; GN-2016A-DD-8), and the Discovery Channel Telescope (PI Cenko) obtained follow-up imaging in optical bandpasses.

**Detection from the Ground with the Gran Telescopio Canarias.** We obtained  $i'$ -band observations of the MACS J1149 field with the 10.4 m Gran Telescopio Canarias (GTC) on 6 June 2016 and 7 June 2016, after the May 2016 peak. To estimate the flux at LS1's position, we extracted the flux inside several apertures with diameters within 1–2 times the the PSF FWHM, and applied aperture corrections to obtain integrated fluxes. The flux estimates for the different apertures agree within 0.10–0.15 mag. The  $i'$ -band AB magnitudes are  $27.73 \pm 0.52$  on 57544.9381 MJD in conditions with  $1.0''$  seeing and a total integration of 3000 s, and  $28.35 \pm 0.43$  on 57546.9445 MJD in  $0.8''$  seeing and a total integration of 5430 s.

**Metallicity of the Local Host-Galaxy Environment of LS1.** The gas-phase oxygen abundance of LS1's host galaxy, including that within the immediate environment of SN Refsdal, has been studied using multiple datasets. LS1 and SN Refsdal have similar offsets from the host nucleus (within  $\sim 0.5$  kpc), so the local metallicity near LS1's and SN Refsdal's host-galaxy locations should have similar values. Both the CATS model<sup>8</sup> ( $\sim 6.7$  kpc and  $\sim 7.3$  kpc, respectively) and the GLAFIC model<sup>10</sup> ( $\sim 7.9$  kpc and  $\sim 8.2$  kpc) find similar nuclear offsets for LS1 and SN Refsdal.

Analysis of Keck-II OSIRIS integral-field unit (IFU) spectra reported a  $3\sigma$  upper limit of  $12 + \log(\text{O}/\text{H}) < 8.67$  dex in the Pettini & Pagel N2 calibration<sup>82</sup> for an H II region  $\sim 200$  pc away from SN Refsdal's site. From the same observations, the authors find a combined upper limit of  $12 + \log(\text{O}/\text{H}) < 8.11$  dex from observations of nine H II regions at nuclear offsets between  $\sim 5$  and  $\sim 7$  kpc<sup>83</sup>, which is similar to the offsets of LS1 and SN Refsdal.



Recent work<sup>84</sup> has analyzed WFC3 grism spectra taken by GLASS<sup>47,48</sup> and follow-up observations of SN Refsdal. They fit the abundance measurement using a linear model,

$$12 + \log(\text{O}/\text{H}) = (-0.0666 \pm 0.0232) \times r + 8.82 \pm 0.039 \text{ dex}, \quad (3)$$

where  $r$  is the offset from the nucleus in kpc. This yields an abundance at LS1's offset (assuming  $7.9 \pm 0.5$  kpc) of  $12 + \log(\text{O}/\text{H}) = 8.29 \pm 0.19$  dex. This analysis does not take into account the [N II] line when estimating the oxygen abundance, as it can be a biased tracer at  $z > 1$ <sup>85</sup>.

Finally, while [N II] was not detected in the OSIRIS IFU spectra of the site of SN Refsdal<sup>83</sup>, a 1 hr Keck-II MOSFIRE integration yielded a [N II] detection. The [N II] line strength yields a PP04 N2 oxygen abundance of  $12 + \log(\text{O}/\text{H}) = 8.3 \pm 0.1$  dex<sup>49</sup>, which is in agreement with the above estimate made using the Maiolino calibration<sup>86</sup> from WFC3 grism spectra.

Given the above grism as well as MOSFIRE [N II] metallicity estimates, we use an oxygen abundance of  $12 + \log(\text{O}/\text{H}) \approx 8.3$  dex as the metallicity of the massive stellar population near LS1's coordinates. The Castelli & Kurucz 2004 stellar atmosphere models<sup>17</sup> are parameterised based on the Grevesse & Sauval 1998<sup>87</sup> solar oxygen abundance of  $12 + \log(\text{O}/\text{H}) = 8.83 \pm 0.06$  dex. Therefore, we adopt  $\log(Z/Z_{\odot}) = -0.5$  when drawing comparisons with the Castelli & Kurucz ATLAS9 models.

**K-correction and Distance Modulus.** We calculate  $K$ -corrections following Equation 2 of Ref. 88,

$$K = 2.5 \times \log_{10}(1 + z) + m_{F125W, \text{syn}}^{\text{AB}} - m_{V, \text{syn}}^{\text{Vega}}, \quad (4)$$

where  $z = 1.49$ ,  $m_{F125W,\text{syn}}^{\text{AB}}$  is the WFC3  $F125W$  synthetic magnitude of a redshifted model spectrum, and  $m_{V,\text{syn}}^{\text{Vega}}$  is the synthetic Johnson  $V$ -band magnitude of the rest-frame model spectrum. Here the  $K$ -correction  $K_{xy}$  is defined as

$$m_y = M_x + dm + K_{xy}, \quad (5)$$

where  $m_y$  is the observer-frame apparent magnitude in the  $y$  band,  $M_x$  is the rest-frame absolute magnitude in the  $x$  band, and  $dm$  is the distance modulus. Using the best-fitting spectral models, we calculate  $K_{V,F125W} = -1.10$  mag, and adopt  $dm = 45.21$  mag at  $z = 1.49$  (with no correction for magnification).

**Stellar-Mass Density Along the Line of Sight to LS1.** We computed two separate estimates of the stellar-mass density to LS1. The first estimate was the value we used when we created most of the simulated light curves, but it excluded light from the nearby brightest cluster galaxy (BCG). We computed a second, improved estimate that accounted for all intracluster light (ICL) along the line of sight. The updated analysis yielded a density approximately twice as high as the initial value.

**Initial Estimate:** Galaxies with  $m_{F160W} < 26$  AB mag are selected and fit with single Sérsic profiles by using GALFIT<sup>89</sup> in a postage stamp ( $300 \text{ pix} \times 300 \text{ pix}$ ). At the same time, the local sky background, assumed to be constant across the stamp, is fitted with the galaxy light profile. After fitting all the galaxies in the field, we reconstruct the ICL map by using the estimated local sky background values. Overlapping pixels are stacked, weighted by the  $\chi^2_{\nu}$  value from the fit.

The uncertainty is estimated from the original root-mean-square (RMS) map (published by the *Hubble* Frontier Fields team) and the systematic differences caused by changing the stamp size. We repeat this procedure for the ACS WFC *F435W*, *F606W*, *F814W*, and WFC3 IR *F105W*, *F125W*, *F140W*, and *F160W* filter bands<sup>90</sup>. A correction is applied for Galactic extinction<sup>91</sup>.

Stellar mass is estimated in each pixel using the Fitting and Assessment of Synthetic Templates (FAST) software tool<sup>92</sup> with the BC03<sup>93</sup> stellar population model. FAST uses the Galaxy Spectral Evolution Library (GALAXEV; <http://www.bruzual.org/>) code to assemble composite stellar populations. We use the BC03 isochrones, a Chabrier IMF, and an exponentially declining star-formation history. Stars have initial masses that are between 0.1 and 100  $M_{\odot}$ , and models are computed for metallicities of 0.004, 0.008, 0.02, and 0.05. The hot gas in the galaxy-cluster ICM is thought to destroy dust, and extinction from dust is assumed to be zero. We note, however, that allowing the dust extinction to be a free parameter would change the estimated stellar mass by  $< 1\%$ .

**Revised Estimate:** We calculated a second estimate for the stellar-mass density that includes the contribution of stellar light associated with the BCG. We first constructed a total of eight apertures around the BCG shown in Extended Data Fig. 12. The apertures' offsets from the BCG center and *F140W* surface brightnesses are similar to those of LS1, and were selected to exclude point sources and cluster-member galaxies (except the BCG).

We estimate ACS WFC *F435W*, *F606W*, *F814W*, and WFC3 IR *F105W*, *F125W*, *F140W*, and *F160W* fluxes within each aperture, and apply a correction for Galactic extinction<sup>91</sup>. We next

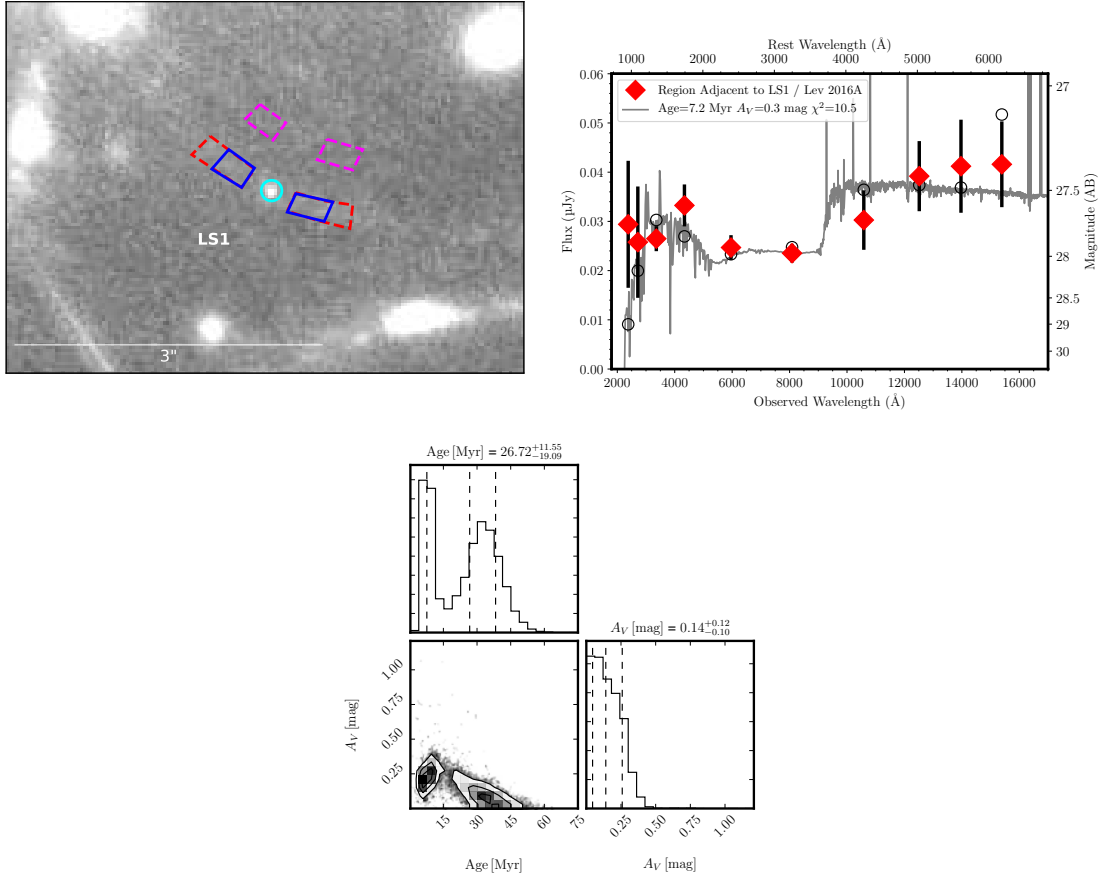
determine the ratio between the stellar mass ( $M_*$ ) and the WFC3-IR  $F140W$  flux ( $L$ ) within each aperture. We estimate  $M_*$  with FAST<sup>92</sup> and the BC03<sup>93</sup> stellar population synthesis models. We adopt a delayed exponentially declining star-formation history and include both subsolar and solar metallicity ( $\sim 0.02$  and  $0.008$ ) populations. Separate model fits are made for Chabrier and Salpeter IMFs, and the stars in our BC03 population synthesis models have initial masses that are between  $0.1$  and  $100 M_\odot$ .

Within each aperture, the statistical uncertainties of the total WFC3-IR flux in each bandpass are  $\lesssim 0.5\%$ . Among fits within the apertures, the average  $e$ -folding time is  $\sim 600$  Myr, and, at redshift  $z = 0.54$ , the stellar population ages are, on average,  $\sim 4$  Gyr. The uncertainty in  $M_*/L$  for each aperture is  $\sim 30\%$ , which approximately equals the standard deviation among the best-fitting estimates for all apertures.

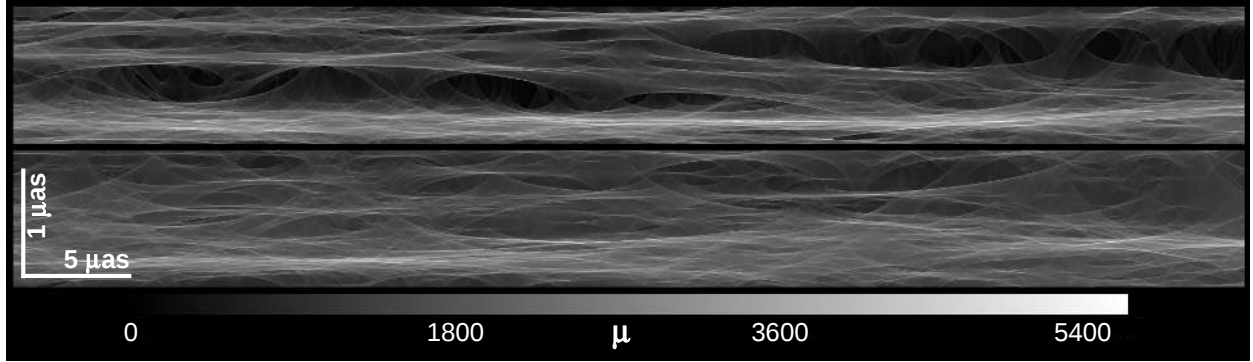
To estimate the stellar-mass density along the line of sight to LS1, we multiply the mean  $M_*/L$  computed across all eight apertures by the average  $F140W$  surface brightness in the two apertures adjacent to LS1. These apertures adjacent to LS1 may contain contamination in observer-frame optical bandpasses from the underlying, young lensed galaxy. Within the WFC3-IR  $F140W$  bandpass, however, light from the cluster dominates.

For Chabrier and Salpeter IMFs, the stellar mass densities computed using the BC03 model are  $1.1_{-0.3}^{+0.3} \times 10^7 M_\odot \text{ kpc}^{-2}$  and  $1.9_{-0.6}^{+0.6} \times 10^7 M_\odot \text{ kpc}^{-2}$ , respectively. These revised estimates as well as our initial estimate for the density include remnants, whose masses are computed using the Renzini “initial–final” mass function<sup>63</sup>. The total local projected mass density inferred from

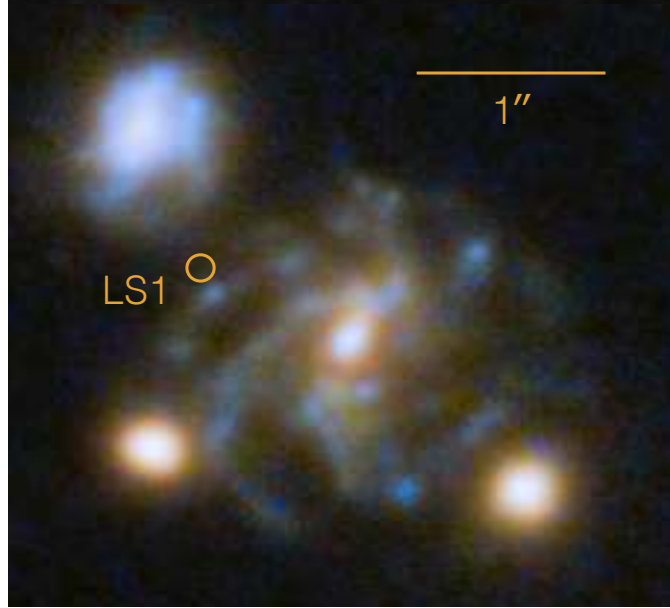
cluster models<sup>7,8,27</sup> is  $\sim 2 \times 10^9 M_{\odot} \text{kpc}^{-2}$ .



Extended Data Fig. 1: Constraints on the age and dust extinction of the stellar population along the lensed arc adjacent to LS1. LS1’s flux was measured in the circular cyan aperture and the background measured inside of the red dashed aperture shown in upper-left panel. Upper-right panel plots the SED of the underlying arc measured inside the aperture outlined by a blue boundary, after subtracting the background measured in the aperture outlined in magenta. Bottom panel shows the posterior probability distributions of the age and extinction  $A_V$  of the stellar population. Spectra of the host galaxy favor a gas-phase metallicity of  $Z \approx -0.3$ . At such a metallicity, we find a bimodal posterior probability distribution with peaks at  $\sim 8$  and  $\sim 35$  Myr. An age of  $\sim 8$  Myr would be consistent with the age of a blue supergiant star. The stellar population synthesis model is constructed using the Padova isochrones<sup>36,37</sup>, and we apply a Cardelli extinction law with  $R_V = 3.1$ <sup>35</sup>.

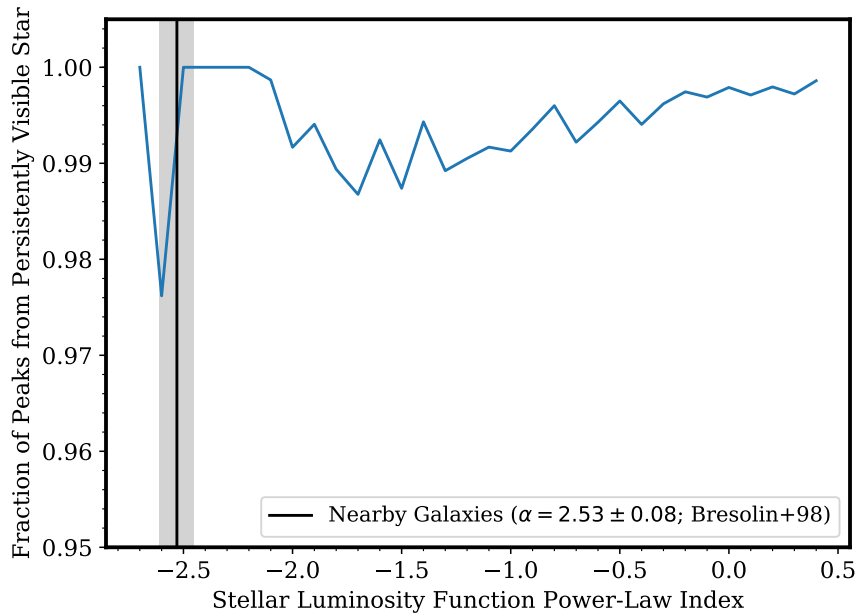


Extended Data Fig. 2: Distinct magnification patterns for respective counterimages Lev16B (upper panel) and LS1/Lev16A (lower panel) of LS1 within the source-plane host galaxy at redshift  $z = 1.49$  from a ray-tracing simulation. Extensive regions of low magnification ( $\lesssim 100$ ) for negative-parity image Lev16A could explain why it is undetected in *HST* imaging acquired in all except a single epoch acquired from 2004 through 2017. The map for positive-parity image LS1/Lev16A lacks such regions of extensive low magnification, and it always detected in deep imaging. Plotted angular scale is in the source plane, and one  $\mu\text{arcsec}$  in each panel corresponds to a physical  $8.6 \times 10^{-3}$  pc at redshift  $z = 1.49$ . If LS1 has an apparent transverse velocity of  $1000 \text{ km s}^{-1}$ , it would travel  $1 \mu\text{arcsecond}$  in 8.6 observer-frame years. These ray-tracing simulations are realistic if Lev16B and LS1/Lev16A are mutual counterimages offset by  $0.13''$  on opposite sides of the galaxy cluster's critical curve in the image plane, and each of the counterimages has an average magnification of 600. The galaxy-cluster caustic, which is offset by 2.1 pc from these maps, is oriented parallel to the horizontal axes of each panel. The different patterns of magnification correspond to the parity of the image; Lev16B has negative parity, while LS1/Lev16A has positive parity. Here we have created a random realization of foreground intracluster stars and remnants having a mass-density ( $1.9_{-0.6}^{+0.6} \times 10^7 \text{ M}_{\odot} \text{ kpc}^{-2}$ ) matching that we infer for a Salpeter IMF.

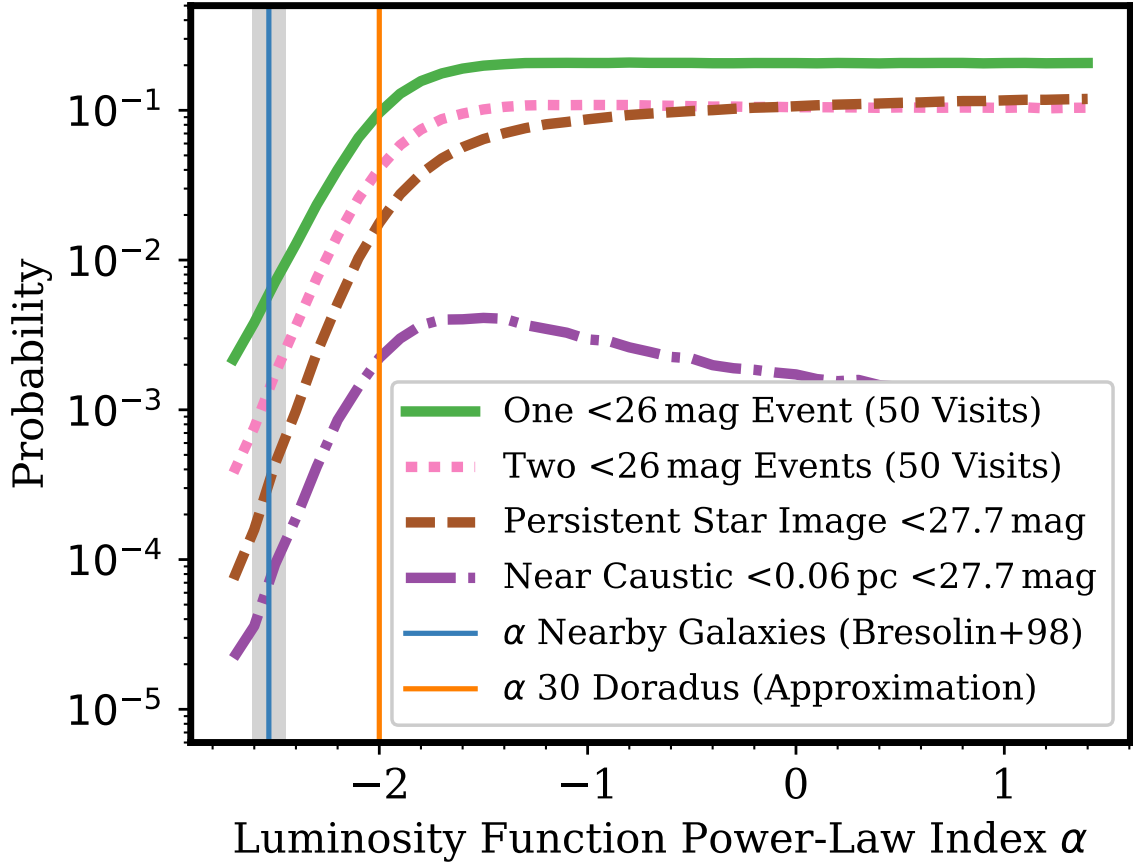


Extended Data Fig. 3: Predicted position of LS1 in separate, full image of its host galaxy created by MACS J1149 galaxy-cluster lens. The cluster lens create three images of the host galaxy at redshift  $z = 1.49$ . We detected LS1 adjacent to the critical curve separating two partial, merging images which have opposite parity. The third, full image shown here is at a greater distance from the cluster center, and it shows that LS1 lies close to the tip of a spiral arm.

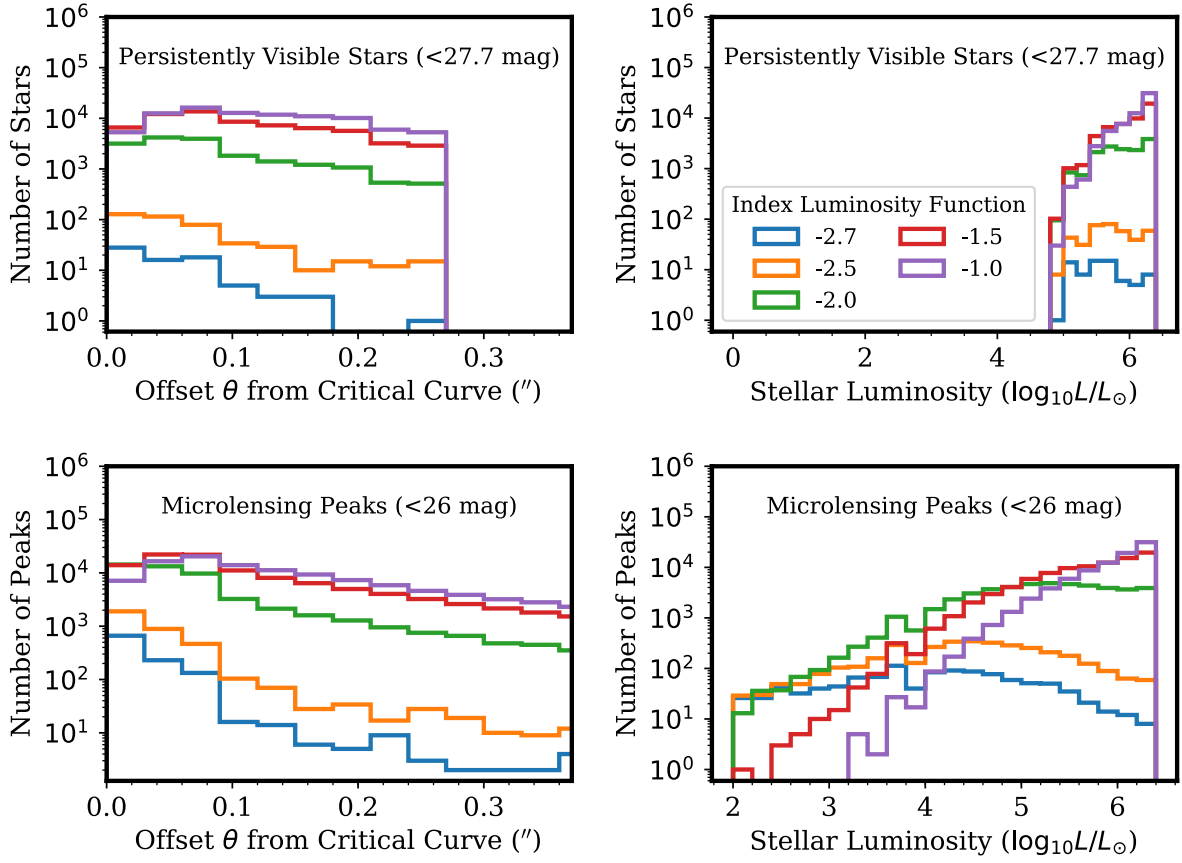




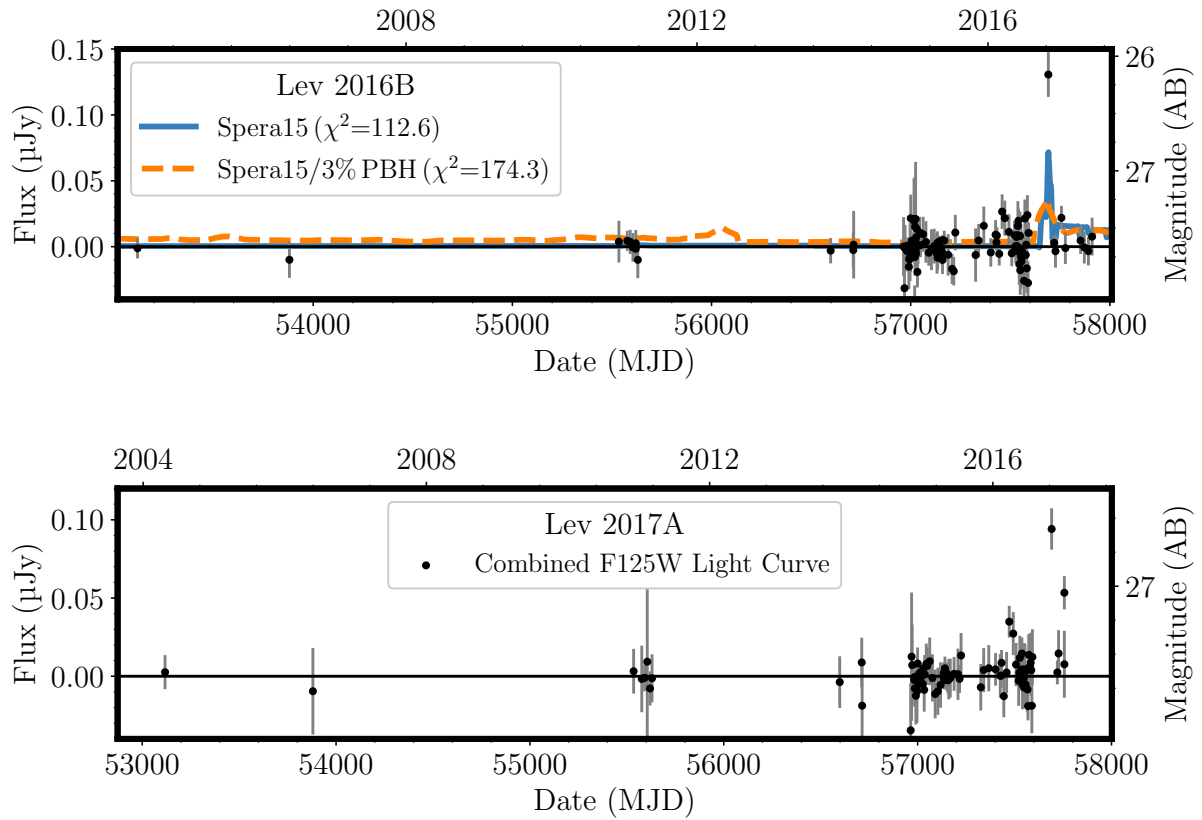
Extended Data Fig. 4: When a lensed star has a bright average apparent magnitude ( $F125W < 27.7$  mag), it will also be responsible for almost all bright microlensing peaks ( $F125W < 26$  mag) observed near the critical curve for simple assumptions. Here we plot the fraction of bright peaks caused by the bright star against the index of the stellar luminosity function. Since  $\gtrsim 99\%$  of events likely arise from the luminous star, it is likely that Lev16B corresponds to the same star as LS1. However, this simulation randomly assigns positions to massive stars. To determine whether the observed clustering of massive stars could yield a greater probability that LS 1 / Lev16A and Lev16B are different stars, we carry out a simulation instead using the observed absolute magnitudes and positions of stars in the 30 Doradus cluster in the LMC from the SIMBAD catalog, and find a similarly low probability.



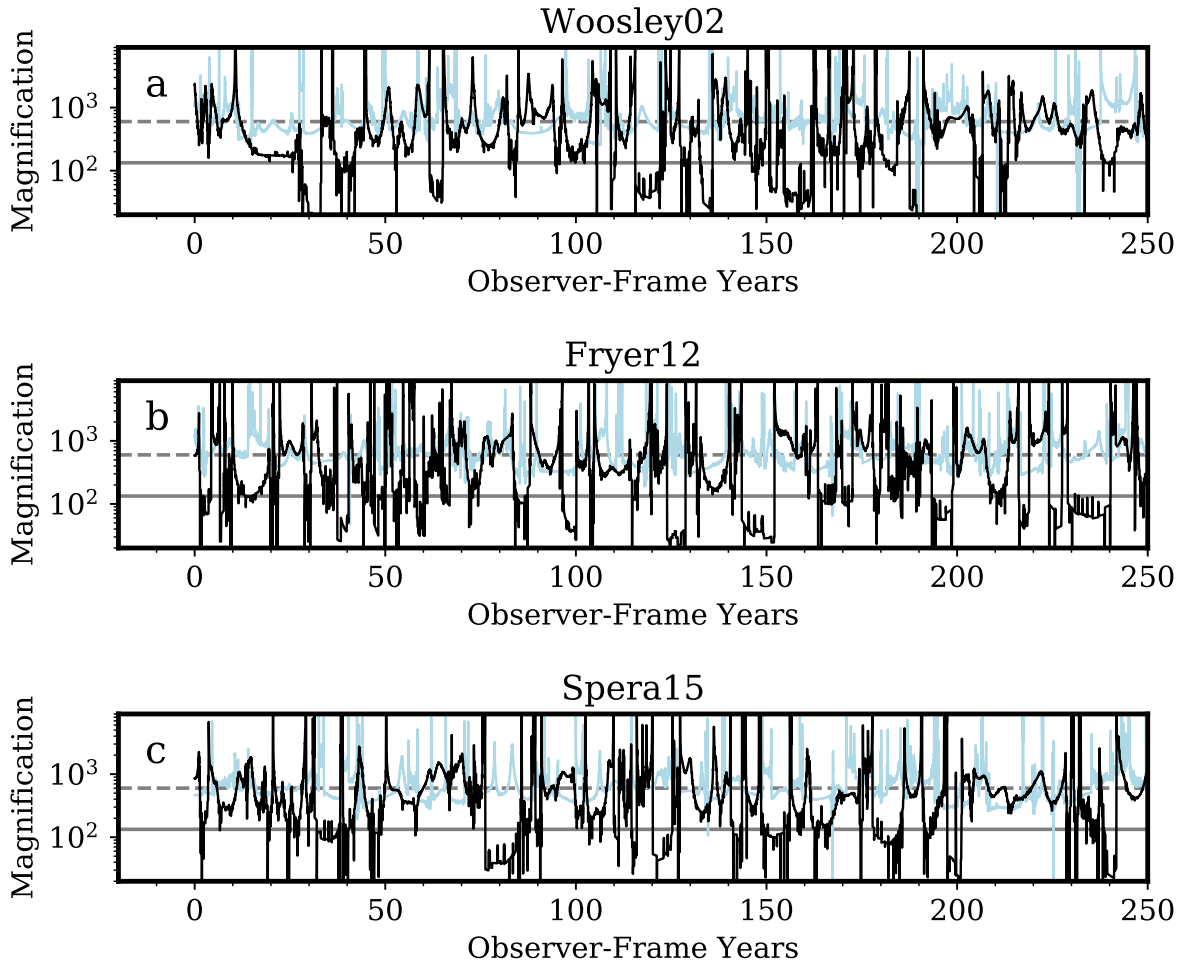
Extended Data Fig. 5: Dependence of the probability of observing highly magnified stellar images on the stellar luminosity function of the underlying arc. Panel shows probabilities of (a) bright microlensing events ( $F_{125W} < 26$  mag; solid green and dotted pink), (b) a persistently bright magnified star ( $F_{125W} < 27.7$  mag) similar to that observed at LS1’s position in 2004–2017 (dashed brown), and (c) a persistently bright magnified star ( $F_{125W} < 27.7$  mag) within 0.06 pc (dot-dash purple). Probabilities are small given the index of stellar luminosity function measured for nearby galaxies ( $\alpha = -2.53 \pm 0.08$ ; vertical blue)<sup>20</sup>, but become significantly larger for shallower power-law indices, such as that for the 30 Doradus star-forming region in the LMC (vertical orange; approximate). Here we have assumed  $N_{\text{obs}} = 50$  visits by *HST*, the number of separate observations of MACS J1149 taken through 13 April 2017 after binning data by 10 days. The lower stellar luminosity limit used for these simulations is  $10 L_{\odot}$ .



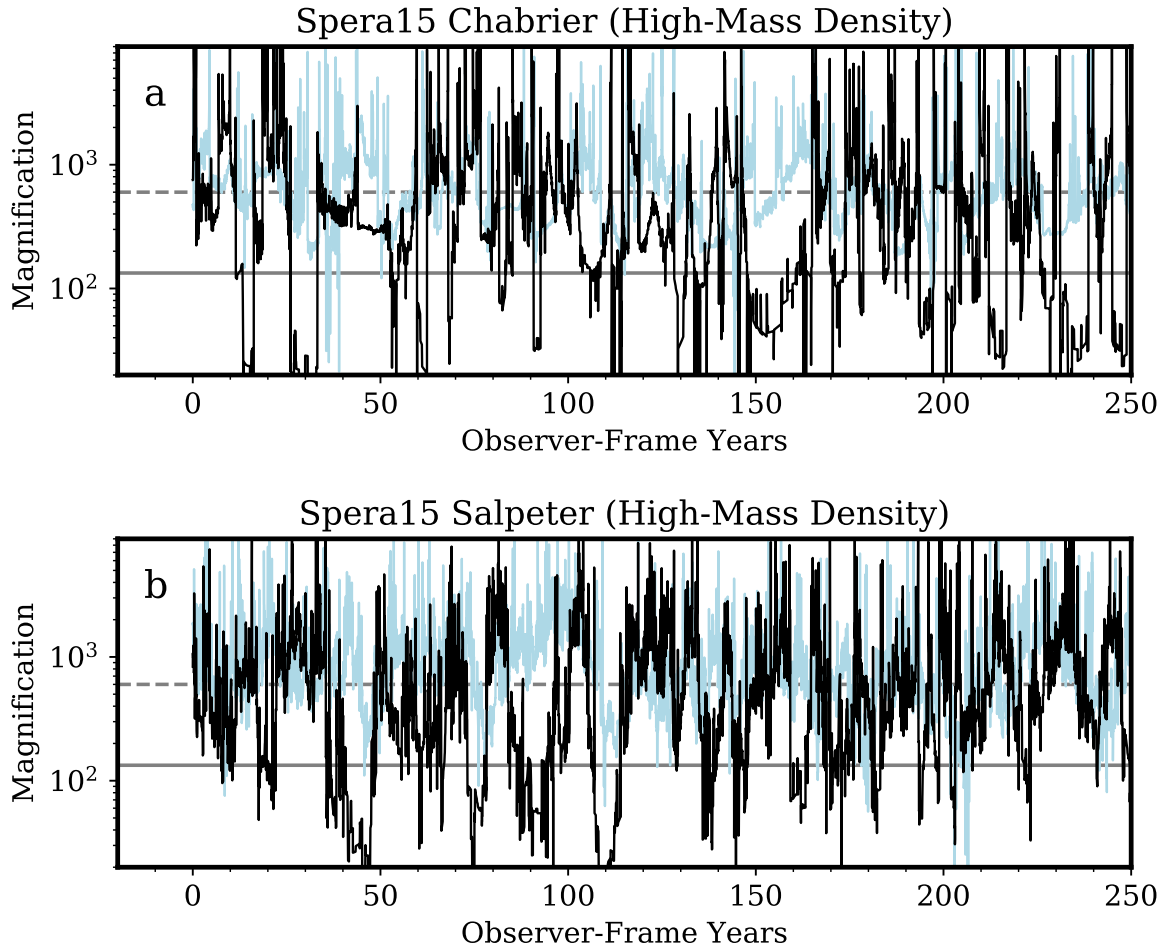
Extended Data Fig. 6: Offsets from critical curve and luminosities of lensed stars for different luminosity functions from  $10^6$  Monte Carlo simulations. We use the surface brightness ( $F_{125W} \approx 25 \text{ mag arcsec}^{-2}$ ) measured along the  $0.2''$ -wide arc to constrain the normalization of the stellar luminosity function, and then Poisson statistics to populate the source plane. The lower luminosity limit used for these simulations is  $10 L_{\odot}$ . Upper panels show that stars with  $F_{125W} \leq 27.7 \text{ mag}$  over a period lasting many years should only appear within  $\sim 0.15''$  of the critical curve, and have luminosities of  $\gtrsim 10^{5.4} L_{\odot}$ . Lower panels show expected offset distribution of bright microlensing peaks ( $F_{125W} \leq 26 \text{ mag}$ ) to  $0.4''$ , and of the luminosities of lensed stars. A stellar luminosity function similar to that measured in nearby galaxies ( $\alpha = -2.53 \pm 0.08$ ) yields fewer events with less-luminous stars<sup>20</sup>. Left panels indicate the offset  $\theta$  in arcseconds of stars from the critical curve, while right panels show the intrinsic luminosity of the stars in units of the solar luminosity ( $L_{\odot}$ ).



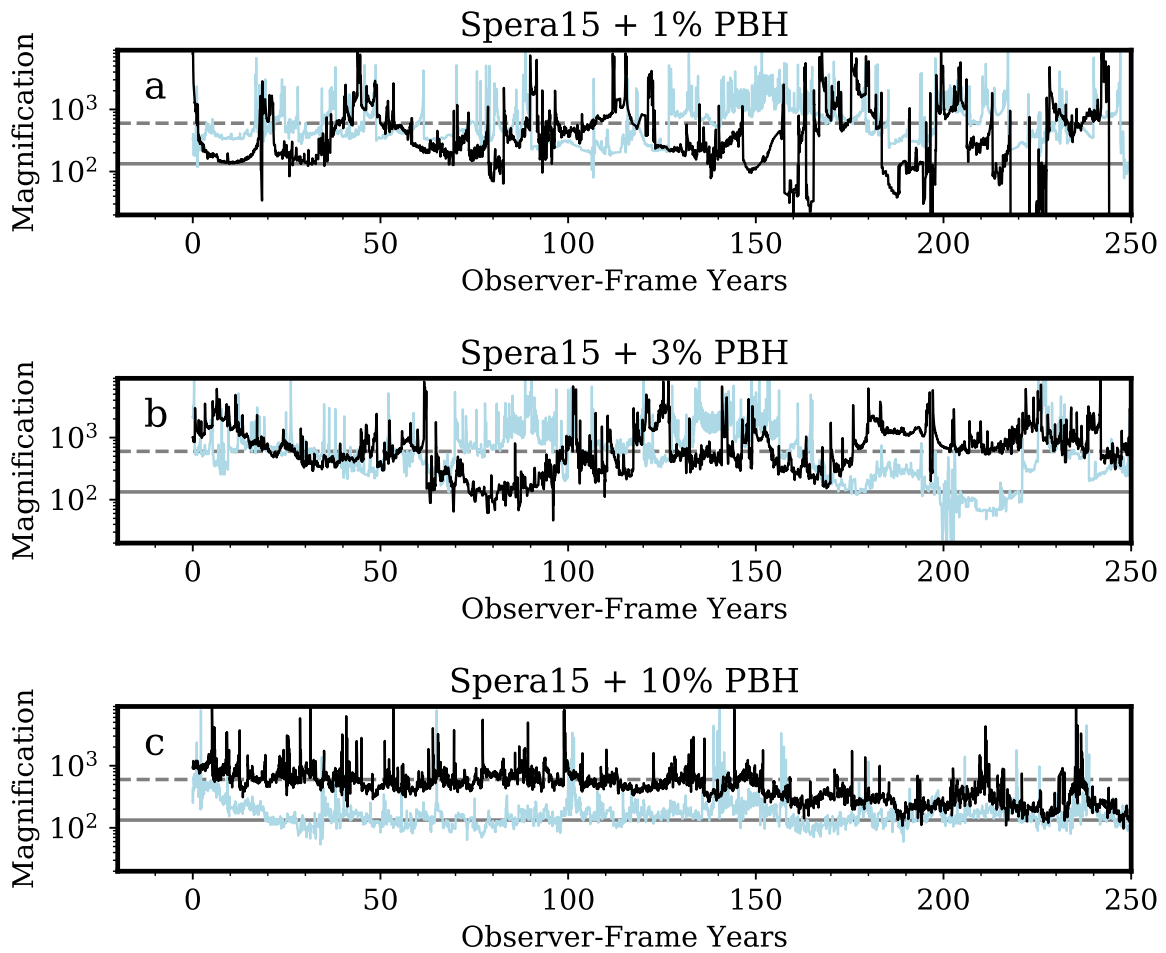
Extended Data Fig. 7: Light curve at the positions of Lev16B (upper panel) detected on 30 October 2016 and potential event Lev 2017A (lower panel) detected on 3 January 2017. Fluxes measured through all wide-band *HST* filters are converted to *F125W* using LS1’s SED. Lev 2017A is only offset from Lev16B by  $0.10''$ , so flux measurements at their positions are correlated. The first (higher) peak in Lev 2017A’s light curve plotted here corresponds to flux from Lev16B.



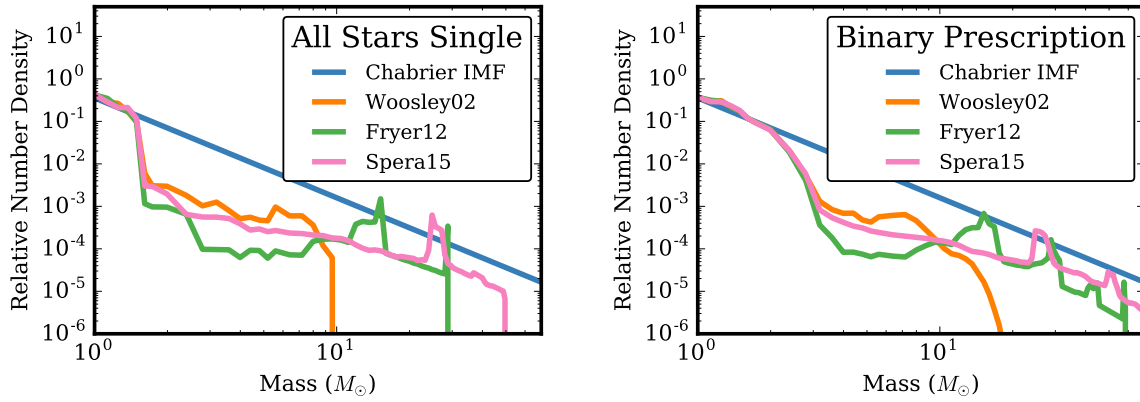
Extended Data Fig. 8: Simulated light curves of a star at  $\theta = 0.13''$  from cluster critical curve for three stellar evolution and core-collapse models. The mass functions are constructed using a Chabrier IMF and a prescription for binary fractions and mass ratios at low redshift<sup>22</sup>. The stellar evolution models used to determine the initial–final mass function for each star include the solar-metallicity, single stellar evolution models (Woosley02)<sup>23</sup>, as well as single stars at subsolar metallicity ( $Z = 0.3 Z_{\odot}$ ;  $Z = 0.006$ ) where BHs with masses up to  $30 M_{\odot}$  form from the collapse of massive stars (Fryer12)<sup>24</sup>, and stars having initial masses greater than  $\sim 33 M_{\odot}$  become BHs with masses within the range  $20\text{--}50 M_{\odot}$  (Spera15)<sup>25</sup>. The Fryer12 and Spera15 models contain greater numbers of BH remnants, which may yield a higher frequency of decade-long intervals with low magnification.



Extended Data Fig. 9: Simulated light curves of a star at  $\theta = 0.13''$  from cluster critical curve for Chabrier (upper panel) and Salpeter (lower panel) IMFs. The simulated light curve constructed from the model with a Salpeter IMF yields a greater number of peaks. Plotted models are constructed using a prescription for binary fractions and mass ratios at low redshift<sup>22</sup>. The stellar-mass densities are  $1.1^{+0.3}_{-0.3} \times 10^7 M_{\odot} \text{ kpc}^{-2}$  and  $1.9^{+0.6}_{-0.6} \times 10^7 M_{\odot} \text{ kpc}^{-2}$  for the upper and lower plots, respectively, and are the best-fitting values to the SED of the ICL for stellar-population synthesis models constructed using Chabrier and Salpeter IMFs.

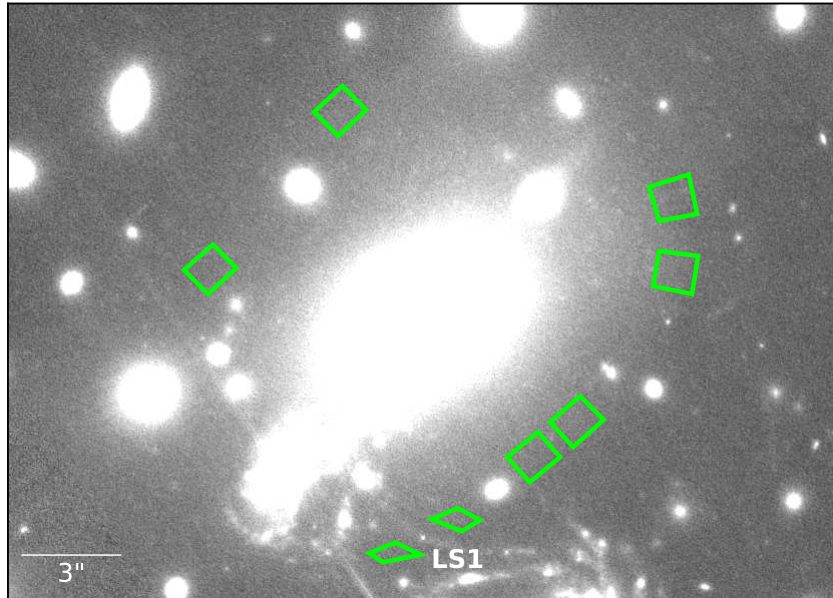


Extended Data Fig. 10: Effect of increasing abundance of  $30 M_{\odot}$  BHs on the simulated light curves of star at  $\theta = 0.13''$ . Replacing 1% (upper panel), 3% (middle), and 10% (bottom) of smooth DM with  $30 M_{\odot}$  BHs yields light curves where the average magnification varies on an increasingly long timescales. An extended period of low magnification for one of the pair of images could help to explain why only a single image, LS1 / Lev16A, is persistently visible in *HST* imaging.

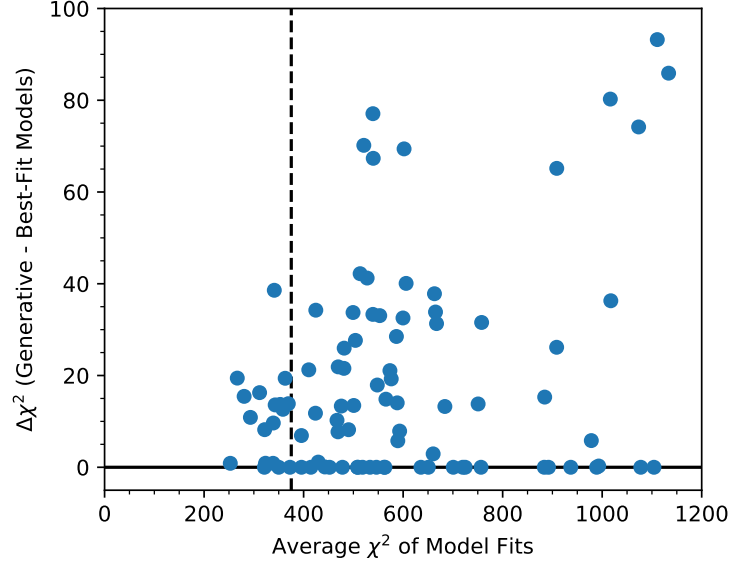


Extended Data Fig. 11: Differences among the mass distributions of surviving stars and stellar remnants (i.e., white dwarf stars, neutron stars, and BHs) for the Woosley02, Fryer12, and Spera15 stellar evolution models. Left panel plots the mass distributions assuming no stars have companions, and right panel shows mass functions assuming the mass-dependent binary fractions and mass ratios measured in the nearby universe<sup>22</sup>.

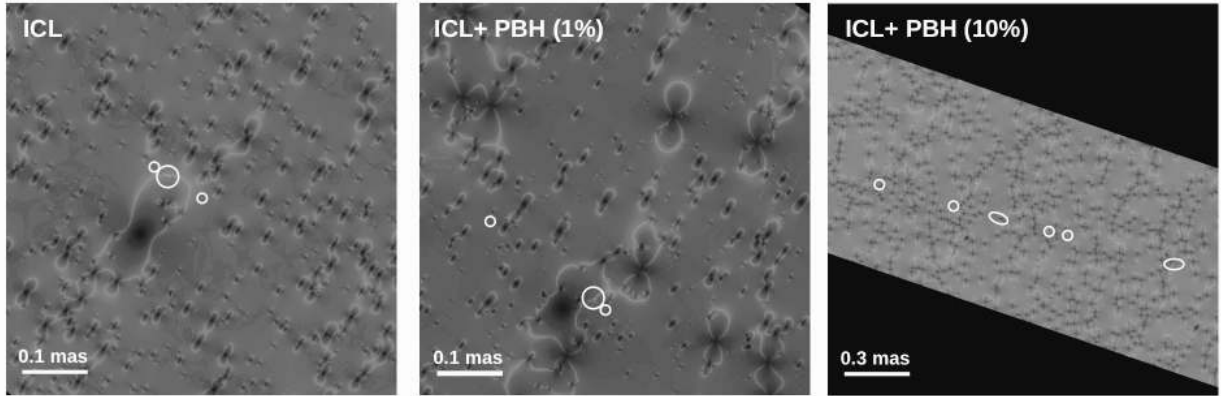




Extended Data Fig. 12: Apertures used for revised estimate of galaxy-cluster stellar-mass density along line-of-sight to LS1. We first estimate the mean  $M_*/L$  across all eight apertures using stellar-population synthesis models. We next multiply the average  $F140W$  surface brightness in the two apertures adjacent to LS1 by the mean value of  $M_*/L$  to estimate the stellar mass density along the line of sight to LS1.



Extended Data Fig. 13: Confidence intervals for  $\langle\chi^2\rangle$  statistics determined using simulated light curves. For the models listed in Table 1, we generate simulated light curves for stars with  $M_V = \{-8, -9, -10\}$ , and fit them, allowing the lensed star to have an absolute magnitude within the range  $-7.5 < M_V < -9.5$ . The dashed black vertical shows the average of the  $\langle\chi^2\rangle$  statistics for the Table 1 models for LS 1/ Lev16A and Lev16B. For all simulated light curves where the average  $\langle\chi^2\rangle$  value is within 100 of the vertical dashed line, we calculate the difference  $\Delta\langle\chi^2\rangle$  values between the  $\langle\chi^2\rangle$  values of the generative (“true”) model and of the best-fitting model. For 68% of simulated light curves,  $\Delta\langle\chi^2\rangle \lesssim 13$ , and, for 95% of simulated light curves,  $\Delta\langle\chi^2\rangle \lesssim 25$ .



Extended Data Fig. 14: Example of trains of multiple counterimages of a single background star as it traverses the region near the galaxy-cluster caustic. In general, there is a single counterimage per microlens<sup>94</sup>, but most images have magnifications of order unity or even less and are not detectable. We show example of trains without PBHs (left panel), where  $30 M_{\odot}$  PBHs account for 1% of DM (middle panel), and where  $30 M_{\odot}$  PBHs account for 10% of DM (right panel). Increasing the PBH abundance yields more extended trains, although their extent ( $\sim 3$  milliarcsec) when PBHs account for 10% would be too small to detect in *HST* imaging. The simulation shown is of a  $1000 R_{\odot}$  star whose image appears at an offset of  $0.13''$  from the cluster critical curve. Near peak magnification, the star appears as a “train” of counterimages. Each circle in right panel encloses one image, and each ellipse encloses a set of two or three closely spaced images, in the train. The sizes of the circles and ellipses indicate the magnification of each image or set of images, respectively. In addition to replacing fractions of cluster DM with PBHs, we have populated the lens plane with stars and compact object remnants to match the mass density in surviving stars and remnants we infer for the ICM ( $1.1^{+0.3}_{-0.3} \times 10^7 M_{\odot} \text{ kpc}^{-2}$ ).

Date (MJD)	Bandpass	Flux	$\sigma$
57538.38	ACS F275W	-0.160	0.192
57531.29	ACS F336W	0.348	0.242
57538.33	ACS F336W	0.394	0.226
57531.37	ACS F475W	-0.005	0.098
57531.46	ACS F435W	-0.303	0.162
57531.46	ACS F435W	-0.033	0.184
57524.28	ACS F606W	0.295	0.055
57524.28	ACS F606W	0.329	0.044
57531.71	ACS F606W	0.332	0.076
57531.71	ACS F606W	0.438	0.054
57534.29	ACS F606W	0.446	0.095
57534.29	ACS F606W	0.522	0.063
57536.10	ACS F606W	0.422	0.098
57536.10	ACS F606W	0.470	0.068
57537.09	ACS F606W	0.555	0.086
57537.09	ACS F606W	0.588	0.070
57524.38	ACS F814W	0.231	0.058
57524.38	ACS F814W	0.304	0.038
57531.49	ACS F814W	0.164	0.094
57531.49	ACS F814W	0.189	0.062
57524.47	WFC3 F105W	0.528	0.113
57524.47	WFC3 F105W	0.681	0.095
57524.47	WFC3 F125W	0.510	0.125
57524.47	WFC3 F125W	0.624	0.097
57524.61	WFC3 F125W	0.578	0.092
57524.61	WFC3 F125W	0.669	0.085
57527.18	WFC3 F125W	0.608	0.142
57527.18	WFC3 F125W	0.748	0.122
57532.02	WFC3 F125W	0.556	0.145
57532.02	WFC3 F125W	0.696	0.138
57534.27	WFC3 F125W	0.967	0.141
57534.27	WFC3 F125W	1.174	0.129
57536.06	WFC3 F125W	1.015	0.140
57536.06	WFC3 F125W	1.211	0.124
57537.05	WFC3 F125W	1.022	0.134
57537.05	WFC3 F125W	1.216	0.128
57538.31	WFC3 F125W	0.930	0.148
57538.31	WFC3 F125W	1.154	0.121
57524.54	WFC3 F160W	0.381	0.110
57524.54	WFC3 F160W	0.489	0.093
57527.20	WFC3 F160W	0.320	0.153

Date (MJD)	Bandpass	Flux	$\sigma$
57527.20	WFC3 F160W	0.427	0.155

Extended Data Table 1: Flux at LS1's position during Lev16A after subtracting flux present in 2011 imaging. Fluxes are measured from difference images created by subtracting exposures acquired in 2016 from template images taken in 2011. The zeropoint of listed fluxes is 25 AB, and no correction for Galactic extinction is applied.

Bandpass	Flux	$\sigma$
ACS <i>F225W</i>	-0.007	0.026
ACS <i>F275W</i>	-0.005	0.019
ACS <i>F336W</i>	0.019	0.010
ACS <i>F435W</i>	0.024	0.005
ACS <i>F606W</i>	0.050	0.006
ACS <i>F814W</i>	0.072	0.003
WFC3 <i>F105W</i>	0.143	0.006
WFC3 <i>F125W</i>	0.141	0.008
WFC3 <i>F140W</i>	0.113	0.004
WFC3 <i>F160W</i>	0.127	0.011

Extended Data Table 2: Photometry of LS1 measured from HFF imaging (2013–2014), and archival near-UV *HST* imaging. The zeropoint of listed fluxes is 25 AB, and a correction for Galactic extinction is applied.

Bandpass	Flux	$\sigma$
ACS <i>F225W</i>	-0.329	0.011
ACS <i>F275W</i>	0.110	0.054
ACS <i>F336W</i>	0.100	0.027
ACS <i>F435W</i>	0.089	0.016
ACS <i>F606W</i>	0.098	0.014
ACS <i>F814W</i>	0.091	0.008
WFC3 <i>F105W</i>	0.095	0.008
WFC3 <i>F125W</i>	0.097	0.009
WFC3 <i>F140W</i>	0.097	0.011
WFC3 <i>F160W</i>	0.107	0.010

Extended Data Table 3: Photometry of underlying lensed arc adjacent to LS1. The zeropoint of listed fluxes is 25 AB, and fluxes are corrected for Galactic extinction.

Date (MJD)	Bandpass	LS1/2016A		2016B		2017A	
		Flux	$\sigma$	Flux	$\sigma$	Flux	$\sigma$
55534.98	WFC3 F125W	0.079 [0.079]	0.040 [0.040]	0.019	0.055	0.021	0.044
55629.90	WFC3 F125W	0.106 [0.106]	0.045 [0.045]	-0.028	0.057	0.008	0.050
56981.06	WFC3 F125W	0.148 [0.148]	0.019 [0.019]	-0.009	0.014	-0.014	0.017
56982.12	WFC3 F125W	0.125 [0.125]	0.020 [0.020]	-0.016	0.018	-0.020	0.017
56983.04	WFC3 F125W	0.131 [0.131]	0.019 [0.019]	-0.017	0.018	0.006	0.014
56983.31	WFC3 F125W	0.112 [0.112]	0.014 [0.014]	-0.013	0.019	-0.006	0.016
56990.90	WFC3 F125W	0.198 [0.198]	0.046 [0.046]	-0.038	0.055	-0.017	0.056
56992.95	WFC3 F125W	0.130 [0.130]	0.059 [0.059]	-0.044	0.038	-0.024	0.042
56994.01	WFC3 F125W	0.146 [0.146]	0.033 [0.033]	-0.029	0.047	-0.045	0.051
56996.73	WFC3 F125W	0.149 [0.149]	0.045 [0.045]	0.012	0.072	-0.016	0.061
56999.52	WFC3 F125W	0.150 [0.150]	0.044 [0.044]	-0.028	0.049	0.015	0.044
57000.11	WFC3 F125W	0.096 [0.096]	0.073 [0.073]	0.068	0.063	0.038	0.042
57005.86	WFC3 F125W	0.148 [0.148]	0.021 [0.021]	0.012	0.016	0.005	0.012
57019.94	WFC3 F125W	0.061 [0.061]	0.076 [0.076]	-0.174	0.104	-0.075	0.112
57020.80	WFC3 F125W	0.006 [0.006]	0.099 [0.099]	0.005	0.088	0.080	0.079
57021.80	WFC3 F125W	0.126 [0.126]	0.093 [0.093]	0.042	0.103	-0.026	0.102
57024.72	WFC3 F125W	0.100 [0.100]	0.102 [0.102]	0.058	0.119	0.010	0.044
57025.78	WFC3 F125W	0.094 [0.094]	0.082 [0.082]	-0.069	0.115	-0.012	0.072
57025.91	WFC3 F125W	0.055 [0.055]	0.089 [0.089]	0.034	0.104	-0.007	0.098
57026.90	WFC3 F125W	0.018 [0.018]	0.080 [0.080]	-0.087	0.133	-0.109	0.082
57029.54	WFC3 F125W	0.151 [0.151]	0.016 [0.016]	0.037	0.015	0.029	0.014
57033.94	WFC3 F125W	0.144 [0.144]	0.044 [0.044]	-0.043	0.043	-0.002	0.046
57036.60	WFC3 F125W	0.109 [0.109]	0.046 [0.046]	0.010	0.050	0.045	0.041
57044.69	WFC3 F125W	0.120 [0.120]	0.036 [0.036]	0.029	0.040	0.011	0.040
57049.20	WFC3 F125W	0.099 [0.099]	0.033 [0.033]	-0.006	0.030	0.023	0.039
57062.36	WFC3 F125W	0.120 [0.120]	0.040 [0.040]	0.041	0.046	0.041	0.047
57076.39	WFC3 F125W	0.111 [0.111]	0.039 [0.039]	0.001	0.055	-0.011	0.047
57090.39	WFC3 F125W	0.103 [0.103]	0.037 [0.037]	-0.033	0.031	-0.032	0.052
57104.27	WFC3 F125W	0.132 [0.132]	0.057 [0.057]	-0.017	0.050	-0.028	0.045
57118.14	WFC3 F125W	0.110 [0.110]	0.040 [0.040]	-0.002	0.042	-0.016	0.044
57132.09	WFC3 F125W	0.144 [0.144]	0.068 [0.068]	-0.027	0.071	0.001	0.079
57149.06	WFC3 F125W	0.079 [0.079]	0.055 [0.055]	0.058	0.045	0.047	0.076
57188.17	WFC3 F125W	0.148 [0.148]	0.040 [0.040]	0.004	0.049	0.009	0.031
57216.20	WFC3 F125W	0.153 [0.153]	0.049 [0.049]	-0.062	0.050	0.010	0.039
57223.96	WFC3 F125W	0.095 [0.095]	0.054 [0.054]	0.030	0.044	0.033	0.044
57325.82	WFC3 F125W	0.044 [0.044]	0.060 [0.060]	-0.023	0.077	0.005	0.049
57340.94	WFC3 F125W	0.109 [0.109]	0.035 [0.035]	0.039	0.043	0.026	0.050
57367.04	WFC3 F125W	0.131 [0.131]	0.051 [0.051]	0.071	0.053	0.053	0.051
57402.11	WFC3 F125W	0.212 [0.212]	0.045 [0.045]	-0.027	0.034	0.011	0.039
57426.21	WFC3 F125W	0.155 [0.155]	0.037 [0.037]	0.007	0.037	-0.012	0.044
57430.59	WFC3 F125W	0.195 [0.195]	0.046 [0.046]	0.024	0.038	0.049	0.037



Date (MJD)	Bandpass	LS1/2016A		2016B		2017A	
		Flux	$\sigma$	Flux	$\sigma$	Flux	$\sigma$
57444.57	WFC3 F125W	0.174 [0.174]	0.033 [0.033]	0.008	0.029	-0.024	0.044
57459.03	WFC3 F125W	0.243 [0.243]	0.056 [0.056]	0.107	0.046	0.063	0.057
57472.53	WFC3 F125W	0.251 [0.251]	0.049 [0.049]	0.051	0.044	0.106	0.041
57493.26	WFC3 F125W	0.323 [0.323]	0.048 [0.048]	0.018	0.044	0.072	0.041
57507.53	WFC3 F125W	0.462 [0.462]	0.033 [0.033]	-0.031	0.030	0.005	0.042
57521.27	WFC3 F125W	0.328 [0.328]	0.055 [0.055]	0.010	0.036	-0.047	0.052
57524.47	WFC3 F125W	0.313 [0.313]	0.056 [0.056]	-0.027	0.041	0.016	0.044
57524.60	WFC3 F125W	0.399 [0.399]	0.045 [0.045]	-0.020	0.044	-0.013	0.049
57524.61	WFC3 F125W	0.280 [0.280]	0.041 [0.041]	-0.021	0.039	0.000	0.038
57527.18	WFC3 F125W	0.345 [0.345]	0.038 [0.038]	0.010	0.046	0.031	0.044
57532.02	WFC3 F125W	0.326 [0.326]	0.048 [0.048]	0.033	0.063	0.072	0.060
57534.27	WFC3 F125W	0.563 [0.563]	0.068 [0.068]	0.001	0.071	0.027	0.056
57536.06	WFC3 F125W	0.517 [0.517]	0.064 [0.064]	-0.020	0.054	0.038	0.060
57537.05	WFC3 F125W	0.516 [0.516]	0.051 [0.051]	0.051	0.054	0.039	0.048
57538.31	WFC3 F125W	0.489 [0.489]	0.066 [0.066]	0.043	0.052	0.060	0.044
57541.09	WFC3 F125W	0.233 [0.233]	0.042 [0.042]	0.068	0.028	-0.011	0.049
57545.07	WFC3 F125W	0.286 [0.286]	0.071 [0.071]	-0.005	0.071	0.019	0.055
57547.05	WFC3 F125W	0.214 [0.214]	0.057 [0.057]	-0.002	0.049	-0.004	0.048
57549.00	WFC3 F125W	0.161 [0.161]	0.062 [0.062]	0.036	0.070	-0.013	0.047
57550.04	WFC3 F125W	0.141 [0.141]	0.057 [0.057]	-0.034	0.063	-0.019	0.035
57551.67	WFC3 F125W	0.130 [0.130]	0.071 [0.071]	0.022	0.042	0.048	0.054
57553.73	WFC3 F125W	0.204 [0.204]	0.071 [0.071]	0.018	0.087	0.023	0.053
57555.91	WFC3 F125W	0.182 [0.182]	0.044 [0.044]	-0.040	0.057	0.017	0.057
57557.50	WFC3 F125W	0.100 [0.100]	0.069 [0.069]	-0.007	0.056	-0.042	0.055
57566.20	WFC3 F125W	0.159 [0.159]	0.055 [0.055]	0.006	0.053	0.006	0.051
57569.25	WFC3 F125W	0.181 [0.181]	0.055 [0.055]	-0.070	0.047	-0.051	0.026
57573.22	WFC3 F125W	0.146 [0.146]	0.041 [0.041]	0.090	0.046	0.072	0.046
57577.71	WFC3 F125W	0.170 [0.170]	0.043 [0.043]	-0.011	0.053	0.017	0.034
57580.18	WFC3 F125W	0.177 [0.177]	0.053 [0.053]	0.067	0.059	0.053	0.066
57583.09	WFC3 F125W	0.168 [0.168]	0.068 [0.068]	-0.039	0.072	0.017	0.072
57586.01	WFC3 F125W	0.252 [0.252]	0.060 [0.060]	0.069	0.045	0.031	0.054
57589.19	WFC3 F125W	0.232 [0.232]	0.058 [0.058]	-0.053	0.059	-0.047	0.060
57592.04	WFC3 F125W	0.111 [0.111]	0.071 [0.071]	0.055	0.056	0.034	0.059
57691.20	WFC3 F125W	0.257 [0.257]	0.055 [0.055]	0.391	0.055	0.260	0.040
57720.81	WFC3 F125W	0.103 [0.103]	0.038 [0.038]	0.008	0.041	0.006	0.023
57727.04	WFC3 F125W	0.155 [0.155]	0.038 [0.038]	-0.001	0.038	0.046	0.046
57756.90	WFC3 F125W	0.159 [0.159]	0.037 [0.037]	0.083	0.033	0.147	0.029
55591.70	WFC3 F105W	0.031 [0.032]	0.035 [0.037]	0.009	0.032	0.011	0.028
55619.67	WFC3 F105W	0.139 [0.145]	0.045 [0.048]	0.014	0.036	-0.021	0.040
56711.48	WFC3 F105W	0.297 [0.311]	0.063 [0.067]	0.011	0.068	0.018	0.065
56711.94	WFC3 F105W	0.279 [0.291]	0.094 [0.100]	-0.044	0.059	-0.007	0.088

Date (MJD)	Bandpass	LS1/2016A		2016B		2017A	
		Flux	$\sigma$	Flux	$\sigma$	Flux	$\sigma$
56713.63	WFC3 F105W	0.260 [0.272]	0.088 [0.094]	0.004	0.071	-0.052	0.077
56964.16	WFC3 F105W	0.180 [0.188]	0.078 [0.083]	0.000	0.062	-0.095	0.078
56968.88	WFC3 F105W	0.138 [0.145]	0.134 [0.143]	-0.091	0.105	0.034	0.106
56972.06	WFC3 F105W	0.207 [0.217]	0.107 [0.114]	0.077	0.137	0.172	0.138
56982.31	WFC3 F105W	0.109 [0.114]	0.028 [0.029]	-0.014	0.032	-0.004	0.029
57002.87	WFC3 F105W	0.137 [0.143]	0.014 [0.015]	0.000	0.018	-0.014	0.017
57006.98	WFC3 F105W	0.134 [0.140]	0.016 [0.017]	0.003	0.015	0.017	0.019
57011.89	WFC3 F105W	0.123 [0.129]	0.015 [0.016]	-0.000	0.013	0.005	0.019
57014.88	WFC3 F105W	0.157 [0.164]	0.015 [0.016]	0.014	0.019	0.009	0.018
57015.81	WFC3 F105W	0.090 [0.094]	0.016 [0.017]	0.006	0.015	-0.008	0.009
57017.80	WFC3 F105W	0.126 [0.132]	0.014 [0.015]	0.000	0.017	0.002	0.014
57020.58	WFC3 F105W	0.125 [0.130]	0.013 [0.014]	-0.027	0.012	-0.012	0.013
57023.77	WFC3 F105W	0.135 [0.141]	0.016 [0.017]	0.015	0.016	0.014	0.014
57025.56	WFC3 F105W	0.119 [0.125]	0.012 [0.013]	-0.013	0.013	-0.001	0.015
57026.49	WFC3 F105W	0.139 [0.146]	0.013 [0.014]	-0.015	0.012	-0.016	0.016
57027.81	WFC3 F105W	0.123 [0.128]	0.014 [0.015]	-0.023	0.010	0.008	0.009
57132.10	WFC3 F105W	0.118 [0.124]	0.064 [0.068]	-0.014	0.069	0.008	0.061
57149.07	WFC3 F105W	0.138 [0.145]	0.048 [0.051]	0.046	0.067	0.022	0.057
57168.28	WFC3 F105W	0.070 [0.073]	0.019 [0.021]	0.012	0.022	-0.006	0.034
57208.06	WFC3 F105W	0.068 [0.071]	0.054 [0.057]	-0.047	0.033	0.004	0.047
57216.28	WFC3 F105W	0.129 [0.135]	0.043 [0.046]	-0.029	0.042	-0.000	0.034
57430.59	WFC3 F105W	0.183 [0.192]	0.030 [0.032]	0.005	0.019	-0.023	0.024
57432.75	WFC3 F105W	0.157 [0.164]	0.023 [0.025]	0.042	0.019	0.028	0.022
57524.47	WFC3 F105W	0.367 [0.384]	0.031 [0.033]	0.005	0.035	-0.002	0.025
55535.00	WFC3 F160W	0.000 [0.000]	0.078 [0.100]	-0.005	0.072	-0.042	0.068
55577.06	WFC3 F160W	0.062 [0.078]	0.063 [0.082]	0.004	0.059	-0.003	0.058
55619.12	WFC3 F160W	0.099 [0.125]	0.059 [0.076]	-0.052	0.062	-0.057	0.061
55629.85	WFC3 F160W	0.116 [0.146]	0.058 [0.075]	-0.035	0.052	-0.036	0.063
56598.14	WFC3 F160W	0.061 [0.077]	0.026 [0.033]	-0.010	0.027	-0.010	0.035
56990.91	WFC3 F160W	0.126 [0.159]	0.086 [0.111]	-0.067	0.087	-0.104	0.088
56992.97	WFC3 F160W	0.038 [0.048]	0.096 [0.124]	0.002	0.048	-0.004	0.108
56994.03	WFC3 F160W	0.076 [0.095]	0.033 [0.042]	-0.016	0.066	0.041	0.061
56996.75	WFC3 F160W	0.075 [0.094]	0.058 [0.075]	-0.086	0.113	-0.080	0.106
56999.56	WFC3 F160W	0.048 [0.060]	0.067 [0.087]	0.052	0.085	0.036	0.083
57000.13	WFC3 F160W	0.146 [0.185]	0.061 [0.079]	0.057	0.081	-0.048	0.081
57002.89	WFC3 F160W	0.118 [0.149]	0.022 [0.028]	0.002	0.023	-0.003	0.019
57007.00	WFC3 F160W	0.111 [0.140]	0.023 [0.030]	-0.021	0.019	-0.011	0.014
57011.91	WFC3 F160W	0.124 [0.157]	0.023 [0.030]	0.032	0.023	0.008	0.027
57014.87	WFC3 F160W	0.020 [0.025]	0.026 [0.034]	0.005	0.031	0.025	0.027
57015.82	WFC3 F160W	0.124 [0.157]	0.025 [0.032]	0.014	0.023	0.015	0.021
57016.79	WFC3 F160W	0.072 [0.091]	0.057 [0.074]	0.069	0.089	-0.034	0.108

Date (MJD)	Bandpass	LS1/2016A		2016B		2017A	
		Flux	$\sigma$	Flux	$\sigma$	Flux	$\sigma$
57017.82	WFC3 F160W	0.097 [0.122]	0.017 [0.022]	0.006	0.017	-0.008	0.019
57018.78	WFC3 F160W	0.076 [0.096]	0.099 [0.128]	0.073	0.084	0.041	0.105
57019.64	WFC3 F160W	-0.082 [-0.103]	0.094 [0.121]	-0.196	0.164	-0.048	0.128
57020.60	WFC3 F160W	0.187 [0.236]	0.028 [0.037]	-0.014	0.028	-0.028	0.028
57020.94	WFC3 F160W	-0.004 [-0.006]	0.143 [0.185]	0.230	0.134	0.160	0.166
57023.78	WFC3 F160W	0.085 [0.107]	0.020 [0.026]	0.008	0.020	0.012	0.025
57025.57	WFC3 F160W	0.108 [0.136]	0.023 [0.029]	-0.007	0.013	-0.013	0.023
57026.50	WFC3 F160W	0.116 [0.147]	0.020 [0.026]	-0.019	0.027	0.002	0.021
57027.83	WFC3 F160W	0.114 [0.143]	0.025 [0.032]	0.004	0.026	0.008	0.019
57033.96	WFC3 F160W	0.116 [0.147]	0.067 [0.086]	-0.083	0.050	-0.072	0.053
57036.61	WFC3 F160W	0.082 [0.103]	0.039 [0.051]	-0.012	0.061	-0.092	0.048
57044.71	WFC3 F160W	0.102 [0.129]	0.057 [0.074]	0.038	0.058	0.067	0.063
57049.21	WFC3 F160W	0.108 [0.136]	0.034 [0.044]	0.034	0.048	0.007	0.047
57062.40	WFC3 F160W	0.077 [0.097]	0.074 [0.096]	-0.002	0.061	-0.036	0.073
57076.41	WFC3 F160W	0.117 [0.147]	0.065 [0.083]	0.030	0.071	0.025	0.067
57090.42	WFC3 F160W	0.149 [0.188]	0.074 [0.096]	0.056	0.053	-0.028	0.060
57104.31	WFC3 F160W	0.072 [0.091]	0.070 [0.091]	0.027	0.080	-0.017	0.079
57118.22	WFC3 F160W	0.091 [0.115]	0.074 [0.096]	0.014	0.072	-0.015	0.074
57132.11	WFC3 F160W	0.029 [0.036]	0.067 [0.086]	0.001	0.081	0.065	0.091
57149.08	WFC3 F160W	0.127 [0.161]	0.086 [0.112]	0.051	0.077	-0.027	0.086
57168.29	WFC3 F160W	0.059 [0.074]	0.066 [0.085]	0.026	0.057	0.021	0.089
57188.19	WFC3 F160W	0.035 [0.045]	0.096 [0.123]	-0.126	0.095	-0.057	0.087
57208.09	WFC3 F160W	0.094 [0.119]	0.088 [0.113]	-0.069	0.094	0.002	0.079
57216.22	WFC3 F160W	0.109 [0.138]	0.052 [0.067]	-0.137	0.079	-0.072	0.055
57224.00	WFC3 F160W	0.019 [0.024]	0.062 [0.080]	0.036	0.070	0.053	0.072
57325.84	WFC3 F160W	0.085 [0.108]	0.064 [0.083]	-0.014	0.081	-0.078	0.059
57340.95	WFC3 F160W	0.125 [0.158]	0.081 [0.105]	-0.044	0.058	-0.011	0.047
57367.06	WFC3 F160W	0.082 [0.104]	0.075 [0.097]	0.009	0.062	-0.055	0.052
57402.15	WFC3 F160W	0.155 [0.196]	0.061 [0.078]	0.044	0.061	0.013	0.033
57426.23	WFC3 F160W	0.157 [0.198]	0.071 [0.092]	0.083	0.055	0.043	0.062
57432.75	WFC3 F160W	0.147 [0.185]	0.046 [0.059]	-0.074	0.042	-0.015	0.052
57444.61	WFC3 F160W	0.084 [0.106]	0.059 [0.076]	-0.090	0.045	-0.064	0.054
57459.09	WFC3 F160W	0.237 [0.299]	0.056 [0.072]	0.023	0.059	-0.032	0.036
57472.54	WFC3 F160W	0.166 [0.210]	0.064 [0.083]	0.102	0.068	0.088	0.030
57493.30	WFC3 F160W	0.229 [0.289]	0.070 [0.090]	0.079	0.069	0.094	0.074
57507.57	WFC3 F160W	0.269 [0.339]	0.062 [0.080]	0.094	0.067	0.088	0.069
57521.30	WFC3 F160W	0.253 [0.319]	0.060 [0.077]	0.071	0.055	0.089	0.063
57524.54	WFC3 F160W	0.259 [0.327]	0.047 [0.061]	-0.020	0.043	0.038	0.035
57527.20	WFC3 F160W	0.244 [0.309]	0.053 [0.069]	-0.018	0.058	0.037	0.064
57541.13	WFC3 F160W	0.168 [0.212]	0.054 [0.070]	-0.021	0.062	-0.030	0.070
57545.10	WFC3 F160W	0.301 [0.380]	0.081 [0.105]	-0.070	0.055	-0.022	0.075

Date (MJD)	Bandpass	LS1/2016A		2016B		2017A	
		Flux	$\sigma$	Flux	$\sigma$	Flux	$\sigma$
57547.09	WFC3 F160W	0.212 [0.268]	0.075 [0.097]	-0.006	0.061	0.003	0.078
57549.04	WFC3 F160W	0.139 [0.176]	0.060 [0.077]	0.009	0.075	-0.029	0.071
57550.10	WFC3 F160W	0.104 [0.131]	0.077 [0.099]	-0.102	0.089	-0.062	0.092
57551.71	WFC3 F160W	0.176 [0.222]	0.076 [0.098]	-0.103	0.071	-0.084	0.068
57553.79	WFC3 F160W	0.121 [0.153]	0.107 [0.138]	-0.096	0.106	-0.053	0.083
57555.95	WFC3 F160W	0.188 [0.237]	0.087 [0.112]	-0.010	0.091	0.011	0.078
57557.53	WFC3 F160W	0.139 [0.175]	0.043 [0.056]	-0.011	0.055	-0.069	0.098
57566.22	WFC3 F160W	0.169 [0.214]	0.079 [0.103]	-0.074	0.066	-0.072	0.052
57569.26	WFC3 F160W	0.133 [0.168]	0.067 [0.086]	-0.093	0.081	-0.085	0.082
57573.24	WFC3 F160W	0.155 [0.196]	0.051 [0.066]	-0.036	0.077	-0.021	0.047
57577.74	WFC3 F160W	0.226 [0.286]	0.077 [0.100]	-0.038	0.073	0.010	0.069
57583.13	WFC3 F160W	0.163 [0.206]	0.079 [0.102]	-0.066	0.073	0.032	0.060
57586.05	WFC3 F160W	-0.005 [-0.006]	0.068 [0.088]	0.059	0.113	-0.038	0.064
57589.20	WFC3 F160W	0.018 [0.023]	0.073 [0.094]	-0.135	0.069	-0.061	0.063
57691.21	WFC3 F160W	0.207 [0.261]	0.088 [0.113]	0.352	0.088	0.258	0.065
57727.07	WFC3 F160W	0.112 [0.142]	0.056 [0.072]	-0.053	0.077	0.016	0.070
55591.71	WFC3 F140W	0.072 [0.092]	0.043 [0.054]	0.016	0.040	-0.026	0.030
55619.65	WFC3 F140W	0.009 [0.011]	0.038 [0.047]	-0.002	0.043	-0.013	0.045
56711.77	WFC3 F140W	0.208 [0.265]	0.071 [0.090]	0.022	0.063	0.048	0.056
56971.93	WFC3 F140W	0.160 [0.204]	0.059 [0.074]	-0.111	0.069	-0.101	0.081
56972.13	WFC3 F140W	0.261 [0.332]	0.080 [0.100]	0.109	0.081	0.107	0.109
56981.85	WFC3 F140W	0.084 [0.107]	0.016 [0.020]	0.001	0.019	-0.004	0.016
56981.98	WFC3 F140W	0.110 [0.139]	0.014 [0.018]	0.019	0.011	0.014	0.012
56982.32	WFC3 F140W	0.115 [0.147]	0.019 [0.024]	-0.007	0.015	-0.013	0.015
56983.18	WFC3 F140W	0.127 [0.161]	0.009 [0.011]	-0.004	0.014	-0.012	0.011
56984.84	WFC3 F140W	0.101 [0.128]	0.013 [0.017]	-0.009	0.015	0.016	0.019
55576.98	ACS F606W	0.000 [0.002]	0.026 [0.109]	0.047	0.023	-0.008	0.023
55619.52	ACS F606W	-0.022 [-0.074]	0.027 [0.113]	0.002	0.020	0.016	0.028
57149.51	ACS F606W	0.028 [0.097]	0.006 [0.026]	-0.013	0.009	-0.001	0.011
57150.57	ACS F606W	0.042 [0.142]	0.011 [0.046]	0.046	0.008	0.008	0.007
57151.49	ACS F606W	0.025 [0.086]	0.008 [0.034]	-0.019	0.008	-0.002	0.010
57155.60	ACS F606W	0.035 [0.119]	0.012 [0.048]	-0.063	0.009	-0.012	0.010
57161.36	ACS F606W	0.035 [0.118]	0.009 [0.038]	0.047	0.010	0.004	0.011
57524.28	ACS F606W	0.108 [0.369]	0.013 [0.053]	0.027	0.016	0.007	0.015
57531.40	ACS F606W	0.113 [0.387]	0.028 [0.114]	0.062	0.022	-0.001	0.021
57720.74	ACS F606W	0.014 [0.046]	0.025 [0.103]	0.025	0.021	-0.014	0.031
57720.89	ACS F606W	0.023 [0.078]	0.025 [0.104]	-0.035	0.031	-0.008	0.024
53117.80	ACS F814W	0.038 [0.051]	0.020 [0.031]	-0.005	0.021	0.007	0.019
53880.47	ACS F814W	0.153 [0.203]	0.035 [0.056]	-0.036	0.038	-0.026	0.048
57131.53	ACS F814W	0.074 [0.098]	0.023 [0.036]	-0.031	0.020	-0.007	0.021
57132.59	ACS F814W	0.073 [0.096]	0.018 [0.028]	0.004	0.021	-0.001	0.021

Date (MJD)	Bandpass	LS1/2016A		2016B		2017A	
		Flux	$\sigma$	Flux	$\sigma$	Flux	$\sigma$
57133.79	ACS F814W	0.057 [0.076]	0.024 [0.038]	0.010	0.025	0.014	0.020
57134.65	ACS F814W	0.084 [0.112]	0.020 [0.031]	0.006	0.021	0.010	0.020
57135.58	ACS F814W	0.067 [0.089]	0.026 [0.041]	-0.031	0.025	-0.010	0.022
57137.09	ACS F814W	0.090 [0.120]	0.017 [0.026]	0.008	0.024	-0.024	0.025
57137.63	ACS F814W	0.081 [0.107]	0.025 [0.040]	-0.010	0.017	0.004	0.017
57137.83	ACS F814W	0.089 [0.118]	0.021 [0.033]	0.006	0.023	-0.005	0.027
57138.09	ACS F814W	0.046 [0.061]	0.020 [0.031]	0.012	0.025	-0.011	0.021
57140.34	ACS F814W	0.099 [0.132]	0.020 [0.032]	0.036	0.027	0.015	0.027
57140.61	ACS F814W	0.076 [0.101]	0.021 [0.033]	0.009	0.021	0.011	0.024
57141.60	ACS F814W	0.114 [0.152]	0.016 [0.025]	0.047	0.018	0.019	0.021
57142.46	ACS F814W	0.073 [0.097]	0.020 [0.031]	-0.010	0.024	-0.009	0.012
57143.39	ACS F814W	0.076 [0.101]	0.021 [0.033]	0.002	0.018	0.001	0.025
57143.66	ACS F814W	0.067 [0.089]	0.012 [0.019]	-0.001	0.020	0.003	0.022
57149.49	ACS F814W	0.094 [0.124]	0.022 [0.035]	-0.023	0.021	0.000	0.020
57150.55	ACS F814W	0.096 [0.127]	0.026 [0.041]	-0.000	0.022	0.002	0.015
57151.48	ACS F814W	0.062 [0.082]	0.028 [0.045]	-0.021	0.027	-0.000	0.020
57157.39	ACS F814W	0.118 [0.157]	0.022 [0.035]	-0.014	0.027	-0.005	0.018
57159.84	ACS F814W	0.125 [0.166]	0.026 [0.042]	-0.037	0.029	-0.017	0.034
57524.34	ACS F814W	0.271 [0.360]	0.037 [0.059]	-0.017	0.037	0.015	0.043
57524.41	ACS F814W	0.284 [0.377]	0.049 [0.077]	-0.036	0.029	0.006	0.032
57531.49	ACS F814W	0.246 [0.327]	0.043 [0.068]	0.029	0.053	-0.033	0.057
57720.76	ACS F814W	0.104 [0.139]	0.079 [0.126]	0.084	0.072	0.031	0.076
57720.87	ACS F814W	0.062 [0.082]	0.071 [0.113]	0.056	0.057	0.028	0.067
55605.27	ACS F435W	0.038 [0.267]	0.028 [0.230]	-0.011	0.030	0.026	0.033
55619.53	ACS F435W	0.011 [0.079]	0.034 [0.282]	-0.096	0.051	-0.009	0.040
57131.54	ACS F435W	0.009 [0.061]	0.013 [0.112]	-0.061	0.016	-0.016	0.017
57137.11	ACS F435W	0.013 [0.090]	0.015 [0.124]	-0.087	0.017	-0.010	0.011
57138.10	ACS F435W	0.039 [0.271]	0.020 [0.163]	-0.030	0.013	0.001	0.016
57140.36	ACS F435W	-0.015 [-0.102]	0.018 [0.147]	-0.014	0.019	0.022	0.015
57140.62	ACS F435W	0.011 [0.077]	0.019 [0.156]	0.066	0.016	-0.011	0.014
57141.62	ACS F435W	0.039 [0.271]	0.020 [0.170]	-0.109	0.018	-0.007	0.016
57142.48	ACS F435W	0.011 [0.080]	0.017 [0.142]	-0.026	0.018	-0.024	0.018
57143.41	ACS F435W	0.022 [0.154]	0.016 [0.135]	0.196	0.019	0.033	0.019
57143.67	ACS F435W	0.029 [0.203]	0.009 [0.073]	-0.114	0.016	-0.005	0.015
57531.46	ACS F435W	0.056 [0.391]	0.059 [0.494]	0.215	0.053	0.010	0.047
56985.07	WFC3 F606W	0.064 [0.140]	0.017 [0.036]	0.005	0.024	-0.005	0.014
56985.80	WFC3 F606W	0.059 [0.129]	0.017 [0.038]	-0.001	0.020	-0.019	0.016
57532.03	WFC3 F606W	0.104 [0.228]	0.039 [0.085]	-0.009	0.026	-0.015	0.029
57534.29	WFC3 F606W	0.144 [0.314]	0.026 [0.056]	-0.001	0.017	0.014	0.031
57536.10	WFC3 F606W	0.170 [0.371]	0.029 [0.062]	-0.013	0.030	-0.007	0.034
57537.09	WFC3 F606W	0.208 [0.453]	0.032 [0.069]	0.038	0.027	0.011	0.022

Date (MJD)	Bandpass	LS1/2016A		2016B		2017A	
		Flux	$\sigma$	Flux	$\sigma$	Flux	$\sigma$
57580.19	WFC3 F606W	0.099 [0.217]	0.023 [0.051]	-0.059	0.041	0.009	0.025
57592.07	WFC3 F606W	0.033 [0.072]	0.034 [0.074]	0.053	0.023	0.051	0.035
57756.92	WFC3 F606W	0.042 [0.092]	0.035 [0.075]	0.060	0.039	0.031	0.031
57776.68	WFC3 F606W	0.036 [0.079]	0.030 [0.065]	-0.007	0.033	-0.025	0.025
57853.22	WFC3 F606W	0.047 [0.102]	0.035 [0.075]	0.028	0.028	0.008	0.024
57872.02	WFC3 F606W	0.089 [0.193]	0.035 [0.075]	-0.004	0.034	-0.023	0.040
57892.57	WFC3 F606W	0.083 [0.180]	0.033 [0.072]	-0.021	0.030	0.014	0.034

Extended Data Table 4: Photometry at locations of LS1/Lev 2016, Lev 2016, and Lev 2017 of *HST* imaging acquired 2004–2017. The zeropoint of listed fluxes is 25 AB, and no correction for Galactic extinction is applied. Values in brackets in LS1/Lev 2016 are estimates of star’s WFC3 *F125W* flux converted using the star’s SED. For LS1/Lev16A, fluxes are the sum of flux measured from deep coaddition and that measured from a difference image created by subtracting each image from the deep coaddition. Fluxes at the positions of Lev16B and Lev 2017A are measured from difference imaging.