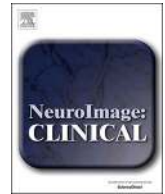




Contents lists available at [ScienceDirect](http://www.sciencedirect.com)

NeuroImage: Clinical

journal homepage: www.elsevier.com/locate/ynicl



Family history and APOE4 risk for Alzheimer's disease impact the neural correlates of episodic memory by early midlife



M.N. Rajah^{a,b,*}, L.M.K. Wallace^{b,c}, E. Ankudowich^{b,c}, E.H. Yu^{b,c}, A. Swierkot^{b,c}, R. Patel^{b,d},
M.M. Chakravarty^{a,b,d}, D. Naumova^{a,c}, J. Pruessner^{a,b}, R. Joober^a, S. Gauthier^e, S. Pasvanis^b

^a Department of Psychiatry, McGill University, Canada.

^b Brain Imaging Centre, Douglas Mental Health University Institute, Canada.

^c Integrated Program in Neuroscience, McGill University, Canada.

^d Department of Biological and Biomedical Engineering, McGill University, Canada.

^e Department of Neurology and Neurosurgery, McGill University, Canada.

A B S T R A C T

Episodic memory impairment is a consistent, pronounced deficit in pre-clinical stages of late-onset Alzheimer's disease (AD). Individuals with risk factors for AD exhibit altered brain function several decades prior to the onset of AD-related symptoms. In the current event-related fMRI study of spatial context memory we tested the hypothesis that middle-aged adults (MA; 40–58 yrs) with a family history of late onset AD (MA_{+FH}), or a combined +FH and apolipoprotein E ε4 allele risk factors for AD (MA_{+FH+APOE4}), will exhibit differences in encoding and retrieval-related brain activity, compared to –FH –APOE4 MA controls. We also hypothesized that the two at-risk MA groups will exhibit distinct patterns of correlation between brain activity and memory performance, compared to controls. To test these hypotheses we conducted multivariate task, and behavior, partial least squares analysis of fMRI data obtained during successful context encoding and retrieval. Our results indicate that even though there were no significant group differences in context memory performance, there were significant differences in brain activity and brain-behavior correlations involving the hippocampus, inferior parietal cortex, cingulate, and precuneus cortex in MA with AD risk factors, compared to controls. In addition, we observed that brain activity and brain-behavior correlations in anterior-medial PFC and in ventral visual cortex differentiated the two MA risk groups from each other, and from MA_{controls}. Our results indicate that functional differences in episodic memory-related regions are present by early midlife in adults with +FH and +APOE-4 risk factors for late onset AD, compared to middle-aged controls.

1. Introduction

Aging is associated with episodic memory decline: a reduced ability to encode, store and retrieve information about past events (recognition memory) in rich spatial and temporal contextual detail (context memory) (Tulving, 1984; Craik, 1994; Grady and Craik, 2000; Cabeza et al., 2005). These deficits negatively impact older adults' quality of life (Mol et al., 2007) and can be an early sign of late-onset Alzheimer's disease (AD) (Backman et al., 1999; Backman et al., 2004; Backman et al., 2005; Perri et al., 2007). One promising way to support healthy brain aging and memory function into late life and prevent/delay AD onset is early identification of episodic memory decline in adults at risk of developing AD, and early intervention to prevent/delay further decline. To achieve these goals it is important to identify when episodic memory decline arises in adulthood, and determine how known risk

factors for AD, e.g. having a family history of AD (+FH) or having an apolipoprotein E ε4 allele (+APOE4), alter memory and brain function at this critical time.

Recent studies of healthy adults show that episodic memory decline can be detected by early midlife (40–58 yrs) when memory is assessed using spatial context memory tasks (Cansino et al., 2015; Cansino et al., 2012; Kwon et al., 2016). In contrast, item recognition memory remains intact in early midlife (Cansino, 2009). This suggests that spatial context memory tasks are sensitive to detecting early episodic memory decline in healthy adults. Spatial context memory tasks require subjects to form item-location associations. As such, they are a type of associative memory task and place greater demands on recollection processes compared to item recognition tasks (Yonelinas, 1999). Neuroimaging studies of healthy young adults indicate that recollection of spatial contextual details relies on the activation of a distributed

* Corresponding author at: Room 2114 CIC Pavilion, Douglas Mental Health University Institute, 6875 LaSalle Blvd, Montreal H4H 1R3, QC, Canada.
E-mail address: maria.rajah@mcgill.ca (M.N. Rajah).

<http://dx.doi.org/10.1016/j.nicl.2017.03.016>

Received 21 November 2016; Received in revised form 29 March 2017; Accepted 30 March 2017

Available online 31 March 2017

2213-1582/ © 2017 The Authors. Published by Elsevier Inc. This is an open access article under the CC BY-NC-ND license (<http://creativecommons.org/licenses/by-nc-nd/4.0/>).

network of brain regions that include the medial temporal lobe (MTL), prefrontal cortex (PFC) and inferior parietal cortex (Rajah et al., 2011; Spaniol and Grady, 2010; Slotnick et al., 2003; Leiker and Johnson, 2015). Recently, we have examined the functional brain differences between middle-aged adults (MA) and young adults during the encoding and retrieval of contextual details (Kwon et al., 2016). We reported group differences in ventrolateral prefrontal cortex (VLPFC) activity at encoding, and in ventral visual activity at retrieval, in MA compared to young adults. These activation differences were related to spatial context memory decline in MA and may reflect functional decline at midlife. In addition, MA also exhibited increased activity in anterior PFC at retrieval, compared to young adults, which correlated with better memory performance (potentially a mechanism for functional compensation).

Taken together, these findings indicate that associative spatial context memory tasks are a powerful tool for detecting behavioral and brain differences in episodic memory at early midlife. Thus, fMRI studies of spatial context memory may be able to help us detect brain differences in early MA at risk of AD, compared to controls, which may be indicative of early pathological brain changes within the episodic memory system. Yet, the majority of fMRI studies of MA at risk of AD have used item recognition tasks. These studies have reported functional differences in the MTL (Trivedi et al., 2006; Johnson et al., 2006; Xu et al., 2009; Sperling et al., 2010), inferior parietal cortex (Lind et al., 2006a; Lind et al., 2006b), prefrontal cortex (Bookheimer et al., 2000), and posterior midline cortex (Xu et al., 2009; Pihlajamaki et al., 2010). However, the results are varied. For example, some of these studies report reduced brain activity in hippocampus and other areas, in at-risk groups vs. controls (Trivedi et al., 2006; Bassett et al., 2006; Filippini et al., 2011); others report increased activity (Johnson et al., 2006; Xu et al., 2009). Moreover, it remains unclear whether these group differences in brain activity were related to episodic memory performance in MA with vs. without AD risk factors.

The goal of the current study was to understand the impact of having AD risk factors on the functional neural correlates of spatial context memory in early midlife (ages 40–58). Specifically, we conducted an event-related fMRI study in which the following MA groups were scanned while performing easy and hard versions of spatial context memory tasks: 1) – FH, – APOE4 MA (MA_{controls}), 2) + FH, – APOE4 MA (MA_{+FH}), and 3) + FH, + APOE4 MA ($MA_{+FH+APOE4}$). Subjects were scanned during both encoding and retrieval phases of the memory tasks. The rationale for testing easy and hard versions of the task was to differentiate between performance effects, and group-by-performance interactions in brain activity. The rationale for scanning subjects during both encoding and retrieval was to examine group similarities and differences in phase (encoding/retrieval)-related activity and to understand how activity patterns at encoding related to those observed at retrieval, and vice versa. Examining brain activity during both encoding and retrieval is important for determining whether group differences in regional activation are apparent across phases, and reflect general changes in regional brain function; or, if they are phase-specific and reflect group differences in task orientation and processes specific to encoding or retrieval. We hypothesized that having + FH or combined + FH, + APOE4 risk factors for AD would be related to differences in event-related activity in the MTL during encoding (Xu et al., 2009; Nichols et al., 2012). We also hypothesized that there will be group differences in brain activity in other regions implicated in AD neuropathology, which are also important for the successful encoding and retrieval of episodic memories, i.e. inferior parietal cortex and PFC. To test these hypotheses we used multivariate “task” partial least squares analysis (T-PLS), a powerful method that allows one to identify whole-brain patterns of activity which maximally account for the covariance between event-related brain activity and the experimental design (McIntosh et al., 2004). In addition, we hypothesized that having + FH and/or combined + FH, + APOE4 risk factors for AD would alter the correlation between brain activity in the aforementioned areas, and

behavior. To test this hypothesis we used behavior-PLS (B-PLS). The current study is novel because it uses spatial context memory tasks and multivariate PLS methods to assess functional brain differences at encoding and retrieval in early middle-aged adults with + FH and with combined + FH, + APOE4, compared to controls.

2. Materials and methods

2.1. Subjects

Fifty-one middle aged adults (MA; age range 41–58 yrs., mean age = 50.69 yrs., 40 females [10 menopausal, 4 on hormone replacement therapy]) were recruited using newspaper and online advertisements in Montreal, Canada. All subjects were healthy at the time of testing and had no history of neurological or psychiatric illness. All subjects were right-handed as measured by the Edinburgh Inventory for Handedness (Oldfield, 1971). The study was approved by the Institutional Review Board of the Faculty of Medicine, McGill University, and all subjects provided informed consent to undergo neuropsychological testing, fMRI testing and to have their blood drawn for APOE genotyping.

2.1.1. Neuropsychological assessment and exclusionary criteria

We administered the following battery of neuropsychological tests to screen out individuals suffering from psychiatric symptoms and cognitive impairment, and to obtain measures of memory and language function: Mini Mental Status Exam (MMSE, exclusion cut-off score < 27, (Folstein et al., 1975)) the Beck Depression Inventory (BDI) (inclusion cut-off < 15 (Beck, 1987)), the American National Adult Reading Test (NART) (inclusion cut-off ≤ 2.5 SD for age and education (Spreen and Strauss, 1997)). Additional medical exclusion criteria included having a history of mental health or substance abuse, neurological insult resulting in a loss of consciousness > 5 min, diabetes, having untreated cataracts and glaucoma, smoking > 40 cigarettes a day; and having a current diagnosis of high cholesterol levels and/or high blood pressure left untreated in the past six months. All subjects who participated in the fMRI scanning session met these cut-off criteria. In addition, the California Verbal Learning Task (CVLT) was administered to assess item memory.

2.1.2. Definitions of risk factors

Having a family history of late onset sporadic AD (+ FH) was defined using the criteria used in the Cache County study (Tschanz et al., 2006; Hayden et al., 2009): having a first degree relative, living or deceased, with a probable or confirmed diagnosis of AD. Having no family history of AD (– FH) was defined as the absence of first and second degree relatives with AD type dementia (Hayden et al., 2009). For APOE genotyping, genomic DNA was extracted from whole blood using the FlexiGene DNA kit from Qiagen (Qiagen, Ontario, Canada). Samples were genotyped with Sequenom iPLEX Gold Assay technology at Genome Quebec Innovation Centre (Quebec, Canada, (Agena-Bioscience, 2015)). APOE genotype results were used to stratify participants into three risk groups based on family history and genotype combination: no family history with APOE $\epsilon 3/\epsilon 3$ genotype (MA_{controls}), family history with APOE $\epsilon 3/\epsilon 3$ (MA_{+FH}), and family history with APOE $\epsilon 3/\epsilon 4$ ($MA_{+FH+APOE4}$).

2.2. Experimental protocol

2.2.1. Cognitive activation task

Subjects performed easy and difficult versions of spatial context memory tasks while undergoing blood-oxygen-level-dependent (BOLD) fMRI scanning. The rationale for including easy and difficult versions of the task was to allow for examination of performance effects and group * performance interactions in behavior and brain activity. Subjects were scanned during encoding and retrieval. The rationale

for scanning during both encoding and retrieval was so that we could directly examine how brain activity during successful encoding - related to subsequent retrieval activity. This allowed us to identify brain regions that were active during the two memory phases across groups, and to explore group differences in memory phase-related modulation. E-Prime (Psychology Software Tools, Inc.; Pittsburgh, PA, USA) was used to present the memory tasks and to collect the behavioral data (accuracy and reaction time (msec)).

2.2.2. Spatial context encoding

During encoding, subjects were shown black and white photographs of human faces, presented one at a time, on either the left or right side of the monitor. Each face was presented for 2 s with a variable inter-trial interval (ITI) of 2.2–8.8 s. Subjects were instructed to rate whether the face was pleasant/neutral using a button press, and to encode the spatial location (left/right) in which the face was presented. During easy spatial context memory tasks (SE) subjects encoded six face stimuli, and during hard spatial context memory tasks (SH) subjects encoded 12 face stimuli. Subjects were aware at encoding that their memory for spatial location would be tested following a 1 min break. Therefore, this was an intentional encoding task.

During the 1 min break subjects performed a verbal alphabetizing task to prevent rehearsal of face stimuli, and to ensure retrieval involved long-term, episodic memory processes. There were 12 blocks of SE encoding blocks and 6 blocks of SH encoding tasks. There were 72 encoding stimuli per task.

2.2.3. Spatial context retrieval

During retrieval tasks, subjects were presented with trials in which two previously encoded face stimuli were presented vertically in the center of the monitor for 6 s, with variable ITI (as stated above). Subjects were required to select which face was originally presented on the left-side, or the right-side (depending on the retrieval cue) during encoding. Responses were collected using an MRI compatible button box. Thus, subjects had to recollect the spatial location of the encoded face to perform the task above chance. During SE retrieval tasks subjects saw 3 face pairs, and during SH retrieval tasks subjects saw 6 face pairs. Therefore, there were 36 retrieval trials per task in total across experimental blocks.

2.2.4. Behavioral data analysis

SPSS for Windows (version 17.0) was used to conduct between group one-way ANOVAs on demographic and neuropsychological variables to ensure groups were matched on age, education, and neuropsychological tests. In addition, 3 (group: MA_{controls}; MA_{+FH}; MA_{+FH+APOE4}) × 2 (event-type: SE, SH) repeated measures ANOVAs were conducted to examine group main effects, task main effects and group × task interactions in spatial context memory accuracy (% correct) and reaction time (RT; msec) during easy and hard task versions (significance threshold $p < 0.05$). Post-hoc Tukey's tests were conducted on the group variable to clarify any significant group main effects and interaction effects.

2.3. MRI data acquisition

Structural and functional magnetic resonance images were acquired using a 3T Siemens Trio scanner, located at the Douglas Institute's Brain Imaging Centre. Subjects lay supine in the scanner wearing a standard head coil. T1-weighted structural images were acquired at the beginning of the fMRI session using a 3D gradient echo MPRAGE sequence (acquisition time: 5 min, 3 s; TR = 2300 msec TE = 2.98 msec, flip angle = 9°, 176 1 mm sagittal slices, 1 × 1 × 1 mm voxels, FOV = 256 mm²). BOLD images were acquired using a single-shot T2*-weighted gradient echo-planar imaging (EPI) pulse sequence (TR = 2000 ms, TE = 30 ms, FOV = 256 mm², matrix size = 64 × 64, in-plane resolution 4 × 4 mm, 32 oblique 4 mm slices

with no slice gap) while participants performed the memory tasks. A mixed rapid event-related design was used with variable ITI (as stated above) to add jitter to the event-related acquisitions.

Visual task stimuli were presented on a computer using E-Prime (described above) and were back-projected onto a screen in the scanner bore. The screen was visible to participants lying in the scanner via a mirror mounted within the standard head coil. Participants requiring correction for visual acuity wore plastic corrective glasses. A fiber-optic 4-button response box was used by subjects to make task-related responses.

2.4. MRI data analysis

2.4.1. Functional MRI analysis

2.4.1.1. Preprocessing. Images were reconstructed from raw (k-space), converted to ANALYZE format, and preprocessed using Statistical Parametric Mapping (SPM) version 8 software (<http://www.fil.ion.ucl.ac.uk/spm>) run with MATLAB (www.mathworks.com) on a Linux platform. Images acquired during the first 10 s of scanning were removed from analysis to ensure all tissue had reached steady state magnetization. All functional images were realigned to the first image and corrected for movement using a 6 parameter rigid body spatial transform. If a subject had > 4 mm movement, they were discarded from analysis. None of the subjects included in the current study moved > 4 mm and the total sample was included in all analyses.

Functional images were then spatially normalized using the MNI EPI-template (available in SPM) at 4 mm³ voxel resolution using a 12 parameter affine transformation with default settings, as follows: template weighting = 0, affine regularisation to the ICBM/MNI space template, nonlinear frequency cutoff = 25, default nonlinear iterations = 16, nonlinear regularisation = 1. Writing options were set to preserve concentrations, 2 × 3 double bounding box, 4 × 4 × 4 voxel size, and trilinear interpolation. Images were smoothed using an 8 mm full-width half-maximum (FWHM) isotropic Gaussian kernel. ArtRepair toolbox for SPM8 was used to correct for bad slices prior to realignment and for bad volumes after normalization and smoothing (<http://cibsr.stanford.edu/tools/human-brain-project/artrepair-software.html>).

2.4.1.2. Multivariate fMRI data analysis. Spatio-temporal Partial Least Squares (PLS) was used to conduct event-related fMRI data analysis using PLSGUI software (<https://www.rotman-baycrest.on.ca/index.php?section=84>). PLS is a powerful method for detecting spatially and temporally distributed patterns of brain activity that differ across experimental conditions (McIntosh et al., 2004). Details on this method have been published elsewhere (Krishnan et al., 2011; McIntosh and Lobaugh, 2004). In the current study, mean centered task PLS (T-PLS) was used to examine group similarities and differences in brain activity during encoding and retrieval phases of SE and SH tasks (McIntosh et al., 2004). Behavior PLS (B-PLS) was used to examine group similarities and differences in brain activity that were directly correlated to SE and SH retrieval accuracy. For both T-PLS and B-PLS analyses, fMRI analysis was restricted to correctly encoded and correctly retrieved (successful) events.

For both T-PLS and B-PLS analyses, the first step was to represent the fMRI data for correctly encoded and retrieved events in an fMRI data matrix. PLS for event-related fMRI converts the three dimensional event-related fMRI data to a two-dimensional data matrix by 'flattening' the temporal dimension (t), so that time series of each voxel (m) is stacked side-by-side across the columns of the data matrix (column dimension = m × t). The rows of the 2D data matrix for an individual subject represented activity during each event stacked within experimental condition (row dimension = events × conditions). The event-related data for each event-type was averaged within subject, and subjects' fMRI data were stacked within group, and groups were stacked above one another (McIntosh et al., 2004). The stacked data matrix contained the fMRI data for each event onset (time lag = 0) as well as

the subsequent seven TRs/time lags ($TR = 2\text{ s} * 7 = 14\text{ s}$) following event onset for *successfully* encoded (eSE, eSH) and *successfully* retrieved (rSE and rSH) event. All subjects analyzed had a minimum of 17 correct events per event type (mean # of correct events for SE task = 30 within each group; and for SH task = 29 for MA_{controls} MA_{+FH} and 30 for MA_{+FH +APOE4}).

In T-PLS, this fMRI data matrix was mean centered, column-wise, within each event type, and underwent singular value decomposition (svd). SVD yields a set of mutually orthogonal latent variables (LVs) in descending order of the magnitude of covariance explained. The number of LVs produced is equivalent to the number of event/task types included in the analysis * the number of groups; in this analysis there were 12 (4 event-types * 3 groups). Each mean centered T-PLS LV consists of: i) a singular value, reflecting the amount of covariance accounted for by the LV; ii) design saliences, representing the event-related contrast effect identified by the LV, which are presented as design salience plots in the results; and, iii) a singular image (s.i.) that represents a pattern of event-related brain activity which corresponds to the contrast effect identified by the design salience plot. The singular image includes brain saliences, which are numerical weights assigned to each voxel at each TR/time lag included in the data matrix. Brain saliences can be negative or positive. Brain regions with positive voxel saliences are positively related to the contrast effect identified by the design salience plot, and those with negative voxel saliences are negatively related to this effect. Thus, the pattern of whole brain activity identified by the s.i. is symmetrically related to the contrast effect identified by the design salience plot.

In B-PLS, the between group fMRI data matrix was correlated with a behavioral vector containing the mean retrieval accuracy for SE and SH tasks (% correct spatial context retrieval), stacked in the same order as the data matrix (subject within group). SVD of this cross-correlation matrix was conducted to yield a series of LVs. The output is similar to the T-PLS output, but instead of design saliences, the B-PLS analysis yields: i) a singular value, ii) a singular image consisting of positive and negative brain saliences, and iii) a correlation profile depicting how subjects' retrieval accuracy correlates with the pattern of brain activity identified in the singular image. The correlation profile and brain saliences represent a symmetrical pairing of i) brain-behavior correlation patterns for each group to ii) a pattern of brain activity, respectively. As with the T-PLS analysis, brain saliences can have positive or negative values, and reflect whether activity in a given voxel is positively or negatively associated with the correlation profile depicted.

Significance testing of LVs identified from the T-PLS and B-PLS was conducted using 1000 permutation tests, respectively. For T-PLS the permutation test involved sampling without replacement to reassign the event/condition order within subject. For each permuted iteration a PLS was recalculated, and the probability that the permuted singular values exceeded the observed singular value for a given LV was used to assess significance at $p < 0.05$ (McIntosh et al., 2004). The permutation method used met the exchangeability criterion as described in (McIntosh and Lobaugh, 2004). The permutation method for B-PLS was identical except that the permutation test involved reassignment of the link between subjects' behavioral measure (retrieval accuracy) - event/condition within subject.

In addition, for each analysis, the standard error of brain saliences for each LV was determined by conducting 500 bootstraps using sampling of subjects with replacement, while maintaining the experimental event/condition order for all subjects (Efron and Tibshirani, 1986). The ratio of the original brain salience to bootstrap standard error (bootstrap ratio; BSR), which is similar to a z-score (McIntosh and Lobaugh, 2004), was calculated for each voxel-based brain salience. The bootstrap result identifies the maximal reliable patterns of positive and negative brain saliences represented by the singular image. A threshold of $BSR \geq \pm 3.5$, $p < 0.001$, with a minimum spatial extent = 10 voxels, was used to report the stable maximal brain

saliences identified in each significant LV. The minimal spatial extent = 10, was selected so that our reported results were comparable to prior work using both univariate and multivariate methods (Eklund et al., 2016). The BSR of a significant voxel salience reflects the stability of its activation.

We also computed temporal brain scores for each task in each significant LV. Temporal brain scores represent the degree to which each subject expresses the pattern of brain activity identified by the s.i., in relation to its paired design salience (T-PLS) / correlation profile (B-PLS), at each time lag. The temporal brain score was used to identify the time lags at which the LV effect was maximally differentiated within the temporal window sampled (McIntosh and Lobaugh, 2004). We only report reliable ($BSR \geq \pm 3.5$) brain saliences from those time lags (Vallesi et al., 2009; Crane et al., 2011). In the current analyses the peak time lags were lags 2–5 (4–10 s post event-onset). The peak coordinates for reliable brain saliences were converted to Talairach space using the icbm2tal transform (Lancaster et al., 2007) as implemented in Ginger-Ale 2.3 (Eickhoff et al., 2009). Since our acquisition incompletely acquired the cerebellum, peak coordinates from this region were not reported. The Talairach and Tournoux atlas (1988) was used to identify the Brodmann area (BA) localizations of significant activations.

2.4.2. Post-hoc hippocampal volumetric analysis

We observed group differences in hippocampal activity (presented below). To determine if this may be related to group differences hippocampal volume, we measured the right and left whole hippocampal volume of each subject using a previously validated automated pipeline called MAGEt (Multiple Automatically Generated Templates brain segmentation algorithm) (Chakravarty et al., 2013; Pipitone et al., 2014). MAGEt uses a multi-atlas voting procedure to generate “template images” from small number of “atlases” created from the subject pool. An “atlas” is defined as a manually segmented structural image from our subject pool. In the current study 5 atlases were manually segmented using the protocol developed by Pruessner (Pruessner et al., 2000), which was previously validated in MAGEt (Pipitone et al., 2014). “Template images” refer to a structural MRI image that was automatically segmented using the 5 atlases via the label propagation method described in Pipitone et al. (2014). Images selected as template images are part of the total set of target images labelled. We balanced template selection to have equal representation from the three groups examined. As such, 21 templates containing 5 atlas labels were created in the current study. These templates were applied to all target images (including the template images). The final labels for each target image were fused using a voxel-wise majority vote procedure.

MAGEt output was quality-controlled by an individual who was trained on the Pruessner hippocampus manual segmentation protocol. The quality control involved scoring each MAGEt brain output for the discrepancy between the MAGEt segmentation and the Pruessner manual segmentation protocol used to create the atlases employed by MAGEt mentioned above, on a slice-to-slice basis (Pruessner et al., 2000). An error was scored each time there was a 20-voxel worth of discrepancy between the MAGEt output for an individual subject, and the manual segmentation boundaries for the individual, based on the Pruessner segmentation protocol. Brains that scored sixteen or more on inaccuracy (> 300 voxels of error) on either the left or right hippocampus, were two standard deviations from the mean, and were manually corrected using the Pruessner (Pruessner et al., 2000) protocol to insure the participants' hippocampi were accurately represented. Since MAGEt yields volumes in native space, we corrected hippocampal volume of each subject by their intracranial volume (ICV) to control for head size by dividing hippocampal volume/ICV. ICV for each subject was obtained using the brain extraction based on nonlocal segmentation technique [BEaST] (Eskildsen et al., 2012). Manual quality assurance was performed on ICV labels. A one-way between group ANOVA was conducted to compare right hippocampal volume (corrected by ICV) across groups, with Tukey's post-hoc tests for group

Table 1
Demographics and behavioral data.

	Middle-aged adults with no family history of dementia (– FH), with APOE e3/3 genotype	Middle-aged adults with a family history of Alzheimer's disease (+ FH), with APOE e3/3 genotype	Middle-aged adults with a family history of Alzheimer's disease (+ FH), with APOE e3/4 genotype
Sample size (n)	26	14	11
Age (mean ± SE)	49.27 ± 1.13	51.43 ± 1.08	51.91 ± 1.52
Gender (n, [%] female)	21 [81]	10 [71]	9 [82]
Education (years, mean ± SE)	15.46 ± 0.37	15.64 ± 0.43	14.92 ± 0.62
BDI (mean ± SE)	3.85 ± 0.85	4.64 ± 1.33	5.41 ± 1.33
CVLT: delayed free recall (mean ± SE)	12.35 ± 0.46	12.86 ± 0.61	12.64 ± 0.66
CVLT: delayed cued recall (mean ± SE)	13.04 ± 0.41	13.14 ± 0.51	12.73 ± 0.82
CVLT: delayed recognition (mean ± SE)	15.19 ± 0.15	15.07 ± 0.27	14.73 ± 0.56
SE reaction time (msec; mean ± SE)	2467.40 ± 77.36	2485.71 ± 135.01	2566.09 ± 200.67
SH reaction time (msec; mean ± SE)	2578.68 ± 61.55	2649.64 ± 135.36	2672.19 ± 131.08
SE retrieval accuracy (% correct; mean ± SE)	0.86 ± 0.02	0.86 ± 0.03	0.85 ± 0.03
SH retrieval accuracy (% correct; mean ± SE)	0.81 ± 0.03	0.87 ± 0.02	0.83 ± 0.03
Left HC Volume (mm; mean ± SE)	2807 ± 75 (N = 25)	2875 ± 440 (N = 13)	2750 ± 113 (N = 11)
Right HC Volume (mm; mean ± SE)	2906 ± 80 (N = 25)	2972 ± 396 (N = 13)	2885 ± 114 (N = 11)

Note: This table presents the group means and standard errors (S.E.) for demographic, neuropsychological, fMRI behavioral measures and hippocampal (HC) volumes obtained. BDI = Beck Depression Inventory; CVLT = California Verbal Learning Task. All CVLT results presented are “hits”. There were no significant group differences on these measures.

comparisons. A parallel one-way ANOVA was conducted for left hippocampal volume.

3. Results

3.1. Demographics and behavioral results

Of the 51 MA tested, 26 were identified as MA_{controls} (– FH, – APOE4); 14 MA were MA_{+FH} (– APOE4); and 11 were MA_{+FH + APOE4}. Table 1 presents the demographic, neuropsychological and behavioral data from the fMRI tasks for each group. There were no significant group differences in any of the demographic or neuropsychological variables. The group (3) x task (2) repeated measures ANOVA for retrieval accuracy (% correct) revealed no significant effects, although there was a trend towards there being a task main effect ($p = 0.10$) due to accuracy on SH tasks being lower than on SE tasks. The group (3) x task (2) repeated measures ANOVA for reaction time (RT, msec) revealed a significant task main effect ($F_{1,48} = 12.85$, $p < 0.001$, SH RT slower than SE), but no other main effects or interactions. Therefore, the three groups were matched on task performance, and retrieval performance on SH tasks was worse than retrieval performance on SE tasks.

3.2. fMRI results

We conducted two multivariate analyses to identify: 1) group similarities and differences in event-related activity during successful spatial context encoding and retrieval (T-PLS), and 2) group similarities and differences in the correlations between event-related activity and retrieval accuracy (B-PLS). These two analyses are complementary and results from both analyses need to be considered together in order to understand how having specific risk factors for AD impact brain activity in a behaviorally relevant manner. In the following sections, we describe the T-PLS and B-PLS results separately. In the Discussion we focus on regions consistently identified across PLS methods to help clarify their roles in context memory encoding and retrieval in MA with vs. without AD risk factors.

3.2.1. Task PLS results

3.2.1.1. Group similarities in event-related brain activity. The mean centered T-PLS analysis identified three significant LVs. The first two LVs identified group similarities in event-related brain activity. Fig. 1A and B present the design salience plot and singular image for these LVs. T-PLS LV1 accounted for 45.95% of the cross-block covariance and identified brain regions that were differentially activated during

successful context encoding vs. retrieval in all three groups. Positive salience brain regions were more active during retrieval, compared to encoding, across all groups. Negative salience brain regions were more active during encoding, compared to retrieval, across all groups. Table 2 lists the local maxima from this LV.

T-PLS LV2 accounted for 14.44% of the cross-block covariance and identified brain regions that were differentially activated during SH encoding, compared to SE encoding in all three groups. Positive salience regions were more active during SH encoding, compared to SE encoding. Negative salience brain regions were more active during SE encoding, compared to SH encoding. In general, this LV identified performance/difficulty-related effects at encoding which was common across groups. The local maxima for this LV are presented in Table 3.

3.2.1.2. Group differences in event-related brain activity. T-PLS LV3 (accounted for 12.81% cross-block covariance) identified a complex three-way interaction between group * event-type * phase (encoding/retrieval). This LV was of primary interest in this study, since it identified group differences in event-related brain activity. Fig. 2A and B present the singular image and design salience plot for this LV. Table 4 presents the local maxima for this LV. Positive brain salience regions from Table 4 were generally more active during encoding, compared to retrieval, in MA_{controls} and MA_{+FH}. These regions included left angular gyrus, precuneus, and cingulate gyrus. Interestingly, these same regions were more active during SE retrieval, compared to SE encoding, in MA_{+FH + APOE4}. Negative brain salience regions reflected the opposite effect. These regions were more active during retrieval, compared to encoding, in MA_{controls} and MA_{+FH}. In contrast these same regions were more active during SE encoding, compared to SE retrieval in MA_{+FH + APOE4}. Negative salience brain regions included bilateral fusiform cortices.

3.2.2. B-PLS results

The B-PLS analysis identified two significant LVs. Fig. 3A presents the singular image and the corresponding bar graph depicting the brain activity-behavior correlation profile for B-PLS LV1 (accounted for 32.36% of the cross-block covariance). Table 5 lists the local maxima from this LV. Most of the peaks identified were positive brain saliences. There was a positive correlation between encoding activity in positive salience brain regions and subsequent retrieval accuracy across groups. In MA_{controls}, this effect was only significant during SH encoding events; in MA_{+FH} subjects, this effect was only significant during SE encoding events; and in MA_{+FH + APOE4} subjects, this was observed for both SE and SH encoding events. At retrieval, activity in these same regions during SE events was positively correlated with memory performance

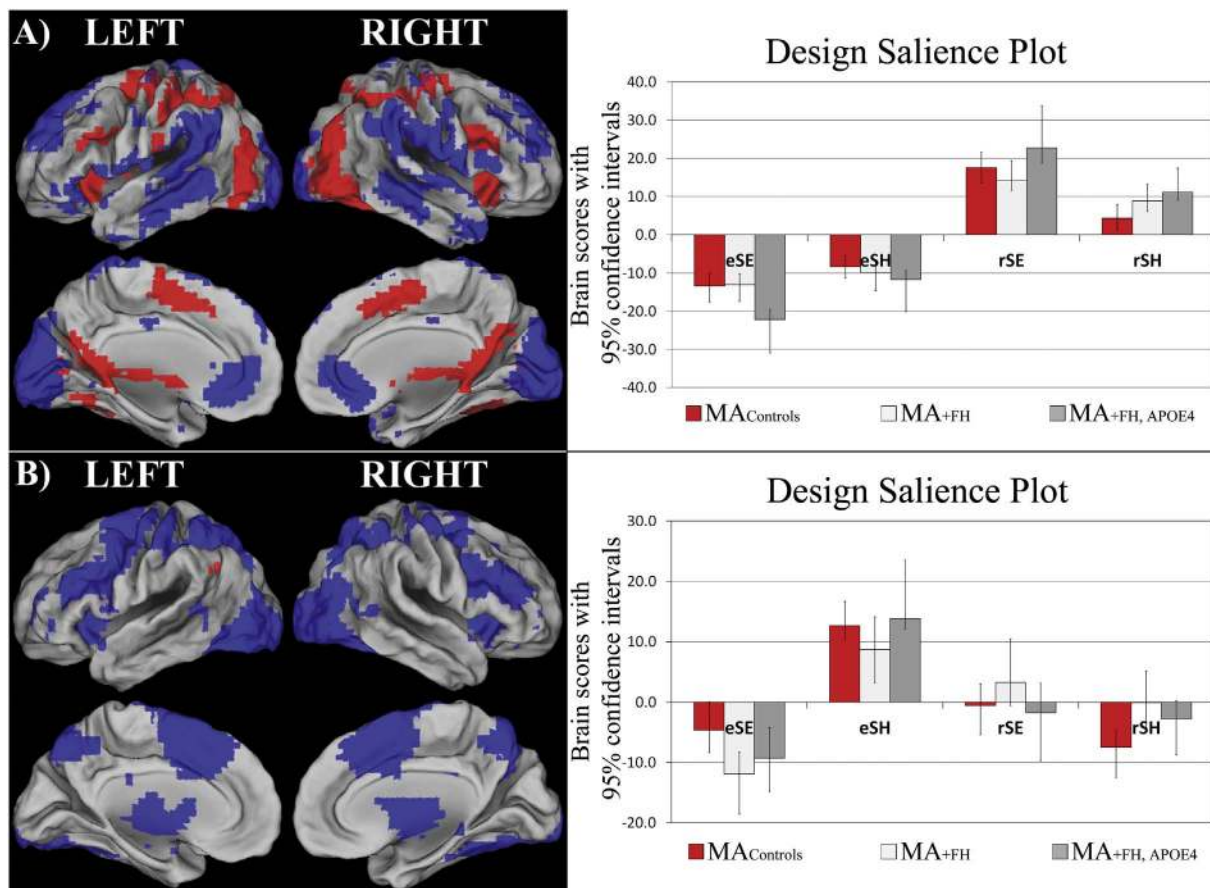


Fig. 1. T-PLS LV1 and LV2 result. A) The singular image and design saliency plot for T-PLS LV1. The singular image is thresholded at a bootstrap ratio of ± 3.5 , $p < 0.001$. Red brain regions reflect positive brain saliences and blue regions reflect negative brain saliences. Activations are presented on template images of the lateral and medial surfaces of the left and right hemispheres of the brain using Caret software (<http://brainvis.wustl.edu/wiki/index.php/Caret:Download>). The design saliency plots represent the brain scores with 95% confidence intervals (y-axis) for each group for each task-type (x-axis). eSE = encoding, easy spatial context memory tasks; eSH = encoding, hard spatial context memory tasks; rSE = retrieval, easy spatial context memory tasks; rSH = retrieval, hard spatial context memory tasks. The design saliency plot for T-PLS LV1 indicates this LV identified brain regions that were differentially activated during successful spatial context retrieval (positive saliences) vs. encoding (negative saliences). B) The singular image and design saliency plot for T-PLS LV2. The singular image is thresholded at a bootstrap ratio of ± 3.5 , $p < 0.001$. This LV identified brain regions that were differentially activated during hard spatial encoding (eSH; positive saliences) vs. easy spatial encoding (eSE; negative saliences).

in MA_{+FH} , but activity in these regions during SE and SH retrieval was negatively correlated with memory performance in $MA_{+FH+APOE4}$. Therefore, LV1 identified brain regions in which: i) encoding activity was correlated with better subsequent retrieval in $MA_{controls}$; ii) encoding and retrieval activity during SE memory tasks was positively correlated with memory performance in MA_{+FH} ; and iii) there was a phase-related difference between activity and memory performance correlations in $MA_{+FH+APOE4}$. Positive salience brain regions identified in this LV included medial precuneus, bilateral inferior parietal cortex, anterior-medial prefrontal cortex, cingulate cortex, and hippocampus.

B-PLS LV2 accounted for 17.94% of the cross-block covariance and identified differences in brain activity–behavior correlations in MA_{+FH} vs. $MA_{+FH+APOE4}$ groups. This LV identified the effect of having +APOE4 status within the context of having a family history of AD on brain-behavior correlation. Fig. 3B presents the singular image and corresponding bar graph depicting the behavior-brain correlation profile for this LV. Table 6 lists the local maxima from this LV. Positive brain saliences listed in Table 6 represent areas in which there was: i) a positive correlation between encoding and retrieval activity and memory performance in the $MA_{+FH+APOE4}$ group, and ii) a negative correlation between encoding activity and subsequent retrieval accuracy in the MA_{+FH} group. These regions primarily included bilateral occipito-temporal cortices and right ventrolateral prefrontal cortex. Negative brain salience regions represent the inverse effect, and identified brain regions in which encoding activity was positively

correlated with subsequent retrieval in MA_{+FH} subjects, but in which encoding and retrieval activity was negatively correlated with memory performance in $MA_{+FH+APOE4}$ subjects. These regions included primarily anterior medial prefrontal cortex.

3.2.3. Post-hoc ROI-based analysis of medial temporal lobe regions identified in PLS analyses

One of our a priori hypotheses was that there would be group differences in MTL activation during spatial context encoding. T-PLS LV2 identified two peaks in right hippocampus that were similarly activated during easy > hard encoding across all groups. B-PLS LV1 identified a region in left hippocampus. We explored if there were between group differences in hippocampal activation in these three hippocampal ROIs (marked with asterisks in Tables 3 and 5) on a univariate level. This was done by extracting the mean activity in a 4 mm cubic region surrounding each ROI using the multiple voxel extraction (MVE) option in PLS. We then calculated the mean activity for lags 2–5, for each ROI within each subject, and conducted post-hoc group (3) \times event-type (2) \times phase (2) repeated measures ANOVAs (significance assessed at $p < 0.05$, corrected).

The post-hoc analysis indicated there was a significant group \times event-type interaction in activity of the right hippocampal ROI ($x = 40$ mm, $y = -15$ mm, $z = -18$ mm; $F_{2,48} = 4.73$, $p < 0.05$) identified from T-PLS LV2. Fig. 2C presents the adjusted mean % signal differences in this right hippocampus ROI across all events, for each

Table 2
Task PLS results - LV1.

Lag	BSR	Spatial extent	Talairach coordinates (mm)			Gyral location	Brodmann area (BA)
			x	y	z		
Positive saliences: regions that were more active during retrieval vs. encoding across all groups							
Left hemisphere							
2,3,4	9.13	76	-31	21	2	Inferior frontal gyrus/insula	BA 47
2,3	5.41	107	-38	-78	14	Middle occipital gyrus	BA 19
2	5.23	27	-16	2	8	Putamen	
2	5.09	88	-13	-59	16	Posterior cingulate	BA 23
3	6.32	806	-5	-10	54	Precentral gyrus	BA 6
3	5.31	44	-38	11	30	Middle frontal gyrus	BA 9/44
3	4.49	14	-12	-1	0	Lentiform nucleus	
3,4	5.19	69	-31	-80	32	Superior occipital gyrus	BA 19
4	5.26	60	-46	-73	0	Inferior temporal gyrus	BA 37
4	5.23	32	-38	-52	-16	Fusiform gyrus	BA 37
4	4.11	32	-42	-35	40	Inferior parietal lobule	BA 40
4	4.08	11	-38	-6	10	Insula	
4	4.05	16	-53	-26	19	Postcentral gyrus	BA 43
Right hemisphere							
2,3	10.24	114	29	25	0	Insula	
2	5.26	28	14	5	9	Putamen	
2	4.39	57	28	-75	19	Middle occipital gyrus	BA 19
3,4	7.48	423	10	-56	21	Posterior cingulate	BA 30
3	5.41	65	39	10	31	Middle frontal gyrus	BA 9/44
4	6.06	143	32	24	4	Inferior frontal gyrus	BA 45
5	4.75	59	36	-45	-17	Fusiform gyrus	BA 37
Negative saliences: regions that were more active during encoding vs. retrieval across all groups							
Left hemisphere							
2	-10.77	925	-27	-99	-2	Cuneus	BA 18
2	-7.99	426	-57	-41	21	Superior temporal gyrus	BA 22
2	-6.09	137	-42	22	-5	Inferior frontal gyrus	BA 47
2	-5.72	124	-12	48	34	Superior frontal gyrus	BA 9
2	-5.49	44	-53	-13	45	Postcentral gyrus	BA 3
2	-4.24	27	-35	-18	16	Insula	
3,4	-8.02	590	-60	-54	-2	Middle temporal gyrus	BA 37
3	-6.97	375	-8	36	4	Anterior cingulate	BA 24
3,4,5	-8.22	263	-46	-6	50	Precentral gyrus	BA 6
4	-4.59	17	-39	17	48	Superior frontal gyrus	BA 8
5	-5.15	24	-5	1	51	Medial frontal gyrus	BA 6
5	-4.81	36	-31	43	11	Superior frontal gyrus	BA 10
Right hemisphere							
2	-8.45	590	58	-23	25	Postcentral gyrus	BA 2
2	-6.52	92	51	8	-23	Superior temporal gyrus	BA 38
2	-5.44	88	40	45	24	Middle frontal gyrus	BA 10
2	-4.06	12	36	-9	-3	Clastrum	
3,4,5	-14.12	1177	3	-87	-8	Lingual gyrus	BA 17,18
3,4	-7.80	472	55	-23	-8	Middle temporal gyrus	BA 21
3,4	-6.23	192	32	20	50	Superior frontal gyrus	BA 8
3,4,5	-5.75	18	54	-10	44	Precentral gyrus	BA 4
3	-4.41	13	40	9	-34	Middle temporal gyrus	BA 21,38
4	-6.24	12	50	-48	47	Inferior parietal lobule	BA 40
4	-5.28	179	10	32	4	Anterior cingulate gyrus	BA 24
5	-5.38	21	25	47	6	Superior frontal gyrus	BA 10

Note: Temporal lag represents the time after event onset, when a cluster of voxels exhibited a contrast effect of interest. The bootstrap ratio threshold was set to $\pm > 3.5$, and identified dominant and stable activation clusters. The spatial extent refers to the total number of voxels included in the cluster (threshold = 10). Gyral location and Brodmann areas (BAs) were determined by referring to Talairach and Tournoux (1988).

group. To clarify this interaction effect, between-group one-way ANOVAs of ROI activity during eSE, eSH, rSE and rSH, respectively, with post-hoc comparisons on the group variable, were conducted. These one-way ANOVAs indicated there were group differences in encoding activity during eSE events, and no other events. M_{controls} activated right hippocampus to lesser degree than $MA_{+FH} + APOE4$ subjects ($p < 0.05$). MA_{+FH} subjects' activation of this region fell midway between the two other groups. In addition, we conducted within group, phase (encoding, retrieval) \times event-type (SE, SH) repeated measures ANOVAs of this right hippocampal ROI. These ANOVAs indicated that there was no significant event-related, or phase-related, modulation of right hippocampal activity in either MA_{controls} or MA_{+FH} groups. However, in $MA_{+FH} + APOE4$ there was a significant main effect of event-type in right hippocampal activation ($p < 0.05$) and a trend towards a significant phase \times event-type

interaction ($p = 0.09$). Therefore, the group \times event-type interaction was driven by a event-related difference in right hippocampal activation during encoding in $MA_{+FH} + APOE4$.

3.2.4. Post-hoc hippocampal volumetric analysis

To examine whether the aforementioned group differences in hippocampal activity may be related to group differences in hippocampal volume, we measured the volumes of right and left hippocampus of each subject using MAGeT (Chakravarty et al., 2013; Pipitone et al., 2014). Two subjects structural MRI files were corrupted (1 MA_{controls} , 1 MA_{+FH}). As such, the volumetric analysis was conducted on 25 MA_{controls} , 13 MA_{+FH} and 11 $MA_{+FH} + APOE4$ subjects. Automatic MAGeT segmentation failed in 2 subjects (1 MA_{controls} , 1 MA_{+FH}) for the left hippocampus and failed in 3 subjects (2 MA_{controls} , 1 MA_{+FH}) in the right hippocampus. These 5 hippocampal segmentations were manually

Table 3
Task PLS results – LV2.

Lag	BSR	Spatial Extent	Talairach coordinates (mm)			Gyral location	Brodmann area (BA)
			x	y	z		
Positive saliences: regions that were more active during hard vs. easy spatial context encoding							
Left hemisphere							
3	5.08	33	– 53	– 60	27	Angular gyrus	BA 39
5	4.55	13	– 12	– 81	4	Lingual gyrus	BA 17
Right hemisphere							
3	5.04	12	54	– 65	31	Angular gyrus	BA 39
Negative saliences: regions that were more active during easy vs. hard spatial context encoding							
Left hemisphere							
2,3	– 10.97	2071	– 31	17	5	Inferior frontal gyrus	BA 45
2,5	– 7.84	463	– 9	9	45	Medial frontal gyrus	BA 32
2,5	– 5.48	68	– 31	– 50	39	Inferior parietal gyrus	BA 40
2,3	– 4.98	38	– 34	54	16	Superior frontal gyrus	BA 10
2	– 4.77	13	– 35	– 85	14	Middle occipital gyrus	BA 18
2	– 4.09	11	– 9	– 72	30	Precuneus	BA 31
2	– 4.80	33	– 1	– 34	23	Posterior cingulate	BA 23
4,5	– 5.54	39	– 49	– 47	3	Middle temporal gyrus	BA 21,37
4	– 4.12	14	– 9	– 17	10	Thalamus	
Right hemisphere							
2	– 5.54	78	13	– 60	24	Precuneus	BA 31
2	– 4.59	63	36	6	34	Precentral gyrus	BA 6
2,5	– 4.15	11	47	34	26	Middle frontal gyrus	BA 46
3	– 5.18	30	29	5	– 24	Hippocampal gyrus*	BA 35
3	– 4.97	12	40	– 15	– 18	Hippocampus*	
4	– 8.94	4943	6	9	48	Superior frontal gyrus	BA 6

Note: Temporal lag represents the time after event onset, when a cluster of voxels exhibited a contrast effect of interest. The bootstrap ratio threshold was set to $\pm > 3.5$, and identified dominant and stable activation clusters. The spatial extent refers to the total number of voxels included in the cluster (threshold = 10). Gyral location and Brodmann areas (BAs) were determined by referring to Talairach and Tournoux (1988). The * identifies the hippocampal peaks for which post-hoc ROI analyses were conducted.

corrected by co-author EHY and verified by co-author JCP, and included in the between-group ANOVAs. The total mean volumes for left and right hippocampus (HC, mm) are presented in Table 1. We calculated the adjusted HC volume (HC volume / ICV) and conducted one-way ANOVAs to determine if there were significant group differences in HC volume. Between group ANOVAs indicated there was no significant left or right HC volume difference between groups ($F < 1$).

4. Discussion

The goal of this study was to use multivariate PLS methods to assess functional brain differences in recollection-related brain activity during the encoding and retrieval of spatial contextual details in early middle-aged adults with + FH, and combined + FH, + APOE4, risk factors for late-onset AD, compared to controls. Our behavioral results show there were no significant group differences in spatial context memory ability. In a previous fMRI study, we used the same experimental tasks to compare episodic memory function in – FH young adults and – FH MA. We observed significantly lower spatial context memory retrieval accuracy in MA compared to young adults (Kwon et al., 2016). This suggests that having risk factors for AD did not impact spatial context memory at midlife, beyond the effect of age.

The fMRI results show there were significant group similarities and differences in event-related brain activity and in the correlation between brain activity and retrieval accuracy. The group similarities in event-related brain activity, highlighted in Task PLS LV1 and LV2, indicate that in general, all three MA groups activated similar sets of brain regions during successful encoding and retrieval of spatial contextual details. Successful encoding of spatial contextual details was associated with increased activity in a distributed set of brain regions including: bilateral occipito-temporal cortices, left VLPFC, and bilateral anterior-medial PFC in all three groups. These results are consistent with prior studies of face encoding which have also reported increased activity in VLPFC and bilateral occipito-temporal cortices (Haxby et al., 1996; Rajah et al., 1999; Grady et al., 2002; Bernstein et al., 2002). Successful recollection of spatial contextual detail was

related to greater activation in bilateral dorsal VLPFC, right DLPFC, left dorsal inferior parietal cortex and bilateral fusiform cortex. This pattern of retrieval-related activation is consistent with prior studies of episodic retrieval of faces (Rajah et al., 1999; Leube et al., 2003; Skinner et al., 2014).

In addition to group similarities in task performance and brain activity, we also observed significant group differences in brain activity and in brain activity-behavior correlations. These differences indicate that having + FH and + APOE4 AD risk factors affected brain function in a behaviorally meaningful manner by early midlife. More specifically, we observed three main group differences in event-related activity and brain-behavior correlations identified in the current study. First, both MA groups with AD risk factors exhibited greater activation in hippocampus during SE encoding events compared to MA_{controls} and increased hippocampal activity at encoding correlated with better subsequent memory performance. Second, there were group differences in activity and brain-behavior correlations in left angular gyrus, cingulate gyrus and precuneus in MA with AD risk factors, compared to controls. Third, activity and brain activity-behavior correlations in anterior-medial PFC and in ventral visual cortex differentiated the two MA risk groups from each other, and from MA_{controls}. We discuss these group differences in brain activity and brain-behavior correlation in detail in the following sections.

4.1. Group differences in hippocampal activity

The T-PLS LV2 results indicated there was increased right hippocampal activation during easy > hard spatial context encoding tasks across all groups. This is surprising since prior task fMRI studies have reported altered MTL activity in adults at genetic risk of developing AD (Bassett et al., 2006; Dennis et al., 2010; Filippini et al., 2009) and have indicated there is an interaction between + FH and + APOE4 risk factors on MTL activity (Johnson et al., 2006; Xu et al., 2009). However, these studies used univariate and region-of-interest analysis methods; not the data driven multivariate approach used in the current study. Indeed, when we conducted post-hoc univariate analyses of the

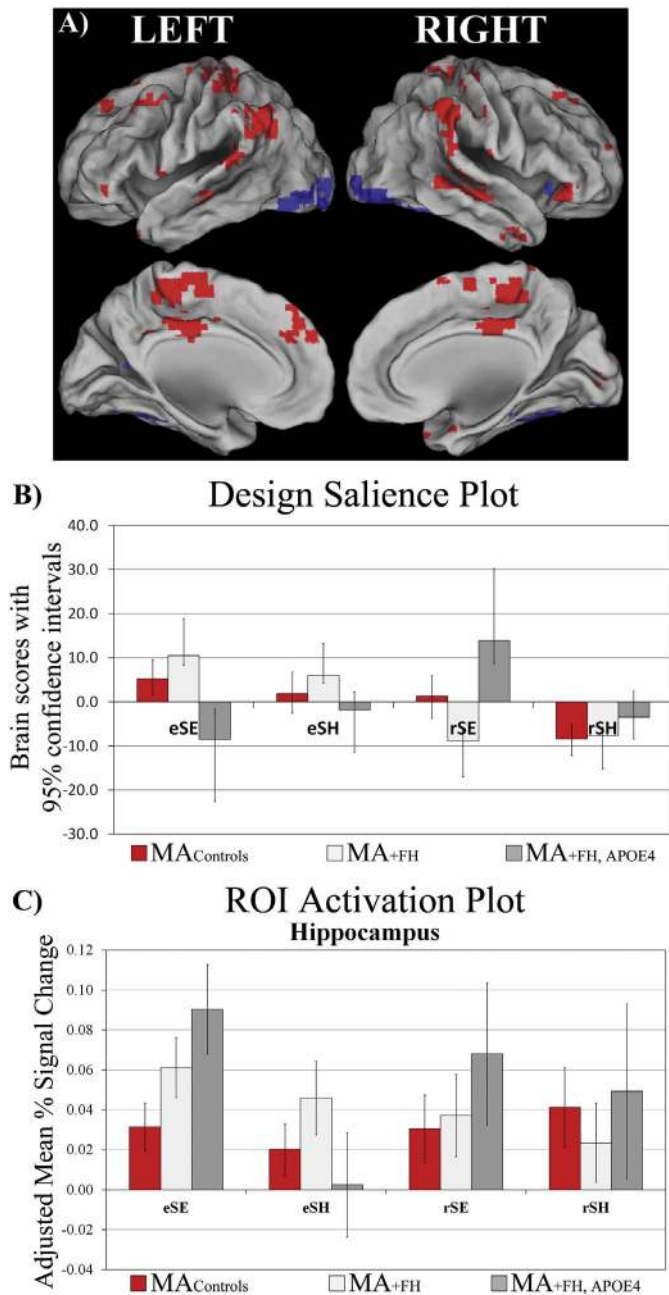


Fig. 2. T-PLS LV3 and right hippocampal activation plot. A) The singular image and B) design saliency plot for T-PLS LV3. The singular image is thresholded at a bootstrap ratio of ± 3.5 , $p < 0.001$. Red brain regions reflect positive brain saliences and blue regions reflect negative brain saliences. The design saliency plot for T-PLS LV3 indicates this LV identified a group \times task \times phase interaction. Positive saliency brain regions were more active during encoding $>$ retrieval in MA_{+FH} and MA_{controls}; and more activity during easy spatial context retrieval $>$ easy spatial context encoding in MA_{+FH} + APOE4. Negative saliency brain regions exhibited the inverse pattern of associations. C) ROI activation plot for right hippocampus from T-PLS LV2.

hippocampal peaks identified by PLS, we observed group differences in right hippocampal activation. Specifically, MA_{+FH} + APOE4 subjects exhibited greater activity in right hippocampus during SE encoding events compared to other event-types, and the level of activity they exhibited was significantly greater than that observed in MA_{controls}. MA subjects with only a + FH risk factor for AD exhibited activation levels in right hippocampus during SE encoding that was midway between MA_{controls} and MA_{+FH} + APOE4 subjects. Therefore, our univariate analysis indicated that MA with risk factors for AD over-activated the hippocampus during SE encoding, compared to MA controls. Interest-

ingly, this difference in activation was apparent even though there were no group differences in hippocampal volume, nor group differences in performance.

We also observed a positive correlation between encoding activity in left hippocampus and subsequent retrieval in all three groups (B-PLS LV1). This indicates that the increased hippocampal activity observed in MA with AD risk factors, compared to controls, supported memory. This interpretation is consistent with the observation that MA with AD risk factors over-activated right hippocampus during SE encoding, compared to controls – the encoding task which was related to better subsequent retrieval, and thus reflected more successful encoding, compared to the SH task. Therefore, our results show that: 1) MA with AD risk factors exhibited greater right hippocampal activity, compared to controls, during SE encoding; 2) left hippocampal activity during SE encoding was correlated with better subsequent memory; and, 3) there were no group differences in memory performance in the current study. Taken together these results are consistent with the hypothesis that over-recruitment of right hippocampal activity in MA at risk of AD during SE encoding tasks may reflect “successful” compensation at encoding (Duzel et al., 2011; Clement and Belleville, 2010; Woodard et al., 2009). Interestingly, our volumetric analysis of the hippocampus did not identify significant group differences. Therefore, over-activation of right hippocampus was apparent in the absence of underlying gray matter volume loss in MA with AD risk factors, compared to controls. Yet, it is important to note, that this negative volumetric findings may be due to the small sample size in the current study and a lack of statistical power for detecting group differences in hippocampal volume.

The current findings are in contrast to Trivedi et al. (2006) who reported MA with + FH and + APOE4 AD risk factors exhibited less activity in hippocampus compared to MA with only the + FH risk factor or MA with neither risk factors (controls). Trivedi et al. (2006) also reported a positive association between left medial temporal activity during encoding and performance on the Rey Auditory Learning Task. However, there were several differences between the methods employed by Trivedi et al. (2006) and the current study. First, Trivedi et al. (2006) tested adults who were on average older than our sample (Trivedi et al., 2006). Given that hippocampal activity decreases with age during episodic encoding, it is possible that the difference between our current results and Trivedi et al. is due to the differing age of the groups tested. This interpretation is consistent with the observation that our findings are more similar to those reported by Filippini et al. (2009) and Dennis et al. (2010) who reported increased hippocampal activation at encoding in young + APOE4 carriers (Dennis et al., 2010; Filippini et al., 2009). In fact, Filippini et al. (2011) showed that there may be interaction between age and APOE4 impact on hippocampal activity (Filippini et al., 2011). Thus, testing on average younger (40–58 yrs., in this study) vs. older (40–65, Trivedi et al. (2006)) middle-aged adults may have affected the pattern of hippocampal activation observed in our study compared to Trivedi et al. (2006).

Second, Trivedi et al. (2006) employed an item memory task to examine brain activation during novel (item encoding), compared to repeated (familiar), presentations of object stimuli across groups. All subjects in this task scored at ceiling (98% or higher) for novelty detection. Therefore, it is unclear if novelty detection in the study by Trivedi et al. (2006) reflected encoding success, as measured in the current study, since Trivedi et al. (2006) did not conduct a post-scanning retrieval test for novel objects presented in the scanner. Moreover, in the current study subjects were aware their memory for spatial context would be subsequently tested. Thus, the experimental design and task demands were significantly different between studies. This highlights a key issue about the interpretation of group differences in hippocampal activity during incidental encoding, as measured with novelty detection by Trivedi et al. (2006), compared to intentional encoding, as measured in the current study. One possibility is that MA with AD risk factors do not automatically activate the hippocampus to

Table 4
Task PLS results – LV3.

Lag	BSR	Spatial Extent	Talairach coordinates (mm)			Gyral location	Brodmann Area (BA)
			x	y	z		
Positive saliences: Regions that were more active during encoding vs. retrieval in MA control and MA _{+FH} groups, but more active during retrieval vs. encoding of SE tasks in MA _{+FH+APOE4} group							
Left hemisphere							
2,3,4	6.33	174	−54	−58	38	Angular gyrus	BA 40
2	5.26	42	−49	−32	11	Superior temporal gyrus	BA 22
2	4.27	21	−9	−23	63	Precentral gyrus	BA 6
4,5	4.90	207	−2	−36	48	Precuneus	BA 7
4	4.48	10	−61	−52	20	Superior temporal gyrus	BA 22
4,5	4.75	36	−16	10	37	Cingulate gyrus	BA 24
5	4.66	39	−17	−41	58	Paracentral lobule	BA 5
Right hemisphere							
2,3	6.13	56	54	−47	44	Inferior parietal lobule	BA 40
2	4.71	20	44	29	−3	Inferior frontal gyrus	BA 47
2	4.44	27	20	−25	53	Precentral gyrus	BA 4
2,3,5	4.64	16	58	−32	2	Middle temporal gyrus	BA 21
4	4.24	32	21	−17	43	Cingulate gyrus	BA 24
5	5.31	112	6	−15	61	Medial frontal gyrus	BA 6
5	4.90	19	18	−2	1	Putamen	
5	4.67	35	20	−42	66	Postcentral gyrus	BA 5
Negative saliences: regions that were more active during retrieval vs. encoding in MA controls and MA _{+FH} groups, but more active during encoding vs. retrieval of SE tasks in MA _{+FH+APOE4} group							
Left hemisphere							
3	−4.39	18	−42	−75	−14	Fusiform gyrus	BA 19
4	−4.53	22	−27	−95	−5	Lingual gyrus	BA 18
Right hemisphere							
4	−4.77	56	36	−75	−13	Fusiform Gyrus	BA 19

Note: Temporal lag represents the time after event onset, when a cluster of voxels exhibited a contrast effect of interest. The bootstrap ratio threshold was set to $\pm > 3.5$, and identified dominant and stable activation clusters. The spatial extent refers to the total number of voxels included in the cluster (threshold = 10). Gyral location and Brodmann areas (BAs) were determined by referring to Talairach and Tournoux (1988).

support incidental encoding, whereas MA controls do (Trivedi et al., 2006). However, when directed to perform a memory task, MA with AD risk factors are able to intentionally activate the hippocampus, and do so to a greater degree than MA controls (i.e. in the current study). This pattern of association between hippocampal activity and incidental vs. intentional encoding is reminiscent of studies of frontal lobe function in cognitive aging (Logan et al., 2002; Stuss et al., 1996; Craik and Rabinowitz, 1985; Craik, 1982). This literature has shown that older adults do not spontaneously engage frontal-related strategic processes to assist memory encoding to the same degree as young adults. However, during intentional encoding conditions, older adults over-activate the frontal lobes compared to young adults – especially when performance is matched between groups (Logan et al., 2002; Maillet and Rajah, 2014a). These findings have been taken to support the hypothesis that there may be subtle deficits in frontal function with age that impede episodic memory, and that older adults over-activate the frontal lobes during intentional encoding, compared to young adults, to compensate for these subtle deficits. We propose a similar interpretation can be applied to explain the discrepant findings from Trivedi et al. (2006) and the current study: that MA with AD risk factors are showing subtle deficits in hippocampal function, which they successfully compensate for by over-activating this region during *intentional* encoding tasks. This conclusion is supported by results from Bassett et al. (2006). In this study, adults aged 50–75 yrs., with +FH and +APOE4 risk factors, exhibited greater activity in hippocampus compared to controls during an intentional encoding study for verbal paired associations. Therefore, task demands may affect whether MA with AD risk factors exhibit decreased or increased MTL activity compared to controls.

4.2. Group differences in brain activity and/or in brain activity-behavior correlations in cortex

T-PLS LV3 identified group differences in task-related activity in a variety of brain regions including: inferior parietal cortex, cingulate

gyrus, precuneus and ventral fusiform cortices. Importantly, these activations overlapped with areas identified in the B-PLS results. In addition, there were activations identified in the B-PLS results (i.e. medial PFC), which overlapped with activations in T-PLS LV1, which highlight group similarities in encoding vs. retrieval activity. In the following sections we discuss brain regions that were identified in both T-PLS and B-PLS results to better understand how AD risk factors impact both activity and brain-behavior associations at midlife.

4.2.1. Overlap in regions identified in T-PLS LV3 and B-PLS LV1

Bilateral inferior parietal cortex, cingulate gyrus and precuneus were positive salience areas from T-PLS LV3. This indicates these regions were more active during encoding, compared to retrieval, in MA_{controls} and MA_{+FH} subjects, and were more active during the SE retrieval, compared to SE encoding, in MA_{+FH+APOE4} subjects. These brain regions were also positive salience areas in B-PLS LV1. Thus, in MA_{controls}, encoding activity in these brain regions was positively correlated with subsequent recollection, particularly during SH events (see Fig. 2a). In MA_{+FH} subjects, encoding activity in these regions was positively correlated with subsequent recollection of SE events; but the pattern of retrieval activity was negatively correlated with recollection of SE events. In MA_{+FH+APOE4} subjects the pattern of event-related activity observed in bilateral inferior parietal, cingulate gyrus and precuneus was not beneficial to their task performance. Specifically, the B-PLS LV1 correlation profile (Fig. 3a) indicates that increased encoding activity and decreased retrieval activity in these areas was positively correlated with memory performance for this group. However, the T-PLS result (Fig. 2b) shows that this group exhibited the opposite pattern of activation in these brain regions: increased activity during retrieval, and decreased activity during encoding of SE events. Taken together these results indicate that there may be a progressive change in brain activity and brain-behavior correlations involving the inferior parietal cortex, cingulate gyrus, and precuneus going from MA_{+FH} to MA_{+FH+APOE4}, compared to controls.

Inferior parietal cortex, cingulate cortex and precuneus are key

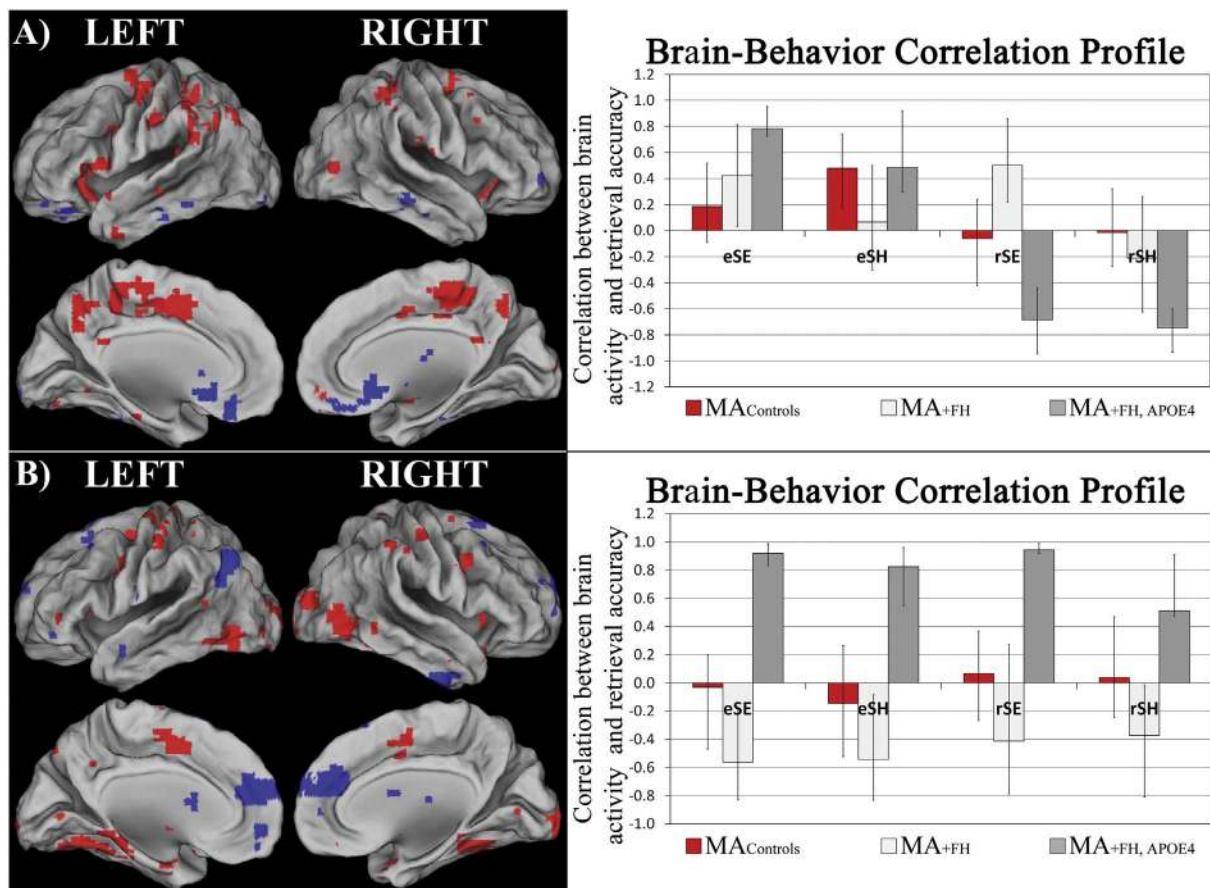


Fig. 3. B-PLS results. A) The singular image at a bootstrap ratio threshold = ± 3.5 , $p < 0.001$ and the brain-behavior correlation profile with 95% confidence intervals for B-PLS LV1. In the singular image red brain regions reflect positive brain saliences and blue regions reflect negative brain saliences. Activations are presented on template images of the lateral and medial surfaces of the left and right hemispheres of the brain using Caret software. The correlation profile indicates that encoding activity in positive salience regions was positively correlated with subsequent retrieval for both task in MA_{+FH} + APOE4 and MA_{controls}; and retrieval activity in these same regions was negative correlated with retrieval accuracy on both tasks in MA_{+FH} + APOE4. In MA_{+FH} encoding and retrieval activity in positive salience regions during SE tasks was correlated with better performance on this task. Negative salience regions exhibited the inverse pattern of brain-behavior correlations. B) The singular image at a bootstrap ratio threshold = ± 3.5 , $p < 0.001$ and the brain-behavior correlation profile with 95% confidence intervals for B-PLS LV2. The correlation profile indicates that increased encoding and retrieval activity in positive salience regions was positively correlated with memory performance on both tasks in MA_{+FH} + APOE4 subjects, and negatively correlated with memory performance on both tasks in MA_{+FH}. Negative salience regions exhibited the inverse pattern of brain-behavior correlations.

nodes of the default mode network (DMN), which is a functionally connected set of brain regions found to be more active during baseline vs. task conditions in fMRI studies (Buckner et al., 2005; Sheline et al., 2010a; Buckner et al., 2008). Several studies have reported differences in DMN activity and functional connectivity in MCI, AD, and in healthy adults with risk factors for AD (Sheline et al., 2010a; Fleisher et al., 2009; Sheline et al., 2010b; Sheline and Raichle, 2013; Buckner et al., 2009). The fact that we observed memory-related activations in inferior parietal, cingulate and precuneus, is not surprising since previous studies have noted the overlap in brain activation patterns observed during autobiographical/episodic memory processing and resting state (Spreng et al., 2009; Spreng and Schacter, 2012; Kim, 2012; Bellana et al., 2016). It has been hypothesized that these regions may be involved in the attentional processing and integration of one's experience, which occurs during both rest and episodic memory tasks (Bellana et al., 2016; Yonelinas et al., 2005; Bird et al., 2015; Cabeza et al., 2008). Although, in the current study we did not observe overt behavioral deficits in MA with AD risk factors, compared to controls; the current B-PLS results suggest that there may be subtle, differences in inferior parietal, cingulate and precuneus function in both MA groups with AD risk factors, compared to controls, which was negatively related to their memory performance. This suggests that having a family history of AD may alter the function of these brain regions at midlife, since this risk factor was common to both MA risk groups.

4.2.2. Overlap in regions identified in T-PLS LV3 and B-PLS LV2

T-PLS LV3 identified significant group differences in bilateral fusiform cortex activation. More specifically, these regions were more active during retrieval, compared to encoding, in MA_{controls} and MA_{+FH} subjects. In contrast, these regions were more active during SE encoding, compared to SE retrieval, in MA_{+FH} + APOE4 subjects (see Fig. 1). These brain regions were also positive salience areas in B-PLS LV2 (see Fig. 2B). Therefore, MA_{+FH} adults had decreased activity in fusiform cortex at encoding, compared to retrieval; and, this was positively related to subsequent retrieval. MA_{+FH} + APOE4 adults had increased activity in this same region at encoding compared to retrieval, and this was positively correlated with subsequent retrieval. In contrast, at retrieval, MA_{+FH} + APOE4 exhibited decreased fusiform activity, relative to encoding; and this pattern of retrieval activity was negatively correlated to memory performance. MA_{+FH} exhibited increased activity in ventral visual regions at retrieval, compared to encoding, but this was not strongly associated with memory performance.

Overall, these results show that MA_{+FH} + APOE4 differentially activated fusiform cortex during encoding and retrieval, compared to MA_{+FH}. However, by combining T-PLS with B-PLS results we see that even though the two MA risk groups displayed distinct activation profiles for these regions, the impact on memory performance was similar across both groups. One speculative interpretation is that this

Table 5
Behavior PLS results – LV1.

Lag	BSR	Spatial Extent	Talairach coordinates (mm)			Gyral location	Brodmann area (BA)
			x	y	z		
Positive saliences: regions where there was a positive correlation between encoding activity and subsequent memory for all groups, and between retrieval activity during SE and accuracy for MA _{+FH} ; but, where there was a negative correlation between retrieval activity and retrieval accuracy in MA _{+FH} + APOE4							
Left hemisphere							
2,3	5.17	54	–13	–17	49	Cingulate gyrus	BA 24
3	5.48	122	–24	–11	64	Precentral gyrus	BA 6
3	5.40	14	–45	16	12	Inferior frontal gyrus	BA 44
3	4.54	24	–50	–19	27	Postcentral gyrus	BA 2
3	3.85	11	–35	–48	14	Superior temporal gyrus	BA 22
4	5.54	128	–13	–29	55	Paracentral lobule	BA 40
4	5.43	17	–34	33	0	Inferior frontal gyrus	BA 45
4	5.33	44	–42	–47	46	Inferior parietal lobule	BA 40
4,5	5.62	29	–57	–56	27	Superior temporal gyrus	BA 39
4,5	6.31	1125	–13	–44	47	Precuneus	BA 7
5	5.90	41	–34	–6	–26	Hippocampal gyrus*	BA 35
Right hemisphere							
2	4.89	30	2	–32	41	Cingulate gyrus	BA 31
3	4.22	10	62	–52	18	Superior temporal gyrus	BA 22
3	3.96	22	13	–47	47	Precuneus	BA 7
4	5.75	28	28	–18	53	Precentral gyrus	BA 4
4	4.56	27	21	20	7	Insula	
4,5	5.12	105	36	–30	24	Postcentral gyrus	BA 40
4,5	4.32	15	58	–50	33	Supramarginal gyrus	BA 40
5	7.96	93	9	–10	54	Cingulate	BA 24
5	4.70	35	43	8	17	Inferior Frontal gyrus	BA 44
5	4.21	11	40	45	24	Middle Frontal gyrus	BA 10
5	4.02	10	32	25	40	Middle Frontal gyrus	BA 8
Negative saliences: regions where there was a negative correlation between encoding activity and subsequent memory for all groups, and between retrieval activity during SE and accuracy for MA _{+FH} ; but, where there was a positive correlation between retrieval activity and retrieval accuracy in MA _{+FH} + APOE4							
Left hemisphere							
3	–5.47	105	–8	14	–5	Caudate	
5	–6.30	26	–8	45	–10	Medial frontal gyrus	BA 10/11
Right hemisphere							
2	–5.59	10	10	–14	17	Thalamus	

Note: Temporal lag represents the time after event onset, when a cluster of voxels exhibited a contrast effect of interest. The bootstrap ratio threshold was set to $\pm > 3.5$, and identified dominant and stable activation clusters. The spatial extent refers to the total number of voxels included in the cluster (threshold = 10). Gyral location and Brodmann areas (BAs) were determined by referring to Talairach and Tournoux (1988).

group difference in fusiform activity at encoding may reflect the utilization of distinct encoding strategies in each of the two at-risk groups, respectively, to support spatial context encoding. For example, in our prior work on healthy aging using the same paradigm we have reported that successful spatial context memory in young adults was associated with increased activity in fusiform cortex (Kwon et al., 2016; Ankudowich et al., 2016). We interpreted this as reflecting young adults' vivid encoding of perceptual details, which supported subsequent memory. Others have also reported that increased ventral visual activity at encoding and retrieval in young adults supported vivid encoding and detailed recollection (Park et al., 2013; Carp et al., 2011). This suggests that MA_{+FH} + APOE4 adults may be relying on similar perceptual strategies to support spatial context encoding in the current study. In contrast, MA_{+FH} may be using a non-perceptual strategy, i.e. a socio-affective strategy at encoding – similar to what we have reported in older adults in this same paradigm (Kwon et al., 2016; Ankudowich et al., 2016) (discussed below). Thus, decreased activity in fusiform cortex at encoding may have supported their utilization of a non-perceptual strategy. Additional research is needed to determine if altered ventral visual function is consistently observed in MA with both +FH and +APOE4 risk factors, compared to +FH MA; and, how this relates to memory performance in these two MA at-risk groups.

4.2.3. Group differences in brain-behavior correlations involving anterior-medial PFC

Anterior-medial PFC was identified as a negative brain salience region in T-PLS LV1 and in B-PLS LV2. T-PLS LV1 identified group

similarities in phase-related differences in brain activity at encoding and at retrieval, and indicated that all groups exhibited greater activity in anterior-medial PFC at encoding compared to retrieval. B-PLS LV2 indicated that increased encoding activity in anterior-medial PFC was correlated with better subsequent memory performance in MA_{+FH} adults, and poorer subsequent memory performance in MA_{+FH} + APOE4 adults. Encoding activity in this region was not significantly correlated with performance in MA_{controls}.

Prior fMRI studies of adults with AD risk factors have reported disruptions in the activation and functional connectivity of the anterior-medial PFC (Fleisher et al., 2009; Sheline and Raichle, 2013; Buckner et al., 2009). Moreover, generalized increased activity in medial PFC has been observed in AD patients and older adults with mild cognitive impairment compared to controls (Rombouts et al., 2005; Sperling, 2007). The current results indicate that having AD risk factors did not impact the pattern of anterior-medial PFC activity at midlife, but there was an interaction in how +FH and +APOE4 risk factors impacted how anterior-medial PFC activity correlated with memory performance.

In the current study, at encoding, subjects had to make pleasant/neutral judgments for face stimuli while simultaneously encoding the face-location association. Activity in anterior-medial PFC at encoding has been associated with the use of subjective encoding strategies (Leshikar and Duarte, 2014; Maillet and Rajah, 2014b). Thus, our T-PLS results suggest that greater anterior-medial PFC activity at encoding may reflect subjects' engaging subjective value-based processes to make the pleasantness judgments of face stimuli at encoding. Interestingly, our B-PLS results suggest that MA_{+FH} subjects' memory performance

Table 6
Behavior PLS Results – LV2.

Lag	BSR	Spatial extent	Talairach coordinates (mm)			Gyral location	Brodmann area (BA)
			x	y	z		
Positive saliences: regions where there was a positive correlation between encoding and retrieval activity and memory performance in MA _{+FH} + APOE4, and a negative correlation between encoding and retrieval activity and memory performance in MA _{+FH}							
Left hemisphere							
2	6.60	45	– 54	– 29	51	Postcentral gyrus	BA 40
2	5.52	16	– 35	– 23	66	Precentral gyrus	BA 6
2	5.23	27	– 31	– 74	15	Middle occipital gyrus	BA 19
2,3,4	5.32	22	– 16	– 91	– 8	Inferior occipital gyrus	BA 17
2	4.80	15	– 46	– 64	– 10	Fusiform gyrus	BA 18/19
2,3	5.03	12	– 9	– 14	53	Medial frontal gyrus	BA 6
3	5.90	66	– 54	– 32	47	Inferior parietal lobule	BA 40
3,5	6.79	75	– 49	– 49	– 12	Fusiform gyrus	BA 37
3	4.09	13	– 31	– 11	57	Precentral gyrus	BA 6
Right hemisphere							
2,3	6.86	42	43	– 61	– 4	Middle occipital gyrus	BA 19
2,4	5.78	20	28	– 85	8	Middle occipital gyrus	BA 18,19
2,3	5.73	14	46	– 23	61	Postcentral gyrus	BA 3
3	5.32	25	39	– 43	41	Inferior parietal lobule	BA 40
3,4	6.80	24	10	– 95	– 5	Lingual gyrus	BA 17
3	4.74	11	24	– 45	62	Superior parietal lobule	BA 7
3	4.11	11	39	2	38	Precentral gyrus	BA 6
4	5.73	16	29	19	– 15	Inferior frontal gyrus	BA 47
5	5.67	13	51	– 42	– 6	Middle temporal gyrus	BA 21
Negative saliences: regions where there was a negative correlation between encoding and retrieval activity and memory performance in MA _{+FH} + APOE4, and a positive correlation between encoding and retrieval activity and memory performance in MA _{+FH}							
Left hemisphere							
2	– 6.53	31	– 31	– 39	4	Caudate	
2,3	– 5.50	40	– 42	– 64	26	Middle temporal/angular gyrus	BA 39
3,5	– 8.08	354	– 9	52	27	Superior frontal gyrus	BA 9/10
3	– 4.30	11	– 9	8	63	Superior frontal gyrus	BA 6
Right hemisphere							
2,5	– 6.45	38	10	56	31	Superior frontal gyrus	BA 9
3	– 6.02	31	44	– 2	– 31	Middle temporal gyrus	BA 21
3	– 4.71	15	13	8	59	Superior frontal gyrus	BA 6

Note: Temporal lag represents the time after event onset, when a cluster of voxels exhibited a contrast effect of interest. The bootstrap ratio threshold was set to $\pm > 3.5$, and identified dominant and stable activation clusters. The spatial extent refers to the total number of voxels included in the cluster (threshold = 10). Gyral location and Brodmann areas (BAs) were determined by referring to Talairach and Tournoux (1988).

benefitted from processing the subjective (pleasantness) aspects of the face stimuli during spatial context encoding. This may reflect a shift in using subjective vs. objective stimulus information to make a retrieval judgment in MA_{+FH}. Similar results have been reported in fMRI studies of episodic memory in healthy older, compared to younger, adults (Dulas et al., 2011; Rosa and Gutchess, 2013; Johnson et al., 2015). Therefore, MA_{+FH} may be exhibiting this shift in processing preferences at an earlier age, compared to other MA groups; or, this may be a group difference in memory processing in general, which is unrelated to aging.

In contrast, MA_{+FH} + APOE4 subjects exhibited a negative correlation pattern between anterior-medial PFC activity and memory performance. This correlation pattern is similar to what has been reported in a meta-analysis of subsequent memory effects in healthy young adults (Kim, 2011). In young adults, activation of anterior-medial PFC during encoding has been associated with poorer subsequent memory when the memory tasks required subjects to encode objective stimulus information (Kim, 2011). This suggests that for MA with both AD risk factors, successful memory performance was related to successful encoding of objective vs. subjective information, similar to what is observed in young adults (Maillet and Rajah, 2014a; Dulas et al., 2011; Rosa and Gutchess, 2013). This is consistent with the positive correlation observed between ventral visual encoding activity and memory performance in both MA groups with AD risk factors (discussed above).

4.3. Caveats

Despite the strengths of the current study, there are some caveats to our findings. First, we have a relatively small sample size for the

MA_{+FH} + APOE4 risk group which may affect the generalizability of the current findings. However, the sample size used in the current study is comparable to previously published work (Xu et al., 2009; Bookheimer et al., 2000; Dennis et al., 2010; Alexander et al., 2012; Yan et al., 2015). Also, we used multivariate PLS analysis of the fMRI data, with permutation and bootstrap to assess the statistical significance of observed results. This analysis method is robust and amenable for use with smaller sample sizes, compared to more traditional univariate fMRI methods (Chin, 1998; Chin, 2010). Another caveat is that we did not have a – FH, + APOE4 MA sample, since only a small portion of the – FH general population are + APOE4 (Devanand et al., 2005). This prevented us from differentiating the unique impacts of + FH vs. + APOE4 risk factors on the neural correlates of spatial context memory.

5. Conclusions

The current study examined group similarities and differences in brain activity and brain-behavior correlations during spatial context memory encoding/retrieval in MA with vs. without + FH and + APOE4 risk factors for late-onset sporadic AD. Overall, we found no significant group differences in behavioral performance and hippocampal volume. We also found significant group similarities in brain activity associated with successful spatial context encoding and retrieval. However, there were notable group differences in activity and brain-behavior correlations in left inferior parietal cortex, cingulate and precuneus; and group differences in hippocampal activity during encoding, in MA with AD risk factors, compared to controls. In addition, we found that activity and brain activity-behavior correlations in anterior-medial PFC and in

ventral visual cortex differentiated the two MA risk groups from each other, and from MA_{controls}. Therefore, the current study broadens our understanding of how having +FH only vs combined +FH, +APOE4 AD risk factors alters brain activity and brain-behavior associations at midlife, and identified subtle changes in the functional neuroanatomy of episodic memory in these AD risk groups.

Acknowledgements

This work was supported by the Canadian Institutes of Health Research (CIHR) – operating grant (Grant No. 126105) and Alzheimer's Society of Canada Research Program Grant (Grant No. 1435) awarded to MNR. LMKW was supported by a STOP-AD fellowship and McGill Graduate Student Excellence Award. We thank Dr. J. Breitner and members of the STOP-AD Centre, McGill University, for subject referrals. The authors declare no conflicts of interest.

References

- Agena-Bioscience, 2015. In: Bioscience, Agena, Genome Quebec, A.B. (Eds.), The Science of SNP Genotyping. Agena Bioscience, San Diego, CA, USA.
- Alexander, G.E., et al., 2012. Gray matter network associated with risk for Alzheimer's disease in young to middle-aged adults. *Neurobiol. Aging* 33 (12), 2723–2732.
- Ankudowich, E., Pasvanis, S., Rajah, M.N., 2016. Changes in the modulation of brain activity during context encoding vs. context retrieval across the adult lifespan. *NeuroImage* 139, 103–113.
- Backman, L., et al., 1999. Brain regions associated with episodic retrieval in normal aging and Alzheimer's disease. *Neurology* 52 (9), 1861–1870.
- Backman, L., et al., 2004. Multiple cognitive deficits during the transition to Alzheimer's disease. *J. Intern. Med.* 256 (3), 195–204.
- Backman, L., et al., 2005. Cognitive impairment in preclinical Alzheimer's disease: a meta-analysis. *Neuropsychology* 19 (4), 520–531.
- Bassett, S.S., et al., 2006. Familial risk for Alzheimer's disease alters fMRI activation patterns. *Brain* 129 (Pt 5), 1229–1239.
- Beck, A.T., 1987. Beck Depression Inventory. The Psychological Corporation, TX.
- Bellana, B., et al., 2016. Laterality effects in functional connectivity of the angular gyrus during rest and episodic retrieval. *Neuropsychologia* 80, 24–34.
- Bernstein, L.J., et al., 2002. The effect of encoding strategy on the neural correlates of memory for faces. *Neuropsychologia* 40 (1), 86–98.
- Bird, C.M., et al., 2015. Consolidation of complex events via reinstatement in posterior cingulate cortex. *J. Neurosci.* 35 (43), 14426–14434.
- Bookheimer, S.Y., et al., 2000. Patterns of brain activation in people at risk for Alzheimer's disease. *N. Engl. J. Med.* 343 (7), 450–456.
- Buckner, R.L., et al., 2005. Molecular, structural, and functional characterization of Alzheimer's disease: evidence for a relationship between default activity, amyloid, and memory. *J. Neurosci.* 25 (34), 7709–7717.
- Buckner, R.L., Andrews-Hanna, J.R., Schacter, D.L., 2008. The brain's default network: anatomy, function, and relevance to disease. *Ann. N. Y. Acad. Sci.* 1124, 1–38.
- Buckner, R.L., et al., 2009. Cortical hubs revealed by intrinsic functional connectivity: mapping, assessment of stability, and relation to Alzheimer's disease. *J. Neurosci.* 29 (6), 1860–1873.
- Cabeza, R., Nyberg, L., Park, D.C., 2005. *Cognitive Neuroscience of Aging*. Oxford University Press, New York.
- Cabeza, R., et al., 2008. The parietal cortex and episodic memory: an attentional account. *Nat. Rev. Neurosci.* 9 (8), 613–625.
- Cansino, S., 2009. Episodic memory decay along the adult lifespan: a review of behavioral and neurophysiological evidence. *Int. J. Psychophysiol.* 71 (1), 64–69.
- Cansino, S., Hernandez-Ramos, E., Trejo-Morales, P., 2012. Neural correlates of source memory retrieval in young, middle-aged and elderly adults. *Biol. Psychol.* 90 (1), 33–49.
- Cansino, S., et al., 2015. fMRI subsequent source memory effects in young, middle-aged and old adults. *Behav. Brain Res.* 280, 24–35.
- Carp, J., et al., 2011. Age differences in neural distinctiveness revealed by multi-voxel pattern analysis. *NeuroImage* 56 (2), 736–743.
- Chakravarty, M.M., et al., 2013. Performing label-fusion-based segmentation using multiple automatically generated templates. *Hum. Brain Mapp.* 34 (10), 2635–2654.
- Chin, W.W., 1998. The partial least squares approach to structural equation modeling. In: Marcoulides, G.A. (Ed.), *Modern Methods for Business Research*. Lawrence Erlbaum Associates, Mahwah, New Jersey, pp. 295–335.
- Chin, W.W., 2010. How to write up and report PLS analyses. In: Esposito Vinzi, V.E.A. (Ed.), *Handbook of Partial Least Squares*. Springer-Verlag, Berlin, Germany, pp. 655–690.
- Clement, F., Belleville, S., 2010. Compensation and disease severity on the memory-related activations in mild cognitive impairment. *Biol. Psychiatry* 68 (10), 894–902.
- Craik, F.I.M., 1982. Selective changes in encoding as a function of reduced processing capacity. In: Klix, F., Hoffmann, J., van der Meer, E. (Eds.), *Cognitive Research in Psychology*. Deutschen Verlag der Wissenschaften, Berlin, pp. 152–161.
- Craik, F.I.M., 1994. Memory changes in normal aging. *Curr. Dir. Psychol. Sci.* 3 (5), 155–158.
- Craik, F.I.M., Rabinowitz, J.C., 1985. The effects of presentation rate and encoding task on age-related memory deficits. *J. Gerontol.* 40, 309–315.
- Crane, D., et al., 2011. Similarities in the patterns of prefrontal cortex activity during spatial and temporal context memory retrieval after equating for task structure and performance. *NeuroImage* 54 (2), 1549–1564.
- Dennis, N.A., et al., 2010. Temporal lobe functional activity and connectivity in young adult APOE varepsilon4 carriers. *Alzheimers Dement.* 6 (4), 303–311.
- Devanand, D.P., et al., 2005. Predictive utility of apolipoprotein E genotype for Alzheimer disease in outpatients with mild cognitive impairment. *Arch. Neurol.* 62 (6), 975–980.
- Dulas, M.R., Newsome, R.N., Duarte, A., 2011. The effects of aging on ERP correlates of source memory retrieval for self-referential information. *Brain Res.* 1377, 84–100.
- Duzel, E., et al., 2011. Functional phenotyping of successful aging in long-term memory: preserved performance in the absence of neural compensation. *Hippocampus* 21 (8), 803–814.
- Efron, B., Tibshirani, R., 1986. Bootstrap methods for standard errors, confidence intervals and other measures of statistical accuracy. *Stat. Sci.* 1, 54–77.
- Eickhoff, S.B., et al., 2009. Coordinate-based activation likelihood estimation meta-analysis of neuroimaging data: a random-effects approach based on empirical estimates of spatial uncertainty. *Hum. Brain Mapp.* 30 (9), 2907–2926.
- Eklund, A., Nichols, T.E., Knutsson, H., 2016. Cluster failure: why fMRI inferences for spatial extent have inflated false-positive rates. *Proc. Natl. Acad. Sci. U. S. A.* 113 (28), 7900–7905.
- Eskildsen, S.F., et al., 2012. BEaST: brain extraction based on nonlocal segmentation technique. *NeuroImage* 59 (3), 2362–2373.
- Filippini, N., et al., 2009. Distinct patterns of brain activity in young carriers of the APOE-epsilon4 allele. *Proc. Natl. Acad. Sci. U. S. A.* 106 (17), 7209–7214.
- Filippini, N., et al., 2011. Differential effects of the APOE genotype on brain function across the lifespan. *NeuroImage* 54 (1), 602–610.
- Fleisher, A.S., et al., 2009. Resting-state BOLD networks versus task-associated functional MRI for distinguishing Alzheimer's disease risk groups. *NeuroImage* 47 (4), 1678–1690.
- Folstein, M.F., Folstein, S.E., McHugh, P.R., 1975. "Mini-mental state". A practical method for grading the cognitive state of patients for the clinician. *J. Psychiatr. Res.* 12 (3), 189–198.
- Grady, C.L., Craik, F.I., 2000. Changes in memory processing with age. *Curr. Opin. Neurobiol.* 10 (2), 224–231.
- Grady, C.L., et al., 2002. The effects of encoding task on age-related differences in the functional neuroanatomy of face memory. *Psychol. Aging* 17 (1), 7–23.
- Haxby, J.V., et al., 1996. Face encoding and recognition in the human brain. *Proc. Natl. Acad. Sci. U. S. A.* 93 (2), 922–927.
- Hayden, K.M., et al., 2009. Effects of family history and apolipoprotein E epsilon4 status on cognitive decline in the absence of Alzheimer dementia: the Cache County Study. *Arch. Neurol.* 66 (11), 1378–1383.
- Johnson, S.C., et al., 2006. The influence of Alzheimer disease family history and apolipoprotein E epsilon4 on mesial temporal lobe activation. *J. Neurosci.* 26 (22), 6069–6076.
- Johnson, M.K., et al., 2015. Age-related differences in the neural basis of the subjective vividness of memories: evidence from multivoxel pattern classification. *Cogn. Affect. Behav. Neurosci.* 15 (3), 644–661.
- Kim, H., 2011. Neural activity that predicts subsequent memory and forgetting: a meta-analysis of 74 fMRI studies. *NeuroImage* 54 (3), 2446–2461.
- Kim, H., 2012. A dual-subsystem model of the brain's default network: self-referential processing, memory retrieval processes, and autobiographical memory retrieval. *NeuroImage* 61 (4), 966–977.
- Krishnan, A., et al., 2011. Partial Least Squares (PLS) methods for neuroimaging: a tutorial and review. *NeuroImage* 56 (2), 455–475.
- Kwon, D., et al., 2016. Context memory decline in middle aged adults is related to changes in prefrontal cortex function. *Cereb. Cortex* 26 (6), 2440–2460.
- Lancaster, J.L., et al., 2007. Bias between MNI and Talairach coordinates analyzed using the ICBM-152 brain template. *Hum. Brain Mapp.* 28 (11), 1194–1205.
- Leiker, E.K., Johnson, J.D., 2015. Pattern reactivation co-varies with activity in the core recollection network during source memory. *Neuropsychologia* 75, 88–98.
- Leshikar, E.D., Duarte, A., 2014. Medial prefrontal cortex supports source memory for self-referenced materials in young and older adults. *Cogn. Affect. Behav. Neurosci.* 14 (1), 236–252.
- Leube, D.T., et al., 2003. Successful episodic memory retrieval of newly learned faces activates a left fronto-parietal network. *Brain Res. Cogn. Brain Res.* 18 (1), 97–101.
- Lind, J., et al., 2006a. Parietal cortex activation predicts memory decline in apolipoprotein E-epsilon4 carriers. *Neuroreport* 17 (16), 1683–1686.
- Lind, J., et al., 2006b. Reduced functional brain activity response in cognitively intact apolipoprotein E epsilon4 carriers. *Brain* 129 (Pt 5), 1240–1248.
- Logan, J.M., et al., 2002. Under-recruitment and nonselective recruitment: dissociable neural mechanisms associated with aging. *Neuron* 33 (5), 827–840.
- Maillet, D., Rajah, M.N., 2014a. Age-related differences in brain activity in the subsequent memory paradigm: a meta-analysis. *Neurosci. Biobehav. Rev.* 45, 246–257.
- Maillet, D., Rajah, M.N., 2014b. Dissociable roles of default-mode regions during episodic encoding. *NeuroImage* 89, 244–255.
- McIntosh, A.R., Lobaugh, N.J., 2004. Partial least squares analysis of neuroimaging data: applications and advances. *NeuroImage* 23 (Suppl. 1), S250–S263.
- McIntosh, A.R., Chau, W.K., Protzner, A.B., 2004. Spatiotemporal analysis of event-related fMRI data using partial least squares. *NeuroImage* 23 (2), 764–775.
- Mol, M., et al., 2007. The effect of perceived forgetfulness on quality of life in older adults; a qualitative review. *Int. J. Geriatr. Psychopharmacol.* 22 (5), 393–400.
- Nichols, L.M., et al., 2012. Interactive effect of apolipoprotein e genotype and age on hippocampal activation during memory processing in healthy adults. *Arch. Gen. Psychiatry* 69 (8), 804–813.

- Oldfield, R.C., 1971. The assessment and analysis of handedness: the Edinburgh inventory. *Neuropsychologia* 9 (1), 97–113.
- Park, H., et al., 2013. An fMRI study of episodic encoding across the lifespan: changes in subsequent memory effects are evident by middle-age. *Neuropsychologia* 51 (3), 448–456.
- Perri, R., et al., 2007. Amnesic mild cognitive impairment: difference of memory profile in subjects who converted or did not convert to Alzheimer's disease. *Neuropsychology* 21 (5), 549–558.
- Pihlajamaki, M., et al., 2010. Evidence of altered posteromedial cortical fMRI activity in subjects at risk for Alzheimer disease. *Alzheimer Dis. Assoc. Disord.* 24 (1), 28–36.
- Pipitone, J., et al., 2014. Multi-atlas segmentation of the whole hippocampus and subfields using multiple automatically generated templates. *NeuroImage* 101, 494–512.
- Pruessner, J.C., et al., 2000. Volumetry of hippocampus and amygdala with high-resolution MRI and three-dimensional analysis software: minimizing the discrepancies between laboratories. *Cereb. Cortex* 10 (4), 433–442.
- Rajah, M.N., McIntosh, A.R., Grady, C.L., 1999. Frontotemporal interactions in face encoding and recognition. *Brain Res. Cogn. Brain Res.* 8 (3), 259–269.
- Rajah, M.N., et al., 2011. Similarities in the patterns of prefrontal cortex activity during spatial and temporal context memory retrieval after equating for task structure and performance. *NeuroImage* 54 (2), 1549–1564.
- Rombouts, S.A., et al., 2005. Altered resting state networks in mild cognitive impairment and mild Alzheimer's disease: an fMRI study. *Hum. Brain Mapp.* 26 (4), 231–239.
- Rosa, N.M., Gutchess, A.H., 2013. False memory in aging resulting from self-referential processing. *J Gerontol B Psychol Sci Soc Sci* 68 (6), 882–892.
- Sheline, Y.I., Raichle, M.E., 2013. Resting state functional connectivity in preclinical Alzheimer's disease. *Biol. Psychiatry*.
- Sheline, Y.I., et al., 2010a. Amyloid plaques disrupt resting state default mode network connectivity in cognitively normal elderly. *Biol. Psychiatry* 67 (6), 584–587.
- Sheline, Y.I., et al., 2010b. APOE4 allele disrupts resting state fMRI connectivity in the absence of amyloid plaques or decreased CSF Aβ42. *J. Neurosci.* 30 (50), 17035–17040.
- Skinner, E.I., et al., 2014. Reinstatement of encoding context during recollection: behavioural and neuroimaging evidence of a double dissociation. *Behav. Brain Res.* 264, 51–63.
- Slotnick, S.D., et al., 2003. Distinct prefrontal cortex activity associated with item memory and source memory for visual shapes. *Brain Res. Cogn. Brain Res.* 17 (1), 75–82.
- Spaniol, J., Grady, C., 2010. Aging and the neural correlates of source memory: over-recruitment and functional reorganization. *Neurobiol. Aging*.
- Sperling, R., 2007. Functional MRI studies of associative encoding in normal aging, mild cognitive impairment, and Alzheimer's disease. *Ann. N. Y. Acad. Sci.* 1097, 146–155.
- Sperling, R.A., et al., 2010. Functional alterations in memory networks in early Alzheimer's disease. *NeuroMolecular Med.* 12 (1), 27–43.
- Spreen, O., Strauss, E., 1997. A compendium of neuropsychological tests: administration, norms, and commentary. Oxford University Press, New York.
- Spreng, R.N., Schacter, D.L., 2012. Default network modulation and large-scale network interactivity in healthy young and old adults. *Cereb. Cortex* 22 (11), 2610–2621.
- Spreng, R.N., Mar, R.A., Kim, A.S., 2009. The common neural basis of autobiographical memory, prospection, navigation, theory of mind, and the default mode: a quantitative meta-analysis. *J. Cogn. Neurosci.* 21 (3), 489–510.
- Stuss, D.T., et al., 1996. Comparison of older people and patients with frontal lesions: evidence from world list learning. *Psychol. Aging* 11 (3), 387–395.
- Talairach, J., Tournoux, P., 1998. Co-Planar Stereotaxic Atlas of the Human Brain. Thieme Medical Publishers, Inc., New York, pp. 122.
- Trivedi, M.A., et al., 2006. Reduced hippocampal activation during episodic encoding in middle-aged individuals at genetic risk of Alzheimer's disease: a cross-sectional study. *BMC Med.* 4, 1.
- Tschanz, J.T., et al., 2006. Conversion to dementia from mild cognitive disorder: the Cache County Study. *Neurology* 67 (2), 229–234.
- Tulving, E., 1984. Precise elements of episodic memory. *The Behavioral and Brain Sciences* 7, 223–268.
- Valles, A., et al., 2009. fMRI evidence of a functional network setting the criteria for withholding a response. *NeuroImage* 45 (2), 537–548.
- Woodard, J.L., et al., 2009. Semantic memory activation in amnesic mild cognitive impairment. *Brain* 132 (Pt 8), 2068–2078.
- Xu, G., et al., 2009. The influence of parental history of Alzheimer's disease and apolipoprotein E epsilon4 on the BOLD signal during recognition memory. *Brain* 132 (Pt 2), 383–391.
- Yan, F.X., et al., 2015. APOE-epsilon4 allele altered the rest-stimulus interactions in healthy middle-aged adults. *PLoS One* 10 (6), e0128442.
- Yonelinas, A.P., 1999. The contribution of recollection and familiarity to recognition and source-memory judgments: a formal dual-process model and an analysis of receiver operating characteristics. *J Exp Psychol Learn Mem Cogn* 25 (6), 1415–1434.
- Yonelinas, A.P., et al., 2005. Separating the brain regions involved in recollection and familiarity in recognition memory. *J. Neurosci.* 25 (11), 3002–3008.