

FDI and Employment by Industry: A Co-Integration Study

Liyan Liu^{1,2}

¹Economics Philosophy, Dongbei University of Finance and Economics, Dalian, China

²Department of Economics and Management, Beijing Institute of Petrochemical Technology, Beijing, China

Email: lucyliuliyuan@bipt.edu.cn

Received July 29, 2011; revised September 16, 2011; accepted October 20, 2011

ABSTRACT

The relationship between high levels of FDI and of employment has been of enduring interest in the development literature, particularly in the context of economy as China which has enjoyed exceptional inflows of foreign capital as well as huge amount of working population. Aiming at exploring the specific relations between FDI and employment of three strata industries in china, EG co-integration method and Granger causality test is applied to identify the long-run relations and short-run linkages between FDI and employment in each of the industry via distributed lag model; moreover, first-order and second-order ECMs are created to assess the short-term deviation. Findings indicate that, in secondary and tertiary industry, growth of FDI in the long run would promote employment, and it is especially true for tertiary industry, where bidirectional linkage between FDI and employment exists; in the short term FDI has limited and even negative impetus on employment, with the latter indirectly increasing the former.

Keywords: FDI; Employment by Industry; Co-Integration; ECM

1. Introduction

Since the economic reform and opening up policy, China has undergone remarkable economic development; concomitantly, there has been an enormous inflow of foreign direct investment (FDI) into the country. Indeed, China has now been one of the most attractive destinations for cross-border direct investment; and since 2000 China has become the world's second largest recipient of FDI after the US. According to the world investment report [1], China attracted \$560.39 billion US dollars of FDI for the period 1980 to 2004. It would seem to be a reasonable assertion that FDI made great contribution to both economic and employment growth of china. For example, in 2006 foreign funded enterprises accounted for 28 per cent of China's added value in the industrial sector, exported about 58% of total exports of goods and services and imported 51% of total imports, and accounted for 11 per cent of local employment (China Investment Year Book (2006)).

Employment-generation or -promotion effect of FDI has attracted considerable attention, and some studies have been generated endeavored to explore the linkage between FDI and employment; earlier studies on the employment effect of FDI as Niu [2] found that FDI had a conspicuous positive impact on China's employment growth when domestic investment efficiency was of low level or comparatively decreasing. Summon, Saul and Klaus [3] concluded that wholly-owned FDI operations had higher

employment growth effect, while local industry characteristics moderate the growth effect; however, in the context of a more broad-based general equilibrium framework of employment, human capital, liberalization and openness, findings indicated that FDI had limited, even negative, impact on the Chinese economic growth and employment creation [4].

Another strand of literature addressed employment structure implications of FDI. Under the framework of human capital, Cai and Wang [5] studied the impact of FDI on China's employment structure, distribution and labor market, concluded that FDI had a positive impact on the development of labor market and the accumulation of human capital. Zhang and Ren [6] focused particularly on the relations of FDI and employment structure, and found that FDI promoted China's employment structure via the transition of rural labor to non-agricultural industries and the quality improvement of labor force.

Yet the definite conclusion of FDI's impact on employment still remains disputed, and its specific linkage with three strata industry has not received enough attention in recent literature. Based on the real utilized FDI for the period 1985-2008, the purpose of this paper is to explore the specific relations between FDI and employment of three strata industry in the particular literature of china. The rest of the paper is organized as follows. Section 2 contains the details of measurements of variables. In Section 3, Section 3.1 gives background information of co-integration; Section 3.2 presents integration test for six se-

ries, where the MacKinnon EG co-integration critical value is high-lighted; and EG co-integration, Granger causality test are in Section 3.3. Section 4 moves to error correction model with associated statistics, equations and graphs. This section also settles the core issues for the paper. Finally, Section 5 contains summary and conclusions based on all the estimations.

2. Data Description

2.1. Definitions and Measurement

Three Strata of Industries (Primary Industry, Secondary Industry, and Tertiary Industry): Different from International Standard Industrial Classification of all Economic Activities (ISIC Rev.3), the three strata of industries in China follows Industrial classification for national economic activities (GB/T4754-2002)¹. According to “Industrial Classification for National Economic Activities (GB/T4754-2002)”, the industrial classification in Chinese national accounts is based on statistics and accounting data [7]. Specifics as follow: Primary industry includes sections as agriculture, forestry, animal husbandry and fishing; Secondary industry contains sections as industry, mining, manufacturing, production and distribution of electricity, gas and water, and construction; Tertiary industry involves all sections and divisions that are not covered by primary and secondary industry².

FDI (Utilized Annual Value of FDI by Industry): FDI is measured as the value of FDI inflow. The utilized annual value of FDI inflow refers to the investment actually occurred each year. Since it takes time for capital transferring and equipment shipping, there usually is a gap between contracted FDI and actually utilized FDI each year, and utilized FDI should be more precise than its contracted value in determining its impact on employment.

Since the official statistics (China Statistics Year Book) for utilized FDI value by section only begins from 1997, and from 1985 to 1996 there is only the proportion of utilized FDI value by section. As for the utilized annual FDI value by section from 1985 to 1996, the author tried to construct utilized FDI series by section through multiplying the total annual utilized FDI with the proportion

each section accounts for. And through the sum of the section series, three (primary, secondary and tertiary industry) time series of FDI by industry are created.

Employment (Number of Employed Persons at Year-end by Three Strata of Industry): annual average employment is used to measure labor force participation in economic activities. Employment is measured by annual number of persons employed at year-end by three strata of Industry.

2.2. Data on the Six Time Series

The annual data of utilized FDI by industry (1997-2008) and total annual utilized FDI (1985-2008) are collected and calculated from China Statistics Year Book, annual proportion of utilized FDI value of each section (1985-1996) are collected from China Foreign Economic Statistical Year book. FDI inflows (originally in US Dollars) are converted into real domestic values by (annual average series of) RMB to US dollar exchange rate. The time series cover the year of 1985 to 2008. All variables are converted into logarithms in the estimation. The graph of the six variables, in their logarithmic values, is given in **Figure 1**.

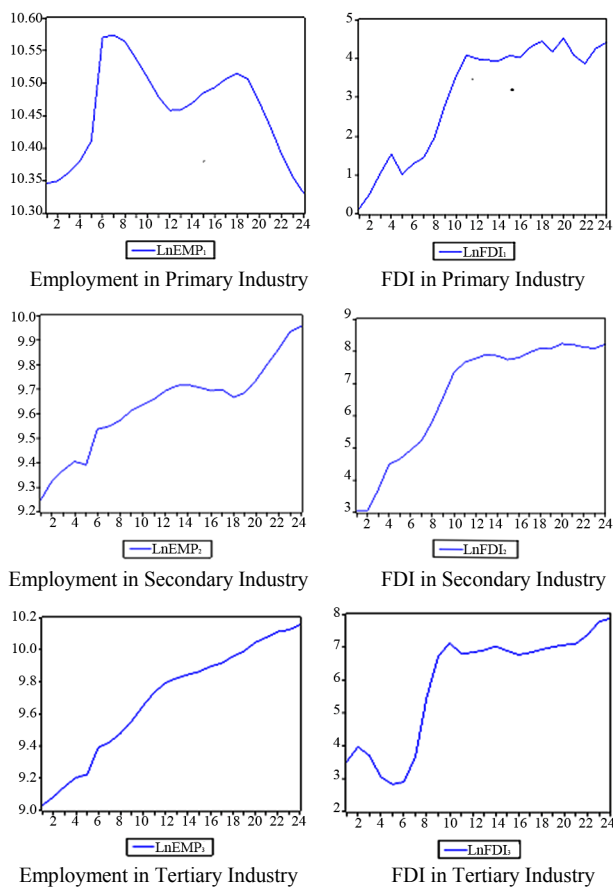


Figure 1. Six variables in logarithmic values.

¹It is the revised version based on GB/T4754-1994; and in GB/T4754-2002 version, service activities for agriculture, forestry, animal husbandry and fishing are shifted to primary industry, as compared with the version of 1994 in which they are in the tertiary industry.

²Traffic, transport, storage and post; Information transfer, computer services and software; Wholesale and retail trade; Accommodation and Restaurants; Finance; Real estate; Tenancy and business services; Scientific research, technical service and geologic perambulation; management of water conservancy, environment and public establishment; Resident services and other services; education; sanitation, social security and social welfare; culture, sports and entertainment; public management and social organization.

3. The EG Co-Integration Method

3.1. Background

Equilibrium Theory in economics shows the existence of long-run equilibrium relation, indicating the adjustability of deviations from equilibrium caused by external influences and the recoverability of equilibrium through its future time periods, in the absence of any internal mechanisms to break the equilibrium.

Assume that the long-run equilibrium relation between X and Y can be described as: $Y_t = \alpha_0 + \alpha_1 X_t + \mu_t$ (3.1), with μ_t denoting the disturbance term. If X_t is defined as X , then Y_t shall be: $\alpha_0 + \alpha_1 X$. At the end of time period $t - 1$, one of the followings will occur: 1) Y equals to its equilibrium value, $Y_{t-1} = \alpha_0 + \alpha_1 X_{t-1}$; 2) Y is smaller than its equilibrium value, $Y_{t-1} < \alpha_0 + \alpha_1 X_{t-1}$; 3) Y is larger than its equilibrium value, $Y_{t-1} > \alpha_0 + \alpha_1 X_{t-1}$.

Assumed X and Y are in its long-run equilibrium, and X changed in its value as ΔX_t , then Y shall change correspondingly in its value as ΔY_t :

$$\Delta X_t = \alpha_1 \Delta X_t + v_t \quad (v_t = \mu_t - \mu_{t-1}) \quad (3.2)$$

However, this is not always the case; the change of Y may be smaller or larger than its equilibrium value. To ensure the equilibrium in Equation (3.1), the difference between real changed value of Y and its equilibrium value ΔY must be stationary, meaning the disturbance term $\mu_t \sim I(0)$. Series μ_t is also named as disequilibrium error, the linear combination of X and Y :

$$\mu_t = Y_t - \alpha_0 - \alpha_1 X_t \quad (3.3)$$

If X and Y are in long-run equilibrium (3.1), μ_t would be a stationary one with zero expected value: $\mu_t \sim I(0)$; and the two variables X and Y are of same-ordered, then X and Y can be called co-integrated. In its economic sense, co-integration statistically expressed the notion of equilibrium.

For the two-variable co-integration test, the Engle-Granger two-step method (null: random walk) [8] is widely used; in the following section, EG method is applied to test the existence of long term relations between employment and FDI in each industry.

3.2. Integration Test of the Six Series

Before checking the co-integrated relations between employment and FDI in the three industries, tests shall be taken to see whether the variables are of same order hence to avoid spurious regression estimations. For this reason, ADF (Augmented Dickey-Fuller Test, [9,10]) is performed to check the order of the variables.

For the constant and linear trend in ADF test, statistical significance of their coefficients is taken into consideration in determining whether to include them in the

unit root tests; according to standard lag selection exclusion and lag length criteria, AIC (information criteria of Akaike-Schwarz), the lag structure for the ADF test is 2.

As shown in **Table 1**, ADF test alone shows all variables are $I(1)$, save for $\ln EMP_2$ and $\ln FDI_2$, which are $I(2)$. Since time series of $\ln EMP_1$ and $\ln FDI_1$ have same order of integration: ($\sim I(1)$), so do integration series of $\ln EMP_2$ and $\ln FDI_2$ ($\sim I(2)$), and $\ln EMP_2$ and $\ln FDI_2$ ($\sim I(1)$); therefore it is eligible to further estimate the long run equilibrium relations (existence of co-integration) between employment and FDI in each industry.

3.3. EG Co-Integration Test and Granger Causality Test

3.3.1. EG Co-Integration Test

Follow the EG Co-integration test, OLS co-integrating regression as the first step will be performed to estimate the disequilibrium error:

$$\hat{Y}_t = \hat{\alpha}_0 + \hat{\alpha}_1 X_t$$

$$\hat{e}_t = Y_t - \hat{Y}_t$$

The second step is to check whether residual series e_t is a stationary one ($I(0)$ series) or not. According to (3.1) and (3.3), if X_t and Y_t is co-integrated, the residual μ_t must be stationary.

As for the residual unit root test, DF or ADF unit root test can be applied; however, its critical value shall be quite different from that of ordinary one. Since the DF or ADF test is for the error series e_t in the integration equation, but not the real disequilibrium error μ_t in (3.1). Moreover, OLS estimation is based on the least total sum of squares, the estimator δ has a downward deviation, resulting in greater possibilities of refusing the null hypothesis. Therefore, critical values for the residual series

Table 1. ADF unit root test.

| Variables | Type (C, T, K) | ADF Test Critical Values | ADF t-Statistic | Conclusion |
|----------------------|----------------|--------------------------|-----------------|------------|
| $\Delta \ln EMP_1$ | (N, N, 0) | -2.674290*** | -2.944332 | stationary |
| $\Delta \ln FDI_1$ | (C, N, 0) | -3.004861** | -3.547440 | stationary |
| $\Delta \ln EMP_2$ | (N, N, 0) | 1.958088** | -1.735972 | unit root |
| $\Delta \ln FDI_2$ | (N, N, 0) | -1.957204** | -1.656700 | unit root |
| $\Delta^2 \ln EMP_2$ | (C, T, 1) | -4.498307*** | -4.950548 | stationary |
| $\Delta^2 \ln FDI_2$ | (C, T, 0) | -4.467895*** | -4.822601 | stationary |
| $\Delta \ln EMP_3$ | (C, T, 0) | -4.440739*** | -5.362610 | stationary |
| $\Delta \ln FDI_3$ | (N, N, 1) | -2.679735*** | -3.361279 | stationary |

E-views 6.0; *** refers to 1% level, ** refers to 5% level and * refers to 10% level of MacKinnon (1996) one-sided p-values; C, T and K respectively represent for constant, linear trend and lag length, N represents for no constant or linear trend; $\ln EMP_{1,2,3}$ refer to the logarithm values of number of persons employed by the primary, secondary and tertiary industry; $\ln FDI_1, \ln FDI_2$ and $\ln FDI_3$ refer to the logarithm values of FDI values of primary, secondary and tertiary industry.

e_t shall be smaller than the usual critical values of DF and ADF test. For the residual unit root test, we shall follow the Engel-Granger co-integration critical values obtained through simulation tests held by MacKinnon [11,12]. The equation for critical values calculating is as:

$C_p = \varphi_\infty + \varphi_1 T_{-1} + \varphi_2 T_{-2}$, with the value of φ_∞ , φ_1 and φ_2 in **Table 2**.

Based on the equation and the surface response of critical values for co-integration test, the critical value for our particular co-integration test is -3.58697 . And the Estimation equations for the three strata industry are as follows:

Primary industry:

$$\text{LnEMP}_1 = 10.430 + 0.009 \text{LnFDI}_1 \quad (3.4)$$

[287.851]*** [0.819]

$R^2 = 0.030$ DW = 0.296.

ADF unit root test for the residual series e_{1t} in (3.4):

$$\hat{e}_{1t} = -0.2475\hat{e}_{1t-1} \quad (-2.07611) \quad (3.5)$$

T-statistics is -2.076 , and the 5% MacKinnon Engel-Granger co-integration critical value³ is -3.58697 , which shows strong evidence to accept null hypothesis, *i.e.* residual series e_{1t} has a unit root, hence there is no long-run equilibrium relation between LnEMP_1 and LnFDI_1 , which is generally consistent with the statistically insignificant R^2 value. The result indicates impact of FDI on employment of primary industry is not statistically significant enough, which is explainable due to the lower technological quality of labor force in the industry and the technically sophisticated capital of FDI.

Secondary industry:

$$\text{LnEMP}_2 = 9.006 + 0.093 \text{Ln FDI}_2 \quad (3.6)$$

[151.548]*** [10.889]***

$R^2 = 0.844$ DW = 0.393.

As approved in the foregoing integration test, LnEMP_2 and LnFDI_2 are I(2) series; therefore, residuals unit root test of their second-order difference series are as follow⁴:

$$\Delta^2 \hat{e}_{2t} = -0.74357\hat{e}_{2t-1}$$

Table 2. Surface response of critical values.

| N | Type | % | φ_∞ | S.E. | φ_1 | φ_2 |
|---|--------------------|---------|------------------|--------|-------------|-------------|
| 2 | Constant, no trend | 1 | -3.9001 | 0.0022 | -10.534 | -30.03 |
| | | 5 | -3.3377 | 0.0012 | -5.967 | -8.98 |
| | Constant, trend | 10 | -3.0462 | 0.0009 | -4.069 | -5.73 |
| | | 1 | -4.3226 | 0.0022 | -15.531 | -34.03 |
| | | 5 | -3.7809 | 0.0013 | -9.421 | -15.06 |
| | 10 | -3.4959 | 0.0009 | -7.203 | -4.01 | |

Critical Values of CI test, J. MacKinnon, 1991.

³Response Surface Study, MacKinnon 1991.

⁴Unit root test for residuals of second-order non-stationary time series follows the equation as: $\Delta^2 y_t = \alpha + \gamma \Delta y_{t-1} + \sum \delta_j \Delta^2 y_{t-j} + e_t$, ($j = 1, \dots, p$), ($H_0: \gamma = 0$, $H_1: \gamma < 0$), critical value is same with first-order, which is MacKinnon Engel-Granger co-integration critical values.

$$[-3.7896]** \quad (3.7)$$

The T-statistics for the residual unit root test is -3.7896 , which is far lower than the 5% MacKinnon Engel-Granger co-integration critical value -3.58697 ; therefore, there is long term equilibrium relation between variables LnEMP_2 and LnFDI_2 .

Tertiary industry:

$$\text{LnEMP}_3 = 8.5760 + 0.1878 \text{LnFDI}_3 \quad (3.8)$$

[74.968]*** [10.115]***

$R^2 = 0.823$ DW = 0.434

ADF unit root test for the residual series e_{3t} :

$$\hat{e}_{3t} = -0.4231\hat{e}_{3t-1} \quad [-3.977]** \quad (3.9)$$

T-statistics is -3.9771 , refusing the null hypothesis; hence we can draw the conclusion that the variables LnEMP_3 and LnFDI_3 are co-integrated.

3.3.2. Granger Causality Test

To further examine the specification of the possible linkages between the pairs of variables, it is necessary to perform the Granger causality test [13,14]. Since the precondition of the Granger causality test is that all the series shall be stationary or I(0) series, therefore, the non-stationary I(1) and I(2) series are differenced as ΔLnEMP_3 , ΔLnFDI_3 , and $\Delta^2 \text{LnEMP}_2$, $\Delta^2 \text{LnFDI}_2$, and lag length is automatically selected according to AIC (Akaike Information Criterion).

Results of Granger causality test in **Table 3** indicates that in the secondary industry $\Delta^2 \text{LnFDI}_2$ does Granger Cause $\Delta^2 \text{LnEMP}_2$ (p-value is 0.02772, which refused the null hypothesis), while $\Delta^2 \text{LnEMP}_2$ does not Granger Cause $\Delta^2 \text{LnFDI}_2$ (p-value is 0.572, which is great enough to accept the null hypothesis); while the case are quite different in the tertiary industry, which shows that ΔLnFDI_3 does Granger Cause ΔLnEMP_3 and vice versa. This bidirectional linkage between FDI inflow and employment implies the FDI-attracting capacity of the industry.

4. The Error Correction Model

Based on the long-run equilibrium and the Granger causality relations between FDI and employment in the secondary

Table 3. Pairwise granger causality tests.

| Null Hypothesis: | Lags | F-Statistic | Probability |
|--|------|-------------|-------------|
| $\Delta^2 \text{LnFDI}_2$ does not Granger Cause $\Delta^2 \text{LnEMP}_2$ | 1 | 5.73491 | 0.02772 |
| $\Delta^2 \text{LnEMP}_2$ does not Granger Cause $\Delta^2 \text{LnFDI}_2$ | 1 | 0.33210 | 0.57156 |
| ΔLnFDI_3 does not Granger Cause ΔLnEMP_3 | 3 | 7.02004 | 0.01182 |
| ΔLnEMP_3 does not Granger Cause ΔLnFDI_3 | 3 | 14.9604 | 0.00128 |

E-views 6.0.

and tertiary industry, the short run relations will be tested. According to Granger representation theorem [15]: if variables X_t and Y_t are co-integrated ($X_t, Y_t \sim I(1)$), then the short-run disequilibrium relation between X_t and Y_t can always be described with an error correction model:

$$\Delta Y_t = \text{lagged}(\Delta Y, \Delta X) - \lambda \mu_{t-1} + \varepsilon_t, (0 < \lambda < 1) \quad (4.1)$$

μ_t denotes disequilibrium error or long-run deviation, and λ short-run regulation factor.

According to Error Correction Model (DHSY) [16], in real world, variables X_t and Y_t are seldom in their long run equilibrium, and what people virtually observed is the short-run or disequilibrium relations as (with the hypothesis that there is first order distributed lag length):

$$Y_t = \beta_0 + \beta_1 X_t + \beta_2 X_{t-1} + \mu Y_{t-1} + \varepsilon_t \quad (4.2)$$

which shows that the value of variable Y_t relates to both the change of X_t , and their respective values in their $t - 1$ time period.

To make the variables in the two sides of the equal mark stationary, Equation (4.2) can be transformed into:

$$Y_t = \beta_0 + \beta_1 X_t + \beta_2 X_{t-1} + \mu Y_{t-1} + \varepsilon_t$$

Let $\lambda = 1 - \mu$, $\alpha_0 = \beta_0 / (1 - \mu)$, $\alpha_1 = \beta_1 + \beta_2 / (1 - \mu)$, then

$$\Delta Y_t = \beta_1 \Delta X_t - \lambda (Y_{t-1} - \alpha_0 - \alpha_1 X_{t-1}) + \varepsilon_t. \quad (4.3)$$

If we take the parameters α_0, α_1 (4.3) as identical with their corresponding ones in (4.2), $Y_{t-1} = \alpha_0 - \alpha_1 X_{t-1}$ (4.3) will be the disequilibrium error in $t - 1$ time period. Then we get:

$$\Delta Y_t = \beta_1 \Delta X_t - \lambda \text{ECM} + \varepsilon_t. \quad (4.4)$$

Here ECM denotes the error correction term.

4.1. Secondary Industry

Since the long run relation between $\ln \text{EMP}_2$ and $\ln \text{FDI}_2$ has been explored as showed in (3.6):

$$\ln \text{EMP}_2 = 9.006 + 0.093 * \ln \text{FDI}_2 \quad (4.5)$$

$$[151.548]^{***} [10.889]^{***}$$

$$R^2 = 0.844 \quad \text{DW} = 0.393$$

From the value of DW (0.393), there is conspicuous series correlation between the two variables; hence simple lag equation is created as follow:

$$\ln \text{EMP}_2 = -0.024 - 0.020 * \ln \text{FDI}_2 + 0.987 * \ln \text{EMP}_{2(-1)} + 0.011 * \ln \text{FDI}_{2(-1)} \quad (4.6)$$

$$[-0.020] [-0.564] [7.415]^{***} [0.345]$$

$$R^2 = 0.953 \quad \text{DW} = 2.021$$

$$\text{LM}(1) = 0.006 \quad \text{LM}(2) = 0.360 \quad \text{LM}(3) = 0.355$$

With the DW value as 2.02 and the F -statistics of LM

test, series correlation has been diminished. And to further check the stationarity of the residuals e'_{2t} :

$$\Delta \hat{e}'_{2t} = -1.0142 \hat{e}'_{2t-1} \quad (4.6)$$

$$[-4.670]^{***}$$

$$R^2 = 0.509 \quad \text{DW} = 1.989$$

$$\text{LM}(1) = 0.067 \quad \text{LM}(2) = 0.318$$

The estimation of residual series shows that (4.5) is stationary; **Figure 2** provides the graphs of the actual, fitted and residual values for (4.5). The virtual coincidence between the actual and fitted values is apparent for the equation. The early fluctuation phase of employment and its subsequent growth phase followed by a second fluctuation are almost perfectly tracked by the estimated Equation (4.5). Residual series being $I(0)$ under the ADF test, with test statistics carrying a probability of nearly reaching zero.

Based on (4.5), second-order error correction model is created. Since $\ln \text{EMP}_2 \sim I(2)$, $\ln \text{FDI}_2 \sim I(2)$, and to make the series in the two sides of the equal mark stationary, $\ln \text{EMP}_2$ and $\ln \text{FDI}_2$ have to be differenced as $\Delta^2 \ln \text{EMP}_2$ and $\Delta^2 \ln \text{FDI}_2$:

$$\Delta^2 \ln \text{EMP}_2 = -0.003 + 0.014 * \Delta^2 \ln \text{FDI}_2 - 0.994 * \text{ECM}_{(-1)} \quad (4.7)$$

$$[-0.307] [0.432] [-4.411]^{***}$$

$$R^2 = 0.510 \quad \text{DW} = 1.763$$

$$\text{LM}(1) = 2.481 \quad \text{LM}(2) = 1.558$$

The result shows, in the long run, there is equilibrium relation between FDI and employment in the secondary industry, and FDI has a positive impetus on employment, with its long-run elasticity as 0.093 (3.6); while in the short term, FDI inflow of the same time period, namely t , is inimical to the growth of employment (-0.02), while FDI inflow of $t - 1$ period presents a positive influence on employment (0.011); however, employment of the current time period, t , is by large positively determined by the employment of the last time period, $t - 1$, with a coefficient as 0.987, and statistically significant so; any deviation

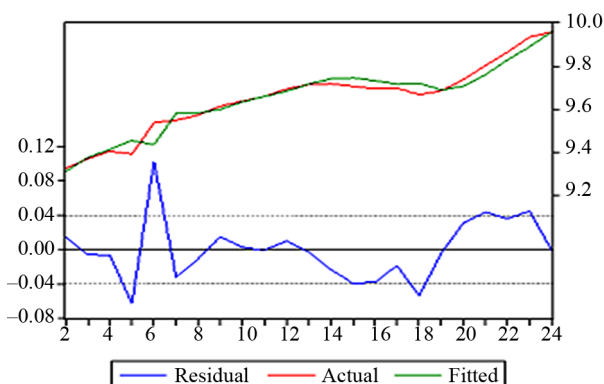


Figure 2. Actual and fitted values and residuals.

from the equilibrium will be effectively corrected at a coefficient of 0.994 (4.7), and also statistically significant (p-value $[-4.411]^{***}$).

We tend to conclude that in the long term employment growth responds positively to the FDI inflow; in the short run, FDI inflow poses statistically limited impact on the growth of employment, and it tends to decrease the employment in the current period, whilst increase employment of the next period; moreover, employment growth is largely determined by its own; any short-run deviation from long-run equilibrium would be effectively corrected.

4.2. Tertiary Industry

The long term relations between $\ln EMP_3$ and $\ln FDI_3$ is showed as (3.8), the DW value "0.3930" shows that there is series correlation; and lagged dependent variable shall be introduced to eliminate influence of series correlation:

$$\begin{aligned} \ln EMP_3 = & 0.713 + 0.006 * \ln FDI_3 \\ & + 0.927 * \ln EMP_{3(-1)} + 0.001 * \ln FDI_{3(-1)} \\ & [1.796] * [0.445] \quad [19.988]^{***} [0.08] \end{aligned} \quad (4.8)$$

$$R^2 = 0.992 \quad DW = 2.323$$

$$LM(1) = 0.663 \quad LM(2) = 0.320 \quad LM(3) = 0.214$$

Judging from DW value and the LM tests for lag length of 1, 2 and 3, there is no series correlation for Equation (4.8). Residual series e'_{3t} is estimated as follow to further explore its stationarity:

$$\Delta \hat{e}'_{3t} = -1.1842 \hat{e}'_{3(t-1)} \quad (4.9)$$

$$[-5.6481]^{***}$$

$$R^2 = 0.603 \quad DW = 2.044$$

$$LM(1) = 0.257 \quad LM(2) = 0.135$$

T-statistics and LM test for one and two lag lengths present robust evidence that Equation (4.8) is stationary; to further explore its fitness, actual and fitted values and residuals are graphed in **Figure 3**.

The virtual coincidence between the actual and fitted

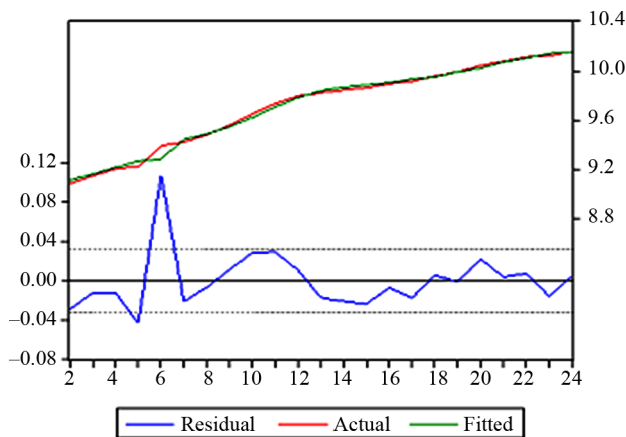


Figure 3. Actual and fitted values and residuals.

values is quite remarkable in (4.8). The early short growth phase, the following slight fluctuation and the steadily growth phase are almost perfectly tracked by the estimated equation. The residual series is $I(0)$ under the ADF test, with test statistics carrying a probability of nearly zero.

First-order error correction model is created as follow:

$$\begin{aligned} \Delta \ln EMP_3 = & 0.095 - 0.008 * \Delta \ln FDI_{3t} - 0.218 * ECM_{(-1)} \\ & [3.437]^{***} \quad [-1.727]^* \quad [-0.909] \end{aligned} \quad (4.10)$$

$$R^2 = 0.317 \quad DW = 1.758$$

$$LM(1) = 2.553 \quad LM(2) = 1.657$$

The co-integration estimation allows us to further identify the long-run and short run relations between, say, FDI and employment. In the long run, employment responds positively to the changes in FDI, with a coefficient as 0.1878 and statistically significant so.

In the short run, impact of FDI is not statistically significant, but does pose positive impact on employment of the same time period (4.8). FDI might not impact short-term employment growth significantly, and employment growth is its main attractor (0.927) of its last time period. FDI inflows to the tertiary industry seem to be driven by the inexorable growth of the employment.

As for the changes in the short-run disequilibrium (4.10), employment responds negatively to the changes in FDI, though the influence might be quite slight with a coefficient as -0.008 ; with the statistically insignificant coefficient of ECM, deviation from long-run equilibrium would be corrected at somewhat lower speed compared with secondary industry.

Findings in the Granger Causality test provide a feasible explanation for the statistically sort of insignificant impact of FDI on employment. There is bidirectional linkage between $\ln EMP_3$ and $\ln FDI_3$, and p-value of Granger causality from $\ln EMP_3$ to $\ln FDI_3$ is even more conspicuous than that from the inverse direction, which is generally consistent with (4.8), where employment growth is the main attractor for FDI inflow.

Hence we can conclude that in the long run, FDI possesses a positive impetus on the growth of employment; whilst in the short run, FDI presents a limited influence on employment, and employment growth is by large generated by its own.

5. Conclusions

In this paper the author has explored the fundamental relations between FDI and employment of three strata industries in china over the past twenty-four years. Conclusions can be extracted as follows.

1) In the long run, growth of FDI would promote employment of the second and tertiary industry, especially the tertiary industry, where there is bidirectional linkage between FDI and employment. This positive role FDI

plays in the long term would be conducive to the transition of labor force from primary to secondary industry and secondary to tertiary industry, therefore enhance the upgrade of China's industry structure and promote the optimization of employment structure.

2) Short-term limited, even negative, impact of FDI and the main attractor role of employment indicate the increase of employment would not only cause employment growth in the next time period, but attract more FDI into the industry, and this is particularly the case for tertiary industry.

3) The policy prescription derived therefore would be directing FDI inflow to China from agricultural sectors to industrial and particularly service sectors, where FDI poses much more important impact on employment promotion and enjoys far greater role in the optimization of employment structure.

REFERENCES

- [1] UNCTAD, "Foreign Direct Investment and the Challenge of Development," World Investment Report, UN, New York, 2005.
- [2] Y. P. Niu, "FDI and Quantities of Employment in China," *Economics Perspectives*, Vol. 4, No. 11, 2001, pp. 29-32.
- [3] S. Sumon and S. Klaus, "Determinants of Employment Growth at MNEs," Working Paper, William Davidson Institute, Ann Arbor, 2004.
- [4] J. L. Ford, S. Sen and H. X. Wei, "FDI and Economic Development in China 1970-2006: A Co-Integration Study," Discussion Paper, University of Birmingham, Birmingham, 2010.
- [5] F. Cai and D. W. Wang, "FDI and Employment—A Human Capital Framework," *Collected Essays on Finance and Economics*, Vol. 1, No. 1, 2004, pp. 1-14.
- [6] E. Z. Zhang and Z. C. Ren, "FDI and the Evolution of China's Employment Structure," *Economics Theory and Management*, Vol. 2, No. 52005, pp. 1-7.
- [7] T. L. Zhao, "Comparison between Industrial Classification in Chinese National Accounts and International Standard Industrial Classification for All Economic Activities (ISIC)," *8th OECD—NBS Workshop on National Accounts*, Paris, 6-10 December 2004.
- [8] R. F. Engle and C. W. J. Granger, "Co-Integration and Error Correction: Representation, Estimation and Testing," *Econometrica*, Vol. 55, No. 2, 1987, pp. 251-276. [doi:10.2307/1913236](https://doi.org/10.2307/1913236)
- [9] D. A. Dickey and W. A. Fuller, "Distributions of the Estimators for Autoregressive Time Series with a Unit Root," *Journal of American Statistical Association*, Vol. 74, No. 366, 1979, pp. 427-431. [doi:10.2307/2286348](https://doi.org/10.2307/2286348)
- [10] D. A. Dickey and W. A. Fuller, "Likelihood Ratio Statistics for Autoregressive Time Series with a Unit Root," *Econometrica*, Vol. 49, No. 4, 1981, pp. 1057-1072. [doi:10.2307/1912517](https://doi.org/10.2307/1912517)
- [11] R. Davidson and J. G. MacKinnon, "Artificial Regressions and C (α) Tests," *Economics Letters*, Vol. 35, No. 2, 1991, pp. 149-153. [doi:10.1016/0165-1765\(91\)90162-E](https://doi.org/10.1016/0165-1765(91)90162-E)
- [12] J. G. MacKinnon, "Critical Values for Cointegration Tests," In: R. F. Engle and C. W. J. Granger, Eds., *Long-Run Economic Relationships*, Oxford University Press, Oxford, 1991, pp. 267-276.
- [13] C. W. J. Granger, "Investigating Causal Relations by Econometric Models and Cross-spectral Methods," *Econometrica*, Vol. 37, No. 3, 1969, pp. 424-438. [doi:10.2307/1912791](https://doi.org/10.2307/1912791)
- [14] C. Granger, "Some Recent Developments in a Concept of Causality," *Journal of Econometrics*, Vol. 39, No. 1-2, 1988, pp. 199-211. [doi:10.1016/0304-4076\(88\)90045-0](https://doi.org/10.1016/0304-4076(88)90045-0)
- [15] R. F. Engle and C. W. J. Granger, "Co-Integration and Error Correction: Representation, Estimation and Testing," *Econometrica*, Vol. 55, No. 2, 1987, pp. 251-276. [doi:10.2307/1913236](https://doi.org/10.2307/1913236)
- [16] J. E. H. Davidson, D. F. Hendry, F. Srba and S. Yeo, "Econometric Modelling of the Aggregate Time-Series Relationship between Consumers' Expenditure and Income in the United Kingdom," *The Economic Journal*, Vol. 88, No. 352, 1978, pp. 661-692. [doi:10.2307/2231972](https://doi.org/10.2307/2231972)