



Feces Derived Allergens of *Tyrophagus putrescentiae* Reared on Dried Dog Food and Evidence of the Strong Nutritional Interaction between the Mite and *Bacillus cereus* Producing Protease Bacillolysins and Exo-chitinases

Tomas Erban^{1*}, Dagmar Rybanska^{1,2}, Karel Harant³, Bronislava Hortova¹ and Jan Hubert¹

¹ Laboratory of Proteomics, Biologically Active Substances in Crop Protection, Crop Research Institute, Prague, Czech Republic, ² Department of Plant Protection, Faculty of Agrobiolgy, Food and Natural Resources, Czech University of Life Sciences Prague, Prague, Czech Republic, ³ Biology Section, Laboratory of Mass Spectrometry, Service Labs, Faculty of Science, Charles University in Prague, Prague, Czech Republic

OPEN ACCESS

Edited by:

Arash Zibaei,
University of Guilan, Iran

Reviewed by:

Ioannis Eleftherianos,
The George Washington University,
USA

Sudeshna Mazumdar-Leighton,
University of Delhi, India

*Correspondence:

Tomas Erban
arachnid@centrum.cz

Specialty section:

This article was submitted to
Invertebrate Physiology,
a section of the journal
Frontiers in Physiology

Received: 08 December 2015

Accepted: 04 February 2016

Published: 24 February 2016

Citation:

Erban T, Rybanska D, Harant K, Hortova B and Hubert J (2016) Feces Derived Allergens of *Tyrophagus putrescentiae* Reared on Dried Dog Food and Evidence of the Strong Nutritional Interaction between the Mite and *Bacillus cereus* Producing Protease Bacillolysins and Exo-chitinases. *Front. Physiol.* 7:53. doi: 10.3389/fphys.2016.00053

Tyrophagus putrescentiae (Schrank, 1781) is an emerging source of allergens in stored products and homes. Feces proteases are the major allergens of astigmatid mites (Acari: Acaridida). In addition, the mites are carriers of microorganisms and microbial adjuvant compounds that stimulate innate signaling pathways. We sought to analyze the mite feces proteome, proteolytic activities, and mite-bacterial interaction in dry dog food (DDF). Proteomic methods comprising enzymatic and zymographic analysis of proteases and 2D-E-MS/MS were performed. The highest protease activity was assigned to trypsin-like proteases; lower activity was assigned to chymotrypsin-like proteases, and the cysteine protease cathepsin B-like had very low activity. The 2D-E-MS/MS proteomic analysis identified mite trypsin allergen Tyr p3, fatty acid-binding protein Tyr p13 and putative mite allergens ferritin (Grp 30) and (poly)ubiquitins. Tyr p3 was detected at different positions of the 2D-E. It indicates presence of zymogen at basic pI, and mature-enzyme form and enzyme fragment at acidic pI. Bacillolysins (neutral and alkaline proteases) of *Bacillus cereus* symbiont can contribute to the protease activity of the mite extract. The bacterial exo-chitinases likely contribute to degradation of mite exuviae, mite bodies or food boluses consisting of chitin, including the peritrophic membrane. Thus, the chitinases disrupt the feces and facilitate release of the allergens. *B. cereus* was isolated and identified based on amplification and sequencing of 16S rRNA and *motB* genes. *B. cereus* was added into high-fat, high-protein (DDF) and low-fat, low-protein (flour) diets to 1 and 5% (w/w), and the diets palatability was evaluated in 21-day population growth test. The supplementation of diet with *B. cereus* significantly suppressed population growth and the suppressive effect was higher in the high-fat, high-protein diet than in the low-fat, low-protein food. Thus, *B. cereus* has to coexist with the mite in balance to be beneficial for the mite. The mite-*B. cereus* symbiosis can be beneficial-suppressive at some level.

The results increase the veterinary and medical importance of the allergens detected in feces. The *B. cereus* enzymes/toxins are important components of mite allergens. The strong symbiotic association of *T. putrescentiae* with *B. cereus* in DDF was indicated.

Keywords: *Tyrophagus putrescentiae*, allergen, *Bacillus cereus*, bacillolysin, protease, exochitinase, symbiosis, nutrition

INTRODUCTION

During digestion, the digestive enzymes enter the peritrophic space and are mixed to ingest food inside a food bolus (Terra, 2001; Sobotnik et al., 2008a). In insects, and probably in mites, a portion of the enzymes is recycled, but a significant portion remains present in the feces (Terra, 1990). Digestive enzymes make up a significant proportion of feces proteins (Ortego et al., 2000; Erban and Hubert, 2008, 2010b, 2015; Erban et al., 2009a). Mites are associated with microorganisms, including bacteria and fungi. The bacteria and fungi contribute to mite nutrition by producing exo-enzymes that predigest the substrate by serving directly as a food source (Sinha, 1966; Hubert et al., 2003, 2012a,b; Smrz, 2003; Erban and Hubert, 2008; Naegele et al., 2013). From a sanitary view, the mite feces are the most significant contaminants of the human environment because they contain major allergens that accumulate and persist in the environment (Tovey et al., 1981; de Boer et al., 1995; Sidenius et al., 2002; Platts-Mills and Woodfolk, 2011). The mites carry microorganisms that have adjuvant functions and stimulate innate signaling pathways leading to allergy (Jacquet, 2013). Specific microbiota are associated with and may modulate inflammatory processes in patients with severe asthma and related phenotypes (Huang et al., 2015).

Tyrophagus putrescentiae (Schrank, 1781) is a generalist feeder that appears in diverse habitats (Hughes, 1976; Smrz and Jungova, 1989; Athanassiou et al., 2002; Klimov and O'Connor, 2015), but it prefers a source of high fat and protein, such as dry dog food (DDF), where it rapidly reproduces (Brazis et al., 2008; Erban et al., 2015b; Rybanska et al., 2016). It is considered the most common pest in DDF, so *T. putrescentiae* is of high veterinary importance. In dogs, it causes atopic dermatitis (Brazis et al., 2008; Gill et al., 2011). The mite is not only found in stored products but also inhouse dust. Therefore, *T. putrescentiae* is a domestic mite as well as a stored-product mite (SPM) (Colloff and Spieksma, 1992). The antigenic properties of *T. putrescentiae* to human and dogs have been studied, and allergenic cross-reactivity between *T. putrescentiae* and house-dust mites (HDMs) has been shown (Arlian et al., 1984; Park et al., 1999; Saridomichelakis et al., 2008; Marsella and Saridomichelakis, 2010). The physiological characteristics of mite gut pH (Erban and Hubert, 2010b) and digestive enzymes (Ortego et al., 2000; Erban and Hubert, 2008, 2010a; Erban et al., 2009a) indicate similar digestive and enzyme properties of *T. putrescentiae* as in other species of SPMs and HDMs.

The *in vitro* study of gut derived enzymes in acaridid mites is limited, due to the size of the mites, to analysis of spent growth medium extract (SGME) comprising the mites, remaining food and mite feces (Stewart et al., 1991) or feces extract (Erban and

Hubert, 2015). Study of the feces proteome of *Dermatophagoides farinae* using a 2D-E-MS/MS proteomic approach detected and thereby increased the quantitative allergenic importance of six proteins/allergens, Der f1, Der f2, Der f3, Der f6, Der f15, and ferritin (Der f30) (Erban and Hubert, 2015). In addition, proteomic analysis enables the detection of proteins of microbial origin in a heterogeneous sample, providing additional information about the proteins of the investigated organism (Erban and Hubert, 2015; Erban et al., 2015a). The database of allergens currently (to date 23/01/2016 at www.allergen.org) registers some equally allergenic groups in HDMs and SPMs. In particular, in *T. putrescentiae*, there are currently five known allergens belonging to mite allergenic groups 2 (NPC2 family), 3 (Trypsin), 10 (Tropomyosin), 13 (Fatty-acid binding protein), and 34 (Troponin C). A proteomic analysis of *T. putrescentiae* feces might identify the gut-derived allergens/proteins and show their quantitative importance for allergy and/or contribution to digestive physiology of the mite.

In this study, the *T. putrescentiae* feces extract was analyzed via enzymatic and proteomic methods to identify the feces allergens with primary focus on proteolytic activities. The proteomic analysis identified bacillolysin, exo-chitinases and other proteins that originate from *Bacillus cereus*. The bacterial symbiont was isolated and identified using amplification and sequencing of the 16S rRNA and *motB* genes. This study demonstrates mite-bacterial symbiosis. The mite feces are not only a source of mite major allergenic proteins; they also contain bacterial compounds that may significantly contribute to allergy.

MATERIALS AND METHODS

Experimental Mite

A laboratory strain of *T. putrescentiae* collected in 1996 by Eva Zdarkova in Bystřice nad Pernštejnem, Czechia, was used in the study. The mite has been kept and reared in laboratory colonies in the Crop Research Institute in Prague since collection (Erban and Hubert, 2008). Prior to the experiment, the mites were removed from the standard rearing diet and fed DDF that was crushed by using a mortar and pestle (brown kernels, Friskies Life Plus Nutrition Junior, Nestle Purina, Buk, Hungary) for nutritional adaptation (Erban et al., 2015b). The mites were cultivated on an IWAKI 25-cm² surface area in 70-mL-capacity tissue culture flasks (IWAKI flasks; Cat No. 3100-025; Sterilin, Newport, UK). Constant 85% relative humidity (RH) was maintained with saturated KCl solution in Secador desiccator cabinets (Bel-Art Products, Pequannock, NJ, USA), and the air-conditioned dark room was maintained at 25 ± 1°C.

The mites previously reared for a long period on the DDF were collected. Then, the mites were placed into culture flasks

with 50 mg of the DDF diet and reared for 10 weeks for feces production. The mite culture was controlled periodically twice weekly, and 20–40 mg feed was added as needed. The flasks were turned 180° at each inspection to facilitate fecal coverage of all flask surfaces (Erban and Hubert, 2015). The flask contents were processed for protein extraction.

Preparation of Feces, Spent Growth Medium, and Control Extracts for Protein Analysis

Spent growth medium (SGM) was removed from the flasks and placed in 50 mL centrifugal tubes (Orange Scientific, Braine-l'Alleud, Belgium) for SGME preparation. Briefly, 0.1 g of SGM was used per 1 mL of HPLC grade water (ddH₂O). The feces-coated tissue culture flasks after SGM and mite removal were filled with 5 mL of ice-cold (4°C) ddH₂O. The flasks were placed on ice and mixed on a ProBlot Rocker (Labnet International, Woodbridge, NJ, USA) for 15 min per side at 100 rpm. The feces extract was removed to 50 mL centrifugal tubes and stored on ice. The extraction step was repeated twice with 10 and 5 mL of the ddH₂O per step. For SGME preparation, the centrifugal tube with content was mixed on ProBlot Rocker for 50 min on ice. The extracts were centrifuged using a MR 23i centrifuge (Jouan Industries, France) at 10,000 g and 4°C for 15 min. After centrifugation, the supernatants were removed with a 10-mL pipette. For control samples, the mite feed was extracted analogously to the feces; specifically, 0.1 g of DDF was used per 1 mL of ddH₂O. SGME was directly used for enzymatic analysis. Feces extract was divided into aliquots and added to 50-mL centrifuge tubes, which were covered with a 0.22- μ m PTFE filter (Cat No. TR-200210, Teknokroma, Spain) and fixed with a vented cap. The tubes were frozen and lyophilized in PowerDry LL3000 (Thermo, Shanghai, China) and stored at -40°C for later use. The protein content was determined by Bradford assay (B6916, Sigma-Aldrich, St. Louis, MO, USA) with BSA as the standard.

Profiling of Optimal Proteolytic pH

Azoalbumin (Cat. No.: A2382; Sigma-Aldrich) was used as a substrate for screening general protease activity. The pH optimum was screened in the pH range from 3.5 to 8.0. The assay was performed on a microplate organized into four replicates of each enzymatic assay and two replicates of each control sample at different pH values. Universal Britton–Robinson buffer I (BR-I) at a concentration of 0.125 M and supplemented with 0.2% azocalbumin was applied to the 96-well microplates (Gama, Ceske Budejovice, Czechia). Reactions were started by adding 50 μ L of SGME containing 20 μ g total proteins. The microplates were covered with adhesive seals (Simport, Beloeil, QC, Canada) and incubated for 1 h at 37°C in a thermoshaker (DTS-2) at 700 rpm. After removal of the seals, reactions were stopped by adding 50 μ L of 0.3 M trichloroacetic acid (TCA). The microplates were centrifuged at 3500 rpm for 20 min at 4°C in an MR 23i centrifuge. Seventy microliters of each supernatant was transferred into a 384-well microplate, and the absorbance was read at 405 nm (Multiskan Ascent, Thermo, USA). Two different controls were analyzed, one for mite homogenate and one for the enzyme substrate.

Specific Protease Activity Levels at Three pH Values

The specific protease activity was measured at pH 5.75, 6.75, and 8.00. The following 4-nitroaniline-bound specific substrates were used: N α -Benzoyl-DL-arginine 4-nitroanilide hydrochloride (BapNA, Cat. No. B4875, Sigma-Aldrich), Ala-Ala-Phe p-nitroanilide (AAPpNA, Cat. No. A9148, Sigma-Aldrich) and Z-Arg-Arg p-nitroanilide (ZRRpNA, Cat. No. P-138, Biomol, Exeter, UK) were used to screen (i) trypsin, (ii) chymotrypsin, and (ii) cysteine protease activity, respectively. Trypsin inhibitor N α -Tosyl-L-lysine chloromethyl ketone hydrochloride (TLCK; Cat. No. T7254, Sigma-Aldrich) dissolved in HPLC grade methanol, chymotrypsin inhibitor N-p-Tosyl-L-phenylalanine chloromethyl ketone (TPCK; Cat. No. T4376, Sigma-Aldrich) dissolved in Dimethyl sulfoxide (DMSO; Cat. No. D8414, Sigma-Aldrich), and cysteine protease inhibitor *trans*-Epoxy succinyl-L-leucylamido(4-guanidino)butane (E-64, Cat. No. E3132, Sigma-Aldrich) dissolved in ddH₂O, and reagent for the selective reduction of disulfides tris(2-carboxyethyl)phosphine hydrochloride (TCEP; Cat. No. C4706, Sigma-Aldrich) dissolved in ddH₂O were used to determine the specificity of the proteolytic activity. Ten microliters of TLCK, TPCK, E64, or TCEP was applied to the appropriate wells of the microplate in four replicates; control wells contained only 10 μ L of ddH₂O or DMSO with inhibitors. Then, 190 μ L of substrate solution BapNA, AAPpNA or ZRRpNA in 0.132 M BR-I was added to each well. The reaction was started by adding 50 μ L of mite homogenate containing 20 μ g total proteins. The microplates were covered with adhesive seals and incubated for 15 min in the case of ZRRpNA and BAPNA and for 35 min in the case of AAPpNA at 37°C in a DTS-2 thermoshaker at 700 rpm. After removal of the seals, reactions were stopped by adding 50 μ L of 0.3 M TCA. The microplates were centrifuged at 3500 rpm for 20 min at 4°C in an MR 23i centrifuge. Seventy microliters of each supernatant was transferred into a 384-well microplate, and the absorbance was read at 405 nm. Two different controls were analyzed, one for mite homogenate and one for the enzyme substrate. Enzyme activity was expressed as the percentage of inhibition; the control was considered to have 100% activity. The effects of inhibitors or TCEP on enzyme activity at each pH and substrate concentration were evaluated using *t*-tests. An ANOVA was used to compare activities on the three substrates within the three tested pHs. The statistical analysis was performed with Statistica 12 (Statsoft, USA).

Protease Analysis by Zymography in Feces Extract

The lyophilized and BSA-quantified feces extract was dissolved in sample buffer lacking reducing agent (2% SDS, 0.0625 M Tris-HCl, 10% Glycerol, pH 6.8). Protein (10, 20 or 30 μ g) was separated on a 4–12% SDS-PAGE gel with the Mini Protean Tetra Cell (Bio-Rad, Hercules, CA, USA) with a 1.5 mm spacer width. Electrophoresis was run at a constant voltage of 25 V for 1 h, after which the proteins were separated at a constant voltage of 77 V in a cooled apparatus. The gel was rinsed with ddH₂O and placed in phosphate buffered saline (PBS; pH 7.4).

Then, the gel was placed on a glass transilluminator with a documentation system (InGenius, Syngene, Cambridge, UK) and was overlaid with fluorescence substrate solution dissolved in PBS. For zymography detection of protease activities, the following fluorogenic substrates (analogous to chromogenic substrates used in microplate based enzyme analysis) were used: trypsin substrate N_α -benzoyl-L-arginine-7-amido-4-methylcoumarin hydrochloride (BAAMC; Cat. No. B7260, Sigma-Aldrich), chymotrypsin substrate Ala-Ala-Phe-7-amido-4-methylcoumarin (AAAMC; Cat. No. A3401, Sigma-Aldrich), and cathepsin B Z-Arg-Arg-7-amido-4-methylcoumarin hydrochloride (ZRRAMC; Cat. No. C5429, Sigma-Aldrich). The results were visualized with the InGenius documentation system with 360 nm transillumination and a 440 nm filter.

2D-E-MS/MS Analysis of Feces Extract and the Control Dry Dog Food Extract

The feces and control extracts were cleaned using a 2D Clean-Up Kit (Cat. No. 80-6484-51, GE Healthcare Lifesciences, Uppsala, Sweden). Isoelectric focusing (IEF) was performed on an Ettan IPG Phor 3 instrument (GE). The separation was performed in 13-cm ceramic strip holders, and Immobiline dry strips with pH ranges 3–10 (Cat. No. 17-6001-14, GE). A DeStreak Rehydration Solution (Cat No. 18-1168-31, GE) containing 0.5% pH 3–10 IPG buffer (Cat No. 17-6000-87, GE) were used for active rehydration. The separation program was as follows: (1) Step, 30 V, 10H (active rehydration); (2) Step, 500 V, 500 Vh; (3) Grad, 1000 V, 800 Vh; (4) Grad, 6000 V, 15,000 Vh and (5) Step 6000 V, 16,000 Vh. The isoelectric focusing program with active rehydration ran for 19 h and a total of 32,600 Vh. Immediately following IEF, the strips were equilibrated for 15 min in an equilibration buffer containing dithiothreitol (Cat No. 43817, Sigma-Aldrich), followed by 15 min in a buffer containing iodoacetamide (Cat No. 57670, Sigma-Aldrich). The strips were placed over an SDS-PAGE gel and fixed with 1% agarose (Cat No. A7431, Sigma-Aldrich). Electrophoresis was run at a constant voltage of 30 V for 50 min, after which the proteins were separated at a constant voltage of 300 V in a cooled apparatus. The gel was stained with 0.02% PhastGel Blue R (Cat. No. 17-0518-01, GE).

For MALDI TOF/TOF protein identification, spots with 0.5 mm to 1 mm inner diameters were selected from the Coomassie stained gels. The protein identification followed a described methodology (Erban and Hubert, 2015). The spectra were then subjected to searches against the non-redundant NCBI database (35,149,712 sequences; 12,374, 887,350 residues) using Mascot 2.2 (Matrix Science, Boston, MA, USA). The database search criteria were as follows: enzyme–trypsin; taxonomy–NCBIInr; fixed modification–carbamidomethylation (C); variable modifications–deamidated (NQ), methionine oxidation (M); protein mass: unrestricted; peptide mass tolerance: ± 125 ppm; fragment mass tolerance: ± 0.3 Da and one missed cleavage allowed. The protein scores were derived from the ion scores as a non-probabilistic basis for ranking the protein hits.

Isolation of Bacteria Strains

For bacterial isolation, six culture flasks of *T. putrescentiae* were selected. Before the extraction, mites were removed from the

culture flasks without including the surface-adhered material. The feces-coated tissue culture flasks were filled with 3 mL sterile ddH₂O and shaken. The extract was removed and placed in sterile 15 mL centrifugal tubes. Bacteria were isolated by serial dilutions of feces solutions and plated on nutrient agar (Difco, Franklin Lakes, NJ, USA). After 24 h of incubation at 25°C, single colonies of bacteria were selected and identified.

DNA Extraction, PCR Amplification, and Sequence Determination of the Bacterial Strains

DNA was extracted from single colonies of bacteria using an Ultra Clean Microbial DNA Isolation Kit (Cat. No. 12224, MoBio Laboratories, Carlsbad, CA, USA) according to the manufacturer's instructions. For 16S rRNA analysis, the following primers were used: 27F (5'-AGAGTTTGTATCMTGGCTCAG-3') and 1492R (5'-GGTTACCTTGTTACGACTT-3'; Jiang et al., 2006). For identification within the *B. cereus* group, the following primers that target the *motB* gene were used: BCFomp1 (5'-ATCGCCTCGTTGGATGACGA-3') and BCRomp1 (5'-CTGCATATCCTACCGCAGCTA-3') (Oliwa-Stasiak et al., 2010). PCR amplification was performed using a C1000 thermal cycler (Bio-Rad, Hercules, CA, USA), and PCR mixtures in a total volume of 25 μ L contained the following components: 2 mM MgCl₂, 200 μ M dNTPs, forward and reverse primers (100 nM each), 0.5U Taq polymerase (all Promega, Madison, WI, USA) and 1 μ l DNA. For amplification of 16S rRNA the following conditions were used: 2 min at 94°C, and 30 cycles of 90 s at 94°C, 90 s at 50°C, and 60 s at 72°C, followed by final extension for 10 min at 72 and 4°C hold (Barbieri et al., 2001). PCR conditions for the gene *motB* were as follows: 30 cycles of 30 s at 94°C, 60 s at 54.5°C, and 60 s at 72°C, with an initial denaturation step for 5 min and a final extension step of 7 min (Oliwa-Stasiak et al., 2010). PCR products were purified and sequenced at Macrogen (Seoul, South Korea). The sequences were assembled and manually edited with CodonCode Aligner version 2.0.6. (CodonCode, Dedham, MA, USA). DNA sequences of 16S rRNA were obtained by using the Basic Local Alignment Search Tool (BLAST) (<http://blast.ncbi.nlm.nih.gov/>; Altschul et al., 1990). Nucleotide sequences of the *motB* gene were translated to protein sequences using the ExpASy Translate tool (Gasteiger et al., 2003) and further searched with BLASTP. All of the obtained sequences were deposited in the GenBank database.

The Effect of Addition of *Bacillus cereus* on the Population Growth of *Tyrophagus putrescentiae*

This experiment tested whether the population growth of *T. putrescentiae* is influenced by different enrichment of two nutritionally different diets with lyophilized cells of *B. cereus*. The diet prepared of the DDF kernels provided a high-fat and high-protein diet, whereas whole-meal spelt flour (WSF; Bioharmonie, Czechia) provided a low-protein and low-fat diet. For preparation of *B. cereus* enriched diet, the isolate was cultivated on Petri dishes (90 mm) with nutrient agar (Difco).

After 24 h of incubation at 25°C, were the bacterial colonies collected and transferred to 15 mL centrifugal tubes with 5 mL sterile ddH₂O. The liquid was discarded after centrifugation at 788 g and 4°C for 5 min. Then were the bacteria washed two times with physiological saline solution and once with sterile ddH₂O and centrifuged at 788 g and 4°C for 5 min. The supernatant was removed and bacteria were lyophilized. The lyophilized bacteria were weighted and dissolved in ddH₂O and incorporated into the mite food; the calculated volume was 3 mL of solution per 1 g of food. Control diet was prepared analogously to the experimental diet, but the solution consisted only of ddH₂O. The experimental diets were derived from DDF (see section experimental mite) or WSF and the diet was enriched by 1, 5, or 0% (control treatment) (w/w) with the lyophilized cells of *B. cereus*. The resulting combination was properly mixed using a MS1 Minishaker (IKA, Staufen, Germany) and lyophilized. The lyophilized material was ground into a powder in a pottery grinding mortar.

Prior to experiment, 6 mg (lyophilized weight) of WSF-type diet or 9 mg (lyophilized weight) of the DDF-type diet was placed to into 70-mL IWAKI flasks. The material was rehydrated 24 h before the experiment in a desiccator containing distilled water. The experiment was begun by placing 10 mite individuals of good condition and similar size from each of the treatments into the flasks. The experimental design included in total 12 replicates per treatment. The flasks were incubated for 21 days in the Secador desiccator cabinets (Bel-Art Products) under constant environmental conditions of 85% RH and 25°C. The experiment was terminated by the addition of 10 mL of 80% ethanol to the flasks. The mites were then counted using a dissection microscope (Carl Zeiss, Jena, Germany).

We applied Fisher's F-test for comparison of variance in final population density (N) on control treatments (DDF and WSF) without *B. cereus* additive. The data did not meet normal distribution; the nonparametric tests were used. The N on control treatment on both types of diet was compared by nonparametric Mann-Whitney test. Next, the effect of *B. cereus* additive diet on N was compared by Kruskal-Wallis test, separately. The data were analyzed using XLSTAT 2015 (Addinsoft, New York, NY, USA).

RESULTS

Enzymatic Analysis of SGME in Microplate Assays

The pH optimum screening of general protease activity between the pH range 3.5 to 8.0 showed three peaks of protease activity at pH 5.75, 6.75, and 8.00 (Figure 1). Both the general protease activity (Figure 1) and activity toward the three specific protease substrates BApNA, ZRRpNA, and AAPNA (Figure 2A) had similar trend at all three pH values tested and increased in the following order: 5.75, 6.75, and 8.00. Specific protease activities were highest toward BApNA, followed by ZRRpNA and AAPNA (Figure 2A). The one-way ANOVA model showed that enzymatic activities on the three substrates at all the three pHs tested were significantly different at the 0.05 level. The parameters of ANOVA for each substrate were: (i) BApNA: $F_{(2, 9)} = 7243$; $P < 0.0001$; (ii) ZRRpNA: $F_{(2, 9)} = 6532$; $P < 0.0001$; (iii) AAPpNA: $F_{(2, 9)} = 1838$; $P < 0.001$.

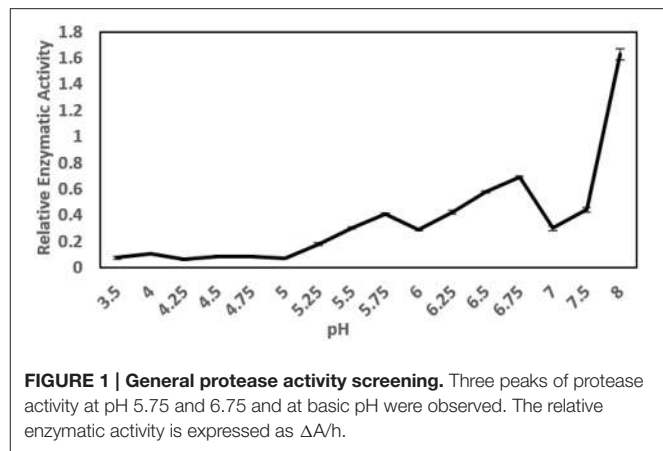


FIGURE 1 | General protease activity screening. Three peaks of protease activity at pH 5.75 and 6.75 and at basic pH were observed. The relative enzymatic activity is expressed as $\Delta A/h$.

A specific trypsin inhibitor, TLCK, strongly inhibited (in a range from 78 to 95%) the proteolytic activity toward the trypsin substrate BApNA at all three pHs (Figure 2B). The inhibition effect of TLCK on BApNA was higher at pH 6.75 and 8.00 compared to 5.75. The chymotrypsin inhibitor TPCK was also found to slightly influence the proteolytic activity toward BApNA. At pH 5.75, the activity decreased, but at pH 8.0, the enzyme activity increased.

The specific chymotrypsin inhibitor TPCK decreased the proteolytic activity (in the range of 44–55%) toward the chymotrypsin substrate AAPpNA at all three pHs (Figure 2C). The inhibition effect of TLCK on AAPpNA was higher at pH 6.75 compared to pH 5.75 and 8.00. TLCK was also found to mildly inhibit the proteolytic activity toward AAPpNA at all three pH levels.

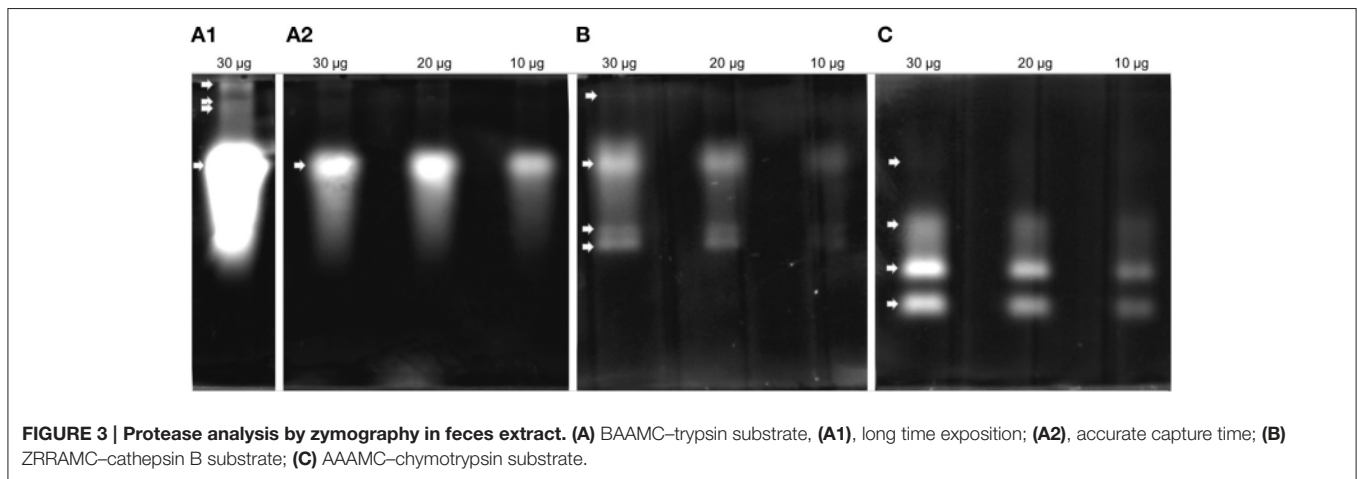
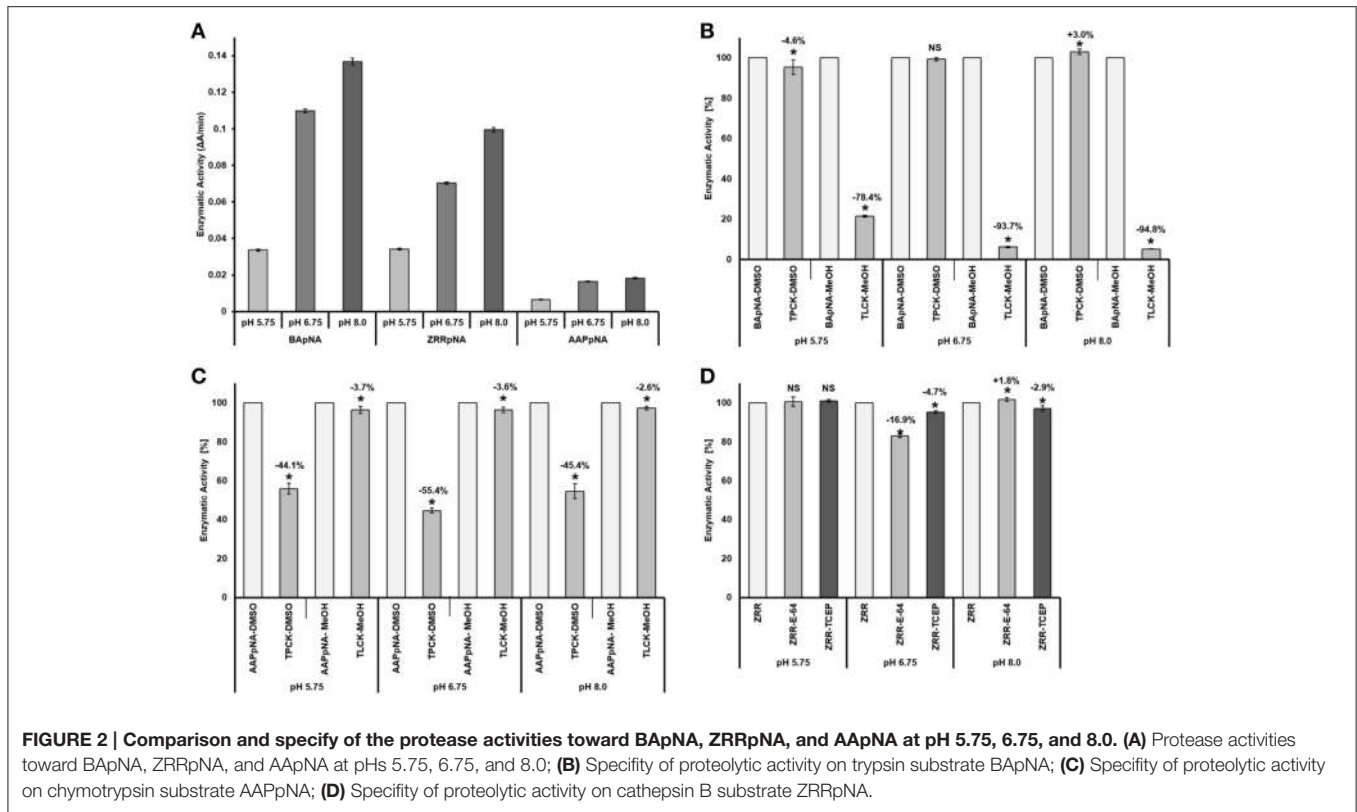
Both the specific cathepsin B inhibitor E-64 and the reducing agent TCEP mildly influenced the proteolytic activity toward cathepsin B substrate ZRRpNA (Figure 2D). Both E-64 and TCEP had no significant effect on enzyme activity at pH 5.75. TCEP slightly decreased the proteolytic activity toward ZRRpNA at pH 6.75 and 8.00. The inhibitory effect of E-64 on proteolysis of ZRRpNA was found to be 16.9% at pH 6.75, whereas at pH 8.0 it slightly increased the proteolytic activity.

Protease Analysis of Feces Extract by Zymography

Proteolytic activity was detected in all four gel enzyme assays. Zymogram patterns differed from each other (Figure 3). The trypsin substrate BAAMC produced one strong band (Figure 3A2) and three weak bands of higher molecular weight (Figure 3A1). The cathepsin B substrate ZRRAMC (Figure 3B) produced four bands, two of similar size to BAAMC. The chymotrypsin substrate AAAMC (Figure 3C) produced four bands, two strong bands of lower MW than BAAMC and ZRRAMC and one band which had the weakest signal and was of similar size to the strong signal of BAAMC and ZRRAMC.

2D-E-MS/MS Analysis of Feces Extract

The 2D-E of the feces extract (Figure 4A) qualitatively differed from the 2D-E of the control extract of untreated DDF (Figures 4A,C). Comparison of the two 2D-E patterns and MS/MS results revealed almost complete depletion of proteins of



the DDF after passing through the mite gut. An exception was spot 9 in the 2D-E of feces extract that was the *Triticum aestivum* α -amylase inhibitor (α -AI), and it was remainder of the food source.

In the 2D-E of the feces extract, there were proteins exactly assigned to mite and bacterium (Figure 4; Table 1). The fatty acid-binding protein, a Tyr p13 allergen, and trypsin protease, a Tyr p3 allergen, were assigned to the mite *T. putrescentiae* according to the current NCBI records. The proteins suggested for the mite by metazoan similarity were ubiquitin/polyubiquitin spots and ferritin. Some other protein spots (e.g., 17 and 18) were also significant by Mascot; however, whether these proteins are

produced by the mite is unclear though result indicated sequence similarity to protein of another invertebrate *Caenorhabditis*. In the 2D-E of the control sample of DDF, MS/MS identified 22 spots (Figure 5; Table 1); most of these results were assigned to the *Triticum aestivum* α -amylase inhibitor (α -AI).

Isolation and Identification of the Bacteria Strain

Six bacterial isolates (denoted as TPFDDF-15-001–TPFDDF-15-006) were obtained from the six flasks coated with feces of *T. putrescentiae* cultured on DDF. The plated colonies were morphologically uniform: irregular, flat with a lobate

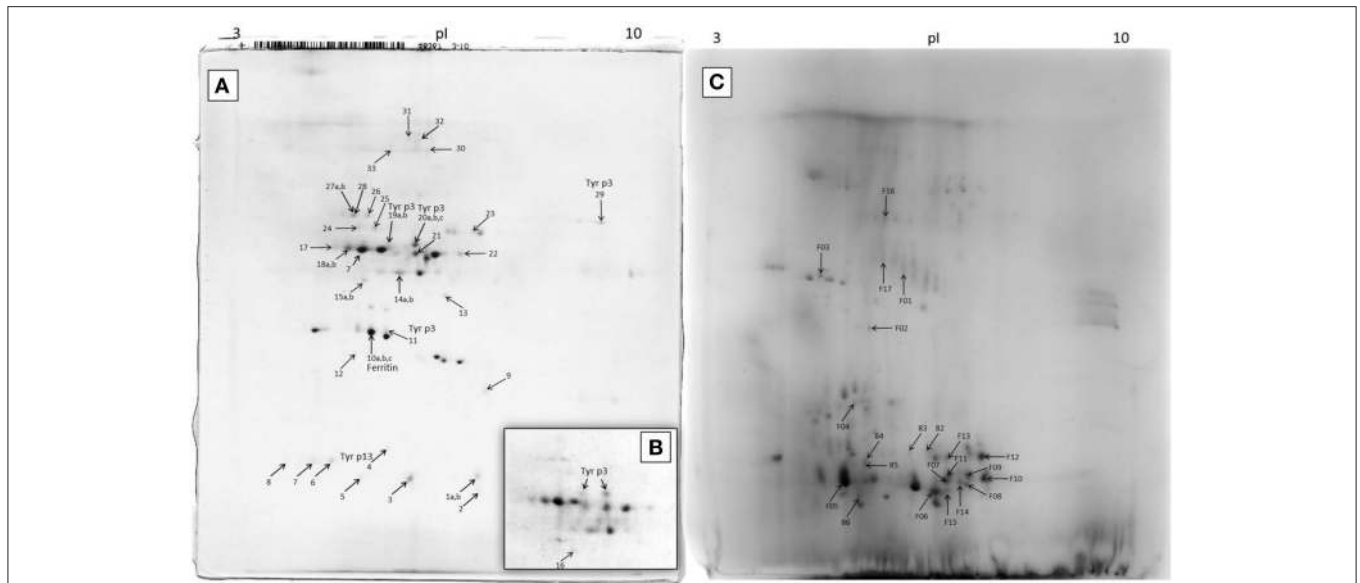


FIGURE 4 | 2D-E image of *Tyrophagus putrescentiae* feces extract and control dry dog food extract with MS/MS identified proteins. (A) entire representative 2D-E; **(B)** detail of spots corresponding to Tyr p3 from another sample; **(C)** 2D-E image of control dry dog food protein extract of mite “food” proteins. Spots No. 19 and 20 are mature trypsin Tyr p3, spot No. 29 at the basic pI is apparently proenzyme of Tyr p3, and spot No. 11 is fragment of Tyr p3. The qualitatively different 2D-E patterns of images **(A,B)** show protein disappearance from the control DDF extract and demonstrate the powerful mite-bacterial digestive proteolytic activity in our experiment. See **Table 1** for the list of MS/MS identified proteins.

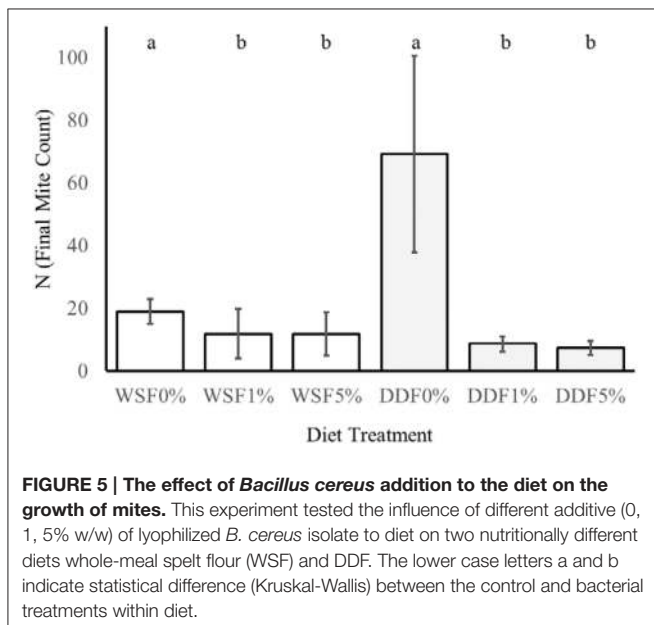


FIGURE 5 | The effect of *Bacillus cereus* addition to the diet on the growth of mites. This experiment tested the influence of different additive (0, 1, 5% w/w) of lyophilized *B. cereus* isolate to diet on two nutritionally different diets whole-meal spelt flour (WSF) and DDF. The lower case letters a and b indicate statistical difference (Kruskal-Wallis) between the control and bacterial treatments within diet.

margin and cream color. The 16S rRNA gene sequence analysis (GenBank Accession Numbers: KT619128, KT619129, KT619130, KT619131, KT619132, KT619133) of the obtained sequences showed 99% identity to *B. cereus*. The sequences of the *motB* gene (GenBank Accession Numbers: KT868888, KT868889, KT868890, KT868891, KT868892, KT868893) from the six isolates showed 100% identity with the *B. cereus* chemotaxis protein MotB (WP016077917.1). No sequence

variation in sequences of 16S rRNA and *motB* genes was observed between the six isolates. Therefore, we considered the six isolates to be a single strain.

The Effect of *Bacillus cereus* Addition to the Diet on the Growth of Mites

On control diets without any addition of *B. cereus*, the final numbers of mites *T. putrescentiae* (N) significantly differed in their variances [$F_{(1, 22)} = 61, P < 0.0001$; **Figure 5**]. The higher variance was in DDF-type diet than on WSF-type diet. The significant differences were found in the final population on control treatments (DDF and WSF) [$U_{(1, 22)} = 0, P < 0.0001$]. The final population density was 3.6 times higher on DDF-type control diet than on the WSF-type control diet.

The addition of *B. cereus* significantly reduced the final population density of mites on both diets tested, i.e., [$K_{(2, 32)} = 10, P = 0.007$] for WSF-type diet and DDF-type diet [$K_{(2, 32)} = 24, P = 0.0001$]. In the case of DDF treatment, the population growth decreased 8 and 9 times after 1 and 5% diet enrichment of *B. cereus*. In the WSF treatment, the decrease of final mite population was 1.5 times after both 1 and 5% diet enrichment of *B. cereus*.

DISCUSSION

Proteolytic Activities in *T. putrescentiae* Feces Supplemented by Bacillolysins

The ascertained protease activities in mite feces and overall protein disappearance from the 2D-E pattern of control DDF extract compared to the 2D-E of feces extract demonstrated

TABLE 1 | Proteins identified in *T. putrescentiae* feces extract by 2D-E-MS/MS.

Spot No.	Protein name	Origin
1ab, 2, 3, 5	Ubiquitin	"Suggest TP"
4	Tyr p13-fatty acid-binding protein	<i>T. putrescentiae</i>
19ab, 20abc, 29, 11	Tyr p3-trypsin	<i>T. putrescentiae</i>
10abc	Ferritin	"Suggest TP"
6, 7, 8	Cold-shock protein	<i>Bacillus cereus</i>
12	Nucleoside diphosphate kinase	<i>Bacillus cereus</i>
13, 15ab	superoxide dismutase	<i>Bacillus cereus</i>
22, 23	Bacillolysins-alkaline serine protease	<i>Bacillus cereus</i>
24, 25	Bacillolysins-neutral protease	<i>Bacillus cereus</i>
26, 27ab	Bacillolysins-neutral protease	<i>Bacillus cereus</i>
28	Extracellular exo-chitinase	<i>Bacillus cereus</i>
30, 31	Peptide ABC transporter	<i>Bacillus cereus</i>
32, 33	1-pyrroline-5-carboxylate dehydrogenase	<i>Bacillus cereus</i>
9	α -AI inhibitor [<i>T. aestivum</i>]	Dry dog food
14a	Triosephosphate isomerase [<i>Xiphophorus</i>]	?
14b	Ribonuclease [<i>Geobacillus</i>]	?
16	Superoxide dismutase [<i>Candida</i>]	?
17, 18a	Hypothetical protein CRE_08947 [<i>Caenorhabditis</i>]	?
18b	Hypothetical protein RB5404 [<i>Rhodospirella</i>]	?
21	hbt1p [<i>Saccharomyces</i>]	?
F01	Alpha S1 casein, partial [<i>Bos taurus</i>]	Dry dog food
F02	Hypothetical protein F775_08244 [<i>Aegilops tauschii</i>]	Dry dog food
F03	Hypothetical protein F775_14150 [<i>Aegilops tauschii</i>]	Dry dog food
F04	Globulin 3 [<i>Triticum aestivum</i>]	Dry dog food
F05	Dimeric alpha-amylase inhibitor [<i>Triticum dicoccoides</i>]	Dry dog food
F06	Monomeric alpha-amylase inhibitor [<i>Triticum monococcum</i>]	Dry dog food
F07	Alpha-amylase inhibitor 0.19 [<i>Triticum aestivum</i>]	Dry dog food
F08	0.19 dimeric alpha-amylase inhibitor [<i>Triticum aestivum</i>]	Dry dog food
F09	0.19 dimeric alpha-amylase inhibitor [<i>Triticum aestivum</i>]	Dry dog food
F10	Alpha-amylase inhibitor 0.19 [<i>Triticum aestivum</i>]	Dry dog food
F11	Alpha-amylase inhibitor 0.19 [<i>Triticum aestivum</i>]	Dry dog food
F12	Alpha-amylase inhibitor 0.19 [<i>Triticum aestivum</i>]	Dry dog food
F13	Alpha-amylase inhibitor 0.19 [<i>Triticum aestivum</i>]	Dry dog food
F14	RecName: Full = Wheatwin-1	Dry dog food

(Continued)

TABLE 1 | Continued

Spot No.	Protein name	Origin
F15	Monomeric alpha-amylase inhibitor [<i>Triticum aestivum</i>]	Dry dog food
F16	Regulator [<i>Bacillus macauensis</i>]	Dry dog food
F17	Argininosuccinate synthase [<i>Sinorhizobium medicae</i>]	Dry dog food

All the proteins listed were MS/MS identified. The *T. putrescentiae* mite allergens and enzymes of *Bacillus cereus* bacterial symbiont are of key interest regarding medical importance. The spots 1-33 denote results of the mite feces extract (see **Figures 4A,B**), while spots F01-F17 denote control dry dog food protein extract of mite "food" identified proteins (see **Figure 4C**). Lower case letters at Spot. No. indicate independent replicates of MS/MS identifications from different 2D-E gels. For the details of protein identifications see the Tables S1, S2.

the powerful mite-bacterial digestive proteolytic activity in our experiment. Although DDF is made via the process of extrusion (Thompson, 2008), we were able to identify some proteins, with highest success to *Triticum* α -AI, via the mass spectrometry approach. The digestion of the abundant α -AI is consistent with the fact that these proteinaceous inhibitors are low effective to mites (Hubert et al., 2014). The digestive pH in the gut of SPMs including *T. putrescentiae* ranges between 4.5 and 7.0 (Erban and Hubert, 2010b). Thus, the peaks of general and specific protease activities found in the mite gut pH range but not at alkaline pH can be considered the mite digestive enzymes. The results indicated that the protease activities detected were not only of mite origin but were influenced by the bacillolysins. The enzymatic activity at pH 6.75 was likely affected by neutral bacillolysins, and the activity measured at pH 8.0 was probably affected by the alkaline bacillolysins. Similarly, in a study by Ortego et al. (2000), the general and specific protease activities at pH 7.0, 7.5, 9.5, and 10 in the mite feces could be influenced by the bacterial proteases (Erban and Hubert, 2010a). The activities at pH 5.75 corresponded mostly to the digestive proteases of the mite, and fit best with pH in the middle or posterior midgut (Erban and Hubert, 2010b). The Tyr p3 trypsin activity in feces could correspond to the peak of general protease activity at pH 5.75. Such optimal enzyme activity suggests activation in the middle or posterior midgut. This is supported by the fact that trypsin Der f3 is localized in the postcolon (posterior midgut) of *D. farinae* (Zhan et al., 2010) and that trypsin activity is localized *in vivo* in the colon and postcolon but not the anterior midgut of *L. destructor* (Erban and Hubert, 2011). Herein, Tyr p3 was detected at different positions of the 2D-E. This result indicated presence of zymogen at basic pI, and mature-enzyme form and enzyme fragment at acidic pI. However, the activation of protease in the mite gut needs to be investigated further.

Detection of *T. putrescentiae* Trypsin, but Almost Lack of Mite Cathepsin B

Cysteine protease activity is of great interest in the acaridid mites because those enzymes are abundant in feces, and they are the most studied Grp 1 allergens of HDMs (Tovey et al., 1981; Thomas et al., 2010; Erban and Hubert, 2015). It was indicated that the cathepsin B-like cysteine protease activity corresponding

to Grp 1 allergens of HDMs is low abundance in the feces/gut digestive pH of *T. putrescentiae* (Ortego et al., 2000; Erban and Hubert, 2010a). In this study, we confirmed that the cathepsin B-like activity in *T. putrescentiae* feces was only low (at the pH 6.75). Despite the zymographic analysis indicating specific cathepsin B-like activity, it needs to be determined whether the proteases are of mite or symbiont origin. Our results suggest that *T. putrescentiae* does not share digestive/allergen importance with the gut derived Grp 1 allergens of *Dermatophagoides* sp. This is different from the Grp 3 mite allergens. The presence and important abundance of Der f3 was confirmed in feces of *D. farinae* (Erban and Hubert, 2015), and here we demonstrated the presence of Tyr p3 in the feces of *T. putrescentiae*. The difference exists in comparison these mites with *D. pteronyssinus* because this mite almost lacks Der p3 in feces (Erban et al., under review). Der p3 was detected in feces of *D. pteronyssinus* only at a basic pI (Erban et al., under review). It is similar to herein suggested zymogen of Tyr p3 detected at the basic pI of the 2D-E. Overall, the result raises the possibility of Tyr p3 allergenic importance and suggests that it contributes to protein digestion in the mite.

Chymotrypsin-Like Activity in Feces Extract

The chymotrypsin Grp 6 HDM allergens were the other candidates for protease activities/allergens in *T. putrescentiae* feces. We confirmed the presence of chymotrypsin-like activity in the feces using both enzymatic and zymographic analysis. However, the chymotrypsin activity was relatively low compared to trypsin activity. The digestive potential of chymotrypsin-like activity has been suggested similar to trypsin in *T. putrescentiae* (Ortego et al., 2000). Although our enzyme results partially support this, the lack of *T. putrescentiae* or similar chymotrypsin sequence records in the current version of Genbank did not allow us to confirm or exclude this suggestion by MS/MS identification.

Symbiotic *Bacillus cereus* Bacterium Producing Exo-proteases and Exo-chitinases

The detection of numerous spots in 2D-E assigned with highest Mascot scores to *B. cereus/thuringiensis/anthracis* indicated the presence of a *B. cereus* group symbiont. The analysis of 16S rRNA from the bacterium isolated from the feces confirmed the identity to the *B. cereus* group, and the analysis of the *motB* gene confirmed this result. Previously, cultivation and cultivation independent approaches indicated *Bacillus* association with laboratory populations of *T. putrescentiae* (Hubert et al., 2012b). The mite-bacteria association was not disrupted by the addition of antibiotics to the diet (Kopecky et al., 2014). These findings, together with results of this study, indicate a strong association between *Bacillus* and the laboratory *T. putrescentiae* population. The isolation of the bacterium from the feces demonstrated the dominance of the bacterium, which was the only colony morphotype among the isolates. It similarly indicates the great abundance of *B. cereus* proteins in the 2D-E of the feces.

Therefore, it appears that our isolated bacterium is the mite-relevant symbiont that suppresses other bacteria. We showed long-term association of the mite with this bacterial species because the bacterium has been present in our *T. putrescentiae* culture for ca. 10 years (Hubert et al., 2012a; Kopecky et al., 2014). Moreover, the first proteomic *B. cereus* detection via the 2D-E-MS/MS was in 2011, and 16S rRNA identification and isolation were performed in 2015.

Mutualism between *T. putrescentiae* Cultured on Dry Dog Food and *Bacillus cereus*

Bacterial symbionts are important for metazoans. They cover the whole spectrum from beneficial mutualists to infectious, disease-causing pathogens. Benefits that the host derives from mutualists are diverse and include extracting essential nutrients from food (Nicholson et al., 2012; Staubach et al., 2013). *T. putrescentiae* can benefit from the *Bacillus* bacterial cells; however, previously was demonstrated for the model bacterium *Micrococcus lysodeikticus* as mite food enrichment (5 w/w) that this mite was not influenced by this treatment and bacteriolytic activity was relatively low compared to other species of mites (Erban and Hubert, 2008). *Bacillus* species are known to produce a wide variety of extracellular enzymes, and the enzymes are of industrial interest (Priest, 1977; Gupta et al., 2002). Two major types of proteases are secreted by bacilli, a subtilisin or alkaline protease and a thermolysin-like metalloprotease or neutral protease (Moriyama et al., 1968; Feder et al., 1971; Holmquist and Vallee, 1976; Vasantha et al., 1984; Sidler et al., 1986). In addition, the zinc neutral proteases have demonstrated esterase activity (Holmquist and Vallee, 1976). The events that we detected for both of these bacterial exo-proteases in the feces extract of *T. putrescentiae* cultured on DDF mean that the *B. cereus* significantly contributes to digestion of protein and fat. Thus, the mite benefits from the predigested substrate. In addition to providing nutrition for the mite, bacillolysins can negatively impact the mite because they are virulence factors of diverse bacterial pathogens that are capable of mediating strong immune responses in invertebrate hosts (Altincicek et al., 2007). The negative impact on fitness of mite demonstrated the population growth tests. The excessive addition of *B. cereus* to diet highly suppressed population growth of *T. putrescentiae*.

The next detected exo-enzyme of the bacterium was an exo-chitinase. The exo-chitinases are known extracellular enzymes of *Bacillus* (Priest, 1977; Wang et al., 2001). The substrate for chitinases is chitin, a major component of most fungal cell walls, insect exoskeletons, and the shells of crustaceans (Flach et al., 1992; Lee et al., 2008; Martinez et al., 2014). In our experiment, the available substrate for the bacterial exo-chitinases in the mite culture was the mite bodies and the exuviae or peritrophic membranes that cover the fecal pellets (Lee et al., 2008; Sobotnik et al., 2008b; Martinez et al., 2014). The fungal cells were not a suggested substrate because we did not detect or observe fungi, the growth of which could be regulated by the bacterial exo-enzymes (Podile et al., 1985; Podile and Prakash, 1996; Manjula and Podile, 2005). Thus, the bacterium contributed to

degradation of residues of the mites and was a possible regulator of fungi. The bacterial exo-chitinases can disrupt the feces by degrading the chitin fibrils in the peritrophic membrane, thereby releasing allergens from the feces.

Medical/Veterinary Aspects of Detected Mite Proteins/Allergens

T. putrescentiae is the common species found in agricultural settings and in homes, where it serves as important source of allergens for humans and animals (van Hage-Hamsten and Johansson, 1998; Bravo et al., 1999; Elder et al., 2012). Just the chitin present in the mite bodies and the peritrophic membrane surrounding feces (Lee et al., 2008; Sobotnik et al., 2008b; Martinez et al., 2014) is capable of producing an allergic response (Mack et al., 2015). The mite bodies and feces contain allergens; however, because mites spread the feces, the feces-containing gut derived proteins are considered the most important source of allergens (Tovey et al., 1981; Erban and Hubert, 2015). In the feces extract of *T. putrescentiae*, we detected three allergens, Tyr p3, Tyr p13, and ferritin (Grp 30), which are current (23/01/2016; www.allergen.org) members of the mite allergenic groups approved by IUIS. In addition, we detected spots of low-molecular weight ubiquitins. In *Blomia tropicalis*, was observed 50% IgE binding in immunoblots to the 6.5 kDa protein that had 98% identity to several polyubiquitins (Mercado et al., 2003). Moreover, ubiquitin was identified as one of the proteins responsible for mite-shrimp cross-reactivity (Gómez et al., 2014). The allergenic potential of mite ubiquitin and the fact that ubiquitin spots in the 2D-E of the *T. putrescentiae* feces were relatively strong suggest that ubiquitin should be the focus of future studies of mite allergens.

Medical/Veterinary Importance of *Bacillus cereus* and its Exo-enzymes

The innate immune system is mediated by a variety of cells and molecular mechanisms that generically recognize pathogens (Thomas et al., 2010). Pathogen recognition is mediated by specific pathogen recognition receptors (PRRs) that respond to pathogen associated molecular patterns (PAMPs). Prolonged epithelial PRR activation by the allergens themselves or by microbial contaminating PAMPs represents one of the key steps in the Th2 cell sensitization process, which is connected to allergies (Lambrecht and Hammad, 2012). PAMPs include bacteria, fungi and their compounds, such as LPS (lipopolysaccharides, endotoxin), β -glucans and chitins. These compounds are abundant in house dust (Douwes et al., 2000; Jacquet, 2013). Hence, the high-abundance bacterium and its compounds represent a serious danger for the recipient immune system.

B. cereus is an aerobic endospore-forming, gram-positive rod that is widely distributed in the environment, including soil, dust, mud, decaying organic matter, fresh and marine waters, vegetables and fomites (Drobniewski, 1993; Fekete, 2010; Ribeiro et al., 2010). It is also well adapted for growth in the intestinal tract of arthropods and mammals (Margulis et al., 1998; Swiecicka and Mahillon, 2006; Stenfors Arnesen et al., 2008;

Bottone, 2010). It easily spreads in food, where may cause an emetic or diarrheal type of food-associated illness. The emetic disease is a food intoxication caused by cereulide, a small ring-formed dodecadepsipeptide. Due to the impact of *B. cereus* on health, it is commonly considered a volatile human pathogen (Hägglblom et al., 2002; Stenfors Arnesen et al., 2008; Bottone, 2010). Other toxins produced during *B. cereus* growth constitute phospholipases, proteases, or hemolysins. These toxins may also contribute to the pathogenicity of *B. cereus* in nongastrointestinal disease (Drobniewski, 1993). In one case, the proteolytic enzymes of mites and cockroaches were described as having dual allergen functions, including one function that affects the epidermal barrier and stimulates protease-activated receptor 2 (PAR-2; Kondo et al., 2004; Jeong et al., 2008; Roelandt et al., 2008). This protease likely increases allergenicity for the bacillolysins of the bacterium, especially if mite proteases are also present, as Tyr p3 is in our case. If other proteins of the bacterium represent health dangers for mammals, this needs to be investigated further. At least our detected *B. cereus* chitinases constitute a risk, and the supposition is that chitinases are used by pathogens (mainly protozoan or metazoan) and cause animal and human diseases (Hamid et al., 2013). The chitinases Der f15 and Der f18 of *D. farinae* are recognized as allergens for dogs (McCall et al., 2001; Weber et al., 2003). Thus, there is suspicion that there can be some similarity between bacterial and mite chitinases, leading to allergen cross-reactivity.

The mite is apparently capable of serving as the carrier of the bacterium and/or its putative toxins to the foods or dust in homes, similar to mycotoxin-producing fungi (Armitage and George, 1986; Hubert et al., 2004). The mite feces are rich in mite allergens, and the peritrophic membrane of the feces contains chitin. Bacterial cells, spores, enzymes, and toxins represent a dangerous cocktail for humans and animals after ingestion or inhalation. Our results indicate that the association of the *B. cereus* group bacterium with the cosmopolitan mite *T. putrescentiae* is of great medical and veterinary importance. Additional molecular, enzymatic, and protein immunoreactivity characterization of our bacterial isolates will help to identify the particular health risks for humans and animals.

Mite-*Bacillus cereus* Association: Association from Soil to the Synanthropic Environment

There is interest in fungal or bacterial associations because mites interact with microbes. The nutritional importance of fungi and/or bacteria leads to increased mite populations (Sinha, 1966; Erban and Hubert, 2008). The synanthropic acaridid mites originally inhabited the soil and migrated into human habitats from the nests of birds and mammals during the Neolithic revolution (O'Connor, 1979, 1982, 1984). It is thought that mites, including *T. putrescentiae*, feed on decomposing tissues in the soil and make use of the fungi and bacteria growing there (Smrz and Catska, 1989, 2010; Erban and Hubert, 2008). In addition, the bacteria in the mite gut are thought to contribute to digestion of the chitin from fungi by exoenzymes (Smrz, 2003; Smrz and Catska, 2010). An increase in diversity within Bacillaceae in *T.*

putrescentiae was observed when the diet of the laboratory strains was changed to fungi (Hubert et al., 2012b). We suggest that the symbiotic interaction identified here between the mite and *B. cereus* also occurs in the soil, where those bacteria comprise soil-dwelling saprophytes (Vilain et al., 2006; Didelot et al., 2009). However, the bacterium apparently limits fungal growth (Vilain et al., 2006) because we did not observe fungal growth in our culture of *T. putrescentiae* on DDF. The *B. cereus* clade is ubiquitous, so the mite can acquire different strains from the environment. Another possibility is that the mite co-exists with the bacterial strain for a long time, and the bacterial abundance increases with an appropriate food source, such as the DDF used in this study. However, here we observed the suppressive effect of *B. cereus* addition to the diet (1 and 5%) on population growth of *T. putrescentiae*. The suppressive effect of *Bacillus sphaericus* to *Dermatophagoides pteronyssinus* development (Saleh et al., 1991) and *Bacillus thuringiensis* var *tenebrionis* to *T. putrescentianae* population growth is well documented (Erban et al., 2009b). Here we suggest that *B. cereus* exo-chitinases are responsible for growth suppression through damage of peritrophic matrix or mite body surface. In *Acarus siro* the addition of chitinase in the range 0.5–50 mg/g to the diet suppressed population growth (Sobotnik et al., 2008b). However, previously in case of *T. putrescentiae* we did not find difference in final population density between chitinase additive to diet (12.5 mg/g) and control diet (Stara et al., 2010). It indicates that the exo-chitinases can differ in their mode of action between mites and increasing concertation should be responsible for suppressive effect.

The need for mite-microbial interactions, whether fungal or bacterial, has been suggested. Analogical situation has been reported for *Aspergillus penicillioides* and *D. pteronyssinus* (de Saint Georges-Grèdelet, 1987; Hay et al., 1993). Although the fungus suppresses *D. pteronyssinus*, the fungus-free mites have much lower fitness than those from the cultures with fungus (Hay et al., 1993). Thus, the mite-*B. cereus* symbiosis can be beneficial-suppressive. For mites such mite-microbial interactions may promote effective utilization of nutrients from keratin and collagen by the mites. Mite extracts show keratinolytic and collagenolytic activities and are highly active at basic pH (10), which facilitates partial hydrolysis of these substrates (Erban and Hubert, 2010a). In the wild, the degradation of keratin-rich substrates, such as skin, hair, nails, and feathers, is caused by

microscopic fungi and bacteria including *B. cereus* (Cardamone, 2002; Muhsin and Hadi, 2002; Gunderson, 2008; Adigüzel et al., 2009). *B. cereus* strains were found to produce keratinases (Adigüzel et al., 2009). The bacillolysins detected here can be effective at hydrolyzing keratin and collagen substrates. Thus, if the mite carries the bacterium from the DDF, the *T. putrescentiae*-*B. cereus* interaction can continue on skin derivatives. It is in agreement with mites harbor a variety of bacterial species often associated with human skin (Tang et al., 2013).

Veterinary and Medical Significance

The DDF infested with *T. putrescentiae* and associated bacterium *B. cereus* represents serious health risks that arise mainly from mite allergens and toxins of bacterium. The *B. cereus* exo-proteases can comprise a large part of the proteases in mite extracts, and thereby contribute to allergy.

AUTHOR CONTRIBUTIONS

TE conceived and designed the study. TE wrote the main manuscript. DR and TE prepared samples, and performed enzyme and gel-based analysis. BH and JH performed isolation and identification of *B. cereus*. KH performed MS/MS identification. TE, DR, BH, and JH prepared figures and tables. TE and JH provided grants.

ACKNOWLEDGMENTS

This research was supported by the Czech Science Foundation (GA CR) (<http://gacr.cz>) via Grant No. GA15-09038S, by the Ministry of Agriculture of the Czech Republic (<http://eagri.cz>) through Grant No. RO0415, and by the Ministry of Education, Youth and Sports of the Czech Republic (<http://www.msmt.cz>) through Grant No. OC10019; COST action CM0804; Chemical Biology with Natural Products. We thank Martin Markovic and Julie Chalupnikova for valuable help.

SUPPLEMENTARY MATERIAL

The Supplementary Material for this article can be found online at: <http://journal.frontiersin.org/article/10.3389/fphys.2016.00053>

REFERENCES

- Adigüzel, A. C., Bitlisli, B. O., Yasa, I., and Eriksen, N. T. (2009). Sequential secretion of collagenolytic, elastolytic, and keratinolytic proteases in peptide-limited cultures of two *Bacillus cereus* strains isolated from wool. *J. Appl. Microbiol.* 107, 226–234. doi: 10.1111/j.1365-2672.2009.04200.x
- Altincicek, B., Linder, M., Linder, D., Preissner, K. T., and Vilcinskis, A. (2007). Microbial metalloproteinases mediate sensing of invading pathogens and activate innate immune responses in the lepidopteran model host *Galleria mellonella*. *Infect. Immun.* 75, 175–183. doi: 10.1128/IAI.01385-06
- Altschul, S. F., Gish, W., Miller, W., Myers, E. W., and Lipman, D. J. (1990). Basic local alignment search tool. *J. Mol. Biol.* 215, 403–410. doi: 10.1016/S0022-2836(05)80360-2
- Arlian, L. G., Geis, D. P., Vyszynski-Moher, D. L., Bernstein, I. L., and Gallagher, J. S. (1984). Antigenic and allergenic properties of the storage mite *Tyrophagus putrescentiae*. *J. Allergy Clin. Immunol.* 74, 166–171. doi: 10.1016/0091-6749(84)90281-1
- Armitage, D. M., and George, C. L. (1986). The effect of three species of mites upon fungal growth on wheat. *Exp. Appl. Acarol.* 2, 111–124. doi: 10.1007/BF01213755
- Athanassiou, C. G., Palyvos, N. E., Eliopoulos, P. A., and Papadoulis, G. T. (2002). Mites associated with stored seed cotton and related products in Greece. *Phytoparasitica* 30, 387–394. doi: 10.1007/BF02979686
- Barbieri, E., Paster, B. J., Hughes, D., Zurek, L., Moser, D. P., Teske, A., et al. (2001). Phylogenetic characterization of epibiotic bacteria in the accessory nidamental gland and egg capsules of the squid *Loligo pealei* (Cephalopoda: Loliginidae). *Environ. Microbiol.* 3, 151–167. doi: 10.1046/j.1462-2920.2001.00172.x

- Bottone, E. J. (2010). *Bacillus cereus*, a volatile human pathogen. *Clin. Microbiol. Rev.* 23, 382–398. doi: 10.1128/CMR.00073-09
- Bravo, C. M., Ortiz, I. L., Soto, A. O., and Vazquez, R. G. (1999). Allergy to storage mites. *Allergy* 54, 769–770. doi: 10.1034/j.1398-9995.1999.00057.x
- Brazis, P., Serra, M., Selles, A., Dethioux, F., Biourge, V., and Puigdemont, A. (2008). Evaluation of storage mite contamination of commercial dry dog food. *Vet. Dermatol.* 19, 209–214. doi: 10.1111/j.1365-3164.2008.00676.x
- Cardamone, J. M. (2002). Proteolytic activity of *Aspergillus flavus* on wool. *AATCC Rev.* 2, 30–35.
- Colloff, M. J., and Spijksma, F. T. M. (1992). Pictorial keys for the identification of domestic mites. *Clin. Exp. Allergy* 22, 823–830. doi: 10.1111/j.1365-2222.1992.tb02826.x
- de Boer, R., van der Hoeven, W. A., and Stapel, S. O. (1995). The decay of house dust mite allergens, Der p I and Der p II, under natural conditions. *Clin. Exp. Allergy* 25, 765–770. doi: 10.1111/j.1365-2222.1995.tb00015.x
- de Saint Georges-Grèdelet, D. (1987). Vitamin requirements of the European house dust mite, *Dermatophagoides pteronyssinus* (Acari: Pyroglyphidae), in relation to its fungal association. *J. Med. Entomol.* 24, 408–411. doi: 10.1093/jmedent/24.4.408
- Didelot, X., Barker, M., Falush, D., and Priest, F. G. (2009). Evolution of pathogenicity in the *Bacillus cereus* group. *Syst. Appl. Microbiol.* 32, 81–90. doi: 10.1016/j.syapm.2009.01.001
- Douwes, J., Zuidhof, A., Doekes, G., van der Zee, S. C., Wouters, I., Boezen, M. H., et al. (2000). (1→3)-beta-D-glucan and endotoxin in house dust and peak flow variability in children. *Am. J. Respir. Crit. Care Med.* 162, 1348–1354. doi: 10.1164/ajrccm.162.4.9909118
- Drobniewski, F. A. (1993). *Bacillus cereus* and related species. *Clin. Microbiol. Rev.* 6, 324–338. doi: 10.1128/CMR.6.4.324
- Elder, B. L., Morgan, M. S., and Arlian, L. G. (2012). Effect of stored product mite extracts on human dermal microvascular endothelial cells. *J. Med. Entomol.* 49, 1411–1418. doi: 10.1603/ME12142
- Erban, T., Erbanova, M., Nesvorna, M., and Hubert, J. (2009a). The importance of starch and sucrose digestion in nutritive biology of synanthropic acaridid mites: alpha-amylases and alpha-glucosidases are suitable targets for inhibitor-based strategies of mite control. *Arch. Insect Biochem. Physiol.* 71, 139–158. doi: 10.1002/arch.20312
- Erban, T., Harant, K., Hubalek, M., Vitamvas, P., Kamler, M., Poltronieri, P., et al. (2015a). In-depth proteomic analysis of *Varroa destructor*: detection of DWV-complex, ABPV, VdMLV and honeybee proteins in the mite. *Sci. Rep.* 5:13907. doi: 10.1038/srep13907
- Erban, T., and Hubert, J. (2008). Digestive function of lysozyme in synanthropic acaridid mites enables utilization of bacteria as a food source. *Exp. Appl. Acarol.* 44, 199–212. doi: 10.1007/s10493-008-9138-x
- Erban, T., and Hubert, J. (2010a). Comparative analyses of proteolytic activities in seven species of synanthropic acaridid mites. *Arch. Insect Biochem. Physiol.* 75, 187–206. doi: 10.1002/arch.20388
- Erban, T., and Hubert, J. (2010b). Determination of pH in regions of the midguts of acaridid mites. *J. Insect Sci.* 10:42. doi: 10.1673/031.010.4201
- Erban, T., and Hubert, J. (2011). Visualization of protein digestion in the midgut of the acarid mite *Lepidoglyphus destructor*. *Arch. Insect Biochem. Physiol.* 78, 74–86. doi: 10.1002/arch.20441
- Erban, T., and Hubert, J. (2015). Two-dimensional gel proteomic analysis of *Dermatophagoides farinae* feces. *Exp. Appl. Acarol.* 65, 73–87. doi: 10.1007/s10493-014-9848-1
- Erban, T., Nesvorna, M., Erbanova, M., and Hubert, J. (2009b). *Bacillus thuringiensis* var. *tenebrionis* control of synanthropic mites (Acari: Acaridida) under laboratory conditions. *Exp. Appl. Acarol.* 49, 339–346. doi: 10.1007/s10493-009-9265-z
- Erban, T., Rybanska, D., and Hubert, J. (2015b). Population growth of the generalist mite *Tyrophagus putrescentiae* (Acari: Acaridida) following adaptation to high- or low-fat and high- or low-protein diets and the effect of dietary switch. *Environ. Entomol.* 44, 1599–1604. doi: 10.1093/ee/nvv129
- Feder, J., Keay, L., Garrett, L. R., Cirulis, N., Moseley, M. H., and Wildi, B. S. (1971). *Bacillus cereus* neutral protease. *Biochim. Biophys. Acta Protein Struct.* 251, 74–78. doi: 10.1016/0005-2795(71)90061-4
- Fekete, T. (2010). “*Bacillus* species and related genera other than *Bacillus anthracis*,” in *Mandell, Douglas, and Bennett's Principles and Practice of Infectious Diseases, 7th Edn.*, eds G. L. Mandell, J. E. Bennett, and E. Dolin (Philadelphia, PA: Churchill Livingstone/Elsevier), 2727–2731. doi: 10.1016/B978-0-443-06839-3.00209-5
- Flach, J., Pilet, P. E., and Jolles, P. (1992). What's new in chitinase research? *Experientia* 48, 701–716. doi: 10.1007/BF02124285
- Gámez, C., Zafra, M., Boquete, M., Sanz, V., Mazzeo, C., Ibáñez, M. D., et al. (2014). New shrimp IgE-binding proteins involved in mite-seafood cross-reactivity. *Mol. Nutr. Food Res.* 58, 1915–1925. doi: 10.1002/mnfr.201400122
- Gasteiger, E., Gattiker, A., Hoogland, C., Ivanyi, I., Appel, R. D., and Bairoch, A. (2003). ExPASy: the proteomics server for in-depth protein knowledge and analysis. *Nucleic Acids Res.* 31, 3784–3788. doi: 10.1093/nar/gkg563
- Gill, C., McEwan, N., McGarry, J., and Nuttall, T. (2011). House dust and storage mite contamination of dry dog food stored in open bags and sealed boxes in 10 domestic households. *Vet. Dermatol.* 22, 162–172. doi: 10.1111/j.1365-3164.2010.00931.x
- Gunderson, A. R. (2008). Feather-degrading bacteria: a new frontier in avian and host-parasite research. *Auk* 125, 972–979. doi: 10.1525/auk.2008.91008
- Gupta, R., Beg, Q. K., Khan, S., and Chauhan, B. (2002). An overview on fermentation, downstream processing and properties of microbial alkaline proteases. *Appl. Microbiol. Biotechnol.* 60, 381–395. doi: 10.1007/s00253-002-1142-1
- Häggbom, M. M., Apetroaie, C., Andersson, M. A., and Salkinoja-Salonen, M. S. (2002). Quantitative analysis of cereulide, the emetic toxin of *Bacillus cereus*, produced under various conditions. *Appl. Environ. Microbiol.* 68, 2479–2483. doi: 10.1128/AEM.68.5.2479-2483.2002
- Hamid, R., Khan, M. A., Ahmad, M., Ahmad, M. M., Abidin, M. Z., Musarrat, J., et al. (2013). Chitinases: an update. *J. Pharm. Bioallied Sci.* 5, 21–29. doi: 10.4103/0975-7406.106559
- Hay, D. B., Hart, B. J., and Douglas, A. E. (1993). Effects of the fungus *Aspergillus penicillioideus* on the house dust mite *Dermatophagoides pteronyssinus*: an experimental re-evaluation. *Med. Vet. Entomol.* 7, 271–274. doi: 10.1111/j.1365-2915.1993.tb00687.x
- Holmquist, B., and Vallee, B. L. (1976). Esterase activity of zinc neutral proteases. *Biochemistry* 15, 101–107. doi: 10.1021/bi00646a016
- Huang, Y. J., Nariya, S., Harris, J. M., Lynch, S. V., Choy, D. F., Arron, J. R., et al. (2015). The airway microbiome in patients with severe asthma: associations with disease features and severity. *J. Allergy Clin. Immunol.* 136, 874–884. doi: 10.1016/j.jaci.2015.05.044
- Hubert, J., Kopecky, J., Perotti, M. A., Nesvorna, M., Braig, H. R., Sagova-Mareckova, M., et al. (2012a). Detection and identification of species-specific bacteria associated with synanthropic mites. *Microb. Ecol.* 63, 919–928. doi: 10.1007/s00248-011-9969-6
- Hubert, J., Nesvorna, M., and Erban, T. (2014). Growth-suppressive effect of the alpha-amylase inhibitor of *Triticum aestivum* on stored-product mites varies by the species and type of diet. *Exp. Appl. Acarol.* 62, 57–65. doi: 10.1007/s10493-013-9718-2
- Hubert, J., Nesvorna, M., Sagova-Mareckova, M., and Kopecky, J. (2012b). Shift of bacterial community in synanthropic mite *Tyrophagus putrescentiae* induced by *Fusarium* fungal diet. *PLoS ONE* 7:e48429. doi: 10.1371/journal.pone.0048429
- Hubert, J., Stejskal, V., Kubatova, A., Munzbergova, Z., Vanova, M., and Zdarkova, E. (2003). Mites as selective fungal carriers in stored grain habitats. *Exp. Appl. Acarol.* 29, 69–87. doi: 10.1023/A:1024271107703
- Hubert, J., Stejskal, V., Munzbergova, Z., Kubatova, A., Vanova, M., and Zdarkova, E. (2004). Mites and fungi in heavily infested stores in the Czech Republic. *J. Econ. Entomol.* 97, 2144–2153. doi: 10.1093/jee/97.6.2144
- Hughes, A. M. (1976). *The Mites of Stored Food and Houses: Technical Bulletin of the Ministry of Agriculture, Fisheries and Food, 2nd Edn.* London: Her Majesty's Stationery Office.
- Jacquet, A. (2013). Innate immune responses in house dust mite allergy. *ISRN Allergy* 2013:735031. doi: 10.1155/2013/735031
- Jeong, S. K., Kim, H. J., Youm, J.-K., Ahn, S. K., Choi, E. H., Sohn, M. H., et al. (2008). Mite and cockroach allergens activate protease-activated receptor 2 and delay epidermal permeability barrier recovery. *J. Invest. Dermatol.* 128, 1930–1939. doi: 10.1038/jid.2008.13
- Jiang, H., Dong, H., Zhang, G., Yu, B., Chapman, L. R., and Fields, M. W. (2006). Microbial diversity in water and sediment of Lake Chaka, an athalassohaline lake in northwestern China. *Appl. Environ. Microbiol.* 72, 3832–3845. doi: 10.1128/AEM.02869-05

- Klimov, P. B., and O'Connor, B. M. (2015). Comment on *Acarus putrescentiae* Schrank, 1781 (currently *Tyrophagus putrescentiae*; Acariformes, ACARIDAE): proposed conservation of usage by designation of a replacement neotype. *Bull. Zool. Nomencl.* 72, 50–56.
- Kondo, S., Helin, H., Shichijo, M., and Bacon, K. B. (2004). Cockroach allergen extract stimulates protease-activated receptor-2 (PAR-2) expressed in mouse lung fibroblast. *Inflamm. Res.* 53, 489–496. doi: 10.1007/s00011-004-1287-8
- Kopecky, J., Nesvorna, M., Mareckova-Sagova, M., and Hubert, J. (2014). The effect of antibiotics on associated bacterial community of stored product mites. *PLoS ONE* 9:e112919. doi: 10.1371/journal.pone.0112919
- Lambrecht, B. N., and Hammad, H. (2012). The airway epithelium in asthma. *Nat. Med.* 18, 684–692. doi: 10.1038/nm.2737
- Lee, C. G., Da Silva, C. A., Lee, J.-Y., Hartl, D., and Elias, J. A. (2008). Chitin regulation of immune responses: an old molecule with new roles. *Curr. Opin. Immunol.* 20, 684–689. doi: 10.1016/j.coi.2008.10.002
- Mack, I., Hector, A., Ballbach, M., Kohlhauf, J., Fuchs, K. J., Weber, A., et al. (2015). The role of chitin, chitinases, and chitinase-like proteins in pediatric lung diseases. *Mol. Cell. Pediatr.* 2:3. doi: 10.1186/s40348-015-0014-6
- Manjula, K., and Podile, A. R. (2005). Production of fungal cell wall degrading enzymes by a biocontrol strain of *Bacillus subtilis* AF 1. *Indian J. Exp. Biol.* 43, 892–896.
- Margulis, L., Jorgensen, J. Z., Dolan, S., Kolchinsky, R., Rainey, F. A., and Lo, S.-C. (1998). The *Arthromitus* stage of *Bacillus cereus*: intestinal symbionts of animals. *Proc. Natl. Acad. Sci. U.S.A.* 95, 1236–1241. doi: 10.1073/pnas.95.3.1236
- Marsella, R., and Saridomichelakis, M. N. (2010). Environmental and oral challenge with storage mites in beagles experimentally sensitized to *Dermatophagoides farinae*. *Vet. Dermatol.* 21, 106–112. doi: 10.1111/j.1365-3164.2009.00859.x
- Martinez, J. P., Falomir, M. P., and Gozalbo, D. (2014). “Chitin: a structural biopolysaccharide with multiple applications,” in *eLS* (John Wiley & Sons, Ltd.). doi: 10.1002/9780470015902.a0000694.pub3
- McCall, C., Hunter, S., Stedman, K., Weber, E., Hillier, A., Bozic, C., et al. (2001). Characterization and cloning of a major high molecular weight house dust mite allergen (Der f 15) for dogs. *Vet. Immunol. Immunopathol.* 78, 231–247. doi: 10.1016/S0165-2427(00)00258-0
- Mercado, D., Boluda, L., Caraballo, L., and Fernandez-Caldas, E. (2003). Identification of ubiquitin as a low molecular weight allergen of *Blomia tropicalis* (Bt). *J. Allergy Clin. Immunol.* 111, S326. doi: 10.1016/S0091-6749(03)81188-0
- Moriyama, K., Tsuzuki, H., and Oka, T. (1968). Comparison of the specificities of various neutral proteinases from microorganisms. *Arch. Biochem. Biophys.* 123, 572–588. doi: 10.1016/0003-9861(68)90179-3
- Muhsin, T. M., and Hadi, R. B. (2002). Degradation of keratin substrates by fungi isolated from sewage sludge. *Mycopathologia* 154, 185–189. doi: 10.1023/A:1016335623534
- Nagele, A., Reboux, G., Scherer, E., Roussel, S., and Millon, L. (2013). Fungal food choices of *Dermatophagoides farinae* affect indoor fungi selection and dispersal. *Int. J. Environ. Health Res.* 23, 91–95. doi: 10.1080/09603123.2012.699029
- Nicholson, J. K., Holmes, E., Kinross, J., Burcelin, R., Gibson, G., Jia, W., et al. (2012). Host-gut microbiota metabolic interactions. *Science* 336, 1262–1267. doi: 10.1126/science.1223813
- O'Connor, B. M. (1979). “Evolutionary origins of astigmatid mites inhabiting stored products,” in *Recent Advances in Acarology, Vol. 1, Proceedings of the V International Congress of Acarology, held August 6-12, 1978 at Michigan State University, East Lansing, Michigan*, ed G. J. Rodriguez (New York, NY; San Francisco, CA; London: Academic Press), 273–278.
- O'Connor, B. M. (1982). Evolutionary ecology of astigmatid mites. *Annu. Rev. Entomol.* 27, 385–409. doi: 10.1146/annurev.en.27.010182.002125
- O'Connor, B. M. (1984). “Acarine-fungal relationships: the evolution of symbiotic associations,” in *Fungus-Insect Relationships: Perspectives in Ecology and Evolution*, ed Q. Wheeler and M. Blackwell (New York, NY; Guildford: Columbia University Press), 354–381.
- Oliwa-Stasiak, K., Molnar, C. I., Arshak, K., Bartoszcze, M., and Adley, C. C. (2010). Development of a PCR assay for identification of the *Bacillus cereus* group species. *J. Appl. Microbiol.* 108, 266–273. doi: 10.1111/j.1365-2672.2009.04419.x
- Ortego, F., Sanchez-Ramos, I., Ruiz, M., and Castanera, P. (2000). Characterization of proteases from a stored product mite, *Tyrophagus putrescentiae*. *Arch. Insect Biochem. Physiol.* 43, 116–124. doi: 10.1002/(SICI)1520-6327(200003)
- Park, J. W., Ko, S. H., Yong, T.-S., Ree, H.-I., Jeoung, B.-J., and Hong, C.-S. (1999). Cross-reactivity of *Tyrophagus putrescentiae* with *Dermatophagoides farinae* and *Dermatophagoides pteronyssinus* in urban areas. *Ann. Allergy Asthma Immunol.* 83, 533–539. doi: 10.1016/S1081-1206(10)62865-7
- Platts-Mills, T. A. E., and Woodfolk, J. A. (2011). Allergens and their role in the allergic immune response. *Immunol. Rev.* 242, 51–68. doi: 10.1111/j.1600-065X.2011.01021.x
- Podile, A. R., and Prakash, A. P. (1996). Lysis and biological control of *Aspergillus niger* by *Bacillus subtilis* AF 1. *Can. J. Microbiol.* 42, 533–538. doi: 10.1139/m96-072
- Podile, A. R., Prasad, G. S., and Dube, H. C. (1985). *Bacillus subtilis* as antagonist to vascular wilt pathogens. *Curr. Sci.* 54, 864–865.
- Priest, F. G. (1977). Extracellular enzyme synthesis in genus *Bacillus*. *Bacteriol. Rev.* 41, 711–753.
- Ribeiro, N. F. F., Heath, C. H., Kierath, J., Rea, S., Duncan-Smith, M., and Wood, F. M. (2010). Burn wounds infected by contaminated water: case reports, review of the literature and recommendations for treatment. *Burns* 36, 9–22. doi: 10.1016/j.burns.2009.03.002
- Roelandt, T., Heughebaert, C., and Hachem, J.-P. (2008). Proteolytically active allergens cause barrier breakdown. *J. Invest. Dermatol.* 128, 1878–1880. doi: 10.1038/jid.2008.168
- Rybanska, D., Hubert, J., Markovic, M., and Erban, T. (2016). Dry dog food integrity and mite strain influence the density-dependent growth of the stored-product mite *Tyrophagus putrescentiae* (Acari: Acaridida). *J. Econ. Entomol.* 109, 454–460. doi: 10.1093/jee/tov298
- Saleh, S. M., Kelada, N. L., and Shaker, N. (1991). Control of European house dust mite *Dermatophagoides pteronyssinus* (Trouessart) with *Bacillus* spp. *Acarologia* 32, 257–260.
- Saridomichelakis, M. N., Marsella, R., Lee, K. W., Esch, R. E., Farmaki, R., and Koutinas, A. F. (2008). Assessment of cross-reactivity among five species of house dust and storage mites. *Vet. Dermatol.* 19, 67–76. doi: 10.1111/j.1365-3164.2008.00654.x
- Sidenius, K. E., Hallas, T. E., Stenderup, J., Poulsen, L. K., and Mosbech, H. (2002). Decay of house-dust mite allergen Der f 1 at indoor climatic conditions. *Ann. Allergy Asthma Immunol.* 89, 34–37. doi: 10.1016/S1081-1206(10)61908-4
- Sidler, W., Niederer, E., Suter, F., and Zuber, H. (1986). The primary structure of *Bacillus cereus* neutral proteinase and comparison with thermolysin and *Bacillus subtilis* neutral proteinase. *Biol. Chem. Hoppe-Seyler* 367, 643–657. doi: 10.1515/bchm3.1986.367.2.643
- Sinha, R. N. (1966). Feeding and reproduction of some stored-product mites on seed-borne fungi. *J. Econ. Entomol.* 59, 1227–1232.
- Smrz, J. (2003). Microanatomical and biological aspects of bacterial associations in *Tyrophagus putrescentiae* (Acari: Acaridida). *Exp. Appl. Acarol.* 31, 105–113. doi: 10.1023/B:APPA.0000005111.05959.d6
- Smrz, J., and Catska, V. (1989). The effect of the consumption of some soil fungi on the internal microanatomy of the mite *Tyrophagus putrescentiae* (Schrank) (Acari, Acaridida). *Acta Univ. Carol. Biol.* 33, 81–93.
- Smrz, J., and Catska, V. (2010). Mycophagous mites and their internal associated bacteria cooperate to digest chitin in soil. *Symbiosis* 52, 33–40. doi: 10.1007/s13199-010-0099-6
- Smrz, J., and Jungova, E. (1989). The ecology of a field population of *Tyrophagus putrescentiae* (Acari, Acaridida). *Pedobiologia* 33, 183–192.
- Sobotnik, J., Alberti, G., Weyda, F., and Hubert, J. (2008a). Ultrastructure of the digestive tract in *Acarus siro* (Acari: Acaridida). *J. Morphol.* 269, 54–71. doi: 10.1002/jmor.10573
- Sobotnik, J., Kudlikova-Krizkova, I., Vancova, M., Munzbergova, Z., and Hubert, J. (2008b). Chitin in the peritrophic membrane of *Acarus siro* (Acari: Acaridida) as a target for novel acaricides. *J. Econ. Entomol.* 101, 1028–1033. doi: 10.1603/0022-0493(2008)101[1028:CITPMO]2.0.CO;2
- Stara, J., Erban, T., and Hubert, J. (2010). The effect of chitin metabolic effectors on the population increase of stored product mites. *Exp. Appl. Acarol.* 52, 155–167. doi: 10.1007/s10493-010-9352-1

- Staubach, F., Baines, J. F., Kunzel, S., Bik, E. M., and Petrov, D. A. (2013). Host species and environmental effects on bacterial communities associated with *Drosophila* in the laboratory and in the natural environment. *PLoS ONE* 8:e70749. doi: 10.1371/journal.pone.0070749
- Stenfors Arnesen, L. P., Fagerlund, A., and Granum, P. E. (2008). From soil to gut: *Bacillus cereus* and its food poisoning toxins. *FEMS Microbiol. Rev.* 32, 579–606. doi: 10.1111/j.1574-6976.2008.00112.x
- Stewart, G. A., Lake, F. R., and Thompson, P. J. (1991). Faecally derived hydrolytic enzymes from *Dermatophagoides pteronyssinus*: physicochemical characterisation of potential allergens. *Int. Arch. Allergy Appl. Immunol.* 95, 248–256. doi: 10.1159/000235437
- Swiecicka, I., and Mahillon, J. (2006). Diversity of commensal *Bacillus cereus* sensu lato isolated from the common sow bug (*Porcellio scaber*, Isopoda). *FEMS Microbiol. Ecol.* 56, 132–140. doi: 10.1111/j.1574-6941.2006.00063.x
- Tang, V. H., Chang, B. J., Srinivasan, A., Mathaba, L. T., Harnett, G. B., and Stewart, G. A. (2013). Skin-associated *Bacillus*, staphylococcal and micrococcal species from the house dust mite, *Dermatophagoides pteronyssinus* and bacteriolytic enzymes. *Exp. Appl. Acarol.* 61, 431–447. doi: 10.1007/s10493-013-9712-8
- Terra, W. R. (1990). Evolution of digestive systems of insects. *Annu. Rev. Entomol.* 35, 181–200. doi: 10.1146/annurev.en.35.010190.001145
- Terra, W. R. (2001). The origin and functions of the insect peritrophic membrane and peritrophic gel. *Arch. Insect Biochem. Physiol.* 47, 47–61. doi: 10.1002/arch.1036
- Thomas, W. R., Hales, B. J., and Smith, W.-A. (2010). House dust mite allergens in asthma and allergy. *Trends Mol. Med.* 16, 321–328. doi: 10.1016/j.molmed.2010.04.008
- Thompson, A. (2008). Ingredients: where pet food starts. *Top. Companion Anim. Med.* 23, 127–132. doi: 10.1053/j.tcam.2008.04.004
- Tovey, E. R., Chapman, M. D., and Platts-Mills, T. A. E. (1981). Mite faeces are a major source of house dust allergens. *Nature* 289, 592–593. doi: 10.1038/289592a0
- van Hage-Hamsten, M., and Johansson, E. (1998). Clinical and immunologic aspects of storage mite allergy. *Allergy* 53(Suppl. 48), 49–53. doi: 10.1111/j.1398-9995.1998.tb04997.x
- Vasantha, N., Thompson, L. D., Rhodes, C., Banner, C., Nagle, J., and Filpula, D. (1984). Genes for alkaline protease and neutral protease from *Bacillus amyloliquefaciens* contain a large open reading frame between the regions coding for signal sequence and mature protein. *J. Bacteriol.* 159, 811–819.
- Vilain, S., Luo, Y., Hildreth, M. B., and Brozel, V. S. (2006). Analysis of the life cycle of the soil saprophyte *Bacillus cereus* in liquid soil extract and in soil. *Appl. Environ. Microbiol.* 72, 4970–4977. doi: 10.1128/AEM.03076-05
- Wang, S.-Y., Moyne, A.-L., Thottappilly, G., Wu, S.-J., Locy, R. D., and Singh, N. K. (2001). Purification and characterization of a *Bacillus cereus* exochitinase. *Enzyme Microb. Technol.* 28, 492–498. doi: 10.1016/S0141-0229(00)00362-8
- Weber, E., Hunter, S., Stedman, K., Dreitz, S., Olivry, T., Hillier, A., et al. (2003). Identification, characterization, and cloning of a complementary DNA encoding a 60-kd house dust mite allergen (Der f 18) for human beings and dogs. *J. Allergy Clin. Immunol.* 112, 79–86. doi: 10.1067/mai.2003.1602
- Zhan, Z.-K., Ji, K.-M., Liu, X.-Y., Liu, Z.-G., Li, M., Chen, J.-J., et al. (2010). Monoclonal antibodies against recombinant Der f 3 reveal localization of Der f 3 in the gut and faecal pellets of *Dermatophagoides farinae*. *Exp. Appl. Acarol.* 52, 63–71. doi: 10.1007/s10493-010-9349-9

Conflict of Interest Statement: The authors declare that the research was conducted in the absence of any commercial or financial relationships that could be construed as a potential conflict of interest.

Copyright © 2016 Erban, Rybanska, Harant, Hortova and Hubert. This is an open-access article distributed under the terms of the Creative Commons Attribution License (CC BY). The use, distribution or reproduction in other forums is permitted, provided the original author(s) or licensor are credited and that the original publication in this journal is cited, in accordance with accepted academic practice. No use, distribution or reproduction is permitted which does not comply with these terms.